



Spatially Resolved Kinematics in the Central 1 kpc of a Compact Star-forming Galaxy at $z \sim 2.3$ from ALMA CO Observations

G. Barro^{1,2} , M. Kriek² , P. G. Pérez-González³, T. Diaz-Santos⁴ , S. H. Price⁵ , W. Rujopakarn^{6,7,8} , V. Pandya⁹,
D. C. Koo⁹ , S. M. Faber⁹, A. Dekel¹⁰ , J. R. Primack¹¹ , and D. D. Kocevski¹²

¹Department of Physics, University of the Pacific, 3601 Pacific Avenue, Stockton, CA 95211, USA

²Department of Astronomy, University of California Berkeley, 501 Campbell Hall #3411, Berkeley, CA, 94720-3411, USA

³Departamento de Astrofísica, Facultad de Ciencias Físicas, Universidad Complutense de Madrid, E-28040 Madrid, Spain

⁴Nucleo de Astronomía, Facultad de Ingeniería y Ciencias, Universidad Diego Portales, Santiago, Chile

⁵Max Planck Institute for Extraterrestrial Physics, Gießenbachstrasse 1, D-85741 Garching, Germany

⁶Department of Physics, Faculty of Science, Chulalongkorn University, 254 Phayathai Road, Pathumwan, Bangkok 10330, Thailand

⁷National Astronomical Research Institute of Thailand (Public Organization), Don Kaeo, Mae Rim, Chiang Mai 50180, Thailand

⁸Kavli Institute for the Physics and Mathematics of the Universe (WPI), The University of Tokyo Institutes for Advanced Study, The University of Tokyo, Kashiwa, Chiba 277-8583, Japan

⁹Department of Astronomy, University of California Santa Cruz, 1156 High Street, Santa Cruz, CA 95064, USA

¹⁰Racah Institute of Physics, The Hebrew University, Jerusalem 91904, Israel

¹¹Physics Department, Santa Cruz Institute for Particle Physics (SCIPP), University of California, Santa Cruz, 1156 High Street, Santa Cruz, CA 95064, USA

¹²Physics Department, Colby College, 5800 Mayflower Hill, Waterville, ME 04901, USA

Received 2017 October 6; revised 2017 November 29; accepted 2017 November 30; published 2017 December 19

Abstract

We present high spatial resolution (FWHM $\sim 0''.14$) observations of the CO(8–7) line in GDS-14876, a compact star-forming galaxy at $z = 2.3$ with a total stellar mass of $\log(M_*/M_\odot) = 10.9$. The spatially resolved velocity map of the inner $r \lesssim 1$ kpc reveals a continuous velocity gradient consistent with the kinematics of a rotating disk with $v_{\text{rot}}(r = 1 \text{ kpc}) = 163 \pm 5 \text{ km s}^{-1}$ and $v_{\text{rot}}/\sigma \sim 2.5$. The gas-to-stellar ratios estimated from CO(8–7) and the dust continuum emission span a broad range, $f_{\text{gas}}^{\text{CO}} = M_{\text{gas}}/M_* = 13\%–45\%$ and $f_{\text{gas}}^{\text{cont}} = 50\%–67\%$, but are nonetheless consistent given the uncertainties in the conversion factors. The dynamical modeling yields a dynamical mass of $\log(M_{\text{dyn}}/M_\odot) = 10.58^{+0.5}_{-0.2}$, which is lower, but still consistent with the baryonic mass, $\log(M_{\text{bar}} = M_* + M_{\text{gas}}^{\text{CO}}/M_\odot) = 11.0$, if the smallest CO-based gas fraction is assumed. Despite a low, overall gas fraction, the small physical extent of the dense, star-forming gas probed by CO(8–7), $\sim 3\times$ smaller than the stellar size, implies a strong relative concentration that increases the gas fraction up to $f_{\text{gas}}^{\text{CO}, 1 \text{ kpc}} \sim 85\%$ in the central 1 kpc. Such a gas-rich center, coupled with a high star formation rate (SFR) $\sim 500 M_\odot \text{ yr}^{-1}$, suggests that GDS-14876 is quickly assembling a dense stellar component (*bulge*) in a strong nuclear starburst. Assuming its gas reservoir is depleted without replenishment, GDS-14876 will quickly ($t_{\text{depl}} \sim 27 \text{ Myr}$) become a compact quiescent galaxy that could retain some fraction of the observed rotational support.

Key words: galaxies: high-redshift – galaxies: photometry

1. Introduction

Compact star-forming galaxies (SFGs) are frequently referred to as a population of massive, strongly SFGs at $z \gtrsim 2$, whose small sizes and high stellar-mass concentrations (e.g., Wuyts et al. 2011; Barro et al. 2013) closely resemble those of typical quiescent galaxies of the same mass and redshift (e.g., Daddi et al. 2005; Trujillo et al. 2007). These galaxies have been identified in sizable numbers and their properties: small stellar sizes, steep radial mass profiles, and obscured star formation rate (SFR) properties have all been confirmed by multiple studies (e.g., Barro et al. 2014a; van Dokkum et al. 2015). Moreover, NIR spectroscopic follow-up has allowed a characterization of the kinematic and dynamical properties of their ionized gas from the analysis of rest-frame optical emission lines (e.g., Barro et al. 2014b; van Dokkum et al. 2015; Nelson et al. 2016). These initial results revealed high integrated velocity dispersions ($\sigma \gtrsim 200 \text{ km s}^{-1}$) and large dynamical masses, roughly consistent with their stellar masses, which imply relatively low gas (and dark matter) fractions and short depletion times. All of this evidence is consistent with the evolutionary picture in which compact SFGs are in a short-lived starburst phase, triggered by a

dissipative event, which leads to the rapid formation of a compact core and subsequent quenching into a compact quiescent galaxy (e.g.; Wellons et al. 2015; Zolotov et al. 2015).

Nonetheless, tension with the dynamical constraints emerged when further spectroscopic follow-up of compact SFGs revealed that at least 20% have dynamical masses that are up to $10\times$ lower than their stellar masses (van Dokkum et al. 2015). The most likely explanation for such large discrepancies are the uncertainties on the dynamical modeling assumptions. For example, the line of sight inclination, the ratio between ordered and random motions of the gas (i.e., the amount of rotational support, v_{rot}/σ), the extent of gas profile relative to the stellar-mass distribution, or the aperture corrections to scale the measurements within the slit to either galaxy-wide or effective ($r = r_e$) values can all contribute to the observed difference (e.g., van Dokkum et al. 2015; Price et al. 2016).

A way to reduce these uncertainties is obtaining emission line velocity maps with similar or better spatial resolution than the stellar-mass maps derived from *Hubble Space Telescope* (HST) data (e.g., Wuyts et al. 2012). These resolved maps can trace the kinematic properties of the gas and allow a more precise dynamical modeling by comparing the gas and

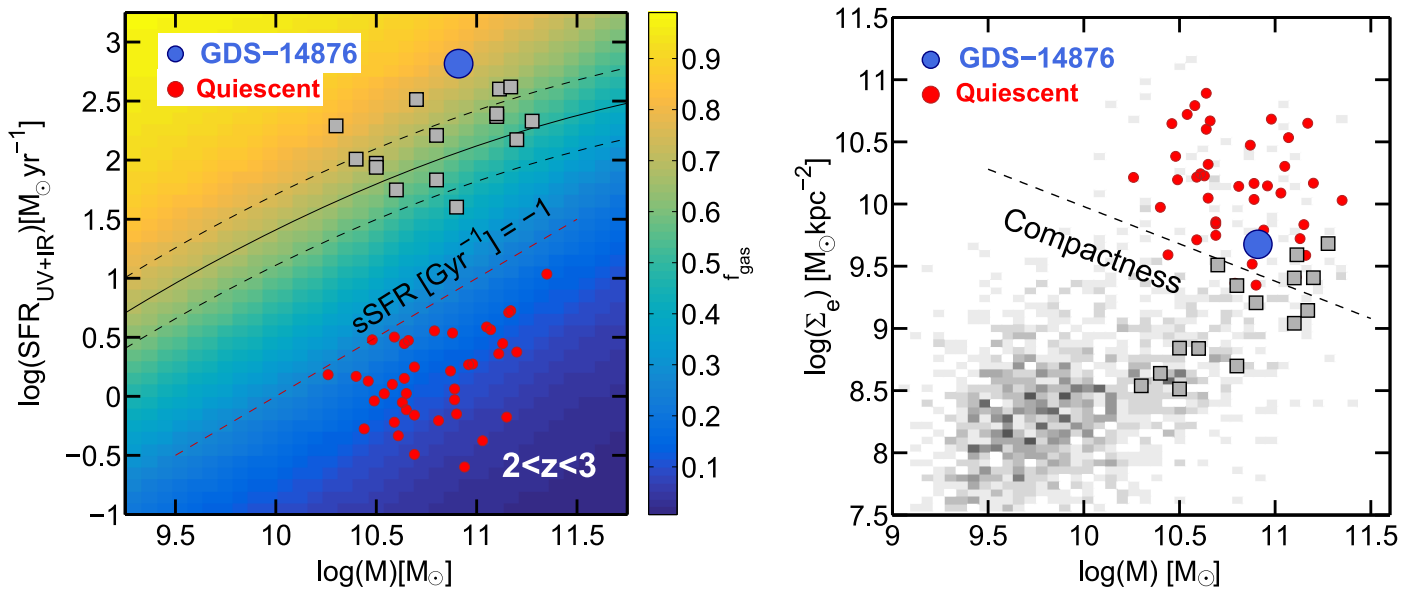


Figure 1. Left: logarithm of SFR vs. stellar mass for GDS-14876 (blue circle) and other massive SFGs at $z \sim 2$ (gray squares) observed with ALMA and *HST*, drawn from Spilker et al. (2016), Rujopakarn et al. (2016), and Popping et al. (2017). The black lines show the locus and $\times 5$ limits (solid and dashed) of the SFR sequence at $z = 2.25$ from Whitaker et al. (2014). The background is colored by the predicted gas fraction determined from the empirical prediction of Genzel et al. (2015). GDS-14876 lies above the SFR sequence and is expected to have a large $f_{\text{gas}} \sim 80\%$. The red line and circles show the location of the quiescent population at the same redshift, selected by low $s\text{SFR} < -1 \text{ Gyr}^{-1}$. Right: logarithm of the effective mass surface density vs. stellar mass for galaxies in CANDELS-GDS at $z \sim 2$ (grayscale) and all galaxies from the left panel. The dashed line indicates the *compactness* selection criterion of Barro et al. (2017).

stellar-mass profiles at a similar scale. The high spatial resolution of submillimeter spectroscopy with Atacama Large Millimeter/submillimeter Array (ALMA) and the Karl G. Jansky Very Large Array (VLA) are a perfect match for this analysis. Submillimeter observations are insensitive to the dust obscuration that heavily attenuates optical emission lines and provide not only resolved kinematics from CO and carbon lines (e.g., Popping et al. 2017; Tadaki et al. 2017), but also far-IR continuum detections to characterize the SFR and the baryonic content (i.e., gas and stars) of the galaxies (e.g., Rujopakarn et al. 2016; Scoville et al. 2016).

This work presents CO $J = 8-7$ line and submillimeter continuum observations of a compact SFG at $z = 2.3$ using ALMA. From the joint analysis of the high spatial resolution *HST*/ACS, *HST*/WFC3, and ALMA continuum and CO line imaging, we simultaneously characterize the spatial distribution and kinematics of the molecular gas. Throughout this Letter, we quote magnitudes in the AB system, assume a Chabrier (2003) initial mass function, and adopt the following cosmological parameters: $(\Omega_M, \Omega_\Lambda, h) = (0.3, 0.7, 0.7)$.

2. Target Selection and Observations

The galaxy analyzed in this Letter is drawn from the compact SFGs sample in the CANDELS (Grogin et al. 2011) GOODS-S region presented in Barro et al. (2014a, 2016). The panels in Figure 1 summarize the selection criteria in SFR and *compactness*. Figure 2 shows the UV to near-IR spectral energy distribution (SED), which includes extensive multi-band data ranging from U to $8 \mu\text{m}$ (Guo et al. 2013). Furthermore, we include far-IR data from *Spitzer* MIPS (Pérez-González et al. 2008), *Herschel* PACS and SPIRE from the GOODS-Herschel survey (Elbaz et al. 2011), and VLA 21 and 5 cm maps (Kellermann et al. 2008; Rujopakarn et al. 2016). The stellar population properties are determined by fitting the optical and NIR SED using FAST (Kriek

et al. 2009), assuming Bruzual & Charlot (2003) stellar population synthesis models, an exponentially declining star formation history, and the Calzetti et al. (2000) dust law with attenuation $0 < A_V < 4$, yielding $\log(M_*/M_\odot) = 10.9$. The SFR was determined in Barro et al. (2016) from a combination of rest-frame UV and IR SFR indicators and modeling the far-IR emission with dust-emission templates, yielding $\log(\text{SFR}/M_\odot \text{y}^{-1}) = 2.7$.

The submillimeter observations of GDS-14876 were taken as part of an ALMA cycle-3 campaign (ID: 2015.1.00907.S; PI: G. Barro) to study CO emission lines in compact SFGs at $z = 2-3$. The observations were conducted on 2016 September 17 in band 7 using four spectral windows in the largest bandwidth mode. The on-source integration time was 51 minutes in an extended array configuration, C39-7 (the shortest and longest baselines were 15.1 m and 3.1 km, respectively). The water vapor during the observations was $\text{PWV} = 0.5 \text{ mm}$. Flux, phase, and bandpass calibrators were also obtained, for a total time of $\sim 2 \text{ hr}$. All the correlators were set to a bandwidth of 1.875 GHz covering 128 channels. The reference spectral window (spw0) was centered at 278.57 GHz to target the CO(8-7) emission line, assuming the redshift derived from optical lines ($z = 2.309$). The other spectral windows were centered at 276.91, 288.91, and 290.91 GHz. These spectral windows were used to observe the band 7 continuum of the target.

We use the CASA software (McMullin et al. 2007) to process and clean the data. We use the `tclean` task with natural weighting for the uv visibility plane. This resulted in a synthetic beam size with an average angular resolution of $\text{FWHM} = 0''.14 \times 0''.12$ ($1.15 \times 0.98 \text{ kpc}$), with a major-axis position angle (PA) of 70° . The rms noise of the observations is 0.19 mJy/beam for the CO(8-7) line, measured in 20 km s^{-1} channel bins, and $\sigma = 28 \mu\text{Jy/beam}$ or 1.5 mJy/arcsec^2 for the continuum, measured on the clean continuum maps excluding the frequency range of the CO line.

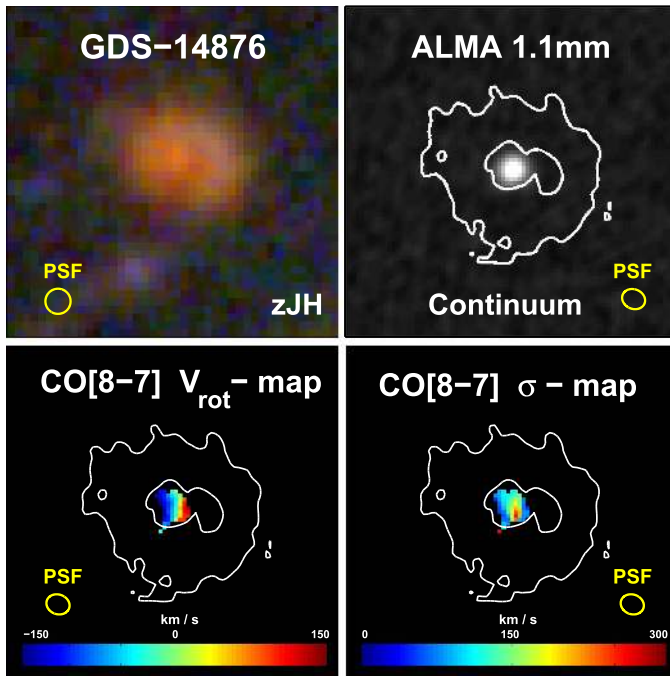


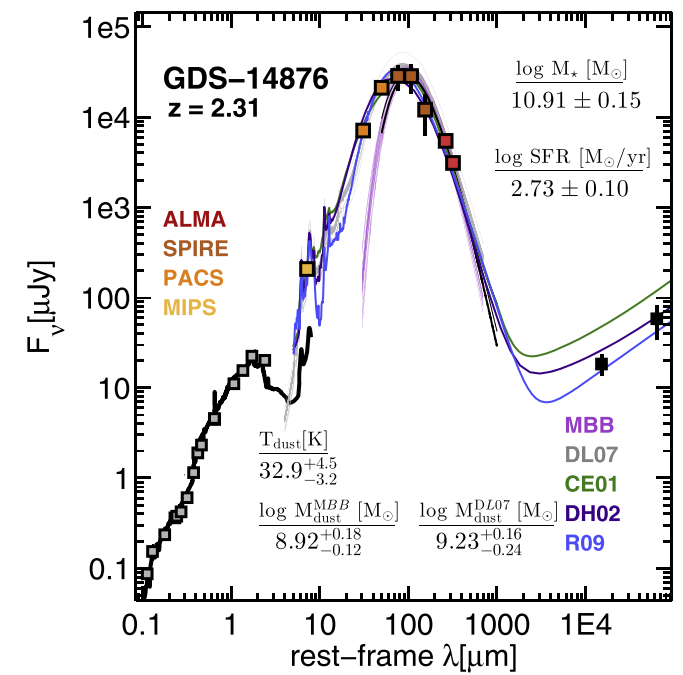
Figure 2. Left: from top to bottom, $2''.5 \times 2''.5$ (20×20 kpc) images of GDS-14876 in WFC3/F160W and ALMA 870 μm , and CO(8–7) rotation velocity and dispersion maps at the same physical scale (with the F160W contours shown in white). Right: UV-to-FIR SED of GDS-14876. The black line shows the best-fit BC03 stellar population model for the photometry up to 8 μm rest-frame (gray squares). The orange-to-red and black squares show the mid-to-far-IR photometry and radio data. The green, purple, and blue lines show the best-fit dust-emission models from the libraries of Chary & Elbaz (2001), Dale & Helou (2002), and Rieke et al. (2009). The gray and pink regions depict 300 models drawn from the posterior probability distribution of the fit to the Draine & Li (2007) models and to an MBB model, respectively. The median values and confidence intervals for M_{dust} and T_{dust} are indicated.

3. Structural Properties

Figure 2 shows the WFC3/ACS color-composite image of the galaxy as well as the ALMA 1.1 mm continuum emission and CO(8–7) velocity maps. We measure the structural properties of GDS-14876 in the F160W image, which at $z = 2.3$ traces the rest-frame optical emission, using GALFIT (Peng et al. 2010) assuming a single two-dimensional Sérsic profile. We obtain size and Sérsic index values of $r_e = 2.3 \pm 0.1$ kpc and $n = 0.6$. The total (99%) isophotal size is $r_{\text{tot}} = 8.25 \pm 0.04$ kpc (outer white contours in Figure 2).

Following Barro et al. (2016), we use GALFIT and the synthetic point-spread function of the ALMA beam to compute the size and Sérsic index of the continuum emission, obtaining values of $r_e = 0.74 \pm 0.04$ kpc, $n = 1.6$. To measure the structural properties of the CO emission line region, we subtract the continuum flux from the image using CASA’s `uvsubcont` task and then collapse the resulting data cube in velocity space using a $\pm 250 \text{ km s}^{-1}$ bin around the central wavelength of the CO[8–7] line. Finally, we run GALFIT on the resulting image, obtaining values of $r_e = 0.67 \pm 0.05$ kpc and $n = 0.9$.

Both the continuum and emission line sizes are $\sim 3\times$ smaller than the rest-frame optical size (Figure 2). This is consistent with previous results based on dust continuum measurements (e.g., Tadaki et al. 2015; Barro et al. 2016; Rujopakarn et al. 2016), which suggest that the compact CO and far-IR emission trace a strong nuclear starburst. This compact burst contrasts with the typical inside-growth of SFGs in which gas profiles are more extended than the stellar distribution (e.g., Nelson et al. 2016). We note, however, that given the high-order CO transition, it is possible that ALMA only detects the



region where $J = 8-7$ can be excited, i.e., a dense and strongly ionized region in the center.

4. Dust and Gas Masses

4.1. Continuum-based Measurement

We fit the mid-to-FIR SED using different libraries of dust-emission templates (e.g., Chary & Elbaz 2001; Dale & Helou 2002) to estimate the total IR luminosity and SFR (see Figure 2). In addition, we fit to the models by Draine & Li (2007, DL07) and to a set of modified blackbody models (MBBs; e.g., Casey et al. 2012) to estimate the dust temperature and dust mass of the galaxy. The best-fit models and the corresponding confidence intervals are computed by exploring the parameter space using the Python Markov Chain Monte Carlo package `emcee` (Foreman-Mackey et al. 2013). The MBB fit assumes an average dust emissivity of $\kappa = 1 \text{ cm}^2 \text{ g}^{-1}$ at 850 μm (e.g., Dunne et al. 2003; Scoville et al. 2016) and a range of $\beta = 1.5-2.5$. Both estimates of the dust mass are roughly consistent within the errors. The DL07 models yield a value of $\log(M_{\text{dust}}^{\text{DL07}}/M_{\odot}) = 9.2 \pm 0.3$, while the MBB models with best-fit values $\beta \sim 1.5$ and $T = 33 \text{ K}$ provide a slightly lower value of $\log(M_{\text{dust}}^{\text{MBB}}/M_{\odot}) = 8.9 \pm 0.2$. Based on these M_{dust} values, we estimate the molecular gas content using the gas-to-dust ratio by assuming $\delta_{\text{GDR}} M_{\text{dust}} = M_{\text{H}_2} + M_{\text{H}_1} \sim M_{\text{H}_2}$. The value of δ_{GDR} depends primarily on the metallicity of the galaxy (e.g., Sandstrom et al. 2013). Here, we assume the typical value for solar metallicity, $\delta_{\text{GDR}} \sim 100$. This leads to gas masses of $\log(M_{\text{gas}}^{\text{DL07}}/M_{\odot}) = 11.2 \pm 0.3$ and $\log(M_{\text{gas}}^{\text{MBB}}/M_{\odot}) = 10.9 \pm$

0.2 dex. Lower values of the metallicity would yield larger gas masses.

4.2. CO-based Measurement

We estimate the gas mass from the CO(8–7) line luminosity using

$$L'_{\text{CO}}[\text{K km s}^{-1} \text{ pc}^2] = 3.25 \times 10^7 (S_{\text{CO}} \Delta v) \frac{D_L^2}{(1+z)^3 \nu_{\text{obs}}^2}, \quad (1)$$

where $S_{\text{CO}} \Delta v$ is the line flux and D_L is the luminosity distance. We obtain $\log L'_{\text{CO},8-7} = 9.65 \pm 0.17$ dex. From L'_{CO} , we estimate the total mass of molecular hydrogen as $\log(M_{\text{gas}}/M_{\odot}) = \log(\alpha_{\text{CO}} L'_{\text{CO},J}/R_{J,1})$, where $R_{J,1} = [S_J/S(1-0)]/J^2$ is the conversion factor to correct for the lower Rayleigh–Jeans brightness temperature of the $J = 8-7$ transition relative to 1–0, and α_{CO} is the CO-to-H₂ conversion factor. For the $J = 8-7$ transition the conversion factor is relatively unconstrained, e.g., $R_{8,1} = 0.9$ (Bradford et al. 2009), $R_{8,1} = 0.01-0.4$ (Danielson et al. 2013; Kamenetzky et al. 2016). Here, we adopt a conservative value of $R_{8,1} = 0.30 \pm 0.20$, where the more sub-thermally excited the gas is ($R_{8,1} \ll 1$), or the lower the interstellar medium (ISM) density is, the higher the gas mass (see, e.g., Daddi et al. 2015). The value of α_{CO} also depends on the physical conditions of the ISM. Adopting $\alpha_{\text{CO}} = 0.8 M_{\odot} (\text{K km s}^{-1} \text{ pc}^2)^{-1}$, the typical value for nearby ultra-luminous infrared galaxies and SMGs (e.g., Tacconi et al. 2008), we obtain $\log(M_{\text{gas}}^{\text{SMG}}/M_{\odot}) = 10.08^{+0.30}_{-0.18}$ dex. If we use the larger Milky Way CO-to-H₂ conversion, $\alpha_{\text{CO}} = 4.3 M_{\odot} (\text{K km s}^{-1} \text{ pc}^2)^{-1}$, the resulting gas mass is $\log(M_{\text{gas}}^{\text{MW}}/M_{\odot}) = 10.81^{+0.30}_{-0.18}$ dex.

In summary, different indicators yield values of the dense, star-forming gas mass that may differ up to ~ 1 dex; nonetheless, given the wide range of modeling assumptions and uncertainties in the conversion factors, these values are still consistent. In Section 6, we discuss which of these estimates are more consistent with the dynamical constraints. The estimates based on the CO line provide a lower limit and imply gas fractions of $f_{\text{gas}}^{\text{CO}} \sim 13^{+10}_{-4}\%$ to $45^{+17}_{-10}\%$ for the SMG and MW gas-to-mass conversions, respectively. The dust-continuum-based values computed with either the MBB or DL07 models yield higher gas fractions of $f_{\text{gas}}^{\text{cont}} = 50 \pm 11\%$ to $67 \pm 15\%$, respectively.

Note that these fractions refer to the total, integrated masses. The spatially resolved gas-to-stellar ratio within the region detected in CO ($r \lesssim 1$ kpc) is much larger, even for the relatively modest CO-based gas masses, $f_{\text{gas}}^{\text{CO},1 \text{ kpc}} = 85\%$. This value indicates that GDS-14876 has a gas-rich nuclear region that fuels the similarly compact starburst detected in the dust continuum emission. Assuming no replenishment, the depletion time of this burst is very short: $t_{\text{depl}} = \text{SFR}/M_{\text{gas}}^{\text{CO,SMG}} = 27 \pm 12$ Myr.

5. Kinematics and Dynamical Modeling

5.1. [O III] Kinematics

GDS-14876 was observed using the NIR multi-object spectrograph MOSFIRE (McLean et al. 2010) on Keck-I. A full description of the observations and data reduction is presented in Barro et al. (2014b). The spectrum yields a clear ($>5\sigma$) detection

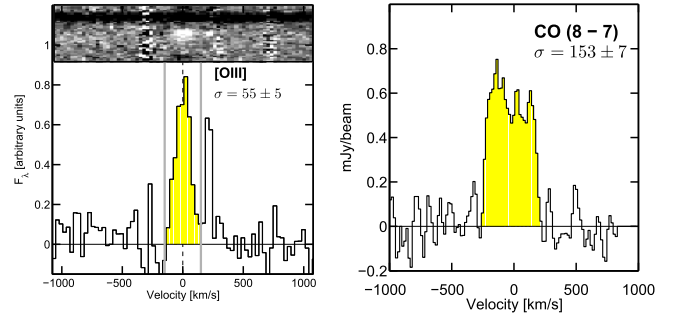


Figure 3. Left: MOSFIRE H-band spectra of GDS-14876 showing the 2D and collapsed 1D profile of the [O III] emission line. The gray lines indicate $\pm 150 \text{ km s}^{-1}$ for reference. Right: continuum-subtracted spectral profile of the CO(8–7) line extracted from the ALMA image using a $0''.3$ diameter circular aperture. At face value, the dispersion of the CO line, measured from a single Gaussian fitting, is $\sim 3\times$ larger than that of the optical [O III] line.

of the [O III] 5007 Å line (left panel of Figure 3), while the H β line is undetected ([O III]/H $\beta \gtrsim 0.8$). The [O III] profile is relatively narrow with a $\sigma = 55 \pm 5 \text{ km s}^{-1}$.

5.2. CO Kinematics

Figure 4 shows the observed rotation velocity and dispersion fields for GDS-14876 obtained by fitting the CO emission line at every spaxel with a single Gaussian. The velocity field reveals a continuous shear and a central dispersion peak that are consistent with the kinematics of a rotating disk. Assuming that the gas is gravitationally bound in a disk, we model the observed kinematic profile to characterize the dynamical properties of the galaxy.

First, we measure the integrated dispersion of the galaxy by fitting a single Gaussian to the spectrum extracted with a $0''.3$ diameter circular aperture. The integrated $\sigma = 153 \pm 7 \text{ km s}^{-1}$ (right panel of Figure 3) is almost $3\times$ larger than the dispersion inferred from [O III]. Such a large difference could indicate that the ionized and neutral gas trace distinct physical regions (e.g., if [O III] traces a relatively unobscured, coronal layer of the star-forming region). The misalignment of the MOSFIRE slit relative to the kinematic major axis (magenta versus white slit in the leftmost panel of Figure 4) can also lower the dispersion. However, the line width measured on a CO spectrum extracted along the MOSFIRE slit PA after convolving the ALMA cube to an FWHM = $0''.7$ resolution still yields a much larger $\sigma \gtrsim 100 \text{ km s}^{-1}$ and suggests that this effect is only minor.

Next, we analyze the spatially resolved velocity field using a forward dynamical modeling procedure that fits the velocity profiles in observed space. The 1D spectra are extracted along the kinematic major axis using circular apertures with a diameter equal to the FWHM of the observations. The dynamical model assumes that the ionized gas is rotating in a thin disk and that the disk density profile can be described by a Freeman model (Freeman 1970). We account for the effects of pressure support by lowering the rotation velocity following Wuyts et al. (2016 and references therein). The fit includes the effects of beam smearing (FWHM = $0''.14 \times 0''.12$) and the line of sight inclination. We estimate the latter from the optical axis-ratio, $q = 0.82$, following the method of van Dokkum et al. (2015), and we obtain $i = 62^{+8}_{-15}$.

The three free parameters of the dynamical fit are: the total dynamical mass and effective radius of the disk, M_{dyn} and $r_{\text{e}}^{\text{dyn}}$, and the intrinsic dispersion floor, σ_0 , measured at large radii.

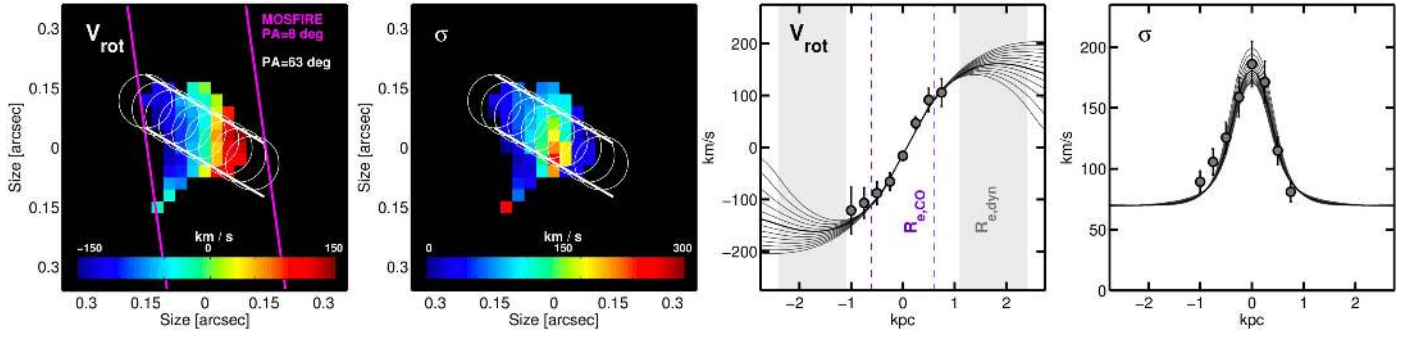


Figure 4. Left: moment maps of the central region of GDS-14876 showing the projected CO velocity field and velocity dispersion where $S/N \geq 3$. The white circles marking the extracted pseudo-slit using apertures with the FWHM of the minimum resolution element. The magenta lines illustrate the orientation of the slit in the MOSFIRE [O III] observations, which is misaligned with the CO kinematic major axis by $\sim 50^\circ$. Right: observed (gray circles) and best-fit models (black line and 1σ gray) for the rotation velocity and velocity dispersion profiles along the kinematic major axis. The dynamical modeling of the kinematic maps is consistent with a rotating disk of gas. The dashed lines and gray regions indicate the CO effective radius and the 1σ confidence for r_e^{dyn} .

Figure 4 shows the observed rotation and dispersion measurements, extracted along a pseudo-slit, compared to the best-fit model. The best-fit values of M_{dyn} and r_e^{dyn} exhibit a positive correlation with 1σ confidence regions of $r_e^{\text{dyn}} = 1.7^{+0.5}_{-0.4}$ kpc and $\log(M_{\text{dyn}}/M_\odot) = 10.58^{+0.52}_{-0.20}$, where the largest radius corresponds to the largest mass. Note that the inner 1 kpc is very well constrained by the models. However, the turnover radius is only loosely constrained because the CO tracer (magenta) probes a smaller region than the confidence interval for r_e^{dyn} (gray region).

The best-fit model also yields an intrinsic $\sigma_0 = 73 \pm 8$ km s^{-1} and a rotation velocity at $r = 1$ kpc of $v_{\text{rot}} \sin i = 163 \pm 5$ km s^{-1} . The dispersion value is slightly higher but consistent with the typical range observed in massive SFGs at $z \sim 2$ (e.g., Wisnioski et al. 2015; Price et al. 2016; Tadaki et al. 2017). The $v_{\text{rot}}/\sigma_0 \sim 2.5$ also indicates that the disk is rotation dominated.

6. Discussion

Figure 5 compares the baryonic (assuming $M_{\text{gas}} = 0$, i.e., $M_{\text{bar}} = M_*$) and dynamical masses for a sample of massive, compact SFGs and quiescent galaxies at $z \gtrsim 2$ from the literature. Most galaxies exhibit a relatively good agreement within the usual ~ 0.3 dex scatter (dashed line). However, there is a group of compact SFG outliers with low M_{dyn} and $M_{\text{dyn}}/M_{\text{bar}} \ll 1$. These outliers, found by van Dokkum et al. (2015), have small integrated dispersions in their optical emission lines, which leads to small dynamical masses, $M_{\text{dyn}} \propto \sigma^2 r_e$. GDS-14876 exhibits a similar issue, i.e., the dynamical mass computed using $\sigma(\text{[O III]}) = 55$ km s^{-1} is almost $10\times$ smaller than its baryonic mass (empty star) even for the smallest fraction of dense, star-forming gas, $f_{\text{gas}}^{\text{CO}} \sim 13\%$.

The M_{dyn} value inferred from the dynamical modeling of the CO emission line provides a better agreement between total M_{dyn} and M_{bar} , although the latter is still in the unphysical region (filled star). As discussed in the previous section, this tension decreases for larger values of the r_e^{dyn} (or the line of sight inclination), which could be better constrained by probing further out into the rotation curve, possibly by observing lower-order CO transitions that are sensitive to colder and potentially more extended neutral gas. Nevertheless, the comparison between total M_{dyn} and M_{bar} suggests that the galaxy is strongly baryon dominated, and the small consistency margin

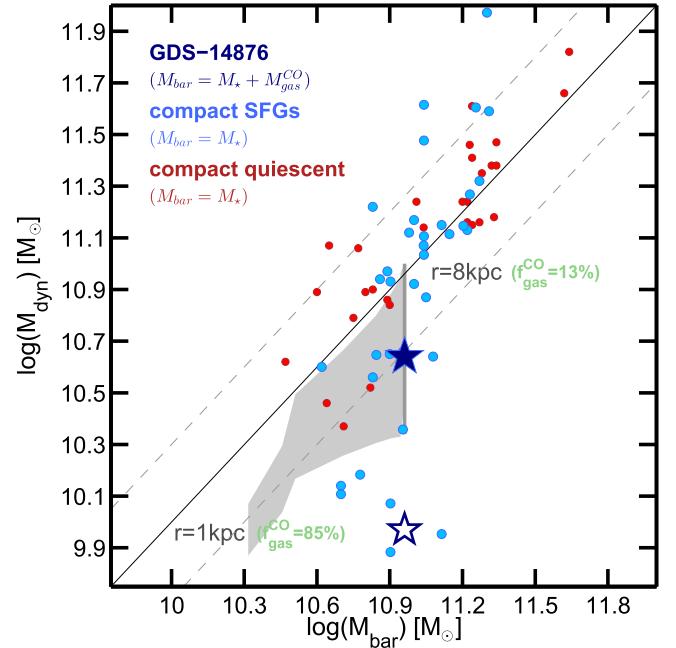


Figure 5. Comparison between the dynamical and stellar masses for GDS-14876 and other samples of compact SFGs (blue) and quiescent (red) galaxies from Barro et al. (2014b), van Dokkum et al. (2015), van de Sande et al. (2013), and Belli et al. (2014). The blue stars show M_{dyn} for GDS-14876 as computed from the CO (filled) and [O III] (empty) lines. The gray shaded area depicts the confidence region of the comparison between cumulative M_{dyn} and M_* with increasing radii from $r = 1$ kpc to $r = 8$ kpc (i.e., total mass). The CO-based gas fraction at both ends is indicated. M_{dyn} and M_{bar} are consistent within the confidence range, although the latter lies predominantly in the unphysical region, $M_{\text{bar}} > M_{\text{dyn}}$.

between the two masses favors the lowest CO-based gas fraction to avoid strongly unphysical results with $M_{\text{dyn}}/M_{\text{bar}} \ll 1$. A low overall gas fraction also agrees with similarly low values reported in recent studies of compact SFGs (Tadaki et al. 2015; Spilker et al. 2016; Popping et al. 2017) and leaves little room for a colder and more extended gas component that might be undetected by the high-order CO(8–7) emission.

The spatially resolved evolution of the $M_{\text{dyn}}/M_*(r \leq R)$ ratio from $R = 1$ kpc to $R = 8$ kpc exhibits a similar result. The shaded gray region in Figure 5 shows that the tension with M_{dyn} increases toward the central region, where the stronger concentration of star-forming gas relative to stars ($\sim 3\times$ smaller size) increases the

gas fraction to $f_{\text{gas}}^{\text{CO,1 kpc}} \sim 85\%$. Note, however, that while the dynamical model is better constrained in the center (narrower gray region) the stellar mass within 1 kpc is likely more uncertain because the large central obscuration and limited spatial resolution can both bias the SED-fitting-based stellar-mass estimate, particularly for such a small, compact galaxy.

In summary, the emerging picture from the CO and dust-continuum-based measurements suggests that GDS-14876 is having a compact and likely short-lived nuclear starburst that could lead to the rapid formation of a compact quiescent galaxy. A relevant prediction of the kinematic modeling is that such a quiescent descendant could preserve some of the observed rotational support, as already hinted at by recent observations (e.g., Newman et al. 2015; Toft et al. 2017).

G.B. and M.K. acknowledge support from HST-AR-12847 and HST-AR-14552. P.G.P.-G. acknowledge support from grants AYA2015-63650-P and AYA2015-70815-ERC. W.R. is supported by JSPS KAKENHI grant number JP15K17604 and the Thailand Research Fund/Office of the Higher Education Commission grant number MRG6080294. This Letter makes use of the following ALMA data: ADS/JAO.ALMA#2015.1.00907.S. ALMA is a partnership of ESO (representing its member states), NSF (USA) and NINS (Japan), together with NRC (Canada), NSC and ASIAA (Taiwan), and KASI (Republic of Korea), in cooperation with the Republic of Chile. The Joint ALMA Observatory is operated by ESO, AUI/NRAO and NAOJ. The National Radio Astronomy Observatory is a facility of the National Science Foundation operated under cooperative agreement by Associated Universities, Inc.

ORCID iDs

G. Barro  <https://orcid.org/0000-0001-6813-875X>
M. Kriek  <https://orcid.org/0000-0002-7613-9872>
T. Diaz-Santos  <https://orcid.org/0000-0003-0699-6083>
S. H. Price  <https://orcid.org/0000-0002-0108-4176>
W. Rujopakarn  <https://orcid.org/0000-0002-0303-499X>
D. C. Koo  <https://orcid.org/0000-0003-3385-6799>
A. Dekel  <https://orcid.org/0000-0003-4174-0374>
J. R. Primack  <https://orcid.org/0000-0001-5091-5098>

References

Barro, G., Faber, S. M., Koo, D. C., et al. 2017, *ApJ*, 840, 47
Barro, G., Faber, S. M., Pérez-González, P. G., et al. 2013, *ApJ*, 765, 104
Barro, G., Faber, S. M., Pérez-González, P. G., et al. 2014a, *ApJ*, 791, 52

Barro, G., Kriek, M., Pérez-González, P. G., et al. 2016, *ApJL*, 827, L32
Barro, G., Trump, J. R., Koo, D. C., et al. 2014b, *ApJ*, 795, 145
Belli, S., Newman, A. B., Ellis, R. S., et al. 2014, *ApJL*, 788, L29
Bradford, C. M., Aguirre, J. E., Aikin, R., et al. 2009, *ApJ*, 705, 112
Bruzual, G., & Charlot, S. 2003, *MNRAS*, 344, 1000
Calzetti, D., Armus, L., Bohlin, R. C., et al. 2000, *ApJ*, 533, 682
Casey, C. M., Berta, S., Béthermin, M., et al. 2012, *ApJ*, 761, 140
Chabrier, G. 2003, *PASP*, 115, 763
Chary, R., & Elbaz, D. 2001, *ApJ*, 556, 562
Daddi, E., Dannerbauer, H., Liu, D., et al. 2015, *A&A*, 577, A46
Daddi, E., Renzini, A., Pirzkal, N., et al. 2005, *ApJ*, 626, 680
Dale, D. A., & Helou, G. 2002, *ApJ*, 576, 159
Danielson, A. L. R., Swinbank, A. M., Smail, I., et al. 2013, *MNRAS*, 436, 2793
Draine, B. T., & Li, A. 2007, *ApJ*, 657, 810
Dunne, L., Eales, S., Ivison, R., et al. 2003, *Natur*, 424, 285
Elbaz, D., Dickinson, M., Hwang, H. S., et al. 2011, *A&A*, 533, A119
Foreman-Mackey, D., Hogg, D. W., Lang, D., et al. 2013, *PASP*, 125, 306
Freeman, K. C. 1970, *ApJ*, 160, 811
Genzel, R., Tacconi, L. J., Lutz, D., et al. 2015, *ApJ*, 800, 20
Grogin, N. A., Kocevski, D. D., Faber, S. M., et al. 2011, *ApJS*, 197, 35
Guo, Y., Ferguson, H. C., Giavalisco, M., et al. 2013, *ApJS*, 207, 24
Kamenetzky, J., Rangwala, N., Glenn, J., et al. 2016, *ApJ*, 829, 93
Kellermann, K. I., Fomalont, E. B., Mainieri, V., et al. 2008, *ApJS*, 179, 71
Kriek, M., van Dokkum, P. G., Labbé, I., et al. 2009, *ApJ*, 700, 221
McLean, I. S., Steidel, C. C., Epps, H., et al. 2010, *Proc. SPIE*, 7735, 77351E
McMullin, J. P., Waters, B., Schiebel, D., et al. 2007, in *ASP Conf. Ser.* 376, *Astronomical Data Analysis Software and Systems XVI*, ed. R. A. Shaw, F. Hill, & D. J. Bell (San Francisco, CA: ASP), 127
Nelson, E. J., van Dokkum, P. G., Förster Schreiber, N. M., et al. 2016, *ApJ*, 828, 27
Newman, A. B., Belli, S., & Ellis, R. S. 2015, *ApJL*, 813, L7
Peng, C. Y., Ho, L. C., Impey, C. D., et al. 2010, *AJ*, 139, 2097
Pérez-González, P. G., Trujillo, I., Barro, G., et al. 2008, *ApJ*, 687, 50
Poppinga, G., Decarli, R., Man, A. W. S., et al. 2017, *A&A*, 602, A11
Price, S. H., Kriek, M., Shapley, A. E., et al. 2016, *ApJ*, 819, 80
Rieke, G. H., Alonso-Herrero, A., Weiner, B. J., et al. 2009, *ApJ*, 692, 556
Rujopakarn, W., Dunlop, J. S., Rieke, G. H., et al. 2016, *ApJ*, 833, 12
Sandstrom, K. M., Leroy, A. K., Walter, F., et al. 2013, *ApJ*, 777, 5
Scoville, N., Sheth, K., Aussel, H., et al. 2016, *ApJ*, 820, 83
Spilker, J. S., Bezanson, R., Marrone, D. P., et al. 2016, *ApJ*, 832, 19
Tacconi, L. J., Genzel, R., Smail, I., et al. 2008, *ApJ*, 680, 246
Tadaki, K.-I., Kodama, T., Nelson, E. J., et al. 2017, *ApJL*, 841, L25
Tadaki, K.-I., Kohno, K., Kodama, T., et al. 2015, *ApJL*, 811, L3
Toft, S., Zabl, J., Richard, J., et al. 2017, *Natur*, 546, 510
Trujillo, I., Conselice, C. J., Bundy, K., et al. 2007, *MNRAS*, 382, 109
van de Sande, J., Kriek, M., Franx, M., et al. 2013, *ApJ*, 771, 85
van Dokkum, P. G., Nelson, E. J., Franx, M., et al. 2015, *ApJ*, 813, 23
Wellons, S., Torrey, P., Ma, C.-P., et al. 2015, *MNRAS*, 449, 361
Whitaker, K. E., Franx, M., Leja, J., et al. 2014, *ApJ*, 795, 104
Wisnioski, E., Förster Schreiber, N. M., Wuyts, S., et al. 2015, *ApJ*, 799, 209
Wuyts, S., Förster Schreiber, N. M., Genzel, R., et al. 2012, *ApJ*, 753, 114
Wuyts, S., Förster Schreiber, N. M., van der Wel, A., et al. 2011, *ApJ*, 742, 96
Wuyts, S., Förster Schreiber, N. M., Wisnioski, E., et al. 2016, *ApJ*, 831, 149
Zolotov, A., Dekel, A., Mandelker, N., et al. 2015, *MNRAS*, 450, 2327