

SPECIFIC STAR FORMATION RATE PROFILES IN NEARBY SPIRAL GALAXIES: QUANTIFYING THE INSIDE-OUT FORMATION OF DISKS

J. C. MUÑOZ-MATEOS,¹ A. GIL DE PAZ,¹ S. BOISSIER,² J. ZAMORANO,¹
T. JARRETT,³ J. GALLEGO,¹ AND B. F. MADORE⁴

Received 2006 September 22; accepted 2006 November 29

ABSTRACT

We present specific star formation rate (sSFR) radial profiles for a sample of 161 relatively face-on spiral galaxies from the *GALEX* Atlas of Nearby Galaxies. The sSFR profiles are derived from *GALEX* and 2MASS ($FUV - K$) color profiles after a proper SFR calibration of the UV luminosity and K -band mass-to-light ratio are adopted. The ($FUV - K$) profiles were first corrected for foreground Galactic extinction and later for internal extinction using the ratio of the total-infrared (TIR) to FUV emission. For those objects where TIR-to-FUV ratio radial profiles were not available, the ($FUV - NUV$) color profiles were used as a measure of the UV slope. The sSFR radial gradients derived from these profiles allow us to quantify the inside-out scenario for the growth of spiral disks for the first time in the local universe. We find a large dispersion in the slope of the sSFR profiles with a slightly positive mean value, which implies a moderate inside-out disk formation. There is also a strong dependency of the value of this slope on the luminosity and size of the disks, with large systems showing a uniform, slightly positive slope in almost all cases and low-luminosity small disks showing a large dispersion with both positive and negative large values. While a majority of the galaxies can be interpreted as forming stars gradually either from inside out or from outside in, a few disks require episodes of enhanced recent growth with scale lengths of the SFR (or gas infall) being significantly larger at present than in the past. We do not find any clear dependence of the sSFR gradient on the environment (local galaxy density or presence of close neighbors).

Subject headings: atlases — galaxies: photometry — galaxies: stellar content — infrared: galaxies — ultraviolet: galaxies

Online material: extended figures, machine-readable table

1. INTRODUCTION

According to the Λ CDM paradigm of hierarchical galaxy formation the inner parts of galactic disks form first followed by the formation of their outer regions (White & Frenk 1991; Mo et al. 1998). This naturally results in a gradual growth of the size (i.e., scale length) of the disks with time. This *inside-out* formation scenario has been also confirmed by recent N -body/SPH simulations of the evolution of individual disk galaxies (e.g., Brook et al. 2006).

Moreover, the inside-out scenario of disk formation has been also proposed to explain the radial variation of the abundances of elements and colors in the disk of our own Milky Way (Matteucci & François 1989; Boissier & Prantzos 1999). In the case of the models for our Galaxy, the inside-out scenario is usually taken into account by increasing the gas-infall timescale with radius. The results of such models are in agreement with observables in our Milky Way, such as the abundance gradients and the wavelength dependence of the scale length of the disk. Interestingly, this radial increase in the gas-infall timescale has been reproduced by some recent N -body/SPH simulations by Sommer-Larsen et al. (2003; model S1) and Samland & Gerhard (2003). Another independent result that is consistent with this scenario comes from

the weak dependence found of the mass-size relation of distant disk galaxies on redshift, since according to the inside-out growth of disks the scale length is expected to increase roughly proportional to the stellar mass (Barden et al. 2005; Trujillo et al. 2004, 2006).

In spite of this being a long-known prediction of both hierarchical and chemical evolution models of galaxy formation very few observational data have been brought forward to convincingly support it. This is probably a consequence of the fact that determining the sizes of disks of intermediate redshift has traditionally been a complicated task due to the cosmological surface brightness dimming, band shifting, and the problems in identifying the distant counterparts to the population of local disk galaxies. Recently, Trujillo & Pohlen (2005) have proposed using the truncation radius of galaxies at different redshifts as a measure of the growth rate in galactic disks. Using the data from the Hubble Ultra Deep Field, these authors have estimated that galactic disks have suffered a small-to-moderate growth of $\sim 25\%$ since redshift $z = 1$.

In the same way that it has been done in the Milky Way, the analysis of the color profiles of nearby spiral galaxies might provide important clues to determine whether the bulk of the galactic disks have indeed formed from inside out. Radial variations in star formation history (SFH) have been identified as a key mechanism in explaining color gradients in disks (de Jong 1996). These gradients can be interpreted on the basis of different scale lengths of the disk in different bands, a result that is predicted by models based on the inside-out scenario (Prantzos & Boissier 2000). The study of color gradients in nearby spirals has been addressed by several authors (see, e.g., de Jong 1996; Taylor et al. 2005), mainly in the optical range. In order to better relate color gradients to a radially varying SFH, observations at other

¹ Departamento de Astrofísica y Ciencias de la Atmósfera, Universidad Complutense de Madrid, E-28040 Madrid, Spain; jcmunoz@astrax.fis.ucm.es, agpaz@astrax.fis.ucm.es, jaz@astrax.fis.ucm.es, jgm@astrax.fis.ucm.es.

² Laboratoire d'Astrophysique de Marseille, 13376 Marseille Cedex 12, France; samuel.boissier@oamp.fr.

³ *Spitzer* Science Center, California Institute of Technology, Pasadena, CA 91125; jarrett@ipac.caltech.edu.

⁴ Observatories of the Carnegie Institution of Washington, Pasadena, CA 91101; barry@ociw.edu.

wavelengths are needed. In particular, the comparison between the ultraviolet-light profiles, very sensitive to the presence of recent star formation activity, and those in the near-infrared K band, sensitive to the accumulated star formation in the galaxy, would give a direct measure of the recent disk growth. In this paper we derive the azimuthally averaged radial profiles in $(FUV - K)$ color (or, equivalently, specific star formation rate, sSFR; see Appendix A) for a sample of 161 relatively face-on nearby ($d < 200$ Mpc) spiral galaxies as a metric tracer of the disk growth. Throughout this article we have adopted a concordance cosmology with $H_0 = 70$ km s $^{-1}$ Mpc $^{-1}$, $\Omega_M = 0.3$, and $\Omega_\Lambda = 0.7$.

In § 2 we present the sample of galaxies for which the availability of both ultraviolet and near-infrared data allow us to determine sSFR profiles. The analysis methods are described in § 3. Results are presented in § 4. Assuming a simple formulation for the SFH of the disks of these galaxies, in § 5 we introduce a model that relates the slope of the sSFR profiles to the growth of the disks. A comparison between the predictions of this model and the sSFR profiles measured is discussed in § 6. Finally, we summarize our conclusions in § 7.

2. THE SAMPLE

We have compiled a sample of 161 galaxies from the *GALEX* Ultraviolet Atlas of Nearby Galaxies (Gil de Paz et al. 2007) on the basis of two main selection criteria: morphological type and inclination. We limit our sample to spiral galaxies with Hubble types from S0/a to Sm, i.e., galaxies with $-0.5 \leq T \leq 9.5$ according to the Third Reference Catalogue of Bright Galaxies (RC3; de Vaucouleurs et al. 1991).

In order to minimize the effects of internal extinction and ambiguity in the morphological class, we select only moderately face-on galaxies ($i \leq 45^\circ$). We compute the inclination angle using the major- and minor-axis sizes at the 25th magnitude isophote in the B band, as given in the RC3. The intrinsic thickness of the disk can be taken into account by using the expression $\cos^2 i = (q^2 - q_0^2)/(1 - q_0^2)$, where q is the observed minor-to-major axis ratio and q_0 is the intrinsic flattening of the disk as seen edge-on. The latter has been estimated as a function of morphological type by Guthrie (1992). Since no value of q_0 is given for type Sdm in this paper, we assume a intermediate value of 0.25.

These two general constraints yield an initial subset of 178 galaxies. It should be noted, however, that the inclination angle derived from the semiaxis ratio may not be reliable for galaxies with asymmetric arms, due to the interaction with a companion galaxy (e.g., M51a), or for those ones with S-shaped arms coming out of a central ring or bar (e.g., M95, NGC 1097). In these cases the inclination angle computed from the semiaxis ratio is usually overestimated. Consequently, we visually inspected the whole *GALEX* Atlas looking for galaxies that, in spite of being clearly face-on, do not match our initial selection criteria. We also added to our sample a few extensively studied galaxies whose inclination angles are slightly above our 45° limit (M33, NGC 0300). In summary, a total of 23 additional galaxies were included in our sample.

Due to the fact that the *GALEX* FUV detector had to be turned off during periods of unusual solar activity or overcurrent events to preserve the detector electronics, some galaxies in the Atlas were observed only in the NUV band. Thus, we had to remove from our sample 26 galaxies that lacked FUV images. Another 14 objects do not have available 2MASS data and were also excluded from the final sample, which is constituted by 161 disk galaxies.

In Table 1 we present basic data of the galaxies in our sample. The equatorial coordinates were taken from NED, and typically are derived from the 2MASS position. We show the apparent major diameter of the elliptical isophote measured at $\mu_B = 25$ mag arcsec $^{-2}$,

D_{25} , as well as the morphological type, both taken from the RC3 catalog. The Galactic color excess is derived from the maps of Schlegel et al. (1998). The inclination angle is obtained as explained above. Apparent magnitudes in the FUV band are asymptotic; i.e., they were computed by extrapolating the growth curve using the surface brightness profiles in FUV (Gil de Paz et al. 2007). For the K band, apparent total magnitudes (K_{tot}) from the 2MASS Large Galaxy Atlas (LGA; Jarrett et al. 2003) were used when available, and those given in the 2MASS Extended Source Catalog (XSC; Jarrett et al. 2000) were adopted for those galaxies not in the LGA. Distances to each object were compiled from a wide variety of resources (see Gil de Paz et al. 2007 for details).

3. ANALYSIS

3.1. Radial Profiles

Surface brightness radial profiles at both *GALEX* UV bands have been presented in Gil de Paz et al. (2007). They were obtained with the IRAF⁵ task `ellipse` by measuring the mean intensity and rms along elliptical isophotes with fixed ellipticity and position angle, equal to those of the $\mu_B = 25$ mag arcsec $^{-2}$ isophote from the RC3 catalog. The center of these ellipses were set at the coordinates shown in Table 1, with a constant increment of $6''$ along the semimajor axis to a final radius at least 1.5 times the D_{25} radius. In the final profiles, the outermost points were removed when the intensity fell below the level of the sky, or when the error in the surface photometry in the NUV band was larger than 0.8 mag.

In order to derive color profiles in a consistent way we used the same set of elliptical isophotes to obtain surface brightness profiles in the K band. Near-infrared images for 121 galaxies (75% of our sample) were compiled from the 2MASS XSC. The remaining 40 objects are too large to fit into a single 2MASS scan or lay too close to an edge. In those cases individual mosaics were obtained from the 2MASS LGA. All FITS were already background and star subtracted; however, in some of the XSC images the star-subtraction algorithm failed to detect some stars, which had to be masked by hand. Companion galaxies were also masked before measuring the profiles. As for the *GALEX* images, foreground stars were detected and masked as those point sources having $(FUV - NUV)$ colors redder than 1 mag; these masks were later modified after a visual inspection. Detailed information about this process can be found in Gil de Paz et al. (2007).

Because for most galaxies, as we show in § 4.1, surface brightness in the K band decreases faster than in FUV as we move away from the center of the galaxy, and because the 2MASS images are not very deep ($K < 20$ mag arcsec $^{-2}$), our K -band surface brightness profiles are usually restricted to a somewhat smaller radius than those in the FUV. For M33, we made use of a deeper (by a factor of 6) 2MASS image ($K < 21$ mag arcsec $^{-2}$; see also Block et al. 2004). M33 is close enough to resolve individual stars, but discerning them from foreground stars in the Milky Way is not straightforward. In fact, the star removal was performed in a statistical way, comparing $(J - K)$ color histograms of adjacent control fields and M33 itself (see Block et al. 2004 for details). Therefore, although the star removal is correct from a statistical point of view, some stars in M33 might have been removed, and vice versa, some sources still visible in the final image could be foreground stars. After examining M33's $(FUV - K)$ profile, we concluded that data points more than $25'$ from the galaxy center

⁵ IRAF is distributed by the National Optical Astronomy Observatory, which is operated by the Association of Universities for Research in Astronomy, Inc., under cooperative agreement with the National Science Foundation.

TABLE 1
SAMPLE

Object Name (1)	R.A. (J2000.0) (2)	Decl. (J2000.0) (3)	D_{25} (arcmin) (4)	i (deg) (5)	$E(B - V)$ (mag) (6)	T Type (7)	Distance (Mpc) (8)	m_{FUV} (mag) (9)	m_K (mag) (10)
PGC 00282	00 04 01.5	-11 10 27.3	1.1	35	0.035	5	161	16.29 ± 0.04	12.56 ± 0.13
Arp 256 NED 02	00 18 50.1	-10 21 41.8	1.1	44	0.036	4.5	116	15.83 ± 0.01	11.82 ± 0.09
NGC 0099.....	00 23 59.4	+15 46 13.5	1.4	22	0.056	6	77	15.13 ± 0.01	11.76 ± 0.10
VV 548	00 36 02.0	-09 53 18.7	1.2	34	0.038	5	69	15.67 ± 0.01	12.27 ± 0.16
NGC 0165.....	00 36 28.9	-10 06 22.2	1.5	30	0.034	4	83	16.6 ± 0.01	10.37 ± 0.07
UGC 00372.....	00 37 27.9	+42 54 08.1	1.5	23	0.065	9	80	16.95 ± 0.04	13.72 ± 0.21
PGC 02269	00 37 57.5	-09 15 09.3	1.4	31	0.035	6	74	15.64 ± 0.02	11.60 ± 0.12
NGC 0195.....	00 39 35.8	-09 11 40.3	1.1	44	0.033	1	69	17.64 ± 0.07	10.36 ± 0.04
NGC 0213.....	00 41 10.0	+16 28 09.8	1.7	35	0.042	1	79	16.33 ± 0.03	9.91 ± 0.04
ESO 540-G025	00 47 37.9	-20 31 10.2	1.0	26	0.018	4.5	89	15.91 ± 0.02	12.52 ± 0.13
NGC 0262.....	00 48 47.1	+31 57 25.1	1.1	0	0.067	0	66	16.17 ± 0.01	10.10 ± 0.05
NGC 0266.....	00 49 47.8	+32 16 39.8	3.0	15	0.069	2	68	15.73 ± 0.01	8.67 ± 0.02
NGC 0300.....	00 54 53.5	-37 41 03.8	21.9	45	0.013	7	2.0	10.21 ± 0.01	6.38 ± 0.06
PGC 03613	01 00 38.1	-07 58 51.8	1.3	23	0.102	5	82	17.24 ± 0.07	10.10 ± 0.06
IC 1616	01 04 56.2	-27 25 45.7	1.6	29	0.019	4.3	78	15.85 ± 0.01	9.87 ± 0.04
ESO 296-G002	01 09 02.6	-37 17 20.0	1.2	34	0.012	1.1	91	16.79 ± 0.02	10.50 ± 0.06
NGC 0479.....	01 21 15.7	+03 51 44.2	1.1	36	0.035	3.7	74	16.49 ± 0.03	11.82 ± 0.10
NGC 0491.....	01 21 20.4	-34 03 47.8	1.4	45	0.03	3	52	15.78 ± 0.01	9.39 ± 0.02
UGC 00910.....	01 21 58.3	+15 47 42.5	1.0	26	0.069	5	91	16.34 ± 0.02	12.18 ± 0.13
NGC 0514.....	01 24 03.9	+12 55 02.6	3.5	37	0.039	5	36	14.59 ± 0.01	9.14 ± 0.09
ESO 352-G069	01 24 14.1	-34 43 34.7	1.5	38	0.024	2.2	84	16.34 ± 0.01	10.59 ± 0.05
M33	01 33 50.9	+30 39 35.8	70.8	54	0.042	6	0.84	7.99 ± 0.01	2.84 ± 0.04
NGC 0628.....	01 36 41.8	+15 47 00.5	10.5	25	0.070	5	11	11.7 ± 0.01	6.84 ± 0.05
NGC 0706.....	01 51 50.5	+06 17 48.8	1.9	43	0.058	4	71	15.52 ± 0.01	9.52 ± 0.03
PGC 07210	01 55 51.3	-09 58 00.5	1.3	40	0.023	4.5	115	15.83 ± 0.05	11.65 ± 0.09
KUG 0156-084	01 58 51.9	-08 09 44.8	1.2	34	0.028	4.6	67	15.78 ± 0.02	12.22 ± 0.09
NGC 0772.....	01 59 19.6	+19 00 27.1	7.2	54	0.073	3	36	14 ± 0.02	7.20 ± 0.04
NGC 0787.....	02 00 48.6	-09 00 09.3	2.5	41	0.028	3	67	16.65 ± 0.01	9.47 ± 0.03
NGC 0783.....	02 01 06.6	+31 52 56.9	1.6	29	0.061	5	76	15.25 ± 0.01	9.68 ± 0.04
UGC 01593.....	02 06 06.0	+13 17 06.8	1.0	37	0.093	5	106	16.49 ± 0.01	...
UGC 01603.....	02 06 42.5	-00 51 37.7	1.2	35	0.036	8	84	16.76 ± 0.05	12.93 ± 0.14
KUG 0210-078	02 13 15.8	-07 39 42.8	1.7	41	0.026	1	67	16.21 ± 0.01	10.91 ± 0.02
NGC 0881.....	02 18 45.3	-06 38 20.7	2.2	47	0.029	5	74	16.44 ± 0.01	9.37 ± 0.04
NGC 0895.....	02 21 36.5	-05 31 17.0	3.6	44	0.025	6	31	14.11 ± 0.01	9.40 ± 0.05
NGC 0906.....	02 25 16.3	+42 05 23.6	1.8	28	0.068	2	69	16.68 ± 0.01	9.92 ± 0.04
PGC 09333	02 27 17.6	-03 53 58.2	1.1	36	0.029	8	186	17.72 ± 0.02	11.83 ± 0.09
NGC 0986.....	02 33 34.3	-39 02 42.2	3.9	41	0.019	2	25	14.81 ± 0.01	7.78 ± 0.03
KUG 0232-079	02 34 48.4	-07 41 00.9	1.1	25	0.034	5	93	15.72 ± 0.01	10.74 ± 0.05
NGC 0991.....	02 35 32.7	-07 09 16.0	2.7	27	0.028	5	20	14.35 ± 0.01	11.18 ± 0.05
NGC 1022.....	02 38 32.7	-06 40 38.7	2.4	34	0.026	1	19	16.91 ± 0.01	8.50 ± 0.02
NGC 1033.....	02 40 16.1	-08 46 37.1	1.3	32	0.028	5	103	16.86 ± 0.03	10.76 ± 0.08
NGC 1042.....	02 40 24.0	-08 26 00.8	4.7	40	0.029	6	18	13.46 ± 0.01	8.85 ± 0.05
NGC 1068.....	02 42 40.7	-00 00 47.8	7.1	33	0.034	3	14	12.52 ± 0.01	...
NGC 1067.....	02 43 50.5	+32 30 42.8	1.0	0	0.188	5	66	16.14 ± 0.03	11.04 ± 0.07
NGC 1097.....	02 46 19.1	-30 16 29.7	9.3	48	0.027	3	15	12.5 ± 0.04	6.25 ± 0.03
NGC 1291.....	03 17 18.6	-41 06 29.1	9.8	35	0.013	0	9.7	14.23 ± 0.01	5.66 ± 0.02
NGC 1285.....	03 17 53.4	-07 17 52.1	1.5	43	0.054	3	73	15.02 ± 0.01	10.15 ± 0.05
NGC 1310.....	03 21 03.4	-37 06 06.1	2.0	42	0.023	5	22	15.07 ± 0.01	9.94 ± 0.05
KUG 0319-072	03 22 17.5	-07 05 26.5	1.1	25	0.071	2	37	15.61 ± 0.01	10.31 ± 0.05
NGC 1317.....	03 22 44.3	-37 06 13.6	2.8	32	0.021	1	19	15.38 ± 0.01	7.74 ± 0.02
NGC 1326.....	03 23 56.4	-36 27 52.8	3.9	47	0.019	-1	16	14.6 ± 0.07	7.45 ± 0.02
PGC 13535	03 40 43.0	-06 24 54.6	1.9	38	0.054	6	73	15.88 ± 0.03	10.98 ± 0.09
PGC 13600	03 42 10.3	-06 45 55.2	1.8	40	0.071	0	73	17.49 ± 0.32	10.98 ± 0.05
NGC 1512.....	04 03 54.3	-43 20 55.9	8.9	52	0.011	1	10	13.46 ± 0.02	7.48 ± 0.04
NGC 1566.....	04 20 00.4	-54 56 16.1	8.3	38	0.009	4	17	12.06 ± 0.02	6.89 ± 0.03
NGC 2442.....	07 36 23.8	-69 31 51.0	5.5	27	0.203	3.7	14	12.59 ± 0.02	6.87 ± 0.04
NGC 2403.....	07 36 51.4	+65 36 09.2	21.9	56	0.040	6	3.2	10.37 ± 0.01	6.19 ± 0.04
NGC 2500.....	08 01 53.2	+50 44 13.6	2.9	26	0.040	7	9.9	13.52 ± 0.01	9.28 ± 0.06
NGC 2550A.....	08 28 39.9	+73 44 52.8	1.6	29	0.026	5	56	15.29 ± 0.01	10.05 ± 0.08
NGC 2681.....	08 53 32.7	+51 18 49.3	3.6	24	0.023	0	13	16.54 ± 0.01	7.43 ± 0.03
UGC 04684.....	08 56 40.7	+00 22 29.8	1.4	40	0.04	8	35	15.63 ± 0.01	12.24 ± 0.14
UGC 04807.....	09 10 05.5	+54 34 49.1	1.0	0	0.021	6	60	16.24 ± 0.01	11.75 ± 0.12
NGC 2782.....	09 14 05.1	+40 06 49.2	3.5	43	0.016	1	39	14.69 ± 0.01	8.87 ± 0.02

TABLE 1—Continued

Object Name (1)	R.A. (J2000.0) (2)	Decl. (J2000.0) (3)	D_{25} (arcmin) (4)	i (deg) (5)	$E(B - V)$ (mag) (6)	T Type (7)	Distance (Mpc) (8)	m_{FUV} (mag) (9)	m_K (mag) (10)
NGC 2903.....	09 32 10.1	+21 30 03.0	12.6	63	0.031	4	8.9	12.12 ± 0.01	6.04 ± 0.02
M81.....	09 55 33.2	+69 03 55.1	26.9	60	0.08	2	3.6	10.77 ± 0.01	3.83 ± 0.02
UGC 05493.....	10 11 17.9	+00 26 32.6	1.6	36	0.037	4.5	52	15.95 ± 0.01	11.09 ± 0.08
UGC 05528.....	10 14 39.6	-00 49 51.2	1.1	44	0.042	1	210	18.63 ± 0.08	10.85 ± 0.07
NGC 3147.....	10 16 53.7	+73 24 02.7	3.9	26	0.024	4	44	14.14 ± 0.01	7.41 ± 0.02
NGC 3183.....	10 21 49.0	+74 10 36.7	2.3	53	0.044	3.5	48	15.16 ± 0.01	9.24 ± 0.02
ESO 317- G019.....	10 23 02.3	-39 09 59.6	1.1	36	0.102	1	38	16.92 ± 0.03	10.77 ± 0.09
NGC 3244.....	10 25 28.8	-39 49 39.2	2.0	42	0.104	6	37	14.58 ± 0.02	9.61 ± 0.05
NGC 3277.....	10 32 55.5	+28 30 42.2	1.9	27	0.026	2	22	15.78 ± 0.01	8.93 ± 0.02
NGC 3288.....	10 36 25.7	+58 33 22.3	1.1	36	0.008	3.7	120	17.61 ± 0.01	10.90 ± 0.06
NGC 3344.....	10 43 31.2	+24 55 20.0	7.1	24	0.033	4	6.9	12.43 ± 0.01	7.44 ± 0.04
M95.....	10 43 57.7	+11 42 13.0	7.4	48	0.028	3	12	13.28 ± 0.01	6.66 ± 0.04
NGC 3353.....	10 45 22.4	+55 57 37.4	1.3	40	0.007	3	17	14.69 ± 0.01	10.61 ± 0.05
M96.....	10 46 45.7	+11 49 11.8	7.6	48	0.025	2	14	14.03 ± 0.01	6.32 ± 0.02
UGC 05943.....	10 50 13.5	-01 17 24.7	1.1	35	0.051	4.5	65	16.26 ± 0.01	12.01 ± 0.11
NGC 3394.....	10 50 39.8	+65 43 38.0	1.9	43	0.012	5	52	15.79 ± 0.01	10.14 ± 0.09
NGC 3445.....	10 54 35.5	+56 59 26.6	1.6	22	0.008	9	32	14.13 ± 0.01	10.61 ± 0.08
NGC 3470.....	10 58 44.9	+59 30 38.5	1.4	32	0.012	2	97	16.38 ± 0.01	10.69 ± 0.05
NGC 3486.....	11 00 24.0	+28 58 29.3	7.1	43	0.022	5	12	12.52 ± 0.01	8.00 ± 0.04
IC 0671.....	11 07 31.6	+00 46 59.2	1.3	23	0.04	4.2	169	17.22 ± 0.02	10.31 ± 0.08
NGC 3821.....	11 42 09.1	+20 18 56.6	1.4	22	0.022	2	84	17.91 ± 0.37	10.15 ± 0.03
NGC 3840.....	11 43 59.0	+20 04 37.3	1.1	44	0.022	1	107	16.79 ± 0.02	10.89 ± 0.06
NGC 3861.....	11 45 03.9	+19 58 25.1	2.3	56	0.032	3	91	15.72 ± 0.01	9.97 ± 0.04
NGC 4108.....	12 06 44.6	+67 09 47.5	1.7	35	0.018	5.3	40	14.89 ± 0.01	9.81 ± 0.03
NGC 4108B.....	12 07 11.6	+67 14 06.6	1.3	32	0.018	6.8	42	15.48 ± 0.01	12.87 ± 0.13
NGC 4136.....	12 09 17.7	+29 55 39.4	4.0	22	0.018	5	11	13.61 ± 0.01	9.31 ± 0.06
NGC 4303.....	12 21 54.9	+04 28 25.1	6.5	27	0.022	4	17	12.08 ± 0.01	6.84 ± 0.03
NGC 4301.....	12 22 27.2	+04 33 58.7	1.5	30	0.024	5.5	17	14.55 ± 0.01	11.20 ± 0.10
NGC 4314.....	12 22 32.0	+29 53 43.3	4.2	29	0.025	1	16	15.49 ± 0.01	7.45 ± 0.02
NGC 4395.....	12 25 48.9	+33 32 48.3	13.2	37	0.017	9	4.2	11.67 ± 0.01	9.98 ± 0.06
NGC 4421.....	12 27 02.6	+15 27 40.9	2.7	43	0.024	0	17	18.75 ± 0.08	8.80 ± 0.02
NGC 4440.....	12 27 53.6	+12 17 35.6	1.9	39	0.027	1	17	18.92 ± 0.08	8.91 ± 0.02
M58.....	12 37 43.6	+11 49 05.1	5.9	37	0.041	3	17	14.48 ± 0.01	6.49 ± 0.03
NGC 4618.....	12 41 32.8	+41 08 41.2	4.2	40	0.021	9	9.5	12.78 ± 0.01	8.66 ± 0.06
NGC 4625.....	12 41 52.7	+41 16 25.4	2.2	33	0.018	9	9.5	14.45 ± 0.01	9.74 ± 0.05
NGC 4665.....	12 45 06.0	+03 03 20.6	3.8	33	0.024	0	17	16.51 ± 0.17	7.43 ± 0.02
NGC 4691.....	12 48 13.6	-03 19 57.8	2.8	36	0.027	0	16	13.66 ± 0.01	8.54 ± 0.03
NGC 4736.....	12 50 53.1	+41 07 13.6	11.2	37	0.018	2	5.2	11.83 ± 0.01	5.11 ± 0.02
NGC 4819.....	12 56 27.8	+26 59 14.9	1.2	42	0.011	1	95	19.3 ± 0.01	10.12 ± 0.03
UGC 08340.....	13 16 35.5	-02 05 28.8	1.0	0	0.032	6	81	16.47 ± 0.01	11.00 ± 0.08
M51a.....	13 29 52.7	+47 11 42.6	11.2	53	0.035	4	8.4	10.89 ± 0.01	5.50 ± 0.02
NGC 5231.....	13 35 48.2	+02 59 56.1	1.1	25	0.024	1	94	17.85 ± 0.02	10.14 ± 0.05
M83.....	13 37 00.9	-29 51 56.7	12.9	27	0.066	5	4.5	10.1 ± 0.01	4.62 ± 0.02
ESO 444-G087.....	13 38 12.0	-31 25 01.1	1.2	42	0.056	1	61	16.93 ± 0.05	10.31 ± 0.04
M101.....	14 03 12.6	+54 20 56.7	28.8	21	0.009	6	7.5	9.98 ± 0.01	5.51 ± 0.05
NGC 5474.....	14 05 01.6	+53 39 44.0	4.8	27	0.011	6	6.8	12.93 ± 0.01	9.48 ± 0.04
UGC 09120.....	14 15 12.3	+04 49 26.9	1.1	44	0.033	6	83	15.77 ± 0.01	11.77 ± 0.13
NGC 5569.....	14 20 32.1	+03 58 59.6	1.7	35	0.030	6	27	15.71 ± 0.01	12.32 ± 0.15
NGC 5656.....	14 30 25.4	+35 19 14.6	1.9	39	0.015	2	48	15.57 ± 0.01	9.35 ± 0.02
NGC 5701.....	14 39 11.1	+05 21 48.8	4.3	18	0.037	0	23	14.98 ± 0.01	8.14 ± 0.03
NGC 5713.....	14 40 11.5	-00 17 21.2	2.8	27	0.039	4	27	14.62 ± 0.01	8.33 ± 0.04
IC 1063.....	14 52 11.0	+04 40 55.4	1.3	32	0.038	3	201	16.99 ± 0.03	10.83 ± 0.06
UGC 09661.....	15 02 03.5	+01 50 28.2	1.4	75	0.059	8	19	15.57 ± 0.02	11.86 ± 0.15
NGC 6154.....	16 25 30.5	+49 50 24.9	2.1	18	0.022	1	90	16.65 ± 0.03	10.19 ± 0.04
IC 1221.....	16 34 41.6	+46 23 31.8	1.3	32	0.018	7	81	15.85 ± 0.01	10.99 ± 0.12
IC 1222.....	16 35 09.1	+46 12 51.0	1.7	40	0.018	5	136	16.17 ± 0.01	12.20 ± 0.12
NGC 6307.....	17 07 40.5	+60 45 03.0	1.3	41	0.023	0	48	19.22 ± 0.13	9.48 ± 0.03
IC 1251.....	17 10 13.2	+72 24 38.5	1.4	45	0.050	6	21	15.77 ± 0.01	12.07 ± 0.11
NGC 6340.....	17 10 24.9	+72 18 15.8	3.2	21	0.049	0	21	17.39 ± 0.01	8.39 ± 0.02
IC 1248.....	17 11 40.2	+59 59 44.2	1.3	23	0.024	5	76	16.11 ± 0.01	11.71 ± 0.10
UGC 10796.....	17 16 47.7	+61 55 12.4	1.6	42	0.020	3	48	16.16 ± 0.01	12.14 ± 0.12
NGC 6373.....	17 24 08.1	+58 59 42.3	1.3	40	0.030	5	52	15.85 ± 0.01	12.52 ± 0.12
UGC 10888.....	17 29 59.3	+60 21 01.0	1.1	51	0.036	3	92	16.97 ± 0.03	10.68 ± 0.05
IC 4836.....	19 16 17.9	-60 12 01.2	1.5	30	0.055	4.3	56	15.47 ± 0.01	10.03 ± 0.03

TABLE 1—Continued

Object Name (1)	R.A. (J2000.0) (2)	Decl. (J2000.0) (3)	D_{25} (arcmin) (4)	i (deg) (5)	$E(B - V)$ (mag) (6)	T Type (7)	Distance (Mpc) (8)	m_{FUV} (mag) (9)	m_K (mag) (10)
NGC 6770.....	19 18 37.3	-60 29 47.3	2.3	43	0.061	3	52	15.48 ± 0.04	8.86 ± 0.04
IC 4845.....	19 20 22.5	-60 23 21.0	1.8	34	0.059	2.9	53	15.64 ± 0.01	8.92 ± 0.02
NGC 6782.....	19 23 57.9	-59 55 20.9	2.2	52	0.060	0.8	50	15.57 ± 0.25	8.87 ± 0.02
NGC 6902B.....	20 23 07.1	-43 52 07.0	1.5	30	0.050	5.6	40	15.43 ± 0.01	11.95 ± 0.09
NGC 6902.....	20 24 28.1	-43 39 12.7	5.6	46	0.040	3.1	38	14.04 ± 0.01	8.61 ± 0.04
NGC 6951.....	20 37 14.1	+66 06 20.3	3.9	35	0.366	4	24	14.62 ± 0.18	7.22 ± 0.02
PGC 65328.....	20 45 41.2	-04 57 00.4	1.3	0	0.052	2	123	16.74 ± 0.03	11.19 ± 0.07
NGC 6962.....	20 47 19.1	+00 19 14.9	2.9	38	0.098	2	61	15.69 ± 0.01	8.79 ± 0.03
PGC 66559.....	21 19 43.0	-07 33 12.5	1.3	23	0.196	8	39	15.55 ± 0.06	15.11 ± 0.26
NGC 7080.....	21 30 02.0	+26 43 04.1	1.8	19	0.140	3	71	16.31 ± 0.05	9.40 ± 0.04
UGC 11790.....	21 41 30.0	+00 53 40.7	1.5	43	0.072	6.5	65	16.84 ± 0.03	11.39 ± 0.10
UGC 11816.....	21 49 07.3	+00 26 50.4	1.5	21	0.130	4.7	68	15.96 ± 0.04	11.45 ± 0.12
NGC 7167.....	22 00 30.6	-24 37 57.4	1.7	40	0.037	5	35	14.84 ± 0.01	9.94 ± 0.06
NGC 7221.....	22 11 15.2	-30 33 47.4	2.0	37	0.018	3.6	60	15.28 ± 0.01	9.19 ± 0.03
NGC 7337.....	22 37 26.6	+34 22 27.5	1.1	35	0.083	3	96	18.13 ± 0.06	10.39 ± 0.05
NGC 7343.....	22 38 37.9	+34 04 17.2	1.1	36	0.067	3.5	109	16.55 ± 0.02	10.47 ± 0.04
ESO 346-G006.....	22 52 39.3	-40 19 49.3	1.0	26	0.015	5	137	16.76 ± 0.01	11.19 ± 0.06
NGC 7418.....	22 56 36.2	-37 01 48.3	3.5	42	0.016	6	18	13.76 ± 0.01	8.52 ± 0.05
NGC 7421.....	22 56 54.3	-37 20 50.1	2.0	26	0.015	4	24	14.94 ± 0.01	9.25 ± 0.04
Arp 314 NED 01.....	22 58 02.2	-03 46 10.9	1.1	36	0.087	4	52	15.57 ± 0.01	10.45 ± 0.05
Arp 314 NED 02.....	22 58 07.5	-03 47 19.6	1.3	32	0.085	6	52	15.31 ± 0.01	10.91 ± 0.09
NGC 7469.....	23 03 15.6	+08 52 26.4	1.5	44	0.069	1	71	14.32 ± 0.02	...
NGC 7479.....	23 04 56.7	+12 19 22.4	4.1	41	0.112	5	35	13.93 ± 0.01	8.20 ± 0.02
IC 5287.....	23 09 20.3	+00 45 23.3	1.1	25	0.040	3	139	17.53 ± 0.03	10.84 ± 0.06
NGC 7496.....	23 09 47.3	-43 25 40.6	3.3	25	0.010	3	21	14.01 ± 0.01	8.65 ± 0.04
NGC 7535.....	23 14 12.8	+13 34 54.8	1.5	0	0.066	7	67	16.02 ± 0.05	...
NGC 7552.....	23 16 10.8	-42 35 05.4	3.4	38	0.014	2	22	14.18 ± 0.01	7.54 ± 0.02
NGC 7645.....	23 23 47.3	-29 23 16.9	1.4	31	0.028	5	97	15.78 ± 0.01	10.25 ± 0.04
NGC 7673.....	23 27 41.1	+23 35 20.2	1.3	23	0.043	5	50	14.31 ± 0.01	10.73 ± 0.03
NGC 7674.....	23 27 56.7	+08 46 44.5	1.1	25	0.059	4	124	15.73 ± 0.01	9.79 ± 0.04
IC 5325.....	23 28 43.4	-41 20 00.5	2.8	27	0.020	4	19	14.02 ± 0.01	8.36 ± 0.03
UGC 12635.....	23 30 25.7	+00 09 24.1	1.3	23	0.048	6.5	74	17.27 ± 0.04	13.68 ± 0.19
NGC 7769.....	23 51 04.0	+20 09 01.5	1.7	20	0.074	3	61	14.76 ± 0.01	8.93 ± 0.02
NGC 7793.....	23 57 49.8	-32 35 27.7	9.3	48	0.019	7	2.0	11.17 ± 0.01	6.86 ± 0.06

NOTES.—Col. (1): Galaxy name. Cols. (2) and (3): Right ascension and declination of the galaxy center. Units of right ascension are hours, minutes, and seconds, and units of declination are degrees, arcminutes, and arcseconds. Col. (4): Apparent major isophotal diameter at $\mu_B = 25$ mag arcsec $^{-2}$ from the RC3 catalog. Col. (5): Inclination angle, corrected for intrinsic thickness. Note that for NGC 1326 $q_0 = 0.4$ was assumed, since no value for $T = -1$ is available. Col. (6): Galactic color excess from Schlegel et al. (1998). Col. (7): Morphological type T s as given in the RC3 catalog. Col. (8): Distance to the galaxy, rounded to the nearest Mpc when larger than 10 Mpc. Col. (9): Apparent FUV magnitude (AB system). Col. (10): Apparent K -band magnitude (Vega system).

(measured along the semimajor axis) were highly contaminated by foreground stars, with little or no contribution coming from M33 sources, and these were withdrawn out from the profile.

Uncertainties in the surface photometry were derived following the prescriptions given by Gil de Paz & Madore (2005), as had been already done for the FUV profiles (Gil de Paz et al. 2007). The random error in μ_K depends on the intrinsic variation of the intensity within each elliptical isophote and the error in the sky level. The latter includes two different contributions: Poisson noise in the sky level (as well as pixel-to-pixel flat-fielding errors), and low spatial frequency flat-fielding errors. Considering that in 2MASS images flat-field correction and sky subtraction are carried out using whole scans, we can safely assume that the contribution of low-frequency errors to the final uncertainty is negligible compared to that of the high-frequency ones. Hence, we compute the final random uncertainty in μ_K from the rms along each isophote (which is part of the output of the IRAF task `el-ellipse`) and local noise measurements provided as part of the headers of the XSC/LGA FITS files.

Once the mean surface brightness and its error have been measured, they are converted into magnitudes per square arcsecond

using the calibrated zero point provided in the header of each XSC/LGA FITS image. This introduces a systematic uncertainty of ± 0.007 mag in the K -band magnitudes, which is considerably smaller than the zero-point error of 0.15 mag in the FUV data.

Before combining our K -band profiles with those in FUV, we correct them for foreground Galactic extinction using the color excesses from the Schlegel et al. (1998) maps and the parameterization of the Galactic extinction curve given by Cardelli et al. (1989). We assume a value of $R_V = 3.1$, which implies a total-to-selective extinction in the K band of $A_K = 0.367E(B - V)$ [compare with $A_{FUV} = 7.9E(B - V)$].

Figure 1 shows the (FUV - K) color profiles for six typical galaxies in our sample (*top part of each panel*). Gray points are only corrected for Galactic extinction, as described above, whereas black points are also corrected for internal extinction (see § 3.2). Each point is shown with its corresponding error, computed as the square root of the quadratic sum of random uncertainties in both μ_K and μ_{FUV} . For the sake of clarity, error bars do not include the systematic zero-point uncertainty in (FUV - K), which is ~ 0.15 mag (the zero-point error in FUV dominates over the one in K). Note that this zero-point uncertainty does not affect

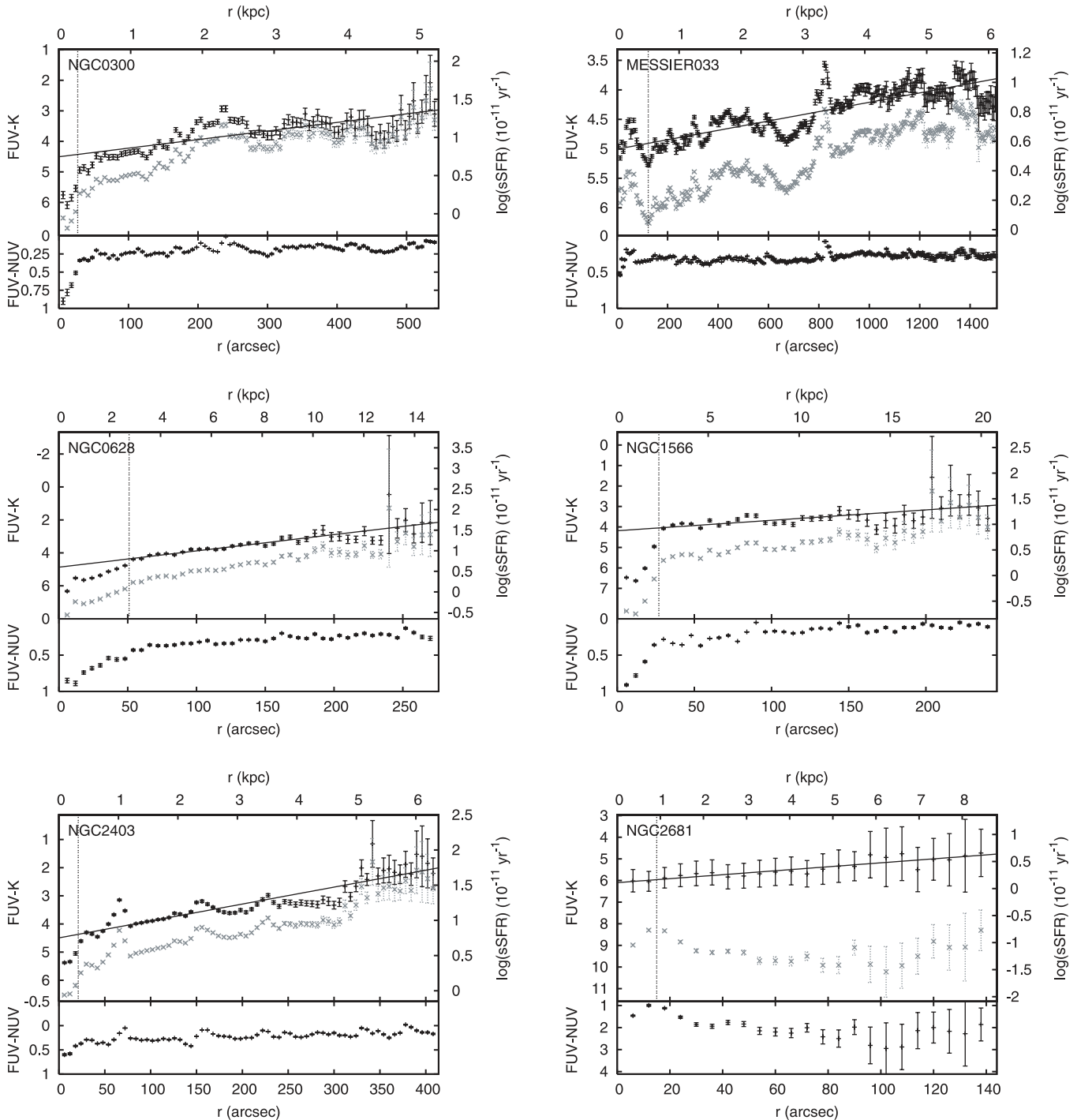


FIG. 1.— Sample galaxy profiles. *Top*: (FUV – K) color profiles, corrected only for foreground Galactic extinction (*gray points*) and for both Galactic and internal extinction (*black points*). *Bottom*: (FUV – NUV) color profiles. The vertical dotted line in each plot represents the radius at which the contribution of the bulge to the light profile becomes negligible compared to that of the disk. The solid line corresponds to the linear fit performed to the fully corrected data. [See the electronic edition of the *Journal* for additional panels of this figure.]

the shape of the profiles, but only the normalization. Moreover, since the vast majority of the images in the *GALEX* Atlas were processed and reduced following the same version of the *GALEX* pipeline, the effect of the zero-point error is expected to be the same for all our galaxies. The bottom plot in each panel shows the (FUV – NUV) color profile for each galaxy (see § 3.2).

3.2. Internal Extinction Correction

Before computing the sSFR as a function of radius, the (FUV – K) color profiles must be corrected for internal extinc-

tion. The ultraviolet light emitted by young massive stars is absorbed and scattered by dust, and then remitted in the far-infrared. Hence, the ratio of far-infrared to ultraviolet luminosity is directly related to dust extinction. Furthermore, on the basis of the results from previous works (e.g., Buat et al. 2005 and references therein), this ratio has proven to be only weakly dependent on certain intrinsic properties of galaxies, such as the internal extinction law, the spatial distribution of dust and stars, or the galaxy SFH. Therefore, although FUV radiation can be highly attenuated by dust, it is possible to infer A_{FUV} and hence recover

TABLE 2
RADIAL PROFILES

a (arcsec) (1)	a (kpc) (2)	μ_{FUV} (mag arcsec $^{-2}$) (3)	μ_K (mag arcsec $^{-2}$) (4)	$(\text{FUV} - K)_{\text{obs}}$ (mag) (5)	A_{FUV} (mag) (6)	$(\text{FUV} - K)_{\text{corr}}$ (mag) (7)	$\log(\text{sSFR})$ (10^{-11} yr^{-1}) (8)
PGC 00282							
6.....	4.69	24.64 \pm 0.07	19.19 \pm 0.09	5.45 \pm 0.11	1.38 $^{+0.39}_{-0.36}$	4.14 $^{+0.38}_{-0.40}$	0.89 $^{+0.16}_{-0.15}$
12.....	9.38	24.37 \pm 0.06	20.12 \pm 0.16	4.25 \pm 0.17	0.86 $^{+0.34}_{-0.31}$	3.42 $^{+0.35}_{-0.38}$	1.18 $^{+0.15}_{-0.14}$
18.....	14.07	24.35 \pm 0.03	20.58 \pm 0.24	3.77 \pm 0.25	1.01 $^{+0.36}_{-0.32}$	2.81 $^{+0.41}_{-0.43}$	1.43 $^{+0.17}_{-0.16}$
24.....	18.76	25.06 \pm 0.04	21.36 \pm 0.40	3.70 \pm 0.40	0.89 $^{+0.35}_{-0.31}$	2.85 $^{+0.51}_{-0.53}$	1.41 $^{+0.21}_{-0.20}$
Arp 256 NED 02							
6.....	3.37	22.91 \pm 0.02	18.19 \pm 0.10	4.72 \pm 0.10	1.08 $^{+0.36}_{-0.33}$	3.69 $^{+0.35}_{-0.38}$	1.07 $^{+0.15}_{-0.14}$
12.....	6.75	23.76 \pm 0.03	19.44 \pm 0.15	4.32 \pm 0.16	1.57 $^{+0.40}_{-0.38}$	2.82 $^{+0.41}_{-0.43}$	1.42 $^{+0.17}_{-0.16}$
18.....	10.12	25.08 \pm 0.03	20.72 \pm 0.37	4.36 \pm 0.37	1.82 $^{+0.42}_{-0.40}$	2.62 $^{+0.54}_{-0.56}$	1.50 $^{+0.23}_{-0.22}$
24.....	13.49	25.19 \pm 0.03	20.95 \pm 0.41	4.24 \pm 0.41	1.36 $^{+0.39}_{-0.36}$	2.95 $^{+0.54}_{-0.56}$	1.37 $^{+0.23}_{-0.22}$
30.....	16.86	25.70 \pm 0.03	21.93 \pm 0.75	3.77 \pm 0.75	1.21 $^{+0.37}_{-0.34}$	2.61 $^{+0.82}_{-0.84}$	1.50 $^{+0.34}_{-0.33}$
NGC 0099							
6.....	2.23	23.12 \pm 0.02	18.30 \pm 0.06	4.82 \pm 0.06	1.25 $^{+0.38}_{-0.35}$	3.62 $^{+0.35}_{-0.38}$	1.10 $^{+0.15}_{-0.14}$
12.....	4.46	23.73 \pm 0.03	19.46 \pm 0.10	4.27 \pm 0.10	1.15 $^{+0.37}_{-0.34}$	3.17 $^{+0.35}_{-0.38}$	1.28 $^{+0.15}_{-0.14}$
18.....	6.70	23.95 \pm 0.02	20.04 \pm 0.15	3.91 \pm 0.15	0.94 $^{+0.35}_{-0.32}$	3.01 $^{+0.35}_{-0.38}$	1.34 $^{+0.15}_{-0.14}$
24.....	8.93	24.40 \pm 0.02	20.56 \pm 0.22	3.84 \pm 0.22	0.94 $^{+0.35}_{-0.32}$	2.95 $^{+0.38}_{-0.41}$	1.37 $^{+0.17}_{-0.15}$
30.....	11.16	24.76 \pm 0.02	20.91 \pm 0.28	3.85 \pm 0.28	0.64 $^{+0.32}_{-0.28}$	3.25 $^{+0.40}_{-0.42}$	1.25 $^{+0.17}_{-0.16}$
36.....	13.39	25.51 \pm 0.03	22.64 \pm 1.23	2.87 \pm 1.23	0.64 $^{+0.32}_{-0.28}$	2.26 $^{+1.26}_{-1.27}$	1.64 $^{+0.51}_{-0.50}$

NOTES.—Cols. (1) and (2): Radius along semimajor axis in arcseconds and kiloparsecs. Cols. (3) and (4): Observed surface brightness in FUV and K , corrected only for Galactic extinction. Col. (5): Observed $(\text{FUV} - K)$ color, corrected only for Galactic extinction. Col. (6): Internal extinction in FUV. Col. (7): $(\text{FUV} - K)$ color corrected for both Galactic and internal extinction. Col. (8): Logarithm of specific star formation rate (SFR per unit of stellar mass). Table 2 is published in its entirety in the electronic edition of the *Astrophysical Journal*. A portion is shown here for guidance regarding its form and content.

the emitted FUV luminosity, and from that the SFR (Kennicutt 1998).

We correct our color profiles using the prescriptions in Boissier et al. (2007). Using *IRAS* data for a sample of well-resolved objects in the *GALEX* Atlas of Nearby Galaxies, Boissier et al. derived far-infrared and total-infrared (TIR) profiles from measurements at 60 and 100 μm . Once combined with the UV profiles, the radial profiles in the $L_{\text{TIR}}/L_{\text{FUV}}$ luminosity ratio (or TIR-to-FUV ratio) obtained are converted into A_{FUV} profiles using the polynomial fits of Buat et al. (2005).

We have applied this internal extinction correction to 16 galaxies in our sample that were also studied by Boissier et al. (2007). Since the images employed to derive extinction profiles were degraded to match the *IRAS* resolution, we had to interpolate A_{FUV} values for our radial profiles. In order to achieve a smooth result and avoid artifacts in our corrected color profiles, a spline interpolation method was used for all galaxies except for NGC 1291, where the extinction curve was not smoothly reproduced by the interpolation algorithm and a linear interpolation was adopted instead. The upper and lower uncertainties in A_{FUV} usually change more abruptly with radius than A_{FUV} itself, thus making the spline interpolation unreliable. Therefore, these errors were linearly interpolated and then assigned to their corresponding A_{FUV} values.

However, for the majority of galaxies in our sample we cannot apply the direct extinction correction based on the $L_{\text{TIR}}/L_{\text{FUV}}$ profiles. Fortunately, the infrared excess $L_{\text{TIR}}/L_{\text{FUV}}$ (and hence A_{FUV}) is related to the slope of the UV spectrum or, equivalently, the $(\text{FUV} - \text{NUV})$ color, with redder $(\text{FUV} - \text{NUV})$ colors meaning higher dust attenuation (see, e.g., Cortese et al. 2006 and references therein). Although this relation (known as the IRX- β law) was originally found to be applicable only to actively star-forming

systems (Meurer et al. 1999), recent work by Gil de Paz et al. (2007) shows that, although with a significant dispersion, such a trend is also present in normal spiral galaxies such as those in our sample, especially when the TIR-to-FUV and $(\text{FUV} - \text{NUV})$ radial profiles of the disks of these galaxies are compared (Boissier et al. 2007). Here we have taken advantage of the empirical relation between the TIR-to-FUV ratio and the $(\text{FUV} - \text{NUV})$ color derived by Boissier et al. (2007) and the $(\text{FUV} - \text{NUV})$ radial profiles presented by Gil de Paz et al. (2007). This procedure allows us to obtain A_{FUV} profiles for the remaining 145 galaxies in our sample. The uncertainties in A_{FUV} were computed from the upper and lower limits of the 1σ prediction band for Boissier et al. fit to the IRX- β plot.

Although to a significantly reduced extent, the K -band luminosity is also affected by the presence of dust inside the disk of the galaxy. Assuming the Cardelli et al. parameterization of the extinction curve to be valid in our galaxies, we compute the K -band extinction to be $A_K = 0.0465 A_{\text{FUV}}$. The choice of a different internal extinction curve would have not significantly affected our extinction-corrected μ_K profiles since $A_K \ll A_{\text{FUV}}$ independent of the composition and physical properties of dust grains.

Table 2 shows the color profiles for the galaxies in our sample. Since we are dealing with disklike galaxies, we use the radius along the semimajor axis of the elliptical isophotes instead of the equivalent radius (as was done in Gil de Paz et al. 2007) to describe our profiles. We show the measured FUV and K -band surface brightness as well as the $(\text{FUV} - \text{NUV})$ color, corrected only for foreground Galactic extinction as described in § 3.1. The different values of A_{FUV} and the corrected $(\text{FUV} - K)$ profiles are also given, with their corresponding upper and lower uncertainties. Finally, we give the sSFR at each radius for each galaxy (see § 4.1 for the derivation of the sSFR).

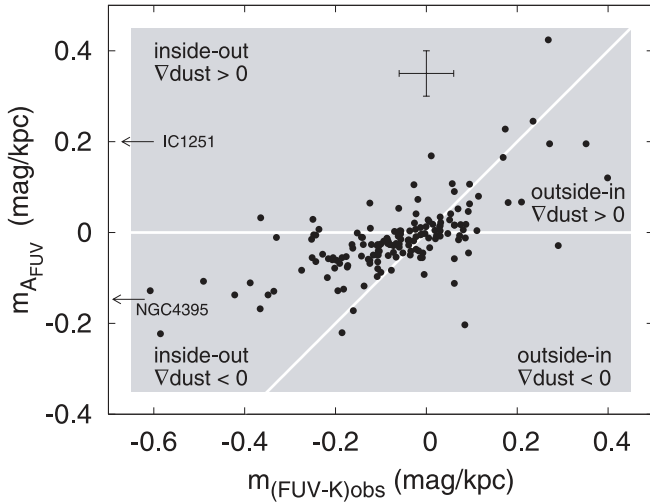


FIG. 2.—Radial gradient of the extinction in the FUV as a function of the observed gradient of $(FUV - K)$ color. The cross shows the mean uncertainties in both parameters. The plot has been divided into four regions. The diagonal line corresponds to galaxies in which the observed color gradient is only due to radial variations of the dust content [i.e., the galaxies’ intrinsic $(FUV - K)$ profiles are flat]. Data points to the left of this line are then consistent with an inside-out formation of disks (and vice versa). The horizontal line sorts out the galaxies depending on whether the dust content decreases with radius (*bottom half of the plot*) or increases (*top half*). Galaxies out of range have been marked with arrows.

Fully corrected profiles can be seen in the top part of each panel in Figure 1 as black dots, whose error bars account for both photometric and extinction-correction uncertainties. The bottom part of each panel shows the $(FUV - NUV)$ color profiles.

Since the extinction correction may be subject to large uncertainties (both random and systematic), it is important to determine to what extent the observed $(FUV - K)$ color profiles are determined by radial variations in the extinction rather than by the intrinsic colors of the underlying stellar population (and hence by the SFH). In order to address this important issue, in Figure 2 we plot $m_{A_{FUV}}$, the radial gradient of the extinction in the FUV (see also Table 3), against $m_{(FUV-K)_{obs}}$, the *observed* $(FUV - K)$ color gradient, both of them measured in the disk-dominated region of the profiles (that is, excluding the bulge). The cross shows the mean uncertainties in both parameters ($\Delta m_{(FUV-K)_{obs}} \sim 0.06 \text{ mag kpc}^{-1}$ and $\Delta m_{A_{FUV}} \sim 0.05 \text{ mag kpc}^{-1}$). Note that almost 30% of the sample shows errors lower than half these values, for which the derived sSFR profiles will be most reliable. See § 4 for an in-depth description of the fitting procedure.

The diagram has been divided into four zones. The diagonal line is the loci of galaxies with $m_{A_{FUV}} = m_{(FUV-K)_{obs}}$, meaning that the intrinsic $(FUV - K)$ profile is flat and the observed color gradient is entirely due to radial changes in the extinction. Therefore, galaxies to the left of this line can be described in terms of an inside-out formation, with the stellar population becoming relatively bluer and younger with increasing radius, and vice versa. On the other hand, galaxies in the bottom half of the figure are those in which the dust content decreases with radius, while those in the top half have positive dust gradients (note that the limitations of the IRX- β plot may constitute an important caveat here).

Two important conclusions concerning the extinction correction can be derived from this plot. Most galaxies are located in the bottom left region of the plot, as would be expected, and they do not follow the diagonal line, meaning that we can actually obtain reliable sSFR gradients since the observed color gradient is not only due to variations of A_{FUV} . Second, correcting for internal extinction is clearly essential to properly study the evolu-

tion and growth of disks from color gradients. Had we simply used the observed $(FUV - K)$ color profile to compute the sSFR, the boundary between inside-out and outside-in scenarios would have been a vertical line at $m_{(FUV-K)_{obs}} = 0$ rather than a diagonal one, leading to an overestimation of their inside-out growth.

4. RESULTS

4.1. Specific SFR Profiles

Once the Galactic and internal extinction corrections have been applied, we proceed to compute the sSFR. Following the calibration given by Kennicutt (1998) to convert FUV luminosity into SFR, the sSFR can be expressed as a function of $(FUV - K)$ as

$$\log(\text{sSFR})(\text{yr}^{-1}) = -0.4(FUV - K) - 8.548 - \log(M/L_K), \quad (1)$$

where M/L_K is the stellar mass-to-light ratio (expressed in solar units) in the K band (see Appendix A). We have adopted a constant value of $M/L_K = 0.8 M_{\odot}/L_{\odot,K}$ (Bell et al. 2003) across the entire extent of the disk. Indeed, the choice of a different mass-to-light ratio would not modify the radial gradient of the sSFR, only the global normalization, as long as it remains constant all over the disk. However, the mass-to-light ratio could depend on the galactocentric distance; the effects that radial variations of M/L_K could have on the sSFR gradient are discussed later in this section.

It is widely known that light profiles of disks usually follow an approximately exponential law. Therefore, $(FUV - K)$ and sSFR (once expressed in log scale) are also expected to track linearly with radius. Thus, in order to characterize the main properties of the sSFR radial variations we have performed a linear fit to our sSFR profiles (in log scale). Obviously, local features in the profiles due to rings or arms, etc., cannot be described with a straight line; we are mainly interested in the global gradient of sSFR along the whole disk, over spatial scales somewhat larger than these local features.

We must first exclude the bulges from this analysis for several reasons. The extinction correction we have applied to our profiles is only valid in star-forming systems such the disks of spiral galaxies. Bulges and early-type galaxies do not usually host active star formation processes, and their red $(FUV - NUV)$ colors are mainly due to the intrinsically red underlying stellar population rather than dust attenuation. Besides, evolved giant stars in the blue part of the horizontal branch may contribute to the observed UV flux. Finally, in galaxies with AGN activity a blue peak could be observed associated with the innermost nuclear regions.

The radius at which the contribution of the bulge to the $(FUV - K)$ color is negligible compared to that of the disk (r_{in} hereafter) was determined by visually inspecting the $(FUV - NUV)$ radial profiles, complemented with UV and optical images. In most cases the bulge-disk separation is rather easy to determine, since both $(FUV - K)$ color and its gradient experience an obvious change. On the other hand, we found many galaxies with no apparent bulge or a very small one. For some of these objects the size of the bulge is of the order of the resolution of the *GALEX* images (PSF FWHM $\simeq 5''$). For those galaxies we adopted a conservative criterion ($r_{in} = 9''$) and removed the first point of the profiles from the linear fit, just to be sure that the contribution of the bulge or AGN (if present) does not significantly alter our results.

Table 3 shows the value of r_{in} used for each galaxy, as well as the resulting parameters of the linear regression: the extrapolated value of sSFR at $r = 0$ (sSFR $_0$ hereafter) and the slope

TABLE 3
FIT RESULTS

Object Name (1)	r_{in} (arcsec) (2)	m_{SFR} (dex kpc ⁻¹) (3)	$\log(sSFR_0)$ (10 ⁻¹¹ yr ⁻¹) (4)	$\Sigma_{M,0}$ (M _⊙ pc ⁻²) (5)	α_M (kpc) (6)	$\Sigma_{SFR,0}$ (10 ⁻⁸ M _⊙ yr ⁻¹ pc ⁻²) (7)	α_{SFR} (kpc) (8)	m_{FUV} (mag kpc ⁻¹) (9)	$A_{FUV,0}$ (mag) (10)
PGC 00282	9	0.025 ^{+0.028} _{-0.027}	0.993 ^{+0.370} _{-0.369}	223 ⁺¹⁵⁷ ₋₉₀	8.22 \dagger	2.20 ^{+2.20} _{-1.06}	15.34 \dagger	0.003 ^{+0.051} _{-0.048}	0.881 ^{+0.731} _{-0.715}
Arp 256 NED 02	9	0.004 ^{+0.032} _{-0.032}	1.405 ^{+0.351} _{-0.356}	473 ⁺⁴¹⁵ ₋₂₁₆	4.71 \dagger	12.01 ^{+7.96} _{-4.65}	4.91 ^{+1.65} _{-0.76}	-0.045 ^{+0.052} _{-0.048}	2.024 ^{+0.619} _{-0.649}
NGC 0099	9	0.028 ^{+0.048} _{-0.049}	1.124 ^{+0.363} _{-0.348}	571 ⁺⁵⁵³ ₋₂₈₂	3.33 \dagger	7.59 ^{+4.25} _{-2.51}	4.25 ^{+1.32} _{-0.66}	-0.059 ^{+0.049} _{-0.045}	1.390 ^{+0.452} _{-0.472}
VV 548	9	-0.006 ^{+0.062} _{-0.063}	1.475 ^{+0.386} _{-0.371}	135 ⁺⁸⁶ ₋₅₃	5.89 \dagger	4.03 ^{+3.85} _{-1.92}	5.42 \dagger	-0.012 ^{+0.119} _{-0.121}	1.114 ^{+0.789} _{-0.723}
NGC 0165	9	0.001 ^{+0.018} _{-0.018}	0.671 ^{+0.199} _{-0.187}	558 ⁺¹⁵⁵ ₋₁₅₅	5.22 ^{+1.38} _{-1.55}	2.62 ^{+0.82} _{-0.59}	5.28 ^{+0.58} _{-0.42}	0.034 ^{+0.021} _{-0.022}	1.165 ^{+0.700} _{-0.316}
UGC 00372	9	0.022 ^{+0.062} _{-0.065}	0.993 ^{+0.440} _{-0.398}	151 ⁺¹⁵⁶ ₋₇₅	3.46 \dagger	1.49 ^{+1.49} _{-0.69}	4.21 \dagger	-0.005 ^{+0.104} _{-0.099}	0.893 ^{+0.725} _{-0.735}
PGC 02269	9	0.012 ^{+0.025} _{-0.025}	1.117 ^{+0.225} _{-0.212}	357 ⁺⁸⁶ ₋₇₂	4.56 ^{+0.91} _{-0.55}	4.67 ^{+2.55} _{-1.62}	5.19 ^{+3.60} _{-0.94}	-0.032 ^{+0.053} _{-0.052}	1.478 ^{+0.487} _{-0.479}
NGC 0195	9	0.023 ^{+0.029} _{-0.028}	0.285 ^{+0.235} _{-0.231}	1364 ⁺⁴⁸⁴ ₋₃₅₉	2.79 ^{+0.47} _{-0.30}	2.63 ^{+1.20} _{-0.79}	3.28 ^{+0.56} _{-0.36}	0.003 ^{+0.049} _{-0.049}	1.802 ^{+0.479} _{-0.477}
NGC 0213	9	0.012 ^{+0.014} _{-0.012}	0.310 ^{+0.156} _{-0.158}	1088 ⁺²²⁰ ₋₁₂₂	4.17 ^{+0.29} _{-0.34}	2.22 ^{+0.93} _{-0.59}	4.71 ^{+0.69} _{-0.53}	-0.080 ^{+0.025} _{-0.023}	1.636 ^{+0.342} _{-0.330}
ESO 540-G025	9	0.001 ^{+0.059} _{-0.061}	1.468 ^{+0.427} _{-0.426}	138 ⁺¹⁴³ ₋₁₄₃	4.37 \dagger	4.05 ^{+3.95} _{-1.97}	4.44 \dagger	0.018 ^{+0.089} _{-0.093}	0.935 ^{+0.764} _{-0.700}
NGC 0262	9	0.031 ^{+0.026} _{-0.025}	0.293 ^{+0.262} _{-0.270}	277 ⁺⁹⁷ ₋₇₃	5.36 ^{+1.50} _{-0.77}	0.54 ^{+0.31} _{-0.19}	8.63 \dagger	-0.029 ^{+0.051} _{-0.052}	1.973 ^{+0.587} _{-0.561}
NGC 0266	27	0.023 ^{+0.013} _{-0.013}	0.226 ^{+0.224} _{-0.222}	1511 ⁺⁴⁶¹ ₋₃₃₆	5.62 ^{+0.66} _{-0.50}	2.54 ^{+1.32} _{-0.84}	7.98 ^{+1.94} _{-1.09}	-0.003 ^{+0.025} _{-0.026}	1.658 ^{+0.487} _{-0.458}
NGC 0300	27	0.116 ^{+0.010} _{-0.010}	0.747 ^{+0.013} _{-0.020}	323 ⁺¹³ ₋₁₃	1.29 ^{+0.02} _{-0.03}	1.80 ^{+0.16} _{-0.20}	1.98 ^{+0.09} _{-0.10}	-0.137 ^{+0.011} _{-0.011}	0.890 ^{+0.020} _{-0.020}
PGC 03613	9	0.022 ^{+0.024} _{-0.024}	0.387 ^{+0.249} _{-0.244}	1321 ⁺⁵¹⁹ ₋₃₈₆	4.01 ^{+0.88} _{-0.49}	3.22 ^{+1.29} _{-0.86}	5.01 ^{+0.83} _{-0.56}	-0.008 ^{+0.034} _{-0.034}	2.227 ^{+0.438} _{-0.425}
IC 1616	9	0.003 ^{+0.013} _{-0.014}	0.797 ^{+0.160} _{-0.154}	965 ⁺²⁰⁰ ₋₁₇₁	4.45 ^{+0.54} _{-0.38}	6.04 ^{+1.92} _{-1.41}	4.62 ^{+0.46} _{-0.35}	-0.005 ^{+0.026} _{-0.022}	1.477 ^{+0.330} _{-0.317}
ESO 296-G002	9	-0.011 ^{+0.018} _{-0.018}	0.754 ^{+0.209} _{-0.211}	489 ⁺²⁰⁶ ₋₁₈₅	5.22 ^{+1.43} _{-0.73}	2.77 ^{+1.07} _{-0.43}	4.63 ^{+0.65} _{-0.43}	0.003 ^{+0.022} _{-0.022}	1.319 ^{+0.370} _{-0.370}
NGC 0479	9	-0.039 ^{+0.028} _{-0.028}	1.449 ^{+0.243} _{-0.232}	139 ⁺⁵² ₋₃₈	5.81 ^{+2.79} _{-1.03}	3.90 ^{+2.04} _{-1.36}	3.81 ^{+1.08} _{-0.54}	-0.012 ^{+0.055} _{-0.055}	1.446 ^{+0.512} _{-0.499}
NGC 0491	9	-0.007 ^{+0.033} _{-0.032}	0.890 ^{+0.215} _{-0.220}	2459 ⁺¹¹¹⁵ ₋₇₇₆	2.34 ^{+0.48} _{-0.29}	19.09 ^{+6.10} _{-4.34}	2.26 ^{+0.16} _{-0.13}	0.013 ^{+0.034} _{-0.035}	1.653 ^{+0.353} _{-0.333}
UGC 00910	9	-0.014 ^{+0.034} _{-0.034}	1.133 ^{+0.300} _{-0.301}	429 ⁺¹⁹⁰ ₋₁₃₄	4.72 ^{+2.28} _{-0.82}	5.83 ^{+1.99} _{-2.30}	4.09 ^{+1.56} _{-0.67}	-0.045 ^{+0.069} _{-0.061}	1.569 ^{+0.725} _{-0.583}
NGC 0514	15	0.031 ^{+0.015} _{-0.015}	0.637 ^{+0.130} _{-0.126}	692 ⁺¹²⁸ ₋₁₁₀	3.83 ^{+0.47} _{-0.33}	3.00 ^{+0.79} _{-0.59}	5.26 ^{+0.74} _{-0.50}	-0.029 ^{+0.025} _{-0.026}	1.499 ^{+0.282} _{-0.252}
ESO 352-G069	9	0.027 ^{+0.026} _{-0.026}	0.596 ^{+0.240} _{-0.241}	878 ⁺⁴⁴⁵ ₋₃₀₄	3.84 ^{+1.32} _{-0.57}	5.05 ^{+0.86} _{-0.95}	5.05 ^{+0.86} _{-0.54}	-0.040 ^{+0.028} _{-0.028}	1.716 ^{+0.376} _{-0.370}
M33	3	0.078 ^{+0.002} _{-0.002}	0.547 ^{+0.005} _{-0.004}	1228 ⁺⁷ ₋₇	1.48 ^{+0.01} _{-0.01}	4.33 ^{+0.20} _{-0.20}	2.01 ^{+0.05} _{-0.05}	-0.083 ^{+0.008} _{-0.008}	1.088 ^{+0.008} _{-0.008}
NGC 0628	51	0.073 ^{+0.018} _{-0.017}	0.601 ^{+0.105} _{-0.110}	1250 ⁺³⁵¹ ₋₂₇₂	2.48 ^{+0.29} _{-0.21}	4.98 ^{+0.86} _{-0.70}	4.25 ^{+0.36} _{-0.27}	-0.064 ^{+0.002} _{-0.002}	1.704 ^{+0.017} _{-0.016}
NGC 0706	9	0.005 ^{+0.024} _{-0.024}	0.774 ^{+0.236} _{-0.232}	3432 ⁺¹⁸⁸⁴ ₋₁₂₃₂	3.13 ^{+0.69} _{-0.40}	20.38 ^{+6.66} _{-4.68}	3.26 ^{+0.25} _{-0.20}	0.013 ^{+0.027} _{-0.027}	1.544 ^{+0.338} _{-0.338}
PGC 07210	9	0.012 ^{+0.025} _{-0.026}	1.032 ^{+0.285} _{-0.279}	518 ⁺¹⁷¹ ₋₁₇₁	4.97 ^{+0.80} _{-0.80}	5.56 ^{+2.15} _{-2.15}	5.79 ^{+1.04} _{-1.04}	0.007 ^{+0.048} _{-0.048}	0.968 ^{+0.587} _{-0.587}
KUG 0156-084	9	-0.005 ^{+0.028} _{-0.029}	1.191 ^{+0.230} _{-0.210}	559 ⁺¹³⁵ ₋₁₁₀	3.39 ^{+0.53} _{-0.34}	8.68 ^{+4.55} _{-3.11}	3.25 ^{+0.92} _{-0.44}	-0.037 ^{+0.059} _{-0.059}	1.406 ^{+0.499} _{-0.462}
NGC 0772	21	0.016 ^{+0.005} _{-0.005}	0.145 ^{+0.096} _{-0.089}	1325 ⁺²³⁶ ₋₁₉₈	7.23 ^{+0.54} _{-0.44}	1.85 ^{+0.28} _{-0.27}	9.85 ^{+0.49} _{-0.44}	0.003 ^{+0.005} _{-0.005}	1.288 ^{+0.151} _{-0.159}
NGC 0787	15	-0.015 ^{+0.014} _{-0.013}	0.536 ^{+0.169} _{-0.169}	745 ⁺¹¹⁵ ₋₁₀₁	5.38 ^{+0.51} _{-0.38}	2.56 ^{+1.01} _{-0.66}	4.52 ^{+0.53} _{-0.39}	0.080 ^{+0.029} _{-0.027}	0.599 ^{+0.374} _{-0.385}
NGC 0783	9	-0.015 ^{+0.011} _{-0.012}	1.013 ^{+0.149} _{-0.143}	1024 ⁺¹⁶⁵ ₋₁₄₄	4.88 ^{+0.42} _{-0.34}	10.56 ^{+3.30} _{-2.46}	4.17 ^{+0.39} _{-0.30}	-0.008 ^{+0.021} _{-0.022}	1.454 ^{+0.313} _{-0.298}
UGC 01593	9	0.027 ^{+0.044} _{-0.045}	0.768 ^{+0.385} _{-0.380}	721 ⁺⁵⁶⁴ ₋₃₁₈	3.08 ^{+1.41} _{-0.54}	4.22 ^{+4.24} _{-1.99}	3.80 ^{+2.05} _{-0.72}	-0.061 ^{+0.075} _{-0.075}	1.353 ^{+0.759} _{-0.759}
UGC 01603	9	0.022 ^{+0.067} _{-0.067}	0.987 ^{+0.468} _{-0.461}	202 ⁺²¹³ ₋₁₀₅	3.96 \dagger	1.97 ^{+1.92} _{-0.96}	4.96 \dagger	-0.027 ^{+0.106} _{-0.103}	1.338 ^{+0.806} _{-0.793}
KUG 0210-078	9	0.041 ^{+0.020} _{-0.021}	0.361 ^{+0.194} _{-0.183}	479 ⁺⁸³ ₋₆₉	4.71 ^{+0.59} _{-0.43}	1.10 ^{+0.52} _{-0.33}	8.51 \dagger	-0.073 ^{+0.044} _{-0.041}	1.826 ^{+0.406} _{-0.416}
NGC 0881	9	-0.005 ^{+0.011} _{-0.011}	0.588 ^{+0.169} _{-0.169}	1022 ⁺²¹¹ ₋₁₇₀	6.13 ^{+0.66} _{-0.61}	3.96 ^{+1.03} _{-0.80}	5.70 ^{+0.39} _{-0.31}	0.041 ^{+0.016} _{-0.016}	1.287 ^{+0.329} _{-0.316}
NGC 0895	9	0.073 ^{+0.033} _{-0.033}	0.566 ^{+0.226} _{-0.218}	724 ⁺⁴¹⁵ ₋₂₅₂	3.10 ^{+1.05} _{-0.52}	2.67 ^{+0.69} _{-0.52}	6.49 ^{+1.26} _{-0.79}	-0.048 ^{+0.026} _{-0.026}	1.576 ^{+0.245} _{-0.249}
NGC 0906	15	-0.018 ^{+0.018} _{-0.015}	0.791 ^{+0.197} _{-0.223}	916 ⁺³⁵² ₋₂₂₁	4.28 ^{+0.57} _{-0.46}	5.67 ^{+1.98} _{-1.29}	3.65 ^{+0.23} _{-0.22}	-0.055 ^{+0.020} _{-0.020}	2.268 ^{+0.346} _{-0.341}
PGC 09333	9	-0.011 ^{+0.021} _{-0.021}	0.717 ^{+0.354} _{-0.347}	147 ⁺⁸² ₋₅₃	14.90 \dagger	0.77 ^{+0.76} _{-0.36}	10.73 \dagger	-0.007 ^{+0.044} _{-0.044}	1.235 ^{+0.769} _{-0.709}
NGC 0986	27	-0.006 ^{+0.015} _{-0.014}	0.514 ^{+0.137} _{-0.137}	1801 ⁺⁴⁰⁵ ₋₃₃₃	3.16 ^{+0.29} _{-0.23}	5.88 ^{+1.33} _{-1.09}	3.02 ^{+0.18} _{-0.15}	0.015 ^{+0.022} _{-0.021}	1.631 ^{+0.241} _{-0.253}
KUG 0232-079	9	0.053 ^{+0.033} _{-0.033}	0.758 ^{+0.295} _{-0.293}	1637 ⁺⁷⁴⁹ ₋₅₂₆	2.84 ^{+0.58} _{-0.34}	9.38 ^{+6.56} _{-3.54}	4.36 ^{+1.65} _{-0.73}	-0.056 ^{+0.062} _{-0.061}	1.865 ^{+0.627} _{-0.617}
NGC 0991	15	0.113 ^{+0.042} _{-0.042}	0.710 ^{+0.168} _{-0.163}	470 ⁺¹⁹⁶ ₋₉₂	1.95 ^{+0.22} _{-0.22}	2.41 ^{+0.62} _{-0.31}	3.97 ^{+0.74} _{-0.79}	-0.111 ^{+0.067} _{-0.077}	1.569 ^{+0.360} _{-0.332}
NGC 1022	9	0.018 ^{+0.038} _{-0.037}	0.363 ^{+0.180} _{-0.179}	1371 ⁺¹¹³ ₋₁₀₃	1.88 ^{+0.08} _{-0.07}	3.16 ^{+0.88} _{-0.67}	2.03 ^{+0.22} _{-0.17}	0.107 ^{+0.085} _{-0.086}	3.402 ^{+0.443} _{-0.428}
NGC 1033	9	0.007 ^{+0.015} _{-0.015}	0.617 ^{+0.194} _{-0.188}	517 ⁺¹⁰⁴ ₋₈₈	5.66 ^{+0.72} _{-0.51}	2.13 ^{+0.99} _{-0.64}	6.22 ^{+1.45} _{-0.85}	0.024 ^{+0.031} _{-0.031}	1.024 ^{+0.444} _{-0.416}
NGC 1042	15	0.006 ^{+0.018} _{-0.017}	0.567 ^{+0.102} _{-0.094}	302 ⁺¹⁹⁰ ₋₁₃	4.62 ^{+0.22} _{-0.19}	1.11 ^{+0.27} _{-0.20}	13.00 \dagger	-0.056 ^{+0.016} _{-0.041}	1.437 ^{+0.244} _{-0.229}
NGC 1068	27	0.006 ^{+0.013} _{-0.012}	0.433 ^{+0.090} _{-0.092}	4545 ⁺²¹⁰ ₋₁₉₃	1.90 ^{+0.03} _{-0.03}	12.33 ^{+2.67} _{-2.11}	1.95 ^{+0.12} _{-0.10}	-0.097 ^{+0.030} _{-0.029}	2.107 ^{+0.222} _{-0.226}
NGC 1067	9	-0.008 ^{+0.035} _{-0.036}	0.948 ^{+0.264} _{-0.248}	549 ⁺¹⁰⁵ ₋₈₉	3.77 ^{+0.50} _{-0.35}	4.87 ^{+2.71} _{-1.62}	3.52 ^{+1.12} _{-0.52}	0.052 ^{+0.069} _{-0.066}	1.113 ^{+0.534} _{-0.521}
NGC 1097	51	0.010 ^{+0.011} _{-0.011}	0.833 ^{+0.102} _{-0.099}	1625 ⁺⁴¹⁵ ₋₃₃₃	3.81 ^{+0.31} _{-0.30}	11.06 ^{+1.57} _{-1.25}	4.16 ^{+0.16} _{-0.14}	-0.118 ^{+0.008} _{-0.008}	3.200 ^{+0.079} _{-0.043}
NGC 1291	123	0.085 ^{+0.041} _{-0.008}	-0.955 ^{+0.098} _{-0.446}	527 ⁺⁷⁸ ₋₃₂	4.09 ^{+0.10} _{-0.23}	0.06 ^{+0.01} _{-0.01}	20.89 ^{+7.91} _{-5.46}	-0.129 ^{+0.100} _{-0.014}	2.978 ^{+0.228} _{-1.096}
NGC 1285	9	0.053 ^{+0.034} _{-0.034}	0.781 ^{+0.286} _{-0.275}	2441 ⁺¹⁷⁰⁴ ₋₉₉₆	2.78 ^{+0.82} _{-0.43}	14.75 ^{+5.80} _{-3.91}			

TABLE 3—Continued

Object Name (1)	r_{in} (arcsec) (2)	m_{sSFR} (dex kpc ⁻¹) (3)	$\log(sSFR_0)$ (10 ⁻¹¹ yr ⁻¹) (4)	$\Sigma_{M,0}$ (M_{\odot} pc ⁻²) (5)	α_M (kpc) (6)	$\Sigma_{SFR,0}$ (10 ⁻⁸ M_{\odot} yr ⁻¹ pc ⁻²) (7)	α_{SFR} (kpc) (8)	$m_{A_{FUV}}$ (mag kpc ⁻¹) (9)	$A_{FUV,0}$ (mag) (10)
NGC 2903.....	27	0.049 ^{+0.009} _{-0.009}	0.592 ^{+0.047} _{-0.048}	5365 ⁺⁶¹⁰ ₋₅₅₇	1.91 ^{+0.08} _{-0.07}	20.93 ^{+2.53} _{-2.19}	2.44 ^{+0.09} _{-0.08}	-0.090 ^{+0.001} _{-0.001}	2.533 ^{+0.007} _{-0.007}
M81.....	201	0.046 ^{+0.029} _{-0.005}	0.238 ^{+0.032} _{-0.201}	3933 ⁺⁴⁵² ₋₁₂₁	2.15 ^{+0.02} _{-0.07}	6.80 ^{+0.80} _{-0.56}	2.78 ^{+0.06} _{-0.07}	-0.026 ^{+0.070} _{-0.012}	1.445 ^{+0.082} _{-0.486}
UGC 05493.....	9	0.012 ^{+0.027} _{-0.027}	0.780 ^{+0.184} _{-0.175}	689 ⁺¹⁹⁹ ₋₁₄₉	2.79 ^{+0.46} _{-0.32}	4.15 ^{+1.70} _{-1.13}	3.03 ^{+0.49} _{-0.33}	-0.044 ^{+0.039} _{-0.042}	1.240 ^{+0.356} _{-0.324}
UGC 05528.....	9	0.010 ^{+0.020} _{-0.021}	0.124 ^{+0.393} _{-0.368}	1103 ⁺²⁷² ₋₂₂₈	8.82 ^{+1.36} _{-0.88}	1.46 ^{+0.99} _{-0.58}	10.97 ^{+5.28} _{-2.00}	0.090 ^{+0.034} _{-0.033}	0.353 ^{+0.702} _{-0.692}
NGC 3147.....	9	0.023 ^{+0.011} _{-0.011}	0.315 ^{+0.123} _{-0.117}	3886 ⁺⁸⁴² ₋₆₈₃	3.91 ^{+0.39} _{-0.30}	8.03 ^{+1.23} _{-1.23}	4.95 ^{+0.29} _{-0.24}	-0.050 ^{+0.013} _{-0.013}	2.120 ^{+0.217} _{-0.208}
NGC 3183.....	15	0.005 ^{+0.016} _{-0.016}	0.721 ^{+0.167} _{-0.164}	1418 ⁺⁴⁶⁰ ₋₃₇₇	3.77 ^{+0.62} _{-0.38}	7.45 ^{+1.93} _{-1.46}	3.94 ^{+0.26} _{-0.21}	-0.028 ^{+0.039} _{-0.017}	1.531 ^{+0.260} _{-0.257}
ESO 317-G019.....	9	0.051 ^{+0.062} _{-0.066}	0.601 ^{+0.282} _{-0.266}	453 ⁺²⁰⁸ ₋₁₄₇	2.14 ^{+0.91} _{-0.36}	1.81 ^{+0.69} _{-0.51}	2.85 ^{+0.68} _{-0.37}	0.105 ^{+0.078} _{-0.083}	1.734 ^{+0.467} _{-0.449}
NGC 3244.....	15	0.007 ^{+0.023} _{-0.023}	1.062 ^{+0.176} _{-0.169}	917 ⁺²⁸³ ₋₂₇₁	2.80 ^{+0.44} _{-0.28}	10.57 ^{+3.26} _{-2.40}	2.93 ^{+0.29} _{-0.21}	-0.088 ^{+0.031} _{-0.031}	1.931 ^{+0.310} _{-0.306}
NGC 3277.....	15	-0.001 ^{+0.035} _{-0.035}	0.524 ^{+0.164} _{-0.154}	921 ⁺¹⁷⁵ ₋₁₄₉	1.74 ^{+0.93} _{-0.12}	3.08 ^{+0.96} _{-0.69}	1.74 ^{+0.13} _{-0.13}	0.245 ^{+0.063} _{-0.065}	0.894 ^{+0.333} _{-0.322}
NGC 3288.....	9	-0.004 ^{+0.019} _{-0.019}	0.594 ^{+0.242} _{-0.243}	1158 ⁺⁴³⁹ ₋₃₂₀	4.38 ^{+0.80} _{-0.51}	4.53 ^{+2.37} _{-1.52}	4.20 ^{+0.65} _{-0.42}	0.022 ^{+0.037} _{-0.036}	1.219 ^{+0.528} _{-0.527}
NGC 3344.....	21	0.194 ^{+0.034} _{-0.035}	0.536 ^{+0.100} _{-0.091}	1665 ⁺²³⁶ ₋₁₉₆	0.95 ^{+0.06} _{-0.05}	5.72 ^{+1.08} _{-0.85}	1.66 ^{+0.17} _{-0.13}	-0.128 ^{+0.049} _{-0.054}	1.602 ^{+0.192} _{-0.170}
M95.....	51	0.060 ^{+0.020} _{-0.020}	0.109 ^{+0.142} _{-0.139}	2696 ⁺⁸¹³ ₋₆₃₄	2.22 ^{+0.24} _{-0.17}	3.46 ^{+0.64} _{-0.50}	3.20 ^{+0.20} _{-0.17}	-0.060 ^{+0.020} _{-0.020}	1.759 ^{+0.190} _{-0.177}
NGC 3353.....	9	-0.127 ^{+0.128} _{-0.126}	1.412 ^{+0.245} _{-0.244}	570 ⁺³²² ₋₂₁₄	0.90 ^{+0.42} _{-0.16}	14.71 ^{+5.06} _{-3.54}	0.71 ^{+0.06} _{-0.05}	-0.029 ^{+0.114} _{-0.114}	1.559 ^{+0.344} _{-0.328}
M96.....	33	0.064 ^{+0.016} _{-0.016}	-0.182 ^{+0.123} _{-0.123}	3042 ⁺⁸⁰⁹ ₋₈₁₉	2.45 ^{+0.24} _{-0.19}	2.00 ^{+0.32} _{-0.25}	3.86 ^{+0.24} _{-0.19}	-0.058 ^{+0.017} _{-0.017}	2.218 ^{+0.177} _{-0.168}
UGC 05943.....	9	-0.005 ^{+0.037} _{-0.039}	1.165 ^{+0.277} _{-0.264}	434 ⁺²⁸⁰ ₋₁₅₉	3.50 ^{+2.04} _{-0.68}	6.35 ^{+2.46} _{-1.68}	3.38 ^{+0.46} _{-0.32}	0.165 ^{+0.044} _{-0.044}	0.432 ^{+0.411} _{-0.395}
NGC 3394.....	9	-0.030 ^{+0.020} _{-0.019}	1.074 ^{+0.163} _{-0.162}	595 ⁺¹⁸⁷ ₋₁₄₀	4.11 ^{+0.90} _{-0.53}	7.06 ^{+1.88} _{-1.37}	3.20 ^{+0.22} _{-0.18}	0.006 ^{+0.024} _{-0.025}	1.403 ^{+0.297} _{-0.269}
NGC 3445.....	9	0.075 ^{+0.065} _{-0.066}	1.260 ^{+0.255} _{-0.253}	945 ⁺⁴⁷¹ ₋₄₂₅	1.37 ^{+0.09} _{-0.09}	17.17 ^{+8.09} _{-5.25}	1.79 ^{+0.38} _{-0.23}	0.065 ^{+0.086} _{-0.086}	0.550 ^{+0.392} _{-0.340}
NGC 3470.....	9	0.055 ^{+0.029} _{-0.026}	0.208 ^{+0.261} _{-0.278}	1247 ⁺⁷⁰⁶ ₋₄₅₂	3.40 ^{+0.91} _{-0.48}	2.01 ^{+1.10} _{-0.69}	6.00 ^{+2.26} _{-1.00}	-0.027 ^{+0.041} _{-0.039}	1.391 ^{+0.487} _{-0.493}
NGC 3486.....	21	0.025 ^{+0.016} _{-0.014}	0.992 ^{+0.086} _{-0.091}	430 ⁺⁸⁶ ₋₆₀	2.44 ^{+0.20} _{-0.18}	4.22 ^{+0.78} _{-0.56}	2.83 ^{+0.16} _{-0.15}	-0.050 ^{+0.017} _{-0.016}	0.954 ^{+0.143} _{-0.127}
IC 0671.....	9	0.004 ^{+0.013} _{-0.012}	0.362 ^{+0.091} _{-0.263}	1007 ⁺²⁵⁹ ₋₃₉₁	7.87 ^{+2.87} _{-1.25}	2.32 ^{+0.79} _{-0.57}	8.49 ^{+0.86} _{-0.65}	-0.018 ^{+0.037} _{-0.011}	1.729 ^{+0.329} _{-0.329}
NGC 3821.....	9	0.003 ^{+0.017} _{-0.017}	0.054 ^{+0.209} _{-0.206}	443 ⁺¹⁰⁹ ₋₈₆	6.20 ^{+1.07} _{-0.68}	0.50 ^{+0.18} _{-0.12}	6.46 ^{+0.12} _{-0.72}	-0.003 ^{+0.026} _{-0.026}	1.734 ^{+0.385} _{-0.372}
NGC 3840.....	9	0.018 ^{+0.023} _{-0.017}	0.461 ^{+0.203} _{-0.241}	633 ⁺²⁷⁸ ₋₁₂₈	4.50 ^{+0.62} _{-0.67}	1.83 ^{+1.28} _{-0.67}	5.52 ^{+1.85} _{-1.02}	-0.065 ^{+0.035} _{-0.032}	1.246 ^{+0.438} _{-0.445}
NGC 3861.....	9	0.031 ^{+0.009} _{-0.009}	0.177 ^{+0.138} _{-0.138}	688 ⁺⁶⁷ ₋₆₇	8.13 ^{+0.51} _{-0.43}	1.03 ^{+0.25} _{-0.25}	19.10 [‡]	-0.025 ^{+0.020} _{-0.020}	1.432 ^{+0.323} _{-0.323}
NGC 4108.....	9	-0.046 ^{+0.030} _{-0.030}	1.377 ^{+0.205} _{-0.196}	621 ⁺⁹⁰ ₋₇₉	2.70 ^{+0.20} _{-0.17}	14.81 ^{+8.36} _{-5.34}	2.10 ^{+0.41} _{-0.25}	-0.058 ^{+0.072} _{-0.071}	1.415 ^{+0.482} _{-0.478}
NGC 4108B.....	9	0.111 ^{+0.138} _{-0.134}	1.255 ^{+0.442} _{-0.452}	305 ⁺³⁵⁸ ₋₁₆₀	1.55 [‡]	5.47 ^{+5.46} _{-2.60}	2.58 [‡]	0.029 ^{+0.194} _{-0.199}	0.880 ^{+0.779} _{-0.751}
NGC 4136.....	9	0.051 ^{+0.036} _{-0.037}	1.027 ^{+0.140} _{-0.104}	391 ⁺⁴³ ₋₄₃	1.46 ^{+0.13} _{-0.10}	4.17 ^{+0.80} _{-0.80}	1.76 ^{+0.25} _{-0.17}	-0.078 ^{+0.073} _{-0.072}	1.275 ^{+0.253} _{-0.248}
NGC 4303.....	21	-0.001 ^{+0.011} _{-0.008}	0.910 ^{+0.068} _{-0.093}	2019 ⁺³⁶⁰ ₋₁₉₆	2.86 ^{+0.10} _{-0.17}	16.39 ^{+2.41} _{-1.88}	2.84 ^{+0.09} _{-0.09}	-0.083 ^{+0.012} _{-0.011}	1.721 ^{+0.145} _{-0.141}
NGC 4301.....	15	-0.005 ^{+0.100} _{-0.100}	1.524 ^{+0.251} _{-0.246}	238 ⁺¹⁵⁵ ₋₉₂	1.21 ^{+0.76} _{-0.23}	7.95 ^{+3.31} _{-2.15}	1.20 ^{+0.17} _{-0.12}	-0.050 ^{+0.102} _{-0.102}	0.972 ^{+0.348} _{-0.340}
NGC 4314.....	33	0.022 ^{+0.023} _{-0.023}	-0.274 ^{+0.156} _{-0.153}	1129 ⁺¹⁰⁸ ₋₉₆	2.57 ^{+0.10} _{-0.09}	0.60 ^{+0.17} _{-0.12}	2.94 ^{+0.35} _{-0.25}	-0.003 ^{+0.049} _{-0.049}	2.884 ^{+0.359} _{-0.343}
NGC 4395.....	21	0.406 ^{+0.179} _{-0.175}	0.955 ^{+0.156} _{-0.159}	125 ⁺⁵² ₋₃₈	0.59 ^{+0.28} _{-0.10}	1.13 ^{+0.41} _{-0.28}	1.32 [‡]	-0.147 ^{+0.048} _{-0.046}	0.604 ^{+0.056} _{-0.058}
NGC 4421.....	9	0.098 ^{+0.065} _{-0.066}	-0.158 ^{+0.240} _{-0.246}	1576 ⁺²²⁰ ₋₁₈₆	1.53 ^{+0.12} _{-0.09}	1.09 ^{+0.23} _{-0.18}	2.32 ^{+0.21} _{-0.16}	0.007 ^{+0.067} _{-0.069}	4.346 ^{+0.357} _{-0.352}
NGC 4440.....	9	-0.001 ^{+0.081} _{-0.080}	0.008 ^{+0.225} _{-0.221}	2390 ⁺²⁰⁴ ₋₁₉₈	1.08 ^{+0.04} _{-0.04}	2.43 ^{+0.77} _{-0.56}	1.08 ^{+0.12} _{-0.09}	-0.172 ^{+0.143} _{-0.140}	4.341 ^{+0.469} _{-0.473}
M58.....	33	-0.014 ^{+0.011} _{-0.011}	0.319 ^{+0.102} _{-0.098}	2666 ⁺³²⁵ ₋₂₈₆	2.96 ^{+0.14} _{-0.13}	5.56 ^{+0.96} _{-0.73}	2.71 ^{+0.10} _{-0.09}	0.063 ^{+0.018} _{-0.018}	1.672 ^{+0.202} _{-0.191}
NGC 4618.....	15	-0.114 ^{+0.039} _{-0.040}	1.503 ^{+0.117} _{-0.113}	678 ⁺¹²³ ₋₁₀₅	1.50 ^{+0.18} _{-0.13}	21.64 ^{+5.60} _{-4.26}	1.07 ^{+0.09} _{-0.07}	0.120 ^{+0.070} _{-0.070}	0.693 ^{+0.243} _{-0.243}
NGC 4625.....	9	0.097 ^{+0.122} _{-0.124}	0.860 ^{+0.172} _{-0.166}	1437 ⁺⁴⁵⁹ ₋₃₄₇	0.51 ^{+0.08} _{-0.05}	10.41 ^{+3.30} _{-2.41}	0.58 ^{+0.06} _{-0.04}	-0.005 ^{+0.157} _{-0.162}	1.276 ^{+0.303} _{-0.286}
NGC 4665.....	15	-0.010 ^{+0.025} _{-0.023}	-0.333 ^{+0.159} _{-0.163}	1498 ⁺¹⁰⁷ ₋₈₂	2.60 ^{+0.07} _{-0.09}	0.69 ^{+0.15} _{-0.11}	2.46 ^{+0.16} _{-0.16}	-0.221 ^{+0.029} _{-0.031}	3.028 ^{+0.253} _{-0.234}
NGC 4691.....	15	-0.111 ^{+0.028} _{-0.030}	1.010 ^{+0.150} _{-0.140}	1012 ⁺¹¹⁰ ₋₉₈	1.82 ^{+0.08} _{-0.08}	10.35 ^{+3.13} _{-2.42}	1.24 ^{+0.09} _{-0.07}	-0.203 ^{+0.063} _{-0.063}	2.713 ^{+0.324} _{-0.323}
NGC 4736.....	27	-0.067 ^{+0.010} _{-0.011}	0.659 ^{+0.025} _{-0.023}	7230 ⁺³⁶⁹ ₋₃₄₄	0.90 ^{+0.02} _{-0.02}	32.93 ^{+5.02} _{-3.98}	0.79 ^{+0.03} _{-0.02}	-0.112 ^{+0.011} _{-0.014}	1.942 ^{+0.031} _{-0.025}
NGC 4819.....	9	0.055 ^{+0.068} _{-0.068}	-0.278 ^{+0.526} _{-0.506}	2060 ⁺³²¹ ₋₂₇₉	3.57 ^{+0.30} _{-0.23}	1.09 ^{+1.06} _{-0.53}	6.46 [‡]	0.424 ^{+0.144} _{-0.139}	-0.212 ^{+1.115} _{-1.119}
UGC 08340.....	9	0.026 ^{+0.033} _{-0.034}	0.756 ^{+0.289} _{-0.287}	677 ⁺²⁵⁴ ₋₂₅₄	3.14 ^{+0.49} _{-0.49}	3.86 ^{+2.52} _{-1.32}	3.87 ^{+0.94} _{-0.53}	-0.020 ^{+0.047} _{-0.047}	1.363 ^{+0.509} _{-0.465}
M51a.....	33	0.018 ^{+0.005} _{-0.005}	0.865 ^{+0.030} _{-0.031}	2681 ⁺¹⁸⁶ ₋₁₇₇	2.89 ^{+0.09} _{-0.08}	19.66 ^{+2.06} _{-1.76}	3.28 ^{+0.11} _{-0.09}	-0.024 ^{+0.002} _{-0.002}	1.860 ^{+0.012} _{-0.010}
NGC 5231.....	3	0.045 ^{+0.041} _{-0.041}	-0.233 ^{+0.406} _{-0.395}	2144 ⁺²¹⁰² ₋₁₁₁₃	3.26 ^{+2.14} _{-0.59}	1.25 ^{+0.59} _{-0.59}	4.91 ^{+0.96} _{-0.81}	0.053 ^{+0.042} _{-0.042}	2.470 ^{+0.536} _{-0.541}
M83.....	39	-0.016 ^{+0.005} _{-0.005}	0.966 ^{+0.018} _{-0.018}	3047 ⁺¹²⁰ ₋₁₁₆	1.69 ^{+0.03} _{-0.03}	28.13 ^{+3.14} _{-2.45}	1.59 ^{+0.05} _{-0.04}	-0.056 ^{+0.004} _{-0.004}	1.813 ^{+0.015} _{-0.013}
ESO 444-G087.....	9	0.096 ^{+0.044} _{-0.046}	-0.060 ^{+0.314} _{-0.291}	2226 ⁺¹⁴⁹⁹ ₋₉₀₇	2.27 ^{+0.75} _{-0.34}	1.94 ^{+0.92} _{-0.60}	4.52 ^{+1.77} _{-0.72}	-0.015 ^{+0.052} _{-0.051}	1.629 ^{+0.452} _{-0.435}
M101.....	33	0.056 ^{+0.004} _{-0.004}	0.569 ^{+0.029} _{-0.037}	826 ⁺⁵⁹ ₋₅₇	3.62 ^{+0.34} _{-0.13}	3.06 ^{+0.28} _{-0.27}	6.78 ^{+0.34} _{-0.30}	-0.061 ^{+0.001} _{-0.011}	1.586 ^{+0.012} _{-0.012}
NGC 5474.....	21	0.087 ^{+0.046} _{-0.045}	0.933 ^{+0.107} _{-0.103}	258 ⁺⁴⁶ ₋₃₉	1.27 ^{+0.17} _{-0.12}	2.21 ^{+0.49} _{-0.37}	1.71 ^{+0.24} _{-0.17}	-0.137 ^{+0.061} _{-0.064}	1.063 ^{+0.195} _{-0.177}
UGC 09120.....	9	-0.028 ^{+0.027} _{-0.027}	1.557 ^{+0.252} _{-0.239}	377 ⁺¹⁵⁷ ₋₁₀₉	4.83 ^{+1.69} _{-0.81}	13.58 ^{+7.41} _{-4.60}	3.68 ^{+0.79} _{-0.47}	0.018 ^{+0.048} _{-0.049}	1.132 ^{+0.507} _{-0.480}
NGC 5569.....	9	0.127 ^{+0.077} _{-0.079}	0.847 ^{+0.234} _{-0.222}	250 ⁺⁸⁶ ₋₆₅	1.63 ^{+0.59} _{-0.26}	1.76 ^{+0.96} _{-0.58}	3.12 [‡]	-0.011 ^{+0.152} _{-0.150}	1.200 ^{+0.503} _{-0.484}
NGC 5656.....	9	0.019 ^{+0.032} _{-0.033}	0.709 ^{+0.268} _{-0.25}						

TABLE 3—Continued

Object Name (1)	r_{in} (arcsec) (2)	m_{sSFR} (dex kpc $^{-1}$) (3)	$\log(\text{sSFR}_0)$ (10^{-11} yr $^{-1}$) (4)	$\Sigma_{M,0}$ (M_{\odot} pc $^{-2}$) (5)	α_M (kpc) (6)	$\Sigma_{\text{SFR},0}$ (10^{-8} M_{\odot} yr $^{-1}$ pc $^{-2}$) (7)	α_{SFR} (kpc) (8)	m_{FUV} (mag kpc $^{-1}$) (9)	$A_{\text{FUV},0}$ (mag) (10)
NGC 6770.....	15	0.035 $^{+0.015}_{-0.014}$	0.222 $^{+0.171}_{-0.165}$	991 $^{+224}_{-178}$	4.71 $^{+0.52}_{-0.39}$	1.65 $^{+0.42}_{-0.32}$	7.64 $^{+0.96}_{-0.70}$	0.073 $^{+0.020}_{-0.020}$	0.687 $^{+0.290}_{-0.273}$
IC 4845.....	9	0.006 $^{+0.017}_{-0.017}$	0.526 $^{+0.177}_{-0.176}$	1215 $^{+340}_{-268}$	4.02 $^{+0.57}_{-0.39}$	4.09 $^{+1.25}_{-0.91}$	4.24 $^{+0.40}_{-0.31}$	-0.009 $^{+0.024}_{-0.024}$	1.638 $^{+0.333}_{-0.321}$
NGC 6782.....	21	0.038 $^{+0.012}_{-0.012}$	0.182 $^{+0.166}_{-0.164}$	1081 $^{+238}_{-190}$	4.44 $^{+0.52}_{-0.32}$	1.64 $^{+0.52}_{-0.38}$	7.32 $^{+1.23}_{-0.78}$	-0.027 $^{+0.023}_{-0.023}$	2.119 $^{+0.357}_{-0.343}$
NGC 6902B.....	9	0.050 $^{+0.046}_{-0.046}$	1.141 $^{+0.224}_{-0.211}$	199 $^{+53}_{-41}$	2.77 $^{+0.65}_{-0.37}$	2.76 $^{+1.55}_{-0.96}$	4.08 ‡	-0.068 $^{+0.096}_{-0.100}$	1.557 $^{+0.512}_{-0.473}$
NGC 6902.....	15	0.051 $^{+0.009}_{-0.010}$	0.182 $^{+0.111}_{-0.102}$	1137 $^{+149}_{-134}$	4.00 $^{+0.28}_{-0.22}$	1.73 $^{+0.39}_{-0.31}$	7.51 ‡	-0.053 $^{+0.018}_{-0.018}$	1.904 $^{+0.239}_{-0.240}$
NGC 6951.....	15	0.052 $^{+0.037}_{-0.034}$	0.243 $^{+0.223}_{-0.243}$	1853 $^{+89}_{-85}$	4.01 $^{+0.11}_{-0.10}$	3.25 $^{+0.91}_{-0.67}$	7.66 ‡	-0.035 $^{+0.059}_{-0.059}$	2.700 $^{+0.383}_{-0.377}$
PGC 65328.....	9	0.021 $^{+0.018}_{-0.017}$	0.625 $^{+0.228}_{-0.239}$	415 $^{+143}_{-106}$	5.64 $^{+1.17}_{-0.60}$	1.75 $^{+0.96}_{-0.60}$	7.82 $^{+3.19}_{-1.33}$	-0.027 $^{+0.034}_{-0.033}$	1.553 $^{+0.523}_{-0.515}$
NGC 6962.....	21	0.028 $^{+0.011}_{-0.010}$	-0.048 $^{+0.180}_{-0.179}$	726 $^{+195}_{-158}$	7.24 $^{+1.12}_{-0.72}$	0.65 $^{+0.18}_{-0.13}$	13.79 $^{+2.83}_{-1.68}$	0.002 $^{+0.014}_{-0.014}$	1.681 $^{+0.306}_{-0.294}$
PGC 66559.....	9	0.025 $^{+0.113}_{-0.114}$	1.384 $^{+0.413}_{-0.396}$	82 $^{+63}_{-36}$	5.27 ‡	1.99 $^{+1.89}_{-0.99}$	7.51 ‡	0.041 $^{+0.221}_{-0.217}$	0.919 $^{+0.779}_{-0.761}$
NGC 7080.....	15	0.009 $^{+0.020}_{-0.019}$	0.619 $^{+0.228}_{-0.238}$	1547 $^{+453}_{-352}$	4.18 $^{+0.57}_{-0.40}$	6.43 $^{+2.97}_{-1.94}$	4.57 $^{+0.77}_{-0.50}$	0.028 $^{+0.040}_{-0.041}$	1.851 $^{+0.529}_{-0.517}$
UGC 11790.....	9	0.060 $^{+0.040}_{-0.039}$	0.387 $^{+0.276}_{-0.274}$	352 $^{+181}_{-65}$	5.15 $^{+0.23}_{-0.66}$	0.86 $^{+0.58}_{-0.34}$	18.09 ‡	-0.001 $^{+0.090}_{-0.093}$	1.635 $^{+0.645}_{-0.636}$
UGC 11816.....	9	0.010 $^{+0.021}_{-0.020}$	1.156 $^{+0.203}_{-0.195}$	158 $^{+56}_{-42}$	4.97 $^{+1.19}_{-0.66}$	2.26 $^{+0.87}_{-0.60}$	5.59 $^{+1.46}_{-0.79}$	-0.017 $^{+0.035}_{-0.035}$	1.359 $^{+0.380}_{-0.371}$
NGC 7167.....	9	-0.013 $^{+0.025}_{-0.026}$	1.108 $^{+0.154}_{-0.146}$	688 $^{+185}_{-148}$	2.65 $^{+0.44}_{-0.38}$	8.82 $^{+2.35}_{-1.75}$	2.45 $^{+0.20}_{-0.16}$	-0.014 $^{+0.032}_{-0.032}$	1.144 $^{+0.255}_{-0.244}$
NGC 7221.....	15	-0.015 $^{+0.007}_{-0.007}$	0.800 $^{+0.106}_{-0.106}$	729 $^{+188}_{-79}$	5.85 $^{+0.39}_{-0.32}$	4.61 $^{+0.34}_{-0.93}$	4.86 $^{+0.29}_{-0.29}$	-0.033 $^{+0.041}_{-0.014}$	1.458 $^{+0.257}_{-0.237}$
NGC 7337.....	9	0.010 $^{+0.026}_{-0.025}$	0.244 $^{+0.285}_{-0.289}$	543 $^{+89}_{-76}$	6.04 $^{+0.70}_{-0.50}$	0.95 $^{+0.52}_{-0.33}$	6.99 $^{+4.42}_{-1.31}$	0.011 $^{+0.051}_{-0.049}$	1.955 $^{+0.597}_{-0.587}$
NGC 7343.....	9	-0.010 $^{+0.023}_{-0.023}$	1.064 $^{+0.255}_{-0.240}$	932 $^{+367}_{-267}$	4.61 $^{+1.31}_{-0.67}$	10.78 $^{+4.11}_{-2.81}$	4.19 $^{+0.39}_{-0.31}$	0.028 $^{+0.025}_{-0.026}$	1.303 $^{+0.431}_{-0.410}$
ESO 346-G006.....	9	0.095 $^{+0.066}_{-0.063}$	-0.111 $^{+1.621}_{-0.650}$	2089 $^{+1523}_{-1523}$	2.87 ‡	1.62 $^{+1.62}_{-0.80}$	7.70 ‡	-0.006 $^{+0.061}_{-0.059}$	1.042 $^{+0.748}_{-0.741}$
NGC 7418.....	15	0.025 $^{+0.018}_{-0.019}$	0.834 $^{+0.107}_{-0.098}$	802 $^{+96}_{-15}$	2.46 $^{+0.19}_{-0.15}$	5.47 $^{+1.20}_{-0.97}$	2.85 $^{+0.31}_{-0.22}$	-0.024 $^{+0.037}_{-0.037}$	1.278 $^{+0.230}_{-0.221}$
NGC 7421.....	15	0.052 $^{+0.044}_{-0.044}$	0.614 $^{+0.191}_{-0.188}$	1720 $^{+587}_{-433}$	1.53 $^{+0.24}_{-0.16}$	7.07 $^{+2.43}_{-1.73}$	1.87 $^{+0.21}_{-0.16}$	0.009 $^{+0.062}_{-0.062}$	1.225 $^{+0.335}_{-0.373}$
Arp 314 NED 01.....	9	0.002 $^{+0.051}_{-0.049}$	1.230 $^{+0.257}_{-0.256}$	1259 $^{+712}_{-435}$	1.99 $^{+0.59}_{-0.32}$	21.34 $^{+10.05}_{-6.63}$	2.02 $^{+0.17}_{-0.18}$	0.106 $^{+0.069}_{-0.065}$	1.107 $^{+0.476}_{-0.446}$
Arp 314 NED 02.....	3	-0.034 $^{+0.061}_{-0.060}$	1.538 $^{+0.301}_{-0.299}$	842 $^{+356}_{-263}$	2.04 $^{+0.53}_{-0.27}$	29.14 $^{+19.98}_{-11.56}$	1.76 $^{+0.40}_{-0.23}$	0.195 $^{+0.118}_{-0.120}$	0.718 $^{+0.642}_{-0.622}$
NGC 7469.....	9	-0.033 $^{+0.015}_{-0.012}$	1.097 $^{+0.174}_{-0.193}$	932 $^{+181}_{-278}$	4.91 $^{+0.62}_{-0.51}$	11.65 $^{+4.48}_{-2.82}$	3.57 $^{+0.25}_{-0.24}$	-0.092 $^{+0.022}_{-0.022}$	2.782 $^{+0.381}_{-0.373}$
NGC 7479.....	15	0.026 $^{+0.019}_{-0.019}$	0.456 $^{+0.186}_{-0.175}$	1390 $^{+623}_{-439}$	4.80 $^{+1.56}_{-0.74}$	3.97 $^{+0.85}_{-0.66}$	6.73 $^{+0.75}_{-0.56}$	-0.041 $^{+0.015}_{-0.015}$	1.936 $^{+0.219}_{-0.209}$
IC 5287.....	9	-0.019 $^{+0.014}_{-0.015}$	0.836 $^{+0.237}_{-0.224}$	528 $^{+169}_{-126}$	6.68 $^{+1.19}_{-0.79}$	3.61 $^{+1.72}_{-1.09}$	5.20 $^{+0.65}_{-0.47}$	0.016 $^{+0.021}_{-0.023}$	1.107 $^{+0.435}_{-0.409}$
NGC 7496.....	15	0.006 $^{+0.022}_{-0.021}$	0.832 $^{+0.121}_{-0.116}$	901 $^{+125}_{-115}$	2.24 $^{+0.19}_{-0.14}$	6.12 $^{+1.57}_{-1.17}$	2.31 $^{+0.22}_{-0.17}$	-0.054 $^{+0.042}_{-0.041}$	1.560 $^{+0.272}_{-0.270}$
NGC 7535.....	9	0.000 $^{+0.022}_{-0.022}$	1.004 $^{+0.197}_{-0.195}$	296 $^{+115}_{-81}$	4.33 $^{+1.15}_{-0.63}$	2.99 $^{+1.04}_{-0.72}$	4.34 $^{+0.59}_{-0.42}$	-0.002 $^{+0.029}_{-0.029}$	1.248 $^{+0.338}_{-0.327}$
NGC 7552.....	21	-0.002 $^{+0.014}_{-0.014}$	0.683 $^{+0.116}_{-0.112}$	1495 $^{+150}_{-145}$	2.84 $^{+0.12}_{-0.10}$	2.91 $^{+1.72}_{-1.41}$	2.80 $^{+0.24}_{-0.18}$	-0.041 $^{+0.031}_{-0.031}$	1.930 $^{+0.271}_{-0.263}$
NGC 7645.....	9	0.033 $^{+0.023}_{-0.022}$	0.579 $^{+0.261}_{-0.260}$	1211 $^{+464}_{-502}$	4.36 $^{+2.13}_{-1.16}$	4.59 $^{+1.61}_{-1.16}$	6.47 $^{+0.97}_{-0.66}$	-0.027 $^{+0.021}_{-0.020}$	1.762 $^{+0.355}_{-0.358}$
NGC 7673.....	3	-0.066 $^{+0.031}_{-0.031}$	1.716 $^{+0.195}_{-0.188}$	412 $^{+103}_{-87}$	2.79 $^{+0.39}_{-0.27}$	21.46 $^{+9.79}_{-6.37}$	1.96 $^{+0.25}_{-0.18}$	0.195 $^{+0.060}_{-0.063}$	0.148 $^{+0.414}_{-0.389}$
NGC 7674.....	9	-0.035 $^{+0.011}_{-0.008}$	1.228 $^{+0.151}_{-0.177}$	1047 $^{+261}_{-138}$	6.09 $^{+0.45}_{-0.56}$	17.67 $^{+7.34}_{-4.44}$	4.10 $^{+0.28}_{-0.27}$	-0.016 $^{+0.019}_{-0.016}$	1.614 $^{+0.341}_{-0.368}$
IC 5325.....	9	-0.023 $^{+0.019}_{-0.018}$	0.893 $^{+0.098}_{-0.089}$	1720 $^{+187}_{-166}$	1.74 $^{+0.99}_{-0.08}$	13.44 $^{+2.67}_{-2.19}$	1.59 $^{+0.08}_{-0.07}$	0.017 $^{+0.035}_{-0.034}$	1.258 $^{+0.208}_{-0.205}$
UGC 12635.....	9	0.010 $^{+0.056}_{-0.051}$	0.710 $^{+0.348}_{-0.365}$	156 $^{+75}_{-51}$	5.63 ‡	0.80 $^{+0.77}_{-0.39}$	6.45 ‡	-0.016 $^{+0.111}_{-0.113}$	1.182 $^{+0.768}_{-0.740}$
NGC 7769.....	9	-0.032 $^{+0.010}_{-0.011}$	0.945 $^{+0.131}_{-0.113}$	2034 $^{+286}_{-261}$	3.62 $^{+0.24}_{-0.19}$	17.90 $^{+4.86}_{-3.52}$	2.87 $^{+0.15}_{-0.13}$	-0.007 $^{+0.019}_{-0.019}$	1.476 $^{+0.274}_{-0.264}$
NGC 7793.....	21	0.149 $^{+0.032}_{-0.033}$	0.955 $^{+0.034}_{-0.033}$	928 $^{+103}_{-69}$	0.56 $^{+0.72}_{-0.02}$	8.37 $^{+1.08}_{-0.88}$	0.70 $^{+0.04}_{-0.03}$	-0.223 $^{+0.007}_{-0.008}$	1.109 $^{+0.068}_{-0.008}$

NOTES.— Col. (1): Galaxy name. Col. (2): Radius at which the contribution of the disk to the (FUV – K) color begins to dominate over that of the bulge. Col. (3): Specific SFR gradient, i.e., $\Delta \log(\text{sSFR})/\Delta r$. Col. (4): Logarithm of the extrapolated value of sSFR at $r = 0$. Col. (5): Stellar mass surface density extrapolated at $r = 0$. Note that these values have not been corrected for inclination. Col. (6): Scale length of the stellar mass surface density profile. Galaxies marked with a double dagger (\ddagger) are those for which $\Delta \alpha_M$ could not be properly computed (see text for details). Col. (7): SFR surface density extrapolated at $r = 0$. Note that these values have not been corrected for inclination. Col. (8): Scale length of the SFR surface density profile. Galaxies marked with a double dagger (\ddagger) are those for which $\Delta \alpha_{\text{SFR}}$ could not be properly computed (see text for details). Col. (9): Radial gradient of the extinction in the FUV. Col. (10): Extrapolated value of the extinction in the FUV at $r = 0$ (note that since it is an extrapolated value from the linear fits, negative values are possible, but without any physical meaning).

[$\Delta \log(\text{sSFR})/\Delta r$; m_{sSFR} hereafter]. These values are obtained by performing an unweighted linear fit over the central (i.e., most probable) values of $\log(\text{sSFR})$ (col. [8] of Table 2). Traditionally, weighted linear fits only take into account the relative weight of each point with respect to the others based on their errors but not the absolute value of each individual uncertainty. Although this results in a correct estimate of the best-fitting parameters and their variances when the individual uncertainties are comparable to the dispersion around the best fit, it might lead to wrong estimates if either individual uncertainties are much smaller than the dispersion of the data (due to the presence of outliers) or the opposite, individual errors are much larger than the actual dispersion of the data (Press et al. 1992). This is actually the case for those of our sSFR profiles corrected for extinction using the empirical relationship between (FUV – NUV) color and TIR-to-FUV ratio given by Boissier et al. (2007). The use of this relationship results in relatively large uncertainties in the corrected (FUV – K) color profiles but small dispersion between individual data points. This is a consequence of assuming that the value of the TIR-to-FUV ratio of the individual data points in the profile for a given galaxy can

be found anywhere within the 1σ prediction band of Boissier et al. (2007) for a given (FUV – NUV) color; i.e., the internal-extinction corrections are independent from point to point. This behavior in the data results in errors in the parameters that are clearly underestimated if a standard weighted least-squares fitting technique is used.

Consequently, in order to derive more realistic errors for m_{sSFR} and sSFR_0 we performed Monte Carlo simulations on our profiles. For each data point in a profile we generated 2000 random points following a normal distribution with $\mu = 0$ and $\sigma = 1$, which are then rescaled according to the upper and lower uncertainties of $\log(\text{sSFR})$ and added to the central values (assumed to be the most probable ones). We then apply a linear fit to each new random profile, ending up with a set of 2000 values of sSFR_0 and m_{sSFR} . We finally compute the upper and lower standard deviations of these randomly obtained values with respect to our best-fit values previously derived. These uncertainties are shown in Table 3.

In order to compute the sSFR from the (FUV – K) color we make the assumption that the K-band mass-to-light ratio depends

only weakly on the galactocentric distance and a constant $M/L_K = 0.8 M_\odot/L_{\odot,K}$ can be adopted. As discussed by Bell & de Jong (2001), for a stellar population showing a wide range of optical colors [$B - R = 0.8 - 1.4$ mag] and timescales of formation (from 3 Gyr to ∞) the $\log(M/L_K)$ is found to vary by only ~ 0.2 dex. In those disks where the M/L_K would decrease toward the outer and consequently bluer parts of the galaxy, the gradient of sSFR would obviously be positive and slightly larger than that derived assuming a constant K -band mass-to-light ratio. A simple estimate shows that m_{sSFR} could be about 0.02 dex kpc^{-1} higher in these disks for a typical radius of 10 kpc, and possibly less for bigger galaxies, under the conservative assumption that the timescale of formation changes from 3 Gyr to ∞ across the disk. The opposite would occur in galaxies with an opposite color gradient, whose sSFR slopes could be reduced by a similar amount. It is worth noting that this systematic uncertainty is significantly smaller than our typical errors in m_{sSFR} (~ 0.03 dex kpc^{-1}), which include both photometric and extinction-correction uncertainties.

The M/L_K ratio can also vary with Hubble type, although this would only affect $\log(\text{sSFR}_0)$, not m_{sSFR} . Portinari et al. (2004) estimate that M/L_K can change from around 1 to 0.6 from early- to late-type spiral galaxies. These variations around our adopted average value of $M/L_K = 0.8$ would globally increase the sSFR of late-type spirals by ~ 0.2 dex, and decrease it by a similar amount for early-type disks.

The conversion factor between FUV luminosity and SFR given by Kennicutt (1998) is computed assuming solar metallicity (see Madau et al. 1998). For a given SFR the FUV luminosity is expected to decrease with increasing metallicity, due to the blanketing effect caused by metallic absorption lines in the FUV. Hence, radial metallicity gradients in our disks might constitute an additional source of systematic uncertainty. We made use of the Starburst99 synthesis code (Leitherer et al. 1999) to estimate how the FUV luminosity would change with different metallicities (ranging from 0.008 to 0.040) and a fixed SFR. The FUV luminosity is found to be ~ 0.2 mag fainter for $Z = 0.040$ than for $Z = 0.008$. Therefore, according to equation (1) the sSFR would be ~ 0.08 dex higher for a high-metallicity region than for a low-metallicity one with the same FUV luminosity. Since metallicity is usually found to decrease with the galactocentric radius, if we assume that these extreme metallicity gradients are spread across the whole disk (~ 10 kpc), our sSFR gradients derived assuming a constant solar metallicity within the whole disk would be overestimated by 0.01 dex kpc^{-1} , which is still below our typical quoted uncertainties. To summarize, we estimate that the possible spread in M/L_K and metallicity is not a significant component of the total sSFR uncertainty.

The SFR calibration could be also affected by FUV radiation coming from stars in the horizontal branch (HB), especially in the innermost regions of our profiles. HB stars are thought to constitute a major source of FUV radiation in elliptical and lenticular galaxies. In Gil de Paz et al. (2007) it was shown that these early-type galaxies are usually redder than $FUV - K \simeq 9$, while spiral and irregular galaxies typically exhibit bluer ($FUV - K$) colors, since their FUV luminosity is dominated by star formation. By comparing the ($FUV - K$) colors of the innermost points of our disk profiles (the ones immediately after r_{in}) with those of E and S0 galaxies presented in Gil de Paz et al. (2007), we conclude that only 21 galaxies (13% of our total sample) present innermost regions red enough to overlap with the colors of elliptical and lenticular galaxies, a fraction that decreases to nearly zero when we apply internal-extinction corrections. Even if some contamination from HB stars might be found in the innermost zones of

those disks, the global fits to the whole disks should not be affected by some SFR calibration changes in those points.

4.2. Stellar Mass Surface Density Profiles

Given the relation between stellar mass and K -band luminosity, another interesting parameter that can be derived from the K -band surface brightness profiles is the surface mass density scale length of the disk (i.e., the radius at which the stellar mass surface density decays by a factor e with respect its value at the center; α_M hereafter). This parameter can be used to measure how much a disk has grown since it began forming stars.

Following the procedure described in § 4.1, we applied linear fits to our extinction-corrected K -band profiles to obtain the central surface brightness $\mu_{K,0}$ (and the corresponding central stellar mass surface density, $\Sigma_{M,0}$) as well as the scale length of the disk, which we consider to be the same for both the K -band luminosity and the mass surface density profiles (i.e., $\alpha_K = \alpha_M$) along with their errors. As explained in the previous section, the assumption of constant K -band mass-to-light ratio is a potential source of uncertainty for α_M . Again, considering the extreme case where $\log(M/L_K)$ decreases by 0.2 dex in the outer regions of the disk, α_M would be $\sim 0.9\alpha_K$. For galaxies with the opposite color gradient α_M could reach $\sim 1.1\alpha_K$. Therefore, our assumption that both scale lengths are equal might introduce a maximum systematic uncertainty of only $\pm 10\%$, depending on the sign of the radial color gradient.

Monte Carlo simulations were carried out in order to properly derive the uncertainties in α_M , following the same methodology as for the sSFR profiles. However, for some galaxies with low spatial resolution and high photometric uncertainties (especially for the outermost parts), upper and lower uncertainties for α_M were extremely high (even greater than 100%); those galaxies are marked with a double dagger (\ddagger) in Table 3.

Linear fits were only applied to points with $r > r_{\text{in}}$ located in the disk-dominated region of the galaxy. In fact, a visual inspection of the K -band profiles showed that our initial determination of r_{in} derived from the ($FUV - K$) color profiles was very accurate, properly isolating the bulge-dominated part of the galaxy. The value of r_{in} was readjusted for only a few objects, but always within our radial isophotal resolution ($6''$). The K -band surface brightness profiles can be seen in Figure 3, along with their corresponding fits. The fitting coefficients are shown in Table 3. The best linear fits to the SFR profiles (within the same radial ranges) have also been derived and the coefficients of these fits are given in Table 3.

4.3. Global Statistical Properties

Figure 4 shows histograms for both $\log(\text{sSFR}_0)$ and m_{sSFR} . Figure 4a shows that galaxies in our sample have values of sSFR_0 ranging over 2 orders of magnitude, between 3×10^{-12} and $3 \times 10^{-10} \text{ yr}^{-1}$. There is a clear dependency on the morphological type: on average, Sc and later type galaxies have greater values of sSFR_0 than earlier types, although both distributions overlap. Assuming that sSFR_0 is somehow related (at least qualitatively) to the global sSFR, this result is consistent with previous works based on total $H\alpha$ or UV photometry data, where late-type spiral galaxies usually show higher sSFRs than more massive early-type spirals (e.g., Boselli et al. 2001; James et al. 2004). This general behavior of the total sSFR seems to be replicated by the extrapolated (central) value of the sSFR of the disks. In other words, to some extent variations in the y -intercept depend on changes of the global sSFR of the disk. However, it must be emphasized that sSFR_0 is an extrapolated value, and the integrated

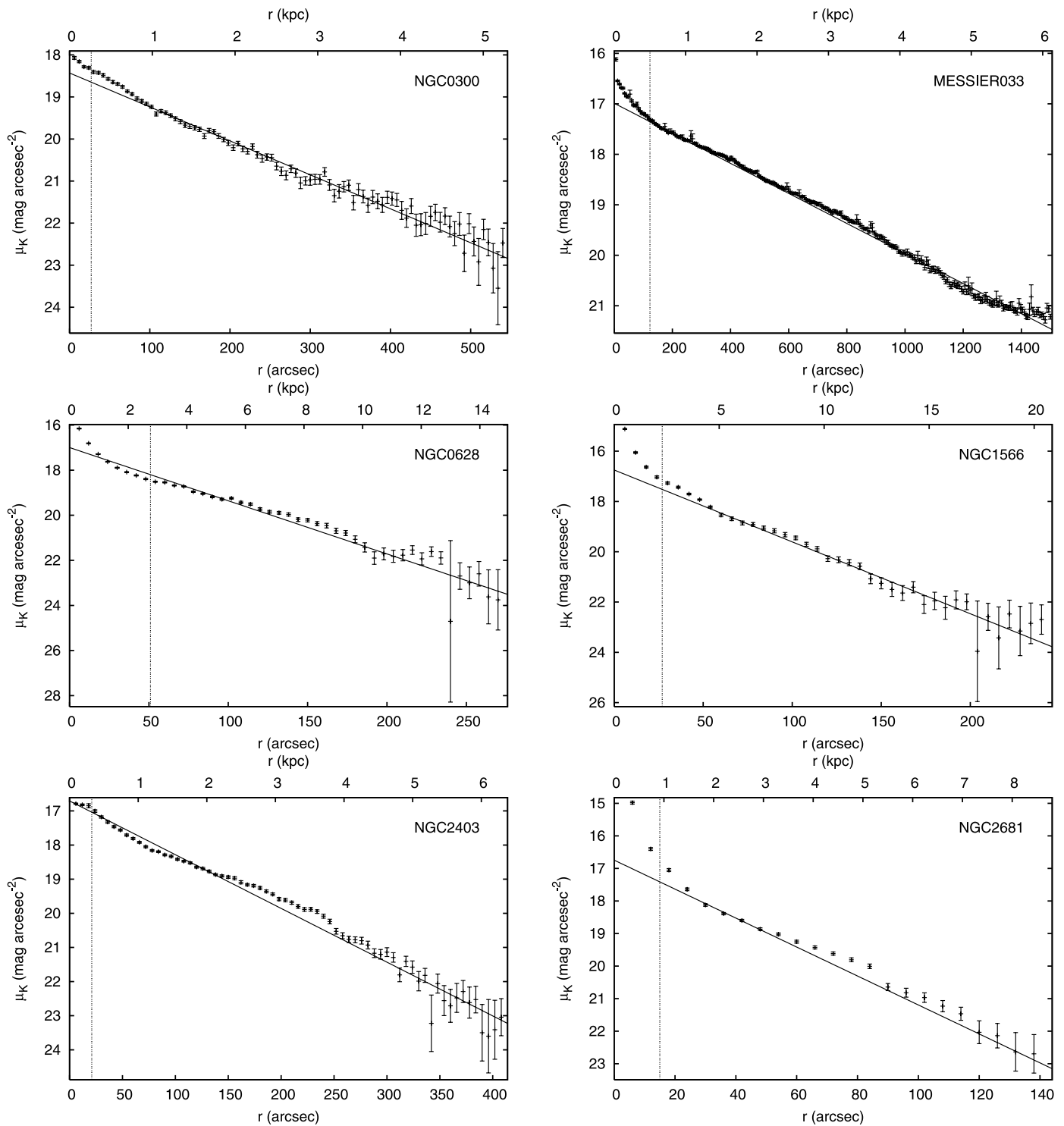


FIG. 3.— Sample K-band surface brightness profiles. The vertical dotted line in each plot represents the radius at which the contribution of the bulge to the light profile becomes negligible compared to that of the disk (same as in Fig. 1). The solid line corresponds to the linear fit performed to the profiles in the disk region. [See the electronic edition of the *Journal* for additional panels of this figure.]

sSFR depends also on the slope of the sSFR profile. Indeed, as we show below, larger slopes are usually found associated with lower γ -intercepts (sSFR $_0$ values) and vice versa. Therefore, all subsequent comparisons between sSFR $_0$ and the global sSFR of the disk should be taken with care.

In Figure 4b we show the histogram of the radial gradient of the sSFR. Most galaxies seem to have a slightly positive gradient of sSFR. Although there are a few galaxies with negative values of m_{sSFR} , the overall distribution favors positive sSFR gradients.

In addition, the histogram of early-type spirals ($T < 5$) seems to be more peaked or concentrated than the distribution of late-type ones ($T \geq 5$). As we see below, this can be understood in terms of the mass and size of each galaxy.

Figure 5a shows the sSFR gradient as a function of the γ -intercept of the profiles. These parameters appear to be correlated in the sense that galaxies with lower sSFR slopes tend to have greater values of $\log(\text{sSFR}_0)$ and vice versa. In other words, we do not find many galaxies with simultaneously high (or low) values

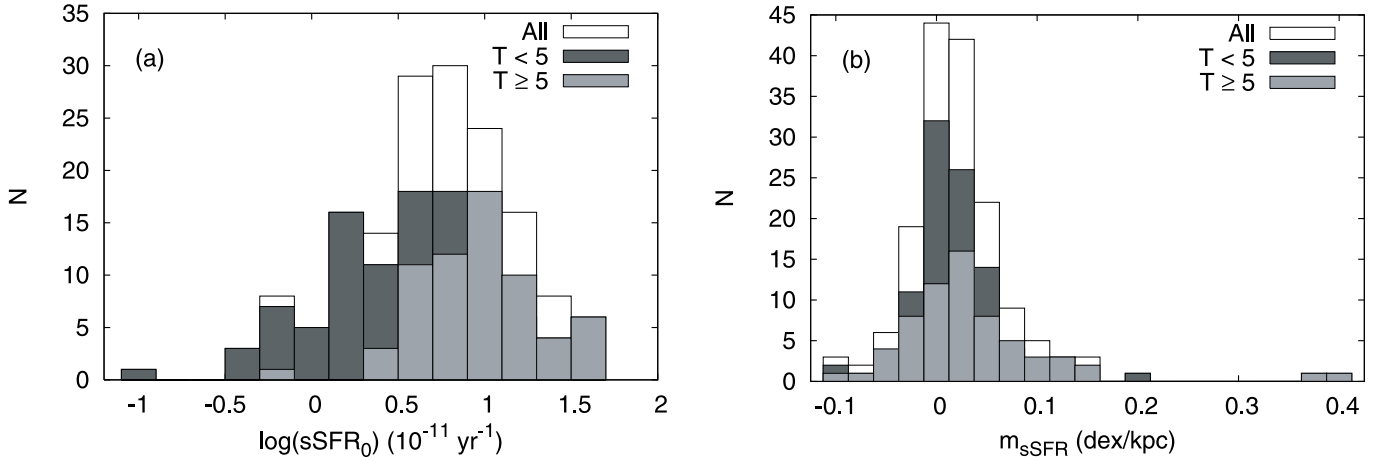


FIG. 4.— (a) Histogram of the sSFR extrapolated to $r = 0$. (b) Histogram of the sSFR gradient [$m_{\text{sSFR}} = \Delta \log(\text{sSFR})/\Delta r$]. Early-type ($T < 5$) and late-type ($T \geq 5$) galaxies are distinguished by dark and light shading of the histograms, respectively.

of m_{sSFR} and $\log(\text{sSFR}_0)$. The observed trend is even tighter if we limit ourselves to relatively large disks ($\alpha_M \geq 3$ kpc), which lie within a narrow band in the diagram; smaller galaxies have a greater dispersion.

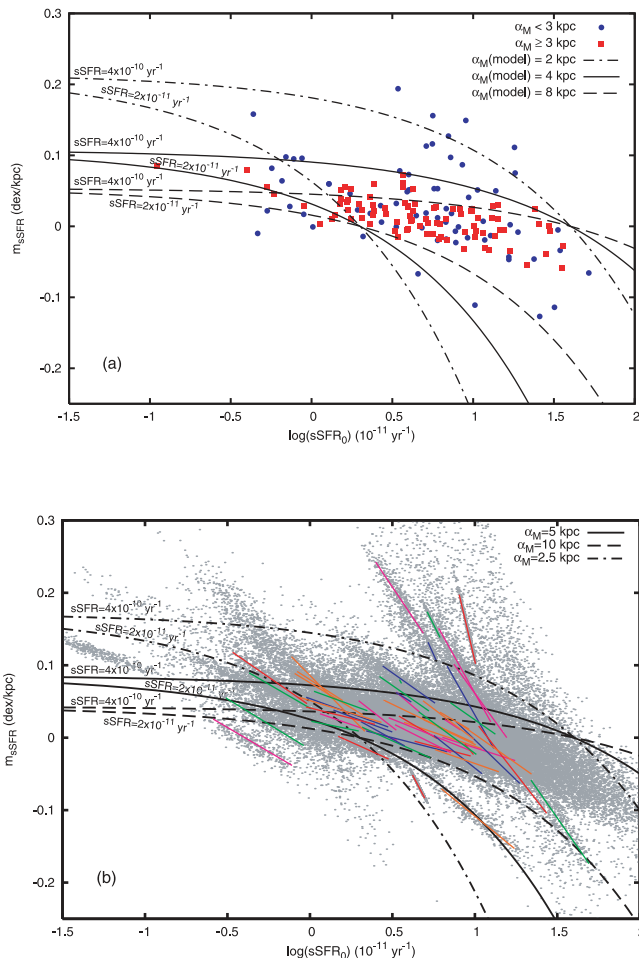


FIG. 5.— (a) Relation between fitting parameters for early- and late-type spirals in our sample. Black curves show the theoretical relation between both parameters for a given total sSFR of the disk and a scale length of the mass surface density profile. (b) Probability distributions of fitting parameters for all galaxies in the sample. Colored segments are the major axes of the 1σ confidence ellipses for each cloud of points (only for the 34% of galaxies with the lowest uncertainties).

The model-derived lines plotted in Figure 5 allow us to understand the relation between both parameters in terms of the size and total sSFR of the disks. Assuming exponential profiles for the radial distributions of both SFR and stellar mass surface densities, the sSFR gradient can be expressed as (see Appendix B)

$$m_{\text{sSFR}} = \left(\frac{1 - \sqrt{\text{sSFR}_0/\text{sSFR}}}{\alpha_M} \right) \log e, \quad (2)$$

where sSFR_0 is the extrapolated specific SFR at $r = 0$ and sSFR is the total specific SFR of the disk (note that we are not including the bulge here).

Therefore, equation (2) provides the possible combinations of sSFR at $r = 0$ and its radial gradient that are compatible with a total sSFR of the disk and a certain scale length of the mass radial profile. In Figure 5a we have plotted six different curves for disk scales of 2, 4, and 8 kpc and total sSFRs of 2×10^{-11} and $4 \times 10^{-10} \text{ yr}^{-1}$. We note that the general shape of the distribution of the data can be well reproduced by equation (2) with a proper choice of reasonable values for these parameters. In particular, the fact that for the same range in total sSFR [$(2-40) \times 10^{-11} \text{ yr}^{-1}$] the curves for both small and large disks nicely define the area of the diagram where the corresponding galaxies are located indicates that physical size is the main factor driving the differences and dispersion observed in the values of the gradient of sSFR.

When analyzing the correlation between m_{sSFR} and $\log(\text{sSFR}_0)$ we must consider the possibility that this correlation could be partly due to a degeneracy between these quantities. In order to determine whether this is true or not, we have plotted the sets of simulated values of both fitting parameters for each galaxy in Figure 5b (in order to avoid a complex graph, we only plot 200 out of the 2000 simulated points for each galaxy). Each galaxy is represented by an elliptical cloud of points that covers the region of the graph where the most probable values of the fitting parameters are likely to be found. To better appreciate the orientation and spatial coverage of these clouds, we have used the covariance matrix to compute the ellipse that contains 68% of the simulated points for each galaxy. The colored segments shown in the figure are the major axes of these ellipses; for the sake of clarity, axes larger than 0.5 (in the units of the plot) have been left out from the figure.

The confidence ellipses are found to be aligned in the same direction (or slightly steeper) than the general distribution of data points, with many of them clearly overlapping. Therefore, the observed global correlation between the fitting parameters could be

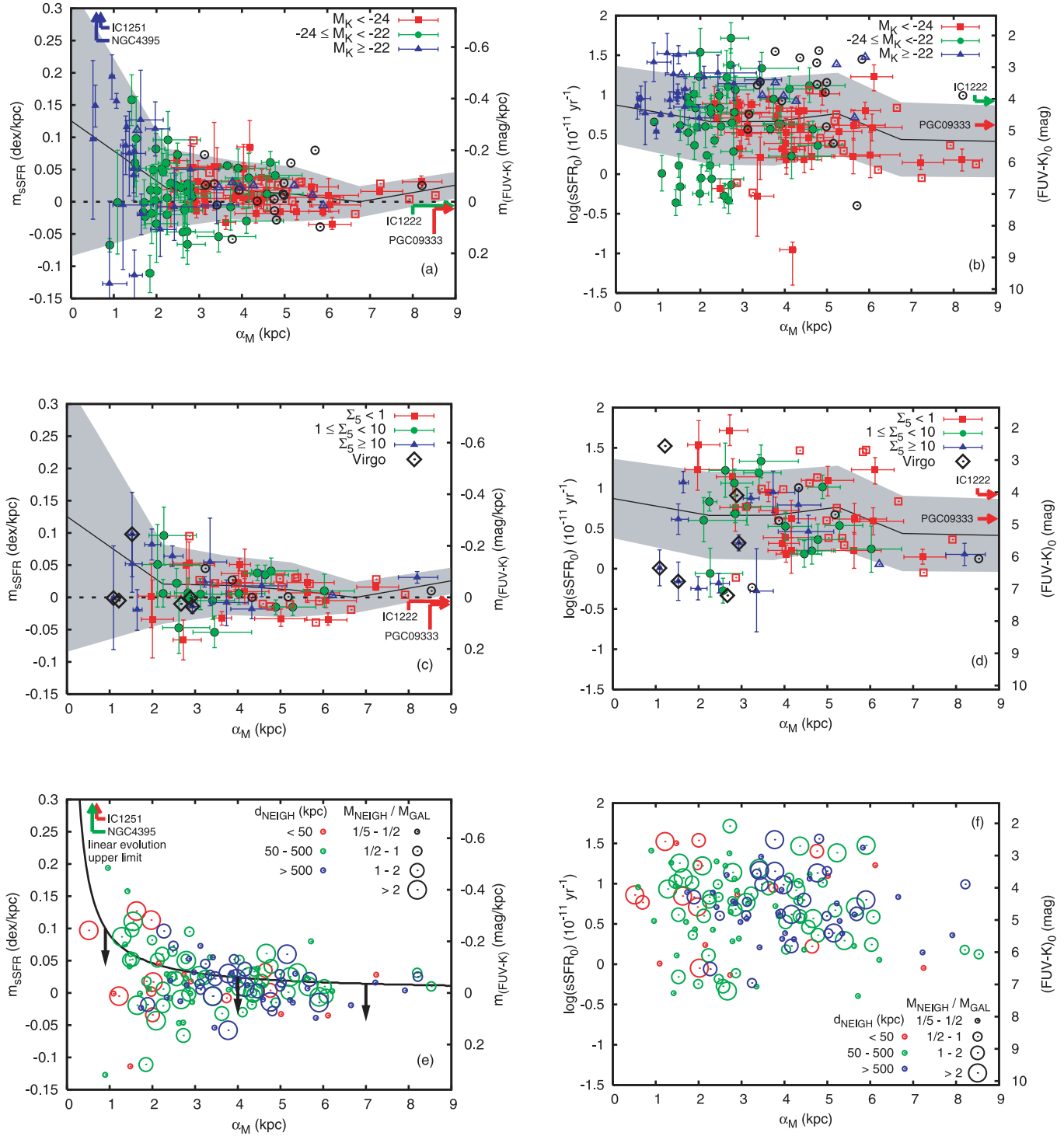


FIG. 6.— (a) Specific SFR gradient [and the equivalent (FUV – K) color gradient] as a function of the scale length of the stellar mass surface density profile. Different colors and symbols are used to sort out galaxies into three bins of absolute K -band magnitude (and therefore mass). The black solid line and the gray shaded band show the mean value and standard deviation of m_{sSFR} in bins of 1.5 kpc, computed from the whole set of randomly simulated values in each bin. Colored arrows mark the positions of galaxies out of range. Open symbols are used for galaxies with $\Delta\alpha_M > 1$ kpc. (b) Same as (a), but with the extrapolated value of $\log(\text{sSFR}_0)$ at $r = 0$ [and the corresponding (FUV – K) color]. (c, d) Same as (a) and (b), but with the galaxies segregated into three bins of projected local galaxy density, in units of Mpc^{-2} . Galaxies belonging to the Virgo Cluster are marked with a black diamond. (e, f) Same as (a) and (b), but with galaxies sorted out according to the distance to and mass of the nearest neighbor with $M_{\text{NEIGH}} \geq 0.2M_{\text{GAL}}$. The black line in (e) corresponds to the maximum sSFR gradient predicted by a linear evolution model with $\tau = \infty$ (see §§ 5 and 6, as well as Fig. 7a).

due—at least to some extent—to degeneracies between m_{sSFR} and $\log(\text{sSFR}_0)$ for each individual object. However, the major axes plotted in the figure show that the confidence regions for many galaxies are small enough to be considered detached from one another over the whole ranges of m_{sSFR} and $\log(\text{sSFR}_0)$. Con-

sequently, the global shape of the correlation between these two parameters cannot be explained just on the basis of individually correlated errors; there do exist physical reasons that determine whether a certain combination of slope and y -intercept of an sSFR profile is plausible or not.

4.4. Dependency on Size and Mass

In this and the following sections we analyze how both fitting parameters, $\log(\text{sSFR}_0)$ and m_{sSFR} , depend on several physical parameters. In Figure 6a we show the variation of the sSFR gradient with α_M , the mass surface density scale length of the disk. The sample has been divided into three bins of M_K , in order to simultaneously study the influence of the total mass. For the sake of clarity, galaxies with error $\Delta\alpha_M > 1$ kpc are shown without error bars (*open symbols*). Also, the ranges in both axes have been stretched and adjusted to show all but four galaxies, which have even higher values of α_M or m_{sSFR} (albeit with larger uncertainties; see Table 3). Their positions along the x/y axis are marked by horizontal/vertical arrows, whose colors indicate the corresponding M_K bin. The black solid line in the background indicates the average value of m_{sSFR} in bins of 1.5 kpc, and the gray shaded band corresponds to the 1σ deviation with respect to the mean. Both quantities, mean value and standard deviation, have been computed using the whole set of 2000 values resulting from the Monte Carlo simulations for each galaxy in its corresponding bin of α_M .

We can clearly see that less massive galaxies present quite different values of m_{sSFR} , mostly positive, but also some negative. This wide range of values, however, shrinks as we move toward larger and more massive galaxies. At the high-mass end of the distribution, most of the data points seem to concentrate within a relatively narrow range, roughly centered around zero or slightly positive values of m_{sSFR} (note that a larger sample of big, massive galaxies would be desirable to better constrain this asymptotic value). These results are consistent with those derived by Taylor et al. (2005) from the analysis of $(U - R)$ color profiles (uncorrected for internal extinction) for a sample of 142 spiral, irregular, and peculiar galaxies. Small galaxies are indeed expected to exhibit a wider variety of behaviors than larger ones, since the effects of the spatial and temporal distribution of star formation episodes are—in relative terms—greater for them. Massive galaxies ought not be so sensitive to external factors that could affect their star formation histories (e.g., gas accretion from a low-mass neighbor galaxy or ram pressure stripping).

It could be argued that the higher dispersion observed in smaller and less luminous galaxies could be just due to greater uncertainties in m_{sSFR} . It is true that most galaxies with high values of Δm_{sSFR} lie in the small-size region of the diagram, typically below 2 kpc, where the overall dispersion is higher. However, if we plot only the 122 galaxies for which $\Delta m_{\text{sSFR}} \leq 0.04$ (a representative value for galaxies all over our ranges of mass and size), the trumpet-like shape of the diagram is preserved.

Figure 6b shows a similar graph, but this time with $\log(\text{sSFR}_0)$. Despite the dispersion of the data, we can see a trend with mass and size, already hinted at by the histogram in Figure 4a: small and less massive spiral galaxies (usually late-type ones) have higher values of sSFR_0 (roughly between 0.5 and $1.5 \times 10^{-11} \text{ yr}^{-1}$) that then decrease as we consider larger and more massive galaxies, although the dispersion is high and the difference is mainly seen only between the two extreme bins of M_K . This trend could be enhanced by ~ 0.4 dex if, as discussed in § 4.1, the mass-to-light ratio varies with Hubble type. Again, if we consider sSFR_0 to be a measure of the overall level of the sSFR, then it is not surprising that its trend with size and mass is similar to the one exhibited by the total sSFR deduced from global photometry data.

4.5. Dependency on Size and Environment

In this section we analyze the possible dependency of the fitting parameters on size and environment. Panels *c* and *d* of Figure 6 are similar to panels *a* and *b*, but the color scheme ac-

counts for different local galaxy densities, computed according to the methodology described in Balogh et al. (2004). For each galaxy we determine d_5 , the projected distance to the fifth neighbor that is brighter than $M_J = -22$ mag. We compute Σ_5 , the projected local density, as being the number of galaxies within a circular area of radius $r = d_5$ and a redshift slice of $\pm 1000 \text{ km s}^{-1}$ (in order to take into account peculiar velocities). That is, $\Sigma_5 = N/(\pi d^2)$. Our magnitude limit of $M_J = -22$ mag for the fifth neighbor is consistent with the one used by Balogh et al., $M_r = -20$ mag, assuming that $(r - J) \sim 2$ for typical spirals (Peletier & Balcells 1996; Fukugita et al. 1995).

We retrieved the coordinates and redshifts of neighbor galaxies for each object in our sample from NED. Their magnitudes in both J and K bands were collected from the 2MASS XSC catalog. It should be noted that since neighbor galaxies were compiled from the different surveys and sources provided by NED, our determinations of Σ_5 are far from being uniform throughout the whole sample. There may exist biases due to the different spatial coverage of each survey. Besides, many galaxies in our sample are so nearby that the search radius had to be extended up to the limit allowed by NED ($300''$) in order to find enough neighbors. Due to that limitation we could only compute Σ_5 for 74 galaxies (45% of the sample).

Figure 6c shows how the sSFR gradient changes with size, with galaxies sorted out into three bins of projected local density, in units of Mpc^{-2} . Galaxies belonging to the Virgo Cluster are represented by black diamonds. There does not seem to exist any kind of relation between m_{sSFR} and Σ_5 , although a larger number of data points and more robust values of Σ_5 would be desirable in order to confirm this. On the other hand, note that among the six Virgo galaxies found in our sample, five of them have $m_{\text{sSFR}} \lesssim 0$ and only one has $m_{\text{sSFR}} > 0$, whereas nearly 70% of the whole sample have positive sSFR gradients.

In Figure 6d we carry out a similar study of the extrapolated sSFR at the center of each galaxy. The dispersion of data is too high to derive conclusive results. It is interesting to note that half of the galaxies belonging to the Virgo Cluster have $\text{sSFR}_0 \lesssim 10^{-11} \text{ yr}^{-1}$, whereas this fraction drops to $\sim 13\%$ when we consider all 74 galaxies in that plot. In any case, the reader is cautioned that the results in Figures 6c and 6d might be marginal considering the high dispersion of the data.

The previous way of measuring the local galaxy density is global in nature as it does not explicitly take into account the possible interactions with the closest neighbors, which could play an important role in the radial distribution of the sSFR. In order to study this aspect of environment, for each galaxy we have computed the projected distance to the nearest neighbor whose mass is at least 0.2 times the mass of the galaxy itself (i.e., being no fainter than 1.75 mag different in K). The color scheme in Figure 6e encodes different distances to these neighbors, whereas several symbol sizes are used to show the different mass ratios. The black curve shows the maximum sSFR gradient expected for a given α_M according to a linear disk-growth model with $\tau = \infty$ (see §§ 5 and 6). No blue circles are seen below $\alpha_M \sim 2$ kpc, since it is easier to find close neighbors over a certain relative mass ratio for the smallest and least massive galaxies. No evident segregation is seen in m_{sSFR} , nor in sSFR_0 (Fig. 6f).

5. MODELING THE SPECIFIC SFR RADIAL PROFILES

We have seen in previous sections that the sSFR radial gradient exhibits an interesting behavior: while there is a wide range of observed values (both positive and negative) for galaxies with disk scales typically smaller than 2 or 3 kpc, this amplitude

decreases when we focus on increasingly larger disks, whose sSFR slopes are generally very close to zero or only slightly positive.

In this section we try to reproduce this trumpet-like shape with a relatively simple model of the radial and temporal evolution of the SFR in these galaxies. According to previous work the evolution of the “thin disk” is thought to dominate the inside-out growth of spiral galaxies (Chiappini et al. 1997), which is believed to start developing at $z \sim 1$ (Brook et al. 2006). After this epoch mergers gradually become less intense and less frequent. We may therefore suppose that since $z = 1$ the growth of spirals has been mainly driven by gradual star formation processes taking place in their thin disks.

We assume that the SFR density can be approximately modeled as

$$\Sigma_{\text{SFR}}(r, t) = \Sigma_{\text{SFR}}(0, 0)e^{-t/\tau}e^{-r/(\alpha_0+bt)}, \quad (3)$$

where we have set our temporal origin $t = 0$ at $z = 1$. Here $\Sigma_{\text{SFR}}(0, 0)$ is the central SFR surface density at $t = 0$ (we do not make any hypothesis about its possible values since, as we will see shortly, it vanishes when computing the sSFR). In equation (3) we have taken into account both temporal and radial variations of the SFR. On one hand, the overall SFR is modulated by the global timescale τ , which should be of the order of the gas-infall timescale divided by the index of the star formation law. On the other hand, we have parameterized the scale length of the SFR profile as $\alpha_{\text{SFR}}(t) = \alpha_0 + bt$. Positive values of b correspond to disks in which the star formation is taking place progressively outward in the disk as time goes by, whereas negative values could be used to describe SFR radial distributions whose extent decreases with time.

We can compute the *current* total stellar mass and SFR surface density profiles as follows:

$$\Sigma_M(r, T) = (1 - R) \int_0^T \Sigma_{\text{SFR}}(0, 0)e^{-t/\tau}e^{-r/(\alpha_0+bt)} dt, \quad (4)$$

$$\Sigma_{\text{SFR}}(r, T) = \Sigma_{\text{SFR}}(0, 0)e^{-T/\tau}e^{-r/(\alpha_0+bT)}, \quad (5)$$

where $T = 7.72$ Gyr is the look-back time for $z = 1$ and R is the fraction of gas that is returned into the ISM. Dividing both equations we obtain the present-day sSFR profiles, from which their radial gradients can be derived (see Appendix C for details). The exact value of R will not affect our sSFR gradients as long as it does not change across the radius of the disk. This is actually the case under the “instantaneous recycling approximation,” which assumes that all stars with masses greater than $1 M_\odot$ die immediately, whereas the rest live forever. Under this assumption, the returned fraction R is an instantaneous parameter that does not depend on the SFH and hence will remain constant across the extent of the disk.

In short, we can use this simple model to “predict” the current values of the sSFR slopes (m_{sSFR}) and scale length of the mass radial distributions (α_M) as a function of three basic parameters: the SFR timescale (τ), the initial scale length of the SFR profile at $z = 1$ (α_0), and its growth rate (b). We can therefore check whether the physical assumptions considered in this model lead to the observed dependency between m_{sSFR} and α_M presented in Figure 6.

6. DISCUSSION

We now proceed to use the results of the simple model described above to reproduce the general trends seen in Figure 6. Figures 7a and 7b show different model predictions for several

sets of parameters along with the observed data points. The initial scale length of the SFR profiles remains constant along solid lines (with the corresponding values shown below each curve in kpc). Similarly, dashed lines are curves with constant values of b , the growth rate of α_{SFR} . They are marked with rotated labels, in units of kpc Gyr^{-1} . Although the maximum value of b shown in the figures is 0.1 kpc Gyr^{-1} , simulations were carried out up to $b = 1.5 \text{ kpc Gyr}^{-1}$, but the corresponding curves lie very close to one another, just slightly above the curve for $b = 0.1 \text{ kpc Gyr}^{-1}$, and hence are not plotted for the sake of clarity. The thick gray line marks the loci of disks that have grown by 25% since $z = 1$ [i.e., $\alpha_M(T) = 1.25\alpha_0$], which is the value found by Trujillo & Pohlen (2005) from the study of intermediate-redshift disk galaxies in the UDF.

In Figure 7a we present the results of the model assuming $\tau = \infty$. As expected, positive values of the sSFR slope require positive values of b (i.e., galaxies in which the SFR profile has been growing with time toward the outer regions of the disk) whereas galaxies with negative values of m_{sSFR} are those with a decreasing $\alpha_{\text{SFR}}(t)$. The model predicts that galaxies with $\alpha_M \lesssim 1 \text{ kpc}$ are expected to present a wide range of sSFR slopes, whereas bigger ones are constrained within a narrower region of the plot, with values of m_{sSFR} close to zero. In fact, there is some degeneracy in that region of the plot, since galaxies with very different values of α_0 and the growth rate b end up with similar current values of α_M and m_{sSFR} . The solid gray line, corresponding to disks that have grown by 25%, nicely bisects the overall distribution of data points.

In spite of the degeneracy, there exists an upper limit for the possible gradient at a given α_M that leaves out many galaxies in the sample. The model predicts lower sSFR gradients than are observed at a given α_M . In § 4.2 we discussed the possible effects that radial changes in the mass-to-light ratio could have on α_M and m_{sSFR} , and argued that galaxies with a typical radial color distribution (bluer in the outer regions) could have smaller scale lengths (by a factor of $\sim 10\%$) and higher sSFR gradients (although possibly not larger than $\sim 0.02 \text{ dex kpc}^{-1}$). This would slightly displace data points with $m_{\text{sSFR}} > 0$ toward the upper left zone of the plot, but to a much lesser extent than needed to correspond to the model results.

Figure 7b shows the model predictions for a timescale of the gas infall of 2 Gyr. Comparing this diagram with Figure 7a we can see that the “isocurves” are somewhat stretched toward the upper right. In other words, since we are now reducing the amount of present-day gas infall, galaxies are required to have higher sSFR radial gradients to achieve a given present-day scale length. This is the reason why the models shown in Figure 7b predict greater values of m_{sSFR} for a given scale length of the mass distribution. However, such short SFR timescales are expected only in elliptical and giant spiral galaxies, whereas for smaller spirals τ -values of $\simeq 7$ Gyr (for which our simple model yields nearly equal results to those with $\tau = \infty$) are commonly inferred (Gavazzi et al. 2002). With our data we cannot completely discard the possibility of low values of τ for at least some galaxies; however, it is worth noting that the average growth of 25% found by Trujillo & Pohlen (2005) (*gray line*) is now a poorer average value of the whole distribution. Hence, although introducing a short SFR timescale might be appropriate for galaxies with the largest values of α_M , it cannot solve the discrepancy between the model results and the observed data for the fraction of small disks with the highest sSFR slopes.

One possible explanation is that the use of a linear function for the temporal variation of $\alpha_{\text{SFR}}(t)$ (eq. [3]) lets the stellar mass surface density profile expand at a very similar rate to that of the

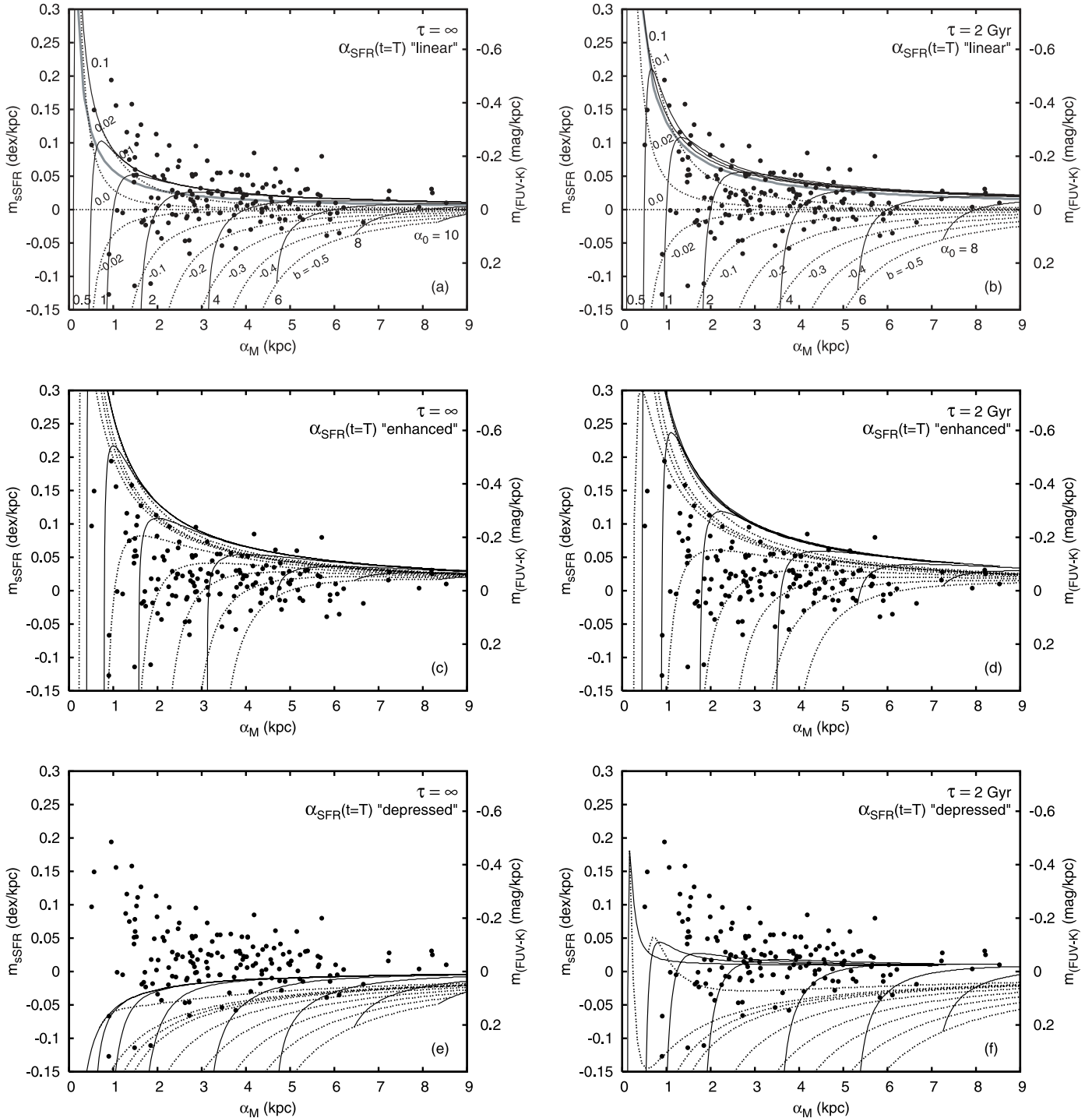


FIG. 7.—Model predictions of the sSFR radial gradient as a function of the scale length of the stellar mass surface density profile. Black solid lines are curves with constant values of α_0 (in kpc), and dashed lines have constant values of b (in kpc Gyr^{-1}). The thick gray line corresponds to disks with $\alpha_M(T) = 1.25\alpha_0$. (a) Model prediction for a $\tau = \infty$ SFR timescale and “linear” evolution. (b) Same as (a) but with $\tau = 2$ Gyr. (c, d) Models with an “enhanced” recent outer-disk star formation (see text for details). (e, f) Models with a “depressed” recent outer-disk star formation (see text).

SFR itself, since it inherits the growth rate of $\alpha_{\text{SFR}}(t)$ through equation (5). Consequently, only certain combinations of the model parameters lead to mass profiles that grow slow enough compared with the SFR profiles so as to yield positive present-day sSFR gradients. We have run tests using other analytic functions to describe the temporal evolution of the SFR scale length (not shown), such as an exponential function, but similar upper limits for the sSFR slope were encountered. The same limit is found

when exploring different star formation histories, such as one “à la Sandage,” which consists of a delayed exponential function (Sandage 1986; Gavazzi et al. 2002). In other words, by describing the growth of the SFR radial profile with a smooth continuous function we are not allowing the model to take into account possible recent events that could have triggered new star-forming events in the outer regions of the galaxy, which would alter the current SFR profile without significantly modifying the mass

distribution. Note that a similar limit is also obtained when adopting an early epoch (earlier than $z = 1$) for the onset of the inside-out (or outside-in) formation of the disks.

We now study the effects on our model of adopting a scale length for the SFR that evolves rapidly with time. As a first approximation to the real problem, we can just multiply the value of $\alpha_{\text{SFR}}(T)$ (i.e., at $z = 0$) for a certain factor, without modifying the corresponding scale length of the mass profile. Figures 7c and 7d show the results of the model using an “enhanced” SFR profile at $z = 0$, with $\alpha_{\text{SFR}}^{\text{enhanced}} = 2\alpha_{\text{SFR}}^{\text{linear}}$, where “linear” refers to the original model. Such an episode of enhanced inside-out growth accommodates the high m_{sSFR} values obtained for some galaxies. However, we should point out that Figures 6c and 6e show that neither local galaxy density nor the presence of close neighbors seem to drive this enhanced inside-out growth. Figure 6e shows that the properties of neighbors (mass and distance to the galaxy) do not seem to change above the upper limit of m_{sSFR} predicted by the linear evolution model.

The opposite scenario is also possible: galaxies that have undergone a long phase of linear disk growth since $z = 1$ may have recently lost some of the gas in their outermost parts (possibly stripped off by a neighboring galaxy or by ram pressure stripping). In Figures 7e and 7f we show how the predictions of the model change if we multiply the final value of α_{SFR} by a factor 0.7, leading to a “depressed” current SFR in the galaxy’s outermost regions. From these graphs we can conclude that the currently negative sSFR gradients seen in many galaxies could be explained either by a long-term reduction of the SFR disk (negative b ; Figs. 7a and 7b) or by a recent inhibition of the star formation in the outer zones of an otherwise linearly evolving galaxy (Figs. 7e and 7f).

We should point out that the smooth SFH used in our simple model is just a first approximation to the real scenario in which the star formation activity of galaxies presumably fluctuates during their lifetime. Thus, it is very likely that the present-day SFR radial distribution deviates from the one predicted by equation (5), so the model upper limit should be interpreted just as an time-averaged quantity. The current stellar mass surface density can be still computed with equation (5), since it is a cumulative parameter and the fluctuations are expected to get averaged after the integration. But the SFR is more dependent on the particular time of observation, thus increasing the dispersion in m_{sSFR} if the SF activity is currently enhanced (even over the linear model upper limit) or depressed.

Finally, some galaxies such as NGC 4736 present bright inner rings of intense star formation that can lead to negative values of m_{sSFR} ; these kinds of (presumably) transitory events are not considered in our model either but might lead to an increase in the dispersion in the m_{sSFR} values.

7. SUMMARY AND CONCLUSIONS

We have obtained specific SFR radial profiles for a sample of 161 moderately face-on spiral galaxies selected from the *GALEX* Atlas of Nearby Galaxies (Gil de Paz et al. 2007). Combining the FUV profiles presented in the Atlas with K -band profiles measured on 2MASS images we obtained (FUV – K) color profiles, which were then corrected for foreground Galactic extinction and internal extinction. For the latter we made use of the radial extinction profiles derived by Boissier et al. (2007) from the ratio of total-infrared to FUV luminosity; for those galaxies in our sample without available TIR-to-FUV profiles, (FUV – NUV) color profiles were used to infer the internal extinction through the IRX- β relation. The uncertainties associated with the use of the IRX- β law were considered when computing the errors in the

extinction-corrected (FUV – K) color profiles. The sSFR profiles were inferred from relation between SFR and FUV luminosity given by Kennicutt (1998) and assuming a mass-to-light ratio $M/L_K = 0.8 M_{\odot}/L_{\odot,K}$.

We characterize these sSFR radial profiles through their slopes and y -intercepts, derived from the linear fit applied to each profile. These fitting parameters are not independent of each other, yet their possible combinations can be physically constrained in terms of the total sSFR of the disk and its scale length.

The extrapolated sSFR at $r = 0$ seems to follow (at least qualitatively) the same trends with morphological type, mass, and size as the total sSFR obtained from UV and H α global photometry in previous works.

As for the sSFR gradient m_{sSFR} , a clear trend is seen with mass and size, in the sense that whereas a large dispersion is found for small galaxies, which present both positive and negative sSFR gradients, this scatter becomes considerably reduced as we consider larger and more massive galaxies, for which the sSFR gradient is nearly flat or slightly positive, consistent with a moderate inside-out scenario of disk formation. This behavior can be reproduced to some extent by assuming a simple description of the SFH of disks in which the typical scale length of the radial distribution of SFR varies linearly with time. This simple assumption seems to explain the progressively more constrained values of m_{sSFR} in increasingly larger disks.

This model predicts an upper limit for m_{sSFR} for each given scale length of the mass profile, α_M , since the growth rate of both the SFR and mass radial profiles are coupled. There is, however, a subset of galaxies in our sample whose sSFR slopes lie clearly above this upper boundary. This limit depends on the adopted SFR timescale τ . Lower values of τ yield higher upper limits for m_{sSFR} , since galaxies must exhibit greater sSFR gradients to achieve a given current size if gas is depleted in shorter timescales. However, values of $\tau \sim 2$ Gyr are usually inferred for elliptical galaxies and the earliest and most massive spirals, while late-type spirals present typically larger SFR timescales (~ 7 Gyr). Although we must not simply discard such low values of τ , it should also be noted that empirical measurements of the disk growth since $z = 1$ (Trujillo & Pohlen 2005) are in better agreement with our model if higher values of τ are used.

Recent deviations from the continuous growth of the SFR radial distribution could account for the observed excess in the sSFR slopes for these galaxies, with present-day scale lengths of the SFR being much larger than in the past. When studying the possible dependence of m_{sSFR} on the environment, however, no clear correlation is found. Disks with very high sSFR gradients do not seem to exhibit neither different local galaxy densities nor closer and more massive neighbors than the rest of the galaxies in the sample. This could be due either to lack of robustness in our estimators of the environment properties or to the fact that interactions with surrounding galaxies could actually modify the sSFR profiles in different ways, depending on the geometry of the interaction, its timescale, etc. Temporal fluctuations of the SFH (not necessarily related to environmental properties) might also account for the observed dispersion of sSFR gradients.

Disks with currently negative sSFR slopes can be modeled with a decreasing scale length of the SFR (outside-in formation), but other scenarios are also feasible. Ram pressure stripping or transitory episodes of enhanced star formation in the inner parts of the disk can lead to a currently smaller SFR scale length than in the past; recent reductions of 30% or even lower are enough to yield negative present sSFR gradients even for galaxies that had been evolving inside-out since the formation of their thin disks.

J. C. M. M. acknowledges the receipt of a Formación del Profesorado Universitario fellowship from the Spanish Ministerio de Educación y Ciencia. J. C. M. M., A. G. d. P., J. Z., and J. G. are partially financed by the Spanish Programa Nacional de Astronomía y Astrofísica under grant AYA2003-01676. A. G. d. P. is also financed by the MAGPOP EU Marie Curie Research Training Network. We thank the anonymous referee for his/her comments that have significantly improved the paper. This publication makes use of data products from 2MASS, which is a joint project of the University of Massachusetts and the Infrared

Processing and Analysis Center/California Institute of Technology, funded by the National Aeronautics and Space Administration and the National Science Foundation. We have made also use of the NASA/IPAC Extragalactic Database (NED), which is operated by the Jet Propulsion Laboratory, California Institute of Technology, under contract with NASA. Stimulating conversations with A. Aragón-Salamanca are gratefully acknowledged.

Facilities: GALEX, FLWO:2MASS, CTIO:2MASS

APPENDIX A

DERIVING sSFR FROM (FUV – K)

The SFR can be computed from the apparent magnitude in the FUV (in the AB system) using the calibration given by Kennicutt (1998):

$$\log(\text{SFR})(M_{\odot} \text{ yr}^{-1}) = 2 \log d(\text{pc}) - 0.4\text{FUV} - 9.216. \quad (\text{A1})$$

Similarly, the K -band surface brightness profiles can be converted into stellar mass surface density profiles as follows:

$$\log(M/M_{\odot}) = \log(M/L_K) - 0.4[K + 5 - 5 \log d(\text{pc}) - 3.33], \quad (\text{A2})$$

where M/L_K is the stellar mass-to-light ratio in solar units, and 3.33 is the absolute K -band magnitude of the Sun in the Vega system (Worthey 1994). Therefore, combining the previous equations we can derive the sSFR:

$$\log(\text{sSFR})(\text{yr}^{-1}) = -0.4(\text{FUV} - K) - 8.548 - \log(M/L_K). \quad (\text{A3})$$

APPENDIX B

DERIVING THE m_{sSFR} -sSFR₀ RELATION

Since light profiles of disks can be approximately described with an exponential law, SFR and stellar mass surface densities may be modeled in the same way:

$$\Sigma_{\text{SFR}} = \Sigma_{\text{SFR},0} e^{-r/\alpha_{\text{SFR}}}, \quad (\text{B1a})$$

$$\Sigma_M = \Sigma_{M,0} e^{-r/\alpha_M}, \quad (\text{B1b})$$

where $\Sigma_{\text{SFR},0}$ and $\Sigma_{M,0}$ are the central SFR and mass surface densities, and α_{SFR} and α_M are the length scales of both distributions. The total sSFR of the disk can be computed by integrating equations (B1a) and (B1b) from $r = 0$ to $r = \infty$ to obtain the total SFR and mass and then dividing both quantities. Strictly speaking, a different choice of the integration limits would not affect the total sSFR, since the functional form of equations (B1a) and (B1b) is the same. In fact, from dimensional considerations alone it is evident that the total mass of the disk $M_{\text{disk}} \propto \alpha_M^2 \Sigma_{M,0}$, and similarly SFR_{disk} has the same proportionality factor. Therefore,

$$\text{sSFR} \equiv \frac{\text{SFR}_{\text{disk}}}{M_{\text{disk}}} = \left(\frac{\alpha_{\text{SFR}}}{\alpha_M} \right)^2 \frac{\Sigma_{\text{SFR},0}}{\Sigma_{M,0}} = \left(\frac{\alpha_{\text{SFR}}}{\alpha_M} \right)^2 \text{sSFR}_0. \quad (\text{B2})$$

Dividing equation (B1a) by (B1b) we obtain the sSFR as a function of r . From the resulting expression we can write m_{sSFR} as a function of both scale lengths:

$$m_{\text{sSFR}} = \left(\frac{1}{\alpha_M} - \frac{1}{\alpha_{\text{SFR}}} \right) \log e = \left(\frac{1 - \alpha_M/\alpha_{\text{SFR}}}{\alpha_M} \right) \log e. \quad (\text{B3})$$

Combining equations (B2) and (B3) to eliminate $\alpha_M/\alpha_{\text{SFR}}$ we obtain

$$m_{\text{sSFR}} = \left(\frac{1 - \sqrt{\text{sSFR}_0/\text{sSFR}}}{\alpha_M} \right) \log e. \quad (\text{B4})$$

APPENDIX C

MATHEMATICAL DETAILS OF THE MODELING OF THE sSFR PROFILES

As explained in § 5, we compute the present-day sSFR as

$$\text{sSFR}(r, T) = \frac{\Sigma_{\text{SFR}}(r, T)}{\Sigma_M(r, T)} = \frac{e^{-T/\tau} e^{-r/(\alpha_0 + bT)}}{(1-R) \int_0^T e^{-t/\tau} e^{-r/(\alpha_0 + bt)} dt}. \quad (\text{C1})$$

The resulting expression for $\text{sSFR}(r, T)$ cannot be expressed in a simple analytical form, and first-order approximations lead to oversimplified results, where both α_M and α_{SFR} expand at the same rate, that is, $\dot{\alpha}_M(t) = b$ and hence $m_{\text{sSFR}} = 0$. Therefore, we opted to derive the sSFR profiles numerically, computing the integral in the previous expression using the Gauss-Legendre quadrature algorithm:

$$\int_a^b f(x) dx = \frac{b-a}{2} \int_{-1}^1 f\left(\frac{b-a}{2}\xi + \frac{b+a}{2}\right) d\xi \simeq \frac{b-a}{2} \sum_{k=1}^n w(\xi_k) f\left(\frac{b-a}{2}\xi_k + \frac{b+a}{2}\right), \quad (\text{C2})$$

where the abscissas ξ_k and their corresponding weights $w(\xi_k)$ can be derived from the Legendre polynomial $P_n(x)$. Due to the low computational cost but high accuracy of this method we decided to use $n = 10$.

The resulting $\Sigma_M(r, T)$ and $\text{sSFR}(r, T)$ profiles slightly deviate from an exponential law, but $\log(\text{sSFR}(r, T))$ and $\log(\Sigma_M(r, T))$ can still be properly described by a straight line. Since in principle α_M could depend on r , we obtain an initial guess on α_M by fitting our model profiles between $r = 0$ and $r = 50$ kpc. All subsequent fits needed to obtain the final values for α_M and m_{sSFR} are performed between $1.5\alpha_M$ and $4.0\alpha_M$. These limits were those used in the numerical N -body simulations by Brook et al. (2006) and are consistent with the values of r_{in} (average value $0.8\alpha_M$; see § 4.1 and Table 3) and the outermost radial data point measured in the 2MASS K -band images of the galaxies in our sample (average value $4.4\alpha_M$; see Table 2). For $\tau = \infty$ the initial guess on α_M differs from the finally adopted value by less than 10% for 93% of the simulated profiles, with the difference being less than 20% for the rest.

REFERENCES

- Balogh, M. L., Baldry, I. K., Nichol, R., Miller, C., Bower, R., & Glazebrook, K. 2004, *ApJ*, 615, L101
- Barden, M., et al. 2005, *ApJ*, 635, 959
- Bell, E. F., & de Jong, R. S. 2001, *ApJ*, 550, 212
- Bell, E. F., McIntosh, D. H., Katz, N., & Weinberg, M. D. 2003, *ApJS*, 149, 289
- Block, D. L., Freeman, K. C., Jarrett, T. H., Puerari, I., Worthey, G., Combes, F., & Gross, R. 2004, *A&A*, 425, L37
- Boissier, S., & Prantzos, N. 1999, *MNRAS*, 307, 857
- Boissier, S., et al. 2007, *ApJS*, in press (astro-ph/0609071)
- Boselli, A., Gavazzi, G., Donas, J., & Scodreggio, M. 2001, *AJ*, 121, 753
- Brook, C. B., Kawata, D., Martel, H., Gibson, B. K., & Bailin, J. 2006, *ApJ*, 639, 126
- Buat, V., et al. 2005, *ApJ*, 619, L51
- Cardelli, J. A., Clayton, G. C., & Mathis, J. S. 1989, *ApJ*, 345, 245
- Chiappini, C., Matteucci, F., & Gratton, R. 1997, *ApJ*, 477, 765
- Cortese, L., et al. 2006, *ApJ*, 637, 242
- de Jong, R. S. 1996, *A&A*, 313, 377
- de Vaucouleurs, G., de Vaucouleurs, A., Corwin, H. G., Buta, R. J., Paturel, G., & Fouqué, P. 1991, *Third Reference Catalogue of Bright Galaxies* (Berlin: Springer)
- Fukugita, M., Shimasaku, K., & Ichikawa, T. 1995, *PASP*, 107, 945
- Gavazzi, G., Bonfanti, C., Sanvito, G., Boselli, A., & Scodreggio, M. 2002, *ApJ*, 576, 135
- Gil de Paz, A., & Madore, B. F. 2005, *ApJS*, 156, 345
- Gil de Paz, A., et al. 2007, *ApJS*, in press (astro-ph/0606440)
- Guthrie, B. N. G. 1992, *A&AS*, 93, 255
- James, P. A., et al. 2004, *A&A*, 414, 23
- Jarrett, T. H., Chester, T., Cutri, R., Schneider, S., Skrutskie, M., & Huchra, J. 2000, *AJ*, 119, 2498
- Jarrett, T. H., Chester, T., Cutri, R., Schneider, S. E., & Huchra, J. P. 2003, *AJ*, 125, 525
- Kennicutt, R. C., Jr. 1998, *ARA&A*, 36, 189
- Leitherer, C., et al. 1999, *ApJS*, 123, 3
- Madau, P., Pozzetti, L., & Dickinson, M. 1998, *ApJ*, 498, 106
- Matteucci, F., & François, P. 1989, *MNRAS*, 239, 885
- Meurer, G. R., Heckman, T. M., & Calzetti, D. 1999, *ApJ*, 521, 64
- Mo, H. J., Mao, S., & White, S. D. M. 1998, *MNRAS*, 295, 319
- Peletier, R. F., & Balcells, M. 1996, *AJ*, 111, 2238
- Portinari, L., Sommer-Larsen, J., & Tantaló, R. 2004, *MNRAS*, 347, 691
- Prantzos, N., & Boissier, S. 2000, *MNRAS*, 313, 338
- Press, W. H., Teukolsky, S. A., Vetterling, W. T., & Flannery, B. P. 1992, *Numerical Recipes in C: The Art of Scientific Computing* (Cambridge: Cambridge Univ. Press)
- Samland, M., & Gerhard, O. E. 2003, *A&A*, 399, 961
- Sandage, A. R. 1986, *A&A*, 161, 89
- Schlegel, D. J., Finkbeiner, D. P., & Davis, M. 1998, *ApJ*, 500, 525
- Sommer-Larsen, J., Götz, M., & Portinari, L. 2003, *ApJ*, 596, 47
- Taylor, V. A., Jansen, R. A., Windhorst, R. A., Odewahn, S. C., & Hibbard, J. E. 2005, *ApJ*, 630, 784
- Trujillo, I., & Pohlen, M. 2005, *ApJ*, 630, L17
- Trujillo, I., et al. 2004, *ApJ*, 604, 521
- . 2006, *ApJ*, 650, 18
- White, S. D. M., & Frenk, C. S. 1991, *ApJ*, 379, 52
- Worthey, G. 1994, *ApJS*, 95, 107