

Durham Research Online

Deposited in DRO:

24 April 2013

Version of attached file:

Accepted Version

Peer-review status of attached file:

Peer-reviewed

Citation for published item:

Mauger, Sarah and Millen, James and Jones, M. P. A. (2007) 'Spectroscopy of strontium Rydberg states using electromagnetically induced transparency.', *Journal of physics B : atomic, molecular and optical physics.*, 40 (22). F319-F325.

Further information on publisher's website:

<http://dx.doi.org/10.1088/0953-4075/40/22/F03>

Publisher's copyright statement:

© 2007 IOP Publishing.

Additional information:

Use policy

The full-text may be used and/or reproduced, and given to third parties in any format or medium, without prior permission or charge, for personal research or study, educational, or not-for-profit purposes provided that:

- a full bibliographic reference is made to the original source
- a [link](#) is made to the metadata record in DRO
- the full-text is not changed in any way

The full-text must not be sold in any format or medium without the formal permission of the copyright holders.

Please consult the [full DRO policy](#) for further details.

Spectroscopy of strontium Rydberg states using electromagnetically induced transparency

S Mauger, J Millen and M P A Jones

Department of Physics, Durham University, Rochester Building, South Road,
Durham DH1 3LE, United Kingdom

E-mail: m.p.a.jones@durham.ac.uk

Abstract. We report on the all-optical detection of Rydberg states in an effusive atomic beam of strontium atoms using electromagnetically induced transparency (EIT). Using narrow-linewidth CW lasers we obtain an EIT linewidth of 5 MHz. To illustrate the high spectroscopic resolution offered by this method, we have measured isotope shifts of the $5s18d\ ^1D_2$ and $5s19s\ ^1S_0$ Rydberg states. This technique could be applied to high-resolution, non-destructive measurements of ultra-cold Rydberg gases and plasmas.

PACS numbers: 32.80.Rm, 42.50.Gy, 52.25.Ya

Submitted to: *J. Phys. B: At. Mol. Phys.*

Laser-cooled atoms can be excited into high-lying electronic states to form a “frozen” gas of Rydberg atoms [1], where the energy scale associated with the strong dipole-dipole interactions between the atoms is much larger than their thermal energy. This system exhibits rich many-body quantum behaviour, such as the “dipole blockade” effect [2, 3, 4, 5], where a single Rydberg excitation can be shared by several entangled atoms [6]. This effect could be used to realise fast two-qubit quantum logic gates between trapped neutral atoms [7]. By exciting the atoms above the ionization threshold, an ultra-cold plasma can be created [8]. These plasmas can reach a strongly coupled regime, where the Coulomb interaction between the ions dominates their kinetic energy, and spatial correlations become important [9]. Rydberg atoms form in these plasmas due to three-body recombination [10], and spectroscopy of Rydberg atoms inside the plasma could be used to obtain information on the electric field [11].

Atoms with two valence electrons such as strontium offer several advantages for experiments on ultra-cold Rydberg gases and plasmas. Narrow intercombination lines allow laser cooling to temperatures below $1\ \mu\text{K}$ [12], and extremely high spectroscopic resolution [13]. In addition, their singly-charged ions have a strong optical transition in the visible, unlike those of alkali metals which have a closed-shell electronic structure. This allows the ions in the plasma to be imaged, yielding spatially resolved information on the ion density and temperature [14, 15].

In most experiments on ultra-cold Rydberg gases the Rydberg atoms are detected indirectly by using field ionization and subsequent detection of the electrons and ions [16]. This technique is efficient and widely applicable, but is destructive. Recently [17], it was shown that electromagnetically induced transparency (EIT) can be used to probe Rydberg states of rubidium atoms in a vapour cell non-destructively and with high resolution. In combination with strong Rydberg-Rydberg interactions, this could also be used to realise a phase gate between single photons [18].

In this paper we extend this technique to Rydberg states of strontium atoms in an effusive atomic beam. This technique could be used to make high-resolution, real time measurements of the properties of ultracold Rydberg gases and plasmas. Although EIT was first observed in strontium [19], most subsequent work has focussed on the alkali metals. Recently, an ultra-precise optical lattice clock based on EIT with bosonic ^{88}Sr atoms was proposed [20]. This work is the first observation of EIT in strontium using narrow-linewidth CW lasers.

The ladder system studied in these experiments and the experimental setup are shown in figure 1. The probe beam is resonant with the $5s^2\ ^1S_0 \rightarrow 5s5p\ ^1P_1$ transition at 460.7 nm, and the coupling beam at 420 nm is resonant with transitions from the $5s5p\ ^1P_1$ intermediate state to a $5sns\ ^1S_0$ or $5snd\ ^1D_2$ Rydberg state. Both the probe and the coupling beams are generated using commercial frequency-doubled diode laser systems, and are tuned using a commercial wavemeter and data on the Rydberg energy levels taken from [21]. The probe and coupling beams are overlapped and counter-propagate perpendicularly to the effusive atomic beam of strontium atoms. A photodiode monitors the transmission of the probe beam as its frequency is scanned across the transition. A second probe laser beam allows real-time measurement of the probe transmission without the coupling laser present. Each probe laser beam has a power of $150\ \mu\text{W}$ and a waist of 1 mm ($1/e^2$ radius), and the two beams are separated by 4 mm. The coupling beam power is typically 12 mW. The probe laser beams are linearly polarized in the vertical direction, and the coupling laser is circularly polarized. This combination was chosen empirically as giving the largest EIT signals under our experimental conditions. To produce the atomic beam, strontium metal is

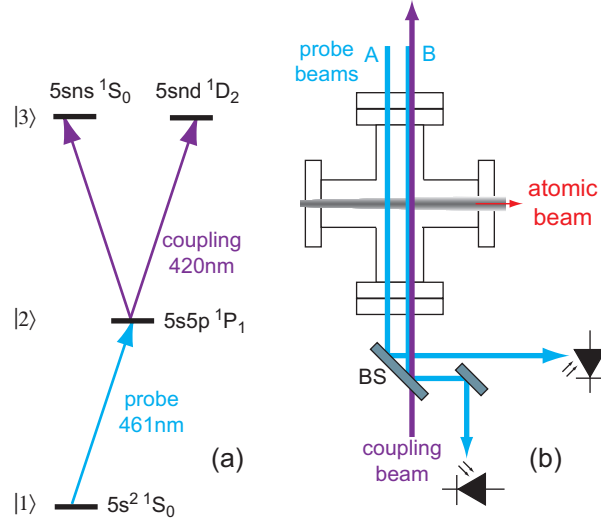


Figure 1. (a) Energy level diagram showing the two ladder systems available. (b) Schematic of the experiment. Probe and coupling beams overlap on a glass plate (BS) and counter-propagate at right angles to the atomic beam. Two spatially separate probe beams allow simultaneous measurement of the probe beam transmission with and without the coupling light.

heated in an oven, and the beam is collimated by a bundle of stainless steel capillaries that restrict the geometric divergence to 43 mrad full width.

To calibrate the probe laser frequency scan, we use saturated absorption spectroscopy and the measured isotope shifts of the $5s^2\ ^1S_0 \rightarrow 5s5p\ ^1P_1$ transition. The saturated absorption spectrum is obtained by replacing the coupling beam with a pump beam at 461 nm derived from the probe laser. An example spectrum is shown in figure 2. The spectrum is fitted using the sum of six Lorentzian components (one for each isotope and hyperfine component), with the shift and weighting of each component taken from table 1, and the width constrained to the natural linewidth of the transition ($\gamma_2 = 2\pi \times 16$ MHz). The free parameters are a linear frequency axis scaling and offset, and the peak absorption. The scaling factor and offset are used to calibrate the frequency axis of EIT data obtained with the same probe laser scan. The accuracy of the scaling factor determines the accuracy of frequency intervals obtained from the EIT data. By examining the residuals from this fit we estimate that the uncertainty in the scaling factor is 3%.

If the coupling laser is tuned close to the $5s5p\ ^1P_1 \rightarrow 5s18d\ ^1D_2$ transition in the dominant ^{88}Sr isotope, then we obtain the spectrum shown in figure 3a. A narrow EIT resonance feature enhances the transmission in a narrow spectral window within the Doppler-broadened absorption profile. The position and amplitude of the resonance depends on the detuning of the coupling laser. The difference between the transmission of the two probe beams is shown in figure 3b. The width of the EIT peak is 5 MHz (FWHM), which is considerably narrower than the natural width of the intermediate 1P_1 state ($\gamma_2 = 2\pi \times 16$ MHz), and the maximum reduction in absorption is 8%. With the coupling laser tuned exactly on resonance, we observe a change in absorption of up to 12%.

In order to understand these data in more detail, we have compared them to a

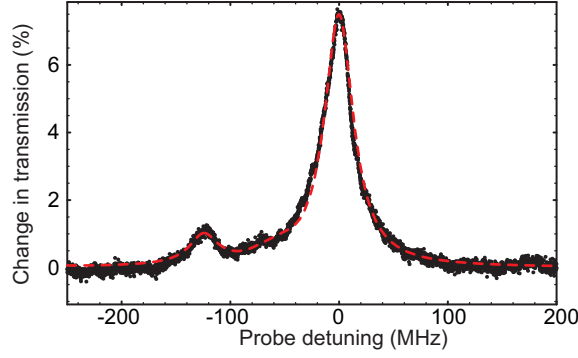


Figure 2. Saturated absorption spectrum of the $5s^2\ ^1S_0 \rightarrow 5s5p\ ^1P_1$ transition (dots). The Doppler background is removed using the second probe beam. The red dashed line shows the fit used to obtain the frequency axis scaling.

Table 1. Properties of naturally occurring strontium used to model the spectra. Isotope shifts and hyperfine splittings for the $5s^2\ ^1S_0 \rightarrow 5s5p\ ^1P_1$ transition are extracted from [22, 23] and are quoted relative to the principal isotope ^{88}Sr .

Isotope	Abundance (%)	I	F	Shift (MHz)	Relative strength
^{84}Sr	0.56	0	-	-270.8	1
^{86}Sr	9.86	0	-	-124.5	1
^{87}Sr	7.00	9/2	7/2	-9.7	4/15
			9/2	-68.9	1/3
			11/2	-51.9	2/5
^{88}Sr	82.58	0	-	0	1

model based on an approximate expression for the susceptibility $\chi(v)$ derived in the limit of a weak probe beam [24]

$$\chi(v)dv = -i\frac{3\lambda_p^2}{4\pi}\gamma_2 N(v)dv \left[\gamma_2 - i(\Delta_p - \mathbf{k}_p \cdot \mathbf{v}) + \frac{(\Omega_c/2)^2}{\gamma_3 - i[\Delta_p + \Delta_c - (\mathbf{k}_p + \mathbf{k}_c) \cdot \mathbf{v}]} \right]^{-1}, \quad (1)$$

where $N(v)$ is the number density of atoms with transverse velocity v , $\Delta_{p,c}$ and $\mathbf{k}_{p,c}$ are the probe and coupling laser detuning and wavevectors respectively, and Ω_c is the coupling laser Rabi frequency. The decay rate $\gamma_2 = 2\pi \times 16$ MHz is the natural width of the intermediate state, and γ_3 is the decay rate of the Rydberg state. This includes the lifetime of the Rydberg state as well as other line-broadening mechanisms, and is treated as a fit parameter.

The lineshape is obtained by summing the contribution to $\chi(v)$ from all four isotopes and integrating the imaginary part of (1) over the transverse velocity distribution of the atomic beam. In figure 3b, the coupling laser is tuned such that only the ^{88}Sr isotope contributes to the EIT resonance part of the signal, and so we set $\Omega_c = 0$ for the other isotopes to simplify the numerical integration.

A standard treatment of the transverse velocity distribution of an effusive

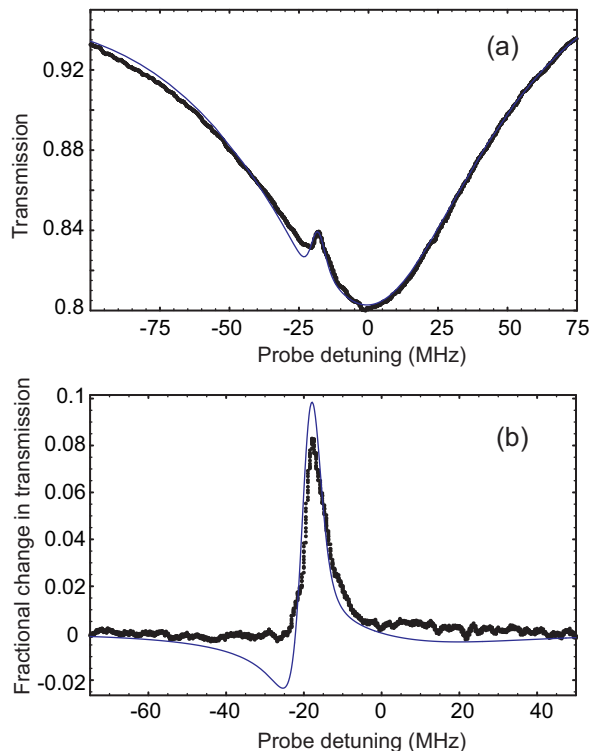


Figure 3. (a) Probe transmission as the laser is scanned across the $5s^2\ ^1S_0 \rightarrow 5s5p\ ^1P_1$ transition, with the coupling laser tuned almost on resonance with the $5s5p\ ^1P_1 \rightarrow 5s18d\ ^1D_2$ transition (dots). Also shown is a fit using equation 1 with $\gamma_3 = 2\pi \times 3.5$ MHz, $\Omega_c = 2\pi \times 7.5$ MHz, $\Delta_c = 2\pi \times 20$ MHz and $\Delta v = 16.5\ \text{ms}^{-1}$ (thin blue line). (b) Difference in transmission between the two probe beams for the same scan (dots). The thin blue line is the difference between the fit in (a) and the same curve with $\Omega_c = 0$ (all other parameters as in (a)).

atomic beam [25] assumes that the velocity distribution inside the oven follows a Maxwell-Boltzmann distribution, and that the divergence angle ϵ of the beam is fixed geometrically by an aperture some distance from the exit slit of the oven. Collisions with the walls of the exit slit or the collimation aperture are neglected. The result is a Gaussian transverse velocity distribution, with a Doppler width that is reduced by a factor $\sin \epsilon$ from that obtained in a vapour at thermal equilibrium at the same temperature. We find that using a Gaussian velocity distribution, we are unable to describe the shape of the Doppler broadened absorption profile. This is almost certainly due to collisions with the walls of the capillaries (length=8mm, diameter = 0.17 mm) used to collimate the atomic beam, which modify the transverse velocity distribution. Empirically, we find that a Lorentzian distribution $N(v) \propto n_{\text{at}}/(1 + v^2/\Delta v^2)$ for the transverse velocity gives good agreement with our data. As a result, there are five adjustable parameters in our model: the half-width of the Lorentzian velocity distribution Δv , the density of the atomic beam n_{at} , the parameters Δ_c , Ω_c of the coupling laser and the rate γ_3 .

The results of this model are compared with our data in figures 3a and 3b. The model accurately reproduces the shape of the Doppler background in figure 3a, and

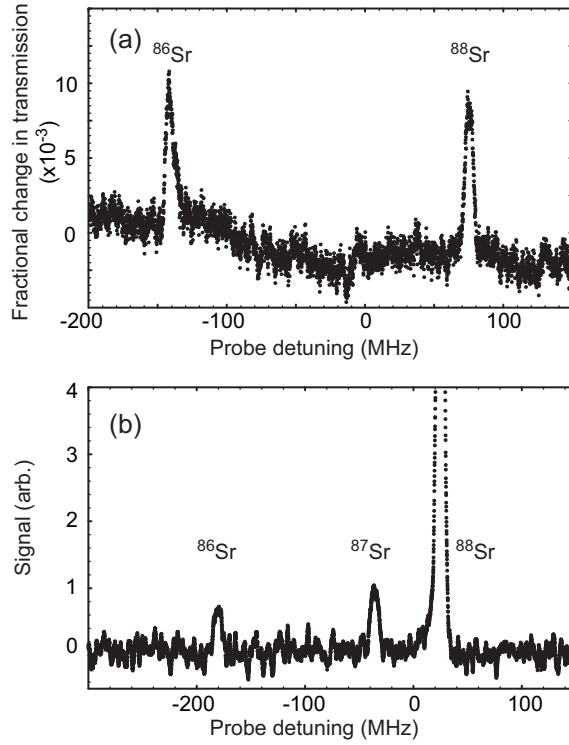


Figure 4. (a) Probe beam intensity difference with the coupling laser tuned slightly away from resonance with the $5s5p^1P_1 \rightarrow 5s18d^1D_2$ transition. A second EIT peak appears due to the ^{86}Sr isotope. (b) EIT signal with the coupling laser tuned near the $5s5p^1P_1 \rightarrow 5s19s^1S_0$ transition. Using lock-in detection, all three abundant isotopes can be observed. The peak due to the ^{88}Sr isotope is visible without the lock-in and gives a $\sim 5\%$ change in absorption.

the asymmetry of the EIT peak in figure 3b. By looking at the behaviour of the model in more detail, we see that the latter effect arises from the combination of the wavelength mismatch between the probe and coupling beams and the velocity averaging. However, we do not observe the *increase* in absorption that is predicted to occur on both sides of the EIT peak, and which was observed in similar experiments in rubidium [17].

By varying the coupling laser detuning, we are also able to observe EIT signals due to the other isotopes. Figure 4a shows EIT signals due to both the ^{86}Sr and ^{88}Sr isotopes. We do not observe a signal due to the ^{87}Sr isotope. The hyperfine interaction splits the ^{87}Sr line into nine components, and for $15 \leq n \leq 25$ the hyperfine splitting of the $5snd^1D_2$ Rydberg states is very large (~ 1 GHz) due to strong mixing with nearby triplet states [26, 27]. As a result of this it is difficult to observe an EIT signal due to this isotope. In contrast, no hyperfine splitting occurs for the $5sns^1S_0$ states. The EIT signal that we obtain with the coupling laser tuned to the $5s5p^1P_1 \rightarrow 5s19s^1S_0$ transition is shown in figure 4b. In this experiment, the amplitude of the coupling laser was modulated using a chopper, and with lock-in detection we observed the signal from the ^{86}Sr , ^{87}Sr and ^{88}Sr isotopes. Due to the wavelength mismatch between the pump and probe lasers and the velocity averaging, the hyperfine splitting of the

Table 2. Transition isotope shifts between the Rydberg states and the ground state calculated from the intervals measured in figure 3 and the data in table 1.

Transition	$^{88}\text{Sr} - ^{86}\text{Sr}$ (MHz)	$^{88}\text{Sr} - ^{87}\text{Sr}$ (MHz)
$5s^2\ ^1S_0 \rightarrow 5s18d\ ^1D_2$	226 ± 7	–
$5s^2\ ^1S_0 \rightarrow 5s19s\ ^1S_0$	213 ± 7	62 ± 8

$5s5p\ ^1P_1$ intermediate state is scaled by a factor $1 - \lambda_c/\lambda_p$. This results in a separation between the EIT signals for each hyperfine component of less than 5 MHz, which is not resolved in figure 4b.

The frequency intervals measured in figure 3 and the isotope shifts given in table 1 can be used to obtain the isotope shifts of the Rydberg states relative to the $5s^2\ ^1S_0$ ground state. In addition to the scaling in the intermediate state, the wavelength mismatch also results in frequency separations in the Rydberg state being scaled by λ_c/λ_p . The results are given in table 2. Our measurement of the $^{88}\text{Sr} - ^{86}\text{Sr}$ isotope shift on the $5s^2\ ^1S_0 \rightarrow 5s18d\ ^1D_2$ transition is in agreement with a previous value of 229 ± 5 MHz reported in [28]. The uncertainty is dominated by the uncertainty in the frequency axis calibration. This could be substantially improved by scanning the laser with an acousto-optic modulator, or by using a well-characterised etalon to calibrate the scan. The narrow linewidth of the EIT features would then allow isotope shifts and hyperfine splitting to be determined with better than 1 MHz resolution.

In summary we have shown that electromagnetically induced transparency can be used to probe the Rydberg states of strontium atoms with high resolution. As an illustration, isotope shifts were measured for transitions from the ground state to the $5s18d\ ^1D_2$ and $5s19s\ ^1S_0$ states. This technique could have important applications as a non-destructive, high-resolution probe of strongly interacting Rydberg gases and plasmas.

Acknowledgments

We are grateful to C. S. Adams, I. G. Hughes, A. Mohapatra and A. Browaeys for many useful discussions. We also thank C. S. Adams for the loan of equipment and the EPSRC for financial support.

- [1] I. Mourachko, D. Comparat, F. de Tomasi, A. Fioretti, P. Nosbaum, V.M. Akulin, and P. Pillet. Many-body effects in a frozen Rydberg gas. *Phys. Rev. Lett.*, 80:253, 1998.
- [2] K. Singer, M. Reetz-Lamour, T. Amthor, L. Gustavo Marcassa, and M. Weidemüller. Suppression of excitation and spectral broadening induced by interactions in a cold gas of Rydberg atoms. *Phys. Rev. Lett.*, 93:163001, 2004.
- [3] D. Tong, S. M. Farooqi, J. Stanojevic, S. Krishnan, Y. P. Zhang, R. Côté, E. E. Eyler, and P. L. Gould. Local blockade of rydberg excitation in an ultracold gas. *Phys. Rev. Lett.*, 93:063001, 2004.
- [4] T. Cubel Liebisch, A. Reinhard, P. R. Berman, and G. Raithel. Atom-counting statistics in ensembles of interacting rydberg atoms. *Phys. Rev. Lett.*, 95:253002, 2005.
- [5] T. Vogt, M. Viteau, J. Zhao, A. Chotia, D. Comparat, and P. Pillet. Dipole blockade at Förster resonances in high-resolution laser excitation of Rydberg states of cesium atoms. *Phys. Rev. Lett.*, 97:083003, 2006.
- [6] R. Heidemann, U. Raitzsch, V. Bendkowsky, B. Butscher, R. Löw, L. Santos, and T. Pfau. Evidence for coherent collective Rydberg excitation in the strong blockade regime, 2007. (*Preprint quant-ph/0701120*).
- [7] M. D. Lukin, M. Fleischauer, R. Côté, L. M. Duan, D. Jaksch, J. I. Cirac, and P. Zoller. Dipole

- blockade and quantum information processing in mesoscopic atomic ensembles. *Phys. Rev. Lett.*, 87:037901, 2001.
- [8] T. C. Killian, S. Kulin, S. D. Bergeson, L. A. Orozco, C. Orzel, and S. L. Rolston. Creation of an ultracold neutral plasma. *Phys. Rev. Lett.*, 83:4776, 1999.
- [9] T. C. Killian, T. Pattard, T. Pohl, and J. M. Rost. Ultracold neutral plasmas, 2006. (*Preprint physics/0612097*).
- [10] T. C. Killian, M. J. Lim, S. Kulin, R. Dumke, S. D. Bergeson, and S. L. Rolston. Formation of Rydberg atoms in an expanding ultracold neutral plasma. *Phys. Rev. Lett.*, 86:3759, 2001.
- [11] S. K. Dutta, D. Feldbaum, and G. Raithel. Spectroscopic electric field measurement in laser-excited plasmas, 2000. (*Preprint physics/00007004*).
- [12] H. Katori, T. Ido, Y. Isoya, and M. Kuwata-Gonokami. Magneto-optical trapping and cooling of strontium atoms down to the photon recoil temperature. *Phys. Rev. Lett.*, 82:1116, 1999.
- [13] M. M. Boyd, T. Zelevinsky, A. D. Ludlow, S. M. Foreman, S. Blatt, T. Ido, and J. Ye. Optical atomic coherence at the 1-second time scale. *Science*, 314:1430, 2006.
- [14] C. E. Simien, Y. C. Chen, P. Gupta, S. Laha, Y. N. Martinez, P. G. Mickelson, D. B. Nagel, and T. C. Killian. Using absorption imaging to study ion dynamics in an ultracold neutral plasma. *Phys. Rev. Lett.*, 92:143001, 2004.
- [15] Y. C. Chen, C. E. Simien, S. Laha, P. Gupta, Y. N. Martinez, P. G. Mickelson, D. B. Nagel, and T. C. Killian. Electron screening and kinetic-energy oscillations in a strongly coupled plasma. *Phys. Rev. Lett.*, 93:265003, 2004.
- [16] T. F. Gallagher. *Rydberg Atoms*, pages 70–142. Cambridge University Press, 1994.
- [17] A. K. Mohapatra, T. R. Jackson, and C. S. Adams. Coherent optical detection of highly excited Rydberg states using electromagnetically induced transparency. *Phys. Rev. Lett.*, 98:113003, 2007.
- [18] I. Friedler, D. Petrosyan, M. Fleischauer, and G. Kurizki. Long-range interactions and entanglement of slow single-photon pulses. *Phys. Rev. A*, 72:043803, 2005.
- [19] K.-J. Boller, A. Imamoglu, and S. E. Harris. Observation of electromagnetically induced transparency. *Phys. Rev. Lett.*, 66:2593, 1991.
- [20] R. Santra, E. Arimondo, T. Ido, C. H. Greene, and J. Ye. High-accuracy optical clock via three-level coherence in neutral bosonic 88-Sr. *Phys. Rev. Lett.*, 94:173002, 2005.
- [21] R. Beigang, K. Lücke, A. Timmermann, P. J. West, and D. Frölich. Determination of absolute level energies of 5sns 1S0 and 5sns 1D2 rydberg series of sr. *Opt. Comm.*, 42:19, 1982.
- [22] E. R. Eliel, W. Hogervorst, T. Olsson, and L. R. Pendrill. High resolution laser spectroscopy of low-lying p-states in sr i and ba i. *Z. Phys. A*, 311:1, 1983.
- [23] H.-J. Kluge and H. Sauter. Levelcrossing experiments in the first excited 1P1 states of the alkaline earths. *Z. Phys.*, 270:295, 1974.
- [24] M. Xiao, Y. Li, S. Jin, and J. Gea-Banacloche. Measurement of dispersive properties of electromagnetically induced transparency in rubidium atoms. *Phys. Rev. Lett.*, 74:666, 1995.
- [25] W. Demtroder. *Laser Spectroscopy: Basic Concepts and Instrumentation*, pages 516–524. Springer-Verlag, second edition, 1996.
- [26] R. Beigang, E. Matthias, and A. Timmermann. Influence of singlet-triplet mixing on the hyperfine structure of 5snd Rydberg states in 87-Sr. *Phys. Rev. Lett.*, 47:326, 1981.
- [27] R. Beigang, D. Schmidt, and A. Timmermann. Hyperfine induced perturbation of the 5s19d Rydberg state of 87-Sr. *J. Phys. B*, 15:L201, 1982.
- [28] C. J. Lorenzen, K. Niemax, and L. R. Pendrill. Isotope shifts of energy levels in the naturally abundant isotopes of strontium and calcium. *Phys. Rev. A*, 28:2051, 1983.