

 Open access • Posted Content • DOI:10.1101/2020.06.11.144790

Spectrum of genes for inherited hearing loss in the Israeli Jewish population, including the novel human deafness gene ATOH1 — [Source link](#)

Zippora Brownstein, Suleyman Gulsuner, Tom Walsh, Fabio Tadeu Arrojo Martins ...+46 more authors

Institutions: Tel Aviv University, University of Washington, National Institutes of Health, Bethlehem University ...+9 more institutions

Published on: 23 Jun 2020 - bioRxiv (Cold Spring Harbor Laboratory)

Topics: Hearing loss, Population, Genetic counseling and Genotype

Related papers:

- [Spectrum of genes for inherited hearing loss in the Israeli Jewish population, including the novel human deafness gene ATOH1](#)
- [Genomic analysis of inherited hearing loss in the Palestinian population.](#)
- [Targeted massive parallel sequencing: the effective detection of novel causative mutations associated with hearing loss in small families](#)
- [Hereditary hearing loss: a 96 gene targeted sequencing protocol reveals novel alleles in a series of Italian and Qatari patients.](#)
- [Whole exome sequencing in adult-onset hearing loss reveals a high load of predicted pathogenic variants in known deafness-associated genes and identifies new candidate genes](#)

Share this paper:    

View more about this paper here: <https://typeset.io/papers/spectrum-of-genes-for-inherited-hearing-loss-in-the-israeli-4f2y7qxyzw>

Spectrum of genes for inherited hearing loss in the Israeli Jewish population, including the novel human deafness gene *ATOH1*

Zippora Brownstein¹, Suleyman Gulsuner², Tom Walsh², Fábio Tadeu Arrojo Martins¹, Shahar Taiber¹, Ofer Isakov³, Ming K. Lee², Mor Bordeynik-Cohen¹, Maria Birkan^{1,4}, Weise Chang⁵, Silvia Casadei², Nada Danial-Farran^{1,6, 7}, Amal Abu-Rayyan^{1,8}, Ryan Carlson², Lara Kamal⁸, Ásgeir Örn Arnþórsson⁹, Meirav Sokolov^{1,10}, Dror Gilony^{1,10}, Noga Lipschitz^{1,11}, Moshe Frydman^{1,12}, Bella Davidov⁴, Michal Macarov¹³, Michal Sagi¹³, Chana Vinkler¹⁴, Hana Poran¹², Reuven Sharony¹⁵, Nadra Samara¹⁶, Na'ama Zvi¹³, Hagit Baris-Feldman¹⁷, Amihood Singer¹⁸, Ophir Handzel¹⁹, Ronna Hertzano²⁰, Doaa Ali-Naffaa^{1,21}, Noa Ruhrman-Shahar⁴, Ory Madgar¹¹, Efrat Sofrin⁴, Amir Peleg²¹, Morad Khayat⁶, Mordechai Shohat^{1,22,23}, Lina Basel-Salmon^{1,4}, Elon Pras^{1,12}, Dorit Lev^{1,14}, Michael Wolf¹¹, Eirikur Steingrímsson⁹, Noam Shomron³, Matthew W. Kelley⁵, Moien Kanaan⁸, Stavitt Allon-Shalev^{6, 7}, Mary-Claire King², Karen B. Avraham¹

¹Department of Human Molecular Genetics & Biochemistry, Sackler Faculty of Medicine and Sagol School of Neuroscience, Tel Aviv University, Tel Aviv, Israel

²Departments of Genome Sciences and Medicine, University of Washington, Seattle, WA, USA

³Department of Cell and Developmental Biology, Sackler Faculty of Medicine, Tel Aviv University, Tel Aviv, Israel

⁴Raphael Recanati Genetic Institute, Rabin Medical Center–Beilinson Hospital, Tel Aviv University Felsenstein Medical Research Center, Petach Tikva, Israel

⁵Laboratory of Cochlear Development, National Institute on Deafness and Other Communications Disorders, NIH, Bethesda, MD, USA

⁶Genetics Institute, Ha'Emek Medical Center, Afula, Israel

⁷Rappaport Faculty of Medicine, Technion, Haifa, Israel

⁸Department of Biological Sciences, Bethlehem University, Bethlehem, Palestine

⁹Department of Biochemistry and Molecular Biology, BioMedical Center, Faculty of Medicine, University of Iceland, Reykjavik, Iceland

¹⁰Department of Otolaryngology - Head and Neck Surgery, Schneider Children's Medical Center, Petach Tikva, Israel

¹¹Department of Otolaryngology - Head and Neck Surgery, Sheba Medical Center, Tel Hashomer, Israel

¹²Institute of Human Genetics, Sheba Medical Center, Tel Hashomer, Israel

¹³Department of Human Genetics and Metabolic Diseases, Hadassah-Hebrew University Medical Center, Jerusalem, Israel

¹⁴Institute of Medical Genetics, Wolfson Medical Center, Holon, Israel

¹⁵Genetics Institute, Meir Medical Center, Kfar Saba and Sackler Faculty of Medicine, Tel Aviv University, Tel Aviv, Israel

¹⁶Ziv Medical Center, Zefat, Israel

¹⁷Genetics Institute, Tel-Aviv Sourasky Medical Center, Tel Aviv, Israel

¹⁸Community Genetics Department, Public Health Services, Ministry of Health, Ramat Gan, Israel

¹⁹Department of Otolaryngology Head and Neck Surgery and Maxillofacial Surgery, Tel-Aviv Sourasky Medical Center, Tel Aviv, Israel

²⁰Department of Otorhinolaryngology Head and Neck Surgery, University of Maryland School of Medicine, Baltimore, MD, USA

²¹Human Genetics Institute, Lady Davis Carmel Medical Center, Haifa, Israel

²²Sheba Cancer Research Center, Sheba Medical Center, Tel Hashomer, Israel

²³Institute of Medical Genetics, Maccabi HMO, Rehovot, Israel

Present address: Faculty of Medicine and Health Technology, Tampere University and Tampere University Hospital, Tampere, Finland (Martins)

Correspondence

Karen B. Avraham, Department of Human Molecular Genetics & Biochemistry, Sackler Faculty of Medicine and Sagol School of Neuroscience, Tel Aviv University, Tel Aviv, 6997901 Israel, Email: karena@tauex.tau.ac.il

Abstract

Mutations in more than 150 genes are responsible for inherited hearing loss, with thousands of different, severe causal alleles that vary among populations. The Israeli Jewish population includes communities of diverse geographic origins, revealing a wide range of deafness-associated variants and enabling clinical characterization of the associated phenotypes. Our goal was to identify the genetic causes of inherited hearing loss in this population, and to determine relationships among genotype, phenotype, and ethnicity. Genomic DNA samples from informative relatives of 88 multiplex families, all of self-identified Jewish ancestry, with either non-syndromic or syndromic hearing loss, were sequenced for known and candidate deafness genes using the HEar-Seq gene panel. The genetic causes of hearing loss were identified for 60% of the families. One gene was encountered for the first time in human hearing loss: *ATOH1* (Atonal), a basic helix-loop-helix transcription factor responsible for autosomal dominant progressive hearing loss in a five-generation family. Our results demonstrate that genomic sequencing with a gene panel dedicated to hearing loss is effective for genetic diagnoses in a diverse population. Comprehensive sequencing enables well-informed genetic counseling and clinical management by medical geneticists, otolaryngologists, audiologists, and speech therapists and can be integrated into newborn screening for deafness.

KEYWORDS

Next-generation sequencing, massively parallel sequencing, diagnostics, hearing, deafness, gene panel, genomics

INTRODUCTION

Hearing loss is a leading cause of disability worldwide, with an estimated 466 million people suffering from a loss of greater than 40dB.¹⁻³ Hearing loss can have dramatic effects on communication, levels of education, and psychosocial development; it is responsible for a subsequent decline in quality of life, particularly in an increasingly older population.^{4,5} Determining the causes of hearing loss is crucial for clinical management, genetic counseling, and potential prevention. More than 150 genes harbor variants causing non-syndromic hearing loss,⁶⁻⁸ and hundreds of genetic syndromes include hearing impairment.⁹ Virtually every population harbors deafness-causing alleles with worldwide distribution and others specific to the local population.¹⁰

The Jewish population of modern Israel is made up of communities that differ with respect to geographic origin, spoken language, and traditions. Ashkenazi Jews from Europe and North America, Sephardic Jews from North Africa (Morocco, Algeria, Libya, and Tunisia) and southern Europe (Italy, Greece, and Turkey), and Mizrahi Jews from the Middle East (Iran, Iraq, Syria, Yemen, and Egypt) all derive from the Jews

who lived in the Middle East 4000 years ago, dispersing with the Babylonian exile in 586 BCE.^{11,12} After the formation of the state of Israel in 1948, Jews from all these regions immigrated to the country. Today, roughly half of Jewish people live in Israel, yielding an Israeli Jewish population that is approximately 47% Ashkenazi, 30% Sephardi, and 23% Mizrahi.^{13,14} In a study conducted in Israel a few years after its founding, high rates of consanguineous marriage were observed, with the lowest rate (2.5%) among Ashkenazi Jews, and higher rates among non-Ashkenazi Jews, with the highest prevalence (29%) among Jews from Iraq.¹⁵ During the intervening years, inter-community marriages have become frequent, and consanguineous marriages are much less common.¹⁶

Centuries of endogamy within each of these communities led to high frequencies of recessive genetic traits, many due to community-specific founder mutations.^{13,17,18} The idea of that each Jewish ancestry has its own genetic blueprint is supported by studies

revealing ancestry-specific polymorphisms and haplotypes. Among these are mutations for at least 40 diseases that are specific to individual Jewish communities.¹⁴ Population-specific mutations include some responsible for hearing loss, such as *GJB2* c.167delT and *TMC1* p.Ser647Phe, while other deafness-causing mutations, such as *GJB2* c.35delG, are common in all Jewish ethnicities and elsewhere^{17,18,16}.

GJB2 variants are the most prevalent cause of hereditary hearing loss worldwide and are responsible for ~30% of deafness in Jewish families.^{17,19,20} Hence in Israel, routine genetic testing has been for the two most common pathogenic variants, *GJB2* c.35delG and *GJB2* c.167delT. For hearing loss not explained by these alleles, high-throughput sequencing using hearing-loss-dedicated gene panels offers the opportunity to identify other disease-causing variants in hundreds of genes.^{21,22,18,23}

The goal of this project was to identify the genetic causes of hearing loss in Israeli Jewish families with more than one affected relative (i.e. multiplex families) and to determine the number of genes responsible for hearing loss in the Israeli Jewish population as a whole. The long-term goal is to apply these results to development of guidelines for the molecular diagnosis of deafness in this population.

MATERIALS AND METHODS

Participants

Probands with hearing loss and their relatives were recruited from medical genetics clinics throughout Israel. All probands had a positive family history of hearing loss. Families were asked about their medical history, including family history of relevant symptoms, consanguinity, degree and symmetry of hearing loss, age of onset, use of hearing aids or cochlear implant, tinnitus, exposure to ototoxic drugs or noise, pathological conditions of the inner ear, and vestibular function. Hearing loss could be non-syndromic or syndromic, stable or progressive, and pre-lingual or post-lingual in onset. Probands or their parents gave written informed consent and provided a blood sample for DNA. *GJB2* and *GJB6* were evaluated by Sanger sequencing, and probands with hearing loss due to *GJB2* were so advised and not

sequenced with the gene panel.¹⁷ After these steps, 188 individuals from 88 multiplex families were evaluated with the HEar-Seq gene panels. Hearing controls from each Israeli Jewish ethnic group were identified from healthy, hearing individuals undergoing genetic screening at the Rabin and Sheba Medical Centers and from the National Laboratory for the Genetics of Israeli Populations (<https://en-med.tau.ac.il/nlgip>). An independent series of 105 individuals with hearing loss, treated at genetics clinics and not related to the 88 multiplex families, were included in order to estimate allele frequencies among Israeli Jewish deaf individuals.

Experimental procedures

Genomic analysis was carried out with the Hear-Seq gene panels, a custom design by the authors with version ranging from 178 to 372 genes^{18,23,24} (Table S1). The BED file of Hear-Seq capture probe locations is freely available from the authors, and capture probes can be ordered directly from the manufacturer (Agilent Technologies, Santa Clara, CA, USA) with permission from the authors. Details of panel design and manufacture are included in Supporting Information.

Details of genomic analysis with the panels, of follow-up sequencing, and of the accompanying bioinformatics pipeline are also included in Supporting Information. Novel mutations of uncertain consequence in *ATOH1* and *MITF* were evaluated by protein biochemistry and cell biology. Details of these methods are also included in Supporting Information.

RESULTS

Genetic diagnoses of hearing loss from gene panel sequencing

Genetic causes of hearing loss were identified for 60% (53/88) of the families evaluated by the HEar-Seq gene panels. These genetic diagnoses involved 57 different causal alleles in 27 different genes (Table S2, Figure S1). Most of the responsible alleles (32 of 57, or 56%) had not been previously reported from any population (Table 1). Of the novel variants, 50% were missense, 31% frameshifts, 9% nonsense, 9% copy number variants (CNVs), and 3% silent mutations that altered splicing. These diagnoses

expanded the total number of genes known to be responsible for inherited loss in the Israeli Jewish population from seven¹⁷ to 32 (Table S3).

***ATOH1*, a new gene for human hearing loss**

Panel sequencing revealed involvement of a new gene for human hearing loss. *ATOH1* (Atonal) encodes a basic helix-loop-helix transcription factor that is essential for neuronal development in the cerebellum.²⁵ Heterozygosity for any of several different variants of *Atoh1* leads to hearing deficits in mice, some with syndromic features.^{26,27} *ATOH1* was included on the panel because mutations in the mouse ortholog lead to hearing loss. In Iraqi Jewish kindred HL263, *ATOH* c.1030delC co-segregated over five generations with progressive non-syndromic hearing loss, with onset at birth or early childhood (Figure 1A,B). Based on whole exome sequencing, no other potentially damaging variant in any gene co-segregated with hearing loss in this family. *ATOH* c.1030delC causes a frameshift that alters the last ten residues of the normally 354-amino acid protein and adds six residues to its length before a stop.

To examine the effects of this mutation, expression constructs for wild type and mutant *ATOH1* were transfected into HEK293 cells. Antibody localization indicated nuclear translocation of both wild-type and mutant *ATOH1* (Figure 1C). Next, to determine the effects of the mutation on protein function, cochlear explants were established at E14 or E15 from *Atoh1*^{-/-} animals and transfected with either the *ATOH1*^{WT} or *ATOH1*^{c.1030delC} expression construct. (*Atoh1*^{-/-} cochleae were used to ensure no potential effects from the endogenous gene.) Results indicated induction of Myo7A⁺ hair cells in response to expression of either construct (Figure 1D). However, western analysis revealed a significantly slower rate of degradation for mutant *ATOH1* protein compared to wild-type *ATOH1* protein (P=0.032, multiple t-test with Holm-Sidak correction, two biological replicates) (Figure 1E, F).

Complex relationships of genotypes to phenotypes

For genes responsible for syndromic hearing loss, different variants in the same gene

revealed new relationships of genotypes to phenotypes. Three families with mutations in *MITF* illustrate these complexities (Figure 2). Damaging variants of *MITF* can cause autosomal dominant Waardenburg type 2A and Tietz albinism/deafness syndromes, both of which are highly heterogeneous clinically (Figure 2A, B). In family DF311, three relatives heterozygous for *MITF* c.935T>C, p.(Leu312Pro) had severe to profound sensorineural hearing loss with congenital albinism. (Hearing loss of DF311.02 is due to a mutation in *CDH23*.) Leu312 is a completely conserved residue in the middle of the *MITF* basic helix-loop-helix (bHLH) domain. A proline at this position would likely break the helix and preclude proper DNA binding and possibly preclude dimerization as well. In family DF219, three relatives heterozygous for *MITF* c.981insC, p.(Leu327fs9Ter) demonstrated the same hearing loss and albinism. A frameshift at residue 327 would lead to truncation in the middle of the bHLH domain and loss of normal protein function. In contrast, in family DF186, three relatives heterozygous for *MITF* c.1190delG, p.(Gly397fs15Ter) also demonstrated congenital sensorineural hearing loss but no pigmentation signs other than hair whitening of the mother in her twenties. Truncation due to frameshift at residue 397 is distal to the bHLH domain, so its consequences to protein function were unknown. A transactivation assay of the protein encoded by *MITF* c.1190delG, p.(Gly397fs15Ter) indicated that the transcriptional potential of the mutant protein is greatly impaired compared to that of wild-type *MITF* (Figure 2C, D).

GATA3 variants present an analogous story. *GATA3* is responsible for an autosomal dominant syndrome including hypoparathyroidism, sensorineural deafness, and renal dysplasia (HDR), for which different alleles are associated with a wide spectrum of phenotypes.²⁸ Two families in our series reflect this heterogeneity (Figure 3). In family HL738, the proband (DF738.01), heterozygous for *GATA3* c.681ins35, p.(Glu228fs37Ter), and his mother both demonstrated congenital severe-to-profound hearing loss and kidney dysplasia. (Medical records for the sister and niece of the proband were not available.) In contrast, in family HL769, all relatives heterozygous for

GATA3 c.829G>A, p.(Asp277Asn), demonstrated severe-to-profound hearing loss, but to date no renal or parathyroid problems.

CLPP is associated with Perrault syndrome, characterized by sensorineural hearing loss (SNHL) and infertility in both females and males.²⁹ In family DF313, affected siblings were both compound heterozygous for novel variants *CLPP* c.173T>G, p.(Leu58Arg) and c.233G>C, p.(Arg78Pro) (Figure S1). These siblings are young, age 3y, and thus far have profound hearing loss and auditory neuropathy but no other symptoms. It is not clear whether they are pre-symptomatic for infertility or if this genotype leads to nonsyndromic hearing loss.

SOX10 is responsible for autosomal dominant Waardenburg syndrome types 2E³⁰ and 4C,³¹ and for Kallmann syndrome.³² The adult proband of family HL971 and his mother, both with congenital profound hearing loss, are heterozygous for novel variant *SOX10* c.125_132del8, p.(Leu42fs21Ter) (Figure S1). Neither the proband nor his mother initially reported any symptoms other than deafness. Upon detecting this *SOX10* variant and asking the proband about his sense of smell, we discovered that both he and his deaf mother have anosmia, characteristic of Kallmann syndrome.

USH2A is responsible for Usher syndrome type 2A but signs of retinitis pigmentosa (RP) depend on genotype and on age. In family HL149, the proband, age 3y is compound heterozygous for *USH2A* c.3368A>G, p.(Tyr1123Cys)³³ and *USH2A* c.240_241insGTAC, a known pathogenic variant associated with SHL³⁴ (Table S2). His mother, in her early thirties, is homozygous for *USH2A* c.240_241insGTAC, with sloping mild-to-severe hearing loss and mild RP. The proband also has a sloping mild-to-moderate hearing loss, but as yet no signs of RP.

TECTA can be responsible for autosomal dominant or autosomal recessive hearing loss. Among families with dominant hearing loss, missense mutations in the *TECTA* zonadhesion domain (amino acid residues 260-1694) are associated with high-frequency hearing loss, while missense mutations in the *TECTA* zona pellicuda domain (residues 1795-2059) are associated with mid-frequency hearing impairment³⁵⁻³⁷. This correspondence obtains

for family HL277 (p.Ala963Thr) and family DF193 (p.Asp2006Gly) (Figure S1).

Contributions of founder alleles

Founder alleles of ancestral Jewish communities continue to contribute to hearing loss in Israeli Jewish families. Table S3 lists the 75 variants in 32 genes of the families in the study, distributed among different communities. Some variants were private to one family, whereas others were more common but limited to one community, reflecting a founder effect (Table S4). Among founder mutations, the principal contribution to hearing loss was of course from *GJB2* alleles, but founder mutations in other genes also contributed. For example, *CEACAM16* c.703C>T, p.(Arg235Cys) was responsible for recessive hearing loss in family DF301, of Jewish Iranian ancestry (Figure S1). This allele was subsequently identified in children with hearing loss from other families of Jewish Iranian ancestry evaluated in clinics. Another example is *OTOF* c.5193-1G>A, responsible for recessive hearing loss with auditory neuropathy in family HL1015, of Syrian Jewish ancestry (Figure S1). This allele was heterozygous in three of 184 hearing controls of Syrian Jewish ancestry (allele frequency 0.008), but was absent from hearing controls of all other Jewish ethnicities and absent from gnomAD. It is likely a founder mutation among Syrian Jews.

A quite common founder allele in the Ashkenazi community is *SLC26A4* c.349C>T, p.(Leu117Phe), with allele frequency 0.005 in the Ashkenazi Jewish population compared to 0.0002 in other gnomAD populations. No homozygotes for this variant have been observed among hearing individuals of any ancestry. This missense occurs in a completely conserved residue in the first transmembrane domain of *SLC26A4*, but its consequence has been uncertain. Families HL1132 and HL1327 were informative for this variant (Figure S1). Of the five children with hearing loss in these families, four are homozygous for *SLC26A4* p.(Leu117Phe). These deaf children are the first homozygotes reported for this variant. HL1327.09, who has profound hearing loss but is heterozygous for *SLC26A4* p.(Leu117Phe), remains unexplained. She has no other mutation in *SLC26A4*. She may be a phenocopy for

inherited hearing loss in this family. Homozygosity for *SLC26A4* p.(Leu117Phe) has also been observed in four other Ashkenazi families during screening for childhood hearing loss by genetics clinics in Israel. We speculate that *SLC26A4* c.349C>T, p.(Leu117Phe), or a non-coding regulatory mutation of *SLC26A4* in tight linkage disequilibrium with it, is pathogenic for nonsyndromic hearing loss.^{38-40,41}

Figure 4 presents genotype-phenotype-ancestry associations for all variants encountered in the study.

DISCUSSION

Genetic diagnosis will play an increasing role in treatment of both congenital and later onset hearing loss. Success of cochlear implant may depend on the genetic cause of the hearing loss.⁴² The clinical application of gene therapy for some forms of hearing loss may prove feasible,^{43,44} but its application depends on correct genetic diagnosis. Gene panel-based sequencing increased the yield of genetic diagnoses from 23%¹⁷ to 60% of familial hearing loss in the Israeli Jewish population. The analysis revealed 57 different pathogenic variants in 27 genes, with most variants not previously reported, and increased the number of genes known to cause hearing loss in the Jewish population from seven to 32.

Yield from the HEar-Seq gene panel compares favorably with whole exome sequencing (WES).⁴⁵ Costs of WES have decreased in recent years, but far fewer patients can be sequenced simultaneously with high coverage by WES than with a gene panel. Gene panels have proven effective for genetic diagnosis of a tremendous variety of conditions, ranging from inherited predisposition to cancer⁴⁶ to inherited eye disorders.⁴⁷ Gene panel sequencing also minimizes the frequency of incidental findings,⁴⁸ which can introduce legal, ethical, and social dilemmas. Nevertheless, for families not solved by panel sequencing, WES is the next step in searching for a genetic diagnosis.

The discovery that mutation of *ATOH1* can cause human hearing loss adds to understanding the role of this transcription factor in mammalian hearing. *ATOH1* is crucial for the development and differentiation of inner-ear

hair cells⁴⁹ and is first expressed in the nascent organ of Corti. Loss of *Atoh1* in mice causes hearing impairment, cerebellar and cochlear malformations, and death,²⁵ while conditional deletion of *Atoh1* leads to lack of differentiated inner ear hair cells,⁵⁰ and the naturally occurring mutation *Atoh1* p.Met200Ile causes hearing loss, progressive cerebellar atrophy, and trembling.²⁶ The *ATOH1* mutation of family HL263 yields a protein with an abnormal C-terminus associated with an abnormally slow degradation rate. This is consistent with previous observations that *Atoh1* protein stability is regulated by its interaction with the E3 ubiquitin ligase Huwe1 at phosphorylation sites S328 and S339 (human S331 and S342).^{51,52} In this context, a mouse with mutation at the phosphorylation site *Atoh1* S193 was shown to have late-onset deafness.²⁷ In wild-type mice, expression of *Atoh1* ceases by the end of the first postnatal week. Induction of *Atoh1* at the neonatal stage causes formation of immature ectopic hair cells, with randomized stereocilia orientation and reduced basolateral measured currents.^{53,54} *Atoh1* is also known to positively auto-regulate its own expression.⁵⁵ We showed that the human *ATOH1* mutation increases the stability of the protein through decreased degradation. We hypothesize that persistent untimely expression of *ATOH1* may generate immature ectopic hair cells that interfere with development of normal hair cells.^{56,57}

Early diagnosis enables caregivers to learn whether children are likely to develop symptoms other than hearing loss and so plan for specialized education and treatment. Among our families, pathogenic variants in *CLPP*, *SOX10*, and *USH2A*, which cause syndromic hearing loss, were detected in children prior to onset of additional symptoms. Similarly, a missense mutation in *GATA3* was present in a family with relatives ages 15-60y with apparently non-syndromic hearing loss. Ages at onset of the syndromic features of *GATA3* are variable, with mean age of onset during childhood or early teenage years, but possible onset of the full spectrum of phenotypes as late as age 50.⁵⁸ It is still possible, therefore, that the affected relatives of this family will develop syndromic features. It is also possible that mild mutations

in *GATA3* could cause non-syndromic hearing loss.

In summary, the diversity of the Israeli Jewish population is reflected in the diversity of mutations that have been revealed to be responsible for hearing loss. These variants include mutations private to one family, founder mutations of ancestral communities, and mutations appearing in families of all ancestries. Our results are informative for genetic counselors, medical geneticists, audiologists and otolaryngologists caring for families with inherited hearing loss. Genetic diagnosis can be integrated with history, physical examination, and audiometry to guide management of patients with hearing loss. The results can also assist in developing guidelines for genetic screening of newborns with possible hearing loss, in Israel and elsewhere.

FIGURE LEGENDS

Figure 1 *ATOH1* c.1030delC and age-related hearing loss. **A**, Family HL263 with progressive sensorineural hearing loss in five generations. Filled symbols represent individuals with hearing loss. V represents the variant allele and N the normal allele. The number under each individual is the birth year. **B**, Average hearing thresholds of family members of various ages heterozygous for the mutation. **C**, HEK293 cells transfected with expression constructs for *ATOH1*^{WT} or *ATOH1*^{c.1030delC}. Anti-*ATOH1* labeling in green indicates nuclear localization of both wild type and mutant *ATOH1* (arrows). **D**, left column: Cochlear explant from an *Atoh1*^{-/-} mouse established at E14 and transfected with an *ATOH1*^{c.1030delC} expression construct. Transfected cells (red) are present in a region that is consistent with the location of the organ of Corti in a wildtype cochlea (shaded region, OC), as well as in several patches that are located outside of the organ of Corti (arrows). Counter-staining for the hair cell marker *Myo7a* indicates that many transfected cells have developed as hair cells. Right column: High magnification images of the boxed region demonstrating expression of *Myo7a* (green) and *ATOH1* (blue) in a patch of transfected cells. **E**, Western blot of *ATOH1* protein extracted from HEK293T cells transfected with wild type or

mutant *ATOH1*, after 1-5 hours treatment with 1mM cycloheximide. **F**, Quantification of the results of part C. Statistical test was repeated measures ANOVA with post-hoc Holm-sidak correction for multiple comparisons.

Figure 2 *MITF1* variants associated with hearing loss and Waardenburg Syndrome Type 2A / Tietz Syndrome in three families. **A**, Pedigrees of families DF311, DF186, and DF219, indicating variation in syndromic features. **B**, Hearing thresholds by age, reflecting severe to profound hearing loss in all affected individuals. **C**, Transactivation assay using a tyrosinase promoter and luciferase reporter revealing that the transcriptional potential of protein encoded by *MITF* c.1190delG is greatly impaired compared to the wild-type protein. Statistical test was one-tailed student's t-test. **D**, Western blot analysis indicates similar levels of wild type and mutant MITF protein.

Figure 3 *GATA3* variants associated with nonsyndromic and syndromic hearing loss in two families. **A**, Pedigrees of families HL738 and HL769. **B**, Hearing thresholds by age, reflecting severe to profound hearing loss in all affected individuals.

Figure 4 Distribution of hearing loss variants in Ashkenazi, Mizrahi, Sephardi, and mixed Jewish communities. Numbers in parentheses are the number of probands of each ethnicity. Numbers of cases are listed next to each gene.

SUPPORTING INFORMATION

Table S1. Genes on HEar-Seq panels

Table S2. Variants identified by HEar-Seq in Israeli Jewish families

Table S3. All variants leading to hearing loss in Israeli Jewish Families in the study

Table S4. Founder mutations in Israeli Jewish families

Figure S1. Pedigrees, audiograms and genotypes of families with hearing loss. N = wild type; V = variant.

ACKNOWLEDGEMENTS

The authors wish to thank all the families for their participation in this study. This research was supported by grants from the National Institutes of Health/National Institute of Deafness and Communication Disorders (NIDCD) R01DC011835 (K.B.A., M.C.K., M.N.K.), the Intramural Program at the NIDCD, DC000059 (M.W.K.), the Israel Precision Medicine Program or the Israel Science Foundation, ISF3499-19 (K.B.A.), the Ernest and Bonnie Beutler Research Program of Excellence in Genomic Medicine (K.B.A.), the Hedrich Charitable Trust (K.B.A.), and travel grants from the University of Washington Virginia Bloedel Hearing Research Institute (K.B.A., R.C.).

CONFLICT OF INTEREST

The authors declare they have no conflict of interest.

AUTHOR CONTRIBUTIONS

K.B.A. and M.-C.K. had full access to all of the data in the study and take responsibility for data integrity and analytic accuracy. Z.B., S.G., T.W., K.B.A. and M.-C.K. were responsible for the concept and design. Z.B., S.G., T.W., F.T.A.M., S.T., O.I., M.K.L., M.B., W.C., S.C., M.B.-C., N.D.-F., A.A.-R., R.C., L.K., A.O.A., M.S., D.G., N.L., M.F., B.D., M.M., M.S., H.V., H.P., R.S., N.S., N.Z., H.B.-F., A.S., O.H., R.H., D.A.-N., N.R.-S., O.M., E.S., A.P., M.K., M.S., L.B.-S., E.P., D.L., N.S., M.W.K., M.-C.K., K.B.A. acquired, analyzed, and/or interpreted the data. Z.B., F.T.A.M., M.B.-C., W.C., E.S., M.-C.K. and K.B.A. drafted the manuscript. S.G., O.I., M.K.L., N.S. and M.-C.K. performed the statistical analysis. All authors approved the final version of the manuscript.

ETHICS APPROVAL

The Ethics Committee of Tel Aviv University, the Helsinki Committee of the Israel Ministry of Health, and the Human Subjects Division of the University of Washington approved the study. Care and housing of *Atoh1*^{+/-} mice was conducted based on the NIH guidelines for animal use (Protocol number 1262).

DATA AVAILABILITY STATEMENT

Novel variants are available at ClinVar (www.ncbi.nlm.nih.gov/clinvar/).

ORCID

Karen B. Avraham, <https://orcid.org/0000-0002-4913-251X>

REFERENCES

1. Cunningham LL & Tucci DL. Hearing loss in adults. *N Engl J Med*. 2017;377(25):2465-2473.
2. GBD 2015 Disease and Injury Incidence and Prevalence Collaborators. Global, regional, and national incidence, prevalence, and years lived with disability for 310 diseases and injuries, 1990-2015: a systematic analysis for the Global Burden of Disease Study 2015. *Lancet*. 2016;388(10053):1545-1602.
3. World Health Organization. Deafness and Hearing Loss. Updated March 2020. Accessed May 2, 2020. <http://www.who.int/news-room/fact-sheets/detail/deafness-and-hearing-loss>
4. Shukla A, Harper M, Pedersen E et al. Hearing loss, loneliness, and social isolation: A systematic review. *Otolaryngol Head Neck Surg*. 2020;194599820910377.
5. Deal JA, Betz J, Yaffe K et al. Hearing impairment and incident dementia and cognitive decline in older adults: The Health ABC Study. *J Gerontol A Biol Sci Med Sci*. 2017;72(5):703-709.
6. an Camp G & Smith RJH. Hereditary Hearing Loss Homepage. Updated April 2020. Accessed May 2, 2020. <http://hereditaryhearingloss.org>
7. Deafness Variation Database. Accessed May 2, 2020. <http://deafnessvariationdatabase.org/>
8. Azaiez H, Booth KT, Ephraim SS et al. Genomic landscape and mutational signatures of deafness-associated genes. *Am J Hum Genet*. 2018;103(4):484-497.
9. Koffler T, Ushakov K & Avraham KB. Genetics of hearing loss: Syndromic. *Otolaryngol Clin North Am*. 2015;48(6):1041-1061.
10. Shearer AE, Eppsteiner RW, Booth KT et al. Utilizing ethnic-specific differences in minor allele frequency to recategorize reported pathogenic deafness variants. *Am J Hum Genet*. 2014;95(4):445-453.
11. Ostrer H & Skorecki K. The population genetics of the Jewish people. *Hum Genet*. 2013;132(2):119-127.
12. Hammer MF, Redd AJ, Wood ET et al. Jewish and Middle Eastern non-Jewish populations share a common pool of Y-chromosome biallelic haplotypes. *Proc Natl Acad Sci U S A*. 2000;97(12):6769-6774.
13. Zlotogora J. Genetics and genomic medicine in Israel. *Mol Genet Genomic Med*. 2014;2(2):85-94.
14. Ostrer H. A genetic profile of contemporary Jewish populations. *Nat Rev Genet*. 2001;2(11):891-898.
15. Goldschmidt E, Ronen A & Ronen I. Changing marriage systems in the Jewish communities of Israel. *Ann Hum Genet*. 1960;24(191-204).
16. Cohen T, Vardi-Saliternik R & Friedlander Y. Consanguinity, intracommunity and intercommunity marriages in a population sample of Israeli Jews. *Ann Hum Biol*. 2004;31(1):38-48.
17. Brownstein Z & Avraham KB. Deafness genes in Israel: implications for diagnostics in the clinic. *Pediatr Res*. 2009;66(2):128-134.
18. Brownstein Z, Friedman LM, Shahin H et al. Targeted genomic capture and massively parallel sequencing to identify genes for hereditary hearing loss in Middle Eastern families. *Genome Biol*. 2011;12(9):R89.
19. Sobe T, Vreugde S, Shahin H et al. The prevalence and expression of inherited connexin 26 mutations associated with nonsyndromic hearing loss in the Israeli population. *Hum Genet*. 2000;106(1):50-57.
20. Estivill X, Fortina P, Surrey S et al. Connexin-26 mutations in sporadic and inherited sensorineural deafness. *Lancet*. 1998;351(9100):394-398.
21. Shearer AE & Smith RJ. Massively parallel sequencing for genetic diagnosis of hearing loss: The new standard of care. *Otolaryngol Head Neck Surg*. 2015;153(2):175-182.

22. Shearer AE, DeLuca AP, Hildebrand MS et al. Comprehensive genetic testing for hereditary hearing loss using massively parallel sequencing. *Proc Natl Acad Sci USA*. 2010;107(49):21104-21109.
23. Brownstein Z, Abu-Rayyan A, Karfunkel-Doron D et al. Novel myosin mutations for hereditary hearing loss revealed by targeted genomic capture and massively parallel sequencing. *Eur J Hum Genet*. 2014;22(6):768-775.
24. Danial-Farran N, Brownstein Z, Gulsuner S et al. Genetics of hearing loss in the Arab population of Northern Israel. *Eur J Hum Genet*. 2018;26(12):1840-1847.
25. Ben-Arie N, Bellen HJ, Armstrong DL et al. *Math1* is essential for genesis of cerebellar granule neurons. *Nature*. 1997;390(6656):169-172.
26. Sheykhholeslami K, Thimmappa V, Nava C et al. A new mutation of the *Atoh1* gene in mice with normal life span allows analysis of inner ear and cerebellar phenotype in aging. *PLoS One*. 2013;8(11):e79791.
27. Xie WR, Jen HI, Seymour ML et al. An *Atoh1*-S193A phospho-mutant allele causes hearing deficits and motor impairment. *J Neurosci*. 2017;37(36):8583-8594.
28. Muroya K, Hasegawa T, Ito Y et al. GATA3 abnormalities and the phenotypic spectrum of HDR syndrome. *J Med Genet*. 2001;38(6):374-380.
29. Jenkinson EM, Rehman AU, Walsh T et al. Perrault syndrome is caused by recessive mutations in *CLPP*, encoding a mitochondrial ATP-dependent chambered protease. *Am J Hum Genet*. 2013;92(4):605-613.
30. Bondurand N, Dastot-Le Moal F, Stanchina L et al. Deletions at the *SOX10* gene locus cause Waardenburg syndrome types 2 and 4. *Am J Hum Genet*. 2007;81(6):1169-1185.
31. Pingault V, Bondurand N, Kuhlbrodt K et al. *SOX10* mutations in patients with Waardenburg-Hirschsprung disease. *Nat Genet*. 1998;18(2):171-173.
32. Vaaralahti K, Tommiska J, Tillmann V et al. De novo *SOX10* nonsense mutation in a patient with Kallmann syndrome and hearing loss. *Pediatr Res*. 2014;76(1):115-116.
33. Behar DM, Davidov B, Brownstein Z et al. The many faces of sensorineural hearing loss: one founder and two novel mutations affecting one family of mixed Jewish ancestry. *Genet Test Mol Biomarkers*. 2014;18(2):123-126.
34. Auslender N, Bandah D, Rizel L et al. Four *USH2A* founder mutations underlie the majority of Usher syndrome type 2 cases among non-Ashkenazi Jews. *Genet Test*. 2008;12(2):289-294.
35. Sagong B, Park R, Kim YH et al. Two novel missense mutations in the *TECTA* gene in Korean families with autosomal dominant nonsyndromic hearing loss. *Ann Clin Lab Sci*. 2010;40(4):380-385.
36. Yamamoto N, Mutai H, Namba K et al. Prevalence of *TECTA* mutation in patients with mid-frequency sensorineural hearing loss. *Orphanet J Rare Dis*. 2017;12(1):157.
37. Kim AR, Chang MY, Koo JW, Oh SH & Choi BY. Novel *TECTA* mutations identified in stable sensorineural hearing loss and their clinical implications. *Audiol Neurootol*. 2015;20(1):17-25.
38. Taylor JP, Metcalfe RA, Watson PF, Weetman AP & Trembath RC. Mutations of the *PDS* gene, encoding pendrin, are associated with protein mislocalization and loss of iodide efflux: implications for thyroid dysfunction in Pendred syndrome. *J Clin Endocrinol Metab*. 2002;87(4):1778-1784.
39. Reardon W, OMahoney CF, Trembath R, Jan H & Phelps PD. Enlarged vestibular aqueduct: a radiological marker of pendred syndrome, and mutation of the *PDS* gene. *QJM*. 2000;93(2):99-104.
40. Albert S, Blons H, Jonard L et al. *SLC26A4* gene is frequently involved in nonsyndromic hearing impairment with enlarged vestibular aqueduct in Caucasian populations. *Eur J Hum Genet*. 2006;14(6):773-779.
41. Costa MD, Pereira JB, Pala M et al. A substantial prehistoric European

- ancestry amongst Ashkenazi maternal lineages. *Nat Commun.* 2013;4(2543).
42. Miyagawa M, Nishio SY & Usami S. A comprehensive study on the etiology of patients receiving cochlear implantation with special emphasis on genetic epidemiology. *Otol Neurotol.* 2016;37(2):e126-134.
43. Schilder AGM, Blackshaw H, Lenarz T et al. Biological therapies of the inner ear: What otologists need to consider. *Otol Neurotol.* 2018;39(2):135-137.
44. Taiber S & Avraham KB. Genetic therapies for hearing loss: Accomplishments and remaining challenges. *Neurosci Lett.* 2019;713(134527).
45. Lewis MA, Nolan LS, Cadge BA et al. Whole exome sequencing in adult-onset hearing loss reveals a high load of predicted pathogenic variants in known deafness-associated genes and identifies new candidate genes. *BMC Med Genomics.* 2018;11(1):77.
46. Walsh T, Lee MK, Casadei S et al. Detection of inherited mutations for breast and ovarian cancer using genomic capture and massively parallel sequencing. *Proc Natl Acad Sci U S A.* 2010;107(28):12629-12633.
47. Consugar MB, Navarro-Gomez D, Place EM et al. Panel-based genetic diagnostic testing for inherited eye diseases is highly accurate and reproducible, and more sensitive for variant detection, than exome sequencing. *Genet Med.* 2015;17(4):253-261.
48. Green RC, Berg JS, Grody WW et al. ACMG recommendations for reporting of incidental findings in clinical exome and genome sequencing. *Genet Med.* 2013;15(7):565-574.
49. Chen P, Johnson JE, Zoghbi HY & Segil N. The role of Math1 in inner ear development: Uncoupling the establishment of the sensory primordium from hair cell fate determination. *Development.* 2002;129(10):2495-2505.
50. Pan N, Jahan I, Kersigo J et al. Conditional deletion of *Atoh1* using *Pax2-Cre* results in viable mice without differentiated cochlear hair cells that have lost most of the organ of Corti. *Hear Res.* 2011;275(1-2):66-80.
51. Forget A, Bihannic L, Cigna SM et al. Shh signaling protects *Atoh1* from degradation mediated by the E3 ubiquitin ligase *Huwe1* in neural precursors. *Dev Cell.* 2014;29(6):649-661.
52. Cheng YF, Tong M & Edge AS. Destabilization of *Atoh1* by E3 ubiquitin ligase *Huwe1* and casein kinase 1 is essential for normal sensory hair cell development. *J Biol Chem.* 2016;291(40):21096-21109.
53. Kelly MC, Chang Q, Pan A, Lin X & Chen P. *Atoh1* directs the formation of sensory mosaics and induces cell proliferation in the postnatal mammalian cochlea *in vivo*. *J Neurosci.* 2012;32(19):6699-6710.
54. Liu Z, Dearman JA, Cox BC et al. Age-dependent *in vivo* conversion of mouse cochlear pillar and Deiters' cells to immature hair cells by *Atoh1* ectopic expression. *J Neurosci.* 2012;32(19):6600-6610.
55. Helms AW, Abney AL, Ben-Arie N, Zoghbi HY & Johnson JE. Autoregulation and multiple enhancers control *Math1* expression in the developing nervous system. *Development.* 2000;127(6):1185-1196.
56. Zhong C, Fu Y, Pan W, Yu J & Wang J. *Atoh1* and other related key regulators in the development of auditory sensory epithelium in the mammalian inner ear: function and interplay. *Dev Biol.* 2019;446(2):133-141.
57. Wu DK & Kelley MW. Molecular mechanisms of inner ear development. *Cold Spring Harb Perspect Biol.* 2012;4(8):a008409.
58. Lemos MC & Thakker RV. Hypoparathyroidism, deafness and renal dysplasia (HDR) syndrome: 20 years after the identification of the first *GATA3* mutations. *Hum Mutat.* 2020;

TABLE 1 Novel variants discovered by the HEar-Seq gene panel in Israeli Jewish families with hearing loss

Gene	Family	Inheritance*	Ethnicity**	Genomic coordinates (hg19)	cDNA	Variant type	Effect	Allele freq controls of same ethnicity*	Allele freq in unrelated deaf^^	ClinVar ID	ACMG classification (criteria)***
<i>ATOH1</i> NM_005172.1	HL263	AD	M	chr4:94751102	c.1030delC	Indel	His344fs17Ter	0	0	813817	P (PM2, PM4, PP1_S, PP3, PP4)
<i>ATP2B2</i> NM_001001331.2	DF328	AD	A	chr3:10420936	c.1033C>T	Nonsense	Gln345Ter	0	0	1337668	P (PM2, PM4, PP1_S, PP3, PP4)
<i>CABP2</i> NM_001318496.1	DF326	AR	Mixed	chr11:67289435	c.250G>A	Missense	Glu84Lys	0	0	1337669	P (PM2, PM3_S, PP1_M, PP3, PP4)
<i>CEACAM16</i> NM_001039213.3	DF301	AR	M	chr19:45208901 Founder allele	c.703C>T	Missense	Arg235Cys	0	0.008	236048	P (PS4, PM2, PP1_S, PP3, PP4)
<i>CLPP</i> NM_006012.2	DF313	AR	S	chr19:6361758	c.173T>G (mat)	Missense	Leu58Arg	0.004	0	500291	1) LP (PM2, PM3_P, PP1_M, PP3, PP4) 2) LP (PM2, PM3_P, PP1_M, PP3, PP4)
			A	chr19:6361914	c.233G>C (pat)	Missense	Arg78Pro	0	0	813818	
<i>COCH</i> NM_004086.2	HL1103	AD	A	chr14:31355200	c.1159C>T	Missense	Leu387Phe	0	0	236036	LP (PM2, PP1_M, PP3, PP4)
<i>COL11A2</i> NM_080680.2	HL1140	AR	S	chr6:33152074	c.967insC	Indel	Thr323fs17Ter	0	0	813820	1) P (PVS1, PM2, PM3_P, PP1_M) 2) P (PM2, PM3_S, PP1_M, PP3, PP4)
			M	chr6:33138676	c.3385G>A	Missense	Gly1129Arg	0	0	813821	
<i>EYA4</i> NM_172105.3	HL21	AD	Mixed	chr6:133783474	c.441delC	Indel	Tyr148fs49Ter	0	0	236032	P (PVS1, PM2, PM4, PP1, PP3, PP4)
<i>EYA4</i> NM_172105.3	DF312	AD	M	chr6:133844297 - 133844299	c.1720_1722 delTACinsAAA	2 bp changes in same codon	Tyr574Lys	0	0	1164280	LP (PM2, PM2, PP1, PP3, PP4)
<i>GATA3</i> NM_002051.2	HL738	AD	A	chr10:8100707	c.681ins35	Indel	Glu228fs37Ter	0	0	236031	P (PVS1, PM2, PP1_M, PP3, PP4)
<i>GATA3</i> NM_002051.2	HL769	AD	Mixed	chr10:8106009	c.829G>A	Missense	Asp277Asn	0	0	813823	LP (PM2, PP1_S, PP3)
<i>MITF</i> NM_198159.2	DF311	AD	S	chr3:70001035	c.935T>C	Missense	Leu312Pro	0	0	547531	P (PS4_P, PM2, PP1, PP3, PP4)
<i>MITF</i> NM_198159.2	DF186	AD	S	chr3:70014025	c.1190delG	Indel	Gly397fs15Ter	0	0	236050	P (PVS1, PM2, PP1, PP3, PP4)
<i>MITF</i> NM_198159.2	DF219	AD	A	chr3:70005649	c.981insC	Indel	Leu327fs9Ter	0	0	813825	P (PVS1, PM2, PM4, PP1, PP3, PP4)
<i>MYO6</i> NM_004999.3	DF305	AD	A	chr6:76538307	c.238C>T	Nonsense	Arg80Ter	0	0	178957	P (PVS1, PM2, PP1, PP3, PP4)
<i>MYO6</i> NM_004999.3	HL1133	AD	S	chr6:76568683	c.1452insT	Nonsense	Asn485Ter	0	0	1337671	P (PVS1, PM2, PM4, PP1_M, PP3, PP4)

<i>MYO6</i> NM_004999.3	HL1274	AD	A	chr6:76568710	c.1473del3insC	Indel	skip exon 14, Glu461fs13Ter	0	0	236034	P (PVS1, PM2, PM4, PP1, PP3)
<i>MYO6</i> NM_004999.3	HL158	AD	A	chr6:76624636	c.3765delC	Indel	Cys1256fs28Ter	0	0	813826	P (PVS1, PM2, PM4, PP1, PP3, PP4)
<i>MYO15A</i> NM_016239.3	HL72	AR	M	chr17:18054799	c.7751_8224del 3446ins23	CNV	Gln2583fs19Ter	0	0.003	236039	P (PVS1, PM2, PM4, PP1, PP3, PP4)
<i>MYO15A</i> NM_016239.3	DF327 DF317	AR	A	chr17:18069748	c.9861C>T	Silent	Gly3287Gly	0	0.003	228276/4 5777	P (PM2_P, PM3_S, PP1_S, PP3)
<i>PCDH15</i> NM_001142769.1	HL1134	AR	M	chr10:56287598	c.146T>C	Missense	Val49Ala	0	0.003	450626	LP (PM2, PM3_P, PP1, PP3, PP4)
<i>SLC26A4</i> NM_000441.1	HL1132 HL1327	AR	A	chr7:107312627	c.349C>T	Missense	Leu117Phe	0.007	0.013	43555	P (PS4, PM1, PM3, PM3_P, PP1_S, PP3, PP4)
<i>SOX10</i> NM_006941.3	HL971	AD	A	chr22:38379660	c.125_132del8	Indel	Leu42fs21Ter		0	813829	P (PVS1, PM2, PM4, PP3, PP4)
<i>STRC</i> NM_153700.2	HL927	AR	Mixed	chr15:43,892,353 - 43,910,998 (min)	del entire gene	CNV	-		0.003	1164296	P (PVS1, PM1, PM3, PM4, PP1, PP3, PP4)
<i>TECTA</i> NM_005422.2	DF303	AR	A	chr11:120979969	c.248C>T	Missense	Thr83Met		0.003	813831	LP (PM2, PM3_P, PP1_M, PP3, PP4)
<i>TECTA</i> NM_005422.2	HL277	AD	S	chr11:121000866	c.2887G>A	Missense	Ala963Thr	0	0	236059	LP (PM2, PP1_M, PP3, PP4)
<i>TECTA</i> NM_005422.2	DF183	AD	A	chr11:121058558	c.6017A>G	Missense	Asp2006Gly	0	0	236033	LP (PM2, PM5, PP1, PP3, PP4)
<i>TJP2</i> NM_001170414.2	DF180	AD	S	chr9:71704982 - 71840362 dup	dup exons 1-6	CNV	-	0	0	236035	P (PS4_P, PM1, PM2, PM4, PP1_S, PP3, PP4)
<i>TMC1</i> NM_138691.2	DF193	AR	Mixed	chr9:75263573	c.15insA	Indel	Val6fs12Ter	0	0.003	236041	P (PVS1, PM2, PM4, PP1, PP3, PP4)
<i>TMC1</i> NM_138691.2	HL1159	AR	A	chr9:75369733	c.674C>T	Missense	Pro225Leu	0	0	424807	P (PM2, PM3_S, PP1_M, PP3, PP4)

*Recessive, R; Dominant, D

** A, Ashkenazi; M, Mizrahi; S, Sephardi

***ACMG classification and criteria legend: P, pathogenic; LP, likely pathogenic; PVS, very strong pathogenicity evidence; PS, strong pathogenicity evidence; PM, moderate pathogenicity evidence; PP, supporting pathogenicity evidence; _S, strong; _M, moderate; _P, supporting
ACMG classification and criteria^{1,2}

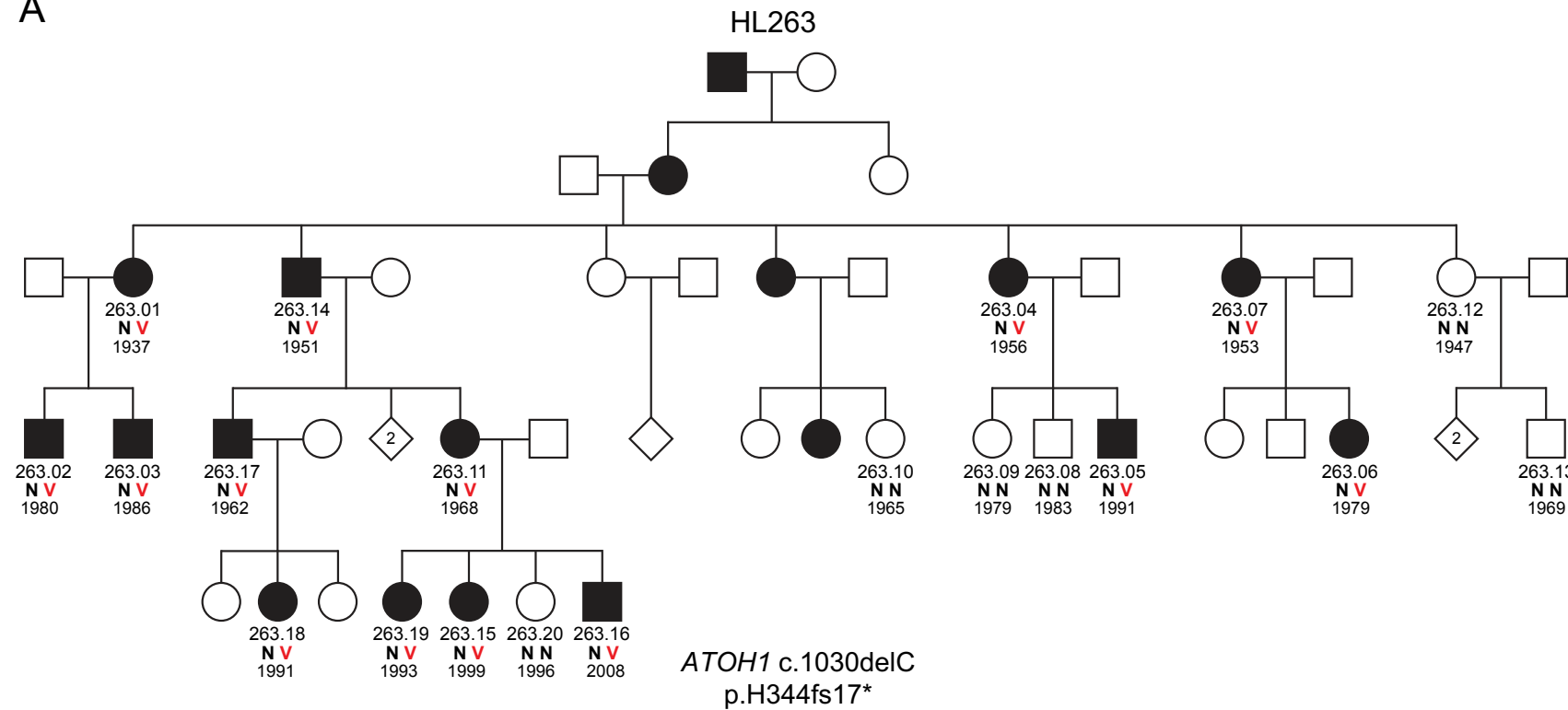
^Number of ethnicity-matched hearing controls ranges from 163-500 individuals (326-1000 chromosomes)

^^Number of unrelated deaf is 105 individuals (210 chromosomes)

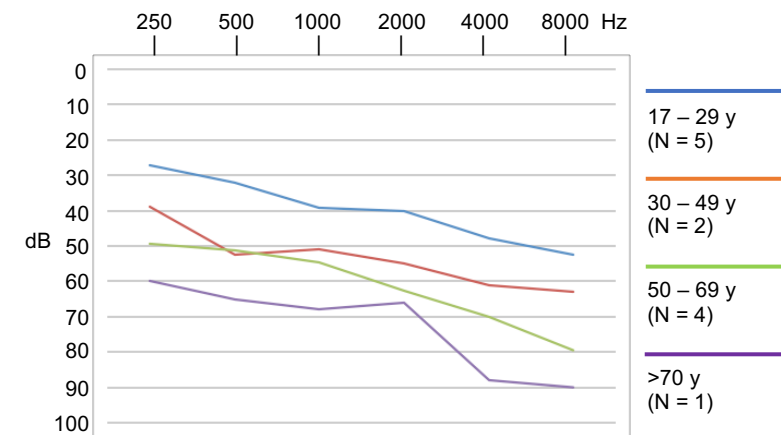
References

- Oza AM, DiStefano MT, Hemphill SE et al. Expert specification of the ACMG/AMP variant interpretation guidelines for genetic hearing loss. *Hum Mutat.* 2018;39(11):1593-1613.
- Richards S, Aziz N, Bale S et al. Standards and guidelines for the interpretation of sequence variants: a joint consensus recommendation of the American College of Medical Genetics and Genomics and the Association for Molecular Pathology. *Genet Med.* 2015;17(5):405-424.

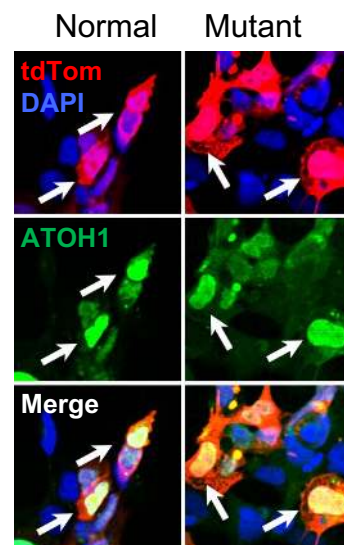
A



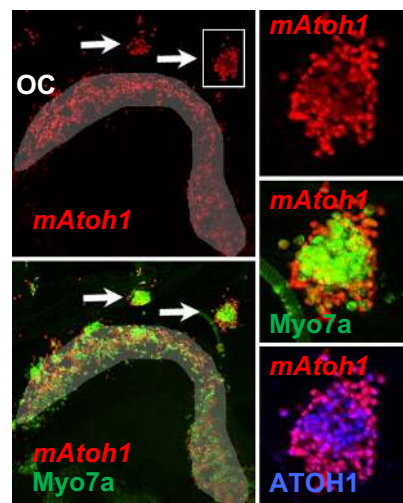
B



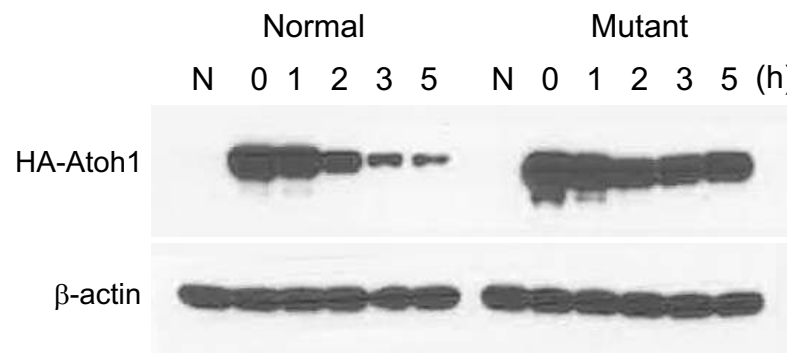
C



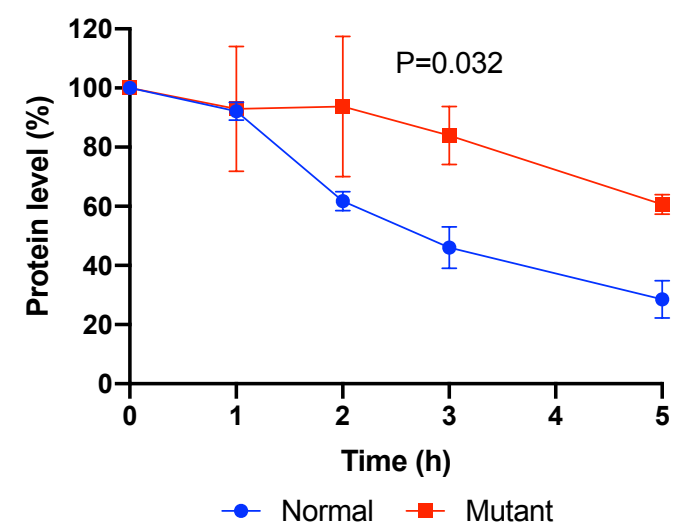
D



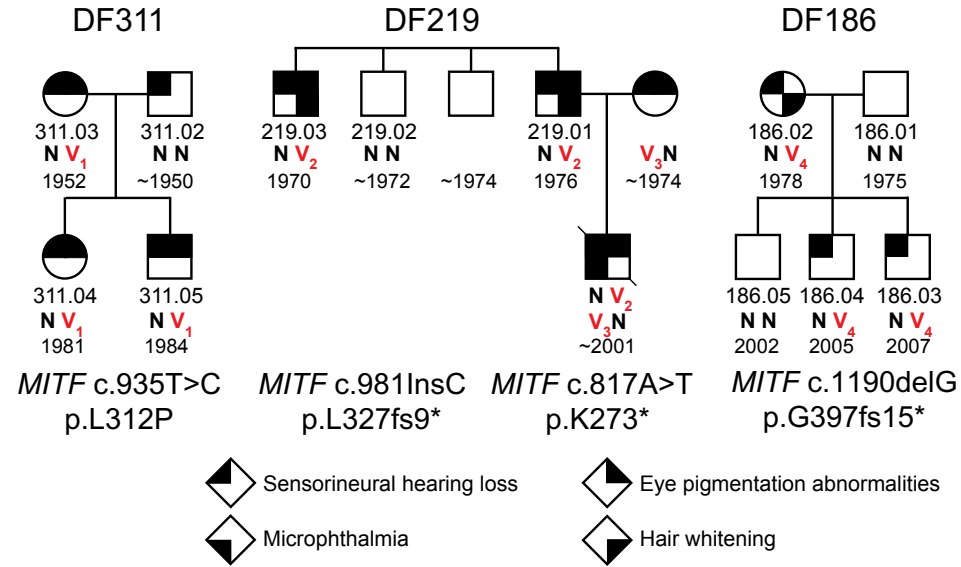
E



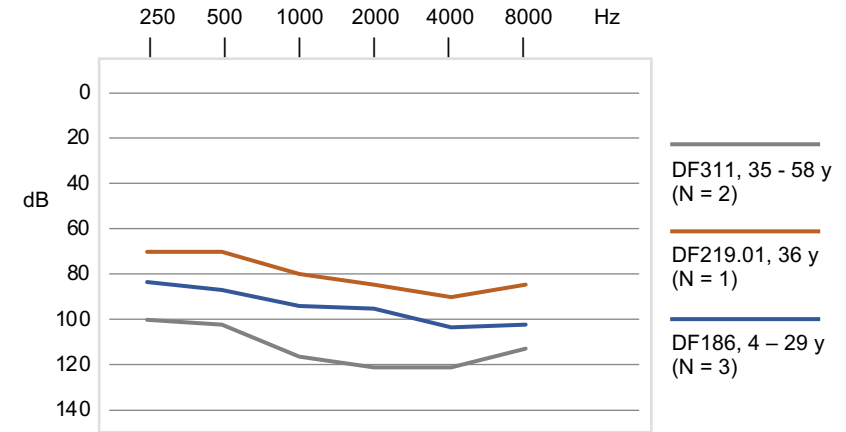
F



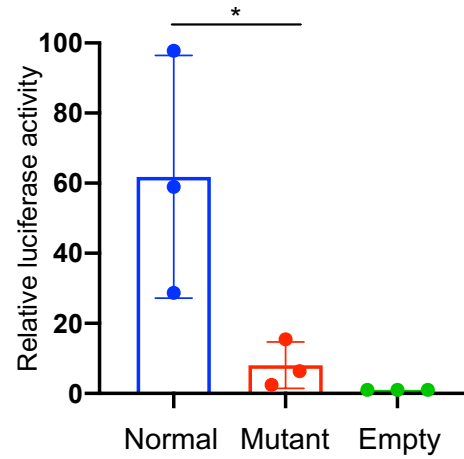
A



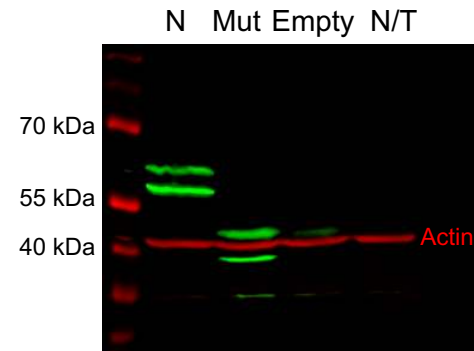
B



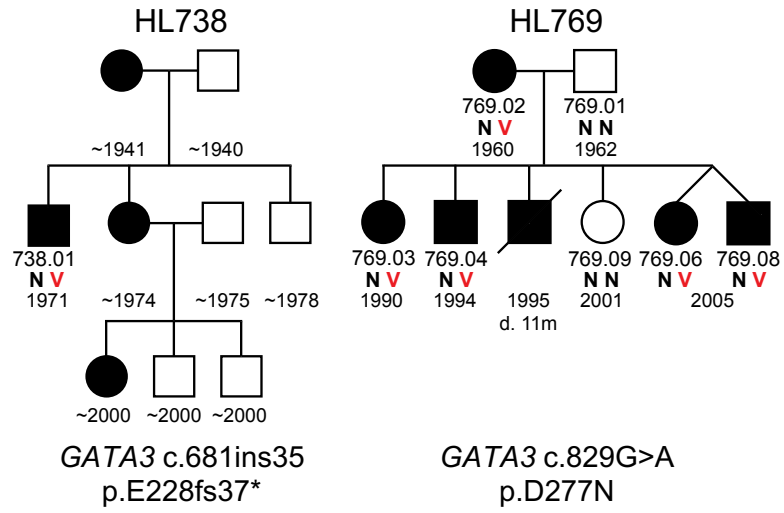
C



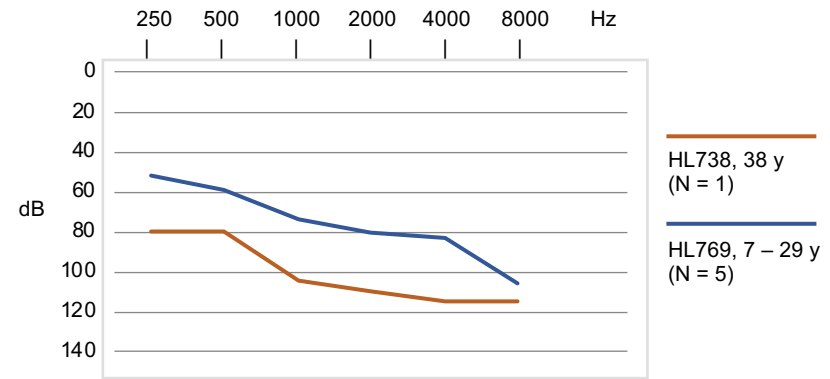
D

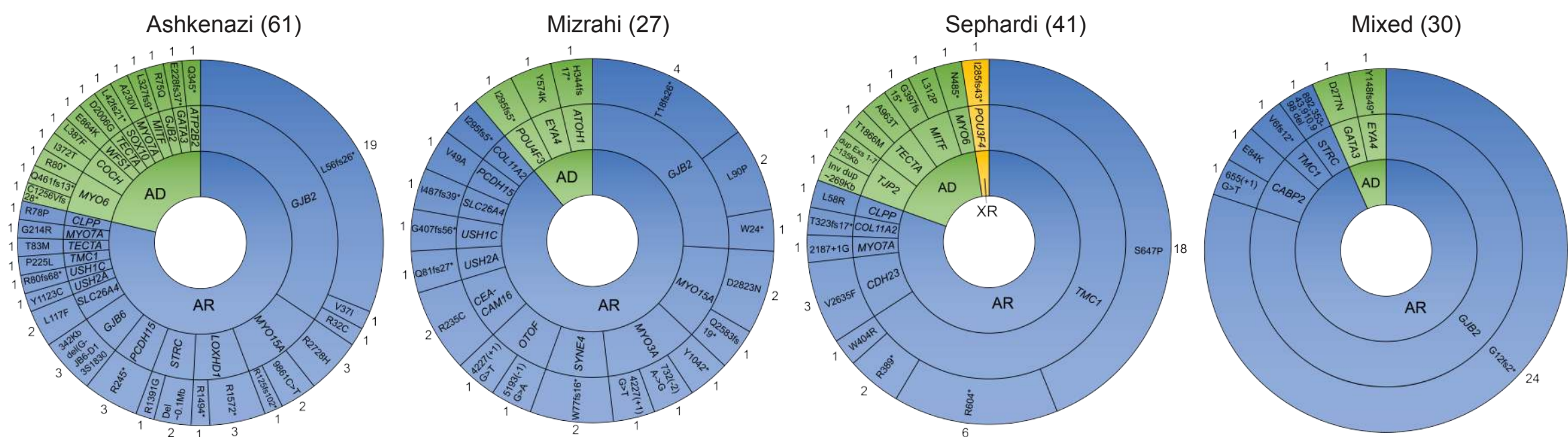


A



B





Ashkenazi

Mizrahi

Sephardi

Mixed

Profound	High-tone	Mild-moderate	Variable
SOX10	COCH	ATP2B2	GATA3
MITF		WFS1	GJB2
GJB6		ANKRD36	TECTA
LOXHD1		STRC	MYO6
PCDH15		USH2A	GJB2
SLC26A4			TECTA
USH1C			MYO15A
TMC1			
CLPP			
MYO7A			

Profound	High-tone	Mild-moderate	Variable
USH1C	POU4F3	ATOH1	EYA4
OTOF	MYO3A	USH2A	GJB2
PCDH15	SYNE4	CEACAM16	
SLC26A4		COL11A2	
MYO15A			

Profound	High-tone	Mild-moderate	Variable
MYO6	TJP2	COL11A2	POU3F4
MITF		MYO7A	TECTA
CDH23			
CLPP			
TMC1			

Profound	Mild-moderate	Variable
EYA4	EYA4	GATA3
TMC1	STRC	GJB2
		CAPB2

Recessive

Dominant

X-linked

Supporting Information

Spectrum of genes for inherited hearing loss in the Israeli Jewish population, including the novel human deafness gene *ATOH1*

Zippora Brownstein, Suleyman Gulsuner, Tom Walsh, Fábio Tadeu Arrojo Martins, Shahar Taiber, Ofer Isakov, Ming K. Lee, Mor Bordeynik-Cohen, Maria Birkan, Weise Chang, Silvia Casadei, Nada Danial-Farran, Amal Abu-Rayyan, Ryan Carlson, Lara Kamal, Ásgeir Örn Arnþórsson, Meirav Sokolov, Dror Gilony, Noga Lipschitz, Moshe Frydman, Bella Davidov, Michal Macarov, Michal Sagi, Chana Vinkler, Hana Poran, Reuven Sharony, Nadra Samara, Na'ama Zvi, Hagit Baris-Feldman, Amihod Singer, Ophir Handzel, Ronna Hertzano, Doaa Ali-Naffaa, Noa Ruhrman-Shahar, Ory Madgar, Efrat Sofrin, Amir Peleg, Morad Khayat, Mordechai Shohat, Lina Basel-Salmon, Elon Pras, Dorit Lev, Michael Wolf, Eirikur Steingrímsson, Noam Shomron, Matthew W. Kelley, Moien Kanaan, Stavit Allon-Shalev, Mary-Claire King, Karen B. Avraham

METHODS

Genomics

Genomic DNA was sequenced using HEar-Seq gene panels containing a custom design of 178 to 372 genes developed by the authors and manufactured by Agilent Technologies (Santa Clara, CA, USA). Genes included in each version of HEar-Seq are indicated in Table S1. For each version of the panel, hg19 genomic coordinates were submitted to eArray (Agilent) to design cRNA oligonucleotides to cover exons and flanking introns. The BED file of capture probe locations is freely available upon request, and capture probes can be ordered directly from Agilent Technologies with permission from the authors. HEar-Seq v4 includes 178 protein-coding genes and one miRNA, with a total target size of 808 kb that includes 3134 exons and 25bp of intronic sequence flanking each splice site of each exon. Genes included in all previous versions of HEar-Seq are indicated in Table S1.

For analysis of participant genomic DNA, molecular barcodes were assigned and 96 samples multiplexed and sequenced in a single flow cell of the Illumina HiSeq 2500 with 105bp paired-end reads. The average depth of coverage per sample across the HEar-Seq panel was 638x (range of 161 - 924x), with 99.1% of

targeted bases with a minimum coverage of 10x and 96.5% of bases with minimum coverage of 50x. Capture and sequencing using the HEar-Seq panels were performed at the University of Washington or the Technion Genome Center. Genotypes of family members were determined by panel sequencing or Sanger sequencing of the family's identified variant. Genotypes of controls and unrelated deaf were evaluated by Sanger sequencing or restriction enzyme analysis. For family HL263, whole exome sequencing was carried out to rule out other pathogenic variants.

A bioinformatics pipeline was designed for analysis of gene panel data. Data were collected locally and processed on a Dell PowerEdge R920 server. Samples were processed from real-time base-calls (RTA1.8 software [Bustard]) and converted to qseq.txt files. Following demultiplexing, the reads were aligned to the reference human genome (hg19) using Burrows-Wheeler Aligner (0.7.9a).¹ PCR duplicates were removed by SAMtools 0.1.19 (<http://samtools.sourceforge.net/>). Indel realignments and base quality score recalibration were carried out, and genotypes called and filtered, with the Genome Analysis

Tool Kit (GATK; v3.0-0; broadinstitute.org/gatk) with recommended parameters.² Large insertions, deletions, and inversions were identified with Pindel 0.2.5³ and BreakDancer 1.1.4.⁴ Mis-alignments were corrected by aligning to data from 850 in-house exomes. CNVs were called using CoNIFER,⁵ XHMM⁶ and an in-house CNV detection pipeline.⁷ Variants were annotated using an in-house pipeline with respect to location (exonic, near splice, intronic, UTRs) and predicted function (frameshift, inframe indel, nonsense, missense, silent, and potential splice altering, cryptic splice, and regulatory effect). Allele frequencies were obtained from the gnomAD browser. GERP, PolyPhen2, SIFT, and Mutation Taster scores were included. Potential splice altering and cryptic splice variants were predicted using our splice variant prediction pipeline, based on the NNSPLICE and MaxEnt algorithms.^{8,9} Variants were classified using the criteria of the American College of Medical Genetics (ACMG) criteria^{10,11} and deposited in ClinVar (www.ncbi.nlm.nih.gov/clinvar/).

ATOH1 analysis

HEK293 cells were cultured on cover slips coated with gelatin. Wild-type and mutant human *ATOH1* sequences were cloned into a pCdt expression construct that also included an *IRES-tdTomato* sequence. Following confirmation by sequencing, HEK cells were transfected with either expression plasmid using Xfect Transfection Reagent (Clontech). Three days after transfection, cells were fixed for 10 minutes in 4% paraformaldehyde. Immunostaining was carried out with primary antibodies against ATOH1¹² and MYO7A (Proteus). Antibody labeling was detected using Alexa goat anti-rabbit 633 and Alex goat anti-chicken 488 (ThermoFisher) secondary antibodies. Finally, nuclei were labeled using a short incubation with DAPI at 1:10,000 in saline.

Expression of tdTOMATO was visualized directly. Labeling was imaged on a Zeiss LSM710.

Localization studies of wildtype and mutant *Atoh1* were carried out in cochlear explants from *Atoh1*^{+/-} animals¹³ and obtained from the Jackson Laboratory. Care and housing of animals was conducted based on the NIH guidelines for animal use (Protocol number 1262). *Atoh1*^{+/-} animals were crossed to generate time-pregnant females. At E14 or E15, females were euthanized and embryos were removed. Cochleae from each embryo were dissected into separate dishes containing cold PBS. DNA was extracted from the tail of each embryo using a Maxwell RSC instrument (Promega) and genotyped by PCR. *Atoh1*^{-/-} cochleae identified and then electroporated with either *pCdt ATOH1*^{WT}-*IRES-tdTom* or *pCdt ATOH1*^{c.1030delC}-*IRES-tdTom* at 1 ug/ul in water.¹⁴ The electroporated cochlear explants were incubated for 8-9 days¹⁵, then fixed with 4% paraformaldehyde for 30 min. Expression of *Atoh1* and *Myo7A* was detected as described above. Expression of tdTOMATO was visualized directly. Labeling was imaged on a Zeiss LSM710.

For western blot analysis, expression constructs for a human *ATOH1*^{WT} or *ATOH1*^{c.1030delC} were generated in *pCdt* as described above, with 3xFLAG and 3xHA tags were added at the N-terminus of the *ATOH1* sequence. HEK293T cells were transfected with either *pCdt 3xFLAG3xHA -ATOH1*^{WT}-*IRES-tdTom* or *pCdt 3xFLAG3xHA-ATOH1*^{c.1030delC}-*IRES-tdTom* using Xfect Transfection Reagent (Clontech). At day 3 after transfection, cells were treated with 1 mM cycloheximide (Sigma) to inhibit new protein synthesis and harvested in cold PBS after 0, 1, 2, 3, and 5 hrs. RIPA buffer supplemented with protease inhibitor cocktail cOmplete Mini (Roche) and phosphatase inhibitor cocktail PhosSTOP (Roche) was used to lyse the cells. After lysis and clarification, the supernatant was divided into two portions – one

for BCA protein assay (Thermo) to quantify the total amount of protein, and the other for gel separation using NuPAGE 4-12% SDS-Bis-Tris gel (Invitrogen). After gel separation, the protein was transferred onto a cellulose membrane using an iBlot apparatus (Invitrogen) following the manufacturer's suggested protocol. Western blotting was carried out using the iBind Flex apparatus (ThermoFisher). Antibodies against the HA tag (H7; Sigma) or ACTIN (Sigma) were used at a 1:5,000-1:10,000 dilution. Binding was detected using an HRP0-conjugated anti-mouse IgG antibody (Jackson Immunoresearch Lab) at a dilution of 1:5,000-1:10,000. For ECL visualization, Clarity Western ECL substrate A and B solutions (Bio-Rad) were used, and DBio Blue sensitive X-ray film (Vita Scientific) was used for image capture. After X-ray film exposure and development, the bands on the film were scanned at highest resolution (600x600 dpi) on a desktop scanner. ImageJ (NIH) was used to measure the intensity of the bands. A similar area with no band was used as a background control. The reading of ACTIN bands was further used for standardization of the ATOH1 band. For the final presentation, the reading was normalized against the reading at 0 hrs. Two replicates were performed.

MITF analysis

For the transactivation assay, HEK293T cells (2×10^4) were grown for 24 hours in a 96-well plate in 100 μ L DMEM + 10% FBS. Cells were transiently co-transfected with an empty pcDNA3.1 construct or pcDNA3.1 containing mouse wild-type *Mitf*^{WT} or the *Mitf*^{E.1190delG} mutation, a pGL3 basic luciferase construct containing the tyrosinase promoter sequence and a CMV-pRL Renilla control vector. 24 hours post transfection the Dual-Glo Luciferase Assay (Promega) was performed according to the protocol with a Modulus II microplate reader (0.5 sec integration time). Luciferase signals

were normalized to corresponding Renilla signals and results expressed as fold change over empty vector. Three biological replicates were performed. For immunoblotting, the cells were lysed and sampled 24 hours post transfection in sample buffer, boiled for 5 min and 20 μ L of each sample were analyzed on 8% SDS-polyacrylamide gels that were transferred to nitrocellulose membranes. Membranes were incubated overnight with antibodies for MITF (C5, Thermo Scientific) and β -actin (13E5, Cell Signaling) and then secondary antibodies (anti-rabbit IgG and anti-mouse IgG, Cell Signaling). Results were visualized using the Odyssey Infrared Imaging System.

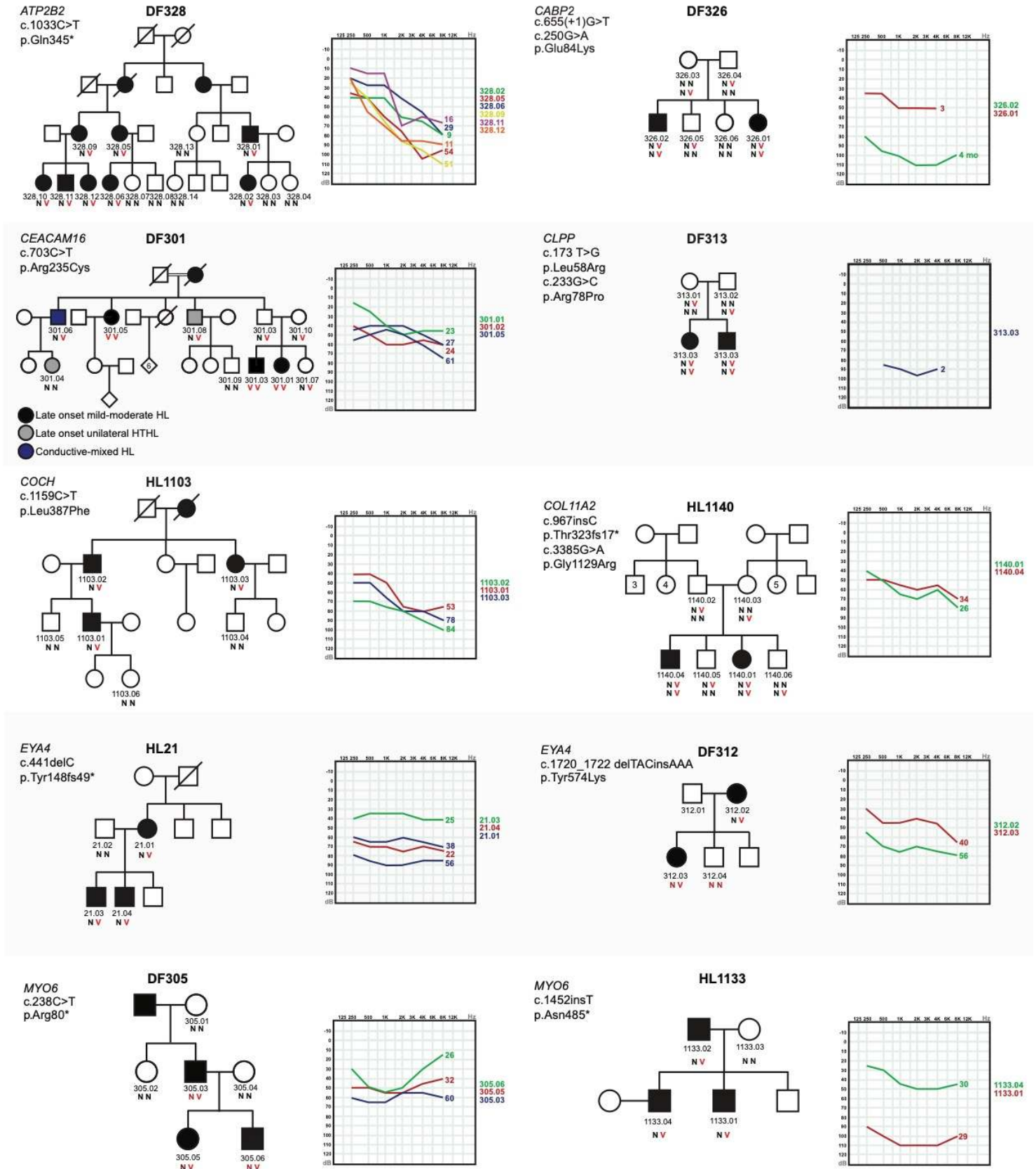
REFERENCES

1. Li H & Durbin R. Fast and accurate long-read alignment with Burrows-Wheeler transform. *Bioinformatics*. 2010;26(5):589-595.
2. DePristo MA, Banks E, Poplin R et al. A framework for variation discovery and genotyping using next-generation DNA sequencing data. *Nat Genet*. 2011;43(5):491-498.
3. Ye K, Schulz MH, Long Q, Apweiler R & Ning Z. Pindel: a pattern growth approach to detect break points of large deletions and medium sized insertions from paired-end short reads. *Bioinformatics*. 2009;25(21):2865-2871.
4. Chen K, Wallis JW, McLellan MD et al. BreakDancer: an algorithm for high-resolution mapping of genomic structural variation. *Nat Methods*. 2009;6(9):677-681.
5. Krumm N, Sudmant PH, Ko A et al. Copy number variation detection and genotyping from exome sequence data. *Genome Res*. 2012;22(8):1525-1532.
6. Fromer M, Moran JL, Chambert K et al. Discovery and statistical genotyping of copy-number variation from whole-exome sequencing depth. *Am J Hum Genet*. 2012;91(4):597-607.
7. Nord AS, Lee M, King MC & Walsh T. Accurate and exact CNV identification from targeted high-throughput sequence data. *BMC Genomics*. 2011;12(184).
8. Reese MG, Eeckman FH, Kulp D & Haussler D. Improved splice site detection in Genie. *J Comput Biol*. 1997;4(3):311-323.
9. Casadei S, Gulsuner S, Shirts BH et al. Characterization of splice-altering mutations in inherited predisposition to cancer. *Proc Natl Acad Sci USA*. 2019;116(52):26798-26807.
10. Richards S, Aziz N, Bale S et al. Standards and guidelines for the interpretation of sequence variants: a joint consensus recommendation of the American College of Medical Genetics and Genomics and the Association for Molecular Pathology. *Genet Med*. 2015;17(5):405-424.
11. Oza AM, DiStefano MT, Hemphill SE et al. Expert specification of the ACMG/AMP variant interpretation guidelines for genetic hearing loss. *Hum Mutat*. 2018;39(11):1593-1613.
12. Driver EC, Sillers L, Coate TM, Rose MF & Kelley MW. The Atoh1-lineage gives rise to hair cells and supporting cells within the mammalian cochlea. *Dev Biol*. 2013;376(1):86-98.
13. Bermingham NA, Hassan BA, Price SD et al. Math1: an essential gene for the generation of inner ear hair cells. *Science*. 1999;284(5421):1837-1841.
14. Woods C, Montcouquiol M & Kelley MW. Math1 regulates development of the sensory epithelium in the mammalian cochlea. *Nat Neurosci*. 2004;7(12):1310-1318.
15. Driver EC & Kelley MW. Transfection of mouse cochlear explants by electroporation. *Curr Protoc Neurosci*. 2010;4.34(1-10).

Supporting Information

Spectrum of genes for inherited hearing loss in the Israeli Jewish population, including the novel human deafness gene *ATOH1*

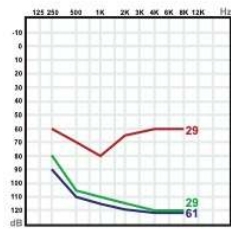
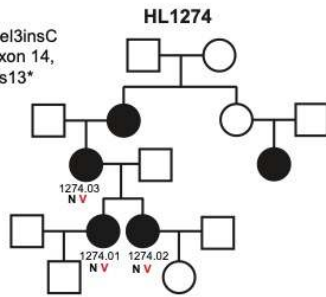
Figure S1. Pedigrees, audiograms and genotypes of families with hearing loss solved by HEar-Seq. Age at the time of testing is noted on audiograms. N = wild type; V = variant.



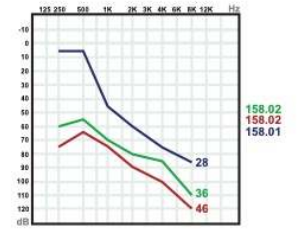
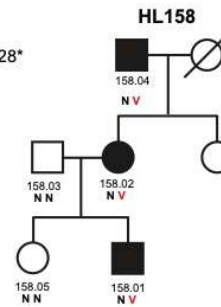
Supporting Information

Spectrum of genes for inherited hearing loss in the Israeli Jewish population, including the novel human deafness gene *ATOH1*

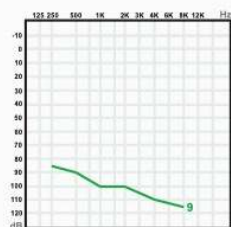
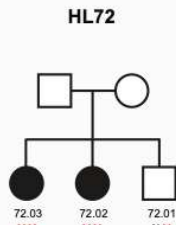
MYO6
c.1473del3insC
p.skip exon 14,
Glu461fs13*



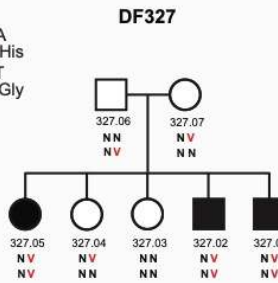
MYO6
c.3765delC
p.Cys1256fs28*



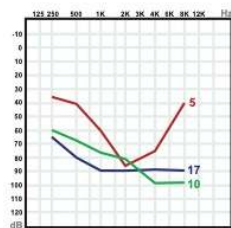
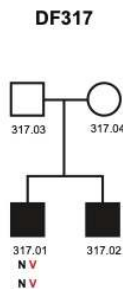
MYO15A
c.7751_8224del
3446ins23
p.Gln2583fs19*



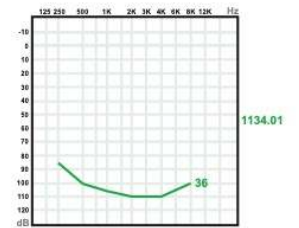
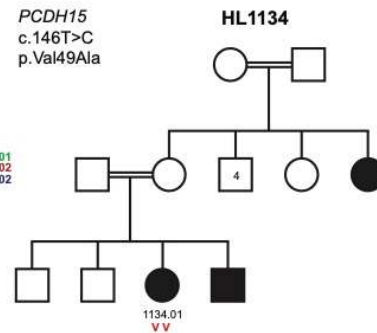
MYO15A
c.8183G>A
p.Arg2728His
c.9861C>T
p.Gly3287Gly



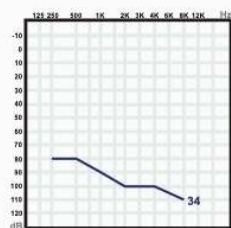
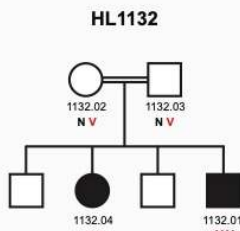
MYO15A
c.8183G>A
p.Arg2728His
c.9861C>T
p.Gly3287Gly



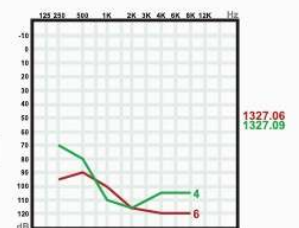
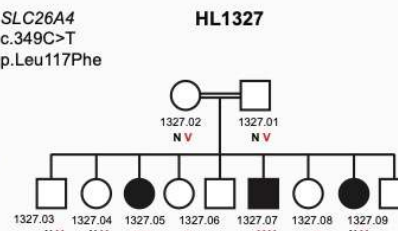
PCDH15
c.146T>C
p.Val49Ala



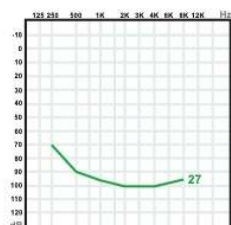
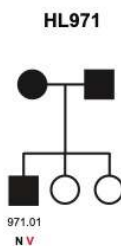
SLC26A4
c.349C>T
p.Leu117Phe



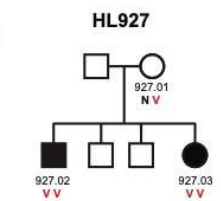
SLC26A4
c.349C>T
p.Leu117Phe



SOX10
c.125_132del8
p.Leu42fs21*



STRC
del18,645bp



Supporting Information

Spectrum of genes for inherited hearing loss in the Israeli Jewish population, including the novel human deafness gene *ATOH1*

