

Speed Finite Control Set Model Predictive Control of a PMSM Fed by Matrix Converter

Andrea Formentini, Andrew Trentin, Mario Marchesoni, *Member, IEEE* Pericle Zanchetta, *Senior Member, IEEE* and Pat Wheeler, *Member, IEEE*

Abstract— This paper presents a new speed Finite Control Set Model Predictive Control (FCS-MPC) algorithm which has been applied to a Permanent Magnet Synchronous Motor (PMSM) driven by a Matrix Converter (MC). This method replaces the classical cascaded control scheme with a single control law that controls the motor currents and speed. Additionally, unlike classical MC modulation methods, the method allows direct control of the MC input currents. The performance of the proposed work has been verified by simulation studies and experimental results.

Index Terms— FCS-MPC, Matrix Converter, PMSM drive

SYMBOLS

L_f	Input filter inductance
C_f	Input filter capacitance
R_f	Input filter parasitic resistance
L_l	Line inductance
R_l	Line resistance
R_m	Stator resistance
L_m	Stator inductance
n_p	Pole pairs
φ	Rotor flux
J	System inertia
B_a	Viscous friction
V_s	Source voltage
I_s	Source current
I_{ij}	j^{th} component of the matrix converter input current
V_{ij}	j^{th} component of the matrix converter input voltage
I_{oj}	j^{th} component of the matrix converter output current
V_{oj}	j^{th} component of the matrix converter output voltage
I_d	Motor direct current
I_q	Motor quadrature current
ω_m	Motor rotor speed
θ_r	Motor rotor position
K_t	Motor torque constant
μ_{mc}	Matrix converter efficiency
$\tilde{\cdot}$	Updated value
$\hat{\cdot}$	Predicted value
$\Re(\cdot)$	Real part

$\Im(\cdot)$ Imaginary part

I. INTRODUCTION

A matrix converter (MC) is a power electronic converter which allows to connect directly two three-phase systems using a matrix of 9 bi-directional switches [1].

Fig. 1 shows a schematic representation of a MC used as a motor drive for a Permanent Magnet Synchronous Motor (PMSM). The MC is composed of a matrix of 9 bidirectional switches which connection between every input and output phase.

A single switch can and must be turned on for each converter output leg, in order to avoid both short-circuit of two input phases and opening of an output inductive circuit. This limits the number of possible switching configurations to 27. One filtering stage is generally present on the input converter side in order to filter the high frequency components introduced by the power semiconductor devices switching.

The first modulation strategy for MCs was proposed by Venturini [2]. Subsequently, the space vector modulation (SVM) has been proposed, which is a modulation strategy based on the instantaneous vector representation of the converter input and output voltages [3]. A common drawback related to the above mentioned modulation strategies is the inability to directly control the input filter current, with the consequent risk of creating unstable resonances in the system [4-6]. The two main solutions to this problem, which have been proposed in the technical literature, are the use of a damping resistor in the input filter or the use of a low-pass filter to properly adjust the measurement of the converter input voltage.

In recent years, Finite Control Set Model Predictive Control (MPC-FCS) is becoming an interesting and alternative approach to traditional control strategies of power converters [7-10], also owing to the increasing cost reduction of the most powerful control hardware. FCS-MPC uses a model of the system to be controlled to predict the next state of the system itself subjected to each possible control action. The best control action is then chosen by minimizing a cost function. This strategy allows to directly control more than one state variable at the same time, using a single control rule. Several authors have applied FCS-MPC to the MC [11, 12]. In [13] a method for increasing the efficiency of the converter has been proposed, while in [14] the use of a virtual damping resistor to mitigate the resonances of the input filter is proposed. In contrast to SVM modulation, FCS-MPC generates a switching harmonic distortion that is not concentrated on a single frequency, on the contrary its harmonic spectrum is almost white. In some applications this behavior may not be appropriate. Owing to this reason, in [15]

a method to impose a well-defined spectrum of the switching harmonic distortion has been proposed.

PMSMs are widely used in industry due to their high dynamic performance and power density. The combination of a PMSM and a MC gives a four-quadrant drive system with potentially low weight and size [16, 17]. The typical control strategy for speed/position drive systems is composed of cascade linear controllers, with a high dynamic inner current loop and a relatively slow outer speed control loop. The use of a single FCS-MPC to control both the PMSM currents and speed when fed by a standard two level converter has been proposed in [18-20]. This solution removes the cascade linear controllers as well as the modulator.

In this paper the innovative idea of using the speed FCS-MPC algorithm to control both PMSM currents and speed with a MC is proposed. The higher number of feasible states along with the need to control input stage quantities increases the algorithm complexity when compared to the one needed from a standard two level inverter, making more difficult its practical implementation using the small sampling time required by FCS-MPC. A new cost function has been also proposed. It permits to take into account both mechanical and electrical variables, overcoming the classical cascaded loop limitations and resulting in a high dynamic response, thus avoiding unwanted oscillations in the input filter currents during transients.

Additionally, a new input filter observer to estimate the source voltage has been presented. This observer reduces the number of sensors, thereby increasing the system reliability and reducing costs.

II. SYSTEM MODELS

FCS-MPC uses a system model to predict the next state of the system itself. Owing to this reason, the definition of the model is a key point for a successful implementation of the control strategy. In the following sections the models that have been used are described.

A. Matrix converter model

With reference to Fig. 1, the mathematical relations between input and output side currents and voltages of the matrix converter are

$$\underline{V}_o = T^T \underline{V}_i \quad \underline{I}_i = T \underline{I}_o \quad (1)$$

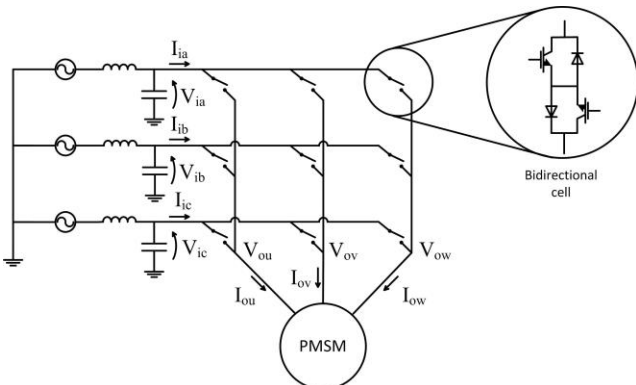


Fig. 1 - Schematic representation of a matrix converter

where

$$\underline{V}_o = \begin{bmatrix} V_{ou} \\ V_{ov} \\ V_{ow} \end{bmatrix} \quad \underline{V}_i = \begin{bmatrix} V_{ia} \\ V_{ib} \\ V_{ic} \end{bmatrix} \quad (2)$$

$$\underline{I}_o = \begin{bmatrix} I_{ou} \\ I_{ov} \\ I_{ow} \end{bmatrix} \quad \underline{I}_i = \begin{bmatrix} I_{ia} \\ I_{ib} \\ I_{ic} \end{bmatrix}$$

The MC state matrix T is defined as

$$T = \begin{bmatrix} S_{au} & S_{av} & S_{aw} \\ S_{bu} & S_{bv} & S_{bw} \\ S_{cu} & S_{cv} & S_{cw} \end{bmatrix} \quad (3)$$

where $S_{ij} = 1$ if the switch that connects the i^{th} input phase with the j^{th} output phase is ON and $S_{ij} = 0$ otherwise. The need to avoid short-circuits between two input phases and the need to avoid the opening of an output phase reduce the number of possible switching configurations to 27.

B. Input filter model

Matrix converters typically need an input filter to filter currents and to avoid voltage spikes during switching. Fig. 2 shows the LC filter used in this work. Only one phase is shown in such a figure, since the system is assumed balanced. Similarly, the subscripts that identify the phase will be omitted in the following equations. The term R_f represents the parasitic resistance of the filter components, since no damping resistor has been used in this work.

The equation representing the model of this input stage is

$$\dot{\underline{x}}_f = A_f \underline{x}_f + B_f \underline{u}_f \quad (4)$$

with

$$\underline{x}_f = \begin{bmatrix} I_s \\ V_i \end{bmatrix} \quad \underline{u}_f = \begin{bmatrix} V_s \\ I_i \end{bmatrix} \quad (5)$$

$$A_f = \begin{bmatrix} -R_t/L_t & -1/L_t \\ 1/C_f & 0 \end{bmatrix} \quad (6)$$

$$B_f = \begin{bmatrix} 1/L_t & 0 \\ 0 & -1/C_f \end{bmatrix} \quad (7)$$

and

$$L_t = L_l + L_f \quad R_t = R_l + R_f \quad (8)$$

are respectively the total inductance and total resistance of the input stage.

Generally, in almost all the works where the use of FCS-MPC has been described, all variables were considered physically measurable. Here, a different approach is adopted [21]: the

mains voltage V_s can be considered sinusoidal and at fixed frequency. For this reason, it can be considered as a system sinusoidal disturbance and therefore it is possible to implement an observer to estimate it. The knowledge of V_s is necessary to predict the future values of I_s and V_i and, as it will be explained in the following, to compute the optimal control.

The generic state space equation of a sinusoidal disturbance is [22]

$$\begin{aligned} \dot{\underline{x}}_n &= \begin{bmatrix} 0 & -\omega^2 \\ 1 & 0 \end{bmatrix} \underline{x}_n \\ d &= \begin{bmatrix} 0 & 1 \end{bmatrix} \underline{x}_n \end{aligned} \quad (9)$$

where ω is the disturbance pulsation. Merging equations (4) and (9) and imposing

$$\underline{x}_n = \begin{bmatrix} \hat{V}_s \\ \hat{V}_s \end{bmatrix} \quad (10)$$

the new filter model equation becomes

$$\dot{\underline{x}}_{fo} = A_{fo} \underline{x}_{fo} + B_{fo} u_{fo} \quad (11)$$

with

$$A_{fo} = \begin{bmatrix} 0 & -\omega_s^2 & 0 & 0 \\ 1 & 0 & 0 & 0 \\ 0 & 1/L_t & -R_t/L_t & -1/L_t \\ 0 & 0 & 1/C_f & 0 \end{bmatrix} \quad (12)$$

$$B_{fo} = \begin{bmatrix} 0 & 0 & 0 & -1/C_f \end{bmatrix} \quad (13)$$

The new augmented state vector and control input become

$$\underline{x}_{fo} = \begin{bmatrix} \hat{V}_s \\ \hat{V}_s \\ I_s \\ V_i \end{bmatrix} \quad u_{fo} = I_i \quad (14)$$

where \hat{V}_s is the estimated source voltage.

It is now possible to construct an observer for system (11) using only the I_s and V_i measurement.

The system (11) must be discretized to be implemented into a Digital Signal Processor (DSP). The obtained equation is

$$\underline{x}_{fo_{k+1}} = \Phi_{fo} \underline{x}_{fo_k} + \Gamma_{fo} u_{fo_k} \quad (15)$$

where

$$\Phi_{fo} = e^{A_{fo}T} \quad \Gamma_{fo} = \int_0^T e^{A_{fo}\tau} d\tau B_{fo} \quad (16)$$

and T is the sample time. The subscripts k , $k+1$ and so on denote the system sample time instants.

Current sensors are generally affected by a low noise and, in

addition, it was found that FCS-MPC provides better performance by using unfiltered values of I_s current and V_i voltage. For this reason, a reduced order observer has been used to estimate the line voltage, thus reducing the complexity of the control algorithms. The system state defined in (14) has been split in

$$\underline{x}_{fo}^a = \begin{bmatrix} \hat{V}_s \\ \hat{V}_s \end{bmatrix} \quad \underline{x}_{fo}^b = \begin{bmatrix} I_s \\ V_i \end{bmatrix} \quad (17)$$

where the superscripts a and b have been arbitrarily used to distinguish the two sub-states. (15) could be then rewritten as

$$\begin{bmatrix} \underline{x}_{fo_{k+1}}^a \\ \underline{x}_{fo_{k+1}}^b \end{bmatrix} = \begin{bmatrix} \Phi_{fo}^{aa} & \emptyset \\ \Phi_{fo}^{ba} & \Phi_{fo}^{bb} \end{bmatrix} \begin{bmatrix} \underline{x}_{fo_k}^a \\ \underline{x}_{fo_k}^b \end{bmatrix} + \begin{bmatrix} \emptyset \\ \Gamma_{fo}^b \end{bmatrix} u_{fo_k} \quad (18)$$

with $\Phi_{fo}^{aa}, \Phi_{fo}^{ba}, \Phi_{fo}^{bb} \in \mathfrak{R}^{2 \times 2}$, $\Gamma_{fo}^b \in \mathfrak{R}^2$.

It is now possible to write the observer as

$$\tilde{\underline{x}}_{fo_k}^a = \hat{\underline{x}}_{fo_k}^a + K (\underline{x}_{fo_k}^b - \hat{\underline{x}}_{fo_k}^b) \quad (19)$$

and

$$\begin{aligned} \hat{\underline{x}}_{fo_{k+1}}^a &= \Phi_{fo}^{aa} \tilde{\underline{x}}_{fo_k}^a \\ \hat{\underline{x}}_{fo_{k+1}}^b &= \Phi_{fo}^{ba} \tilde{\underline{x}}_{fo_k}^a + \Phi_{fo}^{bb} \underline{x}_{fo_k}^b + \Gamma_{fo}^b u_{fo_k} \end{aligned} \quad (20)$$

In the previous equations $\tilde{\underline{x}}_{fo}^a$ is the updated state, $\hat{\underline{x}}_{fo}^a$ and $\hat{\underline{x}}_{fo}^b$ are the predicted states, \underline{x}_{fo}^b is the measured state and $K \in \mathfrak{R}^{2 \times 2}$ is the observer gain matrix.

The above described observer allows eliminating the mains voltage sensor, thus increasing system reliability and reducing costs. In addition, its use allows the use of FCS-MPC even in the absence of the input filter inductors, for example when a transformer is present on the line-side. In fact, in such a configuration, the only inductance existing in the input stage would be that of the grid, and therefore a physical measurement of the mains voltage would not be possible.

C. PMSM model

The d-q structure with general equation (21) has been used to model the PMSM on the output side of the MC

$$\dot{\underline{x}}_m = \underline{f}(\underline{x}_m, \underline{u}_m) \quad (21)$$

where

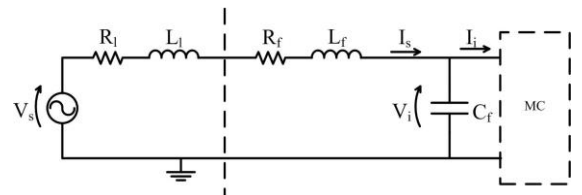


Fig. 2 - Schematic model of an input filter phase

$$\underline{x}_m = \begin{bmatrix} I_d \\ I_q \\ \omega_r \\ \theta_r \end{bmatrix} \quad \underline{u}_m = \begin{bmatrix} V_d \\ V_q \\ T_L \end{bmatrix} \quad (22)$$

and

$$\underline{f}(\cdot) = \begin{pmatrix} -\frac{R_m}{L_m} I_d + n_p I_q \omega_r + \frac{V_d}{L_m} \\ -n_p I_d \omega_r - \frac{R_m}{L_m} I_q - \frac{\varphi n_p}{L_m} \omega_r + \frac{V_q}{L_m} \\ \frac{3\varphi n_p}{2J} I_q - \frac{B_a}{J} \omega_r - \frac{T_L}{J} \\ \omega_r \end{pmatrix} \quad (23)$$

The absence of an integral stage in the FCS-MPC imposes to observe a possible torque disturbance (T_L in (23)) applied to the motor shaft in order to eliminate the steady state speed error. Including a constant disturbance observer the system (21) becomes

$$\dot{\underline{x}}_{mo} = \underline{f}_{mo}(\underline{x}_{mo}, \underline{u}_{mo}) \quad (24)$$

where

$$\underline{x} = \begin{bmatrix} I_d \\ I_q \\ \omega_r \\ \theta_r \\ \hat{T}_L \end{bmatrix} \quad \underline{u} = \begin{bmatrix} V_d \\ V_q \end{bmatrix} \quad (25)$$

and

$$\underline{f}_{mo}(\cdot) = \begin{pmatrix} -\frac{R_m}{L_m} I_d + n_p I_q \omega_r + \frac{V_d}{L_m} \\ -n_p I_d \omega_r - \frac{R_m}{L_m} I_q - \frac{\varphi n_p}{L_m} \omega_r + \frac{V_q}{L_m} \\ \frac{3\varphi n_p}{2J} I_q - \frac{B_a}{J} \omega_r - \frac{\hat{T}_L}{J} \\ \omega_r \\ 0 \end{pmatrix} \quad (26)$$

The system (24) has been discretized using a Taylor series expansion [23] and a truncation order of 1.

Considering that the measures of both I_d and I_q are available and using only the shaft position to update the estimated state, it is possible to implement a linear reduced order observer for the mechanical subspace only. Its equations are

$$\tilde{\underline{x}}_{mo_k}^b = \hat{\underline{x}}_{mo_k}^b + L \cdot C \left(\underline{x}_{mo_k}^b - \hat{\underline{x}}_{mo_k}^b \right) \quad (27)$$

and

$$\hat{\underline{x}}_{mo_{k+1}}^a = \underline{f}_D^a \left(\underline{x}_{mo_k}^a, \tilde{\underline{x}}_{mo_k}^b \right) + B_D^a u_k \quad (28)$$

$$\hat{\underline{x}}_{mo_{k+1}}^b = A_D^{ba} \underline{x}_{mo_k}^a + A_D^{bb} \tilde{\underline{x}}_{mo_k}^b \quad (29)$$

where

$$A_D^{ba} = \begin{bmatrix} \frac{3\varphi n_p T_s}{2J} & 0 \\ 0 & 0 \\ 0 & 0 \end{bmatrix} \quad A_D^{bb} = \begin{bmatrix} 1 - \frac{B_a T_s}{J} & 0 & 0 \\ T_s & 1 & 0 \\ 0 & 0 & 1 \end{bmatrix} \quad (30)$$

$$B_D^a = \begin{bmatrix} \frac{T_s}{L_m} & 0 \\ 0 & \frac{T_s}{L_m} \end{bmatrix} \quad C = [0 \quad 1 \quad 0]$$

$$\underline{x}_{mo}^a = \begin{bmatrix} I_d \\ I_q \end{bmatrix} \quad \underline{x}_{mo}^b = \begin{bmatrix} \omega_r \\ \theta_r \\ \hat{T}_L \end{bmatrix} \quad (31)$$

$L \in \mathfrak{R}^{3 \times 1}$ is the observer gain matrix and the subscript D denotes discretized quantities. Note that the prediction equation (28) is not necessary for the observer, but it will be used later on by the predictive algorithm.

III. FINITE CONTROL SET MODEL PREDICTIVE CONTROL

Fig. 3 shows the steps of the FCS-MPC utilized in this paper. At the beginning of the k^{th} sampling period, all the system inputs are read and saved in memory. Subsequently the states of the two observers described in section II are updated using equations (19) and (27).

The high computational cost and the high sampling frequency required by the FCS-MPC imply that the new control action is available to be applied only at the beginning of the next sampling instant. This produces a delay of a sampling period that needs to be compensated [24]. To accomplish this task the system state at the $(k+1)^{\text{th}}$ sampling period has been computed using the optimal control obtained at the $(k-1)^{\text{th}}$ sampling period. This operation corresponds to the observers prediction steps ((20), (28) and (29)) and, therefore, can be computed only once with a consequently computational optimization. Subsequently the system state at the $k+2^{\text{th}}$ sampling period is computed for each of the 27 possible MC switching configurations. A cost function is computed using a combination of the system state. The optimal control is selected choosing the MC switching configuration producing the lowest cost function value.

IV. COST FUNCTION SELECTION

The choice of the cost function is a key point in the implementation of FCS-MPC. In contrast to the classical control schemes, it is possible to take into account and to control different state variables, if the cost function is properly selected. Variable quantities of both sides of the converter must be taken into account to control the whole system.

A. Input filter cost function

On the input filter side, it is necessary to control the source currents I_s , in order to avoid resonances, obtain a unitary power factor and achieve low distortion. To handle this, a reference signal I_s^* is computed based on a power balance. The input filter equations can be rewritten in a phasor representation as

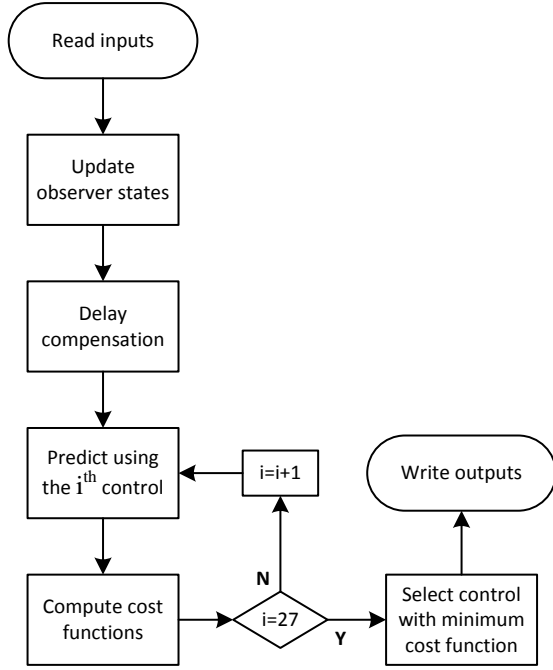


Fig. 3 – FCS-MPC flowchart.

$$\begin{aligned} \mathbf{I}_i &= (1 - C_f L_t \omega_s^2 + C_f R_t j \omega_s) \mathbf{I}_s - \mathbf{V}_s C_f j \omega_s \\ \mathbf{V}_i &= (-R_t - L_t j \omega_s) \mathbf{I}_s + \mathbf{V}_s \end{aligned} \quad (32)$$

The power at the input side of the MC is

$$P_i = \frac{3}{2} (\Re(\mathbf{I}_i) \Re(\mathbf{V}_i) + \Im(\mathbf{I}_i) \Im(\mathbf{V}_i)) \quad (33)$$

Substituting (32) in (33)

$$P_i = \frac{3}{2} (\Re(\mathbf{I}_s) \Re(\mathbf{V}_s) + \Im(\mathbf{I}_s) \Im(\mathbf{V}_s) - R_t \bar{I}_s^2) \quad (34)$$

and, assuming a unitary power factor on the grid side

$$P_i = \frac{3}{2} (\bar{I}_s \bar{V}_s - R_t \bar{I}_s^2) \quad (35)$$

where superscripts $\bar{\cdot}$ denote modules.

On the output side of the converter the power can be written as

$$P_o = \frac{3}{2} (R_m I_q^2) + K_t \omega_r I_q \quad (36)$$

In (36) I_d is considered negligible and the motor iron losses are neglected.

Input and output MC power can be related by the efficiency of the converter.

In motoring mode the relation is

$$P_o = \eta_{mc} P_i \quad (37)$$

The reference source current module has been finally calculated replacing (35) and (36) in (37) and solving for \bar{I}_s

$$\begin{aligned} \bar{I}_s^* &= \frac{\bar{V}_s}{2R_t} \pm \frac{\sqrt{\Delta}}{3R_t} \\ \Delta &= \frac{1}{\eta_{mc}} (-9R_t R_m I_q^2 - 6K_t \omega_r I_q R_t) + \frac{9\bar{V}_s^2}{4} \end{aligned} \quad (38)$$

In regenerative mode (37) becomes

$$P_o = \frac{P_i}{\eta_{mc}} \quad (39)$$

and consequently

$$\begin{aligned} \bar{I}_s^* &= \frac{\bar{V}_s}{2R_t} \pm \frac{\sqrt{\Delta}}{3R_t} \\ \Delta &= \eta_{mc} (-9R_t R_m I_q^2 - 6K_t \omega_r I_q R_t) + \frac{9\bar{V}_s^2}{4} \end{aligned} \quad (40)$$

The proposed method of current reference generation is correct if referred to electrical steady-state. However, the electric variables transient is very fast and it has been verified experimentally that the use of the proposed method also during transients does not affect so much the system performance.

Using eqs. (38) and (40) and imposing \mathbf{I}_s^* in phase with \mathbf{V}_s , the CF relative to the input filter at the k^{th} sample time has been defined as

$$c_{if} = \left(I_{s\alpha}^* - I_{s\alpha_{k+2}} \right)^2 + \left(I_{s\beta}^* - I_{s\beta_{k+2}} \right)^2 \quad (41)$$

where the subscripts α and β denote quantities transformed in the $\alpha - \beta$ domain. This cost function ensures a sinusoidal input current and a unity power factor. The use of sinusoidal references, compared to reactive power minimization method used in some other works[13], avoids that the system becomes unstable owing to resonances due to the input filter, even in the presence of a low damping, without affecting the dynamic performance of the system.

The presence of the c_{if} term slightly reduces the performance on the motor side. It is however necessary to have a stable behavior on the matrix converter input side.

B. PMSM cost function

The main variable to control on the PMSM side is the motor speed. Also in this case the square error has been used and the speed cost function term at the k^{th} sample time has been defined as

$$c_\omega = e_{\omega_{k+2}}^2 \quad (42)$$

with

$$e_{\omega_{k+2}} = \omega_r^* - \omega_{r_{k+2}} \quad (43)$$

The same equation (28) and (29) used for the observer prediction step has been adopted to predict the future states of the motor variables. It has been however necessary to

discretize the 3rd equation of (26) with a Taylor series truncated at the second term in order to obtain a direct relation between ω_r^{k+1} and input \underline{u}^k . The first equation of (29) then becomes

$$\omega_r^{k+1} = \gamma_1 I_d^k \omega_r^k + \gamma_2 I_q^k + \gamma_3 \omega_r^k + \gamma_4 \hat{T}_L^k + \gamma_5 V_q^k \quad (44)$$

where

$$\begin{aligned} \gamma_1 &= -\frac{3\varphi T_s^2 n_p^2}{4J} \\ \gamma_2 &= \frac{3\varphi T_s n_p}{2J} - \frac{3T_s^2 \varphi n_p \left(\frac{3B_a}{2J^2} + \frac{R_m}{2JL_m} \right)}{2} \\ \gamma_3 &= 1 - \frac{3T_s B_a}{J} + \frac{T_s^2 \left(\frac{B_a^2}{J^2} - \frac{3n_p^2 \varphi^2}{2JL_m} \right)}{2} \\ \gamma_4 &= \frac{T_s^2 B_a}{2J^2} - \frac{T_s}{J} \\ \gamma_5 &= \frac{3\varphi T_s^2 n_p}{4JL_m} \end{aligned} \quad (45)$$

In addition to the motor speed it is also important to control the motor currents in order to reduce the output currents distortion during steady-state operation and to avoid exceeding the drive and motor physical limits during transients. For these reasons, a I_q current reference has been defined as

$$I_q^* = (B_a \omega_r^* - \hat{T}_L) K_t^{-1} \quad (46)$$

and used in the current cost function

$$c_{id} = I_{d,k+2}^2 \quad c_{iq} = (I_q^* - I_{q,k+2})^2 \quad (47)$$

These terms ensure good currents quality during steady-state operation. An additional term has been added to avoid currents exceeding the limits during transients

$$c_{il} = \begin{cases} 1e10, & \bar{I}_o > I_o^{max} \\ 0, & \bar{I}_o < I_o^{max} \end{cases} \quad (48)$$

where I_o^{max} is the maximum module of the motor currents. The total cost function has been created as a weighted sum of the single CFs as

$$c = w_\omega c_\omega + w_{if} c_{if} + w_{id} c_{id} + w_{iq} c_{iq} + c_{il} \quad (49)$$

C. Weight parameters tuning

FCS-MPC is a very versatile control strategy able to control different variables at the same time by simply adding appropriate terms to the cost function. However, as the number of terms in the cost function increases, the adjustment of the weight parameters can become very complex. This problem is still an open topic in literature. Different solutions have been thoroughly analyzed and several approaches have been proposed [25-29].

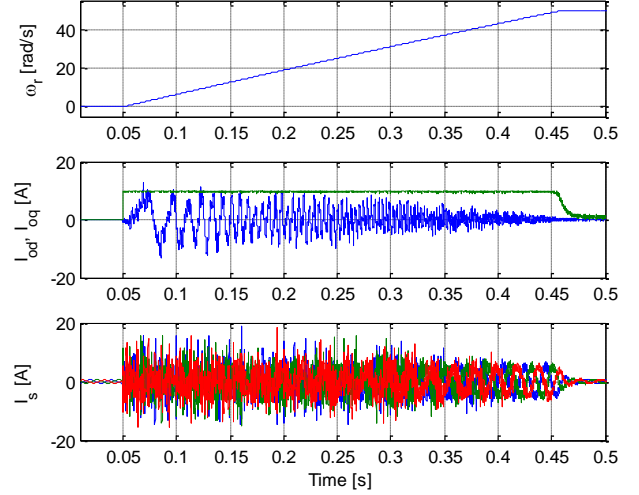


Fig. 4 – Simulative response to a reference step variation without the limitation of equation (50).

In this work, to properly tune the weights in (49), the system has been initially simulated in a speed steady-state condition (50 rad/s) using a Simulink model. As shown in [16], the total harmonic distortion (THD) of the input and output currents are affected not only by the weight parameters but also by the output current amplitude and output power magnitude. The system has been therefore analyzed in different working points: w_{if} has been arbitrarily set equal to 1 and the value of w_{id} and w_{iq} have been selected in order to have low input and output THDs in the whole operating range.

Subsequently, the dynamic response to a speed reference variation has been analyzed. To obtain a good speed dynamic response, w_ω should be set to a high value. However, the predominance of the c_ω term on the current ones does not permit to properly control currents during speed transients, resulting in distorted waveforms and unstable oscillatory behaviors as shown in Fig. 4. To handle this problem, the absolute value of the speed tracking error in (43) has been limited modifying the speed reference as

$$\tilde{\omega}_r^* = \begin{cases} e_\omega^{max} + \omega_{r,k+1}, & \omega_r^* - \omega_{r,k+1} > e_\omega^{max} \\ \omega_{r,k+1} - e_\omega^{max}, & \omega_r^* - \omega_{r,k+1} < -e_\omega^{max} \\ \omega_r^*, & otherwise \end{cases} \quad (50)$$

(43) has been accordingly modified as

$$e_{\omega,k+2} = \tilde{\omega}_r^* - \omega_{r,k+2} \quad (51)$$

TABLE I
NORMALIZED COST FUNCTION WEIGHTS

Parameter	Value	Units
w_ω	1	-
w_{if}	4e-5	
w_{id}	4e-5	-
w_{iq}	1e-5	-
J_o^{max}	10	A
e_ω^{max}	1	$rad \cdot s^{-1}$

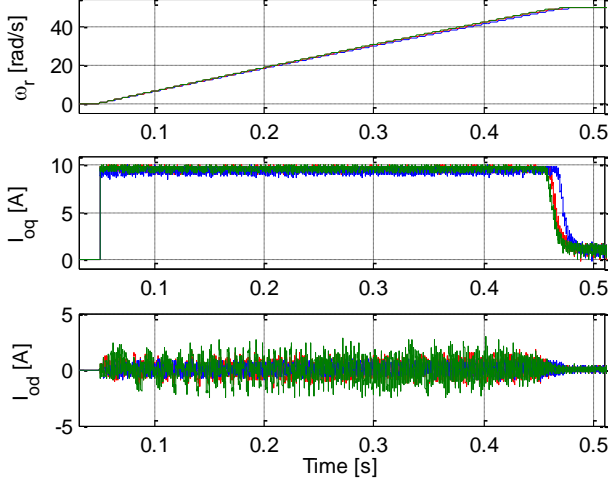


Fig. 5 – Simulative response to a speed reference step variation with different e_ω^{max} value. Blue: nominal value (Table I). Red: 200% of nominal value. Green: 400% of nominal value.

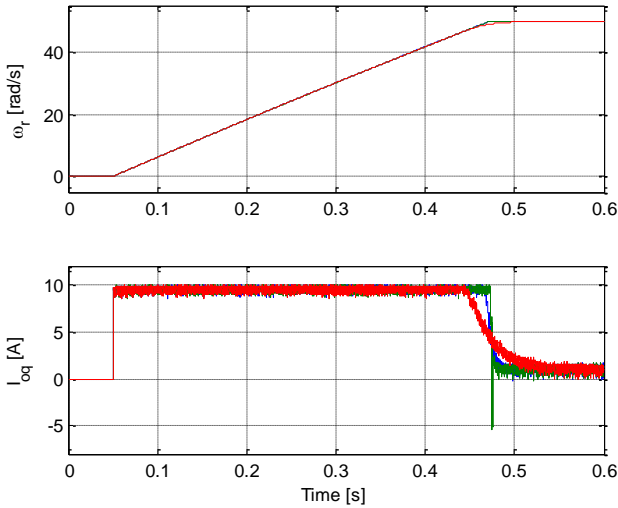


Fig. 6 – Simulative response to a speed reference step variation with different w_ω value (keeping constant the product $w_\omega e_\omega^{max}$). Blue: nominal value (Table I). Red: 25% of nominal value. Green: 400% of nominal value.

During speed transients the product $w_\omega e_\omega^{max}$ defines the importance of the speed term over the current ones: a too small value compromises the speed dynamic response, while a too high value affects the current THDs. Also in this case, a

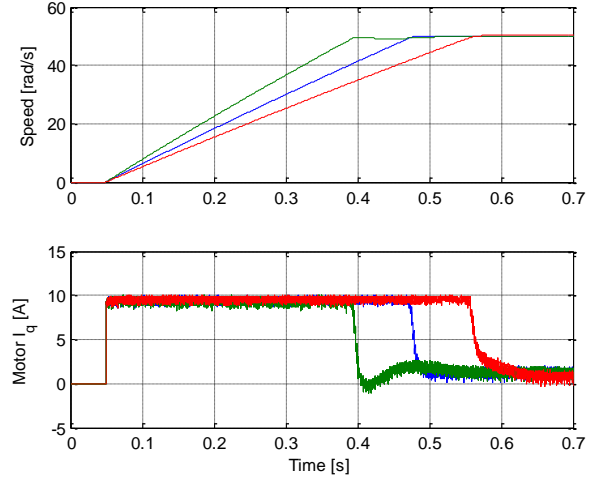


Fig. 7 – Simulative response to a speed reference step variation with different inertia values. Blue: nominal inertia. Red: 120% of nominal inertia. Green: 80% of nominal inertia.

simulative analysis has been used to tune this term in order to ensure a good currents control during speed transients, while maintaining a good speed dynamic response. Fig. 5 shows the system response with different value of e_ω^{max} keeping constant the others parameters.

The value of w_ω has been subsequently tuned keeping constant the above mentioned product. High values of w_ω increase the speed dynamic response but decrease currents quality in steady-state due to the position transducer noise. Fig. 6 shows the system response with different values of w_ω , keeping constant the product $w_\omega e_\omega^{max}$ and the others weights. The weight parameters resulting from the described procedure have been finally normalized and are reported in Table I. The influence of weight parameters variation has been also tested, resulting in a good system robustness within a variation of $\pm 10\%$.

D. Robustness analysis

In industrial applications the identified system parameters may be slightly wrong or change in time. The most critical are usually the mechanical ones as they are dependent from the application. For this reason, it is important to evaluate the control system robustness to parameters variation. To this end, a simulative model of the experimental system described in the next section has been implemented. Subsequently the motor inertia and friction have been changed and the system response has been analyzed. Fig. 7 shows the system response to a speed reference change with different inertia values. It can be noted that the system is stable and it exhibits good performance even with a 20% inertia variation. Similarly, a speed reference step variation is depicted in Fig. 8, with different friction values. Also in this case, the traces show good system stability against wrong friction values.

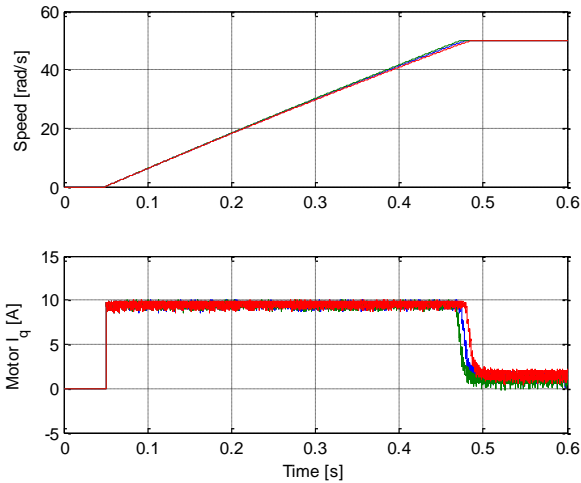


Fig. 8 – Simulative response to a speed reference step variation with different friction values. Blue: nominal friction. Red: 120% of nominal friction. Green: 80% of nominal friction.

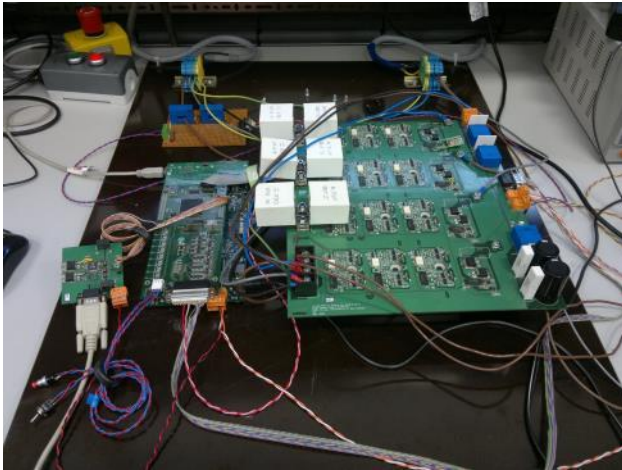


Fig. 9 – Controller board and matrix converter.

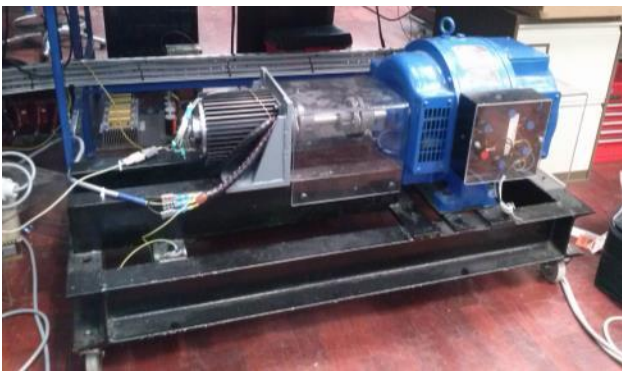


Fig. 10 – PMSM coupled with DC machine.

V. EXPERIMENTAL RESULTS

The proposed control algorithm has been tested on an experimental set-up. Fig. 9 shows the controller and matrix converter used. The proposed control algorithm has been implemented on a Texas Instruments DSP C6713 with a sample time of $20 \mu s$. An FPGA has been connected with the

TABLE II
MOTOR PARAMETERS

Parameter	Value	Units
R_m	1	Ω
L_m	3.2	mH
n_p	10	–
φ	0.126	Wb
J	0.126	$kg \cdot m^2$
B_a	$9.62e-3$	$N \cdot s \cdot m^{-1}$

TABLE III
INPUT FILTER PARAMETERS

Parameter	Value	Units
L_t	0.4	mH
C_f^*	4	μF
R_t	1	Ω

*: Δ connected

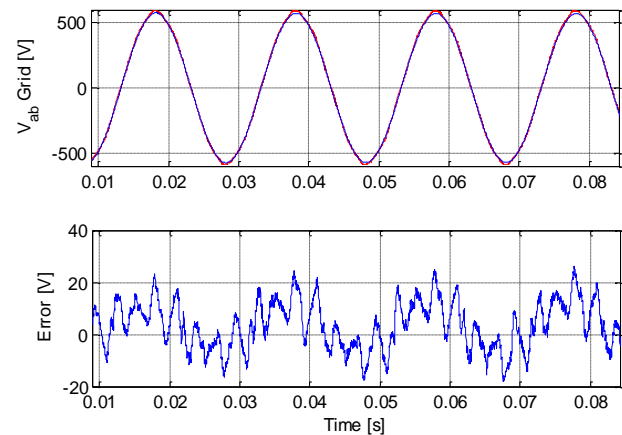


Fig. 11 – Top: matching between real source voltage (red) and estimated one (blue). Bottom: error between real and estimated voltage.

DSP and used to generate the IGBTs four-step commutation pattern. The matrix converter prototype has been realized by the Power Electronics, Machines and Control Group of University of Nottingham using SK60GM123 IGBT modules. The PMSM used in this work coupled with a DC motor is depicted in Fig. 10 and the main parameters of the system are reported in Table II. A resolver with a 12 bit per revolution resolution has been used as position sensor. The parameters of the input stage have been experimentally identified using an approach similar to the one proposed in [30, 31] and are reported in Table III. An LC filter with Δ -connected capacitors and no damping resistors has been used in this work. The input filter observer gain K has been tuned using a Kalman filter approach, in order to place the observer poles at a frequency of about 50 Hz with damping factor equal to 0.707. An empirically procedure has been used to set the noise covariance matrices. It ensures a good filtering of possible source harmonics and a fast enough convergence time. The

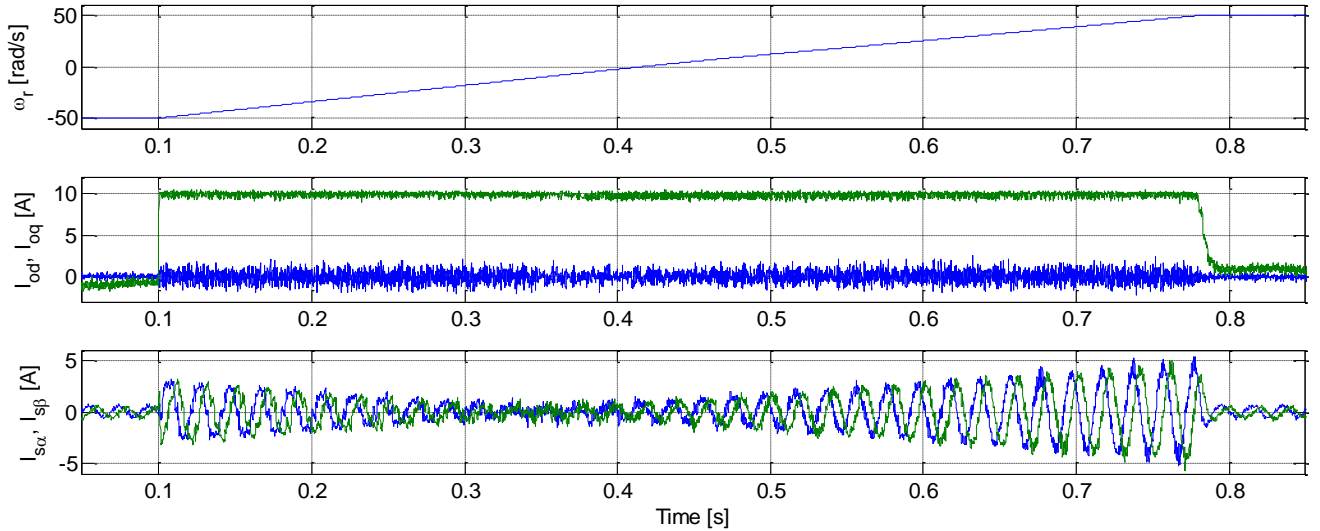


Fig. 12 – Reference step variation. Top: rotor speed. Middle: motor current in d-q frame. Bottom: source current in alpha-beta frame.

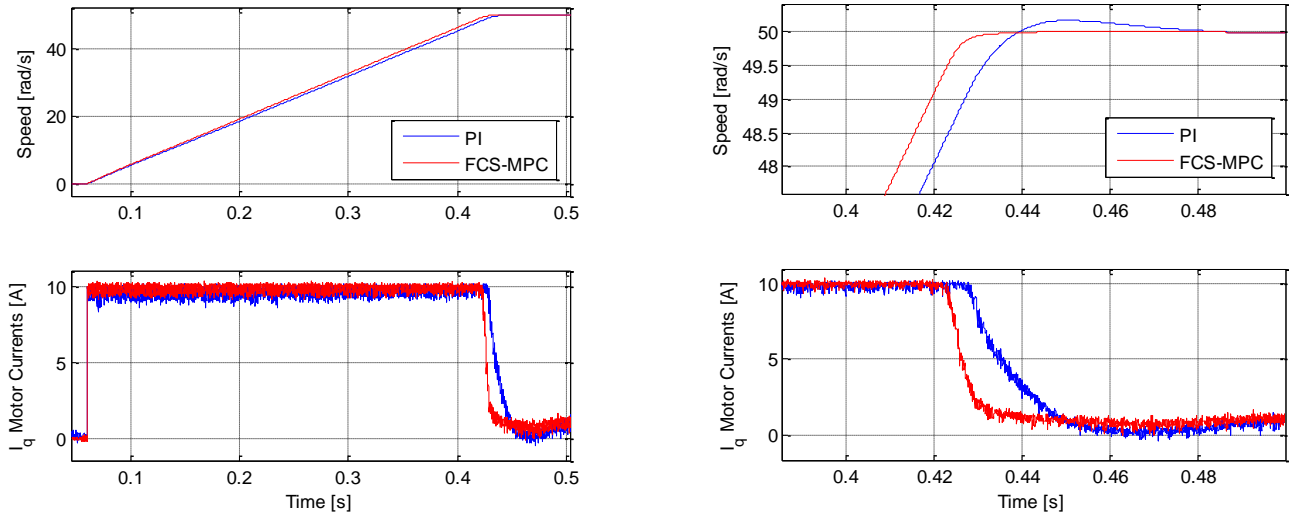


Fig. 13 – Speed reference step response comparison between PI and FCS-MPC controllers. Left: overall response. Right: detail of the final transient.

comparison between the measured line-to-line source voltage and the estimated one is reported in Fig. 11, where a very good match between the two quantities can be noted.

The motor-side observer has been empirically tuned to handle the system mechanical resonances: a pole placement approach

TABLE IV
OBSERVER GAINS

	Value	Bandwidth
K	$\begin{bmatrix} -0.54 & 1.37e-3 \\ 0.139 & 2.83e-2 \end{bmatrix}$	50 Hz
L	$\begin{bmatrix} 4.87e-2 \\ 1.56e-3 \\ -8.92e-2 \end{bmatrix}$	5 Hz

has been used and the gain L has been set to obtain a bandwidth of about 5 Hz and to avoid overshoot. Both observer gains are reported in Table IV along with their bandwidth. In some other works [32] a stability analysis has been made in order to properly tune the observer gain. In this paper the stability has been verified by simulation in different working points.

The response of the system to a speed reference step variation is reported in Fig. 12, where the system is forced to reverse its rotational direction. This causes a regenerative behavior till the rotor speed reaches the null value, thereafter the system switches to motoring mode to accelerate the load to the new set point. It is possible to note a good speed dynamic response along with low-distorted sinusoidal source currents. Also motor-side currents show a good behavior without exceeding the physical limit. Fig. 13 shows a speed reference step response comparison, using FCS-MPC and a standard PI speed controller. The latter has been tuned using the Ziegler-

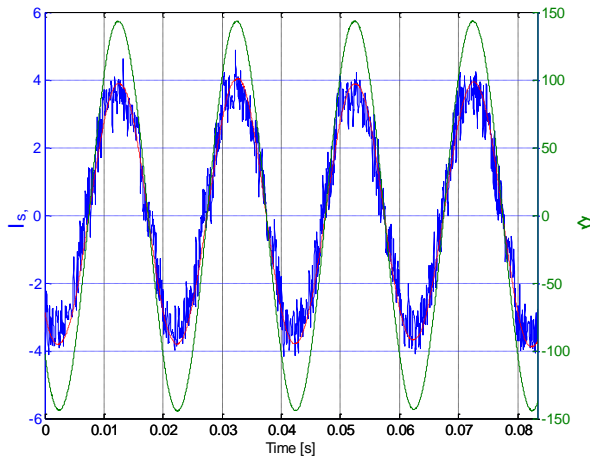


Fig. 14 – Comparison between source voltage (green) and current (blue).

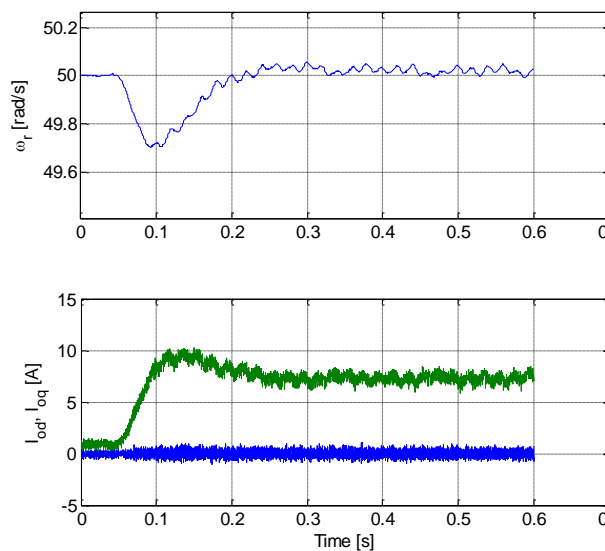


Fig. 15 – System response to a load step of about 12 Nm.

Nichols method and a low pass filter has been added to the regulator output in order to handle mechanical resonance. From such a figure it is possible to note how the proposed approach exhibits a better dynamic response. Fig. 14 shows input phase current and voltage during steady-state operations with an output power of about 600 W. It can be noted that the current matches very well its reference (dashed red line in figure, computed as explained in section IV.A) and it is in phase with the source voltage resulting in unitary power factor.

Finally, the system response to a load step is reported in Fig. 15. Note how the motor speed reaches its set point again, confirming a good efficiency of the PMSM observer.

VI. CONCLUSION

In this work a speed FCS-MPC algorithm applied to a PMSM driven by a MC has been presented. The high number of possible states and the need to control MC input and output quantities render its practical implementation very challenging. The use of a multiobjective cost function permits to replace the classic multi-loop control structure used in drive

applications with a single control law. The proposed cost function permits to control currents during both speed transient and steady state conditions avoiding unstable oscillations on the MC input side, fulfilling currents limit and resulting in a very good speed dynamic response. The overall control behavior has been tested during speed transients and steady state operation. FCS-MPC shows promising result with respect to both. A simple and clear procedure to tune weight parameters has been proposed resulting in a simple commissioning of the drive.

In addition, a new input filter observer has been presented. The estimation of the source voltage permits the reduction of sensors increasing the reliability of the whole system. It also allows the use of the FCS-MPC algorithm in absence of an input filter inductance. In this case the source voltage cannot be measured since the input inductance is the grid one.

The presented work has been validated on an experimental set-up and the excellent results obtained confirm the dynamic advantage of the proposed approach.

REFERENCES

- [1] B. R. Pelly, and L. Gyugyi, *Static power frequency changers: Theory, performance, and application*, New York: Wiley, 1976.
- [2] A. Alesina, and M. Venturini, "Analysis and design of optimum-amplitude nine-switch direct AC-AC converters," *IEEE Trans. Power Electron.*, vol. 4, no. 1, pp. 101-112, Jan. 1989.
- [3] D. Casadei, G. Grandi, G. Serra *et al.*, "Space vector control of matrix converters with unity input power factor and sinusoidal input/output waveforms," in *Proc. EPE Conf*, 1993, vol.7, pp. 170-175.
- [4] D. Casadei, G. Serra, A. Tani *et al.*, "Stability analysis of electrical drives fed by matrix converters," in *Proc. IEEE ISIE*, 2002, vol. 4, pp. 1108-1113.
- [5] D. Casadei, G. Serra, A. Tani *et al.*, "Improvement of the stability of electrical drives fed by matrix converters," in *IEEE Seminar on Matrix Converters*, 2003, pp. 3/1-3/12.
- [6] A. K. Sahoo, K. Basu, and N. Mohan, "Systematic Input Filter Design of Matrix Converter by Analytical Estimation of RMS Current Ripple," *IEEE Trans. Ind. Electron.*, vol. 62, no. 1, pp. 132-143, 2015.
- [7] J. Rodriguez, M. P. Kazmierkowski, J. R. Espinoza *et al.*, "State of the Art of Finite Control Set Model Predictive Control in Power Electronics," *IEEE Trans. Ind. Inform.*, vol. 9, no. 2, pp. 1003-1016, May 2013.
- [8] R. P. Aguilera, P. Lezana, and D. E. Quevedo, "Finite-Control-Set Model Predictive Control With Improved Steady-State Performance," *IEEE Trans. Ind. Inform.*, vol. 9, no. 2, pp. 658-667, May 2013.
- [9] L. Chee Shen, E. Levi, M. Jones *et al.*, "FCS-MPC-Based Current Control of a Five-Phase Induction Motor and its Comparison with PI-PWM Control," *IEEE Trans. Ind. Electron.*, vol. 61, no. 1, pp. 149-163, 2014.
- [10] C.-S. Lim, E. Levi, M. Jones *et al.*, "A Comparative Study of Synchronous Current Control Schemes Based on FCS-MPC and PI-PWM for a Two-Motor Three-Phase Drive," *IEEE Trans. Ind. Electron.*, vol. 61, no. 8, pp. 3867-3878, 2014.
- [11] C. Rojas, M. Rivera, J. Rodriguez *et al.*, "Predictive control of a direct matrix converter operating under an unbalanced AC source," in *Proc. IEEE ISIE*, 2010, pp. 3159-3164.
- [12] S. Yusoff, L. De Lillo, P. Zanchetta *et al.*, "Predictive control of a direct AC/AC matrix converter for power supply applications," in *Proc. PEMD 2012*, 2012, pp. 1-6.
- [13] R. Vargas, U. Ammann, and J. Rodriguez, "Predictive Approach to Increase Efficiency and Reduce Switching Losses on Matrix Converters," *IEEE Trans. Power Electron.*, vol. 24, no. 4, pp. 894-902, Apr. 2009.
- [14] M. Rivera, C. Rojas, Rodri *et al.*, "Predictive Current Control With Input Filter Resonance Mitigation for a Direct Matrix Converter," *IEEE Trans. Power Electron.*, vol. 26, no. 10, pp. 2794-2803, Oct. 2011.
- [15] P. Cortes, J. Rodriguez, D. E. Quevedo *et al.*, "Predictive Current Control Strategy With Imposed Load Current Spectrum," *IEEE Trans. Power Electron.*, vol. 23, no. 2, pp. 612-618, Mar. 2008.
- [16] O. Aydogmus, and S. Sunter, "Four-quadrant operation of PMSM drive fed by a matrix converter," in *Proc. ACEMP*, 2011, pp. 436-439.

- [17] X. Changliang, Z. Jiaxin, Y. Yan *et al.*, "A Novel Direct Torque Control of Matrix Converter-Fed PMSM Drives Using Duty Cycle Control for Torque Ripple Reduction," *IEEE Trans. Ind. Electron.*, vol. 61, no. 6, pp. 2700-2713, 2014.
- [18] E. J. Fuentes, C. A. Silva, and J. I. Yuz, "Predictive Speed Control of a Two-Mass System Driven by a Permanent Magnet Synchronous Motor," *IEEE Trans. Ind. Electron.*, vol. 59, no. 7, pp. 2840-2848, Jul. 2012.
- [19] M. Preindl, and S. Bolognani, "Model Predictive Direct Speed Control with Finite Control Set of PMSM Drive Systems," *IEEE Trans. Power Electron.*, vol. 28, no. 2, pp. 1007-1015, Feb. 2013.
- [20] E. Fuentes, D. Kalise, J. Rodriguez *et al.*, "Cascade-Free Predictive Speed Control for Electrical Drives," *IEEE Trans. Ind. Electron.*, vol. 61, no. 5, pp. 2176-2184, 2014.
- [21] A. Formentini, L. de Lillo, M. Marchesoni *et al.*, "A new mains voltage observer for PMSM drives fed by matrix converters," in *Proc. EPE'14-ECCE Europe*, 2014, pp. 1-10.
- [22] G. F. Franklin, M. L. Workman, and D. Powell, *Digital control of dynamic systems*: Addison-Wesley Longman Publishing Co., Inc., 1997, pp. 328-334.
- [23] N. Kazantzis, and C. Kravaris, "Time-discretization of nonlinear control systems via Taylor methods," *Computers & chemical engineering*, vol. 23, no. 6, pp. 763-784, Jan. 1999.
- [24] P. Cortes, J. Rodriguez, C. Silva *et al.*, "Delay Compensation in Model Predictive Current Control of a Three-Phase Inverter," *IEEE Trans. Ind. Electron.*, vol. 59, no. 2, pp. 1323-1325, 2012.
- [25] P. Cortes, S. Kouro, B. La Rocca *et al.*, "Guidelines for weighting factors design in Model Predictive Control of power converters and drives," in *Proc. IEEE ICIT 2009*, 2009, pp. 1-7.
- [26] P. Zanchetta, "Heuristic multi-objective optimization for cost function weights selection in finite states model predictive control," in *Proc. IEEE PRECEDE*, 2011, pp. 70-75.
- [27] F. Villarreal, J. R. Espinoza, C. A. Rojas *et al.*, "Multiobjective Switching State Selector for Finite-States Model Predictive Control Based on Fuzzy Decision Making in a Matrix Converter," *IEEE Trans. Ind. Electron.*, vol. 60, no. 2, pp. 589-599, Feb. 2013.
- [28] C. A. Rojas, J. Rodriguez, F. Villarreal *et al.*, "Predictive Torque and Flux Control Without Weighting Factors," *IEEE Trans. Ind. Electron.*, vol. 60, no. 2, pp. 681-690, Feb. 2013.
- [29] S. Alireza Davari, D. A. Khaburi, and R. Kennel, "An Improved FCS-MPC Algorithm for an Induction Motor With an Imposed Optimized Weighting Factor," *IEEE Trans. Power Electron.*, vol. 27, no. 3, pp. 1540-1551, Mar. 2012.
- [30] M. Calvini, A. Formentini, G. Maragliano, and M. Marchesoni, "Self-commissioning of direct drive systems," in *Proc. SPEEDAM*, 2012, pp. 1348-1353.
- [31] M. Calvini, M. Carpita, A. Formentini, and M. Marchesoni, "PSO-Based Self-Commissioning of Electrical Motor Drives," *IEEE Trans. Ind. Electron.*, vol. 62, no. 2, pp. 768-776, 2015.
- [32] S. Alireza Davari, D. A. Khaburi, F. Wang *et al.*, "Using full order and reduced order observers for robust sensorless predictive torque control of induction motors," *IEEE Trans. Power Electron.*, vol. 27, no. 7, pp. 3424-3433, 2012.



Andrea Formentini was born in Genova, Italy, in 1985. He received the M.S. degree in computer engineering and the PhD degree in electrical engineering from the University of Genova, Genova, in 2010 and 2014 respectively. He is currently working as research fellow in the Power Electronics, Machines and Control Group, University of Nottingham. His research interests include control systems applied to electrical machine drives and power converters.



Andrew Trentin was born in Conegliano, Italy, in 1975. He received the "Laurea" and the Ph.D. degrees in electrical engineering from the University of Bologna, Bologna, Italy, in 2001 and 2005, respectively. Since 2005 he has been a Research Fellow at the University of Nottingham, Nottingham, U.K. His current research interests are in the fields of electrical drives and direct ac/ac matrix converters for aircraft and automotive applications.



Mario Marchesoni (M'89) received the M.S. degree (with honors) in electrical engineering and the Ph.D. degree in electrical engineering in power electronics from the University of Genova, Genova, in 1986 and 1990, respectively. Following his graduation, he began his research activity with the Department of Electrical Engineering, University of Genova, where he was an Assistant Professor from 1992 to 1995. From 1995 to 2000, he joined the Department of Electric and Electronic Engineering, University of Cagliari, Cagliari, Italy, where he was a Full Professor of power industrial electronics. Since 2000, he has been with the University of Genova, where he is currently a Full Professor of electrical drives control. He is the author or a coauthor of more than 160 papers. His research interests include power electronics, rotating machinery, and automatic control, particularly in high-power converters and electrical drives. Prof. Marchesoni is a Member of the EPE Executive Council.



Pericle Zanchetta (M'00-SM'15) received his degree in Electronic Engineering and his Ph.D. in Electrical Engineering from the Technical University of Bari (Italy) in 1993 and 1997 respectively. In 1998 he became Assistant Professor of Power Electronics at the same University. In 2001 he became lecturer in control of power electronics systems in the PEMC research group at the University of Nottingham – UK, where he is now Professor in Control of Power Electronics systems. He has published over 200 peer reviewed papers and he is Vice-Chair of the IAS Industrial Power Converter Committee IPCC. His research interests include control of power converters and drives, Matrix and multilevel converters.



Prof Pat Wheeler (M'00-SM'13) received his BEng [Hons] degree in 1990 from the University of Bristol, UK. He received his PhD degree in Electrical Engineering for his work on Matrix Converters from the University of Bristol, UK in 1994. In 1993 he moved to the University of Nottingham and worked as a research assistant in the Department of Electrical and Electronic Engineering. In 1996 he became a Lecturer in the Power Electronics, Machines and Control Group at the University of Nottingham, UK. Since January 2008 he has been a Full Professor in the same research group. He is an IEEE PELs 'Member at Large' and an IEEE PELs Distinguished Lecturer. He has published 400 academic publications in leading international conferences and journals.