



# Stability of the Broad-line Region Geometry and Dynamics in Arp 151 Over Seven Years

A. Pancoast<sup>1,21</sup>, A. J. Barth<sup>2</sup>, K. Horne<sup>3</sup>, T. Treu<sup>4</sup>, B. J. Brewer<sup>5</sup>, V. N. Bennert<sup>6</sup>, G. Canalizo<sup>7</sup>, E. L. Gates<sup>8</sup>, W. Li<sup>9,22</sup>, M. A. Malkan<sup>4</sup>, D. Sand<sup>10</sup>, T. Schmidt<sup>2</sup>, S. Valenti<sup>11</sup>, J.-H. Woo<sup>12</sup>, K. I. Clubb<sup>9</sup>, M. C. Cooper<sup>2</sup>, S. M. Crawford<sup>13</sup>, S. F. Höning<sup>14</sup>, M. D. Joner<sup>15</sup>, M. T. Kandrashoff<sup>9</sup>, M. Lazarova<sup>16</sup>, A. M. Nierenberg<sup>2</sup>, E. Romero-Colmenero<sup>13,17</sup>, D. Son<sup>12</sup>, E. Tollerud<sup>18</sup>, J. L. Walsh<sup>19</sup>, and H. Winkler<sup>20</sup>

<sup>1</sup>Harvard-Smithsonian Center for Astrophysics, 60 Garden Street, Cambridge, MA 02138, USA; [anna.pancoast@cfa.harvard.edu](mailto:anna.pancoast@cfa.harvard.edu)

<sup>2</sup>Department of Physics and Astronomy, 4129 Frederick Reines Hall, University of California, Irvine, CA 92697-4575, USA

<sup>3</sup>SUPA Physics and Astronomy, University of St. Andrews, Fife, KY16 9SS Scotland, UK

<sup>4</sup>Department of Physics and Astronomy, University of California, Los Angeles, CA 90095-1547, USA

<sup>5</sup>Department of Statistics, The University of Auckland, Private Bag 92019, Auckland 1142, New Zealand

<sup>6</sup>Physics Department, California Polytechnic State University, San Luis Obispo, CA 93407, USA

<sup>7</sup>Department of Physics and Astronomy, University of California, Riverside, CA 92521, USA

<sup>8</sup>Lick Observatory, P.O. Box 85, Mount Hamilton, CA 95140, USA

<sup>9</sup>Department of Astronomy, University of California, Berkeley, CA 94720-3411, USA

<sup>10</sup>Department of Astronomy and Steward Observatory, University of Arizona, 933 N. Cherry Ave., Tucson, AZ 85719, USA

<sup>11</sup>Las Cumbres Observatory Global Telescope Network, 6740 Cortona Drive, Suite 102, Goleta, CA 93117, USA

<sup>12</sup>Astronomy Program, Department of Physics and Astronomy, Seoul National University, Seoul 151-742, Republic of Korea

<sup>13</sup>South African Astronomical Observatory, P.O. Box 9, Observatory 7935, Cape Town, South Africa

<sup>14</sup>School of Physics & Astronomy, University of Southampton, Southampton SO17 1BJ, UK

<sup>15</sup>Department of Physics and Astronomy, N283 ESC, Brigham Young University, Provo, UT 84602-4360, USA

<sup>16</sup>Dept. of Physics and Astronomy, University of Nebraska at Kearney, Kearney, NE 68849, USA

<sup>17</sup>Southern African Large Telescope Foundation, P.O. Box 9, Observatory 7935, Cape Town, South Africa

<sup>18</sup>Space Telescope Science Institute, 3700 San Martin Dr., Baltimore, MD 21218, USA

<sup>19</sup>George P. and Cynthia Woods Mitchell Institute for Fundamental Physics and Astronomy, Department of Physics and Astronomy, Texas A&M University, College Station, TX 77843-4242, USA

<sup>20</sup>Department of Physics, University of Johannesburg, P.O. Box 524, 2006 Auckland Park, South Africa

Received 2017 October 19; revised 2018 February 27; accepted 2018 February 28; published 2018 March 29

## Abstract

The Seyfert 1 galaxy Arp 151 was monitored as part of three reverberation mapping campaigns spanning 2008–2015. We present modeling of these velocity-resolved reverberation mapping data sets using a geometric and dynamical model for the broad-line region (BLR). By modeling each of the three data sets independently, we infer the evolution of the BLR structure in Arp 151 over a total of 7 yr and constrain the systematic uncertainties in nonvarying parameters such as the black hole mass. We find that the BLR geometry of a thick disk viewed close to face-on is stable over this time, although the size of the BLR grows by a factor of  $\sim 2$ . The dynamics of the BLR are dominated by inflow, and the inferred black hole mass is consistent for the three data sets, despite the increase in BLR size. Combining the inference for the three data sets yields a black hole mass and statistical uncertainty of  $\log_{10}(M_{\text{BH}}/M_{\odot}) = 6.82^{+0.09}_{-0.09}$  with a standard deviation in individual measurements of 0.13 dex.

*Key words:* galaxies: active – galaxies: individual (Arp 151) – galaxies: nuclei – methods: statistical

## 1. Introduction

Outside the local universe, the most promising method to measure the masses of supermassive black holes (BHs) is the reverberation mapping technique (Blandford & McKee 1982; Peterson 1993; Peterson et al. 2004) in accreting BHs in active galactic nuclei (AGNs). Unlike dynamical BH mass measurement techniques that require spatially resolving the BH gravitational sphere of influence and thus are limited to local and larger BHs within  $\sim 150$  Mpc (e.g., McConnell & Ma 2013), reverberation mapping resolves the motions of gas around the BH temporally and is now being applied to AGNs at redshifts of  $z > 2$  (Kaspi et al. 2007; King et al. 2015; Shen et al. 2015). Reverberation mapping relies on the variability of AGN continuum emission from the BH accretion disk as it is reprocessed by gas in the broad emission-line region (BLR). By monitoring an AGN with spectroscopy covering one or more broad emission lines and photometry of the AGN accretion disk continuum emission, we can measure a time lag  $\tau$  between

variations seen in the continuum and later seen in the broad emission lines that is used as a size estimate of the BLR. Combining the time lag with the velocity of the BLR gas  $v$ , as measured from the width of the broad emission lines, we can measure the BH mass,

$$M_{\text{BH}} = fv^2 c\tau / G, \quad (1)$$

where  $c$  is the speed of light,  $G$  is the gravitational constant, and  $f$  is a factor of order unity that depends on the geometry, dynamics, and orientation of the BLR. While  $\tau$  and  $v$  are often measured to better than 20%, the value of  $f$  is generally unknown in individual AGNs because the BLR is not spatially resolved. The unknown value of  $f$  thus introduces the largest source of uncertainty in reverberation-mapped BH masses and requires the use of an average value that is calibrated by assuming the same  $M_{\text{BH}}-\sigma_*$  relation for active and inactive galaxies (Onken et al. 2004; Collin et al. 2006; Greene et al. 2010; Woo et al. 2010, 2013, 2015; Graham et al. 2011; Park et al. 2012; Grier et al. 2013; Batista et al. 2017). While an average value for  $f$  has allowed reverberation-mapped BH

<sup>21</sup> Einstein Fellow.

<sup>22</sup> Deceased 2011 December 12.

masses to be measured in over 50 AGNs (for a compilation, see Bentz & Katz 2015), it introduces an uncertainty in individual BH masses that could be as large as the scatter in the  $M_{\text{BH}}-\sigma_*$  relation of  $\sim 0.4$  dex (a factor of  $\sim 2.5$ ; see, e.g., Park et al. 2012). The only way to reduce this uncertainty is to understand the detailed structure of the BLR and hence measure the value of  $f$  in individual AGNs.

The drive to better understand the BLR combined with the small sample size of reverberation-mapped AGNs has motivated two complimentary approaches. The first approach is to substantially increase the reverberation mapping sample in terms of both the number of AGNs and of which broad emission lines are used (King et al. 2015; Shen et al. 2015), with  $\text{H}\beta$  in the local universe being replaced by  $\text{Mg II } \lambda 2799$  and  $\text{C IV } \lambda 1549$  as the broad emission lines of choice at higher redshifts. While reverberation mapping becomes more challenging at higher redshifts due to longer time lags and lower AGN variability (e.g., MacLeod et al. 2010), the tight relation between the BLR size and AGN luminosity for  $\text{H}\beta$ , the  $r_{\text{BLR}}-L_{\text{AGN}}$  relation (Kaspi et al. 2000, 2005; Bentz et al. 2009a, 2013), allows for thousands of single-epoch BH mass estimates (e.g., Shen et al. 2011) made using a single spectrum in place of long-term spectroscopic and photometric monitoring (e.g., Vestergaard & Peterson 2006; Shen 2013; Park et al. 2017, and references therein). One of the main goals of larger reverberation mapping campaigns monitoring  $\text{Mg II}$  and  $\text{C IV}$  lines is to reduce the uncertainty in single-epoch masses using these lines by measuring their  $r_{\text{BLR}}-L_{\text{AGN}}$  relations directly instead of calibrating BH masses relative to  $\text{H}\beta$  (e.g., Shen et al. 2016). However, the unknown structure of the BLR still introduces a large uncertainty in estimates of the BH mass, since different broad emission lines probe different regions of the BLR due to ionization stratification (Clavel et al. 1991; Reichert et al. 1994) and some lines may be more sensitive to nongravitational forces from AGN winds.

The second approach, of generating a few high-quality reverberation mapping data sets with mainly  $\text{H}\beta$  in the local universe, is therefore critical to understanding single-epoch BH masses as well, since it provides detailed information about the geometry, dynamics, and orientation of the BLR. In the highest-quality data sets, the time lag can be measured in velocity (or wavelength) bins across the broad emission line, and the structure of these velocity-resolved lags is interpreted in terms of the general dynamics of the BLR. Such velocity-resolved reverberation mapping data sets are still in the minority, but the recent application of detailed analysis techniques has uncovered a wealth of information and the first direct measurements of  $f$  in individual AGNs (e.g., Pancoast et al. 2014b). Some of the most successful velocity-resolved reverberation mapping data sets include the MDM 2007 (Denney et al. 2010), 2010 (Grier et al. 2012), 2012, and 2014 (Fausnaugh et al. 2017) campaigns; the Lick AGN Monitoring Project (LAMP) 2008 (Bentz et al. 2009b; Walsh et al. 2009) and 2011 (Barth et al. 2015) campaigns; the Lijiang 2012–2013 (Du et al. 2016) and 2015 (Lu et al. 2016) campaigns; and the AGN STORM 2014 campaign (De Rosa et al. 2015; Edelson et al. 2015; Fausnaugh et al. 2016; Pei et al. 2017).

The ultimate goal of these campaigns is to understand the velocity-resolved response of the broad-line flux  $L(v_{\text{LOS}}, t)$  at line-of-sight velocity  $v_{\text{LOS}}$  and observed time  $t$  to the AGN

continuum variability  $C$ ,

$$L(v_{\text{LOS}}, t) = \int_0^\infty \Psi(v_{\text{LOS}}, \tau) C(t - \tau) d\tau, \quad (2)$$

where  $C(t - \tau)$  is the continuum flux at earlier time  $t - \tau$  and  $\Psi$  is the transfer function that relates the line and continuum emission as a function of  $v_{\text{LOS}}$  and time lag  $\tau$  (Blandford & McKee 1982). When changes in the line and continuum fluxes from their mean values are used in Equation (2) instead of total flux values,  $\Psi$  is called the response function and is generally not the same as the transfer function (for a discussion of this difference, see Section 4 of Goad & Korista 2015). Detailed analysis of velocity-resolved reverberation mapping data sets has focused on either constraining the velocity-resolved response function in a model-independent context or modeling the reverberation mapping data with a BLR model directly. Both approaches have their merits: constraining the response function requires fewer assumptions about BLR physics, while modeling the BLR directly requires more assumptions about the physics but yields quantitative constraints on the model parameter values. Response functions have been measured using the MEMECHO code (Horne et al. 1991; Horne 1994) for the LAMP 2008 data set for Arp 151 (Bentz et al. 2010) and the 2010 MDM campaign (Grier et al. 2013), while response functions have been measured using regularized linear inversion (Krolik & Done 1995; Done & Krolik 1996) for LAMP 2008 (Skjelboe et al. 2015). Modeling reverberation mapping data directly using a geometric and dynamical BLR model has been done for the LAMP 2008 data set for Arp 151 (Brewer et al. 2011), the LAMP 2011 data set for Mrk 50 (Pancoast et al. 2012), five AGNs from the LAMP 2008 data set (Pancoast et al. 2014b), and four AGNs from the MDM 2010 data set (Grier et al. 2017). In addition, a geometry-only BLR model has been applied to a larger AGN sample that includes the LAMP 2008 and MDM 2010 samples (Li et al. 2013). Both approaches of constraining the response function and modeling the BLR show that the BLR dynamics can vary widely between AGNs. Response functions can show symmetry of the red and blue sides of the line, interpreted as gas orbiting in a disk. Alternatively, response functions can show response at longer time delays on either the blue (e.g., Arp 151; Bentz et al. 2010) or red side of the emission line (e.g., the velocity-resolved lag measurements for Mrk 3227; Denney et al. 2009), usually interpreted as signatures of inflowing or outflowing gas, respectively (although see Bottorff et al. 1997 for prompt red-side response in the context of an outflow model). Modeling the BLR directly shows similar features as MEMECHO in the resulting transfer functions.

However, there are still many unanswered questions about the structure of the BLR that could significantly impact our ability to measure BH masses with reverberation mapping techniques. One unknown is the extent to which BLR structure evolves over time. As shown by both the  $r_{\text{BLR}}-L_{\text{AGN}}$  relation for the reverberation-mapped sample and for individual sources such as NGC 5548 (Pei et al. 2017), the size of the BLR can change significantly in response to variability in the AGN continuum. Substantial changes in the AGN accretion rate could affect at least the dynamics of the emitting gas through the generation of AGN-driven outflows (e.g., Emmering et al. 1992;

Murray & Chiang 1997; Elvis 2000; Proga et al. 2000). While values of the virial product (VP)  $\tau v^2$  measured for the same source over time have shown that the BH mass is consistently measured for different broad emission lines and values of the time lag  $\tau$  (e.g., Peterson & Wandel 1999, 2000; Pei et al. 2017), the uncertainties are still large, and it is possible that the virial factor  $f$  changes with time as well. Another unknown is the full uncertainty with which BLR properties are currently being measured through the forward-modeling approaches of Pancoast et al. (2014a) and Li et al. (2013). Since BLR modeling is necessary in order to quantify information directly from reverberation mapping data or through the inferred response function, having a complete understanding of both statistical and systematic uncertainties is needed in order to completely rule out classes of models. Systematic uncertainties can be introduced at every stage of the BLR modeling approach, from how the reverberation mapping data are preprocessed to isolate the emission-line flux to the choice of model parameterization and what physics is included for the AGN continuum source and BLR gas.

In this paper, we aim to address these questions by applying the BLR modeling approach to three velocity-resolved reverberation mapping data sets for Arp 151 (also called Mrk 40) taken over 7 yr, corresponding to the orbital time for gas  $\sim 4$  lt-days from the BH. The main goals of this analysis are to (1) probe possible evolution in BLR structure, (2) investigate the reproducibility of BLR modeling results for independent data sets of the same source, and (3) constrain possible sources of systematic uncertainty in BLR modeling analysis. The three data sets are described in Section 2, and a brief overview of the BLR model is given in Section 3. Results from BLR modeling analysis of each of the data sets individually and a joint inference on BLR structure are detailed in Section 4. Possible evolution in the BLR geometry and dynamics and the effects of systemic uncertainties are described in Section 5, along with a comparison between the transfer functions from BLR modeling and the response functions from MEMEcho analysis. Finally, a summary of our work is given in Section 6. All final values for distances and BH masses from modeling the BLR are given in the rest frame of the AGN. To convert to the observed frame, multiply distances and the BH mass by  $1 + z = 1.021091$ , where  $z$  is the redshift.

## 2. Data

We now describe the three velocity-resolved reverberation mapping data sets for Arp 151 with sampling, resolution, and data quality characteristics listed in Table 1.

### 2.1. LAMP 2008

The LAMP 2008 reverberation mapping campaign was the first to target Arp 151 and includes photometric monitoring of the AGN continuum in the  $B$  and  $V$  bands (Walsh et al. 2009) and spectroscopic monitoring in the optical from 4300 to 7100 Å (Bentz et al. 2009b). The AGN continuum light curves for Arp 151 were measured with standard aperture photometry techniques using data from the 0.80 m Tenagra II telescope in southern Arizona that is part of the Tenagra Observatories complex. Optical spectroscopy is from the Kast Spectrograph (Miller & Stone 1993) on the 3 m Shane Telescope at Lick Observatory.

**Table 1**  
Data Characteristics

	LAMP 2008	LAMP 2011	LCO 2015
(1) Dates	2008 Mar 25– Jun 1	2011 Mar 27– Jun 13	2014 Dec 6–2015 Jun 5
(2) $n_{\text{cont}}$	84	91	119
(3) $n_{\text{line}}$	43	39	55
(4) $\Delta t_{\text{cont}}$ (days)	0.93	0.94	1.03
(5) $\Delta t_{\text{line}}$ (days)	1.02	1.04	1.51
(6) Spectral S/N	80	72	22.5
(7) $\Delta \lambda_{\text{instru}}$ (Å)	5.06	2.47	3.44
(8) Pixel scale (Å)	2	1	1.74
(9) Slit width	4"	4"	1"6
(10) Extraction width	10"1	10"3	8"8

**Note.** The table rows are as follows: (1) range of dates for spectroscopic monitoring, (2) number of epochs in the AGN continuum light curve, (3) number of epochs of spectroscopy, (4) median time between continuum epochs, (5) median time between spectral epochs, (6) median S/N of the spectra in the optical continuum, (7) instrumental resolution (line dispersion,  $\sigma$ ; see Section 2 of Pancoast et al. 2014b), (8) spectral pixel scale, (9) slit width of spectroscopy, and (10) extraction region width used to generate spectra. Values for items (6), (9), and (10) are taken from Bentz et al. (2009b), Barth et al. (2015), and Valenti et al. (2015) for LAMP 2008, LAMP 2011, and LCO 2015, respectively.

### 2.2. LAMP 2011

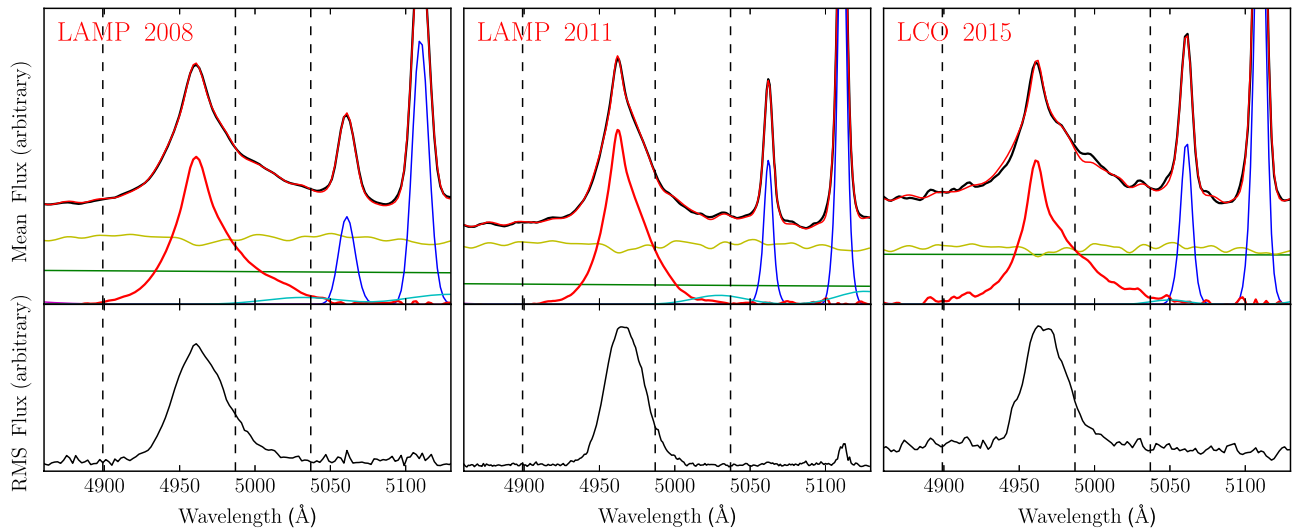
Arp 151 was monitored again as part of the LAMP 2011 reverberation mapping campaign, with photometric monitoring in the  $V$  band (A. Pancoast et al. 2018, in preparation) and spectroscopic monitoring in the optical from 3440 to 8200 Å (Barth et al. 2015). The AGN continuum light curve for Arp 151 was measured with difference-imaging techniques using data from multiple telescopes, including the 0.91 m telescope at West Mountain Observatory, the 2 m Faulkes Telescopes North and South in the Las Cumbres Observatory network (LCO; Brown et al. 2013), the 0.76 m Katzman Automatic Imaging Telescope at Lick Observatory (Filippenko et al. 2001), and the 0.6 m Super-LOTIS telescope at Steward Observatory, Kitt Peak. Optical spectroscopy is from the Kast Spectrograph (Miller & Stone 1993) on the 3 m Shane Telescope at Lick Observatory.

### 2.3. LCO AGN Key Project 2015

Arp 151 was also monitored as part of the ongoing LCO AGN Key Project reverberation mapping campaign (hereafter LCO 2015) with photometric monitoring of the AGN continuum in the  $V$  band and spectroscopic monitoring in the optical from  $\sim 3200$  to 10000 Å (Valenti et al. 2015). The AGN continuum light curve for Arp 151 was measured with the automated aperture photometry scripts described by Pei et al. (2014) using data from LCO network telescopes, including the 1 m telescope at McDonald Observatory and the 2 m Faulkes Telescope North. Optical spectroscopy is from the FLOYDS Spectrograph on the 2 m Faulkes Telescope North.

### 2.4. Spectral Decomposition

The  $H\beta$  broad and narrow emission lines used in our analysis were isolated from the optical spectrum using the spectral decomposition scripts described by Barth et al. (2013). The



**Figure 1.** Spectral decomposition of the mean spectrum (top panels) and the rms line profile for the  $H\beta$  component (bottom panels) for the LAMP 2008, LAMP 2011, and LCO 2015 Arp 151 data sets. The vertical dashed lines show the wavelength ranges used for modeling the BLR. In addition to the mean data spectrum (black line), the spectral decomposition components shown in the top panel include the full model (top red line), AGN power-law continuum (green line), host galaxy starlight (yellow line), narrow [O III] emission lines (blue line), He II (magenta line, mostly too faint at the wavelengths shown), Fe II (cyan line), and  $H\beta$  component constructed by subtracting all components except for broad and narrow  $H\beta$  from the data (bottom red line). The wavelengths shown on the  $x$ -axis are the observed wavelengths, and the flux units for both the mean and rms spectra are in arbitrary units.

spectra were decomposed into contributions from the power-law AGN continuum; the host galaxy starlight; emission lines for  $H\beta$ , He II, and [O III], and a template for Fe II emission blends. While the spectral decomposition scripts allow for additional components of He I at 4471, 4922, and 5016 Å, these components were not included in the fit because they were not consistently differentiated from Fe II and other overlapping features in the red wing of  $H\beta$  for individual spectral epochs. The blue wing of  $H\beta$  is less contaminated, with no substantial overlap with He II. An example of the spectral decomposition in the region around  $H\beta$  is shown for each data set in Figure 1, along with the root-mean-square (rms) spectrum. Note that the rms flux in the continuum is higher for the LCO 2015 data set due to the lower signal-to-noise ratio (S/N) of the spectra.

The spectral decomposition was done using three different Fe II templates from Boroson & Green (1992), Véron-Cetty et al. (2004), and Kovačević et al. (2010). While the results from the three Fe II templates are often very similar (e.g., Barth et al. 2015), sometimes there are differences in the integrated emission-line light-curve scatter or in the rms spectrum. For our analysis of Arp 151, we use the Kovačević et al. (2010) template because it is able to better fit the data. Both the  $\chi^2$  and the reduced  $\chi^2$ , which compensates for the larger number of free parameters, are smallest for the Kovačević et al. (2010) template. The integrated emission-line light-curve scatter and the rms spectrum are very similar for the different templates.

To reduce systematic uncertainties introduced by assuming a smooth model for  $H\beta$  in the spectral decomposition, we isolate the  $H\beta$  emission to be used in our analysis by subtracting all spectral decomposition components from the data except for broad and narrow  $H\beta$ . Examples of the isolated  $H\beta$  emission are also shown in Figure 1. While the spectral decomposition script does not provide statistical uncertainties from the spectral modeling, tests using a Monte Carlo procedure to estimate the final flux uncertainties for LAMP 2011 suggest that the additional statistical uncertainty introduced by spectral decomposition is very small (Barth et al. 2015). We therefore use the

original statistical uncertainties of the optical spectra for our analysis.

### 3. The Geometric and Dynamical Model of the BLR

In this section, we give an overview and define the model parameters of our parameterized phenomenological model for the BLR. A full description is given by Pancoast et al. (2014a).

We model the distribution of broad-line emission using many massless point test particles that linearly and instantaneously reprocess the AGN continuum flux from the accretion disk into emission-line flux seen by the observer. The accretion disk is assumed to be a point source at the origin that emits isotropically. The accretion disk photons are reprocessed into line emission with a time lag that is determined by a point particle’s position and a wavelength of emitted line flux that is determined by a point particle’s velocity.

In order to calculate the line emission from each point particle at any given time, we need to know the AGN continuum flux between the data points in the light curve. We generate a continuous model of the AGN continuum light curve using Gaussian processes. By simultaneously exploring the parameter space of the Gaussian process model parameters, we can include the uncertainties from interpolation between the AGN continuum light curve data points in our inference of the BLR model parameters. We can also use the AGN continuum light-curve model to extrapolate to earlier or later times beyond the extent of the data in order to evaluate the contribution of point particles with long time lags at the beginning of the campaign and model the response of the BLR after the AGN continuum monitoring has ended.

#### 3.1. Geometry

The radial distribution of point particles is parameterized by a gamma distribution,

$$p(r|\alpha, \theta) \propto r^{\alpha-1} \exp\left(-\frac{r}{\theta}\right) \quad (3)$$

**Table 2**  
Inferred BLR Model Parameter Values

Parameter	LAMP 2008	LAMP 2011	LCO 2015	Combined Data Sets	Standard Deviation
$\tau_{\text{CCF}}$ (days)	$3.99^{+0.49}_{-0.68}$	$5.61^{+0.66}_{-0.84}$	$7.52^{+1.43}_{-1.06}$	...	...
$r_{\text{max}}$ (lt-days)	44.85	27.39	54.71	...	...
$r_{\text{mean}}$ (lt-days)	$4.07^{+0.42}_{-0.42}$	$6.77^{+0.52}_{-0.50}$	$7.09^{+1.42}_{-1.17}$	...	...
$r_{\text{median}}$ (lt-days)	$2.74^{+0.65}_{-0.60}$	$5.35^{+0.50}_{-0.54}$	$4.32^{+1.16}_{-0.89}$	...	...
$r_{\text{min}}$ (lt-days)	$0.57^{+0.20}_{-0.31}$	$0.71^{+0.40}_{-0.38}$	$0.50^{+0.52}_{-0.37}$	$0.65^{+0.15}_{-0.12}$	0.08
$\sigma_r$ (lt-days)	$3.89^{+0.74}_{-0.63}$	$5.62^{+1.03}_{-0.63}$	$8.03^{+2.02}_{-1.59}$	...	...
$\tau_{\text{mean}}$ (days)	$3.65^{+0.34}_{-0.38}$	$5.99^{+0.41}_{-0.35}$	$6.04^{+0.80}_{-0.86}$	...	...
$\tau_{\text{median}}$ (days)	$2.28^{+0.60}_{-0.53}$	$4.52^{+0.43}_{-0.36}$	$3.37^{+0.62}_{-0.55}$	...	...
$\beta$	$1.14^{+0.26}_{-0.28}$	$0.90^{+0.14}_{-0.11}$	$1.21^{+0.15}_{-0.13}$	$1.01^{+0.17}_{-0.09}$	0.13
$\theta_o$ (deg)	$24.6^{+5.5}_{-7.8}$	$18.0^{+5.7}_{-6.6}$	$22.2^{+9.4}_{-10.0}$	$21.8^{+2.7}_{-5.4}$	2.72
$\theta_i$ (deg)	$23.7^{+5.1}_{-7.6}$	$15.1^{+3.7}_{-5.0}$	$19.7^{+8.1}_{-9.3}$	$15.3^{+3.9}_{-5.2}$	3.54
$\kappa$	$-0.23^{+0.28}_{-0.15}$	$-0.06^{+0.32}_{-0.30}$	$0.10^{+0.28}_{-0.31}$	$-0.19^{+0.29}_{-0.15}$	0.13
$\gamma$	$3.60^{+1.01}_{-1.38}$	$2.80^{+1.39}_{-1.13}$	$3.78^{+0.89}_{-1.19}$	$3.81^{+0.93}_{-0.97}$	0.42
$\xi$	$0.22^{+0.33}_{-0.16}$	$0.23^{+0.18}_{-0.13}$	$0.28^{+0.23}_{-0.17}$	$0.17^{+0.16}_{-0.09}$	0.03
$\log_{10}(M_{\text{BH}}/M_{\odot})$	$6.66^{+0.26}_{-0.17}$	$6.93^{+0.33}_{-0.16}$	$6.92^{+0.50}_{-0.23}$	$6.82^{+0.09}_{-0.09}$	0.13
$f_{\text{ellip}}$	$0.21^{+0.26}_{-0.15}$	$0.30^{+0.13}_{-0.17}$	$0.18^{+0.16}_{-0.13}$	$0.18^{+0.14}_{-0.13}$	0.05
$f_{\text{flow}}$	$0.25^{+0.17}_{-0.18}$	$0.25^{+0.16}_{-0.18}$	$0.26^{+0.16}_{-0.17}$	$0.27^{+0.15}_{-0.20}$	0.004
$\theta_e$ (deg)	$14.8^{+16.9}_{-10.2}$	$13.6^{+16.0}_{-9.1}$	$20.1^{+18.1}_{-13.5}$	$10.1^{+8.8}_{-6.2}$	2.83
$\sigma_{\text{turb}}$	$0.012^{+0.041}_{-0.010}$	$0.046^{+0.034}_{-0.040}$	$0.010^{+0.029}_{-0.008}$	$0.044^{+0.030}_{-0.037}$	0.017

**Note.** Median values and 68% confidence intervals for the main BLR geometry and dynamics model parameters. The values for the column Combined Data Sets are measured from the joint posterior PDFs for the three data sets. The values for the last column, Standard Deviation, are the standard deviation of the values for the three individual data sets. The fixed values for  $r_{\text{max}}$  used in BLR modeling are shown, as well as the centroid time lag  $\tau_{\text{CCF}}$  from cross-correlation function analysis from Bentz et al. (2009b), A. J. Barth et al. (2018, in preparation), and Valenti et al. (2015) for LAMP 2008, LAMP 2011, and LCO 2015, respectively. All values are redshift-corrected to the AGN rest frame.

that is shifted radially from the origin by the Schwarzschild radius,  $R_s = 2GM_{\text{BH}}/c^2$ , plus a minimum radius of the BLR,  $r_{\text{min}}$ . This shifted gamma distribution is also truncated at an outer radius  $r_{\text{max}}$  (listed in Table 2). We perform a change of variables from  $(\alpha, \theta, r_{\text{min}})$  to  $(\mu, \beta, F)$  in order to work in units of the mean radius,  $\mu$ , such that

$$\mu = r_{\text{min}} + \alpha\theta, \quad (4)$$

$$\beta = \frac{1}{\sqrt{\alpha}}, \quad (5)$$

$$F = \frac{r_{\text{min}}}{r_{\text{min}} + \alpha\theta}, \quad (6)$$

where  $\beta$  is the shape parameter and  $F$  is  $r_{\text{min}}$  in units of  $\mu$ . The standard deviation of the radial distribution is then given by  $\sigma_r = (1 - F)\mu\beta$ . For the three free parameters,  $(\mu, \beta, F)$ , the prior probability distribution is uniform in the log of the parameter between  $1.02 \times 10^{-3}$  lt-days and  $r_{\text{out}}$  for  $\mu$ , uniform between 0 and 2 for  $\beta$ , and uniform between 0 and 1 for  $F$ .

Spherical symmetry is broken by defining a half-opening angle of the point particles,  $\theta_o$ , such that values of  $\theta_o \rightarrow 0^\circ$  ( $90^\circ$ ) correspond to a thin disk (spherical) geometry with a uniform prior between  $0^\circ$  and  $90^\circ$ . An observer views the BLR from an inclination angle,  $\theta_i$ , where  $\theta_i \rightarrow 0^\circ$  ( $90^\circ$ ) corresponds to a face-on (edge-on) orientation, and the prior is uniform in  $\cos(\theta_i)$  between  $0^\circ$  and  $90^\circ$ . The emission from each point particle is given a relative weight,  $W$ , between 0 and 1,

$$W(\phi) = \frac{1}{2} + \kappa \cos(\phi), \quad (7)$$

where  $\kappa$  is a free parameter with a uniform prior between  $-0.5$  and  $0.5$  and  $\phi$  is the angle between the observer's line of sight

to the origin and the point particle's line of sight to the origin. When  $\kappa \rightarrow -0.5$  ( $0.5$ ), then the far (near) side of the BLR is contributing more line emission. We also allow the point particles to be clustered near the faces of the disk, such that the angle  $\theta$  of a point particle from the disk is

$$\theta = \arccos(\cos \theta_o + (1 - \cos \theta_o)U^\gamma), \quad (8)$$

where  $U$  is a random number drawn uniformly between 0 and 1 and  $\gamma$  is a free parameter with a uniform prior between 1 and 5. When  $\gamma \rightarrow 1$  (5), point particles are evenly distributed in (clustered at the faces of) the disk. Finally, we allow for a transparent to opaque disk midplane, where  $\xi$  is twice the fraction of point particles below the disk midplane. When  $\xi \rightarrow 0$  (1), the midplane is opaque (transparent), with a uniform prior between 0 and 1.

### 3.2. Dynamics

The velocities of the point particles depend upon the BH mass,  $M_{\text{BH}}$ , which has a uniform prior in the log of the parameter between  $2.78 \times 10^4$  and  $1.67 \times 10^9 M_{\odot}$ . We define two types of Keplerian orbits for the point particles in the plane of their radial and tangential velocities. The first type of orbit is drawn from a Gaussian distribution in the radial and tangential velocity plane centered on the circular orbit value, resulting in bound elliptical orbits. A fraction,  $f_{\text{ellip}}$ , of the point particles have these near-circular elliptical orbits, where  $f_{\text{ellip}}$  has a uniform prior between 0 and 1 and  $f_{\text{ellip}} \rightarrow 0$  (1) corresponds to no (all) point particles with velocities of this type.

The remaining point particles have a second type of orbit that is drawn from a Gaussian distribution centered on the radial inflowing or outflowing escape velocity, where values of

$0 < f_{\text{flow}} < 0.5$  designate inflow and  $0.5 < f_{\text{flow}} < 1$  designate outflow and  $f_{\text{flow}}$  has a uniform prior between 0 and 1. The center of the distribution of this second type of orbit can also be rotated on an ellipse toward the circular orbit value by an angle  $\theta_e$  that has a uniform prior between  $0^\circ$  and  $90^\circ$ . Finally, for each point particle, we include a contribution from randomly oriented macroturbulent velocities with magnitude

$$v_{\text{turb}} = \mathcal{N}(0, \sigma_{\text{turb}}) |v_{\text{circ}}|, \quad (9)$$

where  $v_{\text{circ}}$  is the circular velocity at the point particle’s radius and  $\mathcal{N}(0, \sigma_{\text{turb}})$  is a random number drawn from a Gaussian distribution with a mean of 0 and a standard deviation of  $\sigma_{\text{turb}}$ . The prior of  $\sigma_{\text{turb}}$  is uniform in the log of the parameter between 0.001 and 0.1.

### 3.3. Generating Model Spectra

For a specific set of model parameter values, the positions, velocities, and weights of each point particle are determined, and, using a Gaussian process model for the AGN continuum light curve, we can generate a time series of model emission-line profiles in velocity space. To convert the model spectra to wavelength space, we include the effects of relativistic Doppler shift and gravitational redshift. The model spectra are also blurred by the time-variable instrumental resolution of the spectroscopic monitoring data, which is measured by comparing the intrinsic width of the narrow [O III]  $\lambda 5007$  emission line measured by Whittle (1992) to the measured width for each observation, with typical values listed in Table 1. We also model the narrow component of the  $H\beta$  emission line as a Gaussian with the same intrinsic width as [O III]  $\lambda 5007$  blurred by the instrumental resolution. Finally, due to the importance of defining the center of the broad emission line and thus the region where point particles with zero line-of-sight velocity contribute line flux, the systematic central wavelength is a free parameter with a narrow Gaussian prior with a standard deviation of 1 Å for LAMP 2008 and 4 Å for LAMP 2011 and LCO 2015. The implications of this choice for the standard deviation of the systematic central wavelength prior are discussed in Section 5.1.3.

### 3.4. Exploring the Model Parameter Space

We explore the high-dimensional parameter space of the AGN continuum light-curve model and the BLR model using the diffusive nested sampling code DNest3 (Brewer et al. 2011). Diffusive nested sampling provides posterior probability distribution functions (PDFs) and calculates the “evidence,” allowing for comparison of models that are parameterized differently. We compare the broad and narrow emission-line models to the broad and narrow emission-line data using a Gaussian likelihood function. In order to calculate posterior PDFs in postprocessing, we soften the likelihood function by dividing the log of the likelihood by a temperature  $T$ , where  $T \geq 1$ . Using values of  $T > 1$  accounts for effects such as underestimated uncertainties in the spectral data or the inability of a simple model to fit the full complexity of the data. For a Gaussian likelihood function, setting  $T > 1$  is equivalent to increasing the uncertainties on the spectral data by  $\sqrt{T}$ . We use values of  $T = 65$  (45) for LAMP 2008, 60 (45) for LAMP 2011, and 30 (30) for LCO 2015 for modeling the full (partial) line profile. The lower values of temperature needed for the LCO 2015 data set are due to the higher uncertainties of the

spectral fluxes. These large values of temperature mean that the numerical noise from specific placement of the point particles in position and velocity space for a given set of parameter values is much less than the spectral flux errors times  $\sqrt{T}$ . We check all results for convergence by comparing the inferred parameter distributions from the first and second halves of the modeling run.

## 4. Results

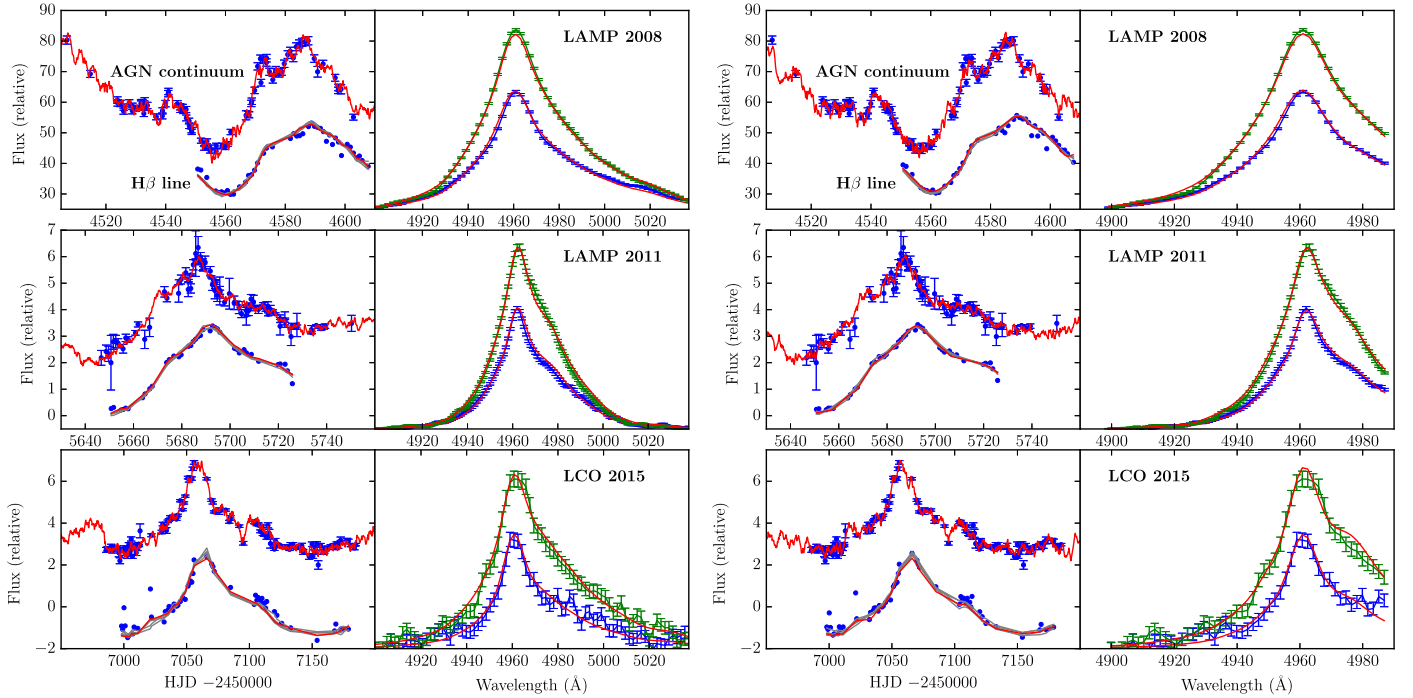
We now present the results from applying our geometric and dynamical model for the BLR to three velocity-resolved reverberation mapping data sets for Arp 151. As discussed in Section 5.1, one of the sources of systematic uncertainty in our analysis is the isolation of  $H\beta$  flux in the red wing, where the choice of Fe II template and possible contribution of He I lines introduce differences in the  $H\beta$  red wing that can exceed the spectral flux uncertainties. To address this, we present two limiting cases for all three data sets of modeling the full  $H\beta$  red wing or approximately half of the red wing. After describing the results for the individual data sets, we then combine the results to provide a joint inference on the BLR model parameters. The median and 68% confidence intervals of the inferred BLR model parameter values are given in Table 2.

### 4.1. Inference for Individual Data Sets

The LAMP 2008 data set for Arp 151 has previously been analyzed using the BLR modeling approach by Brewer et al. (2011) and Pancoast et al. (2014b). Our analysis differs from that of Pancoast et al. (2014b) in three ways. First, we use an updated model for the BLR that includes the systematic central wavelength of the broad emission line as a free parameter and a maximum outer radius for the BLR. Second, the  $H\beta$  emission-line profile has been isolated from the spectrum using a different spectral decomposition code and the Fe II template from Kovačević et al. (2010) instead of that from Boroson & Green (1992). Third, in addition to modeling the  $H\beta$  emission-line profile over the wavelength range of 4899–5037 Å in the observed frame, we also exclude approximately half of the red wing and model the  $H\beta$  emission-line profile over the range of 4899–4985 Å. For both wavelength ranges of the data, the BLR model is able to capture the shape of the  $H\beta$  emission-line profile and the large-scale changes of the integrated  $H\beta$  line flux, as shown in the top panels of Figure 2.

The LAMP 2011 data set for Arp 151 is the second in the sample to be analyzed using the BLR modeling approach, after Mrk 50 (Pancoast et al. 2012). Compared to LAMP 2008, the LAMP 2011 data set showed similarly high variability but with increased instrumental resolution. Again, we model both the full  $H\beta$  emission-line profile over the range of 4899–5038 Å and a truncated version of the  $H\beta$  emission-line profile excluding approximately half of the red wing for a wavelength range of 4899–4986 Å. These wavelength ranges are very close to those used for the LAMP 2008 data set, although with a different pixel scale. As for LAMP 2008, the BLR model is able to both fit the shape of the  $H\beta$  emission-line profile and follow the changes in the integrated  $H\beta$  line flux as a function of time. Examples of the model fit to the data are shown in the middle panels of Figure 2.

The data set for Arp 151 from 2015 is the first velocity-resolved reverberation mapping result from the LCO AGN Key Project (Valenti et al. 2015). Compared to the LAMP data sets



**Figure 2.** Model fits to the emission-line profile for the LAMP 2008 (top panels), LAMP 2011 (middle panels), and LCO 2015 (bottom panels) data sets. The set of six panels on the left shows the model fits to the full emission-line profile, and the set of six panels on the right shows the model fit to the partial emission-line profile when part of the red wing is excluded. On the left, for each data set and for both the full and partial fits to the data, we show the AGN continuum light curve at the top (blue points and error bars) with an example of a Gaussian process continuum light-curve model (red line) and the integrated  $H\beta$  emission-line light curve at the bottom (blue points) with examples of the model fit drawn from the posterior PDF (red and gray lines). On the right, we show two examples of the model fit (red lines) to individual emission-line profiles (blue and green error bars and lines).

for Arp 151, the LCO 2015 data set has similarly high levels of variability and instrumental resolution between the two LAMP data sets but significantly lower S/N for the spectroscopy. We both model the full  $H\beta$  emission-line profile between 4899.8 and 5037.3 Å and exclude approximately half of the red wing to model the line profile between 4899.8 and 4985.1 Å. Other than two highly discrepant data points in the  $H\beta$  light curve, the BLR model is able to fit the  $H\beta$  emission-line profile shape and match the overall variability of the integrated  $H\beta$  line flux, as shown by the bottom panels in Figure 2.

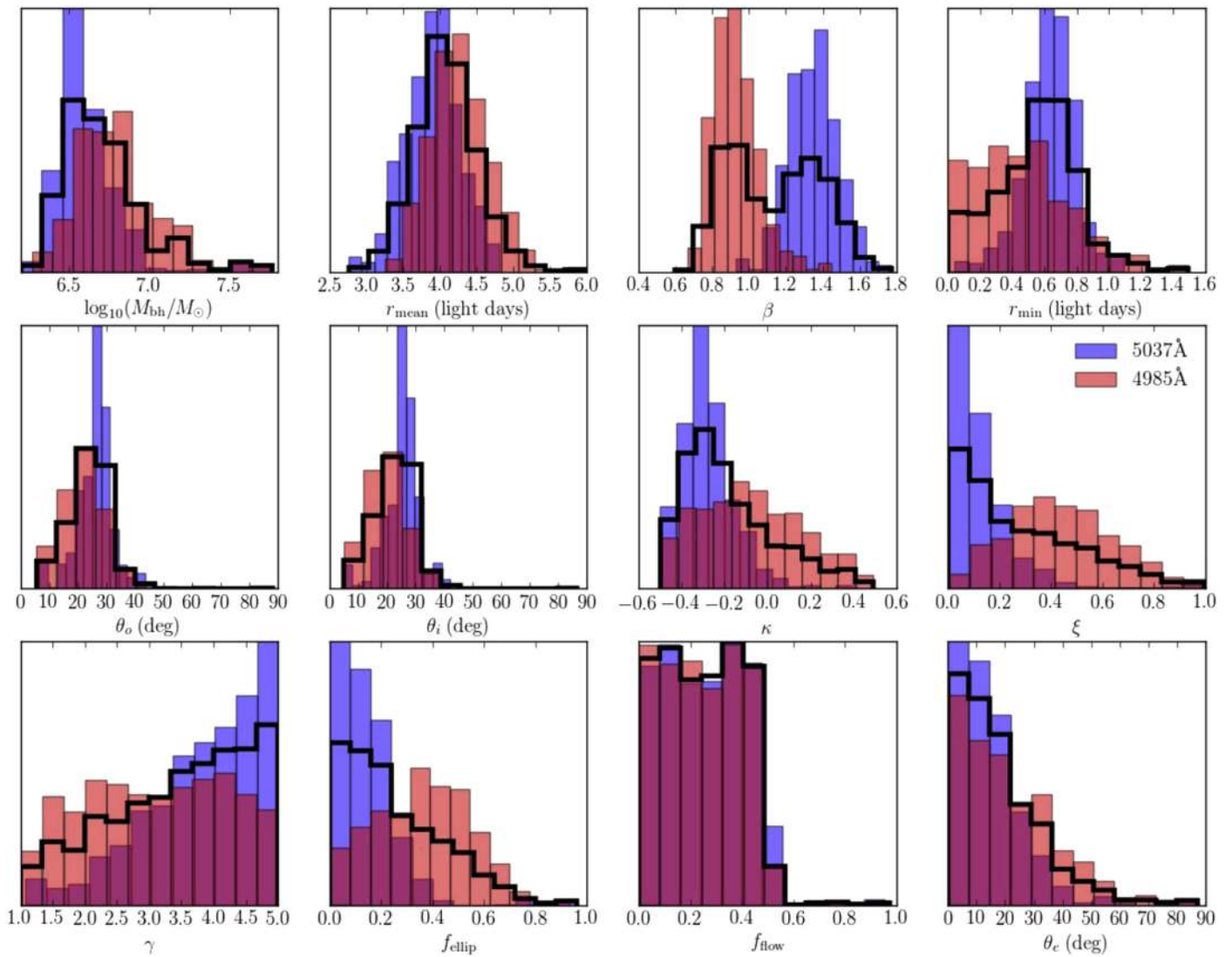
We show the inferred posterior PDFs for some of the key BLR model parameters in Figures 3–5 for the LAMP 2008, LAMP 2011, and LCO 2015 data sets, respectively. To ease comparison between the results for modeling the two different wavelength ranges, we show the posterior PDFs from modeling the emission-line profile out to  $\sim 5037$  Å in blue and to only  $\sim 4985$  Å in orange (areas where the two posterior PDFs overlap appear red). An equal 50/50 mixture of orange and blue posterior PDFs is shown by the thick black histogram and used to measure the median and 68% confidence intervals for the BLR model parameters listed in the first three columns of Table 2 and described below.

For the geometry of the  $H\beta$ -emitting BLR, we infer a thick disk viewed close to face-on with a disk opening angle of  $\theta_o = 24.6^{+5.5}_{-7.8}$  ( $18.0^{+5.7}_{-6.6}$ ,  $22.2^{+9.4}_{-10.0}$ )° and an inclination angle with respect to the observer’s line of sight of  $\theta_i = 23.7^{+5.1}_{-7.6}$  ( $15.1^{+3.7}_{-5.0}$ ,  $19.7^{+8.1}_{-9.3}$ )° ( $0 = \text{face-on}$ ) for LAMP 2008 (LAMP 2011, LCO 2015). The distribution of emission decreases exponentially or steeper as a function of radius, with  $\beta = 1.14^{+0.26}_{-0.11}$  ( $0.90^{+0.14}_{-0.13}$ ,  $1.21^{+0.15}_{-0.13}$ ) for LAMP 2008 (LAMP 2011, LCO 2015), and the median radius of emission changes by almost a factor of two, from  $r_{\text{median}} = 2.74^{+0.65}_{-0.60}$  lt-days for LAMP 2008 to  $r_{\text{median}} =$

$5.35^{+0.50}_{-0.54}$  ( $4.32^{+1.16}_{-0.89}$ ) lt-days for LAMP 2011 (LCO 2015). The asymmetry of emission is inferred to varying degrees by the three data sets. The LAMP 2008 data prefer BLR models where the  $H\beta$  emission comes more from the far side of the BLR with respect to the observer ( $\kappa = -0.23^{+0.28}_{-0.15}$ ), although more emission from the near side of the BLR is not ruled out, and the LAMP 2011 and LCO 2015 data sets have no strong preference. All three data sets prefer BLR models where the disk midplane is partially or completely opaque, with  $\xi = 0.22^{+0.33}_{-0.16}$  ( $0.23^{+0.18}_{-0.13}$ ,  $0.28^{+0.23}_{-0.17}$ ) for LAMP 2008 (LAMP 2011, LCO 2015), and a completely transparent disk midplane is ruled out for LAMP 2011. Finally, the LAMP 2008 and LCO 2015 data have a slight preference for BLR models with more emission from the faces of the disk ( $\gamma = 3.60^{+1.01}_{-1.38}$  and  $3.78^{+0.89}_{-1.19}$ , respectively).

For the dynamics of the  $H\beta$ -emitting BLR, we infer a combination of near-circular elliptical and inflowing orbits for the emitting gas, with the fraction of near-circular elliptical orbits given by  $f_{\text{ellip}} = 0.21^{+0.26}_{-0.15}$  ( $0.30^{+0.13}_{-0.17}$ ,  $0.18^{+0.16}_{-0.13}$ ) for LAMP 2008 (LAMP 2011, LCO 2015). The remaining gas is inflowing with  $f_{\text{flow}} = 0.25^{+0.17}_{-0.18}$  ( $0.25^{+0.16}_{-0.18}$ ,  $0.26^{+0.16}_{-0.17}$ ), where  $0 \leq f_{\text{flow}} \leq 0.5$  indicates inflow, and the gas is anywhere from half gravitationally bound on radial orbits ( $\theta_e \rightarrow 0^\circ$ ) to mostly gravitationally bound on both tangential and radial orbits (out to  $\theta_e \sim 50^\circ$ ) with  $\theta_e = 14.8^{+16.9}_{-10.2}$  ( $13.6^{+16.0}_{-9.1}$ ,  $20.1^{+18.1}_{-13.5}$ ) for LAMP 2008 (LAMP 2011, LCO 2015). There is also a negligible contribution from macroturbulent velocities with  $\sigma_{\text{turb}} = 0.01^{+0.04}_{-0.01}$  ( $0.05^{+0.03}_{-0.04}$ ,  $0.01^{+0.03}_{-0.01}$ ).

Finally, the BH mass setting the scale of the velocity field is inferred to be  $\log_{10}(M_{\text{BH}}) = 6.66^{+0.26}_{-0.17}$  ( $6.93^{+0.33}_{-0.16}$ ,  $6.92^{+0.50}_{-0.23}$ ). While there is a difference of almost 0.3 dex between the BH mass measured for LAMP 2008 compared to the other two, this



**Figure 3.** Inferred posterior PDFs of the main BLR modeling parameters for the LAMP 2008 data set from modeling the full emission-line profile out to 5037 Å (blue histograms) and excluding part of the red wing after 4987 Å (red histogram). An equal mixture of the blue and orange posterior PDFs is given by the thick black histogram.

difference is within the statistical measurement uncertainties, and the posterior PDFs significantly overlap, as seen in Figure 6. The standard deviation in the three BH mass measurements is significantly smaller, at only 0.13 dex. It is also interesting to compare these BH mass values from BLR modeling with values of the VP calculated in traditional reverberation mapping analysis, as shown in the top panel of Figure 7. The VP is related to the BH mass by  $M_{\text{BH}} = f \times \text{VP}$  and  $\log_{10}(\text{VP}) = 6.086_{-0.091}^{+0.075}$ ,  $5.778_{-0.071}^{+0.061}$ , and  $6.053_{-0.094}^{+0.077}$  for the LAMP 2008 (Bentz et al. 2009b), LAMP 2011 (Barth et al. 2018, in preparation), and LCO 2015 (Valenti et al. 2015) data sets, respectively. The standard deviation in the VP values is 0.14 dex, very similar to the value for BLR modeling. While the statistical uncertainties from calculating the VP are quite small, generally  $<0.1$  dex, calculating a VP BH mass requires the additional assumption of choosing a value for the virial factor  $f$ . Traditionally, an average value of  $f$  is derived by matching the reverberation mapping sample to the quiescent galaxy sample  $M_{\text{BH}}-\sigma_*$  relation (Onken et al. 2004; Collin et al. 2006; Greene et al. 2010; Woo et al. 2010, 2013, 2015; Graham et al. 2011; Park et al. 2012; Grier et al. 2013; Batista et al. 2017). However,

the scatter in the  $M_{\text{BH}}-\sigma_*$  relation is measured to be at least 0.4 dex (Park et al. 2012), suggesting that the total uncertainty of VP BH masses could be as large as  $\sim 0.4$  dex for individual AGNs (as discussed by Peterson 2014). This means that the additional uncertainty from the unknown value of  $f$  for individual AGNs is significant and must be included when comparing BH mass measurement techniques. These results show that BLR modeling for Arp 151 generally provides greater precision than VP BH masses with uncertainties  $<0.4$  dex, as well as constraints on BLR structure, and thus  $f$ , independent of the  $M_{\text{BH}}-\sigma_*$  relation.

The inferred structure of the  $\text{H}\beta$ -emitting BLR in Arp 151 for the data sets described above combines the results for both modeling the full emission-line profile and excluding half of the red wing. However, some of the BLR model parameters are sensitive to how much of the red wing is modeled. As is evident from Figure 3, the parameters in best agreement for LAMP 2008 include  $r_{\text{mean}}$ ,  $\theta_o$ ,  $\theta_i$ ,  $f_{\text{flow}}$ ,  $\theta_e$ , and  $M_{\text{BH}}$ , while  $\beta$ ,  $r_{\text{min}}$ ,  $\kappa$ ,  $\xi$ ,  $\gamma$ , and  $f_{\text{ellip}}$  are more dissimilar. Excluding half of the red wing provides weaker constraints on the emission asymmetry parameters  $\kappa$ ,  $\xi$ , and  $\gamma$  but also on the dynamics



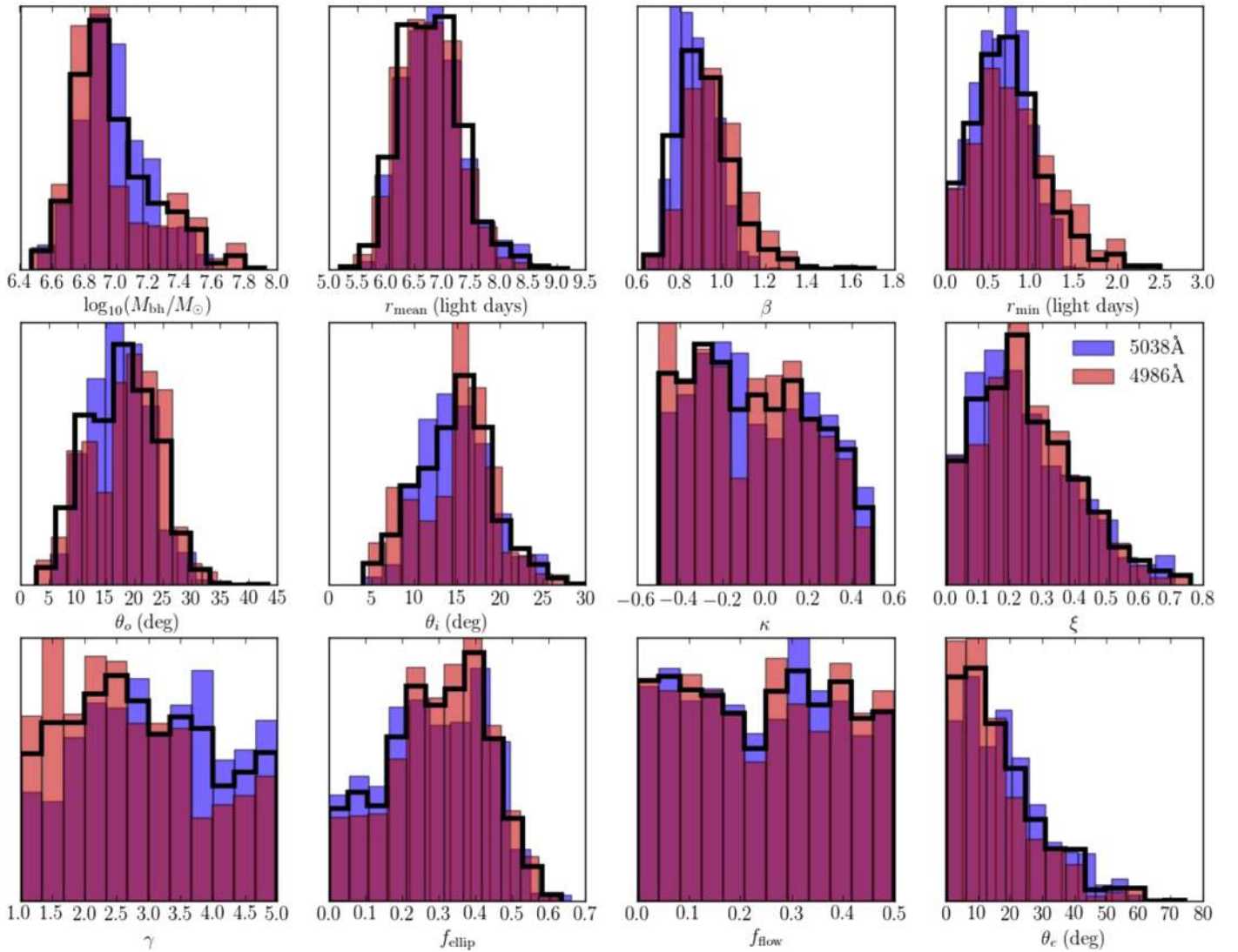


Figure 4. Same as Figure 3, but for the LAMP 2011 data set.

through  $f_{\text{ellip}}$  and larger inferred uncertainties for  $M_{\text{BH}}$ . Since  $M_{\text{BH}}$  is strongly correlated with  $\theta_o$  and  $\theta_i$ , they also have larger inferred uncertainties when excluding half of the red wing. Overall, modeling the full red wing is significantly more constraining for LAMP 2008, but the results are generally consistent with one another, with the largest discrepancy in the inferred values of  $\beta$ , for which the posterior PDFs only slightly overlap. On the other hand, modeling the full red wing does not provide significantly better constraints on BLR structure for the LAMP 2011 data set, since the posterior PDFs from modeling the full and partial red wing almost completely overlap one another (Figure 4). Similarly, modeling the full red wing for the LCO 2015 data set does not provide significantly better constraints (Figure 5). However, there is a slight offset in the posterior PDFs for  $M_{\text{BH}}$ ,  $r_{\text{mean}}$ ,  $\beta$ ,  $\theta_o$ ,  $\theta_i$ , and  $\xi$ , such that modeling the full red wing leads to larger values of the BH mass and, through the tight correlations with the inclination and opening angles, a thinner and more face-on disk.

#### 4.2. Inference from Combining the Three Data Sets

We now combine the results for the three data sets for Arp 151 to obtain a joint inference on the BLR model parameters.

Some parameters, such as the BH mass, we expect to stay constant. Other parameters, such as the mean radius or other measurements of the radial size of the BLR, we expect to change in response to variations in the AGN luminosity. The evolution of BLR structure over the 7 yr time period spanned by the three data sets is discussed in Section 5.2.

We start by defining the set of posterior samples for each data set individually. As described in the previous section, we marginalize over the choice to model the full or partial H $\beta$  red wing by making an equal 50/50 mixture of posterior samples from the results for each case. Since the posterior PDFs from modeling the full or partial H $\beta$  red wing never perfectly overlap, this addition of posterior PDFs has a general broadening effect on the final posteriors for each data set. The equal mixtures of posterior samples for each data set (LAMP 2008, LAMP 2011, and LCO 2015) are shown by the thick black histograms in Figures 3–5 and overplotted in blue, red, and cyan, respectively, in Figure 6. The next step is to combine the independent constraints provided by each of the three data sets to create a joint inference on the BLR model parameters. This is done by multiplying the inferred likelihood functions for each data set before applying the prior probabilities to produce the joint inference posterior PDF. In

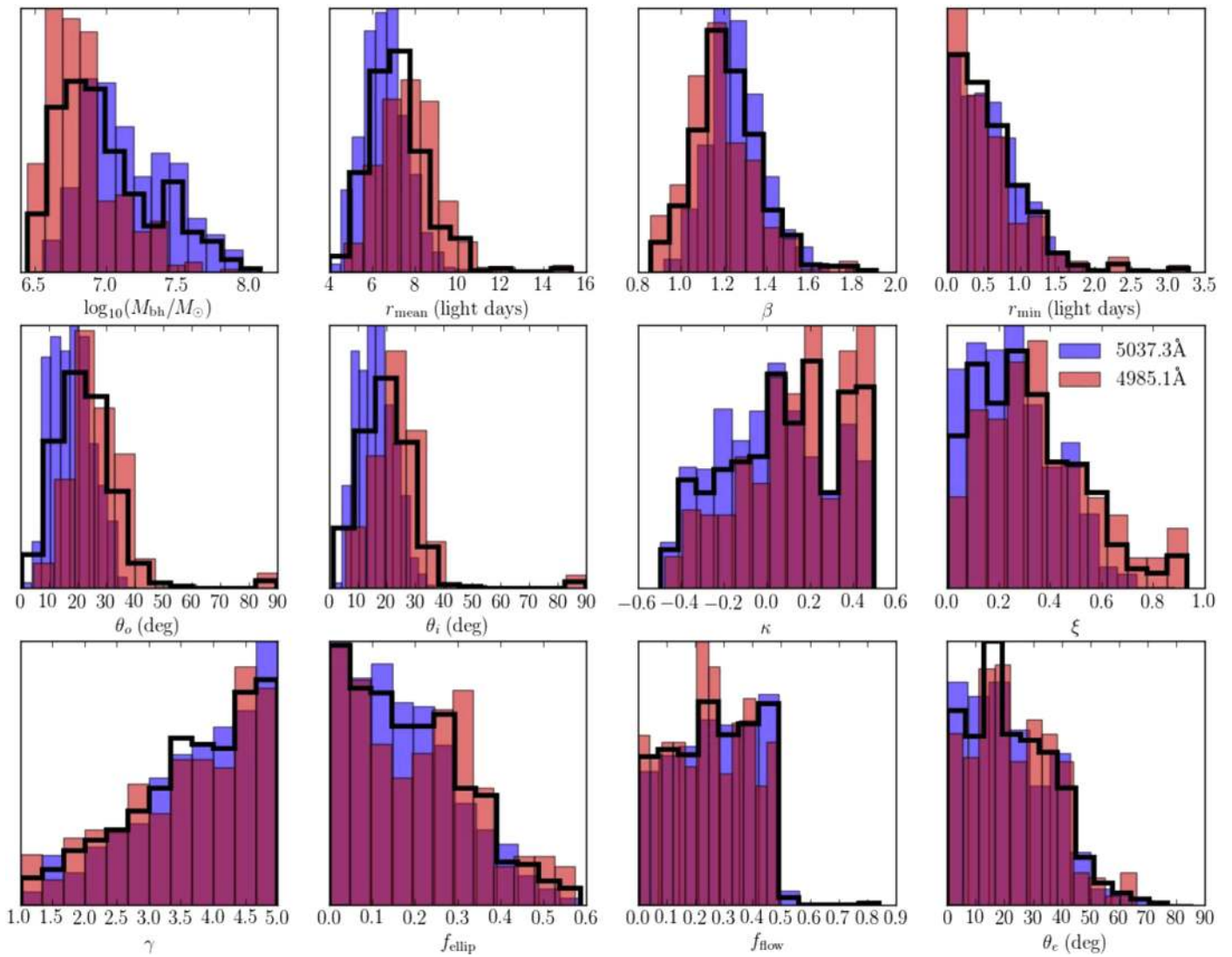


Figure 5. Same as Figure 3, but for the LCO AGN Key Project 2015 data set.

order to multiply likelihood functions made of discrete samples, the posterior samples for each data set are first divided by their prior probability function for priors that are not flat in the parameter (e.g., for parameters such as BH mass that have priors that are flat in the log of the parameter). Then, the likelihood samples are placed in 100 bins, and the binned likelihood functions are multiplied before applying the prior probability functions again. The joint inference posterior PDFs are shown by the thick black histograms in Figure 6 and are used to calculate the median and 68% confidence intervals given in the fourth column of Table 2. Unlike the addition of posterior PDFs, which generally widens the distributions and increases the uncertainties in the inferred parameter values, multiplying the likelihood functions for the three independent data sets shrinks the final posterior PDFs and decreases the uncertainties on the inferred parameter values.

Overall, constraints on the  $H\beta$ -emitting BLR geometry are consistent between the three data sets, with the exception of the size of the BLR, which grows by a factor of almost two between the LAMP 2008 and LAMP 2011 data sets. Due to almost no overlap between the posterior PDFs of the mean and median radius and time lag between LAMP 2008 and both LAMP 2011 and LCO 2015, we do not calculate the combined

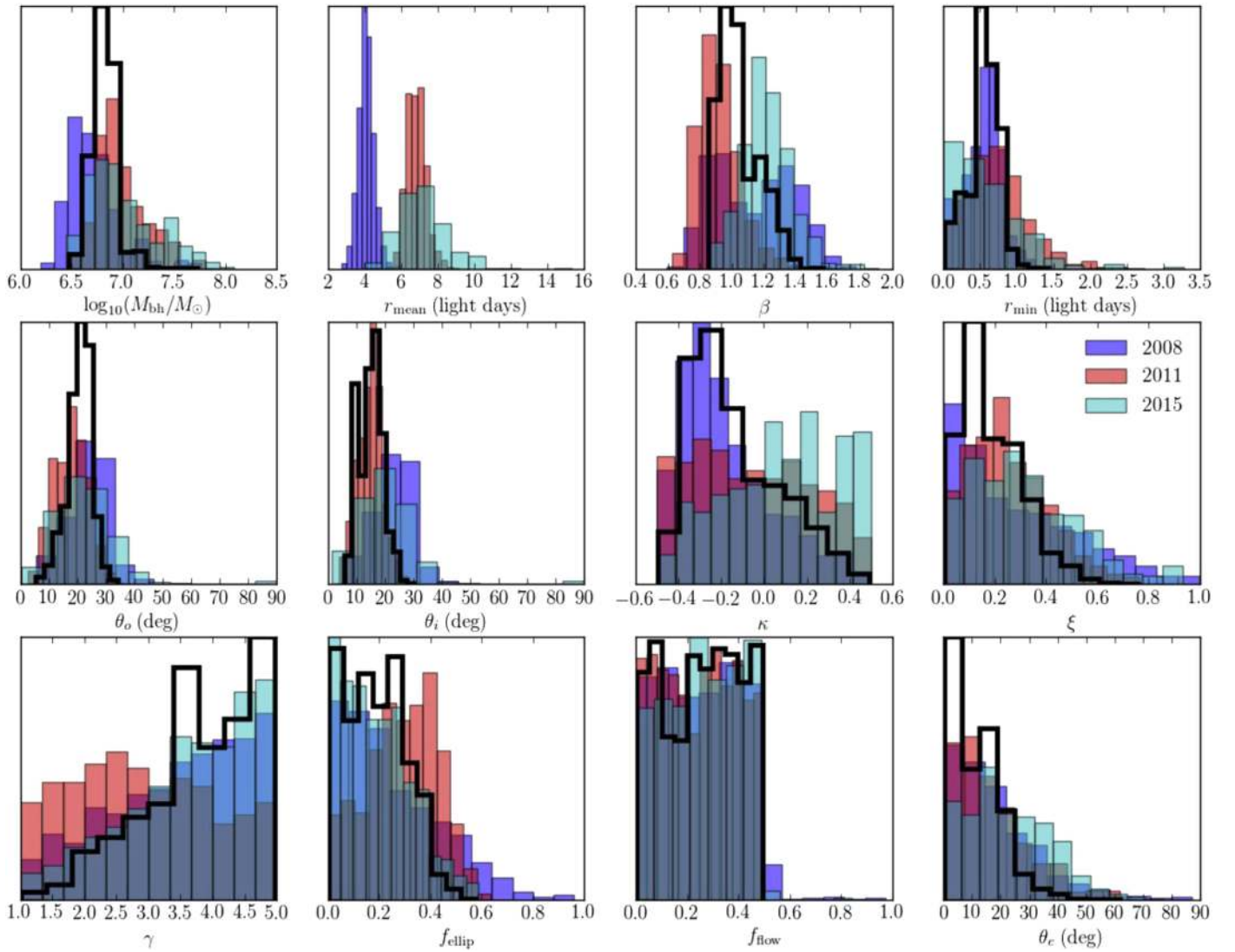
posterior for Figure 6 or Table 2. For the asymmetry of the close to face-on, thick disk ( $\theta_o = 21.8^{+2.7}_{-5.4}$  and  $\theta_i = 15.3^{+3.9}_{-5.2}$ ), we infer a preference for a mostly opaque disk midplane ( $\xi = 0.17^{+0.16}_{-0.09}$ ) with a completely transparent midplane ruled out, more emission from the faces of the disk ( $\gamma = 3.81^{+0.93}_{-0.97}$ ), and a slight preference for more emission back toward the central ionizing source ( $\kappa = -0.19^{+0.29}_{-0.15}$ ).

The constraints on the  $H\beta$ -emitting BLR dynamics are also consistent between the three data sets, with less than 50% of the emitting material in near-circular elliptical orbits ( $f_{\text{ellip}} = 0.18^{+0.14}_{-0.13}$ ) and the remaining gas in mostly radial inflowing orbits ( $f_{\text{flow}} = 0.27^{+0.15}_{-0.20}$  and  $\theta_e = 10.1^{+8.8}_{-6.2}$ ). Finally, the BH mass has a combined inference of  $\log_{10}(M_{\text{BH}}) = 6.82^{+0.09}_{-0.09}$ , more precise than any of the individual BH mass measurements for Arp 151 for a single data set by  $\sim 0.1$  dex and the most precise BH mass from BLR modeling to date.

## 5. Discussion

### 5.1. Systematic Uncertainties in the BLR Modeling Approach

Previous BLR modeling analysis (Brewer et al. 2011; Pancoast et al. 2012, 2014b) has focused on providing



**Figure 6.** Inferred posterior PDFs of the main BLR modeling parameters for the LAMP 2008 (blue histogram), LAMP 2011 (red histogram), and LCO 2015 (cyan histogram) data sets. The posterior PDFs for each data set consist of an equal mixture of posterior samples from modeling the full emission-line profile and a partial emission-line profile that excludes part of the red wing. We also show the joint inference (thick black histogram) from multiplying the inferred likelihood distributions for the three data sets together.

statistical uncertainties in the inferred structure of the BLR as provided by either MCMC or diffusive nested sampling algorithms. Diffusive nested sampling, in particular, provides robust statistical uncertainties for the BLR model parameters even in the case of tight parameter degeneracies and multimodal posterior PDFs. However, there are additional uncertainties not captured by sampling statistics, including what we define as  $H\beta$  line emission and what model we use for the BLR. We will discuss these sources of systematic uncertainty in the following sections.

### 5.1.1. Spectral Decomposition

One of the most important assumptions we make in the process of modeling the BLR is that we can robustly isolate the broad-line flux from the full spectrum using spectral decomposition. However, this requires the choice of both individual templates for certain spectral components and which emission lines or components are present in the data. The two most difficult choices to make for the three Arp 151 data sets are (1) which Fe II template to use and (2) whether He I at 4471, 4922,

and  $5016 \text{ \AA}$  rest wavelength is noticeably present in the spectrum. Both of these spectral components overlap the red wing of  $H\beta$  and can be difficult to disentangle. To quantify the uncertainty introduced by our choice of Fe II template and exclusion of He I, we compared the standard deviation of spectral decomposition solutions for all three Fe II templates with and without He I,  $\Delta f_{\text{decomp}}$ , to the spectral flux errors,  $\sigma_{\text{flux}}$ . The ratio of  $\Delta f_{\text{decomp}}/\sigma_{\text{flux}}$  is 4 (5, 2) times larger for the  $H\beta$  red wing between  $\sim 4985$  and  $5037 \text{ \AA}$  compared to the rest of the line, and the median value of this ratio for the red wing is 2.4 (2.1, 0.4) for LAMP 2008 (LAMP 2011, LCO 2015). This shows that, at least for the LAMP 2008 and 2011 data sets and some epochs of LCO 2015, the choices of Fe II template and presence of He I in the spectral decomposition do meaningfully affect the  $H\beta$  line profile, leading to a source of systematic uncertainty in the isolation of  $H\beta$  flux specifically in the red wing. Looking forward, we can turn this systematic uncertainty into an additional statistical uncertainty in future BLR modeling work by inferring a posterior sample of spectral decompositions instead of a single best-fit data set, thereby

marginalizing over the choice of Fe II template and presence of He I in the data.

### 5.1.2. The Full or Partial Emission-line Profile

One way to probe the magnitude of the systematic uncertainty introduced from spectral decomposition is to compare the BLR properties inferred for the full line profile to the properties inferred when the H $\beta$  red wing is excluded, as we describe in Section 4. This comparison shows that most, but not all, BLR model parameters are consistently inferred. However, this comparison requires excluding just over a third of the line profile, probing another source of systematic uncertainty: how much of the line profile we model. In addition to excluding the H $\beta$  red wing, we also tried excluding either the H $\beta$  blue wing or the center of the emission-line profile. Masking each region results in slightly different inferences on BLR model parameters that are generally consistent with one another, with the two cases of modeling the full line and excluding the red wing providing a typical level of difference. However, given the good agreement in spectral decomposition in the blue wing and center of the emission-line profile, we do not include posterior samples from these runs in our final inference for each data set, as this would generally widen the inferred posteriors due to modeling a smaller fraction of the data. Excluding the red wing (blue wing, center) of H $\beta$  results in larger uncertainties for inferred BLR model parameters by  $10\% \pm 20\%$  ( $20\% \pm 40\%$ ,  $50\% \pm 130\%$ ) for LCO 2015. For LAMP 2008 and 2011, excluding the red wing (center) of H $\beta$  results in larger uncertainties by  $40\% \pm 70\%$  ( $40\% \pm 50\%$ ) and  $3\% \pm 30\%$  ( $20\% \pm 50\%$ ), respectively. This has an important implication for future velocity-resolved reverberation mapping programs focused on wide H $\beta$  emission lines where the line wings may be heavily contaminated by other spectral features (e.g., variable He II in the blue wing and He I and variable Fe II in the red wing): to obtain the smallest statistical uncertainties from BLR modeling, robust identification of H $\beta$  flux is crucial all across the line profile so that no portion of the line profile needs to be excluded.

### 5.1.3. Using a Simple Model

There are many facets of our simply parameterized phenomenological model for the BLR that could introduce systematic uncertainties in the inferred model parameters. Here we discuss possible sources of systematic uncertainty from (1) recent changes to the BLR model, (2) correlations between model parameters, and (3) basic assumptions about the BLR physics.

There are two main changes to the BLR model that were made in the process of analyzing the three data sets for Arp 151. First, the central wavelength of H $\beta$  emission is now a free parameter with a Gaussian prior of standard deviation 1 Å (LAMP 2008) or 4 Å (LAMP 2011, LCO 2015). While using a narrower prior for the central wavelength sometimes leads to more precise inferences on some BLR model parameters, the effects are generally small: comparing results from using Gaussian priors of width 1 or 4 Å makes differences between the inferred BLR model parameters that are  $<40\%$  ( $<40\%$ ,  $<20\%$ ) of the inferred statistical uncertainties for LAMP 2008 (LAMP 2011, LCO 2015), with typical values  $<20\%$  for all three data sets. The second change to the BLR model is that there is now a set maximum outer radius of BLR emission,

with values given in Table 2 for each data set. To test whether the choice of maximum outer radius affects the inferred BLR model parameters, we analyzed each data set using a value for the maximum radius that was approximately twice as large. This test showed that the choice of maximum radius has a larger effect than the choice of Gaussian prior width for the central H $\beta$  wavelength, but the differences between the inferred BLR model parameters are still less than  $<60\%$  ( $<50\%$ ,  $<20\%$ ) of the inferred statistical uncertainties for LAMP 2008 (LAMP 2011, LCO 2015). While adding the maximum radius as a free parameter would be the best way to incorporate this source of systematic uncertainty into the inferred statistical uncertainty, it comes with a computational cost of requiring a longer extrapolated AGN continuum light curve.

Another source of systematic uncertainty comes from correlations between model parameters, as described in detail by Grier et al. (2017). On one hand, the ability of our flexible BLR model to use multiple, discrete combinations of parameter values to generate the same distribution of point particles in position and velocity space inflates the statistical uncertainties on the inferred model parameters compared to the true uncertainty in specific point particle distributions. One example of this is the degeneracy between solutions with  $f_{\text{ellip}} \rightarrow 1$  and solutions with any value of  $f_{\text{ellip}}$  or  $f_{\text{flow}}$  when  $\theta_e \rightarrow 90^\circ$ ; in both cases, the dynamics are dominated by near-circular elliptical orbits. On the other hand, however, degeneracies between model parameters can illuminate systematic uncertainties on a larger scale through the identification of parameter correlations that are unphysical for a sample of AGNs. The best example identified so far is a correlation between the inclination and opening angles for the LAMP 2008 (Pancoast et al. 2014b) and AGN10 (Grier et al. 2017) samples. Tests with simulated data confirm that in order to produce single-peaked emission-line profiles, as observed for LAMP 2008 and AGN10, our model for the BLR requires that  $\theta_o \gtrsim \theta_i$ . This places an effective prior on  $\theta_o$  between  $\theta_i$  and  $90^\circ$ . The fact that BLR modeling infers values of  $\theta_o \sim \theta_i$  suggests that, in reality,  $\theta_o \lesssim \theta_i$ . While it is difficult to quantify how much the values of  $\theta_o \sim \theta_i$  are pulled to the true values of either  $\theta_o$  or  $\theta_i$ , tests with simulated data suggest that the shape of the velocity-resolved transfer function is more sensitive to values of  $\theta_i$ . To obtain fully independent inferences on the inclination and opening angles, we will need to include methods for creating a single-peaked line profile for values of  $\theta_o < \theta_i$  in future BLR models.

Finally, the BLR model makes many assumptions about the physics of gas in the inner regions of AGNs that could add significant systematic uncertainty to our results. While many of these assumptions are discussed in more detail by Pancoast et al. (2014a), recent analysis of a multiwavelength reverberation mapping campaign of NGC 5548 has brought into question the validity of our assumption that the AGN continuum can be treated as coming from a point source (Edelson et al. 2015; Fausnaugh et al. 2016). Specifically, the data set for NGC 5548 provides a robustly measured time lag between the UV continuum at 1367 Å as measured using the *Hubble Space Telescope* and the V-band optical continuum of  $2.04^{+0.22}_{-0.20}$  days (Fausnaugh et al. 2016), which is  $\sim 50\%$  of the time lag between the 5100 Å optical continuum and H $\beta$  line emission (Pei et al. 2017). At first glance, this result suggests that it is problematic both to assume the continuum is coming from a point source and that the optical light curve is a reasonable proxy for the true ionizing continuum in the UV,

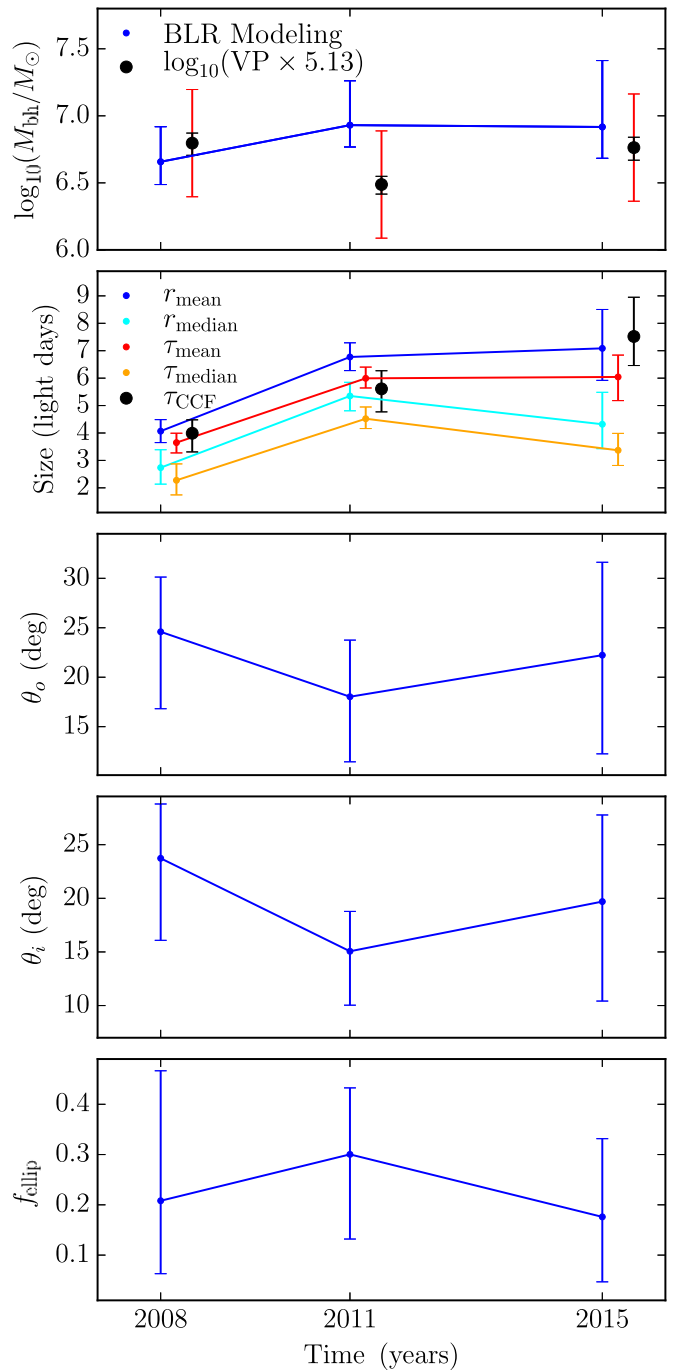
leading to BH masses from BLR modeling that are too small by a factor of  $\tau_{\text{opt}}/\tau_{\text{UV}}$ , where  $\tau_{\text{opt}}$  ( $\tau_{\text{UV}}$ ) is the time lag between the optical (UV) continuum and H $\beta$ . However, it should be noted that NGC 5548 deviated from the usual  $r_{\text{BLR}}-L_{\text{AGN}}$  relation during this campaign with an H $\beta$  BLR size smaller by a factor of  $\sim 4$  compared to what the AGN luminosity predicted (Pei et al. 2017). If NGC 5548 had not deviated from the  $r_{\text{BLR}}-L_{\text{AGN}}$  relation, then the time lag between the UV and optical continuum would only be  $\sim 10\%$  of the time lag between the optical continuum and H $\beta$ , on the order of the statistical uncertainties inferred for the mean radius or time lag from BLR modeling.

Given the change in BLR size between the three data sets for Arp 151 and the fact that we infer a larger BH mass for the data sets with larger BLR radii, we can estimate what time lag between the AGN continuum UV- and optical-emitting accretion disk regions would be required to explain the difference in inferred BH mass. Using the median BH mass values listed in Table 2 suggests that the UV–optical time lag would need to be 0.85 times the optical–H $\beta$  time lag if the larger BH mass we infer is correct. If this were the case, however, even the data sets with larger inferred BLR radii would still be significantly affected by the UV–optical time lag. If we instead solve for the UV–optical time lag with unknown true BH mass, we estimate UV–optical lags of 30–50 days, depending on what measurement of the radius or lag is used, resulting in a true BH mass of  $10^{7.84-7.95} M_{\odot}$ , an order of magnitude greater than what we infer. Given the large difference between the estimated UV–optical lag and the inferred optical–H $\beta$  lag, it is unlikely that the difference in inferred BH mass is primarily due to a violation of our assumption about an AGN continuum point source. Additional simultaneous UV and optical reverberation mapping campaigns focused on other AGNs will be necessary to determine how widely the results for NGC 5548 can be applied to the larger reverberation mapping sample.

### 5.2. Evolution of the BLR

The three data sets for Arp 151 span a time period of 7 yr, which is the orbital time for BLR gas at radii of  $\sim 4$  lt-days from the BH. We now discuss any evidence of evolution in BLR structure over this time, with the time dependence of key BLR model parameters shown in Figure 7. As presented in Section 4.2, the largest difference between inferred BLR parameters for the three data sets is the inference in the radial size of the BLR, such that the mean and median radii and time lags for LAMP 2011 and LCO 2015 are a factor of almost 2 greater than for LAMP 2008. As illustrated in the second panel of Figure 7, the change in size depends upon the measurement used, with CCF time lags and mean values of the radius and time lag showing the largest differences for the LCO 2015 data set. Given the  $r_{\text{BLR}}-L_{\text{AGN}}$  relation (Bentz et al. 2009a, 2013), we might expect Arp 151 to have brightened by up to a factor of 4 in the AGN continuum during the 2011 and 2015 campaigns.

To test whether the AGN continuum flux changed between the three data sets, we remeasured the AGN continuum V-band light curves with a uniform procedure. To ensure that the same level of host galaxy flux is included in all three light curves, we used a uniform photometric aperture size of  $4''$  and the same comparison stars for all three campaigns. We also restricted our analysis to the highest-quality data from each campaign,



**Figure 7.** Evolution of key BLR model parameters over the time spanned by the three Arp 151 data sets. The BH mass from BLR modeling is shown by the blue points in the first panel. For comparison, the VP masses are also shown by black circles, where the small black error bars are from the statistical uncertainties measuring the VP and the large red error bars of 0.4 dex represent an estimate of the systematic uncertainties from using a mean value of  $f = 5.13$  measured by Park et al. (2012). Four model parameters describing the BLR size are shown in the second panel, including the mean and median radius (blue and cyan, respectively) and the mean and median time lag (red and orange, respectively). The BLR size as measured by the model-independent CCF time lag is also shown by the black points for comparison.

including Tenagra Observatory (2008), WMO (2011), and LCOGT (2015). Photometry measurements were made using the automated aperture photometry code described by Pei et al. (2014). The V-band light curve mean values are 15.5, 15.5, and 15.6 mag for the LAMP 2008, LAMP 2011, and LCO 2015

light curves, respectively. Comparing the  $V$ -band light curve mean values provides a lower limit to the AGN variability due to a significant contribution from the host galaxy flux estimated to be 47% for LAMP 2008 (Walsh et al. 2009).

Before including a host galaxy correction, we can first compare the variations in the mean  $V$ -band magnitude to the variability within each reverberation mapping campaign. Comparing the mean  $V$ -band magnitudes, the standard deviation of the three measurements is 0.057 mag, with a spread between the maximum and minimum value of 0.133 mag. Calculating these same values for the variability within each data set, we find a standard deviation (spread between maximum and minimum value) for each light curve of 0.073 (0.322), 0.073 (0.236), and 0.084 (0.339) mag for LAMP 2008, LAMP 2011, and LCO 2015, respectively. This shows that the small changes in the mean  $V$ -band magnitude are less than the variability within each reverberation mapping campaign. Clearly, the BLR size is changing significantly more than expected from the global  $r_{\text{BLR}}-L_{\text{AGN}}$  relation for all AGNs (Bentz et al. 2013), given the relatively constant  $V$ -band luminosity.

While it is possible that long-term variations in AGN luminosity or photons at higher energy may be responsible for the larger-than-expected BLR size in 2011 and 2015, there may also be a more complicated  $r_{\text{BLR}}-L_{\text{AGN}}$  relationship for individual AGNs. This last scenario is illustrated by recent reverberation mapping campaigns for NGC 5548, wherein the AGN diverged from its native  $r_{\text{BLR}}-L_{\text{AGN}}$  relation to first increase in AGN luminosity without a corresponding increase in BLR size and then increase in BLR size while actually decreasing in AGN luminosity (Pei et al. 2017). Even when NGC 5548 is following its native  $r_{\text{BLR}}-L_{\text{AGN}}$  relation, it is steeper than the global relation and has a scatter of  $\sim 0.1$  dex (Kilerci Eser et al. 2015). These results suggest that the behavior seen in Arp 151 may not be so unusual. Only further monitoring will be able to clarify whether its current behavior in  $r_{\text{BLR}}-L_{\text{AGN}}$  space is anomalous or whether it always changes significantly in BLR size at a fixed AGN luminosity.

We can also investigate whether properties of the BLR geometry change with the BLR size. The minimum radius stays constant to within the statistical uncertainties of 0.2–0.5 lt-days. However, the shape of the radial profile changes between the data sets in a manner that appears independent from the size of the BLR, in terms of both the radial distribution shape parameter ( $\beta$ ) and the standard deviation ( $\sigma_r$ ). In comparison, other parameters of the BLR geometry, such as the inclination and opening angles, are consistently inferred for all three data sets, while large uncertainties in the inferred asymmetry parameters prevent us from constraining their evolution.

The BLR dynamics do not appear dependent on the radial BLR size, consistently preferring a majority of inflowing orbits. However, the LAMP 2011 data set does prefer a larger fraction of near-circular elliptical orbits, with the peak of the inferred posterior centered on values of  $f_{\text{ellip}} \sim 0.3$  instead of near  $f_{\text{ellip}} = 0$ . While this difference is not very large, it is consistent with changes in the velocity-resolved time lag measurements for the three data sets, wherein the LAMP 2008 and LCO 2015 data sets show clear asymmetry in time lag measurements across the  $H\beta$  line (Bentz et al. 2009b; Valenti et al. 2015), while the LAMP 2011 data set shows more symmetric lag measurements (Barth et al. 2018, in preparation).

### 5.3. Comparison with MEMECHO Response Functions

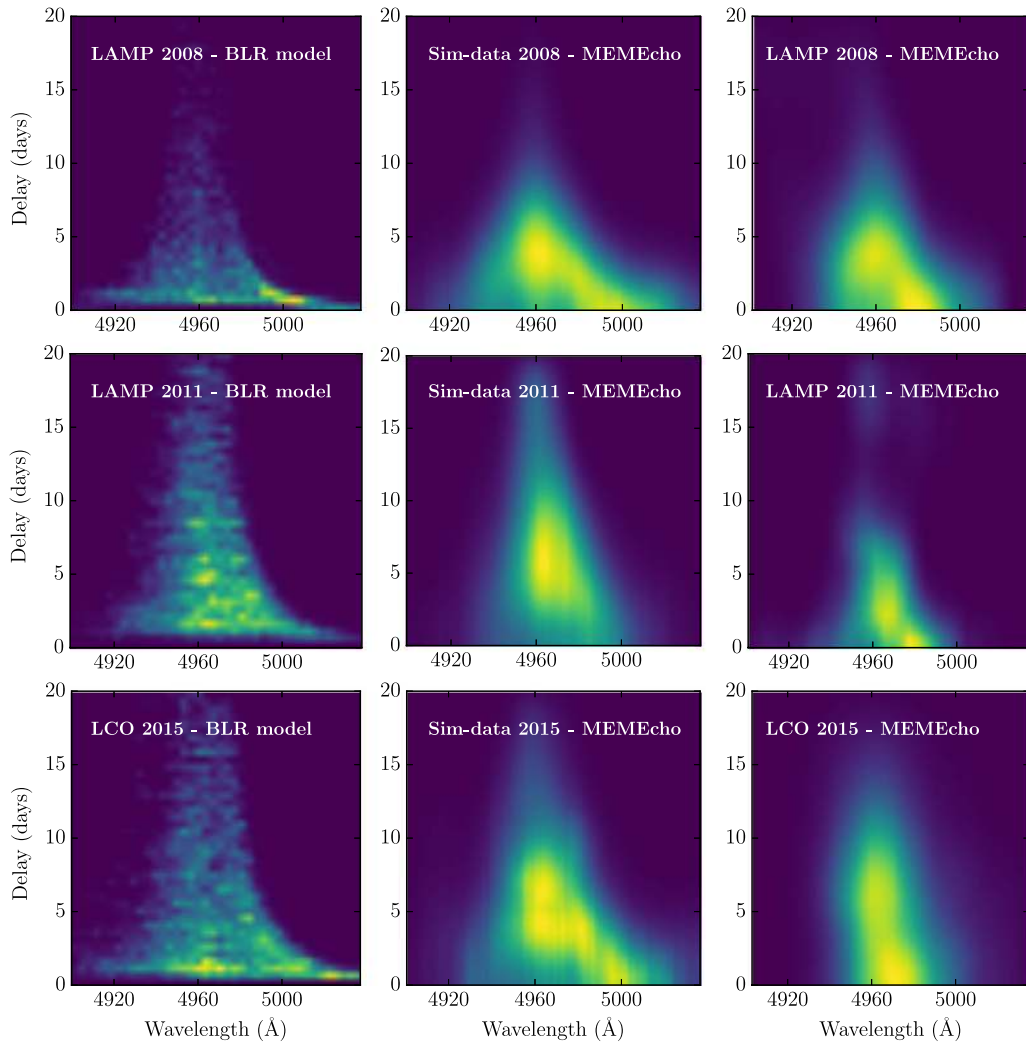
Another way to constrain the properties of the BLR is to recover the broad emission-line response function without assuming a specific BLR model, as discussed in Section 1. The response functions obtained from regularized linear inversion (Krolik & Done 1995; Done & Krolik 1996; Skielboe et al. 2015) or MEMECHO (Horne et al. 1991; Horne 1994) can then be compared qualitatively to the transfer functions from BLR modeling analysis. This comparison provides another critical test of the BLR modeling approach because it can show whether the BLR model is flexible enough to produce the response functions found in the data. In this section, we compare transfer functions from BLR modeling with response functions from MEMECHO for the three  $H\beta$  data sets for Arp 151.

Full details of the MEMECHO code are described by Horne et al. (1991) and Horne (1994), with previous MEMECHO results for multiple optical broad emission lines for the LAMP 2008 data set given by Bentz et al. (2010). The data sets used in the MEMECHO analysis were the same as those used for BLR modeling, including reanalysis of the LAMP 2008 data set with the improved spectral decomposition described in Section 2. Note that while BLR modeling fits a linear echo model (Equation (2)), photoionized line emission is in general a nonlinear function of the continuum (e.g., Korista & Goad 2004). By adopting a linear echo model, values of  $\Psi(\nu, \tau)$  from BLR modeling can be interpreted as some mix of the mean and marginal line response. In contrast, MEMECHO uses a tangent approximation to the nonlinear response, thus fitting a linearized echo model,

$$L(\lambda, t) = L_0(\lambda) + \int_0^{\tau_{\text{max}}} \Psi(\lambda, \tau)[C(t - \tau) - C_0]d\tau. \quad (10)$$

Here,  $C_0$  is an arbitrary continuum level,  $L_0(\lambda)$  is the line emission corresponding to  $C_0$ , and  $\Psi(\lambda, \tau)$  is the marginal response, i.e., the change in line emission per small change in the continuum. The MEMECHO fit then uses maximum entropy regularization to find the “smoothest positive functions”  $C(t)$ ,  $L(\lambda)$ , and  $\Psi(\lambda, \tau)$  that fit the data at different  $\chi^2/N$  levels, where  $N$  is the number of data. At high  $\chi^2/N$ , an overly smooth model underfits the data, while at low  $\chi^2/N$ , an overly noisy model overfits the data. A suitable trade-off between these extremes is chosen by eye to represent the best compromise. Note that BLR modeling uses MCMC methods to fully sample the joint posterior probability distribution of its model parameters, while MEMECHO explores a one-parameter family of best-fit models, with uncertainty estimates requiring Monte Carlo methods.

The transfer functions from BLR modeling and the response functions from MEMECHO are shown in Figure 8 as the first and third columns, respectively. For each Arp 151 data set, we show in the first column a BLR modeling transfer function created from a posterior sample that is chosen such that the transfer function shape is representative of the range shown by many posterior samples. The second column of Figure 8 shows the MEMECHO response function for a simulated data set created from the posterior sample BLR model shown in the first column. Comparing the first and second columns shows that MEMECHO smooths the BLR modeling transfer functions significantly. This is not surprising, since MEMECHO tries to find the smoothest response function that still fits the data, while the BLR modeling approach allows for any sharp



**Figure 8.** Comparison of transfer functions from BLR modeling and response functions from MEMEcho. The top, middle, and bottom rows show results for LAMP 2008, LAMP 2011, and LCO 2015, respectively. The left column shows a representative transfer function from the posterior PDF from BLR modeling for each data set. The middle column shows the MEMEcho response function for a simulated data set generated from the BLR modeling posterior sample shown in the left column for each data set. The right column shows the MEMEcho response function for the data. Light yellow indicates the most emission in the transfer (response) functions, while dark blue indicates the least, with the absolute scales of emission (response) being relative.

features in the transfer function that can be made using the BLR model, such as the sharp emission feature in the red wing. This suggests that a better comparison between BLR modeling and MEMEcho can be made by comparing the MEMEcho response functions for the simulated data and the real data (second and third columns).

However, there are two points to note when making this comparison. First, since the posterior PDFs of the BLR model parameters mostly overlap for the three Arp 151 data sets, as shown in Figure 6, the three transfer functions shown in Figure 8 can also reasonably be interpreted as showing the range in transfer function shape for any of the individual Arp 151 data sets, with the exception of the difference in average time lag that could cause the transfer function shape to be shifted vertically and compressed horizontally to follow the virial envelope. This does not mean that all three transfer functions shown are equally likely for all three data sets; instead, the LAMP 2008 and LCO 2015 data sets have a higher fraction of posterior samples with transfer functions showing strong red-wing asymmetry, while the LAMP 2011 data set has a higher fraction of posterior samples showing a more

symmetric transfer function. These differences in transfer function asymmetry are due to the larger probability of the BLR having a higher fraction of point particles in near-circular elliptical orbits for LAMP 2011. The second point to note when comparing the second and third columns of Figure 8 is that we do not have uncertainty estimates for the MEMEcho response functions, so we cannot make a quantitative comparison.

From a qualitative perspective, the MEMEcho response functions tend to look similar for the simulated and real data sets, with two main regions of high response: at longer time delays in the middle of the line profile ( $\sim 4960$  Å) and at smaller time delays in the red wing of the line profile ( $\sim 4970$ – $5000$  Å). In addition, the simulated and real data sets for LAMP 2008 have very similar MEMEcho response functions, suggesting that the BLR model used in this analysis is flexible enough to capture the large-scale response function behavior of the data. Overall, these results suggest that BLR modeling and MEMEcho analysis are providing consistent information about the BLR transfer function and response function, respectively.

## 6. Summary

We have analyzed three  $H\beta$  reverberation mapping data sets for Arp 151 taken over 7 yr using a geometric and dynamical model for the BLR. By comparing multiple data sets for the same AGN, we are able to probe the systematic uncertainties in the inferred  $H\beta$  BLR structure and look for evolution of the geometry or dynamics on the orbital time. Our main results are as follows:






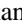


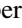
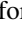



1. The inferred BH mass ranges from  $\log_{10}(M_{\text{BH}}) = 6.66_{-0.17}^{+0.26}$  to  $6.93_{-0.16}^{+0.33}$  for LAMP 2008 and LAMP 2011, respectively, with a standard deviation in the three measurements of 0.13 dex. Since the individual BH masses agree to within the statistical uncertainties, we calculate the combined inference on the BH mass from all three data sets of  $\log_{10}(M_{\text{BH}}) = 6.82_{-0.09}^{+0.09}$ , which is the most precise BH mass measurement from BLR modeling to date.
2. The size of the BLR grows by a factor of  $\sim 2$  between 2008 and 2011, although the minimum radius stays the same over all 7 yr. The shape of the radial profile of emission and the standard deviation of the radial profile do show small changes for each data set, although the changes are not correlated with the BLR size.
3. The inclination and opening angles are consistently inferred ( $\theta_o = 21.8_{-5.4}^{+2.7}^\circ$  and  $\theta_i = 15.3_{-5.2}^{+3.9}^\circ$ ), despite the change in size of the BLR.
4. Each data set constrains the BLR geometry asymmetry parameters to different degrees. While the direction of emission back toward the central ionizing source is only constrained by the LAMP 2008 data set, all three data sets prefer an opaque disk midplane, such that a transparent midplane is ruled out in a joint inference. There is also a preference for more emission from the faces of the disk for the LAMP 2008 and 2011 data sets.
5. The BLR dynamics are consistently inferred to be dominated by mostly-radial inflowing orbits, with the LAMP 2011 data set showing a higher contribution from near-circular elliptical orbits. These differences are consistent with velocity-resolved time lag analysis.
6. We try to include the systematic uncertainty from spectral decomposition in the statistical uncertainties above by marginalizing over results including and excluding the red wing of  $H\beta$ . Spectral decomposition to isolate the  $H\beta$  line is sensitive to the choice of Fe II template and the presence of He I in the  $H\beta$  red wing at a level that is often greater than the spectral flux uncertainties. The choice of whether to exclude parts of the  $H\beta$  profile due to contamination also affects the results by increasing the inferred statistical uncertainties by 3%–50%, depending on the portion of the line excluded and the specific data set. This suggests that by improving spectral decomposition techniques to marginalize over the inclusion of different spectral components and templates self-consistently, we can significantly reduce BLR modeling uncertainties in the future.
7. Comparison between BLR modeling and independent MEMECHO analysis suggests that both methods find similar transfer/response function shapes.

Overall, these results show that parameters expected to be constant in time, such as the BH mass and inclination angle of the BLR, are consistently inferred for Arp 151 from completely

independent data sets and analysis. This suggests that the BLR modeling approach implemented here is robust to reproducibility, although there may still be significant systematic uncertainties introduced by our choice of a specific model. A lack of large changes in other, potentially time-dependent BLR model parameters for the three data sets suggests that the  $H\beta$  BLR structure in Arp 151 is fairly constant on the orbital time, with the exception of the radial size of the BLR that is expected to change in response to variability in the AGN continuum luminosity.

We thank the Lick Observatory staff for their exceptional support during our LAMP 2008 and 2011 observing campaigns. AP is supported by NASA through Einstein Postdoctoral Fellowship grant number PF5-160141 awarded by the *Chandra* X-ray Center, which is operated by the Smithsonian Astrophysical Observatory for NASA under contract NAS8-03060. Research by A.J.B. has been supported by NSF grant AST-1412693. V.N.B. acknowledges assistance from National Science Foundation (NSF) Research at Undergraduate Institutions (RUI) grant AST-1312296. Note that findings and conclusions do not necessarily represent views of the NSF. K.H. acknowledges support from STFC grant ST/M001296/1. S.F.H. acknowledges support from the EU/Horizon 2020 programme via ERC Starting Grant 677117 and the UK STFC via grant ST/N000870/1. Research by D.J.S. is supported by NSF grant AST-1412504 and AST-1517649. T.T. gratefully acknowledges support from the Packard Foundations through a Packard Research Fellowship and by NSF through grant AST-1412315. J.H.W. acknowledges support by the National Research Foundation of Korea (NRF) grant funded by the Korean government (No. 2017R1A5A1070354).

## ORCID iDs

- A. Pancoast  <https://orcid.org/0000-0003-1065-5046>  
 A. J. Barth  <https://orcid.org/0000-0002-3026-0562>  
 K. Horne  <https://orcid.org/0000-0003-1728-0304>  
 T. Treu  <https://orcid.org/0000-0002-8460-0390>  
 V. N. Bennert  <https://orcid.org/0000-0003-2064-0518>  
 M. A. Malkan  <https://orcid.org/0000-0001-6919-1237>  
 S. Valenti  <https://orcid.org/0000-0001-8818-0795>  
 J. H. Woo  <https://orcid.org/0000-0002-8055-5465>  
 M. C. Cooper  <https://orcid.org/0000-0003-1371-6019>  
 S. M. Crawford  <https://orcid.org/0000-0002-8969-5229>  
 E. Tollerud  <https://orcid.org/0000-0002-9599-310X>  
 J. L. Walsh  <https://orcid.org/0000-0002-1881-5908>  
 H. Winkler  <https://orcid.org/0000-0003-2662-0526>

## References

- Barth, A. J., Bennert, V. N., Canalizo, G., et al. 2015, *ApJS*, **217**, 26  
 Barth, A. J., Pancoast, A., Bennert, V. N., et al. 2013, *ApJ*, **769**, 128  
 Batista, M., Bentz, M. C., Raimundo, S. I., Vestergaard, M., & Onken, C. A. 2017, *ApJL*, **838**, L10  
 Bentz, M. C., Denney, K. D., Grier, C. J., et al. 2013, *ApJ*, **767**, 149  
 Bentz, M. C., & Katz, S. 2015, *PASP*, **127**, 67  
 Bentz, M. C., Peterson, B. M., Netzer, H., Pogge, R. W., & Vestergaard, M. 2009a, *ApJ*, **697**, 160  
 Bentz, M. C., Walsh, J. L., Barth, A. J., et al. 2009b, *ApJ*, **705**, 199  
 Bentz, M. C., Walsh, J. L., Barth, A. J., et al. 2010, *ApJ*, **716**, 993  
 Blandford, R. D., & McKee, C. F. 1982, *ApJ*, **255**, 419  
 Boroson, T. A., & Green, R. F. 1992, *ApJS*, **80**, 109  
 Bottorff, M., Korista, K. T., Shlosman, I., & Blandford, R. D. 1997, *ApJ*, **479**, 200  
 Brewer, B. J., Pártay, L. B., & Csányi, G. 2011, *Statistics and Computing*, **21**, 649



- Brown, T. M., Baliber, N., Bianco, F. B., et al. 2013, *PASP*, **125**, 1031
- Clavel, J., Reichert, G. A., Alloin, D., et al. 1991, *ApJ*, **366**, 64
- Collin, S., Kawaguchi, T., Peterson, B. M., & Vestergaard, M. 2006, *A&A*, **456**, 75
- Denney, K. D., Peterson, B. M., Pogge, R. W., et al. 2009, *ApJL*, **704**, L80
- Denney, K. D., Peterson, B. M., Pogge, R. W., et al. 2010, *ApJ*, **721**, 715
- De Rosa, G., Peterson, B. M., Ely, J., et al. 2015, *ApJ*, **806**, 128
- Done, C., & Krolik, J. H. 1996, *ApJ*, **463**, 144
- Du, P., Lu, K.-X., Hu, C., et al. 2016, *ApJ*, **820**, 27
- Edelson, R., Gelbord, J. M., Horne, K., et al. 2015, *ApJ*, **806**, 129
- Elvis, M. 2000, *ApJ*, **545**, 63
- Emmering, R. T., Blandford, R. D., & Shlosman, I. 1992, *ApJ*, **385**, 460
- Fausnaugh, M. M., Denney, K. D., Barth, A. J., et al. 2016, *ApJ*, **821**, 56
- Fausnaugh, M. M., Grier, C. J., Bentz, M. C., et al. 2017, *ApJ*, **840**, 97
- Filippenko, A. V., Li, W. D., Treffers, R. R., & Modjaz, M. 2001, in ASP Conf. Ser. 246, Small Telescope Astronomy on Global Scales, ed. B. Paczynski, W.-P. Chen, & C. Lemme (San Francisco, CA: ASP), 121
- Goad, M. R., & Korista, K. T. 2015, *MNRAS*, **453**, 3662
- Graham, A. W., Onken, C. A., Athanassoula, E., & Combes, F. 2011, *MNRAS*, **412**, 2211
- Greene, J. E., Peng, C. Y., Kim, M., et al. 2010, *ApJ*, **721**, 26
- Grier, C. J., Martini, P., Watson, L. C., et al. 2013, *ApJ*, **773**, 90
- Grier, C. J., Pancoast, A., Barth, A. J., et al. 2017, arXiv:1705.02346
- Grier, C. J., Peterson, B. M., Pogge, R. W., et al. 2012, *ApJ*, **755**, 60
- Horne, K. 1994, in ASP Conf. Ser. Vol. 69, Reverberation Mapping of the Broad-Line Region in Active Galactic Nuclei, ed. P. M. Gondhalekar, K. Horne, & B. M. Peterson (San Francisco, CA: ASP), 23
- Horne, K., Welsh, W. F., & Peterson, B. M. 1991, *ApJL*, **367**, L5
- Kaspi, S., Brandt, W. N., Maoz, D., et al. 2007, *ApJ*, **659**, 997
- Kaspi, S., Maoz, D., Netzer, H., et al. 2005, *ApJ*, **629**, 61
- Kaspi, S., Smith, P. S., Netzer, H., et al. 2000, *ApJ*, **533**, 631
- Kilerci Eser, E., Vestergaard, M., Peterson, B. M., Denney, K. D., & Bentz, M. C. 2015, *ApJ*, **801**, 8
- King, A. L., Martini, P., Davis, T. M., et al. 2015, *MNRAS*, **453**, 1701
- Korista, K. T., & Goad, M. R. 2004, *ApJ*, **606**, 749
- Kovačević, J., Popović, L. Č., & Dimitrijević, M. S. 2010, *ApJS*, **189**, 15
- Krolik, J. H., & Done, C. 1995, *ApJ*, **440**, 166
- Li, Y.-R., Wang, J.-M., Ho, L. C., Du, P., & Bai, J.-M. 2013, *ApJ*, **779**, 110
- Lu, K.-X., Du, P., Hu, C., et al. 2016, *ApJ*, **827**, 118
- MacLeod, C. L., Ivezić, Ž, Kochanek, C. S., et al. 2010, *ApJ*, **721**, 1014
- McConnell, N. J., & Ma, C.-P. 2013, *ApJ*, **764**, 184
- Miller, J. S., & Stone, R. P. S. 1993, Lick Obs. Tech. Rep. 66 (Santa Cruz, CA: Lick Observatory)
- Murray, N., & Chiang, J. 1997, *ApJ*, **474**, 91
- Onken, C. A., Ferrarese, L., Merritt, D., et al. 2004, *ApJ*, **615**, 645
- Pancoast, A., Brewer, B. J., Treu, T., et al. 2012, *ApJ*, **754**, 49
- Pancoast, A., Brewer, B. J., & Treu, T. 2014a, *MNRAS*, **445**, 3055
- Pancoast, A., Brewer, B. J., Treu, T., et al. 2014b, *MNRAS*, **445**, 3073
- Park, D., Barth, A. J., Woo, J.-H., et al. 2017, *ApJ*, **839**, 93
- Park, D., Kelly, B. C., Woo, J.-H., & Treu, T. 2012, *ApJS*, **203**, 6
- Pei, L., Barth, A. J., Aldering, G. S., et al. 2014, *ApJ*, **795**, 38
- Pei, L., Fausnaugh, M. M., Barth, A. J., et al. 2017, *ApJ*, **837**, 131
- Peterson, B. M. 1993, *PASP*, **105**, 247
- Peterson, B. M. 2014, *SSRv*, **183**, 253
- Peterson, B. M., Ferrarese, L., Gilbert, K. M., et al. 2004, *ApJ*, **613**, 682
- Peterson, B. M., & Wandel, A. 1999, *ApJL*, **521**, L95
- Peterson, B. M., & Wandel, A. 2000, *ApJL*, **540**, L13
- Proga, D., Stone, J. M., & Kallman, T. R. 2000, *ApJ*, **543**, 686
- Reichert, G. A., Rodriguez-Pascual, P. M., Alloin, D., et al. 1994, *ApJ*, **425**, 582
- Shen, Y. 2013, *BASI*, **41**, 61
- Shen, Y., Brandt, W. N., Dawson, K. S., et al. 2015, *ApJS*, **216**, 4
- Shen, Y., Horne, K., Grier, C. J., et al. 2016, *ApJ*, **818**, 30
- Shen, Y., Richards, G. T., Strauss, M. A., et al. 2011, *ApJS*, **194**, 45
- Skjelboe, A., Pancoast, A., Treu, T., et al. 2015, arXiv:1502.02031
- Valenti, S., Sand, D. J., Barth, A. J., et al. 2015, *ApJL*, **813**, L36
- Véron-Cetty, M.-P., Joly, M., & Véron, P. 2004, *A&A*, **417**, 515
- Vestergaard, M., & Peterson, B. M. 2006, *ApJ*, **641**, 689
- Walsh, J. L., Minezaki, T., Bentz, M. C., et al. 2009, *ApJS*, **185**, 156
- Whittle, M. 1992, *ApJS*, **79**, 49
- Woo, J.-H., Schulze, A., Park, D., et al. 2013, *ApJ*, **772**, 49
- Woo, J.-H., Treu, T., Barth, A. J., et al. 2010, *ApJ*, **716**, 269
- Woo, J.-H., Yoon, Y., Park, S., Park, D., & Kim, S. C. 2015, *ApJ*, **801**, 38