

StandardRat: A multi-center consensus protocol to enhance functional connectivity specificity in the rat brain

Joanes Grandjean^{1,2}, Gabriel Desrosiers-Gregoire^{3,4}, Cynthia Anckaerts^{5,6}, Diego Angeles-Valdez⁷, Fadi Ayad^{8,9,10}, David A Barrière¹¹, Ines Blockx^{5,6}, Aleksandra B Bortel^{9,10,12}, Margaret Broadwater^{13,14,15}, Beatriz M Cardoso¹⁶, Marina Célestine¹⁷, Jorge E Chavez-Negrete¹⁸, Sangcheon Choi^{19,20}, Emma Christiaen²¹, Perrin Clavijo²², Luis Colon-Perez²³, Samuel Cramer²⁴, Tolomeo Daniele²⁵, Elaine Dempsey^{26,27}, Yujian Diao^{28,29}, Arno Doelemeyer³⁰, David Dopfel²⁴, Lenka Dvořáková³¹, Claudia Falfán-Melgoza³², Francisca F Fernandes¹⁶, Caitlin F Fowler^{8,3}, Antonio Fuentes-Ibañez¹⁸, Clément Garin¹⁷, Eveline Gelderman¹, Carla EM Golden³³, Chao CG Guo¹, Marloes JAG Henckens^{1,34}, Lauren A Hennessy^{35,36}, Peter Herman^{37,38}, Nita Hofwijks¹, Corey Horien³⁷, Tudor M Ionescu³⁹, Jolyon Jones⁴⁰, Johannes Kaesser⁴¹, Eugene Kim⁴², Henriette Lambers⁴³, Alberto Lazari⁴⁴, Sung-Ho Lee^{13,14,15}, Amanda Lillywhite^{45,46}, Yikang Liu²⁴, Yanyan Y Liu⁴⁷, Alejandra López -Castro⁷, Xavier López-Gil⁴⁸, Zilu Ma²⁴, Eilidh MacNicol⁴², Dan Madularu^{8,49}, Francesca Mandino³⁷, Sabina Marciano³⁹, Matthew J McAuslan²⁶, Patrick McCunn⁵⁰, Alison McIntosh^{26,27}, Xianzong Meng¹, Lisa Meyer-Baese²², Stephan Missault^{5,6}, Federico Moro⁵¹, Daphne Naessens⁵², Laura J Nava-Gomez^{53,54}, Hiroi Nonaka⁵⁵, Juan J Ortiz¹⁸, Jaakko Paasonen³¹, Lore M Peeters^{5,6}, Mickaël Pereira⁵⁶, Pablo D Perez²⁴, Marjory Pompilus⁵⁷, Malcolm Prior⁵⁸, Rustam Rakhmatullin⁵⁹, Henning M Reimann⁶⁰, Jonathan Reinwald⁶¹, Rodrigo Triana de Rio⁶², Alejandro Rivera-Olvera¹, Daniel Ruiz-Pérez⁵⁹, Gabriele Russo⁶³, Tobias J Rutten¹, Rie Ryoike⁵⁵, Markus Sack³², Piergiorgio Salvan⁴⁴, Basavaraju G Sanganahalli^{37,38}, Aileen Schroeter⁶⁴, Bhedita J Seewoo^{35,36,65}, Erwan Selingue⁶⁶, Aline Seuwen⁶⁴, Bowen Shi^{6,67}, Nikoloz Sirmipilatzé^{68,69,70}, Joanna AB Smith^{71,72,73}, Corrie Smith²², Filip Sobczak^{19,20}, Petteri J Stenroos⁷⁴, Milou Straathof⁷⁵, Sandra Strobel⁴¹, Akira Sumiyoshi^{55,76}, Kengo Takahashi^{19,20}, Maria E Torres-García¹⁸, Raul Tudela⁷⁷, Monica van den Berg^{5,6}, Kajo van der Mare⁷⁵, Aran TB van Hout¹, Roberta Vertullo¹, Benjamin Vidal⁵⁶, Roel M Vrooman¹, Victora X Wang⁷⁸, Isabel Wank⁴¹, David JG Watson⁴⁵, Ting Yin⁷⁹, Yongzhi Zhang⁸⁰, Stefan Zurbrugg⁸¹, Sophie Achard⁸², Sarael Alcauter¹⁸, Dorothee P Auer^{83,58}, Emmanuel L Barbier⁷⁴, Jürgen Baudewig⁶⁸, Christian F Beckmann^{1,44}, Nicolau Beckmann³⁰, Guillaume JPC Becq⁸⁴, Erwin LA Blezer⁷⁵, Radu Bolbos⁸⁵, Susann Boretius^{68,69,70}, Sandrine Bouvard⁸⁶, Eike Budinger^{86,87}, Joseph D Buxbaum³³, Diana Cash⁴², Victoria Chapman^{45,46,83,76}, Kai-Hsiang Chuang⁸⁸, Luisa Ciobanu⁶⁶, Bram Coolen⁵², Jeffrey W Dalley⁴⁰, Marc Dhenain¹⁷, Rick M Dijkhuizen⁷⁵, Oscar Esteban⁸⁹, Cornelius Faber⁴³, Marcelo Febo⁵⁷, Kirk W Feindel⁶⁵, Gianluigi Forloni⁹⁰, Jérémie Fouquet³, Eduardo A Garza-Villarreal⁷, Natalia Gass³², Jeffrey C Glennon⁹¹, Alessandro Gozzi⁹², Olli Gröhn³¹, Andrew Harkin^{26,27}, Arend Heerschap², Xavier Helluy^{63,93}, Kristina Herfert³⁹, Arnd Heuser⁹⁴, Judith R Homberg¹, Danielle J Houwing¹, Fahmeed Hyder^{37,38}, Giovanna Diletta Ielacqua⁹⁴, Ileana O Jelescu²⁸, Heidi Johansen-Berg⁴⁴, Gen Kaneko⁹⁵, Ryuta Kawashima⁵⁵, Shella D Keilholz²², Georgios A Keliris^{5,6}, Clare Kelly^{27,96,97}, Christian Kerskens^{27,98}, Jibrán Y Khokhar⁵⁰, Peter C Kind^{71,72,73,99}, Jean-Baptiste Langlois⁸⁵, Jason P Lerch^{44,100}, Monica A López-Hidalgo⁵⁴, Denise Manahan-Vaughan⁶³, Fabien Marchand¹⁰¹, Rogier B Mars^{1,44}, Gerardo Marsella¹⁰², Edoardo Micotti⁹⁰, Emma Muñoz-Moreno⁴⁸, Jamie Near^{3,103}, Thoralf Niendorf^{60,104}, Willem M Otte^{75,105}, Patricia Pais^{19,106}, Wen-Ju Pan²², Roberto A Prado-Alcalá¹⁸, Gina L Quirarte¹⁸, Jennifer Rodger^{35,36}, Tim Rosenow¹⁰⁷, Cassandra Sampaio Baptista⁴⁴, Alexander Sartorius⁶¹, Stephen J Sawiak¹⁰⁸, Tom WJ Scheenen^{2,109}, Noam Shemesh¹⁶, Yen-Yu Ian Shih^{13,14,15,110}, Amir Shmuel^{8,9,10,12,111}, Guadalupe Soria¹¹², Ron Stoop⁶², Garth J Thompson^{6,67}, Sally M Till^{71,72,73}, Nick Todd⁸⁰, Annemie Van Der Linden^{5,6}, Annette van der Toorn⁷⁵, Geralda AF van Tilborg⁷⁵, Christian Vanhove²¹, Andor Veltien², Marleen Verhoye^{5,6}, Lydia Wachsmuth⁴³, Wolfgang Weber-Fahr³², Patricia Wenk⁸⁶, Xin Yu^{19,113}, Valerio Zerbj^{114,115}, Nanyin Zhang²⁴, Baogui B Zhang⁴⁷, Luc Zimmer^{85,56,116}, Gabriel A Devenyi^{3,117}, M Mallar Chakravarty^{8,3,117}, Andreas Hess⁴¹

1. Donders Institute for Brain, Behaviour, and Cognition, Nijmegen, The Netherlands
2. Department for Medical Imaging, Radboud University Medical Center, PO Box 9101, Nijmegen, The Netherlands
3. Cerebral Imaging Centre, Douglas Mental Health University Institute, 6875 Boulevard LaSalle, Verdun, Canada
4. Integrated Program in Neuroscience, McGill University, Montreal, Canada
5. Bio-imaging lab, University of Antwerp, Universiteitsplein 1, Antwerp, Belgium
6. μ NEURO Research Centre of Excellence, University of Antwerp, Antwerp, Belgium
7. Instituto de Neurobiología, Universidad Nacional Autónoma de México campus Juriquilla, Querétaro, Mexico
8. Biological and Biomedical Engineering, McGill University, 3775, rue University, Montreal, Canada
9. McConnell Brain Imaging Centre, McGill University, 3801 University St., Montreal, Canada
10. Montreal Neurological Institute, McGill University, 3801 University St., Montreal, Canada
11. UMR CNRS 7247 Physiologie des Comportements et de la Reproduction, Physiologie de la reproduction et des comportements, Centre National pour la Recherche Scientifique, Centre de recherche de Nouzilly, Tours, France
12. Department of Neurology and Neurosurgery, McGill University, 3801 University St., Montreal, Canada
13. Center for Animal MRI, The University of North Carolina at Chapel Hill, 125 Mason Farm Rd., Chapel Hill, USA
14. Neurology, The University of North Carolina at Chapel Hill, 125 Mason Farm Rd., Chapel Hill, USA
15. Biomedical Research Imaging Center, The University of North Carolina at Chapel Hill, 125 Mason Farm Rd., Chapel Hill, USA
16. Preclinical MRI, Champalimaud Research, Champalimaud Centre for the Unknown, Avenida de Brasília, Lisbon, Portugal
17. Laboratoire des Maladies Neurodégénératives, Molecular Imaging Research Center (MIRCen), Université Paris-Saclay, Commissariat à l'Énergie Atomique et aux Énergies Alternatives (CEA), CNRS, 18 Route du Panorama, Fontenay-aux-Roses, France
18. Departamento de Neurobiología Conductual y Cognitiva, Instituto de Neurobiología, Universidad Nacional Autónoma de México, Campus Juriquilla, Boulevard Juriquilla 3001, Querétaro, Mexico
19. Translational Neuroimaging and Neural Control Group, High-Field Magnetic Resonance, Max Planck Institute for Biological Cybernetics, 72076, Tuebingen, Germany
20. Graduate Training Centre of Neuroscience, International Max Planck Research School, University of Tuebingen, 72074, Tuebingen, Germany
21. Institute Biomedical Technology (IBiTech), Electronics and Information Systems (ELIS), Ghent University, Corneel Heymanslaan 10, Gent, Belgium
22. Biomedical Engineering, Emory University/Georgia Institute of Technology, 1760 Haygood Dr, Atlanta, USA
23. Dept. of Pharmacology & Neuroscience, University of North Texas Health Science Center, 3500 Camp Bowie Blvd, Fort Worth, USA

24. Translational Neuroimaging and Systems Neuroscience Lab, Biomedical Engineering, Pennsylvania State University, W-341 Millennium Science Complex, University Park, USA
25. Centre for advanced biomedical imaging, University College London, London, UK
26. Neuropsychopharmacology Research Group, School of Pharmacy and Pharmaceutical Sciences, Trinity College Dublin, Dublin, Ireland
27. Trinity College Institute of Neuroscience, Trinity College Dublin, Dublin, Ireland
28. CIBM Center for Biomedical Imaging, Ecole Polytechnique Fédérale de Lausanne, Route des Noyerettes, Lausanne, Switzerland
29. Laboratory for Functional and Metabolic Imaging, Ecole Polytechnique Fédérale de Lausanne, Route des Noyerettes, Lausanne, Switzerland
30. Musculoskeletal Diseases Department, Novartis Institutes for BioMedical Research, Basel, Switzerland
31. Biomedical Imaging Unit, A.I.V. Institute for Molecular Sciences, University of Eastern Finland, Kuopio, Finland
32. Translational Imaging, Department of Neuroimaging, Central Institute of Mental Health, Medical Faculty Mannheim, University of Heidelberg, J5, Mannheim, Germany
33. Seaver Autism Center for Research & Treatment, Department of Psychiatry, Icahn School of Medicine at Mount Sinai, 1468 Madison Avenue, New York City, USA
34. Department of Neuroscience and Pharmacology, Rudolf Magnus Institute of Neuroscience, University Medical Center Utrecht, Heidelberglaan 100, Utrecht, The Netherlands
35. Experimental and Regenerative Neurosciences, School of Biological Sciences, The University of Western Australia, 35 Stirling Highway, Crawley, Australia
36. Brain Plasticity Group, Perron Institute for Neurological and Translational Science, 8 Verdun Street, Nedlands, Australia
37. Radiology and Biomedical Imaging, Yale University School of Medicine, New Haven, USA
38. Quantitative Neuroscience with Magnetic Resonance (QNMR) Core Center, Yale University School of Medicine, New Haven, USA
39. Werner Siemens Imaging Center, Department of Preclinical Imaging and Radiopharmacy, University of Tuebingen, Tuebingen, Germany
40. Department of Psychology, University of Cambridge, Downing Street, Cambridge, UK
41. Institute of Experimental and Clinical Pharmacology and Toxicology, FAU Erlangen-Nürnberg, Fahrstrasse 17, 91054 Erlangen, Germany
42. Biomarker Research And Imaging in Neuroscience (BRAIN) Centre, Department of Neuroimaging, King's College London, Coldharbour Lane, London, UK
43. Experimental Magnetic Resonance Group, Clinic of Radiology, University Hospital Münster, Albert-Schweitzer-Campus 1, Muenster, Germany
44. Nuffield Department of Clinical Neurosciences, Wellcome Centre for Integrative Neuroimaging, FMRIB, University of Oxford, John Radcliffe Hospital, Headington, OX3 9DU, Oxford, UK
45. School of Life Sciences, University of Nottingham, Nottingham, UK
46. Pain Centre Versus Arthritis, University of Nottingham, Nottingham, UK
47. Brainnetome Center/Brainnetome Center, Institute of Automation, Chinese Academy of Sciences, Zhongguancun East Road, Beijing, China
48. Magnetic Imaging Resonance Core Facility, Institut d'Investigacions Biomèdiques August Pi I Sunyer (IDIBAPS), Rosselló, 149-153, Barcelona, Spain
49. Center for Translational Neuroimaging, Northeastern University, 360 Huntington Avenue, Boston, USA
50. Khokhar Lab, Department of Biomedical Sciences, University of Guelph, 50 Stone Rd E, Guelph, Canada
51. Laboratory of Acute Brain Injury and Therapeutic Strategies, Neuroscience, Istituto di Ricerche Farmacologiche Mario Negri, IRCCS, via Mario Negri 2, Milan, Italy
52. Biomedical Engineering and Physics, Amsterdam UMC location University of Amsterdam, Amsterdam, The Netherlands
53. Facultad de Medicina, Universidad Autónoma de Querétaro, Querétaro, Mexico
54. Escuela Nacional de Estudios Superiores unidad Juriquilla, Universidad Nacional Autónoma de México, Boulevard Juriquilla 3001, Querétaro, Mexico
55. Institute of Development, Aging and Cancer, Tohoku University, 4-1 Seiryomachi, Aoba-ku, Sendai, Japan
56. Lyon Neuroscience Research Center, Université Claude Bernard Lyon 1, INSERM, CNRS, Lyon, France
57. Febo Laboratory, Psychiatry, University of Florida, 1149 S. Newell Drive, Gainesville, United States
58. School of Medicine, University of Nottingham, Nottingham, UK
59. Comparative Medicine Unit, Trinity College Dublin, Dublin, Ireland
60. Berlin Ultrahigh Field Facility (B.U.F.F.), Max-Delbrück Center for Molecular Medicine in the Helmholtz Association, Robert-Rössle-Str. 10, Berlin, Germany
61. Translational Imaging, Department of Psychiatry and Psychotherapy, Central Institute of Mental Health, Medical Faculty Mannheim, University of Heidelberg, J5, Mannheim, Germany
62. Psychiatric neurosciences, Center for Psychiatric Neuroscience, Lausanne University and University Hospital Center, Unicentre, Lausanne, Switzerland
63. Department of Neurophysiology, Medical Faculty, Ruhr University Bochum, Universitätsstraße 150, Bochum, Germany
64. Institute for Biomedical Engineering, University and ETH Zurich, Wolfgang-Pauli-Str. 27, Zurich, Switzerland
65. Centre for Microscopy, Characterisation & Analysis, Research Infrastructure Centres, The University of Western Australia, 6 Verdun Street, Nedlands, Australia
66. NeuroSpin, CEA Saclay, Paris, France
67. iHuman Institute, ShanghaiTech University, Shanghai, China
68. Functional Imaging Laboratory, German Primate Center - Leibniz Institute for Primate Research, Kellnerweg 4, Göttingen, Germany
69. Faculty of Biology and Psychology, Georg-August University of Göttingen, Göttingen, Germany
70. DFG Research Center for Nanoscale Microscopy and Molecular Physiology of the Brain (CNMPB), Göttingen, Germany
71. Simons Initiative for the Developing Brain, The University of Edinburgh, Edinburgh, UK
72. Patrick Wild Centre, The University of Edinburgh, Edinburgh, UK
73. Centre for Discovery Brain Sciences, The University of Edinburgh, Edinburgh, UK
74. Grenoble Institut Neurosciences, Univ. Grenoble Alpes, CNRS, Grenoble, France
75. Biomedical MR Imaging and Spectroscopy Group, Center for Image Sciences, University Medical Center Utrecht & Utrecht University, Yalelaan 2, Utrecht, The Netherlands
76. National Institutes for Quantum Science and Technology, 4-9-1 Anagawa, Inage-ku, Chiba, Japan
77. Group of Biomedical Imaging, Consorcio Centro de Investigación Biomédica en Red (CIBER) de Bioingeniería, Biomateriales y Nanomedicina (CIBER-BBN), University of Barcelona, Barcelona, Spain
78. BioMedical Engineering and Imaging Institute, Icahn School of Medicine at Mount Sinai, 1470 Madison Avenue, New York City, USA
79. Animal Imaging and Technology Section, Center for Biomedical Imaging, École polytechnique fédérale de Lausanne, Route Cantonale, Lausanne, Switzerland
80. Focused Ultrasound Laboratory, Radiology, Brigham and Women's Hospital, 221 Longwood Ave, Boston, USA
81. Neurosciences Department, Novartis Institutes for BioMedical Research, Basel, Switzerland
82. Inria, Univ. Grenoble Alpes, CNRS, Grenoble, France
83. NIHR Biomedical Research Centre, University of Nottingham, Nottingham, UK
84. Gipsa-lab, Univ. Grenoble Alpes, CNRS, Grenoble, France
85. CERMEP - Imagerie du vivant, Lyon, France
86. Combinatorial Neuroimaging Core Facility, Leibniz Institute for Neurobiology, Brenneckestreet 6, Magdeburg, Germany

87. Center for Behavioral Brain Sciences, Universitaetsplatz 2, Magdeburg, Germany
88. Queensland Brain Institute and Centre for Advanced Imaging, University of Queensland, Building 79, St Lucia, Australia
89. Centre de recherche en radiologie, Centre Hospitalier Universitaire Vaudois, Rue Centrale 7, Lausanne, Switzerland
90. Biology of Neurodegenerative Disorders, Neuroscience, Istituto di Ricerche Farmacologiche Mario Negri, IRCCS, via Mario Negri 2, Milan, Italy
91. Conway Institute of Biomedical and Biomolecular Sciences, School of Medicine, University College Dublin, Dublin, Ireland
92. Functional Neuroimaging Laboratory, Center for Neuroscience and Cognitive systems, Istituto Italiano di Tecnologia, Rovereto, Italy
93. Department of Biopsychology, Institute of Cognitive Neuroscience, Ruhr University Bochum, Universitätsstraße 150, Bochum, Germany
94. Max-Delbrück Center for Molecular Medicine in the Helmholtz Association, Robert-Rössle-Straße 10, Haus 90, Berlin, Germany
95. School of Arts & Sciences, University of Houston-Victoria, Victoria, USA
96. School of Psychology, Trinity College Dublin, Dublin, Ireland
97. Department of Psychiatry at the School of Medicine, Trinity College Dublin, Dublin, Ireland
98. Trinity Centre for Biomedical Engineering, School of Medicine, Trinity College Dublin, Dublin 2, Ireland
99. Centre for Brain Development and Repair, Institute for Stem Cell Biology and Regenerative Medicine, Bangalore, India
100. Department of Medical Biophysics, University of Toronto, Toronto, Canada
101. UMR/INSERM Neurodol, Pharmacologie Médicale, Université Clermont Auvergne (UCA), Faculté de médecine et de pharmacie 28, place Henri Dunant, 63001 Clermont-Ferrand cedex, France
102. Animal Care Unit, Istituto di Ricerche Farmacologiche Mario Negri, IRCCS, via Mario Negri 2, Milan, Italy
103. Physical Sciences Platform, Sunnybrook Research Institute, 2075 Bayview Avenue, Toronto, Canada
104. Experimental and Clinical Research Center, A Joint Cooperation Between the Charité Medical Faculty and the Max-Delbrück Center for Molecular Medicine in the Helmholtz Association, Berlin, Germany
105. Department of Pediatric Neurology, UMC Utrecht Brain Center, University Medical Center Utrecht & Utrecht University, Heidelberglaan 100, Utrecht, The Netherlands
106. Medical Imaging Physics (INM-4), Institute of Neuroscience and Medicine, Forschungszentrum Juelich, 52428, Juelich, Germany
107. Centre for Microscopy, Characterisation and Analysis, The University of Western Australia, 35 Stirling Highway, Crawley, Australia
108. Translational Neuroimaging Laboratory, Physiology, Development and Neuroscience, University of Cambridge, Downing Street, Cambridge, UK
109. Erwin L. Hahn Institute for MR Imaging, University of Duisburg-Essen, Essen, Germany
110. Biomedical Engineering, The University of North Carolina at Chapel Hill, 125 Mason Farm Rd., Chapel Hill, USA
111. Department of Physiology, McGill University, 3801 University St., Montreal, Canada
112. Laboratory of Surgical Neuroanatomy, Institute of Neuroscience, University of Barcelona, Casanova, 143, Barcelona, Spain
113. Athinoula A. Martinos Center for Biomedical Imaging, Massachusetts General Hospital and Harvard Medical School, MA 02129, Charlestown, USA
114. Department of Health Sciences and Technology, ETH Zurich, Wolfgang-Pauli-Str. 27, Zurich, Switzerland
115. Neuroscience Center Zürich, ETH Zürich and University of Zürich, Zürich, Switzerland
116. Hospices Civils de Lyon, Lyon, France
117. Department of Psychiatry, McGill University, 1033 Pine Avenue West, Montreal, Canada

Abstract

Task-free functional connectivity in animal models provides an experimental framework to examine connectivity phenomena under controlled conditions and allows comparison with invasive or terminal procedures. To date, animal acquisitions are performed with varying protocols and analyses that hamper result comparison and integration. We introduce *StandardRat*, a consensus rat functional MRI acquisition protocol tested across 20 centers. To develop this protocol with optimized acquisition and processing parameters, we initially aggregated 65 functional imaging datasets acquired in rats from 46 centers. We developed a reproducible pipeline for the analysis of rat data acquired with diverse protocols and determined experimental and processing parameters associated with a more robust functional connectivity detection. We show that the standardized protocol enhances biologically plausible functional connectivity patterns, relative to pre-existing acquisitions. The protocol and processing pipeline described here are openly shared with the neuroimaging community to promote interoperability and cooperation towards tackling the most important challenges in neuroscience.

Introduction

Understanding the brain requires a multilevel approach across spatial and temporal scales. Distinct brain network features, as revealed by task-free functional magnetic resonance imaging (fMRI), play a central role in our comprehension of healthy brain function and disorder mechanisms. Human neuroimaging has made great strides in our understanding of the brain through data-sharing initiatives¹⁻⁵. Nonetheless, animal models, particularly small rodents, continue to play an important role in neuroscience discovery, in part, due to the feasibility of performing invasive and terminal manipulations on genetically controlled animals⁶. Specifically, rats are commonly used in pharmacological studies owing to similarities in drug metabolism, as well as in behavioral neuroscience due to their higher proficiency in learning more complex tasks.

Human neuroimaging sharing initiatives have led to a standardization of fMRI acquisition protocols that aid in the dissemination, aggregation and reuse of data^{4,7,8}. In contrast, preclinical neuroimaging essentially remains without harmonizing guidelines⁹. Acquisitions in animals are performed under diverse protocols that span different strains, restraint and anesthesia conditions, radiofrequency coil designs, and magnetic field strengths. These impact the generalization of the results and conclusions. Efforts to propose acquisition and / or preprocessing protocols rarely extend beyond the confines of single laboratories, thus limiting interoperability and widespread adoption^{9,10}. Thanks to the potential of fMRI in rodents to study the biological basis for connectivity phenomena across the whole-brain longitudinally¹¹, an optimized consensus protocol could potentiate future scientific discoveries.

In this preregistered study, we set out to aggregate and make publicly available representative datasets with various fMRI acquisition protocols in the rat and identify experimental parameters associated with robust and reliable functional connectivity detection. We curated the *Multirat_rest* collection (646 rats from 65 datasets) representing protocols used at 46 institutions. Based on the outcome of the analysis of the *Multirat_rest* collection, we devised a new consensus protocol and used it to aggregate the *StandardRat* collection (209 rats from 21 datasets). Preprocessing and confound correction was tailored to rodent data of different characteristics using a rodent-adapted fMRI preprocessing and analysis tool. Our primary outcome was the detection of plausible functional connectivity patterns corresponding to the biologically expected models. Collating data from 50 centers and 855 rats, we show that standardized acquisition and the associated preprocessing pipeline optimizes the detection of distributed fMRI networks in rats. In line with large-scale studies from other species^{12,13} we have freely released all data and the generated code.

Methods

Preregistration, code, and data availability: The study was pre-registered (<https://doi.org/10.17605/OSF.IO/EMQ4B>). Jupyter notebooks demonstrating the analysis code are available under the terms of the Apache-2.0 license (<https://github.com/grandjeanlab/MultiRat>). The raw datasets are available here: Unstandardized resting-state fMRI (*MultiRat_rest*)

(<https://doi.org/10.18112/openneuro.ds004114.v1.0.0>); Standardized resting-state fMRI (*StandardRat*) (<https://doi.org/10.18112/openneuro.ds004116.v1.0.0>). The preprocessed volumes, time-series, and quality control files are available here (<https://doi.org/10.34973/1gp6-gg97>). Image preprocessing, confound correction and connectivity analysis were performed using RABIES 0.3.5 (<https://github.com/CoBrALab/RABIES>).

Preregistration deviations: We used the SIGMA rat template¹⁴ instead of the Papp et al. 2014 template¹⁵, due to fewer artifacts, additional relevant assets, and improved *in vivo* contrast. Some datasets had field-of-view cropped to ease image registration. Some datasets had time-series cropped to ease the computational load. We used temporal signal-to-noise instead of signal-to-noise ratio as these were shown to be correlated¹². Detailed deviations are listed here: <https://github.com/grandjeanlab/MultiRat>.

Animals: All acquisitions were performed following approval from the respective local and national authorities. Participating laboratories were instructed to provide $n = 10$ rat imaging acquisitions consisting of one anatomical and one resting-state functional run. Exclusion criteria were unsuitability for RABIES preprocessing (e.g., dedicated image reconstruction needs, restricted field-of-view). The *MultiRat_rest* collection consists of $N = 65$ datasets from 46 research centers, $n = 646$ rats (141/505 f/m). *StandardRat* consists of $N = 21$ datasets, $n = 209$ rats (93/116 f/m) from 20 research centers.

Standardized fMRI acquisition protocol: The standardized protocol was determined based on the outcomes of the analysis of *MultiRat_rest* and used to acquire the *StandardRat* dataset. Acquisitions were performed chiefly in ~2 months old free-breathing Wistar rats, mixed-sex, and anesthetised using 4% isoflurane and 0.05 mg/kg medetomidine s.c. bolus for induction, and 0.4% isoflurane and 0.1 mg/kg/h medetomidine s.c. for maintenance. Imaging with a gradient-echo echo-planar imaging technique was conducted 40 min post-anesthesia induction, with repetition time = 1000 ms, echo time / flip angle / bandwidth defined as a function of field strength (**Table S1**), repetitions = 1000, matrix size [64 x 64], field-of-view (25.6 x 25.6) mm², 18 interleaved axial slices of 1 mm with 0.1 mm gap. The full protocol is available here: <https://github.com/grandjeanlab/StandardRat>.

Data preprocessing and confound correction: Scans were organized according to the BIDS format¹⁶. Preprocessing was performed on each scan session separately using a reproducible containerized software environment for RABIES 0.3.5 (Singularity 3.7.3-1.el7, Sylabs, California, USA). The preprocessing was performed using autobox¹⁷, N4 inhomogeneity correction¹⁸, motion correction¹⁸, a rigid registration between functional and anatomical scans¹⁸, non-linear registration between anatomical scan and template, and a common space resampling to (0.3 x 0.3 x 0.3) mm³. Visual inspection was performed on preprocessing outputs for all scans for quality control. Five confound correction models were tested, using three approaches based on ICA-AROMA¹⁹, white-matter and ventricle signal, or global signal regression (**Table S2**). These were done together with motion regression, spatial smoothing to (0.5 mm)³, a high-pass filter of 0.01 Hz, and a low-pass filter of either 0.1 or 0.2 Hz.

Data analysis: To determine functional connectivity in individual rats, seed-based analysis was performed with RABIES in template-space using spherical seeds of 0.9 mm diameter located on the S1 barrel field area (S1bf) and anterior cingulate area (ACA). Functional connectivity was calculated as the Pearson's correlation coefficient between regional time-courses. Functional connectivity specificity was defined relative to the left S1bf seed, using the contralateral right S1bf region-of-interest as the specific region-of-interest, and the ACA as the unspecific region-of-interest¹². Functional connectivity was evaluated for each animal and divided into four categories: specific ($r_{\text{S1bf left to right}} > 0.1$ AND $r_{\text{S1bf left to ACA}} < 0.1$), unspecific ($r_{\text{S1bf left to right}} > 0.1$ AND $r_{\text{S1bf left to ACA}} > 0.1$), no ($r_{\text{S1bf left to right}} \in [-0.1, 0.1]$ AND $r_{\text{S1bf left to ACA}} \in [-0.1, 0.1]$), and spurious connectivity (remaining cases).

Statistical analysis: One sample t-test voxel-wise maps and group independent component analysis were estimated using Nilearn 0.7.1²⁰. Comparisons between functional connectivity specificity and categorical variables (e.g., magnetic field strength, strain, sex) were determined using χ^2 tests, as implemented in SciPy 1.6.2²¹. Continuous variables (e.g., mean framewise displacement) were transformed into six categorical bins to allow comparison with χ^2 tests. Linear regression and ANOVA were performed using Pingouin 0.5²². Individual seed-based maps are represented as color-coded overlays thresholded at $r > 0.1$. Given the emphasis on detection of functional connectivity, we mitigated against false negatives by applying a threshold of $p_{\text{uncorrected}} < 0.05$ to the one-sample t-test maps, following preregistration specifications. Slice positions are indicated in mm relative to the anterior commissure.

Results

We aggregated the *MultiRat_rest* collection of unstandardized fMRI datasets representative of local site acquisition procedures (N = 65 datasets, n = 646 rats). As expected, we found high heterogeneity in all experimental factors recorded, including rat characteristics (sex, strain, **Figure 1a,b**, age, weight, **Figure S1**), in-scan physiology (anesthesia/awake, breathing rates **Figure 1c,e**), and image acquisitions (magnetic field strength, sequence, and sequence parameters **Figure 1d,f,g**). Notably, there was a large sex bias in favor of males (**Figure 1a**). Despite the heterogeneous distribution of the acquisition parameters and ensuing image quality (**Figure 1g,h,i**), 638/646 of the scans passed preprocessing quality control (one scan with excessive motion, one empty scan, six scans failed image registrations, **Figure S2**). As further quality controls, we described temporal signal-to-noise (**Figure S3**) and motion parameters (**Figure S4**). Overall, we found that the aggregated datasets represent current rodent fMRI acquisition trends⁹ and that the RABIES toolbox can be effectively employed for the preprocessing of rat datasets despite widely varying acquisition parameters. This paves the way for reproducible and interoperable data processing across sites.

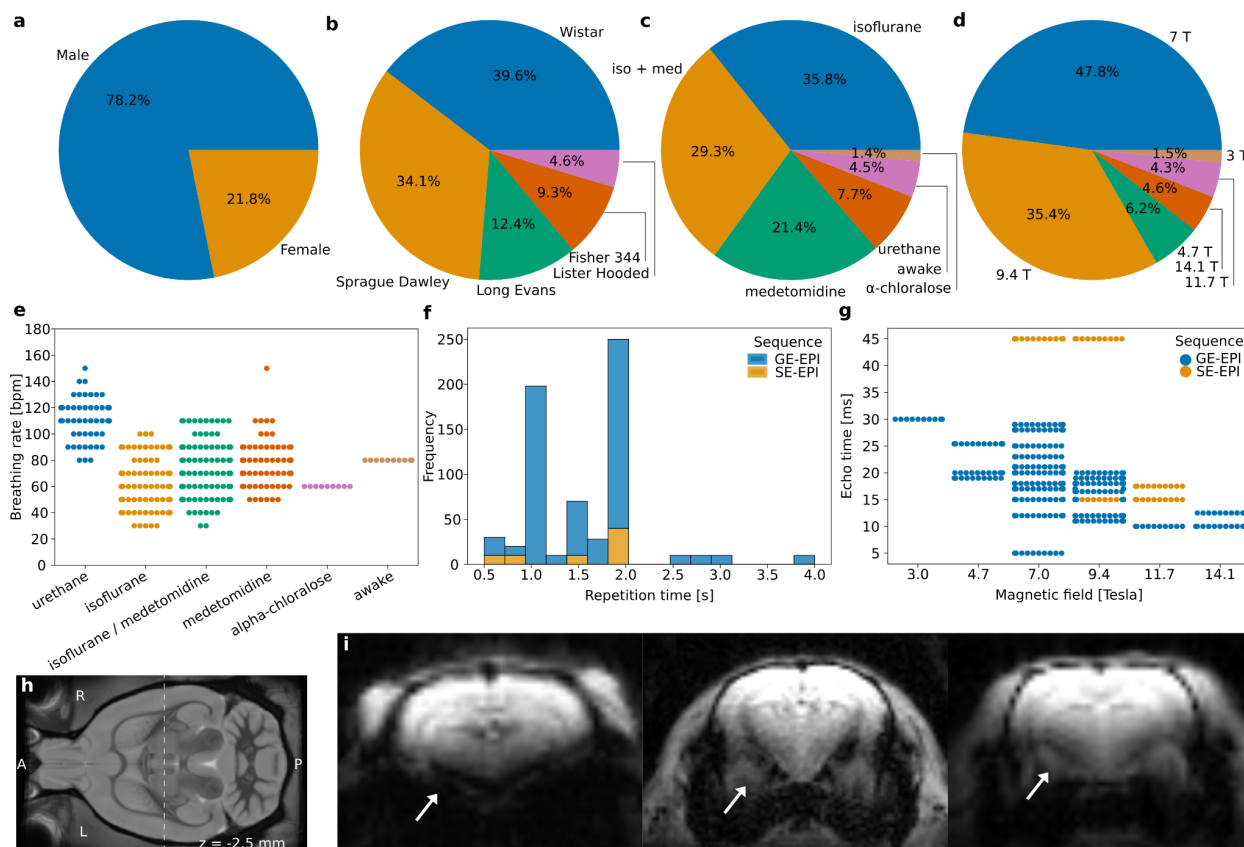


Figure 1. MultiRat_rest dataset description *a. Sex, b. Strain, c. Anesthesia, d. Magnetic field strength, e. Breathing rate as a function of anesthesia, f. Repetition time, g. Echo time as a function of magnetic field strength, h. Slice position for the examples, i. Example of representative raw functional images. Arrows indicate different susceptibility artifact-related geometric distortions in the amygdala.*

We focused on examining functional connectivity in the sensory cortex, as sensory networks are robust to anesthesia effects, in the anesthesia depth range typically used in fMRI²³. More specifically, we evaluated the specificity of the connectivity of the S1 barrel field area (S1bf) using two complementary criteria as indexes of accurate functional connectivity identification (**Figure 2a,b**)¹². The first criterion was the strong connectivity between inter-hemispheric sensory cortices (barrel field, S1bf). Indeed, in both humans and animals, dating back to the original description of functional connectivity²⁴, the majority of the networks including sensory-motor networks have a bilateral homotopic organization. The second criterion was a weak or anti-correlation between S1bf and the anterior cingulate area (ACA). The ACA is a major node in the task-negative rodent default-mode network. Task-positive (as the S1bf-associated sensory network^{25,26}), and task-negative networks are generally non- or anti-correlated²⁷.

Functional connectivity was evaluated for each animal and divided into four categories based on these two criteria referred above: specific, unspecific, spurious, and no connectivity. Five

confound correction models were tested (**Table S2, Figure 2c**). The global signal regression nuisance model was the one that performed the best for specific connectivity detection (40.8% of the animals with specific connectivity, 11.8% as unspecific, 13.6% as spurious, and 33.9% as containing no detectable functional connectivity, **Figure 2c,d,e**). Because network inference is often assessed at the group-level rather than at the individual-level, we performed a one-sample t-test per dataset to estimate the incidence of contralateral connectivity detected within groups, relative to the S1bf seed (**Figure 2f**). Up to 70% of the 65 datasets presented limited evidence of contralateral connectivity relative to the seed, and 50% of the datasets captured the features of a larger sensory network at the group level (see also other seeds, **Figure S5**). We conclude that rat datasets do not capture functional connectivity equally, similar to what we previously reported in the mouse¹². Although we found that global signal regression enhances the incidence of specific connectivity of S1bf seeds, we can not generalize this nuisance model to examine other connectivity outcomes. Indeed, the global signal partakes in previously unsuspected roles in the signal acquired in task-free paradigms²⁸, and its removal should be considered with care.

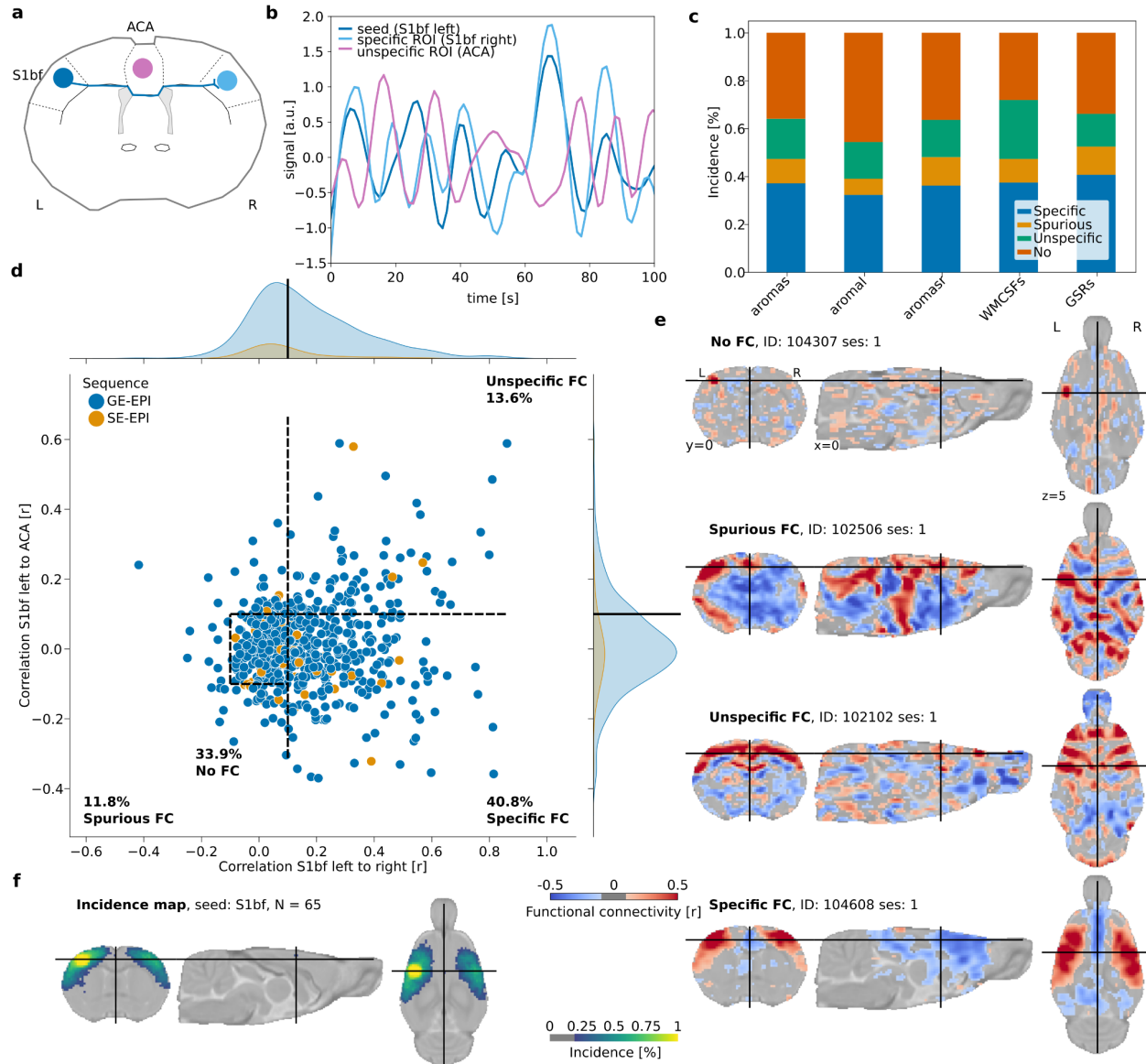


Figure 2. Functional connectivity specificity. *a. Diagram illustrating the logic behind functional connectivity specificity. The sensory (barrel field, S1bf) area (blue) chiefly projects to the contralateral homotopic area (light blue), but not to the anterior cingulate area (ACA) area (purple) b. Example of temporal dynamics in the resting-state signal. Correlated signal between the ipsi- and contralateral S1bf, and anti-correlated signal from the ACA. c. Distribution of functional connectivity (FC) categories as a function of confound correction models. d. Functional connectivity in left S1bf relative to specific (right S1bf) and unspecific (ACA) ROIs using the global regression correction model. Dots represent scans ($n = 638$ rats), dotted lines indicate the thresholds used to delineate the categories. e. Example of individual seed-based analysis maps for each connectivity category. f. Group-level functional connectivity incidence map ($N = 65$ datasets).*

Our observations underline the need for an improved acquisition protocol to maximize individual-level inferences to potentiate discovery in experimental network neuroscience. To address this, we evaluated parameters associated with increased specificity incidence in the *MultiRat_rest* collection. Medetomidine/isoflurane anesthesia combination condition was enriched in scans categorized as specific (**Figure S6a**, 92/187 scans, χ^2 test: $\phi = 0.27$, dof = 15, $g = 92.38$, $p = 3.5e-13$). The use of gradient echo imaging sequence was also associated with higher specificity incidence (**Figure S6b**, 241/568 scans, χ^2 test: $\phi = 0.11$, dof = 3, $g = 16.00$, $p = 0.001$). Based on these observations, we devised an anesthesia protocol derived from dataset ds01031 (9/10 specific scans), and an imaging sequence based on ds01028 (8/10 specific scans), acquired on a 4.7 T mid-field system. We hypothesized that this protocol would enhance functional specificity while being compatible with lower field systems that continue to represent a relevant share of the systems in use (**Figure 1d**)⁹.

Using this consensus protocol, we curated the *StandardRat* collection of 21 datasets obtained across 20 centers. This consisted of $n = 209$ rats (93/116 f/m) rats, chiefly Wistar (189/209) aged ~ 2 months (**Figure S7**). Dataset acquisitions were performed at magnetic field strengths ranging from 4.7 to 17.2 T. Preprocessing was performed similarly to the unstandardized dataset. 207/209 scans passed quality assurance (two discards due to image misregistration). Interestingly, despite the same anesthesia protocol being used, the respiratory rates reported at the start of fMRI acquisition differed as a function of rat strain (**Figure 3a,b**, ANOVA, $\eta^2 = 0.24$, $F_{(195,2)} = 31.17$, $p = 1.8e-12$). Finally, there was only a negligible effect on the temporal signal-to-noise ratio as a function of magnetic field strength (**Figure 3c**, linear regression, coef = 0.53 [-0.23, 1.30], $r^2 = 0.01$, dof = 201, $T = 1.37$, $p = 0.17$).

The objective for this study was to find an improvement in specific connectivity in the individual datasets. We found that 61.8% of the scans were categorized to contain specific connectivity (**Figure 3d**) against 40.8% in the *MultiRat_rest* dataset with unstandardized acquisitions (**Figure 2d**) when using global signal regression (χ^2 test: $\phi = 0.13$, dof = 3, $g = 33.01$, $p = 3.2e-07$). The difference remained when we compared datasets from centers that contributed to both collections exclusively (χ^2 test: $\phi = 0.17$, dof = 3, $g = 28.37$, $p = 3.0e-06$). This is going against the notion that the *StandardRat* collection is outperforming due to an enrichment in datasets from more experienced laboratories. Intriguingly, we could not establish a field strength effect on connectivity specificity (χ^2 test: $\phi = 0.19$, dof = 12, $g = 14.89$, p-value = 0.25), suggesting acquisition systems are not the limiting factor in this protocol. We conclude that the newly standardized protocol outperforms, on average, previously used protocols within the community for the detection of biologically plausible connectivity patterns.

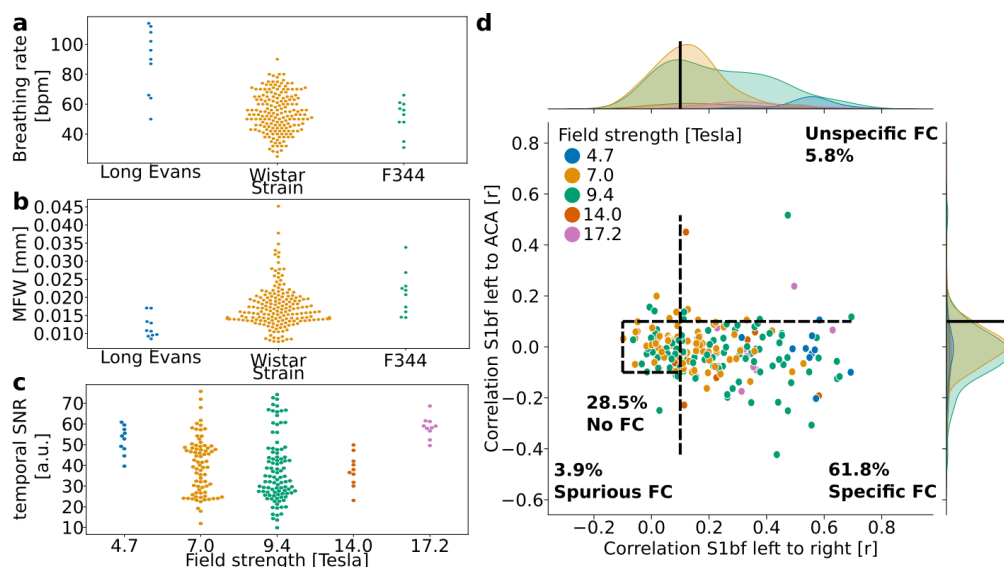


Figure 3. *StandardRat* dataset description. **a.** Breathing rate (breath per minute, bpm) as a function of strain. **b.** Mean framewise displacement (MFW) as a function of strain. **c.** Temporal signal-to-noise ratio in the sensory cortex as a function of field strength. **d.** *Functional connectivity in left S1bf relative to specific (right S1bf) and unspecific (ACA) ROIs using the global regression correction model.* Dots represent scans ($n = 207$ rats), dotted lines indicate the thresholds used to delineate the categories.

Intriguingly, there remained differences in the connectivity patterns between datasets from the *StandardRat* collection. We next sought to identify the variables associated with greater incidences of specific connectivity patterns. Importantly, we could not establish strain, sex, or magnetic field strength effects, suggesting the protocol is applicable for a large range of conditions (**Table S3**). Next, we examined breathing rate and temporal signal-to-noise ratio as indicators of acquisition variability (**Figure S8**). Overall, we found that scans with breathing rates ranging 84-114 breaths-per-minutes, cortical temporal signal-to-noise ratio >53 achieved higher incidences of connectivity specificity among the *StandardRat* collection. These provide the first line of evidence to refine the *StandardRat* protocol by identifying practices that can further enhance connectivity outcomes.

In summary, we curated two dataset collections (*Multirat_rest* and *StandardRat*), analyzed them and made them an open-access resource. These are the largest rodent fMRI datasets currently available. We developed and deployed a preprocessing and confound correction strategy generalizable to most scans and every dataset. Using information from the *Multirat_rest* collection, we provide useful population parameter estimates to enhance the comparison of rat fMRI datasets. We proposed and evaluated a new standardized protocol and found that this consensus acquisition and preprocessing pipeline outperformed the previous acquisitions for connectivity specificity. To allow replication and to inspire new analyses we release all raw and processed data to the broader community.

On average, the standardized protocol yielded improvements over previous acquisitions gathered in the *MultiRat_rest* collection. However, individual-level inferences remain limited to 61.8% of the scans acquired. This underlines the importance of implementing sound quality assurance metrics based on assumptions of biologically-plausible functional connectivity. Improving output quality, either through understanding the factors leading to successful acquisitions, enhanced protocols, preprocessing, or nuisance regression models would lead to tangible outcomes capable of further potentiating future data acquisitions and reducing animal use by reducing discards.

Importantly, our new protocol relies on light sedation to restrain the animals. While optimized for fMRI, this protocol may not generalize to other procedures such as electrophysiology. We also found that existing awake restraining protocols, on average, lead to lower incidence of specific connectivity patterns. A previous report has indicated similar values in a dataset in awake rats²⁹. Due to the impact of anesthesia on networks^{9,10}, it remains central to develop awake imaging as an alternative. However, these protocols should be examined through the lens of quality control metrics to ensure plausible connectivity patterns are achieved consistently. Further, the acquisition sequence in *StandardRat* is designed to run on a wide range of systems. The effectiveness of new sequences should be examined against the current protocol, e.g., isotropic resolution³⁰ or multiband acquisition³¹.

Our project's methodological and conceptual advancements are the first step towards large multi-site rat neuroimaging acquisitions. Coordinated open-science projects in neuroimaging and other disciplines are transforming the scientific landscape³². Through the concerted efforts of our centers and potentiated by a substantially improved protocol, rat functional brain imaging is set to tackle urgent questions in neuroscience and mental health research.

References

1. Elam, J. S. *et al.* The Human Connectome Project: A retrospective. *NeuroImage* **244**, 118543 (2021).
2. Mennes, M., Biswal, B., Castellanos, F. X. & Milham, M. P. Making data sharing work: The FCP/INDI experience. *NeuroImage* **82**, 683 (2013).
3. Miller, K. L. *et al.* Multimodal population brain imaging in the UK Biobank prospective epidemiological study. *Nat. Neurosci.* **19**, 1523–1536 (2016).
4. Smith, S. M. *et al.* Resting-state fMRI in the Human Connectome Project. *NeuroImage* **80**, 144–168 (2013).
5. Van Essen, D. C. *et al.* The WU-Minn Human Connectome Project: an overview. *NeuroImage* **80**, 62–79 (2013).

6. Homberg, J. R. *et al.* The continued need for animals to advance brain research. *Neuron* **109**, 2374–2379 (2021).
7. Alfaro-Almagro, F. *et al.* Image processing and Quality Control for the first 10,000 brain imaging datasets from UK Biobank. *NeuroImage* **166**, 400–424 (2018).
8. Esteban, O. *et al.* FMRIPrep: a robust preprocessing pipeline for functional MRI. *Nat. Methods* **16**, 111–116 (2019).
9. Mandino, F. *et al.* Animal Functional Magnetic Resonance Imaging: Trends and Path Toward Standardization. *Front. Neuroinformatics* **13**, 78 (2019).
10. Reimann, H. M. & Niendorf, T. The (Un)Conscious Mouse as a Model for Human Brain Functions: Key Principles of Anesthesia and Their Impact on Translational Neuroimaging. *Front. Syst. Neurosci.* **14**, 8 (2020).
11. Pais-Roldán, P. *et al.* Contribution of animal models toward understanding resting state functional connectivity. *NeuroImage* **245**, 118630 (2021).
12. Grandjean, J. *et al.* Common functional networks in the mouse brain revealed by multi-centre resting-state fMRI analysis. *NeuroImage* **205**, 116278 (2020).
13. Milham, M. P. *et al.* An Open Resource for Non-human Primate Imaging. *Neuron* **100**, 61-74.e2 (2018).
14. Barrière, D. A. *et al.* The SIGMA rat brain templates and atlases for multimodal MRI data analysis and visualization. *Nat. Commun.* **10**, 5699 (2019).
15. Papp, E. A., Leergaard, T. B., Calabrese, E., Johnson, G. A. & Bjaalie, J. G. Waxholm Space atlas of the Sprague Dawley rat brain. *NeuroImage* **97**, 374–386 (2014).
16. Gorgolewski, K. J. *et al.* The brain imaging data structure, a format for organizing and describing outputs of neuroimaging experiments. *Sci. Data* **3**, 160044 (2016).
17. Cox, R. W. AFNI: Software for Analysis and Visualization of Functional Magnetic Resonance Neuroimages. *Comput. Biomed. Res.* **29**, 162–173 (1996).
18. Avants, B., Tustison, N. J. & Song, G. Advanced Normalization Tools: V1.0. *Insight J.* (2009)

doi:10.54294/uvnhin.

19. Pruim, R. H. R. *et al.* ICA-AROMA: A robust ICA-based strategy for removing motion artifacts from fMRI data. *NeuroImage* **112**, 267–277 (2015).
20. Abraham, A. *et al.* Machine learning for neuroimaging with scikit-learn. *Front. Neuroinformatics* **8**, (2014).
21. Virtanen, P. *et al.* SciPy 1.0: fundamental algorithms for scientific computing in Python. *Nat. Methods* **17**, 261–272 (2020).
22. Vallat, R. Pinguin: statistics in Python. *J. Open Source Softw.* **3**, 1026 (2018).
23. Paasonen, J., Stenroos, P., Salo, R. A., Kiviniemi, V. & Gröhn, O. Functional connectivity under six anesthesia protocols and the awake condition in rat brain. *NeuroImage* **172**, 9–20 (2018).
24. Biswal, B., Yetkin, F. Z., Haughton, V. M. & Hyde, J. S. Functional connectivity in the motor cortex of resting human brain using echo-planar MRI. *Magn. Reson. Med.* **34**, 537–541 (1995).
25. Gozzi, A. & Schwarz, A. J. Large-scale functional connectivity networks in the rodent brain. *NeuroImage* **127**, 496–509 (2016).
26. Mandino, F. *et al.* A triple-network organization for the mouse brain. *Mol. Psychiatry* (2021) doi:10.1038/s41380-021-01298-5.
27. Fox, M. D. *et al.* The human brain is intrinsically organized into dynamic, anticorrelated functional networks. *Proc. Natl. Acad. Sci.* **102**, 9673–9678 (2005).
28. Gutierrez-Barragan, D., Basson, M. A., Panzeri, S. & Gozzi, A. Infralow State Fluctuations Govern Spontaneous fMRI Network Dynamics. *Curr. Biol. CB* **29**, 2295-2306.e5 (2019).
29. Liu, Y. *et al.* An open database of resting-state fMRI in awake rats. *NeuroImage* **220**, 117094 (2020).
30. Lee, S.-H. *et al.* An isotropic EPI database and analytical pipelines for rat brain resting-state fMRI. *NeuroImage* **243**, 118541 (2021).

31. Lee, H.-L., Li, Z., Coulson, E. J. & Chuang, K.-H. Ultrafast fMRI of the rodent brain using simultaneous multi-slice EPI. *NeuroImage* **195**, 48–58 (2019).
32. Milham, M. P. *et al.* Assessment of the impact of shared brain imaging data on the scientific literature. *Nat. Commun.* **9**, 2818 (2018).

Acknowledgments: This research was enabled in part by support provided by Compute Ontario <https://www.computeontario.ca/> and Compute Canada (www.computecanada.ca). For the purpose of Open Access, the author has applied a CC BY public copyright licence to any Author Accepted Manuscript version arising from this submission.

Funding: This research was funded by: the National Institute of Health (K01EB023983, R03DA042971, R21AG065819, K25DA047458, I015I01CX000642-04, R01NS085200, R01MH098003, RF1MH114224, T32AA007573, R01MH067528, P30NS05219, T32GM007205, R01MH111416, R01NS078095, R01EB029857, F31MH115656, 1R21MH116473-01A1), The Wellcome Trust (212934/Z/18/Z, 109062/Z/15/Z, 110027/Z/15/Z, 203139/Z/16/Z), The Dutch Research Council (OCENW.KLEIN.334, 021.002.053, 016.130.662, 016.168.038), The German Research Foundation (SA 1869/15-1, SA 2897/2-1, SFB 874/B3, SFB 1280/A01, SFB 1436/B06), The French National Research Agency (ANR-15-IDEX-02, ANR-11-INBS-0006), Programa de Apoyo a Proyectos de Investigación e Innovación Tecnológica (IN212219, IA202120, IA201622), UK Medical Research Council (MR/N013700/1, 1653552), Portuguese Foundation for Science and Technology (LISBOA-01-0145-FEDER-022170, 275-FCT-PTDC/BBB/IMG/5132/2014), the Swiss National Science Foundation (PCEFP3_203005, PCEFP2_194260), King's College London, Biotechnology and Biological Sciences Research Council (BB/N009088/1), European Community's Seventh Framework Program (FP7/2007-2013), TACTICS (278948), the Brain and Behaviour Foundation (NARSAD, 25861), The Dutch Brain Foundation (F2014(1)-06), The National Science Foundation (DMR-1644779, 1533260), Human Brain Project (945539), Canadian Institutes of Health Research (PJT-148751, PJT-173442, MOP-102599), The Natural Sciences and Engineering Research Council of Canada (RGPIN-2020-05917, RGPIN-375457-09, RGPIN-2015-05103), Horizon 2020 Framework Programme of the European Union (740264, 802371), Academy of Finland (298007), European Research Council (ERC, 679058, 802371), Innosuisse (18546.1), The Research Foundation – Flanders (12W1619N, FWO-G048917N, G045420N), the Stichting Alzheimer Onderzoek (SAO-FRA-20180003), Special Research Programmes (1158), CIBER-BBN, Instituto de Salud Carlos III - FEDER (PI18/00893), Versus Arthritis (20777), The Brain Behavior Foundation (25861), Telethon Foundation (GGP19177), Eurostars (E!114985), Brain Canada Foundation platform support grant (PSG15-3755), the National Natural Science Foundation of China (81950410637), Fonds de recherche du Québec – Nature et technologies, the Forrest Research Foundation, Australian National Imaging Facility, University of Western Australia, National Health and Medical Research Council of the Australian Government, Perron Institute for Neurological and Translational Science, McGill University's Faculty of Medicine, Seaver Foundation, Autism Speaks, the Centre d'Imagerie BioMédicale of the UNIL, UNIGE, HUG, CHUV, EPFL, the Leenaards and Louis-Jeantet Foundations, DFG Research Center for Nanoscale Microscopy and Molecular Physiology of the Brain, the Synapsis foundation, Simons Initiative for the Developing Brain, the Patrick Wild Centre, Department of Biotechnology India, Utrecht University High Potential Program, ERA-NET NEURON Neuromarket, Mannheim Advanced Clinician Scientist Program, ICON - Interfaces and Interventions in Complex Chronic Conditions, Werner Siemens Foundation, Lisboa Regional Operational Programme. The Japan Ministry of Education, Culture, Sports, Science and Technology (MEXT), ShanghaiTech University, the Shanghai Municipal Government.

Conflict of interest: Aline Seuwen is an employee of Bruker, the manufacturer of preclinical MRI systems used for the acquisition of the majority of the datasets in this collection. Emmanuel L. Barbier is a consultant for Bruker. Benjamin Vidal is an employee of Theranexus company. Stefan Zurbruegg, Arno Doelemeyer, and Nicolau Beckmann are employees of Novartis Pharma AG. Thoralf Niendorf is founder and CEO of MRI.TOOLS GmbH.