

## INTRODUCTION

# Status and progress in coral reef disease research

Ernesto Weil<sup>1,\*</sup>, Garriet Smith<sup>2</sup>, Diego L. Gil-Agudelo<sup>3</sup>

<sup>1</sup>Department of Marine Sciences, University of Puerto Rico, PO Box 3208, Lajas, Puerto Rico 00667

<sup>2</sup>Department of Biology and Geology, University of South Carolina Aiken, Aiken, South Carolina 29801, USA

<sup>3</sup>Instituto de Investigaciones Marinas y Costeras INVEMAR, Cerro Punto de Betín, Zona Portuaria, Santa Marta, Magdalena, Colombia

**ABSTRACT:** Recent findings on the ecology, etiology and pathology of coral pathogens, host resistance mechanisms, previously unknown disease/syndromes and the global nature of coral reef diseases have increased our concern about the health and future of coral reef communities. Much of what has been discovered in the past 4 years is presented in this special issue. Among the significant findings, the role that various *Vibrio* species play in coral disease and health, the composition of the 'normal microbiota' of corals, and the possible role of viruses in the disease process are important additions to our knowledge. New information concerning disease resistance and vectors, variation in pathogen composition for both fungal diseases of gorgonians and black band disease across oceans, environmental effects on disease susceptibility and resistance, and temporal and spatial disease variations among different coral species is presented in a number of papers. While the Caribbean may still be the 'disease hot spot' for coral reefs, it is now clear that diseases of coral reef organisms have become a global threat to coral reefs and a major cause of reef deterioration.

**KEY WORDS:** Coral reef · Disease · Caribbean · Global threat · Reef deterioration · *Vibrio* · Disease resistance · Disease vectors

—Resale or republication not permitted without written consent of the publisher—

Over the past decades, coral reefs around the world have experienced significant changes in structure and function due to many interacting factors (Harvell et al. 1999, 2004, Hayes et al. 2001, Jackson et al. 2001, Wilkinson 2002, 2004, Gardner et al. 2003, Hughes et al. 2003, Pandolfi et al. 2003). Although the role or importance of each factor, or a combination of various factors, might vary across localities and/or regions, and time, diseases of coral reef organisms are becoming increasingly important in the deterioration dynamics of these important tropical marine communities. The Caribbean has been dubbed a 'disease hot spot' due to the fast emergence and high virulence of coral reef diseases/syndromes, their widespread geographic distribution, wide host ranges, and frequent epizootic events with significant coral mortalities (Epstein et al. 1998, Hayes & Goreau 1998, Green & Bruckner 2000, Weil et al. 2002a, Weil 2004). Currently, diseases of coral reef organisms have become the most important

factor in the decline of coral reefs throughout the region (Weil 2004). In contrast, relatively few coral diseases and/or epizootic events have been reported for the Indo-Pacific, and these have generally been of both low prevalence and limited geographic distribution (Green & Bruckner 2000, Willis et al. 2004). However, as can be read throughout this issue and in the recently published book *Coral Health and Disease* (Rosenberg & Loya 2004), the number and distribution of coral diseases across the Indo-Pacific is also increasing.

Bleaching events have become more frequent and intensive, usually over wide geographic scales. In the Caribbean, bleaching has caused variable, but generally low coral mortality and nothing like the mass mortalities of the scale observed in the Indo-Pacific. Even the recent extensive bleaching of 2005, probably the worst ever recorded for the Caribbean (Fig. 1), has produced only limited, localized mortalities, some of which are the result of synergistic effects with other

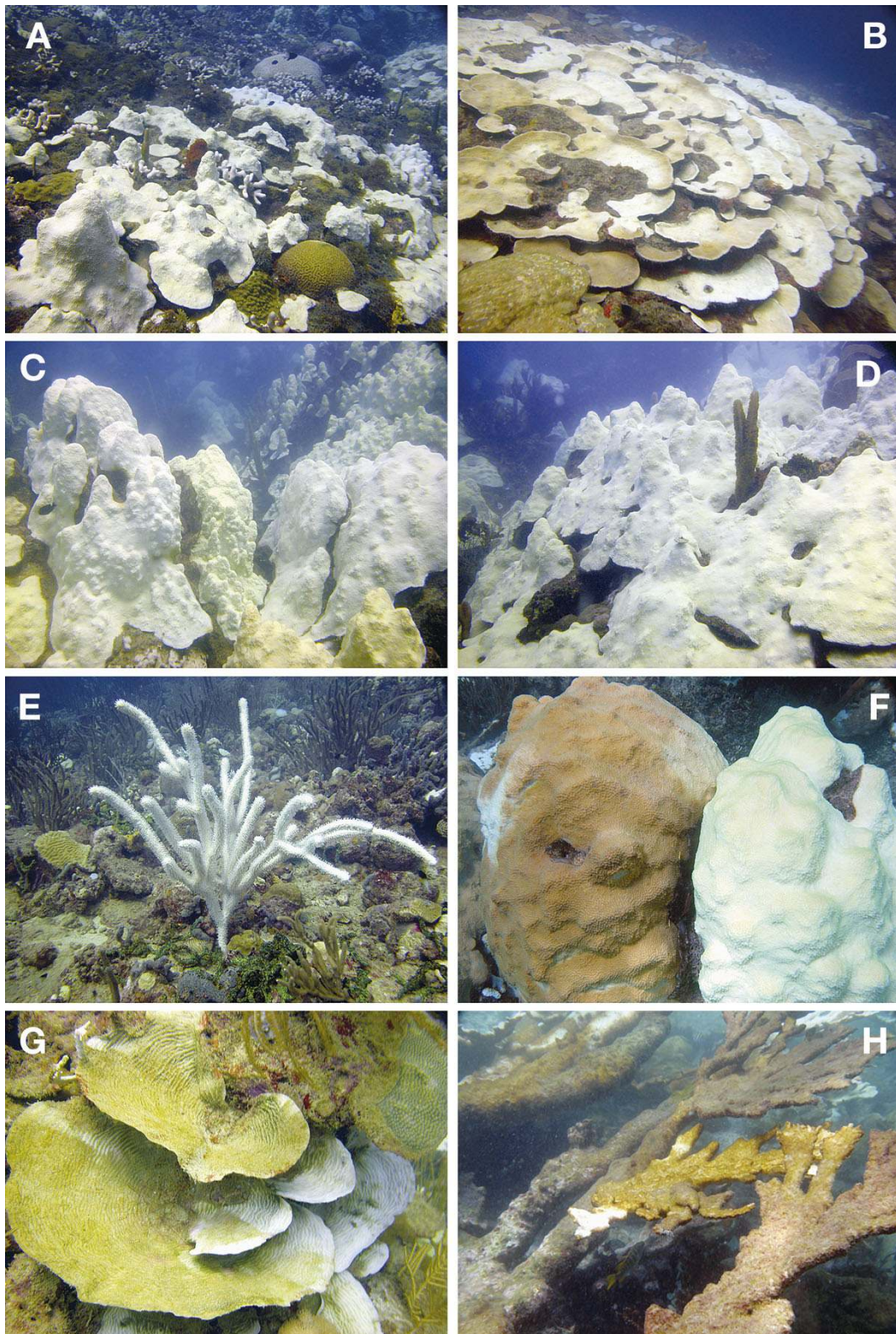


Fig. 1. Bleached reef communities in Grenada (A,B) and Puerto Rico (C,D) in 2005. A high proportion of octocorals (E), hydrocorals and zoanthids also bleached in many localities. Two side by side colonies of *Montastraea faveolata*, one bleached and the other not (F), pose interesting questions about the variability in response to temperature stress. Significant bleaching mortality was observed this time in *Undaria* (agaricids) (G), *Acropora* (H) and the hydrocoral *Millepora* in Puerto Rico

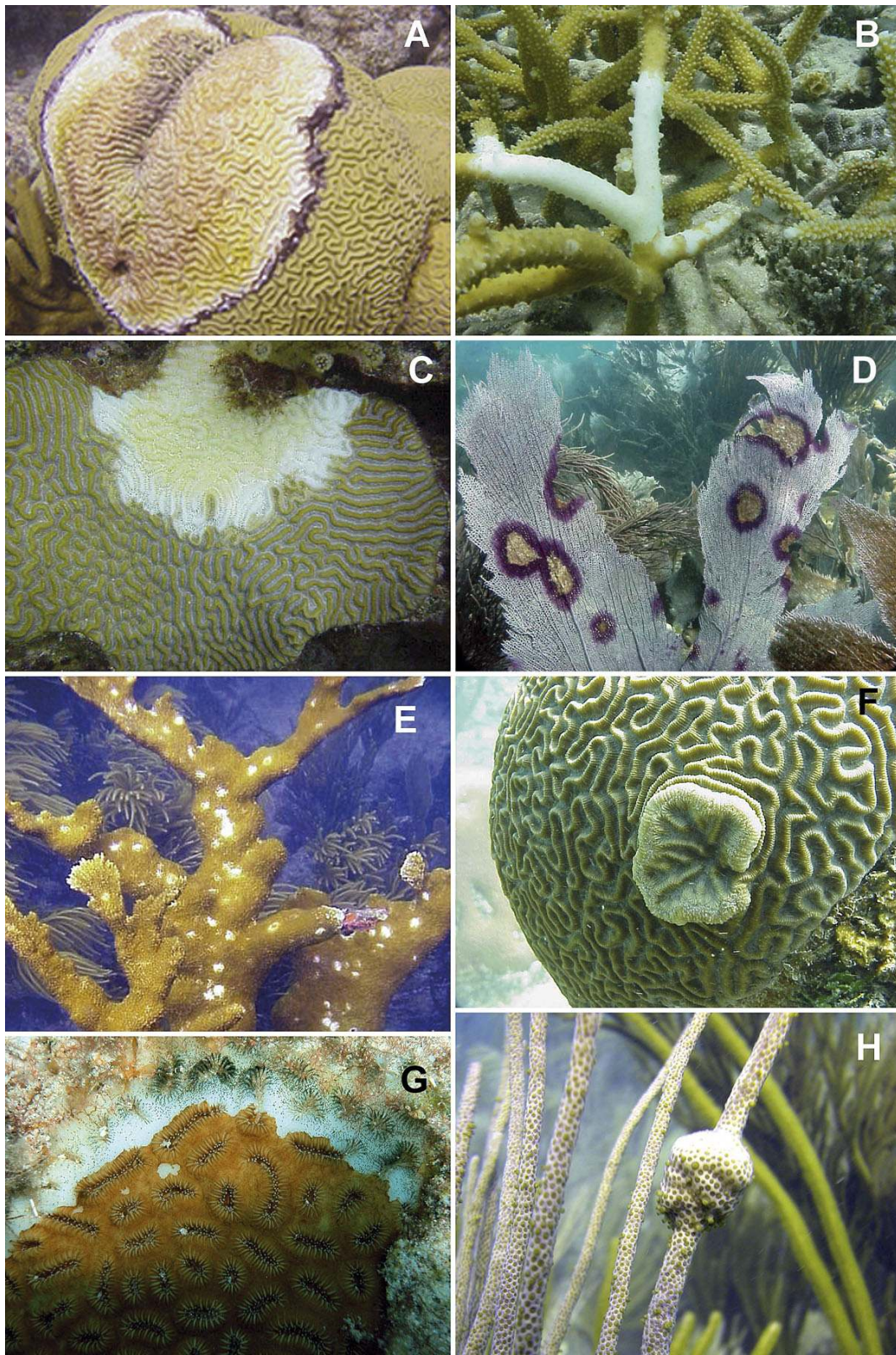


Fig. 2. Common diseases (pathogens known) in the Caribbean include black band disease (A), white band disease (B), white plague (C), aspergillois (D), white pox (E), and tumors (F,H) in corals and octocorals. Secondary/opportunistic infection by a new ciliate (*Halofoliculina* sp.) is increasing in prevalence (G)

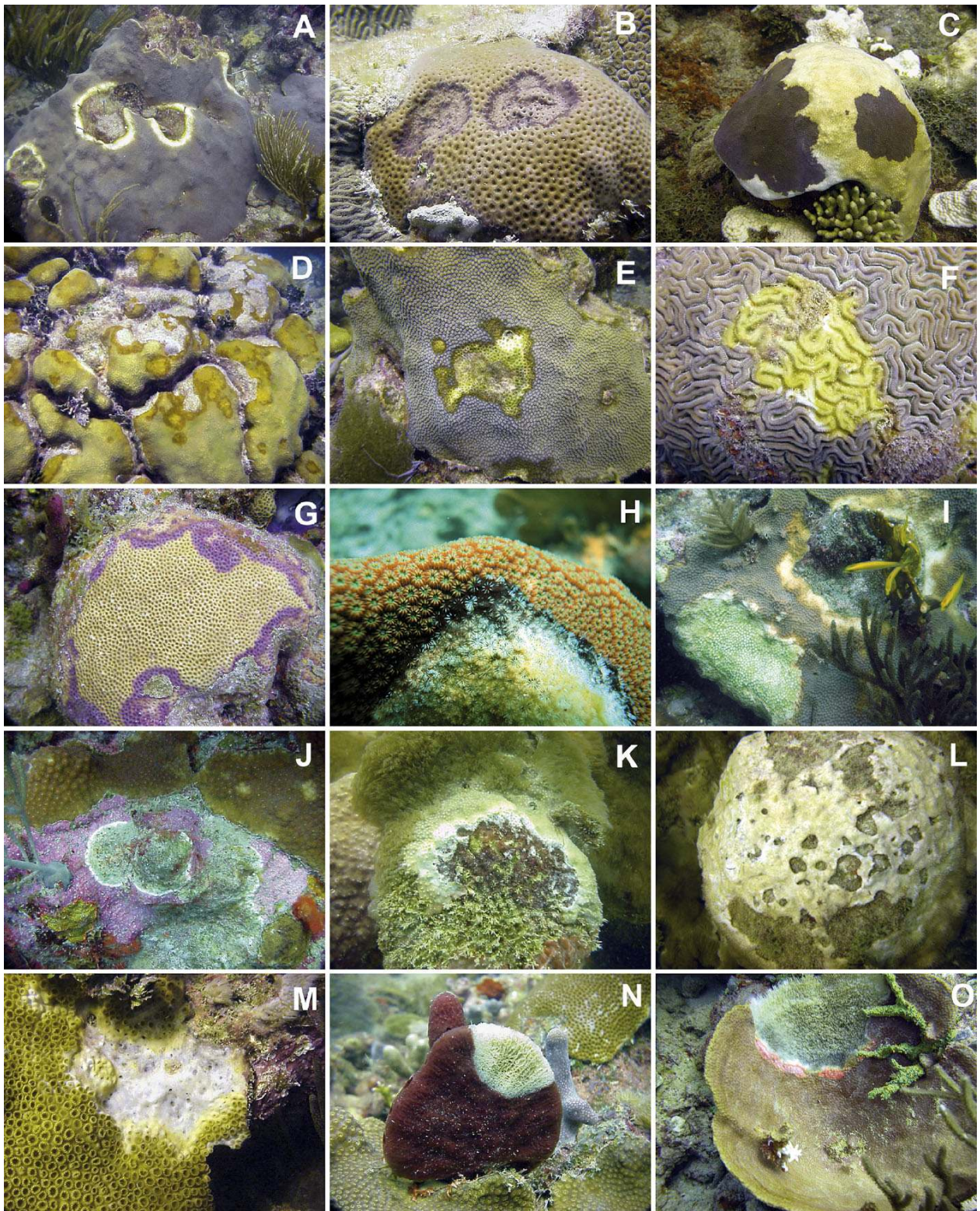


Fig. 3. Several syndromes (pathogens unknown) are affecting the common corals, some with devastating consequences, such as yellow blotch (A). Others are less virulent, like dark spots (B,C) and dark bands (D), while others like tissue necrosis (E,F,G) and the new ciliate (H) are still locally restricted. Increasing prevalence of colonies with multiple diseases (I) and syndromes affecting other important reefs organisms, such as crustose coralline algae (J), encrusting octocorals (K,L), zoanthids (M) and common sponges (N,O), is compounding the problem in the Caribbean

factors. The year 2005 was the first time in Puerto Rico that significant numbers of bleached reef organisms other than corals (Fig. 1) and high mortalities of common corals and hydrocorals were observed (Fig. 1G,H). The question remains, however, as to how the increase in frequency and intensity of these events would affect the emergence, dispersion and virulence of coral diseases. The potential of disease outbreaks to significantly change coral reefs was shown in the early 1980s by the disease-induced massive mortalities of 3 Caribbean keystone species, the black sea urchin *Diadema antillarum* (Lessios et al. 1984, Carpenter 1990a,b) and the acroporid corals *Acropora palmata* and *A. cervicornis* (Gladfelter 1982) over the wider Caribbean. These mortalities brought about a cascade of significant ecological changes in the dynamics, function and structure of coral reefs at local and geographic scales (Hughes 1994, Harvell et al. 1999, Aronson & Precht 2001, Bruckner et al. 2002, Lirman et al. 2002, Weil et al. 2002b, Weil 2004). Only one other widespread epizootic affecting the sea fan *Gorgonia ventalina* (Smith et al. 1996, Nagelkerken et al. 1997a,b, Kim et al. 2000, Harvell et al. 2002, Weil et al. 2002a, Smith & Weil 2004) has been reported for this region in recent times. In contrast, no widespread epizootics (other than bleaching) have been reported for the Indo-Pacific. Intensive and short-lived epizootics of the most common and aggressive diseases and syn-

dromes (i.e. white plague, white band, patchy necrosis, and yellow band) are reported every year from several localities throughout the Caribbean, and recently, from the Indo-Pacific (Miller et al. 2002, Willis et al. 2004). More recently, ciliate (*Halofolliculina* sp.) infections (secondary/opportunistic parasites) have also been observed in the south and western Caribbean (Fig. 2).

Although causative agents for some of the most common diseases in the Caribbean have yet to be identified, primary pathogens for some of the most common diseases (Fig. 2) are now known. White plague in Florida was shown to be caused by a newly described genus *Aurantimonas* (Denner et al. 2003). *Serratia marcescens* was associated with white pox (Patterson et al. 2002) and a host of members of the genus *Vibrio* have been associated with a variety of coral diseases including bacterial bleaching (Kushmaro et al. 1996), white band disease (Ritchie & Smith 1998) and yellow blotch syndrome (Cervino et al. 2004) (Table 1).

Other important reef organisms such as sponges, zoanthids, octocorals and crustose algae have started to show disease signs and frequent disease outbreaks (Weil 2004, Ballantine et al. 2005) (Fig. 3J). Reports of pathogens affecting reef-building coralline red algae, another important reef-building group, were until recently only known from the tropical Pacific Ocean. Littler & Littler (1994, 1995, 1998) reported the presence of 2 disease conditions, coralline lethal orange

Table 1. Most common reported diseases (D) and syndromes (S) of Caribbean sessile coral reef organisms (scleractinian corals [COR], octocoral [OCT], sponges [SPO], crustose coralline algae [CCA] and zoanthids [ZOA]), their acronym, identified pathogen(s), and number of taxa affected. Updated from Weil (2004) and information from the authors' research

Disease (D) / syndrome (S)	Acronym	Pathogen	Number of species				
			COR	OCT	SPO	CCA	ZOA
Black band (D)	BBD	<i>Phormidium coralyticum</i> , <i>Desulfovibrio</i> , <i>Beggiatoa</i> sp.	19	6	-	-	-
White band-I	WBD-I	Gram (-) bacterium	2	-	-	-	-
White band-II (D) <sup>a</sup>	WBD-II	<i>Vibrio harveyi/charchariae</i>	2	-	-	-	-
White plague-I	WP-I	Gram (-) bacterium	12	-	-	-	-
White plague-II (D) <sup>a</sup>	WP-II	<i>Aurantimonas coralocida</i>	41	-	-	-	-
Aspergillosis (D) <sup>a</sup>	ASP	<i>Aspergillus sidowii</i>	-	10	-	-	-
White pox (D) <sup>a</sup>	WPX	<i>Serratia marcescens</i>	1	-	-	-	-
Tumors (D) <sup>b</sup>	TUM	<i>Entocladia endozoica</i> (algae) and other causes	7	5	-	-	-
Red band (D)	RBD	<i>Oscillatoria</i> sp. and other cyanobacteria	13	1	-	-	-
Neoplasia (S)	NEP	?	4	5	-	-	-
Shut down reaction	SDR	?	6	-	-	-	-
Yellow blotch (S)	YBS <sup>d</sup>	<i>Vibrio</i> spp.	11	-	-	-	-
Dark spots-I (S)	DSS-I <sup>d</sup>	?	10	-	-	-	-
Dark bands (S)	DBS-II <sup>d</sup>	?	8	-	-	-	-
Patchy necrosis (S) <sup>c</sup>	PNE <sup>d</sup>	?	1	-	-	-	-
Ring syndrome (S)	RIS	?	1	-	-	-	-
Tissue necrosis (S)	TNE	?	5	8	-	-	-
Octocoral tissue necrosis	OTN <sup>d</sup>	?	-	2	-	-	-
Sponge tissue necrosis	STN <sup>d</sup>	?	-	-	7	-	-
CCA white band (S)	CWB <sup>d</sup>	?	-	-	-	2	-
Zoanthid white band (S)	ZWB	?	-	-	-	-	1

<sup>a</sup>Koch's postulates fulfilled; <sup>b</sup>include hyperplasias and algal tumors; <sup>c</sup>patchy necrosis and white pox are considered the same by some researchers; <sup>d</sup>samples currently under investigation to identify putative pathogens

disease (CLOD), and an undescribed fungal pathogen on the coralline alga *Porolithon onkoides* in the Indo-Pacific. A white band-like syndrome has been found affecting a high proportion of colonies of at least 1 common crustose coralline red algae, *Neogonolithon accretum*, in many Caribbean localities (Weil 2004, Ballantine et al. 2005) (Fig. 3). Still, many syndromes have yet to be characterized and their putative pathogens identified (e.g. yellow blotch, dark spots, dark bands and tissue necrosis). As researchers become more familiar with disease signs and more pathological studies are carried out, the number of described diseases affecting corals and other organisms will increase. Even though many diseases and syndromes from the Indo-Pacific show similar signs to their Caribbean counterparts, pathological studies are showing interesting results. There has been no confirmation of common pathogens (with the exception of black band).

Contrary to what was expected for new emergent pathogens, host ranges for some diseases have been increasing with time. For example, white plague and aspergillosis have been reported to infect 41 coral and at least 6 octocoral species respectively (Smith & Weil 2004, Weil 2004) (Table 1). More recent observations indicate that an increasing number of colonies and species are being infected by more than just 1 disease/syndrome, there sometimes being as many as 4 (E. Weil & A. Croquer unpubl. data) (Fig. 3I).

Both the number and depth of study of microorganisms associated with corals has increased significantly. The 13 manuscripts presented in this special issue present the most recent advances and results in the study and experimentation with diseases of coral reef organisms throughout the world. We are pleased that our knowledge on this important topic is increasing fast through quality research.

Overall, papers in this special issue can be grouped into 4 general categories: (1) Regional assessments of diseases (Kaczmarek 2006, for the Philippines; Ward et al. 2006, for the western Caribbean; Voss & Richardson 2006, for the eastern Caribbean and Page & Willis 2006, for the southwestern Pacific). (2) Prevalence and host interactions of specific diseases (Gochfeld et al. 2006, for dark spots disease; Bruckner & Bruckner 2006, for yellow band disease and Cróquer et al. 2006, for a ciliate disease). (3) Microbial communities (Pantos & Bythell 2006, for bacteria from white band disease; Gil-Agudelo et al. 2006, for metabolic changes with aspergillosis, Kim et al. 2006, for aspergillosis in sea fan corals and Davy et al. 2006, for viral associations). (4) Specific bacteria associated with specific diseases (Sussman et al. 2006, for black band/red band disease and Viehman et al. 2006, for black band disease). Significant advances in the microbiology of coral diseases

are, therefore, presented in this volume. This, together with more information on the ecology and dynamics of the most virulent diseases, is providing much needed information which will enable researchers to start developing epidemiological models.

As human intervention in the environment increases, important questions such as how this will affect the emergence and prevalence of coral reef diseases, how we are to manage this problem at the population and community levels and what the consequences of this problem will be, still remain unanswered.

*Acknowledgements.* Part of this work was supported by the CRESS-NOAA project #NA17OP2919, the GEF-World Bank Coral Reef Targeted Research and Capacity Building program, the NSF Emerging Diseases and Biocomplexity Program, the Department of Marine Sciences, University of Puerto Rico, the Instituto de Investigaciones Marinas (INVE-MAR) and the Khaleb Bin Sultan Living Oceans Foundation.

#### LITERATURE CITED

- Aronson RB, Precht WF (2001) White-band disease and the changing face of Caribbean coral reefs. *Hydrobiologia* 460:25–38
- Aronson RB, Precht WF, Macintyre IG (1998) Extrinsic control of species replacement on a Holocene reef in Belize: the role of coral disease. *Coral Reefs* 17:223–230
- Ballantine D, Weil E, Ruiz H (2005) Coralline white band syndrome: a new affliction affecting coralline algae in the Tropical Atlantic. *Coral Reefs* 24:117
- Bruckner AW, Bruckner RJ (2006) Consequences of yellow band disease (YBD) on *Montastraea annularis* (species complex) populations on remote reefs off Mona Island, Puerto Rico. *Dis Aquat Org* 69:67–73 (this issue)
- Bruckner AW, Aronson RB, Bruckner RJ (2002) Endangered acroporid corals of the Caribbean. *Coral Reefs* 21:41–42
- Carpenter RC (1990a) Mass mortality of *Diadema antillarum*. II. Effects on population densities and grazing intensity of parrotfishes and surgeonfishes. *Mar Biol* 104:79–86
- Carpenter RC (1990b) Mass mortality of *Diadema antillarum*. I. Long-term effects on sea urchin population dynamics and coral reef algal communities. *Mar Biol* 104:67–77
- Cervino JM, Hayes RL, Polson SW, Polson SC, Goreau TJ, Martinez RJ, Smith GW (2004) Relationship of *Vibrio* species infection and elevated temperatures to yellow blotch/band disease in Caribbean corals. *Appl Environ Microbiol* 70:6855–6864
- Cróquer A, Bastidas C, Lipscomb D (2006) Folliculinid ciliates: a new threat to Caribbean corals? *Dis Aquat Org* 69:75–78 (this issue)
- Davy SK, Burchett SG, Dale AL, Davies P, Davy JE, Muncke C, Hoegh-Guldberg O, Wilson WH (2006) Viruses: agents of coral disease? *Dis Aquat Org* 69:101–110 (this issue)
- Denner EBM, Smith GW, Busse HJ, Schumann P, Nartz T, Polson SW, Lubitz W, Richardson LL (2003) *Aurantimonas corallicida* gen. nov., sp. nov., the causative agent of white plague type II on Caribbean scleractinian corals. *Int J Syst Evol Microbiol* 53:1115–1122
- Gardner TAM, Cote IM, Gill JA, Grant A, Watkinson AR (2003) Long-term region-wide declines in Caribbean corals. *Science* 301:958–960

- Gil-Agudelo DL, Myers C, Smith GW, Kim K (2006) Changes in the microbial communities associated with *Gorgonia ventalina* during aspergillosis infection. *Dis Aquat Org* 69:89–94 (this issue)
- Gladfelter WB (1982) White-band disease in *Acropora palmata*: implications for the structure and growth of shallow reefs. *Bull Mar Sci* 32:639–643
- Gochfeld DJ, Olson JB, Slattery M (2006) Colony versus population variation in susceptibility and resistance to dark spot syndrome in the Caribbean coral *Siderastrea siderea*. *Dis Aquat Org* 69:53–65 (this issue)
- Green EP, Bruckner AW (2000) The significance of coral disease epizootiology for coral reef conservation. *Biol Conserv* 96:347–361
- Harvell CD, Kim K, Burkholder JM, Colwell RR and 9 others (1999) Emerging marine diseases—climate links and anthropogenic factors. *Science* 285:1505–1510
- Harvell CD, Mitchell CE, Ward JR, Altizer S, Dobson AP, Ostfeld RS, Samuel MD (2002) Climate warming and disease risk for terrestrial and marine biota. *Science* 296:2158–2162
- Harvell CD, Aronson R, Baron N, Connell and 13 others (2004) The rising tide of ocean diseases: unsolved problems and research priorities. *Front Ecol Environ* 2(7): 375–382
- Hayes ML, Bonaventura J, Mitchell TP, Prospero JM, Shinn EA, Van Dolah F, Barber RT (2001) How are climate and marine biological outbreaks functionally linked? In: Porter JW (ed) *Ecology and etiology of newly emerging diseases*. *Hydrobiologia* 460:213–220
- Hayes RL, Goreau NI (1998) The significance of emerging diseases in the tropical coral reef ecosystem. *Rev Bio Trop* 46:172–185
- Hughes TP (1994) Catastrophes, phase shifts, and large-scale degradation of a Caribbean coral reef. *Science* 265:1547–1551
- Hughes TP, Baird AH, Bellwood DR, Carl M and 11 others (2003) Climate changes, human impacts, and the resilience of coral reefs. *Science* 301:929–933
- Jackson JBC, Kirby MX, Berger WH, Bjorndal KA and 15 others (2001) Historical overfishing and the recent collapse of coastal ecosystems. *Science* 293:629–637
- Kaczmarek LT (2006) Coral disease dynamics in the central Philippines. *Dis Aquat Org* 69:9–22 (this issue)
- Kim K, Harvell CD, Kim PD, Smith GW, Merkel SM (2000) Fungal disease resistance of Caribbean sea fan coral (*Gorgonia* spp.). *Mar Biol* 136:259–267
- Kim K, Alker AP, Shuster K, Quirolo C, Harvell CD (2006) Longitudinal study of aspergillosis in sea fan corals. *Dis Aquat Org* 69:95–99 (this issue)
- Kushmaro A, Loya Y, Fine M, Rosenberg E (1996) Bacterial infection and coral bleaching. *Nature* 380:396
- Lessios HA, Robertson DR, Cubit JD (1984) Spread of *Diadema* mass mortality throughout the Caribbean. *Science* 226:335–337
- Lirman D, Baums I, Bythell J, Gladfelter B and 8 others (2002) Report of the status of the biology and ecology of acroporid populations in the Caribbean. In: Bruckner AW (ed) *Proceedings of the Caribbean Acropora Workshop 'Potential application of the US Endangered Species Act as a conservation strategy'*. NOAA-NMFS 24:18–26
- Littler MM, Littler DS (1994) A pathogen of reef-building coralline algae discovered in the South Pacific. *Coral Reefs* 13:202
- Littler MM, Littler DS (1995) Impact of CLOD pathogen on Pacific coral reefs. *Science* 267:1356–1360
- Littler MM, Littler DS (1998) An undescribed fungal pathogen of reef-forming crustose coralline algae discovered in American Samoa. *Coral Reefs* 17:144
- Nagelkerken I, Buchan K, Smith GW, Bonair K and 10 others (1997a) Widespread disease in Caribbean sea fans: I. Spreading and general characteristics. *Proc 8th Int Coral Reef Symp* 1:679–682
- Nagelkerken I, Buchan K, Smith GW, Bonair K and 10 others (1997b) Widespread disease in Caribbean sea fans: II. Patterns of infection and tissue loss. *Mar Ecol Prog Ser* 160:255–263
- Page C, Willis B (2006) Distribution, host range and large-scale spatial variability in black band disease prevalence on the Great Barrier Reef, Australia. *Dis Aquat Org* 69:41–51 (this issue)
- Pantos O, Bythell JC (2006) Bacterial community structure associated with white band disease in the elkhorn coral *Acropora palmata* determined using culture-independent 16S rRNA techniques. *Dis Aquat Org* 69:79–88 (this issue)
- Patterson KL, Porter JW, Ritchie KB, Polson SW (2002) The etiology of white pox, a lethal disease of the Caribbean elkhorn coral *Acropora palmata*. *Proc Natl Acad Sci USA* 99:8725–8730
- Ritchie KB, Smith GW (1995) Preferential carbon utilization by surface bacterial communities from water mass, normal and white-band diseased *Acropora cervicornis*. *Mol Mar Biol Biotechnol* 4:105–107
- Rosenberg E, Loya Y (eds) (2004) *Coral health and disease*. Springer-Verlag, New York
- Smith GW, Ives ID, Nagelkerken IA, Ritchie KB (1996) Aspergillosis associated with Caribbean sea fan mortalities. *Nature* 382:487
- Smith GW, Weil E (2004) Aspergillosis in gorgonians. In: Rosenberg E, Loya Y (eds) *Coral health and diseases* Springer-Verlag, New York, p 279–288
- Sussman M, Bourne DG, Willis BL (2006) A single cyanobacterial ribotype is associated with both red and black bands on diseased corals from Palau. *Dis Aquat Org* 69:111–118 (this issue)
- Viehman S, Mills DK, Meichel GW, Richardson LL (2006) Culture and identification of *Desulfovibrio* spp. from corals infected by black band disease on Dominican and Florida Keys reefs. *Dis Aquat Org* 69:119–127 (this issue)
- Voss JD, Richardson LL (2006) Coral diseases near Lee Stocking Island, Bahamas: patterns and potential drivers. *Dis Aquat Org* 69:33–40 (this issue)
- Ward JR, Rypien KL, Bruno JF, Harvell CD and 5 others (2006) Coral diversity and disease in Mexico. *Dis Aquat Org* 69:23–31 (this issue)
- Weil E (2004) Coral reef diseases in the wider Caribbean. In: Rosenberg E, Loya Y (eds) *Coral health and disease*. Springer-Verlag, New York, p 35–68
- Weil E, Urreiztieta I, Garzón-Ferreira J (2002a) Geographic variability in the incidence of coral and octocoral diseases in the wider Caribbean. *Proc 9th Int Coral Reef Symp* 2:1231–1238
- Weil E, Hernandez-Delgado EA, Bruckner A, Ortiz A, Nemeth M, Ruiz H (2002b) In: Bruckner AW (ed) *Distribution and status of acroporid populations in Puerto Rico*. *Proceedings of the Caribbean Acropora Workshop 'Potential application of the US Endangered Species Act as a conservation strategy'*. NOAA Tech Memo NOAA-NMFS 24:71–92
- Wilkinson C (ed) (2000) *Status of coral reefs of the world: 2000*. Australian Institute of Marine Sciences, Townsville
- Wilkinson C (ed) (2004) *Status of coral reefs of the world: 2004*. Australian Institute of Marine Sciences, Townsville