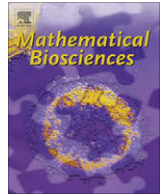




Contents lists available at ScienceDirect

Mathematical Biosciences

journal homepage: www.elsevier.com/locate/mbs

Stochastic epidemic models: A survey

Tom Britton

Department of Mathematics, Stockholm University, SE-106 91 Stockholm, Sweden

ARTICLE INFO

Article history:

Received 22 October 2009
 Received in revised form 13 January 2010
 Accepted 18 January 2010
 Available online xxx

Keywords:

Basic reproduction number
 Critical vaccination coverage
 Household epidemic
 Multitype epidemic
 Stochastic epidemic
 Threshold theorem

ABSTRACT

This paper is a survey paper on stochastic epidemic models. A simple stochastic epidemic model is defined and exact and asymptotic (relying on a large community) properties are presented. The purpose of modelling is illustrated by studying effects of vaccination and also in terms of inference procedures for important parameters, such as the basic reproduction number and the critical vaccination coverage. Several generalizations towards realism, e.g. multitype and household epidemic models, are also presented, as is a model for endemic diseases.

© 2010 Elsevier Inc. All rights reserved.

1. Introduction

Early modelling contributions for infectious disease spread were often for specific diseases. For example Bernoulli [14] aimed at evaluating the effectiveness a certain technique of variolation against smallpox, and Ross [37] modelled the transmission of malaria. One of the first more general and rigorous studies was made by Kermack and McKendrick [31]. Later important contributions were for example by Bartlett [11] and Kendall [30], both also considering stochastic models.

Early models were often deterministic and the type of questions that were addressed were for example: is it possible that there is a big outbreak infecting a positive fraction of the community? How many will get infected if the epidemic takes off? What are the effects of vaccinating a given community fraction prior to the arrival of the disease? What is the endemic level? As problems were resolved, the simple models were generalised in several ways towards making them more realistic. Some such extensions were for example to allow for a community where there are different types of individual, allowing for non-uniform mixing between individuals (i.e. infectious individuals are not equally likely to infect all individuals), for example due to social or spatial aspects, and to allow seasonal variations.

Another generalisation of the initial simple deterministic epidemic model was to study *stochastic* epidemic models. A stochastic model is of course preferable when studying a small community. But, even when considering a large community, which deterministic models primarily are aimed for, some additional questions can

be raised when considering stochastic epidemic models. For example: what is the *probability* of a major outbreak? and for models describing an endemic situation: How long is the disease likely to persist (with or without intervention)? Later stochastic models have also shown to be advantageous when the contact structure in the community contains small complete graphs; households and other local social networks being common examples. Needless to say, both deterministic and stochastic epidemic models have their important roles to play. However, the focus in the present paper is on *stochastic* epidemic models.

In the present paper we will study a fairly simple class of stochastic epidemic models in a closed community of size n , and present properties for such models. These are both small population properties, and approximations assuming n to be large: early stage behaviour of the epidemic, final epidemic size distribution and the duration of the epidemic. The main large population approximation results can be summarized as follows. Assuming a large population, the early stages of the epidemic can be approximated by a branching process, where “giving birth” corresponds to “infecting someone” and “dying” corresponds to “recovering from the disease”. If the branching process/epidemic is supercritical it is possible that a large epidemic outbreak occurs (corresponding to the branching process growing beyond all limits). If this happens, a balance equation determines the final number of infected added with some Gaussian fluctuation of smaller order. As regards to the duration of a major outbreak the whole outbreak is divided into three sections: the beginning (up to when a small fraction have been infected), the main part (in which nearly all infections take place), and the end (when the last small fraction of people get infected), and these parts last for durations of order $\log n$, 1

E-mail address: tom.britton@math.su.se

and $\log n$, respectively, thus making the total duration of order $\log n$.

We will also describe how the models can be applied to answer epidemiological questions, for example how to estimate important epidemiological parameters from outbreak data and how to study effects of interventions such as vaccination. We then describe many important extensions of stochastic epidemic models, aimed at making them more realistic, and give some key references. The paper is however not claiming to be a complete reference guide to all important contributions in stochastic epidemic models.

In Section 2 we first define the deterministic general epidemic model and derive some properties of it, then describe some cases where a deterministic model is insufficient, and end by defining what we call the standard stochastic SIR epidemic model. In Section 3 we present properties of this stochastic model, both exact for a small population, and approximations relying on a large community. In Section 4 we describe how the models can be used to answer epidemiological questions, and in Section 5 we describe a number of model generalizations and also a model for an endemic infectious disease.

2. Stochastic epidemic models – why?

2.1. Deterministic epidemic models

One simple model, the deterministic general epidemic model (e.g. [4, Ch. 6.2]), can be defined by two differential equations. It is assumed that at any time point an individual is either susceptible (S), infected and infectious (I) or recovered and immune (R). Such individuals are from now on called susceptibles, infectives and recovered, respectively.

The model makes the following assumptions: only susceptible individuals can get infected and, after having been infectious for some time, an individual recovers and becomes completely immune for the remainder of the study period. Finally, we assume there are no births, deaths, immigration or emigration during the study period; the community is said to be *closed*. A consequence of the assumptions is that individuals can only make two moves: from S to I and from I to R. For this reason the model is said to be an SIR epidemic model. Models having no immunity (individuals that recover become susceptible immediately) are called SIS-models, models having a latent state when infected, before becoming infectious, are often called SEIR (“E” for exposed but not infectious), models where immunity wanes after some time are called SIRS-models, and so forth. Models that allow for births/deaths/immigration/emigration are referred to as having *demography* or having a *dynamic* community. The focus in this paper is on SIR models in a closed community; see however Section 5.3 for a model allowing births and deaths, and Section 5.4 for a discussion about latency periods.

Let $s(t)$, $i(t)$ and $r(t)$, respectively denote the community fractions of susceptibles, infectives and recovered. Since these are fractions and the community is closed we assume that $s(t) + i(t) + r(t) = 1$ for all $t \geq 0$. From the assumptions mentioned above, together with the assumption of the community being homogeneous and people mixing homogeneously, the deterministic general epidemic model is defined by the following set of differential equations:

$$\begin{aligned} s'(t) &= -\lambda s(t)i(t), \\ i'(t) &= \lambda s(t)i(t) - \gamma i(t), \\ r'(t) &= \gamma i(t). \end{aligned} \quad (1)$$

These differential equations, together with the starting configuration $s(0) = 1 - \varepsilon$, $i(0) = \varepsilon$ and $r(0) = 0$ defines the model.

The initial fraction infectives $\varepsilon > 0$ is often assumed to be small as indicated by the notation ε , it must however be positive – other-

wise all derivatives are constant and equal to 0. The reason for assuming that $r(0) = 0$ is that initially immune individuals play no part in the dynamics so, up to a normalizing constant, initially immune individuals may simply be ignored. Some authors choose to let $s(0) = 1$, $i(0) = \varepsilon$ and $r(0) = 0$. The use of “fraction” is then somewhat misleading, but $s(t)$ has the interpretation of being the fraction still susceptible among the initially susceptibles at t . When ε is small (as we will nearly always assume) there is hardly any difference between the two parametrisations.

The term $\lambda s(t)i(t)$ in Eq. (1) comes from the fact that susceptibles must have contact with infectives in order to get infected, so the assumption about uniform mixing (mass-action) implies that infections occur at a rate proportional to $s(t)i(t)$. This term is non-linear which makes the solution of the system of differential equations non-trivial. Finally, it is worth pointing out that since $s(t) + i(t) + r(t) = 1$ it is actually enough to keep track of two of the quantities.

By studying the differential equations it is straightforward to show that $s(t)$ is monotonically decreasing down to $s(\infty)$ say, and $r(t)$ is monotonically increasing up to $r(\infty)$. The differential equation for $i(t)$ can be written as $i'(t) = i(t)(\lambda s(t) - \gamma)$. So, if $\lambda s(0) > \gamma$, then $i(t)$ initially increases, but eventually, when $s(t)$ has decreased enough, $i(t)$ starts decreasing. If on the other hand $\lambda s(0) < \gamma$, then $i(t)$ decreases already from the start with the effect that little will happen as t tends to infinity (in both cases it can be shown that $i(\infty) = 0$). This dichotomy is illustrated in Fig. 1 where we have plotted $(s(t), i(t), r(t))$. To the left this is done for the case $\lambda = 1.5$, and $\gamma = 1$, and to the right for $\lambda = 0.5$ and $\gamma = 1$, both having initial configuration $(s(0), i(0), r(0)) = (0.99, 0.01, 0)$. In the left a substantial fraction (58.3%) eventually get infected, whereas in the right figure this fraction is negligible (only an additional 0.9% get infected), we say that a major outbreak has occurred in the first case and a minor outbreak occurred in the latter case. Since $i(0)$ is assumed small (and $s(0)$ being close to 1), the critical value separating the two very different scenarios is $R_0 := \lambda/\gamma = 1$.

The ratio λ/γ is hence of fundamental importance and can be interpreted as the average number of new infections caused by an infectious individual before recovering in an otherwise susceptible population. The ratio is often referred to as the *basic reproduction number* (a term with its origin in demography – the average number of individuals that one individual reproduces) and denoted by R_0 (e.g. [27]):

$$R_0 = \frac{\lambda}{\gamma}. \quad (2)$$

When $R_0 > 1$ the epidemic takes off and when $R_0 < 1$ there is no (big) epidemic. The differential Eq. (1) can also be used to obtain a balance equation for the final state $(s(\infty), 0, r(\infty))$. By dividing the first equation by the last we get $ds/dr = -R_0 s$, which implies that $s(t) = s(0)e^{-R_0 r(t)}$. The fact that $i(\infty) = 0$ implies that $s(\infty) = 1 - r(\infty)$; at the end of the epidemic there are no infectives, only susceptibles and recovered (immune). From this we get a balance equation determining the fraction $z = r(\infty)$ that at the end of the epidemic were infected:

$$1 - z = (1 - \varepsilon)e^{-R_0 z}. \quad (3)$$

The balance equation can be interpreted as follows: in order *not* to have been infected (which a fraction $1 - z$ satisfy) you must belong to those not initially infected (the first factor on the right) *and* you must escape the infection pressure R_0 caused by those z who were infected. In Fig. 2 we have plotted the solution z as a function of R_0 , when starting with a negligible fraction initially infectives. The threshold value of 1 is clearly seen to be the value above which a positive fraction gets infected.

The above results will also be useful when considering a related stochastic epidemic model for a large community.

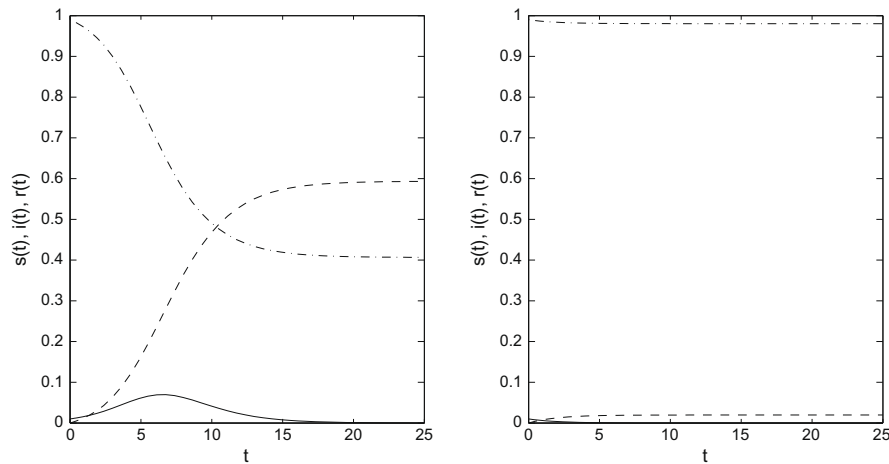


Fig. 1. Solution of the differential system defined in (1), $s(t)$: —, $i(t)$: - -, $r(t)$: - · -. Both figures have initial configuration $s(0) = 0.99$, $i(0) = 0.01$. To the left is the case with $\lambda = 1.5$ and $\gamma = 1$ (so $R_0 = 1.5$), and to the right is the case $\lambda = 0.5$ and $\gamma = 1$ (so $R_0 = 0.5$).

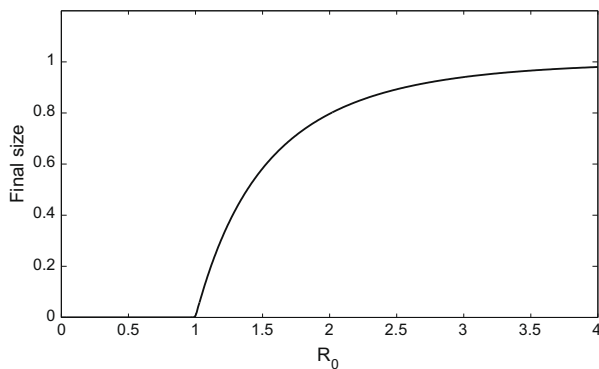


Fig. 2. The final size of the epidemic as a function of R_0 for the deterministic epidemic model. The initial fraction of infectives is approximated to equal $i_0 = 0$.

2.2. When are deterministic models insufficient?

In the previous subsection we analysed the deterministic general epidemic model and showed that: if $R_0 < 1$ there will only be a small outbreak, and if $R_0 > 1$ there will be a major outbreak infecting a substantial fraction of the community, and how big fraction is determined by Eq. (3). The results rely on that the community is homogeneous and that individuals mix uniformly with each other.

Even if the assumption of a homogeneous uniformly mixing community is accepted this model may not be suitable in some cases. For example, if considering a small community like an epidemic outbreak in day-care center or a school it seems reasonable to assume some uncertainty/randomness in the final number infected. Also, even if $R_0 > 1$ and the community is large but the outbreak is initiated by only one (or a few) initial infectives it should be possible that, by chance, the epidemic never takes off. These two arguments motivate the definition of a related *stochastic* epidemic model. Later we will also show two other reasons motivating the use of stochastic epidemic models: it enables parameter estimates from disease outbreak data to be equipped with standard errors and, when studying epidemic diseases, the question of disease extinction is better suited to stochastic models.

2.3. A simple stochastic SIR epidemic model

We now define the *standard stochastic SIR epidemic model*. Just like for the deterministic general epidemic model we assume a

closed homogeneous uniformly mixing community, and let n denote the size of the community.

Let $S(t)$, $I(t)$ and $R(t)$, respectively denote the number of susceptibles, infectives and recovered at time t , and suppose that at time $t = 0$ these numbers are given by $S(0) = n - m$, $I(0) = m$ and $R(0) = 0$. The dynamics of the model are defined as follows. Infectious individuals have “close contact” with other individuals randomly in time at constant rate λ (i.e. according to a Poisson process with intensity λ), and each such contact is with an individual selected uniformly at random from the population, all contacts of different infectives being defined to be mutually independent. By “close contact” is meant a contact close enough to result in infection if the other individual is susceptible, if the other individual is not susceptible the contact has no effect. Any susceptible that receives such a contact immediately becomes infected and infectious and starts spreading the disease according to the same rules. Infected individuals remain infectious for a random time I (the infectious period) after which they stop being infectious, recover and become immune to the disease. The infectious periods are defined to be independent and identically distributed (also independent of the contact processes) having distribution F_I and mean $E(I) = 1/\gamma$ (to agree with the determinist model).

The epidemic starts at time $t = 0$. As the epidemic evolves, according to the rules above, new individuals (may) get infected and eventually recover, up until the first time T when there are no infectives in the community. Then no further individuals can get infected implying that the epidemic stops. The final state of the epidemic is described by the ultimate number $R(T)$ infected (recall that $I(T) = 0$, so $S(T) = n - R(T)$ make up the rest of the community). The final number of infected $R(T)$ will consist of those m who were initially infected plus those Z , say, who were infected during the outbreak. Later we will study the exact and approximate distribution of $Z = R(T) - m$.

Two choices of distributions for the infectious periods have (for mathematical reasons) received special attention in the literature. The first is where F_I is exponentially distributed with intensity parameter γ , when the model is called the “stochastic general epidemic model” (e.g. [4, Ch. 6.3]). This model is Markovian and the Markov process $(S(t), I(t), R(t))$ has jump-intensities closely related to Eq. (1) of the deterministic general epidemic. The second choice of infectious period is where I is non-random (and equal to $1/\gamma$). This choice yields the continuous-time version of the Reed–Frost model. An equivalent (for the final outcome) version is where it is assumed that all infections take place exactly at the end of the infectious period, and this model was initially defined by Reed

and Frost 1928 in a series of lectures (unpublished). The Reed–Frost model has the mathematical tractability that whether or not an individual makes contact with two separate individuals are independent events. This in turn implies that the Reed–Frost model can be analysed by an Erdős–Rényi graph (e.g. [15]) where each pair of individuals has an edge between them independently, with probability $p = 1 - e^{-\lambda/n\gamma}$.

3. Model properties

We now explain some important properties of the standard stochastic SIR epidemic model. In Section 3.1 we derive some exact results; the remaining subsections are devoted to approximations assuming a large community.

3.1. Exact distribution

No matter what infectious period distribution F_I is considered it is not possible to derive an exact and simple closed form expressions for the time dynamics of the epidemic. However, it is possible to derive a recursive formula for the final size of the epidemic, Eq. (8) below, and this formula, which we now explain, is based on the fact that in order not get infected an individual must “escape” infection from all those who did get infected during the outbreak. This has been done in several ways (e.g. [36]), but our outline follows that of Ball [6] where more details can be found.

The derivation of the recursive formula for the final size uses two main ideas: a Wald’s identity for the final size and the total infection pressure, and the interchangeability of individuals making it possible to express the probability of getting i additional infections among the initially $m - n$ in terms of getting i infected in a smaller subset.

We start with the latter result. To this end, fix n and write $\bar{\lambda} = \lambda/n$. Let Z denote the final number infected excluding the initial infectives, so the possible values for Z are $0, \dots, n - m$. Since individuals are interchangeable we can label the individuals according to the order in which they get infected. The initial infectives are labelled $-(m - 1), \dots, 0$, then according to time of infection: $1, \dots, Z$, and those who avoid infection according to any order $Z + 1, \dots, n - m$. With this labelling we define the total infection pressure A by

$$A = \bar{\lambda} \sum_{i=-(m-1)}^Z I_i \tag{4}$$

i.e. the infection pressure, exerted on any individual, during the outbreak (sometimes also called the “total cost” of the epidemic).

Now, let $p_i^{(n-m)} = P(Z^{(n-m)} = i)$ denote the probability that exactly i susceptibles get infected during the outbreak, explicitly showing the number of initial susceptibles but suppressing the dependence on the initial number of infectives m . Then, using the interchangeability of individuals and reasoning in terms of subsets among the initially susceptibles, it can be shown [6] that for any $i \leq k \leq n - m$, it holds that

$$\frac{p_i^{(n-m)}}{\binom{n-m}{i}} = \frac{p_i^{(k)}}{\binom{k}{i}} E(e^{-(n-m-k)A^{(k)}} | Z^{(k)} = i); \tag{5}$$

the probability that i get infected among the initially $m - n$ initially susceptibles equals the product of the probability of having i infected in a smaller subset of size k ($k \leq m - n$) multiplied by the probability that no one in the remaining set gets infected conditioning on the first event. The notation $A^{(k)}$ and $Z^{(k)}$ are hence the total pressure and final size starting with k susceptibles (and m infectives).

We now show a Wald’s identity for $Z^{(k)}$ and $A^{(k)}$. Let $\phi(\theta) = E(e^{-\theta I})$ denote the Laplace transform of the infectious period I . We then have the following Wald’s identity [6]:

$$E\left(\frac{e^{-\theta A^{(k)}}}{(\phi(\theta\bar{\lambda}))^{m+Z^{(k)}}}\right) = 1, \quad \theta \geq 0. \tag{6}$$

The following steps proves the result

$$\begin{aligned} (\phi(\theta\bar{\lambda}))^{m+k} &= E\left[\exp\left(-\theta\bar{\lambda} \sum_{i=-(m-1)}^k I_i\right)\right] \\ &= E\left[\exp\left(-\theta\left(A^{(k)} + \bar{\lambda} \sum_{i=Z^{(k)}+1}^k I_i\right)\right)\right] \\ &= E\left[e^{-\theta A^{(k)}} (\phi(\theta\bar{\lambda}))^{k-Z^{(k)}}\right], \end{aligned}$$

where the last identity follows because the $k - Z^{(k)}$ infectious periods $I_{Z^{(k)}+1}, \dots, I_k$, are mutually independent and also independent of $A^{(k)}$ (which only depends on the first $Z^{(k)}$ infectious periods and the contact processes of these individuals). Dividing both sides by $(\phi(\theta\bar{\lambda}))^{m+k}$ gives the desired result.

If we use Wald’s identity with $\theta = n - m - k$ and condition on the value of $Z^{(k)}$ we get

$$\sum_{i=0}^k \frac{E\left(e^{-(n-m-k)A^{(k)}} | Z^{(k)} = i\right)}{(\phi((n-m-k)\bar{\lambda}))^{m+i}} p_i^{(k)} = 1. \tag{7}$$

Using Eq. (5) in the equation above we get

$$\sum_{i=0}^k \frac{\binom{k}{i} p_i^{(n-m)}}{\binom{n-m}{i} (\phi((n-m-k)\bar{\lambda}))^{m+i}} = 1.$$

Simplifying the equation, returning to $\lambda = \bar{\lambda}n$ and putting $p_k^{(n-m)}$ on one side, we obtain the recursive formula for the final size distribution $p_k^{(n-m)}$, $k = 0, \dots, n - m$:

Exact final size distribution:

$$\begin{aligned} p_k^{(n-m)} &= \binom{n-m}{k} [\phi((n-m-k)\lambda/n)]^{m+k} \\ &\quad - \sum_{i=0}^{k-1} \binom{n-m-i}{k-i} [\phi((n-m-k)\lambda/n)]^{k-i} p_i^{(n-m)}. \end{aligned} \tag{8}$$

Note that this is a recursive formula. For example, solving Eq. (8) for $k = 0$ and then for $k = 1$ gives, after some algebra,

$$\begin{aligned} p_0^{(n-m)} &= (\phi(\lambda))^m, \\ p_1^{(n-m)} &= n\phi((n-1)\lambda/n) ([\phi((n-1)\lambda/n)]^m - [\phi(\lambda)]^m). \end{aligned}$$

In order to compute $p_k^{(n-m)}$ using (8) it is hence necessary to sequentially compute $p_0^{(n-m)}$ up to $p_{k-1}^{(n-m)}$. As a consequence the formula is not very enlightening and it may be numerically very unstable when k (and hence $n - m \geq k$) is large. Even when it is possible to compute $p_k^{(n-m)}$ using (8) with $n - m$ being large, an approximative formula can be more informative. For this reason we devote the rest of this section to the case where $n - m$ is large.

3.2. Early stage approximation

We start by deriving an approximation for the early stages of an outbreak, the approximation relies on the initial number of susceptibles $(n - m)$ being large. The key reason for having an approximation during the early stages of an outbreak when there are many initial susceptibles is that it is then very unlikely that any of the first number of infectious contacts happen to be with the same sus-

ceptible individual. Conversely, it is very *likely* that all of the first set of infectious contacts happen with distinct individuals. As a consequence, the number of individuals that distinct infectives infect (during the early stages) are independent and identically distributed random variables. This hence suggests that the epidemic process may be approximated by a suitable branching process (e.g. [24]). In this subsection we make the approximation more precise and derive results for when a major outbreak (infecting a non-negligible fraction) is possible, and if so, also what the probability of a major outbreak is; see [8], for more results on branching processes of epidemics.

Assume that the initial number of infectives $m \geq 1$ is fixed and that $n - m$ is large (later we will take limits as $n \rightarrow \infty$). One way of constructing the epidemic is as follows. Label the n individuals $-(m - 1), \dots, n - m$, where the first m individuals refer to the initial infectives and the remaining $n - m$ refer to the initial susceptibles, but otherwise arbitrary – note that here the labelling is not according to order of infection. Let $I_{-(m-1)}, \dots, I_{n-m}$ be independent and identically distributed (i.i.d.) with distribution F_I (the infectious periods), $\chi_{-(m-1)}(\cdot), \dots, \chi_{n-m}(\cdot)$ be i.i.d. Poisson processes all having constant intensity λ (the contact processes), and let U_1, \dots, U_{n-m} be i.i.d. uniform random variables on the $(1, 1)$ interval (to be used for determining who is contacted when a close contact occurs). The epidemic process is defined using these random variables as follows. Start at $t = 0$. The contact processes of the initial infectives $\chi_{-(m-1)}(\cdot), \dots, \chi_0(\cdot)$ are “activated” and the infectious periods of these individuals start. Time increases without anything happening until the first time point t_1 when either one of the activated contact processes has an “event”, or one of the infectious periods $I_{-(m-1)}, \dots, I_0$ stops. If the latter happens the corresponding contact process is deactivated, that person’s infectious period stops and the individual recovers and becomes immune. If the former happens the corresponding individual has an infectious contact. Which person that is contacted is determined by U_1 : the person being contacted has index $\lfloor nU_1 \rfloor - (m - 1)$, where $\lfloor \cdot \rfloor$ denotes the integer part, implying that each individual i ($i = -(m - 1), \dots, n - m$) is selected with equal probability $1/n$. If the contacted person is still susceptible he/she gets infected and the corresponding infectious period is started and the contact process activated, and if the contacted person has already been infected nothing happens. Time then moves on until either an infectious period is terminated or a contact among the activated contact processes occur. Depending on what happens an infectious period is terminated or a randomly selected individual is contacted (and infected unless it has already been infected). This goes on until the first (random) time point T when there are no activated contact processes and all initiated infectious periods have stopped. Since there are finite number of individuals, all having finite infectious periods with probability 1, T will be finite with probability 1.

It is straightforward to check that this construction gives the desired epidemic model: individuals have infectious periods distributed according to F_I and while infectious each individual has contacts with randomly selected individuals at rate λ . Another nice feature with this construction is that it is in fact possible to construct a sequences of epidemics, indexed by the initial number of infectives, as well as a homogeneous branching process with life-lengths distributed according to F_I and constant birth rate λ , using the same set of random variables. This can be used to *couple* the whole sequence of epidemics and the limiting branching process and to show that they agree up to some random point. We refer to Ball [5] for a more detailed study about this – here we just give the heuristics.

The branching process is simply constructed without the uniform numbers, so in the branching process a new individual is “born” whenever a contact occurs. The same applies to the epidemic (having $n - m$ initially susceptible) with “born” replaced

by “infected” except when a contact in the epidemic is with an already infected individual. As a consequence, the epidemic and the branching process agrees up until the first time point when a contact is with an individual who has already been infected in the epidemic, denoted a ghost contact in Mollison [32]. Initially there are $n - m$ susceptible and m infected, so the probability that the first contact is *not* a ghost contact equals $(n - m)/n$ which is close to 1 when n is large. Given this, the second contact is also a non-ghost contact with probability $(n - m - 1)/n$, and so on; note the resemblance with the well-known birthday problem. From this it follows that the branching process and epidemic agrees at least up until the k ’th contact (i.e. no ghost contact has occurred) with probability

$$P(\text{no ghost among first } k \text{ contacts}) = \frac{(n - m)_k}{n^k}, \tag{9}$$

where $r_j := r(r - 1), \dots, (r - j + 1)$. Recalling that m and k are much smaller than n and using the well-known approximation $1 - \varepsilon \approx e^{-\varepsilon}$, we get the following approximation for the probability in (9):

$$P(\text{no ghost among first } k \text{ contacts}) \approx e^{-\left(\frac{m}{n} + \dots + \frac{m+k-1}{n}\right)} = e^{-k(k-1+m)/2n}.$$

For large n this probability is close to 1 whenever $k = o(\sqrt{n})$. From this it follows that, with large probability, the epidemic and the branching process agrees at least up until there has been k contacts, where k is small in relation to \sqrt{n} .

The above heuristics (made precise in [5]) motivate that we can approximate the epidemic with the branching process up until k births have occurred. The advantage with this approximation is that branching processes are well-studied (e.g. [24]). For instance, our branching process (with life-length distribution $I \sim F_I$ and constant birth rate λ) has offspring distribution with mean $\lambda E(I) = \lambda/\gamma$, a quantity previously denoted by $R_0 (= \lambda/\gamma)$. The branching process is subcritical if $R_0 < 1$, critical if $R_0 = 1$ and supercritical if $R_0 > 1$. The total progeny Z_∞ , the number of individuals ever born in the branching process, is known to be finite (the branching process goes extinct) with probability 1 if $R_0 \leq 1$. And, if $R_0 > 1$ then Z_∞ has a finite part, and is infinite (grows beyond all limits) with a strictly positive probability ρ that can be determined. In either case, the distribution of the finite part of Z_∞ has a well-defined distribution depending on m, λ and F_I , cf. Jagers [28, Ch. 2.11].

Due to the approximation outlined above, the branching process and the epidemic coincide on the part of the sample space where the branching process goes extinct (whether subcritical or not), with arbitrary large probability if n is large enough. As a consequence, we may approximate $P(Z_n = j)$ with $P(Z_\infty = j)$ for small and moderate j , a distribution which is quite complicated except for some special cases. To compute an expression for $\rho = P(Z_\infty = \infty)$ is however easier. We compute the opposite, i.e. the probability $1 - \rho$ that the branching process, starting with m individuals, goes extinct. For this to happen all m initial lineages must go extinct. So if q denotes the probability that one lineage goes extinct it follows that $1 - \rho = q^m$. In order to obtain an expression for q we condition on the number of births X the initial individual gives birth to before dying. Given that $X = j$ all these j offspring must have lineages that go extinct, an event that happens with probability q^j . It follows that q must satisfy $q = E(q^X)$. The number X that an individual gives birth to during the life-length $I \sim F_I$ of course depends on I . Given this duration: $I = y$, the number of births is Poisson distributed with mean parameter λy since contacts occur according to a Poisson process having rate λ . So, recalling that $\phi(s) = E(e^{-sI})$ denotes the Laplace transform of the infectious period I , the following relation must hence hold for q :

$$q = E(q^X) = E(E(q^X|I)) = E(e^{-\lambda I(1-q)}) = \phi(\lambda(1 - q)), \tag{10}$$

where the third equality uses the Laplace transform of a Poisson variable. It is in fact known (e.g. [28, p 9]) that q is the smallest solution to this equation.

Early stage approximation. To summarize, when n is large, the initial phase of the epidemic can be approximated by a homogeneous branching process with birth rate λ and life-distribution $I \sim F_I$ having Laplace transform $\phi(s)$. If $R_0 := \lambda E(I) = \lambda/\gamma \leq 1$ the final size of the epidemic is bounded in probability, whereas if $R_0 > 1$ it is not. The approximation further tells us that when $R_0 > 1$ the epidemic will be “minor” (bounded) with a probability q^m and “major” (unbounded) with probability $\rho = 1 - q^m$, where q is the smallest solution to (10). The distribution of outbreak sizes in the “minor” case can also be determined from branching process theory.

We end this section with an example illustrating our results. In the section to follow we return to the situation where the branching process grows beyond all limits, corresponding to a major outbreak in the epidemic.

Example. Suppose the epidemic is initiated with $m = 1$ individual and that there are $n - 1 = 999$ initial susceptibles. Further we treat the case where the infectious period is $F_I = \text{Exp}(\gamma)$, the exponential distribution with rate parameter γ (i.e. the general stochastic epidemic). When $I \sim \text{Exp}(\gamma)$ then $\phi(s) = E(e^{-sI}) = \gamma/(\gamma + s)$. This implies that q is the smallest solution to $q = \gamma/(\gamma + \lambda(1 - q))$. Solving this quadratic equation shows that $q = \gamma/\lambda = 1/R_0$ if $R_0 > 1$ and otherwise $q = 1$. This means that there will be a minor epidemic outbreak with probability $1/R_0$, and a major outbreak with the remaining probability $1 - 1/R_0$. Further, it can be shown that for this particular infectious period/life-length distribution (computations omitted) the outbreak probabilities are well-approximated by the corresponding total progeny distribution

$$P(Z_n = j) \approx \binom{2j}{j} \frac{1}{j+1} \left(\frac{1}{1+R_0}\right)^{j+1} \left(\frac{R_0}{1+R_0}\right)^j, \quad j = 0, 1, \dots$$

Note that for fixed λ and γ (and hence $R_0 = \lambda/\gamma$) both q and $P(Z_n = j)$ can be computed numerically. However, the approximation for $P(Z_n = j)$ relies on that not too many individuals have been infected – then the branching process approximation breaks down – so it should only be used for j up to around $20(\sqrt{n} \approx 31.6)$.

3.3. Final size approximation

In the previous subsection it was shown that when n is large the epidemic is well-approximated by a branching process up until approximately \sqrt{n} individuals have been born. If the branching process goes extinct this will never happen when n is large enough, but when the branching process grows beyond all limits (hence implicitly assuming that $R_0 > 1$) the approximation breaks down. The question is of course what happens with the epidemic in this case; something which we now briefly outline. The outline is based on results in Scalia-Tomba [38,39] which uses the elegant Sellke construction [40].

When we are only interested in the final number infected we may introduce a different time scale as follows. Each initially susceptible individual is given a so-called *resistance* having $\text{Exp}(1)$ distribution. In the first time step we let each initially infective i “throw out” its infection pressure λI_i (defined as the contact rate multiplied by the length of the infectious period) uniformly in the community (so $\lambda I_i/n$ on each individual). Those individuals with resistances smaller than this infection pressure then become infected and in turn throw out their infection pressure uniformly, thus increasing the accumulated infection pressure. This procedure goes on until the first time step when there are no new infections; then the epidemic stops. It can be shown that this gives the correct

final size distribution – the only difference with this representation lies in the order and time at which individuals get infected. The advantage with this construction (the Sellke construction) is that, at each time step we add a random number of i.i.d. random variables (the infection pressures), and this is done until the first time point the accumulated sum no longer exceeds another sum of random variables (the resistances). Scalia-Tomba [38,39] uses this, together with an embedding argument, to show that the final size distribution coincides with that of the crossing time of a stochastic process with a straight line. Because the random process is made up of i.i.d. contributions it obeys a law of large number and central limit theorem.

The above description is perhaps not very enlightening, but to show the complete result is quite technical. Something which is easier to explain is an argument for the expression of the limiting final fraction infected z in the case when there is a major outbreak. We do this by deriving a balance equation for z . Neglecting the difference between n and $n - m$ (remember that n is large and m fixed), we have that nz approximates the final number infected. Further, the probability of escaping infection from one infected individual i (with infectious period I_i) equals $E(e^{-\lambda I_i/n})$. We then have the following set of approximations

$$\begin{aligned} 1 - z &= \text{fraction not getting infected} \\ &\approx \text{probability of not getting infected} \\ &\approx \text{probability of escaping infection from all } nz \text{ getting infected} \\ &\approx E(e^{-\lambda I_1/n}) \dots E(e^{-\lambda I_{nz}/n}) = E\left(e^{-\frac{\lambda}{n} \sum_{i=1}^{nz} I_i}\right) \approx e^{-\lambda z E(I)} = e^{-R_0 z}, \end{aligned}$$

where the last approximation is simply the law of large numbers. The limiting fraction infected in case there is a major outbreak should hence be a solution to the equation

$$1 - z = e^{-R_0 z}. \tag{11}$$

Note that this is the same equation as for the deterministic model (3), except that we now assume a negligible fraction initially infected (i.e. $\varepsilon = 0$). It is not hard to show that this equation always has the solution $z = 0$ (corresponding to a minor outbreak) and, when $R_0 > 1$, there is another unique solution z^* between 0 and 1 (corresponding to a major outbreak). In Fig. 2 of Section 2.3, the largest solution z^* is plotted as a function of R_0 .

The above heuristics indicate that the final fraction infected Z/n will lie close to either 0 or else, if $R_0 > 1$, close to z^* . This can in fact be shown rigorously. Moreover, a central limit theorem can be shown for the case where there is a major outbreak. The following theorem summarizes the result for both a minor and a major outbreak (see [2], Ch. 4, and references therein, e.g. von Bahr and Martin-Löf, 1980).

Threshold theorem for the final size of the epidemic: Consider the standard epidemic model with m (fixed) initial infectives and $n - m$ initial susceptibles. If $R_0 \leq 1$, then $\bar{Z}_n := Z_n/n \rightarrow 0$ in probability as $n \rightarrow \infty$. On the other hand, if $R_0 > 1$, then $\bar{Z}_n \rightarrow \zeta$ in distribution, where ζ is a two point distribution defined by $P(\zeta = 0) = q^m$ and $P(\zeta = z^*) = 1 - q^m$, where q was defined in the previous subsection and z^* is the unique strictly positive solution to (11). Finally, on the part of the sample space where $\bar{Z}_n \rightarrow z^*$ we have that

$$\sqrt{n} (\bar{Z}_n - z^*) \rightarrow N\left(0, \frac{z^*(1 - z^*)(1 + r^2(1 - z^*)R_0^2)}{(1 - (1 - z^*)R_0)^2}\right), \tag{12}$$

where the second parameter in the normal distribution denotes the variance, in which $r^2 = V(I)/(E(I))^2$ is the squared coefficient of variation of the infectious period.

To illustrate our results we have simulated an epidemic in a community of $n = 1000$ individuals, starting with $m = 1$ initially infective, and having $\lambda = 1.5$ and $I \sim \text{Exp}(1)$. Before looking at the simulations we compute the theoretical values. For our model and parameter choices we have $R_0 = \lambda E(I) = 1.5$ and $r^2 = V(I)/(E(I))^2 = 1/1 = 1$. Using results from the previous subsection we conclude that the probability of a minor outbreak equals $q^1 = 1/R_0 \approx 0.667$, and using (11) we find that $z^* \approx 0.583$, so the mean of Z_n is $nz^* \approx 583$. The standard deviation of Z_n equals $\sqrt{n} \sqrt{z^*(1-z^*)(1+r^2(1-z^*)R_0^2)/(1-(1-z^*)R_0)} \approx 58.0$.

To see how our limiting results apply to this particular finite case we have simulated 10,000 such epidemics. In Fig. 3 we show the results. In the left figure we show a histogram for all outbreak sizes and to the right we zoom in on the simulations resulting in a major outbreak (somewhat arbitrarily defined as having more than 300 infected). The conclusion is that the limiting results apply quite well with the simulations. First, the proportion of simulations resulting in minor outbreaks equals 0.678, which is to be compared with the theoretical value of $2/3 \approx 0.667$ (as seen from the figure there is a clear distinction between minor and major outbreaks – there are hardly no simulations resulting in sizes between 100 and 320 infected). Further, by simple examination it looks as if the remaining part (the major outbreaks in the right figure) have a distribution close to the normal distribution. The empirical mean and standard deviation of the 322 simulated major outbreaks were 580.5 and 59.5, respectively, numbers which agree quite well with the theoretically obtained numbers 583 and 58.0. Of course the fit is not perfect, the empirical distribution seems slightly skew – the fit is worse if a smaller community is considered and better in a large population.

3.4. Duration of epidemic

In the previous sections we have studied the questions of main interest: can an outbreak occur, and if so, with what probability and how large will these major outbreaks be. Another question of interest could be to understand how long it will take for the epidemic to peak and eventually to die out. Below we sketch some results in this direction. For details we refer to Barbour [10].

If there is only a minor outbreak (which happens with certainty if $R_0 \leq 1$, but also with positive probability q^m if $R_0 > 1$), then the disease will disappear after a short time. We hence focus on the

case where we have a major outbreak (hence assuming $R_0 > 1$) and study how the time to extinction $T = T_n$ depends on the population size n .

It was seen that the initial stages of the epidemic could be approximated by a supercritical branching process up until approximately \sqrt{n} individuals have been infected. Since a branching process has exponential growth, this will take a time of order $\log n$. Once a large number of individuals have been infected, the epidemic process may be approximated by the deterministic counter-part defined in (1). The time for this process, starting in an arbitrary small fraction initially infectives i_0 to first grow and the decrease down to some small value $i(t) = \varepsilon$ has a duration which does not grow with n . The last part of the epidemic is where close to a fraction z^* have already been infected. The epidemic then behaves like another branching process, this time having mean offspring $R_0(1-z^*)$. It can be shown that this number is smaller than 1; otherwise the epidemic would not have “died out” at this stage. It follows that the end of the epidemic can be approximated by a subcritical branching process starting with $n\varepsilon$ infectives. The duration for such a process to go extinct is also of order $\log n$.

To summarize, we have made it plausible that the duration of the epidemic T_n , assuming a major outbreak, has a distribution of the form

$$T_n = c_1 \log n + c_2 + c_3 \log n + Z, \quad (13)$$

where c_1, c_2, c_3 are constants and Z is a random variable, all depending on the model parameters. To show this result is quite technical, see Barbour [10].

4. Applications

There are many applications to modelling of infectious disease spread. Some diseases that have received much modelling attention over the last decades are for example HIV, Small-pox (the threat for terrorist attacks), foot and mouth disease, SARS and most recently the new (H1N1) influenza. Below we describe some specific methodological questions that are often addressed.

4.1. Vaccination and other interventions

One reason for modelling infectious disease spread is to understand how an outbreak can be prevented. This can be achieved in

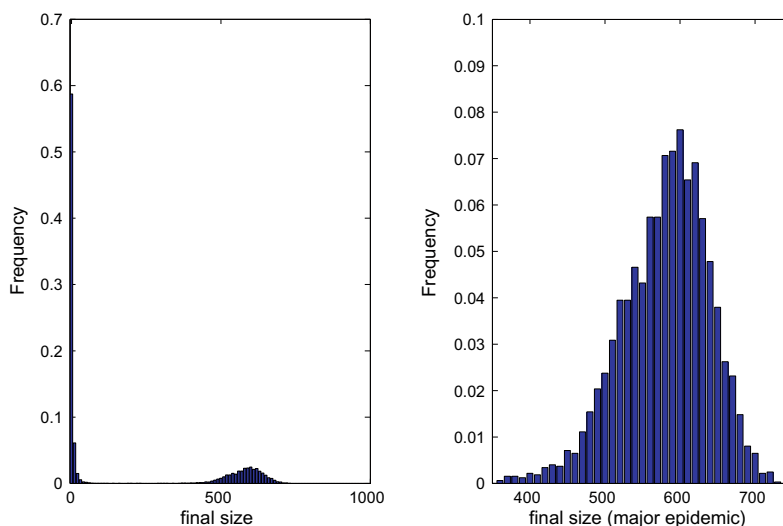


Fig. 3. Empirical distribution of the final size from 10,000 simulations of the general stochastic epidemic with $R_0 = 1.5$ in a community with 1000 individuals and one initial infective. In the left figure all simulations are shown and to the right only the major outbreaks.

several different ways. When it comes to new emerging severe infections like SARS, drastic measures like isolation, closing of schools and travel restrictions are often put into place. All these measures aim at reducing contact rates, i.e. to reduce R_0 . The effect of a specific preventive measure depends on the particular disease and also on the community under consideration.

A somewhat different preventive measure is vaccination. This does not change R_0 , but instead it reduces the pool of susceptibles by making individuals immune. We now describe how to model this and study its effect on the outbreak.

Suppose a vaccine is available prior to the arrival of the disease, and assume a fraction v are vaccinated. Suppose further that the vaccine is perfect in the sense that all vaccinated individuals get completely immune (see Section 5.4 for extensions).

This will have one effect on the model: the number of initially susceptibles is reduced from $n - m$ to $n(1 - v) - m =: n' - m$. Other than that the model is the same. However, the contact rate with a given individual still equals λ/n , so if we want to use n' instead we get $\lambda/n = \lambda(1 - v)/n' =: \lambda'/n'$. We can hence compute the exact final size distribution using results in Section 3.1, for example Eq. (8) with $n' = n(1 - v)$ instead of n and $\lambda' = \lambda(1 - v)$ instead of λ . Similarly, the early stages of the epidemic can be approximated by a branching process with birth rate λ' and mean life-length $1/\gamma$. It follows that the reproduction number after a fraction v has been vaccinated, denoted R_v , satisfies

$$R_v = \lambda'/\gamma = \lambda(1 - v)/\gamma = (1 - v)R_0. \tag{14}$$

From the results of Section 3.2 we hence conclude that if $R_v \leq 1$ there will be no major outbreak, whereas if $R_v > 1$ there will be a major outbreak with probability $1 - (q')^m$, where q' is the smallest solution to Eq. (10), but with $\lambda' = \lambda(1 - v)$ instead of λ .

From Section 3.3 we also conclude that if $R_v > 1$, the size of a major outbreak will be approximately $n'z^*$, where z^* is the unique positive solution to Eq. (11) with R_v replacing R_0 . The central limit theorem also applies, so in the case where there is a major outbreak the total number of infected is normally distributed as stated in (12), but with n' , λ' and R_v instead of n , λ and R_0 .

The most important of these results from an applied point of view is (14), i.e. that the reproduction number after having vaccinated a fraction v in the community satisfies $R_v = R_0(1 - v)$, and the fact that a major outbreak is impossible if $R_v \leq 1$. In terms of v this is equivalent to $v \geq 1 - 1/R_0$ if $R_0 > 1$ (otherwise $v = 0$). The critical vaccination coverage, denoted v_c and defined as the fraction necessary to vaccinate in order to surely prevent a major outbreak, hence satisfies

$$v_c = 1 - \frac{1}{R_0}, \quad \text{if } R_0 > 1, \text{ otherwise } v_c = 0. \tag{15}$$

For the numerical example given above, with $R_0 = 1.5$ it hence follows that $v_c = 1 - 1/1.5 \approx 0.33$. This means that it is enough to vaccinate 33% of the community to prevent a major outbreak. By vaccinating only 33% the whole community is hence protected, a phenomenon called *herd immunity*.

4.2. Estimation

So far we have been interested in (stochastic) modelling, i.e. given a model and its parameters we have studied properties of the epidemic. It was shown that the most important parameter is the basic reproduction number R_0 , defined as the average number of individuals a (typical) infective infects during the early stages of the outbreak, where we by “early stages” mean that few individuals have been infected so the vast majority of the community is still susceptible. When aiming at preventing an outbreak, another important quantity is the critical vaccination coverage v_c defined in (15).

In a particular situation it is hence important to know what these parameters are. We now describe how to estimate R_0 and v_c from observing one epidemic outbreak. One advantage of stochastic modelling is that it not only enables point estimates, but also standard errors as is now illustrated.

Suppose a major epidemic outbreak occurs in a community of n individuals, $n - m$ being susceptible and a small number m being externally infected. Let z_n denote the number of individuals that were infected during the outbreak (excluding the m index cases), and let $\bar{z}_n = z_n/n$ denote the corresponding fraction. We want to estimate R_0 (and v_c) based on this information. From (11) we know that R_0 satisfies

$$R_0 = \frac{-\log(1 - z^*)}{z^*}.$$

We also know that, in case of a major outbreak, \bar{z}_n is asymptotically normally distributed around z^* , with standard deviation

$$\frac{\sqrt{z^*(1 - z^*)(1 + r^2(1 - z^*)R_0^2)}}{\sqrt{n}(1 - (1 - z^*)R_0)}.$$

From this it follows that a consistent and asymptotically normally distributed estimator of R_0 is given by

$$\hat{R}_0 = \frac{-\log(1 - \bar{z}_n)}{\bar{z}_n} \tag{16}$$

The standard deviation of the estimator can be obtained using the delta method (e.g. [19]). Let $f(z) = -\log(1 - z)/z$, then $f'(z^*) = 1/(z^*(1 - z^*)) - R_0/z^*$. It follows that the asymptotic variance of \hat{R}_0 hence equals

$$\begin{aligned} V(\hat{R}_0) &\approx (f'(z^*))^2 V(\bar{z}_n) \\ &\approx \left(\frac{1}{z^*(1 - z^*)} - \frac{R_0}{z^*} \right)^2 \frac{z^*(1 - z^*)(1 + r^2(1 - z^*)R_0^2)}{n(1 - (1 - z^*)R_0)^2} \\ &= \frac{1 + r^2(1 - z^*)R_0^2}{nz^*(1 - z^*)}. \end{aligned}$$

A standard error for \hat{R}_0 is obtained by taking the square root of this and replacing R_0 by \hat{R}_0 and z^* by \bar{z}_n :

$$s.e.(\hat{R}_0) = \sqrt{\frac{1 + r^2(1 - \bar{z}_n)\hat{R}_0^2}{n\bar{z}_n(1 - \bar{z}_n)}}. \tag{17}$$

The standard error above still contains one unknown quantity: $r^2 = V(I)/(E(I))^2$, the squared coefficient of variation of the infectious period. From final size data it is impossible to infer anything about the distribution of the infectious period. The only way to proceed, unless some prior information is available, is to replace it by some conservative upper bound, for example $r^2 = 1$.

Estimation of the critical vaccination v_c is also straightforward. Since v_c is defined by (15) the natural estimator for v_c is

$$\hat{v}_c = 1 - \frac{1}{\hat{R}_0} = 1 - \frac{\bar{z}_n}{-\log(1 - \bar{z}_n)}. \tag{18}$$

Just like \hat{R}_0 the estimator \hat{v}_c is consistent and asymptotically normally distributed around the true value v_c . The asymptotic variance can also be obtained using the delta method. We have $g(x) = 1 - 1/x$, which hence yields $g'(R_0) = 1/R_0^2$. The asymptotic variance of \hat{v}_c then equals $V(\hat{R}_0)/R_0^4$. A standard error for \hat{v}_c is given by

$$s.e.(\hat{v}_c) = \sqrt{\frac{1 + r^2(1 - \bar{z}_n)\hat{R}_0^2}{n\hat{R}_0^4\bar{z}_n(1 - \bar{z}_n)}}. \tag{19}$$

As a numerical example we assume that $z_n = 583$ individuals in a community of $n = 1000$ were infected during an outbreak. Using

(16) and (17) we get $\hat{R}_0 = 1.50$ with standard error $s.e.(\hat{R}_0) = 0.09$ using the conservative upper bound $r^2 = 1$. As for the critical vaccination coverage the corresponding estimate and standard error are given by $\hat{\nu}_c = 0.333$ and $s.e.(\hat{\nu}_c) = 0.04$. Both estimators are asymptotically normally distributed.

In the inference procedure presented above we only made use of the final number infected. If the epidemic process $(S(t), I(t), R(t))$ is observed continuously we have more detailed information and we should hence be able to make more precise inference. This is true although the gain in precision is moderate. We omit this type of inference (involving martingales using counting process theory) and refer to Andersson and Britton [2, Ch. 9]. An alternative approach for making inference in epidemic models is to apply Bayesian inference using Markov chain Monte Carlo (MCMC) methods. The basic idea is that the likelihood is often more tractable had some more detailed data been available, and the method treats such data as “latent variables” which the Markov chain explores, thus giving a posterior distribution of the model parameters as well as the latent variables. This method has been shown successful in more complex situations when more “explicit” methods are not easily attainable (e.g. [35,17]).

5. Extensions

The standard stochastic epidemic model of Section 2.3 was defined as a stochastic version of the deterministic general epidemic model of Section 2.1. The population is finite, and infectious individuals make contacts randomly in time according to a Poisson process with intensity λ , each time the person being contacted is chosen uniformly at random from the population, and the length of the infectious period I is a random variable with distribution I . Despite these more realistic model features, the model still contains several simplifying assumptions. In the present section we touch upon a number of extensions that have been analysed in the literature. Most of these extensions do not alter the qualitative behaviour of the spread of infection, but they do change quantitative properties.

5.1. Individual heterogeneity: multitype models

One assumption in the standard stochastic epidemic model is that all individuals are similar, except the possibility that their infectious periods have different lengths. In reality most populations are heterogeneous, for example with respect to susceptibility, the degree of social activity and/or how infectious they become if infected. The heterogeneities may be unknown to some extent, but quite often it is possible to group individuals into different types of individual, where individuals of the same type have (nearly) identical behaviour. This separation into different types might for example be different age groups, gender, previous experience of the disease (giving partial immunity) etc.

In such situations it is common to define a multitype epidemic model as follows. Suppose there are k types of individuals, labelled $1, \dots, k$, and that the community fractions of the different types equal π_1, \dots, π_k . Type i individuals have i.i.d. infectious periods I_i with distribution F_i having mean $1/\gamma_i$. During the infectious period, an i -individual has close contacts with a given j -individual at rate λ_{ij}/n , $i, j = 1, \dots, k$.

If the population, i.e. n , is large, the epidemic may be approximated by a multitype branching process. The mean offspring matrix has elements (m_{ij}) , where $m_{ij} = \lambda_{ij}\pi_j/\gamma_i$. The basic reproduction number R_0 is the largest eigenvalue of the mean offspring matrix (m_{ij}) . The case where $m_{ij} = \alpha_i\beta_j\pi_j$, referred to as proportionate (or separable) mixing, cf. Diekmann and Heesterbeek [21, Ch. 5.3], has received special attention for two reasons. First, this implies

that α_i can be interpreted as the (average) infectivity of i -individuals and β_j as the (average) susceptibility of j -individuals. Secondly, the basic reproduction then has the simpler form $R_0 = \sum_i \alpha_i \beta_i \pi_i$.

As for the homogeneous case only minor outbreaks are possible if $R_0 \leq 1$ whereas a large outbreak may occur if $R_0 > 1$. There is a related threshold limit theorem stating what the probability of a major outbreak is, and a central limit theorem for the final number of infected of the different types in case the epidemic takes off. The expressions are more involved as are the proofs giving the desired results, so we refer to Ball and Clancy [7] for details.

5.2. Mixing heterogeneity: household and network models

Perhaps even more important than allowing individuals to be different in terms of susceptibility and infectivity is to allow for non-uniform mixing, meaning that an individual has different (average) contact rates with different individuals. The multitype epidemic model of the previous section may include some such non-uniform mixing in the sense that contacts with different types of individuals may be different. However, an assumption of the contact rates between specific pairs of individuals in the multitype model is that they are all of order $1/n$. In many real-life situations individuals tend to have a few other individuals with which they mix at a much higher rate. Epidemic models taking such type of mixing behaviour into account are often referred to as two-level or multilevel mixing epidemic models. The two most common examples are *household* epidemics and *network* epidemics.

In a household epidemic individuals are grouped into small groups (households) and it is assumed that the contact rate between pairs of individuals of the same household equals λ_H and contact rates between pairs of individuals of different households equals λ_G/n (and all individuals have i.i.d. infectious periods I with mean $1/\gamma$). Large population properties for this model were first rigorously analysed by Ball et al. [9]. There they show that it is necessary take into account the random distribution of the total number of infected in a household outbreak. During the initial phase of an outbreak, external infections are nearly always with not yet infected households, so by treating households as “super-individuals” the initial phase of the epidemic may be approximated by a multitype branching process, where the different types refer to household size. The basic reproduction number (now having a more complicated definition but still having the value of 1 as its threshold) equals $R_0 = (\lambda/\gamma)\mu_H$, where μ_H is the mean size of a household outbreak where the size of the selected household has a size biased distribution due to the fact that larger households are more likely to be externally infected as more individuals reside in them.

As before, major outbreaks are only possible if $R_0 > 1$, and when this happens Ball et al. [9] show a law of large numbers for the number of households of different sizes and outbreak sizes using a balance equation. With some additional effort they also derive a central limit theorem for the final size in case of a major outbreak.

Another type of epidemic model having a local structure with much higher (or all) contact rates between “neighbours” is called a network epidemic model (e.g. [33]). The network, an undirected graph, specifies the social structure in the community upon which an epidemic spreads. Quite often the network is assumed to be random but having some pre-specified properties. These could for example be the degree distribution (the distribution of the number of neighbours), the clustering coefficient (specifying how frequent short cycles are present), and the degree correlation of randomly selected neighbours. Given such a network and a stochastic epidemic model “on” the network, it is of interest to see if a major outbreak can occur, and if so what is its probability and what is the size of such an outbreak. There

are still many open problems to be solved in this area (in particular when considering a dynamic network) but see for example Britton et al. [16] for some results. In general, the social structure in the community is more influential for diseases which are not highly infectious. One such class of diseases is sexually transmitted infections – in this case an edge between two individuals in the network corresponds to a sexual relation.

5.3. Models for endemicity

The focus of the present paper has been on SIR epidemic models for a closed population, i.e. not allowing deaths or new individuals to enter the community during the outbreak. This is of course an approximation of real-life but, if focus is on short-term behaviour it is sensible to make such an approximation. Some infectious diseases are endemic in many countries, and a question of interest (e.g. [1]) for such diseases is to understand their dynamics; to understand why certain diseases are endemic and others not, and why a given disease may be endemic in one country but not in another, and it is of course also of interest to determine which preventive measures have the potential of eradicating the disease. We now give a brief outline to this problem area and refer the reader to the literature for more details; e.g. Anderson and May [1, pp. 128] and Näsell [34], and, when studying measles in particular, e.g. Conlan and Grenfell [18]. We now define the Markovian SIR epidemic model with demography [34].

The population dynamics are very simple: new (susceptible) individuals enter the population according to the time points of a homogeneous Poisson process at rate $n\mu$, and each individual lives for an exponentially distributed time with mean $1/\mu$. In words, there is a steady and constant influx of susceptibles at rate $n\mu$ and each individual dies at rate μ , so (in the absence of disease) the population size will fluctuate around the equilibrium state n , which hence can be interpreted as “population size”.

The disease dynamics are just like for the Markovian version of the standard stochastic epidemic model: an infectious individual has close contacts with each other individual at rate λ/n : if such a contact is with a susceptible individual this individual gets infected and infectious immediately, and each infectious individual recovers at rate γ and becomes immune for the rest of its life. Each individual dies at rate μ irrespective of their infection status. The epidemic process $\{S(t), I(t), R(t); t \geq 0\}$ is initiated by $(S(0), I(0), R(0)) = (s_0, i_0, r_0)$, where, as before, we assume that $i_0 > 0$. In Fig. 4 the various jump rates of the model are given in the (s, i) -plane. As before it is enough to keep track of the number of susceptibles and infectives, since recovered and immune individuals play no further role in the disease dynamics. A question of interest is to study properties of this model when n is large; we do this by first studying the corresponding deterministic system defined by the differential equations:

$$\begin{aligned} s'(t) &= \mu - \lambda s(t)i(t) - \mu s(t), \\ i'(t) &= \lambda s(t)i(t) - \gamma i(t) - \mu i(t), \\ r'(t) &= \gamma i(t) - \mu r(t). \end{aligned} \tag{20}$$

By equating all derivatives in (20) to 0 we get the equilibrium state(s). It is straightforward to show that $(s(t), i(t), r(t)) = (1, 0, 0)$, the disease free state, is always a point of equilibrium. The basic reproduction number R_0 , defined as the expected number of individuals a typical individual infects during the early stages of an outbreak, equals $\lambda/(\gamma + \mu)$ since now there are two possible reasons for leaving the infectious state: recovering and dying. Additional to the disease free equilibrium (which is stable if $R_0 \leq 1$ and unstable otherwise) there is another stable equilibrium whenever $R_0 > 1$:

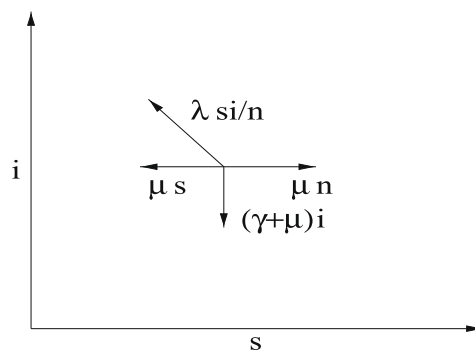


Fig. 4. Jump rates for the SIR epidemic model with demography. All jumps are one unit of length except the jump to the north west in which s decreases and i increases by one unit (due to someone getting infected).

$$(s(t), i(t), r(t)) = (\hat{s}, \hat{i}, \hat{r}) = \left(\frac{1}{R_0}, \frac{R_0 - 1}{R_0 \delta}, 1 - \frac{1/\delta + R_0 - 1}{R_0 \delta} \right), \tag{21}$$

where $\delta = \mu/(\gamma + \mu)$ is the (small) average fraction of a life that an individual is infectious. This state is called the *endemic equilibrium* (\hat{i} being the endemic level).

For the stochastic counter-part it is possible to reach the state $I(t) = 0$ from any other given state in finite time with positive probability. This observation together with the fact that the state $I(t) = 0$ is absorbing – once the disease disappears it can never return – makes all other states transient. As a consequence there is only one stationary equilibrium: the disease free state in which all individuals (fluctuating around the number n) are susceptible. However, when $R_0 > 1$ and n is large there is a drift of $(S(t), I(t), R(t))$ towards the endemic level $(n\hat{s}, n\hat{i}, n\hat{r})$. So, even though the disease eventually will go extinct, this may take a long time, and in the mean time the epidemic process will fluctuate around the endemic level. This type of behaviour is known as *quasi-stationarity* (e.g. [22]). Questions of interest are for example, given the population size n and the parameters λ , γ and μ (or equivalently μ , R_0 and δ) how long will it take for the disease to go extinct? Or, phrased in another way, how big must the population be for a given disease to persist in the community, and which features of the disease are most influential in determining this so called *critical community size*? Another important question is to study effects of introducing vaccination in the model. We refer to for example Näsell [34] and Andersson and Britton [3] for stochastic methodological work in the area of endemic diseases.

5.4. Other extensions

We have focused on presenting results for a fairly simple stochastic epidemic model; the reason being that even in simple models results are far from trivial. Reality is of course much more complicated. There are many features that affect the spread of infections that have not been discussed in the paper – below we list some such features, but there are also many others.

It is well-known that seasonal effects play an important role in disease dynamics. One reason is that certain viruses or bacteria reproduce at higher speed under certain seasons, e.g. influenza virus prefers cold weather, but perhaps even more important is the change in social behaviour over the year. The classical example is school semester and the school start in September being the event that triggered measles outbreaks in for example England prior to vaccination (e.g. [1, Ch. 6]). One of the most recent illustrations of effects of schools is by Cauchemez et al. [17], where the influence of transmission within school is estimated by comparing overall transmission during the school semester with overall transmission during holidays.

The model studied in the present paper lacks a spatial component. Even though travel has increased dramatically during the last century there is of course still a spatial component in the spreading of infections, both between and within countries. In larger modelling/simulation studies of specific diseases, like the new influenza pandemic, space is always taken into account (e.g. [41] and [23]). This is done by assuming that the probability to infect a given individual decays with the distance between the individuals. The main effect of introducing space into the model is that the epidemic growth is slower: more linear than exponential.

In the model it was assumed that the infection rate λ was constant during the infectious period. This rate can be thought of as the product of two quantities: the rate of having contact with other individuals and the probability of transmission upon such a contact. In reality both of these quantities typically vary over the infectious period. First there is often a latency period when an infected individual is hardly infectious, then there is often a period where the individual is highly infectious but still have few or no symptoms. Eventually the individual has symptoms thus reducing their social activity, and finally the infectiousness starts dropping down to 0. This behaviour will clearly affect the dynamics of the disease (a disease having a long latency period of course slows down the epidemic growth), but it has been shown [5] and [6] that the final size results of the present model still apply. The total infectivity of an infectious period in the present model equals the random quantity λI . For a model in which the infection rate t time units after infection equals $C(t)\iota(t)$, where $C(t)$ and $\iota(t)$ are stochastic processes describing social activity and infectiousness, then the new model may be analysed with the present model if the distribution of λI is replaced by the distribution of $\int_0^\infty C(t)\iota(t)dt$. In particular, a latency period of arbitrary length has no effect on the distribution of the final size.

In the section about modelling vaccination it was assumed that the vaccine was perfect in the sense that it gave complete immunity to the disease. In reality this is rarely the case. There are several more realistic models for vaccine response in which the vaccine reduces susceptibility, symptoms and/or infectivity in case of being infected, where all these reductions are random (e.g. [26] and [13]). For example, a vaccine which reduces susceptibility by a factor e , so the average relative susceptibility is $(1 - e)$ as compared with unvaccinated, but has no effect on infectivity in case an infection occurs, has a new (higher) critical vaccination coverage

$$v_c = \frac{1}{e} \left(1 - \frac{1}{R_0} \right).$$

This is true if all individuals have the same reduction e (so-called *leaky* vaccines) as well as if a fraction e of the vaccinated become completely immune and the rest are unaffected by the vaccine (*all-or-nothing* vaccines), or something in-between. Having models for vaccine efficacy is of course not enough for making conclusions in specific situations – it is equally important to estimate the various *vaccine efficacies*. This is most often done in clinical trials, and it is usually harder to estimate reduction in infectivity because this has to be done indirectly since actual infections are rarely observed, see for example Becker et al. [13] and the forth coming book by Halloran et al. [25].

6. Discussion

Even when trying to include as many realistic features in a model as possible there is a limit to how close a model can get to reality, and models can never completely predict what will happen in a given situation. It is for example nearly impossible to predict how people will adapt and change behaviour as a disease starts spreading. Having

said this, models can still be (and are!) very useful as guidance for health professionals when deciding about preventive measures aiming at reducing the spread of a disease.

Stochastic epidemic models, or minor modifications of them, can be used also in other areas. A classic example is models for the spread of rumours or knowledge (e.g. [20, Ch. 5]). More recently, the world wide web have several aspects resembling epidemic models: for example computer viruses (which even use terminology from infectious diseases) and spread of information.

The present paper only gives a short introduction to this rather big research field. There are several monographs about mathematical models for infectious disease spread: Anderson and May [1] is probably the most well-known, Diekmann and Heesterbeek [21] has a higher mathematical level, and Keeling and Rohani [29] also explicitly considers disease spread among animals. When it comes to stochastic epidemic models there is for example the classic book by Bailey [4], and Anderson and Britton [2] who also cover inference; a topic which Becker [12] focuses on.

Acknowledgements

I am grateful to the Swedish Research Council for financial support. I thank two anonymous referees for suggestions which improved the paper.

References

- [1] R.M. Anderson, R.M. May, *Infectious Diseases of Humans; Dynamic and Control*, Oxford University Press, Oxford, 1991.
- [2] H. Andersson, T. Britton, *Stochastic Epidemic Models and their Statistical Analysis*, Springer Lecture Notes in Statistics, Springer Verlag, New York, 2000.
- [3] H. Andersson, T. Britton, Stochastic epidemics in dynamic populations: quasi-stationarity and extinction, *J. Math. Biol.* 41 (2000) 559; B. von Bahr, A. Martin-Löf, Threshold limit theorems for some epidemic processes, *Adv. Appl. Prob.* 12 (1980) 319.
- [4] N.T.J. Bailey, *The Mathematical Theory of Infectious Diseases and its Applications*, Griffin, London, 1975.
- [5] F.G. Ball, The threshold behaviour of epidemic models, *J. Appl. Prob.* 20 (1983) 227.
- [6] F.G. Ball, A unified approach to the distribution of total size and total area under the trajectory of the infectives in epidemic models, *Adv. Appl. Prob.* 18 (1986) 289.
- [7] F.G. Ball, D. Clancy, The final size and severity of a generalised stochastic multitype epidemic model, *Adv. Appl. Prob.* 25 (1993) 721.
- [8] F.G. Ball, P. Donnelly, Strong approximations for epidemic models, *Stoch. Proc. Appl.* 55 (1995) 1.
- [9] F.G. Ball, D. Mollison, G. Scalia-Tomba, Epidemics with two levels of mixing, *Ann. Appl. Prob.* 7 (1997) 46.
- [10] A.D. Barbour, The duration of the closed stochastic epidemic, *Biometrika* 62 (1975) 477.
- [11] M.S. Bartlett, Some evolutionary stochastic processes, *J. Roy. Stat. Soc. B* 11 (1949) 211.
- [12] N.G. Becker, *Analysis of Infectious Disease Data*, Chapman and Hall, London, 1989.
- [13] N.G. Becker, T. Britton, P.D. O'Neill, Estimating vaccine effects from studies of outbreaks in household pairs, *Stat. Med.* 25 (2006) 1079.
- [14] D. Bernoulli, Essai d'une nouvelle analyse de la mortalité causée par la petite vérole et des avantages de l'inoculation pour la prévenir. *Mém., Math. Phys. Acad. Roy. Sci. Paris*, pp. 1–45, 1760.
- [15] B. Bollobás, *Random Graphs*, second ed., Cambridge University Press, Cambridge, 2001.
- [16] T. Britton, S. Janson, A. Martin-Löf, Graphs with specified degree distributions, simple epidemics and local vaccination strategies, *Adv. Appl. Prob.* 39 (2007) 922.
- [17] S. Cauchemez, A. Valleron, P. Boëlle, A. Flahault, N. Ferguson, Estimating the impact of school closure on influenza transmission from sentinel data, *Nature* 452 (2008) 750.
- [18] A.J.K. Conlan, B.T. Grenfell, Seasonality and the persistence and invasion of measles, *Proc. Roy. Soc. Lond. B* 274 (1614) (2007) 1133.
- [19] C. Cox, The delta method, in: P. Armitage, T. Colton (Eds.), *Encyclopedia of Biostatistics*, Wiley, Chichester, 1998.
- [20] D.J. Daley, J. Gani, *Epidemic Modelling: An Introduction*, Cambridge University Press, Cambridge, 1999.
- [21] O. Diekmann, J.A.P. Heesterbeek, *Mathematical Epidemiology of Infectious Diseases: Model Building, Analysis and Interpretation*, Wiley, Chichester, 2000.
- [22] E.A. van Doorn, Quasi-stationary distributions and convergence to quasi-stationarity of birth-death processes, *Adv. Appl. Prob.* 23 (1991) 683.

- [23] C. Fraser, C.A. Donnelly, S. Cauchemez, W.P. Hanage, M.D. Van Kerkhove, T.D. Hollingsworth, J. Griffin, R.F. Baggaley, H.E. Jenkins, E.J. Lyons, et al., Pandemic potential of a strain of influenza A (H1N1): early findings, *Science* 324 (2009) 1557.
- [24] P. Haccou, P. Jagers, V.A. Vatutin, *Branching Processes: Variation, Growth, and Extinction of Populations*, Cambridge University Press, Cambridge, 2005.
- [25] M.E. Halloran, I.M. Longini Jr., C.J. Struchiner, *Design and Analysis of Vaccine Studies*, Springer, 2010.
- [26] M.E. Halloran, M-P. Preziosi, H. Chu, Estimating vaccine efficacy from secondary attack rates, *J. Am. Stat. Assoc.* 98 (2003) 38.
- [27] J.A.P. Heesterbeek, A brief history of R_0 and a recipe for its calculation, *Acta Biotheoret.* 50 (2002) 189.
- [28] P. Jagers, *Branching Processes with Biological Applications*, Wiley, London, 1975.
- [29] M. Keeling, P. Rohani, *Modeling Infectious Diseases in Humans and Animals*, Princeton University Press, Princeton, 2008.
- [30] D.G. Kendall, Deterministic and stochastic epidemics in closed populations, *Proc. Thirs. Berkeley Symp. Math. Statist. Prob.* 4 (1956) 149.
- [31] W.O. Kermack, A.G. McKendrick, A contribution to the mathematical theory of epidemics, *Proc. Roy. Soc. Lond. A* 115 (1927) 700.
- [32] D. Mollison, Spatial contact models for ecological and epidemic spread (with Discussion), *J. Roy. Stat. Soc. B* 39 (1977) 283.
- [33] M.E.J. Newman, The structure and function of complex networks, *SIAM Rev.* 45 (2003) 167.
- [34] I. Näsell, On the time to extinction in recurrent epidemics, *J. Roy. Stat. Soc. B.* 61 (1999) 309.
- [35] P.D. O'Neill, A tutorial introduction to Bayesian inference for stochastic epidemic models using Markov chain Monte Carlo methods *Math. Bioscience* 180 (2002) 103.
- [36] P. Picard, C. Lefèvre, A unified analysis of the final size and severity distribution in collective Reed–Frost epidemic processes, *Adv. Appl. Prob.* 22 (1990) 269.
- [37] R. Ross, *The Prevention of Malaria*, second ed., Murray, London, 1911.
- [38] G. Scalia-Tomba, Asymptotic final size distribution for some chain-binomial processes, *Adv. Appl. Prob.* 17 (1985) 477.
- [39] G. Scalia-Tomba, On the asymptotic final size distribution of epidemics in heterogeneous populations, in: J.-P. Gabriel, C. Lefèvre, P. Picard (Eds.), *Stochastic Processes in Epidemic Theory*, Springer Lecture Notes in Biomath., vol. 86, pp. 189–196, 1990.
- [40] T. Sellke, On the asymptotic distribution of the size of a stochastic epidemic, *J. Appl. Prob.* 20 (1983) 390.
- [41] Y. Yang, J.D. Sugimoto, M.E. Halloran, N.E. Basta, D.L. Chao, L. Matrajt, G. Potter, E. Kenah, I.M. Longini, Jr., The Transmissibility and Control of Pandemic Influenza A (H1N1) Virus, *Science*, 2009, doi:10.1126/science.1177373.