

 Open access • Journal Article • DOI:10.1007/BF02326000

Stress concentrations in bolt-thread roots — Source link

James D. Chalupnik

Institutions: University of Washington

Published on: 01 Sep 1968 - Experimental Mechanics (Kluwer Academic Publishers)

Topics: Nut

Related papers:

- [Mechanical performances and stress states of rock bolts under varying loading conditions](#)
- [Effect of the Residual Stress on the Fatigue Strength of a Bolt in Bolt/Nut Assemblies](#)
- [The Reduction of Stress Concentration by Tapering Threads](#)
- [Effect of Bolt Strength and Loading Conditions on a 7/8" Bolt Within an End-of-Car Arrangement](#)
- [Constant amplitude fatigue test of high strength bolts in grid structures with bolt-sphere joints](#)

Share this paper:    

View more about this paper here: <https://typeset.io/papers/stress-concentrations-in-bolt-thread-roots-ispglvr3q8>

Stress Concentrations in Bolt-thread Roots

Frozen-stress three-dimensional stress-analysis techniques were used in first phase of this investigation; the results of these tests were augmented later by fatigue tests and by metallographic inspection of cracked bolts

by James D. Chalupnik

ABSTRACT—The apparent geometric origin of fatigue fractures in oversize shank bolts is considered in this report. Bolt-nut interaction between the bolt and both a standard nut and a special nut are investigated. The "frozen stress" method of three-dimensional stress analysis was used to determine the magnitudes and locations of points of stress concentration in plastic models of both the oversize shank bolt and a standard bolt in combinations with standard and special nuts.

The results indicate that, for installations in which the special nut is used, bolt geometry may be the controlling factor in determining the fatigue life of the bolt-nut combination, because the stress-concentration factors due to the nut loading are of the same order of magnitude as the stress-concentration factors due solely to bolt geometry. On the other hand, for installations in which standard nuts are used, the nut-induced stress-concentration factors are much larger than those due to bolt geometry; so, bolt geometry will have less effect on the fatigue performance of the combination. If the nut is threaded onto the bolt so far that the first loaded thread of the nut is in the thread-runout area of the bolt, fatigue performance of the installation will be greatly reduced due to the combination of stress-concentration factors from thread loading and section change and, again, bolt geometry may be a prominent causative factor.

Introduction

Fatigue fractures were observed in the thread-runout area of several of a certain-size high-strength bolt. Although the bolts were presumed to be loaded essentially in shear, the fracture had the appearance of a low-cycle, high-load tensile fracture. The similarity of fractures indicates a geometric origin of the fatigue cracks which led to ultimate loss of the bolts. The bolts were $\frac{3}{16}$ oversize shank ($\frac{1}{16}$ shank diameter) titanium-alloy (1 aluminum-8 vanadium-5 iron) bolts rated at 200-ksi minimum ultimate tensile strength based on the pitch diameter. Nuts used on all of the fractured bolts had a special thread design called the "Elastic Stop" thread by the manufacturer (Elastic Stop

James D. Chalupnik is Assistant Professor of Mechanical Engineering, University of Washington, Seattle, Wash.

Paper was presented at 1967 SESA Annual Meeting held in Chicago, Ill., on October 31-November 3.

This research was sponsored by Commercial Airplane Division, The Boeing Company, Renton, Wash.

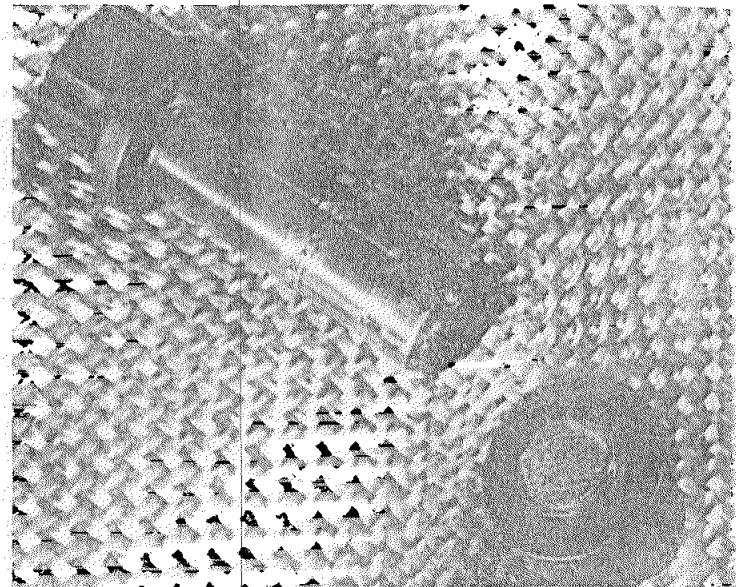


Fig. 1—Fracture of an oversize bolt in thread runout

Nut Company). A typical fracture of one of the subject bolts is shown in Fig. 1.

Fractures were normally observed in the bolt; however, it is a well known fact that fatigue performance of a bolt is largely dependent on the mating nut used in the installation. This is particularly important in this instance, where the nut is specifically intended to improve fatigue performance of a bolt.

A number of questions were raised as a result of these fractures. In order to obtain answers to as many of the questions as possible, a stress-analysis program of the bolt design was initiated. Frozen-stress three-dimensional stress-analysis techniques were used in the first phase of the investigation, and the results of these tests were augmented by fatigue tests and by metallographic inspection of the cracked bolts in a later phase.

Results of the three-dimensional photoelastic stress analysis of the oversize shank bolt with both standard and special nuts are compared to results

for a standard bolt under the same conditions in this report.

Previous Work

Much has been written about screw fasteners and their applications but, even so, the volume of these reports is small when one considers the massive use of these devices in industry. Published reports of actual stress analysis of screw fasteners are few, no doubt due to the complicated geometry of the screw fastener. Because of the geometrical difficulties, many of the significant analyses of stresses in screw fasteners have been experimental in nature and, generally, they utilize photoelastic techniques.

An early attempt at a purely analytical solution of stress distributions in bolts and nuts was given by Stromeyer¹ and another was undertaken by Den Hartog.² These analyses are interesting and provide an insight into the loading of threaded parts in that they account in a qualitative way for the increase in thread loading from the top to the bottom of the nut. Both papers lack something in completeness, because the calculations are based on a thread elasticity which is calculated for a two-dimensional thread, and must necessarily be in error. It is true, however, that since the problem is one in elasticity, the shape of the load-distribution curve should be the same, and only the scale of magnitude would be changed by considering the more correct three-dimensional thread.

Typical early experimental investigations used two-dimensional photoelastic models; descriptions of these experimental investigations are given in the papers of Solakian,³ Hall,⁴ and Heywood.⁵ Goodier analyzed thread loads using the unique experimental technique of measuring the external displacements of a cylindrical nut and relating these displacements to the thread loads and stresses.

The results of all these investigations show essentially the same thing, that, in standard nuts, the first threads carry the largest portion of the load and thereby impose large stress concentrations in the bolt in this region. The two-dimensional photoelastic studies indicated that the area of highest stress concentration was located in the root area of the bolt threads, but there was disagreement as to the magnitude and even some uncertainty as to exactly which bolt thread carries the heaviest load.

Failure of two-dimensional photoelastic methods to yield useful data can be attributed to two causes: (1) the difficulty involved in accurately machining the two-dimensional screw threads, and (2) the basic inability of the two-dimensional model to duplicate the three-dimensional stress distribution existing in screw fasteners.

One of the first reports of three-dimensional stress analysis of threaded fasteners is given by Horger and Buckwalter⁶ in a paper which also gives results of fatigue tests on several bolt-nut combina-

tions. Not long thereafter, Hetényi⁷ published a paper which contains in this author's opinion the most information available in one source about stress concentrations in nuts and bolts. Hetényi investigated the effect of six different nut designs on the stress distribution in bolts. This paper points out the importance of investigating the interaction of the nut and bolt in threaded fasteners and has particular significance in the investigation outlined in this report.

The work of Hetényi, and Horger and Buckwalter serves to demonstrate the usefulness of three-dimensional frozen-stress techniques in the investigation of stress distributions and stress concentrations in nut-bolt combinations.

Frozen Stress

A brief description of the frozen-stress method may be useful at this point. It is assumed that the reader is acquainted with the photoelastic phenomenon.

In frozen-stress investigation, advantage is taken of the two-phase nature of many birefringent materials. It is convenient to think of the material as being composed of a coarse lattice, the interspaces of which are filled with a viscous second phase. At room temperature, the viscous phase is essentially elastic; however, at elevated temperatures, its viscosity is greatly reduced and it flows freely under externally applied loads. The first or lattice phase remains elastic to much higher temperatures and, consequently, carries all the load at higher temperatures.

When a model made of a material displaying this two-phase behavior is loaded and placed in an oven in which the temperature is raised sufficiently to permit the viscous phase to flow, the lattice phase assumes the total load-carrying role. If the temperature is then lowered while the load is still applied, the viscous phase will stiffen and "lock" or "freeze" the stresses in the lattice phase of the plastic. Plane sections removed from the model can be analyzed by conventional two-dimensional photoelastic stress-analysis techniques. Due to the approximate axial symmetry of nuts and bolts, diametral sections are well suited to photoelastic stress analysis and contain the important information pertaining to the stresses in the screw threads.

Scope of Investigation

It was desired to compare the oversize-shank bolt configuration with standard bolt configuration in applications with both the standard and the special nuts. Four combinations were required. Two stud bolts were manufactured, one with a standard and one with an oversize shank, and two standard and two special nuts were manufactured, one each for each bolt. All parts were machined from precast Hysol birefringent plastic.

The Hysol nuts and bolts were four times scale

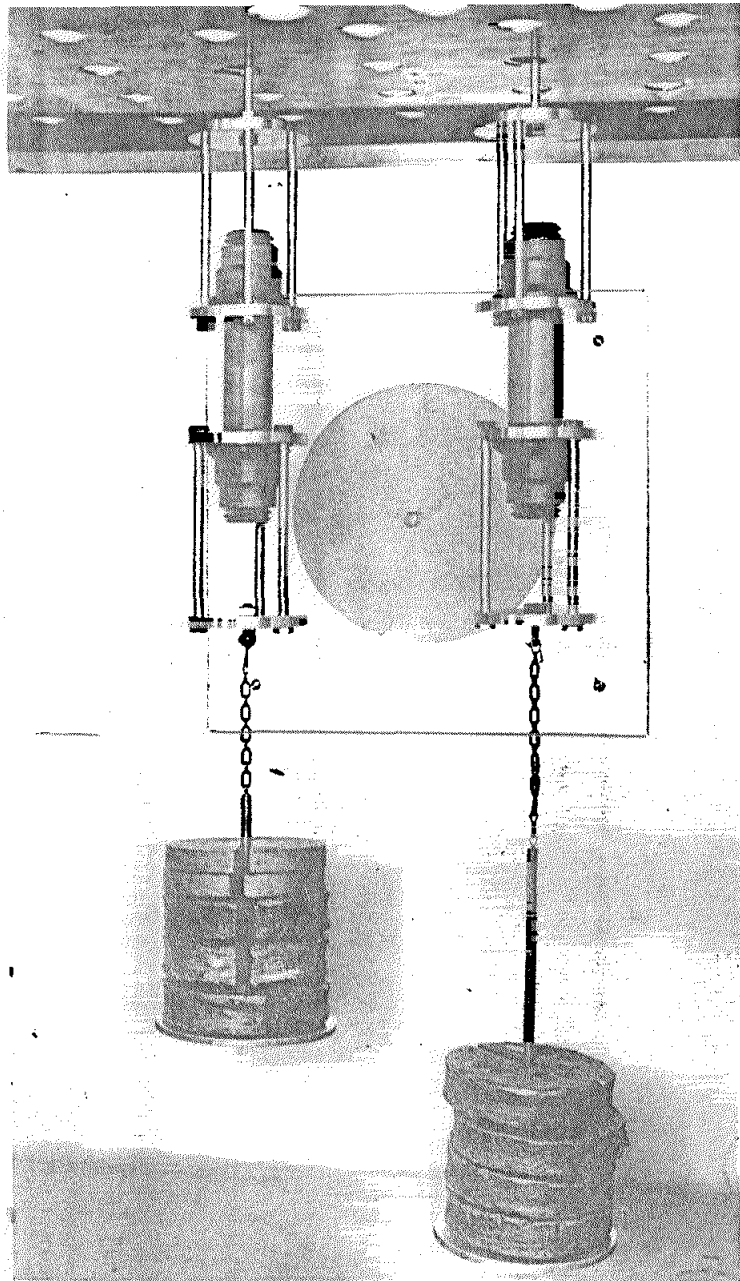


Fig. 2—Loaded models in oven

model of their 0.3125-in. -24 UNJF counterparts and had 1 1/2-in. -6 threads scaled up from MIL-S-8879 specifications. This specification provides for a liberal root radius on bolt threads and a truncated nut thread. MIL-S-8879 is the controlling document for the threads on the fastener under investigation.

Nut and bolt assemblies, threaded to simulate engagement encountered in typical installations, were placed in a controlled oven, loaded and annealed. The load on the specimens represented a preload on the bolts corresponding to roughly 140,000 psi based on the pitch diameter. Figure 2 shows the models loaded in the oven preparatory to the annealing operation.

When the annealing operation was completed, the models were removed from the fixtures, im-

mersed in a small mineral-oil-filled tank, and viewed in the polariscope to get a quick check on the extent of the frozen stresses locked in the models and to check for evidence of excessive bending stresses. The models were then sectioned and again viewed in the polariscope. The sections were photographed and inspected optically to determine the magnitudes and locations of points of stress concentration. The results of these observations are presented in a subsequent section of this report.

Experimental Program

Preparation of Specimens

Model nuts and bolts were prepared from pre-cast Hysol CP5-4290 birefringent plastic. Care was exercised in machining the models from the plastic stock to insure conformance with thread-profile specifications and surface finish, and to insure that the models were free of locked-in stresses sometimes caused by heat generated during the machining operations. The machinist who performed the machining operations on the models is experienced in machining Hysol plastic and is aware of the special precautions which must be taken in machining it. The quality of his work on the nut and bolt models was generally high, as can be seen in the photographs in this report.

Loading and Annealing

The models were assembled with one standard and one special nut on each bolt, suspended inside the annealing oven, and loaded with a dead weight of 20 lb. Self-aligning harnesses were used for hanging the models and for applying the load to the models. Washers made of blotting paper were used between the harnesses and the nuts to provide for more uniform load transfer to the nut models. The loaded models are shown in the annealing oven in Fig. 2.

The room-temperature modulus of elasticity for the Hysol is 480,000 psi but, at 270° F, the modulus is only 2,190 psi. Tensile strength at 270° F is 210 psi and Poisson's ratio is 0.5. The fringe value, which is a measure of the photoelastic sensitivity of the material, is 1.35 psi fr/in. Fringe orders for 1/8-in. sections of the shank portion of the model bolts were calculated to be 1.25 fringe for the oversize and 1.51 fringe for the standard-shank bolt for the 20-lb load. This loading is equivalent to a tensile stress in the prototype bolt of about 140,000 psi based on the pitch diameter of the threads or 115,000 psi in the standard shank and 95,000 psi in the oversize shank.

Polariscope

All fringe photographs and all fringe-order counts were taken on a diffused-light polariscope. Light source is a bank of 17 15-w fluorescent tubes behind a frosted Plexiglas diffuser. The polarizer, analyzer and the two quarter-waves plates are 10

in. in diameter and are independently rotatable.

Green fluorescent tubes were used for illumination for the black-and-white photographs. The green tubes do not provide monochromatic light, but their output covers a relatively narrow spectral band and they are a satisfactory light source, provided the proper film is used. Kodax Commercial Process Ortho film was used for the black-and-white photographs and the film was developed and printed for contrast. Commercial Process Ortho film is highly sensitive to green light; so, the combination provided good fringe photographs. Cool-white fluorescent tubes were used for making the color photographs and for illuminating the models for the telescope examination. Kodak Ektacolor Professional Type "S" film was used for the color photographs.

Preliminary Inspection of Fringes

Immediately following the annealing process, the models were removed from the oven and placed in a small, square Plexiglas tank filled with mineral oil and inspected optically and photographed in the polariscope. Mineral oil has essentially the same refractive index as Hysol and, consequently, permits the observation of fringes in the cylindrical shaped bolt shank without distortion. In this case, the fringes could be observed to within $\frac{1}{32}$ in. or less from the edge of the bolt.

These initial observations were made to determine the fringe order of the stress pattern frozen in the models and to determine the amount of bending introduced by the loading process prior to sectioning the models. Had an undesirable loading condition been noted, the model could have been reloaded and annealed (several times if necessary) until the desired loading conditions were obtained before the expensive models were destroyed by sec-

tioning. The method of determining fringe order in the unsectioned bolt is described below.

Stress distribution in a cross section of the shank portion of a bolt is essentially uniform; consequently, by plotting the fringes in the photographs of the unsectioned shank on a cross-section view of the bolt, it was possible by interpolation to determine the fringe order in a slice cut from this portion of the bolt. Calculations indicated that the fringe level in the shank of the oversize bolt would be about 1.1 fringe and that in the standard bolt shank would be about 1.4 fringe for an $\frac{1}{8}$ -in.-thick section. Largest bending moment was found in the oversize bolt; however, the maximum bending stress was less than 5 percent of the tensile stress. This was considered to be satisfactory; so, the specimens were prepared for sectioning.

Sectioning of the Models

It is considered desirable to section the bolt and nuts as a unit, but it was not considered wise to use normal shop methods for holding the models during the sectioning operations, because of the probability of locking in undesirable stress patterns. A highly satisfactory solution to this problem was found, however. Small wooden boxes were fabricated into which the bolt assemblies were placed, coffin fashion. The space around the bolt and nuts was then filled with a rigid, epoxy foam that was foamed in place. The foam set up and bonded to the test pieces in a matter of minutes and the wooden boxes provided solid material for clamping in shop machines. Both slices of the photoelastic plastic bolts in their epoxy foam jackets are shown in Fig. 3.

The slices were rough cut with a band saw, then the faces were machined smooth, flat and parallel with a fly cutter in a milling machine. The thickness was held to 0.125 ± 0.001 in. over the section; so, no corrections for thickness variations were required.

A dull band-saw blade was used accidentally on one of the roughing cuts, and as a result, a number of bolt threads were chipped on the oversize bolt section. The damage was more esthetic than functional, since the pertinent data sought in this investigation was contained essentially in the root section of the bolt threads, and this part of the model was not damaged.

Detailed Inspection of Fringes

The photoelastic pictures of the sectioned nut and bolt combinations are shown in Fig. 4. Areas of stress concentration in the bolts are readily identified as the roots of the threads. In these areas, the tensile bending stresses due to the beam-type loading of the bolt threads combine with the stresses due to the tensile load on the bolt at a point where the latter stresses are concentrated due to the notch effect of the thread.

The fringes in the photographs can be counted

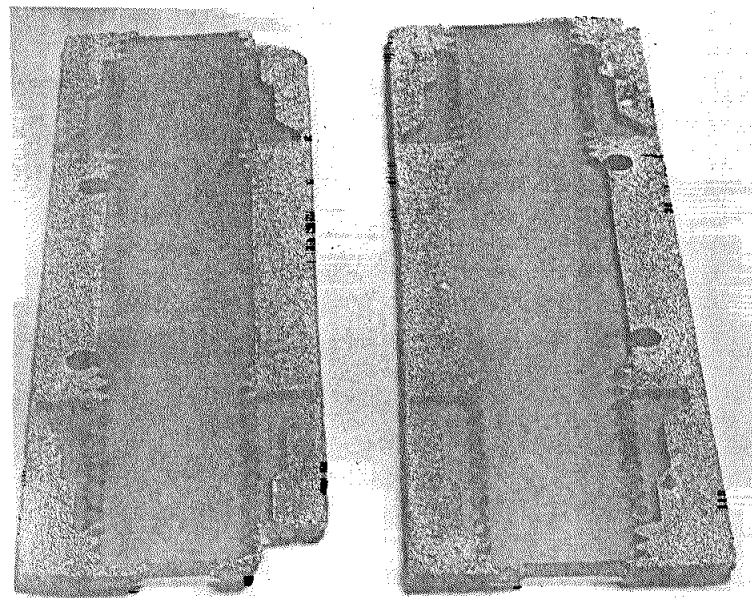
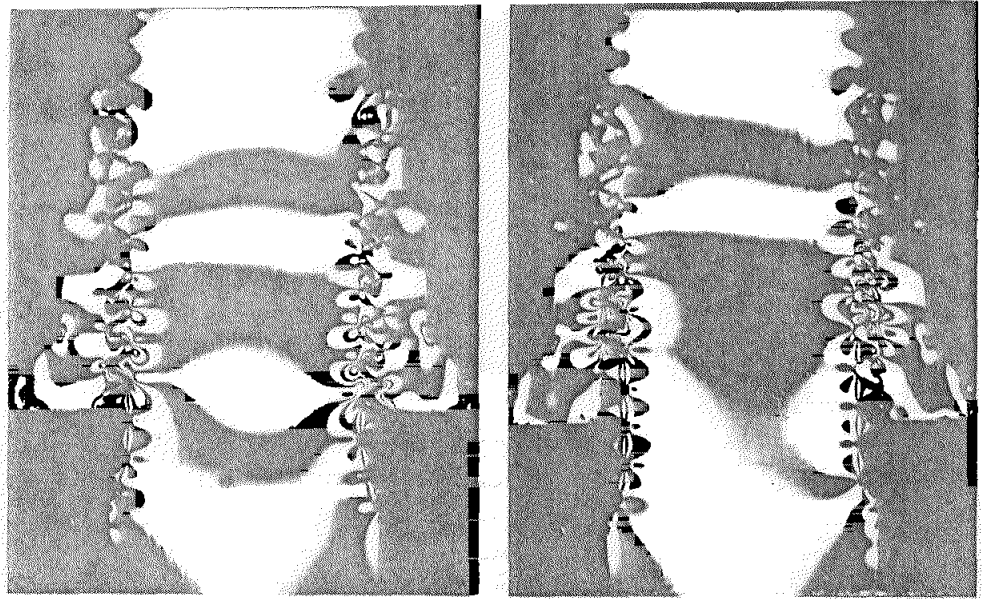


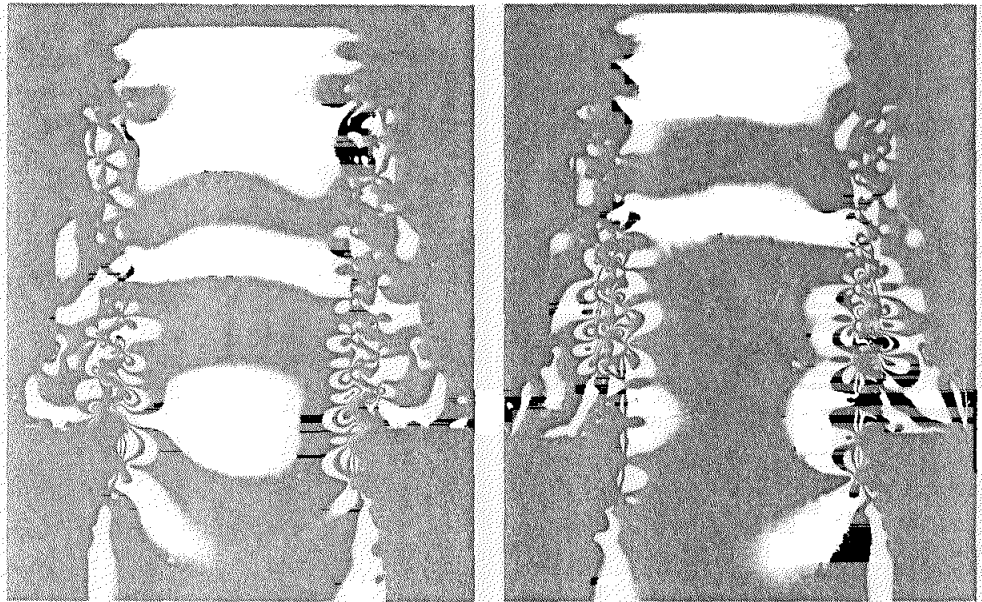
Fig. 3—Sectioned models



a. Standard bolt-standard nut

b. Standard bolt special nut

Fig. 4—Fringe photographs of model slices



c. Oversize bolt standard nut

d. Oversize bolt special nut

either from the end of the bolts, or from an adjacent unloaded thread where the fringe number is zero. In the area of maximum stress concentration, the fringes come quite close together, however, and it was found to be impossible to obtain the maximum fringe count from the black-and-white photographs. Much better results could be obtained from full-color photographs taken of the sectioned models, but even these results were not completely satisfactory. The best results were obtained by counting the fringes directly by means of a short-focus telescope with the models in the polariscope. Using this method, fringes could be counted quite accurately in the very root of the threads. It was found that it was necessary to line up the optical axis of the telescope with the helix angle of the thread root in order to read the highest fringe orders. This alignment was critical, so a maximum of two threads could be read with

each setting of the telescope. Errors in fringe count caused by aligning the telescope with the helix angle are negligible, since the helix angle β is about 2.5 deg and the errors go as $1 - \cos \beta$, or about 0.001.

Most of the fringe-order maxima of interest here occur on traction-free surfaces of the bolt; consequently, the fringe orders are proportional to the maximum stresses at these points. Fringe order is proportional to the difference in the principal stresses and, on a traction-free surface, the principal stresses are normal and tangent to the surface, the normal component being zero. Hence, for locations of interest, points of maximum fringe order are points of maximum stress and the fringe order is proportional to the stress at these points.

One point of maximum stress not falling in the above classification that is used in later calculations in this paper is located at the center of the shank.

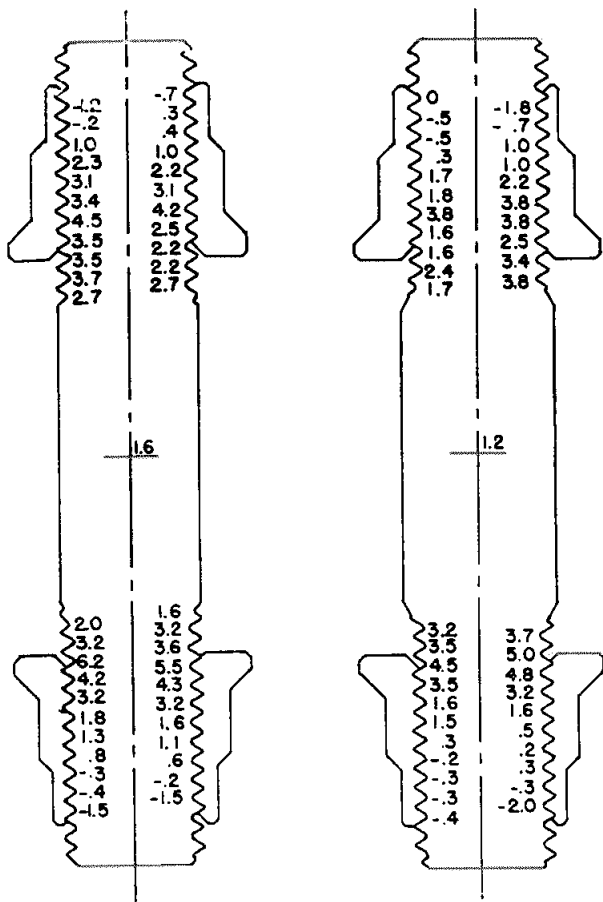


Fig. 5—Fringe-order maxima for standard and oversize bolts. (Standard nuts are at bottom)

Fortunately, this is a point of uniaxial stress and stress is proportional to fringe order here also.

Test Results

Maximum fringe orders obtained from the telescopic investigation are shown in Fig. 5. In each case, the maxima were found in the thread-root area. Results from Fig. 5 are shown graphically in Fig. 6 for the section of the bolt that mates with the nut. Results from both standard and oversize bolts are plotted on the same graph. It will be noted that the results lie very close to each other and the curves are drawn in to "guide the eye through the points." It can be seen immediately that the special nut offers a reduction in maximum stress compared to the standard nut. The reduction amounts to approximately one-third of the maximum stress encountered with the standard nut. This is accomplished by providing relief in the root of the nut thread which imparts a certain amount of flexibility to the nut thread and permits some of the upper threads to share the load-carrying function.

It would be wrong, on the basis of these results, to say that the special thread permits more threads to carry the load, since it will be noted that the first two "engaged" threads in the bolt ends

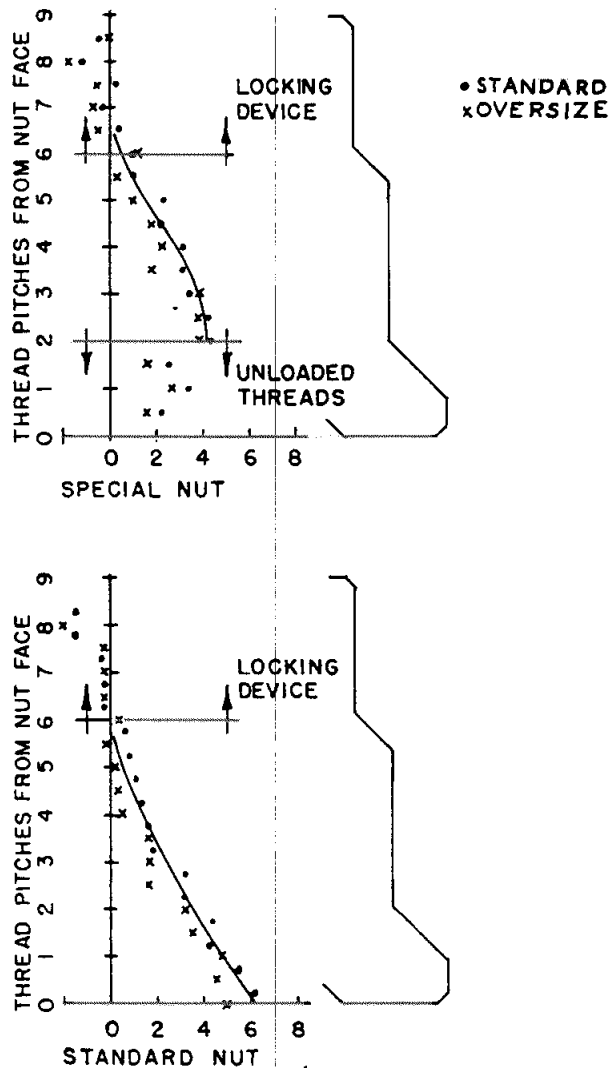


Fig. 6—Maximum fringe counts at bolt thread roots

which mate with the special nuts are not loaded. This has interesting implications which will be discussed in a later paragraph.

Analysis

The maximum fringe orders recorded for bolt threads loaded by the special nuts are all quite low. They are only slightly larger than the fringe orders recorded for the thread-runout area. For example, the four maxima in bolt threads loaded by the special nuts are 3.8, 3.8, 4.2 and 4.5 which can be compared to fringe orders of 3.2, 3.7, 3.8 and 2.4 in the runout areas of the oversize-shank bolt. This means that the stress concentrations due to the reduction in area combined with those due to the presence of a notch (the thread in the runout area give rise to stresses of the same magnitude as those due to the interaction of the bolt and the special nut.

The low fringe order of 2.4 in one of the thread roots is something of a surprise. It is not known if

it is due to some peculiarity of the special nut or due to asymmetric loading of the special nut leading to the low fringe order on one side of the bolt. A bending moment is noted in the section containing the low reading and the low reading is on the same side as the compressive bending stress, so the observed difference is consistent with the bending moment in the shank of the bolt, but it is doubtful that the large difference in fringe order on the two sides of the section can be attributed to the small amount of bending observed in the shank of the bolt.

Maximum fringe orders in the threads loaded by the standard nuts are substantially higher than those in any other part of the bolts, and it is apparent that the first thread engaged by these nuts carries the greatest load. Additionally, the maximum fringe orders due to the standard nuts are substantially higher than those due to the special nut.

When the thread-root fringe order is plotted against the thread position, as was done in Fig. 6, an idea of the load distribution in the bolt can be obtained. It is apparent that the special nut distributes the load in the bolt "better" than the standard nut. For the standard nut, the first loaded thread carries more load than the second; whereas, the first two loaded threads in the other combination carry approximately the same load. The gentle curvature and the initial slope of the curve for the special nut more closely represents an "ideal" loading curve than does the curve for the standard nut.

Stress-concentration Factors

In calculating the stress concentrations, it is important to specify the stress to which the local high stresses will be compared. For instance, the stress can be compared to the mean shank stress, the stress based on the pitch-diameter area, or even the stress maximum in the thread-runout region. Each of these values offers useful information. The particular value that suits a certain application is a matter to be determined by the user of the fastener. Average stress-concentration factors based on these three reference stresses are given for the four tested combinations in Table 1.

The first two engaged threads in the special nuts were not loaded. This was an unexpected phenomenon, but one that is of particularly noteworthy

significance in this investigation. Some concern had been voiced prior to the tests that the nuts could easily be threaded too far on the bolt in normal applications. This condition has long been recognized as detrimental to optimum service life in bolted joints subject to fatigue loading, because it places the first thread of the nut close to the thread runout area, where the stress concentrations due to nut loading are combined with concentrations due to notch effect. In oversize bolts, these also combine with concentrations due to section change from the oversize shank to thread-root diameter. This means that, in addition to the reduction in induced stress concentration offered by the more flexible threads in the special nut, this nut effectively loads the bolt away from other areas of high stress concentration.

The results indicate that, for installations in which the special nut is used, bolt geometry will be a controlling factor in determining the fatigue life of the bolt-nut combination, because the stress-concentration factors due to the nut are of the same magnitude as the stress-concentration factors due solely to bolt geometry. On the other hand, for installations in which standard nuts are used, the nut-induced stress-concentration factors are much larger than those due to bolt geometry, and so bolt geometry should have less effect on the fatigue performance of the combination.

Conclusions

1. Oversize-shank bolts are not recommended for fatigue applications. This is true of both tension and shear applications, since it appears that, in the latter, unexplained mechanisms are at work which cause the bolt to be partially loaded in tension.
2. Based on the results reported herein, it would appear that the special nut offers definite improvements in fatigue performance of bolted joints.

Acknowledgments

The author acknowledges the invaluable assistance rendered him in this project by R. L. Kurtak and R. E. Finigan and other members of the staff of the Technical Support Group of the Structural Research Laboratory, Commercial Airplane Division, The Boeing Company.

References

1. Siromeyer, C. E., "Stress Distribution in Bolts and Nuts," *Trans. Inst. Naval Architects*, LX, 112-122, Plates XIII and XIV (1918).
2. Den Hartog, J. P., "The Mechanics of Plate Rotors for Turbo Generators," *Trans. ASME*, APM-51-1, 51, 1-11 (1929).
3. Solakian, A. G., "Why Threaded Parts Fail," *Product Eng.*, 261-262 (July 1933).
4. Hall, S. G., "Determination of Stress Concentration in Screw Threads by Photoelastic Methods," *University of Illinois Bulletin* 245 (1932).
5. Heywood, R. B., "Tensile Fillet Stresses in Loaded Projections," *Proc. Inst. Mech. Engrs.* 159, 384-391 (1948).
6. Goodier, J. N., "The Distribution of Load on the Threads of Screws," *Jnl. Appl. Mech.*, A-10-16 (March 1940).
7. Horger, O. J., and Buckwaller, T. V., "Photoelasticity as Applied to Design Problems," *The Iron Age*, 42-50 (May 23, 1940).
8. Hetényi, M., "A Photoelastic Study of Bolt and Nut Fastenings," *Jnl. of Appl. Mech.*, A-93-100 (June 1943).

TABLE 1—STRESS-CONCENTRATION FACTORS FOR THE FOUR TEST COMBINATIONS AND THREE REFERENCE STRESSES

Nut	Bolt	Reference Stress		
		Average shank	Pitch diameter	Runout-thread root
Special	Oversize	3.2	2.1	1.2
Special	Standard	2.7	2.9	1.4
Standard	Oversize	4.0	2.1	1.3
Standard	Standard	3.7	3.8	1.8