



STRUCTURAL BIOLOGY
COMMUNICATIONS

Volume 70 (2014)

Supporting information for article:

Structure of a Bacterial Microcompartment Shell Protein Bound to a Cobalamin Cofactor

Michael C. Thompson, Christopher S. Crowley, Jeffrey Kopstein, Thomas A. Bobik and Todd O. Yeates

Supplemental Information for

X-ray Crystal Structure of a Bacterial Microcompartment Shell Protein Bound to a Cobalamin Cofactor

by

Michael C. Thompson, Christopher S. Crowley, Jeffrey Kopstein, Thomas A. Bobik, and Todd O. Yeates

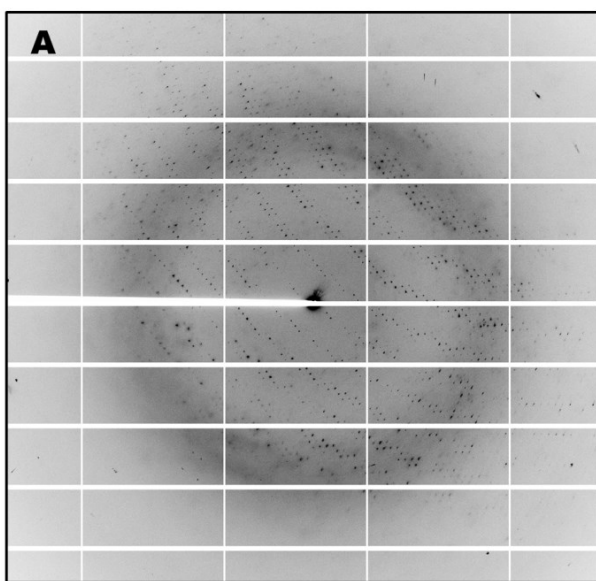


Figure S1. Hexagonal crystals obtained by co-crystallization of cpEutL and hydroxocobalamin displayed diffraction pathologies that impeded structure determination. Two oscillation images (1°) are shown (A,B), which were collected from a single crystal. The image in panel A is related to the image in panel B by a 90° rotation of the crystal specimen.

