

RESEARCH ARTICLE

Open Access

Study of TLR3, TLR4 and TLR9 in breast carcinomas and their association with metastasis

Salomé González-Reyes¹, Laura Marín¹, Lucía González¹, Luis O González^{1,2}, José M del Casar^{1,3}, Maria L Lamelas¹, José M González-Quintana^{1,2}, Francisco J Vizoso^{1,3*}

Abstract

Background: Toll-like receptors (TLRs) have garnered an extraordinary amount of interest in cancer research due to their role in tumor progression. By activating the production of several biological factors, TLRs induce type I interferons and other cytokines, which drive an inflammatory response and activate the adaptive immune system. The aim of this study was to investigate the expression and clinical relevance of TLR3, 4 and 9 in breast cancer.

Methods: The expression levels of TLR3, TLR4 and TLR9 were analyzed on tumors from 74 patients with breast cancer. The analysis was performed by immunohistochemistry.

Results: Samples of carcinomas with recurrence exhibited a significant increase in the mRNA levels of TLR3, TLR4 and TLR9. Tumors showed high expression of TLRs expression levels by cancer cells, especially TLR4 and 9. Nevertheless, a significant percentage of tumors also showed TLR4 expression by mononuclear inflammatory cells (21.6%) and TLR9 expression by fibroblast-like cells (57.5%). Tumors with high TLR3 expression by tumor cell or with high TLR4 expression by mononuclear inflammatory cells were significantly associated with higher probability of metastasis. However, tumours with high TLR9 expression by fibroblast-like cells were associated with low probability of metastasis.

Conclusions: The expression levels of TLR3, TLR4 and TLR9 have clinical interest as indicators of tumor aggressiveness in breast cancer. TLRs may represent therapeutic targets in breast cancer.

Background

Breast cancer remains a major cause of death in women in the developed world. One in nine women will suffer from breast cancer during her life [1]. Although clinical signs of disseminated disease occur in fewer than 10% of women at the time of diagnosis, the disease relapses in the form of metastasis within 5 years of surgery in about half of apparently localized tumours. It is difficult to predict the occurrence of distant metastases since breast cancer is a heterogeneous disease encompassing complex pathologic entities. For all of these reasons, new prognostic factors are essential to improving the classic risk classification in breast cancer.

Inflammation and cancer are related [2-8]. It is well known that persistent inflammatory conditions can induce cancer formation. This is in part, because

cytokines and chemokines play a crucial role promoting angiogenesis, metastasis, and subversion of adaptive immunity [9].

Toll-like receptors (TLRs) are considered a link between innate (non-specific) and adaptive (specific) immunity and TLRs contribute to the immune system's capacity to efficiently combat pathogens [10]. This is done by means of the induction of signaling cascades resulting in the induction of type I interferons (IFNs) and other cytokines. The result of this process leads to an inflammatory response and activates the adaptive immune system [11]. TLRs also enable immune cells to discriminate between self and nonself antigens [12]. As molecular sensors, TLRs detect pathogen-derived products and trigger protective responses. These responses include the secretion of cytokines that increase the resistance of infected cells as well as the release of chemokines that recruit immune cells to dead cells, thus limiting microbe spreading.

* Correspondence: investigacion@hospitaldejove.com

¹Unidad de Investigación, Fundación Hospital de Jove, Gijón, Spain
Full list of author information is available at the end of the article

Viral dsRNA participates in virus-infected cell apoptosis, but the signaling pathway involved remains unclear. Salaun *et al.* [13] showed that synthetic dsRNA induce apoptosis of human breast cancer cells in a TLR3-dependent manner. This mechanism involves the molecular adaptor Toll/IL-1R domain-containing adapter inducing IFN- and type I IFN autocrine signaling, but occurs independently of the dsRNA-activated kinase. The role of TLRs expressed by tumor cells in the evasion of immune surveillance was demonstrated in animal experiments [14]. These results showed that TLRs stimulation may lead to tumor progression and that there are now means to specifically reverse this unwanted effect.

The purpose of the present study was to investigate the expression of TLR3, TLR4 and TLR9 in breast cancer as well as its relation to distant metastasis. To address these questions, we analyzed the protein levels of TLR3, TLR4 and TLR9 by tissue arrays technology (TA) and immunohistochemical techniques, and their mRNA levels by real time-PCR.

Methods

Patients

This study included 74 women with histologically confirmed early breast cancer confirmed and treated between 1990 and 2003. We selected patients with the following inclusion criteria: invasive ductal carcinoma, in cases of non-recurrence, patients had been followed-up for a minimum of 5 years of follow-up. The exclusion criteria were the following: metastatic disease at presentation, prior history of any kind of malignant tumor, bilateral breast cancer at presentation, any type of neoadjuvant therapy, development of loco-regional recurrence during the follow-up period, development of a second primary cancer, and absence of sufficient tissue in paraffin blocks. From a total of 1,264 patients fulfilling these criteria, we randomly selected a sample size of 74 patients in accordance divided them into two different groups of similar size and stratified each group with regard to the development of metastasis. Patients and tumor characteristics are listed in Table 1. Patients were treated according to approved guidelines at our institution. The study adhered to national regulations and was approved by our institutions Ethics and Investigation Committee. Tissue samples were obtained prior informed consent from the patients. All patients were followed for distant metastasis status by clinical and biological studies every 3 months for the first 2 years and then yearly. Radiological studies were performed yearly, or when considered necessary. The end-point was distant metastatic relapse. The median follow-up period was 85 months in patients without metastases, and 46 months in patients with metastases.

Tissue array immunohistochemistry and analysis

Breast carcinoma tissue samples were obtained at the time of surgery. All specimens were routinely fixed in 10% neutral buffered formalin and stored in paraffin at room temperature for a period of four months to five years before further testing. Histopathological representative tumor areas were defined on haematoxylin and eosin-stained sections and marked on the slide. Tumour tissue array (TA) blocks were obtained by punching a tissue cylinder (core) with a diameter of 1.5 mm through a histological representative area of each 'donor' tumor block, which was then inserted into an empty 'recipient' TA paraffin block using a manual tissue arrayer (Beecher Instruments, Sun Prairie, Wisconsin, USA) as described elsewhere [15]. Collection of tissue cores was carried out under highly controlled conditions. Two cores were employed for each case.

Four composite high-density TA blocks were designed, and serial 5- μ m sections were consecutively cut with a microtome (Leica Microsystems GmbH, Wetzlar, Germany) and transferred to adhesive-coated slides. One section from each TA block was stained with haematoxylin and eosin, and these slides were then reviewed to confirm that the sample was representative of the original tumor. Immunohistochemistry was done on these sections of TA fixed in 10% buffered formalin and embedded in paraffin using a TechMate TM50 autostainer (Dako, Glostrup, Denmark). Monoclonal antibodies for TLR3 (TLR3.7; ref: sc-32232), TLR4 (H-80; sc-10741), and TLR9 (H-100; sc-25468) were obtained from Santa Cruz Biotechnology (California, USA). The dilution for each antibody was established based on negative and positive controls (1/50 for TLR3, 1/100 for TLR4 and TLR9).

Tissue sections were deparaffinized in xylene, and then rehydrated in graded concentrations of ethyl alcohol (100%, 96%, 80%, 70% and water). To enhance antigen retrieval for the three antibodies, TA sections were microwave-treated (H2800 Microwave Processor, EBS-ciencies, East Granby, Connecticut, USA) in citrate buffer, (Target Retrieval Solution, Dako), with high pH (pH9) for TLR3 and low pH (pH6) for TLR4 and 9, at 99°C for 16 min. Endogenous peroxidase activity was blocked by incubating the slides in peroxidase-blocking solution (Dako) for 5 min. The EnVision Detection Kit (Dako) was used as the staining detection system. Sections were counterstained with haematoxylin, dehydrated with ethanol, and permanently coverslipped.

The location of immunoreactivity, percentage of stained cells, and intensity were determined for each antibody preparation. All the cases were semiquantified for each protein-stained area. An image analysis system using the Olympus BX51 microscope and analysis soft (analySIS[®], Soft imaging system, Münster, Germany) was

Table 1 Basal characteristics of 74 patients with invasive carcinoma of the breast

CHARACTERISTICS	WITHOUT RECURRENCE N(%)	WITH RECURRENCE N(%)
Age (years)		
<57	14 (48.2)	29 (64.4)
>57	15 (51.8)	16 (35.6)
Menopausal status		
Premenopausal	11 (37.9)	11 (24.4)
Postmenopausal	18 (62.1)	34 (75.6)
Tumoral size		
T1	14 (48.2)	15 (33.3)
T2	15 (51.8)	30 (66.7)
Nodal status		
N-	14 (48.2)	22 (48.8)
N+	15 (51.8)	23 (51.2)
Histological grade		
Well dif	11 (37.9)	10 (22.2)
Mod dif	15 (51.7)	20 (44.4)
Poorly dif	3 (10.4)	15 (33.4)
Nottingham pronostic index		
<3.4	10 (34.4)	12 (26.7)
3.4-5.4	16(55.1)	21 (46.6)
>5.4	3 (10.5)	12 (26.7)
Estrogen receptors		
Negative	10 (34.4)	28 (62.8)
Positive	19 (65.6)	17 (37.8)
Progesterone receptors		
Negative	11 (37.9)	32 (71.1)
Positive	18 (62.1)	13 (28.9)
Desmoplasia		
Negative	11 (37.9)	11 (24.4)
Positive	18 (62.1)	34 (75.5)
Peritumoral inflammation		
No	15 (51.7)	20 (44.4)
Mild	13 (44.8)	24 (53.3)
Intense	1 (3.5)	1 (2.3)
Tumor progress		
Expansive	16 (55.1)	17 (37.7)
Infiltrating	13 (44.9)	28 (62.3)
Mitosis		
<10	16 (55.1)	18 (40)
>10	13 (44.9)	27 (60)
Tumoral necrosis		
No	26 (89.6)	37 (82.2)
Focal	2 (6.9)	7 (15.5)
Extense	1 (3.5)	1 (2.3)

employed as follows: tumor sections were stained with antibodies according to the method explained above and counterstained with haematoxylin. There were different optical thresholds for both stains. Each core was scanned with a 400× power objective in two fields per core. Fields were selected on the basis of protein-stained areas. The computer program selects and traces a line around antibody-stained areas (red spots) for higher optical threshold. The remaining non-stained areas (haematoxylin-stained tissue with lower optical threshold) appear as a blue background. Each field has an area ratio of stained (red) versus non-stained areas (blue). A final area ratio was obtained after averaging two fields. To evaluate immunostaining intensity we used a numeric score ranging from 0 to 3, reflecting the intensity as follows: 0, no staining; 1, weak staining; 2, moderate staining; and 3, intense staining. Using an Excel spreadsheet, the mean score was obtained by multiplying the intensity score (I) by the percentage of stained cells [16] and the results were added together (total score: $I \times PC$). This overall score was then averaged with the number of cores that were done for each patient. If there was no tumor in a particular core, then no score was given. In addition, for each tumor, the mean score of two core biopsies was calculated.

Western blot

Samples were separated by SDS-PAGE using 10% polyacrylamide gels and run at constant 120 V (Mini-Protean® Tetra Electrophoresis System, Bio-Rad, Hercules, USA). The tetraprotean transference kit was used to electrotransfer proteins to nitrocellulose membranes at 160 mA for 1 h in transfer buffer (0.248 M Tris pH 8.8, 1.92 M glycine and 20% methanol). The nitrocellulose filters containing the transferred proteins were blocked by rocking for 1 h in Tris-buffered saline (TBS) containing 1% skimmed milk and rinsed 3 times in TBS. The filters were incubated for 2 h at room temperature with one of these monoclonal antibodies: anti-TLR3 (ref: sc-32232), anti-TLR4 (sc-10741), anti-TLR9 (sc-25468) (Santa Cruz Biotechnology, California, USA) diluted in TBS containing 1% skimmed milk. The blots were then washed with TBS, incubated with protein A peroxidase and the reactive protein bands were visualized by chemiluminescence (Pierce ECL Western Blotting Substrate, Rockford, USA).

Real-time PCR

Total RNA was isolated from breast tissue using the RNeasy Mini kit (Quiagen, Hilden, Germany), including DNase treatment. The integrity of the eluted total RNA was checked by agarose gel electrophoresis and the RNA concentration was determined spectrophotometrically. First strand cDNA was made using the High Capacity

cDNA Reverse Transcription kit (Applied Biosystems, Cheshire, UK) following the manufacturer's instructions. The reverse transcription step was carried using the following program: 25°C for 10 min, 37°C for 120 min and 85°C for 5 sec. The expression levels of TLR3, TLR4, TLR9 and β -actin were assessed by real-time PCR using ABI Prism 7900 HT thermocycler (Applied Biosystems, Cheshire, UK) and the Fast SYBR Green Master Mix (Applied Biosystems, Cheshire, UK) with the following cycling conditions: 95°C for 20 sec, 40 cycles of 95°C for 1 sec and 60°C for 20 sec. The primers used were 5'-TAGCAGTCATCCAACAGAATCAT-3' (forward) and 5'-AATCTTCTGAGTTGATTATGGGTAA-3' (reverse) for TLR3, 5'-ACTCCCTCCAGGTTCTTGATTAC-3' (forward) and 5'-CGGGAATAAAGTCTCTGTAGTGA-3' (reverse) for TLR4, 5'-CTTCCCTGTAGCTGCTGTCC-3' (forward) and 5'-CCTGCACCAGGAGAGACAG-3' (reverse) for TLR9 and 5'-GGCACCCAGCACAATGAAG-3' (forward) and 5'-CCGATCCACACGGAGTACTTG-3' (reverse) for β -actin. PCR products were separated on 2% agarose gels containing ethidium bromide (0.5 μ g/ml).

Data analysis and statistical methods

Differences in percentages were calculated with the chi-square test. Immunostaining score values for each protein were expressed as median (range). A comparison of group immunostaining values was made with the Mann-Whitney or Kruskal-Wallis tests. For metastasis-free survival analysis we used the Cox's univariate method. Cox's regression model was used to examine interactions of different prognostic factors in a multivariate analysis. The SPSS 17.0 program was used for all calculations.

Results

In the present study, we investigated the expression levels of TLR3, TLR4 and TLR9 in tumors from 74 women with ductal invasive breast cancer. Figure 1 shows examples of immunostaining for these proteins. TLRs showed an intracellular location pattern, but

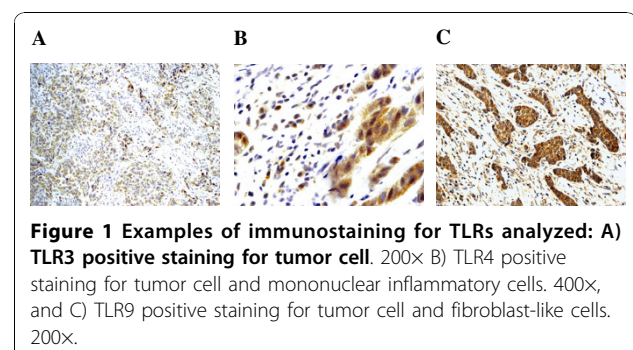


Table 2 TLRs expression in 74 cases of breast cancer

Factor	Tumoral cells	Fibroblast	MICs
	n ^o total cases n ^o positive cases (%)	n ^o total cases n ^o positive cases (%)	n ^o total cases n ^o positive cases (%)
TLR3	52 (79)	2 (3)	2 (3)
TLR4	70 (95)	6 (8)	16 (22)
TLR9	73 (100)	42 (58)	5 (7)

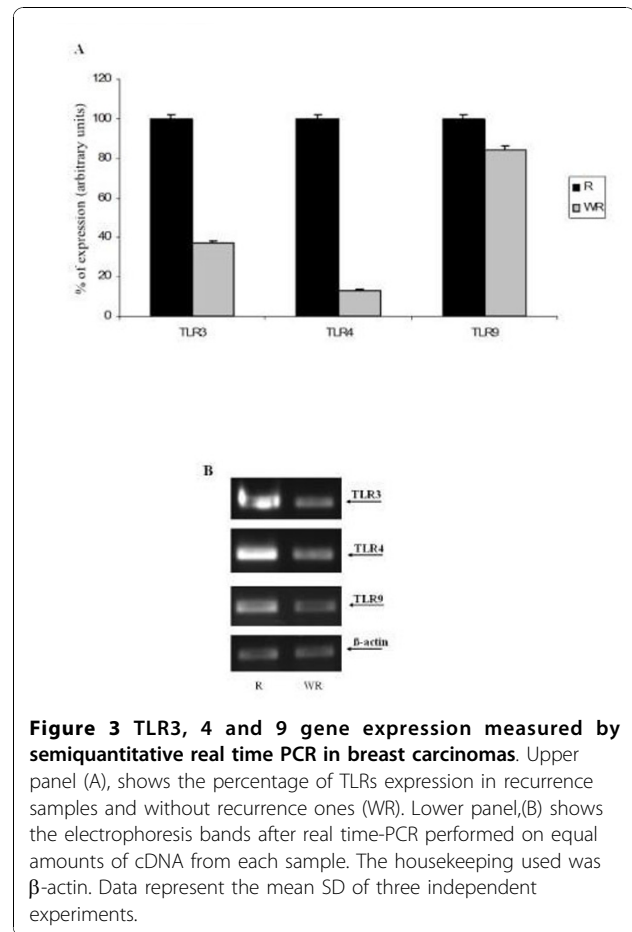
Abbreviations: MICs: mononuclear inflammatory cells.

TLR3 also was localized in the cell surface. Positive staining was generally found in cancer cells but also in some stromal cells (fibroblast-like cells as well as in mononuclear inflammatory cells -MICs-). Table 2 summarizes the percentages of each TLR staining in each cellular type. In tumors, cancer cells exhibited high expressions, especially of TLR4 and TLR9. Nevertheless, a significant percentage of tumors also showed expression levels of TLR4 by MICs (21.6%) and of TLR9 by fibroblast-like cells (57.5%).

The presence of the TLR gene products was confirmed by western blot in breast tumor samples (Figure 2). The results clearly showed immunoreactive bands corresponding to TLR3, TLR4 and TLR9. As shown in Figure 2 anti-TLR3, anti-TLR4 and anti-TLR9 recognized bands of approximately 110, 100 and 120 KDa, respectively.

Figure 3 shows the results of real time PCR. The percentage of TLR cDNA expression in samples obtained from breast cancer patients with recurrence and from breast cancer patients without recurrence are compared in the upper panel whereas the electrophoresis analysis is shown in the lower panel. We found elevated TLR expression levels in tissue samples from patients with recurrence relative to samples from patients without recurrence.

Figure 4 shows the immunostaining score values, which ranged widely for each TLR. We also evaluated the possible relationship between the TLRs expressions and clinicopathological factors of breast carcinomas including menopausal status, tumor size, nodal status,



tumor stage, histological grade, estrogen and progesterone receptors, tumor advancing edge, peri-tumor inflammation and tumor necrosis as summarized in Table 3. Both TLR3 and TLR4 expressions were significantly and positively associates with tumor size. A significant association between TLR3 or TLR9 expression score and tumor stage was also found. In addition, when compared with tumors from premenopausal women, we found that tumors from postmenopausal

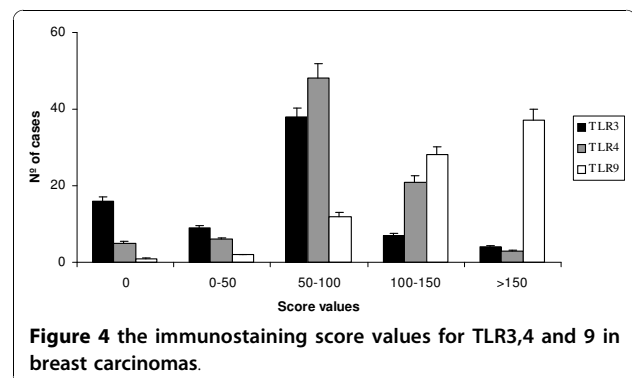
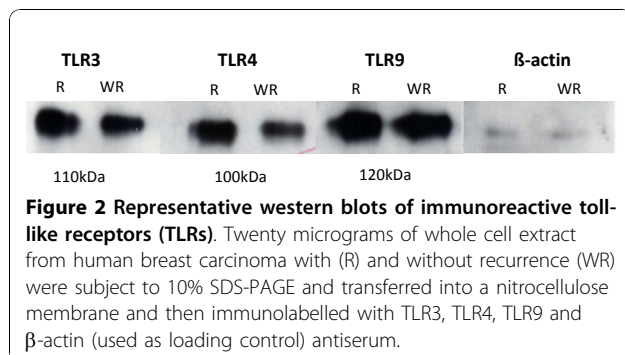


Table 3 stadistical analysis between TLRs expressions and clinicopathological factors in women with breast carcinomas

Characteristics	TLR3		TLR4		TLR9	
	median (range)	p	median (range)	p	median (range)	p
Menopausal Status						
Premenopausal	51.4 (0-158)	0.048	57.37 (0-160)	0.006	138.7 (46-268)	0.319
Postmenopausal	65.9 (0-166)		72.33 (0-158)		153 (37-272)	
Tumoral size						
T1	49.7 (0-166)	0.005	62.7 (0-160)	0.039	140.2 (37-272)	0.269
T2	69.2 (0-162)		71.2 (38-158)		151.4 (46-268)	
Nodal status						
N-	60.5 (0-162)	0.717	68 (0-143)	0.725	147.5 (38-246)	0.724
N+	60.5 (0-166)		68.7 (36-160)		153 (46-272)	
Estrogen receptors						
Negative	63.7 (0-166)	0.923	67.1 (0-159)	0.436	150.5 (46-272)	0.904
Positive	59.9 (0-162)		69.4 (0-156.2)		148 (37-268)	
Progesterone receptors						
Negative	67.3 (0-166)	0.101	70 (0-158)	0.396	150.3 (46-272)	0.251
Positive	57.1 (0-158)		62.8 (38-135)		137.4 (37-268)	
Tumoral progress						
Expansive	62.7 (0-162)	0.863	71.6 (0-160)	0.247	151.8 (65-272)	0.167
Infiltrating	59.9 (0-166)		62.1 (0-156)		143.1 (38-268)	
Stage						
I	46 (0-70)	0.024	62.8 (0-135)	0.175	136.9 (37-180)	0.035
II	62.4 (0-162)		69.3 (38-160)		155.9 (46-268)	
III	72.3 (0-166)		69 (36-158)		147.5 (60-272)	
SBR						
SBRI	57.1 (0-102)	0.671	62.8 (0-135)	0.201	137.9 (38-272)	0.218
SBRII	57.9 (0-166)		66.5 (0-160)		148.4 (60-246)	
SBRIII	64.3 (0-158)		96.2 (0-158)		161.7 (46-268)	
Peritumoral inflammation						
No	57.9 (0-162)	0.815	67.5 (0-156)	0.815	141.7 (37-272)	0.191
Mild	61 (0-166)		69.4 (0-160)		158.2 (46-268)	
Intense	60 (50-70)		88.4 (62-114)		137.7 (115-159)	
Tumoral necrosis						
No	57.5 (0-166)	0.359	68 (0-158)	0.184	147.5 (38-272)	0.095
Focal	69.7 (0-162)		64.4 (46-125)		151.1 (119-173)	
Extense	71.4 (29-113)		133.2 (106-160)		214.6 (183-246)	

women had significantly higher TLR3 and TLR4 score values (Table 3).

We also analyzed the possible relationship between TLRs immunostaining values and distant relapse-free survival. Univariate analysis (Figure 4) demonstrated that high score values for TLR3 expression, TLR3 expression by tumoral cells, or TLR4 expression by MICs, were significantly associated with a great rate of distant metastasis. However, TLR9 expression by

fibroblast-like cells was significantly associated with low rate of distant metastases (Table 4 and Figure 5). Multivariate analysis with a Cox model demonstrated that tumour stage and progesterone receptor-status were significantly and independently associated with relapse-free survival in patients with breast cancer. However, this same analysis also demonstrated that TLRs expressions are significantly associated with prognosis (Table 4).

Table 4 Cox's univariate (HR) and multivariate (RR) analysis of the relationship between TLRs expression and relapse-free survival

Factor	Number of patients	Event frequency	HR (95% CI)	RR (95% CI)
TLR3				
Score<median>median	33/33	13/28	3.4 (1.8-6.7)**	2.6 (1.3-5.1)**
CT (-) vs (+)	14/52	may-36	2.8 (1.1-7.2)*	2.5 (0.9-6.5)*
TLR4				
MIC (-) vs (+)	58/16	29/16	3.7 (2-7)**	3.5 (1.8-6.8)**
TLR9				
F (-) vs (+)	31/42	24/21	0.4 (0.2-0.7)**	0.3 (0.3-0.6)**
Tumoral stage II vs III	38/20	20/17	1.9 (1.3-3) **	2.8 (1.2-6.5)*
Progesterone receptors positive vs negative	42/30	31/13	0.4 (0.2-0.8)*	0.3 (0.1-0.7)**

*p < 0.005; **p < 0.05

Discussion

This study analyzes tumor expression as well as the prognostic significance of TLRs in breast cancer. The results demonstrated an association TLR3, TLR4 and TLR9 expression and distant metastasis.

TLRs expression has been described in different human tumors [13,17-28]. Receptor-deficient mice were found to be protected from or develop less inducible tumors in experimental models [22,29]. Cancer cells activated by TLR signals may release cytokines and chemokines that in turn may recruit immune cells and stimulate them to release further cytokines and chemokines. This process results in a cytokine profile that is associated with immune tolerance, cancer progression and propagation of the tumor microenvironment [30]. Recent evidences also show that functional

TLRs may play an important role in tumor progression by activating the production of interleukins, tumor-necrosis factor-alpha (TNF- α), nuclear factor-kappaBeta (NF-kappaB) and metalloproteases [31,32]. Likewise, activation of tumor cell TLRs not only promotes tumor cell proliferation and resistance to apoptosis, but also enhances tumor cell invasion and metastasis by regulating metalloproteases and integrins [33-35]. Although expression of these factors was generally associated with an adverse prognosis, the expression pattern of TLRs in human breast cancer tissues is largely unknown. Our results show high expression of TLR3, TLR4 and TLR9 by breast cancer cells though.

Our results showed that TLR3 expression is associated with high probability of metastasis, which is in agreement with previous studies indicating that TLR3 expression is related to tumoral aggressiveness [13,36-39]. Therefore, TLR3 may represent a good therapeutic target in breast cancer. In this sense, there are studies showing a variable antineoplastic effect caused by a blockade of TLR3 [40,41].

The TLR4 expression by MICs and/or TLR9 by fibroblast-like cells is another interesting finding of our study. TLR4 expression by MICs was associated with an increased incidence of metastasis, whereas TLR9 expression by fibroblast-like cells was associated a low metastasis-rate. These findings support data from other authors on the importance of the tumor stromal cells in tumor behavior. The role of stromal cells has been attributed to the release by them of various extracellular matrix proteins, growth factors, proteases and other factors that act as signal transducers for tumor progression [42-52]. Therefore, our results also suggest the existence of different phenotypes of stromal cells that influence prognosis depending on their TLR expression pattern.

TLR4 recognizes several bindings which in turn activate transcription factors, resulting in the expression and release of cytokines such as interleukin-1, interleukin-6

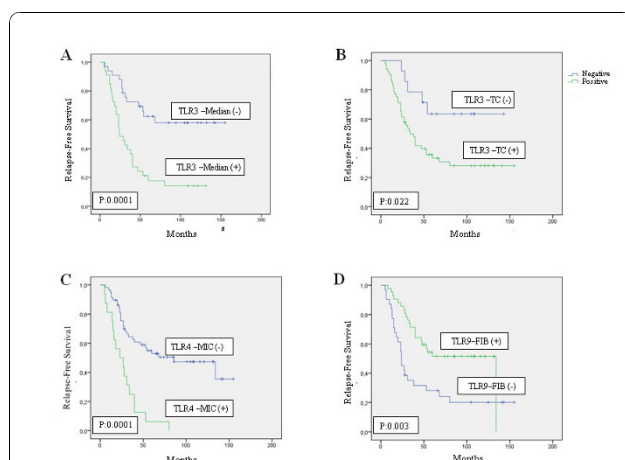


Figure 5 A) Probability of biochemical recurrence as function of TLR3 median (p:0.0001), B) probability of biochemical recurrence as function of TLR3 expression by tumor cells (p: 0.022). C) probability of biochemical recurrence as function of TLR4 in monocytes (p: 0001) and D) probability of biochemical recurrence as function of TLR9 expression by intratumor fibroblasts (p: 0.003).

and interleukin-8 [53]. Consequently, considering the fact that the TLR4 expression by MICs is increased in breast cancer cases with recurrence, our results suggest that the use of TLR4 agonists may become a useful anticancer strategy [18,54,55].

Our data also suggest that TLR9 may help to identify one population of fibroblast-like cells associated with good prognosis. Although the biological significance of TLR9 expression by stromal fibroblast-like cells is currently unknown, there are data pointing to a protective role of this receptor against tumoral progression. Indeed, it was demonstrated that stimulation of TLR-9 activates human plasmacytoid dendritic cells and B cells, thus inducing potent innate immune responses in pre-clinical tumor models as well as in patients [56]. It is therefore understandable that using bindings of nucleic acid-sensing TLR9 as a pharmacological intervention in various diseases is gaining in interest.

Conclusions

Our results show that TLR expression have prognostic significance and suggest that these markers may represent new therapeutic targets in breast cancer. Further studies on the TLRs expression in tumor context may help to better understand the process that links inflammation and cancer, as well as to assess the biological and clinical importance of the interplay between tumor and stroma in breast cancer.

Acknowledgements

this work was supported by grants from: Fondo de Investigación Sanitaria del Instituto Carlos III (FIS-PI070306) (FIS-Spain) and FICYT (IB08-170).

Author details

¹Unidad de Investigación, Fundación Hospital de Jove, Gijón, Spain. ²Servicio de Anatomía Patológica, Fundación Hospital de Jove, Gijón, Spain. ³Servicio de Cirugía General, Fundación Hospital de Jove, Gijón, Spain.

Authors' contributions

guarantor of integrity of the entire study- GRS and VF; study concepts and design- GRS, ML and VF; literature research- GRS, LM and VF; clinical studies- GRS, ML, GL, GLO and GJ; experimental studies/data analysis- GRS, ML, GL, GLO and GJ; statistical analysis DCJ; manuscript preparation- GRS and VF; manuscript editing- GRS and VF. All authors read and approved the final manuscript.

Competing interests

The authors declare that they have no competing interests.

Received: 10 February 2010 Accepted: 3 December 2010

Published: 3 December 2010

References

1. Tyczynski J, Bray F, Parkin D: **Breast cancer in Europe.** *ENCR Cancer Fact Sheets* 2002.
2. Khatami M: 'Yin and Yang' in inflammation: duality in innate immune cell function and tumorigenesis. *Expert Opin Biol Ther* 2008, **8**:1461-1472.
3. Ferrantini M, Capone I, Belardelli F: **Dendritic cells and cytokines in immune rejection of cancer.** *Cytokine Growth Factor Rev* 2008, **19**:93-107.
4. Khatami M: **Developmental phases of inflammation-induced massive lymphoid hyperplasia and extensive changes in epithelium in an experimental model of allergy: implications for a direct link between inflammation and carcinogenesis.** *Am J Ther* 2005, **12**:117-126.
5. Risques RA, Rabinovitch PS, Brentnall TA: **Cancer surveillance in inflammatory bowel disease: new molecular approaches.** *Curr Opin Gastroenterol* 2006, **22**:382-390.
6. Smyth MJ, Godfrey DI, Trapani JA: **A fresh look at tumor immunosurveillance and immunotherapy.** *Nat Immunol* 2001, **2**:293-299.
7. Burnet M: **Cancer; a biological approach. I. The processes of control.** *Br Med J* 1957, **1**:779-786.
8. Stanley MA, Pett MR, Coleman N: **HPV: from infection to cancer.** *Biochem Soc Trans* 2007, **35**:1456-1460.
9. Costantini S, Capone F, Guerriero E, Castello G: **An approach for understanding the inflammation and cancer relationship.** *Immunol Lett* 2009.
10. Kawai T, Akira S: **TLR signaling.** *Cell Death Differ* 2006, **13**:816-825.
11. Pasare C, Medzhitov R: **Toll-like receptors and acquired immunity.** *Semin Immunol* 2004, **16**:23-26.
12. Matzinger P: **An innate sense of danger.** *Ann N Y Acad Sci* 2002, **961**:341-342.
13. Salaun B, Coste I, Risoan MC, Lebecque SJ, Renno T: **TLR3 can directly trigger apoptosis in human cancer cells.** *J Immunol* 2006, **176**:4894-4901.
14. Zeromski J, Mozer-Lisewska I, Kaczmarek M: **Significance of Toll-like Receptors Expression in Tumor Growth and Spreading: A Short Review.** *Cancer Microenviron* 2008, **1**:37-42.
15. Parker RL, Huntsman DG, Lesack DW, Cupples JB, Grant DR, Akbari M, Gilks CB: **Assessment of interlaboratory variation in the immunohistochemical determination of estrogen receptor status using a breast cancer tissue microarray.** *Am J Clin Pathol* 2002, **117**:723-728.
16. Liu N, Lapcevic RK, Underhill CB, Han Z, Gao F, Swartz G, Plum SM, Zhang L, Green SJ: **Metastatin: a hyaluronan-binding complex from cartilage that inhibits tumor growth.** *Cancer Res* 2001, **61**:1022-1028.
17. Huang B, Zhao J, Li H, He KL, Chen Y, Chen SH, Mayer L, Unkeless JC, Xiong H: **Toll-like receptors on tumor cells facilitate evasion of immune surveillance.** *Cancer Res* 2005, **65**:5009-5014.
18. Wolska A, Lech-Maranda E, Robak T: **Toll-like receptors and their role in carcinogenesis and anti-tumor treatment.** *Cell Mol Biol Lett* 2009, **14**:248-272.
19. Kundu SD, Lee C, Billips BK, Habermacher GM, Zhang Q, Liu V, Wong LY, Klumpp DJ, Thumbikat P: **The toll-like receptor pathway: a novel mechanism of infection-induced carcinogenesis of prostate epithelial cells.** *Prostate* 2008, **68**:223-229.
20. Paone A, Starace D, Galli R, Padula F, De Cesaris P, Filippini A, Ziparo E, Riccioli A: **Toll-like receptor 3 triggers apoptosis of human prostate cancer cells through a PKC-alpha-dependent mechanism.** *Carcinogenesis* 2008, **29**:1334-1342.
21. Kelly MG, Alvero AB, Chen R, Silasi DA, Abrahams VM, Chan S, Visintin I, Rutherford T, Mor G: **TLR-4 signaling promotes tumor growth and paclitaxel chemoresistance in ovarian cancer.** *Cancer Res* 2006, **66**:3859-3868.
22. Fukata M, Chen A, Vamadevan AS, Cohen J, Breglio K, Krishnareddy S, Hsu D, Xu R, Harpaz N, Dannenberg AJ, Subbaramaiah K, Cooper HS, Itzkowitz SH, Abreu MT: **Toll-like receptor-4 promotes the development of colitis-associated colorectal tumors.** *Gastroenterology* 2007, **133**:1869-1881.
23. Stark JR, Wiklund F, Gronberg H, Schumacher F, Sinnott JA, Stampfer MJ, Mucci LA, Kraft P: **Toll-like receptor signaling pathway variants and prostate cancer mortality.** *Cancer Epidemiol Biomarkers Prev* 2009, **18**:1859-1863.
24. O'Neill LA, Bryant CE, Doyle SL: **Therapeutic targeting of toll-like receptors for infectious and inflammatory diseases and cancer.** *Pharmacol Rev* 2009, **61**:177-197.
25. Merrell MA, Ilvesaro JM, Lehtonen N, Sorsa T, Gehrs B, Rosenthal E, Chen D, Shackley B, Harris KW, Selander KS: **Toll-like receptor 9 agonists promote cellular invasion by increasing matrix metalloproteinase activity.** *Mol Cancer Res* 2006, **4**:437-447.
26. Ilvesaro JM, Merrell MA, Li L, Wakchoure S, Graves D, Brooks S, Rahko E, Jukkola-Vuorinen A, Vuopala KS, Harris KW, Selander KS: **Toll-like receptor 9 mediates CpG oligonucleotide-induced cellular invasion.** *Mol Cancer Res* 2008, **6**:1534-1543.
27. Berger R, Fiegl H, Goebel G, Obexer P, Ausserlechner M, Doppler W, Hauser-Kronberger C, Reitsamer R, Egle D, Reimer D, Muller-Holzner E, Jones A,

- Widschwendter M: **Toll-like receptor 9 expression in breast and ovarian cancer is associated with poorly differentiated tumors.** *Cancer Sci* 2010.
28. Vaisanen MR, Vaisanen T, Jukkola-Vuorinen A, Vuopala KS, Desmond R, Selander KS, Vaarala MH: **Expression of toll-like receptor-9 is increased in poorly differentiated prostate tumors.** *Prostate* .
29. Swann JB, Vesely MD, Silva A, Sharkey J, Akira S, Schreiber RD, Smyth MJ: **Demonstration of inflammation-induced cancer and cancer immunoeediting during primary tumorigenesis.** *Proc Natl Acad Sci USA* 2008, **105**:652-656.
30. Sato Y, Goto Y, Narita N, Hoon DS: **Cancer Cells Expressing Toll-like Receptors and the Tumor Microenvironment.** *Cancer Microenviron* 2009, **2**(Suppl 1):205-214.
31. Voelcker V, Gebhardt C, Averbeck M, Saalbach A, Wolf V, Weih F, Sleeman J, Anderegg U, Simon J: **Hyaluronan fragments induce cytokine and metalloprotease upregulation in human melanoma cells in part by signalling via TLR4.** *Exp Dermatol* 2008, **17**:100-107.
32. Inoue J, Gohda J, Akiyama T, Semba K: **NF-kappaB activation in development and progression of cancer.** *Cancer Sci* 2007, **98**:268-274.
33. Huang B, Zhao J, Unkeless JC, Feng ZH, Xiong H: **TLR signaling by tumor and immune cells: a double-edged sword.** *Oncogene* 2008, **27**:218-224.
34. Rakoff-Nahoum S, Medzhitov R: **Role of toll-like receptors in tissue repair and tumorigenesis.** *Biochemistry (Mosc)* 2008, **73**:555-561.
35. Rakoff-Nahoum S, Medzhitov R: **Toll-like receptors and cancer.** *Nat Rev Cancer* 2009, **9**:57-63.
36. Shojaei H, Oberg HH, Juricke M, Marischen L, Kunz M, Mundhenke C, Gieseler F, Kabelitz D, Wesch D: **Toll-like receptors 3 and 7 agonists enhance tumor cell lysis by human gammadelta T cells.** *Cancer Res* 2009, **69**:8710-8717.
37. Scarlett UK, Cubillos-Ruiz JR, Nesbeth YC, Martinez DG, Engle X, Gewirtz AT, Ahonen CL, Conejo-Garcia JR: **In situ stimulation of CD40 and Toll-like receptor 3 transforms ovarian cancer-infiltrating dendritic cells from immunosuppressive to immunostimulatory cells.** *Cancer Res* 2009, **69**:7329-7337.
38. Allhorn S, Boing C, Koch AA, Kimmig R, Gashaw I: **TLR3 and TLR4 expression in healthy and diseased human endometrium.** *Reprod Biol Endocrinol* 2008, **6**:40.
39. Morikawa T, Sugiyama A, Kume H, Ota S, Kashima T, Tomita K, Kitamura T, Kodama T, Fukayama M, Aburatani H: **Identification of Toll-like receptor 3 as a potential therapeutic target in clear cell renal cell carcinoma.** *Clin Cancer Res* 2007, **13**:5703-5709.
40. Lacour F, Lacour J, Spira A, Michelson M, Petit JY, Delage G, Contesso G, Merlin-Nahon E, Sarrazin D, Viguier J: **[Adjuvant immunotherapy using polyadenylic acid and polyuridylic acid (Poly A., Poly U.) in operable carcinoma of the breast (author's transl)].** *Chirurgie* 1980, **106**:737-743.
41. Khan AL, Richardson S, Drew J, Larsen F, Campbell M, Heys SD, Ah-See AK, Eremin O: **Polyadenylic-polyuridylic acid enhances the natural cell-mediated cytotoxicity in patients with breast cancer undergoing mastectomy.** *Surgery* 1995, **118**:531-538.
42. Lukits J: **[The effect of the microenvironment of head and neck cancers on tumor progression].** *Magy Onkol* 2009, **53**:51-59.
43. Sachdeva M, Mo YY: **Stroma-mediated expression of estrogen and its role in cancer.** *Front Biosci* 15:237-248.
44. Foidart JM: **[Stromal proteases in the progression of breast cancer].** *Bull Mem Acad R Med Belg* 1997, **152**:229-235, discussion 235-227.
45. Noel A, Emonard H, Polette M, Birembaut P, Foidart JM: **Role of matrix, fibroblasts and type IV collagenases in tumor progression and invasion.** *Pathol Res Pract* 1994, **190**:934-941.
46. Lin EY, Pollard JW: **Role of infiltrated leucocytes in tumour growth and spread.** *Br J Cancer* 2004, **90**:2053-2058.
47. Chang HY, Sneddon JB, Alizadeh AA, Sood R, West RB, Montgomery K, Chi JT, van de Rijn M, Botstein D, Brown PO: **Gene expression signature of fibroblast serum response predicts human cancer progression: similarities between tumors and wounds.** *PLoS Biol* 2004, **2**:E7.
48. Hu M, Polyak K: **Molecular characterisation of the tumour microenvironment in breast cancer.** *Eur J Cancer* 2008, **44**:2760-2765.
49. Gonzalez LO, Pidal I, Junquera S, Corte MD, Vazquez J, Rodriguez JC, Lamelas ML, Merino AM, Garcia-Muniz JL, Vizoso FJ: **Overexpression of matrix metalloproteinases and their inhibitors in mononuclear inflammatory cells in breast cancer correlates with metastasis-relapse.** *Br J Cancer* 2007, **97**:957-963.
50. Del Casar JM, Gonzalez LO, Alvarez E, Junquera S, Marin L, Gonzalez L, Bongera M, Vazquez J, Vizoso FJ: **Comparative analysis and clinical value of the expression of metalloproteases and their inhibitors by intratumor stromal fibroblasts and those at the invasive front of breast carcinomas.** *Breast Cancer Res Treat* 2009.
51. Chekhun VF: **Stroma – regulator of cancer cell progression.** *Exp Oncol* 2009, **31**:126.
52. Flores-Resendiz D, Castellanos-Juarez E, Benitez-Bribiesca L: **[Proteases in cancer progression].** *Gac Med Mex* 2009, **145**:131-142.
53. Medzhitov R, Preston-Hurlburt P, Janeway CA Jr: **A human homologue of the Drosophila Toll protein signals activation of adaptive immunity.** *Nature* 1997, **388**:394-397.
54. Hua D, Liu MY, Cheng ZD, Qin XJ, Zhang HM, Chen Y, Qin GJ, Liang G, Li JN, Han XF, Liu DX: **Small interfering RNA-directed targeting of Toll-like receptor 4 inhibits human prostate cancer cell invasion, survival, and tumorigenicity.** *Mol Immunol* 2009, **46**:2876-2884.
55. Earl TM, Nicoud IB, Pierce JM, Wright JP, Majoras NE, Rubin JE, Pierre KP, Gorden DL, Chari RS: **Silencing of TLR4 decreases liver tumor burden in a murine model of colorectal metastasis and hepatic steatosis.** *Ann Surg Oncol* 2009, **16**:1043-1050.
56. Murad YM, Clay TM, Lyster HK, Morse MA: **CPG-7909 (PF-3512676, ProMune): toll-like receptor-9 agonist in cancer therapy.** *Expert Opin Biol Ther* 2007, **7**:1257-1266.

Pre-publication history

The pre-publication history for this paper can be accessed here:
<http://www.biomedcentral.com/1471-2407/10/665/prepub>

doi:10.1186/1471-2407-10-665

Cite this article as: González-Reyes et al.: Study of TLR3, TLR4 and TLR9 in breast carcinomas and their association with metastasis. *BMC Cancer* 2010 **10**:665.

**Submit your next manuscript to BioMed Central
and take full advantage of:**

- Convenient online submission
- Thorough peer review
- No space constraints or color figure charges
- Immediate publication on acceptance
- Inclusion in PubMed, CAS, Scopus and Google Scholar
- Research which is freely available for redistribution

Submit your manuscript at
www.biomedcentral.com/submit

