

# Summer temperature variations in Lapland during the Medieval Warm Period and the Little Ice Age relative to natural instability of thermohaline circulation on multi-decadal and multi-centennial scales

SAMULI HELAMA,<sup>1\*</sup> MAURI TIMONEN,<sup>2</sup> JARI HOLOPAINEN,<sup>1</sup> MAXIM G. OGURTSOV,<sup>3</sup> KARI MIELIKÄINEN,<sup>4</sup> MATTI ERONEN,<sup>1</sup> MARKUS LINDHOLM<sup>2</sup> and JOUKO MERILÄINEN<sup>5</sup>

<sup>1</sup> Department of Geology, University of Helsinki, Helsinki, Finland

<sup>2</sup> Finnish Forest Research Institute, Rovaniemi Research Unit, Rovaniemi, Finland

<sup>3</sup> Cosmic Ray Laboratory, A. F. Ioffe Physico-Technical Institute, St Petersburg, Russia

<sup>4</sup> Finnish Forest Research Institute, Vantaa Research Unit, Vantaa, Finland

<sup>5</sup> SAIMA Unit of Savonlinna Department of Teacher Education, University of Joensuu, Joensuu, Finland

Helama, S., Timonen, M., Holopainen, J., Ogurtsov, M. G., Mielikäinen, K., Eronen, M., Lindholm, M. and Meriläinen, J. 2009. Summer temperature variations in Lapland during the Medieval Warm Period and the Little Ice Age relative to natural instability of thermohaline circulation on multi-decadal and multi-centennial scales. *J. Quaternary Sci.*, Vol. 24 pp. 450–456. ISSN 0267-8179.

Received 29 February 2008; Revised 19 February 2009; Accepted 8 April 2009

**ABSTRACT:** New tree ring-based analysis for climate variability at a regional scale is presented for high latitudes of Europe. Our absolutely dated temperature reconstruction seeks to characterise the summer temperatures since AD 750. The warmest and coolest reconstructed 250-year periods occurred at AD 931–1180 and AD 1601–1850, respectively. These periods share significant temporal overlap with the general hemispheric climate variability due to the Medieval Warm Period (MWP) and the Little Ice Age (LIA). Further, we detect a multi-decadal (ca. 50- to 60-year) rhythm, attributable to instability of the North Atlantic Deep Water, in the regional climate during the MWP but not during the LIA. Intensified formation of the North Atlantic Deep Water further appeared coincident to the initiation and continuation of MWP, the mid-LIA transient warmth occurring during the period AD 1391–1440, and to recent warming. Our results support the view that the internal climate variability (i.e. thermohaline circulation) could have played a role in the earlier start of the MWP in several proxy reconstructions compared to the externally forced model simulations. Copyright © 2009 John Wiley & Sons, Ltd.

**KEYWORDS:** climate change; dendrochronology; Finland; North Atlantic Deep Water.

## Introduction

Climate trends and fluctuations can be obtained from several types of natural and human archives. However, instrumental climate records are not long enough to resolve the full spectrum of climate variability, especially concerning the long-term behaviour of climate. Indirect proxy estimates of past climate elongate the climatic records retrospectively over past centuries and millennia (Bradley, 1999). Typical proxy records over the continents are recent and subfossil tree rings that can be used for larger-scale and regional reconstructions of past climates (Fritts, 1976; Briffa, 2000; Esper *et al.*, 2002; D'Arrigo *et al.*,

2006; Grudd, 2008). In the present study, we present a tree ring-based reconstruction of palaeotemperature variability at the high-latitudes of Europe over the past millennium. As a regional temperature reconstruction, this record is expected to depict the climate variations inherent to the North Atlantic more clearly than the spatially extended reconstructions that typically mask the details concerning the spatial patterns of climate variations and their causes (Jones and Kelly, 1983; Wanner, 2005).

In the North Atlantic sector, the natural climatic changes originating from the Atlantic Ocean have recently been shown to drive multi-decadal variations over the past centuries (Enfield *et al.*, 2001; Knight *et al.*, 2005; Sutton and Hodson, 2005; Linderholm *et al.*, 2009). These variations are of importance regarding the future climate since the ongoing and future changes in the deep water formation in the northern North Atlantic could abruptly change the continental climate similarly to their past influences (Clark *et al.*, 2002; Alley *et al.*, 2003). Consequently,

\* Correspondence to: S. Helama, Department of Geology, University of Helsinki, PO Box 64, Helsinki 00014, Finland.  
E-mail: samuli.helama@helsinki.fi



the obtained temperature reconstruction was compared to changes in the sedimentary proxy of the thermohaline circulation through the past millennium (Bianchi and McCave, 1999). We hypothesise that synchrony between the temperature reconstruction and thermohaline circulation would indicate an oceanic influence on regional climate through the classical climate stages of the ‘Medieval Warm Period’ and the ‘Little Ice Age’ (Lamb, 1965, 1982; Bradley and Jones, 1993; Grove, 2004; Matthews and Briffa, 2005). Given that such relationships have existed during the past millennium, similar constraints could be expected shaping the 21st-century climate evolution, thus playing a role alongside the external and/or anthropogenic forcings.

## Material and methods

Our reconstruction was derived from the dataset of Scots pine (*Pinus sylvestris* L.) tree ring series of living and subfossil wood from forest limits of Finland and Norway, within 70° to 68° N, and 30° to 20° E (Eronen *et al.*, 1999, 2002; Helama *et al.*, 2004b, 2008). Living pines in this chronology were cored in the autumn of 2000. The initial tree ring dataset of Eronen *et al.* (2002) was later processed by Helama *et al.* (2005c) and this tree ring width chronology was adopted here since AD 750. Previously, the biological trends were removed from the individual tree ring series using an indexing approach that largely resembled the regional curve standardisation (Briffa *et al.*, 1992) with an exception that the concavity of the growth trend, that has for long known to vary with the stand density changes (Mikola, 1950; Helama *et al.*, 2005a,b,c), was adjusted for the known past changes in the pine population density in the study region (Helama *et al.*, 2005b,c). In so doing, we obtained tree ring indices that were more reliable concerning their low-frequency variations than could be retrieved using the conventional regional curve standardisation method (Helama *et al.*, 2005c). The chronology performs expressed population signal statistics (Wigley *et al.*, 1984) well above the level of reliable chronology variability (i.e. above 0.85), indicating potential for proxy record of excellent data quality. Variance in the chronology was further adjusted for temporally varying sample size (Osborn *et al.*, 1997). The ubiquitous climatic signal, detected in Scots pine tree rings in the study region, is that of mid-summer (i.e., July) temperature variability (Hustich and Elfving, 1944; Mikola, 1950; Sirén, 1961; Lindholm, 1996; Helama *et al.*, 2005a). Several calibration and verification exercises have demonstrated the reliability of these tree rings for reconstructions of past temperatures with a high level of statistical significance by differently partitioned spatiotemporal subsets of the data (Lindholm and Meriläinen, 1995; Lindholm *et al.*, 1995, 1996a,b, 1997; Lindholm, 1996; Lindholm and Eronen, 2000; Helama *et al.*, 2002). Importantly, the tree ring widths not only of living trees but also those originating from subfossil wood (retrieved from lake sediments) were previously shown to correlate with mid-summer temperatures (Helama *et al.*, 2004a). In the present study, the instrumental monthly climatic data from meteorological stations of Karasjok in northern Norway (69° 28' N; 25° 31' E) was used in the regression-based transfer functions. The mean temperature of July (AD 1876–1998) was used as a predictand. Calibration between the meteorological data and ring width time series was processed between the years AD 1876 and 1998. Estimates of summer temperature variability were obtained using linear regression. The time series of predictand and predictor were July mean temperatures and ring width indices, respectively. A

model using two lagged ( $t - 2$ ,  $t - 1$ ), one concurrent ( $t$ ) and two leading years ( $t + 1$ ,  $t + 2$ ) of normalised tree ring width (TRW) was used. Leading and/or lagging tree ring values are included in the model to correct for statistical autocorrelation effects that arise from physiological processes (inherent to growth) carrying the concurrent climatic signal over a multitude of years (Fritts, 1976). That is, growth is influenced by the concurrent climate but also results from climatic forcings of previous years that, in turn, are reasonably imprinted in the leading values of tree rings. Similarly, the signal of concurrent climate is stored in the growth over a number of subsequent years, this influence becoming registered by the lagging values of tree rings. Validity of the model was proven by comparing independent climate data to reconstructed temperatures. The model was first calibrated using the data between AD 1876 and 1937; these results were verified with data between AD 1937 and 1998. A similar examination was then repeated using the reversed intervals. Standard methods used frequently in dendroclimatic and palaeoclimatic studies – reduction of error, coefficient of error and sign test (Fritts, 1976; Gordon *et al.*, 1982; Briffa *et al.*, 1988) – were used as tests of reconstruction skill through a calibration verification exercise. The anomalous climate phases were quantified by computing the four warmest and coolest 50-year periods, the three warmest and coolest 100-year periods and the warmest and coolest 250-year periods. These periods were reported with the two-standard-error limits about the period mean (Briffa *et al.*, 1990, 1995). Concentration of climate variability at different periodicities was estimated by multi-taper methods (MTM) (Thomson, 1982, 1990; Ghil *et al.*, 2002).

## Results

All the statistics (reduction of error, coefficient of error, sign test) indicated that the reconstruction exhibited reasonable accuracy for both verification periods (Table 1). The actual calibration period was AD 1876–1998. The final transfer function takes the following form:

$$T_t = -0.190TRW_{t-2} - 0.150TRW_{t-1} + 0.914TRW_t - 0.100TRW_{t+1} - 0.142TRW_{t+2} \quad (1)$$

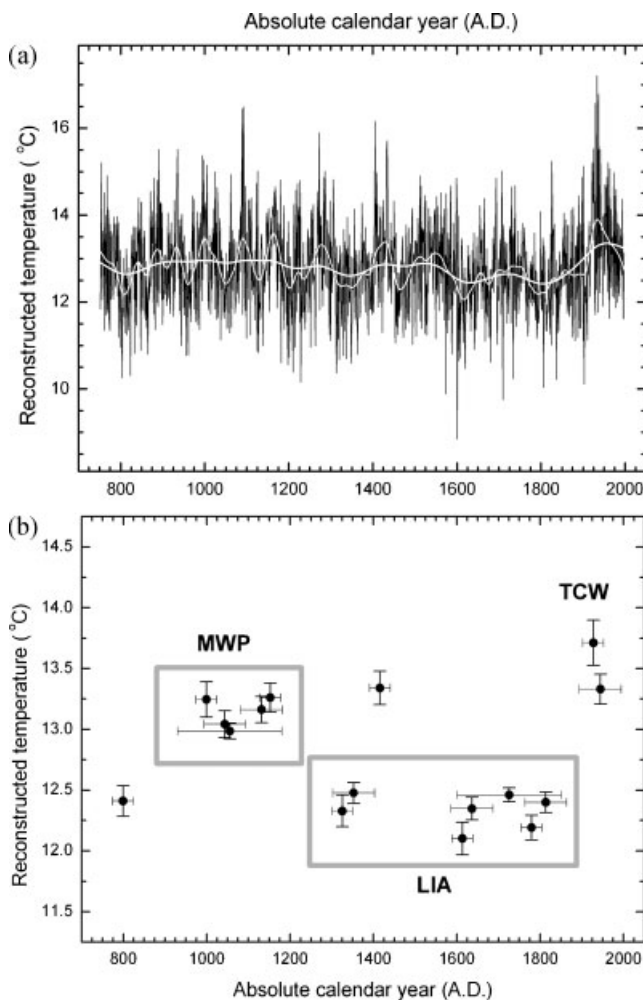
The bi-decadal and longer variations in tree ring indices and temperature series were extracted from the annually based series of observed and estimated temperatures using a 30-year cubic spline (with 50% cut-off) as a ‘low-pass’ filter. The reconstruction accounted for more than 40% of the total summer temperature variation and roughly 60% of the

**Table 1** Calibration and verification statistics for construction. The calibration period was divided into two subperiods for cross-validation to ensure reliability of the transfer function

Calibration period	1876–1937	1937–1998	1876–1998
Verification period	1937–1998	1876–1937	
<i>Calibration</i>			
Correlation ( <i>R</i> )	0.715	0.597	0.636
Sign test (correct/incorrect)	45/16	44/17	86/36
<i>Verification</i>			
Correlation ( <i>r</i> )	0.547	0.643	
Reduction of error (RE)	0.315	0.420	
Coefficient of error (CE)	0.284	0.397	
Sign test (correct/incorrect)	44/17	45/16	

temperature variation at bi-decadal and longer timescales. Considering the temporal length of the calibration period, these figures would indicate that the range of simulated temperature values equal or exceed the average the 95% confidence interval inherent in the model (Lucy *et al.*, 2008), with potential timescale dependency. Cross-spectral analysis (Howell, 2001) indicated that there was statistically significant ( $P < 0.05$ ) coherence at all periods greater than 30 years (not illustrated).

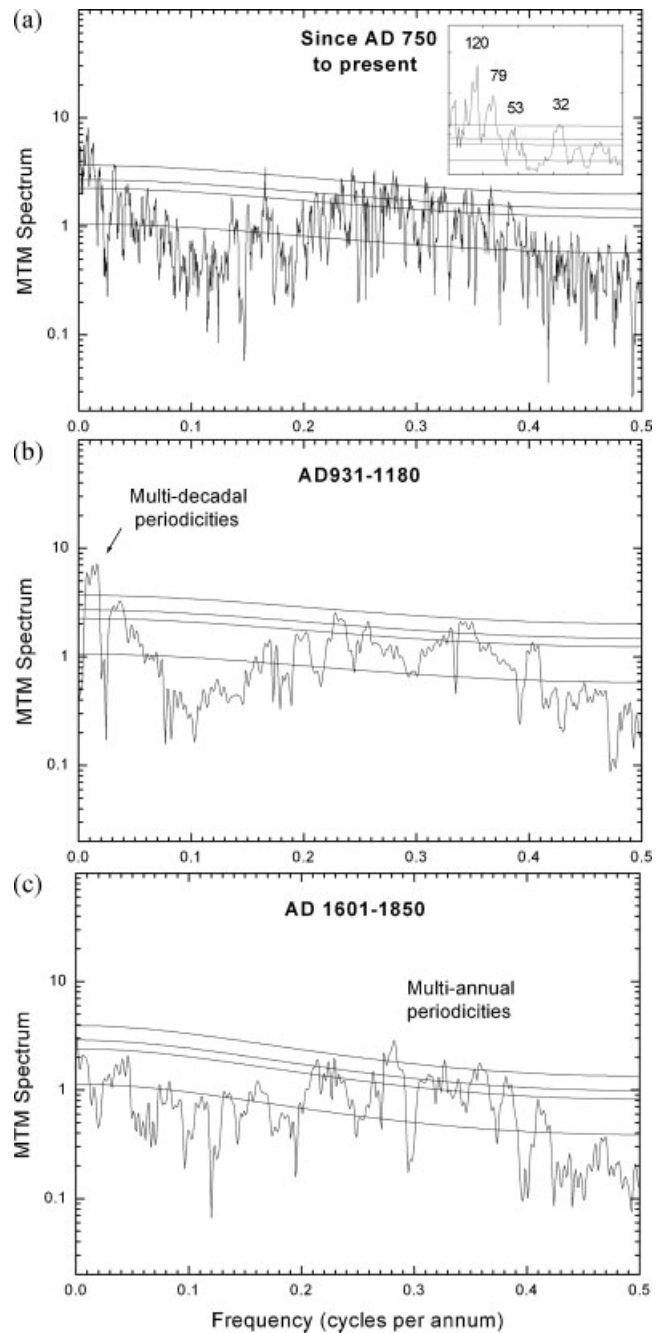
Reconstruction indicates a highly variable late Holocene climate with oscillations of warmer and cooler climatic phases through the record (Fig. 1(a)). Climatic variability has taken place from inter-annual to sub-millennial timescales. The warmest and coolest 250-year periods occurred during the periods AD 931–1180 and AD 1601–1850, respectively. These periods were superimposed by the extreme variations of shorter timescales (Fig. 1(b)). In general, the warm climates were predominantly experienced during the multi-centennial warming at the start of the record (AD 931–1180) or in connection with recent warming that seems to have taken place in the region since the end of the 19th century (Fig. 1(b)). Thereafter,



**Figure 1** Climatic evolution in Lapland since AD 750. Reconstructed temperature variability depicts total variations (black line), decadal (thin white line; 25-year spline, Cook and Peters, 1981) and centennial (thick white line; 75-year spline) variations (a). The anomalous climate phases were quantified by four warmest and coolest 50-year periods, three warmest and coolest 100-year periods and the warmest and coolest 250-year periods. Horizontal bars indicate the duration of the period; vertical bars indicate the 2-standard error limits about the period mean. Grey boxes depict the intervals of increased probability to obtain extremely warm or cool periods due, respectively, to conditions of the Medieval Warm Period (MWP), the Little Ice Age (LIA) and the Twentieth Century Warming (b)

the majority of the cool climate periods occurred roughly between AD 1300 and 1850. The only exceptions found were the cool half-centennial period AD 775–824 and the warm period of the same length between the years AD 1391 and 1440. The recent climatic conditions appeared anomalous in the context of the full reconstruction but not markedly warmer (in terms of overlapping error limits) than the warmest periods at the beginning of the record.

Discrete periodicities at ca. 120, 80, 50 and 30 years were all evident above 95% confidence level (Fig. 2(a)). More precisely, the warmest multi-centennial period was characterised by multi-decadal periodicities (Fig. 2(b)), whereas the coolest multi-centennial period experienced multi-annual periodicities in temperature variability (Fig. 2(c)). Especially well-developed



**Figure 2** Spectral characteristics of reconstructed climate, estimated as MTM spectrum (Thomson, 1982, 1990; Ghil *et al.*, 2002): (a) over the full period (AD 750–1998); (b) during the warmest interval (AD 931–1180); and (c) during the coolest interval (AD 1601–1850). Shown as horizontal lines are the median, 90%, 95% and 99% significance levels relative to the red noise

periodicity was found at 60-year timescales during the warm spell (Fig. 2(b)).

## Discussion and conclusions

### Periodic temperature variations

Previous studies conducted in the region and adjacent areas have found dendroclimatic periodicities similar to our findings (Boman, 1927; Sirén and Hari, 1971; Briffa and Schweingruber, 1992; Ogurtsov *et al.*, 2001, 2002, 2008). With special regard to potential climatic forcings, the century-scale temperature variability over Fennoscandia was tentatively connected to the Gleissberg (1944) cycle of solar activity by Briffa and Schweingruber (1992). Later, it was demonstrated that the regional tree ring-based temperature variations could be statistically correlated both with the observed variations in sunspot numbers (i.e. Gleissberg cycle) and with variations in the reconstructed Northern Hemisphere temperatures (Mann *et al.*, 1999) at centennial scales and through the past millennium, that is, when all the records were filtered to exhibit roughly the 80- to 120-year band of variations (Ogurtsov *et al.*, 2001, 2002, 2008). In this study, we discuss our results in the context of the observed multi-centennial (50- to 60-year) temperature variability that bears a potential link to oceanic origins (Schlesinger and Ramankutty, 1994; Delworth and Mann, 2000) and that is under discussion in the recent palaeoclimatic literature (e.g. Enfield *et al.*, 2001; Latif *et al.*, 2004; Sutton and Hodson, 2005; Knight *et al.*, 2005; Parker *et al.*, 2007; Sicre *et al.*, 2008a,b).

### The warm-cool-warm cycle

The present reconstruction depicted multi-centennial warmth that spanned from the 10th to the 12th century. This observation could be seen as synchronous with some recent proxy-based hemispheric climate records that show evidence concerning the relative warmth during the same centuries (Esper *et al.*, 2002; Moberg *et al.*, 2005; D'Arrigo *et al.*, 2006; Osborn and Briffa, 2006; Grudd, 2008). For example, Osborn and Briffa (2006) found positive temperature anomalies for the Northern Hemisphere between AD 890 and 1170. Of note, our reconstruction did not show any extremely cool periods during this interval. By contrast, the concentration of the coolest periods was recorded from the 14th to the 19th century. Also this observation was parallel to the general palaeoclimatic views that have shown a long-term decline in European temperatures over these centuries (Bradley and Jones, 1993; Matthews and Briffa, 2005). This is the warm-cool-warm cycle of the past millennium that has actually stood as a rough benchmark for climatic history since the studies of Lamb (1959, 1963, 1965, 1982), at least in western Europe, but more broadly in the North Atlantic sector. Still today, a similar cycle can be comprehended as a common feature among several proxy and model-based temperature reconstructions spanning the past millennium (Jones and Mann, 2004). The periods of the past climate that constitute this cycle have been termed the Medieval Warm Period (MWP), the Little Ice Age (LIA) and the Twentieth-Century Warming (TCW). The MWP was likely introduced first by Lamb (1965) in regard to his conclusions about the relatively warm climates in some parts of western Europe during the 12th–13th centuries. The LIA has become

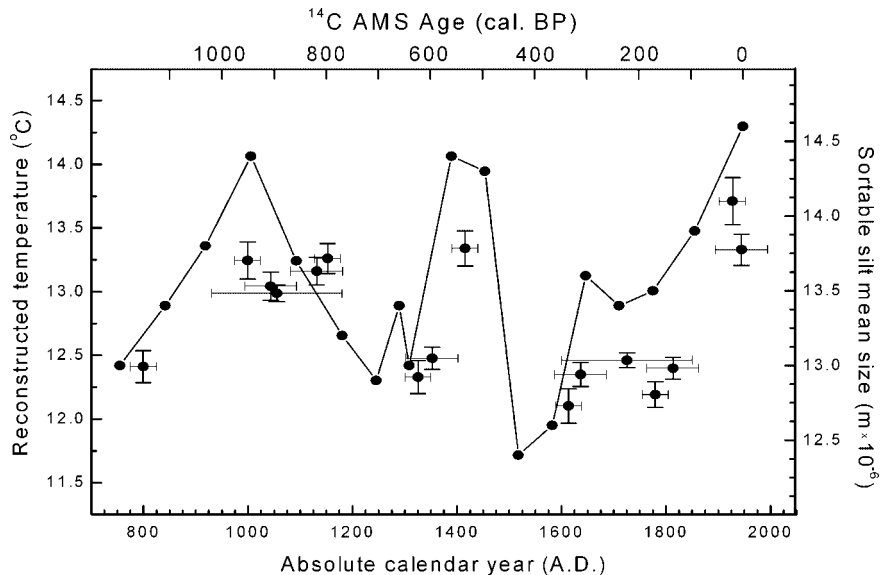
used for the period of cool climates after the MWP but before the TCW (Bradley and Jones, 1993; Grove, 2004). According to Matthews and Briffa (2005), the LIA culminated during the period AD 1570–1900 when Northern Hemisphere summer temperatures dropped significantly below the AD 1961–1990 mean. To this end, the temporal correlation between the MWP and LIA and the climatic extreme periods of our reconstruction appeared evident. It can be concluded that the forcings (internal and external) responsible for the MWP and LIA conditions that have been influential on a wide geographical scale have likewise constrained regional climate conditions towards warmer and cooler conditions, respectively. These conditions were then observed as the general climate instability of Lapland and adjacent areas during the past millennium (Fig. 1(b)).

### Thermohaline circulation

The North Atlantic sedimentary record of Bianchi and McCave (1999) indicates the speed of deep ocean flow (Iceland–Scotland Overflow Water), which is an important component of the thermohaline circulation (THC). The sedimentary record thus indicates the production of North Atlantic Deep Water (NADW) (Bianchi and McCave, 1999). It is known that the variations in THC and sea surface temperatures over the North Atlantic are closely linked. The THC transports warm saline surface water towards high latitudes, thus keeping the surface temperatures over the North Atlantic Ocean and western Europe higher than those of areas with comparable latitudes in the Pacific realms. Likewise, weakening of the THC would result in a concomitant decrease in the formation of NADW and modulation of the climate to reduce air temperatures over the regions under these influences (Weaver *et al.*, 1999; Manabe and Stouffer, 1999; Latif *et al.*, 2004). We observed that the interval characterising the positive temperature anomaly in the study region during the MWP was strikingly coexistent with increased formation of the NADW (Fig. 3). More precisely, the temperature rise during the early MWP (from cool climate during the AD 800s to warmer climate during the AD 900s) seemed to coincide with increasing formation of the NADW. Likewise during the MWP, spectral analysis revealed a dominance of multi-decadal temperature variations with a 50- to 60-year periodicity (Fig. 2(b)). Interestingly, temperature variations of similar timescales (ca. 50–90 years) have previously been associated with recent changes in the THC-related climate variability particularly over the Atlantic region (Schlesinger and Ramankutty, 1994; Delworth and Mann, 2000; Knight *et al.*, 2005). These proxy-based findings would augment the view that the THC may have influenced warming of the climate during the MWP (Bond *et al.*, 2001; Broecker, 2001), especially during the initiation of the MWP.

Additional evidence for the influence of THC on continental summertime climate has been gathered for the beginning of the 15th century. It was found that anomalous warming during the first half of the 15th century coincided with the concurrently intensified formation of the NADW (Fig. 3). Thereafter, during the culmination phase of the LIA, spectral analysis did not show significant periodic behaviour at low frequencies that could be associated with oceanic origins as there seemed to be no evidence for a periodic climatic signal at multi-decadal scales (Fig. 2(c)). During the culmination of the LIA, the most developed periodic behaviour of temperature variability occurred at multi-annual timescales.

Last, the most recent phase of intensified formation of the NADW occurred parallel to the 20th-century warmth (Fig. 3).



**Figure 3** Reconstructed temperature variability indicated by anomalously positive and negative temperature intervals presented with estimated changes in the speed of deep ocean flow (Iceland–Scotland Overflow Water) (line with dots), which is an important component of the thermohaline circulation (THC) and indicates the production of North Atlantic Deep Water, by sortable silt mean size (10–63  $\mu\text{m}$ ) (Bianchi and McCave, 1999). Horizontal axes give dendrochronological calendar years (AD) for reconstruction and calibrated radiocarbon years before present (cal. BP) for sediments. Age uncertainties concerning radiocarbon years are up to  $\pm 35$  a (Bianchi and McCave, 1999; Chapman and Shackleton, 2000)

To conclude, the three warm periods recorded here – AD 931–1180, AD 1391–1440 and AD 1895–1994 – all correlated temporally with the three intensification phases of the THC over the past millennium. In addition, MWP climatic variability showed spectral characteristics similar to expected timescale-dependent behaviour of the THC, whereas the culmination phase of the LIA exhibited absence of climate variability at corresponding timescales. This could imply that the multi-decadal periodicities of oceanic origins are introduced to regional climate notably during intervals of intensified production of the NADW. All these findings concerning ocean–climate interactions confirm and throw more light on previous results by palaeoceanographers (Keigwin, 1996; Bianchi and McCave, 1999; deMenocal *et al.*, 2000; Andersson *et al.*, 2003; Sicre *et al.*, 2008a,b) in the North Atlantic sector, with special reference to the climate of Lapland and adjacent areas of northern Europe.

### Medieval solar activity maximum

As noted previously by D'Arrigo *et al.* (2006), several dendroclimatic temperature reconstructions show an earlier peak in the MWP temperatures than the model simulations. More precisely, North American and Eurasian tree rings were found to show high-index values around AD 950 and AD 1000, respectively (D'Arrigo *et al.*, 2006). Also the multi-proxy compilation of Osborn and Briffa (2006) evidenced positive temperature anomalies for the Northern Hemisphere as early as AD 890 (with continuation roughly to AD 1170). This view was supported by our reconstruction (Fig. 1). By contrast, the externally forced climate model simulations typically indicate the highest MWP-related temperatures no earlier than after AD 1100 (see reviews in Jones and Mann, 2004, and Goosse *et al.*, 2005). A major contribution to the positive model-based temperatures during this time originates from estimates of solar activity showing a concurrent positive anomaly (ca. AD 1100–1250) (Jirikowic and Damon, 1994; Crowley, 2000; Solanki

*et al.*, 2004). Obviously, the influence from medieval solar activity postdates the rise of the early MWP temperatures in proxy reconstructions. As speculated already by D'Arrigo *et al.* (2006), it is possible that the model–proxy deviation could originate from internal climate dynamics unattainable by externally forced models. Meanwhile, multi-decadal variations in North Atlantic sea surface temperatures have been shown to drive adjacent continental climate variations over past centuries (Enfield *et al.*, 2001; Sutton and Hodson, 2005; Knight *et al.*, 2005). Our example supports these views with a proposition that changes in the formation of the NADW could have played a role in the initiation of the relatively warm state of climate during the MWP, as well as other long-term summer temperature variations thereafter. These findings would further indicate that ongoing changes in the North Atlantic hydrology (Curry *et al.*, 2003; Curry and Mauritzen, 2005) could be comprehended as a realistic forcing towards cooler climates in the region.

*Acknowledgements* We are grateful to two anonymous referees for their comments on an earlier version of the manuscript. This work was supported by the Academy of Finland (grant #122033 to SH), the Finnish Cultural Foundation-Satakunta Foundation (JH) and by the EU through the Millennium project (017008-2) (ML).

### References

- Alley RB, Marotzke J, Nordhaus WD, Overpeck JT, Peteet DM, Pielke RA Jr, Pierrehumbert RT, Rhines PB, Stocker TF, Talley LD, Wallace JM. 2003. Abrupt climate change. *Science* **299**: 2005–2010.
- Andersson C, Risebrobakken B, Jansen E, Dahl SO. 2003. Late Holocene surface ocean conditions of the Norwegian Sea (Vøring Plateau). *Paleoceanography* **18**: 1044.
- Bianchi GG, McCave IN. 1999. Holocene periodicity in North Atlantic climate and deep-ocean flow south of Iceland. *Nature* **397**: 515–517.
- Boman A. 1927. Tutkimuksia männyn paksuuskasvun monivuotisista vaihteluista Suomen eri osista kerätyn aineiston perusteella. Referat:

- Über vieljährige Schwankungen im Dickkennwachstum der Kiefer (*Pinus sylvestris*). *Acta Forestalia Fennica* **32**(4): 1–177.
- Bond G, Kromer B, Beer J, Muscheler R, Evans MN, Showers W, Hoffmann S, Lotti-Bond R, Hajdas I, Bonani G. 2001. Persistent solar influence on North Atlantic climate during the Holocene. *Science* **294**: 2130–2136.
- Bradley RS. 1999. *Paleoclimatology: Reconstructing Climates of the Quaternary*, (2nd edn). International Geophysics Series 68. Academic Press: London.
- Bradley RS, Jones PD. 1993. 'Little Ice Age' summer temperature variations: their nature and relevance to recent global warming trends. *The Holocene* **3**: 367–376.
- Briffa KR. 2000. Annual climate variability in the Holocene: interpreting the message of ancient trees. *Quaternary Science Reviews* **19**: 87–105.
- Briffa KR, Schweingruber FH. 1992. Recent dendroclimatic evidence of northern and central European summer temperatures. In *Climate since A.D. 1500*, Bradley RS, Jones PD (eds). Routledge: London; 366–392.
- Briffa KR, Jones PD, Pilcher JR, Hughes MK. 1988. Reconstructing summer temperatures in northern Fennoscandia back to AD 1700 using tree-ring data from Scots pine. *Arctic and Alpine Research* **20**: 385–394.
- Briffa KR, Bartholin TS, Eckstein D, Jones PD, Karlén W, Schweingruber FH, Zetterberg P. 1990. A 1,400-year tree-ring record of summer temperatures in Fennoscandia. *Nature* **346**: 434–439.
- Briffa KR, Jones PD, Bartholin TS, Eckstein D, Schweingruber FH, Karlén W, Zetterberg P, Eronen M. 1992. Fennoscandian summers from AD 500: temperature changes on short and long timescales. *Climate Dynamics* **7**: 111–119.
- Briffa KR, Jones PD, Schweingruber FH, Shiyatov SG, Cook ER. 1995. Unusual twentieth-century summer warmth in a 1,000-year temperature record from Siberia. *Nature* **376**: 156–159.
- Broecker WS. 2001. Was the Medieval Warm Period Global? *Science* **291**: 1497–1499.
- Chapman MR, Shackleton NJ. 2000. Evidence of 550-year and 1000-year cyclicities in North Atlantic circulation patterns during the Holocene. *The Holocene* **10**: 287–291.
- Clark PU, Pisias NG, Stocker TF, Weaver AJ. 2002. The role of the thermohaline circulation in abrupt climate change. *Nature* **415**: 863–869.
- Cook ER, Peters K. 1981. The smoothing spline: a new approach to standardizing forest interior tree-ring series for dendroclimatic studies. *Tree-Ring Bulletin* **41**: 45–53.
- Crowley TJ. 2000. Causes of climate change over the past 1000 years. *Science* **289**: 270–277.
- Curry R, Mauritzen C. 2005. Dilution of the northern North Atlantic Ocean in recent decades. *Science* **308**: 1772–1774.
- Curry R, Dickson B, Yashayaev I. 2003. A change in the freshwater balance of the Atlantic Ocean over the past four decades. *Nature* **426**: 826–829.
- D'Arrigo R, Wilson R, Jacoby G. 2006. On the long-term context for late twentieth century warming. *Journal of Geophysical Research* **111**: D03103.
- Delworth TL, Mann ME. 2000. Observed and simulated multidecadal variability in the Northern Hemisphere. *Climate Dynamics* **16**: 661–676.
- deMenocal P, Ortiz J, Guilderson T, Sarnthein M. 2000. Coherent high- and low-latitude climate variability during the Holocene warm period. *Science* **288**: 2198–2202.
- Enfield DB, Mestas-Nuñez AM, Trimble PJ. 2001. The Atlantic multidecadal oscillation and its relation to rainfall and river flows in the continental U.S. *Geophysical Research Letters* **28**: 2077–2080.
- Eronen M, Hyvärinen H, Zetterberg P. 1999. Holocene humidity changes in northern Finnish Lapland inferred from lake sediments and submerged Scots pines dated by tree rings. *The Holocene* **9**: 569–580.
- Eronen M, Zetterberg P, Briffa KR, Lindholm M, Meriläinen J, Timonen M. 2002. The supra-long Scots pine tree-ring record for Finnish Lapland. Part 1: Chronology construction and initial references. *The Holocene* **12**: 673–680.
- Espér J, Cook ER, Schweingruber FH. 2002. Low-frequency signals in long tree-ring chronologies for reconstructing past temperature variability. *Science* **295**: 2250–2253.
- Fritts HC. 1976. *Tree Rings and Climate*. Academic Press: London.
- Ghil M, Allen MR, Dettinger MD, Ide K, Kondrashov D, Mann ME, Robertson AW, Saunders A, Tian Y, Varadi F, Yiou P. 2002. Advanced spectral methods for climatic time series. *Reviews of Geophysics* **40**: 1003.
- Gleissner W. 1944. A table of secular variations of the solar cycle. *Terrestrial Magnetism and Atmospheric Electricity* **49**: 243–244.
- Goosse H, Crowley TJ, Zorita E, Ammann CM, Renssen H, Driesschaert E. 2005. Modelling the climate of the last millennium: what causes the differences between simulations? *Geophysical Research Letters* **32**: L06710.
- Gordon GA, Gray BM, Pilcher JR. 1982. Verification of dendroclimatic reconstructions. In *Climate from Tree Rings*, Hughes MK, Kelly PM, Pilcher JR, LaMarche VC Jr (eds). Cambridge University Press: Cambridge, UK; 58–62.
- Grove JM. 2004. *Little Ice Ages: Ancient and Modern*. Routledge: London.
- Grudd H. 2008. Torneträsk tree-ring width and density AD 500–2004: a test of climatic sensitivity and a new 1500-year reconstruction of north Fennoscandian summers. *Climate Dynamics* **31**: 843–857.
- Helama S, Lindholm M, Timonen M, Meriläinen J, Eronen M. 2002. The supra-long Scots pine tree-ring record for Finnish Lapland. Part 2: Interannual to centennial variability in summer temperatures for 7500 years. *The Holocene* **12**: 681–687.
- Helama S, Holopainen J, Timonen M, Ogurtsov MG, Lindholm M, Meriläinen J, Eronen M. 2004a. Comparison of living-tree and sub-fossil ring-widths with summer temperatures from 18th, 19th and 20th centuries in northern Finland. *Dendrochronologia* **21**: 147–154.
- Helama S, Lindholm M, Timonen M, Eronen M. 2004b. Dendrochronologically dated changes in the limit of pine in northernmost Finland during the past 7.5 millennia. *Boreas* **33**: 250–259.
- Helama S, Lindholm M, Meriläinen J, Timonen M, Eronen M. 2005a. Multicentennial ring-width chronologies of Scots pine along north-south gradient across Finland. *Tree-Ring Research* **61**: 21–32.
- Helama S, Lindholm M, Timonen M, Eronen M. 2005b. Mid- and late Holocene tree population density changes in northern Fennoscandia derived by a new method using megafossil pines and their tree-ring series. *Journal of Quaternary Science* **20**: 567–575.
- Helama S, Timonen M, Lindholm M, Meriläinen J, Eronen M. 2005c. Extracting long-period climate fluctuations from tree-ring chronologies over timescales of centuries to millennia. *International Journal of Climatology* **25**: 1767–1779.
- Helama S, Mielikäinen K, Timonen M, Eronen M. 2008. Finnish supra-long tree-ring chronology extended to 5634 BC. *Norsk Geografisk Tidsskrift – Norwegian Journal of Geography* **62**: 271–277.
- Howell P. 2001. *ARAND time series and spectral analysis package for the Macintosh*, Brown University. IGBP PAGES/World Data Center for Paleoclimatology Data Contribution Series # 2001-044.
- Hustich I, Elfving G. 1944. Die Radialzuwachsvariationen der Waldgrenzkiefer. *Societas Scientiarum Fennica Commentationes Biologicae* **9**: 1–18.
- Jirikowic JL, Damon PE. 1994. The medieval solar activity maximum. *Climatic Change* **26**: 309–316.
- Jones PD, Kelly PM. 1983. The spatial and temporal characteristics of Northern Hemisphere surface air temperature variations. *Journal of Climatology* **3**: 243–252.
- Jones PD, Mann ME. 2004. Climate over past millennia. *Reviews of Geophysics* **42**: RG20.
- Keigwin LD. 1996. The Little Ice Age and Medieval Warm Period in the Sargasso Sea. *Science* **274**: 1504–1508.
- Knight JR, Allan RJ, Folland CK, Vellinga M, Mann ME. 2005. A signature of persistent natural thermohaline circulation cycles in observed climate. *Geophysical Research Letters* **32**: L20708.
- Lamb HH. 1959. Our changing climate, past and present. *Weather* **14**: 299–318.
- Lamb HH. 1963. What can we find out about the trend of our climate? *Weather* **18**: 194–216.
- Lamb HH. 1965. The early medieval warm epoch and its sequel. *Palaeogeography, Palaeoclimatology, Palaeoecology* **1**: 13–37.
- Lamb HH. 1982. *Climate, History and the Modern World*. Methuen: London.
- Latif M, Roeckner E, Botzet M, Esch M, Haak H, Hagemann S, Jungclaus J, Legutke S, Marsland S, Mikolajewicz U, Mitchell J. 2004. Recon-

- structuring, monitoring, and predicting multidecadal-scale changes in the North Atlantic thermohaline circulation with sea surface temperature. *Journal of Climate* **17**: 1605–1614.
- Linderholm HW, Folland CK, Walther A. 2009. A multicentury perspective on the summer North Atlantic Oscillation (NAO) and drought in the eastern Atlantic Region. *Journal of Quaternary Science* **24**: 415–425. DOI: 10.1002/jqs.1261
- Lindholm M. 1996. Reconstruction of past climate from ring-width chronologies of Scots pine (*Pinus sylvestris* L.) at the northern forest limit in Fennoscandia. Doctoral dissertation. *University of Joensuu, Publications in Sciences* **40**: 1–169.
- Lindholm M, Eronen M. 2000. A reconstruction of mid-summer temperatures from ring-widths of Scots pine since AD 50 in northern Fennoscandia. *Geografiska Annaler* **82A**: 527–535.
- Lindholm M, Meriläinen J. 1995. Growing season thermal climate reconstructed at six pine stands in northern Lapland. *Bulletin of the Geological Society of Finland* **66**: 95–106.
- Lindholm M, Eronen M, Meriläinen J, Zetterberg P. 1995. A tree-ring record of past summer temperatures in northern Finnish Lapland. *Fennoscandia Archaeologica* **12**: 95–101.
- Lindholm M, Meriläinen J, Eronen M, Zetterberg P. 1996a. Summer temperatures reconstructed from tree-rings of pine in northern Lapland. *Paläoklimaforschung – Palaeoclimate Research* **20**: 83–92.
- Lindholm M, Timonen M, Meriläinen J. 1996b. Extracting mid-summer temperatures from ring-width chronologies of living pines at the northern forest limit in Fennoscandia. *Dendrochronologia* **14**: 99–113.
- Lindholm M, Timonen M, Meriläinen J, Vanninen P, Eronen M. 1997. Effects of climate on the growth of Scots pine in the Saimaa lake district, south-eastern Finland, in the southern part of the boreal forest belt. *Dendrochronologia* **15**: 151–168.
- Lucy D, Robertson I, Aykroyd RG, Pollard AM. 2008. Estimates of uncertainty in the prediction of past climatic variables. *Applied Geochemistry* **23**: 2961–2965.
- Manabe S, Stouffer RJ. 1999. The Role of thermohaline circulation in climate. *Tellus* **51**: 91–109.
- Mann ME, Bradley RS, Hughes MK. 1999. Northern hemisphere temperatures during the past millennium: inferences, uncertainties, and limitations. *Geophysical Research Letters* **26**: 759–762.
- Matthews JA, Briffa KR. 2005. The ‘Little Ice Age’: re-evaluation of an evolving concept. *Geografiska Annaler* **87A**: 17–36.
- Mikola P. 1950. Puiden kasvun vaihtelusta ja niiden merkityksestä kasvututkimuksissa. Summary: On variations in tree growth and their significance to growth studies. *Communicationes Instituti Forestalis Fenniae* **38**: 1–131.
- Moberg A, Sonechkin DM, Holmgren K, Datsenko NM, Karlén W, Lauritzen SE. 2005. Highly variable Northern Hemisphere temperatures reconstructed from low- and high-resolution proxy data. *Nature* **433**: 613–617.
- Ogurtsov MG, Kocharov GE, Lindholm M, Eronen M, Nagovitsyn YA. 2001. Solar activity and regional climate in northern Fennoscandia. *Radiocarbon* **43**: 144–156.
- Ogurtsov MG, Kocharov GE, Lindholm M, Meriläinen J, Eronen M. 2002. Evidence of solar variation in tree-ring-based climate reconstructions. *Solar Physics* **205**: 403–417.
- Ogurtsov MG, Raspopov OM, Helama S, Oinonen M, Lindholm M, Jungner H, Meriläinen J. 2008. Climatic variability along a north–south transect of Finland over the last 500 years: signature of solar influence or internal climate oscillations? *Geografiska Annaler* **90A**: 141–150.
- Osborn TJ, Briffa KR. 2006. The spatial extent of 20th-century warmth in the context of the past 1200 years. *Science* **311**: 841–844.
- Osborn TJ, Briffa KR, Jones PD. 1997. Adjusting variance for sample-size in tree-ring chronologies and other regional mean time series. *Dendrochronologia* **15**: 89–99.
- Parker D, Folland C, Scaife A, Knight J, Colman A, Baines P, Dong B. 2007. Decadal to multidecadal variability and the climate change background. *Journal of Geophysical Research* **112**: D18115.
- Schlesinger ME, Ramankutty N. 1994. An oscillation in the global climate system of period 65–70 years. *Nature* **367**: 723–726.
- Sicre M-A, Jacob J, Ezat U, Rouse S, Kissel C, Yiou P, Eiriksson J, Knudsen KL, Jansen E, Turon J-L. 2008a. Decadal variability of sea surface temperatures off North Iceland over the last 2000 yrs. *Earth and Planetary Science Letters* **268**: 137–142.
- Sicre M-A, Yiou P, Eiriksson J, Ezat U, Guimbert E, Dahhaoui I, Knudsen K-L, Jansen E, Turon J-L. 2008b. A 4500-year reconstruction of sea surface temperature variability at decadal time-scales off North Iceland. *Quaternary Science Reviews* **27**: 2041–2047.
- Sirén G. 1961. Skogsgränställen som indikator för klimatfluktuationerna i norra fennoskandien under historisk tid. [Summary in English]. *Communicationes Instituti Forestalis Fenniae* **54**: 1–66.
- Sirén G, Hari P. 1971. Coinciding periodicity in recent tree rings and glacial clay sediments. *Reports from the Kevo Subarctic Research Station* **8**: 155–157.
- Solanki SK, Usoskin IG, Kromer B, Schüssler M, Beer J. 2004. Unusual activity of the Sun during recent decades compared to the previous 11,000 years. *Nature* **431**: 1084–1087.
- Sutton RT, Hodson DLR. 2005. Atlantic Ocean forcing of North American and European summer climate. *Science* **309**: 115–118.
- Thomson DJ. 1982. Spectrum estimation and harmonic analysis. *Proceedings of the IEEE* **70**: 1055–1096.
- Thomson DJ. 1990. Time series analysis of Holocene climate data. *Philosophical Transactions of the Royal Society of London* **330A**: 601–616.
- Wanner H. 2005. Call for PAGES initiative on ‘Past Regional Climate Variability’. *PAGES News* **13**: 19–21.
- Weaver AJ, Bitz CM, Fanning AF, Holland MM. 1999. Thermohaline circulation: high latitude phenomena and the difference between the Pacific and Atlantic. *Annual Review of Earth and Planetary Sciences* **27**: 231–285.
- Wigley TML, Briffa KR, Jones PD. 1984. On the average value of correlated time series, with applications in dendroclimatology and hydrometeorology. *Journal of Climate and Applied Meteorology* **23**: 201–213.