

during the flooding associated with Hurricane Katrina, and this could be explained by the correlation we observe between the location of breach points and the high rate of subsidence beneath these levee sections (see supplementary information). Our subsidence estimates are probably minimum values considered over the lifetime of the levees, given that subsidence was most rapid in the first few years after their construction in the 1960s. Levee failure may have resulted from overtopping because the levees were too low — data collected after the storm⁵ indicate that water levels exceeded those expected by 0.9–1.7 m. Alternatively, the high subsidence rates we observe might reflect active faulting or a weak, easily compacted substrate,

promoting failure at or near the levee base. Timothy H. Dixon*, Falk Amelung*, Alessandro Ferretti†, Fabrizio Novati†, Fabio Rocca‡, Roy Dokka§, Giovanni Sella||, Sang-Wan Kim*, Shimon Wdowski*, Dean Whitman¶
*Rosenstiel School of Marine and Atmospheric Science, University of Miami, Miami, Florida 33149, USA
e-mail: tdixon@rsmas.miami.edu
†Tele-Rilevamento Europa, 20149 Milan, Italy
‡Dipartimento di Elettronica e Informazione, Politecnico di Milano, 20133 Milan, Italy
§Center for Geoinformatics, Louisiana State University, Baton Rouge, Louisiana 70803, USA
||National Geodetic Survey, Silver Spring, Maryland 20910-3282, USA

¶Department of Earth Sciences, Florida International University, Miami, Florida 33199, USA

1. Miller, L. & Douglas, B. C. *Nature* **248**, 407–409 (2004).
2. Dokka, R. K. *Geology* **34**, 281–284 (2006).
3. Shinkle, K. D. & Dokka, R. K. *NOAA Tech. Rep.* **50**, 135 (2004).
4. Burkett, V. R., Zilliox, D. B. & Hart, D. in *US Geol. Surv. Subsidence Int. Grp. Conf., Proc. Tech. Meet., Galveston, Texas, Nov. 27–29, 2001* (eds Prince, K. R. & Galloway, D. L.) 63–70 (report 03-308, US Geol. Surv. Water Resour. Div., 2003).
5. *Performance Evaluation of the New Orleans and Southeast Louisiana Hurricane Protection System Rep. 2* (Interagency Performance Evaluation Task Force, 2006).

Supplementary information accompanies this communication on Nature's website.

Received 28 January; accepted 12 April 2006.

Competing financial interests: declared (see online communication).

doi:10.1038/441587a

SUPERFLUID HELIUM

Visualization of quantized vortices

When liquid helium is cooled to below its phase transition at 2.172 K, vortices appear with cores that are only ångströms in diameter, about which the fluid circulates with quantized angular momentum¹. Here we generate small particles of solid hydrogen that can be used to image the cores of quantized vortices in their three-dimensional environment of liquid helium. This technique enables the geometry and interactions of these vortices to be observed directly.

Since the discovery of quantized vortices², attempts have been made to visualize them. Although the ends of parallel vortices in an array could be located³, there has been no successful imaging of vortices in arbitrary three-dimensional configurations. Suspended particles can trace fluid motions, and the velocities of frozen particles in superfluid helium have been measured since hydrogen was first condensed for the purpose⁴. These particles usually have diameters larger than 10 µm^{5,6}, although smaller polymer particles have been used⁷.

Our technique generates smaller hydrogen particles by injecting a premixed gaseous solution of hydrogen, greatly diluted with helium, into liquid helium in its normal phase above the transition temperature (for details of methods, see supplementary information). This procedure yields a mist of randomly distributed hydrogen particles (Fig. 1a) that are smaller than the 2.7-µm resolution of our long-range microscope. The suspension so prepared is then cooled to below the transition temperature.

Images taken with a digital camera focused

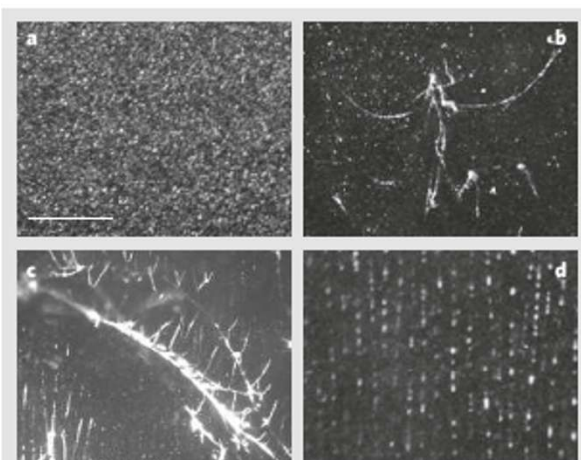


Figure 1 | Quantized vortex cores in liquid helium. a–d, Images of particles (light against dark background) obtained with a camera and 105-mm lens under different conditions: a, just above the transition temperature, when they are uniformly dispersed; b, c, on branching filaments at tens of millikelvin below the transition temperature; and d, regrouping along vertical lines for steady rotation about the vertical axis. In b and c, the particles on lines are evenly separated in small regions. Scale bar, 1 mm.

on a thin laser-illuminated sheet show that not only do the particles trace fluid motions, but a fraction of them also collect on slender filaments, which are often several millimetres long (Fig. 1b, c).

Particles respond in a complicated way to superfluid flows⁸ and can be trapped in vortex cores⁹. The following evidence suggests that the observed filaments are particles collected on such cores. First, these filaments appear only below the transition temperature. Second, when the liquid-helium cell is set in steady rotation, the particles arrange themselves along uniformly spaced lines (Fig. 1d). The lines are parallel to the axis of rotation, which is in the image plane. This observation agrees with the expectation that quantized vortices form a rectangular array aligned with the axis¹. Third, if we

assume that our sheet illuminates a slice of such an array, we find that the number density of lines per unit area normal to the axis of rotation, for a series of rotation rates, is consistent with Feynman's rule¹⁰, which predicts about 2,000 Ω lines per cm², where Ω is the angular velocity of the container in radians per second.

The filaments are complex: for example, they may give rise to branched networks and to particles evenly spaced along lines. Others have speculated how particles could act as passive tracers of the flow^{7,8}; our images indicate that the presence of particles in the superfluid may transform the topology of vortex tangles by stabilizing forks in the vortices. This technique offers a tantalizing glimpse of new phenomena for future investigation.

Gregory P. Bewley*, Daniel P. Lathrop*, Katepalli R. Sreenivasan*†

*Department of Physics, Institute for Research in Electronics and Applied Physics, Institute for Physical Sciences and Technology, University of Maryland, College Park, Maryland 20742, USA
e-mail: dpl@complex.umd.edu

†Department of Mechanical Engineering, Yale University, New Haven, Connecticut 06520, USA

‡International Centre for Theoretical Physics, Trieste 34104, Italy

1. Donnelly, R. J. *Quantized Vortices in Helium II* (Cambridge Univ. Press, Cambridge, 1991).
2. Onsager, L. *Proc. Int. Conf. Theor. Phys.* 877–880 (Science Council of Japan, Tokyo, 1953).
3. Yarmchuk, E. J., Gordon, M. J. V. & Packard, R. E. *Phys. Rev. Lett.* **43**, 214–218 (1979).
4. Chopra, K. L. & Brown, J. B. *Phys. Rev.* **108**, 157 (1957).
5. Chung, D. Y. & Critchlow, P. R. *Phys. Rev. Lett.* **14**, 892–894 (1965).
6. Murakami, M. & Ichikawa, N. *Cryogenics* **29**, 438–443 (1989).
7. Zhang, T. & Van Soest, S. W. *Nature Phys.* **1**, 36–38 (2005).
8. Poole, D. R., Barengli, C. F., Sergeev, Y. A. & Vinen, W. F. *Phys. Rev. B* **71**, 064514–1–16 (2005).
9. Parks, P. E. & Donnelly, R. J. *Phys. Rev. Lett.* **16**, 45–48 (1966).
10. Feynman, R. P. in *Prog. Low Temp. Phys.* **1** (ed. Gorter, C. J.) 17–53 (North Holland, Amsterdam, 1955).

Supplementary information accompanies this communication on Nature's website.

Received 23 December 2005; accepted 28 April 2006.

Competing financial interests: declared none.

doi:10.1038/441588a

BRIEF COMMUNICATIONS ARISING online

www.nature.com/bca see Nature contents.