

ARTICLE

Received 11 Dec 2015 | Accepted 31 Mar 2016 | Published 9 May 2016

DOI: 10.1038/ncomms11480

OPEN

# Superior visible light hydrogen evolution of Janus bilayer junctions via atomic-level charge flow steering

Jie Li<sup>1,2</sup>, Guangming Zhan<sup>1</sup>, Ying Yu<sup>2</sup> & Lizhi Zhang<sup>1</sup>

Although photocatalytic hydrogen evolution (PHE) is ideal for solar-to-fuel conversion, it remains challenging to construct a highly efficient PHE system by steering the charge flow in a precise manner. Here we tackle this challenge by assembling 1T MoS<sub>2</sub> monolayers selectively and chemically onto (Bi<sub>12</sub>O<sub>17</sub>) end-faces of Bi<sub>12</sub>O<sub>17</sub>Cl<sub>2</sub> monolayers to craft two-dimensional (2D) Janus (Cl<sub>2</sub>)-(Bi<sub>12</sub>O<sub>17</sub>)-(MoS<sub>2</sub>) bilayer junctions, a new 2D motif different from van der Waals heterostructure. Electrons and holes from visible light-irradiated Bi<sub>12</sub>O<sub>17</sub>Cl<sub>2</sub> are directionally separated by the internal electric field to (Bi<sub>12</sub>O<sub>17</sub>) and (Cl<sub>2</sub>) end-faces, respectively. The separated electrons can further migrate to MoS<sub>2</sub> via Bi-S bonds formed between (Bi<sub>12</sub>O<sub>17</sub>) and MoS<sub>2</sub> monolayers. This atomic-level directional charge separation endows the Janus bilayers with ultralong carrier lifetime of 3,446 ns and hence a superior visible-light PHE rate of 33 mmol h<sup>-1</sup> g<sup>-1</sup>. Our delineated Janus bilayer junctions on the basis of the oriented assembly of monolayers presents a new design concept to effectively steer the charge flow for PHE.

<sup>1</sup>Key Laboratory of Pesticide and Chemical Biology of Ministry of Education, Institute of Environmental Chemistry, College of Chemistry, Central China Normal University, Wuhan 430079, China. <sup>2</sup>Institute of Nanoscience and Nanotechnology, College of Physical Science and Technology, Central China Normal University, Wuhan 430079, China. Correspondence and requests for materials should be addressed to L.Z. (email: zhanglz@mail.ccn.edu.cn).

Photocatalytic hydrogen evolution (PHE) from water via solar energy and semiconductor photocatalysts provides the prospect of replacing fossil fuels with carbon-free and sustainable hydrogen energy<sup>1</sup>. Yet so far, its realization is still a mirage because PHE efficiency is thwarted to a large extent by the undesirable electron–hole recombination arisen from the random charge flow after the electron–hole separation<sup>2</sup>. The solution of this challenging issue requires our understanding and tuning of charge flow from the microcosmic perspective, preferably at the atomic level, which is still beyond the current state-of-the-art advances on the charge flow steering.

Recent flourishes in graphene studies are provoking tremendous interest in exfoliation-based fabrication of 2D single-layered nanosheets<sup>3</sup>. These advances breathe new life into PHE, as the as-exfoliated 2D monolayers with atomically thin thicknesses offer access to the atomic-level understanding and steering of charge flow<sup>4–7</sup>. Such monolayers enable atomic-level control over architectures and electronic structures, thus manipulating the charge flow from the electron–hole separation sites to their surface in a desired route<sup>8,9</sup>. However, individual semiconductor monolayers still encounter substantial charge recombination for PHE, because they lack sufficient hydrogen-evolving sites to manipulate the fates of these surface-reaching electrons<sup>10,11</sup>. To address this issue and also realize the charge flow at the atomic level, it is highly desirable to load monolayers with abundant hydrogen-evolving sites, such as single-layered metallic transition metal dichalcogenides, selectively on electron-accumulated sites of semiconductor monolayers to extract electrons. Such assembly design may steer the separation, transportation and consumption of charge all at the atomic level, but at present remains unexplored.

In this study, we report on the synthesis of novel bilayer junctions by assembling metallic MoS<sub>2</sub> monolayers selectively and chemically on oxygen-deficient (Bi<sub>12</sub>O<sub>17</sub>) end-faces of Bi<sub>12</sub>O<sub>17</sub>Cl<sub>2</sub> semiconductor monolayers via oxygen-vacancy (OV) chemistry. With the resultant 2D Janus motif of (Cl<sub>2</sub>)-(Bi<sub>12</sub>O<sub>17</sub>)-(MoS<sub>2</sub>), we can successfully steer the charge separation, transportation and consumption all at the atomic level to construct a highly active PHE system. In such a system, electrons originating from visible light-irradiated Bi<sub>12</sub>O<sub>17</sub>Cl<sub>2</sub> are first driven by the internal electric field (IEF) between (Cl<sub>2</sub>) and (Bi<sub>12</sub>O<sub>17</sub>) layers to (Bi<sub>12</sub>O<sub>17</sub>) end-faces, and further transferred via Bi–S bonds formed between Bi<sub>12</sub>O<sub>17</sub>Cl<sub>2</sub> and MoS<sub>2</sub> to MoS<sub>2</sub> for the final catalytic hydrogen evolution, while IEF also drives holes to (Cl<sub>2</sub>) end-faces for the oxidation of organic scavengers.

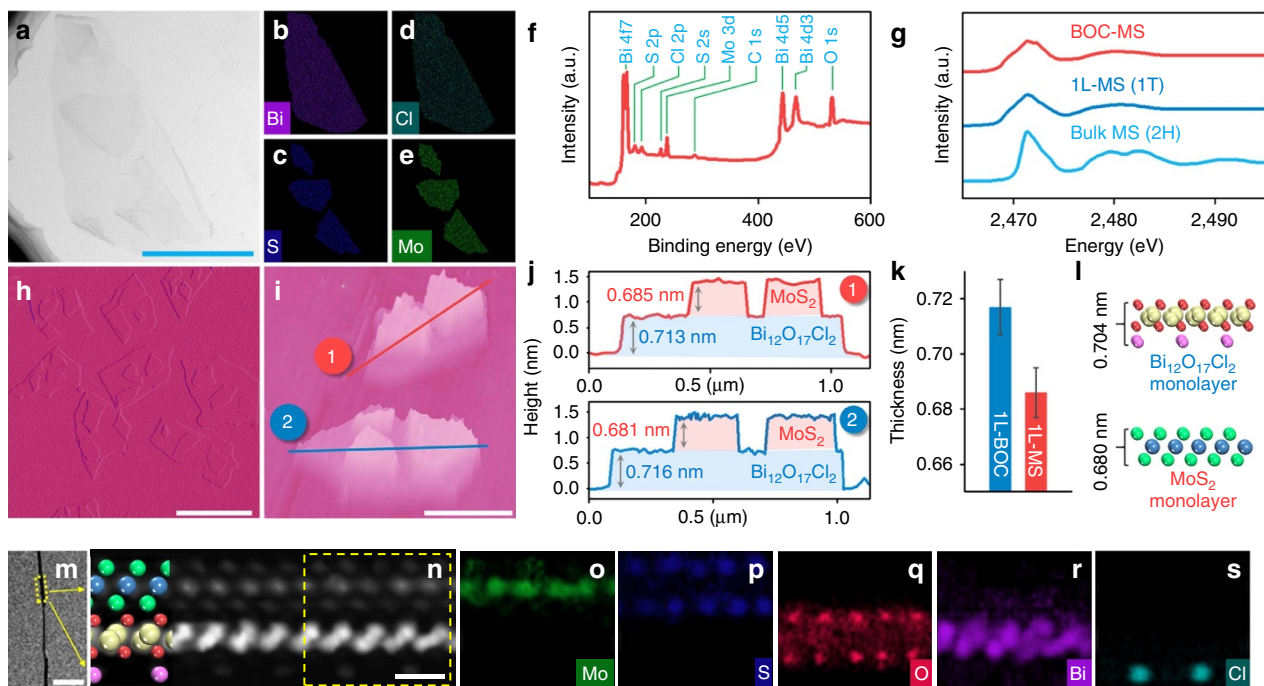
## Results

### Assembly and characterization of the Janus bilayer junctions.

Small-sized MoS<sub>2</sub> monolayers (1L-MS) enriched with metallic phase and large-sized oxygen-deficient Bi<sub>12</sub>O<sub>17</sub>Cl<sub>2</sub> semiconductor monolayers (1L-BOC) were obtained by exfoliating their bulk layered mother-crystals via the well-established lithium-intercalation-based liquid exfoliation (Supplementary Figs 1–4 and Supplementary Note 1–4)<sup>12,13</sup>. The experimentally measured thickness of ~0.71 nm in 1L-BOC well-agreed with the theoretical one (0.2c = 0.704 nm) of Bi<sub>12</sub>O<sub>17</sub>Cl<sub>2</sub> monolayer (Supplementary Figs 2 and 3 and Supplementary Note 2 and 3), as Bi<sub>12</sub>O<sub>17</sub>Cl<sub>2</sub> had a c = 35.2 Å and a unit cell consisting of five Bi<sub>12</sub>O<sub>17</sub>Cl<sub>2</sub> monolayers, similar with the reported Bi<sub>2</sub>WO<sub>6</sub> (ref. 9), which had a c = 16.427 Å, a unit cell consisting of two Bi<sub>2</sub>WO<sub>6</sub> monolayers, but a monolayer thickness of 0.5c ≈ 0.8 nm as experimentally measured. The use of OV chemistry to craft the aforementioned Janus bilayer junctions (BOC-MS) was inspired by the intriguing capability of OV-deficient metal oxides to induce the selective deposition of metals on their OV sites<sup>14</sup>.

Enlightened by this methodology, we assembled the above two monolayers with a facile hydrothermal processing, where OVs induced the oriented anchoring of 1L-MS on (Bi<sub>12</sub>O<sub>17</sub>) end-faces of Bi<sub>12</sub>O<sub>17</sub>Cl<sub>2</sub> to form 2D Janus bilayer junctions of (Cl<sub>2</sub>)-(Bi<sub>12</sub>O<sub>17</sub>)-(MoS<sub>2</sub>). The key to this OV-oriented assembly lies in the metallic characteristic of 1L-MS and the asymmetric structure of 1L-BOC composed of only (Cl<sub>2</sub>) layers and oxygen-deficient (Bi<sub>12</sub>O<sub>17</sub>) layers. Transmission electron microscopy (TEM) image (Fig. 1a) of BOC-MS revealed a 2D heterostructured bilayer composed of many small nanosheets tightly wrapping on a large nanosheet, while the observed transparent nature indicated their ultrathin structures. Elemental mapping images (Fig. 1b–e) coupling with X-ray photoelectron spectroscopy (XPS) (Fig. 1f) and X-ray diffraction pattern (Supplementary Fig. 5 and Supplementary Note 5) identified the small and large nanosheets as MoS<sub>2</sub> and Bi<sub>12</sub>O<sub>17</sub>Cl<sub>2</sub>, respectively. S K-edge X-ray absorption near-edge structure spectra (XANES) (Fig. 1g) revealed that the MoS<sub>2</sub> monolayers in the bilayer showed a distorted 1T metallic phase<sup>15</sup>. 3D topographic atomic force microscopy (AFM) images (Fig. 1h,i) and their corresponding height profiles (Fig. 1j,k) demonstrated that the average thickness values of the small-sized and large-sized nanosheets were 0.686 and 0.717 nm, respectively, well-matching with the theoretical ones of the MoS<sub>2</sub> and Bi<sub>12</sub>O<sub>17</sub>Cl<sub>2</sub> monolayers (Fig. 1l, Supplementary Figs 2–4 and Supplementary Note 2–4), which further evidenced the assembly of MoS<sub>2</sub> on Bi<sub>12</sub>O<sub>17</sub>Cl<sub>2</sub>. More interestingly, we found that all the MoS<sub>2</sub> sheets were anchored on the same surface in Bi<sub>12</sub>O<sub>17</sub>Cl<sub>2</sub>, which was further evidenced by their side-view TEM image (Fig. 1m). These observations clearly demonstrate the occurrence of an oriented assembly. As 1L-BOC has an asymmetric structure consisting of (Cl<sub>2</sub>) and oxygen-deficient (Bi<sub>12</sub>O<sub>17</sub>) end-faces and their assembly might be initiated by OVs of (Bi<sub>12</sub>O<sub>17</sub>) end-faces, we could thus deduce that 1L-MS were anchored selectively on the (Bi<sub>12</sub>O<sub>17</sub>) end-faces of 1L-BOC. The aberration-corrected high-angular annular dark field scanning TEM (HAADF-STEM) image (Fig. 1n) and energy loss spectroscopy (EELS) elemental maps (Fig. 1o–s) of their cross-sectional atomic structures provided direct, atomic-resolution evidences that this oriented assembly resulted in 2D Janus bilayer junctions of (Cl<sub>2</sub>)-(Bi<sub>12</sub>O<sub>17</sub>)-(MoS<sub>2</sub>). Meanwhile, we also found that the amount of MoS<sub>2</sub> loaded on Bi<sub>12</sub>O<sub>17</sub>Cl<sub>2</sub> decreased with OVs quenching, and the assembly behaviour annihilated when OVs were completely removed (Supplementary Figs 5–7, Supplementary Table 1 and Supplementary Note 6 and 7), confirming that the oriented assembly of 2D Janus (Cl<sub>2</sub>)-(Bi<sub>12</sub>O<sub>17</sub>)-(MoS<sub>2</sub>) bilayer junctions was driven by the OVs on the (Bi<sub>12</sub>O<sub>17</sub>) end-faces of 1L-BOC.

**Visible light PHE.** The successful design of BOC-MS featuring Janus (Cl<sub>2</sub>)-(Bi<sub>12</sub>O<sub>17</sub>)-(MoS<sub>2</sub>) bilayer junctions allowed us to first explore their PHE activity under visible light ( $\lambda > 420$  nm). Visible light irradiation of the solution containing BOC-MS and ascorbic acid (organic scavengers) gave a typical gas chromatograph (GC) signal of H<sub>2</sub> at the retention time of 82 s (Fig. 2a), consistent with the previously reported results<sup>16</sup>. At the optimal MoS<sub>2</sub> loading (10 wt%, Supplementary Fig. 8a) and ascorbic acid concentration (0.3 mol l<sup>-1</sup>, Supplementary Fig. 8b), BOC-MS delivered a PHE rate of 33 mmol h<sup>-1</sup> g<sup>-1</sup> (Fig. 2b) and a quantum yield of around 36% at 420 nm (Fig. 2h), representing the currently achieved state-of-the-art PHE activity among all the MoS<sub>2</sub>-based, monolayer-based and bismuth oxyhalide-based PHE systems (Supplementary Tables 2–4). This activity could last over 100 h without significant decay and the bilayer structures were very stable (Supplementary Fig. 9 and Supplementary Note 8),



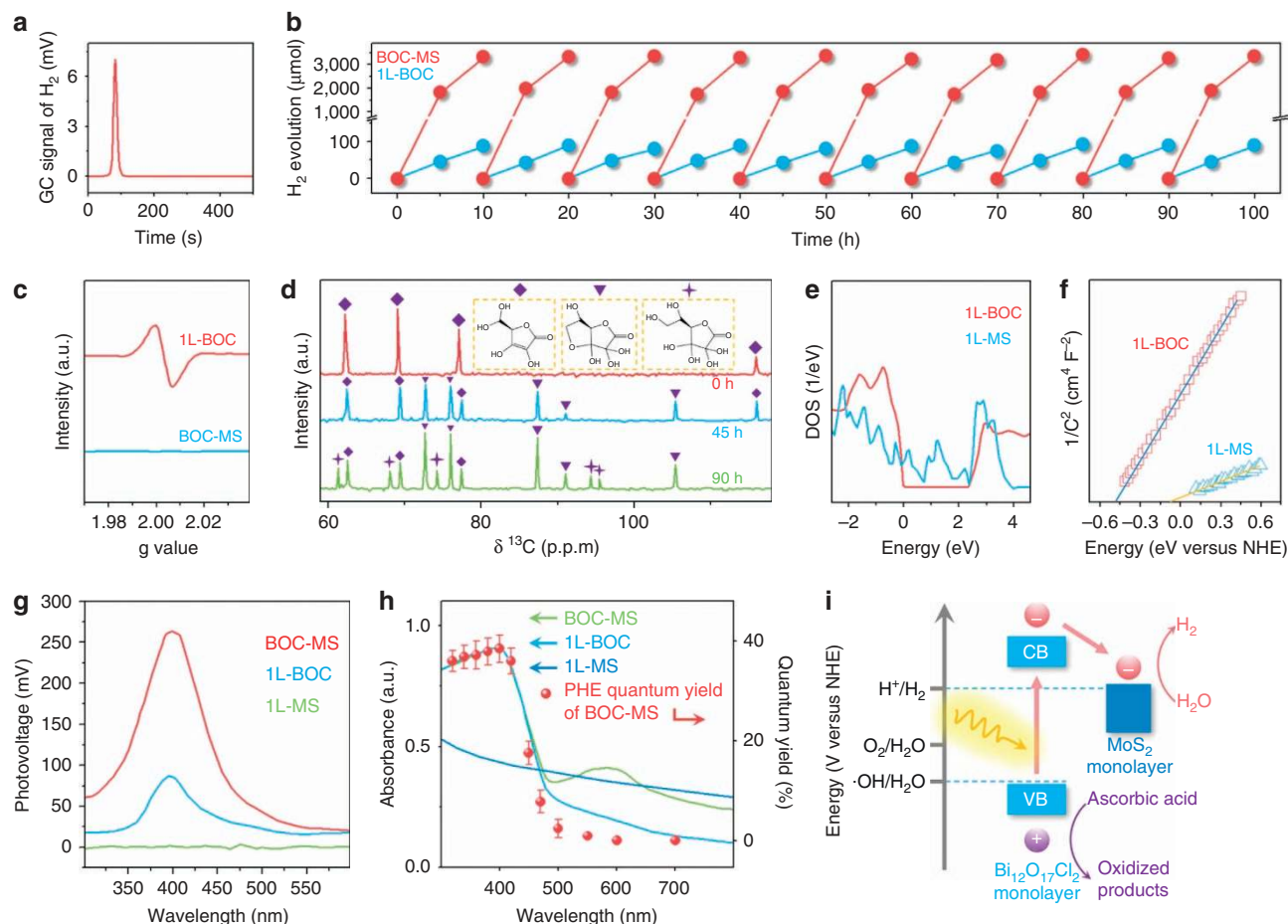
**Figure 1 | Characterizations of the Janus bilayer junctions assembled by  $\text{Bi}_{12}\text{O}_{17}\text{Cl}_2$  and  $\text{MoS}_2$  monolayers (BOC-MS).** (a) Top-view TEM image, (b–e) elemental mapping images, (f) XPS spectra, (h,i) AFM images, side-view TEM image (m) and atomic-resolution HAADF-STEM image (n), and (o–s) the corresponding EELS elemental maps of BOC-MS. Scale bar, 500 nm, 1  $\mu\text{m}$ , 500 nm, 10 nm and 5  $\text{\AA}$ , in a,h,i,m,n, respectively. (g) S K-edge XANES spectra of BOC-MS, 1L-MS and bulk MS. (j) Height profiles along the lines in i. (k) Comparison of the average thicknesses of 1L-BOC and 1L-MS in BOC-MS. The error bars in k represent the s.d. of over 100 independent AFM measurements. (l) The theoretical thicknesses of  $\text{MoS}_2$  and  $\text{Bi}_{12}\text{O}_{17}\text{Cl}_2$  monolayers.

indicating BOC-MS were highly active and robust for visible-light PHE. The absence of OV's signal in BOC-MS ruled out the possibility that its superior PHE activity was arisen from the OVs (Fig. 2c). During PHE, dehydroascorbic acid and its hydrated compound as the oxidized products of ascorbic acid were detected (Fig. 2d)<sup>17</sup>, indicating that ascorbic acid acted as an efficient hole scavenger to suppress the electron and hole recombination. Even using ascorbic acid as the hole scavenger and having surface OVs, 1L-BOC only exhibited a PHE rate of  $0.86 \text{ mmol h}^{-1} \text{ g}^{-1}$ , 1/38 that of BOC-MS.

This giant PHE activity enhancement by the introduction of 1L-MS ignited our interest in unravelling how 1L-MS assisted 1L-BOC to precisely steer charge flow across the assembled Janus bilayer junctions. Density functional theory calculations of 1L-MS showed its density of states resided across the Fermi level (Fig. 2e), revealing its metallic characteristic<sup>3</sup>, which indicated that 1L-MS favoured the electron collection. Mott–Schottky plots showed that 1L-BOC had the much more negative conduction band potential than 1L-MS (Fig. 2f and Supplementary Fig. 10), suggesting that the electron transfer from 1L-BOC to 1L-MS was thermodynamically more favourable. As 1L-MS showed no photoresponse and its assembly onto 1L-BOC could enhance the photoresponse (Fig. 2g), we could conclude that 1L-BOC in the photoexcited BOC-MS solely offered electrons and these electrons were further transferred from 1L-BOC to 1L-MS for PHE (Fig. 2i). This conclusion was confirmed by the observation that the irradiation wavelength-dependent quantum yield of PHE matched well with the photoabsorption edge of 1L-BOC, not with those of 1L-MS or BOC-MS (Fig. 2h and Supplementary Fig. 11).

**IEF-directed charge flow within  $\text{Bi}_{12}\text{O}_{17}\text{Cl}_2$  monolayers.** To clarify these detailed charge flow processes, we first examined the

charge flow in 1L-BOC. Charge density contour plots viewed from the {110} facet of  $\text{Bi}_{12}\text{O}_{17}\text{Cl}_2$  (Fig. 3a) showed that the charge density surrounding  $(\text{Bi}_{12}\text{O}_{17})^{2+}$  layer was higher than that of  $(\text{Cl}_2)^{2-}$  layer and their electrostatic potential differences ( $\Delta E$ ) was calculated to be 6.3 eV (Fig. 3b). This non-uniform charge distribution between  $(\text{Bi}_{12}\text{O}_{17})^{2+}$  and  $(\text{Cl}_2)^{2-}$  layers in  $\text{Bi}_{12}\text{O}_{17}\text{Cl}_2$  nanosheets would polarize the related atoms and orbitals to form a permanent IEF along [001] orientation perpendicular to the  $(\text{Bi}_{12}\text{O}_{17})^{2+}$  and  $(\text{Cl}_2)^{2-}$  layers<sup>18–20</sup>. Using the Kanata's model (Supplementary Methods), which has been used to successfully identify the dependence of IEF intensity of  $\text{Bi}_3\text{O}_4\text{Cl}$  on its {001} facet exposure percentages<sup>20</sup>, we found that monolayer engineering could enhance the IEF magnitude of  $\text{Bi}_{12}\text{O}_{17}\text{Cl}_2$  by sixfolds (Supplementary Fig. 12). As 1L-BOC possessed an asymmetric structure composed of only  $(\text{Cl}_2)^{2-}$  and  $(\text{Bi}_{12}\text{O}_{17})^{2+}$  layers (Supplementary Fig. 3f), we proposed that its IEF would drive electrons and holes to  $(\text{Bi}_{12}\text{O}_{17})^{2+}$  and  $(\text{Cl}_2)^{2-}$  end-faces, respectively. To confirm this atomic-level charge separation, we thus deposited Pt and  $\text{MnO}_x$  on 1L-BOC with  $\text{H}_2\text{PtCl}_6$  and  $\text{Mn}(\text{NO}_3)_2$  as the respective precursors under visible light. We determined their deposition sites through the interaction between Pt (or  $\text{MnO}_x$ ) and the atoms at deposition sites via XPS. The Pt deposition resulted in a shift of O 1s peak position toward lower binding energy without affecting Cl 2p peak position (Fig. 3c,d), indicating the interactions between Pt and O on  $(\text{Bi}_{12}\text{O}_{17})$  end-faces. As for the  $\text{MnO}_x$  deposition, only the Cl 2p peak position shift toward higher binding energy was observed (Fig. 3e,f), indicating the interactions between  $\text{MnO}_x$  and  $(\text{Cl}_2)$  end-faces. When the amounts of photo-deposited Pt and  $\text{MnO}_x$  increased, their size distributions did not change (Supplementary Figs 13 and 14) and the peak shifts became more striking, strongly confirming the photo-depositions of Pt on  $(\text{Bi}_{12}\text{O}_{17})$  end-faces and  $\text{MnO}_x$  on  $(\text{Cl}_2)$  end-faces, respectively.



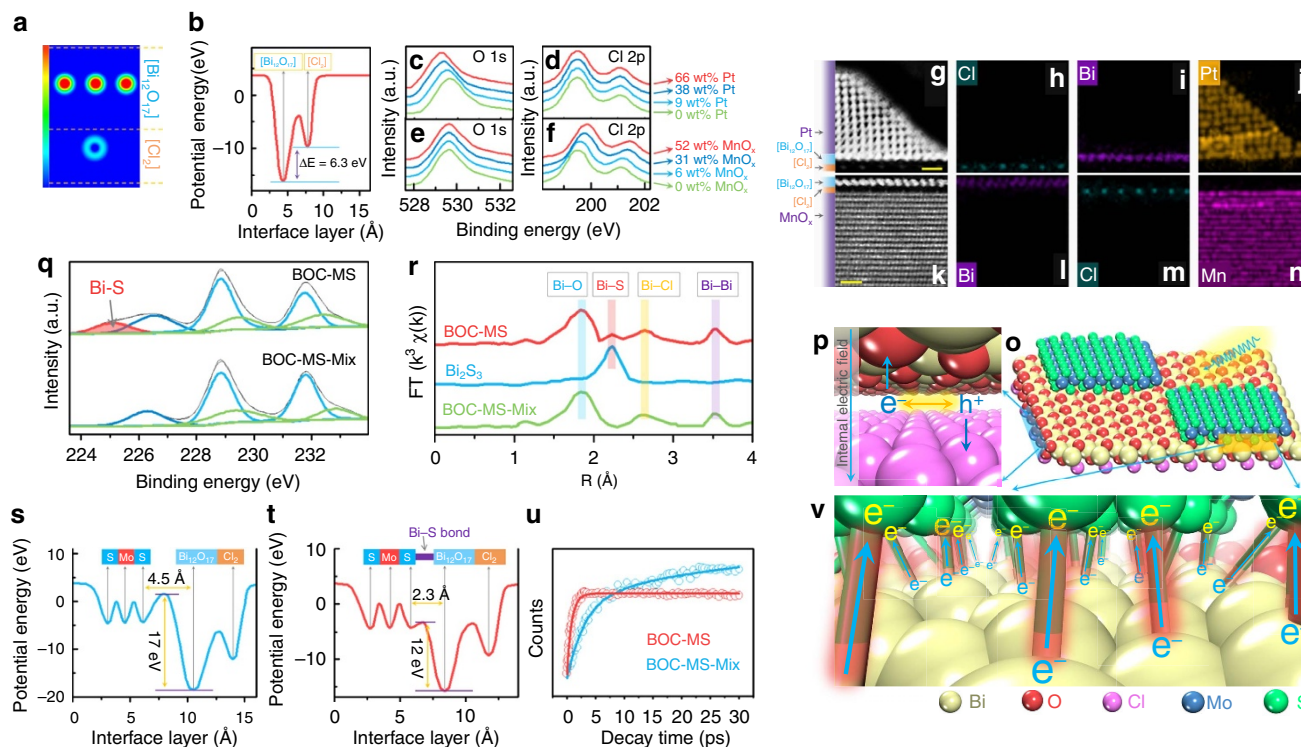
**Figure 2 | Evaluation of visible light PHE performances of BOC-MS.** (a) A typical GC signal of  $\text{H}_2$  formed from BOC-MS involved PHE system. (b) Cycling tests of PHE over BOC-MS and 1L-BOC. Reaction conditions: 10 mg catalysts;  $0.3 \text{ mol l}^{-1}$  ascorbic acid; visible light ( $\lambda > 420 \text{ nm}$ ). The reaction cell was evacuated each 10 h without renewing ascorbic acid solution. (c) EPR spectra of 1L-BOC and BOC-MS. (d)  $^{13}\text{C}$  NMR spectra of the solutions containing BOC-MS and ascorbic acid after 0, 45 and 90 h of PHE experiments. (e) DOS and (f) Mott-Schottky plots of 1L-BOC and 1L-MS. (g) Surface photovoltage spectroscopy of 1L-BOC, 1L-MS and BOC-MS. (h) Ultraviolet-visible diffuse reflectance spectrum of BOC-MS, 1L-BOC and 1L-MS, and PHE quantum yields of BOC-MS plotted as a function of wavelength of the incident light. (i) Band alignments in 1L-BOC and 1L-MS.

These selective photo-depositions were further validated by Raman spectra (Supplementary Fig. 15), which revealed that the intensities of Bi-O and Cl-Cl stretching bands were suppressed by Pt and  $\text{MnO}_x$  depositions, respectively. The atomic-resolution HAADF-STEM images (Fig. 3g,k) and EELS elemental maps (Fig. 3h-j,l-n) of the cross-sectional atomic structures of 1L-BOC photo-deposited with Pt and  $\text{MnO}_x$  provided direct and visual evidences that Pt was photo-deposited on the  $(\text{Bi}_{12}\text{O}_{17})$  end-faces and  $\text{MnO}_x$  on the  $(\text{Cl}_2)$  end-faces. As Pt and  $\text{MnO}_x$  depositions were induced by electron reduction and hole oxidation, respectively<sup>21</sup>, we could therefore conclude that, in 1L-BOC, IEF drove electrons to  $(\text{Bi}_{12}\text{O}_{17})$  end-faces and holes to  $(\text{Cl}_2)$  end-faces (Fig. 3o,p), achieving the atomic-level steering of charge separation. Although the 1L-BOC were rich in surface OVs, the selective deposition of Pt was independent on the OVs on the  $(\text{Bi}_{12}\text{O}_{17})$  end-surfaces, as evidenced by the oriented anchoring of Pt on OV-free  $(\text{Bi}_{12}\text{O}_{17})$  end-surfaces (Supplementary Fig. 16). This phenomenon suggested the above charge separation was not induced by OVs, but further verified the role of IEF in steering the atomic-level charge separation. As a result of this directional charge separation, 1L-BOC afforded a carrier lifetime of 136 ns and a PHE rate of  $0.86 \text{ mmol h}^{-1} \text{ g}^{-1}$  (Supplementary Fig. 17), 15 and 27 times those of bulk  $\text{Bi}_{12}\text{O}_{17}\text{Cl}_2$ , respectively. This is because, for bulk  $\text{Bi}_{12}\text{O}_{17}\text{Cl}_2$  of numerous  $(\text{Bi}_{12}\text{O}_{17})$  and  $(\text{Cl}_2)$

layers, the electrons and holes separated by IEF would recombine on the sites between the two adjacent  $\text{Bi}_{12}\text{O}_{17}\text{Cl}_2$  monolayers, leading to the short-lived carrier lifetime and hence the low PHE activity.

**Interfacial atomic-level charge flow along Bi-S bonds.** After clarifying the photogenerated electrons flow to  $(\text{Bi}_{12}\text{O}_{17})$  end-faces driven by IEF, we further checked the interfacial properties of the Janus bilayer junctions to unravel how the electrons transferred from  $(\text{Bi}_{12}\text{O}_{17})$  end-faces of 1L-BOC to 1L-MS. XPS of BOC-MS showed a Bi-S bond peak at 225 eV (Fig. 3q)<sup>22</sup>, but absent in those of 1L-MS and the physical mixtures of 1L-MS and 1L-BOC (BOC-MS-Mix), and this peak became weaker in the bilayers assembled by 1L-MS and  $\text{Bi}_{12}\text{O}_{17}\text{Cl}_2$  monolayers with less OVs (Supplementary Fig. 18a). Bi L-edge extended X-ray absorption fine structure spectroscopy (Fig. 3r) also validated the existence of Bi-S bonds between the interfaces of 1L-MS and 1L-BOC in BOC-MS<sup>22,23</sup>. This interfacial Bi-S bonds could be further evidenced by the Raman spectra (Supplementary Fig. 19e) and diffuse reflectance Fourier transform infrared curves (Supplementary Fig. 19f and Supplementary Note 9). Furthermore, because of the interfacial chemical bonding via the Bi-S bonds,  $\text{MoS}_2$  and  $\text{Bi}_{12}\text{O}_{17}\text{Cl}_2$





**Figure 3 | Clarification of the charge flow within visible light-irradiated BOC-MS.** (a) Charge density contour plots and (b) electrostatic potential viewed from the {110} facet of  $\text{Bi}_{12}\text{O}_{17}\text{Cl}_2$ . XPS spectra of 1L-BOC photo-deposited with different amounts of Pt (c,d) and  $\text{MnO}_x$  (e,f), demonstrating the interactions between Pt (or  $\text{MnO}_x$ ) and atoms on deposition sites. (g,k) The side-view atomic-resolution HAADF-STEM images, and (h-j,l-n) the corresponding EELS elemental maps of 1L-BOC photo-deposited with Pt and  $\text{MnO}_x$ . Scale bar, 10 Å in g,k. Comparison of XPS spectra (q) and Bi L-edge EXAFS (r) of BOC-MS and BOC-MS-Mix, identifying the formation of Bi-S bonds at the interfaces between  $\text{Bi}_{12}\text{O}_{17}\text{Cl}_2$  and  $\text{MoS}_2$  in the Janus bilayer. Comparison of the electrostatic potentials of  $(\text{Cl}_2)\text{-(Bi}_{12}\text{O}_{17})\text{-(MoS}_2)$  with (s) and without (t) Bi-S bonds. (u) Comparison of the build-up dynamics of electrons' excited-state absorption (ESA) signals (pumped at 400 nm and probed at 650 nm) of BOC-MS and BOC-MS-Mix, highlighting the crucial role of Bi-S bonds in steering charge flow from 1L-BOC to 1L-MS in BOC-MS. Schematic illustration of the crystal structure of BOC-MS (o) and of the charge flow processes within BOC-MS, including the electron-hole separation within 1L-BOC (p) and the interfacial electron transfer from 1L-BOC to 1L-MS along the Bi-S bonds (v).

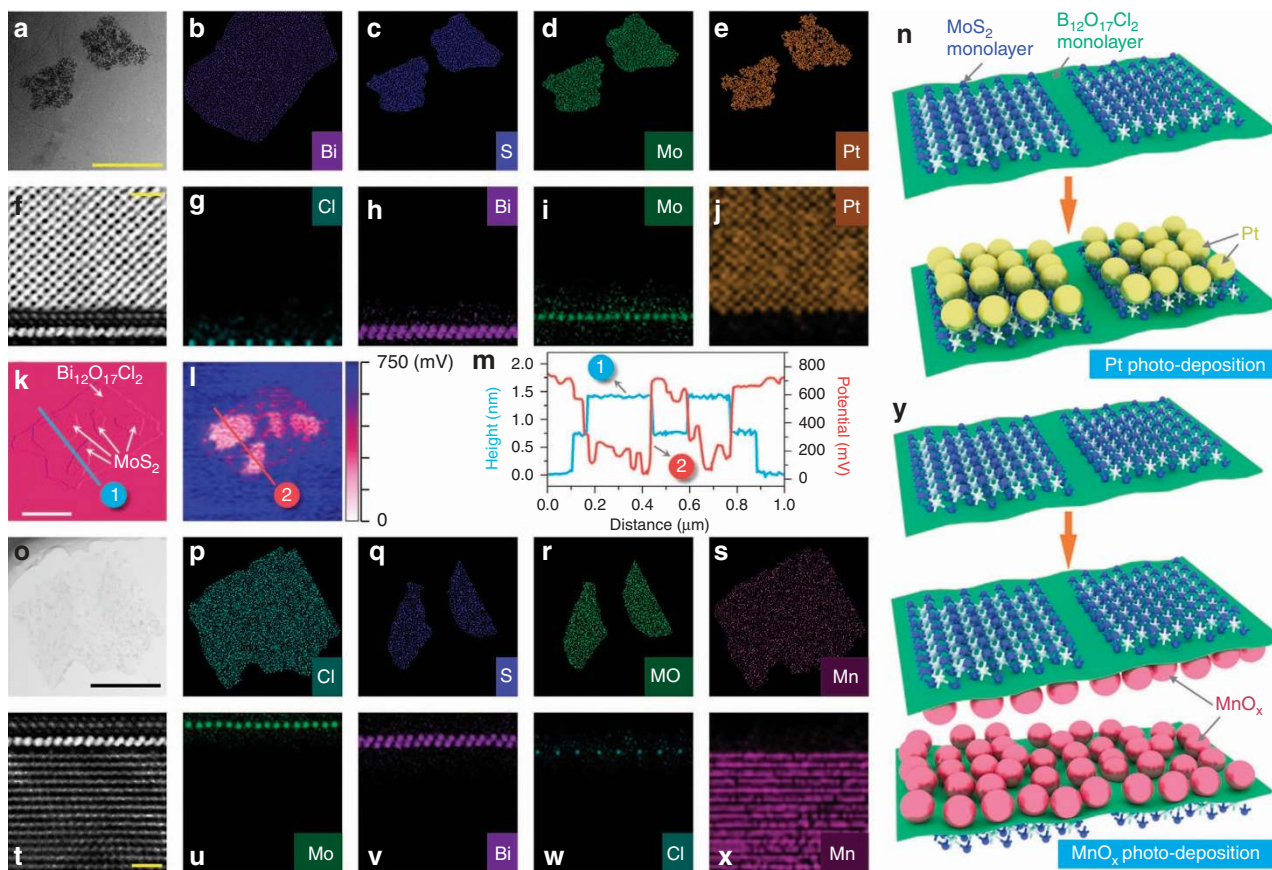
monolayers in the Janus bilayers could enhance their respective thermal decomposition temperatures by 104 and 87 °C (Supplementary Fig. 19g,h,j). In contrast, no obvious improvement was observed in the thermal decomposition temperature of BOC-MS-Mix without the interfacial chemical Bi-S bonds (Supplementary Fig. 19i). Therefore, all these characterizations provided strong evidences for the existence of Bi-S bonds in the interface between  $\text{Bi}_{12}\text{O}_{17}\text{Cl}_2$  and  $\text{MoS}_2$  monolayers. The formation of Bi-S bonds and the dependence of their XPS peak intensity on the OV amounts of 1L-BOC indicated that OV chemistry could selectively assemble 1L-MS on  $(\text{Bi}_{12}\text{O}_{17})$  end-faces of 1L-BOC, and also chemically solidify the interfaces between 1L-BOC and 1L-MS with the resultant Bi-S bonds. It is worth noting that the Janus bilayer junctions of  $(\text{Cl}_2)\text{-(Bi}_{12}\text{O}_{17})\text{-(MoS}_2)$  that we designed and demonstrated here is a new motif for 2D material family, because it is precisely assembled and has chemical bonds as the main linkers between the constituent monolayers. The emergence of Bi-S bonds could be attributed to the OV-mediated exposure of the coordinately unsaturated Bi atoms, which interacted with the surface-terminated S atoms of 1L-MS to form Bi-S bonds during hydrothermal processing. Different from Van der Waals heterostructures<sup>24</sup>, such as BOC-MS-Mix, which lacked the electron shuttle pathway between two adjacent component layers, these chemical junctions may utilize the Bi-S bonds as the interfacial charge flow highway to enable more facile electron transfer from  $(\text{Bi}_{12}\text{O}_{17})$  layers to 1L-MS. To verify this interfacial

electron transfer, we calculated the electrostatic potentials of  $(\text{Cl}_2)\text{-(Bi}_{12}\text{O}_{17})\text{-(MoS}_2)$  with and without Bi-S bonds. When 1L-BOC and 1L-MS interacted with Van der Waals force, the electron transfer from 1L-BOC to 1L-MS needed overcome an energy barrier of 17 eV and the transfer distance was 4.5 Å (Fig. 3s). The energy barrier and transfer distance could be decreased by 5 eV and 2.2 Å, respectively, by the introduction of the Bi-S bonds (Fig. 3t), indicating that the electron transfer along Bi-S bond was energetically and spatially more favourable. To support this theoretical calculation we used femtosecond-resolved transient absorption (TA) spectroscopy to decode the build-up dynamics of electrons' excited-state absorption signals. The TA curves of both BOC-MS and BOC-MS-Mix gave three lifetime components (Fig. 3u and Supplementary Fig. 20), among which  $\tau_1$ ,  $\tau_2$  and  $\tau_3$ , with relative intensities  $I_1$ ,  $I_2$  and  $I_3$ , are rationally assigned to the electron migration along the Bi-S bonds, the electron trapping by surface states and the electron hopping within Van der Waals heterostructures<sup>25,26</sup>. It was found that  $I_1$  increased ca. 17-fold from 5.23% for BOC-MS-Mix to 86.59% for BOC-MS, and its magnitude highly depended on the amounts of Bi-S bonds, confirming the electron transport from 1L-BOC to 1L-MS via the Bi-S bonds within BOC-MS (Fig. 3v). This interfacial electron transfer was ultrafast with a rate of up to  $5.8 \times 10^{-11} \text{ s}^{-1}$ , as calculated by  $(\tau_{\text{BOC-MS}})^{-1} - (\tau_{\text{BOC-MS-Mix}})^{-1}$ , where  $\tau_{\text{BOC-MS}}$  and  $\tau_{\text{BOC-MS-Mix}}$  are the average TA lifetimes for BOC-MS and BOC-MS-Mix, respectively. As a result, the electron flow from 1L-BOC to 1L-MS required only 0.68 ps

( $\tau_1$  for BOC-MS), which was inferior to the time scale (3–20 ps) required for the surface charge recombination<sup>1,2,27</sup>. This comparison indicated that, in photoexcited BOC-MS, the separated electrons of 1L-BOC preferred to migrate along the Bi-S bonds to 1L-MS, rather than recombine with the surface holes. Besides the aforementioned atomic-level steering of the first step charge flow from the electron-hole separation sites to the surface of 1L-BOC by monolayer engineering, such an ultrafast, efficient and selective extracting of electrons offered by the Bi-S bonds maintained the second-step charge flow from the surface of 1L-BOC to hydrogen-evolving sites still at the atomic level because of the MoS<sub>2</sub> monolayer nature. The combination of atomic-level charge separation steering in 1L-BOC and atomic-level charge flow control between the interfaces of 1L-BOC and 1L-MS thus endowed BOC-MS with an ultralong carrier lifetime up to 3,446 ns (Supplementary Fig. 18b), far exceeding those of 1L-BOC (136 ns), and BOC-MS-Mix (165 ns). More importantly, by means of this atomic-level interfacial design for the sufficient electrons extracting from (Bi<sub>12</sub>O<sub>17</sub>) end-faces, BOC-MS exhibited a PHE rate 20 times higher than that of BOC-MS-Mix (Supplementary Fig. 18c).

**Atomic-level charge flow across the Janus bilayer junctions.** To further verify the atomic-level charge flow described above and directly image the destination of electrons and holes in the photoexcited Janus bilayer junctions, we further deposited Pt and MnO<sub>x</sub> on BOC-MS under visible light. As shown in Fig. 4a–e,o–s,

Pt preferred to deposit on MoS<sub>2</sub> surfaces (Fig. 4n), while MnO<sub>x</sub> tended to locate on the opposite surfaces, namely the (Cl<sub>2</sub>) end-faces of Bi<sub>12</sub>O<sub>17</sub>Cl<sub>2</sub> (Fig. 4y). The Pt and MnO<sub>x</sub> photo-deposition sites were further evidenced by the atomic-resolution HAADF-STEM images (Fig. 4f,t) and EELS elemental maps (Fig. 4g–j,u–x) of the cross-sectional atomic structures of BOC-MS photo-deposited with Pt and MnO<sub>x</sub>. When using H<sub>2</sub>AuCl<sub>4</sub> as the metal precursors, Au still photo-deposited on the MoS<sub>2</sub> surfaces in the Janus bilayers (Supplementary Fig. 21). This control experiment strongly supported that the spatially selective photo-depositions of Pt and MnO<sub>x</sub> on the bilayers were induced not by the site-selective adsorptions of the metal precursors, but by the atomic-level charge flow driven by the selective and chemical assembly of MoS<sub>2</sub> monolayers on (Bi<sub>12</sub>O<sub>17</sub>) end-faces of Bi<sub>12</sub>O<sub>17</sub>Cl<sub>2</sub> monolayers via OV chemistry. Furthermore, the side-view TEM image of BOC-MS photo-deposited with MnO<sub>x</sub> also directly evidenced that all the MnO<sub>x</sub> nanoparticles were deposited on the (Cl<sub>2</sub>) end-faces of Bi<sub>12</sub>O<sub>17</sub>Cl<sub>2</sub> monolayers (Supplementary Fig. 22 and Supplementary Note 10), well-matching with the results of the above HAADF-STEM image and EELS elemental maps. These photo-deposition experiments demonstrated the photogenerated charge carriers' transfer pathways in BOC-MS as follows: Electrons from e-h separation sites to (Bi<sub>12</sub>O<sub>17</sub>) end-faces to MoS<sub>2</sub> and holes from e-h separation sites to (Cl<sub>2</sub>) end-faces. Furthermore, the Kelvin probe force microscopy (KPFM) was carried out to further verify these conclusions and directly image the distribution of the photogenerated electrons on the bilayers.



**Figure 4 | Imaging of the destinations of electrons and holes in visible light-irradiated BOC-MS.** (a,o) TEM images, (b–e,p–s) top-view elemental mapping images, and side-view atomic-resolution HAADF-STEM images (f,t) and EELS elemental maps (g–j,u–x) of BOC-MS/Pt and BOC-MS/MnO<sub>x</sub>. Scale bar, 500 nm, 10 Å, 600 nm and 10 Å, in a,f,o,t, respectively. (k) AFM image and (l) KPFM image of BOC-MS. Scale bar, 500 nm in k. (m) Height profiles along the lines in image (k,l). Schematic illustration of Pt (n) and MnO<sub>x</sub> (y) photo-depositions on BOC-MS.



As shown in Fig. 4k–m, 1L-MS displayed much lower surface potential than 1L-BOC, indicating that the photogenerated electrons from the photoexcited BOC-MS were inclined to accumulate on the 1L-MS<sup>28,29</sup>. This phenomenon could also serve as a direct evidence for the steered electron transfer from 1L-BOC to 1L-MS. Besides, the Janus distribution of electrons and holes in BOC-MS also indicated the existence of a Janus photocatalysis behaviour, including the electron-induced hydrogen evolution on MoS<sub>2</sub> and the hole-mediated photo-oxidation of organic scavengers on (Cl<sub>2</sub>) end-faces of Bi<sub>12</sub>O<sub>17</sub>Cl<sub>2</sub> (Supplementary Fig. 23).

## Discussion

Subsequently, we quantified the efficiencies of charge transportations during the above two charge flow processes to probe the origin of the superior PHE performance of BOC-MS by using the following equations (Supplementary Methods).

$$\text{Quantum yield} = \eta_{\text{abs}} \times \eta_{\text{bulk}} (\eta_{\text{bulk}} = \eta_{\text{1L-BOC}} \times \eta_{\text{interface}}) \times \eta_{\text{surface}} \times \eta_{\text{catalysis}} \quad (1)$$

$$J_{\text{ascorbic-acid}} = J_{\text{abs}} \times \eta_{\text{bulk}} \quad (2)$$

$$J_{\text{water}} = J_{\text{abs}} \times \eta_{\text{bulk}} \times \eta_{\text{surface}} \quad (3)$$

In equation (1),  $\eta_{\text{abs}}$  (set as '1'),  $\eta_{\text{bulk}}$ ,  $\eta_{\text{1L-BOC}}$ ,  $\eta_{\text{interface}}$ ,  $\eta_{\text{surface}}$  and  $\eta_{\text{catalysis}}$  are the efficiencies of photoabsorption, bulk charge separation of BOC-MS, bulk charge separation of 1L-BOC, interfacial charge flow from 1L-BOC to 1L-MS, surface charge separation and hydrogen-evolving catalysis, respectively. In equation (2) and equation (3),  $J_{\text{abs}}$  is the current density converted from the absorbed photons when assuming  $\eta_{\text{abs}} = 1$ , while  $J_{\text{ascorbic-acid}}$  and  $J_{\text{water}}$  are the photocurrent densities measured by using ascorbic acid and water as electrolytes, respectively. The establishment of equation (2) is based on the assumption that ascorbic acid oxidation could completely suppress the surface recombination and its catalytic efficiency is 1, similar with the case that Kim *et al.*<sup>30</sup> used sulfite oxidation to determine the  $\eta_{\text{bulk}}$  of BiVO<sub>4</sub>. These experiments were performed under irradiation of 420 nm monochromatic light, which gave a  $J_{\text{abs}} = 0.788 \text{ mA cm}^{-2}$ . For 1L-BOC,  $J_{\text{ascorbic-acid}}$  was measured to be  $0.725 \text{ mA cm}^{-2}$  (Supplementary Fig. 24), so  $\eta_{\text{bulk}} = J_{\text{ascorbic-acid}}/J_{\text{abs}} = 0.92$ . This means, through the atomic-level charge separation steering by IEF, 1L-BOC enabled 92% of photogenerated electrons and holes to be transferred from the electron–hole separation sites to its (Bi<sub>12</sub>O<sub>17</sub>) and (Cl<sub>2</sub>) end-faces, respectively. Despite this ultrahigh  $\eta_{\text{bulk}}$ , the quantum yield of 1L-BOC was still as low as 0.8%, because of its ultralow  $\eta_{\text{surface}}$  (0.8%) and poor  $\eta_{\text{catalysis}}$  (10.8%; Supplementary Fig. 24d). When 1L-MS was selectively and chemically assembled on (Bi<sub>12</sub>O<sub>17</sub>) end-faces,  $\eta_{\text{surface}}$  and  $\eta_{\text{catalysis}}$  increased by 11.4 and 4.2 times, respectively, as this oriented assembly enabled the Janus distribution of electrons and holes in BOC-MS to prevent the surface recombination and the metallic nature of 1L-MS was highly active for the hydrogen-evolving catalysis. Moreover, another crucial factor for the remarkable quantum yield (36%) of BOC-MS lied in the ultrahigh  $\eta_{\text{interface}}$  (91%) offered by the interfacial Bi–S bonds, by which the separated electrons of 1L-BOC could quickly migrate from (Bi<sub>12</sub>O<sub>17</sub>) end-faces to 1L-MS, achieving atomic-level charge flow steering from 1L-BOC to 1L-MS.

In conclusion, we have designed Janus (Cl<sub>2</sub>)-(Bi<sub>12</sub>O<sub>17</sub>)-(MoS<sub>2</sub>) bilayer junctions by assembling MoS<sub>2</sub> monolayers selectively and chemically on (Bi<sub>12</sub>O<sub>17</sub>) end-faces of Bi<sub>12</sub>O<sub>17</sub>Cl<sub>2</sub> monolayers via OV chemistry. This atomic-level structural and interfacial design allowed us to steer all the charge separation, transportation and consumption at the atomic level. Electrons originating from visible light-irradiated Bi<sub>12</sub>O<sub>17</sub>Cl<sub>2</sub> were first driven by the IEF

between (Cl<sub>2</sub>) and (Bi<sub>12</sub>O<sub>17</sub>) end-faces to (Bi<sub>12</sub>O<sub>17</sub>) end-faces, and further transferred via the Bi–S bonds formed between Bi<sub>12</sub>O<sub>17</sub>Cl<sub>2</sub> and MoS<sub>2</sub> monolayers to MoS<sub>2</sub> monolayers to finally catalyse the hydrogen evolution. Meanwhile, the IEF drove holes to (Cl<sub>2</sub>) end-faces where the organic scavenger was oxidized. Such an atomic-level steering of charge flow offered a visible-light PHE rate of  $33 \text{ mmol h}^{-1} \text{ g}^{-1}$  with a quantum efficiency of 36% at 420 nm, superior to any reported MoS<sub>2</sub>, or monolayer, or bismuth oxyhalide-based PHE systems. This work sheds atomic-level mechanistic insights into the flow of photogenerated electrons and holes, thus paving new ways into the exploration and design of high-performance, cost-effective photocatalysts for hydrogen evolution.

## Methods

**Preparation of bulk layered Bi<sub>12</sub>O<sub>17</sub>Cl<sub>2</sub> nanosheets.** First, 8 mmol of BiCl<sub>3</sub> was dissolved in 80 ml of ethanol with vigorous stirring at ambient temperature. Next, the pH value of the obtained homogeneous solution was adjusted to 13.4 by dropwise adding NaOH (1 mol l<sup>-1</sup>) solution, yielding yellow precipitations. Then these precipitations were collected, washed thoroughly with deionized water and ethanol for several times, and dried in an oven at 50 °C under vacuum. Calcination of the collected yellow powders in muffle furnace at 450 °C for 2 h produced layered Bi<sub>12</sub>O<sub>17</sub>Cl<sub>2</sub> nanosheets, which we term BOC.

**Preparation of bulk layered MoS<sub>2</sub> nanosheets.** Typically, 1.5 mmol of (NH<sub>4</sub>)<sub>6</sub>Mo<sub>7</sub>O<sub>24</sub> · 4H<sub>2</sub>O and 36 mmol of thiourea were added in 75 ml of distilled water at room temperature with continuous stirring to give a transparent solution. The resulting mixture solution was then poured into a 100 ml Teflon-lined stainless autoclave. The autoclave was allowed to be heated at 200 °C for 24 h under autogenous pressure, and then air cooled to room temperature. The resulting precipitates were collected, then washed with ethanol and deionized water thoroughly, and finally dried at 50 °C under vacuum. We term the obtained sample MS.

**Preparation of Bi<sub>12</sub>O<sub>17</sub>Cl<sub>2</sub> and MoS<sub>2</sub> monolayers.** Organolithium chemistry was used to exfoliate layered MoS<sub>2</sub> (or Bi<sub>12</sub>O<sub>17</sub>Cl<sub>2</sub>) nanosheets into their single-layered counterpart. Briefly, intercalating lithium into the spaces between each neighbouring MoS<sub>2</sub> (or Bi<sub>12</sub>O<sub>17</sub>Cl<sub>2</sub>) monolayer-unit was first conducted by immersing 0.2 g of layered MoS<sub>2</sub> (or 0.1 g of Bi<sub>12</sub>O<sub>17</sub>Cl<sub>2</sub>) nanosheets in 8 ml (10 ml for Bi<sub>12</sub>O<sub>17</sub>Cl<sub>2</sub>) of *n*-butyllithium (Caution: *n*-butyllithium is highly pyrophoric.) under argon atmosphere for 72 h at 100 °C. The suspension was then washed with hexane for several times to remove the excess of *n*-butyllithium. The collected nanosheets with lithium intercalation were re-dispersed in distilled water at 1 mg ml<sup>-1</sup> and sonicated at a low-power sonic bath (40 W) for 40 min to obtain exfoliated nanosheets. After centrifuging the resultant dispersions at 8,000 r.p.m. (8,000 r.p.m. for MoS<sub>2</sub> and 6,000 r.p.m. for Bi<sub>12</sub>O<sub>17</sub>Cl<sub>2</sub>) for 10 min, the supernatants were collected, removing the unsuccessfully exfoliated nanosheets. The collected supernatants were centrifuged at 12,000 r.p.m for 10 min for several times to remove excess impurity, producing single-layered MoS<sub>2</sub> and Bi<sub>12</sub>O<sub>17</sub>Cl<sub>2</sub> nanosheets with yields of ~47 and 26%, respectively. We term the as-prepared MoS<sub>2</sub> and Bi<sub>12</sub>O<sub>17</sub>Cl<sub>2</sub> monolayers 1L-MS and 1L-BOC, respectively.

It should be noteworthy that the surface of 1L-BOC was rich in oxygen vacancies, because, during the lithium-intercalation process, the organic ligands in *n*-butyllithium would interact strongly with lattice oxygen atoms on Bi<sub>12</sub>O<sub>17</sub>Cl<sub>2</sub> to form coordinate bonds, and during the ultrasonication-mediated exfoliation process, the organic ligands escaped from the interior of Bi<sub>12</sub>O<sub>17</sub>Cl<sub>2</sub>, which inevitably removed a fraction of oxygen atoms from the lattice, leading to the occurrence of surface oxygen vacancies in single-layered Bi<sub>12</sub>O<sub>17</sub>Cl<sub>2</sub> nanosheets. Calcination of 1L-BOC with oxygen-vacancy concentrations of 11% in air at 200 °C for 30 min and at 300 °C for 6 h produced single-layered Bi<sub>12</sub>O<sub>17</sub>Cl<sub>2</sub> nanosheets with oxygen-vacancy concentrations of 5.3% and 0, which we call 1L-BOC-1 and 1L-BOC-2.

**Assembling monolayers of Bi<sub>12</sub>O<sub>17</sub>Cl<sub>2</sub> and MoS<sub>2</sub>.** An OV-directed assembly strategy was used to assemble monolayers of MoS<sub>2</sub> and Bi<sub>12</sub>O<sub>17</sub>Cl<sub>2</sub>. First, 10 mg of MoS<sub>2</sub> monolayers were dispersed in 30 ml of distilled water under ultrasonication to obtain transparent solution A. 40 mg of oxygen-deficient Bi<sub>12</sub>O<sub>17</sub>Cl<sub>2</sub> monolayers were dispersed in a three-neck flask containing 120 ml of distilled water under ultrasonication to obtain transparent solution B. Then the solution A was dropwise added to the solution B under vigorous stirring at ambient temperature to give homogeneous mixture solution. Next, the above mixture was deoxygenated by bubbling argon gas at room temperature for 60 min, subsequently refluxed at 80 °C for 2 h under a stirring rate of 200 r.p.m., and finally air cooled to room temperature. The resulting suspension were first centrifuged at 3,000 r.p.m. for 5 min to remove the aggregated precipitations, and further centrifuged at 12,000 r.p.m. for 10 min to obtain the assemble of MoS<sub>2</sub> and Bi<sub>12</sub>O<sub>17</sub>Cl<sub>2</sub> monolayers, which we call BOC-MS.

We treated the synthesized 1L-BOC, 1L-MS and BOC-MS by many times of water-ethanol washing and plasma treatment to eliminate the surface-adsorbed impurities. Furthermore, when measuring their heights via AFM, we diluted the concentrations of the measured solutions to a considerably low level so as to maintain the nanosheets' surface as flat as possible, which would avoid the wrinkling or twisting.

**Characterization.** The powder X-ray diffraction patterns of the samples were recorded on a Bruker D8 Advance diffractometer with monochromatized Cu K $\alpha$  radiation ( $\lambda = 0.15418$  nm). The powders were deposited on copper grids with carbon support films for electron microscopy observation. TEM and HRTEM (high-resolution TEM) observations were performed on Hitachi H-7650 and JEOL-2010F with an acceleration voltage of 200 kV. The atomic-resolution HRTEM images and EELS elemental mapping images were investigated by aberration-corrected STEM and EELS carried out in a Nion UltraSTEM (Nion) microscope operating at 200 keV and equipped with a cold-field emission gun, a third-generation C3/C5 aberration corrector and a Gatan Enfinity EEL spectrometer. Energy dispersive X-ray spectroscopy were carried out using a JEM-ARM 200F Atomic-Resolution Analytical Microscope operating at an accelerating voltage of 200 kV. Elemental mappings were collected by a Gatan GIF Quantum 965 instrument. Ultraviolet-visible diffused reflectance spectra of the samples were obtained for the dry-pressed film samples with using a ultraviolet-visible spectrophotometer (UV-2550, Shimadzu, Japan) with BaSO $_4$  as the reflectance standard. Chemical compositions and states were analysed using XPS (Thermo Scientific ESCLAB 250Xi). All binding energies were referenced to the C 1s peak (284.6 eV) arising from the adventitious carbon. Atomic concentrations were calculated by normalizing peak areas to the elemental sensitivity factor. Raman measurements were carried out by a confocal laser micro-Raman spectrometer (Thermo DXR Microscope, USA). The laser was 633 nm with a 5 mW. AFM and Kelvin probe force microscope measurements were carried out on an AFM instrument (SPM-9600, Shimadzu). The electrical resistivity study was corrected on a Keithley 4200 station with the computer-controlled four-probe technique. Photoluminescence emission and photoluminescence decay spectra were recorded at room temperature with a fluorescence spectrophotometer (Edinburgh Instruments, FLSP-920). The femtosecond-resolved TA spectra were performed using a modified Excipro pump-probe spectrometer (CDP) in connection with an amplified femtosecond laser system (Coherent). Electron paramagnetic resonance spectra were performed on a Bruker EMX EPR Spectrometer (Billerica, MA). The Bi:O:Cl molar ratios in Bi $_{12}$ O $_{17}$ Cl $_2$  monolayers were detected by IRIS (INTREPID 2) inductively coupled plasma atomic emission spectrometry. The  $^{13}$ C NMR spectra were recorded on a Bruker AVANCE III 600M system. The Bi L-edge X-ray absorption fine structure spectroscopy was carried out at BL 14W1 beamline at the Shanghai Synchrotron Radiation Facility (SSRF) China. Surface photovoltage spectroscopy was recorded on a lock-in amplifier (SR830-DSP, Stanford Research Systems) synchronized with a light chopper (SR540).

**Photocatalytic hydrogen evolution.** The photocatalytic hydrogen production experiments were performed at ambient temperature and atmospheric pressure using 300 W Xe arc lamp as the light source. In all, 10 mg of photocatalyst was dispersed in 80 ml of aqueous solution containing 0.3 M ascorbic acid in a 120 ml Pyrex flask. Before irradiation, the suspensions were bubbled with nitrogen for 30 min to remove the dissolved oxygen and to ensure the anaerobic conditions of the reaction system. During the whole reaction process, the aqueous solution with photocatalyst was continuously stirred by a magnetic stirrer. The generated hydrogen gas was analysed with an online GC (C36880-14, RESTEK) equipped with a thermal conductivity detector, where Ar was used as a carrier gas.

**Theoretical calculations.** Theoretical calculations were performed using density functional theory as implemented in the VASP code. 3D periodic boundary conditions were used to approximate an infinite solid. Exchange-correlation effects were described through the generalized gradient approximation, within the Perdew-Burke-Ernzerhof formalism. The core electrons (Bi:(Xe), Cl:(Ne), O:(He)) were treated within the projector augmented wave method. The energy cutoff is set to be 520 eV, and the atomic positions are allowed to relax until the energy and force are  $< 10^{-4}$  eV and  $10^{-3}$  eV  $\text{\AA}^{-1}$ , respectively.

## References

- Ma, Y. *et al.* Titanium dioxide-based nanomaterials for photocatalytic fuel generations. *Chem. Rev.* **114**, 9987–10043 (2014).
- Bai, S., Jiang, J., Zhang, Q. & Xiong, Y. J. Steering charge kinetics in photocatalysis: intersection of materials syntheses, characterization techniques and theoretical simulations. *Chem. Soc. Rev.* **44**, 2893–2939 (2015).
- Sun, Y. F., Gao, S., Lei, F. C. & Xie, Y. Atomically-thin two-dimensional sheets for understanding active sites in catalysis. *Chem. Soc. Rev.* **44**, 623–636 (2015).
- Zhou, M., Lou, X. W. & Xie, Y. Two-dimensional nanosheets for photoelectrochemical water splitting: Possibilities and opportunities. *Nano Today* **8**, 598–618 (2013).

- Chen, J. Z. *et al.* One-pot synthesis of CdS nanocrystals hybridized with single-layer transition-metal dichalcogenide nanosheets for efficient photocatalytic hydrogen evolution. *Angew. Chem. Int. Ed.* **54**, 1210–1214 (2015).
- Maitra, U. *et al.* Highly effective visible-light-Induced H $_2$  generation by single-layer 1T-MoS $_2$  and a nanocomposite of few-layer 2H-MoS $_2$  with heavily nitrogenated graphene. *Angew. Chem. Int. Ed.* **52**, 13057–13061 (2013).
- Ida, S. & Ishihara, T. Recent progress in two-dimensional oxide photocatalysts for water splitting. *J. Phys. Chem. Lett.* **5**, 2533–2542 (2014).
- Liang, L. *et al.* Single unit cell bismuth tungstate layers realizing robust solar CO $_2$  reduction to methanol. *Angew. Chem. Int. Ed.* **54**, 13971–13974 (2015).
- Zhou, Y. G. *et al.* Monolayered Bi $_2$ WO $_6$  nanosheets mimicking heterojunction interface with open surfaces for photocatalysis. *Nat. Commun.* **6**, 8340 (2015).
- Yang, S. B. *et al.* Exfoliated graphitic carbon nitride nanosheets as efficient catalysts for hydrogen evolution under visible light. *Adv. Mater.* **25**, 2452–2456 (2013).
- Niu, P., Zhang, L. L., Liu, G. & Cheng, H. M. Graphene-like carbon nitride nanosheets for improved photocatalytic activities. *Adv. Funct. Mater.* **22**, 4763–4770 (2012).
- Nicolosi, V., Chhowalla, M., Kanatzidis, M. G., Strano, M. S. & Coleman, J. N. Liquid exfoliation of layered materials. *Science* **340**, 1226419 (2013).
- Chhowalla, M. *et al.* The chemistry of two-dimensional layered metal dichalcogenide nanosheets. *Nat. Chem.* **5**, 263–275 (2013).
- Xi, G. C. *et al.* In situ growth of metal particles on 3D urchin-like WO $_3$  nanostructures. *J. Am. Chem. Soc.* **134**, 6508–6511 (2012).
- Acerce, M., Voiry, D. & Chhowalla, M. Metallic 1T phase MoS $_2$  nanosheets as supercapacitor electrode materials. *Nat. Nanotechnol.* **10**, 313–318 (2015).
- Liao, L. *et al.* Efficient solar water-splitting using a nanocrystalline CoO photocatalyst. *Nat. Nanotechnol.* **9**, 69–73 (2014).
- Han, Z. J., Qiu, F., Eisenberg, R., Holland, P. L. & Krauss, T. D. Robust photogeneration of H $_2$  in water using semiconductor nanocrystals and a nickel catalyst. *Science* **338**, 1321–1324 (2012).
- Jiang, J., Zhao, K., Xiao, X. Y. & Zhang, L. Z. Synthesis and facet-dependent photoreactivity of BiOCl single-crystalline nanosheets. *J. Am. Chem. Soc.* **134**, 4473–4476 (2012).
- Bai, S. *et al.* Toward enhanced photocatalytic oxygen evolution: synergetic utilization of plasmonic effect and schottky junction via interfacial facet selection. *Adv. Mater.* **27**, 3444–3452 (2015).
- Li, J., Zhang, L. Z., Li, Y. J. & Yu, Y. Synthesis and internal electric field dependent photoreactivity of Bi $_3$ O $_4$ Cl single-crystalline nanosheets with high {001} facet exposure percentages. *Nanoscale* **6**, 167–171 (2014).
- Li, R. G. *et al.* Spatial separation of photogenerated electrons and holes among {010} and {110} crystal facets of BiVO $_4$ . *Nat. Commun.* **4**, 1432 (2013).
- Thomson, J. W. *et al.* Ultrathin Bi $_2$ S $_3$  nanowires surface and core structure at the cluster-nanocrystal Transition. *J. Am. Chem. Soc.* **132**, 9058–9068 (2010).
- Fujishima, Y. *et al.* Photofuel cell comprising titanium oxide and bismuth oxychloride (BiO $_{1-x}$ Cl $_{1-y}$ ) photocatalysts that uses acidic water as a fuel. *J. Mater. Chem. A* **3**, 8389–8404 (2015).
- Yuan, Y. J. *et al.* Constructing anatase TiO $_2$  nanosheets with exposed {001} facets/layered MoS $_2$  two-dimensional nanojunctions for enhanced solar hydrogen generation. *ACS Catal.* **6**, 532–541 (2016).
- Bian, Z. F., Tachikawa, T., Zhang, P., Fujitsuka, M. & Majima, T. A nanocomposite superstructure of metal oxides with effective charge transfer interfaces. *Nat. Commun.* **6**, 3038 (2015).
- Li, R. *et al.* Integration of inorganic semiconductor with MOF: a platform for enhanced gaseous photocatalytic reactions. *Adv. Mater.* **26**, 4783–4788 (2014).
- Kamat, P. V. Photochemistry on nonreactive and reactive (semiconductor) surfaces. *Chem. Rev.* **93**, 267–300 (1993).
- Ida, S., Takashiba, A., Koga, S., Hagiwara, H. & Ishihara, T. Potential gradient and photocatalytic activity of ultrathin p-n junction surface prepared with two-dimensional semiconducting nanocrystals. *J. Am. Chem. Soc.* **136**, 1872–1878 (2014).
- Zhu, J. *et al.* Direct imaging of highly anisotropic photogenerated charge separations on different facets of a single BiVO $_4$  photocatalyst. *Angew. Chem. Int. Ed.* **54**, 9111–9114 (2015).
- Kim, T. W. & Choi, K. S. Nanoporous BiVO $_4$  photoanodes with dual-layer oxygen evolution catalysts for solar water splitting. *Science* **343**, 990–994 (2014).

## Acknowledgements

This work was supported by National Natural Science Funds for Distinguished Young Scholars (Grant 21425728), National Basic Research Program of China (973 Program) (Grant 2013CB632402), National Natural Science Foundation of China (Grant 21177048, 21377044, 51472100 and 21573085) and excellent doctoral dissertation cultivation grant from Central China Normal University (2015YBZD019).



### Author contributions

L.Z. and J.L. conceived the project; J.L. performed most of the experiments; G.Z. performed part of the experiments; L.Z. and J.L. co-wrote the paper. Y.Y. helped to analyse the results and took part in the revision of the manuscript. L.Z. supervised the project. All the authors discussed the results and commented on the manuscript.

### Additional information

**Supplementary Information** accompanies this paper at <http://www.nature.com/naturecommunications>

**Competing financial interests:** The authors declare no competing financial interests.

**Reprints and permission** information is available online at <http://npg.nature.com/reprintsandpermissions/>

**How to cite this article:** Li, J. *et al.* Superior visible light hydrogen evolution of Janus bilayer junctions via atomic-level charge flow steering. *Nat. Commun.* 7:11480 doi: 10.1038/ncomms11480 (2016).



This work is licensed under a Creative Commons Attribution 4.0 International License. The images or other third party material in this article are included in the article's Creative Commons license, unless indicated otherwise in the credit line; if the material is not included under the Creative Commons license, users will need to obtain permission from the license holder to reproduce the material. To view a copy of this license, visit <http://creativecommons.org/licenses/by/4.0/>