

8-29-2018

Suprasellar Epidermoid Cyst Originating from the Infundibulum: Case Report and Literature Review.

Erin P McCormack

Justin M Cappuzzo

Zachary Litvack

Neurological Surgery, Swedish Brain and Spine Specialists, Seattle, USA.

M Isabel Almira-Suarez

Jonathan S Sherman

Follow this and additional works at: <https://digitalcommons.psjhealth.org/publications>



Part of the [Neurology Commons](#)

Recommended Citation

McCormack, Erin P; Cappuzzo, Justin M; Litvack, Zachary; Almira-Suarez, M Isabel; and Sherman, Jonathan S, "Suprasellar Epidermoid Cyst Originating from the Infundibulum: Case Report and Literature Review." (2018). *Journal Articles and Abstracts*. 994. <https://digitalcommons.psjhealth.org/publications/994>

This Article is brought to you for free and open access by Providence St. Joseph Health Digital Commons. It has been accepted for inclusion in Journal Articles and Abstracts by an authorized administrator of Providence St. Joseph Health Digital Commons. For more information, please contact digitalcommons@providence.org.

A Median Artery of the Corpus Callosum

Juan J. Altafulla¹, Emily A. Simonds², Graham Dupont³, Stefan Lachkar⁴, Zachary Litvack⁵, Joe Iwanaga⁶, R. Shane Tubbs⁷

1. SNI, Seattle Science Foundation, Seattle, USA 2. Seattle Science Foundation, Seattle, USA 3. Neuroscience Institute, Seattle Science Foundation, Seattle, USA 4. Clinical Anatomy, Seattle Science Foundation, Seattle, WA, USA 5. Neurosurgery, Swedish Neuroscience Institute, Seattle, USA 6. Medical Education and Simulation, Seattle Science Foundation, Seattle, WA, USA 7. Neurosurgery, Seattle Science Foundation, Seattle, WA, USA

✉ **Corresponding author:** Joe Iwanaga, joei@seattlesciencefoundation.org
Disclosures can be found in Additional Information at the end of the article

Abstract

The anterior communicating artery is one of the main components of the vascular network that delivers blood to the brain. Therefore, a good understanding of the normal anatomy and its variations is important to neurologists, neurosurgeons, and other health care providers dealing with the central nervous system. Here, we present a case of a median artery of the corpus callosum found in a cadaver, with consideration of cerebral hemodynamics implications.

Categories: Miscellaneous

Keywords: anterior communicating artery, endovascular, cerebrovascular, anatomical variant, median artery of corpus callosum

Introduction

Proper knowledge of the variations of the anterior communicating artery (ACoMA) is fundamental in a clinical setting, as it serves as one of the components of the circle of Willis in regulating, stabilizing, and balancing the anterior cerebral circulation [1].

The ACoMA acts as a bridge between the left and right A1; its continuation from this point is now the distal part or A2, which ascends in front of the lamina terminalis to pass into the longitudinal fissure between the hemispheres. The A2 segment is formed by the A2 (infracallosal), A3 (precallosal), A4 (supracallosal), and A5 (postercallosal) segments [2]. The mean diameter of the ACoMA is 1.2 mm, and an ACoMA less than 1.0 mm is considered hypoplastic [3].

A rare variant that occurs in only 2-13.1% of individuals is the median artery of the corpus callosum (MACC) originating from the ACoMA [4]. When present, such a variant can be a surgical obstacle for neurosurgeons working in the suprasellar area, as well as alter cerebral hemodynamics and perfusion. Here, we report a duplicated MACC found during routine dissection of a cadaveric brain.

Case Presentation

During routine dissection and removal of cerebral structures of a 56-year-old female at death cadaver, duplicated branches of the ACoMA were observed. After further inspection, both arteries were found to originate from the anterior medial aspect of ACoMA (Figure 1). This was realized to be an extremely rare case of duplication of the MACC, which to our knowledge has

Received 09/14/2018

Review began 09/15/2018

Review ended 09/21/2018

Published 09/25/2018

© Copyright 2018

Altafulla et al. This is an open access article distributed under the terms of the Creative Commons Attribution License CC-BY 3.0., which permits unrestricted use, distribution, and reproduction in any medium, provided the original author and source are credited.

How to cite this article

Altafulla J J, Simonds E A, Dupont G, et al. (September 25, 2018) A Median Artery of the Corpus Callosum. Cureus 10(9): e3355. DOI 10.7759/cureus.3355

never been reported before. The left MACC had a diameter of 0.60 mm and the right MACC had a diameter of 1.02 mm. The left A1 and A2 measured 1.96 mm and 1.74 mm, respectively, while the contralateral A1 was fenestrated measuring 1.06 mm and 1.07 mm joining into a common A2, which measured 2.04 mm. No hypoplasia was observed with the AComA although its course exhibited a variation in diameter of 1.01 mm (right side) and 1.13 mm (left side) (Figure 2). The left recurrent artery of Heubner measured 0.76 mm in diameter while the right one measured 0.80 mm in diameter. No other cerebral vascular variants or pathologies was observed.

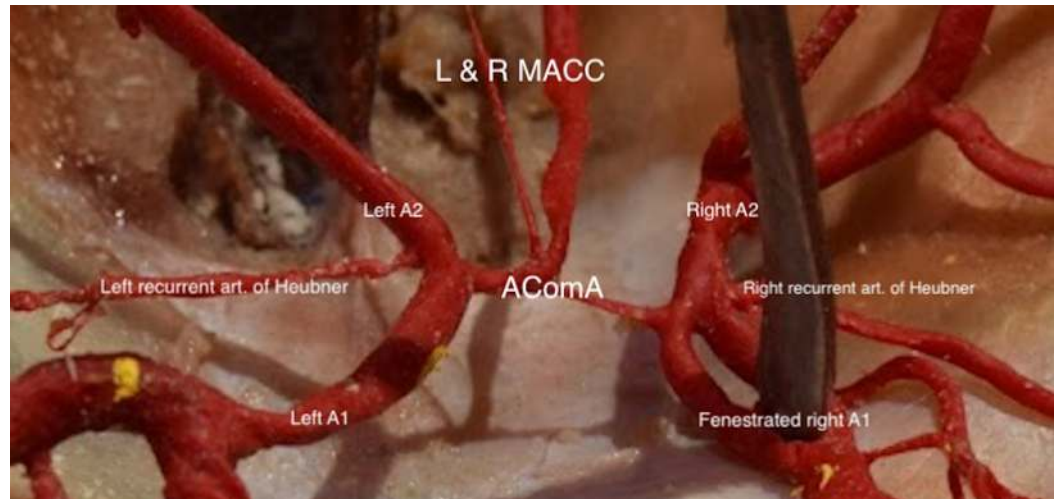


FIGURE 1: Anterior Communicating Artery Complex.

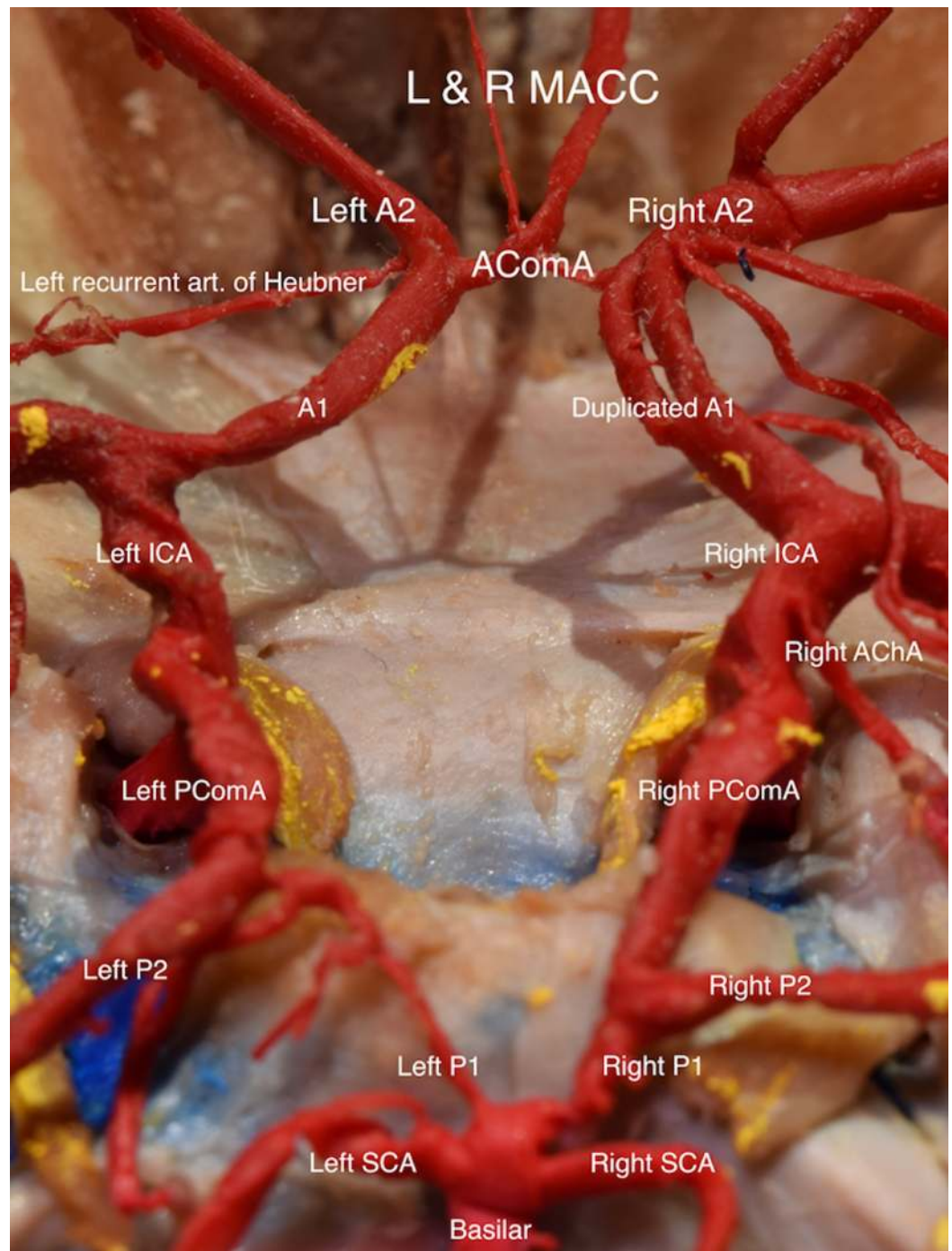


FIGURE 2: Circle of Willis.

Discussion

Anatomically and physiologically speaking, the posterior communicating artery completes the circle of Willis by joining both vertebral arteries, and anteriorly the AComA serves a similar role by connecting both internal carotid arteries. Any anatomical variation in the course of this system may have hemodynamic repercussions for the patient and pose a surgical challenge if treatment is required [5].

The AComA complex consists of two anterior cerebral arteries (ACA), the AComA itself, and both recurrent arteries of Heubner (or medial striate branches). This complex has a strong

clinical and surgical relevance since it is the most common site of intracranial aneurysms [6].

Under normal embryological development, the ACA has been identified at around 41-48 days of gestation. The embryo has already developed the primitive olfactory artery (POA), which by this date already has two branches, one to the nasal fossa and one running more medially to develop into the ACA. As development continues, the MACC (also termed the superior callosal artery, median callosal artery, accessory anterior cerebral artery, medial anterior cerebral artery, or the third A2 artery) appears to arise as a small embryonic branch of the AComA. When apoptotic signals fail to involute this artery, it then continues its course, runs parallel to the pericallosal artery, and supplies blood to the corpus callosum, septal nuclei, septum pellucidum, rostral portions of the fornix, and both frontal lobes [4, 7]. The incidence of this variant ranges from 2 to 13% with a female predominance [8]. As early as 1921, anatomical variants of the AComA complex have been considered to have direct relationships with the formation of aneurysms, with hypoplasia of the A1 segment as the most common variant, observed in approximately 80% of all cases of aneurysms in the AComA complex [9]. Of particular clinical importance regarding the MACC, it has been reported that aneurysms of the AComA use an MACC as their main draining artery [10], while Yanaka et al. have reported a case of ruptured aneurysms of the MACC at its origin [11]. Proper visualization of AComA is not easily achievable during cerebral imaging; orientation is not in a strict transverse plane as expected, but rather in an oblique or straight anterior-posterior fashion. Variation reporting the MACC using angi-MRI as the imaging method is around 3%, microsurgical observations while performing bifrontal craniotomies for clipping AComA aneurysms have found this number to be as high as 13.1% [12]. Confusion or misinterpretation of these anatomical scenarios may cause significant repercussions for the patient being treated as cases of occlusion of the MACC while treating AComA aneurysms have been reported [12, 13].

Structural peculiarities of the intracranial arteries that could lead to the formation of aneurysms when compared to the extracranial vessels include less elastic fibers in the tunica media and adventitia, less muscle in the media, thinner adventitia, and a more prominent elastic lamina. Minor resistance point hypothesis states that aneurysm formation occurs at a level where wall weakness is at its most, during flow direction changes, or during embryogenesis where primitive vessels have sprouted and may have later occluded or not, as in the case of MACC [14, 15]. Histological findings of the wall of aneurysms include disorganization of cellular components (muscle fibers, collagen type III and IV, etc.) with fragmentation or loss of the internal elastic lamina, intimal hyperplasia, loss of collagen I in the adventitia and of fibronectin in the media layer [14].

Treatment remains standard (endovascular versus surgical) depending on the aneurysm characteristics and location, and there have yet to be reported any follow-up differences regarding both treatments under this type of variation, whereas AComA aneurysms with an ACA trunk-dominant circle of Willis configuration (one A1 supplying both A2 while the other is hypoplasia) have shown less angiographic stability at follow-up than those with an ACA trunk-codominance similar to other “termination” type aneurysms [16].

Conclusions

Although no other significant anatomical variant or vascular pathology was associated with this case report, it serves as an aid for further research in which this vascular anomaly may play a much more significant role in a setting of a higher clinical relevance such as when facing an AComA aneurysm. Inadequate visualization of the anterior communicating artery complex and its variations may lead to incorrect vessel identification resulting in catastrophic consequences for the patient. Cerebral hemodynamics and perfusion are also altered in the setting in which an MACC is present and this might lead to the formation of intracranial vascular pathologies.

Additional Information

Disclosures

Human subjects: All authors have confirmed that this study did not involve human participants or tissue. **Conflicts of interest:** In compliance with the ICMJE uniform disclosure form, all authors declare the following: **Payment/services info:** All authors have declared that no financial support was received from any organization for the submitted work. **Financial relationships:** All authors have declared that they have no financial relationships at present or within the previous three years with any organizations that might have an interest in the submitted work. **Other relationships:** All authors have declared that there are no other relationships or activities that could appear to have influenced the submitted work.

References

1. Kardile PB, Ughade JM, Pandit SV, Ughade MN: Anatomical variations of anterior communicating artery. *J Clin Diagn Res.* 2013, 7:2661-2664. [10.7860/JCDR/2013/6664.3725](https://doi.org/10.7860/JCDR/2013/6664.3725)
2. Rhoton AL: The supratentorial arteries. *Neurosurgery.* 2002, 51:53-120. [10.1097/00006123-200210001-00003](https://doi.org/10.1097/00006123-200210001-00003)
3. Padget DH: The circle of Willis: its embryology and anatomy . *Intracranial Arterial Aneurysms.* Dandy WE (ed): Comstock Publishing, New York; 1948. 67-90.
4. Ogawa A, Suzuki M, Sakurai Y, Yoshimoto T: Vascular anomalies associated with aneurysms of the anterior communicating artery: microsurgical observations. *J Neurosurg.* 1990, 72:706-709. [10.3171/jns.1990.72.5.0706](https://doi.org/10.3171/jns.1990.72.5.0706)
5. Alpers BJ, Berry RG, Paddison RM: Anatomical studies of the circle of Willis in normal brain . *AMA Arch Neurol Psychiatry.* 1959, 81:409-418.
6. Leipzig TJ, Morgan J, Horner TG, Payner T, Redelman K, Johnson CS: Analysis of intraoperative rupture in the surgical treatment of 1694 saccular aneurysms. *Neurosurgery.* 2005, 56:455-468. [10.1227/01.NEU.0000154697.75300.C2](https://doi.org/10.1227/01.NEU.0000154697.75300.C2)
7. Okahara M, Kiyosue H, Mori H, Tanoue S, Sainou M, Nagatomi H: Anatomic variations of the cerebral arteries and their embryology: a pictorial review. *Eur Radiol.* 2002, 12:2548-2561. [10.1007/s00330-001-1286-x](https://doi.org/10.1007/s00330-001-1286-x)
8. Parmar H, Sitoh YY, Hui F: Normal variants of the intracranial circulation demonstrated by MR angiography at 3T. *Eur J Radiol.* 2005, 56:220-228. [10.1016/j.ejrad.2005.05.005](https://doi.org/10.1016/j.ejrad.2005.05.005)
9. Kwak R, Niizuma H, Suzuki J: Hemodynamics in the anterior part of the circle of Willis in patients with intracranial aneurysms: a study of cerebral angiography. *Tohoku J Exp Med.* 1980, 132:69-73. [10.1620/tjem.132.69](https://doi.org/10.1620/tjem.132.69)
10. Kwak R, Niizuma HG, Hatanaka M, Suzuki J: Anterior communicating artery aneurysms with associated anomalies. *J Neurosurg.* 1980, 52:162-4. [10.3171/jns.1980.52.2.0162](https://doi.org/10.3171/jns.1980.52.2.0162)
11. Yanaka K, Shirai S, Shibata Y, Nose T: Ruptured aneurysm at the origin of the median artery of the corpus callosum associated with accessory middle cerebral artery--case report. *Neurol Med Chir (Tokyo).* 2000, 40:511-514. [10.2176/nmc.40.511](https://doi.org/10.2176/nmc.40.511)
12. Uchino A, Nomiyama K, Takase Y, Kudo S: Anterior cerebral artery variations detected by MR angiography. *Neuroradiology.* 2006, 48:647-652. [10.1007/s00234-006-0110-3](https://doi.org/10.1007/s00234-006-0110-3)
13. Gibbons K, Hopkins LN, Heros RC: Occlusion of an "accessory" distal anterior cerebral artery during treatment of anterior communicating artery aneurysms. Report of two cases. *J Neurosurg.* 1991, 74:133-135. [10.3171/jns.1991.74.1.0133](https://doi.org/10.3171/jns.1991.74.1.0133)
14. Bacigaluppi S, Piccinelli M, Antiga L, et al.: Factors affecting formation and rupture of intracranial saccular aneurysms. *Neurosurg Rev.* 2014, 37:1-14. [10.1007/s10143-013-0501-y](https://doi.org/10.1007/s10143-013-0501-y)
15. Stehens WE: Etiology of intracranial berry aneurysms . *J Neurosurg.* 1989, 70:823-31. [10.3171/jns.1989.70.6.0823](https://doi.org/10.3171/jns.1989.70.6.0823)
16. Tarulli E, Sneade M, Clarke A, Molyneux AJ, Fox AJ: Effects of circle of Willis anatomic variations on angiographic and clinical outcomes of coiled anterior communicating artery aneurysms. *AJNR Am J Neuroradiol.* 2014, 35:1551-1555. [10.3174/ajnr.A3991](https://doi.org/10.3174/ajnr.A3991)