

Research Paper

Cite this article: Gilardoni C, Di Giorgio G, Bagnato E, Cremonte F (2019). Survey of trematodes in intertidal snails from Patagonia, Argentina: new larval forms and diversity assessment. *Journal of Helminthology* **93**, 342–351. <https://doi.org/10.1017/S0022149X18000329>

Received: 10 November 2017
Accepted: 9 March 2018
First published online: 22 May 2018

Author for correspondence:

C. Gilardoni, E-mail: gilardoni@cenpat-conicet.gob.ar

Survey of trematodes in intertidal snails from Patagonia, Argentina: new larval forms and diversity assessment

C. Gilardoni, G. Di Giorgio, E. Bagnato and F. Cremonte

Laboratorio de Parasitología (LAPA), Instituto de Biología de Organismos Marinos (CCT CONICET-CENPAT), Bvd. Brown 2915, U9120ACD Puerto Madryn, Chubut, Argentina

Abstract

Larval trematodes are the main parasites of snails, and they play a crucial role because they usually castrate their snail hosts and can thus alter their population and community dynamics. This study involved a survey of seven gastropod species (*Crepidatella dilatata*, *Fissurella radiosa*, *Nacella magellanica*, *Pareuthria fuscata*, *Siphonaria lessonii*, *S. lateralis* and *Trophon geversianus*) parasitized by 12 trematode species (one hemiurid, one gymnophallid, two lepecreadiids, two microphallids, one notocotylid, two renicolids, one philophthalmid, one schistosomatid and one zoogonid) from southern Patagonia (47°S, 65°W), Argentina. Only *F. radiosa* was free of parasites. The study included the description of five new larvae, based on morphological and molecular information, and a comparison of the parasite diversity with that of a northern locality (42°S, 64°W), characterized by a lower mollusc diversity. Species richness and diversity of parasites were higher in the southern site. This suggests a correlation between the level of parasitism and the diversity of molluscs (first intermediate hosts), which is higher at the high-latitude site and seems to attract shorebirds, which disperse the digenean eggs and facilitate the completion of their life cycles. These results support the notion that parasitism is influenced by large-scale factors such as biogeographical patterns, and small-scale factors such as diversity or abundance of intermediate and definitive hosts.

Introduction

The intertidal shoreline is a zone of high biodiversity that supports a rich fauna of invertebrates, fish and shorebirds (Sokolova, 1995). As parasites that use different host species sequentially throughout their complex life cycle, the diversity of trematodes in molluscs (first intermediate host) appears to depend on the diversity of benthic invertebrates and fish (second intermediate host) and that of vertebrates, mainly birds and fish (definitive host) (Bustnes & Galaktionov, 1999; Smith, 2001; Hechinger & Lafferty, 2005; Huspeni *et al.*, 2005). Trematode infection in intertidal gastropods can be determined by large-scale factors (climate, occurrence of hosts in the geographical region) and small-scale factors (tidal level, substrate type, distribution of intermediate and definitive hosts in the local habitat, host abundance) (Skirnisson & Galaktionov, 2002; Poulin & Mouritsen, 2003). However, some studies have indicated that the latter may be more important than the former in determining the number of trematode species infecting snails, and the proportion of infected snails in a population (Combes, 2001; Poulin & Mouritsen, 2003). Generally, the abundance of shorebirds plays a crucial role and has been found to be directly related to digenean diversity (Hechinger & Lafferty, 2005; Fredensborg *et al.*, 2006).

The taxonomic identification of larval digeneans is a key step towards the elucidation of their life cycles, which facilitates increased understanding of biodiversity and the use of these parasites as a predictive tool in ecological studies (Nolan & Cribb, 2005). Knowledge of marine cercariae in the south-western Atlantic Ocean has increased in recent years (e.g. Averbuj & Cremonte, 2010; Gilardoni *et al.*, 2011; Bagnato *et al.*, 2015). Seven digenean species were recorded parasitizing four gastropod species in Puerto Madryn (42°S, 64°W), a northern site on the Patagonian coast of Argentina (Gilardoni *et al.*, 2011). To date, larvae of 31 species of marine digeneans from gastropods and bivalves have been recorded on the Argentine coasts by Bagnato *et al.* (2015), including those from Puerto Deseado (47°S, 65°W), many of which remain undescribed.

The goal of this study is to describe the larval digeneans that parasitize gastropods from Puerto Deseado, Argentina (recorded in Bagnato *et al.*, 2015) using morphological and molecular data. An additional goal is to compare the parasite diversity at this locality with that at a more northern site, Puerto Madryn, using the data provided by Gilardoni *et al.* (2011).

Materials and methods

A total of 1758 specimens of seven gastropod species (266 *Crepidatella dilatata*, 151 *Fissurella radiosa*, 306 *Nacella magellanic*, 458 *Pareuthria fuscata*, 237 *Siphonaria lateralis*, 186 *S. lessonii* and 154 *Trophon geversianus*) were collected from the rocky littoral zone near the mouth of the estuary of the Deseado River (47°45'S, 65°55'W), at Puerto Deseado, Santa Cruz Province, Argentina, south-western Atlantic Ocean. Host names are used in accordance with the World Register of Marine Species (WoRMS, 2017). During the lowest tides, in July 2009 (austral winter) and February 2010 (austral summer), specimens of each species were collected at random, by hand, from throughout their intertidal levels, following transects perpendicular to the coast in a 200 m² area. All parasite species were recorded but only new species were described. The gastropods were transported live to the laboratory and placed in small flasks filled with seawater at room temperature (20–23°C), and were inspected twice daily under a stereomicroscope for emerged cercariae. The latter were stained with vital stain (neutral red or Nile blue) and studied alive under a light microscope before being fixed. After 48 hours all gastropods were necropsied to detect prepatent infections and to examine parthenogenetic generations such as sporocysts or rediae, and metacercariae. Several naturally emerged cercariae, parthenites and metacercariae (c. 50 specimens of each stage) were killed with warm seawater, fixed immediately with 10% formalin (Cribb & Bray, 2010), stained with Semichon's acetocarmine or Gomori's trichrome, dehydrated through ascending ethanol series, cleared with methyl salicylate, and mounted on glass slides with Canada balsam. Drawings and measurements were obtained for 15–20 unflattened, fixed, stained and mounted specimens, with the aid of a light microscope with a drawing device. Measurements are presented as mean values in micrometers, followed by the range in parentheses. The forebody of cercariae was measured as the distance from the anterior end to the anterior edge of the ventral sucker. Prevalences were calculated following Bush *et al.* (1997). For scanning electron microscopy (SEM), some specimens were fixed in a 2.5% glutaraldehyde solution buffered with 0.1 M sodium cacodylate, dehydrated through an ascending ethanol series and dried by rinsing for a few minutes in hexamethyldisilazane. Photomicrographs were obtained with a JSM-6460LV SEM (JEOL Ltd, Akishima, Japan) operating at 15 kV. Mounted specimens of new species were deposited at the Parasitological Collection (CNP-Par) of Instituto de Biología de Organismos Marinos (IBIOMAR), Puerto Madryn, Argentina. Molecular data were taken from Bagnato *et al.* (2015) for species described for the first time. For each studied species, comparisons with other available sequences of the same family were made using NCBI BLAST (<https://blast.ncbi.nlm.nih.gov/>) to support the morphological diagnosis. A microphallid species parasitizing *C. dilatata* was previously described by Gilardoni *et al.* (2011) and erroneously identified as *Maritrema* sp. 1; however, comparison of molecular data with NCBI BLAST indicated that the sequence showed low similarity with other species of the genus *Maritrema* (69–77% in ITS1 and 83–86% in ITS2). For this reason, the larva is renamed as Microphallidae gen. et sp.1 until the taxonomic identity and life cycle can be established. Larval digeneans parasitizing the most common gastropods in the northern site of Puerto Madryn, Chubut Province (42°46'S, 64°54'W) were recorded by Gilardoni *et al.* (2011). Analyses of diversity measures were performed considering only samplings carried

out in winter 2009 and summer 2010 in Puerto Madryn (n = 710) and Puerto Deseado; both samplings were identical and only the parasites that use gastropods as first intermediate host were included (i.e. *Gymnophalloides nacellae* was excluded because it occurred as metacercaria). For both sites, species richness (Sg) of parasitized gastropods, and species richness (Sp), Shannon–Wiener diversity (H') and Shannon equitability (E) indices were calculated (Magurran, 2004). For both gastropods and parasites, species richness was calculated as the number of species present at each site. To calculate the H' index, prevalence (p_i) (considered an abundance measure) was calculated as the number of gastropods of species X infected by a parasite species Y divided by the total number of gastropods of species X examined. The H' index was calculated as $\sum p_i \ln p_i$. Additionally, the H' index was calculated considering only parasite species found to occur at both sites. The diversity indices were compared by the Hutcheson method associated with variance of H' (Hutcheson, 1970). The Shannon equitability index is a measure of heterogeneity and is calculated as the ratio of the observed diversity to the maximum diversity ($H'/H_{max} = H'/\ln S$, where S is the species richness). To evaluate the dominance of a given species at each site studied, the Simpson dominance index (D) was calculated as $\sum p_i^2$. To compare the similarity between parasite communities at both study sites, the Jaccard index (I_j) was calculated (equation 1) (Magurran, 2004) as follows:

$$I_j = c/(a + b - c) \quad (1)$$

where a is the number of species present only at site A, b is the number of species present only at site B, and c is the number of species present at both sites (A and B).

Results

Parasite survey and description of new larval forms

Twelve species of digenean trematodes belonging to nine families were found parasitizing six out of the seven surveyed gastropod species. No parasite was found in *Fissurella radiosa* (n = 151). All parasite species and their prevalence are listed in table 1; five of them are new larvae and are here described.

Family Lepocreadiidae Odhner, 1905

Lepocreadiidae gen. et sp. 1

Redia. Body elongate, posterior end pointed, 669 (491–829) long by 130 (105–154) maximum wide, wall 5 (3–7) thick. Birth pore anterior and lateral. Pharynx large, 70 (50–82) long by 50 (43–64) wide; intestine observed in young rediae, masked by cercariae in fully mature rediae. Usually 15 (5–29) larvae per redia at different development stages, 12 (5–29) cercariae and 3 (2–6) germinal balls. The latter mainly located posteriorly; cercariae increase in size and complete development outside of rediae.

Cercaria. Ophthalmotrichocercous. Body spinous, 226 (145–286) long by 98 (84–125) wide at level of ventral sucker. Two lateral rows of eight papillae from posterior end of oral sucker to posterior end of ventral sucker (seen only with SEM, fig. 3A.3). One pair of eyespots, oval-shaped, darkly pigmented (fig. 2A), at pharynx level, 24 (17–31) long by 17 (14–20) wide. Oral sucker 46 (34–54) long by 53 (38–72) wide; mouth subterminal,

Table 1. Prevalence and diversity indexes of digenean larvae from gastropod species in Puerto Deseado, Santa Cruz Province and Puerto Madryn, Chubut Province, Argentina, during winter 2009 and summer 2010 (*Gymnophalloides nacellae* is excluded because it was found only at the metacercaria stage). Parasite species in bold are described in the present study; all species were recorded previously by Gilardoni et al. (2011) and Bagnato et al. (2015).

Parasite species	Snail host	% Prevalence (No. examined) ^a	
		Puerto Deseado	Puerto Madryn
Hemiuroidea fam. gen. et sp.	<i>Siphonaria lessonii</i> (Siphonariidae)	4.84 (n = 186)	No (n = 166)
<i>Diptherostomum</i> sp. (Zoogonidae)	<i>Buccinanops globulosus</i> (Nassariidae)	Absent	No (n = 157)
<i>Gymnophalloides nacellae</i> (Gymnophallidae)	<i>Nacella magellanica</i> (Nacellidae)	83.67 (n = 196)	Absent
Lepocreadiidae gen. et sp. 1	<i>Crepidatella dilatata</i> (Calyptraeidae)	3.76 (n = 266)	Absent
Lepocreadiidae gen. et sp. 2	<i>Pareuthria fuscata</i> (Buccinidae)	3.49 (n = 458)	Absent
<i>Maritrema madrynense</i> (Microphallidae)	<i>Siphonaria lateralis</i> and <i>S. lessonii</i>	0.42 (n = 237) and 9.2 (n = 186)	26.25 (n = 166)
Microphallidae gen. et sp.	<i>Crepidatella dilatata</i>	16.5 (n = 266)	43.10 (n = 218)
Notocotylidae gen. et sp. 1	<i>Nacella magellanica</i>	0.33 (n = 306)	Absent
Renicolidae gen. et sp. 1	<i>Trophon geversianus</i> (Muricidae)	4.64 (n = 151)	No (n = 169)
Renicolidae gen. et sp. 2	<i>Nacella magellanica</i>	0.98 (n = 306)	Absent
<i>Parorchis</i> sp. (Philophthalmidae)	<i>Trophon geversianus</i>	0.66 (n = 151)	0.59 (n = 169)
Schistosomatidae gen. et sp.	<i>Siphonaria lessonii</i>	0.54 (n = 186)	No (n = 166)
Zoogonidae gen. et sp. 1	<i>Pareuthria fuscata</i>	0.22 (n = 458)	Absent
Parasite species richness (S_p)		11	3
Parasitized gastropod species richness (S_g)		6	3
Diversity index (H') including all species		1.78	0.71
Equitability (E)		0.54	0.67
Dominance index (D)		0.23	0.52
Diversity index (H') including only shared species		1.34	0.71
Jaccard index		0.27	

^aAbsent, gastropod and parasite absent at the site; No (not observed), gastropod and parasite are present at the site but were not observed in the samples analysed.

surrounded by numerous papillae; at least 12 at anterior half of oral sucker; an outer circle of at least eight papillae and an inner circle of at least four papillae (seen only with SEM, fig. 3A.3). Forebody 106 (78–109) long. Prepharynx 20 (14–31) long, pharynx muscular 21 (15–24) long by 18 (13–25) wide, oesophagus short 16 (11–21) long, bifurcating anteriorly to ventral sucker. Caeca narrow 153 (93–174) long, extending to posterior end of body. Ventral sucker at mid-level of body 39 (29–48) long by 45 (41–49) wide, with an outer circle of nine papillae and an inner circle of six papillae at anterior half (seen only with SEM, fig. 3A.3). Sucker ratio 1 : 0.98 (0.91–1.2). Four pairs of penetration glands opening dorsally at anterior end of body; none of these glands stained with neutral red; cytons located posteriorly of eyespots at oesophagus level (fig. 2A). Ovary pretesticular 11 (8–15) long by 16 (10–21) wide, posterior to ventral sucker; two testes in tandem, anterior testis 12 (8–17) long by 22 (15–27) wide and posterior testis 14 (9–19) long by 23 (19–29) wide. Metraterm and cirrus sac opening in a genital atrium located anteriorly and at right of ventral sucker (fig. 1A.4). Excretory vesicle elongate and narrow, 145 (103–180) long by 14 (5–31) wide, width variable depending on degree of repletion; extending and bending around ventral sucker, filled with large and refractive excretion granules (fig. 2A). Limbs from excretory vesicle branch at cytons level. Muscular sphincter at posterior end of excretory vesicle. Excretory formula not determined, only some

flame cells observed. Tail long (more than twice length of body), 566 (435–692) long by 35 (28–39) wide at base, with 25 pairs of setae groups, setae 107 (97–120) long, *c.* five to seven setae per group, and a pair in tip of tail.

Taxonomic summary

Host. *Crepidatella dilatata* (Lamarck) (Caenogastropoda, Calyptraeidae).

Infection site. Gonad and digestive gland.

Locality. Puerto Deseado (47°45'S, 65°55'W), Santa Cruz Province, Argentina.

Deposited material. CNP-Par 52.

GenBank accession numbers. KF451932 (18S and partial ITS1), KF451933 (ITS2 and 28S).

Remarks

The following morphological features indicate that the larvae here described belong to the family Lepocreadiidae according to Cable (1963): distome, eyespots present, trichocercous, development inside rediae, spiny body, papillae present, and ornamented tail with pairs of lateral setae (individual or in groups), which are not joined by a membrane forming fins. Intestinal caeca extending to the posterior end of the body. Excretory system variable

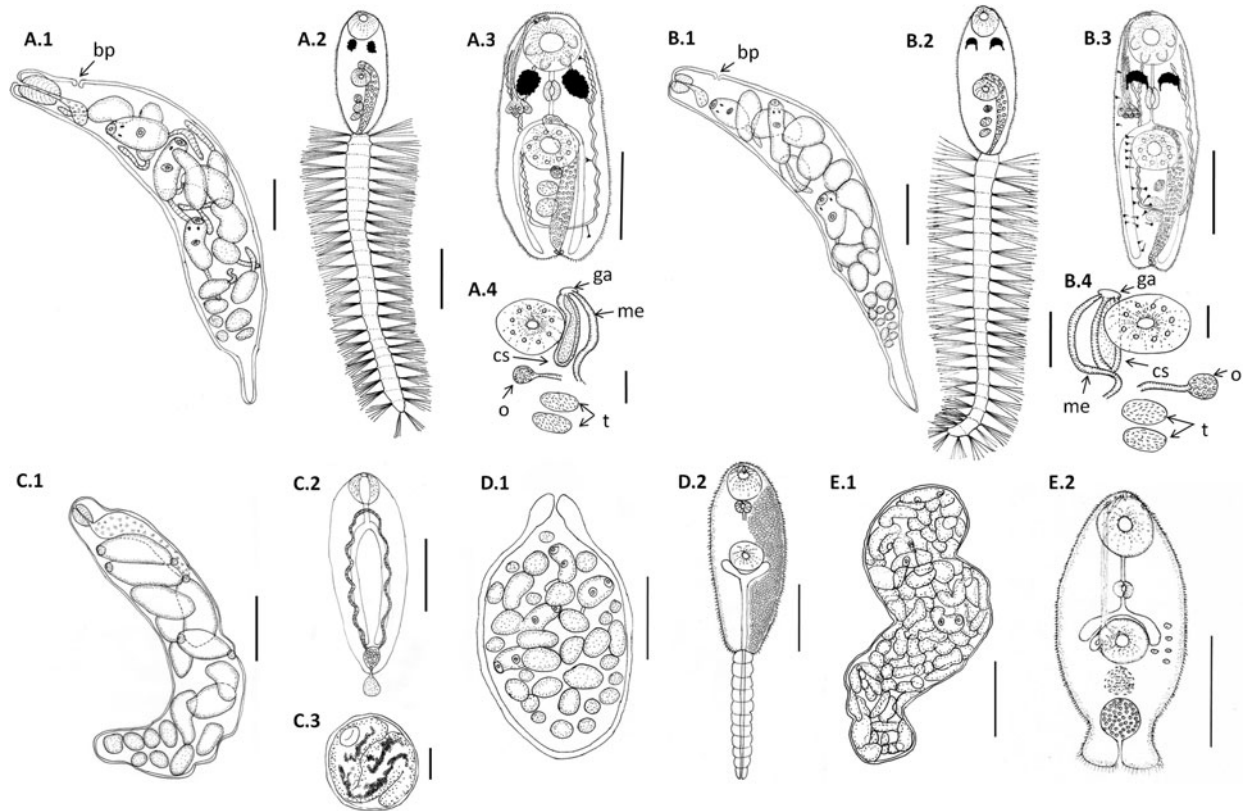


Fig. 1. Line drawings of larval digeneans described in this study that parasitize snails from Puerto Deseado, Argentina. (A) Lepocreadiidae gen. et sp. 1: (A.1) redia; (A.2) cercaria, ventral view; (A.3) body of cercaria, ventral view, penetration glands on left side and flame cells on right side omitted; (A.4) detail of genitalia. (B) Lepocreadiidae gen. et sp. 2: (B.1) redia; (B.2) cercaria, ventral view; (B.3) body of cercaria, ventral view, penetration glands and flame cells on left side omitted; (B.4) detail of genitalia. (C) Notocotylidae gen. et sp. 1: (C.1) rediae; (C.2) cercaria, dorsal view; (C.3) encysted metacercaria from inside the redia. (D) Renicolidae gen. et sp. 2: (D.1) sporocyst; (D.2) cercaria, ventral view, cystogen cells on right side omitted. (E) Zoogonidae gen. et sp. 1: (E.1) sporocyst; (E.2) cercaria, ventral view, penetration glands on left side omitted. Abbreviations: ga, genital atrium; me, metraterm; o, ovary; cs, cirrus sac; t, testis. Scale bars: (C.1, E.1) 200 μ m; (A.1, A.2, A.3, B.1, B.2, B.3, C.2, D.1, D.2) 100 μ m; (E.2) 50 μ m; (A.4, B.4) 20 μ m.

and saccular vesicle extending to the ventral sucker. To date, 23 species of cercariae belonging to this family have been described (Villot, 1875; Macfarlane, 1951; Ito & Shimura, 1980; Stunkard 1980a, b; Watson, 1984; Aguirre-Macedo & Kennedy, 1999; Hassanine, 2006; Averbuj & Cremonte, 2010 and references therein). Six of them were recorded in the Southern Hemisphere and three were recorded in the Argentinean Sea, including the cercariae here described (Martorelli, 1991; Averbuj & Cremonte, 2010; Bagnato *et al.*, 2015). *Lepocreadiidae* gen. et sp. 1 is morphologically similar to the cercariae belonging to the genus *Lepocreadium* Stossich, 1904; it presents four pairs of penetration glands as observed in *L. areolatum* (Linton, 1900), and the shape of eyespots and the excretory vesicle, and the number of setae of the tail (*c.* 25 pairs) are similar to those in *L. pegorchis* (Stossich, 1900) (Bartoli, 1967; Stunkard, 1980a).

Lepocreadiidae gen. et sp. 2

Redia. Body elongate, posterior end pointed, 978 (846–1153) long by 172 (143–212) maximum wide, wall 7 (5–8) thick. Birth pore anterior and lateral. Pharynx large, 48 (40–59) in diameter, intestine observed in young rediae, masked by cercariae in fully mature rediae. Usually 25 (11–34) larvae per redia at different development stages, 16 (9–23) cercariae and 9 (3–15) germinal balls. The latter mainly located posteriorly, cercariae increase in size and complete development outside of redia.

Cercaria. *Ophthalmotrichocercous*. Body spinous, 308 (219–389) long by 94 (76–132) wide at level of ventral sucker. Two lateral rows of eight papillae from posterior end of oral sucker to posterior end of ventral sucker (seen only with SEM, fig. 3B.3). A pair of eyespots half-moon shaped, darkly pigmented (fig. 2B), anterior to the pharynx level, 22 (16–32) long by 14 (8–24) wide. Oral sucker 58 (51–63) long by 56 (45–68) wide, mouth subterminal, surrounded by numerous papillae: at least 12 at anterior half of oral sucker and four larger papillae at posterior half of ventral sucker (seen only with SEM, fig. 3B.3). Forebody 154 (126–185) long. Prepharynx 27 (17–44) long; pharynx muscular, 27 (16–35) long by 18 (15–21) wide; oesophagus short, 13 (9–19) long, bifurcating immediately anterior to ventral sucker. Caeca narrow, 177 (139–219) long, extending to posterior end of body. Ventral sucker at mid-level of body, 48 (39–54) long by 46 (38–58) wide, with an outer circle of nine papillae and an inner circle of six papillae at anterior half (seen only with SEM, fig. 3B.3). Sucker ratio 1–0.86 (0.8–0.87). Six pairs of penetration glands opening dorsally at anterior end of body (fig. 2B), none of which stained with neutral red; cytons located posteriorly to eyespots at oesophagus level. Ovary pretesticular, 15 (9–24) long by 15 (9–24) wide, posterior to ventral sucker; two testes in tandem, anterior testis 17 (11–22) long by 21 (14–28) wide and posterior testis 18 (14–23) long by 22 (15–29) wide. Metraterm and cirrus sac opening in a genital atrium located anteriorly and at left of ventral sucker (fig. 1B.4). Excretory vesicle elongate and

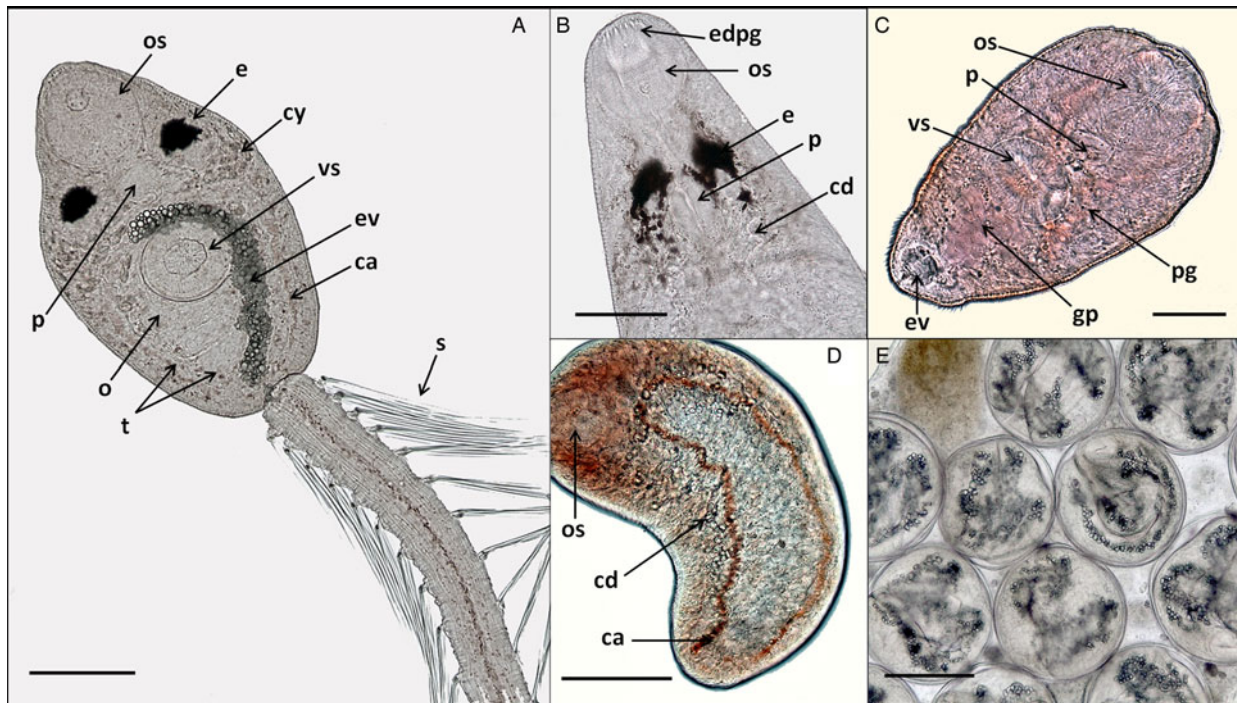


Fig. 2. *In vivo* light microscope photographs of lepopocreadiid, notocotylid and zoogonid species from Puerto Deseado, Argentina. (A) Cercaria of Lepocreadiidae gen. et sp. 1, ventral view; (B) cercaria (anterior part) of Lepocreadiidae gen. et sp. 2, dorsal view; (C) cercaria of Zoogonidae gen. et sp. 1, ventral view; (D) cercaria of Notocotylidae gen. et sp. 1, dorsal view, collector ducts joining caeca at the oesophagus level; (E) metacercaria of Notocotylidae gen. et sp. 1 inside the redia. Abbreviations: ca, caeca; cd, collector ducts; cy, cytons; e, eyespot; edpg, end ducts of penetration glands; ev, excretory vesicle; gp, genital primordium; o, ovary; os, oral sucker; p, pharynx; pg, penetration glands; t, testis; s, spines; vs, ventral sucker. Scale bars: (A, E) 100 µm; (B, D) 50 µm; (C) 25 µm.

narrow, 183 (123–252) long by 34 (14–46) wide, width variable depending on degree of repletion, extending and bending around ventral sucker, filled with large and refractive excretion granules. Limbs from excretory vesicle branch at cytons level. Muscular sphincter at posterior end of excretory vesicle. Excretory formula not determined, only some flame cells observed. Tail long (more than twice length of body), 662 (424–951) long by 34 (30–42) wide at base, with 23 groups of setae per side 102 (81–123) long, *c.* five to seven setae per group, and a pair in tip of tail.

Taxonomic summary

Host. *Pareuthria fuscata* (Bruguère) (= *Pareuthria plumbea* (Philippi)) (Caenogastropoda, Buccinidae).

Infection site. Gonad and digestive gland.

Locality. Puerto Deseado (47°45'S, 65°55'W), Santa Cruz Province, Argentina.

Deposited material. CNP-Par 53.

GenBank accession numbers. KF451934 (18S and partial ITS1), KF451935 (ITS2 and 28S).

Remarks

The cercaria of Lepocreadiidae gen. et sp. 2 is similar to the cercariae belonging to the genus *Opechona* Looss, 1907. It exhibits half-moon shaped eyespots and 23 pairs of setae groups in the tail, comparable to those of *O. pyriforme* (Linton, 1900) and *O. cablei* cercariae (Stunkard, 1969b, 1980b, 1983). Cercariae of Lepocreadiidae gen. et sp. 1 (from *Crepipatella dilatata*) differ from those of Lepocreadiidae gen. et sp. 2 (from *Pareuthria fuscata*) in the number of penetration glands (four vs six) and

in the shape of eyespots (oval vs half-moon shaped). Molecular results show high similarity (~99%) between both Lepocreadiidae species here described, species of the genus *Opechona* such as *Opechona* sp. (KF451938.1), *O. kahawai* Bray & Cribb, 2003 (FJ788491.1), and *Lepocreadium album* (Stossich, 1890) (KF656703.1 and KF656704.1) (the only sequenced species of *Lepocreadium*) (Palombi, 1937; Russell-Pinto *et al.*, 2006). Members of the genera *Lepocreadium* and *Opechona* share several morphological characters, including size, eyespots, excretory vesicle, and setae in the tail (Stunkard, 1969a). Ribosomal DNA sequences of several genera of the Lepocreadiidae family are highly similar (between 81 and 99%). It is necessary to identify these larvae at the genus and species level to find the adults from coastal fish. The morphological and molecular differences (between 0.3 and 1.66% among sequences) between the two larval lepopocreadiids here described, and the fact that both species parasitize different snails support the existence of two different species.

Notocotylidae Lühe, 1909

Notocotylidae gen. et sp. 1

Redia. Only one snail was found parasitized and most rediae were full with metacercariae (fig. 2E) and could not be measured because they were broken. Measurements were taken from rediae with cercariae ($n = 15$). Body large and elongate, 950 (700–1171) long by 212 (166–276) maximum wide, wall 10 (6–13) thick. Birth pore not observed. Pharynx 60 (38–74) in diameter; intestinal caeca saccular, 224 (172–274) long by 53 (36–82) wide. Usually 16 (8–22) larvae per redia at different development stages, 11 (4–17) cercariae and 6 (3–9) germinal balls.

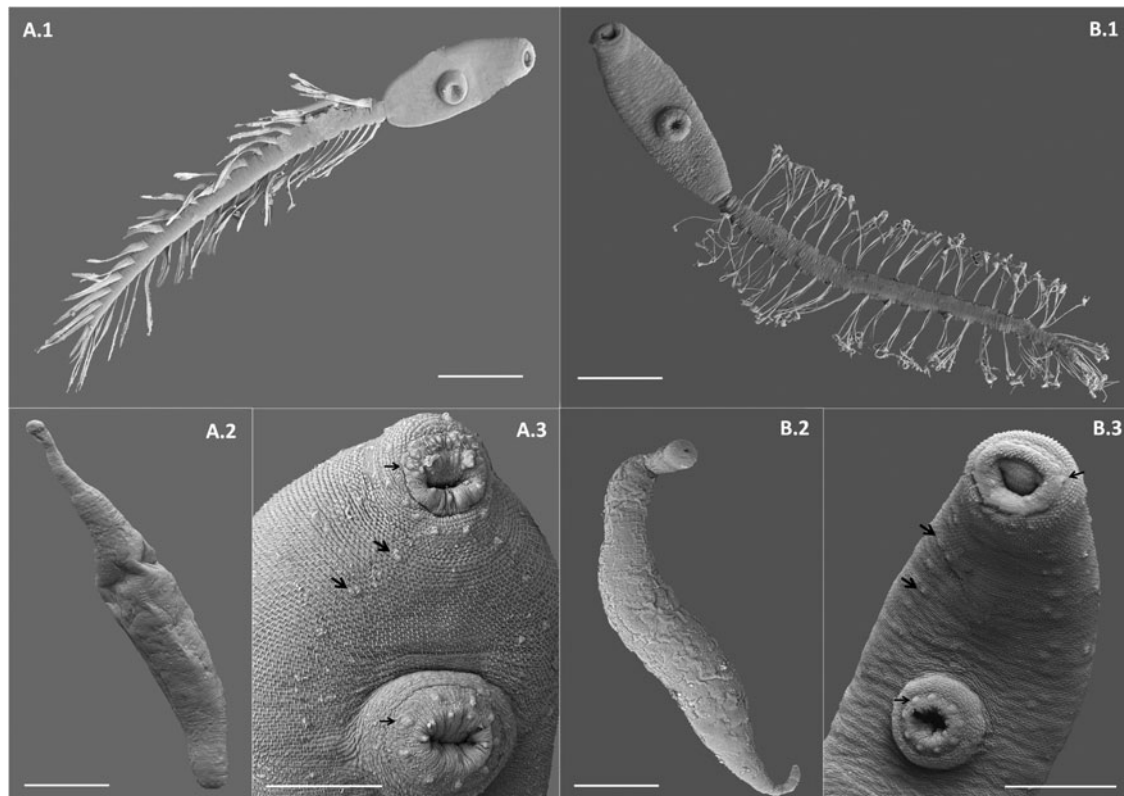


Fig. 3. Scanning electron microscope (SEM) photographs of two lepopocreadiid species from Puerto Deseado, Argentina. (A) Lepopocreadiidae gen. et sp. 1: (A.1) cercaria, ventral view; (A.2) redia; (A.3) detail of anterior part, ventral view, papillae in oral sucker, in ventral sucker (arrows) and on the body along two longitudinal rows (head arrows). (B) Lepopocreadiidae gen. et sp. 2: (B.1) cercaria, ventral view; (B.2) redia; (B.3) detail of anterior part, ventral view, papillae in oral sucker, in ventral sucker (arrows) and on the body along two longitudinal rows (head arrows). Scale bars: (A.1, A.2, B.1, B.2) 100 μ m; (A.3, B.3) 50 μ m.

Cercaria. Monostome. Body small and oval, 299 (229–494) long by 97 (69–161) wide. Oral sucker 45 (34–66) long by 47 (37–75) wide; mouth terminal. Prepharynx and pharynx absent. Oesophagus short, 34 (27–47) long; caeca long, 184 (165–217) extending to posterior end of body. Excretory vesicle small and oval, 41 (21–65) long by 36 (15–50) wide; collector ducts long, extending parallel to caeca up to the oesophagus level, where they join (fig. 2D). Tail small and rounded, 34 (25–43) long by 29 (25–33) wide.

Metacercaria. Cyst spherical, 168 (128–190) in diameter. Wall 5 (4–8) thick. Oral sucker 43 (35–51) in diameter; excretory vesicle well developed, with large and refractive excretion granules (fig. 2E).

Taxonomic summary

Host. *Nacella magellanica* (Gmelin) (Patellogastropoda, Nacellidae).

Infection site. Gonad and digestive gland.

Locality. Puerto Deseado (47°45'S, 65°55'W), Santa Cruz Province, Argentina.

Deposited material. CNP-Par 57.

GenBank accession number. KF656705 (ITS1).

Remarks

The following morphological features indicate that the larvae here described belong to the family Notocotyliidae according to Rotschild (1938): monostome; pharynx absent; small and oval

excretory vesicle with two collector ducts extending to the oesophagus level, where they join, forming a close tubular junction; penetration glands absent (Rotschild, 1938; Yamaguti, 1975). There are two groups of notocotyliid cercariae: (1) cercariae with eyespots and a long tail, and (2) cercariae without eyespots and with a short tail or without a tail. The cercaria described in the present study belong to the second group, along with *Parapronocephalum symmetricum* Belopolskaia, 1952, *Notocotyloides petasatus* (Deslongchamps, 1824), *Catatropis verrucosa* (Froelich, 1789) Odhner, 1905 and pronoccephaloid sp. I (Yamaguti, 1975; Hechinger, 2012). Cercariae of *P. symmetricum* and *N. petasatus* were originally located in the family Pronoccephalidae Looss, 1899 and were subsequently relocated to the family Notocotyliidae (Barton & Blair, 2005). The cercaria here described was previously recorded parasitizing *Nacella deaurata* from Patagonia, Argentina as a pronoccephalid (Martorelli *et al.*, 2005). All mentioned cercariae are similar in the length of caeca and the shape of the excretory vesicle. The cercaria here described is similar to *C. verrucosa* in body size (c. 300 μ m) and in the shape of the metacercaria. In most life cycles of notocotyliids belonging to the second group, the metacercaria encysts inside the redia in the first intermediate host, indicating an abbreviated cycle (Yamaguti, 1975; Hechinger, 2012). Molecular results show a high similarity between the sequences of the cercaria here described and those reported from *Notocotylus malhamensis* (JQ766940.1) (90% in ITS1) and *Tristriata anatis* (KX833023.1) (93% in ITS1), the only two ITS1 sequences available for the Notocotyliidae family. Other sequences (18S, ITS2, 28S) are available for species of this family in GenBank. Future sequencing of these regions could contribute

to determining the taxonomic identity of the notocotyloid here described.

Renicolidae Dollfus, 1939

Renicolidae gen. et sp. 2

Sporocyst. Body oval, anterior end narrow, 294 (156–488) long by 171 (109–269) wide, wall 11 (8–17) thick. Birth pore terminal. Usually 35 (22–47) larvae per sporocyst at different development stages, 8 (3–22) cercariae and 30 (16–37) germinal balls.

Cercaria. (Description based on not-fully developed specimens; sporocysts with developed cercariae were not found). Xiphidocercaria, distome. Body small and elongate, 154 (120–202) long by 67 (58–75) wide. Cystogenous glands filling the parenchyma from level of pharynx to posterior end of body. Oral sucker 34 (28–42) long by 37 (35–40) wide, mouth subterminal. Forebody 65 (53–84) long. Stylet small and lanceolate. Penetration glands not observed. Prepharynx absent, pharynx 11 (10–12) long by 10 (9–11) wide, oesophagus and caeca not observed. Ventral sucker 31 (28–33) long by 30 (24–39) wide. Sucker ratio 1:0.81 (0.68–0.97). Excretory vesicle Y-shaped with long stem and short arms reaching mid-level of ventral sucker, opening at tip of tail. Excretory formula not determined. Tail 128 (117–138) long by 18 (16–23) wide.

Taxonomic summary

Host. *Nacella magellanica* (Gmelin) (Patellogastropoda, Nacellidae).

Infection site. Digestive gland.

Locality. Puerto Deseado (47°45'S, 65°55'W), Santa Cruz Province, Argentina.

Deposited material. CNP-Par 55.

GenBank accession number. KF358775 (ITS1).

Remarks

The following morphological features define the cercariae here described as belonging to the Renicolidae family: xiphidocercaria, Y-shaped excretory vesicle, prepharynx absent and cystogenous glands numerous. At least 24 renicolid cercariae have been described worldwide (e.g. Gilardoni *et al.*, 2011, and references therein). The cercaria here described was recorded previously by Martorelli *et al.* (2005) parasitizing *N. magellanica* at a southern locality on the Patagonian coast, Argentina. This is the second report of a renicolid larva from South America (Gilardoni *et al.*, 2011; Bagnato *et al.*, 2015). It is similar to Renicolidae gen. et sp. 1 (from *T. geversianus*) in the shape of the excretory vesicle and in body size, tail and suckers (Gilardoni *et al.*, 2011); however, the percentage of similarity between both sequences is low (73% in ITS1), indicating the existence of two distinct species. No other ITS1 sequence of renicolid is available, but other sequences (18S, ITS2, 28S) are available for species of this family in GenBank. Future sequencing of these regions could help to determine the taxonomic identity of the renicolid here described.

Family Zoogonidae Odhner, 1902

Zoogonidae gen. et sp. 1

Sporocyst. Only one snail parasitized by this species was found, and most cercariae were not fully developed. Body whitish, variable shape (oval, kidney-shaped or S-shaped), 1273 (851–1739)

long by 310 (201–421) wide, wall 7 (4–12) thick. Birth pore not observed. Usually 114 (83–147) larvae per sporocyst at different development stages, 37 (10–131) cercariae and 77 (16–125) germinal balls.

Cercaria. (Description based on ten not-fully developed cercariae from sporocysts). Xiphidocercaria, body small and elongate, 124 (106–167) long by 59 (55–66) wide, covered with tiny spines from oral sucker level to posterior end of body. Cystogen cells scattered in parenchyma. Forebody 62 (44–87) long. Oral sucker 30 (24–35) long by 28 (24–33) wide, mouth subterminal and tiny stylet. Prepharynx 18 (15–25) long; pharynx globular, 11 (10–14) long by 12 (10–14) wide; oesophagus short, 12 (8–15) long; and caeca saccular, 16 (12–19) long, extending to mid-ventral sucker. Ventral sucker 24 (22–27) long by 25 (21–30) wide. Sucker ratio 1:0.89 (0.87–0.91). Four pairs of penetration glands opening ventrally at stylet base, stained with neutral red; cytons located at ventral sucker level. Excretory vesicle small and oval, 30 (21–35) long by 24 (15–34) wide, filled with excretion granules. Genital primordium 15 (10–21) long by 16 (12–19) wide, located anteriorly to excretory vesicle (fig. 2C). Minute extension of posterior end of body with spines; excretory pore at distal end of the extension.

Taxonomic summary

Host. *Pareuthria fuscata* (Philippi) (Caenogastropoda, Buccinidae).

Infection site. Gonad and digestive gland.

Locality. Puerto Deseado (47°45'S, 65°55'W), Santa Cruz Province, Argentina.

Deposited material. CNP-Par 54.

GenBank accession number. KF358773 (ITS1, 5.8S and ITS2).

Remarks

The genera *Zoogonus* Loos, 1901 and *Zoogonoides* Odhner, 1902 are closely related and represented by few species (Bray, 2008). To date, three cercariae belonging to these genera have been described: *Zoogonus rubellus* (Olson, 1869), *Zoogonoides laevis* Linton, 1940, and *Zoogonoides viviparus* (Olsson, 1868) (Stunkard, 1938, 1943; K ole, 1976). The cercaria here described is provisionally assigned to *Zoogonus*, because it shares characteristics with *Z. rubellus*, such as a long prepharynx, short caeca and a small ventral sucker, when compared with species of *Zoogonoides*. Molecular results also show a high similarity between the sequences of the larva here described and *Z. rubellus* (AJ241804.1) (79% in ITS1 and 83% in ITS2). These results should be corroborated by sequencing the 18S and 28S regions, and by comparing with sequences available in GenBank, e.g. those from *Z. viviparus*, *Deretrema nahaense* Yamaguti, 1942, and *Lepidophyllum steenstrupi* Odhner, 1902.

Diversity assessment

A total of 12 larval digeneans were recorded in Puerto Deseado (southern site), 11 using gastropods as the first intermediate host and one, *Gymnophalloides nacellae* (Gymnophallidae), found only as metacercaria, the limpet acting only as second intermediate host, with a high prevalence (83.67%) (table 1). Of the remaining species, the most prevalent were the two microphallids (16.5% Microphallidae gen. et sp. 1 from *Crepidipatella dilatata* and 9.2% *Maritrema madrynense* from *Siphonaria lessonii*), the renicolid (4.64% Renicolidae gen. et sp. 1 from *Trophon geversianus*) and the two lepecreadiids (3.49% Lepocreadiidae

gen. et sp. 1 from *C. dilatata* and 3.76% Lepocreadiidae gen. et sp. 2 from *Pareuthria fuscata*).

A total of three larval digeneans were recorded in Puerto Madryn (northern site), all using snails as the first intermediate host (table 1), using a sampling scheme comparable to that used in the southern site (a total of six species were recorded previously by Gilardoni *et al.* (2011)). As in the southern site, the most prevalent digeneans were the two microphallids (43.10% Microphallidae gen. et sp. 1 from *C. dilatata* and 26.25% *M. madrynense* from *S. lessonii*), but both prevalences were higher than at the southern site. *Parorchis* sp. from *T. geversianus* showed a low prevalence at both sites (0.66% and 0.59% in Puerto Deseado and Puerto Madryn, respectively).

The parasite species richness (taking into account all digenean species) was found to be higher in Puerto Deseado (12) than in the northern site, Puerto Madryn (6). Five digenean species occur at both localities (Hemiuroidea fam. gen. et sp., *M. madrynense*, Microphallidae gen. et sp. 1, Rencolidae gen. et sp. 1 and *Parorchis* sp.), seven occur only at Puerto Deseado (*G. nacellae*, Lepocreadiidae gen. et sp. 1, Lepocreadiidae gen. et sp. 2, Notocotylidae gen. et sp. 1, Rencolidae gen. et sp. 2, Schistosomatidae gen. et sp. and *Zoogonus* sp.), and only one is exclusive to Puerto Madryn (*Diptherostomum* sp.). Whether parasites occur at both sites or exclusively at one or other of the sites is determined by the exclusivity of snails that act as first intermediate hosts. In the same way, the parasite species richness (considering only the comparative sampling) and the gastropod species richness were higher in Puerto Deseado (11 and six, respectively) than Puerto Madryn (three and three, respectively).

The diversity index (H') was higher in Puerto Deseado ($t = -6.42$; $P < 0.05$); this is explained mainly by the species richness, as the equitability was similar in both localities. Similar results were observed when parasite species that occurred at both sites were considered ($t = -4.68$; $P < 0.05$). The dominance index (D) was higher in Puerto Madryn because of the high prevalence of Microphallidae gen. et sp. from *C. dilatata* there. The Jaccard index value was low (table 1), indicating low similarity between the two parasite assemblages.

Discussion

This study describes five trematode species that parasitize six gastropod species in Puerto Deseado, on the Patagonian coast of Argentina: Lepocreadiidae gen. et sp. 1 from *Crepidatella dilatata*, Lepocreadiidae gen. et sp. 2 and Zoogonidae gen. et sp. 1 from *Pareuthria fuscata*, and Notocotylidae gen. et sp. 1 and Rencolidae gen. et sp. 2 from *Nacella magellanica*. The taxonomic determination of digenean larvae was supported by both molecular and morphological results. There are many morphological variations in cercariae that are constant within a species (or larger taxon); however, various genera within a family can exhibit the same type of cercaria (e.g. *Maritrema madrynense* and Microphallidae gen. et sp. 1, which are morphologically similar but genetically different). Molecular data provide a powerful tool with which to diagnose and study the life cycles of digeneans.

The species described in this study were recorded previously by Bagnato *et al.* (2015), summarizing a total of 12 digenean larval species found in Puerto Deseado. Of 11 digenean larvae that use snails as the first intermediate host, seven use shorebirds as the definitive host (two Microphallidae, one Notocotylidae, two Rencolidae, one Philophthalmidae and one Schistosomatidae) and the other four use fish (one Hemiuroidea, two

Lepocreadiidae and one Zoogonidae) (Gibson *et al.*, 2002; Jones *et al.*, 2005; Bray *et al.*, 2008). Other authors found shorebird digeneans to be the main parasitological component of marine coastal ecosystems (e.g. Lauckner, 1987; Skirnisson & Galaktionov, 2002) because most marine and coastal birds regularly visit the intertidal zone, where they rest or feed on coastal invertebrates and fish, which act as intermediate hosts for digeneans.

The two microphallid species were the most prevalent at both sites, and Microphallidae gen. et sp. 1 from *C. dilatata* was the dominant species in Puerto Madryn. Microphallid parthenites have been recorded as dominant species in other intertidal zones worldwide (e.g. Galaktionov & Bustnes, 1999; Granovitch *et al.*, 2000; Fredensborg *et al.*, 2006). Microphallids mainly use birds as definitive hosts, usually gulls (*Larus* spp.) on marine coasts (e.g. Yamaguti, 1975; La Sala *et al.*, 2009; Diaz *et al.*, 2012). In this regard, *Maritrema madrynense*, one of the two microphallids recorded at both study sites, parasitizes the kelp gull *Larus dominicanus* as definitive host (Diaz & Cremonte, 2010; Bagnato *et al.*, 2015). Kelp gulls are characterized by varied and flexible foraging strategies (Yorio & Caille, 2004). The higher prevalence of microphallids could be explained by the higher abundance of kelp gulls at Puerto Madryn, which appears to be related to the high availability of food resources from an open cast garbage dump, a fishery dump and 18 fishery processing plants (Giaccardi & Yorio, 2004).

The digenean assemblage harboured by gastropods from the southern study site (Puerto Deseado) had a higher species richness and diversity in comparison with the northern site (Puerto Madryn). Additionally, the parasite species described in this study were present only at the southern site, because of the geographical distribution of the mollusc hosts. The higher parasite diversity found at the southern site is partly explained by that site having higher mollusc diversity. Puerto Deseado is located in the Magellanic Biogeographical Province, which is characterized by a higher number of endemic taxa (Balech & Ehrlich, 2008) and a higher diversity of molluscs (Miloslavich *et al.*, 2016). Given the high specificity exhibited by trematodes in their first intermediate host, if a gastropod species is absent at the site then the digenean species is not present. However, even when we considered only the gastropod species that occur at both sites, parasite diversity was still higher at the southern site. A high diversity of molluscs and other invertebrates seems to attract shorebirds and fish (potential definitive hosts), which feed upon them in the intertidal, releasing the digenean eggs with their faeces. Other studies have reported that digenean diversity in molluscs that act as first intermediate hosts is directly related to the diversity of the definitive hosts (mainly birds in the intertidal zone) (e.g. Galaktionov & Bustnes, 1999; Huspeni *et al.*, 2005; Hechinger & Lafferty, 2005; Hechinger *et al.*, 2008).

In the intertidal systems studied, only one of seven snail species surveyed (*S. lessonii*) was found to be the first intermediate host for three digenean species. Most of them hosted two species (*C. dilatata*, *N. magellanica*, *P. fuscata* and *T. geversianus*), and *S. lateralis* hosted only one. In other trematode–snail systems, in freshwater, marine or estuarine ecosystems, a gastropod species can host many digenean species. For example, *Heleobia conexa* (Cochliopidae) serves as first intermediate host in the cycles of at least 22 species of digeneans in the estuarine system of Mar Chiquita Albufera, Buenos Aires Province, Argentina (Merlo & Etchegoin, 2011), and *Littorina* spp. (Littorinidae) are the most common snails in the intertidal zone of south-western Iceland,

where they host 12 digenean species (Skirnisson & Galaktionov, 2002). The low digenean species richness per gastropod species could be explained by the distribution and diversity of shorebirds (definitive hosts) feeding or resting in the intertidal zone (Smith, 2001). Along the shoreline of the Patagonian coast of Argentina almost 45 species were recorded (Narosky & Yzurieta, 1987; Yorio et al., 1998). However, as many as 182 bird species were recorded in Mar Chiquita Albufera (Ferrero, 2001) and 70 in Iceland (Skirnisson & Galaktionov, 2002).

The geographical distribution of larval digeneans in their molluscan hosts should depend on macro-scale factors (e.g. climate, host occurrence in the geographical regions studied) and local, micro-scale factors (e.g. distribution and abundance of intermediate and definitive hosts in the local habitat, and host abundance) (Skirnisson & Galaktionov, 2002; Poulin & Mouritsen, 2003). Our data suggest that both types of factors are acting in the rocky intertidal of Patagonia. A biogeographical pattern may result in higher mollusc diversity in the southern study site (which lies in the rich Magellanic Biogeographical Province), which results in higher digenean diversity, given their specificity for first intermediate hosts. However, the greater diversity of gastropods and other benthic species may further increase trematode diversity and abundance by attracting a greater abundance and diversity of shorebird and fish final hosts that disperse the digenean eggs and promote completion of their life cycles.

Acknowledgements. The authors thank Cristián Ituarte from MACN-CONICET for his help with sampling; Titina Zapata from Centro de Investigaciones, Universidad de la Patagonia Austral at Puerto Deseado, for kindly providing access to laboratory facilities; Jaime Groizard (Aluar S.A.) for the SEM photographs; and the anonymous reviewers of this article for their useful suggestions.

Financial support. This study was funded by Agencia Nacional de Promoción Científica y Tecnológica (ANPCyT) (PICT 1702, PICT 0841 and PICT 0653 Préstamo BID) and the Conservation, Food and Health Foundation.

Conflict of interest. None

Ethical standards. The molluscs were collected with permission from the Subsecretaría de Pesca, Santa Cruz province (Provincial Sample Permission Expte. 428.635/11).

References

- Aguirre-Macedo ML and Kennedy CR (1999) Diversity of metazoan parasites of the introduced oyster species *Crassostrea gigas* in the Exe Estuary. *Journal of the Marine Biological Association of the United Kingdom* **79**, 57–63.
- Averbuj A and Cremonte F (2010) Parasitic castration of *Buccinanops cochlidium* (Gastropoda: Nassariidae) caused by a leoprocadiid digenean in San José Gulf, Argentina. *Journal of Helminthology* **84**, 381–389.
- Bagnato E, et al. (2015) A checklist of marine larval trematodes (Digenea) in molluscs from Argentina, Southwestern Atlantic coast. *Check List* **11**, 1706.
- Balech E and Ehrlich MD (2008) Esquema biogeográfico del Mar Argentino. *Revista de Investigación y Desarrollo Pesquero* **19**, 45–75.
- Bartoli P (1967) Etude du cycle évolutif d'un Trématode peu connu: *Lepocreadium pegorchis* (M. Stossich, 1900) (Trematoda, Digenea). *Annales de Parasitologie Humaine et Comparée* **42**, 605–619.
- Barton DP and Blair D (2005) Family Notocotylidae Lühre, 1909. pp. 383–396 in Jones A, Bray R and Gibson D (Eds) *Keys to the Trematoda. Volume 2*. Wallingford, CABI.
- Bray R (2008) Family Zoogonidae Odhner, 1902. pp. 605–630 in Bray R, Gibson D and Jones A (Eds) *Keys to the Trematoda. Volume 3*. Wallingford, CABI.
- Bray R, Gibson D and Jones A (Eds) (2008) *Keys to the Trematoda. Volume 3*. Wallingford, CABI.
- Bush AO, et al. (1997) Parasitology meets ecology on its own terms: Margolis et al. revisited. *The Journal of Parasitology* **83**, 575–583.
- Bustnes JO and Galaktionov K (1999) Anthropogenic influences on the infestation of intertidal gastropods by seabird trematode larvae on the southern Barents Sea coast. *Marine Biology* **133**, 449–453.
- Cable RM (1963) Marine cercariae from Curaçao and Jamaica. *Zeitschrift für Parasitenkunde* **23**, 429–469.
- Combes C (2001) *Parasitism. The ecology and evolution of intimate interactions*. Chicago, The University of Chicago Press.
- Cribb TH and Bray RA (2010) Gut wash, body soak, blender and heat-fixation: approaches to the effective collection, fixation and preservation of trematodes of fishes. *Systematic Parasitology* **76**, 1–7.
- Diaz JI and Cremonte F (2010) Development from metacercaria to adult of a new species of *Maritrema* (Digenea: Microphallidae) parasitic in the kelp gull, *Larus dominicanus*, from the Patagonian coast, Argentina. *The Journal of Parasitology* **96**, 740–745.
- Diaz JI, Gilardoni C and Cremonte F (2012) Description of *Maritrema formicae* sp. nov. (Digenea, Microphallidae) parasitic in the kelp gull, *Larus dominicanus*, from the Patagonian coast, Argentina. *Acta Parasitologica* **57**, 149–153.
- Ferrero L (2001) Avifauna de Mar Chiquita. Síntesis del trabajo de Mariano Manuel Martínez. pp. 227–250 in Iribarne O (Ed.) *Reserva de Biosfera Mar Chiquita: características físicas, biológicas y ecológicas*. Mar del Plate, Editorial Martin.
- Fredensborg BL, Mouritsen KN and Poulin R (2006) Relating bird host distribution and spatial heterogeneity in trematode infections in an intertidal snail—from small to large scale. *Marine Biology* **149**, 275–283.
- Galaktionov KV and Bustnes JO (1999) Distribution patterns of marine bird digenean larvae in periwinkles along the southern coast of the Barents Sea. *Diseases of Aquatic Organisms* **37**, 221–230.
- Giaccardi M and Yorio P (2004) Temporal patterns of abundance and waste use by kelp gulls (*Larus dominicanus*) at an urban and fishery waste site in northern coastal Patagonia, Argentina. *Ornitología Neotropical* **15**, 93–102.
- Gibson D, Jones A and Bray R (2002) *Keys to the Trematoda. Volume 1*. Wallingford, CABI.
- Gilardoni C, et al. (2011) A survey of larval digeneans in the commonest intertidal snails from Northern Patagonian coast, Argentina. *Acta Parasitologica* **56**, 163–179.
- Granovitch AI, Sergievsky SO and Sokolova IM (2000) Spatial and temporal variation of trematode infection in coexisting populations of intertidal gastropods *Littorina saxatilis* and *L. obtusata* in the White Sea. *Diseases of Aquatic Organisms* **41**, 53–64.
- Hassanine RM (2006) The life-cycle of *Diploproctodaem arothroni* Bray and Nahhas, 1998 (Digenea: Lepocreadiidae), with a comment on the parasitic castration of its molluscan intermediate host. *Journal of Natural History* **40**, 1211–1222.
- Hechinger RF (2012) Faunal survey and identification key for the trematodes (Platyhelminthes: Digenea) infecting *Potamopyrgus antipodarum* (Gastropoda: Hydrobiidae) as first intermediate host. *Zootaxa* **3418**, 1–27.
- Hechinger RF and Lafferty KD (2005) Host diversity begets parasite diversity: bird final hosts and trematodes in snail intermediate hosts. *Proceedings of the Royal Society of London B* **272**, 1059–1066.
- Hechinger RF, Lafferty KD and Kuris AM (2008) Trematodes indicate animal biodiversity in the Chilean intertidal and Lake Tanganyika. *The Journal of Parasitology* **94**, 966–968.
- Huspeni TC, Hechinger RF and Lafferty KD (2005) Trematode parasites as estuarine indicators: opportunities, applications and comparisons with conventional community approaches. pp. 297–314 in Bortones S (Ed.) *Estuarine indicators*. Boca Raton, CRC Press.
- Hutcheson K (1970) A test for comparing diversities based on the Shannon formula. *Journal of Theoretical Biology* **29**, 151–154.
- Ito J and Shimura S (1980) On a new leoprocadiid cercaria, *Cercaria isoninae* n.sp. (Trematoda) from a littoral gastropod, *Japeuthria ferrea* from Kanagawa and Chiba Prefectures, Japan. *Japanese Journal of Parasitology* **29**, 181–187.
- Jones A, Bray R and Gibson D (2005) *Keys to the Trematoda. Volume 2*. Wallingford, CABI.
- Køle M (1976) On the morphology and life-history of *Zoogonoides viviparus* (Olsson, 1868) Odhner, 1902 (Trematoda, Zoogonidae). *Ophelia* **15**, 1–14.

- La Sala LF, et al.** (2009) Some digeneans from Olog's gull *Larus atlanticus* Olog, 1958 (Aves: Laridae) from the Bahía Blanca Estuary, Argentina. *Comparative Parasitology* **76**, 113–116.
- Lauckner G** (1987) Ecological effects of larval trematode infestation on littoral marine invertebrate populations. pp. 391–398 in Howell MJ (Ed.) *Parasitology - Quo Vadit?* Proceedings of the 6th International Congress of Parasitology, Brisbane.
- Macfarlane WV** (1951) The life cycle of *Stegodexamene anguillae* n.g., n.sp., an allocreadiid trematode from New Zealand. *Parasitology* **41**, 1–10.
- Magurran AE** (2004) *Measuring biological diversity*. Oxford, Blackwell Science Ltd.
- Martorelli SR** (1991) Primera cita de una cercaria tricocerca parásita de *Dorsanum moniliferum* (Mollusca: Buccinidae) para el Atlántico Sud-Occidental. Aportes al conocimiento de su ciclo de vida. *Neotrópica* **37**, 57–65.
- Martorelli S, Morriconi E and Marcotegui PS** (2005). Efectos de dos estadios larvales de digeneos sobre la gónada de *Nacella (P.) magellanica* y *Nacella (P.) deaurata* en Usuahia, Argentina. *Parasitología Latinoamericana* **60**, 351–352.
- Merlo MJ and Etchegoin JA** (2011) Testing temporal stability of the larval digenean community in *Heleobia conexa* (Mollusca: Cochliopidae) and its possible use as an indicator of environmental fluctuations. *Parasitology* **138**, 249–256.
- Miloslavich P, et al.** (2016) Benthic assemblages in South American intertidal rocky shores: biodiversity, services, and threats. pp. 1–55 in Riosmena-Rodríguez R (Ed.) *Marine benthos: biology, ecosystem functions and environmental impact*. Hauppauge, Nova Science Publishers.
- Narosky T and Yzurietta D** (1987) *Guía para la identificación de las Aves de Argentina y Uruguay*. Buenos Aires, Asociación Ornitológica de La Plata.
- Nolan MJ and Cribb TH** (2005) The use and implications of ribosomal DNA sequencing for the discrimination of digenean species. *Advances in Parasitology* **60**, 101–163.
- Palombi A** (1937) Il ciclo biologico di *Lepocreadium album* Stossich sperimentalmente realizzato. *Rivista di Parasitologia* **1**, 1–12.
- Poulin R and Mouritsen KN** (2003) Large-scale determinants of trematode infections in intertidal gastropods. *Marine Ecology Progress Series* **254**, 187–198.
- Rotschild ML** (1938) Notes on the classification of cercariae of the superfamily Notocotyloidea (Trematoda), with special reference to the excretory system. *Novitates Zoologicae* **41**, 75–83.
- Russell-Pinto F, Gonçalves JF and Bowers E** (2006) Digenean larvae parasitizing *Cerastoderma edule* (Bivalvia) and *Nassarius reticulatus* (Gastropoda) from Ria de Aveiro, Portugal. *Journal of Parasitology* **92**, 319–332.
- Skirnisson K and Galaktionov KV** (2002) Life cycles and transmission patterns of seabird digeneans in SW Iceland. *Sarsia* **87**, 144–151.
- Smith NF** (2001) Spatial heterogeneity in recruitment of larval trematodes to snail intermediate hosts. *Oecologia* **127**, 115–122.
- Sokolova IM** (1995) Influence of trematodes on the demography of *Littorina saxatilis* (Gastropoda: Prosobranchia: Littorinidae) in the White Sea. *Diseases of Aquatic Organisms* **21**, 91–101.
- Stunkard HW** (1938) *Distomum lasium* Leidy, 1891 (syn. *Cercariaeum lintoni* Miller and Northup, 1926), the larval stage of *Zoogonus rubellus* (Olsson, 1868) (syn. *Z. mirus* Looss, 1901). *Biological Bulletin* **75**, 308–334.
- Stunkard HW** (1943) The morphology and life history of the digenetic trematode, *Zoogonoides laevis* Linton, 1940. *Biological Bulletin* **85**, 227–237.
- Stunkard HW** (1969a) *Lepocreadium areolatum* (Linton, 1900) n. nomb., syn. *Distomum areolatum* Rudolphi of Linton, 1900 (Trematoda: Digenea). *Transactions of the American Microscopical Society* **88**, 79–84.
- Stunkard HW** (1969b) The morphology and life-history of *Neopechona pyriforme* (Linton, 1900) n. gen., n. comb. (Trematoda: Lepocreadiidae). *Biological Bulletin* **136**, 96–113.
- Stunkard HW** (1980a) The morphology, life-history, and taxonomic relations of *Lepocreadium aerolatum* (Linton, 1900) Stunkard, 1969 (Trematoda: Digenea). *Biological Bulletin* **158**, 154–163.
- Stunkard HW** (1980b) Successive hosts and developmental stages in the life history of *Neopechona cablei* sp. n. (Trematode: Lepocreadiidae). *Journal of Parasitology* **66**, 636–641.
- Stunkard HW** (1983) The marine cercariae of the Woods Hole, Massachusetts region, a review and a revision. *Biological Bulletin* **164**, 143–162.
- Villot A** (1875) Recherches sur les helminthes libres ou parasites des côtes de la Bretagne. *Archives de Zoologie Expérimentale et Générale* **4**, 451–482.
- Watson RA** (1984) The life cycle and morphology of *Tetracerasta blepta*, gen. et sp. nov., and *Stegodexamene callista*, sp. nov. (Trematoda: Lepocreadiidae) from the long-finned eel, *Anguilla reinhardtii* Steindacher. *Australian Journal of Zoology* **32**, 177–204.
- WoRMS Editorial Board** (2017) World register of marine species. Available at <http://www.marinespecies.org> at VLIZ (accessed 13 October 2017).
- Yamaguti S** (1975) *A synoptical review of life histories of digenetic trematodes of vertebrates, with special reference to the morphology of their larval forms*. Tokyo, Keigaku Publishing Co.
- Yorio P and Caille G** (2004) Fish waste as an alternative resource for gulls along the Patagonian coast: availability, use, and potential consequences. *Marine Pollution Bulletin* **48**, 778–783.
- Yorio P, et al.** (1998) *Atlas de la distribución reproductiva de aves marinas en el litoral patagónico argentino*. Puerto Madryn, Fundación Patagonia Natural y Wildlife Conservation Society.