

RESEARCH ARTICLE

Open Access



Survivability of hospitalized chronic kidney disease (CKD) patients with moderate to severe estimated glomerular filtration rate (eGFR) after experiencing adverse drug reactions (ADRs) in a public healthcare center: a retrospective 3 year study

Monica Danial^{1,2*} , Mohamed Azmi Hassali¹, Loke Meng Ong² and Amer Hayat Khan³

Abstract

Background: Accurate identification and routine preventive practices are crucial steps in lessening the incidence of medications and patients related adverse drug reactions (ADRs).

Methods: Three years retrospective study was conducted among chronic kidney disease (CKD) patients at multi-wards in a tertiary healthcare center. Data collected included demographic characteristics, physical examination results, comorbid conditions, laboratory tests and medications taken. Only medication prescribed during the hospital stay were considered in this study.

Results: From this study only one ADR incident was definitely preventable and majority of other ADRs (88.3%) were possibly preventable. Type of renal replacement therapy ($p = 0.023$) and stages of renal function ($p = 0.002$) were significantly associated with survivability of the hospitalized CKD patients after ADRs. Highest percentage of mortality based on categories were 50–59 years (20.0%), male (16.3%), Indian ethnicity (23.7%), obese (15.0%), smoking (17.1%), consumes alcohol (17.4%), conservative management of renal disease (19.5%) and renal function of < 15 mL/min/1.73m². Overall survivability using Kaplan-Meier analysis reported a significant difference of 18-day survival rate between patients undergoing hemodialysis and patients conservatively managing their renal disease. The 18 days survival rate of patients undergoing hemodialysis, peritoneal dialysis and conservative management were 94.9%, 91.7% and 75.1% respectively. Eighteen days survival rate of patients with renal functions of 30–59 mL/min/1.73m², 15–29 mL/min/1.73m² and < 15 mL/min/1.73m² were 87.4%, 69.8% and 88.6% respectively. Similarly, Cox regression analysis revealed that renal replacement therapy was the only factor significantly contributed to ADRs related mortality. CKD patients whom conservatively managed renal disease or/and with renal function of < 15 mL/min/1.73m² had 5.61 and 5.33 higher mortality risk respectively.

(Continued on next page)

* Correspondence: monicadanial83@gmail.com; monica@crc.moh.gov.my

¹Discipline of Social and Administrative Pharmacy, School of Pharmaceutical Sciences, Universiti Sains Malaysia, 11800 Minden, Penang, Malaysia

²Clinical Research Center (CRC) Penang General Hospital, 10990 Jalan Residensi, Pulau Pinang, Malaysia

Full list of author information is available at the end of the article



(Continued from previous page)

Conclusion: Majority of the reported ADRs were possibly preventable. Renal replacement therapy and/or renal function were significant risk factors for mortality due to ADRs among hospitalized CKD patients stages 3 to 5. Clinician engagement, intensive resources and regular updates aided with online monitoring technology are needed for enhancing care and prevention of ADRs among CKD patients.

Keywords: Chronic kidney disease (CKD), Adverse drug reactions (ADRs), Preventable, Survival rate, Conservative management

Background

Human body is an intricate system where myriad of biological interactions entangles into a network. Minor disruption in the network by a drug can cause diverse reactions including adverse drug reactions (ADRs). ADRs are caused by the drug interaction with undesired targets within our body [1]. In addition, complex underlying disease states of the human body also influences the drug-drug interaction thus contributing to ADRs. Moreover, factors like increase in the number and type of marketed drugs, increase in aging population, immunological factors (gender and pregnancy), pharmacokinetics differences, polypharmacy and urbanization [1–3] elevates the risk of ADRs. The most commonly reported ADRs causing drugs were NSAIDs, aspirin, anti-neoplastic, anti-psychotics, diuretics and anti-arrhythmic [4]. Tan et al. [1] reviewed, that the top drug-induced toxicities were hepatotoxicity (21%), nephrotoxicity (7%), cardiotoxicity (7%), torsade (21%) and rhabdomyolysis (7%). Each drug prescription carries its own risks for causing ADRs, ranging the full spectrum of severity from cosmetic to severe morbidity and mortality due to patients specific reasons [5].

Clinically significant medications and patients related to ADRs were usually predicted and mostly preventable with few not preventable ADRs [6–8]. Moreover, some of the newly introduced drugs' side effects were not fully documented hence would possibly exert severe deleterious impact during usage [9]. In recent years, it was reviewed and reported that all drugs cause side effects, however the impact and severity vary and ranges from mild (for example: mild itching or mild headache) to severe (for example: severe rash, damage to vital organs, primarily the liver and kidneys and possibly even death). Therefore, precise diagnosis of ADRs is crucial to reduce preventable ADRs, which however remains a challenge among clinicians [7].

Causality assessment methods are primarily used in evaluating the medication related causality of ADRs [10, 11]. These methods traditionally utilize three approaches such as expert judgement, probabilistic method and algorithm method. More recent approaches are genetic algorithm, Liverpool algorithm and pediatric algorithm [12]. Severity is used for quantification of discomfort grades. Hatwig and colleague

[13] developed a scale for assessing the severity of ADRs. Classification on severity are mild (slightly bothersome; relieved with symptomatic treatment), moderate (bothersome, interferes with activities; only partially relieved with symptomatic treatment) and severe (prevents regular activities; not relieved with symptomatic treatment) [14–16]. ADRs preventability are determined by ADRs types which ranges from type A till type D. Type A or Type 1 (augmented) reactions results from an exaggeration of a drug's normal pharmacological actions when common therapeutic dose administered. Type A is usually dose dependent. Type B or Type 2 (bizarre) are ADRs that occurs as novel response not expected from known pharmacological action [17]. Type C (chronic) ADRs includes adaptive changes, rebound phenomena and other long-term effects. Type D (delayed) reactions are carcinogenesis, affecting reproduction such as impaired fertility and adverse effects on the foetus during early or later stages of pregnancy and drug availability in breast milk [16].

Chronic kidney disease (CKD) is a major health burden that amplifies the risk for adverse events [18, 19]. CKD is independently associated with increased adverse risks including kidney failure, cardiovascular events and all-cause mortality [19, 20]. An eight-year (1999–2006) retrospective study conducted in the United States revealed that there were more than 2 million deaths which were attributed as ADR-related deaths [3]. Additionally, Pirmohamed et al. [21] reported high incidence of in-hospital ADRs which was about 14.7%. Therefore it is beneficial to evaluate patients risk factors for ADRs individually. For minimization of ADRs events, understanding and knowledge on prescribed drug metabolism mechanisms, magnitude and probable ADRs is essentially to be equipped by the healthcare professionals. Thus, these will establish safe medication prescription practices which stresses cautious consideration of the benefits and risks of concomitant medications [22]. Therefore, this study aimed to assess the causality, severity and preventability of ADRs among hospitalized CKD patients with estimated glomerular filtration rate (eGFR) value of < 60 ml/min/1.73m². Additionally, risk factors for mortality due to ADRs were also evaluated.

Methods

Study design and participants

This a 3 years retrospective observational study conducted in Penang General Hospital. It is the second largest General Hospital in Malaysia. A total of 1070 medical records of patients experienced ADRs from various wards for the duration of 3 years (January 1, 2014 till December 31, 2016) were screened. CKD patients stages 3–5 (eGFR < 60 ml/min/1.73m²) with stable serum creatinine (sCr) values during the initial days of admission and experienced ADRs during hospitalization were the primary inclusion criteria of this study. The sCr value obtained during the first day of admission were used to estimate the glomerular filtration rate (GFR). Additional inclusion criteria were patient aged ≥18 years old and admitted for more than 24 h. Medical records which were dubious and incomplete and ward admission due to ADRs or acute kidney injury (AKI) were excluded from this study. Only 160 patients were selected after subsequent screening and identification of records that met the inclusion and exclusion criteria. From the total number of the patient records finally selected, 132 patients survived and 28 patients did not survive ADRs during hospitalization. Prior to study commencement, ethical approval was obtained from Medical Research & Ethics Committee (MREC), Ministry of Health Malaysia (MOH). Study approval number: NMRR-15-1810-28,375(IIR).

Estimation of renal function

For each patient, the sCr value was measured at admission using the standardized GFR method in the hospital laboratory department. The eGFR was then calculated from serum creatinine value using the chronic kidney disease epidemiology collaboration (CKD-EPI) equation [23]. Stages of CKD included in this study were 3A eGFR 45–59 mL/min/1.73 m², 3B eGFR 30–44 mL/min/1.73 m², 4 eGFR 15–29 mL/min/1.73 m² and 5 eGFR < 15 mL/min/1.73 m². Based on the type of renal replacement therapy, patients with end stage renal disease (ESRD) were divided into hemodialysis, peritoneal dialysis and patients not undergoing any type of dialysis (will be termed as 'conservative management or conservatively managed renal disease' in subsequent sections).

Data collection

For each patient, data was collected retrospectively from the patients' medical records using a standardized form. Data collected included (a) demographic characteristics such as age and sex; (b) physical examination results such as blood pressure and weight (c) comorbid conditions such as diabetes, hypertension, vascular disease, heart failure, atrial fibrillation and anemia (d) laboratory tests such as serum and biochemical parameters and (e) medications taken before admission, during hospitalization and medications prescribed at

discharge. Only medications prescribed during the hospitalization were considered in this study.

Identifications of ADRs

The primary outcome of this study was to determine the incidence and patterns of ADRs among hospitalized CKD patients stages 3 to 5. Identification of adverse drug reaction (ADR) event was done using a 3-step identification process (trigger list/ physician order, confirmation by an independent reviewer and assessment of causality, severity and preventability of identified ADRs by experienced pharmacist). In this study, ADRs was defined according to Edwards and Aronson [24]. Suspected ADRs were then classified based on the system developed by Rawlin and Thompson [25]. For each suspected ADR, information collected were (a) date start and end of ADR (b) the probable ADRs causative drugs, administered dosage and frequency (c) physical examination and laboratory results (d) reported adverse outcomes such as dizziness and rash. The beginning of the ADR was the date of the clinical or biological diagnosis of the ADR. The end of the ADR was the date of normalization of the effect which was obtained from the ADR reporting form and justified with the date of laboratory examination with normal results or the disappearance of clinical symptoms reported by physicians and pharmacist. If the end date of ADR and the date of the patient demise was reported on the same day therefore the cause of death is regarded as due to ADRs. The ADRs lasted from 1 day to several weeks. Major drug classes that attributed to ADRs were anti-infective, anti-hypertensive, analgesic, statins and anti-diabetic. Furthermore, anti-infectives contributed to highest number of mortality in this study (Danial M, Hassali AMA, Ong LM and Khan AH. Direct cost associated with adverse drug reactions among hospitalized chronic kidney patients in a public healthcare facility: A retrospective 3 year study, submitted).

Assessment of causality, preventability and severity of ADRs

Assessment of ADRs were done based on causality, severity and preventability. The drug related causality was assessed by using Naranjo algorithm [26]. Only definite and probable ADRs were considered for further assessment. The severity of ADRs were then scored using Hartwig and Siegel [13] scale into mild, moderate or severe. Preventability of ADRs were determined using Hallas et al. [27] criteria into definitely preventable, possibly preventable and non-preventable. The overall incidence of ADRs were defined as the total number of patients who suffered ADRs during hospitalization in relation to the total number of patients admitted to various wards during the 3-year study period.

Statistical analysis

For the purpose of descriptive analysis, baseline characteristics of patients with ADRs were analyzed using either chi-square test for categorical variables and t-test or Mann-Whitney test, depending on the skewness of data, for continuously distributed variables. The Cox regression analysis was used to estimate of the relative risk of having an ADR during hospital stay in relation to stages of renal function (stages 3 to 5) or for ESRD in relation to the three types of renal replacement therapy (hemodialysis, peritoneal dialysis and conservative management). The Cox regression model is the most frequently used model for analyzing time-to-event data [28]. In this case, the time from hospital admission to day on which the ADR occurred was considered as the time to event and the outcome of the model is either survival or death. The advantage of using Cox regression model is the ability to censor patients who fail to reach the study end-point [29]. In this case, patients who survived of an ADR during the hospitalization were censored. The hazard ratio is the probability that a patient survived the event or the outcome to a certain time point [29]. The hazard ratio survival of the ADR event was reported graphically using the Kaplan-Meier estimates, plotting the log-minus survival function over time. The log-rank test was used to investigate the association with the outcome. All analysis was performed using SPSS (version 22; SPSS Inc., Chicago, IL). Two-sided *p*-values of less than 0.05 were considered statistically significant.

Results

Baseline characteristics of patients

Baseline characteristic of patients were similar as reported in (Danial M, Hassali AMA, Ong LM and Khan AH. Direct cost associated with adverse drug reactions among hospitalized chronic kidney patients in a public healthcare facility: A retrospective 3 year study, submitted). CKD patients were grouped into survived ($n = 132$) and whom did not survive after ADRs ($n = 28$) event during hospitalization. Majority of the study patients were Chinese; male; aged ≥ 60 years; with eGFR value of < 15 mL/min/ 1.73m^2 and conservatively managed the renal disease (Table 1). Furthermore, the CKD patients were reported to have comorbidities primarily such as diabetes, dyslipidaemia and hypertension. Additionally, it was reported that they consumed ≥ 23 of total number of medications (Danial M, Hassali AMA, Ong LM and Khan AH: Development of a mortality score to assess risk of adverse drug reactions among hospitalized patients with moderate to severe chronic kidney disease, submitted).

Causality assessment of ADRs

Based on Naranjo scale there were 25 (15.6%) definite, 78 (48.8%) probable, 56 (35.0%) possible and 1(0.6%) doubtful ADRs respectively (Fig. 1). Cumulatively, the

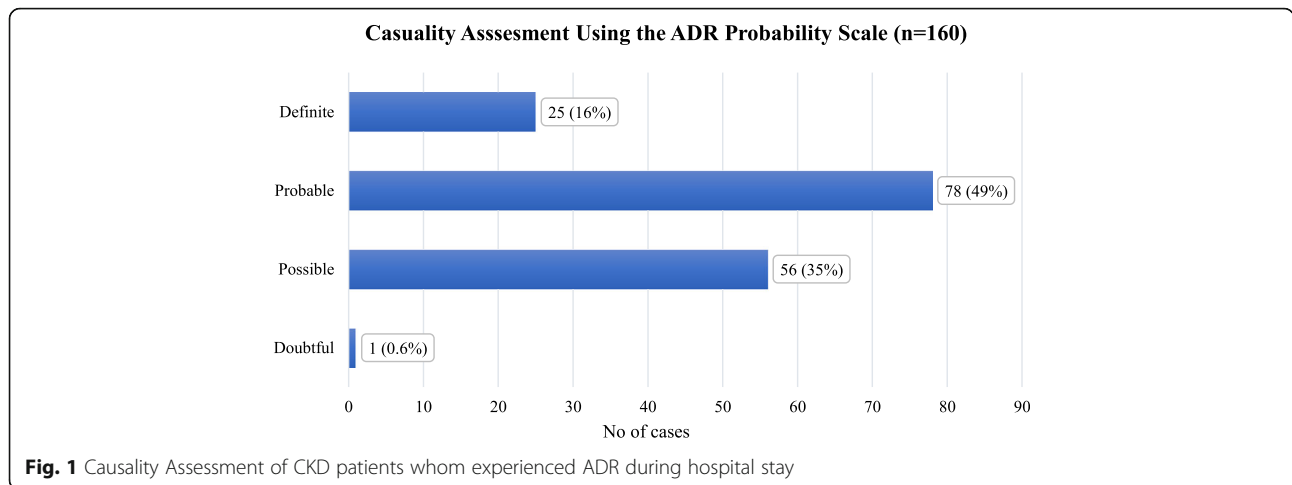
Table 1 Demographic characteristics of the study participants ($n = 160$)

Characteristics	n (%)	Survived ($n = 132$)	Died ($n = 28$)
Demographics			
Age			
≤ 49 years	41 (25.6)	34 (21.3)	7(4.4)
50–59 years	40 (25.0)	32(20.0)	8(5.0)
≥ 60 years	79 (49.4)	66(41.3)	13(8.1)
Gender			
Male	92 (57.5)	77(48.1)	15(9.4)
Female	68 (42.5)	55(34.4)	13(8.1)
Ethnicity			
Malay	52 (32.5)	44(27.5)	8(5.0)
Chinese	68 (42.5)	57(35.6)	11(6.9)
Indian	36 (25.0)	27(18.1)	9(5.6)
Currently or previously smoking	41 (25.6)	34(21.3)	7(4.4)
Currently or previously consumed alcohol	23(14.4)	19(11.9)	4(2.5)
Renal Replacement Therapy			
Haemodialysis	61 (38.1)	52(32.5)	9(5.6)
Peritoneal dialysis	12 (7.5)	10(6.3)	2(1.3)
Conservative management	87 (54.4)	70(43.8)	17(10.6)
Renal Function			
30–59 mL/min/ 1.73m^2	49 (30.6)	46(28.7)	3(1.9)
15–29 mL/min/ 1.73m^2	29 (18.1)	22(13.8)	7(4.4)
< 15 mL/min/ 1.73m^2	82 (51.2)	64(40.0)	18(11.3)

definite and probable ADRs accounted for 103 (64.4%) of the total ADRs. Subsequently, type A accounted for 89 (86.4%) ADRs as per the Rawlin and Thompson classification system. Preventability assessment using Hallas et al. [27] criteria indicated that only one ADR incident was definitely preventable, 91 (88.3%) were possibly preventable and 11 (10.7%) of incidence were non-preventable. Cumulatively, preventable ADRs were about 92 (89.3%) (Table 2). Severity assessment using modified Hartwig and Siegel scale categorized 14 (13.6%) severe, 61 (59.2%) moderate and 28 (27.2%) mild ADRs (Table 3).

Logistic regression

Categories that were more prone for mortality after ADR events were patients aged 50–59 years (20.0%); male (16.3%), Indian ethnicity (23.7%); obese (15.0%); with current or past history of smoking (17.1%); with current or past history of alcohol consumption (17.4%); conservatively managed renal disease (19.5%) and with renal function of < 15 mL/min/ 1.73m^2 (Table 4). The multiple logistic regression values indicated that the age category of 50–59 years had 2.05 (95% CI 0.57–7.34)



higher rates of not surviving ADRs compared to age categories of ≤ 49 years and ≥ 60 years old. Additionally, males had higher mortality rate than females. Indian ethnicity had 2.59 (95% CI 0.77–8.72) higher death rates compared to Malay and Chinese ethnicity. Lowest mortality rate was reported in Chinese ethnicity (OR: 0.70; 95% CI 0.20–2.44). BMI category obese (OR: 1.34; 95% CI 0.18–9.71) had higher rates of mortality compared to overweight, normal and underweight after ADRs. CKD patients with current or past history of smoking and alcohol consumption had higher death rates with OR: 1.19 (95% CI 0.32–4.47) and OR: 1.06 (95% CI 0.21–5.46) respectively. Furthermore, patients whom conservatively managed their renal disease had higher death rate (OR: 5.90; 95% CI 1.63–21.34) compared to those undergoing peritoneal dialysis and hemodialysis. Similarly, CKD patients with renal function of < 15 mL/min/1.73m² recorded highest mortality rate (OR: 22.37; 95% CI 3.99–125.31) in its category. Overall, types of renal replacement therapy ($p = 0.023$) and renal function ($p = 0.002$) were significant factors that influenced the survivability of the hospitalized CKD patients after ADRs.

Table 2 Classification and preventability assessment of the ADRs

Assessments of ADRs	No.*	(%)
Classification of ADR based on;		
^a Type A	89	86.4
^a Type B	14	13.6
^b Definitely preventable	1	1
^b Possibly preventable	91	88.3
^b Non-preventable	11	10.7

Abbreviations: ADR, adverse drug reaction

*The total number of definite or probable ADRs, $n = 103$

^a Type A and Type B ADR are classified based on Rawlin and Thompson (1991)

^b Definitely preventable, Possibly preventable and Non-preventable are classified based on Hallas et al. [27]

Kaplan-Meier overall survivability

The Kaplan-Meier overall survivability analysis performed indicated 85.0% survival for the duration of 18 days (Fig. 2). The Kaplan-Meier survival analysis revealed the differences in survival after ADRs among patients with different renal replacement therapy. Eighteen days survival rates of patients undergoing hemodialysis, peritoneal dialysis and conservative management were 94.9%, 91.7% and 75.1% respectively. However, no survival differences were observed in categories of age, gender, ethnicity, BMI, smoking status, alcohol consumption status and renal function. Eighteen days survival rates of age groups ≤ 49 years,

Table 3 Severity assessment of the ADRs

Level	Description	Scale	No.*	(%)
1	An ADR occurs but requires no change in treatment with the suspected drug.	Mild	7	6.8
2	The ADR requires that the suspected drug be withheld, discontinued or otherwise changed. No changed antidote or other treatment is required, and there is no increase in length of stay.	Mild	21	20.4
3	The ADR requires that the suspected drug be withheld, discontinued or otherwise changed, and/or an antidote or other treatment is required, and there is no increase in length of stay.	Moderate	31	30.1
4	a) Any level 3 ADR that increases length of stay by at least one day, or (b) The ADR is the reason for admission	Moderate	30	29.1
5	Any level 4 ADR that requires intensive medical care.	Severe	13	12.6
6	The adverse reaction causes permanent harm to the patient.	Severe	0	0
7a	The adverse reaction indirectly linked to the death of patient.	Severe	1	1.0
7b	The adverse reaction directly linked to the death of patient.	Severe	0	0

Abbreviations: ADR, adverse drug reaction

*The total number of definite or probable ADRs, $n = 103$

Table 4 Factors associated with survivability after ADR events using simple logistic and multiple regression

Variables	Survived N(%)	Died N(%)	Crude OR	(95% CI)	<i>p</i> -value ^a	Adj. OR	(95% CI)	<i>p</i> -value ^b
Age category								
≤ 49 years	34 (82.9%)	7 (17.1%)	1.00(ref.)		0.888	1.00(ref.)		0.490
50–59 years	32 (80.0%)	8 (20.0%)	1.21	(0.40, 3.73)	0.735	2.05	(0.57,7.34)	
≥ 60 years	66 (83.5%)	13 (16.5%)	0.96	(0.35, 2.62)	0.931	1.14	(0.35, 3.66)	
Gender								
Male	77 (83.7%)	15 (16.3%)	1.00(ref.)		0.644	1.00(ref.)		0.829
Female	55 (80.9%)	13 (19.1%)	1.21	(0.54,2.75)		0.88	(0.28,2.75)	
Ethnicity								
Malay	44 (84.6%)	8 (15.4%)	1.00(ref.)		0.544	1.00(ref.)		0.108
Chinese	57 (83.8%)	11 (16.2%)	1.06	(0.39,2.86)	0.906	0.70	(0.20, 2.44)	
Indian	29 (76.3%)	9 (23.7%)	1.71	(0.59,4.93)	0.324	2.59	(0.77,8.72)	
BMI category								
Underweight	14 (82.4%)	3 (17.6%)	1.00(ref.)		0.917	1.00(ref.)		0.825
Normal	58 (84.1%)	11 (15.9%)	0.89	(0.22,3.60)	0.865	0.82	(0.17, 4.05)	
Overweight	43 (79.6%)	11 (20.4%)	1.19	(0.29,4.90)	0.806	1.33	(0.27, 6.56)	
Obese	17 (85.0%)	3 (15.0%)	0.82	(0.14,4.74)	0.828	1.34	(0.18, 9.71)	
Smoking								
No	98 (82.4%)	21 (17.6%)	1.00(ref.)		0.934	1.00(ref.)		0.800
Yes	34 (82.9%)	7 (17.1%)	0.96	(0.38,2.46)		1.19	(0.32, 4.47)	
Alcohol consumption								
No	113 (82.5%)	24 (17.5%)	1.00(ref.)		0.988	1.00(ref.)		0.943
Yes	19 (82.6%)	4 (17.4%)	0.99	(0.31, 3.18)		1.06	(0.21, 5.46)	
Renal replacement therapy								
Hemodialysis	52 (85.2%)	9 (14.8%)	1.00(ref.)		0.751	1.00(ref.)		0.023*
Peritoneal dialysis	10 (83.3%)	2 (16.7%)	1.16	(0.22,6.17)	0.866	1.21	(0.21, 6.940)	
Conservative management	70 (80.5%)	17 (19.5%)	1.40	(0.58,3.40)	0.453	5.90	(1.63,21.34)	
Renal function								
30–59 mL/min/1.73m ²	46 (93.9%)	3 (6.1%)	1.00(ref.)		0.062	1.00(ref.)		0.002*
15–29 mL/min/1.73m ²	22 (75.9%)	7 (24.1%)	4.88	(1.15,20.69)	0.032	8.90	(1.76, 44.94)	
< 15 mL/min/1.73m ²	64 (78.0%)	18 (22.0%)	4.31	(1.20,15.51)	0.025	22.37	(3.99,125.31)	

Note: ^aSimple Logistic Regression;

^bMultiple Logistic Regression;

Crude OR = Crude Odds Ratio;

Adj. OR = Adjusted Odds Ratio;

95% CI = 95% confidence interval

**p* value < 0.05

50–59 years and ≥ 60 years were 86.2%, 85.6% and 84.2% respectively. Eighteen days survival rates based on gender were 84.7% male and 85.5% female. Eighteen days survival rates based on ethnic groups were 86.1% Malay, 80.0% Chinese and 94.7% Indian. Eighteen days survival rate of patients based on BMI categories were 63.0% underweight, 92.0% normal, 73.0% overweight and 93.8% obese. Eighteen days survival rate of patients based smoking status were 84.5% non-smokers and 86.6% smokers. Eighteen days survival rate of patients-based alcohol consumption were 84.5% no and 87.7% yes. Eighteen days survival rate of patients with

renal functions of 30–59 mL/min/1.73m², 15–29 mL/min/1.73m² and < 15 mL/min/1.73m² were 87.4%, 69.8% and 88.6% respectively (Table 5).

Cox regression

The Cox regression analysis revealed that only renal replacement therapy contributed significantly to mortality associated with ADRs among CKD patients. Factors such as age, gender, ethnicity, BMI, smoking status, alcohol consumption status and renal function were not significantly linked to mortality due to ADRs among CKD patients

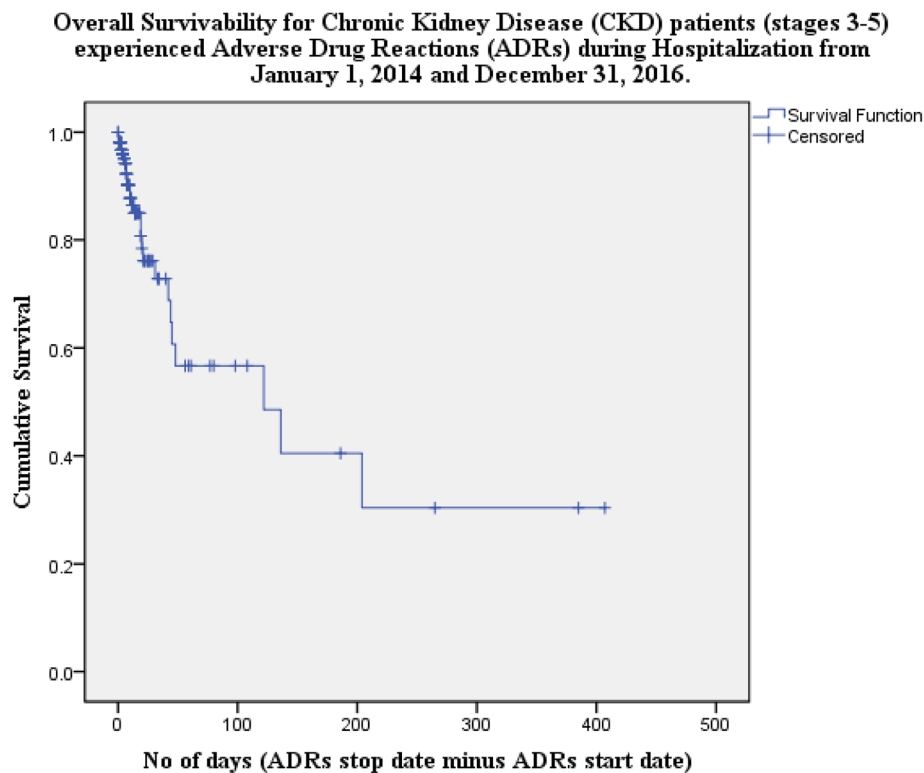


Fig. 2 Overall Survivability for Chronic Kidney Disease (CKD) patients (stages 3–5) experienced Adverse Drug Reactions (ADRs) during Hospitalization from January 1, 2014 and December 31, 2016

(Table 6). CKD patients whom were conservatively managing their renal disease had 5.61 more risk of dying compared to those whom were undergoing hemodialysis. Additionally, lowest risk of mortality (0.61) were observed in patients undergoing peritoneal dialysis. In terms of renal function, CKD patients with renal function of < 15 mL/min/ 1.73m^2 had 5.33 higher risk of mortality compared to patients with renal function of $30\text{--}59$ mL/min/ 1.73m^2 and 2.91 higher risk of mortality compared to patients with renal function of $30\text{--}59$ mL/min/ 1.73m^2 .

Hazard ratio

Age group of 50–59 years old had higher risk of dying (HR: 1.08) compared to ≤ 49 years and ≥ 60 years old. Additionally, male had higher risk of dying (HR: 1.00) compared to females. Indian patients (HR: 1.05) had higher mortality risk compared to Malay and Chinese patients. Overweight patients had higher risk of dying (HR: 1.47) compared to underweight, normal and obese CKD patients. Non-smokers (HR: 1.00) and patients with current or past history alcohol consumption (HR: 1.01) had higher mortality risk after ADRs during hospitalization compared their respective group categories.

Discussions

Identification of ADRs among CKD patients will be useful in clinical practice as to implement appropriate care

aimed at reducing the number of ADRs. Survival estimation studies are vital for the prediction of impending disease burden, redirection in approaches of disease screening and planning of clinical trials both intervention and observational studies, thus paving ways for more successful understanding among public, healthcare providers and policy makers [30].

Based on our study, in Penang General Hospital yearly about 13.5% of hospitalized CKD patients stages 3 to 5 experienced ADRs. Our findings were similar with meta-analysis study conducted by Lazarou et al. [31] where they reported that 10.9% of patients experienced ADRs of all severities as inpatients and another study by Davies et al. [32], which estimated that between 10 and 20% of patients experienced ADRs during hospitalization. Moreover, from our study about 88% of ADRs were possibly preventable. Similar results were reported by Chan et al. [33], where it was reported that 50% of ADR were preventable. Preventable ADRs were commonly associated with prescription of diuretics, antiplatelet, anticoagulant, antidiabetic and NSAIDs drugs to the patients [34, 35].

Severity assessment using the Hartwig and Siegal indicated that nearly 27% of ADRs scored mild and nearly 60% of ADRs scored at level 3 or below on the Hartwig scale. This indicated that remedial action was performed to treat the ADRs as reported in the patients' medical

Table 5 Survivability of the CKD patients after ADR event

Variables	Number of Patients n	Number of Events n	Survivalibility (%)						Comparison	p-value ^a
			3 days	6 days	9 days	12 days	15 days	18 days		
Overall Survivalibility	160	28	96.7	94.2	87.7	86.4	86.4	85.0		
Age category										0.927
≤ 49 years	41	7	95.1	95.1	95.1	91.3	86.2	86.2		
50–59 years	40	8	97.1	97.1	97.1	85.6	85.6	85.6		
≥ 60 years	79	13	97.3	92.5	84.2	84.2	84.2	84.2		
Gender										0.787
Male	92	15	96.6	96.6	91.3	84.7	84.7	84.7		
Female	68	13	96.9	91.1	88.7	88.7	85.5	85.5		
Ethnicity										0.796
Malay	52	8	97.8	97.8	97.8	90.4	86.1	86.1		
Chinese	68	11	96.8	90.6	80.0	80.0	80.0	80.0		
Indian	38	9	94.7	94.7	94.7	94.7	94.7	94.7		
BMI category										0.206
Underweight	17	3	93.3	93.3	84.0	84.0	63.0	63.0		
Normal	69	11	94.0	92.0	92.0	92.0	92.0	92.0		
Overweight	54	11	100.0	94.7	85.3	77.9	73.0	73.0		
Obese	20	3	100.0	100.0	100.0	93.8	93.8	93.8		
Smoking										0.943
No	119	21	97.3	95.2	89.9	86.5	84.5	84.5		
Yes	41	7	95.1	91.2	91.2	86.6	86.6	86.6		
Alcohol consumption										0.647
No	137	24	96.9	94.0	87.7	86.2	84.5	84.5		
Yes	23	4	95.7	95.7	95.7	87.7	87.7	87.7		
Renal replacement therapy										0.050
a. Hemodialysis	61	9	100.0	100.0	97.8	94.9	94.9	94.9	a vs b	0.874
b. Peritoneal dialysis	12	2	91.7	91.7	91.7	91.7	91.7	91.7	a vs c	0.019
c. Conservative management	87	17	95.2	90.1	83.6	78.4	75.1	75.1	b vs c	0.293
Renal function										0.347
30–59 mL/min/1.73m ²	49	3	100.0	100.0	100.0	87.4	87.4	87.4		
15–29 mL/min/1.73m ²	29	7	93.0	93.0	82.6	76.7	69.8	69.8		
< 15 mL/min/1.73m ²	82	18	96.2	92.0	88.6	88.6	88.6	88.6		

Note: ^asurvival analysis using Kaplan-Meier

records. The reported remedial action was either discontinuation of the suspected drug alone and/or treating with the corrective drug. The outcome of the remedial action resulted in additional laboratory investigations, extra procedures, increment in days of hospitalization, admission to intensive care unit and/or death.

Least number of survivors were from age group of ≥60 years (84.2%) using Kaplan-Meier analysis. It has been reported that death is anticipated after an ADR among patients aged more than 55 years [31, 35]. It is

attributable to the presence of high levels of albuminuria with impaired level of eGFR among the older adults [30, 36].

In addition, in this study males were more susceptible to mortality due to ADRs compared to female. The Kaplan-Meier survival analysis revealed that the lowest survival experience for male CKD patients to be 84.7%. Inker et al. [30], indicated that the differences between gender may be attributable to faster progression to ESRD in male compared to female, inaccuracies in estimating equations or lower levels of normal GFR in women [37, 38]. For example,

Table 6 Cox regression of the CKD patients after ADR event

Variables	Censored		Events		Adj. HR	(95% CI)	<i>p</i> -value ^c
	n	(%)	n	(%)			
Age category							0.934
≤ 49 years	34	82.9	7	25.0	1.00	(ref.)	
50–59 years	32	80.0	8	28.6	1.08	(0.34,3.39)	
≥ 60 years	66	83.5	13	46.4	0.89	(0.31,2.58)	
Gender							0.504
Male	77	83.7	15	53.6	1.00	(ref.)	
Female	55	80.9	13	46.4	0.69	(0.23,2.08)	
Ethnicity							0.997
Malay	44	84.6	8	28.6	1.00	(ref.)	
Chinese	57	83.8	11	39.3	1.02	(0.33,3.11)	
Indian	29	76.3	9	32.1	1.05	(0.33,3.35)	
BMI category							0.434
Underweight	14	82.4	3	10.7	1.00	(ref.)	
Normal	58	84.1	11	39.3	0.94	(0.21,4.25)	
Overweight	43	79.6	11	39.3	1.47	(0.32,6.75)	
Obese	17	85.0	3	10.7	0.42	(0.06,2.83)	
Smoking							0.886
No	98	82.4	21	75.0	1.00	(ref.)	
Yes	34	82.9	7	25.0	0.91	(0.24,3.37)	
Alcohol consumption							0.987
No	113	82.5	24	85.7	1.00	(ref.)	
Yes	19	82.6	4	14.3	1.01	(0.20,5.03)	
Renal replacement therapy							0.003
Hemodialysis	52	85.2	9	32.1	1.00	(ref.)	
Peritoneal dialysis	10	83.3	2	7.1	0.61	(0.11,3.39)	
Conservative management	70	80.5	17	60.7	5.61	(1.94,16.20)	
Renal function							0.089
30–59 mL/min/1.73m ²	46	93.9	3	10.7	1.00	(ref.)	
15–29 mL/min/1.73m ²	22	75.9	7	25.0	2.91	(0.65,12.96)	
< 15 mL/min/1.73m ²	64	82.5	18	64.3	5.33	(1.18,24.07)	

Fan et al. [39] reported that the CKD-EPI equation has slight but non-significant overestimation of GFR in women compared with men. Furthermore, gender differences may also be due to immunological and hormonal physiology which influences pharmacodynamics and pharmacokinetics responses, particularly in relation to cardiac and psychotropic medications [40].

In this study, significant positive associations were found between renal function and survivability after ADR events ($r = 0.02$, $p < 0.05$). Patients who were conservatively managed for renal disease (19.5%) and patients with renal function of < 15 mL/min/1.73m² were at the highest risk of mortality. Metabolic changes among advanced CKD patients have been associated with impaired physical

function, which includes reduced muscle function, grip strength and cognition [41]. Furthermore, a poorer degree of CKD is associated with a higher frequency of the frailty syndrome and a higher risk of functional decline over time [42–44].

Safe drug dosage is specifically influenced and associated with individual factors like physical parameters including age and weight; presence of comorbidities; physiological status including renal and hepatic function; current medication usage and previously reported history of allergies [45]. Age influences drug pharmacokinetics and pharmacodynamics activities [46]. Older age influences the rapid accumulation of total body fat and inversely reduces lean muscle mass and water volume. Thus, it impairs the

dissemination of many drugs for example benzodiazepines, antipsychotics and opioids [47]. Additionally, reduced water availability rises toxicity levels. This condition results in lengthening of drug elimination half-life which in turn causes undesirable drug side effect such as drowsiness, falls and unwanted dosage build-up [47].

Likewise, aging causes impairment of GFR like decrease in renal size, nephron function and assimilations which are accountable for comorbidities such as hypertension, diabetes and heart failure [48]. Therefore, estimation of GFR is vital when up-taking renally eliminated drugs like dabigatran and metformin as safe dosage needed to be prescribed as to lessen the risk of an ADR [48]. It also have been reported that aging causes decline in liver mass and perfusion, which can adversely affect drugs with high hepatic extraction ratio such as diltiazem, opiates and warfarin [49]. These drugs systemic bioavailability surges with higher accumulation in serum coupled with enhanced adverse drug effect [47].

Pharmacovigilance of ADRs includes detection, assessment, understanding and prevention of adverse effects or any other drug-related problem with the aim of enhancing medication safety and patient care [50]. Likewise, E-pharmacovigilance will be a resourceful tool in drug safety for potentially predicting an ADR likelihood by utilizing previously obtained information such as laboratory investigations [51]. Moreover, drug safety can be established by adopting programmed electronic methods which can render information on past errors of medication and/or dosage and potential medication interactions. Beneficial attributes of electronic prescribing methods have been applauded by a recent systematic review where it was reported to reduce medical errors and adverse drug effects [47, 52].

Study strengths and limitations

The strength of the current study lies in identifying the ADR event using the 3-step identification process. The study population included all ADR events recorded for 3 years continuously from multiple wards, representing all clinical specialties commonly found in most acute hospitals. Furthermore, the age distribution of our study population was comparable to figures for all in-patient admissions from other literatures. Thus, this study produces highly reliable results that represents the real-world practices. However, the study limitations were firstly, it was conducted in one hospital and there is likely to be variation between different hospitals because of differences in the local population characteristics and the specialties within the hospitals. Secondly, since this study was performed in one hospital, it may limit the generalizability of the results. Finally, survival risks for specific stages may be overestimated because it was derived using only one measurement of GFR.

Conclusions

Conclusively, from this study only one ADR incident was definitely preventable and majority of other ADRs were possibly preventable. Renal replacement therapy and/or renal function were significant risk factors for mortality due to ADRs among hospitalized CKD patients stages 3 to 5. There is a need to develop a high-reliability assessment tool which can meticulously establish suitable diagnostic criteria for ADRs with universal acceptance to improvise the fundamental aspect of drug safety and evades the impending ADRs.

Abbreviations

ADRs: Adverse drug reactions; CKD: Chronic kidney disease; CKD-EPI: Chronic kidney disease epidemiology collaboration; eGFR: estimated glomerulus filtration; ESRD: end stage renal disease; GFR: Glomerular filtration rate

Acknowledgements

We would like to thank the Director General of Health Malaysia for the permission to publish this article.

Funding

The study was not funded in whole or in part by any research grant or funding body.

Availability of data and materials

The datasets generated and analysed during the current study are not publicly available due to data confidentiality policy as dictated in the study approval letter by the Medical Research & Ethics Committee (MREC), Ministry of Health Malaysia (MOH) (Ref no: [5] KKM/NIHSEC/P16–25) but are available from the corresponding author on reasonable request.

Authors' contributions

DM, OLM & HMA: made substantial contributions to conception and design, acquisition of data, analysis and interpretation of data. DM, HMA & KAH: been involved in drafting the manuscript or revising it critically for important intellectual content. DM, HMA, OLM & KAH: given final approval of the version to be published. DM, HMA, OLM & KAH: agreed to be accountable for all aspects of the work in ensuring the accuracy or integrity of this study. (Danial M: DM; Hassali MA: HMA; Ong LM: OLM; Khan AH: KAH). All authors read and approved the final manuscript.

Ethics approval and consent to participate

The study was carried out after obtaining the approval to access the medical records for the purposes of this study from the Medical Research & Ethics Committee (MREC), Ministry of Health Malaysia (MOH). Study approval number: NMRR-15-1810-28,375(IJR).

The need to obtain consent from study participants was waived as there is no direct interaction with the study participants in accordance with the Medical Research & Ethics Committee (MREC), Ministry of Health Malaysia (MOH) regulations.

Consent for publication

Not Applicable.

Competing interests

The authors declare that they have no competing interests.

Publisher's Note

Springer Nature remains neutral with regard to jurisdictional claims in published maps and institutional affiliations.

Author details

¹Discipline of Social and Administrative Pharmacy, School of Pharmaceutical Sciences, Universiti Sains Malaysia, 11800 Minden, Penang, Malaysia. ²Clinical Research Center (CRC) Penang General Hospital, 10990 Jalan Residensi, Pulau Pinang, Malaysia. ³Discipline of Clinical Pharmacy, School of Pharmaceutical Sciences, Universiti Sains Malaysia, 11800 Minden, Penang, Malaysia.

Received: 18 April 2018 Accepted: 14 August 2018

Published online: 29 August 2018

References

- Tan Y, Hu Y, Liu X, Yin Z, Chen XW and Liu M. Improving drug safety: From adverse drug reaction knowledge discovery to clinical implementation. *Methods* (San Diego, Calif). 2016.
- Hinson JA, Roberts DW, James LP. Mechanisms of acetaminophen-induced liver necrosis. *Adverse Drug Reactions*. Berlin, Heidelberg: Springer; 2010. p. 369–405.
- Shepherd G, Mohorn P, Yacoub K, May DW. Adverse drug reaction deaths reported in United States vital statistics, 1999–2006. *Ann Pharmacother*. 2012;46:169–75.
- Alexopoulou A, Dourakis SP, Mantzoukis D, et al. Adverse drug reactions as a cause of hospital admissions: a 6-month experience in a single center in Greece. *Eur J Int Med*. 2008;19:505–10.
- Pirmohamed M, Breckenridge AM, Kitteringham NR, Park BK. Adverse drug reactions. *BMJ*. 1998;316(7140):1295–8. <https://doi.org/10.1136/bmj.316.7140.1295>
- Khan LM, Al-Harhi SE, Saadah OI. Adverse drug reactions in hospitalized pediatric patients of Saudi Arabian University hospital and impact of pharmacovigilance in reporting ADR. *Saudi Pharmaceutical J*. 2013;21:261–6.
- Macedo AF, Marques FB, Ribeiro CF, Teixeira F. Causality assessment of adverse drug reactions: comparison of the results obtained from published decisional algorithms and from the evaluations of an expert panel. *Pharmacoevidential Drug Saf*. 2005;14:885–90.
- Alshammari TM. Drug safety: the concept, inception and its importance in patients' health. *Saudi Pharmaceutical J*. 2016;24:405–12.
- Hilmer SN, McLachlan AJ, Le Couteur DG. Clinical pharmacology in the geriatric patient. *Fundam Clin Pharmacol*. 2007;21:217–30.
- Arimone Y, Begaud B, Miremont-Salame G, et al. Agreement of expert judgment in causality assessment of adverse drug reactions. *Eur J Clin Pharmacol*. 2005;61:169–73.
- Macedo AF, Marques FB, Ribeiro CF, Teixeira F. Causality assessment of adverse drug reactions: comparison of the results obtained from published decisional algorithms and from the evaluations of an expert panel, according to different levels of imputability. *J Clin Pharm Ther*. 2003;28:137–43.
- Khan LM, Al-Harhi SE, Osman AMM, Sattar MAAA, Ali AS. Dilemmas of the causality assessment tools in the diagnosis of adverse drug reactions. *Saudi Pharmaceutical J*. 2016;24:485–93.
- Hartwig SC, Siegel J, Schneider PJ. Preventability and severity assessment in reporting adverse drug reactions. *Am J Hosp Pharm*. 1992;49:2229–32.
- Hartwig SC, Denger SD, Schneider PJ. Severity-indexed, incident report-based medication error-reporting program. *Am J Hosp Pharm*. 1991;48:2611–6.
- Schimmel EM. The Hazards of Hospitalization. *Ann Intern Med*. 1964;60:100–10.
- Aronson J. Stephens' detection of new adverse drug reactions, 5th edn. *Br J Clin Pharmacol*. 2004;58(2):227. <https://doi.org/10.1111/j.1365-2125.2004.02121.x>.
- Rawlins MD and Thompson JW. Pathogenesis of adverse drug reactions. In: (ed) DD, (ed). In *Textbook of Adverse Reactions 1977*, p. 44.
- Matsushita K, Mahmoodi BK, Woodward M, et al. Comparison of risk prediction using the CKD-EPI equation and the MDRD study equation for estimated glomerular filtration rate. *JAMA*. 2012;307:1941–51.
- Tangri N, Kitsios GD, Inker LA, et al. Risk prediction models for patients with chronic kidney disease: a systematic review. *Ann Intern Med*. 2013; 158:596–603.
- Rigatto C, Sood MM, Tangri N. Risk prediction in chronic kidney disease: pitfalls and caveats. *Curr Opin Nephrol Hypertens*. 2012;21:612–8.
- Pirmohamed M, James S, Meakin S, et al. Adverse drug reactions as cause of admission to hospital: prospective analysis of 18 820 patients. *BMJ (Clinical research ed)*. 2004;329:15–9.
- Wiggins BS, Saseen JJ, Page RL 2nd, Reed BN, Sneed K, Kostis JB, Lanfear D, Virani S, Morris PB; on behalf of the American Heart Association Clinical Pharmacology Committee of the Council on Clinical Cardiology; Council on Hypertension; Council on Quality of Care and Outcomes Research; and Council on Functional Genomics and Translational Biology. Recommendations for management of clinically significant drug-drug interactions with statins and select agents used in patients with cardiovascular disease: a scientific statement from the American Heart Association. *Circulation*. 2016;134:e468–e495. <https://doi.org/10.1161/CIR.0000000000000456>.
- Levey AS, Stevens LA, Schmid CH, et al. A new equation to estimate glomerular filtration rate. *Ann Intern Med*. 2009;150:604–12.
- Edwards IR, Aronson JK. Adverse drug reactions: definitions, diagnosis, and management. *Lancet* (London, England). 2000;356:1255–9.
- Rawlins MD, Thompson JW. Mechanisms of adverse drug reactions. In: Davies DM, editor. *Textbook of Adverse Drug Reactions*. Oxford: Oxford University Press; 1991. p. 18–45.
- Naranjo CA, Busto U, Sellers EM, et al. A method for estimating the probability of adverse drug reactions. *Clin Pharmacol Ther*. 1981;30:239–45.
- Hallas J, Harvald B, Gram LF, et al. Drug related hospital admissions: the role of definitions and intensity of data collection, and the possibility of prevention. *J Intern Med*. 1990;228:83–90.
- Cox DR. Regression Models and Life-tables. *J R Stat Soc Ser B Methodol*. 1972;34:187–220.
- Cox DR, Oakes D. *Analysis of Survival Data*. 1st ed. London: Chapman and Hall; 1984, p. 212.
- Inker LA, Tighiouart H, Aspelund T, et al. Lifetime risk of stage 3–5 CKD in a community-based sample in Iceland. *Clin J Am Soc Nephrol*. 2015; 10:1575–84.
- Lazarou J, Pomeranz BH, Corey PN. Incidence of adverse drug reactions in hospitalized patients: a meta-analysis of prospective studies. *JAMA*. 1998; 279:1200–5.
- Davies EC, Green CF, Taylor S, Williamson PR, Mottram DR, Pirmohamed M. Adverse drug reactions in hospital in-patients: a prospective analysis of 3695 patient-episodes. *PLoS One*. 2009;4:e4439.
- Chan M, Nicklason F, Vial JH. Adverse drug events as a cause of hospital admission in the elderly. *Intern Med J*. 2001;31:199–205.
- Howard RL, Avery AJ, Slavenburg S, et al. Which drugs cause preventable admissions to hospital? A systematic review. *Br J Clin Pharmacol*. 2007;63:136–47.
- Budnitz DS, Lovegrove MC, Shehab N, Richards CL. Emergency hospitalizations for adverse drug events in older Americans. *N Engl J Med*. 2011;365:2002–12.
- Hallan SI, Matsushita K, Sang Y, et al. Age and association of kidney measures with mortality and end-stage renal disease. *JAMA*. 2012;308:2349–60.
- Grams ME, Chow EK, Segev DL, Coresh J. Lifetime incidence of CKD stages 3–5 in the United States. *Am J Kidney Dis*. 2013;62:245–52.
- Kvasz M, Allen IE, Gordon MJ, et al. Adverse drug reactions in hospitalized patients: a critique of a meta-analysis. *MedGenMed*. 2000;2:E3.
- Fan L, Levey AS, Gudnason V, et al. Comparing GFR estimating equations using cystatin C and creatinine in elderly individuals. *J Am Soc Nephrol*. 2015;26:1982–9.
- Soldin OP, Chung SH, Mattison DR. Sex differences in drug disposition. *J Biomed Biotechnol*. 2011;2011:187103.
- Doyle EM, Sloan JM, Goodbrand JA, et al. Association between kidney function, rehabilitation outcome, and survival in older patients discharged from inpatient rehabilitation. *Am J Kidney Dis*. 2015;66:768–74.
- Walker SR, Gill K, Macdonald K, et al. Association of frailty and physical function in patients with non-dialysis CKD: a systematic review. *BMC Nephrol*. 2013;14:228.
- Bowling CB, Sawyer P, Campbell RC, Ahmed A, Allman RM. Impact of chronic kidney disease on activities of daily living in community-dwelling older adults. *J Gerontol A Biol Sci Med Sci*. 2011;66(6):689–94. <https://doi.org/10.1093/gerona/glr043>
- Fried LF, Lee JS, Shlipak M, Chertow GM, Green C, Ding J, Harris T, Newman AB. Chronic kidney disease and functional limitation in older people: health, aging and body composition study. *J Am Geriatr Soc*. 2006;54(5):750–56. <https://doi.org/10.1111/j.1532-5415.2006.00727.x>
- Agno W, Gallus AS, Wittkowsky A, Crowther M, Hylek EM, Palareti G. Oral anticoagulant therapy: antithrombotic therapy and prevention of thrombosis, 9th ed: American College of Chest Physicians Evidence-Based Clinical Practice Guidelines. *Chest*. 2012;141:e445–885.
- Mangoni AA, Jackson SHD. Age-related changes in pharmacokinetics and pharmacodynamics: basic principles and practical applications. *Br J Clin Pharmacol*. 2004;57:6–14.
- Lavan AH, Gallagher P. Predicting risk of adverse drug reactions in older adults. *Therapeutic Advances in Drug Safety*. 2016;7:11–22.
- Gottdiener JS, Arnold AM, Aurigemma GP, et al. Predictors of congestive heart failure in the elderly: the cardiovascular health study. *J Am Coll Cardiol*. 2000;35:1628–37.
- Woodhouse KW, Wynne HA. Age-related changes in liver size and hepatic blood flow. *Clin Pharmacokinet*. 1988;15:287–94.

50. Morin L, Fastbom J, Laroche ML, Johnell K. Potentially inappropriate drug use in older people: a nationwide comparison of different explicit criteria for population-based estimates. *Br J Clin Pharmacol*. 2015;80:315–24.
51. Neubert A, Dormann H, Prokosch HU, et al. E-pharmacovigilance: development and implementation of a computable knowledge base to identify adverse drug reactions. *Br J Clin Pharmacol*. 2013;76(Suppl 1):69–77.
52. Ammenwerth E, Schnell-Inderst P, Machan C, Siebert U. The effect of electronic prescribing on medication errors and adverse drug events: a systematic review. *J Am Med Inform Assoc*. 2008;15:585–600.

Ready to submit your research? Choose BMC and benefit from:

- fast, convenient online submission
- thorough peer review by experienced researchers in your field
- rapid publication on acceptance
- support for research data, including large and complex data types
- gold Open Access which fosters wider collaboration and increased citations
- maximum visibility for your research: over 100M website views per year

At BMC, research is always in progress.

Learn more biomedcentral.com/submissions

