

ERRATUM

## Erratum to: Survivin-mediated Therapeutic Efficacy of Gemcitabine through Glucose-regulated Protein 78 in Hepatocellular Carcinoma

Chin-Sheng Hung, MD<sup>1,2,3,4</sup>, Shen-Fu Lin, MS<sup>8</sup>, Hui-Hsiung Liu, MD, PhD<sup>7</sup>, Li-Jen Kuo, MD<sup>1,2,3,4</sup>, Li-Tzu Li, PhD<sup>6</sup>, Hou-Yu Su, MD<sup>1,5</sup>, Phui-Ly Liew, MD<sup>9</sup>, Feng-Yen Lin, PhD<sup>10,11</sup>, Po-Li Wei, MD, PhD<sup>1,2,3,4</sup>, Der-Zen Liu, PhD<sup>8</sup>, and Yu-Jia Chang, PhD<sup>1,2,3,4</sup>

<sup>1</sup>Graduate Institute of Clinical Medicine, College of Medicine, Taipei Medical University, Taipei, Taiwan; <sup>2</sup>Department of Surgery, School of Medicine, College of Medicine, Taipei Medical University, Taipei, Taiwan; <sup>3</sup>Division of General Surgery, Department of Surgery, Taipei Medical University Hospital, Taipei Medical University, Taipei, Taiwan; <sup>4</sup>Cancer Research Center, Taipei Medical University Hospital, Taipei Medical University, Taipei, Taiwan; <sup>5</sup>Department of Surgery, Saint Mary's Hospital Luodong, Luodong, Yilan, Taiwan; <sup>6</sup>Imaging Core Facilities, Institute of Cellular and Organismic Biology, Academia Sinica, Taipei, Taiwan; <sup>7</sup>Department of Public Health, School of Public Health, Taipei Medical University, Taipei, Taiwan; <sup>8</sup>Graduate Institute of Biomedical Materials and Engineering, Taipei Medical University, Taipei, Taiwan; <sup>9</sup>Department of Pathology, Shuang-Ho Hospital, Taipei Medical University, Taipei, Taiwan; <sup>10</sup>Department of Internal Medicine, School of Medicine, College of Medicine, Taipei Medical University, Taipei, Taiwan; <sup>11</sup>Division of Cardiology, Taipei Medical University Hospital, Taipei, Taiwan

**ERRATUM TO: ANN SURG ONCOL (2012) 19:2744–2752  
DOI 10.1245/S10434-011-2188-Z**

Figure 1 was incorrect in the original article. The correct figure is as follows:

---

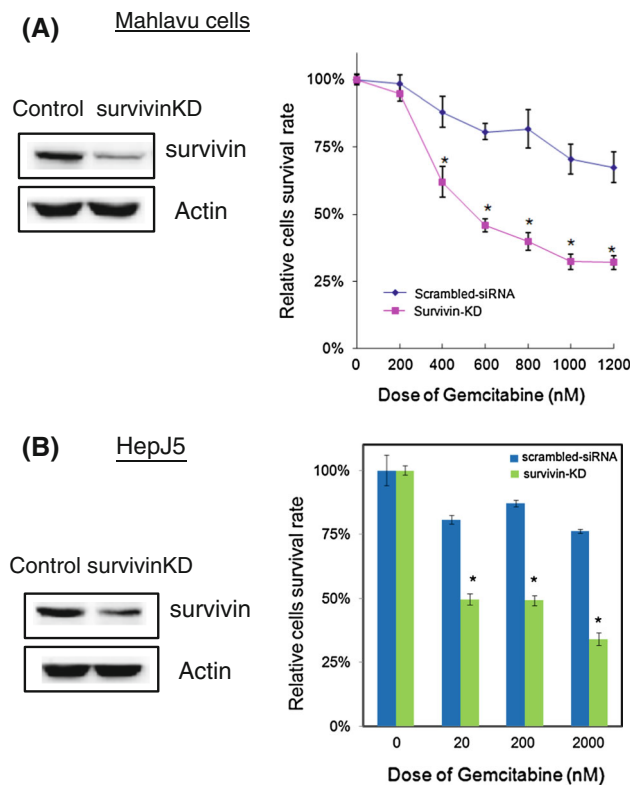
The online version of the original article can be found under doi:[10.1245/s10434-011-2188-z](https://doi.org/10.1245/s10434-011-2188-z).

---

© Society of Surgical Oncology 2013

Published Online: 4 December 2013

Y.-J. Chang, PhD  
e-mail: r5424012@tmu.edu.tw



**FIG. 1** The percentages of the viable HepJ5 and Mahlavu cells after treated with gemcitabine. **a** The survivin-KD and scrambled control Mahlavu cells ( $2 \times 10^4$  cells/well) were plated into 24-well plates with various dose of gemcitabine for 48 hours. The population survival cells were determined by MTT assay. **b** The survivin-KD and scrambled control HepJ5 cells were treated with various dose of gemcitabine for 48 hours. The population survival cells were determined by MTT assay. All the experiments were repeated at least 3 times independently. \* $P < 0.05$