



Citation for published version:

Pitt, M, Monks, T, Crowe, S & Vasilakis, C 2015, 'Systems modelling and simulation in health service design, delivery and decision making', *BMJ Quality and Safety*, vol. 25, no. 1, pp. 38-45. <https://doi.org/10.1136/bmjqs-2015-004430>

DOI:

[10.1136/bmjqs-2015-004430](https://doi.org/10.1136/bmjqs-2015-004430)

Publication date:

2015

Document Version

Peer reviewed version

[Link to publication](#)

(C) Copyright Article author (2015). Produced by BMJ Publishing Group Limited under licence.

University of Bath

Alternative formats

If you require this document in an alternative format, please contact:
openaccess@bath.ac.uk

General rights

Copyright and moral rights for the publications made accessible in the public portal are retained by the authors and/or other copyright owners and it is a condition of accessing publications that users recognise and abide by the legal requirements associated with these rights.

Take down policy

If you believe that this document breaches copyright please contact us providing details, and we will remove access to the work immediately and investigate your claim.

Systems modelling and simulation in health service design, delivery and decision making

AUTHORS : Martin Pitt, Tom Monks, Sonya Crowe, Christos Vasilakis

ABSTRACT:

Ever increasing pressures to ensure the most efficient and effective use of limited health service resources have encouraged policy makers to turn to systems modelling solutions. Such techniques have been available for decades, but despite ample research which demonstrates potential, their application in health services to date is limited. This article surveys the breadth of approaches available to support delivery and design across many areas and levels of healthcare planning. A case study in emergency stroke care is presented as an exemplar of an impactful application of health systems modelling. This is followed by a discussion of the key issues surrounding the application of these methods in health, what barriers need to be overcome to ensure more effective implementation, as well as likely developments in the future.

INTRODUCTION:

Internationally, the ever rising demands, costs, and expectations in health services coupled with restricted or even reducing budgets has led inevitably to increasing pressures on health policy makers to ensure efficient and effective use of resources. One response has increasingly been to turn to systems modelling and simulation to assist in the decision making process. Such techniques hold the promise both to improve outcomes and cut costs through an evidence-informed analysis of service design and delivery alternatives.

Systems modelling and simulation (also referred to as operational or operations research) in healthcare has a history dating back over half a century [1], however the vast majority of research in this field has occurred in the last twenty years. Its rapid evolution has been enabled largely by the increasing availability and accessibility of computer technology. There is now a growing interest in the use of these techniques to identify potential service improvements and provide an improved evidence-base for proposed changes in delivery. This has particular resonance in the context of healthcare quality and safety where potential cost savings need to be assessed against risk.

Despite this growing interest, serious and widespread use of systems modelling and simulation in healthcare remains limited. Although there is undoubtedly some history of applying these techniques in healthcare management [2-4] healthcare lags behind other industries where there is a long and proven track record in applying modelling approaches [5]. Few leading car manufacturers or call centre managers, for instance, would think of establishing new operations or make key system changes without running a computer simulation to test differing configurations and minimise the risks associated with full implementation. These approaches, however, are not routine in the management of health care. Despite chief executives, operations managers, clinicians and others seeking tools to improve service organisation, use of modelling and especially the dissemination of modelling products and the application of modelling results in health care, is at best patchy.

This lack of implementation in healthcare contrasts markedly with levels of research in healthcare modelling and simulation. The following excerpts from reviews of the research literature clearly illustrate the ‘implementation gap’ which exists between research and serious application in the field:

‘Despite the increasing numbers of quality papers published in medical or health services research journals we were unable to reach any conclusion on the value of modelling in health care because the evidence of implementation was so scant.’ [6]

‘Despite the wealth of contributions, relatively few academic papers on health issues in OR or MS journals address issues of outcome, implementation or the use of the work reported’ [7]

“Although more than 90% of the publications provided some discussion of the utility of simulation for analyzing changes in the delivery of surgical care, only half reported on simulation models that were constructed to address the needs of managers or policy-makers, and only a quarter reported some involvement of health system managers and policy-makers in the simulation study.”[8]

In this paper, we outline the wide array of modelling and simulation techniques that are available and the range of areas in health where these can be applied. Through a selected case study we demonstrate the potential value and impact of these. We go on to discuss some of the barriers to wider uptake of systems modelling and simulation, despite the broad scope for potential applications, and highlight areas for future developments.

OUTLINE OF APPROACHES

Sometimes lauded as ‘the science of better’[9], operational research (i.e. systems modelling and simulation) encompasses a wide diversity of approaches[10]. These range across a spectrum from so-called ‘soft’ techniques at one end to ‘hard’ techniques at the other. Soft methods include problem structuring and conceptual modelling techniques such as Soft Systems Methodology [11], Strategic Options & Decision Analysis (SODA) and Strategic Choice Approach [12] (see Table 1). These approaches are used to tackle complex and unstructured problems with multiple stakeholders and typically aim to help improve group understanding of the aims of a system, to ask questions of it, and to facilitate team consensus. Such techniques generally employ qualitative methods such as cognitive mapping and extensive interaction with stakeholders through facilitated workshops. Examples of applications of soft methods in health include a study on improving the organisation of multidisciplinary team meetings for colorectal cancer [13] and addressing the gap between patients’ and providers’ expectations in NHS hospital outpatients department [14].

At the other end of the spectrum, hard systems modelling and simulation makes extensive use of mathematical and computer simulation methods to provide quantitative analysis and insights to problems that have a clearer structure, metrics and quantitative outputs. Mathematical methods such as optimisation [15], data envelopment analysis [16], queuing theory [17] use analytical formulations to develop models that fit a problem description under a range of restrictive assumptions. In comparison, computer simulation methods such as system dynamics [18], Monte Carlo [19], discrete event [20] and agent based [21] often allow for fewer assumptions to be used to capture details of the care system at the expense of more complex and time consuming experimentation procedures and some loss of clarity and repeatability in the model. Importantly

these techniques can also often provide clear tools for process visualisation of which can be instrumental in facilitating understanding amongst decision makers.

Approach	Use	Examples of Methods
Qualitative modelling	To build a picture of the current system and structure the problem. To inform dialogue amongst participants help focus and scope on key issues.	Cognitive mapping, Process mapping, Soft Systems Methods (SSM), Strategic Options and Decision Analysis (SODA)
Mathematical modelling	To supports stakeholders in exploring system trade-offs and evaluating different courses of action using quantitative information and outputs.	Regression, Forecasting, Optimisation methods, Queuing Theory, Markov models, Data Envelopment Analysis (DEA)
Simulation	To test 'what-if' scenarios for service design. Determine levels of uncertainty. Provide visualisations, inform clear understanding and dialogue amongst stakeholders.	Discrete event simulation System dynamics Monte Carlo simulation Agent Based simulation Behavioural simulation

Table 1: Outline of methods commonly used in Healthcare Systems Modelling and Simulation

The choice of approach between soft and hard methods is dictated from the objectives of the study and type of problem being addressed. In many cases this choice is clear. If the objective is to bring into consideration the different opinions from a variety of stakeholders, to deal with high uncertainty or to compare strategic options then the choice of a soft method would appear to be more appropriate. If the nature of the study and the type of the decision problem call for forecasts or insights that are quantitative in nature then one of the hard modelling and simulation technique would be more suitable.

Choosing an appropriate hard modelling method for a particular problem can be more challenging and depends on a number of factors such as; the organisational decision support requirements or the research questions for applied health research projects; the presence, coverage and quality of clinical and operational data; the modelling requirements and specifications; the time and resources available; the availability of skills and expertise in the modelling team including the availability of appropriate software tools if such required.

For the purposes of illustration, assume that the choice is between an analytical method, system dynamics and discrete event simulation. The problem being tackled is the organisation of stroke prevention services at the regional level and the objective is to evaluate the likely impact of different options of service organisation on patient outcomes (e.g. life-years saved) and levels of resources required to meet anticipated demand for services.

With analytical modelling we could capture a few of the essential components of the whole system and the flows of patients between those components. Analytical modelling would not allow for much detail of the organisation of the care system to be included in a realistic way. For example, it would be difficult to include many (or any) stochastic elements such as random effects and uncertainties especially at the individual-patient level (e.g. time of stroke onset). Nevertheless, such an approach could potentially provide a first stepping stone (e.g. scoping the problem, identifying data needs) and the resulting model would also be easier to implement into a computerised software tool if required.

With system dynamics modelling, it would be possible to capture aggregate flows of patients, any feedback effect in the care system (which occurs when outputs of part of the system are "fed back" as inputs to another part) and the effects of time delays and non-linear relationships between these flows. Again, the system dynamics methodology does not allow for random effects or information at individual-patient level to be captured. However, it would allow for the analysis of the dynamic interactions between the system components and variables and how these "play out" over time.

Discrete event simulation would give the capacity of capturing individual patients and their unique trajectories as they flow through the entire care system. It would allow the inclusion of random effects and a large number of different patient attributes such as age, gender, CHADS2 score etc. Experimentation with the models could take place over extended time horizons where patients move through the modelled system as they experience events at discrete points in simulated time. Discrete event simulation would finally provide the flexibility to incorporate capacity and resource constraints explicitly and to capture the "competition" between modelled entities (e.g. patients) for access to limited resources (e.g. appointments in clinic). There are however drawbacks such as the need for more and finer grained data to estimate the values of input parameters, longer model implementation times and increased computational costs associated with running experiments.

In this example, discrete event simulation would be the modelling method of choice, if the capacity to track individual patient journeys (or trajectories) through the care system, the ability to capture the complex web of interactions of patients going through the diagnosis stage to various forms of treatment that is informed by the disease progression of each simulated patient, and the need to model notions of limited availability of resources (and their associated costs). System dynamics would be more appropriate if there was no requirement or need to model at the individual patient level or to include random variability in the model. Finally, an analytical method would perhaps be more appropriate if there was no feedback between the different components of the system (or such feedback could be safely ignored for the purposes of the study). An analytical method would also be more appropriate if the resultant model were to be embedded within a software tool.

Traditionally systems modelling and simulation methods have been used in isolation. More recently, there is increasing realisation of the benefits of using a mixture of soft and hard methods in combination. For example, soft methods that allow for the use of a participative and facilitative approach have been used to generate the conceptual model of a care system and the study objectives of a discrete event simulation study. The approach has been illustrated using a case study on the surgical obesity care pathway [22].

CASE STUDY EXAMPLE

Modelling the implementation of stroke thrombolysis

Stroke is major cause of disability internationally, the leading cause of disability in England, and the third most common cause of death worldwide. In the United Kingdom there are over 150,000 strokes each year with 1.2 million post-stroke survivors. A 2009 estimate placed annual costs of stroke in the United Kingdom at £9 billion (€12.3; \$13.6b) [23].

Healthcare systems need to be highly responsive to acute stroke emergencies in order to minimise the substantial costs and consequences associated with stroke survival and rehabilitation [24]. In

recent years, systems modelling and simulation has been used to aid the design of responsive stroke care systems to meet the time sensitive requirements of treating ischemic strokes with recombinant tissue plasminogen activator (rtPA)[24-32]. There is growing evidence that this work leads to implementation changes and real system improvement [33]. Here we provide an overview of the simulation and modelling work conducted by Monks et al [33, 34].

Strong clinical evidence, weakly implemented

The only licensed treatment for acute ischemic stroke is stroke thrombolysis with rtPA. There have been nine rtPA trials and analysis of both the positive and negative trials in two individual patient pooled meta-analyses [35, 36] demonstrate a time dependent effect of treatment with the benefits of treatment diminishing with the passing of every 90 minutes up to four and a half hours (although the maximum time window of benefit is still uncertain [37, 38]) where the harms of the treatment, specifically risk of symptomatic inter-cranial haemorrhage (SICH), outweigh the benefits. Although treatment for rtPA was originally licenced 19 years ago, treatment rates remain low internationally [39]. Part of the explanation for this apparent low uptake is explained by the in-hospital delays in delivering rtPA, for example, poor identification procedures in emergency departments and unnecessary steps before initiating an urgent CT scan or contacting a stroke specialist.

Methods

Our case study hospital is situated in a mixed rural location and cares for over 630 acute strokes per year. In early 2011, annual treatment rates with rtPA stood at ~4% of all acute stroke with an average arrival-to-treatment (ATT) time of 100 minutes. The hospital treated patients up to three hours after onset of stroke, which at the time followed European guidelines for rtPA. A detailed simulation model of both pre-hospital and in-hospital processes was developed that took account of the intra- and between-day variation seen in onset-to-arrival times, emergency department waiting times, scanning and staff availability. This meant for example, that the model would accurately capture when the emergency department was busiest, when suspected stroke patients were most likely to attend the emergency department and when stroke physicians were on call.

The first stage of the modelling was to reproduce the current in-hospital processes and the typical performance seen in terms of treatment rates and onset-to-treatment times (OTT). In addition the model used clinical data about the time dependent effectiveness of rtPA to estimate post-stroke disability and change in workload. The former was operationalized using modified Rankin Scores (mRS) of 0 or 1 at 90 days [40] while the latter was reported as the increase in prioritised scans and urgent callouts of stroke nurse practitioners. Once the project group were confident that the model mimicked the 'status quo' accurately the model was used to estimate the impact of alternative ways to implement the evidence in practice. The most prominent of these were: extending the rtPA treatment window from three to four and a half hours; senior triage nurses alerting the acute stroke unit (ASU) of suspected stroke patients in ED; ambulance paramedics using a phone-ahead protocol to pre-alert of an imminent arrival of a suspected stroke patient; and extended stroke nurse practitioner hours.

Model results and recommendations

The model provided several important insights into the in-hospital process for stroke. Firstly, although extension of the treatment window from three to four and a half hours increased treatment rates this was substantially less than holding the treatment window at three hours and

implementing the in-hospital measures that reduced delays. The most effective of these was a paramedic phone-ahead protocol, although this did not capture the population of strokes that are brought to the ED by a witness. On this basis, it was recommended that both the ED nurse and paramedic protocols were implemented in addition to extending the treatment window. The most expensive option was extension of stroke nurse practitioner hours from 8pm until 12am. The model predicted minimal improvement in treatment rates during this time. This was due to the arrival profile of strokes to the hospital and the constraint that stroke physicians are not on site from 6pm. Overall the model predicted that if changes listed above were implemented treatment rates would increase from 5% to 15% of all acute stroke. Potential bias in modelled results was handled by an exhaustive sensitivity analysis of model input parameters. This demonstrated that variables that had the most significant impact were process variables: the adherence of paramedics and nurses to the early alert protocols. Detailed results are available in Monks et al [33, 34].

Service Evaluation

The project was evaluated using a simple before and after design[33]. This demonstrated that once implementation was complete door to needle times fell from an average of 100 minutes to 55 minutes (as of July 2013). Thrombolysis rates rose to 14.5% (figure 1 and 2). There was no concern that faster treatment had affected safety with a smaller proportion of complications in the after period (since this time there is new evidence that faster treatment reduces the risk of SICH [41]). The latest quarter figures from the Sentinel Stroke National Audit Programme illustrate that improvement has been sustained with a long term thrombolysis rate of 16% [42].

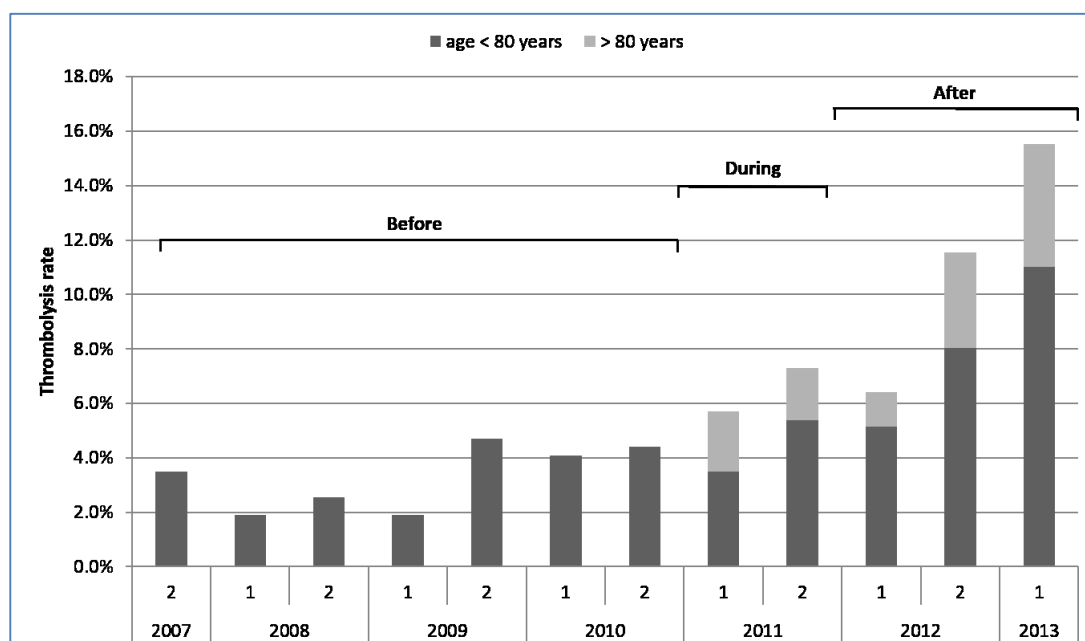


Figure 1. Thrombolysis rate before during and after the modelling project

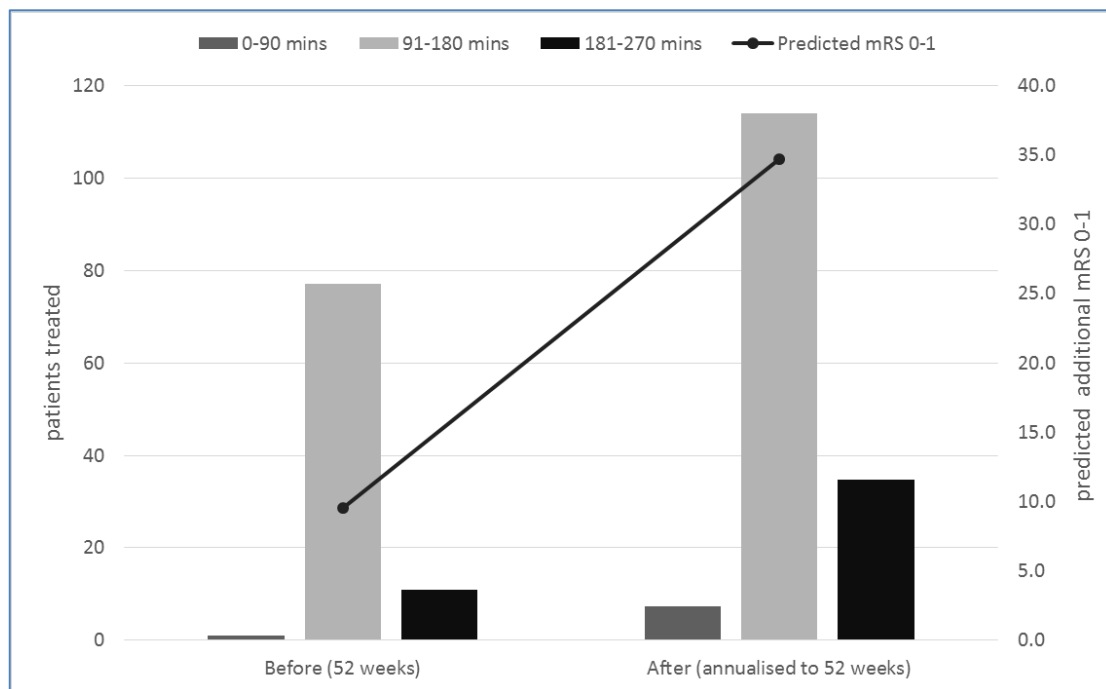


Figure 2: Patients treated by 90 minute epochs and predict mRS 0-1 at 90 days.
 †The period evaluated following the modelling (21 weeks) has been annualised to 52 weeks.

The role of modelling and simulation in organisational learning

Implementation of stroke thrombolysis has proved challenging internationally. The modelling approach adopted in the stroke thrombolysis study directly involved clinicians who administered and facilitated the delivery of thrombolysis in the hospital. This was a key factor in building trust and ownership in the data and results, but also for facilitating organisational learning about where bottlenecks were located in the pathway and how to tackle them effectively. Pathway visualisation provided by the simulation model was also important in this context.

The insights into implementation derived from the modelling are quite general and applicable to other hospitals both nationally and internationally. The work was followed up with three further rural hospitals in the UK. Experiences here indicate that basic process problems for the delivery of rtPA vary considerably and as such it was necessary to conduct bespoke projects (although the same methodological approach was adopted). The benefit of a systems modelling and simulation approach was again to take the project team on a journey from diagnosing problems to investigating solutions.

DISCUSSION

The stroke thrombolysis case study illustrates the potential beneficial insights that systems modelling and simulation can contribute to the design of health services. The discrete event simulation deployed in the example can also be used to address other process-driven problems that are subject both to substantial variability and to capacity constraints, and where there is a clear need to prospectively ask “*what-if?*” and explore the likely impact of any changes. For example, similar techniques have been used to address accident and emergency departments [43-45], hospital pharmacies [46], intensive care units[47] and diabetic retinopathy screening services [48].

In addition, there are numerous examples of other systems modelling and simulation techniques which have been applied successfully in healthcare. Table 2 summarises a selection of these to give a flavour of the potential range.

Issue Addressed	Techniques Applied	Outputs
Capacity Planning for Emergency Medical Services Modelling in Wales	Forecasting, queueing theory, scheduling, location analysis and discrete event simulation integrated into workforce capacity planning tools	A workforce capacity planning tool allowing planners to predict future demand levels, evaluate fleet size to meet government targets, and develop efficient rosters for vehicle and crew members.
Application of Simulation and Queueing Theory to Scheduling Community Mental Health Assessment	Queueing Theory Discrete Event Simulation	Choose and book system implemented. A significant reduction in waiting times achieved. The system rolled out across Devon
Simulation of Orthopaedic Services to model ways to achieve NHS 18 week targets	Pathway mapping Problem Structuring Discrete Event Simulation	The modelling process engaged clinicians who are now able to propose significant process improvement ideas and to test their preferred solutions which were then implemented.
Operational Researchers worked with leading surgeons to develop monitoring tool now used world-wide	Mathematical Risk Model Visualisation tools	Used by most cardiac surgery units in the UK and many worldwide. Adapted to monitor other clinical outcomes such as survival following myocardial infarction, occurrence of surgical wound infections and neonatal deaths.
Exploring the impact of implementing the National Dementia Strategy	Problem Structuring System Dynamics	Supported business case for strategic implementation of Dementia care plan at local level.
A geographic model designed to analyse scenarios of demand following a proposed hospital relocation.	Geographical modelling Forecasting	Provided essential guidance for strategic planning and demand management for hospital relocation.
Improving Access to Psychological Therapies	Pathway mapping Discrete event simulation Workforce planning models	Provided a basis for workforce planning and designing responsive service.

Table 2: Some examples of Systems Modelling and Simulation application in Healthcare *(taken from UK Modelling and Simulation in Healthcare - MASHnet website [49] and Pitt et al. [50])*

The majority of applications address operational issues although others tackle problems of a strategic nature, warranting a different type of approach. For example, the highly detailed micro-level simulation of an acute stroke pathway as illustrated above is rather different to macro-level techniques aimed at modelling broader sections of the health system over longer time horizons. Systems modelling and simulation projects of the latter nature often investigate the interconnectedness of healthcare systems, expose feedback loops that reinforce or self-correct behaviour and help to identify strategic intervention points in a system. This is nicely illustrated by the research of Brailsford et al. in which they construct a macro-level model of the healthcare system in Nottingham (UK) covering primary, secondary and community based services [51]. Their macro-level modelling was used strategically and identified that reducing acute admissions from a small group of long stay patients was more effective in reducing hospital occupancy than reducing discharge delays for a large group of patients.

Applying modelling in healthcare settings has its challenges, however. Perhaps the most widely bemoaned by systems modellers is a lack of reliable and/or comprehensive data, although thoughtful sensitivity analyses can often identify the circumstances in which one can nonetheless be confident in drawing insights from a model. In any case, data-free or conceptual modelling can facilitate learning about how a system works and may behave under given changes, whilst the modelling *process* (e.g. bringing diverse stakeholders together to think through a particular issue) may prove to be of intrinsic value to decision-makers in and of itself (as in our case study, for example).

Beyond data issues are the broader challenges of attempting to influence change within the complex, diverse and highly interactive dynamics of health service organisations. For example, systems modellers can encounter difficulties attempting to develop generic and standardised approaches that can be applied across institutions and for different periods of time. In our case study, the problems faced by different rural hospitals for the delivery of rtPA varied sufficiently to necessitate bespoke modelling (albeit using the same methodological approach), illustrating the importance within systems modelling of drawing appropriately from a range of possible approaches to address the specifics of the problem at hand. Indeed, within the systems modelling community, successful implementation is generally thought to result from appropriate problem diagnosis and choice of modelling strategy, coupled with effective engagement with service managers and practitioners [52]. Wider learning in the field of quality improvement would suggest that it may also be influenced by many other contextual factors (e.g. cultural, financial, political and regulatory) known to affect other healthcare interventions. However, the systems modelling literature focuses heavily on technical methodology and there is no natural home for dissemination about the process of implementation and contextual influences, nor accounts of projects that fail [53]; further research specifically relating to modelling is needed to understand better the factors that influence its effectiveness and generalisability across settings, and where possible take account of these. Additionally, few studies clearly and systematically evaluate the benefits or otherwise of modelling [54]. Devising viable methods to isolate and assess the contribution of a modelling process to the overall outcome of an intervention is admittedly challenging, yet scepticism may legitimately remain as to the effectiveness of systems modelling unless methods for evaluating it are strengthened and applied.

A further barrier to more wide spread use of modelling in healthcare is the lack of capacity within health service organisations of staff with sufficient technical training and capabilities to conduct the modelling themselves, or to be predisposed to adopting analytical and mathematical tools for supporting decision-making. The rarity of effective patient and public involvement in modelling and simulation is also disappointing and an important area for further development (see, for example, [55]). Strengthening partnerships with health organisations and service users is a priority for increasing the relevance and application of academic systems modelling.

Notwithstanding these challenges, systems modelling and simulation is arguably playing an increasing role in healthcare. Our case study and a growing number of publications [56, 57] demonstrate that these methods can, and have been, applied within a number of healthcare areas. However, we are still a long way from systems modelling and simulation contributing widespread impactful change within healthcare. In looking to bridge the 'implementation gap', in which the majority of academic systems modelling fails to be applied effectively in practice [6], we may be wise

to shift our focus from striving to develop ever better technical solutions to drawing on the knowledge and experience of other disciplines about organisational change and quality improvement in order to learn how to conduct and apply systems modelling more effectively [58].

REFERENCES:

1. Fetter, R.B. and J.D. Thompson, *The simulation of hospital systems*. Operations Research, 1965. **13**: p. 689-711.
2. Boldy, D., *Operational Research Applied to the Health Services* 1981: Croom Helm.
3. Luck, G.M., et al., *Patients, Hospitals and Operational Research* 1971: Tavistock.
4. Pierskalla, W.P. and D.J. Brailer, *Applications of Operations Research in Health Care Delivery*, in *Handbooks in OR and MS vol. 6*, S.M.Pollock and et al., Editors. 1994, Elsevier.
5. Young, T., et al., *Using industrial processes to improve patient care*. BMJ, 2004: p. 162-164.
6. Fone, D., et al., *Systematic review of the use and value of computer simulation modelling in population health and health care delivery*. Journal of Public Health Medicine, 2003. **25**(4): p. 325-335.
7. Davies, R. and D. Bensley, *Special Issue: Meeting Health Challenges with OR*. Journal of the Operational Research Society, 2005. **56**(2): p. 123-125.
8. Sobolev, B., V. Sanchez, and C. Vasilakis, *Systematic review of the use of computer simulation modeling of patient flow in surgical care*. Journal of Medical Systems, 2011. **35**: p. 1-16.
9. UK, T.O.S., *The Guide to Operational Research*, T.O. Society, Editor 2004.
10. Jun, J.B., S.H. Jacobson, and J.R. Swisher, *Applications of discrete event simulation in health care clinics: a survey*. Journal of the Operational Research Society, 1999. **50**: p. 109-123.
11. Checkland, P., *Systems thinking, systems practice: includes a 30-year retrospective* 1999, Chichester: John Wiley.
12. Mingers, J. and J. Rosenhead, *Rational analysis for a problematic world revisited : problem structuring methods for complexity, uncertainty and conflict*. 2nd ed 2001, Chichester ; New York: Wiley. xvi, 366 p.
13. Kotiadis, K., et al., *Using a model of the performance measures in Soft Systems Methodology (SSM) to take action: a case study in health care*. Journal of the Operational Research Society, 2013. **64**(1): p. 125-137.
14. Lehaney, B., S.A. Clarke, and R.J. Paul, *A case of an intervention in an outpatients department*. Journal of the Operational Research Society, 1999. **50**(9): p. 877-891.
15. Denton, B., J. Viapiano, and A. Vogl, *Optimization of surgery sequencing and scheduling decisions under uncertainty*. Health Care Management Science, 2007 **10**: p. 13-24.
16. Charnes, A., W. Cooper, and E. Rhodes, *Measuring the efficiency of decision-making units*. European Journal of Operational Research, 1978. **2**: p. 429-444.
17. Gupta, B.D.D., *Appointment Scheduling in Health care: Challenges and Opportunities*. IIE Transactions, 2008. **40**: p. 800-819.
18. Sterman, J., *Business dynamics : systems thinking and modeling for a complex world* 2000, Boston: Irwin/McGraw-Hill. xxvi, 982 p.
19. Berg, B., *Markov Chain Monte Carlo Simulations and Their Statistical Analysis* 2004, Hackensack, NJ: World Scientific.
20. Law, A., *Simulation Modelling and analysis. 4th ed.* : 2006: McGraw-Hill
21. Gilbert, N. and S. Banks, *Platforms and methods for agent-based modeling*. Proceedings of the National Academy of Sciences, 2002. **99**(90003): p. 7197-7198.
22. Kotiadis, K., A.A. Tako, and C. Vasilakis, *A participative and facilitative conceptual modelling framework for discrete event simulation studies in healthcare*. Journal of the Operational Research Society, 2014. **65**(2): p. 197-213.

23. Saka, O., et al., *Cost-Effectiveness of Stroke Unit Care Followed by Early Supported Discharge*. Stroke, 2009. **40** p. 24-29.
24. Monks, T., et al., *Hyperacute stroke care and NHS England's business plan*. BMJ, 2014. **348**.
25. Monks T, et al., *Maximising the population benefit from thrombolysis in acute ischemic stroke: a modeling study of in-hospital delays*. Stroke 2012. **43**(10): p. 2706-11.
26. Bayer, S., et al., *Facilitating stroke care planning through simulation modelling*. Health Informatics Journal, 2010. **16**(2): p. 129-143.
27. Churilov, L. and G.A. Donnan, *Operations Research for stroke care systems: An opportunity for The Science of Better to do much better*. Operations Research for Health Care, 2012. **1**(1): p. 6-15.
28. Churilov, L., et al., *Decision support in pre-hospital stroke care operations: A case of using simulation to improve eligibility of acute stroke patients for thrombolysis treatment*. Computers & Operations Research, 2013. **40**(9): p. 2208-2218.
29. Lahr, M.M.H., et al., *A Simulation-based Approach for Improving Utilization of Thrombolysis in Acute Brain Infarction*. Medical Care, 2013. **51**(12): p. 1101-1105
10.1097/MLR.0b013e3182a3e505.
30. Lahr, M.M.H., et al., *Thrombolysis in Acute Ischemic Stroke: A Simulation Study to Improve Pre- and in-Hospital Delays in Community Hospitals*. PloS one, 2013.
31. Pitt, M., et al., *Will Delays in Treatment Jeopardize the Population Benefit From Extending the Time Window for Stroke Thrombolysis?* Stroke, 2012. **43**(11): p. 2992-2997.
32. Barton, M., et al., *Is it beneficial to increase the provision of thrombolysis?-- a discrete-event simulation model*. Qjm, 2012. **105**(7): p. 665-73.
33. Monks, T., et al., *Evaluating the impact of a simulation study in emergency stroke care*. Operations Research for Health Care, 2015. **IN PRESS**.
34. Monks, T., et al., *Maximizing the population benefit from thrombolysis in acute ischemic stroke: a modeling study of in-hospital delays*. Stroke, 2012. **43**(10): p. 2706-2711.
35. Lees, K.R., et al., *Time to treatment with intravenous alteplase and outcome in stroke: an updated pooled analysis of ECASS, ATLANTIS, NINDS and EPITHET trials*. The Lancet, 2010. **375**: p. 1695-1703.
36. Emberson, J., et al., *Effect of treatment delay, age, and stroke severity on the effects of intravenous thrombolysis with alteplase for acute ischaemic stroke: a meta-analysis of individual patient data from randomised trials*. The Lancet, 2014. **384**(9958): p. 1929-35.
37. Alper, B.S., et al., *Thrombolysis in acute ischaemic stroke: time for a rethink?* Vol. 350. 2015.
38. Wardlaw, J.M., et al., *Recombinant tissue plasminogen activator for acute ischaemic stroke: an updated systematic review and meta-analysis*. The Lancet, 2012. **379**(9834): p. 2364-2372.
39. Pitt MA, et al., *Will delays in treatment jeopardise the population benefit from extending the time window for stroke thrombolysis?* Stroke, 2012. **43**(11): p. 2992-7.
40. Banks, J. and C. Marotta, *Outcomes validity and reliability of the modified Rankin scale: a literature review and synthesis*. Stroke, 2007. **38**: p. 1091-1096.
41. Saver, J.L., et al., *Time to treatment with intravenous tissue plasminogen activator and outcome from acute ischemic stroke*. Jama, 2013. **309**(23): p. 2480-8.
42. Party., I.S.W., *Sentinel Stroke National Audit Programme (SSNAP) July to September 2014*, 2014.
43. Günal, M.M. and M. Pidd, *Understanding target-driven action in emergency department performance using simulation*. Emergency Medicine Journal, 2009. **26**(10): p. 724-727.
44. Eatock, J., et al., *Meeting the four-hour deadline in an A&E department*. Journal of Health Organization and Management, 2011. **25**(6): p. 606-24.
45. Bowers, J., M. Ghattas, and G. Mould, *Success and failure in the simulation of an Accident and Emergency department*. Journal of Simulation, 2009. **3**(3): p. 171-178.

46. Reynolds, M., et al., *Using discrete event simulation to design a more efficient hospital pharmacy for outpatients*. Health Care Manag Sci, 2011. **14**(3): p. 223-36.
47. Griffiths, J.D., et al., *Modelling the requirement for supplementary nurses in an intensive care unit*. J Oper Res Soc, 2004. **56**(2): p. 126-133.
48. Davies, R., et al., *Using simulation modelling for evaluating screening services for diabetic retinopathy*. J Oper Res Soc, 2000. **51**(4): p. 476-484.
49. MASHnet. *MASHnet - The UK Network of Modelling and Simulation in Healthcare*. 2014 [cited 2014 12 June]; Available from: www.mashnet.info.
50. Pitt, M., T. Monks, and M. Allen, *Systems modelling for improving healthcare*, in *Complex interventions in health: an overview of research methods*, D. Richards and I. Rahm Hallberg, Editors. 2015, Routledge: London.
51. Brailsford, S.C., et al., *Emergency and on-demand health care: modelling a large complex system*. Journal of the Operational Research Society, 2004. **55**(1): p. 34-42.
52. Harper PR and Pitt MA, *On the Challenges of Healthcare Modelling and a Proposed Project Life-Cycle for Successful Implementation*. Journal of the Operational Research Society, 2004. **55**(6): p. 657-661.
53. Utley, M., *Editorial*. Operations Research for Health Care, 2013. **2**(4): p. 65.
54. Virtue, A., T. Chausalet, and J. Kelly, *Healthcare planning and its potential role increasing operational efficiency in the health sector: A viewpoint*. Journal of Enterprise Information Management, 2013. **26**(1): p. 12.
55. Pearson, M., et al., *Involving patients and the public in healthcare operational research-The challenges and opportunities*. Operations Research for Health Care, 2013. **2**(4).
56. Katsaliaki, K. and N. Mustafee, *Applications of simulation within the healthcare context*. Journal of the Operational Research Society, 2011. **62**: p. 1431-1451.
57. Brailsford SC, et al., *An Analysis of the Academic Literature on Simulation and Modelling in Healthcare*. Journal of Simulation, 2009. **3**(3): p. 130-140.
58. Utley, M., *Editorial*. Operations Research for Health Care, 2012. **1**(1): p. iv-v.