

# T test as a parametric statistic

Tae Kyun Kim

*Department of Anesthesia and Pain Medicine, Pusan National University School of Medicine, Busan, Korea*

In statistic tests, the probability distribution of the statistics is important. When samples are drawn from population  $N(\mu, \sigma^2)$  with a sample size of  $n$ , the distribution of the sample mean  $\bar{X}$  should be a normal distribution  $N(\mu, \sigma^2/n)$ . Under the null hypothesis  $\mu = \mu_0$ , the distribution of statistics  $z = \frac{\bar{X} - \mu_0}{\sigma/\sqrt{n}}$  should be standardized as a normal distribution. When the variance of the population is not known, replacement with the sample variance  $s^2$  is possible. In this case, the statistics  $\frac{\bar{X} - \mu_0}{s/\sqrt{n}}$  follows a t distribution ( $n-1$  degrees of freedom). An independent-group t test can be carried out for a comparison of means between two independent groups, with a paired t test for paired data. As the t test is a parametric test, samples should meet certain preconditions, such as normality, equal variances and independence.

**Key Words:** Biostatistics, Matched-pair analysis, Normal distribution, Probability.

## Introduction

A t test is a type of statistical test that is used to compare the means of two groups. It is one of the most widely used statistical hypothesis tests in pain studies [1]. There are two types of statistical inference: parametric and nonparametric methods. Parametric methods refer to a statistical technique in which one defines the probability distribution of probability variables and makes inferences about the parameters of the distribution. In cases in which the probability distribution cannot be defined, nonparametric methods are employed. T tests are a type of parametric method; they can be used when the samples satisfy the

conditions of normality, equal variance, and independence.

T tests can be divided into two types. There is the independent t test, which can be used when the two groups under comparison are independent of each other, and the paired t test, which can be used when the two groups under comparison are dependent on each other. T tests are usually used in cases where the experimental subjects are divided into two independent groups, with one group treated with A and the other group treated with B. Researchers can acquire two types of results for each group (i.e., prior to treatment and after the treatment): preA and postA, and preB and postB. An independent t test can be used for an intergroup comparison of postA and postB or for an intergroup comparison of changes in preA to postA (postA-preA) and changes in preB to postB (postB-preB) (Table 1).

On the other hand, paired t tests are used in different experimental environments. For example, the experimental subjects are not divided into two groups, and all of them are treated initially with A. The amount of change (postA-preA) is then measured for all subjects. After all of the effects of A disappear, the subjects are treated with B, and the amount of change (postB-preB) is measured for all of the subjects. A paired t test is used in such crossover test designs to compare the amount of change of A to that of B for the same subjects (Table 2).

Corresponding author: Tae Kyun Kim, M.D., Ph.D.

Department of Anesthesia and Pain Medicine, Pusan National University School of Medicine, 20, Geumo-ro, Mulgeum-eup, Yangsan 50612, Korea  
Tel: 82-51-360-2129, Fax: 82-51-360-2149

E-mail: anesktk@pusan.ac.kr

ORCID: <http://orcid.org/0000-0002-4790-896X>

Received: July 10, 2015.

Revised: August 19, 2015.

Accepted: September 7, 2015.

Korean J Anesthesiol 2015 December 68(6): 540-546

<http://dx.doi.org/10.4097/kjae.2015.68.6.540>

**Table 1.** Example of an Independent T test

Treatment A				Treatment B			
ID	preA	postA	ΔA	ID	preB	postB	ΔB
1	63	77	14	11	81	101	20
2	69	88	19	12	87	103	16
3	76	90	14	13	77	107	30
4	78	95	17	14	80	114	34
5	80	96	16	15	76	116	40
6	89	96	7	16	86	116	30
7	90	102	12	17	98	116	18
8	92	104	12	18	87	120	33
9	103	110	7	19	105	120	15
10	112	115	3	20	69	127	58

ID: individual identification, preA, preB: before the treatment A or B, postA, postB: after the treatment A or B, ΔA, ΔB: difference between before and after the treatment A or B.

**Table 2.** Example of a Paired T test

Treatment A				Treatment B			
ID	preA	postA	ΔA	ID	preB	postB	ΔB
1	63	77	14	1	73	103	30
2	69	88	19	2	74	104	30
3	76	90	14	3	76	107	31
4	78	95	17	4	84	108	24
5	80	96	16	5	84	110	26
6	89	96	7	6	86	110	24
7	90	102	12	7	92	113	21
8	92	104	12	8	95	114	19
9	103	110	7	9	103	118	15
10	112	115	3	10	115	120	5

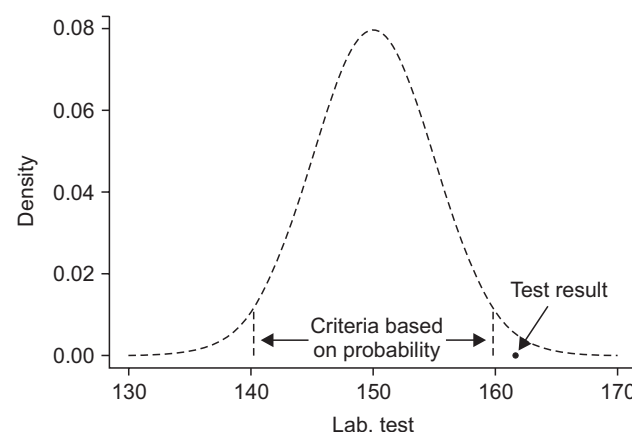
ID: individual identification, preA, preB: before the treatment A or B, postA, postB: after the treatment A or B, ΔA, ΔB: difference between before and after the treatment A or B.

### Statistic and Probability

Statistics is basically about probabilities. A statistical conclusion of a large or small difference between two groups is not based on an absolute standard but is rather an evaluation of the probability of an event. For example, a clinical test is performed to determine whether or not a patient has a certain disease. If the test results are either higher or lower than the standard, clinicians will determine that the patient has the disease despite the fact that the patient may or may not actually have the disease. This conclusion is based on the statistical concept which holds that it is more statistically valid to conclude that the patient has the disease than to declare that the patient is a rare case among people without the disease because such test results are statistically rare in normal people.

The test results and the probability distribution of the results must be known in order for the results to be determined as statistically rare. The criteria for clinical indicators have been established based on data collected from an entire population or at least from a large number of people. Here, we examine a case in which a clinical indicator exhibits a normal distribution with a mean of  $\mu$  and a variance of  $\sigma^2$ . If a patient's test result is  $\chi$ , is this statistically rare against the criteria (e.g., 5 or 1%)? Probability is represented as the surface area in a probability distribution, and the z score that represents either 5 or 1%, near the margins of the distribution, becomes the reference value. The test result  $\chi$  can be determined to be statistically rare compared to the reference probability if it lies in a more marginal area than the z score, that is, if the value of  $\chi$  is located in the marginal ends of the distribution (Fig. 1).

This is done to compare one individual's clinical indicator value. This however raises the question of how we would compare the mean of a sample group (consisting of more than one

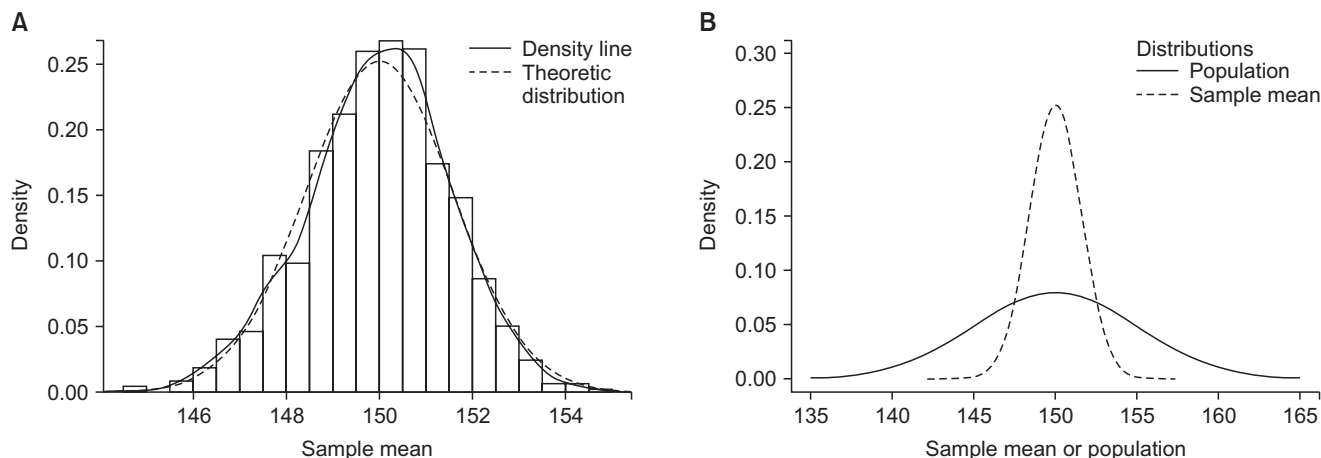


**Fig. 1.** The determination of whether the laboratory finding is abnormal is done according to the probability that the laboratory finding occurs in the distribution of the population.

individual) against the population mean. Again, it is meaningless to compare each individual separately; we must compare the means of the two groups. Thus, do we make a statistical inference using only the distribution of the clinical indicators of the entire population and the mean of the sample? No. In order to infer a statistical possibility, we must know the indicator of interest and its probability distribution. In other words, we must know the mean of the sample and the distribution of the mean. We can then determine how far the sample mean varies from the population mean by knowing the sampling distribution of the means.

### Sampling Distribution (Sample Mean Distribution)

The sample mean we can get from a study is one of means of



**Fig. 2.** Simulation of sampling distribution. (A) A histogram of the sample mean distribution which results from 1,000 samples from population  $N(150, 5^2)$  with a sample size of 10. The simulated density line shows a distribution similar to the theoretical sampling distribution  $N(150, 5^2/10)$ . (B) Comparison of the shapes between the population and the sampling distribution.

all possible samples which could be drawn from a population. This sample mean from a study was already acquired from a real experiment, however, how could we know the distribution of the means of all possible samples including studied sample? Do we need to experiment it over and over again? The simulation in which samples are drawn repeatedly from a population is shown in Fig. 2. If samples are drawn with sample size  $n$  from population of normal distribution  $(\mu, \sigma^2)$ , the sampling distribution shows normal distribution with mean of  $\mu$  and variance of  $\sigma^2/n$ . The number of samples affects the shape of the sampling distribution. That is, the shape of the distribution curve becomes a narrower bell curve with a smaller variance as the number of samples increases, because the variance of sampling distribution is  $\sigma^2/n$ . The formation of a sampling distribution is well explained in Lee et al. [2] in a form of a figure.

### T Distribution

Now that the sampling distribution of the means is known, we can locate the position of the mean of a specific sample against the distribution data. However, one problem remains. As we noted earlier, the sampling distribution exhibits a normal distribution with a variance of  $\sigma^2/n$ , but in reality we do not know  $\sigma^2$ , the variance of the population. Therefore, we use the sample variance instead of the population variance to determine the sampling distribution of the mean. The sample variance is defined as follows:

$$s^2 = \frac{\sum(x_i - \bar{x})^2}{n-1}$$

In such cases in which the sample variance is used, the sampling distribution follows a t distribution that depends on the

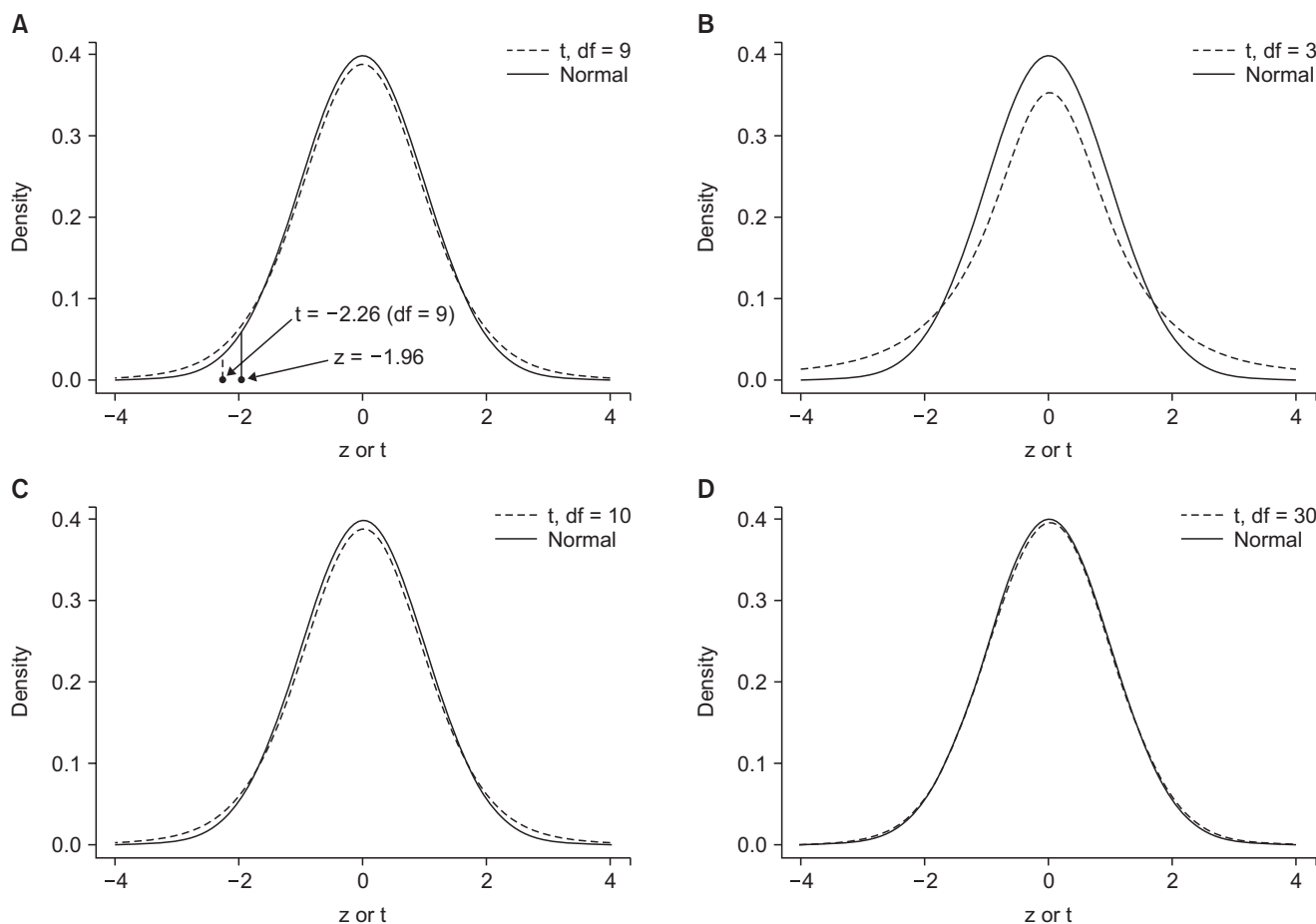
0degree of freedom of each sample rather than a normal distribution (Fig. 3).

### Independent T test

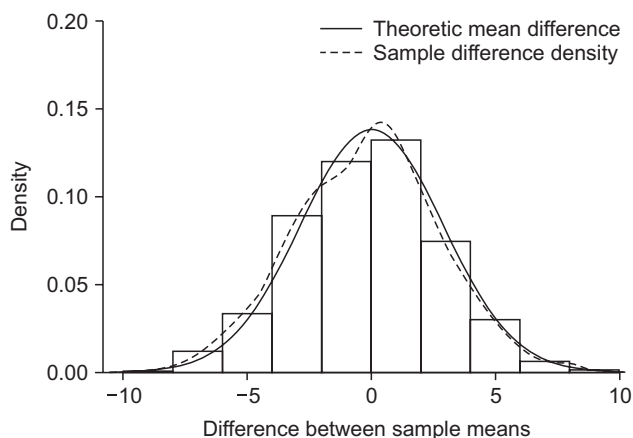
A t test is also known as Student’s t test. It is a statistical analysis technique that was developed by William Sealy Gosset in 1908 as a means to control the quality of dark beers. A t test used to test whether there is a difference between two independent sample means is not different from a t test used when there is only one sample (as mentioned earlier). However, if there is no difference in the two sample means, the difference will be close to zero. Therefore, in such cases, an additional statistical test should be performed to verify whether the difference could be said to be equal to zero.

Let’s extract two independent samples from a population that displays a normal distribution and compute the difference between the means of the two samples. The difference between the sample means will not always be zero, even if the samples are extracted from the same population, because the sampling process is randomized, which results in a sample with a variety of combinations of subjects. We extracted two samples with a size of 6 from a population  $N(150, 5^2)$  and found the difference in the means. If this process is repeated 1,000 times, the sampling distribution exhibits the shape illustrated in Fig. 4. When the distribution is displayed in terms of a histogram and a density line, it is almost identical to the theoretical sampling distribution:  $N(0, 2 \times 5^2/6)$  (Fig. 4).

However, it is difficult to define the distribution of the difference in the two sample means because the variance of the population is unknown. If we use the variance of the sample instead,



**Fig. 3.** Comparison between a normal distribution and a t distribution. (A) The point  $t(-2.25, df = 9)$  corresponding to a probability of 0.025 for a t distribution is located more toward the tail than that of  $z$  for a normal distribution. (B–D) As the degree of freedom of the t distribution increases, the t distribution becomes closer to a normal distribution.



**Fig. 4.** Simulation of the difference between the sample means. A histogram of the difference in the sample means as sampled from population  $N(\mu, \sigma^2)$  with a sample size of 6 in each case. The density line of the simulation is becoming close to the theoretical normal distribution.

the distribution of the difference of the samples means would follow a t distribution. It should be noted, however, that the two samples display a normal distribution and have an equal variance because they were independently extracted from an identical population that has a normal distribution.

Under the assumption that the two samples display a normal distribution and have an equal variance, the t statistic is as follows:

$$t = \frac{(\bar{X}_1 - \bar{X}_2) - (\mu_1 - \mu_2)}{s_{(1+2)} \sqrt{\frac{1}{n_1} + \frac{1}{n_2}}} \sim t(n_1 + n_2 - 2)$$

population mean difference  $(\mu_1 - \mu_2)$  was assumed to be 0; thus:

$$t = \frac{\bar{X}_1 - \bar{X}_2}{s_{(1+2)} \sqrt{\frac{1}{n_1} + \frac{1}{n_2}}}$$

The population variance was unknown and so a pooled variance of the two samples was used:

$$S_{(1+2)}^2 = \frac{(n_1-1)s_1^2 + (n_2-1)s_2^2}{n_1+n_2-2}$$

However, if the population variance is not equal, the t statistic of the t test would be

$$t = \frac{\bar{x}_1 - \bar{x}_2}{\sqrt{\frac{s_1^2}{n_1} + \frac{s_2^2}{n_2}}}$$

and the degree of freedom is calculated based on the Welch Satterthwaite equation.

It is apparent that if  $n_1$  and  $n_2$  are sufficiently large, the t statistic resembles a normal distribution (Fig. 3).

A statistical test is performed to verify the position of the difference in the sample means in the sampling distribution of the mean (Fig. 4). It is statistically very rare for the difference in two sample means to lie on the margins of the distribution. Therefore, if the difference does lie on the margins, it is statistically significant to conclude that the samples were extracted from two different populations, even if they were actually extracted from the same population.

### Paired T test

Paired t tests can be categorized as a type of t test for a single sample because they test the difference between two paired results. If there is no difference between the two treatments, the difference in the results would be close to zero; hence, the difference in the sample means used for a paired t test would be 0.

Let's go back to the sampling distribution that was used in the independent t test discussed earlier. The variance of the difference between two independent sample means was represented as the sum of each variance. If the samples were not independent, the variance of the difference of two variables A and B, Var (A-B), can be shown as follows,

$$\text{Var}(A - B) = \sigma_1^2 + \sigma_2^2 - 2\rho\sigma_1\sigma_2,$$

where  $\sigma_1^2$  is the variance of variable A,  $\sigma_2^2$  is the variance of variable B, and  $\rho$  is the correlation coefficient for the two variables. In an independent t test, the correlation coefficient is 0 because the two groups are independent. Thus, it is logical to show the variance of the difference between the two variables simply as the sum of the two variances. However, for paired variables, the correlation coefficient may not equal 0. Thus, the t statistic for two dependent samples must be different, meaning the following t statistic,

$$t = \frac{\bar{x}_1 - \bar{x}_2}{S_{(1+2)} \sqrt{\frac{1}{n_1} + \frac{1}{n_2}}},$$

must be changed. First, the number of samples are paired; thus,  $n_1 = n_2 = n$ , and their variance can be represented as  $s_1^2 + s_2^2 - 2\rho s_1 s_2$  considering the correlation coefficient. Therefore, the t statistic for a paired t test is as follows:

$$t = \frac{\bar{x}_1 - \bar{x}_2}{\sqrt{\frac{s_1^2 + s_2^2 - 2\rho s_1 s_2}{n}}}$$

In this equation, the t statistic is increased if the correlation coefficient is greater than 0 because the denominator becomes smaller, which increases the statistical power of the paired t test compared to that of an independent t test. On the other hand, if the correlation coefficient is less than 0, the statistical power is decreased and becomes lower than that of an independent t test. It is important to note that if one misunderstands this characteristic and uses an independent t test when the correlation coefficient is less than 0, the generated results would be incorrect, as the process ignores the paired experimental design.

### Assumptions

As previously explained, if samples are extracted from a population that displays a normal distribution but the population variance is unknown, we can use the sample variance to examine the sampling distribution of the mean, which will resemble a t distribution. Therefore, in order to reach a statistical conclusion about a sample mean with a t distribution, certain conditions must be satisfied: the two samples for comparison must be independently sampled from the same population, satisfying the conditions of normality, equal variance, and independence.

Shapiro's test or the Kolmogorov-Smirnov test can be performed to verify the assumption of normality. If the condition of normality is not met, the Wilcoxon rank sum test (Mann-Whitney U test) is used for independent samples, and the Wilcoxon sign rank test is used for paired samples for an additional nonparametric test.

The condition of equal variance is verified using Levene's test or Bartlett's test. If the condition of equal variance is not met, nonparametric test can be performed or the following statistic which follows a t distribution can be used.

$$\frac{\bar{x}_1 - \bar{x}_2}{\sqrt{\frac{s_1^2}{n_1} + \frac{s_2^2}{n_2}}}$$

However, this statistics has different degree of freedom which was calculated by the Welch-Satterthwaite [3,4] equation.

## Conclusion

Owing to user-friendly statistics software programs, the rich pool of statistics information on the Internet, and expert advice from statistics professionals at every hospital, using and processing statistics data is no longer an intractable task. However, it remains the researchers' responsibility to design experiments to fulfill all of the conditions of their statistic methods of choice and to ensure that their statistical assumptions are appropriate. In particular, parametric statistical methods confer reasonable statistical conclusions only when the statistical assumptions are fully met. Some researchers often regard these statistical assumptions inconvenient and neglect them. Even some statisticians argue on the basic assumptions, based on the central limit theory, that sampling distributions display a normal distribution regardless of the fact that the population distribution may or

may not follow a normal distribution, and that t tests have sufficient statistical power even if they do not satisfy the condition of normality [5]. Moreover, they contend that the condition of equal variance is not so strict because even if there is a nine-fold difference in the variance, the  $\alpha$  level merely changes from 0.5 to 0.6 [6]. However, the arguments regarding the conditions of normality and the limit to which the condition of equal variance may be violated are still bones of contention. Therefore, researchers who unquestioningly accept these arguments and neglect the basic assumptions of a t test when submitting papers will face critical comments from editors. Moreover, it will be difficult to persuade the editors to neglect the basic assumptions regardless of how solid the evidence in the paper is. Hence, researchers should sufficiently test basic statistical assumptions and employ methods that are widely accepted so as to draw valid statistical conclusions.

## References

1. Yim KH, Nahm FS, Han KA, Park SY. Analysis of statistical methods and errors in the articles published in the Korean journal of pain. *Korean J Pain* 2010; 23: 35-41.
2. Lee DK, In J, Lee S. Standard deviation and standard error of the mean. *Korean J Anesthesiol* 2015; 68: 220-3.
3. Welch BL. The generalisation of student's problems when several different population variances are involved. *Biometrika* 1947; 34: 28-35.
4. Satterthwaite FE. An approximate distribution of estimates of variance components. *Biometrics* 1946; 2: 110-4.
5. Lumley T, Diehr P, Emerson S, Chen L. The importance of the normality assumption in large public health data sets. *Annu Rev Public Health* 2002; 23: 151-69.
6. Box GEP. Some theorems on quadratic forms applied in the study of analysis of variance problems, I. Effect of inequality of variance in the one-way classification. *Ann Math Statist* 1954; 25: 290-302.

## Appendix

The results of independent and paired t tests of the examples are illustrated in Tables 1 and 2. The tests were conducted using the SPSS Statistics Package (IBM® SPSS® Statistics 21, SPSS Inc., Chicago, IL, USA).

### Independent T test (Table 1)

#### Group Statistics

Independent t test	N	Mean	Standard deviation	Standard error of the mean
ΔA	10	12.1000	5.04315	1.59478
ΔB	10	29.4000	13.20942	4.17719

#### Normality Test

Independent t test	Kolmogorov-smirnov			Shapiro-wilk		
	Statistic	df	P	Statistic	df	P
ΔA	0.192	10	0.200*	0.947	10	0.635
ΔB	0.164	10	0.200*	0.900	10	0.218

df: degree of freedom.

#### Independent Samples Test

Independent t test		Levene's test for equality of variance		t test for equality of means		
		F	Sig.	t	df	P (2-tailed)
Between	Equal variance assumed	4.340	0.052	-3.869	18	0.001
ΔA and ΔB	Equal variance not assumed			-3.869	11.569	0.002

df: degree of freedom.

First, we need to examine the degree of normality by confirming the Kolmogorov-Smirnov or Shapiro-Wilk test in the second table. We can determine that the samples satisfy the condition of normality because the P value is greater than 0.05. Next, we check the results of Levene's test to examine the equality of variance. The P value is again greater than 0.05; hence, the condition of equal variance is also met. Finally, we read the significance probability for the "equal variance assumed" line. If the condition of equal variance is not met (i.e., if the P value is less than 0.05 for Levene's test), we reach a conclusion by referring to the significance probability for the "equal variance not assumed" line, or we perform a nonparametric test.

### Paired T test (Table 2)

#### Paired Samples Statistics

Paired t test	Mean	N	Standard deviation	Standard error of the mean
ΔA	12.1000	10	5.04315	1.59478
ΔB	22.5000	10	8.01734	2.53531

#### Normality Test

Paired t test	Kolmogorov-smirnov			Shapiro-wilk		
	Statistic	df	P	Statistic	df	P
ΔA-ΔB	0.171	10	0.200*	0.919	10	0.350

df: degree of freedom.

#### Paired t test

Paired t test	Paired differences						t	df	P (2-tailed)
	Mean	Standard deviation	Standard error of the mean	95% confidence interval of the difference					
				Lower	Upper				
ΔA-ΔB	-10.40000	4.94862	1.56489	-13.94003	-6.85997	-6.646	9	0.000	

df: degree of freedom.

A paired t test is identical to a single-sample t test. Therefore, we test the normality of the difference in the amount of change for treatment A and treatment B (ΔA-ΔB). The normality is verified based on the results of Kolmogorov-Smirnov and Shapiro-Wilk tests, as shown in the second table. In conclusion, there is a significant difference between the two treatments (i.e., the P value is less than 0.001).