

Washington University School of Medicine

Digital Commons@Becker

Open Access Publications

2014

Targetable kinase-activating lesions in Ph-like acute lymphoblastic leukemia.

L. Ding

Washington University School of Medicine in St. Louis

C. Lu

Washington University School of Medicine in St. Louis

R. S. Fulton

Washington University School of Medicine in St. Louis

E. Mardis

Washington University School of Medicine in St. Louis

R. K. Wilson

Washington University School of Medicine in St. Louis

See next page for additional authors

Follow this and additional works at: https://digitalcommons.wustl.edu/open_access_pubs

Recommended Citation

Ding, L.; Lu, C.; Fulton, R. S.; Mardis, E.; Wilson, R. K.; and et al, "Targetable kinase-activating lesions in Ph-like acute lymphoblastic leukemia.." *The New England Journal of Medicine*. 371,11. 1005-15. (2014).
https://digitalcommons.wustl.edu/open_access_pubs/3317

This Open Access Publication is brought to you for free and open access by Digital Commons@Becker. It has been accepted for inclusion in Open Access Publications by an authorized administrator of Digital Commons@Becker. For more information, please contact vanam@wustl.edu.

Authors

L. Ding, C. Lu, R. S. Fulton, E. Mardis, R. K. Wilson, and et al

ORIGINAL ARTICLE

Targetable Kinase-Activating Lesions in Ph-like Acute Lymphoblastic Leukemia

K.G. Roberts, Y. Li, D. Payne-Turner, R.C. Harvey, Y.-L. Yang, D. Pei, K. McCastlain, L. Ding, C. Lu, G. Song, J. Ma, J. Becksfort, M. Rusch, S.-C. Chen, J. Easton, J. Cheng, K. Boggs, N. Santiago-Morales, I. Iacobucci, R.S. Fulton, J. Wen, M. Valentine, C. Cheng, S.W. Paugh, M. Devidas, I.-M. Chen, S. Reshmi, A. Smith, E. Hedlund, P. Gupta, P. Nagahawatte, G. Wu, X. Chen, D. Yergeau, B. Vadodaria, H. Mulder, N.J. Winick, E.C. Larsen, W.L. Carroll, N.A. Heerema, A.J. Carroll, G. Grayson, S.K. Tasian, A.S. Moore, F. Keller, M. Frei-Jones, J.A. Whitlock, E.A. Raetz, D.L. White, T.P. Hughes, J.M. Guidry Auvil, M.A. Smith, G. Marcucci, C.D. Bloomfield, K. Mrózek, J. Kohlschmidt, W. Stock, S.M. Kornblau, M. Konopleva, E. Paietta, C.-H. Pui, S. Jeha, M.V. Relling, W.E. Evans, D.S. Gerhard, J.M. Gastier-Foster, E. Mardis, R.K. Wilson, M.L. Loh, J.R. Downing, S.P. Hunger, C.L. Willman, J. Zhang, and C.G. Mullighan

ABSTRACT

BACKGROUND

Philadelphia chromosome–like acute lymphoblastic leukemia (Ph-like ALL) is characterized by a gene-expression profile similar to that of BCR–ABL1–positive ALL, alterations of lymphoid transcription factor genes, and a poor outcome. The frequency and spectrum of genetic alterations in Ph-like ALL and its responsiveness to tyrosine kinase inhibition are undefined, especially in adolescents and adults.

METHODS

We performed genomic profiling of 1725 patients with precursor B-cell ALL and detailed genomic analysis of 154 patients with Ph-like ALL. We examined the functional effects of fusion proteins and the efficacy of tyrosine kinase inhibitors in mouse pre-B cells and xenografts of human Ph-like ALL.

RESULTS

Ph-like ALL increased in frequency from 10% among children with standard-risk ALL to 27% among young adults with ALL and was associated with a poor outcome. Kinase-activating alterations were identified in 91% of patients with Ph-like ALL; rearrangements involving *ABL1*, *ABL2*, *CRLF2*, *CSF1R*, *EPOR*, *JAK2*, *NTRK3*, *PDGFRB*, *PTK2B*, *TSLP*, or *TYK2* and sequence mutations involving *FLT3*, *IL7R*, or *SH2B3* were most common. Expression of *ABL1*, *ABL2*, *CSF1R*, *JAK2*, and *PDGFRB* fusions resulted in cytokine-independent proliferation and activation of phosphorylated STAT5. Cell lines and human leukemic cells expressing *ABL1*, *ABL2*, *CSF1R*, and *PDGFRB* fusions were sensitive in vitro to dasatinib, *EPOR* and *JAK2* rearrangements were sensitive to ruxolitinib, and the *ETV6*–*NTRK3* fusion was sensitive to crizotinib.

CONCLUSIONS

Ph-like ALL was found to be characterized by a range of genomic alterations that activate a limited number of signaling pathways, all of which may be amenable to inhibition with approved tyrosine kinase inhibitors. Trials identifying Ph-like ALL are needed to assess whether adding tyrosine kinase inhibitors to current therapy will improve the survival of patients with this type of leukemia. (Funded by the American Lebanese Syrian Associated Charities and others.)

The authors' full names, academic degrees, and affiliations are listed in the Appendix. Address reprint requests to Dr. Mullighan at St. Jude Children's Research Hospital, 262 Danny Thomas Pl., Mail Stop 342, Memphis, TN 38105; or at charles.mullighan@stjude.org.

Drs. Roberts and Li and Drs. Downing, Hunger, Willman, Zhang, and Mullighan contributed equally to this article.

N Engl J Med 2014;371:1005-15.

DOI: 10.1056/NEJMoa1403088

Copyright © 2014 Massachusetts Medical Society.

ACUTE LYMPHOBLASTIC LEUKEMIA (ALL) is the most common childhood cancer and a major cause of illness and death in adults.¹ ALL encompasses a number of distinct entities characterized by chromosomal rearrangements, structural variations, and sequence mutations that perturb lymphoid maturation, cell proliferation, cell-growth suppression, and epigenetic regulation.² Our understanding of the genetic basis of ALL has been transformed by genomewide profiling studies that have identified multiple targets of recurring genetic alterations and have defined new subtypes of ALL.

Childhood ALL is more commonly of B-cell than T-cell lineage and includes cases associated with hyperdiploidy, hypodiploidy, and chromosomal rearrangements resulting in chimeric fusion genes, including *ETV6*–*RUNX1*, *TCF3*–*PBX1*, and *BCR*–*ABL1*, as well as rearrangements of *MLL* and *CRLF2*. As compared with younger children with ALL, adolescents and adults with ALL have inferior outcomes, partly because of the lower frequency of favorable genetic features such as *ETV6*–*RUNX1* and hyperdiploidy, as well as the higher frequency of *BCR*–*ABL1*³; however, the genetic basis of ALL in adolescents and adults is poorly defined.

One subtype of precursor B-cell ALL is *BCR*–*ABL1*–like, or Philadelphia chromosome–like (Ph-like), ALL. Patients with Ph-like ALL do not have the *BCR*–*ABL1* fusion protein expressed from the t(9;22)(q34;q11.2) Philadelphia chromosome yet have a gene-expression profile similar to that of patients with *BCR*–*ABL1* ALL.^{4,5} Deletions or mutations of the lymphoid transcription factor gene *IKZF1* (encoding Ikaros) are a hallmark of both *BCR*–*ABL1*–positive ALL and Ph-like ALL,^{4,6} and Ph-like ALL in children is associated with poor outcomes.^{4,5,7–10} Transcriptome sequencing and whole-genome sequencing in 15 children with Ph-like ALL identified chromosomal rearrangements or sequence mutations deregulating cytokine receptor and tyrosine kinase genes in all 15.¹¹ In addition, there have been recent reports of patients with refractory Ph-like ALL and the *EBF1*–*PDGFRB* fusion who have a remarkably good response to therapy with tyrosine kinase inhibitors.^{12,13} Because the full spectrum of kinase-activating genetic alterations in Ph-like ALL, their effect on outcomes in adolescents and young adults, and their potential for therapeutic targeting are unknown, we

performed a detailed genomic analysis of 1725 children, adolescents, and young adults with precursor B-cell ALL.

METHODS

STUDY DESIGN

We studied 2013 patients with precursor B-cell ALL, 1725 of whom had material available for microarray gene-expression profiling; 1589 of these 1725 patients had single-nucleotide-polymorphism microarray profiling performed. The cohort included 330 children with National Cancer Institute–classified, standard-risk precursor B-cell ALL (age range, 1 to 9 years; and peripheral-blood leukocyte count at diagnosis, <50,000 per cubic millimeter), 853 children with high-risk precursor B-cell ALL (age range, 10 to 15 years; leukocyte count, ≥50,000 per cubic millimeter; or both), 374 adolescents (age range, 16 to 20 years), and 168 young adults (age range, 21 to 39 years) (Table S1 in Supplementary Appendix 1 and Fig. S1 in Supplementary Appendix 2, available with the full text of this article at NEJM.org). There were few significant differences in the clinical features of patients with gene-expression profiling data available and those without such data available (Table S2 in Supplementary Appendix 2). Samples were obtained from patients enrolled under clinical-trial protocols of St. Jude Children's Research Hospital, the Children's Oncology Group, the Eastern Cooperative Oncology Group, the Alliance for Clinical Trials in Oncology (Cancer and Leukemia Group B), and M.D. Anderson Cancer Center. The details of the treatment protocols are provided in Supplementary Appendix 2. Patients, parents, or guardians gave written informed consent for sample collection and research, with assent provided by older children and adolescents. The study was approved by the St. Jude Institutional Review Board. Data from the study have been deposited in the European Genome Phenome archive under accession number EGAS00001000654.

NEXT-GENERATION SEQUENCING

A total of 154 patients with Ph-like ALL underwent detailed genomic analysis, 147 of whom underwent one or more of the following types of next-generation sequencing: transcriptome sequencing (136 patients), whole-genome sequencing (42), and whole-exome sequencing (12) of

tumor and matched remission DNA (Table S1 in Supplementary Appendix 1).¹⁴ Next-generation sequencing was not performed for 7 patients, who instead underwent reverse-transcriptase polymerase-chain-reaction analysis. Transcriptome sequencing was also performed for 160 patients with non-Ph-like ALL (Table S3 in Supplementary Appendix 2). Details of Ph-like ALL classification, sequencing, and analysis are provided in Supplementary Appendix 2.

MICROARRAY PROFILING AND FUNCTIONAL AND CYTOGENETIC ASSAYS

The details of gene expression and single-nucleotide-polymorphism microarray profiling, fluorescence in situ hybridization, cell-line proliferation and tyrosine kinase inhibitor assays, protein expression, and xenograft experiments are provided in Supplementary Appendix 2.

STATISTICAL ANALYSIS

Associations between categorical variables were examined with the use of Fisher's exact test. Associations between Ph-like ALL status and treatment outcome (event-free survival and overall survival) were examined with the use of the Kaplan-Meier estimator, with Peto's estimator of standard deviation and the log-rank test, in each patient cohort (children, adolescents, and young adults).^{4,15,16} An event was defined as a failure to achieve remission, a relapse after remission, or the development of a second malignant neoplasm. A multivariable analysis of event-free and overall survival was performed with the Cox proportional-hazards regression model.¹⁷ Analyses were performed with the use of Prism software, version 6.0 (GraphPad Software), R software (www.r-project.org),¹⁸ and SAS software, version 9.1.2 (SAS Institute).

RESULTS

CLINICAL CHARACTERISTICS AND OUTCOMES

Overall, 264 of 1725 precursor B-cell ALL cases (15.3%) were identified as Ph-like ALL (Table S4 in Supplementary Appendix 2). The prevalence of Ph-like ALL significantly increased with age, from 10% among children with standard-risk ALL and 13% among those with high-risk ALL to 21% among adolescents with ALL and 27% among young adults with ALL ($P<0.001$ for the comparisons of children with adolescents and children

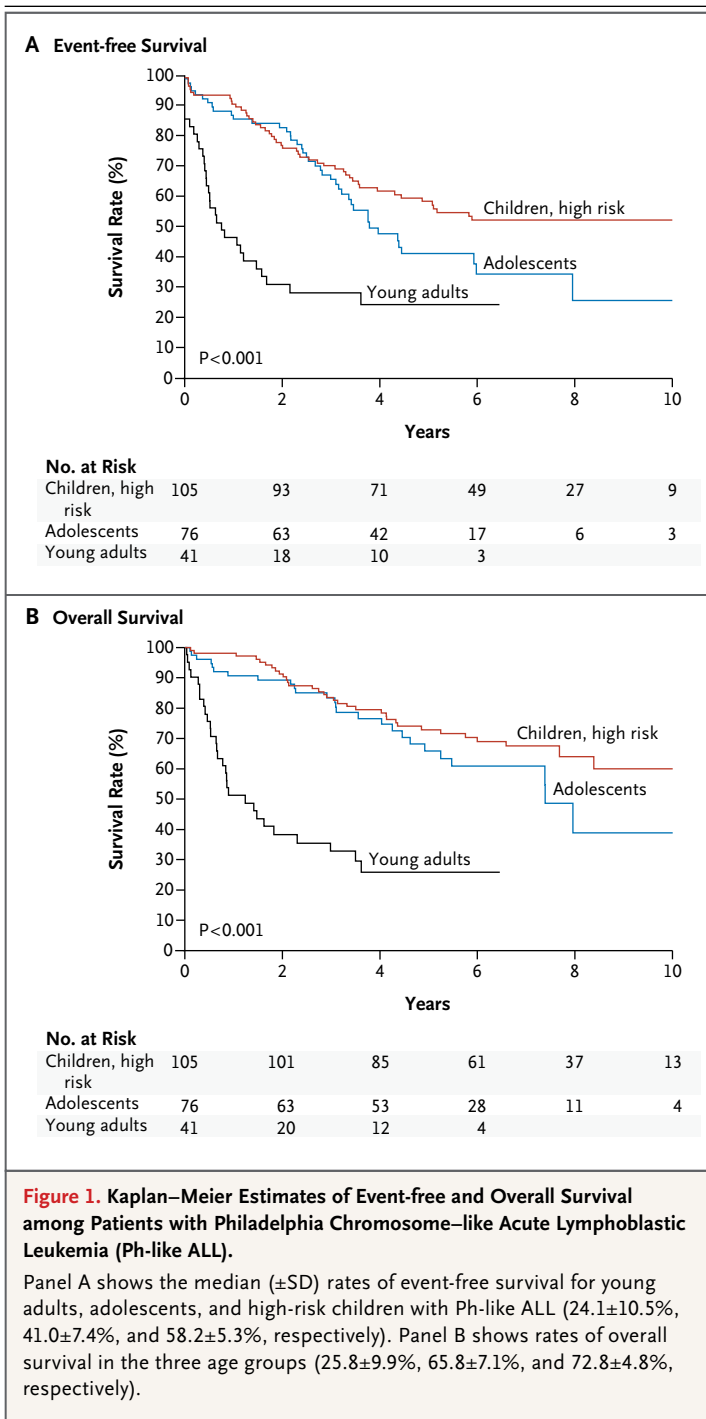
with young adults). Furthermore, patients with Ph-like ALL had higher leukocyte counts at presentation than did patients with non-Ph-like ALL, both overall (106,000 vs. 59,000 per cubic millimeter, $P<0.001$) and in the different age cohorts (Table S5 in Supplementary Appendix 2). Ph-like ALL was more common among males than among females (Table S5 in Supplementary Appendix 2) and was associated with elevated levels of minimal residual disease at the end of induction therapy in the Children's Oncology Group trials (Table S6 in Supplementary Appendix 2). Among patients with Ph-like ALL, the median (\pm SD) 5-year event-free survival rates for children with high-risk ALL, adolescents, and young adults was $58.2\pm5.3\%$, $41.0\pm7.4\%$, and $24.1\pm10.5\%$, respectively, and the 5-year overall survival rates were $72.8\pm4.8\%$, $65.8\pm7.1\%$, and $25.8\pm9.9\%$ (Fig. 1). Across all age groups, these survival rates were inferior to those among patients with non-Ph-like ALL ($P<0.001$ for both comparisons) (Fig. S2 in Supplementary Appendix 2). The presence of Ph-like ALL was an independent prognostic factor in all age groups (Table S7 in Supplementary Appendix 2).

IDENTIFICATION OF KINASE ALTERATIONS IN PH-LIKE ALL

A total of 123 of 264 patients with Ph-like ALL had high *CRLF2* expression, with the frequency ranging from 24% among children with standard-risk ALL to 60% among adolescents with ALL. Among patients with high *CRLF2* expression, we identified *P2RY8-CRLF2* in 45 patients and *IGH-CRLF2* in 61 patients; for 17 patients, there was insufficient material for analysis. Sixty-eight patients (55%) with *CRLF2* rearrangement had concomitant Janus kinase mutations, most commonly in *JAK2* (Fig. S3 in Supplementary Appendix 2).

To identify the spectrum of kinase-activating alterations in the remaining patients with Ph-like ALL, we performed next-generation sequencing in 30 patients with *CRLF2* rearrangement and 124 patients without *CRLF2* rearrangement (Tables S8 and S9 in Supplementary Appendix 1). The analyses of gene-expression levels from transcriptome sequencing recapitulated those from microarray expression data, with clustering of Ph-like and BCR-ABL1-positive cases (Table S10 in Supplementary Appendix 1 and Fig. S4 and Fig. S5 in Supplementary Appendix 2).

Genomic alterations activating kinase signaling were identified in 91% of patients with Ph-

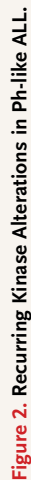


like ALL and were divided into distinct subgroups of kinase and cytokine receptor genes (Fig. 2, and Fig. S6 in Supplementary Appendix 2). These included fusions predicted to respond to ABL1 inhibitors (involving *ABL1*, *ABL2*, *CSF1R*, or *PDGFRB*) (12.6% of cases); rearrangements of *EPOR* (3.9%)

or *JAK2* (7.4%); rearrangements of *CRLF2* (49.7%); genetic alterations of *IL7R*, *FLT3*, *SH2B3*, *JAK1*, *JAK3*, *TYK2*, and *IL2RB* (shown under “Other JAK–STAT” in Fig. 2; 12.6%); Ras pathway mutations, several of which were associated with hypodiploidy (4.3%); and uncommon fusions (e.g., involving *NTRK3* or *DGKH*; 0.9%). A minority of patients (4.8%) were not found to have a kinase-activating alteration on transcriptome sequencing analysis, and suitable material for analysis was not available for 3.9% of patients. The frequencies of these subgroups varied with age. Notably, ABL-class rearrangements were more common among children, and *JAK2* rearrangements were more frequent among young adults (Fig. S7 in Supplementary Appendix 2).

In the transcriptome sequencing analysis, we identified 223 gene rearrangements in 116 of 136 patients (mean, 1.6 per patient; range, 0 to 12) (Table S11 in Supplementary Appendix 1); 115 of these were either chimeric in-frame fusions or rearrangements resulting in deregulated gene expression. Across the entire cohort, rearrangements activating kinase signaling were identified in 96 of 154 patients (62%), including 35 different rearrangements (16 of which were recurrent) in 13 kinase, cytokine, or cytokine-receptor genes: *JAK2* (10 fusion partners), *ABL1* (6), *PDGFRB* (4), *ABL2* (3), *CRLF2* (2), *EPOR* (2), *PTK2B* (2), *CSF1R* (1), *DGKH* (1), *IL2RB* (1), *NTRK3* (1), *TSLP* (1), and *TYK2* (1) (Table 1 and Fig. 2, and Table S12 in Supplementary Appendix 1 and Table S13 in Supplementary Appendix 2). All kinase fusions retained an intact tyrosine kinase domain (Fig. S8 in Supplementary Appendix 2) and were found by means of fluorescence in situ hybridization to be present in the predominant clone at diagnosis (Fig. S9 in Supplementary Appendix 2).

Thirty patients with *CRLF2* rearrangement were studied with the use of transcriptome sequencing and whole-genome sequencing (Fig. 2, and Fig. S10 in Supplementary Appendix 2). We found additional alterations activating JAK–STAT in 5 of 11 patients who had *CRLF2* rearrangement but no *JAK* mutations; these alterations included *IL7R* mutations (4 patients), an *FLT3* mutation (1 patient), and a deletion of *SH2B3*, which encodes the *JAK2* negative regulator LNK (1 patient). One patient had an *IQGAP2–TSLP* fusion; this resulted in overexpression of *TSLP*, which encodes thymic stromal lymphopoietin, the ligand for *CRLF2*.



Data are shown for 154 patients with Ph-like ALL who underwent detailed genomic analysis, including transcriptome sequencing (RNA-seq), whole-genome sequencing (WGS), and whole-exome sequencing (WES), and reverse-transcriptase polymerase chain reaction (RT-PCR). The cohort is divided into patients with ABL-class fusions (*ABL1*, *ABL2*, *CSF1R*, *PDGFRB*) responsive to dasatinib, *EPOR* or *JAK2* rearrangements, *CRLF2* rearrangements, other *JAK-STAT*-activating mutations (*IL7R*, *FLT3*, *SH2B3*, *JAK1*, *JAK3*, *TYK2*, *IL2RB*, and *STAT5B*), other kinase fusions (miscellaneous group, including *NTRK3* and *DGKH*), alterations in the Ras pathway (*KRAS*, *NRAS*, *PTPN11*, *NF1*, and *BRAF*), and no kinase alteration. For details of specific alterations, see Tables S9 and S12 in Supplementary Appendix 1 and Table S20 in Supplementary Appendix 3.

Table 1. Kinase Fusions Identified in Ph-like Acute Lymphoblastic Leukemia.

Kinase Gene	Tyrosine Kinase Inhibitor	Fusion Partners	Patients	5' Genes
		number		
<i>ABL1</i>	Dasatinib	6	14	<i>ETV6</i> , ¹¹ <i>NUP214</i> , ¹¹ <i>RCSD1</i> , ¹¹ <i>RANBP2</i> , ¹¹ <i>SNX2</i> , ¹⁹ <i>ZMIZ1</i> ²⁰
<i>ABL2</i>	Dasatinib	3	7	<i>PAG1</i> ,* <i>RCSD1</i> ,* <i>ZC3HAV1</i> *
<i>CSF1R</i>	Dasatinib	1	4	<i>SSBP2</i> *
<i>PDGFRB</i>	Dasatinib	4	11	<i>EBF1</i> , ¹¹⁻¹³ <i>SSBP2</i> ,* <i>TNIP1</i> ,* <i>ZEB2</i> *
<i>CRLF2</i>	JAK2 inhibitor	2	30	<i>IGH</i> , ²¹ <i>P2RY8</i> ²²
<i>JAK2</i>	JAK2 inhibitor	10	19	<i>ATF7IP</i> ,* <i>BCR</i> , ¹¹ <i>EBF1</i> ,* <i>ETV6</i> , ²³ <i>PAX5</i> , ¹¹ <i>PPFIBP1</i> ,* <i>SSBP2</i> , ²⁴ <i>STRN3</i> , ¹¹ <i>TERF2</i> ,* <i>TPR</i> *
<i>EPOR</i>	JAK2 inhibitor	2	9	<i>IGH</i> , ¹¹ <i>IGK</i> *
<i>DGKH</i>	Unknown	1	1	<i>ZFAND3</i> *
<i>IL2RB</i>	JAK1 inhibitor, JAK3 inhibitor, or both	1	1	<i>MYH9</i> *
<i>NTRK3</i>	Crizotinib	1	1	<i>ETV6</i> ²⁵⁻²⁷ †
<i>PTK2B</i>	FAK inhibitor	2	1	<i>KDM6A</i> ,* <i>STAG2</i> *
<i>TSLP</i>	JAK2 inhibitor	1	1	<i>IQGAP2</i> *
<i>TYK2</i>	TYK2 inhibitor	1	1	<i>MYB</i> *

* The gene is a previously unreported fusion partner.

† *ETV6-NTRK3* has been reported in multiple cancers, including congenital fibrosarcoma^{25,26} and secretory breast carcinoma,²⁷ but it has not previously been described in acute lymphoblastic leukemia.^{28,29}

Two patients had fusions that deregulated protein tyrosine kinase 2 β (*PTK2B*, or *FAK2*). Thus, multiple kinase-activating lesions are likely to cooperate with *CRLF2* rearrangement in leukemogenesis.

Sequence mutations and focal deletions activating JAK–STAT signaling, including in *IL7R*, *FLT3*, *SH2B3*, *JAK1*, and *JAK3*, were identified in 31 patients without *CRLF2* rearrangement or other kinase fusions. Fifteen patients had alterations in the Ras pathway only, including *NRAS*, *KRAS*, *PTPN11*, *NF1*, and *BRAF* (Fig. 2, and Fig. S11 in Supplementary Appendix 2). Eleven patients had mutations in multiple genes, with evidence of subclonality in 7 of the 8 patients who underwent whole-genome or whole-exome sequencing (Table S14 and Fig. S12 in Supplementary Appendix 2). Details of non-kinase fusions and sequence mutations are provided in the Results section of Supplementary Appendix 2.

On analysis of gene-expression data from transcriptome sequencing, patients with *ABL*-class, *EPOR*, or *JAK2* rearrangements clustered separately from those with other JAK–STAT or Ras pathway alterations (Fig. S13 in Supplementary Appendix 2). We also found differences in out-

come between the Ph-like ALL subgroups, with patients who had rearrangements of *JAK2* or *EPOR* having the worst outcome (Table S15 and Fig. S14 in Supplementary Appendix 2).

As previously described,^{4,5,11} we found a higher frequency of *IKZF1* alterations (deletion or point mutation) among patients with Ph-like ALL than among patients with BCR–*ABL1*–negative non-Ph-like ALL (166 of 244 [68%] vs. 204 of 1241 [16%], $P < 0.001$) (Table S16 in Supplementary Appendix 2). *IKZF1* alterations were more common in patients with Ph-like ALL who had kinase fusions (140 of 180 [78%]) than in those with a sequence mutation (14 of 43 [33%], $P < 0.001$) (Fig. S6 in Supplementary Appendix 2). Furthermore, patients with Ph-like ALL who had an *IKZF1* alteration had inferior median (\pm SD) 5-year event-free survival, as compared with patients who had Ph-like ALL without an *IKZF1* alteration; these survival differences were seen in children with high-risk ALL (48.6 ± 7.0 vs. 71.7 ± 8.0 years, $P < 0.001$) and in young adults (18.5 ± 11.8 vs. 42.9 ± 18.7 years, $P < 0.001$) (Fig. S15 in Supplementary Appendix 2). When *IKZF1* alterations were considered in combination with

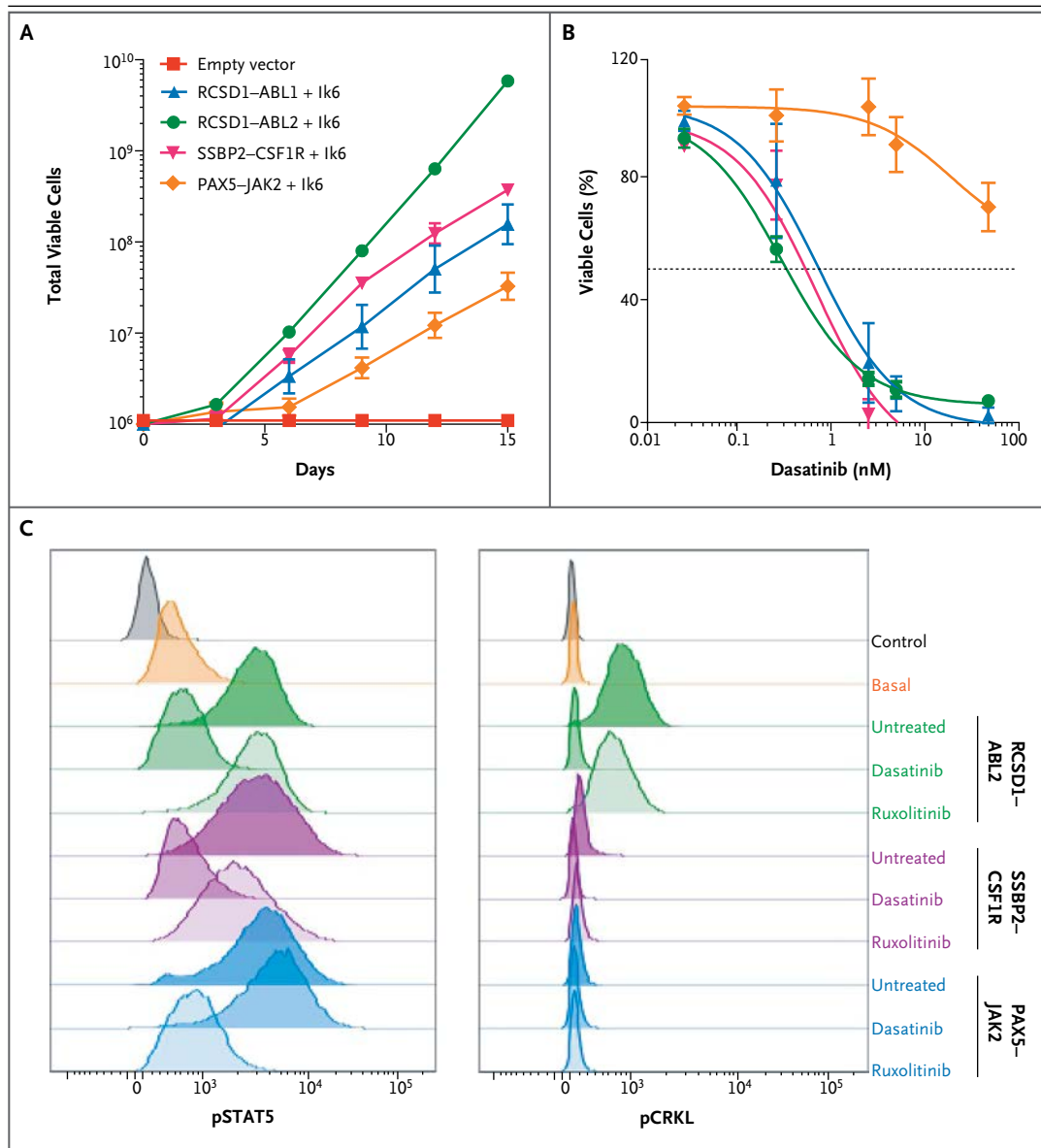


Figure 3. Response to Tyrosine Kinase Inhibitors.

Panel A shows the proliferation of interleukin-7-dependent primary *Arf*^{-/-} pre-B cells expressing the dominant negative Ikaros isoform (Ik6) with empty vector, RCSD1-ABL1, RCSD1-ABL2, SSBP2-CSF1R, or PAX5-JAK2 in the absence of cytokine. Panel B shows the growth of *Arf*^{-/-} pre-B cells in increasing concentrations of dasatinib. Panel C shows constitutive phosphorylation of STAT5 and CRKL (pSTAT5 and pCRKL, respectively). Cells expressing ABL2, CSF1R, and JAK2 fusions have enhanced STAT5 activation, which is inhibited by dasatinib in RCSD1-ABL2 and SSBP2-CSF1R and by ruxolitinib in PAX5-JAK2.

mutations in other lymphoid transcription factors (*ETV6*, *EBF1*, *ERG*, *PAX5*, and *TCF3*), 86% of patients with Ph-like ALL (209 of 244) were found to have alterations affecting lymphoid development, as compared with 61% of patients with non-Ph-like ALL (762 of 1241, $P < 0.001$).

ACTIVITY OF TYROSINE KINASE INHIBITORS IN PH-LIKE ALL

To determine the transforming properties of the kinase fusions, we assessed their ability to induce cytokine-independent proliferation in mouse interleukin-3-dependent Ba/F3 cells and interleu-

kin-7–dependent *Arf*^{fl} pre-B cells^{30,31} expressing the dominant negative isoform of Ikaros, Ik6.⁶ Expression of all fusions tested (RCSD1–ABL1, RANBP2–ABL1, ZMIZ1–ABL1, RCSD1–ABL2, SSBP2–CSF1R, and PAX5–JAK2) conferred cytokine-independent proliferation (Fig. 3A, and Fig. S16 in Supplementary Appendix 2). The ABL1, ABL2, and CSF1R fusions were sensitive to the ABL-class inhibitors imatinib (50% inhibitory concentration [IC₅₀], 135 to 900 nM) (data not shown) and dasatinib (IC₅₀, 1 to 2 nM), whereas PAX5–JAK2 was not sensitive to these agents (Fig. 3B). Differences in signaling-pathway activation between the fusions were observed. All fusions activated STAT5, which was inhibited by dasatinib in cells expressing ABL1, ABL2, CSF1R, or PDGFRB fusions,¹¹ and the JAK2 inhibitor ruxolitinib attenuated phosphorylated STAT5 in cells expressing PAX5–JAK2. Phosphorylation of CRKL, a target of ABL1 and ABL2, was seen only in cells expressing these fusions (Fig. 3C). Human leukemic cells harboring ATF7IP–JAK2 or IGH–EPOR were sensitive to ruxolitinib, whereas imatinib had no effect (Fig. S17A in Supplementary Appendix 2). As reported previously in studies of other tumor models,³² cells expressing ETV6–NTRK3 responded to the ALK inhibitor crizotinib (Fig. S17B in Supplementary Appendix 2). The efficacy of dasatinib was also assessed in a xenograft model of ETV6–ABL1 ALL in which human leukemic cells were engrafted into immunodeficient mice. After 4 weeks of treatment, percentages of circulating human CD45+ cells were significantly reduced in the dasatinib-treated mice, as compared with vehicle-treated controls (17% vs. 88%, *P*<0.001), as was splenic weight (117 vs. 321 mg, *P*<0.001) (Fig. S17C in Supplementary Appendix 2).

The high frequency of kinase-activating lesions in the patients with Ph-like ALL suggests that tyrosine kinase inhibitor therapy is likely to be effective in such patients, as it is in patients with BCR–ABL1–positive ALL.³³ To assess this, we studied 34 patients with precursor B-cell ALL who had high-risk clinical features at diagnosis, alterations found on cytogenetic analysis that were suggestive of a tyrosine kinase gene rearrangement, or a poor response to induction chemotherapy (Table S17 in Supplementary Appendix 2). Remarkably, 86% of patients (24 of 28) who underwent testing with a low-density gene-

expression array³⁴ had Ph-like ALL, and 22 of these patients had a targetable kinase fusion involving ABL1 (10 patients), ABL2 (3), CRLF2 (3), JAK2 (3), or PDGFRB (3). Notably, we identified 4 patients with induction failure who had *EBF1*–PDGFRB. Of the 12 patients who began receiving tyrosine kinase inhibitor therapy, 11 with available follow-up data had rapid and sustained responses. Details for each patient are provided in the Results section of Supplementary Appendix 2.

DISCUSSION

In this study of 1725 children, adolescents, and young adults with precursor B-cell ALL, we defined the frequency and poor outcome of Ph-like ALL, characterized the genetic landscape of alterations activating kinase signaling, and found that the majority of patients with Ph-like ALL have genetic alterations responsive to Food and Drug Administration–approved tyrosine kinase inhibitors. Building on the precedent established for BCR–ABL1–positive ALL,³³ these findings provide a strong rationale for testing new therapies to improve the outcome of Ph-like ALL. We studied more than 500 adolescents and young adults with ALL, for whom treatment outcomes are substantially inferior to those of children with ALL. The frequency of Ph-like ALL is higher than 25% among young adults with ALL. Because BCR–ABL1–positive ALL represents more than 20% of precursor B-cell ALL cases in this age group, about half of young adults with precursor B-cell ALL are candidates for tyrosine kinase inhibitor therapy. The frequency of Ph-like ALL among older adults with ALL is unknown but merits investigation in view of the poor treatment outcome in this age group.

We identified several subgroups of Ph-like ALL distinguished by the type of cytokine receptor or kinase alteration that was present. The frequencies of CRLF2 rearrangement (47%) and concomitant JAK1 or JAK2 mutation (55% among patients with CRLF2 rearrangement) in the entire cohort are consistent with previous reports,^{11,35} with the highest frequency observed in adolescent ALL (60%). Previous reports have shown that the JAK2 inhibitor ruxolitinib is active in models of ALL with CRLF2 rearrangement, which suggests that JAK inhibition may be used in the treatment of these high-risk patients.^{36,37}

The second major subgroup of Ph-like ALL is characterized by fusions involving ABL-class kinase genes. Multiple *ABL1* and *PDGFRB* fusions and new targets of rearrangement were identified, including *ABL2* (also known as Abelson-related gene, or ARG) and *CSF1R* (encoding the macrophage colony-stimulating factor receptor), which are known to respond to the ABL1 inhibitor imatinib.^{38,39} Importantly, we have shown that pre-B cells expressing ABL2 and CSF1R fusions activate oncogenic signaling pathways and cellular proliferation that is potently inhibited by dasatinib at concentrations similar to those for BCR-ABL1, other ABL1 fusions, and EBF1-PDGFRB.¹¹

A striking finding was the high frequency of rearrangements activating JAK2, particularly in young adults. The PAX5-JAK2 fusion activated JAK-STAT signaling and conferred cytokine-independent proliferation that was sensitive to ruxolitinib. We previously identified a single patient with Ph-like ALL who had a cryptic insertion of *EPOR*, encoding the erythropoietin receptor, into the immunoglobulin heavy-chain locus; the current study shows that the insertion of *EPOR* into *IGH* and *IGK* is a recurring event in Ph-like ALL. Human leukemic cells with *EPOR* rearrangement exhibit activation of JAK-STAT signaling and are sensitive to JAK inhibitors *ex vivo*. Thus, JAK inhibition is a widely applicable treatment approach in Ph-like ALL.

We also identified distinct subgroups of patients with Ph-like ALL who had sequence mutations or structural alterations of genes involved in JAK-STAT or MAPK signaling. Alteration of *IKZF1* was less common in such patients than in patients with Ph-like ALL who had a kinase rearrangement, and rearrangement of transcriptional regulators and chromatin modifiers was more common (Fig. S20 and Table S21 in Supplementary Appendix 2). Several patients with Ph-like ALL had Ras mutations but no other kinase alterations. Currently, direct therapeutic targeting of oncogenic Ras mutations is challenging, but targeting signaling pathways downstream of Ras may be considered.

The event-free and overall survival rates among patients with Ph-like ALL were markedly inferior to those among patients with non-Ph-like ALL, in all age groups studied. Thus, implementation

of therapy directed against the activated kinase is an attractive strategy to improve the outcome for these high-risk patients. Although our data have highlighted the genetic complexity of Ph-like ALL, this entity can be rapidly identified with a low-density gene-expression array,³⁴ and the majority of treatable kinase-activating lesions can be identified with the use of conventional molecular and cytogenetic approaches (Fig. S18 in Supplementary Appendix 2). The importance of identifying Ph-like ALL is highlighted by recent reports of the success of tyrosine kinase inhibitors in the treatment of relapsed or refractory *EBF1*-*PDGFRB* Ph-like ALL.^{12,13} Remarkably, most patients with ALL who had clinical features suggestive of Ph-like ALL and who were tested prospectively in this study were identified as having Ph-like ALL with treatable fusions. Furthermore, all patients treated with the relevant tyrosine kinase inhibitor for whom clinical-response data were available had rapid and durable responses. Together, these findings indicate that Ph-like ALL is common, particularly among adolescents and young adults, and is associated with a high risk of treatment failure. Clinical trials combining kinase inhibitors with chemotherapy in patients with Ph-like ALL, guided by careful use of screening and genomic testing, are warranted.

Supported in part by funding from the American Lebanese Syrian Associated Charities (to St. Jude Children's Research Hospital), grants from the National Cancer Institute (CA 21765, to St. Jude Children's Research Hospital; U01 CA157937-01, to Drs. Willman and Hunger; F32 CA141762, to Dr. Paugh; R37 CA36401, to Dr. Evans; U24-CA114737, U10 CA21115, and CA14958, to Dr. Paietta; U10 CA101140, to Cancer and Leukemia Group B Leukemia Correlative Science; CA145707, to Drs. Willman and Mullighan; and U10 CA98543, U10 CA98413, and U24 CA114766, to the Children's Oncology Group), a Stand Up to Cancer Innovative Research Grant and a St. Baldrick's Foundation Scholar Award (both to Dr. Mullighan), a St. Baldrick's Consortium Award (to Dr. Hunger), a grant from the Leukemia and Lymphoma Society Specialized Center of Research (to Drs. Carroll, Hunger, and Mullighan), a Leukemia and Lymphoma Society Special Fellow Award (to Dr. Roberts), Alex's Lemonade Stand Foundation Young Investigator Awards (to Drs. Roberts and Tasian), an Alex's Lemonade Stand Foundation Scholar in Developmental Therapeutics Award (to Dr. Tasian), and a grant from the National Institute of General Medical Sciences (92666, to Dr. Relling).

Disclosure forms provided by the authors are available with the full text of this article at NEJM.org.

We thank the staff of the Tissue Resources Core Facility, the Hartwell Centre for Bioinformatics and Biotechnology, and the Flow Cytometry and Cell Sorting Core Facility of St. Jude Children's Research Hospital.

APPENDIX

The authors' full names and academic degrees are as follows: Kathryn G. Roberts, Ph.D., Yongjin Li, Ph.D., Debbie Payne-Turner, B.S., Richard C. Harvey, Ph.D., Yung-Li Yang, M.D., Deqing Pei, M.S., Kelly McCastlain, B.S., Li Ding, Ph.D., Charles Lu, Ph.D., Guangchun Song, M.S., Jing Ma, Ph.D., Jared Becksfort, M.S., Michael Rusch, B.A., Shann-Ching Chen, Ph.D., John Easton, Ph.D., Jinjun Cheng, M.D., Kristy Boggs, Ph.D., Natalia Santiago-Morales, B.S., Ilaria Iacobucci, Ph.D., Robert S. Fulton, Ph.D., Ji Wen, Ph.D., Marcus Valentine, B.A., Cheng Cheng, Ph.D., Steven W. Paugh, Ph.D., Meenakshi Devidas, Ph.D., I-Ming Chen, D.V.M., Shalini Reshmi, Ph.D., Amy Smith, B.S., Erin Hedlund, Ph.D., Pankaj Gupta, M.S., Panduka Nagahawatte, M.S., Gang Wu, Ph.D., Xiang Chen, Ph.D., Donald Yergeau, Ph.D., Bhavin Vadodaria, B.A., Heather Mulder, B.S., Naomi J. Winick, M.D., Eric C. Larsen, M.D., William L. Carroll, M.D., Nyla A. Heerema, Ph.D., Andrew J. Carroll, Ph.D., Guy Grayson, M.D., Sarah K. Tasian, M.D., Andrew S. Moore, M.D., Frank Keller, M.D., Melissa Frei-Jones, M.D., James A. Whitlock, M.D., Elizabeth A. Raetz, M.D., Deborah L. White, Ph.D., Timothy P. Hughes, M.D., Jaime M. Guidry Auville, Ph.D., Malcolm A. Smith, M.D., Guido Marcucci, M.D., Clara D. Bloomfield, M.D., Krzysztof Mrózek, M.D., Jessica Kohlschmidt, Ph.D., Wendy Stock, M.D., Steven M. Kornblau, M.D., Marina Konopleva, M.D., Elisabeth Paietta, Ph.D., Ching-Hon Pui, M.D., Sima Jeha, M.D., Mary V. Relling, Pharm.D., William E. Evans, Pharm.D., Daniela S. Gerhard, Ph.D., Julie M. Gastier-Foster, Ph.D., Elaine Mardis, Ph.D., Richard K. Wilson, Ph.D., Mignon L. Loh, M.D., James R. Downing, M.D., Stephen P. Hunger, M.D., Cheryl L. Willman, M.D., Jinghui Zhang, Ph.D., and Charles G. Mullighan, M.D.

From the Departments of Pathology (K.G.R., D.P.-T., Y.-L.Y., K. McCastlain, G.S., J.M., S.-C.C., J.C., N.S.-M., I.I., J.W., J.R.D., C.G.M.), Computational Biology and Bioinformatics (Y.L., J.B., M.R., E.H., P.G., P.N., G.W., X.C., J.Z.), Biostatistics (D.P., C.C.), Pharmaceutical Sciences (S.W.P., M.V.R., W.E.E.), and Oncology (C.-H.P., S.J.), the Pediatric Cancer Genome Project (Y.L., L.D., C.L., M.R., J.E., J.C., K.B., R.S.F., E.H., P.G., P.N., G.W., X.C., D.Y., B.V., H.M., M.V.R., W.E.E., E.M., R.K.W., J.R.D., J.Z., C.G.M.), and Cytogenetics Shared Resource (M.V.), St. Jude Children's Research Hospital, Memphis, TN; the University of New Mexico Cancer Center and School of Medicine, Albuquerque (R.C.H., I.-M.C., C.L.W.); the Genome Institute at Washington University (L.D., C.L., R.S.F., E.M., R.K.W.), the Department of Genetics, Washington University School of Medicine (L.D., C.L., R.S.F., E.M., R.K.W.), and Siteman Cancer Center, Washington University (E.M., R.K.W.) — all in St. Louis; Epidemiology and Health Policy Research, College of Medicine, University of Florida, Gainesville (M.D.); the Research Institute at Nationwide Children's Hospital (S.R., A.S., J.M.G.-F.), the Department of Pathology, College of Medicine, Ohio State University (N.A.H.), and Ohio State University Comprehensive Cancer Center (G.M., C.D.B., K. Mrózek, J.K.) — all in Columbus, OH; the Department of Pediatrics, University of Texas Southwestern Medical Center, Dallas (N.J.W.), Scott and White Hospitals and Clinics and Texas A&M Health Science Center, Temple (G.G.), the University of Texas Health Science Center San Antonio, San Antonio (M.F.-J.), and the Departments of Leukemia and Stem Cell Transplantation, Division of Cancer Medicine, University of Texas M.D. Anderson Cancer Center, Houston (S.M.K., M.K.) — all in Texas; Maine Children's Cancer Program, Scarborough (E.C.L.); New York University Cancer Institute, New York (W.L.C.), and the Department of Medicine (Oncology), Albert Einstein College of Medicine, Bronx (E.P.) — both in New York; the Department of Genetics, University of Alabama at Birmingham, Birmingham (A.J.C.); the Division of Oncology, Children's Hospital of Philadelphia, Philadelphia (S.K.T.); Queensland Children's Medical Research Institute, University of Queensland and Royal Children's Hospital Brisbane, Herston (A.S.M.), and Cancer Theme, South Australian Health and Medical Research Institute, Adelaide (D.L.W., T.P.H.) — both in Australia; Children's Healthcare of Atlanta and Emory University School of Medicine — both in Atlanta (F.K.); the Division of Haematology-Oncology, Hospital for Sick Children, and University of Toronto — both in Toronto (J.A.W.); Huntsman Cancer Institute, University of Utah, Salt Lake City (E.A.R.); the Office of Cancer Genomics (J.M.G.A., D.S.G.) and Cancer Therapy Evaluation Program (M.A.S.), National Cancer Institute, and the Children's Oncology Group TARGET ALL project (M.D., I.-M.C., S.R., W.L.C., J.M.G.A., M.A.S., M.V.R., D.S.G., J.M.G.-F., M.L.L., J.R.D., S.P.H., C.L.W., J.Z., C.G.M.), National Institutes of Health, Bethesda, MD; Alliance for Clinical Trials in Oncology Statistics and Data Center, Mayo Clinic, Rochester, MN (J.K.); the University of Chicago Medicine, Chicago (W.S.); the Department of Pediatrics, Benioff Children's Hospital, and the Helen Diller Family Cancer Center, University of California, San Francisco, San Francisco (M.L.L.); and the University of Colorado School of Medicine and Children's Hospital Colorado — both in Aurora (S.P.H.).

REFERENCES

- Inaba H, Greaves M, Mullighan CG. Acute lymphoblastic leukaemia. *Lancet* 2013;381:1943-55.
- Mullighan CG. Genomic characterization of childhood acute lymphoblastic leukemia. *Semin Hematol* 2013;50:314-24.
- Stock W. Adolescents and young adults with acute lymphoblastic leukemia. *Hematology Am Soc Hematol Educ Program* 2010;2010:21-9.
- Mullighan CG, Su X, Zhang J, et al. Deletion of IKZF1 and prognosis in acute lymphoblastic leukemia. *N Engl J Med* 2009;360:470-80.
- Den Boer ML, van Slegtenhorst M, De Menezes RX, et al. A subtype of childhood acute lymphoblastic leukaemia with poor treatment outcome: a genome-wide classification study. *Lancet Oncol* 2009;10:125-34.
- Mullighan CG, Miller CB, Radtke I, et al. BCR-ABL1 lymphoblastic leukaemia is characterized by the deletion of Ikaros. *Nature* 2008;453:110-4.
- van der Veer A, Waanders E, Pieters R, et al. Independent prognostic value of BCR-ABL1-like signature and IKZF1 deletion, but not high CRLF2 expression, in children with B-cell precursor ALL. *Blood* 2013;122:2622-9.
- Loh ML, Zhang J, Harvey RC, et al. Tyrosine kinome sequencing of pediatric acute lymphoblastic leukemia: a report from the Children's Oncology Group TARGET Project. *Blood* 2013;121:485-8.
- Kiyokawa N, Iijima K, Yoshihara H, et al. An analysis of Ph-like ALL in Japanese patients. Presented at the American Society of Hematology Annual Meeting, New Orleans, December 7-10, 2013. abstract 352.
- Te Kronnie G, Silvestri D, Vendramini E, et al. Philadelphia-like signature in childhood acute lymphoblastic leukemia: the AEIOF experience. Presented at the American Society of Hematology Annual Meeting, New Orleans, December 7-10, 2013. abstract 353.
- Roberts KG, Morin RD, Zhang J, et al. Genetic alterations activating kinase and cytokine receptor signaling in high-risk acute lymphoblastic leukemia. *Cancer Cell* 2012;22:153-66.
- Weston BW, Hayden MA, Roberts KG, et al. Tyrosine kinase inhibitor therapy induces remission in a patient with refractory EBF1-PDGFRB-positive acute lymphoblastic leukemia. *J Clin Oncol* 2013;31(25):e413-e416.
- Lengline E, Beldjord K, Dombret H, Soulier J, Boissel N, Clappier E. Successful tyrosine kinase inhibitor therapy in a refractory B-cell precursor acute lymphoblastic leukemia with EBF1-PDGFRB fusion. *Haematologica* 2013;98(11):e146-e148.
- Shah S, Schrader KA, Waanders E, et al. A recurrent germline PAX5 mutation confers susceptibility to pre-B cell acute lymphoblastic leukemia. *Nat Genet* 2013;45:1226-31.
- Mantel N. Evaluation of survival data

- and two new rank order statistics arising in its consideration. *Cancer Chemother Rep* 1966;50:163-70.
16. Fine JP, Gray RJ. A proportional hazards model for the subdistribution of a competing risk. *J Am Stat Assoc* 1999;94:496-509.
 17. Cox DR. Regression models and life-tables. *J R Stat Soc Series B Stat Methodol* 1972;34:187-220.
 18. R Development Core Team. R: A language and environment for statistical computing. 2009 (<http://www.R-project.org>).
 19. Ernst T, Score J, Deininger M, et al. Identification of FOXP1 and SNX2 as novel ABL1 fusion partners in acute lymphoblastic leukaemia. *Br J Haematol* 2011;153:43-6.
 20. Soler G, Radford-Weiss I, Ben-Abdellali R, et al. Fusion of ZMIZ1 to ABL1 in a B-cell acute lymphoblastic leukaemia with a t(9;10)(q34;q22.3) translocation. *Leukemia* 2008;22:1278-80.
 21. Russell LJ, Capasso M, Vater I, et al. Deregulated expression of cytokine receptor gene, CRLF2, is involved in lymphoid transformation in B-cell precursor acute lymphoblastic leukemia. *Blood* 2009;114:2688-98.
 22. Mullighan CG, Collins-Underwood JR, Phillips LA, et al. Rearrangement of CRLF2 in B-progenitor- and Down syndrome-associated acute lymphoblastic leukemia. *Nat Genet* 2009;41:1243-6.
 23. Lacronique V, Boureux A, Valle VD, et al. A TEL-JAK2 fusion protein with constitutive kinase activity in human leukemia. *Science* 1997;278:1309-12.
 24. Poitras JL, Dal Cin P, Aster JC, Deangelo DJ, Morton CC. Novel SSBP2-JAK2 fusion gene resulting from a t(5;9)(q14.1;p24.1) in pre-B acute lymphocytic leukemia. *Genes Chromosomes Cancer* 2008;47:884-9.
 25. Knezevich SR, Garnett MJ, Pysher TJ, Beckwith JB, Grundy PE, Sorensen PH. ETV6-NTRK3 gene fusions and trisomy 11 establish a histogenetic link between mesoblastic nephroma and congenital fibrosarcoma. *Cancer Res* 1998;58:5046-8.
 26. Knezevich SR, McFadden DE, Tao W, Lim JF, Sorensen PH. A novel ETV6-NTRK3 gene fusion in congenital fibrosarcoma. *Nat Genet* 1998;18:184-7.
 27. Tognon C, Knezevich SR, Huntsman D, et al. Expression of the ETV6-NTRK3 gene fusion as a primary event in human secretory breast carcinoma. *Cancer Cell* 2002;2:367-76.
 28. Alessandri AJ, Knezevich SR, Mathers JA, Schultz KR, Sorensen PH. Absence of t(12;15) associated ETV6-NTRK3 fusion transcripts in pediatric acute leukemias. *Med Pediatr Oncol* 2001;37:415-6.
 29. Eguchi M, Eguchi-Ishimae M. Absence of t(12;15) associated ETV6-NTRK3 fusion transcripts in pediatric acute leukemias. *Med Pediatr Oncol* 2001;37:417.
 30. Williams RT, Roussel MF, Sherr CJ. Arf gene loss enhances oncogenicity and limits imatinib response in mouse models of Bcr-Abl-induced acute lymphoblastic leukemia. *Proc Natl Acad Sci U S A* 2006;103:6688-93.
 31. Williams RT, den Besten W, Sherr CJ. Cytokine-dependent imatinib resistance in mouse BCR-ABL+, Arf-null lymphoblastic leukemia. *Genes Dev* 2007;21:2283-7.
 32. Taipale M, Krykbaeva I, Whitesell L, et al. Chaperones as thermodynamic sensors of drug-target interactions reveal kinase inhibitor specificities in living cells. *Nat Biotechnol* 2013;31:630-7.
 33. Schultz KR, Bowman WP, Aledo A, et al. Improved early event-free survival with imatinib in Philadelphia chromosome-positive acute lymphoblastic leukemia: a children's oncology group study. *J Clin Oncol* 2009;27:5175-81.
 34. Harvey RC, Kang H, Roberts KG, et al. Development and validation of a highly sensitive and specific gene expression classifier to prospectively screen and identify B-precursor acute lymphoblastic leukemia (ALL) patients with a Philadelphia chromosome-Like ("Ph-like" or "BCR-ABL1-Like") signature for therapeutic targeting and clinical intervention. *Blood* 2013;122:826.
 35. Harvey RC, Mullighan CG, Chen IM, et al. Rearrangement of CRLF2 is associated with mutation of JAK kinases, alteration of IKZF1, Hispanic/Latino ethnicity, and a poor outcome in pediatric B-progenitor acute lymphoblastic leukemia. *Blood* 2010;115:5312-21.
 36. Maude SL, Tasian SK, Vincent T, et al. Targeting JAK1/2 and mTOR in murine xenograft models of Ph-like acute lymphoblastic leukemia. *Blood* 2012;120:3510-8.
 37. Tasian SK, Doral MY, Borowitz MJ, et al. Aberrant STAT5 and PI3K/mTOR pathway signaling occurs in human CRLF2-rearranged B-precursor acute lymphoblastic leukemia. *Blood* 2012;120:833-42.
 38. Greuber EK, Smith-Pearson P, Wang J, Pendergast AM. Role of ABL family kinases in cancer: from leukaemia to solid tumours. *Nat Rev Cancer* 2013;13:559-71.
 39. Dewar AL, Cambareri AC, Zannettino AC, et al. Macrophage colony-stimulating factor receptor c-fms is a novel target of imatinib. *Blood* 2005;105:3127-32.

Copyright © 2014 Massachusetts Medical Society.