



Discussion Paper Series

Tax Evasion, the Underground Economy and Financial Development

By

Keith Blackburn, Niloy Bose, Salvatore Capasso

Centre for Growth and Business Cycle Research, Economic Studies,
University of Manchester, Manchester, M13 9PL, UK

May 2010
Number 138

Download paper from:

<http://www.socialsciences.manchester.ac.uk/cgbcr/discussionpapers/index.html>

Tax Evasion, the Underground Economy and Financial Development

Keith Blackburn*, Niloy Bose[†] and Salvatore Capasso[‡]

Abstract

We study the relationship between the underground economy and financial development in a model of tax evasion and bank intermediation. Agents with heterogeneous skills seek loans in order to undertake risky investment projects. Asymmetric information between borrowers and lenders implies a menu of loan contracts that induce self-selection in a separating equilibrium. Faced with these contracts, agents choose how much of their income to declare by trading off their incentives to offer collateral against their disincentives to comply with tax obligations. The key implication of the analysis is that the marginal net benefit of income disclosure increases with the level of financial development. Thus, in accordance with empirical observation, we establish the result that the lower is the stage of such development, the higher is the incidence of tax evasion and the greater is the size of the underground economy.

Keywords: Tax evasion, shadow economy, financial development

JEL Classification: E26, G14, H26, O16, O17

*Centre for Growth and Business Cycles Research, Department of Economics, University of Manchester.

[†]Department of Economics, University of Wisconsin (Milwaukee).

[‡]Department of Economic Studies, University of Naples (Parthenope).

Address for correspondence: Keith Blackburn, Department of Economics, University of Manchester, Manchester M13 9PL, England. **Tel:** 0161-275-3908. **Fax:** 0161-275-4928. **E-mail:** keith.blackburn@manchester.ac.uk.

1 Introduction

The underground economy is a pervasive feature of countries throughout the world. In one form or another, and to a lesser or greater degree, it has existed, and continues to exist, in all societies. Known by many other names (e.g., the hidden, shadow, unofficial, informal and black market economy), its effects on economic and social development can be significant and far-reaching as scarce resources are wasted or used inefficiently, as purposeful regulations are circumvented and undermined, as national accounts become inaccurate and incomplete, and as public finances deteriorate to the detriment of public policy. Of course, the presence of an underground sector is simply a reflection of individuals' incentives to conceal their economic activities, either because these activities would be less rewarding if practised in the formal sector, or else because the activities are illegal to begin with. Understanding what factors might influence such incentives is an important avenue of research which we pursue in this paper.¹

By its nature, the underground economy is difficult to study empirically. Nevertheless, there has been a good deal of progress on ascertaining data and developing techniques for quantifying its size and importance. Whilst different approaches yield different estimates, the general conclusion is that the extent of informal economic activity is substantial. For example, Schneider and Enste (2002) report that, over the period 1988-2000, the average size of the shadow economy as a proportion of GDP ranged between 14-16 percent in OECD countries; the equivalent numbers for developing countries were much higher at 35-44 percent, and in some cases reached the staggering figure of 70 percent or more.²

For the most part, the key factors put forward as influencing underground activity have been related to aspects of public policy and public administration.³ Included amongst these are the burdens of taxation and social security contributions, the complexity and arbitrariness of the tax system, the extent of bureaucracy and regulations, and the incidence of corruption and

¹As indicated by these opening remarks, we use the term underground economy to refer to unreported activities that in one way or another contravene official rules and procedures. There are, of course, other activities that go unrecorded but that are perfectly legitimate (such as home production).

²Examples of the latter include Egypt, Thailand and Nigeria, for which the underground economy during 1998-99 was estimated to be 69, 70 and 77 percent of official GDP, respectively. Amongst the developed countries, Greece and Italy share the distinction of having the largest shadow economies, estimated to be in the region of 27-29 percent of GDP during 1998-99.

³For a comprehensive discussion of these (and other) factors, see Schneider and Enste (2000).

rent-seeking (e.g., Friedman *et al.* 2000; Johnson *et al.* 1998a,b; Loayza 1996; Schneider and Enste 2000, 2002; Schneider and Neck 1993).). Without undermining the importance of any of these, our focus in this paper is on another, quite different, factor that has received rather less consideration - namely, the level of financial development. By way of motivating this, we draw attention to two recent studies which suggest that the functioning of financial markets has an important role to play in determining informal behaviour. The first - by Dabla-Norris and Feltenstein (2005) - reports a significant negative correlation between measures of financial development and the size of the shadow economy using aggregate cross-country data. The second - by Straub (2005) - provides evidence of a significant positive effect of credit market efficiency on the degree of business formality using cross-country firm-level data. We obtain similar results from our own investigations, where we plot various standard indicators of financial development against the partial residuals of a regression used to estimate other potential determinants of the shadow economy.⁴ The plots, shown in Figure 1, reveal persuasively that the effect of financial development on the size of the shadow economy is both strongly and robustly negative. Further confirmation of this is given in a more thorough investigation by Bose *et al.* (2009).

The objective of the analysis that follows is to provide an explanation for the above observations. We do so within the context of a simple model of tax evasion and financial intermediation. The basic idea is as follows. Suppose that individuals would like to undertake some investment project, but that the cost of doing so is greater than their current income or wealth so that external finance is needed. This finance is acquired from banks according to the terms and conditions of optimal loan contracts. Asymmetric information between borrowers and lenders leads to a menu of such contracts that stipulate not only the rate of interest charged on loans, but also the probability that a loan will be granted (implying the possibility of credit rationing). Faced with these arrangements, an individual puts forward a loan application which requires her to decide how much of her current wealth to declare, or how much of it to conceal, by trading off the costs and benefits of this. Typically, the costs of concealment - meaning the costs of participating in the informal sector - are modelled in terms of exclusion from certain public goods and services (e.g., social infrastructure, property rights and the justice system), together with the possibility of fines, incarceration and other such punishments. In our case the costs are related to the functioning of finan-

⁴These other factors cover the extent and quality of regulations, the burden of taxation and the quality of governance. A description of the data and methodology is given in an Appendix.

cial markets. Specifically, the more wealth that an individual hides, the less collateral she has to offer for securing a loan and the worse are the terms and conditions of the loan contract made available to her. Significantly, this deterioration in credit arrangements is more pronounced at lower levels of financial development (as measured by higher costs of financial intermediation). As regards the benefits of concealment, an individual who invests any part of her wealth in the shadow economy can avoid some of her tax obligations and earn a black market rate of return on her investment. For reasons alluded to later, we assume that this return is diminishing in the total volume of funds deposited in the black market. This means that there are interactions between tax evaders as each one's participation in this market imposes a negative externality on others. As such, an individual's incentive to engage in tax evasion may depend importantly on the aggregate incidence of this activity (i.e., how many other individuals are investing in the shadow economy). Against this background, we show that the marginal net gain from greater wealth disclosure increases with the level of financial development. Accordingly, we establish the result that the lower is the stage of such development, the higher is the extent of tax evasion and the greater is the size of the underground economy.

Our analysis complements a small body of other research which suggests various possible connections between the credit market and the shadow economy. Dabla-Norris and Feltenstein (2005) construct a computable dynamic general equilibrium model for the purpose of estimating the impact of taxes on underground activity (and other macroeconomic phenomena) in Pakistan. Their numerical results indicate that, in the presence of credit market imperfections, an increase in corporate taxation may not only cause firms to operate underground but, in doing so, may also lead to a reduction in the amount of collateral in the formal sector and, with this, a reduction in the volume of loans and subsequent investments in that sector. In a slightly different vein, Straub (2005) develops a model in which agents face a choice of participating in either a formal or informal credit market. It is shown how this choice is influenced by the interaction between the cost of entry into formality and the relative efficiency of formal and informal credit mechanisms.⁵ Along related lines, Antunes and Cavalcanti (2007) present a framework in which agents can choose to become either workers or entrepreneurs, with the possibility of practising entrepreneurship in either the formal or informal sector. The analysis demonstrates how the choice of occupation is affected by

⁵The distinction between formal and informal credit markets has been utilised in other (related) contexts. For example, Gordon and Li (2005) have used it to provide an explanation for the tax structures in developing countries.

entry barriers (regulation costs) and credit market imperfections. A common feature of these contributions is that the extent of underground activity is a reflection of individuals' all-or-nothing choice as to whether to participate in the shadow economy. By contrast, our own line of inquiry centres on individuals' incentives to exploit unofficial opportunities whilst still doing business in the formal sector.

Whilst the primary objective of our analysis is to shed further light on the determinants of underground activity, our results may be viewed within the broader context of the potential linkages between the real and financial sectors of an economy. Over the past decade or so, a substantial body of research has been directed towards understanding such linkages, identifying channels through which financial market development can shape an economy's growth prospects. Out of this research has emerged a general consensus that financial development is conducive to growth because of the opportunities it creates for borrowers and lenders to increase both the volume and productivity of investment. These opportunities may arise for a number of reasons, such as a greater capacity to pool risks, an improvement in the quality of information and a reduction in the costs of transactions. Based on the evidence alluded to earlier, together with the analysis that follows, this paper suggests another, quite different, channel through which financial development may foster economic performance - namely, the shrinkage in the size of the shadow economy.

The remainder of the paper is organised as follows. Section 2 sets out the basic framework. Section 3 presents the solution to banks' optimal loan contracting problem. Section 4 presents the solution to individuals' optimal tax evasion problem. Section 5 reveals the equilibrium outcomes that transpire from these solutions. Section 6 contains a few concluding remarks.

2 The Basic Set-up

We consider a small open economy in which there is a countably infinite number of agents measuring a size of unit mass. Agents are identical in terms of their preferences, endowments of wealth and production opportunities, but may differ according to their abilities and skills. These attributes, which are bestowed randomly, determine an agent's performance in productive activity that reflects a choice of project, or occupation, which gives access to a technology for generating output. For certain types of project to be undertaken, loans must be acquired from financial intermediaries under the terms and conditions of mutually agreeable loan contracts. Agents are obliged to pay taxes on all sources of income at a rate determined exogenously by the

government. There are two main sources of imperfection in the economy - an imperfection in financial markets due to asymmetric information between borrowers and lenders, and an imperfection in governance due to asymmetric information between tax payers and tax collectors. In more detail the model is described as follows.

Agents are risk neutral, deriving linear utility from consumption of various income streams that are realised at the end of the period. One source of income is an initial asset endowment, $A > 0$, that pays a gross rate of return of $\alpha > 1$ with certainty. The value of this asset is private information, as is the income, αA , that it yields.⁶ Other sources of income are production (or investment) projects, of which there are two types. The first type involves the use of some basic (traditional) technology in some routine activity that is costless and riskless: this is a safe occupation that requires zero capital outlay and that yields a fixed amount of income with certainty. The second type entails the operation of a more advanced (modern) technology in a more speculative venture that is expected to be more productive but which is also costly and subject to uncertainty: this is a risky occupation that requires K units of capital outlay and that yields a stochastic rate of return. The payoffs from both projects depend on an agent's abilities and skills that are drawn randomly from a known probability distribution which accounts for agent heterogeneity. Specifically, an agent faces the prospect of being either high-skilled (type- H) with probability $p \in (0, 1)$ or low-skilled (type- L) with probability $1 - p$.⁷ The realised distribution of skills is private information to agents. Those who turn out to be high-skilled enjoy a greater expected income from each type of project than those who turn out to be low-skilled: for the safe project, the former produce $s_H > 0$ units of output, whilst the latter produce $s_L \in (0, s_H)$ units; for the risky project, the former earn a rate of return of $\kappa > 1$ with probability $q_H \in (0, 1)$ and a rate of return of zero with probability $1 - q_H$, whilst the latter earn the same returns with alternative probabilities $q_L \in (0, q_H)$ and $1 - q_L$. The greater expected income from the risky project is captured by the restriction $q_i \kappa K > s_i$ ($i = H, L$), and the greater productivity of high-skilled agents is reflected in the features $s_H > s_L$ and $q_H > q_L$. To save on notation in our subsequent analysis, we normalise $s_L = 0$ and $q_H = 1$.

Since all income is realised at the end of the period, an agent who wishes to take on the risky project must acquire external finance to the tune of K . Such

⁶The assumption that A is the same for all agents is made for simplicity. Our results would not change were we to consider a distribution of A across agents.

⁷An alternative description of events is to assume that agents are endowed with identical abilities, but are randomly allocated projects with different (high and low) risk characteristics.

finance is acquired from competitive financial intermediaries (banks) that have access to a perfectly elastic supply of loanable funds at the exogenous world (gross) interest rate, r . For reasons given below, equilibrium loan contracting involves different types of agent being offered different terms and conditions on borrowing, including different rates of interest on loans. We denote by R_i the gross rate of interest charged to an agent of type- i . With probability q_i , the risky enterprise is successful and the agent pays back her loan to earn a final project income of $(\kappa - R_i)K$. With probability $1 - q_i$, the enterprise fails and the agent goes bankrupt, earning a final project income of zero.

Agents are obliged to pay taxes on all of their incomes at the proportional rate $t \in (0, 1)$. The government is able to observe the incomes from projects, but not the income from the asset endowment (since the value of the asset is known only to agents). As such, an agent may seek to evade part of her tax liabilities by misreporting her initial wealth. We denote by $\gamma \in [0, 1]$ the fraction of this wealth that an agent declares, the remaining fraction, $1 - \gamma$, being undeclared. By behaving in this way, the agent makes public that she has $\gamma\alpha A$ amount of asset income on which she is liable to pay tax. The agent's motivation for declaring at least some of her wealth is that she can use this as collateral for securing a loan to run the risky project. We assume that the agent can successfully conceal the undeclared fraction of her wealth by investing it in the shadow economy at a black market gross rate of return of $\rho > 1$. This return is exogenous to the agent, but endogenous to the shadow economy as whole: that is, its value is determined by the aggregate level of black marketeering activity. As mentioned previously, this feature plays an important role in our analysis, being one link in the chain that connects the size of the informal sector to the state of financial development. We shall return to it later. For now, we merely note that an agent's final income from her underground investment is $(1 - \gamma)\rho A$ on which he does not pay any tax.⁸

This completes our description of the environment. Decision making takes place as follows. Prior to realising their skills and project returns, agents choose how much of their initial wealth to declare so as to maximise their expected utility, subject to the financial contracts offered by intermediaries.

⁸According to our description of events, an agent's subterfuge in disposing of her undeclared income allows her to evade taxes with complete confidence of impunity. This feature is merely a simplification, though it is probably near the mark for many developing countries, where the will and wherewithal to fight such practices are relatively weak. It is straightforward to show that our results would not change if one was to assume that agents face a risk of being caught as a consequence of some imprecise government monitoring.

Subsequently, the distribution of skills is revealed privately to agents who then apply for loans. Given this private information, together with the part disclosure of wealth, intermediaries set the terms and conditions of contracts in agents' best interests, whilst ensuring that appropriate constraints on behaviour are observed. Out of their realised final incomes, agents pay off any loans and tax liabilities before consuming the remainder. The equilibrium outcomes that transpire from these decisions are determined by solving backwards through the sequence of events - a matter to which we now turn.

3 Financial Contracts

The precise functioning of the credit market is as follows. At the beginning of the period, lenders are approached by prospective borrowers with a request for funding to undertake risky investment projects. A contract is offered, acceptance of which implies a binding agreement that commits a lender to making a loan of size of K , and a borrower to making a subsequent repayment of this loan. A lender's information at this stage includes an agent's declared value of her initial wealth, γA , together with the corresponding future income, $\gamma \alpha A$. Importantly, it does not include separate observations of γ and A , meaning that the lender is unaware of the agent's true wealth status and must therefore design a contract based only on what has actually been declared. Other information available to lenders includes the *ex ante* distribution of borrower types, p , the income from a borrower's outside opportunity, s_i , the expected income from project investment, $q_i \kappa K$ and the cost of funds, r .

In practice, banks and other financial institutions incur various costs in conducting their operations, such as transactions costs associated with the management of asset portfolios and the provision of liquidity services, and agency costs associated with the processing of information, the enforcement of contracts and the screening and monitoring of borrowers (e.g., Diamond 1984; Fama 1980; Gurley and Shaw 1960). For the purposes of the present analysis, we consolidate these into a single composite cost of intermediation, denoted by $\delta > 0$, which serves as our indicator of financial development. Two empirical measures of intermediation costs are banks' overhead expenditures as a proportion of total assets and banks' net interest rate margin (defined as the difference between the interest income and interest cost per unit of interest-bearing loans).⁹ It is well-documented that both measures

⁹The former of these is considered to be a more direct measure since the latter, as well as reflecting overhead costs, might incorporate other factors, such as regulatory and institutional hurdles in transferring loanable funds to borrowers.

tend to be higher in lower states of financial development, as typified by the predominance of banks that operate on a relatively small scale, that hold relatively small amounts of capital and that are subject to relatively tight regulations (e.g., Demiguir-Kunt *et al.* 2003). Accordingly, we interpret lower values of δ as corresponding to improvements in the efficiency of the financial system.

The design of financial contracts is made complicated by the fact that intermediaries are unable to observe the true skill characteristics of agents. From the perspective of lenders, low-skilled agents are more risky than high-skilled agents. We assume that the population of the former is sufficiently large as to allow banks to design contracts in such a way that induces separation of their clients. The possibility of doing this arises from the fact that different borrower types receive different payoffs from their outside opportunity of running the safe project. This feature means that the indifference curves of high-skilled and low-skilled agents satisfy the single crossing property which enables intermediaries to distinguish the two types by offering a menu of contracts that encourages self-selection in a separating equilibrium (e.g., Bencivenga and Smith 1993; Bose and Cothren 1996).¹⁰ As indicated above, one difference between these contracts is the rate of interest on loans. Another difference is the probability that a loan will actually be granted as banks may be induced to ration credit by turning down some loan applications. We denote by $\pi_i \in (0, 1)$ the probability that an agent of type- i will be approved credit, $1 - \pi_i$ being the probability that she will be denied such funds. In the event of the former, banks incur the cost of intermediation, δ , and earn an income that depends on whether or not the risky project succeeds: if so (i.e., with probability q_i), a bank is paid back in full, receiving $R_i K$ in loan repayment; if not (i.e., with probability $1 - q_i$), the bank recovers part of its loss by appropriating a borrower's collateral, $\gamma \alpha A$. It follows that an intermediary's expected income from lending to an agent of type- i is $q_i R_i K + (1 - q_i) \gamma \alpha A$.

We assume that intermediaries operate in a competitive environment, and that the terms and conditions of available loan contracts are public knowledge. As such, an intermediary is approached by an agent only if the contract that it offers is not dominated by the contracts offered by its competitors. In equilibrium the profits of intermediaries are driven to zero, a condition that we state as

$$q_i R_i K + (1 - q_i) \gamma \alpha A = r K + \delta, \quad (1)$$

¹⁰As shown by Rothschild and Stiglitz (1976), this is the only equilibrium under the circumstances that we have described.

where $q_H = 1$. From above, the left-hand-side of this expression is an intermediary's expected income from lending to an agent of type- i . The left-hand-side is the intermediary's total cost of lending, which comprises the cost of borrowing funds, rK , plus the cost of intermediation, δ .

A contract for an agent of type- i is defined by $C_i = \{R_i, \pi_i\}$. The problem for intermediaries is to choose each R_i and each π_i so as to maximise agents' expected utilities, subject to the zero profit condition in (1) and appropriate incentive compatibility constraints. The solution to this problem is summarised as follows.

Proposition 1 *Assume that $(\kappa - R_H)K > s_H$ and $\gamma\alpha A < rK + \delta$. Then the equilibrium separating contracts are characterised by*

$$R_H = \frac{rK + \delta}{K}, \quad \pi_H = \frac{(q_L\kappa - r)K - \delta + (1 - q_L)\gamma\alpha A}{q_L[(\kappa - r)K - \delta]}, \quad (2)$$

$$R_L = \frac{rK + \delta - (1 - q_L)\gamma\alpha A}{q_L K}, \quad \pi_L = 1. \quad (3)$$

Proof. The expression for each R_i is given immediately by the zero profit condition in (1) (where $q_H = 1$). To determine the associated π_i , proceed as follow. An agent of type- i derives an expected utility of $V_i(C_i) = [q_i\pi_i(\kappa - R_i)K + (1 - \pi_i)s_i](1 - t)$ from the contract offer of $C_i = \{R_i, \pi_i\}$ (where $q_H = 1$ and $s_L = 0$). The first term in $[\cdot]$ gives the net payoff from the risky project, $(\kappa - R_i)K$, when a loan is granted (which occurs with probability π_i) and when the project is successful (which occurs with probability q_i). The second term in $[\cdot]$ gives the payoff from the safe project, s_i , when a loan is not granted (which occurs with probability $1 - \pi_i$). In each case the agent pays taxes, t , on her income. Let C_i^F denote the first-best contract that an agent of type- i would receive under full information. For each of these contracts, $\pi_i = 1$ and R_i is determined as above. Given that $\gamma\alpha A < rK + \delta$, then $R_H < R_L$, implying that $V_L(C_H^F) > V_L(C_L^F)$ and $V_H(C_H^F) > V_H(C_L^F)$. Suppose that lenders were to offer C_i^F in the presence of asymmetric information (as exists in the model). Clearly, there would be no incentive for high-skilled agents to reject C_H^F in favour of C_L^F by pretending to be low-skilled agents. Thus, in order to induce self-selection, lenders do not need to distort the contract for the low-skilled types, but are able to offer this group its first-best choices of R_L and π_L (as summarised in (3)). The contract for the high-skilled group is then determined by solving the following problem:

$$\max_{\pi_H} V_H(C_H) = [\pi_H(\kappa - R_H)K + (1 - \pi_H)s_H](1 - t), \quad (4)$$

$$\text{s.t. } q_L(\kappa - R_L)K(1 - t) \geq \pi_H q_L(\kappa - R_H)K(1 - t), \quad (5)$$

$$0 \leq \pi_H \leq 1. \quad (6)$$

The constraint in (5) is the incentive compatibility condition for low-skilled agents, which requires that the expected utility from accepting C_L^F is no less than the expected utility that could be obtained from C_H by pretending to be high-skilled (i.e., $V_L(C_L^F) \geq V_L(C_H)$). Given that $(\kappa - R_H)K > s_H$, it is straightforward to see that this constraint is binding: since $V_H(C_H)$ is strictly increasing in π_H , intermediaries will set this probability at the highest possible value, which is the value that makes (5) hold with equality, given the setting of each R_i . High-skilled agents are therefore offered a combination of R_H and π_H that departs from their first-best choice (as revealed in (2)). ■

In summary, the contractual interest rate is determined directly by lenders' zero profit condition, which reflects the fact that any contract yielding positive profits cannot survive in a competitive equilibrium. The restriction $\gamma\alpha A < rK + \delta$, which implies that $R_H < R_L$, is necessary to make our analysis non-trivial (since in the absence of this restriction intermediaries would face no risk in lending). As it is, the restriction is necessarily satisfied by virtue of a similar condition that we impose later (i.e., $\alpha A < rK + \delta$). With respect to the determination of π_i , intermediaries induce separation of low-skilled and high-skilled agents by offering the former their first-best contract (whereby each one of them is granted a loan with certainty) and presenting the latter with a distorted contract (whereby a fraction of them are credit rationed).¹¹ That separation is achieved at the expense of high-quality clients follows simply from the incentive compatibility condition and is a standard result in the adverse selection literature.

An important implication of the above results is the following.

Corollary 1 *The probability that a high-skilled agent will be given a loan is greater the lower is the cost of financial intermediation and the higher is the agent's declared value of wealth*

Formally, $\frac{\partial \pi_H}{\partial \delta} < 0$ and $\frac{\partial \pi_H}{\partial \gamma} > 0$. The reason is that, as the cost of intermediation declines, or as the declared value of wealth increases, the interest rate charged to low-skilled agents falls by more than the interest rate charged to high-skilled agents; this makes the contract offered to the latter less attractive to the former and thereby provides an opportunity for intermediaries to reduce the incidence of credit rationing whilst maintaining incentive compatibility.¹²

¹¹The same parameter restriction as before, $\gamma\alpha A < rK + \delta$, ensures that $\pi_H \in (0, 1)$.

¹²The results are straightforward to see from our previous expressions. That R_L falls by more than R_H is evident from (2) and (3). Given this, then strict equality of (5) implies an increase in π_H .

4 Tax Evasion

The foregoing analysis reveals how the equilibrium arrangements for borrowing and lending are influenced by the declared asset position of agents. The greater is the initial wealth that agents reveal, the greater is the collateral that can be used as security against a loan and the better are the terms and conditions of loan contracts. At the same time, revealing more wealth means that agents expose themselves to a higher burden of taxation. An agent's disclosure (or concealment) of her wealth status is therefore a decision that involves optimising a trade-off. The agent solves this problem with the knowledge of the contracts on offer, but without the knowledge of which contract she will actually be presented with as her skill type is not realised until subsequently.

The circumstances facing agents are summarised as follows. Each agent pays the same tax rate, t , on all sources of income, except the income from undeclared wealth. With probability π_i , an agent of type- i acquires a loan to run the risky project. The project succeeds with probability q_i and fails with probability $1 - q_i$. In the event of the former, the agent earns a net disposable income of $(1 - t)(\kappa - R_i)K$ from the project, plus a net disposable income of $(1 - t)\gamma\alpha A$ from her declared asset endowment, plus an income of $(1 - \gamma)\rho A$ from her undeclared endowment. In the event of the latter, the agent earns only the last of these incomes, $(1 - \gamma)\rho A$. With probability $1 - \pi_i$, an agent of type- i is denied a loan. In this case the agent receives an after-tax income of $(1 - t)s_i$ from running the safe project, plus an after-tax income of $(1 - t)\gamma\alpha A$ from her reported wealth, plus an income of $(1 - \gamma)\rho A$ from her unreported wealth. Collecting terms together and setting $\pi_L = 1$ (along with $s_L = 0$ and $q_H = 1$), we may write the expected utility of a high-skilled and a low-skilled agent as

$$E(U_H) = (1 - t)[\pi_H(\kappa - R_H)K + (1 - \pi_H)s_H + \gamma\alpha A] + (1 - \gamma)\rho A, \quad (7)$$

$$E(U_L) = (1 - t)[q_L(\kappa - R_L)K + \gamma\alpha A] + (1 - \gamma)\rho A. \quad (8)$$

An agent's choice of how much of her initial wealth to declare is a choice of the value of γ . As indicated above, this decision is made prior to the agent realising her skills, but in the knowledge of the contracts that will be available. Since the probability that an agent will turn out to be high-skilled (low-skilled) is $p(1 - p)$, γ is chosen so as to maximise $U = pE(U_H) + (1 - p)E(U_L)$, given that R_i and π_i are determined according to (2) and (3).

The behaviour of an agent is straightforward to deduce and we summarise it as follows.

Proposition 2 *Let $F(\delta) \equiv (1 - t)p[(\kappa - r)K - \delta - s_H] \frac{\partial \pi_H}{\partial \gamma}$ and $G(\rho) \equiv$*

$[\rho - (1 - t)\alpha]A$. Then assuming that $\alpha A < rK + \delta$, an agent will optimally choose $\gamma = 1$ if $F(\delta) > G(\rho)$ and $\gamma = 0$ if $F(\delta) < G(\rho)$.

Proof. Using (7) and (8), together with (2) and (3), an agent's decision problem may be stated as

$$\begin{aligned} \max_{\gamma} U = & (1 - t)\{p[\pi_H((\kappa - r)K - \delta - s_H) + s_H] \\ & + (1 - p)[(q_L\kappa - r)K - \delta] + \gamma\alpha A\} + (1 - \gamma)\rho A. \end{aligned} \quad (9)$$

It follows that

$$\begin{aligned} \frac{\partial U}{\partial \gamma} = & (1 - t)p[(\kappa - r)K - \delta - s_H]\frac{\partial \pi_H}{\partial \gamma} - [\rho + (1 - t)\alpha]A \\ = & F(\delta) - G(\rho). \end{aligned} \quad (10)$$

The result in (2) implies that $\pi_H \in (0, 1)$, $\frac{\partial \pi_H}{\partial \gamma} > 0$ and $F(\delta) > 0$ for all γ up to $\gamma_{\max} = \frac{rK + \delta}{\alpha A}$, at which point and beyond $\pi_H = 1$ and $\frac{\partial \pi_H}{\partial \gamma} = F(\delta) = 0$. Assume that $\alpha A < rK + \delta$, so that $\gamma_{\max} > 1$. For the case in which $F(\delta) > G(\rho)$, $\frac{\partial U}{\partial \gamma} > 0$ for $\gamma < \gamma_{\max}$ and $\frac{\partial U}{\partial \gamma} < 0$ for $\gamma > \gamma_{\max}$, implying that the agent will set $\gamma = 1$, its maximum value. For the case in which $F(\delta) < G(\rho)$, $\frac{\partial U}{\partial \gamma} < 0$ for all γ , implying that the agent will set $\gamma = 0$, its minimum value. ■

As before, the above results have a straightforward intuition. By declaring more wealth (i.e., by increasing γ), an agent incurs both a gain and a loss. The former is captured by the term $F(\delta)$ and represents the marginal benefit of putting up more collateral, which is the benefit from the reduction in risk faced by lenders and the consequent improvement in the terms and conditions of the loan contract. The latter is given by the term $G(\rho)$ and corresponds to the marginal cost of investing more wealth in the formal sector, which is the cost of both a higher burden of taxation and the foregone interest income from the informal sector. Depending on which is greater, the agent will set γ at either its maximum or minimum value, implying either full or zero disclosure of her asset endowment and therefore either full or zero compliance with her tax obligations on asset income. The restriction $\alpha A < rK + \delta$ is relevant for the case in which $F(\delta) > G(\rho)$, where it is observed that an agent's expected utility is linearly increasing (decreasing) in γ up to (beyond) a critical level, $\gamma_{\max} = \frac{rK + \delta}{\alpha A}$. The restriction implies that $\gamma_{\max} > 1$ which is not a feasible choice since the agent would be claiming to have more wealth than A - a claim that she would need to substantiate (but never could) when putting up her collateral.

In presenting the above results we have singled out two key parameters that may influence an agent's behaviour - namely, the cost of financial intermediation, δ , and the return on underground investment, ρ . These are seen to impact on the expected gains and losses from the disclosure of wealth. In particular, we make the following observation.

Corollary 2 *The marginal benefit (cost) to an agent of disclosing more wealth is higher the lower (higher) is the cost of financial intermediation (return on underground investment).*

Formally, $F'(\delta) < 0$ and $G'(\rho) > 0$. The effect of δ is explained by the fact that a lower cost of intermediation makes the terms and conditions of loan contracts more attractive to agents. As such, agents have a stronger incentive to put up more collateral (i.e., to declare more wealth) in order to improve their chances of acquiring a loan. The effect of ρ is simply that a higher return from investing in the informal sector means a higher opportunity cost of investing in the formal sector. The incentive to do the former (i.e., to conceal more wealth) is therefore greater.

5 Aggregate Outcomes

The results obtained above establish conditions under which an individual agent will seek to evade some of her tax obligations. These conditions depend on economy-wide factors that are relevant to all agents. One of these - the cost of intermediation - provides a measure of financial development. For the purposes of the present paper, we treat this as exogenous since our principal focus is on the causal role played by financial markets in governing events elsewhere in the economy. By contrast, the other economy-wide factor - the return on underground investment - is an outcome that we treat as being determined endogenously on the basis of the aggregate behaviour of individuals. The effect of this is to introduce important interactions between agents, as the following analysis intends to reveal.

A plausible assumption is that the rate of return earned in the informal sector is a decreasing function of the total volume of funds channelled into that sector. One justification for this is simply the existence of diminishing returns to informal productive activity: as more resources are devoted to such activity, the marginal gains from it decline. An alternative, more elaborate, motivation is as follows. Suppose that agents' subterfuge in concealing their income requires assistance from some other individuals who specialise in this type of practice. These individuals are experts at directing funds into

areas where they are difficult to trace by the government, such as the underground economy and overseas bank accounts. In return for this service an agent must pay a commission which increases with the total amount of funds being laundered because of the greater difficulty and greater costs of doing this. As before, the agent's net return on her own hidden income is lower the larger is the total amount of such income. Whichever way one chooses to motivate the assumption, the key implication is that there is an interdependence between individual and aggregate behaviour as any agent who participates in underground activity contributes to a small reduction in the rewards from this activity, an effect that is translated into a large negative externality for all such participants, whose incentives to actually behave in this way are duly affected.¹³

We capture the above ideas as follows. Denote by $\mu \in [0, 1]$ the fraction of agents who set $\gamma = 0$ so that the total volume of undeclared wealth invested in the shadow economy is μA . Each agent then receives a black market return which is a decreasing function of these total hidden funds: that is, $\rho = \hat{\rho}(\mu)$, where $\hat{\rho}'(\mu) < 0$. Given this, together with our previous results, we now proceed to determine the equilibrium outcomes in the economy.

We begin by defining $\rho_0 = \hat{\rho}(0)$ and $\rho_1 = \hat{\rho}(1)$, which are the respective rates of return in the informal sector when every agent and no agent discloses her initial wealth. Evidently, $\rho_0 > \rho_1$. The corresponding marginal costs of disclosure are $G(\rho_0)$ and $G(\rho_1)$, where $G(\rho_0) > G(\rho_1)$. Since the marginal benefit of disclosure, $F(\delta)$, is a monotonically decreasing function, we may deduce that, for each ρ_i ($i = 0, 1$), there is a unique δ_i such that $F(\delta_i) = G(\rho_i)$, $F(\delta) > G(\rho_i)$ for all $\delta < \delta_i$ and $F(\delta) < G(\rho_i)$ for all $\delta > \delta_i$. Evidently, $\delta_0 < \delta_1$. These critical, or threshold, levels of financial development represent boundaries between regions where the incentive to conceal wealth and evade taxes is either present or absent. We are now in a position to establish our main result which we illustrate in Figure 2.

Proposition 3 *The equilibrium fraction of tax-evading agents is given by the following: (i) $\mu = 1$ for $\delta > \delta_1$; (ii) $\mu = 0$ for $\delta < \delta_0$; and (iii) $\mu = \hat{\mu}(\delta) \in (0, 1)$ for $\delta \in (\delta_0, \delta_1)$, where $\hat{\mu}'(\delta) > 0$.*

Proof. Suppose, first, that $\delta > \delta_1$, in which case $F(\delta) < G(\rho_1) < G(\rho_0)$. Consider a profile of behaviour where all agents choose $\gamma = 0$ so that $\rho = \rho_1$ (corresponding to $\mu = 1$). Since $F(\delta) < G(\rho_1)$, no agent has an incentive to deviate from this choice. To establish that this is a unique equilibrium, consider the opposite profile where all agents choose $\gamma = 1$ so that $\rho = \rho_0$

¹³As indicated later, our main results can be established in a different way based on an alternative description of events.

(corresponding to $\mu = 0$). Since $F(\delta) < G(\rho_0)$, it is optimal for each agent to deviate from this choice, implying that $\mu = 0$ cannot exist as an equilibrium. Next, suppose that $\delta < \delta_0$, in which case $F(\delta) > G(\rho_0) > G(\rho_1)$. By a similar argument, there is a unique equilibrium in which all agents set $\gamma = 1$: no agent has an incentive to deviate from this (since $F(\delta) > G(\rho_0)$), whilst each agent has an incentive to deviate from $\gamma = 0$ if all other agents are choosing $\gamma = 0$ (since $F(\delta) > G(\rho_1)$). Finally, suppose that $\delta \in (\delta_0, \delta_1)$, in which case $G(\rho_1) < F(\delta) < G(\rho_0)$. If all agents were to choose $\gamma = 0$, then it would be optimal for each one to deviate and set $\gamma = 1$ (since $G(\rho_1) < F(\delta)$). Likewise, if all agents were to choose $\gamma = 1$, then it would be optimal for each one to deviate and set $\gamma = 0$ (since $F(\delta) < G(\rho_0)$). Thus, neither $\mu = 1$ nor $\mu = 0$ can exist as an equilibrium. Consider, however, a $\mu \in (0, 1)$ such that $\rho_0 > \hat{\rho}(\mu) > \rho_1$ and $G(\rho_0) > G[\hat{\rho}(\mu)] > G(\rho_1)$. Then there exists a unique value of this μ which supports an equilibrium with $F(\delta) = G[\hat{\rho}(\mu)]$. Since $F'(\delta) < 0$ and $G'[\hat{\rho}(\mu)]\hat{\rho}'(\mu) < 0$, then this μ is an increasing function of δ , or $\mu = \hat{\mu}(\delta)$ where $\hat{\mu}'(\delta) > 0$. ■

Based on the above, we are led to distinguish between three types of regime for an economy: the first - a low financial development regime - is one in which the incidence of tax evasion is always at its maximum ($\mu = 1$) for any given value of δ above the higher threshold value, δ_1 ; the second - a high financial development regime - is one in which the incidence of tax evasion is always at its minimum ($\mu = 0$) for any given value of δ below the lower threshold value, δ_0 . And the third - an intermediate financial development regime - is one in which the incidence of tax evasion is somewhere in between its maximum and minimum ($\mu \in (0, 1)$), and decreases monotonically as δ decreases within the interval of the thresholds from δ_1 to δ_0 . The intuition is as follows.

Each agent chooses to disclose or conceal her initial wealth according to whether $F(\delta) > G(\rho)$ or $F(\delta) < G(\rho)$. Whichever of these conditions holds depends on the level of financial development and the return on underground investment: the higher is the former (i.e., the smaller is δ) the better are the terms and conditions of loan contracts (an inducement to disclosure), whilst the higher is the latter (i.e., the greater is ρ) the more attractive is participation in the informal sector (an inducement to concealment). For any $\delta > \delta_1$, we have $F(\delta) < G(\rho_1) < G(\rho_0)$. In this case the level of financial development is so low that it never pays an agent to declare her wealth, even if she is faced with the lowest possible return on underground investment as a result of all other agents concealing their wealth. As such, each and every agent chooses to evade taxes in a unique equilibrium from which there is no incentive to deviate. Conversely, for any $\delta < \delta_0$, we have

$F(\delta) > G(\rho_0) > G(\rho_1)$. In this instance the level of financial development is so high that an agent is always better off by declaring her wealth, even if she could earn the the highest possible return in the informal sector due to all other agents declaring their wealth. Consequently, the only equilibrium from which defection will not occur is one in which each and every agent chooses not to evade taxes. Contrasting these scenarios is the case of $\delta \in (\delta_0, \delta_1)$, for which we have $G(\rho_1) < F(\delta) < G(\rho_0)$. In this intermediate range of financial development the benefits from declaring and concealing wealth exactly offset each other in an equilibrium where some agents evade taxes and others do not. The fraction of tax evaders is the value of μ that satisfies $F(\delta) = G(\rho)$, where $\rho = \hat{\rho}(\mu)$. Since $F'(\delta) < 0$, $G'(\rho) > 0$ and $\hat{\rho}'(\mu) < 0$, a lower value of δ requires a lower value of μ so as to preserve the marginal agent's indifference between compliance and non-compliance in tax regulations.¹⁴

It is worth mentioning that similar results could be obtained using an alternative version of the model based on agent heterogeneity, rather than diminishing returns to black market investment. Suppose, for example, that agents are differentiated according to differences in their costs of concealing wealth, which may be reflected in different net returns from concealment (i.e., differences in ρ), or different disutilities from some personal guilt, moral shame and social stigma attached to such behaviour. This heterogeneity may be captured in a distribution of $G(\rho)$, the marginal cost of wealth disclosure. For any given δ , one could then identify a $\hat{G}(\rho)$ which satisfies $F(\delta) = \hat{G}(\rho)$ and which defines the critical agent for whom it just pays to set $\gamma = 1$. All other agents with $G(\rho) < \hat{G}(\rho)$ would also be setting $\gamma = 1$, whilst all others with $G(\rho) > \hat{G}(\rho)$ would be setting $\gamma = 0$. As δ decreases (causing $F(\delta)$ to increase), $\hat{G}(\rho)$ would increase, meaning that $\gamma = 1$ would be chosen by an increasing proportion of the population.

In summary, our analysis is able to explain the observed negative relationship between the level of financial development and the incidence of tax evasion. When the former is sufficiently low or sufficiently high, the latter is at its maximum or at its minimum; when the former is somewhere in between, the latter is somewhere in between and decreases monotonically as the efficiency of financial markets improves. To the extent that financial development occurs endogenously as the economy, in general, develops, tax evasion may be a temporary phenomenon that a government might be willing to live with, especially if the costs of mitigating it are high. On the other hand, an economy that staggers in its process of development may find itself

¹⁴In terms of Figure 2, lower values of $\delta \in (\delta_0, \delta_1)$ produce a movement along the $F(\delta)$ curve and an upward shift of the $G[\hat{\rho}(\mu)]$ line such that a path of μ is traced out along the points of intersection of the two loci (i.e., where $F(\delta) = G[\hat{\rho}(\mu)]$).

permanently deprived of tax revenues that could otherwise be put to good causes. According to our analysis, financial development serves to combat the incentives to engage in tax evasion only above some threshold level: if this threshold is not reached, then the underground economy will continue to thrive against a backdrop of financial repression.

6 Conclusions

The existence of a shadow economy has potentially serious implications for economic performance and public policy. Activities conducted in this sector are neither protected nor regulated in the same way that applies to activities in the formal sector. Growth prospects can be compromised by encumbrances to doing business due to the lack of social infrastructure. Public finances can suffer as the tax base shrinks, thus weakening the government's capacity to generate revenue. And policy makers' assessments and recommendations can be prone to greater error because of the poorer quality of official statistics. For these and other reasons, the size of the informal sector is a matter of non-trivial concern and an important task is to understand what factors might influence it.

Informality in an economy is a reflection of individuals' incentives to conceal their activities or circumstances. This may take various forms, ranging from full participation in the underground sector (e.g., working exclusively in the shadow labour market) to more subtle clandestine practices (e.g., misreporting income and hiding investments). In this paper we have focused on the latter by considering a situation in which individuals may choose to conceal their true wealth status for the purpose of tax evasion. Our central concern has been to study how the temptation to engage in such behaviour might be influenced by conditions in financial markets from which individuals acquire loans to undertake business ventures. The crux of our analysis is that, in the presence of financial market imperfections (i.e., asymmetric information), the amount of wealth disclosed by an individual affects the terms and conditions of the loan contract that is offered. At the same time, the marginal benefit of disclosure increases with improvements in the functioning of financial markets, as represented by a lower cost of financial intermediation. In spite of its simplicity, the model produces a rich variety of outcomes as a result of the mutual interaction between individual decision making and the aggregate economic environment. In particular, we are led to distinguish between three types of financial development regime with the implication that the fraction of tax-evading agents declines as the economy moves from a low, through an intermediate, to a high development regime. This negative relationship

between the incidence of tax evasion (or size of the underground sector) and the level of financial development accords well with empirical evidence.

Appendix

Figure 1 is based on a regression using annual data for 114 countries (including both developed and developing countries) over the period 1999-2005. The regression equation is specified as

$$SE_{it} = \beta_0 + \beta_1 RF_{it} + \beta_2 RQ_{it} + \beta_3 TB_{it} + \beta_4 PC_{it} + \beta_5 RW_{it} + \varepsilon_{it},$$

where the notation and data are summarised as follows:

- *SE* - shadow economy, measured by the average size of the underground economy as a percentage of GDP (source: Schneider 2007);
- *RF* - regulatory freedom, measured by the average scores on the regulatory freedom index (source: Heritage Foundation Freedom in the World Indicators);
- *RQ* - regulatory quality, measured by the average scores on the regulatory quality index (source: World Bank Governance Indicators);
- *TB* - tax burden, measured by the average scores on the fiscal freedom index (source: Heritage Foundation Freedom in the World Indicators);
- *PC* - public sector corruption, measured by the average scores on the corruption perception index (source: Transparency International);
- *RW* - rule of law, measured by the average scores on the rule of law index (source: World Bank Governance Indicator).
- *i* - country index.

The residuals from the above regression are plotted against the following indicators of financial development:

- Domestic credit to the private sector, measured by the average overall amount of domestic credit provided to private borrowers as a percentage of GDP (source: World Bank Development Indicators).
- Domestic credit provided by the banking sector, measured by the average overall amount of domestic credit provided by private deposit institutions as a percentage of GDP (source: World Bank Development Indicators).
- Liquid liabilities (M3), measured by the average amount of outstanding liquid liabilities of the banking system as a percentage of GDP (source: World Bank Development Indicators).

References

- Antunes, A.R. and T.V. Cavalcanti, 2007. Start up costs, limited enforcement and the hidden economy. *European Economic Review*, 51, 203-224.
- Bencivenga, V.R. and B. Smith, 1993. Some consequences of credit rationing in an endogenous growth model. *Journal of Economic Dynamics and Control*, 17, 97-122.
- Bose, N., S. Capasso and M. Wurm, 2009. The impact of banking development on the size of the shadow economy. Mimeo, University of Wisconsin (Milwaukee).
- Bose, N. and R. Cothren, 1996. Equilibrium loan contracts and endogenous growth in the presence of asymmetric information. *Journal of Monetary Economics*, 38, 363-376.
- Dabla-Norris, E. and A. Feltenstein, 2005. The underground economy and its macroeconomic consequences. *Journal of Policy Reform*, 8, 153-174.
- Demigurre-Kunt, A., L. Laeven and R. Levine, 2003. Regulation, market structure, institutions and the cost of financial intermediation. NBER Working Paper No.9890.
- Diamond, D., 1984. Financial intermediation and delegated monitoring. *Review of Economic Studies*, 51, 393-414.
- Fama, E, 1980, Banking in the theory of finance. *Journal of Monetary Economics*, 6, 39-57.
- Friedman, E., S. Johnson, D. Kaufmann and P. Zoido-Lobaton, 2000. Dodging the grabbing hand: the determination of unofficial activity in 69 countries. *Journal of Public Economics*, 76, 459-493.
- Gordon, R.H. and W. Li, 2005. Tax structure in developing countries: many puzzles and possible explanations. NBER Working Paper No.11267.
- Gurley, H.G. and E.S. Shaw, 1960. *Money in the Theory of Finance*. Brookings Institute: Washington.

Johnson, S., D. Kaufmann and P. Zoido-Lobaton, 1998a. Regulatory discretion and the unofficial economy. *American Economic Review*, 88, 387-392.

Johnson, S., D. Kaufmann and P. Zoido-Lobaton, 1998b. Corruption, public finances and the unofficial economy. World Bank Discussion Paper.

Loayza, N., 1996. The economics of the informal sector: a simple model and some empirical evidence from Latin America. *Carnegie-Rochester Conference Series on Public Policy*, 45, 129-162.

Rothschild, M. and J. Stiglitz, 1976. Equilibrium in competitive insurance markets: an essay on the economics of imperfect information. *Quarterly Journal of Economics*, 90, 629-650.

Schneider, F., 2007. Shadow economies and corruption all over the world: new estimates for 145 countries. *Open-Access, Open-Assessment E-Journal*, 1.

Schneider, F. and D.H. Enste, 2000. Shadow economies: sizes, causes and consequences. *Journal of Economic Literature*, 38, 77-114.

Schneider, F. and D.H. Enste, 2002. *The Shadow Economy: Theoretical Approaches, Empirical Studies and Policy Implications*. Cambridge University Press: Cambridge.

Schneider, F. and R. Neck, 1993. The development of the shadow economy under changing tax systems and structures. *Finanzarchiv N.F.*, 50, 344-369.

Straub, S., 2005. Informal sector: the credit market channel. *Journal of Development Economics*, 78, 299-321.

Figure 1
Shadow Economy Regression Residuals Against
Financial Development Indicators

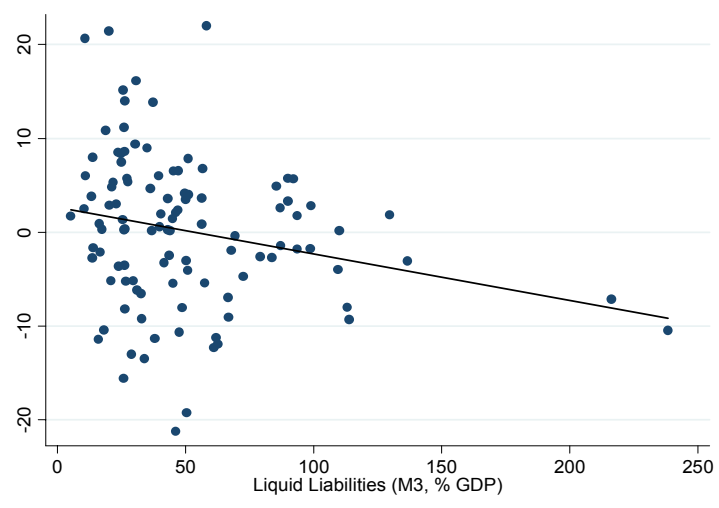
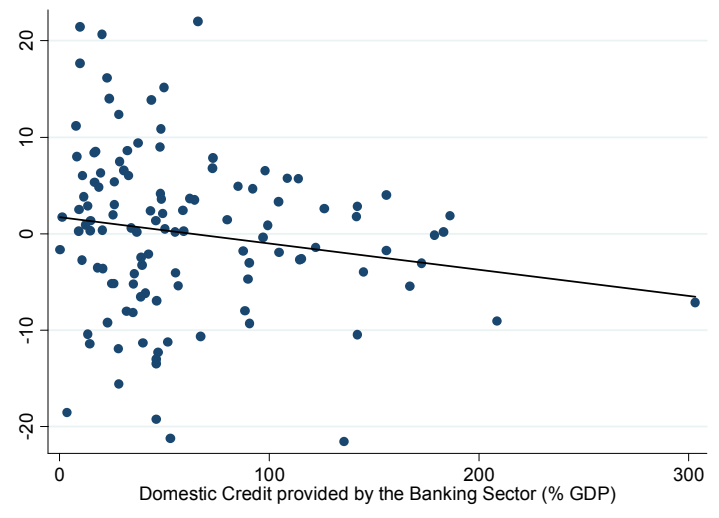
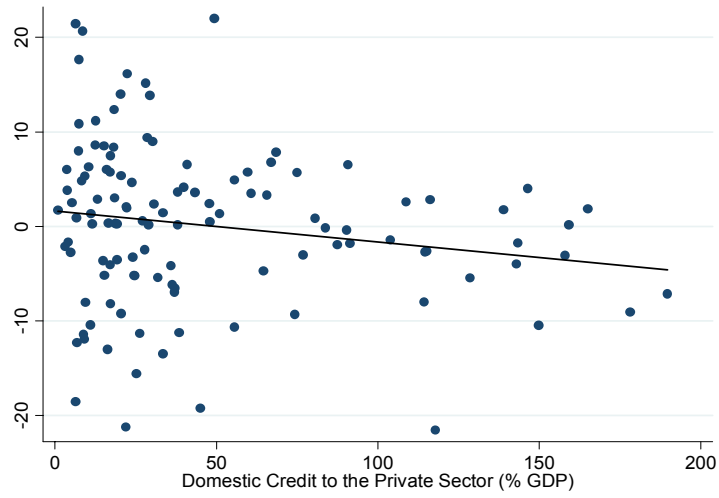


Figure 2
Equilibrium Tax Evasion

