

RESEARCH ARTICLE

Temporal Dynamics of Stress-Induced Alternations of Intrinsic Amygdala Connectivity and Neuroendocrine Levels

C. W. E. M. Quaedflieg*, V. van de Ven, T. Meyer, N. Siep, H. Merckelbach, T. Smeets

Faculty of Psychology and Neuroscience, Maastricht University, Maastricht, The Netherlands

* conny.quaedflieg@maastrichtuniversity.nl



OPEN ACCESS

Citation: Quaedflieg CWEM, van de Ven V, Meyer T, Siep N, Merckelbach H, Smeets T (2015) Temporal Dynamics of Stress-Induced Alternations of Intrinsic Amygdala Connectivity and Neuroendocrine Levels. *PLoS ONE* 10(5): e0124141. doi:10.1371/journal.pone.0124141

Academic Editor: Rongjun Yu, National University of Singapore, SINGAPORE

Received: September 3, 2014

Accepted: March 10, 2015

Published: May 6, 2015

Copyright: © 2015 Quaedflieg et al. This is an open access article distributed under the terms of the [Creative Commons Attribution License](https://creativecommons.org/licenses/by/4.0/), which permits unrestricted use, distribution, and reproduction in any medium, provided the original author and source are credited.

Data Availability Statement: All relevant data are available from the Dutch Dataverse Network at the following URL: <http://hdl.handle.net/10411/20369>.

Funding: This research was supported by grants 451-08-005 and 056-25-011 from the Netherlands Organization for Scientific Research (NWO) to TS. NWO had no further role in the study design; in the collection, analysis and interpretation of the data; in the writing of the report; and in the decision to submit the paper for publication.

Abstract

Stress-induced changes in functional brain connectivity have been linked to the etiology of stress-related disorders. Resting state functional connectivity (rsFC) is especially informative in characterizing the temporal trajectory of glucocorticoids during stress adaptation. Using the imaging Maastricht Acute Stress Test (iMAST), we induced acute stress in 39 healthy volunteers and monitored the neuroendocrine stress levels during three runs of resting state functional magnetic resonance imaging (rs-fMRI): before (run 1), immediately following (run 2), and 30min after acute stress (run 3). The iMAST resulted in strong increases in cortisol levels. Whole-brain analysis revealed that acute stress (run 2 - 1) was characterized by changes in connectivity of the amygdala with the ventrolateral prefrontal cortex (vlPFC), ventral posterior cingulate cortex (PCC), cuneus, parahippocampal gyrus, and culmen. Additionally, cortisol responders were characterized by enhanced amygdala - medial prefrontal cortex (mPFC) connectivity. Stress recovery (run 3 - 2) was characterized by altered amygdala connectivity with the dorsolateral prefrontal cortex (dlPFC), ventral and dorsal anterior cingulate cortex (ACC), anterior hippocampal complex, cuneus, and presupplementary motor area (preSMA). Opposite to non-responders, cortisol responders were characterized by enhanced amygdala connectivity with the anterior hippocampal complex and parahippocampal gyrus, and reduced connectivity with left dlPFC, dACC, and culmen during early recovery. Acute stress responding and recovery are thus associated with changes in the functional connectivity of the amygdala network. Our findings show that these changes may be regulated via stress-induced neuroendocrine levels. Defining stress-induced neuronal network changes is pertinent to developing treatments that target abnormal neuronal activity.

Introduction

Dysfunction of neuroendocrine regulation and impaired coping abilities have been implicated in a variety of psychiatric disorders (e.g., depression, anxiety). Acute stress regulated by the neuroendocrine system affects brain activity and, hence, influences the capacity to cope with

Competing Interests: The authors have declared that no competing interests exist.

stress. Glucocorticoids bind to mineralocorticoid and glucocorticoid receptors (MR and GR, respectively) in the brain and exert a time [1] and spatial [2,3,4,5,6] specific mode of action, enabling the prioritisation of adaptive cognitive processes after having experienced a stressor. In the immediate phase, stress elicits an emotional response expressed as subjective withdrawal motivation as well as enhanced vigilance, perception and attentional focusing on threat-related stimuli. This phase is focused on promoting survival. Subsequently, processes are initiated directed at restoring homeostasis, such as emotion regulation [7,8]. To date, only few studies have investigated the activation of distinct brain networks during acute stress and recovery [9,10] and its relationship to neuroendocrine stress markers [11,12]. This is partly due to fact that it is exceedingly challenging to effectively elicit neuroendocrine stress responses in the constraints of a neuroimaging environment [13]. The paradigms used until now resulted in relatively modest cortisol increases, making it difficult to address how glucocorticoids change brain activation patterns after a stressor.

The functional connectivity of brain areas has been investigated using task absent (i.e., resting state) functional magnetic resonance imaging measurements (rs-fMRI); [14]. Resting state functional connectivity (rsFC) is especially informative when studying the effects of post-stress brain activation changes. rsFC parameters are not related to a task, making it possible to explore the diffuse effects of stress on the brain. Moreover, connectivity alterations following stress and its relationship to neuroendocrine stress markers are particularly intriguing in light of the suggested role of glucocorticoids in stress adaptation [15] and the etiology of stress-related disorders [9,10].

The amygdala is one of the first brain areas to react to a stressor. It initiates the autonomic nervous system (ANS) and hypothalamic-pituitary-adrenal (HPA) responses, thereby mediating the initial surge in vigilance and optimizing the detection of threats to homeostasis [7,16,17]. Moreover, the amygdala is crucially involved in stress induced long-term adaptive responses such as enhanced memory consolidation [18,19,20]. The medial prefrontal cortex (mPFC) is involved in mediating amygdala activity during regulation of autonomic and affective responses [21–25]. Previous neuroimaging studies demonstrated time specific enhancement of the functional connectivity of the amygdala with PFC areas during the acute stress [9] and recovery [10] phase.

The current study investigated the moderating role of glucocorticoids on the *change* in amygdala rsFC during two phases that follow stress exposure: the acute and early recovery phases. Stress was induced using the imaging Maastricht Acute Stress Test (iMAST) [26], a neuroimaging stress task that has been shown to generate considerable subjective stress as well as robust increases in glucocorticoid stress hormones (e.g., the primary human glucocorticoid cortisol). Based on previous studies investigating inter-individual differences in stress reactivity [9,27,28], we also compared cortisol responders and non-responders in their change of amygdala rsFC and its relationship to neuroendocrine stress markers. It is hypothesized that the acute stress phase is characterized by connectivity changes with areas involved in vigilance and perception, while early recovery is characterized by connectivity changes with areas involved in emotion regulation. Furthermore, amygdala connectivity with the mPFC is hypothesized to differentiate between cortisol responders and non-responders.

Materials and Methods

Participants

The sample of the current study consisted of 42 right-handed, scanner-naïve participants (21 men, 21 women, mean age = 21.8 years, $SD = 2.1$; range: 18–35 years) see also [26]. All participants underwent a screening protocol assessing their physical and mental health, fMRI aptness,

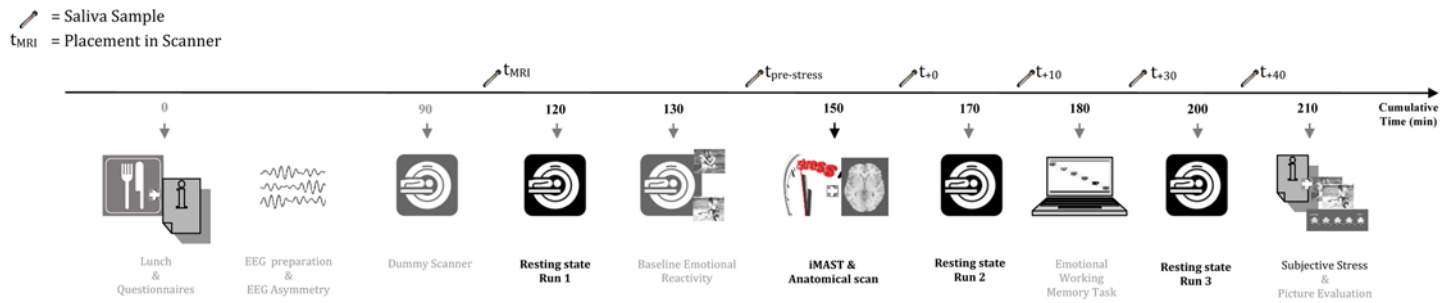


Fig 1. Overview of the study procedure. Abbreviation: iMAST: imaging Maastricht Acute Stress Test.

doi:10.1371/journal.pone.0124141.g001

and handedness (see experimental procedures in [S1 File](#)). Test protocols were approved by the standing ethics committee of the Faculty of Psychology and Neuroscience, Maastricht University. Participants signed a written informed consent form and were given a small monetary reward.

Study procedure

An overview of the experiment is shown in [Fig 1](#). The three resting state measures were part of a larger study investigating the neural correlates of resilience (see [S1 file](#)) and in [\[26\]](#).

One and a half hour after arrival, participants received general information about fMRI measures and were prepared for a 30min simulation scan. To reduce anticipatory anxiety for, and familiarization with the scanner environment, participants were extensively trained in a dummy scanner. Subsequently, participants were placed in the scanner and a baseline cortisol sample (t_{MRI}) was taken. The MRI session lasted for about 1.5h and consisted of the following runs (in chronological order): resting state before stress induction (duration: 8min), implicit emotion task (16min), iMAST including anatomical scan (15min), resting state immediate after stress induction (8min), emotional working memory task (18min), and resting state 30min after stress induction (8min). During the resting state scan, a fixation point was presented. Participants were instructed to relax, not think of anything in particular and keep their eyes open. In total, six saliva samples were collected during scanning (cf. supra).

The implicit emotion task was used as empirical localizer for left and right amygdala seeds. Participants completed two blocks of the task in which they were asked to decide whether 84 pictures (International Affective Picture System; IAPS) [\[29\]](#)—subdivided into the categories neutral, positive or negative—were situated in- or outdoors via a button press (see [S1 file](#)).

Stress induction equipment and procedures

The imaging Maastricht Acute Stress Test (iMAST) [\[26\]](#) consists of a 5min preparation phase in which the task is explained and a 10min acute stress phase that includes several exposures to cold pressor stress (i.e., stimuli of 2°C) and mental arithmetic challenges (i.e., counting backwards as fast and accurate as possible in steps of 17 starting at 2043) along with social-evaluative pressure (i.e., negative feedback). The iMAST protocol increases unpredictability and uncontrollability by applying without prior warning one, two or three hot pulses (49°C) of 10s during each of the mental arithmetic trials, and by telling participants that the computer would randomly choose the order and duration of the cold pressor and mental arithmetic trials (see [S1 file](#)).

Subjective, neuroendocrine and physiological stress responses

Subjective stress. A 100 mm visual analogue scale (VAS) was used at the end of the imaging session to assess subjective stress related to the iMAST. Participants had to specify their level of agreement with the statement on how stressful they had felt during the iMAST (anchors: 0 = “not at all”; 100 = “extremely”).

Cortisol. Neuroendocrine stress prior to and in response to the iMAST was measured via saliva samples that were obtained with synthetic Salivettes (Sarstedt, Etten-Leur, The Netherlands). Participants provided saliva samples immediately after having been placed in the MRI scanner (t_{MRI}), 5min before the iMAST ($t_{pre-stress}$ i.e., 25min after the t_{MRI} sample was taken) and 4 times after stress exposure (t_{+0} , t_{+10} , t_{+30} , t_{+40} with reference to the end of the stressor). For each participant individually, the Area Under the Curve with respect to increase (AUCi) was calculated as a single measure of the total cortisol concentration in response to the iMAST [30]. Two male participants did not provide enough saliva via the Salivettes to be analyzed. One clear cortisol outlier ($> 3SD$ above the mean) was excluded from all analyses. Thus, the final sample consisted of 39 participants.

Based on previous work [31], delta cortisol increases (i.e., peak cortisol level after the iMAST minus pre-stress cortisol level) of 1.5 nmol/l or larger were used to distinguish between cortisol responders ($n = 27$) and non-responders ($n = 12$, see Fig 2B). The percentage of cortisol responders did not differ by gender ($\chi^2(1, N = 39) = 0.140, p = .71$).

Physiological responses. Physiological measurements during MRI scanning included collection of participants’ heart rate using a photoplethysmograph placed on the left index finger, and respiratory data using a respiration belt placed around the chest. The physiological data were transformed to power spectral densities (PSD) using Welch’s method (pwelch). We investigated whether PSD values differed between the three resting-state measurements of the frequencies that coincided with the resolution of MRI scanning (TR = 2s, resulting in a frequency window-of-interest 0.0075–0.25 Hz).

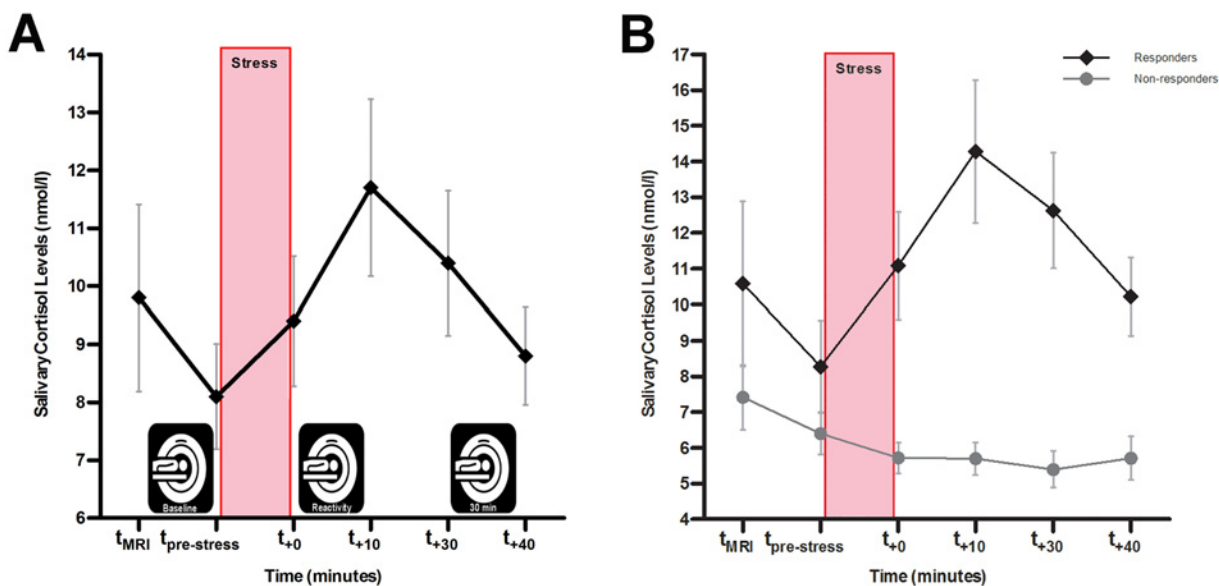


Fig 2. Neuroendocrine responses to the imaging Maastricht Acute Stress Test (iMAST). A) Cortisol response with respect to the imaging runs. **B)** Cortisol responses separately for responders and non-responders. Values represent (untransformed) means \pm SEM.

doi:10.1371/journal.pone.0124141.g002

Data acquisition

Data were acquired on a 3-T Siemens Magnetom Allegra head scanner (Siemens Medical System, Erlangen, Germany). T1-weighted anatomical images were obtained using an MPRAGE sequence with 192 slices and 1 x 1 x 1 mm voxel size covering the whole-brain (repetition time (TR) = 2250 ms, echo time (TE) = 2.6 ms, flip angle = 9°). The anatomical images were obtained from each participant during the iMAST. Functional T2*-weighted resting-state images were acquired using a standard echo-planar imaging (EPI) sequence (TR = 2000 ms, TE = 30 ms, flip angle = 90°, 32 slices, 180 volumes, 3 x 3 x 3 mm). Additionally, a negative slice tilt (30°) was used to minimize inhomogeneity artefacts [32].

fMRI data pre-processing

The fMRI data were pre-processed and analysed using BrainVoyager QX 2.8 software (Brain Innovation, Maastricht, the Netherlands) [33]. For functional datasets, the first two volumes of each complete time series were discarded because of saturation effects. Pre-processing of the functional data included removing the first two volumes, correction for slice time differences using sinc interpolation, 3D motion correction using sinc interpolation, spatial smoothing using a 4 mm full-width-at-half-maximum isotropic Gaussian Kernel and linear trend removal. Individual functional datasets were co-registered with the 3D anatomical data, normalized in Talairach space (1x1x1mm), and were averaged to create a group-based mask to exclude voxels belonging to the ventricles or tissue outside of the brain for further analysis.

Selection of amygdala seed from implicit emotion task

To select amygdala seeds, we investigated the statistical contrast negative > neutral of the implicit emotion task using a whole-brain random effects general linear model (RFX-GLM). The boxcar for the sequences of image presentation was convolved using a two-gamma hemodynamic response function to account for delay of the hemodynamic signal. The resulting contrast map was thresholded using a statistical ($q(\text{FDR}) = 0.01$) and cluster-size threshold (i.e. minimum cluster size of 216 mm³ estimated by a stochastic procedure of the statistical map that incorporated the estimated spatial smoothness of the target statistical map with 1,000 Monte Carlo simulations) [33]. We selected a homogeneous voxel cluster in the left (center coordinate in Talairach space: x, y, z = -20.82, -5.27, -13.10; 253 mm³) and the right amygdala (21.73, -6.28, -11.80; 305 mm³) as corresponding amygdala seeds (see Fig 3A).

Functional connectivity analysis

We used seed-based correlation analysis (SCA) to assess amygdala-based whole-brain functional connectivity of the three resting-state measurements. The analysis was performed using NeuroElf (an MR imaging analysis toolbox, www.neuroelf.net) and custom routines in Matlab (Mathworks, Inc.). Data of the left and right amygdala were collapsed because the correlation between the time courses was high for all three resting state runs ($r > .61$).

We first estimated amygdala-seeded functional connectivity for each participant separately (first-level analysis), which then served as input to a multi-subject statistical analysis (second-level) using an ANOVA model with between-subject factor cortisol responder type and within-subject factor resting state run. Following previous studies and recommendations [34,35], we removed a number of nuisance covariates from the fMRI signal using linear regression before correlating the time series with the amygdala seed. The following parameters were included as regressors: six 3D head motion parameters and their first derivatives, mean signal from the ventricles and white matter, and the global signal. All covariates were Z-normalized to equalize

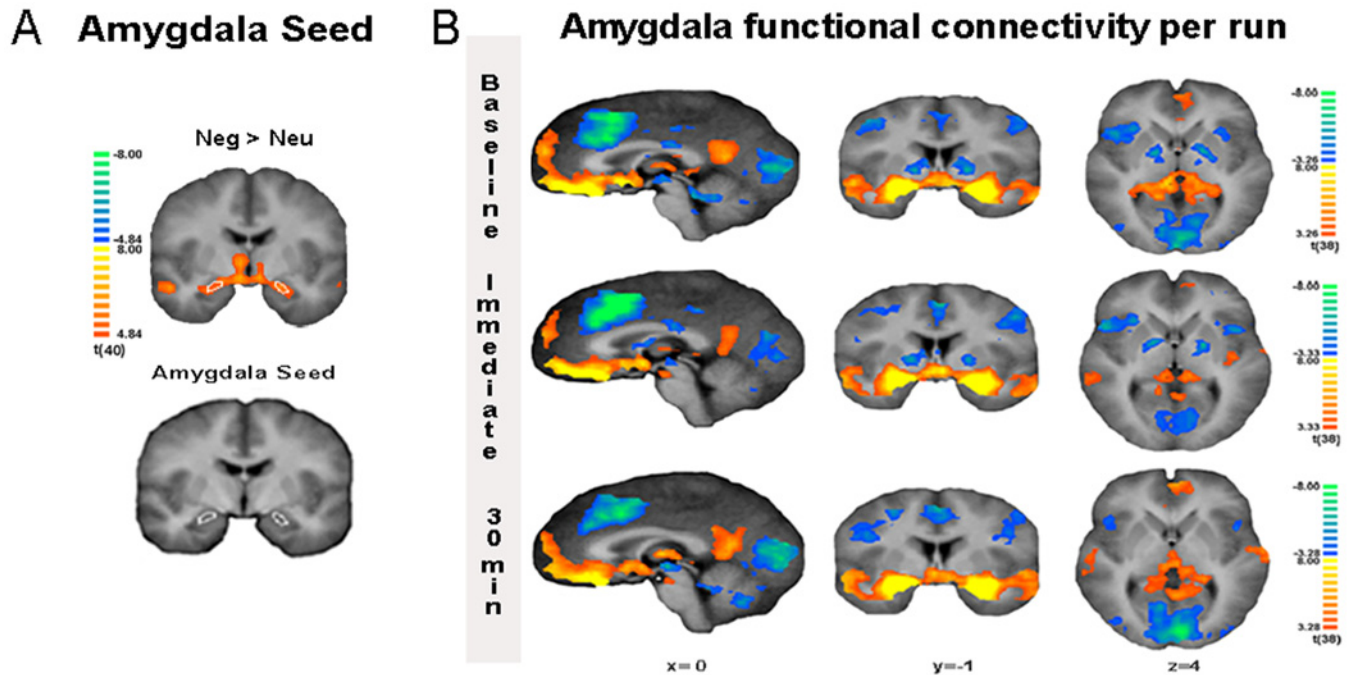


Fig 3. Implicit emotion task and functional connectivity of the amygdala. **A)** The extraction of the amygdala seed. Statistical maps and amygdala ROI selection for the contrast negative > neutral (FDR correction threshold of $q = .001$) overlaid on the anatomical average of the participants. **B)** Amygdala resting state functional connectivity t-maps per run overlaid on the anatomical average of the participants (FDR correction threshold of $q = .005$).

doi:10.1371/journal.pone.0124141.g003

variance. In addition, we added signal oscillations at a frequency above 0.1 Hz (sine-cosine pairs) for low-pass filtering of the time series. Note that there is a debate as to what the global signal represents [36], and whether regressing out the global signal is a valid approach [37] but see [38]. We regressed out the global signal because our focus was on network-specific synchronization of activity unrelated to unspecific global brain activity differences induced by the stressor. After cleaning of the fMRI signal, we then correlated (Pearson's r) the blood oxygenation level dependent (BOLD) time course extracted from the amygdala seed with the cleaned time series from all other brain voxels for each participant.

The first-level voxel-by-voxel correlation coefficients r were then transformed to normality using Fisher's Z normalization and entered into a second-level analysis to study rsFC changes for acute stress and early recovery using a whole-brain random effects mixed-model ANOVA. To summarize the data across all participants, we calculated multi-subject maps for each of the resting state measurements using a mass-univariate (i.e., voxel-by-voxel) one-sample t -test (thresholded for visualization using a statistical q (FDR) = .005; cluster-size threshold 216 mm^3). The resulting F-maps were thresholded using a statistical threshold ($p < .025$, uncorrected) and corrected for multiple comparisons at the 3D cluster level (cluster-level threshold $p = 0.05$, estimated minimum cluster-size = 216 mm^3).

Connectivity changes as a function of time intervals around stress induction were post-hoc analyzed using a Bonferroni corrected t -test on the differences scores: acute stress (run 2—run 1) and early recovery (run 3—run 2). Differences between cortisol responders and non-responders were analyzed using a mixed model with cortisol responder type as between-subject factor. Additionally, Pearson's bivariate correlations (Bonferroni corrected, $p < .01$) were computed to investigate to what extent amygdala rsFC changes were linearly associated with subjective and neuroendocrine stress responses.

Results

Subjective, neuroendocrine, and physiological stress responses

We used the iMAST as acute stressor to elicit subjective and neuroendocrine stress responses. Subjects rated the iMAST as distressing on a 100mm VAS scale ($M = 74.2$, $SEM = 3.24$; see [S1 Table](#)). There were no differences in subjective stress between cortisol responders and non-responders ($F_{(1,37)} = 0.32$, $p = .57$). Neuroendocrine stress responses were defined as salivary cortisol concentration prior to and following the iMAST. For the entire sample, repeated measures ANOVAs revealed significant main effects of Time (6 levels: t_{MRI} , $t_{pre-stress}$, t_{+0} , t_{+10} , t_{+30} , t_{+40min} ; $F_{(2,30,85,04)} = 4.94$, $p = .007$) with a significant increase of cortisol up until t_{+40} (all $ps < .05$; see [S1 Table](#) & [Fig 2](#)). Comparison of the saliva sample at placement (t_{MRI}) with the sample immediately before the iMAST ($t_{pre-stress}$) demonstrated that lying in the scanner did not induce any changes in cortisol ($p > .99$; see also 26).

The repeated measures ANOVAs with Time as within-subject factor for pulse and respiratory power spectral densities (PSDs) were non-significant for all frequencies in the window-of-interest ($ps > 0.05$, FWE-corrected) and for the low-frequency range (< 0.1 Hz; pulse: $F_{(2, 72)} = 1.66$, $p = 0.20$; respiratory: $F_{(2, 72)} = 1.79$, $p = 0.17$; see [S1 Fig](#)). This indicates that the observed differences between the runs in functional connectivity are not due to differences in physiological responses that are known to influence the BOLD signal in the resting state low-frequency range [[39,40](#)].

Amygdala functional connectivity

We implemented SCA on the three runs of eight minutes of resting state data to investigate how acute stress changes the amygdala connectivity during acute stress and early recovery (see [S2 Fig](#)).

First, brain regions that were functionally coupled to the amygdala were identified for each resting state run separately (one-sample t -tests, minimum cluster size of 216 mm^3 , see [Fig 3B](#)). Regions showing significant functional connectivity with the amygdala in all three runs include the lateral frontal pole, lateral orbitofrontal cortex, medial frontal cortex, anterior dorsal cingulate cortex, dorsal and ventral posterior cingulate cortex, hippocampus, hypothalamus, insula, temporal pole, superior temporal gyrus, midbrain, and visual cortex. The majority of these regions have been previously described in rsFC of the amygdala [[10,41,42](#)].

Amygdala functional connectivity during acute stress

To identify amygdala rsFC changes characterizing acute stress, we subtracted the baseline from the reactivity measurement (run 2—run 1). A whole-brain analysis revealed that seven clusters showed a significant effect of acute stress during acute stress. A reduced amygdala rsFC was found with the left ventrolateral prefrontal cortex (vlPFC), left and right ventral posterior cingulate cortex (vPCC), culmen, and bilateral cuneus while the amygdala rsFC was enhanced with the right parahippocampal gyrus immediate after acute stress (see [Table 1](#) for statistical values).

The group contrast of cortisol responders versus non-responders revealed a significant main effect in the mPFC, reflecting an opposing effect of stress on the amygdala rsFC by cortisol responders (enhanced) and non-responders (reduced) (see [Fig 4A](#) & [Table 2](#)).

Amygdala functional connectivity during recovery of stress

To identify amygdala rsFC changes characterizing early recovery of stress, we subtracted the reactivity from the 30min rs-fMRI run (run 3—run 2). The whole-brain analysis revealed an

Table 1. Amygdala functional connectivity results based on whole brain analysis of the two contrasts of interest: acute stress (run 2—run 1) and early recovery (run 3—run 2).

Region	Peak Voxel coordinates			Statistical values		Average ConnectivityFisher's Z			Description of results
	x	y	z	t	(p)	Run 1	Run 2	Run 3	
Amygdala -									
Acute stress (run 2–1)									
Ventrolateral Prefrontal Cortex(vlPFC)	-55	22	24	3.60	(=.001)	-.142	-.028	-.050	↓
Ventral Posterior Cingulate Cortex (vPCC)	23	-35	7	-5.00	(<.001)	.231	.076	.150	↓
	-25	-41	6	-3.98	(<.001)	.203	.052	.127	↓
Parahippocampal Gyrus	23	-29	-22	3.69	(=.001)	.135	.260	.238	↑
Cuneus	-7	-83	9	4.50	(<.001)	-.192	-.093	-.230	↓
Culmen	11	-38	-23	4.19	(<.001)	-.220	-.057	-.134	↓
Recovery (run 3–2)									
Dorsolateral Prefrontal Cortex (dlPFC)	26	25	36	3.55	(=.001)	-.187	-.247	-.101	↓
Ventral Anterior Cingulate Cortex (vACC)	-1	25	24	3.40	(=.002)	-.188	-.211	-.086	↓
Dorsal Anterior Cingulate Cortex (dACC)	-1	42	0	2.98	(=.005)	.164	.088	.194	↑
Presupplementary Moter Area (preSMA)	-4	10	48	3.33	(=.002)	-.297	-.342	-.233	↓
Anterior Hippocampal Complex	29	4	-18	4.92	(<.001)	.571	.507	.634	↑
Cuneus	-7	-83	9	-5.00	(<.001)	-.192	-.093	-.230	↑

Note: For each significant pairwise connection a description of the results are presented as either an increase (↑) or a decrease in connectivity strength (↓). The peak voxel coordinates are Talairach coordinates in mm.

doi:10.1371/journal.pone.0124141.t001

effect on the early recovery of acute stress in six clusters. Early acute stress recovery was characterized by reduced amygdala rsFC with the ventral anterior cingulate cortex (vACC), right dorsolateral prefrontal cortex (dlPFC) and the left presupplementary motor area (preSMA) while the amygdala rsFC was enhanced with the dorsal anterior cingulate cortex (dACC), right anterior hippocampal complex consisting of the amygdala and hippocampus, and bilateral cuneus (see Table 1).

The group contrast of cortisol responders versus non-responders revealed a significant main effect in five areas reflecting the opposing effect of stress recovery on the amygdala rsFC. Opposite to non-responders, cortisol responders were characterized by enhanced amygdala connectivity with the anterior hippocampal complex and parahippocampal gyrus, and reduced connectivity with left dlPFC, dACC, and culmen (see Fig 4B & Table 2 for statistical values).

Association of amygdala rsFC with neuroendocrine and subjective measures

Pearson’s bivariate correlations ($p < .01$) were computed to investigate to what extent amygdala rsFC was linearly associated with total neuroendocrine and subjective stress responses. Baseline (run 1) amygdala—right dmPFC functional connectivity was negatively correlated with the total cortisol concentration AUCi ($r = -.54, p < .001$). Additionally, amygdala—left dlPFC functional connectivity immediately after stress (run 2) was negatively correlated with subjective stress ($r = -.49, p = .002$; see Fig 5).

Discussion

The current study investigated how acute stress affects the temporal trajectory of the amygdala’s rsFC. Using the iMAST [26], we obtained strong increases in cortisol levels, enabling us to

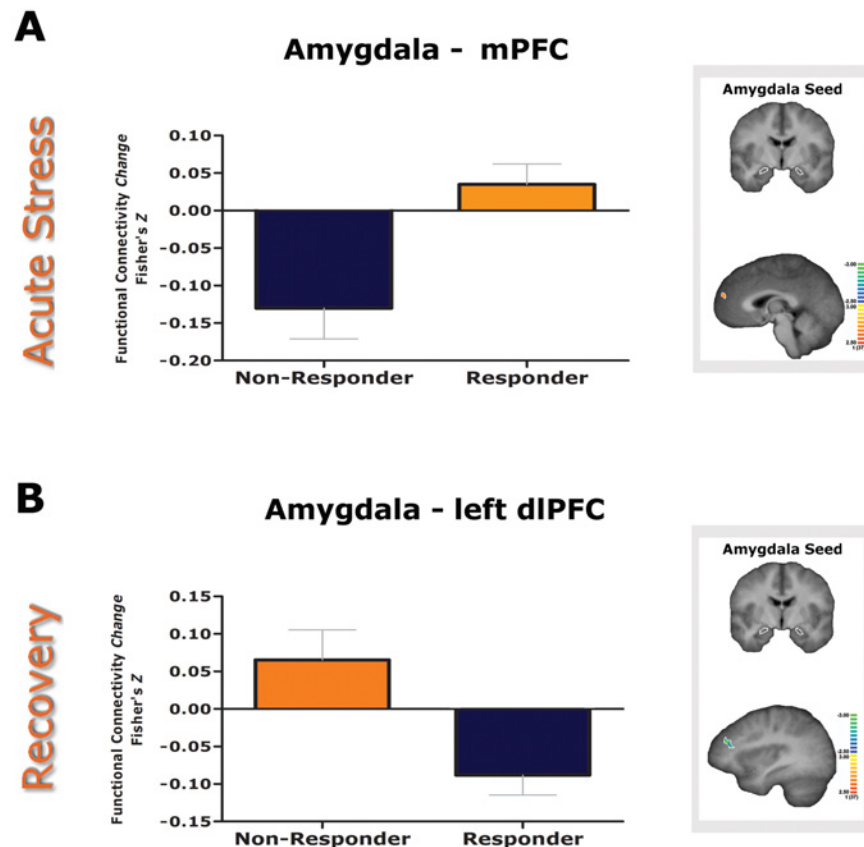


Fig 4. Amygdala rsFC differences between cortisol responders and non-responders during the two stress phases. A) Acute stress (run 2–1): The group contrast revealed an opposing effect of stress on the amygdala—mPFC rsFC by cortisol responders (↑) and non-responders (↓). **B)** Recovery (run 3–2). The group contrast revealed an opposing effect of stress on the amygdala—dlPFC (shown in the figure), culmen and dACC rsFC by cortisol responders (↓) and non-responders (↑) while the opposite pattern was found for the rsFC with the anterior hippocampal complex and parahippocampal gyrus responders (↑) and non-responders (↓).

doi:10.1371/journal.pone.0124141.g004

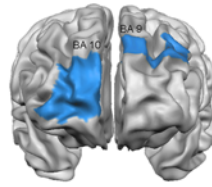
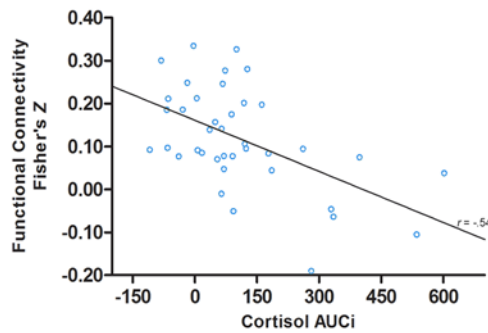
Table 2. Resting state functional connectivity results of the non-responder versus cortisol responder comparison during the two stress phases.

Region	Peak Voxel Coordinates			Statistical Values		Average Connectivity Change Fisher's Z (SEM)	
	x	y	z	t	(p)	Non-responders	Responders
Amygdala -							
Acute stress (run 2–1)							
Medial Prefrontal Cortex (mPFC)	-1	53	15	-3.35	(=.002)	-.130 (.04)	.035 (.03)
Recovery (run 3–2)							
Dorsolateral Prefrontal Cortex (dlPFC)	-34	37	27	3.18	(=.003)	.065 (.04)	-.088 (.03)
Dorsal Anterior Cingulate Cortex (dACC)	-4	7	39	3.36	(=.002)	.142 (.05)	-.046 (.03)
Anterior Hippocampal Complex	33	-29	-9	-4.01	(<.001)	-.085 (.03)	.066 (.02)
Parahippocampal Gyrus	-19	-17	-15	-4.31	(<.001)	-.077 (.04)	.091 (.02)
Culmen	-17	-41	-24	4.23	(<.001)	.105 (.03)	-.076 (.02)

Note: The peak voxel coordinates are Talairach coordinates in mm.

doi:10.1371/journal.pone.0124141.t002

Total Cortisol and FC Amygdala - right dmPFC



VAS Stress and FC Amygdala - left dlPFC

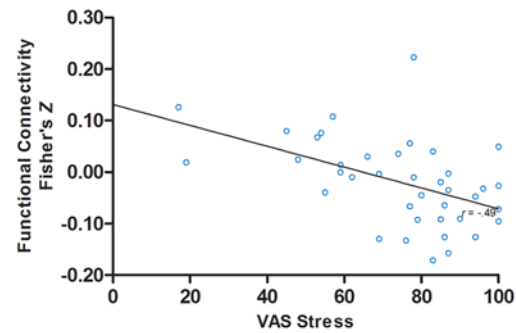


Fig 5. Association of amygdala rsFC with total cortisol and subjective stress. The left scatterplot illustrates the negative correlation between total cortisol and strength of the baseline amygdala—right dmPFC connectivity. The right scatterplot illustrates the negative correlation between subjective stress and strength of the reactivity amygdala—left dlPFC connectivity.

doi:10.1371/journal.pone.0124141.g005

explore the role of neuroendocrine stress responses in amygdala based rsFC. A particular strength of this study is that it deals with the role of glucocorticoids in the amygdala connectivity changes during two phases that follow stress exposure: acute stress and early recovery.

First, acute stress was characterized by enhanced rsFC between the amygdala and parahippocampal gyrus. The parahippocampal gyrus has a strong functional connection with the amygdala [43] and has been associated with appraisal and perceived stress [44,45]. Furthermore, the negative rsFC with the vIPFC, cuneus and culmen and the positive rsFC with the PCC decreased immediately after acute stress. Our results fit with previous reports of increased perfusion in the cuneus at rest immediately after exogenous cortisol administration [46] as well as enhanced visual processing after acute stress [17,47] and during the perception of fear-relevant images [48] optimizing the detection of threats. In line with this reasoning, we also found decreased PCC connectivity during acute stress. This can be regarded as a sign of deactivation in the default mode network (DMN), which is required for focused attention [49]. Thus, decreased PCC connectivity likely promotes focused attention and optimizes threat detection. Moreover, the decreased amygdala—PCC coupling during acute stress mirrors the findings of Veer and colleagues [10] of an enhanced coupling during recovery, suggesting a dynamic connectivity pattern modulating threat detection and attention when it is crucial.

Interestingly, during acute stress, the functional connectivity between the amygdala and mPFC was in opposite direction in cortisol responders and non-responders, with an increased connectivity in responders. This finding is seemingly at odds with the absence of a rapid effect of exogenous cortisol administration on the functional connectivity of the amygdala and mPFC during an emotional processing task [50]. One explanation for the disparity may be that exogenous cortisol administration activates almost exclusively the HPA-axis while a psychological stressor also increases the release of other hormones like catecholamines [51,52]. Animal studies have shown that the mPFC activates behavioural and neuroendocrine systems to acute stress [53]. Our results support the notion that the HPA response to stress and stress integrative functions are regulated by forebrain circuits [5,54]. Our findings are also in line with previous human studies demonstrating that the mPFC modulates the amygdala response during regulation of autonomic and affective responses [18,21,22].

Second, recovery from the stressor was characterized by a reduced negative connectivity between the amygdala and the ventral ACC and preSMA and enhanced negative rsFC with the cuneus. The vACC is thought to contribute to adaptive emotion regulation, and specifically, to

down-regulate limbic regions involved in generating emotional responses [55,56]. In line with this, reduced connectivity between the amygdala and vACC has been found in stress-related psychiatric disorders [57,58]. Additionally, we found that early recovery from the stressor was characterized by changes in connectivity of the amygdala with the dACC and left dlPFC. These changes in amygdala connectivity interacted with the cortisol response, as evidenced by our cortisol responder versus non-responder analysis. Cortisol responders displayed reduced amygdala—dlPFC and amygdala—dACC functional connectivity. The dACC is part of an intrinsic salience network that regulates adaptive behavior in response to environmental stimuli that produce autonomic reactions [59–61]. Our results extend previous reports of enhanced amygdala rsFC with the dACC during acute stress [9,11] by directly comparing cortisol responders and non-responders, and by directly comparing the rsFC immediately and 30min after the stressor. Together, these findings suggest a dynamic connectivity pattern regulating the autonomic response that is dependent on the stress phase. Participants with higher HPA-axis reactivity displayed a reduced amygdala-left dlPFC functional connectivity. Functional asymmetries in the PFC are said to be relevant to stress adaptation, with the left PFC being involved in effective coping and preventing small stressors from becoming significant ones [53,62,63]. Thus, the decreased amygdala—left dlPFC rsFC in cortisol responders might suggest less effective coping and possibly increased vulnerability to stress.

Enhanced emotional memory consolidation is a well-known long-term adaptive response after a stressor, and the connectivity between the amygdala and hippocampus is thought to regulate this effect [64,65]. In line with this, we found enhanced connectivity between the amygdala and anterior hippocampal complex during stress recovery. Interestingly, we found that this change in rsFC connectivity was dependent on glucocorticoid levels, as demonstrated by an opposite direction of the functional connectivity between the amygdala and anterior hippocampal complex in cortisol responders and non-responders. In cortisol responders, recovery was characterized by enhanced amygdala rsFC with the left parahippocampal gyrus and right hippocampal complex. This is in accordance with the view that returning glucocorticoids reactivate the hippocampus after initial stress exposure [24].

Finally, an investigation of the relation between baseline amygdala rsFC and neuroendocrine measure of stress revealed that enhanced amygdala—right dmPFC connectivity was associated with a lower total increase of cortisol in response to the iMAST. This result is consistent with the findings from rodent studies indicating the importance of the dmPFC in reducing HPA activation [53]. Interestingly, subjective stress was inversely associated with amygdala—left dlPFC reactivity rsFC. Immediately after acute stress, stronger amygdala—left dlPFC connectivity was associated with less experienced stress. These findings are in agreement with the idea that the connectivity between the left PFC and amygdala plays a central role in the down-regulation of negative affect [66] and with the proposed role of asymmetrical activation of the prefrontal cortex in stress adaptation via biased motivational processing.

Several issues deserve consideration. First, in light of the debate regarding a possible influence of tasks on the rsFC in a subsequent resting state measurement [67, 68] but see [69, 70], we investigated the influence of an emotional working memory task on rsFC changes during recovery. Per participant, the time course of the amygdala was extracted in the emotional working memory contrast negative > neutral using a whole-brain random effects general linear model. The individual beta values from the amygdala in the emotional working memory task were then correlated with the individual amygdala rsFC Fisher's Z transformed correlation coefficients r of areas where a significant effect between run 2 and 3 was found (i.e., dlPFC, ventral and dorsal ACC, presupplementary motor area, anterior hippocampal complex, parahippocampal gyrus, cuneus, and culmen). All correlations were non-significant. Moreover, by using the cortisol responder versus non-responder contrast, the influence of the emotional

working memory task was curtailed, because all participants had to perform the task. Second, the current study did not include a no-stress control condition. To further investigate the influence of task-engagement, and for future research aiming to investigate stress mechanisms in the brain, a no-stress placebo version of the iMAST is needed. The no-stress placebo version would be similar to the iMAST in terms of physical and mental load as well as its duration, but without eliciting stress reactions [71]. Third, the current study investigated the early recovery phase after stress induction controlled by non-genomic glucocorticoid actions. It would be interesting to also investigate the delayed genomic effect of acute stress on changes in amygdala connectivity by including resting state measurements during a longer period after the stress induction. Glucocorticoids play an important role in both the onset and the termination of the stress-response via the MR and GR. The membrane-bound MR mediates the onset of the stress response while the GR terminates the stress response and facilitates behavioural adaptation [7]. Future studies may extend the current study's test of time-dependent effects of glucocorticoid actions by focusing on the different temporal profiles of the MR and GR (e.g., by pharmacologically blocking the GR or by studying MR polymorphisms that affect the functioning of the MR receptor) and by investigating how these two receptor types mediate the effect of cortisol stress responses on the resting state functional connectivity during the different phases after a stressful experience. Finally, although the amygdala rsFC provides a valuable framework to study the effects of stress, investigating in a more exploratory fashion the temporal dynamics of the entire cortex could yield a comprehensive description of brain functional architecture post-stress.

In sum, this study demonstrates that acute stress and early recovery thereof are associated with changes in the functional connectivity of the amygdala network, which is most probably regulated by stress-induced neuroendocrine levels. The early phase after acute stress is characterized by changes in connectivity strength of the amygdala with areas involved in emotional significance, threat detection and HPA-axis regulation. The period after removal of the stressor was characterized by connectivity changes in areas involved in emotion regulation, coping, and suppression of negative affect. Dysfunction of the HPA-axis regulation and impaired coping abilities have been implicated in a variety of psychiatric disorders (e.g., depression, anxiety). Defining stress-induced neuronal network changes is highly relevant for developing treatments that target abnormal neuronal activity. Our results suggest that the left dlPFC might be a target area of brain activity based treatments to promote recovery and stress adaptation. Moreover, repeated resting-state assessments may prove valuable for further investigations of intrinsic post-stress brain activation changes so as to further delineate the temporal trajectory during which cortisol affects specific brain connectivity patterns.

Supporting Information

S1 Fig. Power spectral densities (PSDs) of the physiological responses. Upper panel: Mean PSDs of the pulse rate (black line) and respiration (grey line) across all participants and conditions. For visualization the frequency range is truncated to 1 Hz. Grey area represents the frequency window coinciding with the scanner resolution of $TR = 2$ s (i.e., 0–0.25 Hz). Lower panels: Mean (\pm SEM area) PSDs of pulse rate (left) and respiration (right) for the scanner-relevant frequency range of the three resting-state measurements. ANOVAs across the plotted frequencies were not significant (all corrected $ps > 0.05$). (TIF)

S2 Fig. Overlap between amygdala resting state functional connectivity maps. The overlap with the baseline measurement (i.e., run 1) is shown in purple in the pairwise maps. The amygdala seed used for the analysis is drawn in white. Statistical maps (FDR correction threshold of

$q = .005$) are overlaid on the anatomical average of the participants. In the coronal view, the left side of the brain corresponds to the right hemisphere and vice versa.

(TIF)

S1 File. Supporting Information.

(DOC)

S1 Table. Means (\pm SEM) of subjective stress and cortisol (untransformed values). Grey areas indicate values used for calculation of the area under the curve (AUCi).

(DOCX)

Acknowledgments

We are especially thankful to Phyllis Mania for the help in collecting the data.

Author Contributions

Conceived and designed the experiments: CQ NS TS TM HM. Performed the experiments: CQ NS. Analyzed the data: CQ NS VvdV. Contributed reagents/materials/analysis tools: CQ VvdV. Wrote the paper: CQ VvdV Ns TM HM TS.

References

1. Joels M, Karst H, DeRijk R, de Kloet ER (2008) The coming out of the brain mineralocorticoid receptor. *Trends Neurosci*, 31, 1–7. PMID: [18063498](#)
2. Hermans EJ, Henckens MJ, Joels M, Fernandez G (2014) Dynamic adaptation of large-scale brain networks in response to acute stressors. *Trends Neurosci*, 37, 304–314. doi: [10.1016/j.tins.2014.03.006](#) PMID: [24766931](#)
3. Lovallo WR, Robinson JL, Glahn DC, Fox PT (2010) Acute effects of hydrocortisone on the human brain: an fMRI study. *Psychoneuroendocrino*, 35, 15–20.
4. van Marle HJF, Hermans EJ, Qin SZ, Fernandez G (2009) From Specificity to Sensitivity: How Acute Stress Affects Amygdala Processing of Biologically Salient Stimuli. *Biol Psychiatry*, 66, 649–655. doi: [10.1016/j.biopsych.2009.05.014](#) PMID: [19596123](#)
5. Henckens MJ, van Wingen GA, Joels M, Fernandez G (2011) Time-dependent corticosteroid modulation of prefrontal working memory processing. *Proc Natl Acad Sci U S A*, 108, 5801–5806. doi: [10.1073/pnas.1019128108](#) PMID: [21436038](#)
6. Henckens MJ, Pu Z, Hermans EJ, van Wingen GA, Joels M, Fernandez G (2012) Dynamically changing effects of corticosteroids on human hippocampal and prefrontal processing. *Hum Brain Mapp*, 33, 2885–2897. doi: [10.1002/hbm.21409](#) PMID: [21938758](#)
7. de Kloet ER, Joels M, Holsboer F (2005) Stress and the brain: from adaptation to disease. *Nat Rev Neurosci* 6: 463–475. PMID: [15891777](#)
8. Ulrich-Lai YM, Herman JP (2009) Neural regulation of endocrine and autonomic stress responses. *Nat Rev Neurosci* 10: 397–409. doi: [10.1038/nrn2647](#) PMID: [19469025](#)
9. van Marle HJ, Hermans EJ, Qin S, Fernandez G (2010) Enhanced resting-state connectivity of amygdala in the immediate aftermath of acute psychological stress. *Neuroimage* 53: 348–354. doi: [10.1016/j.neuroimage.2010.05.070](#) PMID: [20621656](#)
10. Veer IM, Oei NY, Spinhoven P, van Buchem MA, Elzinga BM, et al. (2011) Beyond acute social stress: increased functional connectivity between amygdala and cortical midline structures. *Neuroimage* 57: 1534–1541. doi: [10.1016/j.neuroimage.2011.05.074](#) PMID: [21664280](#)
11. Clewett D, Schoeke A, Mather M (2013) Amygdala functional connectivity is reduced after the cold pressor task. *Cogn Affect Behav Neurosci* 13: 501–518. doi: [10.3758/s13415-013-0162-x](#) PMID: [23645370](#)
12. Vaisvaser S, Lin T, Admon R, Podlipsky I, Greenman Y, et al. (2013) Neural traces of stress: cortisol related sustained enhancement of amygdala-hippocampal functional connectivity. *Front in Hum Neurosci* 7.
13. Dedovic K, D'Aguiar C, Pruessner JC (2009) What stress does to your brain: a review of neuroimaging studies. *Can J Psychiatry* 54: 6–15. PMID: [19175975](#)

14. Fox MD, Raichle ME (2007) Spontaneous fluctuations in brain activity observed with functional magnetic resonance imaging. *Nat Rev Neurosci* 8: 700–711. PMID: [17704812](#)
15. McEwen BS (2007) Physiology and neurobiology of stress and adaptation: central role of the brain. *Physiol Rev* 87: 873–904. PMID: [17615391](#)
16. Phillips ML, Drevets WC, Rauch SL, Lane R (2003) Neurobiology of emotion perception I: The neural basis of normal emotion perception. *Biol Psychiatry* 54: 504–514. PMID: [12946879](#)
17. van Marle HJ, Hermans EJ, Qin S, Fernandez G (2009) From specificity to sensitivity: how acute stress affects amygdala processing of biologically salient stimuli. *Biol Psychiatry* 66: 649–655. doi: [10.1016/j.biopsych.2009.05.014](#) PMID: [19596123](#)
18. McGaugh JL (2004) The amygdala modulates the consolidation of memories of emotionally arousing experiences. *Annu Rev Neurosci*, 27, 1–28. PMID: [15217324](#)
19. Roozendaal B, McEwen BS, Chattarji S (2009) Stress, memory and the amygdala. *Nat Rev Neurosci*, 10, 423–433. doi: [10.1038/nrn2651](#) PMID: [19469026](#)
20. Schwabe L, Joels M, Roozendaal B, Wolf OT, Oitzl MS (2012) Stress effects on memory: An update and integration. *Neurosci Biobehav Rev*, 36, 1740–1749. doi: [10.1016/j.neubiorev.2011.07.002](#) PMID: [21771612](#)
21. Shin LM, Wright CI, Cannistraro PA, Wedig MM, McMullin K, et al. (2005) A functional magnetic resonance imaging study of amygdala and medial prefrontal cortex responses to overtly presented fearful faces in posttraumatic stress disorder. *Arch Gen Psychiatry* 62: 273–281. PMID: [15753240](#)
22. Urry HL, van Reekum CM, Johnstone T, Kalin NH, Thurow ME, et al. (2006) Amygdala and ventromedial prefrontal cortex are inversely coupled during regulation of negative affect and predict the diurnal pattern of cortisol secretion among older adults. *J Neurosci* 26: 4415–4425. PMID: [16624961](#)
23. Banks SJ, Eddy KT, Angstadt M, Nathan PJ, Phan KL (2007) Amygdala-frontal connectivity during emotion regulation. *Soc Cogn Affect Neurosci* 2: 303–312. doi: [10.1093/scan/nsm029](#) PMID: [18985136](#)
24. Gianaros PJ, Sheu LK, Matthews KA, Jennings JR, Manuck SB, et al. (2008) Individual differences in stressor-evoked blood pressure reactivity vary with activation, volume, and functional connectivity of the amygdala. *J Neurosci* 28: 990–999. doi: [10.1523/JNEUROSCI.3606-07.2008](#) PMID: [18216206](#)
25. Kern S, Oakes TR, Stone CK, McAuliff EM, Kirschbaum C, et al. (2008) Glucose metabolic changes in the prefrontal cortex are associated with HPA axis response to a psychosocial stressor. *Psychoneuroendocrinology* 33: 517–529.
26. Quaedflieg CWEM, Meyer T, Smeets T (2013) The imaging Maastricht Acute Stress Test (iMAST): a neuroimaging compatible psychophysiological stressor. *Psychophysiology* 50: 758–766. doi: [10.1111/psyp.12058](#) PMID: [23701399](#)
27. Pruessner JC, Dedovic K, Khalili-Mahani N, Engert V, Pruessner M, et al. (2008) Deactivation of the limbic system during acute psychosocial stress: evidence from positron emission tomography and functional magnetic resonance imaging studies. *Biol Psychiatry* 63: 234–240. PMID: [17686466](#)
28. Dedovic K, Rexroth M, Wolff E, Duchesne A, Scherling C, et al. (2009) Neural correlates of processing stressful information: An event-related fMRI study. *Brain Res* 1293: 49–60. doi: [10.1016/j.brainres.2009.06.044](#) PMID: [19555674](#)
29. Lang PJ, Bradley MM, Cuthbert BN (2008) International Affective Picture System (IAPS): Affective Ratings of Pictures and Instruction Manual, Technical Report A-8. Gainesville: University of Florida.
30. Pruessner JC, Kirschbaum C, Meinlschmid G, Hellhammer DH (2003) Two formulas for computation of the area under the curve represent measures of total hormone concentration versus time-dependent change. *Psychoneuroendocrinology* 28: 916–931.
31. Miller R, Plessow F, Kirschbaum C, Stalder T (2013) Classification Criteria for Distinguishing Cortisol Responders From Nonresponders to Psychosocial Stress: Evaluation of Salivary Cortisol Pulse Detection in Panel Designs. *Psychosom Med* 75: 832–840. doi: [10.1097/PSY.000000000000002](#) PMID: [24184845](#)
32. Weiskopf N, Hutton C, Josephs O, Deichmann R (2006) Optimal EPI parameters for reduction of susceptibility-induced BOLD sensitivity losses: A whole-brain analysis at 3 T and 1.5 T. *Neuroimage* 33: 493–504. PMID: [16959495](#)
33. Goebel R, Esposito F, Formisano E (2006) Analysis of Functional Image Analysis Contest (FIAC) data with BrainVoyager QX: From single-subject to cortically aligned group general linear model analysis and self-organizing group independent component analysis. *Hum Brain Mapp* 27: 392–401. PMID: [16596654](#)
34. Fox MD, Snyder AZ, Vincent JL, Corbetta M, Van Essen DC, et al. (2005) The human brain is intrinsically organized into dynamic, anticorrelated functional networks. *Proc Natl Acad Sci U S A*, 102: 9673–9678. PMID: [15976020](#)

35. Birn RM, Murphy K, Handwerker DA, Bandettini PA (2009) fMRI in the presence of task-correlated breathing variations. *Neuroimage* 47: 1092–1104. doi: [10.1016/j.neuroimage.2009.05.030](https://doi.org/10.1016/j.neuroimage.2009.05.030) PMID: [19460443](https://pubmed.ncbi.nlm.nih.gov/19460443/)
36. Scholvinck ML, Maier A, Ye FQ, Duyn JH, Leopold DA (2010) Neural basis of global resting-state fMRI activity. *Proc Natl Acad Sci U S A* 107: 10238–10243. doi: [10.1073/pnas.0913110107](https://doi.org/10.1073/pnas.0913110107) PMID: [20439733](https://pubmed.ncbi.nlm.nih.gov/20439733/)
37. Murphy K, Birn RM, Handwerker DA, Jones TB, Bandettini PA (2009) The impact of global signal regression on resting state correlations: are anti-correlated networks introduced? *Neuroimage* 44: 893–905. doi: [10.1016/j.neuroimage.2008.09.036](https://doi.org/10.1016/j.neuroimage.2008.09.036) PMID: [18976716](https://pubmed.ncbi.nlm.nih.gov/18976716/)
38. Carbonell F, Bellec P, Shmuel A (2014) Quantification of the impact of a confounding variable on functional connectivity confirms anti-correlated networks in the resting-state. *Neuroimage* 86: 343–353. doi: [10.1016/j.neuroimage.2013.10.013](https://doi.org/10.1016/j.neuroimage.2013.10.013) PMID: [24128734](https://pubmed.ncbi.nlm.nih.gov/24128734/)
39. Shmueli K, van Gelderen P, de Zwart JA, Horovitz SG, Fukunaga M, Jansma JM, et al. (2007) Low-frequency fluctuations in the cardiac rate as a source of variance in the resting-state fMRI BOLD signal. *Neuroimage*, 38, 306–320. PMID: [17869543](https://pubmed.ncbi.nlm.nih.gov/17869543/)
40. Chang C, Metzger CD, Glover GH, Duyn JH, Heinze HJ, Walter M (2013) Association between heart rate variability and fluctuations in resting-state functional connectivity. *Neuroimage*, 68, 93–104. doi: [10.1016/j.neuroimage.2012.11.038](https://doi.org/10.1016/j.neuroimage.2012.11.038) PMID: [23246859](https://pubmed.ncbi.nlm.nih.gov/23246859/)
41. Roy AK, Shehzad Z, Margulies DS, Kelly AMC, Uddin LQ, et al. (2009) Functional connectivity of the human amygdala using resting state fMRI. *Neuroimage* 45: 614–626. doi: [10.1016/j.neuroimage.2008.11.030](https://doi.org/10.1016/j.neuroimage.2008.11.030) PMID: [19110061](https://pubmed.ncbi.nlm.nih.gov/19110061/)
42. Robinson JL, Laird AR, Glahn DC, Lovallo WR, Fox PT (2010) Metaanalytic Connectivity Modeling: Delineating the Functional Connectivity of the Human Amygdala. *Hum Brain Mapp* 31: 173–184. doi: [10.1002/hbm.20854](https://doi.org/10.1002/hbm.20854) PMID: [19603407](https://pubmed.ncbi.nlm.nih.gov/19603407/)
43. Stein JL, Wiedholz LM, Bassett DS, Weinberger DR, Zink CF, et al. (2007) A validated network of effective amygdala connectivity. *Neuroimage* 36: 736–745. PMID: [17475514](https://pubmed.ncbi.nlm.nih.gov/17475514/)
44. Phillips M, Ladouceur C, Drevets W (2008) A neural model of voluntary and automatic emotion regulation: implications for understanding the pathophysiology and neurodevelopment of bipolar disorder. *Mol Psychiatry* 13: 833–857.
45. Li HJ, Li WF, Wei DT, Chen QL, Jackson T, et al. (2014) Examining brain structures associated with perceived stress in a large sample of young adults via voxel-based morphometry. *Neuroimage* 92: 1–7. doi: [10.1016/j.neuroimage.2014.01.044](https://doi.org/10.1016/j.neuroimage.2014.01.044) PMID: [24495811](https://pubmed.ncbi.nlm.nih.gov/24495811/)
46. Strelzyk F, Hermes M, Naumann E, Oitzl M, Walter C, Busch HP et al. (2012) Tune it down to live it up? Rapid, nongenomic effects of cortisol on the human brain. *J Neurosci*, 32, 616–625. doi: [10.1523/JNEUROSCI.2384-11.2012](https://doi.org/10.1523/JNEUROSCI.2384-11.2012) PMID: [22238097](https://pubmed.ncbi.nlm.nih.gov/22238097/)
47. Henckens MJAG, Hermans EJ, Pu ZW, Joels M, Fernandez GN (2009) Stressed Memories: How Acute Stress Affects Memory Formation in Humans. *J Neurosci* 29: 10111–10119. doi: [10.1523/JNEUROSCI.1184-09.2009](https://doi.org/10.1523/JNEUROSCI.1184-09.2009) PMID: [19675245](https://pubmed.ncbi.nlm.nih.gov/19675245/)
48. Sabatinelli D, Bradley MM, Fitzsimmons JR, Lang PJ (2005) Parallel amygdala and inferotemporal activation reflect emotional intensity and fear relevance. *Neuroimage* 24: 1265–1270. PMID: [15670706](https://pubmed.ncbi.nlm.nih.gov/15670706/)
49. Weissman DH, Roberts KC, Visscher KM, Woldorff MG (2006) The neural bases of momentary lapses in attention. *Nat Neurosci* 9: 971–978. PMID: [16767087](https://pubmed.ncbi.nlm.nih.gov/16767087/)
50. Henckens MJ, van Wingen GA, Joels M, Fernandez G (2010) Time-dependent effects of corticosteroids on human amygdala processing. *J Neurosci*, 30, 12725–12732. doi: [10.1523/JNEUROSCI.3112-10.2010](https://doi.org/10.1523/JNEUROSCI.3112-10.2010) PMID: [20861377](https://pubmed.ncbi.nlm.nih.gov/20861377/)
51. Kudielka BM, Hellhammer DH, Wust S (2009) Why do we respond so differently? Reviewing determinants of human salivary cortisol responses to challenge. *Psychoneuroendocrinol*, 34, 2–18.
52. Joels M, Baram TZ (2009) The neuro-symphony of stress. *Nat Rev Neurosci*, 10, 459–466. doi: [10.1038/nrn2632](https://doi.org/10.1038/nrn2632) PMID: [19339973](https://pubmed.ncbi.nlm.nih.gov/19339973/)
53. Sullivan RM, Gratton A (2002) Prefrontal cortical regulation of hypothalamic-pituitary-adrenal function in the rat and implications for psychopathology: side matters. *Psychoneuroendocrinol* 27: 99–114.
54. Dedovic K, Duchesne A, Andrews J, Engert V, Pruessner JC (2009) The brain and the stress axis: the neural correlates of cortisol regulation in response to stress. *Neuroimage* 47: 864–871. doi: [10.1016/j.neuroimage.2009.05.074](https://doi.org/10.1016/j.neuroimage.2009.05.074) PMID: [19500680](https://pubmed.ncbi.nlm.nih.gov/19500680/)
55. Etkin A, Egner T, Peraza DM, Kandel ER, Hirsch J (2006) Resolving emotional conflict: A role for the rostral anterior cingulate cortex in modulating activity in the amygdala. *Neuron* 52: 1121–1121.
56. Etkin A, Egner T, Kalisch R (2011) Emotional processing in anterior cingulate and medial prefrontal cortex. *Trends Cogn Sci* 15: 85–93. doi: [10.1016/j.tics.2010.11.004](https://doi.org/10.1016/j.tics.2010.11.004) PMID: [21167765](https://pubmed.ncbi.nlm.nih.gov/21167765/)

57. Etkin A, Prater KE, Hoett F, Menon V, Schatzberg AF (2010) Failure of Anterior Cingulate Activation and Connectivity With the Amygdala During Implicit Regulation of Emotional Processing in Generalized Anxiety Disorder. *Am J Psychiatry* 167: 545–554. doi: [10.1176/appi.ajp.2009.09070931](https://doi.org/10.1176/appi.ajp.2009.09070931) PMID: [20123913](https://pubmed.ncbi.nlm.nih.gov/20123913/)
58. Johnstone T, van Reekum CM, Urry HL, Kalin NH, Davidson RJ (2007) Failure to regulate: Counterproductive recruitment of top-down prefrontal-subcortical circuitry in major depression. *J Neurosci* 27: 8877–8884. PMID: [17699669](https://pubmed.ncbi.nlm.nih.gov/17699669/)
59. Bush G, Luu P, Posner MI (2000) Cognitive and emotional influences in anterior cingulate cortex. *Trends Cogn Sci* 4: 215–222. PMID: [10827444](https://pubmed.ncbi.nlm.nih.gov/10827444/)
60. McRae K, Reiman EM, Fort CL, Chen K, Lane RD (2008) Association between trait emotional awareness and dorsal anterior cingulate activity during emotion is arousal-dependent. *Neuroimage* 41: 648–655. doi: [10.1016/j.neuroimage.2008.02.030](https://doi.org/10.1016/j.neuroimage.2008.02.030) PMID: [18406175](https://pubmed.ncbi.nlm.nih.gov/18406175/)
61. Seeley WW, Menon V, Schatzberg AF, Keller J, Glover GH, et al. (2007) Dissociable intrinsic connectivity networks for salience processing and executive control. *J Neurosci* 27: 2349–2356. PMID: [17329432](https://pubmed.ncbi.nlm.nih.gov/17329432/)
62. Davidson RJ (2004) What does the prefrontal cortex "do" in affect: perspectives on frontal EEG asymmetry research. *Biol Psychol* 67: 219–233. PMID: [15130532](https://pubmed.ncbi.nlm.nih.gov/15130532/)
63. Quaedflieg CWEM, Meyer T, Smulders FTY, Smeets T (2014) The functional role of individual-alpha based frontal asymmetry in stress responding. *Biol Psychol*: In Press.
64. LeDoux JE (2000) Emotion circuits in the brain. *Annu Rev of Neurosci* 23: 155–184. PMID: [10845062](https://pubmed.ncbi.nlm.nih.gov/10845062/)
65. Roozendaal B (2003) Systems mediating acute glucocorticoid effects on memory consolidation and retrieval. *Prog Neuropsychopharmacol Biol Psychiatry* 27: 1213–1223. PMID: [14659476](https://pubmed.ncbi.nlm.nih.gov/14659476/)
66. Davidson RJ (2000) Affective style, psychopathology, and resilience: Brain mechanisms and plasticity. *Am Psychol* 55: 1196–1214. PMID: [11280935](https://pubmed.ncbi.nlm.nih.gov/11280935/)
67. Waites AB, Stanislavsk A, Abbott DF, Jackson GD (2005) Effect of prior cognitive state on resting state networks measured with functional connectivity. *Hum Brain Mapp*. 24: 59–68. PMID: [15382248](https://pubmed.ncbi.nlm.nih.gov/15382248/)
68. Stevens WD, Buckner RL, Schacter DL (2010) Correlated Low-Frequency BOLD Fluctuations in the Resting Human Brain Are Modulated by Recent Experience in Category-Preferential Visual Regions. *Cereb Cortex*. 20: 1997–2006. doi: [10.1093/cercor/bhp270](https://doi.org/10.1093/cercor/bhp270) PMID: [20026486](https://pubmed.ncbi.nlm.nih.gov/20026486/)
69. Fair DA, Schlaggar BL, Cohen AL, Miezin F M, Dosenbach NUF, Wenger KK et al. (2007) A method for using blocked and event-related fMRI data to study "resting state" functional connectivity. *Neuroimage*. 35: 396–40. PMID: [17239622](https://pubmed.ncbi.nlm.nih.gov/17239622/)
70. van de Ven V, Wingen M, Kuypers KP, Ramaekers JG, Formisano E (2013) Escitalopram Decreases Cross-Regional Functional Connectivity within the Default-Mode Network. *PLoS One*. 8: e68355. PMID: [23826388](https://pubmed.ncbi.nlm.nih.gov/23826388/)
71. Smeets T, Cornelisse S, Quaedflieg CWEM, Meyer T, Jellic M, Merckelbach H (2012) Introducing the Maastricht Acute Stress Test (MAST): A quick and non-invasive approach to elicit robust autonomic and glucocorticoid stress responses. *Psychoneuroendocrino*, 37, 1998–2008.