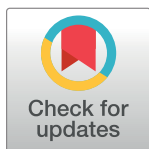


RESEARCH ARTICLE

The association between circulating 25-hydroxyvitamin D metabolites and type 2 diabetes in European populations: A meta-analysis and Mendelian randomisation analysis

Ju-Sheng Zheng^{1,2*}, Jian'an Luan¹, Eleni Sofianopoulou^{3,4}, Stephen J. Sharp¹, Felix R. Day¹, Fumiaki Imamura¹, Thomas E. Gundersen⁵, Luca A. Lotta¹, Ivonne Sluijs⁶, Isobel D. Stewart¹, Rupal L. Shah¹, Yvonne T. van der Schouw⁶, Eleanor Wheeler¹, Eva Ardanaz^{7,8,9}, Heiner Boeing¹⁰, Miren Dorronsoro¹¹, Christina C. Dahm¹², Niki Dimou¹³, Douae El-Fatouhi¹⁴, Paul W. Franks¹⁵, Guy Fagherazzi^{14,16}, Sara Gironi¹⁷, José María Huerta^{9,18}, Alicia K. Heath¹⁹, Louise Hansen¹², Mazda Jenab¹³, Paula Jakszyn^{21,22}, Rudolf Kaaks²³, Tilman Kühn²³, Kay-Tee Khaw²⁴, Nasser Laouali¹⁴, Giovanna Masala¹⁵, Peter M. Nilsson¹⁵, Kim Overvad^{12,26}, Anja Olsen²⁰, Salvatore Panico²⁷, J. Ramón Quirós²⁸, Olov Rolandsson²⁹, Miguel Rodríguez-Barranco^{9,30,31}, Carlotta Sacerdote³², Annemieke M. W. Spijkerman³³, Tammy Y. N. Tong³⁴, Rosario Tumino³⁵, Konstantinos K. Tsilidis^{19,36}, John Danesh^{3,4,37,38}, Elio Riboli¹⁹, Adam S. Butterworth^{3,4}, Claudia Langenberg¹, Nita G. Forouhi^{1*}, Nicholas J. Wareham^{1*}



OPEN ACCESS

Citation: Zheng J-S, Luan J, Sofianopoulou E, Sharp SJ, Day FR, Imamura F, et al. (2020) The association between circulating 25-hydroxyvitamin D metabolites and type 2 diabetes in European populations: A meta-analysis and Mendelian randomisation analysis. *PLoS Med* 17(10): e1003394. <https://doi.org/10.1371/journal.pmed.1003394>

Academic Editor: Ronald C. W. Ma, Chinese University of Hong Kong, CHINA

Received: September 12, 2019

Accepted: September 11, 2020

Published: October 16, 2020

Copyright: © 2020 Zheng et al. This is an open access article distributed under the terms of the [Creative Commons Attribution License](https://creativecommons.org/licenses/by/4.0/), which permits unrestricted use, distribution, and reproduction in any medium, provided the original author and source are credited.

Data Availability Statement: The GWAS summary statistics for the 25(OH)D metabolites can be accessed at figshare.com (<https://doi.org/10.6084/m9.figshare.12611822.v1>). EPIC Study data cannot be deposited publicly as these collaborative data originate from multiple research institutions across European countries with different legal frameworks. The authors confirm that researchers seeking the analysis dataset for this work can submit a data request to the EPIC-InterAct study

1 MRC Epidemiology Unit, University of Cambridge, Cambridge, United Kingdom, **2** Westlake Laboratory of Life Sciences and Biomedicine, Key Laboratory of Growth Regulation and Translational Research of Zhejiang Province, School of Life Sciences, Westlake University, Hangzhou, China, **3** MRC/BHF Cardiovascular Epidemiology Unit, Department of Public Health and Primary Care, University of Cambridge, Cambridge, United Kingdom, **4** National Institute for Health Research Blood and Transplant Research Unit in Donor Health and Genomics, Department of Public Health and Primary Care, University of Cambridge, Cambridge, United Kingdom, **5** VITAS, Oslo, Norway, **6** Julius Center for Health Sciences and Primary Care, University Medical Center Utrecht, Utrecht University, Utrecht, the Netherlands, **7** Navarra Public Health Institute, Pamplona, Spain, **8** Navarra Institute for Health Research (IdiSNA), Pamplona, Spain, **9** CIBER Epidemiology and Public Health (CIBERESP), Madrid, Spain, **10** Department of Epidemiology, German Institute of Human Nutrition Potsdam-Rehbruecke, Germany, **11** Public Health Division of Gipuzkoa, San Sebastian, Spain, **12** Department of Public Health, Aarhus University, Aarhus, Denmark, **13** International Agency for Research on Cancer, Lyon, France, **14** Center of Research in Epidemiology and Population Health, UMR 1018 Inserm, Institut Gustave Roussy, Paris South–Paris Saclay University, Villejuif, France, **15** Department of Clinical Sciences, Lund University, Malmö, Sweden, **16** Department of Population Health, Luxembourg Institute of Health, Strassen, Luxembourg, **17** Epidemiology and Prevention Unit, Milan, Italy, **18** Department of Epidemiology, Murcia Regional Health Council, Instituto Murciano de Investigación Biosanitaria Virgen de la Arrixaca, Murcia, Spain, **19** Department of Epidemiology and Biostatistics, School of Public Health, Imperial College London, London, United Kingdom, **20** Danish Cancer Society Research Center, Copenhagen, Denmark, **21** Unit of Nutrition and Cancer, Cancer Epidemiology Research Program, Catalan Institute of Oncology–Institut d’Investigació Biomèdica de Bellvitge, L’Hospitalet de Llobregat, Barcelona, Spain, **22** Facultat Ciències Salut Blanquerna, Universitat Ramon Llull, Barcelona, Spain, **23** Division of Cancer Epidemiology, German Cancer Research Center (DKFZ), Heidelberg, Germany, **24** Department of Public Health and Primary Care, University of Cambridge, Cambridge, United Kingdom, **25** Cancer Risk Factors and Life-Style Epidemiology Unit, Institute for Cancer Research, Prevention and Clinical Network (ISPRO), Florence, Italy, **26** Department of Cardiology, Aalborg University Hospital, Aarhus, Denmark, **27** Dipartimento di Medicina Clinica e Chirurgia, University of Naples Federico II, Naples, Italy, **28** Public Health Directorate, Asturias, Spain, **29** Family Medicine Division, Department of Public Health and Clinical Medicine, Umeå University, Umeå, Sweden, **30** Andalusian School of Public Health (EASP), Granada, Spain, **31** Instituto de Investigación Biosanitaria de Granada, Universidad de Granada, Granada, Spain, **32** Unit of Cancer Epidemiology, Città della Salute e della Scienza di Torino University Hospital–University of Turin and Center for Cancer Prevention (CPO), Torino, Italy, **33** National Institute for Public Health and the Environment (RIVM), Bilthoven, the Netherlands, **34** Cancer Epidemiology Unit, Nuffield

central contact point by emailing interact@mrc-epid.cam.ac.uk.

Funding: The InterAct project was funded by the EU FP6 programme (grant number LSHM_CT_2006_037197). Biomarker measurements for vitamin D metabolites were funded jointly by the InterAct project, the EPIC-CVD project and the MRC Cambridge Initiative (RG71466, SJAH/004). EPIC-CVD has been supported by the UK Medical Research Council (MR/L003120/1), the British Heart Foundation (RG/13/13/30194; RG/18/13/33946), the European Commission Framework Programme 7 (HEALTH-F2-2012-279233), the European Research Council (268834) and the National Institute for Health Research (Cambridge Biomedical Research Centre at the Cambridge University Hospitals NHS Foundation Trust). JD is funded by the National Institute for Health Research (Senior Investigator Award). NJW and NGF acknowledge funding from the following agencies: Medical Research Council Epidemiology Unit MC_UU_12015/1 and MC_UU_12015/5, and NIHR Biomedical Research Centre Cambridge: Nutrition, Diet, and Lifestyle Research Theme (IS-BRC-1215-20014). JSZ has received funding from Westlake University (No. YSY0209) and the European Union's Horizon 2020 research and innovation programme under the Marie Skłodowska-Curie grant agreement No 701708. EA has received funding from Health Research Fund (FIS) of the Spanish Ministry of Health and Navarre Regional Government. PWF has received funding from Swedish Research Council, Novo Nordisk, Swedish Diabetes Association, Swedish Heart-Lung Foundation, European Research Council. JMH has received funding from Health Research Fund of the Spanish Ministry of Health; Murcia Regional Government (N° 6236). PJ has received funding from the Health Research Funds - RD12/0036/0018 and AGAUR, Generalitat de Catalunya (exp. 2014 SGR 726). RK has received funding from German Cancer Aid, German Ministry of Research (BMBF). KTK has received funding from Medical Research Council UK, Cancer Research UK. TK has received funding from German Cancer Aid, German Cancer Research Center (DKFZ), German Federal Ministry of Education and Research (BMBF). PMN has received funding from Swedish Research Council. KO has received funding from Danish Cancer Society. SP has received funding from Compagnia di San Paolo. JRQ has received funding from Regional Government of Asturias. OR has received funding from the Västerboten County Council. TYNT has received funding from the Cancer Research UK (C570/A16491 and C8221/A19170), UK Medical Research Council (MR/M012190/1).

Department of Population Health, University of Oxford, Oxford, United Kingdom, **35** Azienda Sanitaria Provinciale, Ragusa, Italy, **36** Department of Hygiene and Epidemiology, University of Ioannina School of Medicine, Ioannina, Greece, **37** British Heart Foundation Cambridge Centre of Excellence, Division of Cardiovascular Medicine, Addenbrooke's Hospital, Cambridge, United Kingdom, **38** Department of Human Genetics, Wellcome Trust Sanger Institute, Wellcome Trust Genome Campus, Hinxton, United Kingdom

‡ These authors are joint senior authors on this work.

* zhengjusheng@westlake.edu.cn (JSZ); nita.forouhi@mrc-epid.cam.ac.uk (NGF); nick.wareham@mrc-epid.cam.ac.uk (NJW)

Abstract

Background

Prior research suggested a differential association of 25-hydroxyvitamin D (25(OH)D) metabolites with type 2 diabetes (T2D), with total 25(OH)D and 25(OH)D₃ inversely associated with T2D, but the epimeric form (C3-epi-25(OH)D₃) positively associated with T2D. Whether or not these observational associations are causal remains uncertain. We aimed to examine the potential causality of these associations using Mendelian randomisation (MR) analysis.

Methods and findings

We performed a meta-analysis of genome-wide association studies for total 25(OH)D ($N = 120,618$), 25(OH)D₃ ($N = 40,562$), and C3-epi-25(OH)D₃ ($N = 40,562$) in participants of European descent (European Prospective Investigation into Cancer and Nutrition [EPIC]–InterAct study, EPIC-Norfolk study, EPIC-CVD study, Ely study, and the SUNLIGHT consortium). We identified genetic variants for MR analysis to investigate the causal association of the 25(OH)D metabolites with T2D (including 80,983 T2D cases and 842,909 non-cases). We also estimated the observational association of 25(OH)D metabolites with T2D by performing random effects meta-analysis of results from previous studies and results from the EPIC-InterAct study. We identified 10 genetic loci associated with total 25(OH)D, 7 loci associated with 25(OH)D₃ and 3 loci associated with C3-epi-25(OH)D₃. Based on the meta-analysis of observational studies, each 1–standard deviation (SD) higher level of 25(OH)D was associated with a 20% lower risk of T2D (relative risk [RR]: 0.80; 95% CI 0.77, 0.84; $p < 0.001$), but a genetically predicted 1-SD increase in 25(OH)D was not significantly associated with T2D (odds ratio [OR]: 0.96; 95% CI 0.89, 1.03; $p = 0.23$); this result was consistent across sensitivity analyses. In EPIC-InterAct, 25(OH)D₃ (per 1-SD) was associated with a lower risk of T2D (RR: 0.81; 95% CI 0.77, 0.86; $p < 0.001$), while C3-epi-25(OH)D₃ (above versus below lower limit of quantification) was positively associated with T2D (RR: 1.12; 95% CI 1.03, 1.22; $p = 0.006$), but neither 25(OH)D₃ (OR: 0.97; 95% CI 0.93, 1.01; $p = 0.14$) nor C3-epi-25(OH)D₃ (OR: 0.98; 95% CI 0.93, 1.04; $p = 0.53$) was causally associated with T2D risk in the MR analysis. Main limitations include the lack of a non-linear MR analysis and of the generalisability of the current findings from European populations to other populations of different ethnicities.

Conclusions

Our study found discordant associations of biochemically measured and genetically predicted differences in blood 25(OH)D with T2D risk. The findings based on MR analysis in a large sample of European ancestry do not support a causal association of total 25(OH)D or

ER has received funding from Imperial College Biomedical Research Centre. EPIC Ragusa acknowledges for funding SICILIAN REGIONAL GOVERNMENT and AIRE-ONLUS RAGUSA. EPIC Bilthoven and Utrecht acknowledge the Dutch Ministry of Public Health, Welfare and Sports (VWS), Netherlands Cancer Registry (NKR), LK Research Funds, Dutch Prevention Funds, Dutch ZON (Zorg Onderzoek Nederland), World Cancer Research Fund (WCRF), St. EPIC Ragusa acknowledges for funding SICILIAN REGIONAL GOVERNMENT and AIRE-ONLUS RAGUSA. The funders had no role in study design, data collection and analysis, decision to publish, or preparation of the manuscript.

Competing interests: I have read the journal's policy and the authors of this manuscript have the following competing interests: FI and CL are Academic Editors on *PLOS Medicine's* editorial board. LAL is Employee and shareholder of Regeneron Pharmaceuticals Inc. ASB has received grants unrelated to this work from AstraZeneca, Biogen, Bioverativ, Merck, Novartis and Sanofi, and personal fees from Novartis. Where authors are identified as personnel of the International Agency for Research on Cancer / World Health Organization, the authors alone are responsible for the views expressed in this article and they do not necessarily represent the decisions, policy or views of the International Agency for Research on Cancer / World Health Organization.

Abbreviations: 25(OH)D, 25-hydroxyvitamin D; EPIC, European Prospective Investigation into Cancer and Nutrition; GRS, genetic risk score; GWAS, genome-wide association study; HbA1c, glycated haemoglobin; HOMA-B, homeostatic model assessment of beta cell function; HOMA-IR, homeostatic model assessment of insulin resistance; IVW, inverse-variance-weighted; LLQ, lower limit of quantification; MR, Mendelian randomisation; OR, odds ratio; RR, relative risk; RTC, randomised controlled trial; SD, standard deviation; SNP, single nucleotide polymorphism; T2D, type 2 diabetes.

25(OH)D metabolites with T2D and argue against the use of vitamin D supplementation for the prevention of T2D.

Author summary

Why was this study done?

- There is ongoing uncertainty on whether the body's vitamin D status indicated by blood 25-hydroxyvitamin D (25(OH)D) is relevant to the prevention of type 2 diabetes. There are conflicting findings from observational studies and a limited number of randomised controlled trials.
- Prior research did not distinguish between different metabolites of total 25(OH)D, including 25(OH)D₃ and C3-epi-25(OH)D₃, an isomer of 25(OH)D₃.
- It is not clear whether the associations of 25(OH)D metabolites with type 2 diabetes are causal, with conflicting findings from prior Mendelian randomisation studies of total 25(OH)D and no previous Mendelian randomisation studies appraising 25(OH)D metabolites.

What did the researchers do and find?

- The current research compared observational estimates of the association between 25(OH)D metabolites and incident type 2 diabetes with Mendelian randomisation estimates based on genetic instruments.
- Using multiple data sources, we performed genome-wide association studies among 120,618 individuals for total 25(OH)D, and among 40,562 individuals for the other vitamin D metabolites. Among participants of European descent, 10 genetic loci were identified for total 25(OH)D, 7 loci for 25(OH)D₃ and 3 loci for C3-epi-25(OH)D₃.
- In meta-analysis of observational studies, we found that each 1-standard deviation higher level of total 25(OH)D was associated with 20% lower risk of type 2 diabetes. The result was similar for 25(OH)D₃, but for C3-epi-25(OH)D₃, a positive association with type 2 diabetes was found.
- With up to 80,983 type 2 diabetes cases and 842,909 controls, we assessed the association of genetically predicted differences in total 25(OH)D and its metabolites with type 2 diabetes. Neither genetically predicted higher total 25(OH)D level nor genetically predicted higher levels of 25(OH)D metabolites were significantly associated with type 2 diabetes.

What do these findings mean?

- There were conflicting findings for a link with type 2 diabetes for the observational analysis of biochemically measured 25(OH)D metabolites versus the genetically predicted levels of these metabolites.

- The null findings based on Mendelian randomisation analysis indicate that blood levels of 25(OH)D or its metabolites are not likely to be causal factors for the development of type 2 diabetes.
- The current findings together with other evidence from randomised controlled trials do not support the use of vitamin D supplementation for the prevention of type 2 diabetes.

Introduction

Adequate vitamin D status is crucial for maintaining bone homeostasis, and interest in its potential beneficial roles in cardiometabolic diseases, including type 2 diabetes (T2D), has increased recently. Prospective epidemiological studies have consistently reported an inverse association between circulating 25-hydroxyvitamin D (25(OH)D, a blood marker of vitamin D status) and T2D risk [1,2], but whether there is a causal relationship between vitamin D status and T2D remains uncertain. Older randomised controlled trials (RCTs) reported no beneficial effect of vitamin D supplementation on T2D risk [3,4], but they were limited by issues of subgroup or post hoc analyses, inadequate dose, or inability to separate the effect of vitamin D and calcium. The results of the VITAL study for the secondary endpoint of T2D are still awaited, with the primary endpoints being cancer and cardiovascular disease [5]. With T2D as a primary endpoint, the D2d RCT recently reported that vitamin D₃ supplementation at a dose of 4,000 IU per day among people at high risk for T2D did not result in a lower risk of T2D than placebo [6]. This evidence argues against a benefit of vitamin D₃ supplementation for the prevention of T2D, but there are still unresolved issues.

The D2d trial included participants with confirmed prediabetes, so it remains unclear whether vitamin D supplementation may be more effective at earlier stages in the natural history of T2D, before beta cell dysfunction. However, designing a trial to examine the effects of early supplementation poses several challenges including long follow-up, adherence, and cost. The mean baseline 25(OH)D level was 70 nmol/l in D2d, with the majority of participants vitamin D replete, and the study was not adequately powered to examine potential effects of supplementation among participants with lower levels of 25(OH)D. Moreover, studies of supplementation do not directly assess the causal relationship of long-term body vitamin D status as assessed by blood 25(OH)D metabolite levels, which is relevant biologically given that blood levels reflect both dietary source and endogenous synthesis. Genetic Mendelian randomisation (MR) analysis is a complementary approach to RCTs that, subject to several assumptions, can enable the estimation of causal associations using data from observational studies [7,8]. Given the lack of definitive evidence from RCTs and the challenges of implementing an ideal RCT, MR studies can be a useful supplementary tool.

Previous MR analyses of 25(OH)D and T2D risk reported conflicting results, with some MR studies suggesting no association [1,9,10] but others reporting inverse associations [11,12]. A prior constraint was the use of a genetic instrument that included a limited set of up to 4 single nucleotide polymorphisms (SNPs) in genes involved in vitamin D synthesis and metabolism. Specifically, synthesis pathways involve *DHCR7* in 25(OH)D synthesis in the skin and *CYP2R1* in hepatic 25-hydroxylation, while metabolism pathways involve *GC* (or *DBP*; encoding vitamin D binding protein) in 25(OH)D transport and *CYP24A1* in 25(OH)D catabolism [13]. The inclusion of a greater number of genetic variants could generate a more powerful genetic instrumental variable for MR analysis. A further limitation to date has been the lack of a genetic instrument that can distinguish the 25(OH)D metabolites, including 25(OH)D₃

and C3-epi-25(OH)D₃, an isomer of 25(OH)D₃ [14] that was positively associated with incident T2D [2]. There is no prior genome-wide association study (GWAS) of 25(OH)D₃ to our knowledge, as past studies were restricted to analysing total 25(OH)D. Similarly, no GWAS to our knowledge has been performed for C3-epi-25(OH)D₃.

Therefore, our objective was to assess the evidence for whether the association between total 25(OH)D and T2D is causal, using MR based on a genetic instrument derived from an updated meta-analysis of GWASs for total 25(OH)D. In addition, taking a similar approach, we also assessed the evidence to support any potentially causal associations with T2D for the vitamin D metabolites 25(OH)D₃ and C3-epi-25(OH)D₃ using a novel meta-analysis of GWASs for 25(OH)D₃ and C3-epi-25(OH)D₃.

Methods

Study design and populations

We adopted a multi-stage approach comprising 3 parts (defined in a prospective analysis plan; [S1 Text](#)): stage 1, GWASs of total 25(OH)D and vitamin D metabolites (25(OH)D₃ and C3-epi-25(OH)D₃); stage 2, MR analysis of T2D risk using GWAS-identified lead genetic variants; and stage 3, comparison of MR estimates with observational estimates on the association between vitamin D metabolites and T2D incidence.

At the GWAS stage, for total 25(OH)D, we performed a meta-analysis of GWASs including 120,618 participants of European origin from a number of cohorts as shown in [Fig 1](#): the

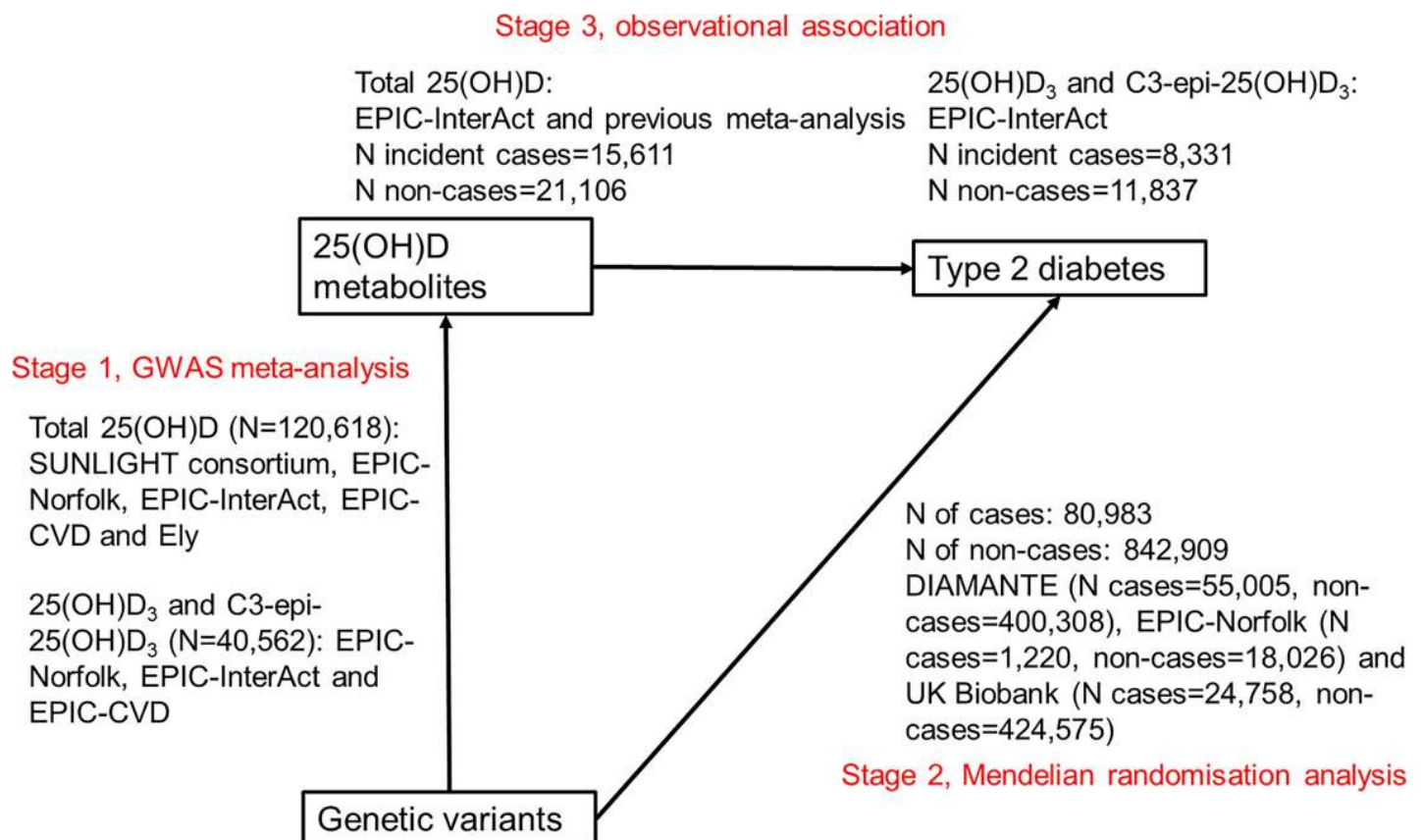


Fig 1. Design of the Mendelian randomisation study to estimate the causal association of 25-hydroxyvitamin D metabolites with type 2 diabetes. 25(OH)D, 25-hydroxyvitamin D; GWAS, genome-wide association study.

<https://doi.org/10.1371/journal.pmed.1003394.g001>

European Prospective Investigation into Cancer and Nutrition (EPIC)–InterAct study ($n = 18,078$) [15], EPIC-Norfolk study ($n = 10,231$) [16], EPIC-CVD study ($n = 12,253$) [17], Ely study ($n = 690$) [18], and publicly available GWAS summary statistics from the SUNLIGHT consortium ($n = 79,366$) [19]. We excluded participants duplicated among the EPIC-InterAct study, EPIC-Norfolk study, and EPIC-CVD study. We then used the UK Biobank dataset ($n = 410,826$) to replicate the findings from the above GWAS meta-analysis of total 25(OH)D. For meta-analysis of GWASs of both 25(OH)D₃ and C3-epi-25(OH)D₃, we included up to 40,562 participants of European origin from the EPIC-InterAct study ($n = 18,078$), EPIC-Norfolk study ($n = 10,231$), and EPIC-CVD study ($n = 12,253$).

At the MR stage, we estimated the association of GWAS-identified lead genetic variants with T2D risk, performing a meta-analysis including participants (80,983 T2D cases, and 842,909 non-cases) from the DIAMANTE study (55,005 T2D cases, 400,308 non-cases) [20], UK Biobank (24,758 T2D cases, 424,575 non-cases) [21], and EPIC-Norfolk study (additional cases not included in DIAMANTE study: 1,220 T2D cases, 18,026 non-cases) [16].

At stage 3, as a comparison to MR results, we estimated the observational association of total 25(OH)D, 25(OH)D₃, and C3-epi-25(OH)D₃ with T2D in the EPIC-InterAct study (8,331 T2D cases, 11,837 non-cases), adapted from the analysis in our prior publication [2]. For total 25(OH)D, we combined the results from the EPIC-InterAct study with those from a previous meta-analysis [1].

Ethics statement

Detailed description of each study is provided in [S2 Text](#). All the studies included in the present analyses were approved by local ethical committees, and participants provided written informed consent. Specifically, EPIC-InterAct and EPIC-CVD were approved by local ethics committees in the participating countries and the institutional review board of the International Agency for Research on Cancer. EPIC-Norfolk was approved by the Norwich local ethics committee, and the Ely study was approved by the Ely local research ethics committee.

Circulating 25(OH)D measurement and genome-wide genotyping

In the EPIC-InterAct study, EPIC-Norfolk study, and EPIC-CVD study, plasma 25(OH)D metabolites were measured using liquid chromatography–tandem mass spectrometry (LC-MS/MS) at VITAS (Oslo, Norway; a reference lab in Europe with a Vitamin D External Quality Assessment Scheme certificate) [2]. In the Ely study, serum total 25(OH)D concentrations were measured by radioimmunoassay. The GWAS summary statistics from the SUNLIGHT consortium included data from 31 studies, within which radioimmunoassay, LC-MS/MS, enzyme-linked immunosorbent assay (ELISA), or chemiluminescence immunoassay was used for the measurement of the 25(OH)D metabolites [19]. In the UK Biobank, serum total 25(OH)D was measured using chemiluminescence immunoassay. Methods of genome-wide genotyping in each study are presented in [S2 Text](#).

Statistical analysis

GWASs. For total 25(OH)D, we performed meta-analysis of 9 sets of GWASs ([Table 1](#)) including 4 in the EPIC-InterAct study (subcohort GWAS array [$n = 3,844$], subcohort core-exome array [$n = 6,932$], non-subcohort GWAS array [$n = 3,188$], and non-subcohort core-exome array [$n = 4,114$]), 1 in the EPIC-Norfolk study ($n = 10,231$), 2 in the EPIC-CVD study (subcohort [$n = 887$] and non-subcohort [$n = 11,366$]), 1 in the Ely study ($n = 690$), and 1 from the SUNLIGHT consortium ($n = 79,366$). For 25(OH)D₃ and C3-epi-25(OH)D₃ (as a binary variable: above versus below the lower limit of quantification [LLQ; 1 nmol/l]), the same datasets

Table 1. Characteristics of the cohorts included in the genome-wide meta-analysis.

Variable	EPIC-InterAct subcohort GWAS array	EPIC-InterAct subcohort core- exome array	EPIC-InterAct non-subcohort GWAS array	EPIC-InterAct non- subcohort core-exome array	EPIC-Norfolk	EPIC-CVD subcohort	EPIC-CVD non- subcohort	Ely study
Participants included in the GWAS, N	3,844	6,932	3,188	4,114	10,231	887	11,366	690
Age (years), mean (SD)	50.6 (9.3)	52.2 (8.9)	54.4 (8.06)	55.7 (6.98)	61.4 (8.9)	53.4 (12.3)	58.6 (8.2)	53.4 (7.7)
BMI, kg/m ² , mean (SD)	26.3 (4.4)	26.0 (4.1)	30.1 (4.7)	29.6 (4.77)	25.9 (3.6)	28.4 (4.8)	26.9 (4.2)	25.7 (3.97)
Female sex, n (%)	2,463 (64.1)	4,226 (61)	1,643 (51.5)	1,970 (47.9)	5,892 (57.6)	527 (59)	4,831 (43)	393 (57)
Plasma 25(OH)D (nmol/l), mean (SD)	42.02 (18.23)	42.43 (18.15)	38.68 (17.12)	37.95 (17.2)	57.33 (22.84)	38.01 (15.80)	41.27 (17.64)	58.58 (23.9)
Plasma 25(OH)D ₃ (nmol/l), mean (SD)	40.88 (17.43)	41.08 (17.38)	37.59 (16.26)	36.66 (16.42)	56.96 (22.84)	38.00 (15.83)	41.29 (17.82)	NA
Plasma C3-epi-25(OH)D ₃ (nmol/l), mean (SD)	2.13 (1.38)	2.17 (1.35)	2.18 (1.45)	2.19 (1.45)	2.31 (1.34)	1.98 (1.03)	2.13 (1.29)	NA
Plasma C3-epi-25(OH)D ₃ (binary, yes), percent	40.2	41.2	39.0	37.6	59.1	38.2	41.0	NA
Ratio of C3-epi-25(OH)D ₃ to 25(OH)D ₃ , percent	4.38 (2.04)	4.43 (2.09)	4.77 (2.28)	4.85 (2.45)	4.01 (2.63)	4.20 (1.07)	4.41 (2.15)	NA
Genotyping chip	Illumina 660W-Quad BeadChip	Illumina HumanCoreExome array	Illumina 660W-Quad BeadChip	Illumina HumanCoreExome array	Affymetrix UK Biobank Axiom Array	Illumina HumanCoreExome array	Illumina HumanCoreExome array	Illumina HumanCoreExome array
Imputation panel	HRC	HRC	HRC	HRC	HRC	HRC	HRC	HRC
Number of GWAS SNPs*	7,737,656	7,693,434	7,739,029	7,686,676	7,716,054	7,705,977	7,692,630	8,171,690

* Number of GWAS SNPs indicates number of SNPs with minor allele frequency $\geq 1\%$ within each cohort, imputation quality (info score) ≥ 4 , and p -value for Hardy-Weinberg equilibrium $\geq 10^{-6}$.
 25(OH)D, 25-hydroxyvitamin D; BMI, body mass index; GWAS, genome-wide association study; HRC, Haplotype Reference Consortium; SD, standard deviation; SNP, single nucleotide polymorphism.

<https://doi.org/10.1371/journal.pmed.1003394.t001>

as total 25(OH)D were used except for the Ely study, where only total 25(OH)D was available. C3-epi-25(OH)D₃ was treated as a binary variable as around half of values were below the LLQ (i.e., missing) in each individual cohort.

For each participating cohort in the above GWAS discovery, standardised residuals of natural-log transformed 25(OH)D metabolites were calculated, adjusting for age, sex, BMI, season of blood collection, and study centre (where appropriate). Then, the GWAS was performed using linear regression with SNPTTEST (v2.5.4) assuming an additive effect, adjusting for the first 10 genetic principal components of ancestry within each cohort. For the binary C3-epi-25(OH)D₃ variable, the GWAS was performed using logistic regression (above versus below LLQ) with QUICKTEST (v6.5.2) assuming an additive effect, adjusting for age, sex, BMI, season of blood collection, study centre (where appropriate), and the first 10 genetic principal components of ancestry within each cohort.

For each of the 25(OH)D measures (total 25(OH)D, 25(OH)D₃, and C3-epi-25(OH)D₃), we performed fixed-effect inverse-variance-weighted (IVW) meta-analysis to combine our results with published GWAS summary statistics (from the SUNLIGHT consortium, only for total 25(OH)D) [19] using the software METAL [22]. The quality control thresholds were as follows: minor allele frequency ≥ 0.01 , imputation info score ≥ 0.4 , and p -value for Hardy-Weinberg equilibrium $\geq 1.0 \times 10^{-6}$. Associated loci were identified using the conventional threshold for genome-wide statistical significance ($p < 5 \times 10^{-8}$). At each locus, the lead SNP was identified as the SNP with the lowest p -value within a 1 million base-pair window. To visualise the findings, we generated Manhattan plots and quantile-quantile plots for the genetic association using R package EasyStrata version 8.5, and regional association plots using LocusZoom software [23]. We used HaploReg v4.1 to explore annotations of the identified lead SNPs, including the nearest genes, eQTL, GRASP QTL, and previous GWAS hits [24].

We used UK Biobank to replicate our GWAS findings for total 25(OH)D. In the UK Biobank study, standardised residuals of natural-log transformed total 25(OH)D were calculated, adjusting for age, sex, BMI, season of blood collection, genotype chip, and aliquot number. GWAS analysis of total 25(OH)D was performed using a linear mixed model with BOLT-LMM, adjusting for the first 10 genetic principal components of ancestry.

Estimation of genetic correlations and variance explained. Genetic correlation of 25(OH)D variables with T2D and related glycaemic traits (fasting glucose, insulin, 2-hour glucose, homeostatic model assessment of insulin resistance [HOMA-IR], homeostatic model assessment of beta cell function [HOMA-B], and glycated haemoglobin [HbA1c]) was estimated with linkage disequilibrium score regression analysis using the meta-analysed GWAS summary statistics and publicly available datasets in the LD Hub platform [25,26]. Variance in 25(OH)D metabolites explained by the identified lead SNPs was estimated using linear regression models with individual-level data from the EPIC-Norfolk study and UK Biobank study. We also calculated the F-statistic in the EPIC-Norfolk study to evaluate the strength of the genetic instrument.

Observational analysis. For comparison to MR, we estimated the observational association between total 25(OH)D and T2D incidence by meta-analysing the results from a previous meta-analysis [1] together with results from the EPIC-InterAct study we previously published [2] (cases $n = 15,611$; non-cases $n = 21,106$). We also used the published effect estimate of T2D for 25(OH)D₃ in the EPIC-InterAct study [2]. For the observational association between C3-epi-25(OH)D₃ and T2D, we used results based on the EPIC-InterAct study, adapted from our prior analysis [2], to estimate the relative risk (RR) of T2D comparing those above versus below the LLQ. To minimise the possibility of residual confounding in the observational association between 25(OH)D and T2D by adiposity, we performed exploratory analyses examining the influence of additional adiposity-related covariates. Specifically, in the EPIC-InterAct

study, we included a genetic risk score (GRS) for BMI (generated from 97 BMI-related genetic variants by summing up the number of risk alleles) [27], and quadratic terms for BMI and waist-to-hip ratio, to account for a potential non-linear association between adiposity and T2D.

MR analyses. We performed MR analysis to combine estimates of ‘SNP to 25(OH)D level’ and ‘SNP to T2D’ associations, to estimate the genetically predicted association of the 25(OH)D variable (either total 25(OH)D or 25(OH)D₃) with T2D (odds ratio [OR] per 1-SD increase). Similarly, we estimated the association of genetically predicted higher C3-epi-25(OH)D₃ level (above versus below the LLQ) with T2D risk. For each of the 25(OH)D variables, we used an IVW method, MR-Egger method, and weighted median method to pool the estimates from multiple SNPs [28,29]. We used MR-Egger regression to detect and adjust for potential unbalanced pleiotropy in the MR analysis, and we used the weighted median MR method to examine the robustness of the results and highlight the results if significant heterogeneity of the associations among different genetic variants was observed. We used the effect estimate from the 25(OH)D GWAS discovery cohort, not UK Biobank, for the above MR analyses, as there were a large number of overlapping UK Biobank samples in the T2D GWASs. In response to peer reviewer comments, we performed analyses using several other MR methods to test the robustness of our results (S1 Text), including MR-PRESSO [30], MR-RAPS [31], and MRMix [32], and we further performed a multivariable MR analysis [7] that jointly estimated the causal association of the highly related traits. In addition, we calculated the statistical power of the MR analysis, which suggested that our MR had 90% power to detect a 6% difference in T2D risk per 1-SD change in 25(OH)D ($\alpha = 0.05$, assuming that the genetic instrument explains 3.95% of the variance of the exposure).

MR assumptions are violated if there is horizontal pleiotropy, i.e., MR is valid when the genetic instrument is associated only with the exposure, not other variables that may be potential confounders. To assess the plausibility of this assumption, we examined the association of the GWAS-identified lead SNPs with metabolic markers and lifestyle and demographic factors, using the PhenoScanner tool (v2) [33]. We performed secondary analyses stratifying the genetic variants into several groups according to their biological roles: for total 25(OH)D and 25(OH)D₃, lead SNPs were divided into those in the vitamin D synthesis pathway (*CYP2R1* and *NADSYN1/DHCR7*), in the vitamin D metabolism pathway (*GC*, *CYP24A1*), and the others (*AMDHD1*, *SEC23A*, *PAD11*, *CRCT1*, *UGT1A5*, *SULT2A1*); for C3-epi-25(OH)D₃, lead SNPs were divided into 2 groups: the *SDR9C7* group and the others (which overlapped with 25(OH)D genes).

We also performed MR analysis to examine the genetically predicted association of the 25(OH)D metabolites with glycaemic traits, including HOMA-IR, HOMA-B, HbA1c, fasting insulin, fasting glucose, and 2-hour glucose. R version 3.4.3 and Stata version 14.2 (StataCorp) were used for the above statistical analyses.

This study is reported as per the Strengthening the Reporting of Observational Studies in Epidemiology (STROBE) guideline (S1 STROBE Checklist).

Results

Total 25(OH)D and T2D

The average 25(OH)D concentrations (SD) of the cohorts ranged from 38.0 (17.2) nmol/l in EPIC-InterAct to 58.6 (23.9) nmol/l in the Ely study (Table 1). For total 25(OH)D level (Fig 2; Table 2), in the meta-analysis of 9 sets of GWASs among 120,618 participants, we identified 10 genetic loci. Of these 10 loci, we confirmed 6 previously discovered loci at *GC* (rs3755967, $p = 2.48 \times 10^{-465}$), *CYP2R1* (rs116970203, $p = 1.19 \times 10^{-64}$), *NADSYN1/DHCR7* (rs12785878,

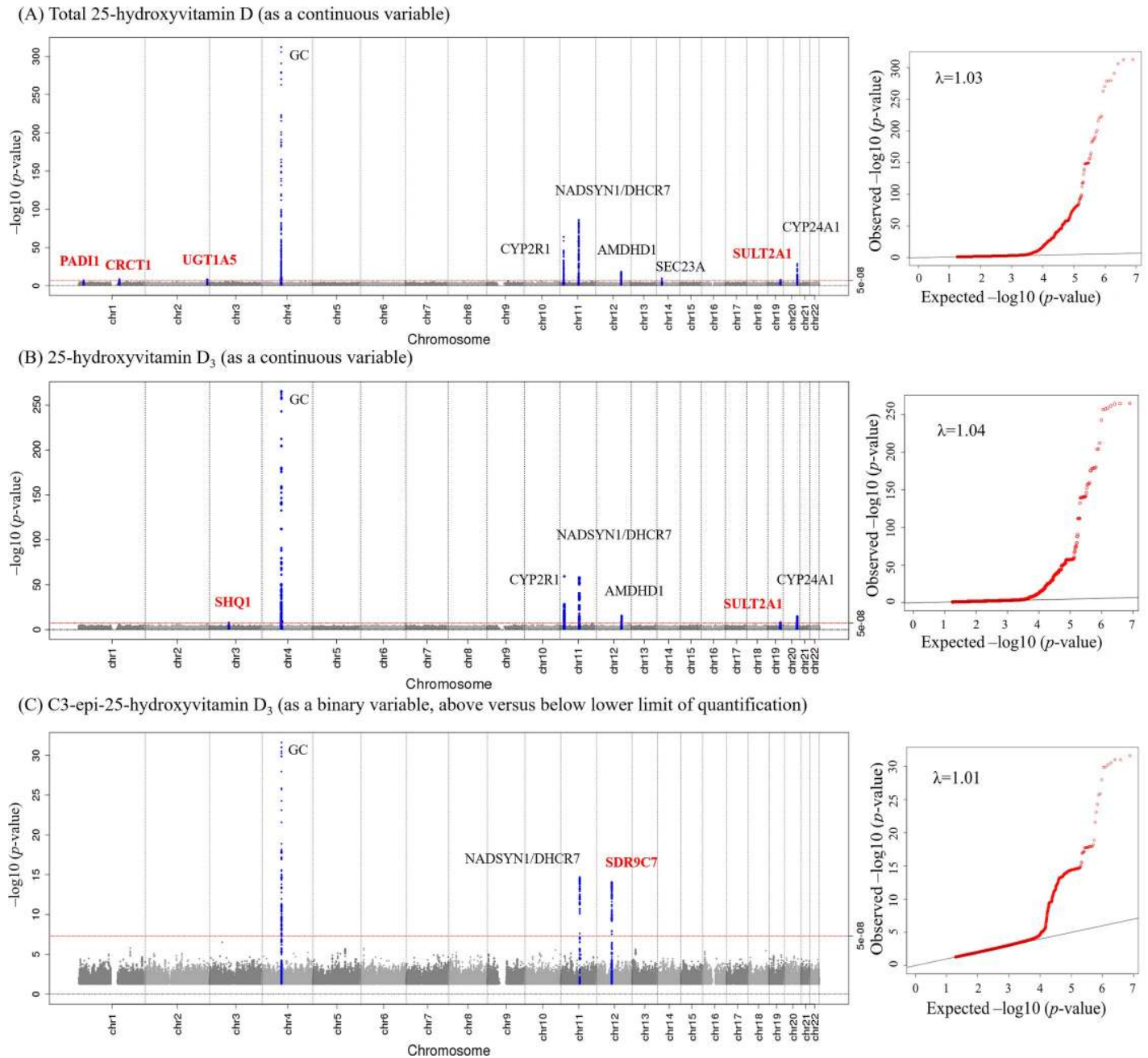


Fig 2. Genome-wide association of circulating 25-hydroxyvitamin D metabolites: Manhattan plot and quantile–quantile plot of all genetic variants from the meta-analysis. Manhattan plot and quantile–quantile plot for each of total 25-hydroxyvitamin D (A), 25-hydroxyvitamin D₃ (B), and C3-epi-25-hydroxyvitamin D₃ (C). Manhattan plot (left): SNPs are plotted on the x-axis according to their positions on each chromosome. The red line indicates the threshold for genome-wide significance ($p < 5 \times 10^{-8}$). Blue points represent SNPs in the ± 100 -kb region of a top hit. Loci are annotated with the gene names closest to the SNPs with lowest p -values (red indicates novel loci identified in the present study). Quantile–quantile plot (right): The x-axis shows the expected $-\log_{10} p$ -values, and the y-axis shows the observed $-\log_{10} p$ -values. Each SNP is plotted as a red dot, and the black line indicates the null hypothesis of no true association.

<https://doi.org/10.1371/journal.pmed.1003394.g002>

$p = 5.60 \times 10^{-87}$), *AMDHD1* (rs3213737, $p = 2.05 \times 10^{-19}$), *SEC23A* (rs8018720, $p = 1.46 \times 10^{-10}$), and *CYP24A1* (rs17216707, $p = 1.61 \times 10^{-29}$). Additionally, we identified 4 novel loci at *PADI1* (rs11203339, $p = 4.64 \times 10^{-8}$), *CRCT1* (rs7529325, $p = 2.09 \times 10^{-9}$), *UGT1A5* (rs17862870, $p = 5.57 \times 10^{-9}$), and *SULT2A1* (rs9304669, $p = 4.53 \times 10^{-8}$) (Table 2; S1–S3

Table 2. Genetic loci identified in the genome-wide analyses for circulating 25(OH)D metabolites.

Circulating vitamin D	Gene	Role of the gene in vitamin D metabolism	Lead SNP	Chromosome	Position	Effect allele/other allele	EAF	Effect (beta)	Standard error	p-Value
Total 25(OH)D (N = 120,618)	<i>PADI1</i> [†]	Other	rs11203339	1	17560972	C/T	0.66	0.012	0.002	4.64×10^{-08}
	<i>CRCT1</i> [†]	Other	rs7529325	1	152492634	A/T	0.08	0.030	0.005	2.09×10^{-09}
	<i>UGT1A5</i> [†]	Other	rs17862870	2	234622742	G/A	0.92	0.021	0.004	5.57×10^{-09}
	<i>GC</i>	Catabolism	rs3755967	4	72609398	C/T	0.71	0.106	0.002	2.48×10^{-465}
	<i>CYP2R1</i>	Synthesis	rs116970203	11	14876718	G/A	0.97	0.381	0.022	1.19×10^{-64}
	<i>NADSYN1/DHCR7</i>	Synthesis	rs12785878	11	71167449	T/G	0.75	0.044	0.002	5.60×10^{-87}
	<i>AMDHD1</i>	Other	rs3213737	12	96379806	G/A	0.43	0.019	0.002	2.05×10^{-19}
	<i>SEC23A</i>	Other	rs8018720	14	39556185	G/C	0.17	0.018	0.003	1.46×10^{-10}
	<i>SULT2A1</i> [†]	Other	rs9304669	19	48384385	T/C	0.16	0.052	0.010	4.53×10^{-08}
	<i>CYP24A1</i>	Catabolism	rs17216707	20	52732362	T/C	0.81	0.030	0.003	1.61×10^{-29}
25(OH)D ₃ (N = 40,562)	<i>SHQ1</i> [†]	Other	rs13084927	3	72709792	C/A	0.83	0.055	0.010	1.94×10^{-08}
	<i>GC</i>	Catabolism	rs4588	4	72618323	G/T	0.71	0.266	0.008	6.55×10^{-266}
	<i>CYP2R1</i>	Synthesis	rs116970203	11	14876718	G/A	0.98	0.372	0.023	3.22×10^{-60}
	<i>NADSYN1/DHCR7</i>	Synthesis	rs28364617	11	71159764	G/T	0.71	0.127	0.008	4.08×10^{-59}
	<i>AMDHD1</i>	Other	rs3819817	12	96378771	C/T	0.45	0.058	0.007	3.59×10^{-16}
	<i>SULT2A1</i> [†]	Other	rs9304669	19	48384385	T/C	0.16	0.054	0.010	1.27×10^{-08}
	<i>CYP24A1</i>	Catabolism	rs17216707	20	52732362	T/C	0.80	0.074	0.009	1.09×10^{-15}
C3-epi-25(OH)D ₃ (as a binary variable, N = 40,562) [‡]	<i>GC</i>	Catabolism	rs4588	4	72618323	G/T	0.71	0.194	0.016	2.48×10^{-32}
	<i>NADSYN1/DHCR7</i>	Synthesis	rs28364617	11	71159764	G/T	0.72	0.131	0.017	1.95×10^{-15}
	<i>SDR9C7</i> [†]	Other	rs11172066	12	57319491	T/A	0.14	0.166	0.021	8.08×10^{-15}

Beta coefficients are in standard deviation (SD) unit per allele.

[†]Novel loci identified in the present genome-wide analyses.

[‡]C3-epi-25(OH)D₃ was coded as binary variable: above versus below the lower limit of quantification (1 nmol/l).

25(OH)D, 25-hydroxyvitamin D; EAF, effect allele frequency; SNP, single nucleotide polymorphism.

<https://doi.org/10.1371/journal.pmed.1003394.t002>

Figs). The association of total 25(OH)D SNPs with each 25(OH)D metabolite is shown in [S1 Table](#). In the UK Biobank, we replicated associations of all the above 10 SNPs, with p -values < 10^{-33} ([S2 Table](#)).

Total 25(OH)D was not genetically correlated with T2D or glycaemic traits including HOMA-IR, HOMA-B, HbA1c, fasting insulin, fasting glucose, and 2-hour glucose ([S3 Table](#)). In the EPIC-Norfolk study, the variance explained by the 10 lead SNPs for total 25(OH)D was 3.95% (with F-statistic = 43.1), which was slightly higher than that explained (3.66%) by the 6 previously known loci (*GC*, *CYP2R1*, *NADSYN1*, *CYP24A1*, *AMDHD1*, and *SEC23A*). In the UK Biobank study, the variance explained by the 10 lead SNPs and the 6 previously known loci was 3.28% and 3.08%, respectively.

The observational analyses suggested that higher levels of 25(OH)D were associated with lower risk of T2D (per 1-SD RR: 0.80; 95% CI 0.77, 0.84; $p < 0.001$) ([Fig 3](#)). Further adjustment for BMI GRS (weighted or unweighted) and quadratic terms for BMI and waist-to-hip ratio had very little effect on the results ([S4 Table](#)).

In the MR analysis ([Fig 3](#)), we did not find evidence that genetically predicted higher total 25(OH)D was associated with T2D, with per 1-SD ORs of 0.96 (95% CI 0.89, 1.03; $p = 0.23$), 1.00 (95% CI 0.91, 1.10; $p = 0.99$), and 0.98 (95% CI 0.90, 1.06; $p = 0.58$) for the IVW,

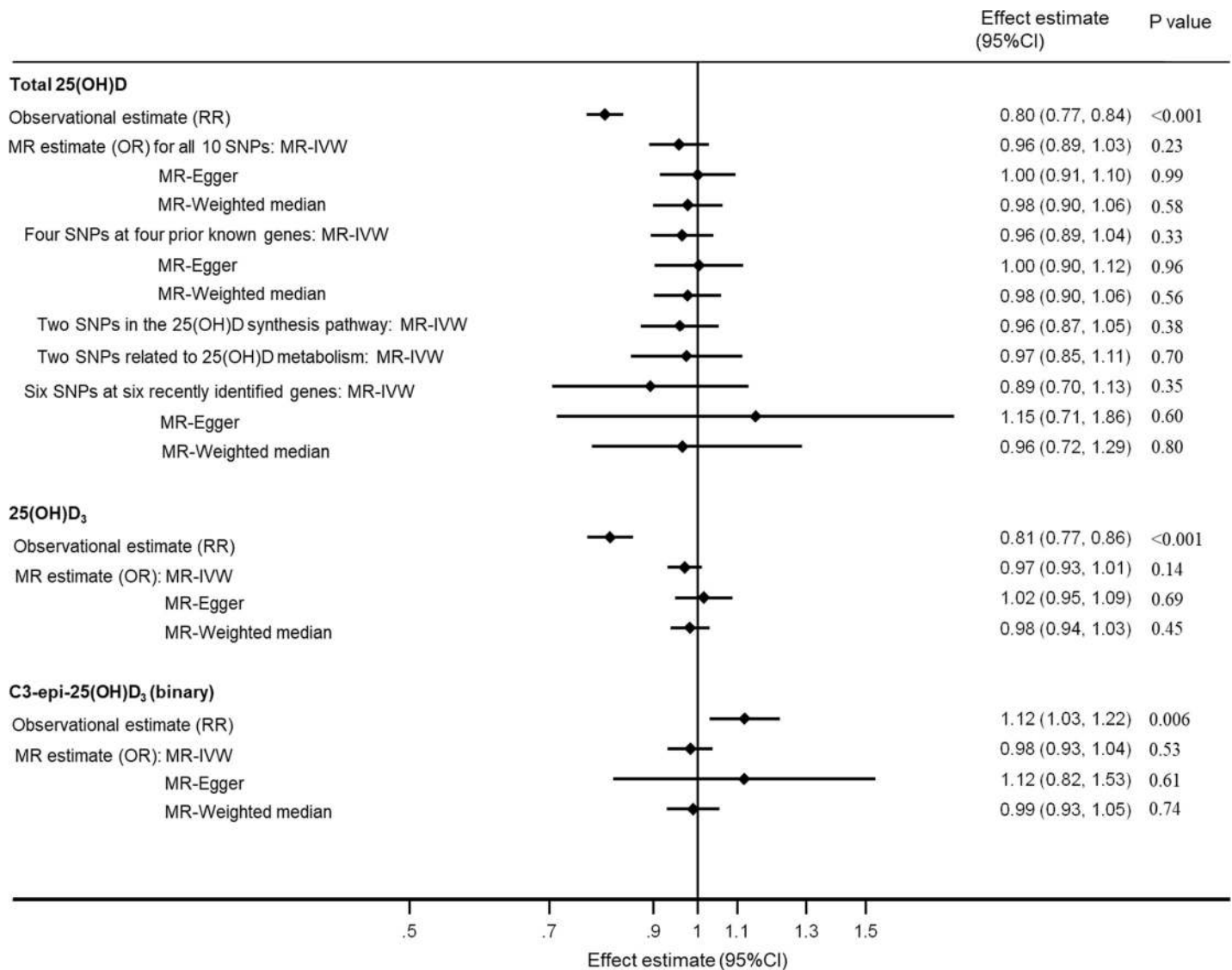


Fig 3. Association of 25(OH)D metabolites with type 2 diabetes from observational and MR analyses. Estimates (95% CIs) were scaled to represent RRs from observational analyses or ORs from MR per 1-standard deviation difference in each 25(OH)D metabolite, except for the binary C3-epi-25(OH)D₃ variable (above versus below the lower limit of quantification). For the MR sensitivity analysis for total 25(OH)D, the 4 prior known genes are *GC*, *CYP2R1*, *NADSYN1/DHCR7*, and *CYP24A1*; the 25(OH)D synthesis pathway genes are *CYP2R1* and *NADSYN1/DHCR7*; the 25(OH)D metabolism genes are *GC* and *CYP24A1*; and the 6 recently identified genes are *PADI1*, *CRCT1*, *UGT1A5*, *AMDHD1*, *SEC23A*, and *SULT2A1*. For each analysis, 3 MR methods were used, including the IVW method, MR-Egger method, and weighted median method. For MR analyses based on 2 SNPs, the MR-Egger and weighted median methods could not be applied. For the observational estimate, the total number of type 2 diabetes cases and non-cases was 15,611 and 21,106, respectively, for total 25(OH)D, and 8,331 and 11,837, respectively, for 25(OH)D₃ (or C3-epi-25(OH)D₃). For the MR estimate of all 3 vitamin D variables, the total number of cases and non-cases was 80,983 and 842,909, respectively. 25(OH)D, 25-hydroxyvitamin D; CI, confidence interval; IVW, inverse-variance-weighted; MR, Mendelian randomisation; OR, odds ratio; RR, relative risk; SNP, single nucleotide polymorphism.

<https://doi.org/10.1371/journal.pmed.1003394.g003>

MR-Egger, and weighted median methods, respectively. Individual 25(OH)D genetic variants were not significantly associated with metabolic markers or lifestyle or demographic factors (S4 Fig). Testing the MR-Egger intercept ($\beta = -0.005$; 95% CI $-0.011, 0.001$; $p = 0.15$) did not yield evidence of directional pleiotropy. MR-PRESSO, MR-RAPS, MRMix, and multivariable MR produced similar null results (S5 Fig). MR analyses suggested that total 25(OH)D was not significantly associated with any glycaemic trait (S5 Table).

Individual 25(OH)D metabolites and T2D

For 25(OH)D₃ (Fig 2; Table 2), we identified 7 novel genetic loci, of which one was a unique locus at *SHQ1* (rs13084927, $p = 1.94 \times 10^{-8}$), while the other 6 were already known to affect total 25(OH)D: *GC* (rs4588, $p = 6.55 \times 10^{-266}$), *CYP2R1* (rs116970203, $p = 3.22 \times 10^{-60}$), *NAD-SYNI/DHCR7* (rs28364617, $p = 4.08 \times 10^{-59}$), *AMDHD1* (rs3819817, $p = 3.59 \times 10^{-16}$), *SULT2A1* (rs9304669, $p = 1.27 \times 10^{-8}$), and *CYP24A1* (rs17216707, $p = 1.09 \times 10^{-15}$) (S6–S8 Figs).

For C3-epi-25(OH)D₃, we identified 2 loci that overlapped with total 25(OH)D at *GC* (rs4588, $p = 2.48 \times 10^{-32}$) and *NADSYNI/DHCR7* (rs28364617, $p = 1.95 \times 10^{-15}$), and 1 unique locus at *SDR9C7* (rs11172066, $p = 8.08 \times 10^{-15}$) (Table 2; S9–S11 Figs).

Neither 25(OH)D₃ nor C3-epi-25(OH)D₃ was genetically correlated with T2D or glycaemic traits including HOMA-IR, HOMA-B, HbA1c, fasting insulin, fasting glucose, and 2-hour glucose (S4 Table). In the EPIC-Norfolk study, the variance explained by the lead SNPs was 4.58% for 25(OH)D₃ (with F-statistic = 71.2) and 0.41% for C3-epi-25(OH)D₃ (binary variable) (with F-statistic = 15.2).

In the non-genetic observational analyses, circulating 25(OH)D₃ was inversely associated with T2D (per 1-SD RR: 0.81; 95% CI 0.77, 0.86; $p < 0.001$), and C3-epi-25(OH)D₃ was positively associated with T2D (above versus below LLQ RR: 1.12; 95% CI 1.03, 1.22; $p = 0.006$) (Fig 3). Further adjustment for BMI GRS (weighted or unweighted) and quadratic terms for BMI and waist-to-hip ratio did not change the estimate for 25(OH)D₃, while slightly strengthening the positive association for C3-epi-25(OH)D₃ (S5 Table).

There was no evidence of pleiotropic associations of the genetic variants with metabolic markers or lifestyle or demographic factors (S12 and S13 Figs). Genetically predicted increases in 25(OH)D₃ or high levels of C3-epi-25(OH)D₃ (binary) were not associated with T2D (Fig 3). The findings did not change substantially in the analyses using other MR methods (S5 Fig) and in secondary analyses stratifying SNPs into different groups (S14 Fig). Testing the MR-Egger intercept did not yield evidence of directional pleiotropy for 25(OH)D₃ (beta = -0.008; 95% CI -0.018, 0.002; $p = 0.16$) or C3-epi-25(OH)D₃ (beta = -0.021; 95% CI -0.073, 0.03; $p = 0.65$). None of the genetically predicted variations of vitamin D metabolites were significantly associated with the glycaemic outcomes (S5 Table).

Discussion

Our updated meta-analysis of GWASs for total 25(OH)D levels using data from 120,618 European-descent participants identified 4 novel genetic loci, in addition to 6 loci previously described [19]. The 4 novel loci were replicated in the UK Biobank study. With GWAS-identified lead SNPs as a genetic instrument, our MR analysis did not find evidence that total 25(OH)D was causally associated with T2D. To the best of our knowledge, the present study is the first GWAS discovery for 25(OH)D₃, the major metabolite of circulating total 25(OH)D, identifying 7 genetic loci, with 1 unique locus and 6 loci overlapping with those for total 25(OH)D. Similarly, for C3-epi-25(OH)D₃, we identified 1 unique locus associated with C3-epi-25(OH)D₃. In the MR analysis, we did not find evidence supporting a causal association between T2D and 25(OH)D₃ or C3-epi-25(OH)D₃.

Our current finding of lack of evidence for a causal association of 25(OH)D with T2D in MR analysis is at variance with the strong inverse observational association between 25(OH)D and T2D [1,34]. This discrepancy was substantial, with non-overlapping confidence intervals (RR 0.80 [95% CI 0.77, 0.84] and 0.96 [95% CI 0.89, 1.03], respectively, for the observational and MR findings), and was not explained by detailed adjustment for the confounding effect of adiposity in the observational analysis. The reasons for the difference between the

observational and MR findings remain unclear, but it may be that adjustment for adiposity, diet, and physical activity using a single imprecise measure of these variables at baseline only partially reduced the confounding effects of these variables. However, the current lack of evidence for a causal association between 25(OH)D levels and T2D is consistent with recent RCT evidence (D2d trial) of a lack of benefit from vitamin D supplementation for the prevention of T2D [6]. The D2d trial was conducted among individuals with prediabetes and thus at high risk for developing T2D [6]; prior RCTs among postmenopausal women or elderly people also had null findings [3,4], and the awaited results from the VITAL trial will be further informative.

Several prior MR analyses found inconsistent results [1,9–12]. In a MR analysis among 28,144 T2D cases and 76,344 controls, we previously used 4 prior GWAS-discovered genetic variants (at *GC*, *CYP2R1*, *DHCR7*, and *CYP24A1*) as genetic instruments, and found a null association between 25(OH)D and T2D (OR 1.01 [95% CI 0.75, 1.36] per 1-SD reduction in 25(OH)D) [1]. When we restricted our analysis to the 2 synthesis-related SNPs (at *DHCR7* and *CYP2R1*), we still had null findings [1], but this differed from other studies [11,12]. Afzal et al. examined variants in the 2 synthesis-related genes *DHCR7* and *CYP2R1* among 96,423 white Danish adults, reporting that per 20-nmol/l genetically determined reduction in plasma 25(OH)D there was an allelic effect for *DHCR7*, with an OR of 1.51 (95% CI 0.98, 2.33), but not for *CYP2R1* (OR 1.02 [95% CI 0.75–1.37]) [11]. The authors acknowledged that their results were weak and generated a hypothesis for a possible causal inverse association with endogenously synthesised 25(OH)D. Lu et al. detected a significant causal protective effect on T2D risk using 2 synthesis SNPs related to *DHCR7* and *CYP2R1* only when including Chinese and European populations in a meta-analysis [12]. The possibility of uncorrected population stratification by different ethnic groups [35] cannot be excluded, though the authors made attempts to reduce this possibility by analysing area-specific estimates and combining them using inverse-variance weighting. Notably, a recent Chinese study did not find a causal association between 25(OH)D and T2D [10].

Described for the first time, to the best of our knowledge, we found a genome-wide significant signal for 25(OH)D₃ at *SHQ1*, which encodes H/ACA ribonucleoprotein assembly factor and has functions in the processing of ribosomal RNAs, modification of spliceosomal small nuclear RNAs, and stabilisation of telomerase [36]. In addition, we identified a novel locus at *SDR9C7* for C3-epi-25(OH)D₃. *SDR9C7* encodes short chain dehydrogenase, whose relationship to the epimerisation of 25(OH)D₃ to C3-epi-25(OH)D₃ or other metabolites is unknown. Since the biological role of the epimerase is yet to be discovered [37], the present GWAS results may provide important insights for future investigation of mechanisms.

Although 25(OH)D₃ is usually the major component of total 25(OH)D [2], the causal association of 25(OH)D₃, on its own, with T2D risk has not previously been evaluated in MR analysis. Prior research mainly focused on total 25(OH)D as a biomarker of vitamin D status, which included a combination of 25(OH)D₂ and 25(OH)D₃, and, less frequently, C3-epi-25(OH)D₃, the epimeric form of 25(OH)D₃, depending on the assay methods. Blood 25(OH)D₃ is derived both from diet and from biosynthesis in the skin upon exposure to sunlight, and 25(OH)D₂ is mainly derived from diet, while C3-epi-25(OH)D₃ is a metabolite of 25(OH)D₃ via a C3 epimerisation process [37]. Traditional high-performance liquid chromatography, liquid chromatography–mass spectrometry, ELISA, and chemiluminescent immunoassay methods do not distinguish C3-epi-25(OH)D₃ from 25(OH)D₃ and thus include it within the definition of 25(OH)D₃ [38]. Our recent study [2] suggested that blood 25(OH)D₃ had an inverse association with T2D risk, while C3-epi-25(OH)D₃ was positively associated. Therefore, these current findings are an important extension to previous research, by including MR analysis for T2D for total 25(OH)D as well as for 25(OH)D₃ and C3-epi-25(OH)D₃ separately, as the results for total 25(OH)D may be potentially confounded by other vitamin D metabolites.

There are several strengths of this study. To the best of our knowledge, this is the largest GWAS meta-analysis to date of total 25(OH)D ($N = 120,618$), and used the most comprehensive genetic instrument for the MR estimate for 25(OH)D and T2D risk (based on 10 SNPs versus the 4 or 2 used previously [1,11,12]). We replicated our total 25(OH)D GWAS results in the UK Biobank study, but were unable to evaluate genetic associations for 25(OH)D metabolites since these were not available in UK Biobank. In our MR analysis, we included 80,983 T2D cases, a larger sample than in the largest previous MR study (58,312 T2D cases) [12]. We performed a novel GWAS on individual vitamin D metabolites—25(OH)D₃ and C3-epi-25(OH)D₃—and used results from these in the MR analysis.

A limitation of this study is the lack of generalisability of our results from European populations to other populations of different ethnicities. Another limitation is that we combined studies with different study designs to maximise sample size and power for both MR analysis and observational analysis, even though definitions of endpoints (e.g., contributing to the degree of misclassification of T2D status) and exposure measurements (e.g., different assays for 25(OH)D measurement) were not standardised across these studies. In addition, we tested a linear causal association using the MR approach, but we cannot rule out a potential weak causal association among people with vitamin D deficiency or insufficiency. Furthermore, although we did not find convincing evidence for an association of these variants with a variety of metabolic markers and lifestyle and demographic factors, we cannot rule out the possibility that horizontal pleiotropy exists for the genetic variants used in the MR analysis. Finally, use of a binary exposure (C3-epi-25(OH)D₃) in MR analysis can potentially lead to violation of the exclusion restriction assumption: The genetic variant can influence the outcome via the continuous risk factor even if the binary exposure does not change [39].

The public health implication of the present study, together with prior evidence of null findings from RCTs of vitamin D supplementation, is that focusing on population-wide supplementation to raise blood vitamin D levels is not likely to be an effective strategy for the prevention of T2D in European populations. However, our current limitations also indicate there are unresolved issues with important implications for further research. Next steps to address these issues include, but are not limited to, investigating the reasons for the discrepancy between the observational and MR findings, which likely reflect residual confounding as discussed above; including populations from different ethnic groups with varying distributions of 25(OH)D levels; and further increasing sample size and hence statistical power for conducting MR analysis of non-linear associations. The last of these would help to address whether there may be effects specifically in those who have hypovitaminosis D or are vitamin D deficient.

In summary, the present findings using MR do not support a causal association of 25(OH)D and related metabolites with T2D, despite the strong association seen in observational studies. The totality of the available evidence from our study and RCTs to date does not justify the use of vitamin D supplementation for the prevention of T2D.

Supporting information

S1 STROBE Checklist. STROBE checklist.
(DOCX)

S1 Fig. Regional plots of the genome-wide significant loci for total 25-hydroxyvitamin D.
For each of the genetic loci, we used LocusZoom software to draw the regional association plot.
(TIF)

S2 Fig. QQ plots by GWAS performed for total 25-hydroxyvitamin D. GWAS, genome-wide association study; QQ, quantile–quantile.

(TIF)

S3 Fig. Association of novel identified genetic variants with total 25-hydroxyvitamin D in each GWAS. Effect estimate (95% confidence interval) of each forest plot represents the change (in standard deviation unit) in total 25-hydroxyvitamin D per allele of the corresponding genetic variant across participating cohorts. GWAS, genome-wide association study.

(TIF)

S4 Fig. Association of total 25-hydroxyvitamin D genetic variants with metabolic markers and lifestyle and demographic factors. Effect estimate (95% confidence interval) of each forest plot represents the change in each trait per allele of the corresponding genetic variant. The summary statistics shown in the present figure were extracted from the PhenoScanner database (<http://www.phenoscanter.medschl.cam.ac.uk/>). We extracted the results with the largest sample size if results from multiple data sources were available in the PhenoScanner database. The corresponding databases in PhenoScanner were UK Biobank for body mass index and diastolic and systolic blood pressure, GIANT for waist-to-hip ratio (PMID: 25673412), GLGC for the 4 lipid traits (PMID: 24097068), MAGIC for the 6 glycaemic traits (PMID: 20081857), SSGAC for years of educational attainment (PMID: 27225129), and TAG for ever smoker (PMID: 20418890). $p < 0.003$ was considered statistically significant after correction for multiple testing within each genetic variant, and none of the results were significant. HbA1c, glycated haemoglobin; HOMA-B, homeostatic model assessment of beta cell function; HOMA-IR, homeostatic model assessment of insulin resistance.

(TIF)

S5 Fig. Forest plots for the Mendelian randomisation analysis of 25-hydroxyvitamin D metabolites and type 2 diabetes. The Mendelian randomisation estimate is per 1-SD increase in vitamin D metabolite, except for the binary C3-epi-25(OH)D₃ variable (above versus below the lower limit of quantification). None of the results show significant heterogeneity ($p = 0.661$ from Q-test) or directional horizontal pleiotropy ($p = 0.153$ from test of Egger intercept). For multivariable MR analysis, the result of total 25(OH)D or 25(OH)D₃ was adjusted for the genetic variants of C3-epi-25(OH)D₃, while the multivariable MR result of C3-epi-25(OH)D₃ was adjusted for total 25(OH)D, as the definition of total 25(OH)D includes only 25(OH)D₃ and 25(OH)D₂, not C3-epi-25(OH)D₃. For C3-epi-25(OH)D₃, MR-PRESSO result was not available due to limited number of genetic variants.

(TIF)

S6 Fig. Regional plots of the genome-wide significant loci for 25-hydroxyvitamin D₃. For each of the genetic loci, we used LocusZoom software to draw the regional association plot.

(TIF)

S7 Fig. QQ plots by GWAS performed for total 25-hydroxyvitamin D₃. GWAS, genome-wide association study; QQ, quantile–quantile.

(TIF)

S8 Fig. Association of novel identified genetic variants with 25-hydroxyvitamin D₃ in each GWAS. Effect estimate (95% confidence interval) of each forest plot represents the change (in standard deviation unit) in total 25-hydroxyvitamin D₃ per allele of the corresponding genetic variant across participating cohorts. GWAS, genome-wide association study.

(TIF)

S9 Fig. Regional plots of the genome-wide significant loci for C3-epi-25-hydroxyvitamin D₃. For each of the genetic loci, we used LocusZoom software to draw the regional association plot.

(TIF)

S10 Fig. QQ plots by GWAS performed for C3-epi-25-hydroxyvitamin D₃. GWAS, genome-wide association study; QQ, quantile–quantile.

(TIF)

S11 Fig. Association of novel identified genetic variants with C3-epi-25-hydroxyvitamin D₃ in each GWAS. Effect estimate (95% confidence interval) of each forest plot represents the change (log odds) in C3-epi-25-hydroxyvitamin D₃ per allele of the corresponding genetic variant across participating cohorts. GWAS, genome-wide association study.

(TIF)

S12 Fig. Association of 25-hydroxyvitamin D₃ genetic variants with metabolic markers and lifestyle and demographic factors. The summary statistics shown in the present figure were extracted from the PhenoScanner database (<http://www.phenoscanter.medschl.cam.ac.uk/>). We extracted the results with the largest sample size if results from multiple data sources were available in the PhenoScanner database. The corresponding databases in PhenoScanner were UK Biobank for body mass index and diastolic and systolic blood pressure, GIANT for waist-to-hip ratio (PMID: 25673412), GLGC for the 4 lipid traits (PMID: 24097068), MAGIC for the 6 glycaemic traits (PMID: 20081857), SSGAC for years of educational attainment (PMID: 27225129), and TAG for ever smoker (PMID: 20418890). $p < 0.003$ was considered statistically significant after correction for multiple testing within each genetic variant, and none of the results were significant. HbA1c, glycated haemoglobin; HOMA-B, homeostatic model assessment of beta cell function; HOMA-IR, homeostatic model assessment of insulin resistance.

(TIF)

S13 Fig. Association of C3-epi-25-hydroxyvitamin D₃ genetic variants with metabolic markers and lifestyle and demographic factors. Effect estimate (95% confidence interval) of each forest plot represents the change in each trait per allele of the corresponding genetic variant. The summary statistics shown in the present figure were extracted from the PhenoScanner database (<http://www.phenoscanter.medschl.cam.ac.uk/>). We extracted the results with the largest sample size if results from multiple data sources were available in the PhenoScanner database. The corresponding databases in PhenoScanner were UK Biobank for body mass index and diastolic and systolic blood pressure, GIANT for waist-to-hip ratio (PMID: 25673412), GLGC for the 4 lipid traits (PMID: 24097068), MAGIC for the 6 glycaemic traits (PMID: 20081857), SSGAC for years of educational attainment (PMID: 27225129), and TAG for ever smoker (PMID: 20418890). $p < 0.003$ was considered statistically significant after correction for multiple testing within each genetic variant, and none of the results were significant. HbA1c, glycated haemoglobin; HOMA-B, homeostatic model assessment of beta cell function; HOMA-IR, homeostatic model assessment of insulin resistance.

(TIF)

S14 Fig. Mendelian randomisation analysis of 25-hydroxyvitamin D metabolites and type 2 diabetes with stratification of single nucleotide polymorphisms. Mendelian randomisation (MR) estimate represents the association between a genetically predicted 1–standard deviation increase in 25-hydroxyvitamin D metabolites (except for the binary C3-epi-25(OH)D₃ variable: above versus below the lower limit of quantification) and T2D risk. For 25(OH)D₃, 4

prior known genes are *GC* (rs4588), *CYP2R1* (rs116970203), *NADSYN1/DHCR7* (rs28364617), and *CYP24A1* (rs17216707). Two genes in the 25(OH)D synthesis pathway are *CYP2R1* (rs116970203) and *NADSYN1/DHCR7* (rs28364617). Two genes related to 25(OH)D metabolism are *GC* (rs4588) and *CYP24A1* (rs17216707). Three genes, *SHQ1*, *AMDHD1*, and *SULT2A1*, were recently identified in the present GWAS meta-analysis or by another recent study. For C3-epi-25(OH)D₃, we did sensitivity analysis stratified by the *SDR9C7* variant and the other variants (related to total 25(OH)D), as *SDR9C7* is a unique locus associated with C3-epi-25(OH)D₃. The *SDR9C7* SNP was rs11172066. 25(OH)D, 25-hydroxyvitamin D; SNP, single nucleotide polymorphism.

(TIF)

S1 Table. Association of GWAS-identified genetic variants with each of the 25-hydroxyvitamin D metabolites.

(DOCX)

S2 Table. Replication of the GWAS-identified variants for total 25-hydroxyvitamin D in the UK Biobank study.

(DOCX)

S3 Table. Genetic correlation of 25-hydroxyvitamin D metabolites with type 2 diabetes and glycaemic traits.

(DOCX)

S4 Table. Observational estimates of the association of 25-hydroxyvitamin D metabolites with incident type 2 diabetes in the EPIC-InterAct study.

(DOCX)

S5 Table. Mendelian randomisation analysis of 25-hydroxyvitamin D metabolites and glycaemic traits.

(DOCX)

S1 Text. Study protocol.

(DOCX)

S2 Text. Description of the participating studies in the present genome-wide association study for vitamin D metabolites.

(DOCX)

Acknowledgments

We thank all EPIC participants and staff for their contribution to the study. We thank Nicola Kerrison (MRC Epidemiology Unit, Cambridge) for managing the data for the InterAct Project. We thank the technical and functional operational teams of the MRC Epidemiology Unit and the laboratory team at VITAS, in Norway, for the measurements of plasma vitamin D. We thank staff from the EPIC-CVD and EPIC-InterAct Coordinating Centres for carrying out sample preparation and data-handling work, particularly Sarah Spackman (EPIC-CVD Data Manager), and Cambridge Genomic Services for genotyping. Dr. Miren Dorronsoro acknowledges the participants of the Spanish EPIC cohort for their contribution to the study as well as the team of trained nurses who participated in the recruitment. EPIC Ragusa acknowledges for their participation blood donors of AVIS RAGUSA (local blood donors association). This research has been conducted using the UK Biobank Resource (application number 44448).

Author Contributions

Conceptualization: Ju-Sheng Zheng, Stephen J. Sharp, John Danesh, Nita G. Forouhi, Nicholas J. Wareham.

Data curation: Thomas E. Gundersen.

Formal analysis: Ju-Sheng Zheng, Jian'an Luan, Eleni Sofianopoulou, Stephen J. Sharp.

Funding acquisition: John Danesh, Elio Riboli, Nita G. Forouhi, Nicholas J. Wareham.

Investigation: Ju-Sheng Zheng, Jian'an Luan, Eleni Sofianopoulou, Felix R. Day, Fumiaki Imamura, Thomas E. Gundersen, Luca A. Lotta, Ivonne Sluijs, Isobel D. Stewart, Rupal L. Shah, Yvonne T. van der Schouw, Eleanor Wheeler, Eva Ardanaz, Heiner Boeing, Miren Dorransoro, Christina C. Dahm, Niki Dimou, Douae El-Fatouhi, Paul W. Franks, Guy Fagherazzi, Sara Grioni, José María Huerta, Alicia K. Heath, Louise Hansen, Mazda Jenab, Paula Jakszyn, Rudolf Kaaks, Tilman Kühn, Kay-Tee Khaw, Nasser Laouali, Giovanna Masala, Peter M. Nilsson, Kim Overvad, Anja Olsen, Salvatore Panico, J. Ramón Quirós, Olov Rolandsson, Miguel Rodríguez-Barranco, Carlotta Sacerdote, Annemieke M. W. Spijkerman, Tammy Y. N. Tong, Rosario Tumino, Konstantinos K. Tsilidis, John Danesh, Adam S. Butterworth, Claudia Langenberg, Nita G. Forouhi, Nicholas J. Wareham.

Methodology: Ju-Sheng Zheng, Jian'an Luan, Felix R. Day.

Project administration: Ju-Sheng Zheng, Stephen J. Sharp, John Danesh, Elio Riboli, Adam S. Butterworth, Claudia Langenberg, Nita G. Forouhi, Nicholas J. Wareham.

Resources: Kay-Tee Khaw, John Danesh, Elio Riboli, Adam S. Butterworth, Claudia Langenberg, Nita G. Forouhi, Nicholas J. Wareham.

Software: Jian'an Luan.

Supervision: Nita G. Forouhi, Nicholas J. Wareham.

Validation: Eleni Sofianopoulou.

Writing – original draft: Ju-Sheng Zheng, Stephen J. Sharp, Nita G. Forouhi, Nicholas J. Wareham.

Writing – review & editing: Ju-Sheng Zheng, Jian'an Luan, Eleni Sofianopoulou, Stephen J. Sharp, Felix R. Day, Fumiaki Imamura, Thomas E. Gundersen, Luca A. Lotta, Ivonne Sluijs, Isobel D. Stewart, Rupal L. Shah, Yvonne T. van der Schouw, Eleanor Wheeler, Eva Ardanaz, Heiner Boeing, Miren Dorransoro, Christina C. Dahm, Niki Dimou, Douae El-Fatouhi, Paul W. Franks, Guy Fagherazzi, Sara Grioni, José María Huerta, Alicia K. Heath, Louise Hansen, Mazda Jenab, Paula Jakszyn, Rudolf Kaaks, Tilman Kühn, Kay-Tee Khaw, Nasser Laouali, Giovanna Masala, Peter M. Nilsson, Kim Overvad, Anja Olsen, Salvatore Panico, J. Ramón Quirós, Olov Rolandsson, Miguel Rodríguez-Barranco, Carlotta Sacerdote, Annemieke M. W. Spijkerman, Tammy Y. N. Tong, Rosario Tumino, Konstantinos K. Tsilidis, John Danesh, Elio Riboli, Adam S. Butterworth, Claudia Langenberg, Nita G. Forouhi, Nicholas J. Wareham.

References

1. Ye Z, Sharp SJ, Burgess S, Scott RA, Imamura F, InterAct Consortium, et al. Association between circulating 25-hydroxyvitamin D and incident type 2 diabetes: a Mendelian randomisation study. *Lancet Diabetes Endocrinol.* 2015; 3:35–42. [https://doi.org/10.1016/S2213-8587\(14\)70184-6](https://doi.org/10.1016/S2213-8587(14)70184-6) PMID: 25281353

2. Zheng J-S, Imamura F, Sharp SJ, van der Schouw YT, Sluijs I, Gundersen TE, et al. Association of plasma vitamin D metabolites with incident type 2 diabetes: EPIC-InterAct case-cohort study. *J Clin Endocrinol Metab.* 2019; 104:1293–303. <https://doi.org/10.1210/jc.2018-01522> PMID: [30418614](https://pubmed.ncbi.nlm.nih.gov/30418614/)
3. Avenell A, Cook JA, MacLennan GS, McPherson GC. Vitamin D supplementation and type 2 diabetes: a substudy of a randomised placebo-controlled trial in older people (RECORD trial, ISRCTN 51647438). *Age Ageing.* 2009; 38(5):606–9. <https://doi.org/10.1093/ageing/afp109> PMID: [19617604](https://pubmed.ncbi.nlm.nih.gov/19617604/)
4. De Boer IH, Tinker LF, Connelly S, Curb JD, Howard BV, Kestenbaum B, et al. Calcium plus vitamin D supplementation and the risk of incident diabetes in the women's health initiative. *Diabetes Care.* 2008; 31:701–7. <https://doi.org/10.2337/dc07-1829> PMID: [18235052](https://pubmed.ncbi.nlm.nih.gov/18235052/)
5. Manson JE, Cook NR, Lee I-M, Christen W, Bassuk SS, Mora S, et al. Vitamin D supplements and prevention of cancer and cardiovascular disease. *N Engl J Med.* 2019; 380:33–44. <https://doi.org/10.1056/NEJMoa1809944> PMID: [30415629](https://pubmed.ncbi.nlm.nih.gov/30415629/)
6. Pittas AG, Dawson-Hughes B, Sheehan P, Ware JH, Knowler WC, Aroda VR, et al. Vitamin D supplementation and prevention of type 2 diabetes. *N Engl J Med.* 2019; 380:23–32. <https://doi.org/10.1056/NEJMoa1811403> PMID: [30415637](https://pubmed.ncbi.nlm.nih.gov/30415637/)
7. Burgess S, Thompson SG. Multivariable Mendelian randomization: the use of pleiotropic genetic variants to estimate causal effects. *Am J Epidemiol.* 2015; 181:251–60. <https://doi.org/10.1093/aje/kwu283> PMID: [25632051](https://pubmed.ncbi.nlm.nih.gov/25632051/)
8. Emdin CA, Khera AV, Kathiresan S. Mendelian randomization. *JAMA.* 2017; 318:1925. <https://doi.org/10.1001/jama.2017.17219> PMID: [29164242](https://pubmed.ncbi.nlm.nih.gov/29164242/)
9. Buijsse B, Boeing H, Hirche F, Weikert C, Schulze MB, Gottschald M, et al. Plasma 25-hydroxyvitamin D and its genetic determinants in relation to incident type 2 diabetes: a prospective case-cohort study. *Eur J Epidemiol.* 2013; 28:743–52. <https://doi.org/10.1007/s10654-013-9844-5> PMID: [24002339](https://pubmed.ncbi.nlm.nih.gov/24002339/)
10. Wang N, Wang C, Chen X, Wan H, Chen Y, Chen C, et al. Vitamin D, prediabetes and type 2 diabetes: bidirectional Mendelian randomization analysis. *Eur J Nutr.* 2019; 59:1379–88. <https://doi.org/10.1007/s00394-019-01990-x> PMID: [31076857](https://pubmed.ncbi.nlm.nih.gov/31076857/)
11. Afzal S, Brøndum-Jacobsen P, Bojesen SE, Nordestgaard BG. Vitamin D concentration, obesity, and risk of diabetes: a Mendelian randomisation study. *Lancet Diabetes Endocrinol.* 2014; 2:298–306. [https://doi.org/10.1016/S2213-8587\(13\)70200-6](https://doi.org/10.1016/S2213-8587(13)70200-6) PMID: [24703048](https://pubmed.ncbi.nlm.nih.gov/24703048/)
12. Lu L, Bennett DA, Millwood IY, Parish S, McCarthy MI, Mahajan A, et al. Association of vitamin D with risk of type 2 diabetes: a Mendelian randomisation study in European and Chinese adults. *PLOS Med.* 2018; 15:e1002566. <https://doi.org/10.1371/journal.pmed.1002566> PMID: [29718904](https://pubmed.ncbi.nlm.nih.gov/29718904/)
13. Wang TJ, Zhang F, Richards JB, Kestenbaum B, van Meurs JB, Berry D, et al. Common genetic determinants of vitamin D insufficiency: a genome-wide association study. *Lancet.* 2010; 376:180–8. [https://doi.org/10.1016/S0140-6736\(10\)60588-0](https://doi.org/10.1016/S0140-6736(10)60588-0) PMID: [20541252](https://pubmed.ncbi.nlm.nih.gov/20541252/)
14. Bailey D, Veljkovic K, Yazdanpanah M, Adeli K. Analytical measurement and clinical relevance of vitamin D3C3-epimer. *Clin Biochem.* 2013; 46(3):190–6. <https://doi.org/10.1016/j.clinbiochem.2012.10.037> PMID: [23153571](https://pubmed.ncbi.nlm.nih.gov/23153571/)
15. Consortium InterAct, Langenberg C, Sharp S, Forouhi NG, Franks PW, Schulze MB, et al. Design and cohort description of the InterAct Project: an examination of the interaction of genetic and lifestyle factors on the incidence of type 2 diabetes in the EPIC Study. *Diabetologia.* 2011; 54:2272–82. <https://doi.org/10.1007/s00125-011-2182-9> PMID: [21717116](https://pubmed.ncbi.nlm.nih.gov/21717116/)
16. Day N, Oakes S, Luben R, Khaw KT, Bingham S, Welch A, et al. EPIC-Norfolk: study design and characteristics of the cohort. *European Prospective Investigation of Cancer. Br J Cancer.* 1999; 80(Suppl 1):95–103.
17. Danesh J, Saracci R, Berglund G, Feskens E, Overvad K, Panico S, et al. EPIC-Heart: the cardiovascular component of a prospective study of nutritional, lifestyle and biological factors in 520,000 middle-aged participants from 10 European countries. *Eur J Epidemiol.* 2007; 22:129–41. <https://doi.org/10.1007/s10654-006-9096-8> PMID: [17295097](https://pubmed.ncbi.nlm.nih.gov/17295097/)
18. Forouhi NG, Luan J, Hennings S, Wareham NJ. Incidence of type 2 diabetes in England and its association with baseline impaired fasting glucose: the Ely study 1990–2000. *Diabet Med.* 2007; 24:200–7. <https://doi.org/10.1111/j.1464-5491.2007.02068.x> PMID: [17257284](https://pubmed.ncbi.nlm.nih.gov/17257284/)
19. Jiang X, O'Reilly PF, Aschard H, Hsu Y-H, Richards JB, Dupuis J, et al. Genome-wide association study in 79,366 European-ancestry individuals informs the genetic architecture of 25-hydroxyvitamin D levels. *Nat Commun.* 2018; 9:260. <https://doi.org/10.1038/s41467-017-02662-2> PMID: [29343764](https://pubmed.ncbi.nlm.nih.gov/29343764/)
20. Mahajan A, Taliun D, Thurner M, Robertson NR, Torres JM, Rayner NW, et al. Fine-mapping type 2 diabetes loci to single-variant resolution using high-density imputation and islet-specific epigenome maps. *Nat Genet.* 2018; 50:1505–13. <https://doi.org/10.1038/s41588-018-0241-6> PMID: [30297969](https://pubmed.ncbi.nlm.nih.gov/30297969/)

21. Collins R. What makes UK Biobank special? *Lancet*. 2012; 379:1173–4. [https://doi.org/10.1016/S0140-6736\(12\)60404-8](https://doi.org/10.1016/S0140-6736(12)60404-8) PMID: [22463865](https://pubmed.ncbi.nlm.nih.gov/22463865/)
22. Willer CJ, Li Y, Abecasis GR. METAL: fast and efficient meta-analysis of genomewide association scans. *Bioinformatics*. 2010; 26:2190–1. <https://doi.org/10.1093/bioinformatics/btq340> PMID: [20616382](https://pubmed.ncbi.nlm.nih.gov/20616382/)
23. Pruim RJ, Welch RP, Sanna S, Teslovich TM, Chines PS, Gliedt TP, et al. LocusZoom: regional visualization of genome-wide association scan results. *Bioinformatics*. 2010; 26:2336–7. <https://doi.org/10.1093/bioinformatics/btq419> PMID: [20634204](https://pubmed.ncbi.nlm.nih.gov/20634204/)
24. Ward LD, Kellis M. HaploReg v4: systematic mining of putative causal variants, cell types, regulators and target genes for human complex traits and disease. *Nucleic Acids Res*. 2016; 44:D877–81. <https://doi.org/10.1093/nar/gkv1340> PMID: [26657631](https://pubmed.ncbi.nlm.nih.gov/26657631/)
25. Bulik-Sullivan B, Finucane HK, Anttila V, Gusev A, Day FR, Loh PR, et al. An atlas of genetic correlations across human diseases and traits. *Nat Genet*. 2015; 47:1236–41. <https://doi.org/10.1038/ng.3406> PMID: [26414676](https://pubmed.ncbi.nlm.nih.gov/26414676/)
26. Zheng J, Erzurumluoglu AM, Elsworth BL, Kemp JP, Howe L, Haycock PC, et al. LD Hub: a centralized database and web interface to perform LD score regression that maximizes the potential of summary level GWAS data for SNP heritability and genetic correlation analysis. *Bioinformatics*. 2017; 33:272–9. <https://doi.org/10.1093/bioinformatics/btw613> PMID: [27663502](https://pubmed.ncbi.nlm.nih.gov/27663502/)
27. Locke AE, Kahali B, Berndt SI, Justice AE, Pers TH, Day FR, et al. Genetic studies of body mass index yield new insights for obesity biology. *Nature*. 2015; 518:197–206 <https://doi.org/10.1038/nature14177> PMID: [25673413](https://pubmed.ncbi.nlm.nih.gov/25673413/)
28. Bowden J, Davey Smith G, Haycock PC, Burgess S. Consistent estimation in Mendelian randomization with some invalid instruments using a weighted median estimator. *Genet Epidemiol*. 2016; 40:304–14. <https://doi.org/10.1002/gepi.21965> PMID: [27061298](https://pubmed.ncbi.nlm.nih.gov/27061298/)
29. Burgess S, Butterworth A, Thompson SG. Mendelian randomization analysis with multiple genetic variants using summarized data. *Genet Epidemiol*. 2013; 37:658–65. <https://doi.org/10.1002/gepi.21758> PMID: [24114802](https://pubmed.ncbi.nlm.nih.gov/24114802/)
30. Verbanck M, Chen CY, Neale B, Do R. Detection of widespread horizontal pleiotropy in causal relationships inferred from Mendelian randomization between complex traits and diseases. *Nat Genet*. 2018; 50:693–8. <https://doi.org/10.1038/s41588-018-0099-7> PMID: [29686387](https://pubmed.ncbi.nlm.nih.gov/29686387/)
31. Zhao Q, Wang J, Hemani G, Bowden J, Small DS. Statistical inference in two-sample summary-data Mendelian randomization using robust adjusted profile score. *Ann Stat*. 2020; 3:1742–69. <https://doi.org/10.1214/19-AOS1866>
32. Qi G, Chatterjee N. Mendelian randomization analysis using mixture models for robust and efficient estimation of causal effects. *Nat Commun*. 2019; 10:1941. <https://doi.org/10.1038/s41467-019-09432-2> PMID: [31028273](https://pubmed.ncbi.nlm.nih.gov/31028273/)
33. Staley JR, Blackshaw J, Kamat MA, Ellis S, Surendran P, Sun BB, et al. PhenoScanner: a database of human genotype-phenotype associations. *Bioinformatics*. 2016; 32:3207–9. <https://doi.org/10.1093/bioinformatics/btw373> PMID: [27318201](https://pubmed.ncbi.nlm.nih.gov/27318201/)
34. Song Y, Wang L, Pittas AG, Del Gobbo LC, Zhang C, Manson JE, et al. Blood 25-hydroxy vitamin D levels and incident type 2 diabetes: a meta-analysis of prospective studies. *Diabetes Care*. 2013; 36:1422–8. <https://doi.org/10.2337/dc12-0962> PMID: [23613602](https://pubmed.ncbi.nlm.nih.gov/23613602/)
35. Davies NM, Holmes MV, Davey Smith G. Reading Mendelian randomisation studies: a guide, glossary, and checklist for clinicians. *BMJ*. 2018; 362:k601. <https://doi.org/10.1136/bmj.k601> PMID: [30002074](https://pubmed.ncbi.nlm.nih.gov/30002074/)
36. Grozdanov PN, Roy S, Kittur N, Meier UT. SHQ1 is required prior to NAF1 for assembly of H/ACA small nucleolar and telomerase RNPs. *RNA*. 2009; 15:1188–97. <https://doi.org/10.1261/rna.1532109> PMID: [19383767](https://pubmed.ncbi.nlm.nih.gov/19383767/)
37. Bikle DD. Vitamin D metabolism, mechanism of action, and clinical applications. *Chem Biol*. 2014; 21(3):319–29. <https://doi.org/10.1016/j.chembiol.2013.12.016> PMID: [24529992](https://pubmed.ncbi.nlm.nih.gov/24529992/)
38. Le Goff C, Cavalier E, Souberbielle JC, González-Antuña A, Delvin E. Measurement of circulating 25-hydroxyvitamin D: a historical review. *Pract Lab Med*. 2015; 2:1–14. <https://doi.org/10.1016/j.plabm.2015.04.001> PMID: [28932799](https://pubmed.ncbi.nlm.nih.gov/28932799/)
39. Burgess S, Labrecque JA. Mendelian randomization with a binary exposure variable: interpretation and presentation of causal estimates. *Eur J Epidemiol*. 2018; 33:947–52. <https://doi.org/10.1007/s10654-018-0424-6> PMID: [30039250](https://pubmed.ncbi.nlm.nih.gov/30039250/)