



# The Association Between Distinct Frontal Brain Volumes and Behavioral Symptoms in Mild Cognitive Impairment, Alzheimer's Disease, and Frontotemporal Dementia

Antti Cajanus<sup>1,2\*</sup>, Eino Solje<sup>1,2</sup>, Juha Koikkalainen<sup>3</sup>, Jyrki Lötjönen<sup>3</sup>, Noora-Maria Suhonen<sup>4</sup>, Ilona Hallikainen<sup>1</sup>, Ritva Vanninen<sup>5</sup>, Päivi Hartikainen<sup>2</sup>, Matteo de Marco<sup>6</sup>, Annalena Venneri<sup>6</sup>, Hilikka Soininen<sup>1</sup>, Anne M. Remes<sup>4,7</sup> and Anette Hall<sup>1</sup>

<sup>1</sup> Institute of Clinical Medicine, Neurology, University of Eastern Finland, Kuopio, Finland, <sup>2</sup> Neurocenter, Neurology, Kuopio University Hospital, Kuopio, Finland, <sup>3</sup> Combinostics Ltd., Tampere, Finland, <sup>4</sup> MRC Oulu, Oulu University Hospital, Oulu, Finland, <sup>5</sup> Department of Radiology, Kuopio University Hospital, Kuopio, Finland, <sup>6</sup> Department of Neuroscience, University of Sheffield, Sheffield, United Kingdom, <sup>7</sup> Unit of Clinical Neuroscience, Neurology, University of Oulu, Oulu, Finland

## OPEN ACCESS

### Edited by:

Hamid R. Sohrabi,  
Edith Cowan University, Australia

### Reviewed by:

Bin Zhang,  
Guangzhou Medical University, China  
Hernando Santamaria-García,  
Pontifical Javeriana  
University, Colombia

### \*Correspondence:

Antti Cajanus  
antti.cajanus@uef.fi

### Specialty section:

This article was submitted to  
Neurodegeneration,  
a section of the journal  
Frontiers in Neurology

**Received:** 25 April 2019

**Accepted:** 19 September 2019

**Published:** 03 October 2019

### Citation:

Cajanus A, Solje E, Koikkalainen J, Lötjönen J, Suhonen N-M, Hallikainen I, Vanninen R, Hartikainen P, de Marco M, Venneri A, Soininen H, Remes AM and Hall A (2019) The Association Between Distinct Frontal Brain Volumes and Behavioral Symptoms in Mild Cognitive Impairment, Alzheimer's Disease, and Frontotemporal Dementia. *Front. Neurol.* 10:1059. doi: 10.3389/fneur.2019.01059

Our aim was to investigate the association between behavioral symptoms of agitation, disinhibition, irritability, elation, and aberrant motor behavior to frontal brain volumes in a cohort with various neurodegenerative diseases. A total of 121 patients with mild cognitive impairment (MCI,  $n = 58$ ), Alzheimer's disease (AD,  $n = 45$ ) and behavioral variant frontotemporal dementia (bvFTD,  $n = 18$ ) were evaluated with a Neuropsychiatric Inventory (NPI). A T1-weighted MRI scan was acquired for each participant and quantified with a multi-atlas segmentation method. The volumetric MRI measures of the frontal lobes were associated with neuropsychiatric symptom scores with a linear model. In the regression model, we included CDR score and TMT B time as covariates to account for cognitive and executive functions. The brain volumes were corrected for age, gender and head size. The total behavioral symptom score of the five symptoms of interest was negatively associated with the volume of the subcallosal area ( $\beta = -0.32$ ,  $p = 0.002$ ). High disinhibition scores were associated with reduced volume in the gyrus rectus ( $\beta = -0.30$ ,  $p = 0.002$ ), medial frontal cortex ( $\beta = -0.30$ ,  $p = 0.002$ ), superior frontal gyrus ( $\beta = -0.28$ ,  $p = 0.003$ ), inferior frontal gyrus ( $\beta = -0.28$ ,  $p = 0.005$ ) and subcallosal area ( $\beta = -0.28$ ,  $p = 0.005$ ). Elation scores were associated with reduced volumes of the medial orbital gyrus ( $\beta = -0.30$ ,  $p = 0.002$ ) and inferior frontal gyrus ( $\beta = -0.28$ ,  $p = 0.004$ ). Aberrant motor behavior was associated with atrophy of frontal pole ( $\beta = -0.29$ ,  $p = 0.005$ ) and the subcallosal area ( $\beta = -0.39$ ,  $p < 0.001$ ). No significant associations with frontal brain volumes were found for agitation and irritability. We conclude that the subcallosal area may be common neuroanatomical area for behavioral symptoms in neurodegenerative diseases, and it appears to be independent of disease etiology.

**Keywords:** magnetic resonance imaging, mild cognitive impairment, Alzheimer's disease, frontotemporal dementia, behavioral symptoms

## INTRODUCTION

Neurodegenerative diseases exhibit various symptoms affecting patients' behavior and personality. Behavioral symptoms such as agitation, disinhibition, irritability, elation, and aberrant motor behavior have a great effect on patients' social relations, caregiver burden, and quality of life. Some symptoms are more characteristic for specific diseases, but there is overlapping of behavioral symptoms between different diseases. Various behavioral symptoms may be present even in the earliest clinical stages of these diseases and the detection of these symptoms can be valuable for diagnostic purposes. Typical behavioral symptoms in the early stage of Alzheimer's disease (AD) are apathy, agitation, irritability, anxiety, and depression (1–4). Considering bvFTD, typical behavioral symptoms are disinhibition, agitation, apathy, loss of empathy, aberrant motor behavior and preservative compulsive behavior (1, 5, 6). Disinhibition, apathy, emotional bluntness, aberrant motor behavior, stereotypical behaviors and eating abnormalities are more characteristic to bvFTD and have been found to discriminate bvFTD from AD (1, 6–8). Behavioral symptoms are also interrelated with dementia severity in AD. Higher agitation, apathy, disinhibition, irritability, and aberrant motor behavior scores are associated with increased dementia severity in AD (1, 9). In bvFTD, the severity of behavioral symptoms is higher than in AD, yet no difference in severity of behavioral disturbances is observed (10). Behavioral symptoms may also be present in cases with mild cognitive impairment (MCI). Especially symptoms such as apathy, agitation, anxiety, irritability, and depression, are more prevalent in subjects with MCI compared to healthy people (11, 12).

Different neurodegenerative disorders present different pattern of brain atrophy compared to each other. The medial temporal atrophy is typical for AD (13, 14), while anterior temporal and/or frontal lobes, the insula and anterior cingulate cortex are affected in bvFTD (15–19). However, there are variance of the pattern of atrophy within both these diagnostic entities. For instance, bvFTD may present different type of atrophy depending from underlying genetic background (20–24). Even though the patterns of atrophy differ, there are also some overlap of brain areas that are affected in these diseases. Given that also behavioral symptoms overlap in different disease etiologies, it supports the idea that damage in some brain areas or networks are associated with specific types of behavioral changes. Detection of neuroanatomical changes associated with these behavioral changes could improve early diagnostic of dementing diseases. Similar idea has been presented for mental disorders by the Research Domain Criteria (RDoC), suggesting that mental disorders are disorders of brain circuits, and specific behavioral signs and symptoms can be explained with neuroimaging and other brain functional quantification methods *in vivo* (25).

In some studies, the association between a specific behavioral symptom and cortical areas has been identified in AD and

bvFTD. Disinhibition has been associated with gray matter atrophy in the orbitofrontal cortex (26, 27). Agitation has been associated with atrophy in the inferior frontal cortex, insula and anterior cingulate cortex (28, 29) and aberrant motor behavior with decreased volume in anterior cingulate gyrus and inferior frontal cortex (27, 28). Similar findings have been also found in other neurodegenerative conditions and also in healthy people (30–32). However, it remains unclear whether these neuroanatomical correlates are disease specific or is there common foci of neural damage associating to behavioral symptoms independently of clinical diagnosis.

The aim of this study was to evaluate common neuroanatomical associations in the frontal area for behavioral symptoms in a cohort of patients with MCI, AD, and bvFTD, irrespective of underlying neurodegenerative disorder. Our hypothesis is, that behavioral symptoms could be driven by common neuroanatomical correlates, regardless of clinical diagnosis. If there were such common associations for behavioral symptoms, this information could be of great value when targeting treatments for individual patients. Contrary to previous studies, our data consist of patients with different neurodegenerative diseases at varying clinical stages allowing us to locate regions of interest in neural networks that associate with behavioral symptoms, regardless of the underlying disease etiology or pathology.

## MATERIALS AND METHODS

### Participants

We examined a total of 121 subjects including 58 patients with a diagnosis of MCI, 45 AD and 18 bvFTD. The study population consisted of 92 subjects from Kuopio, Finland, and 29 subjects from Sheffield, United Kingdom (**Table 1**). The data are part of the VPH-DARE@IT project. The diagnoses of neurodegenerative diseases were formulated by an experienced neurologist specialized in memory disorders according to standard clinical criteria (16, 33–36). We included only patients with an appropriate T1-weighted MRI scan who had a correctly completed Neuropsychiatric Inventory (NPI). Mini-Mental State Examination (MMSE) scores, Clinical Dementia Rating (CDR) scores and Trail Making B test time were also determined.

The ethics committee of the Northern Savonia Hospital District for the Kuopio cohort and the Yorkshire and Humber Regional Ethics Committee (Ref No: 12/YH/0474) for the Sheffield cohort approved the research protocol in accordance with the principles of the Declaration of Helsinki. Written informed consent was obtained from all participants prior to enrollment.

All included patients were 50–85 years old. Inclusion criteria for the MCI patients were set as follows: MCI diagnosis as evidenced by the following: referral because of cognitive impairments and diagnosis of amnesic or non-amnesic MCI (33, 34). AD patients were included if they met the diagnostic criteria for probable AD according to NINCDS-ADRDA Alzheimer's criteria (36) or the diagnosis of prodromal AD according to Dubois et al. (35). bvFTD patients were included if they met the Neary et al. clinical diagnostic criteria for FTD

**Abbreviations:** AD, Alzheimer's Disease; bvFTD, Behavioral variant frontotemporal dementia; MCI, Mild cognitive impairment; NPI, Neuropsychiatric inventory.

**TABLE 1** | Demographic and clinical data according to clinical diagnosis.

	Total	MCI	AD	bvFTD	<i>p</i>
<i>N</i> (%)	121 (100%)	58 (48%)	45 (37%)	18 (15%)	
Gender, female, % ( <i>N</i> )	53% (64)	57% (33)	47% (21)	57% (10)	0.6
Age, mean (SD)	68.2 (9.4)	69.4 (9.0)	68.8 (9.6)	62.6 (8.5)	0.02
Education years, mean (SD)	11.3 (3.5)	11.4 (3.7)	11.4 (3.6)	10.6 (2.6)	0.7
MMSE score, mean (SD)	23.5 (4.8)	26.3 (2.5)	21.5 (4.9)	19.8 (5.4)	<0.001
CDR score, mean (SD)	0.7 (0.5)	0.48 (0.1)	1.0 (0.6)	0.8 (0.6)	<0.001
TMT B time, sec, mean (SD)	242 (159)	194 (99)	311 (215)	240 (83)	0.001
Total NPI score, mean (SD)	8.8 (12.5)	7.2 (11.4)	9.4 (12.5)	12.7 (15.5)	0.3

Statistical significance between groups was assessed with ANOVA and chi square test.

(16). The recruiting of study population was initiated before the establishment of the international consensus criteria for behavior variant frontotemporal dementia (15), thus the consensus criteria by Neary and colleagues were used in the recruitment. However, we retrospectively evaluated the bvFTD patient's data and all subjects fulfilled the criteria for at least clinical probable bvFTD, presenting significant functional decline and positive imaging findings (15).

Patients were excluded if they had obvious brain, systemic or psychiatric disorders that could possibly affect cognitive functions such as stroke, severe depression or endocrine disorders. Also, MCI patients were excluded if they met the diagnostic criteria of dementia according to DSM-IV at baseline.

## Neuropsychiatric Evaluation

Behavioral symptoms were evaluated using the NPI (37). The NPI is a structured interview administered to patients' caregivers. It consists of 10 or 12 separate items assessing neuropsychiatric disturbances common in dementia, including delusions, hallucinations, agitation/aggression, depression/dysphoria, anxiety, elation/euphoria, apathy/indifference, disinhibition, irritability/lability, aberrant motor behavior, nighttime behaviors and appetite/eating disorders. In this study, we used the original 10 items and further grouped those symptoms into three categories, behavioral, affective and psychotic symptoms according to a hierarchical clustering of the NPI items (Figure 1). The clustering of our cohort was similar to the results from a factorial analysis performed with a larger dementia cohort (38). We performed a preliminary analysis for the neuroanatomical correlates with all neuropsychiatric clusters. This analysis revealed significant correlations with frontal lobe structures only with behavioral symptoms, thus we focused our more specific analyses only on behavioral symptoms and excluded affective and psychotic items (results of correlation analysis for affective and psychotic symptoms in **Supplementary Figure 1**). Eating abnormalities and nighttime behaviors were also excluded from analyses, since they are not part of the core NPI questionnaire,

and these items include several types of positive and negative symptoms (e.g., hyperorality vs. lack of appetite). The clustering resulted in behavioral symptoms including agitation, irritability, disinhibition, elation, and aberrant motor behavior. The frequency and severity of each item were rated. Composite scores for each individual neuropsychiatric symptom were calculated by multiplying the frequency score (1–4, occasionally-very often) by severity score (1–3, mild-difficult), making 12 the highest possible score for each item. A behavioral symptoms total score was calculated by adding up the composite scores of agitation, irritability, disinhibition, elation and aberrant motor behavior, making the maximum score  $5 \times 12 = 60$ .

## MRI Analysis

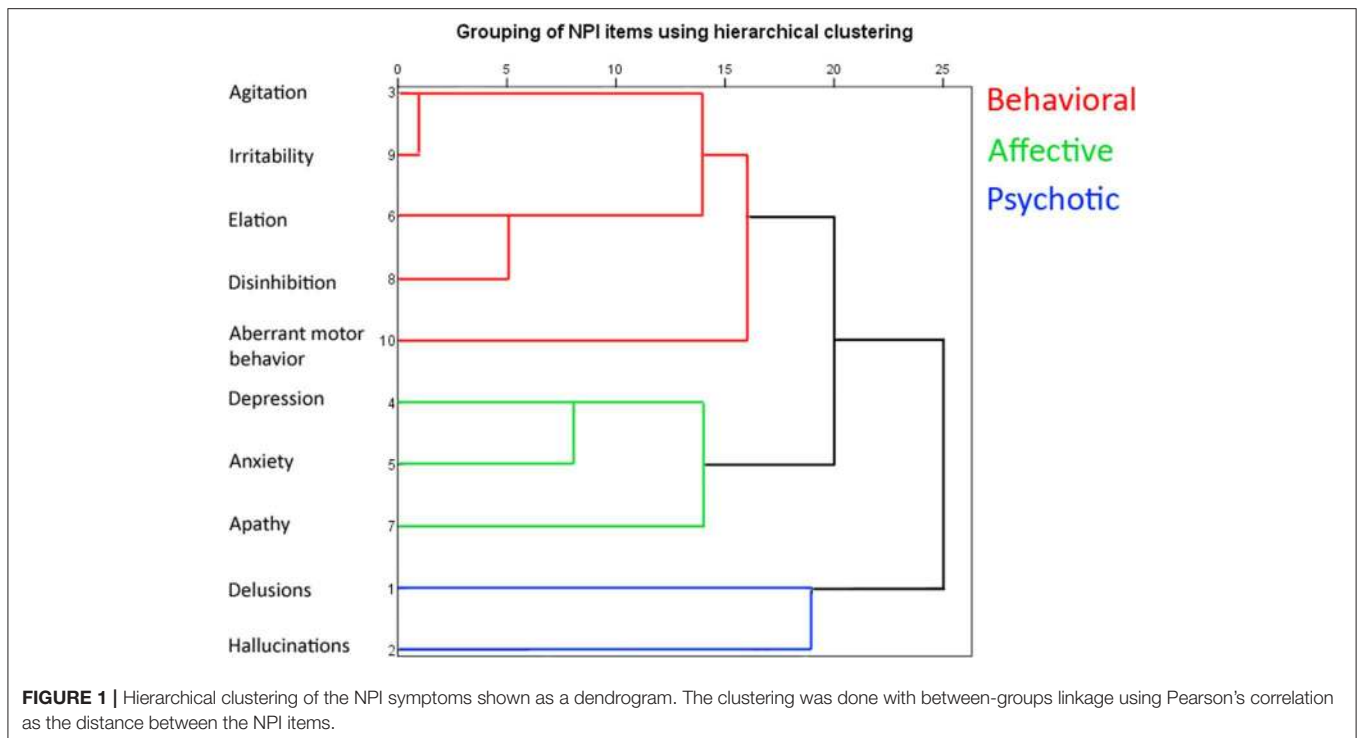
MRI scans were acquired on a Phillips Achieva 3T scanner in Kuopio and Phillips Ingenia 3T scanner in Sheffield using a shared image acquisition protocol. Gradient echo 3D T1-weighted images were acquired sagittally with the following parameters: voxel size:  $0.94 \times 0.94 \times 1.00$  mm; repetition time: 8.2 ms; echo delay time: 3.8 ms; field of view: 256 mm; matrix size:  $256 \times 256 \times 170$ .

Image segmentation was performed using the commercial cNeuro<sup>®</sup> cMRI image quantification tool (Combinostics, Tampere, Finland). The tool segments images to 133 areas by using a multi-atlas segmentation framework (39). The method consists of the following steps: (1) atlas selection is performed, (2) a probabilistic atlas is generated by registering non-rigidly the selected atlases to the patient image and (3) expectation maximization classification is applied for producing the final segmentation (39). The volumes were normalized first for head size (40) and then for age and gender (41).

We focused our analyses to the frontal lobes and excluded other areas in order to maintain sufficient statistical power and due to findings of existing literature. A total of 11 different brain areas of the frontal lobe was selected and the total volumes of the frontal lobes to be used in the analyses included anterior, posterior, lateral and medial orbital gyrus, gyrus rectus, medial frontal cortex, frontal pole, superior frontal gyrus, middle frontal gyrus, inferior frontal gyrus, and the subcallosal area. The volume of the inferior frontal gyrus was calculated by adding three separate segments together: opercular, triangular, and orbital part of the inferior frontal gyrus. The rest of the areas were analyzed as they were segmented by the multi-atlas segmentation method. Any brain areas outside the frontal lobes were excluded.

## Statistical Analysis

The NPI items were grouped with hierarchical clustering using between-groups linkage and Pearson's correlation as the distance between items. The demographic and clinical data between diagnostic groups were analyzed with one-way ANOVA and chi-square tests. The initial correlation analysis of all segmented brain volumes and neuropsychiatric symptoms was done with two-tailed Pearson's correlation. Further analyses of the association between behavioral symptom scores and frontal brain volumes was tested with a linear regression model using CDR (Clinical Dementia Rating) score and TMT-B (Trail-Making Test, B) time as confounders, to control the effect of subjects' cognitive



state and executive functioning. We also examined differences in volumetric brain measures in different groups with one-way ANOVA, using Tukey's *post hoc* analysis. We chose to only discuss results with  $p \leq 0.005$  as significant due to multiple testing. The analyses were performed with IBM SPSS Statistics, version 25.

## RESULTS

The bvFTD group was on average 6 years younger compared to the AD group and 7 years younger than the MCI group. The MMSE score was higher in the MCI group compared to the AD and bvFTD groups. There were no significant differences in the degree of education, gender distribution or total NPI scores among the three groups. The demographic data are presented in **Table 1**.

The frequency of behavioral symptoms and the composite NPI scores according to clinical diagnoses are shown in **Table 2**. The composite scores (frequency\*severity) in all studied behavioral symptom categories were higher in patients with bvFTD. Disinhibition scores were significantly higher in the bvFTD group compared to the AD and MCI groups. Aberrant motor behavior and elation scores were also higher in bvFTD compared to MCI. Irritability was the most frequent symptom in the whole group (33%) as well as in patients with AD (38%) and MCI (31%). Disinhibition and aberrant motor behavior were most common in patients with bvFTD (33 and 28%, respectively). However, there were no statistical differences in the frequency of any of the behavioral symptoms among the three groups.

One-way ANOVA and Tukey's *post hoc* analysis showed that the volume of the subcallosal area did not differ among

the three diagnostic groups. All other frontal lobe volumes showed statistically significant differences among the three groups (**Table 3**). The comparison of brain volumes between different diagnostic groups is shown in **Figure 2**. Compared to MCI, the bvFTD group showed extensive atrophy in frontal cortex, striatum and temporal lobes, and also enlarged lateral ventricles. Marked parietal and also temporal atrophy was detected in AD compared to MCI cases. The comparison between AD and bvFTD revealed prominent medial frontal and orbitofrontal atrophy in bvFTD group, while none of evaluated brain areas was smaller in the AD group compared to bvFTD.

We analyzed the association between NPI behavioral symptom total scores and frontal volumes in all patients using the CDR score and TMT-B time confounders (**Table 4**). There was significant association between the total behavioral symptom score of these five symptoms and the volume of the subcallosal area ( $\beta = -0.32$ ,  $p = 0.002$ ) (**Figure 3**). Disinhibition scores were associated with reduced volumes in the gyrus rectus ( $\beta = -0.30$ ,  $p = 0.002$ ), medial frontal cortex ( $\beta = -0.30$ ,  $p = 0.002$ ), superior frontal gyrus ( $\beta = -0.28$ ,  $p = 0.004$ ), inferior frontal gyrus ( $\beta = -0.28$ ,  $p = 0.005$ ) and in the subcallosal area ( $\beta = -0.28$ ,  $p = 0.005$ ). Aberrant motor behavior scores were associated with reduced volume of frontal pole ( $\beta = -0.29$ ,  $p = 0.005$ ) the subcallosal area ( $\beta = -0.39$ ,  $p < 0.001$ ). Elation was associated with the medial orbital gyrus ( $\beta = -0.30$ ,  $p = 0.002$ ) and inferior frontal gyrus ( $\beta = -0.28$ ,  $p = 0.004$ ). There was no association between agitation and irritability with any focal or gross frontal volumes. Visualizations of the correlations between behavioral symptoms and brain areas are shown in **Figure 4**.

**TABLE 2** | Total scores and frequency of NPI behavioral symptoms according to clinical diagnosis.

Diagnosis		Behavioral symptoms total	Agitation	Elation	Disinhibition	Irritability	Aberrant motor behavior
MCI	Score mean (SD)	1.7 (3.2)*	0.4 (1.1)	0.1 (0.4)*	0.2 (0.4)*	0.8 (1.4)	0.3 (1.2)*
	Frequency	41 %	17 %	9 %	14 %	31 %	10 %
AD	Score mean (SD)	3.2 (5.5)	0.8 (1.7)	0.4 (1.2)	0.4 (1.2)*	1.1 (2.0)	0.6 (1.4)
	Frequency	53 %	31 %	11 %	18 %	38 %	20 %
bvFTD	Score mean (SD)	6.3 (10.7)*	1.1 (2.2)	0.9 (2.9)*	1.4 (2.6)*	1.2 (2.6)	1.7 (2.9)*
	Frequency	44 %	28 %	17 %	33 %	28 %	28 %
Total	Score mean (SD)	3.0 (5.9)	0.6 (1.5)	0.3 (1.4)	0.4 (1.3)	1.0 (1.8)	0.6 (1.7)
	Frequency	46 %	24 %	11 %	18 %	33 %	17 %
	P-value	0.01	0.18	0.08	<0.01	0.51	0.01

Frequency was calculated as a dichotomous variable, based on whether the patient did have symptoms of any severity or did not, and is presented as percentage of the population. The mean values of symptom total scores (frequency\*severity) are presented separately for each clinical diagnosis group and for the whole cohort. Statistical significance of symptom scores were estimated with one-way ANOVA using Tukey's post hoc analysis.

\*Statistically significant difference ( $p \leq 0.05$ ) in between MCI/AD and bvFTD.

**TABLE 3** | Comparison of brain volumes of the frontal lobes based on clinical diagnoses.

Combined volumes of R&L hemispheres, cm <sup>3</sup>	Total	MCI	AD	bvFTD	p-value, all groups	p-value, AD vs. bvFTD
Anterior orbital gyrus, mean (SD)	3.4 (0.6)	3.6 (0.6)	3.4 (0.6)	3.0 (0.6)	0.001	0.020
Posterior orbital gyrus, mean (SD)	5.0 (0.7)	5.2 (0.6)	5.0 (0.6)	4.3 (0.8)	<0.001	<0.001
Lateral orbital gyrus, mean (SD)	3.1 (0.6)	3.4 (0.5)	3.0 (0.5)	2.6 (0.6)	<0.001	0.006
Medial orbital gyrus, mean (SD)	7.3 (0.9)	7.6 (0.6)	7.4 (0.8)	6.4 (1.1)	<0.001	<0.001
Gyrus rectus, mean (SD)	2.9 (0.5)	3.0 (0.4)	2.9 (0.4)	2.4 (0.5)	<0.001	<0.001
Medial frontal cortex, mean (SD)	2.5 (0.5)	2.7 (0.4)	2.5 (0.5)	1.9 (0.5)	<0.001	<0.001
Frontal pole, mean (SD)	6.0 (0.8)	6.2 (0.6)	6.0 (0.7)	5.3 (1.1)	<0.001	0.008
Superior frontal gyrus, mean (SD)	24.8 (2.8)	25.9 (2.2)	24.3 (2.2)	22.5 (3.7)	<0.001	0.030
Middle frontal gyrus, mean (SD)	31.8 (4.0)	33.2 (2.7)	31.4 (4.0)	28.1 (5.2)	<0.001	0.004
Inferior frontal gyrus, mean (SD)	13.1 (1.7)	13.7 (1.6)	13.0 (1.4)	11.5 (2.0)	<0.001	0.002
Subcallosal area, mean (SD)	2.6 (0.4)	2.6 (0.3)	2.6 (0.4)	2.4 (0.4)	0.145	0.160
Frontal lobe, mean (SD)	184 (17)	191 (12)	183 (15)	163 (21)	<0.001	<0.001

The values represent combined right and left hemisphere volumes mean (SD) values of specific areas (cm<sup>3</sup>). The volumes were corrected for age, sex and head size. All frontal areas except the subcallosal area ( $p = 0.145$ ) showed a statistically significant difference between groups. Statistical significance was assessed with one-way ANOVA in addition with Tukey's post hoc analysis.

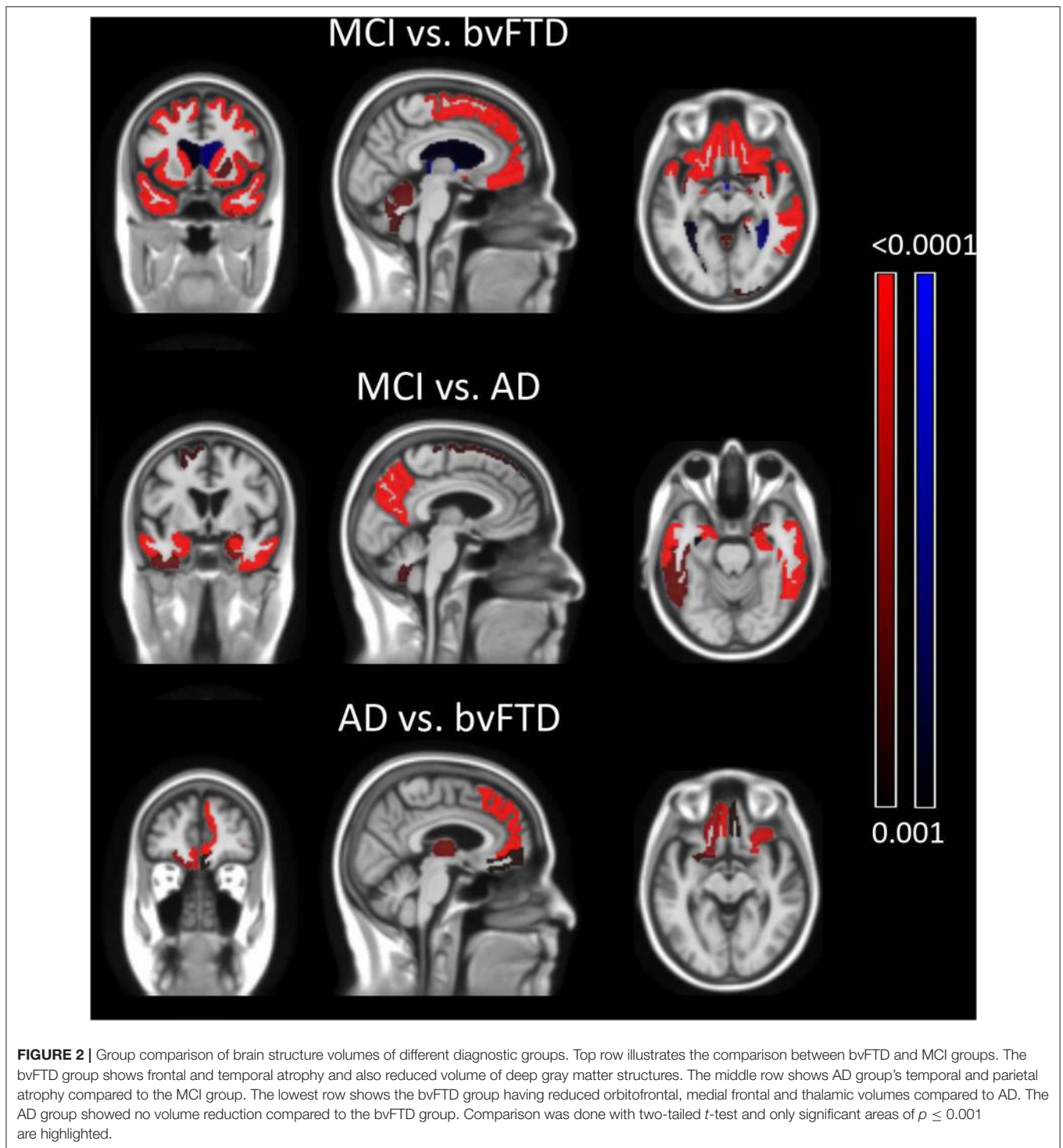
## DISCUSSION

We evaluated the behavioral and frontal volume associations in a cohort of patients at several clinical stages and with different etiologies of neurodegenerative diseases. As expected, frontal lobe volumes were the most preserved in MCI and the most reduced in bvFTD. Of separate frontal volumes, smaller volumes in the subcallosal area were associated with higher disinhibition and aberrant motor behavior scores, as well as the total behavioral symptoms score. Higher elation scores also showed a suggestive association with lower subcallosal volume, however not reaching statistical significance. There was no difference in the volume of the subcallosal area among the three groups, emphasizing its correlations to behavioral symptoms being independent of underlying disease etiology and stage of cognitive impairment (Table 3).

In addition to the subcallosal area, higher disinhibition scores were associated with decreased volume of ventromedial and lateral prefrontal structures, more specifically the gyrus rectus,

medial frontal cortex and superior and inferior frontal gyrus. Decreased volumes of these areas have also been associated with disinhibited behavior in bvFTD and AD patients (27, 28, 30, 32, 42). It has also been postulated that both disinhibition and apathy associate with orbitofrontal and medial frontal cortices (43). However, analyses did not show any association between apathy and analyzed frontal lobe volumes (Supplementary Figure 1). Taken together previous and our findings it can be assumed that the symptoms of aberrant motor behavior and disinhibition are strongly associated with damage to the subcallosal area, the end-point of the uncinate fasciculus.

To our knowledge there is no previous work assessing the neural correlates of elation/euphoria in neurodegenerative diseases. However, there is one study evaluating association between sensitivity to drug reward (measured as euphoria) and functional brain correlates in healthy people. This study suggested reduced activity in the middle frontal gyrus and poor inhibitory control to be associated with greater drug reward experienced as euphoria (44). Our data showed an



association between elation and inferior frontal gyrus and medial orbital gyrus. We suggest that the dysfunction/atrophy of lateral prefrontal cortex might be associated with elation with coexisting poor inhibition in patients with dementia.

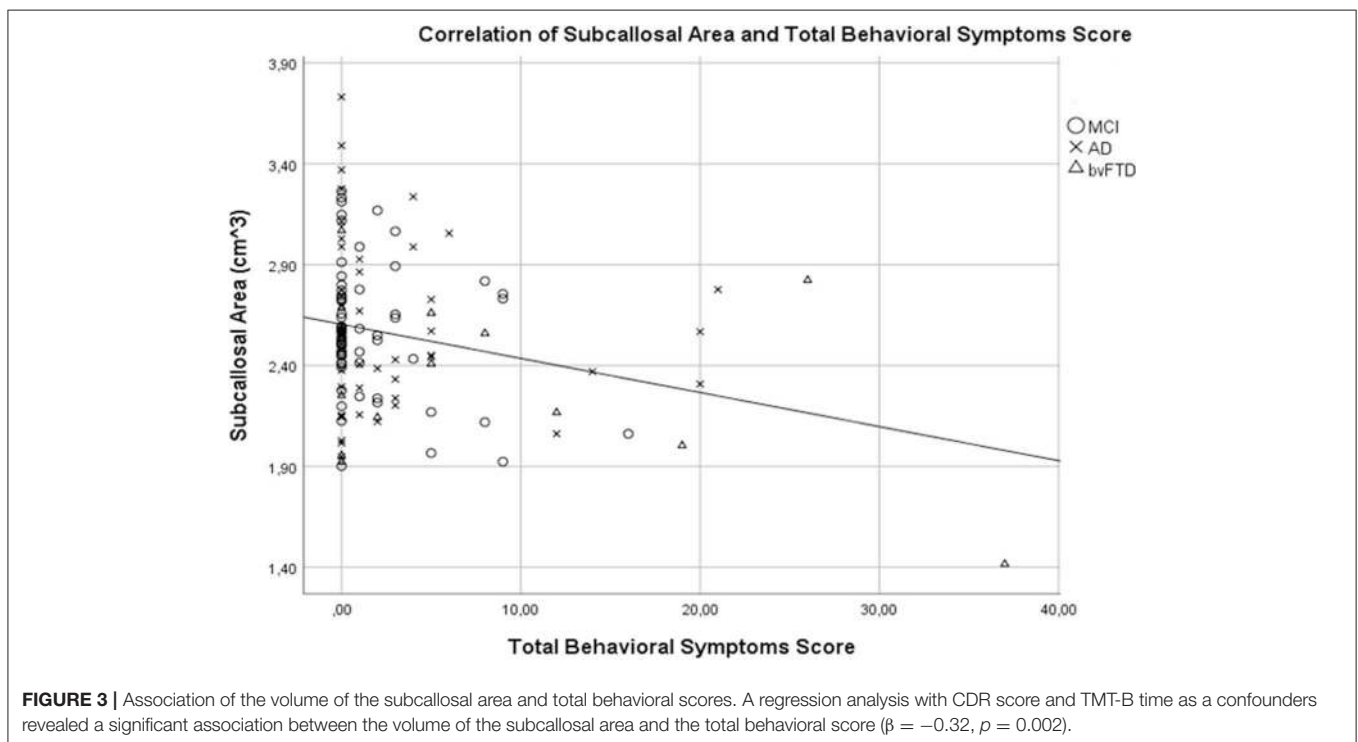
The subcallosal area is a small area located in the medial frontal cortex below the genu of the corpus callosum and anterior cingulate gyrus, caudal to the gyrus rectus. This area is located

in the path of the uncinate fasciculus, a bilateral white matter tract connecting the orbitofrontal cortex and the temporal lobe. The fibers of the uncinate fasciculus connect the amygdala and the uncus to the subcallosal area (45). Decreased volumes in the subcallosal area have been previously associated with disinhibition (27, 42). Also, reduced integrity of the uncinate fasciculus has been detected in bvFTD, AD and psychiatric

**TABLE 4** | Standardized regression coefficients ( $\beta$ ) from the linear regression model of frontal volumes and behavioral symptoms.

	Behavioral symptoms total $\beta$	Agitation $\beta$	Disinhibition $\beta$	Elation $\beta$	Irritability $\beta$	Aberrant motor behavior $\beta$
Anterior orbital gyrus	0.091	0.133	0.072	-0.040	0.160	-0.005
Posterior orbital gyrus	-0.089	-0.015	-0.167	-0.146	0.087	-0.150
Lateral orbital gyrus	-0.061	0.063	-0.235	-0.206	0.155	-0.025
Medial orbital gyrus	-0.204	0.043	-0.257*	<b>-0.302**</b>	-0.025	-0.186
Gyrus rectus	-0.193	-0.092	<b>-0.301**</b>	-0.230	-0.024	-0.124
Medial frontal cortex	-0.164	-0.031	<b>-0.302**</b>	-0.248*	0.020	-0.107
Frontal pole	-0.194	0.089	-0.171	-0.233	-0.044	<b>-0.292**</b>
Superior frontal gyrus	-0.222	-0.060	<b>-0.277**</b>	-0.237	-0.089	-0.205
Middle frontal gyrus	-0.009	0.098	-0.123	-0.101	0.188	-0.164
Inferior frontal gyrus	-0.214	-0.120	<b>-0.276**</b>	<b>-0.279**</b>	-0.073	-0.088
Subcallosal area	<b>-0.317**</b>	-0.140	<b>-0.282**</b>	-0.262*	-0.115	<b>-0.387**</b>
Frontal lobe	-0.139	0.014	-0.265*	-0.233*	0.064	-0.163

The behavioral symptoms column represents the total score of the five individual behavioral symptoms (agitation, disinhibition, elation, irritability and aberrant motor behavior) and combined score of these five symptoms. The models are corrected for CDR score and TMT-B time. The volumes have been pre-corrected for age, gender and head size. Results with statistical significance of  $p \leq 0.005$  are in bold. \* $p \leq 0.01$ ; \*\* $p \leq 0.005$ .



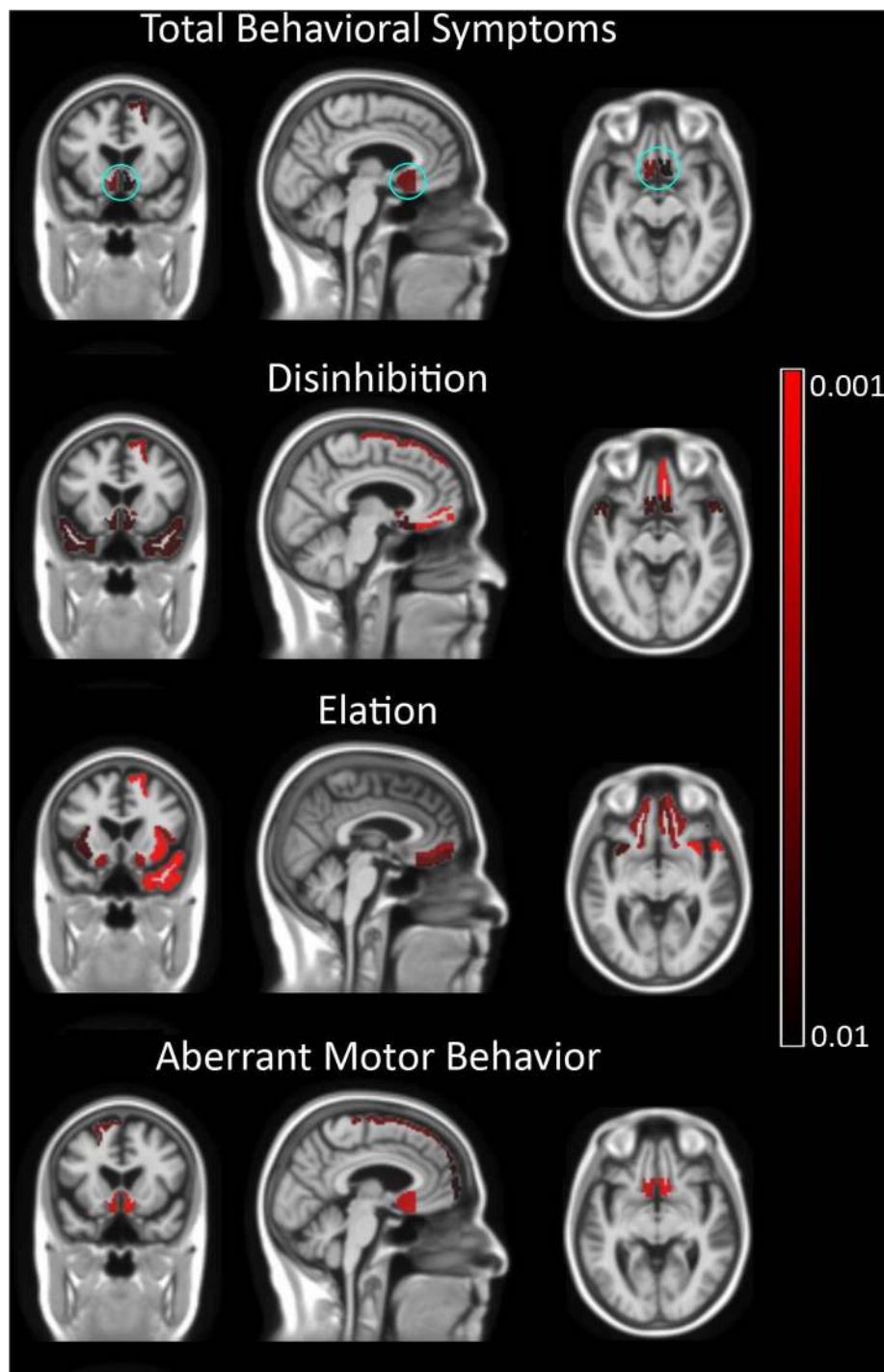
**FIGURE 3** | Association of the volume of the subcallosal area and total behavioral scores. A regression analysis with CDR score and TMT-B time as a confounders revealed a significant association between the volume of the subcallosal area and the total behavioral score ( $\beta = -0.32$ ,  $p = 0.002$ ).

disorders and the reduction of integrity of this specific tract has been found to associate with disinhibition (26, 42, 46, 47) and aberrant motor behavior (28). Our results support previous findings and also suggest that damage to this specific area associates with frequency and severity of disinhibition and aberrant motor behavior, regardless of the underlying etiology of neurodegeneration. This information could be of great value, considering possible symptom specific treatments such

as transcranial magnetic stimulation (TMS), similarly as used in psychiatric conditions for therapeutic purposes. Yet, more studies with larger cohorts and with different diseases are needed to validate these results.

### Strengths and Weaknesses

The patients were clinically well-examined by a neurologist specialized in memory disorders and diagnosed according



**FIGURE 4 |** Correlation of the total and individual behavioral symptoms with brain volumes. In the first row, total behavioral symptom scores show a correlation with the subcallosal area and left superior frontal gyrus. All three symptom scores show a correlation with ventromedial prefrontal cortex. The left superior frontal gyrus showed a correlation with elation and disinhibition, while aberrant motor behavior was associated with right superior frontal gyrus. In addition to frontal volumes, disinhibition scores were associated with the bilateral temporal pole. The subcallosal area is shown in cyan circle in the top row. Irritability and agitation showed no correlation with any focal brain volume. Negative correlations are shown in red. No positive correlations were detected.

to recent clinical guidelines for MCI, AD, and bvFTD. As limitations, we did not have healthy controls with a neuropsychiatric evaluation, thus the study population consisted

only of subjects with subjective and/or evident clinical symptoms. By contrary, this is the first study where neuropsychiatric symptoms and neuroanatomical correlations has been evaluated



with MCI cases with very mild cognitive symptoms. Our study setting was cross-sectional, meaning variability in frequency and severity of neuropsychiatric symptoms and brain volumes between diseases represents the differences only at the time of clinical diagnosis. In future studies we emphasize the importance of longitudinal assessment of atrophy rate and behavioral symptoms. We also performed a similar regression analysis with different diagnostic groups separately and the associations ( $\beta$ -values) between neuropsychiatric symptoms and frontal volumes were similar to those performed with the whole cohort. However, due to the small sample sizes of each diagnostic group, our analyses were unpowered, and the results did not reach statistical significance. Also, we needed to focus on frontal lobes, since due to small sample size whole brain analyses would have been unpowered. The MRI scans were obtained with a homogenous protocol and segmented with a reliable and validated multi-atlas method. The scans were performed with different scanners, however the segmentation method has been shown to be relatively robust over different scanner models. The results did not survive correction for multiple testing (Bonferroni correction). However, we set the threshold for statistical significance at  $p \leq 0.005$  for associations of frontal volumes and behavioral symptoms and  $p \leq 0.001$  for differences in frontal brain volumes between groups in order to maintain reliability of the results.

## CONCLUSIONS

Our findings show that behavioral symptoms in neurodegenerative dementing diseases are associated with atrophy of specific frontal cortical areas and associations appear to be independent of disease etiology and cognitive performance. Especially, the subcallosal area was found to associate well with the behavioral symptoms regardless of clinical diagnosis, thus damage to this area may be a common neuroanatomical area for behavioral symptoms in neurodegenerative diseases independent of the specific type of dementia.

## DATA AVAILABILITY STATEMENT

The datasets for this manuscript are not publicly available because of data confidentiality. Our data concerns delicate

patient information and our study consent does not allow us to share the data publicly.

## ETHICS STATEMENT

The ethics committee of the Northern Savonia Hospital District for the Kuopio cohort and the Yorkshire and Humber Regional Ethics Committee (Ref No: 12/YH/0474) for the Sheffield cohort approved the research protocol in accordance with the principles of the Declaration of Helsinki. Written informed consent was obtained from all participants prior to enrollment.

## AUTHOR CONTRIBUTIONS

AC, AH, and AR contributed conception and design of the study. AC wrote the first draft of the manuscript. All authors contributed to manuscript revision, read and approved the submitted version.

## FUNDING

This study was partly funded by the European Union 7th Framework Program for research, technological development, and demonstration VPH-DARE@IT (Grant Agreement No: 601055). In addition, this study was supported by grants from Finnish Medical Foundation, Olvi Foundation, Päivikki and Sakari Sohlberg foundation, Finnish Alzheimer's research association, Maire Taponen Foundation and Finnish Cultural Foundation. This is a summary of independent research partially carried out at the NIHR Sheffield Biomedical Research Centre (Translational Neuroscience). The views expressed are those of the authors and not necessarily those of the NHS, the NIHR or the Department of Health. The support of the NIHR Clinical Research Facility – Sheffield Teaching Hospital was also acknowledged. This study was supported by the Academy of Finland (grant no. 315460).

## SUPPLEMENTARY MATERIAL

The Supplementary Material for this article can be found online at: <https://www.frontiersin.org/articles/10.3389/fneur.2019.01059/full#supplementary-material>

## REFERENCES

- Srikanth S, Nagaraja AV, Ratnavalli E. Neuropsychiatric symptoms in dementia-frequency, relationship to dementia severity and comparison in Alzheimer's disease, vascular dementia and frontotemporal dementia. *J Neurol Sci.* (2005) 236:43–8. doi: 10.1016/j.jns.2005.04.014
- Mega MS, Cummings JL, Fiorello T, Gornbein J. The spectrum of behavioral changes in Alzheimer's disease. *Neurology.* (1996) 46:130–5.
- do Ferreira MC, Abreu MJ, Machado C, Santos B, Machado Á, Costa AS. Neuropsychiatric profile in early versus late onset Alzheimer's Disease. *Am J Alzheimer's Dis Other Dementiasr.* (2018) 33:93–9. doi: 10.1177/1533317517744061
- Travis Seidl JN, Massman PJ, Seidl JNT, Massman PJ. Cognitive and functional correlates of NPI-Q Scores and Symptom Clusters in Mildly Demented Alzheimer Patients. *Alzheimer Dis Assoc Disord.* (2016) 30:145–51. doi: 10.1097/WAD.000000000000104
- Borroni B, Cosseddu M, Pilotto A, Premi E, Archetti S, Gasparotti R, et al. Early stage of behavioral variant frontotemporal dementia: clinical and neuroimaging correlates. *Neurobiol Aging.* (2015) 36:3108–15. doi: 10.1016/j.neurobiolaging.2015.07.019
- Suhonen N-M, Hallikainen I, Hänninen T, Jokelainen J, Krüger J, Hall A, et al. The modified frontal behavioral inventory (FBI-mod) for patients with frontotemporal lobar degeneration, Alzheimer's Disease, and mild cognitive impairment. *J Alzheimer's Dis.* (2017) 56:1241–51. doi: 10.3233/JAD-160983
- Bahia VS, Viana R. Accuracy of neuropsychological tests and the Neuropsychiatric Inventory in differential diagnosis between Frontotemporal dementia and Alzheimer's disease. *Dement Neuropsychol.* (2009) 3:332–6. doi: 10.1590/S1980-57642009DN30400012

8. Perri R, Koch G, Carlesimo GA, Serra L, Fadda L, Pasqualetti P, et al. Alzheimer's disease and frontal variant of frontotemporal dementia: a very brief battery for cognitive and behavioural distinction. *J Neurol.* (2005) 252:1238–44. doi: 10.1007/s00415-005-0849-1
9. Tanaka H, Hashimoto M, Fukuhara R, Ishikawa T, Yatabe Y, Kaneda K, et al. Relationship between dementia severity and behavioural and psychological symptoms in early-onset Alzheimer's disease. *Psychogeriatrics.* (2015) 15:242–7. doi: 10.1111/psyg.12108
10. Aries MJH, Le Bastard N, Debruyne H, Van Buggenhout M, Nagels G, De Deyn PP, et al. Relation between frontal lobe symptoms and dementia severity within and across diagnostic dementia categories. *Int J Geriatr Psychiatry.* (2010) 25:1186–95. doi: 10.1002/gps.2481
11. Hwang TJ, Masterman DL, Ortiz F, Fairbanks LA, Cummings JL. Mild cognitive impairment is associated with characteristic neuropsychiatric symptoms. *Alzheimer Dis Assoc Disord.* (2004) 18:17–21.
12. Geda YE, Roberts RO, Knopman DS, Petersen RC, Christianson TJH, Pankratz VS, et al. Prevalence of neuropsychiatric symptoms in mild cognitive impairment and normal cognitive aging. *Arch Gen Psychiatry.* (2008) 65:1193. doi: 10.1001/archpsyc.65.10.1193
13. Whitwell JL, Dickson DW, Murray ME, Weigand SD, Tosakulwong N, Senjem ML, et al. Neuroimaging correlates of pathologically defined subtypes of Alzheimer's disease: a case-control study. *Lancet Neurol.* (2012) 11:868–77. doi: 10.1016/S1474-4422(12)70200-4
14. Frisoni GB, Fox NC, Jack CR, Scheltens P, Thompson PM. The clinical use of structural MRI in Alzheimer disease. *Nat Rev Neurol.* (2010) 6:67–77. doi: 10.1038/nrneuro.2009.215
15. Rascovsky K, Hodges JR, Knopman D, Mendez MF, Kramer JH, Neuhaus J, et al. Sensitivity of revised diagnostic criteria for the behavioural variant of frontotemporal dementia. *Brain.* (2011) 134:2456–77. doi: 10.1093/brain/awr179
16. Neary D, Snowden JS, Gustafson L, Passant U, Stuss D, Black S, et al. Frontotemporal lobar degeneration: a consensus on clinical diagnostic criteria. *Neurology.* (1998) 51:1546–54. doi: 10.1212/WNL.51.6.1546
17. Pan PL, Song W, Yang J, Huang R, Chen K, Gong QY, et al. Gray matter atrophy in behavioral variant frontotemporal dementia: a meta-analysis of voxel-based morphometry studies. *Dement Geriatr Cogn Disord.* (2012) 33:141–8. doi: 10.1159/000338176
18. Schroeter ML, Raczka K, Neumann J, Yves von Cramon D. Towards a nosology for frontotemporal lobar degenerations—A meta-analysis involving 267 subjects. *Neuroimage.* (2007) 36:497–510. doi: 10.1016/j.neuroimage.2007.03.024
19. Whitwell JL, Przybelski SA, Weigand SD, Ivnik RJ, Vemuri P, Gunter JL, et al. Distinct anatomical subtypes of the behavioural variant of frontotemporal dementia: a cluster analysis study. *Brain.* (2009) 132:2932–46. doi: 10.1093/brain/awp232
20. Ranasinghe KG, Rankin KP, Pressman PS, Perry DC, Lobach IV, et al. Distinct subtypes of behavioral variant frontotemporal dementia based on patterns of network degeneration. *JAMA Neurol.* (2016) 73:1078. doi: 10.1001/jamaneuro.2016.2016
21. Whitwell JL, Boeve BF, Weigand SD, Senjem ML, Gunter JL, Baker MC, et al. Brain atrophy over time in genetic and sporadic frontotemporal dementia: a study of 198 serial magnetic resonance images. *Eur J Neurol.* (2015) 22:745–52. doi: 10.1111/ene.12675
22. Whitwell JL, Weigand SD, Boeve BF, Senjem ML, Gunter JL, DeJesus-Hernandez M, et al. Neuroimaging signatures of frontotemporal dementia genetics: C9ORF72, tau, progranulin and sporadics. *Brain.* (2012) 135:794–806. doi: 10.1093/brain/awr001
23. Cash DM, Bocchetta M, Thomas DL, Dick KM, van Swieten JC, Borroni B, et al. Patterns of gray matter atrophy in genetic frontotemporal dementia: results from the GENFI study. *Neurobiol Aging.* (2018) 62:191–6. doi: 10.1016/j.neurobiolaging.2017.10.008
24. Snowden JS, Adams J, Harris J, Thompson JC, Rollinson S, Richardson A, et al. Distinct clinical and pathological phenotypes in frontotemporal dementia associated with MAPT, PGRN and C9orf72 mutations. *Amyotroph Lateral Scler Front Degener.* (2015) 16:8421. doi: 10.3109/21678421.2015.1074700
25. Insel T, Cuthbert B, Garvey M, Heinssen R, Pine D, Quinn K, et al. Research domain criteria (RDoC): toward a. *Am J Psychiatry Online.* (2010) 167:748–51. doi: 10.1176/appi.ajp.2010.09091379
26. Santillo AF, Lundblad K, Nilsson M, Landqvist Waldö M, van Westen D, Lätt J, et al. Grey and white matter clinico-anatomical correlates of disinhibition in neurodegenerative disease. *PLoS ONE.* (2016) 11:e0164122. doi: 10.1371/journal.pone.0164122
27. Rosen HJ, Allison SC, Schauer GF, Gorno-Tempini ML, Weiner MW, Miller BL. Neuroanatomical correlates of behavioural disorders in dementia. *Brain.* (2005) 128:2612–25. doi: 10.1093/brain/awh628
28. Hu X, Meiberth D, Newport B, Jessen F. Anatomical correlates of the neuropsychiatric symptoms in Alzheimer's disease. *Curr Alzheimer Res.* (2015) 12:266–77. doi: 10.2174/1567205012666150302154914
29. Bruen PD, McGeown WJ, Shanks ME, Venneri A. Neuroanatomical correlates of neuropsychiatric symptoms in Alzheimer's disease. *Brain.* (2008) 131:2455–63. doi: 10.1093/brain/awn151
30. Huey ED, Lee S, Brickman AM, Manoochchri M, Griffith E, Devanand DP, et al. Neuropsychiatric effects of neurodegeneration of the medial versus lateral ventral prefrontal cortex in humans. *Cortex.* (2015) 73:1–9. doi: 10.1016/j.cortex.2015.08.002
31. Knutson KM, Dal Monte O, Schintu S, Wassermann EM, Raymont V, Grafman J, et al. Areas of brain damage underlying increased reports of behavioral disinhibition. *J Neuropsychiatry Clin Neurosci.* (2015) 27:193–8. doi: 10.1176/appi.neuropsych.14060126
32. O'Callaghan C, Naismith SL, Hodges JR, Lewis SJG, Hornberger M. Frontostriatal atrophy correlates of inhibitory dysfunction in parkinson's disease versus behavioural variant frontotemporal dementia. *Cortex.* (2013) 49:1833–43. doi: 10.1016/j.cortex.2012.12.003
33. Petersen RC. Mild cognitive impairment as a diagnostic entity. *J Intern Med.* (2004) 256:183–94. doi: 10.1111/j.1365-2796.2004.01388.x
34. Petersen RC, Morris JC. Mild cognitive impairment as a clinical entity and treatment target. *Arch Neurol.* (2005) 62:1160. doi: 10.1001/archneur.62.7.1160
35. Dubois B, Feldman HH, Jacova C, DeKosky ST, Barberger-Gateau P, Cummings J, et al. Research criteria for the diagnosis of Alzheimer's disease: revising the NINCDS-ADRDA criteria. *Lancet Neurol.* (2007) 6:734–46. doi: 10.1016/S1474-4422(07)70178-3
36. McKhann G, Drachman D, Folstein M, Katzman R, Price D, Stadlan EM. Clinical diagnosis of Alzheimer's disease: report of the NINCDS-ADRDA Work Group under the auspices of department of health and human services task force on Alzheimer's Disease. *Neurology.* (1984) 34:939–44.
37. Cummings JL. The neuropsychiatric inventory: assessing psychopathology in dementia patients. *Neurology.* (1997) 48:10S–6S. doi: 10.1212/WNL.48.5\_Suppl\_6.10S
38. Aalten P, Verhey FRJ, Boziki M, Brugnolo A, Bullock R, Byrne EJ, et al. Consistency of neuropsychiatric syndromes across dementias: results from the European Alzheimer Disease Consortium. Part II. *Dement Geriatr Cogn Disord.* (2008) 25:1–8. doi: 10.1159/000111082
39. Lötjönen JM, Wolz R, Koikkalainen JR, Thurfjell L, Waldemar G, Soininen H, et al. Fast and robust multi-atlas segmentation of brain magnetic resonance images. *Neuroimage.* (2010) 49:2352–65. doi: 10.1016/j.neuroimage.2009.10.026
40. Buckner RL, Head D, Parker J, Fotenos AF, Marcus D, Morris JC, et al. A unified approach for morphometric and functional data analysis in young, old, and demented adults using automated atlas-based head size normalization: reliability and validation against manual measurement of total intracranial volume. *Neuroimage.* (2004) 23:724–38. doi: 10.1016/j.neuroimage.2004.06.018
41. Cole TJ, Green PJ. Smoothing reference centile curves: The lms method and penalized likelihood. *Stat Med.* (1992) 11:1305–19. doi: 10.1002/sim.4780111005
42. Hornberger M, Geng J, Hodges JR. Convergent grey and white matter evidence of orbitofrontal cortex changes related to disinhibition in behavioural variant frontotemporal dementia. *Brain.* (2011) 134:2502–12. doi: 10.1093/brain/awr173
43. Peters F, Perani D, Herholz K, Holthoff V, Beuthien-Baumann B, Sorbi S, et al. Orbitofrontal dysfunction related to both apathy and disinhibition in frontotemporal dementia. *Dement Geriatr Cogn Disord.* (2006) 21:373–9. doi: 10.1159/000091898
44. Weafer J, Gorka SM, Hedeker D, Dziedzic M, Kareken DA, Phan KL, et al. Associations between behavioral and neural correlates of inhibitory

- control and amphetamine reward sensitivity. *Neuropsychopharmacology*. (2017) 42:1905–13. doi: 10.1038/npp.2017.61
45. Kier EL, Staib LH, Davis LM, Bronen RA. MR imaging of the temporal stem: Anatomic dissection tractography of the uncinate fasciculus, inferior occipitofrontal fasciculus, and Meyer's loop of the optic radiation. *Am J Neuroradiol*. (2004) 25:677–91.
46. Yasmin H, Nakata Y, Aoki S, Abe O, Sato N, Nemoto K, et al. Diffusion abnormalities of the uncinate fasciculus in Alzheimer's disease: diffusion tensor tract-specific analysis using a new method to measure the core of the tract. *Neuroradiology*. (2008) 50:293–9. doi: 10.1007/s00234-007-0353-7
47. McIntosh AM, Maniega SM, Lymer GKS, McKirdy J, Hall J, Sussmann JED, et al. White Matter Tractography in Bipolar Disorder and Schizophrenia. *Biol Psychiatry*. (2008) 64:1088–92. doi: 10.1016/j.biopsych.2008.07.026

**Conflict of Interest:** JK and JL are shareholders and founders of Combinostics Ltd.

The remaining authors declare that the research was conducted in the absence of any commercial or financial relationships that could be construed as a potential conflict of interest.

Copyright © 2019 Cajanus, Solje, Koikkalainen, Lötjönen, Suhonen, Hallikainen, Vanninen, Hartikainen, de Marco, Venneri, Soininen, Remes and Hall. This is an open-access article distributed under the terms of the Creative Commons Attribution License (CC BY). The use, distribution or reproduction in other forums is permitted, provided the original author(s) and the copyright owner(s) are credited and that the original publication in this journal is cited, in accordance with accepted academic practice. No use, distribution or reproduction is permitted which does not comply with these terms.