

 Open access • Posted Content • DOI:10.1101/2020.05.28.121301

## **The Atypical Fibrin Fibre Network in Rheumatoid Arthritis and its Relation to Autoimmunity, Inflammation and Thrombosis** — [Source link](#)

Johannes A. Bezuidenhout, Chantelle Venter, Timothy J. Roberts, Gareth Tarr ...+2 more authors

**Institutions:** Stellenbosch University, University of Liverpool

**Published on:** 30 May 2020 - bioRxiv (Cold Spring Harbor Laboratory)

**Topics:** Fibrin, Thrombus, Thromboelastography, Thrombosis and Coagulation

Related papers:

- [C-reactive protein and fibrin clot strength measured by thrombelastography after coronary stenting](#)
- [Thyroid dysfunction and fibrin network structure: a mechanism for increased thrombotic risk in hyperthyroid individuals.](#)
- [Gender-Specific Alterations in Fibrin Structure Function in Type 2 Diabetes: Associations with Cardiometabolic and Vascular Markers](#)
- [Altered fibrin clot properties in patients with premature peripheral artery disease.](#)
- [Plasma fibrin clot properties in atopic dermatitis: links between thrombosis and atopy](#)

Share this paper:    

View more about this paper here: <https://typeset.io/papers/the-atypical-fibrin-fibre-network-in-rheumatoid-arthritis-4i1xrs4cx1>

## **The Atypical Fibrin Fibre Network in Rheumatoid Arthritis and its Relation to Autoimmunity, Inflammation and Thrombosis**

**Johannes A. Bezuidenhout<sup>1</sup>, Chantelle Venter<sup>1</sup>, Timothy Roberts<sup>1,3,5</sup>, Gareth Tarr<sup>2</sup>, Douglas B. Kell<sup>1,3,4\*</sup> & \*Etheresia Pretorius<sup>1\*</sup>**

<sup>1</sup>Department of Physiological Sciences, Faculty of Science, Stellenbosch University, Stellenbosch, Private Bag X1 Matieland, 7602, South Africa

<sup>2</sup>Division of Rheumatology, Department of Medicine, Faculty of Medicine and Health Sciences, Stellenbosch University, PO Box 241 Cape Town, 8000, South Africa

<sup>3</sup> Department of Biochemistry and Systems Biology, Institute of Systems, Molecular and Integrative Biology, Faculty of Health and Life Sciences, University of Liverpool, Crown St, Liverpool L69 7ZB, UK

<sup>4</sup>The Novo Nordisk Foundation Centre for Biosustainability, Building 220, Chemitovet 200, Technical University of Denmark, 2800 Kongens Lyngby, Denmark

<sup>5</sup>University College London Hospital NHS Foundation Trust, 250 Euston Road, London, NW1 2PB.

### **\*Corresponding authors:**

#### **\*Etheresia Pretorius**

Department of Physiological Sciences, Faculty of Science, Stellenbosch University, South Africa.

resiap@sun.ac.za

<http://www.resiapretorius.net/>

ORCID: 0000-0002-9108-2384

#### **\*Douglas B Kell**

Department of Biochemistry and Systems Biology, Institute of Systems, Molecular and Integrative Biology, Faculty of Health and Life Sciences, University of Liverpool, UK.

dbk@liv.ac.uk

## Abstract

**Objective.** The risk of cardiovascular events in patients with RA is disproportionately heightened as a result of systemic inflammation. The relative effect of autoimmune-associated citrullination on the structure and thrombotic potential of fibrin(ogen) remains unknown. We therefore compared indices of vascular function, inflammation, coagulation and fibrin clot composition in RA patients with healthy controls and evaluated inter-parameter relationships. **Methods.** Blood samples were collected from 30 RA patients and 25 age- and gender-matched healthy volunteers. Levels of SAA, CRP, ICAM-1 and VCAM-1 was measured using a sandwich immunoassay. Whole blood coagulation was assessed using Thromboelastography. Fibrin clot networks and fiber structure was investigated using Scanning Electron Microscopy. The detection and quantification of citrullination in formed fibrin clots were performed using a fluorescently labeled Citrulline monoclonal antibody with Confocal Microscopy. **Results.** Concentrations of SAA, CRP and ICAM-1 were significantly elevated in RA patients compared to controls. TEG parameters relating to coagulation initiation (R and K), rate of fibrin cross-linking ( $\alpha$ -Angle), and time to reach maximum thrombus generation (TMRTG) were attenuated in RA patients. Parameters relating to clot strength (MA, MRTG, TGG) did not statistically differ between RA and controls. Logistic regression modelling revealed stronger association between acute phase reactants (CRP, SAA) with TEG parameters than endothelial function markers. Microscopic analysis revealed denser networks of thicker fibrin fibers in RA patients compared to controls [median (interquartile range) 214 (170-285) vs 120 (100-144) nm respectively,  $p < 0.0001$ , Odds ratio=22.7]. Detection of multiple citrullinated regions within fibrin clot structures in RA patients, which was less prevalent in control samples ( $p < 0.05$ , OR=2.2). **Conclusion.** Patients with active RA display a coagulation profile that is dissimilar to general findings associated with other inflammatory conditions. The alteration of protein structures by autoimmune linked citrullination could play a role in determining the structure of fibrin and the potential of conferring a heightened thrombotic risk in RA patients.

## Key words:

Rheumatoid Arthritis, Coagulation, Fibrinogen, Citrullination, CRP, SAA, ICAM-1, VCAM-1, Cardiovascular Risk

The Atypical Fibrin Fibre Network in Rheumatoid Arthritis and its Relation to Autoimmunity, Inflammation and Thrombosis.....	1
Abstract .....	2
Key words:.....	2
Introduction.....	4
Materials and methods .....	6
Ethical considerations.....	6
Study population.....	7
Blood sampling .....	7
Thromboelastography® .....	7
Scanning electron microscopy .....	8
Vascular injury panel analysis.....	10
Confocal laser scanning microscopy.....	10
Statistical analysis .....	10
Results .....	11
Subjects .....	11
Confirmation of altered inflammatory and vascular function profile in RA .....	12
Functional coagulation assessment indicates a prothrombotic tendency in RA ....	12
Association of vascular injury biomarkers to thrombotic parameters indices .....	13
SEM analysis exposes anomalous fibrin network architecture in formed RA clots	15
Confocal analysis of plasma clots reveals a higher number of citrullinated sites in RA fibrin networks compared to controls.....	17
Discussion .....	20
Concluding remarks.....	25
References .....	27

## Introduction

Rheumatoid Arthritis (RA) is a chronic, systemic autoimmune disease characterized by both peripheral joint and extra-articular site inflammation, with an increased predisposition to a higher incidence of cardiovascular disease (CVD) (1, 2). CVD (including stroke and myocardial infarction) is almost 50% more common in RA patients than the general population and is the most frequent cause of early mortality (3). Traditional risk factors for CVD (age, hypertension, obesity, etc.), do not fully account for the elevated occurrence of CVD events, and thus RA (genetics and disease characteristics) has been identified as a strong independent risk factor (4). The interdependence of inflammatory and hemostatic pathways is well established and observable in multiple types of tissue, organs and pathologies (5). Disruption of the tightly regulated homeostatic control of immune and hemostatic systems could result in a rapid progression towards a prothrombotic tendency, a central cause of ischaemic stroke and myocardial infarction (6). This circumstance holds true for RA, with elevated levels of both pro-inflammatory [e.g. C-reactive protein (CRP) (7-11), Tumor necrosis factor alpha (TNF $\alpha$ ) (7, 9, 11), Interleukin-6 (IL-6) (7-12), IL-1 $\beta$  (7) and Serum Amyloid A (SAA) (10, 13, 14)] and prothrombotic markers [e.g. D-dimer (8, 9, 11, 15, 16), Fibrinogen (10, 11, 16, 17), Tissue Factor (TF) (15), and von Willebrand factor (vWF) (8, 16, 18)], which is associated with one another (7, 19) and with the risk of future cardiovascular complications (20-23).

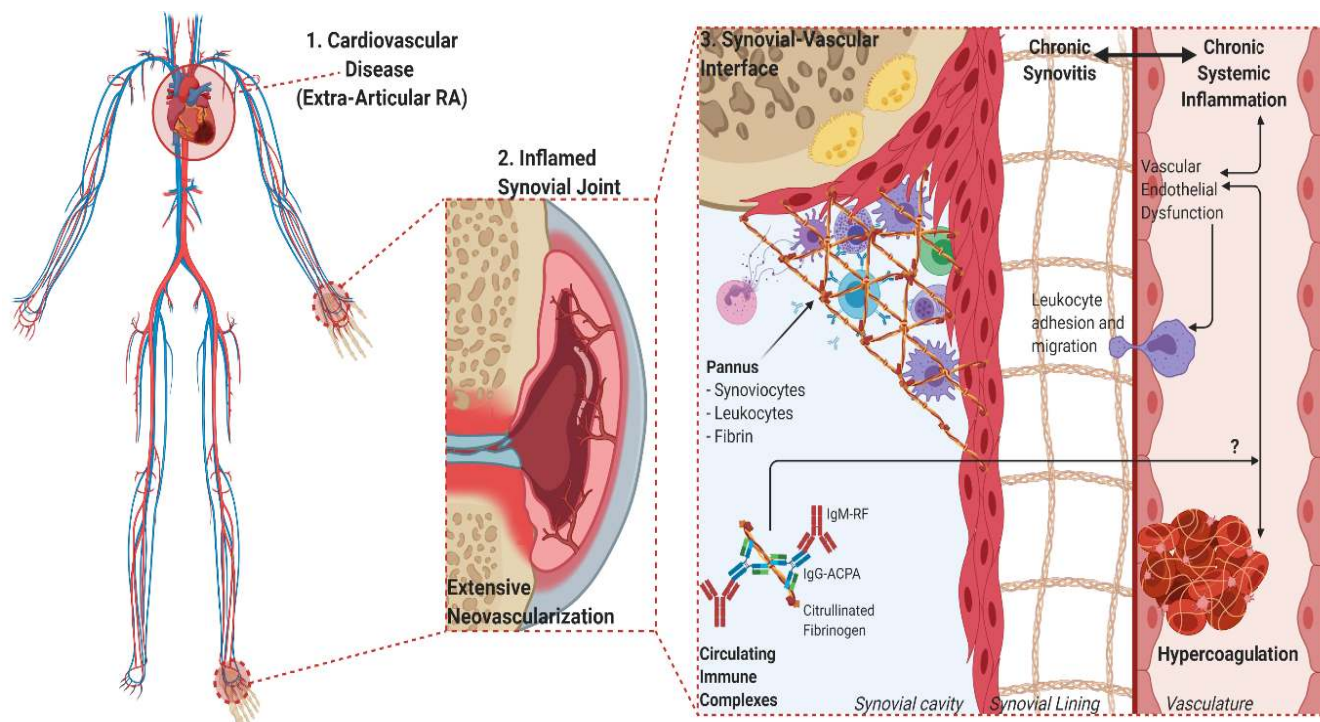
Key intermediaries of this manifestation are the structural components of formed thrombi. Soluble fibrinogen is cleaved by thrombin in order to form dense matrices of thin fibrous protein known as fibrin (24). Polymerized fibrin networks are essential for wound healing and other occlusive physiological processes (24). However, exposure to inflammatory biomarker stimuli [such as CRP (25), SAA (26), and pro-inflammatory cytokines (27, 28)] can result in the alteration of mechanical and viscoelastic properties of fibrin clots into a prothrombotic phenotype. This phenomenon has previously been observed in RA plasma clots (29, 30). Various immunopathogenic processes related to RA development can exert upstream amplification of the coagulation cascade as well as impairing fibrin clot dissolution (9, 19, 31).

Fibrin(ogen) is also a potent pro-inflammatory signaling entity itself, mainly through ligand-receptor interactions with immune cells that further propagates pro-

inflammatory effects (32-36). The deimination of particular arginine residues in fibrin(ogen), known as citrullination, is a distinctive RA posttranslational modification that alters normal protein structure and function that confers antigenicity to modified proteins (37-43). The functional relationship between citrullination and the presence of a prothrombotic fibrin clot phenotype is still poorly understood. Some studies have shown that citrullination of fibrinogen prevents thrombin digestion and subsequent fibrinogenesis (44-46). However, the experimental conditions upon which these findings are based do not reflect physiological coagulation and is inconsistent with a predominantly hypercoagulable state seen in RA (47).

Inflammation-induced fibrin formation is equally present in RA synovial spaces as it is in circulation (Refer to **Figure 1**). Synovial coagulation is a key step in pannus formation, where fibrin provides the structural scaffold for immune cells that are responsible for synovial membrane disintegration and eventual joint damage (31, 48). Endothelial tissue dysfunction is a key process that facilitates this ubiquitous distribution of aberrant fibrin deposition in both synovia and vasculature. This pathophysiological state is characterized by the expression of cell adhesion molecules [intercellular cell adhesion molecule-1 (ICAM-1) and vascular cell adhesion molecule-1 (VCAM-1)], pro-inflammatory cytokines and pro-thrombotic markers (49, 50). This allows for the recruitment, translocation and propagation of inflammatory and thrombotic mediators across the synovial barrier (51-53).

There is significant overlap in inflammatory pathways responsible for joint damage in RA and hypercoagulation, coupled with the fact that disease severity has been correlated to more adverse cardiovascular complications (21, 54, 55). It is therefore prudent that these processes and their relevant markers be examined systemically in RA, and not isolated to either vascular or synovial compartment. The aim of this study was to examine the extent to which the coagulation profiles and fibrin network architecture of RA patients are influenced by acute phase inflammation, endothelial dysfunction an autoimmune-related protein modification.



**Figure 1:** Overview of the overlapping processes of inflammation and coagulation in both synovial and vascular compartments. **1.** The chronic and systemic nature of the inflammatory response in RA characterizes the disease as an independent risk factor for CVD. **2.** The movement of leukocytes, inflammatory cytokines, procoagulant factors and immune complexes are aided by vascular endothelial dysfunction and neovascularization of hyperproliferative joint tissues. **3.** The role of fibrin(ogen) is integral to the formation of hyperplastic and destructive synovial tissue (pannus) and vascular thrombosis, while being a prominent self-protein target of aberrant citrullination and autoimmunogenicity in RA.

## Materials and methods

### Ethical considerations

Ethical approval for this study was given by the Health Research Ethics Committee (HREC) of Stellenbosch University (reference number: 6983). This study was carried out in strict adherence to the International Declaration of Helsinki, South African Guidelines for Good Clinical Practice and the South African Medical Research Council (SAMRC) Ethical Guidelines for research. Written consent was obtained from all participants (RA patients and healthy participants) prior to any sample collection.

## Study population

The RA sample group consisted of 30 patients (24 female and 6 male) that visited the Winelands Rheumatology Clinic (Stellenbosch, South Africa) for routine check-ups. All patients fulfilled the 2010 American College of Rheumatism/European League against Rheumatism (ACR/EULAR) classification criteria for RA diagnosis (56). The mean age of RA group was 53.4 years (range 22-75 years) with a mean disease duration of 10.5 years (range 1-39 years). RA participants were excluded from the study if they presented with other severe comorbidities (such as cancer or diabetes), existing cardiovascular disease or taking anticoagulant medication. RA participants were not excluded on the basis of any antirheumatic drug treatment or the use of glucocorticosteroids. The majority of RA patients (87%) were on a schedule of non-biologic disease modifying antirheumatic drugs (DMARDs, such as methotrexate, hydroxychloroquine, sulfasalazine, or leflunomide), while a lower proportion of patients were on biologic DMARDs (60%) and cortisone (14%, 5-10mg dosage). The control group consisted of 30 age- (mean: 53.9 years) and gender- (22 female and 8 male) matched volunteer blood donors. The inclusion criteria for healthy controls were: (i) no history of thrombotic disease or inflammatory conditions (ii) no use of any chronic medication (iii) no use of anticoagulant therapy (iv) non-smokers (v) females not taking contraceptive medication or hormone replacement therapy (vi) females that are not pregnant or lactating. All demographic information is summarized in **Table 1**.

## Blood sampling

Whole blood (WB) samples were collected in vacutainer tubes using 3.8% sodium citrate as anticoagulant. Blood drawing on all participants was performed by a qualified nurse, or phlebotomist by sterile puncture of the antecubital vein. Blood tubes were incubated at room temperature for a minimum duration of 30 minutes prior to the commencement of any whole blood analysis. In order to obtain platelet poor plasma (PPP), sodium citrated blood tubes were centrifuged at 3000 $\times$ g for 15 minutes, aliquoted into Eppendorf tubes and stored at -80°C until further analysis.

## Thromboelastography®

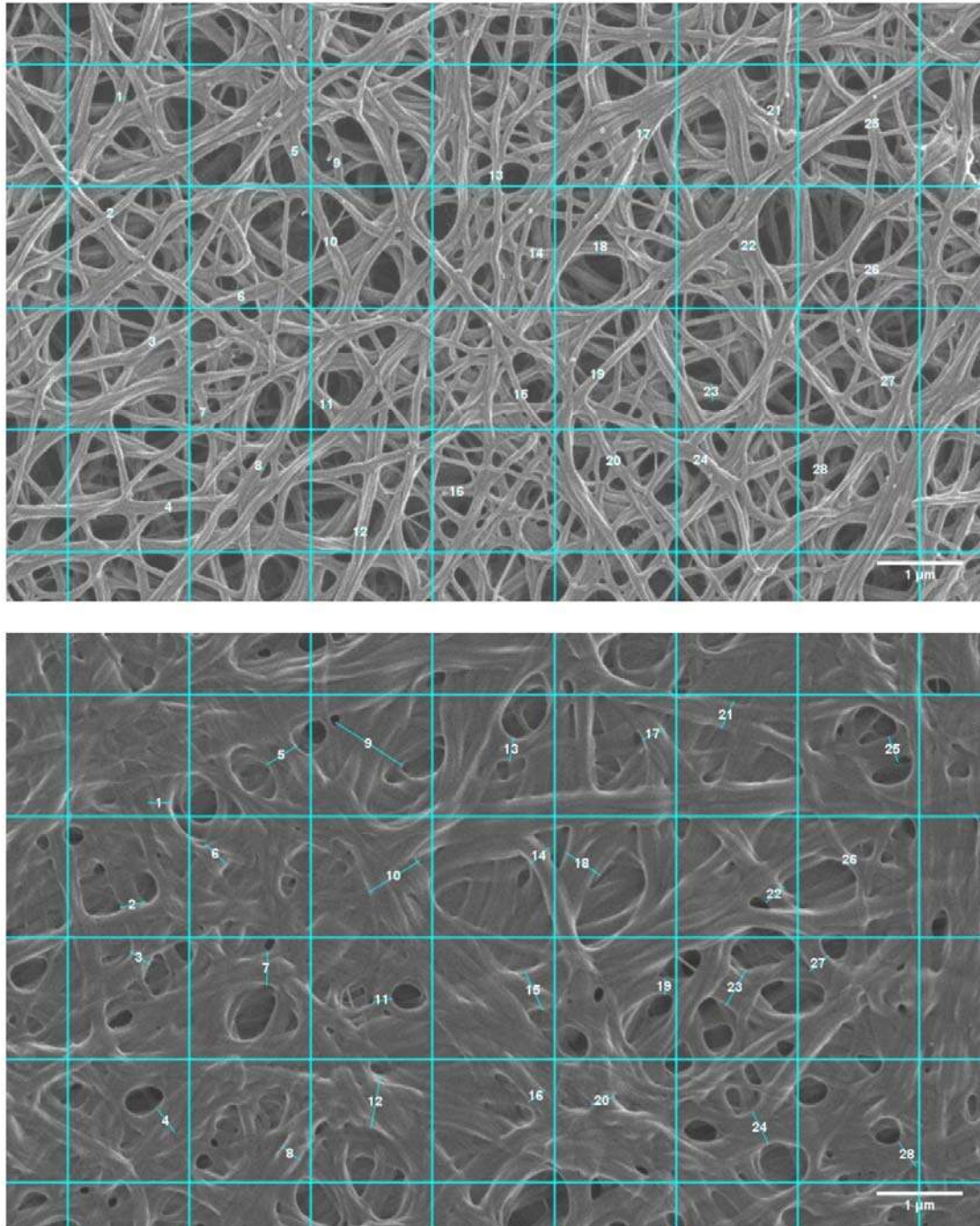
Analysis of dynamic coagulation kinetics were performed on RA and control WB by means of Thromboelastograph® (TEG®) 5000 Haemostasis Analyzer System (Haemonetics®, 07-033). In brief, coagulation is initiated by recalcification of 340 $\mu$ L



WB with 20 $\mu$ L of 0.2mM Calcium chloride ( $\text{CaCl}_2$ ) (Haemonetics<sup>®</sup>, 7003) in a disposable TEG<sup>®</sup> cup (Haemonetics<sup>®</sup>, 6211). Various kinetic clotting parameters are determined by assessing the resistance that the forming thrombus provides against the oscillating pin of the instrument (measuring at 37°C). Parameters derived from the thromboelastograph tracing consist of: reaction time (R, time from test start to initial fibrin formation in minutes), kinetics [K, time required to reach an amplitude (clot thickness) of 20mm, in minutes], alpha angle ( $\alpha$ , rate of fibrin cross linking indicated by degrees), maximal amplitude (MA, maximum strength of formed clot in millimeters), maximum rate of thrombus generation (MRTG, in dynes.cm<sup>-2</sup>.s<sup>-1</sup>), time to maximum rate of thrombus generation (TMRTG, in minutes) and total thrombus generation (TTG, in dynes.cm<sup>-2</sup>). (57)

### Scanning electron microscopy

The ultrastructure of fibrin networks and individual fibrin fibers were examined using scanning electron microscopy (SEM). In summary, clots were prepared from thawed PPP samples of RA patients (n=10) and controls (n=10) by addition of 5 $\mu$ L human thrombin (provided by South African National Blood Service) to 10 $\mu$ L PPP on a glass coverslip and transferred to a 24-well plate. Preparation consisted of washing with 10X Gibco<sup>®</sup> phosphate-buffered saline (PBS, pH 7.4) (ThermoFisher Scientific, 10010015), chemical fixation with 4% Paraformaldehyde (PFA) (Sigma-Aldrich, P6148) and then 1% Osmium Tetrahydroxide ( $\text{OsO}_4$ ) (Sigma-Aldrich, 75632), followed by dehydration with increasing grades of ethanol and 99.9% Hexamethyldisilazane (HMDS) (Sigma-Aldrich, 37921) [for detailed protocols please refer to (57)]. Samples were carbon coated using a Quorum Q150T E carbon coater. Images were captured at an electron high tension (EHT) of 1kV using a high resolution InLens detector of the Zeiss Merlin<sup>™</sup> (Gemini II) FE SEM (Carl Zeiss Microscopy, Munich, Germany). Fibrin fiber diameters representative of each respective sample group (RA and control) was determined by means of image analysis software ImageJ (Version 1.52p). Three representative micrographs (78,98 $\mu\text{m}^2$  image size, 10 000x magnification) were calibrated to scale and overlaid with a non-destructive grid (2 $\mu\text{m}^2$  tile size). Single representative fibrin fibers were measured in 28 tiles per image, producing 84 fiber diameter measurements per sample (method illustrated in **figure 2**).



**Figure 2:** Fibrin fiber diameter measurement scheme. SEM micrographs of a prepared PPP clot from a representative healthy control (top) and RA (bottom).

### **Vascular injury panel analysis**

Plasma concentrations of soluble ICAM-1, VCAM-1, CRP, and SAA were measured by sandwich immunoassay [Meso Scale Discover (MSD) Vascular Injury Panel (V-plex) 2 (human) kits, catalogue number K15198D]. RA (n=30) and control (n=30) PPP samples and reagents were prepared as per manufacturer's protocol. Samples were run in duplicate and measurements read on an MSD Discovery Workbench 4. Analyte concentrations were calculated from the calibration curve generated by absorbance measurements of manufacturer supplied calibrator standards.

### **Confocal laser scanning microscopy**

In order to determine the extent of protein deamination in fibrin networks, PPP aliquots of RA samples (n=10) and control samples (n=10) were thawed and fibrin clots prepared (refer to SEM method) on glass microscope slides in a dark room. Samples were fixed with 4% PFA, washed 3x with PBS, and blocked with 5% Goat serum solution (Abcam, ab7481) for 30 minutes. Clots were then stained with a 1:50 dilution Citrulline Monoclonal Antibody (2D3.1) (Thermo Fisher Scientific, Cat #MA5-27573) and incubated for 1 hour. Following another 3x PBS wash to remove unbound antibodies, samples were then stained with 1:200 dilution Goat Anti-Mouse IgG Secondary antibody conjugated to AlexaFluor 488 (Thermo Fisher Scientific, Cat #A327273) and incubated for 1 hour. Slides were washed 3x with PBS to remove unbound antibody, allowed to dry, and mounted with a glass coverslip. Samples were viewed with a Zeiss LSM 780 Confocal laser scanning microscope (CLSM) with a Plan-Apochromat 63x/1.4 oil DIC M27 objective. AlexaFluor488 was excited with the 488nm laser and emission was detected at 508-570nm. Three representative micrographs per sample were analysed for fluorescent particle distribution using ImageJ (Version 1.52p). Images were calibrated to scale, and a global threshold (27 pixel cut-off) applied to all analysed micrographs.

### **Statistical analysis**

Statistical analysis was performed using R version 4.0. Specifically, univariate logistic regression was performed to determine odds ratios (OR) for experimental variables using the logistic model in the rstanarm package (with default priors). ORs and 95% confidence intervals were extracted in the corresponding unit system (i.e. not z-scaled) for all variables except Fibrin fiber diameter and citrulline particle number shown in Table 4 which *are* z-scaled to aid interpretation. Tables 2 and 3

show ORs after adjustment for age and gender with unadjusted analysis identifying the same significance and effect sizes. In addition, results for classical statistical tests are reported as follows. The distribution of sample datasets for each variable experimental was determined using the Shapiro-Wilk test. Accordingly,  $p$ -values for each variable comparing RA to healthy controls were calculated using either a Mann-Whitney  $U$  test for nonparametric data or a Student  $t$ -test for parametric data. Statistical significance was set at  $p < 0.05$ . One can see close alignment between all these and the OR results.

## Results

### Subjects

Demographic information of all study participants is listed in **Table 1**. The RA sample group closely resembles the general population distribution for age (median: 54 years) and sex (80% female) of the disease (58). The control group of healthy volunteers was closely matched to the RA group with regards to age (median: 50 years) and sex (73% female). The RA sample group was heterogeneous with respect to clinical presentation, with most patients on an anti-rheumatic drug therapy regime. The majority of RA patients also presented with positive titers for anti-cyclic citrullinated peptide (CCP) (77%) and rheumatoid factor (97%) autoantibodies.

**Table 1:** Demographic and clinical characteristics of study participants.

Risk Factor	RA (n=30)	Control (n=30)
Age (years)	53.5 (22-75)	50 (28-79)
Women [n (%)]	24 (80%)	22 (73.3%)
Smokers [n (%)]	3 (10%)	-
Disease duration (years)	6.5 (1-39)	-
Hypertension [n (%)]	5 (16.7%)	-
Hypercholesterolemia [n (%)]	3 (10%)	-
Disease activity (DAS-28) classification [n (%)]		-
- Remission	1 (3.3%)	
- Low	17 (56.7%)	
- Moderate	4 (13.3%)	
- High	8 (26.7%)	
Autoantibody seropositivity [n (%)]		
- RF-/Anti-CCP <sup>-</sup>	1 (3.3%)	
- RF <sup>+</sup> /Anti-CCP <sup>-</sup>	6 (20%)	
- RF-/Anti-CCP <sup>+</sup>	-	
- RF <sup>+</sup> /Anti-CCP <sup>+</sup>	23 (76.7%)	
Conventional DMARD use [n (%)]	26 (86.7%)	-
Biologic DMARD use [n (%)]	18 (60%)	-

Cortisone use [n (%)]	13 (43%)	-
-----------------------	----------	---

Values expressed as median and interquartile range (IQR) unless otherwise stated. Disease activity scores (DAS-28), were categorized in RA patients as remission, low, moderate or high (59). For full demographic information and specified list of disease modifying anti-rheumatic drugs (DMARDs) please refer to full study database in supplementary material.

### Confirmation of altered inflammatory and vascular function profile in RA

Circulating concentrations of endothelial function and acute phase markers are shown in **Table 2**. Previous studies have shown these markers (CRP, SAA, sVCAM-1 and sICAM-1) to be associated with a prothrombotic state and increased CVD risk in RA(7, 13, 60-62), and was therefore measured in this study to determine the extent to which systemic inflammation influences viscoelastic and structural clot properties. As expected, all markers were elevated in RA compared to controls [CRP (median 4.25 µg/mL vs 1.26, OR=1.29), SAA (4.98 µg/mL vs 1.52, OR=1.29), sICAM-1 (378.82 ng/mL vs 289.70, OR=1.01), sVCAM-1 (359.83 ng/mL vs 325.80, OR=1.00)].

**Table 2:** Vascular injury panel (V-Plex) analysis.

V-Plex Analyte	RA (n=30)	Control (n=25)	Adjusted OR (95% CI)	P-value
CRP (µg/mL)	4.25 [1.89-8.11]	1.26 [0.43-3.15]	1.29 (1.09-1.62) *	0.0011**
SAA (µg/mL)	4.98 [2.56-8.84]	1.52 [0.64-2.24]	1.25 (1.08-1.55) *	<0.0001****
sICAM-1 (pg/mL)	377.82 [295.69-460.49]	289.7 [225.34-365.56]	1.008 (1.0021-1.014) *	0.0202*
sVCAM-1 (pg/mL)	359.83 [283.01-394.20]	325.8 [253.73-422.62]	1.001 (0.995-1.007)	0.9

Analyte concentrations for RA and control are expressed as median [IQR]. Odds ratios for age- and gender-adjusted logistic regression model is listed with the 95% confidence interval, while level of statistical significance was set at  $p < 0.05$  for calculated Mann-Whitney test values. \*Denotes statistically significant differences in variables between RA and controls.

### Functional coagulation assessment indicates a prothrombotic tendency in RA

Whole blood coagulation parameters as measured by TEG<sup>®</sup> are listed in **Table 3**. Limited viscoelastic assessment of coagulation in RA has been performed to date (60, 63, 64), with TEG<sup>®</sup> not commonly used in rheumatology practice (65-67). RA

patients showed significantly altered rates of clot formation compared to healthy controls. This included shortened clot initiation (R; OR=0.675,  $p=0.0007$  and K; OR=0.539,  $p=0.0196$ ), augmented fibrin cross-linking ( $\alpha$ ; OR=1.15,  $p=0.0006$ ) and shortened time to maximal thrombus formation (TMRTG; OR=0.737,  $p=0.0001$ ). Measures of overall clot strength (MA) and growth (TTG) were attenuated in RA but did not statistically differ from those of controls.

**Table 3:** Thromboelastography<sup>®</sup> analysis.

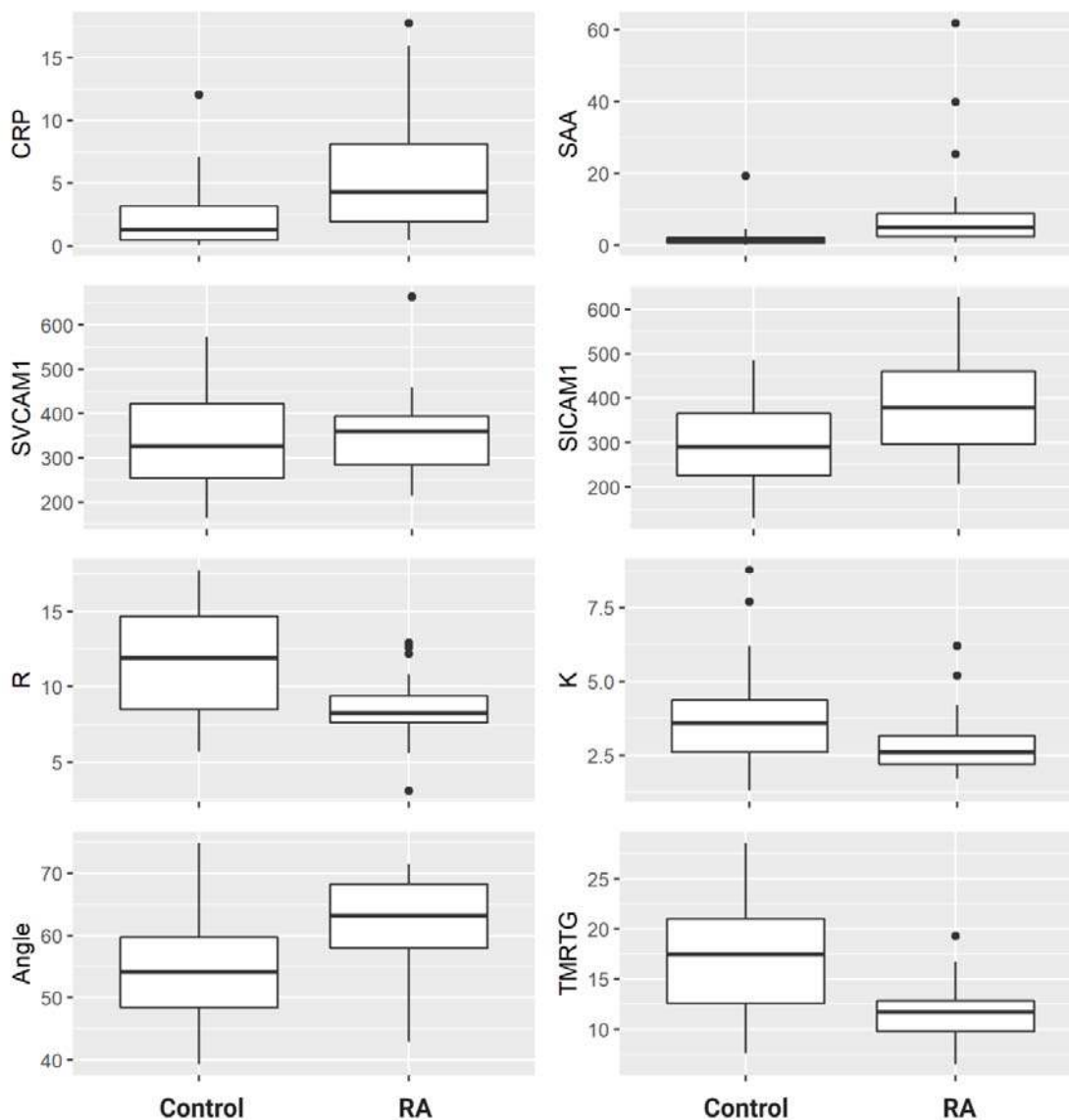
TEG <sup>®</sup> Parameter	RA (n=30)	Control (n=30)	Adjusted OR (95% CI)	P-value
R (min)	8.3 [7.5-9.5]	11.9 [8.3-15.1]	0.675 (0.528-0.827) *	0.0007***
K (min)	2.6 [2.2-3.2]	3.6 [2.6-4.5]	0.539 (0.308-0.847) *	0.0196*
$\alpha$ (°)	63.2 [57.6-68.6]	54.2 [48.4-60.5]	1.15 (1.07-1.27) *	0.0006***
MA (mm)	55.9 [52.0-61.7]	58.9 [54.5-63.9]	0.960 (0.889-1.03)	0.1646
MRTG (dyn·cm <sup>-2</sup> ·s <sup>-1</sup> )	5.01 [3.89-6.02]	4.23 [3.26-5.85]	1.03 (0.767-1.40)	0.2745
TMRTG (min)	11.67 [9.73-12.96]	17.43 [12.48-21.13]	0.737 (0.607-0.858) *	0.0001***
TTG (dyn·cm <sup>-2</sup> )	633 [544.1-775.2]	719.3 [602.1-879.8]	0.997 (0.995-1.00)	0.0899

Viscoelastic coagulation measurements for RA and control are expressed as median [IQR]. Odds ratios for age- and gender-adjusted logistic regression model is listed with the 95% confidence interval, while level of statistical significance was set at  $p<0.05$  for calculated Mann-Whitney test values. \*Denotes statistically significant differences in variables between RA and controls.

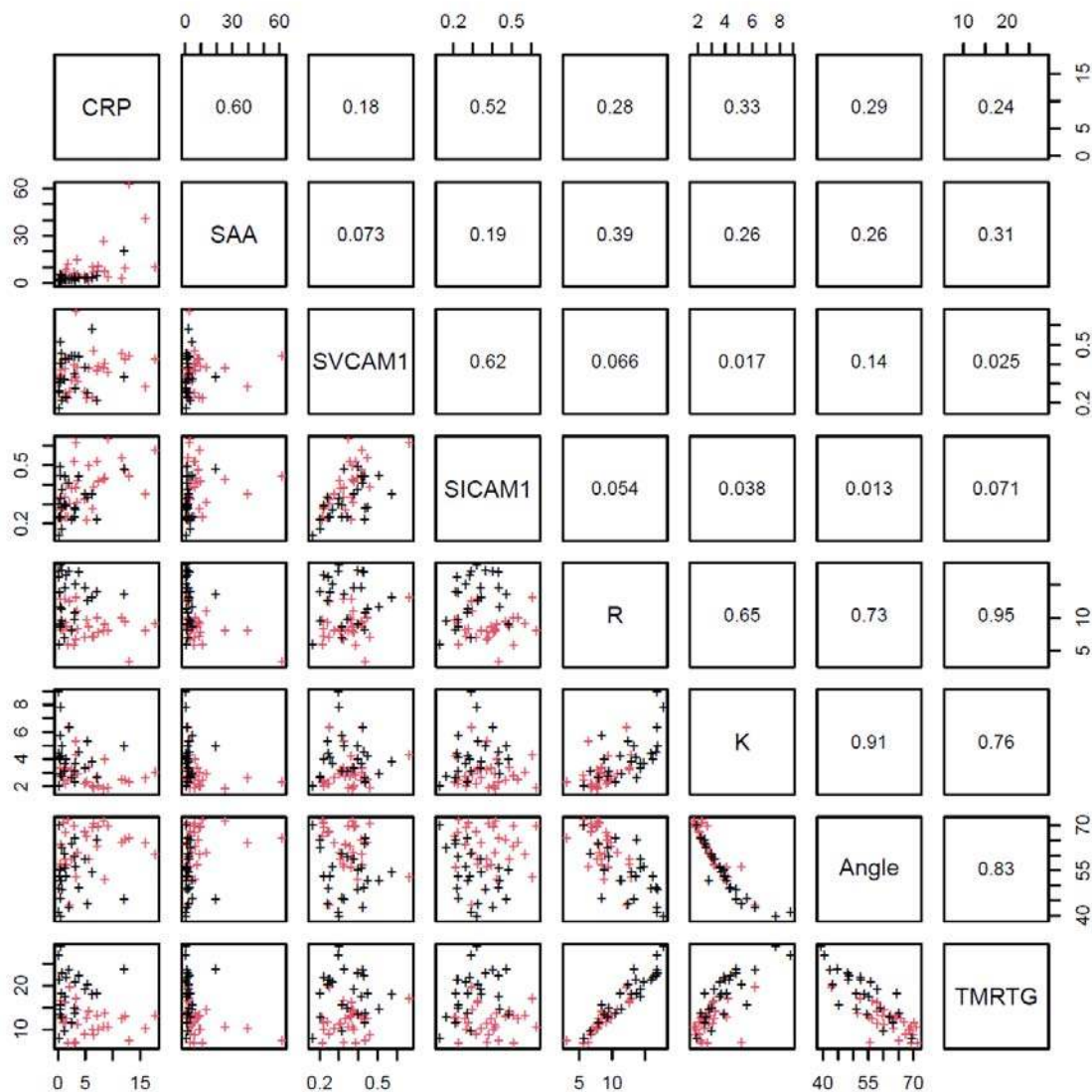
### Association of vascular injury biomarkers to thrombotic parameters indices

Significantly altered inflammatory and coagulation indices in RA, as determined by an adjusted logistic regression model, are represented by box-and-whisker plots (**Figure 3**). Additionally, the distribution of RA and control experimental values are plotted and arranged in a lattice (**Figure 4**) to exhibit correlation values between intra- and inter-assay variables. CRP shows positive and significant association with SAA ( $r = 0.6$ ) and sICAM-1 ( $r = 0.52$ ). Further strong correlation existed between respective endothelial markers (sICAM-1 and sVCAM-1,  $r=0.62$ ), and between all

TEG<sup>®</sup> parameters (R, K,  $\alpha$ , TMRTG). CRP and SAA display stronger association with thromboelastographic parameters than the cell adhesion molecules.



**Figure 3:** Box-and-whisker plots for statistically significant TEG<sup>®</sup> and V-plex parameters. Boxes represent the median and IQR. Whiskers indicate upper (75<sup>th</sup> percentile + 1.5\*IQR) and lower (25<sup>th</sup> percentile - 1.5\*IQR) extremes. Outlier values are indicated by black dots



**Figure 4:** Lattice of cross-plots and correlation values across statistically significant TEG® and V-Plex measurements. The sample values are indicated by crosses (RA: red, Control: black). Strong intra-analysis correlation exists between CRP with SAA and sICAM-1, between sICAM-1 and VCAM-1, and between all TEG parameters (R, K, Angle, TMRTG). CRP and SAA show moderate correlation with inflammatory and endothelial markers.

### SEM analysis exposes anomalous fibrin network architecture in formed RA clots

Further investigation into the apparent modification of the clot structure in RA was carried out by means of SEM. **Figure 2** illustrates the scheme followed for the measurement of fibrin fiber diameters in PPP clots of RA (n=10) and Control (n=10) samples. Results (refer to **Table 4**) indicate that fibrin fiber diameters in

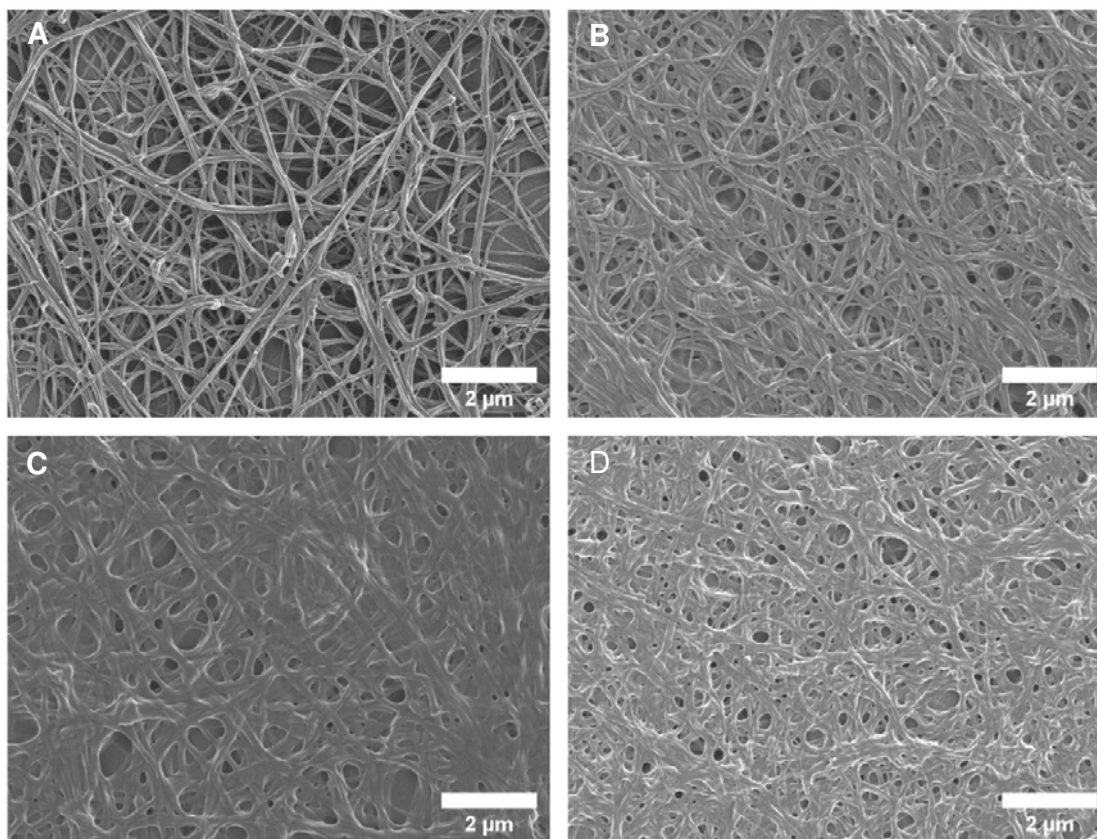


representative areas were significantly increased in RA versus controls (median: 214nm vs 120nm, OR=22.732). Examining the networks qualitatively, it is evident that *ex vivo* formed clots from RA samples have denser, less porous fibrin networks. **Figure 5 B-D**, representative of the RA sample group, illustrates the amalgamation of fibrin monomers that contribute to increased fibrin fiber diameter and overall network density. This contrasts sharply with the ultrastructural attributes of **Figure 5A** (Healthy control sample), which demonstrates thinner protein strands and a more permeable fibrin network.

**Table 4:** Microscopy Image Analysis.

Imaging Parameter	RA (n=10)	Control (n=10)	OR (95% CI)	P-value
Fibrin fiber diameter (nm)	214 (170-285)	120 (100-144)	22.732 (17.085-31.441)	<0.0001 ****
Fluorescent citrulline particles	3279 (1966-4260)	1095 (411-2937)	2.2268 (1.2238-4.3527)	0.0355 *

Evaluation of plasma clots using image analysis software (ImageJ) based techniques for representative RA (n=10) and Healthy control (n=10) subjects. Fibrin fiber diameters were determined from SEM micrographs, while fluorescent particle analysis was calculated from CLSM micrographs. Values are expressed as median [interquartile range]. Scaled odds ratios for the logistic regression model are listed with their 95% confidence intervals, while level of statistical significance was set at  $p < 0.05$  for calculated Mann-Whitney test values. \*Denotes statistically significant differences in variables between RA and controls.

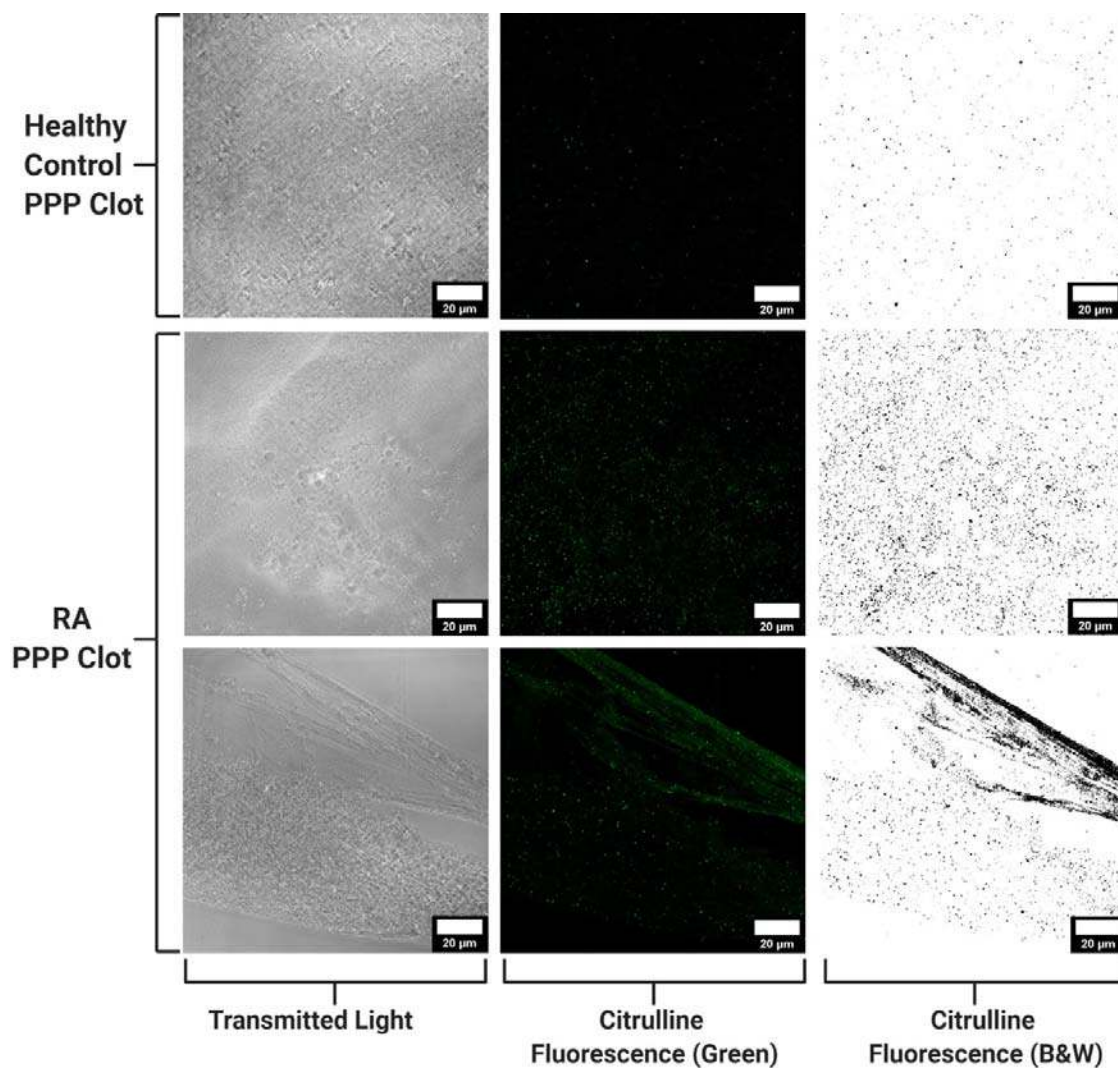


**Figure 5:** Scanning electron micrographs of the fibrin network ultrastructure. Representative micrographs of the fibrin network in healthy controls (A) and RA patients (B-D). The altered clot ultrastructure in RA, consisting of less permeable networks of thicker fibrin fibers, represents a prothrombotic phenotype.

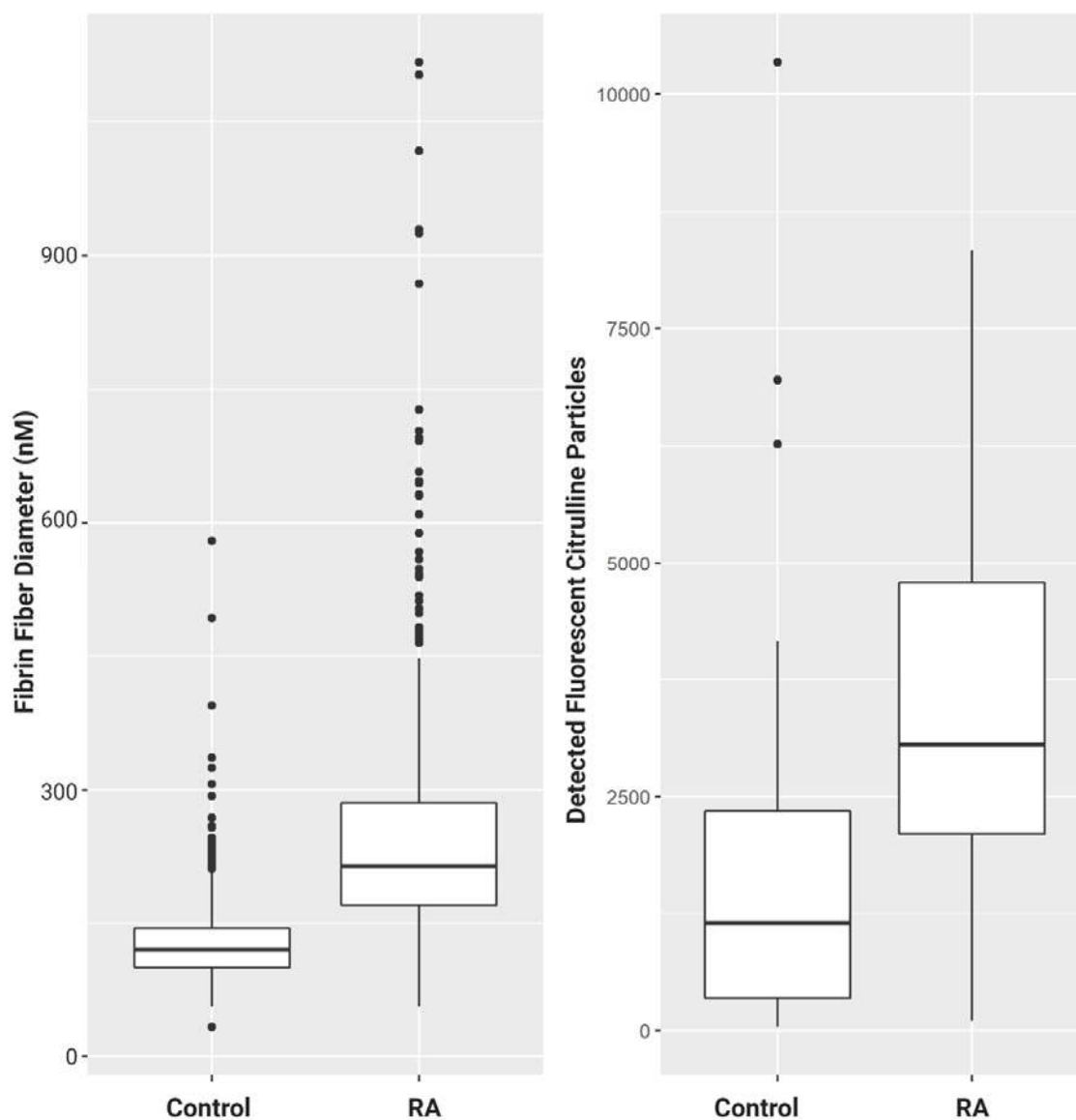
### **Confocal analysis of plasma clots reveals a higher number of citrullinated sites in RA fibrin networks compared to controls**

Additionally, we probed whether autoimmune-related modifications of coagulation proteins are distinctive to RA patients compared to healthy individuals. Fibrin and fibrinogen are well known extracellular targets for peptidylarginine deiminase (PAD) enzymes (37, 68), with citrullinated isoforms eliciting the generation of anti-CCP antibodies in large proportions of RA patients (40, 41). Citrullinated fibrin deposits are common synovial compartment manifestations, but this has not been investigated in plasma. The determination of the net-effect of coagulation factor citrullination on hemostatic outcome also remains elusive. To investigate the presence and extent of potential citrullination in RA (n=10) and Control (n=10) PPP thrombi, fluorescence analysis using a Citrulline-identifying monoclonal antibody with CLSM was performed (**Figure 6**). Acquired image data (**Figure 7**) suggests a

relatively higher proportion of citrulline particles in RA fibrin networks versus controls (OR=2.2268).



**Figure 6:** Confocal microscopy of PPP clots stained with a Citrulline monoclonal antibody. Confocal micrographs of representative control and RA samples. Each row represents identical areas captured of fibrin clot preparations using transmitted light to illustrate fibrin network topography (left-hand column) and a green channel (middle column) to identify fluorescent particles corresponding to citrulline residues. Fluorescent images are also provided in binary (right-hand column) to better illustrate differences seen between RA and control samples with respect to citrulline-coupled fluorescence. Particle analysis confirmed the observable presence of enhanced fluorescent signal in RA samples (n=10) versus healthy controls (n=10).



**Figure 7:** Box-and-whisker plots for micrographs analysis. Outlier values are indicated by black dots. In comparison to healthy individuals, RA subjects exhibited significantly increased fibrin fiber diameters (median: 214nm vs 120nm, OR=22.7) and detected fluorescent areas (median: 3279 vs 1095, OR=2.23) of fibrin citrullination.

## Discussion

There is a need to bridge translational gaps between RA immunopathogenesis and systemic vascular and hemostatic irregularities. The development of RA auto-immunogenicity precedes the onset of joint disease (69, 70). The link between RA autoimmune patterns and its possible role in exacerbating thrombosis is still poorly understood. Crosstalk between immune and hemostatic systems with the endothelium represents a critical interface in which both arthritic and cardiovascular pathologies are initiated and propagated. We therefore analyzed a panel of biomarkers that are representative of this dynamic milieu, is associated with RA disease severity and CVD.

Levels of both acute phase reactants (CRP and SAA) were significantly elevated in RA patients (**Table 2**) and showed a strong association (**Figure 4**). This was expected as acute phase reactant concentrations rise dramatically under acute inflammatory states, with both CRP and SAA shown to reliably predict disease severity and CVD risk in RA (13, 14, 22, 71, 72). CRP can bind to surface receptors on monocytes, endothelial cells and platelets thereby altering their function to propagate hypercoagulable conditions (73, 74). The ability of CRP and SAA to induce TF expression has been demonstrated in various cell types (13, 14, 22, 71, 72, 75-81) and by *in vivo* studies (82, 83). Additionally, acute phase reactants can also suppress fibrinolysis by promoting expression of plasminogen activator inhibitor-1 (PAI-1) (82) and inhibiting TF pathway inhibitor (TFPI) expression (81, 83). CRP is also able to activate endothelial cells and cause the expression of cell adhesion molecules (ICAM-1 and VCAM-1) (84, 85). It should however be noted that cellular effects of CRP have been disputed as being primarily caused by bacterial contaminants in CRP preparations rather than the protein itself (86). SAA is the precursor to amyloid A (AA) protein, which form insoluble fibrillar depositions in major organs as a result of long-term inflammation (87). RA has been prominently implicated as a pre-existing condition for the development of potentially fatal AA amyloidosis (88, 89). Known for being primarily hepatically synthesized, synovial tissue cells (90-93) and chondrocytes (94) can be articular sources of SAA production. Within the synovium SAA promotes pro-arthritic processes through the expression of cell adhesion molecules (95, 96), cytokines (96), and matrix degrading

enzymes (92, 95) by local tissue. SAA showed slightly weaker association with sICAM-1 compared with CRP in our studies (**Figure 4**).

Levels of soluble cell adhesion molecules (sICAM-1 and sVCAM-1) are the most accessible form in which to determine endothelial activity. They are also strong predictive biomarkers for CVD in RA (61, 62, 97). Increased levels of CAMs indicate endothelial dysfunction that facilitates pro-inflammatory and prothrombotic conditions (7). ICAM-1 is a prominent receptor for fibrinogen (98), with interaction fortifying endothelial adhesion and migration of leukocytes (99-101), endothelial-platelet adhesion (102-104), and causes vasoconstriction (105, 106). ICAM-1 signaling pathways can also promote endothelial tissue factor expression (107). The role of VCAM-1 in directly promoting coagulation is not as well understood, but does contribute to atherosclerotic plaque formation as a result of adhering to PBMCs (108, 109) sICAM-1 and sVCAM-1 concentrations were elevated in RA (**Table 2**) but were not as strongly associated with coagulation function as CRP and SAA (**Figure 4**). This belies the fact that CAMs present on cell surfaces play more facilitative roles in thrombotic diseases rather than instigating them.

After confirming the presence of a systemic inflammatory state in RA patients, we investigated the possible repercussions thereof on the coagulation profile of study participants. Thromboelastography<sup>®</sup> is a hemostatic function test that measures the rate, strength, and stability of clot formation through the viscoelastic changes induced by fibrin polymerization. Despite its widespread clinical use, especially as point-of-care instruments in surgical settings, TEG<sup>®</sup> is not often utilized in Rheumatology practice. The advantage that TEG<sup>®</sup> provides over conventional coagulation tests [such as prothrombin time (PT), activated partial thromboplastin time (aPTT) and D-dimer] is that it measures global hemostatic function and outcome rather than single time points or pathways in the coagulation cascade (110). Türk *et al.* (2018) is the only recent study that has assessed thrombotic tendency in RA patient with thromboelastographic assessment (60) Using a modified version of TEG<sup>®</sup>, known as rotational thromboelastometry (ROTEM), they found that RA disease markers (CRP, DAS-28) correlated strongly with ROTEM parameters. Our findings show that coagulation initiation was amplified in RA patients with shortened velocity parameters of clot formation (R, K,  $\alpha$ , TMRTG) (**Table 3**) and these indices were moderately associated with levels of SAA and CRP (**Figure 3**).

Parameters relating to clot strength (MA, TTG) were attenuated in the RA sample group, but did not statistically differ from healthy controls (**Table 3**). Thus, although the blood clots form rapidly it leads to a weak clot. The mechanics of clot formation as measured by TEG<sup>®</sup> have been related to the risk of adverse ischaemic events (111). Excessive hepatic production of fibrinogen is highly prevalent in RA (10). Increased plasma fibrinogen concentration is a strong contributing factor to hypercoagulation (112). Fibrin(ogen) is susceptible to structural and functional modifications by certain inflammatory molecules, including CRP (25), SAA (26), and certain bacterial virulence factors (113-115). Fibrin(ogen) is also prone to post-translational modification that relates to the generation of auto-immunogenicity in RA – the relevance of this process was investigated and is discussed below.

Evaluating fibrin gel matrices visually can reveal much about thrombotic potential under inflammatory conditions. Denser fibrin fiber networks are accompanied with increased resistance to fibrinolysis and is associated with the risk for thrombotic events (reviewed by Undas and Ariëns, 2011) (116). These structural properties can be viewed and functionally assessed with a high degree of resolution using SEM (57) Our analysis revealed denser fibrin networks in RA prepared *ex vivo* PPP clots compared to controls (**Figures 2 and 5**). This is consistent with a prothrombotic phenotype observed in previous studies that have inspected the fibrin network in RA (29, 30). Furthermore, we determined a relative measure of fibrin fiber diameter using an image analysis software-based technique (**Figure 2**). The average diameter of fibrin fibers was larger in RA clots compared to controls (**Figure 7**). This can be clearly seen in the presented micrographs, where there is an apparent amalgamation of single fibrin fibers in RA preparations (**Figures 2 and 5**). The appearance of very thin fibrin strands (approximately 100nm in diameter) was not readily detectable in the RA fibrin networks. Some studies have indicated that thin fibrin fibers have higher tensile strength than thicker fibers, concluding that dense networks consisting of predominantly thin fibers are more resistant to degradation (117, 118). Fibrin networks of this nature in RA were observed by Vrancic *et al.* (2019) (119). However, study by Buclay *et al.* (2015) concluded that thicker fibers are more resistant to plasmin degradation than thinner fibers, owing to their ability to elongate during lysis (120). It is apparent that our investigation into the structural properties of fibrin networks in RA and its relation to hemostatic function has a rather deceptive

appearance. Our group has previously shown that fibrin networks in multiple inflammatory conditions (113, 121-123) and in plasma exposed to inflammatory stimuli (26, 114, 124) stain positive for amyloid-specific dyes. This constitutes the appearance of misfolded, protein aggregates with enriched  $\beta$ -sheet content that confers a higher degree of insolubility (125). It may therefore be possible that the fibrin network in RA may undergo a similar transition. This, coupled with impairment of fibrinolytic pathways, presents a possible explanation for high thrombotic risk seen in RA patients.

Distinct protein modifications related to the generation of autoimmunity in RA could present an additional complication when attempting to expound underlying mechanisms responsible for excessive thrombotic risk. Citrullination is a post-translational modification in which positively charged arginine are deiminated by peptidylarginine deiminase (PAD) enzymes to form neutrally charged citrulline (126). PADs are usually localized to intracellular environments and requires calcium for catalysis (127). PADs become active under inflammatory and apoptotic conditions where enzymes are liberated to extracellular spaces and exposed to sufficient calcium concentrations for catalytic function (126). Two isoforms of PAD (PAD2 and PAD4) are primarily responsible for generating citrullinated antigens that incite the generation of anti-citrullinated protein antibodies (ACPAs), a hallmark serological feature of RA (128). Fibrinogen and fibrin are prominent substrates for PAD2 and PAD4 and autoantibodies targeting citrullinated fibrin(ogen) have been identified (40, 43, 68, 129-131). The pathogenicity of citrullinated fibrin(ogen) immune complexes have been demonstrated both *in vitro*(33) and *in vivo*(132, 133). Citrullinated fibrin deposits are also common manifestations within synovial cavities, where it contributes to self-perpetuating inflammatory processes (48, 134). Our findings provide novel evidence for the citrullination of fibrin within vasculature which is more prominent in RA plasma compared to control plasma (**Figures 6 and 7**). Previously the presence of citrullinated fibrinogen could only be detected in RA synovial fluid (41). Later research by Zhao *et al.* (2008) confirmed the presence of citrullinated fibrinogen containing immune complexes in RA plasma (131). The insolubility of fibrin may increase the likelihood of it being citrullinated in circulation. As we could not stain specifically for citrullinated residues in fibrin only, detected fluorescence could also have originated from citrullinated histone derived from neutrophil



extracellular traps (135). Nevertheless, binding of ACPAs to fibrin could render it less degradable, by decreasing available binding surface to plasmin (136). There remains conjecture as to the effect of citrullination on hemostatic outcome. Citrullination of proteins results in structural unfolding (42) and loss of function (137), which increases its antigenic shelf-life. It has been demonstrated that citrullinated fibrinogen is resistant to thrombin digestion, as preferential epitopes for PADs overlap with thrombin binding sites (45, 46, 138). Despite this, fibrinogenesis in RA is by no means impaired, as evidenced by this study and others. It is plausible that high levels of fibrinogen (10) and thrombin activity (17, 139) in RA has much stronger influence on the fate of fibrinogen than PAD enzymes. There is also evidence that upstream coagulation factors and fibrinolytic components are susceptible to citrullination (140, 141). It is therefore difficult to predict a hemostatic endpoint based on overall citrullination and the effect of citrullination on thrombosis cannot be postulated on singular reactions. The implications that citrullination could have on fibrin, being the end-product of coagulation and a major determinant of thrombotic risk, remains intriguing and should be further investigated.

Future investigations would be to determine the effect of citrullination on the thrombotic potential of formed thrombi. Our research has previously implicated the role of amyloid resembling structures in fibrin clots that confer a prothrombotic phenotype. There is evidence to suggest that the processes of citrullination and amyloidogenesis may overlap. Citrullination has been shown to affect the aggregation and oligomerization of  $\beta$ -amyloid proteins (142) and that citrullination of human myelin oligodendrocyte glycoprotein (MOG) can lead to amyloid-like behavior shift that has pathogenic implications for multiple sclerosis (143).

This study did present some limitations and challenges. The relatively small sample population complicates the determination of correlative associations between inflammatory and hemostatic indices. The determination of true overall fibrin diameter was also not possible with current techniques – statistical analysis revealed a measurement accuracy of 82%. The detection of citrullination in fibrin networks using fluorescent techniques were unspecific to fibrin(ogen) in this study. However, the current study included this analysis only as a preliminary probe into determining if citrullination of clots was a discerning factor between RA and non-RA individuals.

## Concluding remarks

Inflammatory and thrombotic processes are highly pertinent to the development of joint disease and cardiovascular complications. There is a need to study changes that occur within synovial environments in unison with simultaneously occurring changes within circulatory tracts. Further investigation into overlapping processes that are crucially involved in the concurrent development of both RA and CVD could reveal improved global disease markers and novel targets for therapeutic intervention. The formation and structure of fibrin clots in RA shows an atypical pattern compared to conventional observations of hypercoagulation under inflammatory conditions. We propose determining if citrullination causes a structural and functional shift in the nature of fibrin to represent an amyloid-like state. This protein modification could potentially contribute to the formation of aberrant fibrin clots in RA patients that confer a higher degree of thrombotic risk.

## DECLARATIONS

### Competing interests

The authors declare that they have no competing interests.

### Consent for publication

All authors approved submission of the paper.

### Funding

We thank the Medical Research Council of South Africa (MRC) (Self-Initiated Research Program: A0X331) for supporting this collaboration.

### Raw data sharing

All raw data is available at:

<https://1drv.ms/u/s!AgoCOmY3bkKHiqlaVINkRzHB8cUo6Q?e=FusgPo>

## FIGURE AND LEGENDS

**Figure 8:** Overview of the overlapping processes of inflammation and coagulation in both synovial and vascular compartments. **1.** The chronic and systemic nature of the inflammatory response in RA characterizes the disease as an independent risk factor for CVD. **2.** The movement of leukocytes, inflammatory cytokines, procoagulant factors and immune complexes are aided by vascular endothelial dysfunction and neovascularization of hyperproliferative joint tissues. **3.** The role of fibrin(ogen) is integral to the formation of hyperplastic and destructive synovial tissue (pannus) and vascular thrombosis, while being a prominent self-protein target of aberrant citrullination and autoimmunogenicity in RA.

**Figure 9:** Fibrin fiber diameter measurement scheme. SEM micrographs of a prepared PPP clot from a representative healthy control (top) and RA (bottom).

**Figure 10:** Box-and-whisker plots for statistically significant TEG<sup>®</sup> and V-plex parameters. Boxes represent the median and IQR. Whiskers indicate upper (75<sup>th</sup> percentile + 1.5\*IQR) and lower (25<sup>th</sup> percentile - 1.5\*IQR) extremes. Outlier values are indicated by black dots

**Figure 11:** Lattice of cross-plots and correlation values across statistically significant TEG<sup>®</sup> and V-Plex measurements. The sample values are indicated by crosses (RA: red, Control: black). Strong intra-analysis correlation exists between CRP with SAA and sICAM-1, between sICAM-1 and VCAM-1, and between all TEG parameters (R, K, Angle, TMRTG). CRP and SAA show moderate correlation with inflammatory and endothelial markers.

**Figure 12:** Scanning electron micrographs of the fibrin network ultrastructure. Representative micrographs of the fibrin network in healthy controls (A) and RA patients (B-D). The altered clot ultrastructure in RA, consisting of less permeable networks of thicker fibrin fibers, represents a prothrombotic phenotype.

**Figure 13:** Confocal microscopy of PPP clots stained with a Citrulline monoclonal antibody. Confocal micrographs of representative control and RA samples. Each row represents identical areas captured of fibrin clot preparations using transmitted light to illustrate fibrin network topography (left-hand column) and a green channel (middle column) to identify fluorescent particles corresponding to citrulline residues. Fluorescent images are also provided in binary (right-hand column) to better illustrate differences seen between RA and control samples with respect to citrulline-coupled fluorescence. Particle analysis confirmed the observable presence of enhanced fluorescent signal in RA samples (n=10) versus healthy controls (n=10).

**Figure 14:** Box-and-whisker plots for micrographs analysis. Outlier values are indicated by black dots. In comparison to healthy individuals, RA subjects exhibited significantly increased fibrin fiber diameters (median: 214nm vs 120nm, OR=22.7) and detected fluorescent areas (median: 3279 vs 1095, OR=2.23) of fibrin citrullination.

**Table 5:** Demographic and clinical characteristics of study participants.

**Table 6:** Vascular injury panel (V-Plex) analysis.

**Table 7:** Thromboelastography<sup>®</sup> analysis.

**Table 8:** Microscopy Image Analysis.

## References

1. Avina-Zubieta JA, Choi HK, Sadatsafavi M, Etminan M, Esdaile JM, Lacaille D. Risk of cardiovascular mortality in patients with rheumatoid arthritis: a meta-analysis of observational studies. *Arthritis and rheumatism*. 2008;59(12):1690-7.
2. Avina-Zubieta JA, Thomas J, Sadatsafavi M, Lehman AJ, Lacaille D. Risk of incident cardiovascular events in patients with rheumatoid arthritis: a meta-analysis of observational studies. *Ann Rheum Dis*. 2012;71(9):1524-9.
3. Lopez-Mejias R, Castaneda S, Gonzalez-Juanatey C, Corrales A, Ferraz-Amaro I, Genre F, et al. Cardiovascular risk assessment in patients with rheumatoid arthritis: The relevance of clinical, genetic and serological markers. *Autoimmunity reviews*. 2016;15(11):1013-30.
4. del Rincon ID, Williams K, Stern MP, Freeman GL, Escalante A. High incidence of cardiovascular events in a rheumatoid arthritis cohort not explained by traditional cardiac risk factors. *Arthritis and rheumatism*. 2001;44(12):2737-45.
5. Foley JH, Conway EM. Cross Talk Pathways Between Coagulation and Inflammation. *Circulation research*. 2016;118(9):1392-408.
6. Maino A, Rosendaal FR, Algra A, Peyvandi F, Siegerink B. Hypercoagulability Is a Stronger Risk Factor for Ischaemic Stroke than for Myocardial Infarction: A Systematic Review. *PloS one*. 2015;10(8):e0133523-e.
7. Dessein PH, Joffe BI, Singh S. Biomarkers of endothelial dysfunction, cardiovascular risk factors and atherosclerosis in rheumatoid arthritis. *Arthritis research & therapy*. 2005;7(3):R634.
8. Wallberg-Jonsson S, Cvetkovic JT, Sundqvist KG, Lefvert AK, Rantapaa-Dahlqvist S. Activation of the immune system and inflammatory activity in relation to markers of atherothrombotic disease and atherosclerosis in rheumatoid arthritis. *The Journal of rheumatology*. 2002;29(5):875-82.
9. Ingegnoli F, Fantini F, Favalli EG, Soldi A, Griffini S, Galbiati V, et al. Inflammatory and prothrombotic biomarkers in patients with rheumatoid arthritis: effects of tumor necrosis factor- $\alpha$  blockade. *Journal of autoimmunity*. 2008;31(2):175-9.
10. Rooney T, Scherzer R, Shigenaga JK, Graf J, Imboden JB, Grunfeld C. Levels of plasma fibrinogen are elevated in well-controlled rheumatoid arthritis. *Rheumatology (Oxford, England)*. 2011;50(8):1458-65.
11. Bunescu A, Seideman P, Lenkei R, Levin K, Egberg N. Enhanced Fc $\gamma$  receptor I,  $\alpha$ M $\beta$ 2 integrin receptor expression by monocytes and neutrophils in rheumatoid arthritis: interaction with platelets. *The Journal of rheumatology*. 2004;31(12):2347-55.
12. Berckmans RJ, Nieuwland R, Kraan MC, Schaap MC, Pots D, Smeets TJ, et al. Synovial microparticles from arthritic patients modulate chemokine and cytokine release by synoviocytes. *Arthritis Res Ther*. 2005;7(3):R536-44.
13. Targonska-Stepniak B, Majdan M. Serum amyloid A as a marker of persistent inflammation and an indicator of cardiovascular and renal involvement in patients with rheumatoid arthritis. *Mediators of inflammation*. 2014;2014:793628.
14. Shen C, Sun XG, Liu N, Mu Y, Hong CC, Wei W, et al. Increased serum amyloid A and its association with autoantibodies, acute phase reactants and disease activity in patients with rheumatoid arthritis. *Molecular medicine reports*. 2015;11(2):1528-34.
15. So AK, Varisco PA, Kemkes-Matthes B, Herkenne-Morard C, Chobaz-Peclat V, Gerster JC, et al. Arthritis is linked to local and systemic activation of coagulation and fibrinolysis pathways. *Journal of thrombosis and haemostasis : JTH*. 2003;1(12):2510-5.
16. McEntegart A, Capell HA, Creran D, Rumley A, Woodward M, Lowe GD. Cardiovascular risk factors, including thrombotic variables, in a population with rheumatoid arthritis. *Rheumatology (Oxford, England)*. 2001;40(6):640-4.
17. Undas A, Gissel M, Kwasny-Krochin B, Gluszko P, Mann KG, Brummel-Ziedins KE. Thrombin generation in rheumatoid arthritis: dependence on plasma factor composition. *Thrombosis and haemostasis*. 2010;104(2):224-30.

18. Daza L, Aguirre M, Jimenez M, Herrera R, Bollain JJ. Common carotid intima-media thickness and von Willebrand factor serum levels in rheumatoid arthritis female patients without cardiovascular risk factors. *Clin Rheumatol*. 2007;26(4):533-7.
19. Beinsberger J, Heemskerk JW, Cosemans JM, editors. Chronic arthritis and cardiovascular disease: altered blood parameters give rise to a prothrombotic propensity. *Seminars in arthritis and rheumatism*; 2014: Elsevier.
20. Södergren A, Karp K, Bengtsson C, Möller B, Rantapää-Dahlqvist S, Wållberg-Jonsson S. Biomarkers associated with cardiovascular disease in patients with early rheumatoid arthritis. *PloS one*. 2019;14(8).
21. Maradit-Kremers H, Nicola PJ, Crowson CS, Ballman KV, Gabriel SE. Cardiovascular death in rheumatoid arthritis: a population-based study. *Arthritis and rheumatism*. 2005;52(3):722-32.
22. Graf J, Scherzer R, Grunfeld C, Imboden J. Levels of C-reactive protein associated with high and very high cardiovascular risk are prevalent in patients with rheumatoid arthritis. *PLoS One*. 2009;4(7):e6242.
23. del Rincon I, Freeman GL, Haas RW, O'Leary DH, Escalante A. Relative contribution of cardiovascular risk factors and rheumatoid arthritis clinical manifestations to atherosclerosis. *Arthritis and rheumatism*. 2005;52(11):3413-23.
24. Litvinov RI, Weisel JW. What Is the Biological and Clinical Relevance of Fibrin? *Seminars in thrombosis and hemostasis*. 2016;42(4):333-43.
25. Salonen EM, Vartio T, Hedman K, Vaheri A. Binding of fibronectin by the acute phase reactant C-reactive protein. *The Journal of biological chemistry*. 1984;259(3):1496-501.
26. Page MJ, Thomson GJ, Nunes JM, Engelbrecht A-M, Nell TA, de Villiers WJ, et al. Serum amyloid A binds to fibrin (ogen), promoting fibrin amyloid formation. *Scientific reports*. 2019;9(1):1-14.
27. Bester J, Pretorius E. Effects of IL-1 $\beta$ , IL-6 and IL-8 on erythrocytes, platelets and clot viscoelasticity. *Scientific reports*. 2016;6(1):1-10.
28. Page MJ, Bester J, Pretorius E. The inflammatory effects of TNF- $\alpha$  and complement component 3 on coagulation. *Scientific reports*. 2018;8(1):1-9.
29. Kwasny-Krochin B, Gluszko P, Undas A. Unfavorably altered fibrin clot properties in patients with active rheumatoid arthritis. *Thromb Res*. 2010;126(1):e11-6.
30. Pretorius E, Oberholzer HM, van der Spuy WJ, Swanepoel AC, Soma P. Scanning electron microscopy of fibrin networks in rheumatoid arthritis: a qualitative analysis. *Rheumatology international*. 2012;32(6):1611-5.
31. Busso N, Hamilton JA. Extravascular coagulation and the plasminogen activator/plasmin system in rheumatoid arthritis. *Arthritis and rheumatism*. 2002;46(9):2268-79.
32. Smiley ST, King JA, Hancock WW. Fibrinogen stimulates macrophage chemokine secretion through toll-like receptor 4. *Journal of immunology (Baltimore, Md : 1950)*. 2001;167(5):2887-94.
33. Sokolove J, Zhao X, Chandra PE, Robinson WH. Immune complexes containing citrullinated fibrinogen costimulate macrophages via Toll-like receptor 4 and Fc $\gamma$  receptor. *Arthritis and rheumatism*. 2011;63(1):53-62.
34. Rubel C, Gomez S, Fernandez GC, Isturiz MA, Caamano J, Palermo MS. Fibrinogen-CD11b/CD18 interaction activates the NF-kappa B pathway and delays apoptosis in human neutrophils. *European journal of immunology*. 2003;33(5):1429-38.
35. Perez RL, Roman J. Fibrin enhances the expression of IL-1 beta by human peripheral blood mononuclear cells. Implications in pulmonary inflammation. *Journal of immunology (Baltimore, Md : 1950)*. 1995;154(4):1879-87.
36. Perez RL, Ritzenthaler JD, Roman J. Transcriptional regulation of the interleukin-1beta promoter via fibrinogen engagement of the CD18 integrin receptor. *American journal of respiratory cell and molecular biology*. 1999;20(5):1059-66.

37. Blachere NE, Parveen S, Frank MO, Dill BD, Molina H, Orange DE. High-Titer Rheumatoid Arthritis Antibodies Preferentially Bind Fibrinogen Citrullinated by Peptidylarginine Deiminase 4. *Arthritis & rheumatology* (Hoboken, NJ). 2017;69(5):986-95.
38. Raijmakers R, van Beers JJ, El-Azzouny M, Visser NF, Bozic B, Pruijn GJ, et al. Elevated levels of fibrinogen-derived endogenous citrullinated peptides in synovial fluid of rheumatoid arthritis patients. *Arthritis Res Ther*. 2012;14(3):R114.
39. Zhao X, Okeke NL, Sharpe O, Batiwalla FM, Lee AT, Ho PP, et al. Circulating immune complexes contain citrullinated fibrinogen in rheumatoid arthritis. *Arthritis Res Ther*. 2008;10(4):R94.
40. Hill JA, Al-Bishri J, Gladman DD, Cairns E, Bell DA. Serum autoantibodies that bind citrullinated fibrinogen are frequently found in patients with rheumatoid arthritis. *The Journal of rheumatology*. 2006;33(11):2115-9.
41. Takizawa Y, Suzuki A, Sawada T, Ohsaka M, Inoue T, Yamada R, et al. Citrullinated fibrinogen detected as a soluble citrullinated autoantigen in rheumatoid arthritis synovial fluids. *Ann Rheum Dis*. 2006;65(8):1013-20.
42. Tarcsa E, Marekov LN, Mei G, Melino G, Lee SC, Steinert PM. Protein unfolding by peptidylarginine deiminase. Substrate specificity and structural relationships of the natural substrates trichohyalin and filaggrin. *The Journal of biological chemistry*. 1996;271(48):30709-16.
43. Masson-Bessiere C, Sebbag M, Girbal-Neuhauser E, Nogueira L, Vincent C, Senshu T, et al. The major synovial targets of the rheumatoid arthritis-specific antifilaggrin autoantibodies are deiminated forms of the alpha- and beta-chains of fibrin. *Journal of immunology* (Baltimore, Md : 1950). 2001;166(6):4177-84.
44. Damiana T, Damgaard D, Sidelmann JJ, Nielsen CH, de Maat MP, Münster A-MB, et al. Citrullination of fibrinogen by peptidylarginine deiminase 2 impairs fibrin clot structure. *Clinica Chimica Acta*. 2020;501:6-11.
45. Okumura N, Haneishi A, Terasawa F. Citrullinated fibrinogen shows defects in FPA and FPB release and fibrin polymerization catalyzed by thrombin. *Clinica chimica acta; international journal of clinical chemistry*. 2009;401(1-2):119-23.
46. Nakayama-Hamada M, Suzuki A, Furukawa H, Yamada R, Yamamoto K. Citrullinated fibrinogen inhibits thrombin-catalysed fibrin polymerization. *Journal of biochemistry*. 2008;144(3):393-8.
47. Bisioendial RJ, Levi M, Tak PP, Strokes ES. The prothrombotic state in rheumatoid arthritis: an additive risk factor for adverse cardiovascular events. *Seminars in thrombosis and hemostasis*. 2010;36(4):452-7.
48. Sanchez-Pernate O, Largo R, Calvo E, Alvarez-Soria MA, Egido J, Herrero-Beaumont G. A fibrin based model for rheumatoid synovitis. *Ann Rheum Dis*. 2003;62(12):1135-8.
49. Murdaca G, Colombo BM, Cagnati P, Gulli R, Spanò F, Puppo F. Endothelial dysfunction in rheumatic autoimmune diseases. *Atherosclerosis*. 2012;224(2):309-17.
50. Hoppe B, Dörner T. Coagulation and the fibrin network in rheumatic disease: a role beyond haemostasis. *Nature Reviews Rheumatology*. 2012;8(12):738-46.
51. Elshabrawy HA, Chen Z, Volin MV, Ravella S, Virupannavar S, Shahrara S. The pathogenic role of angiogenesis in rheumatoid arthritis. *Angiogenesis*. 2015;18(4):433-48.
52. Veale DJ, Maple C. Cell adhesion molecules in rheumatoid arthritis. *Drugs & aging*. 1996;9(2):87-92.
53. Paleolog EM. Angiogenesis in rheumatoid arthritis. *Arthritis research*. 2002;4 Suppl 3:S81-90.
54. Myasoedova E, Chandran A, Ilhan B, Major BT, Michet CJ, Matteson EL, et al. The role of rheumatoid arthritis (RA) flare and cumulative burden of RA severity in the risk of cardiovascular disease. *Ann Rheum Dis*. 2016;75(3):560-5.
55. Book C, Saxne T, Jacobsson LT. Prediction of mortality in rheumatoid arthritis based on disease activity markers. *The Journal of rheumatology*. 2005;32(3):430-4.

56. Aletaha D, Neogi T, Silman AJ, Funovits J, Felson DT, Bingham CO, 3rd, et al. 2010 rheumatoid arthritis classification criteria: an American College of Rheumatology/European League Against Rheumatism collaborative initiative. *Ann Rheum Dis*. 2010;69(9):1580-8.
57. Pretorius E, Swanepoel AC, DeVilliers S, Bester J. Blood clot parameters: Thromboelastography and scanning electron microscopy in research and clinical practice. *Thromb Res*. 2017;154:59-63.
58. Alamanos Y, Drosos AA. Epidemiology of adult rheumatoid arthritis. *Autoimmunity reviews*. 2005;4(3):130-6.
59. Aletaha D, Ward MM, Machold KP, Nell VP, Stamm T, Smolen JS. Remission and active disease in rheumatoid arthritis: defining criteria for disease activity states. *Arthritis and rheumatism*. 2005;52(9):2625-36.
60. Turk SM, Cansu DU, Teke HU, Kasifoglu T, Meltem Akay O, Bilgin M, et al. Can we predict thrombotic tendency in rheumatoid arthritis? A thromboelastographic analysis (with ROTEM). *Clin Rheumatol*. 2018;37(9):2341-9.
61. Wallberg-Jonsson S, Ohman M, Rantapaa-Dahlqvist S. Which factors are related to the presence of atherosclerosis in rheumatoid arthritis? *Scandinavian journal of rheumatology*. 2004;33(6):373-9.
62. Jonsson SW, Backman C, Johnson O, Karp K, Lundstrom E, Sundqvist KG, et al. Increased prevalence of atherosclerosis in patients with medium term rheumatoid arthritis. *The Journal of rheumatology*. 2001;28(12):2597-602.
63. Motohashi Y, Nakazawa T. [Blood coagulation, fibrinolysis and various values of Lansbury's activity index in rheumatoid arthritis patients]. *Arerugi = [Allergy]*. 1992;41(2 Pt 1):148-55.
64. Motohashi Y, Nakazawa T, Kojima A. [Analysis of blood coagulation and fibrinolysis in rheumatoid arthritis using the urokinase activated thromboelastography]. *Ryumachi [Rheumatism]*. 1992;32(2):123-30.
65. Gong H, Shi C, Zhou Z, Teng J, Sun Y, Yang C, et al. Evaluating hypercoagulability in new-onset systemic lupus erythematosus patients using thromboelastography. *Journal of clinical laboratory analysis*. 2019:e23157.
66. Collins KS, Balasubramaniam K, Viswanathan G, Natasari A, Tarn J, Lendrem D, et al. Assessment of blood clot formation and platelet receptor function ex vivo in patients with primary Sjogren's syndrome. *BMJ open*. 2013;3(5).
67. Yasar Bilge NS, Akay OM, Kasifoglu T, Kus G, Korkmaz C. The role of hemostatic mechanisms in the development of thrombosis in Behcet's disease: an analysis by modified rotation thromboelastogram (ROTEM). *Clin Rheumatol*. 2013;32(12):1815-8.
68. Damgaard D, Bawadekar M, Senolt L, Stensballe A, Shelef MA, Nielsen CH. Relative efficiencies of peptidylarginine deiminase 2 and 4 in generating target sites for anti-citrullinated protein antibodies in fibrinogen, alpha-enolase and histone H3. *PLoS One*. 2018;13(8):e0203214.
69. Rantapaa-Dahlqvist S, de Jong BA, Berglin E, Hallmans G, Wadell G, Stenlund H, et al. Antibodies against cyclic citrullinated peptide and IgA rheumatoid factor predict the development of rheumatoid arthritis. *Arthritis and rheumatism*. 2003;48(10):2741-9.
70. Nielen MM, van Schaardenburg D, Reesink HW, Van de Stadt RJ, van der Horst-Bruinsma IE, de Koning MH, et al. Specific autoantibodies precede the symptoms of rheumatoid arthritis: a study of serial measurements in blood donors. *Arthritis & Rheumatism: Official Journal of the American College of Rheumatology*. 2004;50(2):380-6.
71. Dessein PH, Joffe BI, Stanwix AE. High sensitivity C-reactive protein as a disease activity marker in rheumatoid arthritis. *The Journal of rheumatology*. 2004;31(6):1095-7.
72. Zhang J, Chen L, Delzell E, Muntner P, Hillegass WB, Safford MM, et al. The association between inflammatory markers, serum lipids and the risk of cardiovascular events in patients with rheumatoid arthritis. *Ann Rheum Dis*. 2014;73(7):1301-8.
73. Fay WP. Linking inflammation and thrombosis: Role of C-reactive protein. *World journal of cardiology*. 2010;2(11):365.
74. Badimon L, Pena E, Arderiu G, Padro T, Slevin M, Vilahur G, et al. C-Reactive Protein in Atherothrombosis and Angiogenesis. *Front Immunol*. 2018;9:430.

75. Cermak J, Key NS, Bach RR, Balla J, Jacob HS, Vercellotti GM. C-reactive protein induces human peripheral blood monocytes to synthesize tissue factor. *Blood*. 1993;82(2):513-20.
76. Cirillo P, Golino P, Calabro P, Cali G, Ragni M, De Rosa S, et al. C-reactive protein induces tissue factor expression and promotes smooth muscle and endothelial cell proliferation. *Cardiovascular research*. 2005;68(1):47-55.
77. Cai H, Song C, Endoh I, Goyette J, Jessup W, Freedman SB, et al. Serum amyloid A induces monocyte tissue factor. *Journal of immunology (Baltimore, Md : 1950)*. 2007;178(3):1852-60.
78. Cai X, Freedman SB, Witting PK. Serum amyloid A stimulates cultured endothelial cells to migrate and proliferate: inhibition by the multikinase inhibitor BIBF1120. *Clinical and experimental pharmacology & physiology*. 2013;40(9):662-70.
79. Song C, Shen Y, Yamen E, Hsu K, Yan W, Witting PK, et al. Serum amyloid A may potentiate prothrombotic and proinflammatory events in acute coronary syndromes. *Atherosclerosis*. 2009;202(2):596-604.
80. Witting PK, Song C, Hsu K, Hua S, Parry SN, Aran R, et al. The acute-phase protein serum amyloid A induces endothelial dysfunction that is inhibited by high-density lipoprotein. *Free radical biology & medicine*. 2011;51(7):1390-8.
81. Zhao Y, Zhou S, Heng CK. Impact of serum amyloid A on tissue factor and tissue factor pathway inhibitor expression and activity in endothelial cells. *Arteriosclerosis, thrombosis, and vascular biology*. 2007;27(7):1645-50.
82. Ji Y, Fish PM, Strawn TL, Lohman AW, Wu J, Szalai AJ, et al. C-reactive protein induces expression of tissue factor and plasminogen activator inhibitor-1 and promotes fibrin accumulation in vein grafts. *Journal of thrombosis and haemostasis : JTH*. 2014;12(10):1667-77.
83. Wu J, Stevenson MJ, Brown JM, Grunz EA, Strawn TL, Fay WP. C-reactive protein enhances tissue factor expression by vascular smooth muscle cells: mechanisms and in vivo significance. *Arteriosclerosis, thrombosis, and vascular biology*. 2008;28(4):698-704.
84. Pasceri V, Willerson JT, Yeh ET. Direct proinflammatory effect of C-reactive protein on human endothelial cells. *Circulation*. 2000;102(18):2165-8.
85. Verma S, Li SH, Badiwala MV, Weisel RD, Fedak PW, Li RK, et al. Endothelin antagonism and interleukin-6 inhibition attenuate the proatherogenic effects of C-reactive protein. *Circulation*. 2002;105(16):1890-6.
86. van den Berg CW, Taylor KE. Letter in response to Bisoesndial et al: "activation of inflammation and coagulation after infusion of C-reactive protein in humans". *Circulation research*. 2005;97(1):e2.
87. Papa R, Lachmann HJ. Secondary, AA, Amyloidosis. *Rheumatic diseases clinics of North America*. 2018;44(4):585-603.
88. Koivuniemi R, Paimela L, Suomalainen R, Tornroth T, Leirisalo-Repo M. Amyloidosis is frequently undetected in patients with rheumatoid arthritis. *Amyloid : the international journal of experimental and clinical investigation : the official journal of the International Society of Amyloidosis*. 2008;15(4):262-8.
89. Koivuniemi R, Paimela L, Suomalainen R, Leirisalo-Repo M. Amyloidosis as a cause of death in patients with rheumatoid arthritis. *Clinical and experimental rheumatology*. 2008;26(3):408-13.
90. Tanaka F, Migita K, Kawabe Y, Aoyagi T, Ida H, Kawakami A, et al. Interleukin-18 induces serum amyloid A (SAA) protein production from rheumatoid synovial fibroblasts. *Life sciences*. 2004;74(13):1671-9.
91. O'Hara R, Murphy EP, Whitehead AS, FitzGerald O, Bresnihan B. Acute-phase serum amyloid A production by rheumatoid arthritis synovial tissue. *Arthritis research*. 2000;2(2):142-4.
92. O'Hara R, Murphy EP, Whitehead AS, FitzGerald O, Bresnihan B. Local expression of the serum amyloid A and formyl peptide receptor-like 1 genes in synovial tissue is associated with matrix metalloproteinase production in patients with inflammatory arthritis. *Arthritis and rheumatism*. 2004;50(6):1788-99.



93. Kumon Y, Suehiro T, Hashimoto K, Nakatani K, Sipe JD. Local expression of acute phase serum amyloid A mRNA in rheumatoid arthritis synovial tissue and cells. *The Journal of rheumatology*. 1999;26(4):785-90.
94. Momohara S, Okamoto H, Yamanaka H. Chondrocyte of rheumatoid arthritis serve as a source of intra-articular acute-phase serum amyloid A protein. *Clinica chimica acta; international journal of clinical chemistry*. 2008;398(1-2):155-6.
95. Mullan RH, Bresnihan B, Golden-Mason L, Markham T, O'Hara R, FitzGerald O, et al. Acute-phase serum amyloid A stimulation of angiogenesis, leukocyte recruitment, and matrix degradation in rheumatoid arthritis through an NF-kappaB-dependent signal transduction pathway. *Arthritis and rheumatism*. 2006;54(1):105-14.
96. Connolly M, Rooney PR, McGarry T, Maratha AX, McCormick J, Miggin SM, et al. Acute serum amyloid A is an endogenous TLR2 ligand that mediates inflammatory and angiogenic mechanisms. *Ann Rheum Dis*. 2016;75(7):1392-8.
97. Dessein PH, Joffe BI, Singh S. Biomarkers of endothelial dysfunction, cardiovascular risk factors and atherosclerosis in rheumatoid arthritis. *Arthritis Res Ther*. 2005;7(3):R634-43.
98. Tsakadze NL, Zhao Z, D'Souza SE. Interactions of intercellular adhesion molecule-1 with fibrinogen. *Trends in cardiovascular medicine*. 2002;12(3):101-8.
99. Sriramarao P, Languino LR, Altieri DC. Fibrinogen mediates leukocyte-endothelium bridging in vivo at low shear forces. *Blood*. 1996;88(9):3416-23.
100. Sans E, Delachanal E, Duperray A. Analysis of the roles of ICAM-1 in neutrophil transmigration using a reconstituted mammalian cell expression model: implication of ICAM-1 cytoplasmic domain and Rho-dependent signaling pathway. *Journal of immunology (Baltimore, Md : 1950)*. 2001;166(1):544-51.
101. Languino LR, Plescia J, Duperray A, Brian AA, Plow EF, Geltosky JE, et al. Fibrinogen mediates leukocyte adhesion to vascular endothelium through an ICAM-1-dependent pathway. *Cell*. 1993;73(7):1423-34.
102. Bombeli T, Schwartz BR, Harlan JM. Adhesion of activated platelets to endothelial cells: evidence for a GPIIb/IIIa-dependent bridging mechanism and novel roles for endothelial intercellular adhesion molecule 1 (ICAM-1), alpha v beta 3 integrin, and GPIIb/IIIa. *The Journal of experimental medicine*. 1998;187(3):329-39.
103. Massberg S, Enders G, Matos FC, Tomic LI, Leiderer R, Eisenmenger S, et al. Fibrinogen deposition at the postischemic vessel wall promotes platelet adhesion during ischemia-reperfusion in vivo. *Blood*. 1999;94(11):3829-38.
104. Khandoga A, Biberthaler P, Enders G, Axmann S, Hutter J, Messmer K, et al. Platelet adhesion mediated by fibrinogen-intercellular adhesion molecule-1 binding induces tissue injury in the postischemic liver in vivo. *Transplantation*. 2002;74(5):681-8.
105. Lominadze D, Tsakadze N, Sen U, Falcone JC, D'Souza SE. Fibrinogen and fragment D-induced vascular constriction. *American journal of physiology Heart and circulatory physiology*. 2005;288(3):H1257-64.
106. Sen U, Tyagi N, Patibandla PK, Dean WL, Tyagi SC, Roberts AM, et al. Fibrinogen-induced endothelin-1 production from endothelial cells. *American journal of physiology Cell physiology*. 2009;296(4):C840-7.
107. Schmid E, Muller TH, Budzinski RM, Binder K, Pfizenmaier K. Signaling by E-selectin and ICAM-1 induces endothelial tissue factor production via autocrine secretion of platelet-activating factor and tumor necrosis factor alpha. *Journal of interferon & cytokine research : the official journal of the International Society for Interferon and Cytokine Research*. 1995;15(9):819-25.
108. Cybulsky MI, Iiyama K, Li H, Zhu S, Chen M, Iiyama M, et al. A major role for VCAM-1, but not ICAM-1, in early atherosclerosis. *The Journal of clinical investigation*. 2001;107(10):1255-62.
109. Elices MJ, Osborn L, Takada Y, Crouse C, Luhowskyj S, Hemler ME, et al. VCAM-1 on activated endothelium interacts with the leukocyte integrin VLA-4 at a site distinct from the VLA-4/fibronectin binding site. *Cell*. 1990;60(4):577-84.

110. Karon BS. Why is everyone so excited about thromboelastography (TEG)? *Clinica chimica acta; international journal of clinical chemistry*. 2014;436:143-8.
111. Yao X, Dong Q, Song Y, Wang Y, Deng Y, Li Y. Thrombelastography maximal clot strength could predict one-year functional outcome in patients with ischemic stroke. *Cerebrovascular diseases (Basel, Switzerland)*. 2014;38(3):182-90.
112. Harr JN, Moore EE, Ghasabyan A, Chin TL, Sauaia A, Banerjee A, et al. Functional fibrinogen assay indicates that fibrinogen is critical in correcting abnormal clot strength following trauma. *Shock (Augusta, Ga)*. 2013;39(1):45-9.
113. de Waal GM, Engelbrecht L, Davis T, de Villiers WJS, Kell DB, Pretorius E. Correlative Light-Electron Microscopy detects lipopolysaccharide and its association with fibrin fibres in Parkinson's Disease, Alzheimer's Disease and Type 2 Diabetes Mellitus. *Sci Rep*. 2018;8(1):16798.
114. Pretorius E, Page MJ, Hendricks L, Nkosi NB, Benson SR, Kell DB. Both lipopolysaccharide and lipoteichoic acids potently induce anomalous fibrin amyloid formation: assessment with novel Amytracker stains. *Journal of the Royal Society, Interface*. 2018;15(139).
115. Adams B, Nunes JM, Page MJ, Roberts T, Carr J, Nell TA, et al. Parkinson's Disease: A Systemic Inflammatory Disease Accompanied by Bacterial Inflammagens. *Front Aging Neurosci*. 2019;11:210-.
116. Undas A, Ariens RA. Fibrin clot structure and function: a role in the pathophysiology of arterial and venous thromboembolic diseases. *Arteriosclerosis, thrombosis, and vascular biology*. 2011;31(12):e88-99.
117. Li W, Sigley J, Pieters M, Helms CC, Nagaswami C, Weisel JW, et al. Fibrin Fiber Stiffness Is Strongly Affected by Fiber Diameter, but Not by Fibrinogen Glycation. *Biophysical journal*. 2016;110(6):1400-10.
118. Undas A. Fibrin clot properties and their modulation in thrombotic disorders. *Thrombosis and haemostasis*. 2014;112(1):32-42.
119. Vranic A, Pruner I, Veselinovic M, Soutari N, Petkovic A, Jakovljevic V, et al. Assessment of hemostatic disturbances in women with established rheumatoid arthritis. *Clin Rheumatol*. 2019;38(11):3005-14.
120. Bucay I, O'Brien ET, 3rd, Wulfe SD, Superfine R, Wolberg AS, Falvo MR, et al. Physical determinants of fibrinolysis in single fibrin fibers. *PLoS One*. 2015;10(2):e0116350.
121. de Villiers S, Bester J, Kell DB, Pretorius E. A Possible Role of Amyloidogenic Blood Clotting in the Evolving Haemodynamics of Female Migraine-With-Aura: Results From a Pilot Study. *Front Neurol*. 2019;10:1262-.
122. Pretorius E, Bester J, Page MJ, Kell DB. The Potential of LPS-Binding Protein to Reverse Amyloid Formation in Plasma Fibrin of Individuals With Alzheimer-Type Dementia. *Front Aging Neurosci*. 2018;10:257.
123. Pretorius E, Page MJ, Engelbrecht L, Ellis GC, Kell DB. Substantial fibrin amyloidogenesis in type 2 diabetes assessed using amyloid-selective fluorescent stains. *Cardiovasc Diabetol*. 2017;16(1):141.
124. Pretorius E, Mbotwe S, Bester J, Robinson CJ, Kell DB. Acute induction of anomalous and amyloidogenic blood clotting by molecular amplification of highly substoichiometric levels of bacterial lipopolysaccharide. *Journal of the Royal Society, Interface*. 2016;13(122):20160539.
125. Rambaran RN, Serpell LC. Amyloid fibrils: abnormal protein assembly. *Prion*. 2008;2(3):112-7.
126. Gyorgy B, Toth E, Tarcsa E, Falus A, Buzas EI. Citrullination: a posttranslational modification in health and disease. *Int J Biochem Cell Biol*. 2006;38(10):1662-77.
127. Fujisaki M, Sugawara K. Properties of peptidylarginine deiminase from the epidermis of newborn rats. *The Journal of Biochemistry*. 1981;89(1):257-63.
128. Foulquier C, Sebbag M, Clavel C, Chapuy-Regaud S, Al Badine R, Mechin MC, et al. Peptidyl arginine deiminase type 2 (PAD-2) and PAD-4 but not PAD-1, PAD-3, and PAD-6 are expressed in rheumatoid arthritis synovium in close association with tissue inflammation. *Arthritis and rheumatism*. 2007;56(11):3541-53.

129. Robinson WH, Sokolove J. Citrullination of fibrinogen: generation of neoepitopes and enhancement of immunostimulatory properties. *Arthritis Research & Therapy*. 2012;14(Suppl 1):O30-O.
130. Blachère NE, Parveen S, Frank MO, Dill BD, Molina H, Orange DE. High-Titer Rheumatoid Arthritis Antibodies Preferentially Bind Fibrinogen Citrullinated by Peptidylarginine Deiminase 4. *Arthritis & rheumatology (Hoboken, NJ)*. 2017;69(5):986-95.
131. Zhao X, Okeke NL, Sharpe O, Batliwalla FM, Lee AT, Ho PP, et al. Circulating immune complexes contain citrullinated fibrinogen in rheumatoid arthritis. *Arthritis research & therapy*. 2008;10(4):R94-R.
132. Yue D, Brintnell W, Mannik LA, Christie DA, Haeryfar SM, Madrenas J, et al. CTLA-4lg blocks the development and progression of citrullinated fibrinogen-induced arthritis in DR4-transgenic mice. *Arthritis and rheumatism*. 2010;62(10):2941-52.
133. Cordova KN, Willis VC, Haskins K, Holers VM. A citrullinated fibrinogen-specific T cell line enhances autoimmune arthritis in a mouse model of rheumatoid arthritis. *Journal of immunology (Baltimore, Md : 1950)*. 2013;190(4):1457-65.
134. Sanchez-Pernaute O, Filkova M, Gabucio A, Klein M, Maciejewska-Rodrigues H, Ospelt C, et al. Citrullination enhances the pro-inflammatory response to fibrin in rheumatoid arthritis synovial fibroblasts. *Ann Rheum Dis*. 2013;72(8):1400-6.
135. Varju I, Kolev K. Networks that stop the flow: A fresh look at fibrin and neutrophil extracellular traps. *Thromb Res*. 2019;182:1-11.
136. Sebbag M, Moinard N, Auger I, Clavel C, Arnaud J, Nogueira L, et al. Epitopes of human fibrin recognized by the rheumatoid arthritis-specific autoantibodies to citrullinated proteins. *European journal of immunology*. 2006;36(8):2250-63.
137. Travers TS, Harlow L, Rosas IO, Gochuico BR, Mikuls TR, Bhattacharya SK, et al. Extensive Citrullination Promotes Immunogenicity of HSP90 through Protein Unfolding and Exposure of Cryptic Epitopes. *Journal of immunology (Baltimore, Md : 1950)*. 2016;197(5):1926-36.
138. Damiana T, Damgaard D, Sidelmann JJ, Nielsen CH, de Maat MPM, Munster AB, et al. Citrullination of fibrinogen by peptidylarginine deiminase 2 impairs fibrin clot structure. *Clinica chimica acta; international journal of clinical chemistry*. 2020;501:6-11.
139. Kern A, Balog A, Dulic S, Barabas E, Kizselak M, Vasarhelyi B. Alterations of the thrombin generation profile in rheumatoid arthritis. *J Thromb Thrombolysis*. 2016;41(3):359-64.
140. Chang X, Yamada R, Sawada T, Suzuki A, Kochi Y, Yamamoto K. The inhibition of antithrombin by peptidylarginine deiminase 4 may contribute to pathogenesis of rheumatoid arthritis. *Rheumatology (Oxford, England)*. 2005;44(3):293-8.
141. Tilvawala R, Nguyen SH, Maurais AJ, Nemmara VV, Nagar M, Salinger AJ, et al. The Rheumatoid Arthritis-Associated Citrullinome. *Cell chemical biology*. 2018;25(6):691-704.e6.
142. Osaki D, Hiramatsu H. Citrullination and deamidation affect aggregation properties of amyloid beta-proteins. *Amyloid : the international journal of experimental and clinical investigation : the official journal of the International Society of Amyloidosis*. 2016;23(4):234-41.
143. Araman C, van Gent ME, Meeuwenoord NJ, Heijmans N, Marqvorsen MHS, Doelman W, et al. Amyloid-like Behavior of Site-Specifically Citrullinated Myelin Oligodendrocyte Protein (MOG) Peptide Fragments inside EBV-Infected B-Cells Influences Their Cytotoxicity and Autoimmunogenicity. *Biochemistry*. 2019;58(6):763-75.