

# The axolotl genome and the evolution of key tissue formation regulators

Sergej Nowoshilow<sup>1,2,3,†\*</sup>, Siegfried Schloissnig<sup>4\*</sup>, Ji-Feng Fei<sup>5\*</sup>, Andreas Dahl<sup>3,6</sup>, Andy W. C. Pang<sup>7</sup>, Martin Pippel<sup>4</sup>, Sylke Winkler<sup>1</sup>, Alex R. Hastie<sup>7</sup>, George Young<sup>8</sup>, Juliana G. Roscito<sup>1,9,10</sup>, Francisco Falcon<sup>11</sup>, Dunja Knapp<sup>3</sup>, Sean Powell<sup>4</sup>, Alfredo Cruz<sup>11</sup>, Han Cao<sup>7</sup>, Bianca Habermann<sup>12</sup>, Michael Hiller<sup>1,9,10</sup>, Elly M. Tanaka<sup>1,2,3,†</sup> & Eugene W. Myers<sup>1,10</sup>

**Salamanders serve as important tetrapod models for developmental, regeneration and evolutionary studies. An extensive molecular toolkit makes the Mexican axolotl (*Ambystoma mexicanum*) a key representative salamander for molecular investigations. Here we report the sequencing and assembly of the 32-gigabase-pair axolotl genome using an approach that combined long-read sequencing, optical mapping and development of a new genome assembler (MARVEL). We observed a size expansion of introns and intergenic regions, largely attributable to multiplication of long terminal repeat retroelements. We provide evidence that intron size in developmental genes is under constraint and that species-restricted genes may contribute to limb regeneration. The axolotl genome assembly does not contain the essential developmental gene *Pax3*. However, mutation of the axolotl *Pax3* paralogue *Pax7* resulted in an axolotl phenotype that was similar to those seen in *Pax3*<sup>-/-</sup> and *Pax7*<sup>-/-</sup> mutant mice. The axolotl genome provides a rich biological resource for developmental and evolutionary studies.**

Salamanders boast an illustrious history in biological research as the animal in which the Spemann organizer<sup>1</sup> and Sperry's chemoaffinity theory of axonal guidance<sup>2</sup> were discovered. Since 1768, when Spallanzani discovered tail and limb regeneration, researchers have probed this animal's remarkable regenerative capabilities with increasing molecular resolution. *A. mexicanum* (Fig. 1a) was first collected by von Humboldt, and has been cultivated in the laboratory since 1864 as a model for investigating phenomena such as nuclear reprogramming, the embryology of germ-cell induction, retinal neuron processing and regeneration<sup>3</sup>. Owing to the ease with which *A. mexicanum* can be bred in the laboratory, a sophisticated molecular toolkit has been developed for this species, including germline transgenesis and CRISPR-mediated gene mutation as well as viral and other transfection methods. These tools have enabled discoveries such as the identification of the source cells of regeneration and molecular pathways that control regeneration<sup>4,5</sup>. A full exploitation of the axolotl model, including understanding regeneration and why it is limited in other tetrapods, requires analysis of its genome regulation and evolution. However, efforts towards comprehensive assembly of salamander genomes have been challenging owing to their large genome sizes (14–120 Gb) and the large number of repetitive regions they contain; the 32-Gb axolotl genome is ten times the size of the human genome. Here we report the sequencing, assembly and analysis of the axolotl genome.

## A long-read assembler for large genomes

Our aim was to generate a genome sequence assembly for the d/d axolotl strain (Fig. 1a), which is commonly used in laboratory regeneration studies owing to its compatibility with live imaging. Taking into consideration the expected challenge of assembling the complex 32-Gb genome<sup>6</sup>, we sequenced 110 million long reads (32× coverage, N50 read length

14.2 kb) using Pacific Biosciences (PacBio) instruments (Supplementary Information section 1) to avoid the read sampling bias that is often found when using other technologies and to span repeat-rich genomic regions that cause breaks in short-read assemblies (Fig. 1b, c).

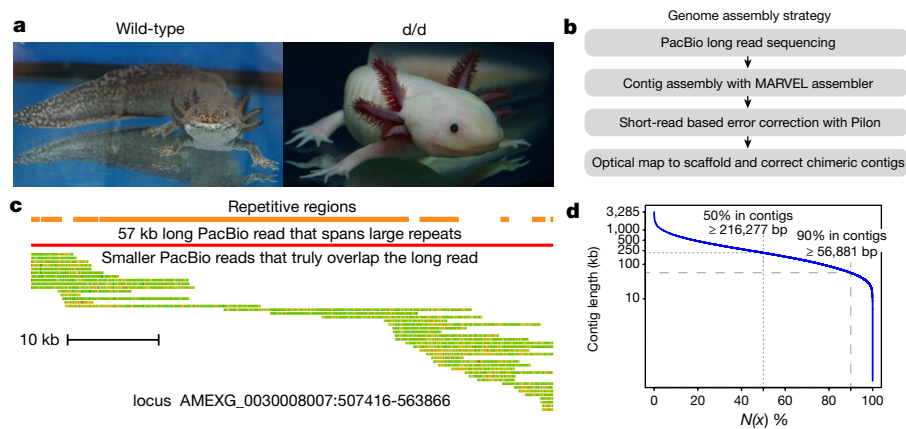
We developed an assembly algorithm (MARVEL) that integrates a two-phase read-correction procedure that keeps long PacBio reads intact for assembly (Supplementary Information section 2). MARVEL produced a contig assembly with an N50 of 218 kb. Next, we used 7× Illumina-based sequencing to correct sequence errors in 1% of the contig bases (Fig. 1b), which yielded a sequence accuracy of more than 99.2%. On the basis of the Illumina data, we estimated a heterozygosity of 0.47% (Supplementary Information section 2.2).

To provide a scaffold for the contig assembly, we generated *de novo* optical maps using the Bionano Saphyr system (Supplementary Information section 2.3). The Bionano map resolved contig chimaeras, which were found in 1.7% of contigs, slightly reducing N50 contig length to 216 kb (Fig. 1d). The final hybrid assembly yielded an N50 scaffold length of 3 Mb. Compared to the short-read assembly of the 20-Gb spruce genome<sup>7</sup> or the 22-Gb loblolly pine genome<sup>8</sup>, which involved 12× long-read coverage, the axolotl assembly showed 56- and 29-fold improvements in contiguity, respectively (Table 1).

To assess the completeness of the assembly (Supplementary Information section 4.1), we first determined the number of aligning non-exonic ultraconserved elements<sup>9</sup> (UCEs). We found that 194 (98.5%) of 197 non-exonic UCEs that are conserved across vertebrates align to the axolotl assembly. By comparison, 189 and 192 UCEs align to the Tibetan frog and *Xenopus* genomes, respectively, and 195 UCEs align to the coelacanth genome, indicating that the completeness of the axolotl genome assembly is comparable to or better than the two other amphibian genomes, which are smaller than 2.3 Gb<sup>10</sup>.

<sup>1</sup>Max Planck Institute of Molecular Cell Biology and Genetics, Dresden, Germany. <sup>2</sup>Research Institute of Molecular Pathology (IMP), Vienna Biocenter (VBC), Vienna, Austria. <sup>3</sup>DFG Research Center for Regenerative Therapies, Technische Universität Dresden, Dresden, Germany. <sup>4</sup>Heidelberg Institute for Theoretical Studies, Heidelberg, Germany. <sup>5</sup>Institute for Brain Research and Rehabilitation, South China Normal University, Guangzhou, China. <sup>6</sup>Deep Sequencing Group, Biotechnology Center (Biotec) Technische Universität Dresden, Dresden, Germany. <sup>7</sup>Bionano Genomics, San Diego, California, USA. <sup>8</sup>The Francis Crick Institute, London, UK. <sup>9</sup>Max Planck Institute for the Physics of Complex Systems, Dresden, Germany. <sup>10</sup>Center for Systems Biology, Dresden, Germany. <sup>11</sup>Molecular and Developmental Complexity Group, Unidad de Genómica Avanzada, Langebio-Cinvestav, Irapuato, Mexico. <sup>12</sup>IBDM – Institut de Biologie du Développement de Marseille, CNRS & Aix-Marseille Université, Marseille, France. <sup>†</sup>Present address: Research Institute of Molecular Pathology (IMP), Vienna Biocenter (VBC), Campus Vienna Biocenter 1, 1030 Vienna, Austria.

\*These authors contributed equally to this work.



**Figure 1 | Contiguity and completeness of the axolotl genome assembly.**

**a**, A wild-type *A. mexicanum* and the sequenced d/d *A. mexicanum* strain. **b**, The assembly strategy combines long-read sequencing, a novel assembler (MARVEL), error correction and scaffolding. **c**, A 57,385-bp PacBio read (red line) spans a large repetitive region (repeats are shown in orange; the

longest repeat is 34 kb) and, together with the other long reads shown below the long PacBio read, allows assembly of the locus (green-to-red colouring indicates alignment quality; repeat-induced alignments of reads belonging to other loci have been removed). **d**,  $N(x)$  plot shows the percentage of the genome ( $x$  axis) that consists of contigs of at least  $x$  kb ( $y$  axis).

To further assess the completeness of the assembly, we generated a comprehensive gene catalogue by sequencing mRNA from 22 tissues (Supplementary Information section 3). Tissue-specific transcriptome assemblies and a composite assembly of all 1.5 billion transcript reads resulted in 180,649 transcript contigs (Supplementary Table 6) that contained 99% of the conserved core eukaryotic genes<sup>11</sup> and achieved the highest BUSCO score (<http://busco.ezlab.org/>) of an axolotl transcriptome reported to date (Supplementary Information section 3.4). More than 85% of the transcripts aligned to the genome along at least 95% of their length (Supplementary Information section 3.5), confirming the high completeness of the assembly. Furthermore, 71% of transcript contigs in which more than 95% of the sequence aligned with the genome were located on single scaffolds, demonstrating the high contiguity of the assembly. Using this comprehensive transcript set, we annotated a total of 23,251 protein-coding genes in the axolotl genome, a similar number to those found in other vertebrate genomes (Supplementary Information section 4.2).

### Expansion of long terminal repeat retroelements

Given the similar number of genes in the *A. mexicanum* genome in comparison to other smaller vertebrate genomes, we analysed repetitive

sequences (Supplementary Information sections 4.2.2, 4.2.3). Repetitive sequences made up 65.6% of the contig assembly, representing a total of 18.6 Gb. Distinct long terminal repeat (LTR) retroelement classes and endogenous retroviruses made up the largest portion of the repetitive sequences (Fig. 2a, b, Supplementary Table 13) and included elements of more than 10 kb in length (Fig. 2c, Extended Data Fig. 1). Such long elements pose challenges for assembly, and indeed 97% of contigs ended in LTR elements. The number of substitutions to the repeat consensus, which is an estimate of the relative age of the LTR retroelement, indicates that the axolotl genome has undergone a long period of transposon activity followed by a recent and apparently continuing burst of expansion (Fig. 2d). This profile is consistent with previous small-scale characterizations of other salamander genomes<sup>12</sup>.

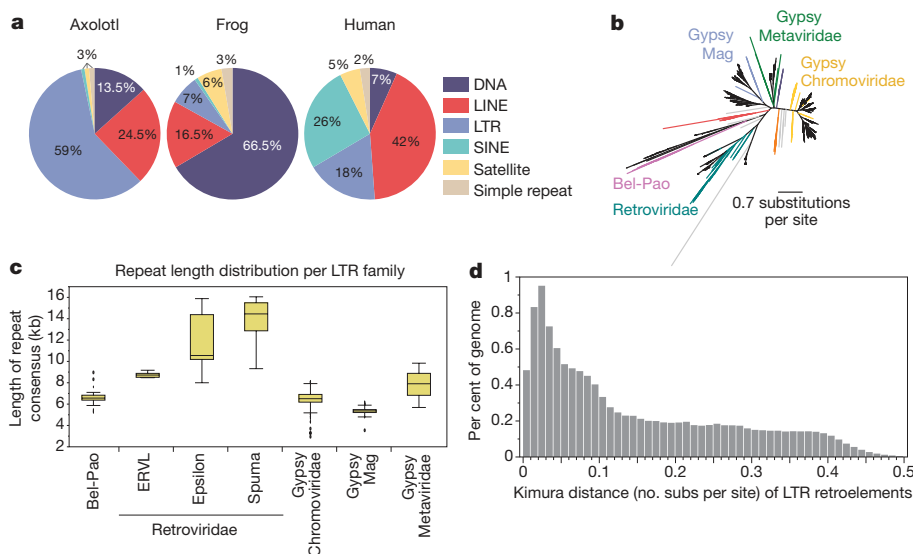
The presence of many repeated elements contributes to a median intron size (22,759 bp) 13, 16 and 25 times that observed in human (1,750 bp), mouse (1,469 bp) and frog (906 bp), respectively (Fig. 3a, Supplementary Information section 4.3), a trend that was previously observed in five genes obtained from selective bacterial artificial chromosome sequencing of the axolotl genome<sup>13</sup>. Figure 3b shows a typical gene organization in axolotl compared to its human orthologue. Consistent with intron expansion, a distance comparison of pairs of highly conserved non-exonic elements shows that intergenic regions in the axolotl genome are 12 to 17 times larger than those in human, mouse and frog (Supplementary Information section 4.4).

**Table 1 | Comparison of assembly contiguity statistics in axolotl, spruce and pine genomes**

	Axolotl ( <i>A. mexicanum</i> )	White spruce ( <i>Picea glauca</i> )	Loblolly pine ( <i>Pinus taeda</i> )
Assembly size (Gb)	32.4 (28.4 in contigs)	24.6	20.6
Genome size (Gb)	32	20	22
Chromosomes	14	12	12
Sequencing technology	PacBio; Optical map	Illumina; cDNAs	Illumina; PacBio; Fosmid DiTag
Coverage	32×	65×	68× Illumina; 12× PacBio
Assembler	MARVEL	ABYSS	MaSuRCA
Contig N50 (bp)	216,277	6,644	25,361
Number of contigs	217,461	5,252,090	2,445,689
Scaffold N50 (bp)	3,052,786	54,661	107,036
Number of scaffolds	125,724	3,033,322	1,496,869

### HoxA cluster and intron size constraints

To examine gene cluster organization within this large genomic context, we focused on the HoxA locus, which has an important role in proximal-to-distal limb development and is reactivated during limb regeneration<sup>14,15</sup>. The entire HoxA locus is contained on a single contig (Fig. 3c), and the conserved neighbouring gene *Evx1* is contained on the same 3.34-Mb scaffold. Compared to the orthologous human and frog clusters, the *A. mexicanum* HoxA cluster has a substantially increased repeat content and is 3.5 times larger, mostly owing to a 170-kb expansion between *HoxA3* and *HoxA4* (Fig. 3c). Notably, highly conserved non-exonic elements that putatively overlap cis-regulatory elements are not interspersed in this 170-kb region, but remain in proximity to *HoxA3* and *HoxA4*. The axolotl has a typical HoxA gene structure, with two coding exons separated by an intron. Notably, in contrast to the overall expansion of intron sizes, the intron sizes in the axolotl HoxA locus are very similar to those in other vertebrates, with the exception of *AmHoxA3*, which is also the longest of the HoxA genes in other tetrapods (Supplementary Table 17). Selected HoxC and HoxD genes examined in the red spotted newt exhibited similar properties<sup>16</sup>.



**Figure 2 | The axolotl genome contains an expansion of LTR retroelements.** **a**, Pie charts of major repeat classes (LINE, long interspersed nuclear elements; SINE, short interspersed nuclear elements) show an abundance of LTR elements. **b**, Phylogenetic tree of axolotl LTR-element clusters (black) and all LTR elements from GyDB2.0<sup>37</sup>. Annotated clusters are indicated by colour, non-annotated clusters are in grey. Note that Errantiviridae (blue), Caulimoviridae (red) and Athila/Tat (orange) families are not found. **c**, Box plots show the length distribution of LTR families (ERVL, endogenous retrovirus-like). Boxes indicate the first quartile, the median and the third quartile with whiskers extending up to 1.5 times the interquartile distance. Outliers are defined as data points outside the whiskers and are shown as dots. Quantitative data and sample sizes are shown in Source Data. **d**, Relative age (Kimura distance) suggests prolonged transposition activity followed by a recent activity burst.

On the basis of these observations, we examined the intron size distribution among a larger set of orthologous genes involved in developmental processes. While introns of non-developmental genes in axolotl show a median size expansion of 13- to 25-fold compared to human, mouse and frog, the expansion of introns of developmental genes is significantly lower (6- to 11-fold,  $P < 10^{-11}$ ) (Fig. 3a, Supplementary Information section 4.3). In contrast to human, mouse and frog, introns of developmental genes in axolotl are shorter than introns of non-developmental genes. Furthermore, axolotl multi-exon genes that contain only short introns exhibit gene ontology enrichments related to developmental patterning that are not enriched in multi-exon genes with larger introns (Supplementary Table 16). These results suggest that intron size in developmental genes is under constraint in the axolotl, possibly because smaller gene sizes facilitate rapid transcription and thus upregulation of these genes in specific developmental contexts.

### A reduced Pax-family complement

Next, we interrogated the genome for families of canonical developmental signalling molecules (Supplementary Information section 5). All three hedgehog paralogs as well as a full set of vertebrate Wnt genes were present (Extended Data Fig. 2a, b). However, we noted that certain members of the paired box family of transcription factors, which have diverse roles in tissue formation, were not found in the assembly. Consistent with the absence of *Pax4* in amphibians and other vertebrate lineages<sup>17</sup>, the axolotl genome does not contain *Pax4* but does contain *Pax10*. Notably, despite the presence of the *Pax3* and *Pax7* paralogs in all other known vertebrate lineages, we were able to identify *Pax7* but not *Pax3* in the axolotl genome assembly (Extended Data Fig. 2c). No *Pax3* sequence was found in either the raw PacBio sequencing reads or the transcriptome. To confirm the loss of *Pax3*, we further examined the genomic region that would be syntenic for *Pax3* for the presence of neighbouring genes and highly-conserved non-exonic elements (CNEs). The orthologues of genes surrounding mouse *Pax3* (*Sgpp2* and *Epha4*) were present in the *A. mexicanum* genome assembly; however, neither the *Pax3* gene nor any of the *Pax3*-associated CNEs were found (Fig. 3d). By contrast, several CNEs that overlap the *Pax7* gene were identified in the assembly. Together, this evidence strongly suggests that *Pax3* and several of its *cis*-regulatory

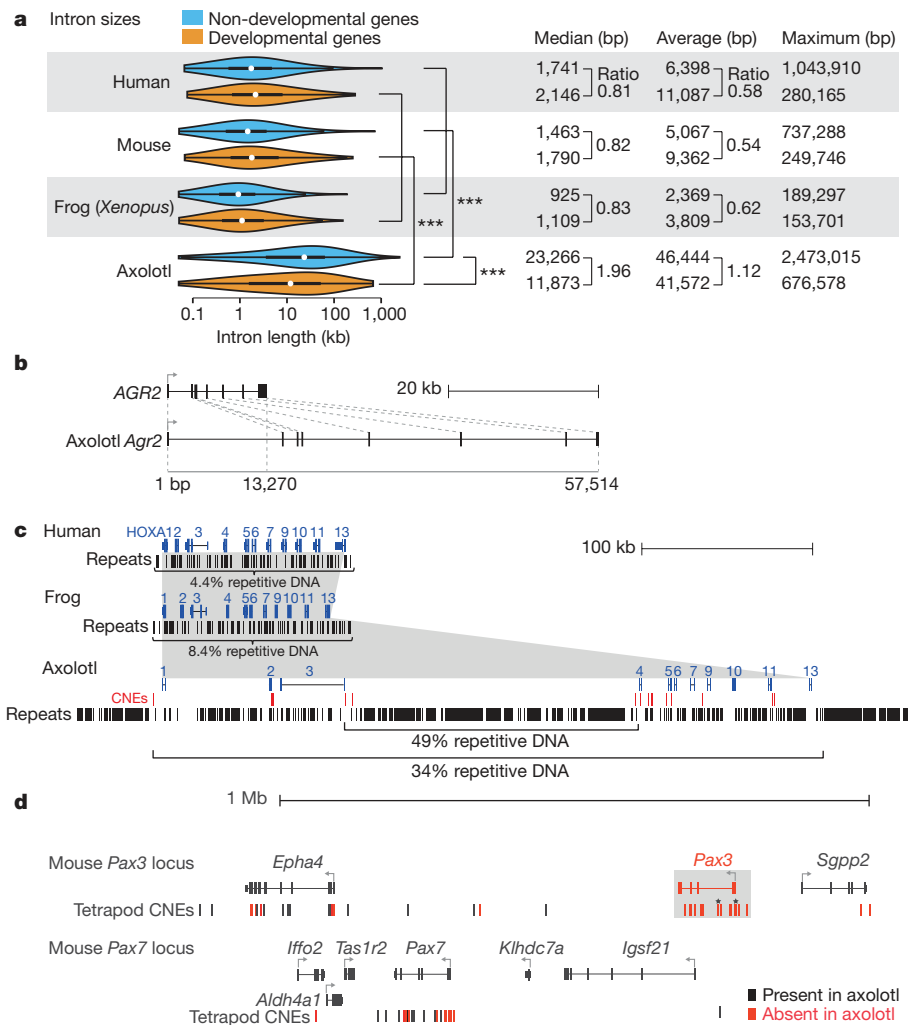
families are not found. **c**, Box plots show the length distribution of LTR families (ERVL, endogenous retrovirus-like). Boxes indicate the first quartile, the median and the third quartile with whiskers extending up to 1.5 times the interquartile distance. Outliers are defined as data points outside the whiskers and are shown as dots. Quantitative data and sample sizes are shown in Source Data. **d**, Relative age (Kimura distance) suggests prolonged transposition activity followed by a recent activity burst.

elements are absent in the axolotl genome, probably owing to a deletion.

### Axolotl *Pax7* has similar functions to *Pax3*

To functionally assess the consequence of the absence of *Pax3* in the axolotl, we used TALEN- and CRISPR-mediated gene editing<sup>18</sup> to mutate *Pax7*. In other vertebrates, *Pax3* and *Pax7* play key roles in muscle, neural tube and neural crest-derived tissue development<sup>19</sup>. Although these two genes share some common functions, deletion of *Pax3* or *Pax7* causes distinct phenotypes in mice<sup>20–22</sup>. We investigated whether frameshift deletions introduced into the *AmPax7* gene would yield a comparable *Pax7* phenotype, or whether *AmPax7* may have taken on functions that are carried out by *Pax3* in other vertebrates. Two different TALEN-mutant alleles (7-nt and 20-nt deletions) of *AmPax7* were bred through two generations (Fig. 4a, Supplementary Information section 6). In the F2 generation, the developmental phenotype described below was observed in 83 out of 345 (24%) progeny from the *Pax7*<sup>Δ20nt/+</sup> intercrossing and 57 of 232 (24.6%) progeny from the *Pax7*<sup>Δ7nt/+</sup> intercrossing (Fig. 4b, Extended Data Fig. 3). The phenotype was evident in homozygous mutants, as analysed by PCR and loss of protein (Supplementary Information sections 6.1, 6.3). This information, combined with the CRISPR-mediated gene mutation results (Supplementary Information sections 6.2), shows that the homozygous *Pax7*<sup>Δ20nt/Δ20nt</sup> and *Pax7*<sup>Δ7nt/Δ7nt</sup> mutants represent recessive, complete or partial loss of *Pax7* function.

The *Pax7*<sup>Δ20nt/Δ20nt</sup> and strong F0 *Pax7*-CRISPR mutants exhibited a curved body, were unable to maintain an erect posture and exhibited a delay in growth compared to controls. Immunohistochemical analysis of trunk or tail cross-sections of early stage, 20-day-old *Pax7*<sup>Δ20nt/Δ20nt</sup> or 17-day-old F0 *Pax7*-CRISPR axolotls showed normal muscle mass. However, at later stages, consistent with the mouse *Pax7* deletion phenotype, tail and trunk muscles were greatly decreased (Fig. 4c, Extended Data Figs 4–6). Remarkably, the *Pax7* mutant axolotls also completely lacked limb muscle (Figs 4d, Extended Data Fig. 7). In mice, *Pax3*, but not *Pax7*, is required for limb muscle formation<sup>21–23</sup> (Supplementary Table 18). These results demonstrate that *AmPax7* has comparable functions to *MmPax3* in the control of limb muscle genesis.



**Figure 3 | Genome organization and loss of *Pax3*.** **a**, Intron size of developmental genes appears to be under constraint in *A. mexicanum*. Violin plots represent the full distribution of intron sizes (thick bar, first to third quartile; white dot, median). \*\*\* $P < 10^{-11}$ ; two-sided Wilcoxon rank-sum tests. Quantitative data are shown in Source Data. **b**, Organization of the *Agr2* exon–intron structure shows a consistent expansion of axolotl intron sizes compared to those in the human

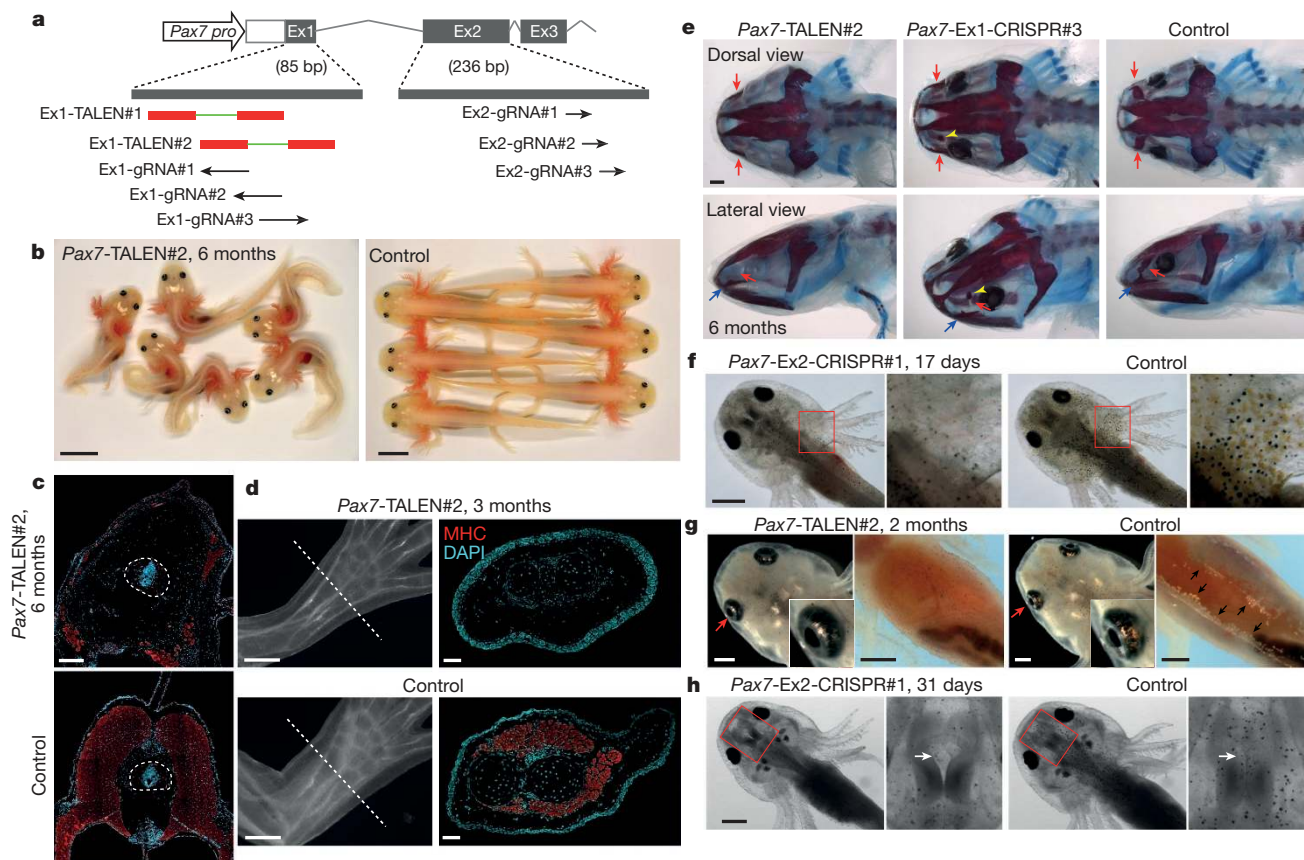
In mice, *Pax7* deletion affects craniofacial neural crest derivatives, including the facial bones<sup>20</sup>, whereas in zebrafish, *pax7* mutants show loss of xanthophores and reduction of melanophores, but no loss of iridophores<sup>24</sup>. The Am*Pax7* mutants lacked a prefrontal bone, had a reduced number of melanophores and were deficient in xanthophores and iridophores except in the eyes (Fig. 4e–g, Extended Data Fig. 8). *Pax3* deletion in mice is associated with neural tube closure defects<sup>22,23</sup> (Supplementary Table 18). Similarly, *Pax7* <sup>$\Delta 20nt/\Delta 20nt$</sup> -TALEN and *Pax7*-CRISPR axolotls displayed failed closure of the neural tube in the midbrain (Fig. 4h, Extended Data Fig. 9). In summary, mutation of Am*Pax7* yields a combination of the *Pax3*- and *Pax7*-mutant phenotypes that are observed in other vertebrates (Supplementary Information section 6). It will be interesting to understand how the regulation of *Pax7* has changed in axolotl to enable the loss of *Pax3*, which is essential in other vertebrates.

### Species-restricted genes in regeneration

Previous searches for mRNA and microRNA (miRNA) transcripts associated with limb regeneration relied on mapping to *de novo* transcriptome assemblies. We sought to re-examine these datasets using our newly acquired genomic data. Recent functional work has highlighted the role of diverged gene or protein function during regeneration<sup>25–27</sup>. Analysis of published tissue-enriched datasets<sup>28</sup>,

orthologue, resulting in a gene that is 4.3 times larger. **c**, Comparison of genes and repetitive elements in the HoxA cluster. CNEs that align to the axolotl HoxA cluster are shown in red. **d**, Axolotl lacks the *Pax3* locus. Analysis of tetrapod-conserved genes and CNEs associated with *Pax7* and *Pax3* genomic loci. Red, gene sequences and CNEs that are absent in axolotl; \*CNEs that overlap well-characterized mouse *Pax3* enhancers<sup>38,39</sup>.

combined with regeneration time courses<sup>29,30</sup> and our own transcriptional profiling of 22 tissues, identified five transcripts that are upregulated in the limb blastema (the mass of proliferating cells involved in regenerating the limb) with orthology limited to non-amniote vertebrates (Supplementary Information section 7). One of these protein sequences shows a weak similarity to tectorin, a basement membrane component normally found in the inner ear, consistent with studies that implicate extracellular matrix components with having an important role in limb regeneration<sup>31,32</sup>. Notably, another of these transcripts encodes a Ly6 family member in the urokinase type plasminogen activator surface receptor (uPAR) class. Previous studies had identified the salamander-specific Ly6 family member *Prodl* as a key factor involved in salamander limb development and regeneration<sup>25,33</sup>. Our results suggest that Ly6 family members have a broader role in limb regeneration. Finally, we also investigated the role of non-coding RNAs by mapping a dataset of small RNA sequences expressed in the limb and limb blastema<sup>34</sup> to our genome assembly. This analysis classified 93 small RNAs as pre-miRNA sequences, of which 42 appear to be novel miRNAs (Supplementary Information section 7.2). Taken together, these data point to a potential role in limb regeneration for several coding and non-coding sequences that have been lost or diverged rapidly



**Figure 4 | *Pax7* mutation in *A. mexicanum* yields a phenotype similar to that of *Pax3*<sup>-/-</sup>*Pax7*<sup>-/-</sup> mice. a**, Deletion of *AmPax7* coding sequences using TALEN and CRISPR. Deletions were made in exon 1 or exon 2. The first three *AmPax7* exons (Ex) are shown. Red rectangles, TALEN targets; arrows, CRISPR-guide RNA (gRNA)-binding sites. **b**, Images of 6-month-old *Pax7*<sup>Δ20nt/Δ20nt</sup> mutants compared to controls show loss of body elongation. Scale bars, 1 cm. **c**, Reduced body wall muscle in *Pax7* mutants. Immunofluorescence images of myosin heavy chain (MHC, red) and DAPI (blue) in trunk cross-sections from a 6-month-old *Pax7*<sup>Δ20nt/Δ20nt</sup> mutant (*Pax7*-TALEN#2) and a control animal. Scale bar, 500 μm. **d**, Limbs of *Pax7* mutants lack muscle. Forelimb (left; scale bars, 500 μm) and immunofluorescence images of MHC (red) and DAPI (blue) in limb cross-sections (right; scale bars, 100 μm) of a 3-month-old *Pax7*<sup>Δ20nt/Δ20nt</sup> mutant and a control animal. **e**, Loss of prefrontal bone in *Pax7* mutants.

Dorsal and lateral views of Alcian blue and Alizarin red-stained *Pax7*<sup>Δ20nt/Δ20nt</sup> and *Pax7*-Ex1-CRISPR#3 mutants and controls (right). Red arrows, prefrontal bone; blue arrows, maxillary bone. The yellow arrowhead points to a small remnant of the prefrontal bone. Scale bar, 1 mm. **f, g**, Reduced melanophores, xanthophores (**f**) and iridophores (**g**) in *Pax7* mutants. Images of 17-day-old *Pax7*-Ex2-CRISPR#1 (**f**), 2-month-old *Pax7*<sup>Δ20nt/Δ20nt</sup> (**g**) mutants and controls (Ctr). Right panels in **f** show a magnified view of the outlined area; red arrows in **g** point to the eyes that are magnified in the insets; black arrows indicate the belly iridophores in the control. Scale bars, 1 mm. **h**, Neural tube closure defect in *Pax7* mutants. Images of a 31-day-old *Pax7*-Ex2-CRISPR#1 mutant and control (Ctr). Right, magnified view of the outlined area. Scale bar, 1 mm. Quantitative data and sample sizes are provided in the Life Sciences Reporting Summary and Source Data.

in amniotes. Future investigations of such sequences are likely to be a fruitful avenue for understanding the evolution of regeneration capabilities.

## Discussion

We have generated a comprehensive whole-genome assembly for the salamander *A. mexicanum*, and analysis of this assembly has allowed us to draw conclusions about the structure of the expanded genome. Our data, together with data from plants and partial data from several other salamander species, show that LTR expansion is a major contributor to giant genome size across animals and plants<sup>6,12,35</sup>. Our assembly is sufficiently complete to reliably detect the absence of *Pax3*, which is present in fish and other amphibians. This analysis was confirmed using gene editing, which showed that *AmPax7* has assumed functions that are carried out by *Pax3* in other animals.

Functional analysis of axolotl development, physiology and regeneration is facilitated by the availability of tissue- and time-dependent gene expression profiles<sup>28–30,36</sup>. The axolotl genome provides a foundation for applying methods such as chromatin immunoprecipitation with sequencing (ChIP-seq) or assay for transposase-accessible chromatin using sequencing (ATAC-seq) to investigate the genomic basis of

gene regulation during regeneration. Together with methods such as CRISPR-mediated gene editing, viral expression methods, transplantation and transgenesis, the axolotl is a powerful system for studying questions such as the evolutionary basis of its remarkable regeneration ability. Our approach of long-read sequencing, optical mapping and genome assembly using MARVEL also demonstrates that it is now feasible to assemble very large repeat-rich genomes.

**Online Content** Methods, along with any additional Extended Data display items and Source Data, are available in the online version of the paper; references unique to these sections appear only in the online paper.

Received 6 April; accepted 13 December 2017.

Published online 24 January 2018.

- Spemann, H. & Mangold, H. Über Induktion von Embryonalanlagen durch Implantation artfremder Organisatoren. *Arch. Mikrosk. Anat. En.* **100**, 599–638 (1924).
- Sperry, R. W. Effect of 180 degree rotation of the retinal field on visuomotor coordination. *J. Exp. Zool.* **92**, 263–279 (1943).
- Voss, S. R., Epperlein, H. H. & Tanaka, E. M. *Ambystoma mexicanum*, the axolotl: a versatile amphibian model for regeneration, development, and evolution studies. *Cold Spring Harb. Protoc.* 2009, <http://www.dx.doi.org/10.1101/pdb.emo128> (2009).

4. Currie, J. D. *et al.* Live imaging of axolotl digit regeneration reveals spatiotemporal choreography of diverse connective tissue progenitor pools. *Dev. Cell* **39**, 411–423 (2016).
5. Tanaka, E. M. The molecular and cellular choreography of appendage regeneration. *Cell* **165**, 1598–1608 (2016).
6. Keinath, M. C. *et al.* Initial characterization of the large genome of the salamander *Ambystoma mexicanum* using shotgun and laser capture chromosome sequencing. *Sci. Rep.* **5**, 16413 (2015).
7. Warren, R. L. *et al.* Improved white spruce (*Picea glauca*) genome assemblies and annotation of large gene families of conifer terpenoid and phenolic defense metabolism. *Plant J.* **83**, 189–212 (2015).
8. Zimin, A. V. *et al.* An improved assembly of the loblolly pine mega-genome using long-read single-molecule sequencing. *Gigascience* **6**, 1–4 (2017).
9. Bejerano, G. *et al.* Ultraconserved elements in the human genome. *Science* **304**, 1321–1325 (2004).
10. Sun, Y.-B. *et al.* Whole-genome sequence of the Tibetan frog *Nanorana parkeri* and the comparative evolution of tetrapod genomes. *Proc. Natl Acad. Sci. USA* **112**, E1257–E1262 (2015).
11. Parra, G., Bradnam, K. & Korf, I. CEGMA: a pipeline to accurately annotate core genes in eukaryotic genomes. *Bioinformatics* **23**, 1061–1067 (2007).
12. Sun, C. & Mueller, R. L. Hellbender genome sequences shed light on genomic expansion at the base of crown salamanders. *Genome Biol. Evol.* **6**, 1818–1829 (2014).
13. Smith, J. J. *et al.* Genic regions of a large salamander genome contain long introns and novel genes. *BMC Genomics* **10**, 19 (2009).
14. Davis, A. P., Witte, D. P., Hsieh-Li, H. M., Potter, S. S. & Capecci, M. R. Absence of radius and ulna in mice lacking *hoxa-11* and *hoxd-11*. *Nature* **375**, 791–795 (1995).
15. Roensch, K., Tazaki, A., Chara, O. & Tanaka, E. M. Progressive specification rather than intercalation of segments during limb regeneration. *Science* **342**, 1375–1379 (2013).
16. Voss, S. R. *et al.* Salamander Hox clusters contain repetitive DNA and expanded non-coding regions: a typical Hox structure for non-mammalian tetrapod vertebrates? *Hum. Genomics* **7**, 9 (2013).
17. Feiner, N., Meyer, A. & Kuraku, S. Evolution of the vertebrate *Pax4/6* class of genes with focus on its novel member, the *Pax10* gene. *Genome Biol. Evol.* **6**, 1635–1651 (2014).
18. Gaj, T., Gersbach, C. A. & Barbas, C. F. 3rd ZFN, TALEN, and CRISPR/Cas-based methods for genome engineering. *Trends Biotechnol.* **31**, 397–405 (2013).
19. Mansouri, A., Hallonet, M. & Gruss, P. Pax genes and their roles in cell differentiation and development. *Curr. Opin. Cell Biol.* **8**, 851–857 (1996).
20. Mansouri, A., Stoykova, A., Torres, M. & Gruss, P. Dysgenesis of cephalic neural crest derivatives in *Pax7*<sup>-/-</sup> mutant mice. *Development* **122**, 831–838 (1996).
21. Kuang, S., Chargé, S. B., Seale, P., Huh, M. & Rudnicki, M. A. Distinct roles for *Pax7* and *Pax3* in adult regenerative myogenesis. *J. Cell Biol.* **172**, 103–113 (2006).
22. Relaix, F., Rocancourt, D., Mansouri, A. & Buckingham, M. Divergent functions of murine *Pax3* and *Pax7* in limb muscle development. *Genes Dev.* **18**, 1088–1105 (2004).
23. Auerbach, R. Analysis of the developmental effects of a lethal mutation in the house mouse. *J. Exp. Zool.* **127**, 305–329 (1954).
24. Nord, H., Dennhag, N., Muck, J. & von Hofsten, J. *Pax7* is required for establishment of the xanthophore lineage in zebrafish embryos. *Mol. Biol. Cell* **27**, 1853–1862 (2016).
25. da Silva, S. M., Gates, P. B. & Brockes, J. P. The newt ortholog of CD59 is implicated in proximodistal identity during amphibian limb regeneration. *Dev. Cell* **3**, 547–555 (2002).
26. Garza-Garcia, A. A., Driscoll, P. C. & Brockes, J. P. Evidence for the local evolution of mechanisms underlying limb regeneration in salamanders. *Integr. Comp. Biol.* **50**, 528–535 (2010).
27. Sugiura, T., Wang, H., Barsacchi, R., Simon, A. & Tanaka, E. M. MARCKS-like protein is an initiating molecule in axolotl appendage regeneration. *Nature* **531**, 237–240 (2016).
28. Bryant, D. M. *et al.* A tissue-mapped axolotl *de novo* transcriptome enables identification of limb regeneration factors. *Cell Reports* **18**, 762–776 (2017).
29. Stewart, R. *et al.* Comparative RNA-seq analysis in the unsequenced axolotl: the oncogene burst highlights early gene expression in the blastema. *PLoS Comput. Biol.* **9**, e1002936 (2013).
30. Knapp, D. *et al.* Comparative transcriptional profiling of the axolotl limb identifies a tripartite regeneration-specific gene program. *PLoS ONE* **8**, e61352 (2013).
31. Calve, S., Odelberg, S. J. & Simon, H.-G. A transitional extracellular matrix instructs cell behavior during muscle regeneration. *Dev. Biol.* **344**, 259–271 (2010).
32. Tassava, R. A., Nace, J. D. & Wei, Y. Extracellular matrix protein turnover during salamander limb regeneration. *Wound Repair Regen.* **4**, 75–81 (1996).
33. Kumar, A., Gates, P. B., Czarkwani, A. & Brockes, J. P. An orphan gene is necessary for preaxial digit formation during salamander limb development. *Nat. Commun.* **6**, 8684 (2015).
34. King, B. L. & Yin, V. P. A conserved microRNA regulatory circuit is differentially controlled during limb/appendage regeneration. *PLoS ONE* **11**, e0157106 (2016).
35. Sun, C. *et al.* LTR retrotransposons contribute to genomic gigantism in plethodontid salamanders. *Genome Biol. Evol.* **4**, 168–183 (2012).
36. Jiang, P. *et al.* Analysis of embryonic development in the unsequenced axolotl: waves of transcriptomic upheaval and stability. *Dev. Biol.* **426**, 143–154 (2017).
37. Llorens, C. *et al.* The Gypsy Database (GyDB) of mobile genetic elements: release 2.0. *Nucleic Acids Res.* **39**, D70–D74 (2011).
38. Milewski, R. C. *et al.* Identification of minimal enhancer elements sufficient for *Pax3* expression in neural crest and implication of *Tead2* as a regulator of *Pax3*. *Development* **131**, 829–837 (2004).
39. Degenhardt, K. R. *et al.* Distinct enhancers at the *Pax3* locus can function redundantly to regulate neural tube and neural crest expressions. *Dev. Biol.* **339**, 519–527 (2010).

Supplementary Information is available in the online version of the paper.

**Acknowledgements** E.W.M. was supported by the Max Planck Society President's fund and BMBF grants O1S14014C and O31L0102. E.M.T., S.N. and J.-F.F. were supported by MPI-CBG, DFG FZ111 and IMP. E.M.T. and J.-F.F. were supported by DFG TA 274/3-3. J.-F.F. is supported by NSFC grant 31771611 and a Research Starting Grant S82111-E2 from SCNU. F.F. was supported by a CONACYT Masters Fellowship. A.C. was supported by The Swedish IRLG GRANT 2014-9040-114152-32, CONACYT FOINS-301 and Ciencia Básica I0017-CB-2015-01-00000000252126. G.Y. was supported by the Crick Institute award FC001162 (to J. P. Stoye). The Crick receives its core funding from CRUK, the MRC and the Wellcome Trust. B.H. was supported by BMBF grant O1IH11003C. We thank W. Bonacci, E. Gromberg, A. Tazaki and I. Stützer for sample preparation; S. Clausing, N. Gscheidel, Y. Duport, A. Sommer and the VBCF NGS facility for sequencing; A. Kavirayani and T. Engelmaier at VBCF for histology; E. Heude for confirmation of *Pax7* mutant immunofluorescence; T. Anantharaman for optimizing assembly and scaffolding parameters for Bionano data; and G. Papoutsoglou for advice.

**Author Contributions** S.N. assembled and analysed the transcriptome, and performed genome analysis. S.S. created, engineered and implemented the assembly algorithm and analysed the genome assembly. J.-F.F. performed DNA extraction and all biological experiments and analysis. M.P. and S.P. contributed to implementing the assembler, assembled the genome and contributed to the genome analysis. A.D. and S.W. performed Pacific Biosciences sequencing. G.Y. analysed the LTR elements. J.G.R. performed the conserved element and intron analysis. F.F. and A.C. performed the developmental orthologue and miRNA analysis. A.W.C.P., A.R.H. and H.C. performed Bionano optical mapping, generated the hybrid and scaffolded the assembly. D.K. performed tectorin analysis. B.H. supervised transcriptome assembly and annotation and acquired funding. E.M.T. and M.H. conceived analytical strategies, performed data analysis and acquired funding. S.N., S.S., J.-F.F., M.P., S.P., E.M.T. and M.H. wrote the manuscript. E.W.M. conceived and implemented the assembly strategy, acquired major funding and edited the manuscript.

**Author Information** Reprints and permissions information is available at [www.nature.com/reprints](http://www.nature.com/reprints). The authors declare no competing financial interests. Readers are welcome to comment on the online version of the paper. Publisher's note: Springer Nature remains neutral with regard to jurisdictional claims in published maps and institutional affiliations. Correspondence and requests for materials should be addressed to M.H. ([hiller@mpi-cbg.de](mailto:hiller@mpi-cbg.de)), E.M.T. ([elly.tanaka@imp.ac.at](mailto:elly.tanaka@imp.ac.at)) and S.S. ([siegfried.schloissnig@h-its.org](mailto:siegfried.schloissnig@h-its.org)).

**Reviewer Information** *Nature* thanks C. Crews and the other anonymous reviewer(s) for their contribution to the peer review of this work.



This work is licensed under a Creative Commons Attribution 4.0 International (CC BY 4.0) licence. The images or other third party material in this article are included in the article's Creative Commons licence, unless indicated otherwise in the credit line; if the material is not included under the Creative Commons licence, users will need to obtain permission from the licence holder to reproduce the material. To view a copy of this licence, visit <http://creativecommons.org/licenses/by/4.0/>.

## METHODS

No statistical methods were used to predetermine sample size. The experiments were not randomized and the investigators were not blinded to allocation during experiments and outcome assessment.

Axolotl genomic DNA was prepared from freshly isolated liver and spleen of an individual three year old adult d/d male using DNAzol followed by phenol/chloroform extraction and ethanol precipitation.

A total of 50 size-selected SMRTbell libraries were prepared with a minimum fragment length cutoff between 10 kb and 20 kb. We sequenced medium and large insert libraries on the PacBio RSII instrument, making use of three different sequencing polymerases (P4, P5 and P6) and the corresponding sequencing chemistries (C2, C3 and C4). Movie times ranged from 180 min to 360 min with the majority of SMRT cells (1,414 of 1,933) at 240 min.

Sequences were assembled using the MARVEL assembler.

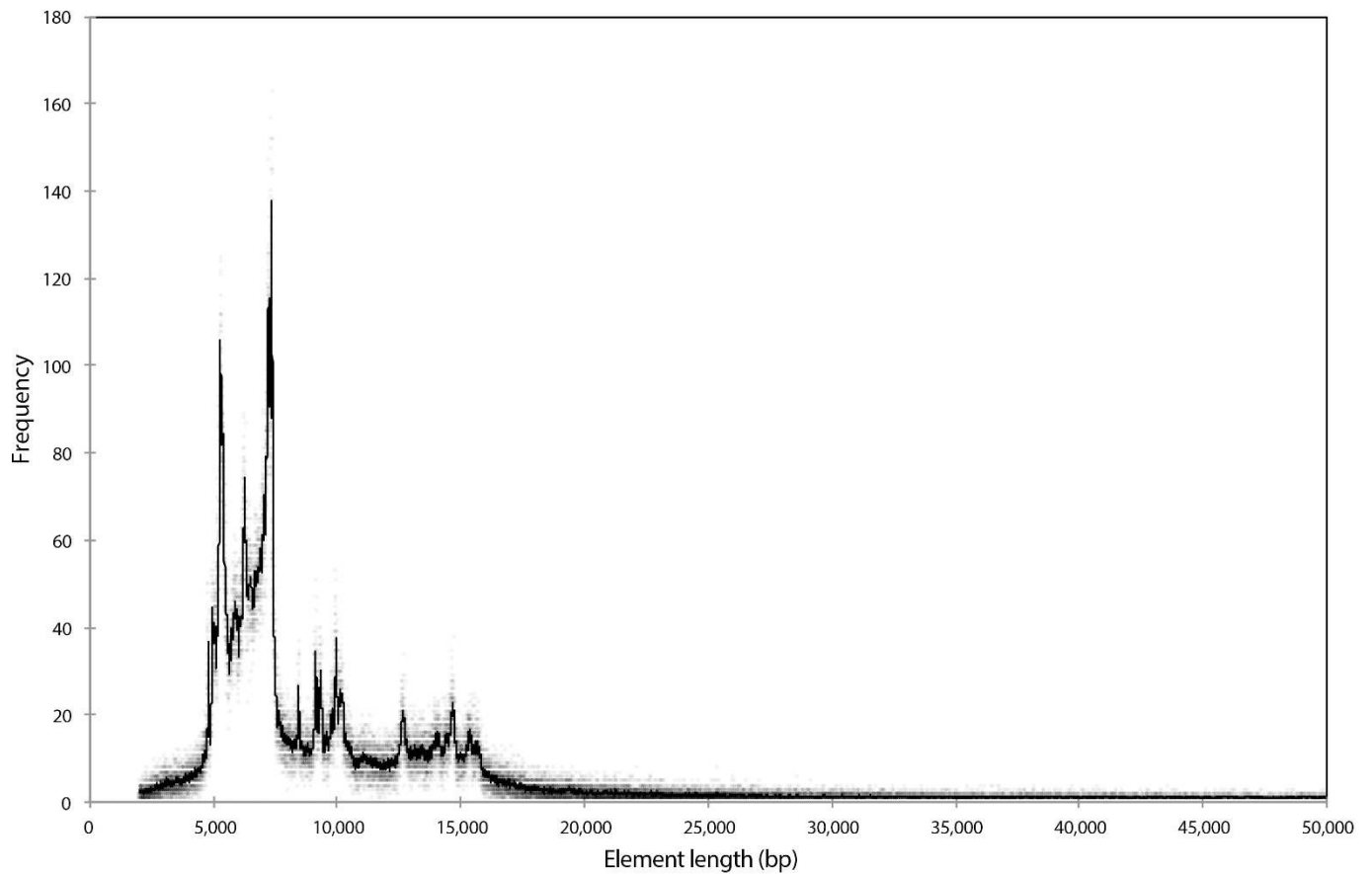
Optical mapping was performed using the Saphyr System (Bionano) based on NanoChannel array Technology. DNA was labelled with Nt.BspQI and Nb.BssSI enzymes in separate labelling reactions. Each enzyme reaction was run on the

Saphyr System. 2.813 Tb of data were collected on three Saphyr Chips for Nt.BspQI and 2.0 Tb of data were collected on two Saphyr Chips for Nb.BssSI samples; single molecule N50 lengths were 240 kb and 184 kb, respectively. Each dataset was *de novo* assembled using Bionano Solve 2.1 software.

RNA was isolated from 22 tissue types using TRIzol or RNeasy reagents and sequenced using Illumina technology. The Trinity software package was used for transcriptome assembly.

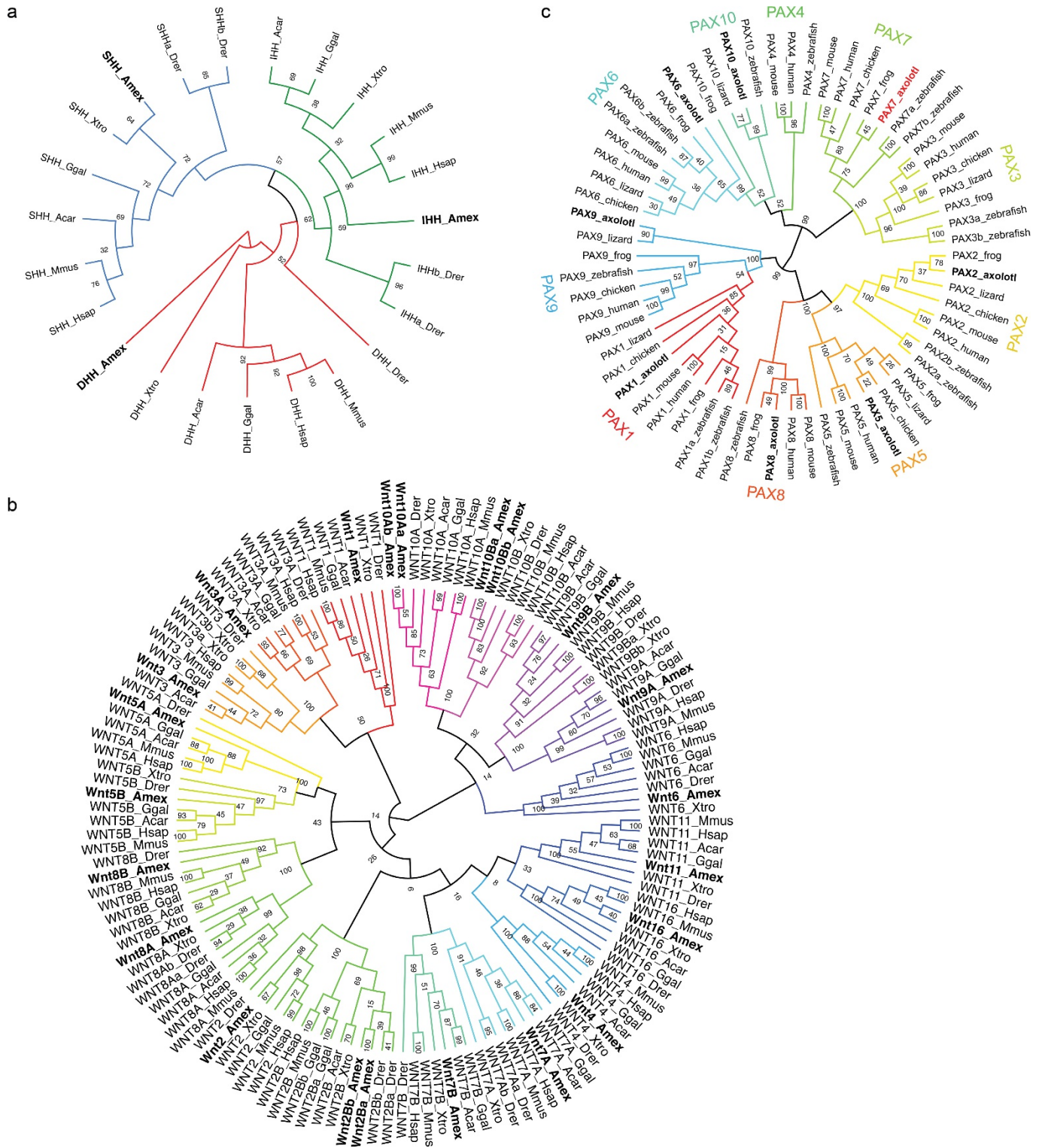
**Code availability.** The MARVEL assembler with documentation is available at <https://github.com/schloi/MARVEL>.

**Data availability.** A browser of the axolotl genome is available at <https://genome.axolotl-omics.org>. The transcriptome assembly and the genome and transcriptome BLAST database can be accessed at <https://www.axolotl-omics.org> with no restrictions. The sequence data and both assemblies have been deposited in the NCBI BioProject database with accession numbers PRJNA378970 (genome data) and PRJNA378982 (transcriptome data). Both genome data and transcriptome data were deposited to the NCBI Nucleotide Database (nucleotide) with accession numbers PGSH000000000 and GFZP000000000, respectively.



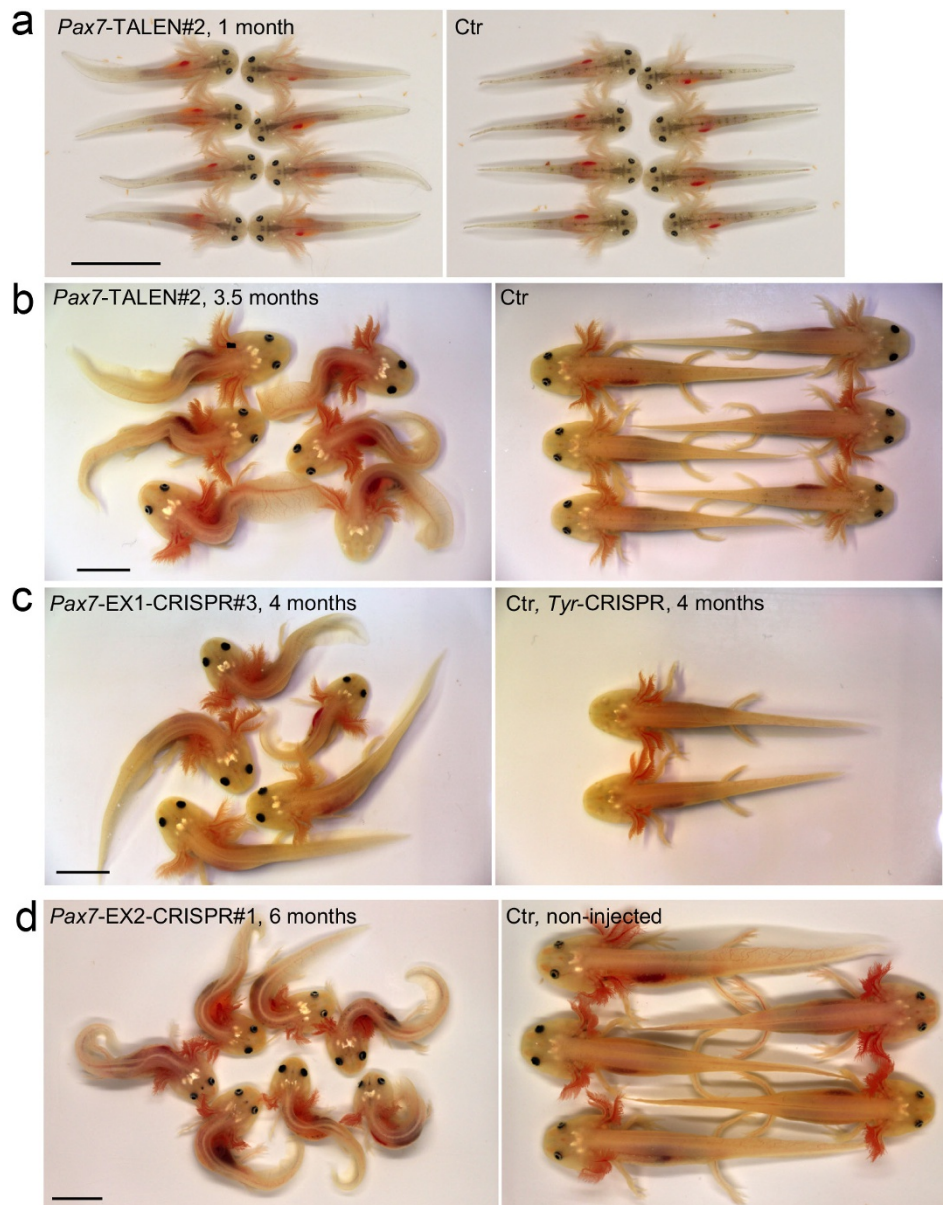
**Extended Data Figure 1 | Analysis of LTR retroelement frequencies according to their lengths.** The line shows a moving average (period 25) to highlight clusters of elements of similar lengths.





Extended Data Figure 2 | Phylogenetic trees. a, Phylogenetic tree of vertebrate hedgehog proteins show the presence of axolotl orthologues. b, Phylogenetic tree of vertebrate Wnt proteins show the presence of

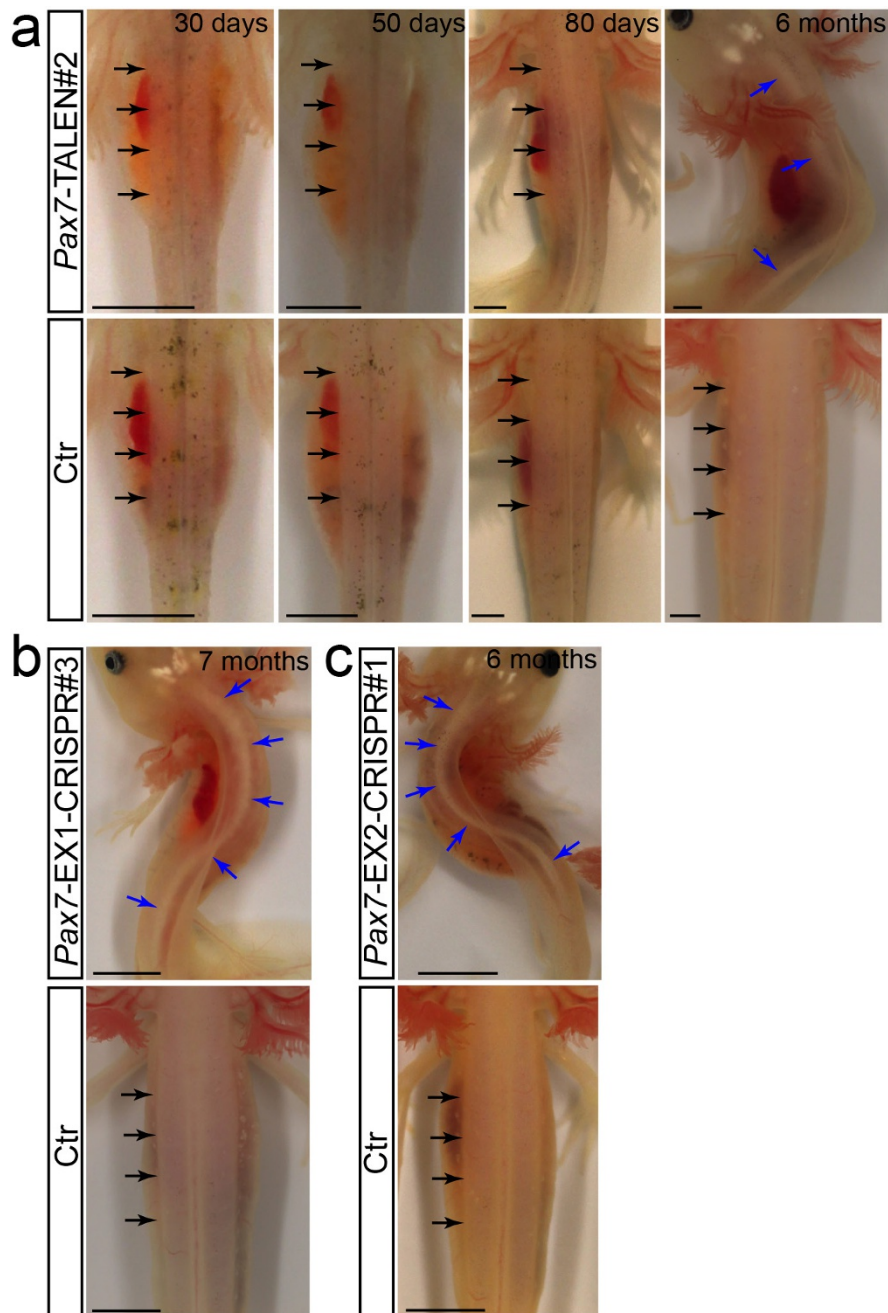
axolotl orthologues in all Wnt classes. c, Phylogenetic tree of vertebrate PAX proteins. *Pax4* and *Pax3* are absent in axolotl.



**Extended Data Figure 3 | Developmental phenotype of *Pax7* mutants.**

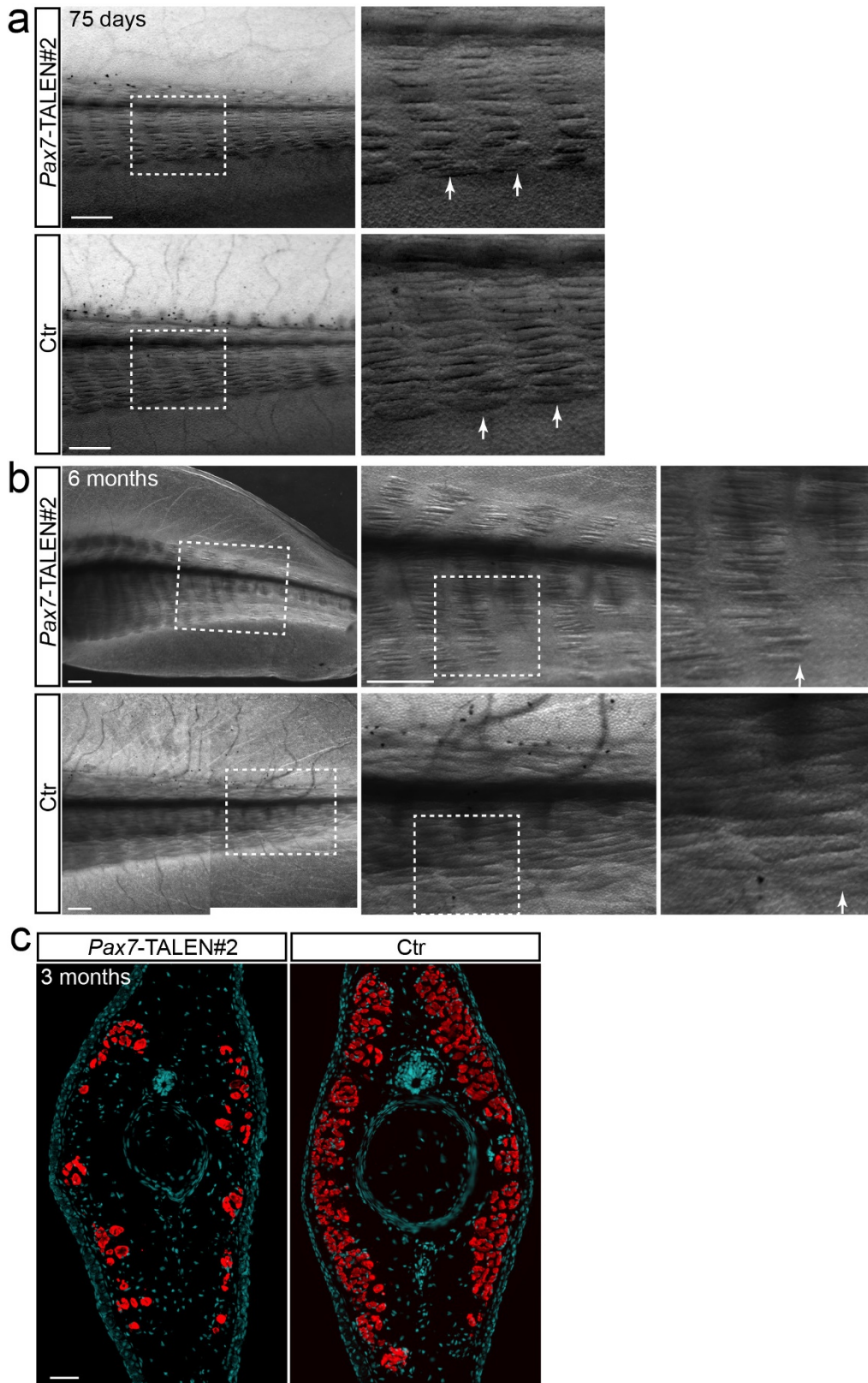
**a, b,** Images of live *Pax7* <sup>$\Delta 20nt/\Delta 20nt$</sup>  mutants compared to controls show no obvious phenotype at early stages (**a**, 1 month), but an obvious phenotype at later stages (**b**, 3.5 months). **c, d,** Images of live F0 *Pax7*-Ex1-CRISPR#3

(**c**, 4 months) and *Pax7*-Ex2-CRISPR#1 (**d**, 6 months) mutants show the curved body phenotype. Scale bars, 1 cm. Numbers of replicate matings and experiments are shown in the Life Sciences Reporting Summary and Source Data.



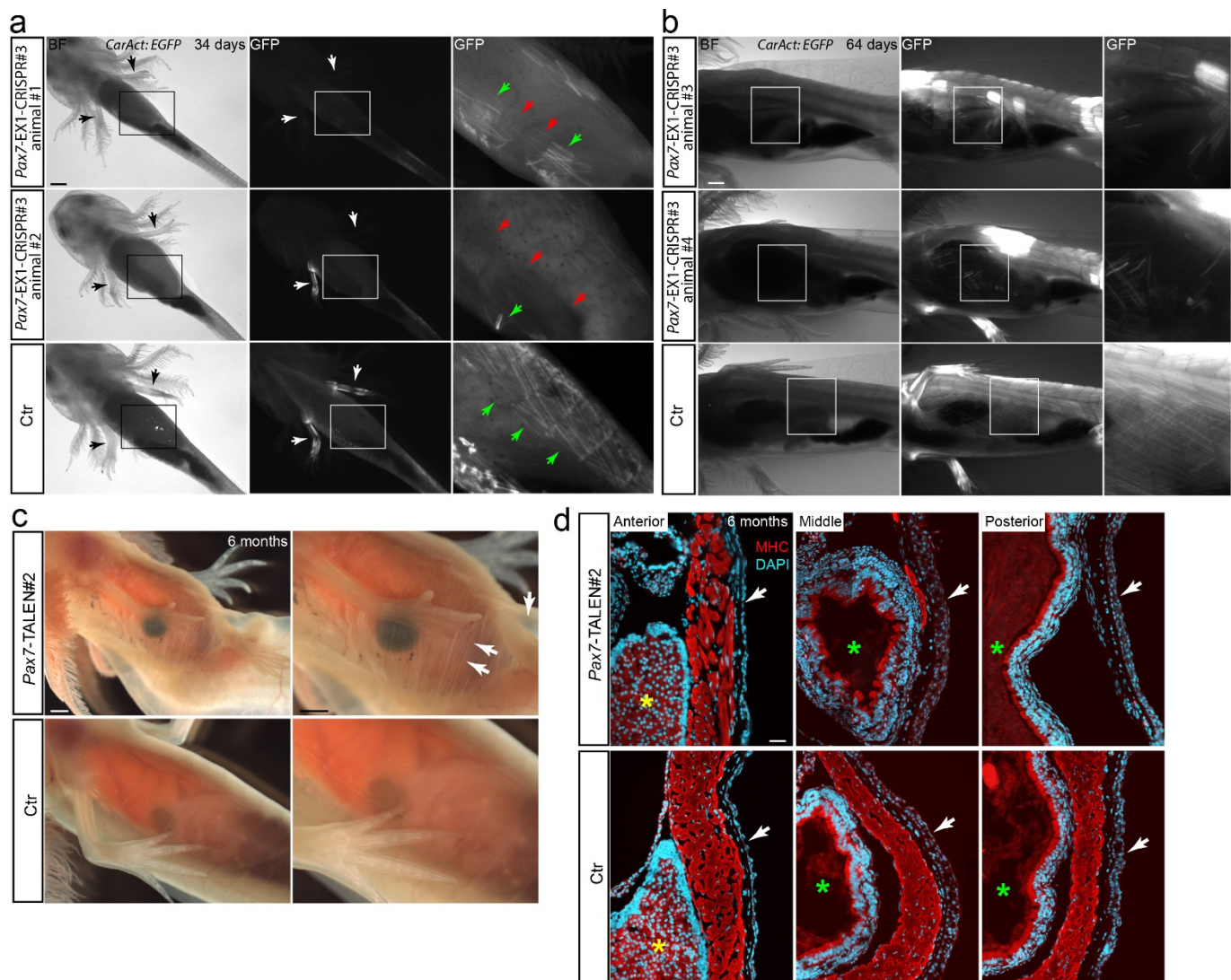
**Extended Data Figure 4 | Progressive depletion of the trunk muscle in *Pax7* mutants.** **a**, Images of live *Pax7* <sup>$\Delta$ 20nt/ $\Delta$ 20nt</sup> animals at different ages compared to corresponding controls show the progressive loss of the trunk muscle in mutant animals. Black arrows indicate trunk muscles; blue arrows highlight the visibility of the spine after reduction and/or depletion of trunk muscle. Scale bars, 2mm. **b**, **c**, Images of live 7-month-old F0

*Pax7*-Ex1-CRISPR#3 (**b**) and 6-month-old F0 *Pax7*-Ex2-CRISPR#1 (**c**) mutants compared to controls, showing loss of trunk muscle. Black arrows indicate trunk muscles; blue arrows indicate the visibility of the spine after depletion of trunk muscle. Scale bars, 5 mm. Number of replicate matings and experiments are shown in the Life Sciences Reporting Summary and Source Data.



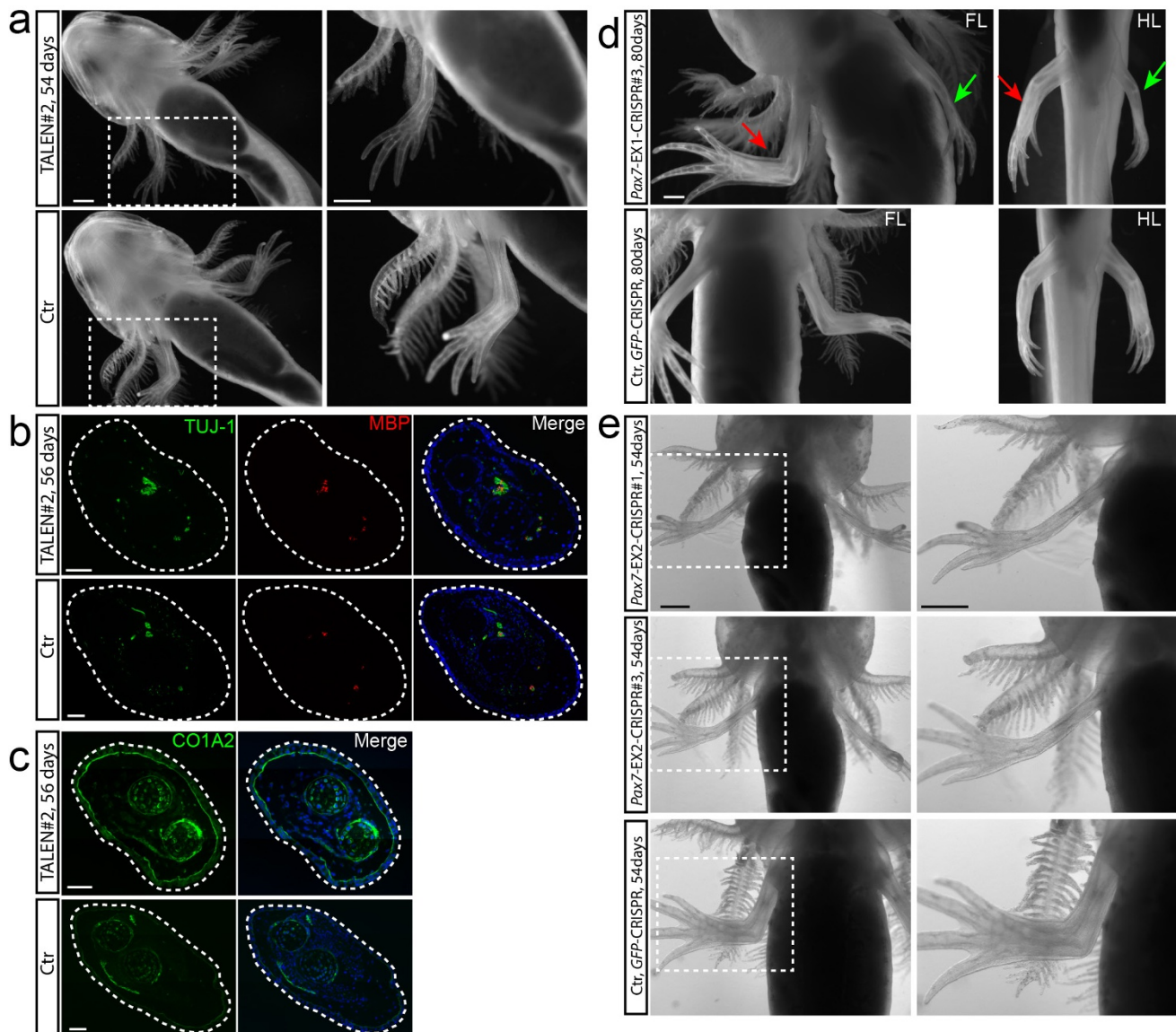
**Extended Data Figure 5 | Progressive depletion of the tail muscle in *Pax7*<sup>Δ20nt/Δ20nt</sup> mutants. a, b, Images of live 75-day (a) and 6-month-old (b) *Pax7*<sup>Δ20nt/Δ20nt</sup> homozygous mutants compared to controls show the progressive depletion of tail muscle. White arrows indicate tail muscle fibres; right, magnified view of the outlined area. Note the decrease in myotome length in 75-day-old *Pax7*<sup>Δ20nt/Δ20nt</sup> homozygous mutants (b).**

Scale bars, 500 μm. c, Immunofluorescence images of MHC (red) and DAPI (blue) in tail cross-sections show reduction in tail muscle in 3-month-old *Pax7*<sup>Δ20nt/Δ20nt</sup> mutants compared to controls. Scale bar, 100 μm. Number of replicate matings and experiments are shown in the Life Sciences Reporting Summary and Source Data.



**Extended Data Figure 6 | Depletion of the abdominal muscle in *Pax7* mutants.** **a, b**, Bright-field image and GFP fluorescence of live 34-day (**a**) and 64-day-old (**b**) F0 *Pax7-Ex1-CRISPR#3* mutants obtained by injecting *Pax7-gRNA#3-CAS9* protein complex into eggs of *CarAct:EGFP* transgenic axolotls, compared to un-injected *CarAct:EGFP* controls. Mutant animals show a reduction in the EGFP-labelled abdominal muscles. Right, magnified view of GFP fluorescence in the outlined area; white arrows indicate forelimbs that either contain or lack EGFP-labelled muscles; green arrows indicate the GFP-labelled abdominal muscle; red arrows indicate regions that lack GFP-labelled abdominal muscle.

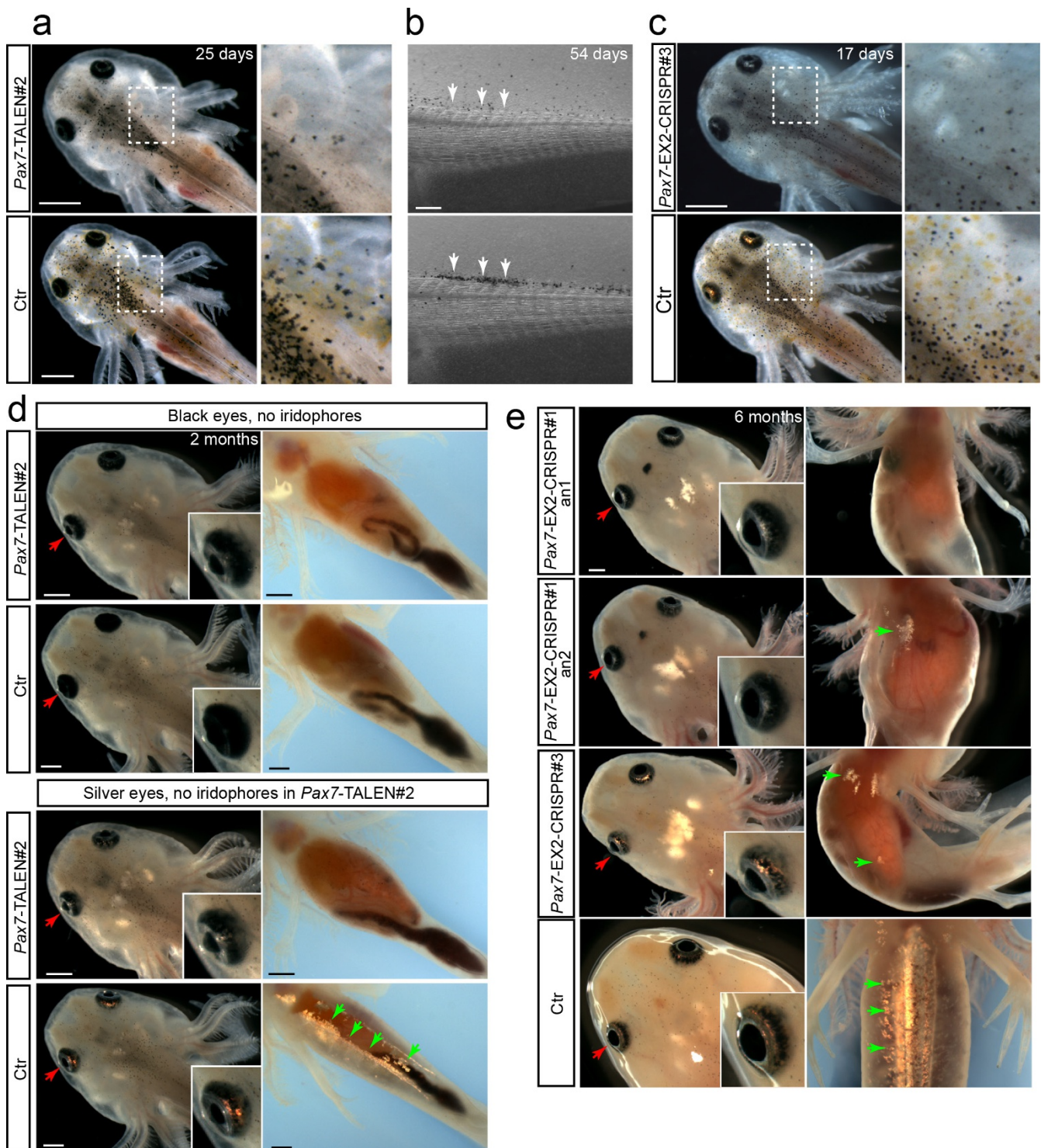
Scale bars, 1 mm. **c**, Images of live 6-month-old *Pax7<sup>Δ20nt/Δ20nt</sup>* mutants compared to controls show the loss of abdominal muscle. Scale bars, 1 mm. **d**, Immunofluorescence images of MHC (red) and DAPI (blue) in cross-sections show the presence of ventral body-wall muscle in the chest position in 6-month-old *Pax7<sup>Δ20nt/Δ20nt</sup>* homozygous mutants compared to controls, and the gradual depletion of the abdominal muscle along the anterior–posterior axis. Arrows, skin; yellow stars, liver; green stars, intestine. Scale bar, 100 μm. Number of replicate matings and experiments are shown in the Life Sciences Reporting Summary and Source Data.



### Extended Data Figure 7 | Loss of limb muscle in *Pax7* mutants.

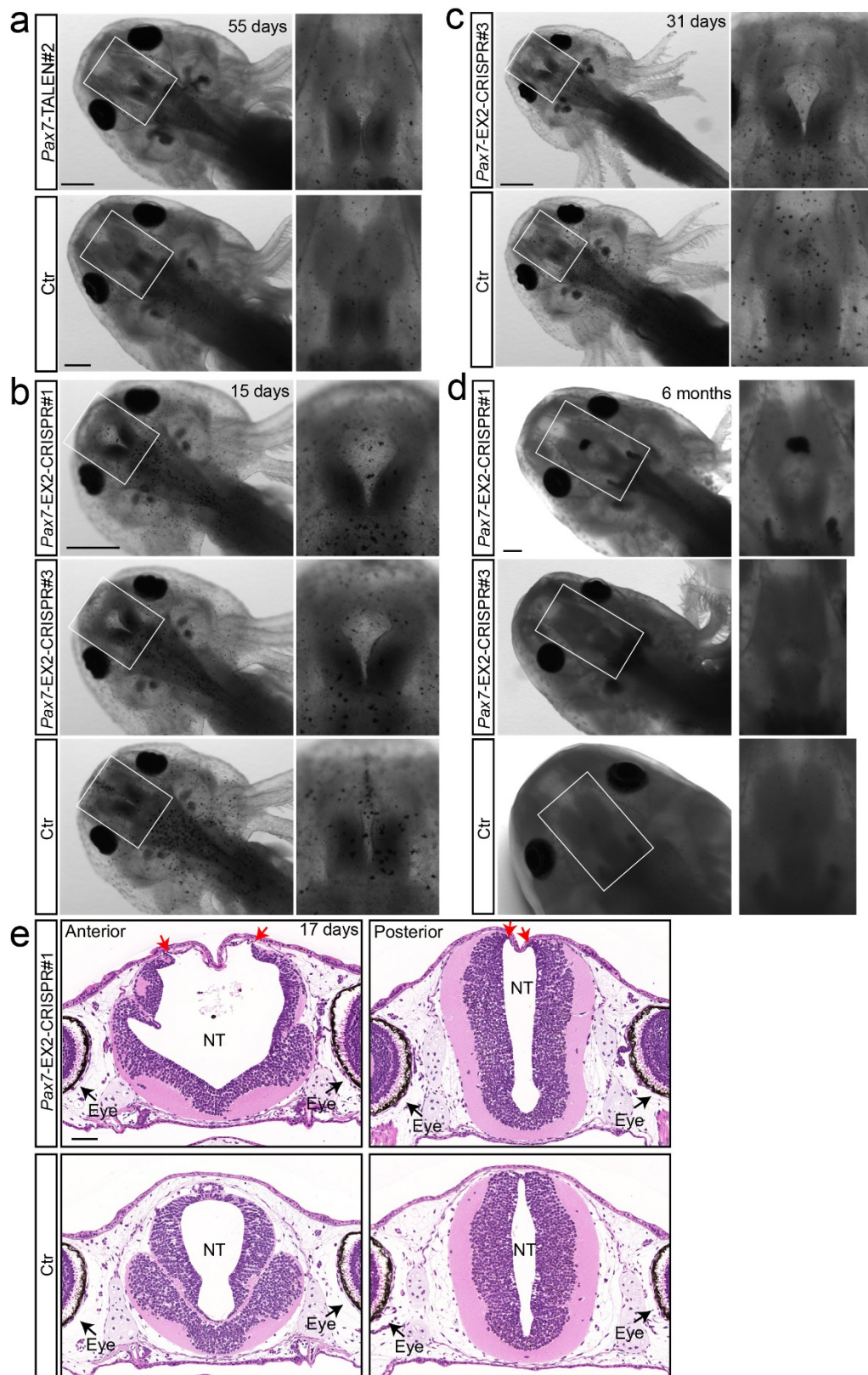
**a**, Images of live 54-day-old *Pax7*<sup>Δ20nt/Δ20nt</sup> mutants compared to controls show loss of limb muscle. Right, magnified view of the outlined area. Scale bars, 1 mm. **b, c**, Non-muscle tissues are normal in *Pax7*<sup>Δ20nt/Δ20nt</sup> mutant limbs. Immunofluorescence images for TUJ-1 (**b**, green) MBP (**b**, red), CO1A2 (**c**, green) and DAPI (blue) in forelimb cross-sections of 56-day-old *Pax7*<sup>Δ20nt/Δ20nt</sup> mutants and controls. Scale bars, 100 μm. **d**, Images of live 80-day-old F0 *Pax7*-Ex1-CRISPR#3 heterozygotes compared to

controls show loss of forelimb (FL) and hindlimb (HL) muscle on one side of the body (green arrows) but not on the other side (red arrows). Scale bar, 1 mm. **e**, Images of live 54-day-old F0 *Pax7*-Ex2-CRISPR#1 and *Pax7*-Ex2-CRISPR#3 mutants compared to a control (bottom) showing loss of forelimb muscle in CRISPR animals. Right, magnified view of the outlined area. Scale bars, 1 mm. Number of replicate matings and experiments are shown in the Life Sciences Reporting Summary and Source Data.



**Extended Data Figure 8 | Reduced melanophores, loss of xanthophores and iridophores in *Pax7* mutants.** **a**, Images of a live 25-day-old *Pax7*<sup>Δ20nt/Δ20nt</sup> homozygous mutant compared to a control animal showing loss of xanthophores and reduction of melanophores in the head and neck region of mutant animals. Right, magnified view of the outlined area. Scale bar, 1 mm. **b**, Images of a live 54-day-old *Pax7*<sup>Δ20nt/Δ20nt</sup> homozygous mutant compared to a control animal showing a reduction in melanophores along the body. Arrows, melanophores. Scale bar, 500 μm. **c**, Images of a live 17-day-old F0 *Pax7-Ex2-CRISPR#3* mutant compared to a control animal showing loss of xanthophores and reduction in melanophores in the head and neck region. Right, magnified view of the outlined area. Scale bar, 1 mm. **d**, Images of a live 2-month-old *Pax7*<sup>Δ20nt/Δ20nt</sup> homozygous mutant compared to a control animal showing loss of iridophores on the belly. Red arrows point to the eye,

which is displayed at higher magnification showing eye pigmentation defects; green arrows indicate the presence of iridophores in the control animal (with silver eyes), but not in the mutant (with black eyes). Iridophores are absent in the *Pax7-TALEN#2* mutants, irrespective of the eye colour. Scale bars, 1 mm. **e**, Images of live 6-month-old *Pax7-Ex2-CRISPR#1* and *Pax7-Ex2-CRISPR#3* mutants compared to a control animal, showing the reduction or loss of belly iridophores (right) in axolotls with silver eyes (left). Red arrows point to the eye, which is displayed at a higher magnification on the right; green arrows indicate remaining iridophores in F0 mosaic *Pax7-CRISPR* mutants or iridophores in the control animal. Scale bars, 1 mm. Number of replicate matings and experiments are shown in the Life Sciences Reporting Summary and Source Data.



**Extended Data Figure 9 | Neural tube closure defects in *Pax7* mutants.**  
**a**, Images of a live 55-day-old *Pax7* <sup>$\Delta$ 20nt/ $\Delta$ 20nt</sup> mutant compared to a control animal show an open brain phenotype. Right, magnified view of the outlined area. Scale bar, 1 mm. **b–d**, Images of live 15-day (b), 31-day (c) and 6-month-old (d) *Pax7*-Ex2-CRISPR#1 and *Pax7*-Ex2-CRISPR#3 mutants compared to controls, showing an open brain phenotype. Right,

magnified view of the outlined area. Scale bar, 1 mm. **e**, Haematoxylin and eosin-stained paraffin cross-sections show the open neural tube of a 17-day-old F0 *Pax7*-Ex2-CRISPR#1 mutant compared to a control. Red arrows indicate the boundaries of the opened neural tube (NT). Scale bar, 200  $\mu$ m. Number of replicate matings and experiments are shown in the Life Sciences Reporting Summary and Source Data.



## Life Sciences Reporting Summary

Nature Research wishes to improve the reproducibility of the work that we publish. This form is intended for publication with all accepted life science papers and provides structure for consistency and transparency in reporting. Every life science submission will use this form; some list items might not apply to an individual manuscript, but all fields must be completed for clarity.

For further information on the points included in this form, see [Reporting Life Sciences Research](#). For further information on Nature Research policies, including our [data availability policy](#), see [Authors & Referees](#) and the [Editorial Policy Checklist](#).

### ► Experimental design

#### 1. Sample size

Describe how sample size was determined.

For genome sequencing no sample size was calculated as we sequenced one individual axolotl. For phenotype analysis, no aprior sample size was determined. The axolotl lay hundreds of eggs per breeding, and with the very strong phenotypes observed, we could discern the phenotype in homozygous mutants with 100% correspondence of phenotype with genotype, as described in Supplement section 6.1.2. Breeding of a pair of F1 Pax7-TALEN#2 mutants produced more than 100 progeny for phenotype analysis. We analyzed phenotypes from three breedings. For Pax7-CRISPR animals, we injected at least 30 eggs for each gRNA. We repeated the injections at least twice and analyzed the Pax7-CRISPR animals derived from those injections. The precise number of animals for morphological phenotype analysis is listed in Supplement section 6.1.3 and section 6.2 and file SD Fig4.xlsx. For immunofluorescence analyses of trunk muscle and limb muscle in Pax7 TALEN#2 mutants, (Fig 5c, , 6.4.8) we performed two independent experiments with the same result, (total n=4). For other immunofluorescence and histochemical datasets in figures 5, S6.4.2, S6.4.3, S6.4.5, S6.4.7, S6.4.10 we analyzed three individual animals (n=3) for each of the mutant and control groups. The experiment was performed once and gave a consistent result in all three sets of animals.

#### 2. Data exclusions

Describe any data exclusions.

We did not exclude data from the manuscript. In the final transcriptome assembly we did not include the oocyte dataset due to the presence of numerous short RNAs in that dataset that did not assemble with other contigs

#### 3. Replication

Describe whether the experimental findings were reliably reproduced.

All attempts to replicate the mutant analysis were successful.

#### 4. Randomization

Describe how samples/organisms/participants were allocated into experimental groups.

In mutant analysis, progeny were allocated as having a phenotype or no phenotype based on limb and body muscle mass. Then genotyping of both types of individuals was performed in the same experiment and the data examined for the genotype.

#### 5. Blinding

Describe whether the investigators were blinded to group allocation during data collection and/or analysis.

The investigators were not blinded.

Note: all studies involving animals and/or human research participants must disclose whether blinding and randomization were used.

## 6. Statistical parameters

For all figures and tables that use statistical methods, confirm that the following items are present in relevant figure legends (or in the Methods section if additional space is needed).

- n/a Confirmed
- The exact sample size ( $n$ ) for each experimental group/condition, given as a discrete number and unit of measurement (animals, litters, cultures, etc.)
  - A description of how samples were collected, noting whether measurements were taken from distinct samples or whether the same sample was measured repeatedly
  - A statement indicating how many times each experiment was replicated
  - The statistical test(s) used and whether they are one- or two-sided (note: only common tests should be described solely by name; more complex techniques should be described in the Methods section)
  - A description of any assumptions or corrections, such as an adjustment for multiple comparisons
  - The test results (e.g.  $P$  values) given as exact values whenever possible and with confidence intervals noted
  - A clear description of statistics including central tendency (e.g. median, mean) and variation (e.g. standard deviation, interquartile range)
  - Clearly defined error bars

See the web collection on [statistics for biologists](#) for further resources and guidance.

## ► Software

Policy information about [availability of computer code](#)

### 7. Software

Describe the software used to analyze the data in this study.

A new assembler, MARVEL, was generated and fully described in the manuscript. The MARVEL documentation and source code are available at : <https://github.com/schloi/MARVEL>

BUSCO (v3)  
 Canu assembler (1.3)  
 Blasr (4.x/5.x)  
 Bowtie2 (2.2.9)  
 Pilon (1.22)  
 SAMtools (1.3.1)  
 Bionano Solve/Access™ (2.1)  
 fastx\_toolkit (0.0.13)  
 Trinity (r20140717)  
 Mira (4.9.3)  
 NCBI Blast+ (2.6.0)  
 CD-HIT (V4.6.6)  
 R/R-Studio (3.2)  
 Blat (36x2)  
 RepeatModeler (1.0.8)  
 RepeatMasker (4.0.6)  
 LTR-FINDER (1.0.6)  
 LTRharvest (GenomeTools) (1.5.9)  
 MGEScan-LTR (0.1)  
 BEDOPS (2.4.20)  
 HMMER (3.1b2)  
 GyDB (2.0)  
 MAFFT (7.271)  
 FastTree (2.1.9)  
 Ensembl Biomart (89)  
 lastz (1.02.00)  
 SPALN (2.3.0)  
 MUSCLE (3.8.31)  
 RAxML (8.2.9)  
 Trimmomatic (0.33)  
 ShortStack (3.8.1)  
 Adobe Photoshop (CS6)  
 Adobe Illustrator (CS6)  
 Zeiss ZEN 2 (blue edition)  
 Olympus CellSens Standard (1.5)

For manuscripts utilizing custom algorithms or software that are central to the paper but not yet described in the published literature, software must be made available to editors and reviewers upon request. We strongly encourage code deposition in a community repository (e.g. GitHub). [Nature Methods guidance for providing algorithms and software for publication](#) provides further information on this topic.

## ► Materials and reagents

Policy information about [availability of materials](#)

### 8. Materials availability

Indicate whether there are restrictions on availability of unique materials or if these materials are only available for distribution by a for-profit company.

All unique materials are openly available.

### 9. Antibodies

Describe the antibodies used and how they were validated for use in the system under study (i.e. assay and species).

monoclonal anti-CO1A2 (clone SP1.D8, DSHB), Validated on limb sections as staining the extracellular, region between dermis and epidermis, and surrounding muscle fascia  
 monoclonal anti-MBP (GTX76114, GeneTex), MBP: Myelin Basic Protein. Validated by staining on CNP:GFP transgenic animal, which expresses in glial cells. Co-localization was observed.  
 monoclonal anti-muscle MHC (clone 4.102538, DSHB). Validated on cultured salamander myogenic cell line - shows positive staining in myotubes and negative in myoblasts. Validated in limb sections as co-staining with muscle as defined by morphology in by DIC microscopy, which shows muscle striations.  
 monoclonal anti-PAX7 (catalog number: PAX7, DSHB), validation on axolotl tissue was performed by Schnapp et al (2005) Development, 132:3243-53  
 monoclonal anti-TUJ-1 (MAB1195, R&D), validated by staining on betalll-tubulin: GFP transgenic animal, which expresses in neurons. Colocalization was observed.  
 Alexafluor 488- (A21202) and 555-(A31570) conjugated donkey anti-mouse secondary antibodies (Invitrogen)  
 Cy3-conjugated donkey anti-rat IgG (H+L)secondary antibody (712-165-153, Jackson ImmunoResearch)  
 Secondary antibodies were validated by staining sections with secondary antibody only to determine that there was no signal in the cell types to be analyzed.

### 10. Eukaryotic cell lines

a. State the source of each eukaryotic cell line used.

No eukaryotic cell lines were used

b. Describe the method of cell line authentication used.

No eukaryotic cell lines were used

c. Report whether the cell lines were tested for mycoplasma contamination.

No eukaryotic cell lines were used

d. If any of the cell lines used are listed in the database of commonly misidentified cell lines maintained by [ICLAC](#), provide a scientific rationale for their use.

No eukaryotic cell lines were used

## ► Animals and human research participants

Policy information about [studies involving animals](#); when reporting animal research, follow the [ARRIVE guidelines](#)

### 11. Description of research animals

Provide details on animals and/or animal-derived materials used in the study.

Ambystoma mexicanum, strain: white (d/d). Male was used for sequencing genome.  
 We analysed the phenotypes at diverse stages. Pax7-TALEN animals: 20, 25, 30, 50, 54, 55, 56, 75, 80-day old axolotls, and 1, 2, 3, 3.5, 6-month old axolotls; Pax7-CRISPR animals: 15, 17, 30, 31, 54, 64, 80-day old axolotls, and 4, 6 and 7 month old axolotls.  
 Up to juvenile stages, it is not possible to determine the sex of the axolotls by morphology and no cytochemical or molecular assay is available. The phenotype is very likely independent of the gender.

## 12. Description of human research participants

Describe the covariate-relevant population characteristics of the human research participants.

This study did not include human research participants

# CORRECTIONS & AMENDMENTS

---

---

## CORRECTION

<https://doi.org/10.1038/s41586-018-0141-z>

## **Author Correction: The axolotl genome and the evolution of key tissue formation regulators**

Sergej Nowoshilow, Siegfried Schloissnig, Ji-Feng Fei, Andreas Dahl, Andy W. C. Pang, Martin Pippel, Sylke Winkler, Alex R. Hastie, George Young, Juliana G. Roscito, Francisco Falcon, Dunja Knapp, Sean Powell, Alfredo Cruz, Han Cao, Bianca Habermann, Michael Hiller, Elly M. Tanaka & Eugene W. Myers

Correction to: *Nature* <https://doi.org/10.1038/nature25458>, published online 24 January 2018.

In the originally published version of this Article, the sequenced axolotl strain (the homozygous white mutant) was denoted as 'D/D' rather than 'd/d' in Fig. 1a and the accompanying legend, the main text and the Methods section. The original Article has been corrected online.