

RESEARCH ARTICLE

Open Access



The distribution of oxytocin and the oxytocin receptor in rat brain: relation to regions active in migraine

Karin Warfvinge^{1,2*} , Diana Krause^{2,3} and Lars Edvinsson^{1,2}

Abstract

Background: Recent work, both clinical and experimental, suggests that the hypothalamic hormone oxytocin (OT) and its receptor (OTR) may be involved in migraine pathophysiology.

In order to better understand possible central actions of OT in migraine/headache pathogenesis, we mapped the distribution of OT and OTR in nerve cells and fibers in rat brain with a focus on areas related to migraine attacks and/or shown previously to contain calcitonin gene related peptide (CGRP), another neuropeptide involved in migraine.

Methods: Distribution of OT and OTR in the adult, rat brain was qualitatively examined with immunohistochemistry using a series of well characterized specific antibodies.

Results: As expected, OT was extensively localized in the cell somas of two hypothalamic nuclei, the supraoptic (SO or SON) and paraventricular nuclei (Pa or PVN). OT also was found in many other regions of the brain where it was localized mainly in nerve fibers. In contrast, OTR staining in the brain was mainly observed in cell somas with very little expression in fibers. The most distinct OTR expression was found in the hippocampus, the pons and the substantia nigra. In some regions of the brain (e.g. the amygdala and the hypothalamus), both OT and OTR were expressed (match). Mismatch between the peptide and its receptor was primarily observed in the cerebral and cerebellar cortex (OT expression) and hippocampus (OTR expression).

Conclusions: We compared OT/OTR distribution in the CNS with that of CGRP and identified regions related to migraine. In particular, regions suggested as “migraine generators”, showed correspondence among the three mappings. These findings suggest central OT pathways may contribute to the role of the hypothalamus in migraine attacks.

Keywords: Immunohistochemistry, Oxytocin, Oxytocin receptor, Migraine-related regions, CGRP, CGRP receptors

Introduction

Oxytocin (OT) is a nine amino acid peptide (nonapeptide) structurally similar to peptide arginine vasopressin, an antidiuretic hormone, which differs from OT in two of the nine amino acid residues. These two hormones exhibit in their structure pronounced evolutionary stability [1]. Numerous studies have been performed on the expression of OT in the brain using e.g. radio-immunoassays, autoradiography, electrophysiology, OT

receptor-lacZ reporter mouse, OT binding sites studies and immunohistochemistry. These have shown that OT, together with vasopressin, are synthesized in magnocellular neurosecretory cells in the supraoptic (SO or SON) and paraventricular nuclei (Pa or PVN) in the hypothalamus [2–8]. In addition, some OT is released from centrally projecting parvocellular neurons of the Pa. These contain however much less peptide levels than do the magnocellular neurons [9]. Groups of oxytocinergic cells outside of SO/Pa are called “accessory neurons”. The magnocellular neurons of SO and Pa project to the posterior pituitary gland where they release OT into the bloodstream thus controlling endocrine events associated with reproduction in both males and females [10].

* Correspondence: karin.birgitta.warfvinge@regionh.dk

¹Department of Clinical Experimental Research, Glostrup Research Institute, Rigshospitalet, Glostrup, Denmark

²Division of Experimental Vascular Research, Department of Clinical Sciences, Lund University Hospital, Lund, Sweden

Full list of author information is available at the end of the article



In addition, OT is released from the cell bodies and dendrites of these neurons [11]. It is still valid that OT neurons are confined to the hypothalamus, even though there seems to be a vast functional diversity. In contrast, the expression of the oxytocin receptor (OTR) is abundant throughout the brain [10], however, the functional role is still unclear.

A steadily increasing number of publications on the molecular, physiological, pharmacological, and behavioral significance of OT, the underlying neuroanatomical and neurochemical basis have been studied to a much lesser extent. This is especially true for OT projections within brain [10].

OT plays a central role in initiating the onset of maternal behavior. In addition to its involvement in uterine contraction, lactation and psychosocial processes, OT has also been implicated in many central processes, including learning and memory, anxiety, addiction, feeding behavior, sexual control and processing of social information [12]. Compared to the vasopressin system, there are fewer sex differences in OT synthesis and expression in the brain and, if any of such, sex differences are specific to brain regions and species [13]. In males, and females, OT neurons are continuously active. In males, OT is involved in reproductive functions such as ejaculation, in cardiovascular homeostasis and other peripheral activities [14]. Significantly, OT is implicated as an endogenous modulator of pain originating from the trigeminal nociceptive system [15].

The ability to artificially synthesize and intranasal administer OT has catalyzed fast-growing line of research on clinical and healthy populations. Acute, single-dose trials are not representative of long-term treatment. Because certain functional impairments have lifelong impacts on quality of life (e.g., schizophrenia, stress disorders), it is improbable that a single administration will constitute an effective treatment plan [16, 17]. Daily OT administration offers greater ecological validity in assessing the neuropeptide's efficacy as a treatment [16]. In addition, a systematic review of the available literature showed that OT had a reliable effect as defined by increasing "pain" tolerance in 29 of 33 animal studies [18]. The results suggested that OT acts as an analgesic for acute "pain" in animals. Research with humans offers consistent evidence to suggest that OT decreases "pain" sensitivity [18].

Migraine is currently rank sixth in worldwide prevalence, 15% of the population suffers migraine, 3 times more women than men, and is posing a heavy burden on individuals and society [19]. While much remains to be unraveled regarding the neurobiology of migraine, emerging evidence links the hypothalamus with the "migraine generator" in the dorsal rostral pons as well as with the spinal trigeminal nuclei and sensory trigeminovascular

system (Fig. 1a), a key pathway in transmission of headache pain [21]. An important focus of migraine research has been identifying possible neuromodulators, primarily neuropeptides, involved in migraine pathophysiology [22].

Circumstantial evidence has pointed us to propose that OT might be involved in migraine, for example the increase of circulating OT during pregnancy correlates with decrease the frequency of headache, and breastfeeding results in higher levels of circulating OT and less postpartum migraine reoccurrence [23]. Clearly, men also suffer from migraine, but so far no differences in OT levels between mothers and fathers have been demonstrated (reviewed [24]).

Therefore, the aim of the present study was to comprehensively map the distribution of OT and OTR in the male rat brain in order to provide an qualitative overview of their localization in fibres and cells to add to the discussion of migraine/headache pathogenesis in general and to compare with their localization with that of calcitonin gene-related peptide (CGRP) and CGRP receptors in the brain [25].

Materials and methods

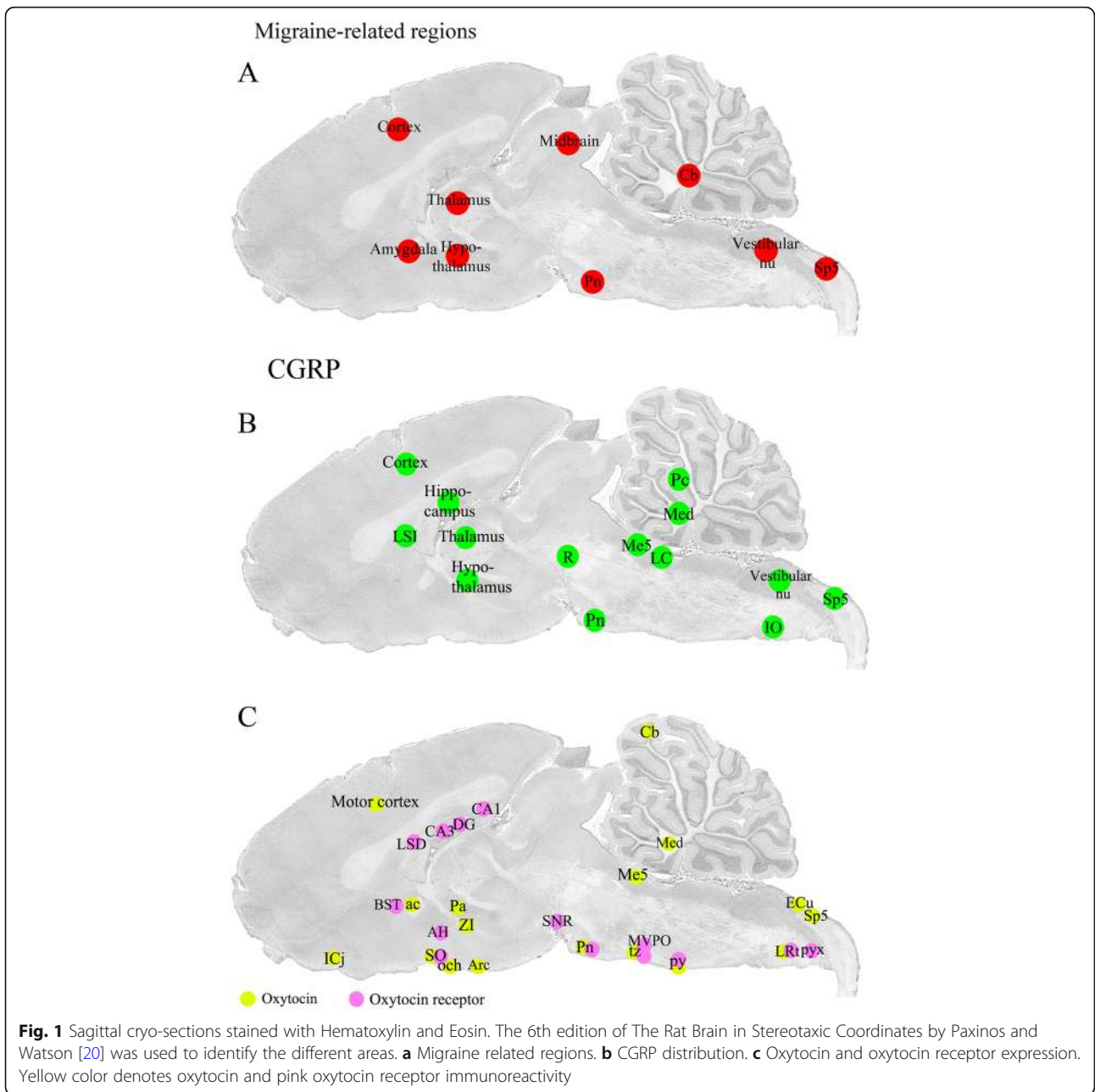
The study followed the guidelines of the European Communities Council (86/609/ECC) and was approved by the Regional Ethical Committee on Animal Research, Malmö/Lund, Sweden (M17–15).

Ten Wistar male rats were euthanized by CO₂ inhalation followed by decapitation. The brains were carefully dissected, cut sagittal in the midline and placed in 4% paraformaldehyde (PF) in phosphate buffer for 4 h, followed by incubation overnight in Sørensen's phosphate buffer (pH 7.2) containing 10% and 25% sucrose in turn. This method of PF fixation allows for a proper fixation up to 2–3 mm from the surface of the brain and inwards [26]. Since we examine a volume of 1 mm lateral to the midline (+ 0.5 – + 1.5 mm), a proper fixation of the tissue used for the immunohistochemical investigation is achieved. The tissue was embedded in Yazulla embedding medium (30% egg albumin, 3% gelatin) and cryo-sectioned at 12 µm. The sections were stored at – 20 °C until use.

The 6th edition of *The Rat Brain in Stereotaxic Coordinates* by Paxinos and Watson [20] and HE staining of sagittal sections spanning over 0.5 mm to 1.5 mm lateral to the midline were used to identify the different areas subjected to the detailed study of OT and OTR distribution. The methods used in the present study are the same as published earlier [25]. However, it is not the same brains as the ones published.

Hematoxylin-eosin (HE)

Sagittal cryo-sections of the whole brain, including cerebellum, brain stem and C₁ spinal cord were stained using Hematoxylin and Eosin (Htx 4 min, Eosin 1 min).



The staining was done in order to examine the morphology and condition of the tissue, and to identify the distance of the section of the brain from the midline. HE staining of sagittal sections spanning over 0.5 mm to 1.5 mm lateral to the midline (Figs. 1a-c) were used to identify the different areas subjected to the detailed study of the OT and OTR distribution.

Immunohistochemistry

Sagittal sections of the brain (lateral 0.5–1.5 mm) were washed in phosphate buffered saline (PBS)

containing 0.25% Triton-X (PBS-T) for 15 min followed by application of the primary antibody (Table 1) with incubation overnight at + 4 °C in moisturized incubation chambers. The following day, the sections were washed twice in PBS-T for 15 min prior to incubation with secondary antibodies (Table 1) for 1 h in room temperature. Finally, the sections were washed 2 × 15 minutes and mounted with Vectashield mounting medium containing 4',6-diamidino-2-phenylindole (DAPI) (Vector Laboratories, Burlingame CA, USA).

Table 1 Details of the primary and secondary antibodies

Primary antibodies				
Product	Host	Dilution	Immunogen	Company
Oxytocin, cat No: AB911	Rabbit	1:500	Synthetic oxytocin (Sigma) conjugated to thyroglobulin, refs Giovannelli et al. 1990, Shen et al. 1992	Millipore, Temecula, CA, USA
Oxytocin, cat No: PA1-18416	Guinea pig	1:1000	Synthetic peptide corresponding to the amino acids 20–28 from human Oxytocin-neurophysin 1, conjugated to carrier protein	Thermo Fisher Scientific, Rockford, IL, USA
Oxytocin, cat No: orb185729	Rabbit	1:100	KLC conjugated synthetic peptide derived between 30 and 18 amino acids of human Oxytocin	Biorbyt LLC, San Francisco, CA, USA
Oxytocin receptor, product code: ab87312	Goat	1:400	Synthetic peptide corresponding to the C terminal amino acids 355–367, ref. Jin Hwan Lee et al. 2019	Abcam, Cambridge, UK
Oxytocin receptor, cat No: AVR-013	Rabbit	1:100	Peptide corresponding to amino acid residues 346–358 of rat Oxytocin receptor	Alomone Labs, Ltd., Jerusalem, Israel
Oxytocin receptor, cat No: PA5-19038	Goat	1:50	Synthetic peptide sequence corresponding to the C-terminus amino acids of OXTR,	Thermo Fisher Scientific, Rockford, IL, USA
Oxytocin receptor, aa43-129, cat No: LS-C373020	Rabbit	1:100	Antibody raised against rat recombinant oxytocin receptor (Val43-Leu129)	LifeSpan Biosciences, Nordic BioSite AB, Täby, SE
CGRP (B47-1)	Rabbit	1:1500	Rat CGRP	Europroxima, Arnheim, Netherlands
RAMP1 844	Goat	1:100	C-terminal of human RAMP1	Merck & Co., Inc., USA
Secondary antibodies				
Product	Dilution	Immunogen	Company	
Cy2	1:100	Anti-rabbit	Jackson Immunoresearch, PA, USA	
FITC	1:100	Anti-rabbit	Cayman Chemical, Ann Arbor, MI, USA	
Alexa 594	1:100	Anti-rabbit	Jackson Immunoresearch, PA, USA	
Cy3	1:100	Anti-rabbit	Jackson Immunoresearch, PA, USA	
Cy2	1:100	Anti-goat	Jackson Immunoresearch, PA, USA	
Cy3	1:400	Anti-goat	Jackson Immunoresearch, PA, USA	
Alexa 488	1:100	Anti-guinea pig	Jackson Immunoresearch, PA, USA	

Three different OT antibodies and 4 OTR antibodies were tested. Anti-rabbit Oxytocin AB911 from Millipore and anti-guinea pig Oxytocin PA1-18416 from Thermo-Fisher displayed consistent and comparable results, and were therefore used in the mapping. As regards to OTR antibodies, anti-goat oxytocin receptor ab87312 from Abcam and anti-rabbit oxytocin receptor AVR-013 from Alomone also showed consistent and comparable results, and were therefore used in the present study. Three to six stainings per antibody were performed. Several secondary antibodies were tested and the best results were achieved using FITC anti-rabbit, Alexa 488 anti-guinea pig and Cy2 anti-goat secondary antibodies. Thus, all positive images in the Results are indicated by green immunofluorescence. For further details of the antibodies used, see Table 1. Omission of primary antibodies served as negative controls.

To compare the OT and OTR distribution with that of CGRP and CGRP receptor, immunohistochemistry was performed on some CNS areas (for information on antibodies, see Table 1). We have recently published the

distribution of CGRP and CGRP receptor components in the rat brain [25].

The sections were examined in a light and epifluorescence microscope (Nikon 80i, Tokyo, Japan) equipped with a motor table, enabling us to get images of a whole section, and with a Nikon DS-2MV camera. Finally, images were processed using Adobe Photoshop CS3 (v0.0 Adobe Systems, Mountain View, CA).

Results

The results of our OT/OTR mapping study is summarized in Fig. 1c. We have compared this distribution with brain areas identified in imaging studies of humans experiencing a migraine attack [27] (Fig. 1a). In addition, we have correlated our findings with that from our recent study on CNS localization of CGRP, another neuropeptide associated with migraine pathophysiology [25] (Fig. 1b).

OT distribution

As expected, OT was expressed in numerous neuronal soma within the *supraoptic (SO)* and *paraventricular*

(Pa) nuclei of the hypothalamus. These nuclei are considered the primary origin of OT projections throughout the brain as well as the OT projections to the posterior pituitary where this neurohormone is released into the circulation [28]. Consistent with this view, OT immunoreactivity observed in other parts of the brain was found mainly in fiber structures but not cell somas. OT fibers exhibited a widespread distribution in the brain. Pearl-like staining of some fibres was also observed within the SO (Fig. 2) and Pa (Fig. 3).

Overall there were few cell bodies in the CNS that contained OT apart from those in the hypothalamic SO and Pa nuclei. Some OT immunoreactive cells were found in the lateral reticular nucleus (LRt) and Sp5. In addition, OT immunoreactive neurons are also found in the TNC (Warfvinge, unpublished).

The *arcuate nucleus* (Arc), which projects to the SO and Pa, expressed intense OT staining in nerve fibres (Fig. 3). These fibers join to distribute to the tract to the pituitary gland [10]. The Arc is considered a key component of neuroendocrine circuitry e.g. OT neurons in the Pa receive neural projections from the Arc [29].

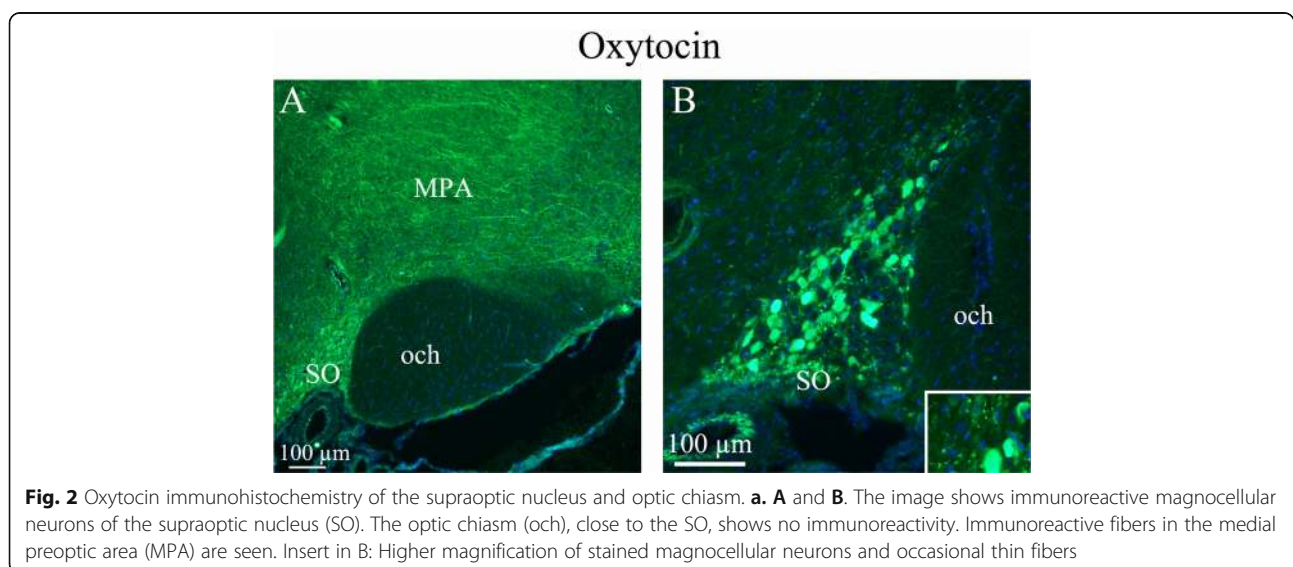
In *cerebral cortex*, OT immunoreactive neuronal processes were found spanning through layers III to VI. Both vertical and horizontal slender processes were observed, forming network structures. OT immunoreactivity was not observed in the cell soma (Figs. 4a-c). Earlier we published a detailed study of CGRP and its receptor components RAMP1/CLR [25]. Figure 4d shows the CGRP receptor activity-modifying protein 1 (RAMP1) in long slender processes that is similar to the OT distribution in cerebral cortex.

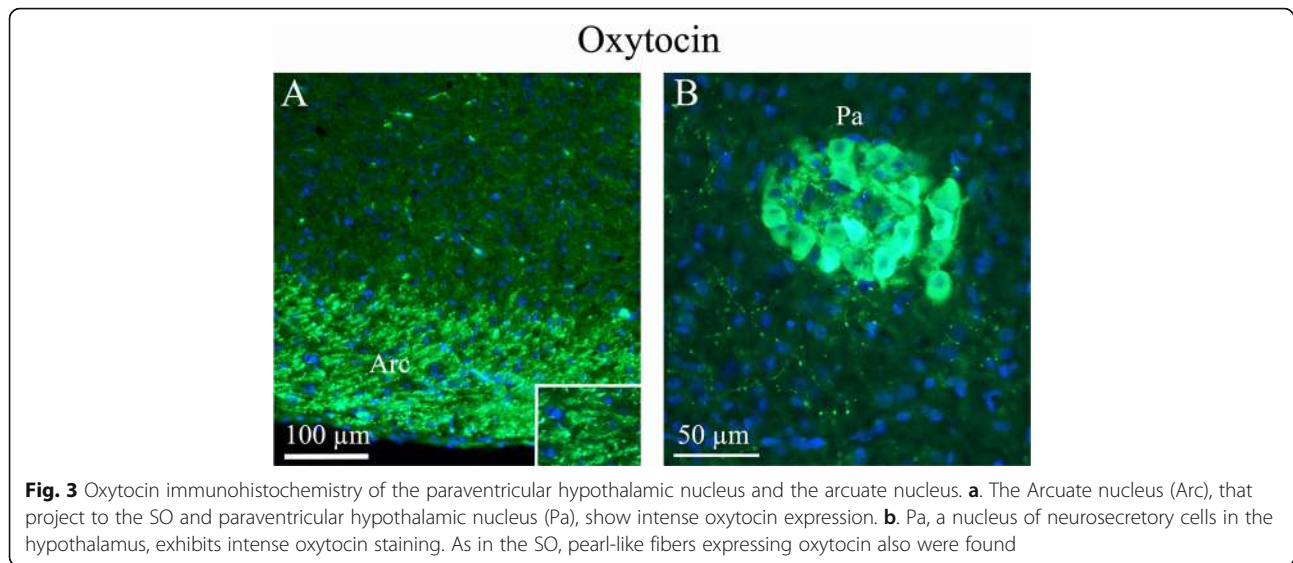
Cerebellar cortex consists of three distinct layers: the molecular, Purkinje cell (PC) and granule cell layers. The only excitatory neurons present are granule cells.

The function of cerebellar circuits, which are believed to be important for motor learning, is entirely dependent on processes carried out by the granular layer. OT immunohistochemistry was revealed in slender processes within the granular cell layer. No immunoreactivity was found in the molecular layer, PC soma or in the most central areas of the cerebellar white matter (Fig. 5a). The staining pattern of OT in the granular layer is similar to that shown previously for the RAMP1 component of the CGRP receptors [25]. However, OT was not present in the white matter, as it was for RAMP1 or in any of the cerebellar neuronal cell bodies (Fig. 5c).

The *mesencephalic nucleus* (Me5) is involved with proprioception of the face, the feeling of position of the muscles. In this nucleus, OT immunoreactive fibre structures were detected (Fig. 5b). This finding was in contrast with the staining of RAMP1, which was observed in the cell bodies of Me5 (Fig. 5d). The *medial cerebellar nucleus* (Med) contains large neurons intermixed with small neurons. The larger cells project to a variety of targets outside the cerebellum. The smaller cells project exclusively to the inferior olive (IO), the source of climbing fibers. OT immunoreactivity in the Med exhibited intense fiber staining, often so tight and close to the cell nuclei that it appeared like cell body staining (Fig. 6).

The *anterior commissure* (ac) is a white matter tract connecting the two temporal cerebral lobes across the midline and placed in front of the fornix (f). The *bed nucleus* is a center of integration for limbic information and monitoring. The *zona incerta* (ZI) is a horizontally elongated region of gray matter below the thalamus. OT immunohistochemistry revealed fiber positivity in ac, bed nucleus and ZI. No immunoreactivity was found in the fornix (Fig. 7).

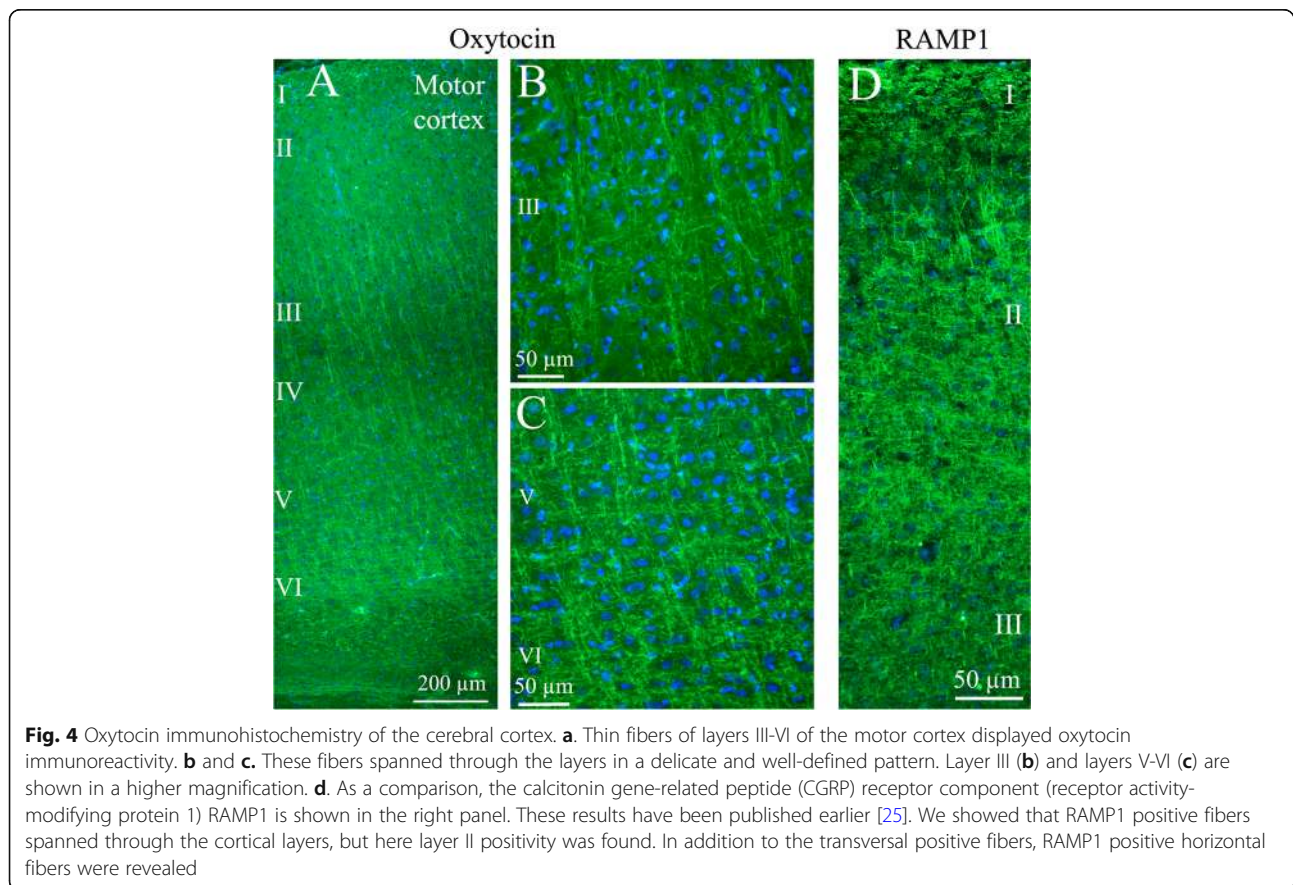


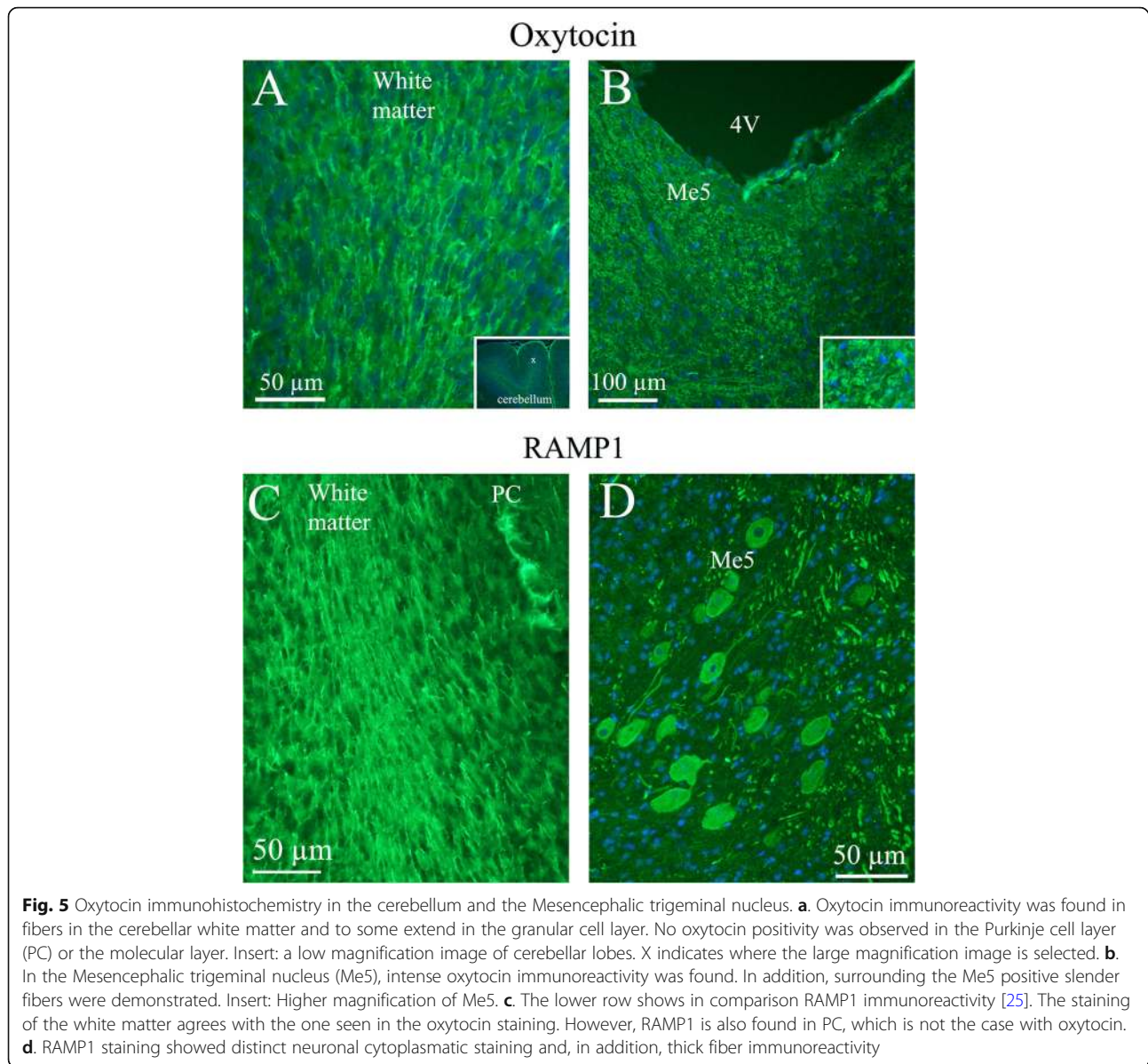


In the reticular formation, a few cells - *the lateral reticular nucleus* (LRt) – were found to express OT. These few cells are the only cells in addition to SO, Pa and Sp5 (and TNC, see above) that were OT immunoreactive in the brain. LRt receives fibers from the spinal cord and

motor cortex and projects to the cerebellum, controlling consciousness (Fig. 8).

The term *pyramidal tract* (py) refers to motor neurons that originate in the motor cortex and terminate in the spinal cord or brainstem. We found OT expression in





the fibres of the pyramidal tract. Adjacent to the pyramidal tract, there is *the trapezoid body* (tz) of the superior olivary complex, a collection of brainstem nuclei that functions in hearing. OT immunohistochemistry revealed staining of fibers in the trapezoid body (Fig. 9).

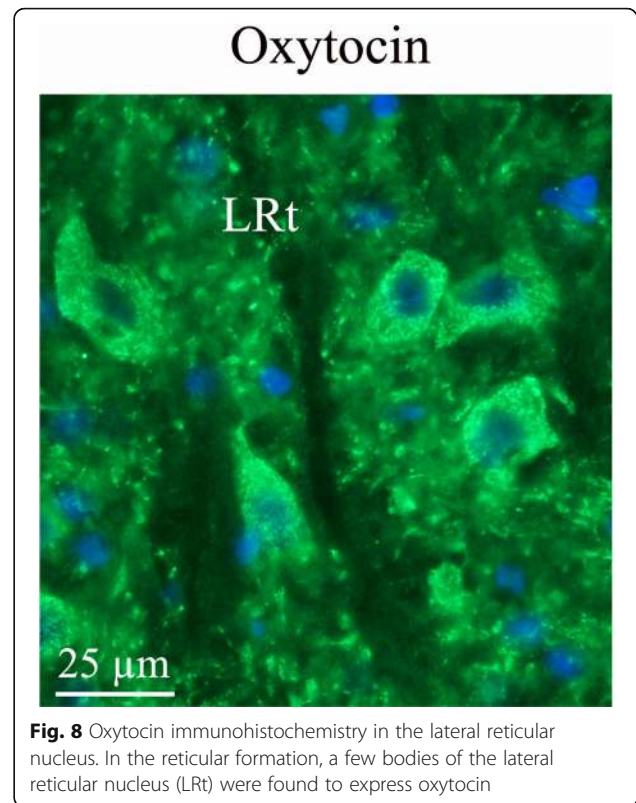
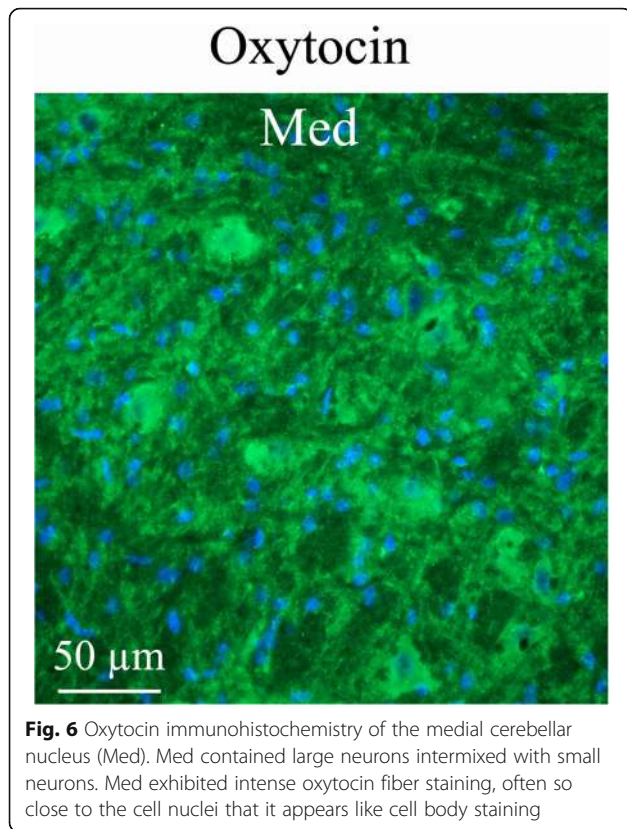
In *the spinal trigeminal nucleus* (Sp5), we found granular OT expression in some cell soma, but not in the fibers (Fig. 10). Sp5 receives trigeminal pain signals originating in the meninges. We have found OT expression in the soma of the neurons in another central trigeminal target, *the trigeminal nucleus caudalis* (TNC) (Warfvinge, unpublished). Here the staining exhibited a granular pattern in the cytoplasm. No OT immunoreactivity was observed in nerve fibres. No OTR immunoreactivity was detected in the TNC.

The islands of Calleja (ICj) are a group of neuronal granule cells that are located within the **olfactory tubercle in rodents**. This region is part of the limbic system, where it aids in the reinforcing effects of reward-like activities. We found thin, slender OT immunoreactive fibers in this region (Fig. 11).

The pons (Pn) is a portion of the brainstem, just above medulla oblongata. It connects upper and lower parts of the brain. The pons helps relay messages from the cortex and the cerebellum. We found OT immunoreactive fibers in and around the pons (Fig. 11).

OTR distribution

In contrast to OT immunohistochemistry, OTR staining was mainly found in cell somas with very little observed

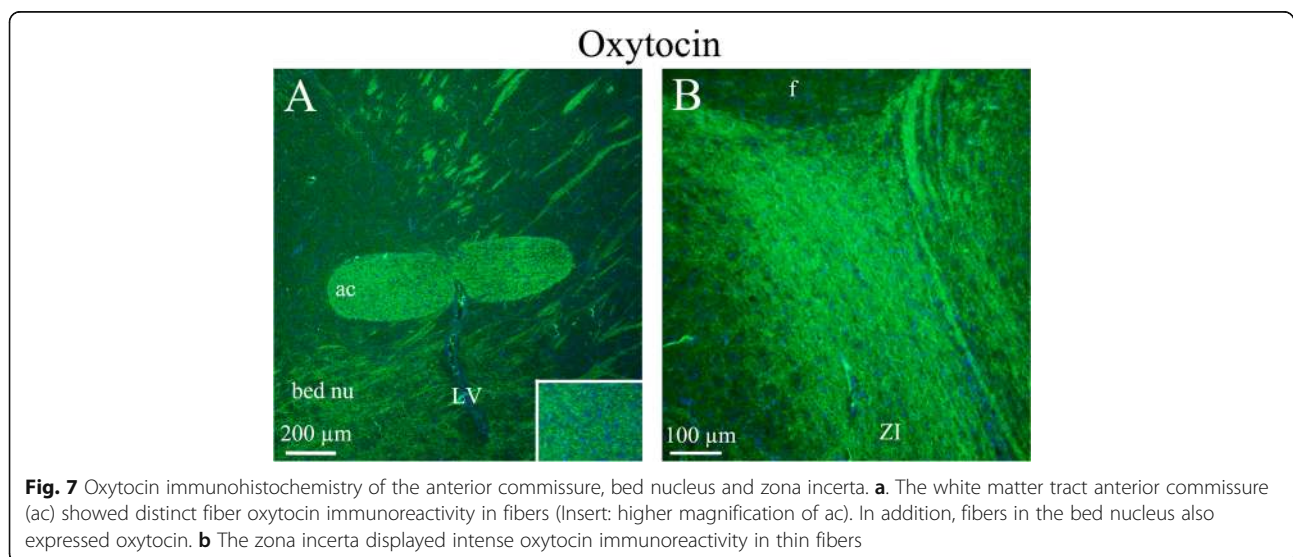


in fibers. Even though OTR immunoreactivity was found in several areas (*lateral reticular nucleus (LRt)*, *lateral septal nucleus (LSD)*, *bed nucleus stria terminalis (BSTL)*, *anterior hypothalamus area (AH)*, *medioventral periolivary nucleus (MVPO)*, *trapezoid body (tz)*), the most distinct OTR expression was found in *the hippocampus* (Fig. 12), *the pons* (Fig. 13) and *the substantia nigra (SNR)* (Fig. 14).

In *the pyramidal tract (py)* and in *the pyramidal decussation (pyx)*, thick positive fibers were found (Fig. 14).

Match and mismatch, OT and OTR

In some regions of the brain (Fig. 1c), both OT and OTR were expressed (match). The most complete overlaps were found in SO, Pn, tz, py and LRt. In addition, both the amygdala and the hypothalamus were regions



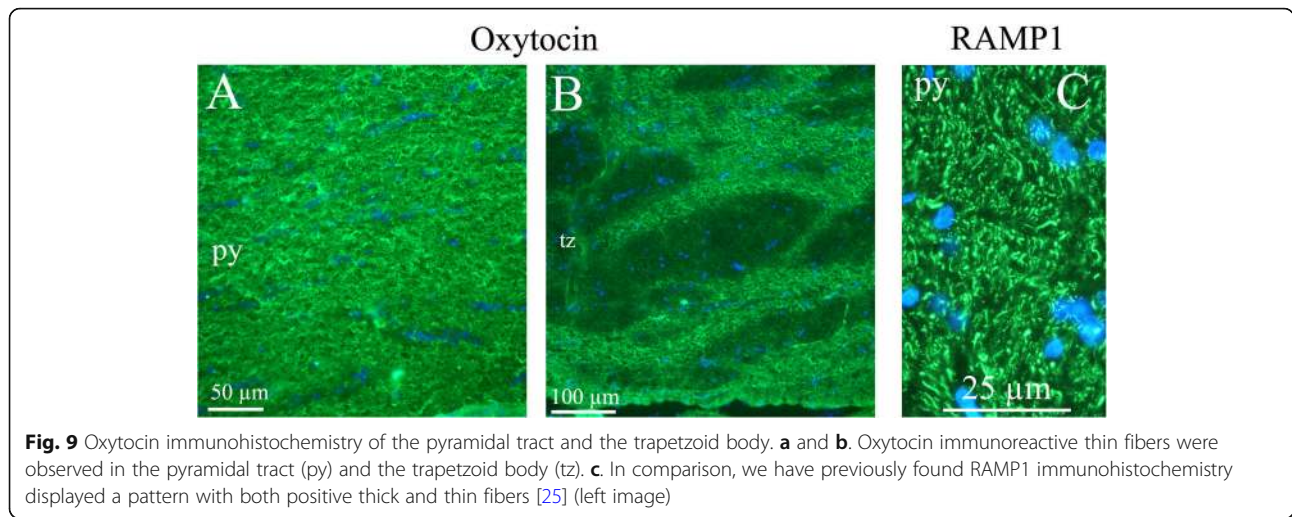


Fig. 9 Oxytocin immunohistochemistry of the pyramidal tract and the trapetoid body. **a** and **b**. Oxytocin immunoreactive thin fibers were observed in the pyramidal tract (py) and the trapetoid body (tz). **c**. In comparison, we have previously found RAMP1 immunohistochemistry displayed a pattern with both positive thick and thin fibers [25] (left image)

where OT and OTR expressions were observed. Mismatch was primarily confined to the cerebral and cerebellar cortex (OT expression) and hippocampus (OTR expression).

Migraine related regions, CGRP and OT

Several regions in the brain are thought to be involved in migraine based on human imaging studies and known pain pathways [27] (Fig. 1a). In the present study, we compared these regions with the expression of OT and OTR, and found congruent distribution in cerebral cortex and cerebellum, pons, amygdala, hypothalamus and Sp5 region.

We also compared the OT and the OTR expression with findings provided in our earlier CGRP distribution

study [25]. As expected, CGRP expression coincide with migraine related regions (Figs. 1a and b). Consequently, cerebral cortex, cerebellum, hypothalamus, pons and Sp5 were regions where CGRP and OT expressions matched (Figs. 1b and c). In addition, in the hippocampal area the OTR and CGRP and its receptor expression overlapped.

Discussion

Migraine occurs in 15% of the general population, but its pathophysiology is not well understood. Imaging results have pointed towards the hypothalamus as a tentative initiation region for the migraine attack [27] and the attacks are often linked to symptoms like stress, depression, diurnal rhythms and autonomic dysfunctions, all of which point towards involvement of the hypothalamus. OT is an important hypothalamic neuropeptide/neurohormone with widespread actions in the periphery and CNS. Recent studies indicate that OT may be involved in migraine and that its administration may relieve acute attacks [15, 23, 30, 31]. In the present study, we demonstrate that OT and OTR are present in a number of brain regions associated with migraine, thus strengthening our insight into possible involvement of OT in migraine attacks.

Historically, OT neurons have been divided into two types, magnocellular and parvocellular OT cells, which project to the posterior pituitary [32–34]. In addition to magno- and parvocellular OT systems, there may be more types of OT neurons which cannot be characterized just by their size [35]. OT is transported to the posterior pituitary gland and secreted into the circulation from the pituitary nerve terminals to regulate numerous peripheral tissues. OT secreted from the pituitary does not enter the brain in significant amounts [36] and a major component of migraine pathophysiology – the trigeminovascular system – is a likely target of circulating OT as it lacks a blood-brain barrier (BBB) [37].

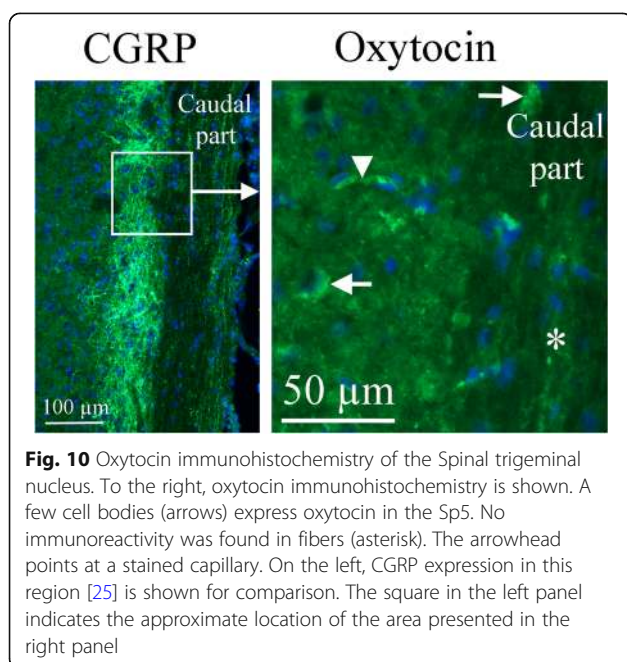
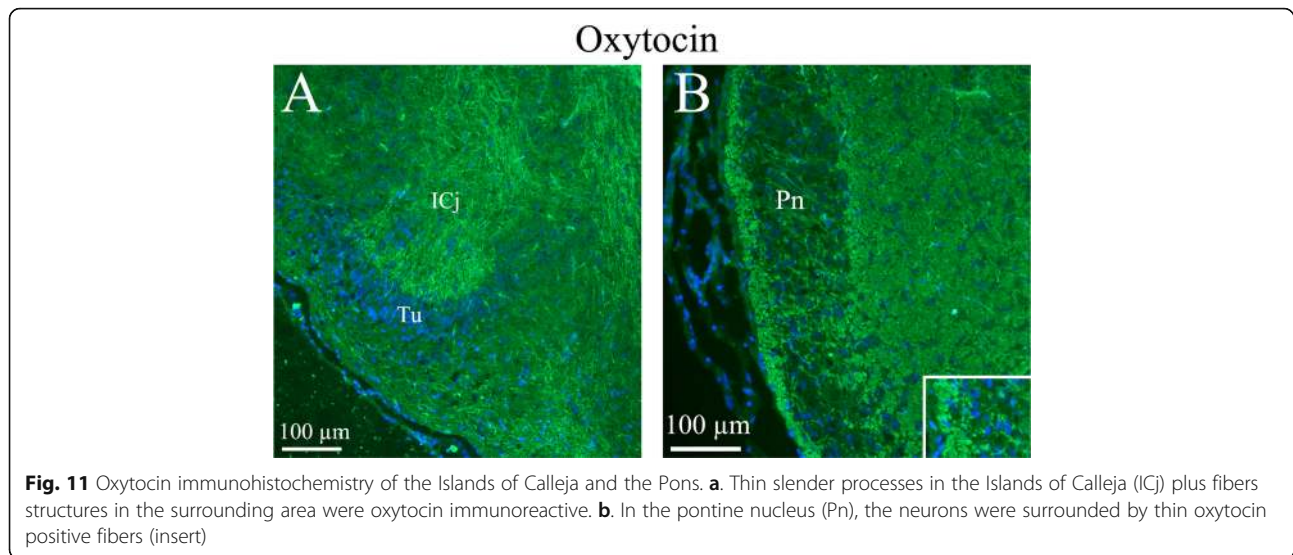


Fig. 10 Oxytocin immunohistochemistry of the Spinal trigeminal nucleus. To the right, oxytocin immunohistochemistry is shown. A few cell bodies (arrows) express oxytocin in the Sp5. No immunoreactivity was found in fibers (asterisk). The arrowhead points at a stained capillary. On the left, CGRP expression in this region [25] is shown for comparison. The square in the left panel indicates the approximate location of the area presented in the right panel

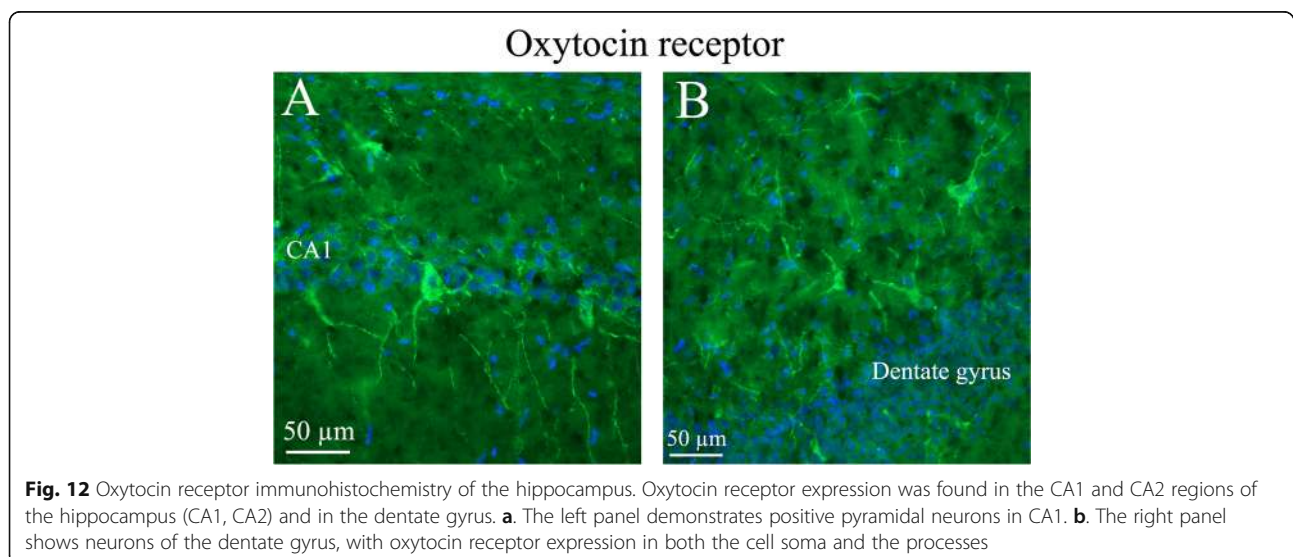


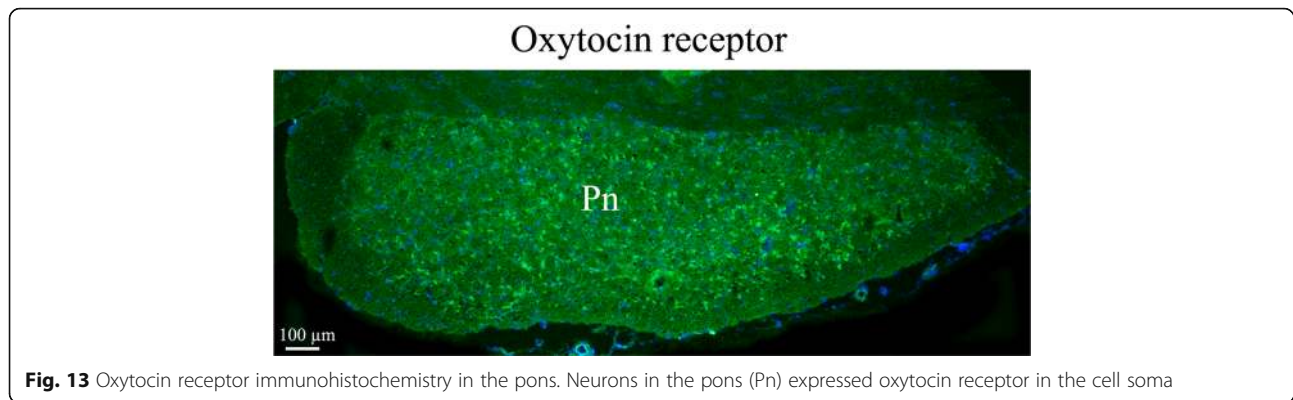
A central role of OT is that both OT and vasopressin are released within the brain by centrally projecting parvocellular neurons (fibers) and also from the soma and dendrites of magnocellular neurons [9, 38, 39]. Synthesis of OT from its precursor “prooxytophysin”, and the secretion of OT are modulated by estrogen, however, the magnocellular OT neurons do not express any of the classical estrogen receptors.

The most fascinating feature of the OT neuron is the long-range axonal projections [40], amply demonstrated in the present work. It has been shown that magnocellular OT neurons project to more than 50 forebrain regions, in addition to their well-known terminations in the posterior pituitary. Parvocellular OT projections give rise to central projections to the SO to influence magnocellular OT activity and simultaneously innervate the

dorsal spinal cord to attenuate acute pain perception [41]. In the present study, we demonstrate using immunohistochemistry a delicate network of fibers expressing OT in many areas of the rat brain, however, the positive fibers in the cerebral cortex showed the most remarkably stunning organization, resembling the distribution of CGRP receptors [25].

Whereas neurotransmitters are ‘private’ messages from one neuron to another, neuropeptides, like OT, are messages between populations of cells — messages that can act across substantial distances linking widely dispersed cell groups, but which lack temporal accuracy or much spatial refinement [9]. To produce its actions in the brain, OT must reach and activate its main target, the OTR. This means that it is not the distribution of OT fibers in the brain that determines behavior, but the





distribution of OTR [9]. When comparing migraine active regions seen in imaging studies of migraine patients [27] and the localization of OT/OTR, it shows that there is overlap in several parts of the brain.

In a recent review, the literature on the overlap OT/OTR in the rat brain has been summarized using autoradiography, *in situ* hybridization and immunohistochemistry [40]. The authors concluded that there is a complete overlap between OT fibers and OTR, but a mismatch appears in a few areas in the brain. Mismatch in the present study using immunohistochemistry was primarily confined to the cortex (OT expression) and hippocampus (OTR expression). The reason for this is unclear but, in many parts, the OT fibers distribute to the ependymal cells of the ventricles, suggestive of cerebral spinal fluid secretion, and to intracerebral microvessels, sometimes fibers reaching through the endothelium and hence suggestive of a secretion to the circulation [10].

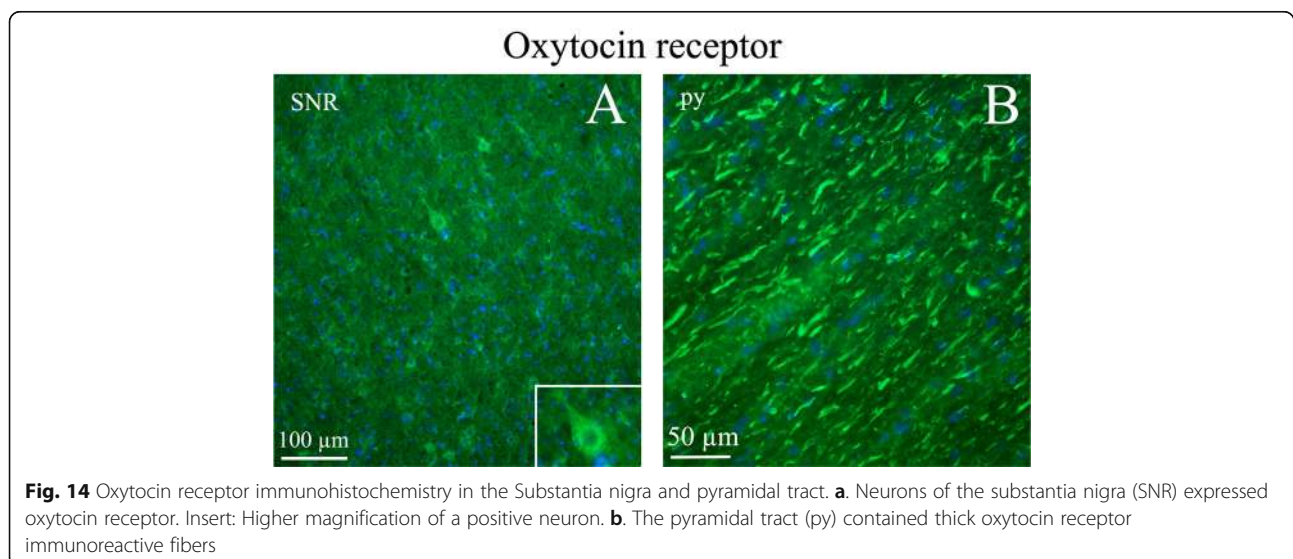
Recent experiments have demonstrated that OTR are expressed in trigeminal ganglion neurons; some of which co-express CGRP, which is indicative of their presence

on primarily nociceptive trigeminal neurons (Warfvinge, unpublished). Furthermore, OTR are up-regulated in trigeminal neurons following inflammatory and/or noxious stimulation.

Effects of OT on the trigeminal pathway have recently been elucidated by [42, 43]. Thus, the acute dura mater stimulation elicits neuronal activation in the trigeminocervical complex (TCC) in the brainstem [44]. This response in the TCC is blunted by spinal (local) OT administration [43]. In addition, the application of a OTR blocker reduced this response, indicating involvement of an OTR at the TCC level. Since the TNC/TCC is protected by the BBB it is reasonable that OT should come from a CNS site like the long slender neuronal fibers from the SO/Pa. The neuroanatomy provided presently support the functional data [42, 43]. We have shown that there are OT positive fibers projecting from the hypothalamic neurons to different parts of the brainstem.

Conclusion

The current study examined the CNS distribution of OT and its receptor with a focus on migraine-related regions



and areas expressing CGRP/receptors. In many regions, in particular regions harboring the “migraine generator” in the brainstem, we found correlation between the three types of mappings. We propose that a central role for OT will be a key to understanding more about migraine pathophysiology.

Abbreviations

ac: anterior commissure; AH: Anterior hypothalamic area; Arc: Arcuate hypothalamic nucleus; BBB: Blood-brain barrier; BST: Bed nucleus stria terminalis; CA1: Field CA1 of the hippocampus; CA3: Field CA3 of the hippocampus; Cb: Cerebellum; CGRP: Calcitonin gene-related peptide; CLR: Calcitonin receptor-like receptor; DG: Dentate gyrus; ECu: External cuneate nucleus; ICj: Islands of Calleja; LSD: Lateral septal nucleus; LRT: Lateral reticular nucleus; Me5: Mesencephalic trigeminal nucleus; Med: Medial cerebellar nucleus; MVPO: Medioventral periolivary nucleus; och: optic chiasm; Pa: Paraventricular hypothalamic nucleus (also named PVN in the literature); Pn: Pons; py: pyramidal tract; pyx: pyramidal decussation; RAMP1: Receptor activity-modifying protein 1; SNR: Substantia nigra reticular part; SO: Supraoptic nucleus (also named SON in the literature); Sp5: Spinal trigeminal nucleus; TCC: Trigemino-cervical complex; TNC: Trigeminal nucleus caudalis; tz: trapetoid body; ZI: Zona incerta

Acknowledgements

The Lundbeck Foundation, Denmark, the Swedish Research Council, the Heart-Lung foundation, Sweden, and the International Headache Society generously supported this work.

Authors' information (optional)

LE was the first to propose that CGRP might be involved in migraine. LE has over the years investigated different angles when it comes to migraine and CGRP. In 2018, the first migraine specific drug (Aimovig®), an antibody against the CGRP receptor, was approved by US FDA and EU EMA. DK expertise in male and female hormones is a result from 30 odd year's investigation on hormonal effects. KW is an expert in immunohistochemical methods and CNS.

Authors' contributions

KW, DK and LE formed the plan of the project. KW did all the immunohistochemical staining and images. KW, DK and LE analyzed the results. KW, DK and LE wrote the manuscript. KW, DK and LE approved to the final manuscript.

Funding

The Lundbeck Foundation, Denmark, the Swedish Research Council, the Heart-Lung foundation, Sweden, and the International Headache Society are gratefully acknowledged. Open access funding provided by Lund University.

Availability of data and materials

The material (stained and not-stained) are kept in the freezers in our laboratory. The data are kept in our computers and also kept in the back-up systems available at our institute.

Ethics approval and consent to participate

The study followed the guidelines of the European Communities Council (86/609/ECC) and was approved by the Regional Ethical Committee on Animal Research, Malmö/Lund, Sweden (M17–15).

Consent for publication

All authors approved the publication of this paper.

Competing interests

The authors declare that they have no competing interests.

Author details

¹Department of Clinical Experimental Research, Glostrup Research Institute, Rigshospitalet, Glostrup, Denmark. ²Division of Experimental Vascular Research, Department of Clinical Sciences, Lund University Hospital, Lund, Sweden. ³Department of Pharmacology, School of Medicine, University of California at Irvine, Irvine, CA, USA.

Received: 1 October 2019 Accepted: 23 January 2020

Published online: 07 February 2020

References

- Murphy D, Si-Hoe SL, Brenner S et al (1998, 20) Something fishy in the rat brain: molecular genetics of the hypothalamo-neurohypophysial system. *Bioessays*:741–749 1998/11/20. DOI: [https://doi.org/10.1002/\(SICI\)1521-1878\(199809\)20:9<741::AID-BIES7>3.0.CO;2-J](https://doi.org/10.1002/(SICI)1521-1878(199809)20:9<741::AID-BIES7>3.0.CO;2-J)
- Vandesande F, Dierickx K (1975) Identification of the vasopressin producing and of the oxytocin producing neurons in the hypothalamic magnocellular neurosecretory system of the rat. *Cell Tissue Res* 164:153–162 1975/12/02
- Jirikowski GF, Caldwell JD, Pilgrim C et al (1989) Changes in immunostaining for oxytocin in the forebrain of the female rat during late pregnancy, parturition and early lactation. *Cell Tissue Res* 256:411–417. <https://doi.org/10.1007/bf00218899>
- Buijs RM (1978) Intra- and extrahypothalamic vasopressin and oxytocin pathways in the rat. Pathways to the limbic system, medulla oblongata and spinal cord. *Cell Tissue Res* 192:423–435. 1978/09/26. <https://doi.org/10.1007/bf00212323>
- Tribollet E, Charpak S, Schmidt A et al (1989) Appearance and transient expression of oxytocin receptors in fetal, infant, and periparturient rat brain studied by autoradiography and electrophysiology. *J Neurosci* 9:1764–1773 1989/05/01
- Gould BR, Zingg HH (2003) Mapping oxytocin receptor gene expression in the mouse brain and mammary gland using an oxytocin receptor-LacZ reporter mouse. *Neuroscience* 122:155–167. 2003/11/05. [https://doi.org/10.1016/s0306-4522\(03\)00283-5](https://doi.org/10.1016/s0306-4522(03)00283-5)
- Boccia ML, Petrusz P, Suzuki K et al (2013) Immunohistochemical localization of oxytocin receptors in human brain. *Neuroscience* 253:155–164. 2013/09/10. <https://doi.org/10.1016/j.neuroscience.2013.08.048>
- Marlin BJ, Froemke RC (2017) Oxytocin modulation of neural circuits for social behavior. *Dev Neurobiol* 77:169–189. 2016/09/15. <https://doi.org/10.1002/dneu.22452>
- Ludwig M, Leng G (2006) Dendritic peptide release and peptide-dependent behaviours. *Nat Rev Neurosci* 7:126–136. 2006/01/24. <https://doi.org/10.1038/nrn1845>
- Jirikowski GF (2019) Diversity of central oxytocinergic projections. *Cell Tissue Res* 375:41–48. 2018/12/01. <https://doi.org/10.1007/s00441-018-2960-5>
- Ludwig M (1998) Dendritic release of vasopressin and oxytocin. *J Neuroendocrinol* 10:881–895 1998/12/31
- Cilz NI, Cymerblit-Sabba A, Young WS (2019) Oxytocin and vasopressin in the rodent hippocampus. *Genes Brain Behav* 18:e12535. 2018/11/01. <https://doi.org/10.1111/gbb.12535>
- Dumais KM, Veenema AH (2016) Vasopressin and oxytocin receptor systems in the brain: Sex differences and sex-specific regulation of social behavior. *Front Neuroendocrinol* 40:1–23. 2015/05/09. <https://doi.org/10.1016/j.yfrne.2015.04.003>
- Gimpl G, Fahrenholz F (2001) The oxytocin receptor system: structure, function, and regulation. *Physiol Rev* 81:629–683. 2001/03/29. <https://doi.org/10.1152/physrev.2001.81.2.629>
- Tzabazis A, Mechanic J, Miller J et al (2016) Oxytocin receptor: Expression in the trigeminal nociceptive system and potential role in the treatment of headache disorders. *Cephalalgia* 36:943–950. 2015/11/23. <https://doi.org/10.1177/0333102415618615>
- Horta M, Kaylor K, Feifel D et al (2019) Chronic oxytocin administration as a tool for investigation and treatment: A cross-disciplinary systematic review. *Neurosci Biobehav Rev* 108:1–23. 2019/10/28. <https://doi.org/10.1016/j.neubiorev.2019.10.012>
- Macdonald K, Feifel D (2013) Helping oxytocin deliver: considerations in the development of oxytocin-based therapeutics for brain disorders. *Front Neurosci* 7:35. 2013/03/20. <https://doi.org/10.3389/fnins.2013.00035>
- Rash JA, Aguirre-Camacho A, Campbell TS (2014) Oxytocin and pain: a systematic review and synthesis of findings. *Clin J Pain* 30:453–462. 2013/07/28. <https://doi.org/10.1097/AJP.0b013e31829f57df>
- Disease GBD, Injury I and Prevalence C (2017) Global, regional, and national incidence, prevalence, and years lived with disability for 328 diseases and injuries for 195 countries, 1990–2016: a systematic analysis for the Global Burden of Disease Study 2016. *Lancet* 390:1211–1259 2017/09/19. [https://doi.org/10.1016/S0140-6736\(17\)32154-2](https://doi.org/10.1016/S0140-6736(17)32154-2)
- Paxinos G, Watson C (2007) The rat brain in stereotaxic coordinates, 6th edn. Academic Press, London

21. May A, Schulte LH (2016) Chronic migraine: risk factors, mechanisms and treatment. *Nat Rev Neurol* 12:455–464. 2016/07/09. <https://doi.org/10.1038/nrneurol.2016.93>
22. Edvinsson L, Uddman R (2005) Neurobiology in primary headaches. *Brain Res Brain Res Rev* 48:438–456. 2005/05/26. <https://doi.org/10.1016/j.brainresrev.2004.09.007>
23. Tzabazis A, Kori S, Mechanic J et al (2017) Oxytocin and Migraine Headache. *Headache* 57(Suppl 2):64–75. 2017/05/10. <https://doi.org/10.1111/head.13082>
24. Sundstrom Poromaa I, Comasco E, Georgakis MK et al (2017) Sex differences in depression during pregnancy and the postpartum period. *J Neurosci Res* 95:719–730. 2016/11/22. <https://doi.org/10.1002/jnr.23859>
25. Warfvinge K, Edvinsson L (2019) Distribution of CGRP and CGRP receptor components in the rat brain. *Cephalalgia* 39:342–353. 2017/09/01. <https://doi.org/10.1177/0333102417728873>
26. Warfvinge K, Edvinsson L (2013) Pearls and pitfalls in neural CGRP immunohistochemistry. *Cephalalgia* 33:593–603. 2013/05/15. <https://doi.org/10.1177/0333102412472072>
27. May A (2017) Understanding migraine as a cycling brain syndrome: reviewing the evidence from functional imaging. *Neurol Sci* 38:125–130. 2017/05/21. <https://doi.org/10.1007/s10072-017-2866-0>
28. Abrahams VC, Pickford M (1956) The effect of anticholinesterases injected into the supraoptic nuclei of chloralosed dogs on the release of the oxytocic factor of the posterior pituitary. *J Physiol* 133:330–333. 1956/08/28. <https://doi.org/10.1113/jphysiol.1956.sp005589>
29. Bouret SG, Draper SJ, Simerly RB (2004) Trophic action of leptin on hypothalamic neurons that regulate feeding. *Science* 304:108–110. 2004/04/06. <https://doi.org/10.1126/science.1095004>
30. Wang YL, Yuan Y, Yang J et al (2013) The interaction between the oxytocin and pain modulation in headache patients. *Neuropeptides* 47:93–97. 2013/02/05. <https://doi.org/10.1016/j.npep.2012.12.003>
31. You DS, Haney R, Albu S et al (2018) Generalized Pain Sensitization and Endogenous Oxytocin in Individuals With Symptoms of Migraine: A Cross-Sectional Study. *Headache* 58:62–77. 2017/11/03. <https://doi.org/10.1111/head.13213>
32. Swanson LW, Kuypers HG (1980) The paraventricular nucleus of the hypothalamus: cytoarchitectonic subdivisions and organization of projections to the pituitary, dorsal vagal complex, and spinal cord as demonstrated by retrograde fluorescence double-labeling methods. *J Comp Neurol* 194:555–570. 1980/12/01. <https://doi.org/10.1002/cne.901940306>
33. Swanson LW, Sawchenko PE (1980) Paraventricular nucleus: a site for the integration of neuroendocrine and autonomic mechanisms. *Neuroendocrinology* 31:410–417. 1980/12/01. <https://doi.org/10.1159/000123111>
34. Swanson LW, Sawchenko PE (1983) Hypothalamic integration: organization of the paraventricular and supraoptic nuclei. *Annu Rev Neurosci* 6:269–324. 1983/01/01. <https://doi.org/10.1146/annurev.ne.06.030183.001413>
35. Althammer F, Grinevich V (2017) Diversity of oxytocin neurons: beyond magno- and parvocellular cell types?, 2017/10/13. *J Neuroendocrinol*, DOI. <https://doi.org/10.1111/jne.12549>
36. Ermisch A, Brust P, Kretzschmar R et al (1993) Peptides and blood-brain barrier transport. *Physiol Rev* 73:489–527. 1993/07/01. <https://doi.org/10.1152/physrev.1993.73.3.489>
37. Edvinsson L, Haanes KA, Warfvinge K et al (2018) CGRP as the target of new migraine therapies - successful translation from bench to clinic. *Nat Rev Neurol* 14:338–350. 2018/04/25. <https://doi.org/10.1038/s41582-018-0003-1>
38. Pow DV, Morris JF (1989) Dendrites of hypothalamic magnocellular neurons release neurohypophysial peptides by exocytosis. *Neuroscience* 32:435–439. 1989/01/01
39. Landgraf R, Neumann ID (2004) Vasopressin and oxytocin release within the brain: a dynamic concept of multiple and variable modes of neuropeptide communication. *Front Neuroendocrinol* 25:150–176. 2004/12/14. <https://doi.org/10.1016/j.yfme.2004.05.001>
40. Grinevich V, Knobloch-Bollmann HS, Eliava M et al (2016) Assembling the Puzzle: Pathways of Oxytocin Signaling in the Brain. *Biol Psychiatry* 79:155–164. 2015/05/24. <https://doi.org/10.1016/j.biopsych.2015.04.013>
41. Eliava M, Melchior M, Knobloch-Bollmann HS et al (2016) A New Population of Parvocellular Oxytocin Neurons Controlling Magnocellular Neuron Activity and Inflammatory Pain Processing. *Neuron* 89:1291–1304. 2016/03/08. <https://doi.org/10.1016/j.neuron.2016.01.041>
42. Garcia-Boll E, Martinez-Lorenzana G, Condes-Lara M et al (2018) Oxytocin inhibits the rat medullary dorsal horn Sp5c/C1 nociceptive transmission through OT but not V1A receptors. *Neuropharmacology* 129:109–117. 2017/11/25. <https://doi.org/10.1016/j.neuropharm.2017.11.031>
43. Garcia-Boll E, Martinez-Lorenzana G, Condes-Lara M et al (2020) Inhibition of nociceptive dural input to the trigeminocervical complex through oxytocinergic transmission. *Exp Neurol* 323:113079. 2019/11/05. <https://doi.org/10.1016/j.expneurol.2019.113079>
44. Akerman S, Holland PR, Lasalandra MP et al (2013) Endocannabinoids in the brainstem modulate dural trigeminovascular nociceptive traffic via CB1 and “triptan” receptors: implications in migraine. *J Neurosci* 33:14869–14877. 2013/09/13. <https://doi.org/10.1523/JNEUROSCI.0943-13.2013>

Publisher's Note

Springer Nature remains neutral with regard to jurisdictional claims in published maps and institutional affiliations.

Ready to submit your research? Choose BMC and benefit from:

- fast, convenient online submission
- thorough peer review by experienced researchers in your field
- rapid publication on acceptance
- support for research data, including large and complex data types
- gold Open Access which fosters wider collaboration and increased citations
- maximum visibility for your research: over 100M website views per year

At BMC, research is always in progress.

Learn more biomedcentral.com/submissions

