

UC Davis

UC Davis Previously Published Works

Title

The Drosophila genome nexus: a population genomic resource of 623 Drosophila melanogaster genomes, including 197 from a single ancestral range population.

Permalink

<https://escholarship.org/uc/item/01r4k7tw>

Journal

Genetics, 199(4)

ISSN

0016-6731

Authors

Lack, Justin B
Cardeno, Charis M
Crepeau, Marc W
et al.

Publication Date

2015-04-01

DOI

10.1534/genetics.115.174664

Peer reviewed

The *Drosophila* Genome Nexus: A Population Genomic Resource of 623 *Drosophila melanogaster* Genomes, Including 197 from a Single Ancestral Range Population

Justin B. Lack,^{*,1} Charis M. Cardeno,[†] Marc W. Crepeau,[†] William Taylor,[‡] Russell B. Corbett-Detig,^{§,**} Kristian A. Stevens,[†] Charles H. Langley,^{†,1} and John E. Pool^{*,1}

^{*}Laboratory of Genetics, University of Wisconsin, Madison, Wisconsin 53706, [†]Department of Evolution and Ecology, University of California, Davis, California 95616, [‡]Department of Computer Sciences, University of Wisconsin, Madison, Wisconsin 53706, and [§]Department of Integrative Biology and ^{**}Department of Statistics, University of California, Berkeley, California 94720

ABSTRACT Hundreds of wild-derived *Drosophila melanogaster* genomes have been published, but rigorous comparisons across data sets are precluded by differences in alignment methodology. The most common approach to reference-based genome assembly is a single round of alignment followed by quality filtering and variant detection. We evaluated variations and extensions of this approach and settled on an assembly strategy that utilizes two alignment programs and incorporates both substitutions and short indels to construct an updated reference for a second round of mapping prior to final variant detection. Utilizing this approach, we reassembled published *D. melanogaster* population genomic data sets and added unpublished genomes from several sub-Saharan populations. Most notably, we present aligned data from phase 3 of the *Drosophila* Population Genomics Project (DPGP3), which provides 197 genomes from a single ancestral range population of *D. melanogaster* (from Zambia). The large sample size, high genetic diversity, and potentially simpler demographic history of the DPGP3 sample will make this a highly valuable resource for fundamental population genetic research. The complete set of assemblies described here, termed the *Drosophila* Genome Nexus, presently comprises 623 consistently aligned genomes and is publicly available in multiple formats with supporting documentation and bioinformatic tools. This resource will greatly facilitate population genomic analysis in this model species by reducing the methodological differences between data sets.

KEYWORDS *Drosophila melanogaster*; population genomics; genome assembly; *Drosophila* Genome Nexus

RECENT advances in next-generation sequencing have led whole-genome sequencing to be extended from only a few genetic strains of select model organisms to many genomes from humans and from model and nonmodel taxa.

While all fields of genetic analysis have benefited from these technological advances, population genetics has been especially affected as hundreds or even thousands of whole-genome sequences have been generated for some organisms (e.g., 1000 Genomes Project Consortium 2010; Pool *et al.* 2012; Long *et al.* 2013; Huang *et al.* 2014; Wallberg *et al.* 2014). As a result of these large population genomic databases, we have gained considerable power in detecting and understanding species history (e.g., Li and Durbin 2011), the genome-wide consequences of natural selection (e.g., Comeron 2014), structural variation (e.g., Corbett-Detig and Hartl 2012), and patterns of linkage disequilibrium and recombination (e.g., Chan *et al.* 2012).

While these data sets have undeniable utility, the rapid development and deployment of next-generation technologies have been accompanied by a diversity of opinions on the most appropriate ways to assemble, filter, and curate extremely large, complex data elements. As a result, each population

Copyright © 2015 by the Genetics Society of America
doi: 10.1534/genetics.115.174664

Manuscript received October 2, 2014; accepted for publication January 23, 2015; published Early Online January 27, 2015.

Available freely online through the author-supported open access option.

Supporting information is available online at <http://www.genetics.org/lookup/suppl/doi:10.1534/genetics.115.174664/-/DC1>.

Reference numbers for data available in public repositories are given in Supporting Information, Table S1.

¹Corresponding authors: 5302 Genetics/Biotechnology Bldg., Laboratory of Genetics, University of Wisconsin, 425-G Henry Mall, Madison, WI 53706.

E-mail: jlack@wisc.edu; 3342B Storer Hall, Center for Population Biology and Department of Evolution and Ecology, University of California, One Shields Ave., Davis, CA 95616-8554. E-mail: chlangley@ucdavis.edu; 5302 Genetics/Biotechnology Bldg., Laboratory of Genetics, University of Wisconsin, 425-G Henry Mall, Madison, WI 53706. E-mail: jpool@wisc.edu

genomic data set is generated using unique combinations of library preparation chemistry and sequencing platform, different short-read aligning programs or pipelines with distinct biases and error rates, a wide range of quality filters and thresholds, and often distinct data formats. Ultimately, this renders population genomic data sets difficult to combine and jointly analyze. For example, it is difficult to understand whether population genetic statistics (*e.g.*, nucleotide diversity) are directly comparable given potential differences in error rate or mapping/coverage biases.

Drosophila melanogaster has played a pivotal role in essentially every field of genetic analysis from population and evolutionary genetics to the development of fly models for understanding human disease. While *D. melanogaster* likely originated in Sub-Saharan Africa (Lachaise *et al.* 1988; Pool *et al.* 2012), natural populations now occur in essentially all temperate and tropical localities and are typically commensal with humans. There are currently multiple independently generated population genomic data sets available that differ in the sequencing platform, assembly pipeline, and the data formats released to the public (Langley *et al.* 2012; Mackay *et al.* 2012; Pool *et al.* 2012; Huang *et al.* 2014). To address at least the last two of these issues, we present the assembly of 623 genomes from natural populations of *D. melanogaster*, all assembled using a common approach. This data set includes the previously published diploid *Drosophila* Population Genomics Project (DGRP) freeze 2.0 genomes from Raleigh, North Carolina (Huang *et al.* 2014), the DPGP collection of homozygous chromosomes from Malawi (Langley *et al.* 2012), the haploid DPGP2 (Pool *et al.* 2012) collections of genomes from Sub-Saharan Africa, and the founder lines from the *Drosophila* synthetic population resource (DSPR) (King *et al.* 2012). In addition, we publish 53 additional haploid embryo and inbred African genomes from Egypt, Ethiopia, Kenya, South Africa, and Uganda, along with the DPGP3 data set of 197 haploid embryo genomes from a single population in Zambia.

This deep genomic sequencing of the Zambia sample (denoted “ZI”) was motivated by preliminary data suggesting that this population has maximal genetic diversity among known *D. melanogaster* populations, along with minimal levels of admixture from non-sub-Saharan (“cosmopolitan”) populations (Pool *et al.* 2012). While the sample size of DPGP3 is comparable to that of DGRP, each data set has particular strengths. DGRP includes a substantial inbreeding effort to facilitate genotype–phenotype comparisons, whereas DPGP3 uses a haploid embryo sequencing effort method (Langley *et al.* 2011) to generate fully homozygous genomes for population genetic analysis. Because of its location within the sub-Saharan ancestral range of the species, the Zambia sample has not experienced the out-of-Africa bottleneck or New World admixture that is relevant to the DGRP population (Duchen *et al.* 2013). By providing a clear picture of diversity in the ancestral range of *D. melanogaster*, the DPGP3 collection will aid in understanding the histories of other worldwide populations and the species as a whole, as illustrated by studies of sub-Saharan human populations

(Bhatia *et al.* 2014; Elhassan *et al.* 2014). While Zambia may not necessarily represent a population at demographic equilibrium, the relative simplicity of its history will also facilitate studies of the effects of natural selection and other processes on genomic diversity.

The *Drosophila* Genome Nexus (DGN) created from these alignments is intended to facilitate population genetic analyses focused on single nucleotide polymorphisms (SNPs). We do not claim that our assembly pipeline produces the best possible alignments. It does represent a modest advance over standard methodology, but its primary virtue is to increase the comparability of population genomic data sets. For example, there would be scientific value in comparing the North Carolina DGRP population against separately published genomes from the European and African source populations from which North American populations may derive (Caracristi and Schlötterer 2003; Duchon *et al.* 2013). Detailed population genetic inference is not a focus of the present study, but we present basic summaries of genetic diversity and structure, as well as patterns of admixture into sub-Saharan African populations from cosmopolitan populations.

Materials and Methods

Reassembly of previously published genomes

We obtained the raw sequencing reads from the National Center for Biotechnology Information short read archive (SRA; <http://www.ncbi.nlm.nih.gov/sra>) for Illumina data from the DGRP freeze 2.0 (Mackay *et al.* 2012; Huang *et al.* 2014), DPGP (Langley *et al.* 2012), DPGP2 (Pool *et al.* 2012), and DSPR (King *et al.* 2012) collections of genomes (SRA accession numbers are given in [Supporting Information, Table S1](#)). See the above citations for information concerning DNA extraction, library preparation, and sequencing, as these varied considerably among data sets. For the DSPR, we assembled all resequenced genomes associated with that project, but did not generate consensus sequences for the t0XSS and t0XSAM libraries, as these were completely heterozygous crosses generated for the sole purpose of determining genotypes in the t0 strain, which possessed an inversion polymorphism on chromosome arm 2L.

Newly sequenced genomes

We present a considerable expansion of the genomic sequences available for *D. melanogaster* with the addition of 246 African lines. [Table S1](#) provides descriptions of fly stocks and their availability, genome and alignment characteristics, and raw data accession numbers. [Table S2](#) gives information about sampling locations. This expansion consists of 193 additional lines (primarily isofemale, some inbred for five generations) collected from Siavonga, Zambia (collectively referred to as the DPGP3 data set), in addition to the 4 Zambia ZI genomes previously published (Pool *et al.* 2012). We also include here 53 additional genomes (referred to here as the African Genomes Extended Sampling,

or the AGES data set) from 12 African populations. Isofemale lines for these populations were collected following Pool (2009). For all DPGP3 genomes, genomic library preparation from haploid embryos followed the protocol of Langley *et al.* (2011). Sequencing for DPGP3 was performed on an Illumina Genome Analyzer IIx (Langley lab, University of California at Davis). From the AGES data set, all but the Egyptian (EG) and Kenyan (KM) paired-end libraries were prepared from haploid embryos using the same methods as for DPGP3. All AGES genomes were sequenced at the University of Wisconsin-Madison Biotechnology Center on the Illumina HiSeq2000 platform. For the three EG genomes, inbred lines were established through full-sib mating for eight generations, while the four KM genomes were sequenced directly from isofemale lines that had been maintained in the laboratory for 12 years and therefore passively inbred. For these seven genomes, we extracted DNA from 30 females; paired-end library preparation and size selection for 300-bp inserts was conducted using the NEBNext DNA Library Prep Reagent Set (New England BioLabs), and sequencing was conducted at the University of Wisconsin-Madison Biotechnology Center on the Illumina HiSeq2000 platform.

Genome assembly pipeline

In reference assembly of short-read sequencing data, a major limitation is SNP and indel divergence of sequenced genomes from the reference. This issue could result in alignment biases if reads derived from low-diversity regions of the genome can be aligned more confidently, in addition to biases among genomes that vary in their overall divergence from the reference sequence (*e.g.*, sub-Saharan vs. cosmopolitan *D. melanogaster*). In an attempt to ameliorate such effects, we developed and applied a pipeline that combines two aligners with different degrees of sensitivity to nonreference variation and speed and utilizes two rounds of mapping (Figure S1). In brief, we first mapped short read data to the *D. melanogaster* reference genome (release 5.57; <http://flybase.org>) using BWA v0.5.9 (Li and Durbin 2010) using default settings, followed by mapping of all unmapped reads using Stampy v1.0.20 (Lunter and Goodson 2010). This approach combines the rapid but strict BWA algorithm to first map the relatively “easy-to-align” reads with the more sensitive but computationally intensive Stampy algorithm, which more effectively and accurately aligns the relatively divergent reads (Lunter and Goodson 2010). All reads with mapping quality scores <20 were excluded. Optical duplicates were then removed using Picard v1.79 (<http://picard.sourceforge.net/>), and assemblies were improved around indels using the GATK v3.2 Indel Realigner (McKenna *et al.* 2010; Depristo *et al.* 2011). The Unified Genotyper (Depristo *et al.* 2011) was then used to call indels and SNPs for each individual genome. Among the indel calling criteria, >50% of the reads at a given position had to support the existence of that indel, with a minimum of three reads containing the variant. For SNP calling in this first round, we required a minimum phred-scaled quality value of 31 and that >75% of the reads at a given position support the SNP.

For the second round of assembly, the SNPs and indels called in the first round were introduced into the *D. melanogaster* reference, and this modified reference was then used for a second round of mapping. Following indel realignment, the Unified Genotyper was then used to call all sites in the modified reference genome. To generate reference-numbered consensus sequences, a custom perl script was used to shift all base coordinates back to those of the original *D. melanogaster* reference. Deletions and all sites within 3 bp of a called indel were coded as “N” (based on the error analysis described in the *Results*), while insertions do not appear in reference-numbered consensus sequences.

Consensus error rate and sequence generation

To estimate the actual error rate of our assemblies and to determine the optimal trade-off between error rate and genomic coverage (the number of euchromatic bases with called alleles), we evaluated base-calling accuracy using the previously published resequenced reference genome ($y^1 cn^1 bw^1 sp^1$) (Pool *et al.* 2012), sequenced on a GAIIx to an $\sim 25\times$ average depth with 76-bp paired-end reads (Table S1). Variation was simulated via dwgsim v0.1.10 (<https://github.com/nh13/DWGSIM/wiki>); we introduced substitutions randomly across the genome at a rate of 0.012/bp, with an indel rate of 0.002/bp and a probability of 0.6 of indel extension (the dwgsim command line options used were -1 100 -2 100 -d 200 -s 25 -C 25 -q 30 -r 0.012 -R 0.166666 -X 0.6 -H -m). The variation in the *.mutations file produced by dwgsim was then inserted into the release 5 *D. melanogaster* reference sequence. The resequenced reference reads were then mapped to the modified reference using the pipeline described above, as well as several variations, to investigate the performance of our pipeline vs. more standard alignment approaches and various degrees of filtering. Analysis of simulated sequence reads via dwgsim gave highly concordant results (not presented).

Heterozygosity filtering

For the DGRP data set, the EG and KM samples from the AGES data set, and the ZK genomes from the DPGP2 data set, libraries were constructed from pools of flies following varying degrees of inbreeding. For these genomes, tracts of heterozygosity can remain (and can even be substantial), presumably due to the presence of multiple recessive lethal and sterile mutations that are segregating in repulsion. These linked lethals may often occur, for example, within large inversions that are polymorphic within a line and suppress crossing over. To allow consistency between haploid and diploid genomes, entire heterozygous regions must be filtered out prior to generating homozygous consensus sequences.

For the samples mentioned above, the Unified Genotyper was run in diploid mode to enable the calling of heterozygous sites. To identify and mask residually heterozygous regions, we scanned the five euchromatic arms of each diploid genome for heterozygous calls in 100-kb windows advancing in 5-kb increments. Rather than use a hard boundary for delineating

windows of residual heterozygosity, we chose to scale the threshold for a given window to the level of genetic diversity observed in that window within either sub-Saharan or cosmopolitan populations (henceforth referred to as π_{sub} and π_{cos} , respectively), depending on the geographic origin of each individual genome. To determine these thresholds, we estimated nucleotide diversity (π) in 100-kb windows advancing in 5-kb increments for the large Rwandan (RG) sample of 27 haploid embryo genomes and the French sample of 9 haploid embryo genomes to represent sub-Saharan and cosmopolitan diversity, respectively. Then to scan each genome for heterozygosity, whenever the proportion of heterozygous sites in a given window exceeded $\pi/5$, a masking interval was initiated, and this interval was extended in both directions on the chromosome arm until encountering a window with heterozygosity $< \pi/20$. The thresholds ($\pi/5$ and $\pi/20$, respectively) were selected heuristically based on two factors: (1) the expected rate of heterozygous sites when genuine heterozygosity is present (π) and (2) the expected rate of erroneous heterozygote calls in homozygous sequence (examined using the diploid variant calling on genomes derived from haploid embryos). Although the latter quantity showed some variability across the genome, it consistently stayed below $\pi/5$ (except for masked cases of “pseudoheterozygosity”; see below) and generally stayed below $\pi/20$ as well. In contrast, true heterozygosity will typically yield rates above $\pi/5$ for a 100-kb region and nearly always above $\pi/20$. The above procedure was conducted beginning from both ends of each chromosome arm. Tracts of heterozygosity were masked to N and are provided in Table S3.

For the DGRP data set, a subset of these genomes had elevated baseline levels of heterozygosity for unknown technical reasons. For the majority of these genomes, this constituted $< 10\%$ of all sites, while 29 genomes had $> 10\%$ of sites masked for this reason (Table S3). Regions with elevated numbers of putatively heterozygous sites were masked from consensus sequences regardless of whether they reflected true heterozygosity, cryptic structural variation, or technical artifacts. However, we also used a normalization approach to identify the DGRP genome regions that reflect genuine heterozygosity. We generated normalization factors using the following procedure: (1) For each euchromatic chromosome arm in each genome, we first determined the mode of heterozygous calls per site (hets/site) in the same windows above (in bins of 0.00001), only including windows with a hets/site between 0 and that window's $\pi_{\text{cos}}/2$ to remove the effects of true heterozygosity in determining the mode of the baseline (“genomic noise factor”). (2) We obtained each genome's normalization factor by dividing the above genomic noise factor by the mode of all DGRP genomic noise factors, truncating this normalization factor at 1 (since we are interested only in reducing the influence of nongenuine heterozygosity calls). (3) For each window in the heterozygosity scan, we divided the hets/site by its genome's normalization factor to provide a corrected hets/site appropriate for the identification of true heterozygosity, using the criteria described above.

While haploid embryo genomes are not expected to contain any true heterozygosity, repetitive and/or duplicated regions can cause mismapping that results in tracts of “pseudoheterozygosity.” To detect these tracts and remove them, we implemented the same threshold approach as outlined above (without normalization, since none of these genomes showed elevated background levels of putative heterozygosity). For these genomes, the Unified Genotyper was run in haploid mode, and so read proportions were analyzed in place of called heterozygous sites, and specifically the proportion of sites in which less than 75% of reads supported the consensus base. For windows in which more than the proportion $\pi/5$ of all sites fit the above criterion, a masking tract was initiated and extended in both directions until encountering a window below $\pi/20$. This procedure was conducted starting from both ends of the chromosome arms, overlapping windows were merged, and all pseudoheterozygosity tracts are reported in Table S3.

Chromosomal inversion detection

Chromosomal inversions are known to be common in natural *D. melanogaster* populations (e.g., Krimbas and Powell 1992; Aulard *et al.* 2002) and can significantly impact the distribution of genetic diversity (e.g., Kirkpatrick and Barton 2006; Hoffman and Rieseberg 2008; Corbett-Detig and Hartl 2012). For the *Drosophila* Genome Nexus, we compiled known inversions for the previously published genomes and also identified inversions for the newly sequenced genomes. For DGRP genomes, inversions were previously identified cytogenetically (Huang *et al.* 2014). For the DPGP2 data set, common inversions were previously detected using the approach of Corbett-Detig *et al.* (2012). For the newly sequenced DPGP3 and AGES data sets, inversions were also detected using this method, and we provide the identified inversions for all of the analyzed genomes in Table S4.

Detection of identical-by-descent genomic regions

Tracts of identical-by-descent (IBD) may reflect the sampling of related individuals and can contradict theoretical assumptions and complicate many population genetic analyses. To identify tracts of IBD, we implemented the approach of Pool *et al.* (2012), but with slight modifications for the diploid genomes and for the large DPGP3 population sample (described below). All possible pairwise comparisons were made for each of the five euchromatic arms of each genome, and pairwise differences per site were calculated in 500-kb windows advanced in 100-kb increments. Windows with < 0.0005 pairwise differences per site were deemed putatively IBD. Some chromosomal intervals (including centromere- and telomere-proximal regions) exhibited large-scale, recurrent IBD between populations, suggesting explanations other than close relatedness, and therefore did not contribute to a genome's IBD total unless they extended outside these recurrent IBD regions. Elsewhere, within-population IBD (presumably due to very recent common ancestry) was determined to be that which totaled genome-wide > 5 Mb for a pairwise comparison of genomes.

For the DPGP2 and AGES genomes, we excluded the same recurrent IBD regions as those of Pool *et al.* (2012). However, for the much larger DGRP and DPGP3 samples of genomes, we visually reexamined these recurrent IBD tracts and generated new regions to be excluded for each of these data sets (provided in Table S5).

Due to heterozygosity filtering, some diploid genomes had genomic coverages far less than the typical ~111 Mb. Therefore, the genome-wide threshold for IBD filtering was adjusted to 5% of all called positions rather than 5 Mb. In addition, only 500-kb windows with >100-kb pairwise comparisons were allowed to contribute to the 5% total, minimizing the influence of windows with large numbers of masked sites. All masked IBD tracts are given in Table S6.

Detection of cosmopolitan admixture

Because admixture from cosmopolitan gene flow into Africa can significantly impact estimates of genetic diversity and violate demographic assumptions of some analyses, it is important to identify instances of cosmopolitan ancestry in the sub-Saharan genomes. We used the HMM approach outlined in detail by Pool *et al.* (2012), but with updated reference panels. The sub-Saharan reference panel included 27 RG genomes, but chromosome arms with known inversions were excluded (as identified by Corbett-Detig and Hartl 2012). The cosmopolitan reference panel included 9 French genomes, again excluding inversions, since inverted arms were previously found to have unusually high divergence from standard arms in this population (Corbett-Detig and Hartl 2012; Pool *et al.* 2012). Pairwise distance comparisons indicated that the Egyptian genomes were genetically cosmopolitan. To augment the cosmopolitan sample, we included homozygous regions of standard arrangement Egypt chromosome arms in the cosmopolitan reference panel.

Aside from these modifications to the reference panels, we implemented the admixture HMM as described in Pool *et al.* (2012). Briefly, this HMM works in the following way. For a focal African genome within a particular window, the method compares this genome against a cosmopolitan reference panel and assesses whether its genetic distance to this reference panel is on the level expected for a sub-Saharan genome or if instead this resembles a comparison of one cosmopolitan genome against others (indicating admixture). As before, window size for the analysis was based on 1000 nonsingleton SNPs among the RG sample, roughly corresponding to a mean window size of 50 kb. The analysis was initially calibrated using the 27 RG genomes to represent the putative non-admixed state, and emission distributions for the non-admixed state were generated as in Pool *et al.* (2012). A revised sub-Saharan panel was then generated through an iterative analysis of the RG genomes. Following a single round of the method, RG genomes were masked for admixture, and then these masked genomes served as the African panel for a second round. RG genomes were then masked for admixture again, and a third round of the method was applied to the RG genomes

to produce a final set of emission distributions that were used in the analysis of all other African genomes.

Genetic diversity and population structure

For all of the analyses described below, only heterozygosity- and IBD-filtered genomes were utilized. Sub-Saharan genomes were also filtered for cosmopolitan admixture as detailed above. Nucleotide diversity (π) was initially calculated in windows of 2000 nonsingleton RG SNPs, corresponding to a median window size of 100 kb for all populations with at least two genomes sampled. For more efficient analysis of the large Raleigh (DGRP) and Siavonga, Zambia (DPGP3), populations, we selected 30 genomes from each of these populations with the highest genomic coverage and with at least 30 \times average depth. To remove the effects of spurious estimates due to low coverage windows, we excluded windows for a given population if site coverage (the number of sites with alleles called for two or more genomes) was below half the coverage in the large RG sample for that window. To obtain whole-arm and genome-wide estimates, we conducted a weighted average of windows (weighted by the number of sites in each window with data from at least two genomes).

To examine patterns of population structure, we calculated D_{xy} and F_{ST} (Hudson *et al.* 1992) for all populations with at least two high-coverage genomes (after IBD and admixture filtering) and including the *D. melanogaster* reference genome for D_{xy} . Both analyses were conducted in windows of 2000 nonsingleton RG SNPs, and a weighted average of windows was used to obtain whole-arm and genome-wide estimates. In addition, to lessen the influence of large inversions on estimates of genetic diversity and population structure, we estimated nucleotide diversity and pairwise F_{ST} excluding inverted arms for a subset of populations with larger sample sizes (inversion presence/absence is given in Table S4).

Data and pipeline files provided

A complete set of files needed to implement this alignment pipeline is provided at <https://github.com/justin-lack/Drosophila-Genome-Nexus.git>, along with a step-by-step list of commands, which is also provided here as Supporting Information, File S1. From the DGN web site (<http://johnpool.net/genomes.html>), three types of alignment files are provided. Sequence text files provided the reference-numbered consensus sequences described above. Only these files are subject to heterozygosity filtering in the downloaded state. Scripts and instructions are provided to enable the filtering of identity-by-descent and admixture in African populations, as indicated above. Sequence text files are the recommended starting point for most users performing SNP-oriented analyses. We also provide two forms of variant call files (VCFs). Indel VCFs summarize the short insertions and deletions called for this genome relative to the reference sequence. These files are provided from both rounds of mapping (with positions in the round 2 file altered to match reference numbering). Many users may find the indel VCFs to be a useful complement to the sequence text files, which contain no explicit information about

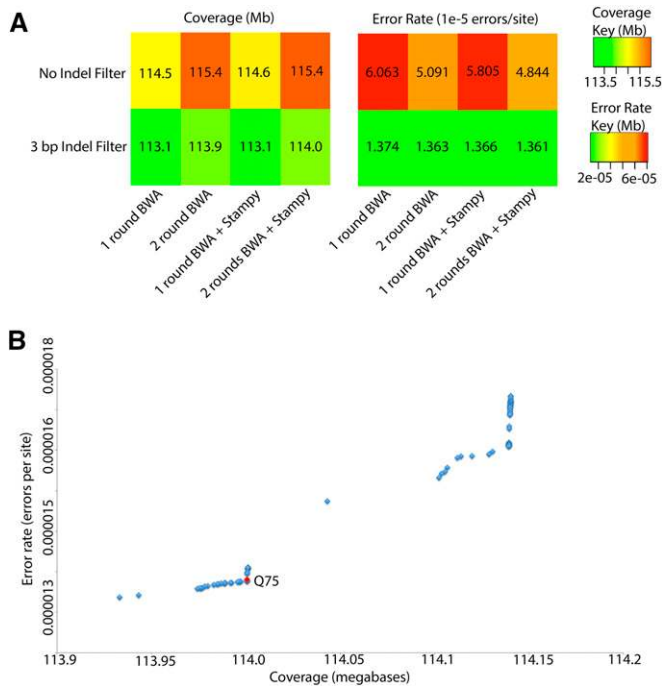


Figure 1 Comparison of genomic coverage and error rate for various genome assembly pipeline variations, based on resequencing of the *D. melanogaster* reference. (A) Heat maps illustrating variation in coverage (left) and error rate (right) at the Q75 threshold chosen to optimize the trade-off between coverage and error rate. (B) Evaluation of the trade-off between genomic coverage and error rate for the haploid caller of the Unified Genotyper; quality values ranged from 10 to 100. Resequenced genomes from the reference strain ($y^1 cn^1 bw^1 sp^1$) were modified to simulate realistic levels of variation. We chose a cutoff of Q75 (red) to maximize coverage and minimize error.

indels. We also provide site-by-site, substitution-oriented VCFs. These files are intended for advanced users. They have not been filtered around indels, for heterozygous regions, or for any other reason, instead representing a distilled raw output of the alignment pipeline. Since each genome was aligned to a distinct modified reference sequence, individual genome VCFs may differ in the “reference” column; these files are not intended for merging via common software. To reduce file size, the downloaded SNP VCFs do not contain the typical “ID,” “FORMAT,” and “FILTER” columns. A script to restore conventional VCF format is available on the DGN and GitHub web sites referenced above.

Results

The *Drosophila* Genome Nexus

The resulting data set, which we have named the *Drosophila* Genome Nexus (<http://www.johnpool.net/genomes.html>), consists of 623 sequenced genomes (varying slightly in number among the five euchromatic chromosomal arms) from 36 populations from Africa, Europe, and North America. The consensus sequences analyzed below and made available online include only the five euchromatic chromosome arms.

Table 1 Chromosome-arm nucleotide diversity (π) for the RG population based on sites called in both rounds of our pipeline and on sites called only by adding the second round of mapping

Chromosome	RG nucleotide diversity	
	Both rounds	Second round only
X	0.0083	0.0277
2L	0.0086	0.0259
2R	0.0077	0.0252
3L	0.0079	0.0248
3R	0.0065	0.0260

These consensus sequences have been filtered for heterozygosity, with additional files provided to facilitate masking of IBD and cosmopolitan admixture as well as locus-specific analysis. SNP and indel VCFs are also available online, both for these five arms and for other arms (mitochondria, chromosomes 4 and Y, and heterochromatic components of the euchromatic arms). The repetitive nature of non-euchromatic arms may entail much higher error rates; we do not focus on their analysis here.

While the consensus sequences made available online specifically focus only on SNP variants, the provided indel VCFs will also be of considerable utility. For indels, the Unified Genotyper is limited to detecting only those encapsulated entirely within a single read. Therefore, read lengths will limit the size of detected indels. To examine the extent of this effect on indel detection, we examined indel length distribution for two DPGP3 genomes with 76-bp paired-end reads as well as for two DPGP3 genomes with much longer read lengths (146 and 150 bp) (Figure S2), each with similarly low cosmopolitan admixture and high mean depth. For indels ~ 25 bp or shorter, the long and short read lengths appeared to have no effect on indel length frequencies. However, for longer indels (>25 bp) the gap in detection between the two read lengths gradually increased, illustrating the decreasing ability of the present approach to detect indels as they approach the read length. This potential bias is important to consider when examining the provided indel calls. A more comprehensive analysis of structural variation within and between these populations will be a target of future research.

While there is considerable variation among genomes in terms of average sequencing depth and coverage, the majority of this variance lies in the DGRP and AGES data sets, which range from $\sim 12\times$ to $>100\times$ mean depth, while the remaining genomes are primarily haploid embryo genomes of $\sim 30\times$ mean depth or higher (Table S1). In addition, coverage varies considerably among the inbred/isofemale genomes from the AGES and DGRP data sets due to heterozygosity filtering.

Genome assembly pipeline performance

To investigate pipeline performance, base-calling bias, and consensus error rate, we assembled a resequenced *D. melanogaster* reference strain to an artificially mutated reference genome to simulate variation. Overall, adding a second round of mapping that incorporated SNP and

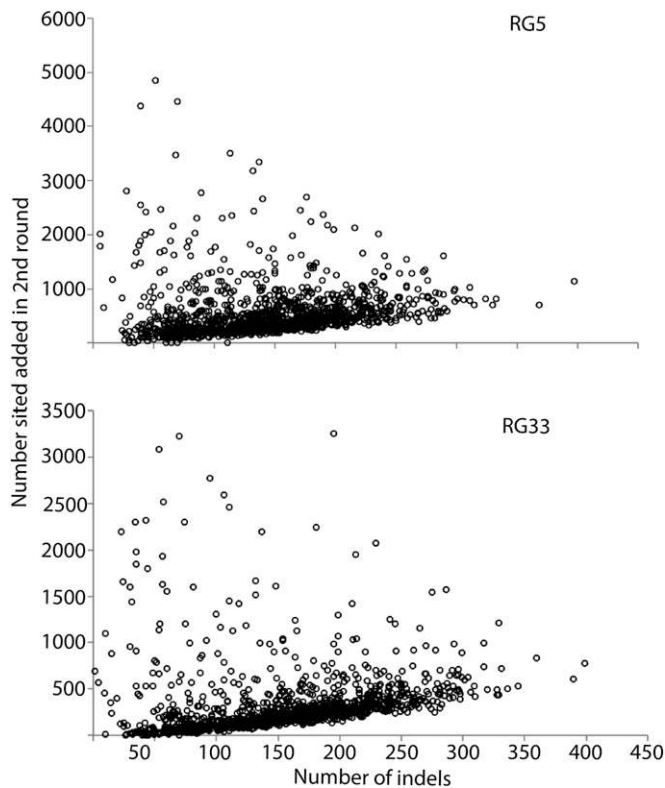


Figure 2 Relationship between the number of indels and the number of sites called by our two-round pipeline but not called in a single-round pipeline for two RG genomes (RG5 and RG33). Site counts (y-axis) and indel counts (x-axis) were determined in 100-kb windows across each genome.

indel variants called in the first round of mapping resulted in an $\sim 1\%$ increase in sequence coverage (just over 1 million sites added) and a modest improvement in error rate relative to performing only a single round of mapping with only BWA (Figure 1 and Figure S3). This improvement was observed irrespective of the nominal quality value threshold for base calling (which had only a modest effect on error rates), with error rates for the two round assemblies completely distinct from the distribution of error rates observed for a single round of assembly. We investigated the contribution of Stampy to this improvement and found that, while both error rate and coverage improved, the vast majority of improvement was due to adding the second round of mapping (Figure 1 and Figure S3).

We also investigated the impact of filtering around indels, as past analyses have found that positions directly adjacent to indels are difficult for aligners to correctly align and a major contributor to error (Meader *et al.* 2010; Alkan *et al.* 2011). We found similar results, with approximately a fivefold reduction in error rate by masking 3 bp on either side of consensus indels. Assessing the possible benefit of masking 5 bases rather than 3, we observed almost no improvement in error rate to justify the nearly 1% reduction in coverage and therefore used the 3-bp mask. Our use of the GATK Indel Realigner (McKenna *et al.* 2010; Depristo *et al.* 2011), in conjunction with incorporating indels into

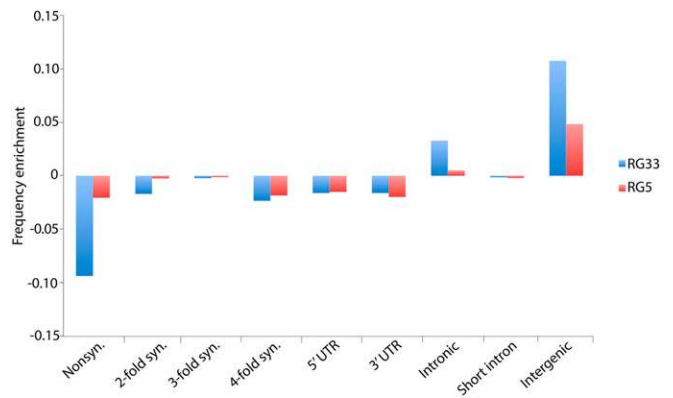


Figure 3 Enrichment of each of nine annotation classes in the sites added by our two-round pipeline, but not called by a single-round pipeline, relative to genome-wide frequencies. We examined two RG genomes (RG5 and RG33) with an $\sim 30\times$ mean depth and comparable coverage.

the reference used in the second round of mapping, may have improved our ability to align around these regions. Finally, to determine the optimal alignment quality value threshold for consensus sequence generation and to estimate the expected error rate of our assemblies, we examined the trade-off between coverage and error rate at a range of quality values for both the haploid and the diploid callers of the Unified Genotyper (Depristo *et al.* 2011), and we selected a minimum of Q75 and Q32 for calling a position in haploid or diploid genomes, respectively (Figure 1 and Figure S4, respectively). These thresholds corresponded to an error rate of $\sim 1.36 \times 10^{-5}$ errors per site.

To further examine our two-round pipeline performance, we compared sites called only by the two-round pipeline vs. those called using just a single round of BWA to map and estimated both error rate and diversity for both classes of sites. In terms of error rate, sites called in both pipelines possessed an error rate of 9.3×10^{-6} , just below the genome-wide rate, while sites added only in our two-round pipeline had an error rate of 2.9×10^{-5} , roughly twofold higher than our genome-wide average. This increase in error rate is not surprising given that these sites added by our two-round pipeline likely constitute highly diverse, hard-to-align regions relative to those confidently called by both pipelines.

To further examine the sites added by our two-round pipeline, we identified bases called in both pipelines vs. those called only in our two-round pipeline for a single RG genome (RG33) and then calculated nucleotide diversity at each class of sites for the RG sample of 27 genomes. In addition, for two RG genomes sequenced at similar depths (RG33, RG5) we determined both the number of sites added by our two-round pipeline and the number of indels (indel “rate”) in 100-kb nonoverlapping windows. For sites called only by our two-round pipeline, nucleotide diversity was over threefold higher than that for sites called in both pipelines (Table 1), and we observed a clear positive relationship

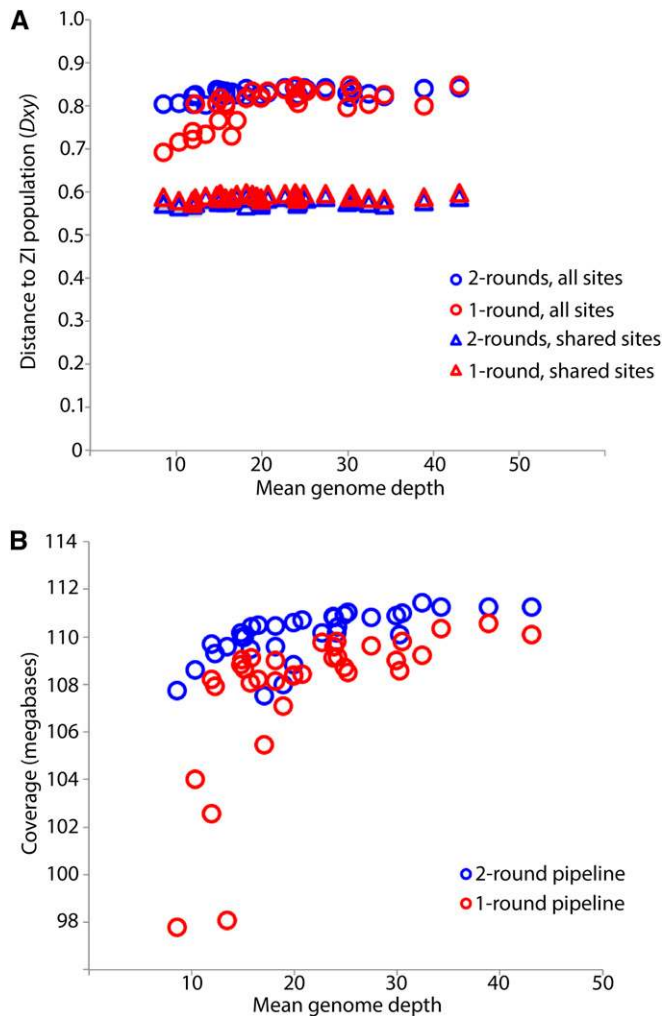


Figure 4 Mean sequencing depth vs. genetic distance (A) from the Zambia population and depth vs. coverage (B) for the AGES dataset genomes with high coverage on all chromosome arms (listed in Table S1). Circles indicate comparisons utilizing all windows with called sites, while triangles indicate comparisons including only sites called for all of the AGES and ZI genomes. Comparisons illustrate the effect of depth on genetic distance (A) and coverage (B) for genomes assembled using a single-round pipeline (red) vs. our two-round pipeline (blue). The two-round pipeline appears to alleviate the potential downward bias present in the single-round pipeline for depths below $\sim 20\times$, and the greater impact of depth on coverage for the single-round pipeline (B) suggests that the sites added by the two-round pipeline are driving the differences in distance to ZI.

between the number of sites added with the new pipeline and the number of indels in that region of the genome (Figure 2). These lines of evidence support the idea that the sites added by our pipeline are found in high diversity, difficult-to-align genomic regions.

To determine whether any particular functional class of sites contributed disproportionately to the sites added by our two-round pipeline, we used the *D. melanogaster* reference genome annotations (v5.57) to assign each individual site called only by our two-round pipeline for RG33 and RG5 to one of nine site classes: nonsynonymous; two-, three-, or

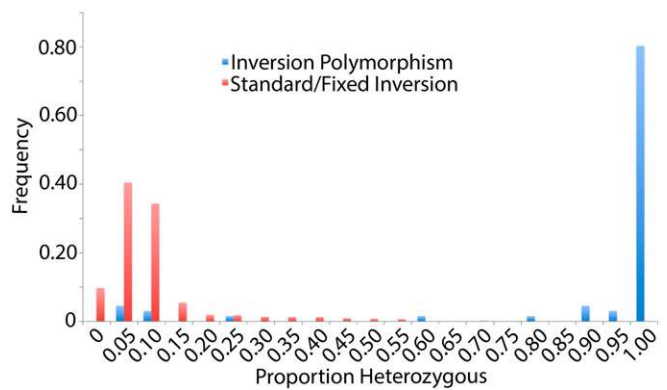


Figure 5 A histogram of the proportions of each autosomal chromosome arm called heterozygous from the 205 DGRP genomes. Based on the cytological analysis of Huang *et al.* (2014), red arms were reported to be free of inversion polymorphism, while blue arms contained polymorphic inversions. The greatly increased heterozygosity of the latter category illustrates the effects of inversion polymorphism on inbreeding efficacy.

fourfold synonymous; 5' UTR; 3' UTR; intronic; short intron (Halligan and Keightley 2006); or intergenic. While all classes of sites contributed to the total sites added by our two-round pipeline, only intergenic and intronic sites were positively enriched for both RG genomes (Figure 3), suggesting that our pipeline disproportionately added these two functional classes of sites to the assemblies. However, the representation of each functional category in the “added sites” class is fairly close to null expectations, and we even added 41,368 and 36,990 nonsynonymous sites, which we would expect to be the least diverse and therefore easiest to align confidently, to RG33 and RG5, respectively, by applying the full pipeline. We also characterized the tract length and genomic distribution of sites added in the second round of our assembly for both RG5 and RG33. In terms of tract length, the vast majority of bases added occurred in short tracts of 1–10 bases (Figure S5). To examine genomic location of these sites, we calculated the number of sites in 100-kb windows across the five euchromatic arms of the genome (Figure S6). While sites were added somewhat uniformly across the genome, repetitive telomeric regions were especially enriched.

Impact of sequencing depth on genetic distance

In a previous assembly of the DPGP2 data set, Pool *et al.* (2012) found a positive, nonlinear relationship between mean sequencing depth (the average number of reads per base pair) and genetic distance to both the reference and the Siavonga, Zambia (ZI) population. This relationship is especially pronounced below the $25\times$ mean depth. Here, we ameliorated that issue by using a consensus caller that is less vulnerable to reference sequence bias and by adding more stringent quality filtering (<http://www.dpgp.org/dpgp2/DPGP2.html>). To examine the impact of this base-calling bias in our pipeline, we quantified the recall rate of reference and nonreference alleles in the resequenced reference. The recall rate for reference and nonreference alleles was nearly identical (0.958 vs. 0.959), suggesting

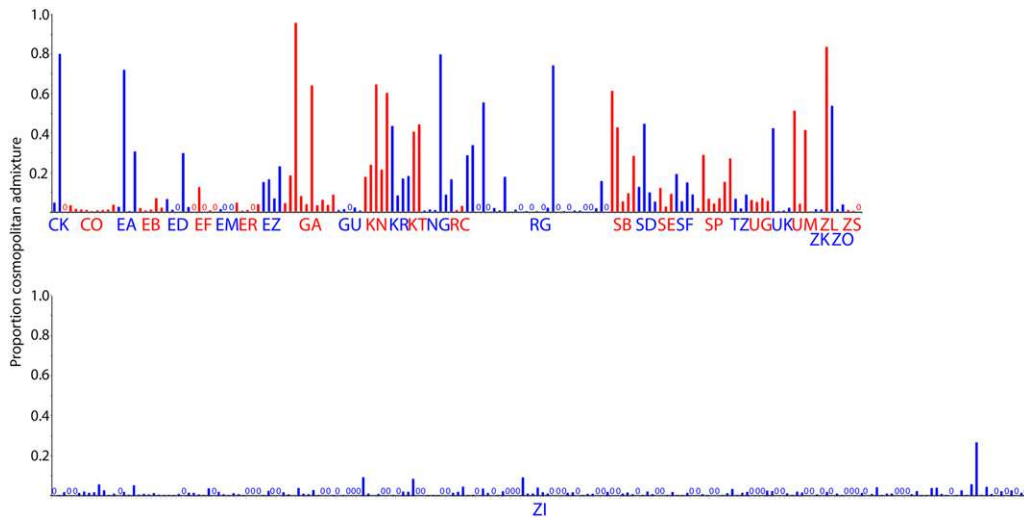


Figure 6 Heterogeneity in estimated cosmopolitan admixture proportions among individuals for each Sub-Saharan African population.

that reference bias has a minimal effect. To further examine this relationship for our two-round pipeline vs. the single round of mapping with only BWA (but including the indel filter), we calculated mean genome-wide distance to the ZI population for each of the genomes in the AGES data set (excluding genomes with whole arms masked due to heterozygosity). For the single round of mapping, a positive relationship between mean depth and distance to ZI was apparent below the $20\times$ mean depth, but for our two-round pipeline distances remained flat even approaching $10\times$ depth (Figure 4A). When limiting this analysis to sites called in all analyzed genomes, the bias observed below $20\times$ mean depth for single-round genomes disappeared, and distance estimates were essentially identical to those of the two-round pipeline (although greatly reduced in both cases, reflecting the exclusion of more diverse genomic regions). These results suggest that the depth-related bias observed for the single-round alignments (Figure 4A) was not due to biased consensus calling (since that would still affect the filtered analysis), but instead stems from differences in genomic coverage between low- and high-depth genomes. And indeed, we observe that genomic coverage is more dependent on depth in the single-round alignments than for the full pipeline (Figure 4B).

Heterozygosity

Heterozygosity can persist in fly stocks even after many generations of full-sibling mating, probably due to the presence of recessive lethal or infertile mutations, which are commonly found on wild-derived *Drosophila* chromosomes (Greenberg and Crow 1960). Especially when combined with inversion polymorphism (e.g., one recessive lethal is fixed on the inversion-bearing chromosomes, and a different recessive lethal is fixed on the standard arms), recombination may be unable to generate reproductively viable homozygous progeny, and residual heterozygosity may extend over much of a chromosome arm.

We report heterozygosity tracts in Table S3, including those for the Egypt EG, Kenya KM, and Zimbabwe ZK samples.

The largest non-isogeneous sample in our analysis is the 205 DGRP genomes originating from Raleigh, North Carolina. In spite of 20 generations of full-sib mating for the DGRP lines, considerable residual heterozygosity was maintained within the inbred lines. Overall, 12.6% of the total genomic sequence was masked due to apparent heterozygosity, and for each autosomal arm there were multiple fly lines for which the entire chromosome arm remained heterozygous. Considerably less masking was needed on the X chromosome than on the autosomes, which is expected given the increased efficacy of selection against recessive lethals and steriles in hemizygous males.

To examine the role of inversions in maintaining heterozygosity in inbred lines, we obtained inversion genotypes for each euchromatic arm of the DGRP lines from Huang *et al.* (2014). As is evident from the distribution of heterozygosity proportions for inverted vs. standard autosomal arms (Figure 5 and Table S7), $>80\%$ of the chromosome arms with inversion polymorphism retain $>95\%$ heterozygosity, compared to chromosome arms lacking inversion polymorphism for which $>80\%$ retained $<10\%$ heterozygosity. These results support the role of recessive deleterious mutations residing within large inversions driving chromosome arm-wide residual heterozygosity, but fail to explain the remaining residual heterozygosity evident in the standard arm distribution shown in Figure 5 (6.5% of non-inverted chromosome arms still retained $>25\%$ heterozygosity after 20 generations of inbreeding). While it is possible that inversion differences between sequenced and karyotyped sublines might exist in some cases, another explanation is that multiple recessive lethals in repulsion on a single chromosome arm might reduce the rate at which viable recombinants arise during inbreeding (Falconer 1989).

In addition to true heterozygosity, artifactual “heterozygosity” (pseudoheterozygosity) can result from mismapping or other technical issues with genome assembly. For the haploid embryo genomes presented here, these positions constituted a very small proportion of total sites in a given

Table 2 Chromosomal arm nucleotide diversity (π) for populations with inversion polymorphism

Population	X		2L		2R		3L		3R	
	Standard	Total	Standard	Total	Standard	Total	Standard	Total	Standard	Total
CO	0.0075	0.0075	0.0082	0.0083	0.0073	No inversion	0.0076	No inversion	Non	0.0058
EA	0.0071	0.0071	0.0087	No inversion	0.0074	No inversion	0.0075	No inversion	0.0060	No inversion
EB	0.0064	No inversion	0.0074	No inversion	0.0066	No inversion	0.0067	No inversion	0.0054	0.0060
EG	0.0034	0.0034	Non	0.0066	0.0053	No inversion	Non	Non	Non	0.0062
FR	0.0036	0.0036	0.0055	0.0061	0.0051	No inversion	0.0054	0.0063	0.0045	0.0058
GA	0.0077	0.0076	0.0087	0.0082	0.0077	No inversion	0.0080	No inversion	0.0066	0.0068
GU	0.0076	0.0076	0.0083	0.0084	0.0075	No inversion	0.0077	No inversion	Non	0.0066
KN	0.0087	0.0086	0.0061	0.0078	0.0077	No inversion	0.0082	No inversion	0.0070	0.0073
KR	0.0082	0.0085	Non	0.0068	0.0080	0.0081	0.0085	No inversion	0.0067	No inversion
NG	0.0076	0.0076	0.0109	0.0077	0.0075	0.0074	0.0085	0.0073	0.0054	0.0065
RAL	0.0041	0.0041	0.0068	0.0070	0.0062	0.0064	0.0064	0.0065	0.0052	0.0052
RG	0.0080	No inversion	0.0085	0.0094	0.0076	0.0081	0.0078	No inversion	0.0063	0.0065
SB	0.0088	No inversion	0.0106	0.0094	0.0082	No inversion	0.0083	0.0089	0.0072	No inversion
SD	0.0086	No inversion	0.0096	0.0097	0.0078	0.0078	0.0080	No inversion	0.0065	No inversion
SE	0.0083	0.0086	Non	0.0075	0.0079	0.0076	0.0081	No inversion	0.0072	No inversion
SF	0.0086	No inversion	0.0103	0.0094	0.0090	0.0085	0.0081	No inversion	0.0048	0.0065
SP	0.0090	No inversion	0.0099	0.0100	0.0083	0.0082	0.0083	No inversion	0.0065	No inv.
TZ	Non	0.0058	Non	0.0062	0.0077	No inversion	0.0075	No inversion	0.0056	0.0066
UK	0.0081	0.0081	0.0085	0.0086	0.0077	0.0078	0.0077	No inversion	0.0060	0.0065
UM	0.0080	0.0081	Non	0.0084	0.0078	No inversion	0.0068	No inversion	0.0075	0.0066
ZI	0.0089	0.0089	0.0099	0.0097	0.0083	0.0082	0.0084	0.0087	0.0076	0.0076
ZS	0.0089	0.0082	0.0099	0.0098	0.0083	0.0080	0.0082	No inversion	0.0074	0.0074

Nucleotide diversity estimates include both the total data set for a given population (“Total”) and excluding arms carrying inversions (“Standard”). “Non” denotes populations with fewer than two standard chromosome arms; “No inversion” denotes populations without inversion polymorphism. Values in boldface indicate a difference $\geq 5\%$.

genome (mean = 0.00798; SD = 0.00501; minimum = 0.00025; maximum = 0.0310).

Identity by descent

IBD regions passing all filters were flagged and are provided as an optional filter in the *Drosophila* Genome Nexus release (all IBD tracts are given in Table S6). For the DPGP2 data set, the IBD tracts that we identified were essentially identical to those of Pool *et al.* (2012) and therefore are not discussed. For the AGES data set, we detected IBD for a single pair of samples from the SF South African population, but this segment included one long tract encompassing all of chromosome 3R and half of chromosome 3L. For the DPGP3 data set, we detected IBD for 20 sample pairs, constituting only 3.2% of all called bases and 0.1% of all pairwise comparisons for those 197 genomes. For the 205 DGRP genomes, IBD appeared to be more widespread, with 9.8% of all called bases flagged for masking. For a case of two IBD genomes, these base counts refer to only the masked individual, and a total of 54 IBD sample pairs were detected.

Cosmopolitan admixture in African genomes

It has previously been noted that the introgression of cosmopolitan alleles into some African populations could have a significant influence on genetic diversity within Africa (Capy *et al.* 2000; Kauer *et al.* 2003), and cosmopolitan admixture proportions were previously estimated for the DPGP2 data set by Pool *et al.* (2012). We repeated this analysis for all sub-Saharan genomes published here, but with improved reference panels (including more genomes,

but excluding inverted arms; see *Materials and Methods*). All identified cosmopolitan admixture tracts are given in Table S8 and are provided as an optional sequence filter in the *Drosophila* Genome Nexus release.

As in the DPGP2 analysis (Pool *et al.* 2012), admixture varied considerably among populations, from <1% in the Ethiopian EM population to >80% in the Zambian ZL population (Figure S7). Within-population variation was also striking, as is evident from individual genome plots of admixture (Figure 6). One important exception to the high level of interindividual variation in cosmopolitan admixture proportions was the large DPGP3 sample (ZI) from Siavonga, Zambia. We targeted this population sample for large-scale genome sequencing for multiple reasons, including its hypothesized position within the ancestral range of *D. melanogaster* (showing maximal genetic diversity), as well as its relatively low level of cosmopolitan admixture among four genomes surveyed in the DPGP2 analysis (Pool *et al.* 2012). Our analysis of the larger DPGP3 data set illustrates that the ZI population does in fact have a very low level of cosmopolitan admixture, with the population average at 1.1% of the genome, the highest individual genome at 26%, and the second highest at 9% (Figure 6). Looking across the genome, DPGP3 is similar to other sub-Saharan genomes in having the lowest admixture levels on the X chromosome (Figure S8), but has a pronounced increase in the middle of arm 3R (~7.6–15.0 Mb), where up to 13 putatively admixed genomes are found in the maximal window (6.6% of the sample), compared with a genome-wide median of just 2 of 197 individuals.

Genetic diversity and structure

Although the present study is not primarily focused on population genetics analysis, we present a few simple summaries of the data to guide potential users of these assemblies. First, we estimated nucleotide diversity for all populations with multiple high coverage genomes for all chromosome arms, both including and excluding inverted arms. For the DPGP2 data set, nucleotide diversity was largely consistent with the previous estimates of Pool *et al.* (2012), although estimates for the newly assembled sequences were generally slightly higher (Table S9), perhaps due to the improved coverage of more diverse regions.

Nucleotide diversity comparisons among populations revealed similar patterns of past analyses (Table S9). The French, Egyptian, and U. S. (DGRP) populations had much lower diversity levels than any sub-Saharan populations (Table S9), particularly on the X. This strong reduction in diversity has been previously documented (Begun and Aquadro 1993; Baudry *et al.* 2004) and presumably results from the bottleneck that occurred during expansion out of sub-Saharan Africa. With additional sub-Saharan African genomes, as well as the expansion of the Siavonga, Zambia, population to nearly 200 genomes, south-central Africa remains the most diverse portion of the *D. melanogaster* distribution. While Siavonga, Zambia, still has the highest nucleotide diversity at 0.854% (Table S9), samples from Zimbabwe and inland South Africa reach 0.814–0.850%. The ancestral range of the species may have included much of southern Africa, unless a more recent expansion occurred with very little loss of diversity. Both eastern and western African populations were still reduced in diversity relative to southern Africa (generally 0.73–0.80%). Pool *et al.* (2012) reported a further, mild diversity reduction in Ethiopian highland populations as previously described (Pool *et al.* 2012), but a lowland sample from far western Ethiopia (EA) showed little diversity reduction.

To examine the effects of inversions on diversity at the genome-scale, we estimated nucleotide diversity with inverted arms removed (Table 2). Previous analyses revealed that the effects of inversions on nucleotide diversity were not limited to regions surrounding breakpoints, but could affect entire chromosome arms (Corbett-Detig and Hartl 2012, Pool *et al.* 2012). Among the studied sub-Saharan populations, inversions appeared to have effects of both elevating and reducing arm-wide diversity (Table 2). The North American DGRP sample showed less diversity elevation from inversions compared with the European FR sample.

Estimation of F_{ST} and D_{xy} revealed patterns similar to those of Pool *et al.* (2012) for the DPGP2 populations (Table S9). Within the population groupings identified in that study, population differentiation was particularly low among southern African populations (mean F_{ST} = 0.0092) and somewhat elevated among Ethiopian samples (mean F_{ST} = 0.0331), which, as previously observed, showed moderate differentiation from other sub-Saharan samples (Table S9). Examination of F_{ST} restricted to standard chromosome arms (Table S10)

Table 3 Pairwise population F_{ST} for select populations averaged across chromosome arms

	FR	GA	NG	RAL	RG	SP	ZI
FR	0.0000	0.1898	0.2263	0.0376	0.2173	0.2213	0.2152
GA	0.2270	0.0000	0.0263	0.1626	0.0515	0.0955	0.0874
NG	0.2630	0.0133	0.0000	0.1954	0.0719	0.1128	0.1067
RAL	0.0444	0.1672	0.2000	0.0000	0.1879	0.1967	0.1911
RG	0.2545	0.0515	0.0631	0.1965	0.0000	0.0694	0.0595
SP	0.2565	0.0962	0.1034	0.2079	0.0768	0.0000	0.0130
ZI	0.2508	0.0939	0.1015	0.2025	0.0662	0.0127	0.0000

Comparisons utilizing the total data set for each population are above the diagonal, and comparisons using only arms without inversions are shown below the diagonal.

indicated mainly small effects of inversions on genetic differentiation: in some cases, the addition of inversions increased genetic differentiation (e.g., Nigeria NG vs. other sub-Saharan samples), while in other cases inversions decreased genetic differentiation (e.g., for comparisons involving the French or U.S. samples). Concordant with previous observations (e.g., Caracristi and Schlotterer 2003; Hadrill *et al.* 2005) and the hypothesized admixed origin of New World populations from European and African sources, standard arms from the North American DGRP sample had consistently higher diversity than the European FR sample (Table 2), as well as closer relationships to sub-Saharan populations (Table 3).

Discussion

We have presented a set of 623 consistently aligned *D. melanogaster* genomes. Although our pipeline primarily makes use of published methods, the resulting alignments are expected to yield a better combination of accuracy and genomic coverage than standard approaches. However, the primary motivation for the *Drosophila* Genome Nexus is to increase the comparability of population genomic data sets, as well as to make available >250 additional genomes, including the large Siavonga, Zambia, sample.

Our effort accounts for one category of potential biases between data sets (differences in alignment methodology and data filtering), but other potential concerns should still be recognized. Although not addressed here, differences in data generation, including (but not limited to) methods of obtaining genomic DNA and sequencing platform/chemistry, may influence the resulting genomic data (Quail *et al.* 2012; Ratan *et al.* 2013; Solonenko *et al.* 2013). Our pipeline reduces the population genetic consequences of differences in sequencing depth, but depth still has an important influence on genomic coverage. Mapping success may vary according to a genome's genetic similarity to the reference sequence, which for *D. melanogaster* is expected to have a primarily cosmopolitan origin. This genetic similarity to the reference sequence will vary geographically (e.g., sub-Saharan genomes being more genetically distant from the reference) and across the genome (especially for admixed populations). Demography may also bias downstream population genetic analyses: for example, recent admixture and identity-by-descent are contrary to the predictions of models that assume

random sampling of individuals from large randomly mating populations (thus we provide filters to reduce the effects of these specific issues).

It should be emphasized that the present DGN is primarily aimed at SNP-oriented analysis of the five major euchromatic chromosome arms. Aside from inversion calling and the detection of short indels, we do not address the important topic of structural variation. Furthermore, the challenge of reliably aligning heterochromatin and other repetitive regions (on a population scale) awaits further technological and methodological progress.

Thorough population genetic analysis of the DPGP3 Zambia (ZI) population sample will be a topic of future analyses. However, the preliminary statistics reported here support the notion that these genomes will be widely utilized in the field of population genetics. This population continues to present the maximal genetic diversity of any *D. melanogaster* population studied to date, offering hope that it may be the least affected by losses of genetic diversity via expansion-related population bottlenecks. Unlike many sub-Saharan populations, it also contains very little cosmopolitan admixture. The availability of nearly 200 genomes from this single sub-Saharan population sample, which may have a relatively simpler demographic history than many *D. melanogaster* populations, will be an asset for studies seeking to understand the genetic, selective, and demographic mechanisms that shape genomic polymorphism and divergence in large populations.

Acknowledgments

We thank Stephen Richards for assistance with the DGRP data; J. J. Emerson for packaging the admixture HMM method; Isaac Knoflicek for help with data management and the DGN web site; and the University of Wisconsin Center for High Throughput Computing for computational resources and assistance regarding our alignments. Funding was provided by National Institutes of Health (NIH) grant HGO2942 (to C.H.L.), NIH grant R01 GM111797 (to J.E.P.), and support to J.B.L. from a Ruth L. Kirschstein National Research Service Award (F32 GM106594) and from the University of Wisconsin-Madison Genome Sciences Training Program.

Literature Cited

Alkan, C., S. Sajjadian, and E. E. Eichler, 2011 Limitations of next-generation genome assembly. *Nat. Methods* 8: 61–65.

Aulard, S., J. R. David, and F. Lemeunier, 2002 Chromosomal inversion polymorphism in Afrotropical populations of *Drosophila melanogaster*. *Genet. Res.* 79: 49–63.

Baudry, E., B. Vinier, and M. Veuille, 2004 Non-African populations of *Drosophila melanogaster* have a unique origin. *Mol. Biol. Evol.* 21: 1482–1491.

Begun, D. J., and C. F. Aquadro, 1993 African and North American populations of *Drosophila melanogaster* are very different at the DNA level. *Nature* 365: 548–550.

Bhatia, G., A. Tandon, N. Patterson, M. C. Aldrich, C. B. Ambrosone *et al.*, 2014 Genome-wide scan of 29,141 African Americans

finds no evidence of directional selection since admixture. *Am. J. Hum. Genet.* 95: 1–8.

Capy, P., M. Veuille, M. Paillette, M. Jallon, J. M. Vouldibio *et al.*, 2000 Sexual isolation of genetically differentiated sympatric populations of *Drosophila melanogaster* in Brazzaville, Congo: The first step towards speciation? *Heredity* 84: 468–475.

Caracristi, G., and C. Schlotterer, 2003 Genetic differentiation between American and European *Drosophila melanogaster* population could be attributed to admixture of African alleles. *Mol. Biol. Evol.* 20: 792–799.

Chan, A. H., P. A. Jenkins, and Y. S. Song, 2012 Genome-wide fine-scale recombination rate variation in *Drosophila melanogaster*. *PLoS Genet.* 8: e1003090.

Comeron, J. P., 2014 Background selection as baseline for nucleotide variation across the *Drosophila* genome. *PLoS Genet.* 10: e1004434.

Corbett-Detig, R. B., and D. L. Hartl, 2012 Population genomics of inversion polymorphisms in *Drosophila melanogaster*. *PLoS Genet.* 8: e1003056.

Corbett-Detig, R. B., C. Cardeno, and C. H. Langley, 2012 Sequence-based detection and breakpoint assembly of polymorphic inversions. *Genetics* 192: 131–137.

DePristo, M., E. Banks, R. Poplin, K. Garimella, J. Maguire *et al.*, 2011 A framework for variant discovery and genotyping using next-generation DNA sequencing data. *Nat. Genet.* 43: 491–498.

Duchen, P., D. Zivkovic, S. Hutter, W. Stephan, and S. Laurent, 2013 Demographic inference reveals African and European admixture in the North American *Drosophila melanogaster* population. *Genetics* 193: 291–301.

Elhassan, N., E. I. Gebremeskel, M. A. Elnour, D. Isabirye, J. Okello *et al.*, 2014 The episode of genetic drift defining the migration of humans out of Africa is derived from a large east African population. *PLoS ONE* 9: e97674.

Falconer, D. S., 1989 *Introduction to Quantitative Genetics*. Longmans Green/John Wiley & Sons, Harlow, Essex, UK/New York.

1000 Genomes Project Consortium *et al.*, 2010 A map of human genome variation from population-scale sequencing. *Nature* 467: 1061–1073.

Greenberg, R., and J. F. Crow, 1960 A comparison of the effect of lethal and detrimental chromosomes from *Drosophila* populations. *Genetics* 45: 1153–1168.

Haddrill, P. R., K. R. Thornton, B. Charlesworth, and P. Andolfatto, 2005 Multilocus patterns of nucleotide variability and the demographic and selection history of *Drosophila melanogaster* populations. *Genome Res.* 15: 790–799.

Halligan, D. L., and P. D. Keightley, 2006 Ubiquitous selective constraints in the *Drosophila* genome revealed by a genome-wide interspecies comparison. *Genome Res.* 16: 875–884.

Hoffman, A. A., and L. H. Rieseberg, 2008 Revisiting the impact of inversion in evolution: From population genetic markers to drivers of adaptive shifts and speciation? *Annu. Rev. Ecol. Evol. Syst.* 39: 21–42.

Huang, W., A. Massouras, Y. Inoue, J. Peiffer, M. Ramia *et al.*, 2014 Natural variation in genome architecture among 205 *Drosophila melanogaster* genetic reference pane lines. *Genome Res.* 24: 1193–1208.

Hudson, R. R., M. Slatkin, and W. P. Madison, 1992 Estimation of levels of gene flow from DNA sequence data. *Genetics* 132: 583–589.

Kauer, M. O., D. Dieringer, and C. Schlotterer, 2003 A microsatellite variability screen for positive selection associated with the ‘out of Africa’ habitat expansion of *Drosophila melanogaster*. *Genetics* 165: 1137–1148.

King, E. G., S. J. Macdonald, and A. D. Long, 2012 Properties and power of the *Drosophila* synthetic population resource for the routine dissection of complex traits. *Genetics* 191: 935–949.

- Kirkpatrick, M., and N. Barton, 2006 Chromosome inversions, local adaptation and speciation. *Genetics* 173: 419–434.
- Krimbas, C. B., and J. R. Powell, 1992 *Drosophila Inversion Polymorphism*. CRC Press, Boca Raton, FL.
- Lachaise, D., M. L. Cariou, J. R. David, F. Lemeunier, L. Tsacas *et al.*, 1988 Historical biogeography of the *Drosophila melanogaster* species subgroup. *Evol. Biol.* 22: 159–225.
- Langley, C. H., M. Crepeau, C. Cardeno, R. Corbett-Detig, and K. Stevens, 2011 Circumventing heterozygosity: sequencing the amplified genome of a single haploid *Drosophila melanogaster* embryo. *Genetics* 188: 239–246.
- Langley, C. H., K. Stevens, C. Cardeno, Y. C. G. Lee, D. R. Schrider *et al.*, 2012 Genomic variation in natural populations of *Drosophila melanogaster*. *Genetics* 192: 533–598.
- Li, H., and R. Durbin, 2010 Fast and accurate long-read alignment with Burrows-Wheeler transform. *Bioinformatics* 26: 589–595.
- Li, H., and R. Durbin, 2011 Inference of human population history from individual whole-genome sequences. *Nature* 475: 493–497.
- Long, Q., F. A. Rabanal, D. Meng, C. D. Huber, A. Farlow *et al.*, 2013 Massive genomic variation and strong selection in *Arabidopsis thaliana* lines from Sweden. *Nat. Genet.* 45: 884–890.
- Lunter, G., and M. Goodson, 2010 Stampy: a statistical algorithm for sensitive and fast mapping of Illumina sequence reads. *Genome Res.* 18: 821–829.
- Mackay, T. F. C., S. Richards, E. A. Stone, A. Barbadilla, J. F. Ayroles *et al.*, 2012 The *Drosophila melanogaster* Genetic Reference Panel. *Nature* 482: 173–178.
- McKenna, A., M. Hanna, E. Banks, A. Sivachenko, K. Cibulskis *et al.*, 2010 The Genome Analysis Toolkit: a MapReduce framework for analyzing next-generation DNA sequencing data. *Genome Res.* 20: 1297–1301.
- Meader, S., L. W. Hillier, D. Locke, C. P. Ponting, and G. Lunter, 2010 Genome assembly quality: assessment of and improvement using the neutral indel model. *Genome Res.* 20: 675–684.
- Pool, J. E., 2009 Notes regarding the collection of African *Drosophila melanogaster*. *Drosoph. Inf. Serv.* 92: 130–134.
- Pool, J. E., R. B. Corbett-Detig, R. P. Sugino, K. A. Stevens, C. M. Cardeno *et al.*, 2012 Population genomics of Sub-Saharan *Drosophila melanogaster*: African diversity and non-African admixture. *PLoS Genet.* 8: e1003080.
- Quail, M. A., M. Smith, P. Coupland, T. D. Otto, S. R. Harris *et al.*, 2012 A tale of three next generation sequencing platforms: comparison of Ion Torrent, Pacific Bioscience and Illumina MiSeq sequencers. *BMC Genomics* 13: 341.
- Ratan, A., W. Miller, J. Guillory, J. Stinson, S. Seshagiri *et al.*, 2013 Comparison of sequencing platforms for single nucleotide variant calls in a human sample. *PLoS ONE* 8: e55089.
- Solonenko, S. A., J. C. Ignacio-Espinoza, A. Alberti, and C. Cruaud, S. Hallam *et al.*, 2013 Sequencing platform and library preparation choices impact viral metagenomes. *BMC Genomics* 14: 320.
- Wallberg, A., F. Han, G. Wellhagen, B. Dahle, M. Kawata *et al.*, 2014 A worldwide survey of genome sequence variation provides insight into the evolutionary history of the honeybee *Apis mellifera*. *Nat. Genet.* 46: 1081–1088.

Communicating editor: J. D. Wall

GENETICS

Supporting Information

<http://www.genetics.org/lookup/suppl/doi:10.1534/genetics.115.174664/-/DC1>

The *Drosophila* Genome Nexus: A Population Genomic Resource of 623 *Drosophila melanogaster* Genomes, Including 197 from a Single Ancestral Range Population

Justin B. Lack, Charis M. Cardeno, Marc W. Crepeau, William Taylor, Russell B. Corbett-Detig, Kristian A. Stevens, Charles H. Langley, and John E. Pool

Fig. S1

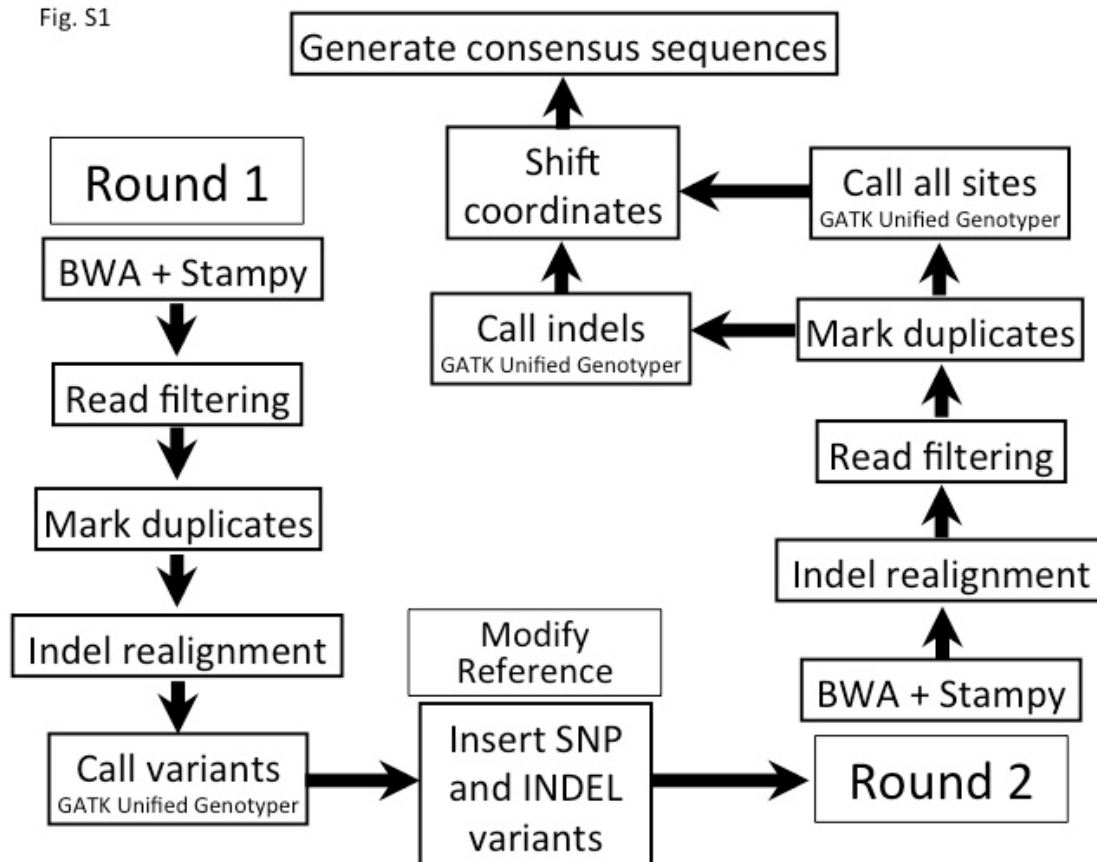


Figure S1 Graphical depiction of the two round assembly pipeline.

Figure S2.

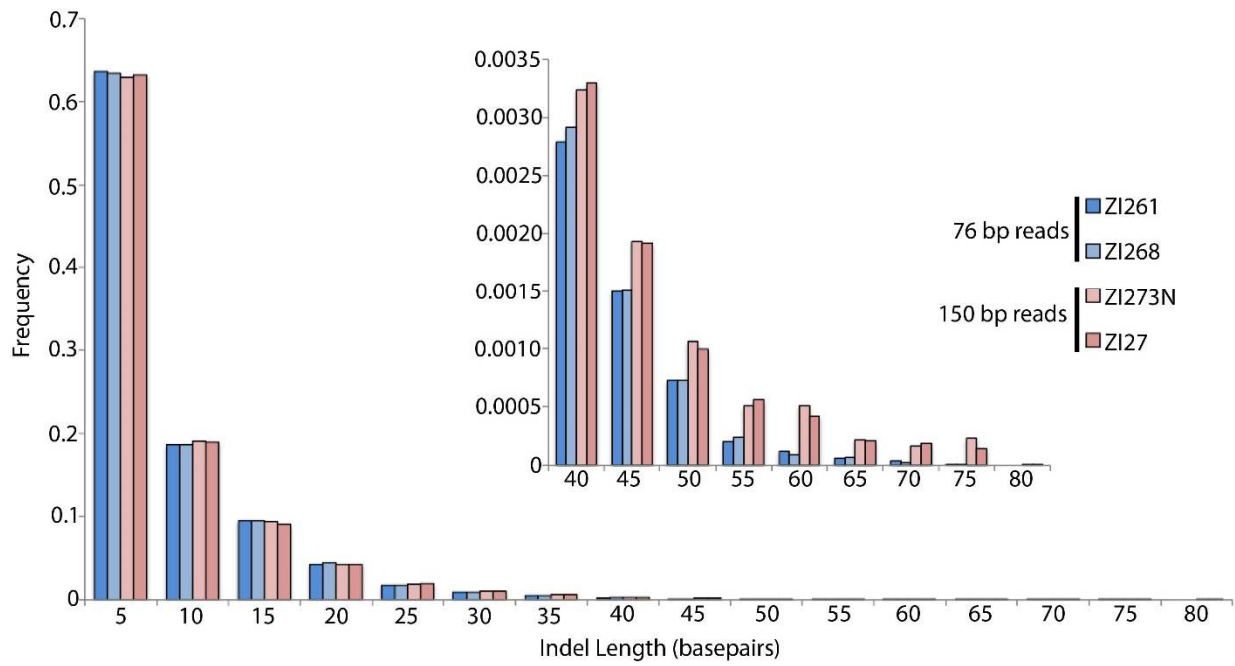


Figure S2 Length distributions for called indels for 46 bp (blue) and 150 bp (pink) read lengths. The inset zooms in on the frequencies for lengths ≥ 40 bp.

Figure S3

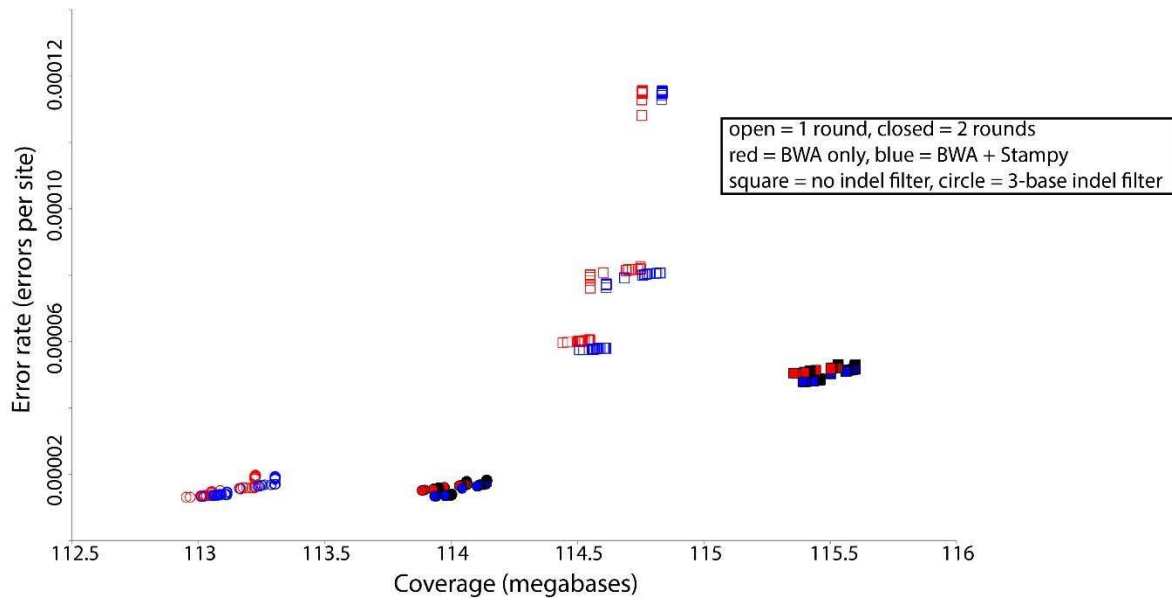


Figure S3 Comparison of genomic coverage and error rate for various genome assembly pipeline variations, based on resequencing of the *D. melanogaster* reference strain (Pool *et al.* 2012). All quality values from Q10 to Q100 are shown; many gave very similar results. Open symbols indicate a single round of mapping, while closed symbols indicate two rounds of mapping. Red symbols indicate only BWA was used to map, while blue symbols indicate BWA and Stampy were both used. Square symbols indicate no indel filter was applied, while circular symbols indicate a 3-base filter was applied.

Figure S4

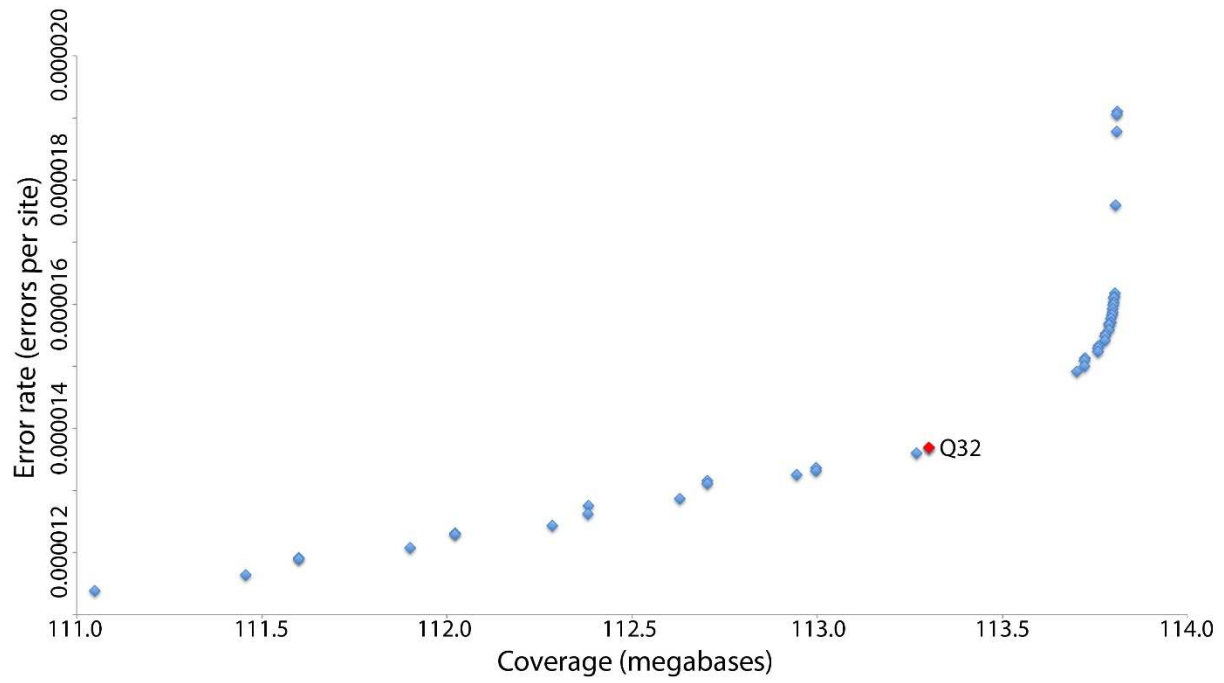


Figure S4 Evaluation of the tradeoff between genomic coverage and error rate for the diploid caller of the Unified Genotyper; quality values ranged from 10 to 100. Resequenced genomes from the reference strain ($y^1 cn^1 bw^1 sp^1$) were modified to simulate realistic levels of variation. We chose a cutoff of Q32 (red) to maximize coverage and minimize error.

Fig. S5

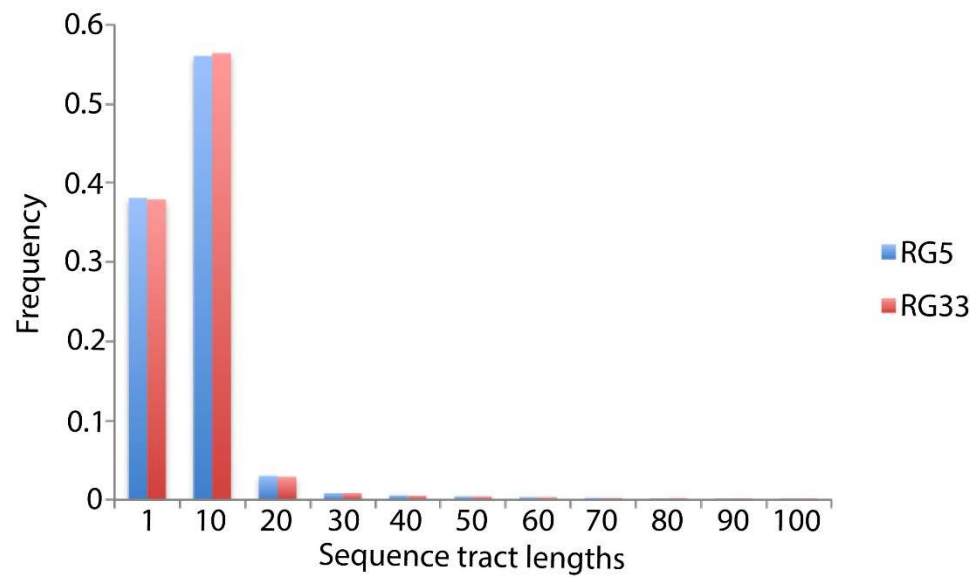


Figure S5 Histogram of sequence tract lengths for sites added by our two round pipeline for the Rwandan genomes RG5 and RG33.

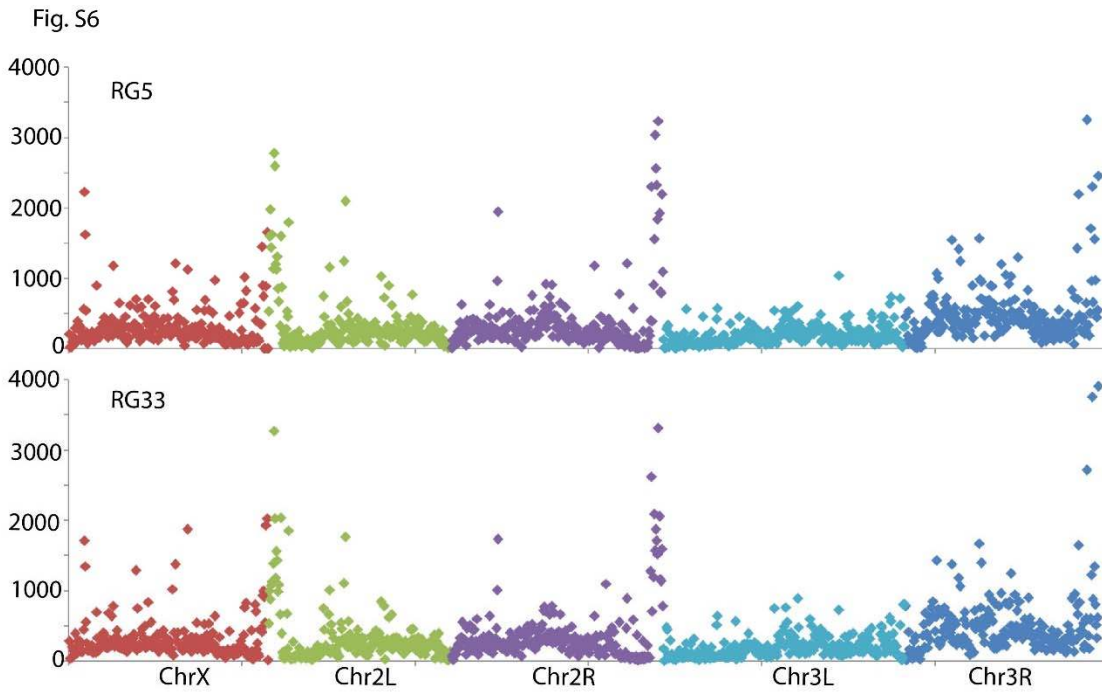


Figure S6 Number of sites added by our two round assembly pipeline in 100 kb windows across the 5 euchromatic chromosome arms for the Rwandan genomes RG5 and RG33.

Figure S7

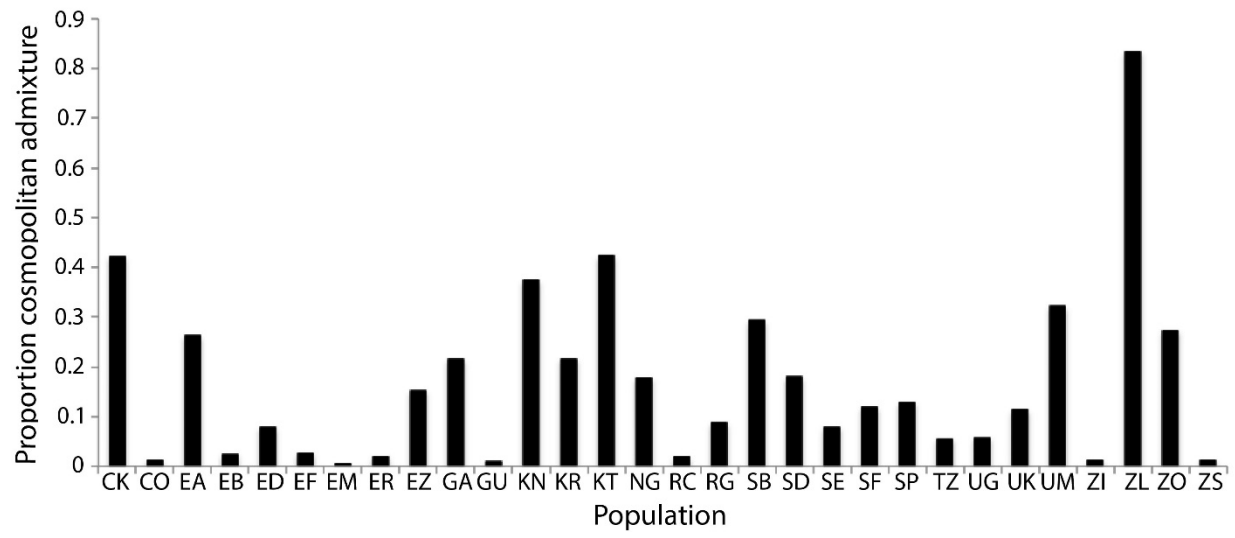


Figure S7 Variation among African populations in estimated cosmopolitan admixture proportions.

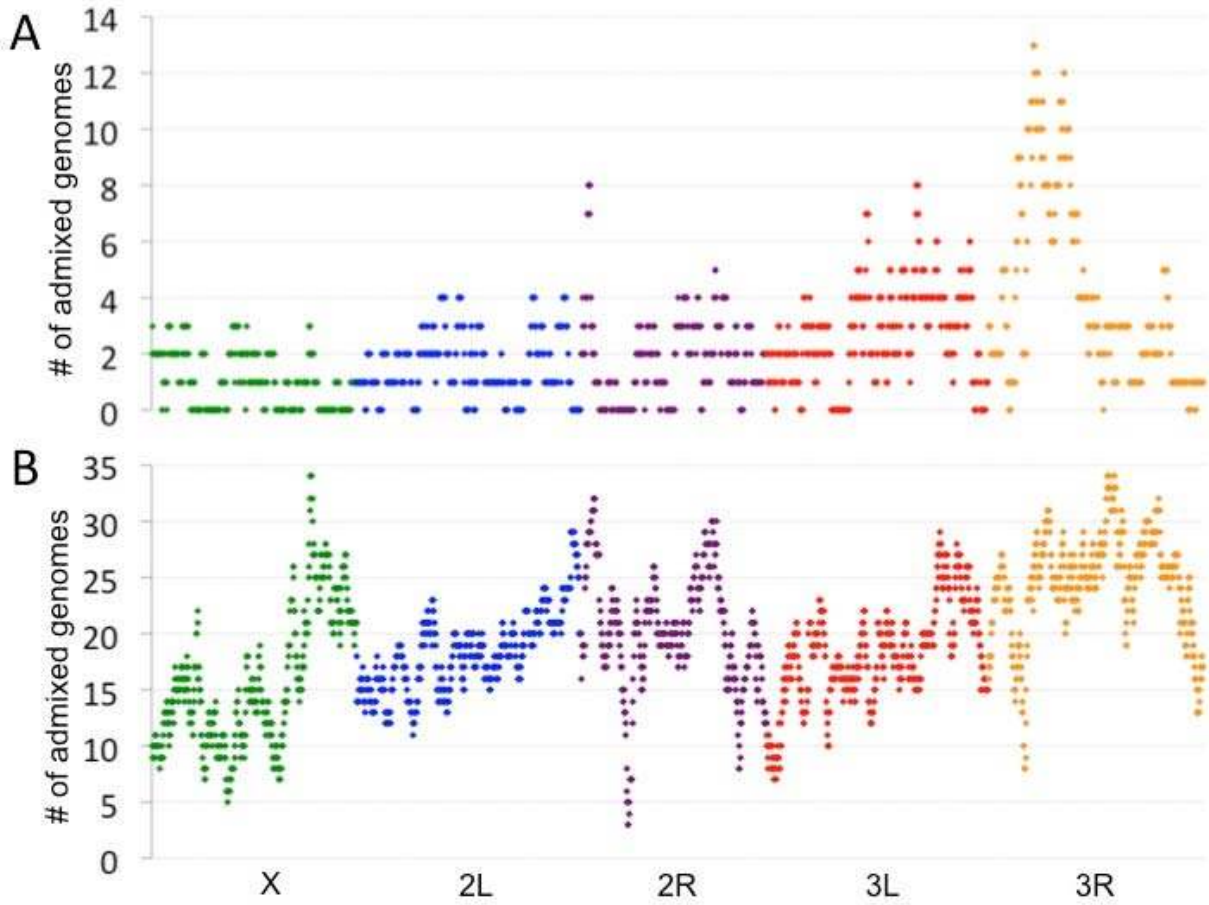


Figure S8 Numbers of sub-Saharan genomes inferred to have cosmopolitan ancestry in each genomic window: (A) For the DPGP3 Zambia ZI sample, and (B) across all other sub-Saharan populations. Windows are depicted for arms X (green), 2L (blue), 2R (purple), 3L (red), and 3R (orange).

File S1

Supplemental Text

Available for download as a PDF file at <http://www.genetics.org/lookup/suppl/doi:10.1534/genetics.115.174664/-/DC1>

Tables S1-S10

Available for download at <http://www.genetics.org/lookup/suppl/doi:10.1534/genetics.115.174664/-/DC1>

Table S1 Individual sequenced genomes included in this data release, including fly stock ID, genomic library ID and type/source for each library, NIH SRA access numbers, focal chromosome arms, read length, coverage and mean depth of focal chromosome arms, and the data set from which the original sequenced reads originated.

Table S2 Population samples from which the sequenced genomes originated. The number of sequenced individuals for each focal chromosome arm is given.

Table S3 Coordinates of residual heterozygosity tracts and pseudoheterozygosity tracts filtered from genomes, and proportions of true heterozygosity and total masked heterozygosity for every genome in the data set. The distinction between the masked proportion and true heterozygosity proportion is due to the presence of artefactual heterozygosity (pseudoheterozygosity) resulting from mismapping or technical issues with individual libraries.

Table S4 Inversions detected from fly stocks via cytology (DGRP; Huang et al. 2014) or from genomes via bioinformatics (Corbett-Detig and Hartl 2012). Note that in the case of the haploid embryo genomes, live stocks may harbor undetected inversion polymorphism. "INV/ST" indicates known polymorphism. "INV/?" indicates that inverted reads were detected, but the genome was heterozygous in this region. Blank cells indicate inversions that were untested or unreported for this genome/stock.

Table S5 Recurrent identity-by-descent (IBD) tracts for the each data set. Only IBD tracts outside of these regions were allowed to contribute to individual totals.

Table S6 Regions of IBD masked from the analyzed genomes, including both individual genomes identified for each tract. See the methods for a detailed description of IBD detection and filtering criteria, and Table S4 for the excluded recurrent IBD regions.

Table S7 Inversion polymorphism and proportion heterozygosity on each focal chromosome arm for each DGRP genome, illustrating the role of inversions in maintaining heterozygosity in spite of considerable inbreeding effort. "Pseudoheterozygosity" corresponds to the proportion of a chromosome arm prior to normalization, and "Corrected heterozygosity" corresponds to the proportion of a chromosome arm following normalization.

Table S8 Regions of cosmopolitan admixture masked in Sub-Saharan African genomes.

Table S9 Genome-wide genetic differentiation and nucleotide diversity for populations with multiple high-coverage focal chromosomes, averaged across the five focal chromosome arms. Values below the diagonal are F_{ST} , values above the diagonal are D_{xy} , and bold values on the diagonal are nucleotide diversity. Distance from the *D. melanogaster* reference genome is given in the bottom row.

Table S10 Individual chromosome arm measures of genetic differentiation and nucleotide diversity for populations with at least two high-coverage sequences. Values below the diagonal are F_{ST} , values above the diagonal are D_{xy} , and bold values on the diagonal are nucleotide diversity. Distance (D_{xy}) from the *D. melanogaster* reference genome is given in the bottom row.