

The dusty heart of nearby active galaxies

II. From clumpy torus models to physical properties of dust around AGN

S. F. Hönig^{1,2} and M. Kishimoto²

¹ University of California in Santa Barbara, Department of Physics, Broida Hall, Santa Barbara, CA 93109, USA
e-mail: shoenig@physics.ucsb.edu

² Max-Planck-Institut für Radioastronomie, Auf dem Hügel 69, 53121 Bonn, Germany

Received 10 June 2009 / Accepted 18 August 2010

ABSTRACT

With the possibilities of high spatial resolution imaging and spectroscopy as well as infrared (IR) interferometry, the dusty environments (= “dusty torus”) of active galactic nuclei (AGN) are now in reach of observations. Following our Paper I on ground-based mid-IR spectro-photometry, we present an upgrade to our radiative transfer model of three-dimensional clumpy dust tori. The upgrade with respect to earlier work concerns an improved handling of the diffuse radiation field in the torus, which is approximated by a statistical approach. The models are presented as tools to translate classical and interferometric observations into characteristic properties of the dust distribution. We compare model spectral energy distributions (SEDs) for different chemical and grain-size compositions of the dust and find that clouds with standard interstellar matter (ISM) dust and optical depth $\tau_V \sim 50$ appear in overall agreement with observed IR SEDs. By studying parameter dependencies, it is shown that type 1 AGN SEDs, in particular the mid-IR spectral index, can be used to constrain the radial dust cloud distribution power law index α , while other parameters are more difficult to assess using SEDs only. Interferometry adds important additional information for modeling when it is interpreted concurrently with the SED. Although type 2 AGN can in principle be used to constrain model parameters as well, obscuration effects make the analysis more ambiguous. We propose a simple, interferometry-based method to distinguish between “compact” and “extended” radial dust distributions without detailed modeling of the data and introduce a way to easily determine individual or sample average model parameters using the observed optical depth in the silicate feature and the mid-IR spectral index.

Key words. galaxies: Seyfert – galaxies: nuclei – infrared: galaxies – X-rays: galaxies

1. Introduction

The unification scheme of active galactic nuclei (AGN) is relying on a toroidal region filled with molecular gas and dust to explain the observed dichotomy of broad- and narrow-line AGN (Antonucci 1993; Urry & Padovani 1995). The presence of this optically-thick region is well supported by direct and indirect observational evidence. Miller & Antonucci (1983) showed that the narrow emission-line galaxy NGC 1068 shows broad optical emission lines in polarized light, scattered outward from the innermost region, which is obscured by the “dust torus”. Several succeeding studies confirmed the presence of a hidden broad-line AGN in many narrow-line objects (e.g. Moran et al. 2000, and references therein). From number statistics of obscured type-2 AGN and non-obscured type-1 AGN as well as from direct observations of the pc-scaled molecular gas in nearby AGN, it is inferred that the torus is not only optically thick but also geometrically thick, with a characteristic scale height $h/r \sim 1$ (e.g. Maiolino & Rieke 1995; Lacy et al. 2004; Martínez-Sansigre et al. 2006; Hicks et al. 2009).

Obscuration of the torus does not only affect the optical broad lines, but can also be observed in X-ray and optical/UV continuum emission from the accretion disk and its immediate vicinity. Optically-obscured type-2 AGN are usually associated with high hydrogen column-densities in the X-ray, from $\sim 10^{23} \text{ cm}^{-2}$ to Compton-thick columns of $>10^{24-25} \text{ cm}^{-2}$ (e.g. Shi et al. 2006). The material causing these high column densities is generally believed to reside in the dust torus, tracing the

gaseous component that dominates the total mass of the torus. Moreover, strong reflection on parsec scales, as observed in the X-ray continuum around 30 keV and associated with the large equivalent width of the Fe-K α line, are interpreted as signs for the presence of the torus.

Because a sizable portion of the torus consists of dust, the UV/optical accretion-disk emission heats up the dust, which thermally re-radiates the received energy in the infrared at temperatures of some 100 K up to the dust sublimation temperature of ~ 1500 K. These temperatures are reached on scales of about 0.1 to 100 pc, depending on the actual AGN luminosity, torus geometry, and dust composition. The thermal radiation from the torus dominates the total near- to mid-infrared (IR) emission of the AGN (“red bump”) with a noticeable cut-off at around $1 \mu\text{m}$ where the UV/optical accretion disk emission starts to dominate (“big blue bump”). At around 10 and $18 \mu\text{m}$, type-1 AGN show some broad spectral features caused by hot silicate dust, which is believed to be associated with the inner part of the torus. On the other hand, these silicate features appear in absorption in most type 2 AGN where only cooler dust is seen.

Owing to the small spatial scales at which the torus resides, it is a difficult task to directly resolve it by infrared observations. Thus, first reports of successful resolution of the nucleus of an AGN involved interferometric techniques. Wittkowski et al. (1998) used bispectrum speckle interferometry to resolve the nucleus of the Seyfert 2 galaxy NGC 1068 in the K-band, followed-up by additional H-band observations (Weigelt et al. 2004). Swain et al. (2003) presented K-band long-baseline

interferometry of the type-1 AGN NGC 4151, which arguably resolve the innermost hot region of the dust torus (see [Kishimoto et al. 2007](#), for this interpretation). More recently, VLTI/MIDI long-baseline mid-IR spectro-interferometry directly revealed the parsec-scaled dust emission sizes in the wavelength band from 8 to 13 μm for a number of nearby type 1 and type 2 AGN ([Jaffe et al. 2004](#); [Tristram et al. 2007](#); [Beckert et al. 2008](#); [Raban et al. 2009](#); [Tristram et al. 2009](#)). These observations finally confirmed the basic picture of the dust torus, while more detailed characteristics remain unclear.

The dust torus has been the subject of several kinds of models that aimed to extract physical properties from broad spectral energy distribution (SED) and, in some cases, interferometric observations. Initially, most authors used smooth dust distributions with different radial and vertical density profiles (e.g. [Pier & Krolik 1993](#); [Granato & Danese 1994](#); [Efstathiou & Rowan-Robinson 1995](#); [Schartmann et al. 2005](#); [Fritz et al. 2006](#)). It was, however, proposed early that the dust is most probably arranged in clouds instead of being smoothly distributed (e.g. [Krolik & Begelman 1988](#); [Tacconi et al. 1994](#); [Hönig & Beckert 2007](#)). This idea received further support by interferometric observations, which arguably rule out smooth dust distributions ([Jaffe et al. 2004](#); [Tristram et al. 2007](#)). Several radiative transfer models have been developed to account for 2D or 3D clumpy dust distributions ([Nenkova et al. 2002](#); [Dullemond & van Bemmell 2005](#); [Hönig et al. 2006](#); [Schartmann et al. 2008](#)). All of these models appear in more or less good agreement with observations, while the resulting torus or cloud properties differ significantly. [Hönig et al. \(2006\)](#) used optically thick dust clouds and a low torus volume filling factor to simultaneously model near- and mid-IR photometry and interferometry of NGC 1068 (see also [Hönig et al. 2007, 2008](#)), while [Schartmann et al. \(2008\)](#) model a torus with high volume filling factor and optically thin clouds for a similar set of observations of the Circinus galaxy. Although the actual properties of the dust clouds are not yet constrained by observations, theoretical predictions and hydrodynamic simulations arguably favor small and compact optically-thick clouds (e.g. [Vollmer et al. 2004](#); [Beckert & Duschl 2004](#); [Hönig & Beckert 2007](#); [Schartmann et al. 2009](#)).

In this paper, we present an update of our radiative transfer model of 3D clumpy AGN tori that we presented in [Hönig et al. \(2006\)](#). In particular, a better handling of the diffuse radiation field inside the torus has been implemented to overcome the limitations discussed in Appendix A.2 of [Hönig et al. \(2006\)](#), and the possibility of different dust compositions and grain sizes is now included. The improved handling of the diffuse radiation field has been proposed in [Hönig \(2008\)](#) and is described in more detail in Sect. 2.3. We intend to provide models for observers and come up with some simple correlations between observational and model parameters. Some emphasis will be put on the radial distribution of the dust and dust grain size and chemical composition, the latter being only marginally explored in literature despite observational evidence that the grain composition might be crucial (e.g. [Kishimoto et al. 2007, 2009a](#)).

In Sect. 2 we outline our model strategy and methods and introduce the mathematical background of the clumpy torus model including model parameters. Following this we present in Sect. 3 simulation results of individual dust clouds. These simulations build up the dust cloud databases that serve as an input to the torus model simulations. In Sect. 4 we show our results from the torus simulations and discuss various aspects of interpreting SEDs and IR interferometry. The results are summarized in Sect. 5.

2. Torus model fundamentals

In this section, we will describe the mathematical and strategic base of our torus model and discuss underlying assumptions. First we outline the general model strategy and compare it conceptually to torus models in literature. Then, we describe the theoretical basis and parameters involved in the model.

2.1. Model strategy

The most straight-forward way of modeling clumpy dust tori in three dimensions is a direct Monte Carlo simulation of a geometrically well-defined, statistically arbitrary distribution of dust clouds spread on a model grid, as demonstrated by [Schartmann et al. \(2008\)](#). There are, however, several practical problems that occur. When solving the radiative transfer equation by Monte Carlo simulations, it is important to properly sample optically thick surface regions by enough grid cells so that each cell is optically thin. Otherwise, emission temperatures will be underestimated, which leads to an incorrect final source function, which in turn affects torus SEDs and images. In principle, adaptive grids can be used, but this may become a difficult task when aiming for $>10^3$ – 10^4 randomly-arranged clouds. Thus, the number of model clouds has to be small, the total optical depth of each cloud has to be limited, and/or the volume filling factors have to be rather large, on the order of $\Phi_V \sim 1$ (see also [Dullemond & van Bemmell 2005](#)). [Schartmann et al. \(2008\)](#) showed that the SED of the nucleus of the Circinus galaxy as well as the position-angle- and baseline-dependence of the visibility agrees well with this kind of Monte Carlo models. Still, these direct Monte Carlo simulations take a lot of time and are, therefore, not very flexible for modeling of observations.

As mentioned in Sect. 1, it is most likely that individual torus clouds are actually optically thick (see also Sect. 3.1). Based on optically thick clouds and the assumption of a low volume filling factor, $\Phi_V \ll 1$, [Nenkova et al. \(2002\)](#) used a probabilistic approach for cloud heating and obscuration, depending on several model parameters (see also [Natta & Panagia 1984](#); [Nenkova et al. 2008a](#)). [Nenkova et al. \(2008b\)](#) presented model SEDs simulated via this approach, which generally agree with observations. [Beckert \(2005\)](#) used a similar probabilistic model to reproduce the high spatial resolution SED of NGC 1068. The benefit of this modeling approach is its time-efficient calculation of average model SEDs and average brightness distributions. On the other hand, as noted by [Nenkova et al. \(2008b\)](#), the probabilistic method is not capable of predicting variations in the overall SED and brightness distribution or small-scale spatial and position-angle variations (“clumpiness variations”) of interferometric visibilities and phases caused by the random distribution of dust clouds in the torus.

In [Hönig et al. \(2006\)](#) we presented a method to time-efficiently simulate torus model images and SEDs and account for the 3D statistical nature of clumpy dust distributions. The strategy follows [Nenkova et al. \(2008a\)](#), but resolves the need for a probabilistic treatment of the dust distribution. Just as in the probabilistic approach, our model strategy is based on separating the simulations of individual cloud SEDs and images, and the final SEDs and images of the torus (see Fig. 1, for an illustration of our method). In a first step, the phase-angle-dependent emission for each cloud is simulated by Monte Carlo radiative transfer simulations. For that, we apply the non-iterative method delineated by [Bjorkman & Wood \(2001\)](#), based on work by [Lucy \(1999\)](#). In our previous model, we used the code *mc-Sim* ([Ohnaka et al. 2006](#)), which is able to simulate a variety

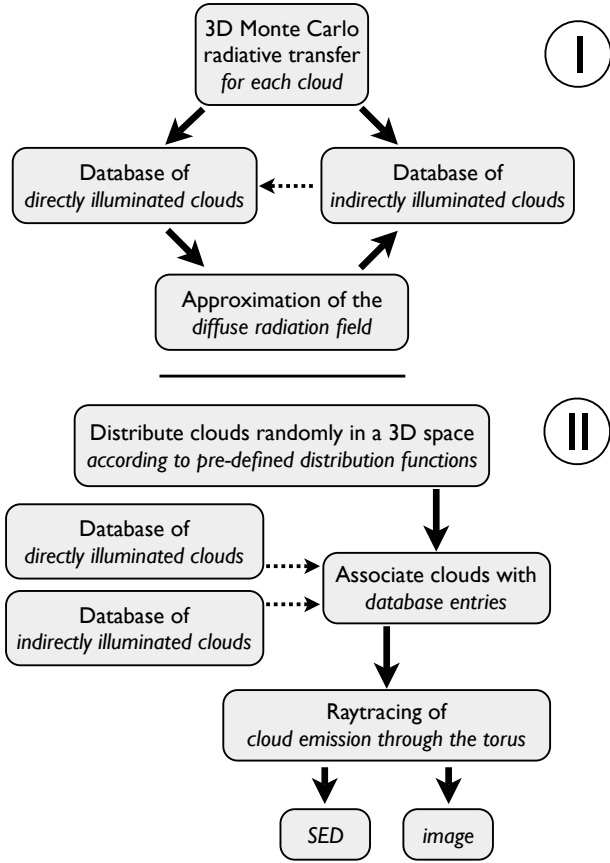


Fig. 1. Flow chart of our method for radiative transfer simulations of 3D clumpy tori. See text for details.

of geometries. However, in order to obtain fast results for different dust compositions, we created a new Monte Carlo code, which is optimized for the AGN-cloud-configuration. For each given dust composition, we determine the sublimation radius $r_{\text{sub}} = r(T_{\text{sub}} = 1500 \text{ K})$ from the source, and simulate several clouds at different distances (normalized for r_{sub}). To finally simulate the torus emission, dust clouds are randomly distributed around an AGN according to some physical and geometrical parameters. Each cloud is associated with a pre-simulated model cloud, after accounting for the individual cloud's direct and indirect heating balance (see Sect. 2.3, for details). The final torus image and SED is calculated via raytracing along the line-of-sight from each cloud to the observer. Contrary to the probabilistic clumpy torus models, this method accounts for the actual three-dimensional (3D) distribution of clouds in the torus, involving all statistical variations of randomly distributed clouds in a time-efficient way.

2.2. Torus parameters

The distribution of clouds in the torus is initially characterized by six model parameters. The torus parameters are (1) the radial dust-cloud distribution power law index a ; (2) the scale height h or the half-opening angle θ_0 ; (3) the number of clouds along an equatorial line-of-sight N_0 ; (4) the cloud radius at the sublimation radius $R_{\text{cl};0}$ in units of r_{sub} ; (5) the cloud size distribution power law index b ; and (6) the outer torus radius R_{out} . From the model parameters, several other physical properties can be derived. However, we will show that some of these parameters can be considered to be only marginally influential for the torus

Table 1. Cloud distribution functions and relations to physical parameters of the torus.

Physical property	Function ^{1,2,3}
radial dust distribution	$\eta_r = \frac{1+a}{(R_{\text{out}}^{1+a}-1)} r^a \cdot \frac{1}{r_{\text{sub}}}$
vertical dust distribution	$\eta_z = \exp(-z^2/2H^2)$ or $\eta_\theta = \exp(-\theta^2/\bar{\theta}_0^2)$
dust cloud radius	$R_{\text{cl}}(r) = R_{\text{cl};0} r^b \cdot r_{\text{sub}}$
total number of clouds	$N_{\text{tot}}^z = \sqrt{8\pi} N_0 h R_{\text{cl};0}^{-2} \frac{1+a}{3+a-2b} \frac{R_{\text{out}}^{3+a-2b}-1}{R_{\text{out}}^{1+a}-1}$ $N_{\text{tot}}^\theta = \sqrt{\pi} N_0 f_{\theta_0} R_{\text{cl};0}^{-2} \frac{1+a}{3+a-2b} \frac{R_{\text{out}}^{3+a-2b}-1}{R_{\text{out}}^{1+a}-1}$
	with $f_{\theta_0} = \bar{\theta}_0 \exp(-\bar{\theta}_0^2/4) \left(\text{Erf} \frac{\pi-i\theta_0^2}{2\theta_0} + \text{Erf} \frac{\pi+i\theta_0^2}{2\theta_0} \right)$
volume filling factor at $z = 0$	$\Phi_{V;0} = \frac{4}{3} N_0 R_{\text{cl};0} \frac{1+a}{R_{\text{out}}^{1+a}-1} r_{\text{sub}}^{a+b}$

Notes. ¹ r , z , H , and $R_{\text{cl};0}$ are given in units of r_{sub} ; ² Model parameters: (1) a : radial distribution power law index; (2) h : scale height, $h = H(r)/r = \text{const.}$ or half-opening angle θ_0 ; (3) N_0 : mean number of clouds along the equatorial line-of-sight; (4) $R_{\text{cl};0}$: cloud radius at r_{sub} (in units of r_{sub}); (5) b : cloud size distribution index; (6) R_{out} : the outer torus radius; ³ we define the altitudinal angle $\theta = 0$ in the torus mid-plane. Therefore we use, for convenience, the half-covering angle $\bar{\theta}_0 = \pi/2 - \theta_0$ instead of the half-opening angle θ_0 in the equations.

SEDs and images, so that less parameters need to be constrained by observations. Below we will briefly show how the model parameters are associated with the dust distribution of the torus.

The most fundamental parameters deal with the geometrical distribution of the clouds in the torus. We separate the 3D dust distribution into a radial distribution power law, $\eta_r \propto (r/r_{\text{sub}})^a$ and a vertical distribution $\eta_{z/\theta}$. For the vertical distribution, it has become common practice to use a Gaussian distribution to reproduce the smooth transition from the type 1 to type 2 viewing angles as implied by observations. However, two different ways of defining this Gaussian have evolved from recent torus models. One possibility is to distribute the clouds perpendicular to the equatorial plane, i.e. in z -direction in a cylindrical coordinate system. The resulting distribution function $\eta_z \propto \exp(-z^2/2H^2)$ depends on the scale height $H(r) = hr$ at radial distance r . This implies that the torus flares with constant $H(r)/r$, as suggested by isothermal disks. Here, h is the fundamental parameter describing the vertical distribution. Another way of distributing clouds can be best understood in a spherical coordinate system: instead of defining the distribution function perpendicular to the equatorial plane, it is also possible to distribute the clouds along an altitudinal path, i.e. in spherical θ -direction with $\eta_\theta \propto \exp(-\theta^2/\bar{\theta}_0^2)$. Here, $\bar{\theta}_0 = (\pi/2 - \theta_0)$ is the half-covering angle of the torus, which is the complementary of the half-opening angle θ_0 (see remarks in Table 1). Most of the simulations shown in the later sections will be based on the θ -distribution, but we will include results using the z -distribution when drawing final conclusions from the SED models. Table 1 shows the full distribution functions η_r , and $\eta_{z/\theta}$. The complete dust-cloud distribution function

$$\eta(r, z/\theta) = 2\pi\eta_r\eta_{z/\theta} \quad (1)$$

is normalized so that $\int_1^{R_{\text{out}}} \eta_r dr = 1$ and $\eta_{z/\theta} = 1$ for $z = 0$ or $\theta = 0$. By this definition, η_r can be understood as the *normalized* number of clouds per unit length, so that

$$N_0\eta(r, z/\theta) = \pi R_{\text{cl}}^2 \rho_N \quad (2)$$

describes the (actual) number of clouds per unit length, where ρ_N denotes the cloud number density per unit volume. Note that r , z , H , and $R_{\text{cl};0}$ are given in units of r_{sub} .

After fixing the distribution of clouds, the total obscuration (or dust mass) of the torus has to be defined. The most convenient way to do this is by defining the mean number of clouds N_0 that intersect the line-of-sight along a radial path in the equatorial plane. From N_0 it is easy to calculate the total number of clouds that have to be randomly distributed in the torus,

$$N_{\text{tot}} = N_0 \int \frac{\eta(r, z/\theta)}{\pi R_{\text{cl}}^2(r)} dV, \quad (3)$$

which is essentially the integrated version of Eq. (2) (see also Hönl et al. 2006; Nenkova et al. 2008a). Here, $R_{\text{cl}}(r) = R_{\text{cl};0} r_{\text{sub}} r^b$ denotes the radius of a dust clouds at radial coordinate r (in units of r_{sub}), with parameters $R_{\text{cl};0}$ and b as defined above. In Table 1, the explicit expression for N_{tot} is given for both vertical z - and θ -distributions.

Because we deal with a clumpy torus, it is most sensible to have a volume filling factor $\Phi_V < 1$ all over the torus. The volume filling factor Φ_V can be calculated by multiplying the cloud number density per unit volume ρ_N and the cloud volume $V_{\text{cl}} = 4/3\pi R_{\text{cl}}^3$, so that

$$\Phi_V = \frac{4}{3} N_0 \eta(r, z/\theta) R_{\text{cl}}. \quad (4)$$

If restricted to the equatorial plane, the expression $\Phi_{V;0}(r) = \Phi_V(r, z \text{ or } \theta = 0)$ is derived as shown in Table 1.

We note that while consistency of our modeling approach requires $\Phi_V(r, z/\theta) < 1 \forall(r, z)$ or (r, θ) , the torus brightness distribution and SED is not explicitly depending on Φ_V , but rather on the combination of the individual parameters. Actually, approximately the same overall SEDs and images can be obtained when reducing Φ_V by reducing $R_{\text{cl};0}$, leaving all other parameters fixed (and calculate N_{tot} clouds according to the new $R_{\text{cl};0}$). This can be illustrated by introducing a simplified version of the clumpy torus model for type 1 AGN (see also Kishimoto et al. 2009a). In a face-on view of the torus, the clouds are projected onto a ring ranging from r_{sub} to R_{out} . First, let us assume that most of the clouds are directly heated by the AGN. Then, a surface filling factor $\sigma_s(r)$ can be described using cloud number density ρ_N projected z -direction¹. If we consider η_z , the surface filling factor becomes

$$\sigma_s(r) = \int_{-\infty}^{\infty} \pi R_{\text{cl}}^2 \rho_N dz = (2\pi)^{3/2} N_0 h \eta_r, r_{\text{sub}} \quad (5)$$

with the explicit dependence $\sigma_s(r) \propto r^a$. In this definition, the surface filling factor can be considered as a weighting factor of how much the clouds at radius r contribute to the total intensity. Here, N_0 and h are scaling constants, that do not depend on the radial distribution. On the other hand, we can include a first-order approximation of obscuration effects, which accounts for a decreasing number of directly-illuminated clouds with radius, by multiplying $\sigma_s(r)$ with $\exp(-N(r, z))$ as described in Sect. 2.3. Finally, to obtain SEDs and brightness distributions in this simplified type-1 model, the luminosity $L_{\nu}^{(\text{tor})}$ is calculated by multiplying the surface filling factor with the source function of the clouds $S_{\nu}(r)$ and integrating from r_{sub} to R_{out} ,

$$L_{\nu}^{(\text{tor})} = 2\pi \int_1^{R_{\text{out}}} \sigma_s(r) S_{\nu}(r) r dr. \quad (6)$$

¹ Actually, $\sigma_s(r)$ can grow to larger than 1, which corresponds to the case where projection caused clouds to overlap. However, $\sigma_s(r) > 1$ is only valid if the dust column is optically thin at that wavelength.

Interestingly, $L_{\nu}^{(\text{tor})}$ does not depend on R_{cl} or b , so that it is difficult to constrain these parameters by observations. Instead, for the purpose of SED modeling, they should be selected in a way to fulfill the ‘‘clumpy criterion’’ $\Phi_V < 1$.

Yet because R_{cl} and b control the total number of clouds N_{tot} , they have influence on small scale surface brightness variations, which result in slightly different SEDs for different random arrangements of clouds (see Hönl et al. 2006) or position-angle variations, which might be interesting for interferometry (see Sect. 4.2). Aside from $R_{\text{cl};0}$ and b , in Sect. 4.1.4 we will further show that R_{out} cannot be considered as a free parameter but has to be chosen in a sensible way depending on a .

In summary, the key torus model parameters that are directly accessible from observations are a , N_0 , and h or θ_0 . In addition, the cloud dust properties (dust composition and optical depth) will have some influence on the overall torus emission.

2.3. The diffuse radiation field in the torus

As described in Sect. 2.1, our model strategy makes use of pre-calculated databases of dust clouds. The main database consists of clouds that are directly heated by the AGN. However, owing to obscuration effects within the torus, some clouds will not be directly exposed to the AGN radiation because the line-of-sight to the AGN is blocked by other clouds. These clouds are heated only by the emission from other clouds in their vicinity. They form a *diffuse radiation field* where mainly those clouds contribute that are directly AGN-heated. In Hönl et al. (2006), we used an upper-limit-approximation for the diffuse radiation, which led to overestimation of the emission longward of $20 \mu\text{m}$. Here we describe a way to statistically recover the diffuse radiation field.

For a given distance from the AGN and the optical depth of each cloud, the parameters which determine the temperature and emission of a cloud are (1) the fractional cloud area, f_{DH} , which is directly heated by the AGN; and (2) the fraction of directly-heated clouds in the cloud’s vicinity, $f_{\text{IH}}(r)$. f_{DH} determines the strength of direct heating. For $f_{\text{DH}} = 1$, the directly-heated re-emission of the cloud is equal to the emission of the pre-calculated database cloud at the same distance $r_{\text{DB}} = r_{\text{cl}}$ from the AGN. If $f_{\text{DH}} < 1$, less direct energy is received and the cloud emission corresponds to a database cloud at distance $r_{\text{DB}} = r_{\text{cl}} / \sqrt{f_{\text{DH}}}$. The parameter $f_{\text{IH}}(r)$ determines the energy that is contained in the diffuse radiation field. It can be approximated by the probability $P_0(r, z)$ that a given cloud at r and z (or θ) is directly illuminated. Note that $P_0(r, z)$ can be considered a global, probabilistic version of f_{DH} , which is a local and individual property of each cloud. According to Natta & Panagia (1984), $P_0(r, z)$ can be derived from Poisson statistics as $P_0(r, z) = \exp(-N(r, z/\theta))$, where $N(r, z/\theta) = N_0 \int_0^s \eta(r, z/\theta) ds$ is the mean number of clouds along the path s from the center to $(r, z/\theta)$. In case $f_{\text{IH}} \equiv P_0(r, z) = 1$ (and $f_{\text{DH}} = 0$), the cloud’s contribution from indirect heating corresponds to the indirectly-heated database cloud emission at the same distance, $r_{\text{DB}} = r_{\text{cl}}$, otherwise $r_{\text{DB}} = r_{\text{cl}} / \sqrt{f_{\text{IH}}}$.

An interesting aspect is the actual contribution of indirectly-heated clouds to the overall torus emission. On one hand, with increasing r the fraction of clouds that are indirectly heated increases due to the increase in obscuration. On the other hand, the diffuse radiation field becomes weaker due to the absence of directly-heated clouds. In Fig. 2, we illustrate the relative contribution of directly- and indirectly-heated clouds to the torus emission at a given distance r in the torus mid-plane (i.e. $z = 0$

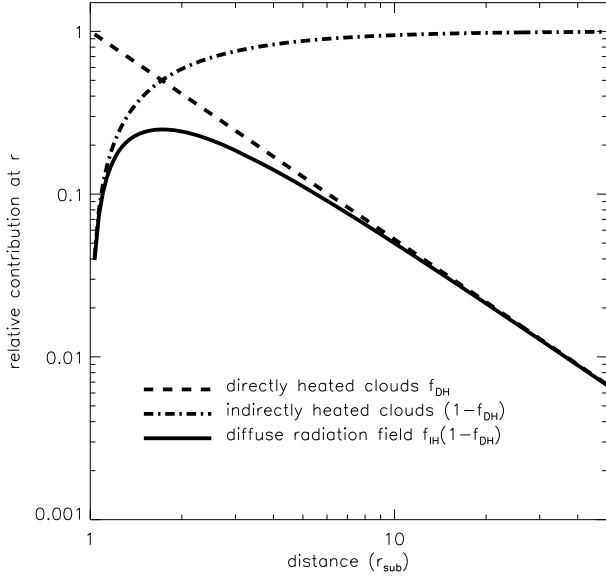


Fig. 2. Illustration of the contribution of directly- and indirectly-heated clouds. The dashed line represents the relative contribution of directly-heated clouds to the torus emission at given distance r from the AGN in the mid-plane, f_{DH} . The dash-dotted line shows the relative contribution $(1 - f_{\text{DH}})$ of indirectly-heated clouds at r if $f_{\text{IH}} = 1$. The solid line presents the actual contribution of indirectly-heated clouds due to the decreasing strength of the diffuse radiation field, $f_{\text{IH}}(1 - f_{\text{DH}})$.

or $\theta = 0$). Here, we fix $N_0 = 5$, $a = -1.0$, and $R_{\text{out}} = 50^2$. The relative contribution, f_{DH} , of directly-heated clouds at distance r from the AGN is shown as a dashed line in Fig. 2. As a dashed-dotted line we show the relative contribution of indirectly-heated clouds if we assume that the vicinity of the indirectly-heated cloud is fully filled-up with directly-heated clouds to form the diffuse radiation field, i.e. $(1 - f_{\text{DH}})$. This was assumed as the contribution of indirectly-heated clouds in Hönig et al. (2006) and led to the overestimation of the SEDs at wavelengths $> 20 \mu\text{m}$ (see Appendix A.2 in Hönig et al. 2006). In reality, the number of directly-heated clouds around an indirectly-heated cloud decreases with r , as outlined in the previous paragraph. The solid line illustrates this effect. It shows the contribution of indirectly-heated clouds at distance r , considering the decrease of directly-heated clouds in the vicinity, $f_{\text{IH}}(1 - f_{\text{DH}})$. As can be expected from energy conservation, this line is lower than the directly-heated cloud contribution and approaches it asymptotically with increasing r . Given their general higher temperatures, this illustrates that directly-heated clouds dominate the torus emission over indirectly-heated clouds – at least in more or less face-on geometries where line-of-sight obscuration effects play a minor role.

Finally, we want to justify why a single iteration of the diffuse radiation field is sufficient. Since the directly heated clouds are also indirectly heated, one would first have to simulate directly-heated clouds. From these clouds, the diffuse radiation field has to be calculated and be included in the simulations of directly-heated clouds. Then, a new diffuse radiation field has to be determined and the process repeated. After several iteration steps, the final diffuse radiation field is obtained. The Monte Carlo method we used is quite flexible in implementing such a scheme without the need to reconsider direct illumination or previous steps (Krügel 2008, p. 283): after the i th

simulation, a “corrected” diffuse radiation field has to be added, which corresponds to the change with respect to the previous $(i - 1)$ th iteration step, $dS_{\nu;\text{DRF}}^{(i)} = S_{\nu;\text{DRF}}^{(i)} - S_{\nu;\text{DRF}}^{(i-1)}$. However, it has been noted that the diffuse radiation field converges quite fast (e.g. Hönig et al. 2006; Nenkova et al. 2008a), so that one can consider that the source function of the diffuse radiation field $S_{\nu;\text{DRF}} \approx S_{\nu;\text{DRF}}^{(0)} = \int_0^\pi S_{\nu;\text{DH}}(\phi) \sin \phi d\phi$, where $S_{\nu;\text{DH}}$ is the source function of (AGN-only) directly-heated clouds, without the need of any further iteration. This makes simulations of cloud databases very time-efficient.

3. Emission from individual dust clouds

In this section we will discuss dust cloud modeling results from step I of the torus simulation (see Fig. 1). First, we discuss the physical properties of the dust clouds in the torus. Next, we describe in detail the Monte Carlo simulation of individual dust clouds and explain underlying assumptions. Finally we present cloud SEDs for both directly- and indirectly-heated dust clouds for different dust compositions.

3.1. Properties of the dust clouds

3.1.1. Observational and theoretical constraints on physical properties

One fundamental property of the dust clouds in radiative transfer simulations is their optical thickness. If they are optically thin, i.e. $\tau_\nu \ll 1$, they could be considered to have uniform temperature and the thermally re-emitted flux can be approximated by $F_\nu = \pi\tau_\nu B_\nu(T)$, where $B_\nu(T)$ is the Planck function at temperature T and τ_ν is the frequency-dependent optical depth. However, from observations of type 2 AGN, we know that both the dust and hydrogen columns are usually quite large, with the hydrogen column even Compton-thick. Associated torus dust temperatures are rather cool, peaking at $T \sim 200\text{--}300$ K (e.g. Jaffe et al. 2004; Tristram et al. 2007). Moreover, the X-ray column density variability as seen in many AGN points to rather small clouds and column densities on the order of 10^{23} cm^{-2} per cloud (e.g. Risaliti et al. 2007). To combine silicate absorption features as seen in type 2 AGN, Compton-thick obscuration, and small clouds, we infer that there are on average about 5–10 optically-thick clouds ($\tau_\nu \gg 1$) along a line-of-sight to the center in a type 2 AGN and that the volume filling factor of the torus $\Phi_V < 1$, i.e. the torus is clumpy. These cloud properties agree at least qualitatively with models of self-gravitating dust and gas clouds in the shear of the gravitational potential of a super-massive black hole (Beckert & Duschl 2004; Hönig & Beckert 2007).

3.1.2. Dust composition

Previous torus studies used dust properties in line with standard grain sizes and chemical composition (e.g. Schartmann et al. 2005; Hönig et al. 2006; Nenkova et al. 2008b). In general, MRN distributions (referring to Mathis, Rumpl and Nordsieck; Mathis et al. 1977) with a grain size power law distribution $\propto a^{-3.5}$ ($a \dots$ grain size) was assumed with lower and upper limits $a_{\text{min}} \sim 0.005\text{--}0.01 \mu\text{m}$ and $a_{\text{max}} \sim 0.25 \mu\text{m}$, respectively. The chemical compositions invoked 47% graphite and 53% silicates, either based on Draine (2003) or Ossenkopf et al. (1992, for silicate dust) optical properties as used in standard interstellar matter (ISM) distributions. These dust compositions are considered as “standard ISM”. Recently it was suggested that the dust composition around AGN might be deviating from standard ISM.

² For $a = -1.0$, the normalized radial distribution function becomes $\eta_r = (r \ln R_{\text{out}})^{-1}$.

Table 2. Main physical properties of the dust compositions used in our study.

Name identifier	fractional composition		a_{\min} (μm)	a_{\max} (μm)	r_{sub}^a (pc)
	silicates	graphite			
standard ISM	0.53	0.47	0.025	0.25	0.9
ISM large grains	0.53	0.47	0.1	1.0	0.5
Gr-dominated	0.30	0.70	0.05	0.25	0.7

Notes. ^a Sublimation radius r_{sub} at a dust temperature $T_{\text{sub}} = 1500$ K for $L_{\text{bol}} = 10^{46}$ erg/s. Sublimation radii for any other luminosity can be calculated by $r = r_{\text{sub}} \times (L_{\text{bol}}/10^{46} \text{ erg/s})^{1/2}$. L_{bol} is defined as $L_{\text{bol}} = \int L_{\nu} d\nu$ of the accretion disk. In our definition of the accretion disk spectrum, the reverberation radius from Kishimoto et al. (2007) for $L_{\text{bol}} = 10^{46}$ erg/s would be $r_{\tau_K} = 0.38$ pc, with approximately 25% scatter.

While Suganuma et al. (2006) confirmed the $L^{1/2}$ -dependence of the sublimation radius, the measured K -band reverberation radii of type 1 AGN are a factor of 3 smaller than what is expected from standard ISM dust. Kishimoto et al. (2007) suggest that this discrepancy might be caused by domination of larger grains, at least in the inner part of the tori.

We aim for testing the impact of different dust compositions on the cloud SEDs. We synthesize standard ISM mixes invoking 47% graphite (using optical constants from Draine 2003) and 53% silicates using both Draine (2003) and Ossenkopf et al. (1992) optical constants. In order to explore recent suggestions, we also create a dust mix with a standard ISM grain size distribution but only containing grains between $0.1 \mu\text{m}$ and $1 \mu\text{m}$ in size (“ISM large grains”). A last composition explores SEDs of dust, which are dominated by intermediate to larger graphite grains (70% graphite, 30% silicates; “Gr-dominated”). The compositions and their respective properties are summarized in Table 2.

3.2. Monte Carlo simulations of dust clouds

Since the exact dust distribution within a cloud is not known, we use a uniform density throughout the cloud. While this might be oversimplified, we note that independent of the actual density distribution of an optically thick cloud, the bulk of the cloud re-emission originates from the optically-thin surface layer of the hot, directly-illuminated face of the cloud. Moreover, the gradient of the temperature at distance r from the cloud surface depends mostly on the total optical thickness at r and is supposedly very similar in all density distribution laws once the same optical depth is reached. So, the temperature of the non-illuminated side of the cloud is more or less independent of the dust density law within the cloud for the same optical depth through the diameter of the cloud (=“total optical depth” τ_V).

The cloud is subdivided into grid cells, where the dust density within each cell is optically thin. This guarantees that the steep temperature gradient in the surface layer on the hot face of the cloud is properly sampled.

For our cloud simulation, we use a spherical cloud geometry. In principle any kind of shape could have been chosen. However, the main difference between a sphere and e.g. an ellipse is the different ratio of radial-to-perpendicular optical depth. As mentioned above, if the cloud has a total $\tau_V \gg 1$, then the dominant emission is coming from the optically-thin layer on the hot side of the cloud. Because the temperature in the layer is mostly independent of the density distribution in the rest of the cloud, the overall temperature of the hot cloud face is similar. For the cold face of the cloud, the main criterion is again the total optical depth within the cloud. For comparable total optical depths

of two clouds with arbitrary shape³, the cold-side temperatures are the same and consequently the emerging emission is, too. In summary, unless one insists on very peculiar cloud surfaces, the exact shape does not matter too much and a spherical cloud presumably catches the essence of the dust clouds in AGN tori.

For time-efficient simulations, we optimize the Monte Carlo code for the cloud-AGN-configuration. For that, we first determine the sublimation radius $r_{\text{sub}} = r(T_{\text{sub}})$ for a given dust chemistry and grain size composition, assuming a dust sublimation temperature $T_{\text{sub}} = 1500$ K. Since r_{sub} scales with the AGN luminosity L as $r_{\text{sub}} \propto L^{1/2}$, the incident AGN flux on a dust cloud at r_{sub} is independent of the actual luminosity, $F_{\text{AGN}}(r_{\text{sub}}) \propto L/r_{\text{sub}}^2 = \text{constant}$. Thus, a single cloud database can be used for all AGN luminosities. Because the dust clouds are believed to be small, with a radius-to-distance-ratio $R_{\text{cl}}/r \lesssim 1$, we assume that the incident AGN radiation (see Appendix. A) enters the model sphere on parallel rays. Moreover, the rotational symmetry of our clouds allows us to reduce the model space for Monte Carlo simulations to a planar 3D grid with only one grid cell in z -direction. These two modification allow for a maximum number of photon packages to be simulated in a short time without suffering from strong Monte Carlo noise in the temperature of the individual grid cells. To be even less dependent on Monte Carlo noise, the final cloud SEDs and images are calculated via raytracing of the emission from each cell into the observer’s direction (i.e. for different phase angles of the cloud): first, the temperature distribution is reconstructed from the temperature grid; then, the source function (thermal re-emission and scattering) for each cell is calculated and the path through the cloud is followed out of the cloud⁴. In this way the angle-dependent source function of the cloud $S_{\nu}(\phi)$ is time-efficiently recovered. The described simulation method is the same for both directly- and indirectly-heated clouds. The only difference occurs in handling the incident radiation: for directly-heated clouds, the AGN spectrum is used, while for indirectly-heated cloudes the diffuse radiation field is the heating source.

In summary, our simulations of dust clouds proceeds as follows (see also Hönig et al. 2006; Nenkova et al. 2008a): (1) Monte Carlo simulations of directly AGN-heated clouds; (2) approximation of the diffuse radiation field (i.e. heating of clouds not directly exposed to the AGN) by averaging the local emission of directly-heated clouds (see also Sect. 2.3, for a description of the assessment of the local circumstances within the torus); (3) Monte Carlo simulation of clouds heated by the averaged diffuse radiation field. This results in two cloud databases which are used for the torus simulations: one for directly-illuminated clouds and one for indirectly-heated clouds.

3.3. Resulting cloud SEDs

Below we present model source functions of directly- and indirectly-heated clouds. Simulations have been carried out for the standard-ISM, ISM large-grains, and Gr-dominated dust configurations as introduced in Sect. 3.1.2.

³ The actual total τ_V ’s that need to be compared depends on the exact shapes/elongations. Thus, one might see the total τ_V of the cloud in our model as some mean value representing all kind of shapes.

⁴ Note that this treatment limits the handling of scattering to single events. For our optically-thick clouds we tested this method against rigorous treatment of scattering with the *mcsim* code and found that any noticeable impact of the single-event-assumption is limited to wavelengths $\lesssim 1 \mu\text{m}$ and is of the order of 2%.

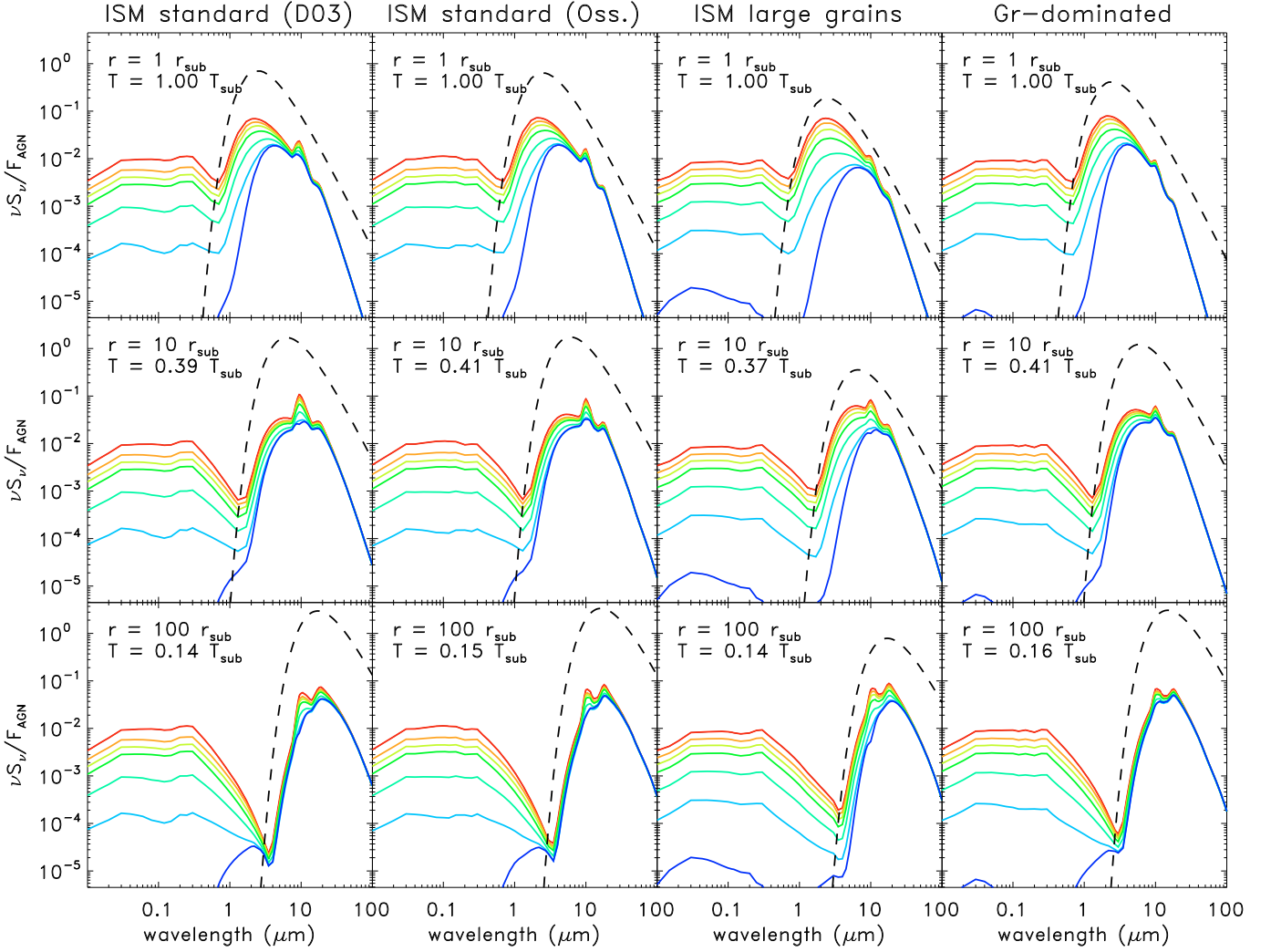


Fig. 3. Model source functions S_ν of directly AGN-heated clouds for several different dust configurations (from left to right column: ISM standard configuration with Draine (2003) silicates, Ossenkopf et al. (1994) silicates, ISM large grains, and Graphite-dominated dust). Each row shows the emission of a cloud with $\tau_V = 50$ at the given AGN distance $r = r_{\text{sub}}$ (top), $10 r_{\text{sub}}$ (middle) and $100 r_{\text{sub}}$ (bottom), scaled to the total incoming flux of the AGN, $F_{\text{AGN}} = L_{\text{bol}}/(4\pi r^2)$. The corresponding hot-side temperature in units of $T_{\text{sub}} = 1500$ K are also given. The various lines represent a specific phase angle, ϕ , of the cloud in steps of 30° (red: $\phi = 0^\circ$, i.e. full hot side; purple: $\phi = 180^\circ$, i.e. full cold side). For comparison, we overplotted the corresponding black-body emission $B_\nu(T)$ with the same temperature as the hot side of the cloud at the same distance from the AGN (dashed line).

3.3.1. Directly-heated clouds

Standard ISM The starting point for our dust composition study will be the “standard ISM”. Physical dust properties are listed in Table 2. We show two versions of the standard ISM configuration: one uses Draine (2003) silicates, the other one consists of Ossenkopf et al. (1992) silicates (see Sect. 3.1.2). The most important difference between both silicate types concerns the central wavelength and width of the silicate feature at around $10 \mu\text{m}$. For a given size distribution, the Draine silicate feature is much wider than the Ossenkopf feature. In Draine silicates, the central silicate feature wavelength is at $\sim 9.5 \mu\text{m}$, while the Ossenkopf silicate feature is centered at $10.0 \mu\text{m}$. The $10.0 \mu\text{m}$ central wavelength seems to be more consistent with peak silicate emission features of type 1 AGN as observed with *Spitzer*, while absorption features in type 2s usually have their center at $9.7 \mu\text{m}$ (e.g. Shi et al. 2006). We note, however, that radiative transfer effects can affect the exact shape of the feature (but see discussions in Nikutta et al. 2009; Höning et al. 2010; Landt et al. 2010, which disagree on the details of this effect).

Simulation results for directly-illuminated clouds with standard ISM dust configurations are shown in the two left columns of Fig. 3. We present clouds with a total optical depth $\tau_V = 50$ at three different distances $r = r_{\text{sub}}$, $10 \times r_{\text{sub}}$, and $100 \times r_{\text{sub}}$ from the AGN. Along with the distances, we also provide the maximum temperature of the hot side of the cloud in units of the sublimation temperature $T_{\text{sub}} = 1500$ K. The overplotted dashed lines show the black-body source function $B_\nu(T)$ with the same temperature as the hot side of the clouds at the same distance from the AGN. For both types of silicates, the temperature gradient on the directly-illuminated face is similar, with some trend of slightly higher temperatures for the Ossenkopf dust. The $r = 10 \times r_{\text{sub}}$ clouds serve best for illustration since the near-IR color is slightly redder for Draine silicates. The different temperature gradients are a result of slightly different absorption efficiencies – or more precisely: Planck mean opacities, which, in the end, determine the temperature at a given radius in the radiative transfer equations. The cloud emission is lower than the corresponding black-body emission by more than a magnitude, indicating that ISM standard mixture clouds are not well

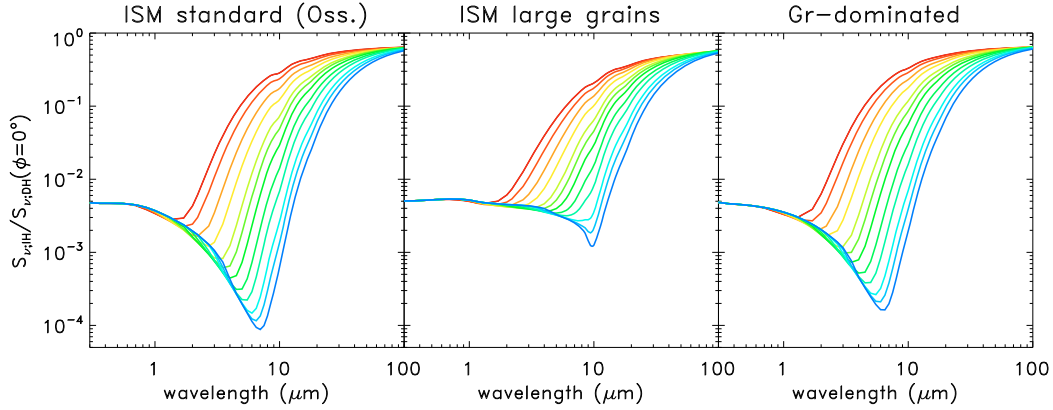


Fig. 4. Wavelength-dependent emission ratio between the source function of indirectly-heated clouds $S_{\nu, IH}$ and the hot face of directly-heated clouds $S_{\nu, DH}(\phi = 0^\circ)$. The various lines represent different distances r from the AGN with $r = 1, 1.5, 2.5, 4, 7, 10, 15, 25, 40, 70, 100$ and $150 r_{\text{sub}}$ from top-red to bottom-blue. *The left panel* shows simulation results for “ISM standard” dust with Ossenkopf et al. silicates, *the middle panel* presents “ISM large grains”, and *the right panels* shows “Gr-dominated” dust.

represented by any black-body approximation. This is true for all dust compositions discussed here. It is worth noting that for the standard ISM configuration, the presented clouds with $\tau_V = 50$ are mostly optically thin in the infrared. This leads to only small differences in SED shapes for different phase angles ϕ^5 so that the hot-side emission shines all through the cloud and significantly contributes to the cold-side emission, e.g. as seen by the 9.7/10 μm silicate emission feature in the $\phi = 180^\circ$ SEDs.

ISM large grains While near-IR reverberation mapping results of type 1 AGN confirmed the $L^{1/2}$ -dependence of r_{sub} , the observed K -band reverberation mapping radii r_{τ_K} are smaller by approximately a factor of 2–3 than what has been inferred from ISM dust (Suganuma et al. 2006; Kishimoto et al. 2007). Suggestions to solve this problem involve larger sizes of the dust grains than used in standard ISM distributions – at least in the innermost part of the torus that dominates the IR emission of type 1 AGN. To test this suggestion, we simulated dust clouds for a standard ISM composition with Ossenkopf silicates and limited the grain sizes to 0.1–1 μm . This “ISM large grain” composition has a sublimation radius $r_{\text{sub}} = 0.5 \text{ pc} \times (L_{\text{bol}}/10^{46} \text{ erg/s})^{1/2}$ that is closer to the observed r_{τ_K} than the standard ISM dust (see Table 2).

The simulated dust cloud SEDs for the ISM large grain composition are shown in the third column of Fig. 3. The hot-side temperature gradient is comparable to clouds with ISM standard dust. The most notable difference concerns the change of the SED shape from $\phi = 0^\circ$ to 180° . While the previously-explored clouds show quite similar SEDs for all phase angles, the ISM large grain clouds become very red at near- and mid-IR wavebands for increasing ϕ . Moreover, the silicate feature at 10 μm turns from emission into absorption. The reason for this difference is the optical depth in the infrared: for both silicate and graphite, large grains have a much flatter extinction efficiency in the infrared. Thus, the cloud-internal extinction in the IR increases. While $\tau_{2.2\mu\text{m}}/\tau_V \sim 0.05\text{--}0.06$ for the ISM standard configuration (depending on the silicate species), the ISM large grains have $\tau_{2.2\mu\text{m}}/\tau_V \sim 0.9$. In the silicate feature at 9.7/10 μm , the ratios are $\tau_{\text{Si}}/\tau_V \sim 0.04$ and 0.1, respectively. As a consequence, a cloud with $\tau_V = 50$ is also optically thick in the

near- and mid-infrared. Thus, when seeing the cloud under large ϕ , the emission from the hot side of the cloud is blocked and the emerging SED is dominated by cool dust emission. This will also have an effect for the simulated torus SED because IR radiation can be efficiently absorbed, which presumably leads to redder IR colors (see Sect. 4.1.1).

We note that the difference between black-body and hot-side cloud emission is smaller than for the other dust composition, as seen in Fig. 3. This implies that large dust grains are better represented by a black-body approximation than smaller grains, although the difference is still almost an order of magnitude.

Graphite-dominated dust In general, silicate dust grains have lower sublimation temperatures than graphite grains (e.g. Schartmann et al. 2005, for simulations with AGN radiation). This might result in a dearth of silicates in the torus, at least in the inner part. Moreover, since AGN are rather strong X-ray emission sources, it is doubtful that smallest dust grains can easily survive without being photo-destroyed. For that, we modified the ISM composition by using only grains $>0.05 \mu\text{m}$ and changed the chemical mixture to 70% graphite grains and 30% Ossenkopf silicates.

In the right-most column of Fig. 3, we show simulated cloud SEDs for this “Gr-dominated” dust. The overall SED shape resembles those of the standard ISM configurations. The dust is optically thin in the IR with $\tau_{2.2\mu\text{m}}/\tau_V = 0.06$ and $\tau_{\text{Si}}/\tau_V = 0.02$. However, two important differences can be seen. First, the silicate emission feature at 10 μm is significantly reduced because of the reduction of silicate dust. This might be interesting given the relative weakness of silicate absorption and emission features observed in Seyfert galaxies (but see Sect. 4.1.1 for actual simulations). Second, the temperature gradient outward from r_{sub} is slightly flatter. As can be seen in the middle panel, the near-IR emission in the Gr-dominated dust clouds is bluer than for the standard ISM configurations and the ISM large grains. Therefore, it can be expected that for a given set of torus parameters (see Sect. 2.2), the radial emission size in the near- and mid-IR is slightly different than for the other dust compositions.

3.3.2. Indirectly-heated clouds

In Fig. 4, we illustrate the contribution of indirectly-heated clouds. The left panel shows the ratio of indirectly-heated cloud emission to directly heated emission as the ratio of the source

⁵ The phase angle ϕ is defined as the AGN-cloud-observer angle. $\phi = 0^\circ$ denotes the full visibility of the directly-illuminated face of the cloud (“full moon”), $\phi = 180^\circ$ describes the situation when only the cold side of the cloud is seen (“new moon”).

functions $S_{\nu, \text{IH}}/S_{\nu, \text{DH}}(\phi = 0^\circ)$ for the ISM standard dust with Ossenkopf silicates at different distances r from the AGN. In the middle panel, we present results for the ISM large grain configuration, and in the right panel Gr-dominated dust was used. Except for the clouds closest to the AGN ($r \lesssim 5 \times r_{\text{sub}}$), the emission contribution of indirectly-heated clouds in the near- and mid-infrared below $10 \mu\text{m}$ is $\ll 0.1$ for the ISM standard and Gr-dominated dust. This means that indirectly-heated clouds are much cooler than the corresponding directly-heated cloud at the same r . This is slightly different for the ISM large grain configuration: since these clouds are also optically thick in the infrared, they absorb the incident diffuse radiation field – which is dominated by IR photons – much more efficiently than the other two dust configurations. This results in better indirect heating so that the temperatures become higher.

4. Torus model results and discussion

In this section we will present results from the full torus simulations as described in Sect. 2.1 and illustrated in Fig. 1. There have already been a number of SED parameter studies on clumpy torus models in literature (Dullemond & van Bemmelen 2005; Hönig et al. 2006; Schartmann et al. 2008; Nenkova et al. 2008b), so that we want to focus on the dust distribution and how it connects to observations. In particular, we will show that certain SED and interferometric properties are almost exclusively depending on the radial distribution of the dust clouds in the torus. The θ -distribution will be used to discuss parameter dependencies, but the z -distribution will be included in the conclusions drawn from the SED studies in Sect. 4.1.5. Both distributions yield very similar results.

4.1. Torus spectral energy distributions

All torus SEDs will be scaled independent of AGN luminosity and spatial scaling. The torus model SEDs νF_ν shown in this section represent the emission at a distance corresponding to the sublimation radius r_{sub} of the respective dust composition. Observed fluxes νf_ν can be easily compared to model fluxes νF_ν via the relation

$$\nu F_\nu = \nu f_\nu \left(\frac{D_L}{r_{\text{sub}}} \right)^2, \quad (7)$$

where D_L is the luminosity distance to the AGN and r_{sub} is the sublimation (or reverberation) radius for the modeled dust composition, which can be taken from Table 2. By that, a comparison of observed and model SEDs allows for constraining the sublimation radius from which, if needed, the bolometric luminosity can be inferred (see Table 2).

4.1.1. The radial distribution of dust clouds

In the parametrization of the torus the radial distribution of the clouds takes a key role in determining the emission, as illustrated in Eqs. (2), (5), and (6). This is reflected by the differences in simulated SEDs when varying the power law index a in the radial dust-cloud-density distribution $\eta_r \propto r^a$. In Figs. 5 and 6 we present comparison of model SEDs for different radial power law indices $a = 0.0, -0.5, -1.0, -1.5,$ and -2.0 , indicated by colored lines in the plot. Figure 5 represents a face-on line-of-sight onto the torus as in type 1 AGN ($i = 0^\circ$ while Fig. 6 shows SEDs for a type 2 case (i.e. face-on; $i = 90^\circ$). Each row represents a different dust composition as discussed

in Sect. 3.1 (top row: Ossenkopf et al. standard ISM; middle row: ISM large grains; bottom row: Gr-dominated dust). Each column shows variations of the mean number of clouds in the equatorial line-of-sight N_0 (see Sect. 2.2), increasing from left to right ($N_0 = 2.5, 5, 7.5,$ and 10). Other fixed parameters are $R_{\text{out}} = 150, \theta_0 = 45^\circ, R_{\text{cl},0} = 0.035, b = 1,$ and $\tau_{\text{cl}} = 50$.

All models have in common that the total SED becomes redder when the power law becomes flatter, simply because cooler dust at larger distances is involved with the flat power law distributions. The standard ISM and Gr-dominated dust distributions show similar overall SEDs and similar trends when changing N_0 or a . For small N_0 , the silicate emission features are strongly pronounced, and there is a considerable difference in the continuum shape for different a . While the flat distributions ($a = 0.0$ to -1.0) peak in the continuum at long mid-IR wavelengths, the steeper distributions ($a = -1.5$ and -2.0) have their continuum emission peak in the near-IR, which is caused by the fact that in the latter case most of the dust is confined to small distances from the AGN, i.e. the average dust temperature is very high. This is the same trend for type 1 and type 2 line-of-sights, although type 2 SEDs appear slightly redder than their type 1 counterparts.

A special case in this study are SEDs for the ISM large grain dust. While they follow the general trend of redder SEDs for shallower dust distributions, the peak continuum emission is located at wavelengths $> 10 \mu\text{m}$ in νF_ν for all selections of a and N_0 in the type 2 case, and their continuum is generally redder in type 1 orientations. The reason for this behavior is the dust-specific τ in the infrared (see Sect. 3.3.1). For the clouds with total $\tau_V = 50$, the large grains are optically thick in the near- and mid-IR ($\tau_{\text{IR}} > 1$), while the other dust compositions are optically thin in the mid-IR. This can also lead to stronger statistical effects, depending on the actual distribution of clouds (see Hönig et al. 2006). Considering overall similarities in the SEDs and in the silicate features of most type 1 cases, it seems difficult to constrain the chemistry by SED observations though.

While the overall SED shows considerable dependence on a , it does not change significantly when varying N_0 for both type 1 and type 2 line-of-sights. There is only a small change in color from $N_0 = 2.5$ to 10 , which can be noted as a smaller dispersion between the extreme a -cases by comparing the left-most with the right-most panels in Figs. 5 and 6. Indeed, the red continuum in flat distributions becomes bluer and the blue, steep dust distribution become redder. This is caused by obscuration effects within the torus: if N_0 increases, clouds at larger distances contribute less to the overall emission since there is less chance that they are directly exposed to AGN emission. That effect is strongest for the flat distributions. In total, however, torus-internal obscuration effects on the SED shape, originating from the selection of N_0 , are minor. This can be taken as a justification of the simplified clumpy torus model for type 1 AGN as introduced by Kishimoto et al. (2008) and quantified in Eq. (6), which captures the essence of the (overall) brightness distribution in pole-on geometries. However, the selection of N_0 seems to have an impact on the strength of the silicate feature, which will be discussed in the next section.

4.1.2. Average number of clouds along an equatorial line-of-sight

In Sect. 4.1.1, it has been shown that the effect of varying N_0 on the overall SED is minor. On the other hand, the silicate feature in both type 1 and type 2 AGN changes from strong emission to weak emission or absorption with N_0 increasing from 2.5 to 10.

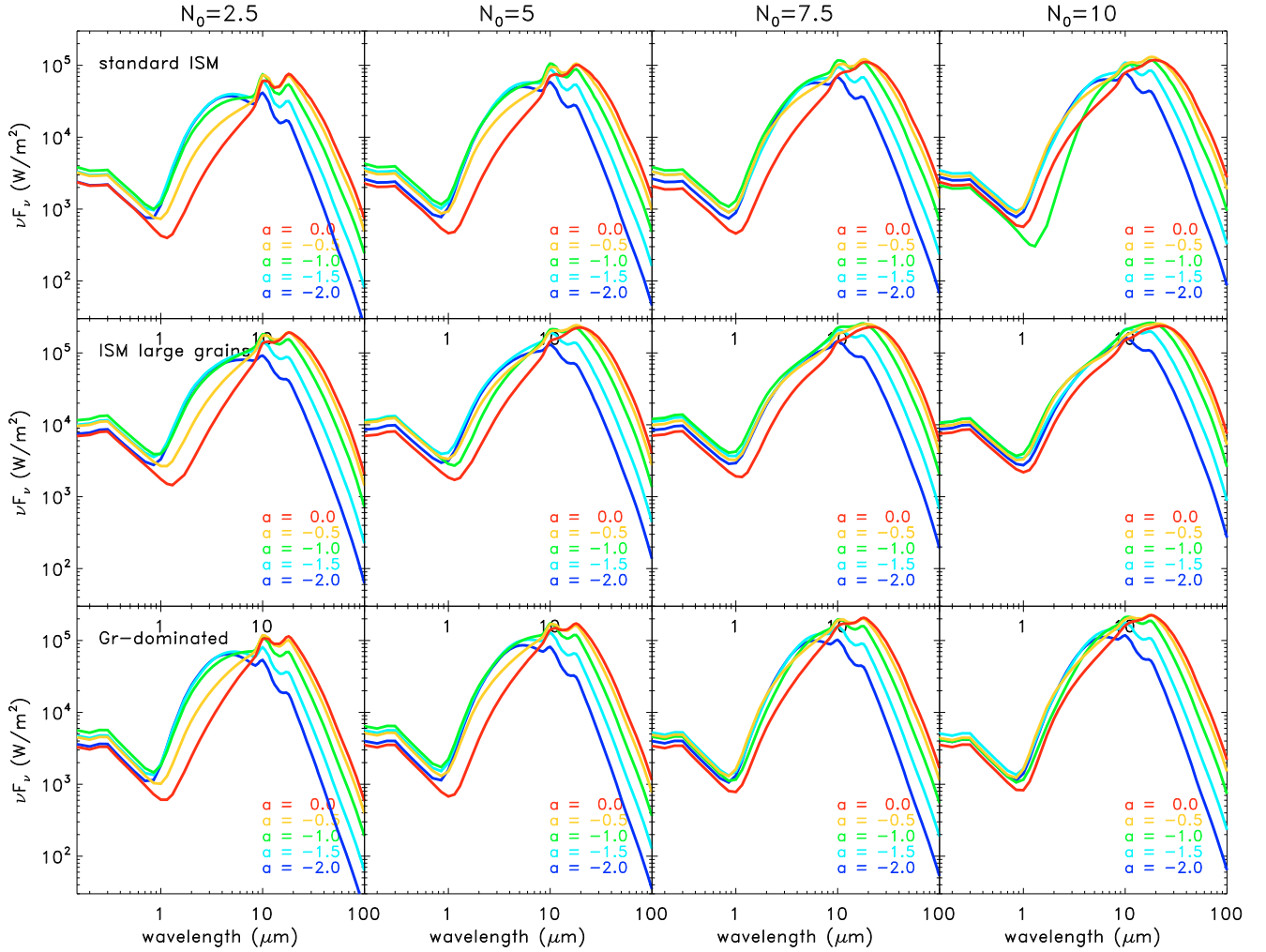


Fig. 5. Model SEDs of a face-on type-1 AGN (inclination angle $i = 0^\circ$). The top row shows models with the standard ISM composition, the middle row is for large grains, and the bottom row represents GR-dominated dust. From left to right, the columns show an increasing mean number of clouds in the equatorial line-of-sight, $N_0 = 2.5, 5, 7.5,$ and 10 , respectively. In each panel, we plot SEDs of one random cloud distribution for radial power law indices $a = 0.5$ (red), -0.5 (orange), -1.0 (green), -1.5 (light blue), and -2.0 (dark blue). Fixed parameters are $R_{\text{out}} = 150$, $\theta_0 = 45^\circ$, $R_{\text{cl},0} = 0.035$, $b = 1$, and $\tau_{\text{cl}} = 50$.

In Figs. 7 and 8, we show the $10\mu\text{m}$ silicate features for different model parameters for type 1 and type 2 AGN respectively. For type 1 AGN we show feature strengths for Ossenkopf ISM standard, large grain, and Gr-dominated dust mixes. To isolate the features, we followed the continuum spline fit procedure proposed by Sirocky et al. (2008). For that a cubic spline has been fitted to the regions at $5\text{--}7\mu\text{m}$, $14\text{--}14.5\mu\text{m}$, and $25\text{--}31.5\mu\text{m}$. The fitting result is considered representative for the “continuum” underlying the silicate features at 10 and $18\mu\text{m}$. While this method is applicable to Spitzer data, ground-based data usually have a much smaller wavelength coverage due to the atmospheric cutoffs (e.g. Hönl et al. 2010). For these data we recommend the use of a linear fit to the 8.5 and $12.5\mu\text{m}$ fluxes as continuum representation. These wavelengths should be mainly unaffected by the $10\mu\text{m}$ silicate feature – at least at typically observed strengths (e.g. Mason et al. 2006, 2009; Horst et al. 2008; Hönl et al. 2010). As in the previous figures, we present increasing N_0 from 2.5 to 10 in the columns from left to right. In each column, we color-coded the individual a -indices from -0.0 to -2.0 as in Fig. 5. From top to bottom, the rows show standard ISM, large grain, and Gr-dominated dust compositions. In general, the ISM standard configuration shows stronger emission features than the other dust configurations.

Most of the change in the strength of the silicate feature happens when varying N_0 . Higher N_0 corresponds to weaker emission features in type 1s. The same applies to type 2 AGN, but with a tendency of weaker emission features and slightly more pronounced absorption features than in type 1s. In addition to the influence of N_0 on the feature strength, shallower dust distributions show less pronounced silicate emission features and stronger absorption features than steeper dust distributions. This is because of the interaction of obscuration in vertical direction (for larger N_0 , more clouds are present in vertical direction) and cloud distribution (flatter distributions are dominated by cooler dust emission).

In summary, while the overall SED depends only on one parameter (for a given dust distribution; as shown in the previous section), the exact strength of $10\mu\text{m}$ silicate feature is depending on at least N_0 and a , with some emphasis on the former. Other parameters that may have an influence on the silicate feature are discussed in the next sections.

The standard ISM dust configuration with τ_{cl} around 50 seems to capture the essence of a typical torus SED including moderate silicate emission in type 1 and absorption in type 2 line-of-sights for a broad range of model parameters. We will

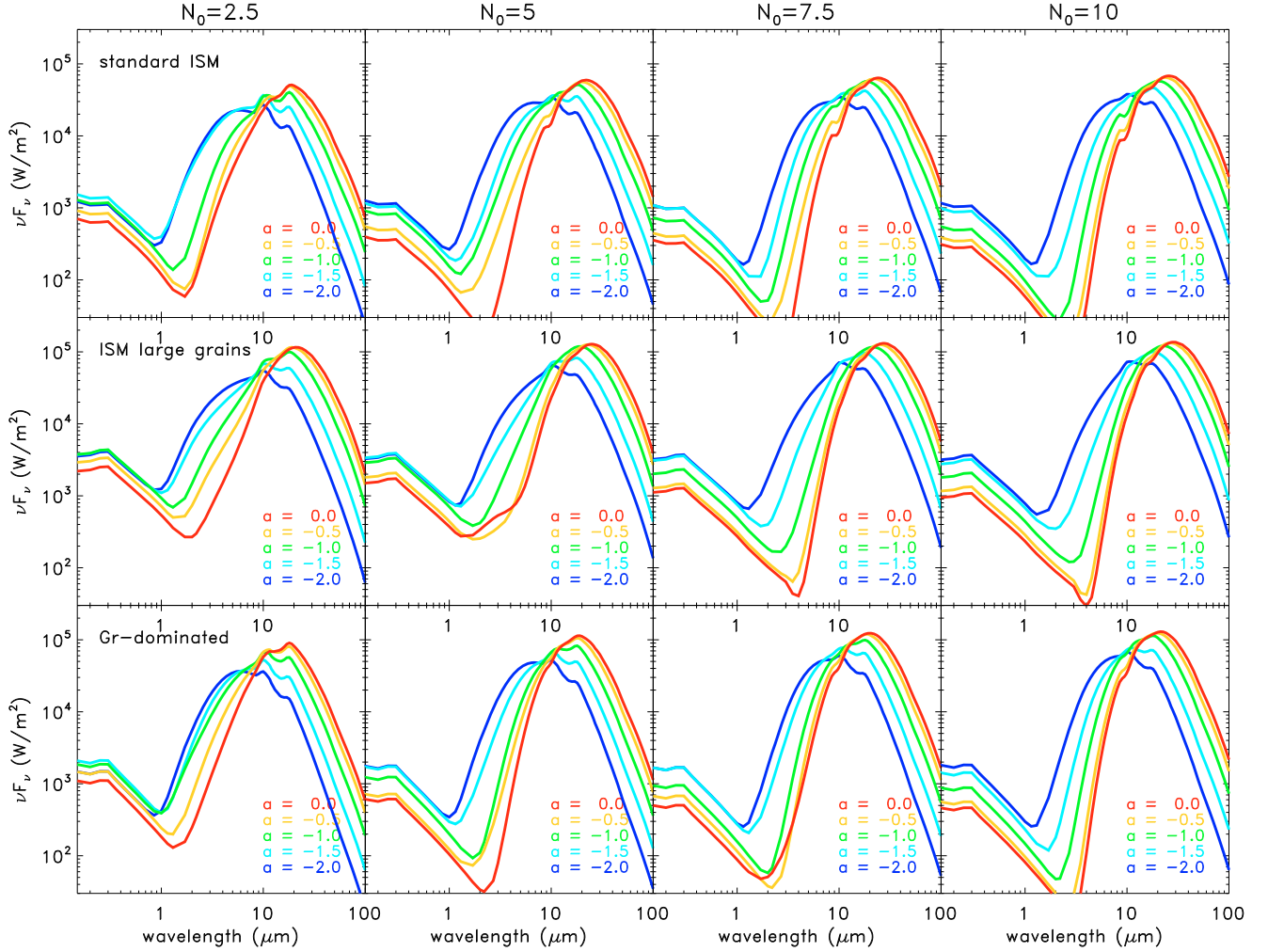


Fig. 6. Model SEDs of an edge-on type-2 AGN (inclination angle $i = 90^\circ$). The top row shows model models with the standard ISM composition, the middle row is for large grains, and the bottom row represents GR-dominated dust. From left to right, the columns show an increasing mean number of clouds in the equatorial line-of-sight, $N_0 = 2.5, 5, 7.5,$ and 10 , respectively. In each panel, we plot SEDs of one random cloud distribution for radial power law indices $a = 0.5$ (red), -0.5 (orange), -1.0 (green), -1.5 (light blue), and -2.0 (dark blue). Fixed parameters are $R_{\text{out}} = 150$, $\theta_0 = 45^\circ$, $R_{\text{cl},0} = 0.035$, $b = 1$, and $\tau_{\text{cl}} = 50$.

therefore use the ISM standard dust with Ossenkopf silicates in the following sections.

4.1.3. The opening angle of the torus

A potential source of uncertainty in determining N_0 from the silicate feature (and maybe a from the continuum SED) could be the geometrical thickness of the torus that we parametrized as the half-opening angle θ_0 . In Fig. 9 we show how changing θ_0 affects the mid-IR spectral index α and the silicate feature for standard ISM dust. For that we plotted the “apparent” optical depth τ_{Si} in the silicate feature as determined in the previous section versus the spectral index α . The mid-IR spectral index α has been determined from the continuum spline fit as described in Sect. 4.1.2. We then made a linear fit to the $7.0\text{--}8.5\ \mu\text{m}$ and $13.9\text{--}14.6\ \mu\text{m}$ region to determine the spectral slope in the N -band from which α has been calculated. In Fig. 9 we show the location of models ranging from $a = 0.0$ to -2.0 and with $N_0 = 2.5\text{--}10$ for $\theta_0 = 60^\circ$, 45° , and 30° . The left panel shows results for a pole-on view on the torus, the right panel represents a type-2-like edge-on view. Varying θ_0 mainly affects the strength of the silicate feature in a

way that emission features are weakened when the half-opening angle is smaller. The reason is that smaller θ_0 results in more clouds along vertical line-of-sights, which on one hand obscure the emission features from the torus mid-plane in type 1 AGN and on the other hand preferentially expose their cooler sides (= less strong emission features) to the observer. This effect is less pronounced for type 2 AGN where clouds affected by obscuration are those on the far-side of the torus, which would be seen almost with their full hot emission side. The overall α and τ_{Si} varies less in type 2 line-of-sights when varying θ_0 .

In summary, varying θ_0 primarily alters the silicate feature depth in type 1 cases, while the spectral index is almost unaffected. Thus, using observables α and τ_{Si} leaves us with a degeneracy in model parameters N_0 and θ_0 . However, sample studies showing type-1/type-2 ratios of 1:1 to 1:3 (e.g. Maiolino & Rieke 1995; Lacy et al. 2004; Martínez-Sansigre et al. 2006) and observed narrow-line region opening cones around 90° in many nearby objects favor $\theta_0 \sim 40\text{--}50^\circ$. For individual objects, θ_0 may be smaller or larger (e.g. Mason et al. 2009) than this average. When considering a larger sample of AGN though, the use of $\theta_0 = 45^\circ$ as the sample average is well justified to break the

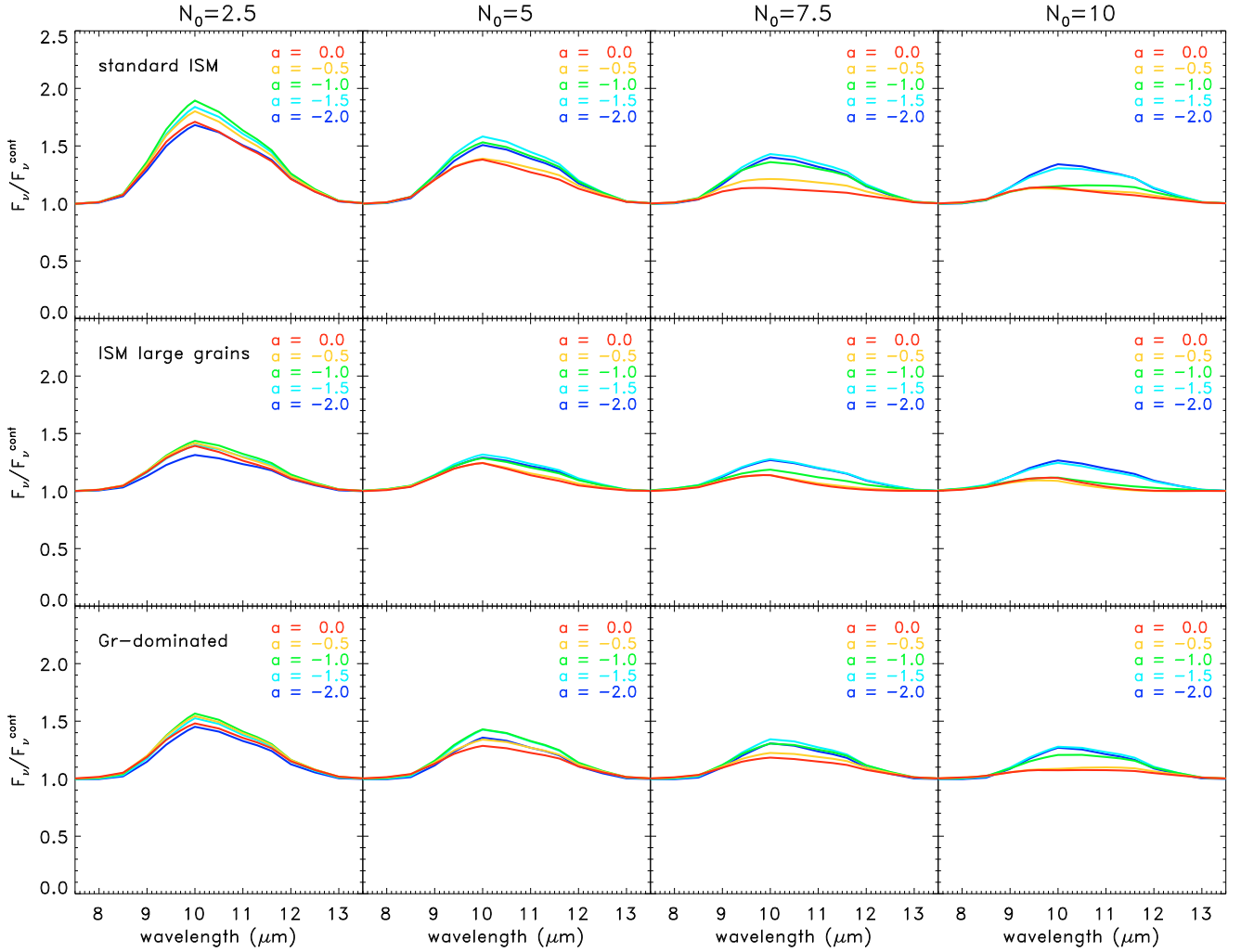


Fig. 7. Continuum-normalized $10\mu\text{m}$ model silicate features in type-1 AGN (inclination angle $i = 15^\circ$). The top row shows models with the standard ISM composition, the middle row is for large grains, and the bottom row represents Gr-dominated dust. From left to right, the columns show an increasing mean number of clouds in the equatorial line-of-sight, $N_0 = 2.5, 5, 7.5,$ and $10,$ respectively. In each panel, we plot SEDs of a representative random cloud distribution for radial power law indices $a = -0.5$ (red), -1.0 (yellow), -1.5 (green), and -2.0 (blue). Fixed parameters are $R_{\text{out}} = 150,$ $\theta_0 = 45^\circ,$ $R_{\text{cl},0} = 0.035,$ $b = 1,$ and $\tau_{\text{cl}} = 50.$

N_0 - θ_0 -degeneracy and get an idea what range of N_0 is covered by the AGN in the sample. On the other hand, the uncertainty in the individual clouds' optical depths remains in such an analysis unless independent evidence narrows down τ_{cl} (e.g. general agreement of SEDs with unification scheme, IR visibilities, Hydrogen column densities, theoretical considerations). Thus it seems more viable to give a sample N_0 - τ_{cl} -range or providing the N_0 constraint under the assumption of a certain τ_{cl} .

4.1.4. The outer radius of the torus

When modeling the IR SEDs, there is often a question about how far outward the torus extends in the model. Because our model defines R_{out} as a parameter, one might think that the R_{out} value would be the correct answer. However, it is not all that simple. Owing to the decrease of cloud temperature with distance and the corresponding decrease of total intensity, clouds at different distances from the AGN contribute different fractions to the total torus flux at a given wavelength. In general, clouds at the innermost torus region contribute most of the near-IR light,

while clouds at larger radii are the dominant source of the mid-IR emission. Being more quantitative we can approximate

$$\frac{r}{r_{\text{sub}}} = \left(\frac{T}{T_{\text{sub}}} \right)^{-2 \dots -2.8} \quad (8)$$

for dust grains in radiative equilibrium (e.g. Barvainis 1987), where T_{sub} is the dust sublimation temperature (~ 1500 K) and T is the dust temperature at distance r from the AGN. The range given for the exponent covers the range from blackbody grains (large, graphite) to typical ISM dust (see also Barvainis 1987). Based on this equation and Wien's law, it is possible to estimate the maximum radius that contributes to the torus emission at a given wavelength. Thus, the maximum size of the emission is depending on the observed wavelength. On the other hand, the exact shape of the SED (and also the observed size of the emission region; see Sect. 4.2) depends on the dust distribution (see previous sections), so that Eq. (8) provides only a rough estimate. However, choosing R_{out} smaller than the size corresponding to the temperature (=wavelength) of interest may result in an artificial cut-off in the brightness distribution of the models. For example, when selecting $R_{\text{out}} = 25,$ the cut-off occurs at

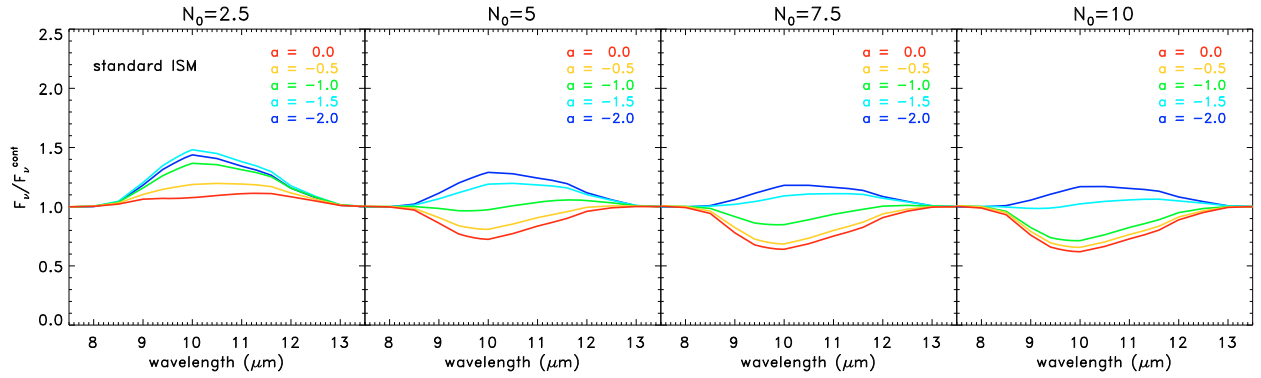


Fig. 8. Continuum-normalized $10\ \mu\text{m}$ model silicate features in type-2 AGN (inclination angle $i = 90^\circ$) using the ISM standard dust composition. From left to right, the panels show an increasing mean number of clouds in the equatorial line-of-sight, $N_0 = 2.5, 5, 7.5,$ and 10 , respectively. In each panel, we plot SEDs of a representative random cloud distribution for radial power law indices $a = -0.5$ (red), -1.0 (yellow), -1.5 (green), and -2.0 (blue). Fixed parameters are $R_{\text{out}} = 150$, $\theta_0 = 45^\circ$, $R_{\text{cl},0} = 0.035$, $b = 1$, and $\tau_{\text{cl}} = 50$.

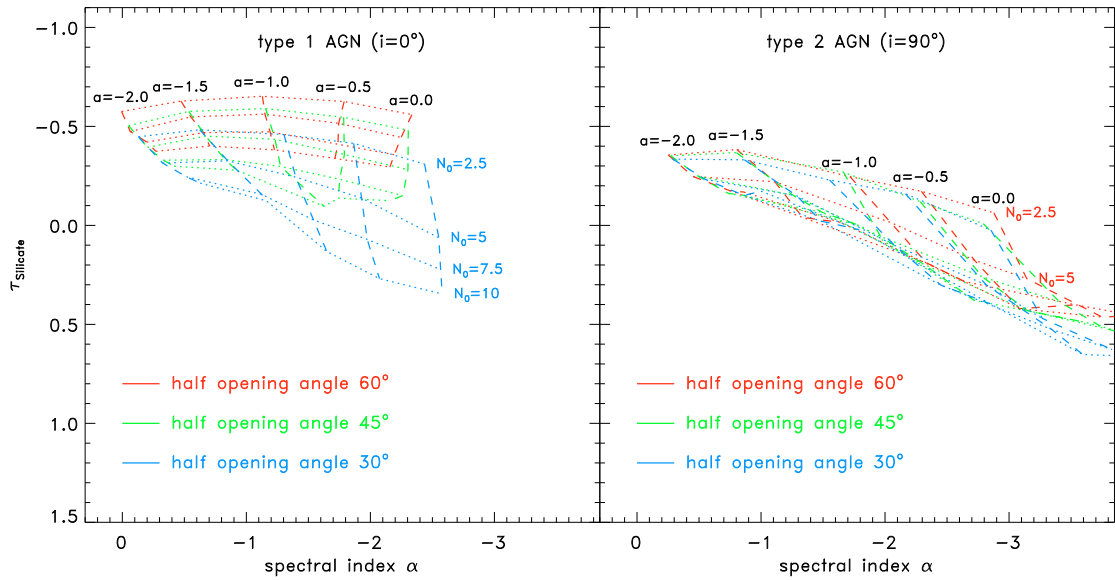


Fig. 9. Dependence of observed silicate-feature optical-depth τ_{Si} and mid-IR spectral index α on model parameters. The grids show how τ_{Si} and α change with a (dotted lines; from $a = 0.0$ to -2.0) and N_0 (dashed lines; from $N_0 = 2.5$ to 10) for different half-opening angles of the torus (red: 60° , green: 45° , blue: 30°). Left: type 1 AGN with $i = 0^\circ$; Right: type 2 AGN with $i = 90^\circ$. The grid lines are results for one random arrangement of clouds for the given set of parameters.

temperatures of $T \sim 475$ K for ISM dust, which corresponds to wavelengths around $8\ \mu\text{m}$.

The torus brightness distribution does not only depend on the dust temperature (or source function of clouds) but also on the dust distribution as shown in Sect. 2.2. Steep dust distributions have most of their dust at small radii so that they are mostly not sensitive to R_{out} . However, the actual choice of R_{out} will become important for the mid-IR SED once the dust distribution is very flat ($a \gtrsim -1$) or even inverted ($a \gtrsim 0$)⁶. Then the integration of the brightness profile will not converge for $R_{\text{out}} \rightarrow \infty$ and the result depends on R_{out} (see Eq. (6)). It is therefore important to select R_{out} properly to avoid artificial cut-offs in intermediate cases. Moreover for quite extended distributions, such as the presented $a = 0.0$ case, R_{out} has to be considered as a full model parameter.

Recent IR interferometric observations and K -band reverberation mapping measurements suggest that the torus brightness

⁶ $a = -1$ seems to be a borderline case. Although the integration of the brightness profile does not formally converge, obscuration effects will reduce the dependency on R_{out} if properly selected.

distributions are far extended at least up to $\sim 100 \times r_{\text{sub}}$ (Kishimoto et al. 2009a,b; Höning et al. 2010) in contrast to the discussion in Nenkova et al. (2008b). For a better constraint on the “real” R_{out} the use of ALMA at even longer wavelengths will be crucial. Yet it may be difficult to set a strict limit of the torus (=AGN-heated dusty region) with respect to its galactic environment (=star or starformation-heated).

4.1.5. Using SEDs to determine the radial power law index α

Summarizing the subsection on torus SEDs, we showed that the slope in the mid-IR, represented by α , is strongly related to the radial dust distribution in the torus. This seems to be the case despite several other parameters that potentially influence the torus emission. It is, however, consistent with expectations based on theoretical considerations (see Sect. 2.2).

In Fig. 10 we present a more quantitative approach to the relation between α and a in type 1 AGN. For each model a parameter, we varied θ_0 (different symbols) and N_0 (color-coded), and plotted the resulting α versus a . In addition we assess the

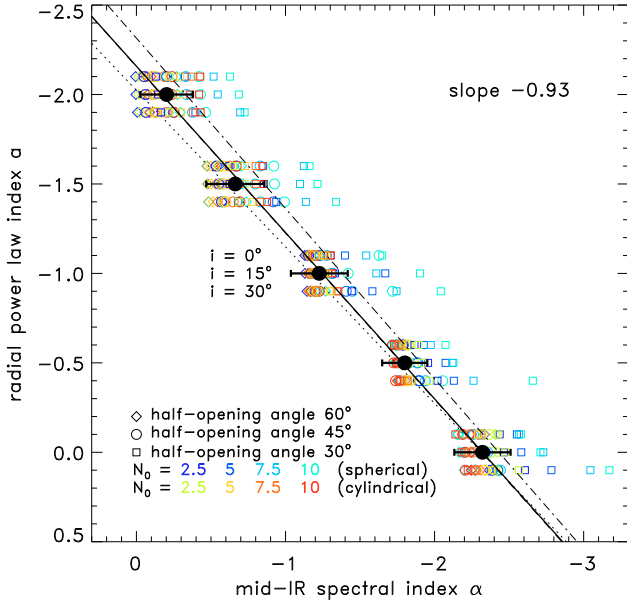


Fig. 10. Relation between the mid-IR spectral index α and the radial dust distribution power law index a in type 1 AGN. Model points are shown for all combinations of $N_0 = 2.5, 5, 7.5,$ and 10 (color-coded symbols) and half-opening angle 30° (squares), 45° (circles), and 60° (diamonds) for both spherical (bluish-colored symbols) and cylindrical (reddish-colored symbols) vertical distributions. In order to cover a range of type-1 inclinations, results for $i = 0^\circ$ (face-on; upward offset), $i = 15^\circ$ (nominal a value) and $i = 30^\circ$ (downward offset) are presented for all a -values. The black-filled circles with errors denote the nominal α -value for each a and one standard deviation. The nominal fit using all values (solid black line) has a slope of -0.93 and a Spearman rank correlation of -0.97 . Fits using only results with half-opening angle 30° (dash-dotted line), 45° (dashed line; almost coincident with the solid line), and 60° (dotted line) are also shown for illustration.

influence of torus inclination in type 1 AGN by varying i from 0° to 30° (offsetted in the plot). To be even more general we also included simulations for both the spherical (bluish colors) and cylindrical (reddish colors) vertical distributions (see Sect. 2.2). This results in 72 modeled α values for each a . The black filled circles with errors note the mean of these models for each a and the standard deviation around the mean value⁷. These mean values have been fitted by a straight line with slope -0.93 , and the overall correlation of a vs. α has a Spearman rank of -0.97 . The main outliers from the fit are geometrically very thick ($\theta_0 = 30^\circ$), higher inclination ($i = 30^\circ$) cases with high N_0 using the spherical distribution, while the general relation is quite tight. Indeed the slope of the fit does not change too much when fixing θ_0 (see lines for $\theta_0 = 30^\circ$ (dash-dotted), 45° (dashed; almost coincidental with solid line), and 60° (dotted)), ranging approximately from -0.87 to -0.95 . The nominal fit relation for the mean values including errors is

$$a = (-2.16 \pm 0.16) - (0.93 \pm 0.11)\alpha. \quad (9)$$

Within the range of errors illustrated in Fig. 10, this relation may be used to extract information about the dust distribution from mid-IR spectra.

⁷ For convenience we calculated the standard deviation from all model α values for each a value, although the distribution of α 's around the mean is non-Gaussian, non-symmetric.

4.2. Interferometry of dust tori

Owing to the mas-spatial scales involved in torus observations, it is difficult to spatially resolve the torus. The most promising tool for this task is IR interferometry, which was already successfully used for a number of nearby objects (Swain et al. 2003; Wittkowski et al. 2004; Weigelt et al. 2004; Jaffe et al. 2004; Poncelet et al. 2006; Meisenheimer et al. 2007; Tristram et al. 2007, 2009; Beckert et al. 2008; Raban et al. 2009; Burtscher et al. 2009; Kishimoto et al. 2009b). However, except for reconstructed images of NGC 1068 obtained from Speckle interferometry (Weigelt et al. 2004), long-baseline interferometry usually provides spatial information coded as Fourier space observables, i.e. phase and visibility information for a given (projected) baseline and position angle. While the object's phase is important for image reconstruction, the visibility contains the fundamental spatial information about the object (size, elongation). This information can be used as complementary to total flux SEDs, in particular if for a given wavelength both total and correlated fluxes are available.

The figures in the following subsections are simulated for an AGN at 15 Mpc distance with an inner radius $r_{\text{sub}} = 0.025$ pc. They can be used as predictions for any AGN by re-scaling the x -axis baseline scale according to

$$BL_{\text{AGN}} = BL_{\text{model}} \left(\frac{D_{A;15}}{r_{0.025}} \right), \quad (10)$$

where $D_{A;15}$ is the AGN's angular-diameter distance in units of 15 Mpc and $r_{0.025}$ is the reverberation/sublimation radius in units of 0.025 pc.

4.2.1. The baseline-dependence of the visibility

As shown in literature, adding interferometric information is very constraining for modeling the dust distribution of the torus. In particular, small-scale position-angle-dependent variations of the visibility for a given baseline and wavelength seem to be clear evidence for the clumpy structure of the torus (Hönig et al. 2006; Schartmann et al. 2008). However, interferometry constrains quite directly information about the radial intensity distribution of the torus emission: when observing almost face-on-projected type 1 AGN, no significant position-angle change of the visibility is expected. Thus, if data for different baseline lengths (corresponding to different resolution scales) are available, we have a direct and model-independent access to the surface brightness distribution I_s of the torus (see also Kishimoto et al. 2009a). As shown in Sect. 2.2, $I_s \propto S_\nu \sigma_s$ primarily depends on a . By modeling the baseline- and wavelength-dependence of the visibility, we will be able to tightly constrain the radial dust distribution, mostly independent of the SED.

In Fig. 11, we show the baseline-dependence of the visibility for four different wavelengths. The wavelengths have been selected to be in line with current and future interferometric instruments at the VLT and the Keck interferometers: the K -band at $2.2 \mu\text{m}$ (e.g. VLTI/AMBER), $4.0 \mu\text{m}$ in the L/M -band region (e.g. KI or future VLTI/MATISSE), and 8.5 and $12.5 \mu\text{m}$ in the N -band (e.g. VLTI/MIDI). For the simulations, we use fixed $N_0 = 7.5$ and $R_{\text{out}} = 150$ and present results for different radial power law indices $a = -0.5, -1.0, -1.5,$ and -2.0 . The top and bottom rows in Fig. 11 show $i = 0^\circ$ and $i = 90^\circ$, respectively. For all wavelengths the variation with position angle in steps of 10° is shown. Each column in Fig. 11 represents one particular random arrangement of clouds for the given set of torus parameters.

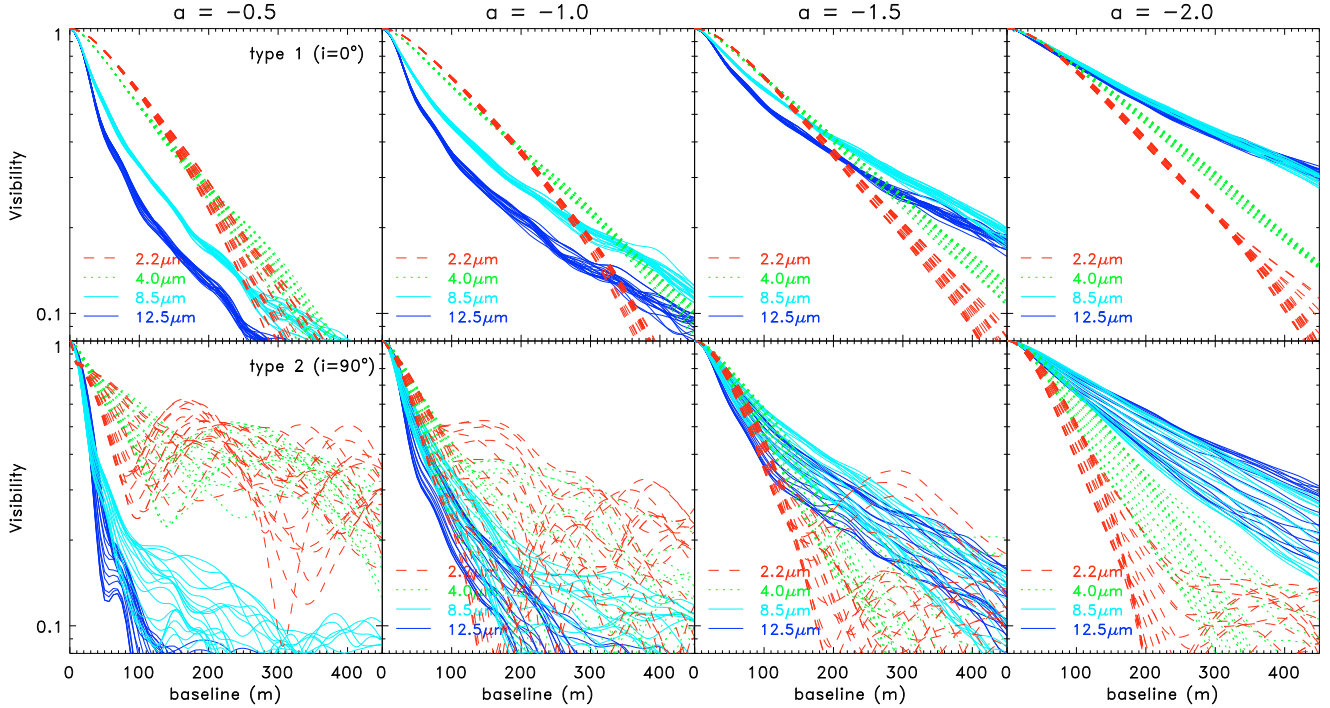


Fig. 11. Dependence of the model visibility on the baseline for an AGN at 15 Mpc distance and a sublimation radius (=near-IR reverberation radius) of 0.025 pc. Each column represents simulation results for a different radial power law index $a = -0.5, -1.0, -1.5,$ and -2.0 , respectively, (top: type 1 AGN at $i = 0^\circ$; bottom: type 2 AGN at $i = 90^\circ$) with constant $N_0 = 7.5$ and $R_{\text{out}} = 150$. In each panel, we show visibility curves at 2.2 (red-dashed lines), 4.0 (green-dotted lines), 8.5 (light-blue solid lines), and 12.5 μm (dark-blue solid lines). The different lines per wavelength reflect the position-angle dependence of the visibility in steps of 10° and represent one particular random distribution of clouds.

We will first concentrate on the type 1 case where the observed visibilities can be directly used to constrain the dust distribution. For the shown baseline lengths from 0–450 m, the K -band visibilities in the visibility range ≥ 0.3 have an overall similar shape with only little dependence on a . For instance, the K -band visibility at 150 m is 0.5 for $a = -2.0$ and 0.4 for $a = -0.5$. This similarity can be understood since most of the K -band emission is originating from the hot dust, which is located in the innermost region of the torus, regardless of the actual torus-internal obscuration or dust distribution.

In a smooth dust distribution we would expect no position-angle dependence of the visibility in a type 1 torus. That we see this PA variations is an evidence for clumpiness. The strength of these variations depends on wavelength. Individual dust clouds are optically thick in the K -band (see Sect. 3.1.2), so that the visibilities can vary between different PAs due to the actual clouds’ placements and resulting torus-internal obscuration effects. At longer wavelengths, the individual clouds are optically thin and the variations with position angle become smaller. The variations still seen at these wavelengths are coming from a combination of “clumping of clumps” in the torus, resulting in both stronger local emission and absorption, or from “holes” in the distribution. From this analysis, we can draw an interesting first conclusion: the strength of the position-angle dependence of the visibility in type 1 AGN is related to properties of the clouds. This concerns in particular the optical depth of the clouds, which is related to the cloud dust mass or geometrical properties and the dust composition. In addition, statistical effects will play a role: the same overall torus parameters (a, N_0, θ_0) can be kept constant when increasing the cloud sizes R_{cl} by decreasing the total number of clouds in the torus (see Sect. 2.2). A lesser number of clouds increases statistical effects in the distribution (i.e. holes,

obscuration along certain line-of-sights) so that the “clumpiness variations” increase.

As previously mentioned, the K -band visibility curves at visibilities ≥ 0.3 are very similar when comparing different a , so that it can be used as a reference for the other wavelengths. As can be seen in Fig. 11, the baseline-dependence of the visibility changes with a for longer wavelengths: the N -band visibilities increase from $V_{12.5\mu\text{m}} = 0.15$ to 0.65 at 150 m when a changes from -0.5 to -2.0 . The basis of this behavior are the spatial regions and temperatures involved in emitting light at the given wavelengths. At short wavelengths, only hot dust contributes to the emission and no light will be emitted from cool dust. This makes the emission region small, no matter how the dust is distributed. In a simplified picture of a type 1 AGN, we expect that only a very small ring is seen, approximately with the size corresponding to the equilibrium temperature peaking at this wavelengths. At longer wavelengths both hot and cooler clouds contribute to the flux. Thus, the emission region appears more extended. The actual extension, however, depends on how the dust is radially distributed. If the density is steeply decreasing outwards, the size is still small and comparable to only hot emission. If the density distribution is flat, larger distances contribute significantly and the size is much more extended than for hot emission.

The described principles are also valid for type 2 objects. However, in type 2 AGN obscuration within the torus becomes more important. In the bottom row of Fig. 11, we show the baseline-dependence of the visibility for an inclination angle $i = 90^\circ$, i.e. edge-on as in type 2 AGN. Since clouds at larger radii along our line-of-sight obscure clouds at smaller radii (where most of the hot emission is originating), the brightness contrast between regions close to the AGN and further away decreases, so that the tori appear more extended. Thus, the visibilities for a

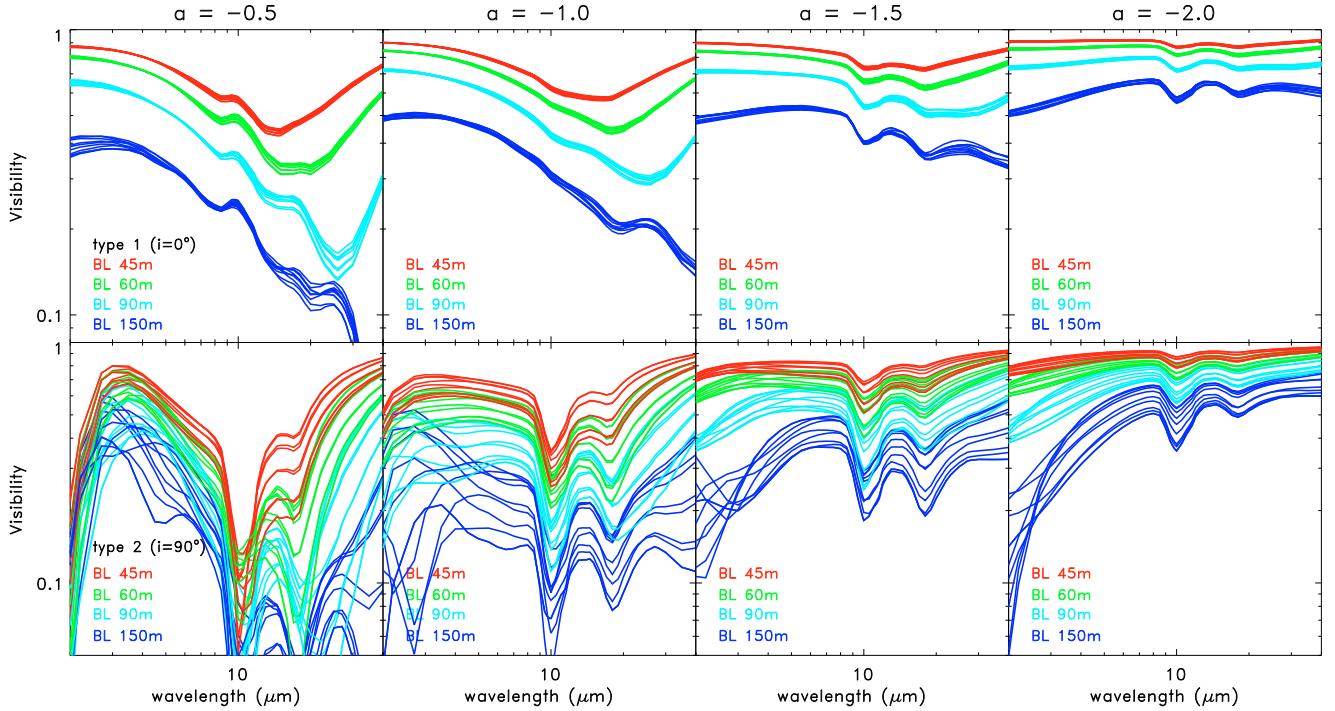


Fig. 12. Wavelength-dependence of the model visibilities for different baselines for an AGN at 15 Mpc distance and a sublimation radius (=near-IR reverberation radius) of 0.025 pc. Each row represents simulation results of one random arrangement of clouds for different radial power law index a (top: type 1 AGN at $i = 0^\circ$; bottom: type 2 AGN at $i = 90^\circ$) with fixed $N_0 = 7.5$ and $R_{\text{out}} = 150$. In each panel, we show visibility curves for baseline lengths 45 m (red lines), 60 m (green lines), 90 m (light-blue lines) and 150 m (dark-blue lines). The different lines per wavelength reflect the position-angle dependence of the visibility.

given baseline and wavelengths are generally smaller than in the type 1 case. Because obscuration plays an important role, the small-scale variations of the visibility are stronger. In addition and as expected, the tori show elongation along the mid-plane, which is responsible for a large fraction of the position-angle dependence of the visibility shown in Fig. 11 (bottom). Similar to the type-1 case, the K -band visibility shows the strongest small-scale visibility variation because the clouds are optically thick. The essential dependence of the visibility curves on wavelength are also comparable to the type 1 case: longer wavelengths show a stronger change from steep to flat for a changing from -0.5 to -2.0 . It is interesting to note that at $a = -2.0$, the type 2 AGN visibilities are very similar to type 1 AGN. This can be understood when considering that in the steep cases, most of the dust is located within few sublimation radii. Thus, the overall emission is dominated by hot clouds without obscuration from larger scales.

In summary, as illustrated in Fig. 11, the baseline-dependence of the visibility in type 1 AGN directly traces the radial dust distribution in the torus: if the dust distribution is steep ($a = -1.5$ or -2.0), the baseline-dependence of the visibility is comparatively flat, and vice versa, and the effect becomes stronger for longer wavelengths. In principle, this also applies to type 2 AGN, but obscuration effects and small-scale visibility variations make the a -dependence of the visibility less obvious. Although we only show results for $N_0 = 7.5$, we note that these conclusions are mostly independent of N_0 for the range of $N_0 = 2.5$ to 10 that we investigate in this paper.

4.2.2. The wavelength-dependence of the visibility

In Fig. 11, we can see that for the “extended” tori with $a = -0.5$ and -1.0 , the visibility curves at wavelengths longer than

$2.2 \mu\text{m}$ are below the K -band visibility curve. In other words, the wavelength-dependent size of the torus grows faster than the wavelength-dependent resolution decreases for a given baseline. On the other hand, the “compact” tori with $a = -1.5$ and -2.0 show the opposite behavior, i.e. the long wavelength visibility curves are close to or above the K -band curve for visibilities below 0.5. Of course, this reflects that most of the dust is confined to the inner torus region, making the apparent size small at all wavelengths. While this finding is true for both type 1 and type 2 orientations, it is much more obvious in face-on geometries where obscuration effects do not play a significant role.

Instead of looking at the baseline-dependent visibility at different wavelengths, we can also compare the wavelength-dependence of the visibility for given baselines. In Fig. 12 we show visibilities in the 2 to $40 \mu\text{m}$ range for both type 1 (top row) and type 2 (bottom row) orientations of the torus. As in the previous figure, we plot curves for $a = -0.5, -1.0, -1.5$, and -2.0 (from left to right column), $N_0 = 7.5$, $R_{\text{out}} = 150$, and $\theta_0 = 45^\circ$ are fixed. Each panel contains simulations for baseline lengths of 45 m (red), 60 m (green), 90 m (light blue), and 150 m (dark blue). For each configuration, various lines illustrate the position-angle dependence. The visibility usually drops strongly with increasing wavelength up to the mid-IR in the extended cases ($a = -0.5$ and -1.0) for both type 1s and type 2s. The turn-around to increasing visibility is depending on baseline and occurs at $\sim 14 \mu\text{m}$ for 45 m, $\sim 18 \mu\text{m}$ at 60 m, and $\sim 27 \mu\text{m}$ at 90 m. This trend is less obvious in the type 2 cases where the 10 and $18 \mu\text{m}$ silicate features are seen in the visibilities. The overall increase in turn-around wavelength for increasing baseline length goes along with the increase in spatial resolution. From this we conclude that up to the turn-around wavelength, the size of the corresponding emission region increases faster than the loss of wavelength-dependent spatial resolution for a given baseline. On

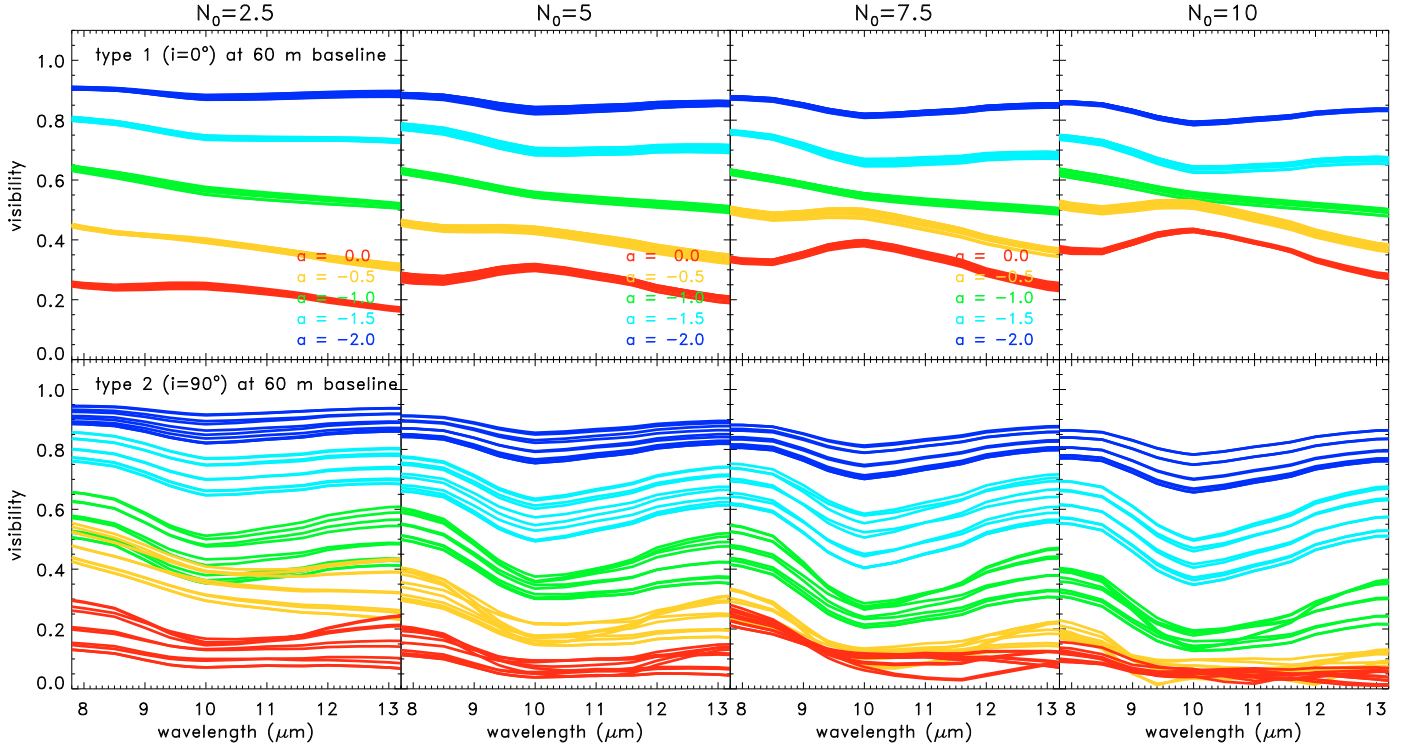


Fig. 13. Wavelength-dependence of the model visibilities in the MIDI wavelength range from 8–13 μm for an AGN at 15 Mpc distance and a sublimation radius (=near-IR reverberation radius) of 0.025 pc at a baseline of 60 m. *Each column* represents simulation results of one random arrangement of clouds for different N_0 ranging from 2.5 (*left*) to 10 (*right*). In *each panel* we show models for radial power law indices $a = 0.0$ (red), -0.5 (orange), -1.0 (green), -1.5 (light blue), and -2.0 (dark blue). *The top row* represents a type 1 AGN at $i = 0^\circ$, *the bottom row* a 2 AGN at $i = 90^\circ$. The different lines per a model reflect the position-angle dependence of the visibility.

the other hand longer wavelengths would correspond to cooler dust in the outer regions of the torus, where both obscuration effects suppress direct AGN heating and our model space ends ($R_{\text{out}} = 150$ corresponds to cloud temperatures of 70–180 K or $>16 \mu\text{m}$). Thus, the size of the emission region cannot grow any further. For compact dust distributions ($a = -1.5$ and -2.0) all clouds are confined to small radii so that there are almost no clouds contributing from cooler regions. As a result the size of the torus is very similar at all wavelengths, so that the loss of resolution with increasing wavelength for a fixed baseline is dominating the trends of visibilities.

The difference of the wavelength-dependent visibility for different selections of a opens an interesting possibility to narrowly constrain the radial distribution of the dust, at least in type 1 AGN: by obtaining interferometric visibilities for an AGN at 2 different wavelengths for the same baseline length – preferably one visibility point in the near-IR, one in the mid-IR – it is possible to constrain the radial dust distribution index a or, at least, characterize the radial dust distribution as “extended” ($a \geq -1.0$) or “compact” ($a \leq -1.5$). These experiments can, for example, be done using the UT telescope baseline configurations at the VLTI in combination with the AMBER and the MIDI instruments. On the other hand, since MIDI already provides some wavelength coverage from 8 to 13 μm , using MIDI alone may already give some hint. In Fig. 13 we show model visibilities for $N_0 = 2.5$ to 10 for $a = 0.0$ to -2.0 for a baseline of 60 m. $\theta_0 = 45^\circ$ and $R_{\text{out}} = 150$ have been fixed. The strongest difference can be seen between the extreme cases in type 1s: while the overall trend in visibilities for $a = -2.0$ is flat for all N_0 (same visibilities at 8 and 13 μm), the shallow distributions (e.g. $a = -0.5$) show some clear trend of decreasing visibility in the same wavelength range.

As shown in Fig. 13 the silicate feature appears in the visibilities. But unlike in the SEDs, it is very shallow for small N_0 and seems in “absorption” for steep dust distributions and in “emission” for flat ones in case of type 1s. In type 2s it is always in “absorption”. This tells us that the feature-emitting region is more extended with respect to the continuum in steep distributions and type 2s while it is more compact in shallow distributions. Given the dependence on N_0 (larger N_0 increases both effects), this difference can be ascribed to torus-internal obscuration effects. Since optical depth effects along the line-of-sight are responsible for the exact strength of the feature, we expect that aside from a and N_0 , other parameters will also have an influence, such as θ_0 (as shown in Sect. 4.1.3 for the SED), the dust chemistry and the optical depth of the individual clouds. Interestingly, at around $a = -1$ the type 1 visibilities do not show the feature, which might indicate canceling out of some of the parameter dependencies. The presence of a silicate “absorption” feature in the visibilities of type 2 geometries have been claimed to be a unique feature to clumpy torus models. Smooth dust distributions are allegedly not showing this feature in the visibility spectrum (Jaffe et al. 2004; Schartmann et al. 2005). On the other hand, a silicate absorption feature is prominently displayed in interferometric data of NGC 1068 (Jaffe et al. 2004; Poncelet et al. 2006; Raban et al. 2009). Here, we show that clumpy models can show a variety of feature appearances in the visibilities for both type 1 and type 2 AGN.

4.2.3. The constraining power of IR interferometry on torus properties

As a summary of the model results for IR interferometry we emphasize the constraining power that IR interferometry has

when combined with proper modeling. Here the radial dust distribution is particularly accessible in type 1 AGN. This has been demonstrated recently by [Kishimoto et al. \(2009b\)](#) on a set of interferometric data of type 1 AGN and in our Paper I for NGC 3783 ([Hönig et al. 2010](#)). The main reason for this constraining power is that IR interferometry can measure wavelength-dependent sizes of the continuum emission region that corresponds to the temperature distribution inside the torus and is, in turn, determined by the dust distribution and the source function of the clouds (see Eq. (6)). Since we showed in Sect. 4.1.5 that the mid-IR continuum slope is also determined by the radial dust distribution, a correlation between mid-IR spectral index α and the compactness in interferometric observations can be expected (compact sources have bluer α).

The silicate feature observed in visibilities has less constraining power on the models. The reason is that there exists some degeneracy in the parameters that control the strength of the feature. We have seen in Fig. 13 that the “absorption” and “emission” feature in type 1 AGN change with a contrary to what has been seen in the SEDs (see Fig. 7), which essentially tells us how the size of the emission regions of the feature change. The actual strength, however, is still influenced by N_0 (see Fig. 13) and θ_0 (as in Fig. 9), and probably also by the optical depth and chemical composition of the individual dust clouds. It may be still possible that simultaneous modeling of SED and interferometry can break some of the degeneracy and provide information about the dust cloud properties (optical depth) using the strength of the “clumpiness variations”.

5. Summary and conclusion

We presented modeling results from our upgraded radiative transfer model of 3D clumpy tori and described how observations can constrain some of the parameters used in the model. The upgrade concerns the handling of the diffuse radiation field within the torus for which we presented a statistical approximation. We outlined our modeling strategy and introduced the mathematical foundation. The model parameters have been connected to properties of the torus, such as the volume filling factor or the cloud number density. We also derived a simplified type 1 torus model from the full and more complex model. This simplified model has been used to illustrate which geometric parameters have the strongest impact on the torus emission, which are the radial dust cloud distribution power law index a , the mean number of clouds along a radial equatorial line-of-sight N_0 , and the torus height described either as the scale height h or the half-opening angle θ_0 . We also noted that the cloud radii R_{cl} do not have a significant impact on the torus simulation results, while the cloud dust properties (τ_V and dust composition) will probably be more important.

In the next step, we presented results of Monte Carlo simulations of dust clouds using different dust compositions. We used standard ISM compositions with [Draine \(2003\)](#) and [Ossenkopf et al. \(1992\)](#) silicates, respectively, and compared the cloud SEDs to simulations with a large grain composition and Graphite-dominated dust. The differences between the cloud SEDs from different dust compositions are an effect of the optical depth in the infrared and the different (Planck mean) opacities of each dust distribution, which result in a slightly different temperature gradient with distance from the AGN.

By using the pre-calculated cloud SEDs and images, we simulated torus SEDs and studied how different parameters affect

the model SEDs. The SEDs are presented in a suitable way to be scaled to observations. Our main conclusions are:

- The dust clouds with standard ISM dust seem to provide reasonable torus SEDs that seemingly capture the essence of recently observed IR characteristics of AGN (e.g. moderate $10\mu\text{m}$ silicate emission and absorption features). While not showing explicit dependence of the SEDs on the optical depth of the individual clouds, $\tau_{cl} = 30\text{--}80$ for ISM standard dust is probably the range that provides good agreement with observations.
- The torus SEDs, in particular in type 1 cases, are quite sensitive to the selection of a . Distributing more dust clouds at larger distances (e.g. $a = -0.5$ or -1.0) results in redder mid-IR colors. We showed that a is the main parameter that determines the mid-IR spectral index α with only little dependence on N_0 or θ_0 . Therefore it is possible to use suitable mid-IR data to directly constrain the radial distribution of the dust in the torus. A formal correlation function between α and a has been extracted from the models (see Sects. 4.1.1, 4.1.5 and Fig. 10).
- The appearance of the silicate feature – either in absorption or emission – is not only viewing-angle (inclination) dependent, as could be naively concluded, but depends on the radial and vertical distribution of the dust (i.e. a and θ_0 or h), the average number of clouds along an equatorial line of sight (N_0) and possibly on τ_{cl} and the dust composition (see Sects. 4.1.2 and 4.1.3). Indeed, all cloud and torus parameters influence the exact shape and depth of the silicate feature toward more absorption or emission, and it may be difficult to constrain individual parameters only based on silicate feature observations. That being said it is, however, crucial that parameters fitting the overall SEDs of observations are also in agreement with the silicate feature strength. We showed that compact dust distributions ($a = -1.5$ and -2.0) with $\tau_{cl} = 50$ do not produce any silicate absorption features for $N_0 \leq 10$ in type 2 line-of-sights. Moreover, the silicate emission features in type 1 AGN become more pronounced with decreasing N_0 and/or more compact a . From the commonly seen weak silicate emission features in type 1 AGN and silicate absorption features in type 2 AGN, we would expect that in general, AGN dust tori should have, on average, very extended dust distributions with $N_0 \gtrsim 5$.
- We present an easy way to compare torus models to observations. For that we plot the apparent silicate feature strength τ_{Si} against the mid-IR spectral index α which are the main observational properties of torus spectra (see Sect. 4.1.3). On top of this, we overplot the parameter range that is covered by the models. Neglecting inclination effects, α is almost exclusively depending on a while τ_{Si} is influenced by N_0 , θ_0 , and the cloud dust properties (τ_V and the dust composition). If we select a separate sample of type 1 and type 2 AGN (i.e. with average inclinations of $i \sim 30^\circ$ and $i \sim 75^\circ$ respectively) and consider sample average type-1/type-2 ratios (leading to an average $\theta_0 \sim 40\text{--}50^\circ$) it should be possible to provide some sample average constraint on a combined $N_0\text{--}\tau_{cl}$. Considering both $10\mu\text{m}$ and $18\mu\text{m}$ silicate features might help breaking some of the remaining degeneracy ([Thompson et al. 2009](#)). The principle of this approach has been introduced in Paper I of this series ([Hönig et al. 2010](#)).
- When modeling near- to mid-IR data, the outer radius does not have a significant influence on the near- and mid-IR emission for steeper dust distribution than $a \lesssim -1$. In these cases the majority of the dust is confined to distances $\ll R_{out}$.

On the other hand, for $a \gtrsim -1$ the dust distribution function does not converge for $R_{\text{out}} \rightarrow \infty$, so that R_{out} influences the peak of the overall torus emission. It is therefore important to properly select R_{out} in all cases to avoid artificial cutoffs in the brightness distribution of the targeted wavelength range (see Sect 4.1.4).

From torus model images, we calculated visibilities to simulate observations with interferometers. In addition to the SEDs, these data provide spatial information at different wavelengths and at different scales depending on the baseline length. We conclude:

- In type 1 AGN, the baseline-dependence of the visibility directly traces the radial distribution of the dust (here: the power law index a) without significant influence from other parameters (see Sect. 4.2.1). The general principle is also valid for type 2 AGN, but obscuration and geometric effects result in significant dependence of the visibility on position angle.
- By comparing baseline-dependent visibilities at two different wavelengths (preferably one in the near-IR, one in the mid-IR) for a given baseline, one can directly conclude if the dust distribution is compact ($a \geq -1.5$) or extended ($a \leq -1.0$). This can be done for both type 1 and type 2 AGN, although type 2s are less constraining due to obscuration effects (see Sects. 4.2.1 and 4.2.2).
- Small-scale position-angle variations of the visibility in type 1 AGN are usually associated with clumpiness of the torus (see Sect. 4.2.1). The strength of these variations is controlled by (1) the optical depth τ_{cl} of the cloud and therefore also the dust composition (they are strongest if $\tau_{\lambda} \gg 1$ at the observed wavelength λ); (2) the cloud size R_{cl} ; and (3) the number of clouds in the torus (i.e. statistics which are related to the choice of N_0). It may be difficult to constrain any of these parameters individually by observing the variations.
- The visibilities show silicate features in both type 1 and type 2 orientations. For type 1 AGN the appearance in “absorption” or “emission” has some strong dependence on a and the feature is mostly canceled out around $a \sim -1$. However, the actual strength of the feature is degenerate with several parameters as in the case of SEDs (see Sects. 4.2.2 and 4.2.3). Because the silicate feature in the visibilities is the result of both changes of flux and emission region size, it cannot be directly associated with emission properties of or within a certain region.

The presented models can be used as direct input for interpreting observational data. We are pleased to provide model SEDs and images based on our clumpy torus model (“CAT3D”) to interested colleagues on request and via the webpage <http://cat3d.sungrazer.org>.

Acknowledgements. We thank R. Antonucci, P. Gandhi, K. Ohnaka, and K. Tristram for fruitful discussion and helpful suggestions during evolution of this project. The paper has been supported by Deutsche Forschungsgemeinschaft (DFG) in the framework of a research fellowship (“Auslandsstipendium”) for SH. We would also like to thank the anonymous referee, who provided very constructive comments from which the manuscript substantially profited.

Appendix A: AGN radiation

As AGN/accretion disk input spectrum, we use a four-component power law that approximately agrees with the range

of power law fits to QSO composite spectra (e.g. Zheng et al. 1997; Manske et al. 1998; Vanden Berk et al. 2001; Scott et al. 2004):

$$F_{\nu} \propto \begin{cases} \nu^2 & \nu < 10^{14} \text{ Hz} \leftrightarrow > 3 \mu\text{m} \\ \nu^{1/3} & 10^{14} - 10^{15} \text{ Hz} \leftrightarrow 0.3 - 3 \mu\text{m} \\ \nu^{-1} & 10^{15} - 10^{16} \text{ Hz} \leftrightarrow 0.03 - 0.3 \mu\text{m} \\ \nu^{-2} & > 10^{16} \text{ Hz} \leftrightarrow < 0.03 \mu\text{m} (> 0.4 \text{ keV}). \end{cases} \quad (\text{A.1})$$

The main difference to the spectrum used in Hönig et al. (2006) concerns the relatively blue part with $F_{\nu} \propto \nu^{1/3}$ in the optical to near-IR between 0.3 and $3 \mu\text{m}$. This spectral shape has recently been confirmed by near-IR polarimetry of quasars (Kishimoto et al. 2008).

We note that the actual shape of the spectrum is much less important for the heating of the dust than the total (spectrally-integrated) luminosity of the accretion disk, $L_{\text{bol}} = \int L_{\nu} d\nu$. In the optically-thick case, the total absorbed heating power is $L_{\text{abs}} = \int Q_{\text{abs}}(\nu) L_{\nu} d\nu \sim 0.5 \times L_{\text{bol}}$, depending on the actual dust composition, where $Q_{\text{abs}}(\nu)$ is the absorption efficiency of the dust. Thus, the spectral shape of the incident radiation is integrated over in the process of radiative transfer.

Appendix B: The influence of the accretion disk on IR interferometry of dust tori

The presented torus models do not include any accretion disk contribution. For type 2 AGN, it is safe to conclude that most of the observed IR flux is coming from the dust torus since, by definition, the accretion disk has to be obscured. On the other hand, depending on wavelength, the accretion disk might contribute to the overall AGN IR flux in type 1 AGN.

Recently, we presented an analysis of the near-IR emission of nearby type 1 AGN (Kishimoto et al. 2007). We used a color-color diagram to separate the hot dust emission from the accretion disk power law spectrum that extends from optical wavelengths into the IR. A simultaneous power law + blackbody fit suggested that the accretion disk contribution to the AGN near-IR is around 10–50% in the H -band and only 5–25% in the K -band. The decrease of accretion disk contribution with wavelength is consistent with the recent observation of the blue tail of the near-IR accretion disk emission (Kishimoto et al. 2008), which suggests that for any wavelength longer than $2 \mu\text{m}$, the accretion disk has marginal effect on SED and interferometry. In Kishimoto et al. (2007), we also showed that a possible 20% accretion disk contribution in the K -band increases the visibilities by at most ≤ 0.1 for the longest baseline shown in Fig. 12. Because the position-angle variations in the near-IR are of the same magnitude, any accretion disk contribution will be hidden under these variations. Thus, we refrained from adding the accretion disk contribution to the presented figures and note that for interpretation of near-IR interferometry, a case-to-case analysis based on the color–color diagram should constrain to what degree the accretion disk has to be taken into account.

References

- Antonucci, R. 1993, ARA&A, 31, 473
 Barvainis, R. 1987, ApJ, 320, 537
 Beckert, T. 2005, MmSAI, 76, 150
 Beckert, T., & Duschl, W. J. 2004, A&A, 426, 445
 Beckert, T., Driebe, T., Hönig, S. F., & Weigelt, G. 2008, A&A, 486, L17
 Bjorkman, J. E., & Wood, K. 2001, ApJ, 554, 615
 Burtscher, L., Jaffe, W., Raban, D., et al. 2009, A&A, 705, L53
 Draine, B. T. 2003, ApJ, 598, 1026

- Dullemond, C. P., & van Bemmell, I. M. 2005, *A&A*, 436, 47
- Efstathiou, A., & Rowan-Robinson, M. 1995, *MNRAS*, 273, 649
- Elitzur, M., & Shlosman, I. 2006, *ApJ*, 648, L101
- Fritz, J., Franceschini, A., & Hatziminaoglou, E. 2006, *MNRAS*, 366, 767
- Granato, G. L., & Danese, L. 1994, *MNRAS*, 268, 235
- Hao, L., Spoon, H. W. W., Sloan, G. C., et al. 2005, *ApJ*, 625, L75
- Hicks, E. K. S., Davies, R. I., Malkan, M. A., et al. 2009, *ApJ*, 696, 448
- Hönig, S. F. 2008, PhD Thesis, Max-Planck-Institute for Radioastronomy, Bonn (available via ADS)
- Hönig, S. F., & Beckert, T. 2007, *MNRAS*, 380, 1172
- Hönig, S. F., Beckert, T., Ohnaka, K., & Weigelt, G. 2006, *A&A*, 452, 459
- Hönig, S. F., Beckert, T., Ohnaka, K., & Weigelt, G. 2007, *ASPC*, 373, 487
- Hönig, S. F., Prieto, M. A., & Beckert, T. 2008, *A&A*, 485, 33
- Hönig, S. F., Kishimoto, M., Gandhi, P., et al. 2010, *A&A*, 515, 23
- Horst, H., Gandhi, P., Smette, A., & Duschl, W. 2008, *A&A*, 479, 389
- Indebetouw, R., Whitney, B. A., Johnson, K. E., & Wood, K. 2006, *ApJ*, 636, 362
- Ivezić, Ž., Nenkova, M., & Elitzur, M. 1999, User Manual for DUSTY, Univ. of Kentucky internal report, accessible at <http://www.pa.uky.edu/~moshe/dusty/>
- Jaffe, W., Meisenheimer, K., Röttgering, H. J. A., et al. 2004, *Nature*, 429, 47
- Kishimoto, M., Hönig, S. F., Beckert, T., & Weigelt, G. 2007, *A&A*, 476, 713
- Kishimoto, M., Antonucci, R., Blaes, O., et al. 2008, *Nature*, 454, 492
- Kishimoto, M., Hönig, S. F., Tristram, K., & Weigelt, G. 2009a, *A&A*, 493, L57
- Kishimoto, M., Hönig, S. F., Antonucci, R., et al. 2009b, *A&A*, 507, L57
- Königl, A., & Kartje, J. F. 1994, *ApJ*, 434, 446
- Krolik, J. H. 2007, *ApJ*, 661, 52
- Krolik, J. H., & Begelman, M. C. 1988, *ApJ*, 329, 702
- Krügel, E. 2008, An introduction to the physics of interstellar dust, Boca Raton
- Lacy, M., Storrie-Lombardi, L. J., Sajina, A., et al. 2004, *ApJS*, 154, 166
- Landt, H., Buchanan, C. L., & Barmby, P. 2010, *MNRAS*, in press [arXiv:1007.0278]
- Lucy, L. B. 1999, *A&A*, 344, 282
- Maiolino, R., & Rieke, G. H. 1995, *ApJ*, 454, 95
- Manske, V., Henning, T., & Men'shchikov, A. B., *A&A*, 331, 52
- Martínez-Sansigre, A., Rawlings, S., Lacy, M., et al. 2006, *MNRAS*, 370, 1479
- Mason, R. E., Geballe, T. R., Packham, C., et al. 2006, *ApJ*, 640, 612
- Mason, R. E., Levenson, N. A., Shi, Y., et al. 2009, *ApJ*, 693, L136
- Mathis, J. S., Rumpl, W., & Nordsieck, K. H. 1977, *ApJ*, 217, 425
- Meisenheimer, K., Tristram, K. R. W., Jaffe, W., et al. 2007, *A&A*, 471, 453
- Miller, J. S., & Antonucci, R. R. J. 1983, *ApJ*, 271, L7
- Moran, C. M., Barth, A. J., Kay, L. E., & Filippenko, A. V. 2000, *ApJ*, 540, L73
- Natta, A., & Panagia, N. 1984, *ApJ*, 287, 228
- Nenkova, M., Ivezić, Ž., & Elitzur, M. 2002, *ApJ*, 570, L9
- Nenkova, M., Sirocky, M. M., Ivezić, Z., & Elitzur, M. 2008a, *ApJ*, 685, 147
- Nenkova, M., Sirocky, M. M., Nikutta, R., Ivezić, Z., & Elitzur, M. 2008b, *ApJ*, 685, 160
- Nikutta, R., Elitzur, M., & Lacy, M. 2009, *ApJ*, 707, 1550
- Ohnaka, K., Driebe, T., Hofmann, K.-H., et al. 2006, *A&A*, 445, 1015
- Ossenkopf, V., Henning, T., & Mathis, J. S. 1992, *A&A*, 261, 567
- Pier, E. A., & Krolik, J. H. 1993, *ApJ*, 418, 673
- Poncellet, A., Perrin, G., & Sol, H. 2006, *A&A*, 450, 483
- Raban, D., Jaffe, W., Röttgering, H., Meisenheimer, K., & Tristram, K. R. W. 2009, *MNRAS*, 394, 1325
- Risaliti, G., Elvis, M., Fabbiano, G., et al. 2007, *ApJ*, 659, L111
- Schartmann, M., Meisenheimer, K., Camenzind, M., Wolf, S., & Henning, T. 2005, *A&A*, 437, 861
- Schartmann, M., Meisenheimer, K., Camenzind, M., Raban, D., Meisenheimer, K., et al. 2008, *A&A*, 482, 67
- Schartmann, M., Meisenheimer, K., Klahr, H., et al. 2009, *MNRAS*, 393, 759
- Scott, J. E., Kriss, G. A., Brotherton, M., et al. 2004, *ApJ*, 615, 135
- Shi, Y., Rieke, G. H., Hines, D. C., et al. 2006, *ApJ*, 653, 127
- Sirocky, M. M., Levenson, N. A., Elitzur, M., Spoon, H. W. W., & Armus, L. 2008, *ApJ*, 678, 729
- Siebenmorgen, R., Haas, M., Krügel, E., & Schulz, B. 2005, *A&A*, 436, L5
- Sturm, E., Schweitzer, M., Lutz, D., et al. 2005, *ApJ*, 629, L21
- Suganuma, M., Yoshii, Y., Kobayashi, Y., et al. 2006, *ApJ*, 639, 46
- Swain, M., Vasisht, G., Akeson, R., et al. 2003, *ApJ*, 596, L163
- Tacconi, L. J., Genzel, R., Blietz, M., et al. 1994, *ApJ*, 426, L77
- Thompson, G. D., Levenson, N. A., Uddin, S. A., & Sirocky, M. M. 2009, *ApJ*, 697, 182
- Tristram, K. R. W., Meisenheimer, K., Jaffe, W., et al. 2007, *A&A*, 474, 837
- Tristram, K. R. W., Raban, D., Meisenheimer, K., et al. 2009, *A&A*, 502, 67
- Urry, C. M., & Padovani, P. 1995, *PASP*, 107, 803
- Vanden Berk, D. E., Richards, G. T., Bauer, A., et al. 2001, *AJ*, 122, 549
- Vollmer, B., Beckert, T., & Duschl, W. J. 2004, *A&A*, 413, 949
- Vollmer, B., Beckert, T., & Davies, R. I. 2008, *A&A*, 491, 441
- Weigelt, G., Wittkowski, M., Balega, Y. Y., et al. 2004, *A&A*, 425, 77
- Wittkowski, M., Balega, Y., Beckert, T., et al. 1998, *A&A*, 329, L45
- Wittkowski, M., Kervella, P., Arsenault, R., et al. 2004, *A&A*, 418, L39
- Zheng, W., Kriss, G. A., Telfer, R. C., Grimes, J. P., & Davidsen, A. F. 1997, *AJ*, 457, 469