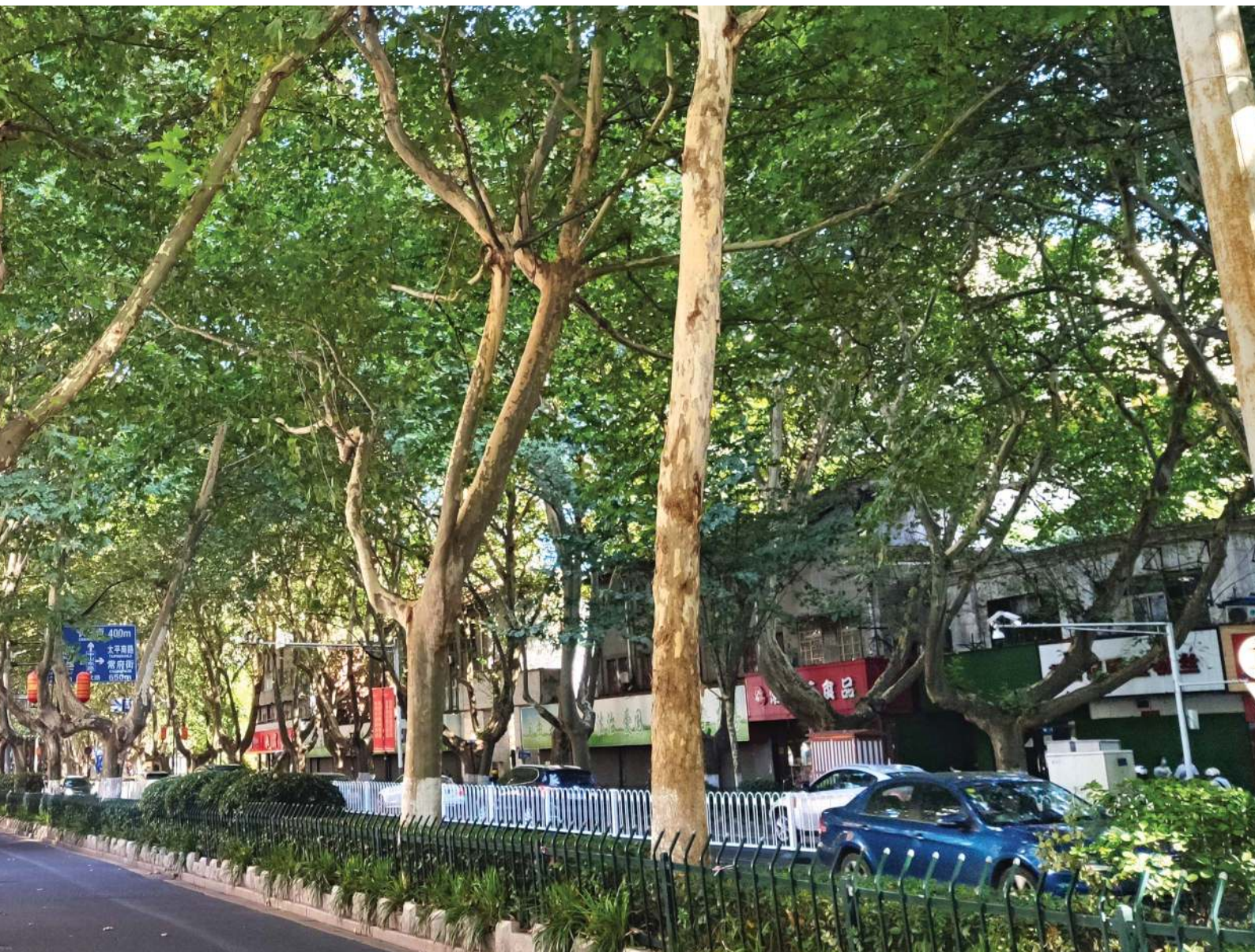


Environmental Science Atmospheres

Volume 1
Number 7
November 2021
Pages 475–592

rsc.li/esatmospheres



ISSN 2634-3606



ROYAL SOCIETY
OF CHEMISTRY

PAPER

Tom V. Kokkonen *et al.*

The effect of urban morphological characteristics
on the spatial variation of PM_{2.5} air quality
in downtown Nanjing



Cite this: *Environ. Sci.: Atmos.*, 2021, 1, 481

The effect of urban morphological characteristics on the spatial variation of PM_{2.5} air quality in downtown Nanjing

Tom V. Kokkonen,¹ Yuning Xie,² Pauli Paasonen,³ Shahzad Gani,⁴ Lin Jiang,⁵ Bo Wang,⁶ Derong Zhou,⁷ Wei Qin,⁸ Wei Nie,⁹ Veli-Matti Kerminen,¹⁰ Tuukka Petäjä,¹¹ Jianning Sun,¹² Markku Kulmala¹³ and Aijun Ding¹⁴

The effects of the urban morphological characteristics on the spatial variation of near-surface PM_{2.5} air quality were examined. Unlike previous studies, we performed the analyses in real urban environments using continuous observations covering the whole scale of urban densities typically found in cities. We included data from 31 measurement stations divided into 8 different wind sectors with individually defined morphological characteristics leading to highly varying urban characteristics. The urban morphological characteristics explained up to 73% of the variance in normalized PM_{2.5} concentrations in street canyons, indicating that the spatial variation of the near-surface PM_{2.5} air quality was mostly defined by the characteristics studied. The fraction of urban trees nearby the stations was found to be the most important urban morphological characteristic in explaining the PM_{2.5} air quality, followed by the height-normalized roughness length as the second important parameter. An increase in the fraction of trees within 50 m of the stations from 25 percentile to 75 percentile (*i.e.* by the interquartile range, IQR) increased the normalized PM_{2.5} concentration by up to 24% in the street canyons. In open areas, an increase in the trees by the IQR actually decreased the normalized PM_{2.5} by 6% during the pre-COVID period. An increase in the height-normalized roughness length by the IQR increased the normalized PM_{2.5} by 9% in the street canyons. The results obtained in this study can help urban planners to identify the key urban characteristics affecting the near-surface PM_{2.5} air quality and also help researchers to evaluate how representative the existing measurement stations are compared to other parts of the cities.

Received 6th May 2021
Accepted 18th August 2021

DOI: 10.1039/d1ea00035g

rsc.li/esatmospheres

Environmental significance

There is substantial spatial variation of near-surface PM_{2.5} pollution in cities. It is crucial to understand the key urban characteristics affecting the local scale air quality so that urban planners could build healthier cities. The effect of nearby trees in street canyons was identified to be the most important urban morphological characteristics defining the near-surface pollutant concentrations and the height normalized roughness length as the second most important. The accumulation of pollutants due to the trees highlights the importance of utilizing scientific knowledge before planting urban trees in street canyons. The results obtained in this paper indicates that the results could be transferred also to other cities even with different emissions scenarios.

1. Introduction

The rapid industrialization and urbanization have led to many environmental problems in China.^{1–4} As a consequence of this rapid development, eastern China is one of the most populated areas in the world which suffers also from atmospheric pollution especially in urban areas.^{5,6} The air pollutants have been estimated to cost over 1 million lives annually in China⁷ and fine particulate pollutants have been identified as one of the most harmful air pollutants in terms of human health.^{8–10}

The air quality can vary substantially in different parts of the city. This is partly due to differences in local spot emissions,^{11,12} traffic conditions^{13–15} and due to the effect of urban structures

¹Joint International Research Laboratory of Atmospheric and Earth System Sciences, School of Atmospheric Sciences, Nanjing University, Nanjing, China. E-mail: tvkokkonen@nju.edu.cn

²Nanjing Atmospheric Environment and Green Development Research Institute (NAGR), Nanjing, China

³Institute for Atmospheric and Earth System Research/Physics, Faculty of Science, University of Helsinki, Helsinki, Finland

⁴Helsinki Institute of Sustainability Science, University of Helsinki, Helsinki, Finland

⁵Gulou Environment Protection Department, Nanjing, China

⁶Jiangsu Environmental Monitoring Center, Nanjing, China



on the ventilation conditions in street canyons.^{16,17} Street-level pollutants in urban environment are dispersed and mixed into the upper layers by the wind in street canyons. However, urban morphological characteristics can affect near-surface ventilation conditions and therefore also pollutant concentrations at a pedestrian level.^{18,19} In addition, good ventilation conditions in cities are beneficial not only in terms of air quality but also in terms of restricting the spreading of airborne transmitted diseases like the COVID-19.²⁰ Therefore, it is crucial for urban planners to have a better understanding of the effect of urban morphology in order to minimize its negative effects on urban ventilation. However, we are lacking information of the relative importance of the different characteristics.

In recent decades, the effect of urban spatial morphological characteristics has gained more attention in urban climate research. The Local Climate Zones (LCZ) proposed by Stewart and Oke²¹ is considered to be one of the essential studies emphasizing the importance of these characteristics in terms of urban climate. There have been numerous studies in the past examining the effect of urban structures on air quality. However, a majority of these studies are performed for example in wind tunnels,²² focusing on idealized street canyons and individual roughness elements,²³ or by modeling.²⁴ Even though modeling studies can give very high-resolution maps of spatial air quality at a street level, they are generally lacking proper evaluation against observations with a high enough spatial coverage.

The effect of trees on air quality in urban environments is still a hot research topic with controversial results. It is generally accepted that urban trees can purify air by absorbing gaseous pollutants and by deposition of particulate matter,²⁵ so planting of urban trees have been understood as an effective air pollution mitigation technique in cities.^{26,27} However, based on recent studies, trees can actually deteriorate the air quality on a local scale. Trees are porous and flexible, and can therefore absorb momentum and reduce the turbulent intensity and the velocity of the wind flow, even during the winter when there are no leaves, and therefore trees can deteriorate the air quality locally.^{28–32} Furthermore, certain tree species can release significant amounts of biogenic volatile organic compound (BVOC),³³ contributing to ozone formation in the atmosphere. However, there are still considerable uncertainties in the net impact of trees on air quality in different urban areas, for example in urban parks and street canyons.

Instead of focusing only on idealized street canyon cases, modelling or few individual sites, we performed this study in a real urban environment using observations in highly varying urban densities. We focused on a few regularly used urban morphological characteristics which can be rather easily defined for any urban areas using commonly available datasets. The characteristics studied are the height normalized roughness length (z_0/z_H), fraction of trees within 50 m radius of the station (f_{trees}^{50}), orthogonal distance to major roads (D_{road}) and street canyon aspect ratio (λ_S) (see Section 2.4 for details). These characteristics are also assumed to be among the most important ones related to ventilation conditions and therefore

influencing the concentrations of near-surface atmospheric pollution.

Our objectives in this paper are (1) to examine the effect of urban morphological characteristics on the near-surface PM_{2.5} mass concentrations, (2) to identify the importance of urban morphological characteristics together and each of the characteristics individually on the spatial variation of the PM_{2.5} mass concentration and (3) to examine the effect of urban morphological characteristics on PM_{2.5} mass concentration during the COVID lockdown under a substantially different emission scenario due to the COVID restrictions. To our knowledge, this is the first study to examine the effect of urban morphological characteristics on air pollution based on continuously observed data covering the whole scale of urban densities typically found in cities and identifying the importance of individual characteristics under different emission scenarios.

2. Material and methods

2.1 Study site

In this study, we used continuously measured hourly data from 31 observation stations scattered around the downtown of Nanjing (Fig. 1). A bit more than half of the stations ($N = 17$) are located in rather open areas (*e.g.*, next to a sports field, large parking lot, urban park *etc.*) and the rest of them ($N = 14$) are located in typical street canyons, with buildings directly on both sides of the street.

The study areas are circles with a 500 m radius around each of the stations, since individual or clusters of roughness elements have been shown to affect the downwind wind profiles up to 4–5 times the roughness element height.^{34,35} Therefore, upwind roughness elements in downtown locations can easily affect wind profiles 500 m downwind. The 500 m radius circles are divided into eight different wind sectors (width 45°) and the urban morphological characteristics are determined and the

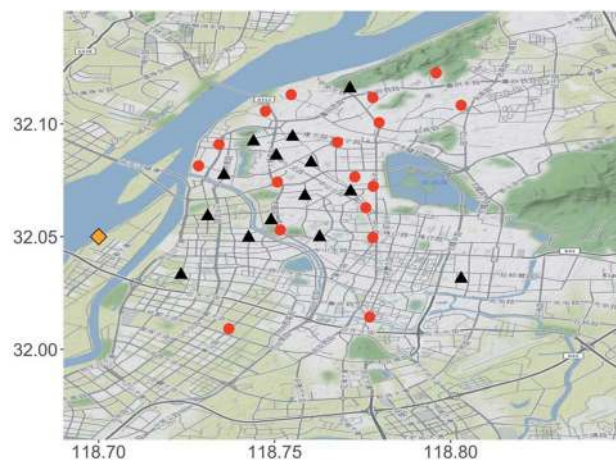


Fig. 1 Map showing the locations of the air quality observation stations in street canyons (black triangles) and open areas (red dots) in downtown Nanjing and the meteorological observation station (orange diamond). The background map is obtained from Stamen Design (CC BY 3.0).



monthly medians are calculated independently for each of the wind sectors, which leads to 248 individual sectors for the analyses.

2.2 Instrumentation and data

The hourly $PM_{2.5}$ observations (YSRDAQ-07; Insights Value Technology Co. Ltd) were performed continuously using a recently installed observation network that has been operational since the latter half of 2019. The hourly meteorological data provided by the Jiangsu Meteorological Bureau, including precipitation, wind speed and direction, were measured at the shore of an island located in Yangtze River (Fig. 1). Therefore, it is assumed to be measuring urban background meteorological conditions without major disturbances.

The frontal area and plan area of buildings were determined using a three-dimensional, GIS-based building dataset for the year 2018 extracted from the Gaode Map (<https://ditu.amap.com>) following the methods described in Zhang *et al.*³⁶ The dataset used in this study are covering the Nanjing urban area and were processed with the QGISv3.10 software.

Trees were determined manually from aerial photographs from Bing Virtual Earth processed with QGISv3.10. The fraction of trees was determined for the whole wind sectors, used in the calculation of the aerodynamic roughness parameters (see Section 2.5), and for a 50 m radius around the station in order to examine the effect of nearby trees on $PM_{2.5}$ air quality. The frontal areas of the trees were calculated using the surface area of trees identified from the aerial photographs and the average tree height of 7 m for Nanjing urban trees,³⁷ since the information of the height of individual trees was not available.

2.3 Data preprocessing and statistical methods

Since urban morphological characteristics are assumed to affect the ventilation of the street canyons by reducing near-surface wind speeds, calm conditions (wind speed $< 1 \text{ m s}^{-1}$) were filtered out from the hourly data. Also, hours with precipitation were filtered out. Hourly $PM_{2.5}$ data were normalized by dividing it with the minimum of all stations, which was assumed to represent the urban background concentration, in order to minimize the effect of meteorological conditions and transported pollutants.

The effect of urban morphological characteristics is assumed to be stronger (or different) for the stations that are located in street canyons than in open areas. Since about half of the stations are located in rather open areas and the other half of them are located in a street canyon (Fig. 1), the analyses were made for the open areas and street canyons separately.

Since the COVID lockdown had substantial effects on the emissions of local pollutants, the analyses were divided into pre-COVID (1 December 2019 to 23 January 2020) and COVID lockdown (24 January 2020 to 29 February 2020) periods.

After the filtering of the data, roughly monthly medians were calculated for each of the eight wind sectors and for each station. For the pre-COVID period, two medians were calculated for the analyses (1 December 2019 to 31 December 2019 and 1

January 2020 to 23 January 2020) and for the COVID lockdown period one median was calculated (24 January 2020 to 29 February 2020). Only the hours with wind coming from the sector were included in the monthly medians for that specific sector. This is also partly the reason why monthly medians were used instead of, for example, daily medians. With daily values, the amount of data used for the averaging might not be sufficient for some of the wind sectors.

Linear regression analysis was used to determine the statistical significance of the relationship between individual urban morphological characteristics and normalized $PM_{2.5}$ concentrations. In addition, the average percentual change of the normalized $PM_{2.5}$ concentration when the characteristics examined increased from 25 percentile to 75 percentile (*i.e.* by the interquartile range, IQR), was calculated using a linear regression fit.

Partial least squares (PLS) regression analysis was used to evaluate the response of the normalized $PM_{2.5}$ concentration on the urban morphological characteristics. The PLS regression method is a multivariate technique combining the features of principal component analysis and multiple regression,³⁸ and it is generally assumed to be more statistically robust than a principal component regression.³⁹ In addition, the multicollinearity problem, which occurs when an independent variable is highly correlated with one or more other independent variables, can result in overfitting in general multiple regression models. However, the PLS regression method can effectively deal with the multicollinearity problem and therefore it is particularly suitable for our case where some of the characteristics are to some extent interrelated. While PLS regression was first applied in the social sciences, its usefulness in geosciences has been recently proved in many studies.^{40–43}

The statistical significance of the PLS regression analysis is shown using the cross-validated R^2 , which is indicating the square of the correlation between the actual and predicted values and it is called Q^2 in the PLS analysis. A PLS analysis is assumed to be statistically significant if the Q^2 value is greater than or equal to 0.0975.³⁸ The PLS analysis can also give the percentage of variance of the dependent variable explained by the PLS components.⁴⁴ In addition, the PLS analysis provides an estimate of the importance of each of the independent variables. This is called the variable importance in projection (VIP) score. The VIP score represents the statistical contribution of each independent variable to the overall fitted PLS regression across all latent vectors.⁴⁵ The higher the VIP score is, the higher is the importance of that independent variable in explaining the variance of the dependent variable.⁴⁶

The normalized $PM_{2.5}$ concentration was used as the dependent variable in the PLS regression, whereas z_0/z_H , f_{trees}^{50} , D_{road} and λ_S were used as the explanatory variables. The PLS analysis was performed to examine the statistical significance of the effect of urban morphological characteristics on the normalized $PM_{2.5}$ concentrations. In addition, the variance explained by the urban morphological characteristics was examined and the importance of the individual characteristics was identified.



2.4 Description of the urban morphological characteristics used in the study

It is challenging to estimate the wind velocity within the roughness sublayer, but the profile above the surface obstacles is generally well approximated by a logarithmic wind profile with the addition of a displacement height.⁴⁷ The roughness length is representing the height above the zero-plane displacement (z_d) where the theoretical logarithmic wind profile is going to zero (Fig. 2a and Table 1).

Urban trees can decrease the ventilation of street canyons by preventing the wind from above rooftops to penetrate into near-surface levels (Fig. 2a). Thus, the pollutants are not effectively dispersed from street canyons to upper layers, and this causes accumulation of pollutants at the pedestrian level. The fraction of trees was calculated as $\Sigma A_{pvj}/A_T$, where A_{pvj} is the plan area of individual trees and A_T is the total surface area (Fig. 2b). Similarly, the plan area fraction of buildings (λ_P) used in the calculation of the aerodynamic parameters (see Section 2.5) was calculated as $\Sigma A_{pbi}/A_T$, where A_{pbi} is the plan area of individual buildings (Fig. 2b).

The street canyon aspect ratio is calculated as z_H/W , where z_H is the mean building height and W is the street canyon width (Fig. 2a). With $\lambda_S < 0.3$ the street canyon wind is isolated and fairly well ventilated, while with approximately $0.3 < \lambda_S < 1.0$

there can be a wake effect flow and with approximately $\lambda_S > 0.65$ there can be skimming flow^{48–50} (Fig. 2a) so that the ventilation of the street canyon is reduced. The free surface in the street canyon can be reduced also by trees, causing a wake effect or even skimming flow (Fig. 2a). The street canyon aspect ratio does not change with different wind directions, and therefore the same value of λ_S was used for all the wind sectors.

The distance to major roads was calculated as the distance from the measurement station to the nearest upwind highway or arterial road.

2.5 Urban aerodynamic parameters

The urban aerodynamic parameters, z_d and z_0 , were determined using the morphometric method by MacDonald *et al.*⁵¹ modified to include trees by Kent *et al.*⁵² In this approach, the vegetation is included in λ_P using a porosity factor. By including buildings and trees, λ_P becomes then:

$$\lambda_P = \frac{\sum_{i=1}^n A_{pbi} + \sum_{j=1}^n (1 - P_{3D}) A_{pvj}}{A_T}, \quad (1)$$

where i or j refers to each individual built or vegetated roughness element, respectively. P_{3D} is the three-dimensional porosity. The recommended values of P_{3D} for leaf-on and leaf-

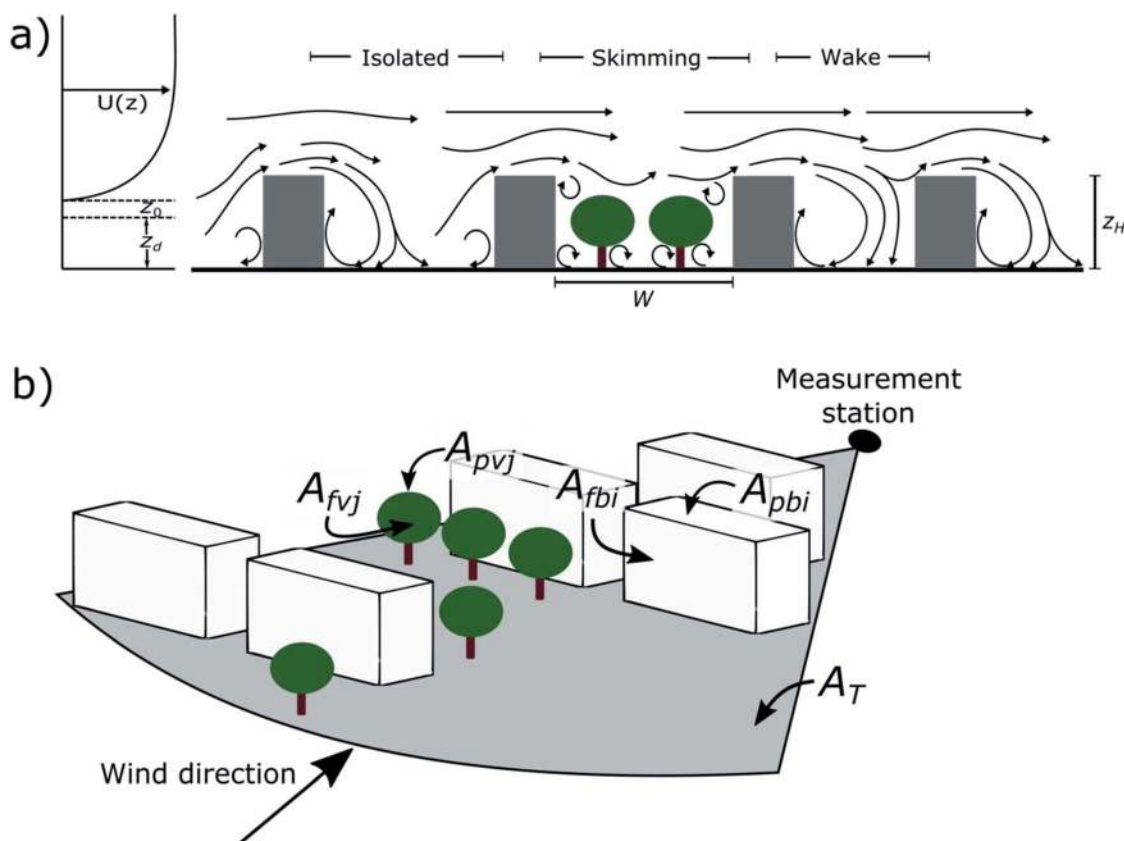


Fig. 2 Schematic illustration of (a) street canyon ventilation and (b) the urban surfaces used in the morphometric analyses. $U(z)$ is the mean wind velocity as a function of height, z_0 is roughness length, z_d is zero-plane displacement height, W is street canyon width, z_H is mean building height, A_T is the total surface area, A_{fvj} and A_{fbi} are frontal area of individual tree or building, respectively, and A_{pvj} and A_{pbi} are plan area of individual tree or building, respectively. The figures are not in scale and the roughness elements relevant to airflow are shown as generic obstacles.



Table 1 Notations used in the study. The variables are calculated as a function of the indented variables below them

Variable	Description
z_d	Zero-plane displacement height: the height in which the logarithmic wind law would go to zero in the absence of surface roughness elements (see Section 2.5 for details)
λ_P	Plan area fraction of buildings: represents the packing density of buildings
A_T	Total surface area
A_{pbi}, A_{pvj}	Surface area of individual surface roughness elements of buildings and trees, respectively
P_{3D}	Three-dimensional porosity of the trees, $P_{3D} = 0.48$ is used in this study
α	Empirical coefficient used to control the increase of z_d , $\alpha = 4.48$ is used in this study
z_H	Mean height of buildings
z_0	Roughness length: represents the effect of the surface roughness on the wind flow (see Section 2.5 for details)
P_v	Porosity factor used in the calculation of z_0
C_{Db}	Drag coefficient of buildings, $C_{Db} = 1.2$ is used in this study
P_{3D}	Three-dimensional porosity of the trees, $P_{3D} = 0.48$ is used in this study
C_{Db}	Drag coefficient of buildings, $C_{Db} = 1.2$ is used in this study
A_T	Total surface area
A_{fb}, A_{fv}	Frontal areas of buildings and trees, respectively
κ	Von Karman's constant, $\kappa = 0.4$
β	Drag correction coefficient, $\beta = 1$ is used in this study
z_d	Zero-plane displacement height
z_H	Mean height of buildings
λ_S	Street canyon aspect ratio: represents the ventilation of the street canyon
W	Width of the street canyon
z_H	Mean height of buildings
D_{road}	Distance to the nearest upwind major road (highways and arterial roads)
f_{trees}^{50}	Surface area fraction of trees
A_{pvj}	Surface area of individual surface roughness elements of trees
A_T	Total surface area

off periods are 0.2 and 0.6, respectively.⁵² Although the study period was during the leaf-off period, the value of $P_{3D} = 0.48$ was used because 30% of the urban trees in Nanjing are evergreen broadleaf trees.⁵³ The height normalized zero-displacement height is calculated as:^{51,52}

$$\frac{z_d}{z_H} = 1 + \alpha^{-\lambda_P} (\lambda_P - 1), \quad (2)$$

where the constant, α , is used to control the increase of z_d with λ_P .

The porosity factor (P_v) used in the roughness length calculation is⁵² given by:

$$P_v = \frac{-1.251P_{3D}^2 + 0.489P_{3D} + 0.803}{C_{Db}}, \quad (3)$$



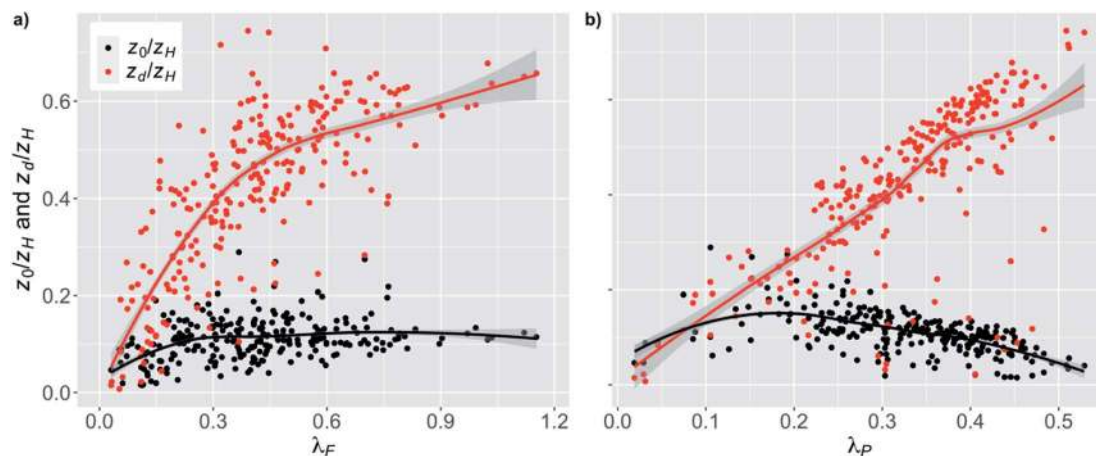


Fig. 3 The relation between the height normalized zero-plane displacement (z_d/z_H) and roughness length (z_0/z_H) and the packing density of roughness elements using (a) the frontal area index (λ_F) and (b) plan area fraction (λ_P) with a LOESS⁵⁵ fit line.

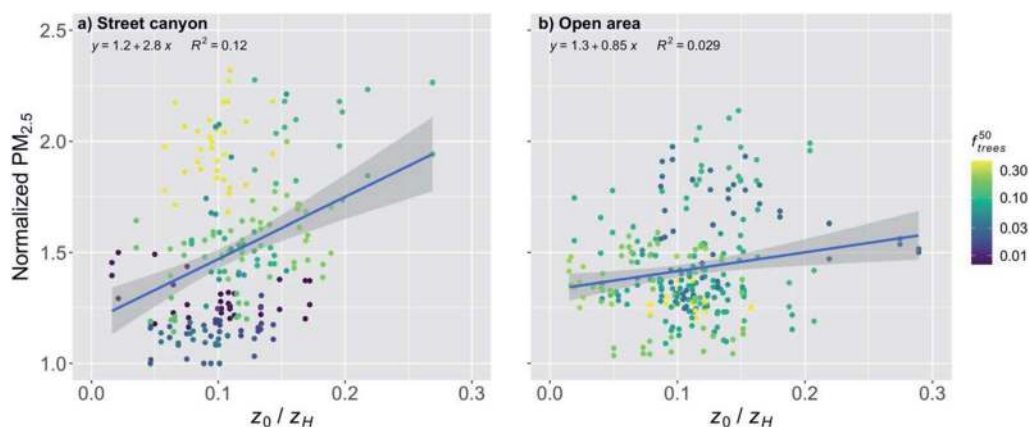


Fig. 4 Monthly medians of normalized $PM_{2.5}$ concentrations for stations in (a) street canyons and (b) open areas against the height normalized roughness length (z_0/z_H) during the pre-COVID period. The coloring shows the fraction of trees (f_{trees}^{50}) within 50 m around the station. The shaded area is showing the 95% confidence boundaries.

Table 2 Statistical parameters for fraction of trees within a 50 m radius (f_{trees}^{50}), height-normalized roughness length (z_0/z_H), distance to major roads (D_{road}) and street canyon aspect ratio (λ_S) against normalized $PM_{2.5}$ concentrations. R^2 is the correlation coefficient for the linear regression, VIP is the variable importance from the partial least squares regression analysis, $\Delta PM_{2.5}$ stands for the percentual increase in the normalized $PM_{2.5}$ with an increase of the variable examined by the interquartile range (from 25 percentile to 75 percentile) and the R2Xy is the variance explained by the variables of the partial regression analysis. Statistical significance of linear regression analyses are shown as: p -value <0.001 (***), <0.01 (**), <0.05 (*), <0.1 (.), <1 (). See Section 2.3 for statistics explanation

Period	Variable	Street canyons				Open areas			
		R^2	VIP	$\Delta PM_{2.5}$ (%)	R2Xy (%)	R^2	VIP	$\Delta PM_{2.5}$ (%)	R2Xy (%)
Pre-COVID	f_{trees}^{50}	0.470***	1.68	24	59	0.084***	1.26	-6	13
	z_0/z_H	0.120***	0.85	9		0.029**	0.87	3	
	D_{road}	0.069***	0.65	-8		0.031**	0.83	-3	
	λ_S	0.003	0.18	—		0.057***	0.99	1	
COVID lockdown	f_{trees}^{50}	0.490***	1.65	22	73	0.002	—	—	—
	z_0/z_H	0.150***	0.91	9		0.026.	—	—	
	D_{road}	0.076**	0.65	-8		0.012	—	—	
	λ_S	0.005	0.17	—		0.013	—	—	



where C_{Db} is the drag coefficient for buildings. The height normalized roughness length then becomes:⁵²

$$\frac{z_0}{z_H} = \left(1 - \frac{z_0}{z_H}\right) \exp \left[- \left(\frac{1}{\kappa^2} 0.5 \beta C_{Db} \left(1 - \frac{z_d}{z_H}\right) \frac{A_{fb} + P_v A_{fv}}{A_T} \right)^{-0.5} \right], \quad (4)$$

where κ is von Karman's constant = 0.4,⁵⁴ β is the drag correction coefficient and A_{fb} and A_{fv} are the frontal areas of buildings and trees, respectively. The values of $\alpha = 4.43$, $C_{Db} = 1.2$ and $\beta = 1$, recommended for staggered arrays,⁵¹ were used in this study.

This study included 31 observation points with a good spatial coverage and all of them were divided into eight different wind sectors with individually identified urban morphological characteristics. Therefore, there were highly varying conditions examined and the different urban densities were well covered in the study (Fig. 3). Thus, the effect of urban morphological characteristics on near-surface $PM_{2.5}$ concentrations could be examined throughout the whole scale of urban densities typically found in cities.⁴⁹

3. Results

3.1 Effect of urban morphological characteristics

3.1.1 Pre-COVID period

Linear regression analysis for the street canyons and open areas.

The roughness length is assumed to be one of the most important urban characteristics in terms of the street canyon ventilation. In this study we examined the effect of the height-normalized roughness length on the near-surface $PM_{2.5}$ concentrations normalized with the background concentration. When the effect of z_0/z_H on normalized $PM_{2.5}$ concentrations was examined for the stations in street canyons, there was a significant (p -value < 0.001) increase with increasing z_0/z_H (Fig. 4a and Table 2). An increase in z_0/z_H from 25 percentile to 75 percentile (*i.e.* by the interquartile range, IQR) increased the normalized $PM_{2.5}$ concentration by 9%. However, there was

a rather large spread in the scatter (from 1.0 to 2.3 in normalized $PM_{2.5}$). The coloring of the points shows that f_{trees}^{50} was responsible for much of this spread. The stations with a higher fraction of trees tended to have higher $PM_{2.5}$ concentrations.

When the stations located in the open areas were examined, the effect of z_0/z_H was much smaller on the normalized $PM_{2.5}$ concentration than it was for the street canyons (Fig. 4b and Table 2), but it was still significant (p -value < 0.01). This was quite expected since the increased surface roughness due to the increased z_0/z_H in the upwind direction could actually induce more turbulence and therefore even benefit the ventilation of open areas, whereas the increasing z_0/z_H was clearly deteriorating the $PM_{2.5}$ air quality in the street canyons. In addition, the nearby trees did not seem to have a similar effect as in street canyons. An increase in z_0/z_H by the IQR increased the normalized $PM_{2.5}$ concentration by 3% in open areas.

When the distance to major roads increased, the normalized $PM_{2.5}$ concentration decreased significantly (p -value < 0.001) for the stations located in the street canyons (Fig. 5a and Table 2). However, the correlation is quite weak ($R^2 = 0.069$) due to the high variation. An increase in D_{road} by the IQR decreased the normalized $PM_{2.5}$ by 8%. Again, especially close to the major roads, f_{trees}^{50} seems to play an important role by increasing the concentration with an increasing fraction of trees, which explains much of the rather high variation.

The spread of the scatter is slightly smaller when examining only the stations located in the open areas (Fig. 5b and Table 2), but again the correlation is quite weak ($R^2 = 0.031$). The other urban morphological characteristics (*e.g.*, z_0/z_H) are assumed to have a smaller effect on the stations in open areas which might partly explain the smaller variation in the open areas. The distance to major roads for the open areas had a significant (p -value < 0.001) effect on the normalized $PM_{2.5}$ concentration (Fig. 5b and Table 2), and an increase in D_{road} by the IQR decreased the normalized $PM_{2.5}$ by 3%.

The effect of street canyon aspect ratio (λ_s) on the normalized $PM_{2.5}$ concentration was nonsignificant (p -value > 0.05) for the street canyons (Fig. 6a and Table 2). However, it can be seen that

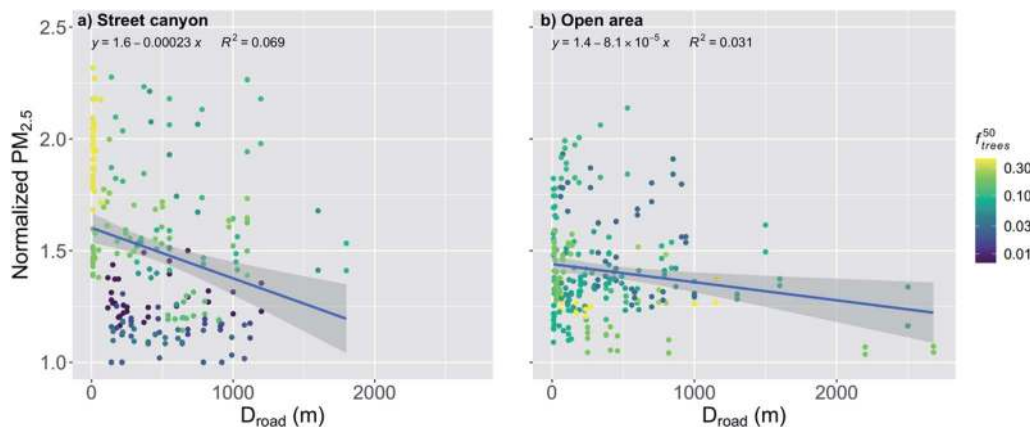


Fig. 5 Monthly medians of normalized $PM_{2.5}$ concentrations stations in (a) street canyons and (b) open areas against the distance to major roads (D_{road}) during the pre-COVID period. The coloring shows the fraction of trees within 50 m radius of the measurement station (f_{trees}^{50}). The shaded area is showing the 95% confidence boundaries.



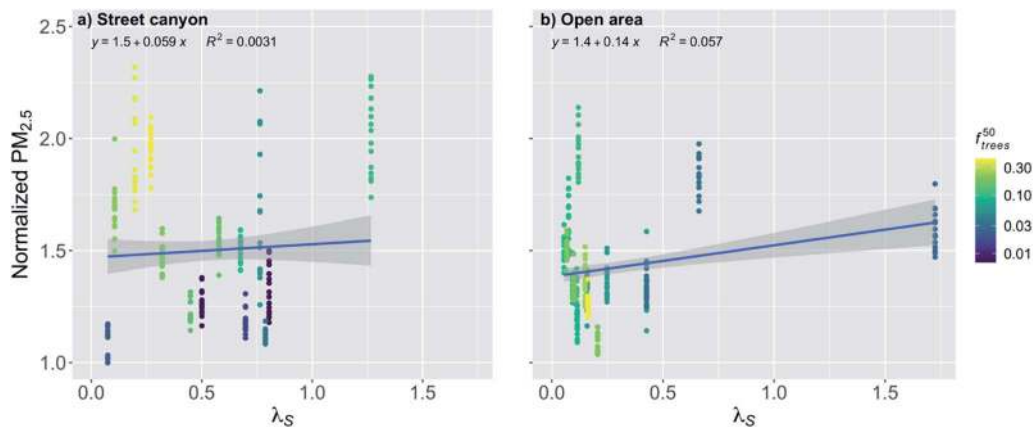


Fig. 6 Monthly medians of normalized $PM_{2.5}$ concentrations for stations in (a) street canyons and (b) open areas against the street canyon aspect ratio (λ_s) during the pre-COVID period. The coloring shows the fraction of trees within 50 m radius of the measurement station (f_{trees}^{50}). The shaded area is showing the 95% confidence boundaries.

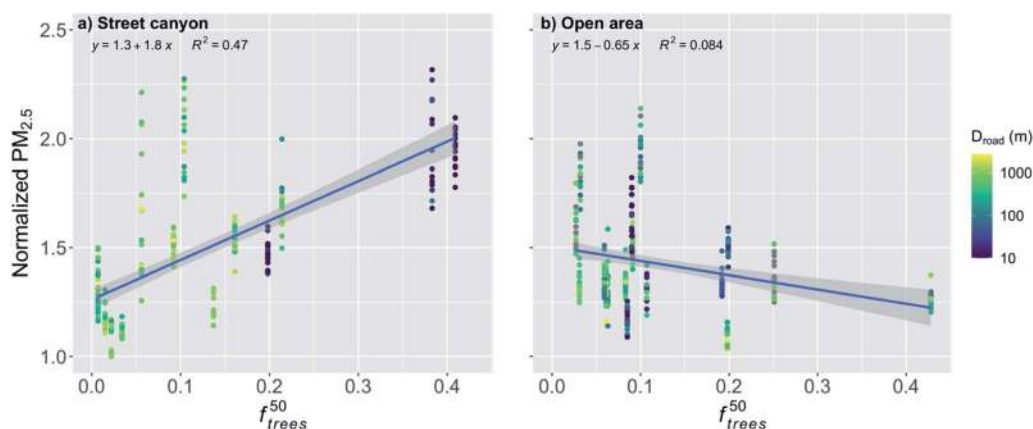


Fig. 7 Monthly medians of normalized $PM_{2.5}$ concentrations for stations in (a) street canyons and (b) open areas against the fraction of trees within 50 m radius of the station (f_{trees}^{50}) during the pre-COVID period. The coloring shows the distance to major roads (arterial roads and highways). The shaded area is showing the 95% confidence boundaries.

if the street canyon has a large fraction of trees, the concentrations tend to be higher, which is expected, since it can make the free area in the street canyon smaller and therefore decrease the ventilation.

In the open areas, due to the large width of the areas, most of the stations have obviously quite low λ_s , except one station that is next to a very tall building (Fig. 6b). This makes the linear regression fit statistically significant (p -value < 0.001), even though there are quite a lot of seemingly random variation between the stations with lower λ_s in the area of isolated flow. There are only few stations in the area of wake effect or skimming, where the λ_s is assumed to have an effect on the ventilation conditions, and therefore the fit between the points might not be representative, especially as the λ_s is assumed to affect more substantially in the street canyons where the linear regression was nonsignificant. When the linear relationship in the open areas is examined, an increase in λ_s by the IQR increased the normalized $PM_{2.5}$ concentration by 1% (Fig. 6b and Table 2). However, this result should probably be

considered doubtful and strong conclusions based on it should be avoided.

In order to further analyze the effect of the trees, the normalized $PM_{2.5}$ was plotted against f_{trees}^{50} (Fig. 7). It is obvious that the trees within a 50 m radius had a significant effect (p -value < 0.001) on the normalized $PM_{2.5}$ concentration for the stations in the street canyons (Fig. 7a and Table 2). An increase in f_{trees}^{50} by the IQR increased the normalized $PM_{2.5}$ concentration by 24%. The distance to major roads is not expected to have a substantial effect on this relationship because the trees around the observation station are likely to accumulate local pollutants and therefore the transport from roads further away should not have a strong effect.

The effect of f_{trees}^{50} seemed to be reversed for the open areas compared to the street canyons, and the normalized $PM_{2.5}$ concentration was actually decreasing significantly (p -value < 0.001) with increasing f_{trees}^{50} (Fig. 7b and Table 2). An increase in f_{trees}^{50} by the IQR decreased the normalized $PM_{2.5}$ by 6%. The stations in the open areas are located for example next to



a sports field, where local emissions are negligible and therefore there is no substantial accumulation of local pollutants and the purification effect of vegetation is dominating, which is agreeing well with previous studies.⁵⁶

Partial least squares (PLS) regression analysis. To further analyze the statistical significance of the urban morphological characteristics and the importance of different characteristics individually on the $PM_{2.5}$ concentration, a partial least squares (PLS) regression analysis was performed (see Section 2.3). In the PLS analysis the quantity Q^2 is used to measure the statistical significance of the analysis with higher values indicating higher statistical significance. When using f_{trees}^0 , z_0/z_H , D_{road} and λ_S as the explanatory variables, the value of Q^2 was 0.4723 for the street canyons. This is an indication of a rather strong statistical significance, since the limit for statistically significant analysis is generally assumed to be 0.0975.³⁸ The variance explained by these urban characteristics based on the PLS analysis was 59%. Therefore, based on these results, the variation of local pollutant emissions and characteristics not covered in this study were responsible only for less than half of the spatial variation within the downtown Nanjing and the urban morphological characteristics studied were very important in determining the spatial variation of $PM_{2.5}$ concentrations. For the open areas, the analysis was also statistically significant ($Q^2 = 0.1064$). The variance explained for the open areas was 13%, much smaller than for the street canyons.

The VIP score is a measure of the importance of the individual variables in the PLS analysis, where the variables with higher values are assumed to be more important. The VIP scores for different characteristics for the street canyons were 1.68, 0.85, 0.65 and 0.18 for f_{trees}^0 , z_0/z_H , D_{road} and λ_S , respectively

(Table 2). For the open areas, the VIP scores were 1.26, 0.87, 0.83 and 0.99 for f_{trees}^0 , z_0/z_H , D_{road} and λ_S , respectively (Table 2). These analyses, in addition to the scatter plots presented before, further support the hypothesis that the z_0/z_H and especially f_{trees}^0 are the two most important urban morphological characteristics dictating the local variation of near-surface $PM_{2.5}$ concentrations in urban areas.

3.1.2 COVID lockdown period. The COVID lockdown affected the local pollutants substantially in Nanjing, as also reported in numerous other studies.^{57–59} Based on our results, the $PM_{2.5}$ concentration dropped approximately 31% when taking the difference in the medians of the values over all the stations for pre-COVID and COVID lockdown periods. The decrease in $PM_{2.5}$ for different wind directions varied from 16% (NE) to 49% (SW) (Fig. 8). The COVID lockdown mainly affected local pollutant emissions, while the industrial emissions stayed relatively similar.⁶⁰ Therefore, the decrease for the northeast direction was presumably the smallest due to the industrial area located in that wind direction.

The decrease in the pollutants due to the COVID restrictions allowed us to examine the effect of urban morphological characteristics also under a substantially different emission scenario. The relatively larger amount of transported emissions compared to local emissions during the COVID lockdown period should not affect the analyses substantially, since the effect of transported emissions was minimized by the normalization of the $PM_{2.5}$ concentrations using the background concentration (see Section 2.3).

Linear regression analysis for the street canyons and open areas. The effect of urban morphological characteristics on the normalized $PM_{2.5}$ concentrations stayed mainly very similar

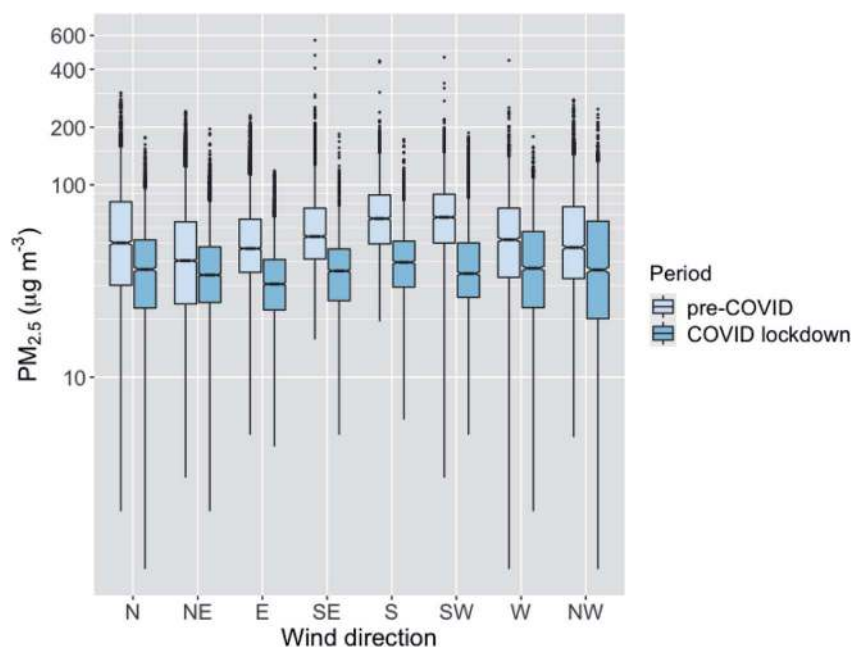


Fig. 8 The $PM_{2.5}$ concentrations of all stations in same boxplots for different wind directions and for pre-COVID and COVID lockdown periods. The medians are shown with horizontal line, the notches represent the 95% confidence boundaries, the boxes are showing the interquartile range (IQR) and the whiskers show 1.5 times the IQR.



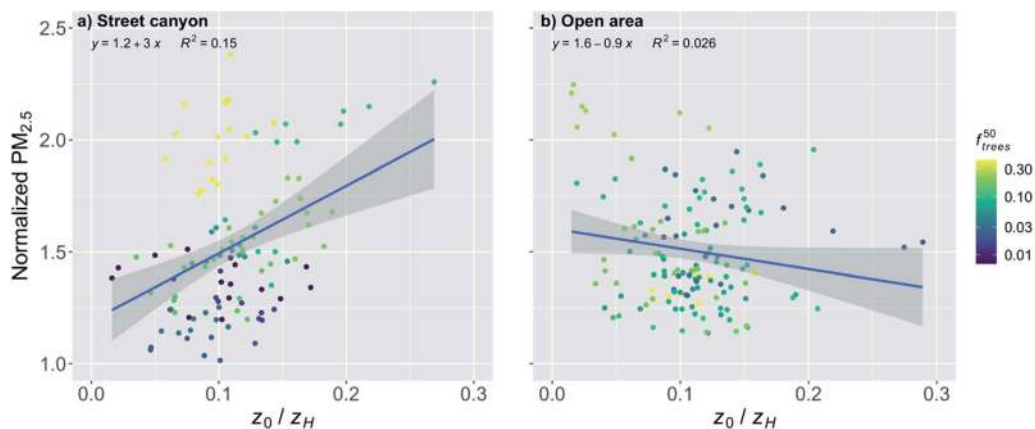


Fig. 9 Monthly medians of normalized PM_{2.5} concentrations for stations in (a) street canyons and (b) open areas against the height normalized roughness length (z_0/z_H) during the COVID lockdown period. The coloring shows the fraction of trees (f_{trees}^{50}) within 50 m around the station. The shaded area is showing the 95% confidence boundaries.

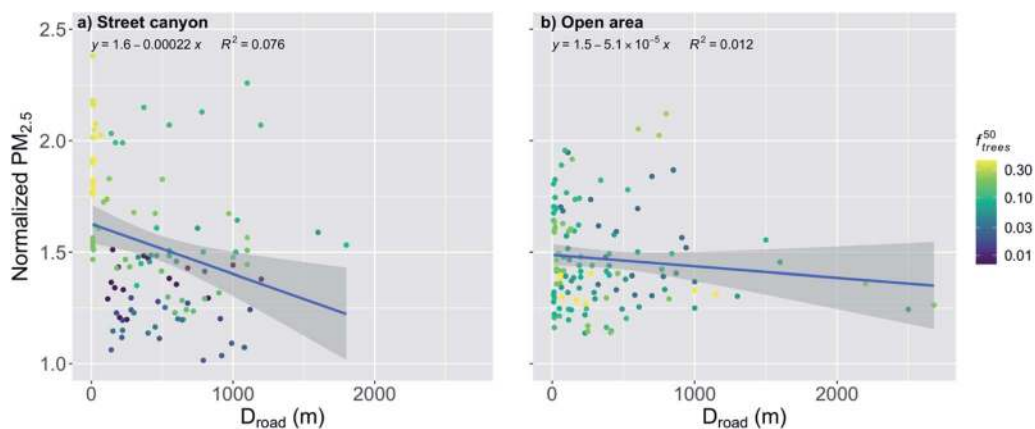


Fig. 10 Monthly medians of normalized PM_{2.5} concentrations stations in the (a) street canyons and (b) open areas against the distance to major roads (D_{road}) during the COVID lockdown period. The coloring shows the fraction of trees within 50 m radius of the measurement station (f_{trees}^{50}). The shaded area is showing the 95% confidence boundaries.

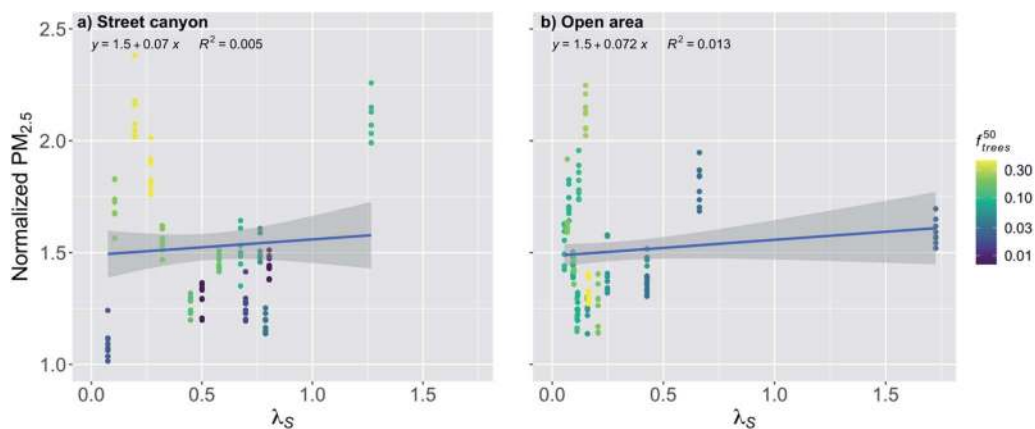


Fig. 11 Monthly medians of normalized PM_{2.5} concentrations for stations in (a) street canyons and (b) open areas against the street canyon aspect ratio (λ_s) during the COVID lockdown period. The coloring shows the fraction of trees within 50 m radius of the measurement station (f_{trees}^{50}). The shaded area is showing the 95% confidence boundaries.



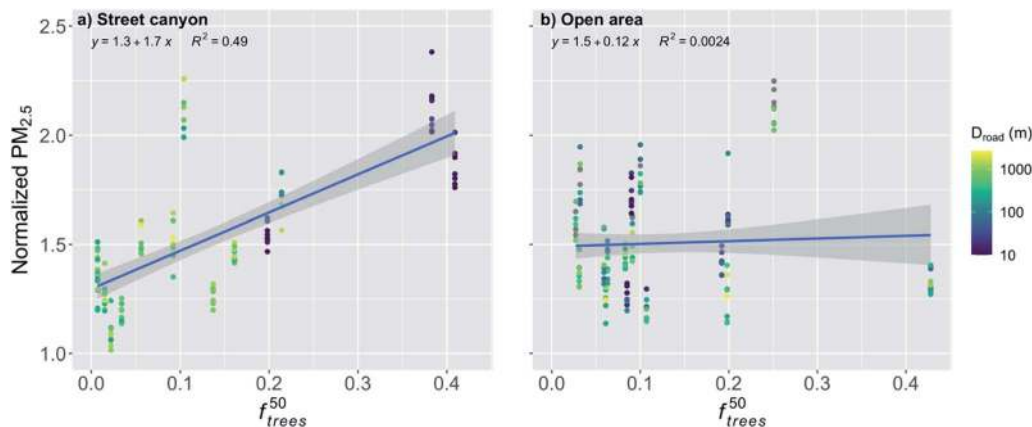


Fig. 12 Monthly medians of normalized $\text{PM}_{2.5}$ concentrations for stations in (a) street canyons and (b) open areas against the fraction of trees within 50 m radius of the station (f_{trees}^{50}) during the COVID lockdown period. The coloring shows the distance to major roads (arterial roads and highways). The shaded area is showing the 95% confidence boundaries.

compared to the pre-COVID period, especially in the street canyons (Table 2), even though the pollutant concentrations dropped due to the COVID restrictions. This is presumably because we were focusing on the relative change through the normalized $\text{PM}_{2.5}$ concentrations and therefore the changes in pollutant emissions did not have such strong influence on the relationship between the urban morphological characteristics and the spatial variation of normalized $\text{PM}_{2.5}$. However, since the pre-COVID analyses are based roughly on monthly medians of two months and the COVID period has only medians for roughly one month (see Section 2.3), the analyses for the two periods might not be directly comparable.

The effect of z_0/z_H on the normalized $\text{PM}_{2.5}$ was very similar also during the COVID lockdown period for the stations in street canyons (Fig. 9a and Table 2). An increase in z_0/z_H by the IQR increased the normalized $\text{PM}_{2.5}$ by 9%. Now during the COVID lockdown, the effect of the increased turbulence induced by the roughness elements in the upwind direction can be seen clearly, as the normalized $\text{PM}_{2.5}$ decreased with an increasing z_0/z_H (Fig. 9b and Table 2), which is opposite to the behavior in the street canyons. However, this relationship was statistically nonsignificant (p -value = 0.059).

During the COVID lockdown period, an increase in D_{road} by the IQR decreased the normalized $\text{PM}_{2.5}$ by 8% for the stations in the street canyons (Fig. 10a and Table 2). However, the correlation was quite weak ($R^2 = 0.076$), even though the relationship was statistically significant (p -value < 0.01). The high variation leading to the weak correlation can again be partly explained by the effect of the nearby trees similarly to pre-COVID period. For the stations in the open areas, the relationship was much smaller than in the street canyons and statistically nonsignificant during the COVID lockdown, even though a slight decrease with an increasing D_{road} can be seen (Fig. 10b).

The effect of λ_s during the COVID lockdown period was nonsignificant for the stations in the street canyons and for the open areas (Fig. 11 and Table 2). For the street canyons, the effect of f_{trees}^{50} could be seen again by inducing higher

normalized $\text{PM}_{2.5}$ concentrations when there was higher fraction of trees (Fig. 11a).

For the stations in the street canyon during the COVID lockdown, f_{trees}^{50} had a significant effect (p -value < 0.001) on the normalized $\text{PM}_{2.5}$ (Fig. 12a and Table 2). An increase in f_{trees}^{50} by the IQR increased the normalized $\text{PM}_{2.5}$ by 22%. Now, f_{trees}^{50} in the open areas had a nonsignificant effect on the normalized $\text{PM}_{2.5}$ concentration (Fig. 12b and Table 2).

Partial least squares (PLS) regression analysis. When examining the statistical significance of the effect of urban morphological characteristics using the PLS analysis, the results for COVID lockdown period are again rather similar to pre-COVID results. When using z_0/z_H , f_{trees}^{50} , D_{road} and λ_s , the value of Q^2 was 0.5488 for street canyons, which indicates strong statistical significance. For the open areas, the analysis was nonsignificant ($Q^2 = 0.0171$). The VIP scores for individual characteristics for the street canyons were 1.65, 0.91, 0.65 and 0.17 for f_{trees}^{50} , z_0/z_H , D_{road} and λ_s , respectively (Table 2). The relative importance of the individual characteristics during the COVID lockdown period stayed mostly very similar to those during pre-COVID period for the street canyons. The variance explained during the COVID lockdown period by these urban characteristics based on the PLS analysis was 73%. Therefore, similarly to the pre-COVID period, the urban morphological characteristics were the most important factor in explaining the local spatial variation of $\text{PM}_{2.5}$ concentrations during the COVID lockdown.

3.1.3 The cleaning effect of trees under different pollution levels. The cleaning effect of nearby trees was significant during the pre-COVID period in the open areas (Fig. 7b), but nonsignificant during the COVID lockdown (Fig. 12b) under substantially lower $\text{PM}_{2.5}$ concentrations. Therefore, the cleaning effect of trees under different pollution levels was further examined. We included data for the whole study period and stratified it into four different hourly $\text{PM}_{2.5}$ levels (<30, 30–60, 60–90 and 90–120 $\mu\text{g m}^{-3}$; Fig. 13) which were used to calculate the monthly medians. The cleaning effect in the open areas was nonsignificant (p -value = 0.197) only with the lowest pollution (<30 $\mu\text{g m}^{-3}$,



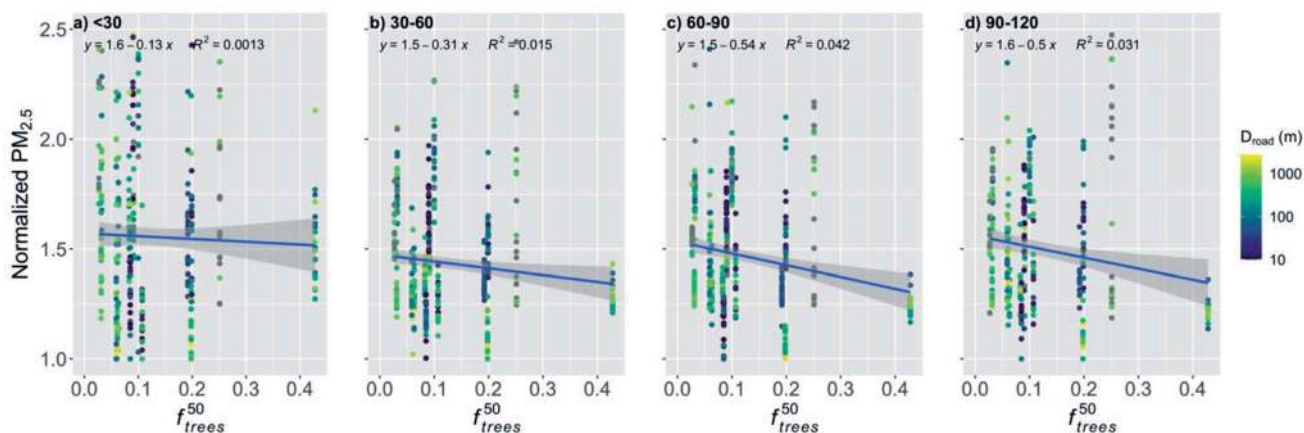


Fig. 13 Monthly medians of normalized $\text{PM}_{2.5}$ concentrations for station in the street canyons against the fraction of trees within a 50 m radius of the station (f_{trees}^{50}) for the whole study period. The data was stratified into four different $\text{PM}_{2.5}$ levels: (a) <30 , (b) $30\text{--}60$, (c) $60\text{--}90$ and (d) $90\text{--}120$ $\mu\text{g m}^{-3}$. The coloring shows the distance to major roads (arterial roads and highways). The shaded area is showing the 95% confidence boundaries.

Fig. 13a). The cleaning effect was significant when the $\text{PM}_{2.5}$ concentration exceeded $30 \mu\text{g m}^{-3}$ (Fig. 13b–d) and it seemed to be more efficient with higher pollution ($>60 \mu\text{g m}^{-3}$, Fig. 13c and d), while staying rather similar with the two highest concentration levels. The p -values were better with higher pollutant concentrations (p -value $\ll 0.001$ and p -value = 0.003 for $60\text{--}90$ and $90\text{--}120 \mu\text{g m}^{-3}$, respectively) when compared to the p -value with the $\text{PM}_{2.5}$ concentration of $30\text{--}60 \mu\text{g m}^{-3}$ (p -value = 0.0124). Similarly, the correlation coefficient (R^2) increased from 0.015 (for $30\text{--}60 \mu\text{g m}^{-3}$, Fig. 13b) to 0.042 and 0.031 (for $60\text{--}90$ and $90\text{--}120 \mu\text{g m}^{-3}$, respectively; Fig. 13c and d).

4. Discussion

In this study, the effect of z_0/z_H on the near-surface $\text{PM}_{2.5}$ concentration was the second most important characteristic studied for both street canyons and open areas during the pre-COVID period and for the street canyons during the COVID lockdown period. In the open areas, z_0/z_H had the strongest correlation with the normalized $\text{PM}_{2.5}$ concentration of the studied characteristics during the COVID lockdown period and an increasing z_0/z_H seemed to be even benefiting the $\text{PM}_{2.5}$ air quality presumably due to the increased turbulence induced by the increased surface roughness in the upwind direction. The roughness length has been identified as one of the most important urban morphological characteristics in terms of air quality also by Edussuriya *et al.*⁶¹ where the effect of 21 different morphological characteristics were studied. However, only 6 of the variables (complete aspect ratio, occlusivity, roughness height, zero-plane displacement height, total building volume/number of buildings, and standard deviation of height) used by Edussuriya *et al.* were found to vary significantly at district level⁶² and therefore also responsible for the spatial variation of air quality within the city. Many of these variables are the same or similar as used in this study, but for example occlusivity was left out of this study since it requires very detailed data on buildings, which are not often available. The standard deviation

of building height has been found to increase the vertical turbulent flux rates⁶³ and therefore also to improve the near-surface air quality.^{36,63} However, in this study the standard deviation of the building height was found to have an insignificant effect on $\text{PM}_{2.5}$ concentrations in all the scenarios. Based on our results, the height-normalized roughness length was representing better the effect of surface roughness on the $\text{PM}_{2.5}$ air quality in this case. Therefore, the standard deviation of the building height was left out of further analyses in this study.

Surprisingly, the street canyon aspect ratio was not a very important factor in determining the near-surface $\text{PM}_{2.5}$ air quality, even though its importance to street canyon ventilation has been shown in many wind tunnel and modelling studies.^{64,65} However, these studies have usually focused on idealized street canyons without trees present. The reason for the weak effect might have been that the fraction of trees in the street canyon was affecting the local $\text{PM}_{2.5}$ air quality so much that the relationship with λ_s and normalized $\text{PM}_{2.5}$ was not strong, which has also been also found by Gromke and Ruck.⁶⁶ This indicates that the street canyon aspect ratio alone does not represent very well ventilation conditions in real urban environments where trees are commonly present in street canyons.

An exponential relationship of D_{road} and many air pollutant concentrations has been suggested by several studies.^{36,67} However, the relationship between the $\text{PM}_{2.5}$ concentration and distance to major roads has been shown to be more gradual and closer to a linear relationship,^{67,68} even though some studies have reported an exponential relationships also for $\text{PM}_{2.5}$.^{69,70} The assumption of a linear relationship seemed to fit well with our results in the open urban areas (Fig. 5b and 10b), but there was visible fast decay with short distances when the distance from major roads was increasing in the street canyons (Fig. 5a and 10a). However, this steep increase in the normalized $\text{PM}_{2.5}$ seemed to be mostly induced by f_{trees}^{50} in the street canyons, and the earlier studies did not take into account the effect of the nearby trees on the $\text{PM}_{2.5}$ concentrations. Therefore, further



research on the nature of this relationship in different urban areas would be needed.

We showed that the trees located nearby the observation stations deteriorated significantly the $PM_{2.5}$ air quality in the street canyons. Similar results of the effect of trees on the air quality have been found also in other studies. Di Sabatino *et al.*²⁸ found that trees decreased the wind velocities under the tree canopy by up to 79% during the leaf-on period and 39% during the leaf-off period when compared to wind velocities at the roof top, and therefore increased the pollutant concentration by up to 20% in Lecce, Italy. Karttunen *et al.*³⁰ found an increase of up to 42% in the $PM_{2.5}$ concentration when compared to a street canyon with no trees in Helsinki, Finland. Jeanjean *et al.*²⁹ found that trees trapped air pollution under the canopy and increased the $PM_{2.5}$ concentration locally by approximately 7% in London, UK. Jeanjean *et al.*²⁹ concluded that even though there is deposition of $PM_{2.5}$ on the trees, the aerodynamic effect decreasing the ventilation and accumulation of pollutants under the canopy increases the $PM_{2.5}$ concentration four times more than the cleaning effect by deposition decreases the pollutant concentration. In addition, certain tree species can release significant amounts of BVOC emissions.³³ The emissions of isoprene contribute to the formation of near-surface ozone in urban areas, and monoterpenes and sesquiterpenes can increase $PM_{2.5}$ and PM_{10} concentrations.⁷¹ Here we showed an increase of 22 and 24% in the normalized $PM_{2.5}$ concentration in the street canyons for the pre-COVID and COVID lockdown periods, respectively, when f_{trees}^{50} increased by the IQR, which agrees well with the earlier findings and with the larger range given in Abhijith *et al.*⁵⁶

However, we also showed that in the open areas the trees nearby the observation station actually clean the air during the pre-COVID period, and we reported a significant decrease in the normalized $PM_{2.5}$ concentration by 6% with an increase in f_{trees}^{50} by the IQR. During the COVID lockdown period, the effect of f_{trees}^{50} was insignificant in open areas. This might be due to the lower pollutant concentrations due to the COVID restrictions, as the pollutant removal by the trees has been shown to be more effective with increasing pollutant concentrations,⁷² which can be seen also in our results (Fig. 13).

Due to the cleaning effect of vegetation, planting of urban trees has often been seen as a solution to improve urban air quality^{26,27} and in urban design the green city idea with a lot of urban trees have been thought to be one with pure air.⁷³ However, planting trees in street canyons in order to purify air in urban areas should be carefully reconsidered, since it tends to deteriorate the air quality locally. Especially, the use of urban trees for alleviating a local pollution hotspot should be avoided, since it would most likely just accumulate the emissions from the hotspot and make the local pollution even worse. Instead, the urban planners should include large open areas with a high fraction of vegetation, for example urban parks with trees and low vegetation (*e.g.*, shrubs and grass),^{74,75} as pointed out also by the results of this study. In addition, low vegetation (*e.g.*, hedges), that do not capture the street level pollutants under the canopy,⁵⁶ planted between the road traffic and pedestrian lanes

in the street canyons have been shown to improve air quality in the pedestrian lanes and therefore protecting the pedestrians from pollutants coming from the road.⁵⁶

However, urban trees have an important role in controlling the human thermal comfort in cities,^{76,77} that suffer from high temperatures during the summertime as in Nanjing. In addition, urban trees also improve the well-being of the citizens.⁷⁸ Therefore, some number of trees should be planted also in the street canyons to protect the pedestrians from the heat and to make the urban areas more pleasant for the citizens. In order to minimize the deterioration effect on air quality, special attention and further research should be given to the choice of tree species, tree placement and tree heights. For example, variation in the tree height has been shown to be effective in increasing turbulence, compared to homogenous canopy height, and therefore leading to a smaller deterioration of the ventilation and air quality at the pedestrian level.³⁰ In addition, it is important to understand the effect of trees on the spatial variation of pollutant accumulation/removal and on the spatial variation of BVOC emissions, in order to understand better the spatial variation of new particle formation in cities.¹

The correlations in the linear regression analyses were rather weak even for the statistically significant cases (from 0.029 to 0.49, Table 2). Therefore, we performed also the PLS analysis which is a statistically more robust method for multi-parameter problems, especially those with interrelated variables (see Section 2.3). The variable importance obtained from the PLS analysis was giving very similar results to the values from the regression analyses further supporting the results (Table 2). The variance of normalized $PM_{2.5}$ explained in the street canyons during the COVID lockdown period by the urban characteristics studied based on the PLS analysis was 73%, which was much higher than the variance explained during the pre-COVID period (59%). This might be explained by the reduced emissions from the local point emission sources due to the restrictions during the COVID lockdown, thereby giving more importance to the morphological characteristics in the spatial variation. In addition, due to the reduced emissions, the accumulation and dispersion of pollutants were also reduced. Therefore, presumably the linear regressions and the PLS analysis in open areas during the COVID lockdown were statistically nonsignificant for all the variables studied. However, in both of these scenarios, the urban morphological characteristics studied were the most important factors in explaining the local spatial variation of $PM_{2.5}$ concentrations in street canyons.

For the open areas, the effects of some characteristics were reversed compared to the street canyons, for example nearby trees seemed to improve the $PM_{2.5}$ air quality. This should be taken carefully into account in urban planning. In addition, the variance explained by the characteristics in the open areas was much smaller than for the street canyons, and therefore further studies would be required in order to understand better the factors affecting the air quality in open areas. Also, the seasonal variation in the effect of the urban morphological characteristics on the $PM_{2.5}$ air quality should be considered in future studies. The normalization of the $PM_{2.5}$ concentrations used in



this study should minimize the effect of varying meteorological conditions, but for example the varying leaf area index of the vegetation is assumed to affect the accumulation of pollutants and the cleaning effect of the trees.

5. Conclusions

In this study we examined the effect of urban morphological characteristics on the spatial variation of near-surface normalized $PM_{2.5}$ concentrations. We focused on the most commonly used urban morphological characteristics that are rather easily defined from commonly available datasets. The study included 31 measurement stations in the Nanjing downtown area located in street canyons and open areas, covering the whole scale of urban densities typically found in cities.

The effect of nearby trees was identified to be the most important urban morphological characteristic defining the near-surface pollutant concentrations and the height-normalized roughness length as the second most important. The street canyon aspect ratio was not representing well the near-surface $PM_{2.5}$ air quality, since the fraction of trees within the street canyons had such a strong influence on the normalized $PM_{2.5}$ concentrations. The variance explained by the urban morphological characteristics studied explained 59 and 73% of the variance of the normalized $PM_{2.5}$ concentrations in the street canyons during the pre-COVID and COVID lockdown periods, respectively, which indicates that the characteristics studied were mainly responsible for the spatial variation of the $PM_{2.5}$ air quality in the street canyons of downtown Nanjing.

Since the effect of nearby trees was so dominant compared to other urban morphological characteristics, it emphasizes that the inclusion of the trees in any type of urban planning or urban modelling related to air quality is crucial in order to obtain representative results. In addition, due to the effect of the nearby trees on the local scale air quality, planting of trees in street canyons in order to purify air in urban areas should be carefully reconsidered, since it tends to deteriorate the air quality locally. Instead, the urban planners should prefer large open areas with a high fraction of vegetation, since based on our results, the trees in open areas improve the air quality. However, several studies have shown the competing positive health impact of trees in street canyons as they protect pedestrians from heat in summertime. Therefore, further research and special attention on tree species, tree placement and heights are recommended in order to minimize the negative effects of trees on air quality.

The results obtained in this study can help urban planners to identify the structures most harmful for local $PM_{2.5}$ air quality. In addition, the results can help researchers to evaluate the representativeness of an individual observation station compared to the other parts of the city and when planning a placement of a new measurement station in order to capture the varying conditions in the cities.

The effect of urban morphological characteristics on normalized $PM_{2.5}$ for the street canyons stayed very similar during the COVID lockdown period, even though the pollutant emissions decreased. This indicates that the results obtained in

this paper to evaluate the effect of urban morphological characteristics and the identification of the most important individual characteristics could be presumably transferred also to other cities even with different emission scenarios especially for the street canyons.

Author contributions

TVK and YX conceptualised the study. YX, LJ, DZ and WN were responsible for the data curation. TVK performed the analyses. BW and WQ were responsible for the observations. JS, MK and AJ supervised the study. TVK, YX, PP, SG, VMK and TP wrote the paper. All authors edited and reviewed the article.

Conflicts of interest

There are no conflicts of interest to declare.

Acknowledgements

The work is supported by Academy of Finland *via* Center of Excellence in Atmospheric Sciences (project no. 272041) and European Research Council *via* ATM-GTP 266 (742206). This research has also received funding from Academy of Finland (project no. 316114, 315203, 307537, 311932), Business Finland *via* Megasense-project, European Commission *via* SMart URban Solutions for air quality, disasters and city growth, (689443), ERA-NET-Cofund as well Jane and Aatos Erkkö Foundation and Academy of Finland Flagship funding (grant no. 337549). Partial support from the National Key R&D Program of China (2016YFC0200500), and the National Natural Science Foundation of China (91544231 & 41725020) is acknowledged.

References

- 1 M. Kulmala, China's choking cocktail, *Nature*, 2015, **526**, 497–499.
- 2 M. Kulmala, T. V. Kokkonen, J. Pekkanen, S. Paatero, T. Petäjä, V. M. Kerminen and A. Ding, Opinion: Gigacity – a source of problems or the new way to sustainable development, *Atmos. Chem. Phys.*, 2021, **21**, 8313–8322.
- 3 H. Liao, W. Y. Chang and Y. Yang, Climatic Effects of Air Pollutants over China: A Review, *Adv. Atmos. Sci.*, 2015, **32**, 115–139.
- 4 M. Shao, X. Y. Tang, Y. H. Zhang and W. J. Li, City clusters in China: air and surface water pollution, *Front. Ecol. Environ.*, 2006, **4**, 353–361.
- 5 L. J. Han, W. Q. Zhou, W. F. Li and L. Li, Impact of urbanization level on urban air quality: a case of fine particles ($PM_{2.5}$) in Chinese cities, *Environ. Pollut.*, 2014, **194**, 163–170.
- 6 HEI International Scientific Oversight Committee, *Outdoor Air Pollution and Health in the Developing Countries of Asia: A Comprehensive Review*, Health Effects Institute, Boston, MA, 2010.
- 7 J. Yang, J. G. Siri, J. V. Remais, Q. Cheng, H. Zhang, K. K. Y. Chan, Z. Sun, Y. Y. Zhao, N. Cong, X. Y. Li,



- W. Zhang, Y. Q. Bai, J. Bi, W. J. Cai, E. Y. Y. Chan, W. Q. Chen, W. C. Fan, H. Fu, J. Q. He, H. Huang, J. S. Ji, P. Jia, X. P. Jiang, M. P. Kwan, T. H. Li, X. G. Li, S. Liang, X. F. Liang, L. Liang, Q. Y. Liu, Y. M. Lu, Y. Luo, X. L. Ma, B. Schwartzlander, Z. Y. Shen, P. J. Shi, J. Su, T. G. Wu, C. H. Yang, Y. Y. Yin, Q. Zhang, Y. P. Zhang, Y. Zhang, B. Xu and P. Gong, The Tsinghua-Lancet Commission on Healthy Cities in China: unlocking the power of cities for a healthy China, *Lancet*, 2018, **391**, 2140–2184.
- 8 R. Burnett, H. Chen, M. Szyszkowicz, N. Fann, B. Hubbell, C. A. Pope, J. S. Apte, M. Brauer, A. Cohen, S. Weichenthal, J. Coggins, Q. Di, B. Brunekreef, J. Frostad, S. S. Lim, H. D. Kan, K. D. Walker, G. D. Thurston, R. B. Hayes, C. C. Lim, M. C. Turner, M. Jerrett, D. Krewski, S. M. Gapstur, W. R. Diver, B. Ostro, D. Goldberg, D. L. Crouse, R. V. Martin, P. Peters, L. Pinault, M. Tjepkema, A. Donkelaar, P. J. Villeneuve, A. B. Miller, P. Yin, M. G. Zhou, L. J. Wang, N. A. H. Janssen, M. Marra, R. W. Atkinson, H. Tsang, Q. Thach, J. B. Cannon, R. T. Allen, J. E. Hart, F. Laden, G. Cesaroni, F. Forastiere, G. Weinmayr, A. Jaensch, G. Nagel, H. Concin and J. V. Spadaro, Global estimates of mortality associated with long-term exposure to outdoor fine particulate matter, *Proc. Natl. Acad. Sci. U. S. A.*, 2018, **115**, 9592–9597.
- 9 M. R. Heal, P. Kumar and R. M. Harrison, Particles, air quality, policy and health, *Chem. Soc. Rev.*, 2012, **41**, 6606–6630.
- 10 D. D. Parrish and T. Zhu, Clean Air for Megacities, *Science*, 2009, **326**, 674–675.
- 11 J. S. Apte, K. P. Messier, S. Gani, M. Brauer, T. W. Kirchstetter, M. M. Lunden, J. D. Marshall, C. J. Portier, R. C. H. Vermeulen and S. P. Hamburg, High-Resolution Air Pollution Mapping with Google Street View Cars: Exploiting Big Data, *Environ. Sci. Technol.*, 2017, **51**, 6999–7008.
- 12 Y. D. Zhou, Y. Zhao, P. Mao, Q. Zhang, J. Zhang, L. P. Qiu and Y. Yang, Development of a high-resolution emission inventory and its evaluation and application through air quality modeling for Jiangsu Province, China, *Atmos. Chem. Phys.*, 2017, **17**, 211–233.
- 13 F. Amato, O. Favez, M. Pandolfi, A. Alastuey, X. Querol, S. Moukhtar, B. Bruge, S. Verlhac, J. A. G. Orza, N. Bonnaire, T. Le Priol, J. F. Petit and J. Sciare, Traffic induced particle resuspension in Paris: emission factors and source contributions, *Atmos. Environ.*, 2016, **129**, 114–124.
- 14 R. J. Huang, Y. L. Zhang, C. Bozzetti, K. F. Ho, J. J. Cao, Y. M. Han, K. R. Daellenbach, J. G. Slowik, S. M. Platt, F. Canonaco, P. Zotter, R. Wolf, S. M. Pieber, E. A. Brun, M. Crippa, G. Ciarelli, A. Piazzalunga, M. Schwikowski, G. Abbazade, J. Schnelle-Kreis, R. Zimmermann, Z. S. An, S. Szidat, U. Baltensperger, I. El Haddad and A. S. H. Prevot, High secondary aerosol contribution to particulate pollution during haze events in China, *Nature*, 2014, **514**, 218–222.
- 15 E. Samoli, A. Stergiopoulou, P. Santana, S. Rodopoulou, C. Mitsakou, C. Dimitroulopoulou, M. Bauwelinck, K. de Hoogh, C. Costa, M. Mari-Dell'Olmo, D. Corman, S. Vardoulakis, K. Katsouyanni and E.-H. Consortium, Spatial variability in air pollution exposure in relation to socioeconomic indicators in nine European metropolitan areas: a study on environmental inequality, *Environ. Pollut.*, 2019, **249**, 345–353.
- 16 X. W. Fu, J. F. Liu, G. A. Ban-Weiss, J. C. Zhang, X. Huang, B. Ouyang, O. Popoola and S. Tao, Effects of canyon geometry on the distribution of traffic-related air pollution in a large urban area: implications of a multi-canyon air pollution dispersion model, *Atmos. Environ.*, 2017, **165**, 111–121.
- 17 T. Wolf, L. H. Pettersson and I. Esau, A very high-resolution assessment and modelling of urban air quality, *Atmos. Chem. Phys.*, 2020, **20**, 625–647.
- 18 T. Gal and J. Unger, Detection of ventilation paths using high-resolution roughness parameter mapping in a large urban area, *Build. Environ.*, 2009, **44**, 198–206.
- 19 E. Ng, C. Yuan, L. Chen, C. Ren and J. C. H. Fung, Improving the wind environment in high-density cities by understanding urban morphology and surface roughness: a study in Hong Kong, *Landsc. Urban Plann.*, 2011, **101**, 59–74.
- 20 E. Ng, Policies and technical guidelines for urban planning of high-density cities – air ventilation assessment (AVA) of Hong Kong, *Build. Environ.*, 2009, **44**, 1478–1488.
- 21 I. D. Stewart and T. R. Oke, Local Climate Zones for Urban Temperature Studies, *Bull. Am. Meteorol. Soc.*, 2012, **93**, 1879–1900.
- 22 N. Sharma, K. K. Chaudhry and C. V. C. Rao, Air pollution dispersion studies through environmental wind tunnel (EWT) investigations: a review, *J. Sci. Ind. Res.*, 2005, **64**, 549–559.
- 23 Q. Xia, J. L. Niu and X. P. Liu, Dispersion of air pollutants around buildings: a review of past studies and their methodologies, *Indoor Built Environ.*, 2014, **23**, 201–224.
- 24 R. Kadaverugu, A. Sharma, C. Matli and R. Biniwale, High Resolution Urban Air Quality Modeling by Coupling CFD and Mesoscale Models: a Review, *Asia-Pac. J. Atmospheric Sci.*, 2019, **55**, 539–556.
- 25 S. Janhäll, Review on urban vegetation and particle air pollution – deposition and dispersion, *Atmos. Environ.*, 2015, **105**, 130–137.
- 26 V. M. Jayasooriya, A. W. M. Ng, S. Muthukumar and B. J. C. Perera, Green infrastructure practices for improvement of urban air quality, *Urban For. Urban Green.*, 2017, **21**, 34–47.
- 27 J. Yang, J. McBride, J. Zhou and Z. Sun, The urban forest in Beijing and its role in air pollution reduction, *Urban For. Urban Green.*, 2005, **3**, 65–78.
- 28 S. Di Sabatino, R. Buccolieri, G. Pappacogli and L. S. Leo, The effects of trees on micrometeorology in a real street canyon: consequences for local air quality, *Int. J. Environ. Pollut.*, 2015, **58**, 100–111.
- 29 A. P. R. Jeanjean, R. Buccolieri, J. Eddy, P. S. Monks and R. J. Leigh, Air quality affected by trees in real street



- canyons: the case of Marylebone neighbourhood in central London, *Urban For. Urban Green.*, 2017, **22**, 41–53.
- 30 S. Karttunen, M. Kurppa, M. Auvinen, A. Hellsten and L. Järvi, Large-eddy simulation of the optimal street-tree layout for pedestrian-level aerosol particle concentrations – a case study from a city-boulevard, *Atmos. Environ.: X*, 2020, **6**, 100073.
- 31 P. E. J. Vos, B. Maiheu, J. Vankerkom and S. Janssen, Improving local air quality in cities: to tree or not to tree?, *Environ. Pollut.*, 2013, **183**, 113–122.
- 32 Y. Xing and P. Brimblecombe, Trees and parks as “the lungs of cities”, *Urban For. Urban Green.*, 2020, **48**, 126552.
- 33 C. Calfapietra, S. Fares, F. Manes, A. Morani, G. Sgrigna and F. Loreto, Role of Biogenic Volatile Organic Compounds (BVOC) emitted by urban trees on ozone concentration in cities: a review, *Environ. Pollut.*, 2013, **183**, 71–80.
- 34 D. Hertwig, H. L. Gough, S. Grimmond, J. F. Barlow, C. W. Kent, W. E. Lin, A. G. Robins and P. Hayden, Wake Characteristics of Tall Buildings in a Realistic Urban Canopy, *Bound.-Layer Meteorol.*, 2019, **172**, 239–270.
- 35 D. Hertwig, S. Grimmond, S. Kotthaus, C. Vanderwel, H. Gough, M. Haeffelin and A. Robins, Variability of physical meteorology in urban areas at different scales: implications for air quality, *Faraday Discuss.*, 2021, **226**, 149–172.
- 36 Y. Zhang, X. Ye, S. Wang, X. He, L. Dong, N. Zhang, H. Wang, Z. Wang, Y. Ma, L. Wang, X. Chi, A. Ding, M. Yao, Y. Li, Q. Li, L. Zhang and Y. Xiao, Large-eddy simulation of traffic-related air pollution at a very high resolution in a mega-city: evaluation against mobile sensors and insights for influencing factors, *Atmos. Chem. Phys.*, 2021, **21**, 2917–2929.
- 37 Z. J. Gu, W. M. Ju, L. Li, D. Q. Li, Y. B. Liu and W. L. Fan, Using vegetation indices and texture measures to estimate vegetation fractional coverage (VFC) of planted and natural forests in Nanjing city, China, *Adv. Space Res.*, 2013, **51**, 1186–1194.
- 38 H. Abdi, Partial least squares regression and projection on latent structure regression (PLS Regression), *Wiley Interdiscip. Rev. Comput. Stat.*, 2010, **2**, 97–106.
- 39 B. V. Smoliak, J. M. Wallace, P. Lin and Q. Fu, Dynamical Adjustment of the Northern Hemisphere Surface Air Temperature Field: Methodology and Application to Observations, *J. Clim.*, 2015, **28**, 1613–1629.
- 40 A. Ceglar, A. Toreti, R. Lecerf, M. Van der Velde and F. Dentener, Impact of meteorological drivers on regional inter-annual crop yield variability in France, *Agric. For. Meteorol.*, 2016, **216**, 58–67.
- 41 L. Guo, J. M. Cheng, E. Luedeling, S. E. Koerner, J. S. He, J. C. Xu, C. C. Gang, W. Li, R. M. Luo and C. H. Peng, Critical climate periods for grassland productivity on China's Loess Plateau, *Agric. For. Meteorol.*, 2017, **233**, 101–109.
- 42 M. T. Hou, A. K. Venäläinen, L. P. Wang, P. I. Pirinen, Y. Gao, S. F. Jin, Y. X. Zhu, F. Y. Qin and Y. H. Hu, Spatio-temporal divergence in the responses of Finland's boreal forests to climate variables, *Int. J. Appl. Earth Obs. Geoinf.*, 2020, **92**, 102186.
- 43 V. K. Prasad, K. V. S. Badarinath and A. Eaturu, Effects of precipitation, temperature and topographic parameters on evergreen vegetation greenery in the Western Ghats, India, *Int. J. Climatol.*, 2008, **28**, 1807–1819.
- 44 E. Brunelli, I. Bernabo, C. Berg, K. Lundstedt-Enkel, A. Bonacci and S. Tripepi, Environmentally relevant concentrations of endosulfan impair development, metamorphosis and behaviour in *Bufo bufo* tadpoles, *Aquat. Toxicol.*, 2009, **91**, 135–142.
- 45 J. H. Matthes, S. H. Knox, C. Sturtevant, O. Sonnentag, J. Verfaillie and D. Baldocchi, Predicting landscape-scale CO₂ flux at a pasture and rice paddy with long-term hyperspectral canopy reflectance measurements, *Biogeosciences*, 2015, **12**, 4577–4594.
- 46 I. G. Chong and C. H. Jun, Performance of some variable selection methods when multicollinearity is present, *Chemom. Intell. Lab. Syst.*, 2005, **78**, 103–112.
- 47 E. J. Plate, Urban Climates and Urban Climate Modelling – an Introduction, *NATO Adv. Sci. Inst. Ser., Ser. I*, 1995, **277**, 23–39.
- 48 M. Hussain and B. E. Lee, A Wind-Tunnel Study of the Mean Pressure Forces Acting on Large Groups of Low-Rise Buildings, *J. Wind Eng. Ind. Aerod.*, 1980, **6**, 207–225.
- 49 C. S. B. Grimmond and T. R. Oke, Aerodynamic properties of urban areas derived, from analysis of surface form, *J. Appl. Meteorol.*, 1999, **38**, 1262–1292.
- 50 T. R. Oke, Street Design and Urban Canopy Layer Climate, *Energy Build.*, 1988, **11**, 103–113.
- 51 R. W. MacDonald, R. F. Griffiths and D. J. Hall, An improved method for the estimation of surface roughness of obstacle arrays, *Atmos. Environ.*, 1998, **32**, 1857–1864.
- 52 C. W. Kent, S. Grimmond and D. Gatey, Aerodynamic roughness parameters in cities: inclusion of vegetation, *J. Wind Eng. Ind. Aerod.*, 2017, **169**, 168–176.
- 53 C. Y. Jim and S. S. Chen, Comprehensive greenspace planning based on landscape ecology principles in compact Nanjing city, China, *Landsc. Urban Plann.*, 2003, **65**, 95–116.
- 54 U. Högström, Review of some basic characteristics of the atmospheric surface layer, *Bound.-Layer Meteorol.*, 1996, **78**, 215–246.
- 55 W. S. Cleveland and S. J. Devlin, Locally Weighted Regression: An Approach to Regression Analysis by Local Fitting, *J. Am. Stat. Assoc.*, 1988, **83**, 596–610.
- 56 K. V. Abhijith, P. Kumar, J. Gallagher, A. McNabola, R. Baldauf, F. Pilla, B. Broderick, S. Di Sabatino and B. Pulvirenti, Air pollution abatement performances of green infrastructure in open road and built-up street canyon environments – a review, *Atmos. Environ.*, 2017, **162**, 71–86.
- 57 X. Huang, A. Ding, J. Gao, B. Zheng, D. Zhou, X. Qi, R. Tang, J. Wang, C. Ren, W. Nie, X. Chi, Z. Xu, L. Chen, Y. Li, F. Che, N. Pang, H. Wang, D. Tong, W. Qin, W. Cheng, W. Liu, Q. Fu, B. Liu, F. Chai, S. J. Davis, Q. Zhang and K. He, Enhanced secondary pollution offset reduction of primary emissions during COVID-19 lockdown in China, *Natl. Sci. Rev.*, 2021, **8**(2), nwa137.



- 58 S. Wang, Y. Ma, Z. Wang, L. Wang, X. Chi, A. Ding, M. Yao, Y. Li, Q. Li, M. Wu, L. Zhang, Y. Xiao and Y. Zhang, Mobile monitoring of urban air quality at high spatial resolution by low-cost sensors: impacts of COVID-19 pandemic lockdown, *Atmos. Chem. Phys.*, 2021, **21**, 7199–7215.
- 59 R. Zhang, Y. Zhang, H. Lin, X. Feng, T.-M. Fu and Y. Wang, NO_x Emission Reduction and Recovery during COVID-19 in East China, *Atmosphere*, 2020, **11**, 433.
- 60 M. Guevara, O. Jorba, A. Soret, H. Petetin, D. Bowdalo, K. Serradell, C. Tena, H. Denier van der Gon, J. Kuenen, V. H. Peuch and C. Pérez García-Pando, Time-resolved emission reductions for atmospheric chemistry modelling in Europe during the COVID-19 lockdowns, *Atmos. Chem. Phys.*, 2021, **21**, 773–797.
- 61 P. Edussuriya, A. Chan and A. Malvin, Urban morphology and air quality in dense residential environments: correlations between morphological parameters and air pollution at street-level, *J. Eng. Sci. Technol.*, 2014, **9**, 64–80.
- 62 P. Edussuriya, A. Chan and A. Ye, Urban morphology and air quality in dense residential environments in Hong Kong. Part I: district-level analysis, *Atmos. Environ.*, 2011, **45**, 4789–4803.
- 63 M. Kurppa, A. Hellsten, M. Auvinen, S. Raasch, T. Vesala and L. Järvi, Ventilation and Air Quality in City Blocks Using Large-Eddy Simulation—Urban Planning Perspective, *Atmosphere*, 2018, **9**, 65.
- 64 X. X. Li, C. H. Liu, D. Y. C. Leung and K. M. Lam, Recent progress in CFD modelling of wind field and pollutant transport in street canyons, *Atmos. Environ.*, 2006, **40**, 5640–5658.
- 65 D. Voordeckers, T. Lauriks, S. Denys, P. Billen, T. Tytgat and M. Van Acker, Guidelines for passive control of traffic-related air pollution in street canyons: an overview for urban planning, *Landsc. Urban Plann.*, 2021, **207**, 103980.
- 66 C. Gromke and B. Ruck, Pollutant Concentrations in Street Canyons of Different Aspect Ratio with Avenues of Trees for Various Wind Directions, *Bound.-Layer Meteorol.*, 2012, **144**, 41–64.
- 67 A. A. Karner, D. S. Eisinger and D. A. Niemeier, Near-Roadway Air Quality: Synthesizing the Findings from Real-World Data, *Environ. Sci. Technol.*, 2010, **44**, 5334–5344.
- 68 J. Hitchins, L. Morawska, R. Wolff and D. Gilbert, Concentrations of submicrometre particles from vehicle emissions near a major road, *Atmos. Environ.*, 2000, **34**, 51–59.
- 69 H. Ling, S. C. C. Lung and U. Uhrner, Micro-scale particle simulation and traffic-related particle exposure assessment in an Asian residential community, *Environ. Pollut.*, 2020, **266**, 115046.
- 70 Y. Xing and P. Brimblecombe, Dispersion of traffic derived air pollutants into urban parks, *Sci. Total Environ.*, 2018, **622**, 576–583.
- 71 G. Churkina, F. Kuik, B. Bonn, A. Lauer, R. Grote, K. Tomiak and T. M. Butler, Effect of VOC Emissions from Vegetation on Air Quality in Berlin during a Heatwave, *Environ. Sci. Technol.*, 2017, **51**, 6120–6130.
- 72 M. Tallis, G. Taylor, D. Sinnett and P. Freer-Smith, Estimating the removal of atmospheric particulate pollution by the urban tree canopy of London, under current and future environments, *Landsc. Urban Plann.*, 2011, **103**, 129–138.
- 73 M. Santamouris, G. Ban-Weiss, P. Osmond, R. Paolini, A. Synnefa, C. Cartalis, A. Muscio, M. Zinzi, T. E. Morakinyo, E. Ng, Z. Tan, H. Takebayashi, D. Sailor, P. Crank, H. Taha, A. L. Pisello, F. Rossi, J. Zhang and D. Kolokotsa, Progress in Urban Greenery Mitigation Science – Assessment Methodologies Advanced Technologies and Impact on Cities, *J. Civ. Eng. Manag.*, 2018, **24**, 638–671.
- 74 L. Y. Rui, R. Buccolieri, Z. Gao, E. Gatto and W. W. Ding, Study of the effect of green quantity and structure on thermal comfort and air quality in an urban-like residential district by ENVI-met modelling, *Build. Simulat.*, 2019, **12**, 183–194.
- 75 V. Yli-Pelkonen, H. Setälä and V. Viippola, Urban forests near roads do not reduce gaseous air pollutant concentrations but have an impact on particles levels, *Landsc. Urban Plann.*, 2017, **158**, 39–47.
- 76 A. Hami, B. Abdi, D. Zarehaghi and S. Bin Maulan, Assessing the thermal comfort effects of green spaces: a systematic review of methods, parameters, and plants' attributes, *Sustain. Cities Soc.*, 2019, **49**, 101634.
- 77 M. Taleghani, Outdoor thermal comfort by different heat mitigation strategies – a review, *Renewable Sustainable Energy Rev.*, 2018, **81**, 2011–2018.
- 78 M. van den Berg, W. Wendel-Vos, M. van Poppel, H. Kemper, W. van Mechelen and J. Maas, Health benefits of green spaces in the living environment: a systematic review of epidemiological studies, *Urban For. Urban Green.*, 2015, **14**, 806–816.

