



# The Effects of Hot Corrosion Pits on the Fatigue Resistance of a Disk Superalloy

*Timothy P. Gabb and Jack Telesman  
Glenn Research Center, Cleveland, Ohio*

*Brian Hazel  
GE Aviation, Cincinnati, Ohio*

*David P. Mourer  
GE Aviation, Lynn, Massachusetts*

## NASA STI Program . . . in Profile

Since its founding, NASA has been dedicated to the advancement of aeronautics and space science. The NASA Scientific and Technical Information (STI) program plays a key part in helping NASA maintain this important role.

The NASA STI Program operates under the auspices of the Agency Chief Information Officer. It collects, organizes, provides for archiving, and disseminates NASA's STI. The NASA STI program provides access to the NASA Aeronautics and Space Database and its public interface, the NASA Technical Reports Server, thus providing one of the largest collections of aeronautical and space science STI in the world. Results are published in both non-NASA channels and by NASA in the NASA STI Report Series, which includes the following report types:

- **TECHNICAL PUBLICATION.** Reports of completed research or a major significant phase of research that present the results of NASA programs and include extensive data or theoretical analysis. Includes compilations of significant scientific and technical data and information deemed to be of continuing reference value. NASA counterpart of peer-reviewed formal professional papers but has less stringent limitations on manuscript length and extent of graphic presentations.
- **TECHNICAL MEMORANDUM.** Scientific and technical findings that are preliminary or of specialized interest, e.g., quick release reports, working papers, and bibliographies that contain minimal annotation. Does not contain extensive analysis.
- **CONTRACTOR REPORT.** Scientific and technical findings by NASA-sponsored contractors and grantees.

- **CONFERENCE PUBLICATION.** Collected papers from scientific and technical conferences, symposia, seminars, or other meetings sponsored or cosponsored by NASA.
- **SPECIAL PUBLICATION.** Scientific, technical, or historical information from NASA programs, projects, and missions, often concerned with subjects having substantial public interest.
- **TECHNICAL TRANSLATION.** English-language translations of foreign scientific and technical material pertinent to NASA's mission.

Specialized services also include creating custom thesauri, building customized databases, organizing and publishing research results.

For more information about the NASA STI program, see the following:

- Access the NASA STI program home page at <http://www.sti.nasa.gov>
- E-mail your question via the Internet to [help@sti.nasa.gov](mailto:help@sti.nasa.gov)
- Fax your question to the NASA STI Help Desk at 443-757-5803
- Telephone the NASA STI Help Desk at 443-757-5802
- Write to:  
NASA Center for AeroSpace Information (CASI)  
7115 Standard Drive  
Hanover, MD 21076-1320

NASA/TM—2009-215629



# The Effects of Hot Corrosion Pits on the Fatigue Resistance of a Disk Superalloy

*Timothy P. Gabb and Jack Telesman  
Glenn Research Center, Cleveland, Ohio*

*Brian Hazel  
GE Aviation, Cincinnati, Ohio*

*David P. Mourer  
GE Aviation, Lynn, Massachusetts*

National Aeronautics and  
Space Administration

Glenn Research Center  
Cleveland, Ohio 44135

---

August 2009

## Acknowledgments

The authors would like to acknowledge Ron Tolbert at GE Aviation for technical work, John Gayda at NASA Glenn Research Center for finite element modeling, James W. Smith for microprobe evaluations, and the NASA Aviation Safety and Intelligent Propulsion programs for support.

Trade names and trademarks are used in this report for identification only. Their usage does not constitute an official endorsement, either expressed or implied, by the National Aeronautics and Space Administration.

*Level of Review:* This material has been technically reviewed by technical management.

Available from

NASA Center for Aerospace Information  
7115 Standard Drive  
Hanover, MD 21076-1320

National Technical Information Service  
5285 Port Royal Road  
Springfield, VA 22161

Available electronically at <http://gltrs.grc.nasa.gov>

# **The Effects of Hot Corrosion Pits on the Fatigue Resistance of a Disk Superalloy**

Timothy P. Gabb and Jack Telesman  
National Aeronautics and Space Administration  
Glenn Research Center  
Cleveland, Ohio 44135

Brian Hazel  
GE Aviation  
Cincinnati, Ohio 45215

David P. Mourer  
GE Aviation  
Lynn, Massachusetts 01910

## **Abstract**

The effects of hot corrosion pits on low cycle fatigue life and failure modes of the disk superalloy ME3 were investigated. Low cycle fatigue specimens were subjected to hot corrosion exposures producing pits, then tested at low and high temperatures. Fatigue lives and failure initiation points were compared to those of specimens without corrosion pits. Several tests were interrupted to estimate the fraction of fatigue life that fatigue cracks initiated at pits. Corrosion pits significantly reduced fatigue life by 60 to 98 percent. Fatigue cracks initiated at a very small fraction of life for high temperature tests, but initiated at higher fractions in tests at low temperature. Critical pit sizes required to promote fatigue cracking were estimated, based on measurements of pits initiating cracks on fracture surfaces.

## **Introduction**

Increasing turbine inlet temperatures allow improved turbine engine efficiency, which can decrease fuel consumption and increase performance in aerospace propulsion applications. However, this results in higher disk rim temperatures in some projections (ref. 1). As disk rim temperatures approach 700 °C, salt contaminants from intake air, engine components, and combustion could melt. The liquid salt mixture could then attack such disk surfaces. Type II hot corrosion mechanisms, in which the protective oxide formed on superalloys is locally reduced by the salt and rendered nonprotective (ref. 2), could then form hot corrosion pits.

Much of the published hot corrosion and associated oxidation studies of gas turbine engine materials have focused on turbine blade, vane, and combustor materials at high temperatures of 800 to 1000 °C (refs. 3 and 4). These components are often limited by high temperature creep or thermal fatigue, due to these high temperatures. However, material consumption and pits produced by hot corrosion attack can reduce their expected life. Turbine rotor disks, interstage rings, and seals have been designed for high strength, fatigue, creep, and oxidation resistance at lower temperatures up to 700 °C. The “disk” superalloys employed here are often limited by fatigue due to the very high centrifugal forces exerted by rotation of these parts, attendant turbine blades, and other attached hardware. Relatively few studies have been published on the effects of hot corrosion pitting damage on disk superalloy durability. However, pits produced by a plating process were definitively shown to initiate fatigue cracks and limit fatigue life of a cast and wrought disk superalloy Inconel 718 (ref. 5). More recent work (ref. 6) has shown that pits produced by hot corrosion can form on a newer, powder metallurgy disk superalloy RR1000, potentially lowering fatigue life.

The effects of corrosion pits on fatigue life have been studied closely in various other alloys (refs. 7 to 9). In this work, fatigue crack initiation at pits has often been considered to occur very early in fatigue life. Fatigue life modeling of pitted materials has therefore often been concentrated on fatigue crack growth, using initial crack dimensions of the pit cross section. However, such assumptions would need to be verified before application to pitted superalloy disks.

The objective of this study was to determine effects of hot corrosion on low cycle fatigue life and failure modes of ME3 disk superalloy. Low cycle fatigue specimens were machined from several disks, subjected to hot corrosion exposures, then tested at low and high temperatures. Fatigue lives and failure initiation points were compared to those of specimens without corrosion exposures. Several tests were interrupted to estimate the fractions of fatigue life at which fatigue cracks initiate at pits.

## Material and Procedures

A recently developed powder metallurgy disk superalloy ME3, also sometimes referred to as Rene 104 and ME16 (refs. 10 to 12), was argon atomized, consolidated, hot compacted, extruded and isothermally forged into disks approximately 61 cm diameter with a 5 cm maximum thickness. The disks were then supersolvus solution heat treated, and given aging heat treatments (ref. 13). Cylindrical low cycle fatigue specimens were machined having a gage diameter of 10.2 mm and gage length of 19 mm, with a low stress ground and polished finish. A subset of specimens was shot peened. A mixture of sulfur-containing salts was then applied to the middle of the gage sections for a group of these specimens. They were then exposed in air at 704 °C for 8 and 24 h within a resistance heating furnace in order to produce accelerated hot corrosion damage. This corrosion treatment was not intended to exactly reproduce the make-up of contaminants from a particular instance of engine service or to simulate actual temperature-time conditions for a turbine disk location. Instead, the treatment was intended to rapidly produce hot corrosion attack in the form of pits, in order to assess the potential effects of pits on fatigue life.

Low cycle fatigue tests were performed in a servo-hydraulic test system, with specimen heating by a direct induction system and specimen strain measured by an axial extensometer. Tests were initiated with strain controlled using a triangular waveform at a frequency of 0.33 Hz. These tests were performed at 204 °C with a strain range of 0.5 percent, and at 704 °C with a strain range of 0.75 percent. The ratio of minimum over maximum strain (R) was maintained at 0 for both cases. Tests surviving beyond 24 h were interrupted, and then continued to failure with load controlled using a triangular waveform at a frequency of 5 Hz. The load levels here were adjusted for each test to maintain the same maximum and minimum stresses immediately prior to test interruption. All tests were run to failure, although several tests were periodically interrupted before failure to determine when the onset of surface fatigue crack initiations occurred in tests. Five tests were performed at each temperature for each condition to estimate mean fatigue life: as-machined with a low stress ground finish (LSG), low stress ground and subsequently shot-peened (SP), LSG then corroded 8 h (LSG+8h), LSG then corroded 24 h (LSG+24h), SP then corroded 8h (SP+8h), and SP then corroded 24 h (SP+24h). Fractography was performed to quantify failure initiation sites on all specimens, using a JEOL 6100 scanning electron microscope (SEM). Several longitudinal sections of failed specimens were metallographically prepared and examined using optical and scanning electron microscopes, and a JEOL JXA-8200 scanning electron microprobe.

The depth, width, and cross sectional area of each pit initiating a fatigue crack on the fracture surface of each specimen were determined and compared. Subsequently, these dimensions were grouped by test condition and ranked, to estimate cumulative probability of fatigue cracking versus pit depth, width, and cross-sectional area. Cumulative probabilities of crack occurrence versus pit dimensions were assessed using SuperSMITH(R) Weibull software of Fulton Findings, LLC. Two different statistical distribution assumptions were evaluated and fit by rank regression: log normal and 3 parameter Weibull distributions. In the log normal distribution, the natural logarithm of each dimension (x) was regressed to estimate a mean value ( $\mu$ ) and standard deviation ( $\sigma$ ), then employed in the following cumulative distribution function:

$$CDF_{ln} = \frac{1}{2} + \frac{1}{2} \operatorname{erf}[(\ln(x) - \mu)/(\sigma\sqrt{2})] \quad (1)$$

In the 3 parameter Weibull distribution (ref. 14), the data was regressed to determine a Weibull slope ( $\beta$ ), characteristic value ( $\eta$ ), and offset ( $t_0$ ) that was used in the cumulative distribution function:

$$CDF_{Weib3} = 1 - \exp[-((x-t_0)/\eta)^\beta] \quad (2)$$

Note that a fitted Weibull distribution can approximate other distribution functions, including the normal, exponential, Rayleigh, and some Poisson and Binomial distributions (ref. 15). Goodness of fit was assessed using the coefficient of determination adjusted for the number of estimated parameters, ( $R^2_{adj}$ ), where a value of 0.50 indicates 50 percent of the response variation is attributable to the variables and a value of 1.0 indicates 100 percent of the response variation is attributable to the variables. Other statistics generated in the SuperSMITH software were also sometimes used to further assess fit.

For estimation of residual stress and cold work in the shot peened specimens before and after corrosion exposures, the gage section of one untested, shot peened fatigue specimen was sliced transversely to produce several cylindrical gage segments. One segment was retained in this state, while other segments were exposed in a resistance heating furnace at 704 °C for times of 8 and 24 h. Residual stress and cold work at the surface were subsequently measured by X-ray diffraction in the loading direction at six points spaced 30° apart circling around the segment perimeter. Residual stress and cold work were then determined as functions of depth at one of these locations on each segment, by sequentially electro-polishing material away of known thickness and performing X-ray measurements. All surface measurements were then corrected for the near-surface stress gradient, using the corresponding depth profile of the appropriate specimen. The X-ray measurements were performed at Lambda Technologies, Inc., Cincinnati, Ohio, using the two-angle sine-squared-psi technique, in accordance with SAE HS-784. Diffraction of manganese K-alpha radiation by the (311) planes was performed, to determine peak intensity, breadth, and angular position (ref. 16).

## Results and Discussion

### Material

Typical microstructures from the test material are shown in figure 1 (ref. 13). The material ranged in average grain size from 25 to 34  $\mu\text{m}$ , and as-large-as grain size of 90 to 170  $\mu\text{m}$ . Mean diameters for secondary gamma prime precipitates ranged from 0.19 to 0.33  $\mu\text{m}$ , and for tertiary gamma prime precipitates ranged from 18 to 39 nm. These differences in specimen microstructure were due to varying prior location of specimens from within disks which had been given intentionally varied solution quench heat treatments (ref. 13). Specimens for each test condition were selected from multiple disks and locations to span this range of microstructure, and associated mechanical response.

Fatigue specimen surfaces after the hot corrosion exposures are shown in figure 2. The salt mixture, applied in a ring around the middle of the gage section, melted at 704 °C and caused pits to form within and along the edges of this ring. The 8 h corrosion exposure produced fewer, usually separated pits that were near hemispherical in profile, as indicated by the arrows. The 24 h exposure produced a higher density of pits, which were sometimes joined together along the ring edges, also indicated. The range of pit morphologies captured by 8 and 24 h exposures allowed determination of how variations in pit characteristics influence fatigue life.

Oxide layers were sometimes retained within and over pits, but in other cases the oxide layers spalled, to openly expose the pits. Open pits are shown at higher magnification in the SEM image of figure 3. The delineation of grain boundaries in the open pit of figure 3 indicates localized corrosion attack at the grain boundaries occurred within these pits. This was easily observed in some, though not all pits.

A cross section containing a pit with the oxide layers still attached is shown in figure 4, from a metallographically prepared section of a specimen. This pit section was analyzed using a scanning electron microprobe, and the major oxide layers in the pit are identified in the figure. Outer porous layers of nickel and cobalt oxide covered entrapped salt particles. Within these outer layers were very fine alternating layers of chromium, aluminum, titanium, and nickel oxides. CrS was present at the inner most layer of attack in the pit. This damage was consistent with a hot corrosion attack mechanism whereby the molten salt breaks down the chromium and aluminum oxides, rendering them nonprotective and allowing sulfur penetration and attack of the substrate to form CrS at the corrosion front (ref. 2).

### Fatigue Life Response

The lives of low cycle fatigue tests performed at 204 and 704 °C are tabulated in table 1 and compared in figure 5. Evaluations indicated the logarithm of lives could be treated as normally distributed, so mean lives were computed from the log(life) values and back transformed for comparisons versus corrosion time in figure 5. Hot corrosion substantially reduced mean fatigue life, by between 60 and 98 percent. The largest reductions were observed in tests at 704 °C, where the LSG+24h corroded condition reduced life from the LSG condition by 98 percent. In tests at 204 °C, this LSG+24h corroded condition reduced mean life by 77 percent. Cyclic fatigue life ( $N_f$ ) approximately varied with hot corrosion time ( $t$ ) according to a power law relationship for LSG specimens:

$$N_{f204^{\circ}\text{C}} = 86,245 t^{-0.2558} \quad (3)$$

$$N_{f704^{\circ}\text{C}} = 17,097 t^{-0.6941} \quad (4)$$

Shot peening of specimens increased mean life for all conditions, but by varying degrees. The positive effect of shot peening was most pronounced for specimens tested at 204 °C after 8 h corrosion exposure. As shown in figure 5, whereas the mean fatigue life of the unpeened specimens tested at these conditions was reduced by over 50 percent, the shot peened specimens given the same 8 h exposure showed equivalent mean life to the unexposed specimens. However, for the specimens given 24 h of corrosion exposure and tested at 204 °C, shot peening was not able to compensate for the corrosion damage and accordingly the SP+24h fatigue life was considerably shorter than for the unexposed specimens. For tests at 704 °C after both corrosion times, shot peening did not negate the effects of subsequent hot corrosion on mean fatigue life. The power law relationship with corrosion time was less applicable here.

### Residual Stress Response

The variation in benefits of shot peening on life could be due in part to the evolution of associated residual stress and cold work during corrosion treatments and fatigue testing. Therefore, axial residual stress and cold work were determined by X-ray diffraction on sections from an untested shot peened specimen given exposure times of 0, 8, and 24 h at 704 °C. Mean residual stress and cold work at the surface are compared as functions of exposure in figures 6 and 7. Mean compressive residual stress (CRS) strongly decreased in magnitude with just 8 h exposure at 704 °C, while further exposure to 24 h produced only a small additional decrease in residual stresses, according to the power law relationship shown below:

$$\text{CRS} = 794.5 t^{0.1755} \quad (5)$$

Cold work magnitude similarly decreased with exposure time. Corresponding plots of residual stress and cold work versus depth are compared for the three conditions in figure 7. Maximum compressive residual



stress occurred beneath the surface, with the magnitude of the maximum compressive stress also decreased in magnitude with increasing exposure time. The depth of compressive residual stresses and cold work remained about 0.1 mm (100  $\mu\text{m}$ ).

Mean compressive residual stresses at the surface versus mean log(life) of shot peened specimens are shown in figure 8. The reductions of beneficial compressive residual stress with exposure time were often associated with reductions in mean fatigue life of shot peened specimens, but not consistently. A corrosion time of 8 h at 704 °C strongly reduced compressive residual stress by 57 percent, where the accompanying mean fatigue life was reduced by 86 percent. However, continuing exposure to 24 h further decreased compressive residual stress by only 6 percent, while further decreasing fatigue life 73 percent, a very significant reduction. This lack of consistent time dependence was even more evident in fatigue tests at 204 °C, where mean life was unchanged after 8 h corrosion, but dropped after 24 h corrosion by 70 percent.

The differences in residual stress-mean fatigue life relationships at the two test temperatures could be due in part to the influences of cyclic loading on these compressive residual stresses. Cyclic plastic flow during initial fatigue cycling at both test temperatures may reduce compressive residual stresses near the surface. Additional time-dependent relaxation of compressive residual stresses near the surface of shot peened specimens could occur due at the high 704 °C test temperature (ref. 12) with continued fatigue cycling at 704 °C. These factors appeared to often reduce the ability of compressive surface residual stresses from shot peening to suppress crack initiations at the specimen's surface pits for improved life, as will be subsequently shown.

### **Fatigue Failure Modes**

The failure initiation sites were identified for all specimens, with typical results compared in figure 9. Failures for specimens not corroded occurred at relatively large grains, which failed on crystallographic planes. Such failures are often termed "facet" grain failures, and are commonly observed in ME3 (ref. 17). Some of these failures were at or near the specimen surfaces, while others were internal and away from the surface. Failures of most corroded specimens initiated from hot corrosion pits at the specimen surface. For specimens tested at 204 °C, failures usually initiated at grain facets along the pits. In corroded specimens tested at 704 °C, cracks initiated along grain boundaries connected to the pit surfaces. Multiple failure initiation sites were present for specimens corroded 24 h, while fewer or even single failure initiation sites were present for specimens corroded 8 h. These results consistently applied for all corroded specimens having large reductions in life from the baselines.

However, the failure mode shifted for most, though not all, SP+8h corroded specimens tested at 204 °C, which had no reduction in mean life. For this one case, cracks initiated at internal grain facets rather than at surface pits to cause failure in four out of five of the SP+8h specimens, giving no reductions in mean life. The remaining specimen had cracks initiated both from an internal grain facet and at two surface pits (fig. 10), and lower resulting life. Thus for the SP+8h condition with tests conducted at 204 °C, compressive residual stresses produced by shot peening were apparently sufficient to mostly suppress fatigue cracking at surface pits, which greatly benefited fatigue life. Yet, in all other SP+8,24h test conditions, the compressive residual stresses were apparently reduced by plastic flow and time-dependent stress relaxation sufficiently to still allow fatigue cracking at the pits, with large reductions in life.

Several fatigue tests were interrupted at cycling intervals, in order to study the onset of crack initiation and assess the mechanisms of crack initiation and propagation at pits. Typical pits on the surfaces of LSG+24h specimens are shown fatigue cycles at 204 and 704 °C in figure 11, with the load direction oriented vertically. Specimens tested at 204 °C did not have identifiable fatigue cracks within the pits when first interrupted at 250 cycles. However, specimens tested at 704 °C for only 250 cycles already had cracks present, with the cracks initiated along grain boundaries nearly normal to the loading axis, figure 11(b). Multiple cracks initiated along grain boundaries within the corrosion pits very early in

tests at 704 °C, which coalesced and grew for the remaining large majority of life to cause failure. In the case of tests at 204 °C, the first cracks were not detected until approximately 1/3 to 1/2 of life was consumed for each corroded condition, e.g., at least 10,000 cycles for the LSG+24h case. In contrast to the 704 °C tests, the crack initiation within the corrosion pits at 204 °C was transgranular with the cracks appearing on apparent crystallographic facets as shown in figure 11(a). This indicated a substantial portion of fatigue life was consumed in the process of fatigue crack initiation at 204 °C. Conversely, most of the fatigue life at 704 °C was apparently taken up in propagation of fatigue cracks, initiated very early in life, at grain boundaries often attacked and weakened by corrosion in the pits (fig. 3). This is consistent with the greater reductions in life observed for corroded specimens tested at 704 °C.

The dimensions of pits initiating identifiable fatigue cracks were measured on the fracture surface of each specimen. Pit depth ( $d$ ) and width ( $w$ ) were measured for each initiation site as shown in figure 10, for approximately 3 to 15 initiation sites present on each fracture surface. Pits which caused fatigue cracks had depths of 21 to 100  $\mu\text{m}$  and widths of 71  $\mu\text{m}$  to 4.56 mm. The very large widths sometimes observed were due to the linking of some corrosion pits in the width direction along the edge of the melted salt ring, as evident in figure 2.

Fatigue damage often first initiates cracks at the largest defects. Therefore, the largest pit depth, width, and cross sectional area measured of the cracked pits on each fracture surface were first evaluated. Maximum pit dimensions were first compared versus corrosion time, as exemplified in the plot of maximum pit depth for specimens tested at 204 and 704 °C versus corrosion time in figure 12 and are summarized in table 2. Maximum pit depth, width, and area all increased significantly with corrosion time. However, there was substantial overlap in values across time in most cases. These maximum pit dimensions are compared versus fatigue lives for each specimen in figure 13 and are summarized in table 3. An increase of each pit dimension significantly decreased fatigue life. This is in agreement with previous work where fatigue life was related to pit depth (refs. 5 and 7). The different pit dimensions were cross-correlated with specimen life, in that lower specimen life occurred in specimens having larger pit depth, width, and area. So step-wise multiple linear regression could not be used to determine the best predictors and most influential dimensions. However, comparison of the coefficients of determination for each separately regressed dimension indicated pit cross sectional area usually correlated with life better than either pit depth or width.

The above correlations of increasing fatigue life with decreasing pit size suggest a “critical” pit size could exist below which no fatigue cracks initiate to cause premature failure. Pits of a relatively wide range of sizes were intentionally produced, and many were found to initiate fatigue cracks on the fracture surfaces. Therefore, cumulative probabilities for cracking at pits could be estimated, versus ranked dimensions of all pits initiating cracks on the fracture surfaces of all specimens. Critical values of pit depth, width, and area having minimum ( $P = 0.001$ ) probabilities of initiating fatigue cracks were thereby estimated, and are tabulated in table 4. In this evaluation, both log normal and three parameter Weibull distribution assumptions were found to give good fits, figure 14.

Pit depth was found to give better correlations than other pit dimensions using both log normal and three parameter Weibull equations, table 3, and figure 14. Coefficients of determination were well above 0.90 for all conditions using pit depth. Pit area had similar, satisfactory correlations for fatigue specimens tested at 204 °C, but somewhat lower values for those tested at 704 °C. This appeared related to several outlier width and area values in each case. These high outlier values were from corrosion pits linked in the width direction along the edge of the melted salt mixture, as seen in figure 2. These joined pits perturbed the curve fits, but were nevertheless important based on their demonstrated influences on life, figure 13. They contributed to the curvature in the Weibull plots, which required fits using the three parameter curved Weibull equation rather than the two parameter straight Weibull equation, where the offset value  $t_0$  is held at zero. Pit width gave mixed, intermediate results, with high width values again producing curvature in both log normal and Weibull plots.

As summarized in table 4, “critical” pit depths of 16 to 20  $\mu\text{m}$  were estimated to have a minimum probability of  $P = 0.001$  for initiating cracks in LSG+8,24h specimens tested at 204 and 704  $^{\circ}\text{C}$ . For SP+8,24h specimens, the estimated critical pit depth increased to 24 to 35  $\mu\text{m}$ . Critical widths and areas also increased in the low stress ground specimens compared to the shot peened specimens at each test temperature. Selection of the log normal distribution assumption usually gave lower critical pit dimension estimates, which could be considered more conservative. However, the three parameter Weibull fits often did a better job modeling curvature in the size distributions, with more accurate capture of minimum experimental values. So overall critical limits for pit depth, width, and area were estimated from the three parameter Weibull fits, and are shown in figures 15 and 16. Overall critical values for pit depth of 18  $\mu\text{m}$ , width of 63  $\mu\text{m}$ , and cross sectional area of 800  $\mu\text{m}^2$  are suggested here, with no benefits credited for shot peening. Note that these values are not exactly self-consistent, as a pit having an area of 800  $\mu\text{m}^2$  and depth of 18  $\mu\text{m}$  could have a width of no more that 57  $\mu\text{m}$  to avoid potential cracking. Conversely, a pit having an area of 800  $\mu\text{m}^2$  and width of 63  $\mu\text{m}$  could have a depth of no more that 16  $\mu\text{m}$  to avoid potential cracking. This lack of exact self-consistency can be attributed to residual errors in the regressions and their estimates of critical pit dimensions, as well as elliptical approximations of pit shape.

In figure 16, plots of width versus depth are shown for all pits initiating cracks in all corroded specimens. These pits all had aspect ratios (depth/width) less than 0.5, the value corresponding to a hemisphere. Smaller pits had aspect ratios approaching this value. This pit shape appeared to be an inherent characteristic of many pits that cracked. Some of the low observed pit aspect ratios were due to the joining of pits along the corrosion ring. Windows of pit depth and width dimensions estimated to have minimal potential for cracking are indicated. However, such estimates are preliminary, and need to be updated as tests at other fatigue conditions are conducted and analyzed.

While maximum pit cross sectional area correlated better with fatigue life than depth or width, a more important aspect may be the concentrated cyclic stresses and strains generated at each pit as functions of its dimensions and the test conditions. As a first step in this direction, a three-dimensional elastic finite element model was used to assess the effects of pit shape on stress concentration. The elastic stress concentration produced by a hemispherical pit with a depth/width aspect ratio of 0.5 was compared to that of a pit extended in one direction by 100 percent, producing an ellipsoid having an aspect ratio of 0.25. The single extended axis of the ellipsoid was oriented normal to the loading direction and parallel to the surface (NP), normal to the loading direction and normal to the surface (NN), and parallel to the loading direction (P). The elastic stress concentration of the hemispherical pit was estimated to be 2.0. For the ellipsoidal pit, the stress concentration was dependent on pit orientation. The P pit had a lower stress concentration of 1.4, while the NP and NN pits had higher stress concentrations of 2.5 to 2.6. These concentrated stresses would be limited by plastic flow at the pits when exceeding the yield stress, which is possible in the present fatigue tests. But this would result in more plastic deformation and consumption of ductility for pits having higher elastic stress concentrations. Overall, the elastic model results do signify that pit morphology and orientation do influence the concentrated stresses and strains generated at a pit, and that extended, wide pits could have higher stresses and resulting propensity for cracking than hemispherical pits at a constant depth, supporting the results in figure 16.

Note that the finite element modeling of small pits on the surface of large cross sections did not indicate a strong dependence of stress concentration on pit depth. However, the stress intensities of surface cracks having profiles similar to these pits are well-known to increase with depth (ref. 18). The strong relationships of probability for cracking with pit depth in figure 14 indicate this depth dependence for crack propagation is also an important consideration operative here. However, in the present case, a surface crack at a pit would be growing through the concentrated stress field generated by the pit.

Further analyses of the concentrated stresses and strains at pits are still required. These parameters drive crack initiation at pits, and then influence stress intensity along a pit front which drive crack propagation, determining total fatigue cycles to specimen failure. This would also allow considerations of actual cyclic stress range and maximum stress generated during each fatigue test. While the tests were performed at a constant cyclic strain range and strain ratio for each temperature, stress range and

maximum stress slightly varied in each test specimen. This could be attributed to differences in specimen mechanical response rooted in varying microstructure (fig. 1), due to varying prior location of specimens from within disks given different solution heat treatment quenches (ref. 13). The effects of cyclic stress variations on observed fatigue life were analyzed and found to be insignificant in most cases. Nevertheless, estimation of concentrated stresses and strains at pits with inclusion of these effects would help identify critical pit stress parameters, refine the estimated critical pit dimensions, and allow their extension to other, untested fatigue conditions.

Further analyses of the concentrated stresses and strains at pits could also help support application of surface enhancement processes including conventional shot peening, laser shock peening, and low plasticity burnishing to better suppress fatigue cracking at pits. The effects of temperature and time exposures during service on their generated compressive residual stresses and cold work could then be screened. But the effects of the eventual magnitudes and depths of compressive residual stresses and cold work on the local concentrated stresses and strains at pits might be more important determinants of fatigue cracking there, and could be considered.

## **Summary of Results**

The effects of hot corrosion pits on low cycle fatigue life and failure modes of powder metallurgy disk superalloy ME3 were examined. Low cycle fatigue specimens were machined from several disks, in some cases shot peened, and subjected to accelerated hot corrosion exposures in order to produce corrosion pits. The specimens were then tested at 204 and 704 °C in low cycle fatigue. Fatigue lives and failure initiation mechanisms were compared to those of specimens without corrosion exposures.

Prior corrosion exposures produced pits that reduced fatigue life 60 to 98 percent, by encouraging early preferential fatigue cracking at these pits. Shot peening mitigated effects of light corrosion for fatigue tests at 204 °C, but not of heavy corrosion on fatigue life at either test temperature. Critical pit sizes were estimated, based on measurements of all pits initiating cracks on fracture surfaces.

## **Conclusions**

Hot corrosion pitting can occur for disk superalloys having salt deposits and exposures near 704 °C. These pits can significantly reduce low cycle fatigue life at low and high temperatures. Shot peening can induce near-surface compressive residual stresses which appear able in some cases to mitigate the effects of corrosion pits on fatigue life. However, both longer corrosion time and fatigue at high temperatures can still produce large reductions in fatigue life for shot peened specimens, due to fatigue cracking at corrosion pits. Increasing pit dimensions significantly influence the probability for fatigue crack initiation and resulting fatigue lives for the test conditions evaluated. Critical pit dimensions can therefore be estimated for fatigue cracking at pits in these test conditions.

Further work is necessary to better understand the effects of hot corrosion pits on fatigue life. Fatigue tests need to be performed at other strain conditions and temperatures, to determine critical pit values as functions of these variables. Additional interrupted tests are needed to further quantify and separate crack initiation and propagation processes. Further modeling will be needed of the stress and strain concentrations produced by various pit morphologies, to determine if local critical stress and strain conditions are required for fatigue crack initiation there. Modeling of the crack driving force along the complex geometries of pit fronts will be needed, to see if a threshold exists for crack growth and to determine crack growth rate curves. Additional corrosion exposures for shorter times would be helpful, to generate even smaller, more widely separated pits for determination of their influences on fatigue crack initiation and growth. Subsequently, carefully varied fatigue tests of variously corroded specimens could be used to independently verify the critical pit considerations described above.

Optimized surface enhancement processes such as shot peening, laser shock peening, and low plasticity burnishing may still have some potential to produce sufficient, stable compressive residual

stresses to suppress fatigue cracking at corrosion pits. However, environmental barrier coatings may ultimately be needed in some cases, to prevent pit formation by isolating any corrosive salts from superalloy surfaces.

## References

1. R. Schafrick, R. Sprague, Saga of Gas Turbine Materials, Part IV, *Advanced Materials & Processes*, June, 2004, pp. 41–46.
2. R.A. Rapp, “Hot Corrosion of Materials: A Fluxing Mechanism?,” *Corrosion Science*, 44, 2002, pp. 209–221.
3. F.S. Pettit, C.S. Giggins, Hot Corrosion, *Superalloys II*, C.T. Sims, N.S. Stoloff, W.C. Hagel, John Wiley & Sons, New York, NY, 1987, pp. 327–358.
4. J.L. Smialek, C.A. Barrett, J.C. Schaeffer, Design for Oxidation Resistance, *ASM Handbook V. 20, Materials Selection and Design*, American Society for Metals, Metals Park, OH, 1990, pp. 589–602.
5. J.R. Groh, R.W. Duvelius, Influence of Corrosion Pitting on Alloy 718 Fatigue Capability, *Superalloy 718, 625, 706, and Derivatives*, ed. E.A. Loria, 2001, pp. 583–592.
6. A. Encinas-Oropesa, G. Drew, M. Hardy, A. Leggett, J. Nicholls, N. Simms, Effects of Oxidation and Hot Corrosion in a Nickel Disc Alloy, *Superalloys 2008*, ed. R.C. Reed, K.A. Green, P. Caron, T.P. Gabb, M.G. Fahrman, E.S. Huron, S.A. Woodard, The Mining, Metallurgy, and Materials Society, Warrendale, PA, 2008, pp. 609–618.
7. S.I. Rokhlin, J.-Y. Kim, H. Nagy, B. Zoofan, Effect of Pitting Corrosion on Fatigue Crack Initiation and Fatigue Life, *Engineering Fracture Mechanics*, 62, 1999, pp. 425–444.
8. S. Kawai, K. Kasai, Considerations of Allowable Stress of Corrosion Fatigue (Focused on the Influence of Pitting), *Fatigue Fract. Engineering Structures*, 8(2), 1985, pp. 115–127.
9. P. Shi, S. Mahadevan, Damage Tolerance Approach for Probabilistic Pitting Corrosion Fatigue Life Prediction, *Engineering Fracture Mechanics*, 68, 2001, pp. 1493–1507.
10. D.P. Mourer, J.L. Williams, Dual Heat Treat Process Development for Advanced Disk Applications, *Superalloys 2004*, ed. K.A. Green, T.M. Pollock, H. Harada, T.E. Howson, R.C. Reed, J.J. Schirra, S. Walston, The Mining, Metallurgy, and Materials Society, Warrendale, PA, 2004, pp. 401–408.
11. J.R. Groh, D.P. Mourer, Alternate Material for Elevated Temperature Turbine Cooling Plate Applications, *Superalloys 2004*, ed. K.A. Green, T.M. Pollock, H. Harada, T.E. Howson, R.C. Reed, J.J. Schirra, S. Walston, The Mining, Metallurgy, and Materials Society, Warrendale, PA, 2004, pp. 101–108.
12. T.P. Gabb, J. Telesman, P.T. Kantzos, and K.M. O’Connor, Characterization of the Temperature Capabilities of Advanced Disk Alloy ME3, NASA/TM—2002-211796, National Aeronautics and Space Administration, Washington, D.C., August, 2002.
13. T.P. Gabb, A. Garg, D.L. Ellis, K.M. O’Connor, Detailed Microstructural Characterization of the Disk Alloy ME3, NASA/TM—2004-213066, National Aeronautics and Space Administration, Washington, D.C., May, 2004.
14. W. Weibull, A Statistical Distribution Function of Wide Applicability, *ASME Journal of Applied Mechanics*, September 1951, pp. 293–297.
15. R.B. Abernethy, The New Weibull Handbook Fifth Edition, R.B. Abernethy, N. Palm Beach, FL, 2006.
16. P.S. Prevey, X-Ray Diffraction Residual Techniques, *Metals Handbook: 9th ed.*, 10, American Society for Metals, Metals Park, OH, 1986, pp. 380–392.
17. T.P. Gabb, J. Telesman, P.T. Kantzos, A. Garg, Effects of Temperature on Failure Modes for a Nickel-Base Disk Superalloy, *Journal of Failure Analysis and Prevention*, 7(1), 2007, pp. 56–65.
18. R.H. Vanstone, T.L. Richardson, Potential-Drop Monitoring of Cracks in Surface-Flawed Specimens, ASTM STP 977, American Society for Testing and Materials, W. Conshohocken, PA, 1985, pp. 148–166.

TABLE 1.—SPECIMEN AND FATIGUE TEST CONDITIONS  
WITH MEAN LIFE RESULTS

Machining Condition	Corrosion Time-h	Test Temperature -C	Log Mean Life -cycles
Low Stress Ground	0	204	147,924
Low Stress Ground	8	204	57,175
Low Stress Ground	24	204	34,616
Shot Peened	0	204	254,527
Shot Peened	8	204	250,908
Shot Peened	24	204	75,921
Low Stress Ground	0	704	80,099
Low Stress Ground	8	704	3,768
Low Stress Ground	24	704	1,970
Shot Peened	0	704	92,936
Shot Peened	8	704	13,202
Shot Peened	24	704	3,616

TABLE 2.—ESTIMATES OF CONSTANTS FOR CORROSION TIME (t) VERSUS  
MAXIMUM PIT DIMENSION (P), USING THE EQUATION  $P = A t^n$

Machining Condition	Test Temperature	Max. Pit Dimension	Base - A	Exponent n	Coeff. Of Determination (R <sup>2</sup> )
LSG	204	Depth	26.826	0.2514	0.5945
SP	204	Depth	33.458	0.2809	0.55
LSG	704	Depth	29.698	0.2308	0.3789
SP	704	Depth	13.021	0.6144	0.8893
LSG	204	Width	87.863	0.8365	0.3049
SP	204	Width	14.269	1.3045	0.4523
LSG	704	Width	71.434	0.8413	0.3044
SP	704	Width	62.169	0.793	0.5236
LSG	204	Area	5161.6	1.1891	0.4819
SP	204	Area	2094.5	1.4247	0.5587
LSG	704	Area	5610.9	1.1119	0.4209
SP	704	Area	3719.5	1.1859	0.7426

TABLE 3.—ESTIMATES OF CONSTANTS FOR MAXIMUM PIT DIMENSION (P) VERSUS FATIGUE LIFE ( $N_f$ ), USING THE EQUATION  $N_f = B P^m$

Machining Condition	Test Temperature	Max. Pit Dimension	Base - B	Exponent m	Coeff. Of Determination ( $R^2$ )
LSG	204	Depth	1,665,765	-0.9171	0.295
SP	204	Depth	3,878,015	-0.8855	0.3905
LSG	704	Depth	77,239	-0.8366	0.1719
SP	704	Depth	25,033,585	-1.9618	0.7309
LSG	204	Width	323,429	-0.2972	0.6691
SP	204	Width	247,384	-0.1677	0.3674
LSG	704	Width	38,002	-0.4067	0.6715
SP	704	Width	7,603,463	-1.1253	0.6803
LSG	204	Area	927,545	-0.2766	0.7407
SP	204	Area	880,690	-0.2113	0.5631
LSG	704	Area	177,558	-0.3615	0.6702
SP	704	Area	48,898,600	-1.0456	0.864

TABLE 4.—ESTIMATES OF CRITICAL PIT DIMENSIONS REQUIRED FOR FATIGUE CRACKING

Condition	Test Temp-C	Pit Dimension	Count	Min. Exp. Value	Distribution Fit	Adjusted Coeff. Of Determination ( $R^2$ )	Est. P value (pve%)	Dimension at P(.5) Cumu. Prob. of Occurrence	Critical Dimension at P(.001) Cumu. Prob. of Occurrence
LSG+8,24h	204	Depth ( $\mu\text{m}$ )	81	22	LogNormal	0.987	50.83	41	19.6
SP+8,24h	204	Depth ( $\mu\text{m}$ )	32	37	LogNormal	0.963	31.88	58	25.2
LSG+8,24h	704	Depth ( $\mu\text{m}$ )	126	21	LogNormal	0.990	42.42	42	16.5
SP+8,24h	704	Depth ( $\mu\text{m}$ )	57	30	LogNormal	0.972	19.63	61	23.8
LSG+8,24h	204	Depth ( $\mu\text{m}$ )	81	22	3P Weibull	0.982	16.03	42	19.1
SP+8,24h	204	Depth ( $\mu\text{m}$ )	32	37	3P Weibull	0.980	55.34	57	35.0
LSG+8,24h	704	Depth ( $\mu\text{m}$ )	126	21	3P Weibull	0.988	17.27	43	20.0
SP+8,24h	704	Depth ( $\mu\text{m}$ )	57	30	3P Weibull	0.973	8.29	62	27.1
LSG+8,24h	204	Width ( $\mu\text{m}$ )	80	90	LogNormal	0.968	5.11	316	32.1
SP+8,24h	204	Width ( $\mu\text{m}$ )	31	191	LogNormal	0.923	4.27	464	69.5
LSG+8,24h	704	Width ( $\mu\text{m}$ )	125	71	LogNormal	0.960	0.412	302	40.1
SP+8,24h	704	Width ( $\mu\text{m}$ )	56	102	LogNormal	0.973	22.49	384	83.9
LSG+8,24h	204	Width ( $\mu\text{m}$ )	80	90	3P Weibull	0.978	7.5	313	86.2
SP+8,24h	204	Width ( $\mu\text{m}$ )	31	191	3P Weibull	0.967	19.65	443	184.1
LSG+8,24h	704	Width ( $\mu\text{m}$ )	125	71	3P Weibull	0.964	0.216	313	67.1
SP+8,24h	704	Width ( $\mu\text{m}$ )	56	102	3P Weibull	0.973	8.69	405	78.6
LSG+8,24h	204	Area ( $\mu\text{m}^2$ )	80	1909	LogNormal	0.983	30.66	10088	638.0
SP+8,24h	204	Area ( $\mu\text{m}^2$ )	31	6450	LogNormal	0.964	35.5	21209	2398.0
LSG+8,24h	704	Area ( $\mu\text{m}^2$ )	125	1517	LogNormal	0.983	8.86	10036	706.2
SP+8,24h	704	Area ( $\mu\text{m}^2$ )	56	2403	LogNormal	0.907	0.255	18314	2350.0
LSG+8,24h	204	Area ( $\mu\text{m}^2$ )	80	1909	3P Weibull	0.983	19.76	10364	1849.0
SP+8,24h	204	Area ( $\mu\text{m}^2$ )	31	6450	3P Weibull	0.976	40.86	21075	5979.0
LSG+8,24h	704	Area ( $\mu\text{m}^2$ )	125	1517	3P Weibull	0.978	2.14	10175	1420.0
SP+8,24h	704	Area ( $\mu\text{m}^2$ )	56	2403	3P Weibull	0.962	2.12	20301	1097.0

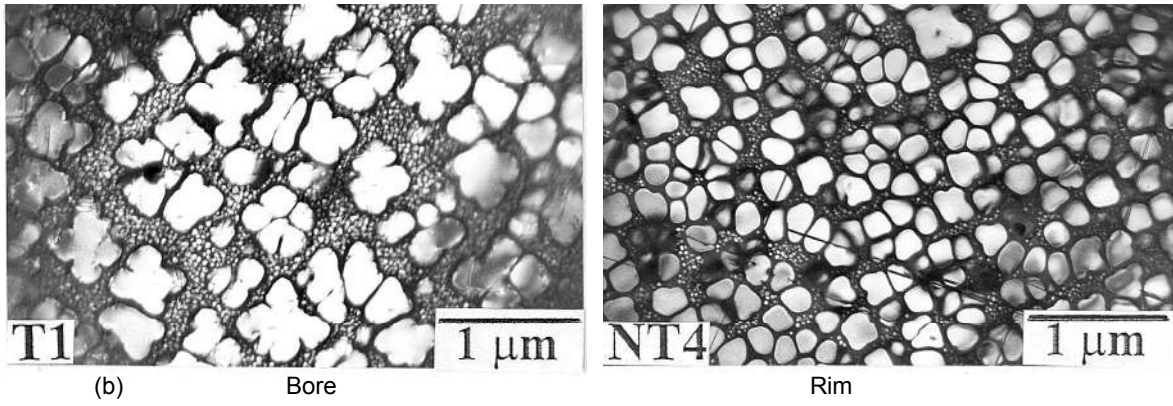
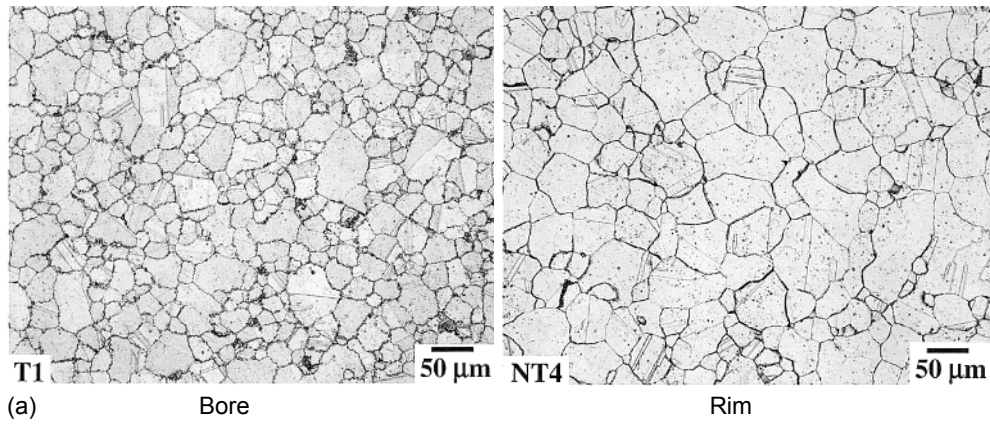


Figure 1.—ME3 microstructure: (a) grain structure, (b)  $\gamma'$  precipitate structure.



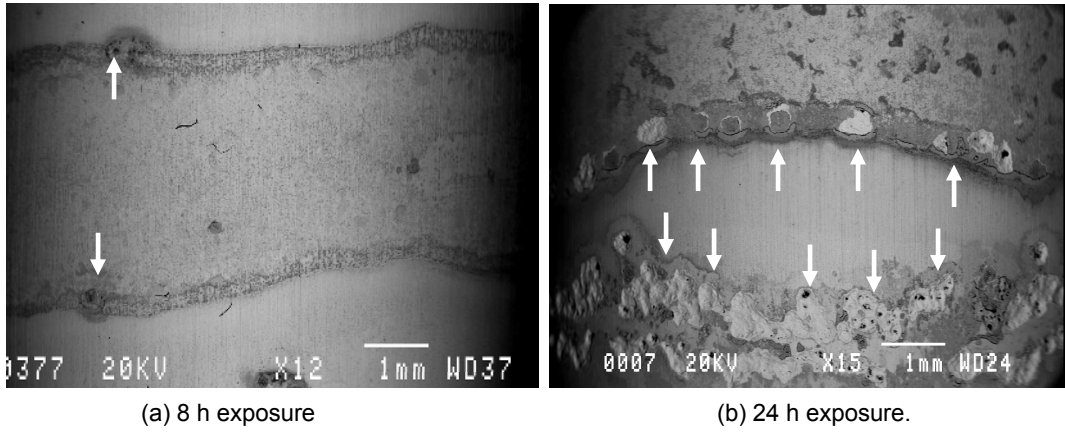


Figure 2.—Corroded fatigue specimens with the loading direction oriented vertically, arrows indicating corrosion pits: (a) 8 h exposure, (b) 24 h exposure.

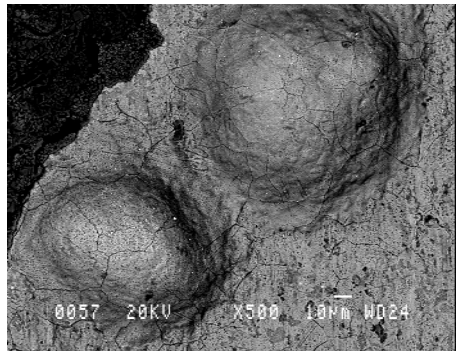


Figure 3.—Corrosion pits with evidence of intergranular attack.

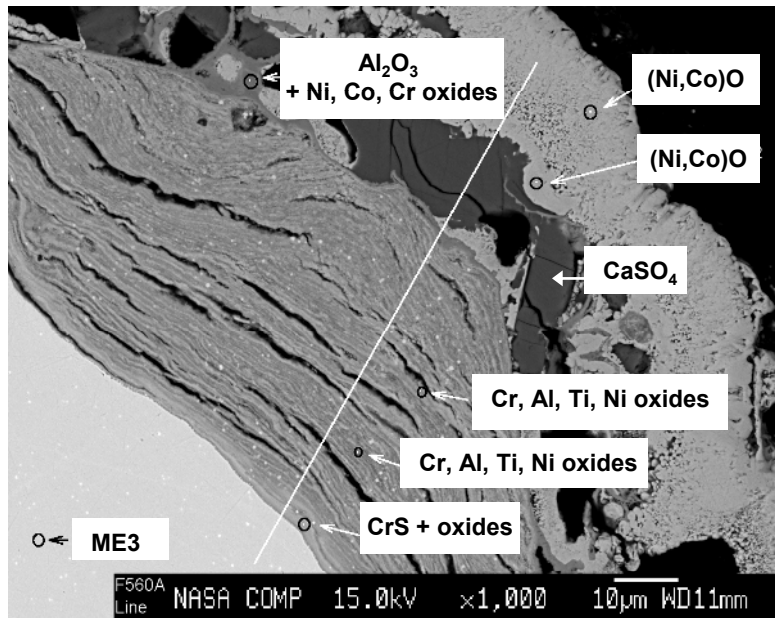


Figure 4.—Corrosion products identified by microprobe on pit cross section.

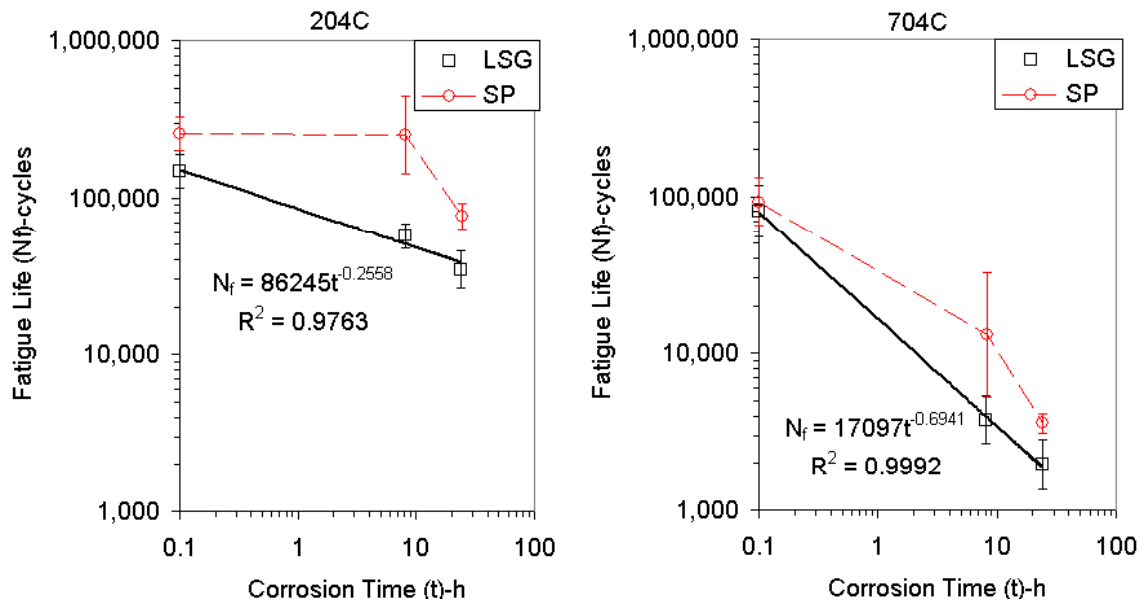


Figure 5.—Comparison of log mean fatigue lives and their 95% confidence intervals.

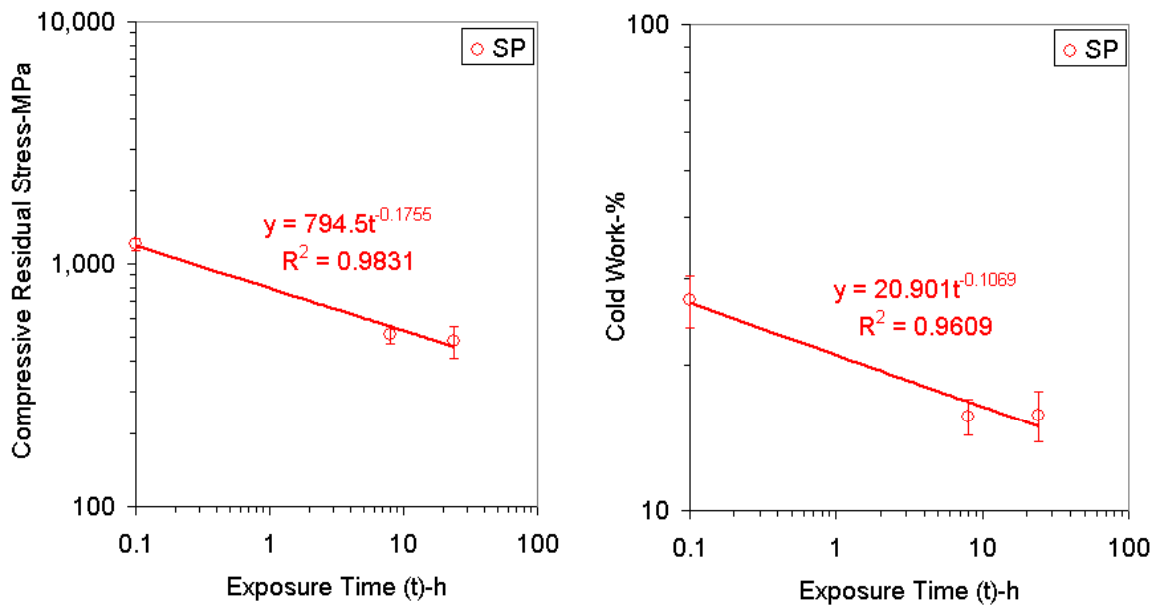


Figure 6.—Comparisons of mean surface residual stress and cold work for shot peened fatigue specimen sections exposed at 704 °C, with their 95% confidence intervals.

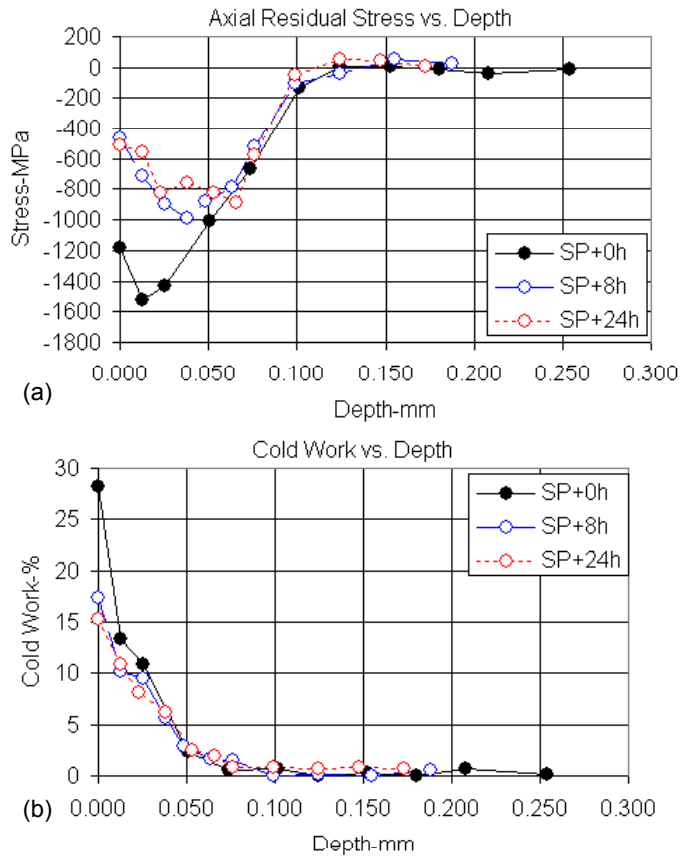


Figure 7.—Comparisons of (a) axial residual stress and (b) cold work with depth for shot peened fatigue specimen sections exposed at 704 °C.

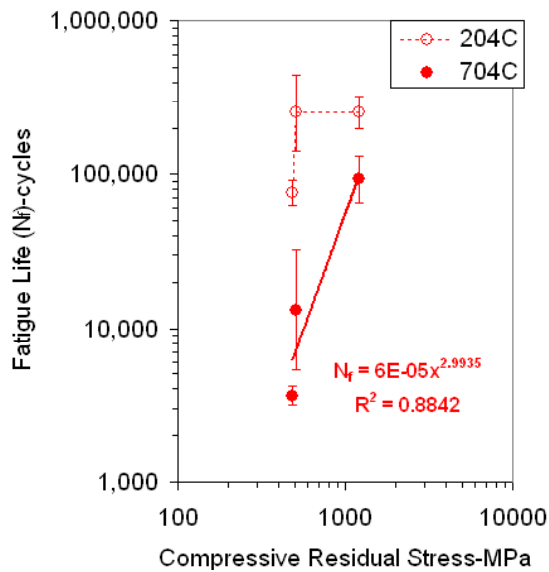


Figure 8.—Correlation of mean fatigue life with surface compressive residual stress for shot peened fatigue specimens, where corroded specimens have reduced stresses.

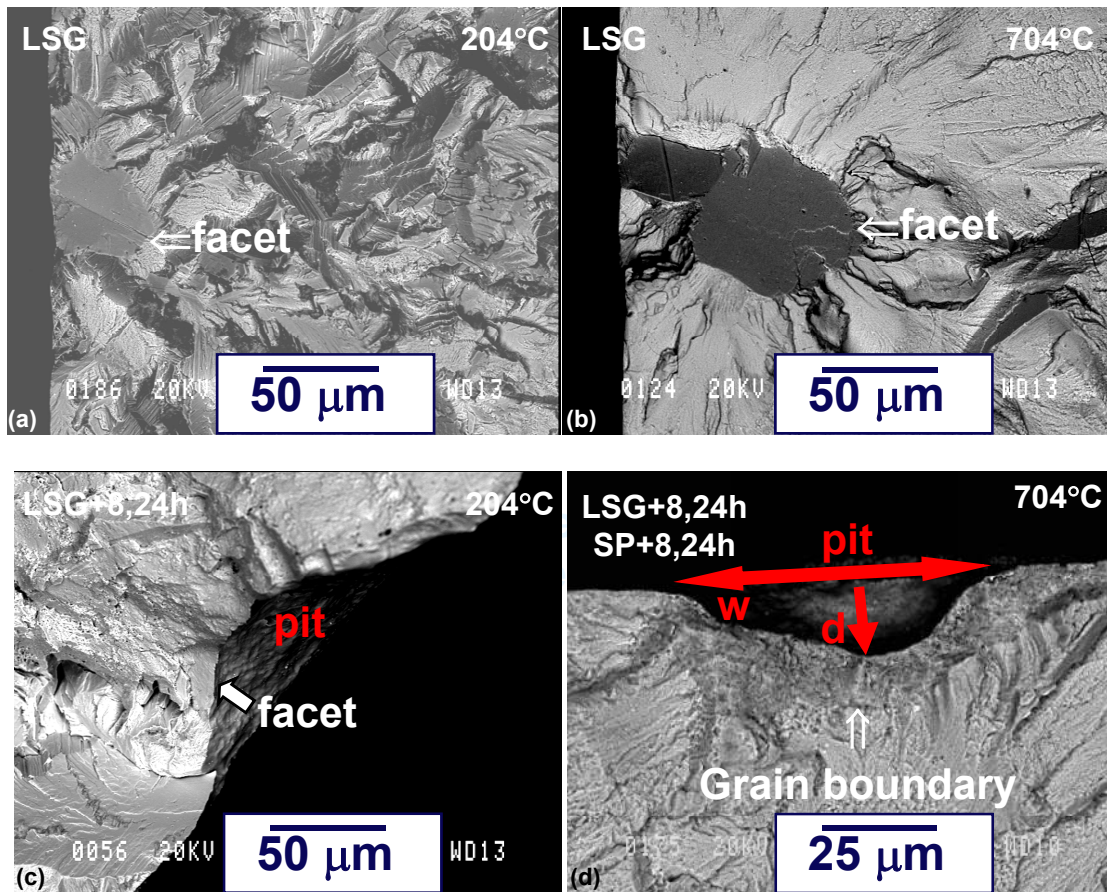


Figure 9.—Typical fatigue failure initiation points: (a) LSG at 204 °C; (b) LSG at 704 °C; (c) LSG + 8,24 h at 204 °C; and (d) LSG + 8,24 h and SP+8,24 h at 704 °C.

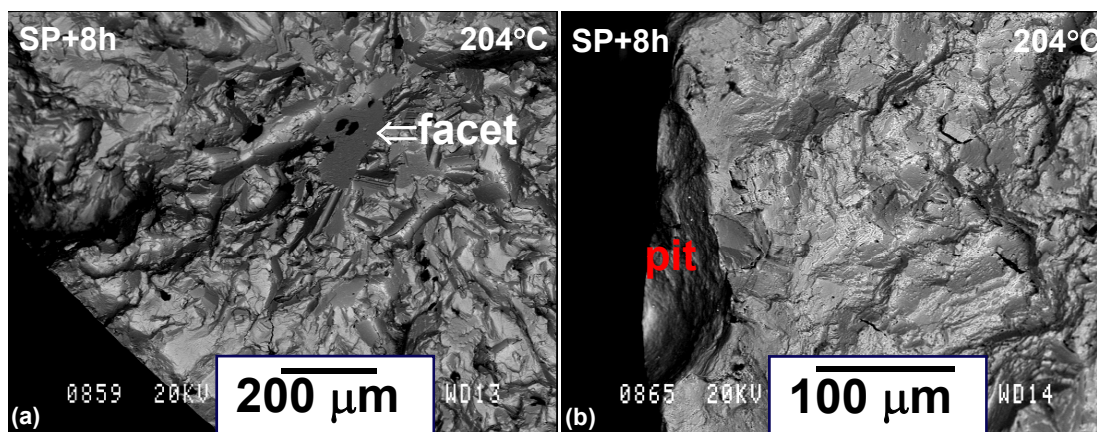


Figure 10.—Failure initiation points for SP+8h specimen tested at 204 °C, having lowest life for this condition of 122,917 cycles: (a) internal grain facet, (b) surface pit.

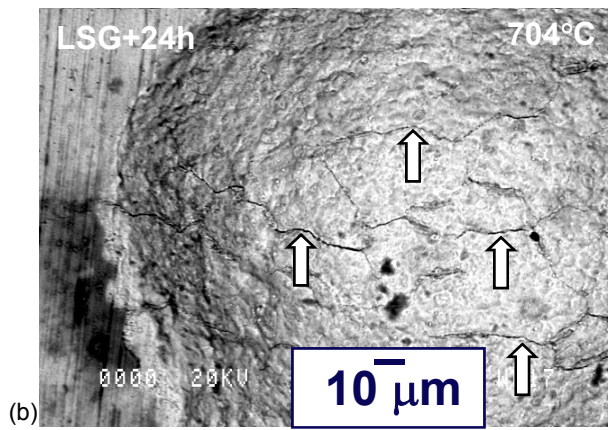
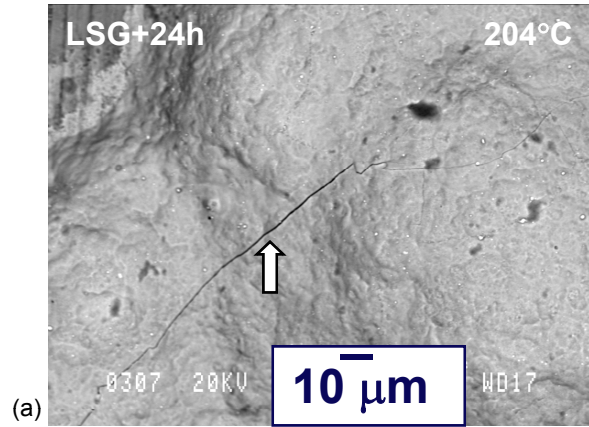


Figure 11.—Cracking at pits in interrupted test specimens with the loading direction oriented vertically, arrows indicating cracks, (a) 204 °C, transgranular cracks observed at crystallographic facets at 33 to 55% of cyclic life; (b) 704 °C, intergranular cracks at 5 to 10% of cyclic life.

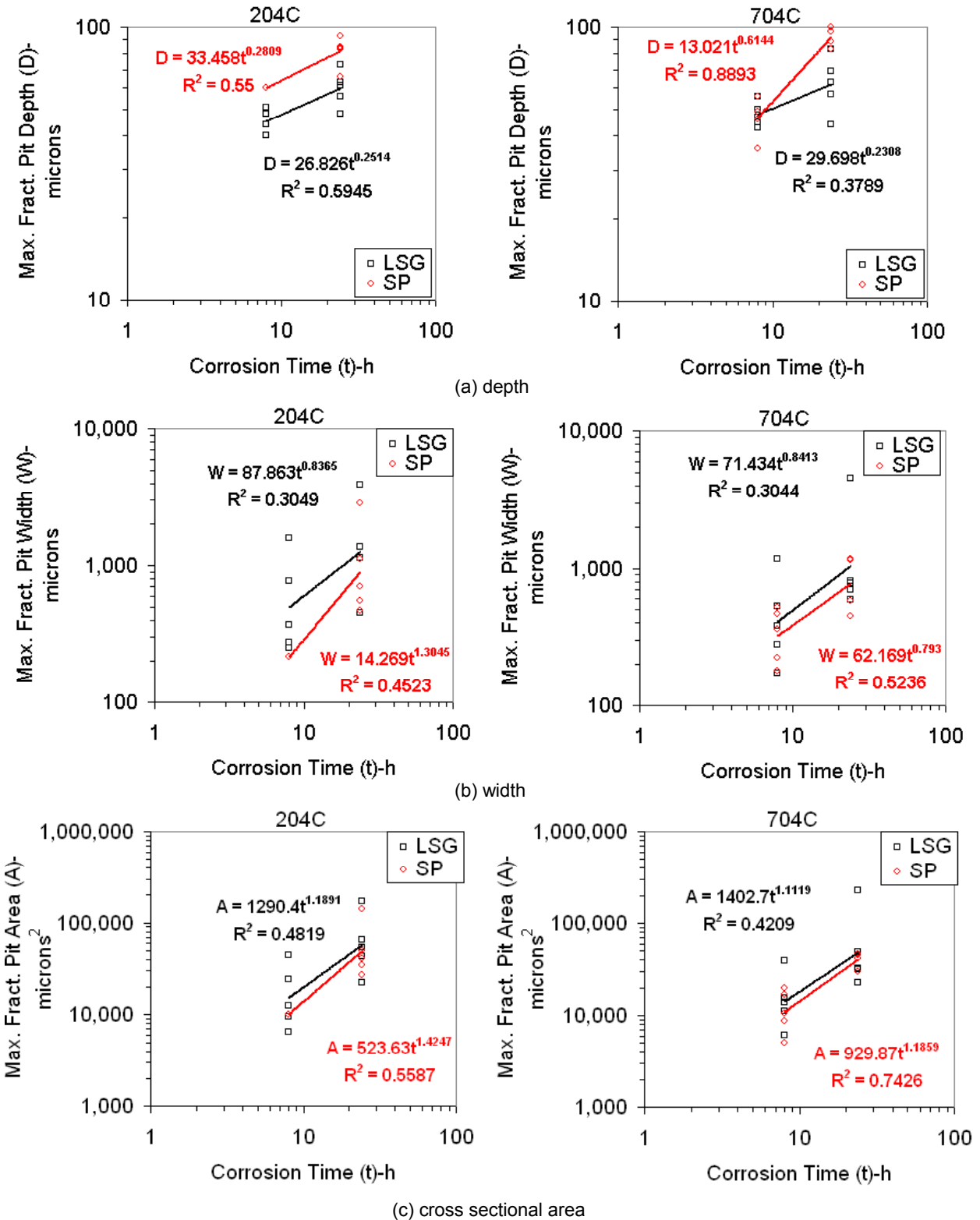


Figure 12.—Relationships between corrosion time and the maximum pit (a) depth, (b) width, and (c) cross sectional area on each corroded specimen's fracture surface.

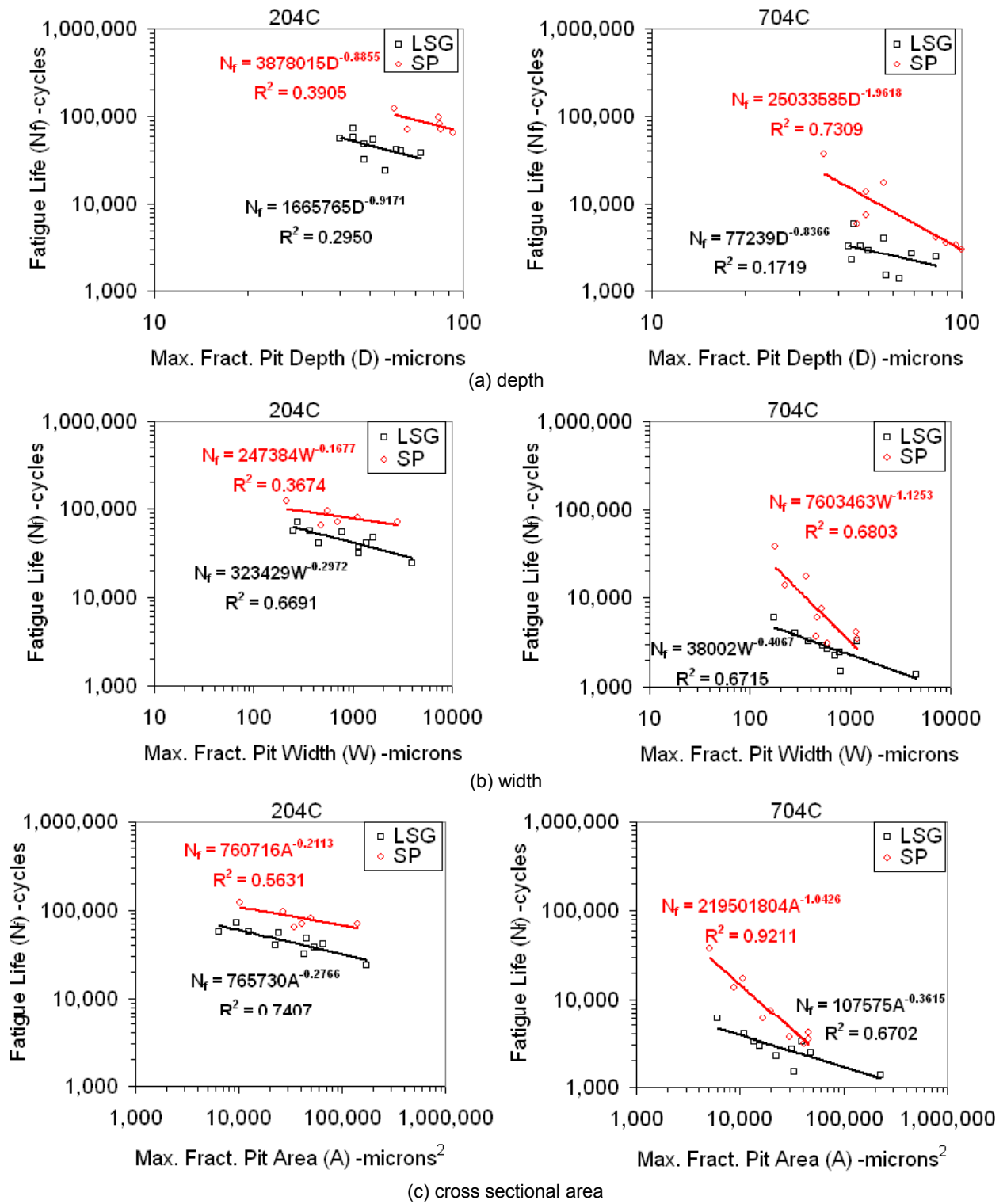
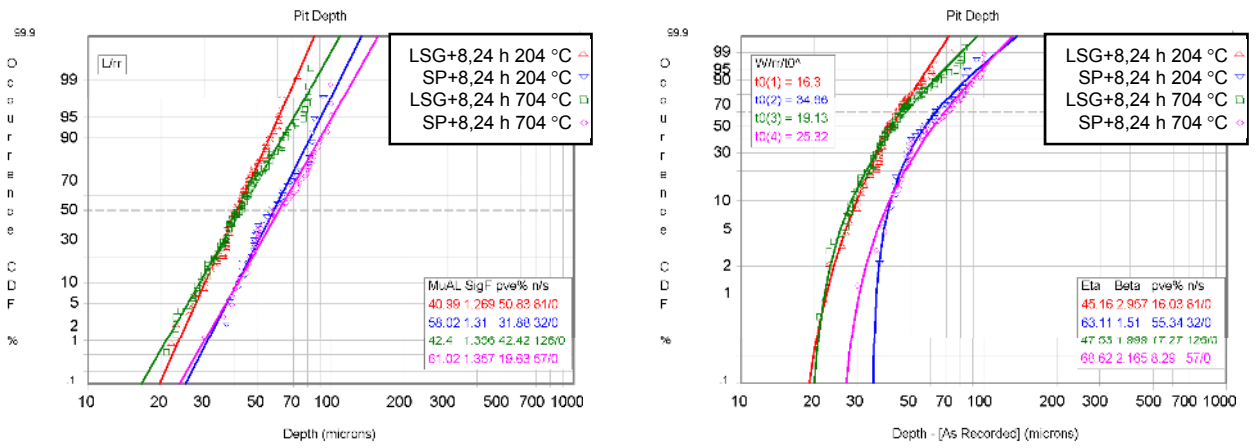
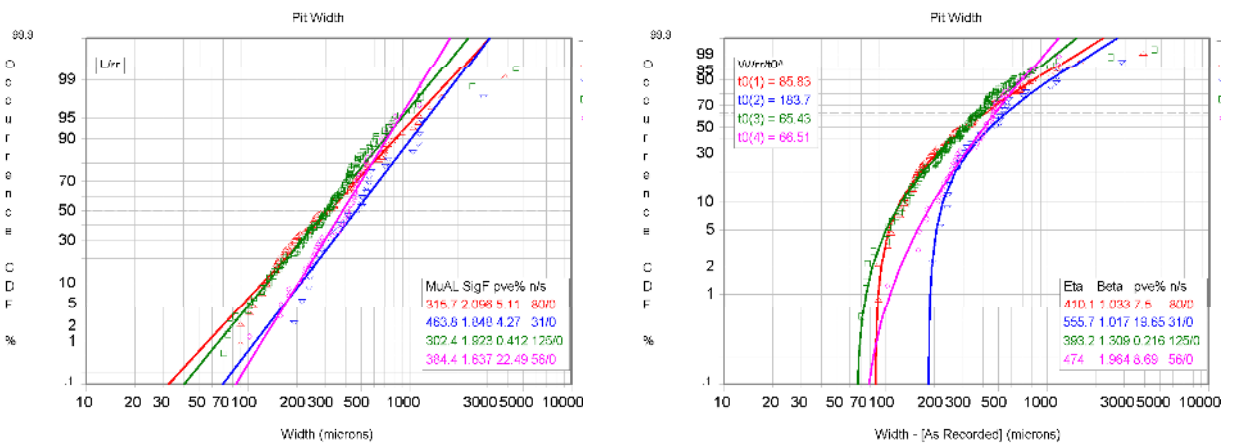


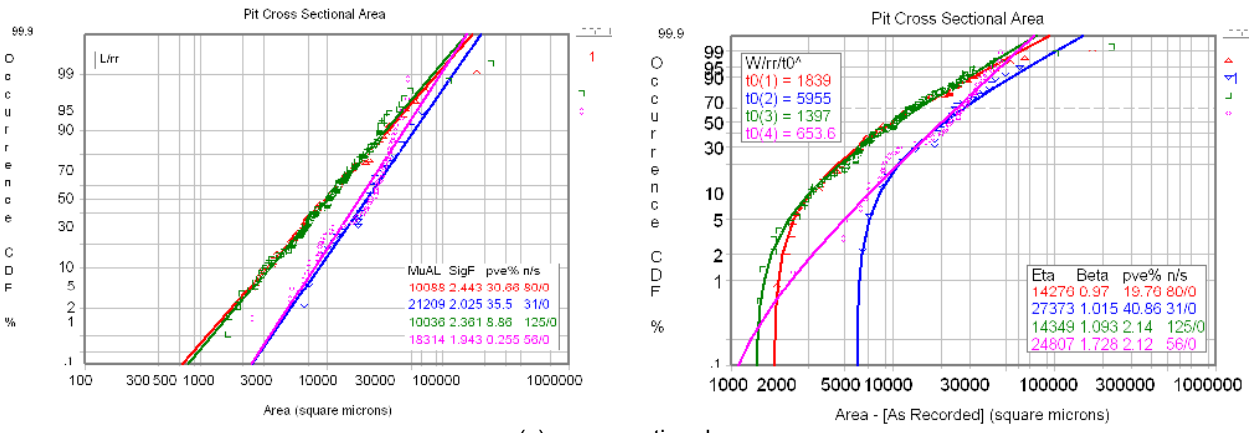
Figure 13.—Relationships between fatigue life and each corroded specimen's maximum pit (a) depth, (b) width, and (c) cross sectional area on it's fracture surface.



(a) depth



(b) width



(c) cross sectional area

Figure 14.—Cumulative probability of cracking versus pit (a) depth, (b) width, and (c) cross sectional area.



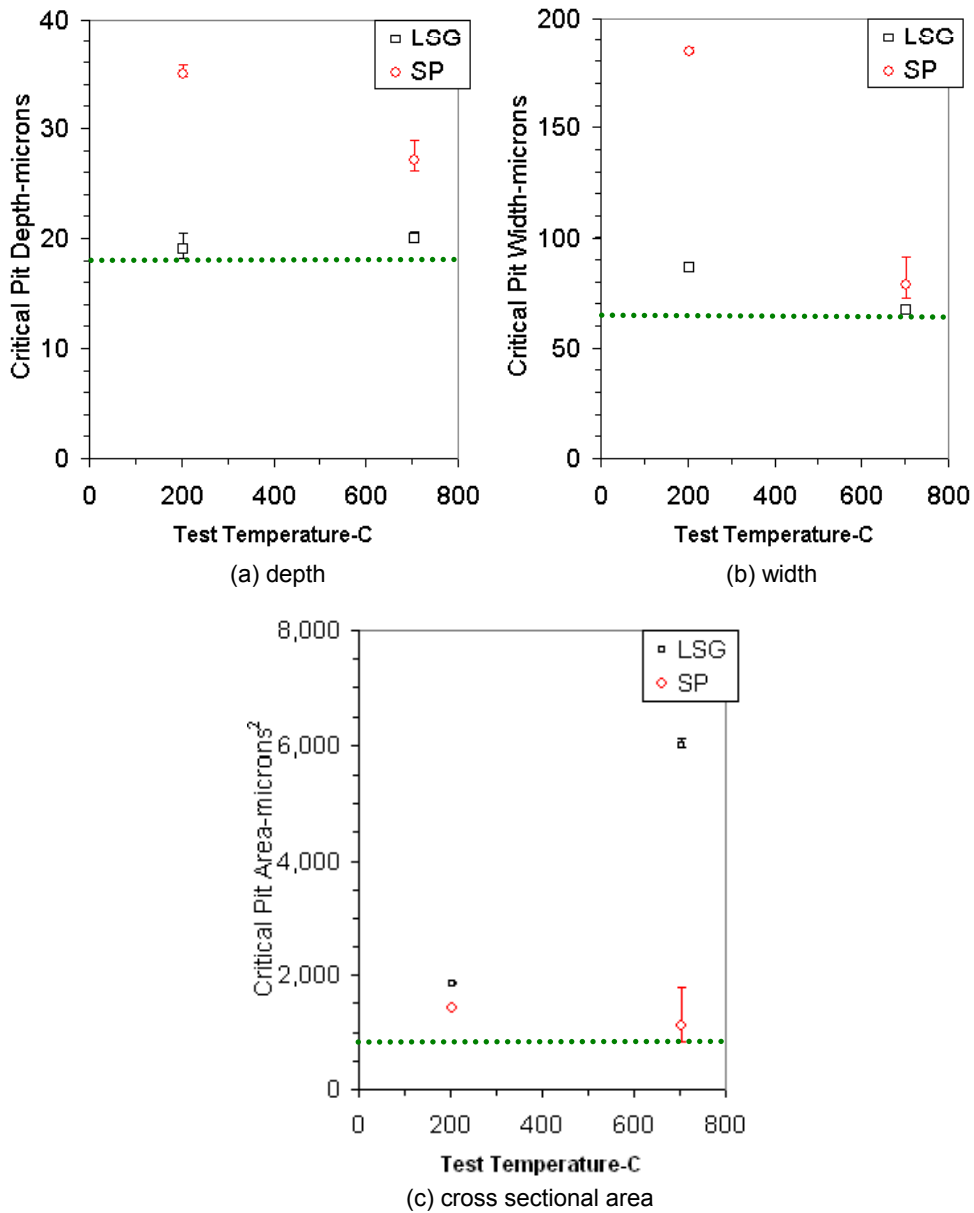


Figure 15.—Critical pit dimensions with their 95% confidence intervals estimated by 3 parameter Weibull equations to have a minimum probability for cracking  $P=0.001$  at the chosen fatigue test conditions: (a) depth, (b) width, and (c) cross sectional area.

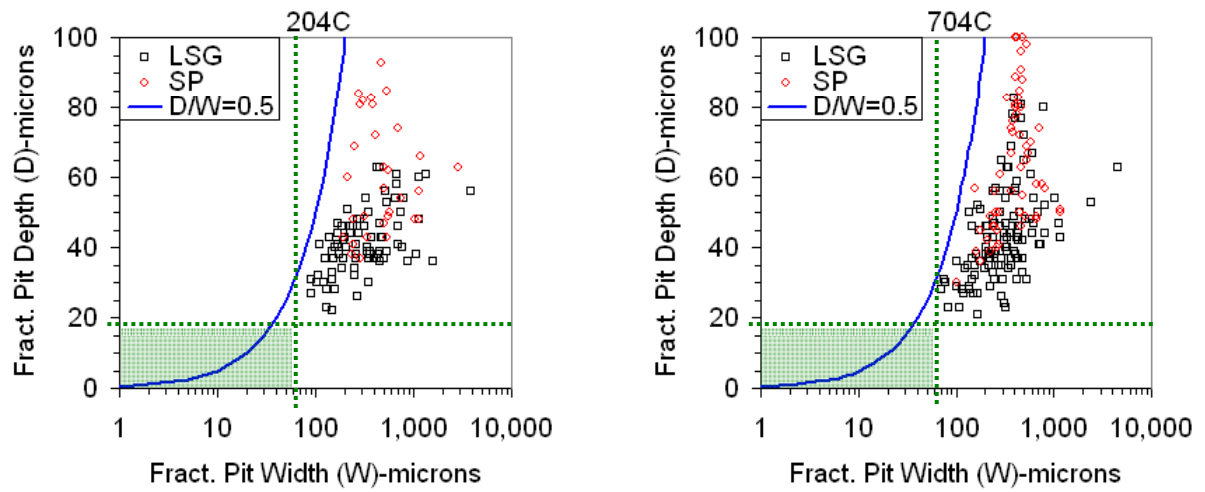


Figure 16.—Depth versus width of all pits initiating fatigue cracks on each specimen’s fracture surface, with shaded region indicating where pits have minimal probability of initiating fatigue cracks for the current test conditions.

REPORT DOCUMENTATION PAGE			Form Approved OMB No. 0704-0188		
<p>The public reporting burden for this collection of information is estimated to average 1 hour per response, including the time for reviewing instructions, searching existing data sources, gathering and maintaining the data needed, and completing and reviewing the collection of information. Send comments regarding this burden estimate or any other aspect of this collection of information, including suggestions for reducing this burden, to Department of Defense, Washington Headquarters Services, Directorate for Information Operations and Reports (0704-0188), 1215 Jefferson Davis Highway, Suite 1204, Arlington, VA 22202-4302. Respondents should be aware that notwithstanding any other provision of law, no person shall be subject to any penalty for failing to comply with a collection of information if it does not display a currently valid OMB control number.</p> <p>PLEASE DO NOT RETURN YOUR FORM TO THE ABOVE ADDRESS.</p>					
<b>1. REPORT DATE (DD-MM-YYYY)</b> 01-08-2009		<b>2. REPORT TYPE</b> Technical Memorandum		<b>3. DATES COVERED (From - To)</b>	
<b>4. TITLE AND SUBTITLE</b> The Effects of Hot Corrosion Pits on the Fatigue Resistance of a Disk Superalloy			<b>5a. CONTRACT NUMBER</b>		
			<b>5b. GRANT NUMBER</b>		
			<b>5c. PROGRAM ELEMENT NUMBER</b>		
<b>6. AUTHOR(S)</b> Gabb, Timothy, P.; Telesman, Jack; Hazel, Brian; Mourer, David, P.			<b>5d. PROJECT NUMBER</b>		
			<b>5e. TASK NUMBER</b>		
			<b>5f. WORK UNIT NUMBER</b> WBS 698259.02.07.03.04.02		
<b>7. PERFORMING ORGANIZATION NAME(S) AND ADDRESS(ES)</b> National Aeronautics and Space Administration John H. Glenn Research Center at Lewis Field Cleveland, Ohio 44135-3191			<b>8. PERFORMING ORGANIZATION REPORT NUMBER</b> E-16940		
<b>9. SPONSORING/MONITORING AGENCY NAME(S) AND ADDRESS(ES)</b> National Aeronautics and Space Administration Washington, DC 20546-0001			<b>10. SPONSORING/MONITOR'S ACRONYM(S)</b> NASA		
			<b>11. SPONSORING/MONITORING REPORT NUMBER</b> NASA/TM-2009-215629		
<b>12. DISTRIBUTION/AVAILABILITY STATEMENT</b> Unclassified-Unlimited Subject Category: 07 Available electronically at <a href="http://gltrs.grc.nasa.gov">http://gltrs.grc.nasa.gov</a> This publication is available from the NASA Center for AeroSpace Information, 443-757-5802					
<b>13. SUPPLEMENTARY NOTES</b>					
<b>14. ABSTRACT</b> The effects of hot corrosion pits on low cycle fatigue life and failure modes of the disk superalloy ME3 were investigated. Low cycle fatigue specimens were subjected to hot corrosion exposures producing pits, then tested at low and high temperatures. Fatigue lives and failure initiation points were compared to those of specimens without corrosion pits. Several tests were interrupted to estimate the fraction of fatigue life that fatigue cracks initiated at pits. Corrosion pits significantly reduced fatigue life by 60 to 98 percent. Fatigue cracks initiated at a very small fraction of life for high temperature tests, but initiated at higher fractions in tests at low temperature. Critical pit sizes required to promote fatigue cracking were estimated, based on measurements of pits initiating cracks on fracture surfaces.					
<b>15. SUBJECT TERMS</b> Gas turbine engines; Rotating disks; Heat resistant alloys					
<b>16. SECURITY CLASSIFICATION OF:</b>			<b>17. LIMITATION OF ABSTRACT</b>	<b>18. NUMBER OF PAGES</b> 28	<b>19a. NAME OF RESPONSIBLE PERSON</b> STI Help Desk (email:help@sti.nasa.gov)
<b>a. REPORT</b> U	<b>b. ABSTRACT</b> U	<b>c. THIS PAGE</b> U			UU

