

The efficacy of natalizumab in patients with relapsing multiple sclerosis: subgroup analyses of AFFIRM and SENTINEL

Michael Hutchinson · Ludwig Kappos · Peter A. Calabresi · Christian Confavreux · Gavin Giovannoni · Steven L. Galetta · Eva Havrdova · Fred D. Lublin · David H. Miller · Paul W. O'Connor · J. Theodore Phillips · Chris H. Polman · Ernst-Wilhelm Radue · Richard A. Rudick · William H. Stuart · Andrzej Wajgt · Bianca Weinstock-Guttman · Daniel R. Wynn · Frances Lynn · Michael A. Panzara · for the AFFIRM and SENTINEL Investigators

Published online: 29 May 2009
© Springer-Verlag 2009

Erratum to: J Neurol (2009) 256:405–415
DOI 10.1007/s00415-009-0093-1

Figs. 1a, 2a and 3a have been published incorrectly. The correct figures are reproduced here.

The online version of the original article can be found under doi:[10.1007/s00415-009-0093-1](https://doi.org/10.1007/s00415-009-0093-1).

M. Hutchinson (✉)
Dept. of Neurology, St. Vincent's University Hospital,
Dublin, Ireland
e-mail: mhutchin@iol.ie

L. Kappos · E.-W. Radue
Dept. of Neurology, University Hospital Basel,
Basel, Switzerland

P. A. Calabresi
Dept. of Neurology,
The Johns Hopkins University School of Medicine,
Baltimore, MD, USA

C. Confavreux
Hôpital Neurologique, Lyon, France

G. Giovannoni · D. H. Miller
Institute of Neurology, London, UK

S. L. Galetta
Dept. of Neurology,
University of Pennsylvania School of Medicine,
Philadelphia, PA, USA

E. Havrdova
General Teaching Hospital, Prague, Czech Republic

F. D. Lublin
Mt. Sinai School of Medicine, New York, NY, USA

P. W. O'Connor
St. Michael's Hospital, Toronto, ON, Canada

J. T. Phillips
Multiple Sclerosis Center at Texas Neurology, Dallas, TX, USA

C. H. Polman
Vrije Universiteit Medical Center, Amsterdam, The Netherlands

R. A. Rudick
Mellen Center for Multiple Sclerosis Research,
Cleveland Clinic Foundation, Cleveland, OH, USA

W. H. Stuart
MS Center of Atlanta, Atlanta, GA, USA

A. Wajgt
Silesian Medical University, Katowice, Poland

B. Weinstock-Guttman
Baird Multiple Sclerosis Center,
State University of New York at Buffalo,
Buffalo, NY, USA

D. R. Wynn
Consultants in Neurology, Multiple Sclerosis Center,
Northbrook, IL, USA

F. Lynn · M. A. Panzara
Biogen Idec, Cambridge, MA, USA

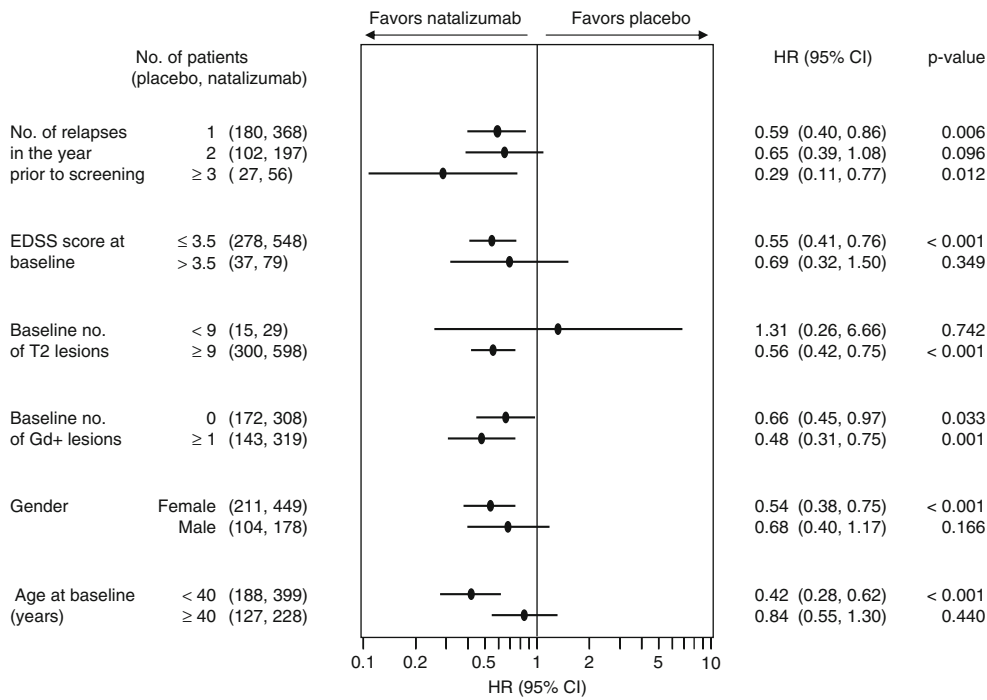


Fig. 1a

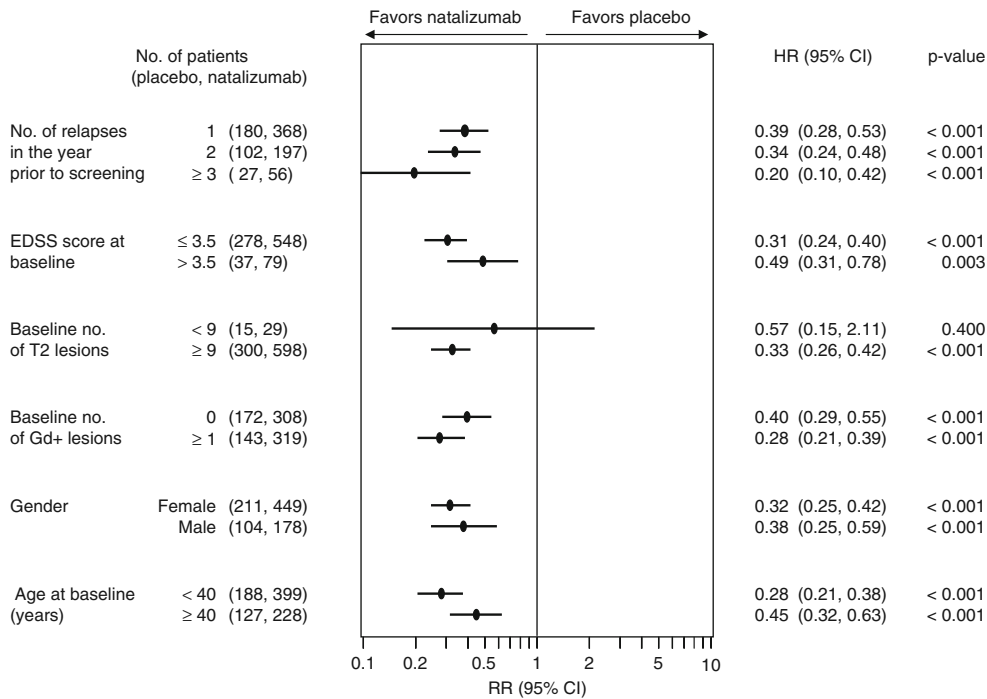
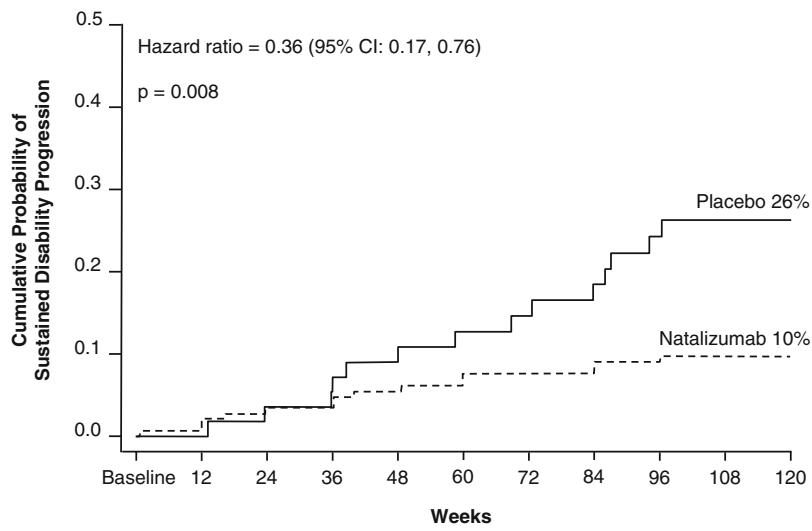


Fig. 2a



	No. of patients at risk									
Placebo	61	57	54	51	47	46	45	42	39	36
Natalizumab	148	144	141	140	137	131	130	128	123	123

Fig. 3a