



# The Epigenome of Evolving *Drosophila* Neo-Sex Chromosomes: Dosage Compensation and Heterochromatin Formation

## Citation

Zhou, Qi, Christopher E. Ellison, Vera B. Kaiser, Artyom A. Alekseyenko, Andrey A. Gorchakov, and Doris Bachtrog. 2013. "The Epigenome of Evolving *Drosophila* Neo-Sex Chromosomes: Dosage Compensation and Heterochromatin Formation." *PLoS Biology* 11 (11): e1001711. doi:10.1371/journal.pbio.1001711. <http://dx.doi.org/10.1371/journal.pbio.1001711>.

## Published Version

doi:10.1371/journal.pbio.1001711

## Permanent link

<http://nrs.harvard.edu/urn-3:HUL.InstRepos:11879083>

## Terms of Use

This article was downloaded from Harvard University's DASH repository, and is made available under the terms and conditions applicable to Other Posted Material, as set forth at <http://nrs.harvard.edu/urn-3:HUL.InstRepos:dash.current.terms-of-use#LAA>

## Share Your Story

The Harvard community has made this article openly available. Please share how this access benefits you. [Submit a story](#).

[Accessibility](#)

# The Epigenome of Evolving *Drosophila* Neo-Sex Chromosomes: Dosage Compensation and Heterochromatin Formation

Qi Zhou<sup>1</sup>\*, Christopher E. Ellison<sup>1</sup>\*, Vera B. Kaiser<sup>1</sup>, Artyom A. Alekseyenko<sup>2,3</sup>, Andrey A. Gorchakov<sup>2,4</sup>, Doris Bachtrog<sup>1</sup>\*

**1** Department of Integrative Biology, University of California Berkeley, Berkeley, California, United States of America, **2** Department of Genetics, Harvard Medical School, Boston, Massachusetts, United States of America, **3** Division of Genetics, Department of Medicine, Brigham and Women's Hospital, Harvard Medical School, Boston, Massachusetts, United States of America, **4** Laboratory of Chromosome Engineering, Institute of Molecular and Cellular Biology, Novosibirsk, Russia

## Abstract

Sex chromosomes originated from autosomes but have evolved a highly specialized chromatin structure. *Drosophila* Y chromosomes are composed entirely of silent heterochromatin, while male X chromosomes have highly accessible chromatin and are hypertranscribed as a result of dosage compensation. Here, we dissect the molecular mechanisms and functional pressures driving heterochromatin formation and dosage compensation of the recently formed neo-sex chromosomes of *Drosophila miranda*. We show that the onset of heterochromatin formation on the neo-Y is triggered by an accumulation of repetitive DNA. The neo-X has evolved partial dosage compensation and we find that diverse mutational paths have been utilized to establish several dozen novel binding consensus motifs for the dosage compensation complex on the neo-X, including simple point mutations at pre-binding sites, insertion and deletion mutations, microsatellite expansions, or tandem amplification of weak binding sites. Spreading of these silencing or activating chromatin modifications to adjacent regions results in massive mis-expression of neo-sex linked genes, and little correspondence between functionality of genes and their silencing on the neo-Y or dosage compensation on the neo-X. Intriguingly, the genomic regions being targeted by the dosage compensation complex on the neo-X and those becoming heterochromatic on the neo-Y show little overlap, possibly reflecting different propensities along the ancestral chromosome that formed the sex chromosome to adopt active or repressive chromatin configurations. Our findings have broad implications for current models of sex chromosome evolution, and demonstrate how mechanistic constraints can limit evolutionary adaptations. Our study also highlights how evolution can follow predictable genetic trajectories, by repeatedly acquiring the same 21-bp consensus motif for recruitment of the dosage compensation complex, yet utilizing a diverse array of random mutational changes to attain the same phenotypic outcome.

**Citation:** Zhou Q, Ellison CE, Kaiser VB, Alekseyenko AA, Gorchakov AA, et al. (2013) The Epigenome of Evolving *Drosophila* Neo-Sex Chromosomes: Dosage Compensation and Heterochromatin Formation. *PLoS Biol* 11(11): e1001711. doi:10.1371/journal.pbio.1001711

**Academic Editor:** Peter B. Becker, Adolf Butenandt Institute, Germany

**Received:** April 6, 2013; **Accepted:** October 4, 2013; **Published:** November 12, 2013

**Copyright:** © 2013 Zhou et al. This is an open-access article distributed under the terms of the Creative Commons Attribution License, which permits unrestricted use, distribution, and reproduction in any medium, provided the original author and source are credited.

**Funding:** This work was supported by grants from the National Institutes of Health (GM076007 and GM093182 to DB) and a Packard Fellowship to DB. AAA and AAG thank Dr. M. I. Kuroda for support (NIH grant GM45744), in whose laboratory the ChIP and immunostaining experiments were performed. The funders had no role in study design, data collection and analysis, decision to publish, or preparation of the manuscript.

**Competing Interests:** The authors have declared that no competing interests exist.

**Abbreviations:** CES, chromatin entry site; FPKM, fragments per kilobase of transcript per million mapped reads; MRE, MSL recognition element; MY, million years; XCI, X-chromosome inactivation.

\* E-mail: dbachtrog@berkeley.edu

† These authors contributed equally to this work.

## Introduction

Sex chromosomes evolve from ordinary autosomes [1]. Degeneration of the Y chromosome is a general facet of sex chromosome evolution, and old Y chromosomes are gene poor, often contain high amounts of repetitive DNA, and in *Drosophila* the Y is entirely heterochromatic [2]. The euchromatic, gene-rich X, in contrast, has adopted a hyperactive chromatin configuration, resulting in hyper-transcription of X-linked genes in male *Drosophila* (i.e., dosage compensation). While ultimately resulting in opposite phenotypic outcomes, the formation of hyperactive chromatin on the X and silent heterochromatin on the Y has intriguing parallels [3,4]. Both are initiated at specific nucleation

sites, are associated with characteristic histone modifications, and spreading of the modified chromatin configuration across tens of kilobases allows genomic neighborhoods to adopt a similar silent or hyperactive chromatin state.

In particular, dosage compensation in *Drosophila* occurs by doubling the transcription rate of X-linked genes in males [5], through recruitment of the MSL-complex to specific chromatin entry sites (CES) on the X in a sequence-specific manner [6,7]. The MSL-complex in *D. melanogaster* targets a 21-bp GA-rich DNA sequence motif found at most CES, termed the MSL recognition element (MRE) [6,7], and roughly 150 CES have been identified on the X chromosome of *D. melanogaster* [6,7]. Co-transcriptional targeting and spreading of the MSL-complex along the X

## Author Summary

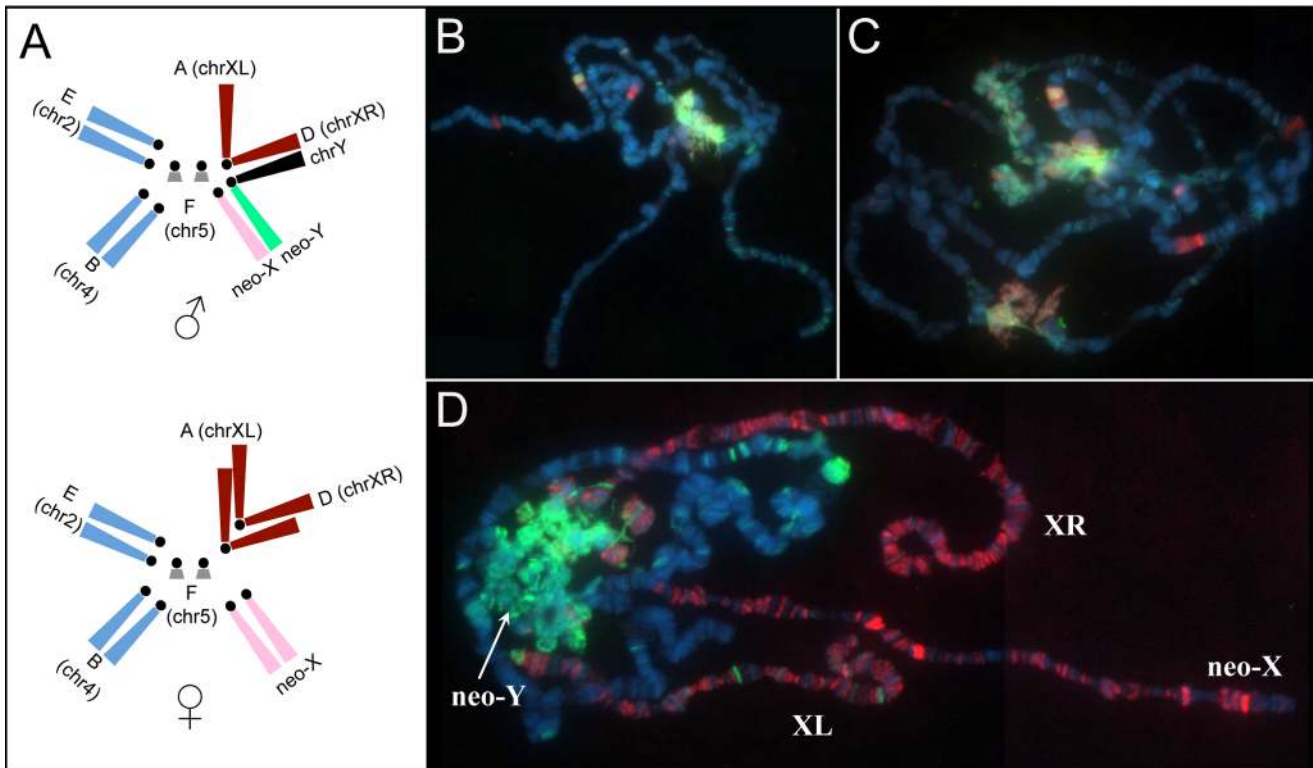
Sex chromosomes differ from non-sex chromosomes (“autosomes”) at the genomic, transcriptomic, and epigenomic level, yet the X and Y share a common evolutionary origin. The *Drosophila* Y chromosome is gene-poor and associated with a compact and transcriptionally inactive form of genetic material called heterochromatin. The X, in contrast, is enriched for activating chromatin marks and is consequently hyper-transcribed, a process thought to be an adaptation to decay and silencing of genes on the Y, resulting in “dosage compensation.” How sex chromosomes have altered their chromatin structure, and what genomic changes led to this dramatically different epigenetic makeup, however, has remained a mystery. By studying the genome, epigenome, and transcriptome of a species with a very recently evolved pair of sex chromosomes (the neo-X and neo-Y of a fruit fly, *Drosophila miranda*), we here recapitulate how both dosage compensation and heterochromatin formation evolve in *Drosophila* and establish several novel and important principles governing the evolution of chromatin structure. We dissect the evolutionary history of over 60 novel binding sites for the dosage compensation complex that evolved by natural selection on the neo-X within the last one million years. We show that the 21-bp consensus motifs for recruiting the dosage compensation complex were acquired by diverse molecular mechanisms along the neo-X, while the onset of heterochromatin formation is triggered by the accumulation of transposable elements, leading to silencing of adjacent neo-Y genes. We find that spreading of these chromatin modifications results in massive mis-expression of neo-sex linked genes, and that little correspondence exists between functional activity of genes on the neo-Y and whether they are dosage-compensated on the neo-X. Intriguingly, the genomic regions being targeted by the dosage compensation complex on the neo-X and those that are heterochromatic on the neo-Y show little overlap, possibly reflecting different propensities of the ancestral chromosome that formed the sex chromosome to evolve *active* versus *repressive* chromatin configurations. These findings have broad implications for current models of sex chromosome evolution.

chromosome results in MSL-binding of most active genes and their transcriptional upregulation, mediated by changes in the chromatin structure of the X (through histone H4 lysine 16 acetylation [H4K16ac] [8–10]). Less is known about how a genomic region is targeted to adopt a heterochromatic configuration, but repetitive elements are thought to be involved in triggering the initiation and spreading of silencing heterochromatin [11,12]. Several studies, particularly in yeast, have suggested that RNAi-mediated silencing pathways can initiate the formation of heterochromatin (reviewed in [13–15]). Transcripts from repetitive elements in the centromeric region of fission yeast are processed into small interfering siRNAs and incorporated into an RNAi-induced transcriptional silencing complex that recognizes and binds homologous regions to initiate gene silencing via histone H3 lysine 9 methylation (H3K9me2/3) [16,17]. *Drosophila* centromeres also contain actively transcribed satellite- and transposon-fragment repeats [18,19], and mutations in genes encoding the RNAi pathway disrupt HP1 localization and heterochromatin formation. This suggests that a similar mechanism for RNAi-mediated heterochromatin assembly operates in

*Drosophila* as well, and recent work has shown how transposons and the piRNA pathway affect chromatin patterns in *Drosophila* [20–22].

How epigenetic modifications are acquired on sex chromosomes is a puzzle, and little is known about how dosage compensation and heterochromatin formation evolve on a newly formed sex chromosome pair. That is, how are new nucleation sites to trigger dosage compensation or heterochromatin formation acquired on a former autosome, how does a genomic region become targeted to adopt a hypertranscribed or heterochromatic appearance, what functional pressures drive the evolution of dosage compensation and heterochromatin formation, and how do they interact?

In *D. miranda*, a new sex chromosome formed about 1 million years (MY) ago, through a fusion of an autosome with the ancestral Y chromosome (Figure 1A) [23]. These “neo-sex” chromosomes are at an intermediate stage in the transition from a pair of autosomes to a pair of heteromorphic sex chromosomes. In particular, the neo-Y of *D. miranda* is undergoing massive degeneration: it is rapidly accumulating repetitive DNA, is evolving a heterochromatic appearance, and about 40% of its ancestral genes have become non-functional (i.e., they have acquired frame shift mutations or stop codons on the neo-Y, or have been completely lost, [24–27]). Gene expression is generally reduced at neo-Y genes compared to their neo-X homologs [25,28], but its chromatin structure, and the association of heterochromatin and gene expression, has not yet been studied at the molecular level. The neo-X, in contrast, is beginning to acquire partial dosage compensation by coopting the MSL machinery that has evolved to compensate the ancestral X chromosome that is shared among all *Drosophila* species (Figure 1B–1D) [29–31]. MSL-mediated dosage compensation is found throughout the *Drosophila* genus [29–31], and several components of the dosage compensation complex have male-specific gene expression patterns and target the newly formed X chromosomes of *D. miranda* males (Figure S1) [29,30]. The characteristic histone modification induced by the MSL-complex (H4K16ac) is also enriched at all the male X chromosomes of *D. miranda*, including the neo-X [30,31], supporting that the function of MSL is conserved across the *Drosophila* genus. We have previously studied MSL-binding patterns in *D. miranda* using ChIP-seq, in order to identify genes on the X chromosomes that are targeted by the dosage compensation complex, and we have shown that the sequence motif and function of CES is conserved between *D. miranda* and *D. melanogaster* [32]. ChIP-seq profiling of MSL3 identified 68 novel CES that have already evolved on the neo-X of *D. miranda*, and, via spreading of the MSL-complex, about 607 neo-X genes (22% of all annotated genes on the neo-X) are MSL-bound (and 37% of actively transcribed genes) [32]. Binding of the MSL-complex may be more transient for some genes [33], and about 1,203 genes on the neo-X are bound by MSL and/or enriched for H4K16ac, the histone mark deposited by the MSL-complex (i.e., 44% of all genes, and 73% of actively transcribed genes may already be dosage compensated on the neo-X; [32]). The mutational paths that create novel CES on the neo-X, and the dynamic interactions of evolving dosage compensation on the neo-X versus degeneration of the neo-Y, however, have not been systematically investigated. Here, we examine the acquisition of dosage compensation on the neo-X chromosome and formation of heterochromatin on the neo-Y of *D. miranda* at the molecular and functional level, in order to identify how epigenetic modifications evolve on nascent sex chromosomes.



**Figure 1. Dosage compensation of the neo-X, and heterochromatin formation on the neo-Y of *D. miranda*.** (A) Schematic karyotype of *D. miranda*. *Drosophila* chromosomes are labeled as “Muller element” from A to F. In *D. miranda*, two fusions between element A (ancient X) and D, and the Y chromosome and element C created sex chromosomes of different ages. Element D became chrXR about ~10–15 MY ago and element C became the neo-X and neo-Y chromosome about ~1–1.5 MY ago. (B–C) Polytene chromosomes stained for H3K9me2 (green) and HP1a (red) in (B) female *D. miranda* and (C) male *D. miranda*. (D) Co-immunolocalization of MSL3-TAP (red) and H3K9me2 (green) in transgenic male *D. miranda* expressing TAP-tagged MSL3. The neo-Y is becoming heterochromatic, as shown by prominent H3K9me2 and HP1 binding, while all three X-chromosome arms are acquiring dosage compensation in *D. miranda* males.  
doi:10.1371/journal.pbio.1001711.g001

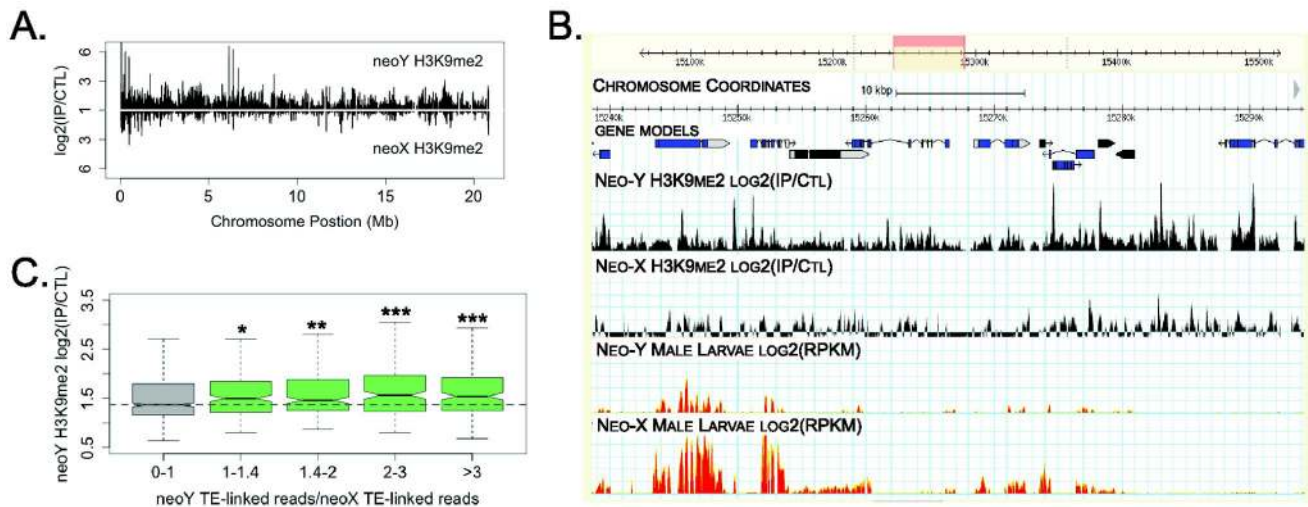
## Results

### Acquisition of MSL-Binding Sites on the Neo-X

Previous work has shown that parts of the neo-X of *D. miranda* have acquired MSL-mediated dosage compensation [29–32]; however, the evolutionary processes involved in the formation of the CES on this chromosome remain unknown. Evolving novel CES along a new X chromosome to initiate dosage compensation presents a challenge. To recruit the MSL complex, a 21-bp GA-rich DNA segment (MRE, see Figure 2A) [6,7], needs to be acquired on many locations along the newly formed X. Multiple mutations may be necessary to evolve that sequence motif at a particular genomic location and the emergence of a novel binding site may require the presence of a pre-site on the neo-X (i.e., a site that shows high sequence similarity to a MRE). While our previous study provided evidence that a CES can be created by tandem amplification of a short GA-rich sequence [32], that work focused on a single CES and it remains unclear whether the other 67 CES evolved via similar mechanisms. The neo-X chromosome of *D. miranda* segregates as an autosome in its closely related sister species *D. pseudoobscura* and *D. affinis*, and comparative sequence analysis allows us to reconstruct, to some extent, the path evolution has taken to acquire the MSL-binding motifs on the neo-X. In particular, we aimed to identify mutational events within the 68 putative CES on the neo-X that were unique to *D. miranda* and would create a novel or stronger MRE on the neo-X (Figure 2B).

We excluded two CES regions that we were not able to align to *D. affinis*. In 25 cases, we were not able to identify the mutations that created a putative CES on the neo-X (see Figure 2B). For the remaining 41 CES, we found several different mutational routes to evolve novel MREs on the neo-X (see Figure 2C for representative examples). At 28 CES, insertion or deletion mutations created a novel CES on the neo-X at a genomic region that has little or no affinity for the MSL complex in outgroup species. In seven cases, simple nucleotide mutations have generated a stronger recruitment motif for the MSL-complex on the neo-X at a pre-site, and in four cases, a GA-microsatellite expansion created a stronger MRE motif at a pre-site. Another mechanism to generate new CES, found twice, involves the modification and tandem amplification of a pre-binding site for the MSL-complex on the neo-X (five and nine tandem copies, respectively). This may increase the affinity of the MSL-complex for such a genomic location and create a more efficient CES. Indeed, we find that CES containing multiple non-overlapping MREs are more strongly bound by the MSL-complex compared to those with a single MRE present ( $p = 0.038$  one-tailed Wilcoxon test; Figure S2). Thus, a broad spectrum of mutational events has contributed to the evolution of novel CES on the neo-X. Only half of the CES identified on the neo-X required the presence of a pre-site, suggesting that the acquisition of dosage compensation is not necessarily constrained by the fortuitous presence of a sequence that resembles the MSL-recognition motif.





**Figure 3. Heterochromatin formation on the neo-Y of *D. miranda*.** (A) Enrichment profile of H3K9me2 on the *D. miranda* neo-sex chromosomes. Intensity ratios are plotted for H3K9me2 (y-axis) relative to chromosomal position (x-axis), for protein-coding genes and their flanking regions along the neo-sex chromosomes. (B) Genome Browser screen capture of a 50 kb region on the neo-sex chromosomes showing intensity ratios for histone marks (H3K9me2, in black) and read coverage depth for RNA-seq data (in red) for the neo-Y and neo-X chromosomes in male third instar larvae. Gene models for potentially functional neo-Y genes are in blue, and for non-functional neo-Y genes in black. (C) TE accumulation on the neo-Y relative to the neo-X, versus H3K9me2 binding along the neo-Y. The ratios of neo-Y repeat-linked read numbers versus neo-X repeat-linked reads were pooled into four bins of equal size, as a reflection of the degree of neo-Y specific repeat accumulation. The boxplots show the neo-Y specific H3K9me2 binding ratios within each bin, and genes without neo-Y specific repeat enrichments show a significantly lower H3K9me2 binding (Wilcoxon one tailed test:  $p$ -value < 0.05) than others. The number of asterisks reflects the significance level. \*,  $p$ -value < 0.05; \*\*,  $p$ -value < 0.01; \*\*\*,  $p$ -value < 0.0001.

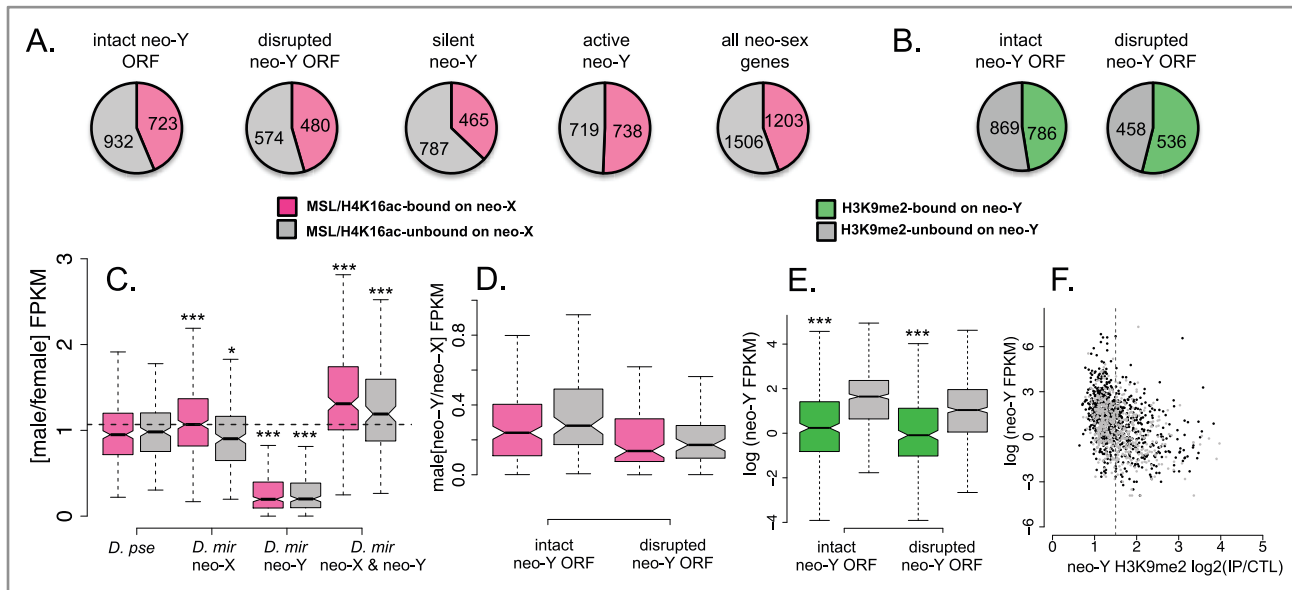
doi:10.1371/journal.pbio.1001711.g003

that neo-X genes with functional neo-Y homologs can become dosage compensated if they reside close to a CES. We divide genes on the neo-Y into non-functional genes if they contain frame-shift mutations or premature stop codons, or if they are deleted from the neo-Y and potentially functional genes if they have an intact open reading frame. Note that the potentially functional genes might nevertheless contain amino-acid substitutions that render them non-functional, or they may contain disabling mutations in their regulatory regions and may not be expressed on the neo-Y. In total, 22% of all annotated neo-sex genes are bound by the MSL-complex on the neo-X (Figure S3). However, MSL-binding in *D. melanogaster* is more transient than its more broadly distributed chromatin mark H4K16ac [33], and we see a similar pattern in *D. miranda* (Figure S4; Table S1); 44% of all genes on the neo-X are dosage compensated, if compensation is defined by either MSL- and/or H4K16ac enrichment (Figure 4A). We find MSL complex binding/H4K16ac enrichment at 46% of the neo-X homologs of neo-Y genes with disrupted ORFs. This value is similar to MSL and/or H4K16ac binding to neo-X genes with intact neo-Y homologs (44% bound on the neo-X; Fisher exact test  $p$ -value = 0.28; see Figure 4A). Further, of neo-X genes whose neo-Y homologs are transcriptionally silent (fragments per kilobase of transcript per million mapped reads [FPKM] < 1, see Methods), only 37% are bound by the MSL-complex/enriched for H4K16ac, significantly fewer than neo-X genes with a transcribed neo-Y copy (51%, Fisher exact test  $p$ -value = 1.6e-12; Figure 4A). Thus, a large number of genes have become dosage compensated on the neo-X, regardless of whether their neo-Y homolog is functional or not. Moreover, the homologs of genes that are actively transcribed on the neo-Y actually appear more likely to be targeted by the dosage compensation complex on the neo-X, which is contrary to the expectation that dosage compensation has evolved to counterbalance reduced expression of genes that have become silenced on the neo-Y. These patterns of MSL binding are

probably due to spreading of the MSL complex in *cis* from CES (see also below). In particular, the recruitment of the MSL-complex to the neo-X by only 68 CES causes dosage compensation of over 1,200 transcribed genes. Hence, the acquisition of each CES could have been driven by only a few dosage-sensitive genes on the neo-X (with a nonfunctional neo-Y copy), and most other neo-X genes within each compensated block might have acquired dosage compensation unnecessarily through spreading of the MSL complex. Consistent with spreading passively compensating many neo-X genes, gene ontology (GO) enrichment analysis reveals no clear categories of genes as being targeted by the MSL-complex or not (Table S2). On the other hand, non-functional genes on the neo-Y (those with disrupted ORFs) are more likely to be associated with H3K9me2 (Fisher exact test,  $p$  < 0.01; Figure 4B). This is consistent with the idea that heterochromatin formation might allow silencing of maladaptive neo-Y genes [36], or silenced genes are free to accumulate nonsense mutations neutrally [37]. However, this association is far from perfect, and many genes with disrupted ORFs (46%) are not silenced by H3K9me2, and many genes with intact ORFs (47%) are targeted by heterochromatin (see Figure 4B).

### Gene Expression on the Evolving Sex Chromosomes

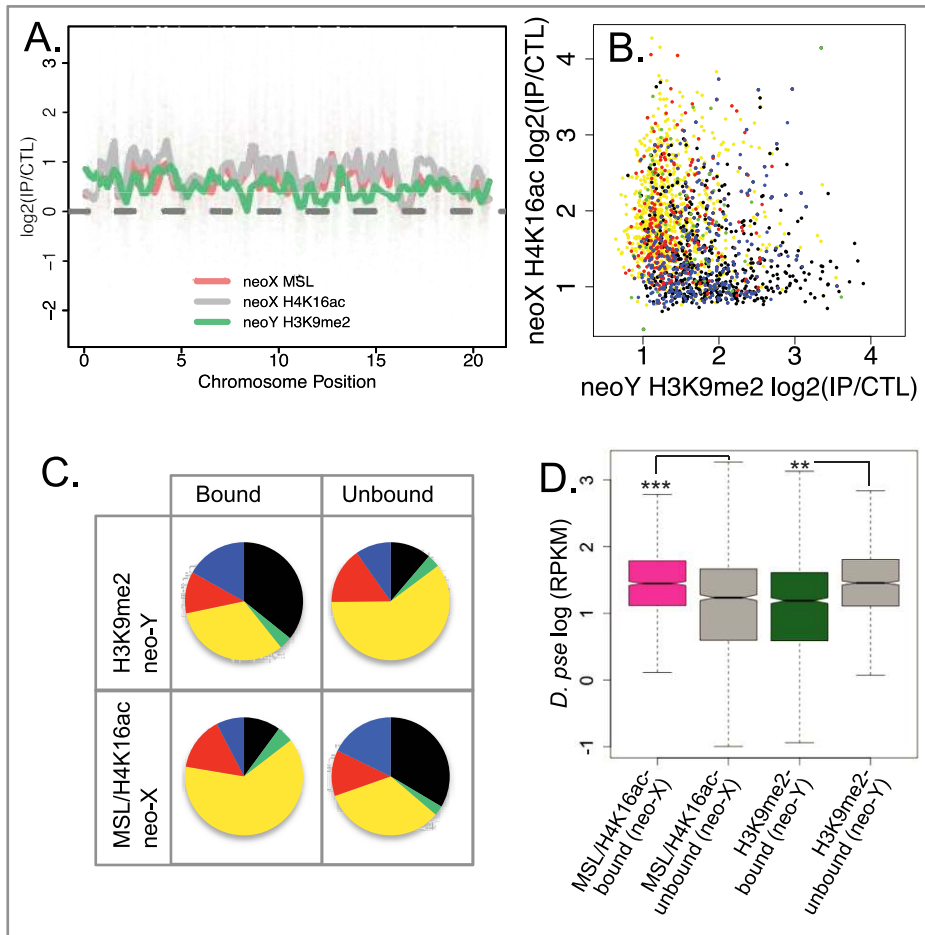
Partial degeneration and silencing of neo-Y genes, and incomplete dosage compensation of the neo-X suggest that there may be massive misexpression of neo-sex linked genes in male *D. miranda*. Many genes that are non-functional or silenced on the neo-Y are not yet dosage compensated on the neo-X, while homologs of functional neo-Y genes often reside within dosage compensated blocks on the neo-X. To confirm that MSL binding or enrichment for chromatin marks which are associated with dosage compensation (H4K16ac) result in transcriptional upregulation of neo-X linked genes in *D. miranda*, we compared expression patterns for neo-X genes between males and females



**Figure 4. Dosage compensation and gene silencing.** Genes that are targeted by the MSL complex or enriched for H4K16ac on the neo-X are shown in pink, and genes that are neither bound by MSL nor H4K16ac are shown in grey. (A) The proportion of MSL-bound/H4K16ac enriched genes does not differ between neo-X genes whose neo-Y homologs are potentially functional (intact neo-Y ORF) versus those whose neo-Y homologs are non-functional (disrupted neo-Y ORF). Genes that are transcriptionally silent on the neo-Y (silent neo-Y, FPKM < 1) are less likely to be dosage compensated on the neo-X, while actively transcribed neo-Y genes (active neo-Y, FPKM > 1) are more often dosage compensated. (B) Pseudogenes on the neo-Y (disrupted neo-Y ORF) are significantly more likely to be targeted by H3K9me2 than potentially functional neo-Y genes (Fisher exact test,  $p < 0.01$ ). (C) Upregulation of gene expression by the dosage compensation complex on the neo-X. Shown is the expression of Muller C genes in males versus females (M/F), and genes are divided into those bound by the MSL complex and/or H4K16ac-marked on the neo-X in *D. miranda* (pink) versus those not targeted by the dosage compensation machinery on the neo-X (grey). Only transcripts with FPKM > 2 are included. *D. pse* (panel 1): M/F expression of Muller C genes in *D. pseudoobscura*. *D. mir* neo-X (panel 2): Expression of the neo-X allele in males versus females. M/F expression is significantly higher for genes targeted by the dosage compensation complex compared to neo-X genes that are not targeted (Wilcoxon test:  $W = 64,915$ ,  $p < 10^{-4}$ ), whereas the M/F ratio in *D. pseudoobscura* is indistinguishable between homologs of bound and unbound genes (Wilcoxon test:  $W = 51,929$ , NS). Haploid output of dosage compensated neo-X genes is slightly higher than diploid expression of *D. pseudoobscura* homologs (Wilcoxon test:  $W = 149,307$ ,  $p < 0.01$ ) (panels 1 and 2) whereas haploid output of unbound neo-X genes is not increased to the same extent, i.e., it is significantly lower compared to diploid expression in *D. pseudoobscura* (Wilcoxon test:  $W = 18,272$ ,  $p < 0.05$ ) (panels 1 and 2). *D. mir* neo-Y (panel 3): Expression of the neo-Y allele in males versus the neo-X in females. Neo-Y expression is significantly reduced compared to neo-X expression (MSL/H4K16ac genes: Wilcoxon test:  $W = 17,481$ ,  $p < 10^{-13}$ ; genes not targeted by MSL/H4K16ac: Wilcoxon test:  $W = 3,006$ ,  $p < 10^{-15}$ ) (panels 2 and 3). *D. mir* neo-X and neo-Y (panel 4): Adding up the FPKM-values of neo-X and neo-Y linked genes leads to an estimate of the overall output from the neo-sex chromosomes. Combined neo-sex expression is significantly higher than autosomal expression of homologs in *D. pseudoobscura* (MSL/H4K16ac genes: Wilcoxon test:  $W = 123,412$ ,  $p$ -value <  $10^{-15}$ ; genes not targeted by MSL/H4K16ac: Wilcoxon test:  $W = 17,455$ ,  $p < 10^{-5}$ ) (panels 1 and 4). (D) As in (C), neo-Y genes whose homologs are dosage compensated on the neo-X are shown in pink, and neo-Y genes with un-compensated neo-X homologs are shown in grey. Neo-Y/neo-X transcript levels are indistinguishable comparing genes with intact neo-Y ORF versus disrupted neo-Y ORF (Wilcoxon test:  $W = 13,588$ , NS, and  $W = 7,096$ , NS), suggesting that downregulation of the neo-Y occurs independently of dosage compensation on the neo-X. However, absolute expression of non-functional neo-Y genes is lower compared to that of functional neo-Y genes (Wilcoxon test:  $W = 52,980$ ,  $p < 10^{-4}$ ). (E) H3K9me2-bound neo-Y genes (shown in green) are expressed at significantly lower levels than genes not targeted by H3K9me2 on the neo-Y (shown in grey) (Wilcoxon test:  $W = 57,006$ ;  $p < 10^{-15}$  [functional genes] and  $W = 20,662$ ;  $p < 10^{-15}$  [pseudogenes]; all FPKM-values are included). (F) Downregulation of neo-Y genes that are targeted by H3K9me2. Potentially functional neo-Y genes are shown in black, pseudogenes in grey; the vertical line indicates the cut-off value for H3K9me2-bound versus unbound genes. doi:10.1371/journal.pbio.1001711.g004

in *D. miranda* to their “ancestral” sex-biased expression in *D. pseudoobscura*, where they are autosomal (Figure 4C, panel 1). Our genome assembly of the repeat-rich neo-Y is not yet of sufficient quality and contiguity to directly extract genes; instead, we used *de novo* assemblies of the transcriptome to compare transcript abundance between neo-X and neo-Y homologs, and between sexes and species (see Methods). Conditioning on active transcription (based on H3K36me3 enrichment, a chromatin marker associated with transcribed regions), we find that neo-X genes that are bound by MSL/H4K16ac (or only MSL; Figure S5) are upregulated, on average, relative to genes that are not associated with those marks (Figure 4C, panel 2). Importantly, however, neo-X genes that lack dosage compensation are not simply transcribed at half the level of genes bound by MSL/H4K16ac (see Figure 4C, panel 2). Instead, buffering mechanisms for expression of haploid genes, as generally observed in *Drosophila* [39,40], result in partial

compensation of genes that are not targeted by the dosage compensation machinery. Further, many genes are still transcribed from the neo-Y, despite being dosage compensated on the neo-X, or despite harboring frame-shift mutations and stop codons (Figure 4C, panel 3, and 4D), and there is no statistical association between MSL-binding levels of neo-X genes and downregulation of their neo-Y homologs (F-statistic test  $p$ -value = 0.73; Figure S6). In fact, if expression from the neo-Y chromosome is taken into account, many genes appear over-expressed in male *D. miranda* (Figure 4C, panel 4). However, it is unclear if the neo-Y copies, which often contain several amino-acid or nonsense mutations [24,25], can functionally substitute for their neo-X homologs. Genes are generally transcribed at a much lower level from the neo-Y relative to the neo-X (Figure 4C, panel 3, and 4D) [25,28], which could in part be caused by changes to its chromatin structure. Consistent with H3K9me2-induced silencing, we find



**Figure 5. Heterochromatin formation and dosage compensation.** (A) Sliding window enrichment profile of H3K9me2-enrichment along neo-Y genes, and H4K16ac and MSL-binding along their neo-X homologs. (B) H4K16ac-enrichment of neo-X genes versus H3K9me2-enrichment at their neo-Y homologs. Genes are color coded according to their chromatin state in *D. melanogaster* [43], with yellow and red corresponding to genes located in active chromatin, and black, green, and blue corresponding to genes located in repressive chromatin. (C) MSL/H4K16ac-bound/unbound neo-X genes and H3K9me2-bound/unbound neo-Y genes versus principle chromatin types in *D. melanogaster*. The color-coded chromatin types of *D. miranda* bound/unbound genes were inferred from the chromatin type definition of their *D. melanogaster* orthologs (from [43]). Genes within “yellow” chromatin are more likely to be targeted by the dosage compensation complex on the neo-X. Genes within “black” chromatin are more likely to be silenced by H3K9me2 on the neo-Y. Genes within active “red” chromatin show no significant difference regarding their dosage compensation states on the neo-X, which is consistent with the lack of H3K36me3 chromatin mark in red chromatin [43], and the dosage compensation complex targeting genes with such a mark. (D) Expression levels of genes in *D. pseudoobscura* whose homologs in *D. miranda* are bound/unbound by MSL/H4K16ac on the neo-X or bound/unbound by H3K9me2 on the neo-Y; *D. pseudoobscura* expression levels can be used as a proxy for ancestral expression of neo-sex linked genes. doi:10.1371/journal.pbio.1001711.g005

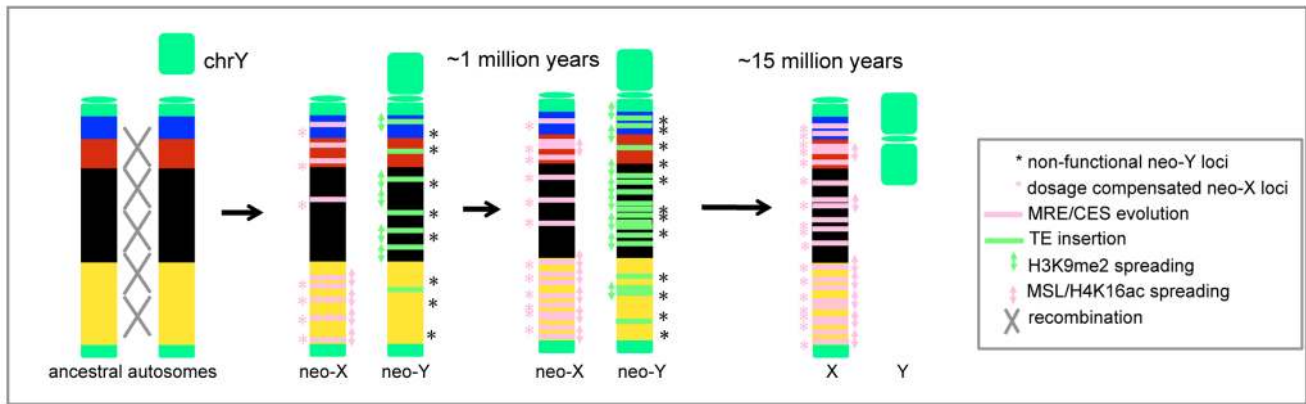
lower expression of H3K9me2 bound neo-Y genes (Figure 4E) and a significantly negative correlation between H3K9me2-binding versus transcript levels for neo-Y genes ( $p$ -value  $< 2.2 \times 10^{-16}$ , coefficient =  $-1.26$ ; Figure 4F).

### Chromatin Structure Evolution

If epigenetic silencing on the neo-Y evolves in direct response to dosage compensation of neo-X genes, or *vice versa*, we would expect to find the homologs of compensated genes on the neo-X being preferentially targeted by H3K9me2 on the neo-Y. Contrary to this expectation, we detect an overall negative correlation between levels of H4K16ac (or MSL)-binding of neo-X linked loci, and H3K9me2 binding of neo-Y genes ( $p$ -value =  $6.21 \times 10^{-6}$ , linear regression coefficient =  $-0.08$ ; Figure 5A and 5B), and the pattern is more prominent in neo-Y genes bound by H3K9me2 ( $p$ -value =  $4.58 \times 10^{-9}$ , coefficient =  $-0.15$ ). This means that dosage compensated neo-X regions are somewhat less likely to have

been silenced by heterochromatin on the neo-Y. This negative relationship may in fact reflect different propensities of the ancestral chromosome that formed the neo-sex chromosome to adapt “active” versus “repressive” chromatin configurations. In particular, spreading of the MSL-complex is targeted to actively transcribed regions [41], while heterochromatin is more prone to form in silent, non-transcribed DNA [42]. An ideal outgroup to establish the ancestral chromatin structure of the neo-sex chromosomes would be *D. pseudoobscura*, where this chromosome is still an autosome. In the absence of such data, we used *D. melanogaster* chromatin data and chromatin profiles from *D. miranda* females as a proxy for the ancestral chromatin structure of the neo-sex chromosomes. If we classify *D. miranda* genes according to their principal chromatin types in *D. melanogaster* [43], we observe a general agreement between expression patterns in *D. miranda* and chromatin type (i.e., reduced gene expression in repressive chromatin, and higher gene expression in active chromatin;





**Figure 6. Model of chromatin changes at evolving neo-sex chromosomes.** The process of heterochromatin formation of the neo-Y chromosome appears to be initiated from repressive (black) chromatin regions and dosage compensation on the neo-X preliminary evolves from active (yellow) chromatin.

doi:10.1371/journal.pbio.1001711.g006

Figure S7), suggesting that overall patterns of chromatin structure are conserved between species, and that we can use *D. melanogaster* as a proxy for the ancestral chromatin configuration [43]. We indeed find that genes that are located in active (“yellow”) chromatin (Figure S8) are more likely to have evolved MSL-mediated dosage compensation on the neo-X, while genes in silent (“black”) chromatin are more likely to have become heterochromatic on the neo-Y (Figure 5B and 5C). A similar pattern is also found using female *D. miranda* chromatin states for approximating the ancestral chromatin configuration of the neo-sex chromosomes (Figure S9). While the neo-X is no longer autosomal in this comparison, the chromatin structure (as measured by H4K16ac enrichment) is similar between the X and autosomes in females and differs dramatically in males (Figure S10), indicating that *D. miranda* females should also provide a good proxy for the ancestral chromatin structure of the neo-sex chromosomes. Chromatin states are overall conserved between *D. melanogaster* and *D. miranda* females, validating our inferences of ancestral chromatin states (Figure S11).

In addition, homologs of H3K9me2-bound genes are expressed at significantly lower levels in *D. pseudoobscura* compared to homologs of neo-Y genes that are not targeted by H3K9me2 (Wilcoxon test:  $W = 746184$ ;  $p\text{-value} < 0.01$ ), while genes bound by MSL and/or H4K16ac on the neo-X tend to have higher expression levels in *D. pseudoobscura* than those not targeted by the dosage compensation machinery ( $W = 846410.5$ ,  $p\text{-value} < 2.2 \times 10^{-16}$ ; Figure 5D). This is consistent with heterochromatic regions on the neo-Y being ancestrally less transcriptionally active, while dosage compensation on the neo-X preferentially evolved in transcriptionally active chromosomal segments. Thus, the acquisition of a hyper-transcribed state on the neo-X is accompanied by the acquisition of an inert, heterochromatic chromatin structure on the neo-Y, but neither epigenetic modification appears to directly trigger the other (Figure 6).

## Discussion

*D. miranda* has a unique karyotype, harboring three sex chromosomes of different ages: XL is the ancestral X chromosome in the genus *Drosophila* and >60 MY old, XR became X-linked about 15 MY ago, is entirely dosage compensated [32] and its former homolog is completely degenerated (i.e., all genes on XR are hemizygous in males [44]). This implies that a former autosome can become completely transformed into a

heteromorphic sex chromosome within only 15 MY in *Drosophila*. The much younger neo-sex chromosomes are at an earlier stage of this evolutionary transition, and the neo-Y is only partially degenerated and the neo-X has evolved incomplete dosage compensation. This provides a unique opportunity to study the evolutionary processes driving the differentiation of sex chromosomes, and here we investigate how changes to the DNA sequence result in novel epigenetic modifications of the diverging neo-sex chromosomes that affect levels of transcription of neo-sex linked genes. Recruitment of the dosage compensation complex to the neo-X requires the acquisition of a 21-bp consensus motif, and we uncover diverse mutational paths that have led to the evolution of novel CES on the neo-X. This highlights how evolution can follow predictable genetic trajectories by repeatedly acquiring the same 21-bp consensus motif for recruitment of the dosage compensation complex, yet utilizing a diverse array of random mutational changes to attain the same phenotypic outcome. We further show that heterochromatin formation is triggered by an accumulation of repetitive DNA on the neo-Y, and silences adjacent genes.

Surprisingly, we find little correspondence between Y degeneration and dosage compensation in *D. miranda*. Many non-functional neo-Y genes are not dosage compensated on the neo-X while many potentially functional neo-Y genes reside within dosage compensated blocks. Spreading of the MSL-complex implies that the acquisition of dozens of CES can result in dosage compensation of hundreds of genes along the neo-X, many with functional and expressed homologs on the neo-Y. Patterns of gene expression confirm that many neo-sex genes are either over- or under-expressed, i.e., there is rampant suboptimal transcription in male *D. miranda*. Dosage compensation of functional genes and transcription of pseudogenes from the neo-Y may in fact select for adaptive downregulation of those genes from the neo-Y, i.e., the degeneration of genes on the neo-Y that are dosage compensated on the neo-X would be selectively favored. Thus, once an evolving X chromosome acquires dosage compensation mechanisms that operate through large-scale modifications to its chromatin structure, such as in *Drosophila*, the entire evolutionary dynamics of sex chromosome evolution will change. While Y degeneration at the initial stages of sex chromosome evolution is a deleterious process with negative consequences to fitness, degeneration of neo-Y genes whose homologs are dosage compensated on the neo-X should restore optimal levels of gene expression, and thus improve fitness. This will result in complex patterns of Y degeneration over evolutionary time, and confounds comparisons of sex chromosome

evolution in taxa with different modes of dosage compensation [45].

While heterochromatin formation on the neo-Y occurs simultaneously with dosage compensation on the neo-X in *D. miranda*, the genomic regions that are being targeted by MSL-dependent dosage compensation on the neo-X and heterochromatin on the neo-Y show little overlap. This may reflect different propensities of the ancestral chromosome that formed the neo-sex chromosome to evolve active versus repressive chromatin configurations (Figure 6). In particular, the MSL-complex spreads along the X chromosome by targeting actively transcribed regions, and spreading should be more efficient in chromosomal neighborhoods that display higher levels of genetic activity. In contrast, active transcription suppresses the spreading of heterochromatin, and heterochromatin is more likely to form and propagate in genetically inert regions. We show that chromosomal neighborhoods of the neo-sex chromosome with ancestrally higher levels of expression and that are classified as active chromatin are more likely to be targeted by the MSL-complex on the neo-X; in contrast, ancestrally silent chromatin with reduced gene expression is more likely to have adopted a heterochromatic appearance on the neo-Y. Thus, the antagonizing effects of active transcription and associated differences in chromatin structure can help to explain the evolution of epigenetic modifications on diverging sex chromosomes.

The epigenome of sex chromosomes is very different in mammals compared to *Drosophila*. For one, the Y chromosome in mammals is less heterochromatic than in *Drosophila* [46]. The human Y contains one large heterochromatic block [47], but most genes appear to reside within the euchromatic part of the chromosome, and the macaque Y chromosome contains almost no heterochromatin [48]. Also, dosage compensation works in opposite directions in mammals and flies, with one of the two X chromosomes being inactivated in female mammals [35]. X chromosome inactivation (XCI) in mammals is initiated in early embryogenesis by *Xist* RNA that localizes to the inactive X chromosome. *Xist* induces XCI by spreading *in cis* across the future inactive X chromosome [49], recruiting a polycomb repressive complex [50], and forming a transcriptionally silent nuclear compartment enriched for repressive chromatin modifications including H3K27me3 [50]. XCI in mammals is initiated from a single region on the X (the X inactivation center, the genomic location from which *Xist* is being transcribed), while *Drosophila* contains hundreds of CES along its X. Both the repressive chromatin modification in mammals and the active chromatin modification in *Drosophila* spread across the chromosome in a sequence-independent manner. During initiation of XCI, *Xist* transfers to distal regions across the X chromosome by exploiting the three-dimensional conformation of the X chromosome; i.e., *Xist* coats the X chromosome by searching in three dimensions, modifying chromosome structure, and spreading to newly accessible locations [51]. The MSL-complex of *Drosophila* spreads along the X chromosome by recognizing features of actively transcribed genes (i.e., H3K36me3 modification), but it is not known if MSL spreads linearly along the X chromosome, or in three dimensions as well. During the maintenance of XCI in mammals, *Xist* binds broadly across the X chromosome [51] while the MSL-complex in flies is highly enriched in actively transcribed genes [10]. While we find little correspondence between whether a gene is dosage compensated on the neo-X and whether its neo-Y homolog is functional in *D. miranda*, X inactivation in

humans appears primarily driven by gene loss on the Y, and X-inactivation status can successfully classify 90% of X-linked genes into those with functional or nonfunctional Y homologs [52].

To conclude, our study highlights both the potential and the limitations of adaptation. On one hand, we show that the neo-X has rapidly evolved dosage compensation, and makes use of different mutations to acquire MSL-binding motifs. This illustrates how evolution can repeatedly attain the same phenotypic outcome, yet utilizing diverse underlying mutational paths, and demonstrates how random *de novo* mutations and natural selection can quickly respond to fitness costs resulting from gene decay on the neo-Y by co-opting the existing dosage compensation machinery. On the other hand, the peculiar mechanistic property of the MSL-complex to spread along the chromosome results in suboptimal patterns of dosage compensation on the neo-X, causing compensation of many functional neo-Y genes. This in turn sets the stage for adaptive Y-degeneration to restore optimal expression levels of dosage compensated neo-sex linked genes. Thus, our study reveals a dynamic interplay between Y degeneration and dosage compensation, and shows how epigenetic modifications drive the evolution of silent and hyper-transcribed chromatin on evolving sex chromosomes, though neither directly triggers the other.

## Materials and Methods

### SNP Calling and Neo-Y Annotation

We sequenced single individuals of both sexes from an inbred *D. miranda* strain (MSH22) at ~90-fold coverage for each sex. The genome assembly and annotation has been greatly improved relative to the earlier version presented in [25] (N50 length: 1,029 kb versus 23.7 kb), because of the increased sequencing coverage and inclusion of Illumina libraries with different insert sizes and 454 data [32]. We aligned the genomic reads of male and female against this improved version of *D. miranda* chromosome sequences using bowtie2 [53] using the “sensitive-local” parameter set and taking the read orientation and library insert size into consideration, and then screened the alignments by their mapping qualities ( $Q > 20$ , where “Q” is the mapping quality determined by bowtie2 and  $Q > 20$  means a certain alignment has less than 1% chance to be spurious). Following the standard GATK pipeline [54], PCR duplicate reads were removed and reads were realigned before calling variants with UnifiedGenotyper. We discarded SNPs/indels with low qualities (quality < 30) or coverage (depth < 5) or showing unusual strand-biases or clustering patterns. Since we have sequenced single individuals of an inbred *D. miranda* strain (three libraries per sex), male-specific variants linked to the neo-sex chromosomes should likely represent neo-Y specific mutations. We have identified a total of 380,684 such mutations (putative neo-Y specific mutations), translating to an average divergence level of 1.8 sites per 100 bp between the neo-X/Y. We estimated the false positive discovery rate to be about 2% to 4%, based on the numbers of male-specific variants on autosomes. The putative neo-Y specific mutations were introduced into the neo-X chromosome sequence to build a reference-based neo-Y chromosome assembly. There are a total of 169,046 neo-X/Y divergence sites identified from 2,496 neo-sex linked genes (92.4% of all annotated genes) with an average of 67 divergent sites per gene. This provides diagnostic sites dense enough for our further discrimination between neo-X and neo-Y ChIP-seq/RNA-seq reads. We then used predicted neo-X protein sequences to annotate the reconstructed sequence of the neo-Y, and any genes containing premature stop codons or frameshift mutations were

characterized as neo-Y genes with disrupted ORFs. We inferred genes deleted from the neo-Y by comparing the mapping coverage between sexes (Figure S12) and conditioned on a lack of male-specific variants in such genes; neo-Y deletion genes are defined as those showing the same distribution of mapping coverage between sexes as X-linked genes. Note that most of our analysis of neo-Y chromosome features is done relative to the neo-X focusing on these neo-X/Y divergent sites; the few genes/gene regions that lack diagnostic SNPs between the neo-sex chromosomes should not greatly bias our analysis (6.6% of all genes).

### Evolutionary Analysis

To infer the molecular evolution and conservation of CES, we used the software package Mercator [55] to generate whole-genome alignments between *D. miranda*, *D. pseudoobscura*, and the more distant outgroup *D. affinis*, for comparison along the neo-X, and *D. melanogaster* for contrasts of CES on XL. We used FIMO [56], part of the MEME [57] suite, to identify genomic regions showing homology to the MRE motif and extracted from the whole-genome alignment the highest scoring motif within 500 bp of each CES summit on the neo-X chromosome. We manually examined each alignment to infer the mutational path by which the motif arose in *D. miranda*.

### Polytene Chromosome Immunostaining and ChIP-seq

Polytene chromosomes were isolated from male third instar larvae and processed for immunostaining as described [8]. Chromatin immunoprecipitation from sexed male and female third instar larvae were prepared as described [8]. The following antibodies against histone modifications were used for ChIP-seq experiments: (1) anti-H3K9me2 (Abcam ab1220; 3  $\mu$ l/IP); (2) anti-H3K27me3 (Abcam ab6002; 5  $\mu$ l/IP); (3) anti-H3K36me3 (Abcam ab9050; 3  $\mu$ l/IP); and (4) anti-H4K16ac (Millipore 07-329; 5  $\mu$ l/IP). Immunoprecipitated and input DNAs were purified and processed according to the standard paired-end Solexa library preparation protocol. Paired-end 100-bp DNA sequencing was performed on the Illumina Genome Analyzer located at UC Berkeley Vincent J. Coates Genomic Sequencing Facility. The following data sets were used from [32]: (1) anti-H3K36me3 male third instar larvae; (2) anti-H4K16ac male third instar larvae; (3) MSL3-TAP mixed-sex larvae, accession numbers SRS402820 and SRS402821.

### ChIP-seq Analysis

We aligned the ChIP-seq and input control reads against the reference genome using bowtie2 and then separated them into neo-X or neo-Y linked reads using male-specific variants. Only reads containing diagnostic variants that allow us to distinguish between the neo-X and the neo-Y allele are used for this analysis, and we only kept reads that have a mapping quality of  $>30$  (such reads have a  $<0.001$  chance to be misidentified as a result of misalignment) and we further require each diagnostic site to have at least three reads for both neo-X and neo-Y alleles to be considered (see Table S3). Removing regions with no input signal, Log<sub>2</sub> mapping coverage ratio of ChIP versus control was investigated along the gene body, including 3 kb of up- and downstream regions, to reflect the binding intensities of certain chromatin markers. The distributions of binding intensities usually show a distinctive bimodal pattern on sex or neo-sex chromosomes compared to autosomes; thus we defined the bound/unbound genes for each chromatin markers at the values where the two peaks of distribution separated out (Figure S13). We also extracted the chromatin state “color” information for all the *D. melanogaster* genes from [43]. To associate such information with *D. miranda*

genes, we used ortholog information between *D. pseudoobscura* and *D. melanogaster* retrieved from FlyBase.

### Repeat Analysis

We generated a consensus *D. miranda* repeat library with RepeatModeler and RepeatMasker (<http://www.repeatmasker.org>), using both the latest *D. miranda* genome assembly (from females) [32] and a previous *de novo* assembly of the neo-Y [25]. We mapped reads from a genomic library of *D. miranda* males (less than 1 kb insert size) against neo-sex linked genes and their flanking regions using bowtie2 with single-end reads mapping mode, and “sensitive-local” option, and assigned linkage of the reads to the neo-X/Y according to male-specific diagnostic SNPs (Figure S14). We then mapped the other mate pair of the neo-X or neo-Y specific read against the repeat consensus library, to estimate local repeat density at neo-X versus neo-Y focal genes. The mapping was done using bowtie2 with single-end reads mapping mode, and “very-sensitive-local” parameter set.

### Gene Expression Analysis

Our genome assembly of the highly repeat-rich neo-Y is not yet of sufficient quality and contiguity to directly extract genes from the *de novo* assembly. Most of our analysis studying the chromatin structure of the neo-Y, or its genomic composition (i.e., analysis of the ChIP-seq data, or TE enrichment on the neo-Y) was done relative to the neo-X. For this analysis, reconstructing the neo-Y sequences as outlined above by introducing male-specific variants was appropriate. To study the transcriptome, we wanted to compare expression levels from the neo-sex chromosome to their ancestral expression levels in *D. pseudoobscura* and contrast expression in males versus females, to test for an upregulation of dosage compensated neo-X genes, and downregulation of neo-Y transcripts. For this analysis, we required absolute expression levels of neo-sex transcripts, to compare across sexes and species, and we generated *de novo* transcriptome assemblies for *D. miranda* and *D. pseudoobscura*, using trinity [58]. The pipeline for the assembly of the neo-sex transcriptomes will be described in more detail (VBK and DB, unpublished data); briefly, neo-X transcripts were re-constructed using a trinity transcriptome assembly from females, and neo-Y transcripts were re-constructed using a trinity transcriptome assembly from males, which was modified to contain all neo-Y-specific variants; this procedure was necessary to resolve chimeric neo-X/Y transcripts produced by trinity. In particular, sections of neo-Y transcripts were kept for the final assembly only if they contained at least one neo-X/neo-Y distinguishing variant, and if they were fully supported by RNA-Seq reads; and genes inferred to be deleted from the neo-Y were excluded from the neo-Y assembly. The neo-sex transcriptome has been submitted to GenBank, accession number GALP00000000. To calculate transcript abundance, neo-X and neo-Y RNA-seq reads from male and female larvae were mapped against the neo-sex chromosomal transcripts using Mosaik (<http://bioinformatics.bc.edu/marthlab/wiki/index.php/Software>), allowing for zero mismatches, i.e., reads were exclusively assigned to their respective neo-sex chromosomes of origin, whenever there was a SNP or indel present. eXpress [59] probabilistically assigns all reads to alleles (including reads mapping to both the neo-X and neo-Y) and was used to calculate transcript abundance (FPKM) for the neo-X in *D. miranda*, separate from any neo-Y expression, and *vice versa*; similarly, eXpress was used to calculate transcript abundance in *D. pseudoobscura*. We defined a neo-Y gene to be actively transcribing if its FPKM value is higher than 1, which is derived as a cut-off from comparing

FPKM distributions of genes versus intergenic regions (Figure S15). FPKM values for each gene are given in Dataset S1.

### Accession Numbers

The ChIP-seq data have been deposited in NCBI Short Reads Archive under the accession number SRR899838, and RNA-seq data has been deposited under the accession number SRR899847 and SRR899848. The transcriptome shotgun assembly project has been deposited at DDBJ/EMBL/GenBank under the accession GALP00000000. The version described in this paper is the first version, GALP01000000.

### Supporting Information

**Dataset S1 Expression values (FPKM) for genes on element C in *D. miranda* and *D. pseudoobscura* male and female larvae, and enrichment levels ( $\log_2[\text{ChIP-seq}/\text{input control}]$ ) for MSL3, H4K16ac, and H3K36me3 on the neo-X and H3K9me2 on the neo-Y of *D. miranda* males.** (XLS)

**Figure S1 Male-specific targeting and expression of the MSL-complex in *D. miranda*.** (A) *roX2* RNA-FISH of *D. miranda* male salivary glands. We cloned the *roX2* gene and performed RNA-FISH, using a similar protocol as described in [60]. (B) Male-specific expression of *MSL2*, *roX1*, and *roX2*. (TIF)

**Figure S2 Intensity of MSL-binding versus number of MRE motifs found at CES.** CES with multiple MREs show significantly more MSL-binding, than CES with single MREs (one-tailed Wilcoxon test  $p = 0.038$ ). (TIF)

**Figure S3 Dosage compensation and neo-Y degeneration.** Genes that are targeted by the MSL complex on the neo-X are shown in pink, and genes that are not bound by MSL are shown in grey. (A) The proportion of MSL-bound genes does not differ between neo-X genes whose neo-Y homologs are potentially functional (intact neo-Y ORF) versus those whose neo-Y homologs are non-functional (disrupted neo-Y ORF). Genes that are transcriptionally silent on the neo-Y are less likely to be dosage compensated on the neo-X, while actively transcribed neo-Y genes are more often dosage compensated. (TIF)

**Figure S4 MSL3 enrichment level is significantly correlated with that of H4K16ac.** Shown are dot plots of  $\log_2$  read depth ratios of ChIP-seq versus input control along the gene body for MSL3 and H4K16ac chromatin marker on different X chromosomes, which significantly correlate with each other ( $R\text{-square} = 0.47\text{--}0.49$ ,  $p\text{-value} < 2.2\text{e-}16$ ). (TIF)

**Figure S5 Pattern of dosage compensated genes that are defined by MSL binding only.** We observe similar patterns as in Figure 4C and Figure 4D if we define dosage compensated genes on the neo-X only by significant MSL binding. (TIF)

**Figure S6 No correlation of neo-Y downregulation versus neo-X dosage compensation.** The x-axis shows reduction of neo-Y expression level measured as the  $\log_2$  ratio of neo-Y gene specific FPKM values versus those of *D. pseudoobscura* orthologs against the MSL-binding enrichment ratio of their corresponding neo-X genes. (TIF)

**Figure S7 Gene expression patterns for autosomal genes in *D. miranda*, classified by their different chromatin types defined in *D. melanogaster*.** (A) We find characteristic *D. miranda* gene expression patterns of each chromatin type that is similar to that of *D. melanogaster* (i.e., reduced gene expression in repressive “black” or “blue” chromatin, and higher gene expression in active “red” or “yellow” chromatin). (B) Genes in black and blue chromatin are more tissue-specific (measured by testis-specificity in *D. miranda*), consistent with their patterns of tissue-specific expression in *D. melanogaster*. These consistent expression patterns between species suggest that we can approximate the *D. miranda* ancestral chromatin types by their *D. melanogaster* orthologs. (TIF)

**Figure S8 Ancestral chromatin states of H4K16ac bound/unbound genes on chrXR.** ChrXR (the Muller D element) is another young X chromosome that originated around 15 MY ago in an ancestor of *D. miranda* and *D. pseudoobscura*, and has evolved full dosage compensation. Dosage compensated genes on XR (defined as those bound by H4K16ac chromatin marks) are enriched for genes within an active chromatin state (“yellow” chromatin) in *D. melanogaster*. (TIF)

**Figure S9 H4K16ac-bound/unbound neo-X genes and H3K9me2-bound/unbound neo-Y genes versus chromatin states of female *D. miranda*.** We approximate the ancestral chromatin states by ChIP-seq data of female *D. miranda* larvae: blue genes were defined by their characteristic H3K27me3 bound state, green genes by H3K9me2, yellow genes by H3K36me3 and high expression level ( $\text{FPKM} > 2$ ), while black genes are not bound by any studied histone markers and show a low expression level ( $\text{FPKM} < 2$ ). We grouped the rest of the genes into an unclassified category as grey genes. (TIF)

**Figure S10 Chromatin structure of sex chromosomes versus autosomes in males versus females.** Chromatin structure (as measured by H4K16ac enrichment) is similar between the X and autosomes in females and differs dramatically on the X and autosomes in males of *D. miranda*. Each boxplot shows  $\log_2$  read depth ratio of ChIP-seq versus input control along the gene body including the flanking 3 kb regions on a specific chromosome. (TIF)

**Figure S11 Chromatin states are overall conserved between *D. melanogaster* and *D. miranda* females.** We define chromatin types either in *D. melanogaster*, using the classification of [43], or in *D. miranda*, using the classification described in Figure S9. The pie charts show the composition of a particular type of chromatin defined in one species (active “yellow” chromatin on top; inactive “black” [and “grey” for *D. miranda*] on the bottom) in the other species. For example, the upper left pie shows the “yellow” genes defined by *D. melanogaster* and their chromatin type compositions defined using *D. miranda* female data. Overall, both definitions of active versus repressive chromatin show a high overlap between species, suggesting chromatin types of orthologous genes are relatively conserved. (TIF)

**Figure S12 Identification of deleted genes on the neo-Y chromosome.** (A) Shown is the histogram of male versus female coverage ratios at exonic regions for all *D. miranda* genes. A cutoff

(dotted line,  $\log_2(\text{male}/\text{female}) = -0.5$ ) separating the distribution of autosomes and X chromosomes was picked to identify genes that are deleted from the neo-Y chromosome. **(B)** Metagene plot of male/female coverage for different classes of genes (X-linked, autosomal, neo-sex genes with/without deleted neo-Y), across the gene body.

(TIF)

**Figure S13 Definition of bound/unbound genes for different chromatin marks.** Shown is the histogram of the  $\log_2$  coverage ratio of ChIP-seq versus input control along the gene body including up/downstream 3 kb regions separately for each chromosome. Autosomes are in green, chrXL in red, chrXR in purple, neo-X in orange, and neo-Y in blue. Cutoffs discriminating bound/unbound genes were chosen where the bimodal distribution is separated for two peaks or sex/neo-sex chromosomes are separated from the autosomes.

(TIF)

**Figure S14 Schematic diagram of repeat enrichment analyses.** To identify neo-Y specific enrichment of repeat sequences, we counted the ratio of mate-pairs where one read spanned a neo-X/Y diagnostic SNP and the other read mapped to a repeat sequence in our consensus repeat library for *D. miranda*.

(TIF)

**Figure S15 Identification of active and silent neo-Y genes.** Shown is the histogram of FPKM values derived from genes (solid line) and intergenic regions (dotted line). The peak of the FPKM distribution at intergenic regions is chosen as a

cut-off to determine whether a gene is active or silent on the neo-Y.

(TIF)

**Table S1 MSL-binding and H4K16ac enrichment for genes on different chromosomes.**

(DOCX)

**Table S2 GO terms significantly enriched in neo-X genes that are targeted/not targeted by the dosage compensation complex.**

(DOCX)

**Table S3 ChIP-seq reads mapped to neo-X and neo-Y specific variants, and undifferentiated neo-sex linked regions.**

(DOCX)

## Acknowledgments

AAA and AAG thank M.I. Kuroda for support, in whose laboratory the ChIP and immunostaining experiments were performed. We thank B. Charlesworth for providing the *D. affinis* sequence.

## Author Contributions

The author(s) have made the following declarations about their contributions: Conceived and designed the experiments: DB QZ CEE. Performed the experiments: QZ CEE VBK AAA AAG. Analyzed the data: QZ CEE VBK. Contributed reagents/materials/analysis tools: DB. Wrote the paper: DB.

## References

- Bachtrog D (2006) A dynamic view of sex chromosome evolution. *Curr Opin Genet Dev* 16: 578–585.
- Gatti M, Pimpinelli S (1983) Cytological and genetic analysis of the Y-chromosome of *Drosophila melanogaster*. I. Organization of the fertility factors. *Chromosoma* 88: 349–373.
- Schulze SR, Wallrath LL (2007) Gene regulation by chromatin structure: paradigms established in *Drosophila melanogaster*. *Annu Rev Entomol* 52: 171–192.
- Riddle NC, Elgin SC (2008) A role for RNAi in heterochromatin formation in *Drosophila*. *Curr Top Microbiol Immunol* 320: 185–209.
- Baker B, Gorman M, MarIn I (1994) Dosage compensation in *Drosophila*. *Annu Rev Genet* 28: 491–521.
- Alekseyenko AA, Peng S, Larschan E, Gorchakov AA, Lee OK, et al. (2008) A sequence motif within chromatin entry sites directs MSL establishment on the *Drosophila* X chromosome. *Cell* 134: 599–609.
- Straub T, Grimaud C, Gilfillan GD, Mitterweiger A, Becker PB (2008) The chromosomal high-affinity binding sites for the *Drosophila* dosage compensation complex. *PLoS Genet* 4: e1000302. doi:10.1371/journal.pgen.1000302
- Larschan E, Alekseyenko AA, Gorchakov AA, Peng S, Li B, et al. (2007) MSL complex is attracted to genes marked by H3K36 trimethylation using a sequence-independent mechanism. *Mol Cell* 28: 121–133.
- Kind J, Akhtar A (2007) Cotranscriptional recruitment of the dosage compensation complex to X-linked target genes. *Genes Dev* 21: 2030–2040.
- Alekseyenko A, Larschan E, Lai W, Park P, Kuroda M (2006) High-resolution ChIP-chip analysis reveals that the *Drosophila* MSL complex selectively identifies active genes on the male X chromosome. *Genes Dev* 20: 848–857.
- Sentmanat MF, Elgin SC (2012) Ectopic assembly of heterochromatin in *Drosophila melanogaster* triggered by transposable elements. *Proc Natl Acad Sci U S A* 109: 14104–14109.
- Dorer DR, Henikoff S (1994) Expansions of transgene repeats cause heterochromatin formation and gene silencing in *Drosophila*. *Cell* 77: 993–1002.
- Grewal SI, Rice JC (2004) Regulation of heterochromatin by histone methylation and small RNAs. *Curr Opin Cell Biol* 16: 230–238.
- Matzke MA, Birchler JA (2005) RNAi-mediated pathways in the nucleus. *Nat Rev Genet* 6: 24–35.
- Zaratiogui M, Irvine DV, Martienssen RA (2007) Noncoding RNAs and gene silencing. *Cell* 128: 763–776.
- Verdel A, Moazed D (2005) RNAi-directed assembly of heterochromatin in fission yeast. *FEBS Lett* 579: 5872–5878.
- Verdel A, Jia S, Gerber S, Sugiyama T, Gygi S, et al. (2004) RNAi-mediated targeting of heterochromatin by the RITS complex. *Science* 303: 672–676.
- Sun X, Wahlstrom J, Karpen G (1997) Molecular structure of a functional *Drosophila* centromere. *Cell* 91: 1007–1019.
- Lakhotia SC, Jacob J (1974) EM autoradiographic studies on polytene nuclei of *Drosophila melanogaster*. II. Organization and transcriptive activity of the chromocentre. *Exp Cell Res* 86: 253–263.
- Pal-Bhadra M, Leibovitch BA, Gandhi SG, Chikka MR, Bhadra U, et al. (2004) Heterochromatic silencing and HP1 localization in *Drosophila* are dependent on the RNAi machinery. *Science* 303: 669–672.
- Riddle NC, Minoda A, Kharchenko PV, Alekseyenko AA, Schwartz YB, et al. (2011) Plasticity in patterns of histone modifications and chromosomal proteins in *Drosophila* heterochromatin. *Genome Res* 21: 147–163.
- Sienski G, Donertas D, Brennecke J (2012) Transcriptional silencing of transposons by Piwi and maelstrom and its impact on chromatin state and gene expression. *Cell* 151: 964–980.
- Bachtrog D, Charlesworth B (2002) Reduced adaptation of a non-recombining neo-Y chromosome. *Nature* 416: 323–326.
- Bachtrog D, Hom E, Wong KM, Maside X, de Jong P (2008) Genomic degradation of a young Y chromosome in *Drosophila miranda*. *Genome Biol* 9: R30.
- Zhou Q, Bachtrog D (2012) Sex-specific adaptation drives early sex chromosome evolution in *Drosophila*. *Science* 337: 341–345.
- Steinmann M, Steinemann S, Lottspeich F (1993) How Y chromosomes become genetically inert. *Proc Natl Acad Sci U S A* 90: 5737–5741.
- Steinmann M, Steinemann S (1992) Degenerating Y chromosome of *Drosophila miranda*: a trap for retrotransposons. *Proc Natl Acad Sci U S A* 89: 7591–7595.
- Bachtrog D (2006) Expression profile of a degenerating neo-Y chromosome in *Drosophila*. *Curr Biol* 16: 1694–1699.
- Marin I, Franke A, Bashaw GJ, Baker BS (1996) The dosage compensation system of *Drosophila* is co-opted by newly evolved X chromosomes. *Nature* 383: 160–163.
- Bone JR, Kuroda MI (1996) Dosage compensation regulatory proteins and the evolution of sex chromosomes in *Drosophila*. *Genetics* 144: 705–713.
- Steinmann M, Steinemann S, Turner BM (1996) Evolution of dosage compensation. *Chromosome Res* 4: 1–6.
- Alekseyenko AA, Ellison CE, Gorchakov AA, Zhou Q, Kaiser VB, et al. (2013) Conservation and de novo acquisition of dosage compensation on newly evolved sex chromosomes in *Drosophila*. *Genes Dev* 27: 853–858.
- Gelbart ME, Larschan E, Peng S, Park PJ, Kuroda MI (2009) *Drosophila* MSL complex globally acetylates H4K16 on the male X chromosome for dosage compensation. *Nat Struct Mol Biol* 16: 825–832.

34. Bachtrog D (2003) Accumulation of *spock* and *worf*, two novel non-LTR retrotransposons on the neo-Y chromosome of *Drosophila miranda*. *Mol Biol Evol* 20: 173–181.
35. Vicoso B, Bachtrog D (2009) Progress and prospects toward our understanding of the evolution of dosage compensation. *Chromosome Res* 17: 585–602.
36. Orr HA, Kim Y (1998) An adaptive hypothesis for the evolution of the Y chromosome. *Genetics* 150: 1693–1698.
37. Zhou Q, Bachtrog D (2012) Chromosome-wide gene silencing initiates Y degeneration in *Drosophila*. *Curr Biol* 22: 522–525.
38. Charlesworth B (1996) The evolution of chromosomal sex determination and dosage compensation. *Curr Biol* 6: 149–162.
39. Zhang Y, Malone JH, Powell SK, Periwal V, Spana E, et al. (2010) Expression in aneuploid *Drosophila* S2 cells. *PLoS Biol* 8: e1000320. doi:10.1371/journal.pbio.1000320
40. Stenberg P, Lundberg LE, Johansson AM, Ryden P, Svensson MJ, et al. (2009) Buffering of segmental and chromosomal aneuploidies in *Drosophila melanogaster*. *PLoS Genet* 5: e1000465. doi:10.1371/journal.pgen.1000465
41. Alekseyenko AA, Ho JW, Peng S, Gelbart M, Tolstorukov MY, et al. (2012) Sequence-specific targeting of dosage compensation in *Drosophila* favors an active chromatin context. *PLoS Genet* 8: e1002646. doi:10.1371/journal.pgen.1002646
42. Hilliker AJ, Appels R, Schalet A (1980) The genetic analysis of *D. melanogaster* heterochromatin. *Cell* 21: 607–619.
43. Filion GJ, van Bommel JG, Braunschweig U, Talhout W, Kind J, et al. (2010) Systematic protein location mapping reveals five principal chromatin types in *Drosophila* cells. *Cell* 143: 212–224.
44. Carvalho A, Clark A (2005) Y chromosome of *D. pseudoobscura* is not homologous to the ancestral *Drosophila* Y. *Science* 307: 108–110.
45. Bachtrog D (2012) Plant sex chromosomes: a non-degenerated Y? *Curr Biol* 21: R685–R688.
46. Bachtrog D (2013) Y-chromosome evolution: emerging insights into processes of Y-chromosome degeneration. *Nat Rev Genet* 14: 113–124.
47. Skaletsky H, Kuroda-Kawaguchi T, Minx P, Cordum H, Hillier L, et al. (2003) The male-specific region of the human Y chromosome is a mosaic of discrete sequence classes. *Nature* 423: 825–837.
48. Hughes JF, Skaletsky H, Brown LG, Pyntikova T, Graves T, et al. (2012) Strict evolutionary conservation followed rapid gene loss on human and rhesus Y chromosomes. *Nature* 483: 82–U124.
49. Avner P, Heard E (2001) X-chromosome inactivation: counting, choice and initiation. *Nat Rev Genet* 2: 59–67.
50. Plath K, Fang J, Mlynarczyk-Evans SK, Cao R, Worringer KA, et al. (2003) Role of histone H3 lysine 27 methylation in X inactivation. *Science* 300: 131–135.
51. Engreitz JM, Pandya-Jones A, McDonel P, Shishkin A, Sirokman K, et al. (2013) The Xist lncRNA exploits three-dimensional genome architecture to spread across the X chromosome. *Science* 341: 1237973.
52. Wilson Sayres MA, Makova KD (2013) Gene survival and death on the human Y chromosome. *Mol Biol Evol* 30: 781–787.
53. Langmead B, Salzberg SL (2012) Fast gapped-read alignment with Bowtie 2. *Nat Methods* 9: 357–359.
54. McKenna A, Hanna M, Banks E, Sivachenko A, Cibulskis K, et al. (2010) The Genome Analysis Toolkit: a MapReduce framework for analyzing next-generation DNA sequencing data. *Genome Res* 20: 1297–1303.
55. Dewey CN (2007) Aligning multiple whole genomes with Mercator and MAVID. *Methods Mol Biol* 395: 221–236.
56. Grant CE, Bailey TL, Noble WS (2011) FIMO: scanning for occurrences of a given motif. *Bioinformatics* 27: 1017–1018.
57. Bailey TL, Boden M, Buske FA, Frith M, Grant CE, et al. (2009) MEME SUITE: tools for motif discovery and searching. *Nucleic Acids Res* 37: W202–208.
58. Grabherr MG, Haas BJ, Yassour M, Levin JZ, Thompson DA, et al. (2011) Full-length transcriptome assembly from RNA-Seq data without a reference genome. *Nat Biotechnol* 29: 644–652.
59. Roberts A, Pachter L (2013) Streaming fragment assignment for real-time analysis of sequencing experiments. *Nat Methods* 10: 71–73.
60. Park S, Kang Y, Sypula J, Choi J, Oh H, et al. (2007) An evolutionarily conserved domain of roX2 RNA is sufficient for induction of H4-Lys16 acetylation on the *Drosophila* X chromosome. *Genetics* 177: 1429–1437.