

The ESPRI project: astrometric exoplanet search with PRIMA

I. Instrument description and performance of first light observations*

J. Sahlmann¹, T. Henning², D. Queloz¹, A. Quirrenbach³, N. M. Elias II³, R. Launhardt², F. Pepe¹, S. Reffert³, D. Ségransan¹, J. Setiawan², R. Abuter⁴, L. Andolfato⁴, P. Bizenberger², H. Baumeister², B. Chazelas¹, F. Delplancke⁴, F. Dérie⁴, N. Di Lieto⁴, T. P. Duc⁴, M. Fleury¹, U. Graser², A. Kaminski³, R. Köhler^{2,3}, S. Lévêque⁴, C. Maire¹, D. Mégevand¹, A. Mérand⁵, Y. Michellod⁶, J.-M. Moresmau⁴, M. Mohler², A. Müller², P. Müllhaupt⁶, V. Naranjo², L. Sache⁷, Y. Salvade⁸, C. Schmid⁴, N. Schuhler⁵, T. Schulze-Hartung², D. Sosnowska¹, B. Tubbs², G. T. van Belle⁹, K. Wagner², L. Weber¹, L. Zago¹⁰, and N. Zimmerman²

¹ Observatoire de Genève, Université de Genève, 51 chemin Des Maillettes, 1290 Versoix, Switzerland
e-mail: johannes.sahlmann@unige.ch

² Max-Planck-Institut für Astronomie, Königstuhl 17, 69117 Heidelberg, Germany

³ Landessternwarte, Zentrum für Astronomie der Universität Heidelberg, Königstuhl 12, 69117 Heidelberg, Germany

⁴ European Southern Observatory, Karl-Schwarzschild-Str. 2, 85748 Garching bei München, Germany

⁵ European Southern Observatory, Alonso de Córdova 3107, Vitacura-Santiago, Chile

⁶ Automatic Control Laboratory, École Polytechnique Fédérale de Lausanne, Switzerland

⁷ Laboratoire de Systèmes Robotiques, École Polytechnique Fédérale de Lausanne, 1015 Lausanne, Switzerland

⁸ École d'ingénieur ARC, 2610 St. Imier, Switzerland

⁹ Lowell Observatory, 1400 West Mars Hill Road, Flagstaff, 86001 Arizona, USA

¹⁰ Centre Suisse d'Électronique et Microtechnique, 2007 Neuchâtel, Switzerland

Received 15 October 2012 / Accepted 5 December 2012

ABSTRACT

Context. The ESPRI project relies on the astrometric capabilities offered by the PRIMA facility of the Very Large Telescope Interferometer for discovering and studying planetary systems. Our survey consists of obtaining high-precision astrometry for a large sample of stars over several years to detect their barycentric motions due to orbiting planets. We present the operation's principle, the instrument's implementation, and the results of a first series of test observations.

Aims. We give a comprehensive overview of the instrument infrastructure and present the observation strategy for dual-field relative astrometry in the infrared *K*-band. We describe the differential delay lines, a key component of the PRIMA facility that was delivered by the ESPRI consortium, and discuss their performance within the facility. This paper serves as reference for future ESPRI publications and for the users of the PRIMA facility.

Methods. Observations of bright visual binaries were used to test the observation procedures and to establish the instrument's astrometric precision and accuracy. The data reduction strategy for the astrometry and the necessary corrections to the raw data are presented. Adaptive optics observations with NACO were used as an independent verification of PRIMA astrometric observations.

Results. The PRIMA facility was used to carry out tests of astrometric observations. The astrometric performance in terms of precision is limited by the atmospheric turbulence at a level close to the theoretical expectations and a precision of 30 μ s was achieved. In contrast, the astrometric accuracy is insufficient for the goals of the ESPRI project and is currently limited by systematic errors that originate in the part of the interferometer beamtrain that is not monitored by the internal metrology system.

Conclusions. Our observations led to defining corrective actions required to make the facility ready for carrying out the ESPRI search for extrasolar planets.

Key words. instrumentation: interferometers – techniques: interferometric – astrometry – planetary systems – binaries: visual – stars: general

1. Introduction

High-precision astrometry will become a key method for the detection and physical characterisation of close-in (<10 AU) extrasolar planets thanks to the onset of instruments that promise a long-term accuracy of 10–100 micro-arcsec (μ s) and the

associated surveys of large stellar samples. So far, the study of exoplanet populations has been dominated by the radial velocity technique (e.g. Mayor et al. 2011) and by transit photometry (e.g. Borucki et al. 2011). The application of astrometry was mostly limited to the characterisation of particular objects with very massive companions (Zucker & Mazeh 2001; Pravdo et al. 2005; Benedict et al. 2010; Lazorenko et al. 2011; Reffert & Quirrenbach 2011; Sahlmann et al. 2011a; Anglada-Escudé et al. 2012). The population of very massive planets and brown dwarf companions was studied with

* Part of this work is based on technical observations collected at the European Southern Observatory at Paranal, Chile. The raw data is publicly accessible at the ESO Science Archive Facility (<http://archive.eso.org/>).

HIPPARCOS astrometry, which resulted in an observational upper mass limit of ~ 35 Jupiter masses (M_J) for the formation of close-in planets around Sun-like stars and a robust determination of the frequency of close brown-dwarf companions of G/K dwarfs (Sahlmann et al. 2011b). To detect the barycentric motion of a nearby Sun-like star caused by a close Jupiter-mass planet, an astrometric accuracy of better than one milli-arcsec (mas) per measurement is needed (Black & Scargle 1982; Sozzetti 2005; Sahlmann 2012). At present, only a few instruments are capable of satisfying this requirement. Among them are the HST-FGS (Benedict et al. 2001), infrared adaptive optics observations (Gillessen et al. 2009), optical seeing-limited imaging with large telescopes (Lazorenko et al. 2009), and optical interferometry.

Construction of optical interferometers was in part motivated by their capability of performing precise (a few mas) global astrometry (Shao et al. 1990) and very precise ($\sim 10 \mu\text{as}$) narrow-angle relative astrometry (Shao & Colavita 1992). The latter requires a dual feed configuration to observe two stars simultaneously, which was demonstrated at the Palomar Testbed Interferometer (PTI; Lane & Colavita 2003). Using the PTI infrastructure but observing sub-arcsecond-scale binary stars within the resolution limit of one single feed, precisions of tens of μas were obtained in this very-narrow angle mode (Muterspaugh et al. 2005). The possibility of using infrared interferometry for astrometric detection of extrasolar planets was described by Shao & Colavita (1992). Consequently, a demonstration experiment was set up at the PTI (Colavita et al. 1999) and the interferometric facilities at the Keck and Very Large Telescope (VLT) observatories, which were being built at that time, included provisions for the dual-field astrometric mode. On the basis of the feasibility study by Quirrenbach et al. (1998) for the VLT interferometer (VLTI), the development of this mode of operation was started and its implementation began with the hardware deployment at the observatory in 2008. The infrastructure for dual-feed operation and relative astrometry at the VLTI is named PRIMA, an acronym for phase-referenced imaging and micro-arcsecond astrometry.

1.1. The ESPRI project

The goals of the ESPRI project (extrasolar planet search with PRIMA, Launhardt et al. 2008) are to characterise known radial velocity planets by measuring the orbit inclination and to detect planets in long period orbits around nearby main-sequence stars and young stars, i.e. in a parameter space which is difficult to access with other planet detection techniques. The ESPRI consortium consists of three institutes: Max Planck Institut für Astronomie Heidelberg, Observatoire Astronomique de l'Université de Genève, and Landessternwarte Heidelberg. A detailed description of the science goals, organisation, and preparatory programme of ESPRI is given in a accompanying paper (Launhardt et al., in prep.). Formally, the ESPRI consortium contributes to the PRIMA facility with the differential delay lines (DDL), the astrometric observation preparation software (APES), and the astrometric data reduction pipeline, all of which are eventually delivered to ESO, hence become publicly available. In return, ESPRI obtains guaranteed time observations (GTO) to carry out its scientific programme. In practice, ESPRI also contributes significantly to the commissioning of the PRIMA astrometry mode, which includes making the facility functional, carrying out the observations, and reducing and analysing the data.

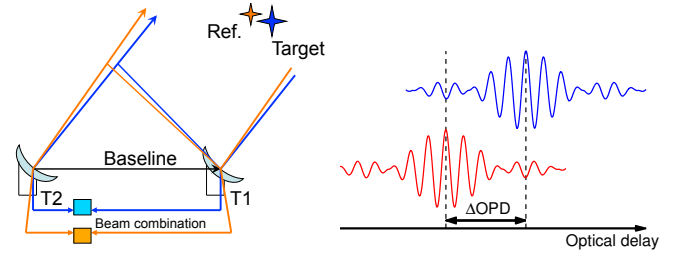


Fig. 1. Principle of PRIMA astrometry: reference and target star are observed simultaneously with two telescopes (left). Light of both stars is made to interfere and the location of the two interference fringe patterns is measured in delay space (right). The fringe separation ΔOPD is proportional to the projected separation of the stars.

The paper is organised as follows: in Sect. 2, we discuss the measurement principle and the interferometric baseline definition. The PRIMA facility is described in Sect. 3 and the design and performance of the differential delay lines is presented in Sect. 4. The astrometric data reduction and modelling is introduced in Sects. 5 and 6, respectively. The results in terms of measurement precision and accuracy are summarised in Sect. 7. We conclude in Sect. 8. Auxiliary information is collected in the appendices.

2. Principles of narrow-angle astrometry

The measurement principle of narrow-angle relative astrometry with an interferometer is to observe two stars simultaneously and to measure the relative position of the two fringe patterns in delay space (Fig. 1).

In stellar interferometry, the astrometric information is encoded in the fringe position measured in delay space. The internal delay that is necessary to observe interference therefore contains information on the star's position, hence a series of delay measurements can be used for the determination of accurate stellar positions (e.g. Shao et al. 1990; Hummel et al. 1994). The relation between the optical delay w and the stellar position defined by the unit vector s in direction of the star is

$$w = \mathbf{B} \cdot \mathbf{s}, \quad (1)$$

where $\mathbf{B} = \mathbf{T}_2 - \mathbf{T}_1$ is the baseline vector connecting two telescopes with coordinates \mathbf{T}_i . When observing two stars identified by unit vectors s_1 and s_2 simultaneously, the differential delay Δw can be written as difference of the respective w -terms

$$\Delta w = w_2 - w_1 = \mathbf{B} \cdot \mathbf{s}_2 - \mathbf{B} \cdot \mathbf{s}_1 = \mathbf{B} \cdot \Delta \mathbf{s}. \quad (2)$$

The potential for high-precision astrometry of this observation mode stems from the combination of a large effective aperture and the fact that the noise originating in atmospheric piston motion is correlated over small fields (Shao & Colavita 1992). In conventional imaging astrometry, the achievable astrometric precision depends on the aperture size D of the telescope (Lazorenko et al. 2009). Shao & Colavita (1992) showed that in the case of dual-field interferometry, where D is effectively replaced by the projected baseline length B_p , and under the narrow angle condition

$$\Theta h < B_p, \quad (3)$$

where Θ is the field size and h is the turbulence layer height, the astrometric error σ_a due to atmospheric turbulence is

$$\sigma_a = q_{\text{site}} \frac{\Theta}{B_p^{2/3} T^{1/2}} \quad \text{or} \quad \sigma_a^2 \sim \frac{\Theta^2}{B_p^{4/3} T}, \quad (4)$$

with B_p in metres, Θ in radians, and T in hours. The parameter q_{site} depends on the atmospheric profile and in the case of a Mauna Kea model is $300'' m^{2/3} h^{1/2} \text{ rad}^{-1}$. Based on Eq. (4), the expected atmospheric limit to the astrometric precision for a baseline length of 100 m, a separation between the stars of $10''$, and an integration time of 1 h is $\sim 10 \mu\text{as}$.

In the horizontal coordinate system, the elevation E and azimuth A of a star at local sidereal time t_s are related to the right ascension α and declination δ in the equatorial coordinate system by the hour angle $h_a = t_s - \alpha$ and the equations

$$\begin{aligned} \sin E &= \sin \delta \sin L + \cos \delta \cos h_a \cos L \\ \cos E \cos A &= \sin \delta \cos L - \cos \delta \cos h_a \sin L \\ \cos E \sin A &= -\cos \delta \sin h_a \\ \Rightarrow \tan A &= \frac{-\cos \delta \sin h_a}{\sin \delta \cos L - \cos \delta \cos h_a \sin L}, \end{aligned} \quad (5)$$

where L is the observer's geographic latitude. The unit vector s in direction of the star is

$$s = \begin{pmatrix} \cos E \cos A \\ \cos E \sin A \\ \sin E \end{pmatrix} \quad (6)$$

and the baseline vector B in the horizontal coordinate system is

$$B = \begin{pmatrix} B_{\text{North}} \\ B_{\text{East}} \\ B_{\text{Elev}} \end{pmatrix}, \quad (7)$$

where the component B_{North} is the ground projection of B measured northward, B_{East} is the ground projection of B measured eastward, and B_{Elev} is the elevation difference of B measured upward. The instantaneous optical path difference (OPD) w is thus (Fomalont & Wright 1974; Dyck 2000)

$$\begin{aligned} w &= B \cdot s \\ &= \cos E \cos A B_{\text{North}} + \cos E \sin A B_{\text{East}} + \sin E B_{\text{Elev}} \end{aligned} \quad (8)$$

and the differential OPD Δw can be written as

$$\begin{aligned} \Delta w &= B_{\text{North}} (\cos E_2 \cos A_2 - \cos E_1 \cos A_1) \\ &+ B_{\text{East}} (\cos E_2 \sin A_2 - \cos E_1 \sin A_1) \\ &+ B_{\text{Elev}} (\sin E_2 - \sin E_1). \end{aligned} \quad (9)$$

In the equatorial system the baseline coordinates are

$$\begin{pmatrix} B_x \\ B_y \\ B_z \end{pmatrix} = \begin{pmatrix} -\sin L & 0 & \cos L \\ 0 & -1 & 0 \\ \cos L & 0 & \sin L \end{pmatrix} \cdot \begin{pmatrix} B_{\text{North}} \\ B_{\text{East}} \\ B_{\text{Elev}} \end{pmatrix} \quad (10)$$

and the u - v - w -coordinate system describing the tangential plane in the sky are given by

$$\begin{pmatrix} u \\ v \\ w \end{pmatrix} = \begin{pmatrix} \sin H & \cos H & 0 \\ -\sin \delta \cos H & \sin \delta \sin H & \cos \delta \\ \cos \delta \cos H & -\cos \delta \sin H & \sin \delta \end{pmatrix} \cdot \begin{pmatrix} B_x \\ B_y \\ B_z \end{pmatrix} \quad (11)$$

yielding the optical path difference

$$w = \cos \delta \cos H B_x - \cos \delta \sin H B_y + \sin \delta B_z. \quad (12)$$

For completeness, we note that the projected baseline length is $B_p = \sqrt{u^2 + v^2}$ and the projected baseline angle θ_B is defined by $\tan \theta_B = v/u$ and that the VLTI baseline B_{VLTI} is defined using a different convention from Eq. (7):

$$B_{\text{VLTI}} = \begin{pmatrix} B_{\text{South}} \\ B_{\text{West}} \\ B_{\text{Elev}} \end{pmatrix} = \begin{pmatrix} -1 \\ -1 \\ 1 \end{pmatrix} \odot B, \quad (13)$$

where the \odot -symbol indicates element-wise multiplication.

2.1. Interferometric baselines

In the theoretical description above, the interferometric baseline B is a well defined quantity. In practice, its definition is not straight-forward because the telescopes and other optical elements are moving during the observation and the simple definition as *the vector connecting telescope T_1 and T_2* becomes ambiguous. Furthermore, PRIMA is used to observe two stars simultaneously and effectively realises two interferometers at the same time, thus making a clarification in the interpretation of the baseline necessary. The following conceptual description neglects any effect related to off-axis observations, optical aberrations, refraction, and dispersion and applies in the horizontal coordinate system. The device allowing us to determine the astrometric baseline is a laser metrology that monitors the optical path lengths of the optical train travelled by the stellar beams inside the interferometer. The two terminal points defining the monitored optical path of each beam are the metrology endpoints. Let L_i be the optical path length measured with the metrology in beam i and let $w = L_i - L_j$ be the instantaneous measured optical path difference between the two arms of an interferometer observing a star defined by the pointing vector s . Note that the metrology yields the internal delay only in the case of ideal fringe tracking, i.e. when the fringe packet as seen by the fringe sensor is centred at all times. Thus for a real system, measurements by the fringe tracking system and their potential systematics have to be considered when using metrology readings.

2.1.1. Wide-angle astrometric baseline

The unique vector B_{Wide} that relates the metrology measurement of optical path difference w to the pointing vector s at all times via the equation

$$w = B_{\text{Wide}} \cdot s + c \quad (14)$$

is called the wide-angle astrometric baseline, where c is a constant term. The wide-angle astrometric baseline can be determined by measuring the metrology delays $w_{1\dots k}$ when observing a set of $1 \dots k$ stars with coordinates $s_{1\dots k}$, selected such that the resulting system of Eq. (14) allows for the non-degenerate solution for the three components of B_{Wide} (e.g. Shao et al. 1990; Buscher 2012).

The pivot point of an ideal telescope is defined as the intersection between the altitude and azimuth axes and remains at a fixed position in the horizontal coordinate system at all times. It is the relative position of the two pivot points that determines the optical path lengths travelled by the stellar beams inside the interferometer. Thus, ideally we would like to make the metrology endpoints at one end coincide with the pivot points and at the other end be located at the location of beam combination. In this configuration, Eq. (14) would be exact. In practice, several complications occur. First, due to the telescope design, misalignments, or flexures, the pivot point may not exist, be ill-defined, or does not remain fixed at all times. Second, the pivot point is hardly accessible and the metrology endpoints are located elsewhere in the beam train. Third, there may be a non-common path between the metrology and stellar beams, i.e. potential changes in stellar path length are not monitored by the metrology. Thus Eq. (14) needs to be complemented with two terms

$$w + \epsilon = (B_{\text{Wide}} - \mu_1 + \mu_2) \cdot s + c, \quad (15)$$

where ϵ is the OPD mismatch between the metrology and stellar beams caused by the non-common path, and μ_i is the offset

vector between the pivot point of telescope i and the respective metrology endpoint. Both terms are time dependent and have to be modelled, but one term can be eliminated by placing the metrology endpoints either in the entrance pupils, then $\epsilon = 0$, or at the pivot points, then $\mu_i = \mu_j = 0$.

The PRIMA facility realises a dual-feed interferometer and at first it can be modelled as two independent interferometers, denoted feed A and feed B, observing the star s_A and s_B , respectively. Thus there are four stellar and four metrology beams and each interferometer has a wide-angle baseline defined by

$$\begin{aligned} w_A &= L_3 - L_1 = \mathbf{B}_{A,Wide} \cdot s_A + c_A \\ w_B &= L_4 - L_2 = \mathbf{B}_{B,Wide} \cdot s_B + c_B. \end{aligned} \quad (16)$$

2.1.2. Narrow-angle astrometric baseline

The goal of the experiment is to measure the angular separation vector $\Delta s = s_A - s_B$ between the two targets in the sky. Although in principle we could use Eq. (16) to achieve this task, the required accuracy on the wide-angle baseline knowledge becomes unachievable for the level of accuracy anticipated for Δs . Instead, both interferometers can be tied together by a common metrology system measuring the difference of optical path differences $\Delta w = w_A - w_B$. The unique vector \mathbf{B}_{AX} that relates Δw to the separation vector Δs at all times via the equation

$$\Delta w = \mathbf{B}_{AX} \cdot \Delta s + c_\Delta \quad (17)$$

is called the narrow-angle astrometric baseline. We can rewrite Eq. (17) as

$$\Delta w = L_3 - L_1 - L_4 + L_2 = \mathbf{B}_{A,Wide} \cdot s_A - \mathbf{B}_{B,Wide} \cdot s_B + c_A - c_B \quad (18)$$

which shows that in order to satisfy Eq. (17), the identity $\mathbf{B}_{A,Wide} = \mathbf{B}_{B,Wide} = \mathbf{B}_{AX}$ is a necessary condition, which requires that the metrology endpoints corresponding to the beams L_1/L_2 and L_3/L_4 coincide in telescope 1 and 2, respectively. We are still not done, because in practice the unknown terms introduced in Eq. (15) have to be considered. We obtain

$$\begin{aligned} \Delta w(t) + \Delta \epsilon(t) &= [\mathbf{B}_{A,Wide} - \mu_{A,1}(t) + \mu_{A,2}(t)] \cdot s_A(t) + c_A \\ &\quad - [\mathbf{B}_{B,Wide} - \mu_{B,1}(t) + \mu_{B,2}(t)] \cdot s_B(t) + c_B \end{aligned} \quad (19)$$

where time dependencies are explicitly noted. Because of the requirement of coinciding metrology endpoints in each telescope, we have $\mathbf{B}_{A,Wide} = \mathbf{B}_{B,Wide}$ and $\mu_{A,i} = \mu_{B,i} = \mu_i$ and it follows

$$\Delta w(t) + \Delta \epsilon(t) = [\mathbf{B}_{AX} - \mu_1(t) + \mu_2(t)] \cdot \Delta s(t) + c_\Delta, \quad (20)$$

where $\Delta \epsilon(t)$ is the differential OPD caused by non-common path between stellar and metrology beams and $c_\Delta = c_A - c_B$ is a constant.

Because of the differential measurement, the requirements on the measurement accuracy of \mathbf{B}_{AX} are relaxed, but the terms $\Delta \epsilon(t)$ and $\mu_i(t)$ have to be minimised by the optical design and consequently modelled (Sect. 7.6). The vectors $\mu_i(t)$ can for instance be determined by accurate modelling combined with external measurement devices, which monitor the telescope motion (Hrynevych et al. 2004). Alternatively, the narrow-angle baseline can be determined by measuring several star pairs with different and known separation vectors and solving the system of equations Eq. (20) for \mathbf{B}_{AX} .

2.1.3. Imaging baseline

The imaging baseline determines the orientation and value of the spatial frequency sampled with the interferometer, i.e. the u - v -coordinates (Eq. (11)), and it is related to the sky-projected configuration of the interfering partial wavefronts. To distinguish between imaging and wide-angle baseline the following example can be useful: if half of one telescope aperture is masked during the observation of an on-axis source, this will not change the wide-angle baseline (the fringe position in delay space remains constant) but it will alter the imaging baseline, because the interfering wavefront portions are changing.

2.1.4. Model applied for initial PRIMA tests

The theoretical description of the narrow-angle baseline given above does not strictly apply to PRIMA observations and several second-order terms have to be considered (e.g. Colavita 2009). Additionally, the wide-angle baseline of PRIMA \mathbf{B}'_{Wide} is determined using the delay line metrology that measures w_{DL} (Sect. 6.2), whereas the differential delay is measured using the dedicated PRIMA metrology having different endpoints yielding the quantity ΔL . For the analysis of the initial astrometric measurements relying on Eq. (20), we will assume that the unknown quantities vanish, i.e. $\Delta \epsilon(t) = 0$ and $\mu_i(t) = 0$, that the endpoints of the differential metrology coincide, and that the measured quantities are given by $\Delta w(t) = \Delta L(t)$ and $\mathbf{B}_{AX} = \mathbf{B}'_{Wide}$. Those assumptions may not necessarily be fulfilled and we discuss potential effects in the text.

3. PRIMA at the Very Large Telescope Interferometer

The PRIMA facility consists of a considerable amount of subsystems, which are distributed both physically on the observatory platform and systematically over the VLTI control system. Its installation necessitated the enhancement of every VLTI building block, i.e. of the telescopes, the delay lines, the laboratory infrastructure, and the control system. PRIMA is a multi-purpose facility with several observing modes, which was added to the existing VLTI framework under the requirement not to impact the already operating instruments. Therefore PRIMA cannot be considered an astronomical instrument in the classic sense. General descriptions of PRIMA are given by Delplancke et al. (2006) and van Belle et al. (2008). A detailed description of the PRIMA fringe sensors and an assessment of their performance for fringe-tracking is given by Sahlmann et al. (2009). The astrometric instrument that uses the PRIMA facility is named PACMAN (Abuter et al. 2010). The status of the VLTI and its subsystems is given by Haguenaer et al. (2008, 2010).

The various subsystems of PRIMA were tested individually at the Paranal observatory since August 2008. Testing of the PRIMA facility began in July 2010, when dual-feed fringes were recorded for the first time. Astrometric observations became possible in January 2011 and PACMAN “first light” was achieved on January 26, 2011. For PRIMA astrometry observations, the interactions between the PRIMA and VLTI subsystems are numerous and flawless interplay is required for the basic functionality. Furthermore, the accuracy goal for PRIMA astrometry sets stringent requirements on the performance of every subsystem, and measurement biases can originate virtually anywhere along the beam train. Thus, a detailed description of the VLTI-PRIMA system is required and given below.

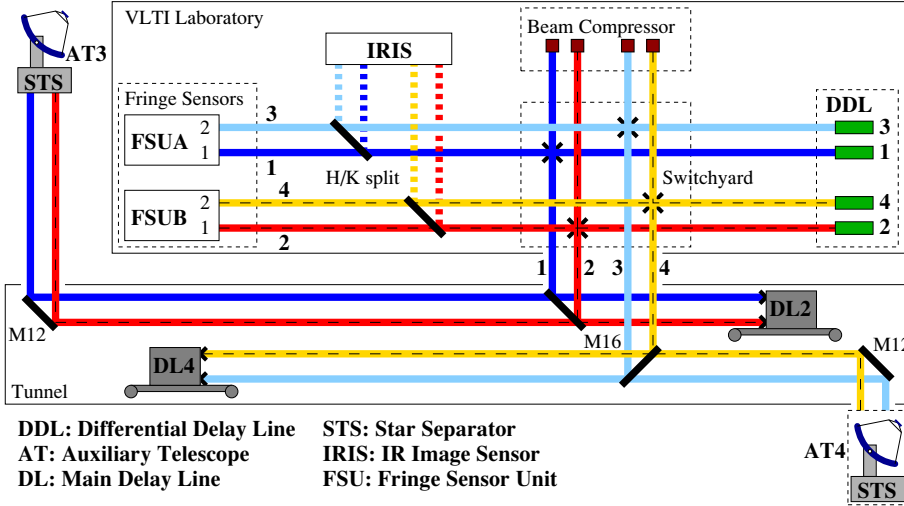


Fig. 2. Schematic of the stellar beam paths for PRIMA astrometric observations showing the main subsystems and their relative locations (not to scale). The beams propagate through underground light ducts from the telescopes to the delay line tunnel from where they are relayed into the beam combination laboratory. The input channel number of each beam is shown in bold. The PRIMA metrology monitors the path lengths of the four beams between the respective endpoints in the FSU and STS. The two metrology beams that monitor the FSUB feed are shown as dashed lines.

3.1. Design goal for the astrometric accuracy

The design goal for PRIMA was that measurement errors introduced by instrument terms shall be smaller than $10 \mu\text{s}$ for observations of two objects in a field of $\sim 1'$ and with a baseline of $\sim 100 \text{ m}$, i.e. inferior to the atmospheric limit for 1 h of integration. We can use Eq. (17) to estimate how this requirement translates into the required accuracy of measured quantities. For simplicity we set the astrometric accuracy to $\sigma_{\Theta} = 10 \mu\text{s}$ for the separation between two targets located in a $\Theta = 10''$ field. The relative accuracy is $\sigma_{\Theta}/\Theta = 10^{-6}$ and thus the astrometric baseline B_{AX} has to be known at this accuracy level, corresponding to $100 \mu\text{m}$ for a baseline length of 100 m. This also illustrates why we cannot get away with measuring the two wide-angle baselines and using Eq. (16), because the accuracy requirement on B_{Wide} would be orders of magnitude more stringent, thus not reachable. The expected differential delay is of the order of 5 mm, thus the required accuracy in the differential delay measurement is 5 nm for optical path lengths reaching several hundred metres.

3.2. PRIMA subsystems and beam train

A schematic overview of the PRIMA-VLTI system is shown in Fig. 2. Below, a short description of the involved subsystem is given in order of incidence, which can be used together with the schematic to follow the path of an incoming stellar beam. The main subsystems are briefly described in the next sections.

- Telescope: two VLTI Auxiliary Telescopes are used.
- Star separator: splits the image plane between the two targets and generates separated output beams for each of them.
- M12: a passive folding mirror located in the delay line tunnel that sends the stellar beams coming from an auxiliary telescope light duct towards a main delay line.
- Main delay line: the main delay line is used for fringe tracking on the primary star. The carriage moves on rails and is capable of introducing optical delay in both feeds with nanometre accuracy over $\sim 120 \text{ m}$ and with a high bandwidth.
- M16: these are configurable mirrors that fold the beams into the laboratory feeding the desired input channel.
- Beam compressor: each beam is downsized from 80 mm to 18 mm by passing through a parallel telescope.
- Switchyard: a set of configurable mirrors, which for PRIMA astrometry fold the beams towards the differential delay lines.

- Differential delay line (DDL): one of the four DDLs is used to compensate for the differential delay between the two star feeds and for fringe tracking on the secondary star.
- *H/K*-dichroic mirror: folds the *H*-band light towards the infrared image sensor (IRIS) and transmits the *K*-band light towards the fringe sensor unit.
- Fringe Sensor Unit (FSU): combines two *K*-band input beams from one star and detects the fringe signals. The twin sensors FSUB and FSUA are driving the primary and secondary fringe tracking loops, respectively.
- IRIS: images the *H*-band beams and measures the point-spread-function (PSF) position and motion for feedback to the control system (Gitton et al. 2004).

In total, the stellar beams are reflected on 38 optical surfaces before being injected into the single-mode fibres of the FSU, see Table C.1. These are 13 reflections more than in the single-feed case, for which Sahlmann et al. (2009) estimated a total effective transmission (including effects of injection fluctuations) in *K*-band of $4 \pm 1\%$. If we assume an average reflectivity of 0.98 or 0.95 per mirror, the additional decrease in transmission for the nominal dual-feed case is 23% or 49%, respectively. A detailed analysis and description of the measured transmission in dual-feed is outside the scope of this work.

3.3. Auxiliary telescopes, derotator, and star separator

The Auxiliary Telescopes (AT, Koehler et al. 2002, 2006) of the VLTI have a 1.8 m diameter primary mirror in altitude-azimuth mount and a coudé beam train as shown in Figs. 3 and 4. Several actuators are used to manipulate the stellar beam: the secondary mirror M2 can be controlled in lateral position (X, Y), in longitudinal position for focus adjustment (Z), and in tip and tilt. A first-order image stabilisation system is implemented to attenuate the fast atmospheric image motion: a quadcell sensor based on avalanche photo diodes is located below the star separator and receives the visible light transmitted by the M9 dichroic mirror (Fig. 6). It measures the image centroid and sends offsets to the fast tip-tilt mirror M6 located upstream, hence realising a closed-loop control system for image motion, capable of very low-order wavefront control. The derotator is located below the telescope and above the star separator. Its role is to generate a fixed field image for the star separator, i.e. to remove the field motion caused by the Earth rotation. The derotator is implemented as a reflective K-prism assembly mounted on a

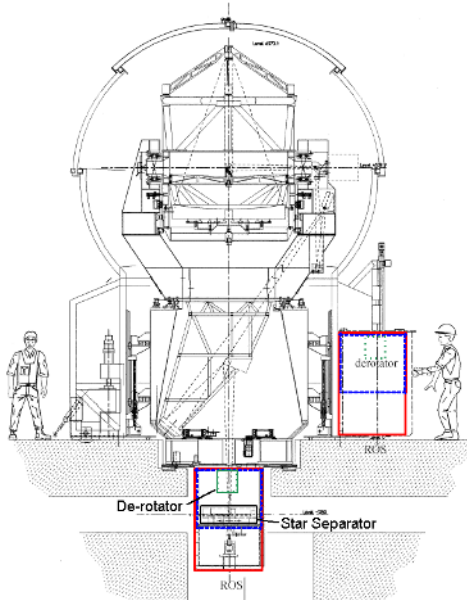


Fig. 3. The cross-section of an auxiliary telescope indicating the location of the derotator and the star separator below the main telescope structure. From Nijenhuis et al. (2004).

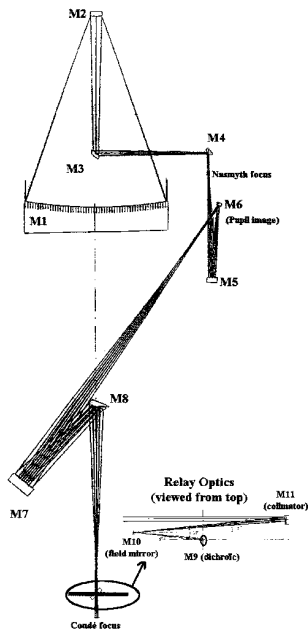


Fig. 4. Beam tracing inside the auxiliary telescope indicating the mirror designations. From Delrez et al. (2001). The derotator is located between M8 in the AT and M9 in the STS, see also Fig. 5.

motorised rotation stage, such that a 180° derotator motion results in 360° field rotation.

The star separator (Nijenhuis et al. 2008) has three main functionalities: (a) it splits the field between the two observed objects and generates two output beams, each containing the light from one sub-field; (b) it supplies the end-point for the PRIMA metrology; (c) it controls the image position measured downstream in the laboratory and the lateral pupil position.

Field splitting: after reflection on M9, the infrared stellar light is focused on M10, which is a roof mirror that separates the field in two and generates two beams (Fig. 5). The telescope

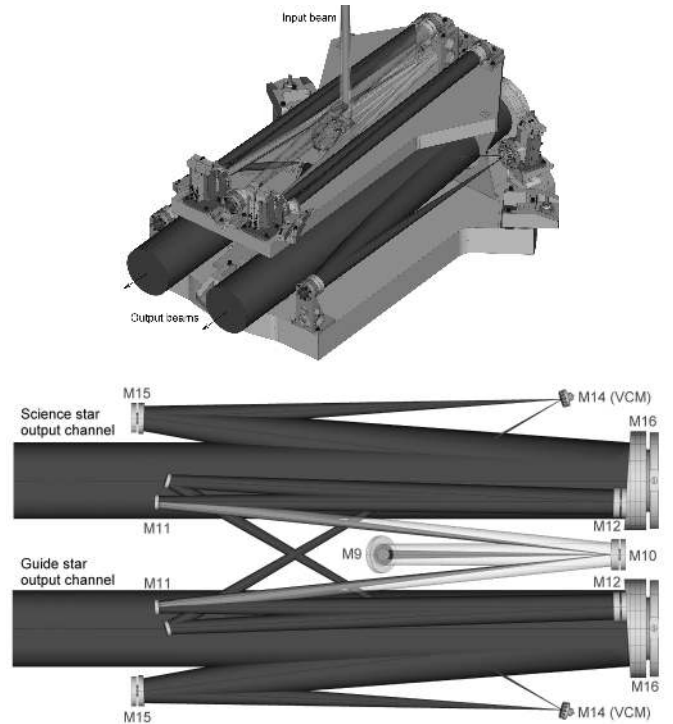


Fig. 5. *Top:* optical layout of one star separator. *Bottom:* top view of the STS optical layout identifying the mirror names. M11 (FSM) is the field selector mirror acting on the image and M14 (STS-VCM) is the variable curvature mirror acting on the pupil. From Nijenhuis et al. (2004).

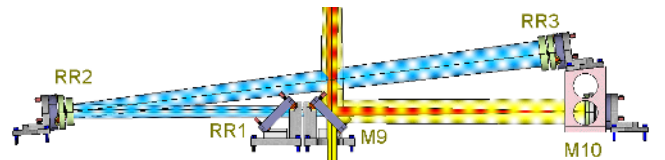


Fig. 6. Optical layout of the metrology endpoint. This side view shows the stellar beam coming from the telescope (above) being reflected towards M10 and the metrology beams coming from the laboratory being reflected on themselves by the assembly of the spherical mirrors RR2 and RR3 and the compensation plate RR1. In this view, the metrology beams enter horizontally from the right, after reflection off M10. The light that is seen to traverse M9 downwards is the visible portion of the stellar beam propagating towards the fast quadcell image sensor.

and the derotator are adjusted such that the middle position between the two objects is located on the M10 edge and the objects are imaged on either side of the edge (Fig. 9). The telescope guiding and the derotator motion ensure that this situation is maintained during the observation.

Metrology end point: the PRIMA metrology beams originate downstream in the laboratory and overlap at the location of the dichroic M9, which they traverse towards an assembly of two spherical mirrors and a compensation plate (Fig. 6), that serve to reflect the beams on themselves. The metrology beams are folded back into the stellar beams, traverse M9 again, and return towards the laboratory. The endpoint is realised by RR3 in Fig. 6, which is where by design both metrology beams have total overlap (RR3 is in a pupil plane).

Image and pupil positioning: M11 is the first mirror downstream of the field separator and is located in a pupil plane. It is mounted on a piezo tip-tilt stage which is used to position

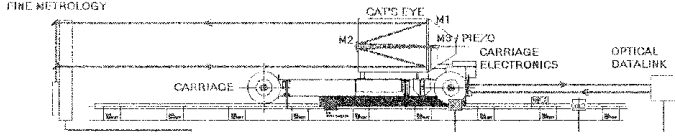


Fig. 7. Drawing of a main delay line showing the rail, the carriage holding the cat's eye assembly, and the delay line metrology beams. The wheelbase is 2.25 m. The tertiary mirror M3 is the variable curvature mirror DL-VCM, which is mounted on a fast piezo stage. From Hogenhuis et al. (2003).

the image location in the laboratory, i.e. for fine-pointing the object. M11 is called the field selector mirror (FSM). M14 is located in an image plane and mounted on a piezo tip-tilt stage, which is used to adjust the output pupil lateral position. This mirror is also used to set the pupil's longitudinal position, defined by the mirror's radius of curvature. It is planned to achieve this dynamically with a variable curvature mirror (VCM), but it was not implemented at the time of writing and a fixed curvature mirror is used instead. Still, M14 is named STS-VCM.

The location of the metrology end points in the star separator shows that there is a substantial non-common path between the stellar and metrology beams inside the telescope. The stellar light path from the primary mirror M1 to the dichroic M9 and in particular inside the derotator is not monitored by the PRIMA metrology. Conversely, the retro-reflector assembly of three optical elements is monitored by the metrology, but is not part of the stellar beam path.

3.4. Main delay lines

The VLTI main delay lines (Hogenhuis et al. 2003) are precision carts carrying a cat's eye-type reflector and used to introduce variable optical delay inside the interferometer. The rail length of ~ 60 m limits the maximum optical delay to ~ 120 m per delay line. Real-time delay control at nanometre level over the full range is achieved with a two-stage system composed of a coarse mechanism moving the full cart and a fine piezo actuator, combined with an internal metrology system measuring the position of the cart along the rail (Fig. 7). The main delay line has dual-feed capability, i.e. it accepts two beams which will experience the same optical delay. A variable curvature mirror (DL-VCM, Ferrari et al. 2003) is part of the cat's eye assembly and it is dynamically adjusted along the delay line trajectory to keep the longitudinal pupil position constant in the laboratory and to preserve the field-of-view of the interferometer. It is realised by a mechanism consisting of a steel mirror connected to an over-pressure chamber of tunable pressure.

3.5. Differential delay lines

There is one differential delay line (DDL) for each of the four PRIMA beams, i.e. the optical delay can be adjusted for each beam individually. The DDL concept is very similar to the main delay lines with the difference that they are kept under vacuum. A motor for coarse actuation is combined with a fine piezo actuator and an internal laser metrology to achieve optical path length control at nanometre level and high bandwidth. A detailed description of the DDL is given in Sect. 4.

Table 1. Details of the PRIMA metrology system.

Feed	FSUA		FSUB	
	IP3	IP1	IP4	IP2
Input channel ^a	IP3	IP1	IP4	IP2
Polarisation	p	s	p	s
Monitored path	(m) L_3	L_1	L_4	L_2
$\delta\nu^b$	(MHz) +38.65	+38.00	-39.55	-40.00
OPD	(m) $\Delta L_A = L_3 - L_1$		$\Delta L_B = L_4 - L_2$	
Beat frequency	(kHz) 650		450	
Diff. delay	(m)	$\Delta L = \Delta L_A - \Delta L_B$		
Constants:				
$\Delta\nu_P^c$	(MHz)			78.1
ν_P^d	(MHz)		227 257 330.6	
λ_P^e	(nm)		1 319.176183	

Notes. ^(a) The input channel (IP) refers to the physical location of the beam at the switchyard level. There are eight input channels at VLTI. ^(b) Frequency shift relative to the laser frequency ν_P . ^(c) Frequency shift between both feeds introduced to avoid crosstalk. ^(d) Calibrated laser frequency. ^(e) Laser vacuum wavelength.

3.6. PRIMA metrology

The PRIMA metrology (Leveque et al. 2003; Schuhler 2007; Sahlmann et al. 2009) is a 4-beam, frequency-stabilised infrared laser metrology with the purpose of measuring the internal differential optical path difference (DOPD) between the two PRIMA feeds. The metrology beams have a diameter of 1 mm at injection and propagate within the central obscuration of the stellar beams, which originates from the telescope secondary mirror. Metrology endpoints are given by the fringe sensors' beam combiners and the star separator modules (Fig. 6). The PRIMA metrology system gives access to two delays: the differential delay ΔL between both feeds, which is the main observable for astrometry and is named PRIMET, and the optical path difference of one feed ΔL_B corresponding to FSUB (Sect. 3.7), hence is named PRIMETB. Both are based on incremental measurements after a fringe counter reset, which is triggered by the instrument, meaning that the metrology has no pre-defined zero-point. The PRIMA metrology beams are also used to stabilise the lateral stellar pupil position. A quadcell sensor located on the fringe sensors' optical bench measures the lateral position of the metrology return beams and stabilises their positions with the STS-VCM mirror actuators in closed loop. Under the condition that the metrology and stellar beams are co-aligned and superimposed, the lateral pupil positions of the four stellar beams are stabilised. Details on the metrology measurement architecture are given in Table 1.

3.7. Fringe sensor unit

The stellar beams are combined by the fringe sensor unit (FSU, Sahlmann et al. 2009). There are two combiners, named FSUA and FSUB, each receiving two beams of one stellar object. The FSU contains the interface for the injection and extraction of the PRIMA metrology beams. The output delay measurements and fluxes are used for real-time control and recorded by the astrometric instrument, constituting the scientific data. Because of its central role within the PRIMA facility, the detailed spectroscopic and photometric characterisation of the FSU is required. The calibration of the sensors is necessary to optimise their performance in the control system and to minimise systematic effects

on the astrometric measurement. An exhaustive description of the FSU is given by [Sahlmann et al. \(2009\)](#).

3.8. Critical aspects of the PRIMA-VLTI control system

Several control loops acting on the stellar beams via the opto-mechanical components listed above are required to make PRIMA observations possible and they are listed in Table C.4. The fast communication between distributed subsystems relies on a fibre network realising a kHz-bandwidth shared memory ([Abuter et al. 2008](#); [Sahlmann et al. 2009](#)). When observing, the number of active loops totals at 19, if we consider equivalent instances for different beams, which illustrates the complexity required to orchestrate the facility. All control loops are discussed in this work except for the fringe tracking loops that are of critical importance for the efficiency of the observations. The fringe tracking loops are implemented in the OPD controller (OPDC) and the differential OPD controller (DOPDC). So far, both controllers were operating independently and with identical algorithms and parameters, which use both group and phase delay measurements of the FSU to track on zero group delay and rely on the FSU delivered signal-to-noise ratio (S/N) to switch between three states: *search*, *idle*, and *track* ([Sahlmann et al. 2009, 2010](#)). When closed, the inner phase controller tracks a time varying target Φ^{target} designed to maintain the group delay at zero. The discretised expressions prescribing the command RT^{offset} (*real time offset*) sent to the delay line in addition to the predicted sidereal motion are given in Eqs. (21) and (22), where ϕ and GD is the unwrapped phase (in rad) and group delay (in m) delivered by the fringe sensor, respectively, and $\kappa = 0.2586267825 \times 10^{-6}$ is a constant.

$$\Phi_k^{\text{target}} = \Phi_{k-1}^{\text{target}} + p_0 GD_k \quad (21)$$

$$RT_k^{\text{offset}} = RT_{k-1}^{\text{offset}} + p_1 \kappa (\Phi_k^{\text{target}} - \phi_k) + p_2 \kappa (\Phi_{k-1}^{\text{target}} - \phi_{k-1}). \quad (22)$$

The subscript k indicates the value at each time step and increases by one every $500 \mu\text{s}$, i.e. the controller has a sampling rate of 2 kHz. The control gains $p_0 = 0.001$, $p_1 = 0.007$ and $p_2 = 0.063$ were determined for robust operation under varying atmospheric conditions and were kept unchanged during the complete test campaign. The outer group delay loop is thus implemented as integral controller and the inner phase loop realises a proportional-integral controller. The fringe tracking strategy for PRIMA astrometry observations can be optimised by coupling both control loops and by adapting the gains of the differential controller, which is an ongoing activity at the time of writing.

3.9. Observing with the astrometric instrument

The astrometric instrument of PRIMA is named PACMAN ([Abuter et al. 2010](#)) and is materialised by a computer, connected to the interferometer control system and the rapid fibre link between the real-time computers. The instrument executes the observation blocks by commanding the interferometer control system to preset the system to the specified configuration, acquire the target with telescopes and delay lines, and eventually by triggering the data recording. So far, PRIMA astrometric commissioning observations were made with the auxiliary telescope AT3 in station G2 and the telescope AT4 in station J2, resulting in a baseline length of ~ 91.2 m (Fig. 8). The main delay lines DL2 and DL4 were used and despite of their long stroke, observations in the north-western sky were prohibited because the available internal optical delay is not sufficient.

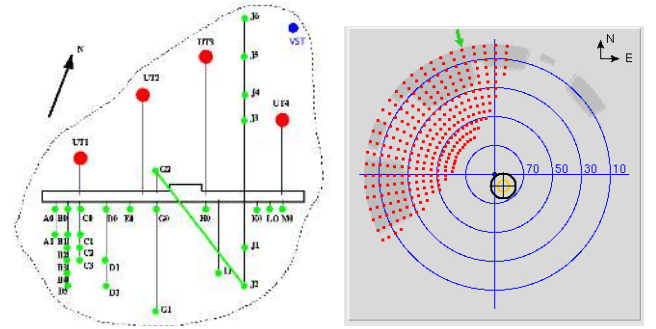


Fig. 8. *Left:* layout of the Paranal observatory platform indicating the baseline used during the commissioning as shown by the APES software. *Right:* not accessible regions in the sky due to delay line limits (dotted regions) and UT shadowing (grey patches) for the baseline G2-J2 as shown by the VLTI observer panel. Labels mark the elevation angle.

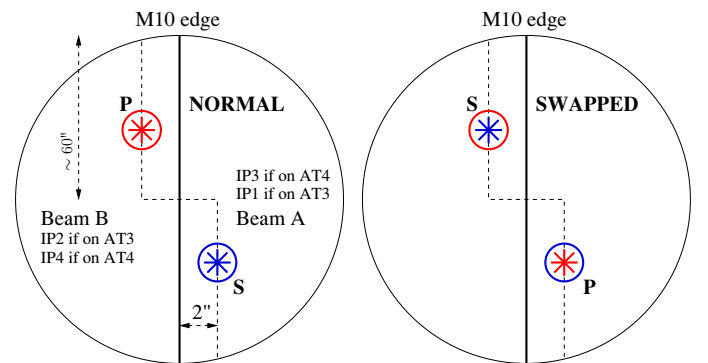


Fig. 9. To illustrate the implementation of the swap procedure, the M10 roof mirror is shown as seen by the technical CCD of the auxiliary telescope. *Left:* in the normal mode configuration, the light of the primary star P falls onto the left side of M10 and feeds IP2 or IP4, thus FSUB, whereas the light of the secondary star feeds FSUA. The derotator ensures that the objects are kept on the dashed line at a distance equivalent to $2''$ from the mirror edge. *Right:* the situation in swapped mode, where the derotator has rotated the field by 180° . The primary star is fed to FSUA and the secondary star to FSUB.

3.9.1. Normal-swapped sequence

The observation strategy to calibrate the metrology zero-point and to minimise differential errors between the two feeds is to obtain a sequence of normal and swapped observations. The physical swap procedure is executed by the derotator located between telescope and star separator. It rotates mechanically by 90° resulting in 180° field rotation so that the primary and secondary object fall on either side of the STS-M10 roof mirror and switch position after the operation (Fig. 9). Consequently, the external differential delay between the two objects is inverted, which has to be compensated internally by the DDL. The typical amplitude of differential delay is tens of mm with a slow dependence on hour angle, see Fig. 10.

3.9.2. Planning and definition

The definition of astrometric observations with PRIMA follows the standard ESO scheme. Observation blocks (OB) are prepared with the P2PP¹ tool and transferred to the broker for observing blocks (BOB) on the instrument workstation, which executes the

¹ <http://www.eso.org/sci/observing/phase2/P2PPTool.html>

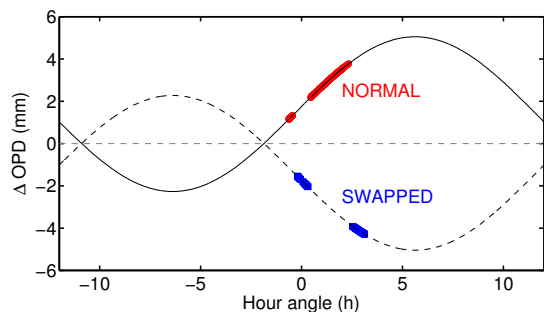


Fig. 10. Expected differential delay for HD 10360 in normal (solid curve) and swapped mode (dashed curve) over 24 h. Red and blue symbols show the data of the demonstration run discussed below. The metrology zero point has been subtracted and is indicated by the horizontal dashed line. The delay amplitude varies between 0–5 mm.

sequence of observing templates defined by the parameter settings in the OB. The PRIMA astrometric observation preparation software APES² allows the user to plan the observation blocks of target stars defined in a user-provided catalogue and to export them to text files, which can be loaded in P2PP.

3.9.3. Instrument calibration and alignment

The only component of the PACMAN instrument that necessitates regular calibration are the fringe detectors (FSU). During the test runs, FSUA and FSUB are calibrated daily on a thermal source inside the laboratory (Sahlmann et al. 2009) with the goal of determining the photometric and spectral response of the system. The opto-mechanical components of the FSU are stable and require only minor re-alignments in monthly intervals due to seasonal temperature variations inside the laboratory³. To reach the required astrometric accuracy level of 10^{-6} , the spectral response of the PRIMA-VLTI system has to be known during the observations and an on-sky calibration procedure has been devised (Sahlmann et al. 2009), but has not been commissioned at the time of writing.

The alignment of the fringe sensor as self-contained system is stable, but the co-alignment with the optical axes of the interferometer can be disturbed by moving optical components during the day, thus it has to be verified. Before the night, both the laboratory guiding camera IRIS and the fringe detectors FSUA and FSUB are aligned on the beams generated by the laboratory light source. Because during observation the guiding camera will stabilise the image on the so-defined positions (the guiding pixels shown in Fig. 11), it is guaranteed that the stellar beams are also stabilised on the FSU. Thermal variations could disturb the co-alignment, but this alignment strategy has proven efficient during many observing nights and usually does not necessitate intra-night corrections.

3.9.4. Target acquisition

The first observing template handles the target acquisition. The telescopes are pointed and the delay lines slew to the predicted position of zero total delay. The movable mirrors of the VLTI are configured to feed the four beams into the fringe sensor units. The integration times of the FSU and IRIS detectors are set to the value appropriate for the object magnitudes. When the telescope

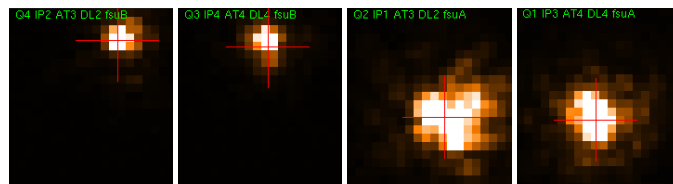


Fig. 11. IRIS *H*-band images of HD 66598 A (two right panels) and HD 66598 B (two left panels). The IRIS quadrant, VLTI input channel number, telescope, delay line, and fringe sensor are indicated at the top of each panel. The magnitude difference between the stars is $\Delta m_H \sim 1.8$ and the exposure time was 0.2 s for all IRIS quadrants. The red cross in each panel indicates the guiding pixel, i.e. the target for the image stabilisation control loop, defined as the position of optimal alignment with the FSU. Because of fast atmospheric turbulence, the IP4 beam was not well aligned at the time of exposure.

control loops for image stabilisation and guiding are closed, the stellar beams are acquired with the IRIS infrared camera and the laboratory guiding is enabled, using the STS-FSM mirror actuator to stabilise the PSF image for the FSU. In a similar fashion, the pupil stabilisation loop using the PRIMA metrology beams and the STS-VCM mirror actuator is enabled. At this stage the telescopes are guiding, the delay line and the differential delay line follow the predicted trajectories⁴, and the facility is ready to begin observing.

3.9.5. Observation sequence

The start of an astrometric observation is defined by the reset of the PRIMA metrology fringe counters. The astrometric measurement relies on the uninterrupted validity of the internal differential delay measured with this metrology, thus another reset or loss of it, e.g. a metrology glitch, marks the end of the usable observation data. Since the metrology zero-point is unknown, it has to be determined by a calibration step consisting of exchanging the roles of the primary and the secondary object, i.e. the swap procedure. The alternating observation in swapped and normal states reduces adverse effects on the astrometry, e.g. caused by dispersion, because errors common to both states are removed and only the differential terms remain (the metrology zero point can be seen as such a common mode error). The PRIMA astrometric data acquisition sequence can be broken down into conceptually equal blocks, which are executed either in normal or in swapped mode in the following order:

1. Photometric calibration: sky-background, sky-flat, and combined flat exposures are taken to calibrate the FSU (Sahlmann et al. 2009). These steps use the STS-FSM mirrors to apply an offset from the star in order to measure e.g. the sky background level. The IRIS and FSU camera backgrounds are taken simultaneously.
2. Fringe detection scan: the actual fringe position in the primary and secondary feed differ by typically less than 1 mm from the model prediction. To facilitate the start of fringe tracking, a scan in OPD of ~ 5 mm is performed with the main delay line while recording FSU data. The processing of the resulting file yields the fringe positions in delay space of both primary and secondary feed and an estimate of the fringe S/N in the respective feed. The OPD control loop is then closed and fringes are tracked with the main delay line.

² <http://obswww.unige.ch/~segransa/apes/tutorial.html>

³ These concern the cold camera image actuators and the fibre positioners at injection level.

⁴ At VLTI, the delay compensation is done with only one delay line (or DDL) moving at the time. The other delay line (or DDLs) is kept fixed during an observation.

3. Scanning observations: while fringe tracking on the primary star with the main delay line, a series of fast scans across the fringes of the secondary star is performed with one DDL and recorded (typically 400 scans). The data can be used both for astrometry and to measure the spectral response of the PRIMA-VLTI system. The scanning observation is optional and not always executed.
4. Tracking observations: the secondary fringe tracking loop is closed with one DDL and data is recorded in dual-fringe tracking (typically 5 min of data). This represents the standard astrometry data.

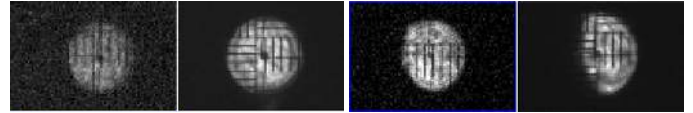


Fig. 12. PRIMA pupils measured after the acquisition of HD 10360 in swapped mode on November 19, 2011. The input channels are IP1–IP4 from *left to right*. While all pupils show signs of vignetting, the two rightmost coming from AT4 are strongly obscured.

After these 4 steps, the swap or unswap procedure is executed, which consists of opening the fringe tracking and beam guiding loops and of turning the field by 180° , thus sending the light of stellar objects into the respective other feed. After closing the telescope and laboratory guiding loops again, the sequence of steps 1.–4. is repeated. An astrometric measurement becomes possible after two sequences, i.e. when at least one observation in normal mode and one in swapped mode have been made, since the zero-point of the metrology can be determined. The basic characteristics and differences of the normal and swapped operation modes are listed below:

Normal mode: FSUB is used to track the primary star fringes with the main delay line via OPDC. FSUA is used to track the secondary star fringes with DDL1 via DOPDC. The internal differential OPD is controlled with DDL1, which can be used for fast scanning or fringe tracking.

Swapped mode: FSUA is used to track the primary star fringes with the main delay line via OPDC. FSUB is used to track the secondary star fringes with DDL2 via DOPDC. The internal differential OPD is controlled with DDL2, which can be used for fast scanning or fringe tracking.

3.9.6. Hardware inadequacies affecting the instrument performance

All astrometric observations reported herein were obtained between November 2010 and January 2012. During this time, the PRIMA-VLTI subsystems exhibited the following hardware problems, which did not impede astrometric observations, but significantly reduced the instrument performance in terms of accessible stellar magnitude range and the data quality.

- Optical aberrations of AT3-STs: the two stellar beams coming from AT3-STs suffered from optical aberrations, which an observer can interpret as different focus positions. At the time of writing, the optical aberrations had not been corrected, yet. In practice, the best focus position of an auxiliary telescopes is found by the operator using the remote adjustment of the secondary mirror and the image quality as seen on IRIS. In the PRIMA case and because there is one common focus actuator for both beams (the telescope secondary mirror), an intermediate focus position had to be determined by minimising the optical aberrations of both beams apparent on IRIS. This is problematic because of the fast injection degradation with defocus and the fast temporal change of focus position. During PRIMA observations the AT foci are adjusted approximately every 30 min.
- Pupil vignetting of stellar beams: the shape of the PRIMA pupils can be measured with a pupil camera located between the switchyard and the fringe sensors. Figure 12 shows an example taken in November 2011.

- APD assembly of AT4-STs for image correction: the tip-tilt correction system of the VLTI auxiliary telescopes has been upgraded by implementing a new assembly of the lenses in front of the avalanche photo diodes, resulting in improved image correction quality especially in good seeing conditions (Haguenaer et al. 2010). The AT3-STs has undergone the upgrade, whereas AT4-STs was operating with the old system, thus operating in non-optimal conditions.
- FSUA fibre transmission and cold camera alignment: during the integration of the FSU at the VLTI, a degraded transmission of FSUA compared to FSUB was noticed (Sahlmann et al. 2009). Additionally, the cold camera alignment of FSUA was not optimised resulting in a distorted spectral response function. Eventually, the fluoride glass fibre assembly of FSUA was exchanged in March 2011 and the cold camera was aligned, which improved the camera throughput⁵ and spectral response.

4. Differential delay lines for PRIMA

When observing two stars with a dual-field interferometer, the differential optical delay Δw between the stellar beams has to be compensated dynamically to make the simultaneous observation of both fringe packets possible. For PRIMA, this is realised with the differential delay lines (DDL), which were delivered by the ESPRI consortium. To make the system symmetric and minimise differential errors, there are four DDL, i.e. one per telescope and per star. In preparation of a potential extension of PRIMA to operation with four telescopes, the DDL system can accommodate up to eight DDL. A detailed description of the DDL before installation at the observatory was given by Pepe et al. (2008). Here, we present a concise overview of their design and implementation and report on their performance at the VLTI observatory.

4.1. Technical requirements

The DDL have been designed to comply with the technical requirements set by their operation within the PRIMA facility and specified by ESO. The most relevant requirements are:

- Stroke: to compensate for the differential delay between two fields separated by $2'$ observed with a baseline of 200 m, a single DDL must be able to introduce an optical delay of ± 66 mm.
- Transfer function: a high actuation bandwidth (>200 Hz) is required to act as fast actuator for optical path length control, e.g. to compensate for atmospheric or structural turbulence.
- Vacuum operation: the DDL must be operated in vacuum to minimise the effects of differential dispersion on the astrometric measurement (cf. Sect. 6.1). In this way, both stellar

⁵ The cold camera flux loss in March 2009 was 13% and 5%, compared to 10% and 4% in November 2011 for FSUA and FSUB, respectively. The uncertainties are 1%.



Fig. 13. PRIMA DDL installed in the VLTI laboratory. The optical table supporting four vacuum vessels is seen in the foreground. Each vessel has four circular optical windows of 66 mm diameter. The cabinet visible in the background contains the front-end electronics.

beams in one interferometer arm travel the same optical path length in air.

- Operation modes: (i) blind tracking mode: the DDL must be able to follow a given trajectory at a rate of up to $200 \mu\text{m s}^{-1}$, e.g. corresponding to the differential delay change due to Earth rotation; (ii) active tracking mode: the DDL must be able to introduce fast delay corrections, e.g. to compensate for atmospheric piston in closed loop with a piston sensor when fringe tracking, optionally in addition to following a given trajectory; (iii) scanning mode: the DDL can be operated in a scanning mode executing a periodic triangular delay modulation, for instance to search for fringes or to obtain data covering the complete fringe envelope.

4.2. Design

The DDL was designed by the ESPRI consortium in close collaboration with ESO. The concept is based on Cassegrain-type retro-reflector telescopes (cat's eyes) with ~ 20 cm diameter that are mounted on linear translation stages. A stepper motor at the translation stage provides the long stroke of up to 69 mm, whereas a piezo actuator at the M3 mirror in the cat's eye realises the fine adjustment over $\sim 10 \mu\text{m}$ with an accuracy of 1 nm. Both actuators are driven with a combined control loop, such that the optical path length can be adjusted over the full range of 120 mm (twice the stroke length) with an accuracy of 2 nm. The DDL and their internal metrology system are mounted on a custom optical bench in non-cryogenic vacuum vessels. The internal metrology beams are launched and collected in front of the cat's eye (Fig. 14). Vacuum windows are part of the optical system and are integrated in the vacuum vessel. The actuators are controlled with front-end electronics located close to the optical bench in the interferometric laboratory of the VLTI. The interface with the interferometer control system is implemented with Local Control Units (LCU) running standard VLT control software and located outside the laboratory.

4.2.1. Optical table and vacuum system

The DDL are supported by a stiff optical table on which four vacuum vessels are installed. It is installed next to the switchyard table in the VLTI laboratory (cf. Figs. 2 and 13). Each vessel

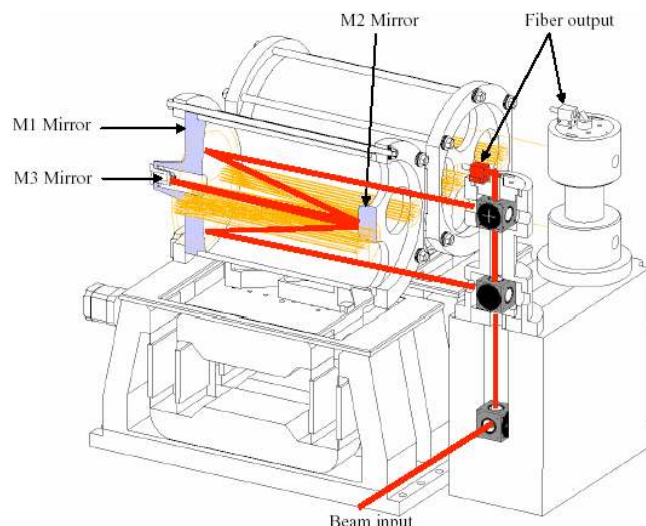


Fig. 14. Schematic and longitudinal section of two DDL. The translation stage supporting the optics is visible below the telescope tubes. The M3 mirror is mounted on a fast piston and tip-tilt piezo actuator. Stellar beams are shown in yellow and internal metrology beams are red.

can host two DDL, i.e. the vacuum system is prepared for up to eight units. As of February 2012, four DDL are installed and two vessels are therefore empty⁶. A pumping system is installed for vacuum maintenance. The front-end electronics are installed in an actively cooled cabinet located next to the optical table. The cabinet and the table have independent fixations to the laboratory floor, to avoid that vibrations from the liquid cooling system and cooling fans inside the cabinet are transmitted to the DDL table.

4.2.2. Cat's eye optics

The cat's eye retro-reflector is realised with three mirrors and five reflections, which result in a horizontal shift between input and output beam of 120 mm. Because the stellar pupil's longitudinal position in the beam combination laboratory has to be identical with and without DDL in the beamtrain and due to the pupil configuration present at the VLTI, the magnifications of individual DDL are not identical but were adapted by adjusting the curvature of M3. All other optical parameters are identical for the four DDL. The parabolic primary mirror, the hyperbolic secondary mirror, and the spherical tertiary mirror are mounted to the telescope tube. M3 is attached to a three-piezo actuator capable of piston and tip-tilt adjustment (Fig. 14).

4.2.3. Translation assembly

The mechanical translation assembly consists of a motorised translation stage providing the 70 mm stroke and a piezoelectric short-stroke actuator for M3. The main translation stage is a guided mechanism composed of two arms where each arm is a compensated parallelogram constituted of four prismatic blades. This custom system realises a rigid, though highly accurate one-dimensional displacement mechanism and is driven by a stepper motor used as DC motor (*Ultramotion Digit*). A piezo-electric platform (customised *Physik Instrumente S-325*) was chosen to support M3. This actuator has three degrees of freedom (tip, tilt, and piston) and makes it possible to both compensate for slowly

⁶ At the time of writing, the construction of two additional DDL to complement the VLTI facility is underway.

varying lateral pupil shifts caused by imperfections of the main translation stage and to introduce fast piston changes. The mechanical piston stroke is $30\ \mu\text{m}$, which corresponds to a differential optical stroke of $\pm 30\ \mu\text{m}$, and the mechanical tip/tilt range is ± 4 milli-rad.

4.2.4. Internal metrology

The purpose of the internal metrology is to measure the instantaneous optical position of the DDL, thus the optical delay introduced in the stellar beam. The system is based on commercially available technology for displacement measurement (*Agilent*), which is also used in the main delay lines. Each single DDL has its own metrology receiver such that its position can be measured independently. A folding mirror directs the metrology laser beam into the vacuum vessel where it is split in two beams, one for each of the two DDL enclosed in the vessel. Each beam feeds a Mach-Zehnder type interferometer, whose interference signals are detected with optical receivers. The front-end electronics convert optical to electric signals and the back-end electronics (VME boards) compute the interferometric phase with a resolution of $2\pi/256$, corresponding to an OPD resolution of $2.47\ \text{nm}$.

After several months of operation at the observatory, opto-mechanical drifts were detected in the metrology system which made regular alignment necessary. Consequently, a slightly modified design leading to a more robust system has been devised and will replace the current system in 2013.

4.2.5. Instrument and translation control

The instrument control hardware is composed of VLT standard components and the software complies with the VLT common software package for instrumentation. The real-time control algorithms are coded in the ESO software architecture TAC (tools for advanced control). To achieve optimal control of the two-stage system composed of the piezo actuator and the motor, their respective controllers are interfaced by an “observer”. In this way, a non-degenerate closed loop control system is realised, where the feedback is given by the laser metrology measurement. The first resonance of the motorised translation occurs at $\sim 100\ \text{Hz}$. Because this stage does not need to be very fast, we avoid excitation of this mode by limiting the bandwidth of the motor stage to $\leq 10\ \text{Hz}$ and by low-pass filtering the reference fed to the motor controller. The motorised stage therefore off-loads the piezo at low frequency. Because the mirror attached to the piezo-electric stage is very light ($\sim 3.5\ \text{g}$), the amplifier (*PI E-509*) and the input capacitance of the piezo itself are determinant for the system bandwidth.

4.3. Laboratory performance

The DDL system was thoroughly tested before delivery to the observatory to confirm that it complies with the technical requirements and the detailed optical performance is reported in [Pepe et al. \(2008\)](#). We therefore briefly summarise the most important values: the throughput of the DDL’s optical system composed of cat’s eyes and windows is shown in [Table 2](#). The transfer function of the DDL is shown in [Fig. 15](#). The responses of the single DDL units were made to match by tuning their control parameters and the actuation bandwidth is $380 \pm 10\ \text{Hz}$ with a quality factor of ~ 0.7 . This setup was chosen for increased robustness, but can further be tuned if the operation conditions at

Table 2. Total optical transmittance of the DDL system.

Bandpass (μm)	requirement	Transmittance ^a		
		windows (2 \times)	cat’s eye	total
0.6–1.0	0.60–0.80	0.86	0.80	0.69
1.0–2.0	>0.80	0.93	0.90	0.84
2.0–2.5	>0.85	0.93	0.93	0.86
2.5–28	>0.90	(no windows)	0.91	0.91
1.319	>0.80	0.99	0.90	0.89

Notes. ^(a) Theoretical throughputs are calculated from the transmittance curves of individual components provided by the manufacturers.

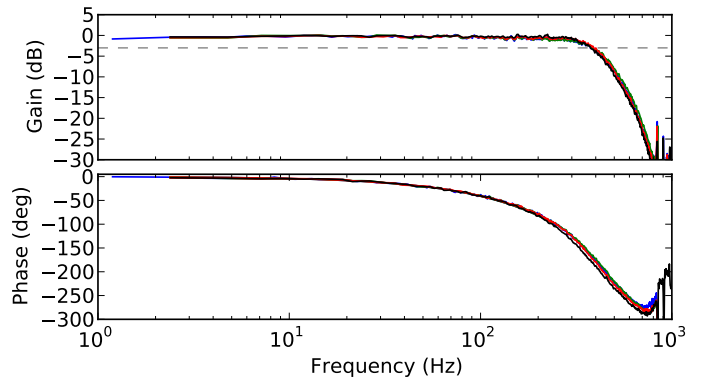


Fig. 15. DDL transfer function gain (*top*) and phase (*bottom*) as a function of frequency. Different colours identify the four DDL units. The dashed line in the *top panel* indicates the $-3\ \text{dB}$ threshold.

Table 3. Technical requirements and achieved performance.

		Specification	Measured
Field of view in pupil	($^\circ$)	>10	>10
Delay range	(mm)	0–120	0–137
rms wavefront error	(nm)	<25	16 ± 2
Tilt	($''$)	<1.5	0.3 ± 0.1
Differential tilt	($''$)	<0.75	<0.7
Transmission		See Table 2	
Resolution	(nm)	<2.5	2.5
Bandwidth	(Hz)	>200	380 ± 10
Lateral pupil stability	(μm)	<50 PTV	60 PTV

the observatory make it necessary. The maximum velocity of the DDL is $5.38 \pm 0.01\ \text{mm s}^{-1}$. A summary of the achieved performance is given in [Table 3](#).

4.4. Performance at the observatory

After integration at the VLTI, it was verified that the DDL in stand-alone operation comply with the performance established in the laboratory in Europe. Thereafter they were introduced and commissioned as a part of the interferometer opto-mechanical and control system. To become compatible with the operation of the PRIMA metrology, rate and acceleration limiters had to be introduced in software to limit the displacement speed and acceleration at an acceptable level, especially when large, step-like motion commands are sent by the control system. During the PRIMA dual-feed commissioning, the DDL were used routinely in all operation modes, i.e. to follow a predicted sidereal motion, to act as actuator for fringe tracking on the secondary star, and to

perform fast triangular motion for fringe scanning. Their operation proved to be robust and reliable. In a single test observation, the DDL were also successfully used for fringe tracking on the primary star. Taking advantage of their excellent actuation bandwidth, the DDL could be used to correct high-frequency piston disturbances, e.g. structural vibrations, in the future. The advantage of having two fast piston actuators in sequence also offers the opportunity to test optimised control strategies for fringe tracking on primary and secondary star.

It was noticed that fast motion with large amplitudes beyond the DDL's specified working range can induce mechanical oscillations of one DDL system, which then propagate to the other DDL by mechanical coupling since all DDL are mounted on the same optical table. Those oscillations are caused by the stepper motor which is controlled without additional damping and they may impact operations because the internal metrology system can fail in these conditions.

In response to the requirements of the second-generation VLT instrumentation, ESO ordered two additional DDL which are under construction at the time of writing. The necessary upgrade to the DDL metrology opto-mechanical system mentioned in Sect. 4.2.4 will be made when those new DDL will be installed.

5. PRIMA astrometry data reduction

An astrometric observation is characterised by the sequence of normal and swapped exposures and requires at least one exposure in each mode. Raw data are therefore grouped into sets of files that correspond to one observation or *astrometric run* and do not have reported PRIMA metrology glitches. Between January 2011 and March 2012, PRIMA was used to obtain ~60 astrometric sequences of eleven different targets. During the first light mission, many short runs were recorded, whereas the later commissionings concentrated on acquiring long duration runs suitable for accurate model testing. For the purpose of commissioning, we developed a dedicated and highly flexible data reduction and analysis software package, which is briefly described below. Further details can be found in Sahlmann (2012). The PRIMA data are sampled at kHz-rate and stored in binary FITS tables. Before fitting an astrometric run containing continuous data over tens of minutes, these data have to be reduced to a manageable size. To ease computations, all data tables are linearly inter- or extrapolated to a common time grid. Basic quality checks and verifications are made at this stage. These include verification of the FSU and PRIMA metrology sampling rates, verification of the PRIMA metrology status and glitch counters requiring data correction where applicable, and the detection of potential fringe-runaway events⁷. The data reduction is accomplished by averaging over a timespan of the order of ~1 s. Combined observables of several raw data tables, e.g. the astrometric observable, are computed before averaging to account for possible correlations. To minimise biases caused by time-averaging quantities which drift considerably during the averaging window, e.g. the differential delay and the delay line position, a model is subtracted from the measurement before averaging and added back thereafter. The model motions are based on the target input catalogue. The output of the data reduction step is one intermediate data file per run, which contains all necessary information for the detailed astrometry analysis and model fitting.

⁷ As a consequence of inapt control thresholds for fringe tracking.

5.1. PRIMA astrometry raw data format

The PACMAN instrument records PRIMA astrometry data in FITS files, containing a primary header and eleven binary tables. The most relevant entries are discussed hereafter. The FSU table contains four data columns corresponding to the detector quadrants A-D and every column contains six subcolumns for the detected intensities in the six spectral pixel. It also contains the phase delay (PD) and group delay (GD), used as feedback signals for the fringe tracking loop, and the FSU S/N, used by the OPD controllers for mode switching (Sahlmann et al. 2009). The METROLOGY_DATA table contains the differential delay $\Delta L = \Delta L_A - \Delta L_B$ and the METROLOGY_DATA_FSUB table contains $-\Delta L_B$, i.e. the delay in the FSUB feed multiplied by -1 . The corrections applied to the PRIMA metrology measurements are discussed in Appendix A. The OPD controller tables contain information about the controller state, the internal control signals, the setpoints sent to the delay line, and the metrology readings of all active differential and main delay lines. The time-stamps in all tables of one file are given relative to one common time defined by the PCR_ACQ_START header keyword. The sampling rate of the data in the D/OPDC, PRIMA metrology, and FSU table is 2 kHz, 4 kHz, and 1 kHz, respectively, where the latter can be smaller depending on the star magnitude. See Sahlmann (2012) for further details.

5.2. Intermediate reduced data

The relevant reduced data, i.e. the 1 s averages for all files of one astrometric run, are stored in an intermediate file. This decouples the data reduction from the data analysis step and facilitates the exchange and comparison of different reduction strategies. For every 1 s averaged sample, the file contains a timestamp, a mode identifier, which is an integer number that indicates the mode in which the data sample was taken (normal or swapped and dual-tracking or fast-scanning mode), and the observables with associated uncertainties, e.g. the astrometric observable, the delay line and differential delay line positions, the PRIMA metrology readings, and the file name corresponding to the data point.

5.3. Dual fringe tracking data

Tracking files are named PACMAN_OBJ_ASTRO[...] and contain dual-feed fringe tracking data. For the reduction, only samples in dual fringe tracking are kept and this criterion is based on the controller states of OPDC and DOPDC, both required to be "7". The astrometric observable AX_{obs} is a linear combination of the differential delay ΔL measured with the PRIMA metrology, the group delay GD_A of FSUA, and the group delay GD_B of FSUB, directly taken from the respective binary tables:

$$AX_{\text{obs}} = \Delta L - GD_A - GD_B, \quad (23)$$

where the signs have been determined empirically. Figure C.3 of the appendix shows an example of this first analysis step. Equation (23) is sufficient for a first performance evaluation of the astrometric instrument. In the future, it could be improved for instance by considering the phase delay, which has lower noise compared to the group delay but has to be corrected for dispersion, and/or by implementing an optimised group delay algorithm. For the science-grade data reduction, it is envisaged to account for the near real-time spectral response of the beamtrain and to obtain optimal and unbiased estimators for the astrometric observable on the basis of the raw pixel counts.

5.4. Scanning data

Scanning files are named PACMAN_OBJ_SCAN[...]⁸ and contain data taken while fringe tracking on the primary and performing fast fringe scans on the secondary feed using a DDL. The basic reduction is slightly more complex than for the tracking data and it involves the following steps: (1) scan identification and data association; (2) interpolation on a regular OPD grid and flux normalisation; (3) computation of the wavelet transform (Torrence & Compo 1998)⁹ for fringe localisation; (4) elimination of low-quality scans based on S/N and primary fringe tracking quality criteria. The astrometric observable is now given by

$$AX_{\text{obs}} = \Delta L_w - GD_{\text{track}}, \quad (24)$$

where ΔL_w is the PRIMA metrology value at the secondary's fringe position determined with the wavelet method and GD_{track} is the average group delay of the primary measured by the tracking FSU during the scan.

In the simplest implementation, the wavelet method is applied to the two white-light flux differences A–C and B–D, both pairs are close to phase-opposition, and the final fringe position is a combination of both results. Figures 16 and 17 illustrate the reduction procedure. The above algorithm is sufficient for a first performance evaluation and proved that astrometric data obtained in dual tracking or fringe scanning mode are equivalent at the μm -level, see e.g. Fig. 28, with the scanning data having a slightly higher noise. The scanning data are rich in information about the photometric fluctuations during the observations, the instantaneous phase-shifts and effective wavelengths of the FSU quadrants or pixels, and the dispersion effects on the fringe packet, which we have started to characterise.

6. PRIMA astrometry data modelling

We describe the data analysis principles that are applied to characterise the observations and eventually lead to the astrometric measurement of the target pair's separation. We first discuss the modelling of the main delay, before proceeding to the differential delay fitting. With the help of one observation sequence, we illustrate the individual steps of the data analysis up to the fit of a separation vector. Error bars are usually derived from Monte Carlo simulations. Three binary stars play an important role in the initial system characterisation and are therefore presented in Table C.3 and briefly discussed below.

- HD 202730 is separated by $7''$ from the secondary GJ 9733 B. The separation change measured over 150 years is well approximated with a linear motion and this binary is included in the Catalog of Rectilinear Elements (<http://www.usno.navy.mil/USNO/astrometry/optical-IR-prod/wds/lin1>).
- HD 10360 is separated by $11''$ from the secondary HD 10361. Both stars are very bright in K -band and have nearly equal masses (Takeda et al. 2007). This visual binary shows considerable orbital motion over the available separation measurements of 200 years and an orbital solution was given by van Albada (1957). This is the pair observed during the run used for illustration below.

⁸ The filenames PACMAN_OBJ_SPECTRUM[...] and PACMAN_SKY_VLTIRESPONSE[...] contain equivalent data but were taken with a different template to obtain the star's spectrum and the interferometer's spectral response, respectively.

⁹ A modified version of the code available at <http://paos.colorado.edu/research/wavelets/> was used.

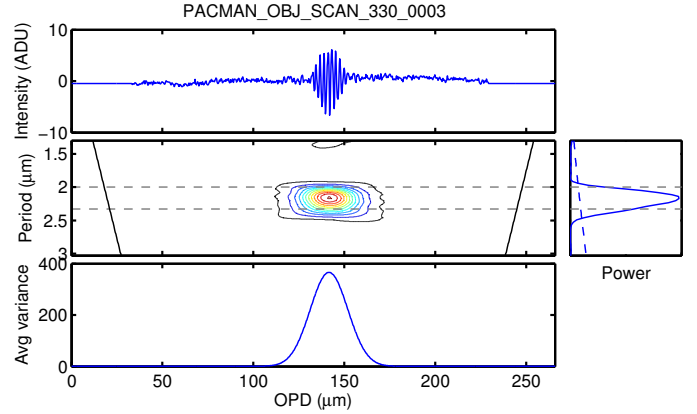


Fig. 16. Illustration of the wavelet analysis. *Top:* the time series showing the fringe signal (here A–C in white light). *Middle:* the contour plot shows the fringe localisation by the wavelet transform in both delay and frequency space. Only data between the two horizontal dashed lines are considered. *Bottom:* projection of the wavelet power in the time domain. *Right:* projection of the wavelet power in the frequency domain.

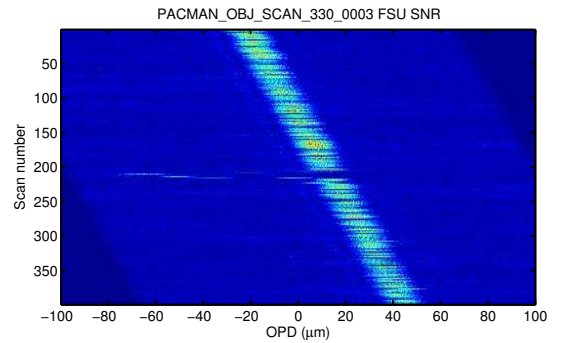


Fig. 17. Raw S/N delivered by the FSU in the scanning channel as a function of differential delay (measured with the PRIMA metrology) and scan number shown on the vertical axis. A loss of lock on the primary fringe tracking occurs at the scan 220.

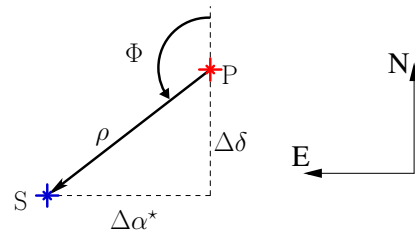


Fig. 18. The target pair separation ρ and position angle Φ define the relative position of the secondary star S and primary star P. The separation vector points towards S and has the rectangular components $\Delta\alpha^*$ and $\Delta\delta$. North is up and East is left.

- HD 66598 is separated by $36''$ from the secondary HD 66598 B. So far, it is the widest pair observed with PRIMA. As indicated by the available measurements in the literature, this binary does not exhibit a significant separation change over the last 100 years.

6.1. Correction of atmospheric refraction and main delay fitting

The VLTI-internal main delay is introduced by the main delay lines and the effect of the Earth rotation makes it a dynamic

quantity. We have access to two measurements of its value, one is the internal metrology of the main delay line (helium-neon laser, $\lambda_{DL} \sim 633$ nm) and the other is the FSUB arm of the PRIMA metrology named PRIMETB (Nd:YAG laser, $\lambda_p \sim 1319$ nm), which in addition to the tunnel measures the optical path within the laboratory and the light ducts up to the retro-reflectors inside the star separators of the auxiliary telescopes (Fig. 2). Both have to be corrected for atmospheric refraction. For astrometric interferometry, the following terms related to chromatic and achromatic refraction have to be considered:

1. Correction of laser metrology measurements: the purpose of a metrology system is to measure the optical path length between its endpoints. Usually, the vacuum laser wavelength is known and used to convert phases to delays. If air-filled beam trains are used, the effective laser wavelength is altered and the delays have to be corrected for the refractive index representative of the air inside the interferometer.
2. Effect of wavelength difference between stellar and metrology beams: if the stellar and metrology bandpasses are not identical, the chromaticity of the refractive index creates a mismatch between the optical path difference experienced by the stellar beam and the one determined with the metrology.
3. Atmospheric refraction: for conventional imaging instruments, atmospheric refraction results in an offset between the true source vector s_0 and the apparent, refracted source vector s (e.g. Gubler & Tytler 1998). In the case of an interferometer, the first order term of this effect is removed if either vacuum delay lines are used or if the effects 1. and 2. are accurately corrected. This is because the geometric path difference GPD is equal to the vacuum optical path difference $\mathbf{B} \cdot s_0$ occurring outside the atmosphere, where $n = 1$, and it is equal to the external optical path difference $n_{1,FSU} \mathbf{B} \cdot s$ experienced within the atmosphere of refractive index $n_{1,FSU}$, where the second subscript indicates that the index is computed for the bandpass accepted by the instrument (e.g. Daigne & Lestrade 2003). To observe fringes, it is compensated by an optical path difference $n_{2,FSU} D$ internal to the interferometer, where D is the internal vacuum delay. The laser metrology system measures the internal optical path difference $L = n_{2,MET} D$, where $n_{2,MET}$ is taken at the metrology wavelength and is determined by the atmosphere at the delay lines, cf. Fig. 19. It follows that

$$GPD = \mathbf{B} \cdot s_0 = n_{1,FSU} \mathbf{B} \cdot s = n_{2,FSU} D = \frac{n_{2,FSU}}{n_{2,MET}} L, \quad (25)$$

where n_1 and n_2 are determined for the detected stellar bandpass and the metrology wavelength, respectively, with the local atmospheric parameters. Note that the angle of s depends on n_1 through Snell's law. If the delay lines are evacuated, $n_2 = 1$ and $\mathbf{B} \cdot s_0 = L$. Second order terms appear for instance because the zenith direction is different for two separated telescopes (Mozurkewich et al. 1988) and due to the elongation of the stellar images by chromatic refraction across the bandpass.

4. Dispersion effects due to chromatic refraction: when the external vacuum delay is compensated in air, the chromatic dependence of the index of refraction distorts the fringe packet and reduces fringe visibility (Tango 1990). Depending on how the astrometric measurement is performed, biases can occur.

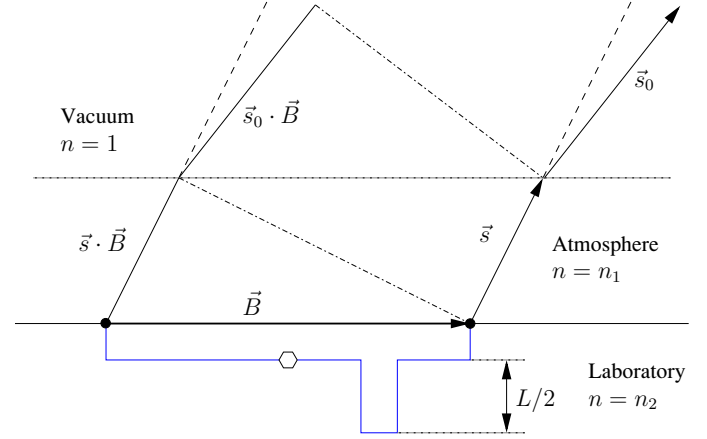


Fig. 19. Schematic of an interferometer with baseline \mathbf{B} observing a source at true position s_0 through a plan-parallel atmosphere of refractive index n_1 .

The first two effects are usually dominant and are discussed here. A couple of remarks are appropriate to underline the particularities of PRIMA-VLTI:

- The vacuum wavelengths of all delay line metrology systems (Model Agilent 5519-A) are identical $\lambda_{DL,vac} = 632.991354$ nm and are supposed to be stable within 2×10^{-8} . However, the VLTI control system was implemented such that a modified wavelength $\lambda_{DL,mod} = 632.863000$ nm is applied instead, presumably to account for an “average” refraction.
- The PRIMA metrology ΔL_B in the B feed (PRIMETB) has to be corrected for refraction in the infrared. It is measuring at $\sim 1.3 \mu\text{m}$ and the accepted stellar bandpass is centred at $\sim 2.25 \mu\text{m}$.
- Conversely, the differential value ΔL does not need to be corrected, because the differential delay is introduced by the DDL that are under vacuum. The same applies to the delay value of the DDL internal metrology. This assumes that any effect on ΔL caused by gradients of temperature, pressure, and humidity between the two interferometer feeds outside of the DDL vacuum vessels can be neglected.

The refraction terms are calculated with the formulae of Birch & Downs (1993) and Mathar (2007) for visible and infrared wavelengths, respectively. We assumed dry air, i.e. neglected any dependence on humidity. Pressure and temperature readings were extracted from the file headers and we assumed that the pressure is global and given by the observatory monitoring system. There are considerable temperature gradients within the facility, which typically amount to ~ 1 K along the tunnel and up to ~ 4 K between ambient and inside the laboratory, depending on the season. Temperature variations during an observation are usually much smaller than the gradient. Refraction terms were computed for each file separately, but only the global average over the tunnel having four temperature sensors was used to estimate n_{DL} . For the terms applied to the PRIMA metrology and for the instrument bandpass, we used the global average obtained with nine temperature sensors between the outside and the laboratory, and we made the approximation $n_{FSU} = n_{1,FSU} \approx n_{2,FSU}$. Table C.2 lists the calculated refractive index at the prominent wavelengths, e.g. $n_{DL} = 1 + 2.025 \times 10^{-4}$. Because the delay line system does not apply the vacuum wavelength, three corrections are necessary to convert the delivered metrology value Ω_{DL} into

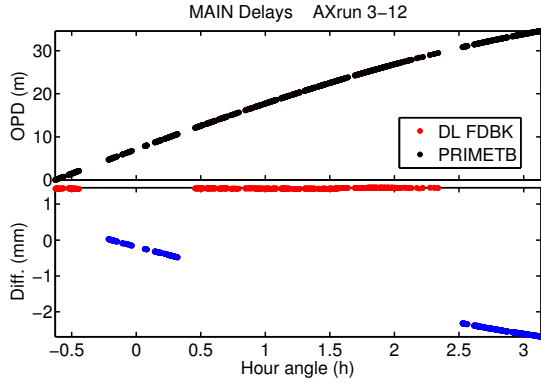


Fig. 20. Internal delay corrected for refraction measured with delay line and PRIMA metrologies (*top*) and their difference (*bottom*), which is shown in red and blue for normal and swapped mode data, respectively.

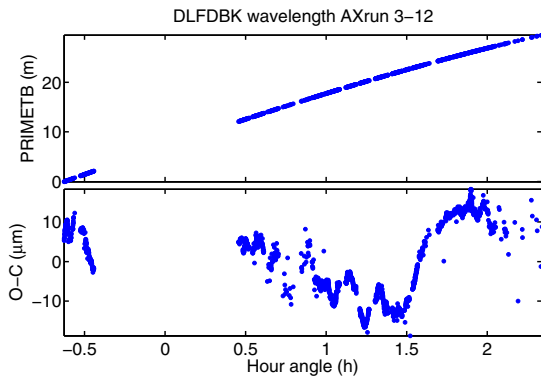


Fig. 21. PRIMETB internal delay (*top*) and the residuals after fitting the delay line delays to it (*bottom*) using the model Eq. (28).

the corrected value Ω'_{DL}

$$\Omega'_{DL} = \frac{\rho_{mod}}{n_{DL}} \Omega_{DL} n_{FSU} = \frac{\Omega_{DL}}{n'} n_{FSU}, \quad (26)$$

where $\rho_{mod} = \lambda_{DL,vac}/\lambda_{DL,mod} = 1 + 2.028 \times 10^{-4}$. Similarly we get

$$\Delta L'_B = \frac{\Delta L_B}{n_p} n_{FSU}. \quad (27)$$

Figures 20 and 21 show both corrected measurements and their difference, which is very small in normal mode. The variable offset in swapped mode appears because PRIMETB sees the differential delay introduced by the DDL in swapped mode. To quantify the agreement between both measurements in normal mode, we determined an average mismatch factor n_{corr} by adjusting the linear model

$$\Delta L'_B = \gamma_{corr} + n_{corr} \Omega'_{DL}, \quad (28)$$

where γ_{corr} is an offset. The value of $n_{corr} - 1$ is smaller than 1×10^{-6} and comparable to the uncertainties in the applied refraction indices of Table C.2, thus validating our approach.

6.2. Determination of the wide-angle baseline

The relationship Eq. (14) shows that the interferometric delay depends on both the target's position in the sky and on the wide-angle baseline vector \mathbf{B} . An astrometric measurement on the basis of a measured delay is thus possible if the baseline is known.

Table 4. Targets used for baseline calibration.

No.	Target	RA (h:m:s)	Dec (d:m:s)
1	HIP 14146	03 02 23.50	-23 37 28.10
2	HIP 20384	04 21 53.33	-63 23 11.01
3	HIP 22449	04 49 50.41	+06 57 40.60
4	HIP 24659	05 17 29.09	-34 53 42.74
5	HIP 34088	07 04 06.53	+20 34 13.08
6	HIP 36795	07 34 03.18	-22 17 45.84
7	HIP 50799	10 22 19.58	-41 38 59.86
8	HIP 50954	10 24 23.71	-74 01 53.80
9	HIP 56647	11 36 56.93	-00 49 25.49

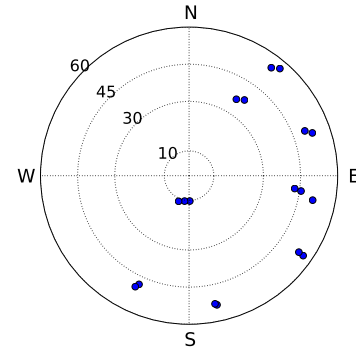


Fig. 22. Orientation and zenith angle of the nine observed stars.

In most cases, a simultaneous adjustment of both target coordinates and baseline is prohibited by the degeneracy of the model function. Consequently, the strategy consists of determining the baseline from a dedicated set of observations and to assume that the baseline calibration remains valid for the astrometric observations obtained thereafter. The principle of the baseline calibration is to observe a set of stars with accurately known coordinates and distributed over a preferably large sky-area. For each star, the internal delay corresponding to the fringe position is recorded. Thus, the corresponding system of Eq. (14) can be solved for four unknowns: a global zero-point and the three components of the baseline vector. Currently, the only VLTI system capable of precisely measuring the internal delay is the delay line metrology, because the PRIMETB zero-point is not tied to a physical reference¹⁰.

During the night of November 21, 2011, the observations for a baseline model were collected. The stars were chosen from the FK6 catalogue (Wielen et al. 1999) based on their K -magnitude, observability, and sky distribution, which is constrained by the delay line limits as shown in Fig. 8. Since these stars usually are single, a fake secondary star at $+8''$ in right ascension was considered for each observation. The telescopes thus pointed at $4''$ from the target. To investigate the baseline in normal and swapped mode, each target was observed in both modes. Note that the measurements in normal mode yield the wide-angle baseline $\mathbf{B}_{B,wide}$ of the FSUB feed, whereas the swapped mode data determine a modified wide-angle baseline $\mathbf{B}'_{A,wide}$ of the FSUA feed, because the derotator is not in the nominal position. Nine stars were observed and are listed in Table 4. The accurate instantaneous coordinates were computed accounting for proper

¹⁰ The zero-point of the main delay line metrology is defined for each night by a mechanical reference in the tunnel. A similar procedure is imaginable for the PRIMA metrology in the future.

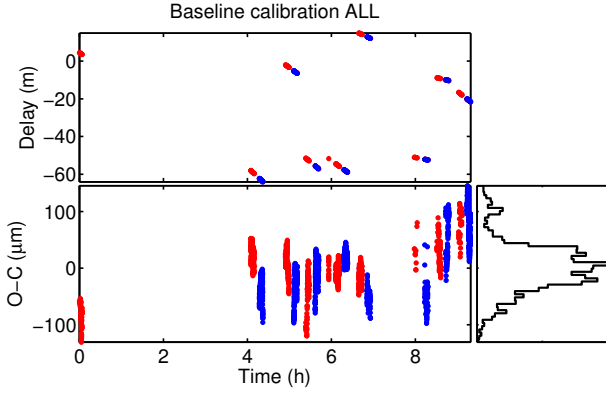


Fig. 23. *Top:* the measured delays, where normal mode data is shown in red, swapped mode data is shown in blue. *Bottom:* residuals of the baseline fit as a function of time and their distribution. The rms is $46 \mu\text{m}$.

motion correction, precession, and nutation, using the parameters of the FK6 catalogue.

Three different datasets were modelled. In the first case all data in both modes were considered, whereas in the second and third case only data in normal or swapped mode were used, respectively. When doing the combined model, the model function Eq. (14) has to account for an additional parameter which is the internal DOPD Δ_{int} which offsets the delay between normal and swapped states (see Sect. 6.1):

$$\frac{\Omega_{\text{DL}}}{n'} n_{\text{FSU}} = \mathbf{B}_{\text{Wide}} \cdot \mathbf{s}_0 + B_0 + \mathcal{H}_S \Delta_{\text{int}}, \quad (29)$$

where Ω_{DL} is the delay line metrology measurement, n' and n_{FSU} are the wavelength-dependent refraction terms introduced in the previous section, \mathbf{B}_{Wide} in the “average” wide-angle baseline of both normal and swapped configuration, B_0 is a constant internal delay, and \mathcal{H}_S is the Heaviside-type function

$$\mathcal{H}_S = \begin{cases} 0 & \text{in normal mode} \\ 1 & \text{in swapped mode} \end{cases} \quad (30)$$

for the swapped mode. Thus the model for the baseline fit of all data combined has 5 parameters: B_x , B_y , B_z , B_0 , and Δ_{int} , where the offsets B_0 and Δ_{int} are assumed constant over the night. For the actual data, the refraction terms $n' - 1$ and $n_{\text{FSU}} - 1$ were of the order of $(1 \pm 0.4) \times 10^{-6}$ and $(1.997 \pm 0.007) \times 10^{-4}$, respectively. The result of the global fit to all data is shown in Fig. 23. Over the 9-h timespan of the observations, the atmosphere appears to introduce an OPD variation of $\sim 250 \mu\text{m}$ peak-to-valley. The residual’s rms after the 5-parameter fit is $46 \mu\text{m}$. At first sight, no obvious systematics or correlations with elevation, azimuth angle, hour angle, or stellar coordinates can be identified. It rather appears like the apparent structure is caused by slowly varying atmospheric parameters with the effect that the residual’s distribution does not resemble a Gaussian curve. Normal and swapped data were also separately adjusted with a 4-parameter model. The resulting graphs are shown in Fig. 24 and reveal that the fit quality is comparably poor in both cases, presumably due to atmospheric turbulence.

Tables 5 and 6 summarise the results. Formal error bars were obtained from Monte Carlo simulations and some parameters are strongly correlated (e.g. B_0 and B_z). The internal DOPD appears here in the difference between B_0 in normal and swapped. We conclude that the differences between the average, the normal, and the swapped baseline are not significant and that the formal uncertainties are compatible with the requirement in Sect. 3.1.

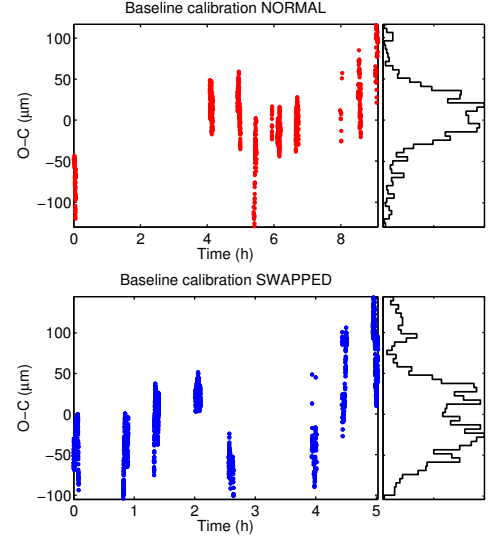


Fig. 24. *Top:* residuals of the baseline fit to normal mode data only. The rms is $38 \mu\text{m}$. *Bottom:* the same for swapped mode only. The rms is $50 \mu\text{m}$.

Table 5. Baseline fit results. Numbers in brackets indicate the Monte Carlo derived errors in the last significant digit (here μm).

	All (m)	Normal (m)	Swapped (m)
	\mathbf{B}_{Wide}	$\mathbf{B}_{\text{B,Wide}}$	$\mathbf{B}'_{\text{A,Wide}}$
B_0	-60.920729 (59)	-60.920707 (59)	-60.920536 (98)
B_x	76.387823 (42)	76.387792 (35)	76.387839 (70)
B_y	-49.877600 (24)	-49.877595 (12)	-49.877606 (52)
B_z	-0.017542 (62)	-0.017527 (62)	-0.017533 (105)
Δ_{int}	0.000193 (15)
rms	0.000045	0.000038	0.000050

Table 6. Baseline fit results: differences between normal and swapped mode data.

	Norm – Swap (μm)	All – Norm (μm)	All – Swap (μm)
B_0	-173 ± 115	-22 ± 85	-195 ± 116
B_x	-47 ± 78	30 ± 55	-16 ± 82
B_y	11 ± 53	-5 ± 27	6 ± 57
B_z	4 ± 121	-13 ± 88	-8 ± 123

We will use the baseline \mathbf{B}_{Wide} obtained from the combined data in all of the following analysis, i.e. as wide-angle baseline and as approximation of the narrow-angle baseline, which is only valid as zeroth order approximation.

6.3. Fitting the main delay line feedback

Assuming the baseline is known, the main delay Ω_{DL} measured with the main delay line internal metrology during an astrometric observation can be used to determine the position of the primary star¹¹. The corresponding model has four free parameters: an offset γ_{DL} , the primary star coordinates in RA α_P and Dec δ_P , and an internal DOPD Δ_{int} . The internal DOPD corresponds to

¹¹ We neglect any effect related to the off-axis pointing by $\rho/2$ of the telescope.

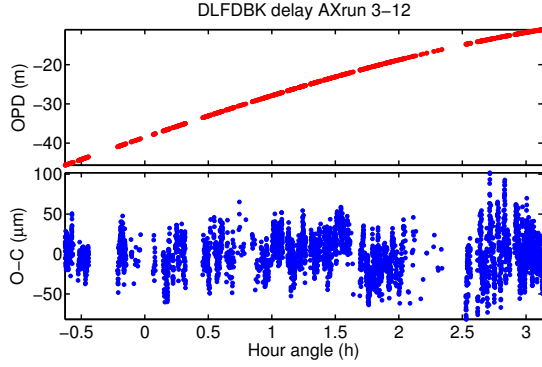


Fig. 25. *Top:* main delay measured with the DL metrology during the demonstration run. *Bottom:* residuals after adjusting the model Eq. (31) including offsets to the primary coordinates. The atmospheric perturbations are visible and have a total rms of $24.0 \mu\text{m}$.

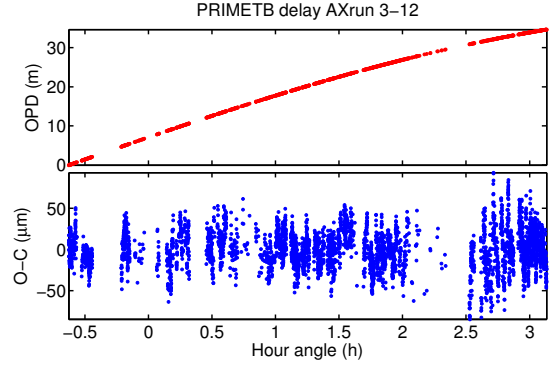


Fig. 26. *Top:* change of PRIMETB during the observation for Run 9. *Bottom:* residuals after adjusting the model Eq. (32). The residual rms is $23.1 \mu\text{m}$.

Table 7. Results of main delay fitting.

Parameter	Unit	DL feedback	PRIMETB
γ_{DL}	(m)	-12.36546 ± 0.00002	...
γ_{PB}	(m)	...	32.27081 ± 0.00002
$\Delta\alpha_{\text{P}}$	($''$)	-0.42 ± 0.05	-1.25 ± 0.09
$\Delta\delta_{\text{P}}$	($''$)	-0.40 ± 0.02	-0.20 ± 0.03
Δ_{int}	(mm)	-0.123 ± 0.001	...
ϱ	($''$)	...	11.445 ± 0.013
Φ	(deg)	...	188.00 ± 0.04

the difference of zero-OPD positions of FSUA and FSUB, which in principle is arbitrary, because the VLTI does not provide the instruments with a common OPD reference. We have to take it into account, because we model combined normal and swapped observations and Δ_{int} is added to the DL position in one mode but not in the other. We assume Δ_{int} is constant in time and arbitrarily assigned it to the swapped observation.

$$\Omega'_{\text{DL}} = \gamma_{\text{DL}} + w(\alpha_{\text{P}}, \delta_{\text{P}}) + \mathcal{H}_{\text{S}} \Delta_{\text{int}}, \quad (31)$$

where w models the OPD (Eq. (12)). The baseline is assumed to be \mathbf{B}_{Wide} determined in Sect. 6.2. The fit result is shown in Fig. 25 and summarised in Table 7. The table lists coordinate offsets $\Delta\alpha_{\text{P}}$ and $\Delta\delta_{\text{P}}$ instead of absolute coordinates. These offsets are computed relative to the instantaneous target position, after proper motion and precession correction. The fit residuals show the atmospheric piston effect, which introduces variations of typically $\pm 50 \mu\text{m}$ with an rms of $24.0 \mu\text{m}$. The larger variations of $\pm 90 \mu\text{m}$ at large hour angle > 2.5 h correspond to observations at high airmass of 1.35–1.45. Atmospheric conditions were stable with an average coherence time of $\tau_0 \sim 1.8$ ms and seeing of $\sim 1.2''$, as reported by the observatory monitoring system measuring in the optical.

6.4. Fitting the PRIMETB main delay

The PRIMETB delay ΔL_{B} is modelled similarly to the main delay line OPD, but the model function is slightly different. The internal DOPD Δ_{int} does not have to be modelled, because it is transparent to PRIMETB, see Fig. 2: in normal mode, Δ_{int} is compensated by the differential delay actuator DDL1, which is not seen by PRIMETB. In swapped mode, Δ_{int} is introduced by both

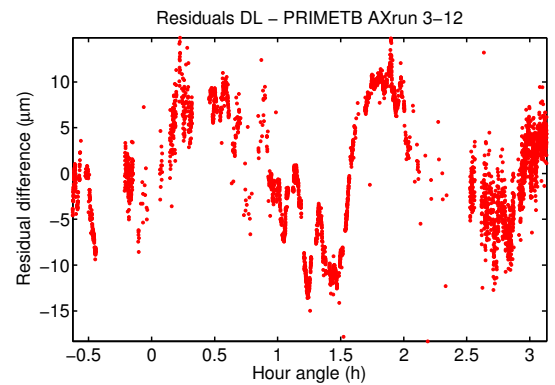


Fig. 27. Difference between the residuals measured in Fig. 25. The residual rms is $4.2 \mu\text{m}$.

the tracking DL (seen by PRIMETB) and by the differential delay actuator DDL2 (also seen by PRIMETB) and the net effect on PRIMETB is therefore zero. However, PRIMETB measures the differential delay introduced by DDL2 in swapped mode to compensate for the external differential delay. Thus, we can use PRIMETB to obtain a first estimate of the pair separation ϱ and position angle Φ . The complete model function is

$$\Delta L'_{\text{B}} = \gamma_{\text{PB}} + w(\alpha_{\text{P}}, \delta_{\text{P}}) + \mathcal{H}_{\text{S}} \Delta w(\alpha_{\text{P}}, \delta_{\text{P}}, \varrho, \Phi), \quad (32)$$

where γ_{PB} is an offset and Δw models the differential delay (Eq. (9)). The results are summarised in Table 7 and Fig. 26 shows the fit residuals. The best fit coordinate offsets agree with the results of the main delay line fit in the previous section within $0.8''$ in RA and within $0.2''$ in Dec. The separation fit yields first realistic estimates of ϱ and Φ .

6.5. Comparison of the residuals when fitting PRIMETB and main delay

Ideally, the residuals shown in Figs. 25 and 26 should be identical, but in practice we expect differences because the monitored optical path is not the same: PRIMETB propagates in the central obscuration of the stellar beams from the beam combiner to the retroreflector at the telescope, whereas the delay line metrology measures only within the DL tunnel. Additionally, the laser wavelengths are different with PRIMETB in the near infrared ($\sim 1.3 \mu\text{m}$) and the delay line in the visible ($\sim 0.6 \mu\text{m}$). Figure 27 shows the residual difference and reveals variations of the order of $20 \mu\text{m}$ PTV with an rms of $6.4 \mu\text{m}$. This residual difference

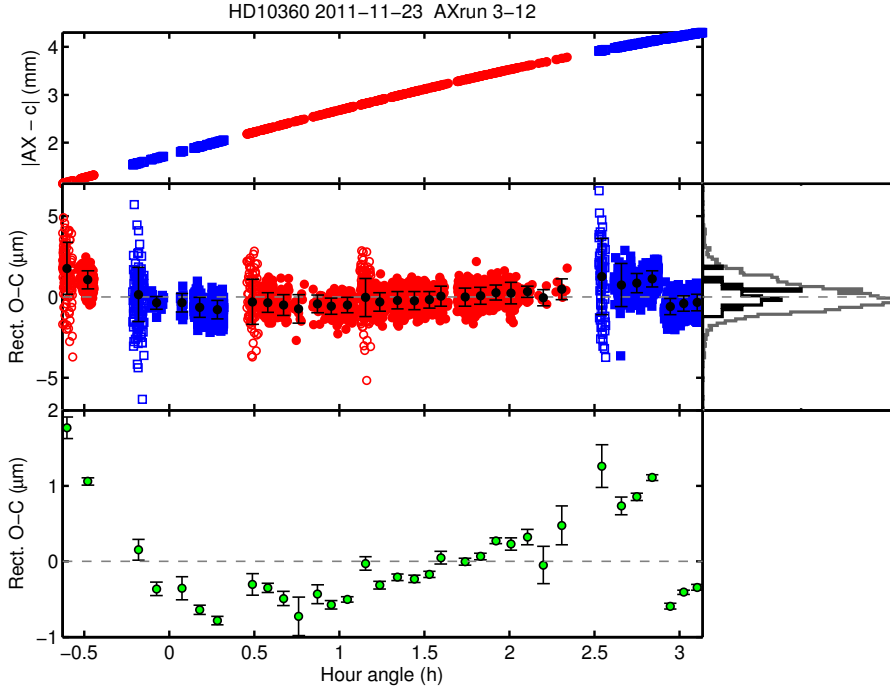


Fig. 28. *Top:* absolute value of the measured differential delay $|AX_{\text{obs}} - c|$ for the demonstration run as a function of hour angle. Normal mode data are shown in red and swapped mode data in blue. *Middle:* rectified residuals of the astrometric fit. Open and filled symbols indicate scanning and tracking data, respectively. File-average bins are shown in black. *Bottom:* rectified and binned residuals with error bars that rely on Gaussian statistics (error of the mean).

could be caused by the atmospheric turbulence present in the beam-path not common to the two metrology systems, i.e. in the beam combination laboratory or between the delay line tunnel and the telescopes. Fluctuations in temperature, pressure, and humidity during the observation and the associated chromatic variations of the refractive index of air can also contribute to the observed turbulence.

6.6. Astrometry fit of a separation vector

The astrometric observable AX_{obs} is a linear combination of the differential delay measured with the PRIMA metrology and the two fringe positions of primary and secondary object measured with the two fringe sensors. The model function for the relative astrometry fit is

$$AX_{\text{obs}} = \Delta L - GD_A - GD_B \\ = c + \mathcal{H}_N \Delta w(\varrho, \Phi, \mathbf{B}_{\text{AX}}) + \mathcal{H}_S \Delta w(\varrho, \Phi, -\mathbf{B}_{\text{AX}}), \quad (33)$$

where \mathbf{B}_{AX} is the narrow-angle astrometric baseline vector and \mathcal{H}_N is the Heaviside-type function

$$\mathcal{H}_N = \begin{cases} 1 & \text{in normal mode} \\ 0 & \text{in swapped mode} \end{cases} \quad (34)$$

for the normal mode. The constant c is the PRIMA metrology zero-point, which depends on the interferometer configuration at the last metrology fringe counter reset. In this description, the swapped observation corresponds to an observation with inverted baseline orientation compared to the normal mode. We initially make the coarse approximation that $\mathbf{B}_{\text{AX}} = \mathbf{B}_{\text{Wide}}$, thus the three free parameters in the model Eq. (33) are the metrology zero point c , the target separation ϱ , and the position angle Φ as defined in Fig. 18. Figure 28 shows the result of the astrometry fit and the corresponding best-fit parameter values are listed in Table 8. The errors given in Table 8 reflect the precision of the measurement, but not its accuracy. As is shown in Fig. 28, the model Eq. (33) does not reproduce the data accurately, because the fit residuals exhibit strong systematics. The accuracy

Table 8. Astrometry fit results for the demonstration run on HD 10360.

Parameter	Unit	Value
c	(mm)	-1.34971 ± 0.00002
ϱ	(mas)	11434.53 ± 0.15
Φ	($^\circ$)	-172.1640 ± 0.0007
σ_{AX}	(μm)	1.025

is therefore not limited by the measurement precision on the astrometric observable, but by a systematic effect that is not taken into account in the model. On this target with $\sim 11''$ separation, the rms of the residuals is of the order of $1 \mu\text{m}$ and corresponds to ~ 2 mas on the sky for a 100 m baseline.

6.7. Auxiliary data of critical elements

The anticipated astrometric accuracy sets tight requirements on the alignment and stability of the VLTI-PRIMA optical train. Whereas thermal drifts of passive mirrors are difficult to monitor, the information about the instantaneous configuration of controllable mirrors can be recorded during the observation for posterior inspection. Basic information about moving systems is included in the file header keywords, i.e. at relatively low cadence. For the commissioning, a low-level recording tool was devised to collect data at higher cadence and continuously. As an example, the motion of the derotator is discussed below, but a detailed presentation of other available data and their characteristics is given in Sahlmann (2012).

Figure C.4 shows the position angle of the derotators in the star separator modules of AT3 and AT4 during the demonstration run. The angle ω_{rot} is the only degree of freedom of the derotator implemented with a relative encoder in the sense that $370^\circ = 10^\circ$. Fast changes by 90° correspond to swap/unswap motions, because the field rotates by twice the derotator angle. The derotator mechanical range is limited to 0 – 180° and both derotators execute the swap procedure in equal fashion. In

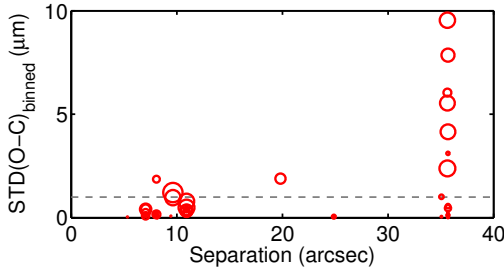


Fig. 29. Dispersion of the binned residuals for 48 astrometric runs obtained on 10 different target pairs as a function of target separation. The symbol size is proportional to the observation time span. The dashed line is at $1 \mu\text{m}$.

Fig. C.4 the derotator of AT3 reaches the software limit at an hour angle of ~ 2.8 h and wraps by 180° .

7. PRIMA astrometry precision and accuracy as of February 2012

Characterising the precision and accuracy of the PRIMA astrometric measurements is not straight-forward because of the large number of external effects to be considered and the resulting large parameter space to be explored. For the initial analysis, we apply the simplest three-parameter model and assume that the astrometric baseline is given by the wide-angle baseline determined in November 2011. This model is applied to all astrometric sequences collected so far with the aim of obtaining a general picture of the performances.

7.1. Amplitude and structure of the residuals

Depending on the target separation, the time coverage of the observation sequence, and the amount of collected data, the amplitude and structure of the residuals about the best astrometry fit changes dramatically. For wide separation binaries the residual structure is orders of magnitude larger than the measurement noise and can reach a peak-to-valley amplitude of $\sim 30 \mu\text{m}$. For small separation targets, the levels of systematic and measurement noise can become comparable and the residual's dispersion can fall below the μm level. Figure 29 shows the residual amplitude for different targets and sequence lengths. To distinguish between measurement noise and systematic biases, the dispersion of the binned residuals are shown (one bin per file). We see that short sequences tend to have small residuals and the residual level at separations of $\sim 10''$ is much lower than at $\sim 35''$. The intermediate separation range is poorly covered with observations. One has to be cautious when using solely the residuals to characterise the quality of an observation. The fact that short sequences have smaller residuals does not necessarily mean that those are of better quality. Instead, it is the consequence of the fitting procedure which determines the best-fit parameters for the respective sequence. For instance, if the sequence consists of only one normal and one swapped observation, any systematic error between these will be absorbed by the metrology zero-point which is a free fit parameter, thus biasing the other free parameters separation and position angle.

Already when analysing the first light data, we found hints for measurement biases that seemed to correlate with the field rotation, which appear as a wavelike structure in the residuals. Since the field rotation is not seen by the PRIMA metrology which provides us with the astrometric observable, biases that

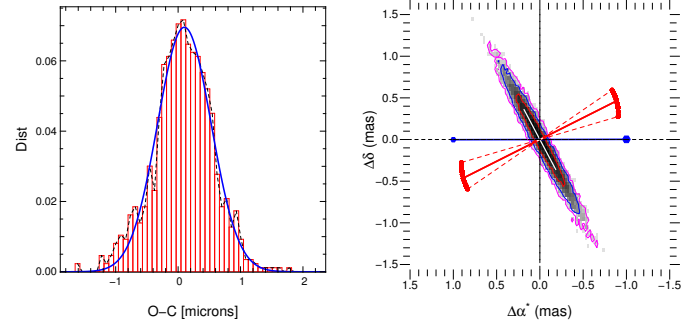


Fig. 30. *Left:* residual's histogram of the HD 202730 observation shown in Fig. C.7 and the best Gaussian fit to it. *Right:* the two-dimensional distribution of the relative secondary's position in the sky for 10 000 Monte Carlo simulations is shown in grey-shading. Contour lines indicate 1, 2, 3- σ confidence intervals. The blue line indicates the position angle of the binary, the red circles show the equivalent u - v -coordinates of the observations, and the solid red line illustrates the average projected baseline orientation.

are related to field rotation are not calibrated with the swap procedure but conversely are amplified and appear with opposite signs in normal and swapped mode. This led to the idea to “rectify” the observed residuals to ease their visual interpretation, as is illustrated in Fig. C.5. Whenever the residuals were rectified, this is indicated by the axis labelling. The dependency of the residual's amplitude on target separation is also illustrated in Fig. C.7, which shows that the wavelike pattern is similar for different objects with an amplitude that depends on the separation.

7.2. Astrometric precision and the atmospheric limit

The residuals for the tight binary HD 202730 shown in Fig. C.7 yield an approximately normal distribution shown in Fig. 30. It is therefore reasonable to assume that the systematic errors for this specific observation are smaller than the measurement noise, thus hidden by it. Inspection of the residuals' periodogram in Fig. 31 confirms that the noise of this observation is approximately white down to the lowest accessible frequency. This is in strong contrast to the observation of HD 10360 shown in Fig. 28, where the systematic errors cause a large excess of low-frequency noise¹². In the case of HD 202730, we can therefore assume Gaussian statistics and determine the formal errors on the fit parameters by Monte Carlo simulations. The distribution of the secondary star position is also displayed in Fig. 30 and shows that the separation vector is best constrained along the projected baseline orientation, as expected. The observation time span was ~ 1.6 h during which the projected baseline rotated, resulting in a less tight but still considerable constraint across the principal baseline orientation. The average projected baseline length during this observation was $B_p \approx 86$ m and the fit residual's dispersion is $\sigma_{O-C} = 0.48 \mu\text{m}$ for a total of $N_{\text{mes}} = 865$ data points, representing the 1 s averages of an effective observation time of 0.24 h. Under the assumption of Gaussian statistics, the expected astrometric precision σ_{AX} can be estimated as

$$\sigma_{\text{AX}} = \frac{\sigma_{O-C}}{\sqrt{N_{\text{mes}}} B_p} \text{ rad} \approx 0.039 \text{ mas.} \quad (35)$$

A principal component analysis of the uncertainty ellipse in the sky shown in Fig. 30 yields a dispersion of 0.436 mas across

¹² For this comparison, only tracking data was considered and scanning data was discarded.

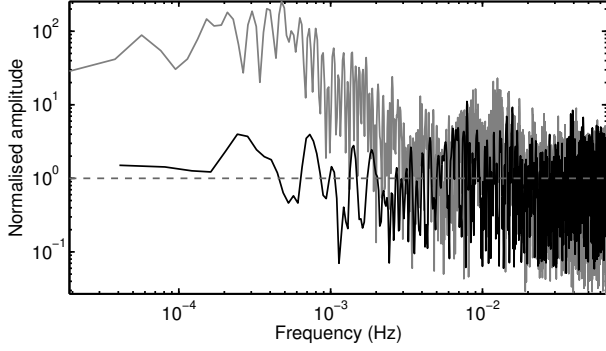


Fig. 31. Lomb Scargle periodogram (Press et al. 1986) of the 1-s average residuals for the observations of HD 202730 (black curve, see Figs. 30 and C.7) and of HD 10360 (grey curve) shown in Fig. 28.

the baseline orientation and of 0.038 mas along the baseline orientation. Thus both approaches of estimating the measurement precision along the principal direction yield a comparable result, which is of the order of 40 micro-arcsec. Using the relationships of Shao & Colavita (1992), the expected astrometric error caused by atmospheric turbulence alone for this observation is 0.018 mas, where we neglected the influence of the actual atmospheric conditions and the difference between the atmospheric profiles at Mauna Kea and Paranal and, which is justified considering the measurements obtained at Cerro Armazones, a neighbour of Cerro Paranal at 22 km (e.g. Schöck et al. 2009). Thus, the astrometric precision achievable with PRIMA in the described configuration and with the above data reduction and analysis techniques is approximately two times worse than the expected atmospheric limit. This performance can potentially be improved by refining the data reduction, in particular the estimation of the astrometric observable Eq. (23). On the other hand, the excess noise presumably can be attributed to the systematic errors of the measurement, which stand out clearly on targets with a wider separation.

The above observation is not one with the best precision achieved. For instance, the observation of HD 10360 on August 26, 2011, taken over ~ 1.3 h and presented in Sahlmann et al. (2012) yield a residual dispersion of $\sigma_{O-C} = 0.40 \mu\text{m}$ for $N_{\text{mes}} = 937$ data points (~ 0.26 h effective observation time) for an average baseline length of 90 m. The corresponding error ellipse has a $1-\sigma$ dispersion of 0.032 mas along the baseline, which is comparable to the estimation of 0.030 mas through Eq. (35) and to the theoretical limit of 0.027 mas (Shao & Colavita 1992). Some observations of HD 10360 discussed in Sect. 7.5 yield even better precision with $1-\sigma$ uncertainties of 0.022–0.025 mas along the baseline.

We stress that precision is not equal to accuracy and the astrometric precision derived above reflects how well the fringes can be tracked and how precisely the internal differential delay can be measured, i.e. the stability of the differential delay measurements on short time scales. In this case, a high precision does not ensure that the best-fit separation is equally accurate, i.e. corresponds to reality. We estimate the astrometric accuracy of PRIMA in Sect. 7.4.

7.3. Combination of multiple epochs

Since several targets have been observed multiple times, the astrometric fit can be applied to the combination of multi-epoch data. The simplest case applies when the targets' relative position change can be neglected and the model function only has to

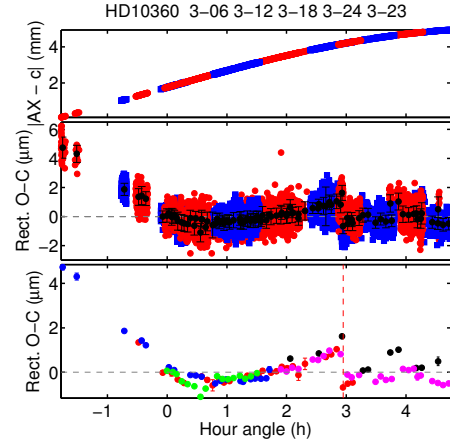


Fig. 32. Result of the combined fit of five epochs spanning over 5 days for HD 10360. The colour coding is like in Fig. C.6. In the *bottom panel*, the vertical dashed line indicates the STS-AT3 derotator wrapping.

account for the different metrology zero-points

$$AX_{\text{obs}} = \mathcal{H}_N \Delta w(\varrho, \Phi, \mathbf{B}_{\text{AX}}) + \mathcal{H}_S \Delta w(\varrho, \Phi, -\mathbf{B}_{\text{AX}}) + \sum_j c_j \mathcal{H}_j, \quad (36)$$

where, the constant c_j is the PRIMA metrology zero point at epoch j , which is applied via the Heaviside-type function

$$\mathcal{H}_j = \begin{cases} 1 & \text{if data taken in epoch } j \\ 0 & \text{else.} \end{cases} \quad (37)$$

The model has thus $2 + N_j$ free parameters, where N_j is the number of epochs. The relative motion of HD 66598 is uncertain but expected to be $\lesssim 10 \text{ mas yr}^{-1}$, because the separation change over 100 years recorded in the WDS catalogue (Mason et al. 2001) is approximately $1''$. The largest expected motion between November 2011 and January 2012 is thus about 1 mas and much smaller than the measurement uncertainty due to the large systematic residuals of this target. Thus the simple combined fit is justified and Fig. C.6 shows the resulting residuals, which reveal that their principal structure is repeatable over several nights and occurs on hour-angle scales of several hours.

A similar analysis for the tight binary HD 10360 of five epochs spanning 5 days is shown in in Fig. 32 and confirms the previous findings, however with a down-scaled amplitude. The residuals of several epochs align with each other and show a structure on hour-long timescales. The discontinuity at hour angle ~ 3 h coincides with a 180° rotation of the telescope derotator in AT3, due to the software limit as shown in Fig. C.4. Although the field rotates by 360° and the system's configuration should thus be identical before and after this event, the step change in the residuals proves that it is not the case. The observed step change of $\sim 2 \mu\text{m}$ is a strong hint that the systematic errors are at least partially related to the derotator's position angle.

7.4. Astrometric accuracy and plate scale

The first step to determine the astrometric accuracy is to examine the repeatability of the measurement results. In the case of the commissioning data for PRIMA astrometry, the observation epochs are typically separated by days or weeks. The measurement precision is in the range of 0.1 mas, which sets the stability

Table 9. Linear elements of the HD 202730 separation change described by Eq. (38).

Parameter	Unit	Value
x_0	($''$)	-5.4991 ± 0.0174
y_0	($''$)	$+0.6341 \pm 0.0174$
μ_x	($'' \text{ yr}^{-1}$)	-0.0256 ± 0.0004
μ_y	($'' \text{ yr}^{-1}$)	-0.0100 ± 0.0004
$\sigma_{\text{O-C}}$	($''$)	0.130

requirement for the relative separation of an ideal calibration target. It turns out that most of the observed targets show relative motions of this order of magnitude *per day*, i.e. these targets have to be characterised in detail before they can be used as reference for the PRIMA astrometry. The following sections present two of those targets and the corresponding PRIMA measurements.

7.4.1. Relative motion of HD 202730

To characterise the relative motion of the binary HD 202730–GJ 9733 B, we used the measurements of the Washington double star catalogue (Mason et al. 2001). It shows considerable linear motion over the 160 year time base and rectilinear elements are given in the respective catalogue¹³. Because of the need for accurate error estimation, we used the raw WDS data and determined the linear elements in the following way. The model function is

$$\begin{aligned} x &= R \sin \Theta = x_0 + \mu_x(t - \langle t \rangle) \\ y &= R \cos \Theta = y_0 + \mu_y(t - \langle t \rangle), \end{aligned} \quad (38)$$

where the separation R and the position angle Θ are given by the WDS. We used uniform weighting after an initial sigma-clipping that resulted in discarding 19 of 76 valid measurements. The global linear fit yields the elements listed in Table 9, which are reasonably close to the catalogue values and imply a separation change of 0.070 and 0.027 mas per day in RA and Dec respectively. The data, the best fit motion, and the residuals are shown in Fig. C.2. Using the obtained parameters, the expected separation at the time of PRIMA observations can be estimated, which is shown in Fig. 33. The axes of the PRIMA measurement ellipses correspond to the $3\text{-}\sigma$ dispersion along the respective principal orientations defined by the baseline orientation (cf. Fig. 30).

The relative positions measured with PRIMA are in agreement with the predicted position within the admittedly large error of 33 mas coming from the WDS extrapolation. However, the scatter of the PRIMA measurements of ~ 10 mas is much larger than their precision and can not be explained by the expected separation change, which is an order of magnitude smaller. Instead, we note that the hour-angle coverage is not identical for these observations and the Aug. 26 epoch is covering the meridian passage.

7.4.2. Orbital motion of HD 10360 – HD 10361

HD 10360 is a very bright visual binary and a solution for the relative orbit has been published (van Albada 1957). The WDS lists 162 valid measurements and the comparison between the published orbit and the more recent data from the WDS showed significant disagreement. Thus, we fitted an updated orbit considering uniform weighting and the WDS data remaining after

¹³ <http://www.usno.navy.mil/USNO/astrometry/optical-IR-prod/wds/lin1>

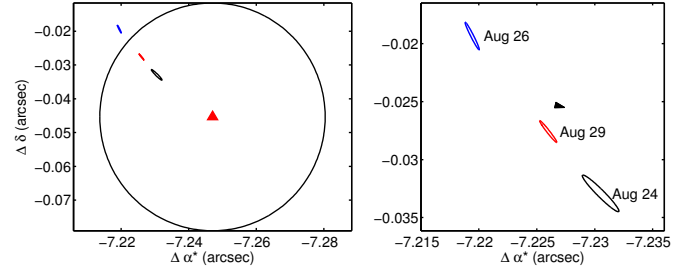


Fig. 33. Left: the expected separation of HD 202730 at the end of August 2011 (red triangle) and its error ellipse (black curve). The $3\text{-}\sigma$ formal error ellipses of PRIMA measurements are visible at the upper left. Right: close-up view showing the large scatter relative to the expected motion of ~ 0.35 mas during the 5 day timespan shown by the black arrow.

Table 10. Updated orbital elements of HD 10360.

Parameter	Unit	van Albada (1957)	This work
P	(Yr)	483.7	312.4 ± 13.3
e		0.53	0.74 ± 0.03
T_0	(JDB)	$-16\,575$	$-14\,024 \pm 322$
ω	($^\circ$)	18.37	-49 ± 5
Ω	($^\circ$)	13.12	-20 ± 2
i	($^\circ$)	142.8	130.3 ± 3.3
a_{rel}	($''$)	7.82	7.77 ± 0.27
$\sigma_{\text{O-C}}$	($''$)	...	0.137

an initial sigma-clipping, which discarded 9 measurements. The result is shown in Fig. C.1 and Table 10. The new orbit is comparable in angular size, but has a considerably shorter orbital period, a higher eccentricity, and a smaller inclination. For the purpose of comparison with PRIMA astrometry, it is important that the model motion fits well the recent WDS measurements, which is the case. The separation change in 2011 and 2012 corresponding to this orbit is $129 \pm 5 \mu\text{as/day}$ eastwards.

HD 10360 was extensively observed with PRIMA for test purposes already before the astrometry facility became operational. Using dual-feed data taken in November 2010, we could recover astrometric observations by using the internal metrology signal of the DDL to construct the astrometric observable, thus those measurements are intrinsically less accurate. Then HD 10360 was observed once in July 2011 and five times in November 2011. Figure 34 shows that the PRIMA measurements do not coincide with the predicted separation based on the updated orbit within the latter's error ellipses of 25–55 mas size, but they are located within $\sim 3\text{-}\sigma$. Considering the incomplete orbital coverage and the uncertain error bars of the WDS measurements, the updated orbit solution may be subject to systematic errors, which could explain the disagreement between the orbit model and the PRIMA measurements. With PRIMA we systematically measure a ~ 60 mas larger separation and a larger position angle, which indicates that these measurements are coherent. This is also enforced by the observation that the separation change of HD 10360 over 1 year is measured with the correct order of magnitude, cf. Fig. 34 right.

In addition these results were obtained under the assumption that the astrometric baseline is the same for all epochs, which is certainly not justified at the required level of precision. Over the 1 year time base, the telescopes and the STS were moved, aligned, and possibly modified. Also we did not consider any effect related to the fit residual structure and the November 2010 epoch was recovered from non-astrometric observations. Thus

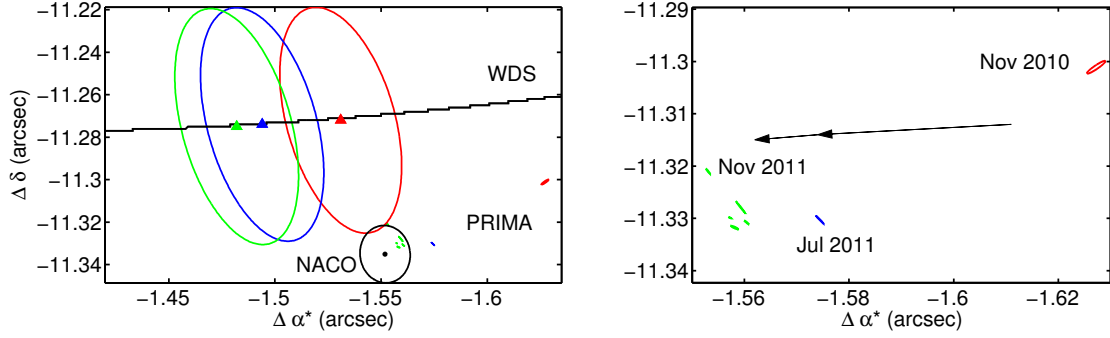


Fig. 34. *Left:* close up view of the updated HD 10360 model orbit (black curve) showing the predicted positions (triangles) and their $1\text{-}\sigma$ error ellipses for Nov. 2010, Jul. 2011, and Nov. 2011 in red, blue, and green, respectively. The PRIMA error ellipses are visible towards to *lower right* of the panel. The $1\text{-}\sigma$ error ellipse of the NACO measurement taken in Nov. 2011 is shown in black. *Right:* the $3\text{-}\sigma$ error ellipses of the PRIMA measurements for the single epochs in Nov. 2010 and Jul. 2011 and the five epochs in Nov. 2011. The black arrows correspond to the expected separation change between the epochs.

the shown results are affected by unquantified systematic errors, which cause the observed inconsistencies. But these measurements provide us with a starting point for the necessary improvement by several orders of magnitude.

7.4.3. Adaptive optics observation with NACO

As shown above, the quality assessment of PRIMA measurements of HD 10360 is limited by the knowledge of the pair's orbital motion, which is not going to improve significantly in the near future because high precision measurements over long time-spans will be necessary. Thus we used an independent method to obtain a high-precision reference measurement for this target and obtained technical observation time with NACO, the adaptive optics assisted infrared camera at the VLT (Lenzen et al. 2003; Rousset et al. 2003). In the night of November 20, 2011, HD 10360 was observed simultaneously with PRIMA and NACO (Fig. 35). We used the $2.17\ \mu\text{m}$ Br_γ filter of the NACO S27 camera to obtain a total of 218 s exposure time in 2000 individual frames. To calibrate the NACO plate scale, we subsequently observed an area of the Trapezium cluster and used the astrometry of selected cluster stars published by Close et al. (2012), and the measurement was corrected for differential refraction. Because of the target separation of $\sim 11''$, the plate scale calibration limits the NACO astrometric accuracy to 13 mas. The formal solution of the PRIMA measurement is a separation of $\rho = (11.4361 \pm 0.0001)''$ and a position angle of $\Phi = (187.829 \pm 0.001)^\circ$. Figure 36 shows that the NACO and PRIMA measurements agree within the NACO error bar of ~ 13 mas, which confirms that the orbit solution based on WDS data alone is biased towards smaller separations and a larger position angle, cf. Fig. 34. The overlap of both independent measurements and the robust astrometric calibration of NACO allow us to conclude that the plate scale¹⁴ of PRIMA is correct at the ~ 13 mas level for a $11.4''$ binary, i.e. exhibits a relative error smaller than 1.1×10^{-3} .

7.5. A closer look at the November 2011 epochs

The five epochs on HD 10360 taken over a time base of five days in November 2011 offer the opportunity to study the short term

¹⁴ Since PRIMA is not a field imaging instrument, its *plate scale* refers to the absolute scale fidelity, which for instance can be affected by an error in the astrometric baseline or in the metrology wavelength.

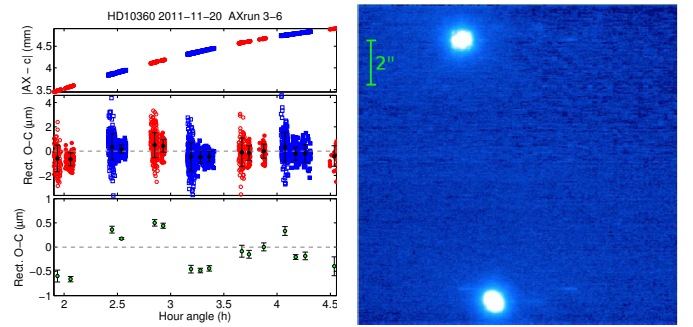


Fig. 35. Simultaneous observation of HD 10360 with PRIMA and NACO. *Left:* result of the PRIMA astrometry fit. *Right:* NACO K -band image of HD 10360 (*top*) and HD 10361 (*bottom*).

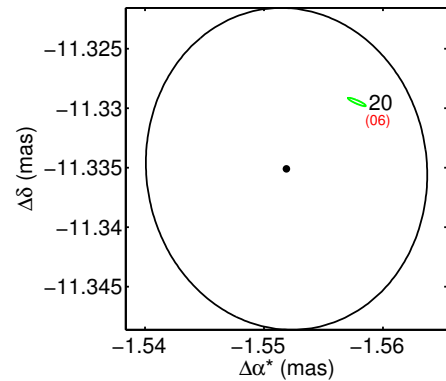


Fig. 36. The separation of HD 10360 on November 20, 2011 measured with NACO (black) and PRIMA (green) are consistent within the former's error ellipse.

stability of the measurement. The raw PRIMA measurements show a scatter of the order of ± 5 mas as shown in Fig. 37. For the following discussion, it is necessary to list the sequence of observations and their conditions.

November 20, 2011: simultaneous observations with NACO and PRIMA are obtained and the latter cover a hour angle range of 2–4.5 (run 06).

November 21, 2011: observations to determine the baseline model are made, which are discussed in Sect. 6.2.

November 22, 2011: failure of the technical CCD of AT4 at the beginning of the night prevents observations. Consequently

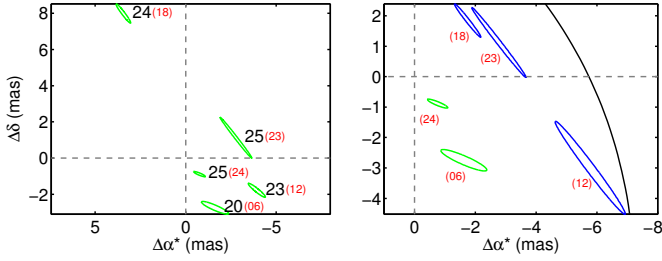


Fig. 37. *Left:* PRIMA error ellipses from the analysis of the raw data on HD 10360 for the five epochs in November 2011. The offsets to a constant vector are shown. Numbers indicate the datum in November 2011 and numbers in brackets show the run number of the respective measurement. *Right:* the same, but after limiting the hour angle range of three epochs (blue). The black curve is the error ellipse section of NACO shown in Fig. 34.

AT4 was moved and the star separator module was taken out of the telescope station to give access to the telescope electronics. The system was then reassembled and thus may have shifted within the mechanical tolerances.

November 23, 2011: PRIMA observations in the hour angle range of -0.5 – 3 (run 12).

November 24, 2011: PRIMA observations in the hour angle range of -1.5 – 1.5 (run 18).

November 25, 2011: PRIMA observations in the hour angle range of 0 – 1.5 (run 23) and 2 – 4.5 (run 24).

Three runs are affected by the AT3 derotator unwrapping at hour angle ~ 2.8 . In Fig. 37 we see that the observations obtained at large hour angle (runs 6 and 24) yield similar separation and position angle, whereas the observations at small hour angles (runs 12, 18, and 23) result in a systematically higher position angle (westward shift) and a higher spread in separation. Run 18 is offset relative to the other runs, which may be explicable by the large hour angle coverage symmetric about meridian passage. In an attempt to limit the effects of unequal hour angle range, we excluded data of those three runs outside $HA = [-0.2, 1.6]$ and the results are shown in Fig. 37 (right). The error ellipse of run 18 is now close to the other measurements at small hour angles.

From the analysis of the HD 10360 data several conclusions can be drawn: (a) The measurement dispersion is of order ± 3 mas and is dominated by hour-angle dependent biases which are much larger than the formal uncertainties; (b) the expected eastward separation change of $\sim 130 \mu\text{s/day}$ can therefore not be detected; (c) the effect of the telescope and star separator relocation on the astrometric measurement was smaller than ~ 2 mas; (d) the uncontrolled biases appear to have a stronger influence on the position angle than on the separation.

7.6. Identifying the sources of systematic errors

Recalling Eq. (20)

$$\Delta w(t) + \Delta \epsilon(t) = [\mathbf{B}_{\text{AX}} - \boldsymbol{\mu}_1(t) + \boldsymbol{\mu}_2(t)] \cdot \Delta s(t) + c_{\Delta},$$

we note that there are two terms capable of introducing biases that reach an amplitude of up to tens of micro-metres, i.e. far larger than one fringe packet and close to the coherence length of the PRIMA bandpass. One is the non-common path error $\Delta \epsilon(t)$ between metrology and stellar beams, and the other is the time-dependent relative position change $\boldsymbol{\mu}_i(t)$ between the metrology end-point and the telescope pivot point. A possibility to distinguish between the different error terms may be to compare the

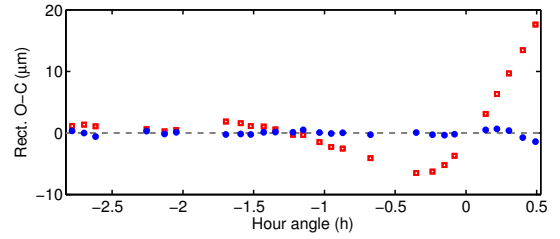


Fig. 38. Rectified and binned residuals of HD 66598 observations after adjustment of the standard model (red open squares, $5.53 \mu\text{m}$ rms) and with the modified, 5-parameter model (blue circles, $0.43 \mu\text{m}$ rms).

Table 11. Fit results with standard and modified model function.

Parameter	Unit	Standard model	Model Eq. (39)
c	(mm)	-10.08724 ± 0.00009	-10.0860 ± 0.0002
ρ	($''$)	35.7789 ± 0.0007	36.162 ± 0.024
Φ	($^\circ$)	134.677 ± 0.003	134.449 ± 0.024
r_1	(μm)	...	-644 ± 37
r_2	($\mu\text{m}/^\circ$)	...	3.9 ± 0.2
$\sigma_{\text{O-C, binned}}$	(μm)	5.53	0.43

differential delay measured with the PRIMA metrology to the differential delay line position, which is discussed in Appendix B. To make accurate astrometry at $10 \mu\text{s}$ level possible, those terms have to be quantified, measured, and calibrated at the 5 nm level for the non-common path error and at the $100 \mu\text{m}$ level for $\boldsymbol{\mu}_i(t)$.

The fit residuals shown in Figs. C.6 and 32 indicate that they are correlated with the field rotation ω . To verify this hypothesis, we added a bias term to the astrometric model function Eq. (33):

$$AX_{\text{obs}} = c + \mathcal{H}_{\text{N}} \Delta w(\varrho, \Phi, \mathbf{B}) + \mathcal{H}_{\text{S}} \Delta w(\varrho, \Phi, -\mathbf{B}) + \text{sign}(\text{mode}) \cdot (r_1 + r_2 \omega), \quad (39)$$

where r_1 is an offset and r_2 models a linear dependency on the field angle, and $\text{sign}(\text{mode})$ is $+1$ in normal mode and -1 in swapped mode. Instead of computing the field rotation angle, we obtained it from the auxiliary data of the derotator angles $\omega_{\text{rot},3}$ and $\omega_{\text{rot},4}$ of STS3 and STS4, respectively, from the relation $\omega = (\omega_{\text{rot},3} + \omega_{\text{rot},4})/2$. When applying the modified model function to a suitable test sequence on the wide binary HD 66598 taken on November 23, 2011, the binned residual dispersion $\sigma_{\text{O-C, binned}}$ decreases by more than a factor of 10 as is shown in Fig. 38 and Table 11. This is a compelling evidence that the dominant systematic errors in the PRIMA astrometry data are correlated with field rotation.

The physical cause was discovered in January 2012, when important and pointing-dependent obscurations of the stellar pupils and a significant lateral pupil run-out as a function of the telescope azimuth angle of both telescopes were detected, which points at insufficient alignment of the PRIMA-VLTI optics. The alignment of the auxiliary telescopes (primarily of M4) used for PRIMA was improved in March 2012, which resulted in a significant reduction of residual amplitude. Figure 39 shows the effect with the help of observations of HD 66598, which were selected to lie within the same hour-angle range and have a comparable amount of collected data. Before the intervention, the residuals show a u-shaped pattern with several μm amplitude typical for observations of a wide-separation binary close to meridian. After the intervention, the remaining residuals have decreased by more than a factor of five in rms. This significant decrease of the systematic error supports the idea that it is introduced in the part of

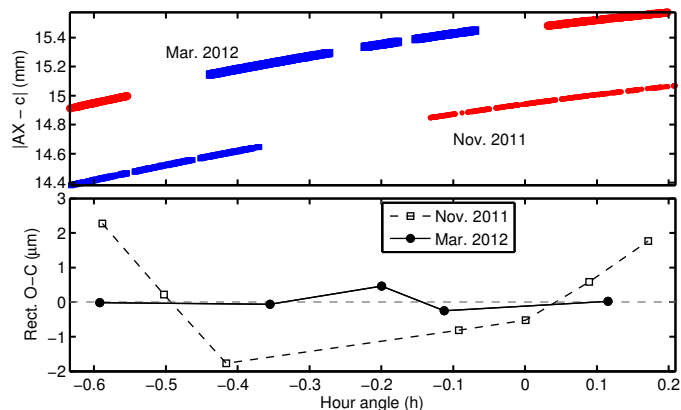


Fig. 39. Observations of HD 66598 before and after telescope realignment. *Top:* differential delay of both sequences. For better readability, the Nov. 2011 sequence was shifted by -0.5 mm. *Bottom:* binned residuals before (dashed line and open squares) and after (solid line and filled circles) the alignment intervention. The binned residual dispersion decreases from $1.46 \mu\text{m}$ to $0.27 \mu\text{m}$. Error bars are smaller than the symbol size.

the optical beamtrain that is not monitored by the PRIMA metrology, i.e. above M9 in the derotator and the telescope.

8. Discussion and conclusions

The concept of narrow-angle astrometry with a dual-feed interferometer has been developed two decades ago and PRIMA at the VLTI is the first large scale facility to implement this mode of operation with the goal of offering it to the astronomical community. PRIMA was integrated in the VLTI and several technical runs and three astrometric commissionings have taken place in 2011/12 with the purpose of establishing the instrument's astrometric capabilities. The technical challenges of operating PRIMA have been overcome and allowed us to collect data of good quality to test the system and obtain first estimates of the achievable astrometric precision and accuracy.

As a critical instrument hardware contribution, the ESPRI consortium has successfully built, installed, and tested differential delay lines for PRIMA according to the technical requirements set by ESO. The differential delay lines are now permanently installed at VLTI and integrated in the interferometer infrastructure. They implement robust and fast piston actuators for four beams with a possible extension to eight beams, and are available for PRIMA astrometry and for the use in conjunction with other and future VLTI instruments.

The astrometric precision of PRIMA observations is limited by the atmosphere at a level close to the theoretical expectations and a value of ~ 0.04 mas was obtained for 0.24 h effective observation time on a bright and small-separation binary. This confirms that the anticipated scientific programme, requiring uncertainties in the 0.01 milli-arcsec range, is feasible with this facility if a long-term stability at the same level can be achieved, which is not the case with the present setup.

For wide-separation binaries ($\gtrsim 10''$) and long (> 2 h) observing sequences, large systematic errors that are correlated with the field rotation are observed. Those errors can amount to several tens of micro-metres in differential delay corresponding to tens of milli-arcseconds in astrometry. The astrometric accuracy obtained so far is not sufficient and several equivalent PRIMA measurements exhibit a scatter much larger than the individual measurement uncertainty. On a bright $11''$ binary,

for instance, the measurement repeatability over five days is of order 3 milli-arcsec. The dominant systematic errors originate in the beam train above M9 that is not monitored by the PRIMA metrology and can therefore be attributed to the non-common path term $\Delta\epsilon(t)$ of the model function Eq. (20). So far, the large amplitude of this term has prevented us from quantifying the contributions of the other error terms and potential biases occurring at the fringe position measurement level. An extension of the metrology endpoint up to M2 or beyond would mitigate a large fraction of the observed systematic errors and allow us to significantly improve the astrometric accuracy. The necessary modification to the telescope and star separator systems are under study at ESO.

To verify the PRIMA astrometric measurement independently, we obtained calibrated NACO astrometry of a $11''$ binary simultaneously with a PRIMA observation. Both measurements agree within the NACO uncertainty of 13 mas, which allows us to conclude that the PRIMA astrometric plate scale is correct at the $\sim 0.1\%$ level. Similar measurements will be helpful to confirm the PRIMA accuracy, which has to reach the 10^{-5} – 10^{-6} level to meet the ESPRI science requirement.

In conclusion, the present astrometric performance of PRIMA is not sufficient to start the ESPRI astrometric search for extrasolar planets. The factors that limit the astrometric accuracy are being identified and corrected, which will be an iterative process in which the true error sources are eliminated in descending order of the introduced error magnitude. The dominant contributor has been identified to be the unmonitored beamtrain between M9 and M1.

In this paper, we have described the interferometer infrastructure and the setup of the PRIMA astrometric instrument. The operation principles and the data reduction and analysis strategies were introduced. Our findings show that modifications to the metrology system are necessary to monitor a larger part of the stellar beamtrain. Despite the changes in the setup provoked by those improvements in the future, the described PRIMA observation principles retain their validity.

8.1. Outlook

The immediate future of the PRIMA and ESPRI projects will be focussed on establishing the astrometric performance necessary for the ESPRI science programme. Once this is accomplished, we will use PRIMA astrometry to constrain the mass distribution of giant planets around Sun-like stars and to advance our knowledge on long-period planets around young stars. This research will be pioneering the era of the GAIA astrometry mission (e.g. Lindegren 2010), which in the intermediate future will have grand influence on the exoplanet field (Casertano et al. 2008) and will bring the application of high-precision astrometry for exoplanet research to maturity.

Because the future of the ASTRA project (Woillez et al. 2010) is uncertain due to ceasing operations at the Keck Interferometer, PRIMA is the only dual-feed interferometer facility worldwide. The future GRAVITY instrument (Eisenhauer et al. 2011) is based on similar operational principles and will take the realisation of high-precision interferometric astrometry one step further.

Acknowledgements. For the research presented in this paper, we have made use of the databases at the Centre de Données astronomiques de Strasbourg (<http://cds.u-strasbg.fr/>) and of NASA's Astrophysics Data System Service (http://adsabs.harvard.edu/abstract_service.html). This research has made use of the Washington Double Star Catalog (<http://ad.usno.navy.mil/wds/>) maintained at the US Naval Observatory. J.S. thanks J. Woillez for

sharing his astrometric baseline description and S. Lacour for insightful discussions on the interferometer modelling. J.S. kindly acknowledges support as a visitor at the Centro de Astrobiología in Villanueva de la Cañada (Madrid), where parts of this paper have been written. All authors are grateful to the technicians, engineers, and scientists of the PRIMA, VLT/VLTI, and ESPRI teams that made the deployment of the PRIMA facility possible. We thank M. Accardo, J. Alonso, H. Bonnet, P. Bourget, A. Cortes, R. Frahm, B. Gilli, P. Gitton, N. Gomes, S. Guisard, P. Haguenaier, C. Hummel, L. Jocou, A. Jost, C. Maire, S. Ménardi, S. Morel, J. Ott, R. Palsa, E. Pedretti, I. Percheron, A. Pino, D. Popovic, E. Pozna, F. Puech, A. Ramirez, F. Somboli, I. Stiliz, G. Valdes, and many others. We thank A. Kaufer for granting us NACO technical time and D. Mawet and L. Tacconi-Garman for kindly preparing and executing the NACO observations.

Appendix A: Corrections to PRIMA metrology measurements

A.1. Correcting PRIMA metrology fringe counter overflows

The PRIMA metrology measurements of differential delay (ΔL , PRIMET) and internal delay of the FSUB feed (ΔL_B , PRIMETB) rely on fringe counters which are stored internally in a memory location using $N_{\text{bit,FC}}$ bits. The value of $N_{\text{bit,FC}}$ defines the maximum measurement range. The PRIMA metrology fringe counter overflows are flagged by the respective PACMAN file header keywords and the counter size is $N_{\text{bit,FC}} = 31$ bits. The laser frequency has been calibrated with a laser frequency comb system and is stabilised to $\lambda_P = 1319.1762$ nm during operation. The value of the offset caused by an overflow is

$$\Delta_{\text{FC}} = \frac{\lambda_P}{2} \frac{\Delta\nu_P}{\nu_P} 2^{N_{\text{bit,FC}}} \approx 486.783 \mu\text{m}, \quad (\text{A.1})$$

where ν_P is the PRIMA metrology laser frequency and $\Delta\nu_P$ is the frequency shift given in Table 1. The factor $\Delta\nu_P/\nu_P$ originates in the heterodyne detection principle of the system and the necessary phase error compensation. Two counters are involved and the corresponding overflows occur approximately every 80 min, provoking an upward offset by $+\Delta_{\text{FC}}$ followed by a downward offset of $-\Delta_{\text{FC}}$ a few seconds later, because of the Doppler-shift due to the moving delay line. During the data reduction, those offsets are detected and corrected.

A.2. Correcting PRIMETB wrapping

The PRIMA metrology system PRIMETB measures the internal delay ΔL_B of the FSUB feed. By design, PRIMETB has a wrapping period of L_{PM} caused by fringe counter overflows in the phasemeter:

$$L_{\text{PM}} = \frac{\lambda_P}{2} 2^{N_{\text{bit,PM}}} \approx 345.814121 \text{ mm}, \quad (\text{A.2})$$

where c_P is the vacuum speed of light and $N_{\text{bit,PM}} = 19$ is the number of bits allocated for this counter. Before using the PRIMETB data for analysis, it has to be unwrapped accurately. More details about the corrections can be found in [Sahlmann \(2012\)](#).

Appendix B: Difference between differential OPD measured with PRIMA metrology and DDL feedback

During the observation, the differential delay is introduced with the DDL and measured with the PRIMA metrology. Ideally,

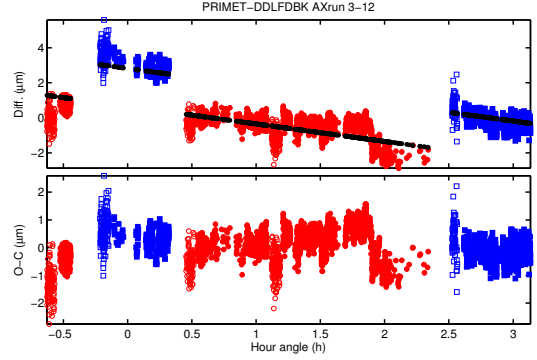


Fig. B.1. *Top:* PRIMA metrology minus DDL feedback during the observations of run 3–12. The black dots show the best linear fit with a first order polynomial. *Bottom:* residuals after adjusting the model Eq. (B.1) with three parameters (offset, slope, step change amplitude).

Table B.1. Results of PRIMET – DDL modelling.

Parameter	Unit	Run 3–12
c_{DDL}	(mm)	-1.48732 ± 0.00002
m_{DDL}	($\mu\text{m h}^{-1}$)	$-1.00368101 \pm 0.00000001$
γ_{DDL}	(μm)	$2.16259646 \pm 0.00000002$
σ_{DDL}	(μm)	0.591

the measurements of the internal DDL laser metrology $\delta\Omega_{\text{DDL}}$ ($\lambda_{\text{DDL}} = 632.991 \mu\text{m}$) and the PRIMA metrology (ΔL) should be equal except for a constant offset. In reality, their difference varies in time and has offsets between normal and swapped states. Figure B.1 shows the PRIMA metrology reading minus the DDL feedback as a function of time. The sequence starts with normal mode observations, where the DDL feedback corresponds to DDL2. In swapped mode, the DDL feedback corresponds to DDL1. Without assuming an underlying physical model, we fitted a linear dependence in time to quantify the apparent variations. The model function is

$$\Delta L - \delta\Omega_{\text{DDL}} = c_{\text{DDL}} + m_{\text{DDL}} t + \mathcal{H}_S \gamma_{\text{DDL}}, \quad (\text{B.1})$$

where c_{DDL} is an offset, m_{DDL} is the observed slope, t is the time, and γ_{DDL} is the additional offset visible in swapped mode. The difference shows a linear drift of $-1.004 \mu\text{m h}^{-1}$ and a step change at each normal-swapped cycle with an amplitude of $\sim 2.163 \mu\text{m}$. Table B.1 shows the fit results, where σ_{DDL} is the rms of the fit residuals. A look at the residuals reveals that this simple model does not account for all systematics apparent in the data.

Since the DDL are controlled in closed loop by the fringe sensors combining the stellar beams and the PRIMA metrology is a passive system measuring the differential delay up to its endpoints and thus does not cover the complete internal stellar beam-train, the difference shown in Fig. B.1 may carry essential information about the non-common path error of the PRIMA system and the interpretation of the astrometric observable and the astrometric baselines. This motivates a closer investigation of the observed drift and the following hypotheses are proposed:

- Refraction: differential chromatic refraction between the metrologies of PRIMA and DDL and between the two feeds are suppressed because the DDL are kept under vacuum.

However, second order differential effects due to gradients along the VLTI beam train are possible and remain to be quantified.

- One or several of the non-tracking DDL introduce the drift and offsets: the internal metrologies of all four DDL have been examined and only the tracking one shows values different from zero. The passive DDL are controlled internally on the basis of their respective independent metrology system. A large drift of the internal metrology wavelength during the observation could explain the observed drift, because it would not appear in the data, but the required amplitude appears unreasonable.
- An error in the PRIMA metrology or DDL metrology laser wavelength: in Sect. 6.1, we have shown that the PRIMA wavelength appears to be accurate, thus the DDL wavelength can be suspected. A DDL wavelength error would result in a linear drift as a function of DDL position and should not result in normal-swap offsets. The corresponding model fit yields a value for the drift of about $-1.1 \mu\text{m}/\text{m}$, i.e. an error of order 10^{-3} , which is very large and does not explain the normal-swap offsets. A DDL wavelength error is therefore an unlikely cause.
- An error introduced by the delay line variable curvature mirror, which is located in an image plane: the delay line VCM curvature depends linearly on the DL position. The effect of the DL VCM curvature on the PRIMET measurement and on the DOPD between the two interferometer feeds has to be studied and understood, thus remains a possible explanation.

We can also examine the problem using the baseline formalism developed in Sect. 2. When neglecting both constant terms and error terms, the delays measured with delay line (Ω_{DL}) and differential delay line ($\delta\Omega_{\text{DDL}}$) metrologies are related to the wide-angle baselines. In normal mode, we have

$$\begin{aligned}\Omega_{\text{DL}} + \delta\Omega_{\text{DDL1}} &= \mathbf{B}_{\text{A,Wide}} \cdot \mathbf{s}_A \\ \Omega_{\text{DL}} &= \mathbf{B}_{\text{B,Wide}} \cdot \mathbf{s}_B,\end{aligned}\quad (\text{B.2})$$

because it is DDL1 that introduces the differential delay and it follows

$$\delta\Omega_{\text{DDL1}} = \mathbf{B}_{\text{A,Wide}} \cdot \mathbf{s}_A - \mathbf{B}_{\text{B,Wide}} \cdot \mathbf{s}_B. \quad (\text{B.3})$$

When considering non-common path errors of the delay line metrologies ϵ_{DL} , the correction terms relating the metrology terms to the pivot points $\boldsymbol{\mu}_{\text{DL}}$, and biases introduced by the fringe position measurements of the FSU η_{FSU} we obtain

$$\begin{aligned}\delta\Omega_{\text{DDL1}} + \epsilon_{\text{N,DL}} &= (\mathbf{B}_{\text{A,Wide}} - \boldsymbol{\mu}_{\text{A1,DL}} + \boldsymbol{\mu}_{\text{A2,DL}}) \cdot \mathbf{s}_A + \eta_{\text{FSUA}} \\ &\quad - (\mathbf{B}_{\text{B,Wide}} - \boldsymbol{\mu}_{\text{B1,DL}} + \boldsymbol{\mu}_{\text{B2,DL}}) \cdot \mathbf{s}_B + \eta_{\text{FSUB}}\end{aligned}\quad (\text{B.4})$$

and the equivalent relation in swapped mode, where the primed quantities stand for the potential baseline modification by turning the derotators:

$$\begin{aligned}\delta\Omega_{\text{DDL2}} + \epsilon_{\text{S,DL}} &= (\mathbf{B}'_{\text{A,Wide}} - \boldsymbol{\mu}'_{\text{A1,DL}} + \boldsymbol{\mu}'_{\text{A2,DL}}) \cdot \mathbf{s}_B + \eta'_{\text{FSUA}} \\ &\quad - (\mathbf{B}'_{\text{B,Wide}} - \boldsymbol{\mu}'_{\text{B1,DL}} + \boldsymbol{\mu}'_{\text{B2,DL}}) \cdot \mathbf{s}_A + \eta'_{\text{FSUB}}.\end{aligned}\quad (\text{B.5})$$

Note that in swapped mode, the secondary star (\mathbf{s}_A) is in the B feed and observed with FSUB. The equation for the PRIMA

metrology measurement is (cf. Eq. (19))

$$\begin{aligned}\text{Normal: } \Delta L + \epsilon_{\Delta L} &= (\mathbf{B}_{\text{A,Wide}} - \boldsymbol{\mu}_{\text{A1,\Delta L}} + \boldsymbol{\mu}_{\text{A2,\Delta L}}) \cdot \mathbf{s}_A + \eta_{\text{FSUA}} \\ &\quad - (\mathbf{B}_{\text{B,Wide}} - \boldsymbol{\mu}_{\text{B1,\Delta L}} + \boldsymbol{\mu}_{\text{B2,\Delta L}}) \cdot \mathbf{s}_B + \eta_{\text{FSUB}}\end{aligned}\quad (\text{B.6})$$

$$\begin{aligned}\text{Swapped: } \Delta L + \epsilon_{\Delta L} &= (\mathbf{B}'_{\text{A,Wide}} - \boldsymbol{\mu}'_{\text{A1,\Delta L}} + \boldsymbol{\mu}'_{\text{A2,\Delta L}}) \cdot \mathbf{s}_B + \eta'_{\text{FSUA}} \\ &\quad - (\mathbf{B}'_{\text{B,Wide}} - \boldsymbol{\mu}'_{\text{B1,\Delta L}} + \boldsymbol{\mu}'_{\text{B2,\Delta L}}) \cdot \mathbf{s}_A + \eta'_{\text{FSUB}},\end{aligned}\quad (\text{B.7})$$

where $\epsilon_{\Delta L}$ is the 4-beam non-common path error of the PRIMA metrology, and the $\boldsymbol{\mu}_{\Delta L}$ model the offsets from the respective endpoints to the pivot points. Subtraction of Eq. (B.4) from Eq. (B.6) yields the observable plotted in Fig. B.1:

$$\begin{aligned}\text{Normal:} \\ \Delta L - \delta\Omega_{\text{DDL1}} &= \epsilon_{\Delta L} - \epsilon_{\text{N,DL}} \\ &\quad + (-\boldsymbol{\mu}_{\text{A1,\Delta L}} + \boldsymbol{\mu}_{\text{A2,\Delta L}} + \boldsymbol{\mu}_{\text{A1,DL}} - \boldsymbol{\mu}_{\text{A2,DL}}) \cdot \mathbf{s}_A \\ &\quad - (-\boldsymbol{\mu}_{\text{B1,\Delta L}} + \boldsymbol{\mu}_{\text{B2,\Delta L}} + \boldsymbol{\mu}_{\text{B1,DL}} - \boldsymbol{\mu}_{\text{B2,DL}}) \cdot \mathbf{s}_B \\ \text{Swapped:} \\ \Delta L - \delta\Omega_{\text{DDL2}} &= \epsilon_{\Delta L} - \epsilon_{\text{S,DL}} \\ &\quad + (-\boldsymbol{\mu}'_{\text{A1,\Delta L}} + \boldsymbol{\mu}'_{\text{A2,\Delta L}} + \boldsymbol{\mu}'_{\text{A1,DL}} - \boldsymbol{\mu}'_{\text{A2,DL}}) \cdot \mathbf{s}_B \\ &\quad - (-\boldsymbol{\mu}'_{\text{B1,\Delta L}} + \boldsymbol{\mu}'_{\text{B2,\Delta L}} + \boldsymbol{\mu}'_{\text{B1,DL}} - \boldsymbol{\mu}'_{\text{B2,DL}}) \cdot \mathbf{s}_A.\end{aligned}\quad (\text{B.8})$$

There are thus several terms that can alter the difference $\Delta L - \delta\Omega_{\text{DDL}}$ and they are either attributable to non-common path errors or to changes in the relative positions of metrology endpoints and telescope pivot points. At the actual state of the analysis, we are unable to conclude on the dominant effect.

Appendix C: Tables and figures

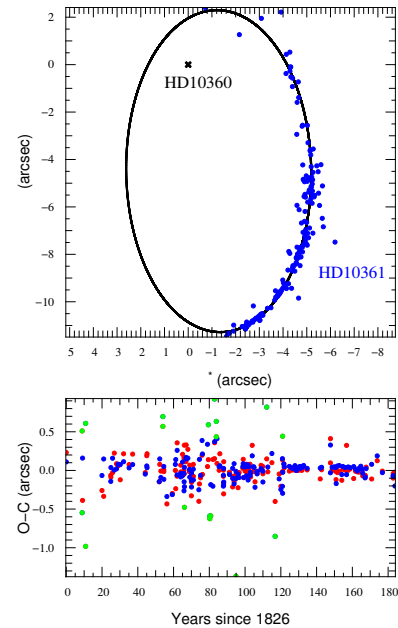


Fig. C.1. *Top:* the relative motion of HD 10361 (blue circles) and HD 10360 (black cross) in the sky and the updated orbital fit (solid curve). *Bottom:* the fit residuals in RA (red) and Dec (blue). Data marked with green symbols was not used for the fit.

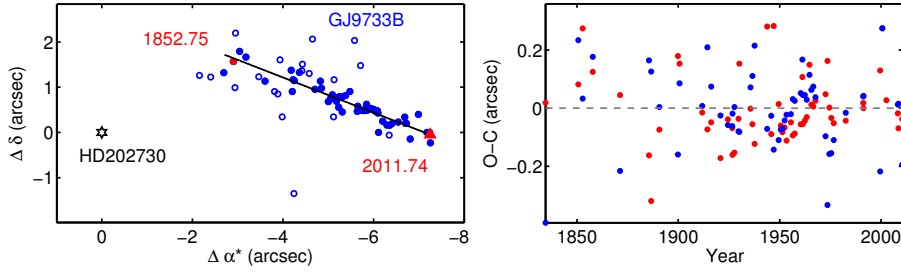


Fig. C.2. Linear fit to the relative motion of HD 202730. *Left:* the location of primary (black star) and secondary (blue circles) and the best linear fit (black line) are shown. Open circles identify measurements not considered for the fit. The expected separation in August 2011 is shown with the red triangle. *Right:* the fit residuals in RA (red) and Dec (blue).

Table C.1. Number of reflections before injection into the FSU fibre when using ATs.

Mode	Element	AT	STS	M12	DL	M16	BC ^a	SY ^b	DDL	FSU ^c	All
Dual	Reflections	8	8	1	5	1	3	1	5	6	38
Single	Reflections	11	–	1	5	1	–	1	–	6	25

Notes. ^(a) Beam compressor. ^(b) Switchyard. ^(c) This includes the folding mirror before the FSU and excludes the IRIS *H/K*-dichroic passed in transmission.

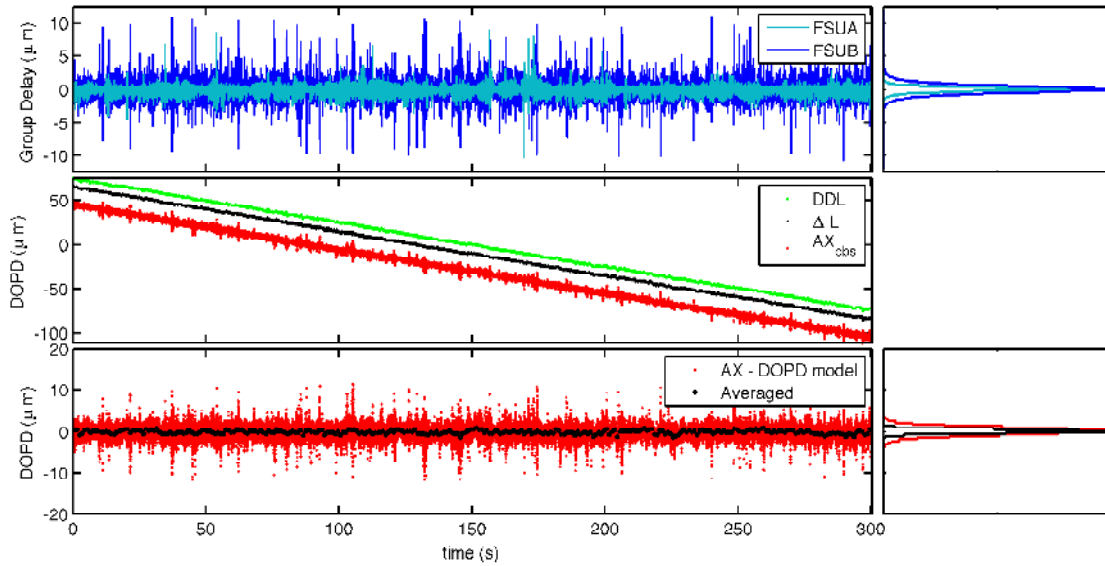


Fig. C.3. Summary graphic of a fringe tracking file. The *top panel* shows the raw group delays, the *middle panel* shows the change of differential delay measured with the DDL metrology, the PRIMA metrology, and the astrometric observable. The raw model-subtracted astrometric observable is shown in red in the lowermost panel and the 1-s averages are shown as solid black circles.

Table C.2. Metrology wavelengths and calculated index of refraction for the demonstration run.

		Applied value ^a	Vac. value	Refract. index
λ_{DL}	(nm)	632.863000	632.991354	$n_{DL} - 1 = 2.025 \pm 0.003 \times 10^{-4}$
λ_{DDL}	(nm)	632.991000	632.991372	1
λ_P	(nm)	1 319.176183	1 319.176183	$n_P - 1 = 2.007 \pm 0.008 \times 10^{-4}$
λ_{FSU}	(nm)	~2250	...	$n_{FSU} - 1 = 2.003 \pm 0.008 \times 10^{-4}$
Pressure	(mbar)		745.4 ± 0.3	
Rel. humidity	(%)		6.8 ± 0.6	
Avg. temp.	(°C)		15.6 ± 1.1	

Notes. ^(a) The applied value of wavelength multiplies the fringe count to yield the length reported by the real-time system. The refraction correction applied to this length is described in the text.

Table C.3. Characteristics of selected targets.

System	HD 10360		HD 202730		HD 66598	
	HD 10360	HD 10361	HD 202730	GJ 9733 B	HD 66598	HD 66598 B
Sp. Type	K2V	K0V	A5V	A7V	K2.5III	...
m_V (mag)	5.96	5.07	4.40	7.20	5.82	8.81
m_K (mag)	3.56	3.51	4.10	5.42	3.04	4.63
m_H (mag)	6.68	...	5.51	...	3.17	4.92
μ_{α^*} (mas/yr)	282	302	107	97	-12	-1
μ_{δ} (mas/yr)	22	-14	-66	-70	8	8
α (h:m:s)	01:39:47.55 ^a		21:19:51.98		08:03:04.16	
δ (d:m:s)	-56:11:36.16 ^a		-53:26:57.93		-32:27:48.78	
ϖ (mas)	148		33.0		6.9	
ρ (")	10.941		7.067		35.630	
Φ (°)	180.656		267.014		134.242	
$\Delta\alpha^*$ (")	-0.125		-7.057		25.527	
$\Delta\delta$ (")	-10.940		-0.368		-24.859	

Notes. ^(a) The coordinates of HD 10360 originate from the Tycho catalogue (Høg et al. 2000), which lists this target with zero proper motion. This makes a proper motion correction from the Tycho epoch to ICRS necessary.

Table C.4. PRIMA-VLTI control loops acting on the stellar beams.

Function	Sensor	Actuator	Bandwidth ^f (Hz)	FB ^a	Band	# ^e
Telescope tracking (Alt.+Az.)	Encoders	Torque motors	~5	1	...	2
Telescope guiding (Alt.+Az.)	CCD	Torque motors	~5	1	V	2
Image stabilisation telescope	STRAP ^b	M6	~5–10	1	V	2
Image stabilisation laboratory	IRIS	STS-FSM	~1	1	H	4
Lateral pupil stabilisation ^c	Quadcell	STS-VCM	~1	1	1.3 μm	4
Primary fringe tracking	FSUB/FSUA	One delay line	~10	1	K	1
Secondary fringe tracking	FSUA/FSUB	One DDL	~5–10	1	K	1
Longitudinal pupil position ^d	...	DL-VCM	...	0	...	1
Image position on STS-M10	...	Derotator	...	0	...	2
Telescope focus ^g (manual)	IRIS	M2	...	0	H	2
Angle tracking ^h (optional)	IRIS	FSU-ACU	~5	0	H	4

Notes. ^(a) The flag indicates whether it is a feedback loop. ^(b) Quadcell sensor based on avalanche photo diodes. ^(c) The prima metrology beams are stabilised. ^(d) A linear model depending on the carriage position is used to blindly adjust the mirror curvature. ^(e) Number of instances. ^(f) Lowest frequency of -3 dB gain loss. ^(g) The telescope focussing is done manually by the operator. ^(h) The angle tracking (IFG) consists of offloading the residual image offsets measured with IRIS onto the image actuators of the FSU (Sahlmann et al. 2009). It is usually not used during astrometric observations.

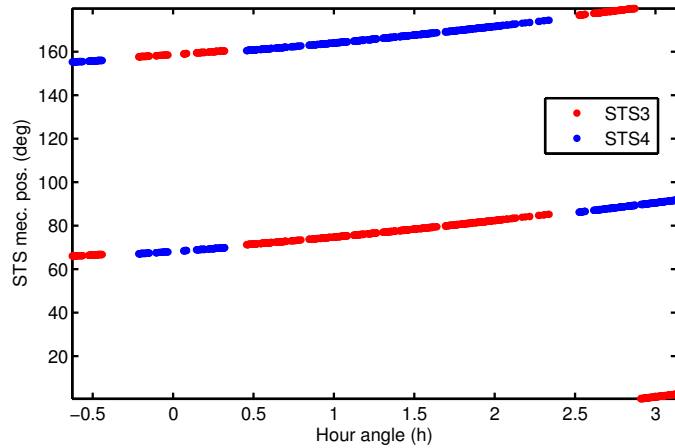


Fig. C.4. Derotator angle of STS3 (red) and STS4 (blue) during the demonstration run. The data is available continuously but only the interpolation on the astrometry data points is shown.

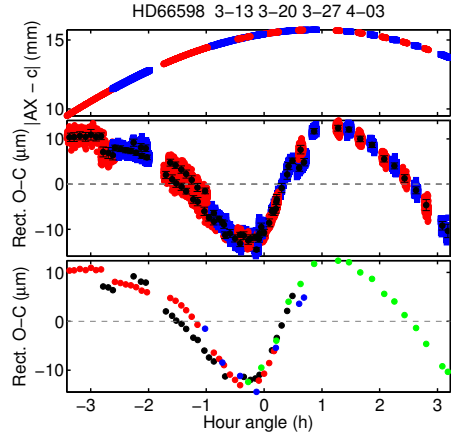
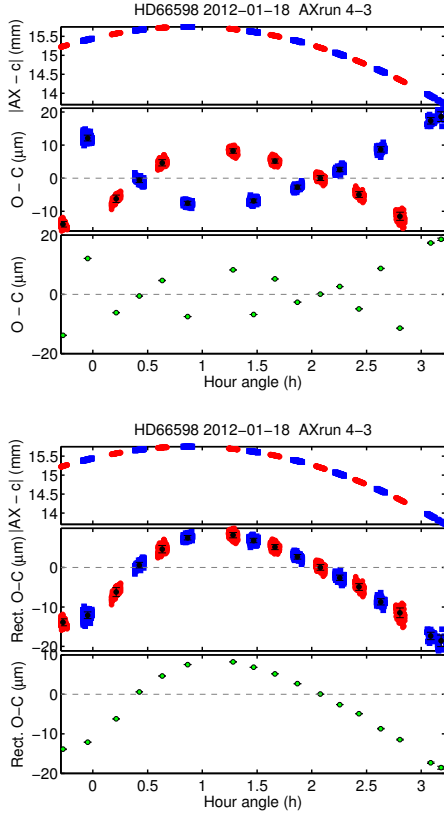


Fig. C.6. Result of the combined fit of four epochs spanning over 56 days for HD 66598. The colour coding and panel definition is similar to Fig. 28, except that each colour in the *bottom panel* marks the data of one epoch.

Fig. C.5. Illustration of the fit residuals for HD 66598 ($\rho \sim 36''$). Colour coding and panel definition as in Fig. 28. *Top*: nominal residuals. *Bottom*: rectified residuals: the O-C of swapped mode data are multiplied with -1 .

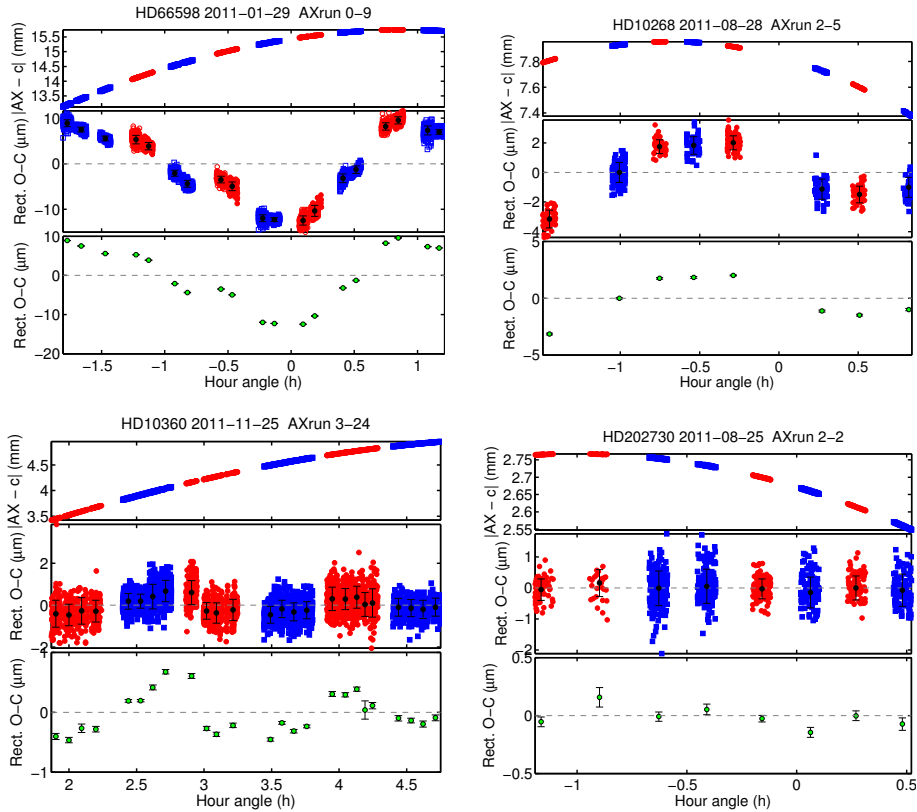


Fig. C.7. Fit residuals for different target separations. *Top left*: HD 66598 ($\rho \sim 36''$, $\sigma_{O-C, \text{binned}} = 7.9 \mu\text{m}$). *Top right*: HD 10268 ($\rho \sim 20''$, $\sigma_{O-C, \text{binned}} = 1.9 \mu\text{m}$). *Bottom left*: HD 10360 ($\rho \sim 11''$, $\sigma_{O-C, \text{binned}} = 0.33 \mu\text{m}$). *Bottom right*: HD 202730 ($\rho \sim 7''$, $\sigma_{O-C, \text{binned}} = 0.08 \mu\text{m}$).

References

- Abuter, R., Popovic, D., Pozna, E., Sahlmann, J., & Eisenhauer, F. 2008, in Proc. SPIE, 7013
- Abuter, R., Sahlmann, J., & Pozna, E. 2010, in Proc. SPIE, 7734
- Anglada-Escudé, G., Boss, A. P., Weinberger, A. J., et al. 2012, *ApJ*, 746, 37
- Benedict, G. F., McArthur, B. E., Franz, O. G., et al. 2001, *AJ*, 121, 1607
- Benedict, G. F., McArthur, B. E., Bean, J. L., et al. 2010, *AJ*, 139, 1844
- Birch, K. P., & Downs, M. J. 1993, *Metrologia*, 30, 155
- Black, D. C., & Scargle, J. D. 1982, *ApJ*, 263, 854
- Borucki, W. J., Koch, D. G., Basri, G., et al. 2011, *ApJ*, 728, 117
- Buscher, D. 2012, *A&A*, 539, A89
- Casertano, S., Lattanzi, M. G., Sozzetti, A., et al. 2008, *A&A*, 482, 699
- Close, L. M., Puglisi, A., Males, J. R., et al. 2012, *ApJ*, 749, 180
- Colavita, M. M. 2009, *New Astron. Rev.*, 53, 344
- Colavita, M. M., Wallace, J. K., Hines, B. E., et al. 1999, *ApJ*, 510, 505
- Daigne, G., & Lestrade, J.-F. 2003, *A&A*, 406, 1167
- Delplancke, F., Derie, F., Lévêque, S., et al. 2006, in Proc. SPIE, 6268
- Delrez, C., Schumacher, J.-M., Flebus, C., Gloesener, P., & Koehler, B. 2001, in *LIACO*
- Dyck, H. M. 2000, *Interferometry with Two Telescopes, Principles of Long Baseline Stellar Interferometry. Course notes from the 1999 Michelson Summer School*
- Eisenhauer, F., Perrin, G., Brandner, W., et al. 2011, *The Messenger*, 143, 16
- Ferrari, M., Lemaitre, G. R., Mazzanti, S. P., et al. 2003, in Proc. SPIE, 4838
- Fomalont, E. B., & Wright, M. C. H. 1974, *Chapter on Interferometry and Aperture Synthesis in Galactic and Extra-Galactic Radio Astronomy (New-York: Springer-Verlag)*, 256
- Gillessen, S., Eisenhauer, F., Trippe, S., et al. 2009, *ApJ*, 692, 1075
- Gitton, P. B., Leveque, S. A., Avila, G., & Phan Duc, T. 2004, in Proc. SPIE, 5491
- Gubler, J., & Tytler, D. 1998, *PASP*, 110, 738
- Haguenauer, P., Abuter, R., Alonso, J., et al. 2008, in Proc. SPIE, 7013
- Haguenauer, P., Alonso, J., Bourget, P., et al. 2010, in Proc. SPIE, 7734
- Høg, E., Fabricius, C., Makarov, V. V., et al. 2000, *A&A*, 355, L27
- Hogehuis, H., Visser, M., & Derie, F. 2003, in Proc. SPIE, 4838
- Hrynevych, M. A., Ligon, III, E. R., & Colavita, M. M. 2004, in Proc. SPIE, 5491
- Hummel, C. A., Mozurkewich, D., Elias, II, N. M., et al. 1994, *AJ*, 108, 326
- Koehler, B., Flebus, C., Dierickx, P., et al. 2002, *The Messenger*, 110, 21
- Koehler, B., Kraus, M., Moresmau, J. M., et al. 2006, in Proc. SPIE, 6268
- Lane, B. F., & Colavita, M. M. 2003, *AJ*, 125, 1623
- Launhardt, R., Queloz, D., Henning, T., et al. 2008, in Proc. SPIE, 7013
- Lazorenko, P. F., Mayor, M., Dominik, M., et al. 2009, *A&A*, 505, 903
- Lazorenko, P. F., Sahlmann, J., Ségransan, D., et al. 2011, *A&A*, 527, A25
- Lenzen, R., Hartung, M., Brandner, W., et al. 2003, in Proc. SPIE, 4841
- Leveque, S. A., Wilhelm, R., Salvade, Y., Scherler, O., & Daendliker, R. 2003, in Proc. SPIE, 4838
- Lindgren, L. 2010, in *IAU Symp.*, 261, 296
- Mason, B. D., Wycoff, G. L., Hartkopf, W. I., Douglass, G. G., & Worley, C. E. 2001, *AJ*, 122, 3466
- Mathar, R. J. 2007, *J. Opt. A: Pure Appl. Opt.*, 9, 470
- Mayor, M., Marmier, M., Lovis, C., et al. 2011, *A&A*, submitted [arXiv:1109.2497]
- Mozurkewich, D., Hutter, D. J., Johnston, K. J., et al. 1988, 95, 269
- Muterspaugh, M. W., Lane, B. F., Konacki, M., et al. 2005, *AJ*, 130, 2866
- Nijenhuis, J. R., Giesen, P., & Delplancke, F. 2004, in Proc. SPIE, 5528
- Nijenhuis, J., Visser, H., de Man, H., et al. 2008, in Proc. SPIE, 7013
- Pepe, F., Queloz, D., Henning, T., et al. 2008, in Proc. SPIE, 7013
- Pravdo, S. H., Shaklan, S. B., & Lloyd, J. 2005, *ApJ*, 630, 528
- Press, W. H., Flannery, B. P., & Teukolsky, S. A. 1986, *Numerical recipes. The art of scientific computing (Cambridge University Press)*
- Quirrenbach, A., Coude Du Foresto, V., Daigne, G., et al. 1998, in Proc. SPIE, 3350
- Reffert, S., & Quirrenbach, A. 2011, *A&A*, 527, A140
- Roussel, G., Lacombe, F., Puget, P., et al. 2003, in Proc. SPIE, 4839
- Sahlmann, J. 2012, *Ph.D. Thesis, Université de Genève*
- Sahlmann, J., Ménardi, S., Abuter, R., et al. 2009, *A&A*, 507, 1739
- Sahlmann, J., Abuter, R., Ménardi, S., et al. 2010, in Proc. SPIE, 7734
- Sahlmann, J., Lovis, C., Queloz, D., & Ségransan, D. 2011a, *A&A*, 528, L8
- Sahlmann, J., Ségransan, D., Queloz, D., et al. 2011b, *A&A*, 525, A95
- Sahlmann, J., Ségransan, D., Mérand, A., et al. 2012, in Proc. SPIE, 8445
- Schöck, M., Els, S., Riddle, R., et al. 2009, *PASP*, 121, 384
- Schuhler, N. 2007, *Ph.D. Thesis, Université de Strasbourg*, <http://scd-theses.u-strasbg.fr/1246/>
- Shao, M., & Colavita, M. M. 1992, *A&A*, 262, 353
- Shao, M., Colavita, M. M., Hines, B. E., et al. 1990, *AJ*, 100, 1701
- Sozzetti, A. 2005, *PASP*, 117, 1021
- Takeda, G., Ford, E. B., Sills, A., et al. 2007, *ApJS*, 168, 297
- Tango, W. J. 1990, *Appl. Opt.*, 29, 516
- Torrence, C., & Compo, G. P. 1998, *BAMS*, 79, 61
- van Albada, G. B. 1957, *Contributions from the Bosscha Observatory*, 5, 1
- van Belle, G. T., Sahlmann, J., Abuter, R., et al. 2008, *The Messenger*, 134, 6
- Wielen, R., Schwan, H., Dettbarn, C., et al. 1999, *Veröffentlichungen des Astronomischen Rechen-Instituts Heidelberg*, 35, 1
- Willez, J., Akeson, R., Colavita, M., et al. 2010, in Proc. SPIE, 7734
- Zucker, S., & Mazeh, T. 2001, *ApJ*, 562, 549