

# The evolution of embryo implantation

MICHAEL R. MCGOWEN<sup>1</sup>, OFFER EREZ<sup>2</sup>, ROBERTO ROMERO<sup>3,4,5</sup> and DEREK E. WILDMAN<sup>\*,1,3,4,6</sup>

<sup>1</sup>Center for Molecular Medicine and Genetics, Wayne State University School of Medicine, Detroit, MI, USA, <sup>2</sup>Department of Obstetrics and Gynecology, Soroka University Medical Center, Ben-Gurion University of the Negev, Beer-Sheva, Israel, <sup>3</sup>Perinatology Research Branch, Program for Perinatal Research and Obstetrics, Division of Intramural Research, Eunice Kennedy Shriver National Institute of Child Health and Human Development, NIH, Bethesda, MD and Detroit, MI USA, <sup>4</sup>Department of Obstetrics and Gynecology, University of Michigan, Ann Arbor, MI, USA, <sup>5</sup>Department of Epidemiology and Biostatistics, Michigan State University, East Lansing, MI, USA and <sup>6</sup>Department of Obstetrics and Gynecology, Wayne State University School of Medicine, Detroit, MI, USA

**ABSTRACT** Embryo implantation varies widely in placental mammals. We review this variation in mammals with a special focus on two features: the depth of implantation and embryonic diapause. We discuss the two major types of implantation depth, superficial and interstitial, and map this character on a well-resolved molecular phylogenetic tree of placental mammals. We infer that relatively deep interstitial implantation has independently evolved at least eight times within placental mammals. Moreover, the superficial type of implantation represents the ancestral state for placental mammals. In addition, we review the genes involved in various phases of implantation, and suggest a future direction in investigating the molecular evolution of implantation-related genes.

**KEY WORDS:** *mammal, phylogeny, gene, implantation, superficial, interstitial*

## Introduction

Embryonic implantation into the maternal endometrium/decidua is a key feature for successful mammalian pregnancy. Early pregnancy loss in humans is a broad concern as an estimated 15% of couples are infertile (Wang and Dey, 2006) and at least 40% of human pregnancies are lost before implantation (Edmonds *et al.*, 1982, Jauniaux and Burton, 2005). However, implantation varies across mammals and this variation may hold clues to treating infertility due to defective implantation. Tracing the evolution of reproductive features has the potential of unraveling reproductive disorders in humans by pinpointing reproductive model organisms and identifying where human-specific changes may have evolved (Crosley *et al.*, 2013, Hou *et al.*, 2009, Uddin *et al.*, 2008). This review examines the evolution of embryo implantation in mammals and sets out a research program for the future investigation of genes involved in implantation that may vary among species with different forms of trophoblast attachment and invasion.

Implantation in eutherian mammals is defined as the process by which the trophoctoderm (i.e. the cells in the blastocyst that give rise to the placenta) of the developing blastocyst adheres to the endometrium of the uterus (Mossman, 1987). There are three phases of implantation: apposition, adhesion, and penetration (Schlafke and Enders, 1975). Apposition involves the establishment

of physical contact between the trophoctoderm of the blastocyst and the epithelial cells of the endometrium. Adhesion entails the process by which the blastocyst forms a stable connection with the uterus and cannot be readily detached. Finally, penetration is defined by the invasion of the endometrium by processes such as fusion, intrusion, or displacement of endometrial cells by the trophoctoderm (Schlafke and Enders, 1975).

## Evolution of implantation depth

There are two major types of embryo implantation in eutherian mammals that can be distinguished by the degree of invasion of the blastocyst at the penetration stage. The most common is superficial attachment, in which there is little if any invasion of the trophoctoderm into the endometrium, and the blastocyst is not wholly encapsulated by the endometrial extracellular matrix (Enders and King, 1991, Enders and Liu, 1991, Ramsey *et al.*, 1976, Salamonsen, 1999). The superficial type of attachment characterizes most of the studied species of mammals. Interstitial

---

*Abbreviations used in this paper:* AsymmMk, asymmetrical Markov k-state 2 parameter; CG, chorionic gonadotropin; ECM, extracellular matrix; Mk1, Markov k-state 1 parameter; ML, maximum likelihood; MMP, matrix metalloproteinase; RIF, recurrent implantation failure.

\*Address correspondence to: Derek E. Wildman. Center for Molecular Medicine and Genetics, Wayne State University School of Medicine, 3240 Scott Hall, 540 E. Canfield Ave., Detroit, MI 48201, USA. Tel: +1-313-577-1253. Fax: +1-313-577-5218. E-mail: [dwildman@wayne.edu](mailto:dwildman@wayne.edu)

Final, author-corrected PDF published online: 8 July 2014.

attachment; however, involves the embedding and encasement of the blastocyst entirely within the uterine endometrium (Carson *et al.*, 2000, Norwitz *et al.*, 2001, Salamonsen, 1999). Interstitial implantation can be found in only four mammalian orders: Rodentia (rodents), Primates, Chiroptera (bats), and Eulipotyphla (non-afrotherian insectivores) (Mossman, 1987). We note that the type of blastocyst attachment has not been characterized in the vast majority of mammalian species, but that at least one representative species has been characterized in most mammalian orders.

Due to the phylogenetic distribution of these orders within mammals, it is unlikely that interstitial attachment has originated only once. To determine the phylogenetic history of embryo implantation, we mapped this trait on a well-supported phylogenetic tree of placental mammals using maximum likelihood (ML) models in Mesquite 2.75 (Maddison and Maddison, 2011). Phylogenetic relationships and molecular dating estimates were taken from the amino acid tree of Meredith *et al.*, (2011), a recent comprehensive molecular phylogenetic study representing most mammal families. In many cases, we condensed genera from the same family into one taxon (i.e., *Rattus* and *Mus* = Muridae). Character states (superficial vs. interstitial implantation) for each species were taken from Mossman (1987) and Hayssen *et al.*, (1993). We used both the Mk1 (Markov k-state 1 parameter) and AsymmMk (Asymmetrical Markov k-state 2 parameter) models, the second of which introduces asymmetry in the rate of change between the two character states. Using a likelihood ratio test with  $df=1$ , we rejected the AsymmMk ( $-\ln L=29.70786763$ ), in favor of the slightly less parameter-rich Mk1 model ( $-\ln L=29.74966663$ ); however, reconstruction barely differed between the two models.

From the ML reconstruction (Fig. 1), we can conclude that superficial attachment is ancestral for placental mammals. In addition, interstitial attachment has evolved separately at least eight times within placental mammals, at least three times within rodents, and at least twice within bats as well as eulipotyphlan insectivores. Humans and mouse, the two most extensively studied species, both have interstitial attachment, and evolved this attachment separately. The finding that the superficial type of implantation is ancestral for placental mammals stands in apparent contradiction to the previous observation that hemochorial placentation is also ancestral for placental mammals, and highlights the dynamic nature of developmental biology during the process of placentation. The only part of tree in which the probability of either superficial or interstitial implantation is  $P<0.95$  is within yangochiropteran bats (see pie charts on nodes in Fig. 1). There is ~72% chance that interstitial implantation evolved separately in the Thyropteridae (*Thyroptera*) and Phyllostomidae (*Macrotus*+*Desmodus*), rather than a reversal back to superficial implantation in the Noctilionidae (*Noctilio*).

What has led to the repeated, although limited, evolution of this feature across the mammalian tree? This is unclear, as there are no features of the uterus or placenta that have a one to one correlation with depth of implantation; however, blastocyst size may be correlated. Blastocysts of species with interstitial attachment, such as human and mouse, tend to have smaller diameters than those with superficial attachment, presumably for the ease of penetration into the endometrium (Mossman, 1987). In some species with superficial attachment, such as ruminants, pigs, horses, and marsupials, elongation of the trophectoderm occurs before the apposition phase of implantation (Dey *et al.*, 2004, Spencer *et al.*, 2007), possibly due to the large surface area of placental attachment. It is unclear

what the selective advantage is of interstitial attachment, although its ability to acquire rapid access to the maternal blood supply is noted (Mossman, 1987).

### Embryonic diapause and delayed implantation

One other feature of implantation is its delay in many species, extending the total length of gestation. Delayed implantation (also known as embryonic diapause) has been identified in approximately 100 species of mammals (~70 eutherians and ~30 marsupials), from seven distinct orders, including Diprotodontia, Carnivora, Rodentia, Eulipotyphla, Chiroptera, Xenarthra, and Cetartiodactyla (Renfree and Shaw, 2000). At least in some species, delayed implantation is most likely correlated with the degree of seasonality of the environment. This is especially well documented in the Carnivora, where mustelids (weasels and relatives) and mephitids (skunks) living in temperate environments tend to retain delayed implantation (Ferguson *et al.*, 2006, Thom *et al.*, 2004), some delaying implantation for up to 11 months (McGowen *et al.*, 2013, Sandell, 1990). In other species with multiple litters per year, such as marsupials, rodents, and insectivores, delayed implantation occurs before the previous litter is weaned, and is likely an energy saving mechanism (Sandell, 1990). As with implantation depth, the phylogenetic distribution of species that undergo embryonic diapause is such that diapause likely evolved independently on multiple mammalian lineages.

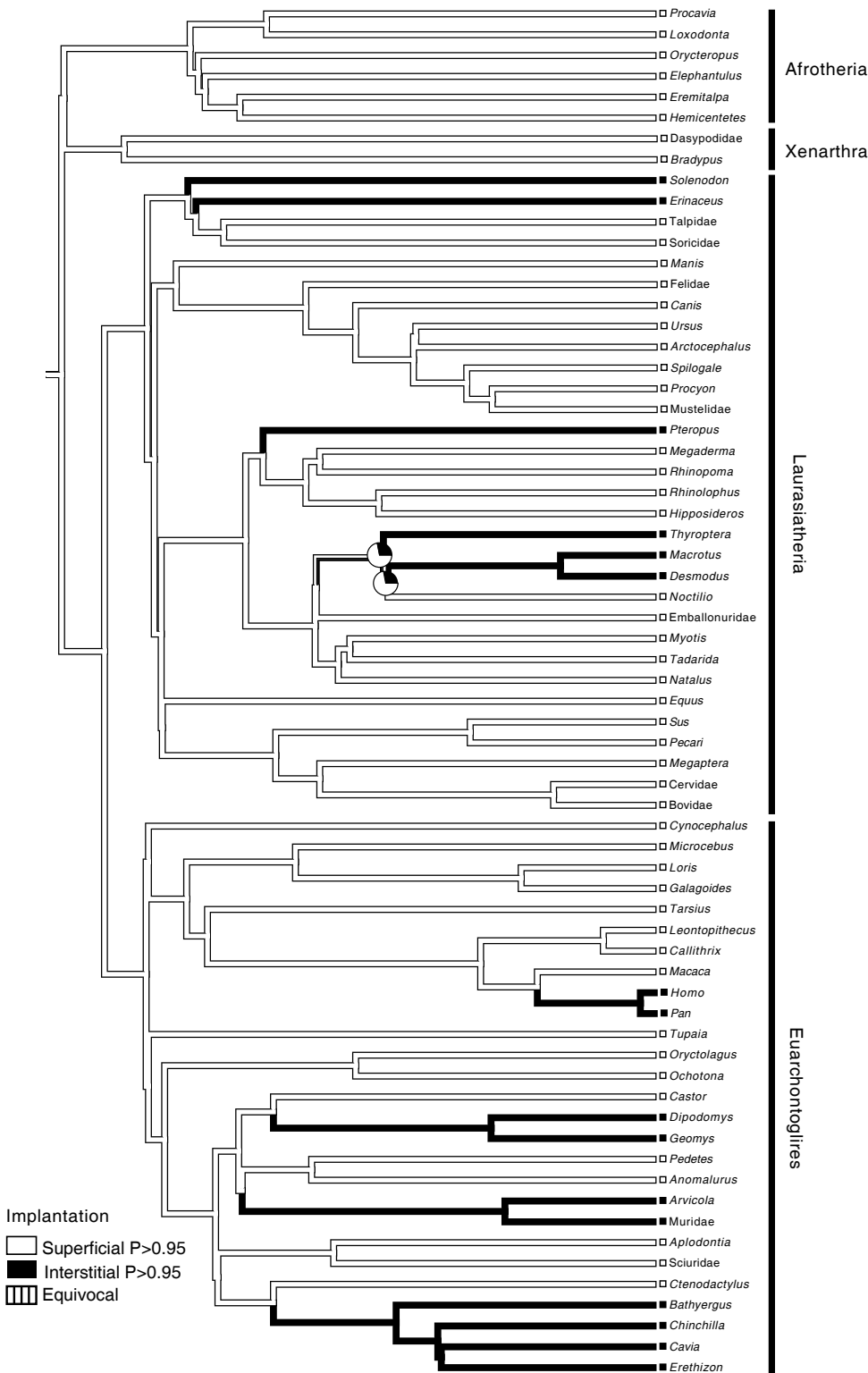
### Proteins involved in implantation

Researchers have identified multiple signaling molecules and proteins that are expressed in the blastocyst and the receptive endometrium before and during implantation that are critical for the establishment of pregnancy, especially in the well-studied mouse (Cha *et al.*, 2012, Dey *et al.*, 2004, Paria *et al.*, 2002, Wang and Dey, 2006). These include nuclear steroid hormone receptor genes such as estrogen and progesterone receptors (*ESR1*, *PGR*), other nuclear receptors (*PPARD*, *PPARG*), cytokines such as *LIF* (leukemia inhibitory factor) and *IL11* (interleukin 11), vasoactive factors such as *PTGS2* (prostaglandin-endoperoxide synthase 2), cannabinoid receptors (*CNR1*, *CNR2*), growth factors and their receptors (*HBEGF*, *EGFR*, *ERBB2*, *ERBB4*) and homeobox genes (*HOXA10*, *HOXA11*), among other genes (Table 1). Some of these genes are known to modulate the window of receptivity and attachment (*CB1*, *CB2*, *MSX1*, *MSX2*, *PLA2G4A*, *LPAR3*). For example, separate deletion of *PLA2G4A* and *LPAR3* in mouse causes the blastocyst to implant after the preferred window of receptivity, leading to complications at later stages of pregnancy, such as embryo crowding (Song *et al.*, 2002, Ye *et al.*, 2005). We propose that these genes are candidates for future research in the molecular evolution of delayed implantation, and sequencing these genes across a diverse array of mammals with and without delayed implantation would be beneficial for understanding implantation.

Many of the genes identified in the mouse also show expression in humans (Cha *et al.*, 2012). For example *IL11* has been identified as critical for implantation in humans as well as macaques (Dimitriadis *et al.*, 2003). *IL11* is expressed at the site of implantation and is related to the promotion of decidualization. However, many other genes have been implicated in uterine receptivity and implantation in humans that have not been noted in murids. Table 1 lists human genes implicated in uterine receptivity from microarray studies but

not identified in mouse receptivity (Altmäe *et al.*, 2012, Wang and Dey, 2006). Very little is known about the expression of these genes during implantation across placental mammal diversity. Therefore, it is currently not known whether the pattern of gene expression seen in humans represents the ancestral or derived state among placental mammals. Regardless, it is likely that these genes could be involved in some of the differences between mouse and human implantation.

During implantation there are different ways in which trophoblast cells penetrate the uterine epithelium. For example, the trophoblast of humans and other primates move between uterine cells, while in the mouse, apoptosis of the epithelial cells facilitates penetration of trophoblast into the endometrium (Carson *et al.*, 2000). One important distinction of anthropoid primates compared to other species is the expression of chorionic gonadotropin (CG), a hormone produced by the developing embryo before implantation, and is involved in maintenance of the corpus luteum. The beta peptide of human (and that of other anthropoid primates) chorionic gonadotropin is a derived gene duplicate member of the beta lutening hormone family (Nagirnaja *et al.*, 2010). In addition, CG is also involved in cross-talk between the embryo and the endometrium, and is one of the key signals to initiate decidualization of uterine epithelium (Banerjee and Fazleabas, 2010). CG was found to initiate the expression of *LIF*, *SOD2*, *PAEP*, and *MMP7* in baboons (Banerjee and Fazleabas, 2010). *LIF* has been shown to be involved in trophoblast invasion in humans (Tapia *et al.*, 2008) and is expressed in the endometrium of other primates and humans (Yue *et al.*, 2000; Licht *et al.*, 2000). Primates; however, show varying degrees of penetration into the uterine epithelium, with only *Pan* (chimpanzees) and *Homo* of primates yet investigated wholly penetrating below the basal membrane upon implantation. However, there is evidence of penetration in places in the New World monkey *Callithrix* (Enders and Lopata, 1999), and penetration of uterine vessels by the trophoblast in the macaque and baboon, (Enders, 1995; Enders *et al.*, 1996, 1997). This may allow for a more rapid access to maternal blood flow in the face of mostly superficial implantation



**Fig. 1. Maximum likelihood reconstruction (using the Mk1 model) of implantation type in placental mammals with available evidence.** Phylogenetic relationships are from Meredith *et al.*, (2011). The colors of each branch signify the presence of superficial (white) or interstitial (black) implantation with probability  $P > 0.95$ . The two nodes that are represented by pie charts depict lineages without limited confidence for either superficial or interstitial implantation and display the probability of each character state at each node.

TABLE 1

## MAJOR CANDIDATE GENES INVOLVED IN THE EVOLUTION OF IMPLANTATION

Gene Symbol	Gene Name	Function in uterus and/or blastocyst
<b>Uterine receptivity and attachment</b>		
<i>MUC1</i>	mucin 1	Prevention of adhesion in prereceptive phase of endometrium
<i>ESR1</i>	estrogen receptor alpha	Detection of estrogen for uterine receptivity
<i>PGR</i>	progesterone receptor	Detection of progesterone for uterine receptivity
<i>LIF</i>	leukemia inhibitory factor	Uterine receptivity and attachment
<i>IL11</i>	interleukin 11	Involved in decidualization
<i>PTGS2</i>	prostaglandin synthase 2	Production of prostaglandins for increased vascular permeability at blastocyst attachment site
<i>BMP2</i>	bone morphogenetic protein 2	Production of prostaglandins for increased vascular permeability at blastocyst attachment site
<i>CB1</i>	cannabinoid receptor 1	Modulation of implantation window in blastocyst
<i>CB2</i>	cannabinoid receptor 2	Modulation of implantation window in blastocyst
<i>HBEGF</i>	heparin-binding EGF-like growth factor	Induction of attachment, promotion of growth in embryo via receptors
<i>EGFR</i>	epidermal growth factor receptor	receptor for HBEGF in blastocyst
<i>ERBB2</i>	v-erb-b2 erythroblastic leukemia viral oncogene homolog 2	receptor for HBEGF in blastocyst
<i>ERBB4</i>	v-erb-b2 erythroblastic leukemia viral oncogene homolog 4	receptor for HBEGF in blastocyst
<i>HAND2</i>	heart and neural crest derivatives expressed 2	Transcription factor crucial for implantation
<i>IHH</i>	Indian hedgehog	Uterine receptivity
<i>FKBP4 (FKBP52)</i>	FK506 binding protein 4, 59kDa	Optimizes progesterone receptor activity
<i>MSX1</i>	msh homeobox 1	Modulation of implantation window in uterus
<i>MSX2</i>	msh homeobox 2	Modulation of implantation window in uterus
<i>KLF5</i>	Kruppel-like factor 5 (intestinal)	Cell proliferation near blastocyst site
<i>HOXA10</i>	homeobox A10	Uterine receptivity and decidualization
<i>HOXA11</i>	homeobox A11	Uterine receptivity and decidualization
<i>PPARD</i>	peroxisome proliferator-activated receptor delta	Uterine receptivity and decidualization
<i>PPARG</i>	peroxisome proliferator-activated receptor gamma	Uterine receptivity and decidualization
<i>PLA2G4A</i>	phospholipase A2, group IVA (cytosolic, calcium-dependent)	Modulation of implantation window in uterus
<i>LPAR3</i>	lysophosphatidic acid receptor 3	Modulation of implantation window in uterus
<b>Uterine receptivity and attachment (detected in human only)</b>		
<i>APOD</i>	apolipoprotein D	
<i>CLDN4</i>	claudin 4	
<i>C1R</i>	complement component 1R	
<i>CYP2C9</i>	cytochrome P450, family 2, subfamily C, polypeptide 9	
<i>DKK1</i>	dickkopf 1	
<i>DPP4</i>	dipeptidyl-peptidase 4	
<i>EDNRB</i>	endothelin receptor type B	
<i>GADD45A</i>	growth arrest and DNA-damage-inducible, alpha	
<i>GPX3</i>	glutathione peroxidase 3 (plasma)	
<i>HABP2</i>	hyaluronan binding protein 2	
<i>ID4</i>	inhibitor of DNA binding 4, dominant negative helix-loop-helix protein	
<i>IL15</i>	interleukin 15	
<i>LMOD1</i>	leiomodulin 1	
<i>MAOA</i>	monoamine oxidase A	
<i>MAP3K5</i>	mitogen-activated protein kinase kinase kinase 5	
<i>MTNR1A</i>	melatonin receptor 1A	
<i>PAEP</i>	progestagen-associated endometrial protein	
<i>SERPINE1</i>	serpin peptidase inhibitor, clade G (C1 inhibitor), member 1	
<i>SPP1</i>	secreted phosphoprotein 1	
<i>CCNB1</i>	cyclin B1	
<i>OLFM1</i>	olfactomedin 1	
<i>TGFB1</i>	transforming growth factor, beta 1	
<b>Penetration</b>		
<i>MMP2</i>	matrix metalloproteinase 2	Breakdown of type IV collagen in endometrium
<i>MMP9</i>	matrix metalloproteinase 9	Breakdown of type IV collagen in endometrium

Altmae et al., 2012; Cha et al., 2012; Curry and Osteen, 2003; Dey et al., 2004; Paria et al., 2002; Song et al., 2002; Wang and Dey, 2006; Ye et al., 2005.

(Enders et al., 1997).

The penetration phase of implantation involves a different set of genes with the role of remodeling endometrial tissue. Matrix metalloproteinases (MMPs) are zinc-dependent endopeptidases which break down numerous extracellular matrix (ECM) proteins and are involved in multiple aspects of tissue remodeling (Martel-Pelletier

et al., 2001). At least some MMPs play a major role in implantation and the remodeling of endometrial tissue (Curry and Osteen, 2003). Evidence of MMP expression during the penetration phase of implantation has been reported from numerous mammalian lineages, including both interstitial and superficial implanting species (Bai et al., 2005, Bischof and Campana, 2000, Bischof et al.,

1998, Blankenship and Enders, 1997, Carson *et al.*, 2000, Chou *et al.*, 2003, Gao *et al.*, 2001, Hardy and Spanos, 2002, Herler *et al.*, 2003, Li *et al.*, 2002, Li *et al.*, 2003, Norwitz *et al.*, 2001) and rodents (Alexander *et al.*, 1996, Canete-Soler *et al.*, 1995, Dai *et al.*, 2003, Feng *et al.*, 1998, Hardy and Spanos, 2002, Hurst and Palmay, 1999, Zhao *et al.*, 2002). MMPs are also expressed in superficially implanting species such as felids (Walter and Schonkypl, 2006) and bovids (Menino *et al.*, 1997, Uekita *et al.*, 2001). Due to their involvement in both superficial and interstitial implanting species, MMPs are likely important in trophoblast invasion in general. Perhaps the most important MMPs to be identified in endometrial penetration are the gelatinases coded by the genes *MMP2* and *MMP9*. Both *MMP2* and *MMP9* play an important role in the establishment of pregnancy (Curry and Osteen, 2003). Indeed *MMP9* is involved in successful cytotrophoblast invasion and specifically dissolves collagen type IV, a major component of the endometrial basal membrane (Librach *et al.*, 1991). Further evidence for the important role of *MMP2* and *MMP9* in successful implantation has been found in the clinic (Yoshii *et al.*, 2013). That study examined the role of these genes in recurrent implantation failure (RIF). Three hundred and sixty patients underwent MMP measurements, and those patients that had high *MMP2* and *MMP9* levels (as measured by gelatin enzyme zymography) were subsequently treated with antibiotics and steroids. This treatment reduced the MMP levels in the vast majority of patients, and the patients who underwent such treatment had significantly better pregnancy rate as well as a significantly lower miscarriage rate than was observed in control patients (Yoshii *et al.*, 2013). The molecular evolution of *MMP2* and *MMP9* has not been investigated, but we would expect that adaptive evolutionary changes could be associated with the emergence and increased depth of implantation in specific species.

Differences between implantation types may involve direct change in amino acid sequence of the protein, which can be investigated using analyses to detect natural selection (Yang, 2007). Alternatively, these changes may be the result of changes in expression level via *cis*-regulatory mutations, with *MMP2* and *MMP9* having greater expression levels at early phases in development in species with interstitial implantation. Indeed, it has been shown that the normally non-translated 3' region of the *LHB* gene is translated in some cases as the *CGB* gene in equids and bovids; however the bovid version lacks proper O-glycans; thus, preventing CG activity in artiodactyls (Gabay *et al.*, 2013). This mechanism of peptide generation differs from the gene duplication model seen in anthropoid primates. Comparative transcriptomics of multiple species has the potential to reveal differences in expression that may have been the result of natural selection (Brawand *et al.*, 2011). However, the scarcity of primate (an other mammal) tissue at various stages of embryonic and placental development may be a critical limiting factor.

## Summary and conclusion

We have demonstrated that deep interstitial implantation has originated at least eight times within eutherian mammals. The genetic and epigenetic variation that accounts for this difference among mammalian species is not clear. Mice, rats, and humans share the interstitial type of implantation, thus murids are, for this feature, an appropriate natural model for human embryo implantation. Additionally, multiple genes have been identified interacting at

the attachment and penetration phases of implantation. Analysis of the evolution of these genes may reveal the underlying mutations that have led to interstitial implantation and provide clues for treatment of implantation defects in humans.

## Acknowledgements

The authors would like to acknowledge the contribution of Caoyi Chen in digitizing the previously published data of H.W. Mossman. The National Science Foundation (BCS-0827546) supported a portion of the first author's (MM) salary.

## References

- ALEXANDER, C.M., HANSELL, E.J., BEHRENDTSEN, O., FLANNERY, M.L., KISHNANI, N.S., HAWKES, S.P. and WERB, Z. (1996). Expression and function of matrix metalloproteinases and their inhibitors at the maternal-embryonic boundary during mouse embryo implantation. *Development* 122: 1723-1736.
- ALTMAE, S., REIMAND, J., HOVATTA, O., ZHANG, P., KERE, J., LAISK, T., SAARE, M., PETERS, M., VILO, J., STAVREUS-EVERS, A. *et al.*, (2012). Research resource: interactome of human embryo implantation: identification of gene expression pathways, regulation, and integrated regulatory networks. *Mol Endocrinol* 26: 203-217.
- BAI, S.X., WANG, Y.L., QIN, L., XIAO, Z.J., HERVA, R. and PIAO, Y.S. (2005). Dynamic expression of matrix metalloproteinases (MMP-2, -9 and -14) and the tissue inhibitors of MMPs (TIMP-1, -2 and -3) at the implantation site during tubal pregnancy. *Reproduction* 129: 103-113.
- BANERJEE, P. and FAZLEABAS, A. T. (2010) Endometrial responses to embryonic signals in the primate. *Int J Dev Biol* 54: 295-302.
- BISCHOF, P. and CAMPANA, A. (2000). Molecular mediators of implantation. *Baillieres Best Pract Res Clin Obstet Gynaecol* 14: 801-814.
- BISCHOF, P., MEISSER, A. and CAMPANA, A. (1998). Involvement of trophoblast in embryo implantation: regulation by paracrine factors. *J Reprod Immunol* 39: 167-177.
- BLANKENSHIP, T.N. and ENDERS, A.C. (1997). Trophoblast cell-mediated modifications to uterine spiral arteries during early gestation in the macaque. *Acta Anat (Basel)* 158: 227-236.
- BRAWAND, D., SOUMILLON, M., NECSULEA, A., JULIEN, P., CSARDI, G., HARRIGAN, P., WEIER, M., LIECHTI, A., AXIMU-PETRI, A., KIRCHER, M. *et al.*, (2011). The evolution of gene expression levels in mammalian organs. *Nature* 478: 343-348.
- CANETE-SOLER, R., GUI, Y.H., LINASK, K.K. and MUSCHEL, R.J. (1995). Developmental expression of MMP-9 (gelatinase B) mRNA in mouse embryos. *Dev Dyn* 204: 30-40.
- CARSON, D.D., BAGCHI, I., DEY, S.K., ENDERS, A.C., FAZLEABAS, A.T., LESSEY, B.A. and YOSHINAGA, K. (2000). Embryo implantation. *Dev Biol* 223: 217-237.
- CHA, J., SUN, X. and DEY, S.K. (2012). Mechanisms of implantation: strategies for successful pregnancy. *Nat Med* 18: 1754-1767.
- CHOU, C.S., ZHU, H., MACCALMAN, C.D. and LEUNG, P.C. (2003). Regulatory effects of gonadotropin-releasing hormone (GnRH) I and GnRH II on the levels of matrix metalloproteinase (MMP)-2, MMP-9, and tissue inhibitor of metalloproteinases-1 in primary cultures of human extravillous cytotrophoblasts. *J Clin Endocrinol Metab* 88: 4781-4790.
- CROSLEY, E.J., ELLIOT, M.G., CHRISTIANS, J.K. and CRESPI, B.J. (2013). Placental invasion, preeclampsia risk and adaptive molecular evolution at the origin of the great apes: evidence from genome-wide analyses. *Placenta* 34: 127-132.
- CURRY, T.E., JR. and OSTEEN, K.G. (2003). The matrix metalloproteinase system: changes, regulation, and impact throughout the ovarian and uterine reproductive cycle. *Endocr Rev* 24: 428-465.
- DAI, B., CAO, Y., ZHOU, J., LI, S., WANG, X., CHEN, D. and DUAN, E. (2003). Abnormal expression of matrix metalloproteinase-2 and -9 in interspecific pregnancy of rat embryos in mouse recipients. *Theriogenology* 60: 1279-1291.
- DEY, S.K., LIM, H., DAS, S.K., REESE, J., PARIJA, B.C., DAIKOKU, T. and WANG, H. (2004). Molecular cues to implantation. *Endocr Rev* 25: 341-373.
- DIMITRIADIS, E., ROBB, L., LIU, Y.-X., ENDERS, A. C., MARTIN, H., STOIKOS, C., WALLACE, E., and SALAMONSEN, L. A. (2003). IL-11 and IL-11R $\alpha$  immunolocalisation at primate implantation sites supports a role for IL-11 in placenta

- and fetal development. *Reprod Biol Endocrinol* 1: 34.
- EDMONDS, D.K., LINDSAY, K.S., MILLER, J.F., WILLIAMSON, E. and WOOD, P.J. (1982). Early embryonic mortality in women. *Fertil Steril* 38: 447-453.
- ENDERS, A. C. (1995). Transition from lacunar to villous stage of implantation in the macaque, including establishment of the trophoblastic shell. *Acta Anat* 152: 151-169.
- ENDERS, A.C. and KING, B.F. (1991). Early stages of trophoblastic invasion of the maternal vascular system during implantation in the macaque and baboon. *Am J Anat* 192: 329-346.
- ENDERS, A.C. and LIU, I.K. (1991). Trophoblast-uterine interactions during equine chorionic girdle cell maturation, migration, and transformation. *Am J Anat* 192: 366-381.
- ENDERS, A. C., LANTZ, K. C., and SCHLAFKE, S. (1996). Preference of invasive cytotrophoblast for maternal vessels in early implantation in the macaque. *Acta Anat* 155: 145-162.
- ENDERS, A. C., LANTZ, K. C., PETERSON, P. E., and HENDRICKS, A. G. (1997). From blastocyst to placenta: the morphology of implantation in the baboon. *Hum Reprod Update* 3: 561-573.
- ENDERS, A. C. and LOPATA, A. (1999). Implantation in the marmoset monkey: expansion of the early implantation site. *Anat Rec* 256: 279-299.
- FENG, J., WOESSNER, J.F., JR. and ZHU, C. (1998). Matrilysin activity in the rat uterus during the oestrous cycle and implantation. *J Reprod Fertil* 114: 347-350.
- FERGUSON, S.H., HIGDON, J.W. and LARIVIERE, S. (2006). Does seasonality explain the evolution and maintenance of delayed implantation in the family Mustelidae (Mammalia: Carnivora)? *Oikos* 114: 249-256.
- GABAY, R., ROZEN, S., SAMOKOVLISKY, A., AMOR, Y., ROSENFELD, R., KOHEN, F., AMSTERDAM, A., BERGER, P., BEN-MENACHEM, D. The role of the 3' region of mammalian gonadotropin  $\beta$  subunit gene in the luteinizing hormone to chorionic gonadotropin evolution. *Mol Cell Endocrinol* 382: 781-790.
- GAO, F., CHEN, X.L., WEI, P., GAO, H.J. and LIU, Y.X. (2001). Expression of matrix metalloproteinase-2, tissue inhibitors of metalloproteinase-1, -3 at the implantation site of rhesus monkey during the early stage of pregnancy. *Endocrine* 16: 47-54.
- GOODMAN, M., GROSSMAN, L.I. and WILDMAN, D.E. (2005). Moving primate genomics beyond the chimpanzee genome. *Trends Genet* 21: 511-517.
- HARDY, K. and SPANOS, S. (2002). Growth factor expression and function in the human and mouse preimplantation embryo. *J Endocrinol* 172: 221-236.
- HAYSSEN, V. D., VAN TIENHOVEN, A., and VAN TIENHOVEN, A. (1993). *Asdell's patterns of mammalian reproduction: a compendium of species-specific data*. Cornell University Press, Ithaca, NY.
- HERRLER, A., VON RANGO, U. and BEIER, H.M. (2003). Embryo-maternal signalling: how the embryo starts talking to its mother to accomplish implantation. *Reprod Biomed Online* 6: 244-256.
- HOU, Z., ROMERO, R., UDDIN, M., THAN, N.G. and WILDMAN, D.E. (2009). Adaptive history of single copy genes highly expressed in the term human placenta. *Genomics* 93: 33-41.
- HURST, P.R. and PALMAY, R.D. (1999). Matrix metalloproteinases and their endogenous inhibitors during the implantation period in the rat uterus. *Reprod Fertil Dev* 11: 395-402.
- JAUNIAUX, E. and BURTON, G.J. (2005). Pathophysiology of histological changes in early pregnancy loss. *Placenta* 26: 114-123.
- LI, Q., WANG, H., ZHAO, Y., LIN, H., SANG, Q.A. and ZHU, C. (2002). Identification and specific expression of matrix metalloproteinase-26 in rhesus monkey endometrium during early pregnancy. *Mol Hum Reprod* 8: 934-940.
- LI, Q.L., ILLMAN, S.A., WANG, H.M., LIU, D.L., LOHI, J. and ZHU, C. (2003). Matrix metalloproteinase-28 transcript and protein are expressed in rhesus monkey placenta during early pregnancy. *Mol Hum Reprod* 9: 205-211.
- LIBRACH, C.L., WERB, Z., FITZGERALD, M.L., CHIU, K., CORWIN, N.M., ESTEVES, R.A., GROBELNY, D., GALARDY, R., DAMSKY, C.H. and FISHER, S.J. (1991). 92-kD type IV collagenase mediates invasion of human cytotrophoblasts. *J Cell Biol* 113: 437-449.
- LICHT, P., RUSSU, V., LEHMEYER, S. and WILDT, L. (2001). Molecular aspects of direct LH/hCG effects on human endometrium—lessons from intrauterine microdialysis in the human female *in vivo*. *Reprod Biol* 1: 10-19.
- MADDISON, W. and MADDISON, D. (2011). Mesquite: a modular system for evolutionary analysis. Version 2.75 <http://mesquiteproject.org>.
- MARTEL-PELLETIER, J., WELSCH, D.J. and PELLETIER, J.P. (2001). Metalloproteases and inhibitors in arthritic diseases. *Best Pract Res Clin Rheumatol* 15: 805-829.
- MCGOWEN, M.R., AGNEW, D. and WILDMAN, D.E. (2013). Reproduction and placentation in Neotropical carnivores. In *Molecular Population Genetics, Evolutionary Biology and Biological Conservation of Neotropical Carnivores*, (ed. RUIZ-GARCIA, M. and SHOSTELL, J. M.). Nova Science, New York, pp. 485-508.
- MENINO, A.R., JR., HOGAN, A., SCHULTZ, G.A., NOVAK, S., DIXON, W. and FOXCROFT, G.H. (1997). Expression of proteinases and proteinase inhibitors during embryo-uterine contact in the pig. *Dev Genet* 21: 68-74.
- MOSSMAN, H.W. (1987). *Vertebrate fetal membranes*. Rutgers University Press, New Brunswick, NJ.
- NAGIRNAJA, L., RULL, K., UUSKULA, L., HALLAST, P., GRIGOROVA, M., LAAN, M. (2010) Genomics and genetics of gonadotropin beta-subunit genes: Unique FSHB and duplicated LHB/CGB loci. *Mol Cell Endocrinol* 329: 4-16.
- NORWITZ, E.R., SCHUST, D.J. and FISHER, S.J. (2001). Implantation and the survival of early pregnancy. *N Engl J Med* 345: 1400-1408.
- PARIA, B.C., REESE, J., DAS, S.K. and DEY, S.K. (2002). Deciphering the cross-talk of implantation: advances and challenges. *Science* 296: 2185-2188.
- RAMSEY, E.M., HOUSTON, M.L. and HARRIS, J.W. (1976). Interactions of the trophoblast and maternal tissues in three closely related primate species. *Am J Obstet Gynecol* 124: 647-652.
- RENFREE, M.B. and SHAW, G. (2000). Diapause. *Annu Rev Physiol* 62: 353-375.
- ROCA, A.L., BAR-GAL, G.K., EIZIRIK, E., HELGEN, K.M., MARIA, R., SPRINGER, M.S., O'BRIEN, S.J. and MURPHY, W.J. (2004). Mesozoic origin for West Indian insectivores. *Nature* 429: 649-651.
- SALAMONSEN, L.A. (1999). Role of proteases in implantation. *Rev Reprod* 4: 11-22.
- SANDELL, M. (1990). The evolution of seasonal delayed implantation. *Q Rev Biol* 65: 23-42.
- SCHLAFKE, S. and ENDERS, A.C. (1975). Cellular basis of interaction between trophoblast and uterus at implantation. *Biol Reprod* 12: 41-65.
- SONG, H., LIM, H., PARI, B.C., MATSUMOTO, H., SWIFT, L.L., MORROW, J., BONVENTRE, J.V. and DEY, S.K. (2002). Cytosolic phospholipase A2alpha is crucial [correction of A2alpha deficiency is crucial] for 'on-time' embryo implantation that directs subsequent development. *Development* 129: 2879-2889.
- SPENCER, T.E., JOHNSON, G.A., BAZER, F.W., BURGHARDT, R.C. and PALMARINI, M. (2007). Pregnancy recognition and conceptus implantation in domestic ruminants: roles of progesterone, interferons and endogenous retroviruses. *Reprod Fertil Dev* 19: 65-78.
- TAPIA, A., SALAMONSEN, L. A., MANUELPIILLAI, U. and DIMITRIADIS, E. (2008). Leukemia inhibitory factor promotes human first trimester extravillous trophoblast adhesion to extracellular matrix and secretion of tissue inhibitor of metalloproteinases-1 and -2. *Hum Reprod* 23: 1724-1732.
- THOM, M.D., JOHNSON, D.D. and MACDONALD, D.W. (2004). The evolution and maintenance of delayed implantation in the Mustelidae (mammalia: carnivora). *Evolution* 58: 175-183.
- UDDIN, M., GOODMAN, M., EREZ, O., ROMERO, R., LIU, G., ISLAM, M., OPAZO, J.C., SHERWOOD, C.C., GROSSMAN, L.I. and WILDMAN, D.E. (2008). Distinct genomic signatures of adaptation in pre- and postnatal environments during human evolution. *Proc Natl Acad Sci USA* 105: 3215-3220.
- UEKITA, T., TANAKA, S.S., SATO, H., SEIKI, M., TOJO, H. and TACHI, C. (2001). Expression of membrane-type 1 matrix metalloproteinase (MT1-MMP) mRNA in trophoblast and endometrial epithelial cell populations of the synepitheliochorial placenta of goats (*Capra hircus*). *Arch Histol Cytol* 64: 411-424.
- WALTER, I. and SCHONKYPL, S. (2006). Extracellular matrix components and matrix degrading enzymes in the feline placenta during gestation. *Placenta* 27: 291-306.
- WANG, H. and DEY, S.K. (2006). Roadmap to embryo implantation: clues from mouse models. *Nat Rev Genet* 7: 185-199.
- YANG, Z. (2007). PAML 4: phylogenetic analysis by maximum likelihood. *Mol Biol Evol* 24: 1586-1591.
- YE, X., HAMA, K., CONTOS, J.J., ANLIKER, B., INOUE, A., SKINNER, M.K., SUZUKI, H., AMANO, T., KENNEDY, G., ARAI, H. et al., (2005). LPA3-mediated lysophosphatidic acid signalling in embryo implantation and spacing. *Nature* 435: 104-108.
- YOSHII, N., HAMATANI, T., INAGAKI, N., HOSAKA, T., INOUE, O., YAMADA, M., MACHIYA, R., YOSHIMURA, Y., ODAWARA, Y. (2013). Successful implantation after reducing matrix metalloproteinase activity in the uterine cavity. *Reprod Biol Endocrinol* 11: 37.

YUE, Z. P., YANG, Z. M., WEI, P., LI, S. J., WANG, H. B., TAN, J. H. and HARPER, M. J. (2000). Leukemia inhibitory factor, leukemia inhibitory factor receptor, and glycoprotein 130 in rhesus monkey uterus during menstrual cycle and early pregnancy. *Biol Reprod* 63: 508-512.

ZHAO, Y.G., XIAO, A.Z., CAO, X.M. and ZHU, C. (2002). Expression of matrix metalloproteinase -2, -9 and tissue inhibitors of metalloproteinase -1, -2, -3 mRNAs in rat uterus during early pregnancy. *Mol Reprod Dev* 62: 149-158.

**Further Related Reading, published previously in the *Int. J. Dev. Biol.***

**Contemporary comparative placenta research - an interview with Allen Enders**

Kent L. Thornburg and Joan S. Hunt  
*Int. J. Dev. Biol.* (2010) 54: 231-236  
<http://dx.doi.org/10.1387/ijdb.082837kt>

**Placentation in mammals once grouped as insectivores**

Anthony M. Carter and Allen C. Enders  
*Int. J. Dev. Biol.* (2010) 54: 483-493  
<http://dx.doi.org/10.1387/ijdb.082830ac>

**Trophoblast phagocytic program: roles in different placental systems**

Estela Bevilacqua, Mara-Sandra Hoshida, Andrea Amarante-Paffaro, Andrea Albieri-Borges and Sara Zago-Gomes  
*Int. J. Dev. Biol.* (2010) 54: 495-505  
<http://dx.doi.org/10.1387/ijdb.082761eb>

**Amphibian gastrulation: history and evolution of a 125 year-old concept**

J C Beetschen  
*Int. J. Dev. Biol.* (2001) 45: 771-795  
<http://dx.doi.org/10.1387/ijdb.11732838>

**Implantation: molecular basis of embryo-uterine dialogue**

B C Paria, H Song and S K Dey  
*Int. J. Dev. Biol.* (2001) 45: 597-605  
<http://dx.doi.org/10.1387/ijdb.11417904>

**5 yr ISI Impact Factor (2011) = 2.959**

