

## ARTICLE OPEN

The *FANCM*:p.Arg658\* truncating variant is associated with risk of triple-negative breast cancer

Gisella Figlioli et al.

Breast cancer is a common disease partially caused by genetic risk factors. Germline pathogenic variants in DNA repair genes *BRCA1*, *BRCA2*, *PALB2*, *ATM*, and *CHEK2* are associated with breast cancer risk. *FANCM*, which encodes for a DNA translocase, has been proposed as a breast cancer predisposition gene, with greater effects for the ER-negative and triple-negative breast cancer (TNBC) subtypes. We tested the three recurrent protein-truncating variants *FANCM*:p.Arg658\*, p.Gln1701\*, and p.Arg1931\* for association with breast cancer risk in 67,112 cases, 53,766 controls, and 26,662 carriers of pathogenic variants of *BRCA1* or *BRCA2*. These three variants were also studied functionally by measuring survival and chromosome fragility in *FANCM*<sup>-/-</sup> patient-derived immortalized fibroblasts treated with diepoxybutane or olaparib. We observed that *FANCM*:p.Arg658\* was associated with increased risk of ER-negative disease and TNBC (OR = 2.44, *P* = 0.034 and OR = 3.79; *P* = 0.009, respectively). In a country-restricted analysis, we confirmed the associations detected for *FANCM*:p.Arg658\* and found that also *FANCM*:p.Arg1931\* was associated with ER-negative breast cancer risk (OR = 1.96; *P* = 0.006). The functional results indicated that all three variants were deleterious affecting cell survival and chromosome stability with *FANCM*:p.Arg658\* causing more severe phenotypes. In conclusion, we confirmed that the two rare *FANCM* deleterious variants p.Arg658\* and p.Arg1931\* are risk factors for ER-negative and TNBC subtypes. Overall our data suggest that the effect of truncating variants on breast cancer risk may depend on their position in the gene. Cell sensitivity to olaparib exposure, identifies a possible therapeutic option to treat *FANCM*-associated tumors.

npj Breast Cancer (2019)5:38; <https://doi.org/10.1038/s41523-019-0127-5>

## INTRODUCTION

The genetic architecture of inherited breast cancer is complex and involves germline pathogenic variants in high and moderate-risk genes and polygenetic factors. The major high-penetrance breast cancer risk genes include *BRCA1* and *BRCA2*, which are key factors in the DNA double-strand break repair through homologous recombination (HR) and in the inter-strand crosslink (ICL) repair as a part of the Fanconi Anemia (FA) pathway.<sup>1,2</sup> Recently, based on a prospective cohort of families carrying *BRCA1* or *BRCA2* pathogenic variants, the average cumulative risk by age 80 was estimated to be 72% and 69% for carriers of *BRCA1* and *BRCA2* pathogenic variants, respectively.<sup>3</sup> *PALB2* has been previously considered a moderate-risk gene, but the latest estimate of about 44% lifetime risk associated with pathogenic variants may raise this gene to the high-risk group.<sup>4</sup> Pathogenic variants in moderate-penetrance genes *ATM* and *CHEK2* are also associated with breast cancer, conferring a 20% average lifetime risk.<sup>5,6</sup> Recently, *BARD1*, *RAD51D*, *BRIP1*, and *RAD51C* have been proposed as risk factors for triple-negative breast cancer (TNBC) with *BARD1* and *RAD51D* conferring high risk, and *BRIP1* and *RAD51C* associated with moderate risk.<sup>7</sup> Thus, the risk associated with pathogenic variants in each gene may vary by breast tumor subtype.

Many of the *BRCA/FA* pathway genes when altered by biallelic mutations cause FA disease. The *FANCM* gene (FA complementation group M, OMIM #609644) encodes for a translocase, which is a member of the *BRCA/FA* molecular pathway but has been recently disqualified as a disease-causing factor for FA.<sup>8,9</sup> Some protein-truncating variants in the *FANCM* gene were described as moderate breast cancer risk factors with a greater risk of TNBC. In the Finnish population, *FANCM*:c.5101 C>T (p.Gln1701\*,

rs147021911) is relatively frequent and was reported to be associated with breast cancer with odds ratio (OR) of 1.86 with 95% confidence intervals (CIs) = 1.26–2.75. A larger effect was observed in familial cases (OR = 2.11; 95% CI = 1.43–3.32), for estrogen receptor-negative (ER-negative) breast cancer (OR = 2.37; 95% CI = 1.37–4.12) and for TNBC (OR = 3.56; 95% CI = 1.81–6.98).<sup>10</sup> We showed an increased risk (OR = 3.93; 95% CI = 1.28–12.11) of the *FANCM*:c.5791 C>T (rs144567652) truncating variant using familial cases and controls. In vitro analysis showed that this variant causes the skipping of the *FANCM* exon 22 and the creation of a downstream stop codon (p.Gly1906Alafs12\*).<sup>11</sup> However, in the present study we refer to the *FANCM*:c.5791 C>T base change as to *FANCM*:p.Arg1931\*, which is the conventional amino acid annotation (consistent with the stop codon creation according to genetic code). The *FANCM*:p.Arg1931\* was also found to be associated with TNBC risk in the Finnish population (OR = 5.14; 95% CI = 1.65–16.0).<sup>12</sup> A burden analysis of truncating variants discovered by a re-sequencing analysis of the entire *FANCM* coding region in German cases and controls confirmed that *FANCM* pathogenic variants had a particularly high risk for TNBC (OR = 3.75; 95% CI = 1.0–12.85).<sup>13</sup>

To study the effect of *FANCM* on breast cancer risk further, we tested three recurrent truncating variants *FANCM*:p.Arg658\*, p.Gln1701\*, and p.Arg1931\*, within the OncoArray Consortium, a collaboration of consortia established to discover germline genetic variants predisposing to different human cancers (e.g., breast, colon, lung, ovary, endometrium and prostate cancers).<sup>14</sup> These three variants were tested for association with breast cancer risk in 67,112 breast cancer cases, 53,766 controls, and 26,662 carriers of pathogenic variants in *BRCA1* or *BRCA2*. We also studied the functional effect of these three variants after their lentiviral transduction into a *FANCM*<sup>-/-</sup> patient-derived cell line in which

\*email: paolo.peterlongo@ifom.eu. A full list of authors and their affiliations appears at the end of the paper.

we measured survival and chromosome fragility after exposure to diepoxybutane (DEB) or the poly (ADP-ribose) polymerase inhibitor (PARPi) olaparib.

## RESULTS

### Case-control analyses

We analyzed the association of three *FANCM* truncating variants, p.Arg658\*, p.Gln1701\*, and p.Arg1931\*, with breast cancer risk for each variant separately and using a burden analysis. We tested 67,112 invasive breast cancer cases and 53,766 controls collected by the Breast Cancer Association Consortium (BCAC, <http://bcac.ccge.medschl.cam.ac.uk/>) and 26,662 carriers of *BRCA1* or *BRCA2* pathogenic variants collected by the Consortium of Investigators of Modifiers of *BRCA1/2* (CIMBA, <http://cimba.ccge.medschl.cam.ac.uk/>), of whom 13,497 were affected with breast cancer and 13,165 were unaffected.

In the BCAC dataset we assessed the breast cancer risk associated with the *FANCM* variants in a primary overall analysis and in a restricted analysis including only countries in which the variant carrier frequencies were higher than the median of the frequencies. In these analyses we tested association with the variants in all available invasive breast cancer cases or in the ER-positive, ER-negative and TNBC subgroups (Table 1). In the overall analysis, no evidence of association was observed, either with the presence of any *FANCM* variant or with any of the three variants individually. However, *FANCM*:p.Arg658\* showed a higher heterozygote frequency in ER-negative breast cancer cases (0.093%) than in controls (0.035%) with a greater than two-fold increased breast cancer risk (OR = 2.44, 95% CI = 1.12–5.34,  $P = 0.034$ ). When only TNBC cases were considered, the association was stronger (OR = 3.79, 95% CI = 1.56–9.18,  $P = 0.009$ ). No association with ER-negative breast cancer or TNBC was seen for p.Gln1701\* or p.Arg1931\* or for all mutations combined (Table 1). In the country-restricted analyses, we confirmed the association found for p.Arg658\* with risk of ER-negative disease and TNBC (OR = 2.31, 95% CI = 1.05–5.07,  $P = 0.047$  and OR = 3.56, 95% CI = 1.46–8.69,  $P = 0.011$ , respectively). The restricted set also provided evidence for an association between p.Arg1931\* and ER-negative subgroup (OR = 1.96, 95% CI = 1.24–3.10,  $P = 0.006$ ), though not for TNBC. No significant association was observed for p.Gln1701\* with either subgroups (Table 1).

### Analyses of carriers of *BRCA1* or *BRCA2* pathogenic variants

We found no evidence of associations for *FANCM*:p.Arg658\*, p.Gln1701\*, and p.Arg1931\* truncating variants with breast cancer risk in carriers of *BRCA1* or *BRCA2* pathogenic variants included in CIMBA (Supplementary Table 1). The p.Arg658\* was detected with approximately four-fold higher frequencies in the *BRCA1* affected individuals (0.063%) in comparison to the unaffected (0.013%), and in the *BRCA2* affected individuals (0.071%) in comparison to the unaffected (0.019%). Consistently, hazard ratios (HRs) above two were estimated for *BRCA1* (HR = 2.4, 95% CI = 0.52–11.12) and for *BRCA2* (HR = 2.13, 95% CI = 0.41–11.14) pathogenic variant carriers. The frequencies of p.Gln1701\* and p.Arg1931\* were not increased in affected versus unaffected individuals carrying *BRCA1* or *BRCA2* pathogenic variants (Supplementary Table 1).

### Functional studies

We tested the functional effect of *FANCM*:p.Arg658\*, p.Gln1701\*, and p.Arg1931\* on DNA repair using genetic complementation assays (Fig. 1). These assays were based on the EGF280 cell line derived from immortalized fibroblasts from a patient who lacked the *FANCM* protein due to a homozygous c.1506\_1507insTA (p.Ile503\*, rs764743944) truncating variant.<sup>8</sup> Complemented *FANCM*<sup>-/-</sup> cells were tested for sensitivity to DEB and olaparib

**Table 1.** Single-variant and burden analyses of *FANCM*:p.Arg658\*, p.Gln1701\* and p.Arg1931\* truncating variants in overall and country-restricted invasive breast cancer cases and controls

Subgroup	Overall					
	Carriers	Non-carriers	Freq %	OR	95% CI	P
<i>FANCM</i> :p.Arg658*						
Controls	19	53,717	0.035	NA		
All cases	31	67,038	0.046	1.26	0.71–2.25	0.430
ER-positive	19	44,516	0.043	1.15	0.61–2.20	0.670
ER-negative	10	10,750	0.093	<b>2.44</b>	<b>1.12–5.34</b>	<b>0.034</b>
TNBC	7	4794	0.146	<b>3.79</b>	<b>1.56–9.18</b>	<b>0.009</b>
<i>FANCM</i> :p.Gln1701*						
Controls	122	53,635	0.229	NA		
All cases	155	66,951	0.232	1.09	0.85–1.38	0.798
ER-positive	97	44,467	0.218	1.02	0.78–1.34	0.893
ER-negative	21	10,748	0.204	0.97	0.61–1.56	0.369
TNBC	10	4794	0.229	1.09	0.57–2.10	0.149
<i>FANCM</i> :p.Arg1931*						
Controls	96	53,633	0.179	NA		
All cases	116	66,968	0.173	1.05	0.80–1.38	0.731
ER-positive	74	44,467	0.166	1.02	0.75–1.38	0.920
ER-negative	27	10,742	0.251	1.52	0.98–2.35	0.070
TNBC	10	4795	0.208	1.29	0.67–2.50	0.461
All variants <sup>a</sup>						
Controls	237	53,455	0.443	NA		
All cases	302	66,736	0.452	1.02	0.86–1.21	0.823
ER-positive	190	44,323	0.427	0.96	0.79–1.16	0.698
ER-negative	58	10,700	0.548	1.23	0.92–1.64	0.154
TNBC	27	4773	0.583	1.32	0.89–1.95	0.167
Subgroup	Country-restricted					
	Carriers	Non-carriers	Freq %	OR	95% CI	P
<i>FANCM</i> :p.Arg658*						
Controls	19	48,887	0.039	NA		
All cases	31	59,540	0.052	1.23	0.69–2.20	0.478
ER-positive	19	39,453	0.048	1.12	0.59–2.15	0.722
ER-negative	10	9613	0.104	<b>2.31</b>	<b>1.05–5.07</b>	<b>0.047</b>
TNBC	7	4283	0.163	<b>3.56</b>	<b>1.46–8.69</b>	<b>0.011</b>
<i>FANCM</i> :p.Gln1701*						
Controls	120	48,506	0.249	NA		
All cases	152	58,919	0.259	1.08	0.85–1.38	0.813
ER-positive	96	38,892	0.246	1.02	0.77–1.34	0.895
ER-negative	21	9558	0.230	0.97	0.60–1.56	0.368
TNBC	10	4197	0.261	1.09	0.56–2.10	0.150
<i>FANCM</i> :p.Arg1931*						
Controls	77	34,988	0.220	NA		
All cases	93	37,903	0.245	1.14	0.84–1.54	0.396
ER-positive	59	25,274	0.233	1.09	0.77–1.53	0.632
ER-negative	25	5920	0.421	<b>1.96</b>	<b>1.24–3.10</b>	<b>0.006</b>
TNBC	10	2614	0.381	1.77	0.91–3.45	0.116
All variants <sup>b</sup>						
Controls	NA					
All cases	NA					
ER-positive	NA					

**Table 1** continued

Subgroup	Country-restricted					
	Carriers	Non-carriers	Freq %	OR	95% CI	P
ER-negative	NA					
TNBC	NA					

In bold are indicated the statistically significant results

Freq frequency, OR odds ratio CI confidence interval, P P-value, TNBC triple-negative breast cancer, NA not applicable

<sup>a</sup>The burden analyses were performed by univariate logistic regression

<sup>b</sup>These analyses were not possible in the country-restricted cases and controls as different countries were included for each variant. P-values were from Pearson chi-squared test

by measuring cell survival and chromosome fragility. The FANCM protein was not detectable in the EGF280 fibroblasts. The transduction of these cells with lentiviral vectors carrying wild-type (wt) FANCM cDNA and cDNAs harboring FANCM:p.Gln1701\* and p.Arg1931\* variants produced, as expected, different C-terminal truncated forms of FANCM. In the EGF280 cells transduced with FANCM:p.Arg658\* no visible band was observed on western blot (Fig. 1a and Supplementary Fig. 1). As we lack information on the epitope recognized by the antibody, we could not determine whether the p.Arg658\*-derived truncated protein was unstable or if the epitope was lost due to the truncation. We therefore analyzed the mRNA expression of FANCM:p.Arg658\* by reverse transcription and digestion of the PCR-amplified cDNAs. The c.1972C > T base substitution causing the p.Arg658\* variant was expected to abolish a digestion site for the restriction enzyme *TseI* present in the wt sequence. *TseI*-digestion of wt and mutated cDNAs clearly indicated the presence of a mutated mRNA product in the EGF280 cells transduced with FANCM:p.Arg658\* (Fig. 1b and Supplementary Fig. 1).

In the DEB sensitivity-based assay (Fig. 1c), the EGF280 patient-derived cell line showed a high-sensitivity phenotype, that was rescued by expression of the wt FANCM. EGF280 cells expressing FANCM:p.Arg658\* failed to rescue DEB sensitivity and showed survival rates overlapping with those of the native EGF280 cells. In comparison, cells expressing FANCM:p.Gln1701\* and p.Arg1931\* variants showed an intermediate phenotype with survival rates significantly higher than those of EGF280 cells, though significantly lower than those of the cells expressing wt FANCM (Fig. 1c and Supplementary Table 2). These results were confirmed in the chromosome fragility tests where the number of chromatid breaks in cells harboring p.Gln1701\* or p.Arg1931\* variants was statistically lower than that of EGF280 cells or cells expressing the p.Arg658\* and statistically higher than that of cells expressing wt FANCM (Fig. 1d). In the olaparib sensitivity-based assay, the survival rates of the cell lines transduced with the three FANCM truncating variants were not statistically different. Only at higher olaparib concentrations (>5000 nM) the survival rates of these cell lines were significantly lower than that of the wt FANCM cells and higher than that of the EGF280 cells (Fig. 1e and Supplementary Table 3).

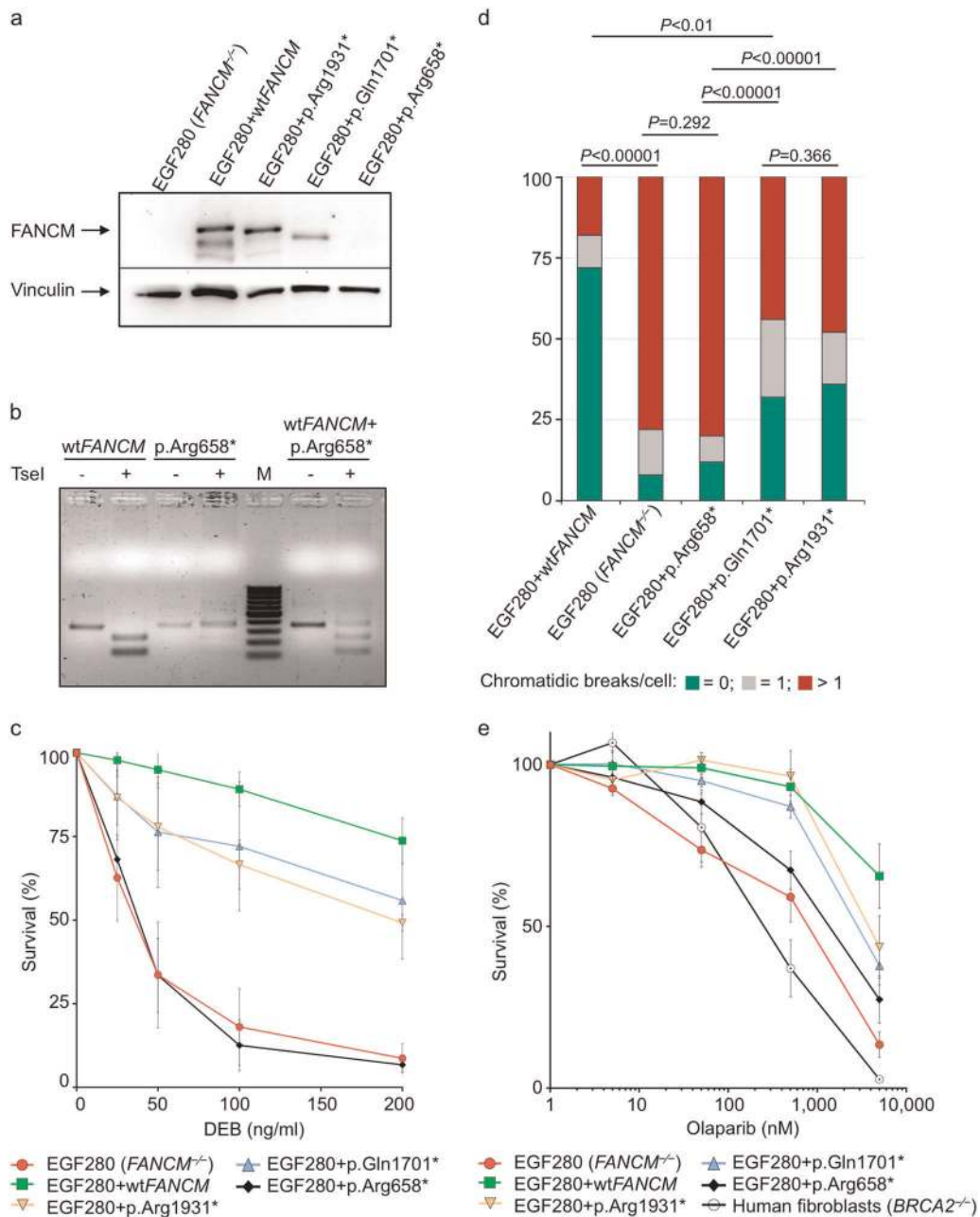
## DISCUSSION

In this study we investigated the association of the three recurrent FANCM truncating variants p.Arg658\*, p.Gln1701\*, and p.Arg1931\*, with breast cancer risk overall and by tumor subtype. While in non-Finnish Europeans these are the three most common FANCM truncating variants, their carrier frequency is low being 0.033, 0.21 and 0.21%, respectively (<https://gnomad.broadinstitute.org/>).<sup>15</sup> We conducted large case-control studies in 67,112 unselected breast cancer cases, 53,766 controls, and 26,662 carriers of BRCA1 or BRCA2 pathogenic variants. Furthermore, we performed functional

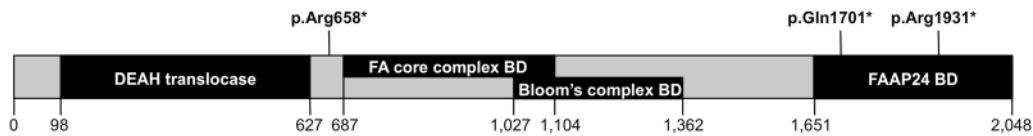
analyses based on a patient-derived FANCM<sup>-/-</sup> cell line transduced with vectors carrying the three FANCM variants and tested for sensitivity to DEB or olaparib. Our genetic data suggest that FANCM:p.Arg658\* is a risk factor for ER-negative and TNBC subtypes with statistically significant ORs of 2.44 and 3.79, respectively. These associations were confirmed when we restricted the analyses to countries with higher carrier frequencies. In these restricted analyses we also found that the p.Arg1931\* was associated with breast cancer risk in the ER-negative subtype with statistically significant OR = 1.96. (Table 1). These data, together with previously published genetic studies,<sup>10–13</sup> confirm that FANCM truncating variants are risk factors for breast cancer, with a stronger association for the ER-negative and TNBC subtypes. Our functional data, obtained in a background of a FANCM null cell line, support these findings showing that all three truncating variants were deleterious; hence, it is expected that, in the heterozygous state, any of these FANCM variants have partial activity. In the functional tests, we also observed that olaparib had a greater effect on survival of the cells harboring any of the FANCM:p.Arg658\*, p.Gln1701\*, or p.Arg1931\* variants with respect to that on EGF280 cells complemented with wt FANCM (Fig. 1e). As this is consistent with previous results,<sup>16</sup> PARP1 inhibition might be a possible therapeutic approach to treat patients with breast tumors associated with germline FANCM pathogenic variants. On the contrary, the DEB sensitivity assays showed that FANCM:p.Arg658\* is associated with a stronger impairment of DNA repair activity, compared to p.Gln1701\* and p.Arg1931\*, possibly reflecting the position of protein truncation (Fig. 1c, d).

FANCM encodes for a key protein of the upstream FA/BRCA pathway mediating the assembly of the FA core complex. This protein is 2048 AA long, possesses in its N-terminal region an intrinsic ATP-dependent DNA translocase activity and, with its central region, recognizes the Bloom's complex, which is also involved in the DNA HR repair. By interacting with its C-terminal binding partner, the FA associated protein 24 (FAAP24), the FANCM protein brings to sites of ICL DNA lesions the FA and the Bloom's complexes initiating HR repair<sup>17</sup> (Fig. 2). We studied FANCM:p.Arg658\*, p.Gln1701\*, and p.Arg1931\* in the same genetic FANCM<sup>-/-</sup> background and showed that, after exposure to DEB, the N-terminal FANCM:p.Arg658\* had a statistically stronger effect on cell survival and chromosome stability (presumably due to less efficient DNA repair activity) than did p.Gln1701\* and p.Arg1931\*. This also suggests that in human living cells the FANCM:p.Arg658\* variant might impair DNA repair more severely than p.Gln1701\* and p.Arg1931\*. We have shown that in vitro both the p.Gln1701\*- and the p.Arg1931\*-derived FANCM proteins are expressed and that the p.Arg658\*-mRNA is transcribed (Fig. 1a, b). An N-terminus fragment including the first 422 AA of FANCM was shown to be stable when expressed in human cell lines,<sup>17</sup> thus supporting the possibility that the FANCM:p.Arg658\*-derived protein may also be expressed and stable. Hence, we hypothesize that the observed difference in survival and chromosome fragility of cells treated with DEB may be attributable to the diverse residual function of the different truncated forms of FANCM. In fact, the p.Gln1701\*- and the p.Arg1931\*-derived forms are expected to lose the interaction with FAAP24, but to retain the ability of binding other FANCM interacting proteins. Hence, our data suggest that the lack of interaction between FANCM and FAAP24 has a less severe impact on the DNA damage response than when protein truncation occurs upstream the FANCM domains AA 687–1104 and AA 1027–1362 mediating the interaction with the FA core complex and the Bloom's complex, respectively.

Previously published genetic and clinical data support our hypothesis of a position effect. FANCM pathogenic variants were shown to be associated with a moderate risk of developing high-grade serous epithelial ovarian cancer, but p.Arg1931\* appeared to confer a lower risk.<sup>18</sup> Moreover, five female breast cancer



**Fig. 1** Functional studies of the FANCM:p.Arg658\*, p.Gln1701\* and p.Arg1931\* truncating variants using the patient-derived FANCM<sup>-/-</sup> EGF280 cell line. **a** Western blot showing the FANCM expression in EGF280 cells complemented with lentiviral vectors harboring the three different variants. Bands corresponding to truncated FANCM protein were visible for EGF280 + p.Gln1701\* and p.Arg1931\*, and no bands were present for the EGF280 + p.Arg658\*. **b** Study of the expression of the FANCM protein in EGF280 + p.Arg658\*. The c.1972C > T base substitution, causing the p.Arg658\* variant abrogates a digestion site for the restriction enzyme Tsel that is present in the wild-type (wt) cDNA sequence. Total RNA was extracted from EGF280 + wtFANCM and from the EGF280 + p.Arg658\* and subjected to reverse transcription. PCR-amplified cDNA products were digested with Tsel. Digested and undigested cDNAs were loaded. In the first two lanes are shown bands of 386 bp corresponding to uncut wt cDNA, and bands of 257 and 129 bp corresponding to cut wt cDNA. In next two lanes bands of 386 bp indicate that p.Arg658\* cDNA was not cut due to the c.1972C > T base substitution abrogating the Tsel site. In the two lanes after the molecular weight marker (M) undigested and digested products of the two previous PCR products were mixed 1:1 and loaded as a control. **c** Analysis of diepoxybutane (DEB) sensitivity on cell survival. The EGF280 cells expressing p.Arg658\* are significantly more sensitive to DEB than the cells expressing p.Gln1701\* or p.Arg1931\* (*P*-values from Tukey's range test are reported in Supplementary Table 4). EGF280 and EGF280 + wtFANCM are used as controls (*N* = 3; error bars: standard deviation). **d** Chromosome fragility induced by DEB treatment (100 ng/ml). Here, the chromatidic break patterns of the cells expressing wt FANCM, of the cells harboring p.Gln1701\* or p.Arg1931\* variants, and of the native EGF280 cells or the cells expressing p.Arg658\* were statistically different. (*P*-values from chi-squared test; *N* = 2). **e** Analysis of cellular sensitivity to olaparib. Contrarily to what we observed in the DEB sensitivity assays, survival rates of the different complemented cell lines were apparently not different. Human fibroblasts (BRCA2<sup>-/-</sup>) were homozygous for the c.469 A > T (p.Lys157\*) truncating variant and were used as a positive control. (*P*-values from Tukey's range test are reported in Supplementary Table 5; *N* = 3; error bars: standard deviation). All blots derive from the same experiment and were processed in parallel



**Fig. 2** Schematic diagram of the 2,048 amino acid long FANCM protein. The functional or binding domains (BD) are indicated in black and as reported in Deans and West, 2009. The position of the three FANCM truncating variants c.1972C > T (p.Arg658\*), c.5101 C > T (p.Gln1701\*) and c.5791 C > T (p.Arg1931\*) is also shown

proband carrying homozygous FANCM truncating variants were recently described.<sup>9</sup> Three of these, two homozygous for p.Gln1701\*, and one for p.Arg1931\*, developed breast cancer at age 52 years or later and their cells did not demonstrate chromosome fragility. The other two probands were homozygous for p.Arg658\* and developed early-onset breast cancer (at age 29 and 32); in addition, one developed several cancers, and the other demonstrated chromosomal fragility.<sup>9</sup>

Due to the rarity of the studied mutations in most populations, estimation of the risks is challenging. Preferably, the cases should be examined in comparison to geographically, ethnically and genetically matched controls. In the Finnish population, p.Gln1701\* and p.Arg1931\* are reported with carrier frequency of 1.62% and of 0.92%, respectively (<https://gnomad.broadinstitute.org/>).<sup>15</sup> Case-control studies based on the Finnish population showed a strong statistical evidence of association of p.Gln1701\* with ER-negative disease, with OR of 2.37 (95% CI = 1.37–4.12,  $P = 0.0021$ ), and with TNBC with ORs of 3.56 (95% CI = 1.81–6.98,  $P = 0.0002$ ),<sup>10</sup> while p.Arg1931\* was found associated with TNBC with an OR of 5.14 (95% CI = 1.65–16.0,  $P = 0.005$ ).<sup>12</sup> However, as our 95% CI of risk estimates for TNBC included odds ratios of 2 for both the latter mutations, the published and our results are not mutually exclusive. Risk estimates associated with rare variants may depend on their frequency and the genetic background of the population studied. Hence, pooling the data from multiple outbred and admixed populations as it was done in the present study, may yield different risk estimates than those derived from geographically, ethnically and genetically matched controls, as in the Finnish studies. Indeed, it would have been interesting to test the FANCM variant position effect in the Finnish population, but unfortunately the p.Arg658\* is very rare if not absent in this population (<https://gnomad.broadinstitute.org/>).<sup>15</sup>

Recent attempts to identify novel, high- to moderate-risk breast cancer-predisposing genes have not been particularly fruitful. However, a few genes have emerged as potential risk factors for ER-negative disease and TNBC, with FANCM, BRIP1, and RAD51C being among those suggested to confer moderate risk of these subtypes. Other predisposing genes increasing the risk of ER-negative and TNBC may also exist. Hence, further gene discovery efforts should take into consideration that risk-associated variants may be associated with specific tumor subtypes and/or variation in risk may depend on the variant position. In addition, we provide evidence that lack of FANCM protein and truncating variants identified in breast cancer patients are associated with increased sensitivity to the PARPi olaparib suggesting a therapeutic opportunity to treat FANCM-associated breast tumors that warrants further investigation. The PARPi sensitivity test may also prove useful for preclinical investigation of further truncating or missense FANCM variants.

In summary, we have shown that FANCM:p.Arg658\* is associated with risk of ER-negative breast cancer and TNBC. The outcomes of functional assays testing the DNA repair efficiency in complemented human cells support the hypothesis that breast cancer risk may be greater for N-terminal than C-terminal FANCM truncating variants. Further genetic studies and meta-analyses are warranted to derive more precise risk estimates for the different FANCM variants.

## METHODS

### Study participants

The individuals included in this study were women of genetically confirmed European ancestry who were originally ascertained in 73 case-control studies from 19 countries participating in the BCAC or in 59 studies enrolling BRCA1 or BRCA2 pathogenic variants carrier from 30 countries participating in the CIMBA.

### Ethics

All participating studies, listed in Supplementary Table 4 and Supplementary Table 5, were approved by their ethics review boards and followed national guidelines for informed consent. However, due to the retrospective nature of the majority of the studies, not all participant individuals have provided written informed consent to take part in the present analysis. The Milan Breast Cancer Study Group (MBCSG) was approved by ethics committee from Istituto Nazionale dei Tumori di Milano and Istituto Europeo di Oncologia, in Milan.

The BCAC studies contributed 67,112 invasive breast cancer cases and 53,766 controls. The majority of these studies were population-based, hospital-based or case-control studies nested within population-based cohorts (86%); few were family-clinic-based studies (14%; Supplementary Table 4). For each study subject, information on the disease status and the age at diagnosis or at interview were provided. Data on lifestyle risk factors were available for most subjects and clinical and pathological data were available for most cases. All these data were incorporated in the BCAC dataset (version 10). A total of 44,565 (66%) cases were ER-positive, 10,770 (16%) were ER-negative, and 4,805 (7%) were TNBC; 13,743 (20%) had a positive first-degree family history of breast cancer.

The CIMBA studies contributed 15,679 carriers of a pathogenic BRCA1 variant and 10,983 carriers of a pathogenic BRCA2 variant to this analysis (Supplementary Table 5). Nearly all (98%) of these carriers were ascertained through cancer genetic clinics; few carriers were recruited by population-based sampling of cases or by community recruitment. In some instances, multiple members of the same family were included. For each pathogenic variant carrier, the information on the type of the BRCA1 or BRCA2 variant, disease status, and censoring variables (see below, *Statistical analyses*) were collected and included in the CIMBA database.

### Genotyping

Genotyping of FANCM:p.Arg658\*, p.Gln1701\*, and p.Arg1931\* truncating variants was conducted using a custom-designed Illumina genotyping array (the “OncoArray”, Illumina, Inc. San Diego, CA, USA) at six independent laboratories. To ensure consistency of the genotype data, all laboratories used the same genotype-clustering file and genotyped the same set of reference-samples selected from the HapMap project. Samples with a call rate <95% and those with heterozygosity <5% or >40% were excluded. Further details of the genotype-calling and quality control have been described previously.<sup>14</sup> The cluster plots of the three FANCM truncating variants were curated manually to confirm the automatic calls (Supplementary Fig. 2).

### Statistical analyses

The BCAC data were analyzed to test the association between FANCM:p.Arg658\*, p.Gln1701\*, and p.Arg1931\* and breast cancer risk. Logistic regression analyses were performed to estimate ORs with 95% CIs for variant carriers versus non-carriers, adjusting for country and the first ten principal components, as previously described.<sup>19</sup>  $P$ -values were calculated by applying the likelihood ratio test (LRT) comparing the model containing the variant carrier status as a covariate to a model without the variant carrier status. The primary analyses were performed including all invasive breast cancer cases and controls and subgrouping cases based on tumor hormonal status. We then performed a country-restricted analysis

including the 50% of the countries with the higher variant carrier frequencies. Specifically, we included only countries in which the carrier frequencies in cases and controls combined were higher than the median of the carrier frequencies observed in all countries. Median frequencies were 0.007, 0.114 and 0.163 for p.Arg658\*, p.Gln1701\* and p.Arg1931\* carriers, respectively.

The CIMBA data were analyzed to evaluate the association between each *FANCM* truncating variant and breast cancer risk in carriers of *BRCA1* or *BRCA2* pathogenic variant. A survival analyses framework was applied. Briefly, each variant carrier was followed from the age of 18 years until the first breast cancer diagnosis, or censored as unaffected at ovarian cancer diagnosis, bilateral prophylactic mastectomy, or age at last follow-up. The analyses were performed by modelling the retrospective likelihood of the observed genotypes conditional on the disease phenotype as detailed previously.<sup>40</sup> All analyses were stratified for country. The per-allele hazard ratio (HR), 95% CIs were estimated separately for each variant. A score test was used to derive *P*-values for the associations. The analyses of the BCAC data were performed using STATA version 15 (StataCorp LLC, College Station, Texas, USA). The analyses of the CIMBA data were carried out using custom-written code in Python and Fortran. All statistical tests were two-sided and *P*-values <0.05 were considered statistically significant.

### Cell lines, plasmids, and lentiviral particles production and transduction

The immortalized patient-derived *FANCM*<sup>-/-</sup> cell line EGF280<sup>8</sup> was transduced with pLenti CMV rTA3 Blast, a gift from E. Campeau (Addgene plasmid #26429). The doxycycline-inducible lentiviral vector pLVX-TRE3G-FANCM, a gift from N. Ameziane (Vrije Universiteit Medical Center, Amsterdam) was mutated by site-directed mutagenesis using the QuickChange II XL Site-Directed Mutagenesis Kit (Agilent Technologies) and the following PAGE purified mutagenic primers. *FANCM* c.1972C>T primer 1: 5'-GCCTTCTCGGAAGTGCAGTGAAAGTCATCTATCTTTCC-3' and primer 2: 5'-GGAAAAGATAGATGACTTTCACTGCAAGTCCGAGAAGGC-3' for the p.Arg658\*; *FANCM* c.5101C>T primer 1: 5'-TAAACAATGGTCC-TATTGTTTGTCTTAAACAGTGCTTGGGT-3' and primer 2: 5'-ACCCAAGCACTGTTAAGAAGAACAACAATAGGACCATTGTTAA-3' for the p.Gln1701\*. Generation of the lentiviral vector containing the *FANCM*:c.5791C>T (p.Arg1931\*) and transduction of the EGF280 cells were already described.<sup>11</sup> Expression of exogenous *FANCM* protein was achieved supplementing cell culture medium with doxycycline (1 µg/ml, final concentration). All the cell lines used in this study were routinely checked for mycoplasma contamination using the MycoAlert™ Mycoplasma Detection Kit (Lonza).

### Western blot and mRNA expression studies

Cell lysis and western blot assays were performed as previously described.<sup>8</sup> The following primary antibodies were used: mouse monoclonal anti-FANCM antibody, clone CV5.1 diluted 1:100 (ref: MAB545, MERCK Millipore), mouse monoclonal anti-Vinculin diluted 1:3000 (ref: ab18058, abcam). Western blotting detection was achieved with Luminata™ Classic (Millipore) (Vinculin) and LuminataForte™ (Millipore) (*FANCM*). We used RT-PCR to test the expression of the mutant *FANCM*:p.Arg658\*. Total RNA was extracted (RNeasy Mini Kit Qiagen) from the wt*FANCM* and *FANCM*:p.Arg658\* transduced EGF280 cell lines. Reverse transcription was performed using High-Capacity RNA-to-cDNA Kit (ThermoFisher); a cDNA region corresponding to the *FANCM* sequence containing the amino acid (AA) position Arg658 was amplified by PCR using the forward: 5'-AGTAACAGGCAGGTCCTTCA-3' and reverse: 5'-TGATCTGCCACAGTCTCCA-3' primers. The 386 bp PCR products were then digested with *TseI* restriction enzyme (New England Biolabs) for two hours at 65 °C and analyzed by standard agarose gel electrophoresis.

### Cell survival assay

The effect of the different *FANCM* variants on cell survival was measured with a Sulforhodamine B (SRB) assay.<sup>21</sup> One-thousand cells were seeded in 96-well plates and treated constantly with DEB or PARPi olaparib at the indicated concentrations until untreated cells reached confluency. Cell monolayers were fixed overnight at 4 °C with 75 µl of 20% trichloroacetic acid (TCA). TCA was aspirated, and cells washed with tap water. Once dried, 50 µl of SRB was added to the wells and plates were incubated on a shaker at room temperature for 30 min. The excess of SRB dye was removed by washing repeatedly with 1% acetic acid, the plates were dried for 20 min, and the protein-bound dye was dissolved in 10 mM Tris for OD determination at 492 nm using a microplate reader (Tecan Sunrise™,

Tecan Group Ltd. Männedorf, Switzerland). At least three independent experiments were performed for each cell line and in each experiment, 12 wells were measured per concentration point. These results were statistically analyzed using the Prism (GraphPad) software. Two-Way ANOVA test was used for single comparisons between different cell lines and statistical significance was assessed with the Tukey's range test. A *P*-value < 0.05 was considered statistically significant.

### Chromosome fragility test

Chromosome fragility test was performed as previously described.<sup>11</sup> Twenty-five metaphases were scored for chromosome breakages using the Metafer Slide Scanning Platform from Metasystems. Results were graphed as distributions of metaphases presenting 0, 1, and >1 chromatid break. Statistical analysis was performed applying chi-squared test.

### Reporting summary

Further information on research design is available in the Nature Research Reporting Summary

### DATA AVAILABILITY

A subset of the genotype data analysed in this study is publicly available from the dbGaP repository and can be accessed at <https://identifiers.org/dbgap:phs001265.v1.p1> (data generated as part of the BCAC studies) and at <https://identifiers.org/dbgap:phs001321.v1.p1> (data generated as part of the CIMBA studies). The remaining genotype data analysed in this study (and generated as part of the BCAC and CIMBA studies listed in Supplementary Tables 4 and 5 of the related article, respectively) are not publicly available due to restraints imposed by the ethics committees of individual studies, but can be accessed from the corresponding author on reasonable request as described at <https://doi.org/10.6084/m9.figshare.8982296>.<sup>22</sup> Additional datasets generated during this study (and supporting Fig. 1 and Supplementary Tables 2 and 3 in the published article) are available on request as described above. The data generated and analyzed during this study are described in the following data record: <https://doi.org/10.6084/m9.figshare.8982296>.<sup>22</sup>

Received: 29 March 2019; Accepted: 30 August 2019;

Published online: 01 November 2019

### REFERENCES

- Boglioli, M. & Surrallés, J. Fanconi anemia: a model disease for studies on human genetics and advanced therapeutics. *Curr. Opin. Genet. Dev.* **33**, 32–40 (2015).
- Michl, J., Zimmer, J. & Tarsounas, M. Interplay between Fanconi anemia and homologous recombination pathways in genome integrity. *EMBO J.* **35**, 909–923 (2016).
- Kuchenbaecker, K. B. et al. Risks of breast, ovarian, and contralateral breast cancer for *BRCA1* and *BRCA2* mutation carriers. *JAMA* **317**, 2402–2416 (2017).
- Antoniou, A. C. et al. Breast-cancer risk in families with mutations in *PALB2*. *N. Engl. J. Med.* **371**, 497–506 (2014).
- Easton, D. F. et al. Gene-panel sequencing and the prediction of breast-cancer risk. *N. Engl. J. Med.* **372**, 2243–2257 (2015).
- Schmidt, M. K. et al. Age- and tumor subtype-specific breast cancer risk estimates for *CHEK2*\*1100delC carriers. *J. Clin. Oncol.* **34**, 2750–2760 (2016).
- Shimelis, H. et al. Triple-negative breast cancer risk genes identified by multigene hereditary cancer panel testing. *J. Natl Cancer Inst.* **110**, 855–862 (2018).
- Boglioli, M. et al. Biallelic truncating *FANCM* mutations cause early-onset cancer but not Fanconi anemia. *Genet. Med.* **20**, 458–463 (2018).
- Catucci, I. et al. Individuals with *FANCM* biallelic mutations do not develop Fanconi anemia, but show risk for breast cancer, chemotherapy toxicity and may display chromosome fragility. *Genet. Med.* **20**, 452–457 (2018).
- Kiiski, J. I. et al. Exome sequencing identifies *FANCM* as a susceptibility gene for triple-negative breast cancer. *Proc. Natl Acad. Sci. USA* **111**, 15172–15177 (2014).
- Peterlongo, P. et al. *FANCM* c.5791C>T nonsense mutation (rs144567652) induces exon skipping, affects DNA repair activity and is a familial breast cancer risk factor. *Hum. Mol. Genet.* **24**, 5345–5355 (2015).
- Kiiski, J. I. et al. *FANCM* mutation c.5791C>T is a risk factor for triple-negative breast cancer in the Finnish population. *Breast Cancer Res. Treat.* **166**, 217–226 (2017).
- Neidhardt, G. et al. Association between loss-of-function mutations within the *FANCM* gene and early-onset familial breast cancer. *JAMA Oncol.* **3**, 1245–1248 (2017).

14. Amos, C. I. et al. The OncoArray consortium: a network for understanding the genetic architecture of common cancers. *Cancer Epidemiol. Biomark. Prev.* **26**, 126–135 (2017).
15. Lek, M. et al. Analysis of protein-coding genetic variation in 60,706 humans. *Nature* **536**, 285–291 (2016).
16. Stoepker, C. et al. DNA helicases FANCM and DDX11 are determinants of PARP inhibitor sensitivity. *DNA Repair (Amst.)* **26**, 54–64 (2015).
17. Deans, A. J. & West, S. C. FANCM connects the genome instability disorders Bloom's Syndrome and Fanconi Anemia. *Mol. Cell* **36**, 943–953 (2009).
18. Dicks, E. et al. Germline whole exome sequencing and large-scale replication identifies FANCM as a likely high grade serous ovarian cancer susceptibility gene. *Oncotarget* **8**, 50930–50940 (2017).
19. Michailidou, K. et al. Association analysis identifies 65 new breast cancer risk loci. *Nature* **551**, 92–94 (2017).
20. Antoniou, A. C. et al. RAD51 135G>C modifies breast cancer risk among BRCA2 mutation carriers: results from a combined analysis of 19 studies. *Am. J. Hum. Genet.* **81**, 1186–1200 (2007).
21. Vichai, V. & Kirtikara, K. Sulforhodamine B colorimetric assay for cytotoxicity screening. *Nat. Protoc.* **1**, 1112–1116 (2006).
22. Figlioli, G. et al. Metadata supporting data files of the related manuscript: The FANCM:p.Arg658\* truncating variant is associated with risk of triple-negative breast cancer. figshare. <https://doi.org/10.6084/m9.figshare.8982296> (2019).

## ACKNOWLEDGEMENTS

Peterlongo laboratory is supported by Associazione Italiana Ricerca sul Cancro (AIRC; IG2015 no.16732) to P. Peterlongo and by a fellowship from Fondazione Umberto Veronesi to G. Figlioli. Surrallés laboratory is supported by the ICREA-Academia program, the Spanish Ministry of Health (projects FANCOSTEM and FANCOLEN), the Spanish Ministry of Economy and Competitiveness (projects CB06/07/0023 and RTI2018-098419-B-I00), the European Commission (EUROFANCOLEN project HEALTH-F5-2012-305421 and P-SPHERE COFUND project), the Fanconi Anemia Research Fund Inc, and the “Fondo Europeo de Desarrollo Regional, una manera de hacer Europa” (FEDER). CIBERER is an initiative of the Instituto de Salud Carlos III, Spain. **BCAC**: we thank all the individuals who took part in these studies and all the researchers, clinicians, technicians and administrative staff who have enabled this work to be carried out. **ABCFS** thank Maggie Angelakos, Judi Maskiell, Tu Nguyen-Dumont is a National Breast Cancer Foundation (Australia) Career Development Fellow. **ABCS** thanks the Blood bank Sanquin, The Netherlands. Samples are made available to researchers on a non-exclusive basis. **BCEES** thanks Allyson Thomson, Christobel Saunders, Terry Slevin, BreastScreen Western Australia, Elizabeth Wylie, Rachel Lloyd. The **BCINIS** study would not have been possible without the contributions of Dr. Hedy Rennert, Dr. K. Landsman, Dr. N. Gronich, Dr. A. Flugelman, Dr. W. Saliba, Dr. E. Liani, Dr. I. Cohen, Dr. S. Kalet, Dr. V. Friedman, Dr. O. Barnet of the NICCC in Haifa, and all the contributing family medicine, surgery, pathology and oncology teams in all medical institutes in Northern Israel. The **BREGOGAN** study would not have been possible without the contributions of the following: Manuela Gago-Dominguez, Jose Esteban Castela, Angel Carracedo, Victor Muñoz Garzón, Alejandro Novo Domínguez, María Elena Martínez, Sara Miranda Ponte, Carmen Redondo Marey, Maite Peña Fernández, Manuel Enquix Castelo, María Torres, Manuel Calaza (BREGOGAN), José Antúnez, Máximo Fraga and the staff of the Department of Pathology and Biobank of the University Hospital Complex of Santiago-CHUS, Instituto de Investigación Sanitaria de Santiago, IDIS, Xerencia de Xestión Integrada de Santiago-SERGAS; Joaquín González-Carrero and the staff of the Department of Pathology and Biobank of University Hospital Complex of Vigo, Instituto de Investigación Biomedica Galicia Sur, SERGAS, Vigo, Spain. **BSUCH** thanks Peter Bugert, Medical Faculty Mannheim. **CBCS** thanks study participants, co-investigators, collaborators and staff of the Canadian Breast Cancer Study, and project coordinators Agnes Lai and Celine Morissette. **CCGP** thanks Styliani Apostolaki, Anna Margioliaki, Georgios Nintos, Maria Perraki, Georgia Saloustrou, Georgia Sevastaki, Konstantinos Pompodakis. **CGPS** thanks staff and participants of the Copenhagen General Population Study. For the excellent technical assistance: Dorte Uldall Andersen, Maria Birna Arnadóttir, Anne Bank, Dorte Kjeldgård Hansen. The Danish Cancer Biobank is acknowledged for providing infrastructure for the collection of blood samples for the cases. Investigators from the **CPS-II** cohort thank the participants and Study Management Group for their invaluable contributions to this research. They also acknowledge the contribution to this study from central cancer registries supported through the Centers for Disease Control and Prevention National Program of Cancer Registries, as well as cancer registries supported by the National Cancer Institute Surveillance Epidemiology and End Results program. The **CTS** Steering Committee includes Leslie Bernstein, Susan Neuhausen, James Lacey, Sophia Wang, Huiyan Ma, and Jessica Clague DeHart at the Beckman Research Institute of City of Hope, Dennis Deapen, Rich Pinder, and Eunjung Lee at the University of Southern California, Pam Horn-Ross, Peggy Reynolds, Christina Clarke Dur and David Nelson at the Cancer Prevention Institute of California, Hoda Anton-Culver, Argyrios Ziogas, and

Hannah Park at the University of California Irvine, and Fred Schumacher at Case Western University. **DIETCOMPLYF** thanks the patients, nurses and clinical staff involved in the study. The DietComplyf study was funded by the charity Against Breast Cancer (Registered Charity Number 1121258) and the NCRN. We thank the participants and the investigators of **EPIC** (European Prospective Investigation into Cancer and Nutrition). **ESTHER** thanks Hartwig Ziegler, Sonja Wolf, Volker Herrmann, Christa Stegmaier, Katja Butterbach. **FHRISK** thanks NIHR for funding. GC-HBOC thanks Stefanie Engert, Heide Hellebrand, Sandra Kröber and LIFE - Leipzig Research Centre for Civilization Diseases (Markus Loeffler, Joachim Thiery, Matthias Nüchter, Ronny Baber). The **GENICA** Network: Dr. Margarete Fischer-Bosch-Institute of Clinical Pharmacology, Stuttgart, and University of Tübingen, Germany [HB, Wing-Yee Lo], German Cancer Consortium (DKTK) and German Cancer Research Center (DKFZ) [HB], Deutsche Forschungsgemeinschaft (DFG, German Research Foundation) under Germany's Excellence Strategy - EXC 2180 - 390900677 [HB], Department of Internal Medicine, Evangelische Kliniken Bonn gGmbH, Johanniter Krankenhaus, Bonn, Germany [Yon-Dschun Ko, Christian Baisch], Institute of Pathology, University of Bonn, Germany [Hans-Peter Fischer], Molecular Genetics of Breast Cancer, Deutsches Krebsforschungszentrum (DKFZ), Heidelberg, Germany [Ute Hamann], Institute for Prevention and Occupational Medicine of the German Social Accident Insurance, Institute of the Ruhr University Bochum (IPA), Bochum, Germany [TB, Beate Pesch, Sylvia Rabstein, Anne Lotz]; and Institute of Occupational Medicine and Maritime Medicine, University Medical Center Hamburg-Eppendorf, Germany [Volker Harth]. **HABCs** thanks Michael Bremer. **HEBCS** thanks Heidi Toiminen, Kristina Aittomäki, Irja Erkkilä and Outi Malkavaara. **HMBCS** thanks Peter Hillemanns, Hans Christiansen and Johann H. Karstens. **HUBCS** thanks Shamil Gantsev. **KARMA** thanks the Swedish Medical Research Counsel. **KBCP** thanks Eija Myöhänen, Helena Kemiläinen. **LMBC** thanks Gilian Peuteman, Thomas Van Brussel, EvyVanderheyden and Kathleen Corthouts. **MABCs** thanks Milena Jakimovska (RCGEB “Georgi D. Efremov), Katerina Kubelka, Mitko Karadzov (Adzibadem-Sistina” Hospital), Andrej Arsovski and Liljana Stojanovska (Re-Medika” Hospital) for their contributions and commitment to this study. **MARIE** thanks Petra Seibold, Dieter Flesch-Janys, Judith Heinz, Nadia Obi, Alina Vrieling, Sabine Behrens, Ursula Eilber, Muhabbet Celik, Til Olchers and Stefan Nickels. **MBCSG** (Milan Breast Cancer Study Group) thanks Daniela Zaffaroni, Irene Feroce, and the personnel of the Cogentech Cancer Genetic Test Laboratory. We thank the coordinators, the research staff and especially the **MMHS** participants for their continued collaboration on research studies in breast cancer. **MSKCC** thanks Marina Corines and Lauren Jacobs. **MTLGEBCS** would like to thank Martine Tranchant (CHU de Québec Research Center), Marie-France Valois, Annie Turgeon and Lea Heguy (McGill University Health Center, Royal Victoria Hospital; McGill University) for DNA extraction, sample management and skillful technical assistance. J.S. is Chairholder of the Canada Research Chair in Oncogenetics. **NBHS** thanks study participants and research staff for their contributions and commitment to the studies. We would like to thank the participants and staff of the Nurses' Health Study and Nurses' Health Study II for their valuable contributions as well as the following state cancer registries for their help: AL, AZ, AR, CA, CO, CT, DE, FL, GA, ID, IL, IN, IA, KY, LA, ME, MD, MA, MI, NE, NH, NJ, NY, NC, ND, OH, OK, OR, PA, RI, SC, TN, TX, VA, WA, WY. The study protocol was approved by the institutional review boards of the Brigham and Women's Hospital and Harvard T.H. Chan School of Public Health, and those of participating registries as required. The authors assume full responsibility for analyses and interpretation of these data. **OFBCR** thanks Teresa Selander and Nayana Weerasooriya. **ORIGO** thanks E. Krol-Warmerdam, and J. Blom for patient accrual, administering questionnaires, and managing clinical information. **PBCS** thanks Louise Brinton, Mark Sherman, Neonila Szeszenia-Dabrowska, Beata Peplonska, Witold Zatonski, Pei Chao and Michael Stagner. The ethical approval for the **POSH** study is MREC /00/6/69, UKCRN ID: 1137. We thank staff in the Experimental Cancer Medicine Centre (ECMC) supported Faculty of Medicine Tissue Bank and the Faculty of Medicine DNA Banking resource. **PREFACE** thanks Sonja Oeser and Silke Landrith. **PROCAS** thanks NIHR for funding. **RBCS** thanks Petra Bos, Jannet Blom, Ellen Crepin, Elisabeth Huijskens, Anja Kromwijk-Nieuwlaet, Annette Heemskerck, the Erasmus MC Family Cancer Clinic. We thank the **SEARCH** and **EPIC** teams. **SKKDKFZS** thanks all study participants, clinicians, family doctors, researchers and technicians for their contributions and commitment to this study. We thank the **SUCCESS** study teams in Munich, Duesseldorf, Erlangen and Ulm. **SZBCS** thanks Ewa Putresza. **UCIBCS** thanks Irene Masunaka. **UKBGS** thanks Breast Cancer Now and the Institute of Cancer Research for support and funding of the Breakthrough Generations Study, and the study participants, study staff, and the doctors, nurses and other health care providers and health information sources who have contributed to the study. We acknowledge NHS funding to the Royal Marsden/ICR NIHR Biomedical Research Centre. **CIMBA**: we are grateful to all the families and clinicians who contribute to the studies; Sue Healey, in particular taking on the task of mutation classification with the late Olga Sinilnikova; Maggie Angelakos, Judi Maskiell, Helen Tsimiklis; members and participants in the New York site of the Breast Cancer Family Registry; members and participants in the Ontario Familial Breast Cancer Registry; Vilijus Rudaitis and Laimonas Griškevičius; Yuan Chun Ding and Linda Steele for their work in participant enrollment and biospecimen and data management; Bent Ejertsen and Anne-Marie

Gerdes for the recruitment and genetic counseling of participants; Alicia Barroso, Rosario Alonso and Guillermo Pita; all the individuals and the researchers who took part in **CONSTIT TEAM** (Consorzio Italiano Tumori Ereditari Alla Mammella), thanks in particular: Giulia Cagnoli, Roberta Villa, Irene Feroce, Mariarosaria Calvello, Riccardo Dolcetti, Giuseppe Giannini, Laura Papi, Gabriele Lorenzo Capone, Liliana Varesco, Viviana Gismondi, Maria Grazia Tibiletti, Daniela Furlan, Antonella Savarese, Aline Martayan, Stefania Tommasi, Brunella Pilato, Isabella Marchi, Elena Bandieri, Antonio Russo, Daniele Calistri and the personnel of the Cogentech Cancer Genetic Test Laboratory, Milan, Italy. **FPGMX**: members of the Cancer Genetics group (IDIS): Ana Blanco, Miguel Aguado, Uxía Esperón and Belinda Rodríguez. We thank all participants, clinicians, family doctors, researchers, and technicians for their contributions and commitment to the DKFZ study and the collaborating groups in Lahore, Pakistan (Noor Muhammad, Sidra Gull, Seerat Bajwa, Faiz Ali Khan, Humaira Naeemi, Saima Faisal, Asif Loya, Mohammed Asim Yusuf) and Bogota, Colombia (Diana Torres, Ignacio Briceño, Fabio Gil). Genetic Modifiers of Cancer Risk in BRCA1/2 Mutation Carriers (**GEMO**) study is a study from the National Cancer Genetics Network UNICANCER Genetic Group, France. We wish to pay a tribute to Olga M. Sinilnikova, who with Dominique Stoppa-Lyonnet initiated and coordinated GEMO until she sadly passed away on the 30th June 2014. The team in Lyon (Olga Sinilnikova, Mélanie Léoné, Laure Barjhoux, Carole Verny-Pierre, Sylvie Mazoyer, Francesca Damiola, Valérie Sorinin) managed the GEMO samples until the biological resource centre was transferred to Paris in December 2015 (Noura Mebirouk, Fabienne Lesueur, Dominique Stoppa-Lyonnet). We want to thank all the GEMO collaborating groups for their contribution to this study. Drs. Sofia Khan, Irja Erkkilä and Virpi Palola; The Hereditary Breast and Ovarian Cancer Research Group Netherlands (**HEBON**) consists of the following Collaborating Centers: Netherlands Cancer Institute (coordinating center), Amsterdam, NL: M.A. Rookus, F.B.L. Hogervorst, F.E. van Leeuwen, M.A. Adank, M.K. Schmidt, N.S. Russell, D.J. Jenner; Erasmus Medical Center, Rotterdam, NL: J.M. Collée, A.M.W. van den Ouweland, M.J. Hoening, C.M. Seynaeve, C.H.M. van Deurzen, I.M. Obdeijn; Leiden University Medical Center, NL: C.J. van Asperen, P. Devilee, T.C.T.E.F. van Cronenburg; Radboud University Nijmegen Medical Center, NL: C.M. Kets, A.R. Mensenkamp; University Medical Center Utrecht, NL: M.G.E.M. Ausems, M.J. Koudijs; Amsterdam Medical Center, NL: C.M. Aalfs, H.E.J. Meijers-Heijboer; VU University Medical Center, Amsterdam, NL: K. van Engelen, J.J.P. Gille; Maastricht University Medical Center, NL: E.B. Gómez-García, M.J. Blok; University of Groningen, NL: J.C. Oosterwijk, A.H. van der Hout, M.J. Mourits, G.H. de Bock; The Netherlands Comprehensive Cancer Organisation (IKNL): S. Siesling, J. Verloop; The nationwide network and registry of histo- and cytopathology in The Netherlands (PALGA): A.W. van den Belt-Dusebout. HEBON thanks the study participants and the registration teams of IKNL and PALGA for part of the data collection. Overbeek; the Hungarian Breast and Ovarian Cancer Study Group members (Janos Papp, Aniko Bozsik, Zoltan Matrai, Miklos Kasler, Judit Franko, Maria Balogh, Gabriella Domokos, Judit Ferenczi, Department of Molecular Genetics, National Institute of Oncology, Budapest, Hungary) and the clinicians and patients for their contributions to this study; **HVH** (University Hospital Vall d'Hebron) the authors acknowledge the Oncogenetics Group (VHIO) and the High Risk and Cancer Prevention Unit of the University Hospital Vall d'Hebron, Miguel Servet Program (CP10/00617), and the Cellex Foundation for providing research facilities and equipment; the ICO Hereditary Cancer Program team led by Dr. Gabriel Capella; the **ICO** Hereditary Cancer Program team led by Dr. Gabriel Capella; Dr Martine Dumont for sample management and skillful assistance; Catarina Santos and Pedro Pinto; members of the Center of Molecular Diagnosis, Oncogenetics Department and Molecular Oncology Research Center of Barretos Cancer Hospital; Heather Thorne, Eveline Niedermayr, all the **kConFab** investigators, research nurses and staff, the heads and staff of the Family Cancer Clinics, and the Clinical Follow Up Study (which has received funding from the NHMRC, the National Breast Cancer Foundation, Cancer Australia, and the National Institute of Health (USA)) for their contributions to this resource, and the many families who contribute to kConFab; the investigators of the Australia New Zealand **NRG Oncology** group; members and participants in the Ontario Cancer Genetics Network; Kevin Sweet, Caroline Craven, Julia Cooper, Amber Aielts, and Michelle O'Conor; Christina Selkirk; Helena Jernström, Karin Henriksson, Katja Harbst, Maria Soller, Ulf Kristofferson; from Gothenburg Sahlgrenska University Hospital: Anna Öfverholm, Margareta Nordling, Per Karlsson, Zakaria Einbeigi; from Stockholm and Karolinska University Hospital: Anna von Wachenfeldt, Annelie Liljegren, Annika Lindblom, Brita Arver, Gisela Barbany Bustinza; from Umeå University Hospital: Beatrice Melin, Christina Edwinsdotter Ardnor, Monica Emanuelsson; from Uppsala University: Hans Ehrencrona, Maritta Hellström Pigg, Richard Rosenquist; from Linköping University Hospital: Marie Stenmark-Askmal, Sigrun Liedgren; Cecilia Zvocec, Qun Niu; Joyce Seldon and Lorna Kwan; Dr. Robert Nussbaum, Beth Crawford, Kate Loranger, Julie Mak, Nicola Stewart, Robin Lee, Amie Blanco and Peggy Conrad and Salina Chan; Carole Pye, Patricia Harrington and Eva Wozniak. **OSUCCG** thanks Kevin Sweet, Caroline Craven, Julia Cooper, Michelle O'Conor and Amber Aielts. **BCAC** is funded by Cancer Research UK [C1287/A16563, C1287/A10118], the European Union's Horizon 2020 Research and Innovation Programme (grant numbers 634935 and 633784 for BRIDGES and B-CAST

respectively), and by the European Community's Seventh Framework Programme under grant agreement number 223175 (grant number HEALTH-F2-2009-223175) (COGS). The EU Horizon 2020 Research and Innovation Programme funding source had no role in study design, data collection, data analysis, data interpretation or writing of the report. Genotyping of the **OncoArray** was funded by the NIH Grant U19 CA148065, and Cancer UK Grant C1287/A16563 and the PERSPECTIVE project supported by the Government of Canada through Genome Canada and the Canadian Institutes of Health Research (grant GPH-129344) and, the Ministère de l'Économie, Science et Innovation du Québec through Genome Québec and the PSRSIIRI-701 grant, and the Quebec Breast Cancer Foundation. The Australian Breast Cancer Family Study (**ABCFS**) was supported by grant UM1 CA164920 from the National Cancer Institute (USA). The content of this manuscript does not necessarily reflect the views or policies of the National Cancer Institute or any of the collaborating centers in the Breast Cancer Family Registry (BCFR), nor does mention of trade names, commercial products, or organizations imply endorsement by the USA Government or the BCFR. The ABCFS was also supported by the National Health and Medical Research Council of Australia, the New South Wales Cancer Council, the Victorian Health Promotion Foundation (Australia) and the Victorian Breast Cancer Research Consortium. J.L.H. is a National Health and Medical Research Council (NHMRC) Senior Principal Research Fellow. M.C.S. is a NHMRC Senior Research Fellow. The **ABCS** study was supported by the Dutch Cancer Society [grants NKI 2007-3839; 2009 4363]. The Australian Breast Cancer Tissue Bank (**ABCTB**) was supported by the National Health and Medical Research Council of Australia, The Cancer Institute NSW and the National Breast Cancer Foundation. The **AHS** study is supported by the intramural research program of the National Institutes of Health, the National Cancer Institute (grant number Z01-CP010119), and the National Institute of Environmental Health Sciences (grant number Z01-ES049030). The work of the **BBCC** was partly funded by ELAN-Fond of the University Hospital of Erlangen. The **BBCS** is funded by Cancer Research UK and Breast Cancer Now and acknowledges NHS funding to the NIHR Biomedical Research Centre, and the National Cancer Research Network (NCRN). The **BCES** was funded by the National Health and Medical Research Council, Australia and the Cancer Council Western Australia. For the **BCFR-NY**, **BCFR-PA**, **BCFR-UT** this work was supported by grant UM1 CA164920 from the National Cancer Institute. The content of this manuscript does not necessarily reflect the views or policies of the National Cancer Institute or any of the collaborating centers in the Breast Cancer Family Registry (BCFR), nor does mention of trade names, commercial products, or organizations imply endorsement by the US Government or the BCFR. **BCINIS** study was funded by the BCRF (The Breast Cancer Research Foundation, USA). The BREast Oncology GALician Network (**BREOGAN**) is funded by Acción Estratégica de Salud del Instituto de Salud Carlos III FIS PI12/02125/Cofinanciado FEDER; Acción Estratégica de Salud del Instituto de Salud Carlos III FIS Intrasalud (PI13/01136); Programa Grupos Emergentes, Cancer Genetics Unit, Instituto de Investigación Biomedica Galicia Sur. Xerencia de Xestión Integrada de Vigo-SERGIS, Instituto de Salud Carlos III, Spain; Grant 10CSA012E, Consellería de Industria Programa Sectorial de Investigación Aplicada, PEME I + D e I + D Suma del Plan Gallego de Investigación, Desarrollo e Innovación Tecnológica de la Consellería de Industria de la Xunta de Galicia, Spain; Grant EC11-192. Fomento de la Investigación Clínica Independiente, Ministerio de Sanidad, Servicios Sociales e Igualdad, Spain; and Grant FEDER-Innterconecta. Ministerio de Economía y Competitividad, Xunta de Galicia, Spain. The **BSUCH** study was supported by the Dietmar-Hopp Foundation, the Helmholtz Society and the German Cancer Research Center (DKFZ). Sample collection and processing was funded in part by grants from the National Cancer Institute (NCI R01CA120120 and K24CA169004). **CBCS** is funded by the Canadian Cancer Society (grant # 313404) and the Canadian Institutes of Health Research. **CCGP** is supported by funding from the University of Crete. The **CECILE** study was supported by Fondation de France, Institut National du Cancer (INCa), Ligue Nationale contre le Cancer, Agence Nationale de Sécurité Sanitaire, de l'Alimentation, de l'Environnement et du Travail (ANSES), Agence Nationale de la Recherche (ANR). The **CGPS** was supported by the Chief Physician Johan Boserup and Lise Boserup Fund, the Danish Medical Research Council, and Herlev and Gentofte Hospital. The American Cancer Society funds the creation, maintenance, and updating of the **CPS-II** cohort. The **CTS** was initially supported by the California Breast Cancer Act of 1993 and the California Breast Cancer Research Fund (contract 97-10500) and is currently funded through the National Institutes of Health (R01 CA77398, K05 CA136967, UM1 CA164917, and U01 CA199277). Collection of cancer incidence data was supported by the California Department of Public Health as part of the statewide cancer reporting program mandated by California Health and Safety Code Section 103885. The University of Westminster curates the **DietCompLyf** database funded by Against Breast Cancer Registered Charity No. 1121258 and the NCRN. The coordination of **EPIC** is financially supported by the European Commission (DG-SANCO) and the International Agency for Research on Cancer. The national cohorts are supported by: Ligue Contre le Cancer, Institut Gustave Roussy, Mutuelle Générale de l'Éducation Nationale, Institut National de la Santé et de la Recherche Médicale (INSERM) (France); German Cancer Aid, German Cancer Research Center (DKFZ), Federal Ministry of Education and Research (BMBF) (Germany); the Hellenic Health Foundation, the Stavros Niarchos



Foundation (Greece); Associazione Italiana per la Ricerca sul Cancro-AIRC-Italy and National Research Council (Italy); Dutch Ministry of Public Health, Welfare and Sports (VWS), Netherlands Cancer Registry (NKR), LK Research Funds, Dutch Prevention Funds, Dutch ZON (Zorg Onderzoek Nederland), World Cancer Research Fund (WCRF), Statistics Netherlands (The Netherlands); Health Research Fund (FIS), PI13/00061 to Granada, PI13/01162 to EPIC-Murcia, Regional Governments of Andalucía, Asturias, Basque Country, Murcia and Navarra, ISCIII RETIC (RD06/0020) (Spain); Cancer Research UK (14136 to EPIC-Norfolk; C570/A16491 and C8221/A19170 to EPIC-Oxford), Medical Research Council (1000143 to EPIC-Norfolk, MR/M012190/1 to EPIC-Oxford) (United Kingdom). The **ESTHER** study was supported by a grant from the Baden Württemberg Ministry of Science, Research and Arts. Additional cases were recruited in the context of the VERDI study, which was supported by a grant from the German Cancer Aid (Deutsche Krebshilfe). **FHRISK** is funded from NIHR grant PGfAR 0707-10031. The **GC-HBOC** (German Consortium of Hereditary Breast and Ovarian Cancer) is supported by the German Cancer Aid (grant no 110837, coordinator: Rita K. Schmutzler, Cologne). This work was also funded by the European Regional Development Fund and Free State of Saxony, Germany (LIFE - Leipzig Research Centre for Civilization Diseases, project numbers 713-241202, 713-241202, 14505/2470, 14575/2470). The **GENICA** was funded by the Federal Ministry of Education and Research (BMBF) Germany grants 01KW9975/5, 01KW9976/8, 01KW9977/0 and 01KW0114, the Robert Bosch Foundation, Stuttgart, Deutsches Krebsforschungszentrum (DKFZ), Heidelberg, the Institute for Prevention and Occupational Medicine of the German Social Accident Insurance, Institute of the Ruhr University Bochum (IPA), Bochum, as well as the Department of Internal Medicine, Evangelische Kliniken Bonn gGmbH, Johanniter Krankenhaus, Bonn, Germany. The **GEPARSIXTO** study was conducted by the German Breast Group GmbH. The **GESBC** was supported by the Deutsche Krebshilfe e. V. [70492] and the German Cancer Research Center (DKFZ). The **HABCS** study was supported by the Claudia von Schilling Foundation for Breast Cancer Research, by the Lower Saxonian Cancer Society, and by the Rudolf Bartling Foundation. The **HEBCS** was financially supported by the Helsinki University Central Hospital Research Fund, Academy of Finland (266528), the Finnish Cancer Society, and the Sigrid Juselius Foundation. The **HMBCS** was supported by a grant from the German Research Foundation (Do 761/10-1). The **HUBCS** was supported by a grant from the German Federal Ministry of Research and Education (RUS08/017), and by the Russian Foundation for Basic Research and the Federal Agency for Scientific Organizations for support the Bioresource collections and RFBR grants 14-04-97088, 17-29-06014 and 17-44-020498. E.K was supported by the program for support the bioresource collections #N007-030164/2 and study was performed as part of the assignment of the Ministry of Science and Higher Education of Russian Federation (№AAAA-A16-116020350032-1). Financial support for **KARBAC** was provided through the regional agreement on medical training and clinical research (ALF) between Stockholm County Council and Karolinska Institutet, the Swedish Cancer Society, The Gustav V Jubilee foundation and Bert von Kantzows foundation. The **KARMA** study was supported by Märit and Hans Rausings Initiative Against Breast Cancer. The **KBCP** was financially supported by the special Government Funding (EVO) of Kuopio University Hospital grants, Cancer Fund of North Savo, the Finnish Cancer Organizations, and by the strategic funding of the University of Eastern Finland. **LMBC** is supported by the 'Stichting tegen Kanker'. DL is supported by the FWO. The **MABCS** study is funded by the Research Centre for Genetic Engineering and Biotechnology "Georgi D. Efremov" and supported by the German Academic Exchange Program, DAAD. The **MARIE** study was supported by the Deutsche Krebshilfe e.V. [70-2892-BR I, 106332, 108253, 108419, 110826, 110828], the Hamburg Cancer Society, the German Cancer Research Center (DKFZ) and the Federal Ministry of Education and Research (BMBF) Germany [01KH0402]. **MBCSG** is supported by grants from the Italian Association for Cancer Research (AIRC) and by funds from the Italian citizens who allocated the 5/1000 share of their tax payment in support of the Fondazione IRCCS Istituto Nazionale Tumori, according to Italian laws (INT-Institutional strategic projects "5 x 1000"). The **MCBCS** was supported by the NIH grants CA192393, CA116167, CA176785 an NIH Specialized Program of Research Excellence (SPORE) in Breast Cancer [CA116201], and the Breast Cancer Research Foundation and a generous gift from the David F. and Margaret T. Grohne Family Foundation. **MCCS** cohort recruitment was funded by VicHealth and Cancer Council Victoria. The MCCS was further supported by Australian NHMRC grants 209057 and 396414, and by infrastructure provided by Cancer Council Victoria. Cases and their vital status were ascertained through the Victorian Cancer Registry (VCR) and the Australian Institute of Health and Welfare (AIHW), including the National Death Index and the Australian Cancer Database. The **MEC** was supported by NIH grants CA63464, CA54281, CA098758, CA132839 and CA164973. The **MISS** study is supported by funding from ERC-2011-294576 Advanced grant, Swedish Cancer Society, Swedish Research Council, Local hospital funds, Berta Kamprad Foundation, Gunnar Nilsson. The **MMHS** study was supported by NIH grants CA97396, CA128931, CA116201, CA140286 and CA177150. **MSKCC** is supported by grants from the Breast Cancer Research Foundation and Robert and Kate Niehaus Clinical Cancer Genetics Initiative. The work of **MTLGBCS** was supported by the Quebec Breast Cancer Foundation, the Canadian Institutes of Health Research for the "CIHR Team in Familial Risks of Breast

Cancer" program – grant # CRN-87521 and the Ministry of Economic Development, Innovation and Export Trade – grant # PSR-SIIRI-701. The **NBHS** was supported by NIH grant R01CA100374. Biological sample preparation was conducted the Survey and Biospecimen Shared Resource, which is supported by P30 CA68485. The Northern California Breast Cancer Family Registry (**NC-BCFR**) and Ontario Familial Breast Cancer Registry (**OFBCR**) were supported by grant UM1 CA164920 from the National Cancer Institute (USA). The content of this manuscript does not necessarily reflect the views or policies of the National Cancer Institute or any of the collaborating centers in the Breast Cancer Family Registry (BCFR), nor does mention of trade names, commercial products, or organizations imply endorsement by the USA Government or the BCFR. The Carolina Breast Cancer Study was funded by Komen Foundation, the National Cancer Institute (P50 CA058223, U54 CA156733, U01 CA179715), and the North Carolina University Cancer Research Fund. The **NHS** was supported by NIH grants P01 CA87969, UM1 CA186107, and U19 CA148065. The **NHS2** was supported by NIH grants UM1 CA176726 and U19 CA148065. The **ORIGO** study was supported by the Dutch Cancer Society (RUL 1997-1505) and the Biobanking and Biomolecular Resources Research Infrastructure (BBMRI-NL CP16). The **PBCS** was funded by Intramural Research Funds of the National Cancer Institute, Department of Health and Human Services, USA. Genotyping for **PLCO** was supported by the Intramural Research Program of the National Institutes of Health, NCI, Division of Cancer Epidemiology and Genetics. The **PLCO** is supported by the Intramural Research Program of the Division of Cancer Epidemiology and Genetics and supported by contracts from the Division of Cancer Prevention, National Cancer Institute, National Institutes of Health. The **POSH** study is funded by Cancer Research UK (grants C1275/A11699, C1275/C22524, C1275/A19187, C1275/A15956 and Breast Cancer Campaign 2010PR62, 2013PR044. **PROCAS** is funded from NIHR grant PGfAR 0707-10031. The **RBCS** was funded by the Dutch Cancer Society (DDHK 2004-3124, DDHK 2009-4318). **SEARCH** is funded by Cancer Research UK [C490/A10124, C490/A16561] and supported by the UK National Institute for Health Research Biomedical Research Centre at the University of Cambridge. The University of Cambridge has received salary support for PDDP from the NHS in the East of England through the Clinical Academic Reserve. The Sister Study (**SISTER**) is supported by the Intramural Research Program of the NIH, National Institute of Environmental Health Sciences (Z01-ES044005 and Z01-ES049033). The Two Sister Study (**2SISTER**) was supported by the Intramural Research Program of the NIH, National Institute of Environmental Health Sciences (Z01-ES044005 and Z01-ES102245), and, also by a grant from Susan G. Komen for the Cure, grant FAS0703856. **SKDKFZS** is supported by the DKFZ. The **SMC** is funded by the Swedish Cancer Foundation and the Swedish Research Council [grant 2017-00644 for the Swedish Infrastructure for Medical Population-based Life-course Environmental Research (SIMPLER)]. The **SZBCS** is financially supported under the program of Minister of Science and Higher Education "Regional Initiative of Excellence" in years 2019-2022, Grant No 002/RID/2018/19. The **TNBCC** was supported by: a Specialized Program of Research Excellence (SPORE) in Breast Cancer (CA116201), a grant from the Breast Cancer Research Foundation, a generous gift from the David F. and Margaret T. Grohne Family Foundation. The **UCIBCS** component of this research was supported by the NIH [CA58860, CA92044] and the Lon V Smith Foundation [LVS39420]. The **UKBGS** is funded by Breast Cancer Now and the Institute of Cancer Research (ICR), London. ICR acknowledges NHS funding to the NIHR Biomedical Research Centre. The **UKOPS** study was funded by The Eve Appeal (The Oak Foundation) and supported by the National Institute for Health Research University College London Hospitals Biomedical Research Centre. The **USRT** Study was funded by Intramural Research Funds of the National Cancer Institute, Department of Health and Human Services, USA. **CIMBA** **CIMBA**: The CIMBA data management and data analysis were supported by Cancer Research – UK grants C12292/A20861, C12292/A11174. ACA is a Cancer Research -UK Senior Cancer Research Fellow. GCT and ABS are NHMRC Research Fellows. The **PERSPECTIVE** project was supported by the Government of Canada through Genome Canada and the Canadian Institutes of Health Research, the Ministry of Economy, Science and Innovation through Genome Québec, and The Quebec Breast Cancer Foundation. **BCFR**: UM1 CA164920 from the National Cancer Institute. The content of this manuscript does not necessarily reflect the views or policies of the National Cancer Institute or any of the collaborating centers in the Breast Cancer Family Registry (BCFR), nor does mention of trade names, commercial products, or organizations imply endorsement by the US Government or the BCFR. **BFBCC**: Lithuania (BFBCC-LT): Research Council of Lithuania grant SEN-18/2015 and Nr. P-MIP-19-164. **BIDMC**: Breast Cancer Research Foundation. **BMBSA**: Cancer Association of South Africa (PI Elizabeth J. van Rensburg). **CNIO**: Spanish Ministry of Health PI16/00440 supported by FEDER funds, the Spanish Ministry of Economy and Competitiveness (MINECO) SAF2014-57680-R and the Spanish Research Network on Rare diseases (CIBERER). **COH-CCGRN**: Research reported in this publication was supported by the National Cancer Institute of the National Institutes of Health under grant number R25CA112486, and RC4CA153828 (PI: J. Weitzel) from the National Cancer Institute and the Office of the Director, National Institutes of Health. The content is solely the responsibility of the authors and does not necessarily represent the official views of the National Institutes of Health. **CONSTIT TEAM**: Associazione Italiana Ricerca sul

Cancro (AIRC; IG2014 no.15547) to P. Radice. Funds from Italian citizens who allocated the 5 × 1000 share of their tax payment in support of the Fondazione IRCCS Istituto Nazionale Tumori, according to Italian laws (INT-Institutional strategic projects '5 × 1000') to S. Manoukian. **UNIROMA1**: Italian Association for Cancer Research (AIRC; grant no. 21389) to L. Ottini. **DFKZ**: German Cancer Research Center. **EMBRACE**: Cancer Research UK Grants C1287/A10118 and C1287/A11990. D. Gareth Evans and Fiona Laloo are supported by an NIHR grant to the Biomedical Research Centre, Manchester (IS-BRC-1215-20007). The Investigators at The Institute of Cancer Research and The Royal Marsden NHS Foundation Trust are supported by an NIHR grant to the Biomedical Research Centre at The Institute of Cancer Research and The Royal Marsden NHS Foundation Trust. Ros Eeles and Elizabeth Bancroft are supported by Cancer Research UK Grant C5047/A8385. Ros Eeles is also supported by NIHR support to the Biomedical Research Centre at The Institute of Cancer Research and The Royal Marsden NHS Foundation Trust. **FCCC**: NIH/NCI grant P30-CA006927. The University of Kansas Cancer Center (P30 CA168524) and the Kansas Bioscience Authority Eminent Scholar Program. A.K.G. was funded by R01CA140323, R01CA214545, and by the Chancellors Distinguished Chair in Biomedical Sciences Professorship. Ana Vega is supported by the Spanish Health Research Foundation, Instituto de Salud Carlos III (ISCIII), partially supported by FEDER funds through Research Activity Intensification Program (contract grant numbers: INT15/00070, INT16/00154, INT17/00133), and through Centro de Investigación Biomédica en Red de Enfermedades Raras CIBERER (ACCI 2016: ER17P1AC7112/2018); Autonomous Government of Galicia (Consolidation and structuring program: IN607B), and by the Fundación Mutua Madrileña (call 2018). **GC-HBOC**: German Cancer Aid (grant no 110837, Rita K. Schmutzler) and the European Regional Development Fund and Free State of Saxony, Germany (LIFE - Leipzig Research Centre for Civilization Diseases, project numbers 713-241202, 713-241202, 14505/2470, 14575/2470). **GEMO**: Ligue Nationale Contre le Cancer; the Association "Le cancer du sein, parlons-en!" Award, the Canadian Institutes of Health Research for the "CIHR Team in Familial Risks of Breast Cancer" program, the French National Institute of Cancer (INCa) (grants AOR 01 082, 2013-1-BCB-01-ICH-1 and SHS-E-SP 18-015) and the Fondation ARC pour la recherche sur le cancer (grant PJA 20151203365). **GEORGETOWN**: the Survey, Recruitment and Biospecimen Shared Resource at Georgetown University (NIH/NCI grant P30-CA051008) and the Fisher Center for Hereditary Cancer and Clinical Genomics Research. **HCSC**: Spanish Ministry of Health PI15/00059, PI16/01292, and CB-161200301 CIBERONC from ISCIII (Spain), partially supported by European Regional Development FEDER funds. **HEBCS**: Helsinki University Hospital Research Fund, Academy of Finland (266528), the Finnish Cancer Society and the Sigrid Juselius Foundation. **HEBON**: the Dutch Cancer Society grants NKI1998-1854, NKI2004-3088, NKI2007-3756, the Netherlands Organization of Scientific Research grant NWO 91109024, the Pink Ribbon grants 110005 and 2014-187.WO76, the BBMRI grant NWO 184.021.007/CP46 and the Transcan grant JTC 2012 Cancer 12-054. **HUNBOCS**: Hungarian Research Grants KTIIA-OTKA CK-80745 and NKFI\_OTKA K-112228. **HVH** (University Hospital Vall d'Hebron) This work was supported by Spanish Instituto de Salud Carlos III (ISCIII) funding, an initiative of the Spanish Ministry of Economy and Innovation partially supported by European Regional Development FEDER Funds: FIS P112/02585 and P115/00355. **ICO**: The authors would like to particularly acknowledge the support of the Asociación Española Contra el Cáncer (AECC), the Instituto de Salud Carlos III (organismo adscrito al Ministerio de Economía y Competitividad) and "Fondo Europeo de Desarrollo Regional (FEDER), una manera de hacer Europa" (P110/01422, P113/00285, PIE13/00022, P115/00854, P116/00563, P18/01029, and CIBERONC) and the Institut Català de la Salut and Autonomous Government of Catalonia (2009SGR290, 2014SGR338, 2017SGR449, and PERIS Project MedPerCan), and CERCA program. **IHCC**: PBZ\_KBN\_122/P05/2004. **ILUH**: Icelandic Association "Walking for Breast Cancer Research" and by the Landspítali University Hospital Research Fund. **INHERIT**: Canadian Institutes of Health Research for the "CIHR Team in Familial Risks of Breast Cancer" program – grant # CRN-87521 and the Ministry of Economic Development, Innovation and Export Trade – grant # PSR-SIIRI-701. **IOVHBOCS**: Ministero della Salute and "5 × 1000" Istituto Oncologico Veneto grant. **IPOBCS**: Liga Portuguesa Contra o Cancro. **kConFab**: The National Breast Cancer Foundation, and previously by the National Health and Medical Research Council (NHMRC), the Queensland Cancer Fund, the Cancer Councils of New South Wales, Victoria, Tasmania and South Australia, and the Cancer Foundation of Western Australia. **MAYO**: NIH grants CA116167, CA192393 and CA176785, an NCI Specialized Program of Research Excellence (SPORE) in Breast Cancer (CA116201), and a grant from the Breast Cancer Research Foundation. **MCGILL**: Jewish General Hospital Weekend to End Breast Cancer, Quebec Ministry of Economic Development, Innovation and Export Trade. Marc Tischkowitz is supported by the funded by the European Union Seventh Framework Program (2007Y2013)/European Research Council (Grant No. 310018). **MSKCC**: the Breast Cancer Research Foundation, the Robert and Kate Niehaus Clinical Cancer Genetics Initiative, the Andrew Sabin Research Fund and a Cancer Center Support Grant/Core Grant (P30 CA008748). **NCI**: the Intramural Research Program of the US National Cancer Institute, NIH, and by support services contracts NO2-CP-11019-50, NO2-CP-21013-63 and NO2-CP-65504 with Westat, Inc, Rockville, MD. **NNPIO**: the Russian Foundation for Basic Research

(grants 17-54-12007, 17-00-00171 and 18-515-45012). **NRG Oncology**: U10 CA180868, NRG SDMC grant U10 CA180822, NRG Administrative Office and the NRG Tissue Bank (CA 27469), the NRG Statistical and Data Center (CA 37517) and the Intramural Research Program, NCI. **OSUCCG**: was funded by the Ohio State University Comprehensive Cancer Center. **PBCS**: Italian Association of Cancer Research (AIRC) [IG 2013 N.14477] and Tuscany Institute for Tumors (ITT) grant 2014-2015-2016. **SMC**: the Israeli Cancer Association. **SWE-BRCA**: the Swedish Cancer Society. **UCHICAGO**: NCI Specialized Program of Research Excellence (SPORE) in Breast Cancer (CA125183), R01 CA142996, 1U01CA161032 and by the Ralph and Marion Falk Medical Research Trust, the Entertainment Industry Fund National Women's Cancer Research Alliance and the Breast Cancer research Foundation. **UCSF**: UCSF Cancer Risk Program and Helen Diller Family Comprehensive Cancer Center. **UKFOCR**: Cancer Research UK. **UPENN**: National Institutes of Health (NIH) (R01-CA102776 and R01-CA083855; Breast Cancer Research Foundation; Susan G. Komen Foundation for the cure, Basser Research Center for BRCA. **UPITT/MWH**: Hackers for Hope Pittsburgh. **VFCTG**: Victorian Cancer Agency, Cancer Australia, National Breast Cancer Foundation. **WCP**: Dr Karlan is funded by the American Cancer Society Early Detection Professorship (SIOP-06-258-01-COUN) and the National Center for Advancing Translational Sciences (NCATS), Grant UL1TR000124.

## AUTHOR CONTRIBUTIONS

G.F. and M.B. contributed equally to this work as first author. J.S. and P.P. contributed equally to this work as last author. Conceived the study: G.F., M.B., I.C., P.R., H.N., J.S., P.P. Wrote the manuscript: G.F., P.P. Contributed to manuscript writing: M.B., T.A.M., A. J.S., M.H.G., W.K.C., R.L.M., G.C.T., T.D., M.K.S., D.F.E., P.R., H.N. Conceived, designed or obtained financial support for the OncoArray: P.K., J.S., D.F.E., A.C. Data management: D.R., J.D., K.M., M.K.B., G.L., A.M.D., L.M., M.T.P., A.C.A. Statistical analyses: G.F., J.I.K., H.N., P.P. Functional analyses: M.B., L.C., S.V.L., R.P., J.S. Provided DNA samples and/or phenotypic data: C.M.A., M.A.A., J.A., S.A., C.A.A., B.A.A., T.A., K.A., C.B.A., L.A., H.A.-C., N.N.A., V.A., N.A., K.J.A., B.K.A., E.A., B.A., P.A., J.Az., J.B., R.B.B., D.B., J.B., L.E.B.F., C.J.B., M.W.B., S.B., J.Bar., R.B., M.B., A.M.B., C.B., N.V.B., A.B., S.E.B., B.B., A.Bor., A.F.B., H.B., H.Br., T.B., B.Bu., S.S.B., T.C., A.C., M.A.C., D.C., I.G.C., F.C., J.E.C., J.C.-C., S.J.C., K.B.M.C., C.L.C., A.Co., T.A.C., D.G.C., C.C., K.C., M.B.D., M.dH., P.D., O.D., Y.C.D., G.S. D., N.D., S.M.D., C.M.D., I.d-S-S., K.D., M.D., D.M.E., A.B.E., A.H.E., C.E., M.E., D.G.E., P.A.F., J.F., H.F., W.D.F., T.M.F., E.F., M.G., P.G., M.G.-D., C.G., S.M.G., J.G., M.M.C., J.A.G.-S., M.M.G., S.A.G., G.G.G., G.G., A.K.G., M.S.G., D.E.G., P.Gu., A.G.-B., L.H., C.A.H., N.H., P.H., U.H., P.A. H., A.H., J.H., P.Hi., A.Ho., J.L.H., H.D.H.-III, A.How., C.H., P.J.H., D.J.H., E.N.I., C.I., M.J., A.J., P.J., R.J., W.J., E.M.J., M.E.J., A.Ju., R.K., B.Y.K., E.K., C.M.K., I.K., S.K., P.K., D.L., C.L., L.L.M., J.L., F.L., J.Li., J.T.L., K.H.L., R.N.L., J.Lu., A.M., M.M., S.Ma., J.W.M.M., T.M., D.O., N.M., A.Me., U.M., A.Mi., M.Mo., K.L.N., S.L.N., W.G.N., T.N.-D., F.C.N., S.N., L.N.-Z., K.O., E.O., O.I. O., A.F.O., J.E.O., H.O., A.O., L.O., B.P., A.P., J.P., D.P.-K., T.P., N.P., M.A.P., K.P., B.R., J.R., M.U.R., R.R.-M., G.R., H.S.R., V.R., A.R., M.A.R., E.A.R., M.R., V.Ru., M.Ru., E.S., K.S., M.S., M.T. S., R.K.S., M.Sc., C.S., L.S., M.Sh., P.S., X-O.S., J.S., C.F.S., C.So., P.So., M.C.S., J.J.S., L.St., D.S.-L., W.J.T., M.R.T., M.B.T., M.T., J.T., D.L.T., M.Ti., R.A.E.M.T., D.T., M.A.T., T.T., N.T., M.U., C.M. V., E.J.v.R., E.M.v.V., A.V., A.Vi., B.W., J.N.W., C.W., G.W., A.W., X.R.Y., W.Z., A.Z., K.K.Z., A.M. D., M.L., Q.W., L.M., M.T.P. P.D.P.P., F.F., A.E.T., I.L.A., S.J.R., A.J.S., M.H.G., W.K.C., R.L.M., G.C.T., T.D., M.K.S. D.F.E., P.R., E.H., A.C.A., F.J.C., H.N., P.P. All authors read and approved the final version of the manuscript.

## COMPETING INTERESTS

C.I. reports consulting with AstraZeneca and Pfizer and her institution receives research support for Tesaro, AstraZeneca, and Pfizer. B.Y.K. served on Invitae Corporation's Advisory Board from 2017 to 2018. K.P. reports receiving fee, paid to his institution, for lectures and/or participation in advisory board of AstraZeneca and Pfizer and travel support from AstraZeneca and Pfizer. Jordi Surrallés' institution received research support from Rocket Pharmaceuticals. The remaining authors declare no competing interests.

## ADDITIONAL INFORMATION

**Supplementary information** is available for this paper at <https://doi.org/10.1038/s41523-019-0127-5>.

**Correspondence** and requests for materials should be addressed to P.P.

**Reprints and permission information** is available at <http://www.nature.com/reprints>

**Publisher's note** Springer Nature remains neutral with regard to jurisdictional claims in published maps and institutional affiliations.



**Open Access** This article is licensed under a Creative Commons Attribution 4.0 International License, which permits use, sharing, adaptation, distribution and reproduction in any medium or format, as long as you give appropriate credit to the original author(s) and the source, provide a link to the Creative Commons license, and indicate if changes were made. The images or other third party material in this article are included in the article's Creative Commons license, unless indicated otherwise in a credit line to the material. If material is not included in the

article's Creative Commons license and your intended use is not permitted by statutory regulation or exceeds the permitted use, you will need to obtain permission directly from the copyright holder. To view a copy of this license, visit <http://creativecommons.org/licenses/by/4.0/>.

© The Author(s) 2019

Gisella Figlioli<sup>1,3,33</sup>, Massimo Bogliolo<sup>2,3,4,33,33</sup>, Irene Catucci<sup>1</sup>, Laura Caleca<sup>5</sup>, Sandra Viz Lasheras<sup>2</sup>, Roser Pujol<sup>2,3,4</sup>, Johanna I. Kiiski<sup>6</sup>, Taru A. Muranen<sup>6</sup>, Daniel R. Barnes<sup>7</sup>, Joe Dennis<sup>7</sup>, Kyriaki Michailidou<sup>7,8</sup>, Manjeet K. Bolla<sup>7</sup>, Goska Leslie<sup>7</sup>, Cora M. Aalfs<sup>9</sup>, ABCTB Investigators, Muriel A. Adank<sup>10</sup>, Julian Adlard<sup>11</sup>, Simona Agata<sup>12</sup>, Karen Cadoo<sup>13</sup>, Bjarni A. Agnarsson<sup>14,15</sup>, Thomas Ahearn<sup>16</sup>, Kristiina Aittomäki<sup>17</sup>, Christine B. Ambrosone<sup>18</sup>, Lesley Andrews<sup>19</sup>, Hoda Anton-Culver<sup>20</sup>, Natalia N. Antonenкова<sup>21</sup>, Volker Arndt<sup>22</sup>, Norbert Arnold<sup>23</sup>, Kristan J. Aronson<sup>24</sup>, Banu K. Arun<sup>25</sup>, Ella Asseryanis<sup>26</sup>, Bernd Auber<sup>27</sup>, Päivi Auvinen<sup>28,29,30</sup>, Jacopo Azzollini<sup>31</sup>, Judith Balmaña<sup>32,33</sup>, Rosa B. Barkardottir<sup>14,34</sup>, Daniel Barrowdale<sup>7</sup>, Julian Barwell<sup>35</sup>, Laura E. Beane Freeman<sup>16</sup>, Charles Joly Beuparant<sup>36</sup>, Matthias W. Beckmann<sup>37</sup>, Sabine Behrens<sup>38</sup>, Javier Benitez<sup>39,40,41</sup>, Raanan Berger<sup>42</sup>, Marina Bermisheva<sup>43</sup>, Amie M. Blanco<sup>44</sup>, Carl Blomqvist<sup>45,46</sup>, Natalia V. Bogdanova<sup>21,47,48</sup>, Anders Bojesen<sup>49</sup>, Stig E. Bojesen<sup>50,51,52</sup>, Bernardo Bonanni<sup>53</sup>, Ake Borg<sup>54</sup>, Angela F. Brady<sup>55</sup>, Hiltrud Brauch<sup>56,57,58</sup>, Hermann Brenner<sup>22,58,59</sup>, Thomas Brüning<sup>60</sup>, Barbara Burwinkel<sup>61,62</sup>, Saundra S. Buys<sup>63</sup>, Trinidad Caldés<sup>64</sup>, Almuth Caliebe<sup>65</sup>, Maria A. Caligo<sup>66</sup>, Daniele Campa<sup>38,67</sup>, Ian G. Campbell<sup>68,69</sup>, Federico Canzian<sup>70</sup>, Jose E. Castelao<sup>71</sup>, Jenny Chang-Claude<sup>38,72</sup>, Stephen J. Chanock<sup>16</sup>, Kathleen B. M. Claes<sup>73</sup>, Christine L. Clarke<sup>74</sup>, Anita Collavoli<sup>75</sup>, Thomas A. Conner<sup>76</sup>, David G. Cox<sup>77,78</sup>, Cezary Cybulski<sup>79</sup>, Kamila Czene<sup>80</sup>, Mary B. Daly<sup>81</sup>, Miguel de la Hoya<sup>64</sup>, Peter Devilee<sup>82,83</sup>, Orland Diez<sup>84,85</sup>, Yuan Chun Ding<sup>86</sup>, Gillian S. Dite<sup>87</sup>, Nina Ditsch<sup>88</sup>, Susan M. Domchek<sup>89</sup>, Cecilia M. Dorfling<sup>90</sup>, Isabel dos-Santos-Silva<sup>91</sup>, Katarzyna Durda<sup>79</sup>, Miriam Dwek<sup>92</sup>, Diana M. Eccles<sup>93</sup>, Arif B. Ekici<sup>94</sup>, A. Heather Eliassen<sup>95,96</sup>, Carolina Ellberg<sup>97</sup>, Mikael Eriksson<sup>80</sup>, D. Gareth Evans<sup>98,99</sup>, Peter A. Fasching<sup>37,100</sup>, Jonine Figueroa<sup>16,101,102</sup>, Henrik Flyger<sup>103</sup>, William D. Foulkes<sup>104</sup>, Tara M. Friebe<sup>105,106</sup>, Eitan Friedman<sup>107,108</sup>, Marika Gabrielson<sup>80</sup>, Pragna Gaddam<sup>109</sup>, Manuela Gago-Dominguez<sup>110,111</sup>, Chi Gao<sup>112</sup>, Susan M. Gapstur<sup>113</sup>, Judy Garber<sup>114</sup>, Montserrat García-Closas<sup>16</sup>, José A. García-Sáenz<sup>64</sup>, Mia M. Gaudet<sup>113</sup>, Simon A. Gayther<sup>116</sup>, GEMO Study Collaborators, Graham G. Giles<sup>87,117,118</sup>, Gord Glendon<sup>119</sup>, Andrew K. Godwin<sup>120</sup>, Mark S. Goldberg<sup>121,122</sup>, David E. Goldgar<sup>123</sup>, Pascal Guénel<sup>124</sup>, Angelica M. Gutierrez-Barrera<sup>125</sup>, Lothar Haeberle<sup>126</sup>, Christopher A. Haiman<sup>127</sup>, Niclas Håkansson<sup>128</sup>, Per Hall<sup>80,129</sup>, Ute Hamann<sup>130</sup>, Patricia A. Harrington<sup>131</sup>, Alexander Hein<sup>37</sup>, Jane Heyworth<sup>132</sup>, Peter Hillemanns<sup>48</sup>, Antoinette Hollestelle<sup>133</sup>, John L. Hopper<sup>87</sup>, H. Dean Hosgood III<sup>134</sup>, Anthony Howell<sup>135</sup>, Chunling Hu<sup>136</sup>, Peter J. Hulick<sup>137,138</sup>, David J. Hunter<sup>96,112,139</sup>, Evgeny N. Imyanitov<sup>140</sup>, KConFab, Claudine Isaacs<sup>141</sup>, Milena Jakimovska<sup>142</sup>, Anna Jakubowska<sup>79,143</sup>, Paul James<sup>69,144</sup>, Ramunas Janavicius<sup>145,146</sup>, Wolfgang Janni<sup>147</sup>, Esther M. John<sup>148</sup>, Michael E. Jones<sup>115</sup>, Audrey Jung<sup>38</sup>, Rudolf Kaaks<sup>38</sup>, Beth Y. Karlan<sup>149</sup>, Elza Khusnutdinova<sup>43,150</sup>, Cari M. Kitahara<sup>151</sup>, Irene Konstantopoulou<sup>152</sup>, Stella Koutros<sup>16</sup>, Peter Kraft<sup>96,112</sup>, Diether Lambrechts<sup>153,154</sup>, Conxi Lazaro<sup>155</sup>, Loic Le Marchand<sup>156</sup>, Jenny Lester<sup>149</sup>, Fabienne Lesueur<sup>157,158,159,160</sup>, Jenna Lilyquist<sup>161</sup>, Jennifer T. Loud<sup>162</sup>, Karen H. Lu<sup>163</sup>, Robert N. Luben<sup>164</sup>, Jan Lubinski<sup>79</sup>, Arto Mannermaa<sup>30,165,166</sup>, Mehdi Manoochehri<sup>130</sup>, Siranoush Manoukian<sup>31</sup>, Sara Margolin<sup>129,167</sup>, John W. M. Martens<sup>133</sup>, Tabea Maurer<sup>72</sup>, Dimitrios Mavroudis<sup>168</sup>, Noura Mebirouk<sup>157,158,159,160</sup>, Alfons Meindl<sup>88</sup>, Usha Menon<sup>169</sup>, Austin Miller<sup>170</sup>, Marco Montagna<sup>12</sup>, Katherine L. Nathanson<sup>89</sup>, Susan L. Neuhausen<sup>86</sup>, William G. Newman<sup>98,99</sup>, Tu Nguyen-Dumont<sup>171,199</sup>, Finn Cilius Nielsen<sup>172</sup>, Sarah Nielsen<sup>173</sup>, Liene Nikitina-Zake<sup>174</sup>, Kenneth Offit<sup>109,175</sup>, Edith Olah<sup>176</sup>, Olufunmilayo I. Olopade<sup>173</sup>, Andrew F. Olshan<sup>177</sup>, Janet E. Olson<sup>161</sup>, Håkan Olsson<sup>97</sup>, Ana Osorio<sup>39,40</sup>, Laura Ottini<sup>178</sup>, Bernard Peissel<sup>31</sup>, Ana Peixoto<sup>179</sup>, Julian Peto<sup>180</sup>, Dijana Plesaska-Karanfilska<sup>142</sup>, Timea Pocza<sup>176</sup>, Nadege Presneau<sup>92</sup>, Miquel Angel Pujana<sup>180</sup>, Kevin Punie<sup>181</sup>, Brigitte Rack<sup>147</sup>, Johanna Rantalala<sup>182</sup>, Muhammad U. Rashid<sup>130,183</sup>, Rohini Rau-Murthy<sup>175</sup>, Gad Rennert<sup>184</sup>, Flavio Lejbkowitz<sup>184</sup>, Valerie Rhenius<sup>131</sup>, Atocha Romero<sup>185</sup>, Matti A. Rookus<sup>186</sup>, Eric A. Ross<sup>187</sup>, Maria Rossing<sup>172</sup>, Vilius Rudaitis<sup>188</sup>, Matthias Ruebner<sup>126</sup>, Emmanouil Saloustros<sup>189</sup>, Kristin Sanden<sup>190</sup>, Marta Santamariña<sup>40,191,192</sup>, Maren T. Scheuner<sup>44</sup>, Rita K. Schmutzler<sup>193,194</sup>, Michael Schneider<sup>126</sup>, Christopher Scott<sup>161</sup>, Leigha Senter<sup>195</sup>, Mitul Shah<sup>131</sup>, Priyanka Sharma<sup>196</sup>, Xiao-Ou Shu<sup>197</sup>, Jacques Simard<sup>36</sup>, Christian F. Singer<sup>26</sup>, Christof Sohn<sup>198</sup>, Penny Soucy<sup>36</sup>, Melissa C. Southey<sup>171,199</sup>, John J. Spinelli<sup>200,201</sup>, Linda Steele<sup>86</sup>, Dominique Stoppa-Lyonnet<sup>202,203,204</sup>, William J. Tapper<sup>205</sup>, Manuel R. Teixeira<sup>179,206</sup>, Mary Beth Terry<sup>207</sup>, Mads Thomassen<sup>208</sup>, Jennifer Thompson<sup>137</sup>, Darcy L. Thull<sup>209</sup>, Marc Tischkowitz<sup>104,210</sup>, Rob A.E.M. Tollenaar<sup>211</sup>, Diana Torres<sup>130,212</sup>, Melissa A. Troester<sup>177</sup>, Thérèse Truong<sup>124</sup>, Nadine Tung<sup>213</sup>, Michael Untch<sup>214</sup>, Celine M. Vachon<sup>161</sup>, Elizabeth J. van Rensburg<sup>90</sup>, Elke M. van Veen<sup>98,99</sup>, Ana Vega<sup>40,191,192</sup>, Alessandra Viel<sup>215</sup>, Barbara Wappenschmidt<sup>193,194</sup>, Jeffrey N. Weitzel<sup>216</sup>, Camilla Wendt<sup>129,167</sup>, Greet Wieme<sup>73</sup>, Alicja Wolk<sup>128,217</sup>, Xiaohong R. Yang<sup>16</sup>, Wei Zheng<sup>197</sup>, Argyrios Ziogas<sup>20</sup>, Kristin K. Zorn<sup>218</sup>, Alison M. Dunning<sup>131</sup>, Michael Lush<sup>7</sup>, Qin Wang<sup>7</sup>, Lesley McGuffog<sup>7</sup>, Michael T. Parsons<sup>219</sup>, Paul D. P. Pharoah<sup>7</sup>, Florentia Fostira<sup>152</sup>, Amanda E. Toland<sup>220</sup>, Irene L. Andrulis<sup>119,221</sup>, Susan J. Ramus<sup>222,223</sup>, Anthony J. Swerdlow<sup>224,225</sup>, Mark H. Greene<sup>162</sup>, Wendy K. Chung<sup>226</sup>, Roger L. Milne<sup>87,117,171</sup>, Georgia Chenevix-Trench<sup>219</sup>, Thilo Dörk<sup>48</sup>, Marjanka K. Schmidt<sup>227,228</sup>, Douglas F. Easton<sup>7,131</sup>, Paolo Radice<sup>5</sup>, Eric Hahnen<sup>193,194</sup>, Antonis C. Antoniou<sup>7</sup>, Fergus J. Couch<sup>136</sup>, Heli Nevanlinna<sup>6</sup>, Jordi Surrallés<sup>2,3,4,229,333</sup> and Paolo Peterlongo<sup>1,333\*</sup>

<sup>1</sup>IFOM - the FIRC Institute for Molecular Oncology, Genome Diagnostics Program, Milan, Italy. <sup>2</sup>Department of Genetics and Microbiology, Universitat Autònoma de Barcelona, Bellaterra, Barcelona, Spain. <sup>3</sup>Center for Biomedical Network Research on Rare Diseases (CIBERER), Madrid, Spain. <sup>4</sup>Institute of Biomedical Research, Sant Pau Hospital, Barcelona, Spain. <sup>5</sup>Fondazione IRCCS Istituto Nazionale dei Tumori, Unit of Molecular Bases of Genetic Risk and Genetic Testing, Department of Research, Milan, Italy. <sup>6</sup>University of Helsinki, Department of Obstetrics and Gynecology, Helsinki University Hospital, Helsinki, Finland. <sup>7</sup>University of Cambridge, Centre for Cancer Genetic Epidemiology, Department of Public Health and Primary Care, Cambridge, UK. <sup>8</sup>The Cyprus Institute of Neurology & Genetics, Department of Electron Microscopy/Molecular Pathology and The Cyprus School of Molecular Medicine, Nicosia, Cyprus. <sup>9</sup>Amsterdam UMC, Iokatie AMC, Department of Clinical Genetics, Amsterdam, The Netherlands. <sup>10</sup>The Netherlands Cancer Institute - Antoni van Leeuwenhoek hospital, Family Cancer Clinic, Amsterdam, The Netherlands. <sup>11</sup>Chapel Allerton Hospital, Yorkshire Regional Genetics Service, Leeds, UK. <sup>12</sup>Veneto Institute of Oncology IOV - IRCCS, Immunology and Molecular Oncology Unit, Padua, Italy. <sup>13</sup>Memorial Sloan-Kettering Cancer Center, Department of Medicine, New York, NY, USA. <sup>14</sup>Landspítali University Hospital, Department of Pathology, Reykjavik, Iceland. <sup>15</sup>University of Iceland, School of Medicine, Reykjavik, Iceland. <sup>16</sup>National Cancer Institute,

National Institutes of Health, Department of Health and Human Services, Division of Cancer Epidemiology and Genetics, Bethesda, MD, USA. <sup>17</sup>University of Helsinki, Department of Clinical Genetics, Helsinki University Hospital, Helsinki, Finland. <sup>18</sup>Roswell Park Cancer Institute, Buffalo, NY, USA. <sup>19</sup>Nelune Comprehensive Cancer Care Centre, The Bright Alliance Building, Randwick, NSW, Australia. <sup>20</sup>University of California Irvine, Department of Epidemiology, Genetic Epidemiology Research Institute, Irvine, CA, USA. <sup>21</sup>N.N. Alexandrov Research Institute of Oncology and Medical Radiology, Minsk, Belarus. <sup>22</sup>German Cancer Research Center (DKFZ), Division of Clinical Epidemiology and Aging Research, Heidelberg, Germany. <sup>23</sup>University Hospital of Schleswig-Holstein, Campus Kiel, Christian-Albrechts University Kiel, Department of Gynaecology and Obstetrics, and Institute of Clinical Molecular Biology, Kiel, Germany. <sup>24</sup>Queen's University, Department of Public Health Sciences, and Cancer Research Institute, Kingston, ON, Canada. <sup>25</sup>University of Texas MD Anderson Cancer Center, Department of Breast Medical Oncology, Houston, TX, USA. <sup>26</sup>Medical University of Vienna, Dept of OB/GYN and Comprehensive Cancer Center, Vienna, Austria. <sup>27</sup>Hannover Medical School, Institute of Human Genetics, Hannover, Germany. <sup>28</sup>Kuopio University Hospital, Cancer Center, Kuopio, Finland. <sup>29</sup>University of Eastern Finland, Institute of Clinical Medicine, Oncology, Kuopio, Finland. <sup>30</sup>University of Eastern Finland, Translational Cancer Research Area, Kuopio, Finland. <sup>31</sup>Fondazione IRCCS Istituto Nazionale dei Tumori di Milano, Department of Medical Oncology and Hematology, Unit of Medical Genetics, Milan, Italy. <sup>32</sup>Vall d'Hebron Institute of Oncology, High Risk and Cancer Prevention Group, Barcelona, Spain. <sup>33</sup>University Hospital, Vall d'Hebron, Department of Medical Oncology, Barcelona, Spain. <sup>34</sup>University of Iceland, BMC (Biomedical Centre), Faculty of Medicine, Reykjavik, Iceland. <sup>35</sup>University Hospitals of Leicester NHS Trust, Leicestershire Clinical Genetics Service, Leicester, UK. <sup>36</sup>Centre Hospitalier Universitaire de Québec – Université Laval, Research Center, Genomics Center, Québec City, QC, Canada. <sup>37</sup>University Hospital Erlangen, Friedrich-Alexander-University Erlangen-Nuremberg, Department of Gynecology and Obstetrics, Comprehensive Cancer Center ER-EMN, Erlangen, Germany. <sup>38</sup>German Cancer Research Center (DKFZ), Division of Cancer Epidemiology, Heidelberg, Germany. <sup>39</sup>Spanish National Cancer Research Centre (CNIO), Human Genetics Group, Human Cancer Genetics Programme, Madrid, Spain. <sup>40</sup>Spanish Network on Rare Diseases (CIBERER), Madrid, Spain. <sup>41</sup>Spanish National Cancer Research Centre (CNIO), Genotyping Unit (CEGEN), Human Cancer Genetics Programme, Madrid, Spain. <sup>42</sup>Chaim Sheba Medical Center, The Institute of Oncology, Ramat Gan, Israel. <sup>43</sup>Ufa Federal Research Center of the Russian Academy of Sciences, Institute of Biochemistry and Genetics, Ufa, Russia. <sup>44</sup>University of California San Francisco, Cancer Genetics and Prevention Program, San Francisco, CA, USA. <sup>45</sup>University of Helsinki, Department of Oncology, Helsinki University Hospital, Helsinki, Finland. <sup>46</sup>Örebro University Hospital, Department of Oncology, Örebro, Sweden. <sup>47</sup>Hannover Medical School, Department of Radiation Oncology, Hannover, Germany. <sup>48</sup>Hannover Medical School, Gynaecology Research Unit, Hannover, Germany. <sup>49</sup>Aarhus University Hospital, Department of Clinical Genetics, Aarhus, Denmark. <sup>50</sup>Copenhagen University Hospital, Copenhagen General Population Study, Herlev and Gentofte Hospital, Herlev, Denmark. <sup>51</sup>Copenhagen University Hospital, Department of Clinical Biochemistry, Herlev and Gentofte Hospital, Herlev, Denmark. <sup>52</sup>University of Copenhagen, Faculty of Health and Medical Sciences, Copenhagen, Denmark. <sup>53</sup>IEO, European Institute of Oncology IRCCS, Division of Cancer Prevention and Genetics, Milan, Italy. <sup>54</sup>Lund University and Skåne University Hospital, Department of Oncology, Lund, Sweden. <sup>55</sup>London North West University Hospitals NHS Trust, Northwick Park Hospital, North West Thames Regional Genetics Service, Kennedy Galton Centre, Harrow, UK. <sup>56</sup>Dr. Margarete Fischer-Bosch-Institute of Clinical Pharmacology, Stuttgart, Germany. <sup>57</sup>University of Tübingen, iFIT-Cluster of Excellence, Tübingen, Germany. <sup>58</sup>German Cancer Research Center (DKFZ), German Cancer Consortium (DKTK), Heidelberg, Germany. <sup>59</sup>German Cancer Research Center (DKFZ) and National Center for Tumor Diseases (NCT), Division of Preventive Oncology, Heidelberg, Germany. <sup>60</sup>Institute for Prevention and Occupational Medicine of the German Social Accident Insurance, Institute of the Ruhr University Bochum, Bochum, Germany. <sup>61</sup>German Cancer Research Center (DKFZ), Molecular Epidemiology Group, C080 Heidelberg, Germany. <sup>62</sup>University of Heidelberg, Molecular Biology of Breast Cancer, University Womens Clinic Heidelberg, Heidelberg, Germany. <sup>63</sup>Huntsman Cancer Institute, Department of Medicine, Salt Lake City, UT, USA. <sup>64</sup>Instituto de Investigación Sanitaria San Carlos (IdISSC), Centro Investigación Biomédica en Red de Cáncer (CIBERONC), Medical Oncology Department, Hospital Clínico San Carlos, Madrid, Spain. <sup>65</sup>University Hospital of Schleswig-Holstein, Campus Kiel, Christian-Albrechts University Kiel, Institute of Human Genetics, Kiel, Germany. <sup>66</sup>University Hospital of Pisa, Section of Molecular Genetics, Dept. of Laboratory Medicine, Pisa, Italy. <sup>67</sup>University of Pisa, Department of Biology, Pisa, Italy. <sup>68</sup>Peter MacCallum Cancer Center, Research Division, Melbourne, VIC, Australia. <sup>69</sup>The University of Melbourne, Sir Peter MacCallum Department of Oncology, Melbourne, VIC, Australia. <sup>70</sup>German Cancer Research Center (DKFZ), Genomic Epidemiology Group, Heidelberg, Germany. <sup>71</sup>Instituto de Investigación Sanitaria Galicia Sur (IISGS), Xerencia de Xestión Integrada de Vigo-SERGAS, Oncology and Genetics Unit, Vigo, Spain. <sup>72</sup>University Medical Center Hamburg-Eppendorf, Cancer Epidemiology Group, University Cancer Center Hamburg (UCCH), Hamburg, Germany. <sup>73</sup>Ghent University, Centre for Medical Genetics, Gent, Belgium. <sup>74</sup>University of Sydney, Westmead Institute for Medical Research, Sydney, NSW, Australia. <sup>75</sup>University and University Hospital of Pisa, Section of Genetic Oncology, Dept. of Laboratory Medicine, Pisa, Italy. <sup>76</sup>Huntsman Cancer Institute, Salt Lake City, UT, USA. <sup>77</sup>Imperial College London, Department of Epidemiology and Biostatistics, School of Public Health, London, UK. <sup>78</sup>Cancer Research Center of Lyon, INSERM, U1052 Lyon, France. <sup>79</sup>Pomeranian Medical University, Department of Genetics and Pathology, Szczecin, Poland. <sup>80</sup>Karolinska Institutet, Department of Medical Epidemiology and Biostatistics, Stockholm, Sweden. <sup>81</sup>Fox Chase Cancer Center, Department of Clinical Genetics, Philadelphia, PA, USA. <sup>82</sup>Leiden University Medical Center, Department of Pathology, Leiden, The Netherlands. <sup>83</sup>Leiden University Medical Center, Department of Human Genetics, Leiden, The Netherlands. <sup>84</sup>Vall d'Hebron Institute of Oncology (VHIO), Oncogenetics Group, Barcelona, Spain. <sup>85</sup>University Hospital Vall d'Hebron, Area of Clinical and Molecular Genetics, Barcelona, Spain. <sup>86</sup>Beckman Research Institute of City of Hope, Department of Population Sciences, Duarte, CA, USA. <sup>87</sup>The University of Melbourne, Centre for Epidemiology and Biostatistics, Melbourne School of Population and Global Health, Melbourne, Victoria, Australia. <sup>88</sup>Ludwig Maximilian University of Munich, Department of Gynecology and Obstetrics, Munich, Germany. <sup>89</sup>Perelman School of Medicine at the University of Pennsylvania, Department of Medicine, Abramson Cancer Center, Philadelphia, PA, USA. <sup>90</sup>University of Pretoria, Department of Genetics, Arcadia, South Africa. <sup>91</sup>London School of Hygiene and Tropical Medicine, Department of Non-Communicable Disease Epidemiology, London, UK. <sup>92</sup>University of Westminster, Department of Biomedical Sciences, Faculty of Science and Technology, London, UK. <sup>93</sup>University of Southampton, Cancer Sciences Academic Unit, Faculty of Medicine, Southampton, UK. <sup>94</sup>Friedrich-Alexander University Erlangen-Nuremberg, Comprehensive Cancer Center Erlangen-EMN, Institute of Human Genetics, University Hospital Erlangen, Erlangen, Germany. <sup>95</sup>Harvard Medical School, Channing Division of Network Medicine, Department of Medicine, Brigham and Women's Hospital, Boston, MA, USA. <sup>96</sup>Harvard T.H. Chan School of Public Health, Department of Epidemiology, Boston, MA, USA. <sup>97</sup>Lund University, Department of Cancer Epidemiology, Clinical Sciences, Lund, Sweden. <sup>98</sup>University of Manchester, Division of Evolution and Genomic Medicine, School of Biological Sciences, Faculty of Biology, Medicine and Health, Manchester, UK. <sup>99</sup>Manchester University NHS Foundation Trust, Manchester Academic Health Science Centre, Manchester Centre for Genomic Medicine, Manchester, UK. <sup>100</sup>University of California at Los Angeles, David Geffen School of Medicine, Department of Medicine Division of Hematology and Oncology, Los Angeles, CA, USA. <sup>101</sup>The University of Edinburgh Medical School, Usher Institute of Population Health Sciences and Informatics, Edinburgh, UK. <sup>102</sup>Cancer Research UK Edinburgh Centre, Edinburgh, UK. <sup>103</sup>Copenhagen University Hospital, Department of Breast Surgery, Herlev and Gentofte Hospital, Herlev, Denmark. <sup>104</sup>McGill University, Program in Cancer Genetics, Departments of Human Genetics and Oncology, Montréal, QC, Canada. <sup>105</sup>Harvard T.H. Chan School of Public Health, Boston, MA, USA. <sup>106</sup>Dana-Farber Cancer Institute, Boston, MA, USA. <sup>107</sup>Chaim Sheba Medical Center, The Susanne Levy Gertner Oncogenetics Unit, Ramat Gan, Israel. <sup>108</sup>Tel Aviv University, Sackler Faculty of Medicine, Ramat Aviv, Israel. <sup>109</sup>Memorial Sloan-Kettering Cancer Center, Clinical Genetics Research Lab, Department of Cancer Biology and Genetics, New York, NY, USA. <sup>110</sup>Instituto de Investigación Sanitaria de Santiago de Compostela (IDIS), Complejo Hospitalario Universitario de Santiago, SERGAS, Genomic Medicine Group, Galician Foundation of Genomic Medicine, Santiago de Compostela, Spain. <sup>111</sup>University of California San Diego, Moores Cancer Center, La Jolla, CA, USA. <sup>112</sup>Harvard T.H. Chan School of Public Health, Program in Genetic Epidemiology and Statistical Genetics, Boston, MA, USA. <sup>113</sup>American Cancer Society, Epidemiology Research Program, Atlanta, GA, USA. <sup>114</sup>Dana-Farber Cancer Institute, Cancer Risk and Prevention Clinic, Boston, MA, USA. <sup>115</sup>The Institute of Cancer Research, Division of Genetics and Epidemiology, London, UK. <sup>116</sup>Cedars-Sinai Medical Center, The Center for Bioinformatics and Functional Genomics at the Samuel Oschin Comprehensive Cancer Institute, Los Angeles, CA, USA. <sup>117</sup>Cancer Council Victoria, Cancer Epidemiology Division, Melbourne, VIC, Australia. <sup>118</sup>Monash University, Department of Epidemiology and Preventive Medicine, Melbourne, VIC, Australia. <sup>119</sup>Lunenfeld-Tanenbaum Research Institute of Mount Sinai Hospital, Fred A. Litwin Center for Cancer Genetics, Toronto, ON, Canada. <sup>120</sup>Kansas University Medical Center, Department of Pathology and Laboratory Medicine, Kansas City, KS, USA. <sup>121</sup>McGill University, Department of Medicine, Montréal, QC, Canada. <sup>122</sup>McGill University, Division of Clinical Epidemiology, Royal Victoria Hospital, Montréal, QC, Canada. <sup>123</sup>Huntsman Cancer Institute, University of Utah School of Medicine, Department of Dermatology, Salt Lake City, UT, USA. <sup>124</sup>INSERM, University Paris-Sud, University Paris-Saclay, Cancer & Environment Group, Center for Research in Epidemiology and Population Health (CESP), Villejuif, France. <sup>125</sup>University of Texas MD Anderson Cancer Center, Department of Breast Medical Oncology and Clinical Genetics Program, Houston, TX, USA. <sup>126</sup>Friedrich-Alexander University Erlangen-Nuremberg, Comprehensive Cancer Center Erlangen-EMN, Department of Gynaecology and Obstetrics, University Hospital Erlangen, Erlangen, Germany. <sup>127</sup>University of Southern California, Department of Preventive Medicine, Keck School of Medicine, Los Angeles, CA, USA. <sup>128</sup>Karolinska Institutet, Institute of Environmental Medicine, Stockholm, Sweden. <sup>129</sup>Södersjukhuset, Department of Oncology, Stockholm, Sweden. <sup>130</sup>German Cancer Research Center (DKFZ), Molecular Genetics of Breast Cancer, Heidelberg, Germany. <sup>131</sup>University of Cambridge, Centre for Cancer Genetic Epidemiology, Department of Oncology, Cambridge, UK. <sup>132</sup>The University of Western Australia, School of Population and Global Health, Perth, WA, Australia. <sup>133</sup>Erasmus MC Cancer Institute, Department of Medical Oncology, Family Cancer Clinic, Rotterdam, The Netherlands. <sup>134</sup>Albert Einstein College of Medicine, Department of Epidemiology and Public Health, Bronx, NY, USA. <sup>135</sup>University of Manchester, Division of Cancer Sciences, Manchester, UK. <sup>136</sup>Mayo Clinic, Department of Laboratory Medicine and Pathology, Rochester, MN, USA. <sup>137</sup>NorthShore

University HealthSystem, Center for Medical Genetics, Evanston, IL, USA. <sup>138</sup>The University of Chicago Pritzker School of Medicine, Chicago, IL, USA. <sup>139</sup>University of Oxford, Nuffield Department of Population Health, Oxford, UK. <sup>140</sup>N.N. Petrov Institute of Oncology, St. Petersburg, Russia. <sup>141</sup>Lombardi Comprehensive Cancer Center, Georgetown University, Washington, DC, USA. <sup>142</sup>Macedonian Academy of Sciences and Arts, Research Centre for Genetic Engineering and Biotechnology 'Georgi D. Efreinov', Skopje, Republic of Macedonia. <sup>143</sup>Pomeranian Medical University, Independent Laboratory of Molecular Biology and Genetic Diagnostics, Szczecin, Poland. <sup>144</sup>Peter MacCallum Cancer Center, Parkville Familial Cancer Centre, Melbourne, VIC, Australia. <sup>145</sup>Vilnius University Hospital Santariskiu Clinics, Hematology, oncology and transfusion medicine center, Dept. of Molecular and Regenerative Medicine, Vilnius, Lithuania. <sup>146</sup>State Research Institute Innovative Medicine Center, Vilnius, Lithuania. <sup>147</sup>University Hospital Ulm, Department of Gynaecology and Obstetrics, Ulm, Germany. <sup>148</sup>Stanford University School of Medicine, Department of Medicine (Oncology) and Stanford Cancer Institute, Stanford, CA, USA. <sup>149</sup>Cedars-Sinai Medical Center, Women's Cancer Program at the Samuel Oschin Comprehensive Cancer Institute, Los Angeles, CA, USA. <sup>150</sup>Bashkir State Medical University, Department of Medical Genetics, Ufa, Russia. <sup>151</sup>National Cancer Institute, Radiation Epidemiology Branch, Division of Cancer Epidemiology and Genetics, Bethesda, MD, USA. <sup>152</sup>National Centre for Scientific Research 'Demokritos', Molecular Diagnostics Laboratory, INRASTES, Athens, Greece. <sup>153</sup>VIB, VIB Center for Cancer Biology, Leuven, Belgium. <sup>154</sup>University of Leuven, Laboratory for Translational Genetics, Department of Human Genetics, Leuven, Belgium. <sup>155</sup>IDIBELL (Bellvitge Biomedical Research Institute), Catalan Institute of Oncology, CIBERONC, Molecular Diagnostic Unit, Hereditary Cancer Program, Barcelona, Spain. <sup>156</sup>University of Hawaii Cancer Center, Epidemiology Program, Honolulu, HI, USA. <sup>157</sup>Inserm U900, Genetic Epidemiology of Cancer team, Paris, France. <sup>158</sup>PSL University, Paris, France. <sup>159</sup>Institut Curie, Paris, France. <sup>160</sup>Mines ParisTech, Fontainebleau, France. <sup>161</sup>Mayo Clinic, Department of Health Sciences Research, Rochester, MN, USA. <sup>162</sup>National Cancer Institute, Clinical Genetics Branch, Division of Cancer Epidemiology and Genetics, Bethesda, MD, USA. <sup>163</sup>University of Texas MD Anderson Cancer Center, Department of Gynecologic Oncology and Clinical Cancer Genetics Program, Houston, TX, USA. <sup>164</sup>University of Cambridge, Clinical Gerontology, Department of Public Health and Primary Care, Cambridge, UK. <sup>165</sup>University of Eastern Finland, Institute of Clinical Medicine, Pathology and Forensic Medicine, Kuopio, Finland. <sup>166</sup>Kuopio University Hospital, Imaging Center, Department of Clinical Pathology, Kuopio, Finland. <sup>167</sup>Karolinska Institutet, Department of Clinical Science and Education, Södersjukhuset, Stockholm, Sweden. <sup>168</sup>University Hospital of Heraklion, Department of Medical Oncology, Heraklion, Greece. <sup>169</sup>University College London, MRC Clinical Trials Unit at UCL, Institute of Clinical Trials & Methodology, London, UK. <sup>170</sup>Roswell Park Cancer Institute, NRG Oncology, Clinical Trials Development Division, Buffalo, NY, USA. <sup>171</sup>Monash University, Precision Medicine, School of Clinical Sciences at Monash Health, Clayton, VIC, Australia. <sup>172</sup>Rigshospitalet, Copenhagen University Hospital, Center for Genomic Medicine, Copenhagen, Denmark. <sup>173</sup>The University of Chicago, Center for Clinical Cancer Genetics, Chicago, IL, USA. <sup>174</sup>Latvian Biomedical Research and Study Centre, Riga, Latvia. <sup>175</sup>Memorial Sloan-Kettering Cancer Center, Clinical Genetics Service, Department of Medicine, New York, NY, USA. <sup>176</sup>National Institute of Oncology, Department of Molecular Genetics, Budapest, Hungary. <sup>177</sup>University of North Carolina at Chapel Hill, Department of Epidemiology, Lineberger Comprehensive Cancer Center, Chapel Hill, NC, USA. <sup>178</sup>University La Sapienza, Department of Molecular Medicine, Rome, Italy. <sup>179</sup>Portuguese Oncology Institute, Department of Genetics, Porto, Portugal. <sup>180</sup>IDIBELL (Bellvitge Biomedical Research Institute), Catalan Institute of Oncology, CIBERONC, ProCURE, Oncobell, Barcelona, Spain. <sup>181</sup>Leuven Cancer Institute, University Hospitals Leuven, Multidisciplinary Breast Center, Department of General Medical Oncology, Leuven, Belgium. <sup>182</sup>Karolinska Institutet, Clinical Genetics, Stockholm, Sweden. <sup>183</sup>Shaukat Khanum Memorial Cancer Hospital and Research Centre (SKMCH & RC), Department of Basic Sciences, Lahore, Pakistan. <sup>184</sup>Carmel Medical Center and Technion Faculty of Medicine, Clalit National Cancer Control Center, Haifa, Israel. <sup>185</sup>Hospital Universitario Puerta de Hierro, Medical Oncology Department, Madrid, Spain. <sup>186</sup>The Netherlands Cancer Institute, Department of Epidemiology, Amsterdam, The Netherlands. <sup>187</sup>Fox Chase Cancer Center, Biostatistics and Bioinformatics Facility, Philadelphia, PA, USA. <sup>188</sup>Vilnius University, Medical Faculty, Institute of Clinical Medicine, Vilnius, Lithuania. <sup>189</sup>University Hospital of Larissa, Department of Oncology, Larissa, Greece. <sup>190</sup>University of Wisconsin, Cancer Center at ProHealth Care, Waukesha, WI, USA. <sup>191</sup>Fundación Pública Galega Medicina Xenómica, Santiago De Compostela, Spain. <sup>192</sup>Instituto de Investigación Sanitaria de Santiago de Compostela, Santiago De Compostela, Spain. <sup>193</sup>University Hospital of Cologne, Center for Hereditary Breast and Ovarian Cancer, Cologne, Germany. <sup>194</sup>University of Cologne, Center for Molecular Medicine Cologne (CMMC), Cologne, Germany. <sup>195</sup>The Ohio State University, Clinical Cancer Genetics Program, Division of Human Genetics, Department of Internal Medicine, The Comprehensive Cancer Center, Columbus, OH, USA. <sup>196</sup>University of Kansas Medical Center, Department of Internal Medicine, Division of Oncology, Westwood, KS, USA. <sup>197</sup>Vanderbilt University School of Medicine, Division of Epidemiology, Department of Medicine, Vanderbilt Epidemiology Center, Vanderbilt-Ingram Cancer Center, Nashville, TN, USA. <sup>198</sup>University of Heidelberg, National Center for Tumor Diseases, Heidelberg, Germany. <sup>199</sup>The University of Melbourne, Department of Clinical Pathology, Melbourne, VIC, Australia. <sup>200</sup>BC Cancer, Population Oncology, Vancouver, BC, Canada. <sup>201</sup>University of British Columbia, School of Population and Public Health, Vancouver, BC, Canada. <sup>202</sup>Institut Curie, Service de Génétique, Paris, France. <sup>203</sup>INSERM U830, Department of Tumour Biology, Paris, France. <sup>204</sup>Université Paris Descartes, Paris, France. <sup>205</sup>University of Southampton, Faculty of Medicine, Southampton, UK. <sup>206</sup>University of Porto, Biomedical Sciences Institute (ICBAS), Porto, Portugal. <sup>207</sup>Columbia University, Department of Epidemiology, Mailman School of Public Health, New York, NY, USA. <sup>208</sup>Odense University Hospital, Department of Clinical Genetics, Odense C, Denmark. <sup>209</sup>Magee-Womens Hospital, University of Pittsburgh School of Medicine, Department of Medicine, Pittsburgh, PA, USA. <sup>210</sup>University of Cambridge, Department of Medical Genetics, Cambridge, UK. <sup>211</sup>Leiden University Medical Center, Department of Surgery, Leiden, The Netherlands. <sup>212</sup>Pontificia Universidad Javeriana, Institute of Human Genetics, Bogota, Colombia. <sup>213</sup>Beth Israel Deaconess Medical Center, Department of Medical Oncology, Boston, MA, USA. <sup>214</sup>Helios Clinics Berlin-Buch, Department of Gynecology and Obstetrics, Berlin, Germany. <sup>215</sup>Centro di Riferimento Oncologico di Aviano (CRO), IRCCS, Division of Functional onco-genomics and genetics, Aviano, Italy. <sup>216</sup>City of Hope, Clinical Cancer Genetics, Duarte, CA, USA. <sup>217</sup>Uppsala University, Department of Surgical Sciences, Uppsala, Sweden. <sup>218</sup>Magee-Womens Hospital, University of Pittsburgh School of Medicine, Pittsburgh, PA, USA. <sup>219</sup>QIMR Berghofer Medical Research Institute, Department of Genetics and Computational Biology, Brisbane, QLD, Australia. <sup>220</sup>The Ohio State University, Department of Cancer Biology and Genetics, Columbus, OH, USA. <sup>221</sup>University of Toronto, Department of Molecular Genetics, Toronto, ON, Canada. <sup>222</sup>University of NSW Sydney, School of Women's and Children's Health, Faculty of Medicine, Sydney, NSW, Australia. <sup>223</sup>The Kinghorn Cancer Centre, Garvan Institute of Medical Research, Sydney, NSW, Australia. <sup>224</sup>The Institute of Cancer Research, Division of Genetics and Epidemiology, London, UK. <sup>225</sup>The Institute of Cancer Research, Division of Breast Cancer Research, London, UK. <sup>226</sup>Columbia University, Departments of Pediatrics and Medicine, New York, NY, USA. <sup>227</sup>The Netherlands Cancer Institute - Antoni van Leeuwenhoek Hospital, Division of Molecular Pathology, Amsterdam, The Netherlands. <sup>228</sup>The Netherlands Cancer Institute - Antoni van Leeuwenhoek hospital, Division of Psychosocial Research and Epidemiology, Amsterdam, The Netherlands. <sup>229</sup>Department of Genetics, Sant Pau Hospital, Barcelona, Spain. <sup>230</sup>These authors contributed equally: Gisella Figlioli, Massimo Bogliolo, Jordi Surrallés, Paolo Peterlongo. A full list of consortium members appears at the end of the paper.

## ABCTB INVESTIGATORS

Rosemary Balleine<sup>230</sup>, Robert Baxter<sup>231</sup>, Stephen Bray<sup>232</sup>, Jane Carpenter<sup>74</sup>, Jane Dahlstrom<sup>233,234</sup>, John Forbes<sup>235</sup>, C. Soon Lee<sup>236</sup>, Deborah Marsh<sup>237</sup>, Adrienne Morey<sup>238</sup>, Nirmala Pathmanathan<sup>239</sup>, Rodney Scott<sup>240,241</sup>, Peter Simpson<sup>242</sup>, Allan Spigelman<sup>243</sup>, Nicholas Wilcken<sup>244,245</sup>, Desmond Yip<sup>233,246</sup> and Nikolajs Zeps<sup>247</sup>

## GEMO STUDY COLLABORATORS

Muriel Belotti<sup>202</sup>, Ophélie Bertrand<sup>202</sup>, Anne-Marie Birot<sup>202</sup>, Bruno Buecher<sup>202</sup>, Sandrine Caputo<sup>202</sup>, Anais Dupré<sup>202</sup>, Emmanuelle Fourme<sup>202</sup>, Marion Gauthier-Villars<sup>202</sup>, Lisa Golmard<sup>202</sup>, Marine Le Mentec<sup>202</sup>, Virginie Moncoutier<sup>202</sup>, Antoine de Pauw<sup>202</sup>, Claire Saule<sup>202</sup>, Nadia Boutry-Kryza<sup>248,249</sup>, Alain Calender<sup>248,249</sup>, Sophie Giraud<sup>248,249</sup>, Mélanie Léone<sup>248,249</sup>, Brigitte Bressac-de-Paillerets<sup>250</sup>, Olivier Caron<sup>250</sup>, Marine Guillaud-Bataille<sup>250</sup>, Yves-Jean Bignon<sup>251</sup>, Nancy Uhrhammer<sup>251</sup>, Valérie Bonadona<sup>249</sup>, Christine Lasset<sup>249</sup>, Pascaline Berthet<sup>252</sup>, Laurent Castera<sup>252</sup>, Dominique Vaur<sup>252</sup>, Violaine Bourdon<sup>253</sup>, Catherine Noguès<sup>253</sup>, Tetsuro Noguchi<sup>253</sup>, Cornel Popovici<sup>253</sup>, Audrey Remenieras<sup>253</sup>, Hagay Sobol<sup>253</sup>, Isabelle Coupier<sup>254</sup>, Pascal Pujol<sup>254</sup>, Claude Adenis<sup>255</sup>, Aurélie Dumont<sup>255</sup>, Françoise Révillion<sup>255</sup>, Danièle Muller<sup>256</sup>, Emmanuelle Barouk-Simonet<sup>257</sup>, Françoise Bonnet<sup>257</sup>, Virginie Bubien<sup>257</sup>, Michel Longy<sup>257</sup>,

Nicolas Sevenet<sup>257</sup>, Laurence Gladieff<sup>258</sup>, Rosine Guimbaud<sup>258</sup>, Viviane Feillel<sup>258</sup>, Christine Toulas<sup>258</sup>, H el ene Dreyfus<sup>259</sup>, Christine Dominique Leroux<sup>259</sup>, Magalie Peysselon<sup>259</sup>, Christine Rebuschung<sup>259</sup>, Cl ementine Legrand<sup>259</sup>, Amandine Baurand<sup>260</sup>, Geoffrey Bertolone<sup>260</sup>, Fanny Coron<sup>260</sup>, Laurence Faivre<sup>260</sup>, Caroline Jacquot<sup>260</sup>, Sarab Lizard<sup>260</sup>, Caroline Kientz<sup>261</sup>, Marine Lebrun<sup>261</sup>, Fabienne Prieur<sup>261</sup>, Sandra Fert-Ferrer<sup>262</sup>, V eronique Mari<sup>263</sup>, Laurence V enat-Bouvet<sup>264</sup>, St ephane B ezieau<sup>265</sup>, Capucine Delnatte<sup>265</sup>, Isabelle Mortemousque<sup>266</sup>, Chrystelle Colas<sup>267</sup>, Florence Coulet<sup>267</sup>, Florent Soubrier<sup>267</sup>, Mathilde Warco in<sup>267</sup>, Myriam Bronner<sup>268</sup>, Johanna Sokolowska<sup>268</sup>, Marie-Agn es Collonge-Rame<sup>269</sup>, Alexandre Damette<sup>269</sup>, Paul Gesta<sup>270</sup>, Hakima Lallaoui<sup>271</sup>, Jean Chiesa<sup>272</sup>, Denise Molina-Gomes<sup>273</sup>, Olivier Ingster<sup>274</sup>, Sylvie Manouvrier-Hanu<sup>275</sup> and Sophie Lejeune<sup>275</sup>

## KCONFAB

Morteza Aghmesheh<sup>276</sup>, Sian Greening<sup>276</sup>, David Amor<sup>277</sup>, Mike Gattas<sup>277</sup>, Leon Botes<sup>278</sup>, Michael Buckley<sup>278</sup>, Michael Friedlander<sup>278</sup>, Jessica Koehler<sup>278</sup>, Bettina Meiser<sup>278</sup>, Mona Saleh<sup>278</sup>, Elizabeth Salisbury<sup>278</sup>, Alison Trainer<sup>278</sup>, Kathy Tucker<sup>278</sup>, Yoland Antill<sup>279</sup>, Alexander Dobrovic<sup>279</sup>, Andrew Fellows<sup>279</sup>, Stephen Fox<sup>279</sup>, Marion Harris<sup>279</sup>, Sophie Nightingale<sup>279</sup>, Kelly Phillips<sup>279</sup>, Joe Sambrook<sup>279</sup>, Heather Thorne<sup>279</sup>, Shane Armitage<sup>280</sup>, Leanne Arnold<sup>280</sup>, Rosemary Balleine<sup>281</sup>, Rick Kefford<sup>281</sup>, Judy Kirk<sup>281</sup>, Edwina Rickard<sup>281</sup>, Patti Bastick<sup>282</sup>, Jonathan Beesley<sup>283</sup>, Nick Hayward<sup>283</sup>, Amanda Spurdle<sup>283</sup>, Logan Walker<sup>283</sup>, John Beilby<sup>284</sup>, Christobel Saunders<sup>284</sup>, Ian Bennett<sup>285</sup>, Anneke Blackburn<sup>286</sup>, Michael Bogwitz<sup>287</sup>, Clara Gaff<sup>287</sup>, Geoff Lindeman<sup>287</sup>, Nick Pachter<sup>287</sup>, Clare Scott<sup>287</sup>, Adrienne Sexton<sup>287</sup>, Jane Visvader<sup>287</sup>, Jessica Taylor<sup>287</sup>, Ingrid Winship<sup>287</sup>, Meagan Brennan<sup>288</sup>, Melissa Brown<sup>289</sup>, Juliet French<sup>289</sup>, Stacey Edwards<sup>289</sup>, Matthew Burgess<sup>290</sup>, Jo Burke<sup>291</sup>, Briony Patterson<sup>291</sup>, Phyllis Butow<sup>292</sup>, Bronwyn Culling<sup>292</sup>, Liz Caldon<sup>293</sup>, David Callen<sup>294</sup>, Deepa Chauhan<sup>295</sup>, Maurice Eisenbruch<sup>295</sup>, Louise Heiniger<sup>295</sup>, Manisha Chauhan<sup>296</sup>, Alice Christian<sup>297</sup>, Joanne Dixon<sup>297</sup>, Alexa Kidd<sup>297</sup>, Paul Cohen<sup>298</sup>, Alison Colley<sup>299</sup>, Georgina Fenton<sup>299</sup>, Ashley Crook<sup>300</sup>, Rebecca Dickson<sup>300</sup>, Michael Field<sup>300</sup>, Deborah Marsh<sup>300</sup>, James Cui<sup>301</sup>, Margaret Cummings<sup>302</sup>, Sarah-Jane Dawson<sup>303</sup>, Anna DeFazio<sup>281,304</sup>, Martin Delatycki<sup>305</sup>, Tracy Dudding<sup>306</sup>, Ted Edkins<sup>307</sup>, Gelareh Farshid<sup>308</sup>, James Flanagan<sup>309</sup>, Peter Fong<sup>310</sup>, Laura Forrest<sup>311</sup>, David Gallego-Ortega<sup>312</sup>, Peter George<sup>313</sup>, Grantley Gill<sup>314</sup>, James Kollias<sup>314</sup>, Eric Haan<sup>315</sup>, Stewart Hart<sup>316</sup>, Mark Jenkins<sup>317</sup>, Clare Hunt<sup>318</sup>, Sunil Lakhani<sup>283,319</sup>, Lara Lipton<sup>320</sup>, Liz Lobb<sup>295</sup>, Graham Mann<sup>321</sup>, Sue Anne McLachlan<sup>322</sup>, Shona O'Connell<sup>323</sup>, Sarah O'Sullivan<sup>324</sup>, Ellen Pieper<sup>311,325</sup>, Bridget Robinson<sup>326</sup>, Jodi Saunus<sup>302,327</sup>, Elizabeth Scott<sup>328</sup>, Rodney Scott<sup>329</sup>, Andrew Shelling<sup>330</sup>, Peter Simpson<sup>302</sup>, Rachael Williams<sup>331</sup> and Mary Ann Young<sup>332</sup>

<sup>230</sup>Pathology West ICPMR, Westmead, NSW, Australia. <sup>231</sup>Kolling Institute of Medical Research, University of Sydney, Royal North Shore Hospital, Sydney, NSW, Australia. <sup>232</sup>Pathology North, John Hunter Hospital, Newcastle, NSW 2305, Australia. <sup>233</sup>Department of Anatomical Pathology, ACT Pathology, Canberra Hospital, Canberra, ACT, Australia. <sup>234</sup>ANU Medical School, Australian National University, Canberra, ACT, Australia. <sup>235</sup>Department of Surgical Oncology, Calvary Mater Newcastle Hospital, Australian New Zealand Breast Cancer Trials Group, and School of Medicine and Public Health, University of Newcastle, Newcastle, NSW, Australia. <sup>236</sup>School of Science and Health, The University of Western Sydney, Sydney, NSW, Australia. <sup>237</sup>Hormones and Cancer Group, Kolling Institute of Medical Research, Royal North Shore Hospital, University of Sydney, Sydney, NSW, Australia. <sup>238</sup>SydPath St Vincent's Hospital, Sydney, NSW, Australia. <sup>239</sup>Department of Tissue Pathology and Diagnostic Oncology, Pathology West, Westmead Breast Cancer Institute, Westmead Hospital, Sydney, NSW, Australia. <sup>240</sup>Centre for Information Based Medicine, Hunter Medical Research Institute, Sydney, NSW 2305, Australia. <sup>241</sup>Priority Research Centre for Cancer, School of Biomedical Sciences and Pharmacy, Faculty of Health, University of Newcastle, Callaghan, NSW, Australia. <sup>242</sup>The University of Queensland, UQ Centre for Clinical Research and School of Medicine, Brisbane, QLD, Australia. <sup>243</sup>Hereditary Cancer Clinic, St Vincent's Hospital, The Kinghorn Cancer Centre, Sydney, NSW 2010, Australia. <sup>244</sup>Crown Princess Mary Cancer Centre, Westmead Hospital, Westmead, NSW, Australia. <sup>245</sup>Sydney Medical School - Westmead, University of Sydney, Sydney, NSW, Australia. <sup>246</sup>Department of Medical Oncology, The Canberra Hospital, Garran, ACT, Australia. <sup>247</sup>St John of God Perth Northern Hospitals, Perth, WA, Australia. <sup>248</sup>Unit e Mixte de G en etique Constitutionnelle des Cancers Fr equents, Hospices Civils de Lyon, Lyon, France. <sup>249</sup>Centre L eon B erard, Lyon, France. <sup>250</sup>Institut Gustave Roussy, Villejuif, France. <sup>251</sup>Centre Jean Perrin, Clermont-Ferrand, France. <sup>252</sup>Centre Fran ois Baclesse, Caen, France. <sup>253</sup>Institut Paoli Calmettes, Marseille, France. <sup>254</sup>CHU Arnaud-de-Villeneuve, Montpellier, France. <sup>255</sup>Centre Oscar Lambret, Lille, France. <sup>256</sup>Centre Paul Strauss, Strasbourg, France. <sup>257</sup>Institut Bergoni e, Bordeaux, France. <sup>258</sup>Institut Claudius Regaud, Toulouse, France. <sup>259</sup>CHU, Grenoble, France. <sup>260</sup>CHU, Dijon, France. <sup>261</sup>CHU, St-Etienne, France. <sup>262</sup>H otel Dieu Centre Hospitalier, Chamb ery, France. <sup>263</sup>Centre Antoine Lacassagne, Nice, France. <sup>264</sup>CHU, Limoges, France. <sup>265</sup>CHU, Nantes, France. <sup>266</sup>CHU Bretonneau, Tours and Centre Hospitalier de Bourges, Bourges, France. <sup>267</sup>Groupe Hospitalier Piti e-Salp etri ere, Paris, France. <sup>268</sup>CHU Vandoeuvre-les-, Nancy, France. <sup>269</sup>CHU, Besan on, France. <sup>270</sup>CHU Poitiers, Centre Hospitalier d'Angoul eme and Centre Hospitalier de Niort, Niort, France. <sup>271</sup>Centre Hospitalier de La Rochelle, La Rochelle, France. <sup>272</sup>CHU Nimes, Car emeau, France. <sup>273</sup>CHI, Poissy, France. <sup>274</sup>CHU, Angers, France. <sup>275</sup>CHRU, de Lille, France. <sup>276</sup>Illawarra Cancer Care Centre Wollongong Hospital, Wollongong, Australia. <sup>277</sup>Royal Children's Hospital, Melbourne, VIC, Australia. <sup>278</sup>Prince of Wales Hospital, Randwick, NSW, Australia. <sup>279</sup>Peter MacCallum Cancer Centre, East Melbourne, VIC, Australia. <sup>280</sup>Royal Brisbane and Women's Hospital, Herston, QLD 4029, Australia. <sup>281</sup>Westmead Hospital, Westmead, NSW, Australia. <sup>282</sup>St George Hospital, Kogarah, NSW, Australia. <sup>283</sup>Queensland Institute of Medical Research, Herston, QLD, Australia. <sup>284</sup>Queen Elizabeth Medical Centre, Nedlands, WA, Australia. <sup>285</sup>Silverton Place, Brisbane, QLD, Australia. <sup>286</sup>Australian National University, Canberra, Australia. <sup>287</sup>The Royal Melbourne Hospital, Parkville, VIC, Australia. <sup>288</sup>NSW Breast Cancer Institute, Westmead, NSW, Australia. <sup>289</sup>University of Queensland, Queensland, QLD, Australia. <sup>290</sup>Austin Health, Heidelberg, VIC, Australia. <sup>291</sup>Royal Hobart Hospital, Hobart, TAS, Australia. <sup>292</sup>Royal Prince Alfred Hospital, Camperdown, NSW, Australia. <sup>293</sup>Garvan Institute of Medical Research, Darlinghurst, NSW, Australia. <sup>294</sup>University of Adelaide/Hanson Institute, Rundle Mall, SA, Australia. <sup>295</sup>University of Sydney, Sydney, NSW, Australia. <sup>296</sup>The Kinghorn Cancer Centre, Sydney, NSW, Australia. <sup>297</sup>Wellington Hospital, Wellington, New Zealand. <sup>298</sup>St John of God Subiaco Hospital, Subiaco, New Zealand. <sup>299</sup>Liverpool Health Service, Liverpool, UK. <sup>300</sup>Royal North Shore Hospital, St Leonards, NSW, Australia. <sup>301</sup>Monash University, Melbourne, VIC, Australia. <sup>302</sup>University of Queensland Medical School, Herston, NSW, Australia. <sup>303</sup>Cambridge University, Cambridge, UK. <sup>304</sup>Westmead Institute for Cancer Research, Westmead, NSW, Australia. <sup>305</sup>Heidelberg Repatriation Hospital, Heidelberg Heights, VIC, Australia. <sup>306</sup>Hunter Area Health Service, Waratah, USA. <sup>307</sup>Princess Margaret Hospital for Children, Perth, WA, Australia. <sup>308</sup>IMVS, Adelaide, SA, Australia. <sup>309</sup>Imperial College London, London, UK. <sup>310</sup>Auckland City Hospital, Auckland, New Zealand. <sup>311</sup>Parkville Familial Cancer Centre, Melbourne, VIC, Australia. <sup>312</sup>The Kinghorn Cancer Centre, Darlinghurst, NSW, Australia. <sup>313</sup>Canterbury Health Labs, Christchurch, New Zealand. <sup>314</sup>Royal Adelaide Hospital, Adelaide, SA, Australia. <sup>315</sup>Women's and Children's Hospital, North Adelaide, NSW, Australia. <sup>316</sup>Monash Medical Centre, Bentleigh, VIC, Australia. <sup>317</sup>University of Melbourne, Melbourne, VIC, Australia. <sup>318</sup>Monash Medical Centre, Melbourne, VIC, Australia. <sup>319</sup>The Royal Brisbane & Women's Hospital, Herston, QLD, Australia. <sup>320</sup>Western Hospital, Footscray, VIC, Australia. <sup>321</sup>Westmead Millennium Institute, Westmead, NSW, Australia. <sup>322</sup>St Vincent's Hospital, Fitzroy, VIC, Australia. <sup>323</sup>Southern Health Familial Cancer Centre, Clayton, VIC, USA. <sup>324</sup>Agnes Walsh House, Subiaco, WA, Australia. <sup>325</sup>Genomic Medicine, Melbourne, VIC, Australia. <sup>326</sup>Christchurch Hospital, Christchurch, New Zealand. <sup>327</sup>Women's Hospital, Herston, QLD, Australia. <sup>328</sup>South View Clinic, Kogarah, NSW, Australia. <sup>329</sup>John Hunter Hospital, New Lambton Heights, NSW 2305, Australia. <sup>330</sup>University of Auckland, Auckland, New Zealand. <sup>331</sup>St Vincent's Hospital, Darlinghurst, NSW, Australia. <sup>332</sup>GenomeOne, Darlinghurst, NSW, Australia.