

 Open access • Journal Article • DOI:10.1088/0004-637X/726/1/30

The First Ultra-cool Brown Dwarf Discovered by the Wide-field Infrared Survey Explorer

— [Source link](#) 

Amy Mainzer, Michael C. Cushing, Mike Skrutskie, Christopher R. Gelino ...+16 more authors

Institutions: California Institute of Technology, University of Virginia, Ames Research Center, Los Alamos National Laboratory ...+5 more institutions

Published on: 01 Jan 2011 - The Astrophysical Journal (American Astronomical Society)

Topics: Brown dwarf and Large Binocular Telescope

Related papers:

- [The wide-field infrared survey explorer \(wise\): mission description and initial on-orbit performance](#)
- [The first hundred brown dwarfs discovered by the wide-field infrared survey explorer \(wise\)](#)
- [A Unified Near-Infrared Spectral Classification Scheme for T Dwarfs](#)
- [The Two Micron All Sky Survey \(2MASS\)](#)
- [The Discovery of Y Dwarfs using Data from the Wide-field Infrared Survey Explorer \(WISE\)](#)

Share this paper:    

View more about this paper here: <https://typeset.io/papers/the-first-ultra-cool-brown-dwarf-discovered-by-the-wide-vwi1vwflvn>

THE FIRST ULTRA-COOL BROWN DWARF DISCOVERED BY THE WIDE-FIELD INFRARED SURVEY EXPLORER

A. MAINZER¹, MICHAEL C. CUSHING¹, M. SKRUTSKIE², C. R. GELINO³, J. DAVY KIRKPATRICK³, T. JARRETT³, F. MASCI³, MARK S. MARLEY⁴, D. SAUMON⁵, E. WRIGHT⁶, R. BEATON², M. DIETRICH⁷, P. EISENHARDT¹, P. GARNAVICH⁸, O. KUHN⁹, D. LEISAWITZ¹⁰, K. MARSH³, I. MCLEAN⁶, D. PADGETT³, AND K. RUEFF⁸

¹ Jet Propulsion Laboratory, California Institute of Technology, Pasadena, CA 91109, USA; amainzer@jpl.nasa.gov

² University of Virginia, 530 McCormick Road Charlottesville, VA 22904, USA

³ Infrared Processing and Analysis Center, California Institute of Technology, Pasadena, CA 91125, USA

⁴ NASA Ames Research Center, Mountain View, CA 94043, USA

⁵ Los Alamos National Laboratory, P.O. Box 1663, Los Alamos, NM 87545, USA

⁶ UCLA Astronomy, P.O. Box 91547, Los Angeles, CA 90095-1547, USA

⁷ Department of Astronomy, Ohio State University, 140 W 18th Avenue, Columbus, OH 43210-1173, USA

⁸ University of Notre Dame, 225 Nieuwland Science Hall, Notre Dame, IN 46556-5670, USA

⁹ Large Binocular Telescope Observatory, University of Arizona, 933 N. Cherry Ave., Tucson, AZ 85721, USA

¹⁰ Goddard Space Flight Center, 8800 Greenbelt Rd., Greenbelt, MD 20771, USA

Received 2010 May 30; accepted 2010 September 30; published 2010 December 13

ABSTRACT

We report the discovery of the first new ultra-cool brown dwarf (BDs) found with the Wide-field Infrared Survey Explorer (WISE). The object’s preliminary designation is WISEPC J045853.90+643451.9. Follow-up spectroscopy with the LUCIFER instrument on the Large Binocular Telescope indicates that it is a very late-type T dwarf with a spectral type approximately equal to T9. Fits to an IRTF/SpEx 0.8–2.5 μm spectrum to the model atmospheres of Marley and Saumon indicate an effective temperature of approximately 600 K as well as the presence of vertical mixing in its atmosphere. The new BD is easily detected by WISE, with a signal-to-noise ratio of ~ 36 at 4.6 μm . Current estimates place it at a distance of 6–10 pc. This object represents the first in what will likely be hundreds of nearby BDs found by WISE that will be suitable for follow-up observations, including those with the *James Webb Space Telescope*. One of the two primary scientific goals of the WISE mission is to find the coolest, closest stars to our Sun; the discovery of this new BD proves that WISE is capable of fulfilling this objective.

Key words: brown dwarfs – infrared: stars – solar neighborhood – stars: late-type – stars: low-mass

Online-only material: color figures

1. INTRODUCTION

Brown dwarfs (BDs) are star-like objects with masses too low to sustain core fusion of hydrogen to helium. Although first predicted to exist in the early 1960’s (Kumar 1963; Hayashi & Nakano 1963), BDs were not discovered in bulk until decades later by deep, large-area surveys such as the Two Micron All Sky Survey (2MASS; Skrutskie et al. 2006), the Sloan Digital Sky Survey (SDSS; York et al. 2000), and the DEep Near-Infrared Southern Sky Survey (DENIS; Epchtein et al. 1997). Strong methane absorption characterizes the coolest observed class of BDs, providing the hallmark of the “T” spectral type. To date, more than 200 T dwarfs have been discovered (DwarfArchives.org). T dwarfs have effective temperatures ranging from ~ 1300 K down to ~ 450 K (Lucas et al. 2010; Burgasser et al. 2006; Burningham et al. 2008; Delorme et al. 2008; Golimowski et al. 2004; Warren et al. 2007), and the coldest T dwarfs are characterized by deep absorption bands of CH_4 , H_2O , H_2 , and NH_3 appearing throughout the near- and mid-infrared portions of their spectrum (Borysow et al. 1997; Irwin et al. 1999; Leggett et al. 2007a). No census of our solar neighborhood can be complete without discovering the lowest temperature BDs, as it is anticipated that they exist in numbers rivaling those of normal stars (Burningham et al. 2010b; Lodieu et al. 2007; Moraux et al. 2003; Reid et al. 1999). Additionally, the spatial density of ultra-cool and low-mass BDs can be used as a sensitive probe of the lowest masses that can be produced

via different star formation processes (Bate 2009; Burgasser 2004).

One of the two primary science objectives for the Wide-field Infrared Survey Explorer (WISE) is to find these coldest BDs, which represent the final link between the lowest mass stars and the giant planets in our own solar system. WISE is a NASA Medium-class Explorer mission designed to survey the entire sky in four infrared wavelengths, 3.4, 4.6, 12, and 22 μm (Wright et al. 2010; Liu et al. 2008; Mainzer et al. 2005). WISE consists of a 40 cm telescope that images all four bands simultaneously every 11 s. It covers nearly every part of the sky a minimum of eight times, ensuring high source reliability, with more coverage at the ecliptic poles. Astrometric errors are less than 0.5 arcsec with respect to 2MASS (Wright et al. 2010). The preliminary estimated S/N = 5 point source sensitivity on the ecliptic is 0.08, 0.1, 0.8, and 5 mJy in the four bands (assuming eight exposures per band; Wright et al. 2010). Sensitivity improves away from the ecliptic due to denser coverage and lower zodiacal background.

WISE’s two shortest wavelength bands, centered at 3.4 and 4.6 μm (W1 and W2, respectively), were specifically designed to optimize sensitivity to the coolest types of BDs (J. D. Kirkpatrick et al. 2010, in preparation). In particular, BDs cooler than ~ 1500 K exhibit strong absorption due to the ν_3 band of CH_4 centered at 3.3 μm , with the onset of methane absorption at this wavelength beginning at ~ 1700 K (Noll et al. 2000). The as-measured sensitivities of 0.08 and 0.1 mJy in W1 and W2

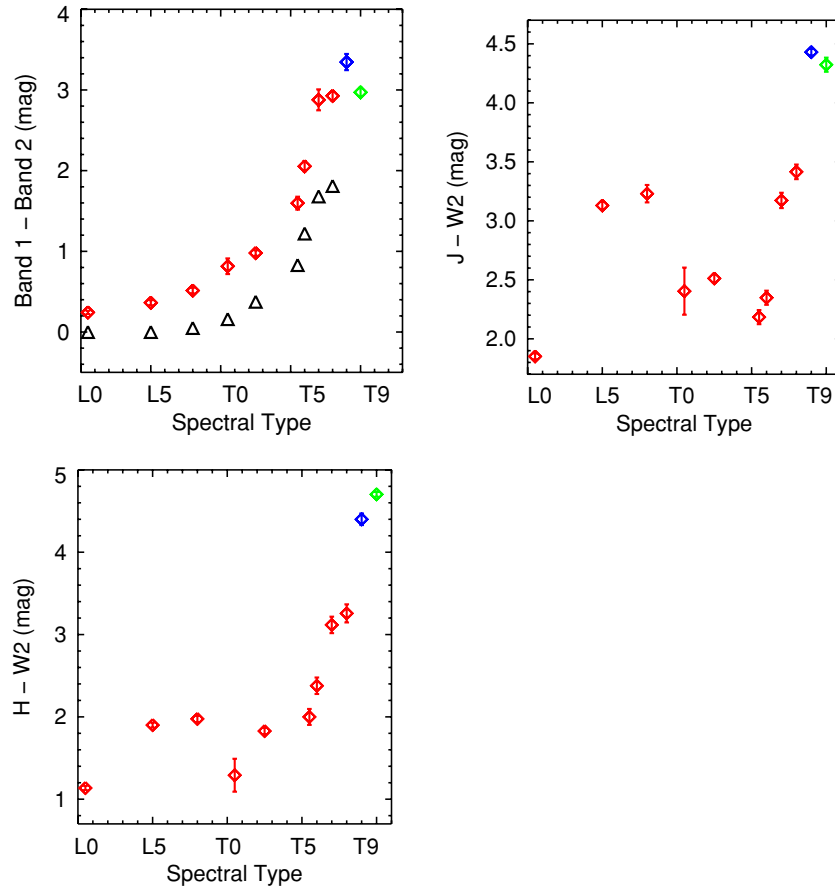


Figure 1. WISE $W1 - W2$ colors are systematically redder than the IRAC Ch1–Ch2 colors for low-temperature objects. WISE measurements are shown as red diamonds; *Spitzer*/IRAC measurements for the same objects are shown as black triangles (Patten et al. 2006). WISEPC J0458+64 is shown as a blue diamond, and UGPS J0722–05 (Lucas et al. 2010) is shown as a green diamond. WISEPC J0458+64 appears ~ 0.4 mag redder than UGPS J0722–05. UGPS J0722–05 is detected with a measured $S/N = 39.9$ by WISE in the $W2$ image formed from co-adding 10 frames. The $J - W2$ and $H - W2$ colors increase rapidly with spectral type. $J - W2$ and $H - W2$ are likely to be effective indices for detecting and characterizing late L and early T dwarfs as well as ultra-cool BDs.

(A color version of this figure is available in the online journal.)

allow WISE to detect a 300 K BD out to a distance of ~ 8 pc, according to models by Marley et al. (2002) and Saumon & Marley (2008).

2. OBSERVATIONS OF KNOWN L AND T DWARFS WITH WISE

In order to facilitate the search for new BDs in the WISE data set, we first examined the WISE fluxes and colors of known BDs. The $W1 - W2$ and IRAC $[3.6] - [4.5]$ colors of a sample of L and T dwarfs are shown in Figure 1(a) along with their *Spitzer*/IRAC colors (Patten et al. 2006). The WISE $W1$ band spans the deep H_2O and CH_4 absorption features found in the coolest BDs, while the $W2$ band is centered on the window near $5 \mu m$ where much of the flux of these objects is emitted; it also includes the $4.6 \mu m$ CO absorption feature and the $4.2 \mu m$ CO_2 feature (Yamamura et al. 2010). While the $W1$ and $W2$ bands are superficially similar to the *Spitzer*/IRAC bands 1 and 2 (which were also designed to isolate cool BDs; Fazio et al. 1998), the WISE $W1$ band is wider to improve discrimination between normal stars and ultra-cool BDs (Wright et al. 2010). This results in a systematically larger $W1 - W2$ color compared to $[3.6] - [4.5]$. Figures 1(b) and (c) show that $J - W2$ and $H - W2$ increase with spectral type, with $H - W2$ showing the smoothest correlation between color and spectral type for BDs later than T5, in good agreement with Leggett et al. (2010);

these indices are likely to be a valuable means of identifying new L and T dwarfs. Table 1 contains the WISE photometry of the small sample of L and T dwarfs shown in the figures, and Figure 2 shows a model of a cool BD along with the WISE $W1$ and $W2$ transmission curves.

3. SEARCH FOR NEW BROWN DWARFS WITH WISE

Several methods were employed for searching for new BD candidates in the WISE data set. The WISE preliminary data processing pipeline produces calibrated frames for each of the individual exposures. These images have been dark-subtracted, flat-fielded, distortion-corrected, have had artifacts flagged and sources extracted. Once the individual images are produced, they are co-added to produce a single frame for each inertial position.

Searches for new BD candidates were performed on both the single-frame and multi-frame co-added mosaic source lists. The co-add search provided the maximum depth and sensitivity since the co-added frames generally feature the combination of at least eight frames per position. The co-add search was performed by searching the source lists for objects with a $W1 - W2 \geq 2.0$, a $W2$ signal-to-noise ratio (S/N) ≥ 10 , although sources were not required to be detected in $W1$ (limiting magnitudes are given to 2.5σ). Sources were required to have been observed a minimum of four times in order to ensure reliability. Sources affected

Table 1
Preliminary Photometry of a Sample of Known BDs Observed with WISE

Object	Spectral Type	W1	W1 Error	W2	W2 Error	W1 – W2
2MASS J04510093–3402150 ^a	L0.5	11.933	0.016	11.690	0.015	0.243
2MASS J08354256–0819237 ^a	L5	10.403	0.025	10.04	0.020	0.363
2MASS J16322911+1904407 ^b	L8	13.151	0.029	12.637	0.024	0.514
SDSSp J083717.22–000018.3 ^c	T0–T1	15.512	0.056	14.697	0.079	0.815
IPMS J013656.57+093347.3 ^d	T2.5	11.922	0.026	10.943	0.024	0.979
2MASSI J1546291–332511 ^e	T5.5	15.044	0.072	13.447	0.037	1.597
SDSSp J162414.37+002915.6 ^f	T6	15.2	0.053	13.146	0.030	2.054
Gliese 570D ^g	T7	15.029	0.119	12.151	0.045	2.878
2MASSI J0415195–093506 ^e	T8	15.207	0.051	12.28	0.022	2.927
UGPS J072227.51–054031.2 ^h	T9+	15.168	0.047	12.197	0.027	2.971

Notes. Spectral types for L dwarfs are based on optical spectroscopy; T dwarfs are based on infrared spectroscopy.

^a Cruz et al. (2003).

^b Kirkpatrick et al. (1999).

^c Leggett et al. (2000).

^d Artigau et al. (2006).

^e Burgasser et al. (2002).

^f Strauss et al. (1999).

^g Burgasser et al. (2000).

^h Lucas et al. (2010).

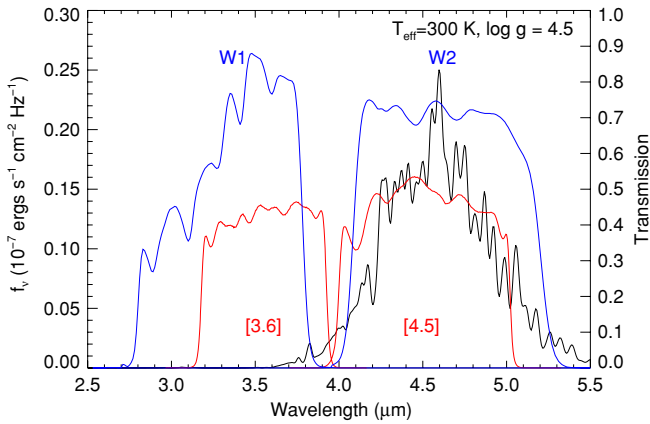


Figure 2. Cloudless model spectrum with $T_{\text{eff}} = 300$ K and $\log g = 4.5$ (cm s^{-2}) (M. S. Marley & D. Saumon 2010, private communication) is shown in black along with the relative response functions of the 3.6 and 4.5 μm bands of IRAC (red) and the W1 and W2 bands of WISE (green). The positions and widths of the W1 and W2 bandpasses were specifically designed to sample the strong absorption at $\lambda \sim 3.5 \mu\text{m}$ due to CH_4 and H_2O and the region relatively free of opacity at $\sim 4.7 \mu\text{m}$ in the emergent spectra of cold BDs.

(A color version of this figure is available in the online journal.)

by artifacts such as diffraction spikes and latent images were excluded, and the reduced chi-squared point-spread function goodness-of-fit parameter was required to be consistent with a point source ($w2rchi2 \leq 3$, where the quantity $w2rchi2$ represents the goodness of fit of a point source model to the set of observed pixel values in band W2, whereby a value close to unity indicates consistency). No requirement on the W1 S/N was levied in order to increase sensitivity to the coolest BDs, which can fall below the W1 sensitivity limits. Subsequent searches were performed with varied criteria, including requiring the W4 S/N to be ≤ 5 , and only sources with high reliability were accepted (as determined by comparing the number of detections to the number of coverages). Once sources meeting these criteria were extracted from the WISE data, they were compared with images from the Digitized Sky Survey (DSS), 2MASS, and SDSS. BD candidates were required to have blue and red optical fluxes from DSS and SDSS (where SDSS data were available)

consistent with expectations for very late T dwarfs observed with WISE. Cold WISE BD candidates were required to be unseen in DSS or SDSS, or in some cases visible at the longest wavelengths only in these surveys.

A source, given the provisional designation WISEPC J045853.90+643451.9 (hereafter WISEPC J0458+64), was located in the co-added source list that met all of the above criteria; Table 2 summarizes the astrometry and Table 3 summarizes the WISE magnitudes and colors for the source. Although WISEPC J0458+64 is faintly visible in the 2MASS *J*-band original scans, slightly offset from the WISE-derived position, the source was not bright enough to have been included in either the 2MASS All-Sky Point Source Catalog or Reject Table. Aperture photometry of the *J*-band flux using standard IDL astronomy library routines reveals it to be detected at 3σ . Figure 3 shows the WISE, 2MASS, and DSS finder images. At the position of the BD candidate, there are 13 separate images from WISE. The S/N in the resulting co-added data in W1 are 11.9 and 36.3 in W2. The source was not detected in W3 due to contaminating cirrus, which can confound photometry at these wavelengths. The object is not detected in W4 to a limiting magnitude of 9.3 (Vega system) or 1.70 mJy. The images of WISEPC J0458+64 were searched for widely separated companions, but none were found. No known nearby stars with common proper motion were found.

4. FOLLOW-UP OBSERVATIONS OF WISEPC J0458+64

4.1. Fan Mountain–FanCam

YJH photometry of WISEPC J0458+64 was obtained on 2010 March 17 (UT) with FanCam, a HAWAII-1 based infrared imager operating at the University of Virginia’s Fan Mountain 31” telescope (Kanneganti et al. 2009). The source position was dithered by approximately $10''$ between 30 s (*JH*) or 60 s (*Y*) exposures during total exposures of 40, 35, and 60 minutes at *Y*, *J*, and *H* bands, respectively. The FanCam field of view (FOV) is $8'.7 \times 8'.7$ ($0'.51 \text{ pixel}^{-1}$). The combined, dithered exposures covered $7' \times 7'$, providing several 2MASS stars for photometric reference within the exposure area. A median “sky” frame was subtracted from each individual exposure prior to flat fielding

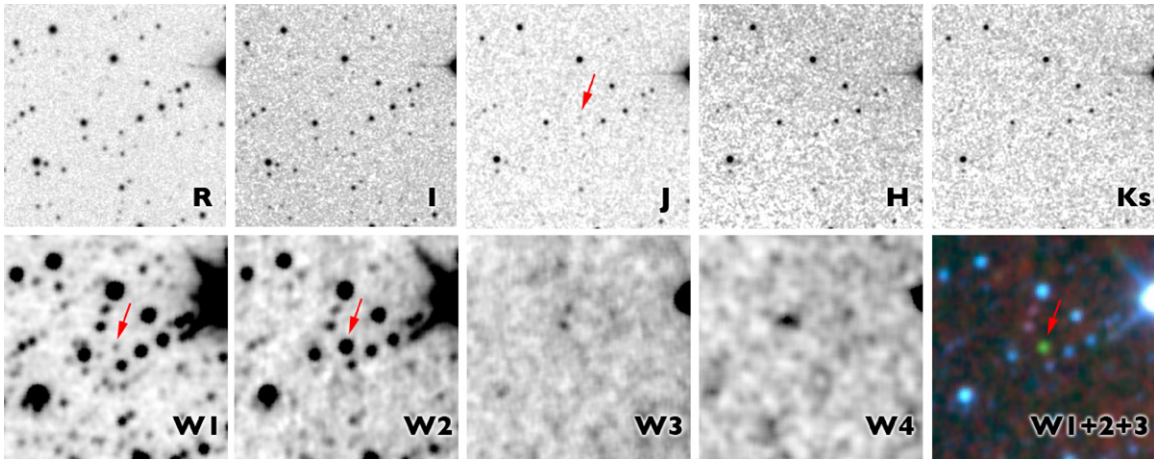


Figure 3. Nine-band finder chart showing the area around the BD. The top row shows DSS images at *R* and *I* bands taken at epochs 1989-12-23 and 1996-10-02 (UT), respectively, as well as 2MASS *J*, *H*, and *K* bands taken at epoch 1999-01-01 (UT). The bottom row shows the WISE co-added images at *W1*, *W2*, *W3*, and *W4*, with an RGB composite of bands *W1*, *W2*, and *W3*. The co-adds come from frames ranging between MJDs 55261.554191 and 55262.811271. Each image is 5 arcmin on a side with north up and east to the left. The BD is detected in *J*, *W1*, and *W2* and shows significant motion between epochs; the *W3* flux is contaminated by nebulosity and is therefore unreliable, and it is undetected in *W4*. The final image is a three-color composite comprised of *W1*, *W2*, and *W3*, shown as blue, green, and red, respectively.

(A color version of this figure is available in the online journal.)

Table 2
Astrometry of WISEPC J0458+64

R.A. (J2000, °)	Decl. (J2000, °)	R.A. Error (")	Decl. Error (")	MJD	Reference
74.7245712	64.5810776	0.1696	0.1703	55262.18273 ^a	WISE Pass 1 Database
74.723142	64.580773	0.3	0.3	51179.32788	2MASS Images
74.724583	64.581224	0.2	0.2	55272.03133	FanCam images

Notes. ^a This is the average of the date of the earliest frame (MJD = 55261.554191) and that of the latest frame (MJD = 55262.811271) contributing to the co-added image.

with the median background level subsequently restored to the image.

YJH aperture photometry was computed for WISEPC J0458+64 using an aperture with a radius of 3 pixels. The zero points for the *JH* bands were computed using stars in the FOV with measured 2MASS magnitudes since the *JH*-band filters in FanCam are based on the 2MASS system. In order to derive the *Y*-band zero point, we first computed the *Y*-band magnitudes of stars in the FOV using their 2MASS *J* and *K_s* magnitudes and the transformation given by Hamuy et al. (2006). The final uncertainty in the magnitudes include the photon noise from the sky and source, the read noise, and the uncertainty in the zero point. The resulting magnitudes and uncertainties are given in Table 3.

4.2. Large Binocular Telescope—LUCIFER

The Large Binocular Telescope (LBT) Near-Infrared Spectroscopic Utility with Camera and Integral Field Unit for Extragalactic Research (LUCIFER) near-infrared camera/spectrograph (Mandel et al. 2008), operating in long-slit grating spectroscopy mode, provided 1.5–2.3 μm spectra of WISEPC J0458+64 at the Gregorian focus of the LBT’s SX (“left”) 8.4 m primary mirror on 2010 March 19 (UT). The 0.75 slit spanned 3.0 pixels and provided a spectral resolving power $R \equiv \lambda/\delta\lambda$ ranging from 1300 at 1.6 μm to 1700 at 2.2 μm dispersing the light in a single order across the array. The orientation of the 200 lines mm^{-1} “H+K” grating centered 1.98 μm on the array. Observations consisted of 300 s exposures with the source nodded between two slit positions separated by 20 arcsec in declina-

Table 3
Photometry, Proper Motion, and Spectral Indices of WISEPC J0458+64

Parameter Name	Value (mag)
<i>J</i> (2MASS)	16.8 ± 0.3
<i>H</i> (2MASS)	(undetected)
<i>K</i> (2MASS)	(undetected)
<i>Y</i> (FanCam)	18.34 ± 0.07
<i>J</i> (FanCam)	17.47 ± 0.07
<i>H</i> (FanCam)	17.41 ± 0.11
<i>W1</i>	16.401 ± 0.100
<i>W2</i>	13.020 ± 0.031
<i>W3</i>	(undetected—cirrus)
<i>W4</i>	(9.322—undetected; lower limit)
$Y_{\text{FC}} - J_{\text{FC}}$	0.87 ± 0.10
$J_{\text{FC}} - H_{\text{FC}}$	0.06 ± 0.13
$H_{\text{FC}} - W2$	4.39 ± 0.11
$W1 - W2$	3.381 ± 0.105
Proper motion (arcsec yr^{-1})	0.256 ± 0.032
Position angle	$51^\circ \pm 7^\circ$ east of north
$\text{H}_2\text{O} - J$	0.03
$\text{CH}_4 - J$	0.32
W_J	0.46
$\text{H}_2\text{O} - H$	0.10
$\text{CH}_4 - H$	0.09
$\text{CH}_4 - K$	0.19

tion following an ABBA position sequence. Three repetitions of this sequence provided for 60 minutes of on-source integration. A0 telluric standards were observed both before and after the observation.

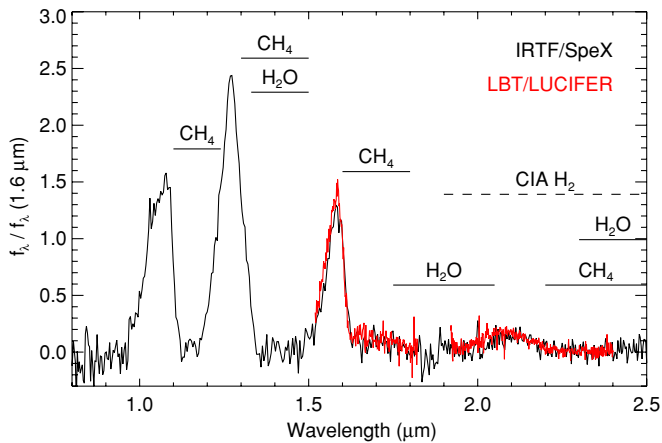


Figure 4. Spectrum of WISEPC J0458+64 obtained with SpeX (black) and LUCIFER (red). Prominent absorption bands of CH₄, H₂O, and H₂ are indicated. The agreement between the two spectra is excellent.

(A color version of this figure is available in the online journal.)

The spectra were processed using a modified version of the Spextool data reduction package (Cushing et al. 2004). Each pair of exposures was subtracted and then flat-fielded. The spectra were then extracted and wavelength calibrated using sky emission features. The raw spectrum of WISEPC J0458+64 was corrected for telluric absorption using the A0 V star HD 33541 and the technique described by Vacca et al. (2003). The spectrum was rebinned to have 1 pixel per resolution element resulting in a final S/N of 20 and 10 in the *H* and *K* bands, respectively.

4.3. NASA Infrared Telescope Facility–SpeX

We obtained a 0.8–2.5 μm spectrum of WISEPC J0458+64 on 2010 September 12 (UT) using SpeX (Rayner et al. 2003) on the 3.0 m NASA Infrared Telescope Facility on Mauna Kea. We used the low-resolution prism mode with the 0.5 wide slit which yielded an average resolving power of $R = 150$. A series of 120 s exposures at two positions along the 15'' slit were obtained to facilitate sky subtraction. Observations of the A0 star HD 14632 were obtained after the science exposures for telluric correction and flux calibration purposes as well as flat and arclamp exposures.

The data were reduced using Spextool (Cushing et al. 2004), the IDL-based data reduction package for SpeX. Given the faintness of WISEPC J0458+64, the images were first pair-subtracted and then averaged together robustly in order to facilitate extraction. The spectra were then optimally extracted (e.g., Horne 1986) and wavelength calibrated using argon lamp exposures. The raw spectrum was then corrected for telluric absorption and flux-calibrated using the observations of the A0 V star HD14632 and the technique described in Vacca et al. (2003). The S/N of the final spectrum ranges from a maximum of ~ 40 in the *J* band to ~ 5 in the *K* band. The spectrum was absolutely flux calibrated as described in Rayner et al. (2009, see Equation (1)) using the FanCam *J*- and *H*-band magnitudes. The agreement between the LUCIFER and SpeX data is excellent (Figure 4).

5. ANALYSIS

5.1. Spectral Analysis

The LUCIFER and SpeX spectra are shown in Figure 4. The spectra exhibit the deep absorption features of CH₄ and H₂O indicative of a very late T dwarf. The spectrum of WISEPC

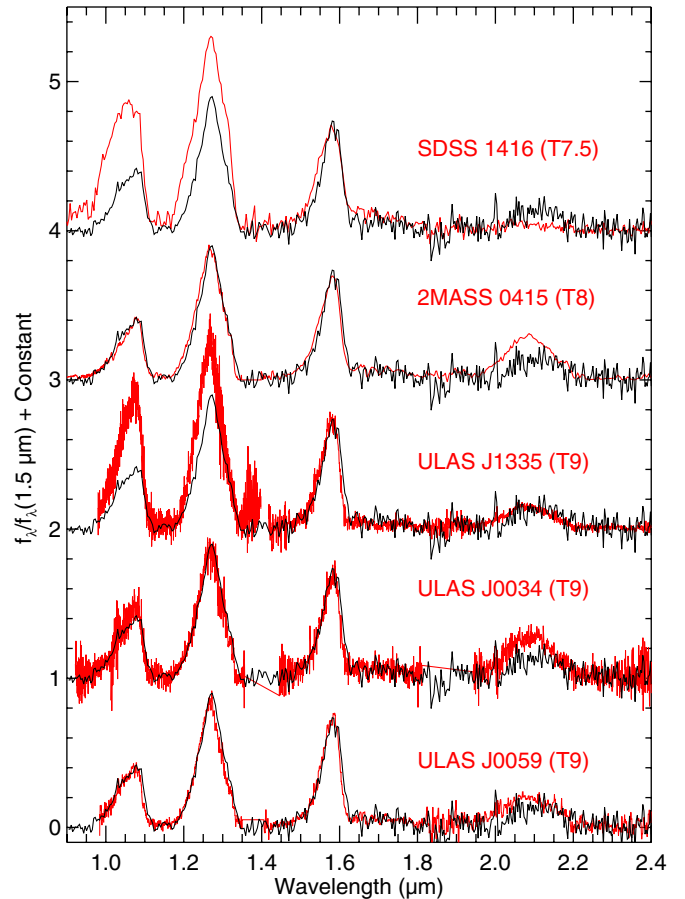


Figure 5. 1.5–2.45 μm spectrum (black) of WISEPC J0458+64. Overplotted (red) are five late T dwarf spectra: SDSS J1416+13B (Scholz 2010; Burgasser et al. 2010), 2MASS J0415–09 (Burgasser et al. 2002), ULAS J1335+11 (Burningham et al. 2008), ULAS J0034–00 (Warren et al. 2007), and CFBDS J0059–01 (Delorme et al. 2008).

(A color version of this figure is available in the online journal.)

J0458+64 can be compared to the NIR spectra of the very late T dwarfs 2MASS J0415–09 (Burgasser et al. 2002), ULAS J003402.77–005206.7 (hereafter ULAS J0034–00; Warren et al. 2007), CFBDS J005910.90–011401.3 (CFBDS J0059–00; Delorme et al. 2008), ULAS J133553.45+113005.2 (ULAS J1335+11; Burningham et al. 2008), and SDSS J1416+13B (Burningham et al. 2010a; Scholz 2010). As shown in Figure 5, WISEPC J0458+64 appears to best match the spectrum of the T9 dwarfs, although formal assignment of a spectral type will have to wait for the identification of spectral standards for objects this late.

The atmospheric parameters of WISEPC J0458+64 were estimated by comparing the SpeX spectrum and the WISE photometry to the model spectra of Marley et al. (2002) and Saumon & Marley (2008). We used a grid of 80 cloudless models with T_{eff} ranging from 500 to 1000 K in steps of 100 K, $\log g = 4.0, 4.5, 5.0$, and 5.5 (cm s^{-2}), $[M/H] = 0, -0.3$, and $K_{zz} = 0, 10^4 \text{ cm}^2 \text{ s}^{-1}$. K_{zz} is the eddy diffusion coefficient and ranges from $\sim 10^2 \text{ cm}^2 \text{ s}^{-1}$ to $10^5 \text{ cm}^2 \text{ s}^{-1}$ in planetary atmospheres (e.g., Saumon et al. 2006). $K_{zz} = 0$ corresponds to an atmosphere without vertical mixing in the radiative zone where chemical equilibrium prevails. The models were first smoothed to the resolution of the spectra and interpolated onto the wavelength scale of the data. In order to include the WISE photometry in the comparison, we converted the observed W1

and $W2$ magnitudes to average fluxes using the following zero points on the Vega system: 306.681, 170.663, 29.0448, and 8.2839 Jy in bands $W1$ through $W4$ and using the relative spectral response curves from Wright et al. (2010) and T. Jarrett et al. (2010, in preparation).

We identified the best-fitting model spectra in the grid using the goodness-of-fit statistic G_k ($w_i = 1$; all data points receiving equal weight) described in Cushing et al. (2008). For each model k , we compute the scale factor $C_k = (R/d)^2$, where R and d are the radius and distance of the dwarf, respectively, that minimizes G_k . The best-fitting model is identified as having the global minimum G_k value. To access the uncertainty in the selection process, we run a Monte Carlo simulation using both the uncertainties in the individual spectral and photometric points and the overall absolute flux calibration of the SpeX spectrum (see Cushing et al. 2008; Bowler et al. 2009). We report the quality of the fit between the data and model k as f_{MC} , the fraction of Monte Carlo simulations in which model k is identified as the best-fitting model.

The best-fitting model has $T_{\text{eff}} = 600$ K, $\log g = 5.0$, $[\text{Fe}/\text{H}] = 0$, $K_{zz} = 10^4 \text{ cm}^2 \text{ s}^{-1}$, and $f_{MC} = 0.66$ while the second best-fitting model has $T_{\text{eff}} = 600$ K, $\log g = 5.5$, $[\text{Fe}/\text{H}] = 0$, $K_{zz} = 10^4 \text{ cm}^2 \text{ s}^{-1}$, and $f_{MC} = 0.34$. Given their f_{MC} values, these are the only two models in the grid that fit the data given the uncertainties. Figure 6 shows the SpeX spectrum and WISE photometry of WISEPC J0458+64 along with the best-fitting model. The spectrum is well matched by the model, but the $W2$ point is discrepant by over 10σ . Although Figure 5 shows that WISEPC J0458+64 appears to show suppressed K -band flux relative to other late T dwarfs, the interpretation of the feature is uncertain as the models for objects in this temperature regime are as yet not well validated. Suppressed K -band flux has previously been ascribed to low metallicity and/or high surface gravity (Leggett et al. 2009; Stephens et al. 2009); however, our model fits do not indicate unusual metallicity. The atmospheric parameters derived herein for WISEPC J0458+64 are consistent with those derived for other late-type T dwarfs (e.g., Leggett et al. 2009; Burningham et al. 2009). In particular, there is evidence for the presence of vertical mixing in the atmosphere of WISEPC J0458+64 as $K_{zz} = 10^4 \text{ cm}^2 \text{ s}^{-1}$. However, the poor match between the data and the model at $4.6 \mu\text{m}$, a spectral region particularly sensitive to vertical mixing (Leggett et al. 2007b; Geballe et al. 2009), makes drawing any conclusions difficult.

Following Bowler et al. (2009), we can also estimate a *spectrophotometric* distance to WISEPC J0458+64 using the scale factor C_k . We first estimate the radius of WISEPC J0458+64 using the derived (T_{eff} , $\log g$) values and the evolutionary models of Saumon & Marley (2008). Using errors given by half the grid spacing of 50 K and 0.25 dex, we estimate a distance of 6–8 pc for WISEPC J0458+64. This distance is in rough agreement with the photometric distance of 9.0 ± 1.9 pc, using the apparent J magnitude of 17.47 ± 0.05 and absolute magnitude $M_J = 17.7 \pm 0.45$. This was computed from a weighted average of M_J for the late T dwarfs Wolf 940B (Burningham et al. 2009), ULAS0034–00 (Smart et al. 2010), and SDSS J1416+13B (Scholz 2010), using the worst-case error.

5.2. Astrometry

The source is not present in either the 2MASS All-Sky Point Source Catalog or the Reject Catalog, but it is faintly visible in the 2MASS J image as shown in Figure 3. We performed a Gaussian fit to the source in the 2MASS J image to measure

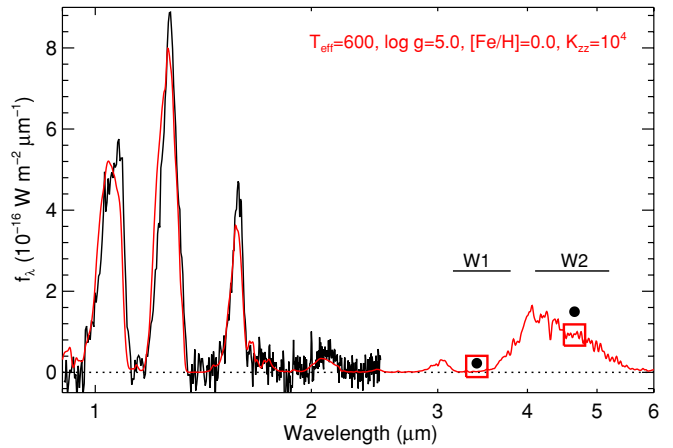


Figure 6. Spectrum and WISE photometry (black) of WISEPC J0458+64 overlaid with a model spectrum. The best-fitting model spectrum for the case $w_i = 1$ (red) has $T_{\text{eff}} = 600$ K, $\log g = 4.5$, $[\text{Fe}/\text{H}] = 0$, and $K_{zz} = 10^4 \text{ cm}^2 \text{ s}^{-1}$. The average model fluxes over the WISE bandpasses are shown as open squares; the photometric errors on the WISE points are comparable to the symbol size.

(A color version of this figure is available in the online journal.)

its position. Astrometry at three epochs (2MASS, WISE, and FanCam) is listed in Table 2. A linear least-squares fit to the measured positions, weighted by their astrometric errors, gives a motion of $0.1968 \pm 0.0291 \text{ yr}^{-1}$ in R.A. and $0.1593 \pm 0.0291 \text{ yr}^{-1}$ in decl. over 11.2 yr, or a total motion of $0.256 \pm 0.032 \text{ yr}^{-1}$.

6. DISCUSSION

One of the key questions in BD science is whether or not the spectral sequence ends with the T dwarfs, or whether another spectral type (with a proposed designation of Y; Kirkpatrick et al. 1999) is justified. Currently, only about two dozen objects with spectral types later than T7 are known, and four objects are known to have type T9 or later: ULAS J0034–00 (Warren et al. 2007), CFBDS J0059–00 (Delorme et al. 2008), ULAS J1335+11 (Burningham et al. 2008), and UGPS J0722–05 (Lucas et al. 2010). New spectral indices for typing these late-type T dwarfs have been developed as the CH_4 absorption band depths may not continue to increase in the NIR with temperatures lower than those of T8/T9 dwarfs (Burningham et al. 2010b). We compute the $\text{H}_2\text{O}-J$, CH_4-J , W_J , $\text{H}_2\text{O}-H$, CH_4-H , and CH_4-K indices given by Burgasser et al. (2006), Burningham et al. (2008), and Warren et al. (2007) for WISEPC J0458+64 (see Table 3). However, as noted in Burningham et al. (2008), these indices must be viewed with caution for extremely late T dwarfs; the values we compute for WISEPC J0458+64 tell us only that it is later than T7/T8. Given the paucity of very late T dwarfs, assignment of a definitive spectral type will await the identification and definition of spectral standards. As this remarkably cool object was found easily in some of the first WISE data, WISE is likely to find many more similar objects, as well as cooler ones, inevitably producing abundant candidates for the elusive Y class BDs. Scaling from the *Spitzer* sample of $4.5 \mu\text{m}$ selected ultra-cool BD candidates (Eisenhardt et al. 2010), we expect to find hundreds of new ultra-cool BDs with WISE. We compute that for most likely initial mass functions, WISE has a better than 50% chance of detecting a cool BD which may actually be closer to our Sun than Proxima Centauri (Wright et al. 2010).

7. CONCLUSIONS

We report the discovery of the first ultra-cool BD with WISE, an object which is consistent with an extremely late T dwarf. The object is easily detected by WISE, with S/N of ~ 40 at $4.6\ \mu\text{m}$. Further, WISEPC J0458+64 lies in projection only 13° off the Galactic midplane. WISE can pick out ultra-cool BDs like this one easily even in regions that are traditionally confused, as the number of sources per square degree at $4.6\ \mu\text{m}$ is significantly lower than in optical and near-IR wavelengths. The WISE survey offers an All-Sky Survey with extremely uniform and stable instrumental characteristics and survey cadence. By surveying the entire sky, including the galactic plane, WISE can provide an accurate census of cold BDs in the solar neighborhood, which is necessary for determining the initial mass function at low masses. WISEPC J0458+64, along with UGPS J0722–05 and the few other BDs like this, represents the first in what is anticipated to be a significant population of objects revealed by the WISE survey. We expect that BDs discovered by WISE will at last close the remaining gap in temperature between the coolest objects currently known ($\sim 500\ \text{K}$) and potentially those of the giant planets in our own solar system (Wright et al. 2010).

This publication makes use of data products from the Wide-field Infrared Survey Explorer, which is a joint project of the University of California, Los Angeles, and the Jet Propulsion Laboratory/California Institute of Technology, funded by the National Aeronautics and Space Administration. We are deeply grateful for the outstanding contributions of all the members of the WISE team. We thank Roger Griffith for assistance with Figure 2 and Beth Fabinsky for assistance with early searches. Support for the modeling work of D.S. was provided by NASA through the *Spitzer* Science Center. M.C. was supported by an appointment to the NASA Postdoctoral Program at the Jet Propulsion Laboratory, administered by Oak Ridge Associated Universities through a contract with NASA. This publication makes use of data products from the Two Micron All Sky Survey (2MASS). 2MASS is a joint project of the University of Massachusetts and the Infrared Processing and Analysis Center/California Institute of Technology, funded by the National Aeronautics and Space Administration and the National Science Foundation. This research has made use of the NASA/IPAC Infrared Science Archive (IRSA), which is operated by the Jet Propulsion Laboratory, California Institute of Technology, under contract with the National Aeronautics and Space Administration. Our research has been benefited from the M, L, and T dwarf compendium housed at DwarfArchives.org whose server was funded by a NASA Small Research Grant, administered by the American Astronomical Society. We are also indebted to the SIMBAD database, operated at CDS, Strasbourg, France. The Digitized Sky Surveys were produced at the Space Telescope Science Institute under U.S. Government grant NAG W-2166. The images of these surveys are based on photographic data obtained using the Oschin Schmidt Telescope on Palomar Mountain and the UK Schmidt Telescope. The Second Palomar Observatory Sky Survey (POSS-II) was made by the California Institute of Technology with funds from the National Science Foundation, the National Geographic Society, the Sloan Foundation, the Samuel Oschin Foundation, and the Eastman Kodak Corporation. The Oschin Schmidt Telescope is operated by the California Institute of Technology and Palomar Observatory. We thank Richard Green and the LBT staff for making the LUCIFER observations possible. The LBT is an in-

ternational collaboration among institutions in the United States, Italy, and Germany. LBT Corporation partners are the University of Arizona on behalf of the Arizona University System; Istituto Nazionale di Astrofisica, Italy; LBT Beteiligungsgesellschaft, Germany, representing the Max-Planck Society, the Astrophysical Institute Potsdam, and Heidelberg University; The Ohio State University, and The Research Corporation, on behalf of The University of Notre Dame, University of Minnesota and University of Virginia. The LUCIFER Project is funded by the Bundesministerium für Bildung und Forschung (BMBF). It is a collaboration of five German institutes: Landessternwarte Heidelberg, Max Planck Institut für Astronomie (Heidelberg), Max Planck Institut für Extraterrestrische Physik (Garching), Fachhochschule für Technik und Gestaltung (Mannheim), and Astronomisches Institut der Universität Bochum.

REFERENCES

- Artigau, E., Doyon, R., Lafreniere, D., Nadeau, D., Robert, J., & Albert, L. 2006, *ApJ*, **651**, L57
- Bate, M. R. 2009, *MNRAS*, **392**, 590
- Borysow, A., Jorgensen, U. G., & Zheng, C. 1997, *A&A*, **324**, 185
- Bowler, B. P., Liu, M. C., & Cushing, M. C. 2009, *ApJ*, **706**, 1114
- Burgasser, A. 2004, *ApJS*, **155**, 191
- Burgasser, A. J., Burrows, A., & Kirkpatrick, J. D. 2006, *ApJ*, **639**, 1095
- Burgasser, A.,Looper, D., & Rayner, J. 2010, *AJ*, **139**, 2448
- Burgasser, A., et al. 2000, *ApJ*, **531**, L57
- Burgasser, A., et al. 2002, *ApJ*, **564**, 421
- Burningham, B., et al. 2008, *MNRAS*, **391**, 320
- Burningham, B., et al. 2009, *MNRAS*, **395**, 1237
- Burningham, B., et al. 2010a, *MNRAS*, **404**, 1952
- Burningham, B., et al. 2010b, *MNRAS*, **406**, 1885
- Cruz, K., Reid, I., Liebert, J., Kirkpatrick, J. D., & Lowrance, P. 2003, *AJ*, **126**, 2421
- Cushing, M. C., Vacca, W. D., & Rayner, J. T. 2004, *PASP*, **116**, 362
- Cushing, M. C., et al. 2008, *ApJ*, **678**, 1372
- Delorme, P., et al. 2008, *A&A*, **482**, 961
- Eisenhardt, P., et al. 2010, *AJ*, **139**, 2455
- Epchtein, N., et al. 1997, *Messenger*, **87**, 27
- Fazio, G., et al. 1998, *Proc. SPIE*, **3354**, 1024
- Geballe, T., et al. 2009, *MNRAS*, **395**, 1237B
- Golimowski, D., et al. 2004, *AJ*, **127**, 3516
- Hamuy, M., et al. 2006, *PASP*, **118**, 839
- Hayashi, C., & Nakano, T. 1963, *Prog. Theor. Phys.*, **30**, 460
- Horne, K. 1986, *PASP*, **98**, 609
- Irwin, P. G. J., et al. 1999, *J. Quant. Spectrosc. Radiat. Transfer*, **62**, 193
- Kanneganti, S., Park, C., Skrutskie, M. F., Wilson, J. C., Nelson, M. J., Smith, A. W., & Lam, C. R. 2009, *PASP*, **121**, 885
- Kirkpatrick, J. D., et al. 1999, *ApJ*, **519**, 802
- Kumar, S. S. 1963, *ApJ*, **137**, 1121
- Leggett, S. K., Marley, M. S., Freedman, R., Saumon, D., Liu, M. C., Geballe, T. R., Golimowski, D. A., & Stephens, D. C. 2007a, *ApJ*, **667**, 537
- Leggett, S. K., et al. 2009, *ApJ*, **695**, 1517
- Leggett, S. K., et al. 2000, *ApJ*, **536**, 35
- Leggett, S. K., et al. 2007b, *ApJ*, **655**, 1079L
- Leggett, S. K., et al. 2010, *ApJ*, **710**, 1627
- Liu, F., et al. 2008, *Proc. SPIE*, **7017**, 16
- Lodieu, N., Hambly, N. C., Jameson, R. F., Hodgkin, S. T., Carraro, G., & Kendall, T. R. 2007, *MNRAS*, **374**, 372
- Lucas, P. W., et al. 2010, *MNRAS*, **408**, L56
- Mainzer, A., Eisenhardt, P., Wright, E. L., Liu, F., Irace, W., Heinrichsen, I., Cutri, R., & Duval, V. 2005, *Proc. SPIE*, **5899**, 262
- Mandel, H., et al. 2008, *Proc. SPIE*, **7014**, 124
- Marley, M. S., Seager, S., Saumon, D., Lodders, K., Ackerman, A. S., Freedman, R. S., & Fan, X. 2002, *ApJ*, **568**, 335
- Moralex, E., Bouvier, J., Stauffer, J. R., & Cuillandre, J.-C. 2003, *A&A*, **400**, 891
- Noll, K., Geballe, T., Leggett, S., & Marley, M. 2000, *ApJ*, **541**, L75
- Patten, B. M., et al. 2006, *ApJ*, **651**, 502
- Rayner, J., Toomey, D., Onaka, P., Denault, A., Stahlberger, W., Vacca, W., Cushing, M., & Wang, S. 2003, *PASP*, **115**, 362
- Rayner, J., et al. 2009, *ApJS*, **185**, 289

- Reid, I. N., et al. 1999, [ApJ](#), **521**, 613
- Saumon, D., & Marley, M. S. 2008, [ApJ](#), **689**, 1327
- Saumon, D., Marley, M. S., Cushing, M. C., Leggett, S. K., Roellig, T. L., Lodders, K., & Freedman, R. S. 2006, [ApJ](#), **647**, 552
- Scholz, R. D. 2010, [A&A](#), **510**, L8
- Skrutskie, M. F., et al. 2006, [AJ](#), **131**, 1163
- Smart, R. L., et al. 2010, [A&A](#), **511**, A30
- Stephens, D. C., et al. 2009, [ApJ](#), **702**, 154
- Strauss, M., et al. 1999, [ApJ](#), **522**, L61
- Vacca, W. D., Cushing, M. C., & Rayner, J. T. 2003, [PASP](#), **115**, 389
- Warren, S. J., et al. 2007, [MNRAS](#), **381**, 1400
- Wright, E. L., et al. 2010, [AJ](#), **140**, 1868
- Yamamura, I., Takashi, T., & Tanabe, T. 2010, [ApJ](#), **722**, 682
- York, D., et al. 2000, [AJ](#), **120**, 1579