

## **Title page**

### **The flaws in the detail of an observational study on TAVI vs SAVR in intermediate-risks patients**

Authors: **Fabio Barili** <sup>1</sup>, M.D. Ph.D., **Nick Freemantle** <sup>2</sup> Ph.D., **Lorenzo Menicanti** <sup>3</sup>, M.D., **Thierry Folliguet** <sup>4</sup>, M.D., **Claudio Muneretto** <sup>5</sup>, M.D., **Michele De Bonis** <sup>6</sup>, M.D., **Martin Czerny** <sup>7</sup>, M.D., **Jean Francois Obadia** <sup>8</sup>, M.D., **Nawwar Al-Attar** <sup>9</sup>, M.D., **Nikolas Bonaros** <sup>10</sup>, M.D., **Jolanda Kluin** <sup>11</sup>, M.D., **Roberto Lorusso** <sup>12</sup>, M.D. Ph.D., **Prakash Punjabi** <sup>13</sup>, M.D., **Rafael Sabada** <sup>14</sup>, M.D., **Malakh Shrestha** <sup>15</sup>, M.D., **Piotr Suvalski** <sup>16,17</sup>, M.D., **Volkmar Falk** <sup>18</sup>, M.D., **Miguel Sousa Uva** <sup>19</sup>, **Pieter A. Kappetein** <sup>20</sup>, M.D. Ph.D., M.D., **Alessandro Parolari** <sup>21</sup>, M.D. Ph.D.

Institutions:

<sup>1</sup> Department of Cardiac Surgery, S. Croce Hospital, Cuneo, Italy

<sup>2</sup> Comprehensive Clinical Trials Unit, Department of Primary Care and Population Health University College London, London, UK.

<sup>3</sup> Department of Cardiac Surgery, IRCCS Policlinico S. Donato, University of Milan, Milan, Italy

<sup>4</sup> Department of Cardiac Surgery, Centre Hospitalo-Universitaire Brabois ILCV, Nancy, France

<sup>5</sup> Department of Cardiac Surgery, University of Brescia Medical School, Brescia, Italy

<sup>6</sup> Department of Cardiac Surgery, S. Raffaele University Hospital, Milan, Italy

<sup>7</sup> Department of Cardio-Vascular Surgery, University Hospital Freiburg, Germany

<sup>8</sup> Department of Cardio-Thoracic Surgery, Hopital Cardiothoracique Louis Pradel, Lyon, France

<sup>9</sup> Department of Cardiac Surgery, Golden Jubilee National Hospital, Glasgow, United Kingdom

<sup>10</sup> Department of Cardiac Surgery, Innsbruck Medical University, Innsbruck, Austria.

<sup>11</sup> Department of Cardiac Surgery, AMC, Amsterdam, Netherlands.

<sup>12</sup> Department of Cardio-Thoracic Surgery, Heart & Vascular Centre - Maastricht University Medical Hospital, Maastricht, Netherlands

<sup>13</sup> Department of Cardio-Thoracic Surgery, Imperial College Healthcare NHS Trust and Imperial College School of Medicine, London, United Kingdom

<sup>14</sup> Department of Cardiac Surgery, Hospital de Navarra, Pamplona, Spain

<sup>15</sup> Department of Cardio-thoracic, Transplantation and Vascular Surgery, Hannover Medical School, Hannover, Germany

<sup>16</sup> Department of Cardiac Surgery, Central Teaching Hospital of the Ministry of the Interior, Warsaw, Poland

<sup>17</sup> Pulaski University of Technology and Humanities, Radom, Poland

<sup>18</sup> Department of Cardio-Thoracic Surgery, Deutsches Herzzentrum Berlin, Charite Berlin, Germany

<sup>19</sup> Department of Cardiac Surgery , Hospital Cruz Vermelha, Lisbon, Portugal

<sup>20</sup> Thoraxcenter, Erasmus MC, Rotterdam, Netherlands.

<sup>21</sup> Unit of Cardiac Surgery and Translational Research, IRCCS Policlinico S. Donato, University of Milan, Italy

Corresponding Author: **Fabio Barili, M.D., PhD,**

Department of Cardiac Surgery, S. Croce Hospital

Via M. Coppino 26, 12100 Cuneo, Italy

Tel: +39 0171642571

Fax: +39 0171642064

Email: [fabarili@libero.it](mailto:fabarili@libero.it)

[barili.f@ospedale.cuneo.it](mailto:barili.f@ospedale.cuneo.it)

## TEXT

### General consideration

The development and availability of a trans-catheter approach for treating severe aortic valve stenosis (TAVI) has warranted clinical trials and observational studies to evaluate the safety and short/long term outcomes of newly designed prostheses in order to compare them with surgical aortic valve replacement (SAVR), the gold-standard treatment [1, 2]. The new treatment has been initially reserved for patients with absolute contraindications to surgery. Subsequently the evidence of safety of the new devices, as well as the maturation of experience with this technology, has led to the expansion of indications to higher-risk patients [3, 4]. Nonetheless, technology runs fast, and new prostheses are regularly launched on the market claiming better performances and wider indications and hence requiring new evidence [5]. The PARTNER group recently published a comparison between the latest-generation SAPIEN3 TAVI system (Edwards Lifesciences, Irvine, CA, USA) and SAVR in intermediate-risk patients, apparently demonstrating superiority of the TAVI and suggesting that TAVI might be the preferred treatment method in this risk-class of patients [6]. These favourable results of transcatheter approach in intermediate risk-patients could lead the decision-makers and the scientific community to consider TAVI as the new standard of care in a wider population of patients with severe aortic stenosis. The recent Food and Drug Administration (FDA) approval for expanded indications for SAPIEN 3 device based on their data somewhat supports this position [7].

Nonetheless [6], assessment of the non-randomised methodology used in this comparison reveals challenges which should be addressed in order to elucidate the validity of the results. The study is observational, employing propensity scores (PS), risk scores that can be used to match patients with a similar likelihood of receiving treatment [8-10], since non-random differences in baseline will lead to bias in comparisons between treatment conditions [10]. PS analysis can be used to create a “quasi-randomized” comparison, but the approach has well-known intrinsic limitations and pitfalls including the misspecification of the PS, effects of unknown biases and confounding by indication [10-14]. Hence, unlike properly randomised trials, the use of the PS does not assure the internal validity of the analyses, and decision-makers and the scientific communities need to be wary of making inference from their results [12]. The PS study by Thourani and Colleagues has a number of major design flaws, and its results have clear signs of bias [6].

### **The assumption of “ignorability” and the effects of propensity score misspecification.**

The first important step in PS analysis is the careful specification of the risk algorithm, as omission of important confounding factors (eg getting it wrong) will lead to biased estimation of treatment effect. The objective is that as a result of the PS conditioning of the relevant explanatory variables, the treatment will be independent of potential outcomes. This conditional independence assumption is called “ignorability”, “unconfoundedness”, “selection on observables” and crucially it is always held as an assumption, because it is not directly testable [15]. In order to assume that treatment assignment is “otherwise ignorable” [10-16], the very first step is the inclusion in the PS algorithm of all known and available confounding factors, as explanatory variables that meet the condition of affecting both treatment assignment and outcome confound the observed relationship between treatment and outcome [10, 16]. The propensity score is compromised when important variables influencing selection have not been collected or considered and misspecification of the propensity score by excluding known confounders has been demonstrated to lead to largely biased results [11].

The study by Thourani and Colleagues was designed to compare outcomes of an observational study on the latest-generation SAPIEN 3 TAVI System (Edwards Lifesciences, Irvine, CA, USA) with results of the surgical group of the PARTNER 2A trial [5, 6, 17]. The two groups were not homogeneous, as shown in baseline characteristics [6] Thourani and Colleagues planned propensity score stratification before analysing outcomes. The use of PS stratification rather than precise matching is surprising as it is by design limited in the extent to which systematic differences between the comparator groups may be accounted for. Indeed there were important differences between the comparator samples. The comparative analysis of patients’ baseline characteristics and baseline variables included in the PS algorithm showed that the most significantly different characteristics between the two groups (left ventricular ejection fraction LVEF, p-value <0.0001; STS score, p-value 0.0002; moderate or severe mitral regurgitation, p-value <0.0001) were omitted in the PS generation, together with other significant factors (frail condition and mean gradient). These different baseline characteristics are well-known predictors of early and late mortality [18-25] and hence, affecting both treatment assignment and outcomes, are major confounders that should be included in the PS. Their omission may violate the “ignorability” assumption and, consequently, may lead to bias.

Moreover, further potential confounders not collected in the study are the associated procedures, such as myocardial revascularization. They increase the risk of perioperative mortality and morbidity as widely demonstrated by STS score and EuroSCORE [18-28], and they could represent a major confounder to be included in the PS algorithm. Nonetheless, although patients with non-complex coronary disease requiring revascularization were included if a treatment plan for the coronary disease was agreed before enrolment [5, 6, 17], no information on associated myocardial revascularization in the TAVI group has been reported [6, 17]. Some information on the SAVR group can be derived from the published PARTNER 2A trial [5] where a total of 86 of 944 patients (9.1%) had concomitant procedures during surgery and 137 of 944 patients (14.5%) underwent associated coronary artery bypass grafting (CABG) [5]. Thus a proportion ranging between 14.5% and 23.6% had concomitant surgical procedures in the SAVR group of the PARTNER 2A trial, indicating an increased risk of mortality and morbidity and potentially a major confounder. The need for a deep analysis on associated procedures in the Thourani's study is also strengthened by the significantly different proportion of myocardial revascularization in the PARTNER 2A trial (137/994, 14.5% in the SAVR; 39/994, 3.9% in the TAVI group; Chi-square p-value <0.0001) [5].

### **Confounding by indication and assessing the performance of the propensity score.**

Confounding by indication is the situation where, although all known confounders have been balanced, allocation to treatment is not otherwise ignorable but instead subject to some latent (unrecognized or unmeasured) process associated with those who are treated. This confounding cannot be measured directly but only tangentially through its effects and hence the effort should be focused on performance analysis of PS [12].

The first useful precaution against unsafe inference from an observational study is to compare it with a known treatment effect and bridge from that point to consider further questions. A deeper step in diagnostic should be the evaluation of PS performance through testing the potential heterogeneity of the treatment effect across the range of the PS. A comparison between two well-balanced groups should lead to a homogeneous treatment effect across the range of the PS, while heterogeneous effects will raise concern.

The treatment effect of the observational study by Thourani and Colleagues [6] can be compared to the PARTNER 2A randomized trial [5]. As shown in Figure 1, the relative risk of the main outcome (all-

cause death or disabling stroke) significantly differs from the two studies (interaction p-value =0.0001), which militates against drawing strong conclusions in the observational study. Moreover, a deeper analysis of the treatment effect across the PS quintiles shows that the treatment effect is not homogeneous across classes, showing a decreasing pattern through strata (Figure 2). Only the treatment effect in the fifth quintile is similar to the PARTNER 2A trial effect. It can be hypothesized that in patients with low likelihood of TAVI (lower quintiles of PS) there is important information that the PS did not capture and so the match was made with inappropriately low risk individuals, leading to a not otherwise ignorable treatment assignment.

[12]

### **To adjust or not to adjust, this is another question.**

The concerns also increase in the second part of the study, the time-to-event analyses. The study is based on evidence that groups are different and biased estimated of treatment effects needs to be accounted for by balancing the covariates with PS methods [6]. Nonetheless, after employing PS stratification for comparing dichotomic outcomes, the Authors surprisingly did not undertake any type of adjustment in time-to-event analysis and presented simple unadjusted Kaplan-Meier estimates and curves, making inference on their results [6]. This is counterintuitive and the curves are not interpretable, as they are simply a first-step evaluation before adjustment. Stating in results “important differences between TAVR and surgery for each endpoint are observed in the first several months” is inappropriate until results are confirmed by adjusted results. Making inference on unadjusted outcomes derived from biased groups should be avoided [10, 14].

### **Is there an outcome missing?**

In the PARTNER 2 SAPIEN 3 observation study, clinical outcomes were reported as defined by Valve Academic Research Consortium (VARC)-2 definitions [6, 29]. The VARC-2 definitions recommend capturing the cause of death with a careful review and, among mortality causes to be reported, all valve-related deaths are included. Valve-related mortality and morbidity represent the main outcomes to evaluate the safety and short/long-term follow-up after valvular treatment, as it is the most specific index of early-late performance. In a comparison between two treatment options for valvular disease considering two homogeneous groups, we might reasonably expect to observe a similar non-cardiovascular and cardiac non-

valve-related mortality, while the treatment effect would be expressed in differences in valve-related mortality [30]. Nonetheless, in the PARTNER 2 SAPIEN 3 observation study only all-cause mortality, non-cardiac and cardiac death were reported, with no information on valve-related mortality shown. Therefore as it is not possible to differentiate prostheses-related events from prostheses-unrelated deaths, such as these caused by non-embolic myocardial infarction, defined as cardiac but non-valve-related death [29,30]. In the Thourani's study, 30-day non-cardiac mortality is higher in the surgical group as shown in the Appendix (0.1% and 1.1% in the TAVR and surgical group respectively, Chi-square p-value 0.0152) which suggests the presence of confounding by indication.

## Conclusions

As shown, the study on the comparison between SAPIEN3 TAVR and surgical AVR [6] has demonstrated several major methodological concerns:

- suboptimal methods in propensity score analysis with evident misspecification of the PS (no adjustment for the most significantly different covariates: LVEF, moderate-severe MR, associated procedures)
- Use of PS quintiles rather than matching
- inference on not-adjusted Kaplan-Meier curves, although the Authors correctly claimed for the need of balancing score for adjusting for confounding factors in order to have unbiased estimates of the treatment effect
- evidence of poor fit
- lack of data on valve-related death

These methodological flaws invalidate direct comparison between treatments and cannot support Authors' conclusions that TAVI with SAPIEN 3 in intermediate-risk is superior to surgery and might be the preferred treatment alternative to surgery.

**Acknowledgment****Sources of funding: None****Authors' contributions:**

All Authors participated to conception of the manuscript, drafted and revised the article and gave their final approval to the text.

**Conflict of interest:**



## References

1. Vahanian A, Alfieri O, Andreotti F, Antunes MJ, Barón-Esquivias G, Baumgartner H, Borger MA, Carrel TP, De Bonis M, Evangelista A, Falk V, Lung B, Lancellotti P, Pierard L, Price S, Schäfers HJ, Schuler G, Stepinska J, Swedberg K, Takkenberg J, Von Oppell UO, Windecker S, Zamorano JL, Zembala M; ESC Committee for Practice Guidelines (CPG); Joint Task Force on the Management of Valvular Heart Disease of the European Society of Cardiology (ESC); European Association for Cardio-Thoracic Surgery (EACTS). Guidelines on the management of valvular heart disease (version 2012): the Joint Task Force on the Management of Valvular Heart Disease of the European Society of Cardiology (ESC) and the European Association for Cardio-Thoracic Surgery (EACTS). *Eur J Cardiothorac Surg*. 2012 Oct;42(4):S1-44.
2. Nishimura RA, Otto CM, Bonow RO, Carabello BA, Erwin JP 3rd, Guyton RA, O'Gara PT, Ruiz CE, Skubas NJ, Sorajja P, Sundt TM 3rd, Thomas JD, Anderson JL, Halperin JL, Albert NM, Bozkurt B, Brindis RG, Creager MA, Curtis LH, DeMets D, Guyton RA, Hochman JS, Kovacs RJ, Ohman EM, Pressler SJ, Sellke FW, Shen WK, Stevenson WG, Yancy CW; American College of Cardiology; American College of Cardiology/American Heart Association; American Heart Association. 2014 AHA/ACC guideline for the management of patients with valvular heart disease: a report of the American College of Cardiology/American Heart Association Task Force on Practice Guidelines. *J Thorac Cardiovasc Surg*. 2014 Jul;148(1):e1-e132.
3. Mack MJ, Leon MB, Smith CR, Miller DC, Moses JW, Tuzcu EM, Webb JG, Douglas PS, Anderson WN, Blackstone EH, Kodali SK, Makkar RR, Fontana GP, Kapadia S, Bavaria J, Hahn RT, Thourani VH, Babaliaros V, Pichard A, Herrmann HC, Brown DL, Williams M, Akin J, Davidson MJ, Svensson LG; PARTNER 1 trial investigators. 5-year outcomes of transcatheter aortic valve replacement or surgical aortic valve replacement for high surgical risk patients with aortic stenosis (PARTNER 1): a randomised controlled trial. *Lancet*. 2015 Jun 20;385(9986):2477-84.
4. Kapadia SR, Leon MB, Makkar RR, Tuzcu EM, Svensson LG, Kodali S, Webb JG, Mack MJ, Douglas PS, Thourani VH, Babaliaros VC, Herrmann HC, Szeto WY, Pichard AD, Williams MR, Fontana GP, Miller DC, Anderson WN, Akin JJ, Davidson MJ, Smith CR; PARTNER trial investigators. 5-year outcomes of transcatheter aortic valve replacement compared with standard treatment for patients with inoperable aortic stenosis (PARTNER 1): a randomised controlled trial. *Lancet*. 2015 Jun 20;385(9986):2485-91

5. Leon MB, Smith CR, Mack MJ, Makkar RR, Svensson LG, Kodali SK, Thourani VH, Tuzcu EM, Miller DC, Herrmann HC, Doshi D, Cohen DJ, Pichard AD, Kapadia S, Dewey T, Babaliaros V, Szeto WY, Williams MR, Kereiakes D, Zajarias A, Greason KL, Whisenant BK, Hodson RW, Moses JW, Trento A, Brown DL, Fearon WF, Pibarot P, Hahn RT, Jaber WA, Anderson WN, Alu MC, Webb JG; PARTNER 2 Investigators. Transcatheter or Surgical Aortic-Valve Replacement in Intermediate-Risk Patients. *N Engl J Med*. 2016 Apr 28;374(17):1609-20.
6. Thourani VH, Kodali S, Makkar RR, Herrmann HC, Williams M, Babaliaros V, Smalling R, Lim S, Malaisrie SC, Kapadia S, Szeto WY, Greason KL, Kereiakes D, Ailawadi G, Whisenant BK, Devireddy C, Leipsic J, Hahn RT, Pibarot P, Weissman NJ, Jaber WA, Cohen DJ, Suri R, Tuzcu EM, Svensson LG, Webb JG, Moses JW, Mack MJ, Miller DC, Smith CR, Alu MC, Parvataneni R, D'Agostino RB Jr, Leon MB.. Transcatheter aortic valve replacement versus surgical valve replacement in intermediate-risk patients: a propensity score analysis. *Lancet*. 2016 May 28;387(10034):2218-25.
- 7.[http://www.fda.gov/NewsEvents/Newsroom/PressAnnouncements/ucm517281.htm?source=govdelivery&utm\\_medium=email&utm\\_source=govdelivery](http://www.fda.gov/NewsEvents/Newsroom/PressAnnouncements/ucm517281.htm?source=govdelivery&utm_medium=email&utm_source=govdelivery)
8. Rosenbaum PR, Dubin DB. The central role of the propensity score in observational studies for causal effect. *Biometrika* 1983; 70:41-55.
9. Rosenbaum PR, Dubin DB. Reducing bias in observational studies using subclassification on the propensity score. *J Am Stat Assoc*. 1984;79: 516-524.
10. Blackstone EH, Comparing apples and oranges. *J Thorac Cardiovasc Surg*. 2002 Jan;123(1):8-15.
11. Drake C. Effects of misspecification of the propensity score on estimators of treatment effects. *Biometrics* 1993; 49:1231-1236.
12. Freemantle N, Marston L, Walters K, Wood J, Reynolds MR, Petersen I. Making inferences on treatment effects from real world data: propensity scores, confounding by indication, and other perils for the unwary in observational research. *BMJ*. 2013 Nov 11;347:f6409.
13. Rosenbaum PR. Optimal matching for observational studies. *J Am Stat Assoc*. 1989;84:1024-1032.
14. D'Agostino RB Jr. Propensity score methods for bias reduction in the comparison of a treatment to a non-randomized control group. *Stat Med*. 1998 Oct 15;17(19):2265-81.

15. Xie Y1, Brand JE, Jann B. Estimating Heterogeneous Treatment Effects with Observational Data. *Sociol Methodol.* 2012 Aug;42(1):314-347.
16. Rubin DB. Estimating causal effects from large data sets using propensity scores. *Ann Intern Med.* 1997 Oct 15;127(8 Pt 2):757-63.
17. Kodali S, Thourani VH, White J, Malaisrie SC, Lim S, Greason KL, Williams M, Guerrero M, Eisenhauer AC, Kapadia S, Kereiakes DJ, Herrmann HC, Babaliaros V, Szeto WY, Hahn RT, Pibarot P, Weissman NJ, Leipsic J, Blanke P, Whisenant BK, Suri RM, Makkar RR, Ayele GM, Svensson LG, Webb JG, Mack MJ, Smith CR, Leon MB. Early clinical and echocardiographic outcomes after SAPIEN 3 transcatheter aortic valve replacement in inoperable, high-risk and intermediate-risk patients with aortic stenosis. *Eur Heart J.* 2016 Jul 21;37(28):2252-62.
18. O'Brien SM, Shahian DM, Filardo G, et al. The Society of Thoracic Surgeons 2008 cardiac surgery risk models: part 2—isolated valve surgery. *Ann Thorac Surg.* 2009;88(1 Suppl):S23–42.
19. Shahian DM, He X, Jacobs JP, et al. The Society of Thoracic Surgeons Isolated Aortic Valve Replacement (AVR) Composite Score: A Report of the STS Quality Measurement Task Force. *Ann Thorac Surg.* 2012 Dec;94(6):2166-71.
20. Barili F, Pacini D, D'Ovidio M, Ventura M, Alamanni F, Di Bartolomeo R, Grossi C, Davoli M, Fusco D, Perucci C, Parolari A. Reliability of Modern Scores to Predict Long-Term Mortality After Isolated Aortic Valve Operations. *Ann Thorac Surg.* 2016 Feb;101(2):599-605.
21. Barili F, Pacini D, Capo A, Ardemagni E, Pellicciari G, Zanobini M, Grossi C, Shahin KM, Alamanni F, Di Bartolomeo R, Parolari A. Reliability of new scores in predicting perioperative mortality after isolated aortic valve surgery: a comparison with the society of thoracic surgeons score and logistic EuroSCORE. *Ann Thorac Surg.* 2013 May;95(5):1539-44.
22. Eleid MF, Goel K, Murad MH, Erwin PJ, Suri RM, Greason KL, Nishimura RA, Rihal CS, Holmes DR Jr. Meta-Analysis of the Prognostic Impact of Stroke Volume, Gradient, and Ejection Fraction After Transcatheter Aortic Valve Implantation. *Am J Cardiol.* 2015 Sep 15;116(6):989-94.
23. Sannino A, Losi MA, Schiattarella GG, Gargiulo G, Perrino C, Stabile E, Toscano E, Giugliano G, Brevetti L, Franzone A, Cirillo P, Imbriaco M, Trimarco B, Esposito G. Meta-analysis of mortality outcomes

and mitral regurgitation evolution in 4,839 patients having transcatheter aortic valve implantation for severe aortic stenosis. *Am J Cardiol.* 2014 Sep 15;114(6):875-82.

24. Schubert SA, Yarboro LT, Madala S, Ayunipudi K, Kron IL, Kern JA, Ailawadi G, Stukenborg GJ, Ghanta RK. Natural history of coexistent mitral regurgitation after aortic valve replacement. *J Thorac Cardiovasc Surg.* 2016 Apr;151(4):1032-9, 1042.e1.

25. Tan TC, Flynn AW, Chen-Tournoux A, Rudski LG, Mehrotra P, Nunes MC, Rincon LM, Shahian DM, Picard MH, Afilalo J. Risk Prediction in Aortic Valve Replacement: Incremental Value of the Preoperative Echocardiogram. *J Am Heart Assoc.* 2015 Oct 26;4(10):e002129.

26. Shahian DM, O'Brien SM, Filardo G, Ferraris VA, Haan CK, Rich JB, Normand SL, DeLong ER, Shewan CM, Dokholyan RS, Peterson ED, Edwards FH, Anderson RP; Society of Thoracic Surgeons Quality Measurement Task Force. The Society of Thoracic Surgeons 2008 cardiac surgery risk models: part 3--valve plus coronary artery bypass grafting surgery. *Ann Thorac Surg.* 2009 Jul;88(1 Suppl):S43-62.

27. Nashef SA, Roques F, Sharples LD, Nilsson J, Smith C, Goldstone AR, Lockowandt U. EuroSCORE II. *Eur J Cardiothorac Surg.* 2012 Apr;41(4):734-44.

28. Barili F, Pacini D, Capo A, Rasovic O, Grossi C, Alamanni F, Di Bartolomeo R, Parolari A. Does EuroSCORE II perform better than its original versions? A multicentre validation study. *Eur Heart J.* 2013 Jan;34(1):22-9.

29. Kappetein AP, Head SJ, Généreux P, Piazza N, van Mieghem NM, Blackstone EH, Brott TG, Cohen DJ, Cutlip DE, van Es GA, Hahn RT, Kirtane AJ, Krucoff MW, Kodali S, Mack MJ, Mehran R, Rodés-Cabau J, Vranckx P, Webb JG, Windecker S, Serruys PW, Leon MB. Updated standardized endpoint definitions for transcatheter aortic valve implantation: the Valve Academic Research Consortium-2 consensus document. *J Am Coll Cardiol.* 2012 Oct 9;60(15):1438-54.

30. Akins CW, Miller DC, Turina MI, Kouchoukos NT, Blackstone EH, Grunkemeier GL, Takkenberg JJ, David TE, Butchart EG, Adams DH, Shahian DM, Hagl S, Mayer JE, Lytle BW; Councils of the American Association for Thoracic Surgery; Society of Thoracic Surgeons; European Association for Cardio-Thoracic

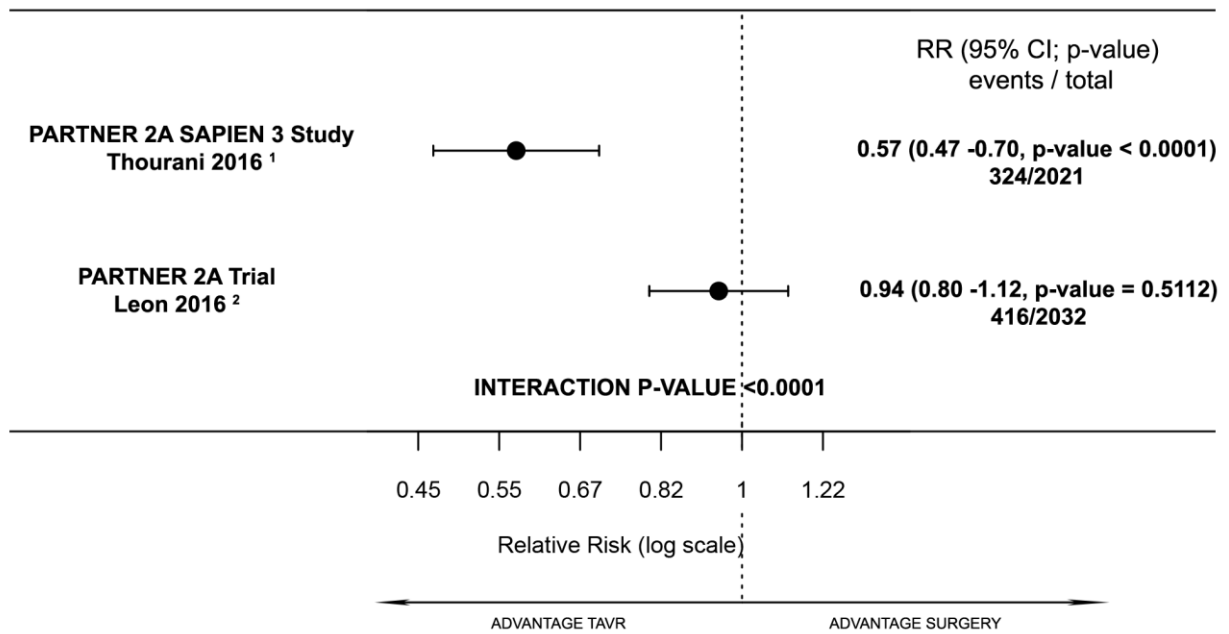
Surgery; Ad Hoc Liaison Committee for Standardizing Definitions of Prosthetic Heart Valve Morbidity. Guidelines for reporting mortality and morbidity after cardiac valve interventions. J Thorac Cardiovasc Surg. 2008 Apr;135(4):732-8.

## **Figures legend**

Figure 1. Treatment effect of TAVR vs Surgery on all-cause mortality and stroke in PARTNER 2A randomized trial and PARTNER 2A SAPIEN 3 observational study.

Figure 2. Treatment effect of TAVR vs Surgery on composite outcome (death, stroke and moderate or severe aortic regurgitation at 1 year) across the quintiles of propensity score in the PARTNER 2A SAPIEN 3 observational study.

## RELATIVE RISK TAVR/SURGERY (ALL-CAUSE DEATH OR STROKE)



<sup>1</sup> Lancet 2016; 387: 2218-25  
<sup>2</sup> N Engl J Med 2016;374:1609-20

Figure 2

**ODDS RATIO TAVR/SURGERY  
(DEATH, STROKE, MODERATE-SEVERE AORTIC REGURGITATION)**

