

THE FORMATION OF VERY MASSIVE STARS IN EARLY GALAXIES AND IMPLICATIONS FOR INTERMEDIATE MASS BLACK HOLES

JOHN A. REGAN^{1,2,*}, JOHN H. WISE³, TYRONE E. WOODS⁴, TURLOUGH P. DOWNES², BRIAN W. O'SHEA^{5,6,7,8}, AND MICHAEL L. NORMAN⁹

¹Department of Theoretical Physics, Maynooth University, Maynooth, Ireland

²Centre for Astrophysics & Relativity, School of Mathematical Sciences, Dublin City University, Glasnevin, D09 W6Y4, Ireland

³Center for Relativistic Astrophysics, Georgia Institute of Technology, 837 State Street, Atlanta, GA 30332, USA

⁴National Research Council of Canada, Herzberg Astronomy & Astrophysics Research Centre, 5071 West Saanich Road, Victoria, BC V9E 2E7, Canada

⁵Department of Computational Mathematics, Science, and Engineering, Michigan State University, MI, 48823, USA

⁶Department of Physics and Astronomy, Michigan State University, MI, 48823, USA

⁷Joint Institute for Nuclear Astrophysics - Center for the Evolution of the Elements, USA

⁸National Superconducting Cyclotron Laboratory, Michigan State, University, MI, 48823, USA and

⁹Center for Astrophysics and Space Sciences, University of California, San Diego, 9500 Gilman Dr, La Jolla, CA 92093

Version December 21, 2020

ABSTRACT

We investigate the ab-initio formation of super-massive stars in a pristine atomic cooling halo. The halo is extracted from a larger self-consistent parent simulation. The halo remains metal-free and star formation is suppressed due to a combination of dynamical heating from mergers and a mild ($J_{\text{LW}} \sim 2 - 10 J_{21}(z)$) Lyman-Werner (LW) background. We find that more than 20 very massive stars form with stellar masses greater than $1000 M_{\odot}$. The most massive star has a stellar mass of over $6000 M_{\odot}$. However, accretion onto all stars declines significantly after the first ~ 100 kyr of evolution as the surrounding material is accreted and the turbulent nature of the gas causes the stars to move to lower density regions. We post-process the impact of ionising radiation from the stars and find that ionising radiation is not a limiting factor when considering SMS formation and growth. Rather the birth environments are highly turbulent and a steady accretion flow is not maintained within the timescale (2 Myr) of our simulations. As the massive stars end their lives as direct collapse black holes this will seed these embryonic haloes with a population of black holes with masses between approximately $300 M_{\odot}$ and $10,000 M_{\odot}$. Afterwards they may sink to the centre of the haloes, eventually coalescing to form larger intermediate mass black holes whose in-situ mergers will be detectable by LISA.

Keywords: Early Universe, Supermassive Stars, Star Formation, First Galaxies, Numerical Methods

1. INTRODUCTION

Supermassive stars (SMSs) with masses between 10^4 and $10^5 M_{\odot}$ have, over the past few decades, been invoked (Rees 1978; Begelman & Rees 1978; Begelman, Volonteri & Rees 2006; Begelman, Rossi & Armitage 2008; Latif, Schleicher & Hartwig 2016; Woods et al. 2019) as an intermediate phase to explain the existence of supermassive black holes (SMBHs) at the centres of massive galaxies (Fan et al. 2006; Kormendy & Ho 2013). The pathways to forming a SMBH are thus far unknown with a number of theoretical models proposing to explain their existence.

Perhaps the simplest explanation is to invoke the black holes left over from the first generation of stars as seeds for SMBHs. The first generation of (metal-free) stars are referred to as Population III (PopIII) stars and according to current theoretical models (e.g. Turk, Abel & O'Shea 2009; Clark, Glover & Klessen 2008; Hirano et al. 2014; Stacy, Bromm & Lee 2016) the initial mass function should be top heavy with a characteristic mass of tens of solar masses. However, PopIII remnant black holes are expected to form in low density environments (Whalen, Abel & Norman 2004; O'Shea et al. 2005; Milosavljević, Couch & Bromm 2009) and are not expected to accrete substantially, at least not initially (Alvarez, Wise

& Abel 2009; Smith et al. 2018). PopIII stars are therefore not seen as good candidates to explain the existence of SMBHs without invoking super-Eddington accretion scenarios which can boost their initial seed masses by an order of magnitude or more over a short period (Lupi et al. 2014; Pacucci, Volonteri & Ferrara 2015; Sakurai, Inayoshi & Haiman 2016; Inayoshi, Haiman & Ostriker 2016a; Pacucci et al. 2017; Inayoshi, Haiman & Ostriker 2016b).

SMSs provide an alternative path to forming a SMBH by giving the seed black hole a head-start compared to a black hole formed from a PopIII remnant. Under a SMS formation scenario the accretion rate onto the protostar must exceed a critical threshold thought to be around $0.001 M_{\odot} \text{ yr}^{-1}$ (Haemmerlé et al. 2018). When this threshold accretion rate is reached and maintained the stellar radius inflates reducing its surface temperature to approximately 5000 K and making the star resemble a red giant star (Omukai & Palla 2003; Hosokawa, Omukai & Yorke 2013; Hosokawa et al. 2013; Woods et al. 2017). However, the SMS must continue to accrete above this threshold rate. If the accretion rate falls below the critical rate, for a time exceeding the Kelvin-Helmholtz time (Sakurai et al. 2016), the star contracts to the main sequence and becomes a hyper-luminous PopIII star with a mass set approximately by the mass at which the accretion rate dropped. When the accretion rate is maintained the star grows rapidly but emits only weak radiative feed-

*E-mail: john.regan@mu.ie, Royal Society - SFI University Research Fellow

back with the spectrum of the emitted radiation peaking below the hydrogen ionisation limit (Woods et al. 2019).

As discussed, the key requirement for forming a SMS is that the mass accretion rate onto the star exceeds approximately $0.001 M_{\odot} \text{ yr}^{-1}$, however, a sufficient baryon reservoir is also required and furthermore the metallicity of the gas being accreted should be below $10^{-3} Z_{\odot}$. Detailed high resolution simulations have found that gas that has been enriched above this threshold fragments into lower mass stars which do not converge to a single object and in this case the formation of a SMS is suppressed (e.g. Chon & Omukai 2020). For these reasons metal-poor (i.e., $Z \lesssim 10^{-3} Z_{\odot}$) atomic cooling haloes are seen as the most promising candidates in which to form SMSs. Haloes which have higher levels of metal-enrichment ($Z > 10^{-3} Z_{\odot}$) may also be viable candidates for SMS formation in the early universe if metal mixing is inhomogeneous (Regan et al. 2020a). Atomic cooling haloes which provide the above requirements for SMS formation were recently investigated by Wise et al. (2019) and Regan et al. (2020b). In particular Wise et al. (2019) found that the combination of a mild Lyman-Werner background combined with the impact of dynamical heating effects due to minor and major mergers can suppress star formation until a halo crosses the atomic cooling threshold. These haloes are therefore predominantly metal-poor (with any metal enrichment coming externally), have large baryon reservoirs and suppressed H_2 content due to the LW radiation fields. In this study we build on the previous works cited above.

The goal of this study is to model the formation and evolution of (super-)massive star formation in haloes that are exposed to moderate LW backgrounds, which when combined with the effects of dynamical heating can suppresses star formation below the atomic cooling limit. To pursue this research we re-simulate two haloes from the original Renaissance simulations using the zoom technique. We designate these haloes as **Hal**oA and **Hal**oB. Both haloes were chosen as they exhibited near isothermal collapse of their inner core in the original Renaissance datasets as shown by Regan et al. (2020b). They were therefore identified as among the most promising candidates for SMS formation. Both haloes were exposed to moderate levels of LW radiation from nearby radiation sources as well as constant mergers which dynamically heated the gas within the haloes. To further understand the impact of the LW field we re-simulate **Hal**oB with no LW radiation in this work. This is done to determine if a halo can remain star-free due to only dynamical heating effects or if the LW field remains a critical component. **Hal**oA, on the other-hand, is re-simulated with a LW background composed of both local source contributions and background contributions.

In the zoom simulations, we find that **Hal**oA forms stars with masses greater than $6000 M_{\odot}$ but that the accretion rate onto individual proto-stars always declines as the star’s immediate gas supply is depleted. In the re-simulation of **Hal**oB, without a LW field, we find that the halo undergoes premature collapse (compared to the original case where a LW field of $J_{\text{LW}} \sim 2 J_{21}^1$ existed). In **Hal**oB the most massive star in the halo has a mass

of approximately $173 M_{\odot}$. The impact of ionising radiation is not considered in these simulations but post-processing of the stellar feedback using **Cloudy** (Ferland et al. 2017) is instead used to gauge the likely impact of ionising sources, particularly for **Hal**oA which forms a number of hyper-luminous PopIII stars.

The paper is laid out as follows: In §2 we very briefly review the original Renaissance simulations as well as discussing the zoom-in simulations. In §3 we analyse the results of the zoom-in simulations. In §4 we discuss the implications of the results and the connection with upcoming gravitational wave observatories. In §5 we summarize our results and outline our conclusions.

2. METHODS

2.1. Renaissance Simulation Suite

Enzo has been extensively used to study the formation of structure in the early universe (Abel, Bryan & Norman 2002; O’Shea et al. 2005; Turk et al. 2012; Wise et al. 2012, 2014; Regan, Johansson & Wise 2015; Regan et al. 2017). **Enzo** includes a ray tracing scheme to follow the propagation of radiation from star formation and black hole formation (Wise & Abel 2011) as well as a detailed multi-species chemistry model that tracks the formation and evolution of nine species (Anninos et al. 1997; Abel et al. 1997). In particular the photo-dissociation of H_2 is followed, which is a critical ingredient for determining the formation of the first metal-free stars (Abel, Bryan & Norman 2000).

The original Renaissance simulations Xu, Wise & Norman (2013); Xu et al. (2014); O’Shea et al. (2015) were carried out on the Blue Waters supercomputer using the adaptive mesh refinement code **Enzo** (Bryan et al. 2014; Brummel-Smith et al. 2019)². The datasets that formed the basis for this study were originally derived from a simulation of the universe in a 40 Mpc on the side box using the WMAP7 best fit cosmology (Komatsu et al. 2011). For more details on the Renaissance simulation suite see Chen et al. (2014). Here we outline only the details relevant to this study for brevity. The simulation suite was broken down into three separate regions, namely the *Rarepeak*, *Normal* and *Void* regions. Each region was simulated with an effective initial resolution of 4096^3 grid cells and particles giving a maximum dark matter particle mass resolution of $2.9 \times 10^4 M_{\odot}$. Further refinement was allowed throughout each region up to a maximum refinement level of 12, which corresponded to 19 pc comoving spatial resolution. Given that the regions focus on different overdensities each region was evolved forward in time to different epochs. The *Rarepeak* region, being the most overdense and hence the most computationally demanding at earlier times, was run until $z = 15$. The *Normal* region ran until $z = 11.6$, and the *Void* region ran until $z = 8$. In all of the regions the halo mass function was very well resolved down to $M_{\text{halo}} \sim 2 \times 10^6 M_{\odot}$.

As noted already in §1, in Wise et al. (2019) we examined two metal-free and star-free haloes from the final output of the *Rarepeak* simulation and re-simulated those two haloes at significantly higher resolution (maximum spatial resolution, $\Delta x \sim 60$ au) until the point

¹ J_{21} is shorthand for $1 \times 10^{-21} \text{ erg cm}^{-2} \text{ s}^{-1} \text{ Hz}^{-1} \text{ sr}^{-1}$

² <https://enzo-project.org/>

of collapse. This re-simulation allowed us to investigate the evolution of the inner halo and the mass distribution of the clumps formed. However, no star formation prescription was employed during this re-simulation. In [Regan et al. \(2020b\)](#) we subsequently investigated the occurrence of metal-free and star-free atomic cooling haloes across all of the Renaissance datasets. We found a total of 79 such haloes in the *Rarepeak* outputs and three such haloes in the *Normal* outputs. None were found in the *Void* outputs. Of the 79 haloes which were metal-free and star free above the atomic cooling limit four haloes showed almost ideal isothermal collapse (see Figure 6. in [Regan et al. \(2020b\)](#)) consistent with what has previously been identified as ideal conditions for forming SMSs ([Inayoshi, Omukai & Tasker 2014](#); [Becerra et al. 2015](#); [Latif, Schleicher & Hartwig 2016](#); [Regan et al. 2017](#); [Chon, Hosokawa & Yoshida 2018](#); [Regan & Downes 2018b](#)). Of those haloes which collapsed isothermally we then selected two haloes for re-simulation in this study.

2.2. Re-simulation of pristine atomic cooling haloes

In order to make the simulation time tractable, we restricted the mesh refinement to be focused around the target haloes. In order to do this we first identified the Lagrangian volume (setting this to three times the virial radius) of the target halo at the redshift at which it was first identified as a star-free, atomic cooling halo with zero metallicity ($z = 15.6$, $M_{halo} \sim 7 \times 10^7 M_{\odot}$ for *HalolA* and $z = 15.0$, $M_{halo} \sim 5 \times 10^7 M_{\odot}$ for *HalolB*) and tagged each dark matter particle within this volume. This ensured that we captured the dynamics of the gas and dark matter both within and surrounding the halo. Upon restarting the simulation subsequently at $z = 20$ we then set each of the tagged dark matter particles as “must-refine-particles.” This meant that any cell, in the simulation, containing one of these particles was allowed to refine. Any cells not containing one of these particles could not refine. This optimisation focuses the refinement solely onto the target halo (and gas surrounding the halo). In addition to the “must-refine-particle” refinement criteria, refinement is updated to be also based on the Jeans length of the gas with the additional criteria that the Jeans length is always refined by at least 64 cells.

Having now optimised the simulations to focus only on the target halo we next looked to (dark matter) particle splitting. By splitting the dark matter particles we increased the mass resolution of the simulation so as to match the increased spatial resolution. Dark matter particles are split in *Enzo* using the prescription of [Kitsionas & Whitworth \(2002\)](#) and was previously described in [Regan, Johansson & Wise \(2015\)](#). By employing particle splitting we reduced the dark matter particle mass to $M_{DM} \sim 170 M_{\odot}$ inside the target halo and its surrounding Lagrangian volume.

2.3. The External Radiation Field

With refinement targeted only on a single halo (and its progenitors) star formation in the surrounding galaxies is therefore neglected. In order to account for the radiation that would otherwise be emitted by these galaxies

we extracted the LW emission from the original simulations and created a table of LW values that this target halo is exposed to as a function of redshift. By doing this the spatial information of the LW field is preserved and so the target haloes feel the same LW radiation as they did in the original simulations where star formation and feedback was followed in every galaxy in the volume. Using the *Grackle-2.1* ([Smith et al. 2017](#)) software library we then used these LW tables as the “background” that this halo is exposed to. Self-shielding to LW radiation is also invoked in the re-simulations based on the [Wolcott-Green, Haiman & Bryan \(2011\)](#) prescription.

For the re-simulation of *HalolA* the LW radiation background follows exactly the radiation field as determined from the original simulations and is shown in Figure 1. For *HalolB* we purposely set the background radiation field to zero. This allows us to study the evolution of *HalolB* with star formation suppression due to dynamical heating only. *HalolB* is therefore the control simulation³ and allows us to examine the impact of what happens when no LW field is present.

2.4. Subgrid Star Formation Prescription

In order to resolve star formation in the collapsing target haloes we set the maximum refinement level of the simulation to 20. This is an increase of a factor of 2^8 (256) compared to the original Renaissance simulations and allows us to reach a maximum spatial resolution of $\Delta x \sim 1000$ au. While this (maximum) resolution is less than what was achieved in [Wise et al. \(2019\)](#) it was necessary as the goal of this re-simulation was not only to follow the collapse of the target halo but to also follow the formation of stars within the collapsing halo for up to 2 Myr following the formation of the first star. At the resolution used in [Wise et al. \(2019\)](#) this proved intractable and so we reduced the resolution by a factor of 2^4 (16), compared to [Wise et al. \(2019\)](#), as a compromise. Reducing the refinement factor compared to [Wise et al. \(2019\)](#) reduced the computational load while still allowing us to resolve star formation at an acceptable resolution.

In order to model star formation within the collapsing gas cloud we employed a star formation criteria using the methodology first described in [Krumholz, McKee & Klein \(2004\)](#). The implementation in *Enzo* is described in detail in [Regan & Downes \(2018a\)](#) and [Regan & Downes \(2018b\)](#) and we give a brief overview here for completeness. Stars are formed when all of the following conditions are met:

1. The cell is at the highest refinement level
2. The cell exceeds the Jeans density
3. The flow around the cell is converging
4. The cooling time of the cell is less than the freefall time
5. The cell is at a local minimum of the gravitational potential

³ Ideally *HalolA* without a LW field would have been the control for the simulation campaign. However, as noted in footnote 4 this was not possible at this time.

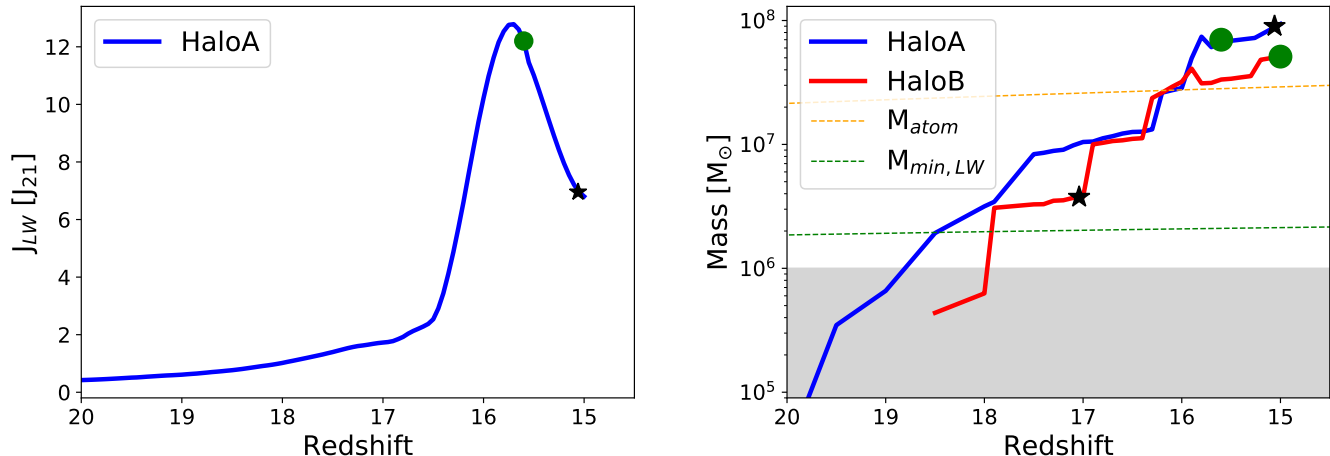


Figure 1. *Left Panel:* The LW background field imposed on Halo A for the re-simulation. HaloB is not shown as no LW background is imposed on HaloB. The LW field values are composed of local sources, plus a LW background from Wise et al. (2012), extracted from the original Renaissance simulations. The local sources dominate over the background by at least an order of magnitude at all times. In the original Renaissance simulations HaloA (and HaloB) remained metal-free and star-free until $z = 15.6$ ($z = 15.0$). The redshift of original collapse is marked with a green circle. A black star marks the redshift at which star formation occurs in HaloA in the zoom-in simulations. *Right Panel:* The merger history of both HaloA and HaloB as determined from the original Renaissance simulations. Again we mark the redshift of first star formation in HaloA and HaloB as found in the re-simulations with black stars. Note that star formation now occurs significantly earlier in HaloB because no LW background is imposed. In HaloA, on the other hand, star formation occurs 15 Myr after the halo was detected in the original (lower resolution) simulations. M_{atom} , orange line, is the atomic cooling threshold (Fernandez et al. 2014) and $M_{min,LW}$ is the threshold mass for halo collapse in the presence of an expected LW background at these redshifts (Machacek, Bryan & Abel 2001; O’Shea & Norman 2008).

Once the star is formed accretion onto the star is determined by evaluating the mass flux across a sphere with a radius of 4 cells centered on the star. Initially all stars are assumed to be stars with low surface temperatures that are appropriate for main sequence SMSs and less massive proto-stars on the Hayashi track. The accretion onto the surface of the embryonic star is found by applying Gauss’s divergence theorem to the volume integral of the accretion zone (e.g. Bleuler & Teyssier 2014) (i.e. the volume integral of flux inside the accretion zone)

$$\dot{M} = 4\pi \int_{\Omega} \rho v_r^- r^2 dr \quad (1)$$

where \dot{M} is the mass accretion rate, Ω is the accretion zone over which we integrate, ρ is the density of the cells intersecting the surface, v_r^- is the velocity of cells intersecting the surface which have negative radial velocities and r is the radius of our surface. As noted above we set the accretion radius to be 4 cells. The accretion onto the star is calculated at each timestep, however this is likely to be a very noisy metric. To alleviate this to some degree we average the accretion rate over intervals of 1 kyr and use that averaged accretion rate in data outputs. The accretion rate is added as an attribute to each star and hence a full accretion history of every star is outputted as part of every snapshot. Mergers with other stars are also included in the accretion onto the stars. Simulations of massive star formation (e.g. Meyer et al. 2020) do show that stellar mergers do increase the “bloatedness” of a star and hence including the mergers in the accretion rates is likely to be valid. In this case the more massive star retains its information (e.g., age, type, etc.) after the merger event - information on the less massive star is lost. The mass of the less massive star is added to the accretion rate of the more massive star for

that timestep. Stars are merged when they come within 3 times the accretion radius of each other (i.e. 12 cell lengths). We also note here that the dark matter particle mass is approximately $M_{DM} \sim 170 M_{\odot}$. This mass is comparable to and greater than the mass of some of the stars that are formed. While the star forming regions are strongly baryon dominated individual dark matter particles may produce some shot noise. The shot noise effects are accounted for however by smoothing the dark matter particles over a scale of approximately 1 pc. This alleviates the impact of individual dark matter particles on the central gas and star particles (e.g. Regan, Johansson & Wise 2015).

Each star also has the ability to provide both radiative and mechanical feedback, which is most appropriate in the case where the star has transitioned into a (accreting) black hole. As the accretion rate onto the star varies the star can transition its type from a SMS, with an inflated surface, to a PopIII star. This transitioning only occurs if the accretion rate onto the star either never exceeds the critical rate (set in our simulations to be $0.04 M_{\odot} \text{ yr}^{-1}$) or if the accretion rate onto the star falls below the critical accretion rate. While the star remains bloated the radiative feedback from the star is primarily below the hydrogen ionisation limit and is mostly in the form of infrared radiation. However, if the accretion rate drops and the star contracts to the main sequence then its surface temperature dramatically increases up to 10^5 K, causing its spectrum to harden and peak in the UV.

All stars in this simulation emit radiative feedback below the ionisation threshold of hydrogen. The radiation is followed explicitly using the ray tracing technique (Wise & Abel 2011). Pop III stars are modelled assuming a blackbody spectrum with a characteristic mass of

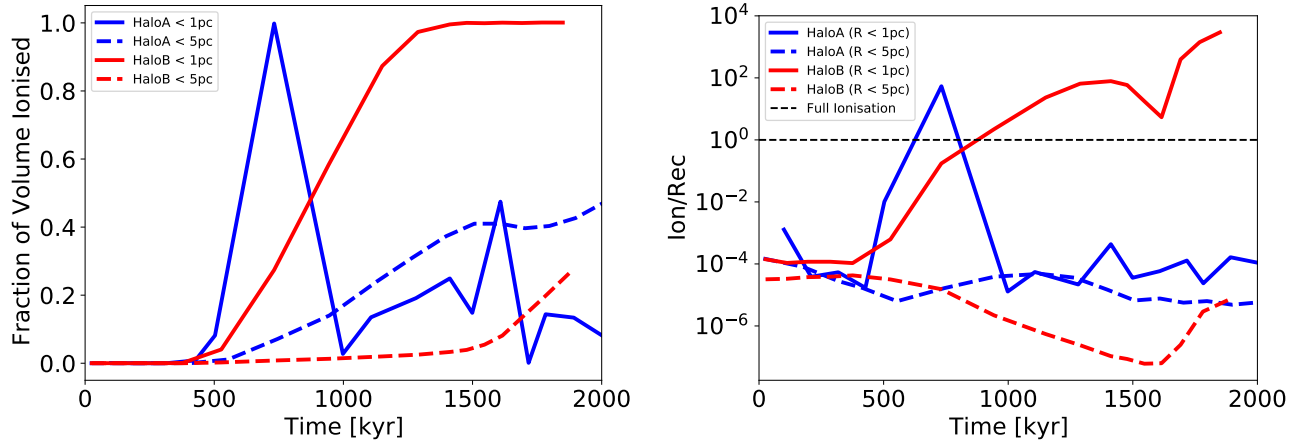


Figure 2. *Left Panel:* The percentage of the inner volume ionised in each halo due to all stars as a function of time. In each case the volume is centred on the most massive star at that time. Two radii are considered, a radius of 1 pc from the most massive star is shown as a solid line, a radius of 5 pc is shown as a dashed line. HaloA is shown in blue, HaloB in red. For both haloes the 1 pc volume surrounding the most massive star becomes ionised but as we look to the larger region (5 pc) the medium remains neutral. Note that for HaloA the most massive star changes over time and this is reflected in the ionisation spikes. The first spike, where the volume becomes ionised quickly (at approximately 700 kyr) is at least partially due to the star moving to a lower density environment and hence ionisation becomes easier. For HaloB, after approximately 1800 kyr the gas within 1 pc of the most massive star has become fully ionised. However, at a radius of 5 pc the gas shows virtually no ionisation. So while the stars are able to ionise their immediate surroundings the radiative feedback does not penetrate much further than a pc. *Right Panel:* The ratio of the ionising photon luminosity and the total integrated recombination rate of the gas. For HaloA we see a similar trend to the left panel. The most massive star, at a time less than ~ 750 kyr is quickly able to ionise its surroundings. However, at larger radii (and also at later times for HaloA when the most massive star is embedded in the central region) the gas remains neutral. For HaloB the results are again similar to the volume averaged calculation. At 1 pc the region becomes fully ionised after approximately 1000 kyr but again at a radius 5 pc the region remains dominated by recombinations.

$40 M_{\odot}$ (Table 4, Schaerer (2002)). From that we assign a *LuminosityPerSolarMass* to the Pop III star and the star consequently becomes more luminous and the feedback more intense as the mass of the star increases. SMS are modelled by assuming a blackbody spectrum with an effective temperature of $T_{\text{eff}} = 5500$ K (Hosokawa et al. 2013). The radiation spectrum for a SMS therefore peaks in the infrared as opposed to the UV for Pop III stars. For the specific luminosity of the SMS we take a characteristic mass of $500 M_{\odot}$ and apply the contribution from the non-ionising photons only (Schaerer 2002). As with the 'normal' Pop III stars the SMS luminosity changes as mass is accreted and the total luminosity then scales up as the mass increases.

In both cases the radiation from the stars is propagated outwards from the star using the MORAY radiative transfer package (Wise & Abel 2011) that is part of Enzo. MORAY is able to model the ionisation of H, He and He^+ . It can also account for the photo-dissociation of H_2 for photons with energies within the Lyman-Werner band and the photo-detachment of H^- and H_2^+ for photons in the infrared band. For each type of star we use five energy bins. The first two energy bins ($E < 13.6$ eV) are weighted by the cross section peaks for H^- , H_2^+ and H_2 photo detachment/dissociation respectively. The next three energy bins are determined using the *sedop* code developed by Mirocha et al. (2012) which determines the optimum number of energy bins needed to accurately model radiation with energy above the ionisation threshold of hydrogen. For the self-shielding of H_2 against LW radiation we use the prescription of Wolcott-Green, Haiman & Bryan (2011).

As stars in this simulation contract to the main sequence, when the accretion rate onto the star drops, radiation above the hydrogen ionisation threshold is not

initiated although in principle it should be and our radiative transfer scheme does support ionising radiation. The problem however is that the shocks generated near the star particle are too strong and unresolved for the PPM reconstruction scheme and HLLC Riemann solver to handle, the steep gradients cause the solution to overshoot to negative densities and energies (see Bryan et al. 2014, for details). We could have avoided this problem by utilizing a more diffusive solver at the expense of accuracy, but instead we neglect the impact of ionising feedback and post-process the impact of ionising feedback with *Cloudy* and use the results to estimate the extent to which the stars (particularly the hyper luminous stars in HaloA) ionise their surroundings and potentially shut-down further star formation⁴.

2.5. Post-Processing with *Cloudy*

CLOUDY (Ferland et al. 2017) is a spectral synthesis code which models radiative transfer through a gas, and its resulting thermal and chemical equilibrium, under a wide range of conditions encompassing those expected for interstellar matter. The code relies on a number of databases for computing the behaviour of atoms and molecules, including tabulated recombination coefficients obtained from Badnell et al. (2003) and Badnell (2006), with Case A and B recombination predictions for single-electron systems from Storey & Hummer (1995) and He I recombination rates from Porter et al. (2012), as well as

⁴ Initially our simulation plan had been to run four haloes with and without a background LW field at a refinement level of 24 (16 times higher than we report here). However, the simulations proved intractable and computationally expensive and hence we reduced the scope of the campaign. As a result, we did not have the capacity to run HaloA without a LW radiation field or HaloB with a radiation field. We are now in the process of undertaking a new more expansive campaign to address these shortcomings.

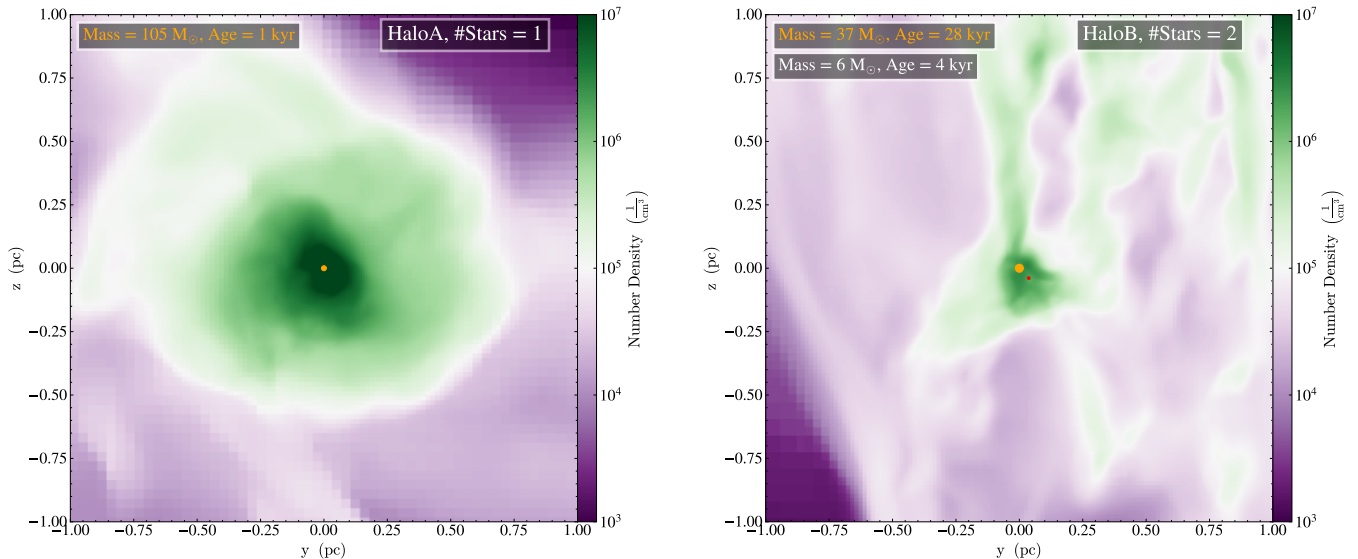


Figure 3. Both panels show the projected number density⁶ of the region around which the first star forms. HaloA is in the left hand panel, HaloB in the right hand panel. The legend in each panel gives the mass of each star at the first output time following star formation as well as the age of each star at that time. The extent of each panel is 2 pc (physical). The orange star in each case represents the most massive star. Stars coloured in red are stars in which the accretion rate exceeds that required for supermassive star formation ($0.04 M_{\odot} \text{ yr}^{-1}$ in our simulations). Blue stars are those stars (normal PopIII stars) for which the rate is below the critical rate. HaloA contains a single initial star. HaloB contains two stars (closely separated) at the first output following star formation. For illustrative purposes the size of each star in the projection is scaled as $R_{\text{star}} \propto M_{\text{star}}^{0.6}$.

ionic emission data from the CHIANTI database (Dere et al. 1997; Landi et al. 2012). Its chief limitation is that it is largely constrained to modelling environments in 1-D and/or assuming spherical symmetry (though see, e.g., Morisset 2013; Fitzgerald et al. 2020, for recent efforts to extend its implementation to pseudo-3D problems). For this reason, and because we do not follow the stellar evolution of each formed star in detail, we must make a number of simplifying approximations in using CLOUDY to estimate the impact of ionising feedback.

For each halo, we consider the ionising feedback for a range of times between 1 kyr and 2000 kyr after the initial star formation has commenced. For each snapshot, we divide the stars formed between those which are accreting $> 5 \times 10^{-3} M_{\odot} \text{ yr}^{-1}$, which will evolve on the Hayashi track due to H^{-} opacity in their inflated envelopes (e.g., Hosokawa et al. 2013), and those accreting below this threshold, which will evolve blue-ward as they contract to become hot ionising sources on the ZAMS (Haemmerlé et al. 2018). We assume that all rapidly-accreting (“red”) stars remain negligible ionising sources, and that all slowly- or non-accreting (“blue”) stars have thermally-relaxed to a main sequence temperature of $\approx 10^5 \text{ K}$ (Schaerer 2002; Woods, Heger & Haemmerlé 2020). We further take their luminosities to be approximately Eddington ($L \approx 1.3 \times 10^{38} \times (M/M_{\odot}) \text{ erg s}^{-1}$), and their spectra to be well-approximated as blackbodies.

For each blue star, we then model the ionisation state of the surrounding gas assuming spherical symmetry, with the density profile found from the average gas density in successive shells 0.5pc in width, centred on each star in the halo, and primordial abundance ratios taken to be 1.0:0.08232:1.6e-10:1e-16 for H:He:Li:Be (consistent with the results of the Planck Collaboration et al. 2014, table 2, see CLOUDY documentation for further

discussion). We assume an inner boundary of 10^{15} cm ($\sim 3 \times 10^{-4} \text{ pc}$) and terminate our calculations at the outer boundary of each nebula once either the gas temperature falls to 8000 K or the electron fraction falls below 5%. Modelling the ionised nebula associated with each star in this way does not account for the overlapping of Strömgren spheres associated with distinct stars; we address this point and further limitations in §3.2.

3. RESULTS

3.1. Conditions for (Super-)Massive Star Formation

As noted in §1 the goal of this study is to model the formation of SMS formation in haloes which are experiencing both LW feedback from nearby galaxies and dynamical heating from mergers. Both of these effects suppress the formation of regular PopIII stars in haloes below the atomic cooling limit and hence may lead to the formation of a SMS in a larger halo (as was found in Wise et al. 2019). In this study we include sub-grid star formation prescriptions to follow the star formation process in two of these candidate haloes.

In the left hand panel of Figure 1 we show the LW history that HaloA is exposed to throughout its re-simulation. As discussed in §2 the LW field at the location of the halo is determined from the original simulation, which included star formation in all of the surrounding haloes. In the re-simulation the adaptive mesh refinement grids are focused only around the target halo and so the LW field must be imposed as a global background, albeit focused on a single halo. As can be seen in the left hand panel of Figure 1 the LW field is very flat and sits below $J_{\text{LW}} \sim 2 J_{21}$ until a redshift of $z \sim 16.5$ at which point it increases strongly due to a nearby source which undergoes a starburst and emits copious amounts

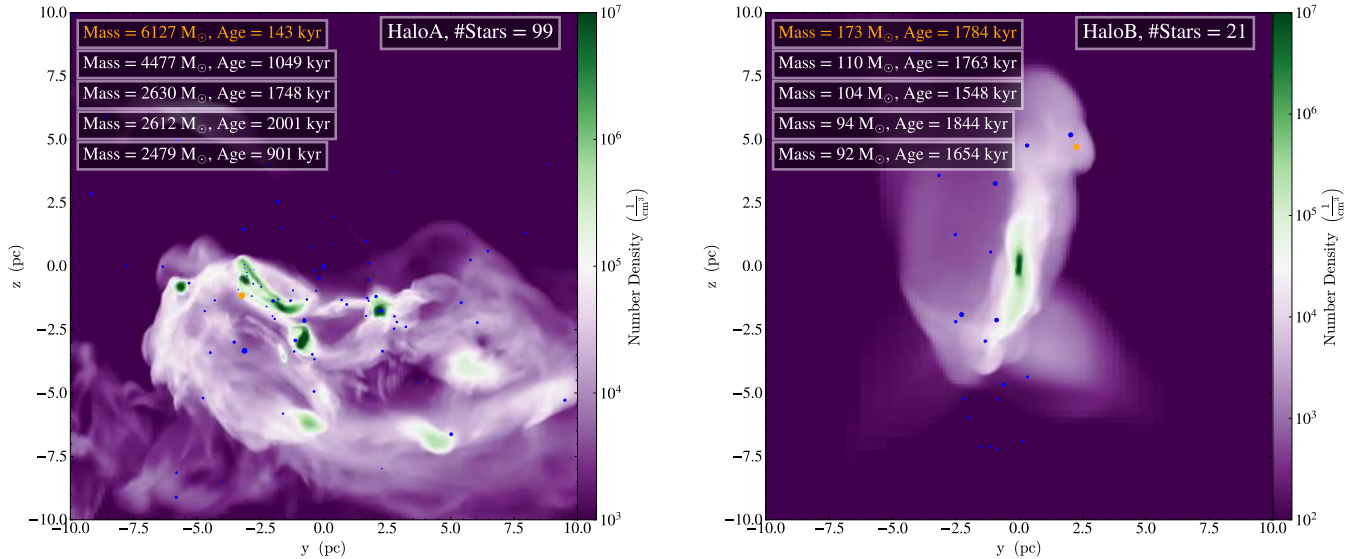


Figure 4. Both panels show the projected number density⁶ in each halo at the end of each simulation. The left panel shows **HaLoA** while the right panel shows **HaLoB**. The legend in each figure gives the mass of the five most massive stars at the final output time, as well as the age of the star at that time. The extent of each panel is 20 pc (physical). The orange star in each case represents the most massive star. Blue stars are those stars (normal PopIII stars) for which the rate is below the critical rate ($0.04 M_{\odot} \text{ yr}^{-1}$) for SMS formation. At the times shown no SMSs exist in either simulation because the accretion rate onto each star is less than the critical rate. For illustrative purposes the size of each star in the projection is scaled as $R_{\text{star}} \propto M_{\text{star}}^{0.6}$.

of LW radiation (and ionising radiation⁵) in the direction of **HaLoA**. The LW field reaches its zenith at a redshift of $z \sim 15.8$ and thereafter starts to decline. The green circle at $z = 15.6$ represents the redshift at which the halo was detected as a metal-free and star-free atomic cooling halo in the original simulations (see [Regan et al. 2020b](#), for details). The black star indicates the redshift at which star formation begins in this re-simulation ($z = 15.05$).

In the right hand panel we show the merger history of both **HaLoA** and **HaLoB** as found in the original simulations. The mergers, both major and minor, drive the dynamical heating which heats the gas and delays star formation ([Wise et al. 2019](#)). **HaLoA** experiences a major merger starting at $z \sim 16.2$ and lasts until $z \sim 15.7$. This merger, in combination with the LW field, suppresses star formation until $z = 15.05$ (again the green circles denotes the time of collapse in the original, lower resolution, simulations). The merger history of **HaLoB** is shown as the red line. Recall that **HaLoB** is run without any LW background as a control case. As a result star formation is triggered at $z = 17.21$. Using the results from the original simulation which allows us to see the future evolution of that halo we see that immediately after star formation the halo undergoes a major merger. It is therefore highly likely that, in the absence of a suppressing LW background, the merger triggers star formation, which in the original simulation was suppressed until after $z = 15$. Therefore, we can see here that the absence of the background LW radiation field was sufficient to allow PopIII star formation to take place. Dynamical heating by itself was not sufficient for this halo to avoid star formation.

Star formation occurs in both **HaLoA** and **HaLoB** when they are at very different phases in their evolution. In **HaLoA** the mass of the halo is significantly above the

atomic cooling limit ($M_{\text{HaloA}} = 9.3 \times 10^7 M_{\odot}$) and the halo has remained metal-free. **HaLoB**, on the other hand, collapses early with a mass of $M_{\text{HaloB}} = 3.7 \times 10^6 M_{\odot}$ due to the lack of a LW background and thus can be classified as a mini-halo. Before analysing the star formation in detail we use results from **Cloudy** to determine if the negative radiative feedback from stars can quench further star formation through photoionisation in each halo.

3.2. Determining the time of star formation quenching

To assess the impact of photoionising stellar feedback, we must investigate the ionisation state of the gas in the innermost star-forming regions of each halo. Here we adopt two different radii at which to calculate the ionisation state of the gas. We use a radius of 1 pc to estimate the ionisation state of the gas close to the most massive star and we also use a radius of 5 pc to estimate the more “large scale” ionisation of the entire halo. We use the same radii, at which to estimate the ionisation state of the gas, for both haloes for consistency. We then evaluate the evolution of both the total ionised volume and the total ionisation budget through each snapshot, in order to provide subtly distinct but complementary measures of the strength of stellar feedback.

First, we compute the ionised volume associated with each thermally-relaxed star as described in §2.5, and integrate the intersection of the union of these Strömgren regions within the central star-forming regions, as defined in the preceding paragraph for each halo, using a Monte Carlo approach. Note that for a constant combined ionising luminosity, any reduction in ionised volume in accounting for overlaps in our spherically-symmetric Strömgren spheres would in principle be compensated by the ionisation of a greater (though presumably not spherically symmetric) volume by the remaining available ionising photons. The extent to which this would raise the total ionised volume beyond our estimate

⁵ The shorter mean free path of the ionising radiation means that **HaLoA** does not get photoionised.

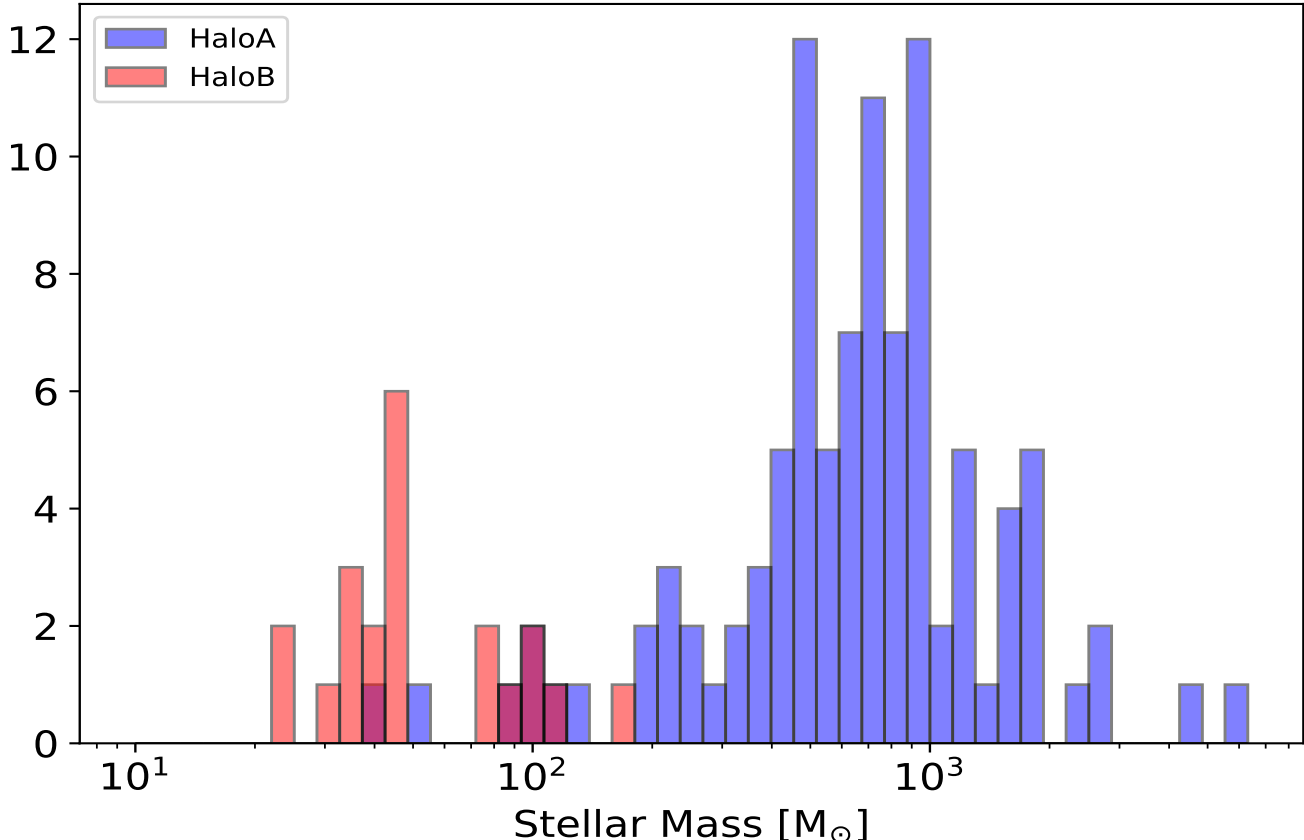


Figure 5. The mass function for the stars that formed in HaloA & HaloB over approximately 2 Myr. Blue bars represent stellar masses from HaloA while red bars represent stellar masses from HaloB. The dichotomy in masses is clearly evident with a strong bias towards more massive stars in HaloA. This is due to the higher temperatures in HaloA compared to HaloB which in turn leads to high infall rates to the centre and hence more mass available for proto-stars to accrete. The median mass for a single star in HaloA is $683 M_{\odot}$ and the median mass for HaloB is $44 M_{\odot}$.

depends sensitively on the local density distribution beyond each Strömgren region.

Indeed, an alternative approach is to simply compare the ionising photon luminosity of all stars within the inner star-forming region with the total integrated recombination rate \dot{N}_R of the gas if all hydrogen atoms were ionised; the latter sets the total emission rate of photons with $E > 13.6$ eV needed to maintain ionisation of the star-forming region in equilibrium. This can be found from integrating over the hydrogen number density:

$$\dot{N}_R = \int_V \alpha_B(\text{H}^0, T) n_{\text{H}}^2(\mathbf{r}) dV \quad (2)$$

where $n_{\text{H}}(r, t)$ is the spherically-averaged density profile centered on the most massive star in the Halo at time t (see above), and $\alpha_B(\text{H}^0, T)$ is the case B recombination coefficient for hydrogen, which we take as $\approx 1.4 \times 10^{-13} \text{cm}^3 \text{s}^{-1}$ for primordial gas at a temperature typical of plasmas photoionised by Population III stars, $T \sim 2 \times 10^4 \text{K}$ (Osterbrock & Ferland 2006; Johnson et al. 2012).

These two measures of the strength of ionising stellar feedback are compared in Figure 2. The left panel shows the volume ionised fraction of the innermost region as a function of time, while the right panel shows the fractional ionising budget as a function of time.

The ionisation state of the gas is shown in blue for HaloA and red for HaloB. Calculations with a 1 pc sphere are shown as solid line, calculations with a 5 pc radius are shown as dashed lines. Note that the ionised volume (left panel) and the fractional ionising photon budget (right panel) do not necessarily move perfectly in tandem. This is partly due to our simplified treatment as described above, including overlapping Strömgren regions and spherically-averaged density profiles, but also reflects the variable density distribution, with the lowest density regions preferentially ionised over high-density knots.

We begin by focusing on HaloA. In the left hand panel, we see a marked rise in the ionised volume between ~ 500 and ~ 1200 kyr when measured in a sphere of 1 pc, this is matched in both cases by a similar rise in the fractional ionising photon budget (right panel). In HaloA we see a sharp rise matched by a sharp drop (solid blue line). This is because the most massive star in the simulation switches at approximately 1000 kyr as another star’s accretion rate gives it a larger mass. Prior to this time the most massive star easily ionises its immediate surrounding and this is at least partly because the star also moves into a lower density region (something similar occurs in HaloB).

After 1000 kyr the most massive star in HaloA be-

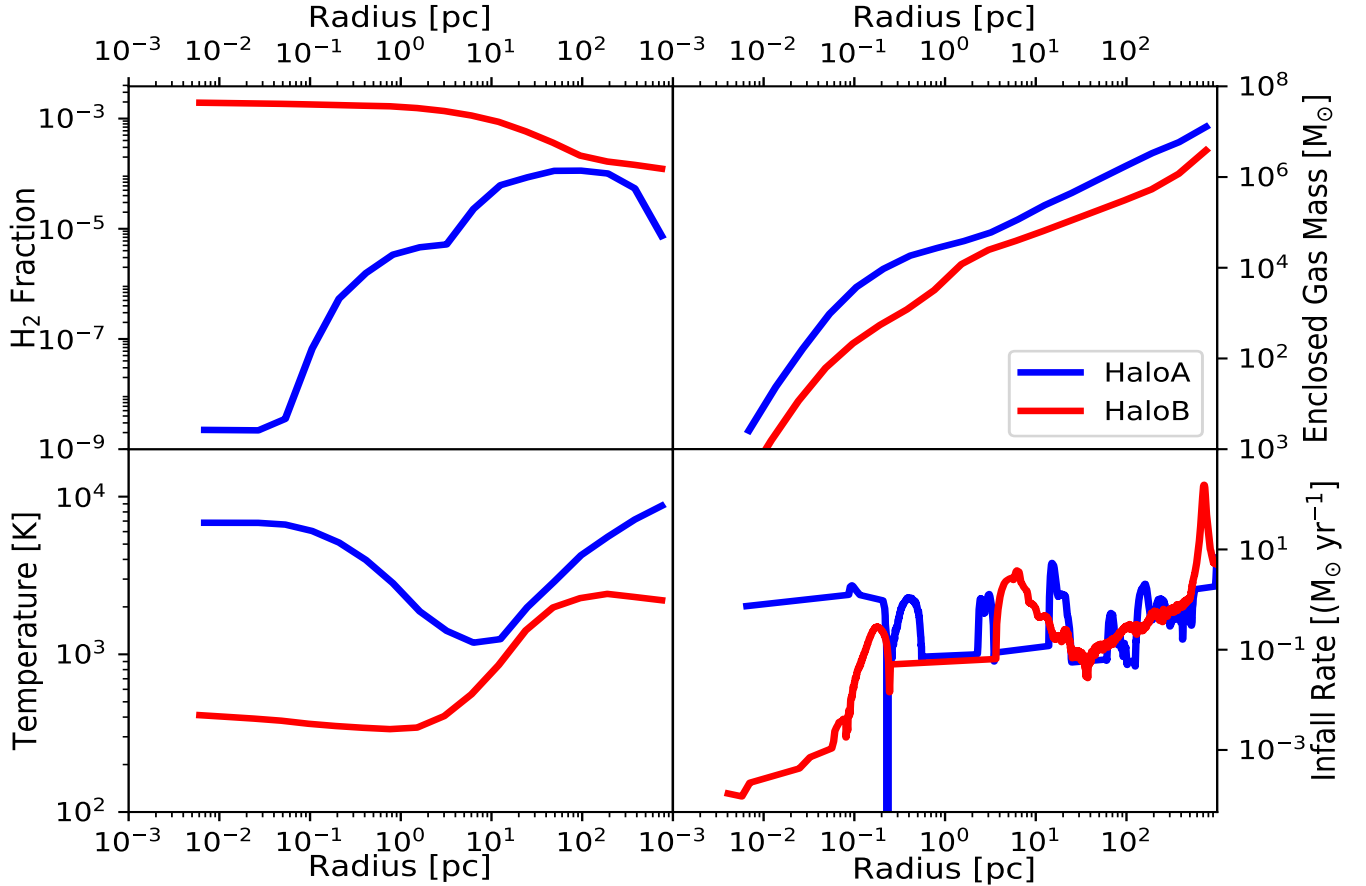


Figure 6. We examine the radial profiles for both HaloA (blue line) and HaloB (red line) immediately prior to star formation. The four panels are from bottom left going clockwise: temperature, H_2 fraction, enclosed gas mass and infall rate. As HaloB collapsed early due to the lack of a LW background (compared to the original Renaissance simulation) the temperature of this halo is significantly lower in the centre. The central temperature equilibrium value is close to 500 K which is characteristic of PopIII simulations for the chemical network used in this work. This lower temperature is due to the high H_2 fraction, as shown in the upper left panel. This can be contrasted with the radial profiles for HaloA which show systematically higher temperatures in the core of the halo and lower H_2 fractions. The lower H_2 fractions are due to a combination of dynamical heating from mergers and from local radiation sources. The enclosed mass fractions identify the difference in masses between the haloes. In the case of HaloB the enclosed masses are systematically lower compared to HaloA as this is effectively a minihalo. Infall rates in both haloes are very different in the centre of each halo. Average infall rates in the very centre ($R \lesssim 0.1$ pc) of HaloA are above $0.1 M_\odot \text{ yr}^{-1}$ compared to below $0.001 M_\odot \text{ yr}^{-1}$ in HaloB. These infall rates are consistent with the accretion rates that are seen onto the stars that subsequently form in each halo. The flat patches in the infall rate are due to outflow at those radii (which show up as negative infall rates).

comes embedded in dense filaments and its ability to ionise even its immediate surroundings is blunted (and hence the ionisation fraction hovers between approximately 0.1 and 0.4). The right hand panel shows a similar result for HaloA with the most massive star, prior to 1000 kyr, easily able to ionise its immediate surroundings. However, after this point, with the most massive star more centrally located, recombinations dominate. When considering the larger 5 pc radius (dashed blue line) ionisation becomes much more difficult. In the left hand panel we see that the 5 pc region is approximately 40% ionised by 2000 kyr but if we look at the right hand panel we see that recombinations are still overwhelmingly dominant. This is because HaloA contains a plethora of dense knots and filaments in which recombinations are dominant and into which ionising photons cannot penetrate.

For HaloB both measures, at 1 pc, show a fully ionised medium after approximately 1000 kyr. The most massive star has a mass of $173 M_\odot$ and crucially it moves to a lower density region away from the central over-

density. However, like HaloA, using a radius of 5 pc shows a medium whose ionisation state remains low reflecting the fact that while the stars are very massive and easily able to ionise their immediate surroundings they are not yet numerous enough to ionise the entire halo.

In summary, ionising stellar emission is unlikely to shut down star formation in either halo prior to the onset of chemical and radiative emission from the supernovae explosions expected to occur for some of the stars (e.g. see Heger et al. 2003) approximately 2 Myr after their formation. In the case of HaloA this is particularly important. HaloA contains a number of hyper-luminous PopIII stars, however, the much denser gas in the central region of HaloA is robust against stellar feedback allowing star formation to proceed in these dense pockets, albeit with the overall volume ionisation growing in importance as the simulation progresses (see left panel of Figure 2). The results from our Cloudy models have very recently been confirmed by the 1-D analysis of Sakurai, Haiman & Inayoshi (2020) who investigated the impact of ionising feedback from a growing protostar in

a very similar environment. They found, similar to us, that no significant HII region forms during the evolution of the star.

3.3. *The onset and end of star formation*

Star formation is triggered when all of the criteria set out in §2.4 are fulfilled. In Figure 3 we show a projection of the total gas number density⁶ in the regions surrounding the formation of the first star in each halo. The projections are made from the first snapshot following star formation. Each panel is 2 pc across. In the left hand panel we show the projection from HaloA, which shows the formation of a single star (coloured in orange at the centre of the green coloured gas cloud). The legend on the top left gives the mass and age of the star at this time. In the right-hand panel we show the projection for HaloB. In this case two stars are formed by the time of the first output following star formation. The most massive star has a mass of 37 M_{\odot} and is 28 kyr old, the second star has a mass of 6 M_{\odot} and is 4 kyr old. Stars are coloured in red if the accretion rate exceeds the SMS critical rate of $0.04 M_{\odot} \text{ yr}^{-1}$, otherwise stars are coloured in blue (denoting PopIII stars). The most massive star is coloured in orange.

In Figure 4 we show the extent of star formation by the end of each simulation. In the left panel we show the results for HaloA and for HaloB in the right hand panel. Both simulations were terminated approximately 2 Myr after the formation of the first star. In both cases we terminate the simulations before the imminent impact of chemical and mechanical feedback from the first supernovae. At the end of the HaloA simulation there are 99 stars in the simulation with masses ranging from approximately 40 M_{\odot} up to a maximum mass of over 6000 M_{\odot} . Star formation in HaloA is widespread throughout the inner 20 pc of the halo with a number of different gas clouds giving rise to star formation. Furthermore, as the simulation develops the interactions between clouds triggers star formation as individual clouds merge and interact. HaloB, on the other hand, contains essentially only a single site of star formation due to the significantly smaller halo mass. At the end of the simulation of HaloB there are 21 stars with masses ranging from approximately 20 M_{\odot} up to approximately 170 M_{\odot} .

In Figure 5 we show the mass distribution of stars at the final output time. Stars from HaloA are binned in blue, stars from HaloB are binned in red. The median mass of stars formed in HaloB is 44 M_{\odot} while the median mass of stars formed in HaloA is 683 M_{\odot} . The most massive star in HaloA at the final output time is 6127 M_{\odot} with another star having a mass of 4477 M_{\odot} . HaloA has 22 stars with masses exceeding 1000 M_{\odot} . The lowest mass star in HaloA has a mass of 40 M_{\odot} . The mass distribution of stars in HaloB is significantly smaller, running from 22 M_{\odot} up to 173 M_{\odot} . However, it should be noted that due to our finite resolution ($\Delta x \sim 1000$ au) we cannot accurately probe the lower end of the initial mass function of either halo and we are likely missing some lower mass stars.

3.4. *The case for super-massive star formation*

⁶ Number density refers here to the total number density from each separate species weighted by each species atomic mass unit.

In Figure 4 we saw that the mass of the most massive star in HaloA was 6127 M_{\odot} . While this mass is well beyond the mass of ordinary PopIII stars (Turk, Abel & O’Shea 2009; Greif et al. 2011; Wise et al. 2012; Crosby et al. 2013; Susa, Hasegawa & Tominaga 2014; Hirano et al. 2014; Stacy, Bromm & Lee 2016) and also more than 30 times larger than the most massive star in HaloB it is still well short of the mass often associated with truly super-massive stars (e.g. Woods et al. 2019) which are expected to have end stage masses of $\sim 10^5 M_{\odot}$. Furthermore, HaloA was chosen here to present near ideal initial conditions in which to form a supermassive star. To illustrate this point we show radial profiles of the halo properties of both HaloA and HaloB in Figure 6. Figure 6 shows the state of the gas in each halo immediately prior to star formation. HaloA is denoted by the blue line, HaloB by the red line. The temperature, H_2 fraction, enclosed gas mass and mass inflow rate are shown in clockwise order starting from the bottom left panel.

HaloA shows near isothermal collapse, although the gas does show some degree of cooling at approximately 10 pc. The H_2 fraction is very different between the two haloes, with HaloA showing a steep decline in H_2 towards the centre due to the combination of the LW background and the rapid assembly of mass. HaloB on the other-hand shows a more typical H_2 evolution consistent with mini-halo formation. The enclosed mass plot in the top right panel illustrates the different mass associated with each halo as a function of radius. HaloA being well inside the atomic cooling mass range. In the bottom right hand panel we see the mass inflow rate for each halo. HaloA shows mass infall rates averaging greater than $0.1 M_{\odot} \text{ yr}^{-1}$ all the way into the centre of the halo. HaloB’s mass infall rates on the other hand fall from approximately $0.1 M_{\odot} \text{ yr}^{-1}$ at 1 pc down to approximately $10^{-3} M_{\odot} \text{ yr}^{-1}$ in the very centre. As we will see this result is reflected in the initial accretion rates observed onto the protostars.

In order to understand why, given apparent high mass infall rates that are greater than the critical rate, a SMS does not form we need to examine the accretion rate that is measured onto the stars within each simulation itself. In Figure 7 we show the mass evolution and the accretion rate onto every star in HaloA, the most massive star in HaloA is coloured in blue. In the left panel we show the mass accretion rate while in the right hand panel we show the mass evolution. In each case we plot as a function of the stellar age. The dashed line in the panel shows the mass evolution of a star with the median⁷ stellar mass in the simulation. The most massive star in HaloA is formed when two gas clouds within the central region merge and trigger star formation. The star quickly grows in mass up to its final mass of 6127 M_{\odot} within approximately 20 kyr, after which its accretion rate declines. The shaded grey lines are the evolutionary tracks for each of the other 100 stars in HaloA. The trend is similar for every other star.

Initially each star follows approximately the mass accretion rate as found in the radial profiles (see Figure

⁷ We define a median star here as the star at the end of the simulation which has a final mass closest to the median stellar mass at the end

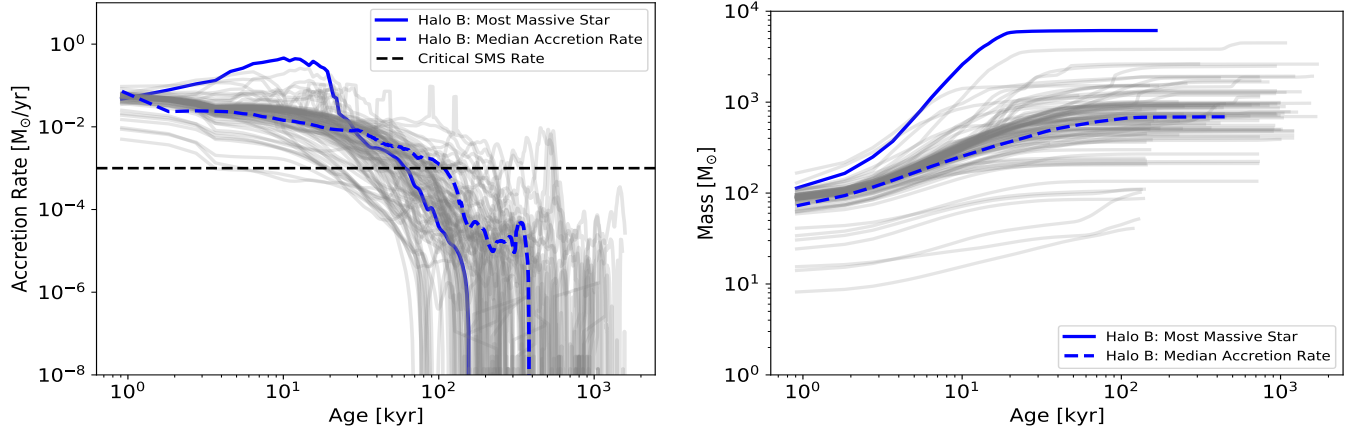


Figure 7. *Left Panel:* The accretion rate onto all stars in `HalolA`. The mass accretion onto the most massive star is shown by the blue line. The dashed blue line gives the accretion rate onto the median mass star in `HalolA`. Accretion onto all other stars are shown as grey lines. In all cases initial accretion rates decline over time, dropping below the critical rate for SMS formation after, on average, 100 kyr. The black dashed line gives the critical rate for SMS star formation (Haemmerlé et al. 2018). *Right Panel:* The mass evolution of every star `HalolA`. The solid blue line is for the most massive star in `HalolA`. It has a mass of $6127 M_{\odot}$ after 143 kyr. We also look at the mass evolution of an average star in `HalolA` for comparison - given by the dashed blue line. In `HalolA` a median⁴ star has a mass of $683 M_{\odot}$.

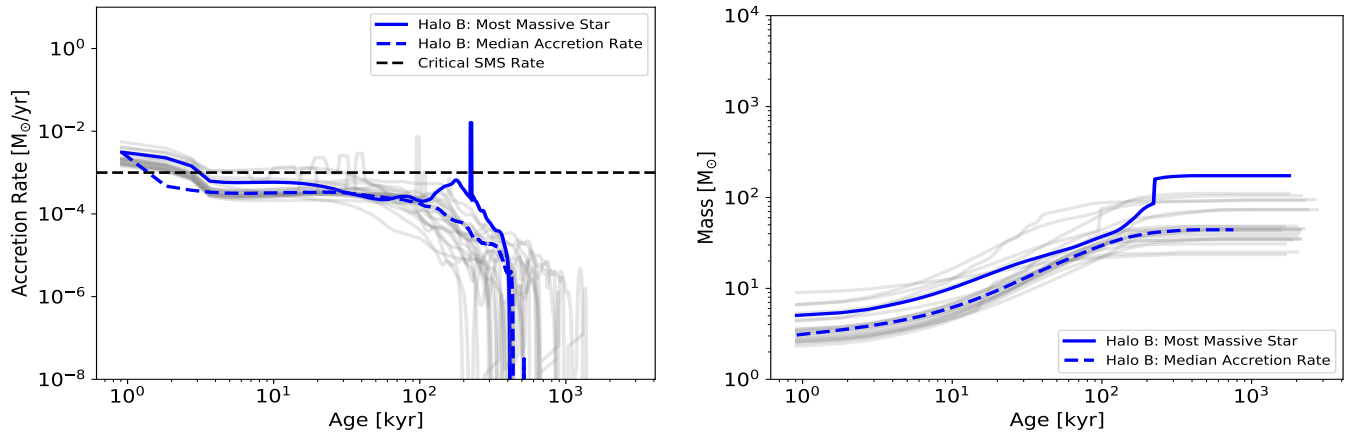


Figure 8. The same as Figure 7 except this time for the evolution of stars in `HalolB`. The most massive star in `HalolB` has a mass of $173 M_{\odot}$. Note that the sharp spike observed at approximately 200 kyr in the left hand panel is caused by a stellar collision.

6). However, in every case after a few tens of kyr the accretion rate onto each star drops dramatically and mass growth is halted. This drop in accretion is not due to feedback since no ionising feedback is present in these simulations. Instead mass accretion is terminated as the star accretes all the gas in its surroundings and moves into a less dense region of the inner halo. All of the stars formed have a small initial velocity of a few km s^{-1} , which it takes from the gas that initially formed the star. While this initial velocity is much smaller than the circular velocity of the host halo it does cause the stars to move around and decouple from the high density gas cloud in which they initially formed.

In Figure 8 we show the mass evolution and accretion rate onto each star in `HalolB`. Again in the left panel we show the mass accretion rate while in the right hand panel we show the mass evolution. The mass evolution of the most massive star (coloured in blue) in `HalolB` is a little different. In this case accretion is somewhat lessened at approximately $10^{-3} M_{\odot} \text{ yr}^{-1}$ (left panel). The most massive star in `HalolB` results from a stellar

merger which then drives the star to increase its mass suddenly. This occurs when the main progenitor star is approximately 200 kyr old and results in a star of $173 M_{\odot}$. However, the general trends are similar with initial accretion rates always declining as stars move into less dense environments.

3.5. Stellar Multiplicity

In Figure 9 we plot the enclosed gas (blue line) and stellar mass (orange line) of `HalolA` as a function of radius. The radial profiles are centred on the centre of mass of the stars in the halo. We also show the number of stars (black dashed line) in each radial bin up to the number of stars in the halo (101). All of the stars are concentrated in a radius of 20 pc of the halo centre. By the end of the simulation the total stellar mass in `HalolA` is $90,000 M_{\odot}$ (cf. $1300 M_{\odot}$ in `HalolB`). The star formation efficiency in the inner 20 pc (5 pc) of `HalolA` (`HalolB`) is $\sim 23\%$ ($\sim 2\%$). The stellar to dark matter ratios are higher in each case since this inner regime is baryon dominated. 20 pc is the

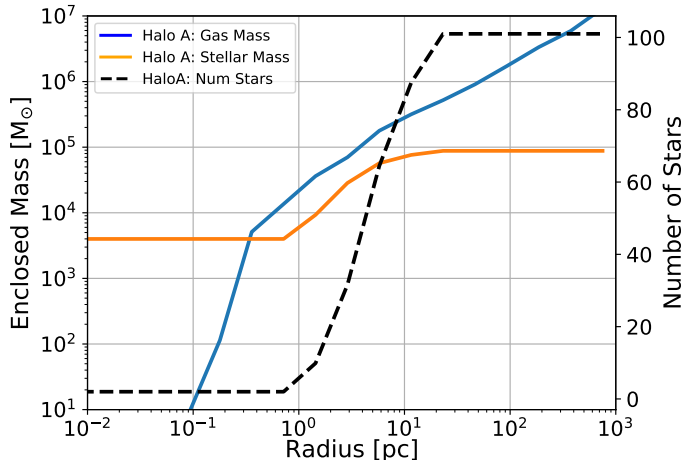


Figure 9. The enclosed gas mass (blue line), enclosed stellar mass (orange line) and the number of stars (dashed black line) as a function of radius. The radial profile is centred on the centre of mass of stars in the simulation. The profile is created from the final dataset of `HaLoA`. The stars are concentrated in the central 20 pc of the simulation with a total stellar mass of approximately $90,000 M_{\odot}$. The baryonic mass at 1 pc is approximately $3 \times 10^4 M_{\odot}$ rising to approximately $6 \times 10^5 M_{\odot}$ at 20 pc.

approximate Jeans length of the gas in `HaLoA` (~ 5 pc for `HaLoB`). In order for the formation of a truly supermassive star in `HaLoA` all of the stellar mass (i.e. $\sim 90,000 M_{\odot}$) would have needed to have been accreted onto the stellar surface. Instead what happened was that the outer gas cloud in `HaLoA` fragmented into a small number of sub-clouds which each generated hotspots of star formation. These sub-clouds tidally disrupt each other during the subsequent evolution both triggering further star formation but also tidally disrupting accretion. From a total baryonic reservoir of approximately $600,000 M_{\odot}$ inside 20 pc, approximately 1% of the baryons went into the most massive star. To form a SMS with a mass of close to $100,000 M_{\odot}$ we would need over a fifth of the mass to flow into a single object. While this is possible it is clearly going to be very challenging given the turbulent nature of the environment in which these stars are forming.

The stars in the central 20 pc region of `HaLoA` wander the inner parts of the halo in a random walk fashion. As stars cross regions (filaments and clumps) of high density they can experience enhanced accretion rates. In Figure 10 we show the environmental changes which occur for five stars within `HaLoA`. Four of the stars were chosen because at some point in their evolution they undergo a second period of high accretion ($\dot{M} > 1 \times 10^{-3} M_{\odot} \text{ yr}^{-1}$) at least 100 kyr after their formation. We also include the most massive star, coloured in green. Periods of high accretion are identified by a circular marker with an embedded black dot. Note that each of the stars (excluding the most massive) undergoes a “bump” in its accretion rate independent of the initial high accretion rate value (top left panel of Figure 10). The high accretion rate is directly correlated with the star passing through a region of high density which is shown in the top right panel. The relative velocities of each of the stars are shown in the bottom right panel while the distance from each star to the nearest high density clump is shown in the bot-

tom left panel. Average relative velocities are below 10 km s^{-1} with some spikes showing velocities between 10 and 20 km s^{-1} . A high density clump is defined as any cell that has a density more than 10% of the Jeans Density. The distance of a star from a high density clump is highly variable with stars encountering a high density clump only occasionally. Encounters with filaments and clumps do occur however with an associated spike in the accretion rate (and density) around the star. What is also clear is that periods of high accretion are fleeting, lasting only a few kyr at most. Apart from these short periods of rapid growth the initial mass of the stars does not increase appreciably and a consistently high accretion rate is not maintained. This is similar in spirit to what [Smith et al. \(2018\)](#) found for accreting stellar mass black holes in similar high- z environments.

In summary none of the stars in our simulation are able to sustain critical accretion rates for SMS formation. Nonetheless, the most massive star(s) in the halo will form of population of intermediate mass black holes (IMBHs) with masses ranging from $300 M_{\odot}$ to several thousand M_{\odot} . The subsequent growth of these IMBHs within the halo then through mergers and accretion will then slowly build the black hole mass. The key issue preventing the formation of a monolithic SMS appears to be that these haloes are highly turbulent and that sustaining accretion onto a single object in such an environment is hugely challenging (see [Chon, Hosokawa & Yoshida \(2018\)](#) and §5 for a more detailed discussion). This conclusion is unlikely to be due to insufficient resolution: it is well-known that low resolution damps turbulent motion very significantly (e.g. [Federrath et al. 2010](#); [Downes 2012](#)). Thus insufficient resolution will lead to an *over-estimate* of the likelihood of forming an SMS.

4. INTERMEDIATE MASS BLACK HOLE MERGING AND IMPLICATIONS FOR GRAVITATIONAL WAVE DETECTION

We begin this section by analysing the stellar content of `HaLoA` and in particular the likelihood that `HaLoA` will undergo two-body collisional processes akin to the runaway collapse of a dense stellar cluster ([Portegies Zwart et al. 2004](#); [Gürkan, Freitag & Rasio 2004](#); [Freitag, Gürkan & Rasio 2006](#); [Regan & Haehnelt 2009](#); [Katz, Sijacki & Haehnelt 2015](#)). In Figure 11 we plot both the collisional time for the stars in `HaLoA` and the relaxation time of the stellar system in `HaLoA` as a function radius. The collisional time, t_{coll} , for a stellar population consisting of two populations can be written as ([Freitag 2008](#)):

$$t_{\text{coll}} = 5 \text{ Gyr} \left(\frac{10^6}{n_*} \right) \left(\frac{\sigma_{\text{vel}}}{10 \text{ km s}^{-1}} \right) \left(\frac{2R_{\odot}}{R_1 + R_2} \right) \left(\frac{2M_{\odot}}{M_1 + M_2} \right) \quad (3)$$

where n_* is the stellar density, σ_{vel} is the one dimensional velocity dispersion, R_1 is the stellar radius of the first population of stars and R_2 is the stellar radius of the second population. We choose the median stellar mass, $683 M_{\odot}$, for M_1 and we choose our maximum stellar mass, $6127 M_{\odot}$, for M_2 . The stellar radii are calculated using the standard formulae from [Stahler, Palla & Salpeter \(1986\)](#). The collisional time, plotted in blue, is a measure of time required for one stellar collision between these two populations. In orange we plot the relaxation

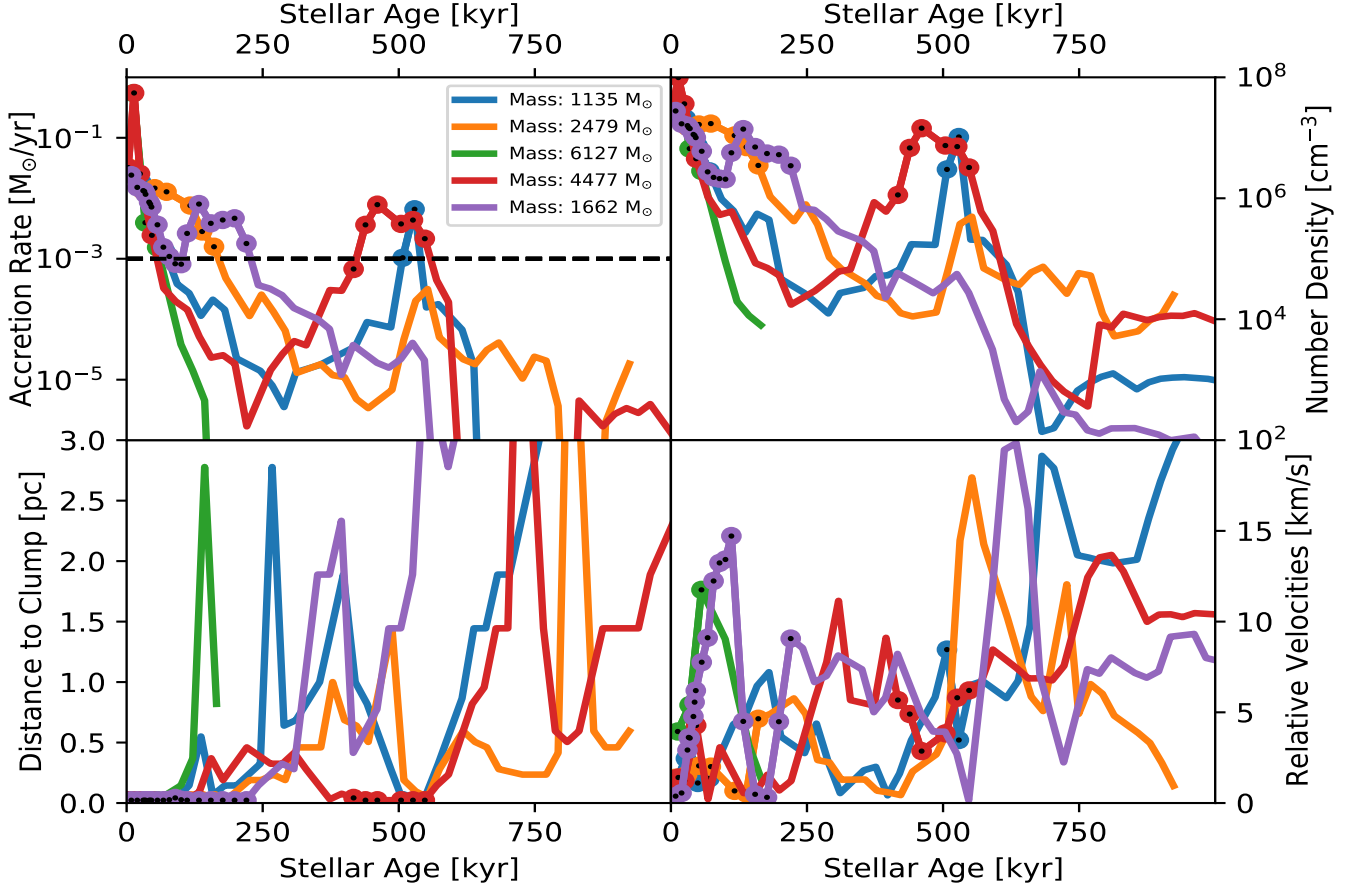


Figure 10. The evolution of the most massive star in `HalOA` and four other stars which cross regions of high density during their evolution resulting in enhanced accretion rates. The accretion rate for each star (most massive in green) is shown in the top left panel. The final mass of each star ranges from approximately $1135 M_{\odot}$ up to $6127 M_{\odot}$. Each of the stars (with the exception of the most massive star) shows a second spike of $\dot{M} \gtrsim 10^{-3} M_{\odot} \text{ yr}^{-1}$ during its evolution. These times of high accretion are highlighted using circular markers with embedded black dots. For most stars this happens a few hundred kyr after formation. This spike in accretion is caused by the star crossing a region of high density. The gas number density surrounding each star is shown in the top right panel. The relative velocity of the stars (which also impacts accretion) is shown in the bottom right panel. Note that the relative velocity values can be as high as $10 - 15 \text{ km s}^{-1}$ during a high accretion event as the star can be crossing through a dense clump. Finally, in the bottom left panel we plot the distance from each star to the nearest high density clump. Times of high accretion always corresponds to a distance of 0 pc from a clump. However, as stars cross the inner halo their distances from a high density clump varies in general. Note that for the most massive star, shown in green, the stellar age is quite short as this star formed near the end of the simulation.

time of the cluster. The relaxation time is the time required for the system to contract due to two body interactions in a populous cluster ($N \gg 10$). The relaxation time is given by:

$$t_{\text{relax}} = 2 \text{ Myr} \left(\frac{10}{\lambda} \right) \left(\frac{10^6}{n_*} \right) \left(\frac{\sigma_{\text{vel}}}{10 \text{ km s}^{-1}} \right)^3 \left(\frac{1 M_{\odot}}{\langle m \rangle} \right)^2 \quad (4)$$

where $\lambda = \ln(0.02N)$ and N is the number of cluster stars and $\langle m \rangle$ is the median stellar mass. The collisional time, t_{coll} , is greater than the Hubble time at all radii indicating that collisions are very unlikely for the stars in `HalOA`. The relaxation time, t_{relax} , is approximately 10 Myr at 1 pc. However, this time exceeds the lifetime of the stars in our cluster and contraction to very high densities appears unlikely and hence the runaway collapse of the cluster is not predicted (or observed here).

At the end of the simulation `HalOA` has 22 stars with masses greater than $1000 M_{\odot}$ with the most massive star having a mass of $6127 M_{\odot}$. Within the central 1 pc of the halo centre there is a total (stellar + gas) mass of $\sim 3 \times 10^4 M_{\odot}$. This puts `HalOA` at the lower end of what

defines a Nuclear Star Cluster (NSC) (e.g. [Georgiev et al. 2016](#)). However, subsequent, further rapid growth of this halo beyond this initial phase of star formation will drive the enclosed mass further upwards. This would have the effect of pushing the environment to a point where the central region of a galaxy becomes a proto-NSC. At this stage if the density of the core reaches a point where the enclosed total baryonic mass within the central parsec reaches approximately $10^6 M_{\odot}$ then core collapse can occur ([Davies, Miller & Bellovary 2011](#)) potentially reaching a central black hole mass of $M_{\text{BH}} \sim 10^5 M_{\odot}$. Depending on the densities reached core collapse could occur on timescales of a few hundred Myr ([Davies, Miller & Bellovary 2011](#)) although equally the NSC could act as an incubator for the rapid growth of a seed black hole through gas accretion achieving similar masses over a potentially longer timescale ([Natarajan 2020](#)).

Our specific case here shows that we will have a proto-galaxy that gets populated with a plethora of weakly accreting black holes early in the proto-galactic evolution. It is therefore reasonable to ask *what are the prospects*

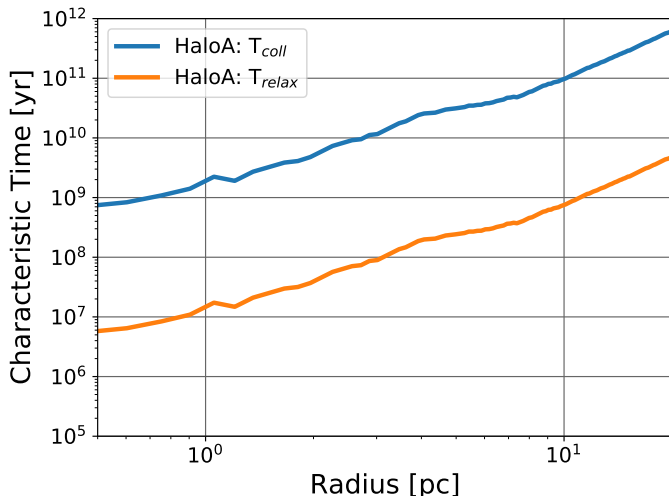


Figure 11. The collisional time and relaxation times for the stars in HaloA. The collisional times is an estimate of the time taken for a collision between two stellar populations. For the stars in HaloA the time taken for a single collision to occur exceeds the Hubble time at all radii. The relaxation time is a measure of the time taken for the stellar system to contract to higher density, perhaps driving a higher collision rate, due to two body relaxation. For HaloA the relaxation time is approximately 10 Myr at 1 pc.

for the merger of this first generation of black holes into a population of more massive black holes?

Pfister et al. (2019) investigated the merging of black holes in high resolution simulations ($\Delta x \sim 10$ pc) with black hole masses in the range $10^4 M_\odot$ to $10^5 M_\odot$ in high- z galaxies. They found that dynamical friction from stars has a more stabilizing effect on the black holes than the gas component but that the stellar distribution in high- z galaxies is highly irregular and hence is not able to stabilise the black hole orbits. The irregular stellar distributions found by Pfister et al. (2019) correlates with what we see in our simulations here. Pfister et al. (2019) found that black holes with masses less than $10^5 M_\odot$ do not sink to the centre of a galaxy, but instead exhibit random walk characteristics. However, their simulation neglected the impact of any radiative feedback from the black hole (which could impede the sinking timescale) and also lacked sufficient resolution to detect high density gas which could promote dynamical friction.

Toyouchi et al. (2020), building on previous investigations of Park, Wise & Bogdanović (2017) and Park & Bogdanović (2019), investigated a more idealised scenario where they modelled the dynamics of a single $10^4 M_\odot$ mass black hole incorporating the effects of dynamical friction from gas drag and radiative feedback. They found that if the gas density is low that the black hole does not sink to the centre - similar to what Pfister et al. (2019) found. However, in the case where the black hole encounters dense gas ($n_{gas} \gtrsim 10^6 \text{ cm}^{-3}$) the ram pressure of the head wind (due to radiative feedback) causes the black hole to lose orbital energy and so the black hole can sink to the centre on a timescale of $t_{dyn} \sim 0.01$ Myr, consistent with the dynamical friction timescale in the Bondi-Hoyle-Littleton case (i.e. no radiative feedback), and much shorter than the dynamical timescale in galactic gas disks.

Taking the two results together this appears to imply that the specific environment that the black hole finds it-

self in will play a central role in determining the timescale for the black hole to sink towards the centre. If the black hole can interact with sufficiently dense gas it may sink towards the centre (even for black holes with masses of $\sim 10^4 M_\odot$) while in the case where the black hole does not encounter sufficiently dense gas then the black hole may wander the central region of the galaxy for many dynamical times. The galactic centres in which our massive PopIII stars form (especially HaloA) contain a web of dense gaseous filaments (with gas clearly approaching that critical level of $n_{gas} \gtrsim 10^6 \text{ cm}^{-3}$ (see Figure 4) in the centre of the halo) which may help to supply the necessary ram pressure and extract orbital energy. A further build up of dense gas would potentially help to promote efficient frictional forces even allowing for radiative feedback.

WHAT THEN DOES THIS MEAN FOR POTENTIAL GRAVITATIONAL WAVE DETECTION?

Within approximately 4 Myr after the formation of the first massive stars here there will be a population of black hole seeds with masses in the range $300 M_\odot$ (upper limit of pair instability supernovae) up to $6000 M_\odot$ (and likely higher). In Figure 12 we plot the characteristic strain expected from the merger of two black holes with masses of $5000 M_\odot$ each at $z = 15$ we note that here that gravitational recoil effects can eject black holes from galactic centres (e.g. Gültekin, Miller & Hamilton 2006), however we consider the idealised case of a non-spinning binary black hole merger with a mass ratio, $q = 1$ and hence in this idealised case ejections can be avoided (Holley-Bockelmann et al. 2008; Morawski et al. 2018; Dunn, Holley-Bockelmann & Bellovary 2020). These masses are consistent with the masses of the stars found in this simulation and black holes with similar masses are expected from the direct collapse of these massive PopIII stars (Heger et al. 2003). The merger of two black holes with these masses will produce a gravitational wave signal detectable by LISA (eLISA Consortium et al. 2013; Sesana 2016; Cornish & Shuman 2020) emitting gravitational waves between approximately 10^{-4} and 10^{-1} Hz (detector frame frequencies). The Signal-to-Noise ratio (SNR) from the merger of two black holes with masses of $5000 M_\odot$ at $z = 15$ reaches a SNR ~ 32 over its time inside the LISA band and hence is well within LISA’s detection parameters⁸. The merger of a $10,000 M_\odot$ binary black hole with a mass ratio of 1 at a redshift of 15 will enter the LISA band approximately 2 months before merger and complete thousands of orbits before the final plunge. The SNR value is calculated by integrating over the entire frequency range over which the binary overlaps with the LISA band. The SNR exceeds 10 approximately 12 hours before merger. With this number of cycles LISA will be able to detect the redshifted mass with a precision of close to 1% (Sesana 2013), with the strongest signal and hence the highest SNR being achieved in the final few hours and hundreds of orbits (Robson, Cornish & Liu 2019). The largest uncertainty will however come from the determination of the redshift (or luminosity distance) which at this redshift is expected to have an uncer-

⁸ The SNR was calculated using the LISA sensitivity calculator available at github.com/eXtremeGravityInstitute/LISA_Sensitivity.git (Robson, Cornish & Liu 2019)

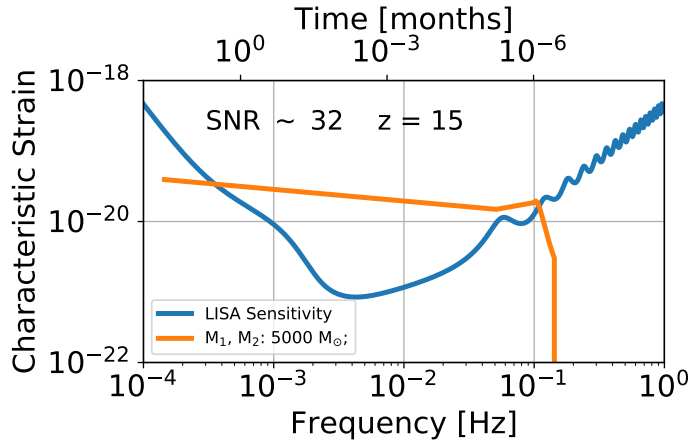


Figure 12. The LISA sensitivity curve with the strain due to two massive black holes each with a mass of $5000 M_{\odot}$. The merger of two $5000 M_{\odot}$ black holes at $z = 15$ gives a signal to noise ratio of 32 that is visible by LISA. The inspiral will enter the LISA band at approximately 5×10^{-4} Hz, corresponding to a time to merger of approximately 2 months.

tainty of approximately 30% (Sesana 2013). Additional uncertainties due to weak lensing will also contribute at the percent level (Shapiro et al. 2010; Petiteau, Babak & Sesana 2011) but the dominant error for these high- z sources will be LISA intrinsic errors on the measurement of the wave amplitude.

This redshift uncertainty will translate to a similar uncertainty in the chirp mass of the binary. Klein et al. (2016) modelled the merger of similar black hole masses and redshifts and using a $\text{SNR} = 7$ finding that the expected number of detections would be 358 over a 5 year mission period (their N2A5M5L6 model in Table II). Their modelling only accounted for the merging of heavy seed black holes following a galaxy merger and neglected the in-situ models as described here which could increase the numbers of events potentially discoverable by LISA significantly. This point was previously investigated by Hartwig, Agarwal & Regan (2018) as a method to discriminate between seed formation scenarios. Further, investigation of the number density of in-situ mergers and how they could influence the number of detections by LISA is now underway (O’Brennan et al. in prep). The merger of less massive black holes ($M_{\text{BH}} \sim 1000 M_{\odot}$) that are produced in these environments may also be detectable by 3rd generation, ground based, GW observatories. An exploration of their potential is outside the scope of this discussion but see Valiante et al. (2020) for more details.

5. DISCUSSION AND CONCLUSIONS

The aim of this study was to examine the prospect of (super-)massive star formation in haloes that are exposed to moderate LW radiation and also experience significant dynamical heating effects due to mergers. We identified 79 such haloes in the Renaissance datasets (Regan et al. 2020b) and then subsequently selected two haloes, which showed no star formation or metal enrichment prior to reaching the atomic cooling limit, for re-simulation at enhanced resolution. These halo characteristics make these environments ideal for forming massive stars.

The two haloes, *Ha1oA* and *Ha1oB*, were then targeted

for re-simulation by increasing the resolution and by adding additional physics capabilities to provide a more self-consistent calculation of (super-)massive star formation in these haloes. Firstly, the spatial resolution was increased by a factor of 256 ($\Delta x \sim 1000$ au) and the mass resolution by a factor of 169 ($M_{\text{DM}} \sim 170 M_{\odot}$). Additionally, self-shielding of H_2 from LW was included and the Jeans length was refined by at least 64 cells at all times. To model star formation within the collapsing gas clouds a star formation prescription was employed, which additionally tracks accretion onto the stars and allows for the distinction between compact PopIII stars and massively inflated SMSs.

Ha1oA was simulated with a LW radiation field impinging on it that followed exactly what was found in the original simulations and so accounted for star formation from nearby galaxies. The LW radiation field imposed is shown in Figure 1. *Ha1oB* on the other hand was used as the control halo and no LW field was imposed to test the impact that turning off the LW field would have.

In the high-resolution re-simulation *Ha1oA* formed 22 stars with masses greater than $1000 M_{\odot}$. The most massive star in *Ha1oA* has a mass of $6127 M_{\odot}$. *Ha1oB*, re-simulated without a LW radiation field, collapsed earlier in its evolution before reaching the atomic cooling limit. The lack of any LW field allows PopIII star formation to occur prior to the onset of atomic line cooling. In *Ha1oB* a total of 21 stars formed by the end of the simulation with the most massive star in *Ha1oB* having a mass of $173 M_{\odot}$. While our results cannot be used to infer a PopIII initial mass function our results are consistent with the results of other groups who have found that PopIII mini-haloes tend to host a small number of stars with peak masses in the range of a few tens of solar masses (Hirano et al. 2014; Susa, Hasegawa & Tominaga 2014; Stacy, Bromm & Lee 2016; Skinner & Wise 2020).

While the most massive star in *Ha1oA* has a mass of more than $6000 M_{\odot}$ its accretion rate had fallen to less than $10^{-6} M_{\odot} \text{ yr}^{-1}$ by the time the simulation terminated. No ionising radiative feedback was employed in these simulations and hence radiative feedback is not the reason for the falloff in accretion. Instead, while high accretion rates of greater than $0.1 M_{\odot} \text{ yr}^{-1}$ initially fall onto the protostar those rates are not sustained. The turbulent nature of the collapsing parent cloud causes a multitude of sub-clouds to form and dissipate. The sub-clouds with masses of thousands of solar masses form stars but also tidally disrupt other sub-clouds disrupting accretion onto other (proto-)stars. This phenomenon is observed in all of the stars formed in the simulation. On average stars accrete above $0.01 M_{\odot} \text{ yr}^{-1}$ for less than 100 kyr before accretion is halted due to external tidal disruption.

What does this mean for the formation of SMSs and massive black hole seeds? This is only a single halo simulated for 2 Myr. However, it is likely that the phenomenon of a turbulent environment is common in the early stages of galaxy formation and PopIII studies have also converged on the formation of multiple stars in mini-haloes (e.g. Turk et al. 2012). It is therefore not surprising that this picture appears in more massive galaxies as well. Chon et al. (2016) and Chon, Hosokawa & Yoshida (2018) investigated a similar system where, like here, they selected massive haloes from a larger scale par-

ent simulation. Using particle splitting techniques they performed two very high resolution zoom-in simulations for approximately 100 kyr each. In one case they found that the central disk fragmented into approximately 15 stars with masses of a few $\times 10^3 M_{\odot}$ - similar to what we find here and indeed what was found in the more idealised simulation of [Regan & Downes \(2018b\)](#) where an external LW field was used to suppress PopIII star formation. In the other case from [Chon, Hosokawa & Yoshida \(2018\)](#) they found much less fragmentation leading to an almost spherical collapse and the formation of a handful of stars with masses in the range of a few $\times 10^4 M_{\odot}$. They concluded that the tidal field surrounding the collapsing haloes in both cases played a major role. Given that `HalOA` in this study experiences a sharp rise in its impinging LW field from a nearby star-bursting galaxies shortly before its own collapse similar tidal effects are also expected here. We plan to evaluate the impact of tidal fields on the formation of haloes hosting massive star formation in an upcoming study (Regan et al. in prep.).

While the tidal effects can change the dynamics of the large scale disk, below the parsec scale the tidal effects only act as a seed to further turbulence which grows through isothermal collapse ([Chon, Hosokawa & Yoshida 2018](#)). Turbulence is a common feature of present day giant molecular clouds in which star formation is clearly evident (e.g. [Girichidis et al. 2020](#); [Lee et al. 2020](#); [Krause et al. 2020](#)) and while in both cases the gas is moving super-sonically the coolants available to the gas in both cases make direct comparisons difficult. After approximately 2 Myr the stars in `HalOA` will start to directly collapse in black holes retaining close to 100% of the stellar mass ([Heger et al. 2003](#)). While this event is unlikely to have any immediate impact on the mass accretion rate onto the black hole it will leave this halo with a small population of massive black holes only a few Myr after the onset of galaxy formation. Allowing the galaxy to evolve further (through a few tens of dynamical times) may reveal than these intermediate mass black holes can sink towards the centre of the halo and subsequently merge to form more massive black holes with masses close to $10^5 M_{\odot}$ (similar to what most canonical galaxy formation simulation use as their seed mass). Such black hole mergers may even be detectable by LISA as we demonstrate in [Figure 12](#). However, it is likely that some of this population of IMBHs will not merge or accrete any significant amount of gas, will display very low duty cycles and will wander their parent galaxy ([Tremmel et al. 2018](#); [Reines et al. 2020](#); [Barausse et al. 2020](#)).

To develop this model further what will actually be required is further high resolution simulations which can model the formation of massive stars in high-infall rate haloes, perhaps independent of metallicity ([Chon & Omukai 2020](#); [Regan et al. 2020a](#)), which experience a large transfer of baryonic mass towards their centres. These simulations will equally need to be able to differentiate between PopIII star formation and SMS star formation, as done here, but for a longer time period and beyond the formation of the subsequent black holes. Tracking the evolution of these truly seed black holes is the next frontier.

ACKNOWLEDGMENTS

JR acknowledges support from the Royal Society and Science Foundation Ireland under grant number URF\R1\191132. JHW is supported by National Science Foundation grants AST-1614333 and OAC-1835213, and NASA grants NNX17AG23G and 80NSSC20K0520. BWO acknowledges support from NSF grants PHY-1430152, AST-1514700, AST-1517908, and OAC-1835213, by NASA grants NNX12AC98G and NNX15AP39G, and by HST-AR-13261 and HST-AR-14315. JR wishes to acknowledge the DJEI/DES/SFI/HEA Irish Centre for High-End Computing (ICHEC) for the provision of computational facilities and support on which the zoom simulations were run. The authors also thank the Extreme Gravity Institute at Montana State University for making the LISA sensitivity curve scripts available on github. The original Renaissance simulations were performed on Blue Waters, which is operated by the National Center for Supercomputing Applications (NCSA) with PRAC allocation support by the NSF (awards ACI-1238993, ACI-1514580, and OAC-1810584). This research is part of the Blue Waters sustained-petascale computing project, which is supported by the NSF (awards OCI-0725070, ACI-1238993) and the state of Illinois. Blue Waters is a joint effort of the University of Illinois at Urbana-Champaign and its NCSA. The freely available plotting library MATPLOTLIB ([Hunter 2007](#)) was used to construct numerous plots within this paper. Computations and analysis described in this work were performed using the publicly-available `Enzo` ([Bryan et al. 2014](#); [Brummel-Smith et al. 2019](#)) and `yt` ([Turk et al. 2011](#)) codes, which are the product of a collaborative effort of many independent scientists from numerous institutions around the world. Their commitment to open science has helped make this work possible. Finally, the authors thank the anonymous referee for a detailed and very helpful report.

REFERENCES

- Abel T., Anninos P., Zhang Y., Norman M. L., 1997, *New Astronomy*, 2, 181
- Abel T., Bryan G. L., Norman M. L., 2000, *ApJ*, 540, 39
- Abel T., Bryan G. L., Norman M. L., 2002, *Science*, 295, 93
- Alvarez M. A., Wise J. H., Abel T., 2009, *ApJ*, 701, L133
- Anninos P., Zhang Y., Abel T., Norman M. L., 1997, *New Astronomy*, 2, 209
- Badnell N. R., 2006, *ApJS*, 167, 334
- Badnell N. R. et al., 2003, *A&A*, 406, 1151
- Barausse E., Dvorkin I., Tremmel M., Volonteri M., Bonetti M., 2020, *ApJ*, 904, 16
- Becerra F., Greif T. H., Springel V., Hernquist L. E., 2015, *MNRAS*, 446, 2380
- Begelman M. C., Rees M. J., 1978, *MNRAS*, 185, 847
- Begelman M. C., Rossi E. M., Armitage P. J., 2008, *MNRAS*, 387, 1649
- Begelman M. C., Volonteri M., Rees M. J., 2006, *MNRAS*, 370, 289
- Bleuler A., Teyssier R., 2014, *MNRAS*, 445, 4015
- Brummel-Smith C. et al., 2019, *The Journal of Open Source Software*, 4, 1636
- Bryan G. L., Norman M. L., O’Shea B. W., Abel T., Wise J. H., Turk M. J., The Enzo Collaboration, 2014, *ApJS*, 211, 19
- Chen P., Wise J. H., Norman M. L., Xu H., O’Shea B. W., 2014, *ApJ*, 795, 144
- Chon S., Hirano S., Hosokawa T., Yoshida N., 2016, *ApJ*, 832, 134
- Chon S., Hosokawa T., Yoshida N., 2018, *MNRAS*, 475, 4104
- Chon S., Omukai K., 2020, *MNRAS*
- Clark P. C., Glover S. C. O., Klessen R. S., 2008, *ApJ*, 672, 757
- Cornish N. J., Shuman K., 2020, *Phys. Rev. D*, 101, 124008

- Crosby B. D., O'Shea B. W., Smith B. D., Turk M. J., Hahn O., 2013, *ApJ*, 773, 108
- Davies M. B., Miller M. C., Bellovary J. M., 2011, *ApJ*, 740, L42
- Dere K. P., Landi E., Mason H. E., Monsignori Fossi B. C., Young P. R., 1997, *A&AS*, 125, 149
- Downes T. P., 2012, *MNRAS*, 425, 2277
- Dunn G., Holley-Bockelmann K., Bellovary J., 2020, *ApJ*, 896, 72
- eLISA Consortium et al., 2013, *ArXiv e-prints* 1305.5720
- Fan X. et al., 2006, *AJ*, 131, 1203
- Federrath C., Roman-Duval J., Klessen R. S., Schmidt W., Mac Low M. M., 2010, *A&A*, 512, A81
- Ferland G. J. et al., 2017, *Rev. Mexicana Astron. Astrofis.*, 53, 385
- Fernandez R., Bryan G. L., Haiman Z., Li M., 2014, *MNRAS*, 439, 3798
- Fitzgerald K., Harvey E. J., Keaveney N., Redman M. P., 2020, *Astronomy and Computing*, 32, 100382
- Freitag M., 2008, in *Astronomical Society of the Pacific Conference Series*, Vol. 387, *Massive Star Formation: Observations Confront Theory*, Beuther H., Linz H., Henning T., eds., pp. 247–+
- Freitag M., Gürkan M. A., Rasio F. A., 2006, *MNRAS*, 368, 141
- Georgiev I. Y., Böker T., Leigh N., Lützgendorf N., Neumayer N., 2016, *MNRAS*, 457, 2122
- Girichidis P. et al., 2020, *Space Sci. Rev.*, 216, 68
- Greif T. H., Springel V., White S. D. M., Glover S. C. O., Clark P. C., Smith R. J., Klessen R. S., Bromm V., 2011, *ApJ*, 737, 75
- Gültekin K., Miller M. C., Hamilton D. P., 2006, *ApJ*, 640, 156
- Gürkan M. A., Freitag M., Rasio F. A., 2004, *ApJ*, 604, 632
- Haemmerlé L., Woods T. E., Klessen R. S., Heger A., Whalen D. J., 2018, *MNRAS*, 474, 2757
- Hartwig T., Agarwal B., Regan J. A., 2018, *MNRAS*, 479, L23
- Heger A., Fryer C. L., Woosley S. E., Langer N., Hartmann D. H., 2003, *ApJ*, 591, 288
- Hirano S., Hosokawa T., Yoshida N., Umeda H., Omukai K., Chiaki G., Yorke H. W., 2014, *ApJ*, 781, 60
- Holley-Bockelmann K., Gültekin K., Shoemaker D., Yunes N., 2008, *ApJ*, 686, 829
- Hosokawa T., Omukai K., Yorke H. W., 2013, *ApJ*, 778, 178
- Hosokawa T., Yorke H. W., Inayoshi K., Omukai K., Yoshida N., 2013, *ApJ*, 778, 178
- Hunter J. D., 2007, *Computing in Science & Engineering*, 9, 90
- Inayoshi K., Haiman Z., Ostriker J. P., 2016a, *MNRAS*, 459, 3738
- Inayoshi K., Haiman Z., Ostriker J. P., 2016b, *MNRAS*, 459, 3738
- Inayoshi K., Omukai K., Tasker E., 2014, *MNRAS*, 445, L109
- Johnson J. L., Whalen D. J., Fryer C. L., Li H., 2012, *ApJ*, 750, 66
- Katz H., Sijacki D., Haehnelt M. G., 2015, *MNRAS*, 451, 2352
- Kitsionas S., Whitworth A. P., 2002, *MNRAS*, 330, 129
- Klein A. et al., 2016, *Phys. Rev. D*, 93, 024003
- Komatsu E. et al., 2011, *ApJS*, 192, 18
- Kormendy J., Ho L. C., 2013, *ARA&A*, 51, 511
- Krause M. G. H. et al., 2020, *Space Sci. Rev.*, 216, 64
- Krumholz M. R., McKee C. F., Klein R. I., 2004, *ApJ*, 611, 399
- Landi E., Del Zanna G., Young P. R., Dere K. P., Mason H. E., 2012, *ApJ*, 744, 99
- Latif M. A., Schleicher D. R. G., Hartwig T., 2016, *MNRAS*, 458, 233
- Lee Y.-N., Offner S. S. R., Hennebelle P., André P., Zinnecker H., Ballesteros-Paredes J., Inutsuka S.-i., Kruijssen J. M. D., 2020, *Space Sci. Rev.*, 216, 70
- Lupi A., Colpi M., Devecchi B., Galanti G., Volonteri M., 2014, *MNRAS*, 442, 3616
- Machacek M. E., Bryan G. L., Abel T., 2001, *ApJ*, 548, 509
- Meyer D. M. A., Vorobyov E. I., Elbakyan V. G., Eislöffel J., Sobolev A. M., Stöhr M., 2020, *MNRAS*
- Milosavljević M., Couch S. M., Bromm V., 2009, *ApJ*, 696, L146
- Mirocha J., Skory S., Burns J. O., Wise J. H., 2012, *ApJ*, 756, 94
- Morawski J., Giersz M., Askar A., Belczynski K., 2018, *MNRAS*, 481, 2168
- Morisset C., 2013, *pyCloudy: Tools to manage astronomical Cloudy photoionization code*
- Natarajan P., 2020, *MNRAS*
- Omukai K., Palla F., 2003, *ApJ*, 589, 677
- O'Shea B. W., Abel T., Whalen D., Norman M. L., 2005, *ApJ*, 628, L5
- O'Shea B. W., Norman M. L., 2008, *ApJ*, 673, 14
- O'Shea B. W., Wise J. H., Xu H., Norman M. L., 2015, *ApJ*, 807, L12
- Osterbrock D. E., Ferland G. J., 2006, *Astrophysics of gaseous nebulae and active galactic nuclei*
- Pacucci F., Natarajan P., Volonteri M., Cappelluti N., Urry C. M., 2017, *ApJ*, 850, L42
- Pacucci F., Volonteri M., Ferrara A., 2015, *MNRAS*, 452, 1922
- Park K., Bogdanović T., 2019, *ApJ*, 883, 209
- Park K., Wise J. H., Bogdanović T., 2017, *ApJ*, 847, 70
- Petiteau A., Babak S., Sesana A., 2011, *ApJ*, 732, 82
- Pfister H., Volonteri M., Dubois Y., Dotti M., Colpi M., 2019, *MNRAS*, 486, 101
- Planck Collaboration et al., 2014, *A&A*, 571, A16
- Portegies Zwart S. F., Baumgardt H., Hut P., Makino J., McMillan S. L. W., 2004, *Nature*, 428, 724
- Porter R. L., Ferland G. J., Storey P. J., Detisch M. J., 2012, *MNRAS*, 425, L28
- Rees M. J., 1978, *Phys. Scr.*, 17, 193
- Regan J. A., Downes T. P., 2018a, *MNRAS*, 475, 4636
- Regan J. A., Downes T. P., 2018b, *MNRAS*, 478, 5037
- Regan J. A., Haehnelt M. G., 2009, *MNRAS*, 396, 343
- Regan J. A., Haiman Z., Wise J. H., O'Shea B. W., Norman M. L., 2020a, *The Open Journal of Astrophysics*, 3, E9
- Regan J. A., Johansson P. H., Wise J. H., 2015, *MNRAS*, 449, 3766
- Regan J. A., Visbal E., Wise J. H., Haiman Z., Johansson P. H., Bryan G. L., 2017, *Nature Astronomy*, 1, 0075
- Regan J. A., Wise J. H., O'Shea B. W., Norman M. L., 2020b, *MNRAS*, 492, 3021
- Reines A. E., Condon J. J., Darling J., Greene J. E., 2020, *ApJ*, 888, 36
- Robson T., Cornish N. J., Liu C., 2019, *Classical and Quantum Gravity*, 36, 105011
- Sakurai Y., Haiman Z., Inayoshi K., 2020, *MNRAS*, 499, 5960
- Sakurai Y., Inayoshi K., Haiman Z., 2016, *MNRAS*, 461, 4496
- Sakurai Y., Vorobyov E. I., Hosokawa T., Yoshida N., Omukai K., Yorke H. W., 2016, *MNRAS*, 459, 1137
- Schaerer D., 2002, *A&A*, 382, 28
- Sesana A., 2013, in *Astronomical Society of the Pacific Conference Series*, Vol. 467, 9th LISA Symposium, Auger G., Binétruy P., Plagnol E., eds., p. 103
- Sesana A., 2016, *Phys. Rev. Lett.*, 116, 231102
- Shapiro C., Bacon D. J., Hendry M., Hoyle B., 2010, *MNRAS*, 404, 858
- Skinner D., Wise J. H., 2020, *MNRAS*, 492, 4386
- Smith B. D. et al., 2017, *MNRAS*, 466, 2217
- Smith B. D., Regan J. A., Downes T. P., Norman M. L., O'Shea B. W., Wise J. H., 2018, *MNRAS*, 480, 3762
- Stacy A., Bromm V., Lee A. T., 2016, *MNRAS*, 462, 1307
- Stahler S. W., Palla F., Salpeter E. E., 1986, *ApJ*, 302, 590
- Storey P. J., Hummer D. G., 1995, *MNRAS*, 272, 41
- Susa H., Hasegawa N., Tominaga N., 2014, *ApJ*, 792, 32
- Toyouchi D., Hosokawa T., Sugimura K., Kuiper R., 2020, *MNRAS*
- Tremmel M., Governato F., Volonteri M., Pontzen A., Quinn T. R., 2018, *ApJ*, 857, L22
- Turk M. J., Abel T., O'Shea B., 2009, *Science*, 325, 601
- Turk M. J., Oishi J. S., Abel T., Bryan G. L., 2012, *ApJ*, 745, 154
- Turk M. J., Smith B. D., Oishi J. S., Skory S., Skillman S. W., Abel T., Norman M. L., 2011, *ApJS*, 192, 9
- Valiante R. et al., 2020, *MNRAS*
- Whalen D., Abel T., Norman M. L., 2004, *ApJ*, 610, 14
- Wise J. H., Abel T., 2011, *MNRAS*, 414, 3458
- Wise J. H., Demchenko V. G., Halicek M. T., Norman M. L., Turk M. J., Abel T., Smith B. D., 2014, *MNRAS*, 442, 2560
- Wise J. H., Regan J. A., O'Shea B. W., Norman M. L., Downes T. P., Xu H., 2019, *Nature*, 566, 85
- Wise J. H., Turk M. J., Norman M. L., Abel T., 2012, *ApJ*, 745, 50
- Wolcott-Green J., Haiman Z., Bryan G. L., 2011, *MNRAS*, 418, 838
- Woods T. E. et al., 2019, *PASA*, 36, e027
- Woods T. E., Heger A., Haemmerlé L., 2020, *MNRAS*, 494, 2236
- Woods T. E., Heger A., Whalen D. J., Haemmerlé L., Klessen R. S., 2017, *ApJ*, 842, L6
- Xu H., Ahn K., Wise J. H., Norman M. L., O'Shea B. W., 2014, *ApJ*, 791, 110

This paper was built using the Open Journal of Astrophysics L^AT_EX template. The OJA is a journal which provides fast and easy peer review for new papers in the `astro-ph` section of the arXiv, making the reviewing process simpler for authors and referees alike. Learn more at <http://astro.theoj.org>.