

 Open access • Posted Content • DOI:10.1101/249912

## The frontal aslant tract (FAT) and its role in speech, language and executive function

— [Source link](#) 

Anthony Steven Dick, Dea Garic, Paulo A. Graziano, Pascale Tremblay

**Institutions:** Florida International University, Laval University

**Published on:** 22 Jan 2018 - bioRxiv (Cold Spring Harbor Laboratory)

**Topics:** Inferior frontal gyrus, Superior frontal gyrus and Lateralization of brain function

Related papers:

- [Neurocomputational Consequences of Evolutionary Connectivity Changes in Perisylvian Language Cortex](#)
- [Cerebellar Contributions to Language in Typical and Atypical Development: A Review](#)
- [On the Neurocognitive Co-Evolution of Tool Behavior and Language: Insights from the Massive Redeployment Framework.](#)
- [Issues in localization of brain function: The case of lateralized frontal cortex in cognition, emotion, and psychopathology.](#)
- [The functions of the frontal lobes: Evidence from patients with focal brain damage.](#)

Share this paper:    

View more about this paper here: <https://typeset.io/papers/the-frontal-aslant-tract-fat-and-its-role-in-speech-language-3m5d1qj50t>

The frontal aslant tract (FAT) and its role in speech, language and executive function

Anthony Steven Dick<sup>1</sup>, Dea Garic<sup>1</sup>, Paulo Graziano<sup>1</sup>, and Pascale Tremblay<sup>2</sup>

Department of Psychology, Florida International University, Miami, FL, USA<sup>1</sup>

Departement de Readaptation, Université Laval, Faculté de Medecine, Quebec City, Quebec, Canada<sup>2</sup>

Corresponding Author:

Anthony Steven Dick, Ph.D.

Associate Professor

Director, Cognitive Neuroscience Program and Graduate Certificate in Cognitive Neuroscience

Department of Psychology

Florida International University Modesto A. Maidique Campus AHC4 454

11200 S.W. 8th Street

Miami, FL 33199

Ph: 305-348-4202; Lab Ph: 305-348-9055; Fx: 305-348-3879

Email: [adick@fiu.edu](mailto:adick@fiu.edu)

Webpage: <http://dcn.fiu.edu>

## Abstract

In this review, we examine the structural connectivity of a recently-identified fiber pathway, the frontal aslant tract (FAT), and explore its function. We first review structural connectivity studies using tract-tracing methods in non-human primates, and diffusion-weighted imaging and electrostimulation in humans. These studies suggest a monosynaptic connection exists between the lateral inferior frontal gyrus and the pre-supplementary and supplementary motor areas of the medial superior frontal gyrus. This connection is termed the FAT. We then review research on the left FAT's putative role in supporting speech and language function, with particular focus on speech initiation, stuttering and verbal fluency. Next, we review research on the right FAT's putative role supporting executive function, namely inhibitory control and conflict monitoring for action. We summarize the extant body of empirical work by suggesting that the FAT plays a domain general role in the planning, timing, and coordination of sequential motor movements through the resolution of competition among potential motor plans. However, we also propose some domain specialization across the hemispheres. On the left hemisphere, the circuit is proposed to be specialized for speech actions. On the right hemisphere, the circuit is proposed to be specialized for general action control of the organism, especially in the visuo-spatial domain. We close the review with a discussion of the clinical significance of the FAT, and suggestions for further research on the pathway.

Keywords: frontal aslant tract; diffusion-weighted imaging; speech; language; executive function

### Highlights:

- The frontal aslant tract (FAT) is a recently identified fiber pathway
- It connects inferior frontal gyrus with medial frontal motor areas
- The left FAT has been associated with speech and language function
- The right FAT has been associated with inhibitory control
- Both FAT pathways may function in sequential motor planning

## The frontal aslant tract (FAT) and its role in speech, language and executive function

The advent of diffusion-weighted magnetic resonance imaging (DW-MRI) has led to an increased interest in accomplishing one of the fundamental goals of human neuroscience—the comprehensive mapping of the cerebral white matter of the brain. It is these short- and long-range axonal connections that comprise the “human connectome,” or “wiring” of the brain, and an understanding of their anatomical connectivity and functional associations is important for establishing a complete model of brain function. Much of this work began in the late 19<sup>th</sup> and early 20<sup>th</sup> centuries, with detailed investigations of the white matter of the brain, most notably in the seminal work of Déjèrine (Déjèrine, 1895, 1901) and Flechsig (1920) using histological staining methods. For the most part, DW-MRI has reinforced these definitions of fiber pathways, and additional ones that were delineated with post-mortem methods, such as blunt fiber dissection (Krieg, 1957; Ludwig & Klingler, 1956; Rosett, 1933).

However, DW-MRI has also led to the definition of new fiber pathways. One of these fiber pathways is the frontal aslant tract (FAT), which has only been identified in the last decade. Although noted earlier (Ford, McGregor, Case, Crosson, & White, 2010; Lawes et al., 2008; Oishi et al., 2008), Catani, Theibaut-de Schotten and colleagues (Catani et al., 2012; Thiebaut de Schotten, Dell'Acqua, Valabregue, & Catani, 2012) defined the pathway and coined the term “aslant tract” due to its oblique course in the frontal white matter. It has now become fairly established that such a pathway exists, and that it connects the posterior inferior frontal gyrus (IFG) with medial aspects of the frontal lobe in the superior frontal gyrus and cingulate gyrus and sulcus—namely the pre-supplementary motor area (pre-SMA), supplementary motor area (SMA), and anterior cingulate cortex (Figure 1).

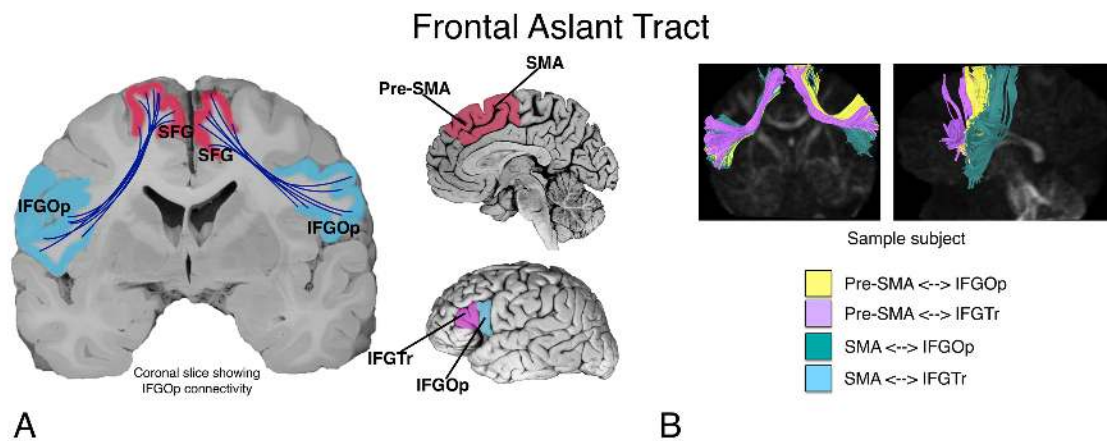


Figure 1. A. The putative connectivity between inferior frontal gyrus (*pars opercularis*; IFGOp, and *pars triangularis*; IFGTr) and pre-supplementary and supplementary motor area (pre-SMA and SMA) in the medial superior frontal gyrus (SFG), supported by the frontal aslant tract (FAT). Figure modified from Dick, A. S., Bernal, B., & Tremblay, P. (2014). The language connectome: new pathways, new concepts. *Neuroscientist*, 20(5), 453-467. B. A sample subject showing four subcomponents of the FAT.

In this review, we strive toward two goals. First, we attempt to establish, based on the available literature, the putative connectivity of the FAT. Second, we attempt to establish the putative functional associations of the FAT, in both the left and the right hemispheres. In the first section, we address the known connectivity of the tract, as well as potential uncertainties. In the second

section, we address the functional associations of the left FAT. In the third section, we explore functional associations of the right FAT. In the final section, we propose a model of the function of the FAT in both hemispheres, with some speculation about the clinical significance of the tract and areas of future research.

### **1. Anatomy and connectivity of the Frontal Aslant Tract**

Although its description in humans is relatively recent, connections between the lateral inferior frontal cortex and medial superior frontal cortex have been described previously in non-human primates. For example, Thiebaut de Schotten and colleagues (Thiebaut de Schotten et al., 2012) note the similarity of the human FAT with a fiber pathway described in a single macaque studied with autoradiography. This fiber pathway, reported in Case 25 of Schmahmann and Pandya (2006) is similar to, though not identical to, the human FAT. Namely, the injection site is reported to be in the face area of the precentral gyrus, in Brodman Area 4 (i.e., motor cortex). Some terminations from this injection site are reported in the SMA, but not pre-SMA, of the superior frontal gyrus. In some respects, this termination is not surprising given the known connectivity of the SMA to the motor cortex.

More compelling evidence is provided by Petrides and Pandya (2002), who showed that tracer injections in the anterior IFG (namely BA 45 and 47) of six macaques resulted in labeled terminations in the medial superior frontal and cingulate cortex (including pre-SMA). Furthermore, Schmahmann and Pandya (2006) report, in Case 29 of their monograph, that tracer injections into rostral SMA/pre-SMA terminate in area 44 of the IFG. Notably, though, at least one study showed that injections to pre-SMA do not project to area 45 (Wang, Isoda, Matsuzaka, Shima, & Tanji, 2005), and there is no mention of such fibers in the seminal work of Mettler (1935) investigating the fibers of the frontal lobe in the macaque. However, the lack of findings from these latter studies represent a null finding, which should be interpreted with caution, as this may be due to methodological shortcomings. For example, in the case of Mettler, the methods of investigation have been vastly improved since that publication. Where there is a direct attempt to define medial superior frontal and inferior frontal connectivity, for example in the study by Petrides and Pandya (2002), the evidence is present in multiple animals and is therefore more compelling.

The earliest description of this pathway in humans appears in the literature around 2007 and 2008 (we could not find an earlier mention of the pathway in the historical literature from the 19<sup>th</sup> and 20<sup>th</sup> centuries). In a 2007 paper, Aron and colleagues (2007) reported connectivity between the pre-SMA and the IFG. Although they did not name it at the time, it is clear that they were identifying the FAT. In another study, Lawes and colleagues (Lawes et al., 2008) conducted an early DW-MRI study combined with post-mortem dissection methods to assess the correspondence between the two methods. In that study, they reported a connection in the DW-MRI analysis between the superior frontal gyrus and the IFG, specifically the *pars triangularis* (IFGTr), and this was verified using post-mortem dissection (albeit on different brains). In the same year, Oishi and colleagues (Oishi et al., 2008) tracked diffusion streamlines from a large superior frontal region of interest (ROI) to an IFG ROI. These streamlines were labeled “frontal short association fibers”. Both tracts defined in these studies contained what we now define to be fibers of the FAT.

In another early DW-MRI study, Ford and colleagues (Ford et al., 2010) used as a point of departure the known inferior frontal-medial superior frontal connectivity described in macaque (Petrides & Pandya, 2002), and explicitly targeted the connections between the IFG and the medial superior frontal cortex in human subjects. They found evidence for connectivity between the posterior IFG and pre-SMA and SMA, and although they did not name the FAT, their description is consistent with the current understanding of the tract. A similar study by Kinoshita and colleagues (Kinoshita et al., 2012), using DW-MRI and blunt fiber dissection in 8 post-mortem brains, also shows what appears to be the FAT. Although this study focused on IFG connections

with the lateral superior frontal gyrus, many of the IFG fibers also project to the medial superior frontal gyrus.

Catani, Theibaut-de Schotten and colleagues (Catani et al., 2012; Thiebaut de Schotten et al., 2012) were the first to explicitly name the FAT. They conducted a comprehensive study of the association and U-fiber pathways in the frontal lobe, one of which was the FAT. In this study, they describe the FAT as a pathway that projects predominantly between IFGOp and pre-SMA. The FAT has since been described using blunt fiber dissection techniques in postmortem brains (Goryainov et al., 2017; Koutsarnakis et al., 2017), which adds to the probability that a genuinely new fiber pathway has been described.

Most studies that have followed find that the predominant origin/termination site in the IFG is the *pars opercularis* (Bozkurt et al., 2016), and the predominant connection in the medial superior frontal gyrus is the pre-SMA. However, additional origin/termination paths are also reported. Connectivity with the IFGTr is common, though less consistent than the IFGOp, while reported connections with the more anterior *pars orbitalis* are rare (Szmuda et al., 2017).

Like the inferior frontal connections, connections to and from medial superior frontal cortex are multifaceted. For example, using DW-MRI, Mandelli and colleagues (Mandelli et al., 2014) report connectivity between posterior IFG and pre-SMA/SMA. In another study of eleven post-mortem human brains, using blunt fiber dissection Bozkurt and colleagues (2016) reported that the FAT arises in the anterior SMA and pre-SMA and connects to IFGOp. This was supported by DW-MRI on two participants. Catani and colleagues (Catani et al., 2013) also reported connectivity between the IFGOp and anterior cingulate cortex, along with pre-SMA. In a study of healthy controls and post-mortem subjects, Vergani and colleagues (Vergani et al., 2014) describe SMA connectivity with the *pars opercularis*. Finally, Baker and colleagues (Baker et al., 2018) describe a fiber pathway that they term the “crossed frontal aslant”, which describes connectivity of SMA with homologous and neighboring regions of the contralateral medial and lateral superior frontal cortex, which travel through the anterior corpus callosum. Although they described these fibers as comprising a new pathway, we feel these authors are describing the well-known and already-described contralateral connectivity of the anterior corpus callosum (Schmahmann & Pandya, 2006). We thus believe that it would not be parsimonious to ascribe a new name to these fibers.

One study has reported connectivity between the anterior cingulate gyrus and the anterior insula via the FAT (Y. Li et al., 2016). However, the ROIs in that study were in the medial white matter, not in the cortex. Examination of the terminations of their tracks are instead in the IFG and medial superior frontal gyrus, not in insula or anterior cingulate. That said, a recent mapping of the structural connectivity of subdivisions of the insula suggests that the dorsal anterior insula makes connections with the more anterior superior frontal gyrus (Nomi, Schettini, Broce, Dick, & Uddin, 2017). Using DW-MRI, Mandelli and colleagues (Mandelli et al., 2014) also report connectivity between SMA and anterior insula, which has previously been associated with apraxia of speech (Dronkers, 1996). Electrophysiologic evidence of insular connectivity to pre-SMA and SMA is also available (Enatsu et al., 2016). Some of the fibers supporting this connectivity may travel as part of the FAT.

Finally, a small number of studies have provided electrophysiological evidence of a monosynaptic connection between IFG and medial superior frontal gyrus (Enatsu et al., 2016; Matsumoto et al., 2007; Ookawa et al., 2017; Swann et al., 2012). Enatsu and colleagues (2016) investigated 18 patients using cortico-cortical evoked potentials (CCEP) and found that stimulation of the pre-SMA induces a robust response in IFG. Matsumoto and colleagues (2007) investigated 7 patients with CCEP, with an emphasis on investigating connectivity among areas of the motor system, including pre-SMA and SMA. Some stimulation sites covered the posterior IFG, and indicated connectivity with SMA. These stimulation sites were, however, very close to ventral premotor

cortex, which may explain the tendency to connectivity with SMA. Swann and colleagues (2012) conducted a case study using CCEP, electrocorticography (EcOG), and DW-MRI, suggesting direct connectivity between these regions. This study also provided information about the directional nature of information transfer during a stop-signal task and is discussed in more detail in a later section. Briefly, it appears that pre-SMA activity precedes IFG activity during this task, which has implications for models of the FAT's role in stopping motor responses. Finally, using CCEP and DW-MRI in 8 adult patients, Ookawa and colleagues (2017) showed that stimulation of the IFG elicits a response in mSFG within ~19-48 ms, on average. Similarly, stimulation of the mSFG elicits a response in IFG within ~24-70 ms, on average. The latency is significantly shorter for stimulation to the IFG, although both latencies are consistent with a monosynaptic projection between the regions. Thus, the electrophysiologic evidence for IFG and medial superior frontal connectivity is substantial and consistent with the structural findings.

### **Summary**

There is now ample evidence for a structural connection between inferior frontal and medial superior frontal gyrus (Martino & De Lucas, 2014), which is referred to as the frontal aslant tract (FAT). There is also evidence from electrophysiology to suggest that the tract supports monosynaptic connectivity between these regions. Thus, the FAT connectivity identified initially in DW-MRI has been validated using additional anatomical and electrophysiological methods and is unlikely to represent an artifact of the DW-MRI method.

## **2. Functional Associations of the Left Frontal Aslant Tract in Speech and Language**

Given its connectivity with the IFG, which has traditionally been referred to as “Broca’s area”, a region important for speech and language (Tremblay & Dick, 2016), and with the pre-SMA and SMA areas associated with aphasia of the supplementary motor area (Ardila & Lopez, 1984) and with speech production in typical people (Tremblay & Gracco, 2009), it is not surprising that the vast majority of studies on the function of the left FAT have focused on speech and language. Indeed, there is extensive evidence that the left IFG and pre-SMA/SMA are associated with important componential processes in speech and language. Imaging studies have shown that the left IFG is associated with controlled lexical and phonological selection/retrieval in a number of linguistic domains, including in the understanding of sign language and gesture (Badre, Poldrack, Pare-Blagoev, Insler, & Wagner, 2005; Devlin, Matthews, & Rushworth, 2003; A. S. Dick, Mok, Raja Beharelle, Goldin-Meadow, & Small, 2014; Emmorey, Mehta, & Grabowski, 2007; Gough, Nobre, & Devlin, 2005; Katzev, Tuscher, Hennig, Weiller, & Kaller, 2013). The pre-SMA/SMA regions are more associated with motor selection and execution in both speech and non-speech domains (e.g., for manual movements). The pre-SMA is especially thought to play a role in higher-order selection, conflict monitoring and resolution (Tremblay & Gracco, 2006, 2009; Tremblay & Small, 2011), as it does not make a direct connection to the primary motor cortex, the spinal cord, or the cranial nerve motor nuclei (Dum & Strick, 1991; Lu, Preston, & Strick, 1994; Luppino, Matelli, Camarda, Gallese, & Rizzolatti, 1991). Execution of movement may rely more on the SMA and its connections with motor cortex (Tremblay & Gracco, 2009, 2010). These regions are recruited during more complex volitional movements in non-linguistic tasks (Lau, Rogers, & Passingham, 2006; Nachev, Rees, Parton, Kennard, & Husain, 2005; Ullsperger & von Cramon, 2001), including during manual gesture, finger movements, saccades, and notably during tasks involving high response competition/conflict such as task switching (Derrfuss, Brass, & von Cramon, 2004; Mars, Piekema, Coles, Hulstijn, & Toni, 2007; Rushworth, Hadland, Paus, & Sipila, 2002) and flanker tasks (Fan et al., 2007; Nachev et al., 2005; Ullsperger & von Cramon, 2001). In the linguistic domain, volitional word production tasks are associated with a higher activation

level than more automatic and more externally constrained tasks (Alario, Chainay, Lehericy, & Cohen, 2006; Etard et al., 2000; Tremblay & Gracco, 2006; Tremblay & Small, 2011).

Damage to these regions is also associated with speech/language disorders. Non-fluent aphasia is a common symptom following lesion to the left perisylvian area, in particular IFG. Despite intense speech therapy, recovery is often incomplete (Kertesz & McCabe, 1977; Pedersen, Jorgensen, Nakayama, Raaschou, & Olsen, 1995; Wade, Hower, David, & Enderby, 1986). Lesion or tumor resection of the pre-SMA and SMA can also lead to motor and speech deficits, characterized by a global akinesia and hypoflexia, especially for volitional movements and volitional speech. Speech motor deficits are typically more profound on the contralesional side (Bannur & Rajshekhar, 2000; Laplane, Talairach, Meininger, Bancaud, & Orgogozo, 1977). Depending on the precise location of the lesion and lesion/tumor size, the dysfunction may affect limb movements (Fontaine, Capelle, & Duffau, 2002; Peraud, Meschede, Eisner, Ilmberger, & Reulen, 2002; Russell & Kelly, 2003; Zentner, Hufnagel, Pechstein, Wolf, & Schramm, 1996), or it may be restricted to speech (Krainik et al., 2003; Mendez, 2004a, 2004b; Pai, 1999a, 1999b). This constellation of symptoms is termed the “SMA syndrome” (Potgieser, de Jong, Wagemakers, Hoving, & Groen, 2014). However, unlike with lesion to the IFG, in most cases, the disorders are only transient, resolving within weeks to months (Bannur & Rajshekhar, 2000; Laplane et al., 1977; Potgieser et al., 2014), with days to recovery correlated with interhemispheric connectivity between the SMA and the primary motor cortex (Oda, Yamaguchi, Enomoto, Higuchi, & Morita, 2018; M. Vassal et al., 2017). In the case of speech recovery, recent evidence suggests that left hemisphere speech functions are relocated to the right hemisphere following resection (Chivukula, Pikul, Black, Pouratian, & Bookheimer, 2018). Together, these findings clearly indicate that regions connected via the FAT—namely left IFG and pre-SMA/SMA have an important role in oral language/speech, but they also suggest some potential mechanisms of compensation in the case of damage to the FAT.

Information about the role of the FAT has also come from studies of electrical stimulation of the FAT. Vassal and colleagues (2014) performed electrostimulation of the FAT in an awake right-handed participant during resection of a glioma impacting the left frontal lobe. Although no speech and language deficits were noted before the surgery, the researchers induced speech arrest upon stimulation of the FAT, with normalization of speech when stimulation was stopped. Fujii and colleagues (2015) conducted a similar study in five right handed patients with left frontal lobe tumors. The target of stimulation was verified to be the FAT by pre-operative DW-MRI tractography. Speech arrest upon stimulation was observed in four out of five cases, with speech initiation delay also reported in one case. Finally, in a much larger study, Kinoshita and colleagues (2015) investigated 19 patients with frontal lobe tumors (14 left and 5 right). In sixteen of these participants, intraoperative electrostimulation of the FAT resulted in speech inhibition (arrest). Postoperative disturbances in speech, however, were limited to cases in which the left FAT was impacted, and no cases of speech disturbance were reported for right FAT lesion.

The left FAT is also associated with persistent developmental stuttering (also known as stammering; Kemerdere et al., 2016). Stuttering is characterized by disordered verbal fluency that appears in childhood and continues into adulthood. There is a lack of consensus about whether stuttering is primarily a disorder of language (Bernstein Ratner, 1997) or of motor coordination (Ludlow & Loucks, 2003; Max, Guenther, Gracco, Ghosh, & Wallace, 2004; Namasivayam & van Lieshout, 2011). There is also debate about the key brain regions associated with stuttering (Etchell, Civier, Ballard, & Sowman, 2018)—indeed fluent speech requires the recruitment of large-scale bilateral neural regions (Crinion, 2018). However, meta-analyses suggest several “neural signatures” of stuttering. These include abnormalities of the SMA, cerebellum, auditory cortex, basal ganglia, and right frontal operculum/insula regions (Brown, Ingham, Ingham, Laird, & Fox, 2005; Budde, Barron, & Fox, 2014; Watkins, Smith, Davis, & Howell, 2008). But stuttering



research also routinely implicates the left and right IFG/PMv (Neef et al., 2016). The IFG/PMv area has been shown to be functionally and structurally anomalous (Watkins et al., 2008) and underactivated (Budde et al., 2014; Neef et al., 2016) in people who stutter. Recently, Chesters and colleagues (Chesters, Mottonen, & Watkins, 2018) targeted the left IFG/PMv using transcranial direct current stimulation (tDCS) and found improved speech fluency in people who stutter. The implication of the IFG in stuttering suggests a potential role for the FAT in this disorder.

There is still, though, a lack of consensus on the fiber pathway systems associated with stuttering (Ingham, Ingham, Euler, & Neumann, 2017; Kronfeld-Duenias, Amir, Ezrati-Vinacour, Civier, & Ben-Shachar, 2016a, 2017; Neef, Anwender, & Friederici, 2017). Structural differences are reported in the white matter underneath the IFG, angular gyrus, premotor cortex, and middle frontal gyrus (Chang, Zhu, Choo, & Angstadt, 2015; Connally, Ward, Howell, & Watkins, 2014; Watkins et al., 2008), and in the anterior segment of the right arcuate fasciculus (Kronfeld-Duenias et al., 2016a). Three recent studies, however, have specifically focused on the involvement of the FAT in persistent developmental stuttering. In the first study, Kronfeld-Duenias and colleagues (Kronfeld-Duenias, Amir, Ezrati-Vinacour, Civier, & Ben-Shachar, 2016b) examined 34 adults (15 of whom were stutters with a history of stuttering since childhood). Mean diffusivity of the left FAT differed between adults who stutter and controls, and predicted individual differences in speech rate in the individuals who stutter, which was interpreted as supporting evidence that the FAT is part of a “motor stream” for speech, as proposed by Dick and colleagues (2014). In the second study of eight patients undergoing surgery for glioma, Kemerdere and colleagues (Kemerdere et al., 2016) showed that transient stuttering can be induced via direct electrical stimulation of the left FAT during awake surgery. Furthermore, in cases where the FAT was spared from resection, patients experienced no post-operative stuttering. Finally, Neef and colleagues (Neef et al., 2018; Neef et al., 2016) investigated 31 adults with stuttering and 34 controls. They found that more severe stuttering was linked to stronger connectivity of the right FAT, which they interpreted as reflecting an overly active global motor inhibition commonly associated with the right inferior frontal gyrus. In sum, although additional research is needed, current evidence across modalities suggests that the FAT may be an important pathway for speech fluency in people who stutter.

The FAT has also been associated with verbal fluency performance more generally. Verbal fluency tasks typically require a participant to produce words beginning with a particular letter (e.g., “F”), or which come from a particular category (e.g., “animals”). The former are typically referred to as phonological fluency tasks, and the latter as semantic or category fluency tasks. Both tasks recruit the left IFG (Costafreda et al., 2006; Smirni et al., 2017) and the pre-SMA/SMA (Abrahams et al., 2003; Alario et al., 2006; Crosson et al., 2001; Persson et al., 2004; Tremblay & Gracco, 2006; Ziegler, Kilian, & Deger, 1997). Connectivity between the left IFG and pre-SMA/SMA could thus be expected to support the function of establishing a preferred motor response in the linguistic domain, and there is evidence that this is the case. For example, Kinoshita and colleagues (2015) reported an association between the distance from the FAT of the tumor resection and scores on post-operative semantic and phonemic fluency. In a study of patients with primary progressive aphasia (PPA), Catani and colleagues (2013) found that microstructural properties of the FAT, as measured by DW-MRI, were correlated with mean length of utterance and word per minute scores. In another study of PPA patients, FA of the left FAT was associated with speech fluency impairments (specifically number of speech distortions, speech rate, and syntactic production; Mandelli et al., 2014). Speech fluency was also related to FAT fractional anisotropy (FA), but only in the right hemisphere, in a sample of 10 minimally verbal children with autism (Chenausky, Kernbach, Norton, & Schlaug, 2017). Finally, Li and colleagues (2017) used DW-MRI and lesion-symptom mapping to study 51 right-handed stroke patients to determine which fiber pathways are associated with semantic and phonemic fluency. Semantic

and phonemic fluency were negatively associated with lesion of the left FAT, and positively associated with FA of the left FAT.

In a controlled case study that is particularly illustrative of potential FAT function with respect to fluent speech, Chernoff and colleagues (Chernoff et al., 2018) examined two patients who underwent pre- and post-operative imaging and testing of speech and language function. The first patient underwent surgery for a left frontal glioma, which caused selective reduction in DW-MRI and fMRI metrics of connectivity of the left FAT. This patient experienced selective impairment in speech production with no impairment in lexical access. The second patient, who underwent left hippocampal resection, had no difficulty with spontaneous speech. Neither patient had difficulty postoperatively with word reading, nonverbal semantic processing, praxis, or motor function. Notably, the first patient's difficulty with fluent speech was restricted to voluntary speech fluency of more complex sequences—the patient had no difficulty with sentence repetition or with picture naming. The patient also had no general or speech motor deficit.

The left IFG is also associated with a number of other more componential linguistic functions, including controlled lexical and phonological selection/retrieval (Badre et al., 2005; Devlin et al., 2003; Gough et al., 2005; Katzev et al., 2013), syntactic processing (Friederici, Ruschemeyer, Hahne, & Fiebach, 2003; Love, Swinney, Walenski, & Zurif, 2008), and production of speech and language more broadly (Guenther, 2016). It is not surprising, therefore, to expect that the FAT might be associated with these linguistic processes, and there is some evidence for this. For example, in young children the length of the left FAT predicts receptive language abilities (Broce, Bernal, Altman, Tremblay, & Dick, 2015). Some compelling evidence is presented by Sierpowska et al. (2015). In this case study of a patient undergoing resection for left frontal tumor, these authors showed that intraoperative stimulation of the left FAT elicited word retrieval deficits in a noun-verb morphological derivation task. When asked to generate a verb associated with a noun (e.g., book), the patient extended a morphological rule to invent a new word (e.g., booked) instead of producing an appropriate existing word (e.g., read). Notably, the patient did not display more extended verbal fluency deficits—in this case the deficit was specific to morphological derivation. Catani and colleagues (Catani et al., 2013) found a similar association with syntactic function and the FAT. Abnormality of the tract was most associated with the non-fluent/agrammatic subtype of PPA. Furthermore, the association between FA of the FAT and performance on an anagram test, a measure of grammatical processing, was  $r = 0.49$ ,  $p = .03$  (although this did not survive correction for multiple comparisons). FA of the left FAT was similarly associated with syntactic production scores in another sample of patients with PPA ( $r = 0.76$ ,  $p = .02$ ; Mandelli et al., 2014). These studies provide initial suggestive evidence for a functional association between the left FAT and syntactic processing.

### **Summary**

Much of the work on the associated functions of the FAT has been conducted with the aim to define its relation to speech and language functions. The extant data suggest that the tract is strongly associated with speech initiation, verbal fluency, and stuttering. Some initial associations have been made between the tract's microstructure and higher-level language functions. Additional data will serve to further identify the specific linguistic functions of the pathway.

### **3. Functional Associations of the Right Frontal Aslant Tract in Executive Function/ Inhibitory Control**

Although speech and language functions are distributed across several regions on both hemispheres, some aspects of speech and language are left lateralized in most right-handed individuals (Knecht et al., 2000), and the function of the left IFG has been a focus of inquiry since the time of Broca. The functional association of the right IFG has only more recently become a

subject of debate. Earlier reports focused on the role of the right IFG in executive function, specifically inhibitory control/stopping behaviors—i.e., countermanding an initiated response tendency via top-down executive control, recruited during Go/NoGo and Stop-Signal experimental paradigms. In these tasks, a prepotent response is initiated (a Go process) that must be overridden when a stop-signal occurs (the Stop process; (Aron, 2007; Aron, Fletcher, Bullmore, Sahakian, & Robbins, 2003; Aron, Monsell, Sahakian, & Robbins, 2004). The initial evidence for the role of right IFG in inhibitory control came from neuroimaging studies using these tasks (Bunge, Dudukovic, Thomason, Vaidya, & Gabrieli, 2002; Garavan, Ross, & Stein, 1999; Konishi et al., 1999; Konishi, Nakajima, Uchida, Sekihara, & Miyashita, 1998; Menon, Adelman, White, Glover, & Reiss, 2001) and studies in patients with right inferior frontal cortex lesions (Aron et al., 2003; Aron et al., 2004). In these latter lesion studies, injury to the right IFG (specifically the IFGOp) was associated with inhibitory control and impaired inhibition of irrelevant task sets.

More recent research has focused on a more extended network implementing inhibitory control, including the dorsolateral prefrontal cortex, pre-SMA, SMA, dorsal anterior cingulate, supplementary eye field, frontal eye field, subthalamic nucleus, globus pallidus, and thalamus (Aron, 2007; Aron, Herz, Brown, Forstmann, & Zaghoul, 2016; Aron & Poldrack, 2006; Chambers, Garavan, & Bellgrove, 2009; Fife et al., 2017; Garavan et al., 1999; Jahanshahi, Obeso, Rothwell, & Obeso, 2015; Levy & Wagner, 2011; Wiecki & Frank, 2013). The outcome of the network interactions of these regions is proposed to be the suppression of cortical output for behaviors that conflict with a goal or target behavior (Wessel & Aron, 2017). The FAT, linking the inferior frontal and pre-SMA nodes, is an understudied connection in this network, but the evidence to which we will now turn suggests it is an important component (Vilasboas, Herbet, & Duffau, 2017).

In several models of inhibitory control (Aron & Poldrack, 2006; Wiecki & Frank, 2013), the right IFG directly activates neurons of the subthalamic nucleus through a direct pathway, which plays an explicit role in stopping motor behavior (Cai & Leung, 2009; Favre, Ballanger, Thobois, Broussolle, & Boulinguez, 2013; Frank, 2006; Jahanshahi, 2013; Obeso et al., 2014; van Wouwe et al., 2017). Thus, the early suggestion has been that suppression occurs through a direct interaction with right IFG and subthalamic nucleus. However, there is also suggestion that this connection proceeds through the pre-SMA (Aron et al., 2016).

In fact, this is consistent with the role of right pre-SMA and SMA in motor control more broadly, and in stopping behaviors in particular (Nachev, Kennard, & Husain, 2008). For example, fMRI studies show the right pre-SMA is more active when participants successfully stop a behavior compared to when they don't (Aron et al., 2007; Aron & Poldrack, 2006; Boehler, Appelbaum, Krebs, Hopf, & Woldorff, 2010), and some have argued that this pre-SMA activation is a signature of successful inhibition (Sharp et al., 2010). Indeed, direct stimulation of both the right IFG and the right SMA/pre-SMA stops the production of ongoing movements (Luders et al., 1988; Mikuni et al., 2006), and right pre-SMA specifically activates in situations in which a participant must choose to perform a new response in favor of an established response (Garavan, Ross, Kaufman, & Stein, 2003). Right SMA/pre-SMA lesion impairs production of complex sequenced movements for both the contralesional and ipsilesional side of the body (J. P. Dick, Benecke, Rothwell, Day, & Marsden, 1986) and the resolution of conflict between competing action plans (Nachev, Wydell, O'Neill, Husain, & Kennard, 2007). Temporary lesion via transcranial magnetic stimulation (TMS) of the right pre-SMA also impairs stopping, resulting in longer response times in the stop signal paradigm (Cai, George, Verbruggen, Chambers, & Aron, 2012). Finally, a rare study implementing single-unit recording of an awake human shows pre-SMA neurons appear to play a role in the selection and preparation of movements (Amador & Fried, 2004). Thus, right pre-SMA and SMA seem to be important for the implementation of inhibitory control.

In such a role, the pre-SMA and SMA may determine response threshold directly through interactions with M1 (Chen, Scangos, & Stuphorn, 2010), or by influencing inhibitory and

excitatory outputs of the basal ganglia back to cortex in a task-dependent manner (Aron et al., 2016; Bogacz, Wagenmakers, Forstmann, & Nieuwenhuis, 2010; Frank, 2006; van Veen, Krug, & Carter, 2008; Wiecki & Frank, 2013). However, this likely occurs within the context of interactions with right IFG—indeed, both regions are consistently active when preparing to stop and during stopping (Chikazoe et al., 2009; Zandbelt & Vink, 2010). The nature of these interactions has been studied in a patient with ECoG electrodes implanted over both the right pre-SMA and right IFG, from which recordings were made during a stop-signal task (Swann et al., 2012). In that study, it was shown that coherence between right pre-SMA and right IFG increased for stop-signal trials, suggesting that these regions make up a physiologically connected circuit engaged during tasks requiring stopping/inhibitory control. Swann et al. also identified, using DW-MRI, that these regions are structurally connected via the FAT (although at the time they did not explicitly label the pathway as the FAT).

### **Summary**

The emerging evidence suggests that interactions between right IFG and pre-SMA/SMA could be important for inhibitory control. This may be because right IFG is a locus of inhibitory control directly and communicates with pre-SMA/SMA and with subcortical basal ganglia structures (Aron, Robbins, & Poldrack, 2014), or it may be because the right IFG functions in controlled context monitoring, and activates in response to detection of salient targets, thereby influencing activity in pre-SMA/SMA (Chatham et al., 2012; Erika-Florence, Leech, & Hampshire, 2014; Hampshire, 2015; Hampshire, Chamberlain, Monti, Duncan, & Owen, 2010). From either perspective, the right FAT is a potential fiber pathway supporting inhibitory control.

### **4. Proposed Function of the Frontal Aslant Tract**

As Schwan and colleagues (2012) point out, the limited physiologic data on this particular connection in humans makes it difficult to specifically determine its function at a more mechanistic level. Yet, several groups have hinted at proposed functions of the FAT, especially for its general involvement in speech. For example, Catani and Bambini (2014) proposed a broad role for the FAT in providing “a basis for intentional communicative acts”, with a potential role in social cognition. However, this is a rather coarse description of the function of the tract—the FAT certainly may be involved in intentional communication and social cognition, but these are rather broad functions. Here, we attempt to provide a systematic proposal for the function of the FAT based on the evidence that is available. Though admittedly speculative given the limited data, we believe this is important to help guide the much-needed research on this fiber pathway.

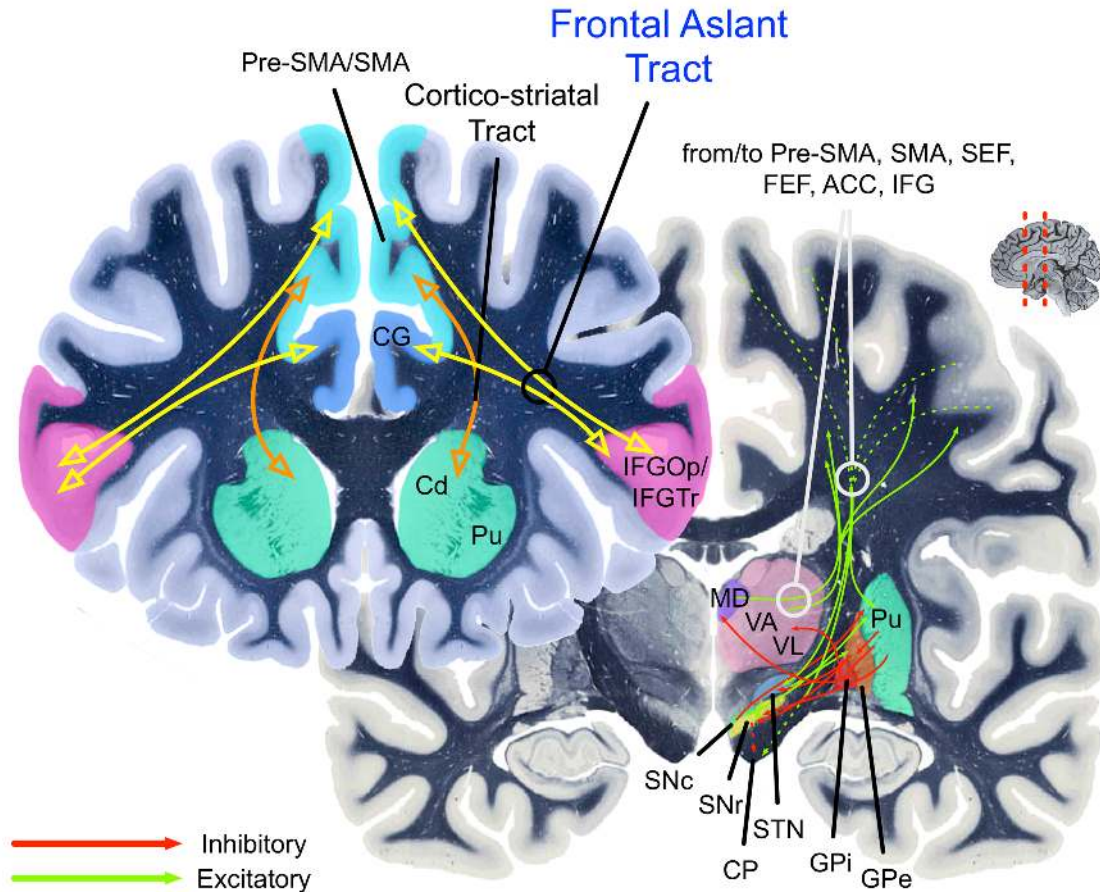


Figure 2. The cortico-basal ganglia circuits involved in speech production (left lateralized) and inhibitory control (right lateralized). The yellow path indicates the Frontal Aslant Tract (FAT). The orange path indicates the cortico-striatal tracts. Pre-SMA = pre-supplementary motor area; SMA = supplementary motor area; STN = subthalamic nucleus; thalamus VA/VL = ventral anterior and ventral lateral thalamic nuclei; GPe and GPi = globus pallidus external and internal; SNc = substantia nigra, *pars compacta*; SNr = substantia nigra, *pars reticulata*. CP = Cerebral peduncle. Pu = Putamen. Cd = Caudate. MD = Medialdorsal nucleus of thalamus. CG = Cingulate gyrus. ACC = Anterior cingulate cortex. SC = superior colliculus. Green arrows indicate excitatory connections. Red arrows indicate inhibitory connections. Hashed green arrows indicate originating fibers from multiple cortical areas arriving together in the internal capsule as they pass to their targets.

Stated simply, our proposal is that the FAT is a key component of a cortico-basal ganglia-thalamic-cerebellar circuit involved in action control. This circuit, with the FAT highlighted, is illustrated in Figure 2. More specifically, based on the evidence reviewed above, the FAT is best described as a pathway involved in the planning, timing, and coordination of sequential motor movements, and in the resolution of competition among possible voluntary sequential motor movements. Compelling empirical evidence for the *voluntary* function of the FAT is the association between resection of the FAT and incidence of the transient Foix-Chavany-Marie syndrome, which describes the loss of the voluntary control of facial, lingual, pharyngeal, and masticatory musculature in the presence of preserved reflexive and automatic functions of the same muscles (Brandao, Ferreria, & Leal Loureiro, 2013; Martino, de Lucas, Ibanez-Plagaro, Valle-Folgueral, & Vazquez-Barquero, 2012). Thus, the FAT is not simply a motor pathway, but seems to perform a

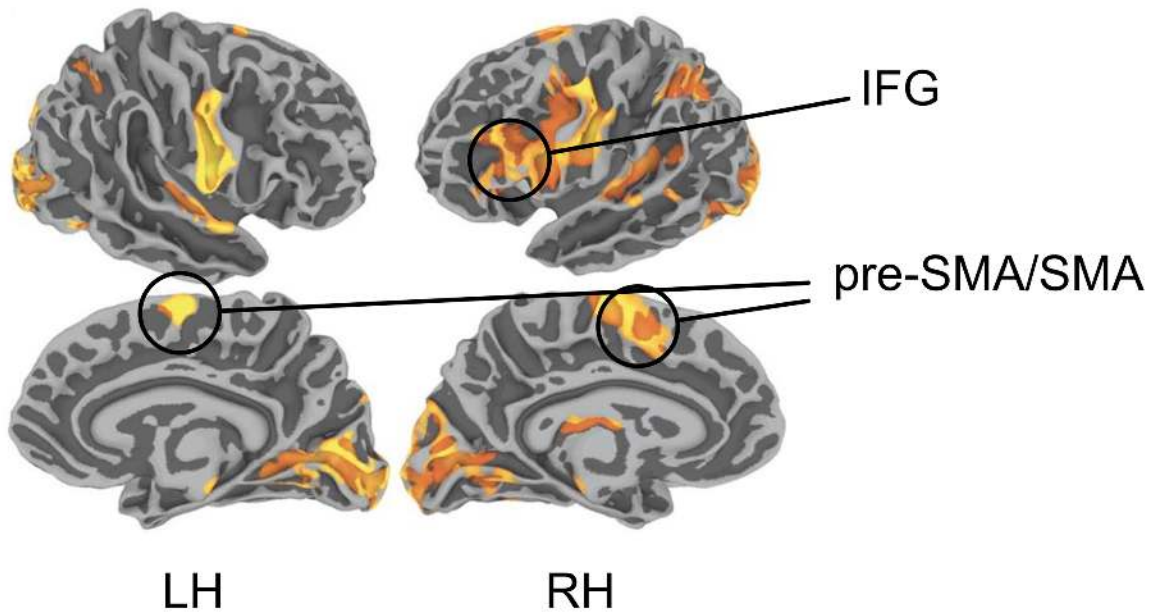
higher-level function resolving conflict among competing motor programs, thus establishing a directed movement.

The function of the FAT and its involvement in resolution of competition among competing motor plans is proposed to be the same across the two hemispheres. However, here we propose some domain specialization across hemispheres. On the left hemisphere, this circuit is specialized for speech actions, although it may also participate in manual movements (Budisavljevic et al., 2017). On the right hemisphere, this circuit is specialized for general action control mechanisms, especially in the visuo-spatial domain. In both cases, the FAT plays a role in selecting among competing representations for actions that require the same motor resources (mainly the articulatory apparatus on the left hemisphere, and the oculomotor and manual/limb action systems on the right hemisphere).

The first piece of evidence in favor of this proposal is that the cortico-basal ganglia-thalamic-cerebellar circuits for speech and for oculomotor and manual/limb actions involve essentially homologous regions across the hemispheres (Figure 3 shows the cortical activations that are relevant for the FAT). This is in keeping with the established phenomenon that cortico-subcortical loops share a similar computational and broadly-defined architecture, but differ in terms of their specific connectivity with the originating and terminating cortical areas, and subregions of the striatum, cerebellum, and thalamus (Middleton & Strick, 2000).



## A: Speech Production (Sentences)



## B: Inhibitory Control

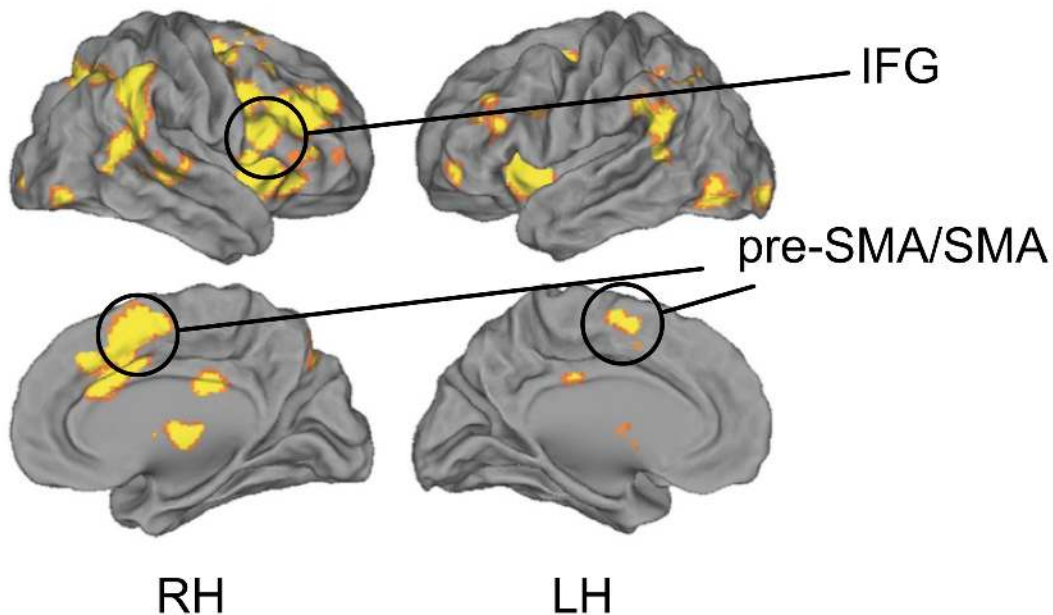


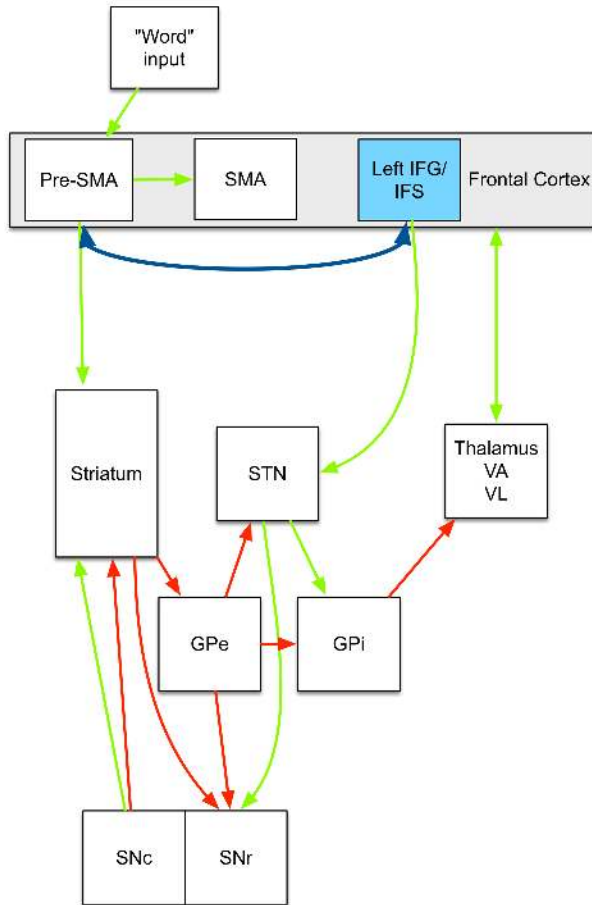
Figure 3. Top: Blood Oxygenation Level Dependent (BOLD) activation (relative to resting baseline) for sentence production in response to visual prompts (i.e., generating sentence from object pictures; IFG = inferior frontal gyrus; pre-SMA/SMA = pre-supplementary motor area/supplementary motor area; from Tremblay, P., & Small, S. L. (2011). Motor response selection in overt sentence production: a functional MRI study. *Front Psychol*, 2, 253. Bottom:

Results from a meta-analysis of inhibitory control from Cai, W., Ryali, S., Chen, T., Li, C. S., & Menon, V. (2014). Dissociable roles of right inferior frontal cortex and anterior insula in inhibitory control: evidence from intrinsic and task-related functional parcellation, connectivity, and response profile analyses across multiple datasets. *J Neurosci*, *34*(44), 14652-14667. Studies included in the meta-analysis were conducted on healthy adults, using the stop-signal or go/no-go task with manual responses.

Side-by-side comparisons of computational models of speech and inhibitory control, which have to-date been developed largely independently, also illustrate this. Figure 4 (left) shows an influential computational model of speech, the Directions Into Velocities of Articulators (DIVA) model, and its extension to account for multisyllabic planning, the Gradient Order DIVA (GODIVA) model, proposed by Guenther (Bohland, Bullock, & Guenther, 2010; Guenther, 1992, 1994, 1995, 2016; Guenther, Ghosh, & Tourville, 2006; Guenther, Hampson, & Johnson, 1998). In this model, activation of a “cognitive context” of abstract phonemic and syllable frames, represented in the posterior inferior frontal sulcus and in pre-SMA, facilitates interactions between the basal ganglia and the SMA to initiate a specific speech motor program. Essentially, in this model, the basal ganglia establish a “winner-take-all” competition between competing speech motor programs, with an initiation signal sent to SMA when the cognitive, motor, and sensorimotor patterns match the context of a particular specific motor program. The extended GODIVA model provides for an inhibitory connection between the left posterior IFS and the left pre-SMA, which are activated in parallel. This interaction supports “winning” potential phonemes (represented in IFS) and syllable frames (represented in pre-SMA). Although not explicitly stated, it can readily be hypothesized that that functional interactions between IFS and pre-SMA are structurally supported by the FAT.



### Model of Speech Production: Left Lateralized



### Model of Inhibitory Control: Right Lateralized

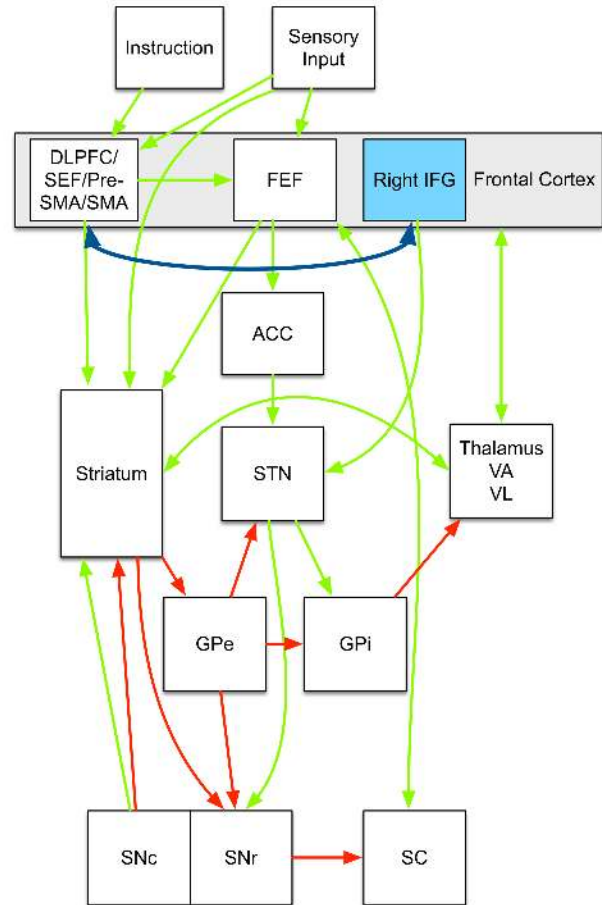


Figure 4. Left: An example connectivity model of speech production, from Guenther (Guenther, 2016). For simplicity, the model is incomplete (e.g., it does not include the cerebellum). The complete model is specified in Guenther (2016). Right: An example connectivity model of inhibitory control, based on Wiecki and Frank (Wiecki & Frank, 2013). The dark blue double-headed arrow represents the frontal aslant tract (FAT). Pre-SMA = pre-supplementary motor area; SMA = supplementary motor area; STN = subthalamic nucleus; thalamus VA/VL = ventral anterior and ventral lateral thalamic nuclei; GPe and GPi = globus pallidus external and internal; SNc = substantia nigra, *pars compacta*; SNr = substantia nigra, *pars reticulata*. ACC = Anterior cingulate cortex. SC = superior colliculus. Green arrows indicate excitatory connections. Red arrows indicate inhibitory connections.

While DIVA/GODIVA focuses on phonemic and syllable-level representations, the data reviewed above suggest that the FAT might also be involved in lexical-level retrieval and selection. This may involve the facilitation of interactions between more anterior IFG, proposed to be involved in semantic selection and retrieval (Badre et al., 2005; Devlin et al., 2003; A. S. Dick et al., 2014; Gough et al., 2005; Katzev et al., 2013), and the pre-SMA and SMA involved in establishing appropriate motor programs for speech. The left-lateralized FAT would presumably establish

these action plans based on left-lateralized linguistic representations, codified in network-level interactions with left posterior temporal cortex.

Models of inhibitory control for manual actions propose a similar, but right lateralized, architecture. For example, the computational model proposed by Frank and Wiecki (Badre & Frank, 2012; Frank, 2006; Frank & Badre, 2012; Wiecki & Frank, 2013) establishes essentially the same basal ganglia loop comprising the direct and indirect pathways of known basal ganglia connectivity (Figure 4, right). In this model, specified for both manual responses and saccadic eye-movements (hence the inclusion of the superior colliculus), these basal ganglia connections implement selective gating of candidate motor actions (e.g., either a “Go” or “NoGo” action). The candidate actions, though, are determined by activity in frontal cortical regions. In the model specified by Wiecki and Frank (2013), rule-based representations are implemented in the right dorsal and lateral prefrontal cortex (DLPFC), supplementary eye-field (SEF), and pre-SMA. The pre-SMA is proposed to play a specific role in transforming the abstract rule representation into concrete candidate actions. The right IFG, however, applies a hyperdirect connection to the STN to facilitate a global stopping mechanism. No accommodation for connectivity between the right IFG and right pre-SMA is applied in this model. Consistent with this model, Aron et al. (2016) suggest that the right IFG and pre-SMA are part of dissociable circuits. The right IFG is proposed to be part of a fronto-STN pathway for stopping, while the pre-SMA is part of fronto-STN circuit for resolving conflict. However, the empirical data we reviewed above suggest that the direct connectivity between right IFG and pre-SMA is a potentially important component of the neural network implementing inhibitory control processes.

We suggest that the right IFG-pre-SMA connection supported by the FAT plays a similar role as it does in the left-lateralized network implementing speech. That is, broadly defined, interactions between these regions establish action plans for the output of sequential (non-speech) motor programs, and together decide on a “winning” action plan, implemented via downstream interactions in basal ganglia and motor cortex. Consistent with this idea are studies that show that diffusion FA of the right FAT is related to deficits in constructional apraxia (Serra et al., 2017), and to more efficient visuomotor processing during manual movements, resulting in smoother movement trajectories (Budisavljevic et al., 2017). This again points to the importance of this tract in sequential movement planning.

Aron and others (Aron et al., 2014; Swann et al., 2012) have proposed the possibility that it is the degree of synchrony between right IFG, pre-SMA, and basal ganglia, and not necessarily their local activity, that determines whether inhibition of a motor response occurs. The proposal that the pre-SMA plays a general task configuration role and directly mediates right IFG function in stopping is consistent with the structural connectivity of the FAT, and the physiologic data suggesting that the pre-SMA activates before right IFG during stop trials (Swann et al., 2012).

In summary, based on the available evidence, we suggest that the FAT implements resolution of competition among conflicting motor programs to implement voluntary sequential movement, with some level of hemispheric specialization.

## **5. Limitations and Suggested Areas of Future Research**

The proposed model suggests a number of potential avenues for future research. We will focus on a few here. First, with respect to the left FAT, although we have argued for an important but perhaps not primary role for the FAT’s in sequential movement planning for speech, we have grounded this on a limited empirical base investigating the tract’s specific functions. Very limited research has examined different sub-components of the FAT and their associated functions. Thus, it may be the case that IFGTr and IFGOp connections with the pre-SMA play somewhat different functional roles for speech. We have also not established that additional connections (e.g., with anterior insula) are functionally important for speech. More focused study of these

subcomponents is necessary. Also necessary is the study of post lesion reorganization, to help understand why speech disorders in patients with SMA syndrome are only transient. It would be interesting to determine whether the similar structural architecture across the two hemispheres facilitates reorganization of function to the contralesional network.

Second, our model does not firmly establish the connection with language functions that have no explicit motor component, such as syntax. We have neglected to speculate broadly on this, as we await further empirical evidence. However, it is possible that the link between speech and syntax is their inherently sequential nature. More research on this specific link is also needed.

Third, with respect to the right FAT, we have focused on only two broadly defined executive functions, inhibitory control and controlled context monitoring. Executive function is itself a non-unitary, broadly defined construct, but little research has investigated the link between executive function and the FAT that we may be simply scratching the surface. Thus, it is possible that the FAT plays a role in planning defined more broadly, or in other broadly defined executive functions. For example, a recent study suggests that left laterality of the FAT is associated with greater attention problems in children, although this association was fully mediated by executive function as measured by parent and teacher ratings (Garic, Broce, Graziano, Mattfeld, & Dick, in press). In another recent study, Varriano and colleagues (2018) showed that more extensive connectivity with anterior superior frontal gyrus via the right FAT is associated with working memory performance in adults. More work in this area is needed to understand which aspects of executive function are associated with the microstructural properties of the FAT. In particular, it will be important to examine connectivity with the anterior cingulate, which has been associated with cognitive control (Lovstad et al., 2012).

Finally, the model we propose suggests that the FAT may be a target of clinical significance. The FAT could be targeted as a structure expected to show change in response to clinical intervention for disorders of speech and language (e.g., stuttering, aphasia), or for disorders associated with inhibitory control deficits (e.g., attention deficit hyperactivity disorder; ADHD). Presurgical mapping of the FAT, in cases of surgical resection, may also become increasingly important if the desire is to spare some of the functions we have identified here.

## 6. Conclusion

The available data suggest the existence of direct pre-SMA and IFG connections. We propose that this connection is a key pathway for two important functional circuits—speech and executive function/inhibitory control—that are typically examined separately but that rely on overlapping mechanisms. What this review shows is that cross-pollination of the models of these circuits may be beneficial for understanding each of them separately. In addition to understanding the basic circuitry of these seemingly-disparate functions, the current models may also inform neurosurgical interventions and, in turn, may stimulate the application of new pre-surgical mapping techniques. The models may also establish targets expected to respond to clinical intervention for disorders of speech and language, or of executive function. Because the pathway is only recently defined, there is a rich empirical landscape available to help us answer some of the critical questions about its associated functions.

**Acknowledgements:** This work was supported by grants from the National Institutes of Mental Health (Grant R01MH112588 and R56MH108616 to P.G. and A.S.D), and from the National Institute for Drug Abuse (U01DA041156; salary support to A.S.D.). P.T is supported by a career award from the from the “Fonds de la Recherche en Santé du Québec” (FRQS, #35016). Conflict of Interest: None.

## References

- Abrahams, S., Goldstein, L. H., Simmons, A., Brammer, M. J., Williams, S. C., Giampietro, V. P., . . . Leigh, P. N. (2003). Functional magnetic resonance imaging of verbal fluency and confrontation naming using compressed image acquisition to permit overt responses. *Hum Brain Mapp*, *20*(1), 29-40. doi: 10.1002/hbm.10126
- Alario, F. X., Chainay, H., Lehericy, S., & Cohen, L. (2006). The role of the supplementary motor area (SMA) in word production. *Brain Res*, *1076*(1), 129-143. doi: 10.1016/j.brainres.2005.11.104
- Amador, N., & Fried, I. (2004). Single-neuron activity in the human supplementary motor area underlying preparation for action. *J Neurosurg*, *100*(2), 250-259. doi: 10.3171/jns.2004.100.2.0250
- Ardila, A., & Lopez, M. V. (1984). Transcortical motor aphasia: one or two aphasias? *Brain Lang*, *22*(2), 350-353.
- Aron, A. R. (2007). The neural basis of inhibition in cognitive control. *Neuroscientist*, *13*(3), 214-228. doi: 10.1177/1073858407299288
- Aron, A. R., Behrens, T. E., Smith, S., Frank, M. J., & Poldrack, R. A. (2007). Triangulating a cognitive control network using diffusion-weighted magnetic resonance imaging (MRI) and functional MRI. *J Neurosci*, *27*(14), 3743-3752. doi: 10.1523/JNEUROSCI.0519-07.2007
- Aron, A. R., Fletcher, P. C., Bullmore, E. T., Sahakian, B. J., & Robbins, T. W. (2003). Stop-signal inhibition disrupted by damage to right inferior frontal gyrus in humans. *Nat Neurosci*, *6*(2), 115-116. doi: 10.1038/nn1003
- Aron, A. R., Herz, D. M., Brown, P., Forstmann, B. U., & Zaghlool, K. (2016). Frontosubthalamic Circuits for Control of Action and Cognition. *J Neurosci*, *36*(45), 11489-11495. doi: 10.1523/JNEUROSCI.2348-16.2016
- Aron, A. R., Monsell, S., Sahakian, B. J., & Robbins, T. W. (2004). A componential analysis of task-switching deficits associated with lesions of left and right frontal cortex. *Brain*, *127*(Pt 7), 1561-1573. doi: 10.1093/brain/awh169
- Aron, A. R., & Poldrack, R. A. (2006). Cortical and subcortical contributions to Stop signal response inhibition: role of the subthalamic nucleus. *J Neurosci*, *26*(9), 2424-2433. doi: 10.1523/JNEUROSCI.4682-05.2006
- Aron, A. R., Robbins, T. W., & Poldrack, R. A. (2014). Inhibition and the right inferior frontal cortex: one decade on. *Trends Cogn Sci*, *18*(4), 177-185. doi: 10.1016/j.tics.2013.12.003
- Badre, D., & Frank, M. J. (2012). Mechanisms of hierarchical reinforcement learning in cortico-striatal circuits 2: evidence from fMRI. *Cereb Cortex*, *22*(3), 527-536. doi: 10.1093/cercor/bhr117
- Badre, D., Poldrack, R. A., Pare-Blagoev, E. J., Insler, R. Z., & Wagner, A. D. (2005). Dissociable controlled retrieval and generalized selection mechanisms in ventrolateral prefrontal cortex. *Neuron*, *47*(6), 907-918. doi: 10.1016/j.neuron.2005.07.023
- Baker, C. M., Burks, J. D., Briggs, R. G., Smitherman, A. D., Glenn, C. A., Conner, A. K., . . . Sughrue, M. E. (2018). The crossed frontal aslant tract: A possible pathway involved in the recovery of supplementary motor area syndrome. *Brain Behav*, *8*(3), e00926. doi: 10.1002/brb3.926
- Bannur, U., & Rajshekhar, V. (2000). Post operative supplementary motor area syndrome: clinical features and outcome. *Br J Neurosurg*, *14*(3), 204-210.
- Bernstein Ratner, N. (1997). Stuttering: A psycholinguistic perspective. In R. F. Curlee & G. M. Siegel (Eds.), *Nature and treatment of stuttering: New directions (2nd Ed.)* (pp. 99-127). Boston, MA: Allyn & Bacon.
- Boehler, C. N., Appelbaum, L. G., Krebs, R. M., Hopf, J. M., & Woldorff, M. G. (2010). Pinning down response inhibition in the brain--conjunction analyses of the Stop-signal task. *Neuroimage*, *52*(4), 1621-1632. doi: 10.1016/j.neuroimage.2010.04.276

- Bogacz, R., Wagenmakers, E. J., Forstmann, B. U., & Nieuwenhuis, S. (2010). The neural basis of the speed-accuracy tradeoff. *Trends Neurosci*, 33(1), 10-16. doi: 10.1016/j.tins.2009.09.002
- Bohland, J. W., Bullock, D., & Guenther, F. H. (2010). Neural representations and mechanisms for the performance of simple speech sequences. *J Cogn Neurosci*, 22(7), 1504-1529. doi: 10.1162/jocn.2009.21306
- Bozkurt, B., Yagmurlu, K., Middlebrooks, E. H., Karadag, A., Ovalioglu, T. C., Jagadeesan, B., . . . Grande, A. W. (2016). Microsurgical and Tractographic Anatomy of the Supplementary Motor Area Complex in Humans. *World Neurosurg*, 95, 99-107. doi: 10.1016/j.wneu.2016.07.072
- Brandao, E., Ferreria, A., & Leal Loureiro, J. (2013). Anterior biopercular syndrome caused by unilateral infarction. *Acta Med Port*, 26(2), 177-179.
- Broce, I., Bernal, B., Altman, N., Tremblay, P., & Dick, A. S. (2015). Fiber tracking of the frontal aslant tract and subcomponents of the arcuate fasciculus in 5-8-year-olds: Relation to speech and language function. *Brain Lang*, 149, 66-76. doi: 10.1016/j.bandl.2015.06.006
- Brown, S., Ingham, R. J., Ingham, J. C., Laird, A. R., & Fox, P. T. (2005). Stuttered and fluent speech production: an ALE meta-analysis of functional neuroimaging studies. *Hum Brain Mapp*, 25(1), 105-117. doi: 10.1002/hbm.20140
- Budde, K. S., Barron, D. S., & Fox, P. T. (2014). Stuttering, induced fluency, and natural fluency: a hierarchical series of activation likelihood estimation meta-analyses. *Brain Lang*, 139, 99-107. doi: 10.1016/j.bandl.2014.10.002
- Budisavljevic, S., Dell'Acqua, F., Djordjilovic, V., Miotto, D., Motta, R., & Castiello, U. (2017). The role of the frontal aslant tract and premotor connections in visually guided hand movements. *Neuroimage*, 146, 419-428. doi: 10.1016/j.neuroimage.2016.10.051
- Bunge, S. A., Dudukovic, N. M., Thomason, M. E., Vaidya, C. J., & Gabrieli, J. D. (2002). Immature frontal lobe contributions to cognitive control in children: evidence from fMRI. *Neuron*, 33(2), 301-311.
- Cai, W., George, J. S., Verbruggen, F., Chambers, C. D., & Aron, A. R. (2012). The role of the right presupplementary motor area in stopping action: two studies with event-related transcranial magnetic stimulation. *J Neurophysiol*, 108(2), 380-389. doi: 10.1152/jn.00132.2012
- Cai, W., & Leung, H. C. (2009). Cortical activity during manual response inhibition guided by color and orientation cues. *Brain Res*, 1261, 20-28. doi: 10.1016/j.brainres.2008.12.073
- Catani, M., & Bambini, V. (2014). A model for Social Communication And Language Evolution and Development (SCALED). *Curr Opin Neurobiol*, 28, 165-171. doi: 10.1016/j.conb.2014.07.018
- Catani, M., Dell'acqua, F., Vergani, F., Malik, F., Hodge, H., Roy, P., . . . Thiebaut de Schotten, M. (2012). Short frontal lobe connections of the human brain. *Cortex*, 48(2), 273-291. doi: 10.1016/j.cortex.2011.12.001
- Catani, M., Mesulam, M. M., Jakobsen, E., Malik, F., Martersteck, A., Wieneke, C., . . . Rogalski, E. (2013). A novel frontal pathway underlies verbal fluency in primary progressive aphasia. *Brain*, 136(Pt 8), 2619-2628. doi: 10.1093/brain/awt163
- Chambers, C. D., Garavan, H., & Bellgrove, M. A. (2009). Insights into the neural basis of response inhibition from cognitive and clinical neuroscience. *Neurosci Biobehav Rev*, 33(5), 631-646. doi: 10.1016/j.neubiorev.2008.08.016
- Chang, S. E., Zhu, D. C., Choo, A. L., & Angstadt, M. (2015). White matter neuroanatomical differences in young children who stutter. *Brain*, 138(Pt 3), 694-711. doi: 10.1093/brain/awu400
- Chatham, C. H., Claus, E. D., Kim, A., Curran, T., Banich, M. T., & Munakata, Y. (2012). Cognitive control reflects context monitoring, not motoric stopping, in response inhibition. *PLoS One*, 7(2), e31546. doi: 10.1371/journal.pone.0031546

- Chen, X., Scangos, K. W., & Stuphorn, V. (2010). Supplementary motor area exerts proactive and reactive control of arm movements. *J Neurosci*, *30*(44), 14657-14675. doi: 10.1523/JNEUROSCI.2669-10.2010
- Chenausky, K., Kernbach, J., Norton, A., & Schlaug, G. (2017). White Matter Integrity and Treatment-Based Change in Speech Performance in Minimally Verbal Children with Autism Spectrum Disorder. *Front Hum Neurosci*, *11*, 175. doi: 10.3389/fnhum.2017.00175
- Chernoff, B. L., Teghipco, A., Garcea, F. E., Sims, M. H., Paul, D. A., Tivarus, M. E., . . . Mahon, B. Z. (2018). A role for the frontal aslant tract in speech planning: A neurosurgical case study. *Journal of Cognitive Neuroscience*, *30*(5), 752-769.
- Chesters, J., Mottonen, R., & Watkins, K. E. (2018). Transcranial direct current stimulation over left inferior frontal cortex improves speech fluency in adults who stutter. *Brain*, *141*(4), 1161-1171. doi: 10.1093/brain/awy011
- Chikazoe, J., Jimura, K., Hirose, S., Yamashita, K., Miyashita, Y., & Konishi, S. (2009). Preparation to inhibit a response complements response inhibition during performance of a stop-signal task. *J Neurosci*, *29*(50), 15870-15877. doi: 10.1523/JNEUROSCI.3645-09.2009
- Chivukula, S., Pikul, B. K., Black, K. L., Pouratian, N., & Bookheimer, S. Y. (2018). Contralateral functional reorganization of the speech supplementary motor area following neurosurgical tumor resection. *Brain Lang*, *183*, 41-46. doi: 10.1016/j.bandl.2018.05.006
- Connally, E. L., Ward, D., Howell, P., & Watkins, K. E. (2014). Disrupted white matter in language and motor tracts in developmental stuttering. *Brain Lang*, *131*, 25-35. doi: 10.1016/j.bandl.2013.05.013
- Costafreda, S. G., Fu, C. H., Lee, L., Everitt, B., Brammer, M. J., & David, A. S. (2006). A systematic review and quantitative appraisal of fMRI studies of verbal fluency: role of the left inferior frontal gyrus. *Hum Brain Mapp*, *27*(10), 799-810. doi: 10.1002/hbm.20221
- Crinion, J. T. (2018). Facilitating fluency in adults who stutter. *Brain*, *141*(4), 944-946. doi: 10.1093/brain/awy075
- Crosson, B., Sadek, J. R., Maron, L., Gokcay, D., Mohr, C. M., Auerbach, E. J., . . . Briggs, R. W. (2001). Relative shift in activity from medial to lateral frontal cortex during internally versus externally guided word generation. *J Cogn Neurosci*, *13*(2), 272-283.
- Déjérine, J. J. (1895). *Anatomie des Centres Nerveux (Vol 1)* (Vol. 1). Paris: Rueff.
- Déjérine, J. J. (1901). *Anatomie des Centres Nerveux (Vol 2)* (Vol. 1). Paris: Rueff.
- Derrfuss, J., Brass, M., & von Cramon, D. Y. (2004). Cognitive control in the posterior frontolateral cortex: evidence from common activations in task coordination, interference control, and working memory. *Neuroimage*, *23*(2), 604-612. doi: 10.1016/j.neuroimage.2004.06.007
- Devlin, J. T., Matthews, P. M., & Rushworth, M. F. (2003). Semantic processing in the left inferior prefrontal cortex: a combined functional magnetic resonance imaging and transcranial magnetic stimulation study. *J Cogn Neurosci*, *15*(1), 71-84. doi: 10.1162/089892903321107837
- Dick, A. S., Bernal, B., & Tremblay, P. (2014). The language connectome: new pathways, new concepts. *Neuroscientist*, *20*(5), 453-467. doi: 10.1177/1073858413513502
- Dick, A. S., Mok, E. H., Raja Beharelle, A., Goldin-Meadow, S., & Small, S. L. (2014). Frontal and temporal contributions to understanding the iconic co-speech gestures that accompany speech. *Hum Brain Mapp*, *35*(3), 900-917. doi: 10.1002/hbm.22222
- Dick, J. P., Benecke, R., Rothwell, J. C., Day, B. L., & Marsden, C. D. (1986). Simple and complex movements in a patient with infarction of the right supplementary motor area. *Mov Disord*, *1*(4), 255-266. doi: 10.1002/mds.870010405
- Dronkers, N. F. (1996). A new brain region for coordinating speech articulation. *Nature*, *384*(6605), 159-161. doi: 10.1038/384159a0
- Dum, R. P., & Strick, P. L. (1991). The origin of corticospinal projections from the premotor areas in the frontal lobe. *J Neurosci*, *11*(3), 667-689.

- Emmorey, K., Mehta, S., & Grabowski, T. J. (2007). The neural correlates of sign versus word production. *Neuroimage*, 36(1), 202-208. doi: 10.1016/j.neuroimage.2007.02.040
- Enatsu, R., Gonzalez-Martinez, J., Bulacio, J., Mosher, J. C., Burgess, R. C., Najm, I., & Nair, D. R. (2016). Connectivity of the frontal and anterior insular network: a cortico-cortical evoked potential study. *J Neurosurg*, 125(1), 90-101. doi: 10.3171/2015.6.JNS15622
- Erika-Florence, M., Leech, R., & Hampshire, A. (2014). A functional network perspective on response inhibition and attentional control. *Nat Commun*, 5, 4073. doi: 10.1038/ncomms5073
- Etard, O., Mellet, E., Papathanassiou, D., Benali, K., Houde, O., Mazoyer, B., & Tzourio-Mazoyer, N. (2000). Picture naming without Broca's and Wernicke's area. *Neuroreport*, 11(3), 617-622.
- Etchell, A. C., Civier, O., Ballard, K. J., & Sowman, P. F. (2018). A systematic literature review of neuroimaging research on developmental stuttering between 1995 and 2016. *J Fluency Disord*, 55, 6-45. doi: 10.1016/j.jfludis.2017.03.007
- Fan, J., Kolster, R., Ghajar, J., Suh, M., Knight, R. T., Sarkar, R., & McCandliss, B. D. (2007). Response anticipation and response conflict: an event-related potential and functional magnetic resonance imaging study. *J Neurosci*, 27(9), 2272-2282. doi: 10.1523/JNEUROSCI.3470-06.2007
- Favre, E., Ballanger, B., Thobois, S., Broussolle, E., & Boulinguez, P. (2013). Deep brain stimulation of the subthalamic nucleus, but not dopaminergic medication, improves proactive inhibitory control of movement initiation in Parkinson's disease. *Neurotherapeutics*, 10(1), 154-167. doi: 10.1007/s13311-012-0166-1
- Fife, K. H., Gutierrez-Reed, N. A., Zell, V., Bailly, J., Lewis, C. M., Aron, A. R., & Hnasko, T. S. (2017). Causal role for the subthalamic nucleus in interrupting behavior. *Elife*, 6. doi: 10.7554/eLife.27689
- Flechsig, P. (1920). *Anatomie des menschlichen Gehirns und Rückenmarks auf myelogenetischer Grundlage*. Leipzig: Thieme.
- Fontaine, D., Capelle, L., & Duffau, H. (2002). Somatotopy of the supplementary motor area: evidence from correlation of the extent of surgical resection with the clinical patterns of deficit. *Neurosurgery*, 50(2), 297-303; discussion 303-295.
- Ford, A., McGregor, K. M., Case, K., Crosson, B., & White, K. D. (2010). Structural connectivity of Broca's area and medial frontal cortex. *Neuroimage*, 52(4), 1230-1237. doi: 10.1016/j.neuroimage.2010.05.018
- Frank, M. J. (2006). Hold your horses: a dynamic computational role for the subthalamic nucleus in decision making. *Neural Netw*, 19(8), 1120-1136. doi: 10.1016/j.neunet.2006.03.006
- Frank, M. J., & Badre, D. (2012). Mechanisms of hierarchical reinforcement learning in corticostriatal circuits 1: computational analysis. *Cereb Cortex*, 22(3), 509-526. doi: 10.1093/cercor/bhr114
- Friederici, A. D., Ruschemeyer, S. A., Hahne, A., & Fiebach, C. J. (2003). The role of left inferior frontal and superior temporal cortex in sentence comprehension: localizing syntactic and semantic processes. *Cereb Cortex*, 13(2), 170-177.
- Fujii, M., Maesawa, S., Motomura, K., Futamura, M., Hayashi, Y., Koba, I., & Wakabayashi, T. (2015). Intraoperative subcortical mapping of a language-associated deep frontal tract connecting the superior frontal gyrus to Broca's area in the dominant hemisphere of patients with glioma. *J Neurosurg*, 122(6), 1390-1396. doi: 10.3171/2014.10.JNS14945
- Garavan, H., Ross, T. J., Kaufman, J., & Stein, E. A. (2003). A midline dissociation between error-processing and response-conflict monitoring. *Neuroimage*, 20(2), 1132-1139. doi: 10.1016/S1053-8119(03)00334-3
- Garavan, H., Ross, T. J., & Stein, E. A. (1999). Right hemispheric dominance of inhibitory control: an event-related functional MRI study. *Proc Natl Acad Sci U S A*, 96(14), 8301-8306.

- Garic, D., Broce, I., Graziano, P., Mattfeld, A., & Dick, A. S. (in press). Laterality of the frontal aslant tract (FAT) explains externalizing behaviors through its association with executive function. *Developmental Science*.
- Goryainov, S. A., Kondrashov, A. V., Gol'dberg, M. F., Batalov, A. I., Sufianov, R. A., Zakharova, N. E., . . . Potapov, A. A. (2017). [Long association tracts of the human white matter: an analysis of 18 hemisphere dissections and in vivo HARDI-CSD tractography]. *Zh Vopr Neurokhir Im N N Burdenko*, *81*(1), 13-25. doi: 10.17116/neiro201780713-25
- Gough, P. M., Nobre, A. C., & Devlin, J. T. (2005). Dissociating linguistic processes in the left inferior frontal cortex with transcranial magnetic stimulation. *J Neurosci*, *25*(35), 8010-8016. doi: 10.1523/JNEUROSCI.2307-05.2005
- Guenther, F. H. (1992). *Neural models of adaptive sensory-motor control for flexible reaching and speaking*. PhD Dissertation. Boston University, Boston, MA.
- Guenther, F. H. (1994). A neural network model of speech acquisition and motor equivalent speech production. *Biol Cybern*, *72*(1), 43-53.
- Guenther, F. H. (1995). Speech sound acquisition, coarticulation, and rate effects in a neural network model of speech production. *Psychol Rev*, *102*(3), 594-621.
- Guenther, F. H. (2016). *Neural control of speech*. Cambridge, MA and London: MIT Press.
- Guenther, F. H., Ghosh, S. S., & Tourville, J. A. (2006). Neural modeling and imaging of the cortical interactions underlying syllable production. *Brain Lang*, *96*(3), 280-301. doi: 10.1016/j.bandl.2005.06.001
- Guenther, F. H., Hampson, M., & Johnson, D. (1998). A theoretical investigation of reference frames for the planning of speech movements. *Psychol Rev*, *105*(4), 611-633.
- Hampshire, A. (2015). Putting the brakes on inhibitory models of frontal lobe function. *Neuroimage*, *113*, 340-355. doi: 10.1016/j.neuroimage.2015.03.053
- Hampshire, A., Chamberlain, S. R., Monti, M. M., Duncan, J., & Owen, A. M. (2010). The role of the right inferior frontal gyrus: inhibition and attentional control. *Neuroimage*, *50*(3), 1313-1319. doi: 10.1016/j.neuroimage.2009.12.109
- Ingham, R. J., Ingham, J. C., Euler, H. A., & Neumann, K. (2017). Stuttering treatment and brain research in adults: A still unfolding relationship. *J Fluency Disord*. doi: 10.1016/j.jfludis.2017.02.003
- Jahanshahi, M. (2013). Effects of deep brain stimulation of the subthalamic nucleus on inhibitory and executive control over prepotent responses in Parkinson's disease. *Front Syst Neurosci*, *7*, 118. doi: 10.3389/fnsys.2013.00118
- Jahanshahi, M., Obeso, I., Rothwell, J. C., & Obeso, J. A. (2015). A fronto-striato-subthalamic-pallidal network for goal-directed and habitual inhibition. *Nat Rev Neurosci*, *16*(12), 719-732. doi: 10.1038/nrn4038
- Katzev, M., Tuscher, O., Hennig, J., Weiller, C., & Kaller, C. P. (2013). Revisiting the functional specialization of left inferior frontal gyrus in phonological and semantic fluency: the crucial role of task demands and individual ability. *J Neurosci*, *33*(18), 7837-7845. doi: 10.1523/JNEUROSCI.3147-12.2013
- Kemerdere, R., de Champfleury, N. M., Deverdun, J., Cochereau, J., Moritz-Gasser, S., Herbet, G., & Duffau, H. (2016). Role of the left frontal aslant tract in stuttering: a brain stimulation and tractographic study. *J Neurol*, *263*(1), 157-167. doi: 10.1007/s00415-015-7949-3
- Kertesz, A., & McCabe, P. (1977). Recovery patterns and prognosis in aphasia. *Brain*, *100*, 1-18.
- Kinoshita, M., de Champfleury, N. M., Deverdun, J., Moritz-Gasser, S., Herbet, G., & Duffau, H. (2015). Role of fronto-striatal tract and frontal aslant tract in movement and speech: an axonal mapping study. *Brain Struct Funct*, *220*(6), 3399-3412. doi: 10.1007/s00429-014-0863-0
- Kinoshita, M., Shinohara, H., Hori, O., Ozaki, N., Ueda, F., Nakada, M., . . . Hayashi, Y. (2012). Association fibers connecting the Broca center and the lateral superior frontal gyrus: a



- microsurgical and tractographic anatomy. *J Neurosurg*, 116(2), 323-330. doi: 10.3171/2011.10.JNS11434
- Knecht, S., Deppe, M., Drager, B., Bobe, L., Lohmann, H., Ringelstein, E., & Henningsen, H. (2000). Language lateralization in healthy right-handers. *Brain*, 123 ( Pt 1), 74-81.
- Konishi, S., Nakajima, K., Uchida, I., Kikyo, H., Kameyama, M., & Miyashita, Y. (1999). Common inhibitory mechanism in human inferior prefrontal cortex revealed by event-related functional MRI. *Brain*, 122 ( Pt 5), 981-991.
- Konishi, S., Nakajima, K., Uchida, I., Sekihara, K., & Miyashita, Y. (1998). No-go dominant brain activity in human inferior prefrontal cortex revealed by functional magnetic resonance imaging. *Eur J Neurosci*, 10(3), 1209-1213.
- Koutsarnakis, C., Liakos, F., Kalyvas, A. V., Skandalakis, G. P., Komaitis, S., Christidi, F., . . . Stranjalis, G. (2017). The Superior Frontal Transsulcal Approach to the Anterior Ventricular System: Exploring the Sulcal and Subcortical Anatomy Using Anatomic Dissections and Diffusion Tensor Imaging Tractography. *World Neurosurgery*, 106, 339-354.
- Krainik, A., Lehericy, S., Duffau, H., Capelle, L., Chainay, H., Cornu, P., . . . Marsault, C. (2003). Postoperative speech disorder after medial frontal surgery: role of the supplementary motor area. *Neurology*, 60(4), 587-594.
- Krieg, W. J. S. (1957). *Brain mechanisms in diachrome (2nd Ed.)*. Evanston, Illinois: Brain Books.
- Kronfeld-Duenias, V., Amir, O., Ezrati-Vinacour, R., Civier, O., & Ben-Shachar, M. (2016a). Dorsal and ventral language pathways in persistent developmental stuttering. *Cortex*, 81, 79-92. doi: 10.1016/j.cortex.2016.04.001
- Kronfeld-Duenias, V., Amir, O., Ezrati-Vinacour, R., Civier, O., & Ben-Shachar, M. (2016b). The frontal aslant tract underlies speech fluency in persistent developmental stuttering. *Brain Struct Funct*, 221(1), 365-381. doi: 10.1007/s00429-014-0912-8
- Kronfeld-Duenias, V., Amir, O., Ezrati-Vinacour, R., Civier, O., & Ben-Shachar, M. (2017). The dorsal language pathways in stuttering: Response to commentary. *Cortex*, 90, 169-172. doi: 10.1016/j.cortex.2017.01.026
- Laplaine, D., Talairach, J., Meininger, V., Bancaud, J., & Orgogozo, J. M. (1977). Clinical consequences of corticectomies involving the supplementary motor area in man. *J Neurol Sci*, 34(3), 301-314.
- Lau, H., Rogers, R. D., & Passingham, R. E. (2006). Dissociating response selection and conflict in the medial frontal surface. *Neuroimage*, 29(2), 446-451. doi: 10.1016/j.neuroimage.2005.07.050
- Lawes, I. N., Barrick, T. R., Murugam, V., Spierings, N., Evans, D. R., Song, M., & Clark, C. A. (2008). Atlas-based segmentation of white matter tracts of the human brain using diffusion tensor tractography and comparison with classical dissection. *Neuroimage*, 39(1), 62-79. doi: 10.1016/j.neuroimage.2007.06.041
- Levy, B. J., & Wagner, A. D. (2011). Cognitive control and right ventrolateral prefrontal cortex: reflexive reorienting, motor inhibition, and action updating. *Ann N Y Acad Sci*, 1224, 40-62. doi: 10.1111/j.1749-6632.2011.05958.x
- Li, M., Zhang, Y., Song, L., Huang, R., Ding, J., Fang, Y., . . . Han, Z. (2017). Structural connectivity subserving verbal fluency revealed by lesion-behavior mapping in stroke patients. *Neuropsychologia*, 101, 85-96. doi: 10.1016/j.neuropsychologia.2017.05.008
- Li, Y., Yuan, K., Guan, Y., Cheng, J., Bi, Y., Shi, S., . . . Tian, J. (2016). The implication of salience network abnormalities in young male adult smokers. *Brain Imaging Behav*. doi: 10.1007/s11682-016-9568-8
- Love, T., Swinney, D., Walenski, M., & Zurif, E. (2008). How left inferior frontal cortex participates in syntactic processing: Evidence from aphasia. *Brain Lang*, 107(3), 203-219. doi: 10.1016/j.bandl.2007.11.004

- Lovstad, M., Funderud, I., Meling, T., Kramer, U. M., Voytek, B., Due-Tonnessen, P., . . . Solbakk, A. K. (2012). Anterior cingulate cortex and cognitive control: neuropsychological and electrophysiological findings in two patients with lesions to dorsomedial prefrontal cortex. *Brain Cogn*, *80*(2), 237-249. doi: 10.1016/j.bandc.2012.07.008
- Lu, M. T., Preston, J. B., & Strick, P. L. (1994). Interconnections between the prefrontal cortex and the premotor areas in the frontal lobe. *J Comp Neurol*, *341*(3), 375-392. doi: 10.1002/cne.903410308
- Luders, H., Lesser, R. P., Dinner, D. S., Morris, H. H., Wyllie, E., & Godoy, J. (1988). Localization of cortical function: new information from extraoperative monitoring of patients with epilepsy. *Epilepsia*, *29 Suppl 2*, S56-65.
- Ludlow, C. L., & Loucks, T. (2003). Stuttering: a dynamic motor control disorder. *J Fluency Disord*, *28*(4), 273-295; quiz 295.
- Ludwig, E., & Klingler, J. (1956). *Atlas cerebri humani*. Boston and Toronto: Little, Brown, and Company.
- Luppino, G., Matelli, M., Camarda, R. M., Gallese, V., & Rizzolatti, G. (1991). Multiple representations of body movements in mesial area 6 and the adjacent cingulate cortex: an intracortical microstimulation study in the macaque monkey. *J Comp Neurol*, *311*(4), 463-482. doi: 10.1002/cne.903110403
- Mandelli, M. L., Caverzasi, E., Binney, R. J., Henry, M. L., Lobach, I., Block, N., . . . Gorno-Tempini, M. L. (2014). Frontal white matter tracts sustaining speech production in primary progressive aphasia. *J Neurosci*, *34*(29), 9754-9767. doi: 10.1523/JNEUROSCI.3464-13.2014
- Mars, R. B., Piekema, C., Coles, M. G., Hulstijn, W., & Toni, I. (2007). On the programming and reprogramming of actions. *Cereb Cortex*, *17*(12), 2972-2979. doi: 10.1093/cercor/bhm022
- Martino, J., & De Lucas, E. M. (2014). Subcortical anatomy of the lateral association fascicles of the brain: A review. *Clin Anat*, *27*(4), 563-569. doi: 10.1002/ca.22321
- Martino, J., de Lucas, E. M., Ibanez-Plagaro, F. J., Valle-Folgueral, J. M., & Vazquez-Barquero, A. (2012). Foix-Chavany-Marie syndrome caused by a disconnection between the right pars opercularis of the inferior frontal gyrus and the supplementary motor area. *J Neurosurg*, *117*(5), 844-850. doi: 10.3171/2012.7.JNS12404
- Matsumoto, R., Nair, D. R., LaPresto, E., Bingaman, W., Shibasaki, H., & Luders, H. O. (2007). Functional connectivity in human cortical motor system: a cortico-cortical evoked potential study. *Brain*, *130*(Pt 1), 181-197. doi: 10.1093/brain/awl257
- Max, L., Guenther, F. H., Gracco, V. L., Ghosh, S. S., & Wallace, M. E. (2004). Unstable or insufficiently activated internal models and feedback-biased motor control as sources of dysfluency: A theoretical model of stuttering. *Contemporary Issues in Communication Science and Disorders*, *31*, 105-122.
- Mendez, M. F. (2004a). Aphemia-like syndrome from a right supplementary motor area lesion. *Clin Neurol Neurosurg*, *106*(4), 337-339. doi: 10.1016/j.clineuro.2003.12.008
- Mendez, M. F. (2004b). Aphemia-like syndrome from a right supplementary motor area lesion. *Clinical Neurology and Neurosurgery*, *106*, 337-339.
- Menon, V., Adelman, N. E., White, C. D., Glover, G. H., & Reiss, A. L. (2001). Error-related brain activation during a Go/NoGo response inhibition task. *Hum Brain Mapp*, *12*(3), 131-143.
- Mettler, F. A. (1935). Corticofugal connections of the cortex of macaca mulatta. The frontal region. *Journal of Comparative Neurology*, *61*, 509-542.
- Middleton, F. A., & Strick, P. L. (2000). Basal ganglia and cerebellar loops: motor and cognitive circuits. *Brain Res Brain Res Rev*, *31*(2-3), 236-250.
- Mikuni, N., Ohara, S., Ikeda, A., Hayashi, N., Nishida, N., Taki, J., . . . Hashimoto, N. (2006). Evidence for a wide distribution of negative motor areas in the perirolandic cortex. *Clin Neurophysiol*, *117*(1), 33-40. doi: 10.1016/j.clinph.2005.08.021

- Nachev, P., Kennard, C., & Husain, M. (2008). Functional role of the supplementary and pre-supplementary motor areas. *Nat Rev Neurosci*, *9*(11), 856-869. doi: 10.1038/nrn2478
- Nachev, P., Rees, G., Parton, A., Kennard, C., & Husain, M. (2005). Volition and conflict in human medial frontal cortex. *Curr Biol*, *15*(2), 122-128. doi: 10.1016/j.cub.2005.01.006
- Nachev, P., Wydell, H., O'Neill, K., Husain, M., & Kennard, C. (2007). The role of the pre-supplementary motor area in the control of action. *Neuroimage*, *36 Suppl 2*, T155-163. doi: 10.1016/j.neuroimage.2007.03.034
- Namasivayam, A. K., & van Lieshout, P. (2011). Speech motor skill and stuttering. *J Mot Behav*, *43*(6), 477-489. doi: 10.1080/00222895.2011.628347
- Neef, N. E., Anwender, A., Butfering, C., Schmidt-Samoa, C., Friederici, A. D., Paulus, W., & Sommer, M. (2018). Structural connectivity of right frontal hyperactive areas scales with stuttering severity. *Brain*, *141*(1), 191-204. doi: 10.1093/brain/awx316
- Neef, N. E., Anwender, A., & Friederici, A. D. (2017). The dorsal pathways: A comment on Kronfeld-Duenias et al. *Cortex*, *90*, 166-168. doi: 10.1016/j.cortex.2016.09.020
- Neef, N. E., Butfering, C., Anwender, A., Friederici, A. D., Paulus, W., & Sommer, M. (2016). Left posterior-dorsal area 44 couples with parietal areas to promote speech fluency, while right area 44 activity promotes the stopping of motor responses. *Neuroimage*, *142*, 628-644. doi: 10.1016/j.neuroimage.2016.08.030
- Nomi, J. S., Schettini, E., Broce, I., Dick, A. S., & Uddin, L. Q. (2017). Structural connections of functionally defined insular subdivisions. *Cerebral Cortex*. doi: 10.1093/cercor/bhx211
- Obeso, I., Wilkinson, L., Casabona, E., Speekenbrink, M., Luisa Bringas, M., Alvarez, M., . . . Jahanshahi, M. (2014). The subthalamic nucleus and inhibitory control: impact of subthalamotomy in Parkinson's disease. *Brain*, *137*(Pt 5), 1470-1480. doi: 10.1093/brain/awu058
- Oda, K., Yamaguchi, F., Enomoto, H., Higuchi, T., & Morita, A. (2018). Prediction of recovery from supplementary motor area syndrome after brain tumor surgery: preoperative diffusion tensor tractography analysis and postoperative neurological clinical course. *Neurosurg Focus*, *44*(6), E3. doi: 10.3171/2017.12.FOCUS17564
- Oishi, K., Zilles, K., Amunts, K., Faria, A., Jiang, H., Li, X., . . . Mori, S. (2008). Human brain white matter atlas: identification and assignment of common anatomical structures in superficial white matter. *Neuroimage*, *43*(3), 447-457. doi: 10.1016/j.neuroimage.2008.07.009
- Ookawa, S., Enatsu, R., Kanno, A., Ochi, S., Akiyama, Y., Kobayashi, T., . . . Mikuni, N. (2017). Frontal fibers connecting the superior frontal gyrus to Broca's area: A cortico-cortical evoked potential study. *World Neurosurg*. doi: 10.1016/j.wneu.2017.07.166
- Pai, M. C. (1999a). Supplementary motor area aphasia: a case report. *Clin Neurol Neurosurg*, *101*(1), 29-32.
- Pai, M. C. (1999b). Supplementary motor area aphasia: a case report. *Clinical Neurology and Neurosurgery*, *101*(1), 29-32.
- Pedersen, P. M., Jorgensen, H. S., Nakayama, H., Raaschou, H. O., & Olsen, T. S. (1995). Aphasia in acute stroke: incidence, determinants, and recovery. *Ann Neurol*, *38*(4), 659-666. doi: 10.1002/ana.410380416
- Peraud, A., Meschede, M., Eisner, W., Ilmberger, J., & Reulen, H. J. (2002). Surgical resection of grade II astrocytomas in the superior frontal gyrus. *Neurosurgery*, *50*(5), 966-975; discussion 975-967.
- Persson, J., Sylvester, C. Y., Nelson, J. K., Welsh, K. M., Jonides, J., & Reuter-Lorenz, P. A. (2004). Selection requirements during verb generation: differential recruitment in older and younger adults. *Neuroimage*, *23*(4), 1382-1390. doi: 10.1016/j.neuroimage.2004.08.004
- Petrides, M., & Pandya, D. N. (2002). Comparative cytoarchitectonic analysis of the human and the macaque ventrolateral prefrontal cortex and corticocortical connection patterns in the monkey. *Eur J Neurosci*, *16*(2), 291-310.

- Potgieser, A. R., de Jong, B. M., Wagemakers, M., Hoving, E. W., & Groen, R. J. (2014). Insights from the supplementary motor area syndrome in balancing movement initiation and inhibition. *Front Hum Neurosci*, 8, 960. doi: 10.3389/fnhum.2014.00960
- Rosett, J. (1933). *Intercortical systems of the human cerebrum*. New York: Columbia University Press.
- Rushworth, M. F., Hadland, K. A., Paus, T., & Sipila, P. K. (2002). Role of the human medial frontal cortex in task switching: a combined fMRI and TMS study. *J Neurophysiol*, 87(5), 2577-2592. doi: 10.1152/jn.2002.87.5.2577
- Russell, S. M., & Kelly, P. J. (2003). Incidence and clinical evolution of postoperative deficits after volumetric stereotactic resection of glial neoplasms involving the supplementary motor area. *Neurosurgery*, 52(3), 506-516; discussion 515-506.
- Schmahmann, J. D., & Pandya, D. N. (2006). *Fiber pathways of the brain*. New York: Oxford University Press.
- Serra, L., Gabrielli, G. B., Tuzzi, E., Spano, B., Giulietti, G., Failoni, V., . . . Bozzali, M. (2017). Damage to the Frontal Aslant Tract Accounts for Visuo-Constructive Deficits in Alzheimer's Disease. *J Alzheimers Dis*, 60(3), 1015-1024. doi: 10.3233/JAD-170638
- Sharp, D. J., Bonnelle, V., De Boissezon, X., Beckmann, C. F., James, S. G., Patel, M. C., & Mehta, M. A. (2010). Distinct frontal systems for response inhibition, attentional capture, and error processing. *Proc Natl Acad Sci U S A*, 107(13), 6106-6111. doi: 10.1073/pnas.1000175107
- Sierpowska, J., Gabarros, A., Fernandez-Coello, A., Camins, A., Castaner, S., Juncadella, M., . . . Rodriguez-Fornells, A. (2015). Morphological derivation overflow as a result of disruption of the left frontal aslant white matter tract. *Brain Lang*, 142, 54-64. doi: 10.1016/j.bandl.2015.01.005
- Smirni, D., Turriziani, P., Mangano, G. R., Bracco, M., Oliveri, M., & Cipolotti, L. (2017). Modulating phonemic fluency performance in healthy subjects with transcranial magnetic stimulation over the left or right lateral frontal cortex. *Neuropsychologia*, 102, 109-115. doi: 10.1016/j.neuropsychologia.2017.06.006
- Swann, N. C., Cai, W., Conner, C. R., Pieters, T. A., Claffey, M. P., George, J. S., . . . Tandon, N. (2012). Roles for the pre-supplementary motor area and the right inferior frontal gyrus in stopping action: electrophysiological responses and functional and structural connectivity. *Neuroimage*, 59(3), 2860-2870. doi: 10.1016/j.neuroimage.2011.09.049
- Szmuda, T., Rogowska, M., Sloniewski, P., Abuhaimeed, A., Szmuda, M., Springer, J., . . . Skorek, A. (2017). Frontal aslant tract projections to the inferior frontal gyrus. *Folia Morphol (Warsz)*. doi: 10.5603/FM.a2017.0039
- Thiebaut de Schotten, M., Dell'Acqua, F., Valabregue, R., & Catani, M. (2012). Monkey to human comparative anatomy of the frontal lobe association tracts. *Cortex*, 48(1), 82-96. doi: 10.1016/j.cortex.2011.10.001
- Tremblay, P., & Dick, A. S. (2016). Broca and Wernicke are dead, or moving past the classic model of language neurobiology. *Brain Lang*, 162, 60-71. doi: 10.1016/j.bandl.2016.08.004
- Tremblay, P., & Gracco, V. L. (2006). Contribution of the frontal lobe to externally and internally specified verbal responses: fMRI evidence. *Neuroimage*, 33(3), 947-957. doi: 10.1016/j.neuroimage.2006.07.041
- Tremblay, P., & Gracco, V. L. (2009). Contribution of the pre-SMA to the production of words and non-speech oral motor gestures, as revealed by repetitive transcranial magnetic stimulation (rTMS). *Brain Res*, 1268, 112-124. doi: 10.1016/j.brainres.2009.02.076
- Tremblay, P., & Gracco, V. L. (2010). On the selection of words and oral motor responses: evidence of a response-independent fronto-parietal network. *Cortex*, 46(1), 15-28. doi: 10.1016/j.cortex.2009.03.003

- Tremblay, P., & Small, S. L. (2011). Motor response selection in overt sentence production: a functional MRI study. *Front Psychol*, 2, 253. doi: 10.3389/fpsyg.2011.00253
- Ullsperger, M., & von Cramon, D. Y. (2001). Subprocesses of performance monitoring: a dissociation of error processing and response competition revealed by event-related fMRI and ERPs. *Neuroimage*, 14(6), 1387-1401. doi: 10.1006/nimg.2001.0935
- van Veen, V., Krug, M. K., & Carter, C. S. (2008). The neural and computational basis of controlled speed-accuracy tradeoff during task performance. *J Cogn Neurosci*, 20(11), 1952-1965. doi: 10.1162/jocn.2008.20146
- van Wouwe, N. C., Pallavaram, S., Phibbs, F. T., Martinez-Ramirez, D., Neimat, J. S., Dawant, B. M., . . . Wylie, S. A. (2017). Focused stimulation of dorsal subthalamic nucleus improves reactive inhibitory control of action impulses. *Neuropsychologia*, 99, 37-47. doi: 10.1016/j.neuropsychologia.2017.02.016
- Varriano, F., Pascual-Diaz, S., & Prats-Galino, A. (2018). When the FAT goes wide: Right extended Frontal Aslant Tract volume predicts performance on working memory tasks in healthy humans. *PLoS One*, 13(8), e0200786. doi: 10.1371/journal.pone.0200786
- Vassal, F., Boutet, C., Lemaire, J. J., & Nuti, C. (2014). New insights into the functional significance of the frontal aslant tract: an anatomo-functional study using intraoperative electrical stimulations combined with diffusion tensor imaging-based fiber tracking. *Br J Neurosurg*, 28(5), 685-687. doi: 10.3109/02688697.2014.889810
- Vassal, M., Charroud, C., Deverdun, J., Le Bars, E., Molino, F., Bonnetblanc, F., . . . de Champfleury, N. M. (2017). Recovery of functional connectivity of the sensorimotor network after surgery for diffuse low-grade gliomas involving the supplementary motor area. *J Neurosurg*, 126(4), 1181-1190. doi: 10.3171/2016.4.JNS152484
- Vergani, F., Lacerda, L., Martino, J., Attems, J., Morris, C., Mitchell, P., . . . Dell'Acqua, F. (2014). White matter connections of the supplementary motor area in humans. *J Neurol Neurosurg Psychiatry*, 85(12), 1377-1385. doi: 10.1136/jnnp-2013-307492
- Vilasboas, T., Herbet, G., & Duffau, H. (2017). Challenging the Myth of Right Nondominant Hemisphere: Lessons from Corticosubcortical Stimulation Mapping in Awake Surgery and Surgical Implications. *World Neurosurg*, 103, 449-456. doi: 10.1016/j.wneu.2017.04.021
- Wade, D. T., Hewer, R. L., David, R. M., & Enderby, P. M. (1986). Aphasia after stroke: natural history and associated deficits. *J Neurol Neurosurg Psychiatry*, 49(1), 11-16.
- Wang, Y., Isoda, M., Matsuzaka, Y., Shima, K., & Tanji, J. (2005). Prefrontal cortical cells projecting to the supplementary eye field and presupplementary motor area in the monkey. *Neurosci Res*, 53(1), 1-7. doi: 10.1016/j.neures.2005.05.005
- Watkins, K. E., Smith, S. M., Davis, S., & Howell, P. (2008). Structural and functional abnormalities of the motor system in developmental stuttering. *Brain*, 131(Pt 1), 50-59. doi: 10.1093/brain/awm241
- Wessel, J. R., & Aron, A. R. (2017). On the Globality of Motor Suppression: Unexpected Events and Their Influence on Behavior and Cognition. *Neuron*, 93(2), 259-280. doi: 10.1016/j.neuron.2016.12.013
- Wiecki, T. V., & Frank, M. J. (2013). A computational model of inhibitory control in frontal cortex and basal ganglia. *Psychol Rev*, 120(2), 329-355. doi: 10.1037/a0031542
- Zandbelt, B. B., & Vink, M. (2010). On the role of the striatum in response inhibition. *PLoS One*, 5(11), e13848. doi: 10.1371/journal.pone.0013848
- Zentner, J., Hufnagel, A., Pechstein, U., Wolf, H. K., & Schramm, J. (1996). Functional results after resective procedures involving the supplementary motor area. *J Neurosurg*, 85(4), 542-549. doi: 10.3171/jns.1996.85.4.0542
- Ziegler, W., Kilian, B., & Deger, K. (1997). The role of the left mesial frontal cortex in fluent speech: evidence from a case of left supplementary motor area hemorrhage. *Neuropsychologia*, 35(9), 1197-1208.