

Full Paper

The genome of the oyster *Saccostrea* offers insight into the environmental resilience of bivalves

Daniel Powell ^{1,*}, Sankar Subramanian¹, Saowaros Suwansa-ard¹, Min Zhao¹, Wayne O'Connor², David Raftos³, and Abigail Elizur¹

¹Centre for Genetics, Ecology and Physiology, University of the Sunshine Coast, Maroochydore DC, QLD 4558, Australia, ²NSW Department of Industry, Department of Primary Industries, DPI Fisheries, Port Stephens Fisheries Institute, Taylors Beach, NSW 2316, Australia and ³Department of Biological Sciences, Macquarie University, North Ryde, NSW 2109, Australia

*To whom correspondence should be addressed. Tel. +61 754594672. Fax. +61 754565010. Email: dpowell1@usc.edu.au

Edited by Dr. Yuji Kohara

Received 16 April 2018; Editorial decision 29 August 2018; Accepted 31 August 2018

Abstract

Oysters are keystone species in estuarine ecosystems and are of substantial economic value to fisheries and aquaculture worldwide. Contending with disease and environmental stress are considerable challenges to oyster culture. Here we report a draft genome of the Sydney Rock Oyster, *Saccostrea glomerata*, an iconic and commercially important species of edible oyster in Australia known for its enhanced resilience to harsh environmental conditions. This is the second reference genome to be reported from the family Ostreidae enabling a genus-level study of lophotrochozoan genome evolution. Our analysis of the 784-megabase *S. glomerata* genome shows extensive expansions of gene families associated with immunological non-self-recognition. Transcriptomic analysis revealed highly tissue-specific patterns of expression among these genes, suggesting a complex assortment of immune receptors provide this oyster with a unique capacity to recognize invading microbes. Several gene families involved in stress response are notably expanded in *Saccostrea* compared with other oysters, and likely key to this species' adaptations for improved survival higher in the intertidal zone. The Sydney Rock Oyster genome provides a valuable resource for future research in molluscan biology, evolution and environmental resilience. Its close relatedness to *Crassostrea* will further comparative studies, advancing the means for improved oyster agriculture and conservation.

Key words: Oyster, genome, bivalve adaptation, gene family evolution, resilience

1. Introduction

Oysters of the family Ostreidae are a group of bivalve molluscs that include over 70 extant members considered to be keystone species widely distributed in estuarine ecosystems, performing important roles in mitigating turbidity and improving water quality.^{1,2} Edible oysters have established commercial significance in fisheries and aquaculture

industries being among the most highly produced mollusc species in the world.³ Having evolved an extraordinary resilience to the harsh conditions of intertidal marine environments, oysters are capable of tolerating wild fluctuations in temperature and salinity, extended emersion and the persistent exposure to microbes encountered by filter-feeding.⁴ A rich and diverse set of immune and stress response genes in the oyster

genome are thought to be pivotal to the remarkably effective host defence system that enables these animals to thrive in estuaries and coastal oceans worldwide.^{4,5} Despite these adaptations, oyster populations both wild and captive are threatened with mass mortalities caused by epizootic infections⁶ and by factors associated with environmental change.¹ Understanding and ameliorating susceptibility to these threats is essential for the establishment of secure mariculture and effective conservation.

The Sydney Rock Oyster (*Saccostrea glomerata*) is an economically important species of edible oyster in Australia, naturally populating the shorelines of its eastern coast and extending across the Tasman Sea to the northern regions of New Zealand. Its cultivation contributes substantially to an aquaculture industry in Australia dating back to the 19th century, supported by selective breeding programmes that have been operating for over 25 years.^{1,7} The Sydney Rock Oyster, in contrast to the more widely distributed and invasive Pacific oyster (*Crassostrea gigas*), grows ~60% slower under favourable conditions, yet has a higher tolerance to abiotic stress, surviving up to three times longer out of water.⁸ It also appears to be resistant to the devastating viral disease Pacific Oyster Mortality Syndrome caused by OsHV-1.⁹ These characteristics provoke inquiry into the nature of the higher resilience observed in *S. glomerata* and offer a unique opportunity for comparative studies given the recent availability of the Pacific oyster genome. A lack of sequenced genomes from closely related species of lophotrochozoa have limited the extent of comparative studies within this highly diverse superphylum of species. Decoding a complete *Saccostrea* genome enables a deeper understanding of the biology and evolution of the Ostreidae and will serve as a valuable resource for genetic improvement within the oyster farming industry. Here, we present an annotated draft genome for *S. glomerata* and explore comparisons between genes relevant to resilience among a close relative and other more evolutionarily distant molluscs.

2. Materials and methods

2.1. Generation of sequence data

Mantle and gill tissues were dissected from a single female oyster for high molecular weight DNA extraction and library preparation. PCR-free short-insert libraries of 210 and 450 bp along with mate-pair libraries of 3, 6 and 9 kb were sequenced on the illumina HiSeq 2500 (Supplementary Table S1). A Chicago library was produced from an additional oyster and sequenced on the illumina platform.

2.2. Sequence assembly

Raw reads were quality filtered and trimmed using either Trimmomatic¹⁰ or Skewer¹¹ to produce over 200 Gb of clean data (Supplementary Table S2). Clean reads were assembled and initially scaffolded *de novo* using Meraculous2.¹² For detailed information see Supplementary data. Construction of a primary haploid assembly was performed using HaploMerger2¹³ and further scaffolding performed by Dovetail Genomics (Santa Cruz, CA, USA).¹⁴ Read mapping of genomic reads was performed using Bowtie2.¹⁵ Rate of heterozygosity was estimated using the SAMtools/BCFtools¹⁶ (mpileup) pipeline to call SNPs and short InDels. Estimates of completeness were undertaken using both the CEGMA¹⁷ pipeline and BUSCO¹⁸ searches of the OrthoDB metazoan library.

2.3. Genome annotation

Automated gene annotation was performed using MAKER2¹⁹ (see Supplementary data). Repetitive sequences were soft-masked with RepeatMasker (<http://www.repeatmasker.org/RMDownload.html> (13 September 2018, date last accessed)) using the RepBase²⁰ library and a

custom repeat library generated with RepeatModeler (<http://www.repeatmasker.org/RepeatModeler/> (13 September 2018, date last accessed)). Protein-coding sequences from the genomes of *C. gigas*, *Pinctada fucata*, *Lottia gigantea*, *Octopus bimaculoides*, *Drosophila melanogaster* and *Homo sapiens* were used for homology-based gene prediction. Stranded RNA-Seq data were aligned to the genome for use with the BRAKER1²¹ pipeline for training an AUGUSTUS²² model that was included with a stranded transcriptome assembly produced by Ertl *et al.*,²³ CEGMA¹⁷ derived proteins and the features of the RNA-Seq alignment in the MAKER2 pipeline. Predictions were filtered from the final gene set if they displayed no alignment to either the protein-coding genes from other species using BLAST (E -value $< 10^{-10}$) or to the Pfam²⁴ database.

2.4. Phylogenetic analysis

Amino acid sequences of 1,205 genes were concatenated to create a super gene (see Supplementary data). The concatenated sequences from 13 species were aligned using MUSCLE²⁵ by selecting default settings. After removing alignment gaps from all sequences 247,779 amino acids were available for further analysis. This multiple sequence alignment was used to infer the phylogenetic relationship between the species and the maximum likelihood based RAXML²⁶ was used for this purpose. A γ distribution was used to model the rate variation among sites and four rate categories were chosen. To model substitutions between amino acids we opted the LG (Le and Gascuel) substitution matrix²⁷ and used the empirical amino acid frequencies. The species *Nematostella vectensis* was set as the outgroup. A bootstrap resampling procedure with 100 pseudo-replicates was used to obtain statistical confidence for each bifurcation (node) of the phylogenetic tree. The software FigTree (<http://tree.bio.ed.ac.uk/software/figtree/> (13 September 2018, date last accessed)) was used to view and print the tree generated by RAXML.

2.5. Divergence time estimation

In order to estimate the divergence times between molluscan species a Bayesian statistics based MCMCTree²⁸ method was employed. The amino acid sequence alignment was used for this analysis and the maximum likelihood tree obtained from the RAXML program was used as the guide tree. The following fossil ages were used to calibrate the tree: 306–581 million years (MY) for the split between *Capitella teleta* and *Helobdella robusta*,²⁹ 470–532 MY for *Aplysia californica*–*L. gigantea* divergence,²⁹ 532–549 MY for the first appearance of the molluscs³⁰ and 550–636 MY for the first appearance of the Lophotrochozoa and Eumetazoa.³⁰ We also fixed a maximum age of 650 MY for the root of the tree (root age). To obtain the Hessian matrix for the protein data, the *codeml* program of the software PAML³¹ was used. Using the WAG+Gamma³² model of amino acid substitution matrix and the four calibration times listed above the divergence times were estimated. The results of MCMCTree were checked for convergence using the program Tracer (<http://tree.bio.ed.ac.uk/software/tracer/> (13 September 2018, date last accessed)) and the time-tree generated by this program was viewed using FigTree. The divergence times for each bifurcating node are given in Fig. 1a.

2.6. Rate of protein evolution and gene expression

To examine the correlation between gene expression and rate of protein evolution we used 11,388 orthologous genes for the Sydney Rock-Pacific Oyster comparison. Using the *codeml* module of software program PAML³¹ we obtained the likelihood based pairwise non-synonymous divergence for each gene. We then obtained the

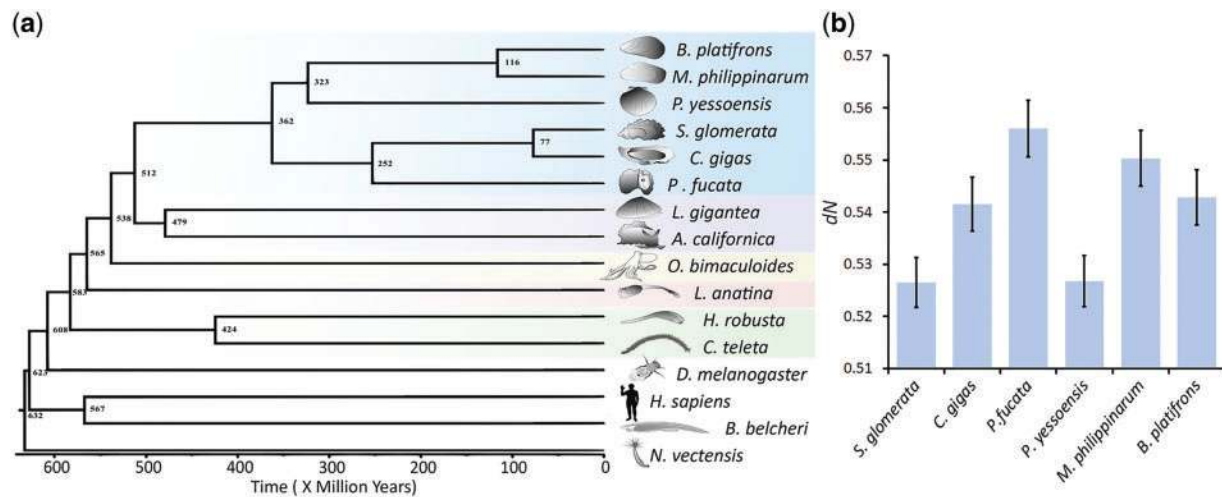


Figure 1. Divergence time and rate of non-synonymous substitutions between bivalves. (a) A time tree based on protein sequences from 16 metazoan genomes. Divergence times were estimated using a Bayesian MCMC method. A maximum likelihood based phylogenetic tree was calibrated based on seven well-defined fossils (see Methods). (b) Genetic divergence measured by the non-synonymous substitution rate (dN) between bivalves and the outgroup *Lottia gigantea* using 3,269 orthologous genes. The relative divergences with respect to the outgroup reveal the differences in the rate of protein evolution among bivalves.

expression levels of each gene in five tissues (gill, mantle, muscle, haemolymph and digestive system). Our analysis revealed a highly significant negative correlation ($P < 0.0001$) between expression level and rate of protein evolution (Supplementary Fig. S7a). We also sorted protein-coding genes based on their expression levels and grouped them into 12 categories containing equal number (949) of genes. The average estimates of gene expression levels and rate of protein evolution were computed for genes belonging to each category (Supplementary Fig. S7b). The relationship based on the mean estimates was also highly significant ($P < 0.0001$). To examine the rate of protein evolution across bivalves we used 3,269 orthologous genes from the 6 bivalves and *L. gigantea*, which was used as the outgroup. Using the *codeml* module of software program PAML³¹ we obtained the likelihood based pairwise non-synonymous divergence between *L. gigantea* and bivalve genomes. Since the time of divergence between *L. gigantea* and each bivalve is expected to be the same, any difference in the pairwise divergence suggest the variation in the rate of evolution between different bivalves (Fig. 1b).

2.7. Gene family analysis

Protein sequences from *S. glomerata*, *C. gigas*, *P. fucata* and *Patinopekten yessoensis* were compared for orthology using all-against-all BLASTP alignment (E -value of 10^{-5}) and clustered using OrthoMCL³³ (inflation value of 1.5). Protein family domain analysis was performed with Hidden Markov Model (HMM) searches of the Pfam²⁴ database (see Supplementary data). Phylogenetic trees were generated using full length protein sequences aligned with MUSCLE²⁵ and constructed with FastTree³⁴ using the Jones–Taylor–Thornton model then visualized with FigTree v1.4.3 and MEGA 7.³⁵ Functional annotation of the protein-coding genes from the *S. glomerata* genome was undertaken using BLASTp 2.5.0+ (E -value 10^{-5}) to search for homologs with a local copy of the NCBI non-redundant database (nr). Protein-coding sequences were aligned against the NCBI KOG database (version 28 March 2017) using RPSBLAST v2.2.15 performed via the WebMGA³⁶ server and for analysis of biological pathways present within the *S. glomerata* genome, KEGG orthologous gene information was obtained using the KEGG Automatic Annotation Server (KAAS)³⁷

using a bi-directional best hit approach with the eukaryote representative gene set as reference.

2.8. Quantifying gene expression

Paired-end transcriptome libraries from gill, mantle, male gonad, female gonad, muscle, haemolymph and digestive system used in this study were generated previously.^{7,23} Expression levels were measured by aligning quality processed RNA-Seq reads to the genome assembly using HiSat.³⁸ Mapped reads were sorted with SAMtools³⁹ and counts reported as transcripts per one million mapped reads (TPM) using StringTie.⁴⁰ TPM values visualized in heatmaps were transformed to \log_2 (TPM + 1) and normalized across tissues using the scale function in R.

3. Results

3.1. Genome sequencing and *de novo* assembly

The genome of *S. glomerata* was estimated to be 784 Mb in size based on an analysis of k -mer frequency distribution. It was sequenced to over 300-fold coverage based on this estimate by a whole-genome shotgun approach using the illumina HiSeq platform (Supplementary Table S1). Over 200 Gb of quality filtered short-insert and mate-pair read data (Supplementary Table S2) was initially assembled and scaffolded in accordance with the strategy outlined in Supplementary Fig. S1. Further contiguity improvements were made by Chicago library sequencing, HiRise scaffolding and gap filling (Supplementary data). The final *S. glomerata* draft assembly included 788 Mb in 10,107 scaffolds with a scaffold N50 of 804.2 kb and a contig N50 of 39.8 kb (Supplementary Tables S3 and S4).

This genome is $\sim 44\%$ larger than that estimated for the closely related Pacific oyster *C. gigas* (545 Mb)⁵ yet smaller than the pearl oyster *P. fucata* (1.14 Gb).⁴¹ Many invertebrate genomes, including that of oysters, exhibit high levels of heterozygosity and repetitiveness which can complicate the assembly process. The repeat content of the draft genome was estimated to be 45.03% (Supplementary

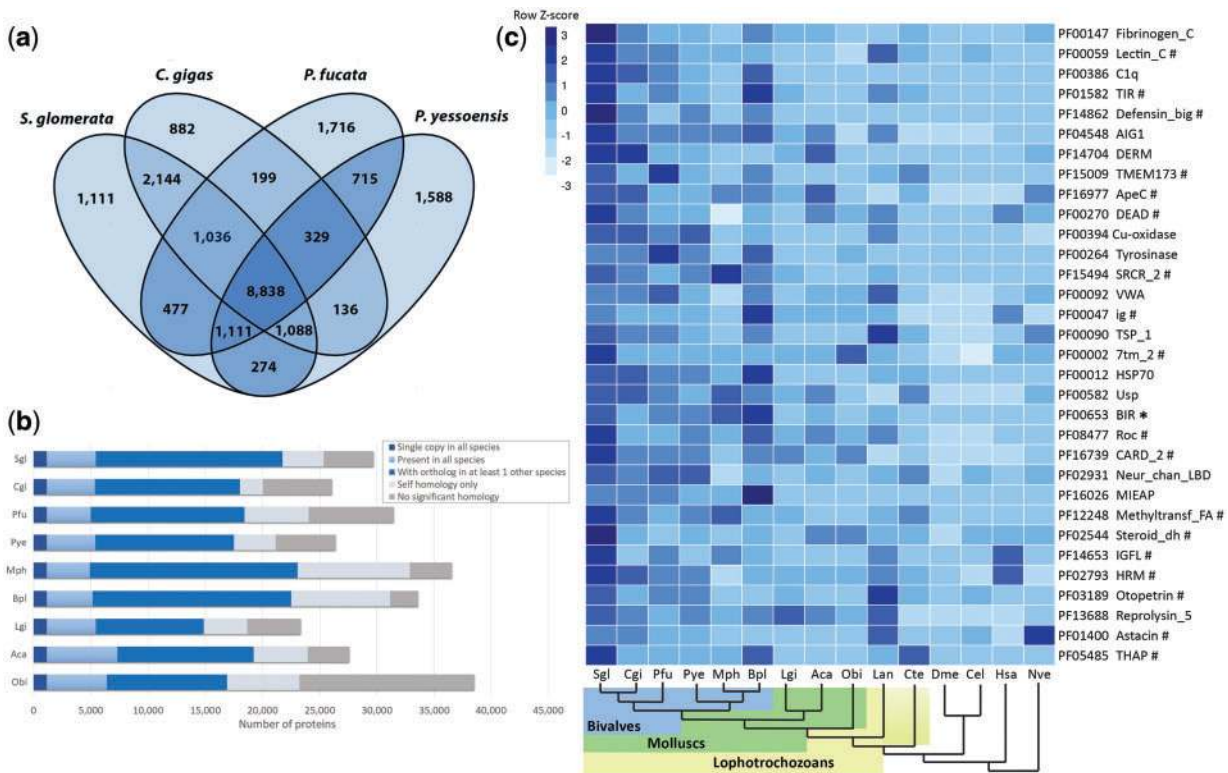


Figure 2. Gene family representation analysis. (a) Numbers of shared and unique gene groups in four species of molluscs. Gene groups were constructed by clustering of orthologous groups using OrthoMCL software. (b) Genome-wide orthology based on OrthoMCL gene clustering among nine species of molluscs. (c) A selection of expanded Pfam domains in *S. glomerata*. Associated gene families were considered expanded with a corrected *P* value of <0.01. Multiple domains in a given gene model were counted only once. Sgl, *S. glomerata*; Cgi, *C. gigas*; Pfu, *P. fucata*; Pye, *P. yessoensis*; Mph, *Modiolus philippinarum*; Bpl, *Bathymodiolus platifrons*; Lgi, *Lottia gigantea*; Aca, *Aplysia californica*; Obi, *O. bimaculoides*; Lan, *Lingula anatina*; Cte, *Capitella teleta*; Dme, *Drosophila melanogaster*; Spu, *Strongylocentrotus purpuratus*; Cel, *Caenorhabditis elegans*; Dre, *Danio rerio*; Xtr, *Xenopus tropicalis*; Hsa, *Homo sapiens*; Nve, *Nematostella vectensis*. *Pfam domain enriched in each species of bivalves; #Pfam domains not found expanded in *Crassostrea*.

Table S5). The *S. glomerata* genome exhibits a relatively high level of heterozygosity based on the observation of 3.2 million SNPs and 354,373 short insertion/deletions (indels) in 703,199,470 eligible positions. This resulted in a polymorphism rate of 0.51%, comparable with the inbred sequenced *C. gigas* (0.73%)⁵ though, in contrast with the octopus, *O. bimaculoides* (0.08%).⁴² Almost 82% complete and 96% partial matches to the 248 core eukaryotic gene set could be identified in the draft assembly using the CEGMA pipeline (Supplementary Table S6), which is comparable with other invertebrate genome assemblies reported previously.⁴³ Using the BUSCO tool we could detect a total of 787 (93.3%) of the 843 genes in the metazoan library with 672 (79%) of these being complete matches. Over 91% of the clean short-insert read data could be aligned to the draft assembly. Half the assembly was contained in the longest 241 scaffolds ranging from 0.8 to 7.1 Mb. Over 90% of the assembled bases were covered by the longest 1,321 (13%) scaffolds. The assembly metrics of the *S. glomerata* genome are comparable to those of other published mollusc genomes^{5,42,44,45} and together with completeness measures, indicate the production of a comprehensive draft.

3.2. Genome annotation and comparative analysis

A total of 29,738 protein-coding genes from the *S. glomerata* genome were annotated using homology-based and *ab initio* predictions (Supplementary data). Almost 88% of these were supported by

RNA-Seq evidence derived from six different tissues. The gene content spanned one-third of the genome with a mean gene length of 8,737 bp averaging 8 exons per transcript (Supplementary Table S7). The number of gene predictions presented here is similar to that reported for the two published oysters *C. gigas* (28,027) and *P. fucata* (29,353).^{5,44} Comparing BUSCO search results with the gene models from *C. gigas* and *P. fucata* show that the predictions from this study have the greatest number of complete (87.2%) and least number if missing genes (5.6%) of the three, indicating this study has produced the most complete gene model set for an oyster species reported to date (Supplementary Table S8).

Phylogenetic analysis using 1,205 conserved orthologues with 247,779 amino acid positions from 16 metazoan species show that *Saccostrea* diverged from *Crassostrea* ~77 million years ago (Ma) (Fig. 1a and Supplementary Fig. S6). The time estimates obtained for the other nodes of the tree was comparable to those of other previous studies.^{5,46,47} *Saccostrea glomerata* has the slowest non-synonymous substitution rate in protein sequences of the six bivalve assemblies reported to date, suggestive of a slowly evolving genome, a rate slightly lower than the scallop (Fig. 1b). The rate of protein evolution has a particularly strong negative correlation with the level of gene expression indicating strong selection pressures in genes expressed highly across the genome (Supplementary Fig. S7).

Comparison of orthologous gene groups shared among bivalves *S. glomerata*, *C. gigas*, *P. fucata* and the scallop *P. yessoensis* show a core set of 8,838 gene groups and unique set of 1,111 that are

Table 1. Distribution of protein families associated with immune response

Pfam	Domain	<i>Sgl</i>	<i>Cgi</i>	<i>Pfu</i>	<i>Pye</i>	<i>Mpb</i>	<i>Bpl</i>	<i>Lgi</i>	<i>Aca</i>	<i>Obi</i>	<i>Lan</i>	<i>Cte</i>
PF00335	Tetraspanin	63	54	53	52	4	42	39	49	31	43	50
PF00061	Lipocalin	12	13	14	11	1	11	14	17	0	17	2
PF02798	GST_N	33	25	37	29	2	23	24	56	22	44	22
PF00255	GSHPx	6	8	9	6	1	7	4	3	4	10	3
PF08210	APOBEC_N	7	2	2	1	1	1	0	0	0	6	0
PF00080	Sod_Cu	8	10	8	8	2	6	9	9	4	6	6
PF01823	MACPF	20	13	9	5	10	13	4	3	0	8	1
PF11648	RIG-I_C-RD	9	8	6	5	2	12	3	5	1	6	3
PF02898	NO_synthase	1	1	7	1	1	2	1	3	1	3	2
PF16673	TRAF_BIRC3_bd	2	2	2	1	1	1	0	0	0	0	1
	Total	161	136	147	119	25	118	98	145	63	143	90

Number of proteins containing the specific Pfam domain for each family. GST_N, glutathione S-transferase; GSHPx, glutathione peroxidase; APOBEC_N, apolipoprotein B mRNA editing enzyme, catalytic polypeptide-like N-terminal domain, N-terminal domain; Sod_Cu, Copper/zinc superoxide dismutase (SODC); MACPF, membrane attack complex/perforin (MACPF) domain; RIG-I_C-RD, C-terminal domain of RIG-I; NO_synthase, nitric oxide synthase, oxygenase domain; TRAF_BIRC3_bd, TNF receptor-associated factor BIRC3 binding domain.

Saccostrea-specific. *Saccostrea glomerata* shares 13,106 gene groups with the most closely related *C. gigas* yet has a larger number of unique genes (Fig. 2a and b). Gene ontology (GO) enrichment analysis of the gene groups unique to *Saccostrea* reveal an overrepresentation of GO terms associated largely with binding and metabolism (Supplementary Table S9).

3.3. Gene family expansion

To better understand the genome-wide similarities among molluscs, we examined the distribution of 8,629 Pfam domains across a diverse set of 26 metazoan genomes identifying a number of significant gene family expansions in *Saccostrea*. These include toll-like receptors (TLRs); PF01582, immunoglobulin domain-containing genes; PF00047, thrombospondins; PF00090, complement (C1q) subunits; PF00386, G-protein-coupled receptors (GPCRs); PF00002 and heat-shock proteins; PF00012, many of which are not found expanded in *Crassostrea* (Fig. 2c). A group of 42 gene families were determined to be significantly expanded in the *S. glomerata* genome and not so in any of the other molluscs examined. Almost a third (13) of these appear uniquely in *Saccostrea*, that is to say, not considered expanded in any of the other 25 species included in this analysis (Supplementary Table S10). Of these gene family expansions, some of the most notable have occurred in gene families associated with non-self-recognition and other components of the immune response. Expansions of some immune-related gene families has been described previously in studies of *Crassostrea* and other bivalves, and has been attributed to a pathogen-rich and dynamic intertidal habitat.^{5,48} However, several protein families in *Saccostrea* greatly exceed the domain counts found in the other oysters. *Saccostrea glomerata* also retain a considerable inventory of some of the important and well-studied immune-related gene families compared with other lophotrochozoans (Table 1), even though these families do not appear expanded when compared with the metazoan genomes used in this study.

TLRs are characterized by an intracellular toll/interleukin-1 receptor (TIR) domain and have a well described association with innate immunity in animals and plants.⁴⁹ The *S. glomerata* genome contains 182 TIR domain-containing genes that are markedly expanded beyond the relatively broad repertoire of 61 and 91 found in *C. gigas*

and *P. fucata*, respectively (Fig. 3a). This level of expansion has extended to other families of non-self-recognition proteins, such as C-type lectins and fibrinogen-related proteins (FREPs). The diversification of TLRs is thought to be important for the recognition of Pathogen Associated Molecular Patterns (PAMPs) and the subsequent activation of an immunological response via MYD88 signalling.^{50,51} The expansions of TLRs indicate a highly specialized recognition and signalling system in *Saccostrea*. The abundant expression in the male gonad implies a number of these genes may have a role in reproduction (Fig. 3c). TLRs have various functions in addition to immunity in other invertebrates⁵² and mammalian studies have suggested a role for TLRs in spermatogenesis⁵³ and the protection of spermatozoa.⁵⁴ The clear tissue specificity of groups of TIR domains in *S. glomerata* may reflect distinctions or possible interactions between reproductive and immune processes.

The fibrinogen_C gene family is the C-terminal globular domain of FREPs that are known to exhibit extremely high levels of sequence variability⁵⁵ and can function as a molecular recognition unit in immunological defence.⁵⁶ There are a total of 576 genes in the *S. glomerata* genome containing at least one fibrinogen_C domain, more than in any of the 25 genomes included in the gene family analysis. This number is triple that of *C. gigas* (192) and *P. fucata* (163) and over 100 more than *B. floridae* which has the highest compliment of FREPs (395) of any other species included in the comparison (Fig. 4a). The *S. glomerata* genes containing fibrinogen_C domains vary considerably in their length, composition and domain arrangement and the majority appear to be indiscriminately distributed across the genome apart from a few main clusters, the largest being a set of 17 genes arranged in the same orientation ranging over 478 kb on a single scaffold (Fig. 4b). The majority of FREPs were not found to be expressed among the 7 tissue types used in this study; however, the expression profile of the 262 FREPs that were detected suggests these genes are distinctly tissue-specific, occurring to a lesser extent within the haemolymph (Fig. 4c). The broadest expression of FREPs can be seen in gill tissue, likely due to the increased exposure of this organ to exogenous microbes. Also observed is an expansion of C-type lectin domain-containing genes that are similarly important for non-self-recognition and display comparable tissue-specific patterns of expression (Supplementary Fig. S9).

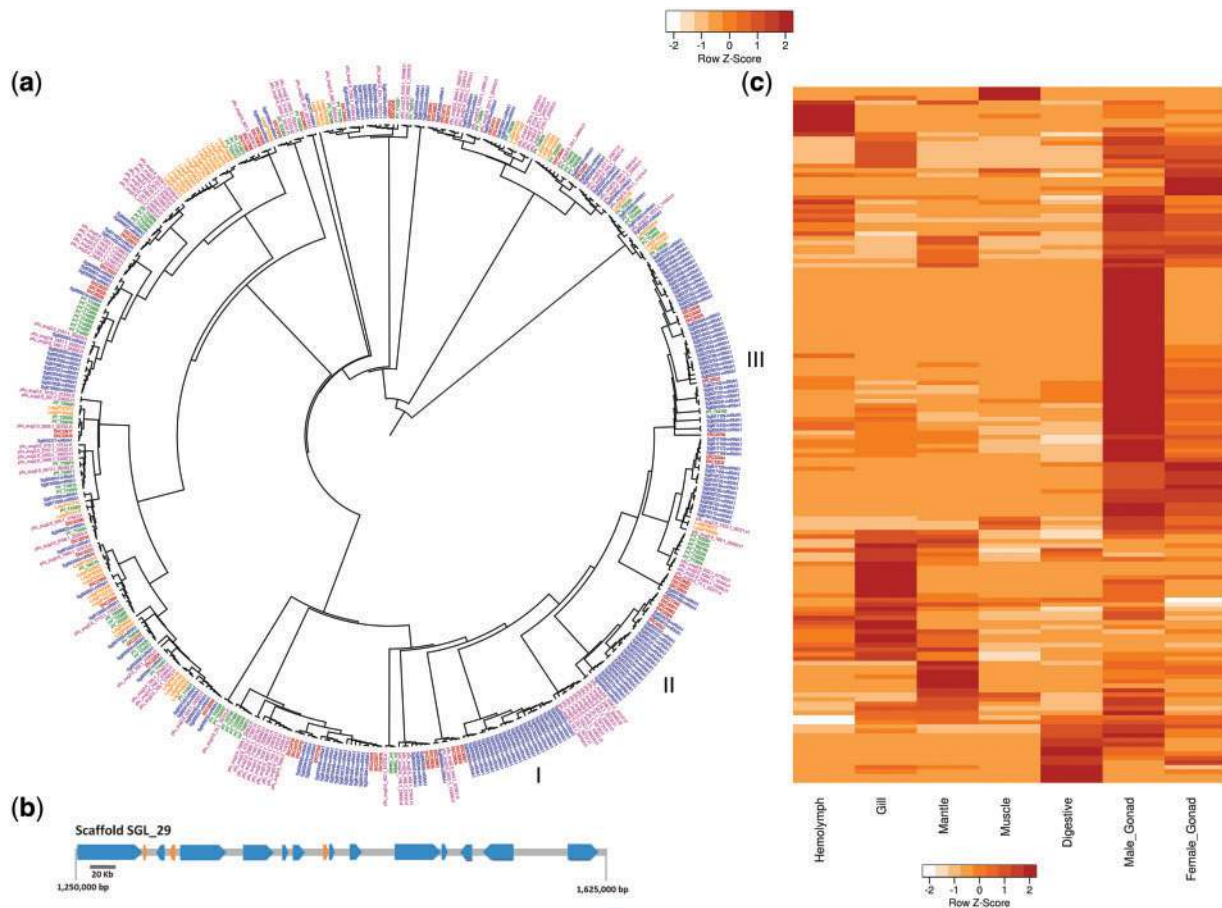


Figure 3. Expansion of Toll/interleukin-1 receptor domain containing genes in *S. glomerata*. (a) Phylogenetic tree of TIR domain-containing genes among five molluscs, *S. glomerata* (blue), *C. gigas* (red), *P. fucata* (purple), *P. yessoensis* (green), *L. gigantea* (gold). I indicates an expansion that includes the largest cluster of 13 genes located on a single scaffold (Scaffold SL_29), II & III indicate the major *Saccostrea* expansions. (b) Scaffold containing the largest cluster of TIR domain-containing genes. The 13 blue regions indicate TIR genes with 3 non-TIR genes interspersed in gold. (c) Expression profile of 154 TIR genes in 7 different tissues. Cell colours indicate the number of standard deviations from the mean expression level.

Phenoloxidases are copper containing proteins including tyrosinase and laccase⁵⁷ that have important roles in the innate immune mechanisms in invertebrates.⁵⁸ Laccases contain multicopper oxidase domains (PF00394) and along with tyrosinase domains (PF00264) are both expanded in *S. glomerata*. Phenoloxidase has been shown to be important in disease resistance in *S. glomerata*⁵⁹ and laccases and have been shown to have antibacterial activity in *C. gigas*.⁶⁰ Phylogenetic analysis of genes in *S. glomerata* that contain at least three multicopper oxidase domains form two clusters and are expressed most highly in the digestive system and mantle and with a pattern suggestive of tissue-specific functionality (Supplementary Fig. S10).

In addition to the expansion of immune-related gene families, oysters have stress response adaptations that enable them to persist in challenging environments. Comparisons of anti-apoptosis and stress-related genes reveal a broadening of these gene families in *S. glomerata* compared with *C. gigas* (Fig. 5). A similar pattern is shared between the mussel *B. platifrons* which endures the stress associated with deep sea vents and the shallow-water mussel *M. philippinarum*.⁴⁶ Expansion of these gene families appears to be a critical response for building resilience in these more stress-adapted species.

Precise regulation of apoptosis is essential for an organism's ability to adapt to changing environments.⁶¹ Inhibitor of apoptosis

proteins (IAPs) are characterized by the presence of at least one copy of the baculovirus IAP repeat (BIR) domain which facilitate binding between IAPs and caspases, controlling apoptotic signalling.⁶² Oysters are thought to maintain a powerful anti-apoptosis system given the repertoire of 48 IAPs annotated from the genome of *Crassostrea*,⁵ and further supported by the 61 found in *Pinctada* in this study. The *S. glomerata* genome encodes 80 IAP genes, almost half of which form two clusters, based on phylogenetic analysis, suggesting a recent expansion (Supplementary Fig. S8a). The expression of these 80 IAPs in 7 oyster tissues appears tissue-specific, suggesting the possibility of functional specializations (Supplementary Fig. S8b). Although, the phylogenetic relationships of these IAPs do not appear to accord with tissue-specific patterns of expression. Expansions of genes containing the IAP repeat were found only within the 6 bivalves included in this study. The enrichment of IAP genes unique to the bivalve lineage is likely a fundamental component of their extraordinary survivability.

3.4. Analysis of molluscan genes associated with reproduction

Reproductive activities of all eumetazoans are controlled by the neuroendocrine system.⁶³ In vertebrates, this includes a hypothalamic-

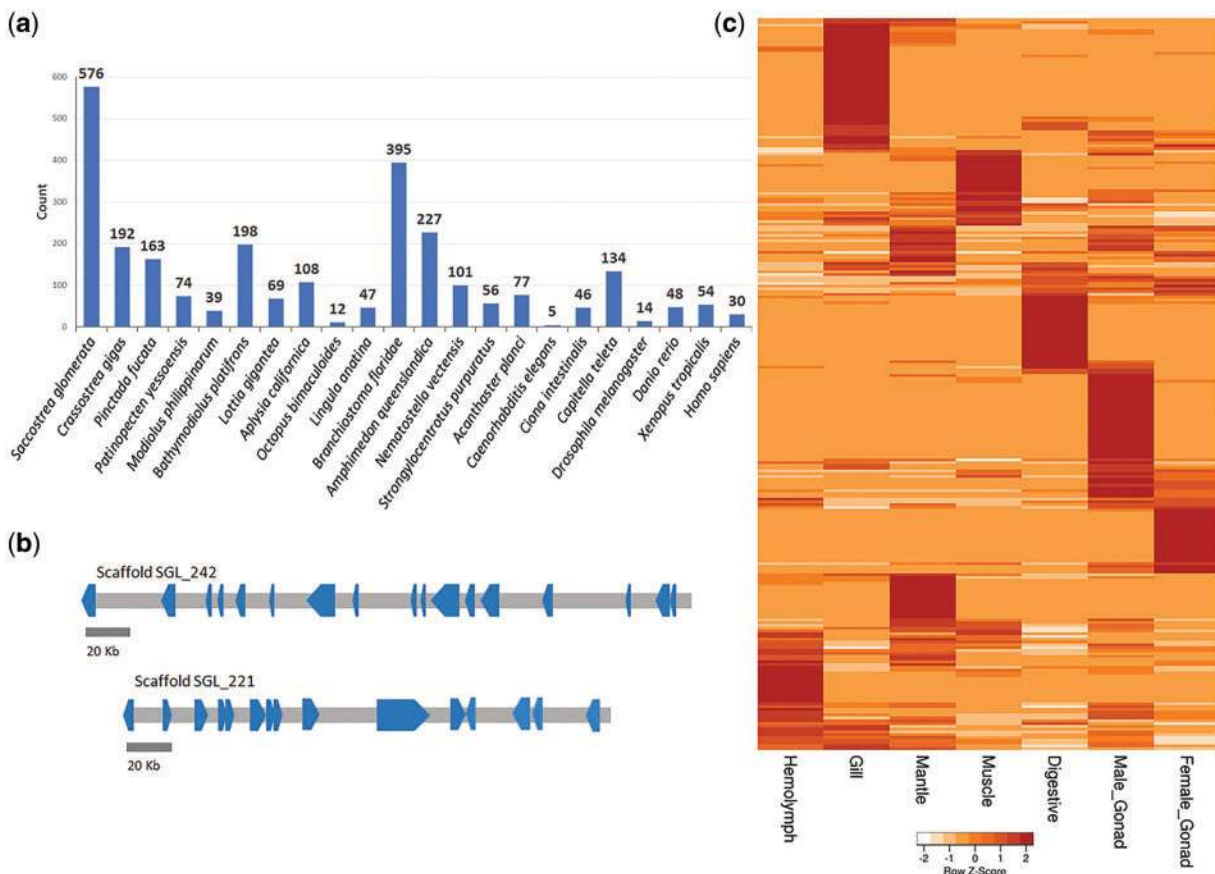


Figure 4. Expansion and expression of *S. glomerata* fibrinogen_C domain-containing genes. (a) Distribution of fibrinogen_C domain-containing gene models detected using hmmsearch among 22 selected metazoan genomes. (b) Scaffold SGL_242 and Scaffold SGL_221 contain the 2 largest clusters of fibrinogen_C domain-containing genes. The largest cluster is on Scaffold SGL_242 and contains 17 genes that vary in genomic span and are each orientated in the anti-sense direction. Scaffold SGL_221 contains 15 genes and is orientated with the majority in a set in the sense direction flanked by 5 genes in the anti-sense direction. (c) Expression profiles of 262 fibrinogen_C domain containing genes in 7 *S. glomerata* tissues. Expression of the remaining 314 fibrinogen_C domain containing genes was not detected in any of the 7 tissues sequenced.

Count	47	33	62	11	PF00656	Caspase
	5	6	7	3	PF00452	Bcl-2
	12	17	12	2	PF00229	TNF
	30	26	71	37	PF00531	DEATH
	52	33	80	11	PF00619	CARD
	80	45	121	88	PF00653	BIR
	33	35	23	35	PF00582	USP
	8	6	8	45	PF00020	TNFR_c6
	87	83	114	32	PF00012	HSP70
	Sgl	Cgl	Bpl	Mph		

Figure 5. Comparison of domains associated with stress between oysters and mussels. Number of proteins containing the specific Pfam domain for each family. Bcl-2, apoptosis regulator proteins Bcl-2 family; TNF, Tumour necrosis factor family; CARD, Caspase recruitment domain; BIR, inhibitor of apoptosis domain; USP, universal stress protein family; TNFR_c6, tumour necrosis factor receptor cysteine-rich region.

pituitary–gonadal (HPG) axis. Several homologs of the HPG axis, such as gonadotropin-releasing hormone (GnRH) and glycoprotein hormones,⁶⁴ have been identified among invertebrates. However, the molecular components of reproductive regulation in invertebrates are still largely unresolved and can be variable across phyla.⁶⁵ We found 40 genes in the *S. glomerata* genome that have previous been linked to invertebrate reproductive processes. A similar distribution was observed for these genes among six other molluscan genomes (Fig. 6). The majority of non-neuropeptide genes associated with reproduction were highly expressed in the gonads, both testis and ovary. However, abundant expression of some of these genes within non-reproductive tissues (haemolymph, gill, mantle, muscle and digestive gland) indicates they may fulfil additional roles. For example, the high abundance of NPY and GPR54-2 within the digestive gland suggests a functional association of these two proteins in the physiological regulation of digestive system and feeding. Putative receptors for GnRH/corazonin, tachykinin and NPY, and a homologue of vertebrate GPR54, which is a receptor for a vertebrate reproductive neuropeptide ‘kisspeptin’,⁶⁶ were abundant in the gonad tissues. This provides strong evidence for a role of these receptors, with their cognate ligands, in *Saccostrea* reproduction.

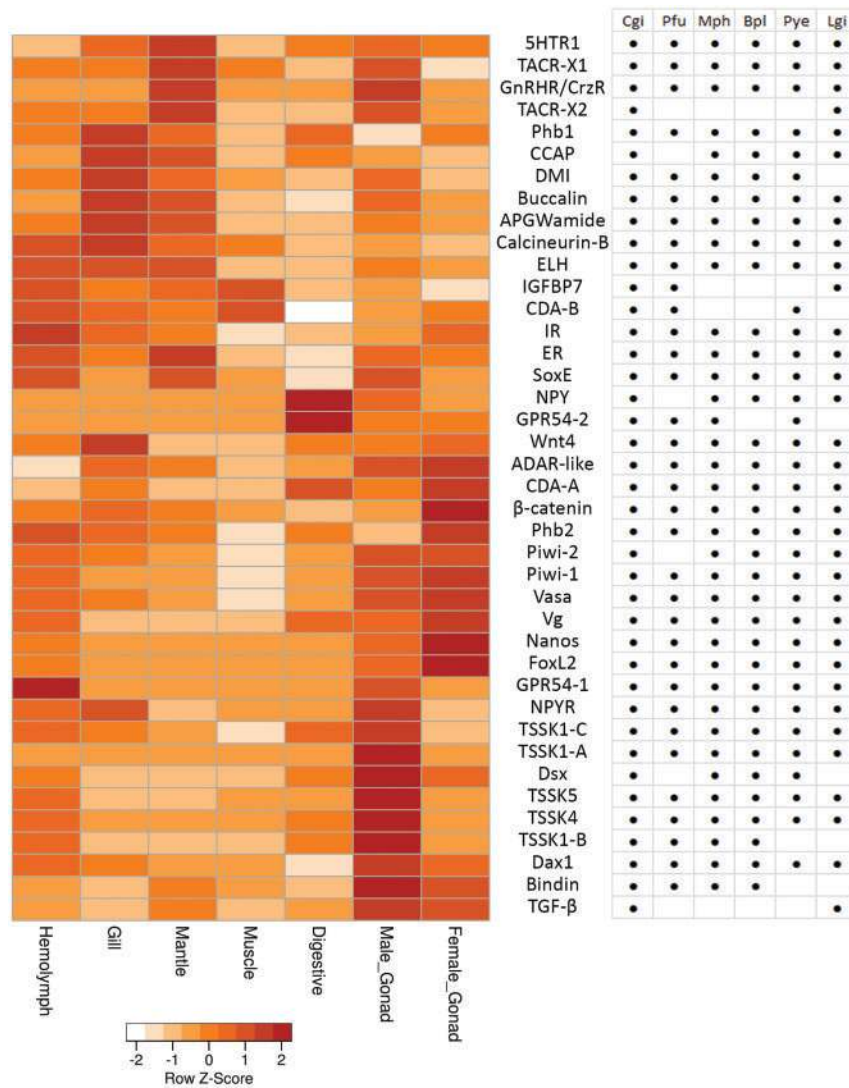


Figure 6. Genes associated with reproduction and their distribution in 6 molluscs and their expression in *S. glomerata*. Genes that were more abundant in the testis compared with ovary includes the putative receptor genes (5HTR1, TACRs, GnRHR/CrzR, and NPYR) and testis-specific protein genes (TSSKs). Conversely, expression of genes encoding reproductive signalling factors, such as CDA-A, β-catenin, Phb2, nanos, FoxL2 and vitellogenin, were higher in ovary tissue. Neuropeptides, including CCAP, buccalin, APGWamide and ELH, were found at relative low abundance in the gonads, but higher in the gill and mantle tissues. In the muscle and digestive tissues, there was overall low expression of all reproductive-related genes, except for NPY and GPR54-2, which were highly expressed and potentially specific to the digestive gland.

4. Discussion

This study presents the sequenced and assembled genome of the Sydney Rock Oyster, *S. glomerata*, an important species for Australian aquaculture and a focus of conservation due to the severe decline in shellfish reef habitats. The *S. glomerata* genome is the second reference genome to be reported from the family Ostreidae (edible oysters), enabling for the first time whole-genome comparative studies between ostreid species. This resource can improve our understanding of the mechanisms these organisms have evolved for survival in the highly stressful intertidal environment, facilitating selective breeding and the enhancement of oyster cultivation practices. The draft assembly achieved comparably high levels of completeness and contiguity with respect to other published mollusc genomes. The statistics for scaffold and contig N50 improved upon the two other

oyster genomes previously reported due largely to technological advances in sequencing. The use of 250 bp read lengths and ‘Chicago’ libraries contributed heavily to the production of a highly contiguous assembly, offering a more affordable alternative to BAC or fosmid sequencing.

The larger genome size of *S. glomerata* did not appear to contain a proportionately higher number of protein-coding genes, nor larger average exon or intron sizes. However, 354 Mb of repetitive sequences (45% of the genome) were identified compared with only 202 Mb (36% of the genome) found in *C. gigas*.⁵ An expansion of nuclease and transposase domains such as PF01498 (15 out of 89 total genes across 23 species) in *S. glomerata*, suggests that this may be the result of increased transposable element activity, adding further support to a role for these mobile sequences in shaping genome variation.⁵

The types of gene families found expanded in the *S. glomerata* genome are not dissimilar to those in the other bivalve genomes. In fact, there is a noteworthy collection of genes associated with stress and immune defence in the genome of *C. gigas* that are thought to have expanded in response to the environmental variability and the exposures of filter-feeding confronted by the oyster.⁴⁴ It appears that these features of the oyster genome are not unique to *C. gigas*, despite its invasive capacity, and are rather a characteristic of oysters more generally and their adaptation to a sessile existence in harsh environments. However, some of the immune-associated gene families are present up to 3-fold higher in *Saccostrea* than in the other published molluscs and are more abundant than in any of the other 26 species investigated here, suggesting an evolutionary history of extensive selective pressure from invading microbes. Given the relative short divergence time from *Crassostrea* and a slower rate of protein evolution yet a distinctly larger, more repetitive genome, it may be that the mechanisms for gene duplications are intrinsically more active in *Saccostrea* and are, at least in part, contributing to a phenotype of higher environmental resilience.

Genes associated with molecular pattern recognition are collectively the most significantly expanded in the *S. glomerata* genome. Large expansions of FREPs have been extensively studied in the snail *Biomphalaria* and are speculated to be due to lineage-specific selective pressure from trematode parasites like *Schistosoma mansoni*.^{48,67} Protozoan parasites, among other microbes, are major threats for a variety of bivalve species.⁶⁸ Commercial production of *S. glomerata* has been severely impacted by mortalities arising from infection with the protozoan pathogens, such as *Marteilia sydneyi* causing QX disease, which infect *S. glomerata* exclusively.^{69,70} The substantial expansion of FREPs in *Saccostrea* may be due to increased selective pressure from persistent challenge by disease-causing microbes and a need for broad recognition capacity. Clustering of these genes within the genome offers some evidence of local tandem duplications and the clear pattern of tissue-specific expression indicates these genes may have evolved to perform specialized functions. Interestingly, the expression of FREPs appears somewhat concentrated in the gill tissue that coincides with the site of infection for *M. sydneyi* and other important pathogens.^{59,71}

In Australia, wild populations of *S. glomerata* have been under pressure from the introduction of the faster growing *C. gigas*, which can rapidly overgrow and displace the native oyster at the low to mid-intertidal zones.⁷² At higher intertidal areas, however, *S. glomerata* is able to survive due to its greater tolerance to thermal stress and emersion.⁸ A highly developed anti-apoptosis system is thought to be important for the endurance of oysters to abiotic stress ascribed to the expansion of IAP genes and the propensity of air exposure to induce the dramatic upregulation of IAPs in *C. gigas*.^{5,62} The expansion of anti-apoptosis and stress response genes in the *S. glomerata* genome appears essential to the resilience observed in this species.

The draft *S. glomerata* genome presented here provides a valuable resource for further studies in molluscan biology and would accelerate genetic enhancement programs for commercially produced oyster species.

Acknowledgements

We gratefully acknowledge the University of the Sunshine Coast for a Post-Graduate Research Scholarship to D.P. and Genecology, the Centre for Genetics, Ecology and Physiology for financial support.

Accession numbers

The *Saccostrea* genome project has been deposited at the NCBI under the BioProject number PRJNA414259 including the clean reads from whole genome sequencing data deposited in the Sequence Read Archive (SRA) database along with the genome assembly. The predicted gene nucleotide and protein annotations are available from the web database <http://soft.bioinfo-minzhao.org/srog/#> (13 September 2018, date last accessed).

Conflict of interest

None declared.

Supplementary data

Supplementary data are available at DNARES online.

References

- Thompson, J., Stow, A. and Raftos, D. 2017, Lack of genetic introgression between wild and selectively bred Sydney rock oysters *Saccostrea glomerata*, *Mar. Ecol. Prog. Ser.*, **570**, 127–39.
- Salvi, D., Macali, A. and Mariottini, P. 2014, Molecular phylogenetics and systematics of the bivalve family Ostreidae based on rRNA sequence-structure models and multilocus species tree, *PLoS One*, **9**, 19–21.
- Saavedra, C. and Bachère, E. 2006, Bivalve genomics, *Aquaculture*, **256**, 1–14.
- Guo, X., He, Y., Zhang, L., Lelong, C. and Jouaux, A. 2015, Immune and stress responses in oysters with insights on adaptation, *Fish Shellfish Immunol.*, **46**, 107–19.
- Zhang, G., Fang, X. and Guo, X. 2012, The oyster genome reveals stress adaptation and complexity of shell formation, *Nature*, **490**, 49–54.
- Dégremont, L., Garcia, C. and Allen, S.K. 2015, Genetic improvement for disease resistance in oysters: a review, *J. Invertebr. Pathol.*, **131**, 226–41.
- In, Van, V., Ntalamagka, N. and O'Connor, W. 2016, Reproductive neuropeptides that stimulate spawning in the Sydney Rock Oyster (*Saccostrea glomerata*), *Peptides*, **82**, 109–19.
- Krassoi, F.R., Brown, K.R., Bishop, M.J., Kelaher, B.P. and Summerhayes, S. 2008, Condition-specific competition allows coexistence of competitively superior exotic oysters with native oysters, *J. Anim. Ecol.*, **77**, 5–15.
- Jenkins, C., Hick, P., Gabor, M., et al. 2013, Identification and characterisation of an ostreid herpesvirus-1 microvariant (OsHV-1 μ -var) in *Crassostrea gigas* (Pacific oysters) in Australia, *Dis. Aquat. Org.*, **105**, 109–26.
- Bolger, A.M., Lohse, M. and Usadel, B. 2014, Trimmomatic: a flexible trimmer for Illumina sequence data, *Bioinformatics*, **30**, 2114–20.
- Jiang, H., Lei, R., Ding, S.-W. and Zhu, S. 2014, Skewer: a fast and accurate adapter trimmer for next-generation sequencing paired-end reads, *BMC Bioinformatics*, **15**, 182.
- Chapman, J.A., Ho, I., Sunkara, S., Luo, S., Schroth, G.P. and Rokhsar, D.S. 2011, Meraculous: *de novo* genome assembly with short paired-end reads, *PLoS One*, **6**, e23501.
- Huang, S., Kang, M. and Xu, A. 2017, HaploMerger2: rebuilding both haploid sub-assemblies from high-heterozygosity diploid genome assembly, *Bioinformatics*, 1–3.
- Putnam, N.H., O'Connell, B., Stites, J.C., et al. 2015, Chromosome-scale shotgun assembly using an in vitro method for long-range linkage, *arXiv*, 1–25.
- Langmead, B. and Salzberg, S.L. 2012, Fast gapped-read alignment with Bowtie 2, *Nat. Methods*, **9**, 357–9.
- Li, H. 2011, A statistical framework for SNP calling, mutation discovery, association mapping and population genetical parameter estimation from sequencing data, *Bioinformatics*, **27**, 2987–93.
- Parra, G., Bradnam, K. and Korf, I. 2007, CEGMA: a pipeline to accurately annotate core genes in eukaryotic genomes, *Bioinformatics*, **23**, 1061–7.

18. Simão, F.A., Waterhouse, R.M., Ioannidis, P., Kriventseva, E.V. and Zdobnov, E.M. 2015, BUSCO: assessing genome assembly and annotation completeness with single-copy orthologs, *Bioinformatics*, **31**, 3210–2.
19. Holt, C. and Yandell, M. 2011, MAKER2: an annotation pipeline and genome-database management tool for second-generation genome projects, *BMC Bioinformatics*, **12**, 491.
20. Bao, W., Kojima, K.K. and Kohany, O. 2015, Repbase update, a database of repetitive elements in eukaryotic genomes, *Mob. DNA*, **6**, 11.
21. Hoff, K.J., Lange, S., Lomsadze, A., Borodovsky, M. and Stanke, M. 2016, BRAKER1: unsupervised RNA-Seq-based genome annotation with GeneMark-ET and AUGUSTUS, *Bioinformatics*, **32**, 767–9.
22. Stanke, M., Schöffmann, O., Morgenstern, B. and Waack, S. 2006, Gene prediction in eukaryotes with a generalized hidden Markov model that uses hints from external sources, *BMC Bioinformatics*, **7**, 62.
23. Ertl, N.G., O'Connor, W.A., Papanicolaou, A., Wiegand, A.N. and Elizur, A. 2016, Transcriptome analysis of the Sydney Rock Oyster, *Saccostrea glomerata*: insights into molluscan immunity, *PLoS One*, **11**, e0156649.
24. Finn, R.D., Bateman, A., Clements, J., et al. 2014, Pfam: the protein families database, *Nucl. Acids Res.*, **42**, D222–30.
25. Edgar, R.C. 2004, MUSCLE: multiple sequence alignment with high accuracy and high throughput, *Nucleic Acids Res.*, **32**, 1792–7.
26. Stamatakis, A. 2014, RAxML version 8: a tool for phylogenetic analysis and post-analysis of large phylogenies, *Bioinformatics*, **30**, 1312–3.
27. Le, S.Q. and Gascuel, O. 2008, An improved general amino acid replacement matrix, *Mol. Biol. Evol.*, **25**, 1307–20.
28. Reis, M. d. and Yang, Z. 2011, Approximate likelihood calculation on a phylogeny for Bayesian estimation of divergence times, *Mol. Biol. Evol.*, **28**, 2161–72.
29. Benton, M., Donoghue, P.C.J. and Asher, R.J. 2009, Calibrating and constraining molecular clocks, *The Timetree of Life*, p 35–86.
30. Benton, M.J., Donoghue, P.C.J., Asher, R.J., Friedman, M., Near, T.J. and Vinther, J. 2015, Constraints on the timescale of animal evolutionary history, *Palaeontol. Electron.*, 1–107.
31. Yang, Z. 2007, PAML 4: phylogenetic analysis by maximum likelihood, *Mol. Biol. Evol.*, **24**, 1586–91.
32. Whelan, S. and Goldman, N. 2001, A general empirical model of protein evolution derived from multiple protein families using a maximum-likelihood approach, *Mol. Biol. Evol.*, **18**, 691–9.
33. Li, L., Stoeckert, C.J. and Roos, D.S. 2003, OrthoMCL: identification of ortholog groups for eukaryotic genomes, *Genome Res.*, **13**, 2178–89.
34. Price, M.N., Dehal, P.S. and Arkin, A.P. 2010, FastTree 2—approximately maximum-likelihood trees for large alignments, *PLoS One*, **5**, e9490.
35. Kumar, S., Stecher, G. and Tamura, K. 2016, MEGA7: molecular evolutionary genetics analysis version 7.0 for Bigger Datasets, *Mol. Biol. Evol.*, **33**, 1870–4.
36. Wu, S., Zhu, Z., Fu, L., Niu, B. and Li, W. 2011, WebMGA: a customizable web server for fast metagenomic sequence analysis, *BMC Genomics*, **12**, 444.
37. Moriya, Y., Itoh, M., Okuda, S., Yoshizawa, A.C. and Kanehisa, M. 2007, KAAS: an automatic genome annotation and pathway reconstruction server, *Nucleic Acids Res.*, **35**, W182–5.
38. Kim, D., Langmead, B. and Salzberg, S.L. 2015, HISAT: a fast spliced aligner with low memory requirements, *Nat. Methods*, **12**, 357–60.
39. Li, H., Handsaker, B., Wysoker, A., et al. 2009, The sequence alignment/map format and SAMtools, *Bioinformatics*, **25**, 2078–9.
40. Pertea, M., Pertea, G.M., Antonescu, C.M., Chang, T.-C., Mendell, J.T. and Salzberg, S.L. 2015, StringTie enables improved reconstruction of a transcriptome from RNA-seq reads, *Nat. Biotechnol.*, **33**, 290–5.
41. Takeuchi, T., Kawashima, T., Koyanagi, R., et al. 2012, Draft genome of the pearl oyster *Pinctada fucata*: a platform for understanding bivalve biology, *DNA Res.*, **19**, 117–30.
42. Albertin, C.B., Simakov, O., Mitros, T., et al. 2015, The octopus genome and the evolution of cephalopod neural and morphological novelties, *Nature*, **524**, 220–4.
43. Luo, Y.-J., Takeuchi, T., Koyanagi, R., et al. 2015, The *Lingula* genome provides insights into brachiopod evolution and the origin of phosphate biomineralization, *Nat. Commun.*, **6**, 8301.
44. Takeuchi, T., Koyanagi, R., Gyoja, F., et al. 2016, Bivalve-specific gene expansion in the pearl oyster genome: implications of adaptation to a sessile lifestyle, *Zoological Lett.*, **2**, 3.
45. Simakov, O., Marletaz, F., Cho, S.-J., et al. 2013, Insights into Bilaterian evolution from three spiralian genomes, *Nature*, **493**, 526–31.
46. Sun, J., Zhang, Y., Xu, T., et al. 2017, Adaptation to deep-sea chemosynthetic environments as revealed by mussel genomes, *Nat. Ecol. Evol.*, **1**, 121.
47. Luo, Y.-J., Kanda, M., Koyanagi, R., et al. 2018, Nemertean and phoronid genomes reveal lophotrochozoan evolution and the origin of bilaterian heads, *Nat. Ecol. Evol.*, **2**, 141–51.
48. Zhang, L., Li, L., Guo, X., Litman, G.W., Dishaw, L.J. and Zhang, G. 2015, Massive expansion and functional divergence of innate immune genes in a protostome, *Sci. Rep.*, **5**, 8693.
49. Fornarino, S., Laval, G., Barreiro, L.B., Manry, J., Vasseur, E. and Quintana-Murci, L. 2011, Evolution of the TIR domain-containing adaptors in humans: swinging between constraint and adaptation, *Mol. Biol. Evol.*, **28**, 3087–97.
50. Gerdol, M., Venier, P., Edomi, P. and Pallavicini, A. 2017, Diversity and evolution of TIR-domain-containing proteins in bivalves and Metazoa: new insights from comparative genomics, *Dev. Comp. Immunol.*, **70**, 145–64.
51. Zhang, Y., He, X., Yu, F., et al. 2013, Characteristic and functional analysis of Toll-like receptors (TLRs) in the lophotrochozoan, *Crassostrea gigas*, reveals ancient origin of TLR-mediated innate immunity, *PLoS One*, **8**, e76464.
52. Leulier, F. and Lemaitre, B. 2008, Toll-like receptors—taking an evolutionary approach, *Nat. Rev. Genet.*, **9**, 165–78.
53. Girling, J.E. and Hedger, M.P. 2007, Toll-like receptors in the gonads and reproductive tract: emerging roles in reproductive physiology and pathology, *Immunol. Cell Biol.*, **85**, 481–9.
54. Saeidi, S., Shapouri, F., Amirchaghmaghi, E., et al. 2014, Sperm protection in the male reproductive tract by Toll-like receptors, *Andrologia*, **46**, 784–90.
55. Allam, B. and Raftos, D. 2015, Immune responses to infectious diseases in bivalves, *J. Invertebr. Pathol.*, **131**, 121–36.
56. Hanington, P.C. and Zhang, S.-M. 2011, The primary role of fibrinogen-related proteins in invertebrates is defense, not coagulation, *J. Invertebr. Pathol.*, **3**, 17–27.
57. Le Clec'h, W., Anderson, T.J.C. and Chevalier, F.D. 2016, Characterization of hemolymph phenoloxidase activity in two *Biomphalaria* snail species and impact of *Schistosoma mansoni* infection, *Parasites Vectors*, **9**, 32.
58. Cerenius, L., Lee, B.L. and Söderhäll, K. 2008, The proPO-system: pros and cons for its role in invertebrate immunity, *Trends Immunol.*, **29**, 263–71.
59. Green, T.J., Raftos, D., O'Connor, W., Adlard, R.D. and Barnes, A.C. 2011, Disease prevention strategies for QX disease (*Marteilia sydneyi*) of Sydney Rock Oysters (*Saccostrea glomerata*), *J. Shellfish Res.*, **30**, 47–53.
60. Luna-Acosta, A., Rosenfeld, E., Amari, M., Fruitier-Arnaudin, I., Bustamante, P. and Thomas-Guyon, H. 2010, First evidence of laccase activity in the Pacific oyster *Crassostrea gigas*, *Fish Shellfish Immunol.*, **28**, 719–26.
61. Ameisen, J.C. 2002, On the origin, evolution, and nature of programmed cell death: a timeline of four billion years, *Cell Death Differ.*, **9**, 367–93.
62. Qu, T., Zhang, L., Wang, W., et al. 2015, Characterization of an inhibitor of apoptosis protein in *Crassostrea gigas* clarifies its role in apoptosis and immune defense, *Dev. Comp. Immunol.*, **51**, 74–8.
63. Chieffi, G. 1984, Control of reproductive cycles in metazoa: exogenous and endogenous factors, *Bollettino Zool.*, **51**, 205–22.
64. Uchida, K., Moriyama, S., Chiba, H., et al. 2010, Evolutionary origin of a functional gonadotropin in the pituitary of the most primitive vertebrate, hagfish, *Proc. Natl. Acad. Sci.*, **107**, 15832–7.

65. Stout, E.P., La Clair, J.J., Snell, T.W., Shearer, T.L. and Kubanek, J. 2010, Conservation of progesterone hormone function in invertebrate reproduction, *Proc. Natl. Acad. Sci. USA.*, **107**, 11859–64.
66. Smith, J.T., Clifton, D.K. and Steiner, R.A. 2006, Regulation of the neuroendocrine reproductive axis by kisspeptin-GPR54 signaling, *Reproduction*, **131**, 623–30.
67. Portet, A., Pinaud, S., Tetreau, G., et al. 2017, Integrated multi-omic analyses in *Biomphalaria-Schistosoma* dialogue reveal the immunobiological significance of FREP-Sm PoMuc interaction, *Dev. Comp. Immunol.*, **75**, 16–27.
68. Fernández Robledo, J.A., Vasta, G.R. and Record, N.R. 2014, Protozoan parasites of bivalve molluscs: literature follows culture, *PLoS One*, **9**, e100872.
69. Dove, M.C., Nell, J.A., Mccorrie, S. and O'connor, W.A. 2013, Assessment of Qx and winter mortality disease resistance of mass selected Sydney Rock Oysters, *Saccostrea glomerata* (Gould, 1850), in the Hawkesbury River and Merimbula Lake, NSW Australia, *J. Shellfish Res.*, **32**, 681–7.
70. Raftos, D.A., Kuchel, R., Aladaileh, S. and Butt, D. 2014, Infectious microbial diseases and host defense responses in Sydney rock oysters, *Front. Microbiol.*, **5**, 1–12.
71. Nell, J.A., Cox, E., Smith, I.R. and Maguire, G.B. 1994, Studies on triploid oysters in Australia. I. The farming potential of triploid Sydney rock oysters *Saccostrea commercialis* (Iredale and Roughley), *Aquaculture*, **126**, 243–55.
72. Padilla, D.K. 2010, Context-dependent impacts of a non-native ecosystem engineer, the Pacific Oyster *Crassostrea gigas*, *Integr. Comp. Biol.*, **50**, 213–25.