

The health impact of polyparasitism in humans: are we under-estimating the burden of parasitic diseases?

R. PULLAN *and* S. BROOKER*

*Department of Infectious and Tropical Disease, London School of Hygiene and Tropical Medicine, London WC1E 7HT, UK
Malaria Public Health and Epidemiology Group, Centre for Geographic Medicine, KEMRI/Wellcome Trust Research Laboratories, Nairobi, Kenya

(Received 23 October 2007; revised 4 January 2008; accepted 30 January 2008; first published online 27 March 2008)

SUMMARY

Parasitic infections are widespread throughout the tropics and sub-tropics, and infection with multiple parasite species is the norm rather than the exception. Despite the ubiquity of polyparasitism, its public health significance has been inadequately studied. Here we review available studies investigating the nutritional and pathological consequences of multiple infections with *Plasmodium* and helminth infection and, in doing so, encourage a reassessment of the disease burden caused by polyparasitism. The available evidence is conspicuously sparse but is suggestive that multiple human parasite species may have an additive and/or multiplicative impact on nutrition and organ pathology. Existing studies suffer from a number of methodological limitations and adequately designed studies are clearly necessary. Current methods of estimating the potential global morbidity due to parasitic diseases underestimate the health impact of polyparasitism, and possible reasons for this are presented. As international strategies to control multiple parasite species are rolled-out, there is a number of options to investigate the complexity of polyparasitism, and it is hoped that the parasitological research community will grasp the opportunity to understand better the health of polyparasitism in humans.

Key words: polyparasitism, helminths, malaria, morbidity, undernutrition, anaemia, disease burden.

INTRODUCTION

There has been a general renaissance in the epidemiological investigation of polyparasitism, with a particular focus on multiple helminth species (Drake and Bundy, 2001) and more recently, on *Plasmodium*-helminth co-infection (Hartgers and Yazdanbakhsh, 2006; Mwangi, Bethony and Brooker, 2006; Brooker *et al.* 2007). Building on Buck's seminal studies of polyparasitism (Buck, Anderson and MacRae, 1978), studies across multiple epidemiological settings have shown recently that polyparasitism is the norm rather than the exception and occurs at different frequencies than would be expected under assumptions of independence (Booth and Bundy, 1995; Booth *et al.* 1998*b*; Howard, Donnelly and Chan, 2001; Howard *et al.* 2002; Keiser *et al.* 2002; Tchuem Tchuente *et al.* 2003; Fleming *et al.* 2006). Interactions between parasites in humans can be synergistic or antagonistic. For example, studies have demonstrated a positive association between intensity and concurrent infection of helminth species, suggesting that individuals harbouring multiple helminth species also harbour the most intense infections (Haswell-Elkins, Anderson and

Elkins, 1987; Holland *et al.* 1989; Chamone *et al.* 1990; Ferreira, Ferreira and Nogueira, 1994; Kightlinger Seed and Kightlinger, 1995; Booth *et al.* 1998*a*; Needham *et al.* 1998; Brooker *et al.* 2000; Faulkner *et al.* 2005). It is conceivable therefore that polyparasitism may have a greater impact on morbidity than single species infections since morbidity is typically related to infection intensity for most parasite species. Multiple species infections may also increase susceptibility to other infections (Nacher, 2004; Druilhe, Tall and Sokhna, 2005; Mwangi *et al.* 2006). However, the health impacts of polyparasitism have not been studied sufficiently despite their potential significance for public health.

This paper provides a brief review of recent field studies on the nutritional and pathological consequences of polyparasitism in humans and, in doing so, hopes to encourage a reassessment of the disease burden caused by polyparasitism. Our focus is on soil-transmitted helminth infections (STH: *Ascaris lumbricoides*, *Trichuris trichiura* and hookworm) schistosomiasis (*Schistosoma haematobium*, *S. mansoni* and *S. japonicum*) and *Plasmodium* spp. infections since these species are ubiquitous throughout much of the developing world and frequently result in common morbidities. Fig. 1 presents a conceptual framework which summarizes these insults and highlights the complex and self-perpetuating relationships and potential mechanisms between polyparasitism and morbidity.

Corresponding author: Rachel Pullan, Department of Infectious and Tropical Disease, London School of Hygiene and Tropical Medicine, Keppel Street, London WC1E 7HT, UK. Email: rachel.pullan@lshtm.ac.uk

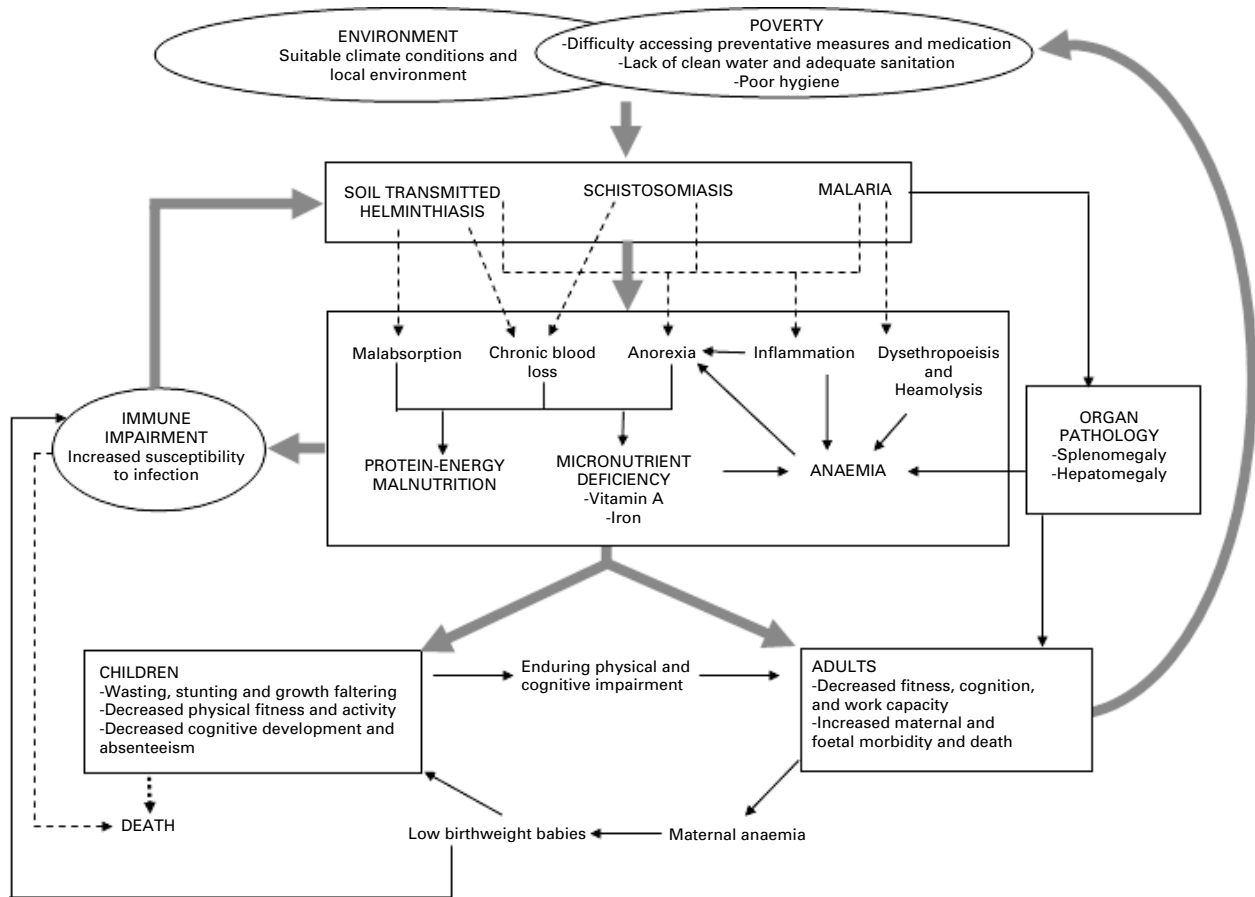


Fig. 1. Conceptual framework: the negative cycle between polyparasitism, malnutrition and cognitive and physical development. Helminth and malaria infections impact upon host nutrition through a number of mechanisms, which may have additive or multiplicative impacts, especially in childhood. Helminth infections cause and/or aggravate malnutrition through worm-induced gastrointestinal tract physiopathology and reduced food intake (Crompton and Nesheim, 2002), chronic blood-loss (Hotez *et al.* 2004) and intestinal inflammation (Stephenson *et al.* 2000*b*). Malaria may contribute to protein-energy malnutrition (PEM) through a number of mechanisms triggered by augmented levels of inflammatory cytokines, including anorexia and the induction of a catabolic response (Tracey and Cerami, 1992; Nyakeriga *et al.* 2004), and to reduced haemoglobin levels through increased rates of destruction and removal of RBCs and anaemia of inflammation. Sequestration of red blood cells in those with *P. falciparum*- and schistosome-associated splenomegaly can also contribute to anaemia (Friedman *et al.* 2005). Associations may also be due to the effect of undernourishment on the immune response, leading to an increased susceptibility to infection (Koski and Scott, 2001). PEM and anaemia associated with parasitic infection can result in decreased physical fitness, cognitive development and school achievement in children (Boivin and Giordani, 1993; Boivin *et al.* 1993; Bundy and Guyatt, 1996), and in decreased cognition and work capacity in adults (Guyatt, 2000; Haas and Brownlie, 2001); factors which are in turn associated with poor socio-economic status, in itself a risk factor for infection.

WHO IS AT RISK OF POLYPARASITISM?

An examination of age-infection profiles of different parasite species helps identify those individuals at greatest risk of polyparasitism. For most helminth species, intensity of infection rises dramatically with age, with the age of maximum intensity varying for each helminth species (Fig. 2). Age-profiles of *Plasmodium* spp. suggest that blood stage infection is most prevalent in school-aged children, and it is among this age group that co-infections are most likely therefore to occur. Pregnant women (particularly primigravidae) are also at risk. However, adults remain at considerable risk of harbouring multiple STH species, although at reduced intensity, and are often neglected in the helminthological literature.

Understanding the age patterns of infection can provide insight into who is most at risk of the health consequences of polyparasitism, but the underlying age-specific susceptibilities to morbidity are also important.

IMPACT ON NUTRIENT DEFICIENCY

Undernutrition, whether characterized in terms of growth impairment or micronutrient malnutrition, is a pervasive problem in the developing world, contributing substantially to both child morbidity and mortality (WHO, 2002*a*), and to poor cognitive and motor performance (Walker *et al.* 2006). As important contributors to undernutrition, helminth

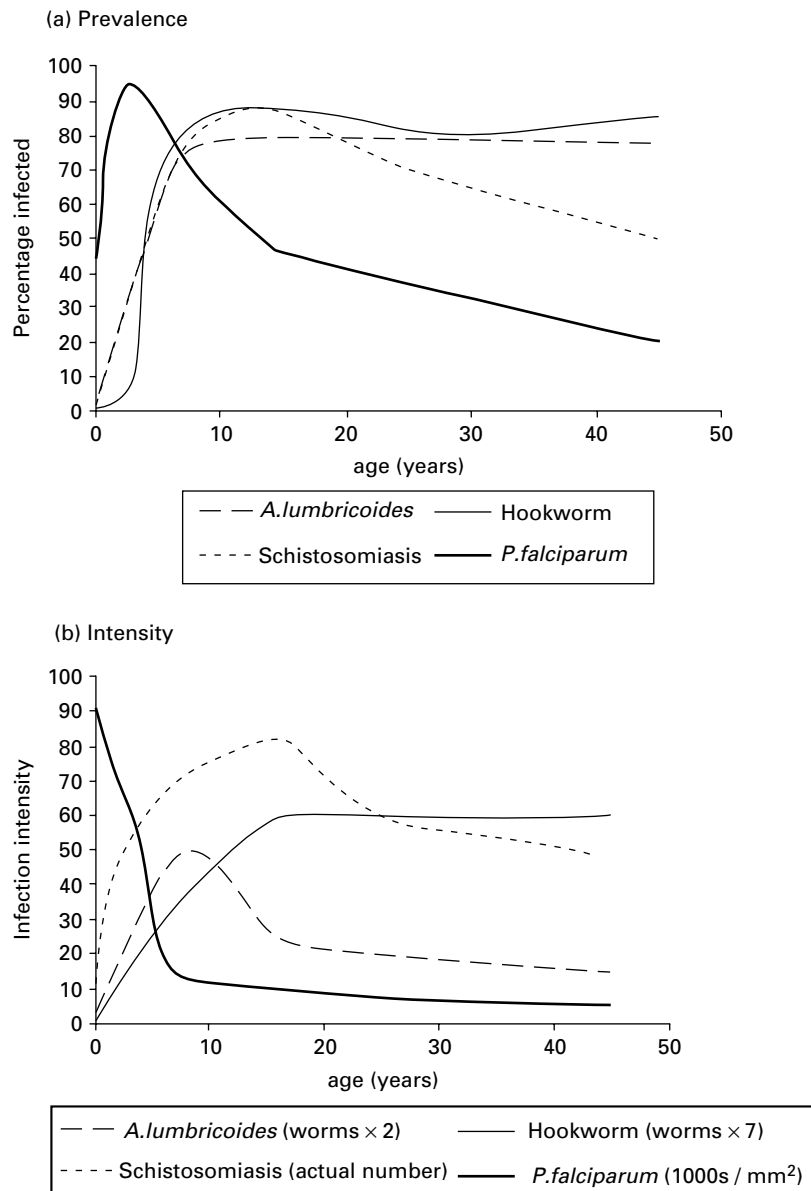


Fig. 2 Age-associated prevalence and intensity profiles of STH, schistosome and malaria infections: typical age profiles for (a) prevalence and (b) intensity of infection with *A. lumbricoides*, schistosomiasis, hookworm and *P. falciparum* malaria; adapted from Bundy (1995) and Anderson and May (2001).

and malaria infections impact upon host nutrition through a number of mechanisms including anorexia, chronic blood loss and malabsorption. In light of the nutritional insults arising from single species infection, multiple species infections may have an additive or multiplicative impact on nutrition, especially in childhood.

Growth impairment

Chronic growth stunting is estimated to affect a third of children under five in developing countries (UNICEF, 2004). Infection with STH species contributes significantly to stunting and impaired growth in children living where infection is endemic (Stephenson *et al.* 2000*b*). Although the nutritional consequences of infection are generally most

pronounced in those who harbour the heaviest infections, relatively light worm burdens may also contribute to growth deficits in nutritional vulnerable populations (Stephenson *et al.* 2000*b*; Crompton and Nesheim, 2002). Schistosome infection is also associated with malnutrition and stunting in children, particularly in nutritionally vulnerable populations (Mott, 2004; King, Dickman and Tisch, 2005). Helminth infections are considered to cause and/or aggravate malnutrition through two processes: worm-induced gastrointestinal tract pathophysiology and reduced food intake (Crompton and Nesheim, 2002). For example, *A. lumbricoides* infection causes physiological abnormalities in the small intestine (Tripathy *et al.* 1972), resulting in malabsorption, nutritional deficiency and growth failure (Hlaing, 1993). *T. trichiura* does not directly

affect dietary nutrient absorption, but can result in chronic colitis and impaired growth (Bundy and Cooper, 1989). In contrast, the involvement of malaria in undernutrition remains unclear, although some role appears likely from observations made during malaria control programmes (McGregor *et al.* 1956; Bradley-Moore *et al.* 1985; Snow *et al.* 1997; ter Kuile *et al.* 2003). Malaria may contribute to malnutrition through a number of mechanisms triggered by augmented levels of inflammatory cytokines, including anorexia and the induction of a catabolic response (Tracey and Cerami, 1992; Nyakeriga *et al.* 2004). Intestinal inflammation is also suggested to be a mechanism contributing to poor growth in hookworm and schistosome infections (Stephenson *et al.* 2000b).

Studies investigating the nutritional consequences of multiple helminth species are noticeably lacking. An early study conducted in Tanzania identified significant correlation between malnutrition and multiple infection with *A. lumbricoides*, hookworm and *S. haematobium* (Meakins, Harland and Carswell, 1981), although no appropriate adjustment for potentially confounding factors was undertaken. A more recent study of Tanzanian school children, which adjusted for age and sex but included no measures of socioeconomic status or nutritional intake, found no evidence that individuals with multiple species infections were at increased risk of morbidity compared to individuals with single species infections (Booth *et al.* 1998b). This may be attributable to an observed low prevalence of co-infection, with very few individuals harbouring heavier infections typically associated with increased morbidity. In Brazil, a cross-sectional study, which appropriately adjusted for calorific intake, socio-economic status and demographic factors, revealed that whilst no significant association existed for each species individually, children harbouring concomitant infection with *A. lumbricoides* and *T. trichiura* were at increased risk of stunting (Saldiva *et al.* 1999).

A major limitation of cross-sectional studies is that associations can operate in both directions and it is difficult to determine whether polyparasitism precedes or determines nutritional deficits (Koski and Scott, 2001). Importantly, chronic and acute undernutrition is a common cause of secondary immune deficiency (Koski, Su and Scott, 1999; Ing *et al.* 2000; Schaible and Kaufman, 2007). For example, altered architecture of the gut mucosa can result in compromised immune defence at the epithelial barrier (Beisel, 1996; Koski *et al.* 1999) which could theoretically increase susceptibility to intestinal helminth infection. Similarly, in murine models of nematode infection protein malnutrition subdues the Th2 cytokine response important in control of helminth infection (Ing *et al.* 2000). Although there is some evidence from experimental studies in livestock and rodent models that well-nourished animals

resist intestinal parasitism better than those less adequately fed, no evidence of a cause-effect relationship between malnutrition and intestinal helminth infections has emerged from epidemiological controlled intervention studies in humans (see Koski and Scott, 2001 for a review).

Surprisingly, no studies have investigated directly the nutritional impacts of *Plasmodium*-helminth co-infections. The effects of malaria on nutritional status are generally greater among children under two years (McGregor *et al.* 1956; Friedman *et al.* 2003; Nyakeriga *et al.* 2004). As incidence of malaria is often still rising in children over two years, this is unlikely to simply reflect lower burden of malaria in older children and may reflect age-specific differences in immune responsiveness profiles or the fact that linear growth is maximal in younger children (Nyakeriga *et al.* 2004). Levels of helminth infections are generally low in young children, resulting in few *Plasmodium*-helminth co-infections, such that even if nutritional insults arising from *Plasmodium*-helminth co-infection occur they are likely to be of less public health importance.

Micronutrient deficiencies

The high iron demands of infant growth and pregnancy means that anaemia is most common and severe among children and pregnant women. These are also the individuals most likely to harbour multiple parasite infections. Malaria, hookworm, schistosomiasis and, to a lesser extent, *T. trichiura* are associated with iron loss and imbalances predisposing to anaemia among nutritionally vulnerable populations, with risk being closely correlated with infection intensity (Stephenson *et al.* 1985; Stoltzfus *et al.* 1997b; Menendez, Fleming and Alonso, 2000; Stephenson *et al.* 2000a; Hotez *et al.* 2004; Friedman, Kanzaria and McGarvey, 2005). Malaria contributes to reduced haemoglobin levels through a number of mechanisms, principally by increasing rates of destruction and removal of red blood cells (RBCs) and through 'anaemia of inflammation', in which pro-inflammatory mediators disrupt RBC production and longevity, and affect iron absorption and metabolism (Menendez *et al.* 2000; McDevitt *et al.* 2004). By contrast, hookworm primarily causes anaemia through the process of intestinal blood loss (Hotez *et al.* 2004). Several mechanisms have been proposed for schistosome-induced anaemia, including chronic blood-loss as a result of egg migration, sequestration of red blood cells in those with splenomegaly and anaemia of inflammation (Friedman *et al.* 2005). Although only a feature of very heavy *T. trichiura* infection, Trichuris dysentery syndrome (TDS) can also cause considerable blood-loss, thus contributing to iron loss and subsequent anaemia. (Stephenson *et al.* 2000a) Most studies in school-aged children have typically found

that hookworm contributes more to anaemia than schistosomiasis or malaria (Stephenson *et al.* 1985; Stoltzfus *et al.* 1997c).

Given the distinct mechanisms by which *P. falciparum*, soil-transmitted helminths and schistosomes reduce haemoglobin levels, it is probable that these parasites would be additive in their ability to cause anaemia. Although the impact of single species helminth infection on the risk of anaemia are well documented, few studies have to date investigated the effect of multiple helminth infection on anaemia. A recent study among Filipino school children showed that even low-intensity concurrent infections were associated with an increased risk of anaemia relative to children with no infection, although significance was only marginal after adjusting for age, sex, socioeconomic status and anthropometric indices (Ezeamama *et al.* 2005). In particular, *S. japonicum* and hookworm (*Necator americanus*) were observed to play a significant and intensity-dependent role in the association between multiple infection and anaemia (Ezeamama *et al.* 2005). A similar study among rural Brazilian school children found the risk of anaemia among children infected with *S. mansoni* and two or three STH infections was significantly higher than those harbouring single STH species, although those with multiple STH infection in absence of *S. mansoni* were not at increased risk (Brito *et al.* 2006). This study also collected data on calorific intake, revealing infection status to be important only in those with inadequate iron intake, thus emphasising that the consequences of infection are greatest in nutritionally vulnerable populations. There is a limitation in analyses of this type since they were secondary analyses of previously collected data and substantially over-sampled those with schistosome infections. In particular, the Brazilian study did not include individuals singly infected with schistosomiasis; therefore, although those with schistosomiasis co-infection did have increased risk of anaemia it cannot be ruled out that this is simply a result of *S. mansoni* mono-infection. Another limitation in such cross-sectional studies, as highlighted above, is uncertainty in the directionality of causality.

It is conceivable that the combined presence of *P. falciparum* and helminth species might interact to further increase the risk of anaemia. In particular, although malarial anaemia is more typically associated with the acute clinical state, there is evidence to suggest that asymptomatic malaria (typically observed in older children who are also at higher risk of helminth infection) may contribute substantially to anaemia in endemic regions (Kurtzhals *et al.* 1999; Korenromp *et al.* 2004). A hospital-based study in Nigeria revealed that pregnant women infected with both malaria and STH infection had lower haemoglobin concentration than women with *Plasmodium* infection alone, although this result was

not statistically significant (Egwyunenga *et al.* 2001). In Cameroon, school children infected exclusively with *P. falciparum* had greater levels of anaemia compared with children uninfected, those with co-infections, and those harbouring only helminths (Nkuo-Akenji *et al.* 2006). Re-analysing available data from Kenya, Brooker *et al.* (2007) found no significant difference amongst mono- and co-infected pregnant women, but found statistical evidence of an additive impact of *Plasmodium*-hookworm co-infection on anaemia in pre-school and school-aged children. Although these initial results are suggestive of an additive impact of *P. falciparum*-helminth co-infection on anaemia in certain age groups, there is substantial potential for confounding by socio-economic, genetic and nutritional factors.

A. lumbricoides has been associated with vitamin A and C deficiency (Hlaing, 1993), possibly by inhibiting intestinal absorption (Tripathy *et al.* 1972; Mahalanabis *et al.* 1979). Vitamin A is essential for maintaining eye health, growth and immune function (Sommer and West, 1996), and its deficiency is estimated to contribute substantially to the worldwide burden of malaria and diarrhoeal diseases, poor birth outcomes and maternal and infant mortality (WHO, 2002a). In addition, there is clear evidence of an association between serum levels of vitamin A and anaemia (Hodges, Sauberlich and Canham, 1978; Suharno *et al.* 1993); although the precise mechanism has yet to be confirmed, it has been suggested that vitamin A plays a role in the haemoglobin synthetic pathway (Bloem *et al.* 1990). It is therefore possible that *A. lumbricoides*-associated vitamin A deficiency may further increase the risk of anaemia in those co-infected with malaria and other helminth species. Few studies have addressed this hypothesis, but a cross-sectional survey of Bangladeshi school children found no evidence of such an interaction (Persson *et al.* 2000).

A major limitation of parasite-haematological studies is the use of a single iron status indicator, namely haemoglobin, which is often measured for practical reasons but is confounded by a number of factors including biological variation and other micronutrient deficiencies (Gibson, 2005). Given the complexity of mechanisms through which mild and asymptomatic malaria infection are thought to contribute to anaemia, the validity of alternative iron status indicators such as serum ferritin, serum transferrin receptor and erythrocyte protoporphyrin in individuals with asymptomatic malaria remains uncertain (Das, Thurman and Das, 1997; Stoltzfus *et al.* 1997a; Odunukwe *et al.* 2000; Asobayire *et al.* 2001; Menendez *et al.* 2001; Verhoef *et al.* 2001). Stoltzfus *et al.* (2000) suggested that both hookworm infection and asymptomatic malaria infection may modify the relationship of iron indicators with haemoglobin levels. If we wish to quantify better the impact of polyparasitism on anaemia and iron

deficiency, we need to clarify our understanding of the reliability of iron status indicators for children living in areas endemic for multiple parasitic species.

IMPACT ON ORGAN PATHOLOGY

Childhood infection with *S. mansoni* and *S. japonicum* is commonly associated with hepatomegaly and splenomegaly, a result of eosinophilic inflammatory and granulomatous reactions against parasite eggs trapped in host tissues (Vennervald and Dunne, 2004; Gryseels *et al.* 2006). Aberrant immune response to repeated or chronic *P. falciparum* malarial infection is also an important cause of hepatomegaly and splenomegaly in the tropics (Grobusch and Kremsner, 2005). As well as acting as an antecedent of severe disease in young and middle-aged adults with long-standing intense schistosome infection (Gryseels *et al.* 2006), splenomegaly is associated with anaemia, possibly because sequestration of RBCs in the spleen reduces the effective circulating mass of RBCs (Abdel-Salam *et al.* 1986; Kloos *et al.* 1997).

It is possible therefore that co-infections with *Schistosoma* and *Plasmodium* species may have synergistic effects on organ pathology. Early epidemiological studies suggest that chronic exposure to malaria and infection with schistosomes may interact in childhood hepatosplenomegaly (Whittle *et al.* 1969; Fulford *et al.* 1991). In a later study in Kenya, children with the highest levels of anti-*P. falciparum* immunoglobulin (Ig)G3 and highest *S. mansoni* egg counts were significantly more likely to present with splenomegaly (Booth *et al.* 2004b). After regular mollusciciding of the source of infection and praziquantel treatment for schistosomiasis, children living in areas with highest exposure to malaria showed the slowest rates of both splenomegaly and hepatomegaly regression, further suggesting that malaria co-infection exacerbates schistosomiasis-associated hepatosplenomegaly; although it should be noted that it was not possible to control for self-treatment for malaria during the follow-up period (Booth *et al.* 2004a). Due to the seasonality of malaria transmission in the region, these studies had to rely on IgG3 responses to *P. falciparum* schizont antigen as a proxy for exposure to malaria infection as very few cohort members presented with blood-smear detectable parasitaemia. Another Kenyan study noted that hepatosplenic children had significantly higher levels of anti-*S. mansoni* and anti-*P. falciparum* antibodies when compared with non-hepatosplenic children, suggesting that past or chronic exposure to malaria may influence the development of hepatosplenomegaly in *S. mansoni*-infected children (Mwatha *et al.* 2003). Likewise, a cross-sectional study of children living in this region revealed that whilst children chronically exposed to malaria (again measured using Pfs-IgG3 levels) but without *S. mansoni* infection can have

hepatosplenomegaly, even light *S. mansoni* infections can exacerbate in an intensity-dependent manner. Although the authors do note that poor model fit suggests some other environmental agent in the study area to be contributing to hepatosplenomegaly in these children, the results do suggest that concurrent chronic exposure to both infections can have an additive or synergistic effect on childhood morbidity (Wilson *et al.* 2007). However, the possibility that hepatosplenomegaly, or the genetic propensity to develop this condition, may in some way influence immune responses to infection cannot be excluded.

S. haematobium is not usually associated with hepatosplenomegaly. It has been postulated however that it may play a role in the causality of organ pathology (Friis *et al.* 1996). For example, in a study among schoolchildren in Zimbabwe although neither *S. mansoni* nor *S. haematobium* were associated with spleen size, *S. mansoni* had an effect on liver size only in the presence, but not in the absence, of *S. haematobium* co-infection (Friis *et al.* 1996). By contrast, in a study in western Sudan, children with *S. haematobium* appeared to be protected from malarial splenomegaly (Friis *et al.* 2000). The precise mechanisms of the impact of such co-infection on organ pathology remains speculative since no relevant studies have been undertaken to date.

QUANTIFYING THE DISEASE BURDEN OF POLYPARASITISM

Clearly polyparasitism is widespread throughout the tropics and sub-tropics, although accurately estimating the magnitude of the problem remains a major epidemiological challenge. Recent analysis combining climate-based risk maps and demographic surfaces suggest that in sub-Saharan Africa alone, between 25 and 45 million school-aged children live in areas of co-endemicity of *P. falciparum* and different STH species (Brooker *et al.* 2007). This type of analysis is obviously crude since it involves estimating only co-distribution and not co-infection. It nonetheless is based on objective and quantitative assessment. The potential burden of polyparasitism with other species and in different regions of the world remains unknown.

A recent approach to assessing the global burden of disease has been adopted by the Global Burden of Disease (GBD) study which employs the metric of disability-adjusted life years (DALYs) (Murray and Lopez, 1994, 1996; Mathers, Lopez and Murray, 2006). This is a summary measure of both mortality and morbidity which combines in a single indicator, years of life lost due to premature death and years of life lived with a disability, using a disability weighting scheme in which normal functioning has a weight of 0 and 1 corresponds to death. Globally, malaria is estimated to cause 46 million DALYs, STH species 2.9 million, and schistosomiasis 1.7 million (WHO,

2004); although several researchers have questioned the accuracy of disease burden estimates due to chronic parasitic infections (King *et al.* 2005; Engels and Savioli, 2006; Hotez *et al.* 2006). The estimation of DALYs adopts a 'one death, one disease approach', in which mortality and loss of health is disaggregated into specific diseases as defined by the diagnostic categories of the International Classification of Diseases (ICD). Owing to the estimation methods employed, disability states in DALYs cannot take into account co-morbid conditions, and there is no provision to consider all conditions simultaneously occurring within the same individual or population (Gold, Stevenson and Fryback, 2002). For example, GBD analysis separates specific causes of disease from their associated morbidities, such as anaemia and undernutrition (Mathers *et al.* 2006). The current disease burden framework is therefore unable to assess the health impact of polyparasitism and this is a particular weakness of current DALY estimates. We suggest therefore that the public health impact of polyparasitism is currently underestimated.

There is a number of reasons why the burden of polyparasitism may not be adequately captured by the current disease burden calculations. First, as our review highlights, there are few direct estimates of the nutritional and pathological sequelae of polyparasitism. It is therefore both surprising and unsatisfactory that the health consequences of polyparasitism have to date received so little research effort. Second, because of the interacting complexity of contributing factors (Fig. 1), it is difficult to disentangle adequately the effects of single and multiple species infections. Though plausible mechanisms exist, confounding by socio-economic, demographic and immunological variables in observed associations remains a major challenge in research studies. Third, there is a lack of systematic and comparable information on the impact of polyparasitism among different age groups and in different epidemiological and nutritional settings. Available data indicate that the impact of polyparasitism may be substantially greater in certain populations than in others. Finally, much of the morbidity of parasitic infections remains insidious and indirect, for example, societal consequences of cognitive impairment arising from helminth infections and malaria (Drake and Bundy, 2001; Kihara, Carter and Newton, 2006). Such non-health consequences of polyparasitism may have greater public health relevance than the direct nutritional and pathological sequelae in individuals.

A FUTURE RESEARCH AGENDA

While it has been convenient for researchers to investigate the epidemiology and health consequences of parasite species in isolation, the majority of infections in the complex and invariably messy reality

of the developing world typically involves multiple species. Despite considerable recent advances in our epidemiological understanding of polyparasitism, the present review highlights that our scientific understanding of the public health significance of polyparasitism is currently inadequate. Available evidence is typically based on retrospective, secondary analyses of previously collected data, which therefore lack sufficient statistical power and are invariably subject to confounding due to socio-economic or dietary intake factors. Purposively designed studies of the health impact of polyparasitism are clearly necessary.

The clearest evidence of the health impacts of polyparasitism can be provided by well-designed intervention studies. Because the most intense helminth infections occur at school age (Bundy, 1988; Bundy and Medley, 1992), and infection can have adverse consequences for health and development (Hotez *et al.* 2006), school-age children are a natural target for such studies. The most robust evidence can be provided by factorial, randomised controlled trials, whereby different interventions are randomised between study populations. However, given that the public health case for de-worming is already well established, withholding treatment from control groups raises ethical issues. The recently launched studies of intermittent preventative treatment (IPT) for malaria in school-aged children (in which curative treatment doses of sulphadoxine-pyrimethamine (SP) are delivered to children every term during the school year, regardless of infection status) can potentially be combined with de-worming to provide an alternative platform to examine the consequences of co-infection on child health (Brooker *et al.* 2007). Another opportunity would be therefore to assess whether combined de-worming and malaria control has a greater health impact than programmes providing de-worming alone.

A limitation of such intervention studies is that, given the possibly irreparable damage of undernutrition on children's cognitive and physical development, there is a risk that they underestimate the impact of polyparasitism. Additional insight can be ascertained from the application of attributable fraction methods (Booth, 1998). For example, chronic morbidity such as bladder lesions and hepatosplenomegaly may take weeks or months to resolve after treatment, during which time some individuals are inevitably being reinfected. In this scenario, detailed cross-sectional surveys in different epidemiological settings and estimation of attributable fractions may prove informative. Given the problems of proving directionality in such study designs, adequate control for socioeconomic, nutritional and genetic confounding is essential.

But why should we study the health impact of polyparasitism, given that we know already that helminths and *Plasmodium* spp. contribute to

malnutrition and ill health, and that cost-effective interventions already exist? We argue that in a world of limited resources for disease control programmes, determining the health impact of polyparasitism is vital to the rational design of control programmes (for a discussion of the issues see review by Brooker *et al.* 2007). In particular, it is important to prioritise the most cost-effective interventions in areas where interventions are most needed and will produce the greatest benefits. For example, in order to reduce rates of maternal anaemia (Shulman *et al.* 1999) and malaria morbidity (Rogerson *et al.* 2000; Newman *et al.* 2003) IPT with SP is currently recommended for control of malaria in pregnancy (WHO, 2002*b*). In hookworm or schistosomiasis endemic areas, it will be important to co-administer anthelmintics (Brooker *et al.* 2007). We suggest that different interventions are likely to have health impacts and cost-effectiveness balances that may vary under different conditions of polyparasitism and this represents an important public health reason to investigate further the consequences of polyparasitism.

CONCLUSIONS

The health consequences of polyparasitism in humans are poorly understood at present. Unravelling the complexity of the processes involved in the messy reality of human polyparasitism is extremely challenging and considerable effort is required to improve our basic knowledge. This will necessitate the systematic investigation of the relative impact of single and multiple species infection, and a very considerable research effort evaluating integrated disease control programmes. Such effort will not be straightforward and will require careful study design, especially in our rapidly changing world in the face of widespread up-scaling of available interventions. As such interventions reduce the intensity of parasite infections it is likely that the health consequences of multiple low-grade infections will become more important, especially among vulnerable populations. We hope that the parasitological research community will grasp the current opportunity to investigate the complexity of human polyparasitism further.

ACKNOWLEDGEMENTS

RP is supported by a Medical Research Council DTA-funded studentship and SB is supported by a Wellcome Trust Career Development Fellowship (081673).

REFERENCES

- Abdel-Salam, E., Abdel Khalik, A., Abdel-Meguid, A., Barakat, W. and Mahmoud, A. A.** (1986). Association of HLA class I antigens (A1, B5, B8 and CW2) with disease manifestations and infection in human schistosomiasis mansoni in Egypt. *Tissue Antigens* **27**, 142–146.
- Anderson, R. M. and May, R. M.** (1991). *Infectious Diseases of Humans: Dynamics and Control*. Oxford: Oxford University Press, 374–429.
- Asobayire, F. S., Adou, P., Davidsson, L., Cook, J. D. and Hurrell, R. F.** (2001). Prevalence of iron deficiency with and without concurrent anemia in population groups with high prevalences of malaria and other infections: a study in Cote d'Ivoire. *American Journal of Clinical Nutrition* **74**, 776–782.
- Beisel, W. R.** (1996). Nutrition in pediatric HIV infection: Setting the research agenda. Nutrition and immune function: Overview. *Journal of Nutrition* **126**, 2611–2615.
- Bloem, M. W., Wedel, M., Van Agtmaal, E. J., Speek, A. J., Soawakontha, S. and Schreurs, W. H. P.** (1990). Vitamin A intervention: short term effects of a single oral massive dose on iron metabolism. *American Journal of Clinical Nutrition* **51**, 76–79.
- Boivin, M. J. and Giordani, B.** (1993). Improvements in cognitive performance for schoolchildren in Zaire, Africa, following an iron supplement and treatment for intestinal parasites. *Journal of Pediatric Psychology* **18**, 249–264.
- Boivin, M. J., Giordani, B., Ndanga, K., Maky, M. M., Manzeki, K. M., Ngunu, N. and Muamba, K.** (1993). Effects of treatment for intestinal parasites and malaria on the cognitive abilities of schoolchildren in Zaire, Africa. *Health Psychology* **12**, 220–226.
- Booth, M.** (1998). The application of attributable risk analysis in helminth epidemiology. *Parasitology Today* **14**, 497–500.
- Booth, M. and Bundy, D. A.** (1995). Estimating the number of multiple-species geohelminth infections in human communities. *Parasitology* **111**, 645–653.
- Booth, M., Bundy, D. A., Albonico, M., Chwaya, H. M., Alawi, K. S. and Savioli, L.** (1998*a*). Associations among multiple geohelminth species infections in schoolchildren from Pemba Island. *Parasitology* **116**, 85–93.
- Booth, M., Mayombana, C. and Kilima, P.** (1998*b*). The population biology and epidemiology of schistosome and geohelminth infections among schoolchildren in Tanzania. *Transactions of the Royal Society of Tropical Medicine and Hygiene* **92**, 491–495.
- Booth, M., Vennervald, B. J., Butterworth, A. E., Kariuki, H. C., Amaganga, C., Kimani, G., Mwatha, J. K., Otedo, A., Ouma, J. H. and Dunne, D. W.** (2004*a*). Exposure to malaria affects the regression of hepatosplenomegaly after treatment for *Schistosoma mansoni* infection in Kenyan children. *BMC Medicine* **2**, 36.
- Booth, M., Vennervald, B. J., Kenty, L., Butterworth, A. E., Kariuki, H. C., Kadzo, H., Ileri, E., Amaganga, C., Kimani, G., Mwatha, J. K., Otedo, A., Ouma, J. H., Muchiri, E. and Dunne, D. W.** (2004*b*). Micro-geographical variation in exposure to *Schistosoma mansoni* and malaria, and exacerbation of splenomegaly in Kenyan school-aged children. *BMC Infectious Diseases* **4**, 13.
- Bradley-Moore, A. M., Greenwood, B. M., Bradley, A. K., Kirkwood, B. R. and Gilles, H. M.** (1985). Malaria chemoprophylaxis with chloroquine in

- young Nigerian children. III. Its effect on nutrition. *Annals of Tropical Medicine and Parasitology* **79**, 575–584.
- Brito, L. L., Barreto, M. L., Silva, R. D. E. C., Assis, A. M., Reis, M. G., Parraga, I. M. and Blanton, R. E.** (2006). Moderate- and low-intensity co-infections by intestinal helminths and *Schistosoma mansoni*. Dietary iron intake, and anemia in Brazilian Children. *American Journal of Tropical Medicine and Hygiene* **75**, 939–944.
- Brooker, S., Akhwale, W. S., Pullan, R., Estambale, B., Clarke, S. and Hotez, P. J.** (2007). Epidemiology of *Plasmodium*-Helminth coinfection in Africa: potential impact on anaemia and prospects for combining control. *American Journal of Tropical Medicine and Hygiene* **77**, 88–98.
- Brooker, S., Miguel, E. A., Moulin, S., Luoba, A. I., Bundy, D. A. and Kremer, M.** (2000). Epidemiology of single and multiple species of helminth infections among school children in Busia District, Kenya. *East African Medicine Journal* **77**, 157–161.
- Buck, A. A., Anderson, R. I. and Macrae, A. A.** (1978). Epidemiology of poly-parasitism. I. Occurrence, frequency and distribution of multiple infections in rural communities in Chad, Peru, Afghanistan, and Zaire. *Tropenmedizin und Parasitologie* **29**, 61–70.
- Bundy, D. A.** (1995). Epidemiology and transmission of helminths. In *Enteric Infections & Intestinal Helminths*. London: Chapman and Hall Medical 5–24.
- Bundy, D. A. and Guyatt, H. L.** (1996). Schools for health: Focus on health, education and the school-age child. *Parasitology Today* **12**, suppl 1–16.
- Bundy, D. A. and Medley, G. F.** (1992). Immuno-epidemiology of human geohelminthiasis: ecological and immunological determinants of worm burden. *Parasitology* **104** (Suppl), S105–S119.
- Bundy, D. A. P.** (1988). Population ecology of intestinal helminth infections in human communities. *Philosophical Transactions of the Royal Society (Series B)* **321**, 405–420.
- Bundy, D. A. P. and Cooper, E. S.** (1989). *Trichuris* and trichuriasis in humans. *Advances in Parasitology* **28**, 107–173.
- Chamone, M., Marques, C. A., Atuncar, G. S., Pereira, A. L. and Pereira, L. H.** (1990). Are there interactions between schistosomes and intestinal nematodes? *Transactions of the Royal Society of Tropical Medicine and Hygiene* **84**, 557–558.
- Crompton, D. W. and Nesheim, M. C.** (2002). Nutritional impact of intestinal helminthiasis during the human life cycle. *Annual Review of Nutrition* **22**, 35–59.
- Das, B. S., Thurnham, D. I. and Das, D. B.** (1997). Influence of malaria on markers of iron status in children: implications for interpreting iron status in malaria-endemic communities. *British Journal of Nutrition* **78**, 751–760.
- Drake, L. J. and Bundy, D. A.** (2001). Multiple helminth infections in children: impact and control. *Parasitology* **122** (Suppl), S73–S81.
- Druilhe, P., Tall, A. and Sokhna, C.** (2005). Worms can worsen malaria: towards a new means to roll back malaria? *Trends in Parasitology* **21**, 359–362.
- Eggunyenga, A. O., Ajayi, J. A., Nmorsi, O. P. and Duhlinska-Popova, D. D.** (2001). *Plasmodium*/intestinal helminth co-infections among pregnant Nigerian women. *Memórias do Instituto Oswaldo Cruz* **96**, 1055–1059.
- Engels, D. and Savioli, L.** (2006). Reconsidering the underestimated burden caused by neglected tropical diseases. *Trends in Parasitology* **22**, 363–366.
- Ezeamama, A. E., Friedman, J. F., Olveda, R. M., Acosta, L. P., Kurtis, J. D., Mor, V. and McGarvey, S. T.** (2005). Functional significance of low-intensity polyparasite helminth infections in anemia. *Journal of Infectious Diseases* **192**, 2160–2170.
- Faulkner, H., Turner, J., Behnke, J., Kamgno, J., Rowlinson, M. C., Bradley, J. E. and Boussinesq, M.** (2005). Associations between filarial and gastrointestinal nematodes. *Transactions of the Royal Society of Tropical Medicine and Hygiene* **99**, 301–312.
- Ferreira, C. S., Ferreira, M. U. and Nogueira, M. R.** (1994). The prevalence of infection by intestinal parasites in an urban slum in Sao Paulo, Brazil. *Journal of Tropical Medicine and Hygiene* **97**, 121–127.
- Fleming, F. M., Brooker, S., Geiger, S. M., Caldas, I. R., Correa-Oliveira, R., Hotez, P. J. and Bethony, J. M.** (2006). Synergistic associations between hookworm and other helminth species in a rural community in Brazil. *Tropical Medicine and International Health* **11**, 56–64.
- Friedman, J. F., Kanzaria, H. K. and McGarvey, S. T.** (2005). Human schistosomiasis and anemia: the relationship and potential mechanisms. *Trends in Parasitology* **21**, 386–392.
- Friedman, J. F., Phillips-Howard, P. A., Hawley, W. A., Terlouw, D. J., Kolczak, M. S., Barber, M., Okello, N., Vulule, J. M., Duggan, C., Nahlen, B. L. and Ter Kuile, F. O.** (2003). Impact of permethrin-treated bed nets on growth, nutritional status, and body composition of primary school children in Western Kenya. *American Journal of Tropical Medicine and Hygiene* **68**, 78–85.
- Friis, H., El Karib, S. A., Sulaiman, S. M., Rahama, A., Magnussen, P. and Mascie-Taylor, C. G.** (2000). Does *Schistosoma haematobium* co-infection reduce the risk of malaria-induced splenomegaly? *Transactions of the Royal Society of Tropical Medicine and Hygiene* **94**, 535–536.
- Friis, H., Ndhlovu, I., Kaondera, K., Franke, D., Vennervald, B. J., Christensen, N. and Doehring, E.** (1996). Ultrasonographic assessment of *Schistosoma mansoni* and *S. haematobium* morbidity in Zimbabwean schoolchildren. *American Journal of Tropical Medicine and Hygiene* **55**, 290–294.
- Fulford, A., Mbugua, G., Ouma, J. H., Kariuki, H. C., Sturrock, R. F. and Butterworth, A. E.** (1991). Differences in the rate of hepatosplenomegaly due to *Schistosoma mansoni* infection between two areas in Machakos District, Kenya. *Transactions of the Royal Society of Tropical Medicine and Hygiene* **85**, 481–488.
- Gibson, R. S.** (2005). Assessment of iron status. In *Principles of Nutritional Assessment*. Oxford University Press, New York, 443–476.

- Gold, M. R., Stevenson, D. and Fryback, D. G.** (2002). HALYS and QALYS and DALYS, Oh My: similarities and differences in summary measures of population Health. *Annual Review of Public Health* **23**, 115–134.
- Grobusch, M. P. and Kreamsner, P. G.** (2005). Uncomplicated malaria. *Current Topics in Microbiology and Immunology* **295**, 83–104.
- Gryseels, B., Polman, K., Clerinx, J. and Kestens, L.** (2006). Human schistosomiasis. *Lancet* **368**, 1106–1118.
- Guyatt, H.** (2000). Do intestinal nematodes affect productivity in adulthood? *Parasitology Today* **16**, 153–158.
- Haas, J. D. and Brownlie, T. T.** (2001). Iron deficiency and reduced work capacity: a critical review of the research to determine a causal relationship. *Journal of Nutrition* **131**, 676S–690S.
- Hartgers, F. C. and Yazdanbakhsh, M.** (2006). Co-infection of helminths and malaria: modulation of the immune responses to malaria. *Parasite Immunology* **28**, 497–506.
- Haswell-Elkins, M. R., Elkins, D. B. and Anderson, R. M.** (1987). Evidence for predisposition in humans to infection with *Ascaris*, hookworm, *Enterobius* and *Trichuris* in a South Indian fishing community. *Parasitology* **95**, 323–337.
- Hlaing, T.** (1993). Ascariasis and childhood malnutrition. *Parasitology* **107** (Suppl), S125–S136.
- Hodges, R. E., Sauberlich, H. E. and Canham, J. E. E. A.** (1978). Hematopoietic studies in Vitamin A deficiency. *American Journal of Clinical Nutrition* **31**, 876–885.
- Holland, C. V., Asaolu, S. O., Crompton, D. W., Stoddart, R. C., MacDonald, R. and Torimiro, S. E.** (1989). The epidemiology of *Ascaris lumbricoides* and other soil-transmitted helminths in primary school children from Ile-Ife, Nigeria. *Parasitology* **99**, 275–285.
- Hotez, P. J., Brooker, S., Bethony, J. M., Bottazzi, M. E., Loukas, A. and Xiao, S.** (2004). Hookworm infection. *New England Journal of Medicine* **351**, 799–807.
- Hotez, P. J., Bundy, D. A. P., Beegle, K., Brooker, S., Drake, L., De Silva, N., Montresor, A., Engels, D., Jukes, M., Chitsulo, L., Chow, J., Laxminarayan, R., Michaud, C., Bethony, J., Oliveira, R., Xiao, S. H., Fenwick, A. and Savioli, L.** (2006). Helminth Infections: soil-transmitted helminth infections and schistosomiasis. In *Disease Control Priorities in Developing Countries* (eds. Jamison, D. T., Breman, J. G., Measham, A. R., Alleyne, G., Claeson, M., Evans, D. B., Jha, P., Mills, A. and Musgrove, P.), pp. 467–497. Oxford University Press, New York.
- Howard, S. C., Donnelly, C. A. and Chan, M. S.** (2001). Methods for estimation of associations between multiple species parasite infections. *Parasitology* **122**, 233–251.
- Howard, S. C., Donnelly, C. A., Kabatereine, N. B., Ratard, R. C. and Brooker, S.** (2002). Spatial and intensity-dependent variations in associations between multiple species helminth infections. *Acta Tropica* **83**, 141–149.
- Ing, R., Su, Z., Scott, M. E. and Koski, K. G.** (2000). Suppressed T helper 2 immunity and prolonged survival of a nematode parasite in protein-malnourished mice. *Proceedings of the National Academy of Sciences, USA* **97**, 7078–7083.
- Keiser, J., N'goran, E. K., Singer, B. H., Lengeler, C., Tanner, M. and Utzinger, J.** (2002). Association between *Schistosoma mansoni* and hookworm infections among schoolchildren in Cote d'Ivoire. *Acta Tropica* **84**, 31–41.
- Kightlinger, L. K., Seed, J. R. and Kightlinger, M. B.** (1995). The epidemiology of *Ascaris lumbricoides*, *Trichuris trichiura*, and hookworm in children in the Ranomafana rainforest, Madagascar. *Journal of Parasitology* **81**, 159–169.
- Kihara, M., Carter, J. A. and Newton, C. R.** (2006). The effect of *Plasmodium falciparum* on cognition: a systematic review. *Tropical Medicine and International Health* **11**, 386–397.
- King, C. H., Dickman, K. and Tisch, D. J.** (2005). Reassessment of the cost of chronic helminth infection: a meta-analysis of disability-related outcomes in endemic schistosomiasis. *Lancet* **365**, 1561–1569.
- Kloos, H., Fulford, A. J., Butterworth, A. E., Sturrock, R. F., Ouma, J. H., Kariuki, H. C., Thiongo, F. W., Dalton, P. R. and Klumpp, R. K.** (1997). Spatial patterns of human water contact and *Schistosoma mansoni* transmission and infection in four rural areas in Machakos District, Kenya. *Social Science and Medicine* **44**, 949–968.
- Korenromp, E. L., Armstrong-Schellenberg, J. R., Williams, B. G., Nahlen, B. L. and Snow, R. W.** (2004). Impact of malaria control on childhood anaemia in Africa – a quantitative review. *Tropical Medicine and International Health* **9**, 1050–1065.
- Koski, K. G. and Scott, M. E.** (2001). Gastrointestinal nematodes, nutrition and immunity: breaking the negative spiral. *Annual Review of Nutrition* **21**, 297–321.
- Koski, K. G., Su, Z. and Scott, M. E.** (1999). Energy deficits suppress both systemic and gut immunity during infection. *Biochemical and Biophysics Research Communications* **264**, 796–801.
- Kurtzhals, J. A., Addae, M. M., Akanmori, B. D., Dunyo, S., Koram, K. A., Appawu, M. A., Nkrumah, F. K. and Hviid, L.** (1999). Anaemia caused by asymptomatic *Plasmodium falciparum* infection in semi-immune African schoolchildren. *Transactions of the Royal Society of Tropical Medicine and Hygiene* **93**, 623–627.
- Mahalanabis, D., Simpson, T. W., Chakraborty, M. L., Ganguli, C., Bhattacharjee, A. K. and Mukherjee, K. L.** (1979). Malabsorption of water miscible vitamin A in children with giardiasis and ascariasis. *American Journal of Clinical Nutrition* **32**, 313–318.
- Mathers, C. D., Lopez, A. D. and Murray, C. J. L.** (2006). *Global Burden of Disease and Risk Factors*. New York: Oxford University Press.
- McDevitt, M. A., Xie, J., Gordeuk, V. and Bucala, R.** (2004). The anemia of malaria infection: role of inflammatory cytokines. *Current Hematology Reports* **3**, 97–106.
- McGregor, I. A., Gilles, H. M., Walters, J. H., Davies, A. H. and Pearson, F. A.** (1956). Effects of heavy and repleted malarial infections on Gambian

- infants and children. Effects of erythrocyte parasitization. *British Medical Journal* **2**, 686–692.
- Meakins, R. H., Harland, P. S. and Carswell, F.** (1981). A preliminary survey of malnutrition and helminthiasis among schoolchildren in one mountain and one lowland ujamaa village in Northern Tanzania. *Transactions of the Royal Society of Tropical Medicine and Hygiene* **75**, 731–735.
- Menendez, C., Fleming, A. F. and Alonso, P. L.** (2000). Malaria-related anaemia. *Parasitology Today* **16**, 469–476.
- Menendez, C., Quinto, L. L., Kahigwa, E., Alvarez, L., Fernandez, R., Gimenez, N., Schellenberg, D., Aponte, J. J., Tanner, M. and Alonso, P. L.** (2001). Effect of malaria on soluble transferrin receptor levels in Tanzanian infants. *American Journal of Tropical Medicine and Hygiene* **65**, 138–142.
- Mott, K. E.** (2004). Schistosomiasis. In *The Global Epidemiology of Infectious Diseases* (eds. Murray, C. J. L., Lopez, A. D. and Mathers, C. D.), WHO: Geneva.
- Murray, C. J. and Lopez, A. D.** (1994). Quantifying disability: data, methods and results. *Bulletin of the World Health Organisation* **72**, 481–494.
- Murray, C. J. and Lopez, A. D.** (1996). Evidence-based health policy – lessons from the Global Burden of Disease Study. *Science* **274**, 740–743.
- Mwangi, T. W., Bethony, J. M. and Brooker, S.** (2006). Malaria and helminth interactions in humans: an epidemiological viewpoint. *Annals of Tropical Medicine and Parasitology* **100**, 551–570.
- Mwatha, J. K., Jones, F. M., Mohamed, G., Naus, C. W., Riley, E. M., Butterworth, A. E., Kimani, G., Kariuki, C. H., Ouma, J. H., Koech, D. and Dunne, D. W.** (2003). Associations between anti-*Schistosoma mansoni* and anti-*Plasmodium falciparum* antibody responses and hepatosplenomegaly, in Kenyan schoolchildren. *Journal of Infectious Disease* **187**, 1337–1341.
- Nacher, M.** (2004). Interactions between worm infections and malaria. *Clinical Reviews in Allergy and Immunology* **26**, 85–92.
- Needham, C., Kim, H. T., Hoa, N. V., Cong, L. D., Michael, E., Drake, L., Hall, A. and Bundy, D. A.** (1998). Epidemiology of soil-transmitted nematode infections in Ha Nam Province, Vietnam. *Tropical Medicine and International Health* **3**, 904–912.
- Newman, R. D., Parise, M. E., Slutsker, L., Nahlen, B. and Steketee, R. W.** (2003). Safety, efficacy and determinants of effectiveness of antimalarial drugs during pregnancy: implications for prevention programmes in *Plasmodium falciparum*-endemic sub-Saharan Africa. *Tropical Medicine and International Health* **8**, 488–506.
- Nkuo-Akenji, T. K., Chi, P. C., Cho, J. F., Ndamukong, K. K. J. and Sumbele, I.** (2006). Malaria and helminth co-infection in children living in a malaria endemic setting of Mount Cameroon and predictors of anaemia. *Journal of Parasitology* **92**, 1191–1195.
- Nyakeriga, A. M., Troye-Blomberg, M., Chemtai, A. K., Marsh, K. and Williams, T. N.** (2004). Malaria and nutritional status in children living on the coast of Kenya. *American Journal of Clinical Nutrition* **80**, 1604–1610.
- Odunukwe, N. N., Salako, L. A., Okany, C. and Ibrahim, M. M.** (2000). Serum ferritin and other haematological measurements in apparently healthy adults with malaria parasitaemia in Lagos, Nigeria. *Tropical Medicine and International Health* **5**, 582–586.
- Persson, V., Ahmed, F., Gebre-Medhin, M. and Greiner, T.** (2000). Relationships between vitamin A, iron status and helminthiasis in Bangladeshi school children. *Public Health Nutrition* **3**, 83–89.
- Rogerson, S. J., Chaluluka, E., Kanjala, M., Mkundika, P., Mhango, C. and Molyneux, M. E.** (2000). Intermittent sulfadoxine-pyrimethamine in pregnancy: effectiveness against malaria morbidity in Blantyre, Malawi, in 1997–99. *Transactions of the Royal Society of Tropical Medicine and Hygiene* **94**, 549–553.
- Saldiva, S. R., Silveira, A. S., Philippi, S. T., Torres, D. M., Mangini, A. C., Dias, R. M., Da Silva, R. M., Buratini, M. N. and Massad, E.** (1999). *Ascaris-Trichuris* association and malnutrition in Brazilian children. *Paediatric and Perinatal Epidemiology* **13**, 89–98.
- Schaible, U. E. and Kaufman, S. H. E.** (2007). Malnutrition and infection: Complex mechanisms and global impacts. *Public Library of Science Medicine* **4**, 806–812.
- Shulman, C. E., Dorman, E. K., Cutts, F., Kawuondo, K., Bulmer, J. N., Peshu, N. and Marsh, K.** (1999). Intermittent sulphadoxine-pyrimethamine to prevent severe anaemia secondary to malaria in pregnancy: a randomised placebo-controlled trial. *Lancet* **353**, 632–636.
- Snow, R. W., Molyneux, C. S., Njeru, E. K., Et Al Omumbo, J., Nevill, C. G., Muniu, E. and Marsh, K.** (1997). The effects of malaria control on nutritional status in infancy. *Acta Tropica* **65**, 1–10.
- Sommer, A. and West, K. P. J.** (1996). *Vitamin A Deficiency: Health, Survival and Vision*. New York: Oxford University Press.
- Stephenson, L. S., Holland, C. V. and Cooper, E. S.** (2000a). The public health significance of *Trichuris trichiura*. *Parasitology* **121** (Suppl), S73–S95.
- Stephenson, L. S., Latham, M. C., Kurz, K. M., Kinoti, S. N., Oduori, M. L. and Crompton, D. W.** (1985). Relationships of *Schistosoma hematobium*, hookworm and malarial infections and metrifonate treatment to hemoglobin level in Kenyan school children. *American Journal of Tropical Medicine and Hygiene* **34**, 519–528.
- Stephenson, L. S., Latham, M. C. and Ottesen, E. A.** (2000b). Malnutrition and parasitic helminth infections. *Parasitology* **121** (Suppl), S23–S38.
- Stoltzfus, R. J., Chwaya, H. M., Albonico, M., Schulze, K. J., Savioli, L. and Tielsch, J. M.** (1997a). Serum ferritin, erythrocyte protoporphyrin and hemoglobin are valid indicators of iron status of school children in a malaria-holoendemic population. *Journal of Nutrition* **127**, 293–298.
- Stoltzfus, R. J., Chwaya, H. M., Montresor, A., Albonico, M., Savioli, L. and Tielsch, J. M.** (2000). Malaria, hookworms and recent fever are related to anemia and iron status indicators in 0- to 5-y old

- Zanzibari children and these relationships change with age. *Journal of Nutrition* **130**, 1724–1733.
- Stoltzfus, R. J., Chwaya, H. M., Tielsch, J. M., Schulze, K. J., Albonico, M. and Savioli, L.** (1997*b*). Epidemiology of iron deficiency anemia in Zanzibari schoolchildren: the importance of hookworms. *American Journal of Clinical Nutrition* **65**, 153–159.
- Stoltzfus, R. J., Dreyfuss, M. L., Chwaya, H. M. and Albonico, M.** (1997*c*). Hookworm control as a strategy to prevent iron deficiency. *Nutrition Reviews* **55**, 223–232.
- Suharno, D., West, C. E., Muhilal Karyadi, D. and Hautvast, G. A. J.** (1993). Supplementation with vitamin A and iron for nutritional anaemia in pregnant women in West Java, Indonesia. *Lancet* **342**, 1325–1328.
- Tchuem Tchuente, L. A., Behnke, J. M., Gilbert, F. S., Southgate, V. R. and Vercruyse, J.** (2003). Polyparasitism with *Schistosoma haematobium* and soil-transmitted helminth infections among school children in Loum, Cameroon. *Tropical Medicine and International Health* **8**, 975–986.
- Ter Kuile, F., Terlouw, D. J. and Kariuki, S., et al.** (2003). Impact of permethrin-treated bed nets on malaria, anemia, and growth in infants in an area of intense perennial malaria transmission in western Kenya. *American Journal of Tropical Medicine and Hygiene* **68**, 68–77.
- Tracey, K. J. and Cerami, A.** (1992). Tumor necrosis factor in the malnutrition (cachexia) of infection and cancer. *American Journal of Tropical Medicine and Hygiene* **47**, 2–7.
- Tripathy, K., Duque, E., Bolanos, O., Lotero, H. and Mayoral, L. G.** (1972). Malabsorption syndrome in ascariasis. *American Journal of Clinical Nutrition* **25**, 1276–1281.
- UNICEF** (2004). The State of the World's Children 2005: childhood under threat. New York: UNICEF.
- Vennervald, B. J. and Dunne, D. W.** (2004). Morbidity in schistosomiasis: an update. *Current Opinions in Infectious Disease* **17**, 439–447.
- Verhoef, H., West, C. E., Ndeto, P., Burema, Y. and Kok, F. J.** (2001). Serum transferrin receptor concentration indicates increased erythropoiesis in Kenyan children with asymptomatic malaria. *American Journal of Clinical Nutrition* **74**, 767–775.
- Walker, S. P., Wachs, T. D., Gardner, J. M., Lozoff, B., Wasserman, G. A., Pollitt, E. and Carter, J. A.** (2006). Child development: risk factors for adverse outcomes in developing countries. *Lancet* **369**, 145–157.
- Whittle, H. C., Gelfand, M., Sampson, E., Purvis, A. and Weber, M.** (1969). Enlarged livers and spleens in an area endemic for malaria and schistosomiasis. *Transactions of the Royal Society of Tropical Medicine and Hygiene* **63**, 353–361.
- WHO** (2002*a*). Quantifying selected major risks to health. In *The World Health Report 2002 – Reducing Risks, Promoting Healthy Life*. World Health Organisation: Geneva.
- WHO** (2002*b*). Report of the WHO informal consultation on the use of Praziquantel during pregnancy/lactation and albendazole/mebendazole in children under 24 months. World Health Organisation: Geneva.
- WHO** (2004). *The Global Epidemiology of Infectious Diseases*, World Health Organisation: Geneva.
- Wilson, S., Vennervald, B. J., Kadzo, H., Ileri, E., Amaganga, C., Booth, M., Kariuki, C., Mwatha, J., Kimani, G., Ouma, J. H., Muchiri, E. and Dunne, D. W.** (2007). Hepatosplenomegaly in Kenyan schoolchildren: exacerbation by concurrent chronic exposure to malaria and *Schistosoma mansoni* infection. *Tropical Medicine and International Health* **12**, 1442–1449.