

2018

The Human Connectome Project 7 Tesla retinotopy dataset: Description and population receptive field analysis

Noah C. Benson
New York University

Keith W. Jamison
University of Minnesota

Michael J. Arcaro
Harvard Medical School

An T. Vu
University of Minnesota

Matthew F. Glasser
Washington University School of Medicine in St. Louis

See next page for additional authors

Follow this and additional works at: https://digitalcommons.wustl.edu/open_access_pubs

Recommended Citation

Benson, Noah C.; Jamison, Keith W.; Arcaro, Michael J.; Vu, An T.; Glasser, Matthew F.; Coalson, Timothy S.; Van Essen, David C.; Yacoub, Essa; Ugurbil, Kamil; Winawer, Jonathan; and Kay, Kendrick, "The Human Connectome Project 7 Tesla retinotopy dataset: Description and population receptive field analysis." *Journal of Vision*. 18,13. 1-22. (2018).
https://digitalcommons.wustl.edu/open_access_pubs/7442

This Open Access Publication is brought to you for free and open access by Digital Commons@Becker. It has been accepted for inclusion in Open Access Publications by an authorized administrator of Digital Commons@Becker. For more information, please contact vanam@wustl.edu.

Authors

Noah C. Benson, Keith W. Jamison, Michael J. Arcaro, An T. Vu, Matthew F. Glasser, Timothy S. Coalson, David C. Van Essen, Essa Yacoub, Kamil Ugurbil, Jonathan Winawer, and Kendrick Kay

The Human Connectome Project 7 Tesla retinotopy dataset: Description and population receptive field analysis

Noah C. Benson

Department of Psychology and Center for Neural Science,
New York University, New York, NY, USA

Center for Magnetic Resonance Research,
Department of Radiology, University of Minnesota,
Minneapolis, MN, USA

Keith W. Jamison

Current address: Department of Radiology,
Weill Cornell Medical College, New York, NY, USA

Michael J. Arcaro

Department of Neurobiology, Harvard Medical School,
Boston, MA, USA

Center for Magnetic Resonance Research,
Department of Radiology, University of Minnesota,
Minneapolis, MN, USA

An T. Vu

Current address: Center for Imaging of Neurodegenerative Diseases,
VA Healthcare System, San Francisco, CA, USA

Department of Neuroscience, Washington University in St. Louis,
St. Louis, MO, USA

**Matthew F.
Glasser**

Department of Radiology, Washington University in St. Louis,
St. Louis, MO, USA

Department of Medicine, St. Luke's Hospital, St. Louis, MO, USA

**Timothy S.
Coalson**

Department of Neuroscience, Washington University in St. Louis,
St. Louis, MO, USA

**David C. Van
Essen**

Department of Neuroscience, Washington University in St. Louis,
St. Louis, MO, USA

Essa Yacoub

Center for Magnetic Resonance Research,
Department of Radiology, University of Minnesota,
Minneapolis, MN, USA

Kamil Ugurbil

Center for Magnetic Resonance Research,
Department of Radiology, University of Minnesota,
Minneapolis, MN, USA

**Jonathan
Winawer***

Department of Psychology and Center for Neural Science,
New York University, New York, NY, USA

Kendrick Kay*

Center for Magnetic Resonance Research,
Department of Radiology, University of Minnesota,
Minneapolis, MN, USA



Citation: Benson, N. C., Jamison, K. W., Arcaro, M. J., Vu, A., Glasser, M. F., Coalson, T. S., Van Essen, D. C., Yacoub, E., Ugurbil, K., Winawer, J., & Kay, K. (2018). The Human Connectome Project 7 Tesla retinotopy dataset: Description and population receptive field analysis. *Journal of Vision*, 18(13):23, 1–22, <https://doi.org/10.1167/18.13.23>.



About a quarter of human cerebral cortex is dedicated mainly to visual processing. The large-scale spatial organization of visual cortex can be measured with functional magnetic resonance imaging (fMRI) while subjects view spatially modulated visual stimuli, also known as “retinotopic mapping.” One of the datasets collected by the Human Connectome Project involved ultrahigh-field (7 Tesla) fMRI retinotopic mapping in 181 healthy young adults (1.6-mm resolution), yielding the largest freely available collection of retinotopy data. Here, we describe the experimental paradigm and the results of model-based analysis of the fMRI data. These results provide estimates of population receptive field position and size. Our analyses include both results from individual subjects as well as results obtained by averaging fMRI time series across subjects at each cortical and subcortical location and then fitting models. Both the group-average and individual-subject results reveal robust signals across much of the brain, including occipital, temporal, parietal, and frontal cortex as well as subcortical areas. The group-average results agree well with previously published parcellations of visual areas. In addition, split-half analyses show strong within-subject reliability, further demonstrating the high quality of the data. We make publicly available the analysis results for individual subjects and the group average, as well as associated stimuli and analysis code. These resources provide an opportunity for studying fine-scale individual variability in cortical and subcortical organization and the properties of high-resolution fMRI. In addition, they provide a set of observations that can be compared with other Human Connectome Project measures acquired in these same participants.

Introduction

The central nervous system maps sensory inputs onto topographically organized representations. In the field of vision, researchers have successfully exploited functional magnetic resonance imaging (fMRI) to noninvasively measure visual field representations (“retinotopy”) in the living human brain (DeYoe et al., 1996; Engel, Glover, & Wandell, 1997; Engel et al., 1994; Sereno et al., 1995). These efforts enable parcellation of visual cortex into distinct maps of the visual field, thereby laying the foundation for detailed investigations of the properties of visual cortex (Abdollahi et al., 2014; Benson, Butt, Brainard, & Aguirre, 2014; Wang, Mruczek, Arcaro, & Kastner, 2015; for a review, see Silver & Kastner, 2009; Tootell, Dale, Sereno, & Malach, 1996; Wandell, Dumoulin, & Brewer, 2007; Wandell & Winawer, 2011).

One of the datasets acquired by the Human Connectome Project (HCP; Ugurbil et al., 2013; Van Essen et al., 2013) was a 7T fMRI retinotopy experiment. This experiment, conducted in 181 healthy

young adults, involved carefully designed stimuli and a substantial amount of fMRI data (30 min, 1,800 time points) acquired at high spatial and temporal resolution (1.6-mm isotropic voxels, 1-s sampling). Although retinotopy is routinely measured in small groups of subjects by individual laboratories in support of various research projects, to date there has not been a large publicly available set of retinotopic measurements.

In this paper, we describe the design of the retinotopy experiment and demonstrate the analyses that we have performed on the fMRI data. We adopt a model-based analysis approach in which a computationally intensive nonlinear optimization is performed to determine parameters of a population receptive field (pRF) model (Dumoulin & Wandell, 2008; Kay, Winawer, Mezer, & Wandell, 2013; Wandell & Winawer, 2015). The results include estimates of pRF position (angle and eccentricity) and pRF size for each “grayordinate” (cortical surface vertex or subcortical voxel), and can be used to define retinotopic maps in the brain. We show that the HCP retinotopy data provide high-quality pRF results in many parts of occipital, temporal, parietal, and frontal cortex. We make freely available these pRF results, as well as associated stimuli and analysis code, at an Open Science Framework website (<https://osf.io/bw9ec/>). The pRF results are also accessible via the Brain Analysis Library of Spatial Maps and Atlases (BALSA) database (<https://balsa.wustl.edu/study/show/9Zkk>; Van Essen et al., 2017), downloadable as “scene files” that can be visualized using Connectome Workbench software (see Supplementary Appendix S1). The neuroscience community at large can now exploit these resources for a variety of purposes, such as developing normative models, mapping new brain areas, analyzing connectomics, characterizing individual differences, and comparing with other suitably aligned datasets (either published or ongoing).

Results

Here we present a summary of the data quality and example results from the HCP 7T Retinotopy Dataset. The stimuli and analyses are detailed in the Methods and are described here very briefly. Each of 181 subjects participated in six 5-min pRF mapping runs. The stimuli comprised colorful object textures windowed through slowly moving apertures (Figure 1A). The colorful object textures were used because they produce high signal-to-noise ratio in higher level visual areas. The apertures were clockwise or counterclockwise rotating wedges, expanding or contracting rings, or bars that swept across the visual field in several directions (Figure 1B).

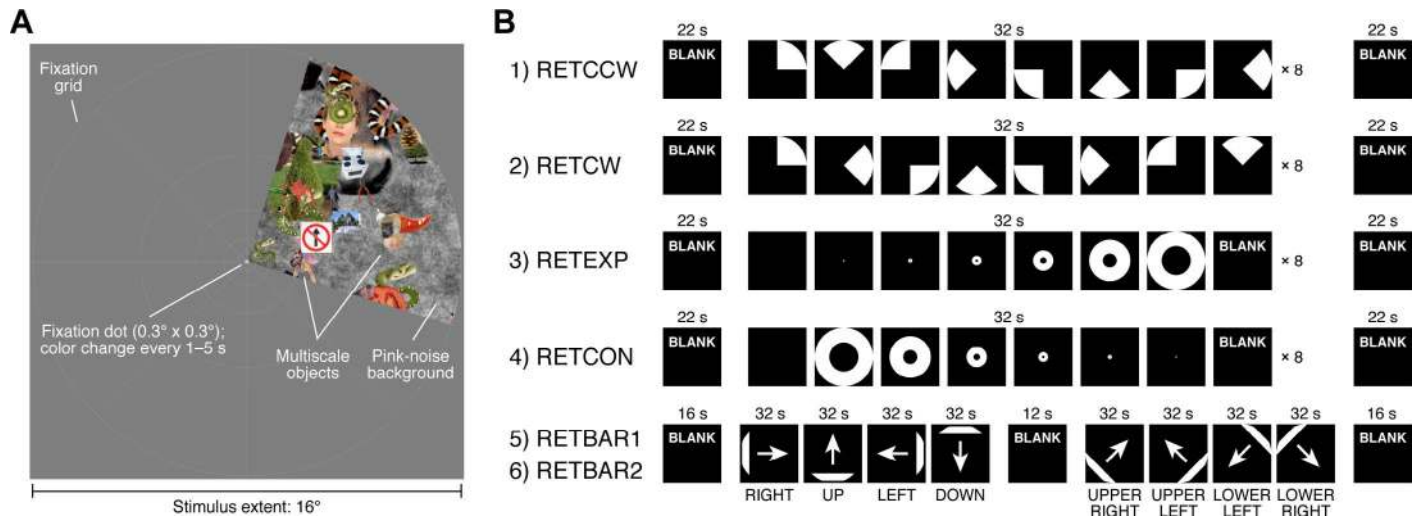


Figure 1. Schematic of experiment. (A) Example stimulus frame. The stimulus consisted of a dynamic colorful texture (composed of objects at multiple scales placed on a pink-noise background) presented within a slowly moving aperture. The aperture and texture were updated at 15 Hz. Subjects were instructed to fixate on a small fixation dot and to press a button whenever its color changed. A fixation grid was provided to aid fixation. (Objects taken from <http://www.cns.nyu.edu/kianilab/Datasets.html>.) (B) Run design. Six 300-s runs were acquired. The temporal structure of the runs is depicted. The first two runs involved a rotating wedge (RETCCW, RETCW), the second two runs involved an expanding or contracting ring (RETEXP, RETCON), and the last two runs involved a moving bar (RETBAR1, RETBAR2).

The resource we provide with this paper is a large set of pRF model solutions. We define the pRF as the region of the visual field within which a visual stimulus elicits an increase in response from the pooled neural activity reflected in fMRI measurements, and can be summarized by the pRF's angle, eccentricity, and size (Figure 2A). The total dataset consists of 181 individual subjects and three group averages. The three group averages reflect two split halves of the subjects as well as all 181 subjects. For each of the 181 individuals and the three group averages, we solved three sets of models: one from the concatenation of all six runs (300 s per run, 1,800 time points), one from the first half of each run (150 s per run, 900 time points), and one from the second half of each run (150 s per run, 900 time points). For each subject or group average and for each of the three types of model fits, we obtained model solutions for the 91,282 cortical vertices and subcortical voxels (grayordinates spaced on average 2 mm apart). Each model solution yielded six numbers: angle, eccentricity, pRF size, and gain describing the pRF model, variance explained by the model, and mean signal intensity. Therefore in total, the pRF model solutions that we provide consist of 184 subjects (181 individuals and 3 group averages) \times 91,282 grayordinates \times 3 model fits \times 6 quantities (Figure 2B). Individual subjects are referred to as S1–S181, the two split-half group averages are referred to as S182 and S183, and the full group average is referred to as S184. The particular form of the pRF model we employed assumes that each grayordinate's pRF is a two-

dimensional (2-D) isotropic Gaussian and that contrast within the pRF is summed sublinearly according to a static power-law nonlinearity with exponent 0.05 (Kay, Winawer, et al. 2013). This can be expressed formally as

$$r(t) = (g \times (S(t) \cdot G)^n) * h(t)$$

where $r(t)$ is the predicted stimulus-related time series, g is a gain parameter, $S(t)$ is the stimulus aperture at time t , G is the 2-D isotropic Gaussian, n is an exponent parameter ($n = 0.05$), and $h(t)$ is a canonical HRF. The subadditive exponent was used to obtain more accurate pRF solutions, but since it was fixed for all models we do not analyze it further. Note that the pRF sizes that we report are not the standard deviation of the 2-D Gaussian G , but rather the standard deviation of the Gaussian that describes the predicted response taking into account the effect of the subadditive exponent. The pRF size can be interpreted as the standard deviation of a 2-D Gaussian that characterizes how a grayordinate responds to point stimuli in the visual field (see Methods for details).

Distinctions between visual responsivity, spatial selectivity, retinotopic organization, and retinotopic maps

The pRF model solutions can be used to make different types of inferences regarding visual response properties. First, if the pRF model successfully explains

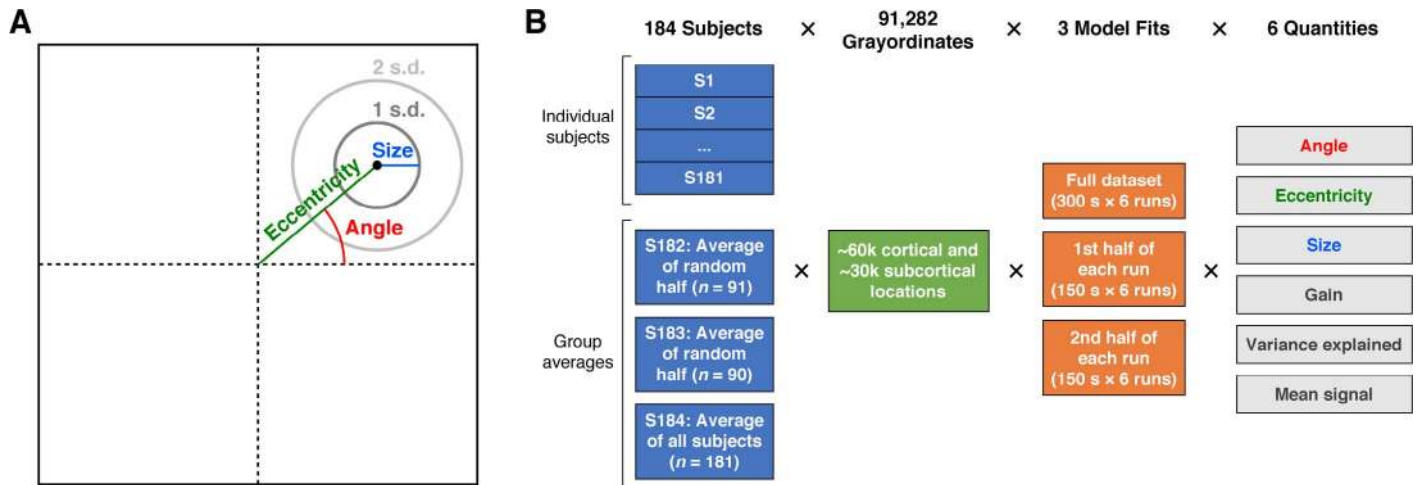


Figure 2. pRF model solutions provided in this resource. (A) pRF parameters. Each pRF is described by a 2-D Gaussian. Angle is the rotation of the center of the Gaussian with respect to the positive x-axis. Eccentricity is the distance between the center of gaze and the center of the Gaussian. Size is defined as 1 SD of the Gaussian. Angle is in units of degrees of polar angle, whereas eccentricity and size are in units of degrees of visual angle. (B) pRF model solutions. We solved pRF models for 181 individual subjects and three group-average pseudosubjects (the average of split halves of the subjects or of all subjects). For each individual subject (S1–S181) and each group average (S182–S184), three types of models were fit: one reflecting the complete set of runs and two reflecting split halves of the runs. Model fits were obtained independently for each of 91,282 grayordinates, yielding six quantities. The total dimensions of the pRF model solutions are 184 subjects × 91,282 grayordinates × 3 model fits × 6 quantities.

variance in the time series data for a grayordinate, this indicates that the grayordinate is *visually responsive*, but does not by itself imply spatial selectivity. For example, if a grayordinate responds with equal strength to a stimulus presented anywhere in the visual field, variance in its time series data can be explained by a pRF model that has very large spatial extent. Second, to be considered *spatially selective*, a grayordinate must not only be visually responsive but also exhibit larger responses to stimuli in some locations compared to others. To help assess spatial selectivity in the HCP dataset, we fit each grayordinate time series with a simple ON/OFF model that is sensitive only to the presence or absence of the stimulus, and compare the variance explained by this model to that explained by the full pRF model (see Supplementary Figure S1). Visual responsivity and spatial selectivity are properties of a single grayordinate. A third type of inference is *retinotopic organization*. This is a stronger claim that describes spatial selectivity at a larger scale: Retinotopic organization implies not only that single brain locations are spatially selective, but also that adjacent brain locations respond to nearby locations in the visual field, thereby producing smooth progressions of polar angle and/or eccentricity. In principle, a brain region might be spatially selective but not retinotopic if the spatial tuning of nearby brain locations is haphazard. In practice, this seems to be uncommon. Finally, a *retinotopic map*, or *visual area*, is generally considered to be a region of the brain that contains a representation of all or most of the contralateral visual

hemifield in each hemisphere. In this paper, we make observations regarding retinotopic organization in the HCP dataset but do not attempt to resolve various ongoing controversies regarding human retinotopic maps (see Discussion).

Group-average results

Cortical data

We first summarize pRF model solutions from group average S184 (which reflects all 181 individual subjects). Group-average results were obtained by taking the time series data from individual subjects (aligned using MSMAll to HCP's average cortical surface space *fs_LR*; see Methods), computing the across-subjects average of the time series data observed at each grayordinate, and then fitting a pRF model to the time series data at each grayordinate. For visualization, we map the results from *fs_LR* space to *fsaverage* space and plot the results on the *fsaverage* surface that has been inflated, spherized, and orthographically projected to a plane (Figure 3). We also provide visualizations of the results on the inflated *fsaverage* surface using dynamic rotating movies (Supplementary Movies S1 through S12).

The effect of averaging the time series data across subjects differs across the cortex, depending on how well pRF parameters match between subjects given the MSMAll alignment. Prior work has shown that the V1–V3 maps have highly regular topography and are

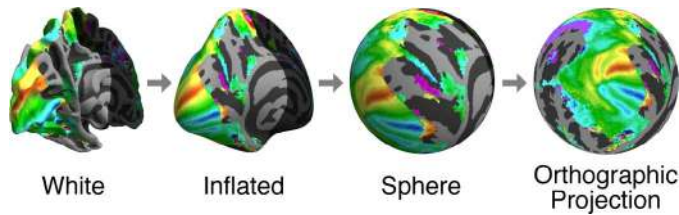


Figure 3. Cortical surface visualization. Cortical surfaces are inflated, warped to a sphere, and rotated with shading discarded to render as an orthographic projection. The regions of the first two surfaces (white, inflated) that are not visible in the final view are darkened. For this schematic, we depict the thresholded group-average angle results (see Figure 4) to provide a visual reference across the transformations.

well aligned to measures of anatomy, such as surface curvature (Benson et al., 2014; Benson et al., 2012; Hinds et al., 2008) and myelination (Abdollahi et al., 2014), and to measures of function such as resting-state connectivity (Bock et al., 2015; Raemaekers et al., 2014). Therefore, these maps are likely to be well aligned across subjects, and averaging will preserve many of the features found in the maps of individual subjects. In particular, the angle and eccentricity maps show clear and expected patterns in V1–V3 (Figure 4, second and third columns), and the variance explained is greater than 75% (cyan regions in the fifth column of Figure 4). As expected, from the lower to upper bank of the calcarine sulcus, there is a smooth progression from the upper vertical meridian through the contralateral horizontal meridian to the lower vertical meridian (blue-cyan-green-yellow-red sweep in the angle color maps). The angle map reverses at the lips of the calcarine sulcus, with mirror-reversed and approximately quarter-field representations in the bordering dorsal and ventral V2 maps and dorsal and ventral V3 maps. As expected, the eccentricity map is in register across V1–V3, progressing from foveal to peripheral representations from near the occipital pole toward medial and anterior directions (blue-magenta-red-yellow-green progression in the eccentricity colormap). The pRF size map has some of the same features of the eccentricity map, exhibiting smaller sizes near the occipital pole and larger sizes in the midperipheral regions of V1–V3. However, in the more peripheral portions of the maps, the size estimates are smaller than predicted from eccentricity due to stimulus edge effects (blue rim around the anterior/medial edge of the V1–V3 maps; see Discussion).

In cortical locations where pRF parameters are variable across subjects (even after registration using MSMAll), the group-average results will preserve less of the detail from individual subjects. Nonetheless, there is a large amount of structure in the group-average results beyond V1–V3, and some clear patterns are evident. The angle maps show the expected

progression from upper to lower field ventral to V3, and from lower to upper field dorsal to V3 (Locations 1 and 2 in Figure 4, top row), consistent with measurements of ventral (Kastner et al., 2001; McKeefry, Watson, Frackowiak, Fong, & Zeki, 1997; Wade, Brewer, Rieger, & Wandell, 2002) and dorsal (Press, Brewer, Dougherty, Wade, & Wandell, 2001; Tootell et al., 1997) occipital cortex. The eccentricity map also shows clear large-scale organization throughout large expanses of parietal and temporal cortex. One feature of the eccentricity maps is multiple distinct, foveal representations: In addition to the foveal representation in V1–V3 at the occipital pole, the eccentricity maps show distinct foveal representations in ventral temporal cortex and parietal cortex (Locations 3 and 4 in Figure 4), consistent with many prior studies (Swisher, Halko, Merabet, McMains, & Somers, 2007; Tootell et al., 1997; Wade et al., 2002; Wandell, Brewer, & Dougherty, 2005). Near both of these distinct foveal representations, there are foveal to peripheral progressions along the lateral to medial direction.

The pRF size map also shows a variety of large-scale patterns. In ventral temporal cortex, there is a small-to-large size gradient from the fusiform gyrus to the collateral sulcus (Locations 5 and 6 in Figure 4). These regions roughly correspond to the locations of face-selective and place-selective cortex (Epstein & Kanwisher, 1998; Grill-Spector & Weiner, 2014; Kanwisher, McDermott, & Chun, 1997). More generally, pRF sizes tend to be larger outside V1–V3, as expected from both single-unit and fMRI measurements (Dumoulin & Wandell, 2008; Maunsell & Van Essen, 1983; Smith, Singh, Williams, & Greenlee, 2001; Tootell et al., 1997). Finally, the variance explained map shows that robust signals occur not only within V1–V3 but also in higher level areas. Variance explained is above 50% in several regions ventral, lateral, and dorsal to the V1–V3 maps, including much of ventral temporal cortex and the intraparietal sulcus (Locations 7 and 8 in Figure 4). Furthermore, for nearly all the cortical locations that survive the variance explained threshold, pRF model parameters are highly reliable. This is confirmed by two types of split-half analysis: First, the data averaged across all 181 subjects (S184) were split into two halves by time, with one dataset comprising time series from the first half of each of the six runs, and a second dataset comprising time series from the second half of each of the six runs. Second, the data were split into two halves by subject, with one dataset reflecting averaging time series data across 91 subjects (S182), and a second dataset reflecting averaging time series data across the remaining 90 subjects (S183). Both split-half analyses indicate high reliability of pRF parameters (results not shown; pRF model solutions available online).

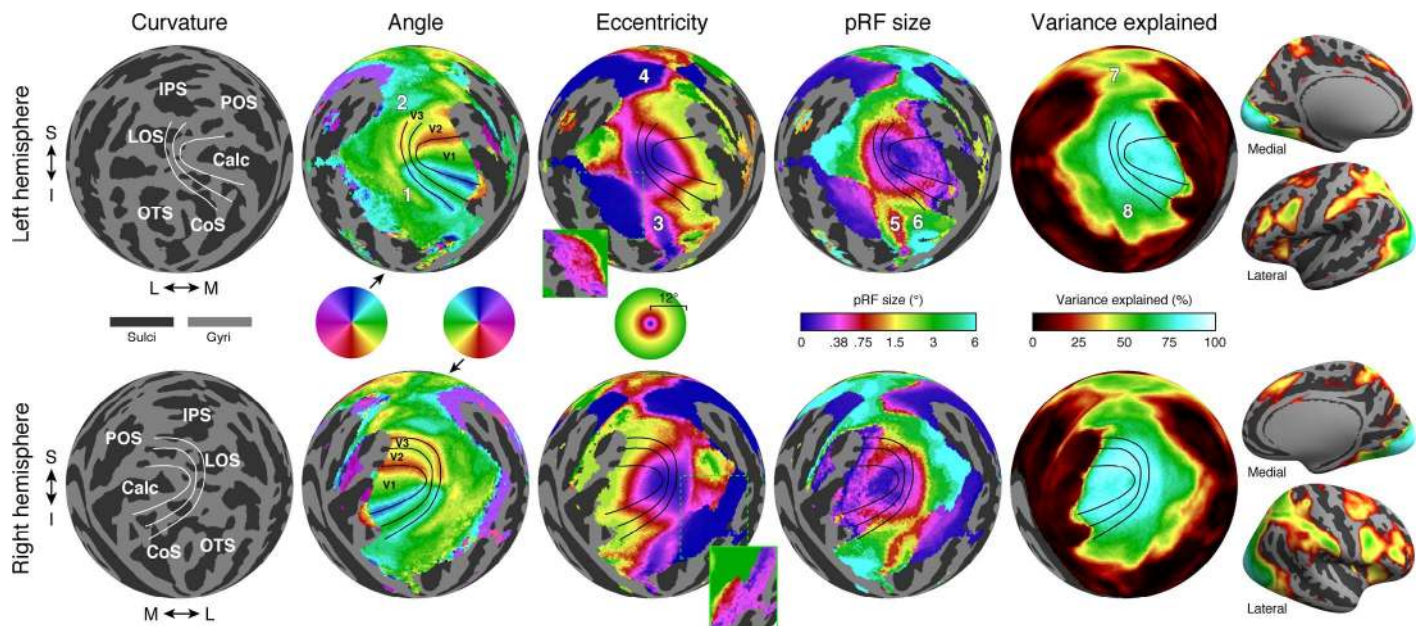


Figure 4. Group-average results. The pRF model solutions are mapped from *fs_LR* space to *fsaverage* using nearest-neighbor interpolation and then visualized (see Methods). Here we visualize results for group average S184 (which reflects all 181 individual subjects) in occipital cortex using an orthographic projection (see Figure 3). The first column shows the thresholded *fsaverage* curvature. White lines are hand-drawn borders of V1, V2, and V3 based on the angle results. Labels indicate several major posterior sulci. The second through fourth columns show angle, eccentricity, and pRF size maps (with areal boundaries now shown in black). These maps are thresholded at 9.8% variance explained (see Methods). In the eccentricity maps, the insets marked with green show the same results but with the entire color range corresponding to 0° – 0.5° —this demonstrates that the large uniform swath of blue in the main figure actually has gradients of near-foveal eccentricities. The fifth column shows variance explained. Finally, the images on the right show thresholded variance explained on inflated left and right surfaces, demonstrating the existence of robust signals in other parts of cortex. Labels: S = superior, I = inferior, M = medial, L = lateral, IPS = intraparietal sulcus, LOS = lateral occipital sulcus, POS = parieto-occipital sulcus, Calc = calcarine sulcus, OTS = occipitotemporal sulcus, CoS = collateral sulcus. In the top panels, the numbers 1–8 indicate features of the parameter maps and are discussed in the text. Distinct numbers are used in each parameter map although some locations are the same or nearly the same (Locations 4 and 7; Locations 3, 5, and 8).

Relationship to cortical parcellations

Many features of the group-average results are in good agreement with recently published parcellations of visual areas, particularly near the posterior occipital pole (Figure 5). We compare the group-average pRF results to two atlases made using different methods: the Wang et al. (2015) maximum probability atlas and the Glasser et al. (Glasser, Coalson, et al., 2016) multi-modal parcellation of cortex. The Wang et al. maximum probability atlas includes 25 regions of interest (ROIs) per hemisphere whose boundaries are derived from the anatomically aligned overlap of manually labeled visual areas in individual subjects. Ten of these in posterior cortex are clearly aligned with expected features of the angle maps: V1v/V1d, V2v/V2d, V3v/V3d, V3A, V3B, LO-1, and hV4. In each of these 10 ROIs, one or more borders lie on an angle reversal. For example, the V1d/V2d border lies on a lower-field angle reversal, and the V1v/V2v border lies on an upper-field angle reversal. The agreement between the retinotopic features of the HCP dataset and the borders from the Wang et al. atlas is

remarkably good despite the atlas reflecting different subjects and different experimental and analysis methods. Other maps such as LO-2, TO-1/2, IPS maps, VO-1/2, and PHC-1/2 show contralateral representations but not clear progressions of angle, in part due to blurring from group averaging. For example, imperfect alignment of the cortex might result in pRF parameters from one subject's upper visual field being averaged with those of another subject's lower visual field. The Glasser et al. parcellation was generated using a semi-automated, supervised approach applied to multimodal neuroimaging data (representing architecture, connectivity, function, and visuotopic organization). For the Glasser et al. parcellation, several areas are well aligned with features of the retinotopic maps, particularly V1, V2, V3, V4, and V3A. In several map clusters in the Wang et al. atlas, there are clear eccentricity gradients: The IPS0–2 maps show a clear foveal-to-peripheral gradient along the medial-to-lateral direction, as do the V1–V3 maps and the VO-1/2 maps. In the Glasser et al. atlas, several areas fall within iso-eccentricity regions. For example, the areas PH and TE2p are clearly foveal,

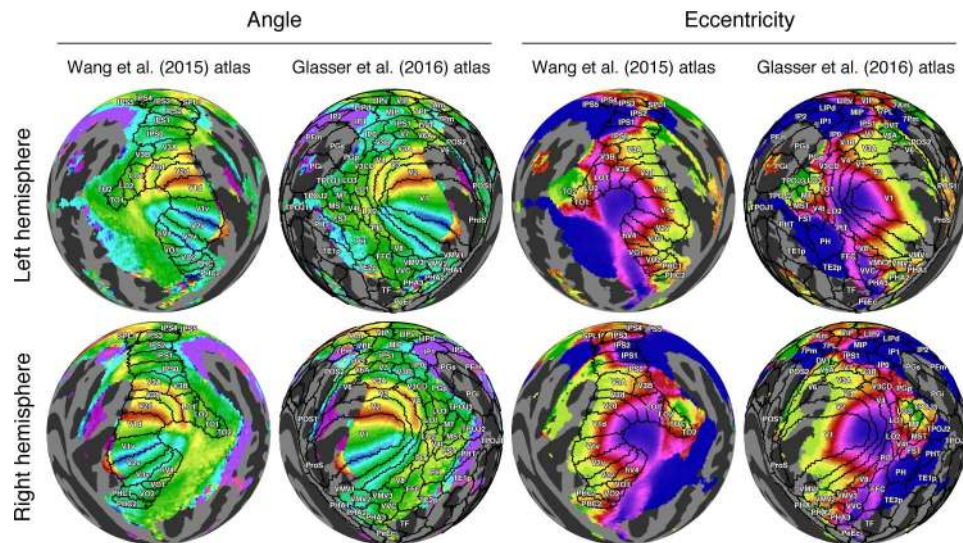


Figure 5. Relationship between group-average results and cortical parcellations. The angle and eccentricity maps from the group-average dataset (S184) are replotted from Figure 4 (same color scales). Superimposed on the maps are regions of interest from the maximum probability atlas of Wang et al. (2015) and cortical parcellations from Glasser, Coalson, et al. (2016).

whereas the adjacent fusiform face complex is more peripheral, with a sharp change in eccentricity along the border between these areas. Consistent with our definitions in the previous sections, the eccentricity gradients indicate clear retinotopic organization in these anterior areas; however, we do not try to draw conclusions in this paper regarding whether there are complete maps of the visual field or the most appropriate way to parcellate cortex into distinct areas.

Subcortical data

The HCP 7T Retinotopy Dataset includes subcortical results in addition to cortical results. Several subcortical nuclei have retinotopic maps that have been previously measured using fMRI (Arcaro, Pinsk, & Kastner, 2015; Cotton & Smith, 2007; DeSimone, Viviano, & Schneider, 2015; Katyal, Zughni, Greene, & Ress, 2010; Schneider & Kastner, 2005; Schneider, Richter, & Kastner, 2004). The subcortical fMRI data were aligned using FNIRT (FSL Nonlinear Image Registration Tool) nonlinear volume registration based on T1-weighted image intensities (Glasser et al., 2013). In contrast to cortex, subcortical structures are not easily represented as 2-D surfaces, and hence it is more difficult to visualize complete maps. Nonetheless, slices through subcortical structures reveal clear, high-quality pRF model solutions in the group-average dataset (Figure 6). In particular, we see expected structure in visual nuclei such as the lateral geniculate nucleus (LGN), superior colliculus (SC), and ventral pulvinar (vPull/2). Within these regions, there are clear representations of the contralateral visual field. As expected, the visual field maps of the LGN and pulvinar are both

inverted with smooth progressions from the upper visual field located ventrally to the lower visual field located dorsally. In the superior colliculus, there is a smooth progression from the upper visual field (anterior and medial) to the lower visual field (posterior and lateral).

Individual-subject results

In addition to group-average results, we also computed pRF model solutions for the 181 individual subjects. We summarize results in several ways, including quantifying the amount of variance explained by the pRF model, inspecting maps in individual subjects, and assessing within-subject reliability of pRF parameters. These analyses reveal that overall data quality is high.

Variance explained

We quantified variance explained by the pRF model within atlas-defined ROIs. We defined one ROI as the union of the 50 maps found in the Wang et al. (2015) maximum probability atlas (25 maps per hemisphere) and a second ROI as the union of the V1–V3 maps from the same atlas. The V1–V3 ROI is a subset of the larger ROI. Because these ROIs are defined based on group-average anatomy, they do not necessarily conform to each individual subject's retinotopic maps, but they provide a simple objective method for region definition. Within the union of the 50 maps, we computed for each subject the median variance explained across grayordinates, yielding one number

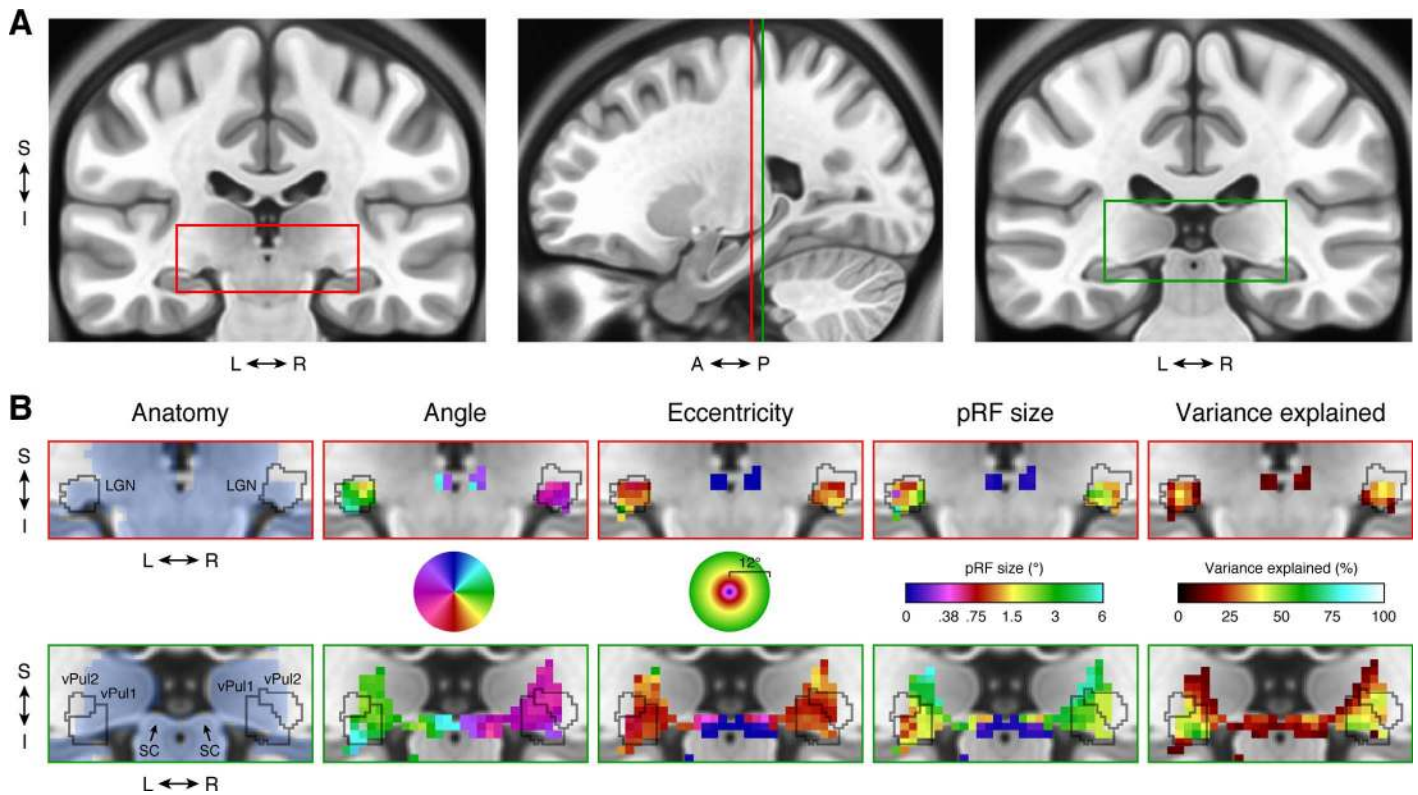


Figure 6. Subcortical results. (A) Anatomical location. The two coronal slices ($y = 25$, far left; $y = 30$, far right) show the MNI average anatomy (ICBM 152 nonlinear symmetric atlas 2009b, 0.5-mm resolution). The red and green rectangles mark the regions detailed in panel B. Vertical lines on the sagittal slice ($x = 23$) indicate the locations of the two coronal slices. (B) pRF results. The upper row highlights the left and right LGN and the lower row highlights the pulvinar and superior colliculus. Outlines of the LGN and ventral pulvinar (vPul1/2) are taken from Arcaro et al. (2015). All pRF results are from the group-average dataset (S184) and are thresholded at 9.8% variance explained, as in Figure 4. Color maps are identical to those in Figure 4 except that only the left-hemisphere angle color map is used. The blue shading in the anatomy column indicates voxels that are included in the CIFTI subcortical data mask.

per subject. The median of this number across the 181 subjects was 17% (Figure 7A). Within just the V1–V3 maps, the median of the median variance explained was substantially higher, at 44%. For comparison, we estimate that for grayordinates not sensitive to the experimental paradigm, the variance explained by the pRF model is less than 1%. This can be seen by inspecting the large peak in the histogram of variance explained across all grayordinates from all individual subjects (Figure 7C).

Cortical maps

For map visualization, we selected three representative subjects: the subjects at the 25th, 50th, and 75th percentiles with respect to median variance explained across regions in the Wang et al. (2015) atlas (see red lines in Figure 7A). For simplicity we show only the left hemisphere, and we replot the group-average results for comparison. The three depicted subjects have clear retinotopic maps in occipital cortex, as seen in the angle and eccentricity results (Figure 7C). In each subject, the

angle maps reveal the boundaries of V1–V3, and the eccentricity maps are in register across visual field maps around the occipital pole. The locations of the V1–V3 boundaries differ slightly across the subjects, as seen by comparing the angle reversals and the V1–V3 boundary lines that were drawn based on the group-average results. This suggests that even after alignment using state-of-the-art algorithms guided by folding and areal features (MSMall), there is residual misalignment of retinotopic maps in some subjects. A few subjects showed strikingly atypical retinotopy, such as a “forked” representation of the lower vertical meridian representation running across V2d and V3d of the group average in subjects S80 (HCP ID 198653) and S138 (HCP ID 644246) (see Figure S2 in Van Essen & Glasser, 2018 and <https://balsa.wustl.edu/ZLV7>).

Beyond V1–V3, several of the features we noted in the group-average results are also generally evident in the individual subjects. For example, the angle maps show a lower-field representation ventral to V3 and an upper-field representation dorsal to V3 (Locations 1 and 2 in Figure 7). There are also distinct foveal representations in parietal and temporal cortex (Loca-

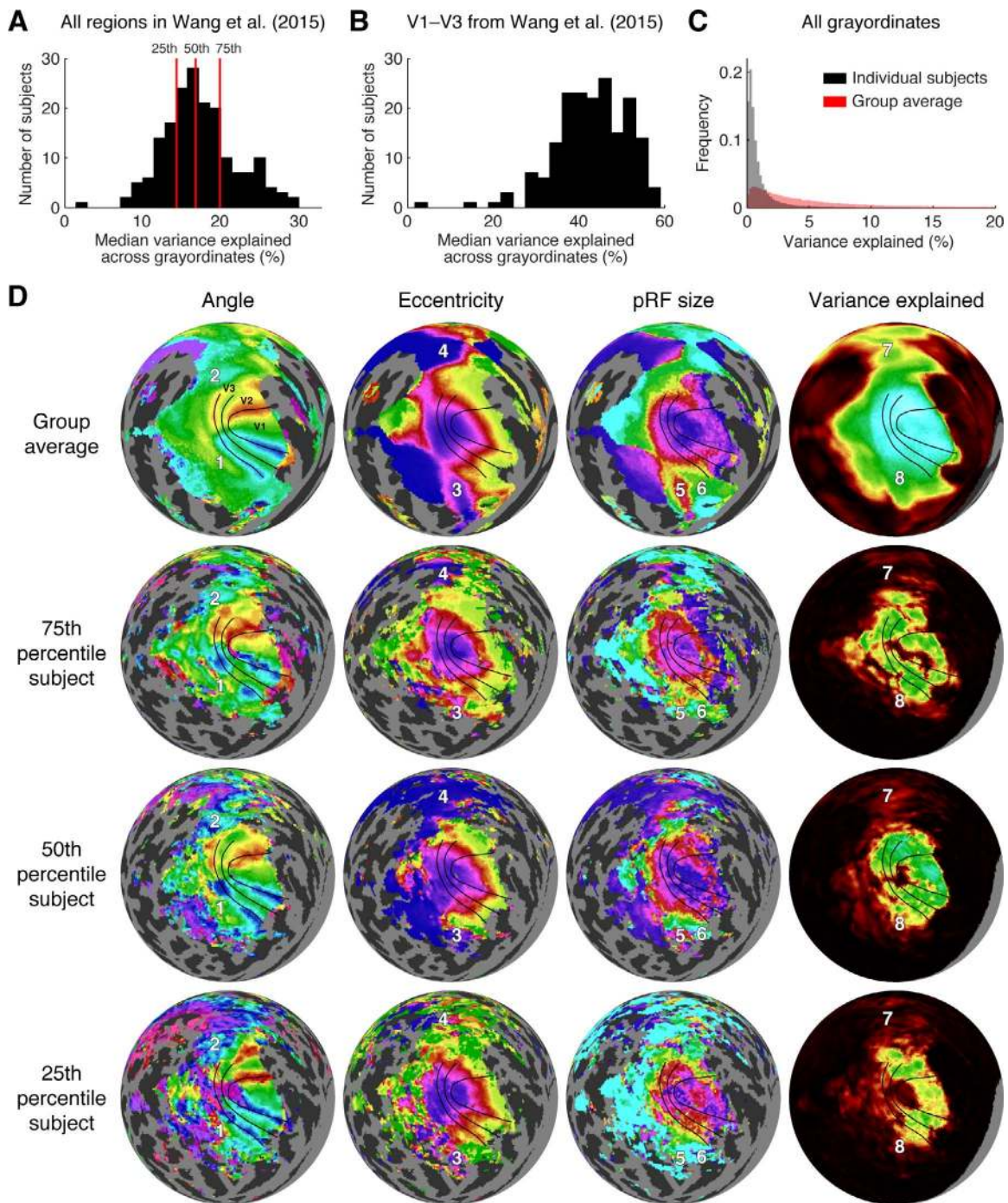


Figure 7. Individual-subject results. (A) Variance explained within all regions of the Wang et al. (2015) maximum probability atlas. For each subject, we computed the median variance explained across grayordinates located within the union of all regions in both hemispheres of the Wang et al. atlas. The histogram shows the distribution of this value across the 181 subjects. The subjects at the 25th, 50th, and 75th percentiles are indicated by red lines. (B) Variance explained within V1–V3 of the Wang et al. atlas. (C) Histogram of variance explained across all grayordinates in individual subjects S1–S181 and in the group average S184 (bin size 0.2%; histogram counts normalized to sum to 1 in each plot). (D) Maps of pRF parameters (left hemisphere). We replot the group-average results from Figure 4 (S184) and show individual-subject results for the three subjects indicated in panel A (S43, S11, and S124, corresponding to the 25th, 50th, and 75th percentiles, respectively; corresponding HCP IDs 164131, 115017, and 536647). Angle, eccentricity, pRF size, and variance explained results are plotted as in Figure 4 (with the same color scales), except that the variance explained threshold used for individual subjects is 2.2% (see Methods). For reference, we show on each map the same V1–V3 boundary lines determined from group-average results in Figure 4 as well as the same numbered locations (1–8) that mark features of the parameter maps.

tions 3 and 4), and pRF size gradients in ventral cortex (Locations 5 and 6). Because variance explained is generally lower for individual subjects compared to the group average, there are some regions in which the group average may provide useful information that is absent in individual subjects (e.g., Location 8). By visual inspection, the overall map quality appears comparable across the three subjects. Since these subjects span the central 50% of variance explained (as detailed previously), this suggests that most of the subjects in the HCP 7T Retinotopy Dataset have good data quality. Additional aspects of individual variability can be readily inspected by scrolling through polar angle and eccentricity maps for all 181 individual subjects in the downloadable Connectome Workbench “scene” files (see Supplementary Appendix S1).

Within-subject reliability

To quantify reliability of pRF parameters for individual subjects, we compared parameter estimates across split-halves of the data. We binned cortical grayordinates into four large ROIs that comprise distinct subsets of the regions in the Wang et al. (2015) atlas: posterior (V1–V3), dorsal (V3A/B, IPS0–5), lateral (LO-1/2, TO-1/2), and ventral (VO-1/2, PHC-1/2). We then aggregated grayordinates within each of these ROIs across subjects, and computed 2-D histograms comparing parameter estimates across the two model fits (first half of each run; second half of each run).

Angle estimates were highly reliable across splits for all four ROIs, indicated by the high density along the diagonals (Figure 8, top row). In addition to demonstrating within-subject reliability, these histograms highlight the fact that angles near the vertical meridian (90° and 270°) are less represented than other angles, an effect observed in many prior studies (Arcaro, McMains, Singer, & Kastner, 2009; Kastner et al., 2007; Larsson & Heeger, 2006; Mackey, Winawer, & Curtis, 2017; Silver, Ress, & Heeger, 2005; Swisher et al., 2007). This effect is likely due, in part, to the pooling intrinsic to the fMRI signal. Assuming that neural receptive field centers are all contralateral, the upper and lower vertical meridians are boundaries of the distribution of centers, and the *average* polar angle of neurons within a voxel is not expected to reach the vertical meridians. The eccentricity histograms (Figure 8, middle row) also show a high degree of reliability, with density highest on and near the diagonal in all four ROIs. Note that the dorsal ROI, while reliable, is more foveally biased than other ROIs. Nonetheless, as indicated in both the maps (Figures 4 and 7) and the reliability plots (Figure 8), the dorsal regions contain eccentricities spanning 0° to 8° . Finally, the size estimates were also fairly reliable, though less so than

the angle and eccentricity estimates. In agreement with the maps (Figures 4 and 7), posterior maps generally contain the smallest pRFs, with few pRF sizes larger than 3° . The high reliability of pRF parameters across data splits supports the interpretation that grayordinates in not only V1–V3 but also dorsal, lateral, and ventral higher extrastriate regions exhibit spatial selectivity and not mere visual responsivity. If grayordinates responded indiscriminately to a visual stimulus presented anywhere in the visual field, pRF parameters would not exhibit such reliable tuning for specific pRF parameter values.

Discussion

In this study, we have described the HCP 7T Retinotopy Dataset and the results of fitting pRF models to all 181 individual subjects as well as the group average. To facilitate quantification of model reliability, all datasets were analyzed using split halves in addition to the full dataset. In addition to the pRF model solutions, we also make available the stimuli and analysis code used to solve the models. This allows the research community to reproduce our analyses and/or reanalyze the time series data using different techniques. The analyses we conducted are computationally intensive, involving three independent nonlinear optimizations for each grayordinate time series. This resulted in approximately 50 million model fits that necessitated the use of a large-scale compute cluster. By providing the parameters of the solved models, we substantially lower the barrier to entry for scientists to make use of the dataset.

Size and quality of the HCP 7T Retinotopy Dataset

Although researchers frequently collect, and occasionally make public, retinotopy datasets, such datasets have generally included no more than 20 subjects (e.g., Benson et al., 2012). To the best of our knowledge, the HCP 7T Retinotopy Dataset is the largest publicly available dataset by an order of magnitude. In addition to containing many subjects, retinotopic maps are derived from six fMRI runs (a total of 30 min of data), making this dataset large both in terms of number of subjects as well as amount of data per subject. Finally, the data were acquired at ultrahigh magnetic field strength (7T), providing enhanced signal-to-noise ratio and high spatial and temporal resolution (1.6-mm isotropic voxels, 1-s temporal sampling using multi-band data acquisition). The advantages of the dataset are clear. In individual subjects, there are reliable

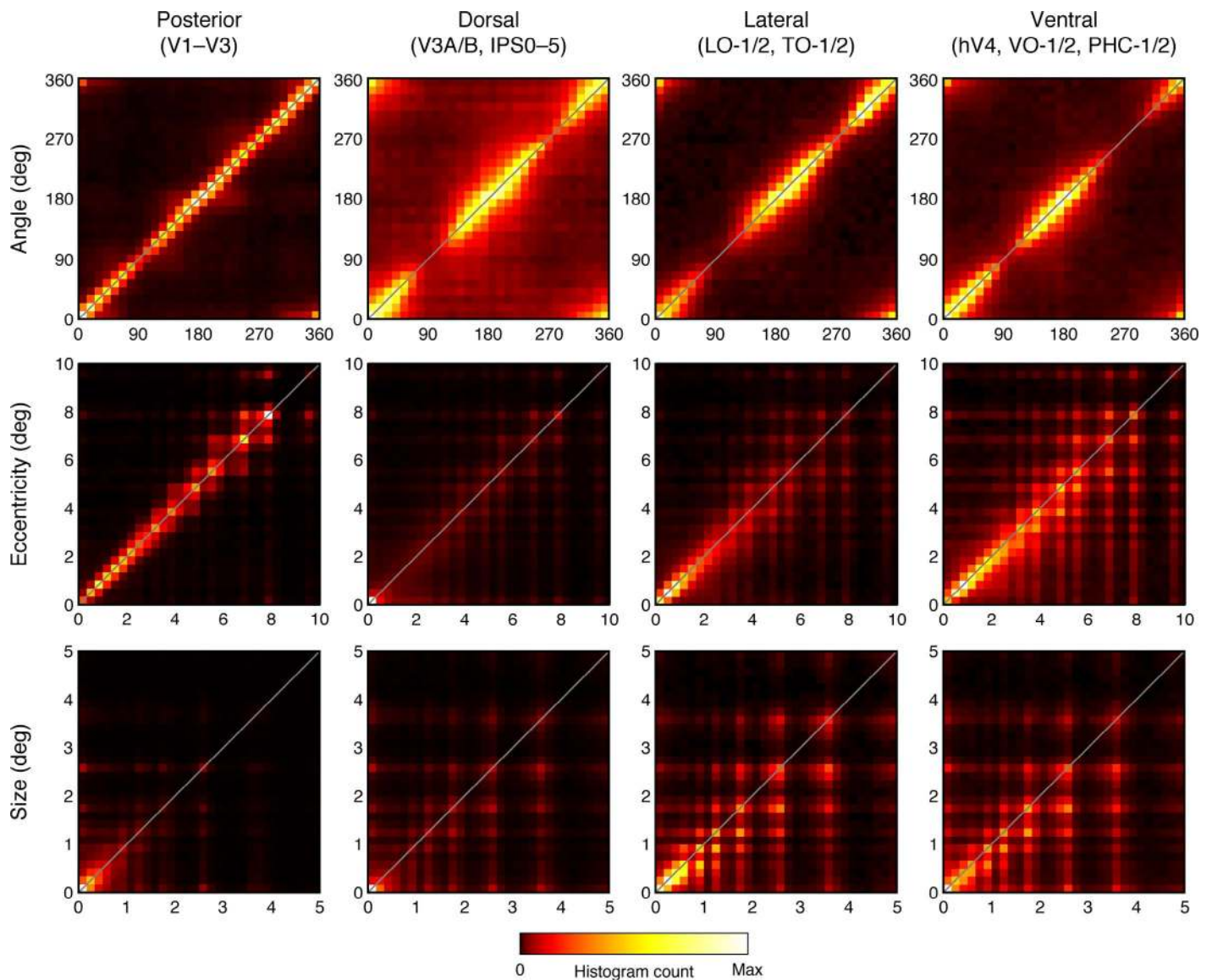


Figure 8. Within-subject reliability of pRF estimates. Estimates of pRF parameters were obtained for two independent splits of the data (first half of each run; second half of each run). Here, we aggregate results across all 181 individual subjects and plot 2-D histograms comparing pRF parameter estimates across the two splits of the data (x-axis: first split; y-axis: second split). The depicted color map is used to represent histogram counts from 0 to the maximum count observed in each plot. The Wang et al. (2015) atlas was used to bin grayordinates into different ROIs (posterior, dorsal, lateral, ventral).

results, even beyond striate and extrastriate cortex. At the group level, the massive averaging of subjects reveals signals in regions of cortex (such as the inferior frontal sulcus) where conventional datasets typically have low signal that can be difficult to distinguish from noise.

Limitations of the dataset

Though the dataset has clear value, it is also important to understand its limitations and take these into account when interpreting the data. There are

several technical issues; we mention a few here, but refer to the Methods for a fuller description. The stimulus size extended to an eccentricity of 8° of visual angle, and so representations of the far periphery are not well measured. Because of cortical magnification of the central visual field, robust signals are found in about half of the surface area of V1 (see Figure 5). Edge effects arise for grayordinates whose pRF centers are near the limit of the stimulus extent: These grayordinates are likely to have underestimates of pRF size and a displaced pRF center. Model solutions are somewhat discretized, reflecting the influence of the first-stage grid fit. Model solutions were constrained to have a

nonnegative gain factor; this may not be appropriate for studying brain regions that exhibit BOLD signal decreases in response to visual stimulation. Finally, there is an inherent limitation related to the fact that we analyzed the data using one specific pRF model with a particular code implementation. The motivation of this paper is to use established tools and models to generate a high-quality retinotopy resource, but some scientific questions will require additional modeling work.

Exploring other pRF models (such as a difference-of-Gaussians pRF model (Zuiderbaan, Harvey, & Dumoulin, 2012), an anisotropic Gaussian pRF model (Merkel, Hopf, & Schoenfeld, 2018; Silson, Reynolds, Kravitz, & Baker, 2018), or pRF models with flexible shapes (Greene, Dumoulin, Harvey, & Ress, 2014; Lee, Papanikolaou, Logothetis, Smirnakis, & Keliris, 2013) and carefully evaluating model accuracy (Kay, Winawer, et al., 2013) may be important to answer such questions.

In addition to modeling choices, it is important to also consider stimulus selectivity and task effects. In particular, there may be parts of the brain that show retinotopic organization given an appropriate stimulus and task but not in all retinotopic experimental paradigms. In the experiment used for the HCP dataset, the images within the moving apertures changed 15 times per second. Cortical areas with low-pass temporal tuning might not be effectively driven by these stimuli (Liu & Wandell, 2005). Other areas, for example in the dorsal attention network, might respond strongly only when stimuli are attended (Mackey et al., 2017); in the HCP experiment, subjects attended to the fixation location. Hence, a lack of spatial selectivity or retinotopic organization in this dataset, even with the large number of subjects, should not be taken as definitive evidence that a brain area is not spatially selective or retinotopically organized.

The neuroscientific interpretation of the pRF results must also be done carefully. Whereas in visual cortex, there is clear interpretation of pRF models in terms of visually responsive population receptive fields, in other parts of the brain, it may be possible to obtain good pRF fits but for different reasons. For example, it is possible that a cortical region indexing cognitive difficulty exhibits response increases when the stimulus is near the fovea because at these points in the experiment, the stimulus is more likely to interfere with the fixation task performed by the subjects. In such a case, the existence of a pRF model solution does not imply visually driven activity in the conventional sense.

Group-average interpretation

The group-average datasets (S182–S184) provide a useful summary of the overall organization of visually

responsive cortex. Because of the large number of subjects that are averaged together and the improved intersubject alignment methods, these datasets contain very high signal-to-noise level. However, there are several caveats to interpreting these data. Most significantly, unlike in individual subjects, the quality of pRF model fits is influenced by the quality of the alignment used to generate these averages. In particular, the quality of the fits in V1, V2, and V3 of the group average appears to be very high; this is due both to the fact that visually evoked signals in V1–V3 are particularly robust, as well as the fact that these cortical areas are less variable in their locations and internal topographic structure than higher visual areas (Benson et al., 2014). As one moves from striate to extrastriate cortex and beyond, coverage of the visual field becomes less and less complete. The effect of averaging can be appreciated by comparing the group-average data to the individual data (see Figure 7). In the group-average data, the V1 maps sweep out nearly 180° of polar angle from the lower vertical meridian (deep red) to the upper vertical meridian (deep blue); the V3 maps do not quite reach the vertical meridians, and V3A (Location 2 in the angle map) reaches only about 45° (cyan as opposed to blue). In contrast, the individual-subject maps, though noisier, often exhibit more representation of the vertical meridian in V3 and V3A (deep blue and red in the angle maps of Figure 7). Indeed, previous work has found that for most visual areas beyond V1–V3, the overlap among subjects decreases substantially (Wang et al., 2015). One analysis that could help shed light on these issues is to examine intersubject variability in pRF parameters as a function of cortical location.

What can the HCP 7T Retinotopy Dataset be used for?

This rich dataset has a wide range of uses. It provides the basis for further analysis of other HCP data; for example, the pRF solutions for an individual subject can be used to determine visual ROIs that could then be used to analyze or validate other HCP measures. Some example applications include the following: (a) The retinotopy dataset can be used for comparison with the HCP's multimodal parcellation (Glasser, Coalson, et al., 2016; see Figure 5). We have shown that the group-average results approximately agree with portions of the parcellation, but we did not compare individual-subject results to the group-average parcellation or to the individual-subject parcellations that were generated using an areal classifier algorithm (Glasser, Coalson, et al., 2016). (b) Identifying visual ROIs and pRF properties within the ROIs can be used in conjunction with resting-state data (Van Essen et al., 2012) to test hypotheses about how maps relate to functional connectivity. (c) The

pRF model solutions can be used in conjunction with the working memory dataset (Barch et al., 2013) to study the role of visual cortex in working memory. Many more such applications (e.g., combining retinotopy with the 7T movie data) are possible.

The visuotopic mapping in the Glasser, Coalson, et al. (2016) parcellation was based on resting-state fMRI correlations measured across the entire visual field representation. This enabled mapping the full extent of visuotopic areas, but does not provide explicit measurement of specific eccentricities or polar angles within each map. Hence, the current 7T retinotopic maps and the visuotopic organization derivable from resting-state data represent complementary and potentially synergistic information.

The HCP 7T Retinotopy Dataset also has a great deal of standalone value, owing to the very large number of subjects. Any examination of the relationship between anatomy and function benefits from having many subjects to characterize the extent of intersubject structure–function variability in an anatomically normalized format. Averaging retinotopic time series data across a large number of subjects has revealed that large swaths of cortex not typically studied by vision scientists show evidence of retinotopic organization (see Figure 4); many of these regions would not have clear signals in smaller sample sizes.

Resolving controversies regarding retinotopic maps

Despite 25 years of measuring retinotopic maps with fMRI, a number of disagreements concerning map organization remain unresolved. For example, there are two different proposals for the organization of the V4 map and neighboring regions. The hV4/VO proposal consists of a single hV4 hemifield map on the ventral surface, with several additional hemifield maps located more anterior (Arcaro et al., 2009; McKeefry & Zeki, 1997; Wade et al., 2002; Winawer & Witthoft, 2015). The V4/V8 proposal involves a different arrangement, with the V4 map split into dorsal and ventral arms (Hansen, Kay, & Gallant, 2007; Sereno et al., 1995) and with a V8 hemifield map adjacent to ventral V4 (Hadjikhani, Liu, Dale, Cavanagh, & Tootell, 1998; Hadjikhani & Tootell, 2000; Tootell & Hadjikhani, 2001). These two different proposals are implicit in the parcellations shown in Figure 5 from Wang et al. (2015) and Glasser, Coalson, et al. (2016). There are a number of additional unresolved questions regarding map organization, including the number and arrangement of maps in the vicinity of MT (Amano, Wandell, & Dumoulin, 2009; Kolster, Peeters, & Orban, 2010). In fact, beyond the V1–V3 maps, there is likely no retinotopic map that is universally agreed upon by

researchers in the field. Part of this is due to the challenge of interpreting complex spatial data; other disagreements might stem from differences across datasets (e.g., due to differences in MRI acquisition methods, stimuli, analysis approaches, and subjects). Indeed, even within V1–V3, there are unresolved questions about retinotopic organization, such as how precisely the maps align with anatomical landmarks and whether some individuals have maps that qualitatively differ from the typical pattern (see supplemental information in Van Essen & Glasser, 2018; <https://balsa.wustl.edu/ZLV7>). We believe that the HCP 7T Retinotopy Dataset provides a unique opportunity to adjudicate among competing hypotheses about the organization of retinotopic representations in the human brain. Future work, perhaps exploiting automated, objective atlas-based fitting procedures (e.g., Benson & Winawer, 2018), could help evaluate how well different proposals are supported by the data.

Conclusion

The visual system is one of the primary functional systems of the human brain, and the resources provided in this paper represent an important step towards more fully characterizing its fundamental organization. The authors believe that the present measurements fill a critical role, both for answering novel scientific questions and for establishing baselines and hypotheses for new experiments. To this end, we have put effort into making all data and analyses fully public and well-documented, and we hope that other researchers will find this dataset enlightening and useful.

Keywords: retinotopy, visual cortex, fMRI, population receptive fields, topography, parcellation

Acknowledgments

This work was supported by the Human Connectome Project (1U54MH091657) from the 16 Institutes and Centers of the National Institutes of Health (NIH) that support the NIH Blueprint for Neuroscience Research; Biotechnology Research Center (BTRC) grant P41 EB015894 from the National Institute of Biomedical Imaging and Bioengineering; National Institute of Neurological Disorders and Stroke Institutional Center Core grant P30 NS076408; R01 MH-060974 (DVE); R01 EY027964 (JW); and R01 EY027401 (JW).

DVE and KU planned the experiment. AV, EY, and KU developed and optimized acquisition sequences

and protocols. AV and KK designed the experiment. NB, KJ, MA, MG, TC, and KK analyzed the data. TC, MG, and DVE prepared results for the BALS database and wrote Supplementary Appendix S1. NB, JW, and KK wrote the paper. All authors discussed the results and edited the manuscript.

*Jonathan Winawer and Kendrick Kay contributed equally to this work.

Commercial relationships: none.

Corresponding author: Kendrick Kay.

Email: kay@umn.edu.

Address: Center for Magnetic Resonance Research, Department of Radiology, University of Minnesota, Minneapolis, MN, USA.

References

- Abdollahi, R. O., Kolster, H., Glasser, M. F., Robinson, E. C., Coalson, T. S., Dierker, D., . . . Orban, G. A. (2014). Correspondences between retinotopic areas and myelin maps in human visual cortex. *NeuroImage*, *99*, 509–524, <https://doi.org/10.1016/j.neuroimage.2014.06.042>.
- Amano, K., Wandell, B., & Dumoulin, S. O. (2009). Visual field maps, population receptive field sizes, and visual field coverage in the human MT+ complex. *Journal of Neurophysiology*, *102*(5), 2704–2718.
- Arcaro, M. J., McMains, S. A., Singer, B. D., & Kastner, S. (2009). Retinotopic organization of human ventral visual cortex. *Journal of Neuroscience*, *29*(34), 10638–10652, <https://doi.org/10.1523/JNEUROSCI.2807-09.2009>.
- Arcaro, M. J., Pinsk, M. A., & Kastner, S. (2015). The anatomical and functional organization of the human visual pulvinar. *Journal of Neuroscience*, *35*(27), 9848–9871, <https://doi.org/10.1523/JNEUROSCI.1575-14.2015>.
- Barch, D. M., Burgess, G. C., Harms, M. P., Petersen, S. E., Schlaggar, B. L., Corbetta, M., . . . WU-Minn HCP Consortium. (2013). Function in the human connectome: task-fMRI and individual differences in behavior. *NeuroImage*, *80*, 169–189, <https://doi.org/10.1016/j.neuroimage.2013.05.033>.
- Benson, N. C., Butt, O. H., Brainard, D. H., & Aguirre, G. K. (2014). Correction of distortion in flattened representations of the cortical surface allows prediction of V1-V3 functional organization from anatomy. *PLoS Computational Biology*, *10*(3), e1003538, <https://doi.org/10.1371/journal.pcbi.1003538>.
- Benson, N. C., Butt, O. H., Datta, R., Radoeva, P. D., Brainard, D. H., & Aguirre, G. K. (2012). The retinotopic organization of striate cortex is well predicted by surface topology. *Current Biology*, *22*(21), 2081–2085, <https://doi.org/10.1016/j.cub.2012.09.014>.
- Benson, N. C., & Winawer, J. (2018). Bayesian analysis of retinotopic maps. *eLife*, *7*:e40224, <https://doi.org/10.7554/eLife.40224>.
- Bock, A. S., Binda, P., Benson, N. C., Bridge, H., Watkins, K. E., & Fine, I. (2015). Resting-state retinotopic organization in the absence of retinal input and visual experience. *Journal of Neuroscience*, *35*(36), 12366–12382, <https://doi.org/10.1523/JNEUROSCI.4715-14.2015>.
- Brainard, D. H. (1997). The Psychophysics Toolbox. *Spatial Vision*, *10*(4), 433–436.
- Coalson, T. S., Van Essen, D. C., & Glasser, M. F. (2018). The impact of traditional neuroimaging methods on the spatial localization of cortical areas. *Proceedings of the National Academy of Sciences, USA*, *115*(27), E6356–E6365, <https://doi.org/10.1073/pnas.1801582115>.
- Cotton, P. L., & Smith, A. T. (2007). Contralateral visual hemifield representations in the human pulvinar nucleus. *Journal of Neurophysiology*, *98*(3), 1600–1609, <https://doi.org/10.1152/jn.00419.2007>.
- DeSimone, K., Viviano, J. D., & Schneider, K. A. (2015). Population receptive field estimation reveals new retinotopic maps in human subcortex. *Journal of Neuroscience*, *35*(27), 9836–9847, <https://doi.org/10.1523/JNEUROSCI.3840-14.2015>.
- DeYoe, E. A., Carman, G. J., Bandettini, P., Glickman, S., Wieser, J., Cox, R., . . . Neitz, J. (1996). Mapping striate and extrastriate visual areas in human cerebral cortex. *Proceedings of the National Academy of Sciences, USA*, *93*(6), 2382–2386.
- Dumoulin, S. O., & Wandell, B. (2008). Population receptive field estimates in human visual cortex. *NeuroImage*, *39*(2), 647–660, <https://doi.org/10.1016/j.neuroimage.2007.09.034>.
- Engel, S. A., Glover, G. H., & Wandell, B. (1997). Retinotopic organization in human visual cortex and the spatial precision of functional MRI. *Cerebral Cortex*, *7*(2), 181–192.
- Engel, S. A., Rumelhart, D. E., Wandell, B., Lee, A. T., Glover, G. H., Chichilnisky, E. J., & Shadlen, M. N. (1994, June 16). fMRI of human visual cortex. *Nature*, *369*(6481), 525.
- Epstein, R., & Kanwisher, N. (1998, April 9). A cortical representation of the local visual environment. *Nature*, *392*(6676), 598–601.

- Glasser, M. F., & Van Essen, D. C. (2011). Mapping human cortical areas in vivo based on myelin content as revealed by T1- and T2-weighted MRI. *Journal of Neuroscience*, *31*(32), 11597–11616, <https://doi.org/10.1523/JNEUROSCI.2180-11.2011>.
- Glasser, M. F., Coalson, T. S., Bijsterbosch, J. D., Harrison, S. J., Harms, M. P., Anticevic, A., ... Smith, S. M. (2018). Using temporal ICA to selectively remove global noise while preserving global signal in functional MRI data. *NeuroImage*, *181*, 692–717.
- Glasser, M. F., Coalson, T. S., Robinson, E. C., Hacker, C. D., Harwell, J., Yacoub, E., ... Van Essen, D. C. (2016, August 11). A multi-modal parcellation of human cerebral cortex. *Nature*, *536*(7615), 171–178, <https://doi.org/10.1038/nature18933>.
- Glasser, M. F., Smith, S. M., Marcus, D. S., Andersson, J. L. R., Auerbach, E. J., Behrens, T. E. J., ... Van Essen, D. C. (2016). The Human Connectome Project's neuroimaging approach. *Nature Neuroscience*, *19*(9), 1175–1187, <https://doi.org/10.1038/nn.4361>.
- Glasser, M. F., Sotiropoulos, S. N., Wilson, J. A., Coalson, T. S., Fischl, B., Andersson, J. L., ... WU-Minn HCP Consortium. (2013). The minimal preprocessing pipelines for the Human Connectome Project. *NeuroImage*, *80*, 105–124, <https://doi.org/10.1016/j.neuroimage.2013.04.127>.
- Greene, C. A., Dumoulin, S. O., Harvey, B. M., & Ress, D. (2014). Measurement of population receptive fields in human early visual cortex using back-projection tomography. *Journal of Vision*, *14*(1):17, 1–17, <https://doi.org/10.1167/14.1.17>. [PubMed] [Article]
- Griffanti, L., Salimi-Khorshidi, G., Beckmann, C. F., Auerbach, E. J., Douaud, G., Sexton, C. E., ... (2014). ICA-based artefact removal and accelerated fMRI acquisition for improved resting state network imaging. *NeuroImage*, *95*, 232–247, <https://doi.org/10.1016/j.neuroimage.2014.03.034>.
- Grill-Spector, K., & Weiner, K. S. (2014). The functional architecture of the ventral temporal cortex and its role in categorization. *Nature Reviews Neuroscience*, *15*(8), 536–548, <https://doi.org/10.1038/nrn3747>.
- Hadjikhani, N., Liu, A. K., Dale, A. M., Cavanagh, P., & Tootell, R. B. (1998). Retinotopy and color sensitivity in human visual cortical area V8. *Nature Neuroscience*, *1*(3), 235–241, <https://doi.org/10.1038/681>.
- Hadjikhani, N., & Tootell, R. B. (2000). Projection of rods and cones within human visual cortex. *Human Brain Mapping*, *9*(1), 55–63.
- Hansen, K. A., Kay, K. N., & Gallant, J. L. (2007). Topographic organization in and near human visual area V4. *Journal of Neuroscience*, *27*(44), 11896–11911.
- Hinds, O. P., Rajendran, N., Polimeni, J. R., Augustinack, J. C., Wiggins, G., Wald, L. L., ... Fischl, B. (2008). Accurate prediction of V1 location from cortical folds in a surface coordinate system. *NeuroImage*, *39*(4), 1585–1599, <https://doi.org/10.1016/j.neuroimage.2007.10.033>.
- Kanwisher, N., McDermott, J., & Chun, M. M. (1997). The fusiform face area: A module in human extrastriate cortex specialized for face perception. *Journal of Neuroscience*, *17*(11), 4302–4311.
- Kastner, S., De Weerd, P., Pinsk, M. A., Elizondo, M. I., Desimone, R., & Ungerleider, L. G. (2001). Modulation of sensory suppression: implications for receptive field sizes in the human visual cortex. *Journal of Neurophysiology*, *86*(3), 1398–1411.
- Kastner, S., DeSimone, K., Konen, C. S., Szczepanski, S. M., Weiner, K. S., & Schneider, K. A. (2007). Topographic maps in human frontal cortex revealed in memory-guided saccade and spatial working-memory tasks. *Journal of Neurophysiology*, *97*(5), 3494–3507, <https://doi.org/10.1152/jn.00010.2007>.
- Katyal, S., Zughni, S., Greene, C., & Ress, D. (2010). Topography of covert visual attention in human superior colliculus. *Journal of Neurophysiology*, *104*(6), 3074–3083, <https://doi.org/10.1152/jn.00283.2010>.
- Kay, K. N., Rokem, A., Winawer, J., Dougherty, R. F., & Wandell, B. (2013). GLMdenoise: A fast, automated technique for denoising task-based fMRI data. *Frontiers in Neuroscience*, *7*, 247.
- Kay, K. N., Winawer, J., Mezer, A., & Wandell, B. (2013). Compressive spatial summation in human visual cortex. *Journal of Neurophysiology*, *110*(2), 481–494, <https://doi.org/10.1152/jn.00105.2013>.
- Kolster, H., Peeters, R., & Orban, G. A. (2010). The retinotopic organization of the human middle temporal area MT/V5 and its cortical neighbors. *Journal of Neuroscience*, *30*(29), 9801–9820, <https://doi.org/10.1523/JNEUROSCI.2069-10.2010>.
- Kriegeskorte, N., Mur, M., Ruff, D. A., Kiani, R., Bodurka, J., Esteky, H., ... (2008). Matching categorical object representations in inferior temporal cortex of man and monkey. *Neuron*, *60*(6), 1126–1141, <https://doi.org/10.1016/j.neuron.2008.10.043>.
- Larsson, J., & Heeger, D. J. (2006). Two retinotopic

- visual areas in human lateral occipital cortex. *Journal of Neuroscience*, 26(51), 13128–13142.
- Lee, S., Papanikolaou, A., Logothetis, N. K., Smirnakis, S. M., & Keliris, G. A. (2013). A new method for estimating population receptive field topography in visual cortex. *NeuroImage*, 81, 144–157, <https://doi.org/10.1016/j.neuroimage.2013.05.026>.
- Liu, J. & Wandell, B. Specializations for chromatic and temporal signals in human visual cortex. *Journal of Neuroscience*, 25, 3459–3468 (2005).
- Mackey, W. E., Winawer, J., & Curtis, C. E. (2017). Visual field map clusters in human frontoparietal cortex. *eLife*, 6, 2704, <https://doi.org/10.7554/eLife.22974>.
- Maunsell, J. H., & Van Essen, D. C. (1983). The connections of the middle temporal visual area (MT) and their relationship to a cortical hierarchy in the macaque monkey. *Journal of Neuroscience*, 3(12), 2563–2586.
- McKeefry, D. J., Watson, J. D., Frackowiak, R. S., Fong, K., & Zeki, S. (1997). The activity in human areas V1/V2, V3, and V5 during the perception of coherent and incoherent motion. *NeuroImage*, 5(1), 1–12, <https://doi.org/10.1006/nimg.1996.0246>.
- McKeefry, D. J., & Zeki, S. (1997). The position and topography of the human colour centre as revealed by functional magnetic resonance imaging. *Brain: A Journal of Neurology*, 120(Pt 12), 2229–2242.
- Merkel, C., Hopf, J.-M., & Schoenfeld, M. A. (2018). Spatial elongation of population receptive field profiles revealed by model-free fMRI back-projection. *Human Brain Mapping*, 39(6), 2472–2481, <https://doi.org/10.1002/hbm.24015>.
- Pelli, D. G. (1997). The VideoToolbox software for visual psychophysics: transforming numbers into movies. *Spatial Vision*, 10(4), 437–442.
- Press, W. A., Brewer, A. A., Dougherty, R. F., Wade, A. R., & Wandell, B. (2001). Visual areas and spatial summation in human visual cortex. *Vision Research*, 41(10–11), 1321–1332.
- Raemaekers, M., Schellekens, W., van Wezel, R. J. A., Petridou, N., Kristo, G., & Ramsey, N. F. (2014). Patterns of resting state connectivity in human primary visual cortical areas: A 7T fMRI study. *NeuroImage*, 84, 911–921, <https://doi.org/10.1016/j.neuroimage.2013.09.060>.
- Robinson, E. C., Garcia, K., Glasser, M. F., Chen, Z., Coalson, T. S., Makropoulos, A., . . . Rueckert, D. (2018). Multimodal surface matching with higher-order smoothness constraints. *NeuroImage*, 167, 453–465, <https://doi.org/10.1016/j.neuroimage.2017.10.037>.
- Robinson, E. C., Jbabdi, S., Glasser, M. F., Andersson, J., Burgess, G. C., Harms, M. P., . . . Jenkinson, M. (2014). MSM: A new flexible framework for Multimodal Surface Matching. *NeuroImage*, 100, 414–426, <https://doi.org/10.1016/j.neuroimage.2014.05.069>.
- Salimi-Khorshidi, G., Douaud, G., Beckmann, C. F., Glasser, M. F., Griffanti, L., & Smith, S. M. (2014). Automatic denoising of functional MRI data: Combining independent component analysis and hierarchical fusion of classifiers. *NeuroImage*, 90, 449–468, <https://doi.org/10.1016/j.neuroimage.2013.11.046>.
- Schira, M. M., Tyler, C. W., Breakspear, M., & Spehar, B. (2009). The foveal confluence in human visual cortex. *Journal of Neuroscience*, 29(28), 9050–9058, <https://doi.org/10.1523/JNEUROSCI.1760-09.2009>.
- Schneider, K. A., & Kastner, S. (2005). Visual responses of the human superior colliculus: A high-resolution functional magnetic resonance imaging study. *Journal of Neurophysiology*, 94(4), 2491–2503, <https://doi.org/10.1152/jn.00288.2005>.
- Schneider, K. A., Richter, M. C., & Kastner, S. (2004). Retinotopic organization and functional subdivisions of the human lateral geniculate nucleus: A high-resolution functional magnetic resonance imaging study. *Journal of Neuroscience*, 24(41), 8975–8985, <https://doi.org/10.1523/JNEUROSCI.2413-04.2004>.
- Sereno, M. I., Dale, A. M., Reppas, J. B., Kwong, K. K., Belliveau, J. W., Brady, T. J., . . . Tootell, R. B. (1995, May 12). Borders of multiple visual areas in humans revealed by functional magnetic resonance imaging. *Science*, 268(5212), 889–893.
- Silson, E. H., Reynolds, R. C., Kravitz, D. J., & Baker, C. I. (2018). Differential sampling of visual space in ventral and dorsal early visual cortex. *Journal of Neuroscience*, 38(9), 2294–2303, <https://doi.org/10.1523/JNEUROSCI.2717-17.2018>.
- Silver, M. A., & Kastner, S. (2009). Topographic maps in human frontal and parietal cortex. *Trends in Cognitive Sciences*, 13(11), 488–495, <https://doi.org/10.1016/j.tics.2009.08.005>.
- Silver, M. A., Ress, D., & Heeger, D. J. (2005). Topographic maps of visual spatial attention in human parietal cortex. *Journal of Neurophysiology*, 94(2), 1358–1371, <https://doi.org/10.1152/jn.01316.2004>.
- Smith, A. T., Singh, K. D., Williams, A. L., & Greenlee, M. W. (2001). Estimating receptive field size from fMRI data in human striate and

- extrastriate visual cortex. *Cerebral Cortex*, *11*(12), 1182–1190.
- Swisher, J. D., Halko, M. A., Merabet, L. B., McMains, S. A., & Somers, D. C. (2007). Visual topography of human intraparietal sulcus. *Journal of Neuroscience*, *27*(20), 5326–5337, <https://doi.org/10.1523/JNEUROSCI.0991-07.2007>.
- Tootell, R. B., Dale, A. M., Sereno, M. I., & Malach, R. (1996). New images from human visual cortex. *Trends in Neuroscience*, *19*(11), 481–489, [https://doi.org/10.1016/S0166-2236\(96\)10053-9](https://doi.org/10.1016/S0166-2236(96)10053-9).
- Tootell, R. B., & Hadjikhani, N. (2001). Where is “dorsal V4” in human visual cortex? Retinotopic, topographic and functional evidence. *Cerebral Cortex*, *11*(4), 298–311.
- Tootell, R. B., Mendola, J. D., Hadjikhani, N. K., Ledden, P. J., Liu, A. K., Reppas, J. B., . . . Dale, A. M. (1997). Functional analysis of V3A and related areas in human visual cortex. *Journal of Neuroscience*, *17*(18), 7060–7078.
- Ugurbil, K., Xu, J., Auerbach, E. J., Moeller, S., Vu, A. T., Duarte-Carvajalino, J. M., . . . WU-Minn HCP Consortium. (2013). Pushing spatial and temporal resolution for functional and diffusion MRI in the Human Connectome Project. *NeuroImage*, *80*, 80–104, <https://doi.org/10.1016/j.neuroimage.2013.05.012>.
- Van Essen, D. C., & Glasser, M. F. (2018). Parcellating cerebral cortex: How invasive animal studies inform noninvasive mapmaking in humans. *Neuron*, *99*(4), 640–663, <https://doi.org/10.1016/j.neuron.2018.07.002>.
- Van Essen, D. C., Smith, S. M., Barch, D. M., Behrens, T. E. J., Yacoub, E., Ugurbil, K., & WU-Minn HCP Consortium. (2013). The WU-Minn Human Connectome Project: An overview. *NeuroImage*, *80*, 62–79, <https://doi.org/10.1016/j.neuroimage.2013.05.041>.
- Van Essen, D. C., Smith, J., Glasser, M. F., Elam, J., Donahue, C. J., Dierker, D. L., . . . Harwell, J. (2017). The Brain Analysis Library of Spatial maps and Atlases (BALSA) database. *NeuroImage*, *144*(Pt B), 270–274, <https://doi.org/10.1016/j.neuroimage.2016.04.002>.
- Van Essen, D. C., Ugurbil, K., Auerbach, E., Barch, D., Behrens, T. E. J., Bucholz, R., . . . WU-Minn HCP Consortium. (2012). The Human Connectome Project: A data acquisition perspective. *NeuroImage*, *62*(4), 2222–2231, <https://doi.org/10.1016/j.neuroimage.2012.02.018>.
- Vu, A. T., Jamison, K., Glasser, M. F., Smith, S. M., Coalson, T., Moeller, S., . . . Yacoub, E. (2016). Tradeoffs in pushing the spatial resolution of fMRI for the 7T Human Connectome Project. *NeuroImage*, <https://doi.org/10.1016/j.neuroimage.2016.11.049>.
- Wade, A. R., Brewer, A. A., Rieger, J. W., & Wandell, B. (2002). Functional measurements of human ventral occipital cortex: Retinotopy and colour. *Philosophical Transactions of the Royal Society of London, Series B: Biological Sciences*, *357*(1424), 963–973.
- Wandell, B., Brewer, A. A., & Dougherty, R. F. (2005). Visual field map clusters in human cortex. *Philosophical Transactions of the Royal Society of London, Series B: Biological Sciences*, *360*(1456), 693–707.
- Wandell, B., Dumoulin, S. O., & Brewer, A. A. (2007). Visual field maps in human cortex. *Neuron*, *56*(2), 366–383.
- Wandell, B., & Winawer, J. (2011). Imaging retinotopic maps in the human brain. *Vision Research*, *51*(7), 718–737.
- Wandell, B., & Winawer, J. (2015). Computational neuroimaging and population receptive fields. *Trends in Cognitive Sciences*, *19*(6), 349–357, <https://doi.org/10.1016/j.tics.2015.03.009>.
- Wang, L., Mruczek, R. E. B., Arcaro, M. J., & Kastner, S. (2015). Probabilistic maps of visual topography in human cortex. *Cerebral Cortex*, *25*(10), 3911–3931, <https://doi.org/10.1093/cercor/bhu277>.
- Winawer, J., & Witthoft, N. (2015). Human V4 and ventral occipital retinotopic maps. *Visual Neuroscience*, *32*, E020, <https://doi.org/10.1017/S0952523815000176>.
- Zuiderbaan, W., Harvey, B. M., & Dumoulin, S. O. (2012). Modeling center-surround configurations in population receptive fields using fMRI. *Journal of Vision*, *12*(3):10, 1–15, <https://doi.org/10.1167/12.3.10>. [PubMed] [Article]

Appendix: Methods

Subjects

Complete retinotopy datasets (six fMRI runs) were acquired for a total of 181 subjects (109 females, 72 males), age 22–35, as part of the Young Adult Human Connectome Project (HCP) (<https://www.humanconnectome.org/study/hcp-young-adult/data-releases>). All subjects also participated in approximately 4 hr of multimodal MRI data acquisition on a customized Siemens 3T Connectom scanner at Wash-

ington University (Van Essen et al., 2013) as well as extensive behavioral and demographic assessments (Barch et al., 2013). All subjects had normal or corrected-to-normal visual acuity. The subjects include 53 pairs of genetically confirmed identical twins (106 individuals), 34 pairs of fraternal twins (68 individuals), two pairs of nontwin siblings (four individuals), and three individuals whose twins/siblings were not included. Each subject has an assigned six-digit HCP ID. For family structure details, researchers must apply for access to “Restricted Data” on ConnectomeDB (<https://www.humanconnectome.org/study/hcp-young-adult/document/wu-minn-hcp-consortium-restricted-data-use-terms>).

Structural image acquisition and preprocessing

T1-weighted (T1w) and T2-weighted (T2w) structural scans at 0.7-mm isotropic resolution were acquired at 3T and used as the anatomical substrate for the retinotopy data. White and pial cortical surfaces were reconstructed from the structural scans using the HCP Pipelines (Glasser et al., 2013). Surfaces were aligned across subjects to the HCP 32k fs_LR standard surface space using first a gentle folding-based registration “MSMSulc” and then a more aggressive areal-feature-based registration “MSMAll” that was driven by myelin maps, resting-state network maps, and 3T resting-state visuotopic maps (Glasser, Coalson, et al., 2016; Robinson et al., 2018; Robinson et al., 2014). Myelin maps were the ratio of T1w/T2w images (Glasser & Van Essen, 2011) normalized using a surface-based atlas to estimate B1+ transmit effects (Glasser et al., 2013). Note that because the MSMAll registration is based partly on measurements of resting-state networks and resting-state-based estimates of visuotopic organization (Glasser, Coalson, et al., 2016), alignment of pRF solutions across individuals is likely to be improved relative to alignment based on cortical folding alone. Subcortical volume data were aligned to Montreal Neurological Institute (MNI) space using FNIRT nonlinear volume-based registration based on T1w image intensities (Glasser et al., 2013).

fMRI acquisition and preprocessing

Full details on data acquisition and preprocessing are provided elsewhere (Glasser et al., 2013; Vu et al., 2016). In brief, fMRI data were collected at the Center for Magnetic Resonance Research at the University of Minnesota using a Siemens 7T Magnetom actively shielded scanner and a 32-channel receiver coil array with a single channel transmit coil (Nova Medical, Wilmington, MA). Whole-brain fMRI data were

collected at a resolution of 1.6-mm isotropic and 1-s TR (multiband acceleration 5, in-plane acceleration 2, 85 slices). The data were processed using the HCP pipelines (Glasser et al., 2013) that correct for head motion and EPI spatial distortion and bring the fMRI data into alignment with the HCP standard surface space as described above. (Note that the data used here reflect the correct phase-encode directions in the EPI undistortion procedure, unlike an early pre-2018 release of the data.) The data produced by the pipeline are in the Connectivity Informatics Technology Initiative (CIFTI) format, which consists of 91,282 grayordinates that cover both cortical and subcortical brain regions with approximately 2-mm spatial resolution. (Higher resolution CIFTI outputs are also available, consisting of 170,494 grayordinates with approximately 1.6-mm spatial resolution. Only the 2-mm CIFTI data are used in this paper.) The fMRI data were also denoised for spatially specific structured noise using multirun sICA+FIX (Glasser et al., 2018; Griffanti et al., 2014; Salimi-Khorshidi et al., 2014). Differences in slice timing were not corrected since the fast multiband acquisition makes such corrections less important (though slices may differ by as much as 1 s). The dimensions of the preprocessed data are 181 subjects \times 91,282 grayordinates \times 6 runs \times 300 time points. These preprocessed data are available from ConnectomeDB (<https://db.humanconnectome.org/>).

The HCP’s methods of preprocessing are designed to maximize alignment of cortical areas across subjects while minimizing blurring of the data in individuals or groups (Coalson, Van Essen, & Glasser, 2018; Glasser, Smith, et al., 2016). HCP-style preprocessing includes correction of distortions in all MRI images so that the images represent the physical space of the subject, registration across modalities and correction for motion within fMRI and DWI scans, and bringing cortical data onto surface meshes and subcortical data in gray-matter parcels (Glasser et al., 2013). Data are aligned on the surface using Multimodal Surface Matching All (MSMAll) areal-feature-based registration, which uses myelin maps and resting-state data to more accurately align cortical areas than a standard folding-based registration (Glasser, Coalson, et al., 2016a; Robinson et al., 2018; Robinson et al., 2014). Data from subcortical areas are aligned using FNIRT nonlinear volume-based registration. Care was taken to minimize the number of interpolations and to use interpolation methods like splines that minimize the blurring effects of interpolation.

Despite efforts in careful preprocessing methods, imperfections inevitably remain in the data. Partial volume effects and other types of blurring are inherent in data acquisition and cannot be easily removed through preprocessing methods. Thus, care must be taken in interpretation where different tissue types are

in close proximity. For example, it appears that the dorsal rim of the cerebellum may exhibit visually responsive signals that likely originate, in part, from nearby locations in cortex.

Stimuli

Retinotopic mapping stimuli were constructed by creating slowly moving apertures and placing a dynamic colorful texture within the apertures. Apertures and textures were generated at a resolution of 768×768 pixels, and were constrained to a circular region with diameter 16.0° . The display was uniform gray beyond the circular region.

Texture design

To elicit strong neural responses in high-level visual areas (while also driving responses in early visual areas), we designed a texture composed of colorful visual objects. The texture was constructed by taking objects from Kriegeskorte et al., 2008 (see <http://www.cns.nyu.edu/kianilab/Datasets.html>), preparing these objects at multiple scales, and placing the objects on an achromatic pink-noise background. One hundred distinct texture images were generated. To generate a texture image, we first created an achromatic pink-noise ($1/f$ amplitude spectrum) background. Then, starting at the largest scale and proceeding to smaller scales, objects were randomly selected and placed at random positions in the image, potentially occluding objects already placed, similar to a “dead leaves” tessellation. There were seven different scales. The object sizes associated with the seven scales were 350 (7.3°), 247 (5.1°), 175 (3.6°), 124 (2.6°), 88 (1.8°), 62 (1.3°), and 44 (0.9°) pixels (decreasing by a factor of $\sqrt{2}$), and the numbers of objects at each scale were 1, 2, 4, 8, 16, 32, and 64 (increasing by a factor of 2). Textures were updated at a rate of 15 Hz (details below). Pilot experiments confirmed that compared to conventional checkerboard patterns, the object texture produces larger BOLD responses and improves test-retest reliability of retinotopic estimates.

Aperture design

The experiment consisted of six runs in which three different types of apertures were presented (wedges, rings, bars). Apertures moved slowly across the visual field and were occasionally interrupted by blank periods in order to help distinguish between nonvisual responses and responses from neurons with very large receptive fields (Dumoulin & Wandell, 2008). Each run lasted 300.0 s. The order of runs was RETCCW,

RETCW, RETEXP, RETCON, RETBAR1, and RETBAR2, and are described below:

- RETCCW consisted of a 22-s blank period, eight cycles of a 90° wedge rotating counterclockwise with a period of 32 s, and a 22-s blank period. The duty cycle for a given point in the visual field was 25% (8 of 32 s).
- RETCW was the same as RETCCW except that the wedge rotated clockwise.
- RETEXP consisted of a 22-s blank period, eight cycles of a ring expanding away from the center of the screen with a period of 32 s, and a 22-s blank period. The last 4 s of each 32-s period was blank (thus helping distinguish foveal and peripheral responses). Ring size increased linearly with eccentricity. The duty cycle for a given point in the visual field was 19% (6 of 32 s).
- RETCON was the same as RETEXP except that the ring contracted towards the center of the screen.
- RETBAR1 and RETBAR2 were identical, and consisted of a 16-s blank period, four bar movements lasting 32 s each (RIGHT, UP, LEFT, DOWN), a 12-s blank period, four bar movements lasting 32 s each (UPPER-RIGHT, UPPER-LEFT, LOWER-LEFT, LOWER-RIGHT), and a 16-s blank period. The capitalized term indicates the direction of bar movement. The last 4 s of each 32-s bar movement was blank (thus, the bar traversed the visual field in 28 s). The width of the bar was $1/8$ of the full stimulus extent. The duty cycle for a given point in the visual field was 10% (3.11 of 32 s).

Apertures were animated at a rate of 15 Hz, and each aperture was anti-aliased to minimize discretization effects. On each aperture update, one of the 100 texture images was randomly selected (under the constraint that the same texture image is not presented consecutively) and presented within the confines of the aperture (using the continuous values of the aperture as opacity values). Each run consisted of $300 \text{ s} \times 15 \text{ Hz} = 4,500$ stimulus frames.

Experimental design and task

A small semitransparent dot ($0.3^\circ \times 0.3^\circ$) at the center of the display was present throughout the experiment. The color of the central dot switched randomly to one of three colors (black, white, or red) every 1–5 s. Subjects were instructed to maintain fixation on the dot and to press a button whenever the color of the dot changed. The purpose of the task was to encourage fixation and allocation of attention to the center of the display. To further aid fixation, a semitransparent fixation grid was superimposed on the

display throughout the experiment (Schira, Tyler, Breakspear, & Spehar, 2009).

Stimuli were presented using an NEC NP4000 projector. The projected image was focused onto a backprojection screen, and subjects viewed this screen via a mirror mounted on the radiofrequency coil. The projector operated at a resolution of 1024×768 at 60 Hz. A Macintosh computer controlled stimulus presentation using code based on the Psychophysics Toolbox (Brainard, 1997; Pelli, 1997). Behavioral responses were recorded using a button box (Current Designs, Philadelphia, PA). Eye tracking was performed using an EyeLink 1000 system (SR Research, Mississauga, Ontario, Canada). Eye tracking data are available on ConnectomeDB for most subjects, but we caution that the quality of the data is variable due to obstructions within the head coil. Eye tracking data were not used in this paper.

The viewing distance to the backprojection screen was 101.5 cm, and the full stimulus extent (i.e., diameter of the circle within which apertures are shown) was 28.5 cm, yielding a total stimulus size of 16.0° . However, due to variations in subject setup, these numbers should be considered approximate. Furthermore, due to the confines of the MRI environment, some subjects were unable to see the very top and very bottom of the stimuli (approximately 1° at each end). This should be taken into account when interpreting the fMRI results.

pRF analysis

Population receptive field (pRF) model

We analyzed the time series data of each grayordinate using a pRF model called the Compressive Spatial Summation model (Kay, Winawer, et al., 2013). This model is implemented in a MATLAB toolbox called analyzePRF (<http://cvnlab.net/analyzePRF/>); to analyze the HCP 7T Retinotopy Dataset, we modified the implementation and archived the resulting code on the Open Science Framework web site (<https://osf.io/bw9ec/>). The model predicts the fMRI time series as the sum of a stimulus-related time series and a baseline time series. The stimulus-related time series is obtained by computing the dot product between the stimulus apertures and a 2-D isotropic Gaussian, applying a static power-law nonlinearity, scaling the result by a gain factor, and then convolving the result with a canonical hemodynamic response function (HRF). This can be expressed formally as $r(t) = (g \times (S(t) \cdot G)^n) * h(t)$ where $r(t)$ is the predicted stimulus-related time series, g is a gain parameter, $S(t)$ is the stimulus aperture at time t , G is the 2-D isotropic Gaussian, n is an exponent parameter, and $h(t)$ is a canonical HRF. This time series characterizes BOLD modulations driven by the stimulus. The baseline time series is obtained by computing a weighted sum of low-

order polynomial terms (constant, linear, quadratic, etc.). This time series characterizes the baseline BOLD signal level (i.e., the signal intensity that is present in the absence of the stimulus).

The canonical HRF was obtained by taking an ideal impulse response determined in a previous study (Kay, Rokem, et al., 2013; can be computed using `spm_hrf(0.1,[6.68 14.66 1.82 3.15 3.08 0.1 48.9])` from SPM; also see Equation 1 where the response is given as a function of t representing time in seconds), convolving the impulse response to predict the response to a 1-s stimulus, resampling to a 1-s sampling rate using cubic interpolation, and normalizing the result to have a peak amplitude of 1. Note that this HRF was used for all grayordinates in all subjects.

$$f(t) = \frac{\beta_1^{\alpha_1} x^{\alpha_1-1} \exp(-\beta_1 x)}{\Gamma(\alpha_1)} - \frac{\beta_2^{\alpha_2} x^{\alpha_2-1} \exp(-\beta_2 x)}{p_5 \Gamma(\alpha_2)} \quad (1)$$

$$x = at + b$$

$$(\alpha_1, \beta_1, \alpha_2, \beta_2) = \left(\frac{p_1}{p_3}, \frac{\Delta t}{p_3}, \frac{p_2}{p_4}, \frac{\Delta t}{p_4} \right)$$

$$(p_1, p_2, p_3, p_4, p_5, \Delta t, a, b) = (6.68, 14.66, 1.82, 3.15, 3.08, 0.1/16, 160, -16)$$

The model yields several parameters of interest: two parameters (x, y) that indicate the position of the Gaussian, a parameter (σ) that indicates the standard deviation of the Gaussian, a parameter (n) that indicates the exponent of the power-law nonlinearity, and a parameter (g) that indicates the overall gain of the predicted responses in raw scanner units. In pilot analyses, we found that the experimental paradigm used here generally does not provide enough statistical power to estimate the exponent parameter reliably. Thus, we did not attempt to estimate this parameter but instead fixed the value of n to 0.05, which is representative of the typical values that we observed in the dataset. Note that a compressive exponent (like 0.05) has the effect of making responses tolerant to changes in the position and size of the stimulus (Kay, Winawer, et al., 2013); intuitively, with a compressive exponent, stimuli presented anywhere within the pRF tend to drive responses equally strongly.

pRF size

The spatial selectivity of a grayordinate depends on both the size of the Gaussian and the subadditive exponent. This relationship can be made explicit by considering the predicted response to point stimuli at

different locations in the visual field. As described previously (Kay, Winawer, et al., 2013), these responses can be expressed as:

$$\begin{aligned} M(x, y) &= g \times G(x, y)^n \\ &\propto \exp\left(-\frac{(x - x')^2 + (y - y')^2}{2\sigma^2} n\right) \\ &= \exp\left(-\frac{(x - x')^2 + (y - y')^2}{2\left(\frac{\sigma}{\sqrt{n}}\right)^2}\right) \end{aligned}$$

where M indicates responses to the different point stimuli, g is the pRF gain, G is the 2-D isotropic Gaussian parameterized by position (x', y') and standard deviation (σ) , and n is the subadditive exponent. Note that these responses, M , follow the form of a new Gaussian. We define pRF size as the standard deviation of this new Gaussian:

$$\sigma_{size} = \frac{\sigma}{\sqrt{n}}.$$

Because we fix n at 0.05, the pRF size is approximately 4.5 times larger than the standard deviation of the Gaussian G . Throughout the text, all references to pRF size reflect σ_{size} . Hence, the reported pRF size already accounts for the effect of the power-law nonlinearity. In summary, pRF size can be interpreted as one standard deviation of a 2-D Gaussian that characterizes how a grayordinate responds to point stimuli in the visual field.

Stimulus preprocessing

Prior to model fitting, we performed preprocessing of the stimulus apertures. The original resolution of the apertures in each run is 768 pixels \times 768 pixels \times 4,500 frames. Aperture values range between 0 and 1, where 0 indicates the absence of the texture image and 1 indicates the presence of the texture image. To reduce computational burden, we resized the apertures to 200 \times 200 pixels. Then, to match the temporal resolution of the stimulus to the temporal resolution of the fMRI data, we averaged consecutive groups of 15 frames. This yielded a final stimulus resolution of 200 pixels \times 200 pixels \times 300 frames. Model fitting was performed in pixel units, and model parameters were post hoc converted from pixel units to degrees by multiplying by a scaling factor of 16.0° / 200 pixels.

Model fitting

In pilot analyses of the fMRI data, we noticed a high propensity for local minima in model solutions. To reduce inaccuracies and biases due to local

minima, we designed the following fitting approach. We first performed a grid fit in which a range of parameter combinations were evaluated. We densely sampled parameter space using 25 nonlinearly spaced eccentricity values between 0° and 16° (0°, 0.04°, 0.09°, 0.16°, 0.22°, 0.33°, 0.43°, 0.58°, 0.73°, 0.95°, 1.2°, 1.5°, 1.8°, 2.2°, 2.7°, 3.3°, 3.9°, 4.7°, 5.6°, 6.8°, 8.0°, 9.6°, 11.3°, 13.7°, and 16°), 32 angle values between 0 and 360 degrees (0°, 11.25°, 22.5°, ..., and 348.75°), and 13 size values on a log scale between 1 and 128 pixels (equivalent to 0.08°, 0.11°, 0.16°, 0.23°, 0.32°, 0.45°, 0.64°, 0.91°, 1.3°, 1.8°, 2.6°, 3.6°, 5.1°, 7.2°, and 10.2°), yielding 25 \times 32 \times 13 = 10,400 parameter combinations. The combination yielding the optimal fit (in a least-squares sense) to the data was identified. We then used this parameter combination as the initial seed in a nonlinear optimization procedure (MATLAB Optimization Toolbox, Levenberg-Marquardt algorithm). For this initial seed, the gain parameter was changed to 75% of its discovered (optimal) value to allow room for adjustment in the optimization. Also, the gain parameter was restricted to be nonnegative to constrain the space of fits to solutions that predict positive BOLD responses to stimulation. Note that no spatial constraints are incorporated into the model fitting process (e.g., smoothing, priors on expected parameter values, etc.). Thus, parameter estimates for grayordinates are computed independently, thereby maximizing resolution and minimizing bias.

We fit the pRF model not only to the data from each subject (S1–S181), but also to the data from three group-average pseudosubjects, which were constructed by averaging time series data across subjects. One group average is the result of averaging all 181 subjects (S184); the second group average is the result of averaging a randomly chosen half of the subjects (S182); and the third group average is the result of averaging the other half of the subjects (S183). For each individual subject and each group average, we performed three separate model fits: One fit uses all six runs, a second fit uses only the first half of each of the six runs, and the third fit uses only the second half of each of the six runs. The rationale for these fits is that the first fit provides the best estimate of model parameters, whereas the second and third fits can be used to assess the reliability of parameter estimates.

Each fit produces six quantities of interest: pRF angle, pRF eccentricity, pRF size (calculated as σ/\sqrt{n}), pRF gain, percentage of variance explained, and mean signal intensity (calculated as the mean of all time points). The dimensions of the final results are (181+3) subjects \times 91,282 grayordinates \times 3 model fits \times 6 quantities (see Figure 2).

Surface visualization

The preprocessed time series data (CIFTI format) reflect MSMAll-alignment of individual subjects to the fs_LR surface (Glasser et al., 2013). The pRF model solutions are obtained by fitting each CIFTI grayordinate independently; thus, there are no additional spatial transformations applied. In this paper, we visualize pRF model solutions for cortical grayordinates by mapping from CIFTI space to *fsaverage* space using nearest-neighbor interpolation and then using orthographic projection to visualize the *fsaverage* surface (see Figure 3). The underlay for the group-average results is the thresholded *fsaverage* curvature, whereas the underlay for individual-subject results is the curvature obtained from individual subjects. An alternative to the *fsaverage* curvature is to compute the average curvature of the 181 subjects, which is useful for maintaining the true relationship between the retinotopic features and folding features in the data (e.g. as in Glasser, Coalson, et al. 2016); this average curvature is the underlay provided in the downloadable BALSAs datasets (<https://balsa.wustl.edu/study/show/9Zkk>).

Group-average maps in Figures 3 through 6 are thresholded at 9.8% variance explained. This threshold was determined by fitting a Gaussian mixture model with two Gaussians to the distribution of variance explained values across grayordinates in the group-average data and then identifying the value at which the posterior probability switches from the Gaussian with smaller mean to the Gaussian with larger mean. The interpretation of this procedure is that the Gaussian with smaller mean likely reflects noise (grayordinates that are not visually responsive), the Gaussian with larger mean likely reflects signal (grayordinates that are visually responsive), and values above the threshold are

more likely to reflect signal than noise. The same procedure was performed for the distribution of variance explained values across grayordinates in individual-subject data, and this yielded a threshold of 2.2% variance explained. We used this more liberal threshold for the individual-subject maps in Figure 7.

Timing and behavioral analysis

Stimulus timing, scanner timing, and button presses were logged in a behavioral file for each run.

Behavioral files are missing for a small fraction of the runs (17 of 1,086) and button presses were not detected for one of the subjects (S152, HCP ID 782561).

Analysis of stimulus timing indicates that run durations were highly reliable: The central 95% of run durations lie within the range [299.974 s, 299.982 s]. Analysis of scanner timing indicates that synchronization of the stimulus computer and the scanner was robust, with the exception of two runs in which scanner acquisition may have started 1 s (1 TR) too early relative to the stimulus.

To quantify behavioral performance, we calculated, for each run, $(A - B) / C \times 100$, where A indicates the number of successful detections of color changes (defined as the existence of a button press within 1 s of a color change), B indicates the number of extraneous button presses, and C indicates the total number of color changes. We then averaged this performance value across the six runs. Behavioral performance was quite good overall: The interquartile range (central 50%) of performance values across subjects is [91.6%, 97.8%].