

The immunomodulatory effect of plant lectins: a review with emphasis on ArtinM properties

Maria A. Souza · Fernanda C. Carvalho ·
Luciana P. Ruas · Rafael Ricci-Azevedo ·
Maria Cristina Roque-Barreira

Received: 30 October 2012 / Revised: 6 December 2012 / Accepted: 9 December 2012 / Published online: 9 January 2013
© The Author(s) 2013. This article is published with open access at Springerlink.com

Abstract Advances in the glycobiology and immunology fields have provided many insights into the role of carbohydrate-protein interactions in the immune system. We aim to present a comprehensive review of the effects that some plant lectins exert as immunomodulatory agents, showing that they are able to positively modify the immune response to certain pathological conditions, such as cancer and infections. The present review comprises four main themes: (1) an overview of plant lectins that exert immunomodulatory effects and the mechanisms accounting for these activities; (2) general characteristics of the immunomodulatory lectin ArtinM from the seeds of *Artocarpus heterophyllus*; (3) activation of innate immunity cells by ArtinM and consequent induction of Th1 immunity; (4) resistance conferred by ArtinM administration in infections with intracellular pathogens, such as *Leishmania (Leishmania) major*, *Leishmania (Leishmania) amazonensis*, and *Paracoccidioides brasiliensis*. We believe that this review will be a valuable resource for more studies in this relatively neglected area of research, which has the potential to reveal carbohydrate targets for novel prophylactic and therapeutic strategies.

Keywords Plant lectins · ArtinM lectin · Immunomodulation · Toll-like receptor · *Leishmania* · *Paracoccidioides brasiliensis*

M. A. Souza
Instituto de Ciências Biomédicas, Universidade Federal de
Uberlândia, Uberlândia, MG, Brazil

F. C. Carvalho · L. P. Ruas · R. Ricci-Azevedo ·
M. C. Roque-Barreira (✉)
Departamento de Biologia Celular e Molecular e Bioagentes
Patogênicos, Faculdade de Medicina de Ribeirão Preto,
Universidade de São Paulo, 14049900 Ribeirão Preto,
São Paulo, Brazil
e-mail: mcrbarre@fmrp.usp.br

Abbreviations

ArtinM	Artocarpus heterophyllus lectin manose binding
ML	Mistletoe lectin
rML	Recombinant mistletoe lectin
RIPs	Type-2 ribosomes inactivating proteins
RNA	Ribonucleic acid
NK	Natural killer cells
IL-12	Interleukin – (12)
IFN- γ	Interferon gamma
TLR	Toll-like receptor
TNF- α	Tumor necrosis factor-alpha
Th1	T helper 1
Th2	T helper 2
Th17	T helper 17
MHC II	Major histocompatibility complex class II
KML	Korean mistletoe lectin
PHA-E and PHA-L	Phytohaemagglutinin
Con A	Concanavalin A
PSA	Pisum sativum agglutinin
WGA	Wheat germ agglutinin
Cramoll	Cratylia mollis lectin
BanLec	Lectin from Musa paradisiacal
Conbr	Lectin from Canavalia brasiliensis
DrosL	Dioclea rostrata lectin
DvioL	Dioclea violacea lectin
Dvirl	Dioclea virgata lectin
Garlic	Lectin from <i>Alium sativum</i>
PAA	Pisum arvense agglutinin (lectin from <i>Pisum arvense</i>)
PWM	Pokeweed mitogen (lectin from <i>Phytolacca Americana</i>)
SBA	Soybean agglutinin
PNA	Peanut agglutinin
AAL	Aleuria aurantia lectin

ScLL	Synadenium carinatum lectin latex
UEA-1	Ulex europaeus agglutinin
CTL	Cytotoxic T lymphocytes
NOD	Non-obese diabetic mice
JRL	Jacalin-related lectins
CRD	Carbohydrate-recognition domain
HRP	Horseradish peroxidase
rArtinM	Recombinant ArtinM
NO	Nitric oxide
PAMPs	Pathogen-associated molecular patterns
TIR	Toll/interleukin-1 receptor
MyD88	Myeloid differentiation primary response gene 88
PCM	Paracoccidioidomycosis
CFU	Colony-forming units

Overview of immunomodulatory plant lectins

Lectins are carbohydrate-binding proteins of non-immune origin. They are involved in various biological processes,

including cell–cell recognition, cell proliferation, cell migration, cell adhesion to the extracellular matrix, and host-parasite interactions [1, 2]. Since the 1960s, plant lectins have been extensively used as valuable tools in biomedical research, because of their interactions with receptor-linked glycans on cell surfaces may trigger cell signaling and biochemical responses.

Several plant lectins exert immunomodulatory activities that are initiated by their interaction with glycan's moieties present over the surface of immune cells. Such interaction may trigger signal transduction, to produce certain cytokines (Table 1) and induce efficient immune responses against tumors or microbial infections. Hence, immunomodulatory lectins have potential pharmaceutical applications or may help to identify sugar targets for new therapeutic strategies.

The European mistletoe (*Viscum album*) contains the most noticeable plant lectin endowed with immunomodulatory and antitumor activities. Mistletoe lectins (ML) type I, II and III are a group of glycosylated, 56–64 kDa cytotoxic proteins, which consist of two non-covalently associated pairs of disulfide-linked A-B dimers and are considered to

Table 1 Some plant lectins that induce cytokines production

Lectin	Source	Cytokine	Reference
ArtinM	<i>Artocarpus heterophyllus</i>	IL-12 and IL-10 (murine macrophages and dendritic cells)	[26, 74, 75]
		TNF- α (murine mast cells)	[117]
		IL-10/IFN- γ (murine spleen cells)	[118]
Banlec	<i>Musa paradisiaca</i>	IFN- γ , IL-10, and IL-4 (murine spleen cells)	[29]
ConA	<i>Canavalia ensiformis</i>	IFN- γ (murine spleen cells)	[75]
		IFN- γ and IL-2 (murine spleen cells)	[25]
		IL-5, IL-10, TNF- α , and IFN- γ (human peripheral blood mononuclear cells—PBMCs)	[119]
Conbr	<i>Canavalia brasiliensis</i>	IL-5, IL-10, TNF- α , and IFN- γ (human PBMCs)	[119]
Cramoll	<i>Cratylia mollis</i>	IFN- γ (murine spleen cells)	[75]
		IFN- γ (murine spleen cells)	[28]
DrosL	<i>Dioclea rostrata</i>	IL-5, IL-10, TNF- α , and IFN- γ (human PBMCs)	[119]
Dviol	<i>Dioclea violacea</i>	TNF- α and IL1- β (peritoneal cavity of rat)	[120]
		IL-5 (human PBMCs)	[119]
Dvirl	<i>Dioclea virgata</i>	IL-5, IL-10, TNF- α , and IFN- γ (human PBMCs)	[119]
ASA-I	<i>Alium sativum</i>	IFN- γ and IL-12 (murine spleen cells)	[30]
KML	<i>Viscum album</i> var. <i>coloratum</i>	IL-12 (human dendritic cells)	[121]
ML-I	<i>Viscum album</i>	IL-12 (human PBMCs)	[11]
		IL-15 (human neutrophils)	[122]
		IL-6, TNF- α , and IL-10 (human PBMCs)	[123]
PAA	<i>Pisum arvense</i>	IFN- γ (murine spleen cells)	[75]
PHA	<i>Phaseolus vulgaris</i>	IFN- γ and IL-2 (murine spleen cells)	[25]
PSA	<i>Pisum sativum</i>	IFN- γ and IL-2 (murine spleen cells)	[25]
PWM	<i>Phytolacca americana</i>	TNF- α , IL-12, and IL-6 (human PBMCs)	[124]
ScLL	<i>Synadenium carinatum</i>	IFN- γ and IL-10 (murine bronchoalveolar lavage fluid-BALF)	[33]
UEA-1	<i>Ulex europaeus</i>	IL-2 and IFN- γ (mice spleen)	[41]
WGA	<i>Triticum vulgare</i>	IL-12 and IFN- γ (murine spleen cells)	[25]

be type-2 ribosome-inactivating protein (RIP). The B-chain selectively binds to β -galactosides [3], whereas the A-chain catalyzes hydrolysis of the N-glycosidic bond at adenine-4324 in the eukaryotic 28S ribosomal RNA, thereby inhibiting the elongation step of protein biosynthesis [4]. ML-I was identified as the active component of the *Viscum album* extract and is applied as a complementary treatment of cancer patients [5]. The ML-I B-chain binds to glycans on the surface of cancer cells and allows A-chain entry into the cytoplasm, where the latter chain is enzymatically active and highly cytotoxic. *In vitro* and *in vivo* studies have shown that the antitumor effects of ML-I are not only cytotoxic, but also immunomodulatory [6], an activity that is fundamental to its antitumor properties [7] (reviewed by Bocci, 1993 [8]). The cloning of the mistletoe lectin gene and the separate heterologous expression of the single chains [9, 10] have pointed out that the B-chain is responsible for the immunostimulatory activity of ML-I, mainly manifested by augmented IL-12 production and increased cytokine-induced Natural Killer Cells activation [11]. Comparison of the biological activities of the recombinant Mistletoe lectins (rML) -heterodimer [10] with those of some ML-I mutants [12] revealed a close correlation between cytotoxicity, apoptosis, and the enzymatic activity of the rML A-chain. Both the enzymatic activity exerted by the A-chain and the carbohydrate binding activity elicited by the B-chain are essential for the ML-I effect as an anticancer agent. The first step in the biological action of ML is to recognize and bind to specific ligands on the surface of target cells. Determination of the sugar specificity of ML has shown that this lectin preferentially binds to β -galactosides in the oligosaccharides of glycoproteins [6, 13, 14]. ML-I has a broad range of affinity for Gal α - and Gal β -linked sequences, revealing primary recognition of the terminal galactose unit irrespective of the anomeric linkage [15, 16]. Recent studies on the binding specificity of ML-I toward glycosphingolipids and gangliosides have demonstrated its preferential binding to terminally α 2-6-sialylated neolacto-series gangliosides isolated from human granulocytes, whereas rML only marginally binds to neutral gangliosides with terminal galactose moiety. Therefore, ML-I is a type-2 RIP, specific to sialic acid rather than galactose [17]. Indeed, gangliosides and glycoproteins with terminal Neu5Ac α 2-6Gal β 1-4GlcNAc residues are the true and physiologically relevant targets of ML-I recognition on the cell surface [18]. CD 75 s has glycans with terminal α 2-6-sialyl-lactosamine and is an important target for rML recognition. It is expressed predominantly on activated B-cell, T-cell, and immature dendritic cells, and it is upregulated in hematological cancers along with the cells of solid tumors. As CD75s is overexpressed in solid tumors, these tumors have been the focus of preclinical trials for the efficacy of rML administration. More than 30 % of the patients were observed to have stabilization in tumor progression associated with increased plasma levels of IL-1 β and IFN- γ in response to rML

administration. The high IFN- γ response indicates that rML administration stimulates Th1 cells, which may mediate an antitumor T-cell response (reviewed by Zwierzina *et al.* [19]).

Besides the European mistletoe, extracts of the Korean and Chinese mistletoes (*Viscum album coloratum* and *Viscum articulatum*, respectively) contain type-2 RIPs that bind D-galactose [20, 21] and have high structural homology with ML. Like ML-I, they are endowed with immunomodulatory properties, as demonstrated by *in vitro* and *in vivo* studies. The B-chain of the Korean mistletoe lectin (KML) accounts for its immunomodulatory and antitumor activities. This is because the KML B-chain promotes NK cells activation and production of cytokines and inflammatory mediators by macrophages [22, 23]. KML interaction with TLR-4 molecules is responsible for macrophage activation and cytokine production. Macrophages stimulation with KLM results in upregulation of TLR4 expression and enhanced TNF- α production, which is reduced by anti-TLR4 specific antibodies or by assaying macrophages from TLR-4 deficient mice [24]. The recombinant B-chain of the Chinese mistletoe lectin (articulatin) stimulates human mononuclear cells to release TNF- α and IL-6 [21]. This suggests that the B-chain acts as an immunomodulator, like that of the European and Korean mistletoes.

Th1 immunity is induced by immunomodulatory plant lectins. As a rule, the Th1 immune response, manifested by high levels of IFN- γ production, occurs through an IL-12-dependent mechanism. *In vitro* assays with 12 different plant lectins have shown that six of the lectins induce murine spleen cells to produce IL-12 and IFN- γ : Con A from *Canavalia ensiformis*, which binds to α -linked mannose; PHA-E and PHA-L from *Phaseolus vulgaris*, which respectively bind to bisected bi- and tri-antennary complex N-glycans and highly branched non-bisected complex N-glycans); PSA from *Pisum sativum*, which binds to N-glycans containing α -linked mannose with an α -fucose residue linked to N-acetylchitobiose; and WGA from *Triticum vulgaris*, which binds to neuraminic acid and glycans containing terminal GlcNAc or GlcNAc β 1-4GlcNAc [25]. Th1 cytokines production is induced by plant lectins such as ArtinM from *Artocarpus heterophyllus* [26], the Korean mistletoe lectin from *Viscum album coloratum* [27], Cramoll from *Cratylia mollis* [28], BanLec from *Musa paradisiaca* [29], and garlic lectin from *Alium sativum* [30]. Some of these lectins are able to induce Th1 cytokines upon interaction with glycosylated receptors on macrophages and/or dendritic cells, such as type 2 and 4 Toll-like receptors (TLR2 and TLR4), respectively recognized by ArtinM [31] and KML [24]. Several plant lectins may act as TLR agonists [32]. The soybean (SBA), peanut agglutinin (PNA), ConA, and PHA lectins (PHA-L and PHA-P) stimulate extracellular TLRs (2/6, 4, and 5), whereas WGA is pan-active.

Plant lectins can also regulate Th2 immunity. For example, mice receiving ScLL, a lectin from *Synadenium carinatum* with affinity for β -galactoside-containing glycans, exhibited

lower leukocyte trafficking and Th2 cytokine production [34]. ScLL also reduced the pathological sequelae associated with the chronic inflammatory disease asthma in experimental animal models [33]. Th2 immunity can be induced by the lectin B-chain of type-2 RIP from *Ricinus communis*, which binds to D-galactose containing glycans, including many glycoproteins expressed on the surface of enterocytes. This property motivated the genetic linking of the ricin B-chain with the coding region of the proinsulin gene, expressed as a fusion protein in *E. coli* [34] or in *Solanum tuberosum* (potato plant) [35]. Oral administration of this recombinant fusion protein to prediabetic NOD mice suppressed the auto-immune insulinitis, associated with the Th2 immune response, whereas administration of insulin only did not interfere in the course of the disease [34]. The lectin interaction with glycans on the surface of enterocytes favors systemic tolerance to the fused autoantigen. Fusion proteins (immunomodulatory lectin/autoantigen) expressed in the tissues of edible plants provide a conceivable strategy to stimulate Th2 immunity and suppress autoimmunity.

Still regarding mucosal immunity, plant lectins that recognize glycans on the surface of M cells may favor mucosal immunity against orally administered antigens (reviewed by Azizi and cols. 2010 [36]). M cells express a particular glycosylation pattern on their surface, including L-fucose-containing glycans [37], and transport a broad range of materials such as particulate antigens from the intestinal lumen to the underlying lymphoid tissue of the mucosae, where local and systemic potent immune response will be initiated. *Ulex europaeus* agglutinin (UEA-1) recognizes α -L-fucose and selectively binds to the surface of murine M cells. This property explains why UEA-1 is the most studied lectin when enhanced potency of oral or nasal particulate vaccines is the ultimate target. UEA-1-poly-L-lysine coated on the surface of microparticles encoding HIV-1 genes was able to bind to the apical surface of M cells of mice immunized with these particles [38]. Both mucosal and systemic antibody (IgA and IgG) and envelope-specific CTLs responses were augmented in mice immunized with poly-L-lysine conjugated to UEA1 and complexed to a plasmid encoding the HIV-1 envelope [39]. Oral immunization of mice with killed whole *Helicobacter pylori* or *Campylobacter jejuni* conjugated to UEA-1 induced protective responses against live challenge [40]. In a recent *in vitro* study, the hepatitis B surface antigen (HBsAg) encapsulated in liposomes coupled with UEA-1 predominantly targeted M-cells, in a sugar-dependent manner. In addition, the lectinized liposomes induced high sIgA level in mucosal secretions as well as high splenic levels of the IL-2 and IFN- γ cytokines in orally immunized mice [41].

This overview provides basic information on plant lectins that act as immunomodulators. Although the text is not exhaustive, it shows that studies have mostly focused on the effects that these lectins may exert on cancer. On the other hand, our laboratory has extensively investigated the

effects that a plant lectin, named ArtinM, may have on the course of experimental infections. This subject will be detailed in the subsequent sections of this review.

ArtinM as an immunomodulatory lectin

Immunomodulatory lectins may play critical roles in the response against infections. The immunobiological importance of carbohydrate recognition is patent in the literature. However, the role exerted by this kind of interaction in infectious diseases is much less appreciated than in other pathological circumstances, like cancer. One reason for the predominant investment in the study of protein-carbohydrate interactions in cancer is related to the logical impact of Hakomori's work, where the aberrant glycosylation pattern has been demonstrated in cancer cells thereby enhancing the biological significance of lectins [42]. This author described the aberrant glycosylation of cancer cells, rendering this subject the favourite for studies on the biological roles of lectins. The most relevant publications on this subject have already been approached in the first section of this review. A second reason for the focus on cancer may be the lack of detailed information on biologically relevant assays to understand the role of carbohydrate-lectin interactions in the immune system during infections.

Our research group is interested in the biological repercussions of carbohydrate recognition by animal [43, 44], pathogen [45–47], and plant lectins [48, 49], with particular emphasis on plant lectins extracted from *Artocarpus heterophyllus* (jackfruit) seeds. Our first study in this field involved Jacalin. This Gal/GalNAc-binding lectin is able to selectively bind to human IgA1 through recognition of the O-glycan core, which is repeatedly found in the hinge region of the α 1 heavy chain [50, 51].

The structural characterization of Jacalin raised a new key in lectin classification. The Jacalin-Related Lectins (JRL) were initially featured as having a β -barrel three-dimensional structure. The JRL were subsequently identified to be having two subfamilies of lectins, namely the Gal-specific JRLs and the Man-specific JRLs. Gal-specific homologs of Jacalin exist in the seeds of *Artocarpus* species [50] and Osage orange (*Maclura pomifera*) [52]. Man-specific JRLs have been isolated from species belonging to a wide range of taxonomic groups, including hedge bindweed (*Calystegia sepium*, family Convolvulaceae) [53, 54], Jerusalem artichoke (*Helianthus tuberosus*, family Asteraceae) [55], jackfruit (*Artocarpus heterophyllus*, family Moraceae) [49], rice (*Oryza sativa*, family Gramineae) [56], banana (*Musa acuminata*, family Musaceae) [57], Japanese chestnut (*Castanea crenata*, family Fagaceae) [58], faveira (*Parkia platycephala*, family Fabaceae) [59], and oilseed rape (*Brassica napus*, Brassicaceae) [60]. Concomitant occurrence of Gal- and Man-specific JLRs has been reported

Table 2 ArtinM biological properties

Cell type	Glycotarget	Triggered events	Final effect	Reference
Neutrophil	N-Glycans on CXCR2 (on the cell surface) and laminin (in the extracellular matrix)	(i) Signal transduction via G protein; (ii) tyrosine phosphorylation; (iii) increased TLR2 expression; (iv) release of leukotriene B4 and CXCL8; (v) shedding of L-selectin; (vi) superoxide production; (vii) phagocytic activity enhancement.	Cell activation and haptotaxis; enhancement of effector functions	[125, 126] [49] [127, 128]
Mast cell	N-Glycans on Fcε receptor	(i) Cell degranulation; (ii) TNF-α release; (iii) mast cell recruitment from bone marrow	Cell recruitment and degranulation; contributes to neutrophil attraction	[117, 129]
Macrophage	N-Glycans on TLR2	(i) Signal transduction via MyD88; (ii) NF-κB activation; (iii) IL-12 production	Th1 immunity	[26, 31] [74]
Dendritic cell	N-Glycans on TLR2	(i) Increased MHCII, CD80, and CD86 expression; (ii) IL-12 production	Cell maturation and Th1 immunity	[75]

for two plant species only. One is the bark of the black mulberry tree (*Morus nigra*), which accumulates high concentrations of a Gal-specific JRL (called MornigaG) and a Man-specific homolog (called MornigaM) [61]. The other *Artocarpus heterophyllus*, seeds of which contain Jacalin, that binds D-galactose and ArtinM that binds to D-mannose. In this review, we will focus on ArtinM.

ArtinM, also known as Artocarpin or KM⁺ [62], specifically recognizes the trisaccharide Man α 1-3 [Man α 1-6] Man core of N-glycans. Interaction of ArtinM with some N-glycans on the cell surface activates innate-immunity cells, such as neutrophils, mast cells, dendritic cells, and macrophages. In this way, ArtinM administration protects against experimental infection with *Leishmania* spp and *Paracoccidioides brasiliensis*. The resistance conferred by ArtinM is attributed to recognition of N-glycans in the ectodomain of Toll-like receptors (TLR) expressed on the surface of innate-immunity cells, and the consequent induction of interleukin 12 (IL-12) production and development of the Th1 adaptive immune response (Table 2).

Here, we review the immunomodulatory effect of ArtinM and the mechanisms behind it. We describe murine experimental models of infection and detail its potential therapeutic applications against certain intracellular pathogens.

ArtinM features

ArtinM is a homotetramer consisting of 13-kDa subunits. The primary structure of ArtinM comprises a polypeptide chain of 149 amino acids that shares 52 % identity with the Jacalin sequence [63]. The differences between Jacalin and ArtinM are attributed to the absence of internal post-translational cleavage in ArtinM, which preserves a short glycine-rich linker sequence holding the regions analogous to the Jacalin α - and β -chains together [63]. These noncovalently associated Jacalin chains are constituted of 133 and 20 residues,

respectively [64], which derive from a 17 kDa precursor [65], whose cleavage does not occur in ArtinM molecule.

The three-dimensional structure of each monomer corresponds to a β -barrel, with a β -prism folding (Fig. 1). Each unit has a carbohydrate-recognition domain (CRD) that binds to D-mannose. ArtinM is thus a tetramer with four CRDs [63]. The structure of ArtinM complexes showed that CRD contains the ligand mannose. So, the lectin possesses a deep-seated binding site formed by three peptide loops (residues 14–17, 137–141, and 88–95). This binding site comprises two subsets, the primary and secondary sites. Interactions at the primary site, corresponding to two of the loops (residues 14–17 and 137–141), involves hydrogen bonds mainly. The secondary site is composed by the third loop (residues 88–95) and establishes interactions that are primarily van der Waals' in nature.

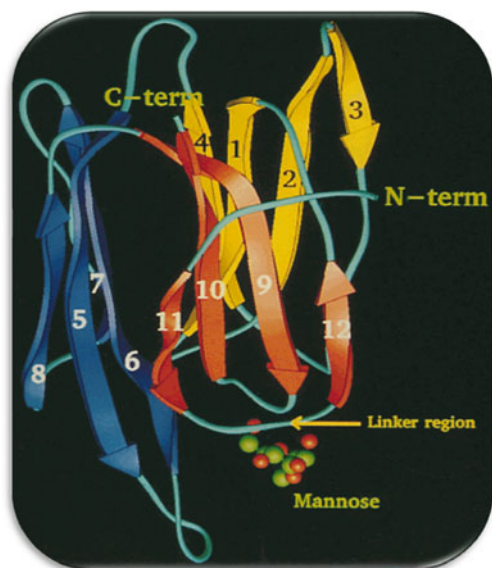


Fig. 1 Three-dimensional structure of the ArtinM monomer. Motifs are distinguished by color, and the positions of the mannose-binding site and linker region are indicated. (Authorized reproduction from Rosa *et al.* [63])

Mannotriose interacts through the three mannopyranosyl residues in its complex with the lectin; mannopentose interacts with the protein via at least three of the five mannose residues. The complexes provide a structural explanation for the carbohydrate specificities of ArtinM. A detailed comparison with the sugar complexes of Heltuba lectin, another mannose-specific JRL with known three-dimensional structure in the sugar-bound form, has established that the sugar-binding loop constituting the secondary site has a role in the different specificities observed at the oligosaccharide level. This loop is four residues longer in the ArtinM CRD than in the Heltuba CRD, so variation in the loop length is a strategy to generate carbohydrate specificity [66].

Molecular modeling and crystallization studies have shown that structural differences account for the distinct carbohydrate-binding specificities between ArtinM and Jacalin [63, 66, 67], especially with respect to the recognition of D-mannose, but not D-galactose, by ArtinM. The binding affinity of ArtinM for the glycoprotein horseradish peroxidase (HRP) is 1633-fold higher than that for the monosaccharide D-mannose. This is because ArtinM interacts with the trimannoside core of the HRP N-glycan, which is reinforced by binding to the mannosyl end of the branched oligosaccharide. The superposition of the mannosyl end with the trisaccharide in the complex leads to severe steric clashes involving the xylose residue and loops 86–95 of the lectin. This results in eight hydrogen bonds and increased binding energy [66].

Although xylose appears to be responsible for the increase in binding energy, it adorns plant N-glycans, as mentioned for HRP, but not mammalian N-glycans [68]. The saccharides that can be coupled to the core of mammalian N-glycans are GlcNAc or Fuc and both are able to establish many van der Waals contacts with loop residues 87–93 of ArtinM [66]. Glycoarray analysis of ArtinM specificity (unpublished data) revealed that subsets of complex-type bi-antennary N-glycans containing $\text{Man}\alpha 1-3(\text{Man}\alpha 1-6)\text{Man}\beta 1-4\text{GlcNAc}\beta 1-4\text{GlcNAc}\beta$ are well recognized by the lectin. The branch attached to $\text{Man}\alpha 1-6$ contributes to ArtinM recognition, whereas $\text{Man}\alpha 1-3$ elongation reduces lectin binding. A previous study of ArtinM specificity evidenced enhanced recognition of $\alpha 1-6\text{Man}$ -extended compared with $\alpha 1-3\text{Man}$ -extended mono-antennary glycans [69]. This unusual binding mechanism accounts for the selectivity of ArtinM binding to certain N-glycans, such as those linked to some protein cell receptors.

Recombinant ArtinM

ArtinM has potential pharmaceutical applications. However, evaluation of these uses has been limited by the lectin paucity in the extract of *A. heterophyllum* seeds (less than 0.5 % of the total protein content) [49]. To further explore the properties of ArtinM, its cDNA has been cloned and

heterologously expressed in *Saccharomyces cerevisiae* and *Escherichia coli* [70].

Glycoarray analysis of ArtinM has shown that the native (ArtinM) and recombinant (rArtinM) forms display the same specificity for $\text{Man}\alpha 1-3(\text{Man}\alpha 1-6)\text{Man}\beta 1-4$ in the context of N-Glycans. Electrogravimetric analysis, allied to a simple kinetic model for HRP binding to the native and recombinant forms of ArtinM, established equivalence for the kinetics of binding/association affinity of the ligand sites [71]. Therefore, ArtinM CRD is preserved in rArtinM, thus facilitating study of its biological properties.

rArtinM reproduces the biological properties of ArtinM, including neutrophil chemotaxis and mast cell degranulation (unpublished data). IL-12 production also occurs when murine macrophages [72] are treated with native or recombinant forms of ArtinM. In addition, the recombinant form is able to induce the release of other inflammatory products, such as TNF- α and NO, at the same level as the native form (unpublished data). Besides the *in vitro* analysis, the ArtinM immunomodulatory effect was reproduced by rArtinM in an assay involving a model of systemic fungal disease caused by *Paracoccidioides brasiliensis*. Administration of ArtinM or rArtinM to mice before or after fungal inoculation induced Th1 immunity, as attested by high TNF- α and IL-12 levels as well as low IL-4 concentrations. Compared with untreated controls, ArtinM- or rArtinM-treated animals exhibited minor pulmonary lesions and fungal burden [31].

ArtinM targets TLR2 N-glycans to induce IL-12 production

The first indication that ArtinM has an immunomodulatory property was its ability to induce IL-12 production by murine macrophages. This ability depends on the lectin concentration and CRD, and IL-12 production is selectively inhibited by D-mannose [26].

IL-12, a 70-kDa heterodimeric cytokine, is important for the activation of the type-1 immune response. A bioactive IL-12p70 form comprises two disulfide-linked subunits: a heavy 40-kDa chain (p40) and a light 35-kDa chain (p35). Macrophages and dendritic cells are the major producers of this cytokine, which is released as a biologically inactive (IL-12p40) and also as a biologically active form (IL-12p70) [73]. IL-12 acts on T lymphocytes and natural killer (NK) cells, and it induces IFN- γ production (Figs. 2 and 5). This hallmark Th1 cytokine functions on T cell proliferation and enhances the cytotoxic activity of macrophages.

By inducing IL-12 production, ArtinM promotes a protective Th1-type response against intracellular pathogens [26, 74, 75]. Reversion of its beneficial effect on IL-12 genetically deficient mice demonstrated the crucial role of IL-12 in the resistance conferred by ArtinM [74]. IL-12

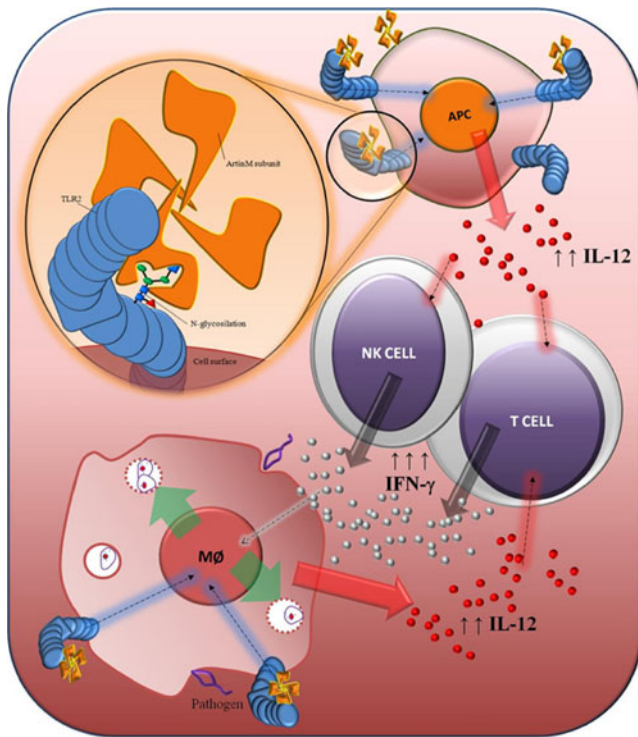


Fig. 2 Immunological repercussions of ArtinM binding to antigen-presenting cells (APCs). The interaction of ArtinM with TLR2 N-glycans on APCs promotes IL-12 production. This cytokine induces increased IFN- γ production by natural killer (NK) and/or T cells, shaping a Th1 immune response. IFN- γ increases the microbicidal activity of macrophages. ArtinM stimulation of infected macrophages further increases the release of IL-12, constituting an amplification looping of Th1 immunity against intracellular pathogens

production by phagocytes is generally initiated by interaction of cell-surface TLR with pathogen-associated molecular patterns (PAMPs).

Toll-like receptors play a key part in the initiation of innate immune responses against pathogens in mammals. Moreover, they recognize a variety of PAMPs from bacteria, viruses, and fungi [76]. To date, more than a dozen different TLRs have been identified. TLRs 1–9 are conserved in humans and mice, TLR10 is selectively expressed in humans, and TLR11 is functional in mice [77]. TLRs are type-I transmembrane proteins. Their ectodomains contain leucine-rich repeats that mediate PAMP recognition. Downstream signal transduction requires their intracellular Toll-IL-1 receptor (TIR) domains. Studies on mice deficient in different TLRs have demonstrated that each TLR has a distinct function in terms of PAMP recognition and immune-response induction [78]. This finding opens new frontiers in the development of therapeutic strategies, as attested by the use of a TLR agonist (Box 1).

Amino acid sequencing analysis of all of the TLRs identified to date has revealed the presence of potential N-linked glycosylation sites. Several lines of evidence indicate that oligosaccharides attached to TLRs play

important roles in PAMP recognition and in the formation of a functional receptor complex on the cell surface [79–83]. The ectodomain of human TLR2 contains N-glycans linked to residues Asn114, Asn199, Asn414, and Asn442; the glycan at Asn442 contributes to efficient secretion of the TLR2 ectodomain [80] and PAMP recognition [84].

We have established that ArtinM-induced IL-12 production occurs via recognition of TLR2 N-glycans (unpublished data) (Fig. 2), but not TLR4 N-glycans; only macrophages from TLR2-deficient mice failed to produce IL-12 in response to ArtinM stimulus [74]. Notably, the ability of ArtinM to induce IL-12 production in wild type (WT) cells was selectively blocked by D-mannose. A gene report assay using TLR2-transfected cells demonstrated direct interaction of ArtinM with TLR2 (unpublished data). The fact that the TLR2 ectodomain contains 4 N-glycans further evidenced TLR2 targeting by ArtinM. We are currently working to identify which glycan(s) is (are) targeted by ArtinM using TLR2 mutants for the ectodomain glycosylation sites (generated in Dr. Nicholas Gay's laboratory—Department of Biochemistry, University of Cambridge).

ArtinM signaling induces IL-12 production and ArtinM affects dendritic cell (DCs) maturation

The TLR signaling triggered by PAMP recognition frequently involves the adaptor molecule and the myeloid differentiation primary response gene MyD88, and this signaling induces nuclear factor- κ B-dependent cytokine production [85, 86]. The signaling triggered by interaction of TLR2 glycans with ArtinM, which accounts for IL-12 induction (Figs. 2 and 5), also requires the MyD88 adaptor molecule [74]. Indeed, macrophages from animals deficient in MyD88 failed to produce IL-12 under ArtinM stimulation. Detection of luciferase activity following ArtinM stimulation confirmed NF- κ B activation in a gene report assay using HEK293 cells transfected with TLR2 and NF- κ B luciferase (manuscript in preparation).

ArtinM also stimulates dendritic cells to produce IL-12 via TLR2 recognition (unpublished data). Indeed, ArtinM induces maturation of bone marrow-derived dendritic cells (BMDC), as manifested by a higher expression of MHC class II, CD80, and CD86 molecules, which characterizes a profile of mature DCs, capable of priming T cells (Table 2).

Investigation of ArtinM-induced Th1 immunity in the murine model of *Leishmania* infection

Leishmaniasis is a complex of diseases caused by protozoan parasites of the genus *Leishmania*, with high impact on

Box 1. TLR agonist

There are consistent reasons for targeting TLR as an alternative therapeutic agent. Currently, imiquimod is the most frequently used TLR ligand in clinical practice. It has been approved for the treatment of external genital warts and (pre-)cancerous skin lesions, such as actinic keratoses and superficial basal cell carcinoma. Upon topical application, this TLR7 agonist induces increased IFN- α , IL -12, and TNF- α production, shaping a Th1-prone immune response. Imiquimod enforces the recruitment of myeloid and plasmacytoid dendritic cells and cytotoxic T cells, and it enhances the ability of antigen-presenting cells to induce reactive T cells. These multifaceted actions, which comprise proapoptotic, antifibrotic, antiangiogenic, and antiaging effects, provide efficacy to the treatment of various other skin diseases (reviewed by Novak *et al.* [130]). In contrast to new adjuvants (comprising complex mixtures of emulsions, detergents, and immunostimulatory components), the interaction of imiquimod with TLR-7 provides a well-defined cellular target and signaling, which can rationally enhance the adjuvant potency of vaccines; e.g., against *Plasmodium falciparum* [131] or the treatment of cutaneous leishmaniasis [132,133]. Other new TLR-agonists, designed through variations of structures and synthetic stimulatory motifs, can be used to modulate immunity and develop novel drugs that are quite distinct from natural ligands. The ability to modulate immune responses in a desired and optimal fashion may facilitate the targeting of a broad range of diseases, including cancer, asthma, allergies, and infections. Viral and synthetic ssRNAs act as agonists of TLR7 and TLR8. Certain nucleoside analogs, such as loxoribine, 7-thia-8-oxo-guanosine, and 7-deazaguanosine, activate TLR7. Imidazoquinoline-based compounds act as agonists of TLR7 and TLR8, and they interact with adenosine-receptor signaling pathways to induce immune responses. Bacterial and synthetic DNA containing unmethylated CpG motifs act as agonists of TLR9 and induce Th1-type immune-response profiles (reviewed by Agrawal and Kandimalla [134]). Monophosphoryl lipid A (MPL) acts as an agonist of TLR4 and, in combination with CpG, induces an effective T cell response against cutaneous leishmaniasis [135].

public health in many regions worldwide. *Leishmania* multiplies within mononuclear phagocytic system cells. Depending upon the parasite species and host immune response, the infection causes a wide spectrum of clinical manifestations, including self-healing single-skin, mucosal, and diffuse cutaneous lesions. The disease also manifests as a severe systemic infection called visceral leishmaniasis, with liver and spleen enlargement, cachexia, and persistent fever (reviewed by Brodskyn *et al.* [87]). The clinical signs have been attributed to the ability of the parasite to spread to lymphatic and hematogenic pathways [88, 89]. Parasite persistence in the tissues accounts for the damage [90].

Severity of non-healing cutaneous lesions, persistence of parasites at the inoculation site, and scattering by organs

such as the liver and spleen [91] constitute signs of susceptibility to leishmaniasis, which is associated with the immune-response profile the host develops. This relationship has been extensively investigated in murine models of leishmaniasis, which showed different degrees of susceptibility depending on the infected mouse strain. In this context, BALB/c mice are susceptible to *L. major* infection, while C57BL/6 mice are resistant and able to mount an effective immune response against the parasite [92]. Infection of susceptible BALB/c mice by *L. major* is an established leishmaniasis model and has contributed to characterization of the dichotomy of the T helper 1 (Th1) and T helper 2 (Th2) profile responses [93, 94], showing that resistance and susceptibility are caused by the

appearance of parasite-specific CD4⁺ Th1 or CD4⁺ Th2 cells, respectively. Infected BALB/c mice display strong IL-4 and IL-10 mRNA expression and very low IFN- γ mRNA expression, whereas infected C57BL/6 animals exhibit high IFN- γ and IL-10 mRNA levels [95]. Thus, during the early stages of infection, resistance is associated with IFN- γ production, whereas susceptibility is linked to IL-4 production [96].

We have demonstrated that ArtinM administration elicits IFN- γ secretion by murine spleen cells. We have taken advantage of the well-established model of susceptibility of BALB/c mice to *L. major* infection and determined whether the IL-12 production induced by ArtinM could reverse the Th2 response that is itself responsible for severe manifestations of the infection. Compared with untreated mice, mice pre-treated with ArtinM (3 doses of 0.5 μ g) in combination, or not, with soluble *L. major* antigens (SLA) and challenged with 1×10^6 promastigotes of *L. major* had smaller lesions (Fig. 3). Association of ArtinM-pretreatment with anti-IL-12 administration blocked the beneficial effect of ArtinM on the foot lesion. This reinforced that ArtinM acts by changing the pattern of cytokine production, as confirmed by the concentration of cytokines produced by the lymph node cells draining the site of parasite inoculation in mice. Cells from SLA-injected animals released high IL-4 and low IFN- γ concentrations. In contrast, cells from animals injected with Artin-M produced lower IL-4 and higher IFN- γ concentrations. Thus, Artin-M stimulates a drive toward Th1 response *in vivo*, contrary to the IL-4-driven, polarized Th2 cell response found for the model of a non-healing *L. major* infection in BALB/c mice.

BALB/c mice immunized with 0.5 μ g of ArtinM and challenged with *L. amazonensis* (1×10^6 infective-stage promastigotes) exhibited significant reduction in the number of

parasites (48 %), and this decrease was even greater (80 %) when ArtinM was associated with SLA [75]. IFN- γ production significantly increased when splenic cells from BALB/c mice were stimulated with ArtinM *in vitro*. Hence, ArtinM was able to control *L. amazonensis* infection, probably by acting upon initial immune response.

The murine models of *Leishmania* infection provide strong evidence for the immunomodulatory effect of ArtinM toward a Th1 profile. They also indicate the importance of induced IL-12 production for the protection conferred by ArtinM against *Leishmania* spp, reinforcing the *in vitro* results described in section “ArtinM targets TLR2 N-glycans to induce IL-12 production”.

ArtinM-induced Th1 immunity confers protection against a fungal disease

Our research on the effect of ArtinM on experimental leishmaniasis motivated us to evaluate how this lectin interferes with the course of other infection for which host resistance depends on the Th1 response. We chose to investigate the experimental model of paracoccidiodomycosis (PCM), which is the most frequent human systemic mycosis in Latin America, and for which a favorable outcome is associated with early and sustained IFN- γ production.

PCM is caused by the dimorphic fungus *Paracoccidioides brasiliensis* and is characterized by lesions in the lungs, lymph nodes, skin, and mucous membranes (oral, nasal, and gastrointestinal) [97]. Infection occurs after inhalation of airborne conidia produced by the mycelial form of the fungus. In the lungs, at 37 °C, the inhaled forms are transformed into yeasts, which cause pulmonary granulomatous lesions and can disseminate to many organ systems via the bloodstream and/or lymphatic system [98, 99]. Depending on the host-specific immunity and virulence of the infecting agent, the infection results in a wide spectrum of clinical manifestations. These range from a few localized forms to systemic infection of multiple organs and, eventually, severe and even fatal disease [100].

Although the mechanisms involved in resistance to *P. brasiliensis* are still poorly understood, there are clinical and experimental evidences that the cell-mediated immune response plays an important role in host defense against PCM [101–103]. The Th1 immune response exerts a singular role in the asymptomatic form of PCM, while a Th2 pattern is associated with the development of severe disease [104–106]. Resistance and susceptibility to fungal infections have been studied in murine models of infection, which simulate the human mycosis. These models have furnished details of the immune response mechanisms involved in PCM. Resistant

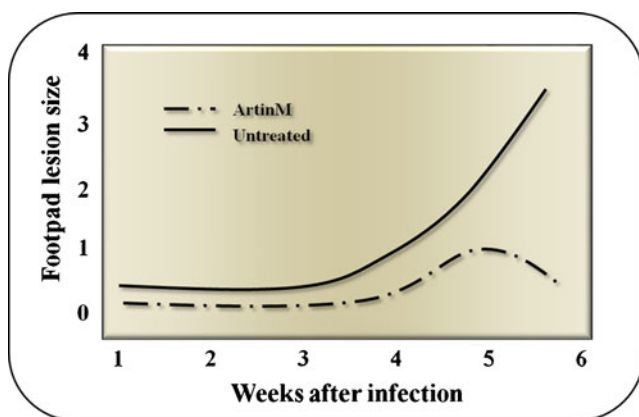


Fig. 3 ArtinM administration avoids the footpad lesion caused by *L. major* inoculation in BALB/c mice. Mice were administered with ArtinM (10 μ g/mL) or vehicle (PBS) and infected (in the hind footpads) with 1×10^6 metacyclic promastigotes of *L. major*. The evolution of the lesion was assessed by measuring the footpad thickness, during an 8-week period. Modified of Panunto-Castelo *et al.* [26]

mice produce early and sustained IFN- γ and IL-2 levels, whereas susceptible mice produce low IFN- γ but significant IL-5 and IL-10 levels [107, 108]. IFN- γ activates TNF- α secretion and fungal replication inhibition by infected macrophages. TNF- α , in turn, is required for macrophage accumulation and granuloma formation in the lungs of *P. brasiliensis*-infected mice. Infected mice treated with anti-IFN- γ showed exacerbated pulmonary infection and early fungal dissemination [109]. The essential role of these cytokines has been further demonstrated by using mice genetically deficient in either the IFN- γ or TNF- α receptor [109, 110]. The functions of cytokines accounting for macrophage activation have been consistently documented and are necessary for fungal killing [111–113].

To investigate the interference of ArtinM administration in PCM, our group used an experimental model in which 1×10^6 yeast cells of a virulent *P. brasiliensis* isolate were intravenously inoculated into BALB/c mice. We evaluated infection severity by the intensity of pulmonary fungal burden and lesions, as well as the extension of fungal dissemination. A screening of regimens of ArtinM administration established that an effective therapeutic protocol consisted of a single subcutaneous injection of ArtinM, 10 days after infection, whereas administration of two subcutaneous injections of ArtinM, on day 10 and day 3 before infection, afforded the best prophylaxis. The therapeutic and prophylactic forms of ArtinM administration were associated with an important decrease in the colony-forming units (CFU) recovered from the mice lungs on day 30 after infection. The lungs presented only mild infiltration of mononuclear cells, contrasting with the lungs of untreated mice, which had multiple sites of focal and confluent epithelioid granulomas, with lymphomonocytic halos circumscribing a high number of viable and non-viable yeast cells (Fig. 4). On day 60 post infection, the untreated mice exhibited disseminated infection, as indicated by the confluent epithelioid granulomas in their liver and spleen. In contrast,

infected mice administered with prophylactic or therapeutic ArtinM exhibited no granulomas or yeast cells in the pulmonary sections and had a well-preserved bronchoalveolar structure along with expected no fungal dissemination to the liver or spleen. Therefore, ArtinM exerted a beneficial effect on the severity of *P. brasiliensis* infection [31, 74, 114].

The advantageous effect of ArtinM administration correlates with an adequate milieu of pulmonary mediators. The lung homogenates from mice infected with *P. brasiliensis* and administered with prophylactic or therapeutic ArtinM showed higher levels of the pro-inflammatory cytokines IL-12 and TNF- α , and also of NO. In addition, lower IL-4 and higher IFN- γ concentrations were stably produced during the disease course in ArtinM-treated mice, whilst high IL-4 and low IFN- γ concentrations were detected in untreated control mice. As in the case of the *Leishmania* infection model, we concluded that a drive toward a Th1 response is stimulated *in vivo* by ArtinM. Besides that, we verified stable IL-10 production in the ArtinM-treated mice. Therefore, ArtinM administration correlates with the establishment of Th1 immunity, balanced by the presence of an anti-inflammatory cytokine (Fig. 5). Interestingly, we also observed, but did not report, IL-10 production in the BALB/c mice infected with *L. major* and administered with ArtinM.

We have investigated the importance of IL-12 for the beneficial effects of ArtinM on experimental PCM. IL-12 knockout (KO) mice inoculated with the fungus and treated with ArtinM were not protected against the infection, showing the crucial nature of IL-12 is for the immunomodulatory effect exerted by ArtinM. We propose that ArtinM interferes with the outcome of *P. brasiliensis* infection, by modulating the host immunity against the fungus according to the following events: recognition of TLR2 glycans by the lectin; induction of IL-12 production (Fig. 2); generation of a Th1-balanced immunity; and protection against *P. brasiliensis*.

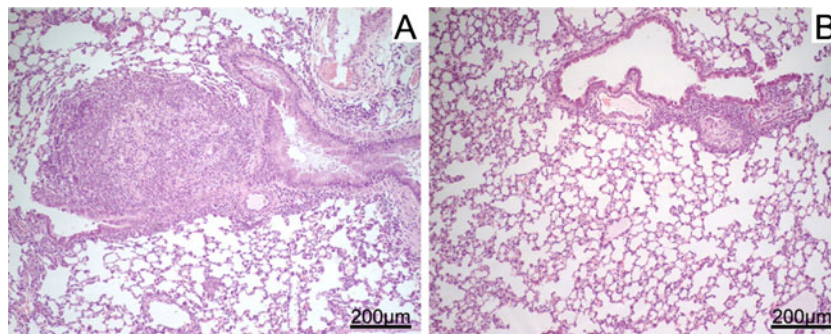


Fig. 4 Protective effect of ArtinM against *P. brasiliensis* infection. Untreated and ArtinM (10 $\mu\text{g}/\text{mL}$) treated BALB/c mice were intravenously infected with 1×10^6 virulent *P. brasiliensis* yeast cells. At the week 2 postinfection, the pulmonary tissue from untreated mice

presented large granulomas surrounding a great number of yeast cells (a), while ArtinM treated mice showed small areas of mononuclear cells infiltration, in which few yeast cells were seen (b)

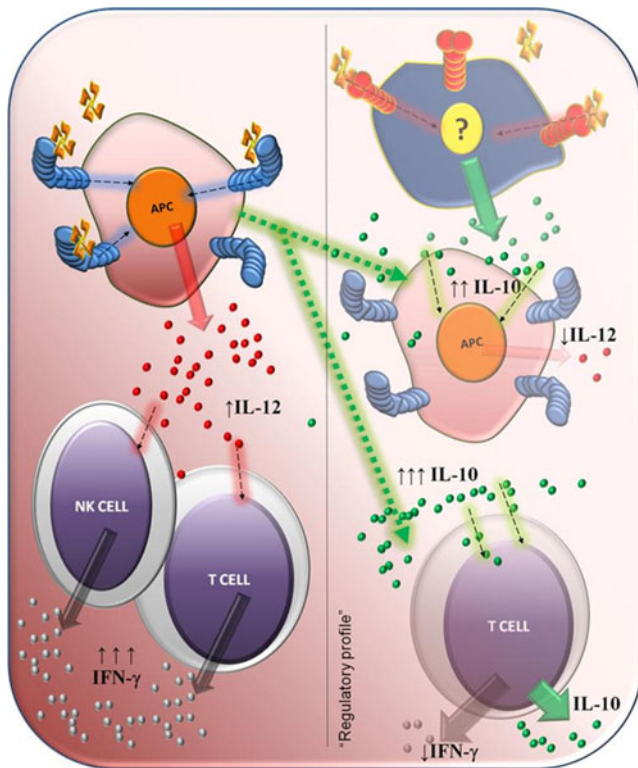


Fig. 5 Pleiotropic activity of ArtinM allows the construction of a Th1 immunity regulated by IL-10. ArtinM administration leads to the production of Th1 cytokines and IL-10, whereas no IL-4 is detected. The cell responding to ArtinM stimulus through IL-10 production has not yet been identified. IL-10 is assumed to counterbalance the inflammation associated with Th1 immunity, thereby preventing tissue injury

The parallel utilization of recombinant ArtinM to treat the *P. brasiliensis*-infected mice provided evidence that the administration of ArtinM or rArtinM has an equally protective effect against the infection. [31].

Box 2. ArtinM exerts positive or negative control of Th17 immunity.

Several lines of evidence indicate that ArtinM pleiotropism is responsible for its immunomodulatory effect against infection by intracellular pathogens such as *P. brasiliensis*. The studies of Loures and coworkers [136] on the role of TLR2 in pulmonary PCM give a rational basis to the hypothesis that ArtinM, as a TLR2 agonist, can negatively control Th17 immunity and prevent tissue injury. This suggests the existence of an additional mechanism for the beneficial effect of ArtinM administration. However, a very recent study revealed that ArtinM induced Th17 immunity in a model of *Candida albicans* infection [137]. Further studies on the effect of ArtinM on Th17 immunity are necessary.

In conclusion, ArtinM exerts a protective effect against experimental infection with *P. brasiliensis*, leading to a Th1-biased immune response with a direct beneficial effect on the severity of lung lesions. The mechanism of protection involves induction of endogenous IL-12, in a process dependent on the MyD88/TLR2 signaling pathway. The detection of IL-10 production in ArtinM-treated animals revealed that the induced Th1-prone immune response is regulated to prevent systemic immune pathology, as indicated by the absence of exacerbated inflammatory lesions in animals administered with ArtinM (Fig. 5). The identification of the cell source of IL-10 is under investigation, as part of a study of ArtinM pleiotropic activities (Box 2) [115, 116].

The new perspectives offered by ArtinM in the development of antifungal therapy has been reviewed recently [114].

Additional interactions of ArtinM with immune cells account for its pleiotropic effects

Pleiotropism refers to the ability of certain mediators, such as cytokines, to act on different cell types. It is an important property shared by all cytokines, and accounts for their ability to act on innate and also adaptive immunity. Various examples illustrate the pleiotropic activities of cytokines. IL-12 enhances NK cell cytotoxicity in innate immunity and induces Th1 cell differentiation in adaptive immunity. IFN- γ , in turn, activates macrophages in the innate and also in the adaptive cell-mediated immune response. Moreover, it increases expression of MHC molecules and enhances antigen processing and presentation. IL-10 (which is produced by macrophages, some T helper cells, and mast cells) inhibits activated macrophages and dendritic cells,

decreases inflammation by inhibiting Th1 cells, and inhibits IL-12 release by macrophages. Although pleiotropism allows cytokines to mediate diverse effects, numerous undesirable side effects limit their therapeutic use. The biological characterization of ArtinM indicates its pleiotropism. As already mentioned, ArtinM activates a variety of cells by interacting with glycosylated receptors on their surface. In addition to the interaction with TLR2 glycans in macrophages and dendritic cells (which is responsible for IL12 production and induction of Th1 immunity), ArtinM activates neutrophils via recognition of N-glycans linked to receptors such as CXCR2 and TLR2. This induces cell migration, release of inflammatory mediators, and enhancement of effector functions. ArtinM also targets glycosylated receptors on the surface of mast cells, which leads to cell degranulation; release of cytokines such as TNF- α , IL-10, and IL-8; and recruitment and differentiation of mast cell precursors from the bone marrow. By analogy with the limitations found for the therapeutic use of cytokines, we are currently evaluating whether the pleiotropic effects of ArtinM impair its immunomodulatory activity. Preliminary results suggest that the pleiotropic effects of ArtinM are not harmful in our models of infection; in fact, neutrophil activation induced by ArtinM appears to favor elimination of intracellular pathogens without causing exacerbated inflammation. We hypothesize that the potential pro-inflammatory effects of ArtinM are counterbalanced by its ability to induce IL-10 production, and we are currently investigating the cell source of this cytokine.

Conclusions and future directions

In this review, we have focused on the immunomodulatory properties of ArtinM. We have provided a structural basis of sugar recognition by ArtinM and applied our knowledge of lectin specificity to explain its interaction with glycosylated receptors on the cell surface. We specifically studied the interaction of ArtinM with TLR2 N-glycans on the surface of macrophages and dendritic cells, because this interaction is primarily responsible for the immunomodulatory activity of this lectin. This activity is characterized by induction of IL-12 production, development of Th1 immunity, and ability to confer protection against murine infections with intracellular pathogens, such as *Leishmania* spp and *P. brasiliensis*. We compared the immunomodulatory activity of ArtinM with those triggered by TLR agonists and considered the former lectin to be advantageous, because of its pleiotropic feature. The presence of multiple glycan targets of ArtinM on the surface of different cells (including neutrophils, macrophages, dendritic cells, and mast cells) appears to favor efficient immunomodulation. However, many questions remain to be answered. We are currently working on: (i) determining the specificity of ArtinM toward

complex glycans; (ii) identifying cell-surface receptors through which N-glycans are recognized by ArtinM; (iii) extending the range of animal models used to assay the effects of ArtinM immunomodulatory activity; (iv) evaluating ArtinM immunomodulatory activity during the early phases of acute infections; and (v) understanding the mechanisms responsible for the ArtinM immunomodulatory activity.

Acknowledgments We thank Dr Constance Oliver and Dr Ademilson Panunto Castelo for comments on the manuscript and Dr Els Van Damme for reviewing the final version of the manuscript and supporting its submission as a member of Editorial Board of the Glycoconjugate Journal. Preparation of this manuscript was supported by grants number 2006/60642-2 from Fundação de Amparo a Pesquisa do Estado de São Paulo (FAPESP) and Conselho Nacional de Desenvolvimento Científico e Tecnológico (CNPq).

Open Access This article is distributed under the terms of the Creative Commons Attribution License which permits any use, distribution, and reproduction in any medium, provided the original author(s) and the source are credited.

References

1. Van Damme, E.J.M., Peumans, W.J., Barre, A., Rougé, P.: Plant lectins: a composite of several distinct families of structurally and evolutionary related proteins with diverse biological roles. *Crit. Rev. Plant Sci.* **17**(6), 575–692 (1998)
2. Van Damme, E.J.M., Lannoo, N., Peumans, W.J.: Plant Lectins. *Adv. Bot. Res.* **48**, 107–209 (2008)
3. Olsnes, S., Stirpe, F., Sandvig, K., Pihl, A.: Isolation and characterization of viscumin, a toxic lectin from *Viscum album* L. (mistletoe). *J. Biol. Chem.* **257**(22), 13263–13270 (1982)
4. Endo, Y., Tsurugi, K., Franz, H.: The site of action of the A-chain of mistletoe lectin I on eukaryotic ribosomes. The RNA N-glycosidase activity of the protein. *FEBS Lett.* **231**(2), 378–380 (1988)
5. Klopp, R., Schmidt, W., Werner, E., Werner, M., Niemer, W., Beuth, J.: Influence of complementary *Viscum album* (Iscador) administration on microcirculation and immune system of ear, nose and throat carcinoma patients treated with radiation and chemotherapy. *Anticancer. Res.* **25**(1B), 601–610 (2005)
6. Hajto, T., Hostanska, K., Gabius, H.J.: Modulatory potency of the beta-galactoside-specific lectin from mistletoe extract (Iscador) on the host defense system *in vivo* in rabbits and patients. *Cancer Res.* **49**(17), 4803–4808 (1989)
7. Beuth, J., Ko, H.L., Gabius, H.J., Pulverer, G.: Influence of treatment with the immunomodulatory effective dose of the beta-galactoside-specific lectin from mistletoe on tumor colonization in BALB/c-mice for two experimental model systems. *In Vivo* **5**(1), 29–32 (1991)
8. Bocci, V.: Mistletoe (*viscum album*) lectins as cytokine inducers and immunoadjuvant in tumor therapy. A review. *J. Biol. Regul. Homeost. Agents* **7**(1), 1–6 (1993)
9. Eck, J., Langer, M., Mockel, B., Baur, A., Rothe, M., Zinke, H., Lentzen, H.: Cloning of the mistletoe lectin gene and characterization of the recombinant A-chain. *Eur. J. Biochem. / FEBS* **264**(3), 775–784 (1999)
10. Eck, J., Langer, M., Mockel, B., Witthohn, K., Zinke, H., Lentzen, H.: Characterization of recombinant and plant-derived mistletoe lectin and their B-chains. *Eur. J. Biochem. / FEBS* **265**(2), 788–797 (1999)

11. Hajto, T., Hostanska, K., Weber, K., Zinke, H., Fischer, J., Mengers, U., Lentzen, H., Saller, R.: Effect of a recombinant lectin, *Viscum album* agglutinin on the secretion of interleukin-12 in cultured human peripheral blood mononuclear cells and on NK-cell-mediated cytotoxicity of rat splenocytes *in vitro* and *in vivo*. *Nat. Immun.* **16**(1), 34–46 (1998)
12. Langer, M., Mockel, B., Eck, J., Zinke, H., Lentzen, H.: Site-specific mutagenesis of mistletoe lectin: the role of RIP activity in apoptosis. *Biochem. Biophys. Res. Commun.* **264**(3), 944–948 (1999). doi:10.1006/bbrc.1999.1610
13. Barbieri, L., Battelli, M.G., Stirpe, F.: Ribosome-inactivating proteins from plants. *Biochim. Biophys. Acta* **1154**(3–4), 237–282 (1993)
14. Gabius, S., Joshi, S., Kayser, K., Gabius, H.: The galactoside-specific lectin from mistletoe as biological response modifier. *Int. J. Oncol.* **1**(6), 705–708 (1992)
15. Lee, R.T., Gabius, H.J., Lee, Y.C.: The sugar-combining area of the galactose-specific toxic lectin of mistletoe extends beyond the terminal sugar residue: comparison with a homologous toxic lectin, ricin. *Carbohydr. Res.* **254**, 269–276 (1994)
16. Gupta, D., Kaltner, H., Dong, X., Gabius, H.J., Brewer, C.F.: Comparative cross-linking activities of lactose-specific plant and animal lectins and a natural lactose-binding immunoglobulin G fraction from human serum with asialofetuin. *Glycobiology* **6**(8), 843–849 (1996)
17. Muthing, J., Burg, M., Mockel, B., Langer, M., Metelmann-Strupat, W., Werner, A., Neumann, U., Peter-Katalinic, J., Eck, J.: Preferential binding of the anticancer drug rViscumin (recombinant mistletoe lectin) to terminally alpha2-6-sialylated neolacto-series gangliosides. *Glycobiology* **12**(8), 485–497 (2002)
18. Muthing, J., Meisen, I., Bulau, P., Langer, M., Witthohn, K., Lentzen, H., Neumann, U., Peter-Katalinic, J.: Mistletoe lectin I is a sialic acid-specific lectin with strict preference to gangliosides and glycoproteins with terminal Neu5Ac alpha 2-6Gal beta 1-4GlcNAc residues. *Biochemistry* **43**(11), 2996–3007 (2004). doi:10.1021/bi0301892
19. Zwierzina, H., Bergmann, L., Fiebig, H., Aamdal, S., Schoffski, P., Witthohn, K., Lentzen, H.: The preclinical and clinical activity of aviscumine: a potential anticancer drug. *Eur. J. Cancer* **47**(10), 1450–1457 (2011). doi:10.1016/j.ejca.2011.02.022
20. Yoon, T.J., Yoo, Y.C., Kang, T.B., Shimazaki, K., Song, S.K., Lee, K.H., Kim, S.H., Park, C.H., Azuma, I., Kim, J.B.: Lectins isolated from Korean mistletoe (*Viscum album coloratum*) induce apoptosis in tumor cells. *Cancer Lett.* **136**(1), 33–40 (1999)
21. Lu, T.L., Chuang, J.Y., Yang, J.S., Chiu, S.T., Hsiao, N.W., Wu, M.C., Wu, S.H., Hsu, C.H.: Production of active nonglycosylated recombinant B-chain of type-2 ribosome-inactivating protein from *viscum articulatum* and its biological effects on peripheral blood mononuclear cells. *Evid. Based Complement. Alternat. Med.* **2011**, 283747 (2011). doi:10.1155/2011/283747
22. Yoon, T.J., Yoo, Y.C., Kang, T.B., Song, S.K., Lee, K.B., Her, E., Song, K.S., Kim, J.B.: Antitumor activity of the Korean mistletoe lectin is attributed to activation of macrophages and NK cells. *Arch. Pharm. Res.* **26**(10), 861–867 (2003)
23. Kang, T.B., Yoo, Y.C., Lee, K.H., Yoon, H.S., Her, E., Kim, J.B., Song, S.K.: Korean mistletoe lectin (KML-IIU) and its subchains induce nitric oxide (NO) production in murine macrophage cells. *J. Biomed. Sci.* **15**(2), 197–204 (2008). doi:10.1007/s11373-007-9210-2
24. Park, H.J., Hong, J.H., Kwon, H.J., Kim, Y., Lee, K.H., Kim, J.B., Song, S.K.: TLR4-mediated activation of mouse macrophages by Korean mistletoe lectin-C (KML-C). *Biochem. Biophys. Res. Commun.* **396**(3), 721–725 (2010). doi:10.1016/j.bbrc.2010.04.169
25. Muraille, E., Pajak, B., Urbain, J., Leo, O.: Carbohydrate-bearing cell surface receptors involved in innate immunity: interleukin-12 induction by mitogenic and nonmitogenic lectins. *Cell. Immunol.* **191**(1), 1–9 (1999). doi:10.1006/cimm.1998.1401
26. Panunto-Castelo, A., Souza, M.A., Roque-Barreira, M.C., Silva, J.S.: KM(+), a lectin from *Artocarpus integrifolia*, induces IL-12 p40 production by macrophages and switches from type 2 to type 1 cell-mediated immunity against *Leishmania major* antigens, resulting in BALB/c mice resistance to infection. *Glycobiology* **11**(12), 1035–1042 (2001)
27. Yoon, T.J., Yoo, Y.C., Kang, T.B., Her, E., Kim, S.H., Kim, K., Azuma, I., Kim, J.B.: Cellular and humoral adjuvant activity of lectins isolated from Korean mistletoe (*Viscum album coloratum*). *Int. Immunopharmacol.* **1**(5), 881–889 (2001)
28. de Melo, C.M., de Castro, M.C., de Oliveira, A.P., Gomes, F.O., Pereira, V.R., Correia, M.T., Coelho, L.C., Paiva, P.M.: Immunomodulatory response of Cramoll 1,4 lectin on experimental lymphocytes. *Phytother. Res.* **24**(11), 1631–1636 (2010). doi:10.1002/ptr.3156
29. Stojanovic, M.M., Zivkovic, I.P., Petrusic, V.Z., Kosec, D.J., Dimitrijevic, R.D., Jankov, R.M., Dimitrijevic, L.A., Gavrovic-Jankulovic, M.D.: *In vitro* stimulation of Balb/c and C57 BL/6 splenocytes by a recombinantly produced banana lectin isoform results in both a proliferation of T cells and an increased secretion of interferon-gamma. *Int. Immunopharmacol.* **10**(1), 120–129 (2009). doi:10.1016/j.intimp.2009.10.007
30. Dong, Q., Sugiura, T., Toyohira, Y., Yoshida, Y., Yanagihara, N., Karasaki, Y.: Stimulation of IFN-gamma production by garlic lectin in mouse spleen cells: involvement of IL-12 via activation of p38 MAPK and ERK in macrophages. *Phytomedicine* **18**(4), 309–316 (2011). doi:10.1016/j.phymed.2010.06.008
31. Coltri, K.C., Oliveira, L.L., Ruas, L.P., Vendruscolo, P.E., Goldman, M.H., Panunto-Castelo, A., Roque-Barreira, M.C.: Protection against *Paracoccidioides brasiliensis* infection conferred by the prophylactic administration of native and recombinant ArtinM. *Med. Mycol.* **48**(6), 792–799 (2010). doi:10.3109/13693780903501671
32. Unitt, J., Hornigold, D.: Plant lectins are novel Toll-like receptor agonists. *Biochem. Pharmacol.* **81**(11), 1324–1328 (2011). doi:10.1016/j.bcp.2011.03.010
33. Rogerio, A.P., Cardoso, C.R., Fontanari, C., Souza, M.A., Afonso-Cardoso, S.R., Silva, E.V., Koyama, N.S., Basei, F.L., Soares, E.G., Calixto, J.B., Stowell, S.R., Dias-Baruffi, M., Faccioli, L.H.: Anti-asthmatic potential of a D-galactose-binding lectin from *Synadenium carinatum* latex. *Glycobiology* **17**(8), 795–804 (2007). doi:10.1093/glycob/cwm053
34. Carter 3rd, J.E., Yu, J., Choi, N.W., Hough, J., Henderson, D., He, D., Langridge, W.H.: Bacterial and plant enterotoxin B subunit-autoantigen fusion proteins suppress diabetes insulinitis. *Mol. Biotechnol.* **32**(1), 1–15 (2006). doi:10.1385/MB:32:1:001
35. Carter 3rd, J.E., Odumosu, O., Langridge, W.H.: Expression of a ricin toxin B subunit: insulin fusion protein in edible plant tissues. *Mol. Biotechnol.* **44**(2), 90–100 (2010). doi:10.1007/s12033-009-9217-1
36. Azizi, A., Kumar, A., Diaz-Mitoma, F., Mestecky, J.: Enhancing oral vaccine potency by targeting intestinal M cells. *PLoS Pathog.* **6**(11), e1001147 (2010). doi:10.1371/journal.ppat.1001147
37. Jang, M.H., Kweon, M.N., Iwatani, K., Yamamoto, M., Terahara, K., Sasakawa, C., Suzuki, T., Nochi, T., Yokota, Y., Rennert, P.D., Hiroi, T., Tamagawa, H., Iijima, H., Kunisawa, J., Yuki, Y., Kiyono, H.: Intestinal villous M cells: an antigen entry site in the mucosal epithelium. *Proc. Natl. Acad. Sci. U. S. A.* **101**(16), 6110–6115 (2004). doi:10.1073/pnas.0400969101
38. Manocha, M., Pal, P.C., Chitralakha, K.T., Thomas, B.E., Tripathi, V., Gupta, S.D., Paranjape, R., Kulkarni, S., Rao, D.N.: Enhanced mucosal and systemic immune response with intranasal immunization of mice with HIV peptides entrapped in PLG microparticles in combination with *Ulex europaeus*-I lectin as M cell target. *Vaccine* **23**(48–49), 5599–5617 (2005). doi:10.1016/j.vaccine.2005.06.031
39. Wang, X., Kochetkova, I., Haddad, A., Hoyt, T., Hone, D.M., Pascual, D.W.: Transgene vaccination using *Ulex europaeus*

- agglutinin I (UEA-1) for targeted mucosal immunization against HIV-1 envelope. *Vaccine* **23**(29), 3836–3842 (2005). doi:10.1016/j.vaccine.2005.02.023
40. Chionh, Y.T., Wee, J.L., Every, A.L., Ng, G.Z., Sutton, P.: M-cell targeting of whole killed bacteria induces protective immunity against gastrointestinal pathogens. *Infect. Immun.* **77**(7), 2962–2970 (2009). doi:10.1128/IAI.01522-08
 41. Gupta, P.N., Vyas, S.P.: Investigation of lectinized liposomes as M-cell targeted carrier-adjuvant for mucosal immunization. *Colloids Surf. B: Biointerfaces* **82**(1), 118–125 (2010). doi:10.1016/j.colsurfb.2010.08.027
 42. Hakomori, S.: Aberrant glycosylation in tumors and tumor-associated carbohydrate antigens. *Adv. Cancer Res.* **52**, 257–331 (1989)
 43. Dias-Baruffi, M., Cunha, F.Q., Ferreira, S.H., Roque-Barreira, M.C.: Macrophage-released neutrophil chemotactic factor (MNCF) induces PMN-neutrophil migration through lectin-like activity. *Agents Actions* **38 Spec No**, C54–C56 (1993)
 44. Bernardes, E.S., Silva, N.M., Ruas, L.P., Mineo, J.R., Loyola, A.M., Hsu, D.K., Liu, F.T., Chammas, R., Roque-Barreira, M.C.: *Toxoplasma gondii* infection reveals a novel regulatory role for galectin-3 in the interface of innate and adaptive immunity. *Am. J. Pathol.* **168**(6), 1910–1920 (2006). doi:10.2353/ajpath.2006.050636
 45. Coltri, K.C., Casabona-Fortunato, A.S., Gennari-Cardoso, M.L., Pinzan, C.F., Ruas, L.P., Mariano, V.S., Martinez, R., Rosa, J.C., Panunto-Castelo, A., Roque-Barreira, M.C.: Paracoccin, a GlcNAc-binding lectin from *Paracoccidioides brasiliensis*, binds to laminin and induces TNF- α production by macrophages. *Microbes Infect.* **8**(3), 704–713 (2006). doi:10.1016/j.micinf.2005.09.008
 46. Lourenco, E.V., Pereira, S.R., Faca, V.M., Coelho-Castelo, A.A., Mineo, J.R., Roque-Barreira, M.C., Greene, L.J., Panunto-Castelo, A.: *Toxoplasma gondii* micronemal protein MIC1 is a lactose-binding lectin. *Glycobiology* **11**(7), 541–547 (2001)
 47. Ganiko, L., Puccia, R., Mariano, V.S., Sant’Anna, O.A., Freymuller, E., Roque-Barreira, M.C., Travassos, L.R.: Paracoccin, an N-acetylglucosamine-binding lectin of *Paracoccidioides brasiliensis*, is involved in fungal growth. *Microbes Infect* **9**(6), 695–703 (2007). doi:10.1016/j.micinf.2007.02.012
 48. Dias-Baruffi, M., Sakamoto, M., Rossetto, S., Vozari-Hampe, M.M., Roque-Barreira, M.C.: Neutrophil migration and aggregation induced by euphorbin, a lectin from the latex of *Euphorbia milii*, var. *milii*. *Inflamm. Res.* **49**(12), 732–736 (2000)
 49. Santos-de-Oliveira, R., Dias-Baruffi, M., Thomaz, S.M., Beltramini, L.M., Roque-Barreira, M.C.: A neutrophil migration-inducing lectin from *Artocarpus integrifolia*. *J. Immunol.* **153**(4), 1798–1807 (1994)
 50. Roque-Barreira, M.C., Campos-Neto, A.: Jacalin: an IgA-binding lectin. *J. Immunol.* **134**(3), 1740–1743 (1985)
 51. Kondoh, H., Kobayashi, K., Hagiwara, K.: A simple procedure for the isolation of human secretory IgA of IgA1 and IgA2 subclass by a jackfruit lectin, jacalin, affinity chromatography. *Mol. Immunol.* **24**(11), 1219–1222 (1987)
 52. Bausch, J.N., Poretz, R.D.: Purification and properties of the hemagglutinin from *Maclura pomifera* seeds. *Biochemistry* **16**(26), 5790–5794 (1977)
 53. Peumans, W.J., Winter, H.C., Bemer, V., Van Leuven, F., Goldstein, I.J., Truffa-Bachi, P., Van Damme, E.J.: Isolation of a novel plant lectin with an unusual specificity from *Calystegia sepium*. *Glycoconj. J.* **14**(2), 259–265 (1997)
 54. Van Damme, E.J., Barre, A., Verhaert, P., Rouge, P., Peumans, W.J.: Molecular cloning of the mitogenic mannose/maltose-specific rhizome lectin from *Calystegia sepium*. *FEBS Lett.* **397**(2–3), 352–356 (1996)
 55. Van Damme, E.J., Barre, A., Mazard, A.M., Verhaert, P., Horman, A., Debray, H., Rouge, P., Peumans, W.J.: Characterization and molecular cloning of the lectin from *Helianthus tuberosus*. *Eur. J. Biochem. / FEBS* **259**(1–2), 135–142 (1999)
 56. Zhang, W., Peumans, W.J., Barre, A., Astoul, C.H., Rovira, P., Rouge, P., Proost, P., Truffa-Bachi, P., Jalali, A.A., Van Damme, E.J.: Isolation and characterization of a jacalin-related mannose-binding lectin from salt-stressed rice (*Oryza sativa*) plants. *Planta* **210**(6), 970–978 (2000)
 57. Peumans, W.J., Zhang, W., Barre, A., Houles Astoul, C., Balint-Kurti, P.J., Rovira, P., Rouge, P., May, G.D., Van Leuven, F., Truffa-Bachi, P., Van Damme, E.J.: Fruit-specific lectins from banana and plantain. *Planta* **211**(4), 546–554 (2000)
 58. Nomura, K., Nakamura, S., Fujitake, M., Nakanishi, T.: Complete amino acid sequence of Japanese chestnut agglutinin. *Biochem. Biophys. Res. Commun.* **276**(1), 23–28 (2000). doi:10.1006/bbrc.2000.3420
 59. Mann, K., Farias, C.M., Del Sol, F.G., Santos, C.F., Grangeiro, T.B., Nagano, C.S., Cavada, B.S., Calvete, J.J.: The amino-acid sequence of the glucose/mannose-specific lectin isolated from *Parkia platycephala* seeds reveals three tandemly arranged jacalin-related domains. *Eur. J. Biochem. / FEBS* **268**(16), 4414–4422 (2001)
 60. Geshi, N., Brandt, A.: Two jasmonate-inducible myrosinase-binding proteins from *Brassica napus* L. seedlings with homology to jacalin. *Planta* **204**(3), 295–304 (1998)
 61. Van Damme, E.J., Hause, B., Hu, J., Barre, A., Rouge, P., Proost, P., Peumans, W.J.: Two distinct jacalin-related lectins with a different specificity and subcellular location are major vegetative storage proteins in the bark of the black mulberry tree. *Plant Physiol.* **130**(2), 757–769 (2002). doi:10.1104/pp.005892
 62. Pereira-da-Silva, G., Roque-Barreira, M.C., Van Damme, E.J.: Artin M: a rational substitution for the names artocarpin and KM+. *Immunol. Lett.* **119**(1–2), 114–115 (2008). doi:10.1016/j.imlet.2008.06.002
 63. Rosa, J.C., De Oliveira, P.S., Garratt, R., Beltramini, L., Resing, K., Roque-Barreira, M.C., Greene, L.J.: KM+, a mannose-binding lectin from *Artocarpus integrifolia*: amino acid sequence, predicted tertiary structure, carbohydrate recognition, and analysis of the beta-prism fold. *Protein Sci.* **8**(1), 13–24 (1999). doi:10.1110/ps.8.1.13
 64. Young, N.M., Johnston, R.A., Watson, D.C.: The amino acid sequences of jacalin and the *Maclura pomifera* agglutinin. *FEBS Lett.* **282**(2), 382–384 (1991)
 65. Ngoc, L.D., Brillard, M., Hoebeke, J.: The alpha- and beta-subunits of the jacalins are cleavage products from a 17-kDa precursor. *Biochim. Biophys. Acta* **1156**(2), 219–222 (1993)
 66. Jeyaprakash, A.A., Srivastav, A., Surolia, A., Vijayan, M.: Structural basis for the carbohydrate specificities of artocarpin: variation in the length of a loop as a strategy for generating ligand specificity. *J. Mol. Biol.* **338**(4), 757–770 (2004). doi:10.1016/j.jmb.2004.03.040
 67. Pratap, J.V., Jeyaprakash, A.A., Rani, P.G., Sekar, K., Surolia, A., Vijayan, M.: Crystal structures of artocarpin, a Moraceae lectin with mannose specificity, and its complex with methyl- α -D-mannose: implications to the generation of carbohydrate specificity. *J. Mol. Biol.* **317**(2), 237–247 (2002). doi:10.1006/jmbi.2001.5432
 68. Lerouge, P., Cabanes-Macheteau, M., Rayon, C., Fischette-Laine, A.C., Gomord, V., Faye, L.: N-glycoprotein biosynthesis in plants: recent developments and future trends. *Plant Mol. Biol.* **38**(1–2), 31–48 (1998). doi:10.1023/A:1006012005654
 69. Nakamura-Tsuruta, S., Uchiyama, N., Peumans, W.J., Van Damme, E.J., Totani, K., Ito, Y., Hirabayashi, J.: Analysis of the sugar-binding specificity of mannose-binding-type Jacalin-related lectins by frontal affinity chromatography—an approach to functional classification. *FEBS J.* **275**(6), 1227–1239 (2008). doi:10.1111/j.1742-4658.2008.06282.x
 70. daSilva, L.L., de Molfetta-Machado, J.B., Panunto-Castelo, A., Denecke, J., Goldman, G.H., Roque-Barreira, M.C., Goldman, M.H.: cDNA cloning and functional expression of KM+, the mannose-binding lectin from *Artocarpus integrifolia* seeds.

- Biochim. Biophys. Acta **1726**(3), 251–260 (2005). doi:10.1016/j.bbagen.2005.09.006
71. Pesquero, N.C., Pedroso, M.M., Watanabe, A.M., Goldman, M.H., Faria, R.C., Roque-Barreira, M.C., Bueno, P.R.: Real-time monitoring and kinetic parameter estimation of the affinity interaction of jArtinM and rArtinM with peroxidase glycoprotein by the electrogravimetric technique. *Biosens. Bioelectron.* **26**(1), 36–42 (2010). doi:10.1016/j.bios.2010.04.047
 72. Pranchevicius, M.C., Oliveira, L.L., Rosa, J.C., Avanci, N.C., Quiapim, A.C., Roque-Barreira, M.C., Goldman, M.H.: Characterization and optimization of ArtinM lectin expression in *Escherichia coli*. *BMC Biotechnol.* **12**, 44 (2012). doi:10.1186/1472-6750-12-44
 73. Trinchieri, G., Wysocka, M., D'Andrea, A., Rengaraju, M., Aste-Amezaga, M., Kubin, M., Valiante, N.M., Chehimi, J.: Natural killer cell stimulatory factor (NKSF) or interleukin-12 is a key regulator of immune response and inflammation. *Prog Growth Factor Res* **4**(4), 355–368 (1992)
 74. Coltri, K.C., Oliveira, L.L., Pinzan, C.F., Vendruscolo, P.E., Martinez, R., Goldman, M.H., Panunto-Castelo, A., Roque-Barreira, M.C.: Therapeutic administration of KM+ lectin protects mice against *Paracoccidioides brasiliensis* infection via interleukin-12 production in a toll-like receptor 2-dependent mechanism. *Am. J. Pathol.* **173**(2), 423–432 (2008). doi:10.2353/ajpath.2008.080126
 75. Teixeira, C.R., Cavassani, K.A., Gomes, R.B., Teixeira, M.J., Roque-Barreira, M.C., Cavada, B.S., da Silva, J.S., Barral, A., Barral-Netto, M.: Potential of KM+lectin in immunization against *Leishmania amazonensis* infection. *Vaccine* **24**(15), 3001–3008 (2006). doi:10.1016/j.vaccine.2005.11.067
 76. Takeda, K., Akira, S.: Toll receptors and pathogen resistance. *Cell. Microbiol.* **5**(3), 143–153 (2003)
 77. West, A.P., Koblansky, A.A., Ghosh, S.: Recognition and signaling by toll-like receptors. *Annu. Rev. Cell Dev. Biol.* **22**, 409–437 (2006). doi:10.1146/annurev.cellbio.21.122303.115827
 78. Akira, S., Uematsu, S., Takeuchi, O.: Pathogen recognition and innate immunity. *Cell* **124**(4), 783–801 (2006). doi:10.1016/j.cell.2006.02.015
 79. Choe, J., Kelker, M.S., Wilson, I.A.: Crystal structure of human toll-like receptor 3 (TLR3) ectodomain. *Science* **309**(5734), 581–585 (2005). doi:10.1126/science.1115253
 80. Weber, A.N., Morse, M.A., Gay, N.J.: Four N-linked glycosylation sites in human toll-like receptor 2 cooperate to direct efficient biosynthesis and secretion. *J. Biol. Chem.* **279**(33), 34589–34594 (2004). doi:10.1074/jbc.M403830200
 81. da Silva Correia, J., Ulevitch, R.J.: MD-2 and TLR4 N-linked glycosylations are important for a functional lipopolysaccharide receptor. *J. Biol. Chem.* **277**(3), 1845–1854 (2002). doi:10.1074/jbc.M109910200
 82. Ohnishi, T., Muroi, M., Tanamoto, K.: MD-2 is necessary for the toll-like receptor 4 protein to undergo glycosylation essential for its translocation to the cell surface. *Clin. Diagn. Lab. Immunol.* **10**(3), 405–410 (2003)
 83. Ohnishi, T., Muroi, M., Tanamoto, K.: N-linked glycosylations at Asn(26) and Asn(114) of human MD-2 are required for toll-like receptor 4-mediated activation of NF-kappaB by lipopolysaccharide. *J. Immunol.* **167**(6), 3354–3359 (2001)
 84. Kataoka, H., Yasuda, M., Iyori, M., Kiura, K., Narita, M., Nakata, T., Shibata, K.: Roles of N-linked glycans in the recognition of microbial lipopeptides and lipoproteins by TLR2. *Cell. Microbiol.* **8**(7), 1199–1209 (2006). doi:10.1111/j.1462-5822.2006.00702.x
 85. Kuka, M., Baronio, R., Valentini, S., Monaci, E., Muzzi, A., Aprea, S., De Gregorio, E., D'Oro, U.: Src kinases are required for a balanced production of IL-12/IL-23 in human dendritic cells activated by Toll-like receptor agonists. *PLoS One* **5**(7), e11491 (2010). doi:10.1371/journal.pone.0011491
 86. Li, F., Thiele, I., Jamshidi, N., Palsson, B.O.: Identification of potential pathway mediation targets in Toll-like receptor signaling. *PLoS Comput. Biol.* **5**(2), e1000292 (2009). doi:10.1371/journal.pcbi.1000292
 87. Brodskyn, C., de Oliveira, C.I., Barral, A., Barral-Netto, M.: Vaccines in leishmaniasis: advances in the last five years. *Expert. Rev. Vaccines* **2**(5), 705–717 (2003). doi:10.1586/14760584.2.5.705
 88. Martinez, J.E., Alba, Arias, L., Escobar, M.A., Saravia, N.G.: Haemoculture of *Leishmania* (*Viannia*) *brasilienis* from two cases of mucosal leishmaniasis: re-examination of haematogenous dissemination. *Trans. R. Soc. Trop. Med. Hyg.* **86**(4), 392–394 (1992)
 89. Marsden, P.D.: Mucosal leishmaniasis (“espundia” Escomel, 1911). *Trans. R. Soc. Trop. Med. Hyg.* **80**(6), 859–876 (1986)
 90. de Magalhaes, A.V., Moraes, M.A., Raick, A.N., Llanos-Cuentas, A., Costa, J.M., Cuba, C.C., Marsden, P.D.: Histopathology of tegumentary leishmaniasis caused by *Leishmania braziliensis*. 3. Cellular reactions in tissues. *Rev Inst Med Trop Sao Paulo* **28**(5), 300–311 (1986)
 91. Childs, G.E., Lightner, L.K., McKinney, L., Groves, M.G., Price, E.E., Hendricks, L.D.: Inbred mice as model hosts for cutaneous leishmaniasis. I. Resistance and susceptibility to infection with *Leishmania braziliensis*, *L. mexicana*, and *L. aethiopica*. *Ann. Trop. Med. Parasitol.* **78**(1), 25–34 (1984)
 92. Sacks, D., Anderson, C.: Re-examination of the immunosuppressive mechanisms mediating non-cure of *Leishmania* infection in mice. *Immunol. Rev.* **201**, 225–238 (2004). doi:10.1111/j.0105-2896.2004.00185.x
 93. Gumy, A., Louis, J.A., Launois, P.: The murine model of infection with *Leishmania major* and its importance for the deciphering of mechanisms underlying differences in Th cell differentiation in mice from different genetic backgrounds. *Int. J. Parasitol.* **34**(4), 433–444 (2004). doi:10.1016/j.ijpara.2003.11.021
 94. Sacks, D., Noben-Trauth, N.: The immunology of susceptibility and resistance to *Leishmania major* in mice. *Nat. Rev. Immunol.* **2**(11), 845–858 (2002). doi:10.1038/nri933
 95. Reis, A.B., Giunchetti, R.C., Carrillo, E., Martins-Filho, O.A., Moreno, J.: Immunity to *Leishmania* and the rational search for vaccines against canine leishmaniasis. *Trends Parasitol.* **26**(7), 341–349 (2010). doi:10.1016/j.pt.2010.04.005
 96. Muller, I., Kropf, P., Etges, R.J., Louis, J.A.: Gamma interferon response in secondary *Leishmania major* infection: role of CD8+ T cells. *Infect. Immun.* **61**(9), 3730–3738 (1993)
 97. Borges-Walmsley, M.I., Chen, D., Shu, X., Walmsley, A.R.: The pathobiology of *Paracoccidioides brasiliensis*. *Trends Microbiol.* **10**(2), 80–87 (2002)
 98. Brummer, E., Castaneda, E., Restrepo, A.: *Paracoccidioidomycosis*: an update. *Clin. Microbiol. Rev.* **6**(2), 89–117 (1993)
 99. McEwen, J.G., Bedoya, V., Patino, M.M., Salazar, M.E., Restrepo, A.: Experimental murine *paracoccidioidomycosis* induced by the inhalation of conidia. *J. Med. Vet. Mycol.* **25**(3), 165–175 (1987)
 100. Tobon, A.M., Agudelo, C.A., Osorio, M.L., Alvarez, D.L., Arango, M., Cano, L.E., Restrepo, A.: Residual pulmonary abnormalities in adult patients with chronic *paracoccidioidomycosis*: prolonged follow-up after itraconazole therapy. *Clin. Infect. Dis.* **37**(7), 898–904 (2003). doi:10.1086/377538
 101. Singer-Vermes, L.M., Caldeira, C.B., Burger, E., Calich, L.G.: Experimental murine *paracoccidioidomycosis*: relationship among the dissemination of the infection, humoral and cellular immune responses. *Clin. Exp. Immunol.* **94**(1), 75–79 (1993)
 102. Mota, N.G., Rezkallah-Iwasso, M.T., Peracoli, M.T., Audi, R.C., Mendes, R.P., Marcondes, J., Marques, S.A., Dillon, N.L., Franco, M.F.: Correlation between cell-mediated immunity and clinical forms of *paracoccidioidomycosis*. *Trans. R. Soc. Trop. Med. Hyg.* **79**(6), 765–772 (1985)

103. Arango, M., Yarzabal, L.: T-cell dysfunction and hyperimmunoglobulinemia E in paracoccidioidomycosis. *Mycopathologia* **79**(2), 115–123 (1982)
104. Oliveira, S.J., Mamoni, R.L., Musatti, C.C., Papiordanou, P.M., Blotta, M.H.: Cytokines and lymphocyte proliferation in juvenile and adult forms of paracoccidioidomycosis: comparison with infected and non-infected controls. *Microbes Infect.* **4**(2), 139–144 (2002)
105. Benard, G., Romano, C.C., Cacere, C.R., Juvenale, M., Mendes-Giannini, M.J., Duarte, A.J.: Imbalance of IL-2, IFN-gamma and IL-10 secretion in the immunosuppression associated with human paracoccidioidomycosis. *Cytokine* **13**(4), 248–252 (2001). doi:10.1006/cyto.2000.0824
106. Karhawi, A.S., Colombo, A.L., Salomao, R.: Production of IFN-gamma is impaired in patients with paracoccidioidomycosis during active disease and is restored after clinical remission. *Med. Mycol.* **38**(3), 225–229 (2000)
107. Kashino, S.S., Fazioli, R.A., Cafalli-Favati, C., Meloni-Bruneri, L.H., Vaz, C.A., Burger, E., Singer, L.M., Calich, V.L.: Resistance to Paracoccidioides brasiliensis infection is linked to a preferential Th1 immune response, whereas susceptibility is associated with absence of IFN-gamma production. *J. Interferon Cytokine Res.* **20**(1), 89–97 (2000). doi:10.1089/107999000312766
108. Calich, V.L., Kashino, S.S.: Cytokines produced by susceptible and resistant mice in the course of Paracoccidioides brasiliensis infection. *Braz. J. Med. Biol. Res.* **31**(5), 615–623 (1998)
109. Cano, L.E., Kashino, S.S., Arruda, C., Andre, D., Xidieh, C.F., Singer-Vermes, L.M., Vaz, C.A., Burger, E., Calich, V.L.: Protective role of gamma interferon in experimental pulmonary paracoccidioidomycosis. *Infect. Immun.* **66**(2), 800–806 (1998)
110. Souto, J.T., Figueiredo, F., Furlanetto, A., Pfeffer, K., Rossi, M.A., Silva, J.S.: Interferon-gamma and tumor necrosis factor-alpha determine resistance to Paracoccidioides brasiliensis infection in mice. *Am. J. Pathol.* **156**(5), 1811–1820 (2000)
111. Moreira, A.P., Dias-Melicio, L.A., Soares, A.M.: Interleukin-10 but not transforming growth factor beta inhibits murine activated macrophages Paracoccidioides brasiliensis killing: effect on H2O2 and NO production. *Cell Immunol* **263**(2), 196–203. doi:10.1016/j.cellimm.2010.03.016
112. Moreira, A.P., Dias-Melicio, L.A., Peracoli, M.T., Calvi, S.A., Victoriano de Campos Soares, A.M.: Killing of Paracoccidioides brasiliensis yeast cells by IFN-gamma and TNF-alpha activated murine peritoneal macrophages: evidence of H(2)O (2) and NO effector mechanisms. *Mycopathologia* **166**(1), 17–23 (2008). doi:10.1007/s11046-007-9046-3
113. Gonzalez, A., de Gregori, W., Velez, D., Restrepo, A., Cano, L.E.: Nitric oxide participation in the fungicidal mechanism of gamma interferon-activated murine macrophages against Paracoccidioides brasiliensis conidia. *Infect. Immun.* **68**(5), 2546–2552 (2000)
114. Ruas, L.P., Carvalho, F.C., Roque-Barreira, M.C.: ArtinM offers new perspectives in the development of antifungal therapy. *Front. Microbiol.* **3**, 218 (2012). doi:10.3389/fmicb.2012.00218
115. Pot, C., Apetoh, L., Awasthi, A., Kuchroo, V.K.: Molecular pathways in the induction of interleukin-27-driven regulatory type 1 cells. *J. Interf. Cytokine Res. Off. J. Int. Soc. Interf. Cytokine Res.* **30**(6), 381–388 (2010). doi:10.1089/jir.2010.0047
116. Xu, M., Mizoguchi, I., Morishima, N., Chiba, Y., Mizuguchi, J., Yoshimoto, T.: Regulation of antitumor immune responses by the IL-12 family cytokines, IL-12, IL-23, and IL-27. *Clin. Dev. Immunol.* **2010** (2010). doi:10.1155/2010/832454
117. Moreno, A.N., Jamur, M.C., Oliver, C., Roque-Barreira, M.C.: Mast cell degranulation induced by lectins: effect on neutrophil recruitment. *Int. Arch. Allergy Immunol.* **132**(3), 221–230 (2003). doi:10.1159/000074303
118. Cardoso, M.R., Mota, C.M., Ribeiro, D.P., Santiago, F.M., Carvalho, J.V., Araujo, E.C., Silva, N.M., Mineo, T.W., Roque-Barreira, M.C., Mineo, J.R., Silva, D.A.: ArtinM, a d-mannose-binding lectin from *Artocarpus integrifolia*, plays a potent adjuvant and immunostimulatory role in immunization against *Neospora caninum*. *Vaccine* (2011). doi:10.1016/j.vaccine.2011.09.136
119. Reis, E.A., Athanazio, D.A., Cavada, B.S., Teixeira, E.H., de Paulo Teixeira Pinto, V., Carmo, T.M., Reis, A., Troccoli, G., Croda, J., Harn, D., Barral-Netto, M., Reis, M.G.: Potential immunomodulatory effects of plant lectins in *Schistosoma mansoni* infection. *Acta Trop.* **108**(2–3), 160–165 (2008). doi:10.1016/j.actatropica.2008.05.025
120. Figueiredo, J.G., Bitencourt, F.S., Mota, M.R., Silvestre, P.P., Aguiar, C.N., Benevides, R.G., Nascimento, K.S., de Moura, T.R., Dal-Secco, D., Assreuy, A.M., Cunha Fde, Q., Vale, M.R., Cavada, B.S., Alencar, N.M.: Pharmacological analysis of the neutrophil migration induced by *D. rostrata* lectin: involvement of cytokines and nitric oxide. *Toxicol. Off. J. Int. Soc. Toxicol.* **54**(6), 736–744 (2009). doi:10.1016/j.toxicol.2009.05.037
121. Lyu, S.Y., Park, W.B.: Mistletoe lectin transport by M-cells in follicle-associated epithelium (FAE) and IL-12 secretion in dendritic cells situated below FAE *in vitro*. *Arch. Pharm. Res.* **33**(9), 1433–1441 (2010). doi:10.1007/s12272-010-0918-6
122. Pelletier, M., Lavastre, V., Savoie, A., Ratthe, C., Saller, R., Hostanska, K., Girard, D.: Modulation of interleukin-15-induced human neutrophil responses by the plant lectin *Viscum album* agglutinin-I. *Clin. Immunol.* **101**(2), 229–236 (2001). doi:10.1006/clim.2001.5105
123. Hostanska, K., Hajto, T., Spagnoli, G.C., Fischer, J., Lentzen, H., Herrmann, R.: A plant lectin derived from *Viscum album* induces cytokine gene expression and protein production in cultures of human peripheral blood mononuclear cells. *Nat. Immun.* **14**(5–6), 295–304 (1995)
124. Stanilova, S.A., Dobrova, Z.G., Slavov, E.S., Miteva, L.D.: C3 binding glycoprotein from *Cuscuta europea* induced different cytokine profiles from human PBMC compared to other plant and bacterial immunomodulators. *Int. Immunopharmacol.* **5**(4), 723–734 (2005). doi:10.1016/j.intimp.2004.12.003
125. Toledo, K.A., Schwartz, C., Oliveira, A.F., Conrado, M.C., Bernardes, E.S., Fernandes, L.C., Roque-Barreira, M.C., Pereira-da-Silva, G., Moreno, A.N.: Neutrophil activation induced by ArtinM: release of inflammatory mediators and enhancement of effector functions. *Immunol. Lett.* **123**(1), 14–20 (2009). doi:10.1016/j.imlet.2009.01.009
126. Pereira-da-Silva, G., Moreno, A.N., Marques, F., Oliver, C., Jamur, M.C., Panunto-Castelo, A., Roque-Barreira, M.C.: Neutrophil activation induced by the lectin KM+ involves binding to CXCR2. *Biochim. Biophys. Acta* **1760**(1), 86–94 (2006). doi:10.1016/j.bbagen.2005.09.011
127. Ganiko, L., Martins, A.R., Freymuller, E., Mortara, R.A., Roque-Barreira, M.C.: Lectin KM+—induced neutrophil haptotaxis involves binding to laminin. *Biochim. Biophys. Acta* **1721**(1–3), 152–163 (2005). doi:10.1016/j.bbagen.2004.10.012
128. Ganiko, L., Martins, A.R., Espreafico, E.M., Roque-Barreira, M.C.: Neutrophil haptotaxis induced by the lectin KM+. *Glycoconj. J.* **15**(5), 527–530 (1998)
129. de Almeida Buranello, P.A., Moulin, M.R., Souza, D.A., Jamur, M.C., Roque-Barreira, M.C., Oliver, C.: The lectin ArtinM induces recruitment of rat mast cells from the bone marrow to the peritoneal cavity. *PLoS One* **5**(3), e9776 (2010). doi:10.1371/journal.pone.0009776
130. Novak, N., Yu, C.F., Bieber, T., Allam, J.P.: Toll-like receptor 7 agonists and skin. *Drug News Perspect.* **21**(3), 158–165 (2008)
131. Othoro, C., Johnston, D., Lee, R., Soverow, J., Bystry, J.C., Nardin, E.: Enhanced immunogenicity of *Plasmodium falciparum* peptide vaccines using a topical adjuvant containing a potent synthetic Toll-like receptor 7 agonist, imiquimod. *Infect. Immun.* **77**(2), 739–748 (2009). doi:10.1128/IAI.00974-08
132. Modabber, F., Buffet, P.A., Torreele, E., Milon, G., Croft, S.L.: Consultative meeting to develop a strategy for treatment of

- cutaneous leishmaniasis. Institute Pasteur, Paris. 13–15 June, 2006. *Kinetoplastid Biol. Dis.* **6**, 3 (2007). doi:[10.1186/1475-9292-6-3](https://doi.org/10.1186/1475-9292-6-3)
133. Arevalo, I., Ward, B., Miller, R., Meng, T.C., Najjar, E., Alvarez, E., Matlashewski, G., Llanos-Cuentas, A.: Successful treatment of drug-resistant cutaneous leishmaniasis in humans by use of imiquimod, an immunomodulator. *Clin. Infect. Dis.* **33**(11), 1847–1851 (2001). doi:[10.1086/324161](https://doi.org/10.1086/324161)
134. Agrawal, S., Kandimalla, E.R.: Synthetic agonists of Toll-like receptors 7, 8 and 9. *Biochem. Soc. Trans.* **35**(Pt 6), 1461–1467 (2007). doi:[10.1042/BST0351461](https://doi.org/10.1042/BST0351461)
135. Raman, V.S., Bhatia, A., Picone, A., Whittle, J., Bailor, H.R., O'Donnell, J., Patabhi, S., Guderian, J.A., Mohamath, R., Duthie, M.S., Reed, S.G.: Applying TLR synergy in immunotherapy: implications in cutaneous leishmaniasis. *J. Immunol.* **185**(3), 1701–1710 (2010). doi:[10.4049/jimmunol.1000238](https://doi.org/10.4049/jimmunol.1000238)
136. Loures, F.V., Pina, A., Felonato, M., Calich, V.L.: TLR2 is a negative regulator of Th17 cells and tissue pathology in a pulmonary model of fungal infection. *J. Immunol.* **183**(2), 1279–1290 (2009). doi:[10.4049/jimmunol.0801599](https://doi.org/10.4049/jimmunol.0801599)
137. Custodio, L.A., Loyola, W., Conchon-Costa, I., da Silva Quirino, G.F., Felipe, I.: Protective effect of Artin M from extract of *Artocarpus integrifolia* seeds by Th1 and Th17 immune response on the course of infection by *Candida albicans*. *Int. Immunopharmacol.* **11**(10), 1510–1515 (2011). doi:[10.1016/j.intimp.2011.05.005](https://doi.org/10.1016/j.intimp.2011.05.005)