

Zanatta, Valentina; Rosato, Paolo

**Working Paper**

## The Impact of Speed Limits on Recreational Boating in the Lagoon of Venice

Nota di Lavoro, No. 135.2005

**Provided in Cooperation with:**

Fondazione Eni Enrico Mattei (FEEM)

*Suggested Citation:* Zanatta, Valentina; Rosato, Paolo (2005) : The Impact of Speed Limits on Recreational Boating in the Lagoon of Venice, Nota di Lavoro, No. 135.2005, Fondazione Eni Enrico Mattei (FEEM), Milano

This Version is available at:

<http://hdl.handle.net/10419/74053>

**Standard-Nutzungsbedingungen:**

Die Dokumente auf EconStor dürfen zu eigenen wissenschaftlichen Zwecken und zum Privatgebrauch gespeichert und kopiert werden.

Sie dürfen die Dokumente nicht für öffentliche oder kommerzielle Zwecke vervielfältigen, öffentlich ausstellen, öffentlich zugänglich machen, vertreiben oder anderweitig nutzen.

Sofern die Verfasser die Dokumente unter Open-Content-Lizenzen (insbesondere CC-Lizenzen) zur Verfügung gestellt haben sollten, gelten abweichend von diesen Nutzungsbedingungen die in der dort genannten Lizenz gewährten Nutzungsrechte.

**Terms of use:**

*Documents in EconStor may be saved and copied for your personal and scholarly purposes.*

*You are not to copy documents for public or commercial purposes, to exhibit the documents publicly, to make them publicly available on the internet, or to distribute or otherwise use the documents in public.*

*If the documents have been made available under an Open Content Licence (especially Creative Commons Licences), you may exercise further usage rights as specified in the indicated licence.*

## **The Impact of Speed Limits on Recreational Boating in the Lagoon of Venice**

Valentina Zanatta, Paolo Rosato, Anna Alberini  
and Dimitrios Reppas

NOTA DI LAVORO 135.2005

**NOVEMBER 2005**

SIEV – Sustainability Indicators and Environmental  
Valuation

Valentina Zanatta, *Dipartimento Casa Città, Politecnico di Torino  
and Fondazione Eni Enrico Mattei*

Paolo Rosato, *Dipartimento of Ingegneria Civile, Università di Trieste  
and Fondazione Eni Enrico Mattei*

Anna Alberini, *Department of Agricultural and Resource Economics, University of Maryland,  
College Park, and Fondazione Eni Enrico Mattei*

Dimitrios Reppas, *Department of Agricultural and Resource Economics,  
University of Maryland, College Park*

This paper can be downloaded without charge at:

The Fondazione Eni Enrico Mattei Note di Lavoro Series Index:  
<http://www.feem.it/Feem/Pub/Publications/WPapers/default.htm>

Social Science Research Network Electronic Paper Collection:  
<http://ssrn.com/abstract=849127>

The opinions expressed in this paper do not necessarily reflect the position of  
Fondazione Eni Enrico Mattei

Corso Magenta, 63, 20123 Milano (I), web site: [www.feem.it](http://www.feem.it), e-mail: [working.papers@feem.it](mailto:working.papers@feem.it)

# **The Impact of Speed Limits on Recreational Boating in the Lagoon of Venice**

## **Summary**

Speed limits were introduced in the Lagoon of Venice in 2002 to reduce wave motion, which damages environmentally sensitive areas in the broader Lagoon as well as buildings in the city of Venice. In this paper, we estimate the welfare losses experienced by recreational boaters as a result of the speed limits. We fit a single-site travel cost model to a sample of boaters intercepted as they depart from or arrive to marinas and launching ramps on the Lagoon. Our Poisson model is corrected for truncation and endogenous stratification. We construct three measures of the price per trip, which allow us to check the sensitivity of models and welfare estimates to possible measurement errors in the opportunity cost of time. Our results are robust to the measure of price used and conservatively peg the welfare losses of boaters to €7.7-9.6 million per year. Even under conservative assumptions, the welfare losses of boaters are sufficiently large that, given current monitoring and enforcement of the speed limits, we believe there is a strong incentive for boaters to disregard the limits.

**Keywords:** Travel cost method, Single-site model, Speed limits, Natural resources management

**JEL Classification:** Q26, Q28

*Address for correspondence:*

Valentina Zanatta  
DICAS - Politecnico di Torino  
Castello del Valentino  
Viale Mattioli 39  
10125 Torino  
Italy  
E-mail: [valentina.zanatta@polito.it](mailto:valentina.zanatta@polito.it)

## **I. Introduction and Motivation**

Speed limits are sometimes imposed on navigational channels and waterways for safety reasons, and to protect wildlife, natural resources and structures (Parnell and Kofoed-Hansen, 2001). Thomas and Stratis (2002) report that in 1989 the state of Florida imposed speed limits to avoid disrupting the natural habitat of the Florida manatee, an endangered species. Speed limits were imposed in 2002 in the Lagoon of Venice<sup>1</sup>, a body of water on UNESCO's cultural heritage site list, and a unique hydrological and ecological system, to reduce wave motion, which is responsible for damage to historical buildings in the city of Venice, coastal erosion, and adverse effects on the Lagoon ecosystem.

At this time, these restrictions are effective in the navigable waters within the jurisdiction of the City of Venice, including to shallow water areas (e.g., Burano, Cavallino Treporti, Valli di Chioggia, Sant'Erasmus), many of which are highly prized for their ecological and environmental quality, but are also heavily used by boaters and tourists. The ordinances impose speed limits on motorboats exceeding 2.3 meters in length and prohibit access in specified areas, providing exceptions for "traditional" boats, which are slower and contribute less to wave motion. Natural resource managers are currently evaluating whether these restrictions should be extended to neighboring jurisdictions and other parts of the Lagoon as well.

<sup>1</sup> Municipality of Venice, Ordinanza n. 09/2002 of the 2 February 2002; Ordinanza 31/2002 of the 27 September 2002; Ordinanza 42/2002 of the 15 November 2002.

When speed limit regulations are proposed, economists would recommend that natural resource managers weigh the gains from the regulations against the costs imposed on the users of the natural resource system. Do the speed limit regulations pass the cost-benefit test? In the North and South Lagoon, for example, speed limits should help reduce the damage of wave motion to environmentally sensitive areas, like *barene* (shoals), may reduce impacts on buildings in Venice proper, and are unlikely to impact in any way commercial aquaculture. Recreational boaters, however, may stand to lose from speed limits because they limit their enjoyment of the regulated body of water and/or raise the cost of using it.

These costs and benefits have not been quantified before, and, to our knowledge, few studies have examined systematically the gains and losses on the regulated entities and communities of imposing speed limits in other bodies of water. Thomas and Stratis (2002) treat the imposition of speed limits as effectively eliminating routes. They fit a model of choice among alternative navigation routes, and estimate the welfare loss associated with the elimination of routes rendered useless by the speed limit. Salomon et al. (2004) use the cost of speed limit law enforcement as a proxy for foregone development benefits in their benefit-cost analysis of a proposed safe minimum standard for the Florida manatee. The benefits of the policy include revenue from manatee-related ecotourism, ecological services provided by manatees, and the public's willingness to pay for conservation, which they elicit through a contingent valuation survey.

In this paper, we wish to estimate the losses experienced by recreational boat users in the Lagoon of Venice as a consequence of the speed limit, but choose a somewhat different approach. Specifically, we estimate a single-site model predicting the number of boating trips into the Lagoon as a function of price per trip and other individual characteristics. The welfare

losses of the speed limit are valued by treating the speed limit as an increase in the price per trip. This is due to an increase in fuel consumption per unit of distance traveled, and by the opportunity cost of the additional travel time.

Our data come from a survey of recreational boaters intercepted at a total of 16 privately owned marinas and boat launching ramps on the Lagoon of Venice in May-August 2002. We queried these boaters about the trips of the year 2001—before the new speed limit regulations were implemented. We focus on recreational boaters because this is a category of Lagoon users whose trips are discretionary and likely to be sensitive to policies that alter the cost of a trip.<sup>2</sup> We focus on private marinas and ramps for three reasons. First, there are a total of 35 privately owned and operated marinas on the Lagoon waterfront, for a total of 5500 mooring spaces, 40% of which are on water. On average, each mooring space generates revenue for about €200 a year, for a total of over €6 million euro a year. In addition to paying fees to the marinas, individual boaters are estimated to spend about €500-600 a year each directly for their boating trips. They also invest considerable amounts of money on maintenance and repairs. This is, therefore, an important industry that serves an important category of recreational users of the Lagoon of Venice.

Second, most of the privately owned marinas and ramps appear to be located near *barene*, the delicate natural environment and ecological systems at high risk of erosion due to the wave motion created by boats. For this reason, the speed limits in the Lagoon are particularly stringent in the vicinity of these marinas and boat launching points,<sup>3</sup> implying that boat owners who keep their vessels there are likely to bear the full brunt of the speed limits.

---

<sup>2</sup> In addition, the wave motion created by these users is likely to affect primarily the highly prized *barene* in the North Lagoon, with some effects trickling down to the buildings of the Venice city center.

<sup>3</sup> The speed limits vary across the areas of the Lagoon, ranging from 5 kmh in the narrow canals closest to the shoals to 20 kmh in the widest navigation channels in the open Lagoon.

Third, the speed limit regulations may have a large impact on the future development of private marinas. Many observers believe that the demand for mooring spaces will remain strong in the future, if all conditions remain the same. Virtually all of this demand will be met by private marinas. Marinas are currently virtually 100% occupied, and there are long waiting lists for mooring spaces at virtually all of them. Several plans have been drafted for building more, which conflict with the regulations seeking to reduce wave motion in the Lagoon by limiting boat traffic. These conflicts suggests that natural resource managers may wish to weigh boat traffic restrictions with the losses in welfare for recreationists (and for the marina industry) when making decisions about Lagoon use.

Because the survey was conducted before the new speed limits went into effect, we first fit a trip demand function using the current price of a trip. Next, we calculate what the price per trip would have been in the presence of the speed limits (it would have been higher), and calculate the corresponding welfare change. Clearly, our calculations presume that individual tastes were not altered by the policy, so that the demand function for trips remains the same. Our results are robust to the measure of price used and conservatively peg the welfare losses of boaters to €7.7-9.6 million per year. Even under conservative assumptions, the welfare losses of boaters are sufficiently large that, given current monitoring and enforcement of the speed limits, we believe there is a strong incentive for boaters to disregard the limits.

The remainder of the paper is organized as follows. Section II describes the survey design and administration and the data. Section III describes the Travel Cost Method, derives a model of Lagoon boating trips, and develops the econometric model. Section IV presents the results and the welfare estimates. We offer our concluding remarks in Section V.

## **II. The Survey and the Data**

### *A. Characteristics of the Respondents*

We developed a questionnaire eliciting information about boat ownership, use and trips into the Lagoon of Venice, and administered it on site at 16 private marina and ramp locations chosen to be representative of the universe of facilities and launching points on the Lagoon.

The first part of the questionnaire queries respondents about their boating trips into the Lagoon, including the total number of trips in the previous year, sites visited, travel time, etc. The second part of the questionnaire investigates the respondents' boat ownership, boat characteristics (e.g., type, length, and engine power) and the annual costs of keeping the boat at a private marina. The third part of the questionnaire elicits individual expenditures on trips into the Lagoon, followed by questions about the respondents' demographics and individual characteristics, such as age, income, education, etc.

We contacted about 300 persons, for a total of 263 completed interviews. The response rate is thus 87.7%. As shown in table 1, the typical respondents is a male (72% of the sample) and full-time employed (80% of the sample). Professionals/clerical workers and self-employed persons account for 33.3% and 31.9% of the sample, respectively, and retired persons account for about 10 percent. The average age is 45 years. About 48.8% percent of the sample has completed high school, and 11% has a college degree. The average family size is 3, and about 7.6% of the sample volunteer time to environmental organizations or initiatives.



Table 1. Descriptive statistics of the respondents.

<b>Variable</b>	<b>Observations</b>	<b>Mean</b>	<b>Standard deviation</b>
Male (dummy)	263	0.7186	0.4497
Age (years)	263	45.58	10.55
Full-time employed (dummy)	263	0.7947	0.4039
Retired (dummy)	263	0.1027	0.3040
High-school diploma (dummy)	263	0.4880	0.4998
College degree (dummy)	263	0.1103	0.0980
Household size	263	3.09	0.93
Household income (euro per year)	263	33,654	18,036
<i>Environmental organization/volunteer</i>	263	0.076	0.01

### *B. Ownership and Type of Boat*

The majority of the respondents (88.2%) use their own boats. Regarding boat type, over three-quarters of the sample (76.4%) use a fiberglass boat and 10.4% uses a rubber dinghy. Traditional wood boats account for only 3% of the sample. The boats used by our respondents are generally small (the average length is 6.5 meters, and the median length is 5.5 meters), relatively new (the average age is 8.5 years) and powered by good engines (about 86 HP), almost half of which are two-stroke engines (47.9%).

The power of the engine—which, combined with width and length, determines the wave motion created by the boat—varies with the type of boat. Traditional wood boats, for example, average about 48 HP,<sup>4</sup> rubber dinghies 59, and fiberglass boats 94.

About 70% of our respondents keep their boats at private marinas, as might be expected, since we surveyed persons as they departed from or returned to private marinas or

<sup>4</sup> We calculate this average after excluding one obvious outlier from the subsample of wood boats. Had this outlier of 440 HP been included, the average engine power would have been about 104 HP.

ramps. Respondents spend on average €1200 a year to keep their boats in private marinas and about €400 a year for maintenance, repairs, and insurance.

### *C. Boating Trips*

The number of annual Lagoon trips ranges from 1 to 70, the average is 9.6, and the standard deviation is 10.00. About three-quarters of the sample report taking ten or less trips per year, and 55% report taking 6 or less, suggesting that we should use a count data model for these data. There were a total of 202 valid observations for this variable.

We calculated three alternative measures of the cost of a trip into the Lagoon. The first is the out-of-pocket cost of the trip, which adds together the cost of travelling from home to the marina, fuel for the boat, food, etc. The second and third are estimates of the full cost of a trip, and are equal to the out-of-pocket cost plus the opportunity cost of the time spent on the trip. These were based on the assumption that the wage rate is equal to individual annual income divided by 2000 hours. In one variant of the full cost of the trip, the opportunity cost of time is equal to total trip time multiplied by the wage rate. In the other variant, we performed the same calculation but—following much of the travel cost literature since Cesario (1976)—we assumed the opportunity cost of time to be equal to one-third of the wage rate. Since the goal of our study is to estimate the welfare loss (if any) associated to speed limit regulations, we also calculated the cost and time per trip in the presence of the speed limits.

We were able to calculate these six measures of price per trip (three variants with and without speed limits) for a total of 195 respondents. As shown in table 2, for these persons the average out-of-pocket cost of an excursion into the Lagoon ranges from €43 to €125 in the

absence and presence of the speed limits, respectively. When we factor in the opportunity cost of time, the average cost of the trip ranges from €48 to €60. The speed limits raise fuel costs, since these boats are extremely fuel-inefficient at low speeds, as well as travel time.<sup>5</sup> It is not, therefore, surprising that the average cost per trip increases significantly with the imposition of the new speed limits.

Table 2 – Average costs per trip in €(standard deviation in parentheses).

	Out-of-pocket cost per trip	Full cost per trip I (wage rate)	Full cost per trip II (1/3 of the wage rate)
In the absence of speed limits	43.32 (33.52)	58.35 (38.89)	48.45 (35.08)
In the presence of speed limits	125.45 (127.70)	160.14 (143.89)	137.74 (132.88)

### III. The Travel Cost Model

We use the number of Lagoon boating trips in a year to fit a single-site travel cost model. The model allows us to estimate the surplus associated with visits at the current conditions and the change in surplus due to the speed limits.

#### A. The Single-site Travel Cost Model

In a single-site travel cost method (TCM) model, it is assumed that an individual's utility depends on aggregate consumption,  $X$ , leisure,  $L$  and trips  $r$  to the site:

$$(1) \quad U = U(X, L, r(q)).$$

We further assume weak complementarity of trips with exogenously set quality at the site,  $q$ .

In other words,  $\partial U / \partial q = 0$  when  $r = 0$  (people do not care about the quality of the site if they

---

<sup>5</sup> Since most of these boats have a flat hull and cannot plane at the low speeds imposed by the speed limits, restricting speed raises dramatically their consumption of fuel per Km.

do not visit it), and  $r$  is increasing in  $q$ . The individual chooses  $X$ ,  $L$  and  $r$  to maximize utility subject to the budget constraint:

$$(2) \quad y + w \cdot [\bar{T} - L - r(t_1 + t_2)] = X + (f + P_d \cdot d) \cdot r$$

where  $y$  is non-work income,  $w$  is the wage rate,  $\bar{T}$  is total time,  $t_1$  is travel time to the site,  $t_2$  is time spent at the site,  $f$  is the access fee (if any),  $P_d$  is the cost per kilometer, and  $d$  is the distance to the site. The price of the aggregate good  $X$  is normalized to 1.<sup>6</sup>

This yields the demand function for trips:

$$(3) \quad r^* = r^*(y, w, p_r, q)$$

where  $p_r = w(t_1 + t_2) + f + p_d \cdot d$  is the full price of a trip.

We specify a log-linear demand function for trips. We focus on access to the Lagoon under the current conditions, and do not attempt to capture the effect on demand of changing site quality  $q$ . Formally,

$$(4) \quad r^* = \exp(\beta_0 + \beta_1 w + \beta_2 p_r).$$

Equation (4) becomes an econometric model once (i)  $r^*$  is interpreted as the expected number of trips, and (ii) we introduce  $r$ , the observed number of trips, which is a random variable with expected value equal to  $r^*$ . To estimate the coefficients in equation (4), it is necessary to ask a sample of visitors and potential visitors to report the number of trips they took in a specified period (year or season), their cost per trip  $p_r$ , plus  $w$ ,  $y$ , and other individual characteristics that might affect the demand for visits to the site. Ideally, the price per trip to an alternative site should also be included in the model, lest the estimated coefficient on own

---

<sup>6</sup> This model further assumes that travel time and time spent at the site are exogenous, that the opportunity costs for time travelling and on-site time are equal to the wage rate, that there is no utility or disutility from travelling to the site, and that each trip to the site is undertaken for no other purpose than visiting the site. It also assumes that individuals perceive and respond to changes in travel costs in the same way they would to changes in a fee for being admitted to the site (Freeman, 2003). Finally, the model assumes that work hours are flexible.

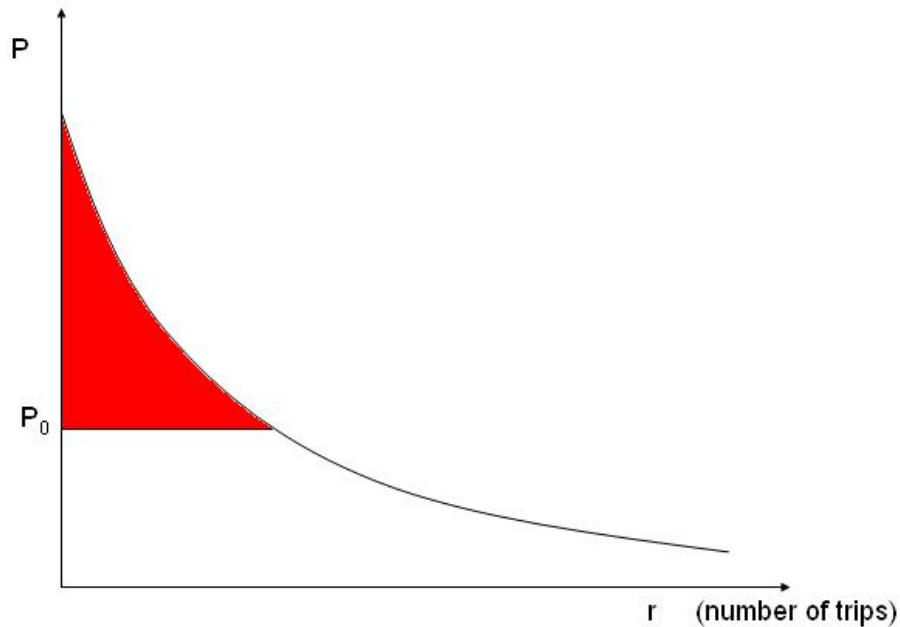
price per trip be biased, the severity of the bias depending on the correlation between the two price variables.

Once the demand function has been estimated, the consumer surplus provides an approximation of the welfare associated with visiting the site.<sup>7</sup> Formally, based on equation (4), the consumer surplus is equal to:

$$(5) \quad CS(p_0, q_0) = -\frac{1}{\beta_2} r_0,$$

where  $r_0 = \exp(\beta_o + \beta_1 w + \beta_2 p_0)$  and  $p_0$  is current price. The consumer surplus corresponding to this functional form for the recreational trip demand is the shaded area in Figure 1.

Figure 1: Inverse demand function for trips and surplus (area in red).



<sup>7</sup> Haab and McConnell (2003) argue that since income effects tend to be small, the consumer surplus is a good approximation to welfare in recreational demand studies.

The loss of welfare due to the speed limits—the change in consumer surplus—is  $-\frac{1}{\beta_2}[r_0 - r_1]$ , where  $r_1$  is the expected number of trips when the speed limits are in force, raising the price of a trip to  $p_1$ . We therefore assume that the speed limits do not shift the trip demand function.<sup>8</sup>

### *B. The Econometric Model.*

We use a Poisson equation to describe boating trips into the Lagoon of Venice. This is appropriate because individuals do not report numerous trips (the average per year is about 10), so that a continuous distribution would provide a poor approximation to the observed data. Formally, letting  $Y$  denote a count-data variable, the probability function for  $Y$  implied by a Poisson model is:

$$(6) \quad \Pr(Y = y) = \frac{e^{-\lambda} \lambda^y}{y!},$$

where  $\lambda > 0$  is the parameter indexing the Poisson distribution. Both the expected value and the variance of  $Y$  are equal to  $\lambda$ .

We specify a Poisson model where  $Y$  is the annual number of trips and  $\lambda$  is individual-specific:

$$(7) \quad \Pr(Y_i = y_i) = \frac{e^{-\lambda_i} \lambda_i^{y_i}}{y_i!},$$

and

$$(8) \quad \lambda_i = \exp(\mathbf{x}_i \boldsymbol{\beta}_1 + p_i \beta_2).$$

---

<sup>8</sup> The speed limits would shift the trip demand function if the existence of the speed limit affects utility directly, in addition through changing the price and hence the optimal number of trips. We assume that it is not so, but are unable to test this assumption because we do not have observations from after the passage of the speed limit regulations. At this time, we only have data from before the new speed limits regulations.

Clearly,  $\lambda_i$  is our operational equivalent of  $r^*$ . Following equation (4),  $\mathbf{x}$  is a vector of determinants of Lagoon trips, including income, whereas  $p_i$  is the price per trip faced by the respondent, and  $\beta_1$  and  $\beta_2$  are unknown coefficients.

Estimation of the parameters in (8) is further complicated by the nature of our sample. Because we intercept people on site, (i) the observations are truncated from below at one, and (ii) the people that we are more likely to run into are the most avid visitors, i.e., those persons with the highest  $\lambda_i$ s. Accordingly, if we wish to estimate the parameters in (8) using the method of maximum likelihood, the correct probability function is:

$$(9) \quad h(y) = \frac{y \cdot \Pr(y)}{\sum_{w=1}^{\infty} w \cdot \Pr(w)} = \frac{y \cdot \Pr(y)}{\lambda},$$

where  $\Pr(\cdot)$  is the Poisson distribution function (equation (7)), and the subscript  $i$  has been omitted to avoid notational clutter (Shaw, 1988).<sup>9</sup>

The likelihood function of the sample is thus  $\prod_i h(y_i)$ , and the log likelihood function is

$$(10) \quad \sum_i \log h(y_i).$$

It is easily shown (see Shaw, 1988) that (9) is simplified to the probability function of a Poisson variate defined as  $y' = y - 1$ . This approach produces population estimates of the coefficients, although one only has the sample that was intercepted on-site (Englin and Shonkwiler, 1995).

---

<sup>9</sup> A similar type of adjustment can be implemented with negative binomial trips. We experimented with estimating negative binomial models corrected for on-site sampling, but these models failed to converge. We therefore restrict attention to the Poisson model corrected for on-site sampling.

### *C. Specification of the Econometric Model*

In our theoretical model, the demand for trips (equation (4)) should depend on the full price of a trip, which includes the opportunity cost of time. Following common practice, we compute the opportunity cost of time in two ways, using the wage rate and one-third of the wage rate (Cesario, 1976), respectively.<sup>10</sup> Azevedo et al. (2003) point out that computing the opportunity cost of time in this fashion is likely to introduce measurement error in the price of a trip, which in turn results in attenuation bias (Greene, 2003, p. 83-86). Accordingly, we also run a specification of the model where we enter the out-of-pocket cost of a trip and income separately (as in Alberini et al., 2005, and Hynes et al., 2005).

Finally, it is important to tackle the issue of substitute sites. Ideally, the price per trip to an alternative site should be included in the model, lest the estimated coefficient on own price per trip be biased, the severity of the bias depending on the correlation between the two price variables. However, it is difficult to identify substitutes to the Lagoon of Venice, so we are forced to ignore this variable in our empirical work.

We also examine how the demand for trips is shifted by individual characteristics. In sum, our candidate regressors are price per trip, income, a gender dummy, a dummy indicating whether the respondent is a retired person (which captures the availability of time), age, a college education dummy, and a dummy for whether the respondent keeps his or her boat at a private marina (MARINA), which we regard as a measure of commitment to boating.

---

<sup>10</sup> McConnell and Strand (1981) have suggested an approach for estimating this fraction directly from the data reported by the respondent in a TCM survey, and, more recently, Shaw and Feather (1999) develop the correct imputation of the opportunity cost of time for those persons who work more hours than they wish, fewer hours than they would prefer, or are not gainfully employed. Hynes et al. (2005) use data from a general household survey to estimate a hedonic wage model in order to predict the market wage rate of students and persons who do not report their income in a travel cost survey.



#### IV. Results

In what follows, we report results based on the Poisson model with the correction for on-site sampling [equation (9), likelihood function (10), and  $\lambda$  specified as an exponential function of the regressors, as in equation (8)].

Table 3 displays the results of three alternative specifications, which differ in the measure of cost per trip used. Specification (I) enters the out-of-pocket cost of a trip, specification (II) the full cost per trip at the full wage rate, and specification (III) the full cost per trip at one-third of the wage rate. Income is entered separately in all three specifications.

The coefficient on price per trip is negative and significant, as expected, in all specifications, regardless of the measure of price used. The three coefficients on price are reasonable, and imply price elasticities of trips of -0.04, -0.03, and -0.04, respectively. In turn, these mean that for the average boater in our sample it takes a price increase of about 60% for expected trips to decline by one. This effect is consistent across the three specifications of the model.

In all three specifications, household income enters in the regression with a negative sign, and the coefficient is significant, even in specifications (II) and (III), where income is already factored into the price per trip. Males take about 25-26% more trips than female respondents, all else the same. By contrast, despite their free time, retired persons take 36-41% fewer trips than all others, a result that perhaps is due to the fact that they limit boating to a shorter period in the summer. In spite of this, age is positively and significantly related to the number of trips. We find that the type of boat owned and its engine power-to-length characteristics do significantly influence the number of trips, but the fact that one keeps his or

her boat at a privately owned marina does not. We also do not find any statistically discernible differences in the number of trips between people that do and do not have a college degree.

Table 3. Poisson regressions with truncation and endogenous stratification  
(t-statistics in parentheses).

	Model I	Model II	Model III
Intercept	2.013 (13.17)	1.9943 (13.43)	2.0081 (13.29)
Out-of-pocket price per trip (price)	-0.0043 (-3.93)		
Full price per trip at wage rate (Prezzosenzarec)		-0.0027 (-3.17)	
Full price per trip at 1/3 od wage rate (Prezzosenza13)			-0.0037 (-3.61)
Household income (Newincome)	-5.62E-06 (-3.57)	-4.65E-06 (-2.91)	-5.02E-06 (-3.18)
MALE	0.2299 (3.72)	0.2281 (3.71)	0.2317 (3.76)
RETIRED	-0.5268 (-4.94)	-0.4326 (-3.97)	-0.4337 (-3.98)
Age	0.0063 (2.05)	0.0067 (2.18)	0.0063 (2.03)
COLLEGE dummy	-0.1367 (-1.48)	-0.1356 (-1.46)	-0.1376 (-1.49)
MARINA dummy	-0.0426 (-0.60)	-0.0443 (-0.62)	-0.0442 (-0.62)
Dinghy dummy (Gommone)	-0.4649 (4.65)	-0.4833 (-4.81)	-0.4812 (-4.80)
Boat is a sailboat or a row boat (Velaremi)	0.2893 (2.37)	0.3669 (3.01)	0.3611 (2.96)
Length/horse power (Powerratio)	1.4346 (3.82)	1.0247 (3.06)	1.2638 3.51
Log-likelihood	-1069.15	-1060.04	-1058.46
Obs.	188	185	185

Since our likelihood function adjusts for the nature of the sample, the estimated coefficients refer to the *population* of boaters, and can therefore be used to compute welfare statistics for the population. Unfortunately, at this time we do not have information about the average income, age, employment status, etc. for the population of Lagoon of Venice boaters.

We therefore compute the welfare measures for each person in our sample using the population coefficients, assuming that the individual characteristics (income, age, etc.) of the persons in the sample are similar to those of the population of Lagoon boaters.

At the current prices (in the absence of limits), the average consumer surplus in the sample is €147, €140, and €293, based on the results of specification (I), (II) and (III), respectively.<sup>11</sup> Each of the model specifications implies that imposing the speed limits would reduce the expected number of trips by about two trips,<sup>12</sup> for welfare changes of €05, €135, and €1040 in specifications (I), (II), and (III), respectively. Assuming conservatively that the number of Lagoon boaters using private marinas on the mainland side of the Lagoon is about 8500, the welfare losses due the imposition of the speed limits range from €7.692 to €9.647 million a year.

## V. Discussion and Conclusions

We have estimated single-site travel cost models of boating trips into the Lagoon of Venice to study the possible welfare losses due to the imposition of speed limit, one of the policies currently in place to reduce wave motion in the Lagoon. The latter is responsible for damages to environmentally sensitive areas and to buildings.

Most travel cost method specialists recommend using the full price of a trip, which is inclusive of the opportunity cost of time, when fitting such trip demand functions. However Azevedo et al. (2003) point out that, due to the difficulty of knowing exactly what the value of

---

<sup>11</sup> A more refined measure of the consumer surplus per year can be calculated by subtracting the fixed costs. We estimate the fixed costs to be about €1240 a year. This figure is calculated as follows. Boat owners who keep their boats at private marinas pay on average €1200 a year for their berth. Since 70% of our sample keep their boats at private marinas, the average over the entire sample is  $(€1200 \times 0.70) = €840$ . We add about €400 a year for maintenance and insure to obtain €1240.

<sup>12</sup> The exact change in the average predicted number of trips is 2.02 in specification (I), 1.71 in specification (II) and 2.03 in specification (III).

time is, doing so is likely to introduce measurement errors, which may invalidate the estimate of the coefficient on price, and hence the welfare statistics.

Accordingly, we experimented with three alternative measures of the price per trip—out-of-pocket costs plus two alternative measures of the full cost—but our estimation results, predicted welfare change and predicted number of trips with and without speed limits are remarkably similar across these alternative approaches. Our calculations indicate that establishing the speed limits almost triples the cost of a boating trip, and our models in turn indicate that such increase reduces annual trips by two. The corresponding change in surplus is €05-1135 a year, so even conservative estimates of the number of boaters using private marinas on the mainland side of the Lagoon (about 8500) result in relatively large losses of welfare on the order of €7.692 to 9.647 million per year. These losses must be added with losses experienced by other categories (e.g., the marina industry; water taxi and commercial boat operators within the city of Venice, etc.), and then compared with the monetized benefits of imposing speed limits to conduct a complete cost-benefit analysis of this policy.

Our welfare loss calculations assume, of course, full compliance to the speed limits on the part of the recreational boaters. Facing these welfare losses, and given the current penalty structure for violations, should we expect boaters to actually obey these speed limits? We reason that a boater will ignore the speed limits on a given trip if the welfare loss due to the limits is greater than the expected penalty, which is the product of the fine times the probability of being caught and fined.

The fines for breaking the limits range from €2 to €16, depending on the severity of the violation and on whether the violation occurred in the open Lagoon or near urban centers. The prescribed penalty is usually reduced for boaters caught speeding but willing to

pay the penalty on the spot. We estimate that the average fine is €100 for violations occurring in the open Lagoon, and €155 for violations taking place in inner canals, in the city of Venice proper, and near urban centers.

In the absence of the speed limit, the surplus per trip is €15-314, depending on the choice of the price per trip variable. The surplus per trip is €155-236 with the speed limits. The loss of welfare on a per trip basis is thus €9-78. For violations occurring in the open Lagoon, where the average fine is about €100, the likelihood of being caught must be extremely high—greater than 0.6-0.8—for the boater to choose to comply with the speed limits. For violations occurring in inner canals and near urban areas, where the penalty is higher (€155), a lower likelihood of being caught (0.4 to 0.5) is sufficient to create the incentive to comply with the limits.

In practice, we believe that the actual likelihood of being caught is much lower than these break-even thresholds, especially in the open Lagoon. Given the large welfare loss incurred by boaters and the current monitoring levels, the fines are inadequate to ensure that boaters will obey the speed limits and limit the damages to environmentally sensitive areas. These considerations should play a role in the benefit-cost calculus, and in the design of an effective speed limit policy.

## References

- Alberini, Anna, Valentina Zanatta, and Paolo Rosato, (2005) "Combining Actual and Contingent Behavior in Travel Cost Method Studies: An Application to Sport Fishing in the Lagoon of Venice," FEEM Working paper 44.05, Milan, March.
- Azevedo, C.D., J.A. Herriges and C.L. Kling (2003), "Combining Revealed and Stated Preferences: Consistency Tests and Their Interpretations," *American Journal of Agricultural Economics*, 85(3): 525-37.
- Cesario, F.J. (1976), "Value of Time in Recreation Benefit Studies," *Land Economics* 52(1): 32-41.
- Englin, J. and J. S. Shonkwiler (1995) "Estimating Social Welfare using Count data models: An Application to Long-run Recreation Demand under Conditions of Endogenous Stratification and Truncation," *The Review of Economics and Statistics*, 77(1), 104-112.
- Freeman, Myrick A. (2003), *The Measurement of Environmental and Resource Values*, 2<sup>nd</sup> edition, Washington, DC: Resources for the Future.
- Greene, W. (2003), *Econometric Analysis*, 5<sup>th</sup> Edition.
- Haab, Timothy C. and Kenneth E. McConnell (2003), *Valuing Environmental and Natural Resources. The Econometrics of Non-market Valuation*, Cheltenham, UK: Edward Elgar.
- Hynes, S., N. Hanley, and C. O'Donoghue (2005) "Measuring the Opportunity Cost of Time in Recreation Demand Modeling: An Application to a Random Utility Model of Whitewater Kayaking in Ireland," paper presented at the 14<sup>th</sup> Annual EAERE Meeting, Bremen, June.
- McConnell, K. E. and I. E. Strand (1981), "Measuring the Cost of Time in Recreation Demand Analysis: An Application to Sport Fishing," *American Journal of Agricultural Economics*, 63 (1), 153-156.
- Parnell, K. E., and H. K. Hansen (2001), "Wakes from Large High-Speed Ferries in Confined Coastal Waters: Management Approaches with Examples from New Zealand and Denmark," *Coastal Management*, 29(3), 217-237.
- Shaw, Daigee (1988), "On-site Samples' Regression. Problems of Non-negative Integers, Truncation and Endogenous Stratification," *Journal of Econometrics* 37, 211-223.
- Shaw, W.D. and P. Feather (1999) "Possibilities for including the opportunity cost of time in recreation demand analysis," *Land Economics*, 75(4), 592-602.

Solomon, B. D., C. M. Corey-Luse, and K. E. Halvorsen (2004), "The Florida Manatee and Eco-Tourism: Towards a Safe Minimum Standard," *Ecological Economics*, 50(1-2), 101-115.

Thomas, J. and N. Stratis (2002), "Compensating variation for recreational policy: A random utility approach to boating in Florida," *Marine Resource Economics* 17(1):23-35.

## NOTE DI LAVORO DELLA FONDAZIONE ENI ENRICO MATTEI

### Fondazione Eni Enrico Mattei Working Paper Series

Our Note di Lavoro are available on the Internet at the following addresses:

<http://www.feem.it/Feem/Pub/Publications/WPapers/default.html>

<http://www.ssrn.com/link/feem.html>

<http://www.repec.org>

### NOTE DI LAVORO PUBLISHED IN 2004

IEM	1.2004	<i>Anil MARKANDYA, Suzette PEDROSO and Alexander GOLUB: <u>Empirical Analysis of National Income and So2 Emissions in Selected European Countries</u></i>
ETA	2.2004	<i>Masahisa FUJITA and Shlomo WEBER: <u>Strategic Immigration Policies and Welfare in Heterogeneous Countries</u></i>
PRA	3.2004	<i>Adolfo DI CARLUCCIO, Giovanni FERRI, Cecilia FRALE and Ottavio RICCHI: <u>Do Privatizations Boost Household Shareholding? Evidence from Italy</u></i>
ETA	4.2004	<i>Victor GINSBURGH and Shlomo WEBER: <u>Languages Disenfranchisement in the European Union</u></i>
ETA	5.2004	<i>Romano PIRAS: <u>Growth, Congestion of Public Goods, and Second-Best Optimal Policy</u></i>
CCMP	6.2004	<i>Herman R.J. VOLLEBERGH: <u>Lessons from the Polder: Is Dutch CO2-Taxation Optimal</u></i>
PRA	7.2004	<i>Sandro BRUSCO, Giuseppe LOPOMO and S. VISWANATHAN (lxv): <u>Merger Mechanisms</u></i>
PRA	8.2004	<i>Wolfgang AUSENNEGG, Pegaret PICHLER and Alex STOMPER (lxv): <u>IPO Pricing with Bookbuilding, and a When-Issued Market</u></i>
PRA	9.2004	<i>Pegaret PICHLER and Alex STOMPER (lxv): <u>Primary Market Design: Direct Mechanisms and Markets</u></i>
PRA	10.2004	<i>Florian ENGLMAIER, Pablo GUILLEN, Loreto LLORENTE, Sander ONDERSTAL and Rupert SAUSGRUBER (lxv): <u>The Chopstick Auction: A Study of the Exposure Problem in Multi-Unit Auctions</u></i>
PRA	11.2004	<i>Bjarne BRENDSTRUP and Harry J. PAARSCH (lxv): <u>Nonparametric Identification and Estimation of Multi-Unit, Sequential, Oral, Ascending-Price Auctions With Asymmetric Bidders</u></i>
PRA	12.2004	<i>Ohad KADAN (lxv): <u>Equilibrium in the Two Player, k-Double Auction with Affiliated Private Values</u></i>
PRA	13.2004	<i>Maarten C.W. JANSSEN (lxv): <u>Auctions as Coordination Devices</u></i>
PRA	14.2004	<i>Gadi FIBICH, Arieh GAVIOUS and Aner SELA (lxv): <u>All-Pay Auctions with Weakly Risk-Averse Buyers</u></i>
PRA	15.2004	<i>Orly SADE, Charles SCHNITZLEIN and Jaime F. ZENDER (lxv): <u>Competition and Cooperation in Divisible Good Auctions: An Experimental Examination</u></i>
PRA	16.2004	<i>Marta STRYSZOWSKA (lxv): <u>Late and Multiple Bidding in Competing Second Price Internet Auctions</u></i>
CCMP	17.2004	<i>Slim Ben YOUSSEF: <u>R&amp;D in Cleaner Technology and International Trade</u></i>
NRM	18.2004	<i>Angelo ANTOCI, Simone BORGHESI and Paolo RUSSU (lxvi): <u>Biodiversity and Economic Growth: Stabilization Versus Preservation of the Ecological Dynamics</u></i>
SIEV	19.2004	<i>Anna ALBERINI, Paolo ROSATO, Alberto LONGO and Valentina ZANATTA: <u>Information and Willingness to Pay in a Contingent Valuation Study: The Value of S. Erasmo in the Lagoon of Venice</u></i>
NRM	20.2004	<i>Guido CANDELA and Roberto CELLINI (lxvii): <u>Investment in Tourism Market: A Dynamic Model of Differentiated Oligopoly</u></i>
NRM	21.2004	<i>Jacqueline M. HAMILTON (lxvii): <u>Climate and the Destination Choice of German Tourists</u></i>
NRM	22.2004	<i>Javier Rey-MAQUIEIRA PALMER, Javier LOZANO IBÁÑEZ and Carlos Mario GÓMEZ GÓMEZ (lxvii): <u>Land, Environmental Externalities and Tourism Development</u></i>
NRM	23.2004	<i>Pius ODUNGA and Henk FOLMER (lxvii): <u>Profiling Tourists for Balanced Utilization of Tourism-Based Resources in Kenya</u></i>
NRM	24.2004	<i>Jean-Jacques NOWAK, Mondher SAHLI and Pasquale M. SGRO (lxvii): <u>Tourism, Trade and Domestic Welfare</u></i>
NRM	25.2004	<i>Riaz SHAREEF (lxvii): <u>Country Risk Ratings of Small Island Tourism Economies</u></i>
NRM	26.2004	<i>Juan Luis EUGENIO-MARTÍN, Noelia MARTÍN MORALES and Riccardo SCARPA (lxvii): <u>Tourism and Economic Growth in Latin American Countries: A Panel Data Approach</u></i>
NRM	27.2004	<i>Raúl Hernández MARTÍN (lxvii): <u>Impact of Tourism Consumption on GDP. The Role of Imports</u></i>
CSRM	28.2004	<i>Nicoletta FERRO: <u>Cross-Country Ethical Dilemmas in Business: A Descriptive Framework</u></i>
NRM	29.2004	<i>Marian WEBER (lxvi): <u>Assessing the Effectiveness of Tradable Landuse Rights for Biodiversity Conservation: an Application to Canada's Boreal Mixedwood Forest</u></i>
NRM	30.2004	<i>Trond BJORN DAL, Phoebe KOUNDOURI and Sean PASCOE (lxvi): <u>Output Substitution in Multi-Species Trawl Fisheries: Implications for Quota Setting</u></i>
CCMP	31.2004	<i>Marzio GALEOTTI, Alessandra GORIA, Paolo MOMBRINI and Evi SPANTIDAKI: <u>Weather Impacts on Natural, Social and Economic Systems (WISE) Part I: Sectoral Analysis of Climate Impacts in Italy</u></i>
CCMP	32.2004	<i>Marzio GALEOTTI, Alessandra GORIA, Paolo MOMBRINI and Evi SPANTIDAKI: <u>Weather Impacts on Natural, Social and Economic Systems (WISE) Part II: Individual Perception of Climate Extremes in Italy</u></i>
CTN	33.2004	<i>Wilson PEREZ: <u>Divide and Conquer: Noisy Communication in Networks, Power, and Wealth Distribution</u></i>
KTHC	34.2004	<i>Gianmarco I.P. OTTAVIANO and Giovanni PERI (lxviii): <u>The Economic Value of Cultural Diversity: Evidence from US Cities</u></i>
KTHC	35.2004	<i>Linda CHAIB (lxviii): <u>Immigration and Local Urban Participatory Democracy: A Boston-Paris Comparison</u></i>



KTHC	36.2004	<i>Franca ECKERT COEN and Claudio ROSSI</i> (Ixviii): <u>Foreigners, Immigrants, Host Cities: The Policies of Multi-Ethnicity in Rome. Reading Governance in a Local Context</u>
KTHC	37.2004	<i>Kristine CRANE</i> (Ixviii): <u>Governing Migration: Immigrant Groups' Strategies in Three Italian Cities – Rome, Naples and Bari</u>
KTHC	38.2004	<i>Kiflemariam HAMDE</i> (Ixviii): <u>Mind in Africa, Body in Europe: The Struggle for Maintaining and Transforming Cultural Identity - A Note from the Experience of Eritrean Immigrants in Stockholm</u>
ETA	39.2004	<i>Alberto CAVALIERE</i> : <u>Price Competition with Information Disparities in a Vertically Differentiated Duopoly</u>
PRA	40.2004	<i>Andrea BIGANO and Stef PROOST</i> : <u>The Opening of the European Electricity Market and Environmental Policy: Does the Degree of Competition Matter?</u>
CCMP	41.2004	<i>Micheal FINUS</i> (Ixix): <u>International Cooperation to Resolve International Pollution Problems</u>
KTHC	42.2004	<i>Francesco CRESPI</i> : <u>Notes on the Determinants of Innovation: A Multi-Perspective Analysis</u>
CTN	43.2004	<i>Sergio CURRARINI and Marco MARINI</i> : <u>Coalition Formation in Games without Synergies</u>
CTN	44.2004	<i>Marc ESCRHUELA-VILLAR</i> : <u>Cartel Sustainability and Cartel Stability</u>
NRM	45.2004	<i>Sebastian BERVOETS and Nicolas GRAVEL</i> (Ixvi): <u>Appraising Diversity with an Ordinal Notion of Similarity: An Axiomatic Approach</u>
NRM	46.2004	<i>Signe ANTHON and Bo JELLESMARK THORSEN</i> (Ixvi): <u>Optimal Afforestation Contracts with Asymmetric Information on Private Environmental Benefits</u>
NRM	47.2004	<i>John MBURU</i> (Ixvi): <u>Wildlife Conservation and Management in Kenya: Towards a Co-management Approach</u>
NRM	48.2004	<i>Ekin BIROL, Ágnes GYOVAI and Melinda SMALE</i> (Ixvi): <u>Using a Choice Experiment to Value Agricultural Biodiversity on Hungarian Small Farms: Agri-Environmental Policies in a Transition al Economy</u>
CCMP	49.2004	<i>Gernot KLEPPER and Sonja PETERSON</i> : <u>The EU Emissions Trading Scheme. Allowance Prices, Trade Flows, Competitiveness Effects</u>
GG	50.2004	<i>Scott BARRETT and Michael HOEL</i> : <u>Optimal Disease Eradication</u>
CTN	51.2004	<i>Dinko DIMITROV, Peter BORM, Ruud HENDRICKX and Shao CHIN SUNG</i> : <u>Simple Priorities and Core Stability in Hedonic Games</u>
SIEV	52.2004	<i>Francesco RICCI</i> : <u>Channels of Transmission of Environmental Policy to Economic Growth: A Survey of the Theory</u>
SIEV	53.2004	<i>Anna ALBERINI, Maureen CROPPER, Alan KRUPNICK and Nathalie B. SIMON</i> : <u>Willingness to Pay for Mortality Risk Reductions: Does Latency Matter?</u>
NRM	54.2004	<i>Ingo BRÄUER and Rainer MARGGRAF</i> (Ixvi): <u>Valuation of Ecosystem Services Provided by Biodiversity Conservation: An Integrated Hydrological and Economic Model to Value the Enhanced Nitrogen Retention in Renaturated Streams</u>
NRM	55.2004	<i>Timo GOESCHL and Tun LIN</i> (Ixvi): <u>Biodiversity Conservation on Private Lands: Information Problems and Regulatory Choices</u>
NRM	56.2004	<i>Tom DEDEURWAERDERE</i> (Ixvi): <u>Bioprospection: From the Economics of Contracts to Reflexive Governance</u>
CCMP	57.2004	<i>Katrin REHDANZ and David MADDISON</i> : <u>The Amenity Value of Climate to German Households</u>
CCMP	58.2004	<i>Koen SMEKENS and Bob VAN DER ZWAAN</i> : <u>Environmental Externalities of Geological Carbon Sequestration Effects on Energy Scenarios</u>
NRM	59.2004	<i>Valentina BOSETTI, Mariaester CASSINELLI and Alessandro LANZA</i> (Ixvii): <u>Using Data Envelopment Analysis to Evaluate Environmentally Conscious Tourism Management</u>
NRM	60.2004	<i>Timo GOESCHL and Danilo CAMARGO IGLIORI</i> (Ixvi): <u>Property Rights Conservation and Development: An Analysis of Extractive Reserves in the Brazilian Amazon</u>
CCMP	61.2004	<i>Barbara BUCHNER and Carlo CARRARO</i> : <u>Economic and Environmental Effectiveness of a Technology-based Climate Protocol</u>
NRM	62.2004	<i>Elissaios PAPYRAKIS and Reyer GERLAGH</i> : <u>Resource-Abundance and Economic Growth in the U.S.</u>
NRM	63.2004	<i>Györgyi BELA, György PATAKI, Melinda SMALE and Mariann HAJDÚ</i> (Ixvi): <u>Conserving Crop Genetic Resources on Smallholder Farms in Hungary: Institutional Analysis</u>
NRM	64.2004	<i>E.C.M. RUIJGROK and E.E.M. NILLESEN</i> (Ixvi): <u>The Socio-Economic Value of Natural Riverbanks in the Netherlands</u>
NRM	65.2004	<i>E.C.M. RUIJGROK</i> (Ixvi): <u>Reducing Acidification: The Benefits of Increased Nature Quality. Investigating the Possibilities of the Contingent Valuation Method</u>
ETA	66.2004	<i>Giannis VARDAS and Anastasios XEPAPADEAS</i> : <u>Uncertainty Aversion, Robust Control and Asset Holdings</u>
GG	67.2004	<i>Anastasios XEPAPADEAS and Constadina PASSA</i> : <u>Participation in and Compliance with Public Voluntary Environmental Programs: An Evolutionary Approach</u>
GG	68.2004	<i>Michael FINUS</i> : <u>Modesty Pays: Sometimes!</u>
NRM	69.2004	<i>Trond BJØRNDAL and Ana BRASÃO</i> : <u>The Northern Atlantic Bluefin Tuna Fisheries: Management and Policy Implications</u>
CTN	70.2004	<i>Alejandro CAPARRÓS, Abdelhakim HAMMOUDI and Tarik TAZDAÏT</i> : <u>On Coalition Formation with Heterogeneous Agents</u>
IEM	71.2004	<i>Massimo GIOVANNINI, Margherita GRASSO, Alessandro LANZA and Matteo MANERA</i> : <u>Conditional Correlations in the Returns on Oil Companies Stock Prices and Their Determinants</u>
IEM	72.2004	<i>Alessandro LANZA, Matteo MANERA and Michael MCALEER</i> : <u>Modelling Dynamic Conditional Correlations in WTI Oil Forward and Futures Returns</u>
SIEV	73.2004	<i>Margarita GENIUS and Elisabetta STRAZZERA</i> : <u>The Copula Approach to Sample Selection Modelling: An Application to the Recreational Value of Forests</u>

CCMP	74.2004	<i>Rob DELLINK and Ekko van IERLAND</i> : <u>Pollution Abatement in the Netherlands: A Dynamic Applied General Equilibrium Assessment</u>
ETA	75.2004	<i>Rosella LEVAGGI and Michele MORETTO</i> : <u>Investment in Hospital Care Technology under Different Purchasing Rules: A Real Option Approach</u>
CTN	76.2004	<i>Salvador BARBERÀ and Matthew O. JACKSON</i> (lxx): <u>On the Weights of Nations: Assigning Voting Weights in a Heterogeneous Union</u>
CTN	77.2004	<i>Àlex ARENAS, Antonio CABRALES, Albert DÍAZ-GUILERA, Roger GUIMERA and Fernando VEGA-REDONDO</i> (lxx): <u>Optimal Information Transmission in Organizations: Search and Congestion</u>
CTN	78.2004	<i>Francis BLOCH and Armando GOMES</i> (lxx): <u>Contracting with Externalities and Outside Options</u>
CTN	79.2004	<i>Rabah AMIR, Effrosyni DIAMANTOUDI and Licun XUE</i> (lxx): <u>Merger Performance under Uncertain Efficiency Gains</u>
CTN	80.2004	<i>Francis BLOCH and Matthew O. JACKSON</i> (lxx): <u>The Formation of Networks with Transfers among Players</u>
CTN	81.2004	<i>Daniel DIERMEIER, Hülya ERASLAN and Antonio MERLO</i> (lxx): <u>Bicameralism and Government Formation</u>
CTN	82.2004	<i>Rod GARRATT, James E. PARCO, Cheng-ZHONG QIN and Amnon RAPOPORT</i> (lxx): <u>Potential Maximization and Coalition Government Formation</u>
CTN	83.2004	<i>Kfir ELIAZ, Debraj RAY and Ronny RAZIN</i> (lxx): <u>Group Decision-Making in the Shadow of Disagreement</u>
CTN	84.2004	<i>Sanjeev GOYAL, Marco van der LEIJ and José Luis MORAGA-GONZÁLEZ</i> (lxx): <u>Economics: An Emerging Small World?</u>
CTN	85.2004	<i>Edward CARTWRIGHT</i> (lxx): <u>Learning to Play Approximate Nash Equilibria in Games with Many Players</u>
IEM	86.2004	<i>Finn R. FØRSUND and Michael HOEL</i> : <u>Properties of a Non-Competitive Electricity Market Dominated by Hydroelectric Power</u>
KTHC	87.2004	<i>Elissaios PAPHAKIS and Reyer GERLAGH</i> : <u>Natural Resources, Investment and Long-Term Income</u>
CCMP	88.2004	<i>Marzio GALEOTTI and Claudia KEMFERT</i> : <u>Interactions between Climate and Trade Policies: A Survey</u>
IEM	89.2004	<i>A. MARKANDYA, S. PEDROSO and D. STREIMIKIENE</i> : <u>Energy Efficiency in Transition Economies: Is There Convergence Towards the EU Average?</u>
GG	90.2004	<i>Rolf GOLOMBEK and Michael HOEL</i> : <u>Climate Agreements and Technology Policy</u>
PRA	91.2004	<i>Sergei IZMALKOV</i> (lxv): <u>Multi-Unit Open Ascending Price Efficient Auction</u>
KTHC	92.2004	<i>Gianmarco I.P. OTTAVIANO and Giovanni PERI</i> : <u>Cities and Cultures</u>
KTHC	93.2004	<i>Massimo DEL GATTO</i> : <u>Agglomeration, Integration, and Territorial Authority Scale in a System of Trading Cities. Centralisation versus devolution</u>
CCMP	94.2004	<i>Pierre-André JOUVET, Philippe MICHEL and Gilles ROTILLON</i> : <u>Equilibrium with a Market of Permits</u>
CCMP	95.2004	<i>Bob van der ZWAAN and Reyer GERLAGH</i> : <u>Climate Uncertainty and the Necessity to Transform Global Energy Supply</u>
CCMP	96.2004	<i>Francesco BOSELLO, Marco LAZZARIN, Roberto ROSON and Richard S.J. TOL</i> : <u>Economy-Wide Estimates of the Implications of Climate Change: Sea Level Rise</u>
CTN	97.2004	<i>Gustavo BERGANTIÑOS and Juan J. VIDAL-PUGA</i> : <u>Defining Rules in Cost Spanning Tree Problems Through the Canonical Form</u>
CTN	98.2004	<i>Siddhartha BANDYOPADHYAY and Mandar OAK</i> : <u>Party Formation and Coalitional Bargaining in a Model of Proportional Representation</u>
GG	99.2004	<i>Hans-Peter WEIKARD, Michael FINUS and Juan-Carlos ALTAMIRANO-CABRERA</i> : <u>The Impact of Surplus Sharing on the Stability of International Climate Agreements</u>
SIEV	100.2004	<i>Chiara M. TRAVISI and Peter NIJKAMP</i> : <u>Willingness to Pay for Agricultural Environmental Safety: Evidence from a Survey of Milan, Italy, Residents</u>
SIEV	101.2004	<i>Chiara M. TRAVISI, Raymond J. G. M. FLORAX and Peter NIJKAMP</i> : <u>A Meta-Analysis of the Willingness to Pay for Reductions in Pesticide Risk Exposure</u>
NRM	102.2004	<i>Valentina BOSETTI and David TOMBERLIN</i> : <u>Real Options Analysis of Fishing Fleet Dynamics: A Test</u>
CCMP	103.2004	<i>Alessandra GORIA e Gretel GAMBARELLI</i> : <u>Economic Evaluation of Climate Change Impacts and Adaptability in Italy</u>
PRA	104.2004	<i>Massimo FLORIO and Mara GRASSEN</i> : <u>The Missing Shock: The Macroeconomic Impact of British Privatisation</u>
PRA	105.2004	<i>John BENNETT, Saul ESTRIN, James MAW and Giovanni URGA</i> : <u>Privatisation Methods and Economic Growth in Transition Economies</u>
PRA	106.2004	<i>Kira BÖRNER</i> : <u>The Political Economy of Privatization: Why Do Governments Want Reforms?</u>
PRA	107.2004	<i>Pehr-Johan NORBÄCK and Lars PERSSON</i> : <u>Privatization and Restructuring in Concentrated Markets</u>
SIEV	108.2004	<i>Angela GRANZOTTO, Fabio PRANOVI, Simone LIBRALATO, Patrizia TORRICELLI and Danilo MAINARDI</i> : <u>Comparison between Artisanal Fishery and Manila Clam Harvesting in the Venice Lagoon by Using Ecosystem Indicators: An Ecological Economics Perspective</u>
CTN	109.2004	<i>Somdeb LAHIRI</i> : <u>The Cooperative Theory of Two Sided Matching Problems: A Re-examination of Some Results</u>
NRM	110.2004	<i>Giuseppe DI VITA</i> : <u>Natural Resources Dynamics: Another Look</u>
SIEV	111.2004	<i>Anna ALBERINI, Alistair HUNT and Anil MARKANDYA</i> : <u>Willingness to Pay to Reduce Mortality Risks: Evidence from a Three-Country Contingent Valuation Study</u>
KTHC	112.2004	<i>Valeria PAPPONETTI and Dino PINELLI</i> : <u>Scientific Advice to Public Policy-Making</u>
SIEV	113.2004	<i>Paulo A.L.D. NUNES and Laura ONOFRI</i> : <u>The Economics of Warm Glow: A Note on Consumer's Behavior and Public Policy Implications</u>
IEM	114.2004	<i>Patrick CAYRADE</i> : <u>Investments in Gas Pipelines and Liquefied Natural Gas Infrastructure What is the Impact on the Security of Supply?</u>
IEM	115.2004	<i>Valeria COSTANTINI and Francesco GRACCEVA</i> : <u>Oil Security. Short- and Long-Term Policies</u>

IEM	116.2004	<i>Valeria COSTANTINI and Francesco GRACCEVA: <u>Social Costs of Energy Disruptions</u></i>
IEM	117.2004	<i>Christian EGENHOFER, Kyriakos GIALOGLOU, Giacomo LUCIANI, Maroeska BOOTS, Martin SCHEEPERS, Valeria COSTANTINI, Francesco GRACCEVA, Anil MARKANDYA and Giorgio VICINI: <u>Market-Based Options for Security of Energy Supply</u></i>
IEM	118.2004	<i>David FISK: <u>Transport Energy Security. The Unseen Risk?</u></i>
IEM	119.2004	<i>Giacomo LUCIANI: <u>Security of Supply for Natural Gas Markets. What is it and What is it not?</u></i>
IEM	120.2004	<i>L.J. de VRIES and R.A. HAKVOORT: <u>The Question of Generation Adequacy in Liberalised Electricity Markets</u></i>
KTHC	121.2004	<i>Alberto PETRUCCI: <u>Asset Accumulation, Fertility Choice and Nondegenerate Dynamics in a Small Open Economy</u></i>
NRM	122.2004	<i>Carlo GIUPPONI, Jaroslaw MYSLAK and Anita FASSIO: <u>An Integrated Assessment Framework for Water Resources Management: A DSS Tool and a Pilot Study Application</u></i>
NRM	123.2004	<i>Margaretha BREIL, Anita FASSIO, Carlo GIUPPONI and Paolo ROSATO: <u>Evaluation of Urban Improvement on the Islands of the Venice Lagoon: A Spatially-Distributed Hedonic-Hierarchical Approach</u></i>
ETA	124.2004	<i>Paul MENSINK: <u>Instant Efficient Pollution Abatement Under Non-Linear Taxation and Asymmetric Information: The Differential Tax Revisited</u></i>
NRM	125.2004	<i>Mauro FABIANO, Gabriella CAMARSA, Rosanna DURSI, Roberta IVALDI, Valentina MARIN and Francesca PALMISANI: <u>Integrated Environmental Study for Beach Management: A Methodological Approach</u></i>
PRA	126.2004	<i>Irena GROSFELD and Iraj HASHI: <u>The Emergence of Large Shareholders in Mass Privatized Firms: Evidence from Poland and the Czech Republic</u></i>
CCMP	127.2004	<i>Maria BERRITTELLA, Andrea BIGANO, Roberto ROSON and Richard S.J. TOL: <u>A General Equilibrium Analysis of Climate Change Impacts on Tourism</u></i>
CCMP	128.2004	<i>Reyer GERLAGH: <u>A Climate-Change Policy Induced Shift from Innovations in Energy Production to Energy Savings</u></i>
NRM	129.2004	<i>Elissaios POPYRAKIS and Reyer GERLAGH: <u>Natural Resources, Innovation, and Growth</u></i>
PRA	130.2004	<i>Bernardo BORTOLOTTI and Mara FACCIO: <u>Reluctant Privatization</u></i>
SIEV	131.2004	<i>Riccardo SCARPA and Mara THIENE: <u>Destination Choice Models for Rock Climbing in the Northeast Alps: A Latent-Class Approach Based on Intensity of Participation</u></i>
SIEV	132.2004	<i>Riccardo SCARPA Kenneth G. WILLIS and Melinda ACUTT: <u>Comparing Individual-Specific Benefit Estimates for Public Goods: Finite Versus Continuous Mixing in Logit Models</u></i>
IEM	133.2004	<i>Santiago J. RUBIO: <u>On Capturing Oil Rents with a National Excise Tax Revisited</u></i>
ETA	134.2004	<i>Ascensión ANDINA DÍAZ: <u>Political Competition when Media Create Candidates' Charisma</u></i>
SIEV	135.2004	<i>Anna ALBERINI: <u>Robustness of VSL Values from Contingent Valuation Surveys</u></i>
CCMP	136.2004	<i>Gernot KLEPPER and Sonja PETERSON: <u>Marginal Abatement Cost Curves in General Equilibrium: The Influence of World Energy Prices</u></i>
ETA	137.2004	<i>Herbert DAWID, Christophe DEISSENBERG and Pavel ŠEVČIK: <u>Cheap Talk, Gullibility, and Welfare in an Environmental Taxation Game</u></i>
CCMP	138.2004	<i>ZhongXiang ZHANG: <u>The World Bank's Prototype Carbon Fund and China</u></i>
CCMP	139.2004	<i>Reyer GERLAGH and Marjan W. HOFKES: <u>Time Profile of Climate Change Stabilization Policy</u></i>
NRM	140.2004	<i>Chiara D'ALPAOS and Michele MORETTO: <u>The Value of Flexibility in the Italian Water Service Sector: A Real Option Analysis</u></i>
PRA	141.2004	<i>Patrick BAJARI, Stephanie HOUGHTON and Steven TADELIS (lxxi): <u>Bidding for Incomplete Contracts</u></i>
PRA	142.2004	<i>Susan ATHEY, Jonathan LEVIN and Enrique SEIRA (lxxi): <u>Comparing Open and Sealed Bid Auctions: Theory and Evidence from Timber Auctions</u></i>
PRA	143.2004	<i>David GOLDREICH (lxxi): <u>Behavioral Biases of Dealers in U.S. Treasury Auctions</u></i>
PRA	144.2004	<i>Roberto BURGUET (lxxi): <u>Optimal Procurement Auction for a Buyer with Downward Sloping Demand: More Simple Economics</u></i>
PRA	145.2004	<i>Ali HORTACSU and Samita SAREEN (lxxi): <u>Order Flow and the Formation of Dealer Bids: An Analysis of Information and Strategic Behavior in the Government of Canada Securities Auctions</u></i>
PRA	146.2004	<i>Victor GINSBURGH, Patrick LEGROS and Nicolas SAHUGUET (lxxi): <u>How to Win Twice at an Auction. On the Incidence of Commissions in Auction Markets</u></i>
PRA	147.2004	<i>Claudio MEZZETTI, Aleksandar PEKEČ and Ilia TSETLIN (lxxi): <u>Sequential vs. Single-Round Uniform-Price Auctions</u></i>
PRA	148.2004	<i>John ASKER and Estelle CANTILLON (lxxi): <u>Equilibrium of Scoring Auctions</u></i>
PRA	149.2004	<i>Philip A. HAILE, Han HONG and Matthew SHUM (lxxi): <u>Nonparametric Tests for Common Values in First-Price Sealed-Bid Auctions</u></i>
PRA	150.2004	<i>François DEGEORGE, François DERRIEN and Kent L. WOMACK (lxxi): <u>Quid Pro Quo in IPOs: Why Bookbuilding is Dominating Auctions</u></i>
CCMP	151.2004	<i>Barbara BUCHNER and Silvia DALL'OLIO: <u>Russia: The Long Road to Ratification. Internal Institution and Pressure Groups in the Kyoto Protocol's Adoption Process</u></i>
CCMP	152.2004	<i>Carlo CARRARO and Marzio GALEOTTI: <u>Does Endogenous Technical Change Make a Difference in Climate Policy Analysis? A Robustness Exercise with the FEEM-RICE Model</u></i>
PRA	153.2004	<i>Alejandro M. MANELLI and Daniel R. VINCENT (lxxi): <u>Multidimensional Mechanism Design: Revenue Maximization and the Multiple-Good Monopoly</u></i>
ETA	154.2004	<i>Nicola ACOCELLA, Giovanni Di BARTOLOMEO and Wilfried PAUWELS: <u>Is there any Scope for Corporatism in Stabilization Policies?</u></i>
CTN	155.2004	<i>Johan EYCKMANS and Michael FINUS: <u>An Almost Ideal Sharing Scheme for Coalition Games with Externalities</u></i>
CCMP	156.2004	<i>Cesare DOSI and Michele MORETTO: <u>Environmental Innovation, War of Attrition and Investment Grants</u></i>

CCMP	157.2004	<i>Valentina BOSETTI, Marzio GALEOTTI and Alessandro LANZA: <u>How Consistent are Alternative Short-Term Climate Policies with Long-Term Goals?</u></i>
ETA	158.2004	<i>Y. Hossein FARZIN and Ken-Ichi AKAO: <u>Non-pecuniary Value of Employment and Individual Labor Supply</u></i>
ETA	159.2004	<i>William BROCK and Anastasios XEPAPADEAS: <u>Spatial Analysis: Development of Descriptive and Normative Methods with Applications to Economic-Ecological Modelling</u></i>
KTHC	160.2004	<i>Alberto PETRUCCI: <u>On the Incidence of a Tax on PureRent with Infinite Horizons</u></i>
IEM	161.2004	<i>Xavier LABANDEIRA, José M. LABEAGA and Miguel RODRÍGUEZ: <u>Microsimulating the Effects of Household Energy Price Changes in Spain</u></i>

#### NOTE DI LAVORO PUBLISHED IN 2005

CCMP	1.2005	<i>Stéphane HALLEGATTE: <u>Accounting for Extreme Events in the Economic Assessment of Climate Change</u></i>
CCMP	2.2005	<i>Qiang WU and Paulo Augusto NUNES: <u>Application of Technological Control Measures on Vehicle Pollution: A Cost-Benefit Analysis in China</u></i>
CCMP	3.2005	<i>Andrea BIGANO, Jacqueline M. HAMILTON, Maren LAU, Richard S.J. TOL and Yuan ZHOU: <u>A Global Database of Domestic and International Tourist Numbers at National and Subnational Level</u></i>
CCMP	4.2005	<i>Andrea BIGANO, Jacqueline M. HAMILTON and Richard S.J. TOL: <u>The Impact of Climate on Holiday Destination Choice</u></i>
ETA	5.2005	<i>Hubert KEMPF: <u>Is Inequality Harmful for the Environment in a Growing Economy?</u></i>
CCMP	6.2005	<i>Valentina BOSETTI, Carlo CARRARO and Marzio GALEOTTI: <u>The Dynamics of Carbon and Energy Intensity in a Model of Endogenous Technical Change</u></i>
IEM	7.2005	<i>David CALEF and Robert GOBLE: <u>The Allure of Technology: How France and California Promoted Electric Vehicles to Reduce Urban Air Pollution</u></i>
ETA	8.2005	<i>Lorenzo PELLEGRINI and Reyer GERLAGH: <u>An Empirical Contribution to the Debate on Corruption Democracy and Environmental Policy</u></i>
CCMP	9.2005	<i>Angelo ANTOCI: <u>Environmental Resources Depletion and Interplay Between Negative and Positive Externalities in a Growth Model</u></i>
CTN	10.2005	<i>Frédéric DEROLAN: <u>Cost-Reducing Alliances and Local Spillovers</u></i>
NRM	11.2005	<i>Francesco SINDICO: <u>The GMO Dispute before the WTO: Legal Implications for the Trade and Environment Debate</u></i>
KTHC	12.2005	<i>Carla MASSIDDA: <u>Estimating the New Keynesian Phillips Curve for Italian Manufacturing Sectors</u></i>
KTHC	13.2005	<i>Michele MORETTO and Gianpaolo ROSSINI: <u>Start-up Entry Strategies: Employer vs. Nonemployer firms</u></i>
PRCG	14.2005	<i>Clara GRAZIANO and Annalisa LUPORINI: <u>Ownership Concentration, Monitoring and Optimal Board Structure</u></i>
CSRM	15.2005	<i>Parashar KULKARNI: <u>Use of Ecolabels in Promoting Exports from Developing Countries to Developed Countries: Lessons from the Indian LeatherFootwear Industry</u></i>
KTHC	16.2005	<i>Adriana DI LIBERTO, Roberto MURA and Francesco PIGLIARU: <u>How to Measure the Unobservable: A Panel Technique for the Analysis of TFP Convergence</u></i>
KTHC	17.2005	<i>Alireza NAGHAVI: <u>Asymmetric Labor Markets, Southern Wages, and the Location of Firms</u></i>
KTHC	18.2005	<i>Alireza NAGHAVI: <u>Strategic Intellectual Property Rights Policy and North-South Technology Transfer</u></i>
KTHC	19.2005	<i>Mombert HOPPE: <u>Technology Transfer Through Trade</u></i>
PRCG	20.2005	<i>Roberto ROSON: <u>Platform Competition with Endogenous Multihoming</u></i>
CCMP	21.2005	<i>Barbara BUCHNER and Carlo CARRARO: <u>Regional and Sub-Global Climate Blocs. A Game Theoretic Perspective on Bottom-up Climate Regimes</u></i>
IEM	22.2005	<i>Fausto CAVALLARO: <u>An Integrated Multi-Criteria System to Assess Sustainable Energy Options: An Application of the Promethee Method</u></i>
CTN	23.2005	<i>Michael FINUS, Pierre v. MOUCHE and Bianca RUNDSHAGEN: <u>Uniqueness of Coalitional Equilibria</u></i>
IEM	24.2005	<i>Wietze LISE: <u>Decomposition of CO2 Emissions over 1980–2003 in Turkey</u></i>
CTN	25.2005	<i>Somdeb LAHIRI: <u>The Core of Directed Network Problems with Quotas</u></i>
SIEV	26.2005	<i>Susanne MENZEL and Riccardo SCARPA: <u>Protection Motivation Theory and Contingent Valuation: Perceived Realism, Threat and WTP Estimates for Biodiversity Protection</u></i>
NRM	27.2005	<i>Massimiliano MAZZANTI and Anna MONTINI: <u>The Determinants of Residential Water Demand Empirical Evidence for a Panel of Italian Municipalities</u></i>
CCMP	28.2005	<i>Laurent GILOTTE and Michel de LARA: <u>Precautionary Effect and Variations of the Value of Information</u></i>
NRM	29.2005	<i>Paul SARFO-MENSAH: <u>Exportation of Timber in Ghana: The Menace of Illegal Logging Operations</u></i>
CCMP	30.2005	<i>Andrea BIGANO, Alessandra GORIA, Jacqueline HAMILTON and Richard S.J. TOL: <u>The Effect of Climate Change and Extreme Weather Events on Tourism</u></i>
NRM	31.2005	<i>Maria Angeles GARCIA-VALIÑAS: <u>Decentralization and Environment: An Application to Water Policies</u></i>
NRM	32.2005	<i>Chiara D'ALPAOS, Cesare DOSI and Michele MORETTO: <u>Concession Length and Investment Timing Flexibility</u></i>
CCMP	33.2005	<i>Joseph HUBER: <u>Key Environmental Innovations</u></i>
CTN	34.2005	<i>Antoni CALVÓ-ARMENGOL and Rahmi İLKILIÇ (Ixxii): <u>Pairwise-Stability and Nash Equilibria in Network Formation</u></i>
CTN	35.2005	<i>Francesco FERI (Ixxii): <u>Network Formation with Endogenous Decay</u></i>
CTN	36.2005	<i>Frank H. PAGE, Jr. and Myrna H. WOODERS (Ixxii): <u>Strategic Basins of Attraction, the Farsighted Core, and Network Formation Games</u></i>

CTN	37.2005	<i>Alessandra CASELLA and Nobuyuki HANAOKI</i> (lxxii): <u>Information Channels in Labor Markets. On the Resilience of Referral Hiring</u>
CTN	38.2005	<i>Matthew O. JACKSON and Alison WATTS</i> (lxxii): <u>Social Games: Matching and the Play of Finitely Repeated Games</u>
CTN	39.2005	<i>Anna BOGOMOLNAIA, Michel LE BRETON, Alexei SAVVATEEV and Shlomo WEBER</i> (lxxii): <u>The Egalitarian Sharing Rule in Provision of Public Projects</u>
CTN	40.2005	<i>Francesco FERI</i> : <u>Stochastic Stability in Network with Decay</u>
CTN	41.2005	<i>Aart de ZEEUW</i> (lxxii): <u>Dynamic Effects on the Stability of International Environmental Agreements</u>
NRM	42.2005	<i>C. Martijn van der HEIDE, Jeroen C.J.M. van den BERGH, Ekko C. van IERLAND and Paulo A.L.D. NUNES</i> : <u>Measuring the Economic Value of Two Habitat Defragmentation Policy Scenarios for the Veluwe, The Netherlands</u>
PRCG	43.2005	<i>Carla VIEIRA and Ana Paula SERRA</i> : <u>Abnormal Returns in Privatization Public Offerings: The Case of Portuguese Firms</u>
SIEV	44.2005	<i>Anna ALBERINI, Valentina ZANATTA and Paolo ROSATO</i> : <u>Combining Actual and Contingent Behavior to Estimate the Value of Sports Fishing in the Lagoon of Venice</u>
CTN	45.2005	<i>Michael FINUS and Bianca RUNDSHAGEN</i> : <u>Participation in International Environmental Agreements: The Role of Timing and Regulation</u>
CCMP	46.2005	<i>Lorenzo PELLEGRINI and Reyer GERLAGH</i> : <u>Are EU Environmental Policies Too Demanding for New Members States?</u>
IEM	47.2005	<i>Matteo MANERA</i> : <u>Modeling Factor Demands with SEM and VAR: An Empirical Comparison</u>
CTN	48.2005	<i>Olivier TERCIEUX and Vincent VANNETELBOSCH</i> (lxx): <u>A Characterization of Stochastically Stable Networks</u>
CTN	49.2005	<i>Ana MAULEON, José SEMPERE-MONERRIS and Vincent J. VANNETELBOSCH</i> (lxxii): <u>R&amp;D Networks Among Unionized Firms</u>
CTN	50.2005	<i>Carlo CARRARO, Johan EYCKMANS and Michael FINUS</i> : <u>Optimal Transfers and Participation Decisions in International Environmental Agreements</u>
KTHC	51.2005	<i>Valeria GATTAI</i> : <u>From the Theory of the Firm to FDI and Internalisation: A Survey</u>
CCMP	52.2005	<i>Alireza NAGHAVI</i> : <u>Multilateral Environmental Agreements and Trade Obligations: A Theoretical Analysis of the Doha Proposal</u>
SIEV	53.2005	<i>Margaretha BREIL, Gretel GAMBARELLI and Paulo A.L.D. NUNES</i> : <u>Economic Valuation of On Site Material Damages of High Water on Economic Activities based in the City of Venice: Results from a Dose-Response-Expert-Based Valuation Approach</u>
ETA	54.2005	<i>Alessandra del BOCA, Marzio GALEOTTI, Charles P. HIMMELBERG and Paola ROTA</i> : <u>Investment and Time to Plan: A Comparison of Structures vs. Equipment in a Panel of Italian Firms</u>
CCMP	55.2005	<i>Gernot KLEPPER and Sonja PETERSON</i> : <u>Emissions Trading, CDM, JI, and More – The Climate Strategy of the EU</u>
ETA	56.2005	<i>Maia DAVID and Bernard SINCLAIR-DESGAGNÉ</i> : <u>Environmental Regulation and the Eco-Industry</u>
ETA	57.2005	<i>Alain-Désiré NIMUBONA and Bernard SINCLAIR-DESGAGNÉ</i> : <u>The Pigouvian Tax Rule in the Presence of an Eco-Industry</u>
NRM	58.2005	<i>Helmut KARL, Antje MÖLLER, Ximena MATUS, Edgar GRANDE and Robert KAISER</i> : <u>Environmental Innovations: Institutional Impacts on Co-operations for Sustainable Development</u>
SIEV	59.2005	<i>Dimitra VOUVAKI and Anastasios XEPAPADEAS</i> (lxxiii): <u>Criteria for Assessing Sustainable Development: Theoretical Issues and Empirical Evidence for the Case of Greece</u>
CCMP	60.2005	<i>Andreas LÖSCHEL and Dirk T.G. RÜBBELKE</i> : <u>Impure Public Goods and Technological Interdependencies</u>
PRCG	61.2005	<i>Christoph A. SCHALTEGGER and Benno TORGLER</i> : <u>Trust and Fiscal Performance: A Panel Analysis with Swiss Data</u>
ETA	62.2005	<i>Irene VALSECCHI</i> : <u>A Role for Instructions</u>
NRM	63.2005	<i>Valentina BOSETTI and Gianni LOCATELLI</i> : <u>A Data Envelopment Analysis Approach to the Assessment of Natural Parks' Economic Efficiency and Sustainability. The Case of Italian National Parks</u>
SIEV	64.2005	<i>Arianne T. de BLAEIJ, Paulo A.L.D. NUNES and Jeroen C.J.M. van den BERGH</i> : <u>Modeling 'No-choice' Responses in Attribute Based Valuation Surveys</u>
CTN	65.2005	<i>Carlo CARRARO, Carmen MARCHIORI and Alessandra SGOBBI</i> : <u>Applications of Negotiation Theory to Water Issues</u>
CTN	66.2005	<i>Carlo CARRARO, Carmen MARCHIORI and Alessandra SGOBBI</i> : <u>Advances in Negotiation Theory: Bargaining, Coalitions and Fairness</u>
KTHC	67.2005	<i>Sandra WALLMAN</i> (lxxiv): <u>Network Capital and Social Trust: Pre-Conditions for 'Good' Diversity?</u>
KTHC	68.2005	<i>Asimina CHRISTOFOROU</i> (lxxiv): <u>On the Determinants of Social Capital in Greece Compared to Countries of the European Union</u>
KTHC	69.2005	<i>Eric M. USLANER</i> (lxxiv): <u>Varieties of Trust</u>
KTHC	70.2005	<i>Thomas P. LYON</i> (lxxiv): <u>Making Capitalism Work: Social Capital and Economic Growth in Italy, 1970-1995</u>
KTHC	71.2005	<i>Graziella BERTOCCHI and Chiara STROZZI</i> (lxxv): <u>Citizenship Laws and International Migration in Historical Perspective</u>
KTHC	72.2005	<i>Elsbeth van HYLCKAMA Vlieg</i> (lxxv): <u>Accommodating Differences</u>
KTHC	73.2005	<i>Renato SANSA and Ercole SORI</i> (lxxv): <u>Governance of Diversity Between Social Dynamics and Conflicts in Multicultural Cities. A Selected Survey on Historical Bibliography</u>
IEM	74.2005	<i>Alberto LONGO and Anil MARKANDYA</i> : <u>Identification of Options and Policy Instruments for the Internalisation of External Costs of Electricity Generation. Dissemination of External Costs of Electricity Supply Making Electricity External Costs Known to Policy-Makers</u> <u>MAXIMA</u>

IEM	75.2005	<i>Margherita GRASSO and Matteo MANERA: <u>Asymmetric Error Correction Models for the Oil-Gasoline Price Relationship</u></i>
ETA	76.2005	<i>Umberto CHERUBINI and Matteo MANERA: <u>Hunting the Living Dead A “Peso Problem” in Corporate Liabilities Data</u></i>
CTN	77.2005	<i>Hans-Peter WEIKARD: <u>Cartel Stability under an Optimal Sharing Rule</u></i>
ETA	78.2005	<i>Joëlle NOAILLY, Jeroen C.J.M. van den BERGH and Cees A. WITHAGEN (lxxvi): <u>Local and Global Interactions in an Evolutionary Resource Game</u></i>
ETA	79.2005	<i>Joëlle NOAILLY, Cees A. WITHAGEN and Jeroen C.J.M. van den BERGH (lxxvi): <u>Spatial Evolution of Social Norms in a Common-Pool Resource Game</u></i>
CCMP	80.2005	<i>Massimiliano MAZZANTI and Roberto ZOBOLI: <u>Economic Instruments and Induced Innovation: The Case of End-of-Life Vehicles European Policies</u></i>
NRM	81.2005	<i>Anna LASUT: <u>Creative Thinking and Modelling for the Decision Support in Water Management</u></i>
CCMP	82.2005	<i>Valentina BOSETTI and Barbara BUCHNER: <u>Using Data Envelopment Analysis to Assess the Relative Efficiency of Different Climate Policy Portfolios</u></i>
ETA	83.2005	<i>Ignazio MUSU: <u>Intellectual Property Rights and Biotechnology: How to Improve the Present Patent System</u></i>
KTHC	84.2005	<i>Giulio CAINELLI, Susanna MANCINELLI and Massimiliano MAZZANTI: <u>Social Capital, R&amp;D and Industrial Districts</u></i>
ETA	85.2005	<i>Rosella LEVAGGI, Michele MORETTO and Vincenzo REBBA: <u>Quality and Investment Decisions in Hospital Care when Physicians are Devoted Workers</u></i>
CCMP	86.2005	<i>Valentina BOSETTI and Laurent GILOTTE: <u>Carbon Capture and Sequestration: How Much Does this Uncertain Option Affect Near-Term Policy Choices?</u></i>
CSRM	87.2005	<i>Nicoletta FERRO: <u>Value Through Diversity: Microfinance and Islamic Finance and Global Banking</u></i>
ETA	88.2005	<i>A. MARKANDYA and S. PEDROSO: <u>How Substitutable is Natural Capital?</u></i>
IEM	89.2005	<i>Anil MARKANDYA, Valeria COSTANTINI, Francesco GRACCEVA and Giorgio VICINI: <u>Security of Energy Supply: Comparing Scenarios From a European Perspective</u></i>
CCMP	90.2005	<i>Vincent M. OTTO, Andreas LÖSCHEL and Rob DELLINK: <u>Energy Biased Technical Change: A CGE Analysis</u></i>
PRCG	91.2005	<i>Carlo CAPUANO: <u>Abuse of Competitive Fringe</u></i>
PRCG	92.2005	<i>Ulrich BINDSEIL, Kjell G. NYBORG and Ilya A. STREBULAEV (lxv): <u>Bidding and Performance in Repo Auctions: Evidence from ECB Open Market Operations</u></i>
CCMP	93.2005	<i>Sabrina AUCI and Leonardo BECCHETTI: <u>The Stability of the Adjusted and Unadjusted Environmental Kuznets Curve</u></i>
CCMP	94.2005	<i>Francesco BOSELLO and Jian ZHANG: <u>Assessing Climate Change Impacts: Agriculture</u></i>
CTN	95.2005	<i>Alejandro CAPARRÓS, Jean-Christophe PEREAU and Tarik TAZDAÏT: <u>Bargaining with Non-Monolithic Players</u></i>
ETA	96.2005	<i>William BROCK and Anastasios XEPAPADEAS (lxxvi): <u>Optimal Control and Spatial Heterogeneity: Pattern Formation in Economic-Ecological Models</u></i>
CCMP	97.2005	<i>Francesco BOSELLO, Roberto ROSON and Richard S.J. TOL (lxxvii): <u>Economy-Wide Estimates of the Implications of Climate Change: Human Health</u></i>
CCMP	98.2005	<i>Rob DELLINK, Michael FINUS and Niels OLIEMAN: <u>Coalition Formation under Uncertainty: The Stability Likelihood of an International Climate Agreement</u></i>
CTN	99.2005	<i>Valeria COSTANTINI, Riccardo CRESCENZI, Fabrizio De FILIPPIS, and Luca SALVATICI: <u>Bargaining Coalitions in the Agricultural Negotiations of the Doha Round: Similarity of Interests or Strategic Choices? An Empirical Assessment</u></i>
IEM	100.2005	<i>Giliola FREY and Matteo MANERA: <u>Econometric Models of Asymmetric Price Transmission</u></i>
IEM	101.2005	<i>Alessandro COLOGNI and Matteo MANERA: <u>Oil Prices, Inflation and Interest Rates in a Structural Cointegrated VAR Model for the G-7 Countries</u></i>
KTHC	102.2005	<i>Chiara M. TRAVISI and Roberto CAMAGNI: <u>Sustainability of Urban Sprawl: Environmental-Economic Indicators for the Analysis of Mobility Impact in Italy</u></i>
ETA	103.2005	<i>Livingstone S. LUBOOBI and Joseph Y.T. MUGISHA: <u>HIV/AIDS Pandemic in Africa: Trends and Challenges</u></i>
SIEV	104.2005	<i>Anna ALBERINI, Erik LICHTENBERG, Dominic MANCINI, and Gregmar I. GALINATO: <u>Was It Something I Ate? Implementation of the FDA Seafood HACCP Program</u></i>
SIEV	105.2005	<i>Anna ALBERINI and Aline CHIABAI: <u>Urban Environmental Health and Sensitive Populations: How Much are the Italians Willing to Pay to Reduce Their Risks?</u></i>
SIEV	106.2005	<i>Anna ALBERINI, Aline CHIABAI and Lucija MUEHLENBACHS: <u>Using Expert Judgment to Assess Adaptive Capacity to Climate Change: Evidence from a Conjoint Choice Survey</u></i>
CTN	107.2005	<i>Michele BERNASCONI and Matteo GALIZZI: <u>Coordination in Networks Formation: Experimental Evidence on Learning and Saliency</u></i>
KTHC	108.2005	<i>Michele MORETTO and Sergio VERGALLI: <u>Migration Dynamics</u></i>
NRM	109.2005	<i>Antonio MUSOLESI and Mario NOSVELLI: <u>Water Consumption and Long-Run Urban Development: The Case of Milan</u></i>
SIEV	110.2005	<i>Benno TORGLER and Maria A. GARCIA-VALIÑAS: <u>Attitudes Towards Preventing Environmental Damage</u></i>
SIEV	111.2005	<i>Alberto LONGO and Anna ALBERINI: <u>What are the Effects of Contamination Risks on Commercial and Industrial Properties? Evidence from Baltimore, Maryland</u></i>
SIEV	112.2005	<i>Anna ALBERINI and Alberto LONGO: <u>The Value of Cultural Heritage Sites in Armenia: Evidence from a Travel Cost Method Study</u></i>
CCMP	113.2005	<i>Mikel GONZÁLEZ and Rob DELLINK: <u>Impact of Climate Policy on the Basque Economy</u></i>
NRM	114.2005	<i>Gilles LAFFORGUE and Walid OUESLATI: <u>Optimal Soil Management and Environmental Policy</u></i>

NRM	115.2005	<i>Martin D. SMITH and Larry B. CROWDER</i> (Ixxvi): <u>Valuing Ecosystem Services with Fishery Rents: A Lumped-Parameter Approach to Hypoxia in the Neuse River Estuary</u>
NRM	116.2005	<i>Dan HOLLAND and Kurt SCHNIER</i> (Ixxvi): <u>Protecting Marine Biodiversity: A Comparison of Individual Habitat Quotas (IHQs) and Marine Protected Areas</u>
PRCG	117.2005	<i>John NELLIS</i> : <u>The Evolution of Enterprise Reform in Africa: From State-owned Enterprises to Private Participation in Infrastructure — and Back?</u>
PRCG	118.2005	<i>Bernardo BORTOLOTTI</i> : <u>Italy's Privatization Process and Its Implications for China</u>
SIEV	119.2005	<i>Anna ALBERINI, Marcella VERONESI and Joseph C. COOPER</i> : <u>Detecting Starting Point Bias in Dichotomous-Choice Contingent Valuation Surveys</u>
CTN	120.2005	<i>Federico ECHENIQUE and Mehmet B. YENMEZ</i> : <u>A Solution to Matching with Preferences over Colleagues</u>
KTHC	121.2005	<i>Valeria GATTAI and Corrado MOLteni</i> : <u>Dissipation of Knowledge and the Boundaries of the Multinational Enterprise</u>
KTHC	122.2005	<i>Valeria GATTAI</i> : <u>Firm's Intangible Assets and Multinational Activity: Joint-Venture Versus FDI</u>
CCMP	123.2005	<i>Socrates KYPREOS</i> : <u>A MERGE Model with Endogenous Technological Change and the Cost of Carbon Stabilization</u>
CCMP	124.2005	<i>Fuminori SANO, Keigo AKIMOTO, Takashi HOMMA and Toshimasa TOMODA</i> : <u>Analysis of Technological Portfolios for CO<sub>2</sub> stabilizations and Effects of Technological Changes</u>
CCMP	125.2005	<i>Fredrik HEDENUS, Christian AZAR and Kristian LINDGREN</i> : <u>Induced Technological Change in a Limited Foresight Optimization Model</u>
CCMP	126.2005	<i>Reyer GERLAGH</i> : <u>The Value of ITC under Climate Stabilization</u>
PRCG	127.2005	<i>John NELLIS</i> : <u>Privatization in Africa: What has happened? What is to be done?</u>
PRCG	128.2005	<i>Raphaël SOUBEYRAN</i> : <u>Contest with Attack and Defence: Does Negative Campaigning Increase or Decrease Voters' Turnout?</u>
PRCG	129.2005	<i>Pascal GAUTIER and Raphael SOUBEYRAN</i> : <u>Political Cycles : The Opposition Advantage</u>
ETA	130.2005	<i>Giovanni DI BARTOLOMEO, Nicola ACOCELLA and Andrew HUGHES HALLETT</i> : <u>Dynamic Controllability with Overlapping targets: A Generalization of the Tinbergen-Nash Theory of Economic Policy</u>
SIEV	131.2005	<i>Elissaios POPYRAKIS and Reyner GERLAGH</i> : <u>Institutional Explanations of Economic Development: the Role of Precious Metals</u>
ETA	132.2005	<i>Giovanni DI BARTOLOMEO and Nicola ACOCELLA</i> : <u>Tinbergen and Theil Meet Nash: Controllability in Policy Games</u>
IEM	133.2005	<i>Adriana M. IGNACIUK and Rob B. DELLINK</i> : <u>Multi-Product Crops for Agricultural and Energy Production – an AGE Analysis for Poland</u>
IEM	134.2005	<i>Raffaele MINIACI, Carlo SCARPA and Paola VALBONESI</i> : <u>Restructuring Italian Utility Markets: Household Distributional Effects</u>
SIEV	135.2005	<i>Valentina ZANATTA, Paolo ROSATO, Anna ALBERINI and Dimitrios REPPAS</i> : <u>The Impact of Speed Limits on Recreational Boating in the Lagoon of Venice</u>

- (lxv) This paper was presented at the EuroConference on “Auctions and Market Design: Theory, Evidence and Applications” organised by Fondazione Eni Enrico Mattei and sponsored by the EU, Milan, September 25-27, 2003
- (lxvi) This paper has been presented at the 4<sup>th</sup> BioEcon Workshop on “Economic Analysis of Policies for Biodiversity Conservation” organised on behalf of the BIOECON Network by Fondazione Eni Enrico Mattei, Venice International University (VIU) and University College London (UCL), Venice, August 28-29, 2003
- (lxvii) This paper has been presented at the international conference on “Tourism and Sustainable Economic Development – Macro and Micro Economic Issues” jointly organised by CRENoS (Università di Cagliari e Sassari, Italy) and Fondazione Eni Enrico Mattei, and supported by the World Bank, Sardinia, September 19-20, 2003
- (lxviii) This paper was presented at the ENGIME Workshop on “Governance and Policies in Multicultural Cities”, Rome, June 5-6, 2003
- (lxix) This paper was presented at the Fourth EEP Plenary Workshop and EEP Conference “The Future of Climate Policy”, Cagliari, Italy, 27-28 March 2003
- (lxx) This paper was presented at the 9<sup>th</sup> Coalition Theory Workshop on "Collective Decisions and Institutional Design" organised by the Universitat Autònoma de Barcelona and held in Barcelona, Spain, January 30-31, 2004
- (lxxi) This paper was presented at the EuroConference on “Auctions and Market Design: Theory, Evidence and Applications”, organised by Fondazione Eni Enrico Mattei and Consip and sponsored by the EU, Rome, September 23-25, 2004
- (lxxii) This paper was presented at the 10<sup>th</sup> Coalition Theory Network Workshop held in Paris, France on 28-29 January 2005 and organised by EUREQua.
- (lxxiii) This paper was presented at the 2nd Workshop on "Inclusive Wealth and Accounting Prices" held in Trieste, Italy on 13-15 April 2005 and organised by the Ecological and Environmental Economics - EEE Programme, a joint three-year programme of ICTP - The Abdus Salam International Centre for Theoretical Physics, FEEM - Fondazione Eni Enrico Mattei, and The Beijer International Institute of Ecological Economics
- (lxxiv) This paper was presented at the ENGIME Workshop on “Trust and social capital in multicultural cities” Athens, January 19-20, 2004
- (lxxv) This paper was presented at the ENGIME Workshop on “Diversity as a source of growth” Rome November 18-19, 2004
- (lxxvi) This paper was presented at the 3rd Workshop on Spatial-Dynamic Models of Economics and Ecosystems held in Trieste on 11-13 April 2005 and organised by the Ecological and Environmental Economics - EEE Programme, a joint three-year programme of ICTP - The Abdus Salam International Centre for Theoretical Physics, FEEM - Fondazione Eni Enrico Mattei, and The Beijer International Institute of Ecological Economics
- (lxxvii) This paper was presented at the Workshop on Infectious Diseases: Ecological and Economic Approaches held in Trieste on 13-15 April 2005 and organised by the Ecological and Environmental Economics - EEE Programme, a joint three-year programme of ICTP - The Abdus Salam International Centre for Theoretical Physics, FEEM - Fondazione Eni Enrico Mattei, and The Beijer International Institute of Ecological Economics.



**2004 SERIES**

<b>CCMP</b>	<i>Climate Change Modelling and Policy</i> (Editor: Marzio Galeotti )
<b>GG</b>	<i>Global Governance</i> (Editor: Carlo Carraro)
<b>SIEV</b>	<i>Sustainability Indicators and Environmental Valuation</i> (Editor: Anna Alberini)
<b>NRM</b>	<i>Natural Resources Management</i> (Editor: Carlo Giupponi)
<b>KTHC</b>	<i>Knowledge, Technology, Human Capital</i> (Editor: Gianmarco Ottaviano)
<b>IEM</b>	<i>International Energy Markets</i> (Editor: Anil Markandya)
<b>CSRM</b>	<i>Corporate Social Responsibility and Sustainable Management</i> (Editor: Sabina Ratti)
<b>PRA</b>	<i>Privatisation, Regulation, Antitrust</i> (Editor: Bernardo Bortolotti)
<b>ETA</b>	<i>Economic Theory and Applications</i> (Editor: Carlo Carraro)
<b>CTN</b>	<i>Coalition Theory Network</i>

**2005 SERIES**

<b>CCMP</b>	<i>Climate Change Modelling and Policy</i> (Editor: Marzio Galeotti )
<b>SIEV</b>	<i>Sustainability Indicators and Environmental Valuation</i> (Editor: Anna Alberini)
<b>NRM</b>	<i>Natural Resources Management</i> (Editor: Carlo Giupponi)
<b>KTHC</b>	<i>Knowledge, Technology, Human Capital</i> (Editor: Gianmarco Ottaviano)
<b>IEM</b>	<i>International Energy Markets</i> (Editor: Anil Markandya)
<b>CSRM</b>	<i>Corporate Social Responsibility and Sustainable Management</i> (Editor: Sabina Ratti)
<b>PRCG</b>	<i>Privatisation Regulation Corporate Governance</i> (Editor: Bernardo Bortolotti)
<b>ETA</b>	<i>Economic Theory and Applications</i> (Editor: Carlo Carraro)
<b>CTN</b>	<i>Coalition Theory Network</i>