

The incidence of pancreatic cancer in *BRCA1* and *BRCA2* mutation carriers

J Iqbal¹, A Ragone¹, J Lubinski², HT Lynch³, P Moller⁴, P Ghadirian⁵, WD Foulkes⁶, S Armel⁷, A Eisen⁸, SL Neuhausen⁹, L Senter¹⁰, CF Singer¹¹, P Ainsworth¹², C Kim-Sing¹³, N Tung¹⁴, E Friedman¹⁵, M Llacuachqui¹, S Ping¹ and SA Narod^{*,1}, the Hereditary Breast Cancer Study Group¹⁶

¹Women's College Research Institute, Familial Breast Cancer Research, 790 Bay Street, Toronto, Ontario, Canada M5G 1N8; ²International Hereditary Cancer Center, Pomeranian Medical University, Al. Powstancow Wlk. 72, 70-111 Szczecin, Poland; ³Department of Preventive Medicine and Public Health, Creighton University School of Medicine, 2500 California Plaza, Omaha, NE 68178, USA; ⁴Norwegian Radium Hospital, Oslo N-0310, Norway; ⁵Epidemiology Research Unit, Research Centre of the University of Montreal Hospital Centre (CRCHUM), 3850 Saint Urbain Street, Montreal, Quebec, Canada H2W 1T8; ⁶Program in Cancer Genetics, Department of Oncology, McGill University, 1650 Cedar Avenue, Montreal, Quebec, Canada H3G 1A4; ⁷Department of Obstetrics and Gynecology, University of Toronto and Gynecologic Oncology, Princess Margaret Hospital, Toronto, Ontario, Canada M5G 2M9; ⁸Sunnybrook Regional Cancer Centre, Toronto, Ontario, Canada M4N 3M5; ⁹Department of Population Sciences, City of Hope, Duarte, CA 91010, USA; ¹⁰Division of Human Genetics, The Ohio State University Medical Center, Comprehensive Cancer Center, Columbus, OH 43210, USA; ¹¹Department of Obstetrics and Gynecology and Comprehensive Cancer Center, Medical University of Vienna, Spitalgasse 23, Vienna 1090, Austria; ¹²London Regional Cancer Program, London, Ontario, Canada N6A 4L6; ¹³BC Cancer Agency, 675 West 10th Avenue Vancouver; British Columbia, Canada V5Z 1L3; ¹⁴Beth Israel Deaconess Medical Center, Cancer Risk and Prevention Program, 330 Brookline Avenue Boston, MA 02215, USA; ¹⁵The Susanne Levy Gertner Oncogenetics Unit, Chaim Sheba Medical Center and the Sackler School of Medicine, Tel-Aviv University, Tel-Hashomer 52621, Israel

BACKGROUND: Germline mutations in *BRCA1* and *BRCA2* predispose to pancreatic cancer. We estimated the incidence of pancreatic cancer in a cohort of female carriers of *BRCA1* and *BRCA2* mutation. We also estimated survival rates in pancreatic cancer cases from families with a *BRCA* mutation.

METHODS: We followed 5149 women with a mutation for new cases of pancreatic cancer. The standardised incidence ratios (SIR) for pancreatic cancer were calculated based on age group and country of residence. We also reviewed the pedigrees of 8140 pedigrees with a *BRCA1* or a *BRCA2* mutation for those with a case of pancreatic cancer. We recorded the year of diagnosis and the year of death for 351 identified cases.

RESULTS: Eight incident pancreatic cancer cases were identified among all mutation carriers. The SIR for *BRCA1* carriers was 2.55 (95% CI = 1.03–5.31, $P = 0.04$) and for *BRCA2* carriers was 2.13 (95% CI = 0.36–7.03, $P = 0.3$). The 5-year survival rate was 5% for cases from a *BRCA1* family and 4% for cases from a *BRCA2* family.

CONCLUSION: The risk of pancreatic cancer is approximately doubled in female *BRCA* carriers. The poor survival in familial pancreatic cancer underscores the need for novel anti-tumoural strategies.

British Journal of Cancer (2012) 107, 2005–2009. doi:10.1038/bjc.2012.483 www.bjcancer.com

Published online 25 October 2012

© 2012 Cancer Research UK

Keywords: *BRCA1*; *BRCA2*; incidence; survival; pancreatic cancer

Germline mutations in various cancer susceptibility genes have been implicated in the pathogenesis of pancreatic cancer. These include *BRCA1* and *BRCA2* (Lal *et al*, 2000), *TP53* (Caldas *et al*, 1994), *PALB2* (Jones *et al*, 2009), *p16/CDKN2A* (Redston *et al*, 1994; Ghiorzo *et al*, 2012), *SMAD4* (Hahn *et al*, 1996), *STK11* (Sato *et al*, 2001), ataxia-telangiectasia-mutated (*ATM*) gene (Roberts *et al*, 2011) and the mismatch repair genes (*MMR*) (Win *et al*, 2012). Familial pancreatic cancer accounts for about 5–10% of pancreatic cancers (Fernandez *et al*, 1994; Klein *et al*, 2001; Bartsch *et al*, 2004). In a study of 102 familial pancreatic cancer patients, Lal *et al* (2000) identified five germline mutations: three mutations in *BRCA2* gene and one mutation each in *BRCA1* and *p16*.

Several other lines of evidence also suggest that carriers of *BRCA1* or *BRCA2* mutations face an increased risk of pancreatic cancer (Phelan *et al*, 1996; The Breast Cancer Linkage Consortium, 1999; Thompson *et al*, 2002; Risch *et al*, 2006). In the cross-sectional study of The Breast Cancer Linkage Consortium (1999), Thompson *et al* (2002) reported a significant increase in the risk of pancreatic cancer in *BRCA1* mutation carriers (RR = 2.26, 95% CI = 1.26–4.06, $P = 0.004$) and in *BRCA2* mutation carriers (RR = 3.51, 95% CI = 1.87–6.58, $P = 0.0012$). In a study of 1171 unselected patients with ovarian cancer in Ontario, Risch *et al* (2006) estimated the risk of pancreatic cancer among relatives of 977 proband patients with invasive ovarian cancer, including 127 with a *BRCA1* or *BRCA2* mutation. The relative risk for pancreatic cancer was 3.1 (95% CI = 0.45–21) in relatives of *BRCA1* mutation carriers and 6.6 (95% CI = 1.9–23) in relatives of *BRCA2* mutation carriers, compared with the relatives of non-carriers.

*Correspondence: Dr SA Narod; E-mail: steven.narod@wchospital.ca

¹⁶See Appendix.

Received 18 May 2012; revised 24 September 2012; accepted 24 September 2012; published online 25 October 2012

All previous studies are based on reviews of family histories and the diagnoses of pancreatic cancer relied on accurate information provided by a family member. Further, in previous studies, the mutation status of the pancreatic cancer cases was unknown. We have conducted the first prospective study of the incidence of pancreatic cancer in a cohort of *BRCA1* and the *BRCA2* mutation carriers. The knowledge of pancreatic cancer incidence rates has important implications for genetic counsellors and potentially for informing screening policies. We also estimated the survival rate of pancreatic cancer in cases from families with a known *BRCA1* or *BRCA2* mutation. Information on current survival rates may be relevant before initiating therapies for women or men with a *BRCA1* or *BRCA2* mutation.

MATERIALS AND METHODS

Incidence

We estimated the incidence of pancreatic cancer in a cohort 5149 women with a known *BRCA1* or *BRCA2* mutation in women who completed a baseline questionnaire and who had completed at least one follow-up questionnaire. The cohort was assembled from 50 study centres in 10 different countries. The 5149 carriers were from 3878 different families. Each woman was proven to be a carrier of a deleterious mutation in *BRCA1* or *BRCA2* by direct DNA sequencing. Women with a past history of breast cancer or of skin cancer were eligible for the study but women with a past history of ovarian cancer or of another cancer were excluded. All women had completed a risk questionnaire at study entry and a follow-up questionnaire every 2 years thereafter. The baseline and follow-up questionnaires were standardised across the study centres. Women were followed from the date at the baseline until the date of last questionnaire, the diagnosis of pancreatic cancer, diagnosis of ovarian cancer or death from another cause. Of 5149 women, 60 women had data missing on key variables (e.g., date of birth, date of questionnaires, gene mutation) and were excluded, leaving 5089 women in final analysis. The diagnosis of pancreatic cancer was confirmed by reference to a pathology report or medical record where possible.

The risk of pancreatic cancer in the *BRCA1* and *BRCA2* mutation carriers, relative to the general population, was estimated with standardised incidence ratios (SIRs). The SIR was obtained by calculating the ratio of observed to expected number of new pancreatic cancer cases, for all women combined and then separately for *BRCA1* and the *BRCA2* carriers. To do so, the observed and expected numbers of pancreatic cancers were derived separately for carriers from each of five countries (Canada, United States, Poland, France and Italy). First, the annual age-standardised incidence rates of pancreatic cancer were calculated with the count (numerator) and person-year at risk (denominator). The person-years at risk were calculated using the total number of *BRCA1* and *BRCA2* carriers multiplied with the average follow-up time in years. The person-years were subcategorised according to different countries and different age groups. The age-standardised incidence rates for each participating country were obtained from GLOBOCAN 2008 (Ferlay *et al*, 2010). The expected number of pancreatic cancers was calculated by multiplying each age-standardised incidence rate of the country-specific general population by the observed person-years in our *BRCA* cohort and divided by 100 000 to get the expected numbers of pancreatic cancers (indirect standardisation method). The SIRs were also estimated for age subgroups <65 years and ≥65 years. We divided the cohort of women into those with and without a first-degree relative with pancreatic cancer and into those who did and who did not develop pancreatic cancer during the follow-up period. We then estimated the univariate odds ratio for the development of pancreatic cancer, conditional on the presence of a

first-degree relative affected with pancreatic cancer, based on the two by two table.

Overall survival

In a separate analysis, we reviewed the pedigrees of all families in the database with a *BRCA1* or a *BRCA2* mutation. This included 8140 pedigrees from families with a known *BRCA1* or *BRCA2* mutation, enrolled at one of 50 centres across North America and Europe. Families were ascertained on the basis of breast and ovarian cancers (but not pancreatic cancer); we then identified families with one or more individuals with pancreatic cancer. The pancreatic cancer subjects were included if they were a first-, second- or third-degree relative of a known carrier. A total of 351 pancreatic cancers were identified. Of these, 163 were in first-degree relatives of a known carrier, 143 were in second-degree relatives and 45 were in third-degree relatives. We recorded the age at diagnosis and age at death for each case, from the information provided on the pedigree diagram, where available. We did not have the mutation status of these patients and the diagnosis was based on information provided by the proband at interview, when the pedigree was constructed. All cases of pancreatic cancer that were included in this analysis were diagnosed before the date of genetic testing of the proband, but the specific years of diagnosis were not indicated. To estimate survival, patients were followed from the year of diagnosis to the years of death or the year the pedigree was constructed. The survival from the diagnosis was calculated by Kaplan–Meier method and the difference between groups was compared with the log-rank test of significance. We did not have information on the specific cause of death for the pancreatic cancer patients, and all deaths were assumed to be from pancreatic cancer.

RESULTS

Incidence

Five thousand eighty-nine women in our database of *BRCA1* and *BRCA2* carriers were followed for a mean of 1.95 years. We identified eight new pancreatic cancer cases among the *BRCA1* and *BRCA2* carriers vs 3.28 pancreatic cancers expected (SIR = 2.44, $P = 0.03$). The characteristics of the eight incident cases are presented in Table 1. Six of the eight cases were confirmed by pathology report or medical record and two were based on the patient questionnaire. Of the eight pancreatic cancer cases, six cases occurred in *BRCA1* carriers, vs 2.35 pancreatic cancers

Table 1 Characteristics of the incident cases of pancreatic cancer in the *BRCA* cohort.

Case no.	Mutation status	Pancreatic cancer, age of diagnosis	Previous breast cancer, age of diagnosis (years)	Smoking history	History of pancreatic cancer in first-degree relatives, age of diagnosis (years)
1	<i>BRCA1</i>	77	Yes, age 43	No	No
2	<i>BRCA2</i>	59	No	Yes	No
3	<i>BRCA2</i>	75	Yes, age 44	No	Yes, sister, age 79
4	<i>BRCA1</i>	67	Yes, age 60	No	No
5	<i>BRCA1</i>	60	No	Yes	No
6	<i>BRCA1</i>	65	No	No	No
7	<i>BRCA1</i>	54	No	Yes	No
8	<i>BRCA1</i>	53	No	No	Yes, mother, age 77

Table 2 Observed and expected numbers of pancreatic cancers in *BRCA1* and *BRCA2* carriers according to the major contributing country

Country	BRCA status	N	Person-years	Expected cancers	Observed cancers	SIR 95% CI	P-value (two-tailed)
Canada	All	1493	8801.07	1.21	2	1.65 (0.28–5.45)	0.4
	<i>BRCA1</i>	846	5058.73	0.65	1	1.54 (0.07–7.63)	0.6
	<i>BRCA2</i>	647	3742.34	0.57	1	1.76 (0.09–8.69)	0.5
USA	All	1437	7639.41	1.15	2	1.73 (0.29–5.72)	0.4
	<i>BRCA1</i>	973	5373.37	0.80	1	1.25 (0.06–6.18)	0.7
	<i>BRCA2</i>	464	2266.04	0.35	1	2.80 (0.14–13.82)	0.3
Poland	All	2020	9312.29	0.84	2	2.36 (0.39–7.81)	0.3
	<i>BRCA1</i>	2013	9292.51	0.84	2	2.37 (0.39–7.84)	0.2
	<i>BRCA2</i>	7	19.78	0.003	0	—	—
France	All	64	348.30	0.04	1	25 (1.25–123.3)	0.04
	<i>BRCA1</i>	51	273.18	0.03	1	33.3 (1.66–164.4)	0.03
	<i>BRCA2</i>	13	75.12	0.01	0	—	—
Italy	All	75	371.83	0.04	1	25 (1.25–123.3)	0.04
	<i>BRCA1</i>	59	283.43	0.03	1	33.3 (1.66–164.4)	0.03
	<i>BRCA2</i>	16	88.40	0.01	0	—	—
All countries	All	5089	26 472.90	3.28	8	2.44 (1.13–4.63)	0.03
	<i>BRCA1</i>	3942	20 281.23	2.35	6	2.55 (1.03–5.31)	0.04
	<i>BRCA2</i>	1147	6191.67	0.94	2	2.13 (0.36–7.03)	0.3

Abbreviations: CI = confidence interval; SIR = standardised incidence ratio.

Table 3 Observed and expected numbers of pancreatic cancers in *BRCA1* and *BRCA2* carriers by age groups

Age (years)	N	Person-years	Expected cancers	Observed cancers	SIR 95% CI	P-value (two-tailed)
All						
<65	4532	22 996.66	1.68	3	1.79 (0.45–4.86)	0.3
≥65	557	3476.23	1.61	5	3.10 (1.14–6.88)	0.03
<i>BRCA1</i>						
<65	3566	17 931.4	1.25	2	1.6 (0.26–5.29)	0.4
≥65	376	2349.82	1.09	4	3.67 (1.16–8.85)	0.03
<i>BRCA2</i>						
<65	966	5065.26	0.43	1	2.33 (0.12–11.47)	0.4
≥65	181	1126.41	0.52	1	1.92 (0.09–9.48)	0.5

Abbreviations: CI = confidence interval; SIR = standardised incidence ratio.

expected (SIR = 2.52, $P = 0.04$) and two cases occurred in *BRCA2* carriers vs 0.94 pancreatic cancers expected (SIR = 2.13, $P = 0.3$) (Table 2). All eight pancreatic cancer cases were diagnosed in women aged 50 and above. For women above the age of 50, the annual incidence rate was 37 per 100 000 per year for *BRCA1* carriers and 39 per 100 000 per year for *BRCA2* carriers. The rates are estimated for women below and above age 65 in Table 3.

Interestingly, two of the incident case of pancreatic cancer had a first-degree relative with pancreatic cancer. Among the 5089 women in the follow-up study, 35 had a first-degree relative with pancreatic cancer (data for 615 women was missing). The odds ratio for developing pancreatic cancer for those with a first-degree relative was 46.5 (95% CI = 9.4–230, $P < 0.0001$), compared with women without a first-degree relative.

Survival

Of 8140 families in the database, a total of 317 (3.9%) families had one or more individuals diagnosed with pancreatic cancer. Of 5742 families with a *BRCA1* mutation, 213 (3.7%) had a case of pancreatic cancer, and of 2269 families with a *BRCA2* mutation, 138 (6.1%) had a case of pancreatic cancer. In aggregate, 317 families included 351 subjects with pancreatic cancer (range 1–5). The mean age at diagnosis of pancreatic cancer was similar in cases from families with a *BRCA1* and a *BRCA2* mutation

(*BRCA1* = 63.4 years, range 20–90 years; *BRCA2* = 62.7 years, range 27–90 years; $P = 0.56$). Of the 351 cases of pancreatic cancer, 84% were diagnosed at age 50 or above (87% for *BRCA1* carriers and 80% for *BRCA2* carriers). Of the 351 cases of pancreatic cancer 203 (58%) were in males and 148 (42%) were in females.

The mean survival from diagnosis to death was 1.07 years (range 0.5–6 years) for *BRCA1* mutation carriers and 1.00 years (range 0.5–6 years) for *BRCA2* mutation carriers ($P = 0.83$). The 5-year survival rate was 6.1% for cases with a *BRCA1* mutation and 3.6% for cases with a *BRCA2* mutation (Figure 1). We did not observe a significant survival difference between males and females among either the *BRCA1* or *BRCA2* mutation carriers (data not shown).

DISCUSSION

In the prospective component of this study of *BRCA1* and the *BRCA2* mutation carriers, we saw a statistically significant 2.4-fold increase in the incidence of pancreatic cancer in female *BRCA* mutation carriers ($P = 0.03$). The increase in the incidence of pancreatic cancer was similar for *BRCA1* mutation carriers (SIR = 2.55) and *BRCA2* mutation carriers (SIR = 2.13). For women above the age of 50, the annual risk of pancreatic cancer for a woman with a mutation in either gene was 0.04%. In this prospective study, we do not have data on males with either

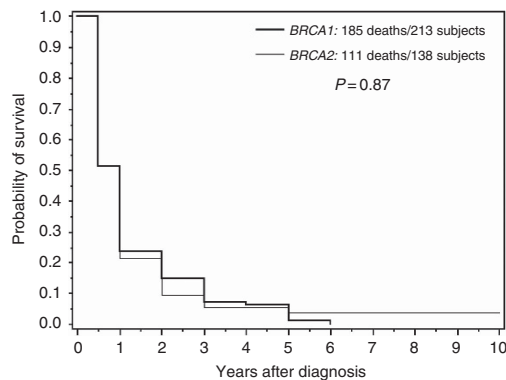


Figure 1 Survival after pancreas cancer by BRCA mutation.

mutation. However, based on the sex distribution of pancreatic cases in our pedigree review (203 males: 148 females), we expect the risk of pancreatic cancer to be slightly higher in males.

In our study, the absolute risks of pancreatic cancer were similar for *BRCA1* and *BRCA2* carriers; in other studies, the risks for *BRCA2* carriers exceeded that for *BRCA1* carriers. In particular, the Breast Cancer Linkage Consortium (BCLC) reported a 2.2-fold increase in the risk of pancreatic cancer among *BRCA1* mutation carriers ($P=0.004$) (Thompson *et al*, 2002) and a 3.5-fold increase in the risk of pancreatic cancer was reported in the *BRCA2* carriers ($P=0.0012$) (The Breast Cancer Linkage Consortium, 1999).

We measured survival in the pancreatic patients recorded in the pedigrees for the families in the data set. We did not have the mutation status of the cancers observed in relatives and a proportion of these will likely not carry the familial BRCA mutation. We observed a poor overall survival in both men and women with a *BRCA1* mutation or a *BRCA2* mutation. The average time from diagnosis to death was ~ 1 year for both groups and the 5-year survival was 5% for *BRCA1* carriers and 4% for *BRCA2* carriers. The poor survival in our cohort is similar to that of the general population, where the 5-year survival is 6% (Canadian Cancer Society, 2010).

Our study has a number of limitations pertaining to both the estimation of the incidence and overall survival. Our cohort study

includes only women and therefore we cannot estimate the incidence of pancreatic cancer in males. The number of incidence cases was relatively small (eight) and this limits the precision of the risk estimates, especially for subgroups. To record overall survival, we obtained the age of diagnosis and death on the patients with pancreatic cancer from the review of family pedigrees based on the probands interview. Moreover, it was not possible to review the pathology reports to confirm the diagnosis in the relatives. Some patients may have died of causes other than the pancreatic cancer, but this number is likely to be small.

Our study has implications for the planning of a screening programme for pancreatic cancer in men and women with a *BRCA1* or *BRCA2* mutation. The estimated annual incidence rate for women over the age of 50 was 0.04% for *BRCA1* and *BRCA2* carriers, and the results of our study do not support the adoption of a screening policy (if we were to screen 1000 carriers annually for 10 years, we would expect to detect approximately four pancreatic cancers). Among women with a mutation and a first-degree relative with pancreatic cancer the risk was much higher (annual risk = 1.0%). The high relative risk for women with a family history was based on only two incident cases (one with a mutation in *BRCA1* and one in *BRCA2*) and the confidence limits are wide. However, this observation suggests that there may be modifying genes associated with the development of pancreatic cancer in these families. Furthermore, it has not yet been shown that screening for pancreatic cancer is associated with a reduction in mortality from the disease and screening should not be recommended outside of clinical trials.

The poor survival observed among pancreatic cancer patients in these families does not appear to be different from that of patients in the general population and emphasises the need for better prevention strategies and novel chemotherapies. It is possible that some drugs (e.g., cisplatin) might potentially benefit specifically *BRCA1* and *BRCA2* carriers diagnosed with pancreatic cancer (van der Heijden *et al*, 2005; Lowery *et al*, 2011) and clinical trials are indicated.

ACKNOWLEDGEMENTS

The study was funded by the Canadian Cancer Society Research Institute.

REFERENCES

- Bartsch DK, Kress R, Sina-Frey M, Grutzmann R, Gerdes B, Pilarsky C *et al*. (2004) Prevalence of familial pancreatic cancer in Germany. *Int J Cancer* **110**: 902–906
- Caldas C, Hahn SA, da Costa LT, Redston MS, Schutte M, Seymour AB, Weinstein CL, Hruban RH, Yeo CJ, Kern SE (1994) Frequent somatic mutations and homozygous deletions of the p16 (MTS1) gene in pancreatic adenocarcinoma. *Nat Genet* **8**: 27–32
- Canadian Cancer Society (2010) *Canadian Cancer Statistics*. Canadian Cancer Society: Toronto
- Ghiorzo P, Fornarini G, Sciallero S, Battistuzzi L, Belli F, Bernard L, Bonelli L, Borgonovo G, Bruno W, De Cian F, Decensi A, Filauro M, Faravelli F, Gozza A, Gargiulo S, Mariette F, Nasti S, Pastorino L, Queirolo P, Savarino V, Varesco L, Scarrà GB. Genoa Pancreatic Cancer Study Group (2012) CDKN2A is the main susceptibility gene in Italian pancreatic cancer families. *J Med Genet* **49**: 164–170
- Ferlay J, Shin HR, Bray F, Forman D, Mathers C, Parkin DM (2010) GLOBOCAN 2008 v1.2 cancer incidence and mortality worldwide: IARC CancerBase No. 10 (Internet). Lyon, France: International Agency for Research on Cancer; available from <http://globocan.iarc.fr>
- Fernandez E, La Vecchia C, D'Avanzo B, Negri E, Franceschi S (1994) Family history and the risk of liver, gallbladder, and pancreatic cancer. *Cancer Epidemiol Biomarkers Prev* **3**: 209–212
- Hahn SA, Schutte M, Hoque AT, Moskaluk CA, da Costa LT, Rozenblum E, Weinstein CL, Fischer A, Yeo CJ, Hruban RH, Kern SE (1996) DPC4, a candidate tumor suppressor gene at human chromosome 18q21.1. *Science* **271**: 350–353
- Jones S, Hruban RH, Kamiyama M, Borges M, Zhang X, Parsons DW, Lin JC, Palmisano E, Brune K, Jaffee EM, Iacobuzio-Donahue CA, Maitra A, Parmigiani G, Kern SE, Velculescu VE, Kinzler KW, Vogelstein B, Eshleman JR, Goggins M, Klein AP (2009) Exomic sequencing identifies PALB2 as a pancreatic cancer susceptibility gene. *Science* **324**: 217
- Klein AP, Hruban RH, Brune KA, Petersen GM, Goggins M (2001) Familial pancreatic cancer. *Cancer J* **7**: 266–273
- Lal G, Liu G, Schmocker B, Kaurah P, Ozcelik H, Narod SA, Redston M, Gallinger S (2000) Inherited predisposition to pancreatic adenocarcinoma: role of family history and germ-line p16, BRCA1, and BRCA2 mutations. *Cancer Res* **60**: 409–416
- Lowery MA, Kelsen DP, Stadler ZK, Yu KH, Janjigian YY, Ludwig E, D'Adamo DR, Salo-Mullen E, Robson ME, Allen PJ, Kurtz RC, O'Reilly EM (2011) An emerging entity: pancreatic adenocarcinoma associated with a known BRCA mutation: clinical descriptors, treatment implications, and future directions. *Oncologist* **16**: 1397–1402
- Phelan CM, Lancaster JM, Tonin P, Gumbs C, Cochran C, Carter R, Ghadirian P, Perret C, Moslehi R, Dion F, Faucher MC, Dole K, Karimi S, Foulkes W, Lounis H, Warner E, Goss P, Anderson D, Larsson C, Narod SA, Futreal PA (1996) Mutation analysis of the BRCA2 gene in 49 site-specific breast cancer families. *Nat Genet* **13**: 120–122
- Redston MS, Caldas C, Seymour AB, Hruban RH, da Costa L, Yeo CJ, Kern SE (1994) p53 mutations in pancreatic carcinoma and evidence of common involvement of homocopolymer tracts in DNA microdeletions. *Cancer Res* **54**: 3025–3033

- Risch HA, McLaughlin JR, Cole DEC, Rosen B, Bradley L, Fan I, Ang J, Li S, Zhang S, Shaw PA, Narod SA (2006) Population BRCA1 and BRCA2 mutation frequencies and cancer penetrances: a kin-cohort study in Ontario, Canada. *J Natl Cancer Inst* **98**: 1694–1706
- Roberts NJ, Jiao Y, Yu J, Kopelovich L, Petersen GM, Bondy ML, Gallinger S, Schwartz AG, Syngal S, Cote ML, Axilbund J, Schulick R, Ali SZ, Eshleman JR, Velculescu VE, Goggins M, Vogelstein B, Papadopoulos N, Hruban RH, Kinzler KW, Klein AP (2011) ATM mutations in patients with hereditary pancreatic cancer. *Cancer Discov* **2**: 41–46
- Sato N, Rosty C, Jansen M, Fukushima N, Ueki T, Yeo CJ, Cameron JL, Iacobuzio-Donahue CA, Hruban RH, Goggins M (2001) STK11/LKB1 Peutz-Jeghers gene inactivation in intraductal papillary-mucinous neoplasms of the pancreas. *Am J Pathol* **159**: 2017–2022
- The Breast Cancer Linkage Consortium (1999) Cancer risks in BRCA2 mutation carriers. *J Natl Cancer Inst* **91**: 1310–1316
- Thompson D, Easton DF, Breast Cancer Linkage Consortium (2002) Cancer Incidence in BRCA1 mutation carriers. *J Natl Cancer Inst* **94**: 1358–1365
- van der Heijden MS, Brody JR, Dezentje DA, Gallmeier E, Cunningham SC, Swartz MJ, DeMarzo AM, Offerhaus GJ, Isacoff WH, Hruban RH, Kern SE (2005) *In vivo* therapeutic responses contingent on Fanconi anemia/BRCA2 status of the tumor. *Clin Cancer Res* **11**: 7508–7515
- Win AK, Young JP, Lindor NM, Tucker KM, Ahnen DJ, Young GP, Buchanan DD, Clendenning M, Giles GG, Winship I, Macrae FA, Goldblatt J, Southey MC, Arnold J, Thibodeau SN, Gunawardena SR, Bapat B, Baron JA, Casey G, Gallinger S, Le Marchand L, Newcomb PA, Haile RW, Hopper JL, Jenkins MA (2012) Colorectal and other cancer risks for carriers and noncarriers from families with a DNA mismatch repair gene mutation: a prospective cohort study. *J Clin Oncol* **30**: 958–964

This work is published under the standard license to publish agreement. After 12 months the work will become freely available and the license terms will switch to a Creative Commons Attribution-NonCommercial-Share Alike 3.0 Unported License.

APPENDIX

Other members of the Hereditary Breast Cancer Clinical Study Group: Ophira Ginsburg, André Robidoux, Louise Maehle, Kevin Sweet, Dawna Gilchrist, Olufunmilayo I. Olopade, Fergus Couch, Claudine Isaacs, Beth Karlan, Charis Eng, Jeffrey N. Weitzel, Mary B. Daly, Judy E. Garber, Dana Zakalik, Carey A. Cullinane, Dominique Stoppa-Lyonnet, Howard Saal, Wendy Meschino,

Wendy McKinnon, Marie Wood, Taya Fallen, Raluca Kurz, Siranoush Manoukian, Barry Rosen, Rochelle Demsky, Edmond Lemire, Jane McLennan, Seema Panchal, Albert E. Chudley, Susan T. Vadaparampil, Tuya Pal, Daniel Rayson, Adriana Valentini, Susan Friedman (on behalf of FORCE) Cezary Cybulski, Jacek Gronwald, Tomasz Byrski, Tomasz Huzarski.