

The Infant Gut Resistome is Associated with E. coli and Early-life Exposures

Rebecca M. Lebeaux (✉ rebecca.m.lebeaux.gr@dartmouth.edu)

Dartmouth College <https://orcid.org/0000-0002-3046-1225>

Modupe O. Coker

Rutgers School of Dental Medicine

Erika F. Dade

Dartmouth College Geisel School of Medicine

Thomas J. Palys

Dartmouth College Geisel School of Medicine

Hilary G. Morrison

Marine Biological Laboratory

Benjamin D. Ross

Dartmouth College Geisel School of Medicine

Emily R. Baker

Children's Hospital at Dartmouth

Margaret R. Karagas

Dartmouth College Geisel School of Medicine

Juliette C. Madan

Dartmouth College Geisel School of Medicine

Anne G. Hoen

Dartmouth College Geisel School of Medicine

Research

Keywords: Gastrointestinal Microbiome, Antibiotic Resistance, Epidemiology, Cohort Studies, Infants

Posted Date: August 6th, 2020

DOI: <https://doi.org/10.21203/rs.3.rs-52285/v1>

License: © ⓘ This work is licensed under a Creative Commons Attribution 4.0 International License.

[Read Full License](#)

Version of Record: A version of this preprint was published at BMC Microbiology on July 2nd, 2021. See the published version at <https://doi.org/10.1186/s12866-021-02129-x>.

Abstract

Background: Antibiotic resistance is an increasing threat to human health. The human gut microbiome harbors a collection of bacterial antimicrobial resistance genes (ARGs) known as the resistome. The factors associated with establishment of the resistome in early life are not well understood and clarifying these factors would inform strategies to decrease antibiotic resistance. We investigated the early-life exposures and taxonomic signatures associated with resistome development over the first year of life in a large, prospective cohort in the United States. Shotgun metagenomic sequencing was used to profile both microbial composition and ARGs in stool samples collected at 6 weeks and 1 year of age from infants enrolled in the New Hampshire Birth Cohort Study. Negative binomial regression and statistical modeling was used to examine infant factors such as sex, delivery mode, feeding method, gestational age, antibiotic exposure, and infant gut microbiome composition in relation to the diversity and relative abundance of ARGs.

Results: Metagenomic sequencing was performed on paired samples from 195 full term (at least 37 weeks' gestation) and 15 late preterm (33-36 weeks' gestation) infants. 6-week samples compared to 1-year samples had 4.37 times (95% CI: 3.54-5.39) the rate of harboring ARGs. The majority of ARGs that were at a greater relative abundance at 6 weeks (chi-squared $p < 0.01$) worked through the mechanism of antibiotic efflux (i.e., by pumping antibiotics out of the cell). The overall relative abundance of the resistome was strongly correlated with Proteobacteria (Spearman correlation = 78.9%) and specifically *E. coli* (62.2%) relative abundance in the gut microbiome. Among infant characteristics, delivery mode was most strongly associated with the diversity and relative abundance of ARGs. Infants born via cesarean delivery had a higher risk of harboring unique ARGs [relative risk = 1.12 (95% CI: 0.97 – 1.29)] as well as a having an increased risk for overall ARG relative abundance [relative risk = 1.43 (95% CI: 1.12 – 1.84)] at 1 year compared to infants born vaginally. Additionally, 6 specific ARGs were at a greater relative abundance in infants delivered by cesarean section compared to vaginally delivered infants across both time points.

Conclusions: Our findings suggest that the developing infant gut resistome may be alterable by early-life exposures. Establishing the extent to which infant characteristics and early-life exposures impact the resistome can ultimately lead to interventions that decrease the transmission of ARGs and thus the possibility of antibiotic resistant life threatening infections.

Introduction

The overuse of antibiotics in medicine and agriculture has contributed to the growing public health burden of antimicrobial resistance [1]. Studies have identified sets of antimicrobial resistance genes (ARGs) known collectively as the resistome [2,3] in animals, humans, and the environment [4–6]. The human gut microbiome is a critical reservoir of ARGs [7,8], but differential acquisition and composition of ARGs in the beginning of life is still largely unexplored.

Infants and young children are prescribed more antibiotics than any other age group [9,10]. Multiple studies have focused on understanding the role of early-life antibiotic exposures to the infant gut resistome noting enrichment for ARGs that did and did not confer resistance to the antibiotic prescribed [11–14]. Moreover, ARGs have been identified in infants' first stools following delivery and prior to any direct antibiotic exposure [15–17]. The abundance of ARGs in the infant gut has been shown to decrease with age [11,15,18,19]. These findings have motivated studies to explore early-drivers that shape the resistome beyond infant antibiotic usage. Factors that have specifically been assessed in relation to the infant gut resistome include age of the infant [11,18,19], type of delivery [15,20], breast versus formula feeding [21], gestational age [11,13,21], and intrapartum antibiotic usage [19]. Prior investigations assessing how early-life factors impact the resistome have focused on preterm infants [11,13,22] or were based on small cohorts (< 50) of full term infants [8,12,14,17–19]. The two largest studies in full-term infants [15,20] reported on the count and types of ARGs but did not examine longitudinal changes in ARGs or early-life factors associated with resistome development. This has led to a gap in understanding how early-life factors shape the resistome of full term infants.

Resistomic and taxonomic composition are intrinsically intertwined, but the extent to which early-life factors shape the resistome via infant gut microbial composition has not been established. Variation to ecological successional patterns of microbiome assembly has been observed by our group and others in association with gestational age [13], delivery mode [15,20,23], feeding mode [23,24], intrapartum antibiotic exposure [13,19,20,25–28], geographic diversity [29,30], and antibiotic usage [11,12,29,31]. As ARGs can be passed horizontally between bacteria through mobile genetic elements or vertically within the infant gut [11,12,19] and differential infant characteristics impact the trajectory of microbial composition [12,15,32], taxonomic composition is an important factor to consider in context to resistome development.

Despite the wide number of studies that have investigated the resistome, no study has simultaneously evaluated the independent effects of differential infant exposures and microbiome taxonomic composition on the resistome in a general population of infants. Our study objectives were to fill two important gaps in the epidemiology of human resistome development. First, we aimed to establish the baseline composition of the resistome at approximately 6 weeks and 1 year of life in a general population United States birth cohort. Second, we aimed to assess how early-life exposures, in conjunction and independently to microbial composition, affect the infant gut resistome. We found that infant gut microbiota harbored a greater relative abundance of ARGs at 6 weeks than 1 year. A similar number of unique ARGs were found at each time point, but the types of ARGs varied considerably. Overall, differential resistome composition was impacted by early-life exposures including delivery mode, but was primarily driven by taxonomic composition during the first year of life.

Results

Sample selection and baseline characteristics

We performed whole metagenome sequencing on stool samples from infants enrolled in the New Hampshire Birth Cohort Study (NHBCS) to profile the gut resistome and microbiome. Our study consisted of infants born between 2012 and 2017 who had a stool sample collected at approximately 6 weeks and 12 months of life. From 238 infants with paired 6-week and 1-year samples, we excluded infants if one or both samples had missing sample age, feeding mode, or intrapartum antibiotic exposure data. This resulted in a total of 420 stool samples from 210 infants. Of these, 195 (92.9%) infants were born full term (at least 37 weeks' gestation) and 15 (7.1%) were born late preterm (33-36 weeks' gestation) (**Table 1**). Infants commonly were vaginally delivered ($n = 152$; 72.4%) and slightly more than half were exposed to intrapartum antibiotics ($n = 115$; 54.8%). The majority of infants who were vaginally delivered and received intrapartum antibiotics ($n = 63$) were given penicillin-like antibiotics ($n = 41$; 65%) while the majority of women receiving intrapartum antibiotics for a cesarean birth ($n = 52$) received cephalosporins ($n = 34$; 65%). Most infants (93.8%) were ethnically of European Ancestry and White race which reflects the underlying study population in the surrounding rural northern New England community. No covariate analyzed was associated with analysis using single or paired-end reads (Additional File 2: **Table S1**).

Table 1: Baseline Characteristics of Paired Infant Samples ($n = 210$)

Infant Characteristics	
Infant Sex (%)	
Female	89 (42.4)
Male	121 (57.6)
Infant Race (%)	
White	197 (93.8)
Other	13 (6.2)
Feeding Mode at 6-Week Sample (%)	
Breast fed	157 (74.8)
Formula fed	7 (3.3)
Combination	46 (21.9)
Feeding Mode at 1-Year Sample (%)	
Breastfed	70 (33.3)
Formula fed	7 (3.3)
Combination	133 (63.3)
Antibiotics During Initial Hospitalization (%)	
No	203 (96.7)
Yes	7 (3.3)
Gestational Age at Birth in Weeks [Mean (SD)]	39.05 (1.56)
Birth Weight in Grams [Mean(SD)]	3414 (507)
Age at 6-Week Sample Collection in Days [Mean (SD)]	46.78 (18.44)
Age at 1-Year Sample Collection in Days [Mean (SD)]	375.32 (35.69)
Maternal Characteristics	
Delivery Mode (%)	
Vaginal	152 (72.4)
Cesarean section	58 (27.6)
Prenatal Antibiotics Prior to Delivery (%)	

No	157 (74.8)
Yes	39 (18.6)
Missing	14 (6.7)
Group B <i>Streptococcus</i> Positive (%)	
No	137 (65.2)
Yes	68 (32.4)
Missing	5 (2.4)
Parity (%)*	
Nulliparous	104 (49.8)
One	72 (34.4)
At least two	33 (15.8)
Intrapartum Antibiotic Exposure Class** (%)	
None	95 (45.2)
Penicillin	43 (20.5)
Cephalosporin	43 (20.5)
Multiple	25 (11.9)
Other	4 (1.9)
<p>*One mother was missing parity status</p> <p>**Infants were grouped according to intrapartum antibiotic exposures using the following categories: no antibiotics; penicillin-like antibiotics only (amoxicillins, penicillins); cephalosporins only (cefazolin, cephalexin); multi-drug classes (two or more antibiotics characterized as penicillin, cephalosporin, vancomycin, clindamycin, and/or gentamicin); or “other” antibiotics such as aminoglycosides, glycopeptides, or lincomycin.</p>	

Descriptive overview of the resistome and microbiome

Using ShortBRED [33], we profiled ARGs using markers for ARGs derived from shortened proteins stored in the Comprehensive Antibiotic Resistance Database [34]. Our primary outcomes were the number of unique ARGs and the overall relative abundance of ARGs in reads per kilobase of reference sequence per million sample reads (RPKM). The prevalence, mean, and median values for all ARGs profiled ($n = 887$) were calculated across all samples and among samples with the gene present (Additional File 2: **Table**

S2). 359 different ARG markers were identified in the 420 samples and 241 were identified in at least 1% of samples. There was a median of 77 (interquartile range: 45-94) unique ARG markers per sample and all samples had at least 7 unique antimicrobial resistance markers (Additional File 1: **Figure S1a**). Total median (interquartile range) relative abundance of ARG markers was 1086 (570-2459) RPKM.

Resistome relative abundance and composition differed in the 6-week and 1-year samples. The overall relative abundance of ARGs was significantly higher at 6 weeks than 1 year (**Figure 1a**; Additional File 1: **Figure S1b**). Many differentially abundant ARG markers by postnatal age of the infant were related to antibiotic efflux (Additional File 1: **Figure S2**). The most commonly identified (94.3% prevalence) ARG marker for 6-week samples was *Enterobacter cloacae* *acrA* [Antibiotic Resistance Ontology (ARO): 3004042], a resistance-nodulation-cell-division antibiotic efflux pump. *tetO* (ARO: 3000190) was most commonly found in 1-year samples (97.6%). Through assessing the resistome compositionally, we identified that 6-week samples had a more even dispersion of unique ARGs while 1-year samples mainly were composed of 1 or 2 dominant ARGs (**Figure 1b**). Specifically, 1-year samples had a high relative abundance of either *tetO*, *tetW*, or *tetQ* which confer resistance to tetracycline antibiotics, along with *dfrF* which confers resistance to diaminopyrimidine antibiotics and *cfxA6* a beta-lactamase gene conferring resistance to cephamycin. The overall relative abundance in RPKM of ARGs conferring resistance to tetracycline, however, was greater in 6-week samples as compared to 1-year samples.

To determine the influence of microbial composition on resistome composition, we taxonomically profiled the infant stool samples using MetaPhlAn2 [35]. As previous research has identified Proteobacteria abundance to be associated with certain ARGs [13,15,19,36,37] and we visually examined and identified Proteobacteria to be correlated with the relative abundance of the resistome (**Figure 1c**), we focused on this taxon as a potential mediator between infant characteristics and resistome composition.

The resistome is driven by early-life factors

After profiling resistomic and taxonomic composition, we aimed to explore which covariates and early-life factors may impact resistome development. We used negative binomial regression to assess how delivery mode, feeding mode, intrapartum antibiotic exposure, sex, and initial antibiotic exposure during hospitalization, controlling for log₁₀-number of reads, impacted the count of unique ARG markers (Additional File 2: **Table S3**). Sample age (6-week vs. 1-year) was not associated with unique ARGs (relative risk = 0.99; 95% CI: 0.9-1.08). Nonetheless, we stratified the remainder of our results because we hypothesized that, since different types of ARGs were present at 6 weeks and 1 year, covariates and early-life factors may be differentially associated at each time point. Cesarean delivery, as compared to vaginal delivery, was associated with differential risk of having unique ARGs but in different directions at 6 weeks and 1 year. Cesarean section delivered infants had a decreased risk [0.84 (95% CI: 0.72 - 0.99)] at 6 weeks and yet an increased risk [1.12 (95% CI: 0.97 - 1.29)] at 1 year of having unique ARGs compared to vaginally delivered infants. Compared to exclusive breastfeeding at 6 weeks, any formula feeding

exposure was associated with an increased risk of having diverse ARGs [relative risk = 1.29 (95% CI: 0.92-1.89) for infants formula fed exclusively and relative risk = 1.13 (95% CI: 0.97-1.33) for combination fed infants] with the opposing trend at 1 year [relative risk = 0.74 (95% CI: 0.54-1.04) for infants formula fed exclusively; relative risk = 0.81 (95% CI: 0.72-0.92) for combination fed infants]. Although males had no differential risk of harboring a unique number of ARGs at 6 weeks compared to females, at 1 year males had a decreased risk [relative risk = 0.84 (95% CI 0.75-0.95)] of harboring unique ARGs.

In addition to profiling how covariates and early-life factors may contribute to different types of ARGs, we also assessed how these factors impacted the overall relative abundance of the resistome. In negative binomial regression analyses assessing total RPKM of ARG markers, we found that 6-week samples harbored a higher relative abundance of ARGs compared to 1-year samples. After adjustment for delivery mode, feeding mode, initial antibiotic exposure after hospitalization, intrapartum antibiotic exposure, gestational age, and sex, 6-week samples, as compared to 1 year samples, had 4.37 times (95% CI: 3.54-5.39) the rate of harboring ARG markers (Additional File 2: **Table S4**). At 6 weeks, male infants had a 1.41 times (95% CI: 1.02-1.94) higher rate of harboring ARGs compared to females but there was no sex difference at 1 year. At one year, antibiotic exposure ($n = 7$) during initial hospitalization was associated with an overall lower risk of harboring ARGs compared to infants not given these antibiotics [relative risk: 0.41 (95% CI: 0.23-0.78)]. Infants exposed to penicillin-like intrapartum antibiotics had a 1.48 (95% CI: 1.10-2.00) times greater risk of harboring ARGs at one year compared to infants not exposed to intrapartum antibiotics. However, once we removed two 1-year samples that were considered outliers (RPKM of ARGs > 10,000), there was no association between penicillin exposure and relative abundance load of ARGs (Additional File 2: **Table S5**) but there was an association between resistome relative abundance and cesarean section [relative risk = 1.43 (95% CI: 1.12 – 1.84)]. To explore the interaction between intrapartum antibiotic exposure and delivery mode, we categorized the 210 infants into four groups: (1) vaginal delivery and no intrapartum antibiotic exposure ($n = 89$), (2) vaginal delivery and intrapartum antibiotic exposure ($n = 63$), (3) cesarean delivery and no intrapartum antibiotic exposure ($n = 6$), and (4) cesarean delivery and intrapartum antibiotic exposure ($n = 52$). With the inclusion of the two outliers, groups (2) and (4), which both had intrapartum antibiotic exposure, were both independently associated with harboring higher quantities of ARGs [relative risk = 1.30 (95% CI: 0.99-1.70) and relative risk = 1.54 (95% CI 1.16-2.07)] relative to group (1). Without inclusion of the outliers which both occupied group (2), only group (4) remained statistically significant [relative risk = 1.51 (95% CI: 1.16-1.96)]. Additional sensitivity analysis restricted to vaginal delivery suggested a similar trend; intrapartum antibiotics was not independently a risk factor for ARG load. Feeding mode was not statistically significant at either time point.

After assessing overall measures of the resistome and determining differences by covariates and early-life factors, we hypothesized that these factors may be associated with the relative abundance of individual ARGs. We used MaAsLin2 [38] to test if the relative abundance of ARGs varied by covariates and early-life exposures (Additional File 2: **Table S6**). Using a multiple hypothesis correction (Benjamini-Hochberg $q < 0.01$), we found ARGs associated primarily with postnatal age of the infant of which a statistically significant majority (chi-squared test $p < 0.01$) worked through the mechanism of antibiotic

efflux (**Figure 2**). The only early-life factor that was associated with specific differentially abundant ARGs was delivery mode. ARG markers associated with increased relative abundance in infants delivered via cesarean section were *Enterobacter cloacae* *acrA* (ARO: 3004042), CRP (ARO: 3000518), and *sdiA* (ARO: 3000826) all of which encode resistance-nodulation-cell division antibiotic efflux pumps. Additionally, *Escherichia coli* *soxS* with mutation conferring antibiotic resistance (ARO: 3003511), *uhpT* with mutation conferring resistance to fosfomycin (ARO: 3003890), and *rpoB* mutants conferring resistance to rifampicin (ARO: 3003288), were identified and are linked to a variety of pathogenic species [34].

Resistome composition is impacted by early-life factors primarily via *E. coli*

To directly determine the association between *E. coli* and Proteobacteria with overall resistome outcomes, we plotted the relative abundance of each versus the resistome overall relative abundance (**Figure 3a** and **Figure 3b**) and number of unique ARGs (**Figure 3c** and **Figure 3d**). We found that the overall relative abundance of the resistome was correlated (using Spearman correlation) with Proteobacteria (78.9%) and *E. coli* (62.2%) relative abundance. Specifically for **Figure 3b**, the samples with high Proteobacteria relative abundance and high ARG relative abundance were samples with high *E. coli* relative abundance. The relative abundance of *E. coli* had a 78.1% correlation with the number of unique ARGs, but only 44.2% correlation with Proteobacteria relative abundance. Unlike **Figure 3a**, the association shown in **Figure 3c** isn't linear (i.e., no positive or negative association) but is representative of a threshold effect. For instance, all samples that had an *E. coli* relative abundance greater than 5% had at least 68 unique ARGs, but a sample could still have a substantial number of unique ARGs with having a 0% or near 0% relative abundance of *E. coli*.

Between sample (beta) resistome diversity using CLR-transformed ARG relative abundance and principal component analysis (PCA) was used to further understand which covariates or taxa were associated with the dispersion of samples' resistome compositions. The PCA was described by two main principal components explaining 31.1% and 10.2% of the variation respectively. Upon visual inspection, we found that infant age was associated with principal component 2. In an attempt to understand the bimodal distribution of unique ARG markers (Additional File 1: **Figure S1a**), we colored the PCA by the number of unique ARGs. The coloring aligned with the horizontal of principal component 1 sample separation (**Figure 4a**). To assess the underlying mechanisms for this dispersion by the number of unique markers, we considered the impact of different Proteobacteria species. Consistent with the results of the scatterplots associating *E. coli* relative abundance with resistome outcomes, we found that *E. coli* relative abundance best described the dispersion patterns in the PCA (**Figure 4b**). To statistically test whether *E. coli* composition described the dispersion of resistomes across samples, we conducted a PERMANOVA of the CLR-transformed resistome composition adjusting for CLR-transformed relative abundance of *E. coli*, covariates, early-life factors, and individual variation. We found the relative abundance of *E. coli* to be

associated with 24.7% of the variation of the relative abundance of the resistome. In comparison, each individual's resistome described 35.3% of the variation. Additionally, sample age described 5.0% of the variation and feeding mode 2.4%, but no other factor described more than 1% of the variation (Additional File 2: **Table S7**). To further explore how *E. coli* relative abundance may affect the relative abundance of ARGs, we plotted each sample against the ARGs with the highest overall relative abundance across all samples (>7000 RPKM) using a heat map. Samples clustered mostly by the number of unique ARG markers and CLR-transformed *E. coli* abundance and not primarily by any other factor (**Figure 5**).

To test if microbiome or resistome composition progressed asymmetrically due to early-life exposures, we took advantage of the paired sample design and tested if CLR-transformed relative abundance of ARGs, number of unique ARGs, or CLR-transformed relative abundance of *E. coli* was differential between the two time points. Using adjusted linear regression models, we found that cesarean section delivered infants had on average 18.5 (4.6 – 32.4) additional unique ARG markers that increased from 6 weeks to 1 year compared to vaginally delivered infants (Additional File 1: **Figure S3a**). Infants born by cesarean section also had on average 4.1 (95% CI: 1.7 – 6.4) units higher CLR-transformed relative abundance of *E. coli* compared to vaginally born infants (Additional File 1: **Figure S3b**; Additional File 2: **Table S8**). This was not a result of differential sample collection ages between the 6-week and 1-year time points by delivery mode. These results suggest that cesarean delivery may be associated with differential acquisition of *E. coli* over time which may lead to increased relative abundance of ARGs.

Since we found *E. coli* to be strongly correlated with the number of ARG markers and early-life exposures, we hypothesized that early-life factors proliferate *E. coli* strains with unique genes. We used PanPhlan [39] to determine if the dominant strain of *E. coli* for each sample had different types of genes due to any early-life exposure. A PCA and heat map revealed that the gene presence/absence matrix separated into three groups predominantly based on the number of genes present and absent (Additional File 1: **Figure S4a**). The first principal component of the strain analysis described 51.2% of the variation and was visually determined to be the total number of genes present and not related to any covariates (Additional File 1: **Figure S4b**). A logistic regression analysis assessing sample age, feeding mode, mode of delivery and intrapartum antibiotic exposures, and number of reads (with gene presence/absence as the outcome) identified one gene to be statistically significantly associated with increased presence in 1-year samples after a multiple hypothesis correction ($q < 0.1$). A BLAST search of the gene using the Kyoto Encyclopedia of Genes and Genomes (KEGG) revealed it was a 23S ribosomal RNA gene. Mutations within 23S ribosomal RNA are associated with different types of antibiotic resistance (CARD ARO: 3000336). As this gene was only associated with sample age, this finding suggests that no individual ARG within the *E. coli* pangenome was independently associated with early-life exposures in our dataset.

Lastly, we assessed if mobile genetic elements (MGEs) were associated with infant characteristics and *E. coli* relative abundance. Using results from HUMAnN2, we identified three MGEs related to transposition (GO:0004803 [molecular function] transposase activity; GO:0006313: [biological process (BP)] transposition, DNA-mediated; and GO:0032196 [BP] transposition) and one related to plasmid maintenance (GO: 0006276 [BP]). We tested each MGE versus infant characteristics and early-life factors

using MaAsLin2. We found that all of the MGEs were statistically significantly associated with sample age with transposase activity and DNA-mediated transposition at a greater relative abundance at 1 year while transposition and plasmid maintenance were at a greater relative abundance at 6 weeks (Additional File 2: **Table S9**). For plasmid maintenance in particular, *E. coli* was an important contributor to the MGE's relative abundance (Additional File 1: **Figure S5**).

Discussion

In this prospective cohort study of paired 6-week and 1-year stool samples from 210 infants, we characterized the developing infant gut resistome and determined which factors affect its composition. Results from this resistome epidemiology study align with previous studies; postnatal age of the infant and taxonomic composition drive both individual ARGs and overall resistome composition but other factors play a role either directly or indirectly including delivery mode, feeding method, and sex. Overall, our results provide insight into the acquisition and development of ARGs in a general population cohort of infants.

The infant gut resistome changes primarily in relation to the microbiome

The infant gut resistome samples profiled at 6 weeks were different than those profiled from the same infants at 1 one year of age, which we primarily attribute to shifts in microbial composition. We found a higher relative abundance of ARGs at 6 weeks than 1 year. This finding agrees with other studies analyzing the resistome that have found greater relative abundances of ARGs in younger infants compared to young children or adults [11,15,18,19]. Additionally, although we did not identify a difference in the observed number of unique ARGs across the two time points, the types of ARGs varied. These trends occurred in parallel to the taxonomic composition development within the infant gut. Specifically, the 6-week samples had a high relative abundance of Proteobacteria compared with one year samples. In our study, the relative abundance of both *E. coli* and Proteobacteria were highly correlated with the composition of the resistome.

Our findings agree with other studies that have identified Proteobacteria [13,15,19,36,37] and specifically *E. coli* [13,19,37] as significant sources of ARGs. While it could be argued that these results are a consequence of identified ARGs, it is worth noting that studies across different species and ecosystems using qPCR or assembly-based methods have also identified that Proteobacteria harbor a proportionately high level of ARGs [40,41]. Additionally, although *E. coli* are commonly found in low abundance within the human gut and are recognized as early colonizers of the infant gut, microbial dysbiosis can lead to Proteobacteria and *E. coli* blooms presenting increased opportunities for horizontal gene transfer of ARGs [42,43]. As *E. coli* contain a high diversity of plasmids and high potential for horizontal gene transfer [43],

this is a particular concern. Two recent papers [14,19] did not directly identify an association between any specific MGE and *E. coli* in the infant gut, but do provide additional context that support this study's findings. Of particular interest, one study found that *E. coli* relative abundance was associated with an increased ARG relative abundance and that plasmids and other MGEs were at a higher relative abundance in infant guts at 1 month as opposed to 6 months [19]. Both studies also found MGEs to be at a greater abundance in infants as opposed to mothers. [14,19]. This notion that *E. coli* is important to the resistome and mobilome is also supported by the results of our MGE analysis as MGE relative abundance was associated with *E. coli*-specific contributions especially regarding plasmid maintenance. Future studies with additional timepoints before 1 year could evaluate in detail the dynamics of *E. coli* abundance in the gut and how they relate to the development of the gut resistome over time. Findings from these studies could provide insight on *E. coli* susceptibility patterns to available antibiotics in early life and could be used to evaluate appropriate empiric regimens to early-life infections and bacteremia. For instance, as both Group B *Streptococcus* and *E. coli* are leading causes of neonatal sepsis [44,45], it is becoming increasingly important to assess how intrapartum antibiotic prophylaxis for Group B *Streptococcus* may affect ARGs in *E. coli* and lead to neonatal sepsis or antibiotic resistant *E. coli* infections.

Delivery mode and not intrapartum antibiotic exposure contributes to resistome alterations

Intrapartum antibiotic exposure and delivery mode have previously been rarely explored in full term infant gut resistome epidemiology. Only one study [19], has specifically assessed intrapartum antibiotic exposure on ARGs in infant stool. The study included 16 vaginally delivered, full term (at least 37 weeks' gestation) infants assessed at approximately 1 and 6 months. They found that intrapartum antibiotic exposure did not impact overall resistome composition although some ARGs [including *dfrE*, *efrA*, and *isa(A)*] profiled were at a higher abundance among infants in the exposed group. We did not find evidence that any ARG was at a higher relative abundance after adjustment for other covariates and after accounting for possible false positives through multiple hypothesis correction. Differences between studies may be a result of varying sample age measurement; differential measurement of taxa and genes; variation in the dose, duration, and type of intrapartum antibiotic administered; or differential sensitivities to intrapartum antibiotics that vary by study population.

Delivery mode has also been associated with differential resistome load. One study [15] found that infants that were vaginally delivered had a lower proportion of ARGs (as a fraction of the overall number of genes) in their samples compared to cesarean delivered infants in newborn, 4-month, and 12-month stool samples. We found that 6 ARGs were at an increased relative abundance in infants born via cesarean delivery as compared to those delivered vaginally. These genes have been identified in sequences of *Salmonella enterica*, *E. coli*, and pathogens often associated with nosocomial transmission

including some *Enterobacter spp.* and *Klebsiella pneumoniae* [34]. As we did identify that cesarean delivery was associated with increased *E. coli* relative abundance between sample collection points, it is worthwhile to note that cesarean section also alters the trajectory of taxonomic development within the infant gut. Thus, our conclusion is that cesarean section likely impacts resistome composition directly and indirectly via alterations to the successional timeline of microbes in the infant gut.

Studies often have not been powered to tease apart intrapartum antibiotic exposure from other exposures that occur concomitantly at delivery including gestational age and delivery mode. This has contributed to inconsistent results regarding the independent impacts of intrapartum antibiotic exposure. Although our analysis of overall resistome load at 1 year ($n = 210$) found that intrapartum antibiotic exposure to penicillin was associated with an increased risk of harboring ARGs, upon sensitivity analyses to remove 2 infants with RPKM of ARGs greater than or equal to 10,000 at 1 year, this result no longer persisted. Further analyses reclassifying intrapartum antibiotic exposure and delivery mode into four groups suggested only the combination of cesarean delivery and intrapartum antibiotic exposure to be associated with an increased rate of harboring ARGs. While it's possible a positive association between intrapartum antibiotic exposure and the overall relative abundance of ARGs may exist only in infants that are born by cesarean section (i.e., cesarean section is an effect modifier), we hypothesize cesarean section to be the more important factor driving the increased relative abundance of ARGs for several reasons. First, it is worthwhile to note that the two 1-year samples that were removed had a high relative abundance of *E. coli* (21% and 41% respectively) compared to the average among 1 year samples (1.3% not including the outliers). This suggests that these two infant samples displayed evidence of an *E. coli* bloom during sample collection which likely was unrelated to their intrapartum antibiotic exposure. Second, there was only a small number ($n = 6$) of infants who were delivered by cesarean section but did not receive intrapartum antibiotics. This likely precluded our ability to statistically significantly detect the independent exposure of cesarean section. Third, across multiple analyses, we identified positive associations between cesarean delivery and the resistome, but never with intrapartum antibiotics regardless of the antibiotic type. Lastly, in sensitivity analyses limited to infants who were delivered vaginally or by cesarean section, we found no association between intrapartum antibiotic exposure and overall relative abundance of ARGs. Additional studies that have more infants that were born via cesarean delivery but not exposed to intrapartum antibiotics could be used to validate this conclusion. The higher ARG relative abundance in cesarean delivered infants could be due to the environment of the operating room, preferential colonization from skin as opposed to vaginal microbes, differences in mothers or infants who are born by cesarean delivery, or potentially a synergistic interaction between intrapartum antibiotics and cesarean delivery.

Other covariates and early-life factors may alter the trajectory of the microbiome and indirectly impact the

resistome

Feeding method has been considered one of the most important factors in microbial and metabolic development [29,32], but we found little evidence to suggest its impact directly on the resistome. A previous study in preterm infants [21] identified class D beta-lactamase genes to be enriched in formula fed infants which were most frequently identified in *Clostridium difficile*. We did not find class D beta-lactamase genes in infants who were formula fed. The remainder of our results suggest feeding method acts on the resistome via increasing taxonomic diversity which could also be correlated with the introduction of formula or solid foods. For instance, compared to infants that were exclusively breastfed, infants that were given any formula at 6 weeks had an increased risk for developing unique ARGs but a lower risk at 1 year. This finding suggests that introduction of taxonomic diversity during unstable periods in development can lead to more instability, but in more stable infant gut community, taxonomic diversity provides colonization resistance [46].

Surprisingly, we identified that male sex was associated with a greater overall relative abundance of ARGs at 6 weeks, but with a decreased risk of unique ARGs at 1 year. A recent study [14] found that among 40 infants that were 6 months old, males had a higher richness of ARGs (defined as the total prevalence of ARGs in each sample) but found no difference in the summed relative abundance. Another study [47] assessed sex differences in the gut resistome of adults. They found that females had a greater mean prevalence of ARGs than males and attributed this primarily to differences in antibiotic prescribing practices by sex. Sex differences in antibiotic prescription rates have not been fully teased apart [48] but, for older children and adults, some of the differences are likely due to distinct urinary tract infection rates or sex-based differences in care utilization [48,49]. As these factors may not be as applicable for infants, antibiotic prescription rate differences may not explain the differential resistome composition. Instead, a combination of microbial, hormonal, or developmental differences may explain variation between infant male and female resistomes.

Strengths and limitations

While our study had many strengths including our large sample size, paired sample design to reduce individual-level variation, and prospective data collection framework, our study does have some limitations. The NHBCS includes primarily White women and their infants from New Hampshire and Vermont in the United States. Thus, our results may not be generalizable to other communities with different ethnic [50] or geographic compositions [30]. Most variables were collected via standardized medical record review including age, sex, delivery mode, and antibiotic exposures reducing multiple possible biases. However, for reported covariates such as feeding mode within the first year, recall and misclassification bias was a concern. To mitigate this, we temporally assessed infant breast feeding exposures beyond the marked interval time points to improve the accuracy of the feeding mode

classification (see Methods). Additionally, we conducted a duplicate analysis of one 6-week sample from sequencing to analysis. The duplicate samples were highly correlated across taxonomic and resistome metrics. We also did not include antibiotic exposures throughout the first year of life due to the variety and timing of the exposures, but recognize future studies that primarily focus on antibiotics over the first year of life should be conducted. Likewise, we acknowledge that there are inherent limitations to the reference databases, many of which are updated frequently, and tools we used to profile ARGs and taxa. To alleviate this concern, we used previously curated and highly used sources including a precompiled set of ARG markers from 2017. Thus, we believe any misclassification would be non-differential by infant characteristic. Specific to ARGs, there is much debate regarding the classification of ARGs and their actualized significance to differential health outcomes with some ARGs purely indicating the presence of a particular species [51]. Regardless, these genes can functionally confer resistance to the associated organism and is the predominant reason why we did not remove any possible ARGs from analysis. Future papers could work to tease apart which genes functionally contribute to antimicrobial resistant infections within and between hosts or use metatranscriptomics to further investigate the expression and utilization of these ARGs.

Conclusion

We identified that the infant gut resistome of 210 infants from the general population sampled at two time points in the NHBCS varies by early-life exposures but predominantly tracks with taxonomic succession. Proteobacteria and specifically *E. coli* were correlated with the overall relative abundance of ARGs and the number of unique ARGs. Early-life factors and covariates beyond infant antibiotic exposure were associated with the infant gut resistome with cesarean delivery most associated with differential resistome acquisition and development. As one of the largest infant gut resistome epidemiology studies to date, this work provides a baseline level of resistome development in a general population of infants. Future studies should consider how other early-life factors and perturbations throughout development may impact the infant gut resistome to offer insights on measures to reduce antibiotic resistance early in life.

Methods

Study population and design

The NHBCS is an ongoing prospective cohort study of over 2000 pregnant women and their offspring recruited from prenatal clinics in New Hampshire, USA. Pregnant women ages 18-45 are recruited from prenatal clinics beginning at approximately 24-28 weeks of gestation and all women must use private well water as discussed previously [52]. Fecal samples were collected prospectively for infants at approximately 6 weeks and 1 year. Institutional review board approval was obtained at Dartmouth with yearly renewal.

Covariate data collection

Extensive covariate data on lifestyle, medical history, and environmental exposures was collected in the NHBCS from participants through medical records, postpartum questionnaires, and telephone interviews. Delivery mode (vaginal or cesarean), feeding mode (exclusively breast fed, exclusively formula fed, or combination of breast and formula fed), prenatal maternal antibiotic usage (yes or no), gestational age (in days), birth weight (in grams), maternal Group B *Streptococcus* status (yes or no), infant sex (male or female), and other demographic characteristics were collected from telephone questionnaires at 4, 8, and 12 months following birth and delivery medical records. Age of breast milk samples is also used to determine feeding mode and additional information about the classification of breastfeeding exposure. Additional information about feeding method during infant stool sample collection can be found in Additional File 1: **Supplementary Methods**. Infant antibiotic exposures were only classified if oral, injected, or intravenous antibiotic exposure was indicated during the initial hospitalization. Intrapartum antibiotic exposures administered during labor and delivery were extracted from maternal medical delivery records and were assessed both as a yes/no variable and explored by class of intrapartum antibiotic received. Subjects were grouped according to intrapartum antibiotic exposures using the following categories: no antibiotics; penicillin-like antibiotics only (amoxicillin, penicillin); cephalosporins only (cefazolin, cephalexin); multi-drug classes (two or more antibiotics characterized as penicillin, cephalosporin, vancomycin, clindamycin, and/or gentamicin); or “other” antibiotics such as aminoglycosides, glycopeptides, or lincomycin.

Metagenomics collection and processing pipeline

Infant stool samples were collected at 6-weeks and 12-months maternal postpartum. Stool samples were provided in diapers and stored by guardians in a home freezer (-20 °C) until they were able to return them to the study site. Stool was thawed at 4 °C and aliquoted (range 350-850 mg) into 3ml RNeasy in cryotubes and homogenized before storing at -80 °C. RNeasy stool samples were thawed and DNA was extracted using the Zymo Fecal DNA extraction kit (Cat# D6010, Zymo Research, Irvine, CA), according to the manufacturer's instructions. For each sample extraction, 400ul RNeasy stool slurry (50–100 mg of stool) was used to isolate DNA. Extractions were performed in batches of multiple samples and included a composite RNeasy stool positive control and a RNeasy negative control. Lysis of stool slurry was performed using 750ul Lysis Buffer in ZR BashingBead™ Lysis Tubes (0.5 mm beads), mixed and then shaken on a Disruptor Genie for 6 min. Eluted DNA was quantified on a Qubit™ fluorometer using the Qubit™ dsDNA BR Assay. Average coefficient of variation of DNA yields (ng/ul) for composite RNeasy stool positive controls was 28%. No DNA was ever detectable in negative control elutions. Concentrations of DNA samples used for metagenomic gene sequencing ranged from 1 ng/ul to 25 ng/ul.

Metagenomic sequencing libraries were prepared at the Marine Biological Laboratory (MBL) in Woods Hole, MA using established methods. These libraries were constructed using Nugen's Ovation Ultralow V2 protocol. Using a Covaris S220 focused ultrasonicator, DNA samples were sheared to a mean insert size of 400 base pairs.

Some metagenomic samples were processed as paired-end reads ($n = 219$; 52.1%) and others as single-end reads ($n = 201$; 47.9%). Generally, sequencing batches of 12 were run for paired-end reads and batches of 16 were run for single-end reads. Paired-end DNA reads were merged into one FASTQ file and all samples were trimmed with KneadData and Trimmomatic with default settings [53] for quality control. Mean (SD) reads after this quality control for single-end reads was 22.3 million (9.6 million) and was 58.9 million (20.8 million) for paired-end reads.

Taxonomic analysis was conducted using both MetaPhlAn2 [35] and PanPhlAn version 1.2.2.5 (10 May 2018) [39]. MetaPhlAn2 [35], an output of the HUMAnN2 [54] version 0.11.2 pipeline, was used to analyze relative abundance of taxa to the species level. MetaPhlAn2 characterizes microbial clades through the use of clade-specific markers. PanPhlAn was used to conduct a strain-level analysis of *E. coli*. A precompiled pangenome database of *E. coli* from 2016 [39] was utilized for this analysis. Using PanPhlAn, each sample was mapped to the pangenome to assess presence and absence of genes corresponding to the dominant strain of *E. coli* in each sample.

ARG markers were quantified using ShortBRED version 0.9.5 [33]. ShortBRED works in two steps. First, it creates a database of antimicrobial resistance gene markers and then uses this set of markers to identify antibiotic resistance in samples. A precompiled list of markers [55] known to confer bacterial antibiotic resistance from the Comprehensive Antibiotic Resistance Database (CARD) [34] was used and the relative abundance of ARG markers in our samples were classified using the "shortbred_quantify" script with default parameters. Outputs from ShortBRED are normalized for average read length, marker length, and sequencing depth and are represented in RPKM. Annotations for the ARGs were adapted from (Sinha et al., 2018), which also used ARG markers from ShortBRED.

MGEs were identified using HUMAnN2 [54] with default settings. Briefly, HUMAnN2 uses a 'tiered search' approach to first identify known species using reference markers, map these reads to the pangenome of the species, and finally conduct a translated search on all reads that were not classified by known species giving gene family in reads per kilobase. Output gene family files were regrouped by gene ontology (GO), normalized to relative abundance to account for sequencing depth, merged into one file, and then renamed. This was completed using the "humann2_regroup_table", "humann2_renorm_table", "humann2_join_tables", and "humann2_rename_tables" utility scripts available via bioBakery [56].

Baseline metrics of the resistome

The prevalence, mean, and median values for all ARG markers was assessed overall and stratified by 6-week and 1 year samples. Additionally, all values were assessed in comparison to all samples and to only samples that had the gene present. ARGs were considered incident if they were present in at least one sample. A heatmap was created using “pheatmap” [57] to assess the correlation between ARG markers greater than 7,000 RPKM summed across all samples. Relative abundance of these ARGs was then \log_{10} -transformed and plotted against the samples. ARGs were clustered using the Canberra distance and samples were clustered using the Euclidean distance based on previously used methods [33].

Covariate selection

Early-life exposures and variables that we hypothesized to be associated with differential resistome composition were chosen based on previous research demonstrating their impact on the resistome and due to their specificity. For our models we used the following covariates: postnatal age of the infant (sampled at approximately 6 weeks or 1 year), gestational age (in weeks), sex (male or female), delivery mode (vaginal or cesarean section), intrapartum antibiotic exposure (yes or no), feeding mode (exclusively breastfed, exclusively formula fed, or mixed fed at the time of sample collection), and infant antibiotic exposure before leaving the hospital (yes or no). Sensitivity analyses assessed sample age in days as a linear variable with the infant as a random effect, intrapartum antibiotic exposures grouped by class of antibiotic prescribed, never versus ever formula fed, and possible joint interactions between intrapartum antibiotic exposure (yes or no) and delivery mode (vaginal or cesarean delivery). Inter-individual differences were analyzed as it often accounts for the largest amount of variation in microbiome studies [20,29,58]. Geographic location has also been associated with differential resistome composition [36], but is controlled primarily through restricting to NHBCS infants.

Statistical analysis

The impacts of covariates on the resistome were assessed primarily using negative binomial regression through quantifying two outcomes: i) the relative abundance of all ARG markers and ii) the presence of unique ARG markers. Additionally, as microbes are hypothesized to be on the causal pathway between many early-life exposures and the resistome, we tested how taxa are correlated with covariates, overall relative abundance of ARGs, and number of unique of ARGs. The outcomes were analyzed across all our samples controlling for sample age (6-week or 1-year) and stratified by the age of sample collection (i.e., cross-sectionally). Negative binomial regression was selected over regression models using the normal or Poisson distribution to avoid overdispersion [19] and because the coefficient can be exponentiated to estimate relative risk. Thus, the interpretation of the negative binomial regression results for assessing the overall number of unique ARGs would be: in comparison to the unexposed group, the exposed group

had X times the risk of harboring unique ARGs. Relative risks can be considered statistically significant if they do not include 1, but, if they do cross 1, may be considered meaningfully significant depending on the width of the confidence interval. To assess relative abundance of ARG markers and alpha diversity of species together, Shannon alpha diversity metrics were extracted for species and used as an additional exposure with overall ARG marker relative abundance and number of ARG markers observed as outcomes in sensitivity analyses. To assess the direct correlation between microbial relative abundance and the two overall resistome outcomes, we assessed the Spearman correlation between each CLR-transformed species and phyla relative abundance against each outcome.

Phyloseq [59] objects were created to measure diversity metrics and to make compositional plots for ARGs, taxa, and functional analyses. Alpha (within) sample diversity metrics were calculated using the Shannon and Simpson diversity metrics. For beta (between) sample diversity, genes in RPKM were transformed into compositional data. Using the “microbiome” package [60], a pseudo count of the minimum value divided by two was used in place of any 0s and then the data was CLR-transformed [61]. PCA plots using Euclidean distances were created to visualize results by different covariates. PERMANOVAs were created using the *adonis2* function in “vegan” [62] to evaluate between sample diversity.

To further explore similarities and differences in groups with adjustments for all other covariates, MaAsLin2 [38] was used. MaAsLin2 uses a feature reduction technique involving additive boosting of generalized linear models to choose covariates that are most associated with the outcome of interest. Compositional abundance data for each ARG was associated with covariates in MaAsLin2. Deviation from the default parameters included the use of a CLR normalization approach, no standardization of continuous variables, no transformation, and only associations with Benjamini-Hochberg multiple hypothesis correction (q -value) less than 0.01 were considered statistically significant.

To understand whether *E. coli* strains varied by any covariates in our analysis, we used a variety of visual and statistical tools. Multidimensional scaling using the jaccard distance on the presence/absence matrix of genes with a prevalence of at least 10% was used to visualize sample similarities and differences by covariates. A heat map including only genes that had between 20-80% prevalence was used to cluster samples. Logistic regression with a Benjamini-Hochberg correction ($q < 0.01$) was used to assess if any genes were differentially abundant by sample age, feeding mode, a combination of delivery mode and intrapartum antibiotic exposure, or total number of reads. A BLAST search of statistically significant genes using KEGG was conducted to reveal differentially prevalent genes.

The goals of the MGE analysis were twofold as we wanted to assess if MGE relative abundance was associated with (1) any covariate or (2) the species-specific contribution of *E. coli*. Using a custom R script, we collapsed all taxonomic information in the resulting gene families file outputted by HUMAnN2 to calculate the relative abundance of each GO term for each infant sample (i.e., the summed gene family relative abundance for each sample equaled 1). Using a CLR-normalization, MaAsLin2 was used to assess which gene families were statistically associated with metadata including sample age, feeding

method (ever or never formula fed), intrapartum antibiotic exposure, delivery mode, gestational age, infant sex, and antibiotic use during the initial hospitalization. Statistically significant results (q -value < 0.25) were queried for MGEs. Specifically, the terms “integrase”, “integron”, “transpos”, or “plasmid” were used for the query as they previously have been used to identify MGE elements from HUMAnN2 results [63]. Since we found these MGEs to only be associated with sample age, we assessed the species specific contribution to each MGE broken down by sample age using the “humann2_barplot” script from HUMAnN2. Bar plots were sorted by the sample sum coefficient of the GO term and grouped by sample age.

Quality control

Number of reads was not added as a covariate in any models where a relative abundance was calculated as all techniques normalized for sample depth (number of reads). However, our assessment of unique ARG markers and genes present in *E. coli* included \log_{10} -transformed number of reads as these presence/absence analyses were impacted by sample depth. Sequencing type and batch effects were assessed through a PCA of the resistome. No evidence of differential effects to the resistome were identified in either (Additional File 1: **Figure S6a** and **Figure S6b**) so sequencing type nor batch effect was not considered as a covariate in regression models. A secondary quality control measure was assessed by rerunning a 6-week, single-end sample through the sequencing and downstream analysis pipeline. Upon re-analysis, ShortBRED and MetaPhlAn2 results were nearly identical (Additional File 1: **Figure S6c** and **Figure S6d**).

Abbreviations

ARG: antimicrobial resistance gene, ARO: Antibiotic Resistance Ontology, CLR: centered log-ratio, CI: confidence interval, NHBCS: New Hampshire Birth Cohort Study, MGE: mobile genetic elements, PCA: Principal components analysis, RPKM: reads per kilobase of reference sequence per million sample reads

Declarations

Funding

This work was funded in part by US National Institute Health under award numbers NIGMS P20GM104416, NIEHS P01ES022832, NIEHS P20ES018175, NLM R01LM012723, and NLM K01LM011985, and the US Environmental Protection Agency (RD83459901 and RD83544201). RML was funded under the Host-Microbe Interactions Training Grant at Dartmouth NIAID T32AI007519.

Acknowledgements

We would like to thank all the families that participated in the NHBCS and the NHBCS staff. We are also grateful for support from the Biorepository of the COBRE Center for Molecular Epidemiology and from members of the Hoen Lab for feedback on this research. Additionally, we would like to thank Nicole Robichaud from the Marine Biological Laboratory for handling the bulk of the metagenomic sequencing in this paper.

Competing interests

The authors have no conflicts to disclose.

Authors' Contributions

RML, MOC, JCM, AGH, and MRK designed the research. JCM, ERB, and MRK designed the study protocols and provided oversight for cohort and the collection, processing, and analyses of samples. RML and EFD performed the data analysis. RML and AGH wrote the initial manuscript draft. EFD and TJP managed the sample repository. RML, MOC, BDR, MRK, JCM, and AGH interpreted the results. HGM provided technical and methodological support from the Marine Biological Laboratory. All authors contributed to revised versions of the manuscript and approved of the final published version.

Ethics Approval and Consent to Participate

Institutional review board (IRB) approval was obtained from the Center for the Protection of Human Subjects at Dartmouth.

Availability of Data and Materials

The whole metagenomic shotgun sequencing samples are available through the National Center for Biotechnology Information (NCBI) Sequence Read Archive: <https://www.ncbi.nlm.nih.gov/sra> (Accession number: PRJNA296814).

References

1. World Health Organization. Antimicrobial Resistance Global Report on Surveillance. 2014.
2. Perry JA, Westman EL, Wright GD. The antibiotic resistome: What's new? *Curr Opin Microbiol* [Internet]. 2014;21:45–50. Available from: <http://dx.doi.org/10.1016/j.mib.2014.09.002>
3. Wright GD. The antibiotic resistome: the nexus of chemical and genetic diversity. *Nat Rev Microbiol* [Internet]. 2007;5:175–86. Available from: <http://www.ncbi.nlm.nih.gov/pubmed/17277795>

4. Hernando-Amado S, Coque TM, Baquero F, Martínez JL. Defining and combating antibiotic resistance from One Health and Global Health perspectives. *Nat Microbiol* [Internet]. 2019;4:1432–42. Available from: <http://dx.doi.org/10.1038/s41564-019-0503-9>
5. Pal C, Bengtsson-Palme J, Kristiansson E, Larsson DGJ. The structure and diversity of human, animal and environmental resistomes. *Microbiome* [Internet]. 2016;4:1–15. Available from: <http://dx.doi.org/10.1186/s40168-016-0199-5>
6. Pehrsson EC, Tsukayama P, Patel S, Mejía-Bautista M, Sosa-Soto G, Navarrete KM, et al. Interconnected microbiomes and resistomes in low-income human habitats. *Nature* [Internet]. 2016;533:212–6. Available from: <http://dx.doi.org/10.1038/nature17672>
7. Salyers AA, Gupta A, Wang Y. Human intestinal bacteria as reservoirs for antibiotic resistance genes. *Trends Microbiol*. 2004;12:412–6.
8. Moore AM, Patel S, Forsberg KJ, Wang B, Bentley G, Razia Y, et al. Pediatric fecal microbiota harbor diverse and novel antibiotic resistance genes. *PLoS One* [Internet]. 2013;8:e78822. Available from: <http://dx.doi.org/10.1371/journal.pone.0078822>
9. Hicks LA, Bartoces MG, Roberts RM, Suda KJ, Hunkler RJ, Taylor TH, et al. US outpatient antibiotic prescribing variation according to geography, patient population, and provider specialty in 2011. *Clin Infect Dis* [Internet]. 2015;60:1308–16. Available from: <https://doi.org/10.1093/cid/civ076>
10. Lee GC, Reveles KR, Attridge RT, Lawson KA, Mansi IA, Lewis JS, et al. Outpatient antibiotic prescribing in the United States: 2000 to 2010. *BMC Med* [Internet]. 2014;12:1–8. Available from: <http://dx.doi.org/10.1186/1741-7015-12-96>
11. Gibson MK, Wang B, Ahmadi S, Burnham CD, Tarr PI, Warner BB, et al. Developmental dynamics of the preterm infant gut microbiota and antibiotic resistome. *Nat Microbiol* [Internet]. 2016;1:1–25. Available from: <http://dx.doi.org/10.1038/nmicrobiol.2016.24>
12. Yassour M, Vatanen T, Siljander H, Hämäläinen A, Hamalainen A, Al E. Natural history of the infant gut microbiome and impact of antibiotic treatments on strain-level diversity and stability. *Sci Trans Med* [Internet]. 2016;8:1173–8. Available from: <http://dx.doi.org/10.1126/scitranslmed.aad0917>
13. Gasparrini AJ, Wang B, Sun X, Kennedy EA, Hernandez-leyva A, Ndao IM, et al. Persistent metagenomic signatures of early-life hospitalization and antibiotic treatment in the infant gut microbiota and resistome. *Nat Microbiol* [Internet]. 2019;4:2285–97. Available from: <http://dx.doi.org/10.1038/s41564-019-0550-2>
14. Sosa-Moreno A, Comstock SS, Sugino KY, Ma TF, Paneth N, Davis Y, et al. Perinatal risk factors for fecal antibiotic resistance gene patterns in pregnant women and their infants. *PLoS One* [Internet]. 2020;15:1–21. Available from: <http://dx.doi.org/10.1371/journal.pone.0234751>
15. Bäckhed F, Roswall J, Peng Y, Feng Q, Jia H, Kovatcheva-Datchary P, et al. Dynamics and stabilization of the human gut microbiome during the first year of life. *Cell Host Microbe* [Internet]. 2015;17:690–703. Available from: <http://dx.doi.org/10.1016/j.chom.2015.04.004>
16. Gosalbes MJ, Vallès Y, Jimenez-Hernandez N, Balle C, Riva P, Miravet-Verde S, et al. High frequencies of antibiotic resistance genes in infants' meconium and early fecal samples. *J Dev Orig Health Dis*

- [Internet]. 2016;7:35–44. Available from: <http://dx.doi.org/10.1017/S2040174415001506>
17. Yassour M, Jason E, Hogstrom LJ, Arthur TD, Tripathi S, Siljander H, et al. Strain-Level Analysis of Mother-to-Child Bacterial Transmission during the First Few Months of Life Short Article Strain-Level Analysis of Mother-to-Child Bacterial Transmission during the First Few Months of Life. *Cell Host Microbe* [Internet]. 2018;24:146–54. Available from: <http://dx.doi.org/10.1016/j.chom.2018.06.007>
 18. Moore AM, Ahmadi S, Patel S, Gibson MK, Wang B, Ndao MI, et al. Gut resistome development in healthy twin pairs in the first year of life. *Microbiome* [Internet]. 2015;3:1–10. Available from: <http://dx.doi.org/10.1186/s40168-015-0090-9>
 19. Pärnänen K, Karkman A, Hultman J, Lyra C, Bengtsson-palme J, Larsson DGJ, et al. Maternal gut and breast milk microbiota affect infant gut antibiotic resistome and mobile genetic elements. *Nat Commun* [Internet]. 2018;9:1–11. Available from: <http://dx.doi.org/10.1038/s41467-018-06393-w>
 20. Shao Y, Forster SC, Tsaliki E, Vervier K, Strang A, Simpson N, et al. Stunted microbiota and opportunistic pathogen colonization in caesarean-section birth. *Nature* [Internet]. 2019;574:117–21. Available from: <http://dx.doi.org/10.1038/s41586-019-1560-1>
 21. Rahman SF, Olm MR, Morowitz MJ, Banfield JF. Machine Learning Leveraging Genomes from Metagenomes Identifies Influential Antibiotic Resistance Genes in the Infant Gut Microbiome. *mSystems* [Internet]. 2018;3:1–12. Available from: <http://dx.doi.org/10.1128/msystems.00123-17>
 22. Esaiassen E, Hjerde E, Cavanagh JP, Pedersen T, Andresen JH, Rettedal SI, et al. Effects of Probiotic Supplementation on the Gut Microbiota and Antibiotic Resistome Development in Preterm Infants. *Front Pediatr* [Internet]. 2018;6:1–16. Available from: <https://doi.org/10.3389/fped.2018.00347>
 23. Madan JC, Hoen AG, Lundgren SN, Farzan SF, Cottingham KL, Morrison HG, et al. Association of cesarean delivery and formula supplementation with the intestinal microbiome of 6-week-old infants. *JAMA Pediatr* [Internet]. 2016;170:212–9. Available from: <http://dx.doi.org/10.1001/jamapediatrics.2015.3732>
 24. Vatanen T, Plichta DR, Somani J, Münch PC, Arthur TD, Hall AB, et al. Genomic variation and strain-specific functional adaptation in the human gut microbiome during early life. *Nat Microbiol* [Internet]. 2019;4:470–9. Available from: <http://dx.doi.org/10.1038/s41564-018-0321-5>
 25. Coker MO, Hoen AG, Dade E, Lundgren S, Li Z, Wong AD, et al. Specific class of intrapartum antibiotics relates to maturation of the infant gut microbiota: a prospective cohort study. *BJOG An Int J Obstet Gynaecol* [Internet]. 2019;127:217–27. Available from: <http://dx.doi.org/10.1111/1471-0528.15799>
 26. Azad MB, Konya T, Persaud RR, Guttman DS, Chari RS, Field CJ, et al. Impact of maternal intrapartum antibiotics, method of birth and breastfeeding on gut microbiota during the first year of life: a prospective cohort study. *BJOG An Int J Obstet Gynaecol* [Internet]. 2016;123:983–93. Available from: <http://dx.doi.org/10.1111/1471-0528.13601>
 27. Mazzola G, Murphy K, Ross RP, Di Gioia D, Biavati B, Corvaglia LT, et al. Early gut microbiota perturbations following intrapartum antibiotic prophylaxis to prevent group B streptococcal disease. *PLoS One* [Internet]. 2016;11:1–11. Available from: <http://dx.doi.org/10.1371/journal.pone.0157527>

28. Nogacka A, Salazar N, Suárez M, Milani C, Arboleya S, Solís G, et al. Impact of intrapartum antimicrobial prophylaxis upon the intestinal microbiota and the prevalence of antibiotic resistance genes in vaginally delivered full-term neonates. *Microbiome* [Internet]. 2017;5:1–10. Available from: <http://dx.doi.org/10.1186/s40168-017-0313-3>
29. Vatanen T, Franzosa EA, Schwager R, Tripathi S, Arthur TD, Vehik K, et al. The human gut microbiome in early-onset type 1 diabetes from the TEDDY study. *Nature* [Internet]. 2018;562:589–94. Available from: <http://dx.doi.org/10.1038/s41586-018-0620-2>
30. Yatsunen T, Rey FE, Manary MJ, Trehan I, Dominguez-Bello MG, Contreras M, et al. Human gut microbiome viewed across age and geography. *Nature* [Internet]. 2012;486:222–7. Available from: <https://www.nature.com/articles/nature11053.pdf>
31. Korpela K, Salonen A, Saxen H, Nikkonen A, Peltola V, Jaakkola T, et al. Antibiotics in early life associate with specific gut microbiota signatures in a prospective longitudinal infant cohort. *Pediatr Res* [Internet]. Springer US; 2020;1–6. Available from: <http://dx.doi.org/10.1038/s41390-020-0761-5>
32. Stewart CJ, Ajami NJ, O'Brien JL, Hutchinson DS, Smith DP, Wong MC, et al. Temporal development of the gut microbiome in early childhood from the TEDDY study. *Nature* [Internet]. 2018;562:583–8. Available from: <http://dx.doi.org/10.1038/s41586-018-0617-x>
33. Kaminski J, Gibson MK, Franzosa EA, Segata N, Dantas G, Huttenhower C. High-Specificity Targeted Functional Profiling in Microbial Communities with ShortBRED. *PLOS Comput Biol* [Internet]. 2015;486:207–14. Available from: <http://dx.doi.org/10.1038/nature11234>
34. Alcock BP, Raphenya AR, Lau TTY, Tsang KK, Bouchard M, Edalatmand A, et al. CARD 2020: antibiotic resistome surveillance with the comprehensive antibiotic resistance database. *Nucleic Acids Res*. 2020;48:D517–25.
35. Segata N, Waldron L, Ballarini A, Narasimhan V, Jousson O, Huttenhower C. Metagenomic microbial community profiling using unique clade-specific marker genes. *Nat Methods* [Internet]. 2012;9:811–4. Available from: <http://dx.doi.org/10.1038/nmeth.2066>
36. Hu Y, Yang X, Qin J, Lu N, Cheng G, Wu N, et al. Metagenome-wide analysis of antibiotic resistance genes in a large cohort of human gut microbiota. *Nat Commun* [Internet]. 2013;4:1–7. Available from: <http://dx.doi.org/10.1038/ncomms3151>
37. Casaburi G, Duar RM, Vance DP, Mitchell R, Contreras L, Frese SA, et al. Early-life gut microbiome modulation reduces the abundance of antibiotic-resistant bacteria. *Antimicrob Resist Infect Control*. *Antimicrobial Resistance & Infection Control*; 2019;8:1–18.
38. Mallick H, McIver L, Rahnavard A, Ma S, Zhang Y, Nguyen LH, et al. Maaslin2: Multivariable Association in Population-scale Meta-omics Studies [Internet]. 2020. Available from: <https://huttenhower.sph.harvard.edu/maaslin/>
39. Scholz M, Ward D V., Pasolli E, Tolio T, Zolfo M, Asnicar F, et al. Strain-level microbial epidemiology and population genomics from shotgun metagenomics. *Nat Methods* [Internet]. 2016;13:435–8. Available from: <http://dx.doi.org/10.1038/nmeth.3802>

40. Cao J, Hu Y, Liu F, Wang Y, Bi Y, Lv N, et al. Metagenomic analysis reveals the microbiome and resistome in migratory birds. *Microbiome*. 2020;8:1–18.
41. Shi P, Jia S, Zhang XX, Zhang T, Cheng S, Li A. Metagenomic insights into chlorination effects on microbial antibiotic resistance in drinking water. *Water Res [Internet]*. Elsevier Ltd; 2013;47:111–20. Available from: <http://dx.doi.org/10.1016/j.watres.2012.09.046>
42. Shin NR, Whon TW, Bae JW. Proteobacteria: Microbial signature of dysbiosis in gut microbiota. *Trends Biotechnol [Internet]*. Elsevier Ltd; 2015;33:496–503. Available from: <http://dx.doi.org/10.1016/j.tibtech.2015.06.011>
43. Stecher B, Maier L, Hardt WD. “Blooming” in the gut: How dysbiosis might contribute to pathogen evolution. *Nat Rev Microbiol*. 2013;11:277–84.
44. Doenhardt M, Seipolt B, Mense L, Winkler JL, Thürmer A, Rüdiger M, et al. Neonatal and young infant sepsis by Group B Streptococci and Escherichia coli: a single-center retrospective analysis in Germany—GBS screening implementation gaps and reduction in antibiotic resistance. *Eur J Pediatr. European Journal of Pediatrics*; 2020;
45. Schrag SJ, Farley MM, Petit S, Reingold A, Weston EJ, Pondo T, et al. Epidemiology of invasive early-onset neonatal sepsis, 2005 to 2014. *Pediatrics*. 2016;138:e20162013.
46. Lozupone CA, Stombauch JI, Gordon JI, Jansson JK, Knight R. Diversity, stability and resilience of the human gut microbiota. *Nature*. 2012;489:220–30.
47. Sinha T, Vich Vila A, Garmaeva S, Jankipersadsing SA, Imhann F, Collij V, et al. Analysis of 1135 gut metagenomes identifies sex-specific resistome profiles. *Gut Microbes [Internet]*. Taylor & Francis; 2018;10:358–66. Available from: <https://doi.org/10.1080/19490976.2018.1528822>
48. Schröder W, Sommer H, Gladstone BP, Foschi F, Hellman J, Evengard B, et al. Gender differences in antibiotic prescribing in the community: A systematic review and meta-analysis. *J Antimicrob Chemother*. 2016;71:1800–6.
49. Smith DRM, Dolk FCK, Smieszek T, Robotham J V., Pouwels KB. Understanding the gender gap in antibiotic prescribing: A cross-sectional analysis of English primary care. *BMJ Open*. 2018;8:1–7.
50. Brooks AW, Priya S, Blekhman R, Bordenstein SR. Gut microbiota diversity across ethnicities in the United States. *PLoS Biol*. 2018;16:1–24.
51. Martínez JL, Coque TM, Baquero F. What is a resistance gene? Ranking risk in resistomes. *Nat Rev Microbiol [Internet]*. 2015;13:116–23. Available from: <http://dx.doi.org/10.1038/nrmicro3399>
52. Gilbert-Diamond D, Cottingham KL, Gruber JF, Punshon T, Sayarath V, Gandolfi AJ, et al. Rice consumption contributes to arsenic exposure in US women. *Proc Natl Acad Sci U S A [Internet]*. 2011;108:20656–60. Available from: <https://www.pnas.org/content/pnas/108/51/20656.full.pdf>
53. Bolger AM, Lohse M, Usadel B. Trimmomatic: a flexible trimmer for Illumina sequence data. *Bioinformatics*. 2014;30:2114–20.
54. Franzosa EA, McIver LJ, Rahnnavard G, Thompson LR, Schirmer M, Weingart G, et al. Species-level functional profiling of metagenomes and metatranscriptomes. *Nat Methods [Internet]*. 2018;15:962–8. Available from: <http://dx.doi.org/10.1038/s41592-018-0176-y>

55. Huttenhower Lab. Mid-2017 Comprehensive Antibiotic Resistance Database (CARD) Markers [Internet]. 2017. Available from: <https://huttenhower.sph.harvard.edu/shortbred>
56. McIver LJ, Abu-Ali G, Franzosa EA, Schwager R, Morgan XC, Waldron L, et al. BioBakery: A meta'omic analysis environment. *Bioinformatics*. 2018;34:1235–7.
57. Kolde R. pheatmap: Pretty Heatmaps. R package version 1.0.12. 2019.
58. Lloyd-Price J, Arze C, Ananthakrishnan AN, Schirmer M, Avila-Pacheco J, Poon TW, et al. Multi-omics of the gut microbial ecosystem in inflammatory bowel diseases. *Nature* [Internet]. 2019;569:655–62. Available from: <http://dx.doi.org/10.1038/s41586-019-1237-9>
59. McMurdie PJ, Holmes S. Phyloseq: An R Package for Reproducible Interactive Analysis and Graphics of Microbiome Census Data. *PLoS One*. 2013;8:e61217.
60. Lahti L, Sudarshan S. Tools for microbiome analysis in R. [Internet]. 2017. Available from: <https://microbiome.github.io/tutorials/>
61. Gloor GB, Macklaim JM, Pawlowsky-Glahn V, Egozcue JJ. Microbiome datasets are compositional: And this is not optional. *Front Microbiol* [Internet]. 2017;8:1–6. Available from: <http://dx.doi.org/10.3389/fmicb.2017.02224>
62. Oksanen J, Blanchet FG, Friendly M, Kindt R, Legendre P, McGlinn D, et al. vegan: Community Ecology Package. R package version 2.5.6. 2019.
63. Maamar S Ben, Glawe AJ, Brown TK, Hellgeth N, Hu J, Wang JP, et al. Mobilizable antibiotic resistance genes are present in dust microbial communities. *PLoS Pathog*. 2020;16:1–21.

Figures

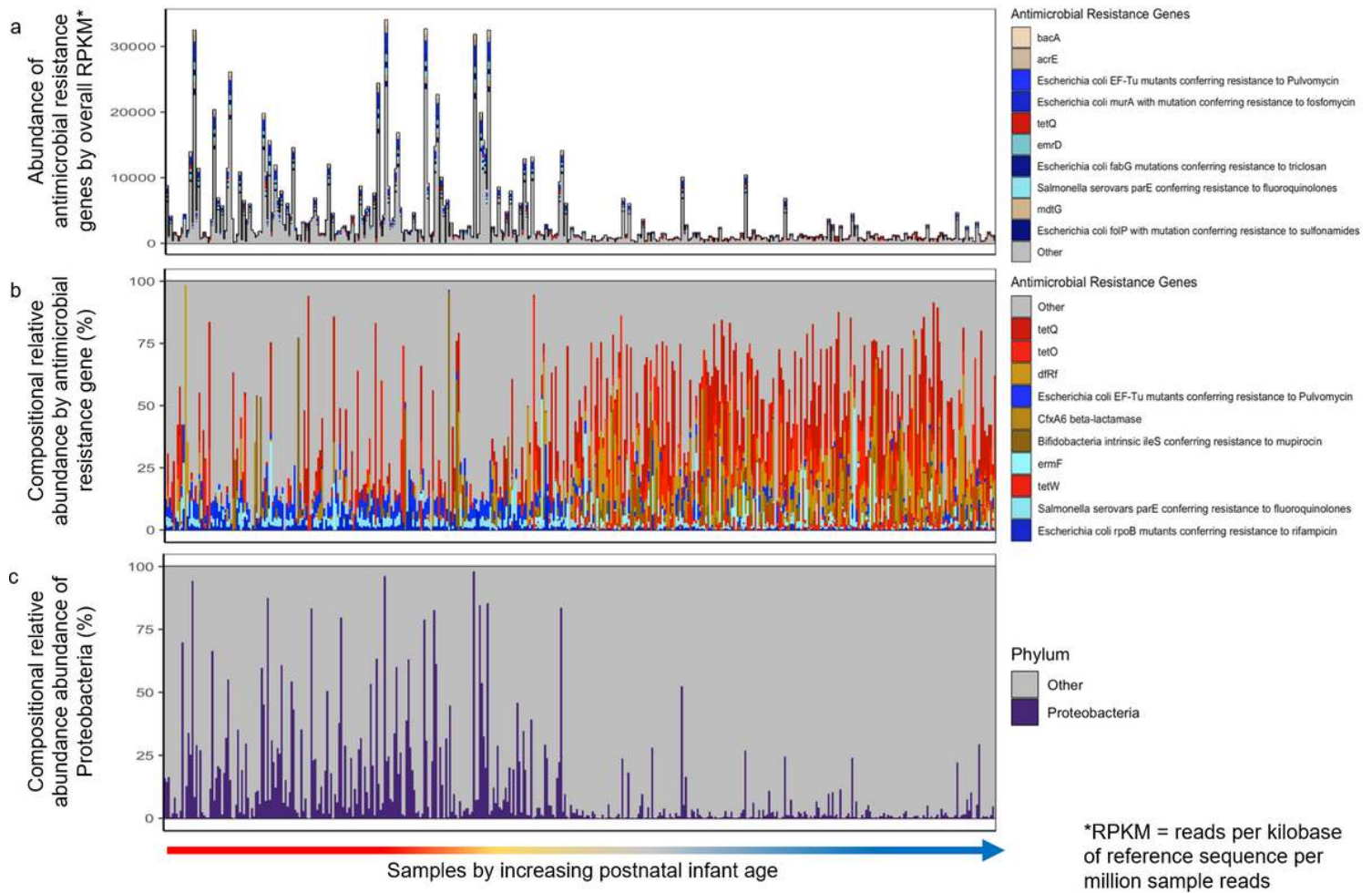


Figure 1

Composition of the resistome and microbiome in 420 infant gut samples. All samples are ordered by increasing sample age at collection. (a) Overall relative abundance (in RPKM) of the 10 antimicrobial resistance genes with the greatest mean abundance across all samples. (b) Compositional relative abundance of the 10 antimicrobial resistance genes with the greatest mean compositional abundance across all samples. (c) Compositional relative abundance of Proteobacteria. For (a) and (b), antimicrobial resistance genes colored in blue are found predominantly or exclusively in *E. coli*, light blue if they are hypothesized to be predominantly associated with *E. coli*, red if they confer resistance to tetracycline, and light brown or beige if they confer resistance to multiple antibiotics.

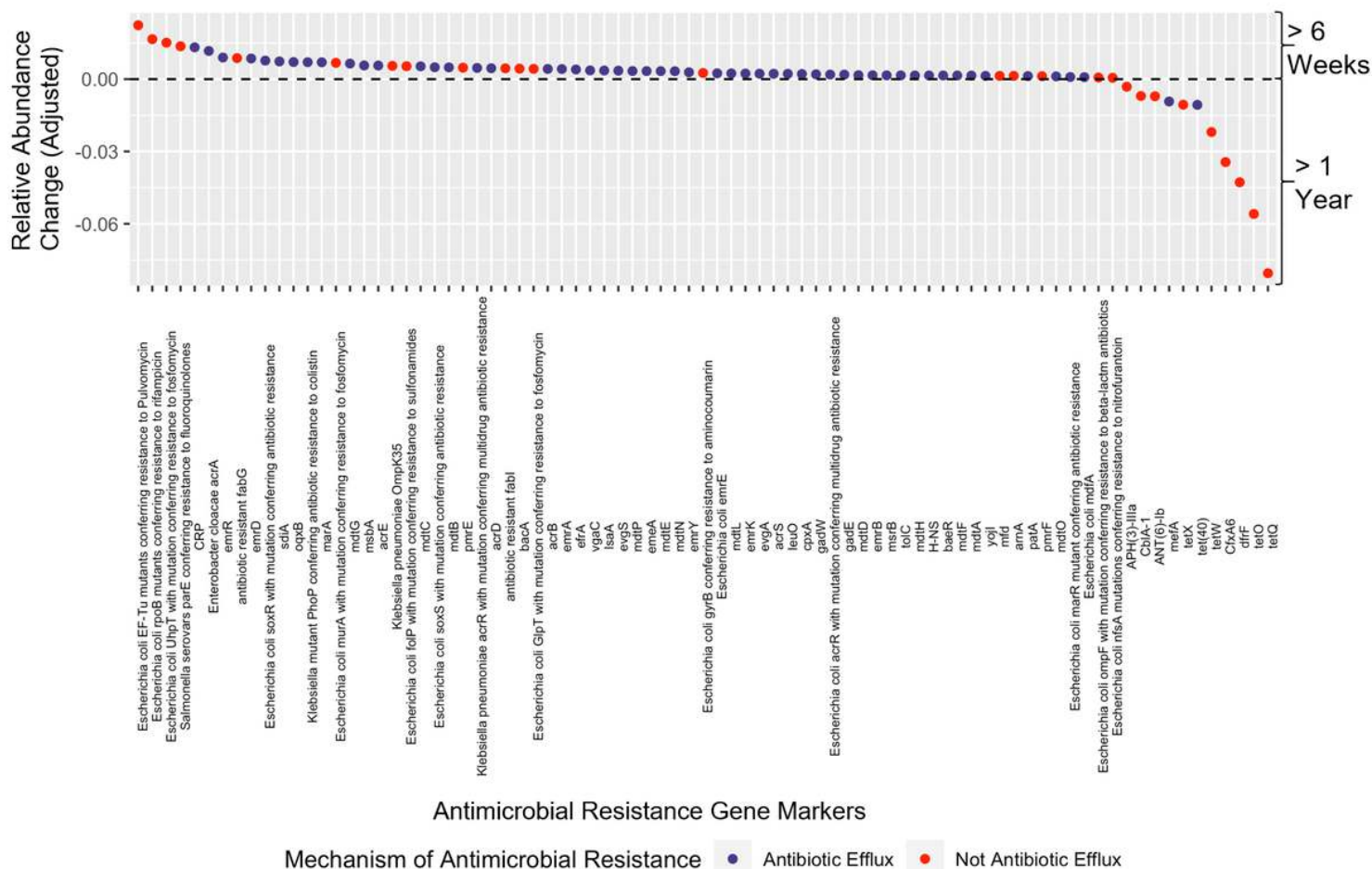
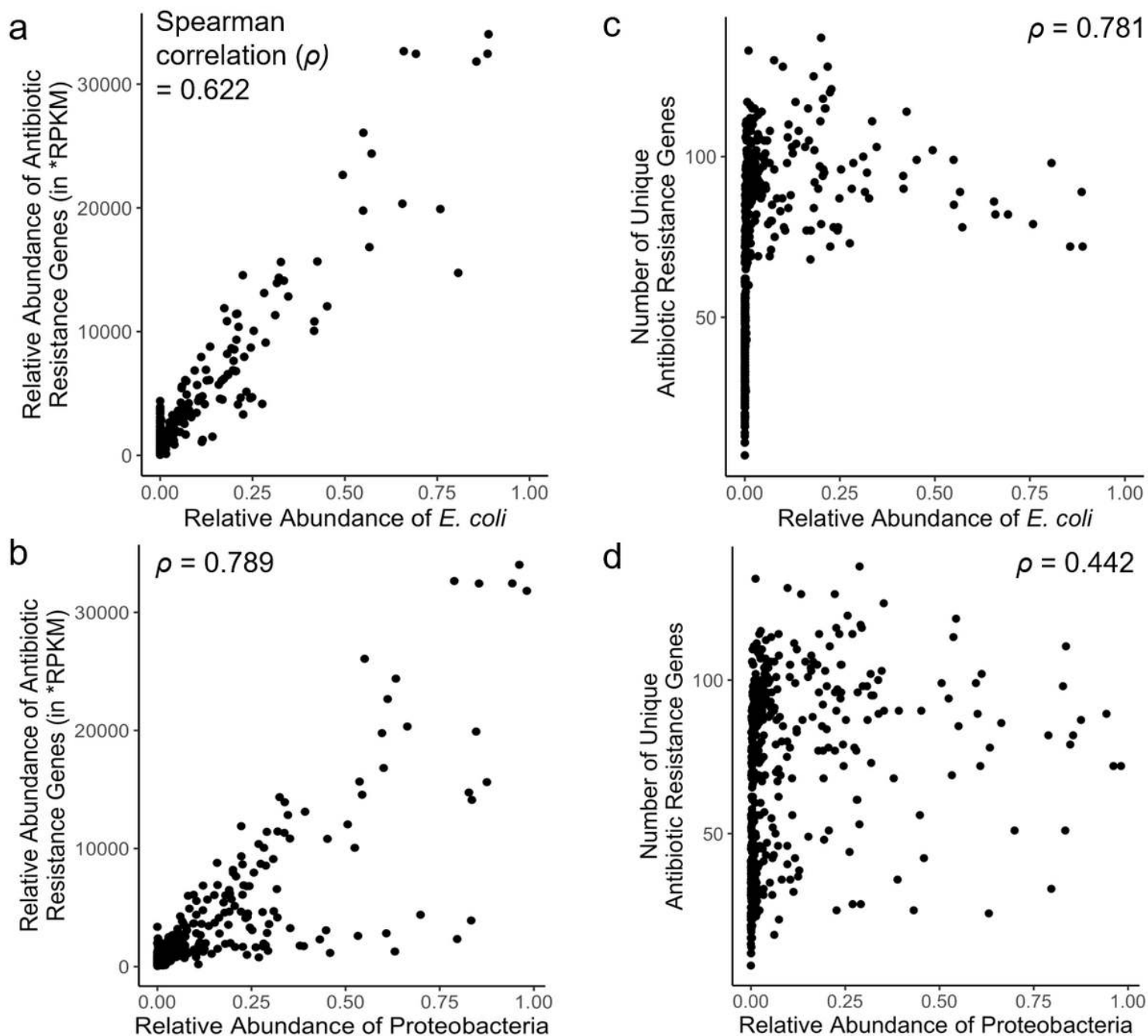


Figure 2

The relative abundance of antimicrobial resistance genes is different at 6 weeks and 1 year. MaAsLin2 was used to test if the compositional relative abundance of ARGs varied by postnatal age of the infant, delivery mode, feeding mode, gestational age at birth, infant sex, and antibiotic use during the infant's initial hospitalization. Using a multiple hypothesis correction [Benjamini-Hochberg $q < 0.01$], 81 antimicrobial resistance genes were differentially abundant between the 6-week and 1-year time points. Antimicrobial resistance genes are colored by mechanism of antibiotic resistance (antibiotic efflux or not) with a greater proportion of genes that work through antibiotic efflux at 6 weeks (chi-square test $p < 0.01$).



*RPKM = reads per kilobase of reference sequence per million sample reads

Figure 3

Scatterplots show the association between highly correlated taxa and overall resistome outcomes. Plots (a) and (b) depict the overall relative abundance of the resistome in RPKM versus the relative abundance of *E. coli* and Proteobacteria with high correlation. The number of unique antimicrobial resistance genes was most correlated with the relative abundance of *E. coli* (c) and less correlated with Proteobacteria relative abundance (d).

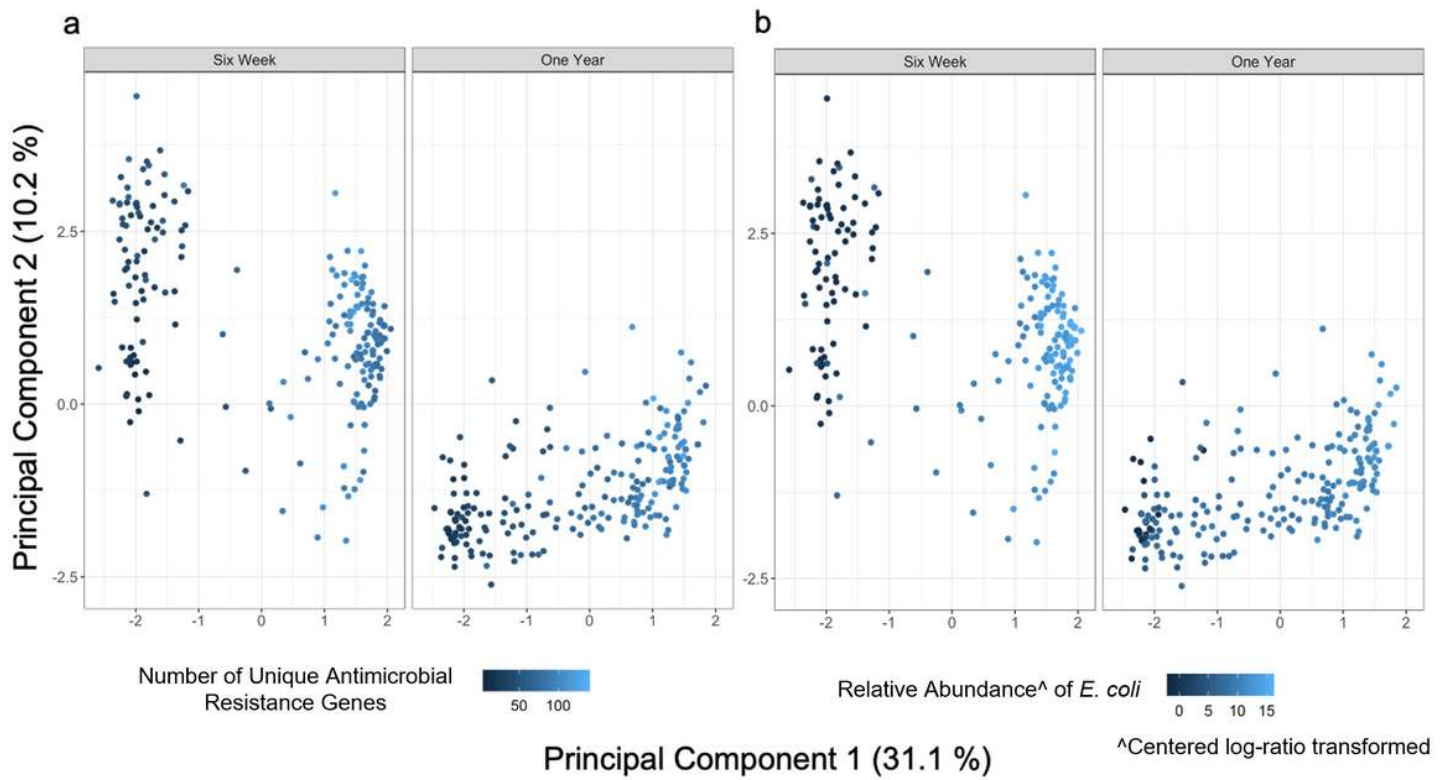


Figure 4

Infant gut sample resistomes are correlated with *E. coli* relative abundance. Principal component analysis (PCA) of centered log-ratio transformed relative abundance of infant gut resistomes by sample colored by (a) the number of unique antimicrobial resistance genes and (b) centered log-ratio transformed *E. coli* relative abundance.

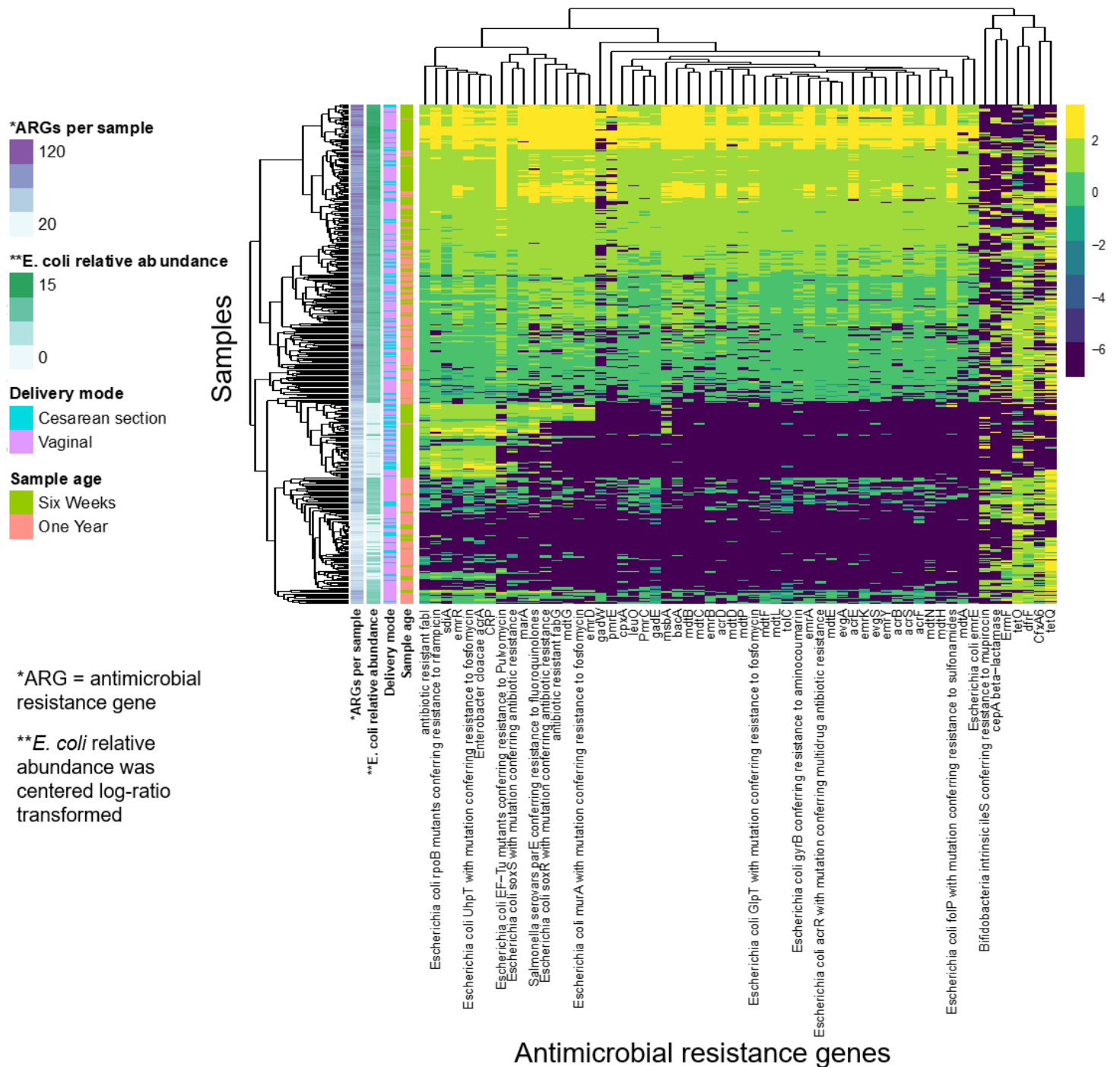


Figure 5

Heat map showing the most abundant antimicrobial resistance genes (ARGs) by overall relative abundance. ARGs (x-axis) have been log-10 transformed and clustered by specific features of the samples (y-axis) including sample age, E. coli relative abundance, delivery mode, and the number of ARGs per sample. ARGs are clustered by the Canberra distance matrix and samples are clustered using the Euclidean distance.

Supplementary Files

This is a list of supplementary files associated with this preprint. Click to download.

- [SupplementDescriptiveResistome.docx](#)
- [SupplementaryTables19DescriptiveResistome.xlsx](#)