

The Interaction between HLA-DRB1 and Smoking in Parkinson's Disease Revisited

Author

Domenighetti, Cloé, Douillard, Venceslas, Sugier, Pierre-Emmanuel, Sreelatha, Ashwin Ashok Kumar, Schulte, Claudia, Grover, Sandeep, May, Patrick, Bobbili, Dheeraj R, Radivojkov-Blagojevic, Milena, Lichtner, Peter, Singleton, Andrew B, Hernandez, Dena G, Edsall, Connor, Gourraud, Pierre-Antoine, Mellick, George D, et al.

Published

2022

Journal Title

Movement Disorders

Version

Version of Record (VoR)

DOI

<https://doi.org/10.1002/mds.29133>

Copyright Statement

© 2022 The Authors. Movement Disorders published by Wiley Periodicals LLC on behalf of International Parkinson and Movement Disorder Society. This is an open access article under the terms of the Creative Commons Attribution-NonCommercial License, which permits use, distribution and reproduction in any medium, provided the original work is properly cited and is not used for commercial purposes.

Downloaded from

<http://hdl.handle.net/10072/416164>

Griffith Research Online

<https://research-repository.griffith.edu.au>

BRIEF REPORT

The Interaction between *HLA-DRB1* and Smoking in Parkinson's Disease Revisited

Cloé Domenighetti, PhD,¹ Venceslas Douillard, PhD,² Pierre-Emmanuel Sugier, PhD,¹ Ashwin Ashok Kumar Sreelatha, PhD candidate,³ Claudia Schulte, MSc,^{4,5} Sandeep Grover, PhD,³ Patrick May, PhD,⁶ Dheeraj R. Bobbili, PhD,⁶ Milena Radivojkov-Blagojevic, MSc,⁷ Peter Lichtner, PhD,⁷ Andrew B. Singleton, PhD,^{8,9} Dena G. Hernandez, PhD,⁸ Connor Edsall, PhD candidate,⁸ Pierre-Antoine Gourraud, PhD,² George D. Mellick, PhD,¹⁰ Alexander Zimprich, MD,¹¹ Walter Pirker, MD,¹² Ekaterina Rogaeva, PhD,¹³ Anthony E. Lang, MD,^{13,14,15,16} Sulev Koks, MD, PhD,^{17,18} Pille Taba, MD, PhD,^{19,20} Suzanne Lesage, PhD,²¹ Alexis Brice, MD,²¹ Jean-Christophe Corvol, MD, PhD,^{21,22} Marie-Christine Chartier-Harlin, PhD,²³ Eugénie Mutez, MD,²³ Kathrin Brockmann, MD,^{4,5} Angela B. Deuschländer, MD,^{24,25,26} Georges M. Hadjigeorgiou, MD,^{27,28} Efthimos Dardiotis, MD,²⁷ Leonidas Stefanis, MD, PhD,^{29,30} Athina Maria Simitsi, MD, PhD,²⁹ Enza Maria Valente, MD, PhD,^{31,32} Simona Petrucci, MD, PhD,^{33,34} Stefano Duga, PhD,^{35,36} Letizia Straniero, PhD,³⁵ Anna Zecchinelli, MD,³⁷ Gianni Pezzoli, MD,³⁸ Laura Brighina, MD, PhD,^{39,40} Carlo Ferrarese, MD, PhD,^{39,40} Grazia Annesi, PhD,⁴¹ Andrea Quattrone, MD,⁴² Monica Gagliardi, PhD,⁴³ Hirotaka Matsuo, MD, PhD,⁴⁴ Akiyoshi Nakayama, PhD,⁴⁴ Nobutaka Hattori, MD, PhD,⁴⁵ Kenya Nishioka, MD, PhD,⁴⁵ Sun Ju Chung, MD, PhD,⁴⁶ Yun Joong Kim, MD, PhD,⁴⁷ Pierre Kolber, MD,⁴⁸ Bart P.C. van de Warrenburg, MD, PhD,⁴⁹ Bastiaan R. Bloem, MD, PhD,⁴⁹ Jan Aasly, MD,⁵⁰ Mathias Toft, MD, PhD,⁵¹ Lasse Pihlstrøm, MD, PhD,⁵¹ Leonor Correia Guedes, MD, PhD,^{52,53} Joaquim J. Ferreira, MD, PhD,^{52,54} Soraya Bardien, PhD,⁵⁵ Jonathan Carr, PhD,⁵⁶

Eduardo Tolosa, MD, PhD,^{57,58} Mario Ezquerra, PhD,⁵⁹ Pau Pastor, MD, PhD,^{60,61} Monica Diez-Fairen, MSc,^{60,61} Karin Wirdefeldt, MD, PhD,^{62,63} Nancy L. Pedersen, PhD,⁶³ Caroline Ran, PhD,⁶⁴ Andrea C. Belin, PhD,⁶⁴ Andreas Puschmann, MD, PhD,⁶⁵ Emil Ygland Rödström, MD,⁶⁵ Carl E. Clarke, MD,⁶⁶ Karen E. Morrison, MD,⁶⁷ Manuela Tan, PhD,⁶⁸ Dimitri Krainc, MD, PhD,⁶⁹ Lena F. Burbulla, PhD,^{69,70,71,72} Matt J. Farrer, PhD,⁷³ Rejko Krüger, MD,^{4,5} Thomas Gasser, MD,^{4,5} Manu Sharma, PhD,³ Nicolas Vince, PhD,² Alexis Elbaz, MD, PhD,^{1*} on behalf of the Comprehensive Unbiased Risk Factor Assessment for Genetics and Environment in Parkinson's Disease (Courage-PD) Consortium

¹ Université Paris-Saclay, UVSQ, Univ. Paris-Sud, Inserm, Team "Exposome, Heredity, Cancer, and Health", CESP, Villejuif, France
² Nantes Université, INSERM, Center for Research in Transplantation and Translational Immunology, Nantes, France
³ Centre for Genetic Epidemiology, Institute for Clinical Epidemiology, and Applied Biometry, University of Tübingen, Tübingen, Germany
⁴ Department for Neurodegenerative Diseases, Hertie Institute for Clinical Brain Research, University of Tübingen, Tübingen, Germany
⁵ German Center for Neurodegenerative Diseases (DZNE), Tübingen, Germany
⁶ Translational Neuroscience, Luxembourg Centre for Systems Biomedicine (LCSB), University of Luxembourg, Esch-sur-Alzette, Luxembourg
⁷ Institute of Human Genetics, Helmholtz Zentrum München, Neuherberg, Germany
⁸ Molecular Genetics Section, Laboratory of Neurogenetics, NIA, NIH, Bethesda, Maryland, USA
⁹ Center For Alzheimer's and Related Dementias, NIA, NIH, Bethesda, Maryland, USA
¹⁰ Griffith Institute for Drug Discovery, Griffith University, Nathan, Queensland, Australia
¹¹ Department of Neurology, Medical University of Vienna, Wien, Austria
¹² Department of Neurology, Klinik Ottakring, Vienna, Austria
¹³ Tanz Centre for Research in Neurodegenerative Diseases, University of Toronto, Toronto, Ontario, Canada
¹⁴ Edmond J. Safra Program in Parkinson's Disease, Morton and Gloria Shulman Movement Disorders Clinic, Toronto Western Hospital, UHN, Toronto, Ontario, Canada
¹⁵ Division of Neurology, University of Toronto, Toronto, Ontario, Canada
¹⁶ Krembil Brain Institute, Toronto, Ontario, Canada
¹⁷ Centre for Molecular Medicine and Innovative Therapeutics,

This is an open access article under the terms of the [Creative Commons Attribution-NonCommercial](#) License, which permits use, distribution and reproduction in any medium, provided the original work is properly cited and is not used for commercial purposes.

*Correspondence to: Dr. Alexis Elbaz, INSERM U1018 CESP, Hôpital Paul Brousse, Bâtiment 15/16, 16 avenue Paul Vaillant Couturier, 94807 Villejuif Cedex, France; E-mail: alexis.elbaz@inserm.fr

Relevant conflicts of interest/financial disclosures: A.B.S. reports grants from Department of Defense, during the conduct of the study and grants from The Michael J. Fox Foundation, outside the submitted work. W.P. reports personal fees from Grünenthal, personal fees from AbbVie, personal fees from AOP Orphan, personal fees from Zambon, personal fees and other from Boehringer Ingelheim, personal fees from Stada, and personal fees from UCB Pharma, outside the submitted work. A.E.L. reports personal fees from AbbVie, personal fees from AFFiRis, personal fees from Janssen, personal fees from

Biogen, personal fees from Merck, personal fees from Sun Pharma, personal fees from Corticobasal Solutions, personal fees from Sunovion, personal fees from Paladin, personal fees from Lilly, personal fees from Medtronic, personal fees from Theravance, personal fees from Lundbeck, personal fees from Retrophin, personal fees from Roche, and personal fees from PhotoPharmics, outside the submitted work. A. B. reports grants from France Parkinson + FRC, grants from Agence Nationale de Recherche (ANR)-EPIG, grants from ANR-Joint Programming for Neurodegenerative Diseases (JPND), grants from Roger de Spoelberch Foundation (RDS), grants from France Alzheimer, grants from Institut de France, grants from ANR-EPIG, and grants from FMR (maladies rares), outside the submitted work. J.C.C. reports grants from The Michael J. Fox Foundation, Sanofi, and served in advisory boards for Air Liquide, Biogen, Denali, Ever Pharma, Idorsia, Prevail Therapeutic, Theranexus, and UCB, outside the submitted work. M.C.C.H. reports grants from France Parkinson, grants from ANR (MetDePaDi, Synapark), grant from ANR-JPND (TransNeuro), grants from Fondation de France, grants from The Michael J. Fox Foundation, outside the submitted work.

Murdoch University, Murdoch, Australia¹⁸Perron Institute for Neurological and Translational Science, Nedlands, Western Australia, Australia¹⁹Department of Neurology and Neurosurgery, University of Tartu, Tartu, Estonia²⁰Neurology Clinic, Tartu University Hospital, Tartu, Estonia²¹Department of Neurologie, Sorbonne Université, Institut du Cerveau - Paris Brain Institute - ICM, INSERM, CNRS, Assistance Publique Hôpitaux de Paris, Paris, France²²Assistance Publique Hôpitaux de Paris, Department of Neurology, CIC Neurosciences, Paris, France²³Univ. Lille, Inserm, CHU Lille, UMR-S 1172 - LiNCog- Centre de Recherche Lille Neurosciences and Cognition, Lille, France²⁴Department of Neurology, Ludwig Maximilians University of Munich, Munich, Germany²⁵Department of Neurology, Max Planck Institute of Psychiatry, Munich, Germany²⁶Department of Neurology and Department of Clinical Genomics, Mayo Clinic Florida, Jacksonville, Florida, USA²⁷Department of Neurology, Laboratory of Neurogenetics, University of Thessaly, University Hospital of Larissa, Larissa, Greece²⁸Department of Neurology, Medical School, University of Cyprus, Nicosia, Cyprus²⁹1st Department of Neurology, Eginition Hospital, Medical School, National and Kapodistrian University of Athens, Athens, Greece³⁰Center of Clinical Research, Experimental Surgery, and Translational Research, Biomedical Research Foundation of the Academy of

Athens, Athens, Greece³¹Department of Molecular Medicine, University of Pavia, Pavia, Italy³²Istituto di Ricovero e Cura a Carattere Scientifico (IRCCS) Mondino Foundation, Pavia, Italy³³UOC Medical Genetics and Advanced Cell Diagnostics, S. Andrea University Hospital, Rome, Italy³⁴Department of Clinical and Molecular Medicine, University of Rome, Rome, Italy³⁵Department of Biomedical Sciences, Humanitas University, Milan, Italy³⁶Humanitas Clinical and Research Center, IRCCS, Milan, Italy³⁷Parkinson Institute, Azienda Socio Sanitaria Territoriale (ASST) Gaetano Pini/CTO, Milan, Italy³⁸Parkinson Institute, Fontazione Grigioni, Milan, Italy³⁹Department of Neurology, San Gerardo Hospital, Monza, Italy⁴⁰Department of Medicine and Surgery and Milan Center for Neuroscience, University of Milano Bicocca, Milan, Italy⁴¹Institute for Biomedical Research and Innovation, National Research Council, Cosenza, Italy⁴²Institute of Neurology, Magna Graecia University, Catanzaro, Italy⁴³Institute of Molecular Bioimaging and Physiology National Research Council, Catanzaro, Italy⁴⁴Department of Integrative Physiology and Bio-Nano Medicine, National Defense Medical College, Saitama, Japan⁴⁵Department of Neurology, Juntendo University School of Medicine, Tokyo, Japan⁴⁶Department of Neurology, Asan Medical Center, University of Ulsan College of Medicine, Seoul, South Korea⁴⁷Department of Neurology, Yonsei University College of Medicine,

K.B. reports grants from The Michael J. Fox Foundation, grants from BMBF; personal fees from Zambon, UCB, and Abbvie; and grants from University of Tuebingen, outside the submitted work. L.S. has received the following grants over the past year: PPMI2 (supported by The Michael J. Fox Foundation), IMPRIND-IMI2 Number 116060 (EU, H2020), “Transferring autonomous and non-autonomous cell degeneration 3D models between EU and USA for development of effective therapies for neurodegenerative diseases (ND)-CROSS NEUROD” (H2020-EU 1.3.3., 778003), “Chaperone-Mediated Autophagy in Neurodegeneration” (Hellenic Foundation for Research and Innovation grant HFRI-FM17-3013), and “CMA as a Means to Counteract α -Synuclein Pathology in Non-Human Primates” grant by The Michael J. Fox Foundation (Collaborator). He is co-head and PI at the NKUA of the General Secretariat of Research and Technology (GSRT)-funded grant “National Network of Precision Medicine for Neurodegenerative Diseases.” He has served on an Advisory Board for AbbVie, ITF Hellas, and Biogen and has received honoraria from Abbvie and Sanofi. There are no specific disclosures related to the current work. E.M.V. serves as Associate Editor of Journal of Medical Genetics, Section Editor of Pediatric Research, Member of the Editorial Board of Movement Disorders Clinical Practice; grants from the Italian Ministry of Health, CARIPLO Foundation, Pierfranco and Luisa Mariani Foundation, and Telethon Foundation Italy, outside the submitted work. N.H. reports grants from Japan Agency for Medical Research and Development (AMED), Japan Society for the Promotion of Science (JSPS), and the Ministry of Education Culture, Sports, Science, and Technology Japan; grant-in-aid for Scientific Research on Innovative Areas; personal fees and other from Dai-Nippon Sumitomo Pharma, Takeda Pharmaceutical, Kyowa Kirin, GSK K.K., Nippon Boehringer Ingelheim, FP Pharmaceutical Corporation, Eisai, Kissei Pharmaceutical Company, Nihon Medi-physics, Novartis Pharma K.K., Biogen Idec Japan, and AbbVie, from Medtronic, other from Boston Scientific Japan, personal fees and other from Astellas Pharma, grants and other from Ono Pharmaceutical, other from Nihon Pharmaceutical, other from Asahi Kasei Medical, other from Mitsubishi Tanabe Pharma Corporation, personal fees and other from Daiichi Sankyo, other from OHARA Pharmaceutical, other from Meiji Seika Pharma, personal fees from Sanofi K.K., personal fees from Pfizer Japan, personal fees from Alexion Pharmaceuticals, personal fees from Mylan N.V., personal fees from MSD K.K., personal fees from Lund Beck Japan, and other from Hisamitsu Pharmaceutical, outside the submitted work. K.N. reports grants from Japan Society for the Promotion of Science (JSPS), outside the submitted work. P.K. reports other from Centre Hospitalier de Luxembourg; University of Luxembourg, grants from Fonds National de Recherche (FNR), and from null, outside the submitted work. B.P.C.W. reports grants from ZonMW, grants from Hersenstichting, grants from uniQure, other from uniQure, grants from

Gosswiler Fund, and grants from Radboud university medical centre, outside the submitted work. B.R.B. reports grants from Netherlands Organization for Health Research and Development, grants from The Michael J. Fox Foundation, grants from Parkinson Vereniging, grants from Parkinson Foundation, grants from Gatsby Foundation, grants from Verily Life Sciences, grants from Horizon 2020, grants from Topsector Life sciences and Health, grants from Stichting Parkinson Fonds, grants from UCB, grants from AbbVie, during the conduct of the study; personal fees from Biogen, personal fees from AbbVie, personal fees from Walk with Path, personal fees from UCB, personal fees from AbbVie, personal fees from Zambon, personal fees from Bial, personal fees from Roche, outside the submitted work; and serves as editor-in-chief of the Journal of Parkinson’s Disease and serves on the editorial board of Practical Neurology and Digital Biomarkers. M. Toft reports grants from Research Council of Norway, during the conduct of the study; grants from South-Eastern Norway Regional Health Authority, and grants from The Michael J. Fox, outside the submitted work. L.P. reports grants from Norwegian Health Association, and grants from South-Eastern Norway Regional Health Authority, outside the submitted work. J.J.F. reports grants from GlaxoSmithKline, Grunenthal, Fundação MSD (Portugal), TEVA, MSD, Allergan, Novartis, Medtronic, GlaxoSmithKline, Novartis, Lundbeck, Solvay, BIAL, Merck-Serono, Merz, Ipsen, Biogen, Acadia, Abbvie, and Sunovion Pharmaceuticals, personal fees from Faculdade de Medicina de Lisboa, Campus Neurológico Sênior (CNS), BIAL, and Novartis outside the submitted work. E.T. received honoraria for consultancy from TEVA, Bial, Prevail Therapeutics, Boehringer Ingelheim, Roche, and BIOGEN and has received funding for research from Spanish Network for Research on Neurodegenerative Disorders (CIBERNED), Instituto Carlos III (ISCIII), and The Michael J. Fox Foundation for Parkinson’s Research. K.W. reports grants from Swedish Research Council during the conduct of the study. N.L.P. reports grants from Swedish Research Council during the conduct of the study. A.P. reports grants from Parkinsonfonden (The Swedish Parkinson Foundation), grants from ALF (Swedish Government), grants from Region Skåne, Sweden, Skåne University Hospital, Hans-Gabriel och Trolle Wachtmeister Stiftelse för Medicinsk Forskning, Sweden, and Multipark—a strategic research environment at Lund University, during the conduct of the study; and personal fees from Elsevier, outside the submitted work. E.Y.R. reports grants from ALF (Swedish Government), Hans-Gabriel och Trolle Wachtmeister Stiftelse för Medicinsk Forskning, Sweden, and Demensfonden (all in Sweden). M. Tan reports grants from Parkinson’s United Kingdom (UK), other from The Michael J. Fox Foundation and University College London, outside the submitted work. R.K. reports grants from FNR and the German Research Council (DFG), non-financial support from AbbVie, Zambon, during the conduct of the study; personal fees from University of Luxembourg; Luxembourg

Seoul, South Korea⁴⁸Neurology, Centre Hospitalier de Luxembourg, Luxembourg, Luxembourg⁴⁹Donders Institute for Brain, Cognition and Behaviour, Department of Neurology, Radboud University Medical Centre, Nijmegen, The Netherlands⁵⁰Department of Neurology, St Olav's Hospital and Norwegian University of Science and Technology, Trondheim, Norway⁵¹Department of Neurology, Oslo University Hospital, Oslo, Norway⁵²Instituto de Medicina Molecular João Lobo Antunes, Faculdade de Medicina, Universidade de Lisboa, Lisbon, Portugal⁵³Department of Neurosciences and Mental Health, Neurology, Hospital de Santa Maria, Centro Hospitalar Universitário Lisboa Norte (CHULN), Lisbon, Portugal⁵⁴Laboratory of Clinical Pharmacology and Therapeutics, Faculdade de Medicina, Universidade de Lisboa, Lisbon, Portugal⁵⁵Division of Molecular Biology and Human Genetics, Department of Biomedical Sciences, Faculty of Medicine and Health Sciences, Stellenbosch University, Stellenbosch, South Africa⁵⁶Division of Neurology, Department of Medicine, Faculty of Medicine and Health Sciences, Stellenbosch University, Stellenbosch, South Africa⁵⁷Parkinson's Disease and Movement Disorders Unit, Neurology Service, Hospital Clínic de Barcelona, Institut d'Investigacions Biomèdiques August Pi i Sunyer (IDIBAPS), University of Barcelona, Barcelona, Spain⁵⁸Centro de Investigación Biomédica en Red sobre Enfermedades Neurodegenerativas (CIBERNED: CB06/05/0018-ISCIII) Barcelona, Barcelona, Spain⁵⁹Lab of Parkinson Disease and Other Neurodegenerative Movement Disorders, Institut d'Investigacions Biomèdiques August Pi i Sunyer (IDIBAPS), Institut de Neurociències, Universitat de Barcelona, Barcelona, Catalonia,

Spain⁶⁰Fundació per la Recerca Biomèdica i Social Mútua Terrassa, Barcelona, Spain⁶¹Movement Disorders Unit, Department of Neurology, Hospital Universitari Mutua de Terrassa, Barcelona, Spain⁶²Department of Clinical Neuroscience, Karolinska Institutet, Stockholm, Sweden⁶³Department of Medical Epidemiology and Biostatistics, Karolinska Institutet, Stockholm, Sweden⁶⁴Department of Neuroscience, Karolinska Institutet, Stockholm, Sweden⁶⁵Department of Clinical Sciences Lund, Neurology, Lund University, Skåne University Hospital, Lund, Sweden⁶⁶University of Birmingham and Sandwell and West Birmingham Hospitals NHS Trust, Birmingham, United Kingdom⁶⁷Faculty of Medicine, Health and Life Sciences, Queens University, Belfast, United Kingdom⁶⁸Department of Clinical and Movement Neurosciences, UCL Queen Square Institute of Neurology, University College London, London, United Kingdom⁶⁹Department of Neurology, Northwestern University Feinberg School of Medicine, Chicago, Illinois, USA⁷⁰Metabolic Biochemistry, Biomedical Center (BMC), Faculty of Medicine, Ludwig-Maximilians-Universität München, Munich, Germany⁷¹Munich Cluster for Systems Neurology (SyNergy), Munich, Germany⁷²German Center for Neurodegenerative Diseases (DZNE), Munich, Germany⁷³Department of Neurology, McKnight Brain Institute, University of Florida, Gainesville, Florida, USA⁷⁴Parkinson's Research Clinic, Centre Hospitalier de Luxembourg, Luxembourg, Luxembourg⁷⁵Transversal Translational Medicine, Luxembourg Institute of Health (LIH), Strassen, Luxembourg

Institute of Health; Centre Hospitalier de Luxembourg, grants from Fonds National de Recherche, Luxembourg (FNR), grants from FNR, grants from FNR, Luxembourg/DFG, grants from FNR, Luxembourg (FNR), personal fees from Desitin/Zambon, personal fees from AbbVie, and personal fees from Medtronic, outside the submitted work. T.G. reports personal fees from UCB Pharma, Novartis, Teva, and MedUpdate, grants from The Michael J. Fox Foundation for Parkinson's Research, Bundesministerium für Bildung und Forschung (BMBF), and DFG, other from JPND program, funded by the European Commission, outside the submitted work; in addition, T.G. has a patent number: EP1802749 (A2) *KASPP (LRRK2)* gene, its production and use for the detection and treatment of neurodegenerative disorders issued. A. E. reports grants from ANR, The Michael J. Fox foundation, Plan Ecophyto (French Ministry of Agriculture), and France Parkinson, outside the submitted work.

Funding agencies: This study used data from the Comprehensive Unbiased Risk Factor Assessment for Genetics and Environment in Parkinson's Disease (Courage-PD) consortium, conducted under a partnership agreement between 35 studies. The Courage-PD consortium is supported by the EU JPND research (<https://www.neurodegenerationresearch.eu/initiatives/annual-calls-for-proposals/closed-calls/risk-factors-2012/risk-factor-call-results/courage-pd/>). C.D. is the recipient of a doctoral grant from Université Paris-Saclay, France. P.M. was funded by the FNR, Luxembourg as part of the National Centre of Excellence in Research on Parkinson's disease (NCER-PD, FNR11264123), and the DFG Research Units FOR2715 (INTER/DFG/17/11583046) and FOR2488 (INTER/DFG/19/14429377). A.B.S., D.G.H., and C.E. are funded by the Intramural Research Program of the

National Institute on Aging, National Institutes of Health, Department of Health and Human Services, project ZO1 AG000949. E.R. is funded by the Canadian Consortium on Neurodegeneration in Aging. S.K. is funded by MSWA. P.T. is the recipient of an Estonian Research Council Grant PRG957. E.M.V. is funded by the Italian Ministry of Health (Ricerca Corrente 2021). S.B. and J.C. are supported by grants from the National Research Foundation of South Africa (106052); the South African Medical Research Council (Self-Initiated Research Grant); and Stellenbosch University, South Africa; they also acknowledge the support of the NRF-DST Centre of Excellence for Biomedical Tuberculosis Research; South African Medical Research Council Centre for Tuberculosis Research; Division of Molecular Biology and Human Genetics, Faculty of Medicine and Health Sciences, Stellenbosch University, Cape Town. P.P. and M.D.F. have received funding from the Spanish Ministry of Science and Innovation (SAF2013-47939-R). K.W. and N.L.P. are funded by the Swedish Research Council (K2002-27X-14,056-02B, 521-2010-2479, 521-2013-2488, and 2017-02175). N.L.P. is funded by the National Institutes of Health (ES10758 and AG 08724). C.R. is funded by the Märta Lundkvist Foundation, Swedish Brain Foundation, Karolinska Institutet Research Fund. A.C.B. from the Swedish Brain Foundation, Swedish Research Council, and Karolinska Institutet Research Funds. M.T. is funded by the Parkinson's UK. M.S. was supported by the grants from the German Research Council (DFG/SH 599/6-1), MSA Coalition, and The Michael J. Fox Foundation (USA Genetic Diversity in PD Program: GAP-India Grant ID: 17473). P.G. GEN sample collection was funded by the MRC and UK Medical Research Council (CEC, KEM). The sponsors had no role in the study design, data collection, data analysis, data interpretation, the writing of the report, or the decision to submit the paper for publication.

ABSTRACT: Background: Two studies that examined the interaction between *HLA-DRB1* and smoking in Parkinson's disease (PD) yielded findings in opposite directions.

Objective: To perform a large-scale independent replication of the *HLA-DRB1* × smoking interaction.

Methods: We genotyped 182 single nucleotide polymorphism (SNPs) associated with smoking initiation in 12 424 cases and 9480 controls to perform a Mendelian randomization (MR) analysis in strata defined by *HLA-DRB1*.

Results: At the amino acid level, a valine at position 11 (V11) in *HLA-DRB1* displayed the strongest association with PD. MR showed an inverse association between genetically predicted smoking initiation and PD only in absence of V11 (odds ratio, 0.74, 95% confidence interval, 0.59–0.93, $P_{\text{Interaction}} = 0.028$). *In silico* predictions of the influence of V11 and smoking-induced modifications of α -synuclein on binding affinity showed findings consistent with this interaction pattern.

Conclusions: Despite being one of the most robust findings in PD research, the mechanisms underlying the inverse association between smoking and PD remain unknown. Our findings may help better understand this association. © 2022 The Authors. *Movement Disorders* published by Wiley Periodicals LLC on behalf of International Parkinson and Movement Disorder Society

Key Words: Parkinson's disease; smoking; gene-environment interaction; HLA

Genome-wide association studies (GWAS) in Parkinson's disease (PD) identified an association with the human leucocyte antigen (*HLA*) region, in particular with *HLA-DRB1*. Hollenbach et al¹ reported an inverse association of PD with the shared epitope (SE), a combination of amino acids (AA) coded by *HLA-DRB1*, only in the presence of a valine at position 11 (V11). The strongest association in a cross-ethnic GWAS meta-analysis was an inverse association with a histidine at position 13 (H13) in *HLA-DRB1*, strongly correlated with V11.² The latest study, with some overlap with the previous two, highlighted three AA (V11, H13, and H33) encoded by *HLA-DRB1* inversely associated with PD.³

Following studies showing interactions between smoking and *HLA-DRB1* in other conditions,^{4,6} Chuang et al⁷ genotyped one single nucleotide polymorphism (SNP) in the *HLA-DRB1* region whose minor G allele is inversely associated with PD (2056 cases, 2723 controls) and reported a significant positive interaction between self-reported smoking and rs660895-G: the inverse

association between smoking and PD was stronger in carriers of the AA genotype compared to G-allele carriers.⁷ Based on a smaller selected sample (837 cases, 918 controls), the study that identified an inverse association of the SE and V11 combination (SE+V11+) with PD also showed an interaction with smoking, but in the opposite direction: the inverse association between smoking and PD was restricted to SE+V11+ carriers.¹ The authors hypothesized that post-translational modifications of α -synuclein induced by smoking (citruination/homocitruination) explained this interaction.

We performed a large-scale independent replication of the *HLA-DRB1* × smoking interaction by performing a Mendelian randomization (MR) analysis using smoking predisposing genes as instrumental variables in strata defined by *HLA-DRB1*.

Subjects and Methods

Courage-PD

The Comprehensive Unbiased Risk Factor Assessment for Genetics and Environment in Parkinson's Disease (Courage-PD) consortium pooled individual-level data from 35 studies and used the Neurochip array to genotype participants (Supplementary Appendix S1). Analyses are based on 26 studies with at least 50 cases or controls of European descent (12 424 cases, 9480 controls); participants' characteristics are shown in Supplementary Table S1. Additional methods on genotyping and imputation of *HLA* alleles/haplotypes/AA are available as Supplementary Appendix S1. All studies were approved by local ethical committees following procedures of each country.

Smoking Initiation: Two-Sample Mendelian Randomization

Because self-reported smoking was not available in most studies, we used SNPs associated with smoking initiation to perform two-sample MR.⁸ Summary statistics for the association between SNPs and smoking initiation (182 SNPs independently associated at $P < 5 \times 10^{-8}$) came from the GWAS and Sequencing Consortium of Alcohol and Nicotine use ($n = 1\,232\,091$, European descent) (Supplementary Appendix S1),⁹ and those for associations with PD came from Courage-PD (Supplementary Table S2).

In Silico Prediction of Binding Affinity of *HLA-DRB1* Alleles to α -Synuclein

We assessed the binding affinity (nM) of *HLA-DRB1* alleles to α -synuclein derived peptides using NetMHCIIpan 4.0 and predicted whether peptides are strong, weak, or non-binders.¹⁰ After targeting 607 four-digit *HLA-DRB1* alleles, we restricted our analyses to 34 alleles observed in Courage-PD. Of 126 α -synuclein derived peptides,¹ we retained 96 peptides with lysine residues that can be

homocitrullinated to examine the role of smoking-related post-translational modifications. We also performed analyses restricted to a single peptide (Tyrosine 39, Y39) that induces T cell responses in PD patients¹¹ and was previously used for binding affinity predictions.²

Statistical Analyses

We used SAS9.4 (SAS Institute Inc, Cary, NC, USA), STATA16 (StataCorp LP, College Station, TX, USA), and R packages HIBAG¹² and TwoSampleMR¹³ (R Foundation for Statistical Computing, Vienna, Austria).

Interaction between Genetically Predicted Smoking Initiation and HLA-DRB1

To perform an independent replication of the *HLA-DRB1* × smoking interaction, we excluded the French study that contributed to identify the interaction between smoking and rs660895 in PD.⁷

We used the random-effects inverse-variance weighted (IVW)⁸ approach to perform MR analyses for genetically predicted smoking initiation in two strata defined by the presence of V11 encoded by *HLA-DRB1* alleles (Supplementary Appendix S1). We compared the two MR estimates using the statistic $(\beta_2 - \beta_1) / \sqrt{(\text{SE}(\beta_2))^2 + \text{SE}(\beta_1)^2}$, where β_1 and β_2 are MR estimates in the two strata with variances $\text{SE}(\beta_1)^2$ and $\text{SE}(\beta_2)^2$; this difference represents the interaction between smoking and *HLA-DRB1* and follows a normal distribution. In sensitivity analyses, we used other MR approaches that are less powerful, but more robust to pleiotropy (weighted median-method and mode-based, MR-PRESSO, MR-Lasso)⁸; we also performed analyses after excluding 31 pleiotropic SNPs associated with alcohol drinking and/or body mass index (Supplementary Appendix S1).

As secondary analyses, we ran MR analyses stratified by rs660895⁷ and *HLA-DRB1**04,³ which are both inversely associated with PD and in linkage disequilibrium with V11. Analyses stratified by rs660895 have the advantage that they did not involve *HLA* imputation and are, therefore, based on a larger number of cases and controls than analyses that required *HLA* imputation.

In Silico Prediction of Binding Affinity

To examine the influence of V11 encoded by *HLA-DRB1* alleles and homocitrullination (HC) of α -synuclein derived peptides on binding affinity, we described binding affinity for the four groups defined by the combination of V11 and HC. All 2 × 2 differences were tested using the Wilcoxon non-parametric test corrected for multiple comparisons.¹⁴ We compared the percentage of binding

peptides in the four groups using multinomial logistic regression.

Data Availability

Results can be reproduced using the Supplementary Appendix S1.

Results

Supplementary Table S3 shows 19 SNPs from the *HLA* region associated with PD after accounting for multiple comparisons, of which 17 were located near *HLA-DRB1* (including rs660895); none of them was associated with smoking initiation ($P > 0.05$). Among 64 alleles of *HLA* class 2 genes (*HLA-DPB1*, *HLA-DQA1*, *HLA-DQB1*, and *HLA-DRB1*), five were significantly and inversely associated with PD (*HLA-DQA1**03:01, *HLA-DQA1**03:03; *HLA-DQB1**03:02; *HLA-DRB1**04:01, and *HLA-DRB1**04:04) (Supplementary Table S4). The odds ratio (OR) for the association of all *HLA-DRB1**04 alleles combined with PD was of 0.84 (95% confidence interval [CI], 0.78–0.91; $P = 3.9 \times 10^{-6}$). Associations between *DRB1* ~ *HLA-DQB1* haplotypes and PD are shown in Supplementary Table S4.

Among 131 AA encoded by *HLA-DRB1* and 116 by *HLA-DQB1*, 11 AA were associated (9 inversely, 2 positively) with PD and were all encoded by *HLA-DRB1* (Supplementary Table S5). Two AA, V11, and S37, remained significantly associated with PD after a backward stepwise selection procedure, with a stronger association for V11 (OR, 0.85; 95% CI, 0.79–0.92; $P = 2.2 \times 10^{-5}$) than S37 (OR, 1.07; 95% CI, 1.00–1.14; $P = 0.040$). The association of H13 and H33 with PD was explained by V11 (Supplementary Table S6). We found no significant interaction between SE and V11 ($P = 0.29$); only V11 remained associated with PD (OR, 0.81; 95% CI, 0.74–0.89; $P < 10^{-3}$) when both were included in the model (Supplementary Table S7).

The overall association between genetically predicted smoking initiation and PD was of 0.86 (95% CI, 0.73–1.05; $P = 0.10$) without evidence of heterogeneity between SNPs ($P = 0.40$). Compared with 26% ($n = 2212$) of the controls, 22% ($n = 2531$) of the cases carried at least one V11 residue. Genetically predicted smoking initiation was inversely associated with PD in the absence of V11 (OR_{IVW}, 0.74; 95%, 0.59–0.93; $P = 0.0092$), but not in its presence (OR_{IVW}, 1.25; 95% CI, 0.83–1.87; $P = 0.29$), with a positive and significant interaction ($P = 0.03$) (Table 1, Fig. 1). There was no significant heterogeneity across SNPs and MR-PRESSO did not detect pleiotropy (all $P > 0.10$). Results of pleiotropy-robust approaches were consistent with the IVW method, although CIs were generally larger. Similar conclusions were reached after

TABLE 1 Mendelian randomization analysis of the relation between genetically predicted smoking initiation (182 SNPs) and PD stratified by HLA-DRB1

HLA-DRB1	0 allele or AA residue			1/2 alleles or AA residues		
	OR per 1-SD increase in the prevalence of ever smoking (95% CI)	P	P-het.	OR per 1-SD increase in the prevalence of ever smoking (95% CI)	P	P-het.
Valine 11 ^b	6383 controls, 8812 cases			2212 controls, 2531 cases		
Inverse variance weighted	0.74 (0.59–0.93)	9.2×10^{-3}	0.73	1.25 (0.83–1.87)	0.29	0.40
Weighted median	0.75 (0.53–1.07)	0.11		1.14 (0.61–2.15)	0.68	0.26
Weighted mode	0.63 (0.30–1.31)	0.22		1.72 (0.38–7.82)	0.48	0.24
MR-Lasso	No invalid SNP ($\lambda = 0.20$)			1.30 (0.87–1.96)	0.20 ^c	0.020
MR-PRESSO			0.59			0.47
rs660895-G ^d	6498 controls, 8903 cases			2982 controls, 3521 cases		
Inverse variance weighted	0.73 (0.59–0.91)	4.8×10^{-3}	0.84	1.33 (0.95–1.87)	0.10	0.41
Weighted median	0.72 (0.52–1.00)	0.05		1.04 (0.62–1.73)	0.89	0.24
Weighted mode	0.68 (0.31–1.48)	0.34		0.99 (0.23–4.26)	0.99	0.66
MR-Lasso	No invalid SNP ($\lambda = 0.19$)			1.25 (0.89–1.75)	0.20 ^e	9.1×10^{-3}
MR-PRESSO			0.83			0.40
HLA-DRB1*04 ^b	6563 controls, 9014 cases			2032 controls, 2329 cases		
Inverse variance weighted	0.73 (0.59–0.92)	6.8×10^{-3}	0.77	1.29 (0.83–2.00)	0.26	0.47
Weighted median	0.70 (0.50–0.97)	0.03		1.16 (0.59–2.29)	0.66	0.18
Weighted mode	0.67 (0.30–1.48)	0.32		1.51 (0.34–6.66)	0.59	0.34
MR-Lasso	No invalid SNP ($\lambda = 0.20$)			1.18 (0.76–1.83)	0.46 ^f	0.06
MR-PRESSO			0.67			0.57

Valine 11 amino acids and HLA-DRB1*04 alleles were determined using imputation of HLA alleles and amino acids based on SNPs from the HLA region.

^aThe interaction OR represents the OR in carriers of 1/2 alleles or AA residues divided by the OR in carriers of 0 allele or AA residue.

^bTotal number: 8595 controls, 11,343 cases.

^cNumber of invalid SNPs = 4; $\lambda = 0.17$.

^dTotal number: 9480 controls, 12,424 cases.

^eNumber of invalid SNPs = 4; $\lambda = 0.19$.

^fNumber of invalid SNPs = 11; $\lambda = 0.19$.

SNPs, single nucleotide polymorphism; PD, Parkinson's disease; OR, odds ratio; CI, confidence interval; AA, amino acid; P-het., P for heterogeneity; λ , tuning parameter for MR-Lasso.

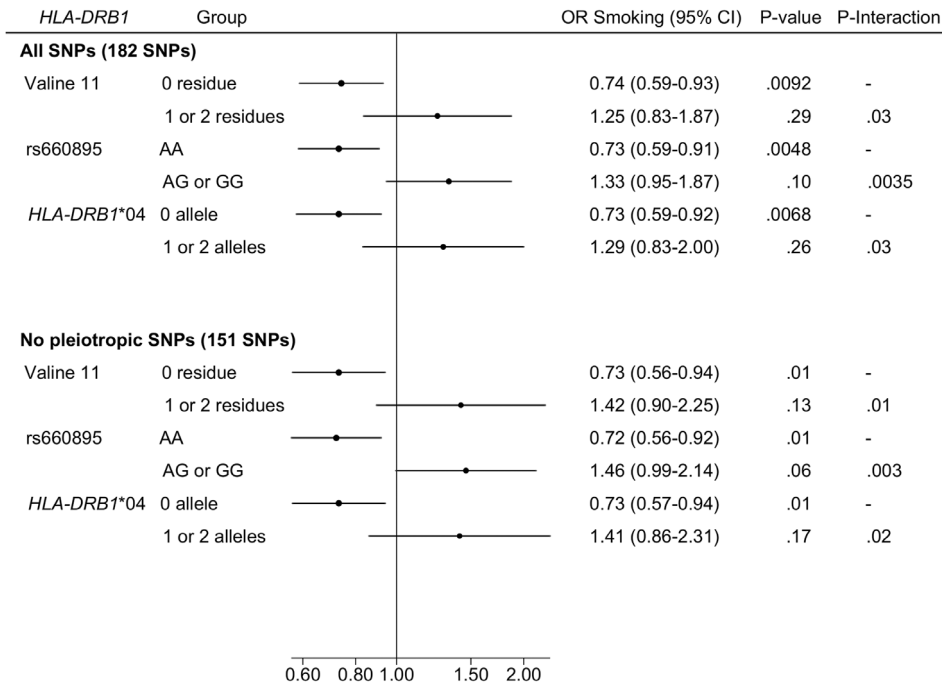


FIG. 1. Forest plot of the association between genetically predicted smoking initiation (inverse variance weighted estimate) and Parkinson's disease stratified by HLA-DRB1.

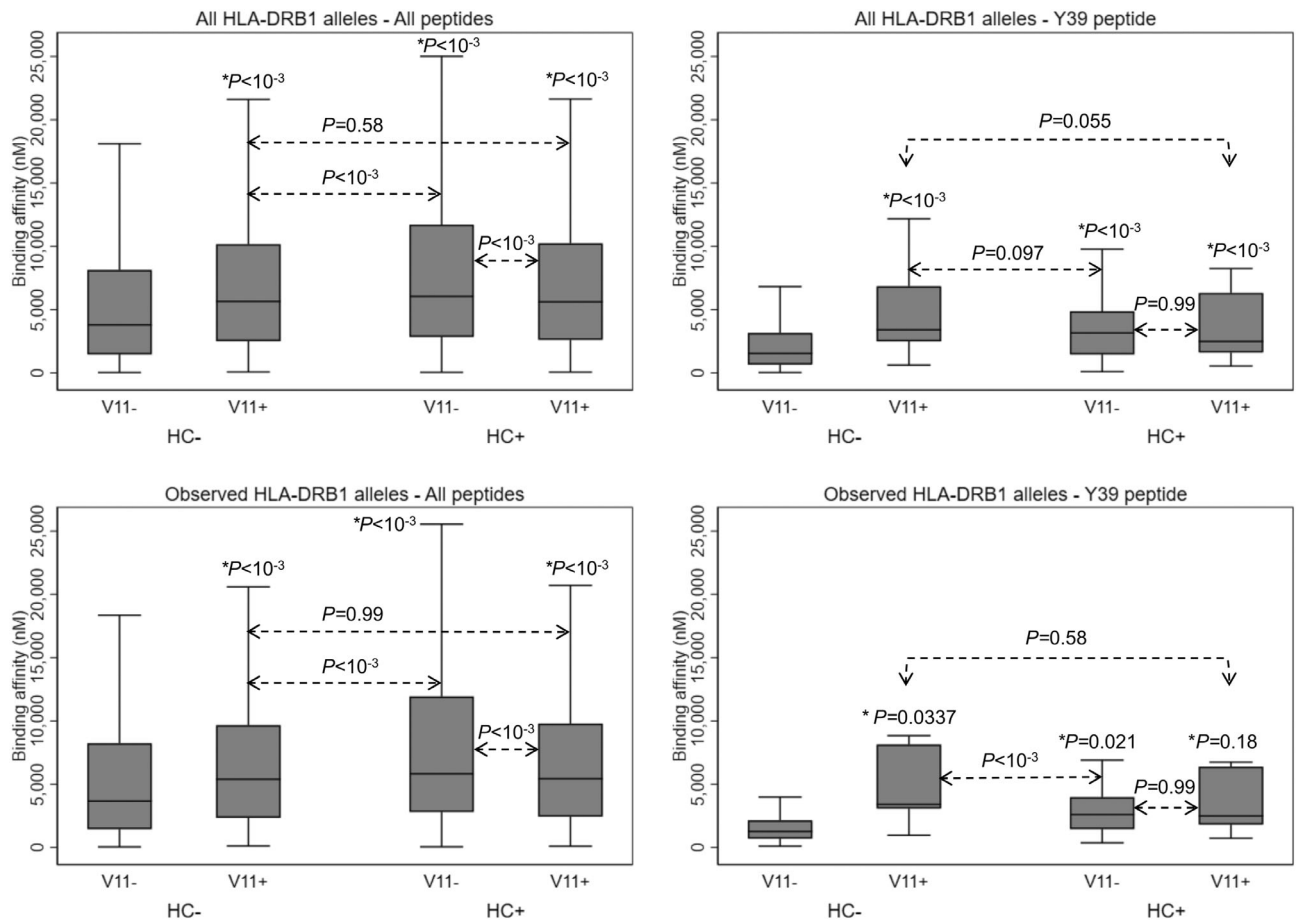


FIG. 2. Prediction of binding affinity (nM) according to the presence of a valine at position 11 (V11) coded by HLA-DRB1 alleles and homocitrullination (HC) of α -synuclein derived peptides. *P values for the comparison versus the reference group (V11-HC-).

excluding 31 pleiotropic SNPs (Fig. 1, Supplementary - Table S8). Results were similar in analyses stratified by rs660895 or *HLA-DRB1**04.

Compared to V11-HC-, V11+HC- and V11-HC+ were both associated with decreased binding affinity, with a stronger effect of HC+ than V11+ (Fig. 2, Supplementary - Table S9). Alternatively, in the presence of HC+, V11+ increased binding affinity (all peptides) or had no effect (Y39); HC+ had no effect on binding affinity in the presence of V11+. Analyses of binding and non-binding peptides paralleled these results (Supplementary Table S10).

Discussion

We replicate an interaction between *HLA-DRB1* and smoking,⁷ according to which the inverse association between smoking and PD is only present in participants without protective *HLA-DRB1* AA/alleles. *In silico* predictions of binding affinity are consistent with an interaction between V11 and post-translational smoking-induced modifications of α -synuclein derived peptides.

Recent MR studies showed an inverse association between genetically predicted smoking and PD.¹⁵⁻¹⁸ These findings are in favor of a causal role of smoking in PD, but the underlying mechanisms remain unknown and gene-environment interactions analyses may contribute to their understanding. The interaction pattern we found is similar to the interaction between self-reported smoking and rs660895 reported by Chuang et al.⁷ Our study represents a fully independent replication using a different approach to define smoking (MR) and SNP-based imputation of *HLA* amino acids that allowed us to examine this interaction at the AA level. Therefore, our findings contradict those from Hollenbach et al¹ who reported an interaction in the opposite direction based on a selected sample of smaller size.

Lower binding affinity for α -synuclein derived peptides is associated with a weaker immune response that may explain decreased PD risk.¹⁹ Our binding affinity analyses are consistent with the interaction pattern we identified. Although V11 and HC both decreased binding affinity for α -synuclein derived peptides in the absence of each other, consistent with the inverse association of V11 and smoking with PD, there was a positive interaction between V11 and HC, whereby both V11 and HC had a weaker or no effect in the presence of each other; this pattern is consistent with the lack of association between smoking and PD in V11 carriers that we found.

We used MR to define genetically predicted smoking initiation, rather than self-reported smoking; MR has the advantage that, provided that a set of assumptions are met, smoking-PD association estimates are less likely to be biased by confounding or reverse causation than association estimates based on self-reported smoking.⁸ Another

strength of our study compared to Chuang et al⁷ is that rather than using a single SNP, we used genome-wide data to impute AA encoded by *HLA-DRB1*. Finally, using an independent dataset, we report similar associations with *HLA* alleles and AA as previous studies.^{2,3} One limitation of our *HLA-DRB1* \times smoking interaction analyses is that the approach we used allowed us to estimate the association between smoking initiation and PD stratified by *HLA-DRB1*, but did not allow us to estimate the association between *HLA-DRB1* and PD stratified by smoking.

Despite being one of the most robust findings in PD, the mechanisms underlying its inverse association with smoking remain unknown. This work represents the first example of large-scale replication of a gene-environment interaction in PD, and allows proposing a biological mechanism to explain the inverse smoking-PD association, in the context of a larger body of work on the relationship between the immune system and PD.¹⁹ ■

Acknowledgments: We thank the GWAS and Sequencing Consortium of Alcohol and Nicotine consortium (GSCAN use) for providing summary statistics for this analysis. Additional Courage-PD investigators are: Sophia N. Pchelina (Saint Petersburg, Russia), Thomas Brücke (Wien, Austria), Marie-Anne Lorient (Paris, France), Claire Mulot (Paris, France), Yves Koudou (Villejuif, France), Alain Destée (Lille, France), Georgia Xiromerisiou (Larissa, Greece), Christos Koros (Athens, Greece), Matina Maniati (Athens, Greece), Maria Bozi (Athens, Greece), Micol Avenali (Pavia, Italy), Margherita Canesi (Milan, Italy), Giorgio Sacilotto (Milan, Italy), Michela Zini (Milan, Italy), Roberto Cilia (Milan, Italy), Francesca Del Sorbo (Milan, Italy), Nicoletta Meucci (Milan, Italy), Rosanna Asselta (Milan, Italy), Radha Procopio (Catanzaro, Italy), Clara Hellberg (Lund, Sweden), Manabu Funayama (Tokyo, Japan), Aya Ikeda (Tokyo, Japan), Takashi Matsushima (Tokyo, Japan), Yuanzhe Li (Tokyo, Japan), Hiroyo Yoshino (Tokyo, Japan), Zied Landoulsi (Luxembourg, Luxembourg), Rubén Fernández-Santiago (Barcelona, Spain), Nicholas Wood (London, UK), Huw R. Morris (London, United Kingdom).

Data Availability Statement

Results can be reproduced using the Supplementary material

References

- Hollenbach JA, Norman PJ, Creary LE, et al. A specific amino acid motif of HLA-DRB1 mediates risk and interacts with smoking history in Parkinson's disease. *Proc Natl Acad Sci U S A* 2019;116:7419-7424.
- Naito T, Satake W, Ogawa K, et al. Trans-ethnic fine-mapping of the major histocompatibility complex region linked to Parkinson's disease. *Mov Disord* 2021;36:1805-1814.
- Yu E, Ambati A, Andersen MS, et al. Fine mapping of the HLA locus in Parkinson's disease in Europeans. *NPJ Parkinsons Dis* 2021;7:84
- Hedström AK, Hillert J, Brenner N, et al. DRB1-environment interactions in multiple sclerosis etiology: results from two Swedish case-control studies. *J Neurol Neurosurg Psychiatry* 2021;92:717-722.
- Karlson EW, Chang SC, Cui J, et al. Gene-environment interaction between HLA-DRB1 shared epitope and heavy cigarette smoking in predicting incident rheumatoid arthritis. *Ann Rheum Dis* 2010;69:54-60.
- Baecklund F, Foo JN, Askling J, et al. Possible interaction between cigarette smoking and HLA-DRB1 variation in the risk of follicular lymphoma. *Am J Epidemiol* 2017;185:681-687.

7. Chuang YH, Lee PC, Vlaar T, et al. Pooled analysis of the HLA-DRB1 by smoking interaction in Parkinson disease. *Ann Neurol* 2017;82:655–664.
8. Burgess S, Davey Smith G, Davies NM, et al. Guidelines for performing Mendelian randomization investigations. *Wellcome Open Res* 2019;4:186
9. Liu M, Jiang Y, Wedow R, et al. Association studies of up to 1.2 million individuals yield new insights into the genetic etiology of tobacco and alcohol use. *Nat Genet* 2019;51:237–244.
10. Reynisson B, Barra C, Kaabinejadian S, et al. Improved prediction of MHC II antigen presentation through integration and motif deconvolution of mass spectrometry MHC eluted ligand data. *J Proteome Res* 2020;19:2304–2315.
11. Sulzer D, Alcalay RN, Garretti F, et al. T cells from patients with Parkinson's disease recognize α -synuclein peptides. *Nature* 2017; 546:656–661.
12. Zheng X, Shen J, Cox C, et al. HIBAG—HLA genotype imputation with attribute bagging. *Pharmacogenomics J* 2014;14:192–200.
13. Hemani G, Zheng J, Elsworth B, et al. The MR-base platform supports systematic causal inference across the human phenome. *Elife* 2018;7:e34408
14. Douglas CE, Michael FA. On distribution-free multiple comparisons in the one-way analysis of variance. *Commun Stat - Theory Methods* 1991;20:127–139.
15. Grover S, Lill CM, Kasten M, et al. Risky behaviors and Parkinson disease: a mendelian randomization study. *Neurology* 2019;93: e1412–e1424.
16. Heilbron K, Jensen MP, Bandres-Ciga S, et al. Unhealthy behaviours and risk of Parkinson's disease: a Mendelian randomisation study. *J Parkinsons Dis* 2021;11:1981–1993.
17. Dominguez-Baleon C, Ong JS, Scherzer CR, et al. Understanding the effect of smoking and drinking behavior on Parkinson's disease risk: a Mendelian randomization study. *Sci Rep* 2021;11:13980
18. Domenighetti C, Sugier PE, Sreelatha AAK, et al. Mendelian randomisation study of smoking, alcohol, and coffee drinking in relation to Parkinson's disease. *J Parkinsons Dis* 2022;12:267–282.
19. Tan EK, Chao YX, West A, et al. Parkinson disease and the immune system - associations, mechanisms and therapeutics. *Nat Rev Neurol* 2020;16:303–318.

Supporting Data

Additional Supporting Information may be found in the online version of this article at the publisher's web-site.

SGML and CITI Use Only
DO NOT PRINT

Author Roles

(1) Research project: A. Conception, B. Organization, C. Execution; (2) Statistical Analysis: A. Design, B. Execution, C. Review and Critique; (3) Manuscript: A. Writing of the FIRST DRAFT, B. Review and Critique.

C.D.: 1A, 1B, 1C, 2A, 2B, 2C, 3A, 3B

V.D.: 1A, 1B, 1C, 2A, 2C, 3B

P.E.S.: 1A, 1B, 1C, 2A, 2C, 3B

A.A.K.S.: 1B, 1C, 2C, 3B

C.S.: 1B, 1C, 2C, 3B

S.G.: 1B, 1C, 2C, 3B

P.M.: 1B, 1C, 2C, 3B

D.R.B.: 1B, 1C, 2C, 3B

M.R.B.: 1A, 1B, 1C, 2C, 3B

P.L.: 1A, 1B, 1C, 2C, 3B

A.B.S.: 1B, 1C, 2C, 3B

D.G.H.: 1B, 1C, 2C, 3B

C.E.: 1B, 1C, 2C, 3B

P.A.G.: 1B, 1C, 2C, 3B

G.D.M.: 1B, 1C, 2C, 3B

A.Z.: 1B, 1C, 2C, 3B

W.P.: 1B, 1C, 2C, 3B

E.R.: 1B, 1C, 2C, 3B

A.E.L.: 1B, 1C, 2C, 3B

S.K.: 1B, 1C, 2C, 3B

P.T.: 1B, 1C, 2C, 3B

S.L.: 1B, 1C, 2C, 3B

A.B.: 1B, 1C, 2C, 3B

J.C.C.: 1B, 1C, 2C, 3B

M.C.C.H.: 1B, 1C, 2C, 3B

E.M.: 1B, 1C, 2C, 3B

K.B.: 1B, 1C, 2C, 3B

A.B.D.: 1B, 1C, 2C, 3B

G.M.H.: 1B, 1C, 2C, 3B

E.D.: 1B, 1C, 2C, 3B

L.S.: 1B, 1C, 2C, 3B

A.M.S.: 1B, 1C, 2C, 3B

E.M.V.: 1B, 1C, 2C, 3B

S.P.: 1B, 1C, 2C, 3B

S.D.: 1B, 1C, 2C, 3B

L.S.: 1B, 1C, 2C, 3B

A.Z.: 1B, 1C, 2C, 3B

G.P.: 1B, 1C, 2C, 3B

L.B.: 1B, 1C, 2C, 3B

C.F.: 1B, 1C, 2C, 3B

G.A.: 1B, 1C, 2C, 3B

A.Q.: 1B, 1C, 2C, 3B

M.G.: 1B, 1C, 2C, 3B

H.M.: 1B, 1C, 2C, 3B

Y.K.: 1B, 1C, 2C, 3B

N.H.: 1B, 1C, 2C, 3B

K.N.: 1B, 1C, 2C, 3B
S.J.C.: 1B, 1C, 2C, 3B
Y.J.K.: 1B, 1C, 2C, 3B
P.K.: 1B, 1C, 2C, 3B
B.P.C.v.d.W.: 1B, 1C, 2C, 3B
B.R.B.: 1B, 1C, 2C, 3B
J.A.: 1B, 1C, 2C, 3B
M.T.: 1B, 1C, 2C, 3B
L.P.: 1B, 1C, 2C, 3B
L.C.G.: 1B, 1C, 2C, 3B
J.J.F.: 1B, 1C, 2C, 3B
S.B.: 1B, 1C, 2C, 3B
J.C.: 1B, 1C, 2C, 3B
E.T.: 1B, 1C, 2C, 3B
M.E.: 1B, 1C, 2C, 3B
P.P.: 1B, 1C, 2C, 3B
M.D.F.: 1B, 1C, 2C, 3B
K.W.: 1B, 1C, 2C, 3B
N.L.P.: 1B, 1C, 2C, 3B
C.R.: 1B, 1C, 2C, 3B
A.C.B.: 1B, 1C, 2C, 3B
A.P.: 1B, 1C, 2C, 3B
E.Y.R.: 1B, 1C, 2C, 3B
C.E.C.: 1B, 1C, 2C, 3B
K.E.M.: 1B, 1C, 2C, 3B
M.T.: 1B, 1C, 2C, 3B
D.K.: 1B, 1C, 2C, 3B
L.F.B.: 1B, 1C, 2C, 3B
M.J.F.: 1B, 1C, 2C, 3B
R.K.: 1A, 1B, 1C, 2C, 3B
T.G.: 1A, 1B, 1C, 2C, 3B
M.S.: 1A, 1B, 1C, 2C, 3B
N.V.: 1A, 1B, 1C, 2A, 2C, 3B
A.E.: 1A, 1B, 1C, 2A, 2B, 2C, 3A, 3B